

COGCC – CPW MAP UPDATE

New Rules and Amendments to Current Rules of
the Colorado Oil and Gas Conservation
Commission, 2 CCR 404-1



CPW ROUTINELY UPDATES MAPS

- Continuous (nest sites)
- Annual (lek sites)
- Every ~4 Years (species activity maps)



INFORMATION USED TO UPDATE MAPS

- Leks, Nests (Direct observation)
- Animal locations (Direct observation, radio-telemetry)
- Species activity/distribution maps (Combination of ground/aerial observation and expert knowledge from local field staff)



RESTRICTED SURFACE OCCUPANCY (RSO) VS. SENSITIVE WILDLIFE HABITAT (SWH)

- Separate RSO and SWH definitions for each wildlife species – detailed definitions provided
- RSO – restricted in scope; avoid/minimize development activity
- SWH – broader in scope; wildlife considered when planning development

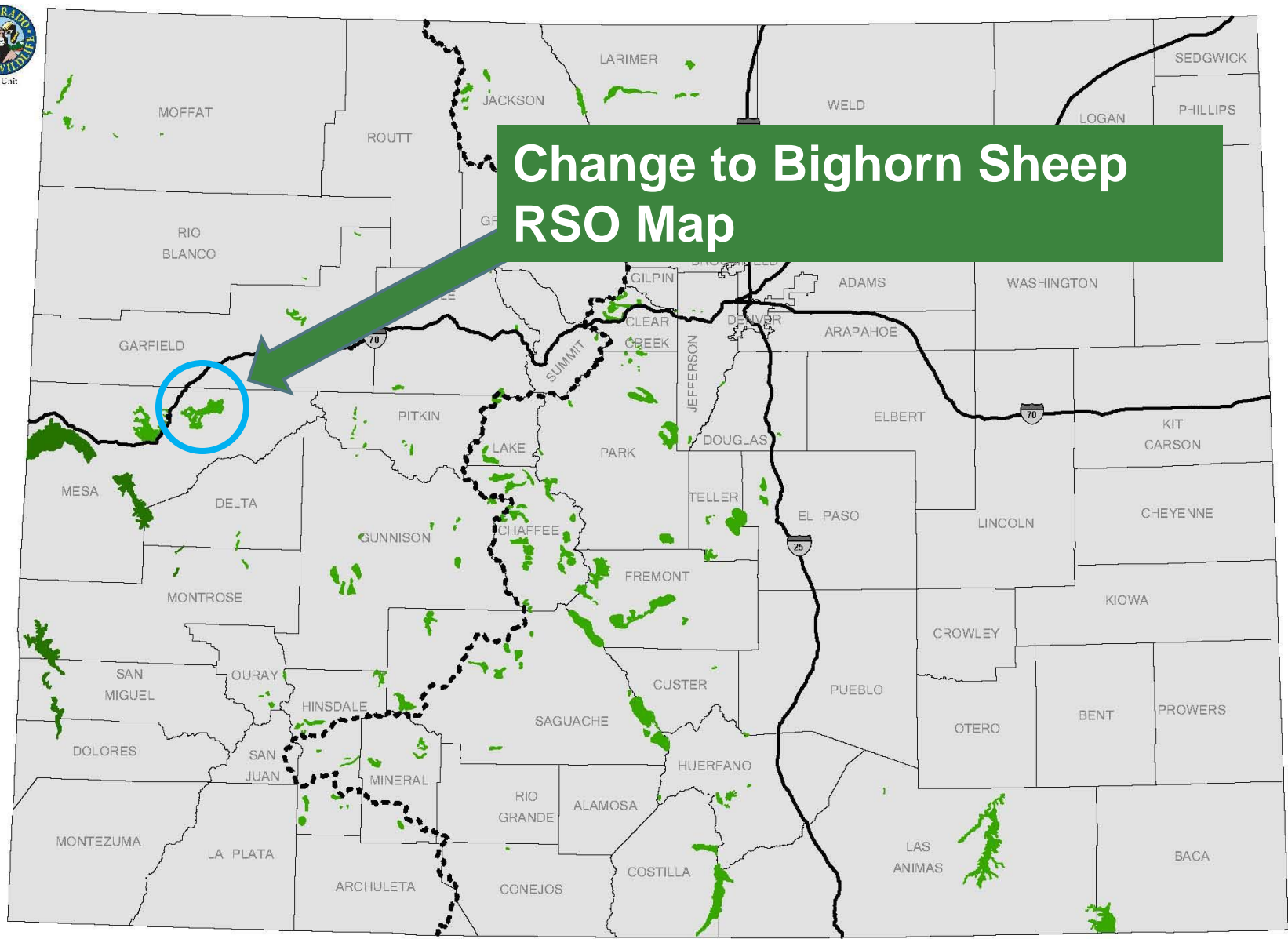




SUMMARY OF RSO MAP CHANGES

- Active Nest Sites
 - Significant reductions in Ferruginous Hawk, Golden Eagle, Northern Goshawk, Peregrine, and Prairie Falcon nests
 - Significant increases in Bald Eagle and Osprey nests
- Active Lek Sites
 - Reductions in sage-grouse and lesser prairie-chicken lek sites
 - Increases in sharp-tailed grouse lek sites
- Reduction in cutthroat trout designated habitat
- Significant increase in bighorn sheep production areas
- 2% Net Change in total RSO habitat



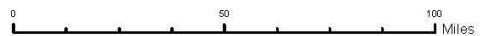
Change to Bighorn Sheep RSO Map



-  Rocky Mountain Bighorn Sheep Production Areas
-  Desert Bighorn Sheep Production Areas

DRAFT
September, 2013
PROPOSED

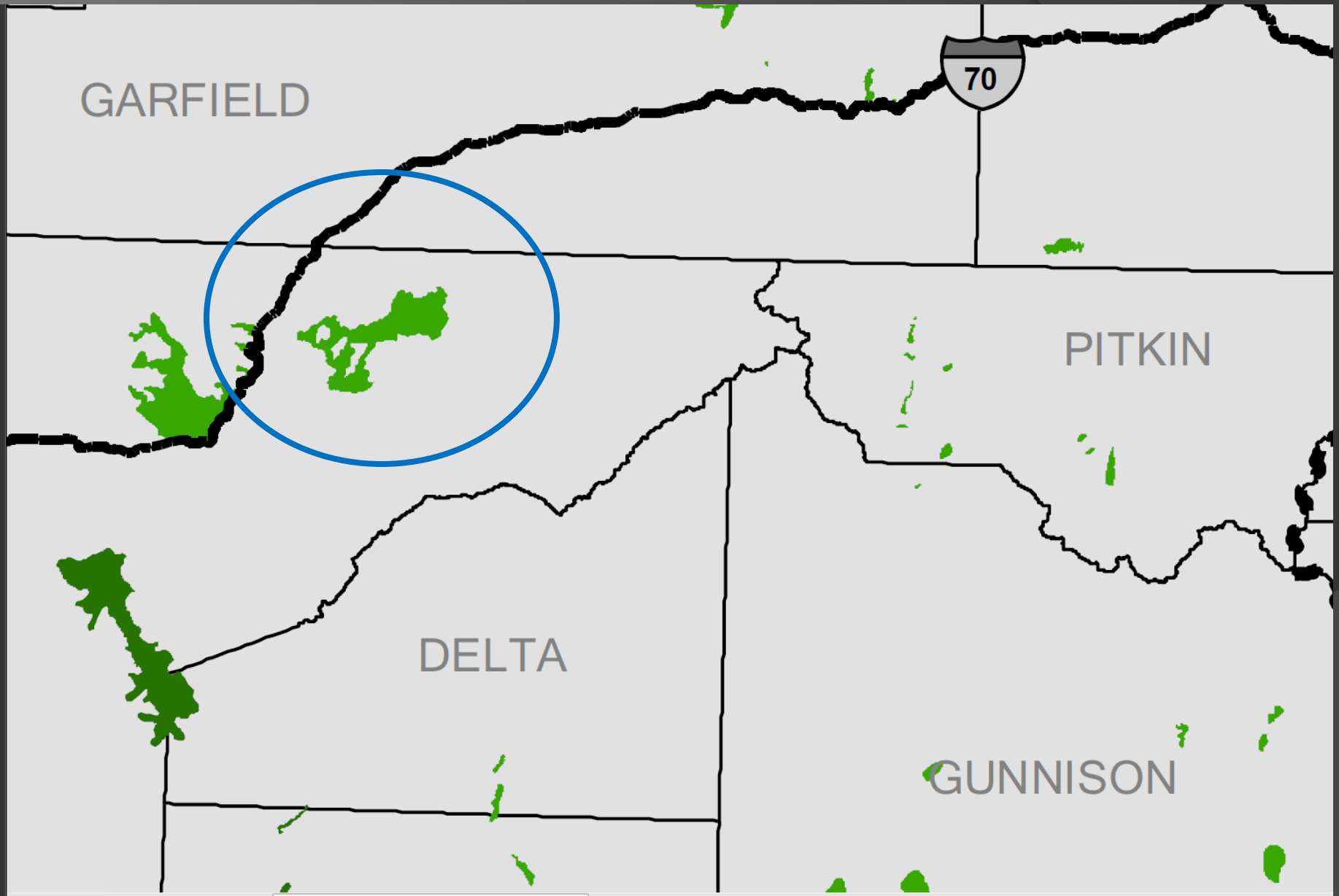
Restricted Surface Occupancy Bighorn Sheep Production Areas



This product is produced and distributed by:
Colorado Parks and Wildlife, GIS Unit
 317 W. Prospect Avenue
 Fort Collins, CO 80526

Information depicted hereon is for reference purposes only and is compiled from best available sources. Reasonable efforts have been made to ensure the accuracy of this map. Colorado Parks and Wildlife expressly disclaims responsibility for damages or liability that may arise from the use of this map.

BIGHORN SHEEP RSO CHANGE



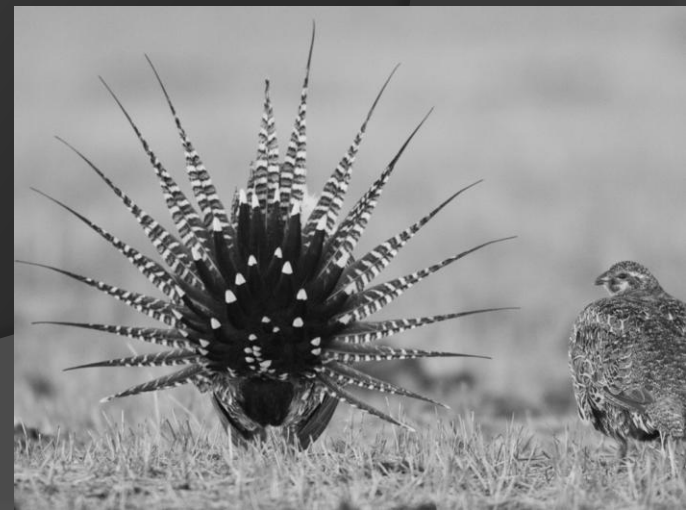
GREATER SAGE-GROUSE SWH MAP

- Delay consideration of greater sage-grouse SWH map
- In process of refining SWH for the Parachute-Piceance-Roan (PPR) population of greater sage-grouse using recent research data
- Update expected within ~5-6 months



NOTEWORTHY SWH MAP CHANGES

- Gunnison sage-grouse
 - Existing SWH map does not adequately identify habitat or account for disturbance – especially in satellite populations
 - Change to 4 mile buffers on active leks
 - 64% increase
- Lesser prairie-chicken
 - Propose to use Focal Areas as SWH based on 5-state rangewide plan
 - 86% increase



NOTEWORTHY SWH MAP CHANGES

- Reduction in Golden eagle nest sites (-82%)
- Reduction in mule deer critical winter range (-7%)
- 10% Net Change in total SWH habitat



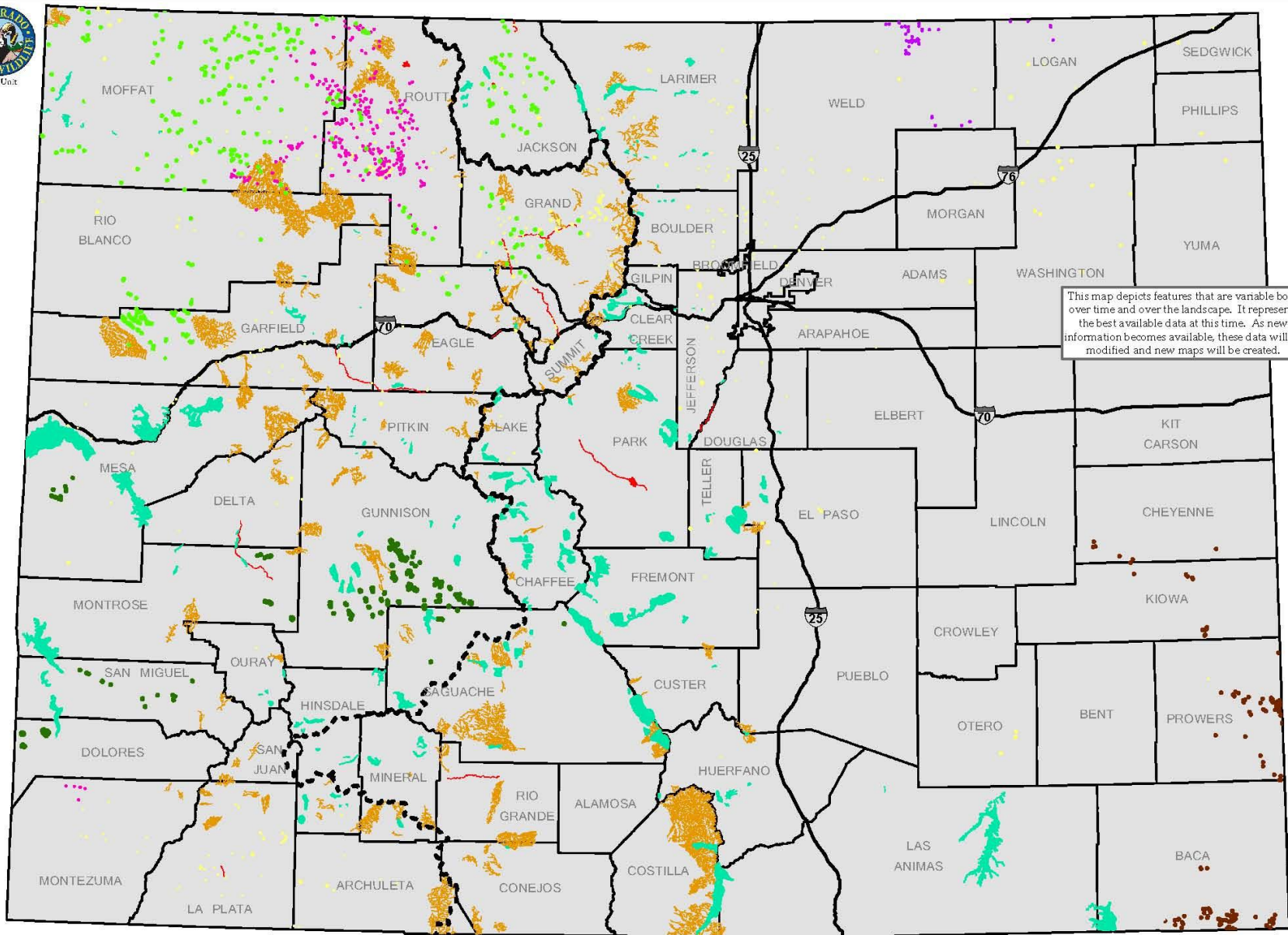
SWH DEFINITION CHANGES

- Gunnison sage-grouse (4-mile active lek buffers) and lesser-prairie chicken (focal areas) as described previously
- Correction to mule deer definition (original definition adopted in 2008 did not align with the approved map)
 - Includes winter concentration areas, and severe winter range **in units with >7 deer per square kilometer**







GIS Unit





This map depicts features that are variable both over time and over the landscape. It represents the best available data at this time. As new information becomes available, these data will be modified and new maps will be created.


 Gold Medal Streams (300 ft buffer)


 Raptor Active Nest Sites (Bald and Golden Eagles, Ferruginous Hawk, Osprey, N. Goshawk, Peregrine and Prairie Falcons)


**Restricted Surface Occupancy
All Activities**


 Lesser Prairie Chicken Leaks


 Plains Sharp-Tailed Grouse Leaks

 Designated Cutthroat Trout Habitat (300ft buffer)

 Bighorn Sheep Production Areas

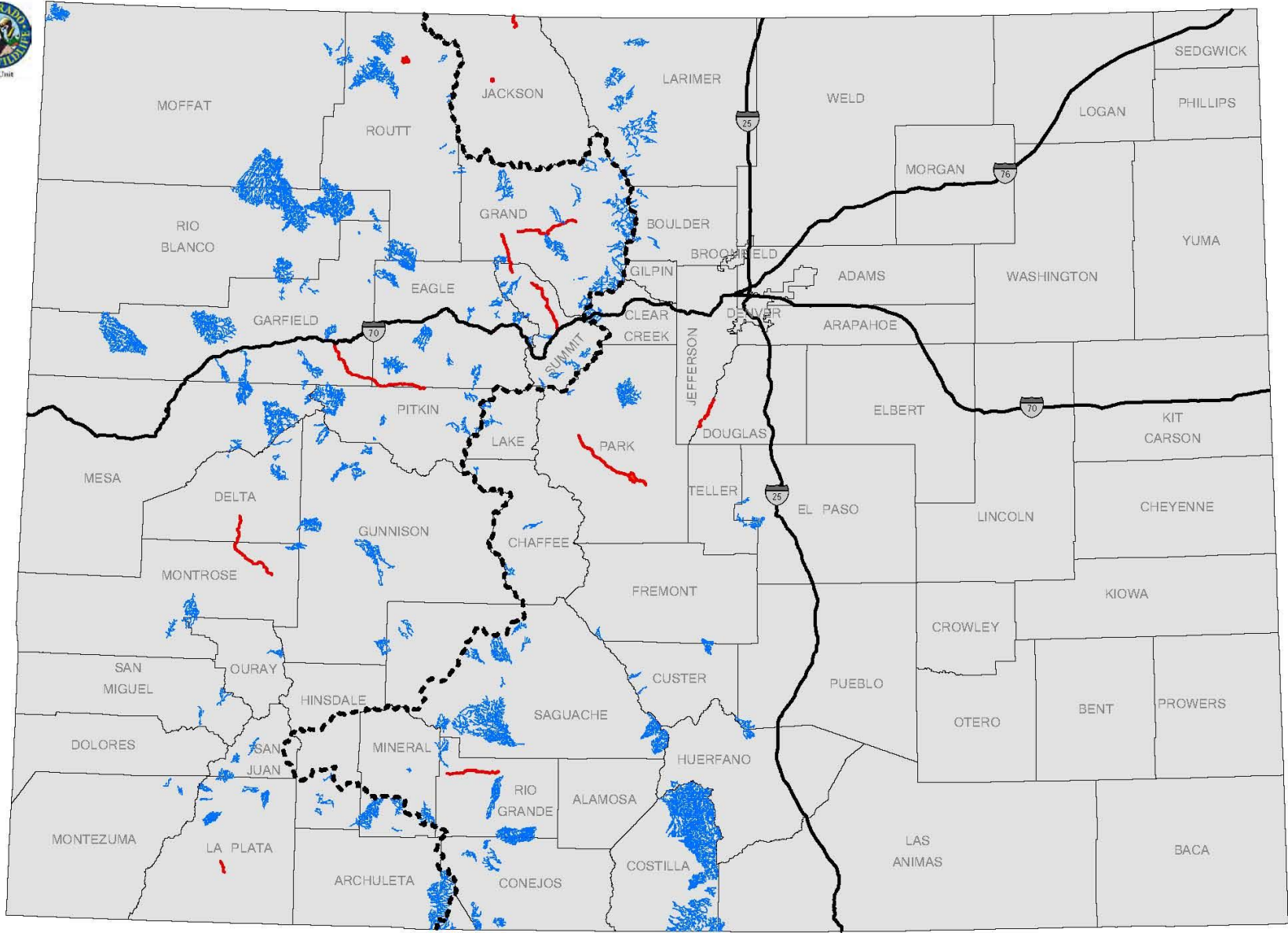
 Greater Sage Grouse Leaks



 Columbian Sharp-Tailed Grouse Leaks

 Gunnison's Sage Grouse Leaks



DRAFT September, 2013 PROPOSED

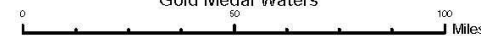


-  Designated Cutthroat Trout Habitat (300 ft buffer)
-  Gold Medal Waters (300 ft buffer)

DRAFT
June, 2013
PROPOSED

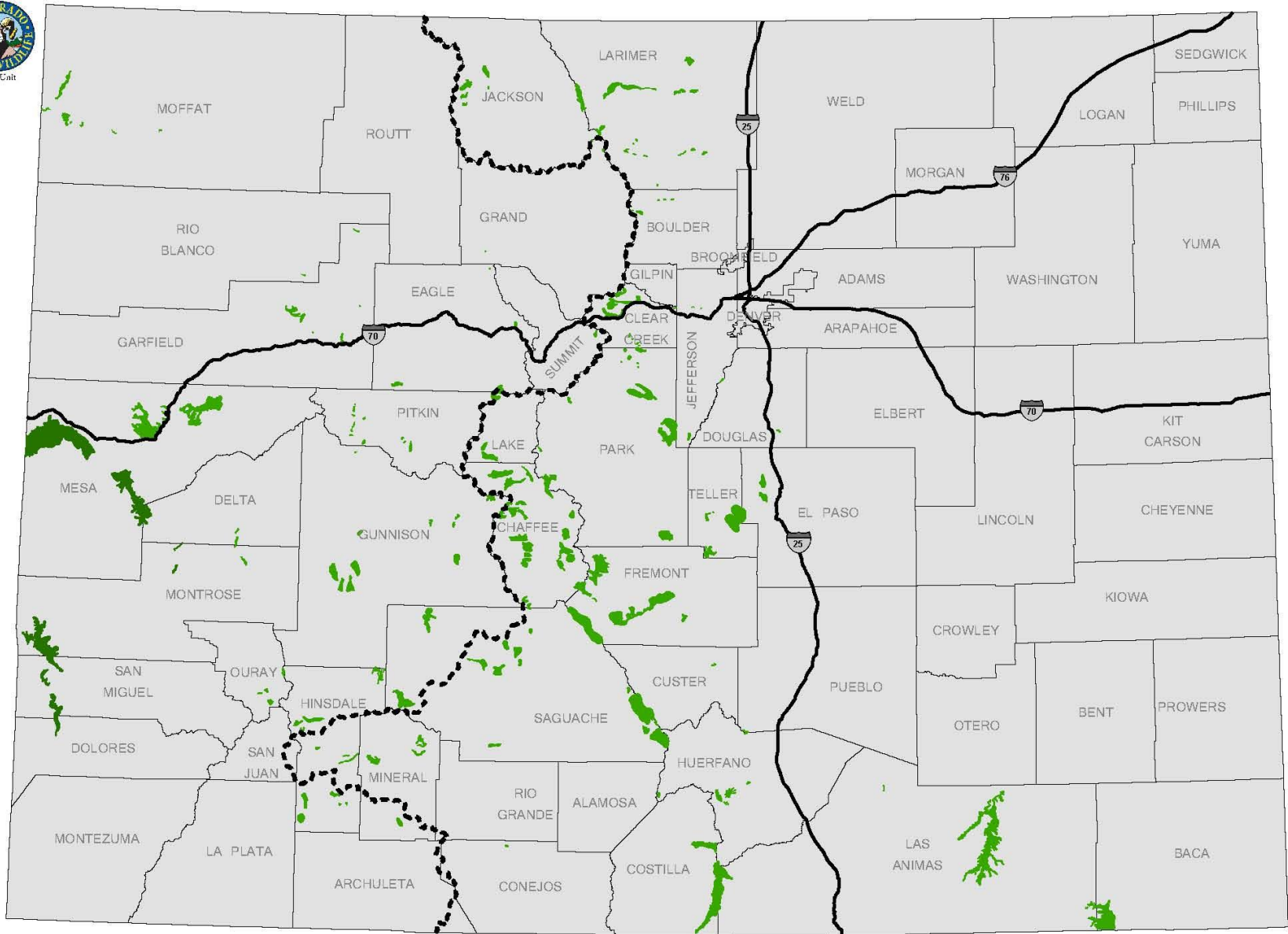
Restricted Surface Occupancy



Designated Cutthroat Trout and Gold Medal Waters



This product is produced and distributed by:
Colorado Parks and Wildlife, GIS Unit
 317 W. Prospect Avenue
 Fort Collins, CO 80526

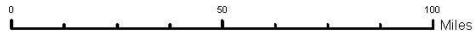
Information depicted hereon is for reference purposes only and is compiled from best available sources. Reasonable efforts have been made to ensure the accuracy of this map. Colorado Parks and Wildlife expressly disclaims responsibility for damages or liability that may arise from the use of this map.



-  Rocky Mountain Bighorn Sheep Production Areas
-  Desert Bighorn Sheep Production Areas

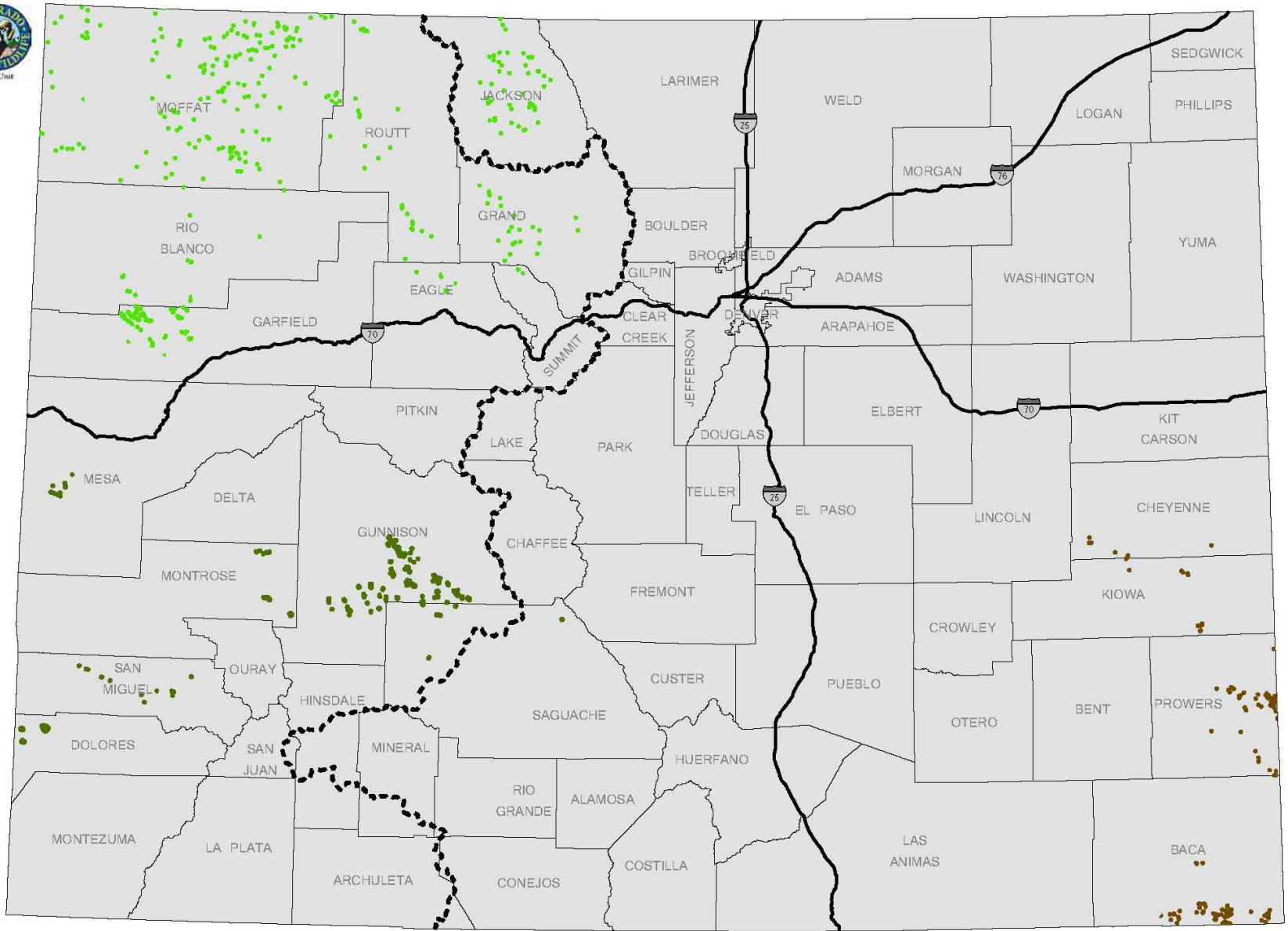
DRAFT
September, 2013
PROPOSED




Restricted Surface Occupancy Bighorn Sheep Production Areas



This product is produced and distributed by:
Colorado Parks and Wildlife, GIS Unit
 317 W. Prospect Avenue
 Fort Collins, CO 80526

Information depicted hereon is for reference purposes only and is compiled from best available sources. Reasonable efforts have been made to ensure the accuracy of this map. Colorado Parks and Wildlife expressly disclaims responsibility for damages or liability that may arise from the use of this map.

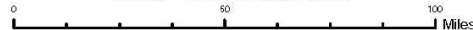


-  Lesser Prairie Chicken Leks
-  Greater Sage Grouse Leks
-  Gunnison's Sage Grouse Leks

DRAFT
June, 2013
PROPOSED

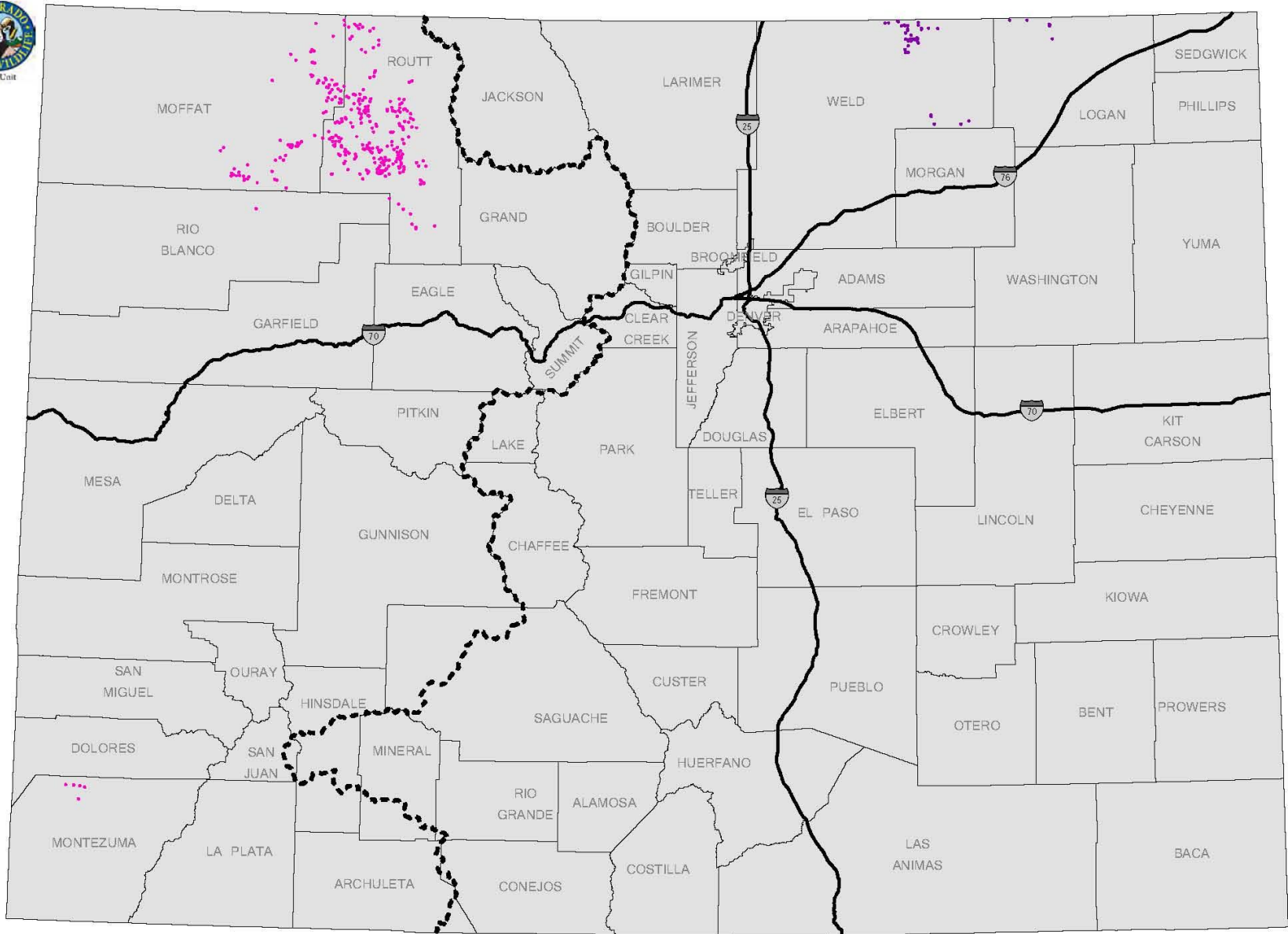
Restricted Surface Occupancy

Greater Sage-Grouse, Gunnison's Sage-Grouse,
 Lesser Prairie-Chicken Leks



This product is produced and distributed by:
 Colorado Parks and Wildlife, GIS Unit
 317 W. Prospect Avenue
 Fort Collins, CO 80526

Information depicted hereon is for reference purposes only and is compiled from best available sources. Reasonable efforts have been made to ensure the accuracy of this map. Colorado Parks and Wildlife expressly disclaims responsibility for damages or liability that may arise from the use of this map.

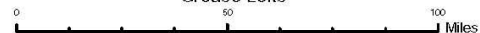


- Columbian Sharp-Tailed Grouse Leks
- Plains Sharp-Tailed Grouse Leks

DRAFT
June, 2013
PROPOSED

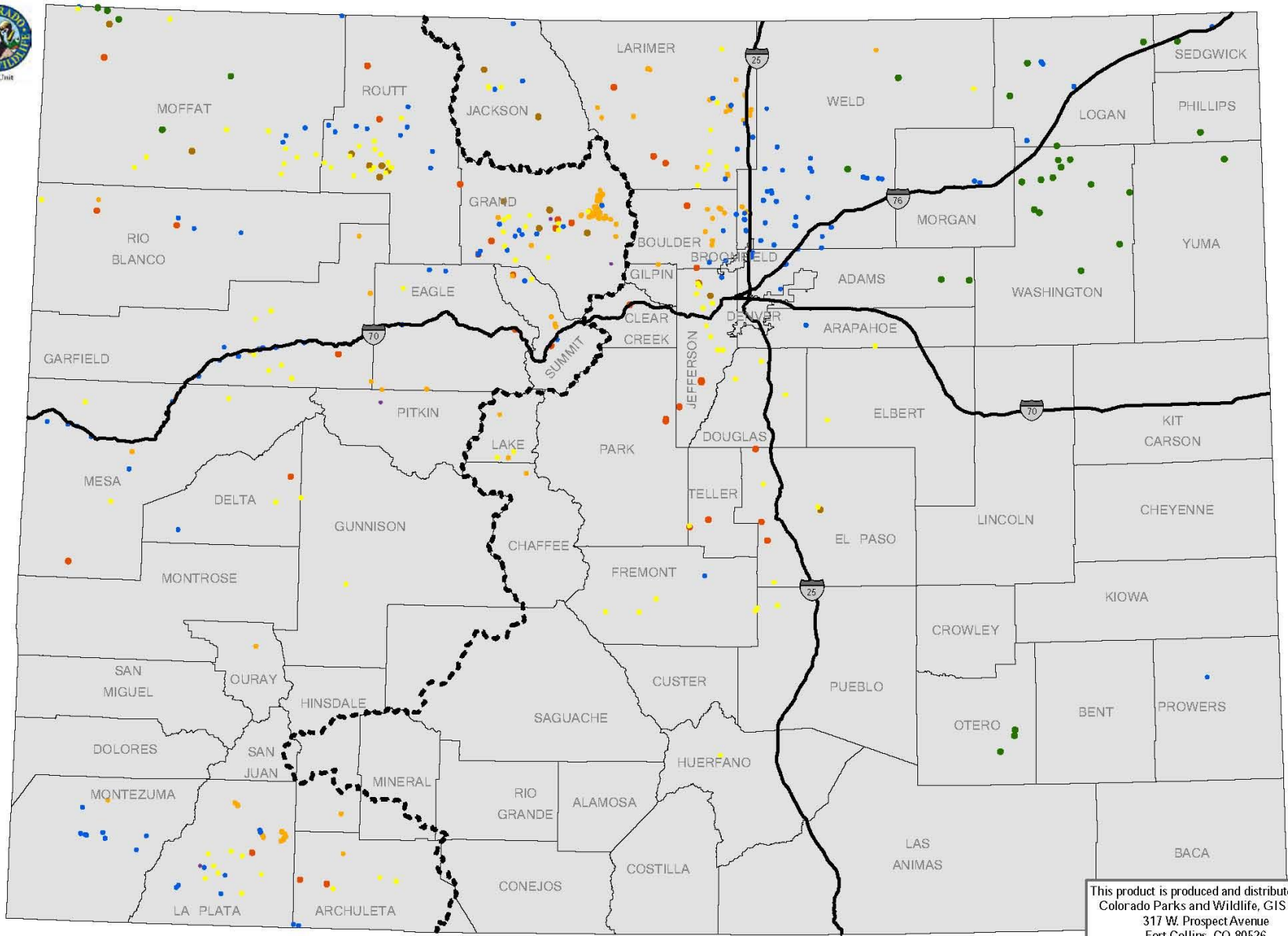
Restricted Surface Occupancy

Columbian and Plains Sharp-Tailed Grouse Leks



This product is produced and distributed by:
 Colorado Parks and Wildlife, GIS Unit
 317 W. Prospect Avenue
 Fort Collins, CO 80526

Information depicted hereon is for reference purposes only and is compiled from best available sources. Reasonable efforts have been made to ensure the accuracy of this map. Colorado Parks and Wildlife expressly disclaims responsibility for damages or liability that may arise from the use of this map.



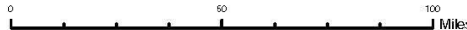
This product is produced and distributed by:
 Colorado Parks and Wildlife, GIS Unit
 317 W. Prospect Avenue
 Fort Collins, CO 80526

- Golden Eagle Active Nests
- Bald Eagle Active Nests
- Prairie Falcon Active Nests
- Osprey Active Nests
- Peregrine Falcon Active Nests
- Ferruginous Hawk Nest Sites
- Northern Goshawk Active Nests

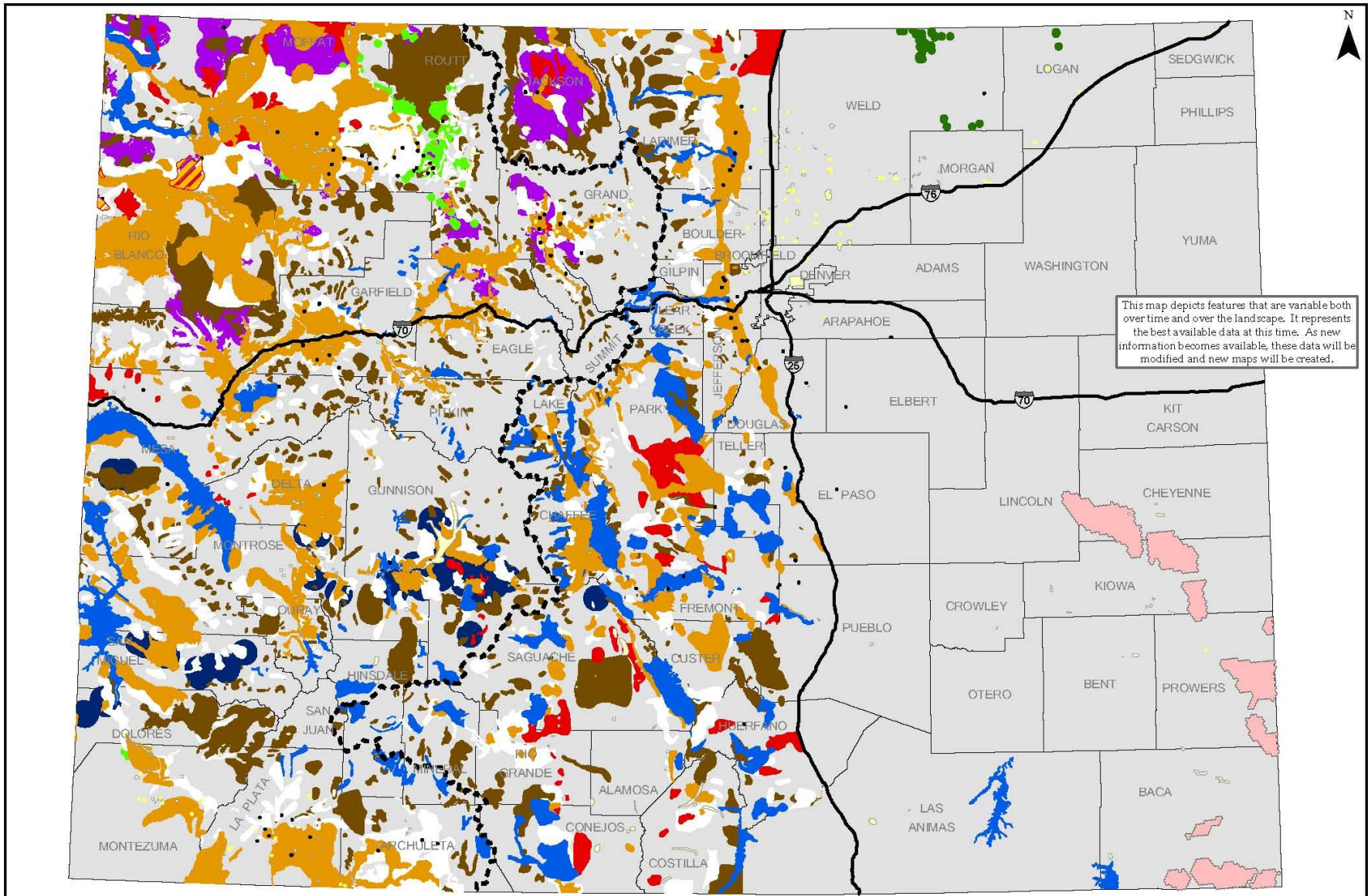
DRAFT
June, 2013
PROPOSED

Restricted Surface Occupancy

Raptor Active Nest Sites

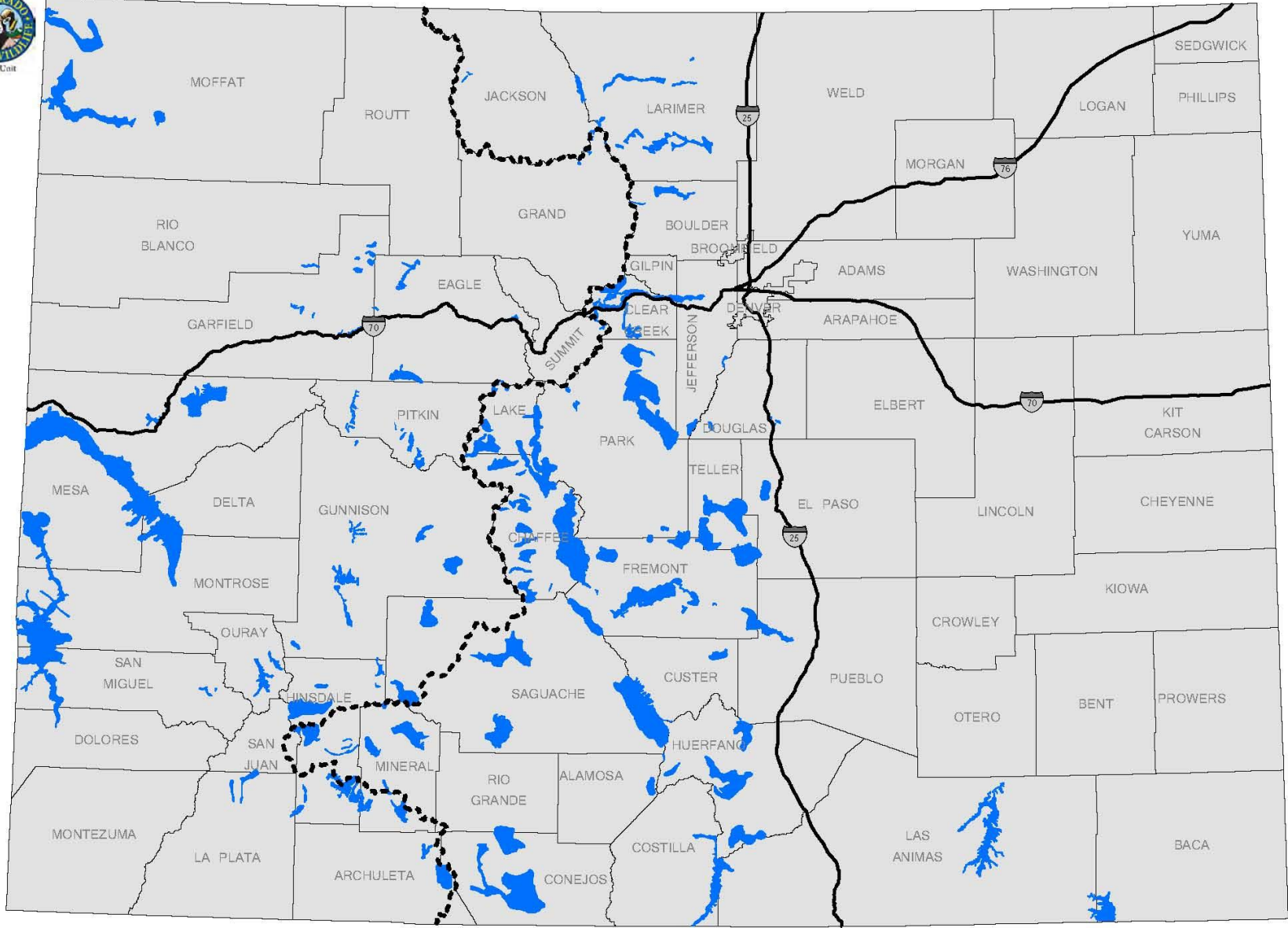



Information depicted hereon is for reference purposes only and is compiled from best available sources. Reasonable efforts have been made to ensure the accuracy of this map. Colorado Parks and Wildlife expressly disclaims responsibility for damages or liability that may arise from the use of this map.



This map depicts features that are variable both over time and over the landscape. It represents the best available data at this time. As new information becomes available, these data will be modified and new maps will be created.

		Sensitive Wildlife Habitat All Activities DRAFT <i>June, 2013</i> PROPOSED 		



 Bighorn Sheep Winter Range

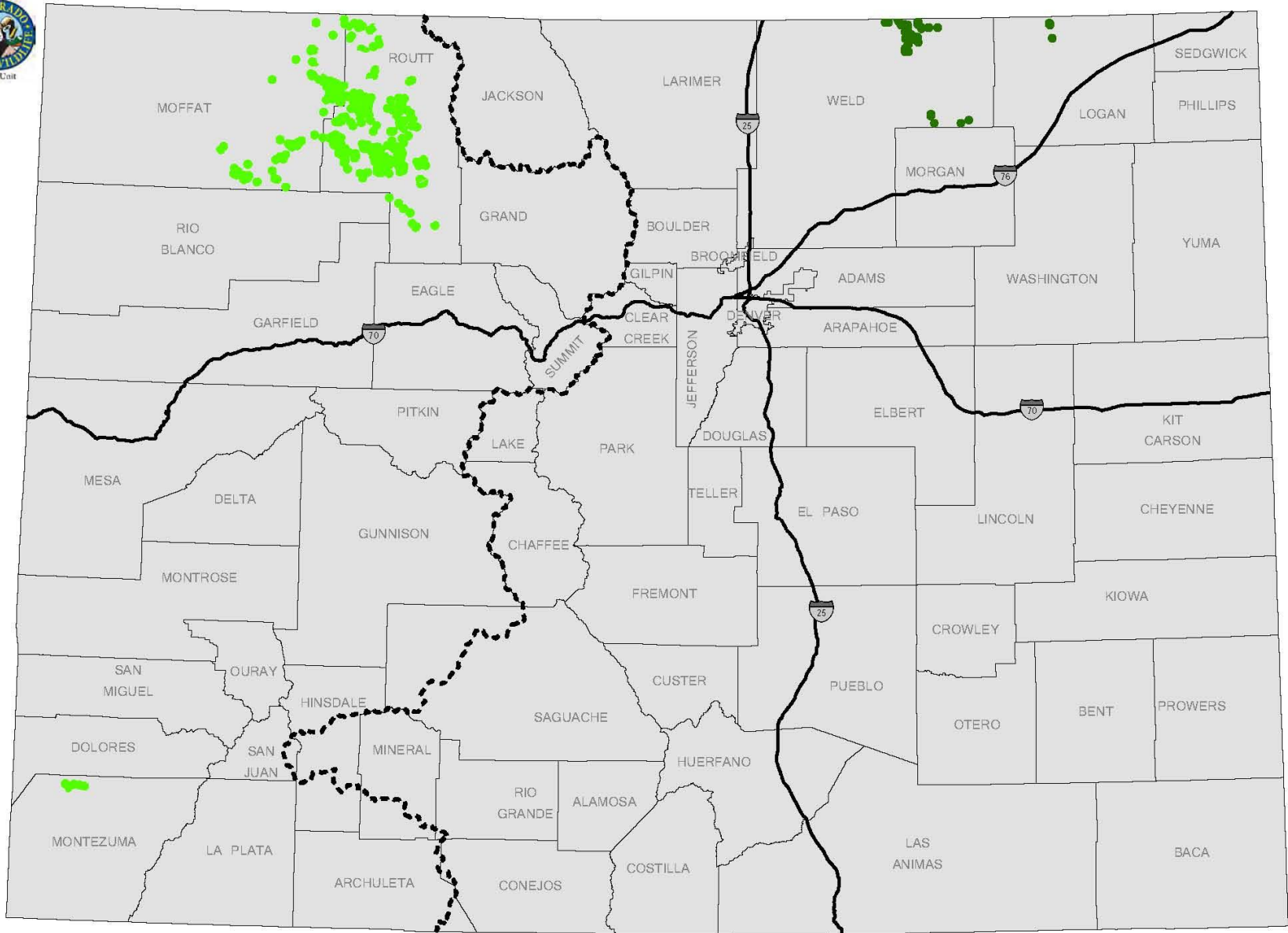
DRAFT
June, 2013
PROPOSED



Sensitive Wildlife Habitat
 Bighorn Sheep Winter Range



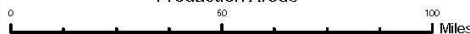
This product is produced and distributed by:
Colorado Parks and Wildlife, GIS Unit
 317 W. Prospect Avenue
 Fort Collins, CO 80526

Information depicted hereon is for reference purposes only and is compiled from best available sources. Reasonable efforts have been made to ensure the accuracy of this map. Colorado Parks and Wildlife expressly disclaims responsibility for damages or liability that may arise from the use of this map.



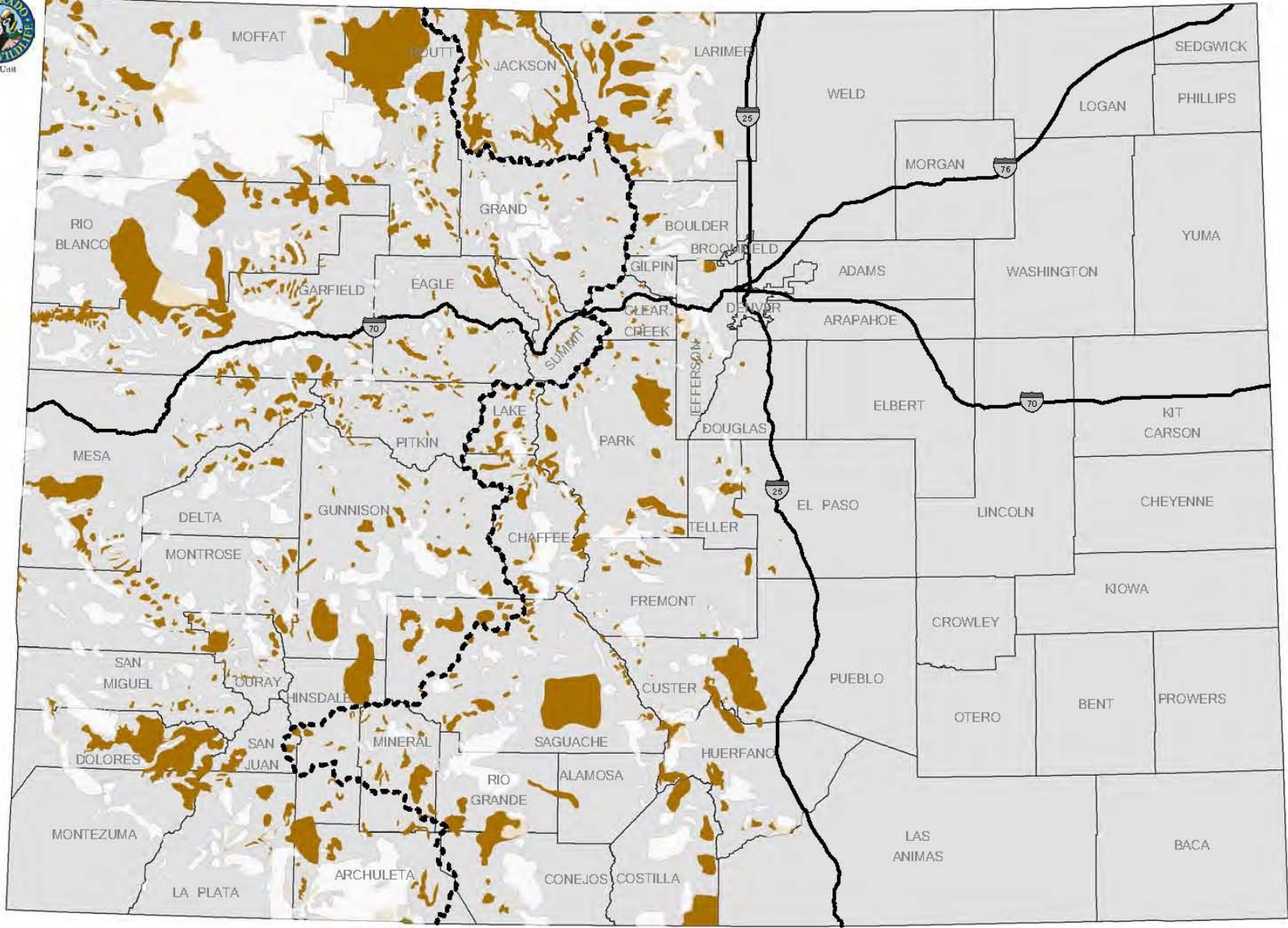
-  Columbian Sharp-Tailed Grouse Production Areas
 -  Plains Sharp-Tailed Grouse Production Areas
- DRAFT**
June, 2013
PROPOSED

Sensitive Wildlife Habitat
Columbian and Plains Sharp-Tailed Grouse
Production Areas



This product is produced and distributed by:
Colorado Parks and Wildlife, GIS Unit
317 W. Prospect Avenue
Fort Collins, CO 80526

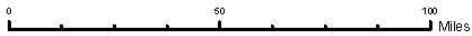
Information depicted hereon is for reference purposes only and is compiled from best available sources. Reasonable efforts have been made to ensure the accuracy of this map. Colorado Parks and Wildlife expressly disclaims responsibility for damages or liability that may arise from the use of this map.



- Elk Winter Concentration Areas
- Elk Production Areas
- Elk Production/Winter Concentration Areas

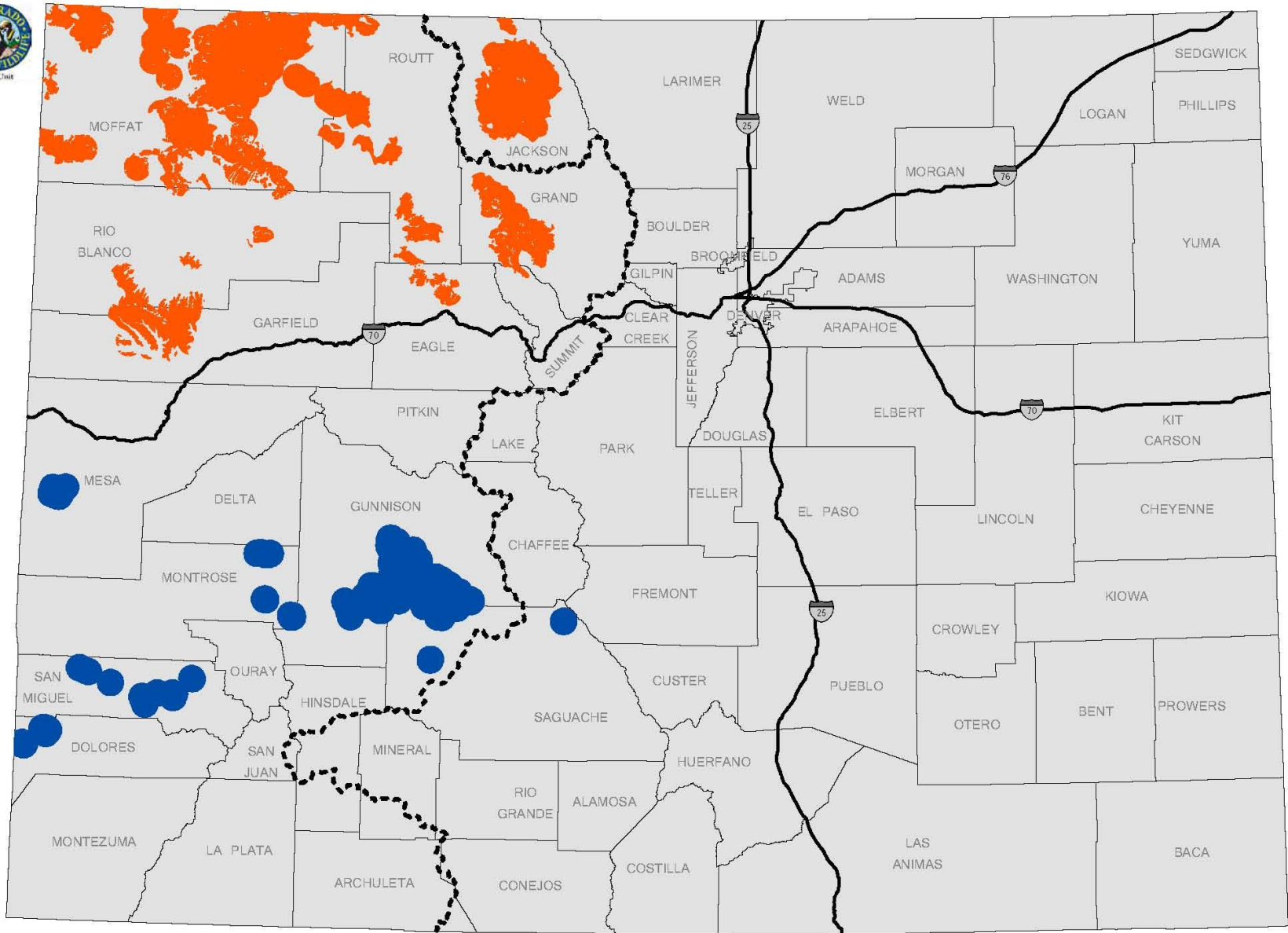
DRAFT June, 2013
PROPOSED



Sensitive Wildlife Habitat
Elk Production and Winter Concentration Areas



This product is produced and distributed by:
Colorado Parks and Wildlife, GIS Unit
317 W. Prospect Avenue
Fort Collins, CO 80526

Information depicted hereon is for reference purposes only and is compiled from best available sources. Reasonable efforts have been made to ensure the accuracy of this map. Colorado Parks and Wildlife expressly disclaims responsibility for damages or liability that may arise from the use of this map.



-  Greater Sage Grouse Preliminary Priority Habitat
-  Gunnison Sage Grouse Production Areas

DRAFT
June, 2013
PROPOSED

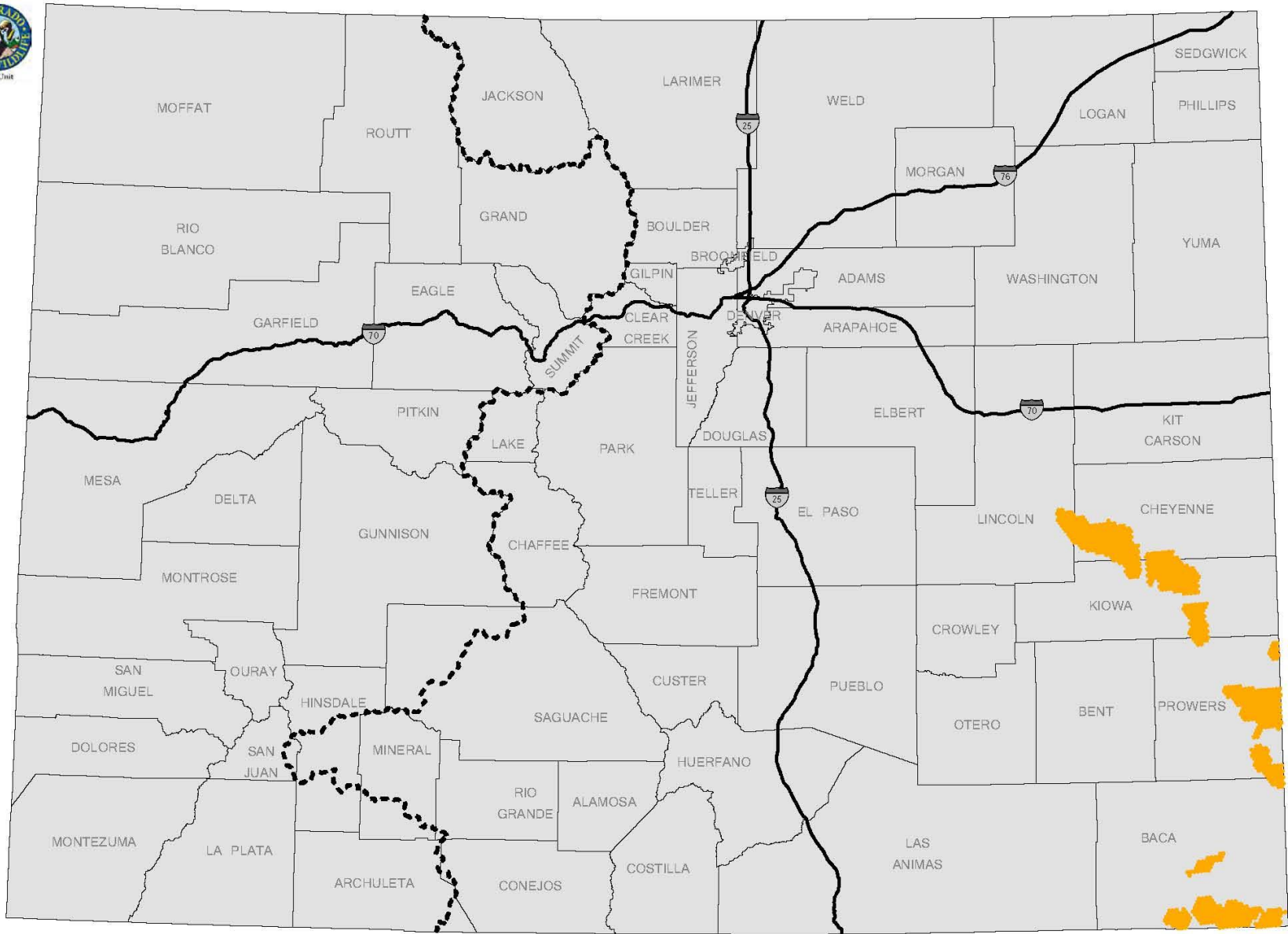
Sensitive Wildlife Habitat


Greater Sage-Grouse Preliminary Priority Habitat
 and Gunnison Sage-Grouse Production Areas



This product is produced and distributed by:
 Colorado Parks and Wildlife, GIS Unit
 317 W. Prospect Avenue
 Fort Collins, CO 80526

Information depicted hereon is for reference purposes only and is compiled from best available sources. Reasonable efforts have been made to ensure the accuracy of this map. Colorado Parks and Wildlife expressly disclaims responsibility for damages or liability that may arise from the use of this map.

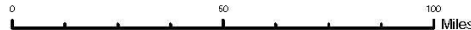


 Lesser Prairie-Chicken Focal Areas

DRAFT
June, 2013
PROPOSED

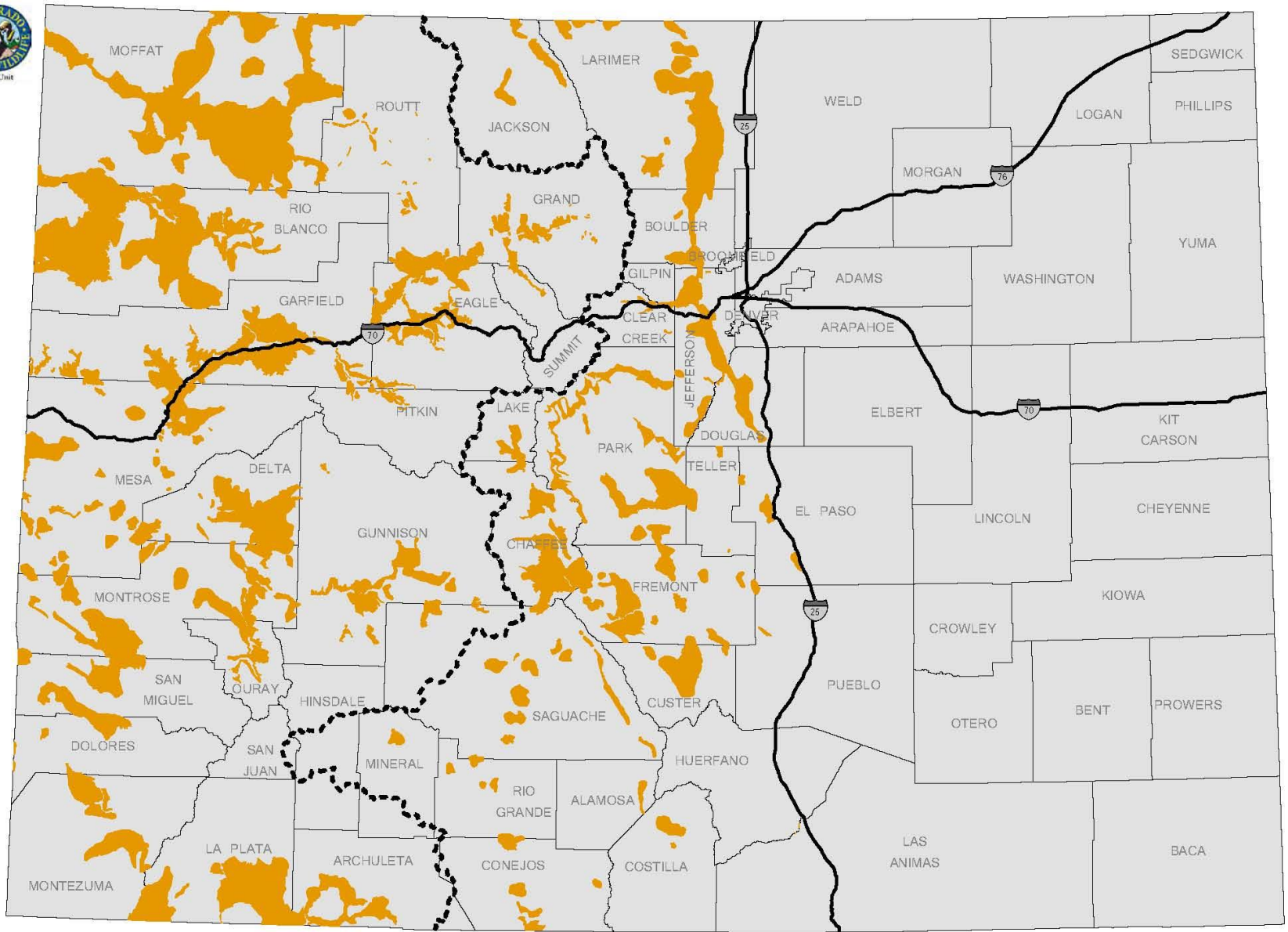
Sensitive Wildlife Habitat


Lesser Prairie-Chicken Focal Areas



This product is produced and distributed by:
 Colorado Parks and Wildlife, GIS Unit
 317 W. Prospect Avenue
 Fort Collins, CO 80526

Information depicted hereon is for reference purposes only and is compiled from best available sources. Reasonable efforts have been made to ensure the accuracy of this map. Colorado Parks and Wildlife expressly disclaims responsibility for damages or liability that may arise from the use of this map.



 Mule Deer Critical Winter Range

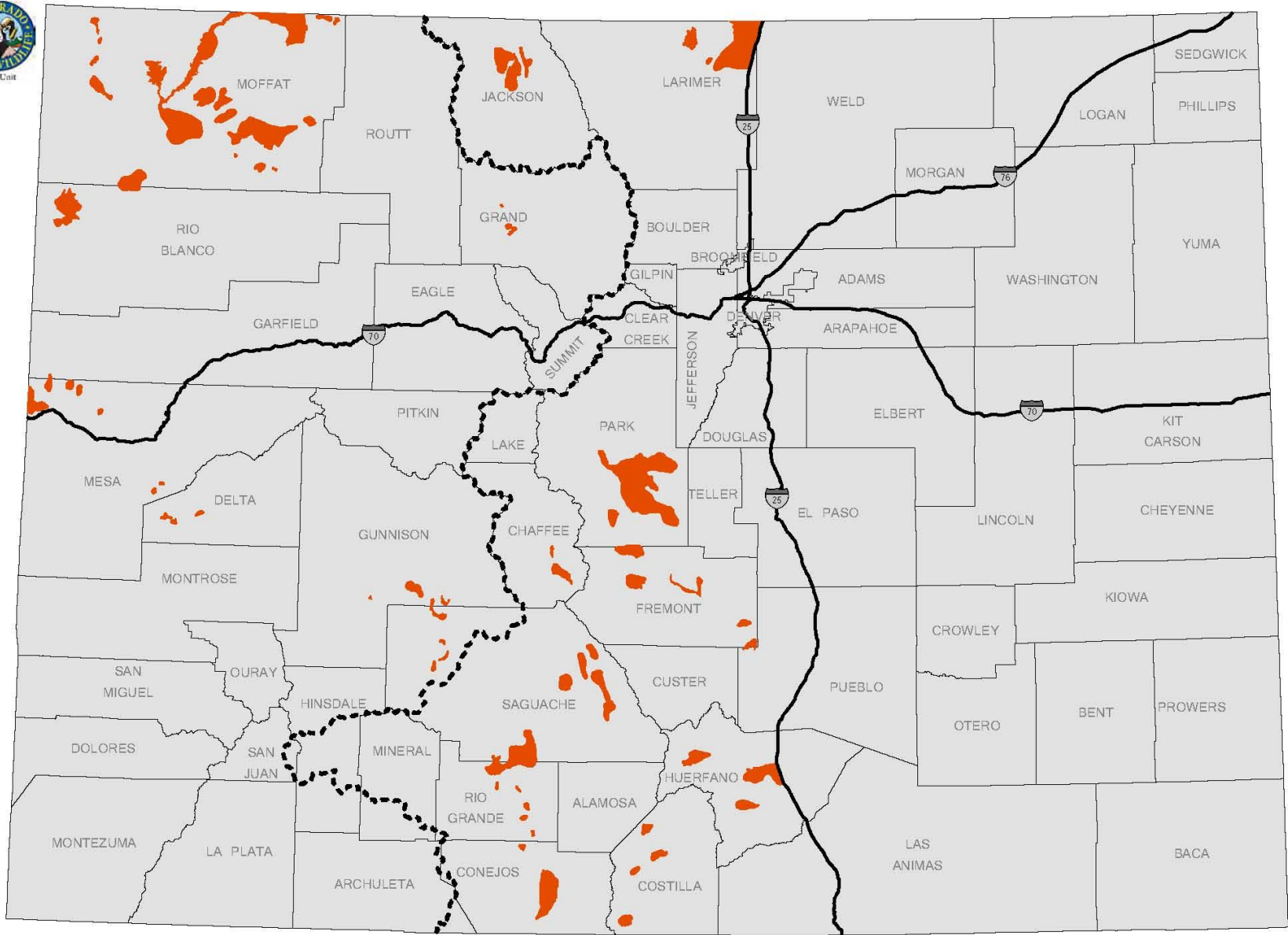
DRAFT
June, 2013
PROPOSED

Sensitive Wildlife Habitat
 Mule Deer Critical Winter Range



This product is produced and distributed by:
 Colorado Parks and Wildlife, GIS Unit
 317 W. Prospect Avenue
 Fort Collins, CO 80526

Information depicted hereon is for reference purposes only and is compiled from best available sources. Reasonable efforts have been made to ensure the accuracy of this map. Colorado Parks and Wildlife expressly disclaims responsibility for damages or liability that may arise from the use of this map.

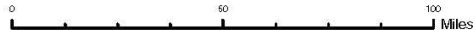


Pronghorn Winter Concentration Areas

DRAFT
June, 2012
PROPOSED

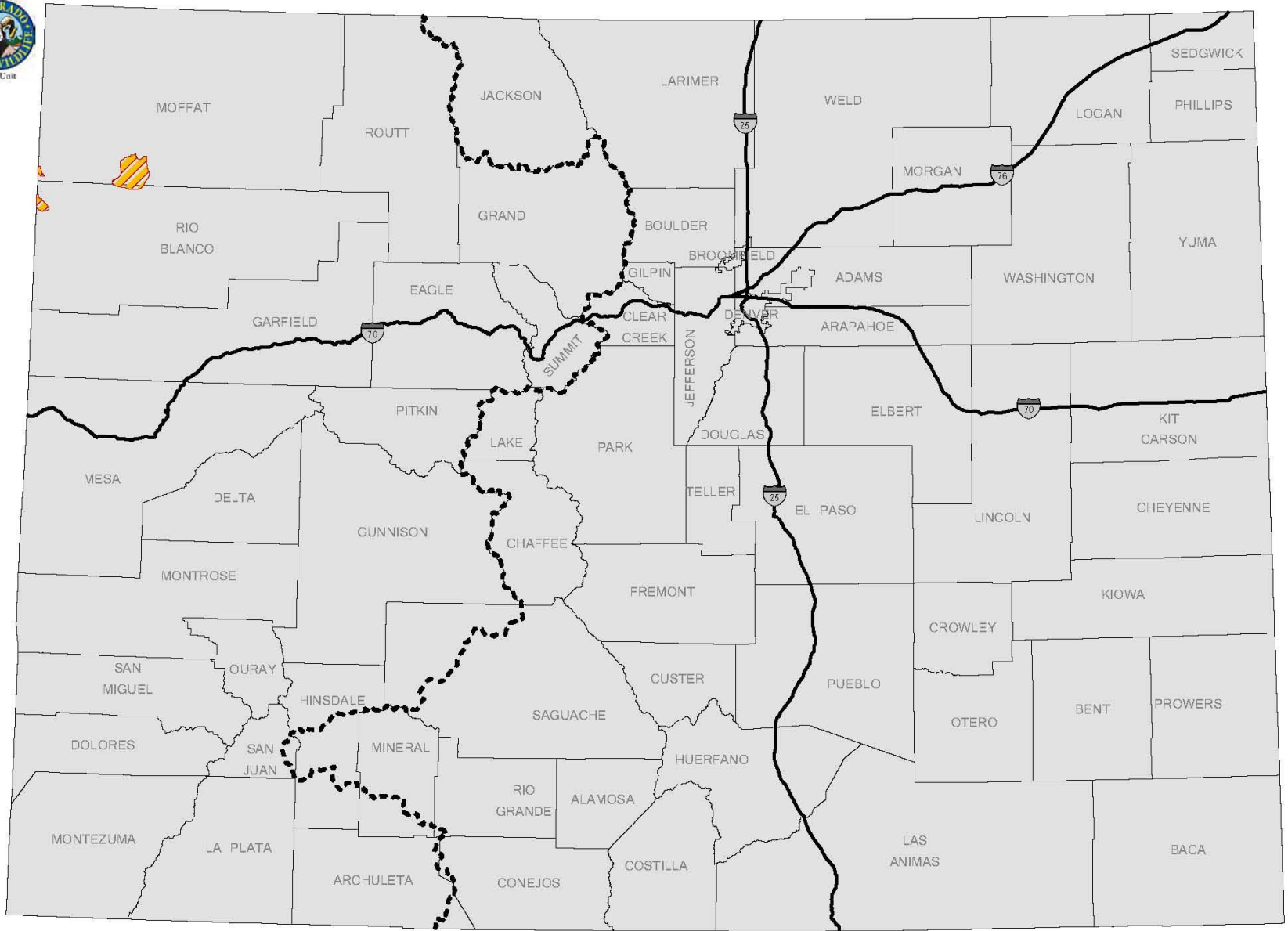
Sensitive Wildlife Habitat


Pronghorn Winter Concentration Areas



This product is produced and distributed by:
 Colorado Parks and Wildlife, GIS Unit
 317 W. Prospect Avenue
 Fort Collins, CO 80526

Information depicted hereon is for reference purposes only and is compiled from best available sources. Reasonable efforts have been made to ensure the accuracy of this map. Colorado Parks and Wildlife expressly disclaims responsibility for damages or liability that may arise from the use of this map.



 Black-footed Ferret Release Areas

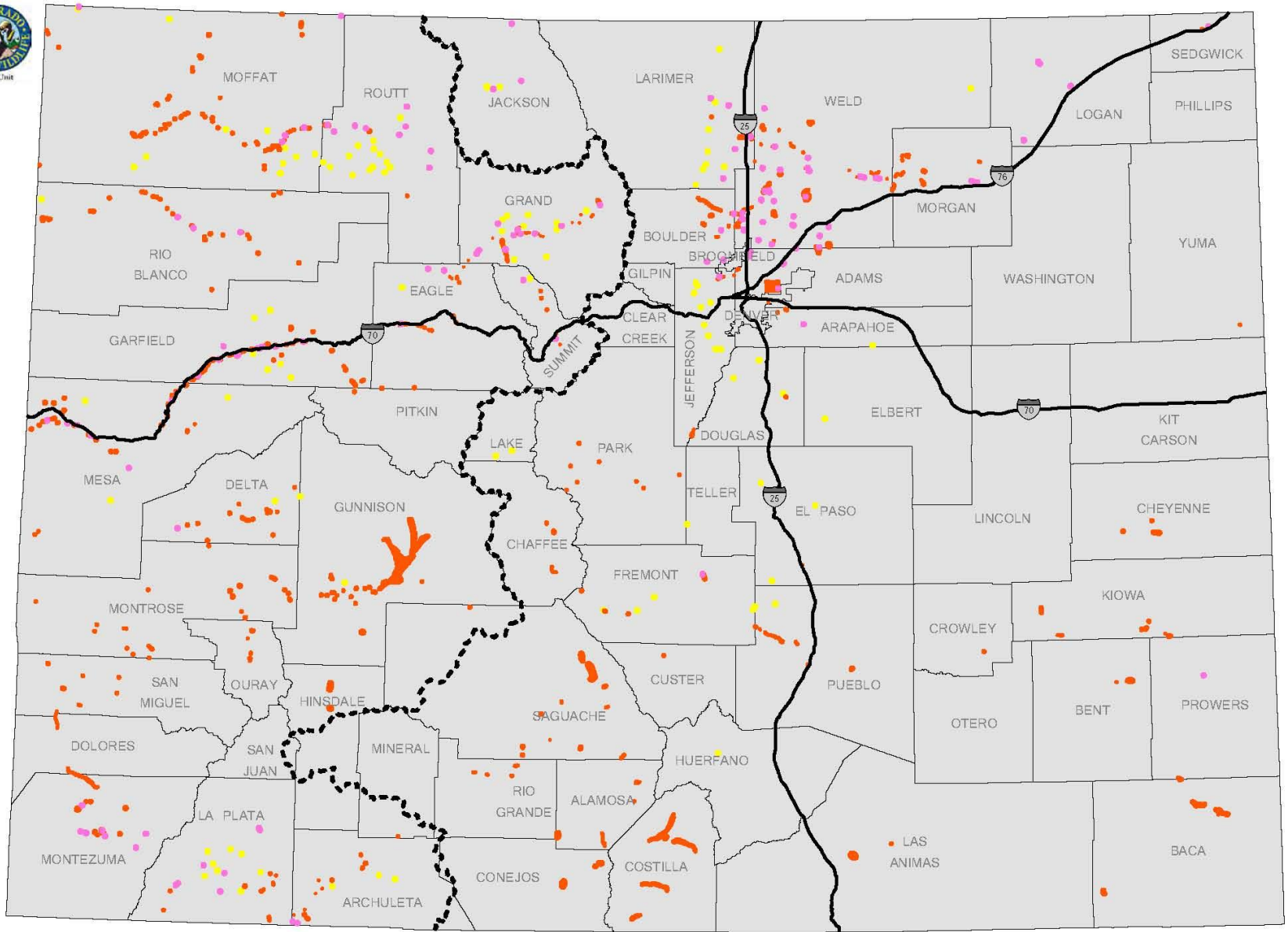
DRAFT
June, 2013
PROPOSED

Sensitive Wildlife Habitat
 Black-footed Ferret Release Areas



This product is produced and distributed by:
 Colorado Parks and Wildlife, GIS Unit
 317 W. Prospect Avenue
 Fort Collins, CO 80526

Information depicted hereon is for reference purposes only and is compiled from best available sources. Reasonable efforts have been made to ensure the accuracy of this map. Colorado Parks and Wildlife expressly disclaims responsibility for damages or liability that may arise from the use of this map.



-  Bald Eagle Roost Sites
-  Bald Eagle Active Nests
-  Golden Eagle Active Nests

DRAFT
June, 2013
PROPOSED

Sensitive Wildlife Habitat

Bald and Golden Eagle Activities



This product is produced and distributed by:
 Colorado Parks and Wildlife, GIS Unit
 317 W. Prospect Avenue
 Fort Collins, CO 80526

Information depicted hereon is for reference purposes only and is compiled from best available sources. Reasonable efforts have been made to ensure the accuracy of this map. Colorado Parks and Wildlife expressly disclaims responsibility for damages or liability that may arise from the use of this map.

Colorado Parks & Wildlife HB1298 RSO/SWH updates; September 2013

Restricted Surface Occupancy Datasets	Oct., 2008 Acreage	June, 2013 Acreage	Acreage Change	% Change
Bald Eagle Active Nest Sites	13,157	16,147	2,990	23%
Bighorn Sheep Production Areas	394,443	768,708	374,265	95%
Columbian Sharp-Tailed Grouse Lek Sites	76,706	92,664	15,958	21%
Cutthroat Trout Designated Critical Habitat	643,784	567,667	-76,117	-12%
Ferruginous Hawk Active Nest Sites	40,307	15,582	-24,725	-61%
Golden Eagle Active Nest Sites	77,533	12,967	-64,566	-83%
Gold Medal Waters	15,670	18,938	3,268	21%
Greater-Sage Grouse Lek Sites	298,214	217,858	-80,356	-27%
Gunnison-Sage Grouse Lek Sites	127,815	115,556	-12,259	-10%
Lesser Prairie Chicken Lek Sites	68,074	65,907	-2,167	-3%
Northern Goshawk Active Nest Sites	25,713	2,011	-23,702	-92%
Osprey Active Nest Sites	9,944	14,079	4,135	42%
Peregrine Falcon Active Nest Sites	78,904	18,232	-60,672	-77%
Prairie Falcon Active Nest Sites	24,053	8,203	-15,850	-66%
Plains Sharp-Tailed Grouse Lek Site	11,457	12,939	1,482	13%
Total	1,905,774	1,947,458	41,684	2%

Sensitive Wildlife Habitat Datasets	Oct., 2008 Acreage	June, 2013 Acreage	Acreage Change	% Change
Bald Eagle Active Nest Sites	52,202	62,118	9,916	19%
Bald Eagle Winter Night Roost Sites	166,074	194,080	28,006	17%
Black-footed Ferret Release Sites	60,661	60,661	0	0%
Bighorn Sheep Winter Range	1,625,247	2,154,396	529,149	33%
Columbian Sharp-tailed Grouse Production Area	405,639	473,193	67,554	17%
Elk Production Area	3,699,798	4,484,188	784,390	21%
Elk Winter Concentration Area	5,419,275	6,099,289	680,014	13%
Golden Eagle Active Nest Sites	280,662	51,124	-229,538	-82%
Greater-Sage Grouse Production Area/Preliminary Priority Habitat	2,479,501	2,366,541	-112,960	-5%
Gunnison-Sage Grouse Production Area	650,845	1,066,858	416,013	64%
Lesser Prairie-Chicken Production Area/Focal Areas	338,314	628,081	289,767	86%
Mule Deer Critical Winter Range	6,196,460	5,757,800	-438,660	-7%
Pronghorn Winter Concentration Area	797,905	1,005,957	208,052	26%
Plains Sharp-tailed Grouse Production Area	74,779	68,819	-5,960	-8%
Total	22,247,362	24,473,103	2,225,741	10%