



Statistics

Applications for Permit to Drill New Wells (Form 2s)

Mo - Yr	Received	Approved	Withdrawn	Rejected	Pending
Jan-19	590	244	95	26	6,376
Feb-19	445	307	65	32	6,444
Mar-19	500	397	132	21	6,403
Apr-19	522	156	136	18	6,446
May-19	35	41	109	56	6,272
Jun-19	308	166	61	185	6,328
Jul-19	444	130	129	241	6,361
Aug-19	362	208	294	81	6,176
Sep-19	82	181	70	0	5,981
Oct-19	106	445	358	132	5,487
Nov-19	112	67	32	104	5,369
Dec-19	119	86	66	67	5,300
Jan-20	71	101	38	30	5,228

Oil and Gas Location Assessments (Form 2As)

Mo - Yr	Received	Approved	Withdrawn	Rejected	Pending
Jan-19	49	34	8	3	510
Feb-19	48	36	8	0	518
Mar-19	60	27	7	1	542
Apr-19	45	27	9	2	540
May-19	6	5	12	0	525
Jun-19	45	15	5	1	560
Jul-19	34	20	10	9	559
Aug-19	26	13	13	0	558
Sep-19	17	19	5	0	542
Oct-19	12	9	3	6	546
Nov-19	12	16	6	4	529
Dec-19	15	20	4	3	524
Jan-20	10	16	3	6	508

Applications for Permit to Recomplete Existing Wells (Form 2s)

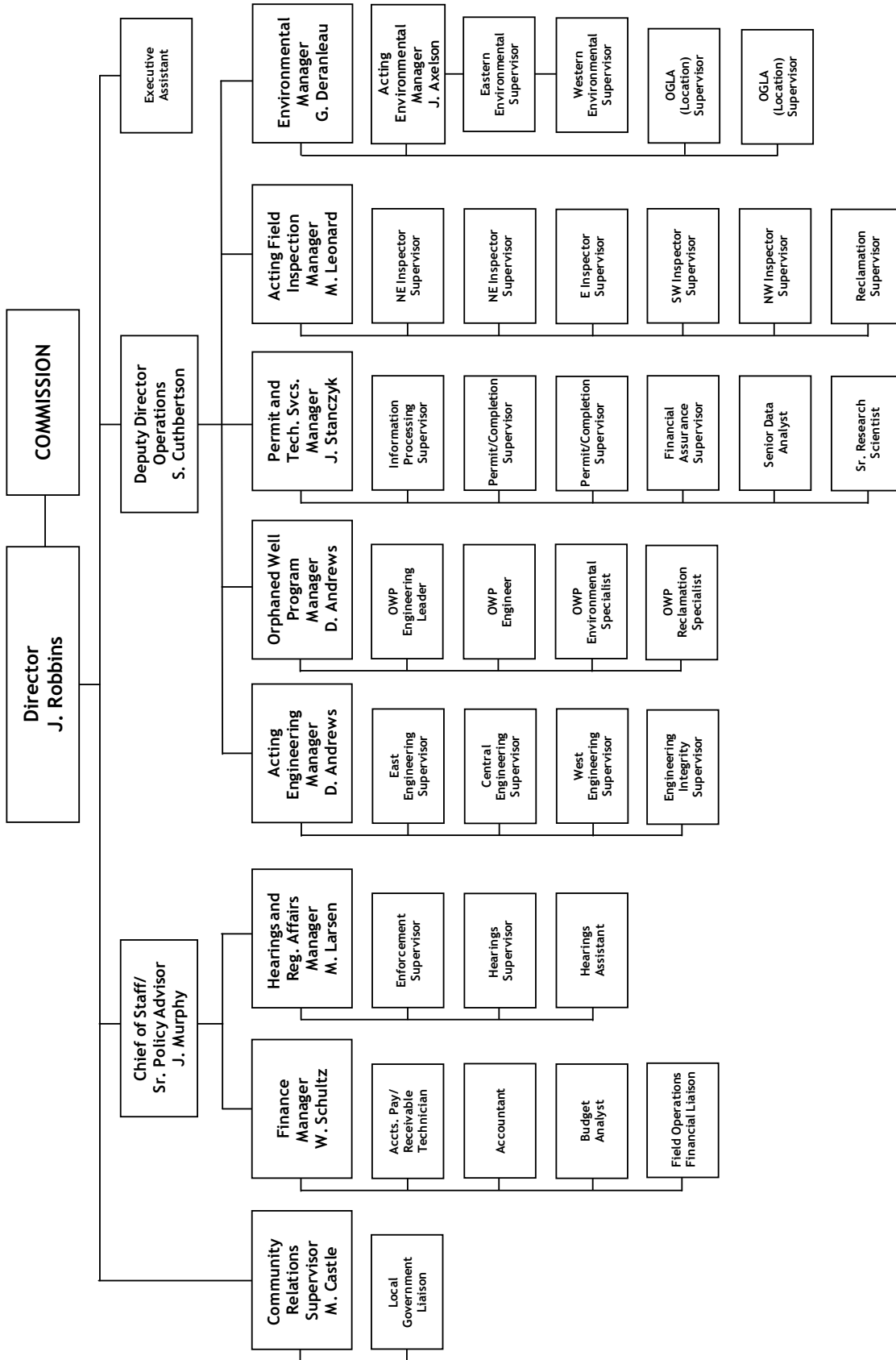
Mo - Yr	Received	Approved	Withdrawn	Rejected	Pending
Jan-19	6	2	0	0	30
Feb-19	3	2	0	0	33
Mar-19	10	4	7	0	33
Apr-19	4	3	1	0	30
May-19	0	0	0	0	30
Jun-19	1	0	0	0	30
Jul-19	4	2	1	0	32
Aug-19	1	1	0	0	31
Sep-19	3	0	0	0	34
Oct-19	0	0	0	0	34
Nov-19	1	2	0	0	34
Dec-19	3	1	0	0	37
Jan-20	0	0	0	0	37

*Numbers are month to date (through Jan 28, 2020).



Organizational Charts

COLORADO OIL & GAS CONSERVATION COMMISSION

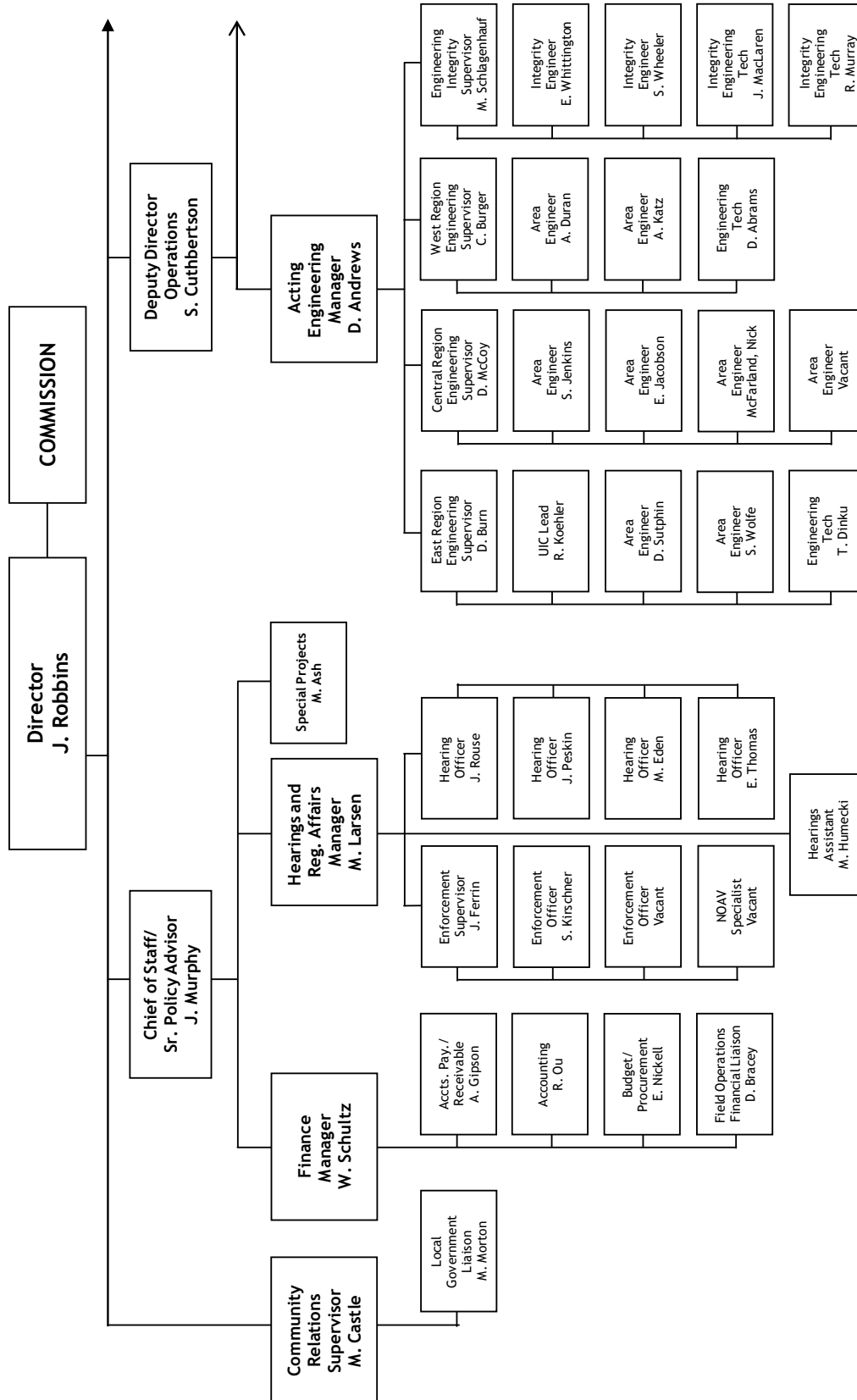


See the next four pages for details

Reg = Regulatory
Tech = Technical
Svc = Services

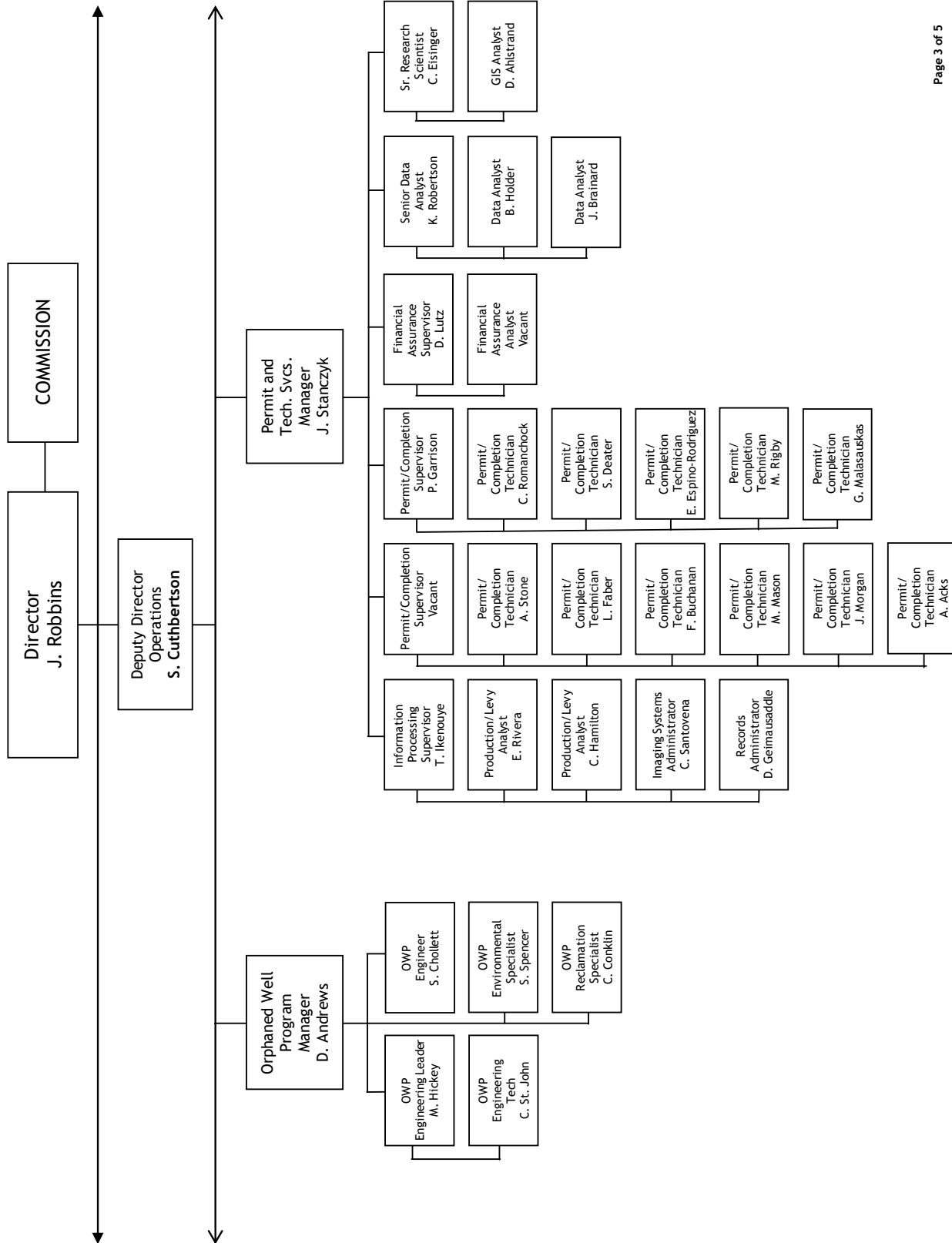


Organizational Charts



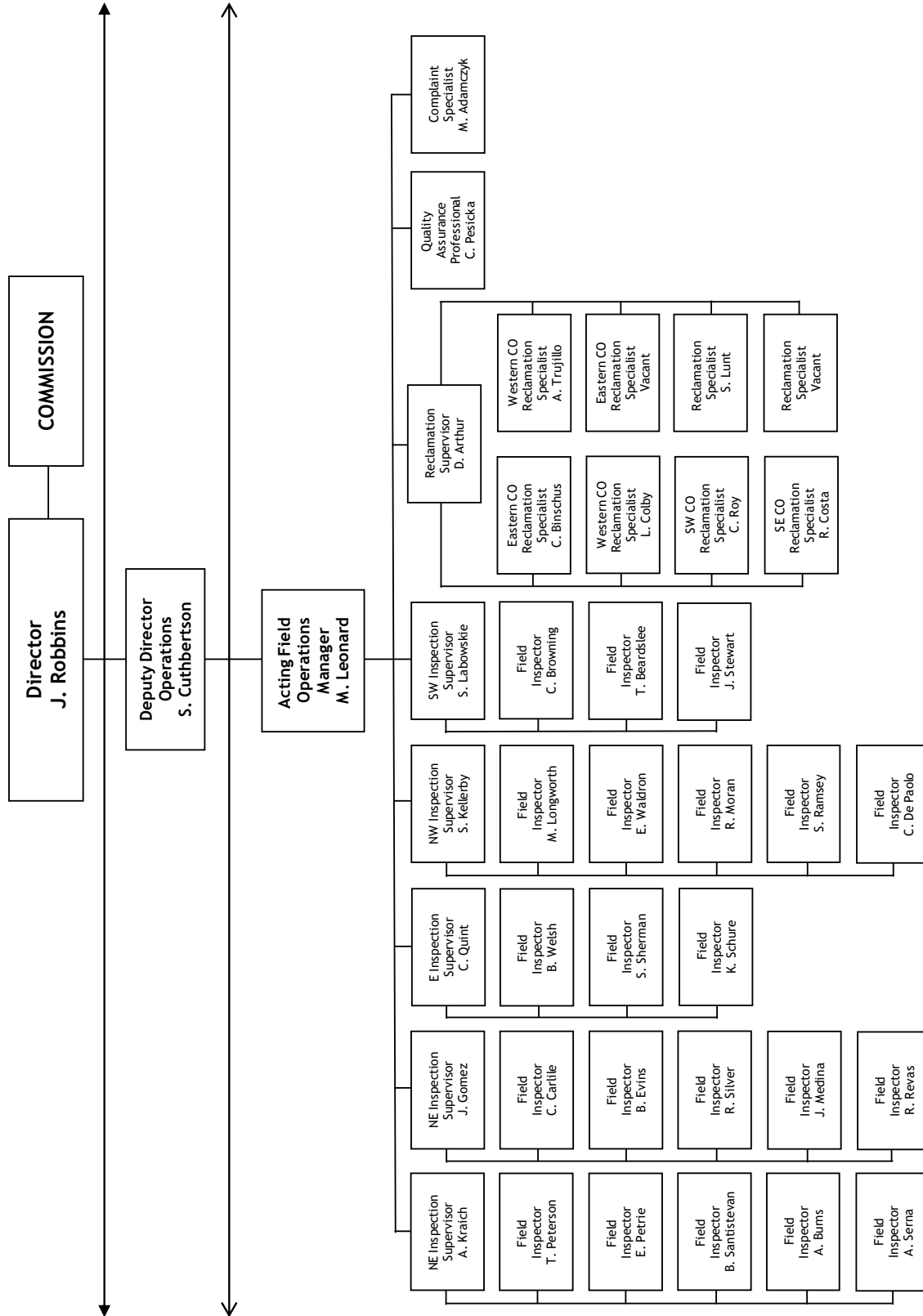


Organizational Charts





Organizational Charts





Organizational Charts

