



Statistics

Applications for Permit to Drill New Wells (Form 2s)

| Mo - Yr | Received | Approved | Withdrawn | Rejected | Pending |
|---------|----------|----------|-----------|----------|---------|
| Feb-19 | 445 | 307 | 65 | 32 | 6,444 |
| Mar-19 | 500 | 397 | 132 | 21 | 6,403 |
| Apr-19 | 522 | 156 | 136 | 18 | 6,446 |
| May-19 | 35 | 41 | 109 | 56 | 6,272 |
| Jun-19 | 308 | 166 | 61 | 185 | 6,328 |
| Jul-19 | 444 | 130 | 129 | 241 | 6,361 |
| Aug-19 | 362 | 208 | 294 | 81 | 6,176 |
| Sep-19 | 82 | 181 | 70 | 0 | 5,981 |
| Oct-19 | 106 | 445 | 358 | 132 | 5,487 |
| Nov-19 | 112 | 67 | 32 | 104 | 5,369 |
| Dec-19 | 119 | 86 | 66 | 67 | 5,300 |
| Jan-20 | 117 | 168 | 86 | 30 | 5,169 |
| Feb-20* | 101 | 58 | 14 | 35 | 5,187 |

Oil and Gas Location Assessments (Form 2As)

| Mo - Yr | Received | Approved | Withdrawn | Rejected | Pending |
|---------|----------|----------|-----------|----------|---------|
| Feb-19 | 48 | 36 | 8 | 0 | 518 |
| Mar-19 | 60 | 27 | 7 | 1 | 542 |
| Apr-19 | 45 | 27 | 9 | 2 | 540 |
| May-19 | 6 | 5 | 12 | 0 | 525 |
| Jun-19 | 45 | 15 | 5 | 1 | 560 |
| Jul-19 | 34 | 20 | 10 | 9 | 559 |
| Aug-19 | 26 | 13 | 13 | 0 | 558 |
| Sep-19 | 17 | 19 | 5 | 0 | 542 |
| Oct-19 | 12 | 9 | 3 | 6 | 546 |
| Nov-19 | 12 | 16 | 6 | 4 | 529 |
| Dec-19 | 15 | 20 | 4 | 3 | 524 |
| Jan-20 | 18 | 24 | 4 | 7 | 500 |
| Feb-20* | 25 | 15 | 1 | 0 | 518 |

Applications for Permit to Recomplete Existing Wells (Form 2s)

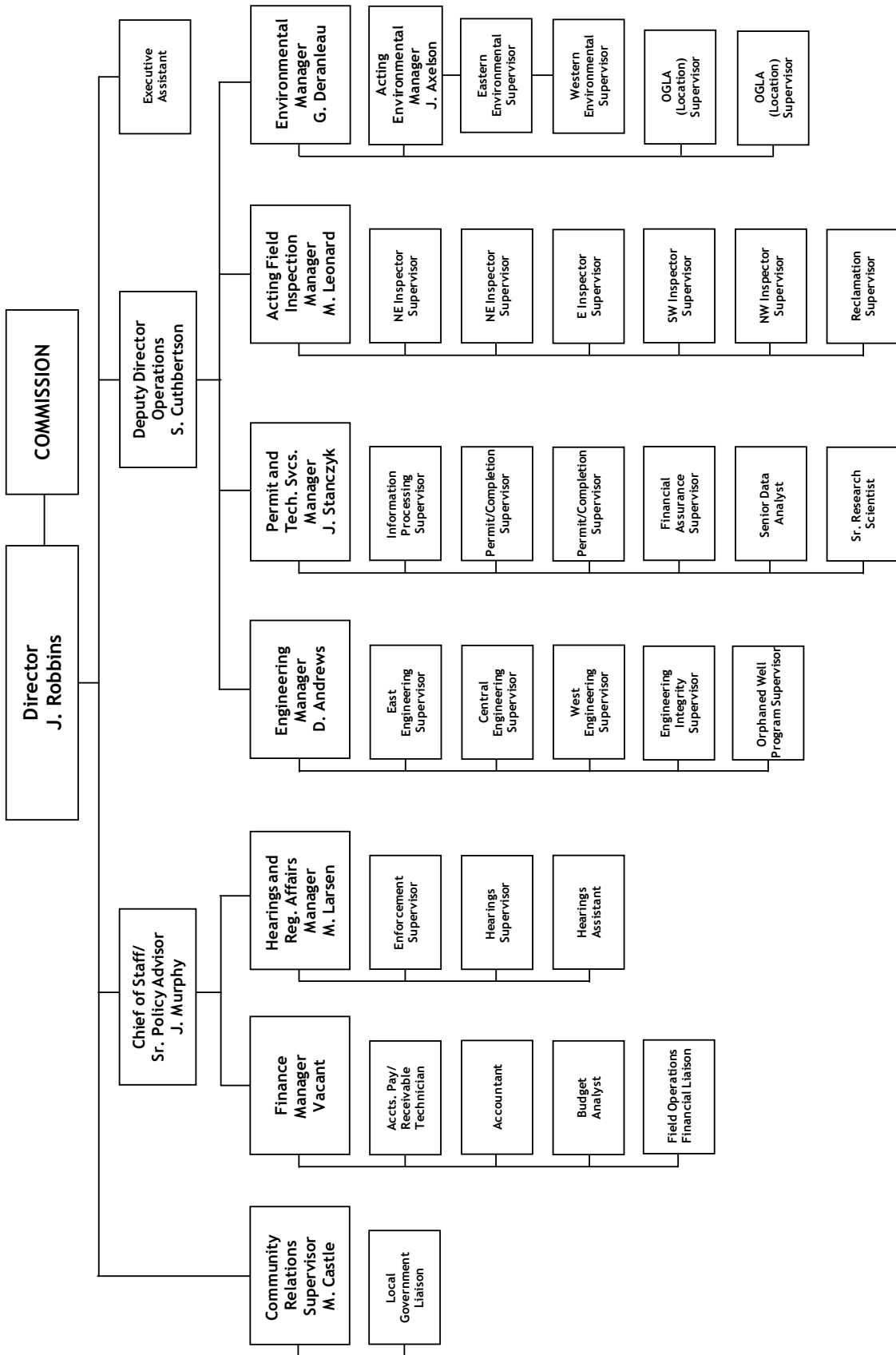
| Mo - Yr | Received | Approved | Withdrawn | Rejected | Pending |
|---------|----------|----------|-----------|----------|---------|
| Feb-19 | 3 | 2 | 0 | 0 | 33 |
| Mar-19 | 10 | 4 | 7 | 0 | 33 |
| Apr-19 | 4 | 3 | 1 | 0 | 30 |
| May-19 | 0 | 0 | 0 | 0 | 30 |
| Jun-19 | 1 | 0 | 0 | 0 | 30 |
| Jul-19 | 4 | 2 | 1 | 0 | 32 |
| Aug-19 | 1 | 1 | 0 | 0 | 31 |
| Sep-19 | 3 | 0 | 0 | 0 | 34 |
| Oct-19 | 0 | 0 | 0 | 0 | 34 |
| Nov-19 | 1 | 2 | 0 | 0 | 34 |
| Dec-19 | 3 | 1 | 0 | 0 | 37 |
| Jan-20 | 0 | 3 | 1 | 0 | 32 |
| Feb-20* | 0 | 0 | 0 | 0 | 32 |

*Numbers are month to date (through Feb 25, 2020).



Organizational Charts

COLORADO OIL & GAS CONSERVATION COMMISSION

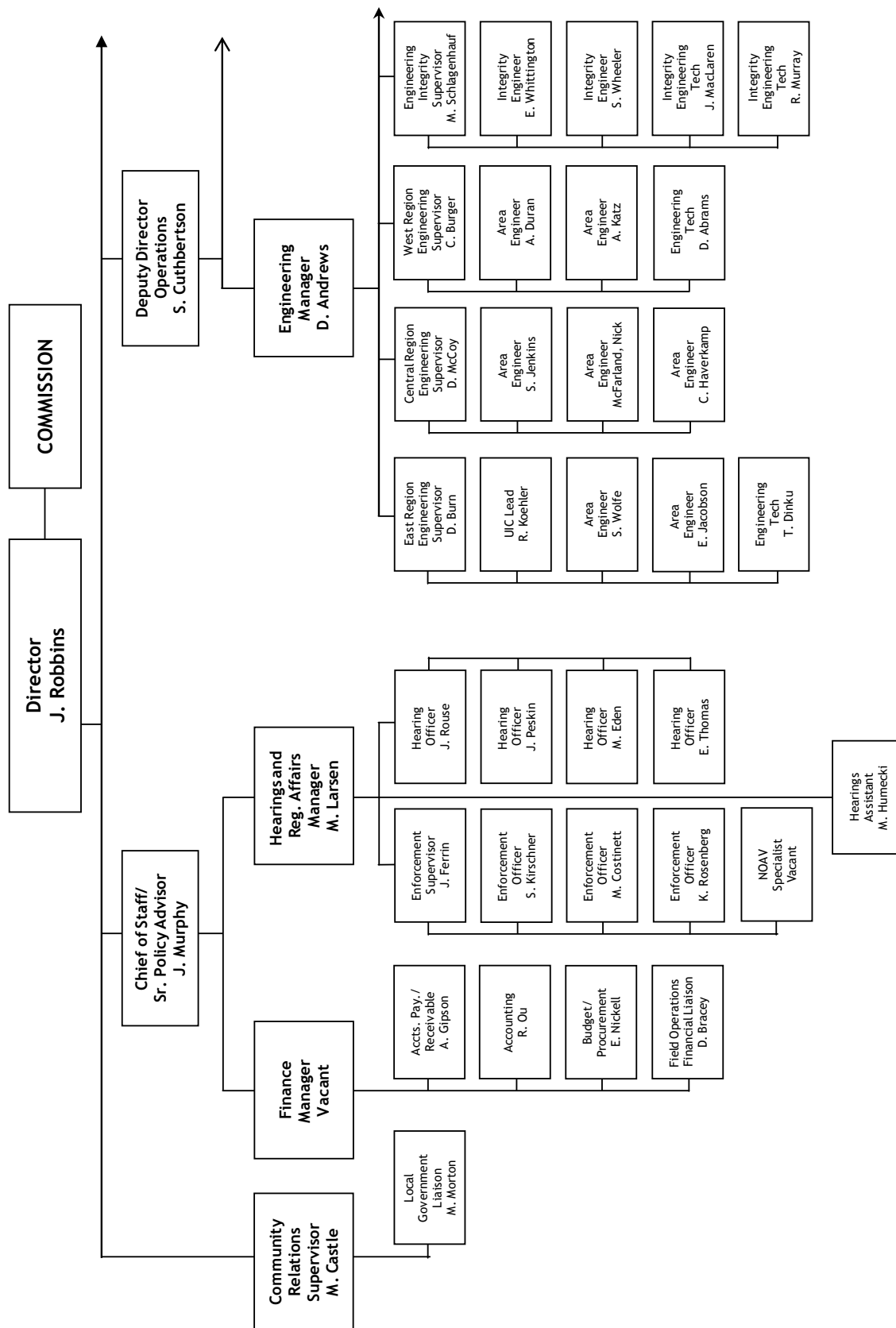


See the next four pages for details

Reg = Regulatory
Tech = Technical
Svc = Services

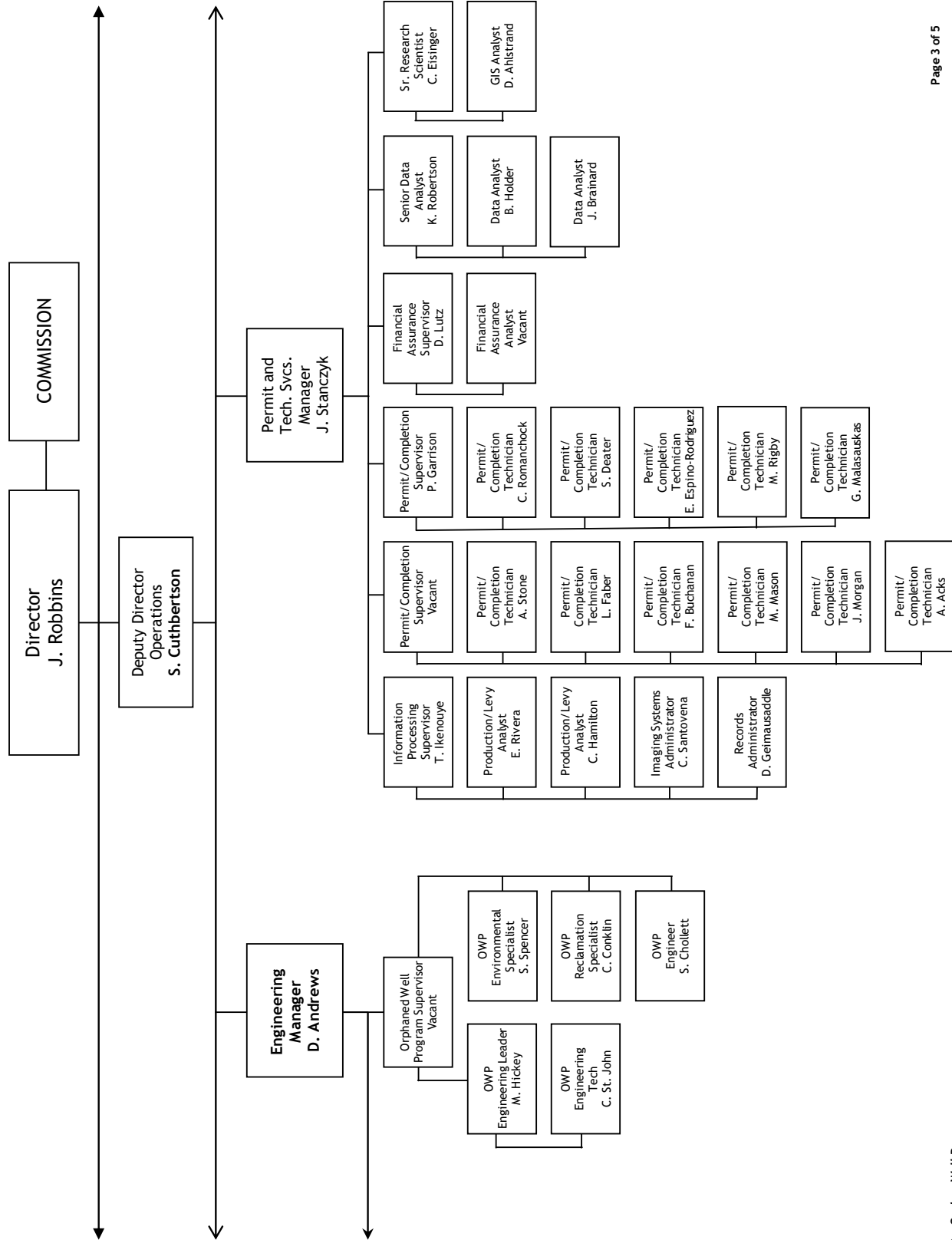


Organizational Charts



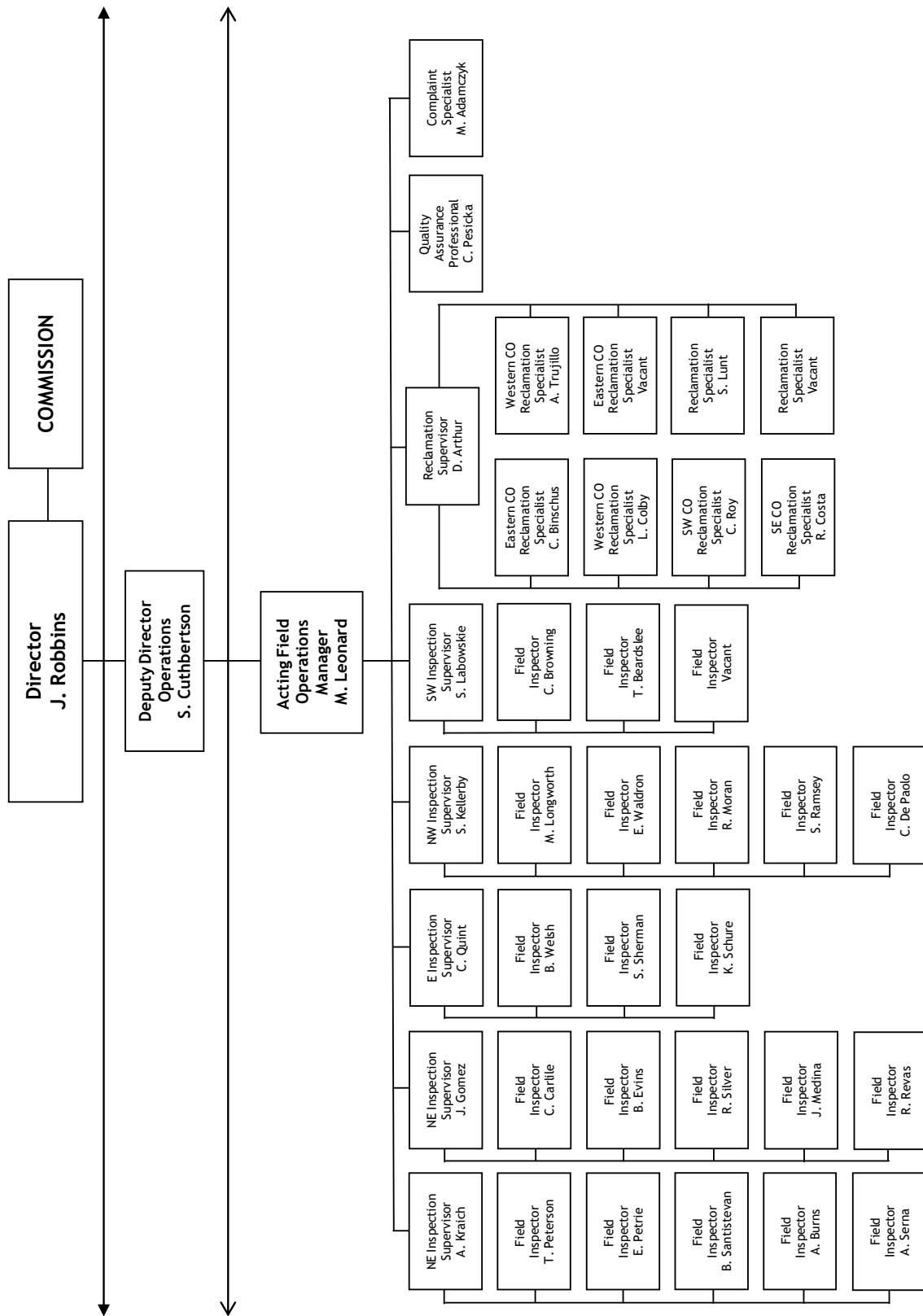


Organizational Charts





Organizational Charts





Organizational Charts

