



## Statistics

### Applications for Permit to Drill New Wells (Form 2s)

Mo - Yr	Received	Approved	Withdrawn	Rejected	Pending
Apr-19	522	156	136	18	6,446
May-19	35	41	109	56	6,272
Jun-19	308	166	61	185	6,328
Jul-19	444	130	129	241	6,361
Aug-19	362	208	294	81	6,176
Sep-19	82	181	70	0	5,981
Oct-19	106	445	358	132	5,487
Nov-19	112	67	32	104	5,369
Dec-19	119	86	66	67	5,300
Jan-20	117	168	86	30	5,169
Feb-20	112	105	31	35	5,130
Mar-20	139	144	126	40	4,941
Apr-20*	21	60	33	16	4,926

### Oil and Gas Location Assessments (Form 2As)

Mo - Yr	Received	Approved	Withdrawn	Rejected	Pending
Apr-19	45	27	9	2	540
May-19	6	5	12	0	525
Jun-19	45	15	5	1	560
Jul-19	34	20	10	9	559
Aug-19	26	13	13	0	558
Sep-19	17	19	5	0	542
Oct-19	12	9	3	6	546
Nov-19	12	16	6	4	529
Dec-19	15	20	4	3	524
Jan-20	18	24	4	7	500
Feb-20	31	26	21	0	490
Mar-20	10	22	6	0	474
Apr-20*	3	7	2	4	471

### Applications for Permit to Recomplete Existing Wells (Form 2s)

Mo - Yr	Received	Approved	Withdrawn	Rejected	Pending
Apr-19	4	3	1	0	30
May-19	0	0	0	0	30
Jun-19	1	0	0	0	30
Jul-19	4	2	1	0	32
Aug-19	1	1	0	0	31
Sep-19	3	0	0	0	34
Oct-19	0	0	0	0	34
Nov-19	1	2	0	0	34
Dec-19	3	1	0	0	37
Jan-20	0	3	1	0	32
Feb-20	1	1	0	0	32
Mar-20	0	1	0	0	31
Apr-20*	0	0	0	0	31

\*Numbers are month to date (through Apr 26, 2020).



## Final, Interim, and Other Reclamation Variances

### ◆ Final Reclamation Surface Owner Variances

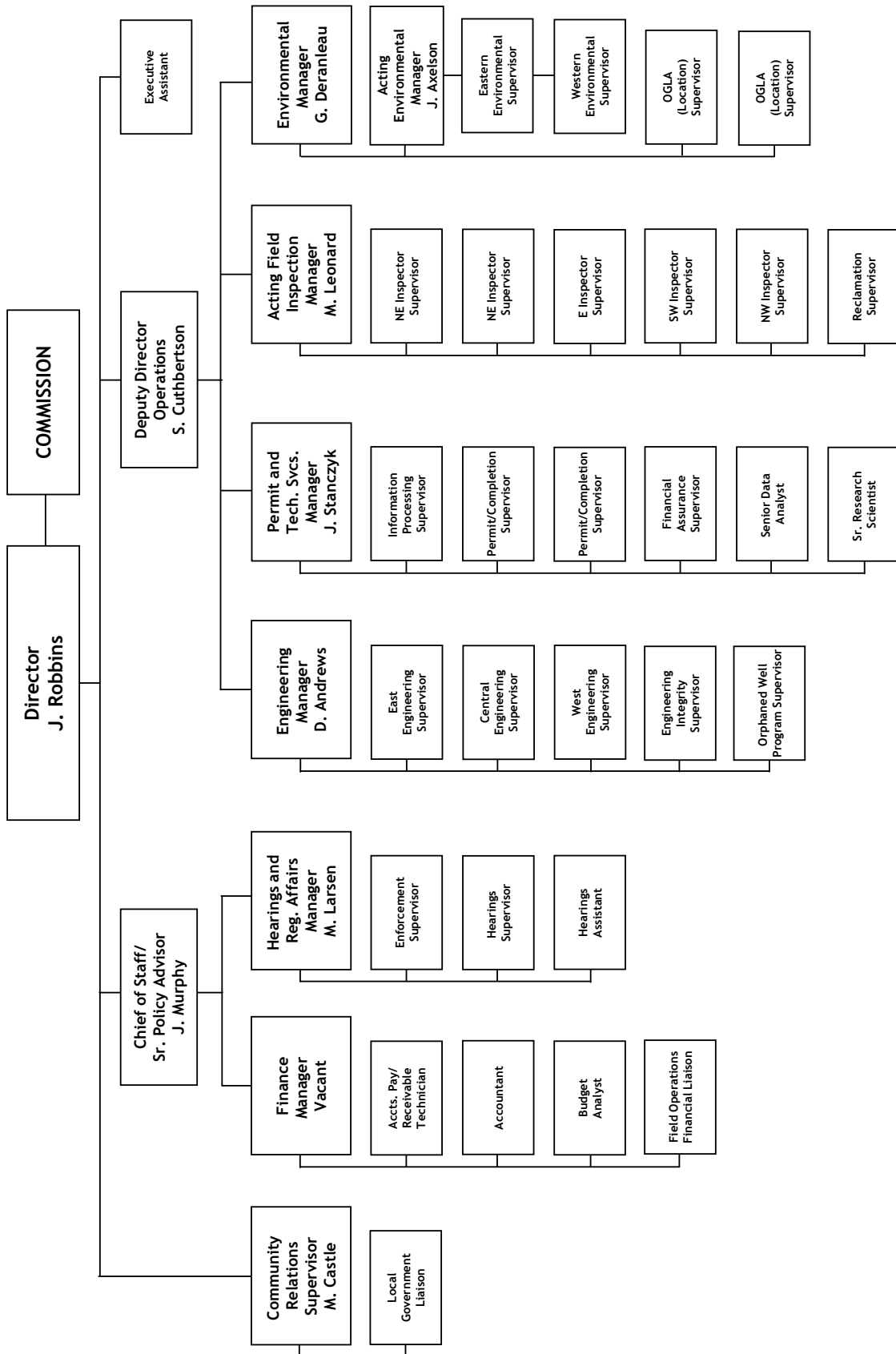
Listed below are locations with approved Rule 502.b variances granting a release to the Operator from select portions of the COGCC's final reclamation requirements (in Rule 1004) per Rule 1001.c. Conditions of approval may be attached to the approved variances. For further information on the specific variances and conditions of approval; see the Form 4 request. The Form 4 can also be found as documents under the specific well location number or API number depending on how the Form was originally submitted.

<b>Operator</b>	<b>Form 4 Doc #</b>	<b>Location ID # or API #</b>
SWN	401388923	05-107-06247
Caerus	401667426	312501
Caerus	401614293	312510
Caerus	401705410	324240



## Organizational Charts

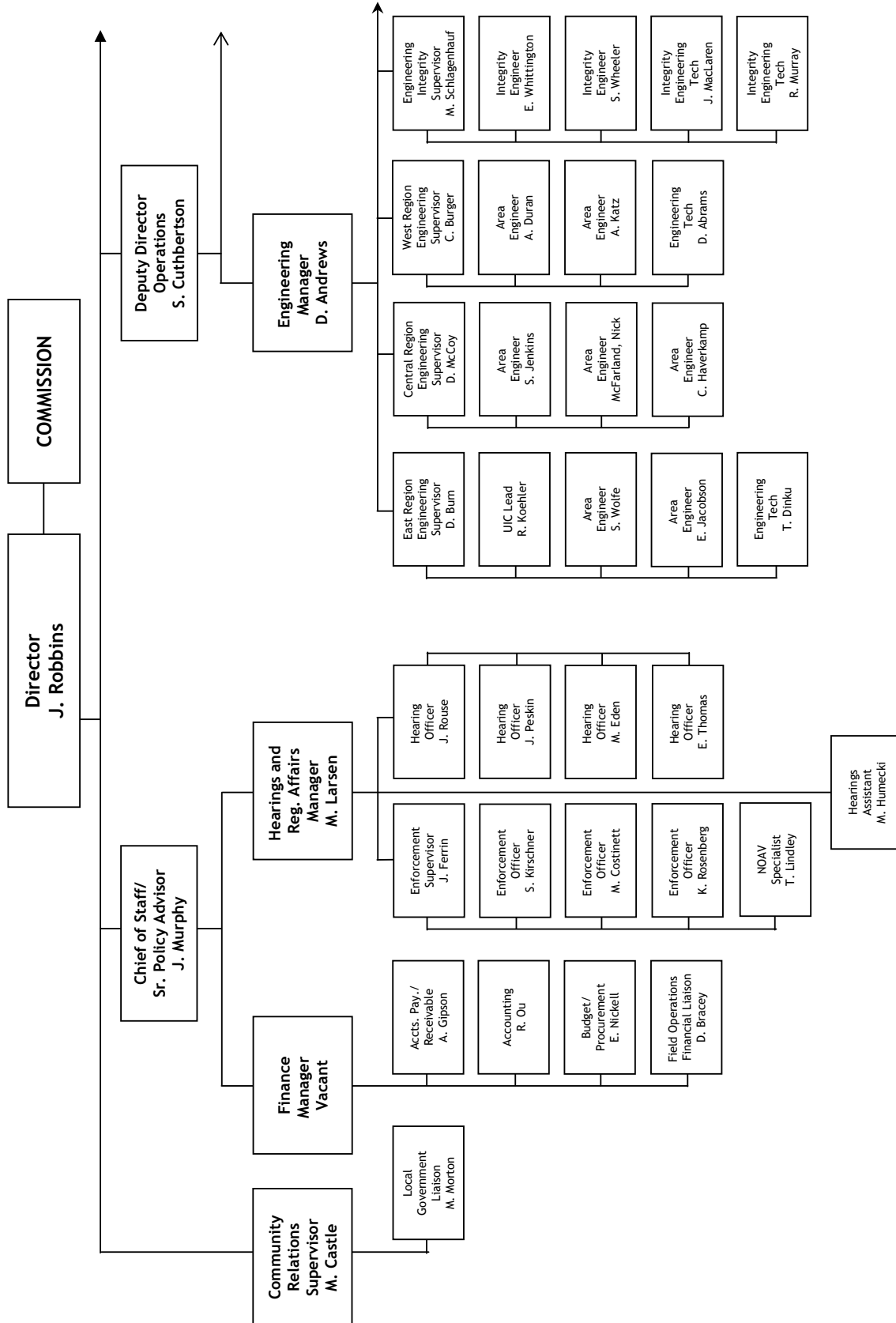
### COLORADO OIL & GAS CONSERVATION COMMISSION



See the next four pages for details

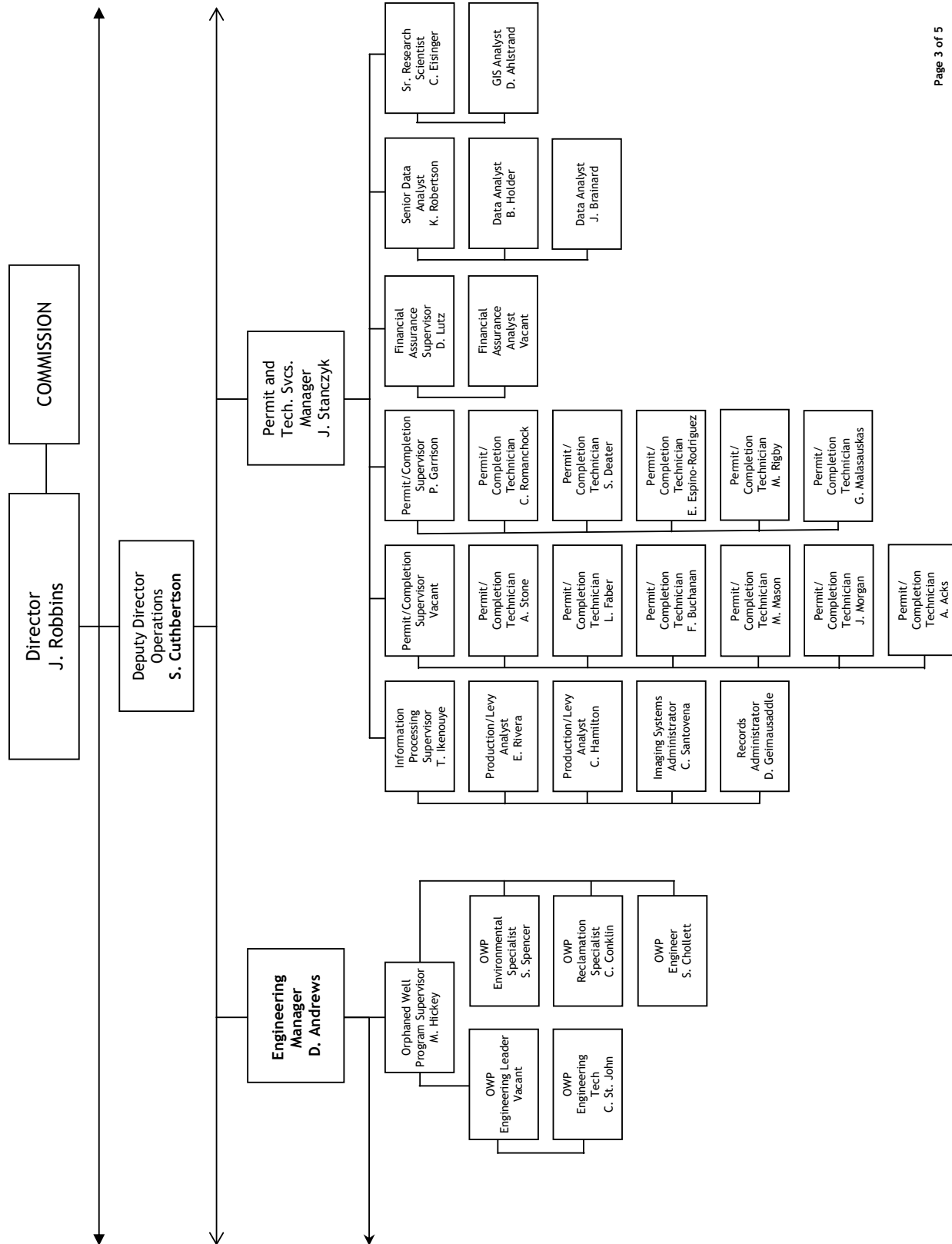


## Organizational Charts



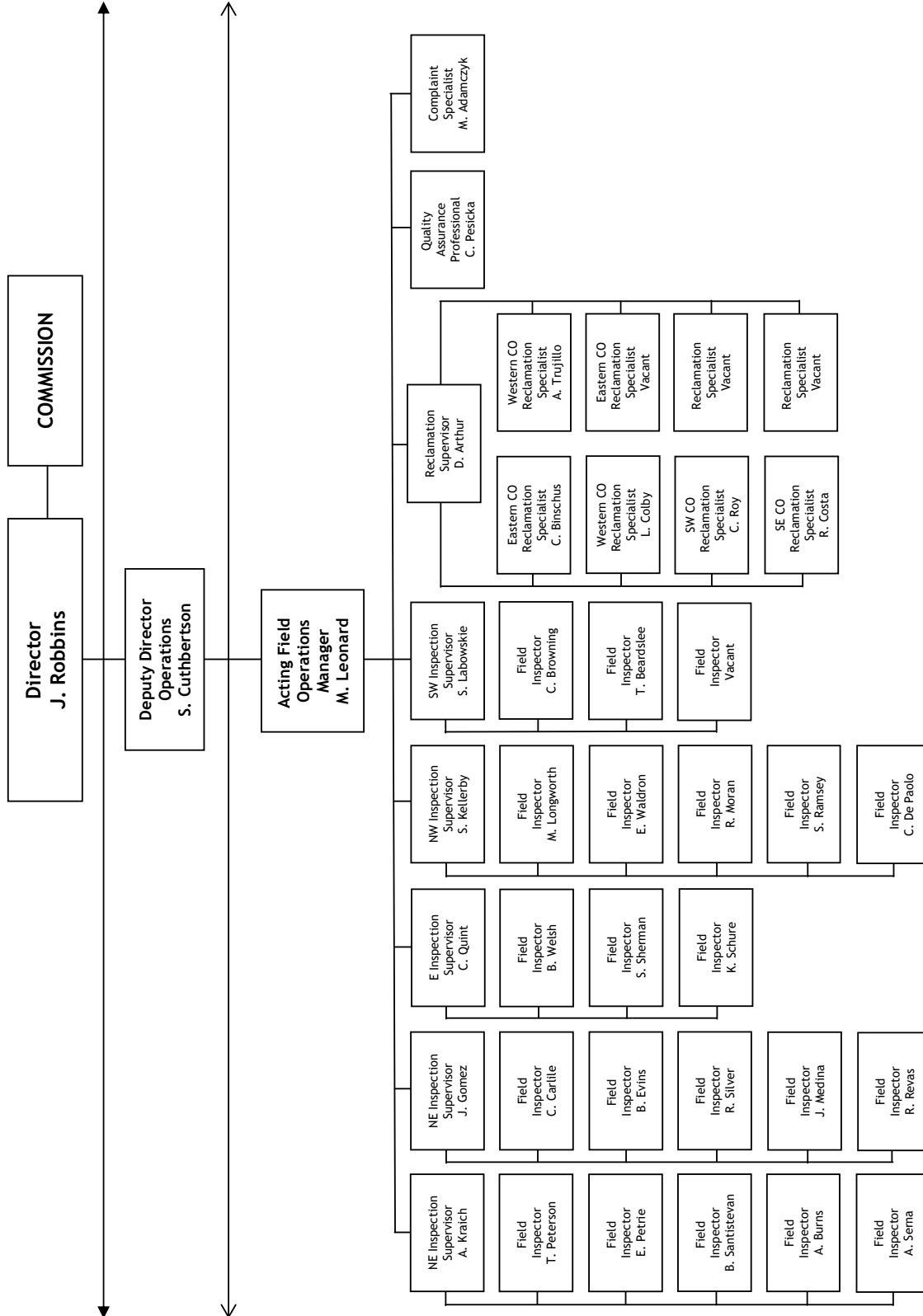


## Organizational Charts





## Organizational Charts





## Organizational Charts

