



Statistics

Applications for Permit to Drill New Wells (Form 2s)

Mo - Yr	Received	Approved	Withdrawn	Rejected	Pending
Sep-18	709	435	77	24	5,628
Oct-18	1,087	596	39	9	6,002
Nov-18	826	715	132	18	6,307
Dec-18	604	687	73	31	6,149
Jan-19	590	244	95	26	6,376
Feb-19	445	307	65	32	6,444
Mar-19	500	397	132	21	6,403
Apr-19	522	156	136	18	6,446
May-19	35	41	109	56	6,272
Jun-19	308	166	61	185	6,328
Jul-19	444	130	129	241	6,361
Aug-19	362	208	294	81	6,176
Sep-19	82	181	70	0	5,981

Oil and Gas Location Assessments (Form 2As)

Mo - Yr	Received	Approved	Withdrawn	Rejected	Pending
Sep-18	67	38	5	4	459
Oct-18	97	52	4	6	490
Nov-18	100	81	7	3	535
Dec-18	59	83	5	2	511
Jan-19	49	34	8	3	510
Feb-19	48	36	8	0	518
Mar-19	60	27	7	1	542
Apr-19	45	27	9	2	540
May-19	6	5	12	0	525
Jun-19	45	15	5	1	560
Jul-19	34	20	10	9	559
Aug-19	26	13	13	0	558
Sep-19	17	19	5	0	542

Applications for Permit to Recomplete Existing Wells (Form 2s)

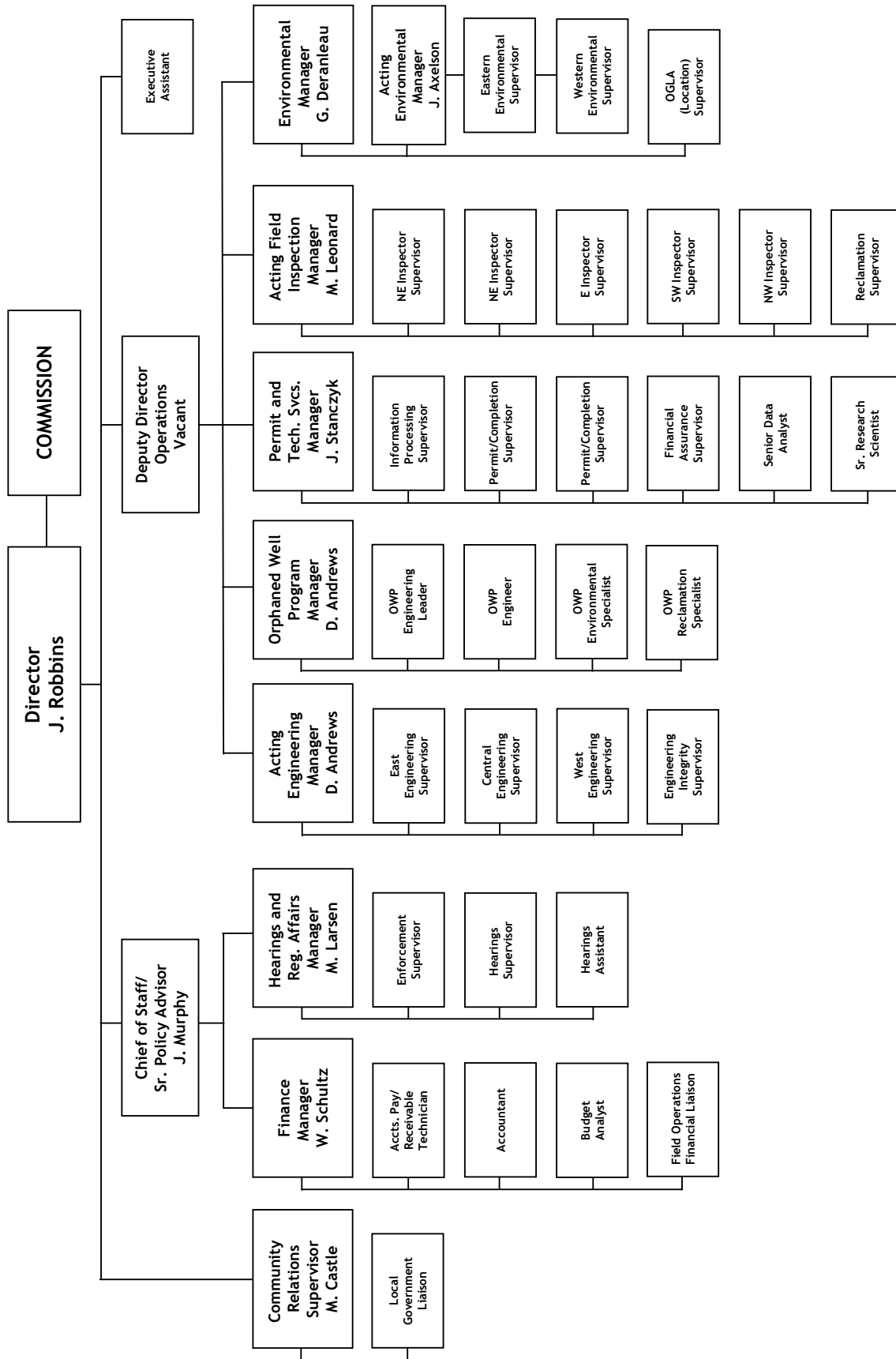
Mo - Yr	Received	Approved	Withdrawn	Rejected	Pending
Sep-18	7	0	0	0	22
Oct-18	4	0	0	0	29
Nov-18	3	4	0	0	27
Dec-18	1	0	0	0	29
Jan-19	6	2	0	0	30
Feb-19	3	2	0	0	33
Mar-19	10	4	7	0	33
Apr-19	4	3	1	0	30
May-19	0	0	0	0	30
Jun-19	1	0	0	0	30
Jul-19	4	2	1	0	32
Aug-19	1	1	0	0	31
Sep-19	3	0	0	0	34

*Numbers are month to date (through Oct 24, 2019).



Organizational Charts and Statistics

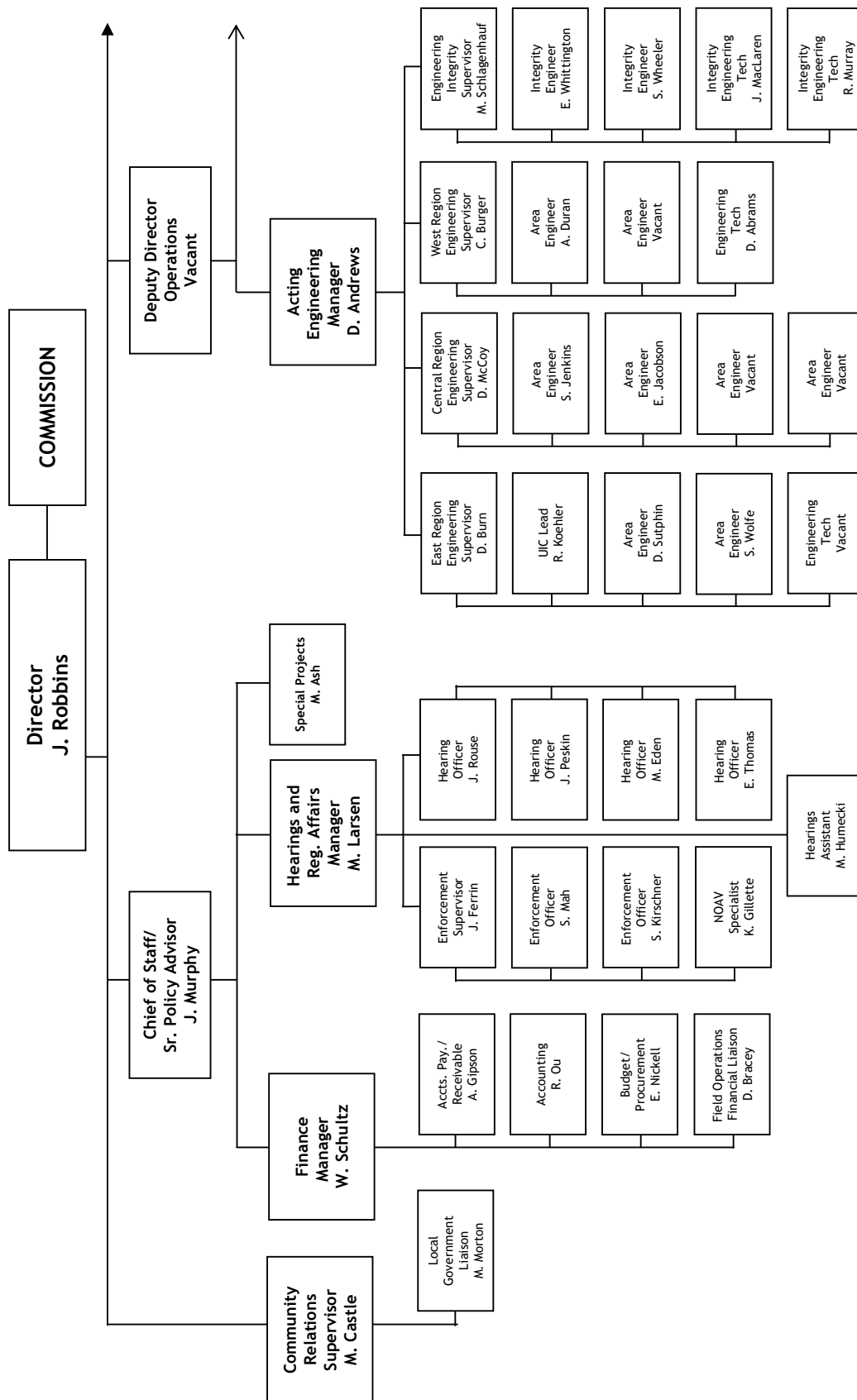
COLORADO OIL & GAS CONSERVATION COMMISSION



See the next four pages for details

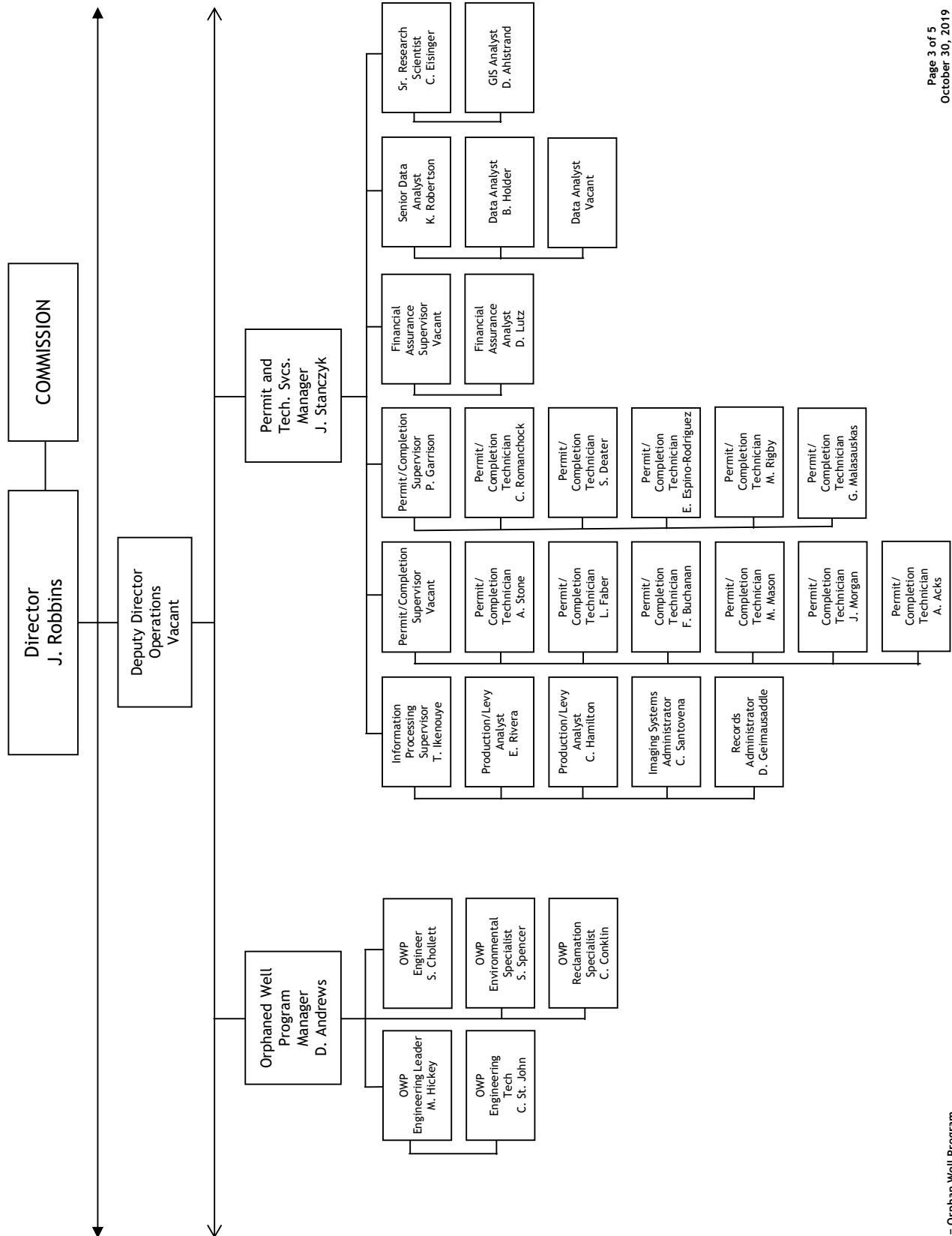


Organizational Charts and Statistics



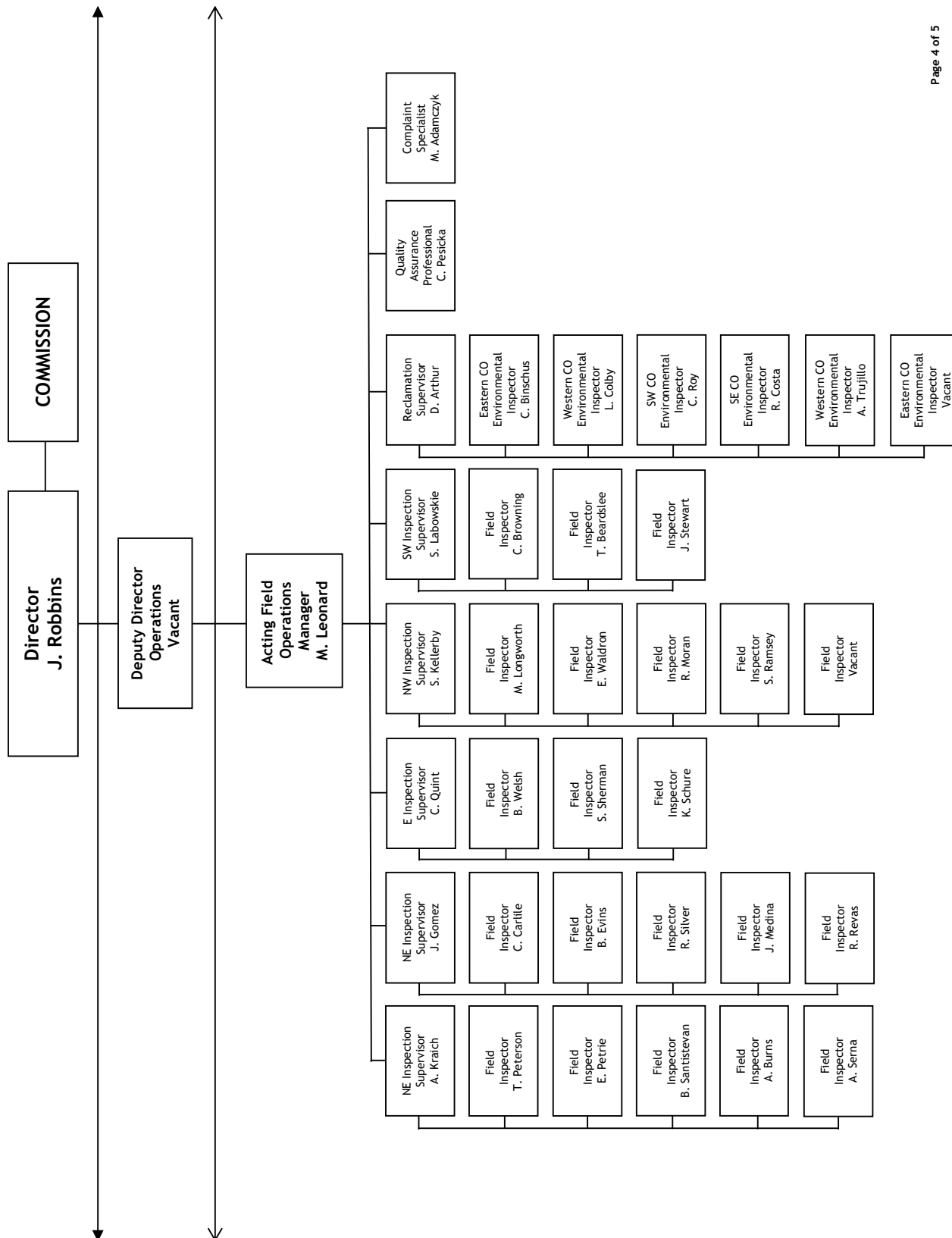


Organizational Charts and Statistics





Organizational Charts and Statistics





Organizational Charts and Statistics

