



COLORADO

Oil & Gas Conservation
Commission

Department of Natural Resources

Staff Report

for January 29, 2018

Top Stories

◆ Status of Proposed Flowline Rules

The Commission began its Flowline Rulemaking Hearing on January 8 and 9 at the CU-Denver School of Public Affairs. The Commission heard from a diverse group of stakeholders, including citizens, County and Municipal governments, trade associations, nonprofits, and oil and gas operators. Overall, COGCC Staff's draft proposed rules were well received by Commissioners and stakeholders. While stakeholder groups had different positions on some issues, all agreed that the rules regulating Flowlines need to be updated.

Commissioners asked many questions and engaged in thoughtful discussion with stakeholders over the two day Hearing. Due to the length of the presentations and discussion, party closing statements and Commission deliberation was continued to another Hearing. The conclusion of the Flowline Rulemaking Hearing will be held on February 13 in the COGCC's Wasatch Hearing Room, starting at 9:00 a.m. Detailed information on the full rulemaking, including comments and prehearing statements, can be found at the COGCC website:

<http://cogcc.state.co.us/reg.html#/rules/flowlinerulemaking>

◆ Mill Levy Rulemaking

On February 12, the Commission will hold a Rulemaking Hearing to consider raising the Oil and Gas Conservation Levy, authorized by § 34-60-122(1)(a), C.R.S., by at least four tenths of a mill in order to meet projected revenue shortfalls in the Oil and Gas Conservation and Environmental Response Fund. The Notice of Rulemaking and draft proposed rule, along with a rulemaking timeline, and other information, can be found at this location:

<http://cogcc.state.co.us/reg.html#/rules/levyrulemaking>

◆ SB 89-181 Annual Report

As an implementing agency for the groundwater standards and classifications established by the Water Quality Control Commission (WQCC), the COGCC is responsible for reporting annually on the program actions taken related to oil and gas activities under its jurisdiction. The COGCC completed the 2017 report and presented to the WQCC on January 8.

Highlights include discussions on spills and remediation projects, stray gas investigations, special environmental projects, Firestone, and the Flowline Rulemaking. The COGCC continues to meet with WQCD staff quarterly to ensure effective interagency coordination with respect to spills, releases, and remediation of spills and releases that impact groundwater or surface water.

The 2017 SB 89-181 report can be accessed at this link:

http://cogcc.state.co.us/documents/library/Technical/WQCC_WQCD%20Annual%20Reports/2017%20ANNUAL%20REPORT%20WQCC_FINAL_12302017.pdf

◆ Review of Handheld Laser Based Methane Detection Equipment

An eye safe, laser based natural gas (methane) detector that can quickly and efficiently detect leaks up to one hundred feet away is being evaluated by COGCC Engineering Staff. The instrument works in this way: when an infrared laser beam is transmitted from the launch port, some of the laser light is reflected back and converted into an electrical signal that the detected uses to estimate the methane



concentration. Joint field trials of this equipment are being conducted by Engineering and Field Inspection Unit Staff.

◆ **Local Government Liaison (LGL) Program Update**

COGCC Local Government Liaison (LGL) Staff provide valuable training, outreach, and support in response to inquiries, training requests, and requests for assistance in navigating the COGCC website. LGL Staff also regularly represent the COGCC in meetings with local governments across the state.

And as a reminder to all participating Local Government Delegates (LGDs) and local governments, it is extremely important to notify the COGCC LGL (via submittal of a signed and updated Form 29) of any change in an LGD email address or other contact information, or of a change in the status of personnel assigned to the LGD program. The link to the Form 29 is available at this location on the COGCC website:

http://cogcc.state.co.us/documents/reg/Forms/PDF_Forms/form29.pdf

It is the responsibility of participating local governments to inform the COGCC of a change in the e-mail address of the LGD, as notifications that an LGD receives from the COGCC or from operators are sent via email.

In 2017, the COGCC saw continued strong interest from local governments and LGDs in attending training offered by LGL Staff. 2017 LGD training included LGD orientation trainings offered to newly appointed LGDs and to associated local government staff.

Training in 2018 will continue with the following four types of training:

- Comprehensive LGD Training - see schedule below - typically a full day
- LGD Orientation Training - offered to newly appointed LGDs, or upon request; typically 3-4 hours
- COGCC Website Training - available upon request; typically 3-4 hours
- Topic Specific Training - available upon request given Staff availability; typically 1-2 hours.

Three full-day Comprehensive LGD Training sessions (9 a.m. to 5 p.m.) are now scheduled for 2018, including:

Tuesday, March 13 (Denver)
 Wednesday, April 11 (Denver)
 Thursday, May 10 (Denver)

Additional trainings, including venues outside of Denver, may be scheduled in the second half of 2018 based on need, interest, or upon request.

Comprehensive LGD Training is targeted to LGDs and local government staff. If space is available, nongovernmental agencies, nonprofits, environmental organizations, operators, consultants or subcontractors may preregister to attend the training.

Comprehensive LGD Training topics are expected to include the following:

- COGCC Overview (Commission / Staff / rules, recent rulemakings, programs, database/COGIS)
- Well and Location Permitting (Form 2 and 2A)
- LGD Program Opportunities / Key LGD Tools / Public Involvement
- Overview and Navigation of the COGCC Website (i.e, using eForms, Maps, Data, etc. including various hands-on exercises).

To preregister for one of the scheduled LGD trainings, please email LGL Marc Morton at

marc.morton@state.co.us

When you contact him, please provide:

- Name(s) of those planning to attend
- Your contact information (e-mail and telephone)
- The role/position each attendees has in the local government or organization
- The approximate number of years of experience with oil and gas regulation
- The preferred training date(s).

Once preregistered, an email confirming training participation will be sent. If a training is full, the group will be placed on a wait list and notified of



the next opening, or offered an alternative training date. If you are interested in an LGD training but the dates above or locations are not convenient, additional training dates may be offered. Alternatively, the LGL may offer a training at your venue or location that is designed to fit your local government's or organization's schedule or topic specific needs. If an alternative training date is your preference, please ask about scheduling one.

Registration will remain open until training space (limited to 15 people per class) is filled.

Additional training dates may be added if warranted based on interest and need. To get more information on LGD training opportunities, please contact the COGCC LGL Marc Morton at 303-894-2100, ext 5132, or by e-mail:

marc.morton@state.co.us

A list of the LGL outreach and public involvement activities conducted since the last staff report is included in the Public Outreach section below.

Public Outreach

➤ *Outreach by the LGL*

- On December 6, Marc Morton coordinated the Northwest Colorado Oil and Gas Forum meeting in Rifle. COGCC Director Matt Lepore provided an updated of current COGCC initiatives and projects. Dave Andrews (Western Colorado Engineering Supervisor) provided an update and overview of the Colorado Orphan and Distressed Operator (ODO) program.
- On December 6, Marc attended the monthly Garfield County Energy Advisory Board (EAB) meeting.
- On December 6, at the request of members of the Grand Valley Citizens Alliance, Marc provided an overview of the COGCC well, location, and UIC Class II well permitting process.
- On December 18, Marc travelled to Mead to provide a half day LGD orientation training to the recently appointed Town of Mead LGD Erica Rasmussen.
- On January 3, Marc attended the Fremont County Mayors' monthly roundtable meeting held in Williamsburg.
- On January 8, at the request of CDPHE staff, Marc attended a source water protection planning meeting for the Town of Gardner in Huerfano County and provided an overview of oil and gas activity in the County and in the immediate area.
- On January 11, Marc provided a written update to the Mesa County BOCC and Land / Resource Managers quarterly meeting.
- On January 18, Marc travelled to Rifle and attended the G County BOCC and Land / Resource Managers quarterly meeting.

Regional Activities

➤ *Northwest Colorado*

◆ Northwest Colorado Oil and Gas Forum

The Northwest Colorado Oil and Gas Forum (NWF) meetings for 2018 have been scheduled for March 1, August 2, and December 8. All meetings will be held in Rifle at the Colorado Mountain College - Rifle Campus / Clough Auditorium at 3595 Airport Road beginning at 9:00 a.m. and concluding by 12:00 p.m.

Meeting agendas will be posted to the COGCC website approximately one to two weeks prior to each meeting. The COGCC welcomes suggestions for speakers and topics. Meeting information is also emailed to those on the email distribution list.

All parties wishing to be placed on the meeting agenda or added to the email distribution list for announcements should contact Marc Morton at (303) 894-2100, ext. 5132 (direct), (720) 415-4959 (mobile), or by email:

marc.morton@state.co.us



As a reminder, NWF meetings are open to the public, and a public comment period is held as part of each meeting. Past NWF presentations (dating back to 2006) are available on the COGCC website at:

<http://cogcc.state.co.us/library.html#/forums>

◆ **Project Rulison**

The 5-year revision of the Project Rulison Sampling and Analysis Plan (RSAP) has been completed. Major revisions to the plan included re-defining the exterior buffer zones to align with hydrogeologic flow patterns instead of more arbitrary circular rings in the original plan.

This document is in the COGCC's Area Reports Library and can be found at the following link:

<http://cogcc.state.co.us/documents/library/AreaReports/PiceanceBasin/Rulison/Rulison%20Sampling%20and%20Analysis%20Plan%20Revision%204%20062217.pdf>

The email for Project Rulison submittals is

DNR_rulison.submittal@state.co.us

◆ **Project Rio Blanco**

The email for Project Rio Blanco submittals is

DNR_rioblanco.submittal@state.co.us

➤ ***Southwest Colorado***

◆ **Gas and Oil Regulatory Team (GORT) Meeting**

The Southwest Colorado Gas and Oil Regulatory Team (GORT) meeting schedule for 2018 has

been set. GORT meetings in 2018 are scheduled for February 8, June 21, and October 18.

The February 8 meeting will be held from 9:00 a.m. to noon at the La Plata County Fairgrounds, Extension Building, 2500 Main Avenue, Durango. The June 21 and October 18 GORT meetings will be held at the Durango Public Library at 1900 E. 3rd Avenue, Durango, between 9:00 a.m. and 12:00 p.m.

GORT meeting agendas will be posted to the COGCC website approximately one to two weeks prior to each meeting, and emailed to those on the email distribution list. The COGCC welcomes suggestions and input for speakers, topics, as well as meeting format and venue.

All parties wishing to be placed on the next meeting agenda or added to the distribution list for announcements should contact Marc Morton at (303) 894-2100, ext. 5132 (direct), (720) 415-4959 (mobile), or by email:

marc.morton@state.co.us

As a reminder, GORT meetings are open to the public, and a public comment period is held as part of each meeting.

◆ **Fruitland Formation Outcrop Mitigation and Monitoring Projects**

South Fork Texas Creek Mitigation Site - La Plata County. Regularly scheduled operations and maintenance are being performed at the South Fork Texas Creek (SFTC) site by LTE, the COGCC's contractor. Since May 2009, the system has collected 21,665 Mcf of methane and generated 254,045 kWh of surplus electricity.

Variance

◆ **TEP Rocky Mountain LLC (TEP)**

On January 4, per Rule 303.i.(2), the COGCC Director approved the Form 2 Permit to Drill for the TEP Tri State Trucking PA 543-26 well (API #045-23846) prior to the end of the 20 day comment period. The operator cited significant economic hardship in the form of drilling rig stand by charges as the basis for the expedited

approval request. This well is a replacement well for a previously approved well which had to be plugged after drill pipe became stuck while drilling the surface hole. In accordance with COGCC procedures, TEP obtained waivers of the 20-day comment period from the Surface Owner and the Garfield County LGD. The well is in the SE 1/4 NW 1/4 of Section 25, Township 6 South, Range 95 West in Garfield County.

Admin / Organization / Other

◆ Plugging and Reclaiming Orphaned Wells (PROW) Project Updates

The COGCC performed field work for the Orphan and Distressed Operator (ODO) Program projects described below since December 11. These projects relate either to “Orphan” locations or wells for which there is no known responsible party, or they relate to “Distressed Operator” projects in which surety claim funds are available.

The ODO project summary tables for Fiscal Year 2017-18 (FY18) are found on pages 11-15. The projects are sorted first by county and then by the project name. The field work described below pertains to ongoing projects or to recently completed projects. The agency has prioritized the ODO work planned for FY18, although each project is subject to change as new conditions arise during the year.

The **CM Production Project** began with Commission Order 1V-581. The project involves 28 locations in Jackson, Logan, and Washington Counties. The original operators drilled a total of 31 wells, and the project involves many single well pads and two multi well pads. Recent FY18 well work included wellhead repairs, temporary abandonment, and a mechanical integrity test. Work was suspended in December and is resuming in January. Recent environmental work included routine bi-annual groundwater monitoring related to an historic release.

The **Red Mesa Holdings Project** began with Commission Order 1V-508. The project involves 56 locations and 52 wells in La Plata County. Recent FY18 work included excavation and off site disposal of petroleum impacted soils from one well pad and stormwater BMP maintenance at two other well pads.

The **Lloyd and Lowell #1 Project** is located in Mesa County. FY18 well work was suspended in December after rigging up and cleaning out the wellbore. Well plugging resumed in January.

The **State #1-36 Project** is located in Montezuma County. After well plugging in FY17, recent FY18 work included initial surface reclamation activities.

The **Wolcott #1 Project** is located in Montezuma County. After well plugging in FY17, recent FY18 work included initial surface reclamation activities.

◆ Colorado Oil and Gas Information System (COGIS) Projects, Updates and Changes

Update on Proposed New Flowline Form

The Proposed New Flowline Report, the Form 44, will allow operators to register, report realignment, report removal from service, or report abandonment of Off-Location Flowlines, Domestic Taps, Crude Oil Transfer Systems, and Produced Water Transfer Systems, as proposed in the Draft Revised Flowline Rules.

The form will also allow operators to report Grade 1 Gas Leaks, which are leaks that represent an existing or probable hazard to people or property and require immediate repair or continuous action until the conditions are no longer hazardous. The Form 44 is currently in development and will be released this year.

Electronic Form (eForm) Submissions

The COGCC uses 41 types of forms to authorize oil and gas operations, inspect and monitor ongoing operations, and receive reports of operations. Of those 41 forms, 21 are currently available for electronic submittal through the eForms system.

The development team continues to work on the eForm conversion of existing forms. Currently, four forms are in various stages of development: Forms 8, 11, 12, 14, 14A, and 43. In addition, the development team updates eForms with improvements requested by Staff and as required by rule revisions.

In 2017, industry electronically submitted 98 percent of the forms available in eForms. There are 878 operator users of eForms and 3,523 individual users. For any operator not currently enrolled in eForms, instructions for starting the process can be found on the COGCC website at:

<http://cogcc.state.co.us/Announcements/COUAINformation.pdf>



Applications and Location Assessments

The public can make comments on all submitted Drilling Permit Applications (Form 2s) and Location Assessments (Form 2As) through the eForm system. Simply go to the COGCC website and click on the menu option “Permits” or

<http://cogcc.state.co.us/permits.html#/permits>

On the “Permits Search” page, three search options are available. The first option, “All Pending Permit Applications,” is used for public comments. When the results are displayed for “Pending Applications,” a user can click on the document number hyperlink in the “Status” column, which logs him or her to the eForms application.

Once the page is displayed with the selected document, the user can select the “Comment” button to make a comment on that particular form.

Data Access

The COGCC’s database is a comprehensive repository of Colorado’s oil and gas data. The information in the database is available to the public through interactive search tools and a variety of file downloads on the website. Users of bulk data come from many different sectors of the community, including academia, oil and gas operators, environmental groups, government agencies, and the media.

All the data file downloads are available at:

<http://cogcc.state.co.us/data2.html#/downloads>

Current Data File Downloads

Complaints
Field Operations
Flowline NTO Imported Data
GIS Shapefiles (12 files)
Mechanical Integrity Tests
Notices of Alleged Violation
Production Data (1999 - present)
Spacing Orders
Spills and Releases
Analytical Sample Data

Future Data File Downloads

Enforcement Orders (OFVs and AOCs)
Underground Injection Control (UIC) Data

◆ March 2018 Hearing Docket

The docket for the March 2018 hearing will be available shortly after the January hearing. Hearing dockets are available on our website by clicking on “Regulation” in the menu and then “Hearings”:

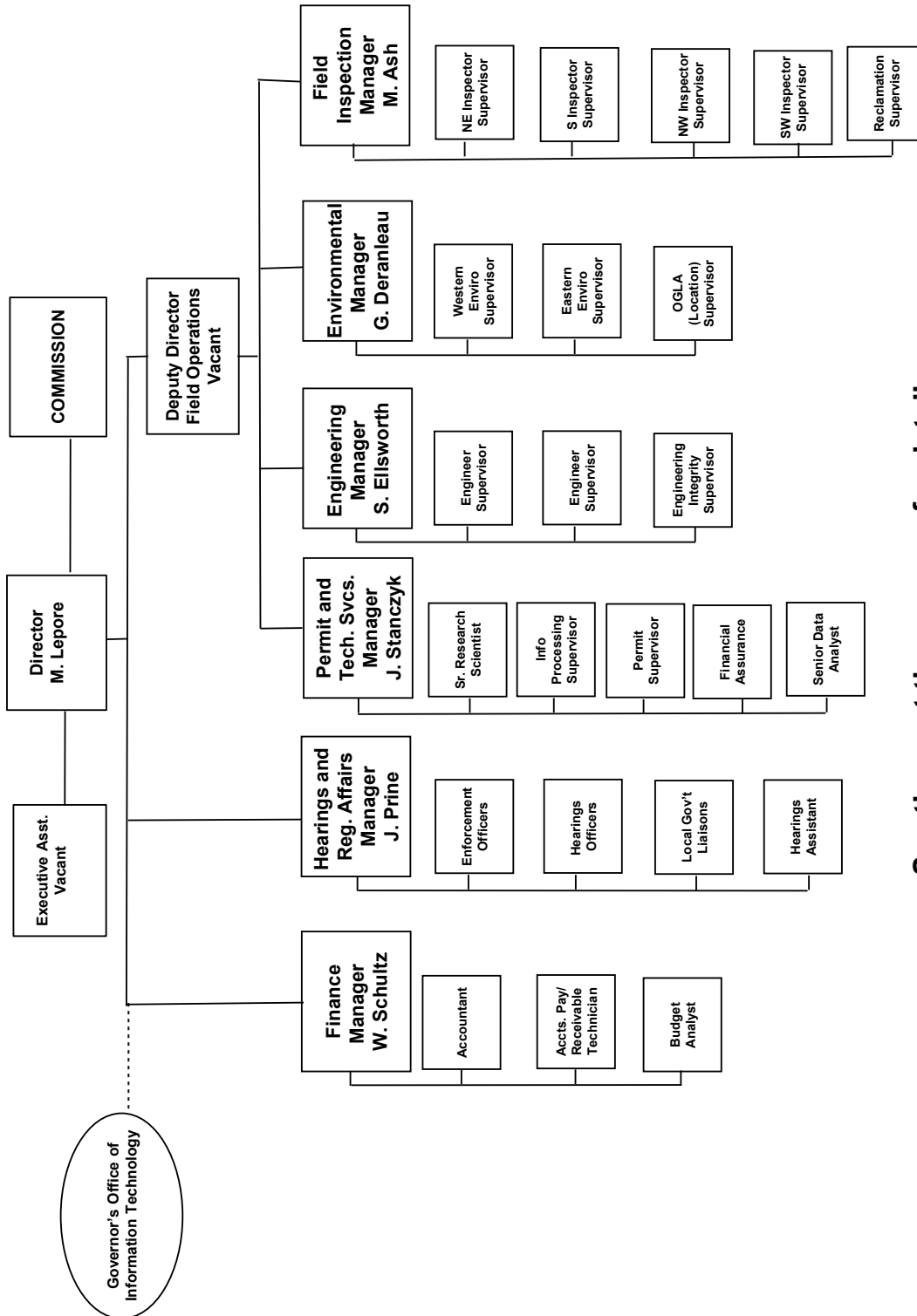
<http://cogcc.state.co.us/reg.html#/hearings>

Links to the notices and hearing applications are available from the Docket Number and Applicant, respectively, by clicking the March Gen_Docket link. To sign up for email notification of hearing notices and applications, please see the announcement and instructions on the homepage of the COGCC website.



Organizational Charts and Statistics

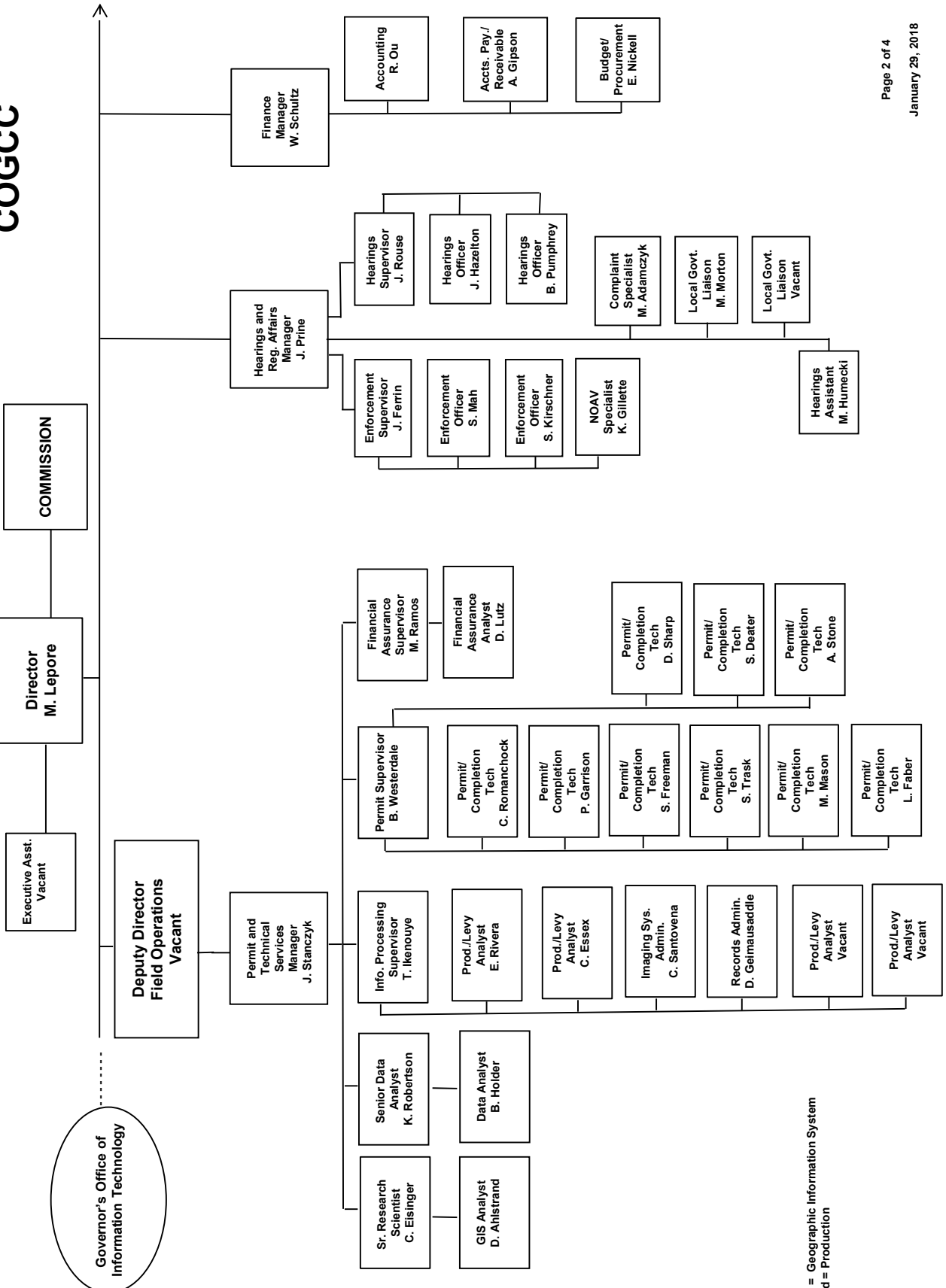
COLORADO OIL & GAS CONSERVATION COMMISSION



See the next three pages for details



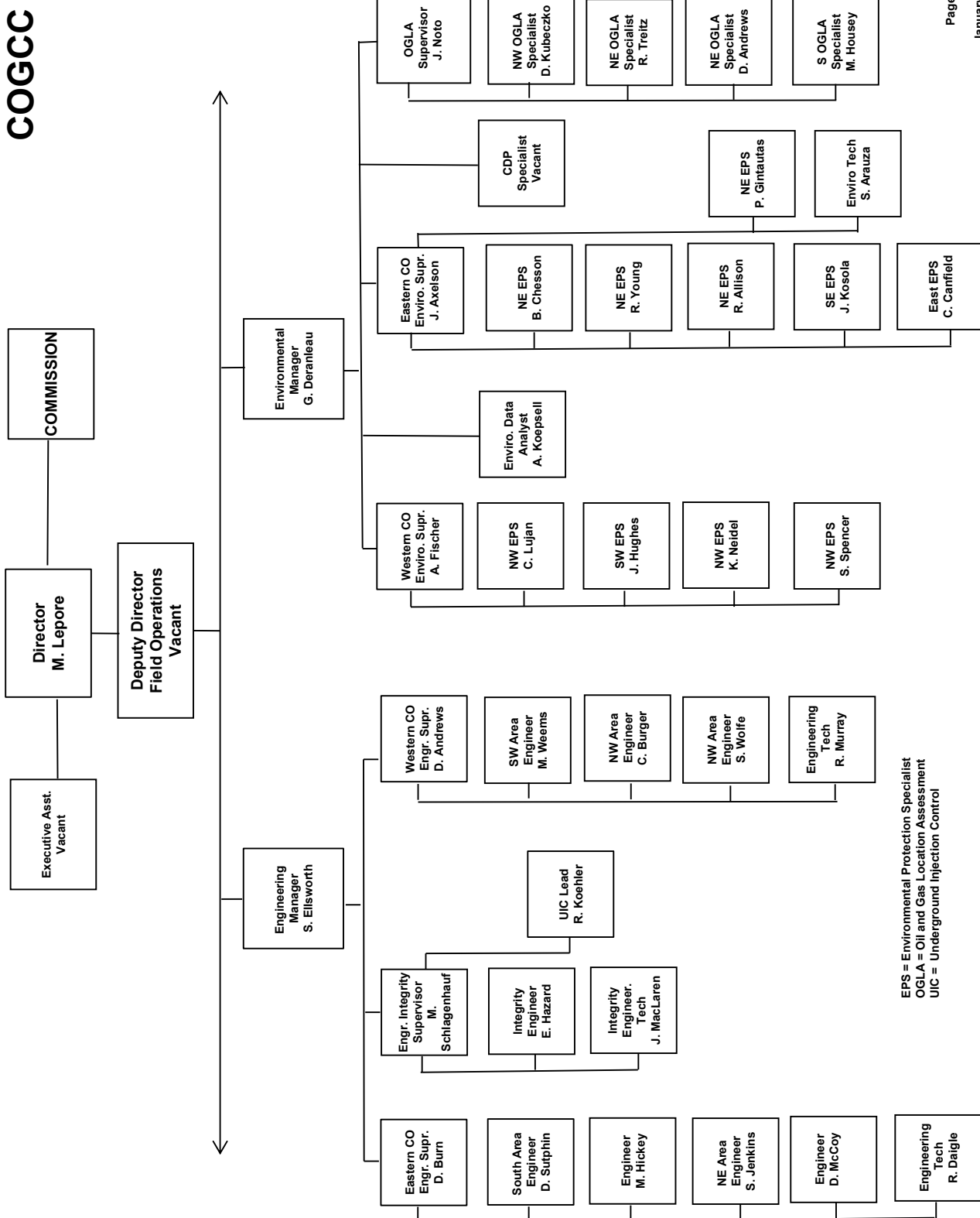
COGCC



GIS = Geographic Information System
Prod = Production



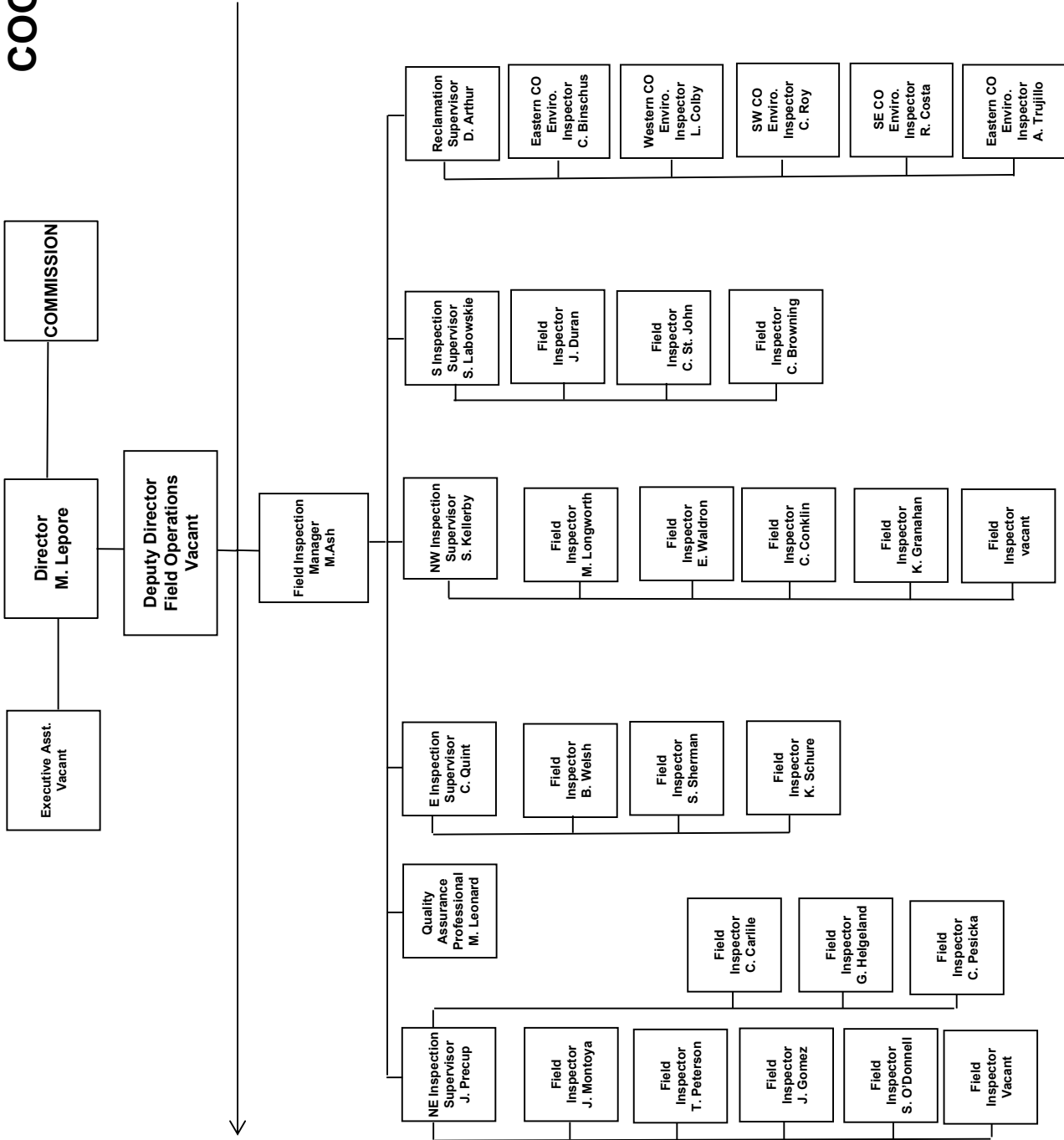
COGCC



EPS = Environmental Protection Specialist
 OGLA = Oil and Gas Location Assessment
 UIC = Underground Injection Control



COGCC





PLUGGING AND RECLAIMING ORPHANED WELLS (PROW) PROGRAM FISCAL YEAR 2017-18

Page 1 of 5

BONDS AND OTHER SURETY CLAIM STATUS FOR ACTIVE FY2017-18 "BOND CLAIM" PROJECTS

Project	Order Number(s)	Total Bond Claim	Amount Spent in Prior Fiscal Years	Amount Spent in FY2017-18	Remaining Bond Balance
Atom Petroleum Bond Claim	1V-586	\$ -	\$ 797	\$ 1,275	\$ (2,072)
Benchmark Energy Bond Claim	1V-564	\$ 620,000	\$ 98,931	\$ -	\$ 521,069
CM Production Bond Claim	1V-581	\$ 67,849	\$ 13,299	\$ 28,366	\$ 26,184
Dolphin Bond Claim	1V-382	\$ 55,000	\$ 55,000	\$ -	\$ -
Humiston, G Everett Bond Claim	1V-390	\$ 500	\$ -	\$ -	\$ 500
Koch, Delbert Bond Claim	1V-634				
Noel Reynolds Bond Claim	1V-374, 1V-375	\$ 30,000	\$ -	\$ 841	\$ 29,159
Nolte Bond Claim	1V-582	\$ 61,838	\$ -	\$ -	\$ 61,838
Petrohunter Bond Claim	1V-608				
Pine Ridge Bond Claim	1V-622	\$ 85,000	\$ -	\$ -	\$ 85,000
Red Mesa Holdings Bond Claim	1V-508	\$ 72,831	\$ 12,258	\$ 60,574	\$ -
Red Mountain Bond Claim*	1V-549, 5LB	\$ 92,015	\$ 30,070	\$ 30,675	\$ 31,271
Ricker Farms Bond Claim	1V-529				
Ruth #1 Bond Claim	1V-395				
Texas Tea Bond Claim	1V-573	\$ 71,850	\$ 40,283	\$ 31,568	\$ -
Vitruvian Exploration Bond Claim	1V-514	\$ 30,000	\$ -	\$ 9,010	\$ 20,990
TOTALS ->		\$ 1,280,307	\$ 344,061	\$ 162,308	\$ 773,939

Note: * Red Mountain Bond Total Claim Amount includes \$24,169 bankruptcy deposit and \$5,000 State Land Board deposit (bond transfer)

ACTIVE TASK LIST (PLANNED OR IN PROGRESS) - FY2017-18

Work Unit	County	Project and Task	Task Status	Planning Comments
Reclamation	Adams	Texas Tea Bond Claim: Task 2.2 - Weed Control (maintenance) - Spindle and Sun Fields,	Planned	Reclamation maintenance
Reclamation	Fremont	Pine Ridge Bond Claim: Task 4 - Re-Seeding (maintenance), Weed Control (maintenance) - 382573,	Planned	Reclamation maintenance
Reclamation	Fremont	Pine Ridge Bond Claim: Task 5 - Re-Seeding (maintenance), Weed Control (maintenance) - 419495,	Planned	Reclamation maintenance
Environmental	Jackson	CM Production Bond Claim: Task 1.11 - Sampling and Analysis - Lone Pine Field,	In Progress	Biannual sampling and analysis (first sampling event completed November 2017)
Engineering	Jackson	CM Production Bond Claim: Task 3.1, 3.2 - MIT or Other Well Work, Plug and Abandon - 324630, 057-06093	In Progress	Set downhole plug to TA well and MIT
Engineering	Jackson	CM Production Bond Claim: Task 3.1, 3.2 - MIT or Other Well Work, Plug and Abandon - 324626, 057-06069	Planned	Set downhole plug to TA well and MIT
Reclamation	Jefferson	Red Mountain Bond Claim: Task 14 - Stormwater BMPs (maintenance), Weed Control (maintenance) - 324775,	Planned	Reclamation maintenance (in-house Staff and Equipment)



ACTIVE TASK LIST (PLANNED OR IN PROGRESS), cont.				
Work Unit	County	Project and Task	Task Status	Planning Comments
Engineering	La Plata	Atom Petroleum Bond Claim: Task 2.5 - MIT or Other Well Work - 325653, 067-06777	In Progress	Removed liquid from cellar, no wellhead leak apparent during work in October 2017, continuing to monitor well cellar
Engineering	La Plata	Noel Reynolds Bond Claim: Task 1 - Plug and Abandon, Flowline Abandonment - 325354, 067-06232	Planned	Plug well and abandon flowline
Environmental	La Plata	Red Mesa Holdings Bond Claim: Task 3 - Sampling and Analysis, Spill or Remediation - 325267,	In Progress	Remove hydrocarbon-impacted soil (includes sampling and analysis)
Reclamation	La Plata	Red Mesa Holdings Bond Claim: Task 5 - Weed Control (maintenance) - Red Mesa Field,	Planned	Reclamation maintenance
Environmental	Larimer	Hall #1: Task 1 - Gas Meter Survey - 385978,	Planned	Gas meter monitoring (in-house Staff and
Engineering	Larimer	Sheffer Jack #1: Task 1 - Plug and Abandon, Flowline Abandonment - 385978, 069-05014	Planned	FY2018 flowline utility locate in preparation to plug well and abandon flowline
Reclamation	Lincoln	Nolte Bond Claim: Task 1 - Re-Seeding (maintenance), Weed Control (maintenance) - 421302,	Planned	Reclamation maintenance
Reclamation	Lincoln	Pine Ridge Bond Claim: Task 1 - Re-Seeding (maintenance), Weed Control (maintenance), Fence Removal - 433053,	Planned	Reclamation maintenance
Reclamation	Lincoln	Pine Ridge Bond Claim: Task 2 - Re-Seeding (maintenance), Weed Control (maintenance), Fence Removal - 430683,	Planned	Reclamation maintenance
Reclamation	Lincoln	Pine Ridge Bond Claim: Task 3 - Re-Seeding (maintenance), Weed Control (maintenance), Fence Removal - 430828,	Planned	Reclamation maintenance
Reclamation	Logan	CM Production Bond Claim: Task 3.6 - Stormwater BMPs (maintenance), Weed Control (maintenance) - Cliff Field,	Planned	Weed control
Reclamation	Logan	CM Production Bond Claim: Task 3.6 - Weed Control (maintenance) - 312201,	Planned	Weed control
Environmental	Logan	Red Mountain Bond Claim: Task 11 - Sampling and Analysis, Spill or Remediation, Pit Closure - 450396,	Planned	Remove pit fluids and pit liner; sampling and analysis for confirmation and pit closure.
Reclamation	Logan	Red Mountain Bond Claim: Task 21 - Weed Control (maintenance) - Merino and Twin Mills Fields,	Planned	Reclamation maintenance
Environmental	Mesa	DB Orphan #8: Task 3 - Soil Vapor Extraction System - 450650,	In Progress	SVE blower shut down while residents are away for winter. Wind turbine ventilator installed. Periodic soil gas meter monitoring is on-going (in-house Staff and Equipment)
Engineering	Mesa	Lloyd and Lowell #1: Task 2 - Plug and Abandon - 428669, 077-40017	In Progress	Plug well
Reclamation	Moffat	Vitruvian Exploration Bond Claim: Task 2 - Reclamation (initial work) - 392480,	Planned	Reclaim location
Engineering	Montezuma	Atom Petroleum Bond Claim: Task 1.1 - Plug and Abandon - 313483, 083-06263	Planned	Plug well
Engineering	Montezuma	Atom Petroleum Bond Claim: Task 1.1 - Plug and Abandon - 313628, 083-06653	Planned	Plug well
Field Operations	Montezuma	Atom Petroleum Bond Claim: Task 2.3 - Equipment Intervention,	Planned	Remove production equipment
Field Operations	Montezuma	Atom Petroleum Bond Claim: Task 2.3 - Equipment Intervention, Equipment Salvage - 313628,	Planned	Remove production equipment
Engineering	Montezuma	Humiston, G Everett Bond Claim: Task 1 - Plug and Abandon - 313456, 083-06110	Planned	Plug well



ACTIVE TASK LIST (PLANNED OR IN PROGRESS), cont.				
Work Unit	County	Project and Task	Task Status	Planning Comments
Reclamation	Routt	Pine Ridge Bond Claim: Task 6 - Re-Seeding (maintenance), Weed Control (maintenance) - 316792,	Planned	Reclamation maintenance
Reclamation	Washington	CM Production Bond Claim: Task 3.6 - Weed Control (maintenance) - Hyde and Tap Fields,	Planned	Weed control
Engineering	Washington	Vondy #3: Task 1 - Plug and Abandon - 402779, 121-08717	Planned	Plug well
Environmental	Weld	Severin & Co #1: Task 1 - Sampling and Analysis, Spill or Remediation - 407304,	Planned	Environmental sampling around wellhead (well is plugged)
COMPLETED TASK LIST - FY2017-18				
Work Unit	County	Project and Task	Task Status	Planning Comments
Engineering	Adams	Texas Tea Bond Claim: Task 2.1, 3.1A - Plug and Abandon, Flowline Abandonment - 320139, 001-08204	Completed	Plug well and abandon flowline; cut off casing during landfill expansion
Engineering	Adams	Texas Tea Bond Claim: Task 2.1, 3.1A - Plug and Abandon, Flowline Abandonment - 320206, 001-08443	Completed	Plug well and abandon flowline
Engineering	Adams	Texas Tea Bond Claim: Task 2.1, 3.1A - Plug and Abandon, Flowline Abandonment - 320240, 001-08699	Completed	Plug well and abandon flowline
Engineering	Adams	Texas Tea Bond Claim: Task 3.3, 3.7 - Plug and Abandon, Flowline Abandonment - 320257, 001-08775	Completed	Plug well and abandon flowline
Engineering	Boulder	Juhl #1: Task 1 - Plug and Abandon, Flowline Abandonment - 379627, 013-05018	Completed	Fluid disposal
Environmental	Jackson	CM Production Bond Claim: Task 1.14 - Sampling and Analysis, Spill or Remediation - 324630,	Completed	Soil sampling and analysis
Environmental	Jackson	CM Production Bond Claim: Task 1.7, 1.10 - Equipment Intervention - 324634,	Completed	Remove liquids from tanks
Field Operations	La Plata	Atom Petroleum Bond Claim: Task 1.2 - Equipment Intervention - 325653,	Completed	Remove liquids from tank
Environmental	La Plata	McCullough #4: Task 2 - Sampling and Analysis - 325208,	Completed	Collect wellhead gas samples
Engineering	La Plata	Noel Reynolds Bond Claim: Task 1 - MIT or Other Well Work, Install pressure gauge - 385368, 067-05448	Completed	Wellhead work to prepare for future re-entry to plug and abandon, installed pressure gauge.
Engineering	La Plata	Red Mesa Holdings Bond Claim: Task 2 - MIT or Other Well Work, Complaint response, Bradenhead test - 325858, 067-07085	Completed	Set downhole plugs to TA well, perform MIT, abandon flowline, and remove liquid tank bottoms for off-site disposal
Engineering	La Plata	Red Mesa Holdings Bond Claim: Task 2 - MIT or Other Well Work, Plug and Abandon, Flowline Abandonment - 325267, 067-06033	Completed	Plug well and abandon flowlines, remove pump jack, and install stormwater BMPs
Reclamation	Larimer	Ranchers Bond Claim: Task 1 - Reclamation (initial work), Re-Seeding (maintenance), Weed Control (maintenance) - 435790,	Completed	Reclamation maintenance
Reclamation	Larimer	Ranchers Bond Claim: Task 2 - Engineering Design - 419639,	Completed	Soil sampling and analysis
Environmental	Logan	Red Mountain Bond Claim: Task 13 - Sampling and Analysis, Spill or Remediation - 312261,	Completed	Collected samples for analysis at produced water pit and around other production equipment.



COMPLETED TASK LIST - FY2017-18, cont.

Work Unit	County	Project and Task	Task Status	Planning Comments
Engineering	Logan	Red Mountain Bond Claim: Task 8 - Plug and Abandon, Flowline Abandonment - 312261, 075-08293	Completed	Plug well and abandon flowline
Engineering	Mesa	DB Orphan #8: Task 1 - Plug and Abandon - 450650, 077-10381	Completed	Set surface plug, cut off casing, and weld plate
Environmental	Mesa	DB Orphan #8: Task 2 - Sampling and Analysis, Soil Vapor Monitoring - 450650,	Completed	Soil gas monitoring
Reclamation	Moffat	Tatonka Bond Claim: Task 10 - Weed Control (maintenance), Stormwater BMP maintenance - 313340,	Completed	Stormwater permit
Engineering	Moffat	Vitruvian Exploration Bond Claim: Task 1 - Flowline Abandonment - 392479,	Completed	Abandon flowlines
Engineering	Moffat	Vitruvian Exploration Bond Claim: Task 1 - Flowline Abandonment - 392480,	Completed	Abandon flowlines
Environmental	Montezuma	Pilcher #1: Task 1 - Sampling and Analysis - 393155,	Completed	Collect samples at former tank battery location and develop remediation plan if needed
Reclamation	Montezuma	State #1-36: Task 2 - Reclamation (initial work) - 313502,	Completed	Reclaim location
Reclamation	Montezuma	Wolcott #1: Task 2 - Reclamation (initial work) - 313501,	Completed	Reclaim location
Reclamation	Montrose	Redwine Bond Claim: Task 4 - Stormwater BMPs (maintenance), Weed Control (maintenance) - 313641,	Completed	Reclamation maintenance



Oil and Gas Staff Report

January 29, 2018

15

Page 5 of 5

PROJECT FINANCIALS - FY2017-18

Project Name	BOND Actual	PROW Actual	EMGY Actual	Subtotals Actual
Atom Petroleum Bond Claim	\$ 1,275	\$ -	\$ -	1,275
CM Production Bond Claim	\$ 28,366	\$ -	\$ -	28,366
DB Orphan #8	\$ -	\$ 13,027	\$ -	13,027
Juhl #1	\$ -	\$ 78	\$ -	78
McCullough #4	\$ -	\$ 3,007	\$ -	3,007
Noel Reynolds Bond Claim	\$ 841	\$ -	\$ -	841
Pilcher #1	\$ -	\$ 1,074	\$ -	1,074
Ranchers Bond Claim	\$ -	\$ 1,387	\$ -	1,387
Red Mesa Holdings Bond Claim	\$ 60,574	\$ 34,970	\$ -	95,543
Red Mountain Bond Claim	\$ 30,675	\$ -	\$ -	30,675
Redwine Bond Claim	\$ -	\$ 3,023	\$ -	3,023
State #1-36	\$ -	\$ 322	\$ -	322
Tatonka Bond Claim	\$ -	\$ 350	\$ -	350
Texas Tea Bond Claim	\$ 31,568	\$ 62,088	\$ -	93,656
Vitruvian Exploration Bond Claim	\$ 9,010	\$ -	\$ -	9,010
Wolcott #1	\$ -	\$ 407	\$ -	407
TOTAL EXPENDITURES ->	\$ 162,308	\$ 119,733	\$ -	282,040

NOTES:

Project and Task Format: [Location or Well Name and Number (if orphan) or Operator Name + "Bond Claim"] :
 "Task" [Task No(s)] - [Task Type(s)] - [Facility ID Number], [Well API Number (county and sequence code,
 if well work included with task)]

Project Financials: COGCC may be waiting on invoices for some Completed Tasks, and therefore
 expenditures for those Tasks may not be shown in the Project Financials Section.

ABREVIATIONS:

EMGY = Emergency Response Appropriation
 PROW = Plugging and Reclaiming Orphaned Wells Appropriation

PROW FUNDS SCOREBOARD

\$ 445,000	Annual PROW Appropriation
\$ (229,121)	Planned and In Progress Estimate
\$ (92,871)	Completed Work (Waiting on Invoice Approval)
\$ (119,733)	Completed Work (Invoiced)
\$ 3,275	Estimated Fiscal Year End Balance

(Scoreboard excludes work involving Bond Expenditures)



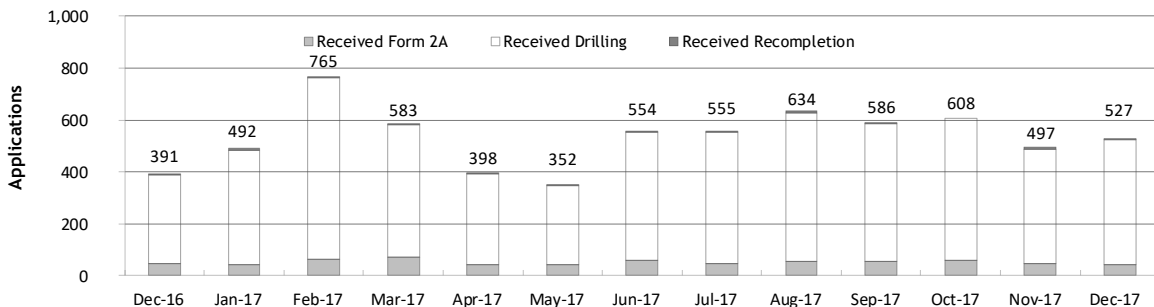
Monthly Permit Activity as of January 2, 2018

Form/Month	Backlog	Received	Approved	Withdrawn	Rejected	Incomplete ¹	In-Process	Remaining ²
Form2A								
Dec-16	110	48	25	6	0	20	107	127
Jan-17	127	42	25	1	1	18	124	142
Feb-17	142	62	38	2	0	28	136	164
Mar-17	164	71	48	6	3	29	149	178
Apr-17	178	41	54	3	0	34	128	162
May-17	162	41	55	0	0	25	123	148
Jun-17	148	58	40	2	1	31	132	163
Jul-17	163	45	31	3	1	33	140	173
Aug-17	173	53	49	6	0	33	138	171
Sep-17	171	56	41	0	1	25	160	185
Oct-17	185	58	40	6	2	25	170	195
Nov-17	195	47	38	2	0	24	178	202
Dec-17	202	44	32	3	0	31	180	211
Drilling								
Dec-16	893	342	267	15	9	115	829	944
Jan-17	944	442	211	1	13	89	1,072	1,161
Feb-17	1,161	701	263	14	0	86	1,499	1,585
Mar-17	1,585	510	423	14	47	131	1,480	1,611
Apr-17	1,611	352	301	21	14	167	1,460	1,627
May-17	1,627	307	367	13	52	168	1,334	1,502
Jun-17	1,502	493	331	3	9	185	1,467	1,652
Jul-17	1,652	508	234	49	75	146	1,656	1,802
Aug-17	1,802	572	349	13	20	137	1,855	1,992
Sep-17	1,992	528	450	12	36	135	1,887	2,022
Oct-17	2,022	550	311	75	64	139	1,983	2,122
Nov-17	2,122	438	331	19	59	125	2,026	2,151
Dec-17	2,151	479	304	15	25	124	2,162	2,286
Recompletion								
Dec-16	10	1	4	1	0	2	4	6
Jan-17	6	8	2	0	0	2	10	12
Feb-17	12	2	4	0	0	3	7	10
Mar-17	10	2	2	0	0	2	8	10
Apr-17	10	5	4	1	0	2	8	10
May-17	10	4	3	4	0	1	6	7
Jun-17	7	3	2	0	0	2	6	8
Jul-17	8	2	4	0	0	2	4	6
Aug-17	6	9	0	1	0	2	12	14
Sep-17	14	2	6	0	0	2	8	10
Oct-17	10	0	2	0	0	3	5	8
Nov-17	8	12	1	0	0	3	16	19
Dec-17	19	4	4	0	0	8	11	19

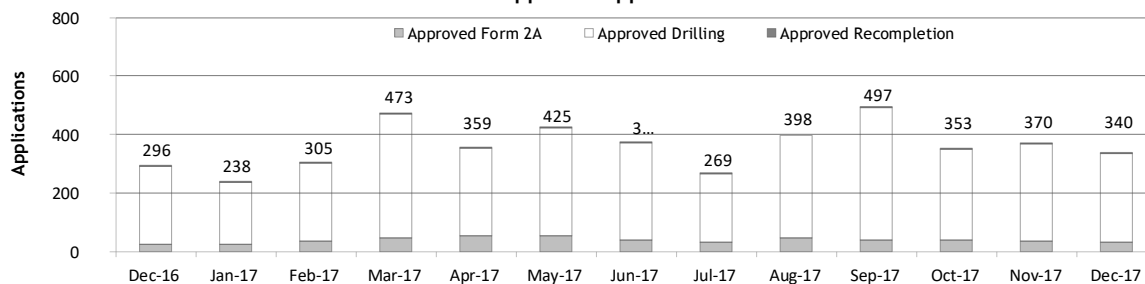
¹ Incomplete are applications that have missing or inaccurate data and cannot be approved.

² Backlog = Incomplete + In-process = Remaining permits from previous month.

Received Applications



Approved Applications





Status of Permit Applications Filed By Month as of January 2, 2018

Form 2A Location Assessment

Year	Month	Received	Approved	Withdrawn	In Process	Percent In Process	Average			
							Days to Process	Less Than 30 Days	30 to 49 Days	Greater Than 50 Days
2011	TOTAL	2,391	2,298	93	0	0%		1,416	620	262
2012	TOTAL	1,359	1,291	68	0	0%		706	378	207
2013	TOTAL	1,281	1,202	78	1	0%		369	433	400
2014	TOTAL	1,114	1,067	47	0	0%		279	429	359
2015	TOTAL	592	563	26	3	1%		78	157	328
2016	TOTAL	407	376	24	5	1%		32	61	283
2017	JAN	42	32	6	4	10%	92	0	5	27
	FEB	59	56	2	1	2%	88	7	9	40
	MAR	70	58	3	9	13%	71	6	18	34
	APR	41	33	2	6	15%	79	5	9	19
	MAY	41	32	3	6	15%	88	2	6	24
	JUNE	57	45	1	11	19%	68	7	16	22
	JULY	43	31	1	11	26%	56	6	14	11
	AUG	51	36	1	13	25%	56	6	9	21
	SEP	55	27	1	27	49%	50	4	10	13
	OCT	57	23	1	33	58%	41	9	7	7
	NOV	47	12	0	35	74%	30	5	7	0
	DEC	44	1	0	43	98%	21	1	0	0
2017	TOTAL	607	386	21	199	33%		58	110	218

Form 2 Application For Permit to Drill (APDs)

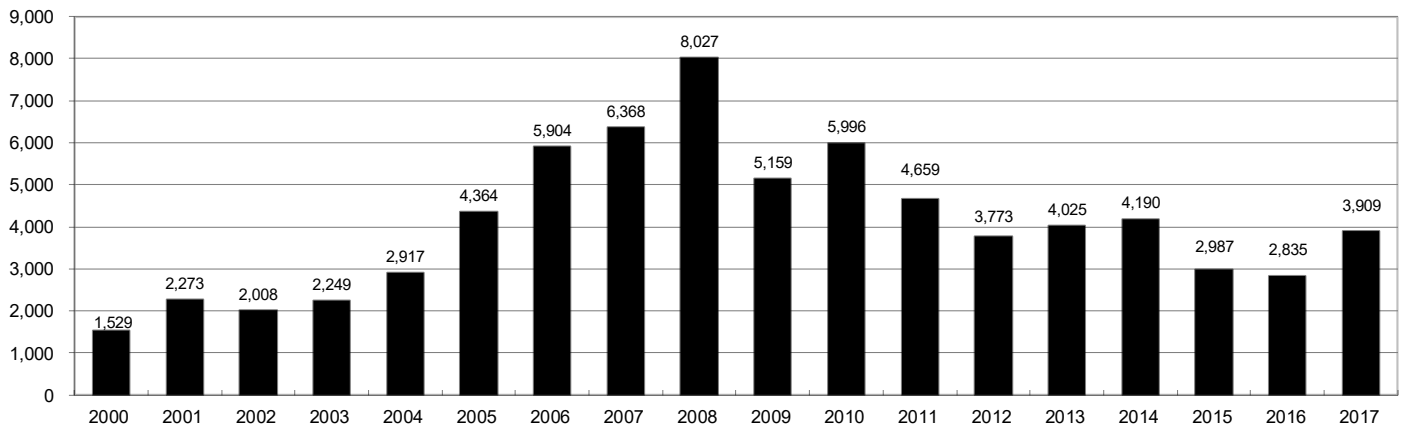
Year	Month	Received	Approved	Withdrawn	In Process	Percent In Process	Average			
							Days to Process	Less Than 30 Days	30 to 49 Days	Greater Than 50 Days
2011	TOTAL	4,691	4,557	132	0	0%		2,723	1,565	587
2012	TOTAL	3,955	3,816	139	0	0%		1,971	1,393	602
2013	TOTAL	4,548	4,312	235	1	0%		1,046	1,626	1,714
2014	TOTAL	4,208	4,026	182	0	0%		689	1,629	1,744
2015	TOTAL	3,237	3,088	130	19	1%		249	759	2,110
2016	TOTAL	3,253	3,026	98	71	2%		204	402	2,442
2017	JAN	418	330	50	38	9%	117	5	41	290
	FEB	590	485	32	73	12%	104	36	39	411
	MAR	508	388	45	75	15%	94	15	70	305
	APR	335	277	18	40	12%	104	10	17	255
	MAY	306	225	10	71	23%	93	18	65	143
	JUNE	472	323	3	146	31%	98	12	75	238
	JULY	458	289	6	163	36%	91	22	27	239
	AUG	522	281	16	225	43%	66	8	94	185
	SEP	512	236	5	271	53%	63	18	89	131
	OCT	519	204	5	310	60%	61	7	50	147
	NOV	429	72	0	357	83%	34	40	23	12
	DEC	479	2	0	477	100%	1	1	0	0
2017	TOTAL	5,548	3,112	190	2,246	40%		192	590	2,356



Annual Drilling Permits by County as of January 2, 2018

County	2000	2001	2002	2003	2004	2005	2006	2007	2008	2009	2010	2011	2012	2013	2014	2015	2016	2017
ADAMS	38	28	9	26	39	34	37	89	51	35	21	8	40	51	96	74	125	
ARAPAHOE		2	1	2	5	7	11	10	10	10	8	23	35	23	34	19	5	78
ARCHULETA	7	9	6	10	8	13	14	26	47	11	18	12	5	4	3	11	3	21
BACA	22	6	2	3	7	8	2	11	13	3	4	5	3	1	1			5
BENT	2				5	3	8	1	1		5		2	1				
BOULDER	1	5	6	7	17	13	21	37	32	35	24	30	22					
BROOMFIELD			2	7		1	1		2	33	28	11	36		31			
CHEYENNE	3	3	3	3	3	10	21	15	33	12	13	16	31	50	26	9		1
COSTILLA																		
CROWLEY															2			3
DELTA			7	4	5	10	9	2			4	3	6	1	2			
DENVER		3					19	25	24									
DOLORES				1	1	1	6	10	12	21	8	8	13	12	3		3	2
EAGLE														1				
ELBERT	2						4			1		1	2	2	4	3	3	1
EL PASO										2	3	3	18	1	2			
FREMONT					1	3	2	4	14	13	22	14	11	2	8	2	2	1
GARFIELD	213	353	362	567	796	1,509	1,845	2,550	2,888	1,981	2,037	1,323	1,046	870	1,066	532	724	612
GRAND																		
GUNNISON			5	10	1	9	19	7	10	12	4	3	11	9	20	28	19	33
HUERFANO	41	27	27		8	2			7		2	1	9	1	13	2		2
JACKSON	34	18	21	9	14	6	8	5	27	19	9	18	5	12	17	3	57	28
JEFFERSON	1						1	3	2					1				
KIOWA	11	18	2	4	2	1	11	9	26	7	16	17	17	12	5	3		3
KIT CARSON				1	3	5	4	4	13	7	3	2	6	1	2		1	
LA PLATA	127	156	104	162	102	115	235	251	328	298	191	99	71	32	87	106	96	108
LARIMER	2		1			1		5	46	12	41	8	13	2	4	28	4	30
LAS ANIMAS	268	400	259	180	332	413	500	362	303	88	92	85	11	2	1			
LINCOLN	2	2	1	6	3	4	1	2	58	44	48	31	36	87	129	24	5	31
LOGAN	4	7	3	3	6	13	17	14	5	9	17	8	27	4	5		1	3
MESA	13	27	30	27	54	136	265	293	501	427	306	127	150	105	74	126	7	215
MOFFAT	35	52	62	63	63	60	120	68	57	51	53	93	88	44	54	12	17	5
MONTEZUMA	4		5	8	8	11	5	12	22	39	19	27	29	14	25	3	3	6
MONTROSE	1	3	2	4	2		1	3	3		1	1						
MORGAN	9	9	2	7	9	7	3	6	2	1	6	13	5	16	6	4	28	
OTERO																		
PARK										3	4	1						
PHILLIPS	1	2		7	13	17	12	69	82	45	64	112	56		11	2		
PITKIN				1				1								1		
PROWERS	2	5	4		7	5	7	5	8	1	3	1			1		1	
RIO BLANCO	89	187	105	179	154	161	360	321	477	348	441	109	117	167	121	107	71	118
RIO GRANDE	1	1		1					1	1			2		1			
ROUTT	20	13	1		4	6	9	8	4	2	3	10	4	12	4	9		
SAGUACHE	2		2					2	1	2								
SAN MIGUEL	11	13	27	18	42	45	35	23	20	13	10	2	1		2	3		
SEDGWICK				1	5	2	7	2	1	19	11	12	2		7	1		
WASHINGTON	23	17	27	34	128	50	69	45	11	1	6	12	6	19	12	9	7	10
WELD	509	702	760	757	832	901	1,418	1,527	2,340	1,448	2,152	2,262	1,826	2,468	2,303	1,841	1,704	2,466
YUMA	31	205	160	138	237	782	797	541	545	105	299	148	11	9	53	3		2
TOTAL	1,529	2,273	2,008	2,249	2,917	4,364	5,904	6,368	8,027	5,159	5,996	4,659	3,773	4,025	4,190	2,987	2,835	3,909

ALL COUNTIES





Form 2A Breakdown By County By Year as of January 2, 2018

Year	County	Form 2As Completed	In Process	New Location	CDP	SWH	RSO	CDPHE	
2009	Total State	818	818	0	408	2	80	5	5
2010	Total State	2,377	2,377	0	1,543	0	317	22	55
2011	Total State	2,297	2,297	0	1,724	1	259	16	5
2012	Total State	1,297	1,297	0	900	0	167	6	1
2013	Total State	1,195	1,194	1	845	0	144	2	4
2014	Total State	1,067	1,065	0	776	3	129	7	3
2015	Total State	574	568	4	399	0	95	2	2
2016	ADAMS	9	9	0	8	0	0	0	0
	ARAPAHOE	10	9	0	5	0	0	0	0
	ARCHULETA	1	1	0	0	0	1	0	0
	DOLORES	1	1	0	1	0	0	0	0
	ELBERT	3	3	0	0	0	0	0	0
	FREMONT	1	0	1	0	0	1	0	0
	GARFIELD	26	27	0	4	0	13	3	2
	GUNNISON	6	6	0	1	0	2	1	0
	HUERFANO	1	0	0	1	0	1	0	0
	JACKSON	10	10	0	5	0	9	0	0
	KIT CARSON	1	1	0	1	0	0	0	0
	LA PLATA	5	5	0	0	0	5	0	1
	LARIMER	2	2	0	2	0	0	0	0
	LINCOLN	5	5	0	4	0	0	0	0
	LOGAN	2	2	0	0	0	0	0	0
	MESA	4	4	0	2	0	3	0	1
	MOFFAT	15	11	0	6	0	13	0	1
	MONTEZUMA	1	1	0	1	0	0	0	0
	MORGAN	1	1	0	1	0	0	0	0
	PROWERS	1	1	0	1	0	0	0	0
	ROUTT	1	1	0	0	0	1	0	0
	WASHINGTON	6	6	0	6	0	0	0	0
	WELD	281	273	3	175	0	3	0	2
2016	Total State	393	379	4	224	0	52	4	7
2017	ADAMS	30	7	23	29	0	0	0	0
	ARAPAHOE	34	11	23	30	0	0	0	0
	ARCHULETA	3	1	2	2	0	3	0	0
	BACA	3	3	0	3	0	0	0	0
	CROWLEY	3	3	0	3	0	0	0	0
	DOLORES	2	2	0	2	0	1	0	0
	ELBERT	1	1	0	1	0	0	0	0
	FREMONT	1	1	0	1	0	1	0	0
	GARFIELD	32	31	1	12	0	23	3	1
	GUNNISON	4	3	1	1	0	2	0	0
	JACKSON	7	6	1	4	0	7	0	0
	LA PLATA	13	12	1	5	0	12	0	0
	LARIMER	3	3	0	3	0	0	0	0
	LINCOLN	25	24	1	19	0	0	0	0
	MESA	15	15	0	10	0	4	1	0
	MOFFAT	1	1	0	1	0	1	0	0
	MONTEZUMA	3	3	0	3	0	0	0	0
	MORGAN	3	0	3	3	0	0	0	0
	RIO BLANCO	9	5	4	1	0	8	0	0
	WASHINGTON	8	8	0	7	0	1	0	0
	WELD	372	233	139	268	0	9	0	2
	YUMA	1	1	0	1	0	0	0	0
2017	Total State	573	374	199	409	0	72	4	3

Abbreviations:

CDP = Comprehensive Drilling Plan SWH = Sensitive Wildlife Habitat consultation

RSO = Restricted Surface Occupancy consultation CDPHE= Colorado Department of Health and Environment consultation



Horizontal Well Activity as of January 1, 2018

County	Prior Years		2009		2010		2011		2012		2013		2014		2015		2016		2017		Total		Completion		
	Drilled	PA	Permit	Spud	Permit	Spud	Permit	Spud	Permit	Spud	Permit	Spud	Permit	Spud	Permit	Spud	Permit	Spud	Permit	Spud	AC	PR	DA	PA	
ADAMS			6	5	2	3	1	1	17	2	26	1	42	18	92	3	72	2	125	28	62	3	23	1	
ARAPAHOE	2						10	1	22	4	11	13	22	11	9	5	5	1	77	15	47	2	30	1	
ARCHULETA	17		7	6	15	7	10	8	5	9	2	2	1	1	6	3	2	1	17	2	58		53		
BENT									1		1										1				
BOULDER							4														0				
CHEYENNE	5	4						4			7	2	1	1	1	1					9	3	5	5	
DELTA						2			6	1	1	1	2								3	2			
DOLORES	9		18	2	6				9	3	5	4	3	1							18	12		5	
EL PASO									10												0			1	
ELBERT									1												0				
FREMONT	7	6	6		12	5	3	4	4	1	1	1			1						18	10	7	1	
GARFIELD	10	2	1	1	16	2	18	6	43	6	18	4	20	11	12	7	4		11		42	40		2	
GUNNISON	1				1				3	2	2	2	9		18	2	10	1	24	1	7	6			
HUERFANO									4	1			2		1						1	1			
JACKSON	8	1	1	8	3	4	9	1	4	4	8	5	15	4	3	52	24	24	24	9	52	21		3	
KIOWA									1		4	2	1								2			1	
KIT CARSON	1								1		1	1									2			4	
LA PLATA	28	2	11	2	28	3	18	7	12	1	5	1	43	7	42	3	67	8	83	6	74	73	1	3	
LARIMER	3	2					5	1	2	1	2	2			22	8	4	3	29	25	40	11		2	
LAS ANIMAS	16	2	4		1	1															16	16			
LINCOLN			2	1	2	1	1				6	6	4	2							4	1		3	
LOGAN	2								1												2				
MESA	3	2	36		22	7	24	13	14		9	2	9	1	6	3					31	27	2	4	
MOFFAT	7	1	6	3	4		9	4	44	6	18	13	15	1	5	2	3	1	3		35	23		10	
MONTEZUMA	6	1	23	6	11	2	8	2	18	6	3	4	15	2							36	28		7	
MORGAN							6	2	2	1	13	1	6		4	1	28				5	5			
PARK							1	1													1				
RIO BLANCO	7	2			1	1	11	2	15	2	4	5	3	2	3				9		16	12	3		
ROUTT	10	6	1						1		1				3						1	1	6	1	
SAN MIGUEL	1																				1			1	
WASHINGTON	1																				1			1	
WELD	11	3	12	5	208	84	763	229	964	594	2,114	1,099	2,215	1,423	1,789	1,063	1,671	723	2,435	1,248	6,397	4,538	12	62	
YUMA	1	1	6																		1			1	
TOTAL Horizontal	156	25	14	147	31	333	901	280	1,203	641	2,260	1,160	2,428	1,484	2,016	1,096	1,918	764	2,837	1,334	6,983	5	4,939	33	116
Percent of Total HZ																									
Total All Permits							5,159		3,773		4,025		4,190		2,988		2,835		3,875		0%				
HZ Percent of Total							2.8%		31.9%		56.1%		57.9%		67.5%		67.7%		73.2%		0%				



Well to Building Setbacks by Year and by County as of January 1, 2018

Count of well locations, grouped by proximity from well to buildings.

Location Proximity to Buildings	2010	2011	2012	2013	2014	2015	2016	2017	Number of Locations Since 2009	Percent of Total Locations
Less than 150 feet	3	3	2	0	3	2	0	0	15	0%
150 to 350 feet	58	61	39	34	38	12	15	16	310	3%
350 to 500 feet	110	97	61	64	48	33	23	24	510	6%
500 to 1000 feet	385	331	188	188	161	83	76	90	1,619	18%
1000 + feet	1,705	1,470	838	761	724	378	206	318	6,756	73%
TOTAL LOCATIONS	2,261	1,962	1,128	1,047	974	508	320	448	9,210	

County	TOTAL	Less than 150 feet	150 to 350 feet	350 to 500 feet	500 to 1000 feet	1000 + feet
ADAMS	96	0	4	9	25	58
ARAPAHOE	116	0	2	5	10	99
ARCHULETA	25	0	1	1	12	11
BACA	18	0	0	0	1	17
BENT	7	0	0	0	0	7
BOULDER	23	0	1	1	17	4
BROOMFIELD	33	0	0	4	13	16
CHEYENNE	140	1	0	0	2	137
CROWLEY	5	0	0	0	0	5
DELTA	7	0	0	2	1	4
DOLORES	22	0	0	0	7	15
EAGLE	1	0	0	0	0	1
EL PASO	14	0	0	0	3	11
ELBERT	15	0	0	0	3	12
FREMONT	41	0	2	7	9	23
GARFIELD	612	0	12	10	83	507
GUNNISON	49	1	0	4	1	43
HUERFANO	16	0	0	0	5	11
JACKSON	63	0	1	5	1	56
KIOWA	66	0	0	0	1	65
KIT CARSON	15	0	0	0	0	15
LA PLATA	150	0	6	15	49	80
LARIMER	42	0	5	5	16	16
LAS ANIMAS	201	1	6	7	37	150
LINCOLN	399	0	1	2	5	391
LOGAN	45	0	1	1	1	42
MESA	115	0	0	3	16	96
MOFFAT	190	0	1	3	16	170
MONTEZUMA	46	0	0	1	4	41
MONTROSE	2	0	0	0	0	2
MORGAN	31	0	0	2	4	25
PARK	4	0	0	0	0	4
PHILLIPS	275	1	4	6	21	243
PITKIN	1	0	0	0	0	1
PROWERS	6	0	0	0	0	6
RIO BLANCO	192	0	0	0	2	190
RIO GRANDE	2	0	0	0	1	1
ROUTT	30	0	0	0	2	28
SAN MIGUEL	14	0	0	0	0	14
SEDGWICK	33	0	0	1	3	29
WASHINGTON	87	0	2	0	3	82
WELD	5,435	11	251	401	1,200	3,571
YUMA	529	0	9	16	45	459

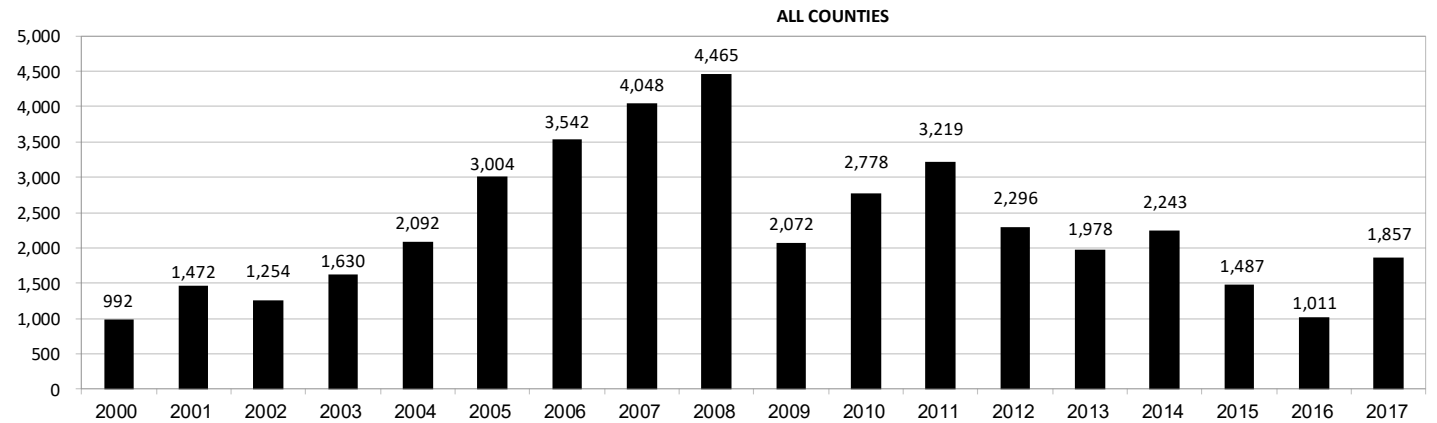

Well to Building Setbacks Less Than Two Hundred Feet as of January 1, 2018

Year	Location Doc Number	County	High Density	New Location	Distance (Feet)	Proximity (Feet)	Building Description
2015	400768804	WELD	No	Yes	46	less 150	Building to be razed
2011	2587822	CHEYENNE	No	No	58	less 150	Water well house
2009	1691798	WELD	No	No	58	less 150	Vehicle garage
2010	400072164	WELD	No	Yes	69	less 150	Abandoned hog shed
2014	400569085	WELD	No	No	78	less 150	Well shed
2014	400600705	WELD	No	No	80	less 150	Livestock shed
2012	400240957	GUNNISON	No	Yes	90	less 150	Equipment shed
2015	400742811	WELD	No	Yes	102	less 150	Building to be razed
2009	1758843	WELD	No	Yes	103	less 150	Building to be razed
2011	1636646	WELD	No	No	122	less 150	Storage shed
2009	400011284	LAS ANIMAS	No	Yes	127	less 150	Operator is owner
2009	1786896	PHILLIPS	No	No	132	less 150	Grain storage
2014	400642113	WELD	No	Yes	142	less 150	Barn
2011	400117702	WELD	No	Yes	143	less 150	Irrigation pump house
2011	400227765	WELD	No	Yes	145	less 150	Storage barn
2014	400558626	LINCOLN	No	No	150	less 150	Gas plant equipment building
2009	1904205	WELD	No	No	154	150 to 350	Livestock enclosure
2012	400243295	WELD	No	Yes	155	150 to 350	Unused storage shed
2015	400862577	GARFIELD	No	No	155	150 to 350	Gravel pit scale house
2011	400179419	WELD	No	Yes	157	150 to 350	Existing well / storage building
2010	400054716	WELD	No	No	159	150 to 350	Equipment barn
2011	400188968	WELD	No	Yes	159	150 to 350	Abandoned
2014	400554054	WELD	No	Yes	159	150 to 350	Equipment shed
2014	400559404	WELD	No	Yes	160	150 to 350	Barn
2016	400950178	LA PLATA	No	Yes	162	150 to 350	Residence
2010	400021477	WELD	No	Yes	162	150 to 350	Goat barn
2009	1758386	WELD	No	Yes	168	150 to 350	Storage shed
2011	1635946	WELD	No	No	169	150 to 350	Storage shed
2013	400447386	WELD	No	No	169	150 to 350	Abandoned turkey barn
2013	400447391	WELD	No	No	169	150 to 350	Abandoned turkey barn
2011	400165164	WELD	No	Yes	178	150 to 350	Residence
2013	400367184	WELD	No	Yes	179	150 to 350	Shed
2011	400188780	WELD	No	Yes	180	150 to 350	Residence
2014	400562498	WELD	No	Yes	181	150 to 350	Garage / storage shed
2010	1697620	WELD	No	No	187	150 to 350	Livestock shed
2009	1758746	WELD	No	No	193	150 to 350	Storage shed
2011	400154431	WELD	No	Yes	198	150 to 350	Turkey barn
2012	400250031	WELD	No	Yes	198	150 to 350	Abandoned guard shack
2010	1774783	WELD	No	No	199	150 to 350	Cement service building
2011	400118102	YUMA	No	Yes	199	150 to 350	Steel barn



Annual Well Starts by County as of January 1, 2018

County	2000	2001	2002	2003	2004	2005	2006	2007	2008	2009	2010	2011	2012	2013	2014	2015	2016	2017
ADAMS	18	13	4	19	22	24	13	41	14	14	21	1	15	5	29	3	2	29
ARAPAHOE					6	1	5	2	1	1	3	8	9	25	21		1	16
ARCHULETA	4	4	2	5	4	10	5	7	29	9	12	10	11		1	7	4	5
BACA	19	6	2	1	6	6	2	6	12		5	4	2	2		1		1
BENT	2				3	2	8	1	1			1	2					
BOULDER				2	5	11	9	14	25	16	13	7	14					
BROOMFIELD			2		1				10		21	11	5					
CHEYENNE	2	1	3	3		9	14	15	14	8	12	11	17	35	19	3		
COSTILLA																		
CROWLEY															2			1
DELTA				5	4	6	5	2			7	3	3		1			
DENVER		2					7	5	4									
DOLORES					2		2	13	6	2		1	5	10	4			1
EAGLE														1				
EL PASO											2		5		1			
ELBERT	2						1									3		1
FREMONT					1	3	2	2	6	3	9	16	9	2	4		1	1
GARFIELD	190	251	245	417	585	799	1,005	1,304	1,690	765	906	877	495	391	361	174	161	301
GUNNISON			1		1	1	9	5	1	4	5	4	4	1	2	4	1	6
HUERFANO	25	14	19	3	6	2			2		2		2	1	4	1		
JACKSON	24	2	4	10	10		3	3	12	1	8	7		7	7		24	13
JEFFERSON								2										
KIOWA	8	16	2	4	2	1	7	7	2	5	15	14	10	12	3	2		
KIT CARSON				1	1	6	2	1	14	3	1	1	3	1	2			1
LA PLATA	99	135	118	110	103	104	108	179	203	131	67	54	3	10	40	38	43	41
LARIMER	1	1				1		4	8	1	28	2	10	4	1	9	3	25
LAS ANIMAS	202	286	205	221	296	384	413	326	222	14	7	78	1		1			
LINCOLN	2	2	1	5	2	2	1	2	18	11	14	21	23	41	41	12	2	11
LOGAN	4	6	3	3	2	11	12	12	3	7	3	9	13	4	6			
MESA	2	12	12	13	25	89	156	209	225	14	11	41	4	11	17	77	4	122
MOFFAT	18	23	25	28	19	40	60	42	26	18	15	32	26	27	3	6	3	
MONTEZUMA	2	3	5	5	1	7	2	4	22	10	3	8	18	12	8	1		2
MONTROSE		3		2	1			1	2			1						
MORGAN	9	8	1	7	5	5	3	1	1	2	3	2	3	1	3	1		
PARK											2							
PHILLIPS	1			6	10	11	4	35	18	2	42	130	48		9			
PROWERS	2	4	4		5	5	6	3	5	2	3	1				1		
RIO BLANCO	51	82	47	83	92	95	107	95	205	118	107	71	54	36	43	17		5
RIO GRANDE														1				
ROUTT	5	12	1		1	6	3	2		2	1	2	4	2	2			
SAN MIGUEL	6	9	10	19	28	13	20	17	5	1	2	2			2			
SEDGWICK				1	2	1	1	5			3	8	3			1		
WASHINGTON	15	12	24	29	65	34	23	14	11	2	2	4	1	9	7	2	6	8
WELD	237	403	406	522	632	718	931	1,222	1,312	878	1,209	1,672	1,458	1,314	1,560	1,124	756	1,267
YUMA	42	162	108	106	144	597	593	445	336	28	213	106	16	13	39			
TOTAL	992	1,472	1,254	1,630	2,092	3,004	3,542	4,048	4,465	2,072	2,778	3,219	2,296	1,978	2,243	1,487	1,011	1,857





Active Wells by County and Status as of January 2, 2018

COUNTY	Drilling	Domestic	Injecting	Producing	Shut In	Temp Aband	Waiting on Completion	Active Storage	Total Active Wells
ADAMS	32		6	690	216	16	1	12	973
ARAPAHOE	10	1	3	113	35	12		44	218
ARCHULETA	1	5	1	99	22	13	6	1	148
BACA	1		11	101	28	5		56	202
BENT		1		17	17	2			37
BOULDER				275	33	2			310
BROOMFIELD				90	3				93
CHEYENNE			43	286	42	44	1		416
CROWLEY									0
DELTA				3	12		1		16
DENVER				42	6	1	3		52
DOLORES			2	27	11	1			41
EL PASO		1				1			2
ELBERT	1			60	10	3		1	75
FREMONT	3	3		56	9	6	2		79
GARFIELD	282	2	42	10580	382	61	101	1	11,451
GUNNISON	4		2	28	13		2		49
HUERFANO			1	36	4	6			47
JACKSON	20		24	95	62		1		202
JEFFERSON					2		1	3	6
KIOWA			12	86	22	4	2		126
KIT CARSON		1	1	9	3	2			16
LA PLATA	19	7	33	2993	220	30	3	35	3,340
LARIMER	24	1	23	151	51	23	1		274
LAS ANIMAS	1	4	18	2652	109	115	12	23	2,934
LINCOLN	9	1	12	85	14	8			129
LOGAN			26	88	39	31		30	214
MESA	92	1	8	879	165	31	3	11	1,190
MOFFAT	1		11	406	100	37	5		560
MONTEZUMA		1	7	112	32	13			165
MONTROSE								1	1
MORGAN			15	50	125	34		81	305
OURAY		1				1			2
PARK									0
PHILLIPS			3	244	23	2			272
PITKIN								10	10
PROWERS				11	16	1			28
RIO BLANCO	28	3	299	1996	409	144	7	2	2,888
ROUTT		2		22	12	2			38
SAN MIGUEL	1			55	59	14			129
SEDGWICK	2		1	10	6	1	2		22
WASHINGTON	7		27	359	59	10	1		463
WELD	1141	1	61	13126	8394	990	35	5	23,753
YUMA	2	8	22	3693	127	9	13	1	3,875
Totals	1,681	44	714	39,625	10,892	1,675	203	317	55,151



Oil and Gas Staff Report

January 29, 2018

Monthly Statistics as of January 1, 2018

Page 1 of 2

YEAR and MONTH	Baker - Hughes Rig Count	Permits										Well Spud Notices	Active Drilling Permits	Active Wells	Public Visits			
		Drilling		Recompletion		Injection		Pits		Locations					Data	Office	Internet	
		Rcvd	Apvd	Rcvd	Apvd	Rcvd	Apvd	Rcvd	Apvd	Rcvd	Authz							
2011 TOTAL		4,709	4,659	325	320	44	32	190	192	2,382	2,267	3,216			187	1,294	1,337,865	
2012 TOTAL		3,982	3,773	154	168	63	44	114	84	1,373	1,293	2,297			159	1,305	1,324,443	
2013 TOTAL		4,481	4,028	74	72	67	63	67	106	1,268	1,213	1,977			92	1,456	511,734	
2014 TOTAL		4,223	4,191	37	34	48	48	82	45	1,113	1,115	2,243			130	1,682	521,685	
2015 TOTAL		3,505	2,988	33	33	28	54	38	17	581	557	1,473			73	1,489	339,080	
2016 TOTAL		3,395	2,832	20	16	45	37	62	19	417	353	1,011			41	1,339	325,117	
2017 TOTAL		5,880	3,875	53	34	57	46	10	61	618	491	1,857			27	1,369	357,023	

Abbreviation Key: Rcvd = Received, Apvd = Approved, Authz = Authorized



Monthly Statistics as of January 1, 2018

Page 2 of 2

YEAR and MONTH	Well Oper Change	Operators		Bonds						Hearings			Enforcement			Remediation Projects		Inspections		
		New	Inactive	Release	Claim		Replaces	Ind	Blnt	Blnt	Apps.	Orders	NOAVs	AOCs	OFVs	Cmplt	Spills	Rcvd	Comp	Wells
2011 TOTAL	6,743	33	31	79	44	43														
2012 TOTAL	7,546	47	37	70	46	33	3	0	0	482	396	157	9	2	244	402	690	641	19,071	12,670
2013 TOTAL	7,192	49	21	48	26	20	0	0	0	571	522	237	37	3	201	568	507	541	23,551	13,370
2014 TOTAL	10,297	55	28	42	39	13	1	1	698	598	179	43	4	243	786	596	502	34,208	18,982	
2015 TOTAL	4,458	59	27	27	45	31	3	3	738	645	173	57	8	358	623	516	601	38,957	19,199	
2016 TOTAL	6,527	38	28	37	41	23	9	5	473	397	107	43	7	261	528	461	600	43,135	23,126	
2017 TOTAL	9,470	37	26	58	45	57	1	6	885	680	79	36	6	1,358	608	538	329	32,991	17,866	

Abbreviation Key: Ind = Individual, Blnt = Blanket, Apps = Application for Hearing, NOAV = Notice of Alleged Violation, AOC = Administrative Order of Consent, OFV = Order Finding Violation, Cmplt = Complaint, Comp = Completed