



**COLORADO**

**Oil & Gas Conservation  
Commission**

Department of Natural Resources

# Staff Report

for March 19, 2018

## Top Stories

### ◆ Randall Appoints New COGCC Director

On February 20, the Colorado Department of Natural Resources (DNR) Executive Director Bob Randall appointed Julie Murphy as the COGCC's new director. Murphy was DNR's Assistant Director for Energy and Minerals and responsible for policy, technical and legal matters on oil and gas, as well as mining and reclamation.

Prior to the Assistant Director position, Murphy served as the COGCC's Hearings and Regulatory Affairs Manager, directing the agency's legal affairs and its attorneys. She also represented the Division of Reclamation, Mining and Safety and COGCC as an Assistant Attorney General.

COGCC Chair John Benton welcomed Murphy by saying, "Julie brings a steady hand to the agency helm. Her experience, intellect and equable nature will serve her – and our state – well. We're fortunate to have someone of Julie's capability and competency ready to step into this role and oversee the responsible and balanced development of Colorado's oil and gas resources."

### ◆ Adopted Flowline Rules

On February 13, the Commission approved a set Flowline Rules. In creating these rules, the Commission heard from a diverse group of stakeholders, including citizens, county and municipal governments, trade associations, nonprofits, and oil and gas operators.

The Flowline Rules include definitions, registration, mapping, design and construction standards, integrity management, and abandonment criteria. COGCC Staff are currently developing the Flowline Report (Form 44) in accordance with the new Rules. You may find these Rules at this url on the COGCC website:

[http://cogcc.state.co.us/documents/reg/Rules/FlowlineRulemaking/Flowline\\_Adopted%20Rules%202\\_13\\_18.pdf](http://cogcc.state.co.us/documents/reg/Rules/FlowlineRulemaking/Flowline_Adopted%20Rules%202_13_18.pdf)

### ◆ Local Government Liaison (LGL) Program Update

COGCC Local Government Liaison (LGL) Marc Morton manages the nationally unique Local Governmental Designee (LGD) program offered by the COGCC. In this role, Marc strives to enhance collaboration between local governments, operators, and the COGCC in its mission to regulate oil and gas in Colorado. Marc provides information, training, outreach, and consultation to LGDs, other local government staff, the public, nongovernmental organizations, industry representatives, elected officials, and others.

LGL Staff are available upon request to participate in educational forums and panel discussions, and along with COGCC management, provide assistance and guidance to local governments as they develop operator-local government agreements (commonly referred to as Memorandums of Understanding) and local land use regulations as they pertain to oil and gas development.

In 2017, the COGCC saw continued strong interest from local governments and LGDs in receiving training offered by the LGL. Training in 2018 is again being offered.

Four types of training are available:

- **Comprehensive LGD Training** - see schedule and description below; 8 hours
  - ◇ Tuesday, March 13 (Denver)
  - ◇ Wednesday, April 11 (Denver)
  - ◇ Thursday, May 10 (Denver)



- **LGD Orientation Training** - offered to newly appointed LGDs, or upon request; 3-4 hours
- **COGCC Website Training** - available upon request; 3-4 hours
- **Topic Specific Training** - available upon request, management approval, and pending Staff subject matter expert availability; 1-2 hours.

Comprehensive LGD Training is targeted to LGDs and local government staff. If space is available, nongovernmental agencies, nonprofits, environmental organizations, operators, consultants or subcontractors may preregister to attend the training.

Comprehensive LGD Training topics are expected to include the following:

- COGCC Overview (Commission/Staff/Rules; recent rulemakings; programs; database, also known as COGIS)
- Well and Location Permitting (Forms 2A and 2)
- Effective Commenting on Pending Permit Applications (Forms 2A and 2)
- CDPHE Role in Oil and Gas Development
- LGD Program Opportunities
- Key LGD Tools and Skills
- Public Involvement Opportunities
- Overview and Navigation of the COGCC Website (use of eForms, Maps, Data Queries, Dashboard and other website features - hands on exercises and examples to be utilized).

To preregister for one of the scheduled LGD trainings, please email LGL Morton at

[marc.morton@state.co.us](mailto:marc.morton@state.co.us)

When you contact him, please provide:

- Name(s) of those planning to attend
- Your contact information (email and telephone)
- The role/position each attendee has in the local government or organization
- The approximate number of years of experience with oil and gas regulation
- The preferred training date(s).

Once preregistered, an email confirming training participation will be sent. If a training is full, the requester(s) will be placed on a wait list and notified of the next opening, or offered an alternative training date.

If you are interested in an LGD training but the dates above or locations are not convenient, additional training dates may be offered. Alternatively, the LGL may offer a training at your venue or location that is designed to fit your local government's or organization's schedule or topic specific needs. If an alternative training date is your preference, please ask about scheduling one.

Registration will remain open until training space (limited to 15 people per class) is filled. Additional training dates may be added if warranted based on interest and need. To get more information on LGD training opportunities, please contact LGL Morton at (303) 894-2100, ext. 5132, or by email:

[marc.morton@state.co.us](mailto:marc.morton@state.co.us)

A list of the LGL outreach and public involvement activities conducted since the last staff report is included in the Public Outreach section below.

## Public Outreach

### ➤ Outreach by the LGL

- On January 18, Marc attended the bimonthly meeting of the Aurora Oil and Gas Advisory Committee in Aurora.
- On January 18, Marc provided an update (remotely, via teleconference) to the Garfield

County Board of County Commissioners and Land/Resource Managers quarterly meeting.

- On January 31, at the request of the Colorado Rural Water Association, Marc attended the Pueblo West source water protection planning meeting in Pueblo.

- On February 1, Marc travelled to Rifle and attended the monthly Garfield County Energy Advisory Board (EAB) meeting and updated EAB members and the public on the status of rulemakings, the new public comment process at Commission Hearings, and permitting activity in the County.
- On February 8, Marc travelled to Durango to coordinate the Southwest Colorado Gas and Oil Regulatory Team meeting.
- On February 14, Marc travelled to Louisville to provide a three hour LGD orientation training to the City of Louisville, which recently opted to participate in the LGD program.
- On February 23, Marc Morton provided a three hour LGD orientation training to the City and County of Denver LGD and various staff.
- On March 1, Marc travelled to Rifle and coordinated the Northwest Oil and Gas Forum meeting. Engineering Manager Stuart Ellsworth provided an update on implementation of the Flowline Rulemaking.
- Later on March 1, Marc attended the monthly EAB meeting. Stuart Engineering Manager Stuart Ellsworth also provided information on the Flowline Rulemaking.

## Regional Activities

### ➤ Northwest Colorado

#### ◆ Northwest Colorado Oil and Gas Forum

Remaining Northwest Colorado Oil and Gas Forum (NWF) meetings for 2018 have been scheduled for August 2 and December 8. All meetings will be held in Rifle at the Colorado Mountain College - Rifle Campus / Clough Auditorium at 3595 Airport Road beginning at 9:00 a.m. and concluding by 12:00 p.m.

Meeting agendas will be posted to the COGCC website approximately one to two weeks prior to each meeting. The COGCC welcomes suggestions for speakers and topics. Meeting information is also emailed to those on the email distribution list.

All parties wishing to be placed on the meeting agenda or added to the email distribution list for announcements should contact Marc Morton at (303) 894-2100, ext. 5132 (direct), (720) 415-4959 (mobile), or by email:

[marc.morton@state.co.us](mailto:marc.morton@state.co.us)

As a reminder, NWF meetings are open to the public, and a public comment period is held as part of each meeting. Past NWF presentations (dating back to 2006) are available on the COGCC website at:

<http://cogcc.state.co.us/library.html#/forums>

#### ◆ Project Rulison

The five year revision of the Project Rulison Sampling and Analysis Plan (RSAP) has been completed. Major revisions to the plan included re-defining the exterior buffer zones to align with hydrogeologic flow patterns instead of more arbitrary circular rings in the original plan.

This document is in the COGCC's Area Reports Library and can be found at the following link:

<http://cogcc.state.co.us/documents/library/AreaReports/PiceanceBasin/Rulison/Rulison%20Sampling%20and%20Analysis%20Plan%20Revision%204%20062217.pdf>

The email for Project Rulison submittals is

[DNR\\_rulison.submittal@state.co.us](mailto:DNR_rulison.submittal@state.co.us)

#### ◆ Project Rio Blanco

The email for Project Rio Blanco submittals is

[DNR\\_rioblanco.submittal@state.co.us](mailto:DNR_rioblanco.submittal@state.co.us)

### ➤ Southwest Colorado

#### ◆ Gas and Oil Regulatory Team (GORT) Meeting

The Southwest Colorado Gas and Oil Regulatory Team (GORT) meeting schedule for 2018 has been set. Remaining GORT meetings in 2018 will take place June 21 and October 18.



The June 21 and October 18 GORT meetings will be held at the Durango Public Library at 1900 E. 3rd Avenue, Durango, between 9:00 a.m. and 12:00 p.m.

GORT meeting agendas will be posted to the COGCC website approximately one to two weeks prior to each meeting, and emailed to those on the email distribution list. The COGCC welcomes suggestions and input for speakers, topics, as well as meeting format and venue.

All parties wishing to be placed on the next meeting agenda or added to the distribution list for announcements should contact Marc Morton at (303) 894-2100, ext. 5132 (direct), (720) 415-4959 (mobile), or by email:

[marc.morton@state.co.us](mailto:marc.morton@state.co.us)

As a reminder, GORT meetings are open to the public, and a public comment period is held as part of each meeting.

#### ◆ Fruitland Formation Outcrop Mitigation and Monitoring Projects

**South Fork Texas Creek Mitigation Site - La Plata County.** Regularly scheduled operations and maintenance are being performed at the South Fork Texas Creek (SFTC) site by LTE, the COGCC's contractor. Since May 2009, the system has collected 22,527 Mcf of methane and generated 258,318 kWh of surplus electricity.

### Admin / Organization / Other

#### ◆ New Orphaned Well Program Manager

Dave Andrews has been promoted to a new position as the agency's Orphaned Well Program Manager. The program is also known as the Orphan and Distressed Operator or ODO Program. Effective March 1, he is responsible for identifying, prioritizing, and addressing wells, locations, and production facilities for which there are no known responsible parties (Orphans) or for which financial assurance instruments have been claimed (Distressed Operators).

Mr. Andrews holds AAS, BS, and MS degrees in Engineering and a Certificate in Electrical Instrumentation. He is a licensed Professional Engineer in Colorado, Michigan, and Wyoming, and a licensed Professional Geologist in Wyoming. Prior to assuming the ODO Program Manager role, Mr. Andrews served as a Staff Engineer and a Supervisor in the COGCC Engineering Unit from 2006 through 2017. Congratulations, Dave, on your well-deserved promotion.

#### ◆ New Community Relations Manager

Mike Leonard has been named Manager of the newly formed Community Relations Unit. This Unit will be tasked with day to day operations of the COGCC complaint system, the Local Government Designee program, and outreach to other governmental entities.

Mike has been with the COGCC since 2006 in the Field Inspection Unit, holding the positions of Inspector, Supervisor, and most recently Quality Assurance Professional. We are very pleased to welcome Mike to the management team.

#### ◆ New Permit Supervisor

Penny Garrison has been named to the newly created second Supervisor position for the Permit Group. Penny has worked as a COGCC Permit Completion Technician for ten years. She has processed completion reports and permits throughout the state, and for the past five years has been the permitting expert in the Greater Wattenberg Area, the most active permitting area of the state.

Prior to coming to the COGCC, Penny worked for over eight years in the oil and gas industry in positions with both regulatory and land departments. We look forward to her contributions of skills, experience, and leadership as a Supervisor in the Permit Group.

#### ◆ Two New Permit Completion Technicians

Please welcome the permitting team's two newest permit completion technicians:

**Stephen Schwarz** has been processing Form 2s and 2As for completeness since July and has managed to include several completion report



reviews during that time as well. Stephen holds undergraduate and graduate degrees in Earth and Environmental Science from Wesleyan University. He also completed a MS in Geology at Colorado School of Mines. Stephen spent six months in the DJ Basin as a geosteerer/mudlogger and completed a few internships dealing with oil and gas fields in California, North Dakota, and the Gulf of Mexico. His experience also includes drilling groundwater monitoring wells in New York for 2.5 years.

**Fenton Buchanan** has joined the permitting team as the permit completion tech responsible for evaluating completion and plugging reports in NW Colorado. Fenton has been with the COGCC since the beginning of this year as a temporary permit completions tech. Prior to joining the COGCC, Fenton spent eight years with Weatherford Core Laboratories and has experience in core retrieval and analysis. Fenton also has four years of experience as a quality control specialist for a production data firm and a log digitizing service.

## ◆ New Field Inspectors

The COGCC Field Inspection Unit (FIU) welcomes five new field inspectors. These field inspectors fill openings resulting from internal promotions, retirements, staff moving to industry jobs, and budgetary constraints.

**Alicia Duran** started with the FIU on November 20 and works for James Precup in the Northeastern inspection group. Ms. Duran has a petroleum engineering degree from the Colorado School of Mines, completed an internship with the COGCC engineering group, and evaluated pipeline records and documentation for Xcel Energy to ensure that high pressure pipelines could operate at the maximum allowable operating pressure in compliance with both Pipeline and Hazardous Materials Safety Administration (PHMSA) and Xcel standards.

**Darin Holtz** started on February 12 and works in Northwest Colorado for Shaun Kellerby. Mr. Holtz has an extensive oil and gas background including managing flowback operations. He also has an extensive construction background and has worked throughout the Piceance Basin.

**Tom Beardslee** started in the Northeast inspection group on March 1 and reports to James Precup. Mr. Beardslee brings nearly 20 years of diverse oil and gas experience to the COGCC, including drilling, cementing operations, well killing, and mechanical integrity tests.

**Bret Evins** also started on March 1 and works for James Precup in the NE inspection group. Mr. Evins was a field foreman for one of the larger DJ Basin operators and has experience with inspections, safety, and environmental issues, plus knowledge of operations and maintenance of oil and gas wells.

**Adam Kraich** started with the COGCC on March 1 and works for James Precup in the Northeast. Adam served as the oil and gas inspector for Adams County and has conducted inspections very similar to COGCC inspections throughout Adams County for over a year. The County's inspection sharing program has been extremely successful and relatively seamless. Mr. Kraich shared County inspections with the COGCC, and the COGCC provided training, data, participation in team and agency meetings. Prior to working for the County, Adam performed various oil and gas operations throughout the DJ Basin.

COGCC organizational charts can be found on pages 8-11. For contact information, please go to the COGCC homepage and select "Contact Us" in the upper right corner of the page.

## ◆ Plugging and Reclaiming Orphaned Wells (PROW) Project Updates

The COGCC performed field work for the Orphan and Distressed Operator (ODO) Program projects described below since January 29. These projects relate either to "Orphan" locations or wells for which there is no known responsible party, or they relate to "Distressed Operator" projects in which surety claim funds are available.

The ODO project summary tables for Fiscal Year 2017-18 (FY18) are found on pages 12-15. The projects are sorted first by county and then by the project name. The field work described below pertains to ongoing projects or to recently completed projects. The agency has prioritized the ODO work planned for FY18, although each



project is subject to change as new conditions arise during the year.

The **CM Production Project** began with Commission Order 1V-581. The project involves 28 locations in Jackson, Logan, and Washington Counties. The original operators drilled a total of 31 wells, and the project involves many single well pads and two multi well pads. Recent FY18 well work included temporary abandonment and a mechanical integrity test.

The **Lloyd and Lowell #1 Project** is located in Mesa County. Well plugging resumed and was completed in January.

#### ◆ Colorado Oil and Gas Information System (COGIS) Projects, Updates and Changes

##### Update on Proposed New Flowline Form

The New Flowline Report (Form 44) will allow operators to register, report realignment, report removal from service, or report abandonment of Off Location Flowlines, Domestic Taps, Crude Oil Transfer Systems, and Produced Water Transfer Systems.

The form will also allow operators to report Grade 1 Gas Leaks, which are leaks that represent an existing or probable hazard to people or property and require immediate repair or continuous action until the conditions are no longer hazardous. The Form 44 is currently in development and will be ready for use by operators by May 1 to register new flowline construction.

##### Electronic Form (eForm) Submissions

The COGCC uses 41 types of forms to authorize oil and gas operations, inspect and monitor ongoing operations, and receive reports of operations. Of those 41 forms, 21 are currently available for electronic submittal through the eForms system.

The development team continues to work on the eForm conversion of existing forms. Currently, four forms are in various stages of development: Forms 8, 11, 12, 14, 14A, 43, and 44. In preparation for the May 1, 2018 effective date of the new flowline rules, the development team is creating the new Form 44 and making required revisions to several other forms.

As of March 1, industry electronically submitted 96 percent of the forms available in eForms in 2018. There are 886 operator users of eForms and 3,582 individual users. For any operator not currently enrolled in eForms, instructions for starting the process can be found on the COGCC website at:

<http://cogcc.state.co.us/Announcements/COUAIInformation.pdf>

##### Applications and Location Assessments

The public can make comments on all submitted Drilling Permit Applications (Form 2s) and Location Assessments (Form 2As) through the eForm system. Simply go to the COGCC website and click on the menu option “Permits” or

<http://cogcc.state.co.us/permits.html#/permits>

On the “Permits Search” page, three search options are available. The first option, “All Pending Permit Applications,” is used for public comments. When the results are displayed for “Pending Applications,” a user can click on the document number hyperlink in the “Status” column, which logs him or her to the eForms application.

Once the page is displayed with the selected document, the user can select the “Comment” button to make a comment on that particular form.

##### Data Access

The COGCC’s database is a comprehensive repository of Colorado’s oil and gas data. The information in the database is available to the public through interactive search tools and a variety of file downloads on the website.

Users of bulk data come from many different sectors of the community, including academia, oil and gas operators, environmental groups, government agencies, and the media.

All the data file downloads are available at:

<http://cogcc.state.co.us/data2.html#/downloads>



## Current Data File Downloads

Complaints  
Field Operations  
Flowline NTO Imported Data  
GIS Shapefiles (12 files)  
Mechanical Integrity Tests  
Notices of Alleged Violation  
Production Data (1999 - present)  
Spacing Orders  
Spills and Releases  
Analytical Sample Data

## Future Data File Downloads

Enforcement Orders (OFVs and AOCs)  
Underground Injection Control (UIC) Data

## ◆ April 2018 Hearing Docket

The docket for the April 2018 hearing will be available shortly after the March hearing. Hearing dockets are available on our website by clicking on “Regulation” in the menu and then “Hearings”:

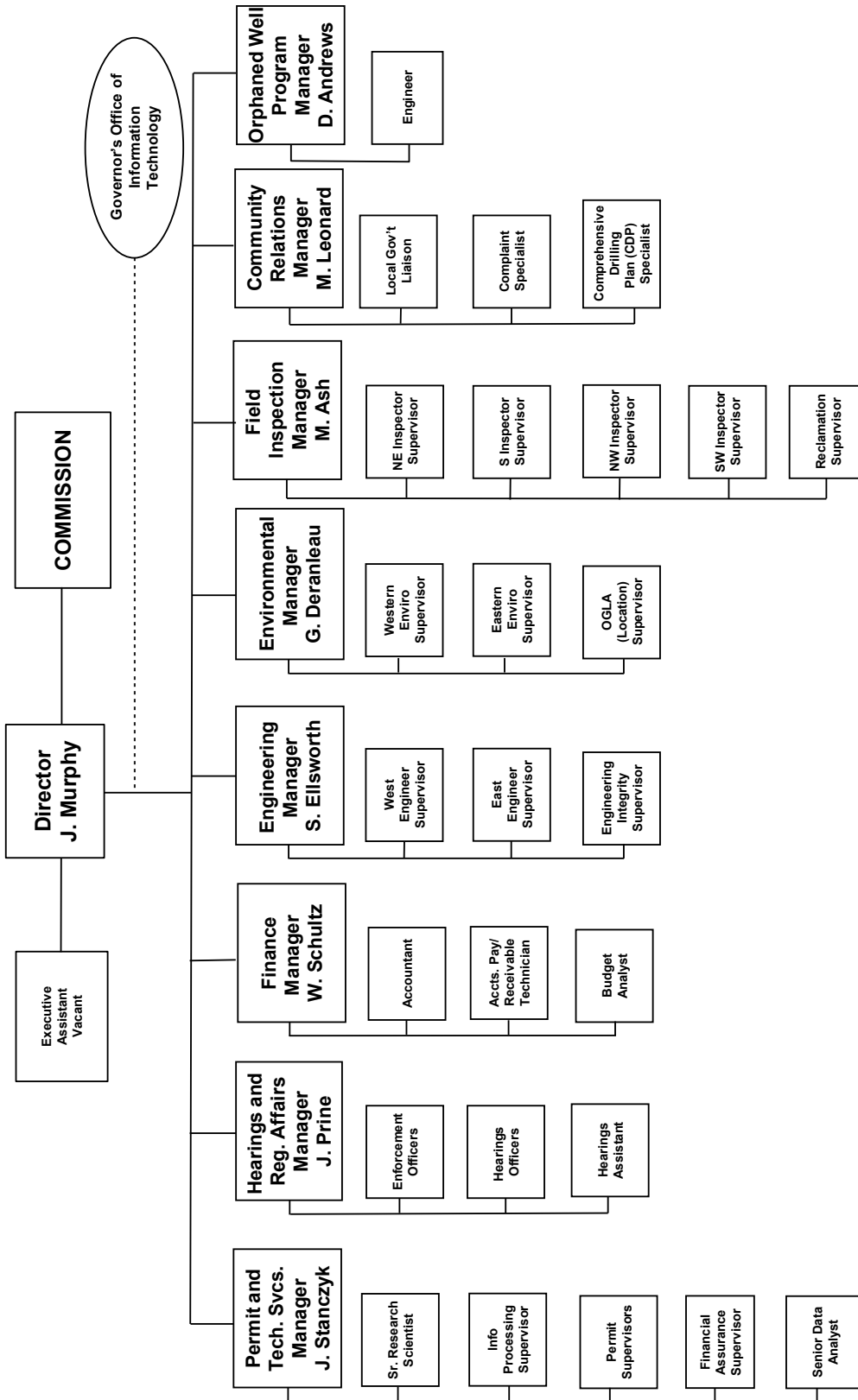
<http://cogcc.state.co.us/reg.html#/hearings>

Links to the notices and hearing applications are available from the Docket Number and Applicant, respectively, by clicking the April Gen\_Docket link. To sign up for email notification of hearing notices and applications, please see the announcement and instructions on the homepage of the COGCC website.



## Organizational Charts and Statistics

### COLORADO OIL & GAS CONSERVATION COMMISSION

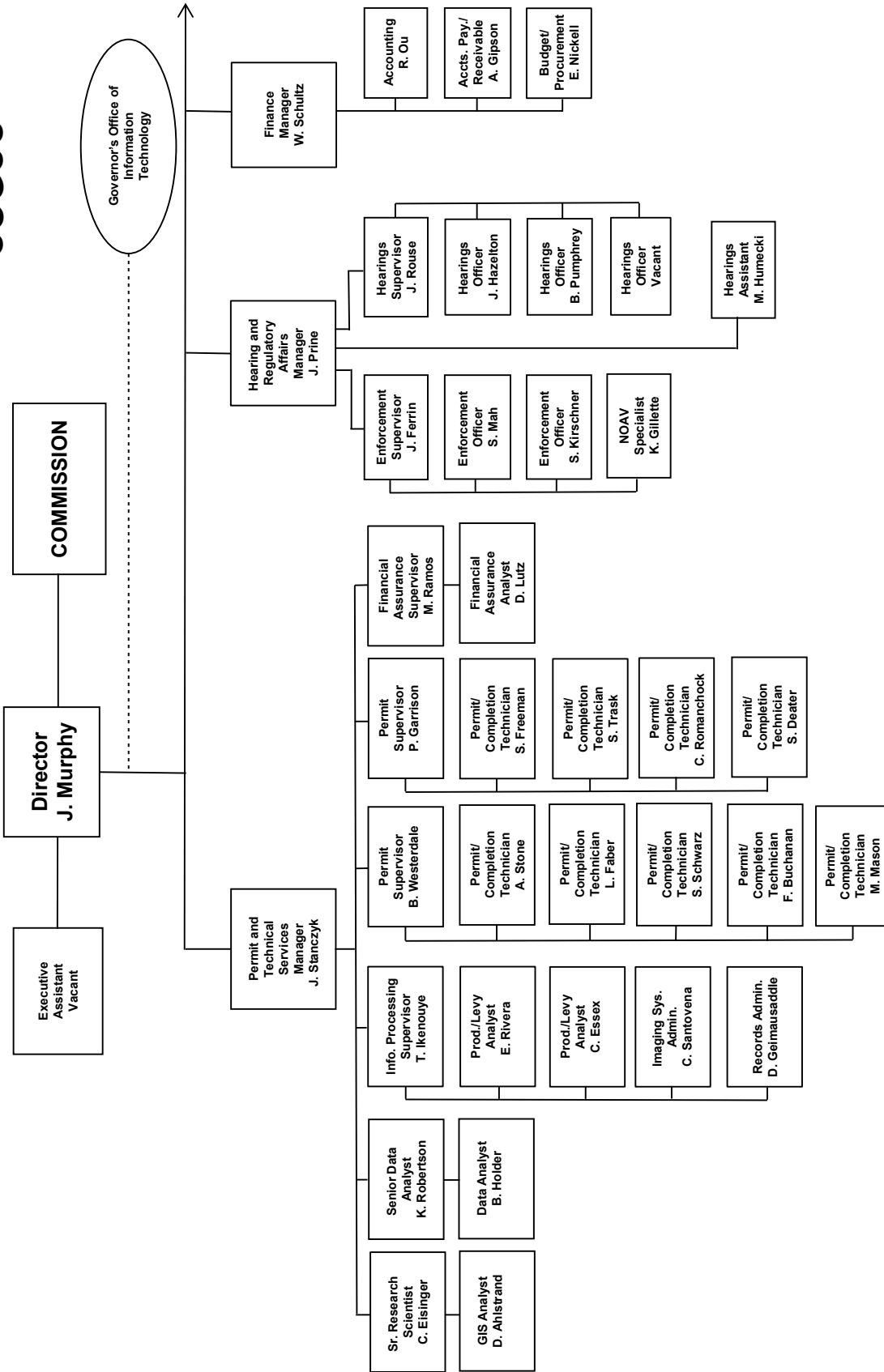


See the next three pages for details



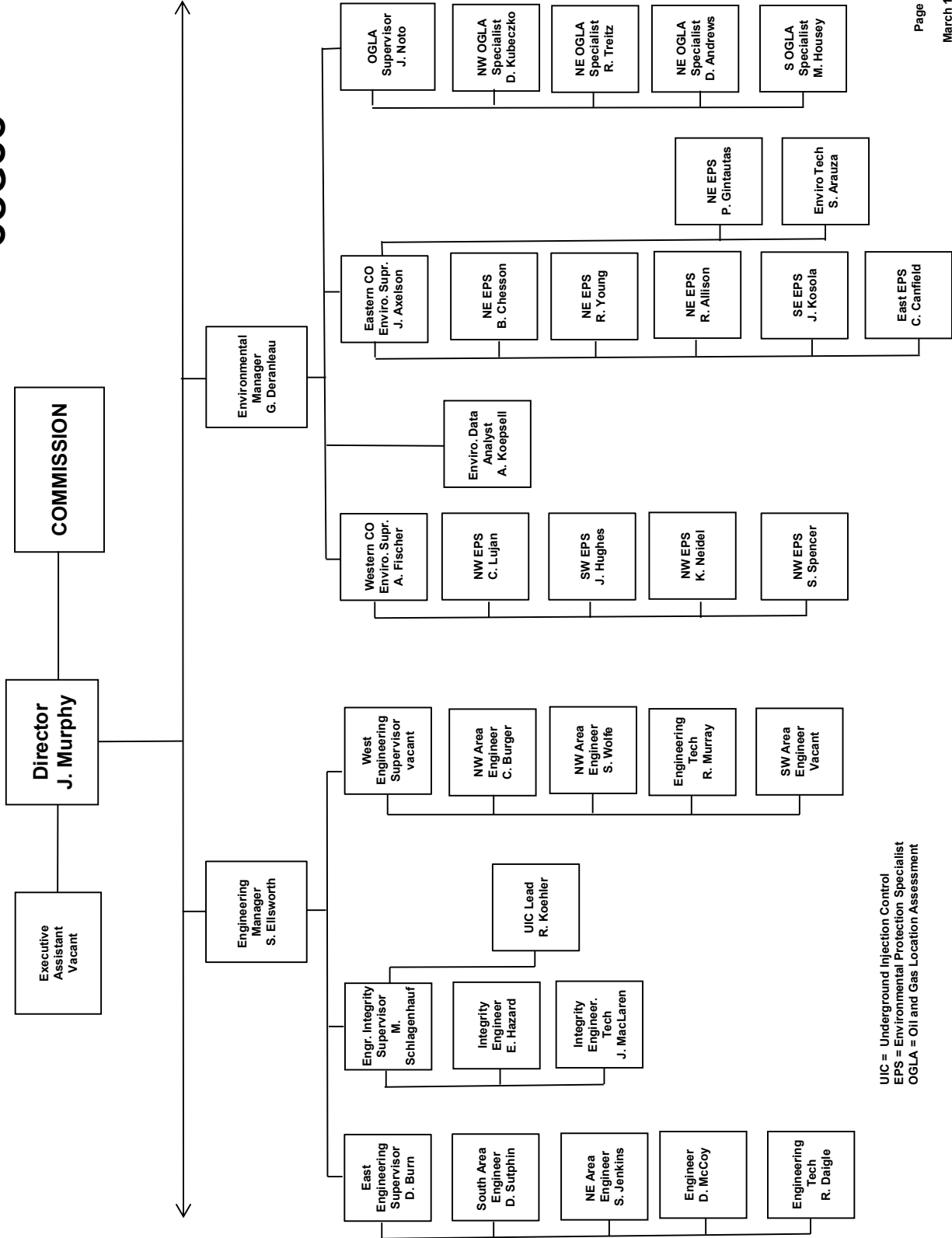


# COGCC





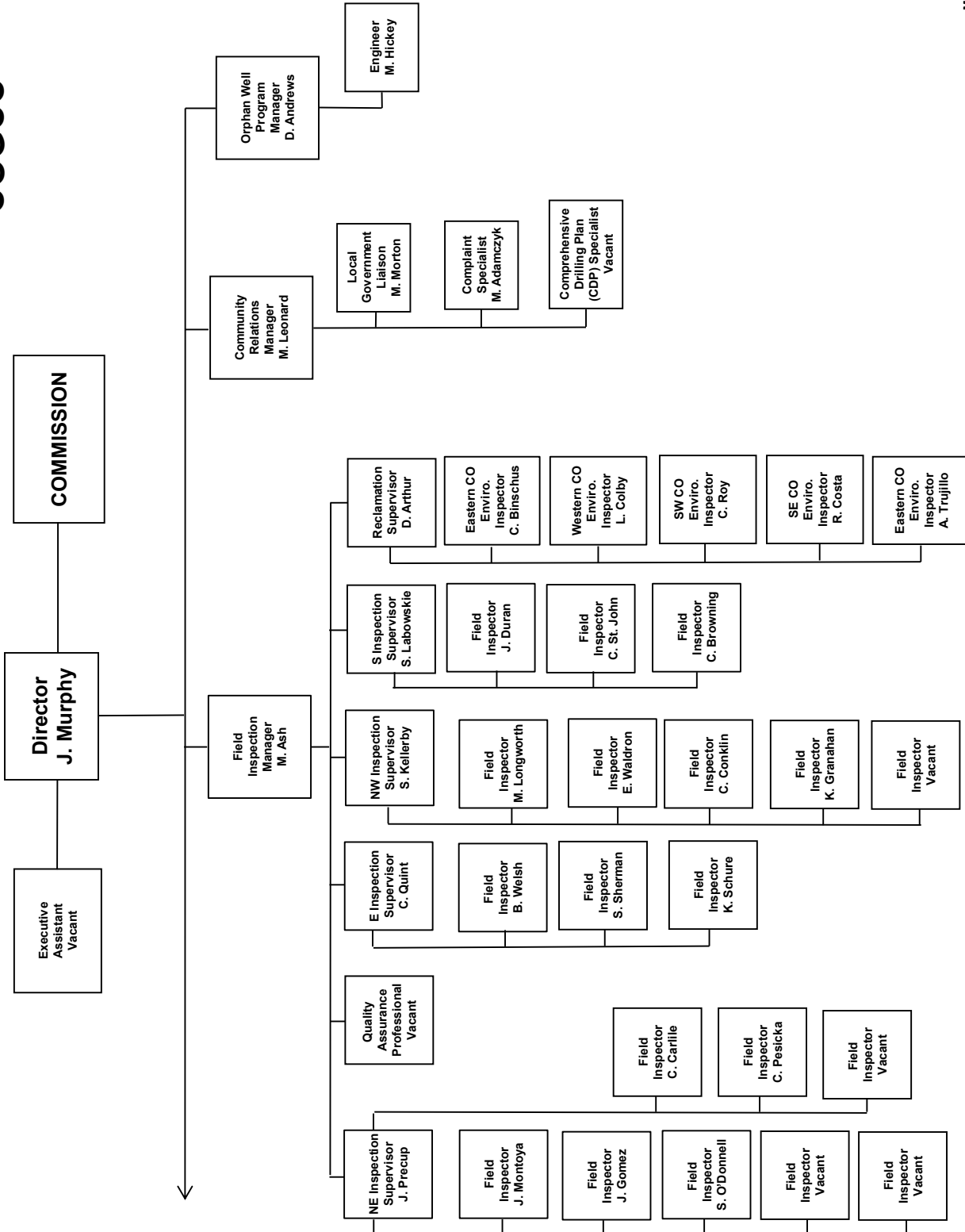
## COGCC



UIC = Underground Injection Control  
 EPS = Environmental Protection Specialist  
 OGLA = Oil and Gas Location Assessment



## COGCC





PLUGGING AND RECLAIMING ORPHANED WELLS (PROW) PROGRAM  
FISCAL YEAR 2017-18

BONDS AND OTHER SURETY CLAIM STATUS FOR ACTIVE FY2017-18 "BOND CLAIM" PROJECTS						
Project	Order Number(s)	Total Bond Claim	Amount Spent in Prior Fiscal Years	Amount Spent in FY2017-18	Remaining Bond Balance	
Atom Petroleum Bond Claim	1V-586	\$ 60,000	\$ 797	\$ 1,425	\$ 57,778	
Benchmark Energy Bond Claim	1V-564	\$ 620,000	\$ 98,931	\$ -	\$ 521,069	
CM Production Bond Claim	1V-581	\$ 67,849	\$ 13,299	\$ 27,820	\$ 26,730	
Dolphin Bond Claim	1V-382	\$ 55,000	\$ 55,000	\$ -	\$ -	
Energy Search Bond Claim	1V-636	\$ 60,000	\$ -	\$ -	\$ 60,000	
Reynolds* Noel Bond Claim	1V-374, 1V-375	\$ 30,000	\$ -	\$ 841	\$ 29,159	
Nolte Bond Claim	1V-582	\$ 61,838	\$ -	\$ -	\$ 61,838	
Pine Ridge Bond Claim	1V-622	\$ 85,000	\$ -	\$ -	\$ 85,000	
Red Mesa Holdings Bond Claim	1V-508	\$ 72,831	\$ 12,258	\$ 60,574	\$ -	
Red Mountain Bond Claim*	1V-549, 5LB	\$ 92,015	\$ 30,070	\$ 30,675	\$ 31,270	
Redwine Bond Claim	1V-470, 1V-494	\$ 30,000	\$ 30,000	\$ -	\$ -	
Texas Tea Bond Claim	1V-573	\$ 71,850	\$ 40,283	\$ 31,568	\$ -	
Tudex Petroleum Bond Claim	1V-646	\$ 62,470	\$ -	\$ -	\$ 62,470	
Vitruvian Exploration Bond Claim	1V-514	\$ 30,000	\$ -	\$ 9,010	\$ 20,990	
<b>TOTALS -&gt;</b>		<b>\$ 1,398,853</b>	<b>\$ 280,638</b>	<b>\$ 161,913</b>	<b>\$ 956,304</b>	

Note: \* Red Mountain Bond Total Claim Amount includes \$24,169 bankruptcy deposit and \$5,000 State Land Board deposit (bond transfer)

ACTIVE TASK LIST (PLANNED OR IN PROGRESS) - FY2017-18				
Work Unit	County	Project and Task	Task Status	Planning Comments
Engineering	Adams	Energy Search Bond Claim: Task 2 - Flowline Abandonment - 444882,	Planned	FY2017-18 work: abandon flowline
Engineering	Adams	Energy Search Bond Claim: Task 2 - Flowline Abandonment - 444886,	Planned	FY2017-18 work: abandon flowline
Engineering	Adams	Energy Search Bond Claim: Task 2 - Plug and Abandon, Flowline Abandonment - 319667,	Planned	FY2017-18 work: abandon flowline
Engineering	Adams	Energy Search Bond Claim: Task 2 - Plug and Abandon, Flowline Abandonment - 319813,	Planned	FY2017-18 work: abandon flowline
Engineering	Adams	Energy Search Bond Claim: Task 2 - Plug and Abandon, Flowline Abandonment - 319818,	Planned	FY2017-18 work: abandon flowline
Engineering	Adams	Energy Search Bond Claim: Task 2 - Plug and Abandon, Flowline Abandonment - 319856,	Planned	FY2017-18 work: abandon flowline
Engineering	Adams	Energy Search Bond Claim: Task 2 - Plug and Abandon, Flowline Abandonment - 319874,	Planned	FY2017-18 work: abandon flowline
Engineering	Adams	Energy Search Bond Claim: Task 2 - Plug and Abandon, Flowline Abandonment - 320267,	Planned	FY2017-18 work: abandon flowline
Engineering	Adams	Energy Search Bond Claim: Task 2 - Plug and Abandon, Flowline Abandonment - 320268,	Planned	FY2017-18 work: abandon flowline
Engineering	Adams	Energy Search Bond Claim: Task 2 - Plug and Abandon, Flowline Abandonment - 333070,	Planned	FY2017-18 work: abandon flowline
Reclamation	Adams	Ruth Bond Claim: Task 4 - Weed Control (maintenance) - 319655,	Planned	Weed control
Engineering	Adams	Texas Tea Bond Claim: Task 1.4 - Site Security, LOTO - Multiple Locations,	In Progress	Install lock-out / tag-out devices on wellheads, equipment and fences
Engineering	Adams	Texas Tea Bond Claim: Task 2.1, 3.1A - Plug and Abandon, Flowline Abandonment - 320223, 001-08516	Planned	FY2017-18 work: abandon flowline



# Oil and Gas Staff Report

March 19, 2018

13

ACTIVE TASK LIST (PLANNED OR IN PROGRESS) - FY2017-18, cont.				
Work Unit	County	Project and Task	Task Status	Planning Comments
Reclamation	Adams	Texas Tea Bond Claim: Task 2.2 - Weed Control (maintenance) - Spindle and Sun Fields,	Planned	Reclamation maintenance
Engineering	Adams	Tudex Petroleum Bond Claim: Task 2 - Plug and Abandon, Flowline Abandonment - 320126, 001-08153	Planned	FY2017-18 work: abandon flowline
Engineering	Adams	Tudex Petroleum Bond Claim: Task 2 - Plug and Abandon, Flowline Abandonment - 320129, 001-08162	Planned	FY2017-18 work: abandon flowline
Engineering	Adams	Tudex Petroleum Bond Claim: Task 2 - Plug and Abandon, Flowline Abandonment - 320217, 001-08491	Planned	FY2017-18 work: abandon flowline
Engineering	Adams	Tudex Petroleum Bond Claim: Task 2 - Plug and Abandon, Flowline Abandonment - 320452, 001-09362	Planned	FY2017-18 work: abandon flowline
Engineering	Adams	Tudex Petroleum Bond Claim: Task 2 - Plug and Abandon, Flowline Abandonment - 320453, 001-09363	Planned	FY2017-18 work: abandon flowline
Engineering	Adams	Tudex Petroleum Bond Claim: Task 2 - Plug and Abandon, Flowline Abandonment - 335733, 001-08163	Planned	FY2017-18 work: abandon flowline
Engineering	Adams	Tudex Petroleum Bond Claim: Task 2 - Plug and Abandon, Flowline Abandonment - 335737, 001-08767	Planned	FY2017-18 work: abandon flowline
Engineering	Adams	Tudex Petroleum Bond Claim: Task 2 - Plug and Abandon, Flowline Abandonment - 335737, 001-08768	Planned	FY2017-18 work: abandon flowline
Reclamation	Fremont	Pine Ridge Bond Claim: Task 4 - Re-Seeding (maintenance), Weed Control (maintenance) - 382573,	Planned	Reclamation maintenance
Reclamation	Fremont	Pine Ridge Bond Claim: Task 5 - Re-Seeding (maintenance), Weed Control (maintenance) - 419495,	Planned	Reclamation maintenance
Environmental	Jackson	CM Production Bond Claim: Task 1.11 - Sampling and Analysis - Lone Pine Field,	In Progress	Biannual sampling and analysis (first sampling event completed November 2017)
Engineering	Jackson	CM Production Bond Claim: Task 3.1. 3.2 - MIT or Other Well Work, Plug and Abandon - 324626, 057-06069	Planned	Set downhole plug to TA well and MIT
Reclamation	Jefferson	Red Mountain Bond Claim: Task 14 - Stormwater BMPs (maintenance), Weed Control (maintenance) - 324775,	Planned	Reclamation maintenance (in-house Staff and Equipment)
Engineering	La Plata	Atom Petroleum Bond Claim: Task 2.5 - MIT or Other Well Work - 325653, 067-06777	In Progress	Removed liquid from cellar, no wellhead leak apparent during work in October 2017, continuing to monitor well cellar
Environmental	La Plata	Red Mesa Holdings Bond Claim: Task 3 - Sampling and Analysis, Spill or Remediation - 325267,	In Progress	Remove hydrocarbon-impacted soil (includes sampling and analysis)
Reclamation	La Plata	Red Mesa Holdings Bond Claim: Task 5 - Weed Control (maintenance) - Red Mesa Field,	Planned	Reclamation maintenance
Field Operations	La Plata	Red Mesa Holdings Bond Claim: Task 8 - Equipment Intervention, Flowline Abandonment, Equipment Salvage, Spill or Remediation, Stormwater BMPs (maintenance), Weed Control (maintenance) - Red Mesa Field,	Planned	Various tasks to be assigned to specific locations
Engineering	La Plata	Reynolds* Noel Bond Claim: Task 2 - Plug and Abandon, Flowline Abandonment - 325354, 067-06232	Planned	Plug well and abandon flowline
Environmental	Larimer	Hall #1: Task 1 - Gas Meter Survey - 385978,	Planned	Gas meter monitoring (in-house Staff and Equipment)
Engineering	Larimer	Sheffer Jack #1: Task 1 - Plug and Abandon, Flowline Abandonment - 385978, 069-05014	Planned	FY2017-18 work: flowline utility locate in preparation for well plugging and flowline abandonment
Reclamation	Lincoln	Nolte Bond Claim: Task 1 - Re-Seeding (maintenance), Weed Control (maintenance) - 421302,	Planned	Reclamation maintenance
Reclamation	Lincoln	Pine Ridge Bond Claim: Task 1 - Re-Seeding (maintenance), Weed Control (maintenance), Fence Removal - 433053,	Planned	Reclamation maintenance
Reclamation	Lincoln	Pine Ridge Bond Claim: Task 2 - Re-Seeding (maintenance), Weed Control (maintenance), Fence Removal - 430683,	Planned	Reclamation maintenance
Reclamation	Lincoln	Pine Ridge Bond Claim: Task 3 - Re-Seeding (maintenance), Weed Control (maintenance), Fence Removal - 430828,	Planned	Reclamation maintenance
Engineering	Logan	Benchmark Energy Bond Claim: Task 2.5 - Plug and Abandon, Flowline Abandonment - 312151, 075-05875	Planned	FY2018 work: plug well



ACTIVE TASK LIST (PLANNED OR IN PROGRESS) - FY2017-18, cont.				
Work Unit	County	Project and Task	Task Status	Planning Comments
Engineering	Logan	Benchmark Energy Bond Claim: Task 2.5 - Plug and Abandon, Flowline Abandonment - 312159, 075-05978	Planned	FY2018 work: plug well
Engineering	Logan	Benchmark Energy Bond Claim: Task 2.5 - Plug and Abandon, Flowline Abandonment - 312162, 075-06002	Planned	FY2018 work: plug well
Engineering	Logan	Benchmark Energy Bond Claim: Task 2.5 - Plug and Abandon, Flowline Abandonment - 312177, 075-06126	Planned	FY2018 work: plug well
Engineering	Logan	Benchmark Energy Bond Claim: Task 2.5 - Plug and Abandon, Flowline Abandonment - 312183, 075-06137	Planned	FY2018 work: plug well
Engineering	Logan	Benchmark Energy Bond Claim: Task 2.5 - Plug and Abandon, Flowline Abandonment - 312185, 075-06158	Planned	FY2018 work: plug well
Engineering	Logan	Benchmark Energy Bond Claim: Task 2.5 - Plug and Abandon, Flowline Abandonment, Remove anchors - 312157, 075-05971	Planned	FY2018 work: plug well
Reclamation	Logan	GW Production Bond Claim: Task 3.6 - Stormwater BMPs (maintenance), Weed Control	Planned	Weed control
Reclamation	Logan	GW Production Bond Claim: Task 3.6 - Weed Control (maintenance) - 312201,	Planned	Weed control
Environmental	Logan	Red Mountain Bond Claim: Task 11 - Sampling and Analysis, Spill or Remediation, Pit Closure - 450396,	Planned	Remove pit fluids and pit liner; sampling and analysis for confirmation and pit closure.
Reclamation	Logan	Red Mountain Bond Claim: Task 21 - Weed Control (maintenance) - Merino and Twin Mills Fields,	Planned	Reclamation maintenance
Environmental	Mesa	DB Orphan #8: Task 3 - Soil Vapor Extraction System - 450650,	In Progress	SVE blower shut down while residents are away for winter. Wind turbine ventilator installed. Periodic soil gas meter monitoring is ongoing (in-house Staff and Equipment)
Reclamation	Moffat	Vitruvian Exploration Bond Claim: Task 2 - Reclamation (initial work) - 392480,	Planned	Reclaim location
Engineering	Montezuma	Atom Petroleum Bond Claim: Task 1.1 - Plug and Abandon, Flowline Abandonment - 313483, 083-06263	Planned	Plug well and abandon flowlines
Engineering	Montezuma	Atom Petroleum Bond Claim: Task 1.1 - Plug and Abandon, Flowline Abandonment - 313628, 083-06653	Planned	Plug well and abandon flowlines
Reclamation	Routt	Pine Ridge Bond Claim: Task 6 - Re-Seeding (maintenance), Weed Control (maintenance) - 316792,	Planned	Reclamation maintenance
Reclamation	Washington	GW Production Bond Claim: Task 3.6 - Weed Control (maintenance) - Hyde and Tap Fields,	Planned	Weed control
Field Operations	Washington	Energy Search Bond Claim: Task 1.1 - Fence Repair - 317183,	Planned	Repair fence
Field Operations	Washington	Energy Search Bond Claim: Task 1.1 - Fence Repair - 317287,	Planned	Repair fence
Field Operations	Washington	Energy Search Bond Claim: Task 1.1 - Fence Repair - 317288,	Planned	Repair fence
Field Operations	Washington	Energy Search Bond Claim: Task 1.1 - Fence Repair - 317289,	Planned	Repair fence
Field Operations	Washington	Energy Search Bond Claim: Task 1.2 - Equipment intervention - 317287,	Planned	Repair fence
Field Operations	Washington	Energy Search Bond Claim: Task 1.2 - Equipment intervention - 317288,	Planned	FY2018 work: remove produced water from tanks
Field Operations	Washington	Energy Search Bond Claim: Task 1.2 - Equipment intervention - 317289,	Planned	FY2018 work: remove produced water from tanks
Field Operations	Washington	Energy Search Bond Claim: Task 4.1 - Stormwater BMPs (maintenance), Install Stormwater BMPs - 317183,	Planned	FY2018 work: remove produced water from tanks Install stormwater BMPs
Environmental	Weld	Severin & Co #1: Task 1 - Sampling and Analysis, Spill or Remediation - 407304,	Planned	Environmental sampling around wellhead (well is plugged)
Engineering	Weld	Texas Tea Bond Claim: Task 3.3, 3.7 - Plug and Abandon, Flowline Abandonment - 318231, 123-08720	In Progress	FY2017-18 work: abandon flowline (complete); well plugging timing TBD



COMPLETED TASK LIST - FY2017-18				
Work Unit	County	Project and Task	Task Status	Planning Comments
Engineering	Adams	Texas Tea Bond Claim: Task 2.1, 3.1A - Plug and Abandon, Flowline Abandonment - 320139, 001-08204	Completed	Plug well and abandon flowline; cut off casing during landfill expansion
Engineering	Adams	Texas Tea Bond Claim: Task 2.1, 3.1A - Plug and Abandon, Flowline Abandonment - 320206, 001-08443	Completed	Plug well and abandon flowline
Engineering	Adams	Texas Tea Bond Claim: Task 2.1, 3.1A - Plug and Abandon, Flowline Abandonment - 320240, 001-08699	Completed	Plug well and abandon flowline
Engineering	Adams	Texas Tea Bond Claim: Task 3.3, 3.7 - Plug and Abandon, Flowline Abandonment - 320257, 001-08775	Completed	Plug well and abandon flowline
Engineering	Boulder	Juhl #1: Task 1 - Plug and Abandon, Flowline Abandonment - 379627, 013-05018	Completed	Fluid disposal
Environmental	Jackson	GM Production Bond Claim: Task 1.14 - Sampling and Analysis, Spill or Remediation - 324630,	Completed	Soil sampling and analysis
Environmental	Jackson	GM Production Bond Claim: Task 1.15 - Sampling and Analysis, Spill or Remediation - 324599,	Completed	Soil sampling and analysis
Environmental	Jackson	GM Production Bond Claim: Task 1.7, 1.10 - Equipment Intervention - 324634,	Completed	Remove liquids from tanks
Engineering	Jackson	GM Production Bond Claim: Task 3.1, 3.2 - MIT or Other Well Work, Plug and Abandon - 324599, 057-06011	Completed	Set downhole plug to TA well and MIT
Engineering	Jackson	GM Production Bond Claim: Task 3.1, 3.2 - MIT or Other Well Work, Plug and Abandon - 324630, 057-06093	Completed	Set downhole plug to TA well and MIT
Field Operations	La Plata	Atom Petroleum Bond Claim: Task 1.2 - Equipment Intervention - 325653,	Completed	Remove liquids from tank
Environmental	La Plata	McCullough #4: Task 2 - Sampling and Analysis - 325208,	Completed	Collect wellhead gas samples
Engineering	La Plata	Red Mesa Holdings Bond Claim: Task 2 - MIT or Other Well Work, Complaint response, Bradenhead test - 325858, 067-07085	Completed	Set downhole plugs to TA well, perform MIT, abandon flowline, and remove liquid tank bottoms for off-site disposal
Engineering	La Plata	Red Mesa Holdings Bond Claim: Task 2 - MIT or Other Well Work, Plug and Abandon, Flowline Abandonment - 325267, 067-06033	Completed	Plug well and abandon flowlines, remove pump jack, and install stormwater BMPs
Field Operations	La Plata	Red Mesa Holdings Bond Claim: Task 6 - Equipment Intervention, Remove crude oil - 385368, 067-05448	Completed	Remove liquids from tank
Reclamation	La Plata	Red Mesa Holdings Bond Claim: Task 7 - Stormwater BMPs (maintenance) - Red Mesa Field, Reynolds' Noel Bond Claim: Task 2.1 - MIT or Other Well Work, Install pressure gauge - 385368, 067-05448	Completed	Install and maintain stormwater BMPs
Engineering	La Plata	Ranchers Bond Claim: Task 1 - Reclamation (initial work), Re-Seeding (maintenance), Weed Control (maintenance) - 435790,	Completed	Wellhead work to prepare for future re-entry to plug and abandon, installed pressure gauge
Reclamation	Larimer	Ranchers Bond Claim: Task 2 - Engineering Design - 419639,	Completed	Reclamation maintenance
Reclamation	Larimer	GM Production Bond Claim: Task 1.5 - Equipment Intervention - Cliff and Mount Hope Fields,	Completed	Soil sampling and analysis
Field Operations	Logan	Red Mountain Bond Claim: Task 13 - Sampling and Analysis, Spill or Remediation - 312261,	Completed	Collected samples for analysis at produced water pit and around
Environmental	Logan	Red Mountain Bond Claim: Task 8 - Plug and Abandon, Flowline Abandonment - 312261, 075-08293	Completed	Plug well and abandon flowline
Engineering	Mesa	DB Orphan #8: Task 1 - Plug and Abandon - 450650, 077-10381	Completed	Set surface plug, cut off casing, and weld plate
Environmental	Mesa	DB Orphan #8: Task 2 - Sampling and Analysis, Soil Vapor Monitoring - 450650,	Completed	Soil gas monitoring
Engineering	Mesa	Lloyd and Lowell #1: Task 2 - Plug and Abandon - 428669, 077-40017	Completed	Plug well
Reclamation	Moffat	Tatonka Bond Claim: Task 10 - Weed Control (maintenance), Stormwater BMP maintenance - 313340,	Completed	Stormwater permit
Engineering	Moffat	Vitruvian Exploration Bond Claim: Task 1 - Flowline Abandonment - 392479,	Completed	Abandon flowlines
Engineering	Moffat	Vitruvian Exploration Bond Claim: Task 1 - Flowline Abandonment - 392480,	Completed	Abandon flowlines
Environmental	Montezuma	Pilcher #1: Task 1 - Sampling and Analysis - 393155,	Completed	Collect samples at former tank battery location and develop remediation plan if needed



COMPLETED TASK LIST - FY2017-18, cont.		
Work Unit	County	Project and Task
Reclamation	Montezuma	Wolcott #: Task 2 - Reclamation (initial work) - 313501,
Reclamation	Montezuma	Woosley Oil - State #1-36: Task 4 - Reclamation (initial work) - 313502,
Reclamation	Montrose	Redwine Bond Claim: Task 4 - Stormwater BMPs (maintenance), Weed Control (maintenance) - 313641,

PROJECT FINANCIALS - FY2017-18						
Project Name	BOND Actual	PROW Actual	EMGY Actual	Subtotals	Actual	Comments
Atom Petroleum Bond Claim	\$ 1,425	\$ -	\$ -	\$ -	\$ 1,425	
CM Production Bond Claim	\$ 27,820	\$ 2,323	\$ -	\$ 2,323	\$ 30,143	Reclaim location
DB Orphan #8	\$ -	\$ 13,027	\$ -	\$ 13,027	\$ 13,027	Reclaim location
Juhl #1	\$ -	\$ 78	\$ -	\$ 78	\$ 78	Reclamation maintenance
Lloyd and Lowell #1	\$ -	\$ 76,610	\$ -	\$ 76,610	\$ 76,610	
McCullough #4	\$ -	\$ 3,007	\$ -	\$ 3,007	\$ 3,007	
Pitcher #1	\$ -	\$ 1,074	\$ -	\$ 1,074	\$ 1,074	
Ranchers Bond Claim	\$ -	\$ 4,585	\$ -	\$ 4,585	\$ 4,585	
Red Mesa Holdings Bond Claim	\$ 60,574	\$ 38,875	\$ -	\$ 99,448	\$ 99,448	
Red Mountain Bond Claim	\$ 30,675	\$ -	\$ -	\$ 30,675	\$ 30,675	
Redwine Bond Claim	\$ -	\$ 3,023	\$ -	\$ 3,023	\$ 3,023	
Reynolds* Noel Bond Claim	\$ 841	\$ -	\$ -	\$ 841	\$ 841	
Tatonka Bond Claim	\$ -	\$ 350	\$ -	\$ 350	\$ 350	
Texas Tea Bond Claim	\$ 31,568	\$ 106,686	\$ -	\$ 138,254	\$ 138,254	
Vitruvian Exploration Bond Claim	\$ 9,010	\$ -	\$ -	\$ 9,010	\$ 9,010	
Wolcott #1	\$ -	\$ 407	\$ -	\$ 407	\$ 407	
<b>TOTAL EXPENDITURES --&gt;</b>				<b>\$ 250,367</b>	<b>\$ -</b>	<b>\$ 412,279</b>

**NOTES:**

Project and Task Format: [Location or Well Name and Number (if orphan) or Operator Name + "Bond Claim"]:

"Task" [Task No(s)] - [Task Type(s)] - [Facility ID Number], [Well API Number (county and sequence code), if well work included with task]

Project Financials: COGCC may be waiting on invoices for some Completed Tasks, and therefore expenditures for those Tasks may not be shown in the Project Financials Section.

**ABBREVIATIONS:**

EMGY = Emergency Response Appropriation

PROW = Plugging and Reclaiming Orphaned Wells Appropriation

**PROW FUNDS SCOREBOARD**

\$ 445,000	Annual PROW Appropriation
\$ (129,001)	Planned and In Progress Estimate
\$ (65,145)	Completed Work (Waiting on Invoice Approval)
\$ (250,367)	Completed Work (Invoiced)
<b>\$ 487</b>	<b>Estimated Fiscal Year End Balance</b>

(Scoreboard excludes work involving Bond Expenditures)





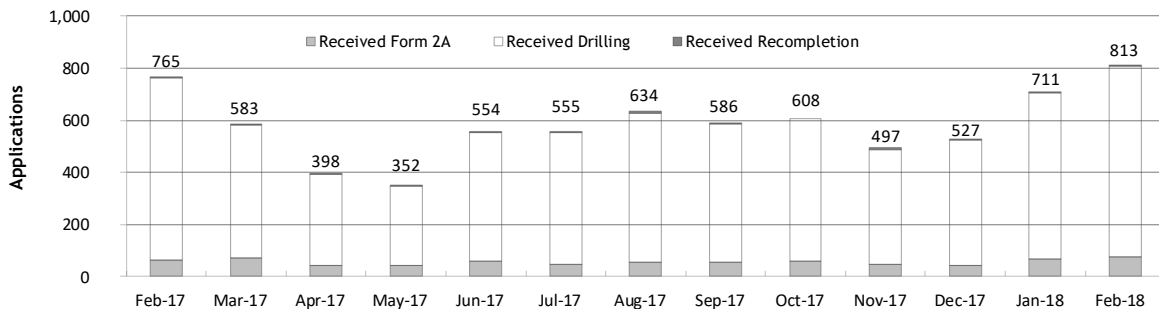
## Monthly Permit Activity as of March 1, 2018

Form/Month	Backlog	Received	Approved	Withdrawn	Rejected	Incomplete <sup>1</sup>	In-Process	Remaining <sup>2</sup>
<b>Form2A</b>								
Feb-17	142	62	38	2	0	28	136	164
Mar-17	164	71	48	6	3	29	149	178
Apr-17	178	41	54	3	0	34	128	162
May-17	162	41	55	0	0	25	123	148
Jun-17	148	58	40	2	1	31	132	163
Jul-17	163	45	31	3	1	33	140	173
Aug-17	173	53	49	6	0	33	138	171
Sep-17	171	56	41	0	1	25	160	185
Oct-17	185	58	40	6	2	25	170	195
Nov-17	195	47	38	2	0	24	178	202
Dec-17	202	44	32	3	0	31	180	211
Jan-18	211	66	19	4	0	33	221	254
Feb-18	254	73	22	5	1	45	254	299
<b>Drilling</b>								
Feb-17	1,161	701	263	14	0	86	1,499	1,585
Mar-17	1,585	510	423	14	47	131	1,480	1,611
Apr-17	1,611	352	301	21	14	167	1,460	1,627
May-17	1,627	307	367	13	52	168	1,334	1,502
Jun-17	1,502	493	331	3	9	185	1,467	1,652
Jul-17	1,652	508	234	49	75	146	1,656	1,802
Aug-17	1,802	572	349	13	20	137	1,855	1,992
Sep-17	1,992	528	450	12	36	135	1,887	2,022
Oct-17	2,022	550	311	75	64	139	1,983	2,122
Nov-17	2,122	438	331	19	59	125	2,026	2,151
Dec-17	2,151	479	304	15	25	124	2,162	2,286
Jan-18	2,286	639	218	68	0	93	2,546	2,639
Feb-18	2,639	736	217	34	45	99	2,980	3,079
<b>Recompletion</b>								
Feb-17	12	2	4	0	0	3	7	10
Mar-17	10	2	2	0	0	2	8	10
Apr-17	10	5	4	1	0	2	8	10
May-17	10	4	3	4	0	1	6	7
Jun-17	7	3	2	0	0	2	6	8
Jul-17	8	2	4	0	0	2	4	6
Aug-17	6	9	0	1	0	2	12	14
Sep-17	14	2	6	0	0	2	8	10
Oct-17	10	0	2	0	0	3	5	8
Nov-17	8	12	1	0	0	3	16	19
Dec-17	19	4	4	0	0	8	11	19
Jan-18	19	6	3	0	0	9	13	22
Feb-18	22	4	3	0	0	9	14	23

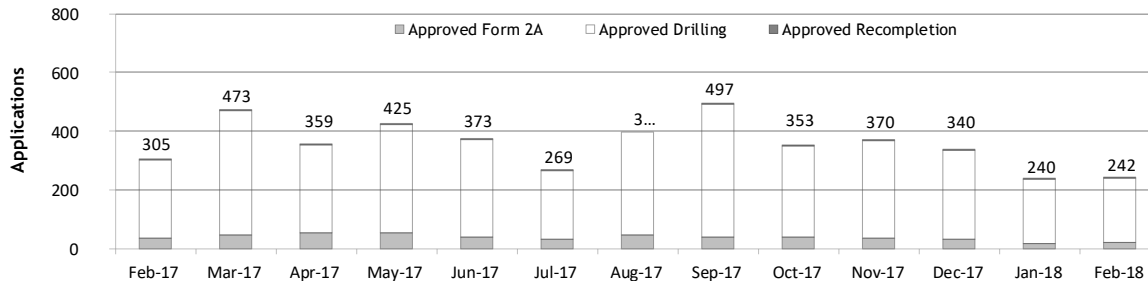
<sup>1</sup> Incomplete are applications that have missing or inaccurate data and cannot be approved.

<sup>2</sup> Backlog = Incomplete + In-process = Remaining permits from previous month.

Received Applications



Approved Applications




**Status of Permit Applications Filed By Month as of March 1, 2018**
**Form 2A Location Assessment**

Year	Month	Received	Approved	Withdrawn	In Process	Percent In Process	Average			
							Days to Process	Less Than 30 Days	30 to 49 Days	Greater Than 50 Days
2013	TOTAL	1,281	1,202	78	1	0%		369	433	400
2014	TOTAL	1,114	1,067	47	0	0%		279	429	359
2015	TOTAL	592	564	26	2	0%		78	157	329
2016	TOTAL	407	376	25	4	1%		32	61	283
2017	JAN	42	32	8	2	5%	92	0	5	27
	FEB	59	57	2	0	0%	93	7	9	41
	MAR	70	59	3	8	11%	76	6	18	35
	APR	41	33	2	6	15%	79	5	9	19
	MAY	41	33	3	5	12%	93	2	6	25
	JUNE	57	46	1	10	18%	72	7	16	23
	JULY	43	32	4	7	16%	59	6	14	12
	AUG	51	37	2	12	24%	60	6	9	22
	SEP	55	29	1	25	45%	56	4	10	15
	OCT	57	29	1	27	47%	53	9	7	13
	NOV	47	22	0	25	53%	47	5	8	9
	DEC	44	11	1	32	73%	52	1	2	8
2017	TOTAL	607	420	28	159	26%		58	113	249
2018	JAN	65	6	2	57	88%	31	2	4	0
	FEB	73	0	0	73	100%	0	0	0	0
2018	TOTAL	138	6	2	130	94%	31	2	4	0

**Form 2 Application For Permit to Drill (APDs)**

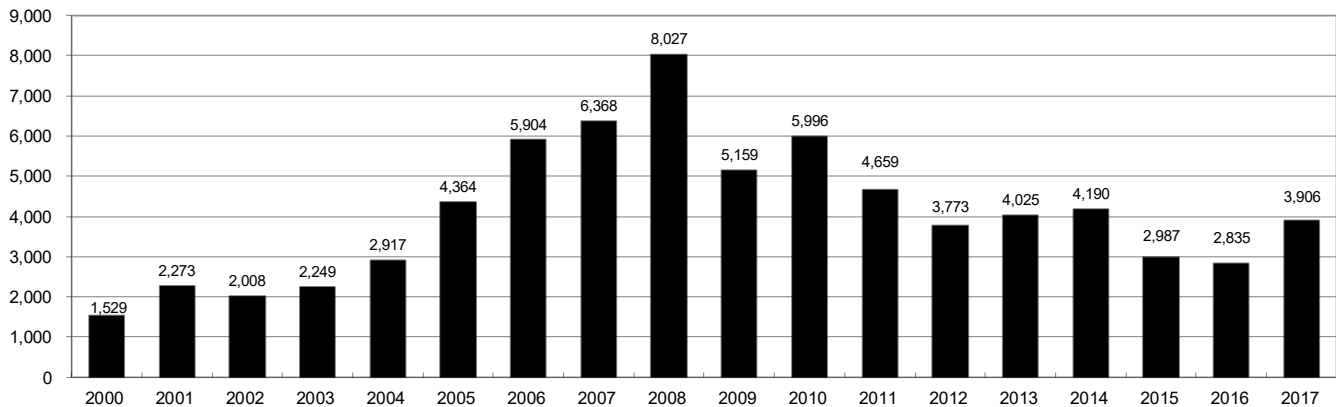
Year	Month	Received	Approved	Withdrawn	In Process	Percent In Process	Average			
							Days to Process	Less Than 30 Days	30 to 49 Days	Greater Than 50 Days
2013	TOTAL	4,548	4,312	235	1	0%		1,046	1,626	1,714
2014	TOTAL	4,208	4,026	182	0	0%		689	1,629	1,744
2015	TOTAL	3,237	3,091	146	0	0%		249	759	2,113
2016	TOTAL	3,253	3,026	107	62	2%		204	402	2,442
2017	JAN	418	330	59	29	7%	117	5	41	290
	FEB	590	493	32	65	11%	109	36	39	419
	MAR	508	393	45	70	14%	97	15	70	310
	APR	335	277	18	40	12%	104	10	17	255
	MAY	306	231	21	54	18%	98	18	65	149
	JUNE	472	347	4	121	26%	109	12	75	262
	JULY	458	300	46	112	24%	95	22	27	251
	AUG	522	290	16	206	40%	69	8	94	194
	SEP	512	266	5	241	47%	71	18	89	161
	OCT	519	222	9	288	55%	65	7	50	165
	NOV	429	202	0	227	53%	68	40	23	146
	DEC	479	117	0	362	76%	63	3	10	105
2017	TOTAL	5,548	3,468	255	1,815	33%		194	600	2,707
2018	JAN	639	74	12	516	86%	42	10	36	30
	FEB	735	2	0	733	100%	2	2	0	0
2018	TOTAL	1374	76	12	1249	91%	44	12	36	30



## Annual Drilling Permits by County as of March 1, 2018

County	2000	2001	2002	2003	2004	2005	2006	2007	2008	2009	2010	2011	2012	2013	2014	2015	2016	2017	2018
ADAMS	38	28	9	26	39	34	37	89	51	35	21	8	40	40	51	96	74	125	24
ARAPAHOE		2	1	2	5	7	11	10	10	10	8	23	35	23	34	19	5	78	13
ARCHULETA	7	9	6	10	8	13	14	26	47	11	18	12	5	4	3	11	3	21	10
BACA	22	6	2	3	7	8	2	11	13	3	4	5	3	1	1			5	1
BENT	2				5	3	8	1	1		5		2	1					
BOULDER	1	5	6	7	17	13	21	37	32	35	24	30	22						
BROOMFIELD			2	7		1	1		2	33	28	11	36		31				
CHEYENNE	3	3	3	3	3	10	21	15	33	12	13	16	31	50	26	9		1	
COSTILLA																			
CROWLEY															2				3
DELTA			7	4	5	10	9	2			4	3	6	1	2				
DENVER		3					19	25	24										
DOLORES				1	1	1	6	10	12	21	8	8	13	12	3		3	2	
EAGLE														1					
ELBERT	2						4			1		1	2	2	4	3	3	1	
EL PASO										2	3	3	18	1	2				
FREMONT					1	3	2	4	14	13	22	14	11	2	8	2	2	1	
GARFIELD	213	353	362	567	796	1,509	1,845	2,550	2,888	1,981	2,037	1,323	1,046	870	1,066	532	724	612	16
GRAND																			
GUNNISON			5	10	1	9	19	7	10	12	4	3	11	9	20	28	19	33	17
HUERFANO	41	27	27		8	2			7		2	1	9	1	13	2		2	
JACKSON	34	18	21	9	14	6	8	5	27	19	9	18	5	12	17	3	57	28	5
JEFFERSON	1						1	3	2					1					
KIOWA	11	18	2	4	2	1	11	9	26	7	16	17	17	12	5	3		3	
KIT CARSON				1	3	5	4	4	13	7	3	2	6	1	2		1		
LA PLATA	127	156	104	162	102	115	235	251	328	298	191	99	71	32	87	106	96	108	35
LARIMER	2		1			1		5	46	12	41	8	13	2	4	28	4	30	
LAS ANIMAS	268	400	259	180	332	413	500	362	303	88	92	85	11	2	1				
LINCOLN	2	2	1	6	3	4	1	2	58	44	48	31	36	87	129	24	5	31	2
LOGAN	4	7	3	3	6	13	17	14	5	9	17	8	27	4	5		1	3	
MESA	13	27	30	27	54	136	265	293	501	427	306	127	150	105	74	126	7	215	3
MOFFAT	35	52	62	63	63	60	120	68	57	51	53	93	88	44	54	12	17	5	
MONTEZUMA	4		5	8	8	11	5	12	22	39	19	27	29	14	25	3	3	6	
MONTROSE	1	3	2	4	2		1	3	3		1	1							
MORGAN	9	9	2	7	9	7	3	6	2	1	6	13	5	16	6	4	28		1
OTERO																			
PARK										3	4	1							
PHILLIPS	1	2		7	13	17	12	69	82	45	64	112	56		11	2			
PITKIN					1			1								1			
PROWERS	2	5	4		7	5	7	5	8	1	3	1		1			1		
RIO BLANCO	89	187	105	179	154	161	360	321	477	348	441	109	117	167	121	107	71	115	51
RIO GRANDE	1	1		1					1	1			2		1				
ROUTT	20	13	1		4	6	9	8	4	2	3	10	4	12	4	9			
SAGUACHE	2		2					2	1	2									
SAN MIGUEL	11	13	27	18	42	45	35	23	20	13	10	2	1		2	3			
SEDGWICK				1	5	2	7	2	1	19	11	12	2		7	1			
WASHINGTON	23	17	27	34	128	50	69	45	11	1	6	12	6	19	12	9	7	10	2
WELD	509	702	760	757	832	901	1,418	1,527	2,340	1,448	2,152	2,262	1,826	2,468	2,303	1,841	1,704	2,466	239
YUMA	31	205	160	138	237	782	797	541	545	105	299	148	11	9	53	3		2	
<b>TOTAL</b>	<b>1,529</b>	<b>2,273</b>	<b>2,008</b>	<b>2,249</b>	<b>2,917</b>	<b>4,364</b>	<b>5,904</b>	<b>6,368</b>	<b>8,027</b>	<b>5,159</b>	<b>5,996</b>	<b>4,659</b>	<b>3,773</b>	<b>4,025</b>	<b>4,190</b>	<b>2,987</b>	<b>2,835</b>	<b>3,906</b>	<b>419</b>

ALL COUNTIES





## Form 2A Breakdown By County By Year as of March 1, 2018

Year	County	Form 2As	Completed	In Process	New Location	CDP	SWH	RSO	CDPHE
2009	Total State	818	818	0	408	2	80	5	5
2010	Total State	2,377	2,377	0	1,543	0	317	22	55
2011	Total State	2,297	2,297	0	1,724	1	259	16	5
2012	Total State	1,297	1,297	0	900	0	167	6	1
2013	Total State	1,195	1,194	1	845	0	144	2	4
2014	Total State	1,067	1,065	0	776	3	129	7	3
2015	Total State	574	569	3	398	0	95	2	2
2016	Total State	393	379	4	222	0	52	4	7
2017	ADAMS	33	8	25	29	0	0	0	0
	ARAPAHOE	35	12	22	30	0	0	0	0
	ARCHULETA	3	3	0	2	0	3	0	0
	BACA	3	3	0	3	0	0	0	0
	CROWLEY	3	3	0	3	0	0	0	0
	DOLORES	2	2	0	2	0	1	0	0
	ELBERT	1	1	0	1	0	0	0	0
	FREMONT	1	1	0	1	0	1	0	0
	GARFIELD	32	31	1	12	0	23	3	1
	GUNNISON	4	4	0	1	0	2	0	0
	JACKSON	7	7	0	4	0	7	0	0
	LA PLATA	13	13	0	5	0	12	0	0
	LARIMER	3	3	0	3	0	0	0	0
	LINCOLN	25	25	0	19	0	0	0	0
	MESA	15	15	0	10	0	4	1	0
	MOFFAT	1	1	0	1	0	1	0	0
	MONTEZUMA	3	3	0	3	0	0	0	0
	MORGAN	4	1	3	4	0	0	0	0
	RIO BLANCO	9	8	1	1	0	8	0	0
	WASHINGTON	8	8	0	7	0	1	0	0
	WELD	382	256	124	280	0	9	0	2
	YUMA	1	1	0	1	0	0	0	0
2017	Total State	588	409	176	422	0	72	4	3
2018	ADAMS	4	0	4	1	0	0	0	0
	ARAPAHOE	1	0	1	2	0	0	0	0
	BROOMFIELD	2	0	2	2	0	0	0	0
	GARFIELD	9	2	7	1	0	7	0	1
	LARIMER	3	0	3	0	0	0	0	0
	LINCOLN	6	1	5	6	0	0	0	0
	MOFFAT	1	0	1	1	0	0	0	0
	MORGAN	1	0	1	1	0	0	0	0
	RIO BLANCO	1	0	1	0	0	1	0	1
	WASHINGTON	6	2	4	5	0	0	0	0
	WELD	84	0	84	70	0	0	0	0
2018	Total State	118	5	113	89	0	8	0	2

## Abbreviations:

CDP = Comprehensive Drilling Plan      SWH = Sensitive Wildlife Habitat consultation

RSO = Restricted Surface Occupancy consultation      CDPHE= Colorado Department of Health and Environment consultation



# Oil and Gas Staff Report

March 19, 2018

## Horizontal Well Activity as of March 1, 2018

County	2009		2010		2011		2012		2013		2014		2015		2016		2017		2018		Total				
	Drilled	PA	Permit	Spud	Permit	Spud	Permit	Spud	Permit	Spud	Permit	Spud	Permit	Spud	Permit	Spud	Permit	Spud	Permit	Spud	Spud	AC	PR	DA	PA
ADAMS			6	5	2	3	1	17	2	26	1	42	18	92	3	72	2	125	28	24	18	80	3	23	1
ARAPAHOE	2		10	1	10	8	10	22	4	11	13	22	11	9	5	5	1	77	15	13		45	2	30	1
ARCHULETA	17		7	6	15	7	10	5	9	2	2	1		6	3	2	1	17	2	7		58		53	
BENT							1			1												1			
BOULDER																						0			
CHEYENNE	5	4					4			7	2	1	1	1	1						9		3	5	
DELTA								6	1	1	1	2									3		3		
DOLORES	9		18	2	6			9	3	5	4	3	1								18		12	5	
EL PASO								10													0			1	
ELBERT								1													0				
FREMONT	7	6	6	1	12	5	3	4	4	1	1			1							11		10	7	
GARFIELD	10	2	1	1	16	2	18	6	43	6	18	4	20	11	7	4		11			44		41	2	
GUNNISON	1				1			3	2	2	2	9		18	2	10	1	24	1	14	7		7		
HUERFANO								4	1			2		3							1		1		
JACKSON	8	1	8		3	4	9	1	4	4	8	5	15	4	3	52	24	24	9	5	4	58	21	3	
KIOWA								1		4	2	1									2			1	
KIT CARSON	1							1		1	1										2			4	
LA PLATA	28	2	11	2	28	3	18	7	12	1	5	1	43	7	42	3	67	8	18		78		75	1	
LARIMER	3	2					5	1	2	1	2			22	8	4	3	29	25		40		11	2	
LAS ANIMAS	16	2	4		1	1															16		16		
LINCOLN			2	1	2	1	1			6		4	2								4		1	3	
LOGAN	2							1													2		2		
MESA	3	2	36		22	7	24	13	14		9	2	9	1	6	3				31		27	2		
MOFFAT	7	1	6	3	4		9	4	44	6	18	13	15	1	5	2	3	1	3	35		23	10		
MONTEZUMA	6	1	23	6	11	2	8	2	18	6	3	4	15	2						36		28	7		
MORGAN							6	2	2	1	13	1	6		4	1	28			5		5			
PARK							1	1	1												1				
RIO BLANCO	7	2			1	1	11	2	15	2	4	5	3	2	3			9			17		12	3	
ROUTT	10	6	1					1		1				3							1		1	6	
SAN MIGUEL	1																				1			1	
WASHINGTON	1	1																			1			1	
WELD	11	3	12	5	208	84	763	229	964	594	2,114	1,099	2,215	1,423	1,789	1,063	1,671	723	238	208	6,691	4,681	12	68	
YUMA	1	1	6																		1			1	
<b>TOTAL Horizontal</b>	<b>156</b>	<b>25</b>	<b>14</b>	<b>147</b>	<b>31</b>	<b>333</b>	<b>123</b>	<b>901</b>	<b>280</b>	<b>641</b>	<b>2,260</b>	<b>1,160</b>	<b>2,428</b>	<b>1,484</b>	<b>2,016</b>	<b>1,096</b>	<b>1,918</b>	<b>764</b>	<b>322</b>	<b>230</b>	<b>7,299</b>	<b>5</b>	<b>5,087</b>	<b>33</b>	<b>123</b>
Percent of Total HZ	16%	9%																				0%	70%	0%	2%
Total All Permits			5,159		5,996		4,659		3,773		4,025		4,190		2,988		2,835		435						
HZ Percent of Total			2.8%		5.6%		19.3%		31.9%		56.1%		57.9%		67.5%		67.7%		74.0%						



## Well to Building Setbacks by Year and by County as of March 1, 2018

Count of well locations, grouped by proximity from well to buildings.

Location Proximity to Buildings	2010	2011	2012	2013	2014	2015	2016	2017	2018	Number of Locations Since 2009	Percent of Total Locations
Less than 150 feet	3	3	2	0	3	2	0	0	0	15	0%
150 to 350 feet	58	61	39	34	38	12	15	16	0	310	3%
350 to 500 feet	110	97	61	64	48	33	23	24	5	515	6%
500 to 1000 feet	385	331	188	188	161	83	76	90	10	1,629	18%
1000 + feet	1,705	1,470	838	761	724	378	206	318	25	6,781	74%
<b>TOTAL LOCATIONS</b>	<b>2,261</b>	<b>1,962</b>	<b>1,128</b>	<b>1,047</b>	<b>974</b>	<b>508</b>	<b>320</b>	<b>448</b>	<b>40</b>	<b>9,210</b>	

County	TOTAL	Less than 150 feet	150 to 350 feet	350 to 500 feet	500 to 1000 feet	1000 + feet
ADAMS	96	0	4	9	25	59
ARAPAHOE	116	0	2	5	10	100
ARCHULETA	27	0	1	1	14	11
BACA	18	0	0	0	1	17
BENT	7	0	0	0	0	7
BOULDER	23	0	1	1	17	4
BROOMFIELD	33	0	0	4	13	16
CHEYENNE	140	1	0	0	2	137
CROWLEY	5	0	0	0	0	5
DELTA	7	0	0	2	1	4
DOLORES	22	0	0	0	7	15
EAGLE	1	0	0	0	0	1
EL PASO	14	0	0	0	3	11
ELBERT	15	0	0	0	3	12
FREMONT	41	0	2	7	9	23
GARFIELD	612	0	12	10	84	508
GUNNISON	50	1	0	4	1	44
HUERFANO	16	0	0	0	5	11
JACKSON	64	0	1	5	1	57
KIOWA	66	0	0	0	1	65
KIT CARSON	15	0	0	0	0	15
LA PLATA	151	0	6	16	49	80
LARIMER	42	0	5	5	16	16
LAS ANIMAS	201	1	6	7	37	150
LINCOLN	400	0	1	2	5	393
LOGAN	45	0	1	1	1	42
MESA	115	0	0	3	16	97
MOFFAT	190	0	1	3	16	170
MONTEZUMA	46	0	0	1	4	41
MONTRORSE	2	0	0	0	0	2
MORGAN	31	0	0	2	4	26
PARK	4	0	0	0	0	4
PHILLIPS	275	1	4	6	21	243
PITKIN	1	0	0	0	0	1
PROWERS	6	0	0	0	0	6
RIO BLANCO	192	0	0	0	2	193
RIO GRANDE	2	0	0	0	1	1
ROUTT	30	0	0	0	2	28
SAN MIGUEL	14	0	0	0	0	14
SEDGWICK	33	0	0	1	3	29
WASHINGTON	87	0	2	0	3	84
WELD	5,446	11	251	405	1,207	3,582
YUMA	529	0	9	16	45	459



## Well to Building Setbacks Less Than Two Hundred Feet as of March 1, 2018

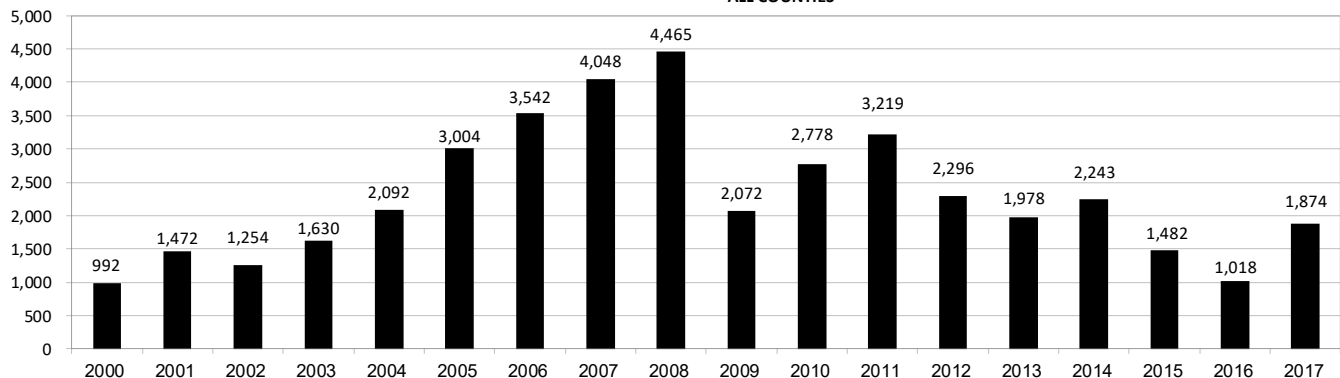
Year	Location Doc Number	County	High Density	New Location	Distance (Feet)	Proximity (Feet)	Building Description
2015	400768804	WELD	No	Yes	46	less 150	Building to be razed
2011	2587822	CHEYENNE	No	No	58	less 150	Water well house
2009	1691798	WELD	No	No	58	less 150	Vehicle garage
2010	400072164	WELD	No	Yes	69	less 150	Abandoned hog shed
2014	400569085	WELD	No	No	78	less 150	Well shed
2014	400600705	WELD	No	No	80	less 150	Livestock shed
2012	400240957	GUNNISON	No	Yes	90	less 150	Equipment shed
2015	400742811	WELD	No	Yes	102	less 150	Building to be razed
2009	1758843	WELD	No	Yes	103	less 150	Building to be razed
2011	1636646	WELD	No	No	122	less 150	Storage shed
2009	400011284	LAS ANIMAS	No	Yes	127	less 150	Operator is owner
2009	1786896	PHILLIPS	No	No	132	less 150	Grain storage
2014	400642113	WELD	No	Yes	142	less 150	Barn
2011	400117702	WELD	No	Yes	143	less 150	Irrigation pump house
2011	400227765	WELD	No	Yes	145	less 150	Storage barn
2014	400558626	LINCOLN	No	No	150	less 150	Gas plant equipment building
2009	1904205	WELD	No	No	154	150 to 350	Livestock enclosure
2012	400243295	WELD	No	Yes	155	150 to 350	Unused storage shed
2015	400862577	GARFIELD	No	No	155	150 to 350	Gravel pit scale house
2011	400179419	WELD	No	Yes	157	150 to 350	Existing well / storage building
2010	400054716	WELD	No	No	159	150 to 350	Equipment barn
2011	400188968	WELD	No	Yes	159	150 to 350	Abandoned
2014	400554054	WELD	No	Yes	159	150 to 350	Equipment shed
2014	400559404	WELD	No	Yes	160	150 to 350	Barn
2016	400950178	LA PLATA	No	Yes	162	150 to 350	Residence
2010	400021477	WELD	No	Yes	162	150 to 350	Goat barn
2009	1758386	WELD	No	Yes	168	150 to 350	Storage shed
2011	1635946	WELD	No	No	169	150 to 350	Storage shed
2013	400447386	WELD	No	No	169	150 to 350	Abandoned turkey barn
2013	400447391	WELD	No	No	169	150 to 350	Abandoned turkey barn
2011	400165164	WELD	No	Yes	178	150 to 350	Residence
2013	400367184	WELD	No	Yes	179	150 to 350	Shed
2011	400188780	WELD	No	Yes	180	150 to 350	Residence
2014	400562498	WELD	No	Yes	181	150 to 350	Garage / storage shed
2010	1697620	WELD	No	No	187	150 to 350	Livestock shed
2009	1758746	WELD	No	No	193	150 to 350	Storage shed
2011	400154431	WELD	No	Yes	198	150 to 350	Turkey barn
2012	400250031	WELD	No	Yes	198	150 to 350	Abandoned guard shack
2010	1774783	WELD	No	No	199	150 to 350	Cement service building
2011	400118102	YUMA	No	Yes	199	150 to 350	Steel barn



## Annual Well Starts by County as of March 1, 2018

County	2000	2001	2002	2003	2004	2005	2006	2007	2008	2009	2010	2011	2012	2013	2014	2015	2016	2017	2018
ADAMS	18	13	4	19	22	24	13	41	14	14	21	1	15	5	29	3	2	29	18
ARAPAHOE					6	1	5	2	1	1	3	8	9	25	21		1	16	
ARCHULETA	4	4	2	5	4	10	5	7	29	9	12	10	11		1	7	4	5	3
BACA	19	6	2	1	6	6	2	6	12		5	4	2	2		1		1	
BENT	2				3	2	8	1	1			1	2						
BOULDER				2	5	11	9	14	25	16	13	7	14						
BROOMFIELD			2		1				10		21	11	5						
CHEYENNE	2	1	3	3		9	14	15	14	8	12	11	17	35	19	3			
COSTILLA																			
CROWLEY															2				1
DELTA				5	4	6	5	2			7	3	3		1				
DENVER		2					7	5	4										
DOLORES				2			2	13	6	2		1	5	10	4				1
EAGLE														1					
EL PASO											2		5		1				
ELBERT	2						1									3			1
FREMONT				1	3		2	2	6	3	9	16	9	2	4		1		1
GARFIELD	190	251	245	417	585	799	1,005	1,304	1,690	765	906	877	495	391	361	174	161	305	47
GUNNISON			1		1	1	9	5	1	4	5	4	4	1	2	4	1		6
HUERFANO	25	14	19	3	6	2			2		2		2	1	4	1			
JACKSON	24	2	4	10	10		3	3	12	1	8	7		7	7		24	13	4
JEFFERSON								2											
KIOWA	8	16	2	4	2	1	7	7	2	5	15	14	10	12	3	2			
KIT CARSON				1	1	6	2	1	14	3	1	1	3	1	2				1
LA PLATA	99	135	118	110	103	104	108	179	203	131	67	54	3	10	40	38	43	51	1
LARIMER	1	1				1		4	8	1	28	2	10	4	1	9	3	25	
LAS ANIMAS	202	286	205	221	296	384	413	326	222	14	7	78	1		1				
LINCOLN	2	2	1	5	2	2	1	2	18	11	14	21	23	41	41	12	2	11	1
LOGAN	4	6	3	3	2	11	12	12	3	7	3	9	13	4	6				
MESA	2	12	12	13	25	89	156	209	225	14	11	41	4	11	17	77	4	122	26
MOFFAT	18	23	25	28	19	40	60	42	26	18	15	32	26	27	3	6	3		
MONTEZUMA	2	3	5	5	1	7	2	4	22	10	3	8	18	12	8	1			2
MONTROSE		3		2	1			1	2		1								
MORGAN	9	8	1	7	5	5	3	1	1	2	3	2	3	1	3	1			
PARK											2								
PHILLIPS	1			6	10	11	4	35	18	2	42	130	48		9				
PROWERS	2	4	4		5	5	6	3	5	2	3	1				1			
RIO BLANCO	51	82	47	83	92	95	107	95	205	118	107	71	54	36	43	17			5
RIO GRANDE														1					
ROUTT	5	12	1		1	6	3	2		2	1	2	4	2	2				
SAN MIGUEL	6	9	10	19	28	13	20	17	5	1	2	2			2				
SEDGWICK				1	2	1	1	5			3	8	3			1			
WASHINGTON	15	12	24	29	65	34	23	14	11	2	2	4	1	9	7	2	6	8	1
WELD	237	403	406	522	632	718	931	1,222	1,312	878	1,209	1,672	1,458	1,314	1,560	1,119	763	1,270	209
YUMA	42	162	108	106	144	597	593	445	336	28	213	106	16	13	39				
<b>TOTAL</b>	<b>992</b>	<b>1,472</b>	<b>1,254</b>	<b>1,630</b>	<b>2,092</b>	<b>3,004</b>	<b>3,542</b>	<b>4,048</b>	<b>4,465</b>	<b>2,072</b>	<b>2,778</b>	<b>3,219</b>	<b>2,296</b>	<b>1,978</b>	<b>2,243</b>	<b>1,482</b>	<b>1,018</b>	<b>1,874</b>	<b>310</b>

## ALL COUNTIES







## Active Wells by County and Status as of March 1, 2018

COUNTY	Drilling	Domestic	Injecting	Producing	Shut In	Temp Aband	Waiting on Completion	Active Storage	Total Active Wells
ADAMS	48		6	673	234	15	1	12	989
ARAPAHOE	9	1	3	112	38	12		44	219
ARCHULETA	4	5	1	101	20	13	6	1	151
BACA			12	101	27	5		56	201
BENT		1		19	15	2			37
BOULDER				267	41	2			310
BROOMFIELD				89	4				93
CHEYENNE			43	286	37	47	1		414
CROWLEY									0
DELTA				3	13		1		17
DENVER				42	6	1	3		52
DOLORES			2	27	11	1			41
EL PASO		1				1			2
ELBERT	1			61	9	3		1	75
FREMONT	3	3		55	10	6	2		79
GARFIELD	198	2	34	10693	383	68	110	1	11,489
GUNNISON	2		2	30	9	2	2		47
HUERFANO			1	35	5	5			46
JACKSON	23		24	93	64		1		205
JEFFERSON					2		1	3	6
KIOWA			12	82	27	3	2		126
KIT CARSON		1	1	9	3	2			16
LA PLATA	8	7	33	3000	228	31	3	35	3,345
LARIMER	24	1	23	151	48	25			272
LAS ANIMAS	1	4	19	2663	98	114	12	23	2,934
LINCOLN	9	1	11	86	19	4			130
LOGAN			25	86	41	31		30	213
MESA	87	1	11	892	174	30	4	11	1,210
MOFFAT	1		8	397	113	35	5		559
MONTEZUMA		1	7	110	34	14			166
MONTROSE								1	1
MORGAN			16	50	122	34		81	303
OURAY		1				1			2
PARK									0
PHILLIPS			3	244	23	2			272
PITKIN								10	10
PROWERS				14	13	1			28
RIO BLANCO	28	3	299	1989	411	145	7	2	2,884
ROUTT		2		22	12	2			38
SAN MIGUEL	1			56	57	15			129
SEDGWICK	2		1	10	5	1	2		21
WASHINGTON	8		27	361	57	10	1		464
WELD	1157	1	60	13240	8220	982	21	5	23,686
YUMA	2	8	23	3669	146	10	12	1	3,871
<b>Totals</b>	<b>1,616</b>	<b>44</b>	<b>707</b>	<b>39,818</b>	<b>10,779</b>	<b>1,675</b>	<b>197</b>	<b>317</b>	<b>55,153</b>



## Monthly Statistics as of March 1, 2018

Page 1 of 2

YEAR and MONTH	Baker - Hughes Rig Count	Permits										Well Spud Notices	Active Drilling Permits	Active Wells	Public Visits			
		Drilling		Recompletion		Injection		Pits		Locations					Data	Office	Internet	
		Rcvd	Apvd	Rcvd	Apvd	Rcvd	Apvd	Rcvd	Apvd	Rcvd	Authz							
2011 TOTAL		4,709	4,659	325	320	44	32	190	192	2,382	2,267	3,216			187	1,294	1,337,865	
2012 TOTAL		3,982	3,773	154	168	63	44	114	84	1,373	1,293	2,297			159	1,305	1,324,443	
2013 JAN	53	538	331	6	0	3	5	6	8	176	124	141	5,060	50,265	9	108	47,406	
FEB	56	260	455	10	5	2	3	4	11	91	141	139	5,250	50,372	7	102	40,649	
MAR	57	344	241	5	9	3	8	15	6	129	84	173	5,093	50,540	9	133	43,019	
APR	61	331	333	6	5	5	5	6	8	146	117	161	4,925	50,687	3	132	46,459	
MAY	61	350	342	8	6	6	6	10	7	106	142	162	5,110	50,810	3	123	45,215	
JUN	62	349	273	2	8	8	8	5	3	114	85	145	5,273	50,909	8	122	41,015	
JUL	68	864	304	11	4	9	2	9	5	218	91	160	5,070	51,091	7	154	45,558	
AUG	69	232	291	6	4	3	2	4	1	35	76	206	5,200	51,255	20	130	44,722	
SEP	69	212	362	9	5	10	9	3	19	56	109	164	5,185	51,407	5	105	41,256	
OCT	72	319	376	5	9	7	5	1	8	67	88	238	4,967	51,598	5	135	45,151	
NOV	69	346	353	4	13	7	4	2	27	67	85	163	5,141	51,711	12	119	38,903	
DEC	64	336	367	2	4	4	6	2	3	63	71	125	5,129	51,737	4	93	32,381	
2013 TOTAL		4,481	4,028	74	72	67	63	67	106	1,268	1,213	1,977			92	1,456	511,734	
2014 JAN	62	278	232	3	2	3	4	14	8	90	43	171	4,926	51,840	1	90	46,150	
FEB	61	284	297	6	4	1	1	3	1	91	94	150	5,051	51,847	12	113	43,408	
MAR	62	367	329	4	6	7	1	6	6	110	88	183	4,997	51,952	16	140	46,620	
APR	63	276	317	2	3	2	5	8	3	89	99	172	4,897	52,060	11	188	45,558	
MAY	65	458	383	2	2	3	1	6	7	83	94	180	4,923	52,202	18	131	42,365	
JUN	67	429	377	3	0	6	7	5	2	134	92	223	4,924	52,337	10	156	42,518	
JUL	69	272	446	2	5	3	11	8	5	97	126	181	4,955	52,431	7	166	45,481	
AUG	73	376	259	4	3	4	4	3	4	111	87	217	5,060	52,582	8	145	42,431	
SEP	76	412	304	2	3	3	1	20	1	116	81	214	5,006	52,694	14	175	43,577	
OCT	76	459	371	3	2	9	2	4	6	93	109	192	4,827	52,785	19	138	46,030	
NOV	73	326	479	5	2	5	4	4	0	54	103	168	5,171	52,947	8	96	39,583	
DEC	69	286	397	1	2	2	7	1	2	45	99	192	5,236	53,054	6	144	37,964	
2014 TOTAL		4,223	4,191	37	34	48	48	82	45	1,113	1,115	2,243			130	1,682	521,685	
2015 JAN	64	349	316	3	1	2	9	3	1	60	43	196	5,060	53,195	17	114	41,502	
FEB	49	324	161	3	2	5	6	9	0	73	28	115	4,750	53,309	4	117	38,245	
MAR	38	246	294	1	6	1	5	7	5	44	70	167	4,983	53,414	6	146	42,513	
APR	37	194	165	3	1	2	5	1	2	46	37	95	4,854	53,456	1	125	39,559	
MAY	39	324	190	1	4	2	6	8	0	41	44	107	4,632	53,535	5	113	unavailable	
JUN	38	327	281	4	1	0	5	2	1	52	49	142	4,726	53,608	5	138	unavailable	
JUL	38	373	250	4	2	2	1	0	0	57	48	121	4,663	53,706	7	145	26,975	
AUG	37	289	300	2	6	3	0	5	5	32	46	121	4,847	53,766	2	109	30,674	
SEP	33	242	312	3	1	1	7	0	3	59	49	100	4,953	53,806	4	146	31,642	
OCT	30	372	223	2	2	3	1	1	0	54	51	108	4,694	53,898	12	119	33,199	
NOV	31	190	254	6	2	4	3	1	0	21	49	116	4,765	53,719	7	105	29,112	
DEC	25	275	242	1	5	3	6	1	0	42	43	85	4,594	53,652	3	112	25,659	
2015 TOTAL		3,505	2,988	33	33	28	54	38	17	581	557	1,473			73	1,489	339,080	
2016 JAN	22	250	126	1	0	3	5	0	0	34	9	71	4,528	53,698	2	118	30,105	
FEB	20	205	227	3	0	3	2	44	2	31	39	68	4,599	53,723	8	115	28,611	
MAR	17	268	268	0	0	2	2	5	0	34	36	73	4,530	53,710	3	132	30,902	
APR	17	185	224	0	1	3	4	0	0	24	39	62	4,511	53,774	4	113	27,914	
MAY	16	353	217	0	2	3	1	1	1	33	24	85	4,464	53,749	4	106	26,778	
JUN	16	315	233	0	0	2	3	2	1	38	30	73	4,456	53,651	2	80	27,284	
JUL	20	268	249	5	0	4	4	6	6	31	30	88	4,344	53,724	5	91	24,151	
AUG	21	141	150	1	3	5	3	2	0	33	23	93	4,436	53,740	1	106	29,192	
SEP	19	366	270	0	2	4	2	0	6	29	24	70	4,522	53,817	4	154	25,698	
OCT	19	334	297	6	1	6	3	1	0	42	29	95	4,601	53,903	1	135	25,893	
NOV	20	368	304	3	3	3	3	0	1	40	45	130	4,566	53,993	2	97	25,140	
DEC	26	342	267	1	4	7	5	1	2	48	25	103	4,477	54,036	5	92	23,449	
2016 TOTAL		3,395	2,832	20	16	45	37	62	19	417	353	1,011			41	1,339	325,117	
2017 JAN	28	442	211	8	2	2	2	0	0	42	25	132	4,492	54,111	6	79	28,702	
FEB	26	701	263	2	4	4	3	0	0	62	38	139	4,543	54,194	1	97	27,715	
MAR	28	510	423	2	2	7	4	3	24	71	48	189	4,714	54,322	1	152	31,952	
APR	29	352	301	5	4	3	7	1	2	41	54	131	4,635	54,369	1	103	30,406	
MAY	31	307	367	4	3	1	6	1	28	41	55	169	4,899	54,369	5	94	36,109	
JUNE	36	493	331	3	2	6	1	1	1	58	40	162	4,947	54,605	5	109	30,644	
JULY	37	508	234	2	4	2	2	1	1	45	31	182	4,999	54,699	2	80	27,025	
AUG	37	572	349	9	0	8	3	1	2	53	49	159	5,000	54,814	1	143	30,715	
SEP	35	528	450	2	6	5	4	1	1	56	41	149	4,976	54,925	2	114	27,402	
OCT	34	550	311	0	2	2	3	0	1	58	40	139	5,022	54,989	2	174	31,995	
NOV	37	438	331	12	1	13	10	1	1	47	38	157	5,016	55,062	1	124	28,802	
DEC	34	479	304	4	4	4	1	0	0	44	32	149	5,039	55,151	0	100	25,556	
2017 TOTAL		5,880	3,875	53	34	57	46	10	61	618	491	1,857			27	1,369	357,023	
2018 JAN	34	639	218	6	3	4	3	2	0	66	19	236	4,920	55,155	4	102	34,895	
FEB	33	736	217	4	3	2	8	1	5	73	22	74	4,871	55,153	2	99	30,666	
2018 TOTAL		1,375	435	10	6	6	11	3	5	139	41	310			6	201	65,561	

Abbreviation Key: Rcvd = Received, Apvd = Approved, Authz = Authorized



# Oil and Gas Staff Report

March 19, 2018

27

Monthly Statistics as of March 1, 2018

Page 2 of 2

YEAR and MONTH	Well Oper Change	Operators		Bonds						Hearings			Enforcement			Remediation Projects		Inspections	
		New	Inactive	Release Ind	Release Blnkt	Replace	Claim Ind	Claim Blnkt	Apps.	Orders	NOAVs	AOCs	OFVs	Cmplt	Spills	Rcvd	Comp	Wells	Locations
<b>2011 TOTAL</b>	<b>6,743</b>	<b>33</b>	<b>31</b>	<b>79</b>	<b>44</b>	<b>43</b>	<b>4</b>	<b>4</b>	<b>403</b>	<b>349</b>	<b>230</b>	<b>10</b>	<b>19</b>	<b>247</b>	<b>527</b>	<b>726</b>	<b>536</b>	<b>12,394</b>	<b>-</b>
<b>2012 TOTAL</b>	<b>7,546</b>	<b>47</b>	<b>37</b>	<b>70</b>	<b>46</b>	<b>33</b>	<b>3</b>	<b>0</b>	<b>482</b>	<b>396</b>	<b>157</b>	<b>9</b>	<b>2</b>	<b>244</b>	<b>402</b>	<b>690</b>	<b>641</b>	<b>19,071</b>	<b>12,670</b>
2013 JAN	653	3	5	12	2	0	0	0	48	75	15	4	-	21	40	31	45	1,622	789
FEB	289	4	2	6	3	2	0	0	41	35	11	2	-	15	30	42	90	1,044	615
MAR	354	1	3	2	2	1	0	0	54	67	16	2	-	11	25	65	29	1,968	1,149
APR	333	7	1	5	2	8	0	0	-	-	21	-	-	16	33	39	37	1,510	910
MAY	346	2	1	3	0	0	0	0	46	50	22	6	-	13	31	41	60	2,621	1,576
JUN	1,456	6	2	2	4	5	0	0	91	44	13	2	-	25	40	47	37	1,860	1,102
JUL	1,009	4	1	2	2	0	0	0	96	70	25	3	-	21	47	50	22	2,298	1,338
AUG	389	6	4	5	4	2	0	0	-	-	23	-	-	25	57	36	41	2,146	1,033
SEP	277	4	1	6	1	0	0	0	101	51	7	2	-	16	60	43	51	1,536	703
OCT	345	6	0	2	2	2	0	0	52	82	4	12	3	12	79	47	60	1,868	1,158
NOV	442	2	0	2	2	0	0	0	-	-	30	-	-	12	51	31	34	2,401	1,613
DEC	1,299	4	1	1	2	0	0	0	42	48	50	4	-	14	75	35	35	2,677	1,384
<b>2013 TOTAL</b>	<b>7,192</b>	<b>49</b>	<b>21</b>	<b>48</b>	<b>26</b>	<b>20</b>	<b>0</b>	<b>0</b>	<b>571</b>	<b>522</b>	<b>237</b>	<b>37</b>	<b>3</b>	<b>201</b>	<b>568</b>	<b>507</b>	<b>541</b>	<b>23,551</b>	<b>13,370</b>
2014 JAN	1,971	6	3	3	2	0	0	0	57	46	25	2	-	8	68	46	28	3,243	1,597
FEB	2,039	8	2	6	5	0	0	0	-	-	23	-	-	17	59	51	13	2,330	1,282
MAR	493	2	3	1	5	0	0	0	97	75	29	10	-	22	63	66	31	1,822	1,298
APR	312	5	3	6	4	1	0	0	74	64	17	8	1	20	57	47	59	2,651	1,715
MAY	508	6	2	3	3	5	0	0	-	-	12	-	-	13	63	50	42	2,437	1,571
JUN	1,008	5	3	7	4	1	0	1	95	90	14	6	1	16	74	44	50	3,209	1,717
JUL	338	2	1	5	3	1	0	0	96	96	11	6	-	12	60	60	59	3,071	1,536
AUG	452	6	2	2	3	0	0	0	-	-	8	-	-	31	56	32	58	2,788	1,682
SEP	378	4	2	1	2	0	0	0	73	63	13	7	1	18	65	39	50	2,587	1,616
OCT	886	8	2	0	2	0	1	0	80	75	12	3	1	13	74	78	36	3,886	1,914
NOV	498	2	4	8	4	5	0	0	-	-	6	-	-	15	72	27	59	3,156	1,458
DEC	1,414	1	1	0	2	0	0	0	126	89	9	1	-	58	75	56	17	3,028	1,596
<b>2014 TOTAL</b>	<b>10,297</b>	<b>55</b>	<b>28</b>	<b>42</b>	<b>39</b>	<b>13</b>	<b>1</b>	<b>1</b>	<b>698</b>	<b>598</b>	<b>179</b>	<b>43</b>	<b>4</b>	<b>243</b>	<b>786</b>	<b>596</b>	<b>502</b>	<b>34,208</b>	<b>18,982</b>
2015 JAN	727	2	3	2	3	0	0	0	76	64	15	2	1	36	64	38	58	2,491	1,246
FEB	556	5	2	2	3	1	0	0	-	-	10	-	-	22	44	34	64	2,667	1,382
MAR	183	5	3	5	2	4	2	0	72	72	33	1	1	42	76	59	94	3,469	1,738
APR	271	7	1	0	5	3	0	0	60	54	19	3	-	21	46	40	61	3,451	1,620
MAY	436	8	0	0	2	3	0	0	89	54	10	10	2	25	46	56	41	2,869	1,422
JUN	508	2	2	3	5	4	0	0	-	-	27	-	-	25	41	32	43	3,366	1,716
JUL	396	3	3	0	5	1	0	0	123	140	5	13	1	32	67	52	28	3,445	1,774
AUG	218	8	2	0	7	4	0	0	-	-	13	-	-	18	56	24	62	3,693	1,848
SEP	273	6	5	1	7	4	0	2	112	78	25	11	-	30	41	44	40	2,887	1,528
OCT	356	4	1	6	1	6	1	0	115	103	6	12	1	32	58	51	33	3,420	1,494
NOV	97	2	3	5	0	0	0	1	-	-	6	-	-	15	38	47	40	3,348	1,666
DEC	437	7	2	3	5	1	0	0	91	80	4	5	2	60	46	39	37	3,851	1,765
<b>2015 TOTAL</b>	<b>4,458</b>	<b>59</b>	<b>27</b>	<b>27</b>	<b>45</b>	<b>31</b>	<b>3</b>	<b>3</b>	<b>738</b>	<b>645</b>	<b>173</b>	<b>57</b>	<b>8</b>	<b>358</b>	<b>623</b>	<b>516</b>	<b>601</b>	<b>38,957</b>	<b>19,199</b>
2016 JAN	508	2	1	0	5	5	0	0	76	66	4	7	1	29	51	44	36	3,184	1,551
FEB	165	2	1	0	1	1	1	0	-	-	8	-	-	27	47	34	49	3,666	1,738
MAR	1,035	6	4	2	2	2	1	1	62	57	3	7	1	19	42	50	45	3,020	1,646
APR	244	3	3	2	7	4	0	0	34	32	6	4	2	20	40	48	90	4,046	2,117
MAY	374	2	3	6	3	3	1	0	-	-	0	-	-	20	37	41	29	3,491	2,193
JUN	272	6	3	3	4	1	1	1	67	65	3	6	2	20	36	40	77	4,099	2,330
JUL	2,234	3	2	0	2	0	0	0	-	-	10	-	-	20	41	29	56	3,483	2,068
AUG	137	3	3	3	2	1	1	1	71	43	20	4	-	20	51	39	38	4,065	2,288
SEP	321	3	1	9	3	3	0	1	-	-	8	-	-	20	37	44	22	3,527	1,788
OCT	428	1	3	7	5	1	0	0	96	74	23	7	1	21	40	34	36	3,325	1,811
NOV	551	3	0	4	0	0	3	0	-	-	19	-	-	22	40	27	50	3,855	1,912
DEC	260	4	4	1	7	2	1	1	67	60	3	8	-	23	66	31	72	3,374	1,684
<b>2016 TOTAL</b>	<b>6,529</b>	<b>38</b>	<b>28</b>	<b>37</b>	<b>41</b>	<b>23</b>	<b>9</b>	<b>5</b>	<b>473</b>	<b>397</b>	<b>107</b>	<b>43</b>	<b>7</b>	<b>261</b>	<b>528</b>	<b>461</b>	<b>600</b>	<b>43,135</b>	<b>23,126</b>
2017 JAN	4,183	3	3	3	3	1	0	0	80	72	1	11	1	46	48	23	11	3,007	1,447
FEB	354	1	5	2	4	2	0	3	0	0	13	0	0	74	57	34	17	3,180	1,372
MAR	1,092	6	4	2	2	2	1	1	86	65	18	3	0	44	55	49	18	3,812	1,851
APR	922	3	0	1	5	5	0	0	0	0	6	0	0	32	40	43	29	2,895	1,578
MAY	640	1	3	0	5	0	0	0	128	93	3	6	0	185	55	46	30	2,491	1,487
JUNE	399	6	1	1	2	0	0	0	107	102	2	4	1	131	63	57	26	2,532	1,680
JULY	554	5	2	2	2	0	0	1	108	104	5	3	0	66	38	29	23	2,168	1,300
AUG	523	4	2	27	13	32	0	0	0	0	3	0	0	207	55	63	51	2,886	1,706
SEP	624	1	2	9	6	6	0	1	133	74	20	1	0	212	54	64	38	2,804	1,568
OCT	1,018	1	0	0	2	2	0	0	131	79	3	5	4	237	51	37	24	2,768	1,589
NOV	522	2	0	0	0	0	0	0	0	19	1	0	0	81	51	51	34	2,570	1,175
DEC	79	4	4	11	1	7	0	0	112	72	4	3	0	43	46	42	28	2,010	1,153
<b>2017 TOTAL</b>	<b>10,910</b>	<b>37</b>	<b>26</b>	<b>58</b>	<b>45</b>	<b>57</b>	<b>1</b>	<b>6</b>	<b>885</b>	<b>680</b>	<b>79</b>	<b>36</b>	<b>6</b>	<b>1,358</b>	<b>613</b>	<b>538</b>	<b>329</b>	<b>33,123</b>	<b>17,906</b>
JAN	35	3	9	5	6	3	1	2	105	95	11	3	0	60	54	55	39	2,371	1,245
FEB	14	3	3	2	7	1													