



COLORADO

**Oil & Gas Conservation
Commission**

Department of Natural Resources

Staff Report

for April 30, 2018

Top Stories

◆ Environmental Database Update

The COGCC in conjunction with the Ground Water Protection Council (GWPC) has developed a publicly available, searchable database of groundwater, surface water, and soil sample analytical results from throughout the state. This database is referred to as the COENV database. The COENV database has been active since September 2012. The database has sampling data dating back as far as 1941. The environmental database currently contains over 16,144 sample locations and 45,286 individual samples.

To date in Fiscal Year 2017-18, 1,315 water samples from 509 separate locations have been added to the database. Since the statewide rules for groundwater sampling went into effect (May 1, 2013), the COGCC has received a total of 10,106 samples from 3,069 separate locations.

The data can be accessed through the GIS Online map. Sample locations with available water and natural gas data appear as green triangles when the "Sample Sites" layer is turned on. The user can double click on a sample site and gain access to the analytical data for that site.

The database allows for electronic data deliverables to be used for input. New samples from COGCC staff sampling efforts, current COGCC baseline sampling rules (Rules 317B, 318AE4, 608, and 609), and operator driven voluntary baseline sampling programs are available.

In April 2014, water sample data in the COENV database was made available for download in an Access database format for those who wish to query large datasets. Access to the download is under the HELP section of the COGCC webpage under DOWNLOADS. The database download has

been used by a number of entities such as scientific organizations, local governments, and others to better understand background water quality in their area of interest.

In addition to water samples, natural gas and produced liquid sample data collected from oil and gas wells by operators or COGCC Staff are stored in the COENV database. The data is collected as part of Bradenhead testing, before plugging and abandoning wells, as part of complaint investigations, and as part of requests to vent or flare. Currently, this data is only available through the GIS online maps.

◆ Form 44 Training Webcast Online This Month

On April 17, COGCC Staff offered operators across Colorado initial training on using the new Flowline Report (eForm 44). The agency webcast the training presentation from the COGCC hearing room to an online audience. Many others attended in person.

Operators received instructions for submitting reports for:

- Registration
- As Built Specifications
- Realignment
- Removal from Service
- Abandonment of Off Location Flowlines
- Domestic Taps
- Crude Oil Transfer Lines
- Produced Water Transfer Systems
- Reporting Grade 1 Gas Leaks.

◆ Community Relations Unit and Local Government Liaison (LGL) Program Update

Mike Leonard was recently promoted to manage the newly formed Community Relations Unit (CRU) at the COGCC, which includes Local

Published in advance of each COGCC hearing



Government Liaison (LGL) Marc Morton and Complaint Intake Specialist Megan Adamczyk. Under consideration since 2016, the CRU was finalized in March 2018.

In keeping with the COGCC Mission Statement, the CRU allows the agency to expand its interaction and communication amongst local, state and federal government agencies, the general public, the oil and gas industry, and other stakeholders.

In leading the CRU, Mike Leonard has the following duties:

- Assist in responding to inquiries and information requests from local government staff, the public, operators, and other stakeholders;
- Lead the agency in responding to emergency situations and working with emergency response personnel;
- Support the agency's complaint intake and resolution process;

- Strengthen the LGD Program by seeking opportunities for outreach to local government officials and their constituents about the state's regulatory process and what to expect when oil and gas activity is planned or occurs in the area; and
- Support LGL staff efforts in managing the Local Governmental Designee (LGD) program, which includes offering ongoing training opportunities to LGDs and local government staff, which between 2013 and present has had over 480 participants. COGCC training opportunities are detailed on the COGCC website under the Government page by selecting 2018 LGD Training Information.

A list of CRU Unit Staff outreach and public involvement activities conducted since the last Staff Report is included in the Public Outreach section of the Staff Report (below).

Public Outreach

➤ **Outreach by the Director and Other Staff**

- On April 9, Integrity Engineer Ellice Whittington attended a Coordinated Response Exercise (CoRE) in Aurora, where she interacted with One Call representatives, first responders, pipeline operators, and others to discuss response plans for pipeline emergencies.

➤ **Outreach by the Community Relations Unit**

- On March 11 at COGCC offices in Denver, Marc Morton provided a full day LGD training to staff members from the City of Boulder and City of Commerce City. Training was attended by Mike Leonard, recently named as Manager of the newly created Community Relations Unit at COGCC, and Oil and Gas Liaison Kent Kuster of the Colorado Department of Public Health and the Environment (CDPHE).
- On March 21 in Aurora, Field Inspection Unit Manager Margaret Ash, Eastern Area Field Inspector Susan Sherman, and Marc attended the bimonthly public meeting of the Aurora Oil and Gas Advisory Committee at the City of Aurora Municipal Center. Margaret provided a presentation titled "Field Inspection Unit

Overview", and she and Susan fielded questions about field inspection methodology, outcomes, and prioritization.

- On March 28, Marc travelled to Keenesburg and provided a half day LGD orientation training to recently installed Town of Keenesburg LGD Marc Johns.
- On April 11, Marc provided a full day LGD training to staff members from the City and County of Broomfield, the City of Longmont, the Town of Frederick, and Town of Keenesburg. CRU Manager Leonard took part in the training, and Kent Kuster, Sean Hackett, and Tami McMullin of CDPHE also participated.
- On April 18 and 19, Orphan Wells Program Manager David Andrews, Field Inspection Unit Manager Ash, Supervising Field Inspector Shaun Kellerby, Field Inspector Kyle Granahan, and Marc travelled to Rifle and attended the annual Energy and Environment Symposium presented by Garfield County and the Colorado Mesa University Unconventional Energy Center. Marc provided a presentation titled "Overview of the COGCC Local Governmental Designee Program." The three Field Inspection Staff presented a tour



for attendees entitled “The COGCC’s Field Inspection Process: Who We Are, What We Do, and How We Do It.” Orphan Wells Program

Manager Andrews presented “Plugged and Abandoned Well Information for Local Planners.”

Regional Activities

➤ Northwest Colorado

◆ Northwest Colorado Oil and Gas Forum

Remaining Northwest Colorado Oil and Gas Forum (NWF) meetings for 2018 have been scheduled for August 2 and December 8. All meetings will be held in Rifle at the Colorado Mountain College - Rifle Campus / Clough Auditorium at 3595 Airport Road beginning at 9:00 a.m. and concluding by 12:00 p.m.

Meeting agendas will be posted to the COGCC website approximately one to two weeks prior to each meeting. The COGCC welcomes suggestions for speakers and topics. Meeting information is also emailed to those on the email distribution list.

All parties wishing to be placed on the meeting agenda or added to the email distribution list for announcements should contact Marc Morton at (303) 894-2100, ext. 5132 (direct), (720) 415-4959 (mobile), or by email:

marc.morton@state.co.us

As a reminder, NWF meetings are open to the public, and a public comment period is held as part of each meeting. Past NWF presentations (dating back to 2006) are available on the COGCC website at:

<http://cogcc.state.co.us/library.html#/forums>

◆ Project Rulison

The five year revision of the Project Rulison Sampling and Analysis Plan (RSAP) has been completed. Major revisions to the plan included re-defining the exterior buffer zones to align with hydrogeologic flow patterns instead of more arbitrary circular rings in the original plan.

This document is in the COGCC’s Area Reports Library and can be found at the following link:

<http://cogcc.state.co.us/documents/library/AreaReports/PiceanceBasin/Rulison/Rulison%20Sampling%20and%20Analysis%20Plan%20Revision%204%20062217.pdf>

The email for Project Rulison submittals is

DNR_rulison.submittal@state.co.us

◆ Project Rio Blanco

The email for Project Rio Blanco submittals is

DNR_rioblanco.submittal@state.co.us

➤ Southwest Colorado

◆ Gas and Oil Regulatory Team (GORT) Meeting

The Southwest Colorado Gas and Oil Regulatory Team (GORT) meeting schedule for 2018 has been set. Remaining GORT meetings in 2018 will take place June 21 and October 18. The June 21 and October 18 GORT meetings will be held at the Durango Public Library at 1900 E. 3rd Avenue, Durango, between 9:00 a.m. and 12:00 p.m.

GORT meeting agendas will be posted to the COGCC website approximately one to two weeks prior to each meeting, and emailed to those on the email distribution list. The COGCC welcomes suggestions and input for speakers, topics, as well as meeting format and venue.

All parties wishing to be placed on the next meeting agenda or added to the distribution list for announcements should contact Marc Morton at (303) 894-2100, ext. 5132 (direct), (720) 415-4959 (mobile), or by email:

marc.morton@state.co.us

As a reminder, GORT meetings are open to the public, and a public comment period is held as part of each meeting.



◆ **Fruitland Formation Outcrop Mitigation and Monitoring Projects**

South Fork Texas Creek Mitigation Site - La Plata County. Regularly scheduled operations and maintenance are being performed at the South Fork Texas Creek (SFTC) site by LTE, the COGCC's contractor. Since May 2009, the system has collected 22,933 Mcf of methane and generated 264,128 kWh of surplus electricity.

The 4M Mitigation Operations and Maintenance Report for August 2016 through December 2017 has been posted on the COGCC website in the library under San Juan Basin 4M Project.

The 2017 Fruitland Outcrop Monitoring Report for La Plata County and the 2017 Outcrop Zone Report for Archuleta County are also now available on the library under San Juan Basin La Plata County, and Archuleta County, respectively.

Admin / Organization / Other

◆ **New Western Region Engineering Supervisor**

Craig Burger accepted the position of Western Region Engineering Supervisor this month after working in the COGCC's Engineering unit as an area engineer since 2014 and, before that, as a field inspector since 2013.

Before coming to the COGCC, Craig's experience included 15 years in consulting engineering. Craig holds a bachelor's degree in Civil Engineering from Washington State University and a master's degree in geotechnical engineering from Colorado State University.

The ODO project summary tables for Fiscal Year 2017-18 (FY18) are found on pages 11-15. The projects are sorted first by county and then by the project name. The field work described below pertains to ongoing projects or to recently completed projects. The agency has prioritized the ODO work planned for FY18, although each project is subject to change as new conditions arise during the year.

The **Atom Petroleum Project** began with Commission Order 1V-586. The project involves three single well locations in La Plata and Montezuma Counties. Recent FY18 work included well plugging and flowline abandonment at the Montezuma County wells.

◆ **New Area Engineer**

Eric Jacobson accepted the position of an Area Engineer this month after serving the COGCC's Engineering Integrity work unit as a temporary engineer. Before coming to the COGCC, Eric's experience included 11 years with large and small operators in Denver as a drilling and completions engineer, and 17 years in the oilfield service industry. Eric holds a bachelor's degree in Petroleum Engineering from New Mexico Tech.

The **Energy Search Project** began with Commission Order 1V-636. The project involves 15 locations in Adams and Washington Counties. A total of 12 wells remain on these locations. Recent FY18 work included fence repair at three locations in grazing pastures in Washington County.

The **Texas Tea Project** began with Commission Order 1V-573. The project involves eight single well locations in Adams and Weld Counties. Recent FY18 work included flowline abandonment at two locations in Adams and Weld Counties.

◆ **Plugging and Reclaiming Orphaned Wells (PROW) Project Updates**

The COGCC performed field work for the Orphan and Distressed Operator (ODO) Program projects described below since January 29. These projects relate either to "Orphan" locations or wells for which there is no known responsible party, or they relate to "Distressed Operator" projects in which surety claim funds are available.

COGCC Staff also installed lock out and tag out devices on wells, production equipment, and fences at various locations for multiple Front Range locations in Adams and Weld Counties.



♦ Colorado Oil and Gas Information System (COGIS) Projects, Updates and Changes

Update on New Flowline Form

The New Flowline Report (Form 44) will allow operators to register, report realignment, report removal from service, or report abandonment of Off Location Flowlines, Domestic Taps, Crude Oil Transfer Systems, and Produced Water Transfer Systems.

The form will also allow operators to report Grade 1 Gas Leaks, which are leaks that represent an existing or probable hazard to people or property and require immediate repair or continuous action until the conditions are no longer hazardous. The Form 44 will be released in eForms by May 1 to register new flowline construction.

Form 12 Release in eForms

The Gas Facility Registration/Change of Operator, Form 12 has been released in eForms. The Form 12 includes revisions for the registration and reporting requirements of new Rule 313B, effective May 1, 2018.

Form Revisions for New Rules

Several forms have been revised to accommodate the new flowline rules and associated rule revisions effective May 1, 2018. The One Call - UNCC Member Code has been added to the Operator Registration, Form 1 and the Change of Operator, Form 10.

The new pipeline facility types have been added to the Change of Operator, Form 10 and the Spill/Release Report, Form 19. The Produced Water Transfer System has been added to the Performance Bond, Form 3 as a bond type.

Electronic Form (eForm) Submissions

The COGCC uses 41 types of forms to authorize oil and gas operations, inspect and monitor ongoing operations, and receive reports of operations. Of those 41 forms, 21 are currently available for electronic submittal through the eForms system.

The development team continues to work on the eForm conversion of existing forms. Currently, four forms are in various stages of development: Forms 8, 11, 12, 14, 14A, 43, and 44. In preparation for the May 1, 2018 effective date of the new flowline rules, the development team is creating the new Form 44 and making required revisions to several other forms.

As of March 1, industry electronically submitted 97 percent of the forms available in eForms in 2018. There are 900 operator users of eForms and 3,643 individual users. For any operator not currently enrolled in eForms, instructions for starting the process can be found on the COGCC website at:

<http://cogcc.state.co.us/Announcements/COUAIInformation.pdf>

Applications and Location Assessments

The public can make comments on all submitted Drilling Permit Applications (Form 2s) and Location Assessments (Form 2As) through the eForm system. Simply go to the COGCC website and click on the menu option “Permits” or

<http://cogcc.state.co.us/permits.html#/permits>

On the “Permits Search” page, three search options are available. The first option, “All Pending Permit Applications,” is used for public comments. When the results are displayed for “Pending Applications,” a user can click on the document number hyperlink in the “Status” column, which logs him or her to the eForms application.

Once the page is displayed with the selected document, the user can select the “Comment” button to make a comment on that particular form.

Data Access

The COGCC’s database is a comprehensive repository of Colorado’s oil and gas data. The information in the database is available to the public through interactive search tools and a variety of file downloads on the website.

Users of bulk data come from many different sectors of the community, including academia,



oil and gas operators, environmental groups, government agencies, and the media.

All the data file downloads are available at:

<http://cogcc.state.co.us/data2.html#/downloads>

Current Data File Downloads

Complaints
Field Operations
Flowline NTO Imported Data
GIS Shapefiles (12 files)
Mechanical Integrity Tests
Notices of Alleged Violation
Production Data (1999 - present)
Spacing Orders
Spills and Releases
Analytical Sample Data

Future Data File Downloads

Enforcement Orders (OFVs and AOCs)
Underground Injection Control (UIC) Data

◆ June 2018 Hearing Docket

The docket for the June 2018 hearing will be available shortly after the April hearing. Hearing dockets are available on our website by clicking on “Regulation” in the menu and then “Hearings”:

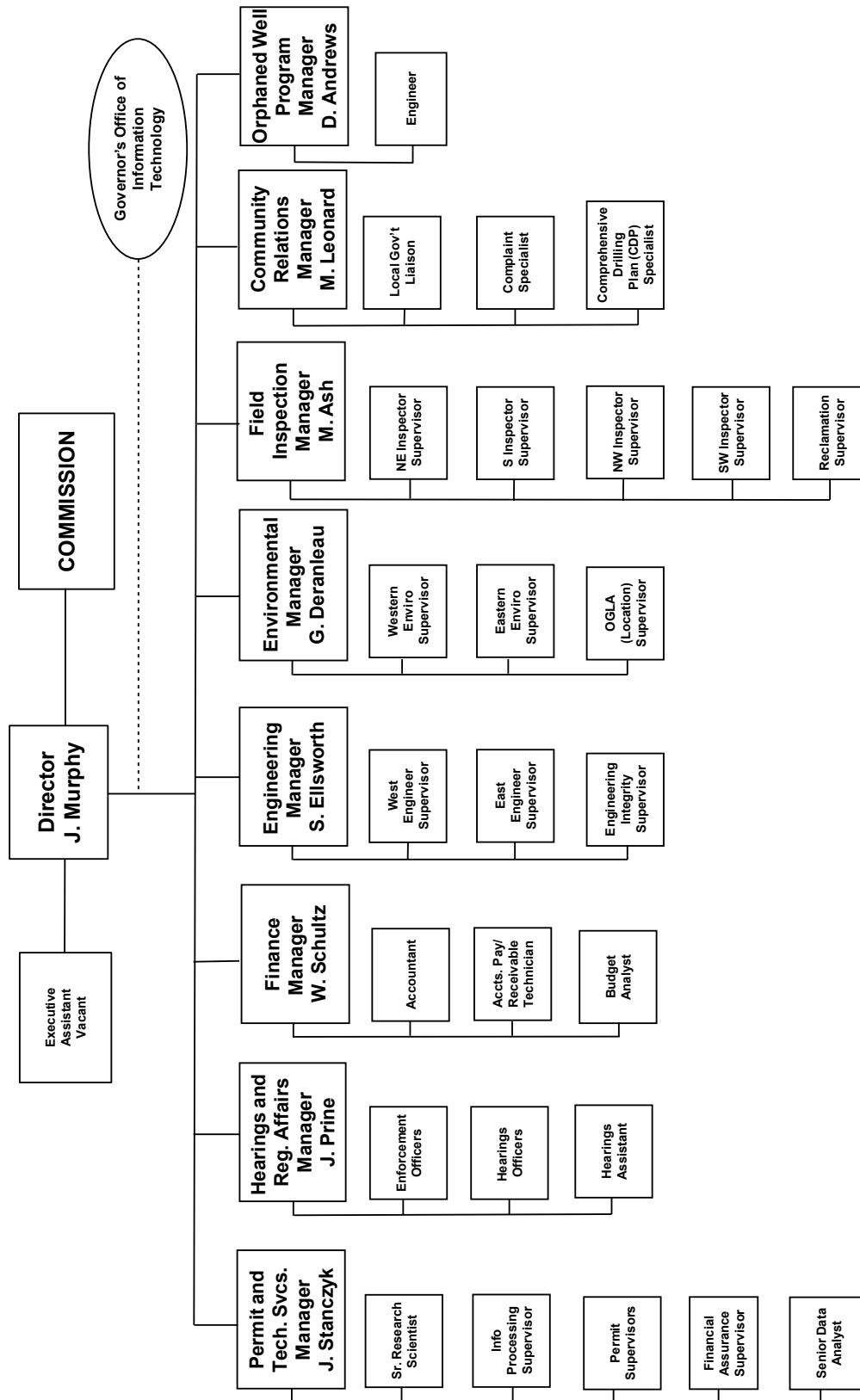
<http://cogcc.state.co.us/reg.html#/hearings>

Links to the notices and hearing applications are available from the Docket Number and Applicant, respectively, by clicking the June Gen_Docket link. To sign up for email notification of hearing notices and applications, please see the announcement and instructions on the homepage of the COGCC website.



Organizational Charts and Statistics

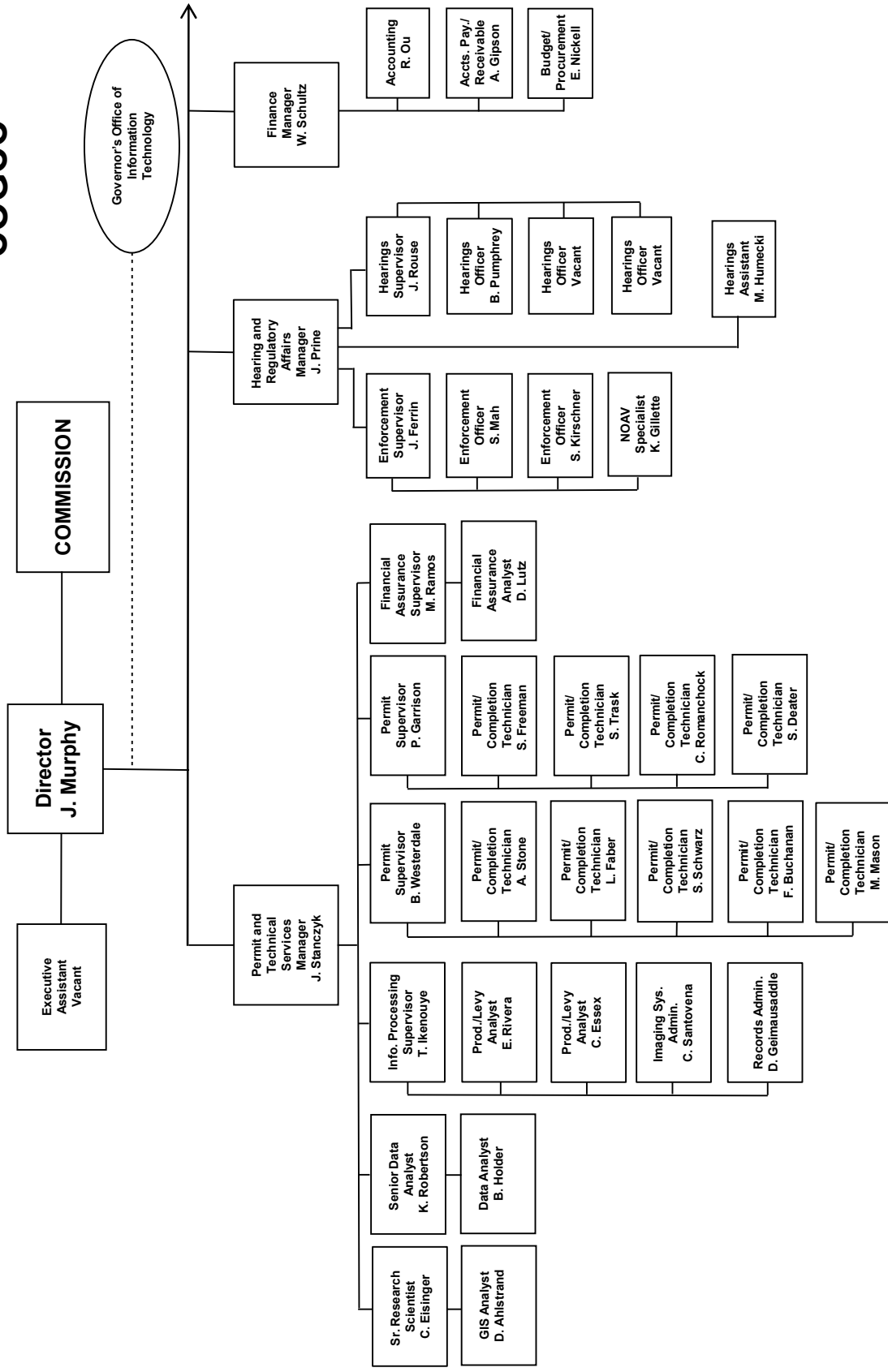
COLORADO OIL & GAS CONSERVATION COMMISSION



See the next three pages for details

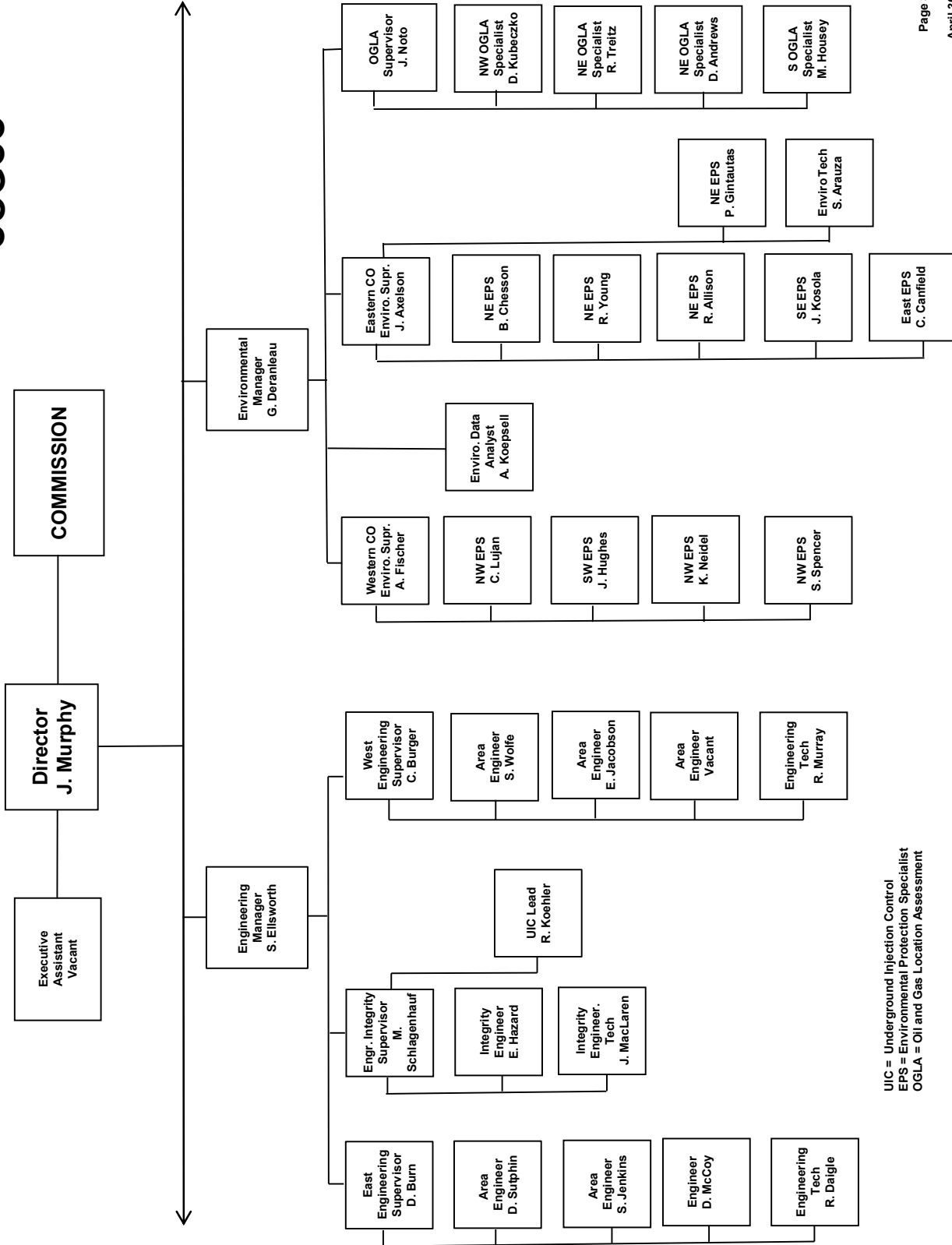


COGCC





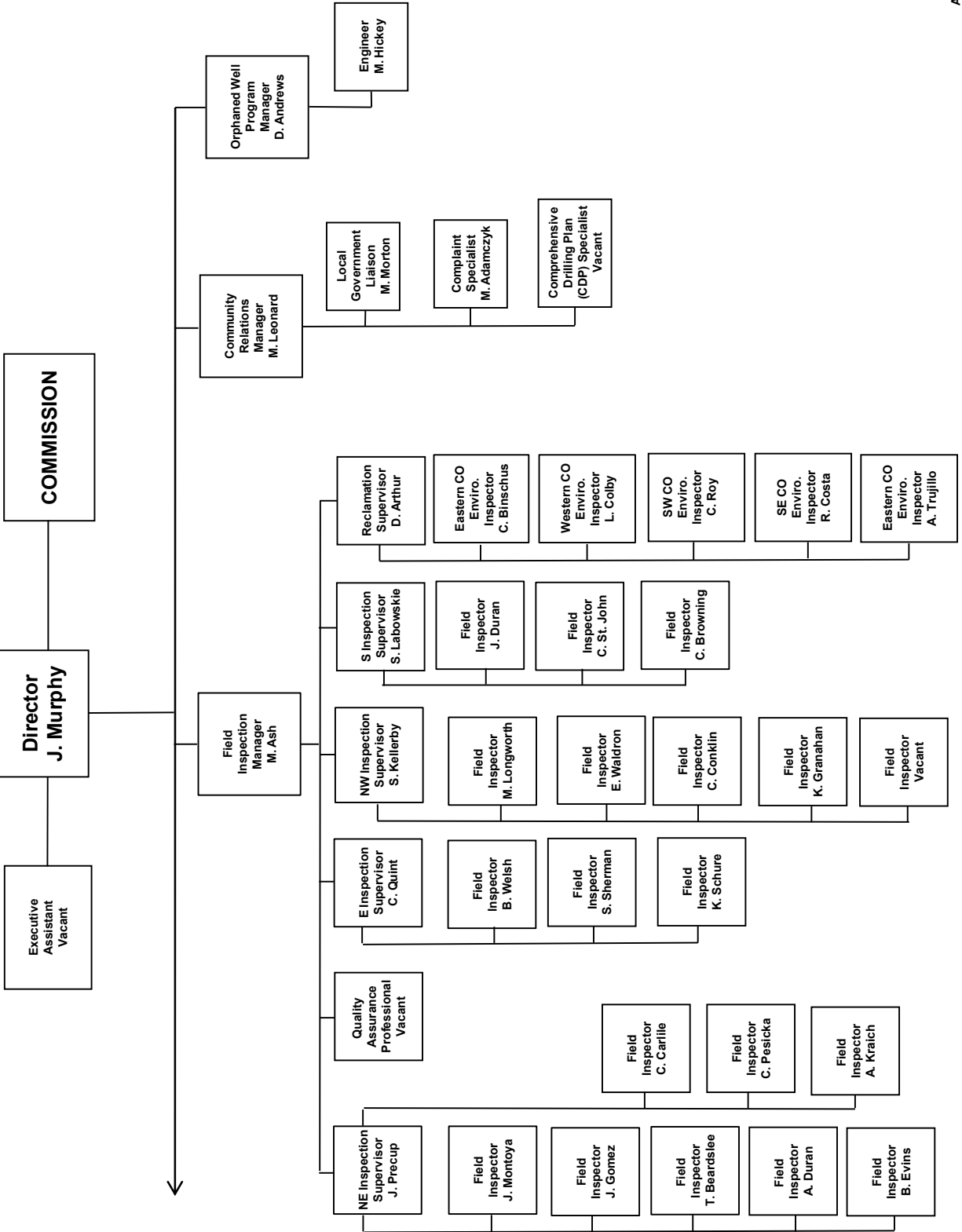
COGCC



UIC = Underground Injection Control
 EPS = Environmental Protection Specialist
 OGLA = Oil and Gas Location Assessment



COGCC





**PLUGGING AND RECLAIMING ORPHANED WELLS (PROW) PROGRAM
FISCAL YEAR 2017-18**

BONDS AND OTHER SURETY CLAIM STATUS FOR ACTIVE FY2017-18 "BOND CLAIM" PROJECTS

Project	Order Number(s)	Total Bond Claim	Amount Spent in Prior Fiscal Years	Amount Spent in FY2017-18	Remaining Bond Balance
Atom Petroleum Bond Claim	1V-586	\$ 60,000	\$ 797	\$ 1,440	\$ 57,763
Benchmark Energy Bond Claim	1V-564	\$ 620,000	\$ 98,931	\$ -	\$ 521,069
CM Production Bond Claim	1V-581	\$ 67,849	\$ 13,299	\$ 54,549	\$ -
Dolphin Bond Claim	1V-382	\$ 55,000	\$ 55,000	\$ -	\$ -
Energy Search Bond Claim	1V-636	\$ 60,000	\$ -	\$ -	\$ 60,000
Nolte Bond Claim	1V-582	\$ 61,838	\$ -	\$ -	\$ 61,838
Northstar Gas Bond Claim	1V-642, BLM (Fee and Fed)	\$ 30,000	\$ -	\$ -	\$ 30,000
Pine Ridge Bond Claim	1V-622	\$ 85,000	\$ -	\$ -	\$ 85,000
Red Mesa Holdings Bond Claim	1V-508	\$ 72,831	\$ 12,258	\$ 60,574	\$ -
Red Mountain Bond Claim*	1V-549, SLB	\$ 92,015	\$ 30,070	\$ 30,842	\$ 31,104
Redwine Bond Claim	1V-470, 1V-494	\$ 30,000	\$ 30,000	\$ -	\$ -
Reynolds* Noel Bond Claim	1V-374, 1V-375	\$ 30,000	\$ -	\$ 841	\$ 29,159
Texas Tea Bond Claim	1V-573	\$ 71,850	\$ 40,283	\$ 31,568	\$ -
Tudex Petroleum Bond Claim	1V-646	\$ 62,470	\$ -	\$ -	\$ 62,470
Vitruvian Exploration Bond Claim	1V-514	\$ 30,000	\$ -	\$ 9,010	\$ 20,990
TOTALS ->		\$ 1,428,853	\$ 280,638	\$ 188,824	\$ 959,393

Note: * Red Mountain Bond Total Claim Amount includes \$24,169 bankruptcy deposit and \$5,000 State Land Board deposit (bond transfer)

ACTIVE TASK LIST (PLANNED OR IN PROGRESS) - FY2017-18

Work Unit	County	Project and Task	Task Status	Planning Comments
Reclamation	Adams	Texas Tea Bond Claim: Task 2.2 - Weed Control (maintenance) - Spindle and Sun Fields,	Planned	Reclamation maintenance
Engineering	Adams	Tudex Petroleum Bond Claim: Task 2 - Plug and Abandon, Flowline Abandonment - 320126, 001-08153	Planned	FY2017-18 work: abandon flowline
Engineering	Adams	Tudex Petroleum Bond Claim: Task 2 - Plug and Abandon, Flowline Abandonment - 320129, 001-08162	Planned	FY2017-18 work: abandon flowline
Engineering	Adams	Tudex Petroleum Bond Claim: Task 2 - Plug and Abandon, Flowline Abandonment - 320217, 001-08491	Planned	FY2017-18 work: abandon flowline
Engineering	Adams	Tudex Petroleum Bond Claim: Task 2 - Plug and Abandon, Flowline Abandonment - 320452, 001-09362	Planned	FY2017-18 work: abandon flowline
Engineering	Adams	Tudex Petroleum Bond Claim: Task 2 - Plug and Abandon, Flowline Abandonment - 320453, 001-09363	Planned	FY2017-18 work: abandon flowline
Engineering	Adams	Tudex Petroleum Bond Claim: Task 2 - Plug and Abandon, Flowline Abandonment - 335733, 001-08163	Planned	FY2017-18 work: abandon flowline
Engineering	Adams	Tudex Petroleum Bond Claim: Task 2 - Plug and Abandon, Flowline Abandonment - 335737, 001-08767	Planned	FY2017-18 work: abandon flowline
Engineering	Adams	Tudex Petroleum Bond Claim: Task 2 - Plug and Abandon, Flowline Abandonment - 335737, 001-08768	Planned	FY2017-18 work: abandon flowline
Environmental	Jackson	CM Production Bond Claim: Task 1.11 - Sampling and Analysis - Lone Pine Field,	In Progress	Biannual sampling and analysis (first sampling event completed November 2017)



ACTIVE TASK LIST (PLANNED OR IN PROGRESS) - FY2017-18, cont.				
Work Unit	County	Project and Task	Task Status	Planning Comments
Engineering	Jackson	CM Production Bond Claim: Task 3.1, 3.2 - MIT or Other Well Work, Plug and Abandon - 324630, 057-06093	In Progress	FY2017-18 Work: Set downhole plug to TA well and MIT
Reclamation	Jefferson	Red Mountain Bond Claim: Task 14 - Stormwater BMPs (maintenance), Weed Control (maintenance) - 324775,	Planned	Reclamation maintenance (in-house Staff and Equipment)
Engineering	La Plata	Red Mesa Holdings Bond Claim: Task 2 - Plug and Abandon, Flowline Abandonment - 325224, 067-05729	Planned	Plug well, disconnect, and cap flowline
Field Operations	La Plata	Red Mesa Holdings Bond Claim: Task 8 - Equipment Intervention, Flowline Abandonment, Equipment Salvage, Spill or Remediation, Stormwater BMPs (maintenance), Weed Control	Planned	Various tasks to be assigned to specific locations
Engineering	La Plata	Reynolds* Noel Bond Claim: Task 2 - Plug and Abandon, Flowline Abandonment - 325354, 067-06232	Planned	Plug well and abandon flowline
Environmental	Larimer	Hall #1: Task 1 - Gas Meter Survey - 385978,	Planned	Gas meter monitoring (in-house Staff and Equipment)
Reclamation	Larimer	Ranchers Bond Claim: Task 1 - Reclamation (initial work), Re-Seeding (maintenance), Weed Control (maintenance) - 435790,	Planned	FY2017-18 Work: Reclamation maintenance
Reclamation	Larimer	Ranchers Bond Claim: Task 3 - Reclamation (initial work), Re-Seeding (maintenance), Weed Control (maintenance), Re-seal breached landfill cover - 419639,	Planned	FY2017-18 Work: Weed Control (maintenance)
Engineering	Larimer	Sheffer Jack #1: Task 1 - Plug and Abandon, Flowline Abandonment - 385978, 069-05014	Planned	FY2017-18 work: flowline utility locate in preparation for well plugging and flowline abandonment
Reclamation	Lincoln	Pine Ridge Bond Claim: Task 1 - Re-Seeding (maintenance), Weed Control (maintenance), Fence Removal - 433053,	Planned	FY2017-18 work: Re-seed and weed control
Reclamation	Lincoln	Pine Ridge Bond Claim: Task 2 - Re-Seeding (maintenance), Weed Control (maintenance), Fence Removal - 430683,	Planned	FY2017-18 work: Re-seed and weed control
Reclamation	Lincoln	Pine Ridge Bond Claim: Task 3 - Re-Seeding (maintenance), Weed Control (maintenance), Fence Removal - 430828,	Planned	FY2017-18 work: Re-seed and weed control
Engineering	Logan	Benchmark Energy Bond Claim: Task 2.5 - Plug and Abandon, Flowline Abandonment - 312151, 075-05875	Planned	FY2018 work: plug well
Engineering	Logan	Benchmark Energy Bond Claim: Task 2.5 - Plug and Abandon, Flowline Abandonment - 312157, 075-05971	Planned	FY2018 work: plug well
Engineering	Logan	Benchmark Energy Bond Claim: Task 2.5 - Plug and Abandon, Flowline Abandonment - 312162, 075-06002	Planned	FY2018 work: plug well
Engineering	Logan	Benchmark Energy Bond Claim: Task 2.5 - Plug and Abandon, Flowline Abandonment - 312177, 075-06126	Planned	FY2018 work: plug well
Engineering	Logan	Benchmark Energy Bond Claim: Task 2.5 - Plug and Abandon, Flowline Abandonment - 312183, 075-06137	Planned	FY2018 work: plug well
Engineering	Logan	Benchmark Energy Bond Claim: Task 3.2 - Plug and Abandon, Flowline Abandonment - 312161, 075-06000	Planned	FY2018 work: plug well
Engineering	Logan	Benchmark Energy Bond Claim: Task 3.2 - Plug and Abandon, Flowline Abandonment - 312184, 075-06155	Planned	FY2018 work: plug well
Reclamation	Logan	CM Production Bond Claim: Task 3.6 - Stormwater BMPs (maintenance), Weed Control (maintenance) - Cliff Field,	Planned	Weed control
Reclamation	Logan	CM Production Bond Claim: Task 3.6 - Weed Control (maintenance) - 312201,	Planned	Weed control
Environmental	Logan	Red Mountain Bond Claim: Task 11 - Sampling and Analysis, Spill or Remediation, Pit Closure - 450396,	In Progress	Remove pit fluids and pit liner; sampling and analysis for confirmation and pit closure.
Reclamation	Logan	Red Mountain Bond Claim: Task 21 - Weed Control (maintenance) - Merino and Twin Mills Fields,	Planned	Reclamation maintenance



ACTIVE TASK LIST (PLANNED OR IN PROGRESS) - FY2017-18, cont.			
Work Unit	County	Project and Task	Task Status
Field Operations	Statewide	Various Projects: Task 999 - Site Security, LOTO, Marking and Labeling - Statewide,	In Progress
Reclamation	Washington	CM Production Bond Claim: Task 3.6 - Weed Control (maintenance) - Hyde and Tap Fields,	Planned
Field Operations	Washington	Energy Search Bond Claim: Task 1.1 - Fence Repair - 317183,	Planned
Field Operations	Washington	Energy Search Bond Claim: Task 1.1 - Fence Repair - 317287,	Planned
Field Operations	Washington	Energy Search Bond Claim: Task 1.1 - Fence Repair - 317288,	Planned
Field Operations	Washington	Energy Search Bond Claim: Task 1.1 - Fence Repair - 317289,	Planned
Field Operations	Washington	Energy Search Bond Claim: Task 1.2 - Equipment Intervention - 317287,	Planned
Field Operations	Washington	Energy Search Bond Claim: Task 1.2 - Equipment Intervention - 317288,	Planned
Field Operations	Washington	Energy Search Bond Claim: Task 1.2 - Equipment Intervention - 317289,	Planned
Field Operations	Washington	Energy Search Bond Claim: Task 4.1 - Stormwater BMPs (maintenance), Install Stormwater BMPs - 317183,	Planned
Engineering	Washington	Northstar Gas Bond Claim: Task 2 - Flowline Abandonment - 401646,	Planned

COMPLETED TASK LIST - FY2017-18			
Work Unit	County	Project and Task	Task Status
Engineering	Adams	Texas Tea Bond Claim: Task 2.1, 3.1A - Plug and Abandon, Flowline Abandonment - 320139, 001-08204	Completed
Engineering	Adams	Texas Tea Bond Claim: Task 2.1, 3.1A - Plug and Abandon, Flowline Abandonment - 320206, 001-08443	Completed
Engineering	Adams	Texas Tea Bond Claim: Task 2.1, 3.1A - Plug and Abandon, Flowline Abandonment - 320223, 001-08516	Completed
Engineering	Adams	Texas Tea Bond Claim: Task 2.1, 3.1A - Plug and Abandon, Flowline Abandonment - 320240, 001-08699	Completed
Engineering	Adams	Texas Tea Bond Claim: Task 3.3, 3.7 - Plug and Abandon, Flowline Abandonment - 320257, 001-08775	Completed
Engineering	Boulder	Juhl #1: Task 1 - Plug and Abandon, Flowline Abandonment - 379627, 013-05018	Completed
Environmental	Jackson	CM Production Bond Claim: Task 1.14 - Sampling and Analysis, Spill or Remediation - 324630,	Completed
Environmental	Jackson	CM Production Bond Claim: Task 1.15 - Sampling and Analysis, Spill or Remediation - 324599,	Completed
Environmental	Jackson	CM Production Bond Claim: Task 1.7, 1.10 - Equipment Intervention - 324634,	Completed
Engineering	Jackson	CM Production Bond Claim: Task 3.1, 3.2 - MIT or Other Well Work, Plug and Abandon - 324599, 057-06011	Completed
Engineering	Jackson	CM Production Bond Claim: Task 3.1, 3.2 - MIT or Other Well Work, Plug and Abandon - 324640, 057-06127	Completed

Install lock-out / tag-out devices on wellheads, equipment and fences

Weed control

Repair fence

Repair fence

Repair fence

Repair fence

FY2018 work: remove produced water from tanks

FY2018 work: remove produced water from tanks

FY2018 work: remove produced water from tanks

Install stormwater BMPs

Evaluate possible flowline risers, abandon flowlines if needed, and remove debris.

Plug well and abandon flowline; cut off casing during landfill expansion

Plug well and abandon flowline

FY2017-18 Work: abandon flowline (complete). Timing for final

Plug well and abandon flowline

Plug well and abandon flowline

Fluid disposal

Soil sampling and analysis

Soil sampling and analysis

Remove liquids from tanks

FY2017-18 Work: Set downhole plug to TA well and MIT (complete).

FY2017-18 Work: Wellhead repair (complete). Timing for final plugging



COMPLETED TASK LIST - FY2017-18, cont.				
Work Unit	County	Project and Task	Task Status	Planning Comments
Engineering	Jackson	CM Production Bond Claim: Task 3.1 - 3.2 - MIT or Other Well Work, Plug and Abandon - 324626, 057-06069	Completed	FY2017-18 Work: Set downhole plug to TA well and MIT (complete). Remove liquids from tank
Field Operations	La Plata	Atom Petroleum Bond Claim: Task 1.2 - Equipment Intervention - 325653,	Completed	
Engineering	La Plata	Atom Petroleum Bond Claim: Task 2.5 - MIT or Other Well Work - 325653, 067-06777	Completed	FY2017-18 Work: Removed liquid from cellar, no wellhead leak Collect wellhead gas samples
Environmental	La Plata	McCullough #4: Task 2 - Sampling and Analysis - 325208,	Completed	
Engineering	La Plata	Red Mesa Holdings Bond Claim: Task 2 - MIT or Other Well Work, Complaint response, Bradenhead test - 325858, 067-	Completed	Set downhole plugs to TA well, perform MIT, abandon flowline, and plug well and abandon flowlines, remove pump jack, and install
Engineering	La Plata	Red Mesa Holdings Bond Claim: Task 2 - MIT or Other Well Work, Plug and Abandon, Flowline Abandonment - 325267,	Completed	
Environmental	La Plata	Red Mesa Holdings Bond Claim: Task 3 - Sampling and Analysis, Spill or Remediation - 325267,	Completed	FY2017-18 Work: Remove hydrocarbon-impacted soil (includes Remove liquids from tank
Field Operations	La Plata	Red Mesa Holdings Bond Claim: Task 6 - Equipment Intervention, Remove crude oil - 325297,	Completed	
Reclamation	La Plata	Red Mesa Holdings Bond Claim: Task 7 - Stormwater BMPs (maintenance) - Red Mesa Field,	Completed	Install and maintain stormwater BMPs
Engineering	La Plata	Reynolds' Noel Bond Claim: Task 2.1 - MIT or Other Well Work, Install pressure gauge - 385368, 067-05448	Completed	Wellhead work to prepare for future re-entry to plug and abandon, Soil sampling and analysis
Reclamation	Larimer	Ranchers Bond Claim: Task 2 - Engineering Design - 419639,	Completed	
Field Operations	Logan	CM Production Bond Claim: Task 1.5 - Equipment Intervention - Cliff and Mount Hope Fields,	Completed	
Environmental	Logan	Red Mountain Bond Claim: Task 13 - Sampling and Analysis, Spill or Remediation - 312261,	Completed	Collected samples for analysis at produced water pit and around other
Engineering	Logan	Red Mountain Bond Claim: Task 8 - Plug and Abandon, Flowline Abandonment - 312261, 075-08293	Completed	Plug well and abandon flowline
Engineering	Mesa	DB Orphan #8: Task 1 - Plug and Abandon - 450650, 077-10381	Completed	Set surface plug, cut off casing, and weld plate
Environmental	Mesa	DB Orphan #8: Task 2 - Sampling and Analysis, Soil Vapor Monitoring - 450650,	Completed	Soil gas monitoring
Environmental	Mesa	DB Orphan #8: Task 3 - Soil Vapor Extraction System - 450650,	Completed	FY2017-18 Work: Wind turbine ventilator installed. SVE blower shut Plug well
Engineering	Mesa	Lloyd and Lowell #1: Task 2 - Plug and Abandon - 428669, 077-40017	Completed	Stormwater permit
Reclamation	Moffat	Tatanka Bond Claim: Task 10 - Weed Control (maintenance), Stormwater BMP maintenance - 313340,	Completed	Abandon flowlines
Engineering	Moffat	Vitruvian Exploration Bond Claim: Task 1 - Flowline Abandonment - 392479,	Completed	Abandon flowlines
Engineering	Moffat	Vitruvian Exploration Bond Claim: Task 1 - Flowline Abandonment - 392480,	Completed	Abandon flowlines
Engineering	Montezuma	Atom Petroleum Bond Claim: Task 1.1 - Plug and Abandon, Flowline Abandonment - 313483, 083-06263	Completed	Plug well and abandon flowlines
Engineering	Montezuma	Atom Petroleum Bond Claim: Task 1.1 - Plug and Abandon, Flowline Abandonment - 313628, 083-06653	Completed	Plug well and abandon flowlines
Environmental	Montezuma	Pitcher #1: Task 1 - Sampling and Analysis - 393155,	Completed	Collect samples at former tank battery location and develop Reclaim location
Reclamation	Montezuma	Wolcott #1: Task 2 - Reclamation (initial work) - 313501,	Completed	Reclaim location
Reclamation	Montezuma	Woosley Oil - State #1-36: Task 4 - Reclamation (initial work) - 313502,	Completed	Reclaim location



Oil and Gas Staff Report

April 30, 2018

COMPLETED TASK LIST - FY2017-18, cont.				
Work Unit	County	Project and Task	Task Status	Planning Comments
Reclamation	Montrose	Redwine Bond Claim: Task 4 - Stormwater BMPs (maintenance), Weed Control (maintenance) - 313641,	Completed	Reclamation maintenance
Engineering	Weld	Texas Tea Bond Claim: Task 3.3, 3.7 - Plug and Abandon, Flowline Abandonment - 318231, 123-08720	Completed	FY2017-18 Work: abandon flowline (complete). Timing for final
Engineering	Weld	Texas Tea Bond Claim: Task 3.3, 3.7 - Plug and Abandon, Flowline Abandonment - 318452, 123-09110	Completed	FY2017-18 work: abandon flowline (complete at Tank Battery). Timing

PROJECT FINANCIALS - FY2017-18					
Project Name	BOND Actual	PROW Actual	EMGY Actual	Subtotals	Actual
Atom Petroleum Bond Claim	\$ 1,440	\$ -	\$ -	\$ -	1,440
CM Production Bond Claim	\$ 54,549	\$ 13,104	\$ -	\$ -	67,654
DB Orphan #8	\$ -	\$ 13,027	\$ -	\$ -	13,027
Juhl #1	\$ -	\$ 78	\$ -	\$ -	78
Lloyd and Lowell #1	\$ -	\$ 76,610	\$ -	\$ -	76,610
McCullough #4	\$ -	\$ 3,007	\$ -	\$ -	3,007
Pitlcher #1	\$ -	\$ 1,074	\$ -	\$ -	1,074
Ranchers Bond Claim	\$ -	\$ 4,585	\$ -	\$ -	4,585
Red Mesa Holdings Bond Claim	\$ 60,574	\$ 41,214	\$ -	\$ -	101,787
Red Mountain Bond Claim	\$ 30,842	\$ -	\$ -	\$ -	30,842
Redwine Bond Claim	\$ -	\$ 3,023	\$ -	\$ -	3,023
Reynolds* Noel Bond Claim	\$ 841	\$ -	\$ -	\$ -	841
Tatonka Bond Claim	\$ -	\$ 350	\$ -	\$ -	350
Texas Tea Bond Claim	\$ 31,568	\$ 109,335	\$ -	\$ -	140,902
Vitruvian Exploration Bond Claim	\$ 9,010	\$ -	\$ -	\$ -	9,010
Wolcott #1	\$ -	\$ 407	\$ -	\$ -	407
Woosley Oil - State #1:36	\$ -	\$ 322	\$ -	\$ -	322
TOTAL EXPENDITURES ->	\$ 188,824	\$ 266,136	\$ -	\$ -	454,959

NOTES:

Project and Task Format: [Location or Well Name and Number (if orphan) or Operator Name + "Bond Claim"] :
 "Task" [Task No(s)] - [Task Type(s)] - [Facility ID Number], [Well API Number (county and sequence code,
 if well work included with task)]

Project Financials: COGCC may be waiting on invoices for some Completed Tasks, and therefore expenditures for those Tasks may not be shown in the Project Financials Section.

ABBREVIATIONS:

EMGY = Emergency Response Appropriation

PROW = Plugging and Reclaiming Orphaned Wells Appropriation

PROW FUNDS SCOREBOARD

\$	445,000	Annual PROW Appropriation
\$	(115,712)	Planned and In Progress Estimate
\$	(49,951)	Completed Work (Waiting on Invoice Approval)
\$	(266,136)	Completed Work (Invoiced)
\$	13,201	Estimated Fiscal Year End Balance

(Scoreboard excludes work involving Bond Expenditures)



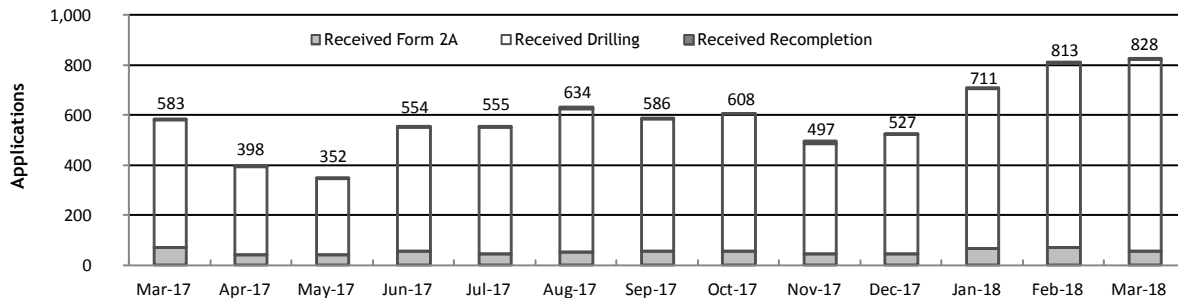
Monthly Permit Activity as of April 1, 2018

Form/Month	Backlog	Received	Approved	Withdrawn	Rejected	Incomplete ¹	In-Process	Remaining ²
Form2A								
Mar-17	164	71	48	6	3	29	149	178
Apr-17	178	41	54	3	0	34	128	162
May-17	162	41	55	0	0	25	123	148
Jun-17	148	58	40	2	1	31	132	163
Jul-17	163	45	31	3	1	33	140	173
Aug-17	173	53	49	6	0	33	138	171
Sep-17	171	56	41	0	1	25	160	185
Oct-17	185	58	40	6	2	25	170	195
Nov-17	195	47	38	2	0	24	178	202
Dec-17	202	44	32	3	0	31	180	211
Jan-18	211	66	19	4	0	33	221	254
Feb-18	254	73	22	5	1	45	254	299
Mar-18	299	56	50	5	0	52	248	300
Drilling								
Mar-17	1,585	510	423	14	47	131	1,480	1,611
Apr-17	1,611	352	301	21	14	167	1,460	1,627
May-17	1,627	307	367	13	52	168	1,334	1,502
Jun-17	1,502	493	331	3	9	185	1,467	1,652
Jul-17	1,652	508	234	49	75	146	1,656	1,802
Aug-17	1,802	572	349	13	20	137	1,855	1,992
Sep-17	1,992	528	450	12	36	135	1,887	2,022
Oct-17	2,022	550	311	75	64	139	1,983	2,122
Nov-17	2,122	438	331	19	59	125	2,026	2,151
Dec-17	2,151	479	304	15	25	124	2,162	2,286
Jan-18	2,286	639	218	68	0	93	2,546	2,639
Feb-18	2,639	736	217	34	45	99	2,980	3,079
Mar-18	3,079	769	463	1	8	98	3,278	3,376
Recompletion								
Mar-17	10	2	2	0	0	2	8	10
Apr-17	10	5	4	1	0	2	8	10
May-17	10	4	3	4	0	1	6	7
Jun-17	7	3	2	0	0	2	6	8
Jul-17	8	2	4	0	0	2	4	6
Aug-17	6	9	0	1	0	2	12	14
Sep-17	14	2	6	0	0	2	8	10
Oct-17	10	0	2	0	0	3	5	8
Nov-17	8	12	1	0	0	3	16	19
Dec-17	19	4	4	0	0	8	11	19
Jan-18	19	6	3	0	0	9	13	22
Feb-18	22	4	3	0	0	9	14	23
Mar-18	23	3	8	0	0	10	8	18

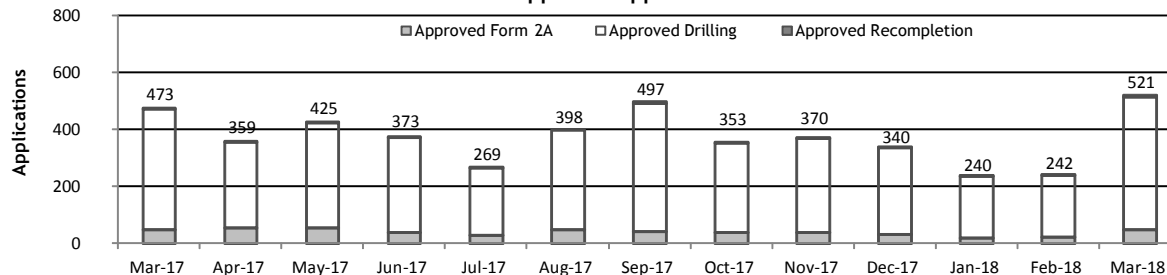
¹ Incomplete are applications that have missing or inaccurate data and cannot be approved.

² Backlog = Incomplete + In-process = Remaining permits from previous month.

Received Applications



Approved Applications





Status of Permit Applications Filed By Month as of April 1, 2018

Form 2A Location Assessment

Year	Month	Received	Approved	Withdrawn	In Process	Percent In Process	Average	Less Than 30 Days	30 to 49 Days	Greater Than 50 Days
							Days to Process			
2013	TOTAL	1,281	1,202	78	1	0%		369	433	400
2014	TOTAL	1,114	1,067	47	0	0%		279	429	359
2015	TOTAL	592	564	26	2	0%		78	157	329
2016	TOTAL	407	376	25	4	1%		32	61	283
2017	JAN	42	32	8	2	5%	92	0	5	27
	FEB	59	57	2	0	0%	93	7	9	41
	MAR	70	59	3	8	11%	76	6	18	35
	APR	41	34	2	5	12%	87	5	9	20
	MAY	41	35	3	3	7%	105	2	6	27
	JUNE	57	47	1	9	16%	77	7	16	24
	JULY	43	32	4	7	16%	59	6	14	12
	AUG	51	37	2	12	24%	60	6	9	22
	SEP	55	35	1	19	35%	80	4	10	21
	OCT	57	32	1	24	42%	62	9	7	16
	NOV	47	25	2	20	43%	56	5	8	12
	DEC	44	19	1	24	55%	66	1	2	16
2017	TOTAL	607	444	30	133	22%		58	113	273
2018	JAN	65	17	3	45	69%	51	2	6	9
	FEB	73	14	1	58	79%	32	5	8	1
	MAR	56	1	1	54	96%	29	1	0	0
2018	TOTAL	194	32	5	157	81%	112	8	14	10

Form 2 Application For Permit to Drill (APDs)

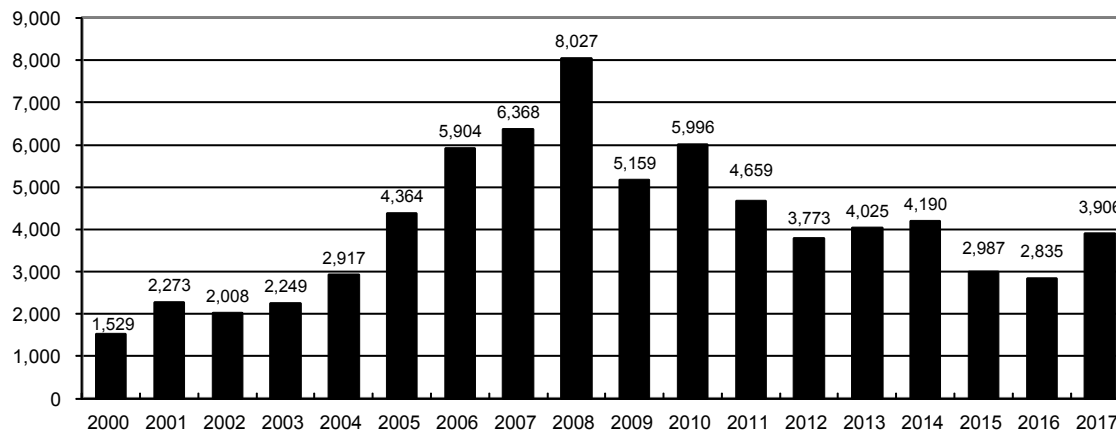
Year	Month	Received	Approved	Withdrawn	In Process	Percent In Process	Average	Less Than 30 Days	30 to 49 Days	Greater Than 50 Days
							Days to Process			
2013	TOTAL	4,548	4,312	235	1	0%		1,046	1,626	1,714
2014	TOTAL	4,208	4,026	182	0	0%		689	1,629	1,744
2015	TOTAL	3,237	3,091	146	0	0%		249	759	2,113
2016	TOTAL	3,253	3,026	107	62	2%		204	402	2,442
2017	JAN	418	330	59	29	7%	117	5	41	290
	FEB	590	495	32	63	11%	110	36	39	421
	MAR	508	393	45	70	14%	97	15	70	310
	APR	335	285	18	32	10%	111	10	17	263
	MAY	306	247	21	38	12%	112	18	65	165
	JUNE	472	354	4	114	24%	113	12	75	269
	JULY	458	301	46	111	24%	96	22	27	252
	AUG	522	291	16	205	40%	71	8	94	197
	SEP	512	321	5	185	36%	95	18	88	217
	OCT	519	258	9	252	49%	77	7	50	201
	NOV	429	234	0	195	45%	77	40	23	178
	DEC	479	194	0	285	59%	77	3	10	183
2017	TOTAL	5,548	3,703	255	1,579	28%		194	599	2,946
2018	JAN	639	186	13	403	67%	56	10	47	134
	FEB	735	89	0	638	88%	36	13	73	5
	MAR	769	28	0	741	96%	33	3	25	0
2018	TOTAL	2,143	303	13	1,782	83%	125	26	145	139



Annual Drilling Permits by County as of April 1, 2018

County	2005	2006	2007	2008	2009	2010	2011	2012	2013	2014	2015	2016	2017	2018
ADAMS	34	37	89	51	35	21	8	40	40	51	96	74	125	60
ARAPAHOE	7	11	10	10	10	8	23	35	23	34	19	5	78	33
ARCHULETA	13	14	26	47	11	18	12	5	4	3	11	3	21	10
BACA	8	2	11	13	3	4	5	3	1	1			5	1
BENT	3	8	1	1		5		2	1					
BOULDER	13	21	37	32	35	24	30	22						
BROOMFIELD	1	1		2	33	28	11	36		31				
CHEYENNE	10	21	15	33	12	13	16	31	50	26	9		1	
COSTILLA														
CROWLEY										2			3	
DELTA	10	9	2			4	3	6	1	2				
DENVER		19	25	24										
DOLORES	1	6	10	12	21	8	8	13	12	3		3	2	
EAGLE									1					
ELBERT		4			1		1	2	2	4	3	3	1	
EL PASO					2	3	3	18	1	2				
FREMONT	3	2	4	14	13	22	14	11	2	8	2	2	1	
GARFIELD	1,509	1,845	2,550	2,888	1,981	2,037	1,323	1,046	870	1,066	532	724	612	161
GRAND														
GUNNISON	9	19	7	10	12	4	3	11	9	20	28	19	33	17
HUERFANO	2			7		2	1	9	1	13	2		2	
JACKSON	6	8	5	27	19	9	18	5	12	17	3	57	28	5
JEFFERSON		1	3	2					1					
KIOWA	1	11	9	26	7	16	17	17	12	5	3		3	
KIT CARSON	5	4	4	13	7	3	2	6	1	2		1		
LA PLATA	115	235	251	328	298	191	99	71	32	87	106	96	108	47
LARIMER	1		5	46	12	41	8	13	2	4	28	4	30	
LAS ANIMAS	413	500	362	303	88	92	85	11	2	1				
LINCOLN	4	1	2	58	44	48	31	36	87	129	24	5	31	2
LOGAN	13	17	14	5	9	17	8	27	4	5		1	3	
MESA	136	265	293	501	427	306	127	150	105	74	126	7	215	3
MOFFAT	60	120	68	57	51	53	93	88	44	54	12	17	5	
MONTEZUMA	11	5	12	22	39	19	27	29	14	25	3	3	6	
MONTROSE		1	3	3		1	1							
MORGAN	7	3	6	2	1	6	13	5	16	6	4	28		4
OTERO														
PARK					3	4	1							
PHILLIPS	17	12	69	82	45	64	112	56		11	2			
PITKIN			1								1			
PROWERS	5	7	5	8	1	3	1			1		1		
RIO BLANCO	161	360	321	477	348	441	109	117	167	121	107	71	115	52
RIO GRANDE				1	1			2		1				
ROUTT	6	9	8	4	2	3	10	4	12	4	9			
SAGUACHE			2	1	2									
SAN MIGUEL	45	35	23	20	13	10	2	1		2	3			
SEDGWICK	2	7	2	1	19	11	12	2		7	1			
WASHINGTON	50	69	45	11	1	6	12	6	19	12	9	7	10	4
WELD	901	1,418	1,527	2,340	1,448	2,152	2,262	1,826	2,468	2,303	1,841	1,704	2,466	499
YUMA	782	797	541	545	105	299	148	11	9	53	3		2	
TOTAL	4,364	5,904	6,368	8,027	5,159	5,996	4,659	3,773	4,025	4,190	2,987	2,835	3,906	898

ALL COUNTIES





Form 2A Breakdown By County By Year as of April 1, 2018

Year	County	Form 2As	Completed	In Process	New Location	CDP	SWH	RSO	CDPHE	
2009	Total State	818	818	0	408	2	80	5	5	
2010	Total State	2,377	2,377	0	1,543	0	317	22	55	
2011	Total State	2,297	2,297	0	1,724	1	259	16	5	
2012	Total State	1,297	1,297	0	900	0	167	6	1	
2013	Total State	1,195	1,194	1	845	0	144	2	4	
2014	Total State	1,067	1,065	0	776	3	129	7	3	
2015	Total State	574	569	3	398	0	95	2	2	
2016	Total State	393	379	2	219	0	49	4	7	
2017	ADAMS	33	12	21	29	0	0	0	0	
	ARAPAHOE	35	14	20	30	0	0	0	0	
	ARCHULETA	3	3	0	2	0	3	0	0	
	BACA	3	3	0	3	0	0	0	0	
	CROWLEY	3	3	0	3	0	0	0	0	
	DOLORES	2	2	0	2	0	1	0	0	
	ELBERT	1	1	0	1	0	0	0	0	
	FREMONT	1	1	0	1	0	1	0	0	
	GARFIELD	32	31	1	12	0	23	3	1	
	GUNNISON	4	4	0	1	0	2	0	0	
	JACKSON	7	7	0	4	0	7	0	0	
	LA PLATA	13	13	0	5	0	12	0	0	
	LARIMER	3	3	0	3	0	0	0	0	
	LINCOLN	25	25	0	19	0	0	0	0	
	MESA	15	15	0	10	0	4	1	0	
	MOFFAT	1	1	0	1	0	1	0	0	
	MONTEZUMA	3	3	0	3	0	0	0	0	
	MORGAN	4	4	0	4	0	0	0	0	
	RIO BLANCO	9	8	1	1	0	8	0	0	
	WASHINGTON	8	8	0	7	0	1	0	0	
	WELD	382	275	101	273	0	9	0	2	
	YUMA	1	1	0	1	0	0	0	0	
	2017	Total State	588	437	144	415	0	72	4	3
	2018	ADAMS	6	0	6	2	0	0	0	0
		ARAPAHOE	2	0	2	2	0	0	0	0
		BROOMFIELD	2	0	2	2	0	0	0	0
		DOLORES	1	0	1	1	0	1	0	0
GARFIELD		15	9	6	3	0	12	0	1	
LA PLATA		4	0	4	0	0	2	0	0	
LARIMER		3	0	3	0	0	0	0	0	
LINCOLN		8	2	6	8	0	0	0	0	
LOGAN		1	0	1	0	0	0	0	0	
MESA		2	0	2	1	0	0	1	0	
MOFFAT		2	0	2	2	0	0	0	0	
MONTEZUMA		1	0	1	1	0	0	0	0	
MORGAN		1	1	0	0	0	0	0	0	
RIO BLANCO		1	0	1	0	0	1	0	1	
WASHINGTON		7	5	2	7	0	0	0	0	
WELD		118	10	108	99	0	0	0	0	
2018		Total State	174	27	147	128	0	16	1	2

Abbreviations:

CDP = Comprehensive Drilling Plan SWH = Sensitive Wildlife Habitat consultation

RSO = Restricted Surface Occupancy consultation CDPHE= Colorado Department of Health and Environment consultation



Horizontal Well Activity as of April 1, 2018

County	2009		2010		2011		2012		2013		2014		2015		2016		2017		2018		Total			Completion		
	Drilled	PA	Permit	Spud	Permit	Spud	Permit	Spud	Permit	Spud	Permit	Spud	Permit	Spud	Permit	Spud	Permit	Spud	Permit	Spud	Spud	AC	PR	DA	PA	
ADAMS			6	5	2	3	1	2	26	1	42	18	92	3	72	2	125	28	60	18	80	3	23	1		
ARAPAHOE	2		10	1	1	4	11	13	22	11	22	11	9	5	1	77	15	13	45	2	45	2	30	1		
ARCHULETA	17		7	6	15	7	10	8	5	9	2	1	6	3	2	1	17	2	7	1	59		52			
BENT							1														1					
BOULDER							4																			
CHEYENNE	5	4							7	2	1	1	1	1							4		3	5		
DELTA							2		6	1	2										3		3			
DOLORES	9		18	2	6				9	3	5	3									18		12	5		
EL PASO							10																			
ELBERT							1																			
FREMONT	7	6	6	5	3	4	4	1	1	1	1	1	1	1	1	1	1	1	1	1	11		10	7		
GARFIELD	10	2	1	1	16	2	18	6	43	6	20	11	12	7	4	11	1	14	1	42		41	2			
GUNNISON	1						1		3	2	9	2	18	2	10	1	24	1	14	7		7				
HUERFANO							4		4	1	2	2	4							1		1				
JACKSON	8	1	8	4	3	4	1	4	8	5	15	4	3	52	24	24	9	5	4	58		21	3			
KIOWA							1		4	2	1									2		1				
KIT CARSON	1						1		1	1	1									2		2				
LA PLATA	28	2	11	2	28	3	18	7	12	1	43	7	42	3	67	8	83	6	28	78		76	1	3		
LARIMER	3	2					5	1	2	1	2		22	8	4	3	29	25		40		11	2	1		
LAS ANIMAS	16	2	4		1	1			5	1	43	7	42	3	67	8	83	6	28	16		16				
LINCOLN							2		6		4	2								4		4				
LOGAN	2						1													2		2				
MESA	3	2	36		22	7	24	13	14		9	1	6	3					3	31		27	2	4		
MOFFAT	7	1	6	3	4		9	4	44	6	18	15	5	2	3	1	3		35		21		12			
MONTEZUMA	6	1	23	6	11	2	8	2	18	6	3	4	4	1	28				36		29		7			
MORGAN							6	2	2	1	6		4	1					5		5		5			
PARK							1	1	1										1		1					
RIO BLANCO	7	2					1	1	11	2	4	5	3	2			9		17		12		3			
ROUITT	10	6	1				1		1				3						1		1		6	1		
SAN MIGUEL	1						1												1		1					
WASHINGTON	1	1																	1							
WELD	11	3	12	5	208	84	763	229	964	594	2,215	1,423	1,789	1,063	1,671	723	2,435	1,248	498	295	6,779		4,749	12	70	
YUMA	1	1	6																1		0		1	0		
TOTAL Horizontal	156	25	14	147	31	333	123	901	280	641	2,260	1,160	2,016	1,096	1,918	764	2,837	1,334	629	318	7,381	5	5,154	33	127	
Percent of Total HZ																						0%	70%	0%	2%	
Total All Permits			5,159		5,996		4,659		3,773		4,025		2,988		2,835		3,875		898							
HZ Percent of Total			2.8%		5.6%		19.3%		31.9%		56.1%		67.5%		67.7%		73.2%		70.0%							



Well to Building Setbacks by Year and by County as of April 1, 2018

Count of well locations, grouped by proximity from well to buildings.

Location Proximity to Buildings	2010	2011	2012	2013	2014	2015	2016	2017	2018	Number of Locations Since 2009
Less than 150 feet	3	3	2	0	3	2	0	0	0	15
150 to 350 feet	58	61	39	34	38	12	15	16	0	310
350 to 500 feet	110	97	61	64	48	33	23	24	8	518
500 to 1000 feet	385	331	188	188	161	83	76	90	16	1,635
1000 + feet	1,705	1,470	838	761	724	378	206	318	104	6,860
TOTAL LOCATIONS	2,261	1,962	1,128	1,047	974	508	320	448	128	9,210

County	TOTAL	Less than 150 feet	150 to 350 feet	350 to 500 feet	500 to 1000 feet	1000 + feet
ADAMS	101	0	4	9	25	63
ARAPAHOE	119	0	2	5	10	102
ARCHULETA	27	0	1	1	14	11
BACA	18	0	0	0	1	17
BENT	7	0	0	0	0	7
BOULDER	23	0	1	1	17	4
BROOMFIELD	33	0	0	4	13	16
CHEYENNE	140	1	0	0	2	137
CROWLEY	5	0	0	0	0	5
DELTA	7	0	0	2	1	4
DOLORES	22	0	0	0	7	15
EAGLE	1	0	0	0	0	1
EL PASO	14	0	0	0	3	11
ELBERT	15	0	0	0	3	12
FREMONT	41	0	2	7	9	23
GARFIELD	620	0	12	10	84	514
GUNNISON	50	1	0	4	1	44
HUERFANO	16	0	0	0	5	11
JACKSON	64	0	1	5	1	57
KIOWA	66	0	0	0	1	65
KIT CARSON	15	0	0	0	0	15
LA PLATA	151	0	6	16	49	80
LARIMER	42	0	5	5	16	16
LAS ANIMAS	201	1	6	7	37	150
LINCOLN	401	0	1	2	5	393
LOGAN	45	0	1	1	1	42
MESA	116	0	0	3	16	97
MOFFAT	190	0	1	3	16	170
MONTEZUMA	46	0	0	1	4	41
MONTROSE	2	0	0	0	0	2
MORGAN	35	0	0	2	5	28
PARK	4	0	0	0	0	4
PHILLIPS	275	1	4	6	21	243
PITKIN	1	0	0	0	0	1
PROWERS	6	0	0	0	0	6
RIO BLANCO	195	0	0	0	2	193
RIO GRANDE	2	0	0	0	1	1
ROUTT	30	0	0	0	2	28
SAN MIGUEL	14	0	0	0	0	14
SEDGWICK	33	0	0	1	3	29
WASHINGTON	91	0	2	0	3	86
WELD	5,483	11	251	408	1,212	3,600
YUMA	529	0	9	16	45	459


Well to Building Setbacks Less Than Two Hundred Feet as of April 1, 2018

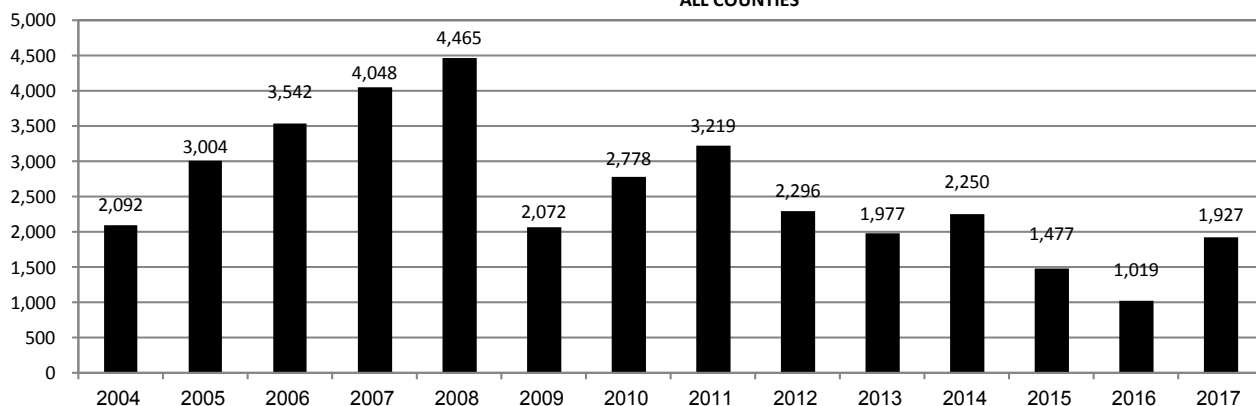
Year	Location Doc Number	County	High Density	New Location	Distance (Feet)	Proximity (Feet)	Building Description
2015	400768804	WELD	No	Yes	46	less 150	Building to be razed
2011	2587822	CHEYENNE	No	No	58	less 150	Water well house
2009	1691798	WELD	No	No	58	less 150	Vehicle garage
2010	400072164	WELD	No	Yes	69	less 150	Abandoned hog shed
2014	400569085	WELD	No	No	78	less 150	Well shed
2014	400600705	WELD	No	No	80	less 150	Livestock shed
2012	400240957	GUNNISON	No	Yes	90	less 150	Equipment shed
2015	400742811	WELD	No	Yes	102	less 150	Building to be razed
2009	1758843	WELD	No	Yes	103	less 150	Building to be razed
2011	1636646	WELD	No	No	122	less 150	Storage shed
2009	400011284	LAS ANIMAS	No	Yes	127	less 150	Operator is owner
2009	1786896	PHILLIPS	No	No	132	less 150	Grain storage
2014	400642113	WELD	No	Yes	142	less 150	Barn
2011	400117702	WELD	No	Yes	143	less 150	Irrigation pump house
2011	400227765	WELD	No	Yes	145	less 150	Storage barn
2014	400558626	LINCOLN	No	No	150	less 150	Gas plant equipment building
2009	1904205	WELD	No	No	154	150 to 350	Livestock enclosure
2012	400243295	WELD	No	Yes	155	150 to 350	Unused storage shed
2015	400862577	GARFIELD	No	No	155	150 to 350	Gravel pit scale house
2011	400179419	WELD	No	Yes	157	150 to 350	Existing well / storage building
2010	400054716	WELD	No	No	159	150 to 350	Equipment barn
2011	400188968	WELD	No	Yes	159	150 to 350	Abandoned
2014	400554054	WELD	No	Yes	159	150 to 350	Equipment shed
2014	400559404	WELD	No	Yes	160	150 to 350	Barn
2016	400950178	LA PLATA	No	Yes	162	150 to 350	Residence
2010	400021477	WELD	No	Yes	162	150 to 350	Goat barn
2009	1758386	WELD	No	Yes	168	150 to 350	Storage shed
2011	1635946	WELD	No	No	169	150 to 350	Storage shed
2013	400447386	WELD	No	No	169	150 to 350	Abandoned turkey barn
2013	400447391	WELD	No	No	169	150 to 350	Abandoned turkey barn
2011	400165164	WELD	No	Yes	178	150 to 350	Residence
2013	400367184	WELD	No	Yes	179	150 to 350	Shed
2011	400188780	WELD	No	Yes	180	150 to 350	Residence
2014	400562498	WELD	No	Yes	181	150 to 350	Garage / storage shed
2010	1697620	WELD	No	No	187	150 to 350	Livestock shed
2009	1758746	WELD	No	No	193	150 to 350	Storage shed
2011	400154431	WELD	No	Yes	198	150 to 350	Turkey barn
2012	400250031	WELD	No	Yes	198	150 to 350	Abandoned guard shack
2010	1774783	WELD	No	No	199	150 to 350	Cement service building
2011	400118102	YUMA	No	Yes	199	150 to 350	Steel barn



Annual Well Starts by County as of April 1, 2018

County	2004	2005	2006	2007	2008	2009	2010	2011	2012	2013	2014	2015	2016	2017	2018
ADAMS	22	24	13	41	14	14	21	1	15	5	29	3	2	29	18
ARAPAHOE	6	1	5	2	1	1	3	8	9	25	21		1	16	
ARCHULETA	4	10	5	7	29	9	12	10	11		1	7	4	5	4
BACA	6	6	2	6	12		5	4	2	2		1		1	
BENT	3	2	8	1	1			1	2						
BOULDER	5	11	9	14	25	16	13	7	14						
BROOMFIELD	1				10		21	11	5						
CHEYENNE		9	14	15	14	8	12	11	17	35	19	3			
COSTILLA															
CROWLEY											2			1	
DELTA	4	6	5	2			7	3	3		1				
DENVER			7	5	4										
DOLORES	2		2	13	6	2		1	5	10	4			1	
EAGLE										1					
EL PASO							2		5		1				
ELBERT			1									3		1	
FREMONT	1	3	2	2	6	3	9	16	9	2	4		1	1	
GARFIELD	585	799	1,005	1,304	1,690	765	906	877	495	391	361	174	160	308	71
GUNNISON	1	1	9	5	1	4	5	4	4	1	2	4	1	7	
HUERFANO	6	2			2		2		2	1	4	1			
JACKSON	10		3	3	12	1	8	7		7	7		24	13	5
JEFFERSON				2											
KIOWA	2	1	7	7	2	5	15	14	10	12	3	2			
KIT CARSON	1	6	2	1	14	3	1	1	3	1	2			1	
LA PLATA	103	104	108	179	203	131	67	54	3	10	40	38	44	97	1
LARIMER		1		4	8	1	28	2	10	4	1	9	3	25	
LAS ANIMAS	296	384	413	326	222	14	7	78	1		1				
LINCOLN	2	2	1	2	18	11	14	21	23	41	41	12	2	12	2
LOGAN	2	11	12	12	3	7	3	9	13	4	6				
MESA	25	89	156	209	225	14	11	41	4	11	17	77	4	123	43
MOFFAT	19	40	60	42	26	18	15	32	26	27	3	6	3		
MONTEZUMA	1	7	2	4	22	10	3	8	18	12	8	1		2	
MONTROSE	1			1	2		1								
MORGAN	5	5	3	1	1	2	3	2	3	1	3	1			2
PARK							2								
PHILLIPS	10	11	4	35	18	2	42	130	48		9				
PROWERS	5	5	6	3	5	2	3	1				1			
RIO BLANCO	92	95	107	95	205	118	107	71	54	36	43	17		5	
RIO GRANDE										1					
ROUTT	1	6	3	2		2	1	2	4	2	2				
SAN MIGUEL	28	13	20	17	5	1	2	2			2				
SEDGWICK	2	1	1	5			3	8	3			1			
WASHINGTON	65	34	23	14	11	2	2	4	1	9	7	2	6	8	2
WELD	632	718	931	1,222	1,312	878	1,209	1,672	1,458	1,313	1,567	1,114	764	1,271	300
YUMA	144	597	593	445	336	28	213	106	16	13	39				
TOTAL	2,092	3,004	3,542	4,048	4,465	2,072	2,778	3,219	2,296	1,977	2,250	1,477	1,019	1,927	448

ALL COUNTIES





Active Wells by County and Status as of April 1, 2018

COUNTY	Drilling	Domestic	Injecting	Producing	Shut In	Temp Aband	Waiting on Completion	Active Storage	Total Active Wells
ADAMS	47		6	667	233	15	1	12	981
ARAPAHOE	9	1	4	107	42	12		44	219
ARCHULETA	5	5	1	100	19	14	6	1	151
BACA			14	101	21	5		56	197
BENT		1		18	15	2			36
BOULDER				266	40	2			308
BROOMFIELD				89	4				93
CHEYENNE			41	287	37	46	1		412
CROWLEY									0
DELTA				2	14		1		17
DENVER				42	6	1	3		52
DOLORES			2	27	11	1			41
EL PASO		1				1			2
ELBERT	1			59	11	3		1	75
FREMONT	3	3		55	10	6	2		79
GARFIELD	211	2	33	10744	345	67	104	1	11,507
GUNNISON	1		2	28	12	2	2		47
HUERFANO			1	36	3	6			46
JACKSON	23		23	94	64		1		205
JEFFERSON					2		1	3	6
KIOWA			12	83	25	4	2		126
KIT CARSON		1	1	9	3	2			16
LA PLATA	5	7	32	3007	225	34	2	35	3,347
LARIMER	24	1	23	145	57	21			271
LAS ANIMAS	1	4	19	2674	82	114	10	23	2,927
LINCOLN	6	1	12	85	15	8			127
LOGAN			25	85	42	31		30	213
MESA	91	1	11	902	165	36	4	11	1,221
MOFFAT	1		9	391	113	36	5		555
MONTEZUMA		1	7	113	32	14			167
MONTROSE								1	1
MORGAN	2		16	48	122	34		81	303
OURAY		1				1			2
PARK									0
PHILLIPS			3	244	23	2			272
PITKIN								10	10
PROWERS				14	13	1			28
RIO BLANCO	28	3	297	1988	407	146	7	2	2,878
ROUTT		2		21	12	2			37
SAN MIGUEL	1			57	57	14			129
SEDGWICK	2		1	10	5	1	2		21
WASHINGTON	9		26	362	56	10	1		464
WELD	1188	1	59	12839	8326	919	20	4	23,356
YUMA	2	8	22	3671	141	9	12	1	3,866
Totals	1,660	44	702	39,470	10,810	1,622	187	316	54,811



Oil and Gas Staff Report

April 30, 2018

25

Monthly Statistics as of April 1, 2018

Page 1 of 2

YEAR and MONTH	Baker - Hughes Rig Count	Permits										Well Spud Notices	Active Drilling Permits	Active Wells	Public Visits		
		Drilling		Recompletion		Injection		Pits		Locations					Data	Office	Internet
		Rcvd	Apvd	Rcvd	Apvd	Rcvd	Apvd	Rcvd	Apvd	Rcvd	Authz						
2011 TOTAL		4,709	4,659	325	320	44	32	190	192	2,382	2,267	3,216			187	1,294	1,337,865
2012 TOTAL		3,982	3,773	154	168	63	44	114	84	1,373	1,293	2,297			159	1,305	1,324,443
2013 TOTAL		4,481	4,028	74	72	67	63	67	106	1,268	1,213	1,977			92	1,456	511,734
2014 TOTAL		4,223	4,191	37	34	48	48	82	45	1,113	1,115	2,243			130	1,682	521,685
2015 TOTAL		3,505	2,988	33	33	28	54	38	17	581	557	1,466			73	1,489	339,080
2016 TOTAL		3,395	2,832	20	16	45	37	62	19	417	353	1,019			41	1,339	325,117
2017 TOTAL		5,880	3,875	53	34	57	46	10	61	618	491	1,927			27	1,369	357,023
2018 TOTAL		2,144	898	13	14	12	20	7	7	195	91	416			8	319	97,746

Abbreviation Key: Rcvd = Received, Apvd = Approved, Authz = Authorized



Monthly Statistics as of April 1, 2018

Page 2 of 2

YEAR and MONTH	Well Oper Change	Operators		Bonds			Claim		Hearings		Enforcement			Remediation Projects		Inspections			
		New	Inactive	Release	Ind	Blntk	Replace	Ind	Blntk	Apps.	Orders	NOAVs	AOCs	OFVs	Cmplt	Spills	Rcvd	Comp	Wells
2011 TOTAL	6,743	33	31	79	44	43	4	4	403	349	230	10	19	247	527	726	536	12,394	-
2012 TOTAL	7,546	47	37	70	46	33	3	0	482	396	157	9	2	244	402	690	641	19,071	12,670
2013 JAN	653	3	5	12	2	0	0	0	48	75	15	4	-	21	40	31	45	1,622	789
FEB	289	4	2	6	3	2	0	0	41	35	11	2	-	15	30	42	90	1,044	615
MAR	354	1	3	2	2	1	0	0	54	67	16	2	-	11	25	65	29	1,968	1,149
APR	333	7	1	5	2	8	0	0	-	-	21	-	-	16	33	39	37	1,510	910
MAY	346	2	1	3	0	0	0	0	46	50	22	6	-	13	31	41	60	2,621	1,576
JUN	1,456	6	2	2	4	5	0	0	91	44	13	2	-	25	40	47	37	1,860	1,102
JUL	1,009	4	1	2	2	0	0	0	96	70	25	3	-	21	47	50	22	2,298	1,338
AUG	389	6	4	5	4	2	0	0	-	-	23	-	-	25	57	36	41	2,146	1,033
SEP	277	4	1	6	1	0	0	0	101	51	7	2	-	16	60	43	51	1,536	703
OCT	345	6	0	2	2	2	0	0	52	82	4	12	3	12	79	47	60	1,868	1,158
NOV	442	2	0	2	2	0	0	0	-	-	30	-	-	12	51	31	34	2,401	1,613
DEC	1,299	4	1	1	2	0	0	0	42	48	50	4	-	14	75	35	35	2,677	1,384
2013 TOTAL	7,192	49	21	48	26	20	0	0	571	522	237	37	3	201	568	507	541	23,551	13,370
2014 JAN	1,971	6	3	3	2	0	0	0	57	46	25	2	-	8	68	46	28	3,243	1,597
FEB	2,039	8	2	6	5	0	0	0	-	-	23	-	-	17	59	51	13	2,330	1,282
MAR	493	2	3	1	5	0	0	0	97	75	29	10	-	22	63	66	31	1,822	1,298
APR	312	5	3	6	4	1	0	0	74	64	17	8	1	20	57	47	59	2,651	1,715
MAY	508	6	2	3	3	5	0	0	-	-	12	-	-	13	63	50	42	2,437	1,571
JUN	1,008	5	3	7	4	1	0	1	95	90	14	6	1	16	74	44	50	3,209	1,717
JUL	338	2	1	5	3	1	0	0	96	96	11	6	-	12	60	60	59	3,071	1,536
AUG	452	6	2	2	3	0	0	0	-	-	8	-	-	31	56	32	58	2,788	1,682
SEP	378	4	2	1	2	0	0	0	73	63	13	7	1	18	65	39	50	2,587	1,616
OCT	886	8	2	0	2	0	1	0	80	75	12	3	1	13	74	78	36	3,886	1,914
NOV	498	2	4	8	4	5	0	0	-	-	6	-	-	15	72	27	59	3,156	1,458
DEC	1,414	1	1	0	2	0	0	0	126	89	9	1	-	58	75	56	17	3,028	1,596
2014 TOTAL	10,297	55	28	42	39	13	1	1	698	598	179	43	4	243	786	596	502	34,208	18,982
2015 JAN	727	2	3	2	3	0	0	0	76	64	15	2	1	36	64	38	58	2,491	1,246
FEB	556	5	2	2	3	1	0	0	-	-	10	-	-	22	44	34	64	2,667	1,382
MAR	183	5	3	5	2	4	2	0	72	72	33	1	1	42	76	59	94	3,469	1,738
APR	271	7	1	0	5	3	0	0	60	54	19	3	-	21	46	40	61	3,451	1,620
MAY	436	8	0	0	2	3	0	0	89	54	10	10	2	25	46	56	41	2,869	1,422
JUN	508	2	2	3	5	4	0	0	-	-	27	-	-	25	41	32	43	3,366	1,716
JUL	396	3	3	0	5	1	0	0	123	140	5	13	1	32	67	52	28	3,445	1,774
AUG	218	8	2	0	7	4	0	0	-	-	13	-	-	18	56	24	62	3,693	1,848
SEP	273	6	5	1	7	4	0	2	112	78	25	11	-	30	41	44	40	2,887	1,528
OCT	356	4	1	6	1	6	1	0	115	103	6	12	1	32	58	51	33	3,420	1,494
NOV	97	2	3	5	0	0	0	1	-	-	6	-	-	15	38	47	40	3,348	1,666
DEC	437	7	2	3	5	1	0	0	91	80	4	5	2	60	46	39	37	3,851	1,765
2015 TOTAL	4,458	59	27	27	45	31	3	3	738	645	173	57	8	358	623	516	601	38,957	19,199
2016 JAN	508	2	1	0	5	5	0	0	76	66	4	7	1	29	51	44	36	3,184	1,551
FEB	165	2	1	0	1	1	1	0	-	-	8	-	-	27	47	34	49	3,666	1,738
MAR	1,035	6	4	2	2	2	1	1	62	57	3	7	1	19	42	50	45	3,020	1,646
APR	244	3	3	2	7	4	0	0	34	32	6	4	2	20	40	48	90	4,046	2,117
MAY	374	2	3	6	3	3	1	0	-	-	0	-	-	20	37	41	29	3,491	2,193
JUN	272	6	3	3	4	1	1	1	67	65	3	6	2	20	36	40	77	4,099	2,330
JUL	2,234	3	2	0	2	0	0	0	-	-	10	-	-	20	41	29	56	3,483	2,068
AUG	137	3	3	3	2	1	1	1	71	43	20	4	-	20	51	39	38	4,065	2,288
SEP	321	3	1	9	3	3	0	1	-	-	8	-	-	20	37	44	22	3,527	1,788
OCT	428	1	3	7	5	1	0	0	96	74	23	7	1	21	40	34	36	3,325	1,811
NOV	551	3	0	4	0	0	3	0	-	-	19	-	-	22	40	27	50	3,855	1,912
DEC	260	4	4	1	7	2	1	1	67	60	3	8	-	23	66	31	72	3,374	1,684
2016 TOTAL	6,529	38	28	37	41	23	9	5	473	397	107	43	7	261	528	461	600	43,135	23,126
2017 JAN	4,183	3	3	3	3	1	0	0	80	72	1	11	1	46	48	23	11	3,007	1,447
FEB	373	1	5	2	4	2	0	3	0	0	13	0	0	74	57	34	17	3,180	1,372
MAR	1,092	6	4	2	2	2	1	1	86	65	18	3	0	44	55	49	18	3,812	1,851
APR	930	3	0	1	5	5	0	0	0	0	6	0	0	32	40	43	29	2,895	1,578
MAY	663	1	3	0	5	0	0	0	128	93	3	6	0	185	55	46	30	2,491	1,487
JUNE	575	6	1	1	2	0	0	0	107	102	2	4	1	131	63	57	26	2,532	1,680
JULY	738	5	2	2	2	0	0	1	108	104	5	3	0	66	38	29	23	2,168	1,300
AUG	572	4	2	27	13	32	0	0	0	0	3	0	0	207	55	63	51	2,903	1,712
SEP	776	1	2	9	6	6	0	1	133	74	20	1	0	212	54	64	38	2,804	1,568
OCT	1,049	1	0	0	2	2	0	0	131	79	3	5	4	237	51	37	24	2,770	1,593
NOV	545	2	0	0	0	0	0	0	19	1	0	0	0	81	51	51	34	2,570	1,180
DEC	129	4	4	11	1	7	0	0	112	72	4	3	0	43	46	42	28	2,011	1,159
2017 TOTAL	11,625	37	26	58	45	57	1	6	885	680	79	36	6	1,358	613	538	329	33,143	17,927
JAN	220	3	9	5	6	3	1	2	105	95	11	3	0	60	54	55	39	2,371	1,247
FEB	96	3	3	2	7	1	1	0	0	0	6	0	0	52	40	51	81	1,985	1,028
MAR	0	5	0	4	0	0	0	0	159	105	16	4	0	47	46	52	52	2,219	1,413
2018 TOTAL	316	11	12	11	13	4	2	2	264	200	33	7	0	159	140	158	172	6,575	3,688

Abbreviation Ind = Individual, Blntk = Blanket, Apps = Application for Hearing, NOAV = Notice of Alleged Violation, AOC = Administrative Order of Consent, OFV = Order Finding
Key: Violation, Cmplt = Complaint, Comp = Completed