



COLORADO

**Oil & Gas Conservation
Commission**

Department of Natural Resources

Staff Report

for June 11, 2018

Top Stories

◆ Request for Information on Instrument Monitoring Methods for Flowline Integrity

On May 11, the COGCC posted a request for interested instrument suppliers to submit information on their technologies and services to the COGCC. This request will support the stakeholder group charged with examining instrument-based technologies and processes for reducing risks from flowlines. The Commission asked the Director to set up this group as part of the 2018 Flowline Rulemaking.

◆ Form 44 - Off-Location Flowline Riser and Location Review: New Visualization Tool

The COGCC's 1100 Series Rules require that, as a part of Off Location Flowline registration, the starting and ending points of oil and gas risers are identified and described. The Rules also require that the latitude and longitude of the risers be included in the registration.

COGCC Staff has created a tool that helps operators visualize and validate their Form 44 data. The Off-Location Flowline Riser and Location Review Tool displays information that can be used to help verify that the latitude and longitude of the risers coincide with their respective locations, and it maps the risers and associated locations in Google Earth. Operators can also use the tool to update the riser and location information in the eForm.

◆ Updates from the Colorado Public Utility Commission (PUC) and US Pipeline and Hazardous Materials Safety Administration (PHMSA)

To discuss common regulatory issues, COGCC staff recently met with staff from the PUC's Gas Safety Group and with staff from PHMSA at PHMSA offices in Lakewood. PHMSA is the federal

pipeline and hazardous materials safety regulator. The agencies shared information about the following topics relevant to oil and gas operations:

Excavation Damage Prevention

The bill entitled "Enforce Requirements of 811 Locate Underground Facilities" (SB18-167), signed by Gov. Hickenlooper, updates current law to address new industry technologies, methods, and best practices. The bill includes an enforcement provision with the creation of an Underground Damage Prevention Safety Commission that will review complaints and impose penalties.

The bill also phases in a true "one call" system by eliminating the tiered membership provisions of the 811 service and addresses use of American Society of Civil Engineers standard ASCE 38 for defining the quality of an underground facility location.

COGCC New Flowline Rules

New COGCC rules were discussed, and possible areas of cooperation were identified. These areas include domestic tap information, crude oil transfer lines, gas gathering registration (Form 12), spill reports (Form 19), sharing inspection information, riser removal for abandonment, and handling of complaints.

Pipeline Rights of Way

These legal agreements between operator and landowner may also involve county planning departments. PHMSA requires the operator to perform surveillance and leak surveys. If vegetation in the rights of way pose a threat to integrity, PHMSA will require removal.



PHMSA Accident Investigation Division (AID)

PHMSA provided an overview of its AID group which:

- Screens and evaluates all National Response Center reports of accidents/incidents
- Conducts accident investigations
- Conducts root cause determinations
- Captures and actively shares lessons learned/safety findings with internal and external stakeholders
- Conducts education and outreach to advance pipeline safety
- Evaluates and identifies emerging safety trends.

◆ Community Relations Unit and Local Government Liaison Program Update

Mike Leonard manages the newly formed Community Relations Unit (CRU) at the COGCC, which includes Local Government Liaison (LGL) Marc Morton, Complaint Intake Specialist Megan Adamczyk, Senior Data Analyst Ken Robertson, Data Analyst Bryce Holder, Senior GIS Scientist Chris Eisinger, and GIS Analyst Dennis Ahlstrand.

In keeping with the COGCC Mission Statement, the CRU allows the agency to expand its interaction and communication amongst local, state and federal government agencies, the general public, the oil and gas industry, and other stakeholders.

In leading the CRU, Mike Leonard has the following duties:

- Assist in responding to inquiries and information requests from local government staff, the public, operators, and other stakeholders;
- Lead the agency in responding to emergency situations and working with emergency response personnel;
- Support the agency's complaint intake and resolution process;
- Strengthen the LGD Program by seeking opportunities for outreach to local government officials and their constituents about the state's regulatory process and what to expect when oil and gas activity is planned or occurs in the area; and
- Support LGL staff efforts in managing the Local Governmental Designee (LGD) program, which includes offering ongoing training opportunities to LGDs and local government staff, which between 2013 and present has had over 480 participants.

Local Governmental Designees (LGDs) and staff are reminded of training opportunities available from from COGCC CRU staff. For more information on training available, please visit the link listed below:

<https://cogcc.state.co.us/documents/gov/local/2018%20LGD%20Training%20Information.pdf>

This link is found on the COGCC website under the Government tab and under the LGD Resources heading, and is titled "2018 LGD Training Information."

Public Outreach

➤ *Outreach by the Director and Other Staff*

- On May 8 and 9, the COGCC presented an exhibitor's booth at the Four Corners Energy Conference. Presenting were these COGCC Staff: Southwest Environmental Protection Specialist Jim Hughes, Field Inspection Manager Margaret Ash, Southwest Reclamation Specialist Catherine Roy, Southwest Field Inspector Cal St. John, and Southern Colorado Field Inspection Supervisor Steve Labowskie.
- On May 10, Reclamation Specialist Chris Binschus gave a presentation at the Second Annual USA Reclamation Summit, focusing on COGCC reclamation rules and regulations, and common reclamation challenges facing oil and gas operators. The summit highlighted key reclamation processes, starting from planning to final reclamation, and featured innovative equipment demonstrations. The summit was attended by approximately 270 participants, including many oil and gas operators, consultants, and regulatory agencies.

- On May 17, Field Inspection Manager Margaret Ash provided a presentation to the TOPCORP program held at the Colorado School of Mines. The talk addressed quality assurance for field inspection programs.
- On May 18, Environmental Manager Greg Deranleau met with a group of six visiting professionals from Israel in coordination with the International Visitor Leadership Program, an exchange program hosted by WorldDenver and the U.S. State Department. The visitors were interested in learning about the COGCC's role in "addressing oil and gas related health concerns; requirements and permits associated with air emissions and solid waste from the oil and gas industry." Greg provided an overview of COGCC regulatory programs with a specific emphasis on environmental protection. He answered numerous specific questions in a round table format.
- On May 30, East Environmental Supervisor, John Axelson was a panelist at a Workshop on Environmental Legacies and Produced Water Related to Oil and Gas Production held by The National Academies of Sciences, Engineering and Medicine. John discussed some of the common legacy issues in Colorado including challenges

with oil & gas development along the Front Range in areas of rapid residential growth into active oil & gas fields. After the environmental legacy discussion John and the other panelists answered questions from the audience.

➤ *Outreach by the LGL*

- On May 18, Marc Morton and Mike Leonard, Community Relations Manager, attended the bi-monthly Aurora Oil and Gas Advisory Committee meeting at the Aurora Municipal Center.
- On May 22, Marc Morton and Mike Leonard, Community Relations Manager, traveled to Platteville and provided an LGD orientation training to staff from the towns of Platteville and Hudson.
- On May 24, Marc Morton traveled to Brighton and provided an LGD orientation training to staff from the City of Brighton. CDPHE Staff Kent Kuster (Oil and Gas Liaison) and Sean Hackett (Health Concern Investigator - Oil and Gas Health Information and Response Program) also participated in the training.
- On June 7, Marc Morton traveled to Rifle and attended the monthly Garfield County Energy Advisory Board (EAB) meeting.

Regional Activities

➤ *Northwest Colorado*

◆ Northwest Colorado Oil and Gas Forum

Remaining Northwest Colorado Oil and Gas Forum (NWF) meetings for 2018 have been scheduled for August 2 and December 8. All meetings will be held in Rifle at the Colorado Mountain College - Rifle Campus / Clough Auditorium at 3595 Airport Road beginning at 9:00 a.m. and concluding by 12:00 p.m.

Meeting agendas will be posted to the COGCC website approximately one to two weeks prior to each meeting. The COGCC welcomes suggestions for speakers and topics. Meeting information is also emailed to those on the email distribution list.

Parties wishing to be placed on the meeting agenda or added to the email distribution list for announcements should contact Marc Morton

at (303) 894-2100, ext. 5132 (direct), (720) 415-4959 (mobile), or by email:

marc.morton@state.co.us

As a reminder, NWF meetings are open to the public, and a public comment period is held as part of each meeting. Past NWF presentations (dating back to 2006) are available on the COGCC website at:

<http://cogcc.state.co.us/library.html#/forums>

◆ Project Rulison

The five year revision of the Project Rulison Sampling and Analysis Plan (RSAP) has been completed. Major revisions to the plan included re-defining the exterior buffer zones to align with hydrogeologic flow patterns instead of more arbitrary circular rings in the original plan.



This document is in the COGCC's Area Reports Library and can be found at the following link:

<http://cogcc.state.co.us/documents/library/AreaReports/PiceanceBasin/Rulison/Rulison%20Sampling%20and%20Analysis%20Plan%20Revision%204%20062217.pdf>

The email for Project Rulison submittals is

DNR_rulison.submittal@state.co.us

◆ Project Rio Blanco

The email for Project Rio Blanco submittals is

DNR_rioblanco.submittal@state.co.us

➤ Southwest Colorado

◆ Gas and Oil Regulatory Team (GORT) Meeting

The Southwest Colorado Gas and Oil Regulatory Team (GORT) meeting schedule for 2018 has been set. Remaining GORT meetings in 2018 will take place June 21 and October 18.

The June 21 and October 18 GORT meetings will be held at the Durango Public Library at 1900 E. 3rd Avenue, Durango, from 9:00 a.m. until noon. GORT meeting agendas will be posted to the

COGCC website approximately one to two weeks prior to each meeting, and emailed to those on the email distribution list. The COGCC welcomes suggestions and input for speakers, topics, as well as meeting format and venue.

Parties wishing to be placed on the next meeting agenda or added to the distribution list for announcements should contact Marc Morton at (303) 894-2100, ext. 5132 (direct), (720) 415-4959 (mobile), or by email:

marc.morton@state.co.us

As a reminder, GORT meetings are open to the public, and a public comment period is held as part of each meeting.

◆ Fruitland Formation Outcrop Mitigation and Monitoring Projects

South Fork Texas Creek Mitigation Site - La Plata County. Regularly scheduled operations and maintenance are being performed at the South Fork Texas Creek (SFTC) site by LTE, the COGCC's contractor. Since May 2009, the system has collected 23,619 Mcf of methane and generated 269,645 kWh of surplus electricity.

Variations

◆ Caerus Piceance LLC (Caerus)

K10-596, COGCC Location ID 335676

On April 27, 2018, the COGCC Director granted Caerus a Rule 502.b variance to Rule 502.b. variance request set forth in Rule 907.e.(1) in order to obtain permission to transport cuttings from one of their current drilling locations (K10-596, COGCC Location ID 335676) to one of their existing production pads (D23-596, COGCC Location ID 335672). Rule 907.e.(1) of the COGCC's Rules and Regulations states "Oily waste may be treated or disposed as follows:

- A. Disposal at a commercial solid waste disposal facility;
- B. Land treatment onsite; or
- C. Land treatment at a centralized E&P waste

management facility permitted in accordance with Rule 908."

Caerus requested permission to transport approximately 3,000 to 5,000 cubic yards of cuttings from Location ID #335676 (K10-596) to Location ID #335672 (D23-596) due to a spacing limitation within the current boundaries of the K10-596 pad.

COGCC Location Facility ID 335672

On April 27, 2018, the COGCC Director granted Caerus a Rule 502.b variance to Rule 603.f. (Statewide equipment, weeds, waste, and trash requirements), for Location Facility ID 335672.

Rule 603.f. states that “All locations, including wells and surface production facilities, shall be kept free of the following: equipment, vehicles, and supplies not necessary for use on that lease; weeds; rubbish, and other waste material. The burning or burial of such material on the premises shall be performed in accordance with applicable local, state, or federal solid waste disposal regulations and in accordance with the 900-Series Rules. In addition, material may be burned or buried on the premises only with the prior written consent of the Surface Owner.”

Caerus requested permission to transport approximately 3,000 to 5,000 cubic yards of cuttings from Location ID #335676 (K10-596) to Location ID #335672 (D23-596) due to a spacing limitation within the current boundaries of the K10-596 pad.

◆ Great Western Operating Company LLC (Great Western)

On May 2, the COGCC Director granted Great Western a Rule 502.b. variance from the requirements of Rule 605.b.(5) to Great Western Operating for the Kodak South FD Pad 28-222HN (Location ID #306149) in Section 26, Township 6 North, Range 67 West in Weld County. Rule 605.b.(5) requires that at the time of installation, fired vessels and heater treaters shall be a minimum of two hundred (200) feet from buildings. This variance was granted to place a fired vessel, an Emissions Control Device (ECD), 124 feet from the nearest building. This existing Oil & Gas Location is in an industrial park and the operator was amending the location to add wells and production facilities.

Initially, the operator proposed 12 ECDs with the closest being 55 feet from a building. Following discussions with COGCC staff, the operator revised the equipment layout to place 2 larger ECDs with the closest being 124 feet from the nearest building. The nearest building is an unoccupied storage shed with metal sides and a metal roof owned by one of the operator’s sister companies which provided written consent to place the ECDs closer than the 200 foot setback.

◆ PDC Energy, Inc. (PDC)

On May 17, the COGCC Director granted PDC a Rule 502.b variance from the requirements of Rule 605.a.(2) for the Lory 4N65W33 1-12 Location (ID #455075). Rule 605.a.(2) requires that “Tanks shall be located at least two (2) diameters or three hundred fifty (350) feet, whichever is smaller, from the boundary of the property on which it is built.” The production facility, which includes production tanks, for this location crosses the property line of two parcels owned by the same surface owner. The surface owner signed a waiver agreeing to the location of the production facility, including the location of the tanks less than 350 feet or two tank diameters from the property line between the two parcels. The Lory 4N65W33 1-12 Location is in Section 33, Township 4 North, Range 54 West in Weld County.

◆ Kerr-McGee Oil & Gas Onshore LP (Kerr-McGee)

On May 10, pursuant to Rule 502.b.(1), the COGCC Director approved multiple variances to Administrative Order by Consent No. 1V-643 (“Order”) pertaining to two surface facilities and five wells in Weld County. The variances were granted to address factual scenarios that were not known, or suspected, at the time the Commission approved the Order.

These scenarios include unforeseen difficulties encountered in plugging the Warren Chadburn True 1 (API 123-11384), the PSC 9-3 (API 123-22777), the Frank 14-6 (API 123-25685), and the Carlson V 11-7JI (API 123-19769) wells; the presence of a bald eagle nest which delayed the plugging of the Kodak 34-23 (API 123-22081) well; and the existence of two surface facilities that should have been included in the Order to ensure comprehensive compliance with Rule 603.h by the Operator. More information regarding the variances can be found in Document Nos. 401628174, 401564841, 401584603, 401587792 and 401589349.

Approval of these variances in no way restricts or limits COGCC’s enforcement authority for any other violations that may exist or arise at these locations. Approval of these requests will not adversely affect public health, safety, welfare and the environment nor violate the basic intent of the Oil and Gas Conservation Act.



◆ **Wiepking-Fullerton Energy LLC (Wiepking-Fullerton)**

Wiepking-Fullerton (#96340) received a variance from select parts of Rule 1004.a for the Pilger Berge #12-17 #2 (API 071-07697). The property owner William Bledsoe requested that that the access road remain to allow access to his property for ranching operations.

The following conditions were applied to this variance:

- Establish 80% vegetation cover of reference area levels at the location.
- Maintain site specific erosion controls to prevent sediment movement to protect Wild Horse Creek.
- Continue to monitor and manage the site for erosion and noxious weed control until final reclamation is passed.

All corrective actions identified on a field inspection report must be performed by the corrective action date until final reclamation is passed.

◆ **Pioneer Natural Resources USA Inc. (Pioneer)**

Zamora 22-14V, API 071-09444

Pioneer (#10084) received a variance from select parts of Rule 1004 for the Zamora 22-14V. The property owners, Felix and Linda Zamora, requested that that the access road, gravel, culverts, and gate remain, and that the location and right of way not be recoutoured, to allow access to his property for ranching operations.

The following conditions were applied to this variance:

- Establish 80% vegetation cover of reference area levels at the location and roadsides.
- Provide stamped detailed engineering plan to reconstruct the road for safety and long term stormwater controls, including compacted gravel along the entire road surface.

Gabriel 14-12, API 071-09418

Pioneer (#10084) received a variance from select parts of Rule 1004 for the Gabriel 14-12. The property owner, Meredith Laine, requested that that the access road, gravel, culverts, and gate remain, and that the location and right of way not be recoutoured, to provide a place for camping.

The following condition was applied to this variance:

- Establish 80% vegetation cover of reference area levels at the location, except where gravel remains within the flat portion of the well pad for long term erosion controls.

Vallejo 32-19, API 071-09338

Pioneer (#10084) received a variance from select parts of Rule 1004 for the Vallejo 32-19. The property owners, Ed Purcell and Mark Thomas, requested that that the access road, gravel, culverts, gate, and electric utility remain to provide a place for camping trailers, ATV riding, and stage equipment.

The following conditions were applied to this variance:

- Establish 80% vegetation cover of reference area levels at the location, except where gravel remains within the flat portion of the well pad for long term erosion controls.
- Secure and cover, or remove the utility cable on the surface.
- Install a well marker at the plugged and abandoned wellhead.

Model 44-10, API 071-07517

Pioneer (#10084) received a variance from select parts of Rule 1004 for the Model 44-10. The property owner, Daniel Borrego, requested that that the right of way and location remain for livestock operations and installation of a hunting blind.

The following condition was applied to this variance:

- Fully establish adequate stormwater controls for long term stability and 80% vegetation of a reference area standard along the access road and install culverts to protect ephemeral drainage ways.

Cora 21-19, API 071-06983

Pioneer (#10084) received a two variances from select parts of Rule 1004 for the Cora 21-19 location and pit (#258353). The property owner, Douglas Taylor, requested that that the right of way, location, and produced water pit not be recontoured, and remain in place for livestock feeding/watering.

The following conditions were applied to this variance:

- In order to stabilize the site for long term stormwater control, the entire location including cut slopes must establish a uniform vegetation cover of at least 80% of pre disturbance or reference area levels for long term erosion.
- Establish 80% vegetation cover of reference area levels at the pit location and above the high water line, and slopes for long term erosion control.

Eclipse #34-16, API 071-07516

Pioneer (#10084) received a variance from select parts of Rule 1004 for the Eclipse #34-16. The property owner, the Colorado State Land Board, requested that that the right of way and location not be recontoured, and remain for hunting, and for the benefit of wildlife.

The following conditions were applied to this variance:

- In order to stabilize the site for long term stormwater control, the entire location must establish a uniform vegetation cover of at least 80% of reference area levels. This includes the pad and fill slope.
- All pipe risers must be abandoned and removed from the location.

PCW #44-9, API 071-06393

Pioneer (#10084) received a variance from select parts of Rule 1004 for PCW #44-9. The property owner, Gebhart, requested that that the location and access road not be recontoured, and that gravel, culverts, and electric utility remain to a place for storage, camping, or possible building.

The variance was approved with the following condition:

- Continue to monitor and manage the site for erosion and noxious weed control until final reclamation is passed.

Pierre 13-11, API 071-07711

Pioneer (#10084) received a variance from select parts of Rule 1004 for Pierre 13-11 . The property owner (Daniel Borrego) has signed a waiver to not recontour the right of way or the location, and to retain a gate. The intended use is for livestock operations and installation of a hunting blind for hunting operations.

The variance was approved with the following conditions:

- Fully establish adequate stormwater controls for long term stability and 80% vegetation of a reference area standard along the access road.
- In order to stabilize the location for long term stormwater control, the entire location must have an established uniform vegetation cover of at least 80% of pre disturbance or reference area levels.



Admin / Organization / Other

◆ Western Region Environmental Protection Specialist (EPS) Changes

Carlos Lujan, Northwest Region EPS, will be retiring on June 15, 2018. Carlos has been with the COGCC since April, 2013, and has provided EPS support out of the Rifle office. Prior to 2013, Carlos provided three years of contract support for the COGCC Environmental Unit. We appreciate all that Carlos has done and his service to the State of Colorado. Carlos, congratulations and best wishes in your retirement.

Steven Arauza, an EPS I supporting Front Range staff since 2015, has been promoted into the Northwest Region EPS position effective June 18.

Before coming to the COGCC, Steven spent three years working for the Railroad Commission of Texas. Steven holds a Master's degree in Earth Science from the University of California, a Bachelor's degree in Geological Sciences from the University of Texas at Austin, and an Associate's degree in Geology from the Oxford College of Emory University, Oxford, Georgia.

COGCC organizational charts can be found on pages 10-13. For contact information, please go to the COGCC homepage and select "Contact Us" in the upper right corner of the page.

◆ Plugging and Reclaiming Orphaned Wells (PROW) Project Updates

The COGCC performed field work for the Orphaned Wells Program projects described below since April 30. These projects relate either to "Orphaned" locations or wells for which there is no known responsible party, or they relate to Bond Claim projects for which sureties have been claimed.

Project summary tables for Fiscal Year 2017-18 (FY18) are found on pages 15-19. The projects are sorted first by county and then by the project name. The field work described below pertains to ongoing projects or to recently completed projects. The agency has prioritized work planned for FY18, although each project is subject to change as new conditions arise during the year.

The **Hodges Pool Unit #1 Project** is located in La Plata County. Recent FY18 work included gas monitoring at a cathodic protection well near the plugged well. Neither carbon dioxide nor hydrogen sulfide were detected in the discharge from the well.

The **Pine Ridge Project** began with Commission Order 1V-622. The project involves 6 locations in Fremont, Lincoln, and Routt Counties. Recent FY18 reclamation work included ripping and seeding at three locations in Lincoln County.

The **Provide Energy and Red Mountain Project** began with Commission Orders 1V-364 and 1V-508. The project involves six single well locations in Jefferson and Logan Counties. Both operators were responsible for the same well and location in Jefferson County, and Red Mountain was responsible for the other five wells in Logan County. Recent FY18 work includes pit closure at one location in Logan County. Whiting Oil and Gas Corporation also commenced plugging of one well as a Public Project on behalf of the state, pursuant to Rule 523.f. and Order 1V-652.

◆ Colorado Oil and Gas Information System (COGIS) Projects, Updates and Changes

Form 44 – New Flowline Form

The New Flowline Report, Form 44 is used to register, report realignment, report removal from service, or report abandonment of Off-Location Flowlines, Domestic Taps, Crude Oil Transfer Systems, and Produced Water Transfer Systems.

The form is also used to report Grade 1 Gas Leaks, which are leaks that represent an existing or probable hazard to people or property and require immediate repair or continuous action until the conditions are no longer hazardous. The Form 44 is only available in eForms.



Form 12 Release in eForms

The Gas Facility Registration/Change of Operator, Form 12 has been released in eForms. The Form 12 includes revisions for the registration and reporting requirements of new Rule 313B, effective May 1, 2018.

Form Revisions

Several forms have been revised to accommodate the new flowline rules and associated rule revisions effective May 1, 2018. Indication of One Call - UNCC Membership has been added to the Operator Registration, Form 1, and the Change of Operator, Form 10.

The new pipeline facility types have been added to the Change of Operator, Form 10, and the Spill/Release Report, Form 19. The Produced Water Transfer System has been added to the Performance Bond, Form 3 as a bond type.

The revised Accident Report, Form 22 will be released on July 1, 2018.

Electronic Form (eForm) Submissions

The COGCC uses 42 types of forms to authorize oil and gas operations, inspect and monitor ongoing operations, and receive reports of operations. Of those 42 forms, 22 are currently available for electronic submittal through the eForms system.

The development team continues to work on the eForm conversion of existing forms. Currently, five forms are in various stages of development: Forms 8, 11, 14, 14A, and 43.

As of June 1, industry electronically submitted 98 percent of the forms available in eForms in 2018. There are 910 operator users of eForms and 3,690 individual users. For any operator not currently enrolled in eForms, instructions for starting the process can be found on the COGCC website at:

<http://cogcc.state.co.us/Announcements/COUInformation.pdf>

Applications and Location Assessments

The public can make comments on all submitted Drilling Permit Applications (Form 2s) and

Location Assessments (Form 2As) through the eForm system. Simply go to the COGCC website and click on the menu option "Permits" or

<http://cogcc.state.co.us/permits.html#/permits>

On the "Permits Search" page, three search options are available. The first option, "All Pending Permit Applications," is used for public comments. When the results are displayed for "Pending Applications," a user can click on the document number hyperlink in the "Status" column, which logs him or her to the eForms application.

Once the page is displayed with the selected document, the user can select the "Comment" button to make a comment on that particular form.

Data Access

The COGCC's database is a comprehensive repository of Colorado's oil and gas data. The information in the database is available to the public through interactive search tools and a variety of file downloads on the website.

Users of bulk data come from many different sectors of the community, including academia, oil and gas operators, environmental groups, government agencies, and the media.

All the data file downloads are available at:

<http://cogcc.state.co.us/data2.html#/downloads>

Current Data File Downloads

- Complaints
- Field Operations
- Flowline NTO Imported Data
- GIS Shapefiles (12 files)
- Mechanical Integrity Tests
- Notices of Alleged Violation
- Production Data (1999 - present)
- Spacing Orders
- Spills and Releases
- Analytical Sample Data

Future Data File Downloads

- Enforcement Orders (OFVs and AOCs)
- Underground Injection Control (UIC) Data



◆ **July 2018 Hearing Docket**

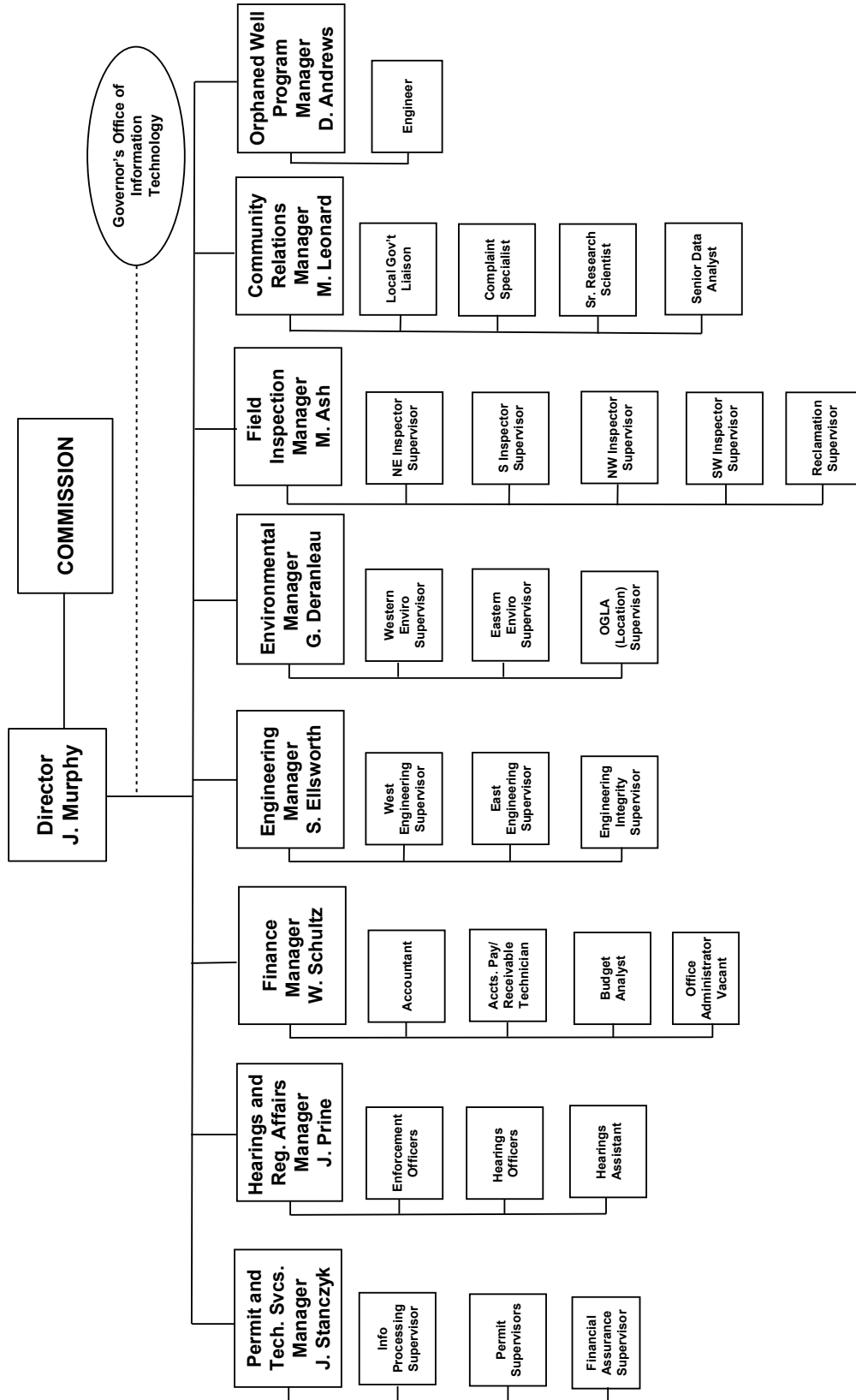
The docket for the July 2018 hearing will be available shortly after the June hearing. Hearing dockets are available on our website by clicking on “Regulation” in the menu and then “Hearings”:

<http://cogcc.state.co.us/reg.html#/hearings>

Links to the notices and hearing applications are available from the Docket Number and Applicant, respectively, by clicking the July Gen_Docket link. To sign up for email notification of hearing notices and applications, please see the announcement and instructions on the homepage of the COGCC website.

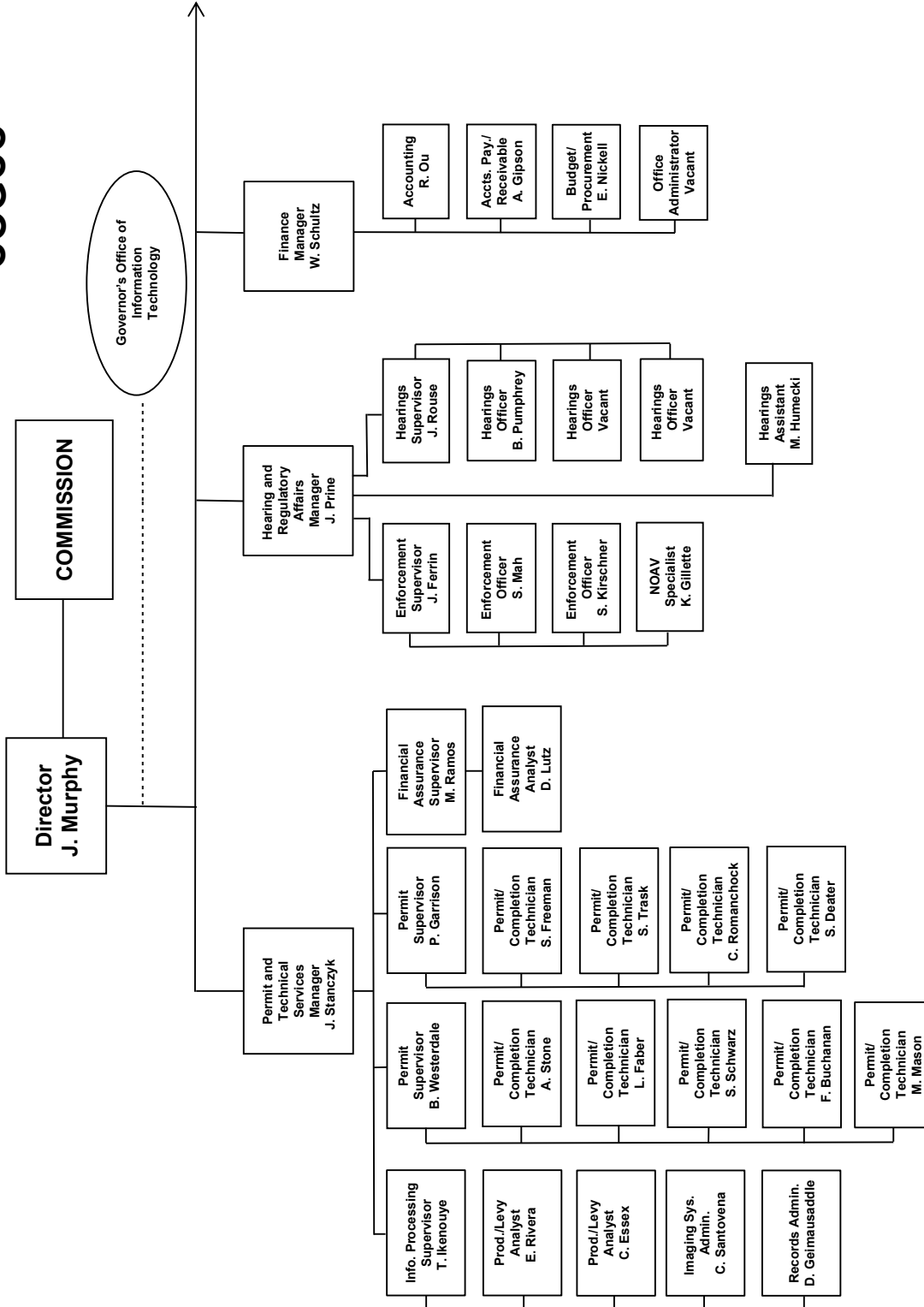
Organizational Charts and Statistics

COLORADO OIL & GAS CONSERVATION COMMISSION



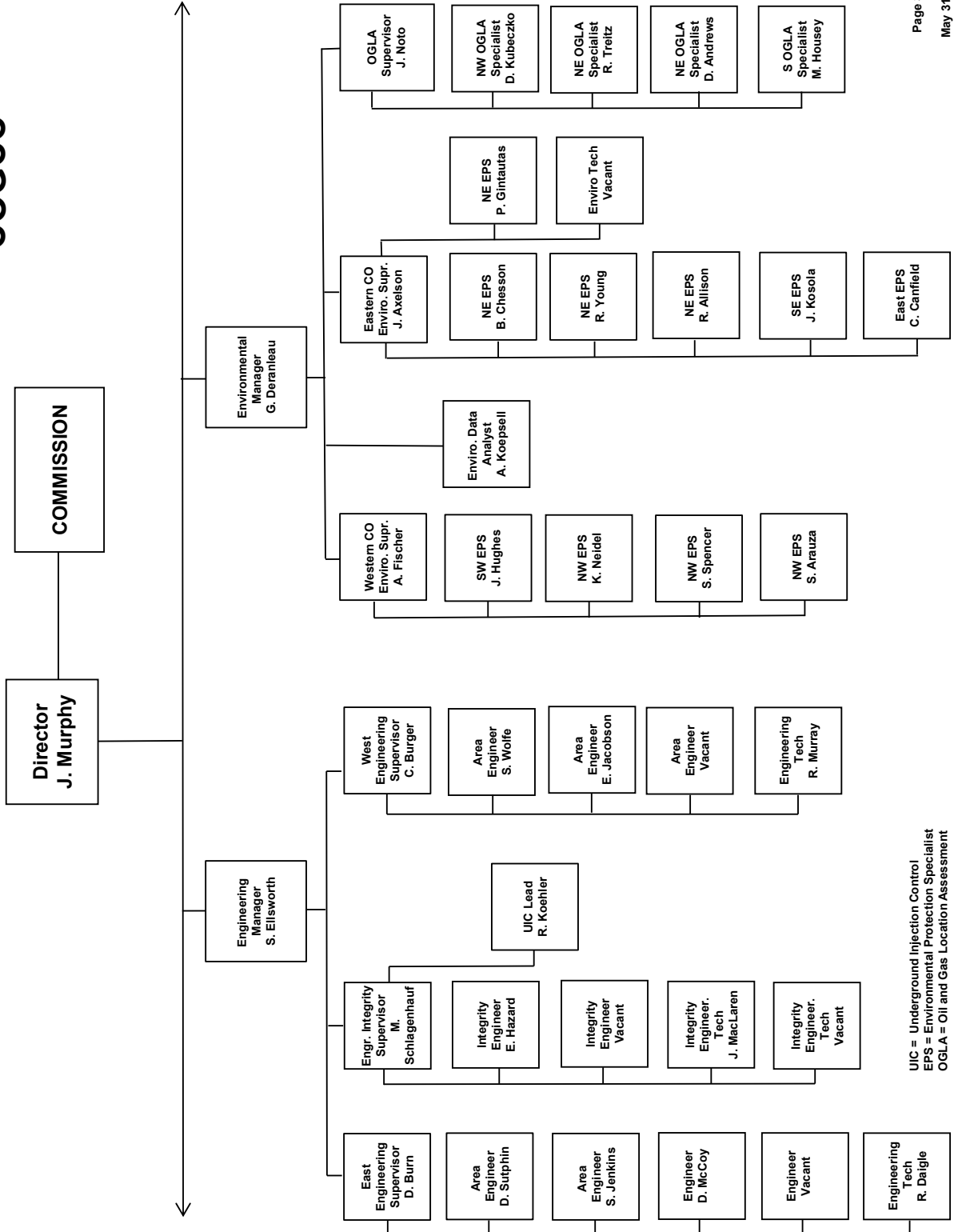


COGCC



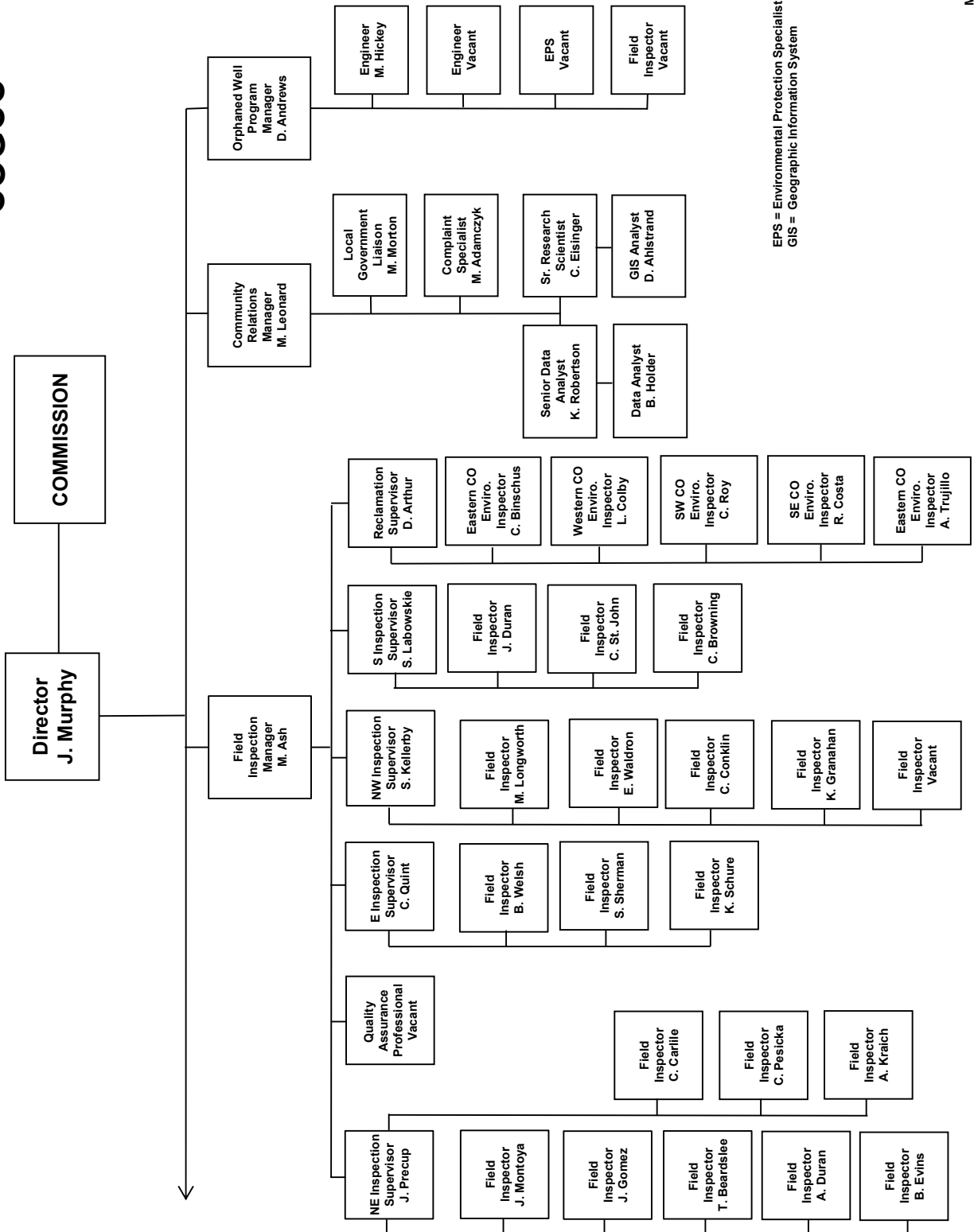


COGCC





COGCC



EPS = Environmental Protection Specialist
GIS = Geographic Information System



**PLUGGING AND RECLAIMING ORPHANED WELLS (PROW) PROGRAM
FISCAL YEAR 2017-18**

BONDS AND OTHER SURETY CLAIM STATUS FOR ACTIVE FY2017-18 "BOND CLAIM" PROJECTS

Project	Order Number(s)	Total Bond Claim	Amount Spent in Prior Fiscal Years	Amount Spent in FY2017-18	Remaining Bond Balance
Atom Petroleum Bond Claim	1V-586	\$ 60,000	\$ 797	\$ 46,410	\$ 12,793
Benchmark Energy Bond Claim	1V-564	\$ 620,000	\$ 98,931	\$ -	\$ 521,069
CM Production Bond Claim	1V-581	\$ 67,849	\$ 13,299	\$ 54,549	\$ -
Dolphin Bond Claim	1V-382	\$ 55,000	\$ 55,000	\$ -	\$ -
Energy Search Bond Claim	1V-636	\$ 60,000	\$ -	\$ 4,684	\$ 55,316
Nolte Bond Claim	1V-582	\$ 61,838	\$ -	\$ -	\$ 61,838
Northstar Gas Bond Claim	1V-642, BLM (Fee and Fed)	\$ 30,000	\$ -	\$ -	\$ 30,000
Pine Ridge Bond Claim	1V-622	\$ 85,000	\$ -	\$ -	\$ 85,000
Red Mesa Holdings Bond Claim	1V-508	\$ 72,831	\$ 12,258	\$ 60,574	\$ -
Red Mountain Bond Claim*	1V-549, SLB	\$ 92,015	\$ 30,070	\$ 30,842	\$ 31,104
Redwine Bond Claim	1V-470, 1V-494	\$ 30,000	\$ 30,000	\$ -	\$ -
Reynolds* Noel Bond Claim	1V-374, 1V-375	\$ 30,000	\$ -	\$ 841	\$ 29,159
Texas Tea Bond Claim	1V-573	\$ 71,850	\$ 40,283	\$ 31,568	\$ -
Tudex Petroleum Bond Claim	1V-646	\$ 62,470	\$ -	\$ -	\$ 62,470
Vitruvian Exploration Bond Claim	1V-514	\$ 30,000	\$ -	\$ 9,010	\$ 20,990
TOTALS ->		\$ 1,492,277	\$ 344,062	\$ 238,478	\$ 909,739

Note: * Red Mountain Bond Total Claim Amount includes \$24,169 bankruptcy deposit and \$5,000 State Land Board deposit (bond transfer)

ACTIVE TASK LIST (PLANNED OR IN PROGRESS) - FY2017-18

Work Unit	County	Project and Task	Task Status	Planning Comments
Reclamation	Adams	Texas Tea Bond Claim: Task 2.2 - Weed Control (maintenance) - Spindle and Sun Fields,	Planned	Reclamation maintenance
Engineering	Adams	Tudex Petroleum Bond Claim: Task 2 - Plug and Abandon, Flowline Abandonment - 320126, 001-08153	Planned	FY2017-18 Work: abandon flowlines
Engineering	Adams	Tudex Petroleum Bond Claim: Task 2 - Plug and Abandon, Flowline Abandonment - 320129, 001-08162	Planned	FY2017-18 Work: abandon flowlines
Engineering	Adams	Tudex Petroleum Bond Claim: Task 2 - Plug and Abandon, Flowline Abandonment - 320217, 001-08491	Planned	FY2017-18 Work: abandon flowlines
Engineering	Adams	Tudex Petroleum Bond Claim: Task 2 - Plug and Abandon, Flowline Abandonment - 320452, 001-09362	Planned	FY2017-18 Work: abandon flowlines
Engineering	Adams	Tudex Petroleum Bond Claim: Task 2 - Plug and Abandon, Flowline Abandonment - 320453, 001-09363	Planned	FY2017-18 Work: abandon flowlines
Engineering	Adams	Tudex Petroleum Bond Claim: Task 2 - Plug and Abandon, Flowline Abandonment - 335733, 001-08163	Planned	FY2017-18 Work: abandon flowlines
Engineering	Adams	Tudex Petroleum Bond Claim: Task 2 - Plug and Abandon, Flowline Abandonment - 335737, 001-08767	Planned	FY2017-18 Work: abandon flowlines
Engineering	Adams	Tudex Petroleum Bond Claim: Task 2 - Plug and Abandon, Flowline Abandonment - 335737, 001-08768	Planned	FY2017-18 Work: abandon flowlines
Environmental	Jackson	CM Production Bond Claim: Task 1.11 - Sampling and Analysis - Lone Pine Field,	In Progress	Biannual sampling and analysis (first sampling event completed November 2017)



ACTIVE TASK LIST (PLANNED OR IN PROGRESS) - FY2017-18, cont.					
Work Unit	County	Project and Task	Task Status	Planning Comments	
Engineering	Jackson	CW Production Bond Claim: Task 3.1, 3.2 - MIT or Other Well Work, Plug and Abandon - 324630, 057-06093	In Progress	FY2017-18 Work: Set downhole plug to TA well and MIT	
Reclamation	Jefferson	Red Mountain Bond Claim: Task 14 - Stormwater BMPs (maintenance), Weed Control (maintenance) - 324775,	Planned	Reclamation maintenance (in-house Staff and Equipment)	
Field Operations	La Plata	Red Mesa Holdings Bond Claim: Task 1 - Equipment Intervention, Equipment Salvage - 325230,	Planned	FY2017-18 Work: Remove fluids from tank	
Field Operations	La Plata	Red Mesa Holdings Bond Claim: Task 1 - Equipment Intervention, Equipment Salvage - 325302,	Planned	FY2017-18 Work: Stand up tank	
Field Operations	La Plata	Red Mesa Holdings Bond Claim: Task 1 - Equipment Intervention, Equipment Salvage - 325667,	Planned	FY2017-18 Work: Remove fluids from tank	
Engineering	La Plata	Red Mesa Holdings Bond Claim: Task 2 - MIT or Other Well Work, Plug and Abandon, Flowline Abandonment - 325111, 067-05321	Planned	FY2017-18 Work: load well and disconnect flowline from well	
Engineering	La Plata	Red Mesa Holdings Bond Claim: Task 2 - MIT or Other Well Work, Plug and Abandon, Flowline Abandonment - 325230, 067-05765	Planned	FY2017-18 Work: disconnect flowline from well	
Engineering	La Plata	Red Mesa Holdings Bond Claim: Task 2 - MIT or Other Well Work, Plug and Abandon, Flowline Abandonment - 325362, 067-06242	Planned	FY2017-18 Work: load well and disconnect flowline from well	
Engineering	La Plata	Red Mesa Holdings Bond Claim: Task 2 - MIT or Other Well Work, Plug and Abandon, Flowline Abandonment - 325745, 067-06932	Planned	FY2017-18 Work: disconnect flowline from well	
Engineering	La Plata	Red Mesa Holdings Bond Claim: Task 2 - Plug and Abandon, Flowline Abandonment - 325224, 067-05729	Planned	Plug well, disconnect, and cap flowline	
Engineering	La Plata	Red Mesa Holdings Bond Claim: Task 2 - Plug and Abandon, Flowline Abandonment - 333799, 067-09364	Planned	FY2017-18 Work: load well and disconnect flowline from well	
Reclamation	La Plata	Red Mesa Holdings Bond Claim: Task 4 - Reclamation (initial work) - 325111,	Planned	FY2017-18 Work: Install Stormwater BMPs	
Reclamation	La Plata	Red Mesa Holdings Bond Claim: Task 4 - Reclamation (initial work) - 325134,	Planned	FY2017-18 Work: Install Stormwater BMPs	
Reclamation	La Plata	Red Mesa Holdings Bond Claim: Task 4 - Reclamation (initial work) - 325224,	Planned	FY2017-18 Work: Install Stormwater BMPs	
Reclamation	La Plata	Red Mesa Holdings Bond Claim: Task 4 - Reclamation (initial work) - 325302,	Planned	FY2017-18 Work: Install Stormwater BMPs	
Reclamation	La Plata	Red Mesa Holdings Bond Claim: Task 4 - Reclamation (initial work) - 325352,	Planned	FY2017-18 Work: Install Stormwater BMPs	
Reclamation	La Plata	Red Mesa Holdings Bond Claim: Task 4 - Reclamation (initial work) - 333799,	Planned	FY2017-18 Work: Install Stormwater BMPs	
Reclamation	La Plata	Red Mesa Holdings Bond Claim: Task 5 - Weed Control (maintenance) - Red Mesa Field,	Planned	Reclamation maintenance	
Field Operations	La Plata	Red Mesa Holdings Bond Claim: Task 8 - Debris, Junk, and Trash Removal - Red Mesa Field,	Planned	Field-wide debris, junk, and trash pick-up for offsite disposal	
Engineering	La Plata	Reynolds* Noel Bond Claim: Task 2 - Plug and Abandon, Flowline Abandonment - 325354, 067-06232	Planned	Plug well and abandon flowline	
Reclamation	Larimer	Ranchers Bond Claim: Task 1 - Reclamation (initial work), Re-Seeding (maintenance), Weed Control (maintenance) - 435790,	Planned	FY2017-18 Work: Reclamation maintenance	
Reclamation	Larimer	Ranchers Bond Claim: Task 3 - Reclamation (initial work), Re-Seeding (maintenance), Weed Control (maintenance), Re-seal breached landfill cover - 419639,	Planned	FY2017-18 Work: Weed Control (maintenance)	
Engineering	Larimer	Sheffer Jack #1: Task 1 - Plug and Abandon, Flowline Abandonment - 385978, 069-05014	Planned	FY2017-18 work: flowline utility locate in preparation for well plugging and flowline abandonment	
Reclamation	Lincoln	Pine Ridge Bond Claim: Task 1 - Re-Seeding (maintenance), Weed Control (maintenance), Fence Removal - 433053,	Planned	FY2017-18 work: rip and seed	
Reclamation	Lincoln	Pine Ridge Bond Claim: Task 2 - Re-Seeding (maintenance), Weed Control (maintenance), Fence Removal - 430683,	Planned	FY2017-18 work: rip and seed	
Reclamation	Lincoln	Pine Ridge Bond Claim: Task 3 - Re-Seeding (maintenance), Weed Control (maintenance), Fence Removal - 430828,	Planned	FY2017-18 work: rip and seed	
Engineering	Logan	Benchmark Energy Bond Claim: Task 2.5 - Plug and Abandon, Flowline Abandonment - 312151, 075-05875	Planned	FY2018 work: plug well, disconnect and cap flowline at the well	



Oil and Gas Staff Report

June 11, 2018

ACTIVE TASK LIST (PLANNED OR IN PROGRESS) - FY2017-18, cont.				
Work Unit	County	Project and Task	Task Status	Planning Comments
Engineering	Logan	Benchmark Energy Bond Claim: Task 2.5 - Plug and Abandon, Flowline Abandonment - 312157, 075-05971	Planned	FY2018 work: plug well, disconnect and cap flowline at the well
Engineering	Logan	Benchmark Energy Bond Claim: Task 2.5 - Plug and Abandon, Flowline Abandonment - 312162, 075-06002	Planned	FY2018 work: plug well, disconnect and cap flowline at the well
Engineering	Logan	Benchmark Energy Bond Claim: Task 2.5 - Plug and Abandon, Flowline Abandonment - 312177, 075-06126	Planned	FY2018 work: plug well, disconnect and cap flowline at the well
Engineering	Logan	Benchmark Energy Bond Claim: Task 2.5 - Plug and Abandon, Flowline Abandonment - 312183, 075-06137	Planned	FY2018 work: plug well, disconnect and cap flowline at the well
Engineering	Logan	Benchmark Energy Bond Claim: Task 3.2 - Plug and Abandon, Flowline Abandonment - 312161, 075-06000	Planned	FY2018 work: plug well, disconnect and cap flowline at the well
Engineering	Logan	Benchmark Energy Bond Claim: Task 3.2 - Plug and Abandon, Flowline Abandonment - 312184, 075-06155	Planned	FY2018 work: plug well, disconnect and cap flowline at the well
Reclamation	Logan	CM Production Bond Claim: Task 3.6 - Stormwater BMPs (maintenance), Weed Control (maintenance) - Cliff Field,	Planned	Weed control
Reclamation	Logan	CM Production Bond Claim: Task 3.6 - Weed Control (maintenance) - 312201,	Planned	Weed control
Environmental	Logan	Red Mountain Bond Claim: Task 11 - Sampling and Analysis, Spill or Remediation, Pit Closure - 450396,	In Progress	Remove pit fluids and pit liner; sampling and analysis for confirmation and pit closure.
Reclamation	Logan	Red Mountain Bond Claim: Task 21 - Weed Control (maintenance) - Merino and Twin Mills Fields,	Planned	Reclamation maintenance
WHITTING OIL & GAS	Logan	Red Mountain Bond Claim: Task 6 - Plug and Abandon, Flowline Abandonment - 312132, 075-05078	Planned	FY2017-18 Work: Plug well (by Whiting Oil and Gas Corporation as a Public Project, pursuant to Rule 523.f. and Order 1V-652)
Field Operations	Statewide	Various Projects: Task 999 - Site Security, LOTO, Marking and Labeling - Statewide,	In Progress	Install lock-out / tag-out devices on wellheads, equipment and fences
Reclamation	Washington	CM Production Bond Claim: Task 3.6 - Weed Control (maintenance) - Hyde and Tap Fields,	Planned	Weed control
Field Operations	Washington	Energy Search Bond Claim: Task 1.1 - Fence Repair - 317288,	In Progress	Repair fence

COMPLETED TASK LIST - FY2017-18				
Work Unit	County	Project and Task	Task Status	Planning Comments
Engineering	Adams	Texas Tea Bond Claim: Task 2.1, 3.1A - Plug and Abandon, Flowline Abandonment - 320139, 001-08204	Completed	Plug well and abandon flowline; cut off casing during landfill expansion
Engineering	Adams	Texas Tea Bond Claim: Task 2.1, 3.1A - Plug and Abandon, Flowline Abandonment - 320206, 001-08443	Completed	Plug well and abandon flowline
Engineering	Adams	Texas Tea Bond Claim: Task 2.1, 3.1A - Plug and Abandon, Flowline Abandonment - 320223, 001-08516	Completed	FY2017-18 Work: abandon flowline (complete). Timing for final plugging is TBD.
Engineering	Adams	Texas Tea Bond Claim: Task 2.1, 3.1A - Plug and Abandon, Flowline Abandonment - 320240, 001-08699	Completed	Plug well and abandon flowline
Engineering	Adams	Texas Tea Bond Claim: Task 3.3, 3.7 - Plug and Abandon, Flowline Abandonment - 320257, 001-08775	Completed	Plug well and abandon flowline
Engineering	Boulder	Jul1 #: Task 1 - Plug and Abandon, Flowline Abandonment - 379627, 013-05018	Completed	Fluid disposal
Environmental	Jackson	CM Production Bond Claim: Task 1.14 - Sampling and Analysis, Spill or Remediation - 324630,	Completed	Soil sampling and analysis
Environmental	Jackson	CM Production Bond Claim: Task 1.15 - Sampling and Analysis, Spill or Remediation - 324599,	Completed	Soil sampling and analysis
Environmental	Jackson	CM Production Bond Claim: Task 1.7, 1.10 - Equipment intervention - 324634,	Completed	Remove liquids from tanks
Engineering	Jackson	CM Production Bond Claim: Task 3.1, 3.2 - MIT or Other Well Work, Plug and Abandon - 324599, 057-06011	Completed	FY2017-18 Work: Set downhole plug to TA well and MIT (complete). Timing for final plugging is TBD.
Engineering	Jackson	CM Production Bond Claim: Task 3.1, 3.2 - MIT or Other Well Work, Plug and Abandon - 324640, 057-06127	Completed	FY2017-18 Work: Wellhead repair (complete). Timing for final plugging is TBD.



COMPLETED TASK LIST - FY2017-18, cont.				
Work Unit	County	Project and Task	Task Status	Planning Comments
Engineering	Jackson	CM Production Bond Claim: Task 3.1, 3.2 - MIT or Other Well Work, Plug and Abandon - 324626, 057-06069	Completed	FY2017-18 Work: Set downhole plug to TA well and MIT (complete). Timing for final plugging is TBD.
Field Operations	La Plata	Atom Petroleum Bond Claim: Task 1.2 - Equipment Intervention - 325653,	Completed	Remove liquids from tank
Engineering	La Plata	Atom Petroleum Bond Claim: Task 2.5 - MIT or Other Well Work - 325653, 067-06777	Completed	FY2017-18 Work: Removed liquid from cellar, no wellhead leak apparent during work in October 2017; continuing to monitor well cellar. Timing of plugged well. Neither carbon dioxide nor hydrogen sulfide were
Engineering	La Plata	Hodges Pool Unit #1: Task 2 - Plug and Abandon - 385403, 067-05539	Completed	FY2017-18 Work: gas monitoring at a cathodic protection well near the plugged well. Neither carbon dioxide nor hydrogen sulfide were
Environmental	La Plata	McCullough #4: Task 2 - Sampling and Analysis - 325208,	Completed	Collect wellhead gas samples
Engineering	La Plata	Red Mesa Holdings Bond Claim: Task 2 - MIT or Other Well Work, Complaint response, Bradenhead test - 325858, 067-07085	Completed	Set downhole plugs to TA well, perform MIT, abandon flowline, and remove liquid tank bottoms for off-site disposal
Engineering	La Plata	Red Mesa Holdings Bond Claim: Task 2 - MIT or Other Well Work, Plug and Abandon, Flowline Abandonment - 325267, 067-06033	Completed	Plug well and abandon flowlines, remove pump jack, and install stormwater BMPs
Environmental	La Plata	Red Mesa Holdings Bond Claim: Task 3 - Sampling and Analysis, Spill or Remediation - 325267,	Completed	FY2017-18 Work: Remove hydrocarbon-impacted soil (includes sampling and analysis). Timing of additional work TBD.
Field Operations	La Plata	Red Mesa Holdings Bond Claim: Task 6 - Equipment Intervention, Remove crude oil - 325297,	Completed	Remove liquids from tank
Reclamation	La Plata	Red Mesa Holdings Bond Claim: Task 7 - Stormwater BMPs (maintenance) - Red Mesa Field,	Completed	Install and maintain stormwater BMPs
Engineering	La Plata	Reynolds' Noel Bond Claim: Task 2.1 - MIT or Other Well Work, Install pressure gauge - 385368, 067-05448	Completed	Wellhead work to prepare for future re-entry to plug and abandon, installed pressure gauge.
Reclamation	Larimer	Ranchers Bond Claim: Task 2 - Engineering Design - 419639,	Completed	Soil sampling and analysis
Field Operations	Logan	CM Production Bond Claim: Task 1.5 - Equipment Intervention - Cliff and Mount Hope Fields,	Completed	
Environmental	Logan	Red Mountain Bond Claim: Task 13 - Sampling and Analysis, Spill or Remediation - 312261,	Completed	Collected samples for analysis at produced water pit and around other production equipment.
Engineering	Logan	Red Mountain Bond Claim: Task 8 - Plug and Abandon, Flowline Abandonment - 312261, 075-08293	Completed	Plug well and abandon flowline
Engineering	Mesa	DB Orphan #8: Task 1 - Plug and Abandon - 450650, 077-10381	Completed	Set surface plug, cut off casing, and weld plate
Environmental	Mesa	DB Orphan #8: Task 2 - Sampling and Analysis, Soil Vapor Monitoring - 450650,	Completed	Soil gas monitoring
Environmental	Mesa	DB Orphan #8: Task 3 - Soil Vapor Extraction System - 450650,	Completed	FY2017-18 Work: Wind turbine ventilator installed. SVE blower shut down for winter. Periodic soil gas meter monitoring is on-going (in-house Plug well
Engineering	Mesa	Lloyd and Lowell #1: Task 2 - Plug and Abandon - 428669, 077-40017	Completed	Stormwater permit
Reclamation	Moffat	Tatonka Bond Claim: Task 10 - Weed Control (maintenance), Stormwater BMP maintenance - 313340,	Completed	
Engineering	Moffat	Vitruvian Exploration Bond Claim: Task 1 - Flowline Abandonment - 392479,	Completed	Abandon flowlines
Engineering	Moffat	Vitruvian Exploration Bond Claim: Task 1 - Flowline Abandonment - 392480,	Completed	Abandon flowlines
Engineering	Montezuma	Atom Petroleum Bond Claim: Task 1.1 - Plug and Abandon, Flowline Abandonment - 313483, 083-06263	Completed	Plug well and abandon flowlines
Engineering	Montezuma	Atom Petroleum Bond Claim: Task 1.1 - Plug and Abandon, Flowline Abandonment - 313628, 083-06653	Completed	Plug well and abandon flowlines
Environmental	Montezuma	Pilcher #1: Task 1 - Sampling and Analysis - 393155,	Completed	Collect samples at former tank battery location and develop remediation
Reclamation	Montezuma	Wolcott #1: Task 2 - Reclamation (initial work) - 313501,	Completed	Reclaim location



Oil and Gas Staff Report

June 11, 2018

COMPLETED TASK LIST - FY2017-18, cont.				
Work Unit	County	Project and Task	Task Status	Planning Comments
Reclamation	Montezuma	Woosley Oil - State #1-36: Task 4 - Reclamation (initial work) - 313502,	Completed	Reclaim location
Reclamation	Montrose	Redwine Bond Claim: Task 4 - Stormwater BMPs (maintenance), Weed Control (maintenance) - 313641,	Completed	Reclamation maintenance
Field Operations	Washington	Energy Search Bond Claim: Task 1.1 - Fence Repair - 317287,	Completed	Repair fence
Field Operations	Washington	Energy Search Bond Claim: Task 1.1 - Fence Repair - 317289,	Completed	Repair fence
Engineering	Weld	Texas Tea Bond Claim: Task 3.3: 3.7 - Plug and Abandon, Flowline Abandonment - 318231, 123-08720	Completed	FY2017-18 Work: abandon flowline (complete). Timing for final plugging is TBD.
Engineering	Weld	Texas Tea Bond Claim: Task 3.3: 3.7 - Plug and Abandon, Flowline Abandonment - 318452, 123-09110	Completed	FY2017-18 work: abandon flowline (complete at Tank Battery). Timing for final plugging is TBD.

PROJECT FINANCIALS - FY2017-18					
Project Name	BOND Actual	PROW Actual	EMGY Actual	Subtotals	Actual
Atom Petroleum Bond Claim	\$ 46,410	\$ -	\$ -	\$	46,410
CM Production Bond Claim	\$ 54,549	\$ 13,104	\$ -	\$	67,654
DB Orphan #8	\$ -	\$ 13,027	\$ -	\$	13,027
Energy Search Bond Claim	\$ 4,684	\$ -	\$ -	\$	4,684
Juhl #1	\$ -	\$ 78	\$ -	\$	78
Lloyd and Lowell #1	\$ -	\$ 76,610	\$ -	\$	76,610
McCullough #4	\$ -	\$ 3,007	\$ -	\$	3,007
Pitcher #1	\$ -	\$ 1,074	\$ -	\$	1,074
Ranchers Bond Claim	\$ -	\$ 4,585	\$ -	\$	4,585
Red Mesa Holdings Bond Claim	\$ 60,574	\$ 41,214	\$ -	\$	101,787
Red Mountain Bond Claim	\$ 30,842	\$ -	\$ -	\$	30,842
Redwine Bond Claim	\$ -	\$ 3,023	\$ -	\$	3,023
Reynolds* Noel Bond Claim	\$ 841	\$ -	\$ -	\$	841
Tatonka Bond Claim	\$ -	\$ 350	\$ -	\$	350
Texas Tea Bond Claim	\$ 31,568	\$ 109,335	\$ -	\$	140,902
Vitruvian Exploration Bond Claim	\$ 9,010	\$ -	\$ -	\$	9,010
Wolcott #1	\$ -	\$ 407	\$ -	\$	407
TOTAL EXPENDITURES ->	\$ 238,478	\$ 265,814	\$ -	\$ -	\$ 504,291

NOTES:

Project and Task Format: [Location or Well Name and Number (if orphan) or Operator Name + "Bond Claim"] : "Task" [Task No(s)] - [Task Type(s)] - [Facility ID Number], [Well API Number (county and sequence code, if well work included with task)]

Project Financials: COGCC may be waiting on invoices for some Completed Tasks, and therefore expenditures for those Tasks may not be shown in the Project Financials Section.

ABBREVIATIONS:

EMGY = Emergency Response Appropriation

PROW = Plugging and Reclaiming Orphaned Wells Appropriation

PROW FUNDS SCOREBOARD

\$	445,000	Annual PROW Appropriation
\$	(107,412)	Planned and In Progress Estimate
\$	(51,273)	Completed Work (Waiting on Invoice Approval)
\$	(265,814)	Completed Work (Invoiced)
\$	20,501	Estimated Fiscal Year End Balance

(Scoreboard excludes work involving Bond Expenditures)



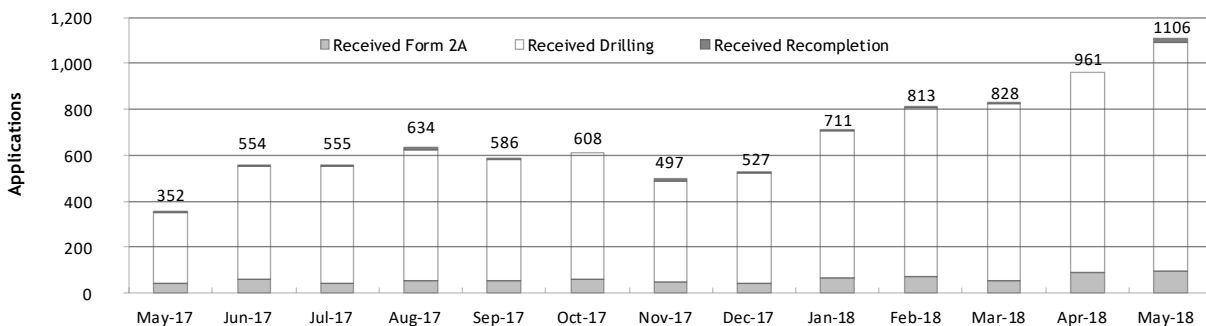
Monthly Permit Activity as of June 1, 2018

Form/Month	Backlog	Received	Approved	Withdrawn	Rejected	Incomplete ¹	In-Process	Remaining ²
Form2A								
May-17	162	41	55	0	0	25	123	148
Jun-17	148	58	40	2	1	31	132	163
Jul-17	163	45	31	3	1	33	140	173
Aug-17	173	53	49	6	0	33	138	171
Sep-17	171	56	41	0	1	25	160	185
Oct-17	185	58	40	6	2	25	170	195
Nov-17	195	47	38	2	0	24	178	202
Dec-17	202	44	32	3	0	31	180	211
Jan-18	211	66	19	4	0	33	221	254
Feb-18	254	73	22	5	1	45	254	299
Mar-18	299	56	50	5	0	52	248	300
Apr-18	300	87	25	8	1	60	293	353
May-18	353	98	46	10	0	74	321	395
Drilling								
May-17	1,627	307	367	13	52	168	1,334	1,502
Jun-17	1,502	493	331	3	9	185	1,467	1,652
Jul-17	1,652	508	234	49	75	146	1,656	1,802
Aug-17	1,802	572	349	13	20	137	1,855	1,992
Sep-17	1,992	528	450	12	36	135	1,887	2,022
Oct-17	2,022	550	311	75	64	139	1,983	2,122
Nov-17	2,122	438	331	19	59	125	2,026	2,151
Dec-17	2,151	479	304	15	25	124	2,162	2,286
Jan-18	2,286	639	218	68	0	93	2,546	2,639
Feb-18	2,639	736	217	34	45	99	2,980	3,079
Mar-18	3,079	769	463	1	8	98	3,278	3,376
Apr-18	3,376	874	164	185	64	104	3,733	3,837
May-18	3,837	994	327	54	89	91	4,332	4,361
Recompletion								
May-17	10	4	3	4	0	1	6	7
Jun-17	7	3	2	0	0	2	6	8
Jul-17	8	2	4	0	0	2	4	6
Aug-17	6	9	0	1	0	2	12	14
Sep-17	14	2	6	0	0	2	8	10
Oct-17	10	0	2	0	0	3	5	8
Nov-17	8	12	1	0	0	3	16	19
Dec-17	19	4	4	0	0	8	11	19
Jan-18	19	6	3	0	0	9	13	22
Feb-18	22	4	3	0	0	9	14	23
Mar-18	23	3	8	0	0	10	8	18
Apr-18	18	0	3	0	0	9	6	15
May-18	15	14	3	0	0	9	17	26

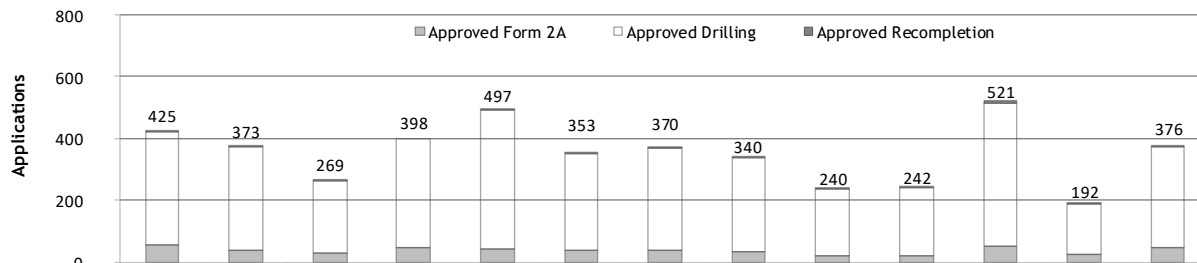
¹Incomplete are applications that have missing or inaccurate data and cannot be approved.

²Backlog = Incomplete + In-process = Remaining permits from previous month.

Received Applications



Approved Applications





Status of Permit Applications Filed By Month as of June 1, 2018

Form 2A Location Assessment										
Year	Month	Received	Approved	Withdrawn	In Process	Percent In Process	Average			
							Days to Process	Less Than 30 Days	30 to 49 Days	Greater Than 50 Days
2013	TOTAL	1,281	1,202	78	1	0%		369	433	400
2014	TOTAL	1,114	1,067	47	0	0%		279	429	359
2015	TOTAL	592	564	26	2	0%		78	157	329
2016	TOTAL	407	376	26	3	1%		32	61	283
2017	JAN	42	33	9	0	0%	104	0	5	28
	FEB	59	57	2	0	0%	93	7	9	41
	MAR	70	59	4	7	10%	76	6	18	35
	APR	41	35	2	4	10%	95	5	9	21
	MAY	41	35	4	2	5%	105	2	6	27
	JUNE	57	47	1	9	16%	77	7	16	24
	JULY	43	32	4	7	16%	59	6	14	12
	AUG	51	37	4	10	20%	60	6	9	22
	SEP	55	37	1	16	29%	88	4	10	23
	OCT	57	34	6	17	30%	69	9	7	18
	NOV	47	26	2	19	40%	61	5	8	13
	DEC	44	21	1	22	50%	74	1	2	18
2017	TOTAL	607	453	40	113	19%		58	113	282
2018	JAN	65	24	4	37	57%	68	2	6	16
	FEB	73	35	2	36	49%	60	5	10	20
	MAR	56	22	3	30	55%	42	3	14	5
	APR	87	13	1	72	83%	33	3	10	0
	MAY	98	0	0	98	100%	0	0	0	0
2018	TOTAL	379	94	10	273	72%		13	40	41

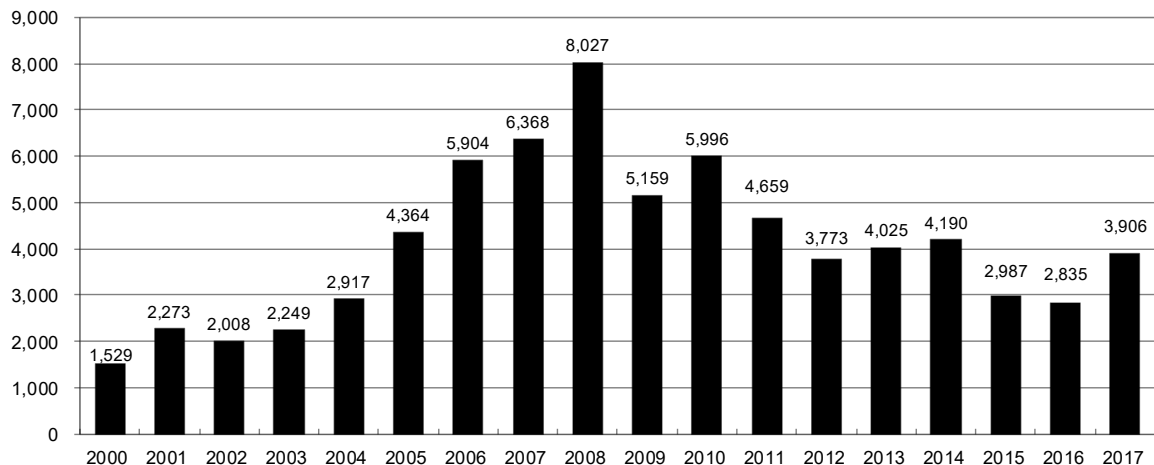
Form 2 Application For Permit to Drill (APDs)										
Year	Month	Received	Approved	Withdrawn	In Process	Percent In Process	Average			
							Days to Process	Less Than 30 Days	30 to 49 Days	Greater Than 50 Days
2013	TOTAL	4,548	4,312	235	1	0%		1,046	1,626	1,714
2014	TOTAL	4,208	4,026	182	0	0%		689	1,629	1,744
2015	TOTAL	3,237	3,091	146	0	0%		249	759	2,113
2016	TOTAL	3,253	3,026	145	24	1%		204	402	2,442
2017	JAN	418	330	84	4	1%	117	5	41	290
	FEB	590	495	49	46	8%	110	36	39	421
	MAR	508	393	45	70	14%	97	15	70	310
	APR	335	285	18	32	10%	111	10	17	263
	MAY	306	254	29	23	8%	119	18	65	172
	JUNE	472	354	29	89	19%	113	12	75	270
	JULY	458	301	70	87	19%	96	22	27	252
	AUG	522	293	52	167	33%	72	8	94	199
	SEP	512	325	5	145	31%	96	18	88	221
	OCT	519	283	21	210	41%	89	7	50	226
	NOV	429	250	24	151	36%	83	40	23	194
	DEC	479	220	0	235	52%	86	3	10	209
2017	TOTAL	5,548	3,783	426	1,259	23%		194	599	3,027
2018	JAN	639	224	13	365	61%	69	10	47	173
	FEB	735	232	14	468	66%	64	18	84	134
	MAR	769	150	13	571	78%	53	15	68	69
	APR	874	106	2	743	87%	31	25	75	6
	MAY	995	2	1	992	100%	7	2	0	0
2018	TOTAL	4,012	714	43	3,139	78%		70	274	382



Annual Drilling Permits by County as of June 1, 2018

County	2005	2006	2007	2008	2009	2010	2011	2012	2013	2014	2015	2016	2017	2018
ADAMS	34	37	89	51	35	21	8	40	40	51	96	74	125	63
ARAPAHOE	7	11	10	10	10	8	23	35	23	34	19	5	78	44
ARCHULETA	13	14	26	47	11	18	12	5	4	3	11	3	21	12
BACA	8	2	11	13	3	4	5	3	1	1			5	1
BENT	3	8	1	1		5		2	1					
BOULDER	13	21	37	32	35	24	30	22						
BROOMFIELD	1	1		2	33	28	11	36		31				
CHEYENNE	10	21	15	33	12	13	16	31	50	26	9		1	
COSTILLA														
CROWLEY										2				3
DELTA	10	9	2			4	3	6	1	2				
DENVER		19	25	24										
DOLORES	1	6	10	12	21	8	8	13	12	3		3	2	1
EAGLE									1					
ELBERT		4			1		1	2	2	4	3	3	1	
EL PASO					2	3	3	18	1	2				
FREMONT	3	2	4	14	13	22	14	11	2	8	2	2	1	
GARFIELD	1,509	1,845	2,550	2,888	1,981	2,037	1,323	1,046	870	1,066	532	724	612	250
GRAND														
GUNNISON	9	19	7	10	12	4	3	11	9	20	28	19	33	17
HUERFANO	2			7		2	1	9	1	13	2		2	
JACKSON	6	8	5	27	19	9	18	5	12	17	3	57	28	10
JEFFERSON		1	3	2					1					
KIOWA	1	11	9	26	7	16	17	17	12	5	3		3	
KIT CARSON	5	4	4	13	7	3	2	6	1	2		1		
LA PLATA	115	235	251	328	298	191	99	71	32	87	106	96	108	66
LARIMER	1		5	46	12	41	8	13	2	4	28	4	30	2
LAS ANIMAS	413	500	362	303	88	92	85	11	2	1				
LINCOLN	4	1	2	58	44	48	31	36	87	129	24	5	31	10
LOGAN	13	17	14	5	9	17	8	27	4	5		1	3	1
MESA	136	265	293	501	427	306	127	150	105	74	126	7	215	24
MOFFAT	60	120	68	57	51	53	93	88	44	54	12	17	5	2
MONTEZUMA	11	5	12	22	39	19	27	29	14	25	3	3	6	2
MONTROSE		1	3	3		1	1							
MORGAN	7	3	6	2	1	6	13	5	16	6	4	28		4
OTERO														
PARK					3	4	1							
PHILLIPS	17	12	69	82	45	64	112	56		11	2			
PITKIN			1								1			
PROWERS	5	7	5	8	1	3	1			1		1		
RIO BLANCO	161	360	321	477	348	441	109	117	167	121	107	71	115	56
RIO GRANDE				1	1			2		1				
ROUTT	6	9	8	4	2	3	10	4	12	4	9			
SAGUACHE			2	1	2									
SAN MIGUEL	45	35	23	20	13	10	2	1		2	3			
SEDGWICK	2	7	2	1	19	11	12	2		7	1			
WASHINGTON	50	69	45	11	1	6	12	6	19	12	9	7	10	6
WELD	901	1,418	1,527	2,340	1,448	2,152	2,262	1,826	2,468	2,303	1,841	1,704	2,466	818
YUMA	782	797	541	545	105	299	148	11	9	53	3			2
TOTAL	4,364	5,904	6,368	8,027	5,159	5,996	4,659	3,773	4,025	4,190	2,987	2,835	3,906	1,389

ALL COUNTIES





Form 2A Breakdown By County By Year as of June 1, 2018

Year	County	Form 2As	Completed	In Process	New Location	CDP	SWH	RSO	CDPHE	
2009	Total State	818	818	0	408	2	80	5	5	
2010	Total State	2,377	2,377	0	1,543	0	317	22	55	
2011	Total State	2,297	2,297	0	1,724	1	259	16	5	
2012	Total State	1,297	1,297	0	900	0	167	6	1	
2013	Total State	1,195	1,194	1	845	0	144	2	4	
2014	Total State	1,067	1,065	0	776	3	129	7	3	
2015	Total State	574	569	3	398	0	95	2	2	
2016	Total State	393	379	2	219	0	49	4	7	
2017	ADAMS	33	12	19	29	0	0	0	0	
	ARAPAHOE	35	15	18	29	0	0	0	0	
	ARCHULETA	3	3	0	2	0	3	0	0	
	BACA	3	3	0	3	0	0	0	0	
	CROWLEY	3	3	0	3	0	0	0	0	
	DOLORES	2	2	0	2	0	1	0	0	
	ELBERT	1	1	0	1	0	0	0	0	
	FREMONT	1	1	0	1	0	1	0	0	
	GARFIELD	32	31	1	12	0	23	3	0	
	GUNNISON	4	4	0	1	0	2	0	0	
	JACKSON	7	7	0	4	0	7	0	0	
	LA PLATA	13	13	0	5	0	12	0	0	
	LARIMER	3	3	0	3	0	0	0	0	
	LINCOLN	25	25	0	19	0	0	0	0	
	MESA	15	15	0	10	0	4	1	0	
	MOFFAT	1	1	0	1	0	1	0	0	
	MONTEZUMA	3	3	0	3	0	0	0	0	
	MORGAN	4	4	0	4	0	0	0	0	
	RIO BLANCO	9	9	0	1	0	8	0	0	
	WASHINGTON	8	8	0	7	0	1	0	0	
	WELD	382	282	89	270	0	9	0	1	
	YUMA	1	1	0	1	0	0	0	0	
	2017	Total State	588	446	127	411	0	72	4	1
	2018	ADAMS	14	1	13	9	0	0	0	0
		ARAPAHOE	5	3	2	5	0	0	0	0
		ARCHULETA	3	0	3	2	0	2	0	
		BROOMFIELD	5	0	5	5	0	0	0	0
		DOLORES	1	1	0	1	0	1	0	0
GARFIELD		18	16	2	4	0	14	0	1	
JACKSON		2	0	2	0	0	2	0	0	
LA PLATA		4	3	1	0	0	2	0	0	
LARIMER		3	1	2	0	0	0	0	0	
LINCOLN		16	11	5	17	0	0	0	0	
LOGAN		1	1	0	0	0	0	0	0	
MESA		4	2	2	2	0	0	0	0	
MOFFAT		2	1	1	2	0	0	0	0	
MONTEZUMA		4	4	0	2	0	0	0	0	
MORGAN		1	1	0	0	0	0	0	0	
RIO BLANCO		2	0	2	1	0	1	0	1	
WASHINGTON		9	7	2	10	0	0	0	0	
WELD	255	37	218	197	0	0	0	0		
2018	Total State	349	89	260	257	0	22	0	2	

Abbreviations:

CDP = Comprehensive Drilling Plan

SWH = Sensitive Wildlife Habitat consultation

RSO = Restricted Surface Occupancy consultation

CDPHE= Colorado Department of Health and Environment consultation



Horizontal Well Activity as of June 1, 2018

County	Prior Years		2009		2010		2011		2012		2013		2014		2015		2016		2017		2018		Total		Completion		
	Drilled	PA	Permit	Spud	Permit	Spud	Permit	Spud	Permit	Spud	Permit	Spud	Permit	Spud	Permit	Spud	Permit	Spud	Permit	Spud	Permit	Spud	AC	PR	DA	PA	
ADAMS			6	5	2	3	1	1	17	2	26	1	42	18	92	3	72	2	125	28	63	18	80	3	21	1	
ARAPAHOE	2		10	1	22	4	11	13	22	11	11	13	22	11	9	5	5	1	77	15	43	11	56	2	32	1	
ARCHULETA	17		7	6	15	7	10	8	5	9	2	2	1	1	6	3	2	1	17	2	9	2	60	2	54		
BENT									1	1	1											1					
BOULDER							4																				
CHEYENNE	5	4									7	2	1	1	1	1						4		3	5		
DELTA									6	1	1		2									3		3			
DOLORES	9		18	2	6				9	3	5	4	3	1								18		12	5		
EL PASO									10																		
ELBERT									1																	1	
FREMONT	7	6	6		12	5	3	4	4	1	1	1			1							11		10	7	1	
GARFIELD	10	2	1	1	16	2	18	6	43	6	18	4	20	11	12	7	4		11		1	42		42	2		
GUNNISON	1				1				3	2	2	2	9		18	2	10	1	24	1	14	1	8		7		
HUERFANO									4	1	4	1	2									1		1		1	
JACKSON	8	1	1	8	3	4	9	1	4		8	5	15	4	3	52	24		24	9	10	5	59		21	3	
KIOWA									1		4	2	1									2				1	
KIT CARSON	1								1		1	1										2				4	
LA PLATA	28	2	11	2	28	3	18	7	12	1	5	1	43	7	42	3	67	8	83	6	42	2	91		89	1	
LARIMER	3	2					5	1	2	1	2	2			22	8	4	3	29	25	2	2	42		24	2	
LAS ANIMAS	16	2	4		1	1																16		16		1	
LINCOLN			2	1	2	1	1				6		4	2								4		4		3	
LOGAN	2								1													2				2	
MESA	3	2	36		22	7	24	13	14		9	2	9	1	6	3					3	31		28	2	4	
MOFFAT	7	1	6	3	4		9	4	44	6	18	13	15	1	5	2	3	1	3		1	35		21	12		
MONTEZUMA	6	1	23	6	11	2	8	2	18	6	3	4	15	2								36		29	8		
MORGAN							6	2	2	1	13	1	6		4	1	28					5		5		5	
PARK							1	1	1													1				1	
RIO BLANCO	7	2			1	1	11	2	15	2	4	5	3	2	3				9		3	1	18		12	3	
ROUITT	10	6	1						1		1				3							1		1	6	1	
SAN MIGUEL	1																					1				1	
WASHINGTON	1	1																				1				1	
WELD	11	3	12	5	208	84	763	229	964	594	2,114	1,099	2,215	1,423	1,789	1,063	1,671	723	2,435	1,248	815	531	7,020	5,098	12	80	
YUMA	1	1	6																			1				1	
TOTAL Horizontal	156	25	14	147	31	333	123	901	280	1,203	2,260	1,160	2,428	1,484	2,016	1,096	1,918	764	2,837	1,334	1,006	573	7,652	5	5,533	33	138
Percent of Total HZ																											
Total All Permits																											
HZ Percent of Total																											

0% 72% 0% 2%
 1,389 72.4%
 3,875 73.2%
 2,835 67.7%
 2,988 67.5%
 4,190 57.9%
 4,025 56.1%
 3,773 31.9%
 4,659 19.3%
 5,996 5.6%
 5,159 2.8%
 16% 9%
 5,098 12 80



Well to Building Setbacks by Year and by County as of June 1, 2018

Count of well locations, grouped by proximity from well to buildings.

Location Proximity to Buildings	2010	2011	2012	2013	2014	2015	2016	2017	2018	Number of Locations Since 2009	Percent of Total Locations
Less than 150 feet	3	3	2	0	3	2	0	0	0	15	0%
150 to 350 feet	58	61	39	34	38	12	15	16	3	313	3%
350 to 500 feet	110	97	61	65	48	33	23	24	12	523	6%
500 to 1000 feet	385	331	188	188	161	83	76	90	24	1,643	18%
1000 + feet	1,705	1,470	838	761	724	380	206	318	108	6,866	73%
TOTAL LOCATIONS	2,261	1,962	1,128	1,048	974	510	320	448	147	9,360	

County	TOTAL	Less than 150 feet	150 to 350 feet	350 to 500 feet	500 to 1000 feet	1000 + feet
ADAMS	102	0	4	9	25	64
ARAPAHOE	123	0	2	5	11	105
ARCHULETA	27	0	1	1	14	11
BACA	18	0	0	0	1	17
BENT	7	0	0	0	0	7
BOULDER	23	0	1	1	17	4
BROOMFIELD	33	0	0	4	13	16
CHEYENNE	140	1	0	0	2	137
CROWLEY	5	0	0	0	0	5
DELTA	7	0	0	2	1	4
DOLORES	23	0	0	0	7	16
EAGLE	1	0	0	0	0	1
EL PASO	14	0	0	0	3	11
ELBERT	15	0	0	0	3	12
FREMONT	41	0	2	7	9	23
GARFIELD	625	0	12	10	84	519
GUNNISON	50	1	0	4	1	44
HUERFANO	16	0	0	0	5	11
JACKSON	64	0	1	5	1	57
KIOWA	66	0	0	0	1	65
KIT CARSON	15	0	0	0	0	15
LA PLATA	154	0	8	16	49	81
LARIMER	43	0	5	5	16	17
LAS ANIMAS	201	1	6	7	37	150
LINCOLN	409	0	1	2	5	401
LOGAN	46	0	1	1	1	43
MESA	118	0	0	3	17	98
MOFFAT	191	0	1	3	16	171
MONTEZUMA	50	0	0	1	4	45
MONTROSE	2	0	0	0	0	2
MORGAN	35	0	0	2	5	28
PARK	4	0	0	0	0	4
PHILLIPS	275	1	4	6	21	243
PITKIN	1	0	0	0	0	1
PROWERS	6	0	0	0	0	6
RIO BLANCO	196	0	0	0	2	194
RIO GRANDE	2	0	0	0	1	1
ROUTT	30	0	0	0	2	28
SAN MIGUEL	14	0	0	0	0	14
SEDGWICK	33	0	0	1	3	29
WASHINGTON	93	0	2	0	3	88
WELD	5,513	11	252	412	1,218	3,619
YUMA	529	0	9	16	45	459



Well to Building Setbacks Less Than Two Hundred Feet as of June 1, 2018

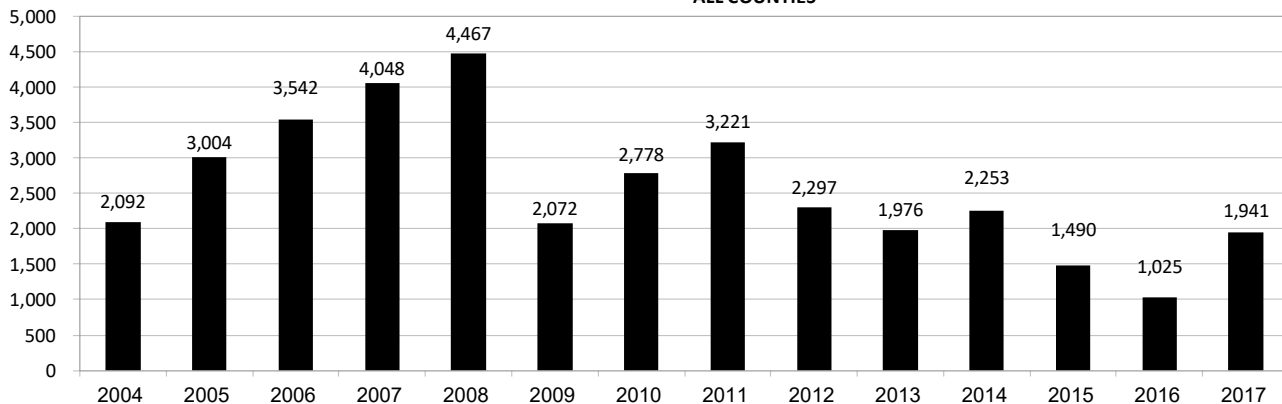
Year	Location Doc Number	County	High Density	New Location	Distance (Feet)	Proximity (Feet)	Building Description
2015	400768804	WELD	No	Yes	46	less 150	Building to be razed
2011	2587822	CHEYENNE	No	No	58	less 150	Water well house
2009	1691798	WELD	No	No	58	less 150	Vehicle garage
2010	400072164	WELD	No	Yes	69	less 150	Abandoned hog shed
2014	400569085	WELD	No	No	78	less 150	Well shed
2014	400600705	WELD	No	No	80	less 150	Livestock shed
2012	400240957	GUNNISON	No	Yes	90	less 150	Equipment shed
2015	400742811	WELD	No	Yes	102	less 150	Building to be razed
2009	1758843	WELD	No	Yes	103	less 150	Building to be razed
2011	1636646	WELD	No	No	122	less 150	Storage shed
2009	400011284	LAS ANIMAS	No	Yes	127	less 150	Operator is owner
2009	1786896	PHILLIPS	No	No	132	less 150	Grain storage
2014	400642113	WELD	No	Yes	142	less 150	Barn
2011	400117702	WELD	No	Yes	143	less 150	Irrigation pump house
2011	400227765	WELD	No	Yes	145	less 150	Storage barn
2014	400558626	LINCOLN	No	No	150	less 150	Gas plant equipment building
2009	1904205	WELD	No	No	154	150 to 350	Livestock enclosure
2012	400243295	WELD	No	Yes	155	150 to 350	Unused storage shed
2015	400862577	GARFIELD	No	No	155	150 to 350	Gravel pit scale house
2011	400179419	WELD	No	Yes	157	150 to 350	Existing well / storage building
2010	400054716	WELD	No	No	159	150 to 350	Equipment barn
2011	400188968	WELD	No	Yes	159	150 to 350	Abandoned
2014	400554054	WELD	No	Yes	159	150 to 350	Equipment shed
2014	400559404	WELD	No	Yes	160	150 to 350	Barn
2016	400950178	LA PLATA	No	Yes	162	150 to 350	Residence
2010	400021477	WELD	No	Yes	162	150 to 350	Goat barn
2009	1758386	WELD	No	Yes	168	150 to 350	Storage shed
2011	1635946	WELD	No	No	169	150 to 350	Storage shed
2013	400447386	WELD	No	No	169	150 to 350	Abandoned turkey barn
2013	400447391	WELD	No	No	169	150 to 350	Abandoned turkey barn
2011	400165164	WELD	No	Yes	178	150 to 350	Residence
2013	400367184	WELD	No	Yes	179	150 to 350	Shed
2011	400188780	WELD	No	Yes	180	150 to 350	Residence
2014	400562498	WELD	No	Yes	181	150 to 350	Garage / storage shed
2010	1697620	WELD	No	No	187	150 to 350	Livestock shed
2009	1758746	WELD	No	No	193	150 to 350	Storage shed
2011	400154431	WELD	No	Yes	198	150 to 350	Turkey barn
2012	400250031	WELD	No	Yes	198	150 to 350	Abandoned guard shack
2010	1774783	WELD	No	No	199	150 to 350	Cement service building
2011	400118102	YUMA	No	Yes	199	150 to 350	Steel barn



Annual Well Starts by County as of July 1, 2018

County	2004	2005	2006	2007	2008	2009	2010	2011	2012	2013	2014	2015	2016	2017	2018
ADAMS	22	24	13	41	14	14	21	2	15	5	29	3	2	29	22
ARAPAHOE	6	1	5	2	1	1	3	8	9	25	21	1	1	17	11
ARCHULETA	4	10	5	7	29	9	12	10	11		1	7	4	5	16
BACA	6	6	2	6	12		5	4	2	2		1		2	
BENT	3	2	8	1	1			1	2						
BOULDER	5	11	9	14	25	16	13	7	14						
BROOMFIELD	1				10		21	11	5						
CHEYENNE		9	14	15	14	8	12	11	17	35	19	3			
COSTILLA															
CROWLEY											2			1	
DELTA	4	6	5	2			7	3	3		1				
DENVER				7	5	4									
DOLORES	2		2	13	6	2		1	5	10	4			1	
EAGLE										1					
EL PASO							2		5		1				
ELBERT			1									3		1	
FREMONT	1	3	2	2	6	3	9	16	9	2	4		1	1	
GARFIELD	585	799	1,005	1,304	1,690	765	906	877	495	391	361	174	160	307	148
GUNNISON	1	1	9	5	1	4	5	4	4	1	2	4	1	7	2
HUERFANO	6	2			2		2		2	1	4	1			
JACKSON	10		3	3	12	1	8	8		7	7		24	13	5
JEFFERSON				2											
KIOWA	2	1	7	7	2	5	15	14	10	12	3	2			
KIT CARSON	1	6	2	1	14	3	1	1	3	1	2			1	
LA PLATA	103	104	108	179	205	131	67	54	3	10	40	42	44	97	14
LARIMER		1		4	8	1	28	2	10	4	1	9	3	25	2
LAS ANIMAS	296	384	413	326	222	14	7	78	1		1				
LINCOLN	2	2	1	2	18	11	14	21	23	41	42	12	2	12	8
LOGAN	2	11	12	12	3	7	3	9	13	4	6				
MESA	25	89	156	209	225	14	11	41	4	11	17	77	4	123	62
MOFFAT	19	40	60	42	26	18	15	32	26	27	3	6	3	1	
MONTEZUMA	1	7	2	4	22	10	3	8	18	12	8	1		2	1
MONTROSE	1			1	2		1								
MORGAN	5	5	3	1	1	2	3	2	3	1	3	1			4
PARK							2								
PHILLIPS	10	11	4	35	18	2	42	130	48		9				
PROWERS	5	5	6	3	5	2	3	1				1			
RIO BLANCO	92	95	107	95	205	118	107	71	54	36	43	17		5	3
RIO GRANDE										1					
ROUTT	1	6	3	2		2	1	2	4	2	2				
SAN MIGUEL	28	13	20	17	5	1	2	2		2					
SEDGWICK	2	1	1	5			3	8	3			1			
WASHINGTON	65	34	23	14	11	2	2	4	1	9	7	2	6	8	3
WELD	632	718	931	1,222	1,312	878	1,209	1,672	1,459	1,312	1,569	1,123	770	1,283	612
YUMA	144	597	593	445	336	28	213	106	16	13	39				
TOTAL	2,092	3,004	3,542	4,048	4,467	2,072	2,778	3,221	2,297	1,976	2,253	1,490	1,025	1,941	913

ALL COUNTIES





Active Wells by County and Status as of June 1, 2018

COUNTY	Drilling	Domestic	Injecting	Producing	Shut In	Temp Aband	Waiting on Completion	Active Storage	Total Active Wells
ADAMS	44		6	662	227	22	1	12	974
ARAPAHOE	17	1	4	116	36	12		44	230
ARCHULETA	2	5	1	103	19	15	6	1	152
BACA			15	97	21	6		56	195
BENT		1		19	10	5			35
BOULDER				264	39	2			305
BROOMFIELD				88	4				92
CHEYENNE			41	280	43	47	1		412
CROWLEY									0
DELTA				2	14		1		17
DENVER				42	5	2	3		52
DOLORES			1	27	12				40
EL PASO		1				1			2
ELBERT				59	12	3		1	75
FREMONT	3	3		54	11	6	2		79
GARFIELD	236	2	38	10703	410	69	99	1	11,558
GUNNISON	3		2	28	12	3	2		50
HUERFANO			1	35	3	5			44
JACKSON	20		24	100	61		1		206
JEFFERSON					2		1	3	6
KIOWA			12	85	18	9	2		126
KIT CARSON		1		8	5	2			16
LA PLATA	9	7	20	3013	201	32	2	35	3,319
LARIMER	2	1	23	168	57	21			272
LAS ANIMAS	1	4	19	2664	91	115	10	23	2,927
LINCOLN	8	1	11	86	16	9			131
LOGAN			25	85	40	33		30	213
MESA	97	1	5	912	180	31	4	11	1,241
MOFFAT	1		9	379	124	37	5		555
MONTEZUMA		1	7	113	31	13			165
MONTROSE								1	1
MORGAN	4		16	48	122	34		81	305
OURAY		1				1			2
PARK									0
PHILLIPS			3	244	23	2			272
PITKIN								10	10
PROWERS				22	5	1			28
RIO BLANCO	30	3	302	2005	379	151	7	2	2,879
ROUTT		2		21	12	2			37
SAN MIGUEL	1			52	62	14			129
SEDGWICK	2		1	8	7	1	2		21
WASHINGTON	10		26	357	63	8	1		465
WELD	1209	1	56	12256	8213	570	19	4	22,328
YUMA	2	8	24	3683	127	9	12	1	3,866
Totals	1,701	44	692	38,888	10,717	1,293	181	316	53,832



Oil and Gas Staff Report

June 11, 2018

29

Monthly Statistics as of June 1, 2018

Page 1 of 2

YEAR and MONTH	Baker - Hughes Rig Count	Permits										Well Spud Notices	Active Drilling Permits	Active Wells	Public Visits			
		Drilling		Recompletion		Injection		Pits		Locations					Data	Office	Internet	
		Rcvd	Apvd	Rcvd	Apvd	Rcvd	Apvd	Rcvd	Apvd	Rcvd	Authz							
2011 TOTAL		4,709	4,659	325	320	44	32	190	192	2,382	2,267	3,216			187	1,294	1,337,865	
2012 TOTAL		3,982	3,773	154	168	63	44	114	84	1,373	1,293	2,297			159	1,305	1,324,443	
2013 TOTAL		4,481	4,028	74	72	67	63	67	106	1,268	1,213	1,977			92	1,456	511,734	
2014 TOTAL		4,223	4,191	37	34	48	48	82	45	1,113	1,115	2,243			130	1,682	521,685	
2015 TOTAL		3,505	2,988	33	33	28	54	38	17	581	557	1,466			73	1,489	339,080	
2016 TOTAL		3,395	2,832	20	16	45	37	62	19	417	353	1,019			41	1,339	325,117	
2017 TOTAL		5,880	3,875	53	34	57	46	10	61	618	491	1,930			27	1,369	357,023	
2018 TOTAL		4,012	1,389	27	20	29	37	17	14	380	162	756			13	543	162,022	

Abbreviation Key: Rcvd = Received, Apvd = Approved, Authz = Authorized



Monthly Statistics as of June 1, 2018

Page 2 of 2

YEAR and MONTH	Well Oper Change	Operators		Bonds			Claim		Hearings		Enforcement			Remediation Projects		Inspections			
		New	Inactive	Release Ind	Blntk	Replace	Ind	Blntk	Apps.	Orders	NOAVs	AOCs	OFVs	Cmplt	Spills	Rcvd	Comp	Wells	Locations
2011 TOTAL	6,743	33	31	79	44	43	4	4	403	349	230	10	19	247	527	726	536	12,394	-
2012 TOTAL	7,546	47	37	70	46	33	3	0	482	396	157	9	2	244	402	690	641	19,071	12,670
2013 TOTAL	7,192	49	21	48	26	20	0	0	571	522	237	37	3	201	568	507	541	23,551	13,370
2014 TOTAL	10,297	55	28	42	39	13	1	1	698	598	179	43	4	243	786	596	502	34,208	18,982
2015 TOTAL	4,461	59	27	27	45	31	3	3	738	645	173	57	8	358	623	516	601	38,957	19,199
2016 TOTAL	6,560	38	28	37	41	23	9	5	473	397	107	43	7	261	528	461	600	43,135	23,126
2017 TOTAL	11,735	37	26	58	45	57	1	6	885	680	79	36	6	1,358	613	538	329	33,143	17,938
2018 TOTAL	764	18	15	27	21	19	2	2	358	270	50	11	0	267	248	280	257	11,994	6,566

Abbreviation Ind = Individual, Blntk = Blanket, Apps = Application for Hearing, NOAV = Notice of Alleged Violation, AOC = Administrative Order of Consent, OFV = Order Finding Violation, Cmplt = Complaint, Comp = Completed