



**COLORADO**

**Oil & Gas Conservation  
Commission**

Department of Natural Resources

# Staff Report

for July 30, 2018

## Top Stories

### ◆ Rulemaking to Address Pooling and Hearing Processes

The COGCC will implement rule changes based on changes made to the State's pooling statute in SB18-230, and will also consider additions and amendments to other 500 Series Rules to streamline the process used by operators and others to initiate a hearing matter for consideration by the Commission, and the process used by COGCC Staff to manage hearing matters.

The Notice of Rulemaking and draft rules will be published in the Colorado Register by the Secretary of State's Office on August 10. The rulemaking hearing will take place during the Commission's September 17-18 hearing in Rifle. Additional information can be found at this location:

<http://cogcc.state.co.us/reg.html#/rules/hearingprocessrulemaking>

### ◆ Instrument Based Technologies and Processes for Detecting and Preventing Leaks and Spills from Flowlines

Last month, the COGCC engaged the Energy Institute at Colorado State University in Fort Collins to begin a review of instruments currently available and under development to prevent and detect leaks. The study will look at the applications of different technologies in detecting and preventing leaks and spills of produced fluids, including oil and water, and produced gas.

The Energy Institute's work will address detection methods using technologies applicable to both above ground and buried flowlines. The COGCC will receive a report addressing technologies such as infrared, laser, fiberoptic, spectroscopy, magnetic flux, LIDAR (Light

Detection and Ranging), acoustic, ground penetrating radar, piezoelectric, and metal oxide semiconductor.

### ◆ Probabilistic Models for Flowline Integrity

The COGCC entered into a six month agreement with the Colorado School of Mines (CSM) in Golden beginning in June 2018 to review probabilistic models for flowlines. This study looks at how upstream pipeline systems in Colorado may be modeled using highly mathematical techniques, with an emphasis on modeling flowlines that extend off the oil and gas location.

The CSM study will look the integrity of lines carrying produced fluids including oil and water, and produced gas. The COGCC will also receive from the CSM the results of a survey, undertaken with the assistance of the Interstate Oil and Gas Compact Commission, which will characterize how other states are addressing flowline regulations and how those states are using probabilistic models.

### ◆ Community Relations Unit and Local Government Liaison Program Update

Mike Leonard manages the new Community Relations Unit (CRU) at the COGCC, which includes Local Government Liaison (LGL) Marc Morton, Complaint Intake Specialist Megan Adamczyk, Senior Data Analyst Ken Robertson, Data Analyst Bryce Holder, Senior Geographic Information Systems (GIS) Scientist Chris Eisinger, and GIS Analyst Dennis Ahlstrand. In keeping with the COGCC Mission Statement, the CRU allows the agency to expand its interaction and communication amongst local, state and federal government agencies, the general public, the oil and gas industry, and other stakeholders. The CRU has the following five priority areas:



- Assist in responding to inquiries and information requests from local government staff, the public, operators, and other stakeholders;
- Lead the agency in responding to emergency situations and working with emergency response personnel;
- Support the agency's complaint intake and resolution process;
- Strengthen the Local Governmental Designee (LGD) Program by seeking opportunities for outreach to local government officials and their constituents about the State's regulatory process and what to expect when oil and gas activity is planned or occurs in the area; and
- Support LGL Staff efforts in managing the LGD program, including ongoing training opportunities that between 2013 and present has had over 500 LGDs and local government staff.
- LGD orientation training (3-4 hours)
- LGD Program and COGCC overview training (typically 6-8 hours)
- Topic-specific training (typically 1-2 hours).

We remind Local Governmental Designees (LGDs) and local government staff about training opportunities available from COGCC CRU Staff. Marc Morton focuses on providing training to LGDs and local government staff regarding COGCC initiatives and ongoing projects, such as the recently upgraded Daily Activity Dashboard tool, the online complaint intake process, navigation of the COGCC website, best practices for submitting effective and COGCC actionable comments on pending drilling or oil and gas location assessment permit applications, or any other topic of specific interest. For more information on training available, please visit the link listed below:

<https://cogcc.state.co.us/documents/gov/local/2018%20LGD%20Training%20Information.pdf>

Marc Morton is available upon request to provide training to LGDs and local government staff concerning the role of local government in oil and gas industry regulation in Colorado. LGD trainings typically take one of three forms:

This link is found on the COGCC website under the Government tab and under the LGD Resources heading at the upper right, and is titled "2018 LGD Training Information."

## Public Outreach

### ➤ *Outreach by the Director and Other Staff*

- On June 7, Integrity Engineer Ellice Whittington and Senior Geographic Information Systems (GIS) Scientist Chris Eisinger hosted a Form 44 help session at the COGCC Denver Office. Operators were welcomed and asked questions related to Form 44 submittals, geodatabase information, and field operations.
- On June 26, Integrity Engineer Whittington gave an overview of Form 44 to the operators at the Sterling Small Operator Meeting.

### ➤ *Outreach by the Community Relations Unit*

- On June 5, Community Relations Unit (CRU) Manager Mike Leonard, with assistance from Marc Morton, provided a three hour presentation and training to various staff from the Colorado Department of Public Health and the

Environment (CDPHE). Mike's presentation was entitled "Oil and Gas 101."

- On June 6, and as a supplement to the June 5 presentation to CDPHE staff, CRU Manager Leonard, with assistance from Marc, arranged an operator provided tour of various field operations, including a recently completed hydraulic fracturing project, an active production facility, and an active drilling location. The tour was facilitated and provided by staff and contractors of Extraction Oil and Gas, Inc. Locations the group visited included Coyote Trails (Adams County), MLD (Weld County) and Kennedy (Weld County).
- On June 7, Marc travelled to Rifle and attended the monthly Garfield County Energy Advisory Board meeting.

- On June 19, Marc travelled to Milliken and provided a half day LGD orientation training to staff from the Town of Milliken, including the recently appointed LGD for the Town, Pepper McClanahan.
- On July 19, Marc travelled to Rifle and attended the quarterly Garfield County Land and Resource Managers meeting.
- On July 25, Marc travelled to Greeley and provided a half day LGD orientation training to the recently appointed LGD for Weld County, Jason Maxey.

## Regional Activities

### ➤ **Northwest Colorado**

#### ◆ **Northwest Colorado Oil and Gas Forum**

Remaining Northwest Colorado Oil and Gas Forum (NWF) meetings for 2018 have been scheduled for August 2 and December 8. All meetings will be held in Rifle at the Colorado Mountain College - Rifle Campus / Clough Auditorium at 3595 Airport Road beginning at 9:00 a.m. and concluding by 12:00 p.m.

Meeting agendas will be posted to the COGCC website approximately one to two weeks prior to each meeting. The COGCC welcomes suggestions for speakers and topics. Meeting information is also emailed to those on the email distribution list.

Parties wishing to be placed on the meeting agenda or added to the email distribution list for announcements should contact Marc Morton at (303) 894-2100, ext. 5132 (direct), (720) 415-4959 (mobile), or by email:

[marc.morton@state.co.us](mailto:marc.morton@state.co.us)

As a reminder, NWF meetings are open to the public, and a public comment period is held as part of each meeting. Past NWF presentations (dating back to 2006) are available on the COGCC website at:

<http://cogcc.state.co.us/library.html#/forums>

#### ◆ **Project Rulison**

The five year revision of the Project Rulison Sampling and Analysis Plan (RSAP) has been completed. Major revisions to the plan included re-defining the exterior buffer zones to align with hydrogeologic flow patterns instead of more arbitrary circular rings in the original plan.

This document is in the COGCC's Area Reports Library and can be found at the following link:

<http://cogcc.state.co.us/documents/library/AreaReports/PiceanceBasin/Rulison/Rulison%20Sampling%20and%20Analysis%20Plan%20Revision%204%20062217.pdf>

The email for Project Rulison submittals is

[DNR\\_rulison.submittal@state.co.us](mailto:DNR_rulison.submittal@state.co.us)

#### ◆ **Project Rio Blanco**

The email for Project Rio Blanco submittals is

[DNR\\_rioblanco.submittal@state.co.us](mailto:DNR_rioblanco.submittal@state.co.us)

### ➤ **Southwest Colorado**

#### ◆ **Gas and Oil Regulatory Team (GORT) Meeting**

The Southwest Colorado Gas and Oil Regulatory Team (GORT) meeting schedule for 2018 has been set. The remaining GORT meeting in 2018 will take place October 18. The October 18 GORT meeting will be held at the Durango Public Library at 1900 E. 3rd Avenue, Durango, from 9:00 a.m. until noon.

GORT meeting agendas will be posted to the COGCC website approximately one to two weeks prior to each meeting, and emailed to those on the email distribution list. The COGCC welcomes suggestions and input for speakers, topics, as well as meeting format and venue.

Parties wishing to be placed on the next meeting agenda or added to the distribution list for announcements should contact Marc Morton at (303) 894-2100, ext. 5132 (direct), (720) 415-4959 (mobile), or by email:



[marc.morton@state.co.us](mailto:marc.morton@state.co.us)

As a reminder, GORT meetings are open to the public, and a public comment period is held as part of each meeting.

◆ **Fruitland Formation Outcrop Mitigation and Monitoring Projects**

**South Fork Texas Creek Mitigation Site - La Plata County.** Regularly scheduled operations

and maintenance are being performed at the South Fork Texas Creek (SFTC) site by LTE, the COGCC's contractor. Since May 2009, the system has collected 23,921 Mcf of methane and generated 272,763 kWh of surplus electricity.

The 2017 4M Monitoring Report has recently been finalized and will soon be posted to the COGCC website in the Library under San Juan Basin, 4M Project, 2017 4M Monitoring Report (2018 June).

### Variances

◆ **Chesapeake Operating LLC (Chesapeake)**

Chesapeake (#16660) received a variance from selected parts of Rule 1004.a for the Sidwell 32-10-66 Location, API 123-33550. The property owner, Linda Sidwell, requested that the lease road remain to allow access to that portion of her property.

The variance was unconditionally approved following a field inspection to verify that the location passed Rule 1000 vegetation standards and that no stormwater issues were identified.

◆ **PDC Energy, Inc. (PDC)**

**Anderson, Patrick Tank Battery Facility Location ID 319159**

PDC (#69175) received a variance from selected parts of Rule 1004 for the Anderson, Patrick tank battery. The property owner, Don Anderson, requested that the access point and tank battery pad, and associated culvert remain, to allow access to his property and storage for ranching operations.

The variance was unconditionally approved following a field inspection to verify that the location passed Rule 1000 vegetation standards and that no stormwater issues were identified.

**Kindsfater #1 Location, API 123-12425**

PDC (#69175) received a variance from selected parts of Rule 1004 for the Kindsfater #1. The property owner, Kirk Kindsfater, requested that the vehicle turn around remain for vehicle and equipment use. The following condition was applied to this variance:

- All corrective actions identified on a field inspection report must be performed by the corrective action date until final reclamation is passed.

**Baker 5-41 Location, API 123-19884**

PDC (#69175) received a variance from selected parts of Rule 1004 for the Baker 5-41. The property owner, Mark Kain, requested that the access road, well pad, and former production facility pad remain for vehicle, equipment and hay storage. The following condition was applied to this variance:

- All corrective actions identified on a field inspection report must be performed by the corrective action date until final reclamation is passed.

◆ **Chevron Midcontinent LP (Chevron Midcontinent)**

Chevron Midcontinent (#16695) received a variance from selected parts of Rule 1004 for the Crader 3-3. A letter from the surface owner requested a final reclamation rules variance so that the well pad can be used for farm equipment storage and access road. The following condition was applied to this variance:

- A variance of 1004.c.(2). In order to stabilize the site for long term stormwater control, the entire cut and fill slopes must establish a uniform vegetation cover of at least 80 percent of reference area levels.
- Continue to monitor and manage the site for erosion and noxious weed control until final reclamation is passed through an inspection.

## ◆ Pioneer Natural Resources USA Inc. (Pioneer)

### Majestic Canyon 44-15 Location, API 071-06639

Pioneer (#10084) received a variance from selected parts of Rule 1004 for the Majestic Canyon 44-15. The property owner, Anthony Tamberelli, requested that the access road and culverts remain to provide vehicle access to his property. The following conditions were applied to this variance:

- Continue to monitor and manage the site for erosion and noxious weed control until final reclamation is passed.
- The entire location must establish a uniform vegetation cover of at least 80 percent of reference area levels except where the two track area of the access road on the pad.

### Ricki J 31-22 Location, API 071-09651

Pioneer (#10084) received a variance from selected parts of Rule 1004 for the Ricki J 31-22. The property owner, Anthony Tamberelli, requested that the access road remains to provide vehicle access to his property. The following conditions were applied to this variance:

- Continue to monitor and manage the site for erosion and noxious weed control until final reclamation is passed.
- In order to stabilize the site for long-term stormwater control, the entire location must establish a uniform vegetation cover of at least 80 percent of reference area levels.
- A pipe riser that was likely installed for this location, just east of the access road, must be removed per the 1004 a. Rules.

### Jill 32-15 Location, API 071-06732

Pioneer (#10084) received a variance from selected parts of Rule 1004 for the Jill 32-15. The property owner, Anthony Tamberelli, requested a variance from fully re-contouring and revegetating the Location for access, development, and other purposes.

A variance from 1004.c.(2) was requested due to areas being left compacted. This request is

denied, as leaving areas compacted is not an adequate long term stabilization method. The following conditions were applied to this partially approved variance:

- In order to stabilize the site for long term stormwater control, the entire location must establish a uniform vegetation cover of at least 80 percent of pre-disturbance or reference area levels.
- Continue to monitor and manage the site for erosion and noxious weed control until final reclamation is passed.
- All corrective actions identified on a field inspection report must be performed by the corrective action date until final reclamation is passed.

### Cash 33-10 Location, API 071-08047

Pioneer (#10084) received a variance from selected parts of Rule 1004 for the Cash 33-10. The property owner, Anthony Tamberelli, requested a variance from fully re-contouring and revegetating the Location for access, development, and other purposes.

A variance from 1004.c.(2) was requested due to the presence of gravel. However, there was no gravel observed at the Location during the inspection, and the request was therefore denied. The following conditions were applied to this partially approved variance:

- In order to stabilize the site for long term stormwater control, the entire location must establish a uniform vegetation cover of at least 80% of pre-disturbance or reference area levels.
- Continue to monitor and manage the site for erosion and noxious weed control until final reclamation is passed.
- Upgrade long term erosion controls to de-energize the stormwater exiting the Best Management Practices (BMPs). Stormwater is concentrated to a single discharge location. Recommend installation of check dams to slow the water prior to discharging stormwater and installing sediment traps.

**Admin / Organization / Other****◆ Field Inspection Unit Changes**

Jason Gomez has been promoted from Field Inspector to Field Inspection Supervisor. He will cover a new area that is being referred to as Northeast (NE) 2. Jason has been with the COGCC since 2013 and has exhibited exemplary work including serving as the acting supervisor for the prior NE Area for several months in 2017, and working as a lead inspector for the Area.

Jason has demonstrated an amazing ability and willingness to manage and respond to complaints, including working with complainants. He brings extensive oil and gas experience to the position, including gas measurement, pumper, and frac operator. Jason also has a law enforcement background and is a US Military Veteran.

Conor Pesicka has been selected as the new Quality Assurance Professional for the Field Inspection Unit. Conor has worked as a Field Inspector with the COGCC since 2015. Prior to working for the COGCC, Conor conducted well logging throughout the DJ Basin. He graduated from the Colorado School of Mines in 2011 with a Geological Engineering degree.

**◆ New Permit Supervisor**

Sabrina Trask has been promoted to Permit Supervisor, filling the vacancy left by Barbara Westerdale's retirement earlier this month. Sabrina has been a permit/completions specialist with the COGCC for two years, processing permits and completion reports in the DJ Basin. She is currently collaborating on the Forms 2/2A revision project.

Sabrina had seven years of oil and gas industry experience prior to coming to the COGCC, working as a measurement specialist and geological technician and interning with the Alaska Department of Geological and Geophysical Surveys. She also served for six years as a Park Ranger for the National Park Service at the Grand Canyon, Yellowstone, and Glacier Bay Park units. Sabrina has a BS in Geology and a MS in Environmental Policy and Management, with a concentration in Environmental Planning.

**◆ New Hearings Officer**

Jon Peskin comes to the COGCC from the Colorado Judicial Department, where he worked as an attorney in the 17th Judicial District for the last two and one half years. Prior to working for the State of Colorado, Jon worked in private practice in Florida and Colorado. He is a huge college football fan and lives in Denver with his wife and two dachshunds.

**◆ New Hearings Officer**

Michael Eden received his law degree from the University of Denver's Sturm College of Law. After law school, he worked in the Natural Resources Section of Davis Graham & Stubbs for several years before moving to the Virgin Islands. There, he worked as a law clerk for the U.S. federal district court. He lives in Aurora with his wife and two kids. He enjoys running, hiking, and Nebraska Huskers football.

COGCC organizational charts can be found on Pages 10-13. For contact information, please go to the COGCC homepage and select "Contact Us" in the upper right corner of the page.

**◆ Plugging and Reclaiming Orphaned Wells (PROW) Project Updates**

The COGCC performed field work for the Orphaned Wells Program projects described below since June 11. These projects relate either to "Orphaned" locations or wells for which there is no known responsible party, or they relate to Bond Claim projects for which sureties have been claimed.

Project summary tables for Fiscal Year 2017-18 (FY18) are found on Pages 14-18. The projects are sorted first by county and then by the project name. The field work described below pertains to ongoing projects or to recently completed projects. The sole exception is that work on the Benchmark Project is ongoing and spans FY18 and FY19.

The agency is in the process of scheduling other project work for FY19, to be announced in the next Staff Report to the Commission. Scheduling



is subject to change as new conditions arise during the year.

The **Tudex Petroleum Project** began with Commission Order # 1V-646. The project consists of nine wells located in Adams and Weld Counties. Two locations are multi well pads. Recent FY18 work included abandoning over 100 flowlines and removing flowline manifolds and associated debris at multiple Adams County locations.

The **Texas Tea Project** began with Commission Order 1V-573. The project involves eight single well locations in Adams and Weld Counties. Recent FY18 work included weed control at two locations in Adams and Weld Counties.

The **Florence - Canon City Field Project** involves single well locations in the Florence - Canon City Field, which was drilled at various times in the 20th Century. FY18 work included plugging one well and abandoning the associated flowline.

The **CM Production Project** began with Commission Order 1V-581. The project involves 28 locations in Jackson, Logan, and Washington Counties. The original operators drilled a total of 31 wells, and the project involves many single well pads and two multi well pads. Recent FY18 well work included temporary abandonment and mechanical integrity testing of one well, sampling and analysis, and fluids disposal at Lone Pine Field in Jackson County. Work also included sampling and analysis and weed control at multiple locations in Washington County.

The **Red Mesa Holdings Project** began with Commission Order 1V-508. The project involves 56 locations and 52 wells in La Plata County. Recent FY18 work included wellhead preparation for future plugging at five wells, liquid sampling from production tanks, transport and disposal of liquids, stormwater BMP installation and maintenance, and weed control at several locations in La Plata County.

The **William Taylor Project** began with Commission Order #1V-647. The project involves one well. Liquids were sampled for disposal.

The **Ranchers Project** began with Commission Order 1V-526. The project involves two single well locations in Larimer County. Both wells were

plugged and abandoned prior to FY17. Recent FY18 work included weed control.

The **Pine Ridge Project** began with Commission Order 1V-622. The project involves six locations in Fremont, Lincoln, and Routt Counties. Recent FY18 reclamation work included contouring, re-seeding, and weed control at three locations in Lincoln County.

The **Arco - Sindt #4 Project** includes an orphaned exploration and production waste disposal site from the 1950s. FY18 work included re-fencing the site to exclude cattle until remediation commences.

The **Benchmark Project** began with Commission Order 1V-564. The project involves 44 locations and 39 wells in Logan County. FY18 work included plugging three wells of a seven well program. Plugging of the remaining four wells is ongoing in FY19.

The **General Resources Project** is located in Weld County. FY18 work included weed control.

The **Provide Energy and Red Mountain Project** began with Commission Orders 1V-364 and 1V-508. The project involves six single well locations in Jefferson and Logan Counties. Both operators were responsible for the same well and location in Jefferson County, and Red Mountain was responsible for the other five wells in Logan County.

Recent FY18 work included sampling and analysis with pit closure, stormwater Best Management Practice (BMP) maintenance, and weed control at locations in Jefferson and Logan Counties. Whiting Oil & Gas Corporation plugged one well as a Public Project on behalf of the State, pursuant to Rule 523.f. and Order 1V-652.

The **Redwine Project** began with Commission Orders 1V-470 and 1V-494. The project involves one location in Montrose County. Most project work was completed in prior fiscal years. Recent FY18 work included weed control.



## ◆ Colorado Oil and Gas Information System (COGIS) Projects, Updates and Changes

### Electronic Form (eForm) Submissions

The COGCC uses 42 types of forms to authorize oil and gas operations, inspect and monitor ongoing operations, and receive reports of operations. Of those 42 forms, 24 are currently available for electronic submittal through the eForms system.

The development team continues to work on the eForm conversion of existing forms. Currently, five forms are in various stages of development: Forms 8, 14, 14A, 29, and 43.

As of July 1, industry electronically submitted 98 percent of the forms available in eForms in 2018. There are 914 operator users of eForms and 3,729 individual users. For any operator not currently enrolled in eForms, instructions for starting the process can be found on the COGCC website at:

<http://cogcc.state.co.us/Announcements/COUInformation.pdf>

### Form 11 Release in eForms

The Monthly Report of Gasoline or Other Extraction Plant, Form 11 has been released in eForms. The COGCC Production Group Staff conducted a training webinar for the industry representatives that submit the Form 11. A quick overview of the new eForm was presented at the July Operator Meeting.

The Form 11 instructions, including a recording of the webinar, are posted on the Form 11 page of the website at

[http://cogcc.state.co.us/reg.html#/forms/form11\\_new](http://cogcc.state.co.us/reg.html#/forms/form11_new)

### Applications and Location Assessments

The public can make comments on all submitted Drilling Permit Applications (Form 2s) and Location Assessments (Form 2As) through the eForm system. Simply go to the COGCC website and click on the menu option “Permits” or

<http://cogcc.state.co.us/permits.html#/permits>

On the “Permits Search” page, three search options are available. The first option, “All Pending Permit Applications,” is used for public comments. When the results are displayed for “Pending Applications,” a user can click on the document number hyperlink in the “Status” column, which logs him or her to the eForms application.

Once the page is displayed with the selected document, the user can select the “Comment” button to make a comment on that particular form.

### Data Access

The COGCC’s database is a comprehensive repository of Colorado’s oil and gas data. The information in the database is available to the public through interactive search tools and a variety of file downloads on the website.

Users of bulk data come from many different sectors of the community, including academia, oil and gas operators, environmental groups, government agencies, and the media.

All the data file downloads are available at:

<http://cogcc.state.co.us/data2.html#/downloads>

### Current Data File Downloads

Complaints  
 Field Operations  
 Flowline NTO Imported Data  
 GIS Shapefiles (12 files)  
 Mechanical Integrity Tests  
 Notices of Alleged Violation  
 Production Data (1999 - present)  
 Spacing Orders  
 Spills and Releases  
 Analytical Sample Data (COENV Database)

### Future Data File Downloads

Enforcement Orders (OFVs and AOCs)  
 Underground Injection Control (UIC) Data

### COENV Database Update

The COENV database (active since 2012) is a publicly available, searchable database of groundwater, surface water, gas, and soil sample



analytical results from throughout the state. COENV currently contains over 46,000 individual samples from 16,329 sample locations. In FY18, the COGCC received data from 2,699 water samples from 770 separate sample locations, and added them to the database.

The table on Page 30 reports the frequency of each reason for submission of a sample to the COENV database during FY18.

## ◆ September 2018 Hearing Docket

The docket for the September 2018 hearing will be available shortly after the July hearing. Hearing dockets are available on our website by clicking on “Regulation” in the menu and then “Hearings”:

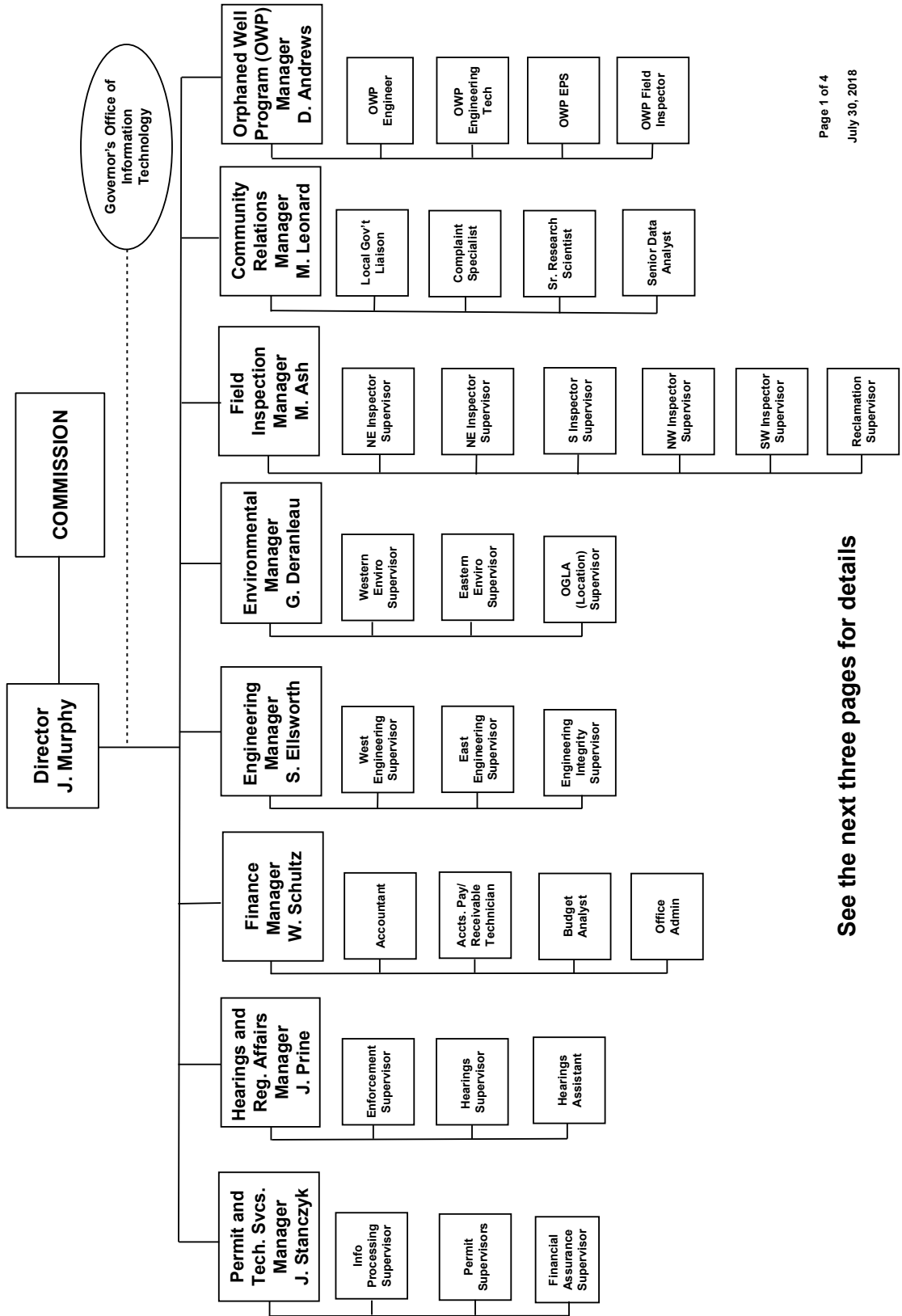
<http://cogcc.state.co.us/reg.html#/hearings>

Links to the notices and hearing applications are available from the Docket Number and Applicant, respectively, by clicking the September Gen\_Docket link. To sign up for email notification of hearing notices and applications, please see the announcement and instructions on the homepage of the COGCC website.



## Organizational Charts and Statistics

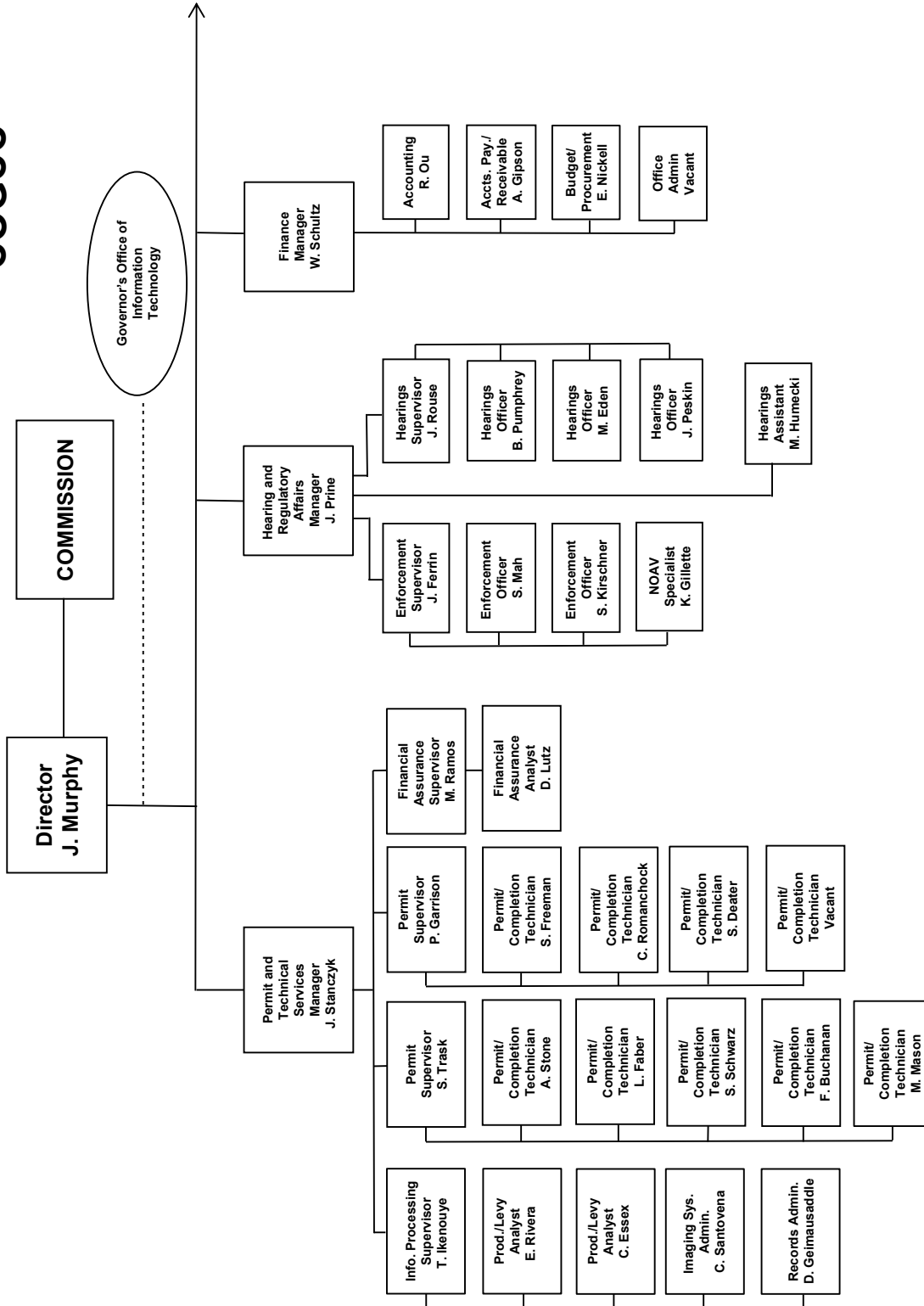
### COLORADO OIL & GAS CONSERVATION COMMISSION



See the next three pages for details

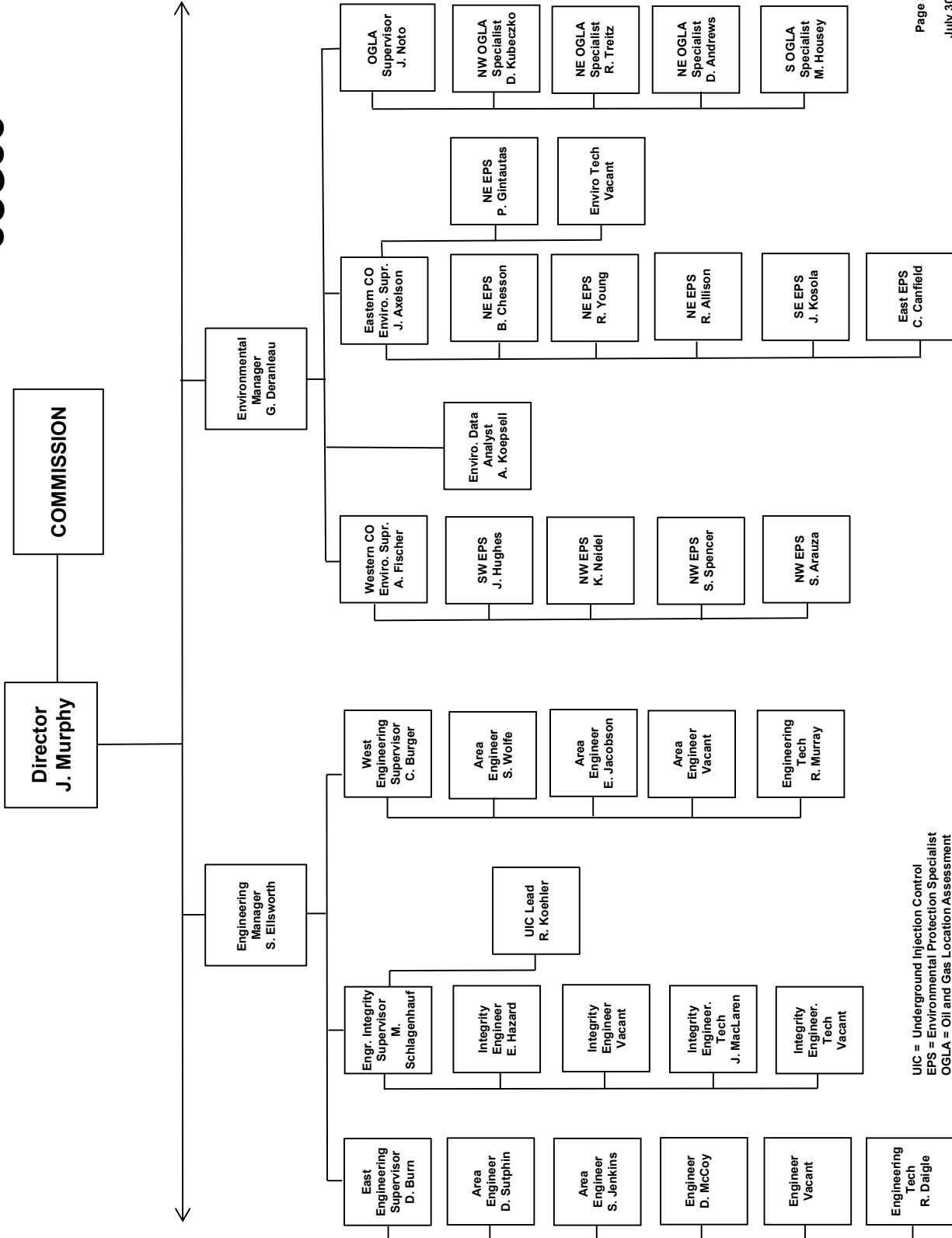


## COGCC



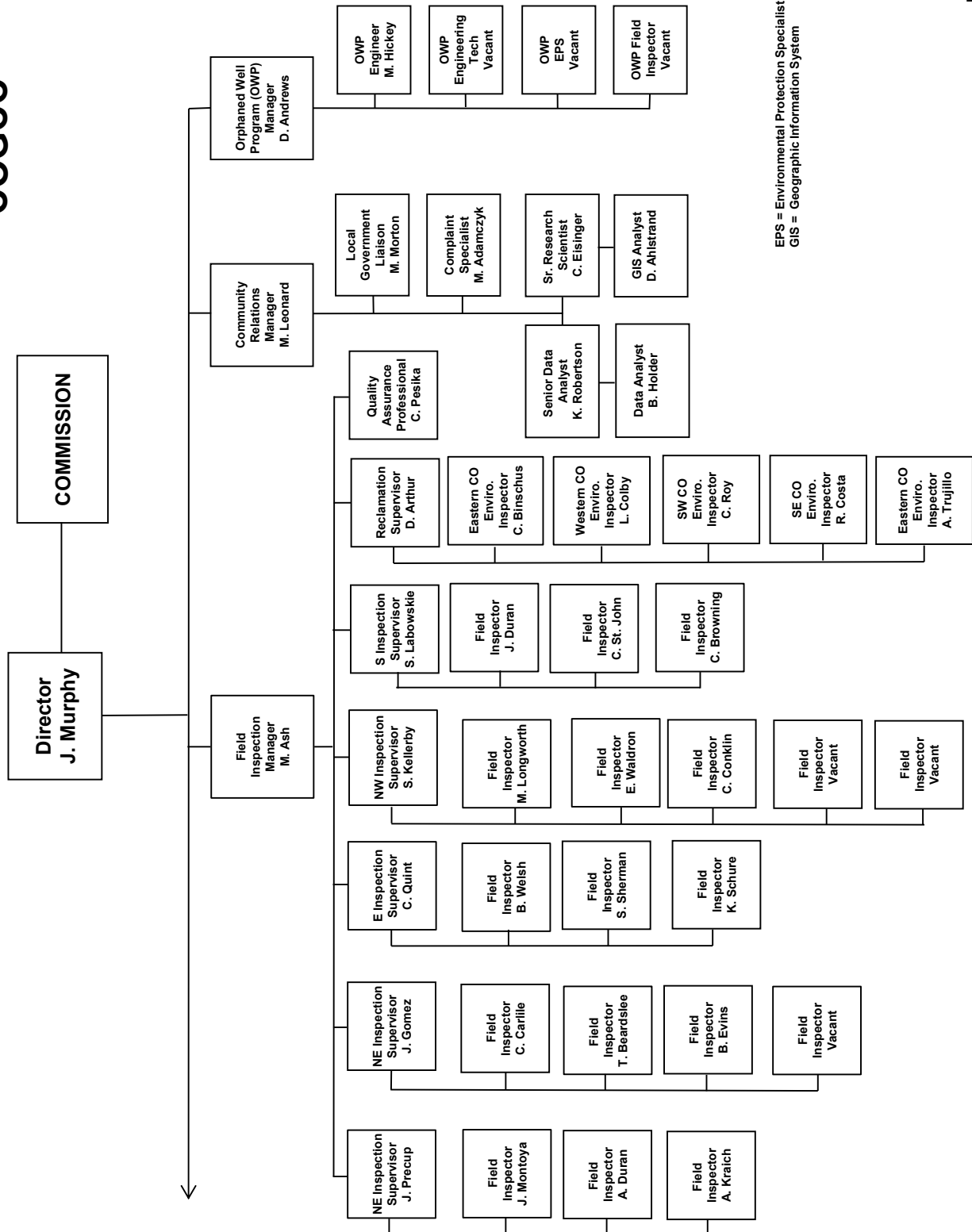


## COGCC





## COGCC



EPS = Environmental Protection Specialist  
 GIS = Geographic Information System



PLUGGING AND RECLAIMING ORPHANED WELLS (PROW) PROGRAM  
FISCAL YEAR 2017-18

BONDS AND OTHER SURETY CLAIM STATUS FOR ACTIVE FY2017-18 "BOND CLAIM" PROJECTS

Project	Order Number(s)	Total Bond Claim	Amount Spent in Prior Fiscal Years	Amount Spent in FY2017-18	Remaining Bond Balance
Atom Petroleum Bond Claim	1V-586	\$ 60,000	\$ 797	\$ 46,410	\$ 12,793
Benchmark Energy Bond Claim	1V-564	\$ 620,000	\$ 98,931	\$ 56,630	\$ 464,439
CM Production Bond Claim	1V-581	\$ 67,849	\$ 13,299	\$ 54,549	\$ -
Energy Search Bond Claim	1V-636	\$ 60,000	\$ -	\$ 7,777	\$ 52,223
Pine Ridge Bond Claim	1V-622	\$ 85,000	\$ -	\$ 42,491	\$ 42,509
Ranchers Bond Claim	1V-526	\$ 63,424	\$ 63,424	\$ -	\$ -
Red Mesa Holdings Bond Claim	1V-508	\$ 72,831	\$ 12,258	\$ 60,574	\$ -
Red Mountain Bond Claim*	1V-549, 5LB	\$ 92,015	\$ 30,070	\$ 51,430	\$ 10,515
Redwine Bond Claim	1V-470, 1V-494	\$ 30,000	\$ 30,000	\$ -	\$ -
Reynolds* Noel Bond Claim	1V-374, 1V-375	\$ 30,000	\$ -	\$ 841	\$ 29,159
Taylor* William Bond Claim	1V-647	\$ 10,000	\$ -	\$ 117	\$ 9,883
Texas Tea Bond Claim	1V-573	\$ 71,850	\$ 40,283	\$ 31,568	\$ -
Tudex Petroleum Bond Claim	1V-646	\$ 62,470	\$ -	\$ 58,375	\$ 4,095
Vitruvian Exploration Bond Claim	1V-514	\$ 30,000	\$ -	\$ 9,010	\$ 20,990
<b>TOTALS -&gt;</b>		<b>\$ 1,355,439</b>	<b>\$ 289,062</b>	<b>\$ 419,772</b>	<b>\$ 646,606</b>

Note: \* Red Mountain Bond Total Claim Amount includes \$24,169 bankruptcy deposit and \$5,000 State Land Board deposit (bond transfer)

ACTIVE TASK LIST (PLANNED OR IN PROGRESS) - FY2017-18

Work Unit	County	Project and Task	Task Status	Planning Comments
Field Operations	Statewide	Various Projects: Task 999 - Site Security, LOTO, Marking and Labeling - Statewide,	In Progress	Ongoing: Install lock-out / tag-out devices on wellheads, equipment and fences

COMPLETED TASK LIST - FY2017-18

Work Unit	County	Project and Task	Task Status	Planning Comments
Engineering	Adams	Texas Tea Bond Claim: Task 2.1, 3.1A - Plug and Abandon, Flowline Abandonment - 320139, 001-08204	Completed	FY2017-18: Plug well and abandon flowlines; FY2018-19 (Planned): Cut off casing during landfill expansion
Engineering	Adams	Texas Tea Bond Claim: Task 2.1, 3.1A - Plug and Abandon, Flowline Abandonment - 320206, 001-08443	Completed	Plug well and abandon flowline
Engineering	Adams	Texas Tea Bond Claim: Task 2.1, 3.1A - Plug and Abandon, Flowline Abandonment - 320223, 001-08516	Completed	FY2017-18 Work: Abandon flowlines; Timing for well plugging TBD
Engineering	Adams	Texas Tea Bond Claim: Task 2.1, 3.1A - Plug and Abandon, Flowline Abandonment - 320240, 001-08699	Completed	Plug well and abandon flowline
Reclamation	Adams	Texas Tea Bond Claim: Task 2.2 - Weed Control (maintenance) - Spindle and Sun Fields,	Completed	Weed control at multiple locations
Engineering	Adams	Texas Tea Bond Claim: Task 3.3; 3.7 - Plug and Abandon, Flowline Abandonment - 320257, 001-08775	Completed	Plug well and abandon flowline
Engineering	Adams	Tudex Petroleum Bond Claim: Task 2 - Plug and Abandon, Flowline Abandonment - 320126, 001-08153	Completed	FY2017-18 Work: Abandon flowlines; Timing for well plugging TBD
Engineering	Adams	Tudex Petroleum Bond Claim: Task 2 - Plug and Abandon, Flowline Abandonment - 320129, 001-08162	Completed	FY2017-18 Work: Abandon flowlines; Timing for well plugging TBD
Engineering	Adams	Tudex Petroleum Bond Claim: Task 2 - Plug and Abandon, Flowline Abandonment - 320217, 001-08491	Completed	FY2017-18 Work: Abandon flowlines; Timing for well plugging TBD



COMPLETED TASK LIST - FY2017-18, cont.				
Work Unit	County	Project and Task	Task Status	Planning Comments
Engineering	Adams	Tudex Petroleum Bond Claim: Task 2 - Plug and Abandon, Flowline Abandonment - 320452, 001-09362	Completed	FY2017-18 Work: Abandon flowlines; Timing for well plugging TBD
Engineering	Adams	Tudex Petroleum Bond Claim: Task 2 - Plug and Abandon, Flowline Abandonment - 320453, 001-09363	Completed	FY2017-18 Work: Abandon flowlines; Timing for well plugging TBD
Engineering	Adams	Tudex Petroleum Bond Claim: Task 2 - Plug and Abandon, Flowline Abandonment - 335733, 001-08163	Completed	FY2017-18 Work: Abandon flowlines; Timing for well plugging TBD
Engineering	Adams	Tudex Petroleum Bond Claim: Task 2 - Plug and Abandon, Flowline Abandonment - 335737, 001-08767	Completed	FY2017-18 Work: Abandon flowlines; Timing for well plugging TBD
Engineering	Adams	Tudex Petroleum Bond Claim: Task 2 - Plug and Abandon, Flowline Abandonment - 335737, 001-08768	Completed	FY2017-18 Work: Abandon flowlines; Timing for well plugging TBD
Engineering	Boulder	Juhl #1: Task 1 - Plug and Abandon, Flowline Abandonment - 379627, 013-05018	Completed	FY2017-18 Work: Liquid disposal from plugging completed at the end of FY2016-18
Engineering	Fremont	Florence-Canon City Field: Task 2 - Plug and Abandon, Flowline Abandonment - 426290, 043-40080	Completed	Plug well and abandon flowlines
Environmental	Jackson	CM Production Bond Claim: Task 1.11 - Sampling and Analysis - Lone Pine Field,	Completed	Biannual sampling and analysis
Environmental	Jackson	CM Production Bond Claim: Task 1.14 - Sampling and Analysis, Spill or Remediation - 324630,	Completed	Soil sampling and analysis
Environmental	Jackson	CM Production Bond Claim: Task 1.15 - Sampling and Analysis, Spill or Remediation - 324599,	Completed	Soil sampling and analysis
Environmental	Jackson	CM Production Bond Claim: Task 1.7, 1.10 - Equipment intervention - 324634,	Completed	Remove liquids from tanks, hauling, and offsite disposal
Environmental	Jackson	CM Production Bond Claim: Task 2.2, 2.8 - Sampling and Analysis, Remove fluids from pits, Pit Closure - 324634,	Completed	FY2017-18 Work: Soil sampling and analysis; Future pit closure timing TBD
Engineering	Jackson	CM Production Bond Claim: Task 3.1, 3.2 - MIT or Other Well Work, Plug and Abandon - 324599, 057-06011	Completed	FY2017-18 Work: Set downhole plug to TA well and MIT; Timing for final plugging TBD
Engineering	Jackson	CM Production Bond Claim: Task 3.1, 3.2 - MIT or Other Well Work, Plug and Abandon - 324630, 057-06093	Completed	FY2017-18 Work: Set downhole plug to TA well and MIT; and haul water to off-site disposal; Timing for final plugging TBD
Engineering	Jackson	CM Production Bond Claim: Task 3.1, 3.2 - MIT or Other Well Work, Plug and Abandon - 324640, 057-06127	Completed	FY2017-18 Work: Set downhole plug to TA well and MIT; Timing for final plugging TBD
Engineering	Jackson	CM Production Bond Claim: Task 3.1, 3.2 - MIT or Other Well Work, Plug and Abandon - 324626, 057-06069	Completed	FY2017-18 Work: Set downhole plug to TA well and MIT; Timing for final plugging TBD.
Reclamation	Jefferson	Red Mountain Bond Claim: Task 14 - Stormwater BMPs (maintenance), Weed Control (maintenance) - 324775,	Completed	Weed control
Field Operations	La Plata	Atom Petroleum Bond Claim: Task 1.2 - Equipment intervention - 325653,	Completed	Remove liquids from tank, hauling, and offsite disposal
Engineering	La Plata	Atom Petroleum Bond Claim: Task 2.5 - MIT or Other Well Work - 325653, 067-06777	Completed	FY2017-18 Work: Removed liquid from cellar, no wellhead leak apparent during work in October 2017; continuing to monitor well cellar; Timing of any additional work TBD
Field Operations	La Plata	Hodges Pool Unit #1: Task 1 - Gas Monitoring - 385-403,	Completed	FY2017-18 Work: gas monitoring at a cathodic protection well near the plugged well. Neither carbon dioxide nor hydrogen sulfide were detected in the discharge from the well.
Environmental	La Plata	McCullough #4: Task 2 - Sampling and Analysis - 325208,	Completed	Wellhead gas sampling and analysis
Field Operations	La Plata	Red Mesa Holdings Bond Claim: Task 1 - Equipment intervention, Equipment Salvage - 325667,	Completed	FY2017-18 Work: Remove liquids from tank and haul for off-site disposal; Timing for additional work TBD
Field Operations	La Plata	Red Mesa Holdings Bond Claim: Task 1 - Equipment intervention, Equipment Salvage, Sampling and Analysis - 325230,	Completed	FY2017-18 Work: Spec, gauge, sample liquids, and transfer liquids to consolidate to a single tank; Timing for additional work TBD
Field Operations	La Plata	Red Mesa Holdings Bond Claim: Task 1 - Equipment intervention, Equipment Salvage, Sampling and Analysis - 325745,	Completed	FY2017-18 Work: Spec, gauge, and sample liquids in tank(s); Timing for additional work TBD
Field Operations	La Plata	Red Mesa Holdings Bond Claim: Task 1 - Equipment intervention, Equipment Salvage, Sampling and Analysis, Gauge Tank - 325286,	Completed	FY2017-18 Work: gauge and sample liquids in tank(s); Timing for additional work TBD
Field Operations	La Plata	Red Mesa Holdings Bond Claim: Task 1 - Equipment intervention, Equipment Salvage, Sampling and Analysis, Gauge tank - 325297,	Completed	FY2016-17 Work: Gauge tank and sample liquids; FY2017-18 Work: Remove liquids from tank and dispose off-site; Timing for additional work TBD
Engineering	La Plata	Red Mesa Holdings Bond Claim: Task 2 - MIT or Other Well Work, Complaint response, Bradenhead test - 325858, 067-07085	Completed	Set downhole plugs to TA well, perform MIT, abandon flowlines, and remove liquid tank bottoms for off-site disposal; Timing for final well plugging TBD



COMPLETED TASK LIST - FY2017-18, cont.				
Work Unit	County	Project and Task	Task Status	Planning Comments
Engineering	La Plata	Red Mesa Holdings Bond Claim: Task 2 - MIT or Other Well Work, Plug and Abandon, Flowline Abandonment - 325111, 067-05321	Completed	FY2017-18 Work: load well and disconnect flowlines from well; Timing for well plugging and flowline abandonment TBD
Engineering	La Plata	Red Mesa Holdings Bond Claim: Task 2 - MIT or Other Well Work, Plug and Abandon, Flowline Abandonment - 325267, 067-06033	Completed	Plug well and abandon flowlines, remove pump jack, and install stormwater BMPs
Engineering	La Plata	Red Mesa Holdings Bond Claim: Task 2 - MIT or Other Well Work, Plug and Abandon, Flowline Abandonment - 325297, 067-06111	Completed	FY2017-18 Work: load well and disconnect flowlines from well; Timing for well plugging and flowline abandonment TBD
Engineering	La Plata	Red Mesa Holdings Bond Claim: Task 2 - MIT or Other Well Work, Plug and Abandon, Flowline Abandonment - 325352, 067-06226	Completed	FY2017-18 Work: load well and disconnect flowlines from well; Timing for well plugging and flowline abandonment TBD
Engineering	La Plata	Red Mesa Holdings Bond Claim: Task 2 - MIT or Other Well Work, Plug and Abandon, Flowline Abandonment - 325745, 067-06932	Completed	FY2017-18 Work: load well and disconnect flowlines from well; Timing for well plugging and flowline abandonment TBD
Engineering	La Plata	Red Mesa Holdings Bond Claim: Task 2 - MIT or Other Well Work, Plug and Abandon, Flowline Abandonment - 333799, 067-09364	Completed	FY2017-18 Work: load well and disconnect flowlines from well; Timing for well plugging and flowline abandonment TBD
Environmental	La Plata	Red Mesa Holdings Bond Claim: Task 3 - Sampling and Analysis, Spill or Remediation - 325267,	Completed	FY2017-18 Work: Remove hydrocarbon-impacted soil (includes sampling and analysis). Timing of additional work TBD.
Reclamation	La Plata	Red Mesa Holdings Bond Claim: Task 5 - Weed Control (maintenance) - Red Mesa Field,	Completed	Weed control at 12 locations
Reclamation	La Plata	Red Mesa Holdings Bond Claim: Task 7 - Stormwater BMPs (maintenance) - Red Mesa Field,	Completed	Install and maintain stormwater BMPs
Engineering	La Plata	Reynolds' Noel Bond Claim: Task 2.1 - MIT or Other Well Work, Install pressure gauge - 385368, 067-05448	Completed	Wellhead work to prepare for future re-entry to plug and abandon, installed pressure gauge.
Field Operations	La Plata	Taylor' William Bond Claim: Task 1 - Equipment Intervention, Equipment Salvage, Sampling and Analysis, Gauge Tank - 325120,	Completed	FY2017-18 Work: Gauge and test tank(s); Timing of additional work TBD
Reclamation	Larimer	Ranchers Bond Claim: Task 1 - Reclamation (initial work), Re-Seeding (maintenance), Weed Control (maintenance) - 435790,	Completed	Weed control
Reclamation	Larimer	Ranchers Bond Claim: Task 2 - Engineering Design - 419639,	Completed	Soil sampling and analysis
Reclamation	Lincoln	Pine Ridge Bond Claim: Task 1 - Re-Seeding (maintenance), Weed Control (maintenance), Fence Removal - 433053,	Completed	FY2017-18 work: ripping, seeding, and weed control
Reclamation	Lincoln	Pine Ridge Bond Claim: Task 2 - Re-Seeding (maintenance), Weed Control (maintenance), Fence Removal - 430683,	Completed	FY2017-18 work: ripping, seeding, and weed control
Reclamation	Lincoln	Pine Ridge Bond Claim: Task 3 - Re-Seeding (maintenance), Weed Control (maintenance), Fence Removal - 430828,	Completed	FY2017-18 work: ripping, seeding, and weed control
Field Operations	Logan	Arco - Sindr #4 Lease: Task 1 - Site Security, Fence Repair, NWNE 7 - 312213,	Completed	Fence repair
Engineering	Logan	Benchmark Energy Bond Claim: Task 2.5 - Plug and Abandon, Flowline Abandonment - 312151, 075-05875	Completed	FY2018 work: plug well, disconnect and cap flowline at the well; Timing of additional work TBD
Engineering	Logan	Benchmark Energy Bond Claim: Task 2.5 - Plug and Abandon, Flowline Abandonment - 312157, 075-05971	Completed	FY2018 work: plug well, disconnect and cap flowline at the well; Timing of additional work TBD
Engineering	Logan	Benchmark Energy Bond Claim: Task 3.2 - Plug and Abandon, Flowline Abandonment - 312161, 075-06000	Completed	FY2018 work: plug well, disconnect and cap flowline at the well; Timing of additional work TBD
Field Operations	Logan	CM Production Bond Claim: Task 1.5 - Equipment Intervention - Cliff and Mount Hope Fields,	Completed	Remove liquids from tanks, hauling, and offsite disposal
Environmental	Logan	Red Mountain Bond Claim: Task 11 - Sampling and Analysis, Spill or Remediation, Pit Closure - 450396,	Completed	Remove pit fluids and pit liner; sampling and analysis for confirmation and pit closure
Environmental	Logan	Red Mountain Bond Claim: Task 13 - Sampling and Analysis, Spill or Remediation - 312261,	Completed	FY2017-18 Work: Soil sampling and analysis at produced water pit and around production equipment; Timing of additional work TBD
WHITING OIL & GAS CORP. - #96155	Logan	Red Mountain Bond Claim: Task 6 - Plug and Abandon, Flowline Abandonment - 312132, 075-05078	Completed	FY2017-18 Work: Plug well (by Whiting Oil and Gas Corporation as a Public Project, pursuant to Rule 523.f. and Order 1V-652); Timing of additional work TBD
Engineering	Logan	Red Mountain Bond Claim: Task 8 - Plug and Abandon, Flowline Abandonment - 312261, 075-08293	Completed	Plug well and abandon flowlines
Engineering	Mesa	DB Orphan #8: Task 1 - Plug and Abandon - 450650, 077-10381	Completed	Set surface plug, cut off casing, and weld plate
Environmental	Mesa	DB Orphan #8: Task 2 - Sampling and Analysis, Soil Vapor Monitoring - 450650,	Completed	Soil gas monitoring





COMPLETED TASK LIST - FY2017-18, cont.				
Work Unit	County	Project and Task	Task Status	Planning Comments
Environmental	Mesa	DB Orphan #8; Task 3 - Soil Vapor Extraction System - 450650,	Completed	FY2017-18 Work: Installed wind turbine ventilator installed; FY2018-19 Work (Planned) Soil gas sampling and analysis
Engineering	Mesa	Lloyd and Lowell #1; Task 2 - Plug and Abandon - 428669, 077-40017	Completed	Plug well
Reclamation	Moffat	Tatonka Bond Claim: Task 10 - Weed Control (maintenance), Stormwater BMP maintenance - 313340,	Completed	Stormwater permit
Engineering	Moffat	Vitruvian Exploration Bond Claim: Task 1 - Flowline Abandonment - 392479,	Completed	Abandon flowlines
Engineering	Moffat	Vitruvian Exploration Bond Claim: Task 1 - Flowline Abandonment - 392480,	Completed	Abandon flowlines
Engineering	Montezuma	Atom Petroleum Bond Claim: Task 1.1 - Plug and Abandon, Flowline Abandonment - 313483, 083-06263	Completed	Plug well and abandon flowlines
Engineering	Montezuma	Atom Petroleum Bond Claim: Task 1.1 - Plug and Abandon, Flowline Abandonment - 313628, 083-06653	Completed	Plug well and abandon flowlines
Environmental	Montezuma	Pilcher #1: Task 1 - Sampling and Analysis - 393155,	Completed	Soil sampling and analysis at former tank battery location
Reclamation	Montezuma	Wolcott #1: Task 2 - Reclamation (initial work) - 313501,	Completed	Reclaim location
Reclamation	Montezuma	Woodsley Oil - State #1-36: Task 4 - Reclamation (initial work) - 313502,	Completed	Reclaim location
Reclamation	Montrose	Redwine Bond Claim: Task 4 - Stormwater BMPs (maintenance), Weed Control (maintenance) - 313641,	Completed	Stormwater BMP maintenance and weed control
Environmental	Washington	CM Production Bond Claim: Task 1.13, 2.3 - Sampling and Analysis, Spill or Remediation - 317041,	Completed	FY2017-18 Work: Waste characterization sampling and analysis; Timing of additional work TBD for waste disposal
Environmental	Washington	CM Production Bond Claim: Task 1.13, 2.3 - Sampling and Analysis, Spill or Remediation, Waste Disposal - 317043,	Completed	FY2017-18 Work: Waste characterization sampling and analysis; Timing of additional work TBD for waste disposal
Reclamation	Washington	CM Production Bond Claim: Task 3.6 - Weed Control (maintenance) - Hyde and Tap Fields,	Completed	Weed control at four locations in Tap Field
Field Operations	Washington	Energy Search Bond Claim: Task 1.1 - Fence Repair - 317287,	Completed	Repair fence
Field Operations	Washington	Energy Search Bond Claim: Task 1.1 - Fence Repair - 317288,	Completed	Repair fence
Field Operations	Washington	Energy Search Bond Claim: Task 1.1 - Fence Repair - 317289,	Completed	Repair fence
Reclamation	Weld	General Resources Ltd: Task 4.1 - Stormwater BMPs (maintenance), Re-Seeding (maintenance), Weed Control (maintenance) - 407442,	Completed	FY2017-18 Work: Weed control
Engineering	Weld	Texas Tea Bond Claim: Task 3.3, 3.7 - Plug and Abandon, Flowline Abandonment - 318231, 123-08720	Completed	FY2017-18 Work: Abandon flowlines; Timing for well plugging TBD
Engineering	Weld	Texas Tea Bond Claim: Task 3.3, 3.7 - Plug and Abandon, Flowline Abandonment - 318452, 123-09110	Completed	FY2017-18 work: Abandon flowlines (complete at Tank Battery). Timing for final plugging TBD

PROJECT FINANCIALS - FY2017-18					
Project Name	BOND Actual	PROW Actual	EMGY Actual	Subtotals Actual	
Arco - Sindt #4 Lease	\$ -	\$ -	\$ 3,549	\$ -	\$ 3,549
Atom Petroleum Bond Claim	\$ 46,410	\$ -	\$ -	\$ -	\$ 46,410
Benchmark Energy Bond Claim	\$ 56,630	\$ -	\$ -	\$ -	\$ 56,630
CM Production Bond Claim	\$ 54,549	\$ 71,360	\$ -	\$ -	\$ 125,910
DB Orphan #8	\$ -	\$ 13,027	\$ -	\$ -	\$ 13,027
Energy Search Bond Claim	\$ 7,777	\$ -	\$ -	\$ -	\$ 7,777
Florence-Canon City Field	\$ -	\$ 13,485	\$ -	\$ -	\$ 13,485
General Resources Ltd	\$ -	\$ 948	\$ -	\$ -	\$ 948



PROJECT FINANCIALS - FY2017-18, cont.	BOND Actual	PROW Actual	EMGY Actual	Subtotals Actual
Project Name				
Hodges Pool Unit #1	\$ -	\$ 632	\$ -	\$ 632
Juhl #1	\$ -	\$ 78	\$ -	\$ 78
Lloyd and Lowell #1	\$ -	\$ 76,610	\$ -	\$ 76,610
McCullough #4	\$ -	\$ 3,007	\$ -	\$ 3,007
Pitcher #1	\$ -	\$ 1,074	\$ -	\$ 1,074
Pine Ridge Bond Claim	\$ 42,491	\$ -	\$ -	\$ 42,491
Ranchers Bond Claim	\$ -	\$ 5,489	\$ -	\$ 5,489
Red Mesa Holdings Bond Claim	\$ 60,574	\$ 60,840	\$ -	\$ 121,413
Red Mountain Bond Claim	\$ 51,430	\$ -	\$ -	\$ 51,430
Redwine Bond Claim	\$ -	\$ 3,638	\$ -	\$ 3,638
Reynolds* Noel Bond Claim	\$ 841	\$ -	\$ -	\$ 841
Tatonka Bond Claim	\$ -	\$ 350	\$ -	\$ 350
Taylor* William Bond Claim	\$ 117	\$ -	\$ -	\$ 117
Texas Tea Bond Claim	\$ 31,568	\$ 159,987	\$ -	\$ 191,554
Tudex Petroleum Bond Claim	\$ 58,375	\$ -	\$ -	\$ 58,375
Vitruvian Exploration Bond Claim	\$ 9,010	\$ -	\$ -	\$ 9,010
Wolcott #1	\$ -	\$ 407	\$ -	\$ 407
Woosley Oil - State #1-36	\$ -	\$ 322	\$ -	\$ 322
<b>TOTAL EXPENDITURES -&gt;</b>	<b>\$ 419,772</b>	<b>\$ 414,803</b>	<b>\$ -</b>	<b>\$ 834,574</b>

**NOTES:**

Project and Task Format: [Location or Well Name and Number (if orphan) or Operator Name + "Bond Claim"] :

"Task" [Task No(s)] - [Task Type(s)] - [Facility ID Number], [Well API Number (county and sequence code, if well work included with task)]

Project Financials: COGCC may be waiting on invoices for some Completed Tasks, and therefore expenditures for those Tasks may not be shown in the Project Financials Section.

**ABBREVIATIONS:**

EMGY = Emergency Response Appropriation

PROW = Plugging and Reclaiming Orphaned Wells Appropriation

**PROW FUNDS SCOREBOARD**

\$	445,000	Annual PROW Appropriation
\$	-	Planned and In Progress Estimate
\$	-	Completed Work (Waiting on Invoice Approval)
\$	(414,803)	Completed Work (Invoiced)
\$	<b>30,197</b>	<b>Estimated Fiscal Year End Balance</b>

(Scoreboard excludes work involving Bond Expenditures)

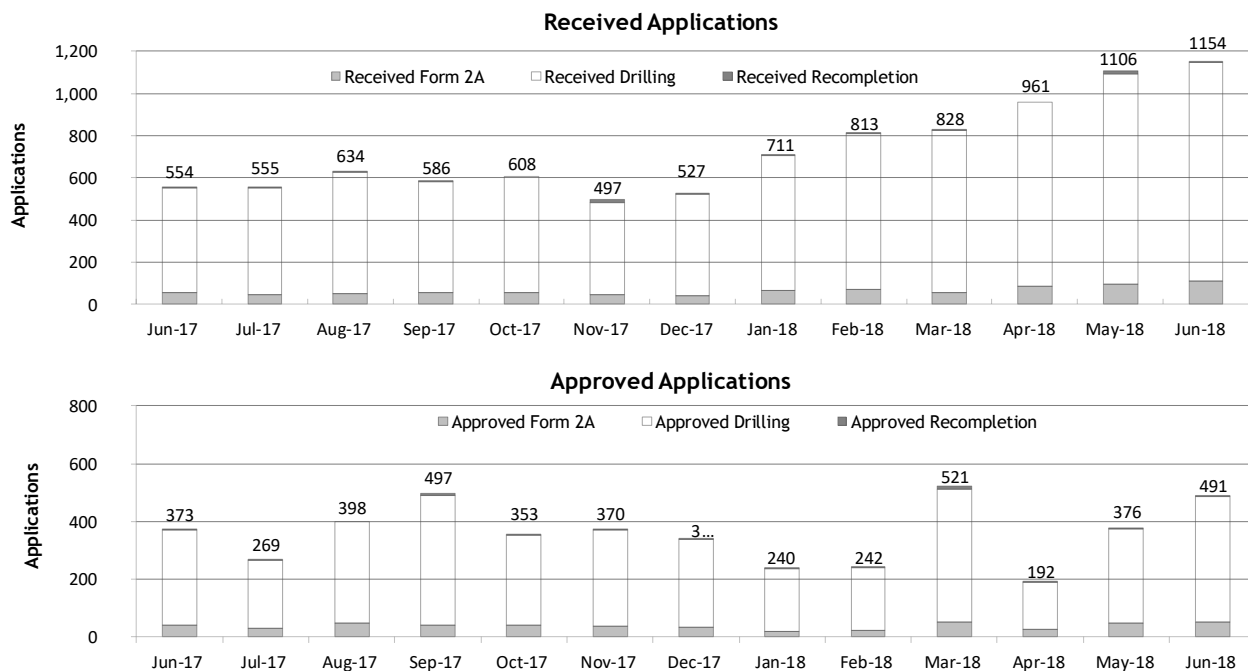


## Monthly Permit Activity as of July 1, 2018

Form/Month	Backlog	Received	Approved	Withdrawn	Rejected	Incomplete <sup>1</sup>	In-Process	Remaining <sup>2</sup>
<b>Form2A</b>								
Jun-17	148	58	40	2	1	31	132	163
Jul-17	163	45	31	3	1	33	140	173
Aug-17	173	53	49	6	0	33	138	171
Sep-17	171	56	41	0	1	25	160	185
Oct-17	185	58	40	6	2	25	170	195
Nov-17	195	47	38	2	0	24	178	202
Dec-17	202	44	32	3	0	31	180	211
Jan-18	211	66	19	4	0	33	221	254
Feb-18	254	73	22	5	1	45	254	299
Mar-18	299	56	50	5	0	52	248	300
Apr-18	300	87	25	8	1	60	293	353
May-18	353	98	46	10	0	74	321	395
Jun-18	395	109	51	5	5	65	376	443
<b>Drilling</b>								
Jun-17	1,502	493	331	3	9	185	1,467	1,652
Jul-17	1,652	508	234	49	75	146	1,656	1,802
Aug-17	1,802	572	349	13	20	137	1,855	1,992
Sep-17	1,992	528	450	12	36	135	1,887	2,022
Oct-17	2,022	550	311	75	64	139	1,983	2,122
Nov-17	2,122	438	331	19	59	125	2,026	2,151
Dec-17	2,151	479	304	15	25	124	2,162	2,286
Jan-18	2,286	639	218	68	0	93	2,546	2,639
Feb-18	2,639	736	217	34	45	99	2,980	3,079
Mar-18	3,079	769	463	1	8	98	3,278	3,376
Apr-18	3,376	874	164	185	64	104	3,733	3,837
May-18	3,837	994	327	54	89	91	4,332	4,361
Jun-18	4,423	1,040	436	81	56	59	4,839	4,890
<b>Recompletion</b>								
Jun-17	7	3	2	0	0	2	6	8
Jul-17	8	2	4	0	0	2	4	6
Aug-17	6	9	0	1	0	2	12	14
Sep-17	14	2	6	0	0	2	8	10
Oct-17	10	0	2	0	0	3	5	8
Nov-17	8	12	1	0	0	3	16	19
Dec-17	19	4	4	0	0	8	11	19
Jan-18	19	6	3	0	0	9	13	22
Feb-18	22	4	3	0	0	9	14	23
Mar-18	23	3	8	0	0	10	8	18
Apr-18	18	0	3	0	0	9	6	15
May-18	15	14	3	0	0	9	17	26
Jun-18	26	5	4	0	0	9	18	27

<sup>1</sup> Incomplete are applications that have missing or inaccurate data and cannot be approved.

<sup>2</sup> Backlog = Incomplete + In-process = Remaining permits from previous month.




**Status of Permit Applications Filed By Month as of July 1, 2018**
**Form 2A Location Assessment**

Year	Month	Received	Approved	Withdrawn	In Process	Percent In Process	Average Days to Process	Less Than 30 Days	30 to 49 Days	Greater Than 50 Days
2013	TOTAL	1,281	1,202	78	1	0%		369	433	400
2014	TOTAL	1,114	1,067	47	0	0%		279	429	359
2015	TOTAL	592	564	26	2	0%		78	157	329
2016	TOTAL	407	376	26	3	1%		32	61	283
2017	JAN	42	33	9	0	0%	104	0	5	28
	FEB	59	57	2	0	0%	93	7	9	41
	MAR	70	59	5	6	9%	76	6	18	35
	APR	41	35	2	4	10%	95	5	9	21
	MAY	41	35	4	2	5%	105	2	6	27
	JUNE	57	47	1	9	16%	77	7	16	24
	JULY	43	34	4	5	12%	76	6	14	14
	AUG	51	38	4	7	14%	66	6	9	23
	SEP	55	43	2	10	18%	114	4	10	29
	OCT	57	37	7	13	23%	83	9	7	21
	NOV	47	30	2	15	32%	81	5	8	17
	DEC	44	23	1	20	45%	85	1	2	20
2017	TOTAL	607	471	43	91	15%		58	113	300
2018	JAN	65	28	4	33	51%	77	2	6	20
	FEB	73	36	2	33	45%	62	5	10	21
	MAR	56	32	3	20	36%	57	3	14	15
	APR	87	19	3	64	74%	46	3	10	6
	MAY	98	12	0	85	88%	40	0	10	2
	JUNE	109	0	0	109	100%	0	0	0	0
2018	TOTAL	488	127	12	344	70%		13	50	64

**Form 2 Application For Permit to Drill (APDs)**

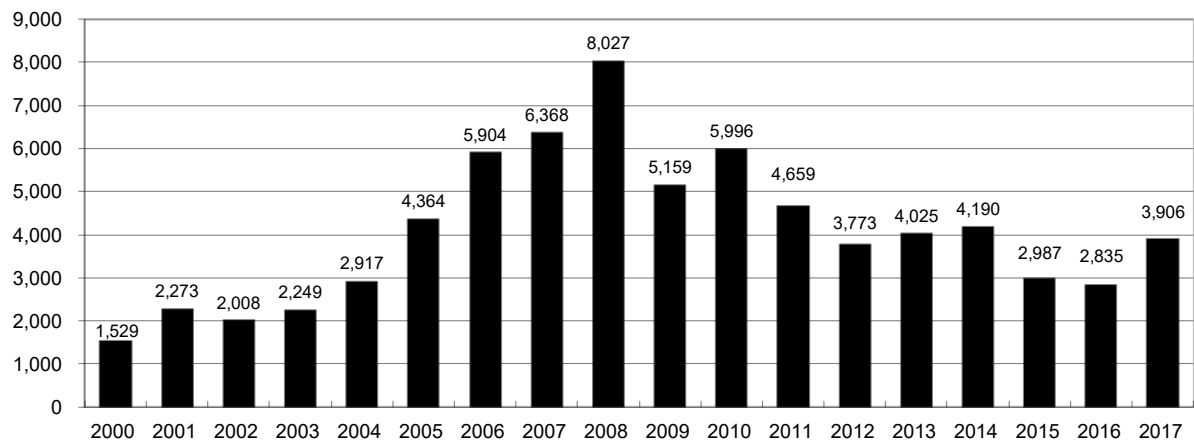
Year	Month	Received	Approved	Withdrawn	In Process	Percent In Process	Average Days to Process	Less Than 30 Days	30 to 49 Days	Greater Than 50 Days
2013	TOTAL	4,548	4,312	235	1	0%		1,046	1,626	1,714
2014	TOTAL	4,208	4,026	182	0	0%		689	1,629	1,744
2015	TOTAL	3,237	3,091	146	0	0%		249	759	2,113
2016	TOTAL	3,253	3,026	145	24	1%		204	402	2,442
2017	JAN	418	330	84	4	1%	117	5	41	290
	FEB	590	495	49	46	8%	110	36	39	421
	MAR	508	393	45	70	14%	97	15	70	310
	APR	335	285	18	32	10%	111	10	17	263
	MAY	306	254	29	23	8%	119	18	65	172
	JUNE	472	354	29	89	19%	113	12	75	270
	JULY	458	321	70	67	15%	111	22	27	272
	AUG	522	299	52	161	31%	77	8	94	205
	SEP	512	393	29	53	11%	129	18	88	289
	OCT	519	327	23	164	32%	111	7	50	270
	NOV	429	264	28	130	31%	91	40	23	208
	DEC	479	226	5	219	49%	90	3	10	215
2017	TOTAL	5,548	3,941	461	1,058	19%		194	599	3,185
2018	JAN	639	255	13	334	55%	78	10	47	204
	FEB	735	280	46	375	53%	74	18	84	182
	MAR	769	197	19	507	70%	67	15	68	117
	APR	874	219	2	614	74%	53	25	75	119
	MAY	995	37	9	949	95%	37	2	35	3
	JUNE	1040	4	0	1036	100%	2	4	0	0
2018	TOTAL	5,052	992	89	3,815	76%		74	309	625



## Annual Drilling Permits by County as of July 1, 2018

County	2005	2006	2007	2008	2009	2010	2011	2012	2013	2014	2015	2016	2017
ADAMS	34	37	89	51	35	21	8	40	40	51	96	74	125
ARAPAHOE	7	11	10	10	10	8	23	35	23	34	19	5	78
ARCHULETA	13	14	26	47	11	18	12	5	4	3	11	3	21
BACA	8	2	11	13	3	4	5	3	1	1			5
BENT	3	8	1	1		5		2	1				
BOULDER	13	21	37	32	35	24	30	22					
BROOMFIELD	1	1		2	33	28	11	36		31			
CHEYENNE	10	21	15	33	12	13	16	31	50	26	9		1
COSTILLA													
CROWLEY										2			3
DELTA	10	9	2			4	3	6	1	2			
DENVER		19	25	24									
DOLORES	1	6	10	12	21	8	8	13	12	3		3	2
EAGLE									1				
ELBERT		4			1		1	2	2	4	3	3	1
EL PASO					2	3	3	18	1	2			
FREMONT	3	2	4	14	13	22	14	11	2	8	2	2	1
GARFIELD	1,509	1,845	2,550	2,888	1,981	2,037	1,323	1,046	870	1,066	532	724	612
GRAND													
GUNNISON	9	19	7	10	12	4	3	11	9	20	28	19	33
HUERFANO	2			7		2	1	9	1	13	2		2
JACKSON	6	8	5	27	19	9	18	5	12	17	3	57	28
JEFFERSON		1	3	2					1				
KIOWA	1	11	9	26	7	16	17	17	12	5	3		3
KIT CARSON	5	4	4	13	7	3	2	6	1	2		1	
LA PLATA	115	235	251	328	298	191	99	71	32	87	106	96	108
LARIMER	1		5	46	12	41	8	13	2	4	28	4	30
LAS ANIMAS	413	500	362	303	88	92	85	11	2	1			
LINCOLN	4	1	2	58	44	48	31	36	87	129	24	5	31
LOGAN	13	17	14	5	9	17	8	27	4	5		1	3
MESA	136	265	293	501	427	306	127	150	105	74	126	7	215
MOFFAT	60	120	68	57	51	53	93	88	44	54	12	17	5
MONTEZUMA	11	5	12	22	39	19	27	29	14	25	3	3	6
MONTROSE		1	3	3		1	1						
MORGAN	7	3	6	2	1	6	13	5	16	6	4	28	
OTERO													
PARK					3	4	1						
PHILLIPS	17	12	69	82	45	64	112	56		11	2		
PITKIN			1								1		
PROWERS	5	7	5	8	1	3	1			1		1	
RIO BLANCO	161	360	321	477	348	441	109	117	167	121	107	71	115
RIO GRANDE				1	1			2		1			
ROUTT	6	9	8	4	2	3	10	4	12	4	9		
SAGUACHE			2	1	2								
SAN MIGUEL	45	35	23	20	13	10	2	1		2	3		
SEDGWICK	2	7	2	1	19	11	12	2		7	1		
WASHINGTON	50	69	45	11	1	6	12	6	19	12	9	7	10
WELD	901	1,418	1,527	2,340	1,448	2,152	2,262	1,826	2,468	2,303	1,841	1,704	2,466
YUMA	782	797	541	545	105	299	148	11	9	53	3		2
<b>TOTAL</b>	<b>4,364</b>	<b>5,904</b>	<b>6,368</b>	<b>8,027</b>	<b>5,159</b>	<b>5,996</b>	<b>4,659</b>	<b>3,773</b>	<b>4,025</b>	<b>4,190</b>	<b>2,987</b>	<b>2,835</b>	<b>3,906</b>

### ALL COUNTIES





## Form 2A Breakdown By County By Year as of July 1, 2018

Year	County	Form 2As	Completed	In Process	New Location	CDP	SWH	RSO	CDPHE
2009	Total State	818	818	0	408	2	80	5	5
2010	Total State	2,377	2,377	0	1,543	0	317	22	55
2011	Total State	2,297	2,297	0	1,724	1	259	16	5
2012	Total State	1,297	1,297	0	900	0	167	6	1
2013	Total State	1,195	1,194	1	845	0	144	2	4
2014	Total State	1,067	1,065	0	776	3	129	7	3
2015	Total State	574	569	3	398	0	95	2	2
2016	Total State	393	379	2	219	0	49	4	7
2017	ADAMS	33	13	17	28	0	0	0	0
	ARAPAHOE	35	16	16	29	0	0	0	0
	ARCHULETA	3	3	0	2	0	3	0	0
	BACA	3	3	0	3	0	0	0	0
	CROWLEY	3	3	0	3	0	0	0	0
	DOLORES	2	2	0	2	0	1	0	0
	ELBERT	1	1	0	1	0	0	0	0
	FREMONT	1	1	0	1	0	1	0	0
	GARFIELD	32	31	1	12	0	23	3	0
	GUNNISON	4	4	0	1	0	2	0	0
	JACKSON	7	7	0	4	0	7	0	0
	LA PLATA	13	13	0	5	0	12	0	0
	LARIMER	3	3	0	3	0	0	0	0
	LINCOLN	25	25	0	19	0	0	0	0
	MESA	15	15	0	10	0	4	1	0
	MOFFAT	1	1	0	1	0	1	0	0
	MONTEZUMA	3	3	0	3	0	0	0	0
	MORGAN	4	4	0	4	0	0	0	0
	RIO BLANCO	9	9	0	1	0	8	0	0
	WASHINGTON	8	8	0	7	0	1	0	0
	WELD	382	298	71	264	0	9	0	2
	YUMA	1	1	0	1	0	0	0	0
2017	Total State	588	464	105	404	0	72	4	2
2018	ADAMS	18	1	17	12	0	0	0	0
	ARAPAHOE	9	3	6	10	0	0	0	0
	ARCHULETA	4	0	4	3	0	3	0	0
	BROOMFIELD	6	1	5	6	0	0	0	0
	CHEYENNE	1	0	1	0	0	0	0	0
	DOLORES	1	1	0	1	0	1	0	0
	GARFIELD	26	18	8	8	0	20	0	1
	GUNNISON	2	0	2	0	0	1	0	0
	JACKSON	3	1	2	0	0	3	0	0
	KIOWA	1	0	1	1	0	0	0	0
	LA PLATA	4	4	0	0	0	2	0	0
	LARIMER	3	1	2	0	0	0	0	0
	LINCOLN	17	11	6	17	0	0	0	0
	LOGAN	1	1	0	0	0	0	0	0
	MESA	4	4	0	2	0	0	0	0
	MOFFAT	2	1	1	2	0	0	0	0
	MONTEZUMA	4	4	0	2	0	0	0	0
	MORGAN	1	1	0	0	0	0	0	0
	RIO BLANCO	3	0	3	2	0	2	0	1
	WASHINGTON	10	9	1	10	0	0	0	0
	WELD	332	61	271	248	0	1	0	0
2018	Total State	452	122	330	324	0	33	0	2

## Abbreviations:

CDP = Comprehensive Drilling Plan SWH = Sensitive Wildlife Habitat consultation

RSO = Restricted Surface Occupancy consultation CDPHE= Colorado Department of Health and Environment consultation



# Oil and Gas Staff Report

July 30, 2018

23

## Horizontal Well Activity as of July 1, 2018

County	2009		2010		2011		2012		2013		2014		2015		2016		2017		2018		Total																												
	DA	PA	Permit	Spud	Permit	Spud	Permit	Spud	Permit	Spud	Permit	Spud	Permit	Spud	Permit	Spud	Permit	Spud	Permit	Spud	AC	PR	DA	PA																									
ADAMS			6	5	2	3	1	2	26	1	42	18	92	3	72	2	125	28	67	22	84	3	19	1																									
ARAPAHOE	2		10	1	22	4	10	4	11	13	22	11	9	5	5	1	77	15	47	11	56	2	34	1																									
ARCHULETA	17		7	6	15	7	10	8	5	9	2	1	6	3	2	1	17	2	9	5	63	57																											
BENT							1														1																												
BOULDER						4																																											
BROOMFIELD																																																	
CHEYENNE	5	4							7	2	1	1	1	1					13		4	3	5	5																									
DELTA									1		2										3	2																											
DOLORES	9		18	2	6		6	1	9	3	5	4	3	1							18	12		5																									
EL PASO							10																																										
ELBERT							1																																										
FREMONT	7	6	6	6	12	5	4	4	1	1	1	1	1								11	10	7	1																									
GARFIELD	10	2	1	1	16	2	18	6	43	6	18	4	12	7	4		11		1	42	42	42	2																										
GUNNISON	1				1		3	2	2	2	9	9	18	2	10	1	24	1	19	1	8	7																											
HUERFANO							4	1			2		3								1	1																											
JACKSON	8	1	8	3	4	9	4	4	8	5	15	4	3		52	24	24	9	10	5	59	21	3																										
KIOWA							1		4	2	1										2			1																									
KIT CARSON	1						1		1	1	1										2			4																									
LA PLATA	28	2	11	2	28	3	18	7	12	1	5	1	42	3	67	8	83	6	50	2	91	90	1	3																									
LARIMER	3	2					5	1	2	2	43	7	22	8	4	3	29	25	2	2	42	27	2	1																									
LAS ANIMAS	16	2	4	1	1																16	16																											
LINCOLN			2	1	2	1	1				6	4	2								4	1	3																										
LOGAN	2						1														2			2																									
MESA	3	2	36	7	22	7	24	13	14	9	2	9	6	3					3		31	27	2	4																									
MOFFAT	7	1	6	3	4	9	4	44	6	18	13	15	5	2	3	1	3		2		36	22	12																										
MONTEZUMA	6	1	23	6	11	2	8	2	18	6	3	4	4	1	28						36	29		8																									
MORGAN							6	2	2	1	13	1	4	1							5	5																											
PARK							1	1													1																												
RIO BLANCO	7	2			1	1	11	2	15	2	4	5	3	2			9		3	1	18	12	3																										
ROUTT	10	6	1				1			1			3								1	1	6	1																									
SAN MIGUEL	1																				1			1																									
WASHINGTON	1		1																		1			1																									
WELD	11	3	12	5	208	84	763	229	964	594	2,215	1,423	1,789	1,063	1,671	723	2,435	1,248	1,140	605	7,096	5,200	12	82																									
YUIMA	1		6																		1			1																									
<b>TOTAL Horizontal</b>	<b>156</b>	<b>25</b>	<b>14</b>	<b>147</b>	<b>31</b>	<b>333</b>	<b>123</b>	<b>901</b>	<b>280</b>	<b>1,203</b>	<b>641</b>	<b>2,260</b>	<b>1,160</b>	<b>2,016</b>	<b>1,918</b>	<b>764</b>	<b>2,837</b>	<b>1,334</b>	<b>1,366</b>	<b>654</b>	<b>7,736</b>	<b>5</b>	<b>5,641</b>	<b>33</b>	<b>140</b>																								
Percent of Total HZ																								16%	9%																								
Total All Permits																								5,159	5,996	4,659	3,773	4,025	4,190	2,988	2,835	3,875	1,825	1,825	74.8%														
HZ Percent of Total																								2.8%	5.6%	19.3%	31.9%	56.1%	57.9%	67.5%	67.7%	73.2%	74.8%	74.8%	73.2%	0%	73%	0%	2%										



## Well to Building Setbacks by Year and by County as of July 1, 2018

Count of well locations, grouped by proximity from well to buildings.

Location Proximity to Buildings	2010	2011	2012	2013	2014	2015	2016	2017	2018	Number of Locations Since 2009	Percent of Total Locations
Less than 150 feet	3	3	2	0	3	2	0	0	0	15	0%
150 to 350 feet	58	61	39	34	38	12	15	16	3	313	3%
350 to 500 feet	110	97	61	65	48	33	23	24	12	523	6%
500 to 1000 feet	385	331	188	188	161	83	76	90	30	1,649	18%
1000 + feet	1,705	1,470	838	761	724	380	206	318	147	6,905	74%
<b>TOTAL LOCATIONS</b>	<b>2,261</b>	<b>1,962</b>	<b>1,128</b>	<b>1,048</b>	<b>974</b>	<b>510</b>	<b>320</b>	<b>448</b>	<b>192</b>	<b>9,360</b>	

County	TOTAL	Less than 150 feet	150 to 350 feet	350 to 500 feet	500 to 1000 feet	1000 + feet
ADAMS	103	0	4	9	25	65
ARAPAHOE	124	0	2	5	11	106
ARCHULETA	27	0	1	1	14	11
BACA	18	0	0	0	1	17
BENT	7	0	0	0	0	7
BOULDER	23	0	1	1	17	4
BROOMFIELD	34	0	0	4	14	16
CHEYENNE	140	1	0	0	2	137
CROWLEY	5	0	0	0	0	5
DELTA	7	0	0	2	1	4
DOLORES	23	0	0	0	7	16
EAGLE	1	0	0	0	0	1
EL PASO	14	0	0	0	3	11
ELBERT	15	0	0	0	3	12
FREMONT	41	0	2	7	9	23
GARFIELD	625	0	12	10	84	519
GUNNISON	50	1	0	4	1	44
HUERFANO	16	0	0	0	5	11
JACKSON	65	0	1	5	1	58
KIOWA	66	0	0	0	1	65
KIT CARSON	15	0	0	0	0	15
LA PLATA	156	0	8	16	49	83
LARIMER	43	0	5	5	16	17
LAS ANIMAS	201	1	6	7	37	150
LINCOLN	409	0	1	2	5	401
LOGAN	46	0	1	1	1	43
MESA	120	0	0	3	18	99
MOFFAT	191	0	1	3	16	171
MONTEZUMA	50	0	0	1	4	45
MONTROSE	2	0	0	0	0	2
MORGAN	35	0	0	2	5	28
PARK	4	0	0	0	0	4
PHILLIPS	275	1	4	6	21	243
PITKIN	1	0	0	0	0	1
PROWERS	6	0	0	0	0	6
RIO BLANCO	196	0	0	0	2	194
RIO GRANDE	2	0	0	0	1	1
ROUTT	30	0	0	0	2	28
SAN MIGUEL	14	0	0	0	0	14
SEDGWICK	33	0	0	1	3	29
WASHINGTON	95	0	2	0	4	89
WELD	5,548	11	252	412	1,221	3,652
YUMA	529	0	9	16	45	459





## Well to Building Setbacks Less Than Two Hundred Feet as of July 1, 2018

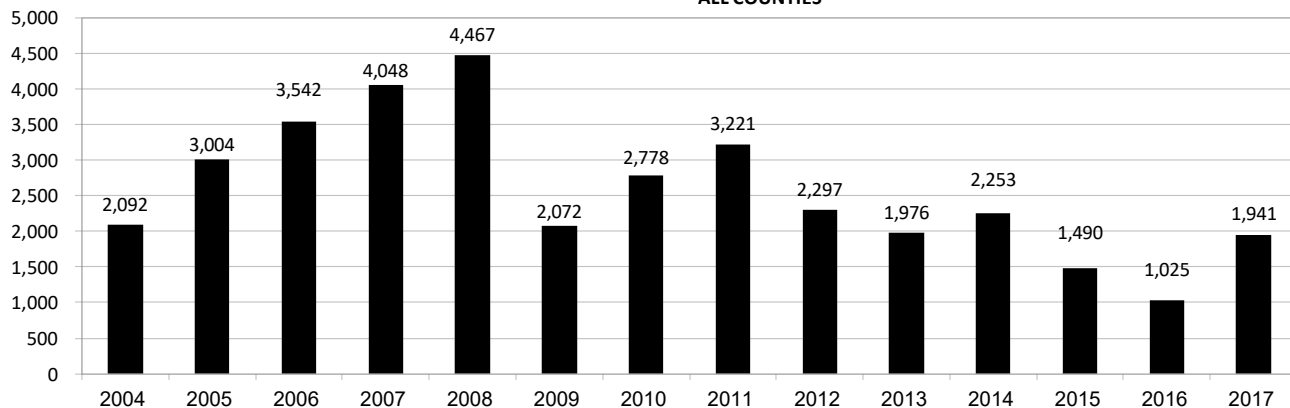
Year	Location Doc Number	County	High Density	New Location	Distance (Feet)	Proximity (Feet)	Building Description
2015	400768804	WELD	No	Yes	46	less 150	Building to be razed
2011	2587822	CHEYENNE	No	No	58	less 150	Water well house
2009	1691798	WELD	No	No	58	less 150	Vehicle garage
2010	400072164	WELD	No	Yes	69	less 150	Abandoned hog shed
2014	400569085	WELD	No	No	78	less 150	Well shed
2014	400600705	WELD	No	No	80	less 150	Livestock shed
2012	400240957	GUNNISON	No	Yes	90	less 150	Equipment shed
2015	400742811	WELD	No	Yes	102	less 150	Building to be razed
2009	1758843	WELD	No	Yes	103	less 150	Building to be razed
2011	1636646	WELD	No	No	122	less 150	Storage shed
2009	400011284	LAS ANIMAS	No	Yes	127	less 150	Operator is owner
2009	1786896	PHILLIPS	No	No	132	less 150	Grain storage
2014	400642113	WELD	No	Yes	142	less 150	Barn
2011	400117702	WELD	No	Yes	143	less 150	Irrigation pump house
2011	400227765	WELD	No	Yes	145	less 150	Storage barn
2014	400558626	LINCOLN	No	No	150	less 150	Gas plant equipment building
2009	1904205	WELD	No	No	154	150 to 350	Livestock enclosure
2012	400243295	WELD	No	Yes	155	150 to 350	Unused storage shed
2015	400862577	GARFIELD	No	No	155	150 to 350	Gravel pit scale house
2011	400179419	WELD	No	Yes	157	150 to 350	Existing well / storage building
2010	400054716	WELD	No	No	159	150 to 350	Equipment barn
2011	400188968	WELD	No	Yes	159	150 to 350	Abandoned
2014	400554054	WELD	No	Yes	159	150 to 350	Equipment shed
2014	400559404	WELD	No	Yes	160	150 to 350	Barn
2016	400950178	LA PLATA	No	Yes	162	150 to 350	Residence
2010	400021477	WELD	No	Yes	162	150 to 350	Goat barn
2009	1758386	WELD	No	Yes	168	150 to 350	Storage shed
2011	1635946	WELD	No	No	169	150 to 350	Storage shed
2013	400447386	WELD	No	No	169	150 to 350	Abandoned turkey barn
2013	400447391	WELD	No	No	169	150 to 350	Abandoned turkey barn
2011	400165164	WELD	No	Yes	178	150 to 350	Residence
2013	400367184	WELD	No	Yes	179	150 to 350	Shed
2011	400188780	WELD	No	Yes	180	150 to 350	Residence
2014	400562498	WELD	No	Yes	181	150 to 350	Garage / storage shed
2010	1697620	WELD	No	No	187	150 to 350	Livestock shed
2009	1758746	WELD	No	No	193	150 to 350	Storage shed
2011	400154431	WELD	No	Yes	198	150 to 350	Turkey barn
2012	400250031	WELD	No	Yes	198	150 to 350	Abandoned guard shack
2010	1774783	WELD	No	No	199	150 to 350	Cement service building
2011	400118102	YUMA	No	Yes	199	150 to 350	Steel barn



## Annual Well Starts by County as of July 1, 2018

County	2004	2005	2006	2007	2008	2009	2010	2011	2012	2013	2014	2015	2016	2017	2018
ADAMS	22	24	13	41	14	14	21	2	15	5	29	3	2	29	22
ARAPAHOE	6	1	5	2	1	1	3	8	9	25	21		1	17	11
ARCHULETA	4	10	5	7	29	9	12	10	11		1	7	4	5	16
BACA	6	6	2	6	12		5	4	2	2		1			2
BENT	3	2	8	1	1			1	2						
BOULDER	5	11	9	14	25	16	13	7	14						
BROOMFIELD	1				10		21	11	5						
CHEYENNE		9	14	15	14	8	12	11	17	35	19	3			
COSTILLA															
CROWLEY											2			1	
DELTA	4	6	5	2			7	3	3		1				
DENVER			7	5	4										
DOLORES	2		2	13	6	2		1	5	10	4			1	
EAGLE										1					
EL PASO							2		5		1				
ELBERT			1									3		1	
FREMONT	1	3	2	2	6	3	9	16	9	2	4		1	1	
GARFIELD	585	799	1,005	1,304	1,690	765	906	877	495	391	361	174	160	307	148
GUNNISON	1	1	9	5	1	4	5	4	4	1	2	4	1	7	2
HUERFANO	6	2			2		2		2	1	4	1			
JACKSON	10		3	3	12	1	8	8		7	7		24	13	5
JEFFERSON				2											
KIOWA	2	1	7	7	2	5	15	14	10	12	3	2			
KIT CARSON	1	6	2	1	14	3	1	1	3	1	2			1	
LA PLATA	103	104	108	179	205	131	67	54	3	10	40	42	44	97	14
LARIMER		1		4	8	1	28	2	10	4	1	9	3	25	2
LAS ANIMAS	296	384	413	326	222	14	7	78	1		1				
LINCOLN	2	2	1	2	18	11	14	21	23	41	42	12	2	12	8
LOGAN	2	11	12	12	3	7	3	9	13	4	6				
MESA	25	89	156	209	225	14	11	41	4	11	17	77	4	123	62
MOFFAT	19	40	60	42	26	18	15	32	26	27	3	6	3	1	
MONTEZUMA	1	7	2	4	22	10	3	8	18	12	8	1		2	1
MONTROSE	1			1	2		1								
MORGAN	5	5	3	1	1	2	3	2	3	1	3	1			4
PARK							2								
PHILLIPS	10	11	4	35	18	2	42	130	48		9				
PROWERS	5	5	6	3	5	2	3	1				1			
RIO BLANCO	92	95	107	95	205	118	107	71	54	36	43	17		5	3
RIO GRANDE											1				
ROUTT	1	6	3	2		2	1	2	4	2	2				
SAN MIGUEL	28	13	20	17	5	1	2	2			2				
SEDGWICK	2	1	1	5			3	8	3			1			
WASHINGTON	65	34	23	14	11	2	2	4	1	9	7	2	6	8	3
WELD	632	718	931	1,222	1,312	878	1,209	1,672	1,459	1,312	1,569	1,123	770	1,283	612
YUMA	144	597	593	445	336	28	213	106	16	13	39				
<b>TOTAL</b>	<b>2,092</b>	<b>3,004</b>	<b>3,542</b>	<b>4,048</b>	<b>4,467</b>	<b>2,072</b>	<b>2,778</b>	<b>3,221</b>	<b>2,297</b>	<b>1,976</b>	<b>2,253</b>	<b>1,490</b>	<b>1,025</b>	<b>1,941</b>	<b>913</b>

ALL COUNTIES





## Active Wells by County and Status as of July 1, 2018

COUNTY	Drilling	Domestic	Injecting	Producing	Shut In	Temp Aband	Waiting on Completion	Active Storage	Total Active Wells
ADAMS	42		6	674	220	23	1	12	978
ARAPAHOE	15	1	4	120	34	12		44	230
ARCHULETA	1	5	2	106	18	14	6	1	153
BACA			15	96	23	5		56	195
BENT		1		19	9	6			35
BOULDER				266	37	2			305
BROOMFIELD				84	8				92
CHEYENNE			40	281	40	50	1		412
CROWLEY									0
DELTA				3	12		1		16
DENVER				39	7	3	3		52
DOLORES			1	27	12				40
EL PASO		1				1			2
ELBERT				58	13	3		1	75
FREMONT	3	3		53	12	6	2		79
GARFIELD	236	2	42	10741	401	69	95	1	11,587
GUNNISON	2		2	33	8	3	2		50
HUERFANO			1	35	3	5			44
JACKSON	20		24	101	61		1		207
JEFFERSON					2		1	3	6
KIOWA			12	82	20	10	2		126
KIT CARSON		1		8	5	2			16
LA PLATA	9	7	36	3020	183	28	2	35	3,320
LARIMER	2	1	23	171	51	24			272
LAS ANIMAS	1	4	19	2656	93	121	10	23	2,927
LINCOLN	9	1	10	88	19	6			133
LOGAN			26	89	33	33		31	212
MESA	85	1	7	932	167	34	5	11	1,242
MOFFAT	1		9	398	106	37	5		556
MONTEZUMA	1	1	7	103	31	13			156
MONTROSE								1	1
MORGAN	3		15	40	131	35		81	305
OURAY		1				1			2
PARK									0
PHILLIPS			3	244	23	2			272
PITKIN								10	10
PROWERS				21	6	1			28
RIO BLANCO	30	3	302	2017	368	151	7	2	2,880
ROUTT		2		21	12	2			37
SAN MIGUEL	1			61	51	16			129
SEDGWICK	2		1	8	7	1	2		21
WASHINGTON	10		24	355	67	8	1		465
WELD	1225	1	56	12295	7883	723	17	4	22,204
YUMA	2	8	23	3672	139	9	12	1	3,866
<b>Totals</b>	<b>1,700</b>	<b>44</b>	<b>710</b>	<b>39,017</b>	<b>10,315</b>	<b>1,459</b>	<b>176</b>	<b>317</b>	<b>53,738</b>



## Monthly Statistics as of July 1, 2018

Page 1 of 2

YEAR and MONTH	Baker - Hughes Rig Count	Drilling		Recompletion		Injection		Pits		Locations		Well Spud Notices	Active Drilling Permits	Active Wells	Public Visits			
		Rcvd	Apvd	Rcvd	Apvd	Rcvd	Apvd	Rcvd	Apvd	Rcvd	Authz				Data	Office	Internet	
2011 TOTAL		4,709	4,659	325	320	44	32	190	192	2,382	2,267	3,220				187	1,294	1,337,865
2012 TOTAL		3,982	3,773	154	168	63	44	114	84	1,373	1,293	2,297				159	1,305	1,324,443
2013 TOTAL		4,481	4,028	74	72	67	63	67	106	1,268	1,213	1,976				92	1,456	511,734
2014 JAN	62	278	232	3	2	3	4	14	8	90	43	172	4,926	51,840		1	90	46,150
FEB	61	284	297	6	4	1	1	3	1	91	94	149	5,051	51,847		12	113	43,408
MAR	62	367	329	4	6	7	1	6	6	110	88	184	4,997	51,952		16	140	46,620
APR	63	276	317	2	3	2	5	8	3	89	99	173	4,897	52,060		11	188	45,558
MAY	65	458	383	2	2	3	1	6	7	83	94	180	4,923	52,202		18	131	42,365
JUN	67	429	377	3	0	6	7	5	2	134	92	223	4,924	52,337		10	156	42,518
JUL	69	272	446	2	5	3	11	8	5	97	126	180	4,955	52,431		7	166	45,481
AUG	73	376	259	4	3	4	4	3	4	111	87	218	5,060	52,582		8	145	42,431
SEP	76	412	304	2	3	3	1	20	1	116	81	210	5,006	52,694		14	175	43,577
OCT	76	459	371	3	2	9	2	4	6	93	109	198	4,827	52,785		19	138	46,030
NOV	73	326	479	5	2	5	4	4	0	54	103	172	5,171	52,947		8	96	39,583
DEC	69	286	397	1	2	2	7	1	2	45	99	194	5,236	53,054		6	144	37,964
2014 TOTAL		4,223	4,191	37	34	48	48	82	45	1,113	1,115	2,253				130	1,682	521,685
2015 JAN	64	349	316	3	1	2	9	3	1	60	43	198	5,060	53,195		17	114	41,502
FEB	49	324	161	3	2	5	6	9	0	73	28	115	4,750	53,309		4	117	38,245
MAR	38	246	294	1	6	1	5	7	5	44	70	161	4,983	53,414		6	146	42,513
APR	37	194	165	3	1	2	5	1	2	46	37	99	4,854	53,456		1	125	39,559
MAY	39	324	190	1	4	2	6	8	0	41	44	111	4,632	53,535		5	113	unavailable
JUN	38	327	281	4	1	0	5	2	1	52	49	143	4,726	53,608		5	138	unavailable
JUL	38	373	250	4	2	2	1	0	0	57	48	122	4,663	53,706		7	145	26,975
AUG	37	289	300	2	6	3	0	5	5	32	46	121	4,847	53,766		2	109	30,674
SEP	33	242	312	3	1	1	7	0	3	59	49	100	4,953	53,806		4	146	31,642
OCT	30	372	223	2	2	3	1	1	0	54	51	108	4,694	53,898		12	119	33,199
NOV	31	190	254	6	2	4	3	1	0	21	49	117	4,765	53,719		7	105	29,112
DEC	25	275	242	1	5	3	6	1	0	42	43	79	4,594	53,652		3	112	25,659
2015 TOTAL		3,505	2,988	33	33	28	54	38	17	581	557	1,474				73	1,489	339,080
2016 JAN	22	250	126	1	0	3	5	0	0	34	9	76	4,528	53,698		2	118	30,105
FEB	20	205	227	3	0	3	2	44	2	31	39	68	4,599	53,723		8	115	28,611
MAR	17	268	268	0	0	2	2	5	0	34	36	76	4,530	53,710		3	132	30,902
APR	17	185	224	0	1	3	4	0	0	24	39	62	4,511	53,774		4	113	27,914
MAY	16	353	217	0	2	3	1	1	1	33	24	86	4,464	53,749		4	106	26,778
JUN	16	315	233	0	0	2	3	2	1	38	30	73	4,456	53,651		2	80	27,284
JUL	20	268	249	5	0	4	4	6	6	31	30	88	4,344	53,724		5	91	24,151
AUG	21	141	150	1	3	5	3	2	0	33	23	94	4,436	53,740		1	106	29,192
SEP	19	366	270	0	2	4	2	0	6	29	24	73	4,522	53,817		4	154	25,698
OCT	19	334	297	6	1	6	3	1	0	42	29	96	4,601	53,903		1	135	25,893
NOV	20	368	304	3	3	3	3	0	1	40	45	119	4,566	53,993		2	97	25,140
DEC	26	342	267	1	4	7	5	1	2	48	25	114	4,477	54,036		5	92	23,449
2016 TOTAL		3,395	2,832	20	16	45	37	62	19	417	353	1,025				41	1,339	325,117
2017 JAN	28	442	211	8	2	2	2	0	0	42	25	137	4,492	54,111		6	79	28,702
FEB	26	701	263	2	4	4	3	0	0	62	38	142	4,543	54,194		1	97	27,715
MAR	28	510	423	2	2	7	4	3	24	71	48	200	4,714	54,322		1	152	31,952
APR	29	352	301	5	4	3	7	1	2	41	54	133	4,635	54,369		1	103	30,406
MAY	31	307	367	4	3	1	6	1	28	41	55	180	4,899	54,369		5	94	36,109
JUNE	36	493	331	3	2	6	1	1	1	58	40	163	4,947	54,605		5	109	30,644
JULY	37	508	234	2	4	2	2	1	1	45	31	184	4,999	54,699		2	80	27,025
AUG	37	572	349	9	0	8	3	1	2	53	49	179	5,000	54,814		1	143	30,715
SEP	35	528	450	2	6	5	4	1	1	56	41	152	4,976	54,925		2	114	27,402
OCT	34	550	311	0	2	2	3	0	1	58	40	154	5,022	54,989		2	174	31,995
NOV	37	438	331	12	1	13	10	1	1	47	38	168	5,016	55,062		1	124	28,802
DEC	34	479	304	4	4	4	1	0	0	44	32	149	5,039	55,151		0	100	25,556
2017 TOTAL		5,880	3,875	53	34	57	46	10	61	618	491	1,941				27	1,369	357,023
2018 JAN	34	639	218	6	3	4	3	2	0	66	19	163	4,920	55,155		4	102	34,895
FEB	33	736	217	4	3	2	8	1	5	73	22	142	4,871	55,153		2	99	30,666
MAR	30	769	463	3	8	6	9	4	2	56	50	125	5,024	54,811		2	118	32,185
APR	30	874	164	0	3	7	6	4	4	87	25	128	4,918	54,260		4	124	33,403
MAY	29	994	327	14	3	10	11	6	3	98	46	207	4,847	53,832		1	100	30,873
JUNE	33	1,040	436	5	4	7	3	3	1	109	51	129	5,017	53,738		0	138	29,244
2018 TOTAL		5,052	1,825	32	24	36	40	20	15	489	213	894				13	681	191,266

Abbreviation Key: Rcvd = Received, Apvd = Approved, Authz = Authorized



# Oil and Gas Staff Report

July 30, 2018

29

Monthly Statistics as of July 1, 2018

Page 2 of 2

YEAR and MONTH	Well Oper Change	Operators		Bonds						Hearings			Enforcement			Remediation Projects				Inspections		
				Release		Claim		Replace	Ind	Blntk	Apps.	Orders	NOAVs	AOCs	OFVs	Cmplt	Spills	Rcvd		Comp	Wells	Locations
				Ind	Blntk	Ind	Blntk											Rcvd	Comp			
<b>2011 TOTAL</b>	<b>6,743</b>	<b>33</b>	<b>31</b>	<b>79</b>	<b>44</b>	<b>43</b>	<b>4</b>	<b>4</b>	<b>403</b>	<b>349</b>	<b>230</b>	<b>10</b>	<b>19</b>	<b>247</b>	<b>527</b>	<b>726</b>	<b>536</b>	<b>12,394</b>	<b>-</b>			
<b>2012 TOTAL</b>	<b>7,546</b>	<b>47</b>	<b>37</b>	<b>70</b>	<b>46</b>	<b>33</b>	<b>3</b>	<b>0</b>	<b>482</b>	<b>396</b>	<b>157</b>	<b>9</b>	<b>2</b>	<b>244</b>	<b>402</b>	<b>690</b>	<b>641</b>	<b>19,071</b>	<b>12,670</b>			
<b>2013 TOTAL</b>	<b>7,192</b>	<b>49</b>	<b>21</b>	<b>48</b>	<b>26</b>	<b>20</b>	<b>0</b>	<b>0</b>	<b>571</b>	<b>522</b>	<b>237</b>	<b>37</b>	<b>3</b>	<b>201</b>	<b>568</b>	<b>507</b>	<b>541</b>	<b>23,551</b>	<b>13,370</b>			
<b>2014 TOTAL</b>	<b>10,298</b>	<b>55</b>	<b>28</b>	<b>42</b>	<b>39</b>	<b>13</b>	<b>1</b>	<b>1</b>	<b>698</b>	<b>598</b>	<b>179</b>	<b>43</b>	<b>4</b>	<b>243</b>	<b>786</b>	<b>596</b>	<b>502</b>	<b>34,208</b>	<b>18,982</b>			
<b>2015 TOTAL</b>	<b>4,461</b>	<b>59</b>	<b>27</b>	<b>27</b>	<b>45</b>	<b>31</b>	<b>3</b>	<b>3</b>	<b>738</b>	<b>645</b>	<b>173</b>	<b>57</b>	<b>8</b>	<b>358</b>	<b>623</b>	<b>516</b>	<b>601</b>	<b>38,957</b>	<b>19,199</b>			
<b>2016 TOTAL</b>	<b>6,560</b>	<b>38</b>	<b>28</b>	<b>37</b>	<b>41</b>	<b>23</b>	<b>9</b>	<b>5</b>	<b>473</b>	<b>397</b>	<b>107</b>	<b>43</b>	<b>7</b>	<b>261</b>	<b>528</b>	<b>461</b>	<b>600</b>	<b>43,135</b>	<b>23,126</b>			
<b>2017 TOTAL</b>	<b>11,918</b>	<b>37</b>	<b>26</b>	<b>58</b>	<b>45</b>	<b>57</b>	<b>1</b>	<b>6</b>	<b>885</b>	<b>680</b>	<b>79</b>	<b>36</b>	<b>6</b>	<b>1,358</b>	<b>614</b>	<b>538</b>	<b>329</b>	<b>33,143</b>	<b>17,938</b>			
<b>2018 TOTAL</b>	<b>1,165</b>	<b>22</b>	<b>16</b>	<b>28</b>	<b>23</b>	<b>20</b>	<b>2</b>	<b>2</b>	<b>466</b>	<b>344</b>	<b>54</b>	<b>13</b>	<b>0</b>	<b>294</b>	<b>298</b>	<b>331</b>	<b>304</b>	<b>14,300</b>	<b>7,855</b>			

Abbreviation Key: Ind = Individual, Blntk = Blanket, Apps = Application for Hearing, NOAV = Notice of Alleged Violation, AOC = Administrative Order of Consent, OFV = Order Finding Violation, Cmplt = Complaint, Comp = Completed


**Analytical Samples Submitted by Month to the COENV Database as of July 1, 2018**

Sample Submission Reason	Jul 2017	Aug 2017	Sep 2017	Oct 2017	Nov 2017	Dec 2017	Jan 2018	Feb 2018	Mar 2018	Apr 2018	May 2018	Jun 2018	TOTAL
Rule 318A.e.(4)/318A.f pre drill	3	3	9	6	4	4	16	4	2	4	5	12	72
Rule 318A.e.(4)/318A.f post drill	10	10	6	6	5	2	6	1	4	10	2	13	75
Rule 609 pre drill	1	4	5	16	2	12	1	13	3		6		63
Rule 609 1 year subsequent		1				5		4	1				11
Rule 609 5 year subsequent										11	2		13
Rule 608 pre drill	18	27		9	24		21	26	6	3	11	3	148
Rule 608 1 year post drill	3	6			12					15			36
Rule 608 3 year post drill												11	11
Rule 608 6 year post drill	3				3	3	2		6		6	2	25
317 B subsequent sample						4		1		1			6
Voluntary baseline sample	50	30	46	30	65	56	78	100	112	73	37	63	740
Voluntary post drill	24	13	18	15		24	9	9	9	17		2	140
Bradenhead gas sample	34	36	22	25	27	19	46	44	29	36	33	40	391
Bradenhead water sample	11	27	8	10	5	23	22	37	4	24	11	18	200
Bradenhead non-aqueous liquids	7	4	3	6	3		3	6	2	3	7	4	48
Production gas sample	34	26	24	20	15	19	30	35	20	26	18	27	294
Int. casing gas sample												1	1
Produced water			17			8	2						27
Rule 912b flaring natural gas									2				2
Remediation	4	1			3	6	200	6	1		24	1	246
Complaint investigation	1	8		15	5			3		3			35
Land owner request		3											3
Spill investigation					1				40	3			44
UIC_COA_5year				2					1				3
Rule 908.B.(9) post construction sample		1								1			2
COA baseline							4	1					5
COA post drill		3	3	3	3	6	3	3	6		3		33
COA 1 year post drill					1								1
COA 3 year post drill				1			4						5
COGCC baseline - COGCC Staff	5												5
COA post construction								3					3
Adena Field monitoring					5								5
COGA baseline				1									1
Duplicate sample		1					1		2	1			5
<b>TOTAL, ALL REASONS</b>	<b>208</b>	<b>204</b>	<b>161</b>	<b>165</b>	<b>183</b>	<b>191</b>	<b>448</b>	<b>296</b>	<b>250</b>	<b>231</b>	<b>165</b>	<b>197</b>	<b>2,699</b>