



COLORADO

**Oil & Gas Conservation
Commission**

Department of Natural Resources

Staff Report

for September 17, 2018

Top Stories

◆ Community Relations Unit and Local Government Liaison Program Update

Mike Leonard manages the COGCC's Community Relations Unit (CRU), which includes Local Government Liaison (LGL) Marc Morton and Complaint Intake Specialist Megan Adamczyk.

In keeping with key principles in the COGCC Mission Statement, the CRU expands COGCC's interaction, communication, and consultation among local, state, and federal government agencies; the general public; the oil and gas industry; and oil and gas industry stakeholder groups.

In leading the CRU, Mike Leonard has the following duties:

- Responds to inquiries and information requests from local government staff, the public, operators, and other stakeholders;
- Leads the agency in responding to emergency situations and working with emergency response personnel;
- Supports the agency's complaint intake and resolution process;
- Strengthens the LGD Program by seeking opportunities for outreach to local government officials and their constituents regarding the State's regulatory process and what to expect when oil and gas activity is planned or occurs in the area; and
- Supports LGL staff efforts in managing the Local Governmental Designee (LGD) program, including offering ongoing training opportunities to LGDs, local government staff, and other stakeholders.

Information on COGCC led training opportunities is summarized on the COGCC website under the Government page by selecting 2018 LGD Training Information.

The COGCC's LGL Staff continues to conduct outreach and support in response to inquiries, training requests, and requests for assistance navigating the COGCC website. LGL Staff also regularly represent the COGCC in meetings with local governments across the State.

And as a reminder to all participating LGDs and local governments, it is extremely important to notify the COGCC LGL (via submittal of a signed and updated Form 29 LGD Participation) of any change in an LGD's email address, contact information, or of a change in the status of your participation in the LGD program. The primary reason is that notifications an LGD will receive from the COGCC (via eForms) or operators are sent via email.

The link to the Form 29 is available on the COGCC website at the link below:

http://cogcc.state.co.us/documents/reg/Forms/PDF_Forms/form29.pdf

There continues to strong interest from local government staff, LGDs, and other stakeholders in attending training offered by the COGCC's LGL Staff. Thus far in 2018, LGL Staff has provided training to over 50 participants and offered 11 training sessions.

Training opportunities in 2018 continue with three main types of training available:

- LGD Orientation Training - offered to newly appointed LGDs, or upon request; typically 3-4 hours
- COGCC Website Training - available upon request; typically 3-4 hours



- Topic Specific Training - available upon request and staff availability; typically 1 -2 hours.

LGD Orientation training typically includes the following:

- COGCC overview (Commission and Staff roles, rules, setback rules, programs, database/COGIS)
- Well and location permitting (Forms 2 and 2A)
- LGD program opportunities
- Public involvement opportunities
- Overview and navigation of the COGCC website
- Oil and gas basics.

To get more information on LGD program training opportunities, please contact COGCC LGL Marc Morton at (303) 894-2100, ext. 5132, or email

marc.morton@state.co.us

A list of the LGL outreach and public involvement activities conducted since the last staff report is included in the Public Outreach section below.

◆ Operator Training: Form 5 Drilling Completion Report

COGCC Staff will be hosting an all day training session on the Form 5 Drilling Completion Report, on Wednesday, September 26, starting at 9:00 a.m. in the Wasatch Room at the COGCC's Denver office.

Training is open to all operators, contractors, consultants, and regulatory and technical staff. We will briefly cover Rule 308A, discuss compliance issues, and conduct an in depth review and discussion on the Form 5 itself, including a tab by tab examination of data field, log, and attachment requirements. For additional information contact Sabrina Trask at (303) 894-2100, ext. 5125, or email

sabrina.trask@state.co.us

◆ Abandonment of Coors Wells and Production Facilities in Firestone

Between August 13 and 28, Engineering Integrity Inspector Joe MacLaren inspected and witnessed flowline abandonment work being completed by Anadarko Petroleum in Firestone. The field work involved the removal and final abandonment of the off location flowlines associated with the Coors V 6-14JI, Coors V 6-13JI, and Coors V 6-13 wells.

The majority of the flowline pipe was removed, although some sections were cemented full and abandoned in place per State Rule 1105 at areas such as road and sidewalk crossings. The scope of work was approved by the Town of Firestone.

COGCC Field Inspector Tom Beardslee was onsite to witness plugging operations for the Coors V 6-14JI, Coors V 6-13JI and Coors V 6-13 wells.

In addition, COGCC Environmental Staff witnessed the removal of the separator, emission control device and the crude oil tank at battery facility 451374 and documented the findings with inspection reports. The operator submitted an initial site investigation plan for removal of the partly buried produced water vessel at the battery with plans to remove it when the three wells nearby are plugged. The site investigation plan was approved and is catalogued as Project 11666.

◆ Updates from the Colorado Public Utility Commission (PUC) and US Pipeline and Hazardous Materials Safety Administration (PHMSA)

To discuss common regulatory issues, COGCC Staff recently met with staff from the PUC's Gas Safety Group and with staff from PHMSA at PHMSA offices in Lakewood. PHMSA is the federal pipeline and hazardous materials safety regulator.

The agencies shared information about the following eight topics relevant to oil and gas operations:

PERI (Pipeline Emergency Response Initiative). This initiative plans for emergency response to pipeline incidents for each state. PHMSA is

coordinating efforts with interested states in the Western Region. PHMSA will be presenting on this topic in Nevada at the upcoming Western Regional Conference for the states. There is some interest from Colorado operator organizations in supporting this initiative, but the funding has not yet been confirmed.

Recent Complaints. The COGCC transferred a complaint on a Raton Basin gathering line to the PUC. The PUC is currently reviewing the class determination with the operator. In addition, the PUC transferred a complaint about an older well in the City of La Junta to the COGCC. It appears that the well in question was a water well used by the City, and as the City was aware of it and had no concerns, no action was taken.

Domestic Taps. The PUC and the COGCC are coordinating regulation of domestic taps, which are required to be registered with the COGCC under State flowline rules adopted in 2018. The tap registration information is automatically forwarded to the PUC when the COGCC Form 44 is passed. The PUC treats these taps as distribution lines, regulated under Part 192 of the federal pipeline regulations.

Welding Standard API 1104. PHMSA references the November 2005 version of API 1104 in its rules, whereas COGCC references the newer September 2013 edition in its recently adopted rules. PHMSA does not currently report that there are any issues with the newer version, but adopting an updated version takes time, and PHMSA was not aware of any plan to move to the newer version in the immediate future. The COGCC's use of the newer version in its rulemaking was based upon agreement between registered parties (operator associations and the welders union) in its recent rulemaking.

Update on Gathering Lines. API RP 80 or "Guidelines for the Definition of Onshore Gathering Lines" is currently under revision. This document provides guidance on where production ends and gathering begins and where gathering ends and transmission begins. The guidance is useful for determining jurisdiction of regulatory authorities. It is not certain whether PHMSA and the States will adopt this new standard when it is completed. However, the PUC plans to update its Class 1 Gathering Line Rules in 2019.

Permalock Tee National Transportation Safety Board (NTSB) Advisory Dated June 18, 2018. The Permalock Tee is a Honeywell product that NTSB has identified as being prone to installation error and possible gas leaks. The product is used to connect a smaller poly gas line to a larger one without requiring fusing equipment. These components may be found in original equipment installed in prior years in Colorado, but are no longer used for new installs in the State.

Fiber Optic Sensing Association. This association issued two new guidance documents, "Advancing Pipeline Safety with Fiber Optic Sensing," and "Installation Considerations for Pipelines." PHMSA's Research and Development Group reviews these technologies and will be discussing them at a September 2018 conference.

◆ Introduction to Colorado Parks and Wildlife (CPW) Energy Liasons

Brandon Marette of CPW joined his colleagues in a conference call with the COGCC to introduce the Energy Liason Program. There are four liasons within the State, each with wildlife biology backgrounds. These staff comment on permit applications under review by the COGCC. The proposed Elk Creek Pipeline was briefly discussed, which is an interstate liquid line passing through Colorado and regulated by PHMSA.

◆ National Pipeline Database

COGCC Staff held an introductory video conference with the GIS department of the NPMS (National Pipeline Mapping System), which is located in Washington, DC. This agency maintains the database for all federally regulated pipelines. Topics discussed included validation of submitted data, visualization tools, guidance for operators, and pipeline abandonment.



Public Outreach

➤ Outreach by the Director and Other Staff

- On August 2, LGL Marc Morton traveled to Rifle and coordinated the Northwest Colorado Oil and Gas Forum meeting. Flowline Integrity Supervisor Mark Schlagenhauf provided an update concerning implementation of the recently updated Flowline rules and use of Form 44. West Engineering Supervisor Craig Burger provided an update regarding Western Colorado COGCC initiatives.
- From August 20 to 23, Community Relations Manager Mike Leonard, Field Inspection Supervisor Jason Gomez, Senior Data Analyst Ken Robertson, and Senior Research Scientist Chris Eisinger attended the Weld County sponsored Integrated Emergency Management Course.

The four day course, based on a simulation exercise, was led by Federal Emergency Management Agency (FEMA) instructors and was designed to allow Emergency Operation Center personnel to practice simulated but realistic crisis situations within a structured environment. This course was also attended by over 100 emergency responders, city and county officials, and public works employees from the northern Front Range area.

➤ Outreach by the Community Relations Unit

- On August 1 and 26, Marc Morton participated at the request of Delta County in meetings of the Delta County Oil and Gas Working Group.
- On August 2, Marc attended the monthly Garfield County Energy Advisory Board (EAB) meeting in Rifle.
- On August 14, Marc, Community Relations Manager Leonard, and East Engineering Supervisor Diana Burns participated in a telephone conference at the request of the City of Fort Collins LGD and other City staff concerning the COGCC's well plugging and abandonment process and regulations, the proposed recompletion and permitting status of a well within City limits, and the City's proposed updated land use regulations.
- On August 22, Marc traveled to Fort Collins and provided an LGD Program Orientation training to the newly appointed Larimer County LGD and other Larimer County and City of Fort Collins staff.
- On August 29, Marc and Community Relations Manager Leonard traveled to Thornton and provided an COGCC and LGD Program Overview Training to a group affiliated with the League of Oil and Gas Impacted Citizens.

Regional Activities

➤ Northwest Colorado

◆ Northwest Colorado Oil and Gas Forum

The remaining Northwest Colorado Oil and Gas Forum (NWF) meeting for 2018 has been scheduled for December 8. This meeting will be held in Rifle at the Colorado Mountain College - Rifle Campus / Clough Auditorium at 3595 Airport Road beginning at 9:00 a.m. and concluding by 12:00 p.m.

Meeting agendas will be posted to the COGCC website approximately one to two weeks prior to each meeting. The COGCC welcomes suggestions for speakers and topics. Meeting information is

also emailed to those on the email distribution list.

Parties wishing to be placed on the meeting agenda or added to the email distribution list for announcements should contact Marc Morton at (303) 894-2100, ext. 5132 (direct), (720) 415-4959 (mobile), or email

marc.morton@state.co.us

As a reminder, NWF meetings are open to the public, and a public comment period is held as part of each meeting. Past NWF presentations (dating back to 2006) are available on the COGCC website at:



<http://cogcc.state.co.us/library.html#/forums>

◆ Project Rulison

The five year revision of the Project Rulison Sampling and Analysis Plan (RSAP) has been completed. Major revisions to the plan included re-defining the exterior buffer zones to align with hydrogeologic flow patterns instead of more arbitrary circular rings in the original plan. This document is in the COGCC's Area Reports Library and can be found at the following link:

<http://cogcc.state.co.us/documents/library/AreaReports/PiceanceBasin/Rulison/Rulison%20Sampling%20and%20Analysis%20Plan%20Revision%204%20062217.pdf>

The email for Project Rulison submittals is

DNR_rulison.submittal@state.co.us

◆ Project Rio Blanco

The email for Project Rio Blanco submittals is

DNR_rioblanco.submittal@state.co.us

➤ *Southwest Colorado*

◆ Gas and Oil Regulatory Team (GORT) Meeting

The Southwest Colorado Gas and Oil Regulatory Team (GORT) meeting schedule for 2018 has been set. The remaining GORT meeting in 2018 will take place October 18. The October 18 GORT

meeting will be held at the Durango Public Library at 1900 E. 3rd Avenue, Durango, from 9:00 a.m. until noon.

GORT meeting agendas will be posted to the COGCC website approximately one to two weeks prior to each meeting, and emailed to those on the email distribution list. The COGCC welcomes suggestions and input for speakers, topics, as well as meeting format and venue.

Parties wishing to be placed on the next meeting agenda or added to the distribution list for announcements should contact Marc Morton at (303) 894-2100, ext. 5132 (direct), (720) 415-4959 (mobile), or email

marc.morton@state.co.us

As a reminder, GORT meetings are open to the public, and a public comment period is held as part of each meeting.

◆ Fruitland Formation Outcrop Mitigation and Monitoring Projects

South Fork Texas Creek Mitigation Site - La Plata County. Regularly scheduled operations and maintenance are being performed at the South Fork Texas Creek (SFTC) site by LTE, the COGCC's contractor. Since May 2009, the system has collected 25,150 Mcf of methane and generated 275,396 kWh of surplus electricity.

The 2017 4M Monitoring Report has recently been finalized and will soon be posted to the COGCC website in the Library under San Juan Basin, 4M Project, 2017 4M Monitoring Report (2018 June).

Admin / Organization / Other

◆ New Environmental Protection Specialists

Kari Oakman was selected to fill the vacant Environmental Protection Specialist I position. Kari started her professional career working in the mining industry, where she was part of a gold exploration program in Alaska and later worked in an underground mine in Nevada. She also has experience in both upstream and midstream oil and gas operations, and in GIS. Kari has a BS in Geology and a BS in Anthropology from Tulane University, and a master's degree from Colorado

School of Mines in Mineral Exploration from the Department of Geology and Geologic Engineering. Kari lives in the Denver area and enjoys running and hiking with her two dogs.

Nikki (Candice) Graber was selected to fill a new Environmental Protection Specialist II position that will provide additional coverage in Central Weld County. Nikki comes to the COGCC from Olsson Associates, where she worked in oil and gas compliance and remediation for the past five years. Prior to that position, Nikki was a rig



geologist in the Denver Julesburg Basin and in North Dakota. She has a degree in Geology from Northern Arizona University, as well as a degree in Sustainability from Arizona State University. She lives in Greeley and is currently building a house in the foothills outside Loveland. She and her husband enjoy hiking, biking, camping, horseback riding, and any other excuse to get out into the wilderness.

◆ New Area Engineer

Shannon Chollett accepted the position of Northwest Area Engineer this month. Before coming to the COGCC, Shannon's experience included seven years with large and small operators (both publicly and privately held companies) as a Reservoir Engineer, and seven years in the IT industry as a Systems Engineer. Shannon holds a BS in Geophysics from Boise State University and an MS in Petroleum Engineering from Louisiana State University.

◆ New Integrity Engineer

Steven Wheeler, PE is the new Integrity Engineer in the Denver office. He is a Denver native and received two bachelors degrees, one in Environmental Engineering and the other in Civil Engineering, both from the Colorado School of Mines. Prior to coming to the COGCC, he worked for engineering firms for seven years, mostly in design and construction of oil and gas pipelines in Oklahoma, Texas, and Colorado. He was an All American lacrosse player in college and currently coaches high school and youth lacrosse.

◆ New Integrity Inspector

Richard Murray is the new Integrity Inspector. He is based in Rifle and will cover Western Colorado for flowline and other engineering integrity issues. He has over 20 years experience in oil and gas, most recently as an Engineering Technician in the Rifle office and previously worked as a Field Inspector for the COGCC's Field Inspection Unit. Prior to that position, he worked for a number of oil and gas operators and service companies including Shell and Nabors Drilling. He has certifications in a number of OSHA and other safety programs and helped develop the COGCC safety program.

COGCC organizational charts can be found on Pages 9-12. For contact information, please go to the COGCC homepage and select "Contact Us" in the upper right corner of the page.

◆ Orphaned Well Program (OWP) Project Updates

Since June 30, the COGCC performed field work for the Orphaned Wells Program (OWP) projects described below. These projects relate either to "Orphaned" locations or wells for which there is no known responsible party, or they relate to Bond Claim projects for which sureties have been claimed.

Final, revised project summary tables for Fiscal Year 2017-18 (FY18) are found on pages 13-18. A tentative FY19 project list follows on pages 19-22. The projects are sorted first by county and then by the project name.

Organization of the project summary tables for FY18 and FY19 now groups "In Progress" and "Completed" OWP tasks. In Progress tasks will retain that status until all phases of the task are completed. Recently completed field work described below refers to FY19 projects only. Scheduling for FY19 work is subject to change as new conditions arise during the year.

The **Texas Tea Project** began with Commission Order 1V-573. The project involves eight single well locations in Adams and Weld Counties. Recent FY19 work included removal, hauling, and salvage of production equipment from one site in Adams County.

The **Benchmark Project** began with Commission Order 1V-564. The project involves 44 locations and 39 wells in Logan County. FY19 work included plugging four wells of a seven well program started in FY18.

The **Provide Energy and Red Mountain Project** began with Commission Orders 1V-364 and 1V-508. The project involves six single well locations in Jefferson and Logan Counties. Both operators were responsible for the same well and location in Jefferson County, and Red Mountain was responsible for the other five wells in Logan County. Recent FY19 work included plugging of one well by Whiting Oil & Gas Corporation as a Public Project on behalf of the State, pursuant to Rule 523.f. and Order 1V-652.



The **Texaco - Moffat Field Project** is located in Moffat County. Area operators, Peterson Energy Operating Inc - 68710 and Robert L Bayless Producer LLC - 6720, notified the COGCC of a release from an historic flowline following a heavy rainstorm. Recently in FY19, the COGCC collected samples for laboratory analysis, and the operators assisted the COGCC by providing personnel and contractor equipment to abandon the historic flowline.

The **General Resources Project** is located in Weld County. FY19 work included maintenance of stormwater controls.

◆ Colorado Oil and Gas Information System (COGIS) Projects, Updates and Changes

Electronic Form (eForm) Submissions

The COGCC uses 42 types of forms to authorize oil and gas operations, inspect and monitor ongoing operations, and receive reports of operations. Of those 42 forms, 24 are currently available for electronic submittal through the eForms system.

The development team continues to work on the eForm conversion of existing forms. Currently, five forms are in various stages of development: Forms 8, 14, 14A, 29, and 43. As of September 1, industry electronically submitted 98 percent of the forms available in eForms in 2018. There are 920 operator users of eForms and 3,804 individual users.

For any operator not currently enrolled in eForms, instructions for starting the process can be found on the COGCC website at:

<http://cogcc.state.co.us/Announcements/COUAINformation.pdf>

Applications and Location Assessments

The public can make comments on all submitted Drilling Permit Applications (Form 2s) and Location Assessments (Form 2As) through the eForm system. Simply go to the COGCC website and click on the menu option “Permits” or

<http://cogcc.state.co.us/permits.html#/permits>

On the “Permits Search” page, three search options are available. The first option, “All Pending Permit Applications,” is used for public comments. When the results are displayed for “Pending Applications,” a user can click on the document number hyperlink in the “Status” column, which logs him or her to the eForms application.

Once the page is displayed with the selected document, the user can select the “Comment” button to make a comment on that particular form.

Data Access

The COGCC’s database is a comprehensive repository of Colorado’s oil and gas data. The information in the database is available to the public through interactive search tools and a variety of file downloads on the website.

Users of bulk data come from many different sectors of the community, including academia, oil and gas operators, environmental groups, government agencies, and the media.

All the data file downloads are available at:

<http://cogcc.state.co.us/data2.html#/downloads>

Current Data File Downloads

- Complaints
- Field Operations
- Flowline NTO Imported Data
- GIS Shapefiles (12 files)
- Mechanical Integrity Tests
- Notices of Alleged Violation
- Production Data (1999 - present)
- Spacing Orders
- Spills and Releases
- Analytical Sample Data (COENV Database)

Future Data File Downloads

- Enforcement Orders (OFVs and AOCs)
- Underground Injection Control (UIC) Data

COENV Database Update

The COENV database (active since 2012) is a publicly available, searchable database of groundwater, surface water, gas, and soil sample



analytical results from throughout the state. COENV currently contains over 46,000 individual samples from 16,329 sample locations. In FY18, the COGCC received data from 2,699 water samples from 770 separate sample locations, and added them to the database.

The table on Page 34 reports the frequency of each reason for submission of a sample to the COENV database during FY18.

◆ **October 2018 Hearing Docket**

The docket for the October 2018 hearing will be available shortly after the September hearing. Hearing dockets are available on our website by clicking on “Regulation” in the menu and then “Hearings”:

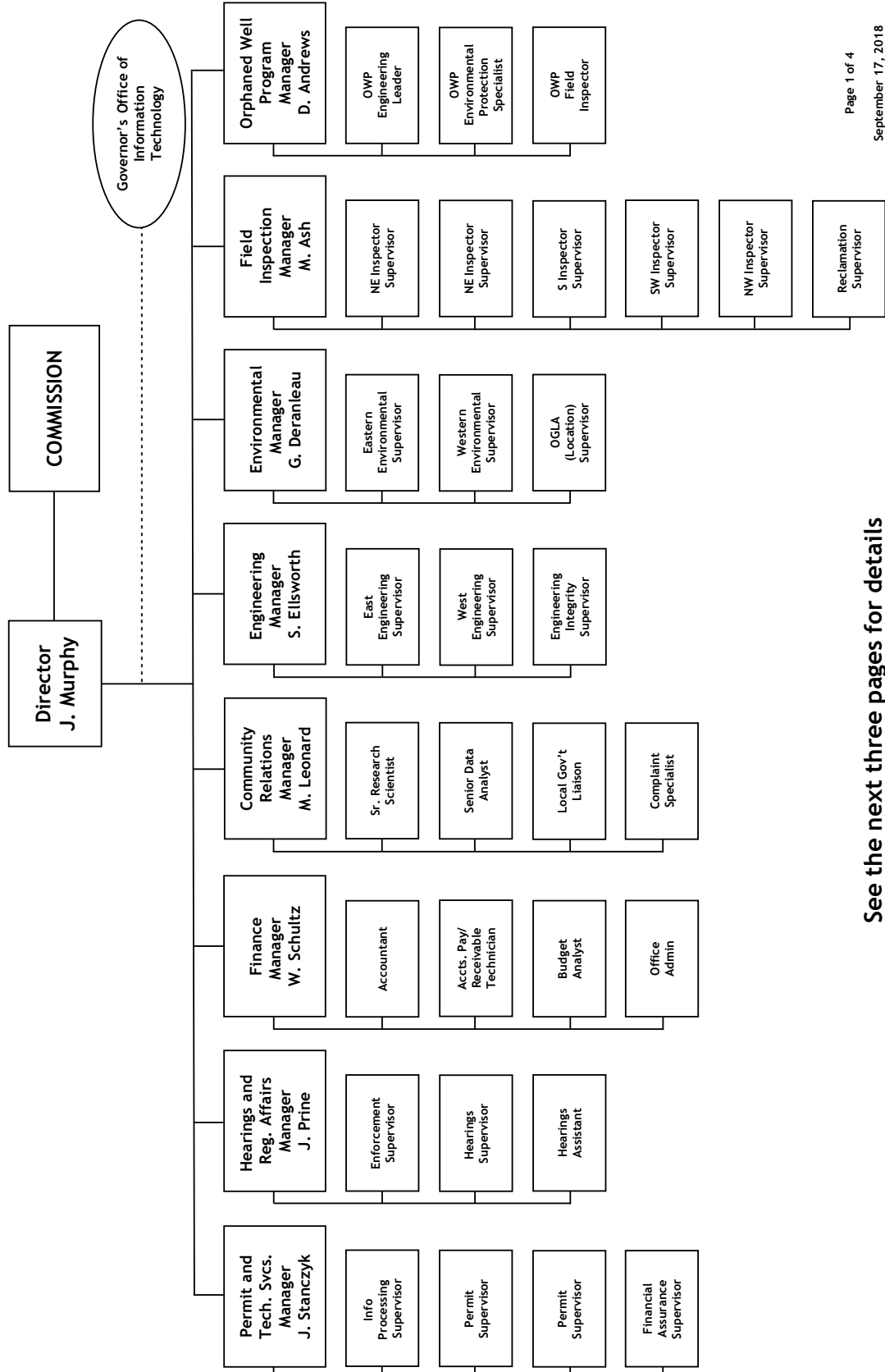
<http://cogcc.state.co.us/reg.html#/hearings>

Links to the notices and hearing applications are available from the Docket Number and Applicant, respectively, by clicking the October Gen_Docket link. To sign up for email notification of hearing notices and applications, please see the announcement and instructions on the homepage of the COGCC website.



Organizational Charts and Statistics

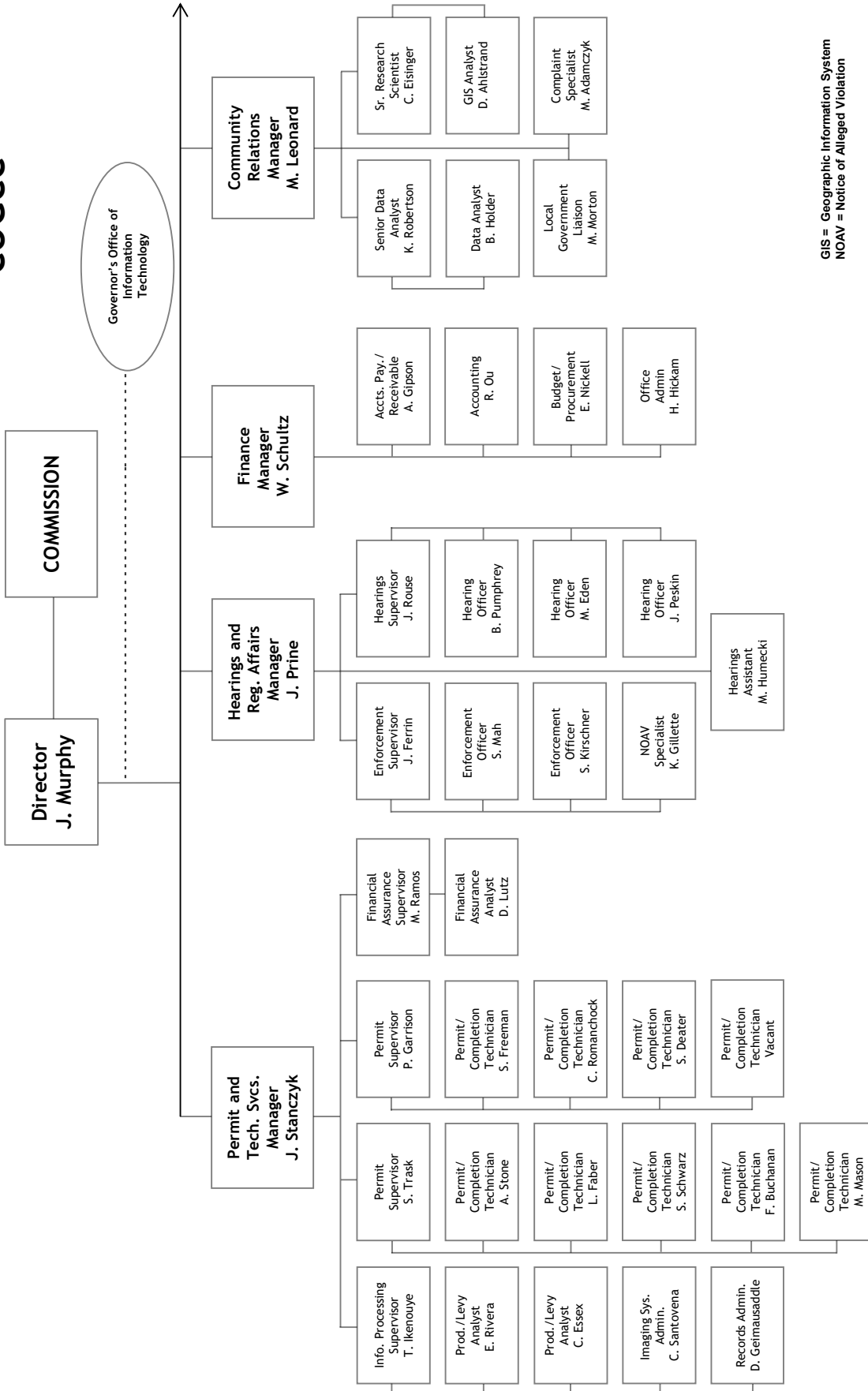
COLORADO OIL & GAS CONSERVATION COMMISSION



See the next three pages for details



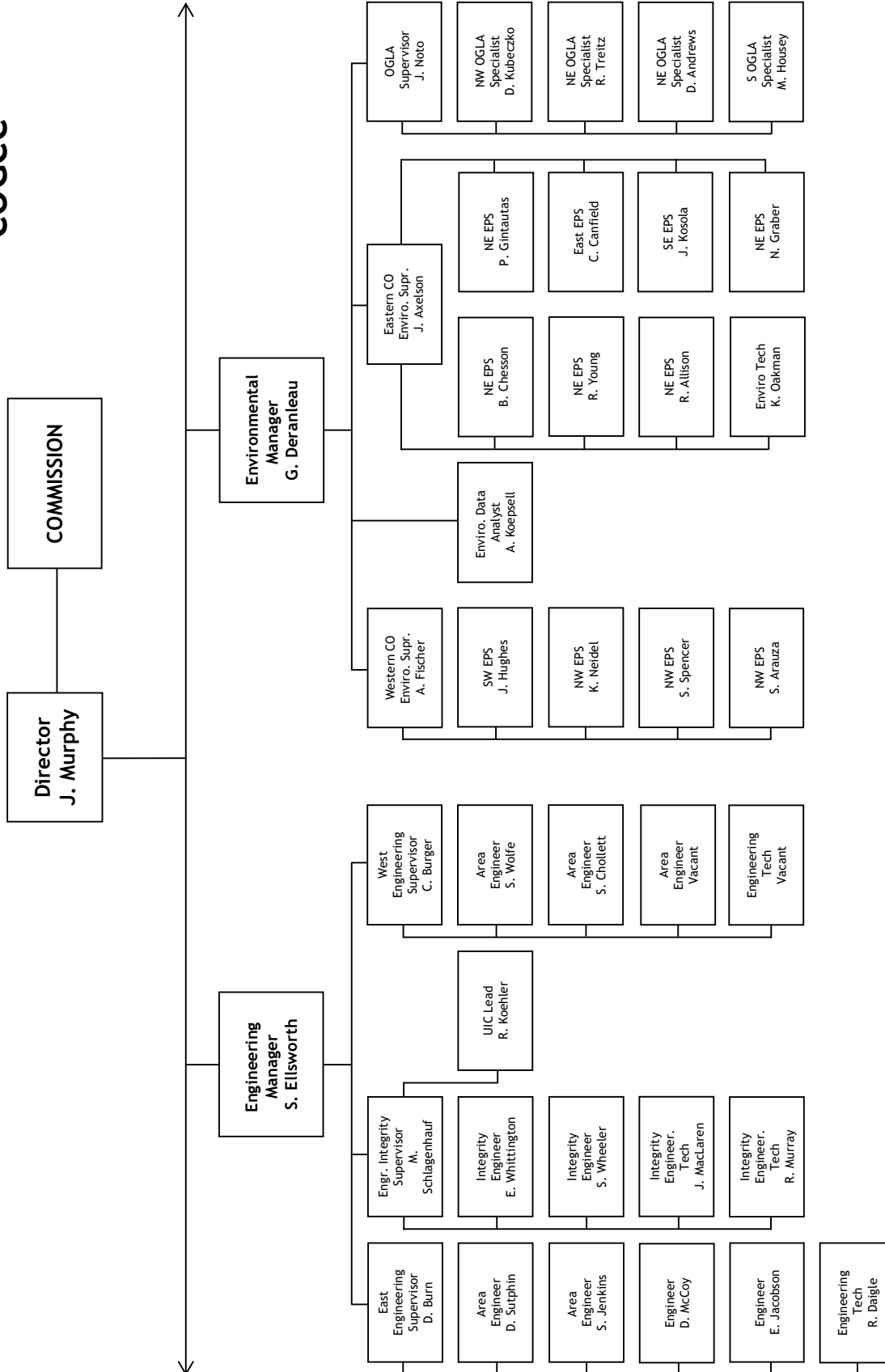
COGCC



GIS = Geographic Information System
NOAV = Notice of Alleged Violation



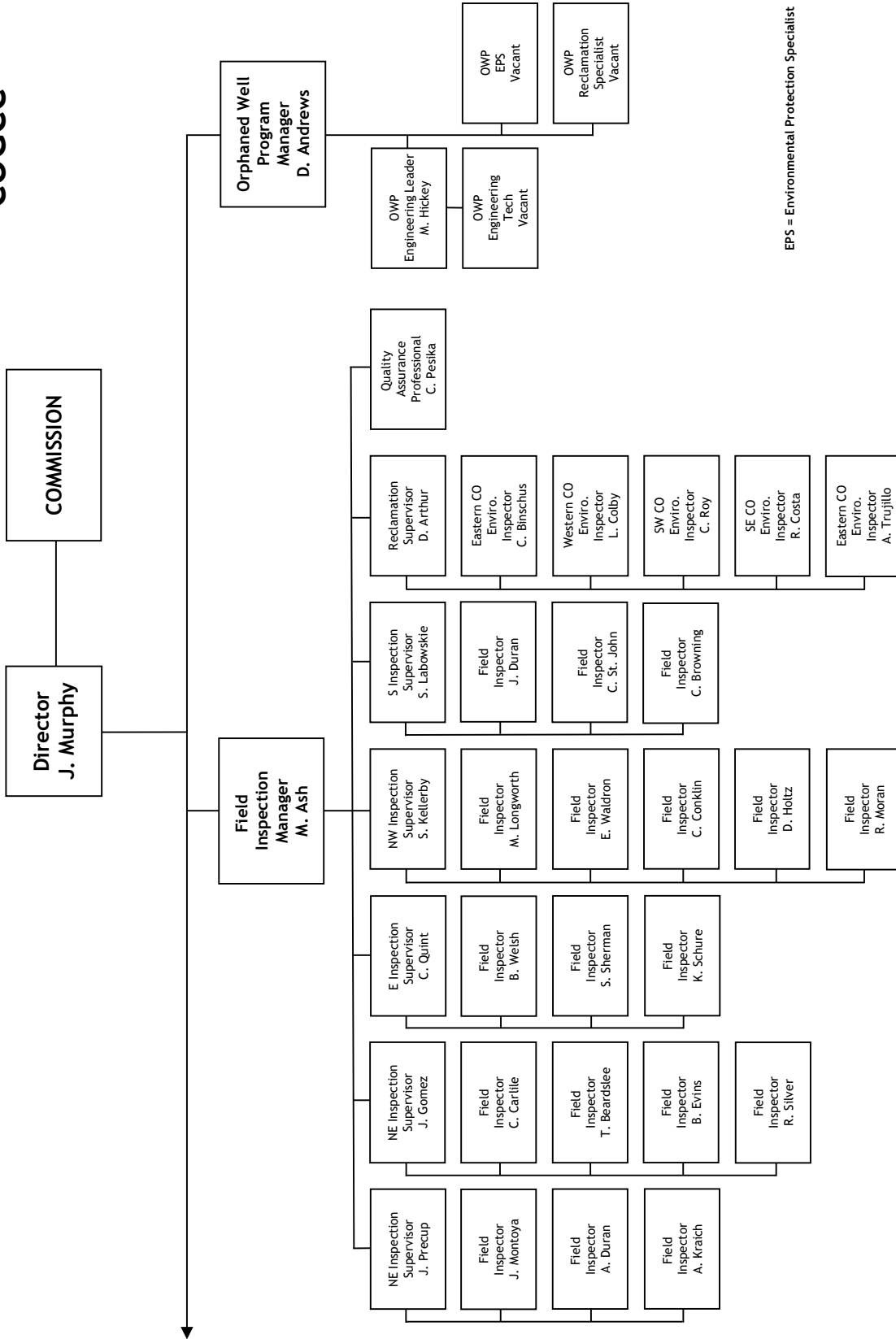
COGCC



UIC = Underground Injection Control
 EPS = Environmental Protection Specialist
 OGLA = Oil and Gas Location Assessment



COGCC



EPS = Environmental Protection Specialist

Orphaned Well Program
Active Task List for Fiscal Year 2017-18

Page 1 of 4

Work Unit	County	Project and Task	Task Status	Orphaned Site Work and Planning Comments (by Location ID)
Engineering	Adams	Texas Tea Bond Claim: Task 2.1, 3.1A - Plug and Abandon, Flowline Abandonment - 320139, 001-08204	Completed	FY2017-18 (Completed): Plugged well and abandoned flowlines; FY2018-19 Work (Planned): Cut of casing when Adams County is ready during landfill expansion
Engineering	Adams	Texas Tea Bond Claim: Task 2.1, 3.1A - Plug and Abandon, Flowline Abandonment - 320206, 001-08443	Completed	FY2017-18 (Completed): Plugged well and abandoned flowlines; FY2018-19 Work (Planned): Remove electrical panel and appurtenances; commence final reclamation
Engineering	Adams	Texas Tea Bond Claim: Task 2.1, 3.1A - Plug and Abandon, Flowline Abandonment - 320223, 001-08516	In Progress	FY2017-18 (Completed): Abandon flowlines; Timing for well plugging TBD
Engineering	Adams	Texas Tea Bond Claim: Task 2.1, 3.1A - Plug and Abandon, Flowline Abandonment - 320240, 001-08699	Completed	FY2017-18 (Completed): Plugged well and abandoned flowlines; FY2018-19 (Planned): Sampling and analysis, remove waste; Timing for removal of junk and unused equipment TBD
Reclamation	Adams	Texas Tea Bond Claim: Task 2.2 - Weed Control (maintenance) - Spindle and Sun Fields,	In Progress	FY2016-17, FY2017-18 (Completed) and FY2018-19 (Planned): Weed control at multiple locations
Engineering	Adams	Texas Tea Bond Claim: Task 3.3, 3.7 - Plug and Abandon, Flowline Abandonment - 320257, 001-08775	Completed	FY2016-17 (Completed): Sampling and analysis, removed and disposed EBP waste off-site; FY2017-18 (Completed): Plugged well and abandoned flowlines; FY2018-19 (Completed): Removed production equipment; FY2018-19 (Planned) Remove and dispose of residual EBP waste off-site
Engineering	Adams	Tudex Petroleum Bond Claim: Task 2 - Plug and Abandon, Flowline Abandonment - 320126, 001-08153	In Progress	FY2017-18 (Completed): Abandon flowlines; Timing for removal of junk and unused equipment and timing for well plugging TBD
Engineering	Adams	Tudex Petroleum Bond Claim: Task 2 - Plug and Abandon, Flowline Abandonment - 320129, 001-08162	In Progress	FY2017-18 (Completed): Abandon flowlines; Timing for removal of junk and unused equipment and timing for well plugging TBD
Engineering	Adams	Tudex Petroleum Bond Claim: Task 2 - Plug and Abandon, Flowline Abandonment - 320217, 001-08491	In Progress	FY2017-18 (Completed): Abandon flowlines; FY2018-19 (Tentative - commence one or more tasks): Remove production equipment, sampling and analysis, or plug well
Engineering	Adams	Tudex Petroleum Bond Claim: Task 2 - Plug and Abandon, Flowline Abandonment - 320452, 001-09362	In Progress	FY2017-18 (Completed): Abandon flowlines; FY2018-19 (Tentative): Plug well and remove production equipment
Engineering	Adams	Tudex Petroleum Bond Claim: Task 2 - Plug and Abandon, Flowline Abandonment - 320453, 001-09363	In Progress	FY2017-18 (Completed): Abandon flowlines; Timing for well plugging, sampling and analysis and decommissioning of process facility and removal of production equipment at tank battery TBD
Engineering	Adams	Tudex Petroleum Bond Claim: Task 2 - Plug and Abandon, Flowline Abandonment - 335733, 001-08163	In Progress	FY2017-18 (Completed): Abandon flowlines; FY2018-19; (Tentative - commence one or more tasks): Remove junk, concrete pump jack base, and unused equipment, plug well
Engineering	Adams	Tudex Petroleum Bond Claim: Task 2 - Plug and Abandon, Flowline Abandonment - 335737, 001-08767	In Progress	FY2017-18 (Completed): Abandon flowlines; FY2018-19 Work (Tentative - commence one or more tasks); Remove production equipment, sampling and analysis, or plug two wells
Engineering	Adams	Tudex Petroleum Bond Claim: Task 2 - Plug and Abandon, Flowline Abandonment - 335737, 001-08768	In Progress	FY2017-18 (Completed): Abandon flowlines; FY2018-19 Work (Tentative - commence one or more tasks); Remove production equipment, sampling and analysis, or plug two wells
Engineering	Boulder	JuH #1: Task 1 - Plug and Abandon, Flowline Abandonment - 379627, 013-05018	Completed	FY2016-17 (Completed): Plugged well; FY2017-18 (Completed): Liquid disposal from well plugging
Engineering	Fremont	Florence-Caron City Field: Task 2 - Plug and Abandon, Flowline Abandonment - 426290, 043-40080	Completed	FY2017-18 (Completed): Plugged well and abandoned flowlines; FY2018-19 (Planned): Commence final reclamation
DEVON ENERGY CORPORATION - 24030 Environmental	Garfield	Snyder-Barton Porter #2-21: Task 7 - Plug and Abandon - 382885, 045-06388	Completed	FY2017-18 (Completed): Plugged well (by Devon Energy on behalf of defunct operator Snyder Oil Corp)
Environmental	Jackson	CM Production Bond Claim: Task 1.11 - Sampling and Analysis - Lone Pine Field,	In Progress	Ongoing: Biannual sampling and analysis
Environmental	Jackson	CM Production Bond Claim: Task 1.14 - Sampling and Analysis, Spill or Remediation - 324630,	In Progress	FY2017-18 (Completed): Soil sampling and analysis; Timing of additional work TBD
Environmental	Jackson	CM Production Bond Claim: Task 1.15 - Sampling and Analysis, Spill or Remediation - 324659,	In Progress	FY2017-18 (Completed): Soil sampling and analysis; Timing of additional work TBD
Environmental	Jackson	CM Production Bond Claim: Task 1.7, 1.10 - Equipment Intervention - 324634,	Completed	FY2016-17, FY2017-18 (Completed): Remove liquids from tanks, hauling, and offsite disposal
Environmental	Jackson	CM Production Bond Claim: Task 2.2, 2.8 - Sampling and Analysis, Remove fluids from pits, Pit Closure - 324634,	In Progress	FY2017-18 (Completed): Soil sampling and analysis; Timing for additional work TBD
Engineering	Jackson	CM Production Bond Claim: Task 3.1, 3.2 - MIT or Other Well Work, Plug and Abandon - 324599, 057-06011	In Progress	FY2017-18 (Completed): Set downhole plug to TA well and MIT; Timing for final plugging TBD
Engineering	Jackson	CM Production Bond Claim: Task 3.1, 3.2 - MIT or Other Well Work, Plug and Abandon - 324630, 057-06093	In Progress	FY2017-18 (Completed): Set downhole plug to TA well and MIT; and hauled water to off-site disposal; Timing for final plugging TBD
Engineering	Jackson	CM Production Bond Claim: Task 3.1, 3.2 - MIT or Other Well Work, Plug and Abandon - 324640, 057-06127	In Progress	FY2017-18 (Completed): Set downhole plug to TA well and MIT; Timing for final plugging TBD
Engineering	Jackson	CM Production Bond Claim: Task 3.1, 3.2 - MIT or Other Well Work, Plug and Abandon - 324626, 057-06069	In Progress	FY2017-18 (Completed): Set downhole plug to TA well and MIT; Timing for final plugging TBD



Orphaned Well Program
Active Task List for Fiscal Year 2017-18

Page 2 of 4

Work Unit	County	Project and Task	Task Status	Orphaned Site Work and Planning Comments (by Location ID)
Reclamation	Jefferson	Red Mountain Bond Claim: Task 14 - Stormwater BMPs (maintenance), Weed Control (maintenance) - 324775,	In Progress	FY2011-12, FY2012-13, and FY2015-16 (Completed): Weed control; FY2015-16 and FY2016-17 (Completed): Plugged well and removed production equipment; FY2016-17 (Completed): Commenced final reclamation and installed fence; FY2017-18 (Completed) and FY2018-19 (Planned): Stormwater BMP maintenance and Weed control
Field Operations	La Plata	Atom Petroleum Bond Claim: Task 1.2 - Equipment Intervention - 325653,	Completed	FY2016-17, FY2017-18 (Completed): Remove liquids from tank, hauling, and offsite disposal (Completed); continuing to monitor well cellar; Timing of any additional work TBD
Engineering	La Plata	Atom Petroleum Bond Claim: Task 2.5 - MIT or Other Well Work - 325653, 067-06777	In Progress	FY2017-18 (Completed): gas monitoring at a cathodic protection well near the plugged well. Neither carbon dioxide nor hydrogen sulfide were detected in the discharge from the well.
Field Operations	La Plata	Hodges Pool Unit #1: Task 1 - Gas Monitoring - 385403,	Completed	FY2017-18 (Completed): Wellhead gas sampling and analysis
Environmental	La Plata	McCullough #4: Task 2 - Sampling and Analysis - 325208,	Completed	FY2017-18 (Completed): Remove liquids from tank and haul for off-site disposal; Timing for additional work TBD
Field Operations	La Plata	Red Mesa Holdings Bond Claim: Task 1 - Equipment Intervention, Equipment Salvage - 325667,	In Progress	FY2017-18 (Completed): Spec, gauge, sample liquids, and transfer liquids to consolidate to a single tank; Timing for additional work TBD
Field Operations	La Plata	Red Mesa Holdings Bond Claim: Task 1 - Equipment Intervention, Equipment Salvage - 325230,	In Progress	FY2017-18 (Completed): Spec, gauge, and sample liquids in tank(s); Timing for additional work TBD
Field Operations	La Plata	Red Mesa Holdings Bond Claim: Task 1 - Equipment Intervention, Equipment Salvage, Sampling and Analysis - 325745,	In Progress	FY2017-18 (Completed): Spec, gauge, and sample liquids in tank(s); Timing for additional work TBD
Field Operations	La Plata	Red Mesa Holdings Bond Claim: Task 1 - Equipment Intervention, Equipment Salvage, Sampling and Analysis, Gauge Tank - 325286,	In Progress	FY2017-18 (Completed): Spec, gauge, and sample liquids in tank(s); Timing for additional work TBD
Field Operations	La Plata	Red Mesa Holdings Bond Claim: Task 1 - Equipment Intervention, Equipment Salvage, Sampling and Analysis, Gauge Tank - 325297,	In Progress	FY2016-17 (Completed): Gauge tank and sample liquids; FY2017-18 (Completed): Remove liquids from tank and dispose off-site; Timing for additional work TBD
Engineering	La Plata	Red Mesa Holdings Bond Claim: Task 2 - MIT or Other Well Work, Complaint response, Bradenhead test - 325858, 067-07085	In Progress	FY2017-18 (Completed): Set downhole plugs to TA well, perform MIT, abandon flowlines, and remove liquid tank bottoms for off-site disposal; FY2018-19: Bradenhead Test (Planned); Timing for final well plugging TBD
Engineering	La Plata	Red Mesa Holdings Bond Claim: Task 2 - MIT or Other Well Work, Plug and Abandon, Flowline Abandonment - 325111, 067-05321	In Progress	FY2017-18 (Completed): Load well and disconnect flowlines from well; Timing for well plugging and flowline abandonment TBD
Engineering	La Plata	Red Mesa Holdings Bond Claim: Task 2 - MIT or Other Well Work, Plug and Abandon, Flowline Abandonment - 325267, 067-06033	Completed	FY2017-18 (Completed): Plugged well and abandoned flowlines, removed pump jack, and installed stormwater BMPs, sampling, analysis, and off-site waste disposal; Timing of additional work TBD
Engineering	La Plata	Red Mesa Holdings Bond Claim: Task 2 - MIT or Other Well Work, Plug and Abandon, Flowline Abandonment - 325297, 067-06111	In Progress	FY2017-18 (Completed): Loaded well and disconnected flowlines from well; Timing for well plugging and flowline abandonment TBD
Engineering	La Plata	Red Mesa Holdings Bond Claim: Task 2 - MIT or Other Well Work, Plug and Abandon, Flowline Abandonment - 325352, 067-06226	In Progress	FY2017-18 (Completed): Loaded well and disconnected flowlines from well; Timing for well plugging and flowline abandonment TBD
Engineering	La Plata	Red Mesa Holdings Bond Claim: Task 2 - MIT or Other Well Work, Plug and Abandon, Flowline Abandonment - 325745, 067-06932	In Progress	FY2017-18 (Completed): Loaded well and disconnected flowlines from well; Timing for well plugging and flowline abandonment TBD
Engineering	La Plata	Red Mesa Holdings Bond Claim: Task 2 - MIT or Other Well Work, Plug and Abandon, Flowline Abandonment - 333799, 067-09364	In Progress	FY2017-18 (Completed): Loaded well and disconnected flowlines from well; Timing for well plugging and flowline abandonment TBD
Environmental	La Plata	Red Mesa Holdings Bond Claim: Task 3 - Sampling and Analysis, Spill or Remediation - 325267,	In Progress	FY2017-18 (Completed): Plugged well and abandoned flowlines, removed pump jack, and installed stormwater BMPs, sampling, analysis, and off-site waste disposal; Timing of additional work TBD
Reclamation	La Plata	Red Mesa Holdings Bond Claim: Task 5 - Weed Control (maintenance) - Red Mesa Field,	In Progress	FY2016-17, FY2017-18 (Completed), FY2018-19 (Planned): Weed control at various sites (12 locations in FY2017-18)
Reclamation	La Plata	Red Mesa Holdings Bond Claim: Task 7 - Stormwater BMPs (maintenance) - Red Mesa Field,	In Progress	FY2016-17, FY2017-18 (Completed): Install and maintain stormwater BMPs at various locations
Engineering	La Plata	Reynolds* Noel Bond Claim: Task 2.1 - MIT or Other Well Work, Install pressure gauge - 385368, 067-05448	Completed	FY2017-18 (Completed): Wellhead work to prepare for future re-entry to plug and abandon, installed pressure gauge
Field Operations	La Plata	Taylor* William Bond Claim: Task 1 - Equipment Intervention, Equipment Salvage, Sampling and Analysis, Gauge Tank - 325120,	In Progress	FY2017-18 (Completed): Gauge and sample tank(s); Timing of additional work TBD
Reclamation	Larimer	Ranchers Bond Claim: Task 1 - Reclamation (initial work), Re-Seeding (maintenance), Weed Control (maintenance) - 435790,	In Progress	FY2015-16 and FY2016-17 (Completed): Commenced final reclamation; FY2017-18 (Completed) and FY2018-19 (Planned): Stormwater BMP maintenance and weed control
Reclamation	Larimer	Ranchers Bond Claim: Task 2 - Engineering Design - 419639,	Completed	FY2015-16, FY2016-17, and FY2017-18 (Completed): Engineering design (included soil sampling and analysis for design purposes); FY2016-17 and FY2017-18 (Completed): Weed control; FY2018-19 (Planned): Re-seal breached landfill cover
Reclamation	Larimer	Ranchers Bond Claim: Task 3 - Reclamation (initial work), Re-Seeding (maintenance), Weed Control (maintenance), Re-seal breached landfill cover - 419639,	In Progress	FY2015-16, FY2016-17, and FY2017-18 (Completed): Engineering design (included soil sampling and analysis for design purposes); FY2016-17 and FY2017-18 (Completed): Weed control; FY2018-19 (Planned): Re-seal breached landfill cover
Reclamation	Lincoln	Pine Ridge Bond Claim: Task 1 - Re-Seeding (maintenance), Weed Control (maintenance), Fence Removal - 433053,	In Progress	FY2017-18 (Completed): Ripping, seeding, and weed control; FY2018-19 (Planned): Reclamation monitoring and maintenance



Orphaned Well Program Active Task List for Fiscal Year 2017-18 Page 3 of 4

Activity	Location	Task Description	Progress	Notes
Reclamation	Lincoln	Pine Ridge Bond Claim: Task 2 - Re-Seeding (maintenance), Weed Control (maintenance), Fence Removal - 450683;	In Progress	FY2017-18 (Completed): Ripping, seeding, and weed control; FY2018-19 (Planned): Reclamation monitoring and maintenance
Reclamation	Lincoln	Pine Ridge Bond Claim: Task 3 - Re-Seeding (maintenance), Weed Control (maintenance), Fence Removal - 430828.	In Progress	FY2017-18 (Completed): Ripping, seeding, and weed control; FY2018-19 (Planned): Reclamation monitoring and maintenance
Field Operations	Logan	Arco - Sinds #4 Lease: Task 1 - Site Security, Fence Repair, NWNE 7 - 312213.	Completed	FY2017-18 (Completed): Repaired fences; FY2018-19 (Planned): Sampling, analysis, and remediation
Engineering	Logan	Benchmark Energy Bond Claim: Task 2.5 - Plug and Abandon, Flowline Abandonment - 312151, 075-05875	In Progress	FY2017-18 (Completed): Plugged well, disconnected and capped flowline at the well; Timing of additional work TBD
Engineering	Logan	Benchmark Energy Bond Claim: Task 2.5 - Plug and Abandon, Flowline Abandonment - 312157, 075-05971	In Progress	FY2017-18 (Completed): Plugged well, disconnected and capped flowline at the well; Timing of additional work TBD
Engineering	Logan	Benchmark Energy Bond Claim: Task 3.2 - Plug and Abandon, Flowline Abandonment - 312161, 075-06000	In Progress	FY2017-18 (Completed): Plugged well, disconnected and capped flowline at the well; Timing of additional work TBD
Field Operations	Logan	CM Production Bond Claim: Task 1.5 - Equipment Intervention - Cliff and Mount Hope Fields.	Completed	FY2016-17 (Completed & invoiced in FY2017-18): Removed liquids from tanks, hauling, and ofsite disposal.
Environmental	Logan	Red Mountain Bond Claim: Task 11 - Sampling and Analysis, Spill or Remediation, Pit Closure - 450396,	Completed	FY2017-18 (Completed): Removed pit fluids and pit liner; sampling and analysis for confirmation and pit closure
Environmental	Logan	Red Mountain Bond Claim: Task 13 - Sampling and Analysis, Spill or Remediation - 312261.	In Progress	FY2017-18 (Completed): Plugged well and abandoned flowlines, soil sampling and analysis at produced water pit and around production equipment; Timing of additional work TBD
WHITING OIL & GAS CORPORATION - 96155	Logan	Red Mountain Bond Claim: Task 6 - Plug and Abandon, Flowline Abandonment - 312132, 075-05078	In Progress	FY2017-18 (Completed): Plugged well (by Whiting Oil and Gas Corporation as a Public Project, pursuant to Rule 523.f. and Order 1V-652); Timing of additional work TBD
Engineering	Logan	Red Mountain Bond Claim: Task 8 - Plug and Abandon, Flowline Abandonment - 312261, 075-08293	Completed	FY2017-18 (Completed): Plugged well and abandoned flowlines, soil sampling and analysis at produced water pit and around production equipment; Timing of additional work TBD
Engineering	Mesa	DB Orphan #8: Task 1 - Plug and Abandon - 450650, 077-10381	Completed	FY2016-17, FY2017-18 (Completed): Plugged well
Environmental	Mesa	DB Orphan #8: Task 2 - Sampling and Analysis, Soil Vapor Monitoring - 450650.	In Progress	FY2016-17, FY2017-18 (Completed), FY2018-19 (Planned): Soil gas monitoring
Environmental	Mesa	DB Orphan #8: Task 3 - Soil Vapor Extraction System - 450650,	Completed	FY2017-18 (Completed): SVE System operation and maintenance; FY2018-19 (Completed): Installed wind turbine ventilator
Engineering	Mesa	Lloyd and Lowell #1: Task 2 - Plug and Abandon - 428669, 077-40017	Completed	FY2017-18 (Completed): Plugged well
Engineering	Moffat	Vitruvian Exploration Bond Claim: Task 1 - Flowline Abandonment - 392479,	Completed	FY2017-18 (Completed): Abandoned flowlines; FY2018-19 (Planned): Commence final reclamation
Engineering	Moffat	Vitruvian Exploration Bond Claim: Task 1 - Flowline Abandonment - 392480,	Completed	FY2017-18 (Completed): Abandoned flowlines; FY2018-19 (Planned): Commence final reclamation
Engineering	Montezuma	Atom Petroleum Bond Claim: Task 1.1 - Plug and Abandon, Flowline Abandonment - 313483, 083-06263	Completed	FY2017-18 (Completed): Plugged well and abandoned flowlines
Engineering	Montezuma	Atom Petroleum Bond Claim: Task 1.1 - Plug and Abandon, Flowline Abandonment - 313628, 083-06653	Completed	FY2017-18 (Completed): Plugged well and abandoned flowlines
Environmental	Montezuma	Pitcher #1: Task 1 - Sampling and Analysis - 393155,	Completed	FY2017-18 (Completed): Soil sampling and analysis at former tank battery location; Timing of additional work TBD
Reclamation	Montezuma	Wolcott #1: Task 2 - Reclamation (initial work) - 313501,	Completed	FY2017-18 (Completed): Commenced reclamation; FY2018-19 Work (Planned): Reclamation monitoring and maintenance
Reclamation	Montezuma	Woosley Oil - State #1-36: Task 4 - Reclamation (initial work) - 313502,	Completed	FY2017-18 (Completed): Commenced reclamation; FY2018-19 (Planned): Reclamation monitoring and maintenance
Reclamation	Montrose	Redwine Bond Claim: Task 4 - Stormwater BMPs (maintenance), Weed Control (maintenance) - 313641,	In Progress	FY2014-15 (Completed): Plugged well, waste characterization sampling, FY2015-16 (Completed): Pit closure and confirmation sampling, commenced reclamation; FY2016-17, FY2017-18 (Completed): Stormwater BMP maintenance and weed control; FY2018-19 (Planned): Reclamation monitoring and maintenance as needed
Field Operations	Statewide	Various Projects: Task 999 - Site Security, LOTO, Marking and Labeling - Statewide,	In Progress	Ongoing: Install lock-out / tag-out devices on wellheads, equipment and fences
Environmental	Washington	CM Production Bond Claim: Task 1.12, 1.13, 2.3, 2.5 - Site Security, Sampling and Analysis, Spill or Remediation, Pit Closure - 317043,	In Progress	FY2017-18 (Completed): Waste characterization sampling and analysis; Timing of additional work TBD for waste disposal
Environmental	Washington	CM Production Bond Claim: Task 1.13, 2.3 - Sampling and Analysis, Spill or Remediation - 317041,	In Progress	FY2017-18 (Completed): Waste characterization sampling and analysis; Timing of additional work TBD for waste disposal
Reclamation	Washington	CM Production Bond Claim: Task 3.6 - Weed Control (maintenance) - Hyde and Tap Fields,	In Progress	FY2017-18 (Completed): Weed control at four locations in Tap Field; FY2018-19 (Planned): Weed control at various locations in both fields
Field Operations	Washington	Energy Search Bond Claim: Task 1.1 - Fence Repair - 317287,	Completed	FY2017-18 (Completed): Repaired fence
Field Operations	Washington	Energy Search Bond Claim: Task 1.1 - Fence Repair - 317288,	Completed	FY2017-18 (Completed): Repaired fence
Field Operations	Washington	Energy Search Bond Claim: Task 1.1 - Fence Repair - 317289,	Completed	FY2017-18 (Completed): Repaired fence
Reclamation	Weld	General Resources Ltd: Task 4.1 - Stormwater BMPs (maintenance), Re-Seeding (maintenance), Weed Control (maintenance) - 407442,	In Progress	FY2017-18 (Completed): Sampling, analysis, and remediation, weed control; FY2018-19 (Planned): Reclamation monitoring and maintenance



Orphaned Well Program

Active Task List for Fiscal Year 2017-18

Engineering	Well	Texas Tea Bond Claim: Task 3.3, 3.7 - Plug and Abandon, Flowline Abandonment - 318231, 123-08720	In Progress	FY2016-17 (Completed): Groundwater monitoring wells, sampling and analysis; FY2017-18 (Completed): Abandoned flowlines; FY2018-19 (Planned): Remove production equipment from remote tank battery, groundwater sampling and analysis; Timing for well plugging TBD
Engineering	Well	Texas Tea Bond Claim: Task 3.3, 3.7 - Plug and Abandon, Flowline Abandonment - 318452, 123-09110	In Progress	FY2017-18 (Completed): Abandoned flowlines at Tank Battery; Timing for well plugging TBD

Project and Task Format: [Location or Well Name and Number (if orphan) OR Operator Name + "Bond Claim"] : "Task" [Task No(s)] - [Task Type(s)] - [Location ID Number], [Well API Number (county and sequence code), if well work included with task]



**Orphaned Well Program
Active Bonds and Other Surety Claim Status for Fiscal Year 2017-18**

Project	Order Number(s)	Total Bond Claim	Amount Spent in Prior Fiscal Years	Amount Spent in FY2017-18	Remaining Bond Balance
Atom Petroleum Bond Claim	1V-586	\$ 60,000	\$ 797	\$ 46,410	\$ 12,793
Benchmark Energy Bond Claim	1V-564	\$ 620,000	\$ 98,931	\$ 56,630	\$ 464,439
CM Production Bond Claim	1V-581	\$ 67,849	\$ 13,299	\$ 54,549	\$ -
Energy Search Bond Claim	1V-636	\$ 60,000	\$ -	\$ 7,777	\$ 52,223
Pine Ridge Bond Claim	1V-622	\$ 85,000	\$ -	\$ 42,491	\$ 42,509
Ranchers Bond Claim	1V-526	\$ 63,424	\$ 63,424	\$ -	\$ -
Red Mesa Holdings Bond Claim	1V-508	\$ 72,831	\$ 12,258	\$ 60,574	\$ -
Red Mountain Bond Claim	1V-549, SLB	\$ 92,015	\$ 30,070	\$ 51,430	\$ 10,515
Redwine Bond Claim	1V-470, 1V-494	\$ 30,000	\$ 30,000	\$ -	\$ -
Reynolds* Noel Bond Claim	1V-374, 1V-375	\$ 30,000	\$ -	\$ 841	\$ 29,159
Tatonka Bond Claim	1V-383	\$ 30,000	\$ 30,000	\$ -	\$ -
Taylor* William Bond Claim	1V-647	\$ 10,000	\$ -	\$ 117	\$ 9,883
Texas Tea Bond Claim	1V-573	\$ 71,850	\$ 40,283	\$ 31,568	\$ -
Tudex Petroleum Bond Claim	1V-646	\$ 62,470	\$ -	\$ 58,375	\$ 4,095
Vitruvian Exploration Bond Claim	1V-514	\$ 30,000	\$ -	\$ 9,010	\$ 20,990
TOTALS ->		\$ 1,385,439	\$ 319,061	\$ 419,772	\$ 646,606

Note: Red Mountain Bond Total Claim Amount includes \$24,169 bankruptcy deposit and \$5,000 State Land Board deposit (bond transfer)



**Orphaned Well Program
Project Financials for Fiscal Year 2017-18**

Project Name	BOND Actual	PROW Actual	EMGY Actual	Subtotals Actual
Arco - Sindt #4 Lease	\$ -	\$ 3,549	\$ -	\$ 3,549
Atom Petroleum Bond Claim	\$ 46,410	\$ -	\$ -	\$ 46,410
Benchmark Energy Bond Claim	\$ 56,630	\$ -	\$ -	\$ 56,630
CM Production Bond Claim	\$ 54,549	\$ 71,560	\$ -	\$ 126,110
DB Orphan #8	\$ -	\$ 13,027	\$ -	\$ 13,027
Energy Search Bond Claim	\$ 7,777	\$ -	\$ -	\$ 7,777
Florence-Canon City Field	\$ -	\$ 13,485	\$ -	\$ 13,485
General Resources Ltd	\$ -	\$ 948	\$ -	\$ 948
Hodges Pool Unit #1	\$ -	\$ 632	\$ -	\$ 632
Juhl #1	\$ -	\$ 78	\$ -	\$ 78
Lloyd and Lowell #1	\$ -	\$ 76,610	\$ -	\$ 76,610
McCullough #4	\$ -	\$ 3,007	\$ -	\$ 3,007
Pilcher #1	\$ -	\$ 1,074	\$ -	\$ 1,074
Pine Ridge Bond Claim	\$ 42,491	\$ -	\$ -	\$ 42,491
Ranchers Bond Claim	\$ -	\$ 5,489	\$ -	\$ 5,489
Red Mesa Holdings Bond Claim	\$ 60,574	\$ 60,840	\$ -	\$ 121,413
Red Mountain Bond Claim	\$ 51,430	\$ -	\$ -	\$ 51,430
Redwine Bond Claim	\$ -	\$ 3,638	\$ -	\$ 3,638
Reynolds* Noel Bond Claim	\$ 841	\$ -	\$ -	\$ 841
Tatonka Bond Claim	\$ -	\$ 350	\$ -	\$ 350
Taylor* William Bond Claim	\$ 117	\$ -	\$ -	\$ 117
Texas Tea Bond Claim	\$ 31,568	\$ 159,987	\$ -	\$ 191,554
Tudex Petroleum Bond Claim	\$ 58,375	\$ -	\$ -	\$ 58,375
Vitruvian Exploration Bond Claim	\$ 9,010	\$ -	\$ -	\$ 9,010
Wolcott #1	\$ -	\$ 407	\$ -	\$ 407
Woosley Oil - State #1-36	\$ -	\$ 322	\$ -	\$ 322
TOTAL EXPENDITURES ->	\$ 419,772	\$ 415,003	\$ -	\$ 834,775

Note: Snyder-Barton Porter #2-21 Project not shown on this table. Work performed in FY18 by operator (no OMP expenditures)

ABREVIATIONS:

EMGY = Emergency Response Appropriation

PROW = Plugging and Reclaiming Orphaned Wells Appropriation

FY2017-18 PROW FUNDS SCOREBOARD

\$	445,000	Annual PROW Appropriation
\$	-	Planned Task Estimated Costs
\$	(415,003)	In Progress or Completed Tasks (Invoiced)
\$	29,996.70	Fiscal Year End Balance

(Scoreboard excludes work involving Bond and Emergency Expenditures)



Orphaned Well Program Active Task List for Fiscal Year 2018-19

County	Project and Task	Field Operations Task(s)	Engineering Task(s)	Environmental Task(s)	Reclamation Task(s)
Adams	Energy Search Bond Claim		■		
Adams	Ruth Bond Claim				■
Adams	Texas Tea Bond Claim	■	■	■	■
Adams	Tudex Petroleum Bond Claim	■	■		
Archuleta	Underwood Ditch Wells		■		
Baca	Baughman Farms #1-5				■
Baca	Falcon Seaboard - Chapman #1				■
Baca	Wallace Bond Claim				■
Cheyenne	Samotlor Bond Claim				■
Elbert	Coggins #10-5				■
Fremont	Florence-Canon City Field		■		■
Fremont	Hassler #1		■		■
Fremont	Pine Ridge Bond Claim				■
Jackson	CM Production Bond Claim			■	
Jefferson	Red Mountain Bond Claim				■
La Plata	Atom Petroleum Bond Claim		■		
La Plata	Hodges Pool Unit #1		■		
La Plata	K-F #1				■
La Plata	McCullough #4		■		■
La Plata	Red Mesa Holdings Bond Claim	■	■	■	■
La Plata	Reynolds* Noel Bond Claim		■	■	
La Plata	Stewart #1		■		
La Plata	Taylor* William Bond Claim		■		
La Plata	Wheeler #2				■
Larimer	Hall #1		■		
Larimer	Ranchers Bond Claim				■
Larimer	Sheffer Jack #1		■		■
Lincoln	Kelly Oil - State #1		■		■
Lincoln	Nolte Bond Claim				■
Lincoln	Pine Ridge Bond Claim				■
Logan	Arco - Sindt #4 Lease			■	■
Logan	Benchmark Energy Bond Claim	■	■	■	■
Logan	CM Production Bond Claim				■
Logan	Donnelly Bond Claim	■	■	■	
Logan	J&L Oil Corp - North Shore Field				■
Logan	Pease Bond Claim			■	■
Logan	Red Mountain Bond Claim	■	■	■	■
Logan	Simms #1				■
Mesa	Buckeye #2				■
Mesa	Canfield #1		■		
Mesa	Curtis - Mann #1		■		
Mesa	DB Orphan #8			■	
Mesa	DB Orphan Ballpark #7				■
Mesa	DeBeque #1		■		
Mesa	Flushwell #1		■		
Mesa	Geowell #1		■		
Mesa	Govt-Baker #1-A		■		
Mesa	Lloyd and Lowell #1			■	
Moffat	Texaco - Moffat Field		■	■	
Moffat	Vitruvian Exploration Bond Claim				■
Montezuma	Atom Petroleum Bond Claim	■			
Montezuma	Federal #13-6				■



Orphaned Well Program
Active Task List for Fiscal Year 2018-19

Page 2 of 2

County	Project and Task	Field Operations Task(s)	Engineering Task(s)	Environmental Task(s)	Reclamation Task(s)
Montezuma	Pilcher #1			■	
Montezuma	Woosley Oil Bond Claim		■		■
Montrose	Redwine Bond Claim				■
Morgan	Dyer* J G - Plainsman Field		■		■
Morgan	Lamborn #1		■		■
Morgan	Timpe #1				■
Rio Blanco	Gentry #2				■
Rio Blanco	Gentry #6				■
Rio Blanco	Gentry Lease - Rangely Field				■
Rio Blanco	Petrohunter Bond Claim	■	■		■
Rio Blanco	Unknown Operators - Rangely Field				■
Routt	Pine Ridge Bond Claim				■
San Miguel	Suckla #1		■		
Statewide	Various Projects	■			
Washington	CM Production Bond Claim	■	■	■	■
Washington	Energy Search Bond Claim	■			
Washington	Northstar Gas Bond Claim		■		
Washington	Vondy #3		■		
Weld	General Resources Ltd				■
Weld	P&M Petroleum Management Bond Claim			■	■
Weld	Porter #3				■

Notes:

Field Operations Tasks may include but are not limited to: Site Security, Equipment Intervention (draining, cleaning, and fluid management), or Equipment Salvage, including Hauling

Engineering Tasks may include but are not limited to: Engineering Design (site access for heavy equipment), Mechanical Integrity Tests or Other Well Work, Well Plugging, or Flowline Abandonment

Environmental Tasks may include but are not limited to: Sampling and Analysis, Remediation of Spills/Releases, or Pit Closure

Reclamation Tasks may include but are not limited to: Grading, Contouring, Stormwater Controls (BMPs), Seeding, and Weed Control



**Orphaned Well Program
Active Bonds and Other Surety Claim Status for Fiscal Year 2018-19**

Project	Order Number(s)	Total Bond Claim	Amount Spent in Prior Fiscal Years	Amount Spent in FY2017-18	Remaining Bond Balance
Atom Petroleum Bond Claim	1V-586	\$ 60,000	\$ 47,207	\$ -	\$ 12,793
Benchmark Energy Bond Claim	1V-564	\$ 620,000	\$ 155,561	\$ 70,190	\$ 394,249
CM Production Bond Claim	1V-581	\$ 67,849	\$ 67,849	\$ -	\$ -
Dolphin Bond Claim	1V-382	\$ 55,000	\$ 55,000	\$ -	\$ -
Donnelly Bond Claim	1V-659	\$ 20,000	\$ -	\$ -	\$ 20,000
Energy Search Bond Claim	1V-636	\$ 60,000	\$ 7,777	\$ -	\$ 52,223
Nolte Bond Claim	1V-582	\$ 61,838	\$ -	\$ -	\$ 61,838
Northstar Gas Bond Claim	1V-642, BLM (Fee and Fed)	\$ 30,000	\$ -	\$ -	\$ 30,000
P&M Petroleum Management Bond Claim	1V-520	\$ 61,239	\$ -	\$ -	\$ 61,239
Pease Bond Claim	1V-252, 1V-253	\$ 30,000	\$ -	\$ -	\$ 30,000
Petrohunter Bond Claim	1V-608	\$ 62,573	\$ 4,786	\$ -	\$ 57,787
Pine Ridge Bond Claim	1V-622	\$ 85,000	\$ 42,491	\$ -	\$ 42,509
Ranchers Bond Claim	1V-526	\$ 63,424	\$ 63,424	\$ -	\$ -
Red Mesa Holdings Bond Claim	1V-508	\$ 72,831	\$ 72,831	\$ -	\$ -
Red Mountain Bond Claim*	1V-549, SLB	\$ 92,015	\$ 81,500	\$ -	\$ 10,515
TOTALS ->		\$ 1,676,090	\$ 768,619	\$ 70,190	\$ 837,281

Note: Red Mountain Bond Total Claim Amount includes \$24,169 bankruptcy deposit and \$5,000 State Land Board deposit (bond transfer)



Orphaned Well Program
Project Financials for Fiscal Year 2018-19

Project Name	BOND Actual	PROW Actual	EMGY Actual	Subtotals Actual
Benchmark Energy Bond Claim	\$ 70,190	\$ -	\$ -	\$ 70,190
General Resources Ltd	\$ -	\$ 1,545	\$ -	\$ 1,545
Ranchers Bond Claim	\$ -	\$ 695	\$ -	\$ 695
Texas Tea Bond Claim	\$ -	\$ 21,610	\$ -	\$ 21,610
TOTAL EXPENDITURES ->	\$ 70,190	\$ 23,850	\$ -	\$ 94,040

ABBREVIATIONS:

EMGY = Emergency Response Appropriation

PROW = Plugging and Reclaiming Orphaned Wells Appropriation



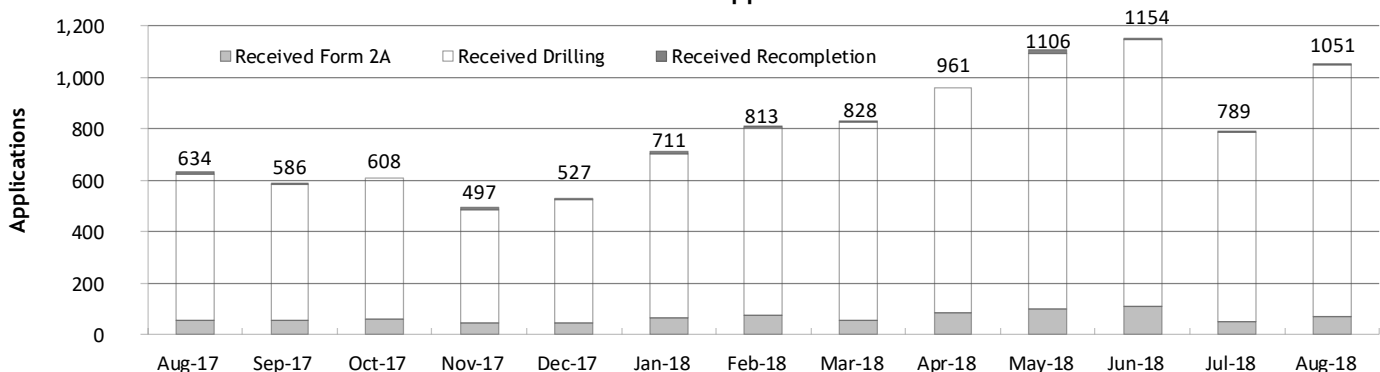
Monthly Permit Activity as of September 1, 2018

Form/Month	Backlog	Received	Approved	Withdrawn	Rejected	Incomplete ¹	In-Process	Remaining ²
Form2A								
Aug-17	173	53	49	6	0	33	138	171
Sep-17	171	56	41	0	1	25	160	185
Oct-17	185	58	40	6	2	25	170	195
Nov-17	195	47	38	2	0	24	178	202
Dec-17	202	44	32	3	0	31	180	211
Jan-18	211	66	19	4	0	33	221	254
Feb-18	254	73	22	5	1	45	254	299
Mar-18	299	56	50	5	0	52	248	300
Apr-18	300	87	25	8	1	60	293	353
May-18	353	98	46	10	0	74	321	395
Jun-18	395	109	51	5	5	65	376	443
Jul-18	441	50	44	7	2	65	372	438
Aug-18	437	71	53	5	0	72	378	450
Drilling								
Aug-17	1,802	572	349	13	20	137	1,855	1,992
Sep-17	1,992	528	450	12	36	135	1,887	2,022
Oct-17	2,022	550	311	75	64	139	1,983	2,122
Nov-17	2,122	438	331	19	59	125	2,026	2,151
Dec-17	2,151	479	304	15	25	124	2,162	2,286
Jan-18	2,286	639	218	68	0	93	2,546	2,639
Feb-18	2,639	736	217	34	45	99	2,980	3,079
Mar-18	3,079	769	463	1	8	98	3,278	3,376
Apr-18	3,376	874	164	185	64	104	3,733	3,837
May-18	3,837	994	327	54	89	91	4,332	4,361
Jun-18	4,423	1,040	436	81	56	59	4,839	4,890
Jul-18	4,898	738	466	58	73	61	4,979	5,039
Aug-18	5,040	978	392	30	45	62	5,489	5,551
Recompletion								
Aug-17	6	9	0	1	0	2	12	14
Sep-17	14	2	6	0	0	2	8	10
Oct-17	10	0	2	0	0	3	5	8
Nov-17	8	12	1	0	0	3	16	19
Dec-17	19	4	4	0	0	8	11	19
Jan-18	19	6	3	0	0	9	13	22
Feb-18	22	4	3	0	0	9	14	23
Mar-18	23	3	8	0	0	10	8	18
Apr-18	18	0	3	0	0	9	6	15
May-18	15	14	3	0	0	9	17	26
Jun-18	26	5	4	0	0	9	18	27
Jul-18	27	1	11	0	0	8	9	17
Aug-18	17	2	1	0	0	8	10	18

¹ Incomplete are applications that have missing or inaccurate data and cannot be approved.

² Backlog = Incomplete + In-process = Remaining permits from previous month.

Received Applications





Status of Permit Applications Filed By Month as of September 1, 2018

Form 2A Location Assessment

Year	Month	Received	Approved	Withdrawn	In Process	Percent In Process	Average			
							Days to Process	Less Than 30 Days	30 to 49 Days	Greater Than 50 Days
2013	TOTAL	1,281	1,202	78	1	0%		369	433	400
2014	TOTAL	1,114	1,067	47	0	0%		279	429	359
2015	TOTAL	592	564	26	2	0%		78	157	329
2016	TOTAL	407	376	26	3	1%		32	61	283
2017	JAN	42	33	9	0	0%	104	0	5	28
	FEB	59	57	2	0	0%	93	7	9	41
	MAR	70	59	5	6	9%	76	6	18	35
	APR	41	35	2	4	10%	95	5	9	21
	MAY	41	35	5	1	2%	105	2	6	27
	JUNE	57	47	1	9	16%	77	7	16	24
	JULY	43	35	4	4	9%	84	6	14	15
	AUG	51	38	5	6	12%	66	6	9	23
	SEP	55	44	2	9	16%	119	4	10	30
	OCT	57	38	8	11	19%	89	9	7	22
	NOV	47	31	2	14	30%	88	5	8	18
	DEC	44	27	1	16	36%	104	1	2	24
2017	TOTAL	607	479	46	80	13%		58	113	308
2018	JAN	65	30	5	30	46%	86	2	6	22
	FEB	73	40	5	28	38%	73	5	10	25
	MAR	56	37	3	15	27%	68	3	14	20
	APR	87	42	2	40	48%	78	3	10	29
	MAY	98	37	0	60	62%	72	0	11	26
	JUNE	109	20	6	82	76%	47	4	7	9
	JULY	50	10	2	38	76%	39	1	8	1
	AUG	71	0	0	71	100%	0	0	0	0
2018	TOTAL	609	216	23	364	60%		18	66	132

Form 2 Application For Permit to Drill (APDs)

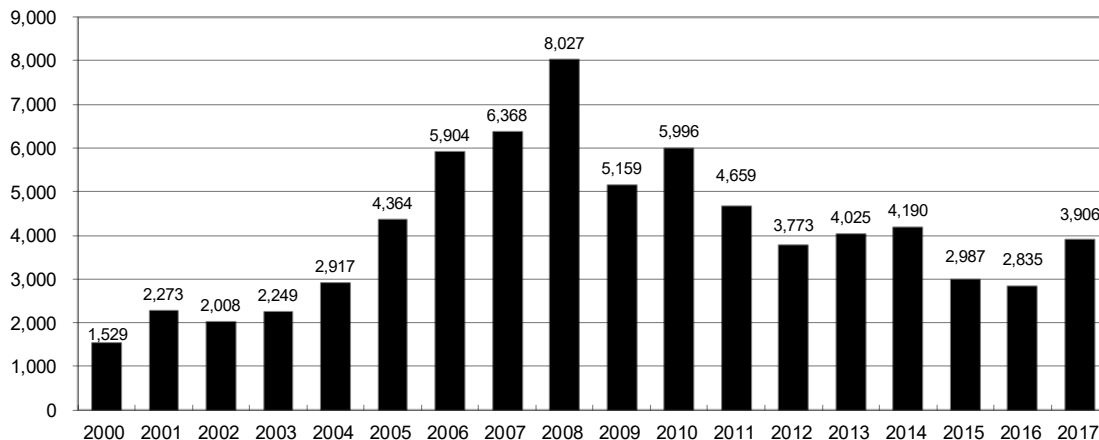
Year	Month	Received	Approved	Withdrawn	In Process	Percent In Process	Average			
							Days to Process	Less Than 30 Days	30 to 49 Days	Greater Than 50 Days
2013	TOTAL	4,548	4,312	235	1	0%		1,046	1,626	1,714
2014	TOTAL	4,208	4,026	182	0	0%		689	1,629	1,744
2015	TOTAL	3,237	3,091	146	0	0%		249	759	2,113
2016	TOTAL	3,253	3,026	145	24	1%		204	402	2,442
2017	JAN	418	330	84	4	1%	117	5	41	290
	FEB	590	495	49	46	8%	110	36	39	421
	MAR	508	393	45	70	14%	97	15	70	310
	APR	335	285	18	32	10%	111	10	17	263
	MAY	306	254	32	20	7%	119	18	65	172
	JUNE	472	354	29	89	19%	113	12	75	270
	JULY	458	321	70	67	15%	112	22	27	273
	AUG	522	299	55	134	27%	77	8	94	205
	SEP	512	393	29	53	11%	129	18	88	289
	OCT	519	357	26	115	23%	127	7	50	300
	NOV	429	268	28	126	30%	94	40	23	212
	DEC	479	269	26	156	35%	111	3	10	260
2017	TOTAL	5,548	4,018	491	912	16%		194	599	3,265
2018	JAN	639	269	15	318	53%	86	10	47	218
	FEB	735	294	54	353	50%	79	18	84	196
	MAR	769	300	19	384	55%	100	15	68	220
	APR	874	358	6	471	56%	77	25	75	258
	MAY	995	281	19	670	69%	74	2	37	253
	JUNE	1040	180	34	794	79%	55	11	83	87
	JULY	738	66	1	671	91%	41	8	45	13
	AUG	978	25	0	953	97%	26	13	11	1
2018	TOTAL	6,768	1,773	148	3,661	54%		102	450	1,246



Annual Drilling Permits by County as of September 1, 2018

County	2005	2006	2007	2008	2009	2010	2011	2012	2013	2014	2015	2016	2017	2018
ADAMS	34	37	89	51	35	21	8	40	40	51	96	74	125	99
ARAPAHOE	7	11	10	10	10	8	23	35	23	34	19	5	78	69
ARCHULETA	13	14	26	47	11	18	12	5	4	3	11	3	21	40
BACA	8	2	11	13	3	4	5	3	1	1			5	1
BENT	3	8	1	1		5		2	1					
BOULDER	13	21	37	32	35	24	30	22						
BROOMFIELD	1	1		2	33	28	11	36		31				52
CHEYENNE	10	21	15	33	12	13	16	31	50	26	9		1	
COSTILLA														
CROWLEY										2			3	
DELTA	10	9	2			4	3	6	1	2				
DENVER		19	25	24										
DOLORES	1	6	10	12	21	8	8	13	12	3		3	2	1
EAGLE									1					
ELBERT		4			1		1	2	2	4	3	3	1	
EL PASO					2	3	3	18	1	2				
FREMONT	3	2	4	14	13	22	14	11	2	8	2	2	1	
GARFIELD	1,509	1,845	2,550	2,888	1,981	2,037	1,323	1,046	870	1,066	532	724	612	440
GRAND														
GUNNISON	9	19	7	10	12	4	3	11	9	20	28	19	33	23
HUERFANO	2			7		2	1	9	1	13	2		2	
JACKSON	6	8	5	27	19	9	18	5	12	17	3	57	28	13
JEFFERSON		1	3	2					1					
KIOWA	1	11	9	26	7	16	17	17	12	5	3		3	
KIT CARSON	5	4	4	13	7	3	2	6	1	2		1		
LA PLATA	115	235	251	328	298	191	99	71	32	87	106	96	108	79
LARIMER	1		5	46	12	41	8	13	2	4	28	4	30	2
LAS ANIMAS	413	500	362	303	88	92	85	11	2	1				
LINCOLN	4	1	2	58	44	48	31	36	87	129	24	5	31	15
LOGAN	13	17	14	5	9	17	8	27	4	5		1	3	1
MESA	136	265	293	501	427	306	127	150	105	74	126	7	215	63
MOFFAT	60	120	68	57	51	53	93	88	44	54	12	17	5	3
MONTEZUMA	11	5	12	22	39	19	27	29	14	25	3	3	6	2
MONTROSE		1	3	3		1	1							
MORGAN	7	3	6	2	1	6	13	5	16	6	4	28		4
OTERO														
PARK					3	4	1							
PHILLIPS	17	12	69	82	45	64	112	56		11	2			
PITKIN			1								1			
PROWERS	5	7	5	8	1	3	1			1		1		
RIO BLANCO	161	360	321	477	348	441	109	117	167	121	107	71	115	66
RIO GRANDE				1	1			2		1				
ROUTT	6	9	8	4	2	3	10	4	12	4	9			
SAGUACHE			2	1	2									
SAN JUAN														2
SAN MIGUEL	45	35	23	20	13	10	2	1		2	3			
SEDGWICK	2	7	2	1	19	11	12	2		7	1			
WASHINGTON	50	69	45	11	1	6	12	6	19	12	9	7	10	8
WELD	901	1,418	1,527	2,340	1,448	2,152	2,262	1,826	2,468	2,303	1,841	1,704	2,466	1,700
YUMA	782	797	541	545	105	299	148	11	9	53	3		2	
TOTAL	4,364	5,904	6,368	8,027	5,159	5,996	4,659	3,773	4,025	4,190	2,987	2,835	3,906	2,683

ALL COUNTIES





Form 2A Breakdown By County By Year as of September 1, 2018

Year	County	Form 2As	Completed	In Process	New Location	CDP	SWH	RSO	CDPHE
2009	Total State	818	818	0	408	2	80	5	5
2010	Total State	2,377	2,377	0	1,543	0	317	22	55
2011	Total State	2,297	2,297	0	1,724	1	259	16	5
2012	Total State	1,297	1,297	0	900	0	167	6	1
2013	Total State	1,195	1,194	1	845	0	144	2	4
2014	Total State	1,067	1,065	0	776	3	129	7	3
2015	Total State	574	569	3	398	0	95	2	2
2016	Total State	393	379	2	219	0	49	4	7
2017	ADAMS	33	16	13	27	0	0	0	0
	ARAPAHOE	35	18	14	28	0	0	0	0
	ARCHULETA	3	3	0	2	0	3	0	0
	BACA	3	3	0	3	0	0	0	0
	CROWLEY	3	3	0	3	0	0	0	0
	DOLORES	2	2	0	2	0	1	0	0
	ELBERT	1	1	0	1	0	0	0	0
	FREMONT	1	1	0	1	0	1	0	0
	GARFIELD	32	31	1	12	0	23	3	0
	GUNNISON	4	4	0	1	0	2	0	0
	JACKSON	7	7	0	4	0	7	0	0
	LA PLATA	13	13	0	5	0	12	0	0
	LARIMER	3	3	0	3	0	0	0	0
	LINCOLN	25	25	0	19	0	0	0	0
	MESA	15	15	0	10	0	4	1	0
	MOFFAT	1	1	0	1	0	1	0	0
	MONTEZUMA	3	3	0	3	0	0	0	0
	MORGAN	4	4	0	4	0	0	0	0
	RIO BLANCO	9	9	0	1	0	8	0	0
	WASHINGTON	8	8	0	7	0	1	0	0
	WELD	382	301	65	263	0	9	0	2
	YUMA	1	1	0	1	0	0	0	0
2017	Total State	588	472	93	401	0	72	4	2
2018	ADAMS	27	5	22	18	0	0	0	0
	ARAPAHOE	11	3	8	9	0	0	0	0
	ARCHULETA	5	5	0	4	0	4	0	0
	BACA	1	0	1	1	0	1	0	0
	BROOMFIELD	6	4	2	6	0	0	0	0
	CHEYENNE	1	0	1	0	0	0	0	0
	DOLORES	1	1	0	1	0	1	0	0
	GARFIELD	39	27	12	13	0	30	0	1
	GUNNISON	3	1	2	0	0	2	0	0
	JACKSON	4	1	3	1	0	4	0	0
	KIOWA	2	0	2	1	0	0	0	0
	LA PLATA	7	4	3	0	0	5	0	0
	LARIMER	3	1	2	0	0	0	0	0
	LINCOLN	20	17	3	19	0	0	0	0
	LOGAN	1	1	0	0	0	0	0	0
	MESA	4	4	0	2	0	0	0	0
	MOFFAT	2	1	1	2	0	0	0	0
	MONTEZUMA	4	4	0	2	0	0	0	0
	MORGAN	1	1	0	0	0	0	0	0
	RIO BLANCO	4	2	2	3	0	3	0	1
	WASHINGTON	13	9	4	13	0	0	0	0
	WELD	400	120	280	297	0	1	0	0
	YUMA	3	0	3	2	0	0	0	0
2018	Total State	562	211	351	394	0	51	0	2

Abbreviations:

CDP = Comprehensive Drilling Plan SWH = Sensitive Wildlife Habitat consultation

RSO = Restricted Surface Occupancy consultation CDPHE= Colorado Department of Health and Environment consultation



Horizontal Well Activity as of September 1, 2018

County	Prior Years		2009		2010		2011		2012		2013		2014		2015		2016		2017		2018		Total		Completion		
	Drilled	DA PA	Permit	Spud	Permit	Spud	Permit	Spud	Permit	Spud	Permit	Spud	Permit	Spud	Permit	Spud	Permit	Spud	Permit	Spud	Permit	Spud	AC	PR	DA	PA	
ADAMS			6	5	2	3	1	1	17	2	26	1	42	18	92	3	72	2	125	28	99	41	103	3	19	1	
ARAPAHOE	2		10	1	22	4	11	13	11	4	11	13	22	11	9	5	5	1	77	15	67	11	56	2	34	1	
ARCHULETA	17		7	6	15	7	10	8	5	9	2	2	1	1	6	3	2	1	17	2	27	5	63	5	57		
BENT											1																
BOULDER							4																				
BROOMFIELD																											
CHEYENNE	5	4																			52		4		3	5	
DELTA									6	1	1		2												2		
DOLORES	9		18	2	6				9	3	5	4	3	1											12	5	
EL PASO									10																		
ELBERT																											
FREMONT	7	6	6	1	12	5	3	4	4	1	1	1	1	1	1									11	10	7	
GARFIELD	10	2	1	1	16	2	18	6	43	6	18	4	20	11	12	7	4		11		1			42	41	2	
GUNNISON	1								3	2	2	2	9	2	18	2	10	1	24	1	19	1	8		7		
HUERFANO									4	1			2	2											1	1	
JACKSON	8	1	8	3	4		9	1	4		8	5	15	4	3		52	24	24	9	12	6	59	22	3		
KIOWA									1		4	2	1												2		
KIT CARSON	1								1		1	1	1												2	4	
LA PLATA	28	2	11	2	28	3	18	7	12	1	5	1	43	7	42	3	67	8	83	6	54	3	93	92	1	3	
LARIMER	3	2					5	1	2	1	2	2			22	8	4	3	29	25	2	2	42	27	2	1	
LAS ANIMAS	16	2	4	1	1																		16	16			
LINCOLN			2	1	2	1	1				6	4	2												4	3	
LOGAN	2								1																2	2	
MESA	3	2	36	7	22	7	24	13	14		9	2	9	1	6	3					3		31	27	2	4	
MOFFAT	7	1	6	3	4		9	4	44	6	18	13	15	1	5	2	3	1	3		2		36	20	12		
MONTEZUMA	6	1	23	6	11	2	8	2	18	6	3	4	15	2	4	1	28						36	29	8		
MORGAN							6	2	2	1	13	1	6		4	1							5	5			
PARK							1	1															1				
RIO BLANCO	7	2					11	2	15	2	4	5	3	2	3				9		3	1	18	12	3		
ROUITT	10	6	1						1		1				3								1	1	6	1	
SAN MIGUEL	1						1																1	1	1	1	
WASHINGTON	1																										
WELD	11	3	12	5	208	84	763	229	964	594	2,114	1,099	2,215	1,423	1,789	1,063	1,671	723	2,435	1,248	1,690	811	7,305	5,287	12	93	
YUMA	1	1	6																				1	1	1		
TOTAL Horizontal	156	25	147	31	333	123	901	280	1,203	641	2,260	1,160	2,428	1,484	2,016	1,096	1,918	764	2,837	1,334	2,031	881	7,966	5	5,728	33	151
Percent of Total HZ																											
Total All Permits			5,159		5,996		4,659		3,773		4,025		4,190		2,988		2,835		3,875		2,683						
HZ Percent of Total			2.8%		5.6%		19.3%		31.9%		56.1%		57.9%		67.5%		67.7%		73.2%		75.7%						



Well to Building Setbacks by Year and by County as of September 1, 2018

Count of well locations, grouped by proximity from well to buildings.

Location Proximity to Buildings	2010	2011	2012	2013	2014	2015	2016	2017	2018	Number of Locations Since 2009	Percent of Total Locations
Less than 150 feet	3	3	2	0	3	2	0	0	0	15	0%
150 to 350 feet	58	61	39	34	38	12	15	16	5	315	3%
350 to 500 feet	110	97	61	65	48	33	23	24	17	528	6%
500 to 1000 feet	385	331	188	188	161	83	76	90	44	1,663	18%
1000 + feet	1,706	1,470	838	761	724	380	206	318	214	6,973	74%
TOTAL LOCATIONS	2,262	1,962	1,128	1,048	974	510	320	448	280	9,360	

County	TOTAL	Less than 150 feet	150 to 350 feet	350 to 500 feet	500 to 1000 feet	1000 + feet
ADAMS	110	0	4	9	26	71
ARAPAHOE	126	0	2	5	11	108
ARCHULETA	32	0	2	1	15	14
BACA	18	0	0	0	1	17
BENT	7	0	0	0	0	7
BOULDER	23	0	1	1	17	4
BROOMFIELD	37	0	0	4	17	16
CHEYENNE	140	1	0	0	2	137
CROWLEY	5	0	0	0	0	5
DELTA	7	0	0	2	1	4
DOLORES	23	0	0	0	7	16
EAGLE	1	0	0	0	0	1
EL PASO	14	0	0	0	3	11
ELBERT	15	0	0	0	3	12
FREMONT	41	0	2	7	9	23
GARFIELD	631	0	12	10	84	525
GUNNISON	51	1	0	4	1	45
HUERFANO	16	0	0	0	5	11
JACKSON	65	0	1	5	1	58
KIOWA	66	0	0	0	1	65
KIT CARSON	15	0	0	0	0	15
LA PLATA	156	0	8	16	49	83
LARIMER	43	0	5	5	16	17
LAS ANIMAS	201	1	6	7	37	150
LINCOLN	414	0	1	2	5	406
LOGAN	46	0	1	1	1	43
MESA	120	0	0	3	18	99
MOFFAT	191	0	1	3	16	171
MONTEZUMA	50	0	0	1	4	45
MONTROSE	2	0	0	0	0	2
MORGAN	35	0	0	2	5	28
PARK	4	0	0	0	0	4
PHILLIPS	275	1	4	6	21	243
PITKIN	1	0	0	0	0	1
PROWERS	6	0	0	0	0	6
RIO BLANCO	197	0	0	0	2	195
RIO GRANDE	2	0	0	0	1	1
ROUTT	30	0	0	0	2	28
SAN MIGUEL	14	0	0	0	0	14
SEDGWICK	33	0	0	1	3	29
WASHINGTON	95	0	2	0	4	89
WELD	5,607	11	253	417	1,230	3,695
YUMA	529	0	9	16	45	459



Well to Building Setbacks Less Than Two Hundred Feet as of September 1, 2018

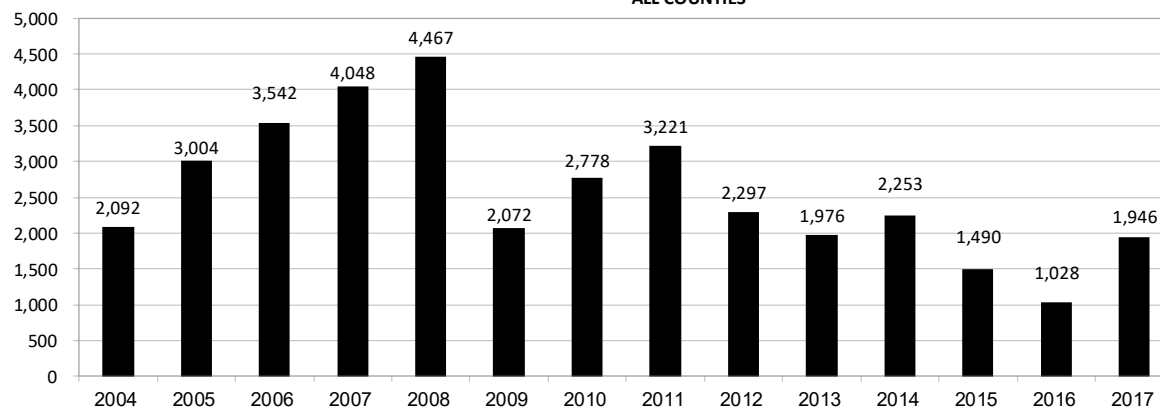
Year	Location Doc Number	County	High Density	New Location	Distance (Feet)	Proximity (Feet)	Building Description
2015	400768804	WELD	No	Yes	46	less 150	Building to be razed
2011	2587822	CHEYENNE	No	No	58	less 150	Water well house
2009	1691798	WELD	No	No	58	less 150	Vehicle garage
2010	400072164	WELD	No	Yes	69	less 150	Abandoned hog shed
2014	400569085	WELD	No	No	78	less 150	Well shed
2014	400600705	WELD	No	No	80	less 150	Livestock shed
2012	400240957	GUNNISON	No	Yes	90	less 150	Equipment shed
2015	400742811	WELD	No	Yes	102	less 150	Building to be razed
2009	1758843	WELD	No	Yes	103	less 150	Building to be razed
2011	1636646	WELD	No	No	122	less 150	Storage shed
2009	400011284	LAS ANIMAS	No	Yes	127	less 150	Operator is owner
2009	1786896	PHILLIPS	No	No	132	less 150	Grain storage
2014	400642113	WELD	No	Yes	142	less 150	Barn
2011	400117702	WELD	No	Yes	143	less 150	Irrigation pump house
2011	400227765	WELD	No	Yes	145	less 150	Storage barn
2014	400558626	LINCOLN	No	No	150	less 150	Gas plant equipment building
2009	1904205	WELD	No	No	154	150 to 350	Livestock enclosure
2012	400243295	WELD	No	Yes	155	150 to 350	Unused storage shed
2015	400862577	GARFIELD	No	No	155	150 to 350	Gravel pit scale house
2011	400179419	WELD	No	Yes	157	150 to 350	Existing well / storage building
2010	400054716	WELD	No	No	159	150 to 350	Equipment barn
2011	400188968	WELD	No	Yes	159	150 to 350	Abandoned
2014	400554054	WELD	No	Yes	159	150 to 350	Equipment shed
2014	400559404	WELD	No	Yes	160	150 to 350	Barn
2016	400950178	LA PLATA	No	Yes	162	150 to 350	Residence
2010	400021477	WELD	No	Yes	162	150 to 350	Goat barn
2009	1758386	WELD	No	Yes	168	150 to 350	Storage shed
2011	1635946	WELD	No	No	169	150 to 350	Storage shed
2013	400447386	WELD	No	No	169	150 to 350	Abandoned turkey barn
2013	400447391	WELD	No	No	169	150 to 350	Abandoned turkey barn
2011	400165164	WELD	No	Yes	178	150 to 350	Residence
2013	400367184	WELD	No	Yes	179	150 to 350	Shed
2011	400188780	WELD	No	Yes	180	150 to 350	Residence
2014	400562498	WELD	No	Yes	181	150 to 350	Garage / storage shed
2010	1697620	WELD	No	No	187	150 to 350	Livestock shed
2009	1758746	WELD	No	No	193	150 to 350	Storage shed
2011	400154431	WELD	No	Yes	198	150 to 350	Turkey barn
2012	400250031	WELD	No	Yes	198	150 to 350	Abandoned guard shack
2010	1774783	WELD	No	No	199	150 to 350	Cement service building
2011	400118102	YUMA	No	Yes	199	150 to 350	Steel barn



Annual Well Starts by County as of September 2, 2018

County	2004	2005	2006	2007	2008	2009	2010	2011	2012	2013	2014	2015	2016	2017	2018
ADAMS	22	24	13	41	14	14	21	2	15	5	29	3	2	29	41
ARAPAHOE	6	1	5	2	1	1	3	8	9	25	21		1	17	11
ARCHULETA	4	10	5	7	29	9	12	10	11		1	7	4	5	16
BACA	6	6	2	6	12		5	4	2	2		1		2	
BENT	3	2	8	1	1			1	2						
BOULDER	5	11	9	14	25	16	13	7	14						
BROOMFIELD	1				10		21	11	5						
CHEYENNE		9	14	15	14	8	12	11	17	35	19	3			
COSTILLA															
CROWLEY											2				1
DELTA	4	6	5	2			7	3	3		1				
DENVER			7	5	4										
DOLORES	2		2	13	6	2		1	5	10	4			1	1
EAGLE										1					
EL PASO							2		5		1				
ELBERT			1									3		1	
FREMONT	1	3	2	2	6	3	9	16	9	2	4		1	1	
GARFIELD	585	799	1,005	1,304	1,690	765	906	877	495	391	361	174	160	307	196
GUNNISON	1	1	9	5	1	4	5	4	4	1	2	4	1	7	2
HUERFANO	6	2			2		2		2	1	4	1			
JACKSON	10		3	3	12	1	8	8		7	7		23	13	7
JEFFERSON				2											
KIOWA	2	1	7	7	2	5	15	14	10	12	3	2			
KIT CARSON	1	6	2	1	14	3	1	1	3	1	2			1	
LA PLATA	103	104	108	179	205	131	67	54	3	10	40	42	44	100	22
LARIMER		1		4	8	1	28	2	10	4	1	9	3	25	2
LAS ANIMAS	296	384	413	326	222	14	7	78	1		1				
LINCOLN	2	2	1	2	18	11	14	21	23	41	42	12	2	12	10
LOGAN	2	11	12	12	3	7	3	9	13	4	6				
MESA	25	89	156	209	225	14	11	41	4	11	17	77	4	123	67
MOFFAT	19	40	60	42	26	18	15	32	26	27	3	6	3	1	
MONTEZUMA	1	7	2	4	22	10	3	8	18	12	8	1		2	2
MONTROSE	1			1	2		1								
MORGAN	5	5	3	1	1	2	3	2	3	1	3	1			4
PARK							2								
PHILLIPS	10	11	4	35	18	2	42	130	48		9				
PROWERS	5	5	6	3	5	2	3	1				1			
RIO BLANCO	92	95	107	95	205	118	107	71	54	36	43	17		5	9
RIO GRANDE										1					
ROUTT	1	6	3	2		2	1	2	4	2	2				
SAN MIGUEL	28	13	20	17	5	1	2	2			2				
SEDGWICK	2	1	1	5			3	8	3			1			
WASHINGTON	65	34	23	14	11	2	2	4	1	9	7	2	6	8	4
WELD	632	718	931	1,222	1,312	878	1,209	1,672	1,459	1,312	1,569	1,123	774	1,285	815
YUMA	144	597	593	445	336	28	213	106	16	13	39				1
TOTAL	2,092	3,004	3,542	4,048	4,467	2,072	2,778	3,221	2,297	1,976	2,253	1,490	1,028	1,946	1,210

ALL COUNTIES





Active Wells by County and Status as of September 2, 2018

County	Drilling	Domestic	Injecting	Producing	Shut In	Temp Aband	Waiting on Completion	Active Storage	Total Active Wells
ADAMS	54		6	484	393	39	1	12	989
ARAPAHOE	15	1	3	101	54	11		44	229
ARCHULETA		5	2	107	18	14	6	1	153
BACA			15	97	22	5		56	195
BENT		1		18	10	6			35
BOULDER				269	33	3			305
BROOMFIELD				83	7	1			91
CHEYENNE			41	281	41	47	1		411
CROWLEY									-
DELTA				3	12	1			16
DENVER				4	42	3	3		52
DOLORES	1		1	27	12				41
EL PASO		1				1			2
ELBERT				37	34	3		1	75
FREMONT	3	3		56	9	6	2		79
GARFIELD	258	2	40	10,786	389	75	75	1	11,626
GUNNISON	2		2	34	6	5	2		51
HUERFANO			1	36	4	4			45
JACKSON	18		28	108	55		1		210
JEFFERSON					2		1	3	6
KIOWA			12	84	19	9	2		126
KIT CARSON		1		8	5	2			16
LA PLATA	12	7	35	3,016	188	27	2	38	3,325
LARIMER	2	1	22	164	57	23			269
LAS ANIMAS	1	4	18	2,655	97	119	10	23	2,927
LINCOLN	6	1	10	91	19	6			133
LOGAN			24	84	37	35		31	211
MESA	63	1	6	950	177	34	5	11	1,247
MOFFAT	1		10	399	98	43	5		556
MONTEZUMA	2	1	7	102	31	13			156
MONTROSE								1	1
MORGAN	3		18	41	128	35		81	306
OURAY		1				1			2
PARK									-
PHILLIPS			3	244	23	2			272
PITKIN								10	10
PROWERS				22	5	1			28
RIO BLANCO	36	3	299	2,005	378	157	6	2	2,886
ROUTT		2		23	10	2			37
SAN MIGUEL	1			65	47	16			129
SEDGWICK	2		1	8	7	1	2		21
WASHINGTON	10		23	359	65	8	1		466
WELD	1,222	1	61	12,190	7,738	762	23	4	22,001
YUMA	3	8	24	3,678	131	9	12	1	3,866
Totals	1,715	44	712	38,719	10,403	1,529	160	320	53,602



Monthly Statistics as of September 2, 2018

Page 1 of 2

YEAR and MONTH	Baker - Hughes Rig Count	Permits										Well Spud Notices	Active Drilling Permits	Active Wells	Public Visits		
		Drilling		Recompletion		Injection		Pits		Locations					Data	Office	Internet
		Rcvd	Apvd	Rcvd	Apvd	Rcvd	Apvd	Rcvd	Apvd	Rcvd	Authz						
2011 TOTAL		4,709	4,659	325	320	44	32	190	192	2,382	2,267	3,220			187	1,294	1,337,865
2012 TOTAL		3,982	3,773	154	168	63	44	114	84	1,373	1,293	2,297			159	1,305	1,324,443
2013 TOTAL		4,481	4,028	74	72	67	63	67	106	1,268	1,213	1,976			92	1,456	511,734
2014																	
JAN	62	278	232	3	2	3	4	14	8	90	43	172	4,926	51,840	1	90	46,150
FEB	61	284	297	6	4	1	1	3	1	91	94	149	5,051	51,847	12	113	43,408
MAR	62	367	329	4	6	7	1	6	6	110	88	184	4,997	51,952	16	140	46,620
APR	63	276	317	2	3	2	5	8	3	89	99	173	4,897	52,060	11	188	45,558
MAY	65	458	383	2	2	3	1	6	7	83	94	180	4,923	52,202	18	131	42,365
JUN	67	429	377	3	0	6	7	5	2	134	92	223	4,924	52,337	10	156	42,518
JUL	69	272	446	2	5	3	11	8	5	97	126	180	4,955	52,431	7	166	45,481
AUG	73	376	259	4	3	4	4	3	4	111	87	218	5,060	52,582	8	145	42,431
SEP	76	412	304	2	3	3	1	20	1	116	81	210	5,006	52,694	14	175	43,577
OCT	76	459	371	3	2	9	2	4	6	93	109	198	4,827	52,785	19	138	46,030
NOV	73	326	479	5	2	5	4	4	0	54	103	172	5,171	52,947	8	96	39,583
DEC	69	286	397	1	2	2	7	1	2	45	99	194	5,236	53,054	6	144	37,964
2014 TOTAL		4,223	4,191	37	34	48	48	82	45	1,113	1,115	2,253			130	1,682	521,685
2015																	
JAN	64	349	316	3	1	2	9	3	1	60	43	198	5,060	53,195	17	114	41,502
FEB	49	324	161	3	2	5	6	9	0	73	28	115	4,750	53,309	4	117	38,245
MAR	38	246	294	1	6	1	5	7	5	44	70	161	4,983	53,414	6	146	42,513
APR	37	194	165	3	1	2	5	1	2	46	37	99	4,854	53,456	1	125	39,559
MAY	39	324	190	1	4	2	6	8	0	41	44	112	4,632	53,535	5	113	unavailable
JUN	38	327	281	4	1	0	5	2	1	52	49	142	4,726	53,608	5	138	unavailable
JUL	38	373	250	4	2	2	1	0	0	57	48	122	4,663	53,706	7	145	26,975
AUG	37	289	300	2	6	3	0	5	5	32	46	121	4,847	53,766	2	109	30,674
SEP	33	242	312	3	1	1	7	0	3	59	49	100	4,953	53,806	4	146	31,642
OCT	30	372	223	2	2	3	1	1	0	54	51	108	4,694	53,898	12	119	33,199
NOV	31	190	254	6	2	4	3	1	0	21	49	117	4,765	53,719	7	105	29,112
DEC	25	275	242	1	5	3	6	1	0	42	43	79	4,594	53,652	3	112	25,659
2015 TOTAL		3,505	2,988	33	33	28	54	38	17	581	557	1,474			73	1,489	339,080
2016																	
JAN	22	250	126	1	0	3	5	0	0	34	9	76	4,528	53,698	2	118	30,105
FEB	20	205	227	3	0	3	2	44	2	31	39	68	4,599	53,723	8	115	28,611
MAR	17	268	268	0	0	2	2	5	0	34	36	81	4,530	53,710	3	132	30,902
APR	17	185	224	0	1	3	4	0	0	24	39	62	4,511	53,774	4	113	27,914
MAY	16	353	217	0	2	3	1	1	1	33	24	86	4,464	53,749	4	106	26,778
JUN	16	315	233	0	0	2	3	2	1	38	30	73	4,456	53,651	2	80	27,284
JUL	20	268	249	5	0	4	4	6	6	31	30	88	4,344	53,724	5	91	24,151
AUG	21	141	150	1	3	5	3	2	0	33	23	93	4,436	53,740	1	106	29,192
SEP	19	366	270	0	2	4	2	0	6	29	24	72	4,522	53,817	4	154	25,698
OCT	19	334	297	6	1	6	3	1	0	42	29	96	4,601	53,903	1	135	25,893
NOV	20	368	304	3	3	3	3	0	1	40	45	119	4,566	53,993	2	97	25,140
DEC	26	342	267	1	4	7	5	1	2	48	25	114	4,477	54,036	5	92	23,449
2016 TOTAL		3,395	2,832	20	16	45	37	62	19	417	353	1,028			41	1,339	325,117
2017																	
JAN	28	442	211	8	2	2	2	0	0	42	25	139	4,492	54,111	6	79	28,702
FEB	26	701	263	2	4	4	3	0	0	62	38	142	4,543	54,194	1	97	27,715
MAR	28	510	423	2	2	7	4	3	24	71	48	200	4,714	54,322	1	152	31,952
APR	29	352	301	5	4	3	7	1	2	41	54	133	4,635	54,369	1	103	30,406
MAY	31	307	367	4	3	1	6	1	28	41	55	181	4,899	54,369	5	94	36,109
JUNE	36	493	331	3	2	6	1	1	1	58	40	162	4,947	54,605	5	109	30,644
JULY	37	508	234	2	4	2	2	1	1	45	31	186	4,999	54,699	2	80	27,025
AUG	37	572	349	9	0	8	3	1	2	53	49	179	5,000	54,814	1	143	30,715
SEP	35	528	450	2	6	5	4	1	1	56	41	153	4,976	54,925	2	114	27,402
OCT	34	550	311	0	2	2	3	0	1	58	40	153	5,022	54,989	2	174	31,995
NOV	37	438	331	12	1	13	10	1	1	47	38	168	5,016	55,062	1	124	28,802
DEC	34	479	304	4	4	4	1	0	0	44	32	150	5,039	55,151	0	100	25,556
2017 TOTAL		5,880	3,875	53	34	57	46	10	61	618	491	1,946			27	1,369	357,023
2018																	
JAN	34	639	218	6	3	4	3	2	0	66	19	164	4,920	55,155	4	102	34,895
FEB	33	736	217	4	3	2	8	1	5	73	22	142	4,871	55,153	2	99	30,666
MAR	30	769	463	3	8	6	9	4	2	56	50	126	5,024	54,811	2	118	32,185
APR	30	874	164	0	3	7	6	4	4	87	25	127	4,918	54,260	4	124	33,403
MAY	29	994	327	14	3	10	11	6	3	98	46	211	4,847	53,832	1	100	30,873
JUNE	33	1,040	436	5	4	7	3	3	1	109	51	128	5,017	53,738	0	138	29,244
JULY	32	738	466	1	11	5	9	1	0	50	44	133	5,133	53,708	3	138	29,781
AUG	30	978	392	2	1	9	10	1	2	71	53	146	5,400	53,602	5	121	32,801
2018 TOTAL		6,768	2,683	35	36	50	59	22	17	610	310	1,177			16	819	221,047

Abbreviation

Key: Rcvd = Received, Apvd = Approved, Authz = Authorized



Oil and Gas Staff Report

September 17, 2018

33

Monthly Statistics as of September 2, 2018

Page 2 of 2

YEAR and MONTH	Well Oper Change	Operators		Bonds				Hearings		Enforcement			Remediation Projects				Inspections		Unedited Historic Records
		New	Inactive	Release Ind	Release Blnkt	Claim Ind	Claim Blnkt	Apps.	Orders	NOAVs	AOCs	OFVs	Complt	Spills	Rcvd	Comp	Wells	Locations	
2011 TOTAL	6,743	33	31	79	44	43	4	4	403	349	230	10	19	247	527	726	536	12,394	-
2012 TOTAL	7,546	47	37	70	46	33	3	0	482	396	157	9	2	244	402	690	641	19,071	12,670
2013 TOTAL	7,192	49	21	48	26	20	0	0	571	522	237	37	3	201	568	507	541	23,551	13,370
2014 JAN	1,971	6	3	3	2	0	0	0	57	46	25	2	-	8	68	46	28	3,243	1,597
FEB	2,039	8	2	6	5	0	0	0	-	-	23	-	-	17	59	51	13	2,330	1,282
MAR	494	2	3	1	5	0	0	0	97	75	29	10	-	22	63	66	31	1,822	1,298
APR	312	5	3	6	4	1	0	0	74	64	17	8	1	20	57	47	59	2,651	1,715
MAY	508	6	2	3	3	5	0	0	-	-	12	-	-	13	63	50	42	2,437	1,571
JUN	1,008	5	3	7	4	1	0	1	95	90	14	6	1	16	74	44	50	3,209	1,717
JUL	338	2	1	5	3	1	0	0	96	96	11	6	-	12	60	60	59	3,071	1,536
AUG	452	6	2	2	3	0	0	0	-	-	8	-	-	31	56	32	58	2,788	1,682
SEP	378	4	2	1	2	0	0	0	73	63	13	7	1	18	65	39	50	2,587	1,616
OCT	886	8	2	0	2	0	1	0	80	75	12	3	1	13	74	78	36	3,886	1,914
NOV	498	2	4	8	4	5	0	0	-	-	6	-	-	15	72	27	59	3,156	1,458
DEC	1,414	1	1	0	2	0	0	0	126	89	9	1	-	58	75	56	17	3,028	1,596
2014 TOTAL	10,298	55	28	42	39	13	1	1	698	598	179	43	4	243	786	596	502	34,208	18,982
2015 JAN	727	2	3	2	3	0	0	0	76	64	15	2	1	36	64	38	58	2,491	1,246
FEB	556	5	2	2	3	1	0	0	-	-	10	-	-	22	44	34	64	2,667	1,382
MAR	183	5	3	5	2	4	2	0	72	72	33	1	1	42	76	59	94	3,469	1,738
APR	271	7	1	0	5	3	0	0	60	54	19	3	-	21	46	40	61	3,451	1,620
MAY	436	8	0	0	2	3	0	0	89	54	10	10	2	25	46	56	41	2,869	1,422
JUN	508	2	2	3	5	4	0	0	-	-	27	-	-	25	41	32	43	3,366	1,716
JUL	396	3	3	0	5	1	0	0	123	140	5	13	1	32	67	52	28	3,445	1,774
AUG	218	8	2	0	7	4	0	0	-	-	13	-	-	18	56	24	62	3,693	1,848
SEP	273	6	5	1	7	4	0	2	112	78	25	11	-	30	41	44	40	2,887	1,528
OCT	359	4	1	6	1	6	1	0	115	103	6	12	1	32	58	51	33	3,420	1,494
NOV	97	2	3	5	0	0	0	1	-	-	6	-	-	15	38	47	40	3,348	1,666
DEC	437	7	2	3	5	1	0	0	91	80	4	5	2	60	46	39	37	3,851	1,765
2015 TOTAL	4,461	59	27	27	45	31	3	3	738	645	173	57	8	358	623	516	601	38,957	19,199
2016 JAN	534	2	1	0	5	5	0	0	76	66	4	7	1	29	51	44	36	3,184	1,551
FEB	165	2	1	0	1	1	1	0	-	-	8	-	-	27	47	34	49	3,666	1,738
MAR	1,035	6	4	2	2	2	1	1	62	57	3	7	1	19	42	50	45	3,020	1,646
APR	245	3	3	2	7	4	0	0	34	32	6	4	2	20	40	48	90	4,046	2,117
MAY	374	2	3	6	3	3	1	0	-	-	0	-	-	20	37	41	29	3,491	2,193
JUN	272	6	3	3	4	1	1	1	67	65	3	6	2	20	36	40	77	4,099	2,330
JUL	2,234	3	2	0	2	0	0	0	-	-	10	-	-	20	41	29	56	3,483	2,068
AUG	138	3	3	3	2	1	1	1	71	43	20	4	-	20	51	39	38	4,065	2,288
SEP	321	3	1	9	3	3	0	1	-	-	8	-	-	20	37	44	22	3,527	1,788
OCT	428	1	3	7	5	1	0	0	96	74	23	7	1	21	40	34	36	3,325	1,811
NOV	552	3	0	4	0	0	3	0	-	-	19	-	-	22	40	27	50	3,855	1,912
DEC	264	4	4	1	7	2	1	1	67	60	3	8	-	23	66	31	72	3,374	1,684
2016 TOTAL	6,562	38	28	37	41	23	9	5	473	397	107	43	7	261	528	461	600	43,135	23,126
2017 JAN	4,203	3	3	3	3	1	0	0	80	72	1	11	1	46	48	23	11	3,007	1,447
FEB	373	1	5	2	4	2	0	3	0	0	13	0	0	74	57	34	17	3,180	1,372
MAR	1,092	6	4	2	2	2	1	1	86	65	18	3	0	44	55	49	18	3,812	1,851
APR	938	3	0	1	5	5	0	0	0	0	6	0	0	32	40	43	29	2,895	1,578
MAY	663	1	3	0	5	0	0	0	128	93	3	6	0	185	55	46	30	2,491	1,487
JUNE	577	6	1	1	2	0	0	0	107	102	2	4	1	131	63	57	26	2,532	1,680
JULY	758	5	2	2	2	0	0	1	108	104	5	3	0	66	38	29	23	2,168	1,300
AUG	630	4	2	27	13	32	0	0	0	0	3	0	0	207	55	63	51	2,903	1,712
SEP	824	1	2	9	6	6	0	1	133	74	20	1	0	212	55	64	38	2,804	1,568
OCT	1,138	1	0	0	2	2	0	0	131	79	3	5	4	237	51	37	24	2,770	1,593
NOV	609	2	0	0	0	0	0	0	0	19	1	0	0	81	51	51	34	2,570	1,191
DEC	194	4	4	11	1	7	0	0	112	72	4	3	0	43	46	42	28	2,011	1,159
2017 TOTAL	11,999	37	26	58	45	57	1	6	885	680	79	36	6	1,358	614	538	329	33,143	17,938
2018 JAN	579	3	9	5	6	3	1	2	105	95	11	3	0	60	54	55	39	2,381	1,257
FEB	419	3	3	2	7	1	1	0	0	0	6	0	0	52	40	51	81	1,988	1,031
MAR	225	5	0	4	0	0	0	0	159	105	16	4	0	47	55	52	52	2,509	1,545
APR	616	4	0	11	5	15	0	0	94	70	4	4	0	47	54	60	44	2,402	1,228
MAY	204	3	3	5	3	0	0	0	0	0	13	0	0	61	55	60	41	2,809	1,571
JUNE	124	4	1	1	2	1	0	0	108	74	4	2	0	27	45	53	47	2,428	1,375
JULY	65	4	2	1	5	2	1	0	128	102	9	4	0	23	50	71	77	2,729	1,576
AUG	6	2	1	1	3	0	0	0	0	0	8	0	0	55	44	55	43	2,263	1,129
2018 TOTAL	2,238	28	19	30	31	22	3	2	594	446	71	17	0	372	397	457	424	19,509	10,712

Abbreviation Ind = Individual, Blnkt = Blanket, Apps = Application for Hearing, NOAV = Notice of Alleged Violation, AOC = Administrative Order of Consent, OFV = Order Finding
 Key: Violation, Complt = Complaint, Comp = Completed


Analytical Samples Submitted by Month to the COENV Database as of September 1, 2018

Sample Submission Reason	Sep 2017	Oct 2017	Nov 2017	Dec 2017	Jan 2018	Feb 2018	Mar 2018	Apr 2018	May 2018	Jun 2018	Jul 2018	AUG 2018	TOTAL
Rule 318A.e.(4)/318A.f pre drill	9	6	4	4	16	4	2	4	5	12	1	3	70
Rule 318A.e.(4)/318A.f post drill	6	6	5	2	6	1	4	10	2	13	14		69
Rule 609 pre drill	5	16	2	12	1	13	3		6		10		68
Rule 609 1 year subsequent				5		4	1				21		31
Rule 609 5 year subsequent								11	2				13
Rule 608 pre drill		9	24		21	26	6	3	11	3			103
Rule 608 1 year post drill			12					15			12		39
Rule 608 3 year post drill										11	9		20
Rule 608 6 year post drill			3	3	2		6		6	2			22
317 B subsequent sample				4		1		1			3		9
Voluntary baseline sample	46	30	65	56	78	100	112	73	37	63	65	3	728
Voluntary post drill	18	15		24	9	9	9	17		2	3		106
Bradenhead gas sample	22	25	27	19	46	44	29	36	33	40	106	13	440
Bradenhead water sample	8	10	5	23	22	37	4	24	11	18	18	8	188
Bradenhead non-aqueous liquids	3	6	3		3	6	2	3	7	4	7		44
Production gas sample	24	20	15	19	30	35	20	26	18	27	101	10	345
Int. casing gas sample										1			1
Produced water	17			8	2						4		31
Rule 912b flaring natural gas							2						2
Remediation			3	6	200	6	1		24	1			241
Complaint investigation		15	5			3		3			1	1	28
Land owner request												1	1
Spill investigation			1			40	3				1		45
UIC_COA_5year		2				1							3
Rule 908.B.(9) post construction sample								1					1
COA baseline					4	1							5
COA post drill	3	3	3	6	3	3	6		3		1	2	33
COA 1 year post drill			1								4	1	6
COA 3 year post drill		1			4								5
COGCC baseline - COGCC Staff													0
COA post construction						3							3
Adena Field monitoring			5										5
COGA baseline		1											1
Duplicate sample					1		2	1			1		5
TOTAL, ALL REASONS	161	165	183	191	448	296	250	231	165	197	197	197	2,287