



COLORADO

**Oil & Gas Conservation
Commission**

Department of Natural Resources

Staff Report

for October 29, 2018

Top Stories

◆ Operator Training: Form 5 Drilling Completion Report

COGCC Staff hosted an all day training session on the Form 5 Drilling Completion Report on September 26. Operators talked with Staff, asking numerous questions and covering the more difficult aspects of the form in detail.

More than 35 industry representatives attended in person, and more than 50 others participated remotely. The presentation has been posted on the Form 5 Instructions page of the COGCC website at this location:

http://cogcc.state.co.us/reg.html#/forms/form5_new

◆ Engineering Integrity Program Update

Members of the COGCC's Engineering Integrity Work Unit have shared the following field exercise and conference summaries as good examples of the training and information being used to build a successful program to regulate flowlines and gathering lines in Colorado.

Spill Prevention, Control, and Countermeasure (SPCC) Workshop

One Staff member attended a September 18 and 19 workshop near Cortez that was hosted by the U.S. Environmental Protection Agency (EPA) and the Ute Mountain Ute Tribe.

This workshop covered oil spill prevention and preparedness regulations, inspection protocols, common potential violations, the enforcement process, and what facilities can do to be more compliant with SPCC and Facility Response Plan regulations.

The purpose of the SPCC rule is to help facilities prevent a discharge of oil into navigable waters

or adjoining shorelines. Important elements of an SPCC Plan include:

- A facility diagram and description of the facility (must be site specific)
- Oil discharge predictions
- Appropriate secondary containment or diversionary structures
- Facility drainage
- Site security
- Facility inspections
- Requirements for bulk storage containers including inspections, overfill, and integrity testing requirements
- Transfer procedures and equipment (including piping)
- Requirements for qualified oil filled operational equipment
- Loading/unloading rack requirements and procedures for tank cars and tank trucks
- Brittle fracture evaluations for above ground field constructed containers
- Personnel training and oil discharge prevention briefings
- Recordkeeping requirements
- A five year interval for SPCC Plan review
- Management approval
- Plan certification by a Professional Engineer (PE) or in certain cases by the facility owner/operator.

CO 811 Mock Pipeline Strike

One COGCC Staff member participated in this year's annual Colorado 811 sponsored Mock Line Strike on September 19 in Jefferson County. The presentation featured a scenario of a line strike, specifically a gas distribution main. The response



included local police and fire agencies and Xcel Energy's Gas Leak Response Team.

As in the past, the event's purpose is to spread awareness of potential dangers when excavating without the benefit of Colorado 811's free locate service. Colorado 811 wishes to emphasize the two business day turnaround time, which does not include the day of ticket submittal, to have the utility locate completed.

Fifth Annual CH4 Connections Conference

Two Staff members attended the Methane Connections conference in Fort Collins September 25 and 26. The conference was organized by the Gas Technology Institute (GTI) and the Energy Institute at Colorado State University (CSU).

This year, the Methane Connections Conference focused on detection, measurement, and mitigation technologies, as well as the regulatory landscape surrounding natural gas methane emissions. It also featured a special methane detection vendor program showing independent results on methane detection using known leak locations and rates from oilfield equipment at the METEC (Methane Emissions Test and Evaluation Center) facility operated by the Energy Institute at CSU.

◆ Community Relations Unit and Local Government Liaison Program Update

Mike Leonard manages the recently formed Community Relations Unit (CRU) at the COGCC, which includes Local Government Liaison (LGL) Marc Morton, Complaint Intake Specialist Megan Adamczyk, Senior Data Analyst Ken Robertson, Data Analyst Bryce Holder, Senior GIS Scientist Chris Eisinger, and GIS Analyst Dennis Ahlstrand.

In keeping with the COGCC Mission Statement, the CRU allows the agency to expand its interaction and communication amongst local, state and federal government agencies, the

general public, the oil and gas industry, and other stakeholders.

In leading the CRU, Mike Leonard has the following duties:

- Responds to inquiries and information requests from local government staff, the public, operators, and other stakeholders;
- Leads the agency in responding to emergency situations and working with emergency response personnel;
- Supports the agency's complaint intake and resolution process;
- Strengthens the Local Governmental Designee (LGD) Program by seeking opportunities for outreach to local government officials and their constituents regarding the State's regulatory process and what to expect when oil and gas activity is planned or occurs in the area; and
- Supports LGL staff efforts in managing the LGD program, including offering ongoing training opportunities to LGDs and local government staff, which between 2013 and today has had over 500 participants.

LGDs and local government staff are reminded of training opportunities available from COGCC CRU staff. For more information on training available or to request a training, please contact Mike Leonard or Marc Morton.

Among its current initiatives, CRU staff are working to rollout an online Form 29, which will streamline the LGD registration process. Additional information on the rollout will be presented in the next Staff Report.

A list of the LGL outreach and public involvement activities conducted since the last staff report is included in the Public Outreach section below.

Public Outreach

➤ *Outreach by the Director and Other Staff*

- On September 5, Local Government Liaison (LGL) Marc Morton, Underground Injection

Control Lead Bob Koehler, and Community Relations Unit (CRU) Manager Mike Leonard participated in a teleconference with and at the request of Natasha Leger, Interim Executive



Director of Citizens for Healthy Community. The group discussed the COGCC's approach to evaluating seismic activity in Colorado and its relation to induced seismicity.

- On September 27, Integrity Engineer Ellice Whittington presented the new COGCC flowline rules to a group of small operators in Lamar.
 - On October 11, Northeast Colorado Environmental Protection Specialist Bob Chesson provided a presentation for HIS Markit on the COGCC 900 Series Rules, the statewide water sampling program, and spill reporting and cleanup.
- **Outreach by the Community Relations Unit**
- On September 6, LGL Marc Morton travelled to Rifle and attended the monthly Garfield County Energy Advisory Board (EAB) meeting.
 - On September 27, Marc traveled to Firestone and provided a half day LGD orientation training to staff from the Town of Firestone.
 - On October 10, Marc staffed a booth at the annual Leadville Lions Club Career Fair held at the Leadville/Lake County High School. Marc provided interested students and others with information regarding careers in the earth sciences and environmental protection in both the private and governmental sectors.
 - On October 18, Marc and CRU Manager Leonard coordinated the Southwest Colorado Gas and Oil Regulatory Team (GORT) meeting in Durango.
 - On October 24, Marc traveled to Aurora and provided a half day LGD orientation training to staff from the East Cherry Creek Valley Water and Sanitation District, a participating special district in the LGD program.

Regional Activities

➤ **Northwest Colorado**

◆ **Northwest Colorado Oil and Gas Forum**

The remaining Northwest Colorado Oil and Gas Forum (NWF) meeting for 2018 has been scheduled for December 8. This meeting will be held in Rifle at the Colorado Mountain College - Rifle Campus / Clough Auditorium at 3595 Airport Road beginning at 9:00 a.m. and concluding by 12:00 p.m.

Meeting agendas will be posted to the COGCC website approximately one to two weeks prior to each meeting. The COGCC welcomes suggestions for speakers and topics. Meeting information is also emailed to those on the email distribution list.

Parties wishing to be placed on the meeting agenda or added to the email distribution list for announcements should contact Marc Morton at (303) 894-2100, ext. 5132 (direct), (720) 415-4959 (mobile), or email

marc.morton@state.co.us

As a reminder, NWF meetings are open to the public, and a public comment period is held as part of each meeting. Past NWF presentations

(dating back to 2006) are available on the COGCC website at:

<http://cogcc.state.co.us/library.html#/forums>

◆ **Project Rulison**

The five year revision of the Project Rulison Sampling and Analysis Plan (RSAP) has been completed. Major revisions to the plan included redefining the exterior buffer zones to align with hydrogeologic flow patterns instead of more arbitrary circular rings in the original plan. This document is in the COGCC's Area Reports Library and can be found at the following link:

<http://cogcc.state.co.us/documents/library/AreaReports/PiceanceBasin/Rulison/Rulison%20Sampling%20and%20Analysis%20Plan%20Revision%204%20062217.pdf>

The email for Project Rulison submittals is

DNR_rulison.submittal@state.co.us

◆ **Project Rio Blanco**

The email for Project Rio Blanco submittals is

DNR_rioblanco.submittal@state.co.us



➤ Southwest Colorado

◆ Fruitland Formation Outcrop Mitigation and Monitoring Projects

South Fork Texas Creek Mitigation Site - La Plata County. Regularly scheduled operations and maintenance are being performed at the

South Fork Texas Creek (SFTC) site by LTE, the COGCC's contractor. Since May 2009, the system has collected 27,878 Mcf of methane and generated 278,084 kWh of surplus electricity.

The 2017 4M Monitoring Report has recently been finalized and has been posted to the COGCC website in the Library under San Juan Basin, 4M Project, 2017 4M Monitoring Report (2018 June).

Variance

◆ URSA Operating Company, LLC (URSA)

On October 17, at the request of the operator, the COGCC Director granted URSA a 502.b variance request to Rule 318.d.(3) for the BR C-240 FED 31B-25-2-98 (Doc. #401702323). The

bottom hole location of the well is less than the required setback but is offset by the planned completed interval of the BR C-240-04 (API 103-11416) in the adjoining section. URSA has signed waivers from the mineral owners.

Admin / Organization / Other

◆ New Office Administrator

Please join us in welcoming Hannah Hickam as our new Office Administrator. She will be assisting the management staff with special projects and logistics as well as employee and commissioner onboarding and off boarding. Hannah comes to us with several years of administrative support experience in the non-profit sector, and we are confident she will make a significant contribution to the success of the COGCC Team.

◆ New Permit Completions Technician

Eden Espino-Rodriguez is the new Permit-Completions Technician in the Denver office. Eden has seven years of experience in the oil and gas industry, having worked as a geoscientist and as a mudlogger. He holds a Bachelor's Degree in Geology from the University of Nevada, Las Vegas. He started in the Permit-Completions Group in March in a temporary tech position and moved to a full time position in September. Eden has been, and will continue to be, a great asset to the Permitting Group.

COGCC organizational charts can be found on Pages 7-10. For contact information, please go to the COGCC homepage and select "Contact Us" in the upper right corner of the page.

◆ Orphaned Well Program (OWP) Project Updates

The COGCC performed field work for the Orphaned Wells Program projects described below since September 30. These projects relate either to "Orphaned" locations or wells for which there is no known responsible party, or they relate to Bond Claim projects for which sureties have been claimed.

Project summary tables for Fiscal Year 2018-19 (FY19) are found on Pages 11-14. The projects are sorted first by county and then by the project name. The field work described below pertains to ongoing projects or to recently completed projects. The agency has prioritized work planned for FY19, although each project is subject to change as new conditions arise during the year.

The **Texas Tea Project** began with Commission Order 1V-573. The project involves eight single well locations in Adams and Weld Counties. Recent FY19 work included removal, hauling, and offsite disposal of residual impacted soils discovered during equipment removal from one site in Adams County.

The **Ranchers Project** began with Commission Order 1V-526. The project involves two single well locations in Larimer County. Both wells were plugged and abandoned prior to FY17. Recent



FY19 work included stormwater control maintenance and weed control.

The **Pine Ridge Project** began with Commission Order 1V-622. The project involves six locations in Fremont, Lincoln, and Routt Counties. Recent FY19 reclamation work included weed control at three locations in Lincoln County.

The **Texaco - Moffat Field Project** is located in Moffat County. An oil release from an historic flowline was discovered in August 2018. Recent FY19 environmental work included removal and offsite disposal of impacted soils.

The **General Resources Project** is located in Weld County. Recent FY19 work included weed control.

◆ Colorado Oil and Gas Information System (COGIS) Projects, Updates and Changes

Electronic Form (eForm) Submissions

The COGCC uses 44 types of forms to authorize oil and gas operations, inspect and monitor ongoing operations, and receive reports of operations. Of those 44 forms, 28 are currently submitted electronically.

The electronic form development team continues to convert and revise existing forms and is currently working on Forms 14, 14A, and 29. As of October 1, industry electronically submitted 98 percent of the forms available in eForms in 2018. There are 932 operator users of eForms and 3,877 individual users.

For any operator not currently enrolled in eForms, instructions for starting the process can be found on the COGCC website at:

<http://cogcc.state.co.us/Announcements/COUAINformation.pdf>

Applications and Location Assessments

The public can make comments on all submitted Drilling Permit Applications (Form 2s) and Location Assessments (Form 2As) through the eForm system. Simply go to the COGCC website and click on the menu option “Permits” or

<http://cogcc.state.co.us/permits.html#/permits>

On the “Permits Search” page, three search options are available. The first option, “All Pending Permit Applications,” is used for public comments. When the results are displayed for “Pending Applications,” a user can click on the document number hyperlink in the “Status” column, which logs him or her to the eForms application.

Once the page is displayed with the selected document, the user can select the “Comment” button to make a comment on that particular form.

Data Access

The COGCC’s database is a comprehensive repository of Colorado’s oil and gas data. The information in the database is available to the public through interactive search tools and a variety of file downloads on the website.

Users of bulk data come from many different sectors of the community, including academia, oil and gas operators, environmental groups, government agencies, and the media.

All the data file downloads are available at:

<http://cogcc.state.co.us/data2.html#/downloads>

Current Data File Downloads

- Complaints
- Field Operations
- Flowline NTO Imported Data
- GIS Shapefiles (12 files)
- Mechanical Integrity Tests
- Notices of Alleged Violation
- Production Data (1999 - present)
- Sample Data
- Spacing Orders
- Spills and Releases
- Analytical Sample Data (COENV Database)

Future Data File Downloads

- Enforcement Orders (OFVs and AOCs)
- Underground Injection Control (UIC) Data

COENV Database Update

The COENV database (active since 2012) is a publicly available, searchable database of



groundwater, surface water, gas, and soil sample analytical results from throughout the state. COENV currently contains over 46,000 individual samples from 16,329 sample locations. In FY18, the COGCC received data from 2,699 water samples from 770 separate sample locations, and added them to the database.

The table on Page 26 reports the frequency of each reason for submission of a sample to the COENV database during the most recent 12 month period.

◆ **December 2018 Hearing Docket**

The docket for the December 2018 hearing will be available shortly after the October hearing. Hearing dockets are available on our website by clicking on “Regulation” in the menu and then “Hearings”:

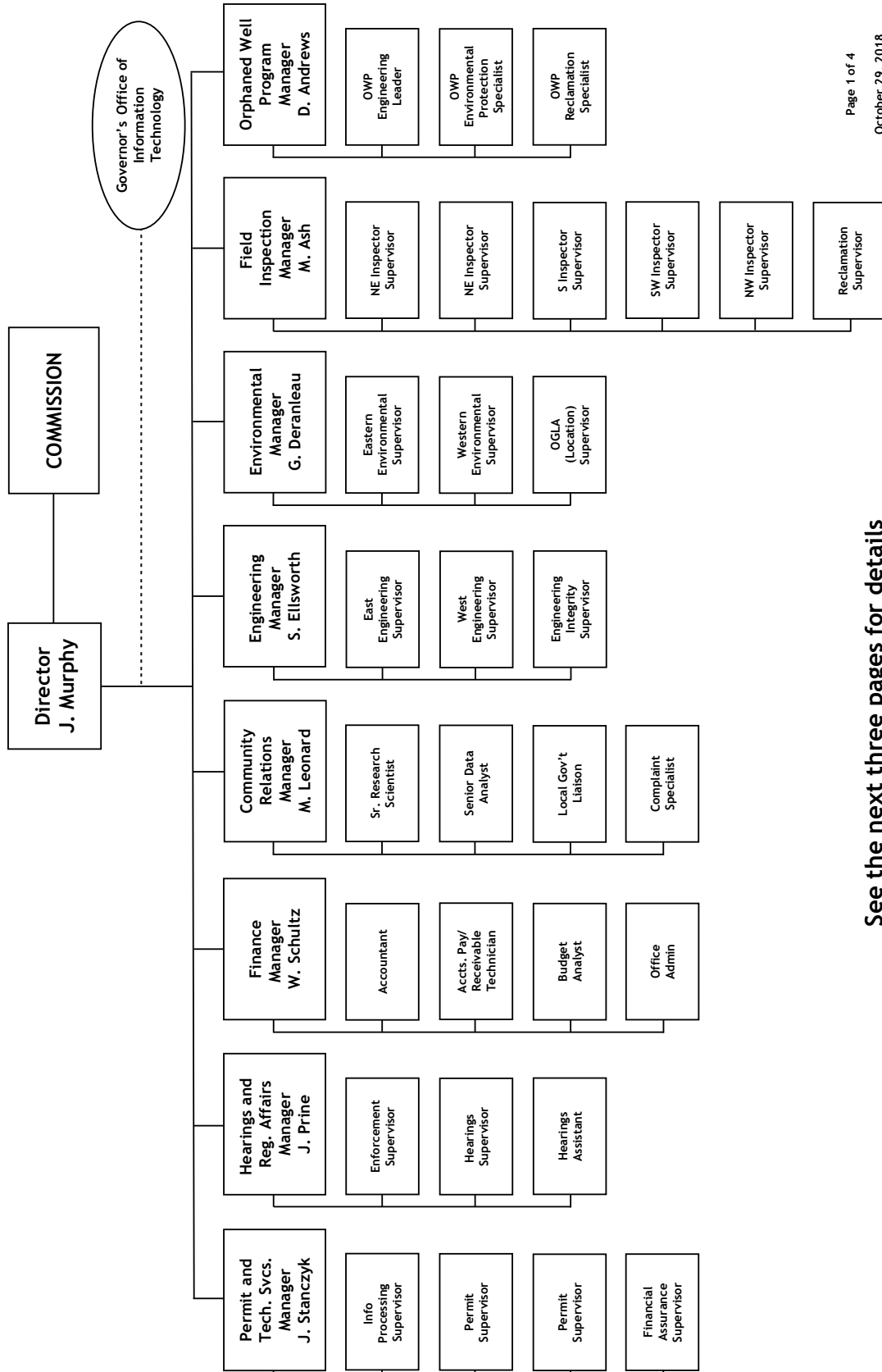
<http://cogcc.state.co.us/reg.html#/hearings>

Links to the notices and hearing applications are available from the Docket Number and Applicant, respectively, by clicking the December Gen_Docket link. To sign up for email notification of hearing notices and applications, please see the announcement and instructions on the homepage of the COGCC website.



Organizational Charts and Statistics

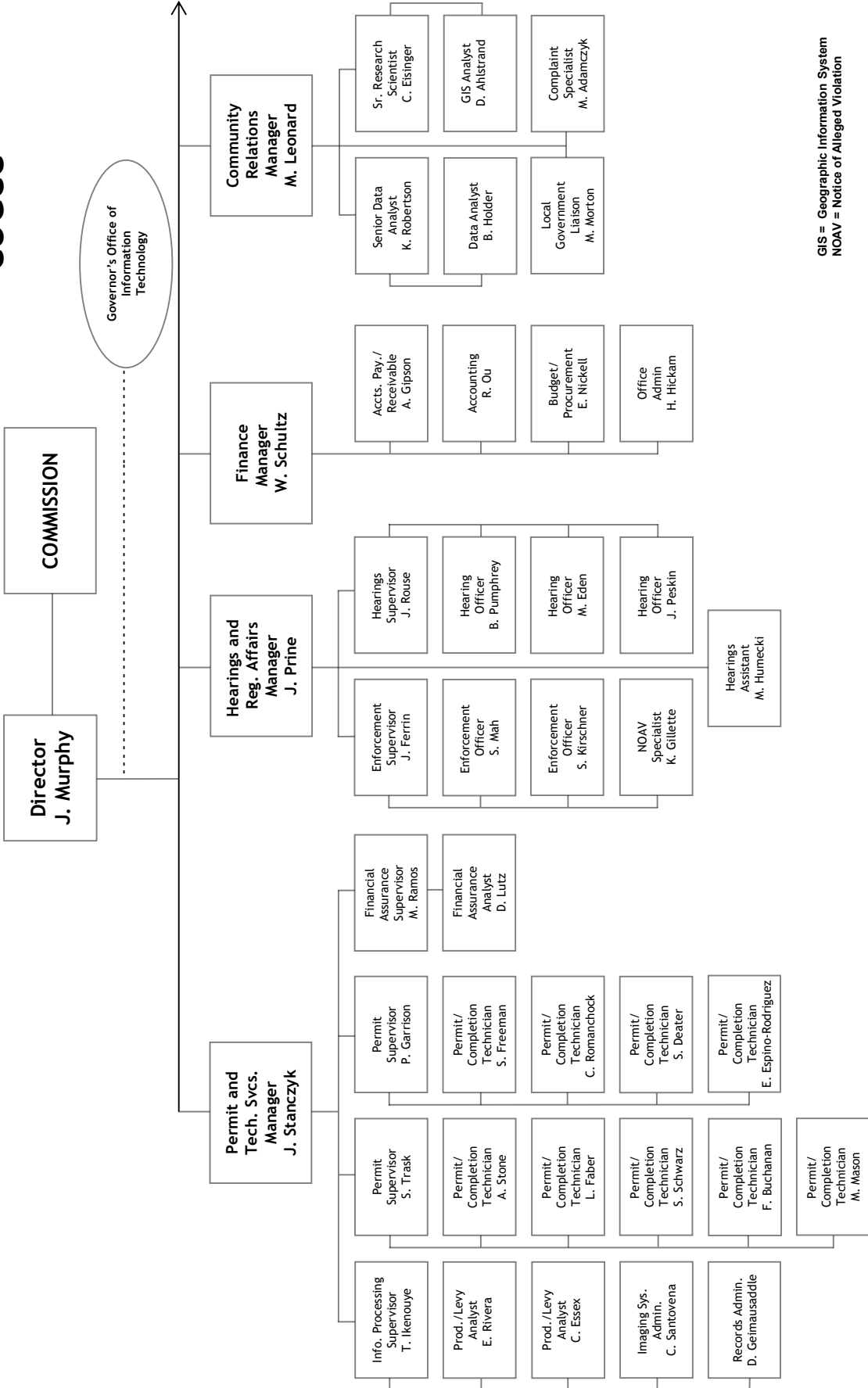
COLORADO OIL & GAS CONSERVATION COMMISSION



See the next three pages for details



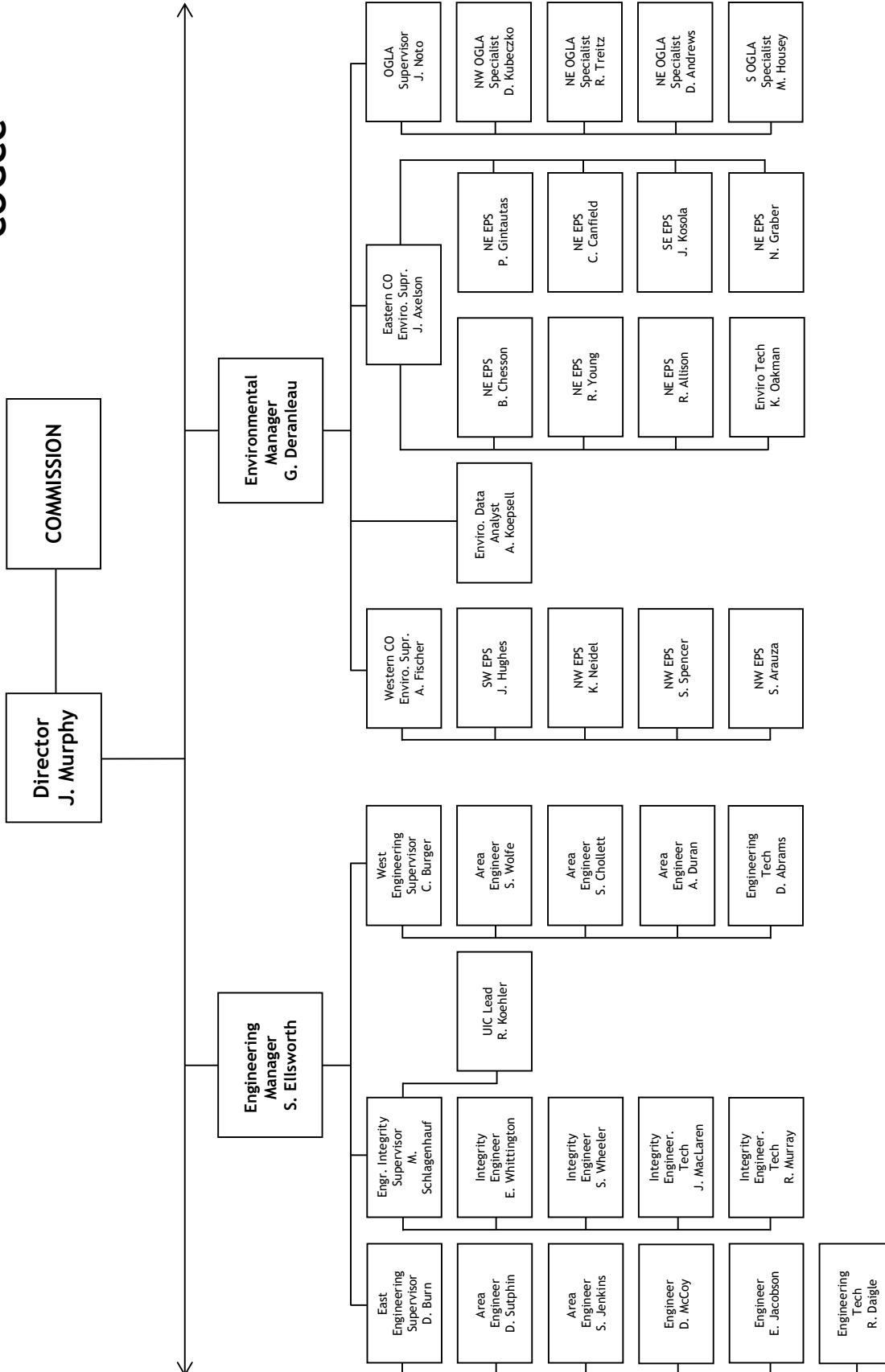
COGCC



GIS = Geographic Information System
 NOAV = Notice of Alleged Violation

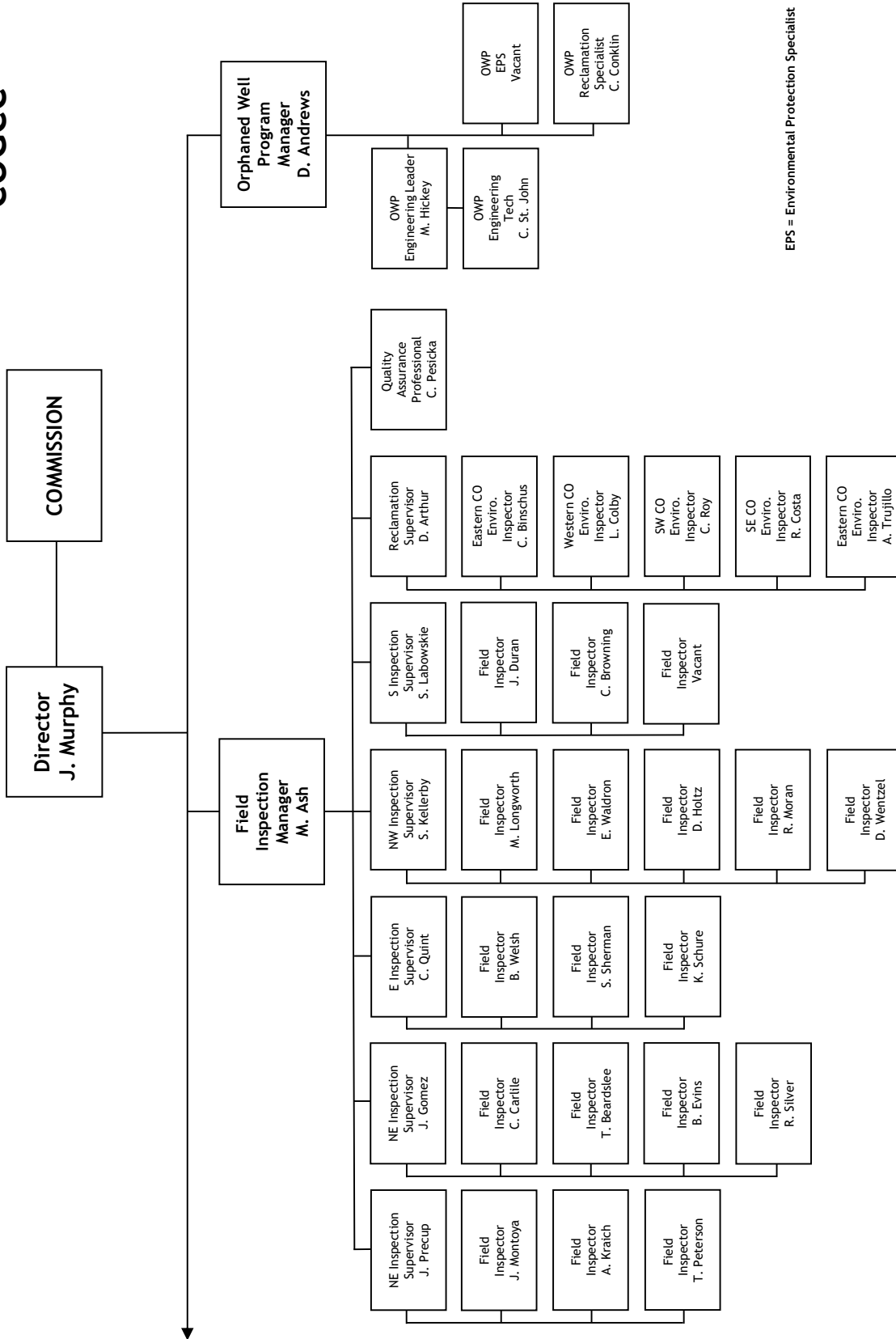


COGCC





COGCC



EPS = Environmental Protection Specialist



**Orphaned Well Program
Active Task List for Fiscal Year 2018-19**

County	Project and Task	Field Operations Task(s)	Engineering Task(s)	Environmental Task(s)	Reclamation Task(s)
Adams	Energy Search Bond Claim		■		
Adams	Ruth Bond Claim				■
Adams	Texas Tea Bond Claim	■	■	■	■
Adams	Tudex Petroleum Bond Claim	■	■		
Archuleta	Underwood Ditch Wells		■		
Baca	Baughman Farms #1-5				■
Baca	Falcon Seaboard - Chapman #1				■
Baca	Wallace Bond Claim				■
Cheyenne	Samotlor Bond Claim				■
Elbert	Coggins #10-5				■
Fremont	Florence-Canon City Field		■		■
Fremont	Hassler #1		■		■
Fremont	Pine Ridge Bond Claim				■
Jackson	CM Production Bond Claim			■	
Jefferson	Red Mountain Bond Claim				■
La Plata	Atom Petroleum Bond Claim		■		
La Plata	Hodges Pool Unit #1		■		
La Plata	K-F #1				■
La Plata	McCullough #4		■		■
La Plata	Red Mesa Holdings Bond Claim	■	■	■	■
La Plata	Reynolds* Noel Bond Claim		■	■	
La Plata	Stewart #1		■		
La Plata	Taylor* William Bond Claim		■		
La Plata	Wheeler #2				■
Larimer	Hall #1		■		
Larimer	Ranchers Bond Claim				■
Larimer	Sheffer Jack #1		■		■
Lincoln	Kelly Oil - State #1		■		■
Lincoln	Notte Bond Claim				■
Lincoln	Pine Ridge Bond Claim				■
Logan	Arco - Sindt #4 Lease			■	■
Logan	Benchmark Energy Bond Claim	■	■	■	■
Logan	CM Production Bond Claim				■
Logan	Donnelly Bond Claim	■	■	■	
Logan	J&L Oil Corp - North Shore Field				■
Logan	Red Mountain Bond Claim	■	■	■	■
Logan	Simms #1				■
Mesa	Buckeye #2				■
Mesa	Canfield #1		■		
Mesa	Curtis - Mann #1		■		
Mesa	DB Orphan #8			■	
Mesa	DB Orphan Ballpark #7				■
Mesa	DB Orphan Blair #1				■
Mesa	DeBeque #1		■		
Mesa	Flushwell #1		■		
Mesa	Geowell #1		■		
Mesa	Govt-Baker #1-A		■		
Mesa	Lloyd and Lowell #1			■	
Moffat	Texaco - Moffat Field		■	■	
Moffat	Vitruvian Exploration Bond Claim				■
Montezuma	Atom Petroleum Bond Claim	■			
Montezuma	Federal #13-6				■



Orphaned Well Program
Active Task List for Fiscal Year 2018-19

Page 2 of 2

County	Project and Task	Field Operations Task(s)	Engineering Task(s)	Environmental Task(s)	Reclamation Task(s)
Montezuma	Pilcher #1			■	
Montezuma	Woosley Oil - State #1-36				■
Montezuma	Woosley Oil Bond Claim		■		■
Montrose	Redwine Bond Claim				■
Morgan	Dyer* J G - Plainsman Field		■		■
Morgan	Lamborn #1		■		■
Morgan	Timpe #1				■
Rio Blanco	Gentry #2				■
Rio Blanco	Gentry #6				■
Rio Blanco	Gentry Lease - Rangely Field				■
Rio Blanco	Petrohunter Bond Claim	■	■		■
Rio Blanco	Unknown Operators - Rangely Field				■
Routt	Pine Ridge Bond Claim				■
San Miguel	Suckla #1		■		
Statewide	Various Projects	■			
Washington	CM Production Bond Claim	■	■	■	■
Washington	Energy Search Bond Claim	■			
Washington	Northstar Gas Bond Claim		■		
Washington	Vondy #3		■		
Weld	General Resources Ltd				■
Weld	P&M Petroleum Management Bond Claim			■	■

Notes:

Field Operations Tasks may include but are not limited to: Site Security, Equipment Intervention (draining, cleaning, and fluid management), or Equipment Salvage, including Hauling

Engineering Tasks may include but are not limited to: Engineering Design (site access for heavy equipment), Mechanical Integrity Tests or Other Well Work, Well Plugging, or Flowline Abandonment

Environmental Tasks may include but are not limited to: Sampling and Analysis, Remediation of Spills/Releases, or Pit Closure

Reclamation Tasks may include but are not limited to: Grading, Contouring, Stormwater Controls (BMPs), Seeding, and Weed Control



Orphaned Well Program Active Bonds and Other Surety Claim Status for Fiscal Year 2018-19

Project	Order Number(s)	Total Bond Claim	Amount Spent in Prior Fiscal Years	Amount Spent in FY2017-18	Remaining Bond Balance
Atom Petroleum Bond Claim	1V-586	\$ 60,000	\$ 47,207	\$ -	\$ 12,793
Benchmark Energy Bond Claim	1V-564	\$ 620,000	\$ 155,561	\$ 70,190	\$ 394,249
CM Production Bond Claim	1V-581	\$ 67,849	\$ 67,849	\$ -	\$ -
Dolphin Bond Claim	1V-382	\$ 55,000	\$ 55,000	\$ -	\$ -
Donnelly Bond Claim	1V-659	\$ 20,000	\$ -	\$ -	\$ 20,000
Energy Search Bond Claim	1V-636	\$ 60,000	\$ 7,777	\$ -	\$ 52,223
Nolte Bond Claim	1V-582	\$ 61,838	\$ -	\$ -	\$ 61,838
Northstar Gas Bond Claim	1V-642, BLM (Fee and Fed)	\$ 30,000	\$ -	\$ -	\$ 30,000
P&M Petroleum Management Bond Claim	1V-520	\$ 61,239	\$ -	\$ -	\$ 61,239
Pease Bond Claim	1V-252, 1V-253	\$ 30,000	\$ -	\$ -	\$ 30,000
Petrohunter Bond Claim	1V-608	\$ 62,573	\$ 4,786	\$ -	\$ 57,787
Pine Ridge Bond Claim	1V-622	\$ 85,000	\$ 42,491	\$ 3,200	\$ 39,309
Ranchers Bond Claim	1V-526	\$ 63,424	\$ 63,424	\$ -	\$ -
Red Mesa Holdings Bond Claim	1V-508	\$ 72,831	\$ 72,831	\$ -	\$ -
Red Mountain Bond Claim*	1V-549, SLB	\$ 92,015	\$ 81,500	\$ -	\$ 10,515
Redwine Bond Claim	1V-470, 1V-494	\$ 30,000	\$ 30,000	\$ -	\$ -
Reynolds* Noel Bond Claim	1V-374, 1V-375	\$ 30,000	\$ 841	\$ -	\$ 29,159
Taylor* William Bond Claim	1V-647	\$ 10,000	\$ 117	\$ -	\$ 9,883
Texas Tea Bond Claim	1V-573	\$ 71,850	\$ 71,850	\$ -	\$ -
Tudex Petroleum Bond Claim	1V-646	\$ 62,470	\$ 58,375	\$ -	\$ 4,095
Vitruvian Exploration Bond Claim	1V-514	\$ 30,000	\$ 9,010	\$ -	\$ 20,990
TOTALS ->		\$ 1,676,090	\$ 768,619	\$ 73,390	\$ 834,081

Note: Red Mountain Bond Total Claim Amount includes \$24,169 bankruptcy deposit and \$5,000 State Land Board deposit (bond transfer)



Orphaned Well Program
Project Financials for Fiscal Year 2018-19

Project Name	BOND Actual	PROW Actual	EMGY Actual	Subtotals Actual
Benchmark Energy Bond Claim	\$ 70,190	\$ -	\$ -	\$ 70,190
General Resources Ltd	\$ -	\$ 2,655	\$ -	\$ 2,655
Pine Ridge Bond Claim	\$ 3,200	\$ -	\$ -	\$ 3,200
Ranchers Bond Claim	\$ -	\$ 4,717	\$ -	\$ 4,717
Texaco - Moffat Field	\$ -	\$ 2,250	\$ -	\$ 2,250
Texas Tea Bond Claim	\$ -	\$ 24,486	\$ -	\$ 24,486
TOTAL EXPENDITURES ->	\$ 73,390	\$ 34,108	\$ -	\$ 107,498

ABBREVIATIONS:

EMGY = Emergency Response Appropriation

PROW = Plugging and Reclaiming Orphaned Wells Appropriation

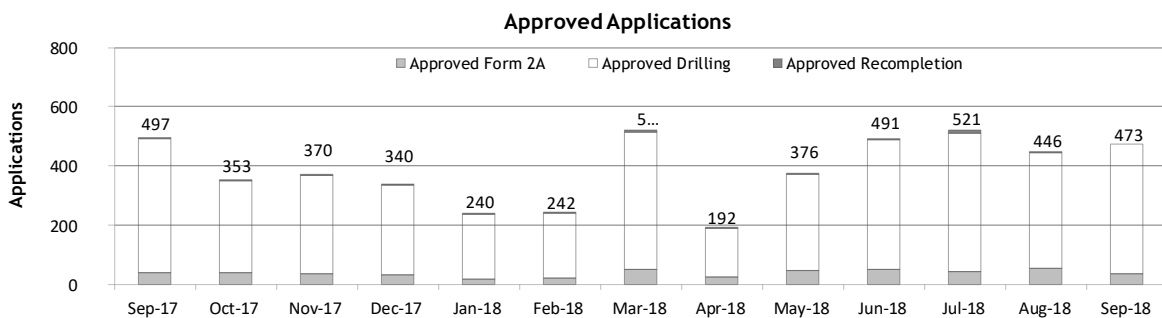
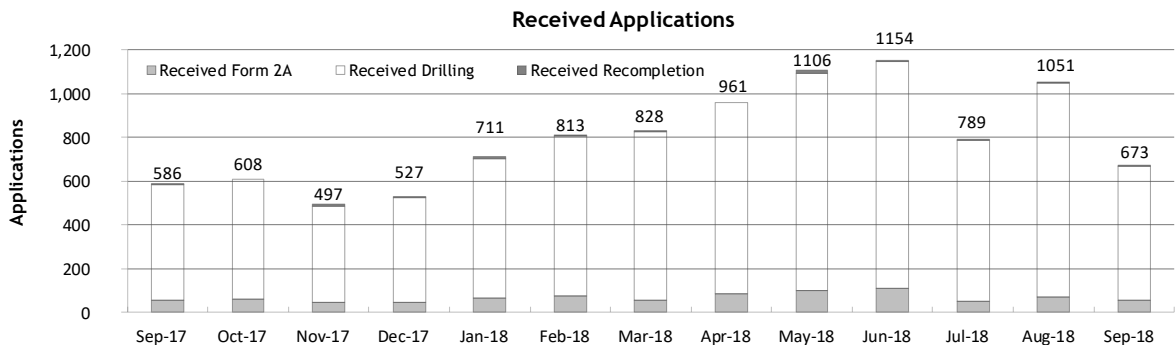


Monthly Permit Activity as of October 1, 2018

Form/Month	Backlog	Received	Approved	Withdrawn	Rejected	Incomplete ¹	In-Process	Remaining ²
Form2A								
Sep-17	171	56	41	0	1	25	160	185
Oct-17	185	58	40	6	2	25	170	195
Nov-17	195	47	38	2	0	24	178	202
Dec-17	202	44	32	3	0	31	180	211
Jan-18	211	66	19	4	0	33	221	254
Feb-18	254	73	22	5	1	45	254	299
Mar-18	299	56	50	5	0	52	248	300
Apr-18	300	87	25	8	1	60	293	353
May-18	353	98	46	10	0	74	321	395
Jun-18	395	109	51	5	5	65	376	443
Jul-18	441	50	44	7	2	65	372	438
Aug-18	437	71	53	5	0	72	378	450
Sep-18	450	56	38	5	4	61	398	459
Drilling								
Sep-17	1,992	528	450	12	36	135	1,887	2,022
Oct-17	2,022	550	311	75	64	139	1,983	2,122
Nov-17	2,122	438	331	19	59	125	2,026	2,151
Dec-17	2,151	479	304	15	25	124	2,162	2,286
Jan-18	2,286	639	218	68	0	93	2,546	2,639
Feb-18	2,639	736	217	34	45	99	2,980	3,079
Mar-18	3,079	769	463	1	8	98	3,278	3,376
Apr-18	3,376	874	164	185	64	104	3,733	3,837
May-18	3,837	994	327	54	89	91	4,332	4,361
Jun-18	4,423	1,040	436	81	56	59	4,839	4,890
Jul-18	4,898	738	466	58	73	61	4,979	5,039
Aug-18	5,040	978	392	30	45	62	5,489	5,551
Sep-18	5,551	613	435	77	24	92	5,536	5,628
Recompletion								
Sep-17	14	2	6	0	0	2	8	10
Oct-17	10	0	2	0	0	3	5	8
Nov-17	8	12	1	0	0	3	16	19
Dec-17	19	4	4	0	0	8	11	19
Jan-18	19	6	3	0	0	9	13	22
Feb-18	22	4	3	0	0	9	14	23
Mar-18	23	3	8	0	0	10	8	18
Apr-18	18	0	3	0	0	9	6	15
May-18	15	14	3	0	0	9	17	26
Jun-18	26	5	4	0	0	9	18	27
Jul-18	27	1	11	0	0	8	9	17
Aug-18	17	2	1	0	0	8	10	18
Sep-18	18	4	0	0	0	8	14	22

¹ Incomplete are applications that have missing or inaccurate data and cannot be approved.

² Backlog = Incomplete + In-process = Remaining permits from previous month.





Status of Permit Applications Filed By Month as of October 1, 2018

Form 2A Location Assessment										
Year	Month	Received	Approved	Withdrawn	In Process	Percent In Process	Average			
							Days to Process	Less Than 30 Days	30 to 49 Days	Greater Than 50 Days
2013	TOTAL	1,281	1,202	78	1	0%		369	433	400
2014	TOTAL	1,114	1,067	47	0	0%		279	429	359
2015	TOTAL	592	564	26	2	0%		78	157	329
2016	TOTAL	407	376	26	3	1%		32	61	283
2017	JAN	42	33	9	0	0%	104	0	5	28
	FEB	59	57	2	0	0%	93	7	9	41
	MAR	70	59	5	6	9%	76	6	18	35
	APR	41	35	2	4	10%	95	5	9	21
	MAY	41	35	5	1	2%	105	2	6	27
	JUNE	57	47	1	9	16%	77	7	16	24
	JULY	43	35	4	4	9%	84	6	14	15
	AUG	51	39	5	5	10%	74	6	9	24
	SEP	55	44	2	9	16%	119	4	10	30
	OCT	57	38	8	11	19%	89	9	7	22
	NOV	47	31	2	14	30%	88	5	8	18
	DEC	44	30	1	13	30%	121	1	2	27
2017	TOTAL	607	483	46	76	13%		58	113	312
2018	JAN	65	30	5	30	46%	86	2	6	22
	FEB	73	41	5	27	37%	76	5	10	26
	MAR	56	38	3	14	25%	71	3	14	21
	APR	87	47	3	34	40%	85	3	10	34
	MAY	98	39	0	57	59%	75	0	11	28
	JUNE	109	32	8	67	63%	64	4	7	21
	JULY	50	14	2	34	68%	47	1	8	5
	AUG	71	8	2	59	86%	35	1	7	0
	SEP	56	1	0	55	98%	2	1	0	0
2018	TOTAL	665	250	28	377	57%		20	73	157

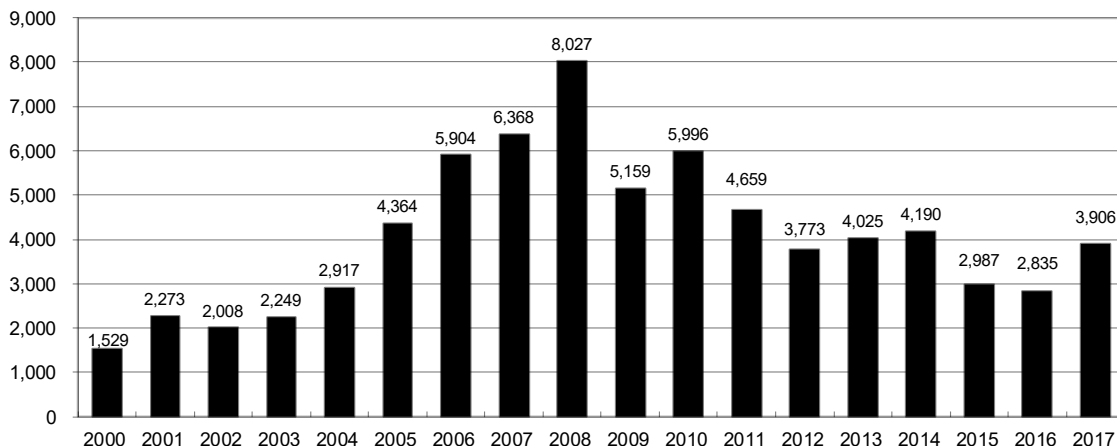
Form 2 Application For Permit to Drill (APDs)										
Year	Month	Received	Approved	Withdrawn	In Process	Percent In Process	Average			
							Days to Process	Less Than 30 Days	30 to 49 Days	Greater Than 50 Days
2013	TOTAL	4,548	4,312	235	1	0%		1,046	1,626	1,714
2014	TOTAL	4,208	4,026	182	0	0%		689	1,629	1,744
2015	TOTAL	3,237	3,091	146	0	0%		249	759	2,113
2016	TOTAL	3,253	3,026	145	24	1%		204	402	2,442
2017	JAN	418	330	84	4	1%	117	5	41	290
	FEB	590	495	49	46	8%	110	36	39	421
	MAR	508	393	45	70	14%	97	15	70	310
	APR	335	285	18	32	10%	111	10	17	263
	MAY	306	254	48	4	1%	119	18	65	172
	JUNE	472	354	29	89	19%	113	12	75	270
	JULY	458	321	70	67	15%	112	22	27	273
	AUG	522	307	55	126	26%	84	8	94	213
	SEP	512	393	29	53	11%	129	18	88	289
	OCT	519	357	26	115	23%	127	7	50	300
	NOV	429	268	28	110	27%	94	40	23	212
	DEC	479	287	26	138	31%	122	3	10	278
2017	TOTAL	5,548	4,044	507	854	15%		194	599	3,291
2018	JAN	639	272	15	315	52%	87	10	47	221
	FEB	735	341	70	290	41%	98	18	84	243
	MAR	769	317	21	365	52%	106	15	68	237
	APR	874	387	22	426	51%	83	25	75	287
	MAY	995	347	19	604	62%	84	2	37	319
	JUNE	1040	258	61	689	68%	70	11	83	165
	JULY	738	128	1	601	82%	56	8	45	75
	AUG	978	125	0	853	87%	44	13	65	47
	SEP	613	7	0	606	99%	5	7	0	0
2018	TOTAL	7,381	2,182	209	4,749	64%		109	504	1,594



Annual Drilling Permits by County as of October 1, 2018

County	2005	2006	2007	2008	2009	2010	2011	2012	2013	2014	2015	2016	2017	2018
ADAMS	34	37	89	51	35	21	8	40	40	51	96	74	125	124
ARAPAHOE	7	11	10	10	10	8	23	35	23	34	19	5	78	69
ARCHULETA	13	14	26	47	11	18	12	5	4	3	11	3	21	40
BACA	8	2	11	13	3	4	5	3	1	1			5	1
BENT	3	8	1	1		5		2	1					
BOULDER	13	21	37	32	35	24	30	22						
BROOMFIELD	1	1		2	33	28	11	36		31				55
CHEYENNE	10	21	15	33	12	13	16	31	50	26	9		1	
COSTILLA														
CROWLEY										2				3
DELTA	10	9	2			4	3	6	1	2				
DENVER		19	25	24										
DOLORES	1	6	10	12	21	8	8	13	12	3		3	2	1
EAGLE									1					
ELBERT		4			1		1	2	2	4	3	3	1	
EL PASO					2	3	3	18	1	2				
FREMONT	3	2	4	14	13	22	14	11	2	8	2	2	1	
GARFIELD	1,509	1,845	2,550	2,888	1,981	2,037	1,323	1,046	870	1,066	532	724	612	525
GRAND														
GUNNISON	9	19	7	10	12	4	3	11	9	20	28	19	33	23
HUERFANO	2			7		2	1	9	1	13	2		2	
JACKSON	6	8	5	27	19	9	18	5	12	17	3	57	28	13
JEFFERSON		1	3	2					1					
KIOWA	1	11	9	26	7	16	17	17	12	5	3		3	
KIT CARSON	5	4	4	13	7	3	2	6	1	2		1		
LA PLATA	115	235	251	328	298	191	99	71	32	87	106	96	108	86
LARIMER	1		5	46	12	41	8	13	2	4	28	4	30	2
LAS ANIMAS	413	500	362	303	88	92	85	11	2	1				
LINCOLN	4	1	2	58	44	48	31	36	87	129	24	5	31	16
LOGAN	13	17	14	5	9	17	8	27	4	5		1	3	1
MESA	136	265	293	501	427	306	127	150	105	74	126	7	215	63
MOFFAT	60	120	68	57	51	53	93	88	44	54	12	17	5	4
MONTEZUMA	11	5	12	22	39	19	27	29	14	25	3	3	6	2
MONTROSE		1	3	3		1	1							
MORGAN	7	3	6	2	1	6	13	5	16	6	4	28		4
OTERO														
PARK					3	4	1							
PHILLIPS	17	12	69	82	45	64	112	56		11	2			
PITKIN			1								1			
PROWERS	5	7	5	8	1	3	1			1		1		
RIO BLANCO	161	360	321	477	348	441	109	117	167	121	107	71	115	66
RIO GRANDE				1	1			2		1				
ROUTT	6	9	8	4	2	3	10	4	12	4	9			
SAGUACHE			2	1	2									
SAN JUAN														2
SAN MIGUEL	45	35	23	20	13	10	2	1		2	3			
SEDGWICK	2	7	2	1	19	11	12	2		7	1			
WASHINGTON	50	69	45	11	1	6	12	6	19	12	9	7	10	9
WELD	901	1,418	1,527	2,340	1,448	2,152	2,262	1,826	2,468	2,303	1,841	1,704	2,466	2,012
YUMA	782	797	541	545	105	299	148	11	9	53	3		2	
TOTAL	4,364	5,904	6,368	8,027	5,159	5,996	4,659	3,773	4,025	4,190	2,987	2,835	3,906	3,118

ALL COUNTIES





Form 2A Breakdown By County By Year as of October 1, 2018

Year	County	Form 2As	Completed	In Process	New Location	CDP	SWH	RSO	CDPHE
2009	Total State	818	818	0	408	2	80	5	5
2010	Total State	2,377	2,377	0	1,543	0	317	22	55
2011	Total State	2,297	2,297	0	1,724	1	259	16	5
2012	Total State	1,297	1,297	0	900	0	167	6	1
2013	Total State	1,195	1,194	1	845	0	144	2	4
2014	Total State	1,067	1,065	0	776	3	129	7	3
2015	Total State	574	569	3	398	0	95	2	2
2016	Total State	393	379	2	219	0	49	4	7
2017	ADAMS	33	16	13	26	0	0	0	0
	ARAPAHOE	35	18	14	28	0	0	0	0
	ARCHULETA	3	3	0	2	0	3	0	0
	BACA	3	3	0	3	0	0	0	0
	CROWLEY	3	3	0	3	0	0	0	0
	DOLORES	2	2	0	2	0	1	0	0
	ELBERT	1	1	0	1	0	0	0	0
	FREMONT	1	1	0	1	0	1	0	0
	GARFIELD	32	31	1	12	0	23	3	0
	GUNNISON	4	4	0	1	0	2	0	0
	JACKSON	7	7	0	4	0	7	0	0
	LA PLATA	13	13	0	5	0	12	0	0
	LARIMER	3	3	0	3	0	0	0	0
	LINCOLN	25	25	0	19	0	0	0	0
	MESA	15	15	0	10	0	4	1	0
	MOFFAT	1	1	0	1	0	1	0	0
	MONTEZUMA	3	3	0	3	0	0	0	0
	MORGAN	4	4	0	4	0	0	0	0
	RIO BLANCO	9	9	0	1	0	8	0	0
	WASHINGTON	8	8	0	7	0	1	0	0
	WELD	382	305	61	262	0	9	0	2
	YUMA	1	1	0	1	0	0	0	0
2017	Total State	588	476	89	399	0	72	4	2
2018	ADAMS	26	5	21	18	0	0	0	0
	ARAPAHOE	13	3	10	9	0	0	0	0
	ARCHULETA	5	5	0	4	0	4	0	0
	BACA	1	0	1	1	0	1	0	0
	BROOMFIELD	6	4	2	6	0	0	0	0
	CHEYENNE	1	0	1	0	0	0	0	0
	DOLORES	1	1	0	1	0	1	0	0
	GARFIELD	40	34	6	14	0	32	0	1
	GUNNISON	3	1	2	0	0	2	0	0
	JACKSON	6	1	5	2	0	6	0	0
	KIOWA	2	0	2	1	0	0	0	0
	LA PLATA	7	4	3	0	0	5	0	0
	LARIMER	3	1	2	0	0	0	0	0
	LINCOLN	23	18	5	22	0	0	0	0
	LOGAN	2	1	1	1	0	0	0	0
	MESA	4	4	0	2	0	0	0	0
	MOFFAT	2	1	1	2	0	0	0	0
	MONTEZUMA	4	4	0	2	0	0	0	0
	MORGAN	1	1	0	0	0	0	0	0
	RIO BLANCO	5	2	3	3	0	4	0	1
	WASHINGTON	13	10	3	13	0	0	0	0
	WELD	438	145	293	325	0	1	0	0
	YUMA	3	0	3	2	0	0	0	0
2018	Total State	609	245	364	428	0	56	0	2

Abbreviations:

CDP = Comprehensive Drilling Plan SWH = Sensitive Wildlife Habitat consultation

RSO = Restricted Surface Occupancy consultation CDPHE= Colorado Department of Health and Environment consultation



Horizontal Well Activity as of October 1, 2018

County	2009			2010			2011			2012			2013			2014			2015			2016			2017			2018			Total		
	DA	PA	Completion	Permit	Spud	Completion	Permit	Spud	Completion	Permit	Spud	Completion	Permit	Spud	Completion	Permit	Spud	Completion	Permit	Spud	Completion	Permit	Spud	Completion	Permit	Spud	Completion	Permit	Spud	Completion			
ADAMS				6	5	2	3	1	17	2	26	1	42	18	92	3	72	2	125	28	124	53	115	3	19	1							
ARAPAHOE	2			10	1	22	4	11	13	22	11	9	5	1	77	15	67	16	61	2	34	1											
ARCHULETA	17			7	6	15	7	10	8	5	9	2	1	1	17	2	27	5	63	5	56	1											
BENT								4																									
BOULDER																																	
BROOMFIELD																																	
CHEYENNE	5	4																															
DELTA																																	
DOLORES	9			18	2	6	2																										
EL PASO																																	
ELBERT																																	
FREMONT	7	6		6	6	12	5	3	4	4	1	1	1	1	1	1	1	1	1	1	1	1	1	1	1	1	1	1					
GARFIELD	10	2		1	1	16	2	18	6	43	6	18	4	20	11	7	4	4	11	1	1	1	43	10	7	1	41	2					
GUNNISON	1					1																											
HUERFANO																																	
JACKSON	8	1		8	3	4	4	9	1	4	4	8	5	15	4	3	52	24	24	9	12	9	62	22	3								
KIOWA																																	
KIT CARSON	1																																
LA PLATA	28	2		11	2	28	3	18	7	12	1	5	1	43	7	42	3	67	8	83	6	60	3	93	92	1	3						
LARIMER	3	2																															
LAS ANIMAS	16			4		1	1	5	1	2	1	2	2	8	4	3	4	3	29	25	2	2	42	27	2	1							
LINCOLN																																	
LOGAN	2																																
MESA	3	2		36		22	7	24	13	14	9	2	9	1	6	3	3	3	3	6	3	30	27	2	4								
MOFFAT	7	1		6	3	4	4	9	4	44	6	18	13	15	1	5	2	3	1	3	3	36	20	12									
MONTEZUMA	6			23	6	11	2	8	2	18	6	3	4	15	2	4	1	28				36	29	8									
MORGAN																																	
PARK																																	
RIO BLANCO	7	2																															
ROUITT	10	6																															
SAN MIGUEL	1																																
WASHINGTON	1																																
WELD	11	3		12	5	208	84	763	229	964	594	2,114	1,099	2,215	1,423	1,789	1,063	1,671	723	2,435	1,248	2,001	933	7,415	5,335	13	93						
YUMA	1																																
TOTAL Horizontal	156	25	14	147	31	333	123	901	280	1,203	641	2,260	1,160	2,428	1,484	2,016	1,096	1,918	764	2,837	1,334	2,377	1,024	8,095	5	5,775	34	151					
Percent of Total HZ	16%																																
Total All Permits				5,159		5,996		4,659		3,773		4,025		4,190		2,988		2,835		3,118		3,875		5,335		0%		71%	0%	2%			
HZ Percent of Total				2.8%		5.6%		19.3%		31.9%		56.1%		57.9%		67.5%		67.7%		76.2%		73.2%		76.2%									



Well to Building Setbacks by Year and by County as of October 1, 2018

Count of well locations, grouped by proximity from well to buildings.

Location Proximity to Buildings	2010	2011	2012	2013	2014	2015	2016	2017	2018	Number of Locations Since 2009	Percent of Total Locations
Less than 150 feet	3	3	2	0	3	2	0	0	0	15	0%
150 to 350 feet	58	61	39	34	38	12	15	16	6	316	3%
350 to 500 feet	110	97	61	65	48	33	23	24	18	529	6%
500 to 1000 feet	385	331	188	188	161	83	76	90	51	1,670	18%
1000 + feet	1,706	1,470	838	761	724	380	206	318	240	6,999	73%
TOTAL LOCATIONS	2,262	1,962	1,128	1,048	974	510	320	448	315	9,529	

County	TOTAL	Less than 150 feet	150 to 350 feet	350 to 500 feet	500 to 1000 feet	1000 + feet
ADAMS	110	0	4	9	26	71
ARAPAHOE	126	0	2	5	11	108
ARCHULETA	32	0	2	1	15	14
BACA	18	0	0	0	1	17
BENT	7	0	0	0	0	7
BOULDER	23	0	1	1	17	4
BROOMFIELD	37	0	0	4	17	16
CHEYENNE	140	1	0	0	2	137
CROWLEY	5	0	0	0	0	5
DELTA	7	0	0	2	1	4
DOLORES	23	0	0	0	7	16
EAGLE	1	0	0	0	0	1
EL PASO	14	0	0	0	3	11
ELBERT	15	0	0	0	3	12
FREMONT	41	0	2	7	9	23
GARFIELD	636	0	12	11	84	529
GUNNISON	51	1	0	4	1	45
HUERFANO	16	0	0	0	5	11
JACKSON	65	0	1	5	1	58
KIOWA	66	0	0	0	1	65
KIT CARSON	15	0	0	0	0	15
LA PLATA	156	0	8	16	49	83
LARIMER	43	0	5	5	16	17
LAS ANIMAS	201	1	6	7	37	150
LINCOLN	415	0	1	2	5	407
LOGAN	46	0	1	1	1	43
MESA	120	0	0	3	18	99
MOFFAT	191	0	1	3	16	171
MONTEZUMA	50	0	0	1	4	45
MONTROSE	2	0	0	0	0	2
MORGAN	35	0	0	2	5	28
PARK	4	0	0	0	0	4
PHILLIPS	275	1	4	6	21	243
PITKIN	1	0	0	0	0	1
PROWERS	6	0	0	0	0	6
RIO BLANCO	197	0	0	0	2	195
RIO GRANDE	2	0	0	0	1	1
ROUTT	30	0	0	0	2	28
SAN MIGUEL	14	0	0	0	0	14
SEDGWICK	33	0	0	1	3	29
WASHINGTON	96	0	2	0	4	90
WELD	5,635	11	254	417	1,237	3,715
YUMA	529	0	9	16	45	459



Well to Building Setbacks Less Than Two Hundred Feet as of October 1, 2018

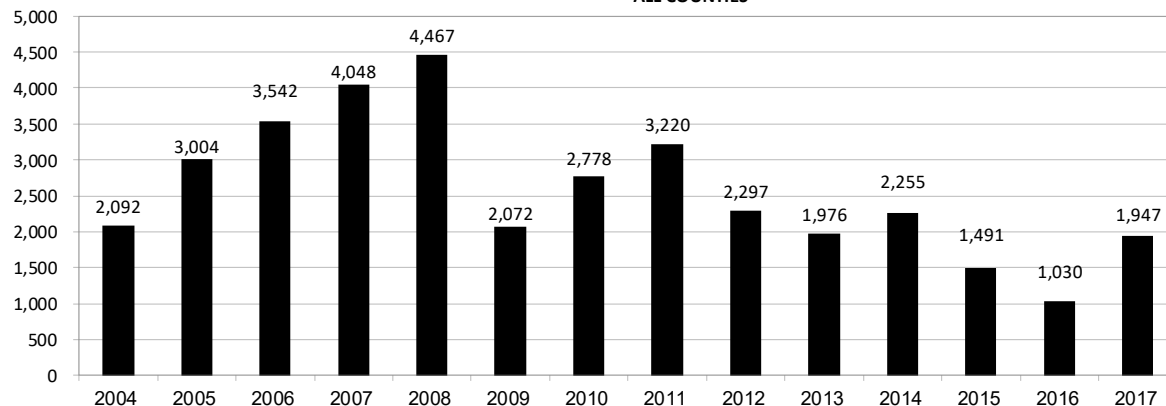
Year	Location Doc Number	County	High Density	New Location	Distance (Feet)	Proximity (Feet)	Building Description
2015	400768804	WELD	No	Yes	46	less 150	Building to be razed
2011	2587822	CHEYENNE	No	No	58	less 150	Water well house
2009	1691798	WELD	No	No	58	less 150	Vehicle garage
2010	400072164	WELD	No	Yes	69	less 150	Abandoned hog shed
2014	400569085	WELD	No	No	78	less 150	Well shed
2014	400600705	WELD	No	No	80	less 150	Livestock shed
2012	400240957	GUNNISON	No	Yes	90	less 150	Equipment shed
2015	400742811	WELD	No	Yes	102	less 150	Building to be razed
2009	1758843	WELD	No	Yes	103	less 150	Building to be razed
2011	1636646	WELD	No	No	122	less 150	Storage shed
2009	400011284	LAS ANIMAS	No	Yes	127	less 150	Operator is owner
2009	1786896	PHILLIPS	No	No	132	less 150	Grain storage
2014	400642113	WELD	No	Yes	142	less 150	Barn
2011	400117702	WELD	No	Yes	143	less 150	Irrigation pump house
2011	400227765	WELD	No	Yes	145	less 150	Storage barn
2014	400558626	LINCOLN	No	No	150	less 150	Gas plant equipment building
2009	1904205	WELD	No	No	154	150 to 350	Livestock enclosure
2012	400243295	WELD	No	Yes	155	150 to 350	Unused storage shed
2015	400862577	GARFIELD	No	No	155	150 to 350	Gravel pit scale house
2011	400179419	WELD	No	Yes	157	150 to 350	Existing well / storage building
2010	400054716	WELD	No	No	159	150 to 350	Equipment barn
2011	400188968	WELD	No	Yes	159	150 to 350	Abandoned
2014	400554054	WELD	No	Yes	159	150 to 350	Equipment shed
2014	400559404	WELD	No	Yes	160	150 to 350	Barn
2016	400950178	LA PLATA	No	Yes	162	150 to 350	Residence
2010	400021477	WELD	No	Yes	162	150 to 350	Goat barn
2009	1758386	WELD	No	Yes	168	150 to 350	Storage shed
2011	1635946	WELD	No	No	169	150 to 350	Storage shed
2013	400447386	WELD	No	No	169	150 to 350	Abandoned turkey barn
2013	400447391	WELD	No	No	169	150 to 350	Abandoned turkey barn
2011	400165164	WELD	No	Yes	178	150 to 350	Residence
2013	400367184	WELD	No	Yes	179	150 to 350	Shed
2011	400188780	WELD	No	Yes	180	150 to 350	Residence
2014	400562498	WELD	No	Yes	181	150 to 350	Garage / storage shed
2010	1697620	WELD	No	No	187	150 to 350	Livestock shed
2009	1758746	WELD	No	No	193	150 to 350	Storage shed
2011	400154431	WELD	No	Yes	198	150 to 350	Turkey barn
2012	400250031	WELD	No	Yes	198	150 to 350	Abandoned guard shack
2010	1774783	WELD	No	No	199	150 to 350	Cement service building
2011	400118102	YUMA	No	Yes	199	150 to 350	Steel barn



Annual Well Starts by County as of October 1, 2018

County	2004	2005	2006	2007	2008	2009	2010	2011	2012	2013	2014	2015	2016	2017	2018
ADAMS	22	24	13	41	14	14	21	2	15	5	29	3	2	29	53
ARAPAHOE	6	1	5	2	1	1	3	8	9	25	21		1	17	17
ARCHULETA	4	10	5	7	29	9	12	10	11		1	7	4	5	24
BACA	6	6	2	6	12		5	4	2	2		1		2	
BENT	3	2	8	1	1			1	2						
BOULDER	5	11	9	14	25	16	13	7	14						
BROOMFIELD	1				10		21	11	5						
CHEYENNE		9	14	15	14	8	12	11	17	35	19	3			
COSTILLA															
CROWLEY											2				1
DELTA	4	6	5	2			7	3	3		1				
DENVER			7	5	4										
DOLORES	2		2	13	6	2		1	5	10	4			1	1
EAGLE										1					
EL PASO							2		5		1				
ELBERT			1									3			1
FREMONT	1	3	2	2	6	3	9	16	9	2	4		1	1	
GARFIELD	585	799	1,005	1,304	1,690	765	906	877	495	391	361	174	160	308	216
GUNNISON	1	1	9	5	1	4	5	4	4	1	2	4	1	7	2
HUERFANO	6	2			2		2		2	1	4	1			
JACKSON	10		3	3	12	1	8	8		7	7		23	13	9
JEFFERSON				2											
KIOWA	2	1	7	7	2	5	15	14	10	12	3	2			
KIT CARSON	1	6	2	1	14	3	1	1	3	1	2			1	
LA PLATA	103	104	108	179	205	131	67	54	3	10	40	42	44	100	22
LARIMER		1		4	8	1	28	2	10	4	1	9	3	25	2
LAS ANIMAS	296	384	413	326	222	14	7	78	1		1				
LINCOLN	2	2	1	2	18	11	14	21	23	41	42	12	2	12	11
LOGAN	2	11	12	12	3	7	3	9	13	4	6				
MESA	25	89	156	209	225	14	11	41	4	11	17	77	4	123	74
MOFFAT	19	40	60	42	26	18	15	32	26	27	3	6	3	1	
MONTEZUMA	1	7	2	4	22	10	3	8	18	12	8	1		2	2
MONTROSE	1			1	2		1								
MORGAN	5	5	3	1	1	2	3	2	3	1	3	1			4
PARK							2								
PHILLIPS	10	11	4	35	18	2	42	130	48		9				
PROWERS	5	5	6	3	5	2	3	1				1			
RIO BLANCO	92	95	107	95	205	118	107	71	54	36	43	17		5	14
RIO GRANDE											1				
ROUTT	1	6	3	2		2	1	2	4	2	2				
SAN MIGUEL	28	13	20	17	5	1	2	2			2				
SEDGWICK	2	1	1	5			3	8	3			1			
WASHINGTON	65	34	23	14	11	2	2	4	1	9	7	2	6	8	4
WELD	632	718	931	1,222	1,312	878	1,209	1,671	1,459	1,312	1,571	1,124	776	1,285	935
YUMA	144	597	593	445	336	28	213	106	16	13	39				1
TOTAL	2,092	3,004	3,542	4,048	4,467	2,072	2,778	3,220	2,297	1,976	2,255	1,491	1,030	1,947	1,391

ALL COUNTIES





Active Wells by County and Status as of October 8, 2018

County	Drilling	Domestic	Injecting	Producing	Shut In	Temp Aband	Waiting on Completion	Active Storage	Total Active Wells
ADAMS	56		6	435	433	42	1	12	985
ARAPAHOE	21	1	3	96	58	12		44	235
ARCHULETA	8	5	2	107	17	15	6	1	161
BACA			15	96	23	5		56	195
BENT		1		17	11	6			35
BOULDER				263	37	3			303
BROOMFIELD				78	12	1			91
CHEYENNE			40	281	42	47	1		411
CROWLEY									-
DELTA				3	12	1			16
DENVER				2	44	3	3		52
DOLORES	1		1	27	12				41
EL PASO		1				1			2
ELBERT				30	38	3		1	72
FREMONT	2	3		57	9	6	2		79
GARFIELD	267	2	36	10,881	330	73	65	1	11,655
GUNNISON	2		2	35	6	5	2		52
HUERFANO			1	36	4	4			45
JACKSON	19		26	109	58		1		213
JEFFERSON					2		1	3	6
KIOWA			12	86	17	9	2		126
KIT CARSON		1		9	4	2			16
LA PLATA	7	7	35	3,018	190	28	2	38	3,325
LARIMER	2	1	22	154	61	21			261
LAS ANIMAS	1	4	18	2,610	143	118	10	23	2,927
LINCOLN	7	1	10	89	21	6			134
LOGAN	2		23	87	34	35		31	212
MESA	53	1	5	982	167	33	4	11	1,256
MOFFAT	1		9	363	135	43	5		556
MONTEZUMA	2	1	7	103	30	13			156
MONTROSE								1	1
MORGAN	3		18	41	127	35		81	305
OURAY		1				1			2
PARK									-
PHILLIPS			2	245	23	2			272
PITKIN								10	10
PROWERS				23	4	1			28
RIO BLANCO	41	3	303	2,002	375	159	6	2	2,891
ROUTT		2		22	11	2			37
SAN MIGUEL	1			65	49	14			129
SEDGWICK	2		1	8	7	1	2		21
WASHINGTON	8		24	361	60	8	2		463
WELD	1,219	1	62	12,234	7,760	785	24	4	22,089
YUMA	3	8	24	3,672	136	10	12	1	3,866
Totals	1,728	44	707	38,727	10,502	1,553	151	320	53,732



Monthly Statistics as of October 8, 2018

Page 1 of 2

YEAR and MONTH	Baker - Hughes Rig Count	Permits										Well Spud Notices	Active Drilling Permits	Active Wells	Public Visits			
		Drilling		Recompletion		Injection		Pits		Locations					Data	Office	Internet	
		Rcvd	Apvd	Rcvd	Apvd	Rcvd	Apvd	Rcvd	Apvd	Rcvd	Authz							
2011 TOTAL		4,709	4,659	325	320	44	32	190	192	2,382	2,267	3,220			187	1,294	1,337,865	
2012 TOTAL		3,982	3,773	154	168	63	44	114	84	1,373	1,293	2,297			159	1,305	1,324,443	
2013 TOTAL		4,481	4,028	74	72	67	63	67	106	1,268	1,213	1,976			92	1,456	511,734	
2014 TOTAL		4,223	4,191	37	34	48	48	82	45	1,113	1,115	2,253			130	1,682	521,685	
2015																		
JAN	64	349	316	3	1	2	9	3	1	60	43	198	5,060	53,195	17	114	41,502	
FEB	49	324	161	3	2	5	6	9	0	73	28	115	4,750	53,309	4	117	38,245	
MAR	38	246	294	1	6	1	5	7	5	44	70	161	4,983	53,414	6	146	42,513	
APR	37	194	165	3	1	2	5	1	2	46	37	99	4,854	53,456	1	125	39,559	
MAY	39	324	190	1	4	2	6	8	0	41	44	112	4,632	53,535	5	113	unavailable	
JUN	38	327	281	4	1	0	5	2	1	52	49	142	4,726	53,608	5	138	unavailable	
JUL	38	373	250	4	2	2	1	0	0	57	48	122	4,663	53,706	7	145	26,975	
AUG	37	289	300	2	6	3	0	5	5	32	46	121	4,847	53,766	2	109	30,674	
SEP	33	242	312	3	1	1	7	0	3	59	49	100	4,953	53,806	4	146	31,642	
OCT	30	372	223	2	2	3	1	1	0	54	51	108	4,694	53,898	12	119	33,199	
NOV	31	190	254	6	2	4	3	1	0	21	49	117	4,765	53,719	7	105	29,112	
DEC	25	275	242	1	5	3	6	1	0	42	43	79	4,594	53,652	3	112	25,659	
2015 TOTAL		3,505	2,988	33	33	28	54	38	17	581	557	1,474			73	1,489	339,080	
2016																		
JAN	22	250	126	1	0	3	5	0	0	34	9	76	4,528	53,698	2	118	30,105	
FEB	20	205	227	3	0	3	2	44	2	31	39	68	4,599	53,723	8	115	28,611	
MAR	17	268	268	0	0	2	2	5	0	34	36	81	4,530	53,710	3	132	30,902	
APR	17	185	224	0	1	3	4	0	0	24	39	62	4,511	53,774	4	113	27,914	
MAY	16	353	217	0	2	3	1	1	1	33	24	86	4,464	53,749	4	106	26,778	
JUN	16	315	233	0	0	2	3	2	1	38	30	73	4,456	53,651	2	80	27,284	
JUL	20	268	249	5	0	4	4	6	6	31	30	88	4,344	53,724	5	91	24,151	
AUG	21	141	150	1	3	5	3	2	0	33	23	93	4,436	53,740	1	106	29,192	
SEP	19	366	270	0	2	4	2	0	6	29	24	72	4,522	53,817	4	154	25,698	
OCT	19	334	297	6	1	6	3	1	0	42	29	96	4,601	53,903	1	135	25,893	
NOV	20	368	304	3	3	3	3	0	1	40	45	119	4,566	53,993	2	97	25,140	
DEC	26	342	267	1	4	7	5	1	2	48	25	114	4,477	54,036	5	92	23,449	
2016 TOTAL		3,395	2,832	20	16	45	37	62	19	417	353	1,028			41	1,339	325,117	
2017																		
JAN	28	442	211	8	2	2	2	0	0	42	25	139	4,492	54,111	6	79	28,702	
FEB	26	701	263	2	4	4	3	0	0	62	38	142	4,543	54,194	1	97	27,715	
MAR	28	510	423	2	2	7	4	3	24	71	48	200	4,714	54,322	1	152	31,952	
APR	29	352	301	5	4	3	7	1	2	41	54	133	4,635	54,369	1	103	30,406	
MAY	31	307	367	4	3	1	6	1	28	41	55	181	4,899	54,369	5	94	36,109	
JUNE	36	493	331	3	2	6	1	1	1	58	40	162	4,947	54,605	5	109	30,644	
JULY	37	508	234	2	4	2	2	1	1	45	31	186	4,999	54,699	2	80	27,025	
AUG	37	572	349	9	0	8	3	1	2	53	49	179	5,000	54,814	1	143	30,715	
SEP	35	528	450	2	6	5	4	1	1	56	41	153	4,976	54,925	2	114	27,402	
OCT	34	550	311	0	2	2	3	0	1	58	40	153	5,022	54,989	2	174	31,995	
NOV	37	438	331	12	1	13	10	1	1	47	38	168	5,016	55,062	1	124	28,802	
DEC	34	479	304	4	4	4	1	0	0	44	32	151	5,039	55,151	0	100	25,556	
2017 TOTAL		5,880	3,875	53	34	57	46	10	61	618	491	1,947			27	1,369	357,023	
2018																		
JAN	34	639	218	6	3	4	3	2	0	66	19	163	4,920	55,155	4	102	34,895	
FEB	33	736	217	4	3	2	8	1	5	73	22	143	4,871	55,153	2	99	30,666	
MAR	30	769	463	3	8	6	9	4	2	56	50	126	5,024	54,811	2	118	32,185	
APR	30	874	164	0	3	7	6	4	4	87	25	127	4,918	54,260	4	124	33,403	
MAY	29	994	327	14	3	10	11	6	3	98	46	211	4,847	53,832	1	100	30,873	
JUNE	33	1,040	436	5	4	7	3	3	1	109	51	128	5,017	53,738	0	138	29,244	
JULY	32	738	466	1	11	5	9	1	0	50	44	136	5,133	53,708	3	138	29,781	
AUG	30	978	392	2	1	9	10	1	2	71	53	146	5,400	53,602	5	121	32,801	
SEP	32	613	435	4	0	11	2	3	0	56	38	169	5,451	53,732	1	130	28,323	
2018 TOTAL		7,381	3,118	39	36	61	61	25	17	666	348	1,349			22	1,070	282,171	

Abbreviation

Rcvd = Received, Apvd = Approved, Authz = Authorized

Key:



Oil and Gas Staff Report

October 29, 2018

25

Monthly Statistics as of October 8, 2018

Page 2 of 2

YEAR and MONTH	Well			Bonds						Hearings					Enforcement				Remediation			
	Oper Change	Operators New	Operators Inactive	Release		Claim		Hearings		Enforcement			Projects		Inspections							
				Ind	Blnt	Replace	Ind	Blnt	Apps.	Orders	NOAVs	AOCs	OFVs	Cmplt	Spills	Rcvd	Comp	Wells	Locations			
2011 TOTAL	6,743	33	31	79	44	43	4	4	403	349	230	10	19	247	527	726	536	12,394	-			
2012 TOTAL	7,546	47	37	70	46	33	3	0	482	396	157	9	2	244	402	690	641	19,071	12,670			
2013 TOTAL	7,192	49	21	48	26	20	0	0	571	522	237	37	3	201	568	507	541	23,551	13,370			
2014 TOTAL	10,298	55	28	42	39	13	1	1	698	598	179	43	4	243	786	596	502	34,208	18,982			
2015 JAN	727	2	3	2	3	0	0	0	76	64	15	2	1	36	64	38	58	2,491	1,246			
FEB	556	5	2	2	3	1	0	0	-	-	10	-	-	22	44	34	64	2,667	1,382			
MAR	183	5	3	5	2	4	2	0	72	72	33	1	1	42	76	59	94	3,469	1,738			
APR	271	7	1	0	5	3	0	0	60	54	19	3	-	21	46	40	61	3,451	1,620			
MAY	436	8	0	0	2	3	0	0	89	54	10	10	2	25	46	56	41	2,869	1,422			
JUN	508	2	2	3	5	4	0	0	-	-	27	-	-	25	41	32	43	3,366	1,716			
JUL	396	3	3	0	5	1	0	0	123	140	5	13	1	32	67	52	28	3,445	1,774			
AUG	218	8	2	0	7	4	0	0	-	-	13	-	-	18	56	24	62	3,693	1,848			
SEP	273	6	5	1	7	4	0	2	112	78	25	11	-	30	41	44	40	2,887	1,528			
OCT	359	4	1	6	1	6	1	0	115	103	6	12	1	32	58	51	33	3,420	1,494			
NOV	97	2	3	5	0	0	0	1	-	-	6	-	-	15	38	47	40	3,348	1,666			
DEC	437	7	2	3	5	1	0	0	91	80	4	5	2	60	46	39	37	3,851	1,765			
2015 TOTAL	4,461	59	27	27	45	31	3	3	738	645	173	57	8	358	623	516	601	38,957	19,199			
2016 JAN	534	2	1	0	5	5	0	0	76	66	4	7	1	29	51	44	36	3,184	1,551			
FEB	165	2	1	0	1	1	1	0	-	-	8	-	-	27	47	34	49	3,666	1,738			
MAR	1,035	6	4	2	2	2	1	1	62	57	3	7	1	19	42	50	45	3,020	1,646			
APR	245	3	3	2	7	4	0	0	34	32	6	4	2	20	40	48	90	4,046	2,117			
MAY	374	2	3	6	3	3	1	0	-	-	0	-	-	20	37	41	29	3,491	2,193			
JUN	272	6	3	3	4	1	1	1	67	65	3	6	2	20	36	40	77	4,099	2,330			
JUL	2,234	3	2	0	2	0	0	0	-	-	10	-	-	20	41	29	56	3,483	2,068			
AUG	138	3	3	3	2	1	1	1	71	43	20	4	-	20	51	39	38	4,065	2,288			
SEP	321	3	1	9	3	3	0	1	-	-	8	-	-	20	37	44	22	3,527	1,788			
OCT	428	1	3	7	5	1	0	0	96	74	23	7	1	21	40	34	36	3,325	1,811			
NOV	552	3	0	4	0	0	3	0	-	-	19	-	-	22	40	27	50	3,855	1,912			
DEC	264	4	4	1	7	2	1	1	67	60	3	8	-	23	66	31	72	3,374	1,684			
2016 TOTAL	6,562	38	28	37	41	23	9	5	473	397	107	43	7	261	528	461	600	43,135	23,126			
2017 JAN	4,203	3	3	3	3	1	0	0	80	72	1	11	1	46	48	23	11	3,007	1,447			
FEB	373	1	5	2	4	2	0	3	0	0	13	0	0	74	57	34	17	3,180	1,372			
MAR	1,092	6	4	2	2	2	1	1	86	65	18	3	0	44	55	49	18	3,812	1,851			
APR	938	3	0	1	5	5	0	0	0	0	6	0	0	32	40	43	29	2,895	1,578			
MAY	663	1	3	0	5	0	0	0	128	93	3	6	0	185	55	46	30	2,491	1,487			
JUNE	760	6	1	1	2	0	0	0	107	102	2	4	1	131	63	57	26	2,532	1,680			
JULY	758	5	2	2	2	0	0	1	108	104	5	3	0	66	38	29	23	2,168	1,300			
AUG	638	4	2	27	13	32	0	0	0	0	3	0	0	207	55	63	51	2,903	1,712			
SEP	824	1	2	9	6	6	0	1	133	74	20	1	0	212	55	64	38	2,804	1,568			
OCT	1,138	1	0	0	2	2	0	0	131	79	3	5	4	237	51	37	24	2,770	1,593			
NOV	627	2	0	0	0	0	0	0	0	19	1	0	0	81	51	51	34	2,570	1,191			
DEC	201	4	4	11	1	7	0	0	112	72	4	3	0	43	46	42	28	2,011	1,159			
2017 TOTAL	12,215	37	26	58	45	57	1	6	885	680	79	36	6	1,358	614	538	329	33,143	17,938			
2018 JAN	582	3	9	5	6	3	1	2	105	95	11	3	0	60	54	55	39	2,381	1,257			
FEB	466	3	3	2	7	1	1	0	0	0	6	0	0	52	40	51	81	1,988	1,031			
MAR	258	5	0	4	0	0	0	0	159	105	16	4	0	47	55	52	52	2,509	1,545			
APR	681	4	0	11	5	15	0	0	94	70	4	4	0	47	54	60	44	2,402	1,228			
MAY	261	3	3	5	3	0	0	0	0	0	13	0	0	61	55	60	41	2,809	1,571			
JUNE	268	4	1	1	2	1	0	0	108	74	4	2	0	27	45	53	47	2,429	1,376			
JULY	171	4	2	1	5	2	1	0	128	102	9	4	0	23	52	71	77	2,729	1,576			
AUG	56	2	1	1	3	0	0	0	0	0	8	0	0	55	54	55	43	2,505	1,240			
SEP	19	3	2	1	2	0	0	0	73	132	6	5	0	41	39	47	59	2,102	1,288			
2018 TOTAL	2,762	31	21	31	33	22	3	2	667	578	77	22	0	413	448	504	483	21,854	12,112			

Abbreviation Ind = Individual, Blnt = Blanket, Apps = Application for Hearing, NOAV = Notice of Alleged Violation, AOC = Administrative Order of Consent, OFV = Order Finding
Key: Violation, Cmplt = Complaint, Comp = Completed



Analytical Samples Submitted by Month to the COENV Database as of October 12, 2018

Sample Submission Reason	Oct 2017	Nov 2017	Dec 2017	Jan 2018	Feb 2018	Mar 2018	Apr 2018	May 2018	Jun 2018	Jul 2018	Aug 2018	Sept 2018	TOTAL
Rule 318A.e.(4)/318A.f pre drill	6	4	4	16	4	2	4	5	12	1	4	1	63
Rule 318A.e.(4)/318A.f post drill	6	5	2	6	1	4	10	2	13	14	1	3	67
Rule 609 pre drill	16	2	12	1	13	3		6		10	1	5	69
Rule 609 1 year subsequent			5		4	1				21		3	34
Rule 609 5 year subsequent							11	2					13
Rule 608 pre drill	9	24		21	26	6	3	11	3			1	104
Rule 608 1 year post drill		12					15			12		1	40
Rule 608 3 year post drill									11	9			20
Rule 608 6 year post drill		3	3	2		6		6	2				22
317 B subsequent sample			4		1		1			3			9
Voluntary baseline sample	30	65	56	78	100	112	73	37	63	65	6	18	703
Voluntary post drill	15		24	9	9	9	17		2	3	10		98
Bradenhead gas sample	25	27	19	46	44	29	36	33	40	130	24	28	481
Bradenhead water sample	10	5	23	22	37	4	24	11	18	19	27	5	205
Bradenhead non-aqueous liquids	6	3		3	6	2	3	7	4	7		2	43
Production gas sample	20	15	19	30	35	20	26	18	27	120	18	23	371
Int. casing gas sample									1				1
Produced water			8	2						4			14
Rule 912b flaring natural gas						2							2
Remediation		3	6	200	6	1		24	1				241
Complaint investigation	15	5			3		3			1	1	4	32
Land owner request											1		1
Spill investigation		1				40	3			1			45
UIC_COA_5year	2					1							3
Rule 908.B.(9) post construction sample							1						1
COA baseline				4	1								5
COA post drill	3	3	6	3	3	6		3		1	2		30
COA 1 year post drill		1								4	6		11
COA 3 year post drill	1			4									5
COGCC baseline - COGCC Staff													0
COA post construction					3								3
Adena Field monitoring		5											5
COGA baseline	1												1
Duplicate sample				1		2	1			1			5
TOTAL, ALL REASONS	165	183	191	448	296	250	231	165	197	426	101	94	2,747