



COLORADO

**Oil & Gas Conservation
Commission**

Department of Natural Resources

Staff Report

for January 30, 2017

Top Stories

◆ Operator Outreach Meetings Continue in February, March, April, and Beyond

In 2017, the COGCC will continue hosting a series of Industry Operations meetings to promote a dialogue about expectations defined in COGCC's guidance documents. The discussions held during the monthly operator meetings serve to enhance operator-agency communication, create a platform for operators to voice their concerns, and facilitate compliance with the guidance information that the COGCC has compiled at this location:

<http://cogcc.state.co.us/reg.html#/opguidance>

The next Industry Operations meetings are shown below and take place at 1120 Lincoln, Suite 801, starting at 9AM:

- February 14
- March 22
- April 18

Any technical or operations personnel staff who have questions or comments about particular COGCC rule guidance are welcome to attend. Call in and Zoom Meeting numbers are provided in case you do not wish to attend in person.

◆ Three Topics from the COGCC Flowline Team

The COGCC recently updated its Operator Guidance on flowlines, which can be found at this location:

http://cogcc.state.co.us/documents/reg/OpGuidance/Rule%201101%20and%201102%20and%201103%20Flowline%20Guidance%2012_20_2016.pdf

The document's three new sections include a discussion on Rule 1102d (One Call participation: "Call Before You Dig") and Rule 1103

(Abandonment) along with information on how to handle certain hazardous materials such as asbestos, which may have been used in coating historic flowlines.

One Call ("Call Before You Dig") Requirements

Rule 1102d requires operators with flowlines or pipelines to register their company and line locations with CO 811. The initial registration fee is \$25, and the company name registered should be the same as the one used by the operator to register with the COGCC. Companies operating under several corporate names should register all those names with CO 811.

The COGCC recommends a CO 811 Tier 1 membership, which is the current standard communicated to industry by the Colorado Public Utilities Commission. Operators should also periodically check and update the information in the CO 811 database each time the operator's lines are reconfigured.

Finally, operators are expected to follow the Colorado One Call rules prior to excavating at their sites. Third party damage while excavating is recognized as one of the leading causes of pipeline failures. Additional information can be obtained at the following website:

<http://colorado811.org/>

Flowline Abandonment

In Colorado, flowline abandonment is addressed in COGCC Rule 1103. This rule requires operators to purge, depressurize and disconnect flowlines, cutting them off below grade (3 feet or at buried depth), and sealing at the ends. Additional requirements may be included in the plugging orders submitted to the COGCC for review.

Cathodic protection and above grade equipment such as valves, risers, piping, etc. should also be



removed. Underground pits for valves, etc. should be filled with a suitable compacted material. Records of abandoned underground facilities should be maintained in accordance with Colorado One Call requirements.

Hazardous Materials

Operators should be aware that asbestos may have been used as a component in pipeline coating. There are additional Federal and State regulations related to this material. The following Colorado Department of Public Health and Environment (CDPHE) website is useful for additional initial guidance:

<https://www.colorado.gov/pacific/cdphe/categories/services-and-information/environment/asbestos>

◆ Reclamation Notice to Operators Issued

On January 5, the COGCC issued a Notice to Operators (NTO) regarding Interim Reclamation Procedures for Delayed Operations. The NTO outlines the COGCC's interpretation of Rule 1003 interim reclamation requirements when delayed operations occur, and can be downloaded at this location:

http://cogcc.state.co.us/documents/reg/Policies/NTO%20Interim%20Reclamation%20for%20Delayed%20Operations_Final_20170105.pdf

Delayed Operations occur when an operator constructs a multi-well location but does not complete the drilling program, or an operator constructs a production facility but does not install facilities or equipment. This NTO is separate from the surface owner waiver/variance process outlined in Rule 1001.c. A guidance document outlining the surface owner waiver process is available at the following location:

<http://cogccintranet/documents/reg/OpGuidance/Rule%201001%20c%20Reclamation%20Waiver%20Variances%20Guidance%2012-17%20Updated.pdf>

◆ Local Government Liaison (LGL) Program Update

Although the retirement of Local Government Liaison (LGL) Nancy Prince at the end of 2016 is a loss to COGCC and local governments, LGL Marc Morton continues to be a direct link for COGCC to assist Local Governmental Designees (LGDs), local government staff, their constituents, and others in accessing information and answering questions regarding oil and gas related issues in Colorado.

In conjunction with COGCC Staff, Marc works to assist, educate, and inform those interested in oil and gas in Colorado. Marc is available upon request to local governments to provide training and presentations specific to a particular group's informational needs. Marc can be reached at this email address:

marc.morton@state.co.us

LGL duties include tracking participation in the voluntary LGD program, a primary tool offered by the COGCC that provides notifications and information to participating local government regarding proposed oil and gas activity in their jurisdictions via system-generated e-mail notifications. We are aware of no other oil and gas producing state has a similar program.

As email is used for transmitting notifications of pending Form 2 and 2A permit applications and other oil and gas activity notifications as specified in COGCC rules, a current email address provided via COGCC Form 29 is critical to active participation in the LGD program. Email is also used to distribute the periodic LGD Newsletters and to notify participating local governments of other critical information, announcements, and COGCC updates. Local governments are therefore reminded to submit a new Form 29 when their LGD changes, or when an LGD is assigned a new e-mail address.

A list of the LGL outreach and public involvement activities conducted since the previous staff report is included in the latter half of the Public Outreach section below.

Public Outreach

➤ *Outreach by Director and Other Staff*

- On January 19, Reclamation Supervisor Denise Arthur and Field Inspection Manager Margaret Ash delivered a Reclamation Workshop in Durango. The workshop included two main parts, including an overview of the COGCC reclamation program with a discussion of the Rule 1001.c. Surface Owner Variance Process. The discussion was followed by a technical workshop discussing COGCC reclamation rules and helpful hints for performing successful reclamation. Southwest Reclamation Specialist Catherine Roy, Southwest Field Inspector Supervisor Steve Labowskie, Field Inspector Cal St. John, and Environmental Protection Specialist Jim Hughes also attended. Approximately 30 people from the oil and gas industry including operators, consultants and contractors participated.

➤ *Outreach by LGLs*

- On December 6, Director Lepore, Nancy Prince, Marc Morton, and Kent Kuster (CDPHE Oil and Gas Liaison) provided a full day LGD training to six individuals at the COGCC office in Denver.
- On December 6 and at the request of Grand County, Marc Morton travelled to Hot Sulphur Springs and gave a presentation titled "Overview of the Colorado Oil and Gas Conservation Commission" to the Grand County Board of

County Commissioners. BLM staff also attended and presented information regarding the BLM's proposed May 2017 lease sale within portions of several northwestern Colorado counties (including Grand, Jackson, Moffat, Rio Blanco and Routt).

- On December 8, Director Lepore, Nancy Prince, Marc Morton, and Oil and Gas Location Assessment Supervisor John Noto travelled to Greeley and provided a half day LGD training to 24 individuals at the Greeley Recreation Center.
- On December 13, Nancy Prince participated in the Town of Rockvale Source Water Protection Plan stakeholder meeting.
- On December 20 and at the request of the City of Fort Collins LGD, Marc Morton and North Central Environmental Protection Specialist Rick Allison attended a multi-agency de-briefing meeting concerning agency response to an exploration and production (E&P) waste spill at the Prospect Energy tank battery (COGCC facility #333083) in Larimer County, as reported by the operator on October 27.
- On December 20, Nancy Prince met with City of Aurora staff as a follow up to their participation in a recent LGD training.
- On December 20, Marc Morton travelled to Hudson and met with Hudson LGD Joe Racine to discuss a concern with planned facilities in the vicinity of Hudson.

Regional Activities

➤ *Northwest Colorado*

◆ Northwest Colorado Oil and Gas Forum

Northwest Colorado Oil and Gas Forum (NWF) meetings in 2017 are scheduled for April 6, August 3, and December 7. The venues have not yet been confirmed, but all meetings will take place in Rifle. Finalized NWF meeting information will be posted in future editions of the Staff Report and to the COGCC website approximately two to three weeks prior to each meeting.

Meeting information will also be emailed to those on the email distribution list. NWF meetings are open to the public, and public comment is held as part of each meeting.

Past presentations (dating back to 2006) are available on the website under the Library tab, then under the Local Public Forum tab, and finally under the Northwest Colorado Oil and Gas Forum Presentations link, or from

<http://cogcc.state.co.us/library.html#/forums>

All parties wishing to be placed on the next meeting agenda or added to the distribution list for announcements should contact Marc Morton at (303) 894-2100, ext. 5132 (direct), (720) 415-4959 (mobile), or by email:

marc.morton@state.co.us



◆ **Project Rulison**

The email for Project Rulison submittals is

DNR_rulison.submittal@state.co.us

◆ **Project Rio Blanco**

The email for Project Rio Blanco submittals is

DNR_rioblanco.submittal@state.co.us

➤ **Southwest Colorado**

◆ **Fruitland Formation Outcrop Mitigation and Monitoring Projects**

South Fork Texas Creek Mitigation Site - La Plata County. Regularly scheduled operations and maintenance continue at the South Fork Texas Creek (SFTC) site, performed by LTE, the COGCC's contractor. Since May 2009, the system has collected 19,033 Mcf of methane and generated 226,639 kWh of surplus electricity.

The results of Fruitland Outcrop monitoring efforts in 2015 were presented at the 2016 First Quarter GORT Meeting by LTE. The 2015 Fruitland Outcrop Monitoring Report has also been posted in the COGCC website library under the 3M project in the San Juan Basin at the following link:

http://cogccintranet/documents/library/AreaReports/SanJuanBasin/3m_project/2015%20FRUITLAND%20OUTCROP%20MONITORING%20REPORT_La_Plata.pdf

The 2015 4M Monitoring Report, prepared by Resource Hydrogeologic Services, has been posted in the COGCC website library under the 4M Project in the San Juan Basin at the following link:

http://cogccintranet/documents/library/AreaReports/SanJuanBasin/4m_project/FINAL%204M%20Project%20June%202016%20Monitoring%20Program%20Report.pdf

At all eleven 3M/4M monitoring well locations, the contractor replaced the 12V lead acid batteries during the summer and fall. The work included replacement of desiccants at each well during the spring or summer. The contractor replaced the lower transducer at the Beaver Creek monitoring well #1 in July. The cable for the upper transducer in this well was also replaced.

In October, the contractor replaced the cable for the lower transducer in the Wagon Gulch #2 monitoring well. In November, both the upper and lower transducers were replaced at the Fosset Gulch #1 monitoring well. As the monitoring well network ages, more system upgrades and maintenance are anticipated.

◆ **GORT Meetings**

Remaining GORT meetings in 2017 are scheduled for June 29 and October 12. These meetings will be held in Durango at the Durango Public Library (1900 E. 3rd Avenue in Durango) from 9:00 a.m. to 12:00 p.m.

GORT meeting agendas will be posted to the COGCC website approximately two to three weeks prior to each meeting, and emailed to those on the email distribution list. GORT meetings are open to the public, and public comment is held as part of each meeting.

All parties wishing to be placed on the next meeting agenda or added to the distribution list for announcements should contact Marc Morton

at (303) 894-2100, ext. 5132 (direct), (720) 415-4959 (mobile), or by email:

marc.morton@state.co.us

Variances

◆ **Lyster Oil Company, Inc. (Lyster)**

Lyster submitted Form 4, Sundry Notice #401151199 on November 16, 2016, requesting a

variance to the setback requirement between fired equipment (an ignition source) and a tank as specified in COGCC Rule 605.a.(5) for their Federal Elk Springs Unit #4 well (API No. 081-



06837) located in the NWSE of Section 30, Township 5 North, Range 98 West (6th P.M.). The operator submitted the variance request after several discussions and an on-site consultation with COGCC Engineering and Field Inspection Staff on November 12, 2016.

Field Inspection Report #675000014, which documented the on-site consultation, included a corrective action requirement stating, “[Operator’s variance] request shall describe how the operator will re-route the vent pipe to an alternate location near the crude oil tanks located in a separate bermed area west of the heater treater and produced water tank. The request shall include a statement from BLM regarding their concurrence with the equipment change. Continued venting and emissions from production equipment is subject to any site-specific permitting that may be required separately by the Colorado Department of Public Health and Environment.”

Production equipment for the well includes a heater treater with an ignition source at a distance of approximately 15 feet from a heated produced water tank, with a separate ignition source. Although the well produced through the production equipment without incident for many years, Staff was concerned with the proximity of the heater treater gas outlet vent line to both ignition sources. The discharge was located near the roofline of a shed positioned in between the heater treater and the produced water tank. The shed was constructed to keep pipes near the production equipment from freezing, as the heated produced water tank is only used intermittently during the winter.

Rule 605.a.(5) requires that tanks shall be a minimum of seventy-five (75) feet from a fired vessel or heater-treater. Lyster’s variance request states, “Due to the existing pad configuration, and the problematic freezing of pipes, the tank and heat source cannot be separated any further.”

Following consultation with COGCC Staff and BLM, Lyster opted to re-route the heater treater discharge to a separate oil tank bermed area on the well pad. The crude oil tanks are located more than 75 feet away from ignition sources at the heater treater and produced water tank. This new equipment configuration was approved by

BLM, and it was selected to improve worker safety (routed away from shed) and explosion hazard (routed away from ignition sources).

As required by COGCC Rule 502.b.(1), and as discussed above, Lyster has made a good faith effort to comply with Rule 605.a.(5) by re-routing the heater treater gas outlet discharge to a remote location at the crude oil production tanks. Lyster contends that this variance request does not violate the basic intent of the Oil and Gas Conservation Act. On December 9, 2016, the COGCC Director approved Lyster’s Rule 605.a.(5) variance request for production equipment at this well.

◆ **Conoco Phillips Company, Petron Development Company**

Director Lepore approved requests by Conoco Phillips Company and Petron Development Company for variances to certain parts of Rule 1101.e.(1). This rule requires pressure testing at installation and on an annual basis to maximum anticipated operating pressure.

The Conoco Phillips variance applies to the Conoco Phillips DJ Basin properties in Arapahoe county Facility number 444866. This field started development in 2012 and consists of relatively new horizontal wells and associated facilities. In the variance requests, Conoco-Phillips documents an equivalent or better system in place that complies with the intent of the rule to ensure flow-line integrity and minimize spills.

The Petron Development Company variance applies to the Petron gas properties in Yuma county Facility number 446703. These shallow stripper gas wells produce gas with some water. In the variance requests, Petron documents an equivalent or better system in place that complies with the intent of the rule to ensure flow-line integrity and minimize spills.

Operators receiving variances must submit annual reports to COGCC staff on the effectiveness of their systems. Each variance is for a period of one year but can be extended up to 4 additional years at the Director’s discretion.



Admin / Organization / Other

COGCC organizational charts can be found on pages 10-13.

For contact information, please go to our homepage, find the “About Us” menu, and select “Contact Us.”

◆ **Plugging and Reclaiming Orphaned Wells (PROW) - Project Updates**

The **Benchmark BOND NW Graylin D-Sand Unit #20W Plug and Abandon Project** is in the “distressed operator” category of the PROW Program (Order 1V-564). The well is located in Logan County, approximately nine miles northwest of Sterling. This well was drilled to a total depth of 5,150 feet in 1953, and it was completed in the D-Sand Formation.

The NW Graylin Field was later converted to a secondary recovery unit (waterflood) in 1959, and the #20W well has been serving as a water injection well. Several other companies operated this well prior to Benchmark. This well failed a mechanical integrity test (MIT) in 2014 and has since been temporarily abandoned with the plug set for the MIT. Shortly after discovery of a casing leak above the plug, an effort by the operator to repair the well was unsuccessful.

Because the operator failed to either plug and abandon the well or maintain its mechanical integrity, the COGCC retained contractors to plug and abandon the well in mid January 2017. The remaining project work will abandon the flowlines and remove equipment from the location. The COGCC continues to evaluate plugging and abandonment priorities for other wells in the NW Graylin Field.

The **Pagoda Plug and Abandon Project** is located approximately 14 miles southeast of Craig, near the Moffat and Routt county lines and includes two previously plugged wells. The landowner is improving and developing the east fork of the Williams Fork River habitat on his property and has requested that COGCC cut off the existing above-ground vertical PA markers. This project may be delayed until next summer or fall because of scheduling conflicts with the landowner and current winter conditions.

The **Cache Unit #8 Plug and Abandon Project** is in the category of the “distressed operator” section of the PROW Program (Order 1V-577). This well is located in Montezuma County, approximately 26 miles west-southwest of Cortez. This well was drilled in 1964 to a total depth of 5760 feet and completed in the Desert Creek Formation.

The Cache Field was unitized in 1967 and converted to secondary recovery (waterflood). This well has served as an injection well. The well failed its mechanical integrity test in 2014 and was temporarily abandoned pending a decision to repair the casing leak or plug and abandon the well.

The operator commenced plugging operations during December 2015 and stopped during a winter storm before completing the work. Subsequently, the COGCC gave the operator a specific time frame to complete the plugging, and the operator failed to meet that obligation citing unavailable funds to do so. The well has been successfully plugged. Remaining work includes abandoning both the injection line and the old oil flow line and removing the existing rig anchors.

The **Lloyd & Lowell #1 Plug and Abandon Project** is located about two miles west of DeBeque in Mesa County. This well was drilled in 1914 to a total depth of 3045 feet; however, casing & cement records are not available. It is currently discharging water and natural gas with a dark tar-like material in place near the well. The volume of water flowing from the well over many years has created its own wetlands making access to the well very difficult.

Water analysis indicates 1,100 milligrams per liter total dissolved solids and 110 micrograms per liter of benzene. Downhole camera work was attempted, but a wooden plug was observed in the casing near surface. COGCC expects to bid out additional work to plug this well during January or February 2017.

The **DB Blair #1 Re-Entry and Re-Plugging Project** is located near the town of DeBeque. It was originally drilled in 1902 and was plugged by the COGCC during the fall of 2014. The well continued to leak gas at a low rate through the



plug and has been under COGCC and landowner observation since 2014. Recently, COGCC drilled out the plug and used a resin plug to stop the residual gas flow to surface.

The **State 1-36 Plug and Abandon Project** is located approximately 6 miles east-southeast of Cortez. It was drilled in 1982 to a total depth of 500 feet to the Dakota Formation and had a show of natural gas, but not in quantities to justify constructing a pipeline. The well has 6-inch outside diameter open casing rising four feet above ground with the well identification in raised welded beading on the casing. There is no surface plug, and it appears that the operator may have left the well for fresh water purposes. The work is scheduled for spring 2017.

The **Ruth #1 BOND Plug and Abandon Project** is located in the Manila Field on the very east side of Aurora, about 2 miles north of Highway 36. This well was drilled in 1970 to a total depth of 8192 feet and completed in the J-Sand Formation. The bond was claimed in 2012 via Order Finding Violation #395 (1V-395). All bond monies were spent removing surface equipment. Pending available funds for this fiscal year, plugging work is planned for late spring 2017.

The **Ranchers (BOND) Retta J #1 Reclamation Project** is located in Larimer County, near the City of Windsor. The COGCC claimed the Ranchers Exploration bond through Order 1V-526. The site is complicated by the fact that the well was drilled on a closed Johnston Landfill, which ceased its business operations in 1982. The CDPHE landfill closure plan does not allow any disturbance to the landfill area. Disturbance occurred during the well pad construction and during the drilling operations. The COGCC required the drilling operation to end early in the drilling operations process and prohibited further oil and gas operations on the location.

Subsequently, the well was plugged and abandoned by the operator in April 2012, but the operator failed to implement adequate stormwater Best Management Practices and reclaim the well site. The COGCC and CDPHE are working together to close the location since there is a landfill component and an oil and gas component.

The first phase of the redesign work and soil

sampling was required for planning the reclamation and landfill closure design. This work was completed June 30, 2016. Ongoing work will be required to provide closure of the landfill and properly reclaim the location.

Page 14 contains a spreadsheet listing PROW projects that are either planned, in progress, or completed as of December 31, 2016.

◆ Interested Parties Notification

BY ORDER OF THE COLORADO OIL AND GAS CONSERVATION COMMISSION

ORDER NO. 1V-508

TO ALL INTERESTED PARTIES AND TO WHOM IT MAY CONCERN:

Pursuant to Section 34-60-124 of the Colorado Revised Statutes and Order No. 1V-508 of the Colorado Oil and Gas Conservation Commission ("Commission"):

The Commission has commenced activities to investigate, prevent, monitor, or mitigate conditions that threaten to cause, or that actually cause, significant adverse environmental impacts at oil and gas locations formerly operated by Red Mesa Holdings/O&G LLC ("Red Mesa") (Operator No. 10254). These activities may include the plugging and abandonment of wells and/or the reclamation of Red Mesa's well sites and associated facilities.

The Commission's actions may impact the following properties, located in La Plata County, Colorado:

1. Sections 1 and 2, Township 32 North, Range 13 West, N.M. P.M.
2. Sections 11, 13, 14, 21, 22, 26, 27, 28, 32, 33, 34 and 35, Township 33 North, Range 12 West, N.M. P.M.

ANY PARTY WHO CLAIMS AN INTEREST IN THE PLUGGING AND ABANDONMENT OF THESE WELLS AND/OR THE RECLAMATION OF THESE WELL SITES AND ASSOCIATED FACILITIES, MUST CONTACT THE COMMISSION'S ENFORCEMENT SUPERVISOR IMMEDIATELY, by: phone - (303) 894-2100; email - dnr_cogccenforcement@state.co.us; or mail -



Colorado Oil and Gas Conservation Commission,
Attn: Enforcement Supervisor, 1120 Lincoln
Street, Suite 801, Denver, Colorado 80203.

◆ Colorado Oil and Gas Information System (COGIS) Projects, Updates and Changes

Electronic Form (eForm) Submissions

The COGCC uses 41 types of forms to authorize oil and gas operations, inspect and monitor ongoing operations, and receive reports of operations. Of those 41 forms, 21 are currently available for electronic submittal through the eForms system.

The development team continues to work on the eForm conversion of existing forms. Currently, four forms are in various stages of development: Forms 11, 14, 14A, and 43. In addition, the development team updates eForms with improvements requested by Staff and as required by rule revisions. In 2016, 95 percent of the forms available in eForms were submitted electronically by industry.

There are 759 operator users of eForms and 3,039 individual users. For any operator not currently enrolled in eForms, instructions for starting the process can be found on the COGCC website at:

<http://cogcc.state.co.us/Announcements/COUInformation.pdf>

Form 27 eForm Release

The COGCC's Site Investigation and Remediation Workplan (Form 27) is currently being upgraded. The Governor's Office of Information Technology (OIT) has completed development of the eForm 27, and COGCC Staff have completed internal testing. Further testing by a select group of operators has been undertaken and feedback is being received and incorporated into the final product.

Applications and Location Assessments

The public can make comments on all submitted Drilling Permit Applications (Form 2s) and Location Assessments (Form 2As) through the eForm system. Simply go to the COGCC website and click on the menu option "Permits" or

<http://cogcc.state.co.us/permits.html#/permits>

On the "Permits Search" page, three search options are available. The first option, "All Pending Permit Applications," is used for public comments.

When the results are displayed for "Pending Applications," a user can click on the document number hyperlink in the "Status" column, which logs him or her to the eForms application. Once the page is displayed with the selected document, the user can select the Comment button to make a comment on that particular form.

Data Access

The COGCC's database is a comprehensive repository of Colorado's oil and gas data. The information in the database is available to the public through interactive search tools and a variety of file downloads on the website. Users of bulk data come from many different sectors of the community, including academia, oil and gas operators, environmental groups, government agencies, and the media.

The number of these users and the variety of data requested are steadily increasing. Staff continues to publish additional data file downloads at:

<http://cogcc.state.co.us/data2.html#/downloads>

Current Data File Downloads

Complaints
Field Operations
GIS Shapefiles (12 files)
Mechanical Integrity Tests
Notices of Alleged Violation
Production Data (1999 - present)
Spacing Orders
Spills and Releases
Water Well Data

Future Data File Downloads

Enforcement Orders (OFVs and AOCs)
Underground Injection Control (UIC) Data

◆ March 2017 Hearing Docket

The docket for the March 2017 hearing will be available shortly after the January hearing.



Hearing dockets are available on our website by clicking on “Regulation” in the menu and then “Hearings”:

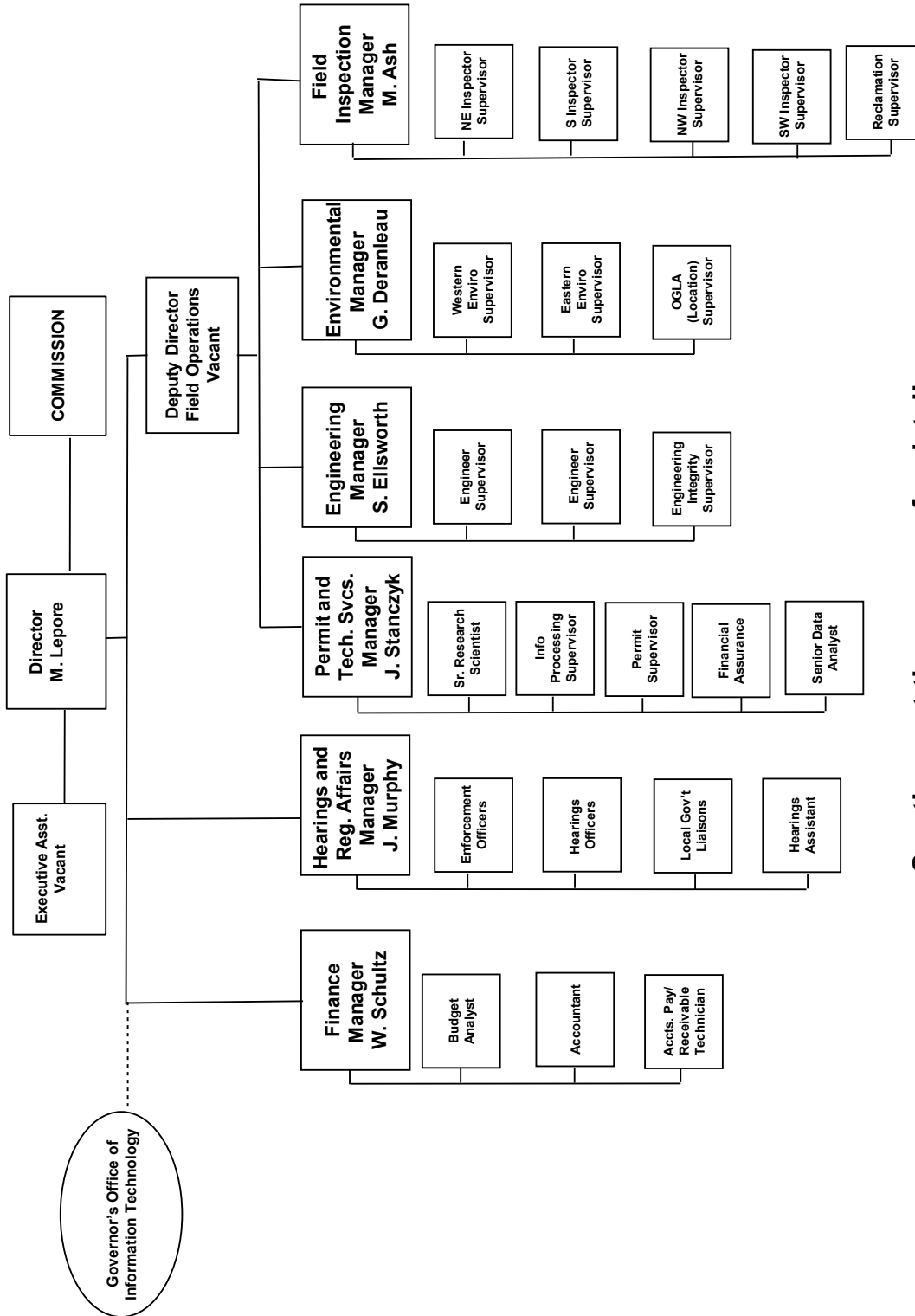
<http://cogcc.state.co.us/reg.html#/hearings>

Links to the notices and hearing applications are available from the Docket Number and Applicant, respectively, by clicking the March Gen_Docket link. To sign up for email notification of hearing notices and applications, please see the announcement and instructions on the homepage of the COGCC website.



Organizational Charts and Statistics

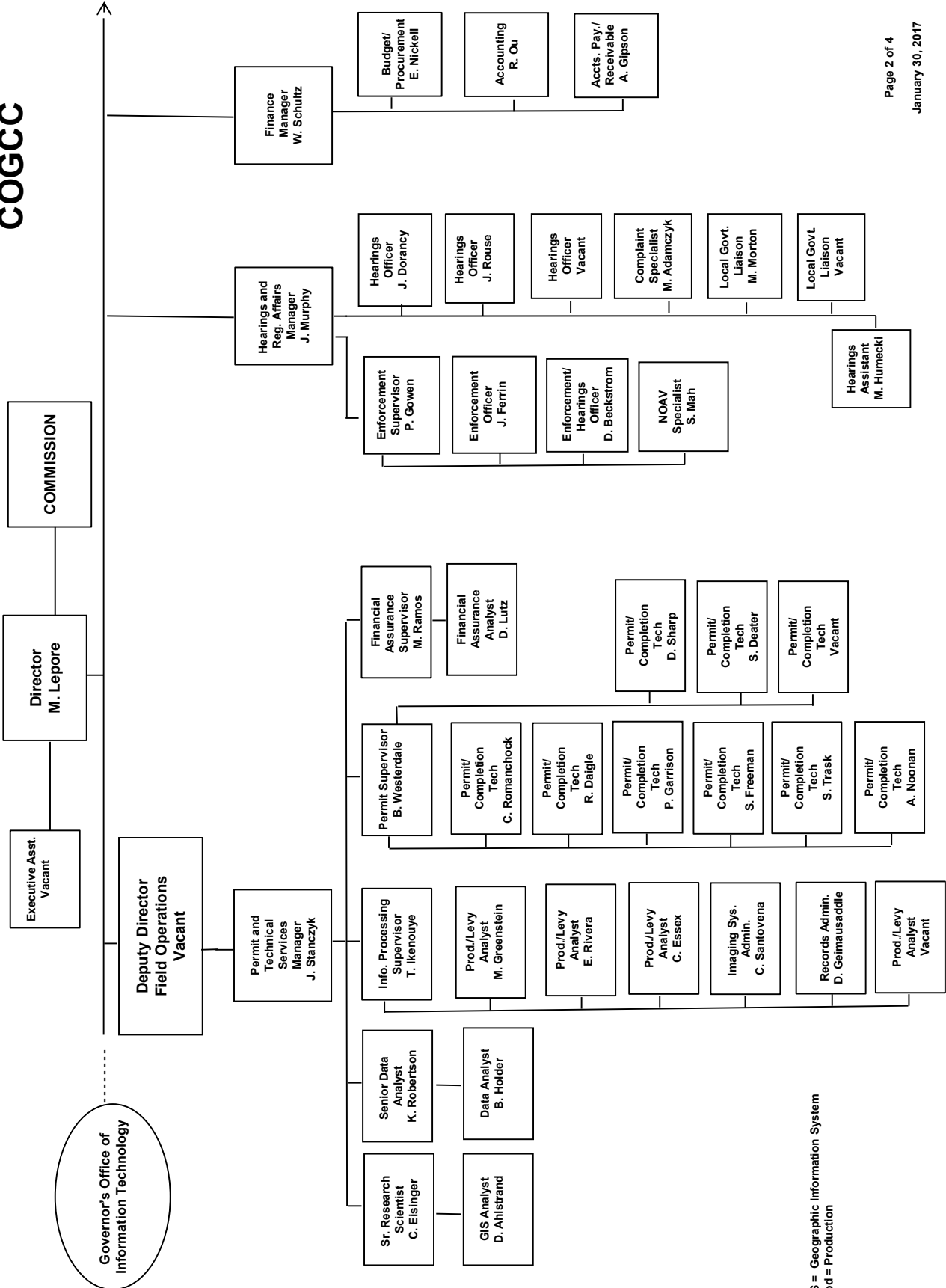
COLORADO OIL & GAS CONSERVATION COMMISSION



See the next three pages for details



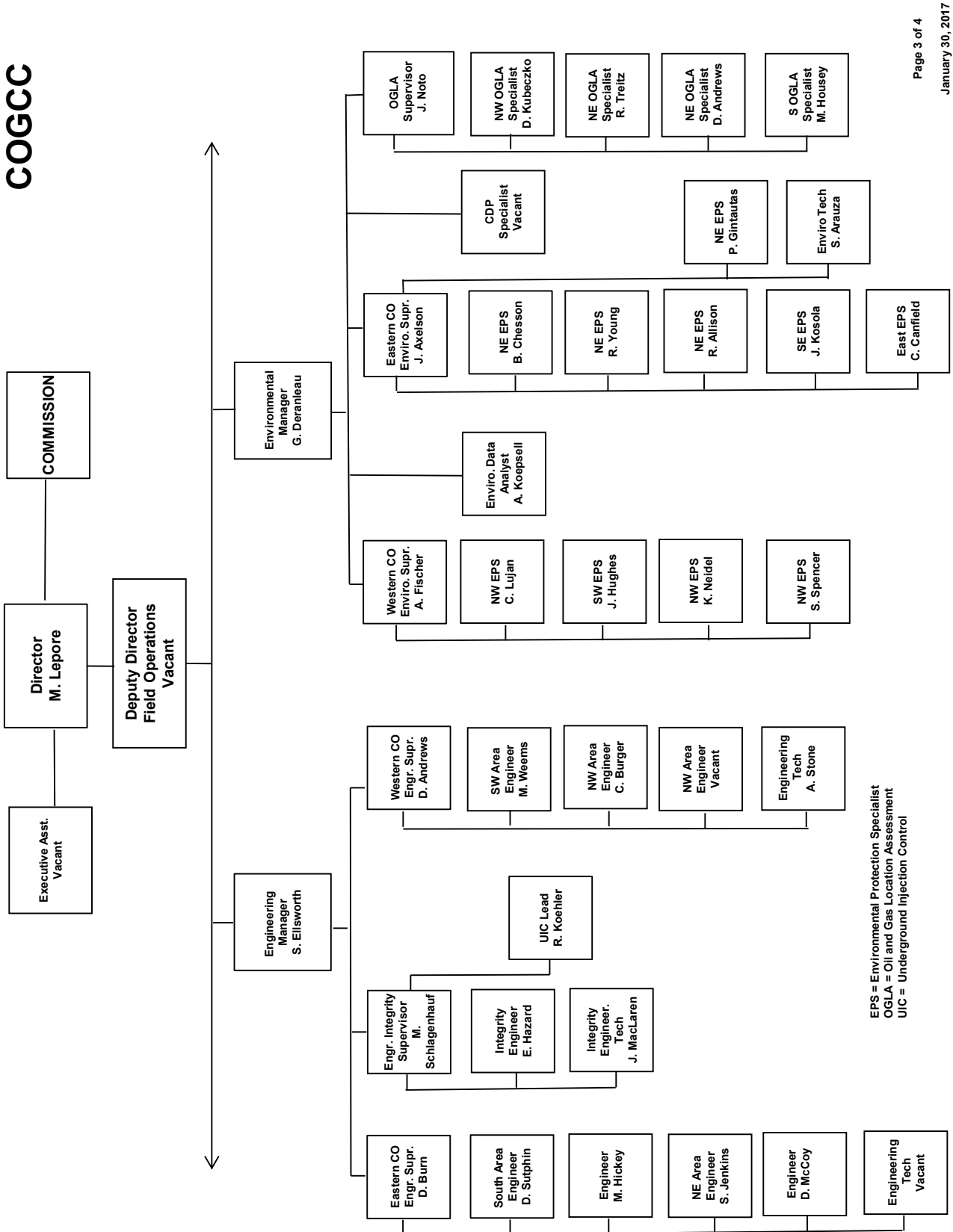
COGCC



GIS = Geographic Information System
Prod = Production



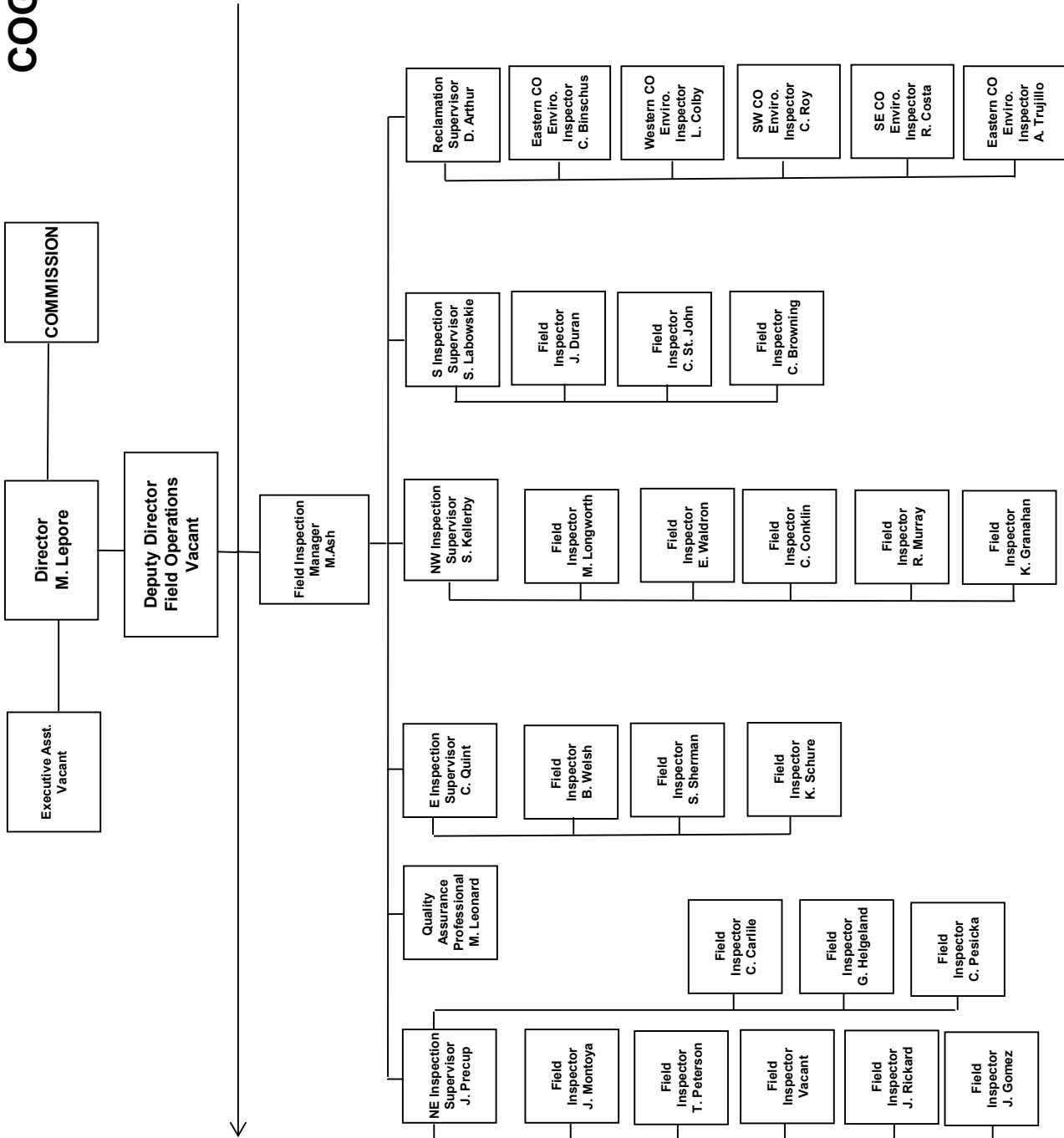
COGCC



EPS = Environmental Protection Specialist
 OGLA = Oil and Gas Location Assessment
 UIC = Underground Injection Control



COGCC





PLUGGING AND RECLAIMING ORPHANED WELLS (PROW) PROGRAM
FISCAL YEAR 2016-17

PLANNED		ESTIMATED COSTS		FY17 YTD ACTUAL EXPENDITURES		Description	
Type	County	Project Name	Bond	PROW	EMGY	Totals	Totals
PA	Moffat/Routt	Pagoda		\$ 3,000		\$ 3,000	
PA	Montezuma	State 1-36		\$ 10,000		\$ 10,000	Cut-off existing PA marker. Previously plugged. Landowner development
PA	Adams	Ruth #1 BOND		\$ 45,000		\$ 45,000	Re-enter PA well and finish plugging the well. The bond money has all been spent removing surface equipment
Sub Totals, PA Projects -->			\$ 0	\$ 58,000	\$ 0	\$ 58,000	\$ 0
RECL	Larimer	Ranchers BOND Retta J		\$ 175,000		\$ 175,000	
Sub Totals, RECL Projects -->			\$ 0	\$ 175,000	\$ 0	\$ 175,000	
PLANNED TOTALS-->			\$ 0	\$ 233,000	\$ 0	\$ 233,000	\$ 0
IN PROGRESS		ESTIMATED COSTS		FY17 YTD ACTUAL EXPENDITURES		Description	
Type	County	Project Name	Bond	PROW	EMGY	Totals	Totals
PA	Mesa	Lloyd & Lowell #1		\$ 50,000		\$ 50,000	
PA	Logan	Benchmark BOND NW Graylin D-Sand Unit #20W WIW	\$ 31,043			\$ 31,043	Leaking liquids and gas
PA	Montezuma	Cache Unit #8 WIW	\$ 52,870			\$ 52,870	Water injection well with a casing leak. Operator failed to PA or maintain mechanical integrity. Order 1V-564 Casing leak
Sub Totals, PA Projects-->			\$ 83,913	\$ 50,000	\$ 0	\$ 133,913	\$ 0
ENV	Montezuma	Cache Unit #8 WIW		\$ 823		\$ 823	Samples and analysis of special purpose pit and in situ surrounding soils
Sub Totals, ENV Projects -->			\$ 0	\$ 823	\$ 0	\$ 823	\$ 823
IN PROGRESS TOTALS ==>			\$ 83,913	\$ 50,823	\$ 0	\$ 134,736	\$ 0
COMPLETED		ESTIMATED COSTS		FY17 YTD ACTUAL EXPENDITURES		Description	
Type	County	Project Name	Bond	PROW	EMGY	Totals	Totals
PA	Ourray	Ridgway-Swanson Peterson #1		\$ 1,240		\$ 1,240	
PA	Mesa	1 DB Blair #1		\$ 29,200		\$ 29,200	Fence installation to hide the propane tank
Sub Totals, PA Projects -->			\$ 0	\$ 30,440	\$ 0	\$ 30,440	\$ 0
RECL	Larimer	Ranchers BOND River West #2	\$ 33,240			\$ 33,240	Leaking gas
RECL	Jefferson	Provide Energy Red Mtn BOND State #16-4		\$ 35,000		\$ 35,000	All Bond money previously spent plugging this well.
RECL	Garfield	Dolphin Arroyo #9-16D		\$ 1,000		\$ 1,000	Weed control, mowing.
RECL	Montrose	Redwine Bond - SNU #1-31		\$ 5,000		\$ 5,000	BMP maintenance.
RECL	Moffat	Tatonka Culverwell #10-23-07-		\$ 5,000		\$ 5,000	Seeding
RECL	Moffat	Think Oil BOND Silver et al #1		\$ 18,600		\$ 18,600	Earthwork, recontouring, stormwater controls.
Sub Totals, RECL Projects -->			\$ 33,240	\$ 64,600	\$ 0	\$ 97,840	\$ 33,215
COMPLETED TOTALS ==>			\$ 33,240	\$ 95,040	\$ 0	\$ 128,280	\$ 23,765
GRAND TOTALS			\$ 117,153	\$ 378,863	\$ 0	\$ 496,016	\$ 33,215
							\$ 85,420

SCOREBOARD (PROW FUNDING ONLY)

PA = plug and abandon RECL = reclamation ENV = enviro remediation
EMGY = funding from the Emergency Response Appropriation
PROW = Plugging and Reclaiming Orphaned Wells

In Progress Project Expenditures to Date \$8,329
Completed Project Expenditures to Date \$76,979
Total Expenditures to Date \$85,308
FY17 Budget Appropriation \$445,000
Remaining Annual Funding \$359,692
Project Total Costs \$378,863

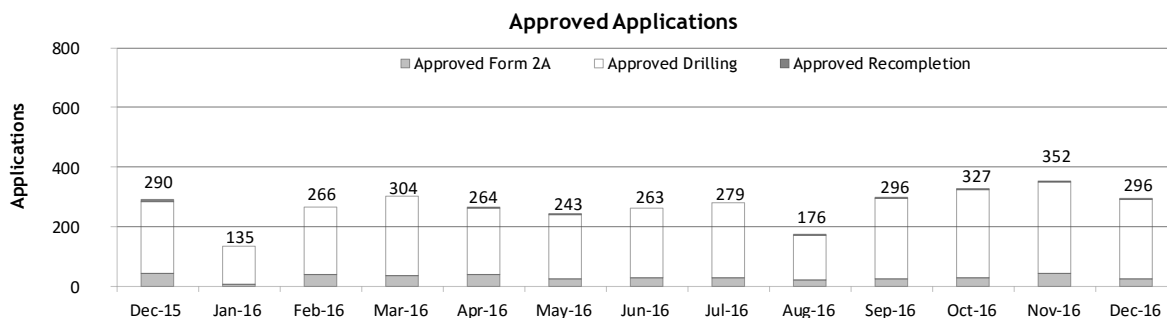
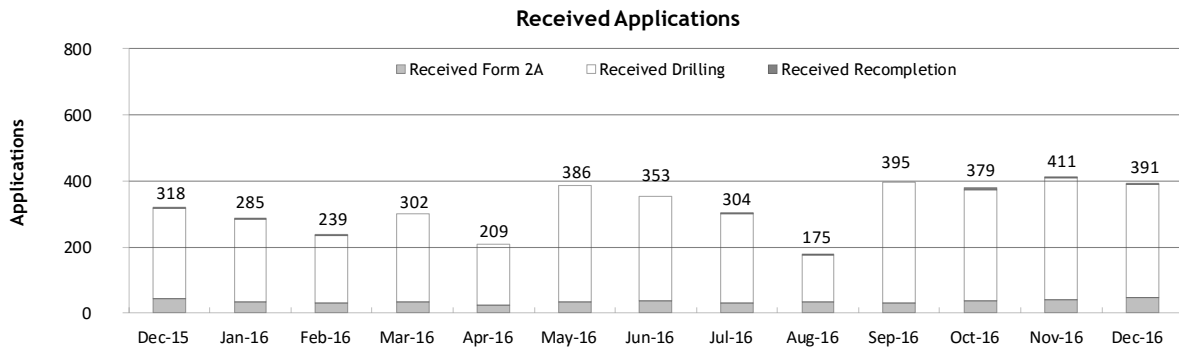


Monthly Permit Activity as of January 1, 2017

Form/Month	Backlog	Received	Approved	Withdrawn	Rejected	Incomplete ¹	In-Process	Remaining ²
Form2A								
Dec-15	99	42	43	2	0	27	69	96
Jan-16	96	34	9	1	0	29	91	120
Feb-16	120	31	39	1	0	32	79	111
Mar-16	111	34	36	3	0	27	79	106
Apr-16	106	24	39	2	0	29	60	89
May-16	89	33	24	0	2	27	69	96
Jun-16	96	38	30	3	0	23	78	101
Jul-16	101	31	30	3	0	25	74	99
Aug-16	99	33	23	2	0	19	88	107
Sep-16	107	29	24	1	0	17	94	111
Oct-16	111	38	29	2	0	25	93	118
Nov-16	118	40	45	0	3	22	88	110
Dec-16	110	48	25	6	0	20	107	127
Drilling								
Dec-15	698	275	242	13	6	159	553	712
Jan-16	712	250	126	4	30	201	601	802
Feb-16	802	205	227	1	15	212	552	764
Mar-16	764	268	268	16	59	220	469	689
Apr-16	689	185	224	13	20	155	462	617
May-16	617	353	217	1	16	138	598	736
Jun-16	736	315	233	6	2	125	685	810
Jul-16	810	268	249	24	0	145	660	805
Aug-16	805	141	150	9	7	126	654	780
Sep-16	780	366	270	0	12	77	787	864
Oct-16	864	334	297	1	0	82	818	900
Nov-16	900	368	304	7	64	138	755	893
Dec-16	893	342	267	15	9	115	829	944
Recompletion								
Dec-15	8	1	5	2	0	0	2	2
Jan-16	2	1	0	0	0	1	2	3
Feb-16	3	3	0	0	0	2	4	6
Mar-16	6	0	0	0	0	2	4	6
Apr-16	6	0	1	0	0	1	4	5
May-16	5	0	2	0	0	2	1	3
Jun-16	3	0	0	0	0	2	1	3
Jul-16	3	5	0	0	0	2	6	8
Aug-16	8	1	3	0	0	2	4	6
Sep-16	6	0	2	0	0	2	2	4
Oct-16	4	7	1	0	0	2	8	10
Nov-16	10	3	3	0	0	3	7	10
Dec-16	10	1	4	1	0	2	4	6

¹ Incomplete are applications that have missing or inaccurate data and cannot be approved.

² Backlog = Incomplete + In-process = Remaining permits from previous month.





Status of Permit Applications Filed By Month as of January 1, 2017

Form 2A Location Assessment

Year	Month	Received	Approved	Withdrawn	In Process	Percent In Process	Average			
							Days to Process	Less Than 30 Days	30 to 49 Days	Greater Than 50 Days
2011	TOTAL	2,391	2,298	93	0	0%		1,416	620	262
2012	TOTAL	1,359	1,291	68	0	0%		706	378	207
2013	TOTAL	1,281	1,202	78	1	0%		369	433	400
2014	TOTAL	1,114	1,067	46	1	0%		279	429	359
2015	JAN	49	48	1	0	0%	57	6	15	27
	FEB	69	65	3	1	1%	66	5	16	44
	MAR	54	47	6	1	2%	59	6	20	21
	APR	39	39	0	0	0%	64	8	13	18
	MAY	40	39	1	0	0%	60	6	12	21
	JUN	54	52	2	0	0%	57	10	17	25
	JUL	45	45	0	0	0%	77	4	12	29
	AUG	68	65	3	0	0%	58	11	21	33
	SEP	58	54	2	2	3%	57	16	9	29
	OCT	53	50	2	1	2%	89	3	10	37
	NOV	21	18	1	2	10%	83	2	4	12
	DEC	42	38	3	1	2%	80	1	8	26
2015	TOTAL	592	560	24	8	1%		78	157	325
2016	JAN	34	33	0	1	3%	90	2	4	27
	FEB	31	30	1	0	0%	89	1	3	26
	MAR	34	32	2	0	0%	76	3	8	21
	APR	23	19	1	2	9%	85	1	3	15
	MAY	32	32	0	0	0%	100	1	5	26
	JUN	36	33	0	3	8%	69	3	11	19
	JUL	29	21	4	4	14%	71	7	1	13
	AUG	34	21	1	11	32%	77	1	2	18
	SEP	29	21	0	8	28%	61	5	3	13
	OCT	37	23	1	12	32%	42	3	12	8
	NOV	40	6	1	33	83%	37	1	4	1
	DEC	48	3	1	44	92%	22	3	0	0
2016	TOTAL	407	274	12	118	29%		31	56	187

Form 2 Application For Permit to Drill (APDs)

Year	Month	Received	Approved	Withdrawn	In Process	Percent In Process	Average			
							Days to Process	Less Than 30 Days	30 to 49 Days	Greater Than 50 Days
2011	TOTAL	4,691	4,557	132	0	0%		2,723	1,565	587
2012	TOTAL	3,955	3,816	139	0	0%		1,971	1,393	602
2013	TOTAL	4,548	4,312	235	1	0%		1,046	1,626	1,714
2014	TOTAL	4,208	4,026	155	27	1%		689	1,629	1,744
2015	JAN	291	290	1	0	0%	69	50	60	183
	FEB	294	277	17	0	0%	72	24	73	183
	MAR	306	249	35	22	7%	84	10	73	168
	APR	169	154	15	0	0%	78	28	35	94
	MAY	270	265	5	0	0%	77	9	84	172
	JUN	321	310	11	0	0%	67	45	81	186
	JUL	299	290	3	6	2%	67	15	84	197
	AUG	319	309	10	0	0%	90	11	64	236
	SEP	203	195	2	6	3%	74	17	37	145
	OCT	346	337	9	0	0%	101	16	75	246
	NOV	181	166	13	2	1%	91	15	46	110
	DEC	238	228	9	1	0%	79	9	47	172
2015	TOTAL	3,237	3,070	130	37	1%		249	759	2,092
2016	JAN	232	231	1	0	0%	99	23	33	176
	FEB	180	177	3	0	0%	80	5	34	141
	MAR	249	246	3	0	0%	98	16	36	194
	APR	174	167	1	6	3%	68	31	24	112
	MAY	352	351	1	0	0%	94	9	61	281
	JUN	312	261	19	32	10%	89	6	51	204
	JUL	236	155	22	59	25%	77	30	1	128
	AUG	136	113	4	19	14%	83	9	26	80
	SEP	359	282	0	77	21%	62	22	72	189
	OCT	313	236	7	70	22%	61	20	26	195
	NOV	368	63	5	291	81%	37	29	22	13
	DEC	342	4	0	338	99%	8	4	0	0
2016	TOTAL	3,253	2,286	66	892	27%		204	386	1,713



Oil and Gas Staff Report

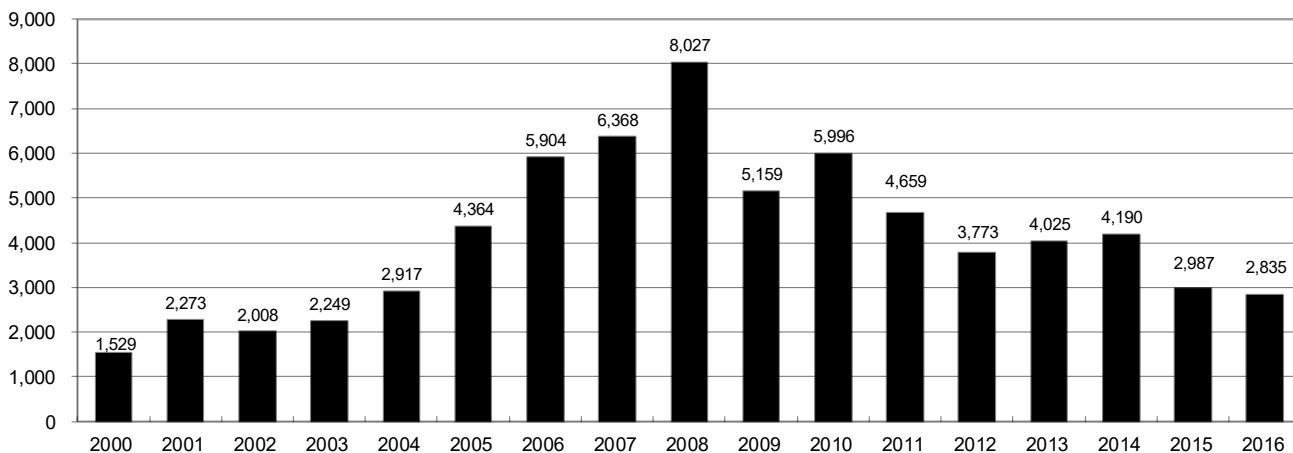
January 30, 2017

17

Annual Drilling Permits by County as of January 1, 2017

County	2000	2001	2002	2003	2004	2005	2006	2007	2008	2009	2010	2011	2012	2013	2014	2015	2016
ADAMS	38	28	9	26	39	34	37	89	51	35	21	8	40	40	51	96	74
ARAPAHOE		2	1	2	5	7	11	10	10	10	8	23	35	23	34	19	5
ARCHULETA	7	9	6	10	8	13	14	26	47	11	18	12	5	4	3	11	3
BACA	22	6	2	3	7	8	2	11	13	3	4	5	3	1	1		
BENT	2				5	3	8	1	1		5		2	1			
BOULDER	1	5	6	7	17	13	21	37	32	35	24	30	22				
BROOMFIELD			2	7		1	1		2	33	28	11	36		31		
CHEYENNE	3	3	3	3	3	10	21	15	33	12	13	16	31	50	26	9	
COSTILLA																	
CROWLEY															2		
DELTA			7	4	5	10	9	2			4	3	6	1	2		
DENVER		3					19	25	24								
DOLORES				1	1	1	6	10	12	21	8	8	13	12	3		3
EAGLE														1			
ELBERT	2						4			1		1	2	2	4	3	3
EL PASO											2	3	3	18	1	2	
FREMONT					1	3	2	4	14	13	22	14	11	2	8	2	2
GARFIELD	213	353	362	567	796	1,509	1,845	2,550	2,888	1,981	2,037	1,323	1,046	870	1,066	532	724
GRAND																	
GUNNISON			5	10	1	9	19	7	10	12	4	3	11	9	20	28	19
HUERFANO	41	27	27		8	2			7		2	1	9	1	13	2	
JACKSON	34	18	21	9	14	6	8	5	27	19	9	18	5	12	17	3	57
JEFFERSON	1						1	3	2					1			
KIOWA	11	18	2	4	2	1	11	9	26	7	16	17	17	12	5	3	
KIT CARSON				1	3	5	4	4	13	7	3	2	6	1	2		1
LA PLATA	127	156	104	162	102	115	235	251	328	298	191	99	71	32	87	106	96
LARIMER	2		1			1		5	46	12	41	8	13	2	4	28	4
LAS ANIMAS	268	400	259	180	332	413	500	362	303	88	92	85	11	2	1		
LINCOLN	2	2	1	6	3	4	1	2	58	44	48	31	36	87	129	24	5
LOGAN	4	7	3	3	6	13	17	14	5	9	17	8	27	4	5		1
MESA	13	27	30	27	54	136	265	293	501	427	306	127	150	105	74	126	7
MOFFAT	35	52	62	63	63	60	120	68	57	51	53	93	88	44	54	12	17
MONTEZUMA	4		5	8	8	11	5	12	22	39	19	27	29	14	25	3	3
MONTROSE	1	3	2	4	2		1	3	3		1	1					
MORGAN	9	9	2	7	9	7	3	6	2	1	6	13	5	16	6	4	28
OTERO																	
PARK										3	4	1					
PHILLIPS	1	2		7	13	17	12	69	82	45	64	112	56		11	2	
PITKIN					1			1									1
PROWERS	2	5	4		7	5	7	5	8	1	3	1			1		1
RIO BLANCO	89	187	105	179	154	161	360	321	477	348	441	109	117	167	121	107	71
RIO GRANDE	1	1		1					1	1			2		1		
ROUTT	20	13	1		4	6	9	8	4	2	3	10	4	12	4	9	
SAGUACHE	2		2					2	1	2							
SAN MIGUEL	11	13	27	18	42	45	35	23	20	13	10	2	1		2	3	
SEDGWICK				1	5	2	7	2	1	19	11	12	2		7	1	
WASHINGTON	23	17	27	34	128	50	69	45	11	1	6	12	6	19	12	9	7
WELD	509	702	760	757	832	901	1,418	1,527	2,340	1,448	2,152	2,262	1,826	2,468	2,303	1,841	1,704
YUMA	31	205	160	138	237	782	797	541	545	105	299	148	11	9	53	3	
TOTAL	1,529	2,273	2,008	2,249	2,917	4,364	5,904	6,368	8,027	5,159	5,996	4,659	3,773	4,025	4,190	2,987	2,835

ALL COUNTIES





Form 2A Breakdown By County By Year as of January 1, 2017

Year	County	Form 2As	Completed	In Process	New Location	CDP	SWH	RSO	CDPHE
2009	Total State	818	818	0	408	2	80	5	5
2010	Total State	2,377	2,377	0	1,543	0	317	22	55
2011	Total State	2,297	2,297	0	1,724	1	259	16	5
2012	Total State	1,297	1,297	0	900	0	167	6	1
2013	Total State	1,195	1,194	1	845	0	144	2	4
2014	Total State	1,067	1,065	1	777	3	129	7	3
2015	ADAMS	8	8	0	5	0	0	0	1
	ARAPAHOE	10	10	0	5	0	0	0	0
	ARCHULETA	5	5	0	2	0	4	0	1
	CHEYENNE	7	7	0	7	0	0	0	0
	ELBERT	3	3	0	3	0	0	0	0
	FREMONT	1	1	0	1	0	1	0	0
	GARFIELD	32	31	1	9	0	20	1	0
	GUNNISON	10	10	0	1	0	8	0	0
	HUERFANO	1	1	0	0	0	0	0	0
	JACKSON	7	7	0	4	0	7	1	0
	KIOWA	3	3	0	3	0	3	0	0
	LA PLATA	18	18	0	8	0	16	0	0
	LARIMER	3	3	0	1	0	0	0	0
	LINCOLN	26	26	0	25	0	0	0	0
	LOGAN	1	1	0	0	0	0	0	0
	MESA	12	11	1	8	0	6	0	0
	MOFFAT	9	9	0	5	0	9	0	0
	MONTEZUMA	3	3	0	3	0	0	0	0
	MORGAN	4	2	2	3	0	0	0	0
	PHILLIPS	2	2	0	2	0	0	0	0
	RIO BLANCO	13	13	0	8	0	13	0	0
	ROUTT	3	3	0	1	0	3	0	0
	SAN MIGUEL	2	2	0	2	0	2	0	0
	SEDGWICK	1	1	0	1	0	0	0	0
	WASHINGTON	15	15	0	13	0	0	0	0
	WELD	372	367	5	278	0	3	0	0
	YUMA	3	3	0	1	0	0	0	0
2015	Total State	574	565	9	399	0	95	2	2
2016	ADAMS	9	3	6	8	0	0	0	0
	ARAPAHOE	10	2	8	6	0	0	0	0
	DOLORES	1	1	0	1	0	0	0	0
	ELBERT	3	3	0	0	0	0	0	0
	FREMONT	1	0	1	0	0	1	0	0
	GARFIELD	26	24	2	4	0	13	3	2
	GUNNISON	6	5	1	1	0	2	1	0
	HUERFANO	1	0	1	1	0	1	0	0
	JACKSON	10	9	1	5	0	9	0	0
	KIT CARSON	1	1	0	1	0	0	0	0
	LA PLATA	3	1	2	0	0	3	0	1
	LARIMER	2	2	0	2	0	0	0	0
	LINCOLN	6	4	1	4	0	0	0	0
	LOGAN	2	1	1	0	0	0	0	0
	MESA	4	2	2	2	0	3	0	1
	MOFFAT	13	8	5	5	0	13	0	1
	MONTEZUMA	1	1	0	1	0	0	0	0
	MORGAN	1	1	0	1	0	0	0	0
	PROWERS	1	1	0	1	0	0	0	0
	ROUTT	1	1	0	0	0	1	0	0
	WASHINGTON	6	6	0	6	0	0	0	0
	WELD	275	189	86	181	0	3	0	2
2016	Total State	383	265	117	230	0	49	4	7

Abbreviations:

CDP = Comprehensive Drilling Plan SWH = Sensitive Wildlife Habitat consultation

RSO = Restricted Surface Occupancy consultation CDPHE= Colorado Department of Health and Environment consultation



Horizontal Well Activity as of January 1, 2017

County	2009		2010		2011		2012		2013		2014		2015		2016		Total		Completion		
	Drilled	PA	Permit	Spud	Permit	Spud	Permit	Spud	Permit	Spud	Permit	Spud	Permit	Spud	Permit	Spud	Spud	AC	PR	DA	PA
ADAMS			6	5	2	3	1	17	2	26	2	42	18	92	3	72	2	35	3	23	1
ARAPAHOE	2						10	22	4	11	13	22	11	9	5	1	32	2	30	1	
ARCHULETA	17		7	6	15	7	10	5	9	2	2	1	1	6	3	2	51	5	51		
BENT								1	1	1							1		1		
BOULDER							4										0				
CHEYENNE	5	4							7	2	1	1	1	1	1		9	1	1	5	
DELTA								6	1	1		2					3		3		
DOLORES	9		18	2	6	2		9	3	5	4	3	1				19		11	5	
EL PASO								10									0			1	
ELBERT								1									0				
FREMONT	7	6	6	6	12	5	3	4	1	1	1			1			18		10	7	
GARFIELD	10	2	1	1	16	2	18	6	43	6	18	4	20	11	7	4	47		37	1	
GUNNISON	1							3	2	2	2	9		18	2	10	6		4		
HUERFANO								4	1	1		2					1		1		
JACKSON	8	1	8	8	3	4	9	1	4	8	5	15	4	3	52	24	46		21	2	
KIOWA								1		4	2	1					2				
KIT CARSON	1							1		1	1						2		2	4	
LA PLATA	28	2	11	2	28	3	18	7	12	1	5	43	7	42	3	67	8	60	1	3	
LARIMER	3	2					5	1	2	1	2			22	8	4	18		11	2	
LAS ANIMAS	16	2	4	4	1	1											17		16		
LINCOLN			2	1	2	1	1			6		4	2				4		1	3	
LOGAN	2							1									2		2		
MESA	3	2	36	6	22	7	24	13	14	9	2	9	1	6	3		29		27	2	
MOFFAT	7	1	6	3	4	4	9	4	44	6	18	13	15	5	2	3	37		29	2	
MONTEZUMA	6	1	23	6	11	2	8	2	18	6	3	4	15	4	1	28	28		31	7	
MORGAN							6	2	2	1	13	1	6	4	1	28	5		5		
PARK							1	1	1								1				
RIO BLANCO	7	2					11	2	15	2	4	5	3	3			19		12	3	
ROUTT	10	6	1					1		1				3			10		1	6	
SAN MIGUEL	1						1										1		1	1	
WASHINGTON	1	1															1			1	
WELD	11	3	12	5	208	84	763	229	964	594	2,114	1,099	2,215	1,426	1,671	716	5,225		3,797	11	
YUMA	1	1	6														1		1		
TOTAL Horizontal	156	25	14	31	333	123	901	280	1,203	641	2,260	1,161	2,428	1,487	1,918	757	5,730	5	4,186	32	104
Percent of Total HZ																					
Total All Permits			5,159		5,996		4,659		3,773		4,025		4,190		2,835		2,988		2,835		2%
HZ Percent of Total			2.8%		5.6%		19.3%		31.9%		56.1%		57.9%		67.5%		67.7%		73%		1%



Well to Building Setbacks by Year and by County as of January 1, 2017

Count of well locations, grouped by proximity from well to buildings.

Location Proximity to Buildings	2009	2010	2011	2012	2013	2014	2015	2016	Percent of	
									Number of Locations	Total Locations
Less than 150 feet	2	3	3	2	0	3	2	0	15	0%
150 to 350 feet	37	58	61	39	34	38	12	15	294	3%
350 to 500 feet	50	110	97	61	64	48	33	23	486	6%
500 to 1000 feet	117	385	331	188	188	161	83	76	1,529	17%
1000 + feet	356	1,705	1,470	838	761	724	378	206	6,438	73%
TOTAL LOCATIONS	562	2,261	1,962	1,128	1,047	974	508	320	8,762	

County	TOTAL	Less than 150 feet	150 to 350 feet	350 to 500 feet	500 to 1000 feet	1000 + feet
ADAMS	82	0	4	9	22	48
ARAPAHOE	98	0	2	4	10	82
ARCHULETA	23	0	0	1	11	11
BACA	15	0	0	0	1	14
BENT	7	0	0	0	0	7
BOULDER	23	0	1	1	17	4
BROOMFIELD	33	0	0	4	13	16
CHEYENNE	140	1	0	0	2	137
CROWLEY	2	0	0	0	0	2
DELTA	7	0	0	2	1	4
DOLORES	20	0	0	0	7	13
EAGLE	1	0	0	0	0	1
EL PASO	14	0	0	0	3	11
ELBERT	14	0	0	0	3	11
FREMONT	40	0	2	7	8	23
GARFIELD	583	0	12	10	80	480
GUNNISON	47	1	0	4	1	41
HUERFANO	16	0	0	0	5	11
JACKSON	58	0	0	5	1	52
KIOWA	66	0	0	0	1	65
KIT CARSON	15	0	0	0	0	15
LA PLATA	136	0	6	14	46	70
LARIMER	41	0	5	5	15	16
LAS ANIMAS	201	1	6	7	37	150
LINCOLN	374	0	1	2	4	367
LOGAN	44	0	1	1	1	41
MESA	99	0	0	3	15	81
MOFFAT	186	0	1	2	16	167
MONTEZUMA	43	0	0	1	4	38
MONTROSE	2	0	0	0	0	2
MORGAN	31	0	0	2	4	25
PARK	4	0	0	0	0	4
PHILLIPS	275	1	4	6	21	243
PITKIN	1	0	0	0	0	1
PROWERS	6	0	0	0	0	6
RIO BLANCO	187	0	0	0	2	185
RIO GRANDE	2	0	0	0	1	1
ROUTT	30	0	0	0	2	28
SAN MIGUEL	14	0	0	0	0	14
SEDGWICK	33	0	0	1	3	29
WASHINGTON	79	0	2	0	3	74
WELD	5,141	11	238	379	1,125	3,388
YUMA	528	0	9	16	44	459



Well to Building Setbacks Less Than Two Hundred Feet as of January 1, 2017

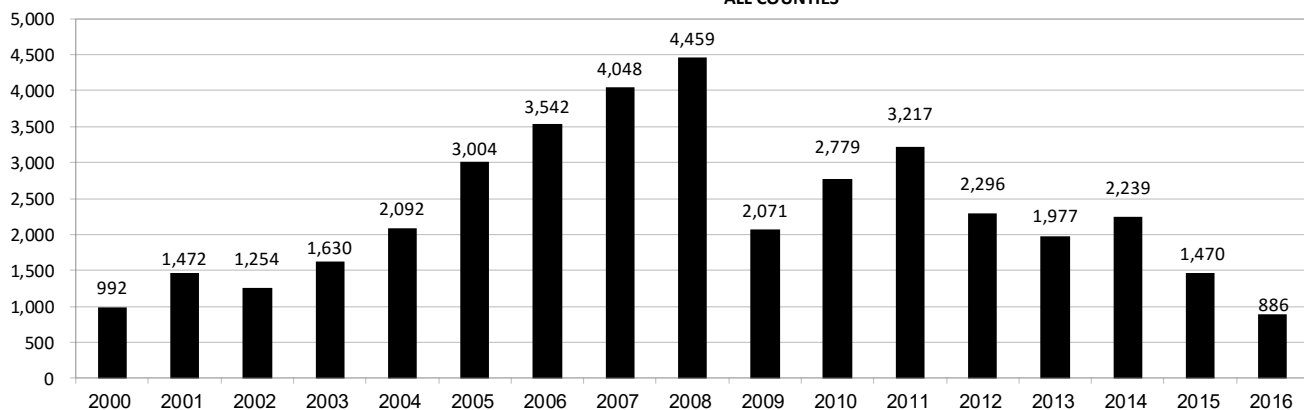
Year	Location Doc Number	County	High Density	New Location	Distance (Feet)	Proximity (Feet)	Building Description
2015	400768804	WELD	No	Yes	46	less 150	Building to be razed
2011	2587822	CHEYENNE	No	No	58	less 150	Water well house
2009	1691798	WELD	No	No	58	less 150	Vehicle garage
2010	400072164	WELD	No	Yes	69	less 150	Abandoned hog shed
2014	400569085	WELD	No	No	78	less 150	Well shed
2014	400600705	WELD	No	No	80	less 150	Livestock shed
2012	400240957	GUNNISON	No	Yes	90	less 150	Equipment shed
2015	400742811	WELD	No	Yes	102	less 150	Building to be razed
2009	1758843	WELD	No	Yes	103	less 150	Building to be razed
2011	1636646	WELD	No	No	122	less 150	Storage shed
2009	400011284	LAS ANIMAS	No	Yes	127	less 150	Operator is owner
2009	1786896	PHILLIPS	No	No	132	less 150	Grain storage
2014	400642113	WELD	No	Yes	142	less 150	Barn
2011	400117702	WELD	No	Yes	143	less 150	Irrigation pump house
2011	400227765	WELD	No	Yes	145	less 150	Storage barn
2014	400558626	LINCOLN	No	No	150	less 150	Gas plant equipment building
2009	1904205	WELD	No	No	154	150 to 350	Livestock enclosure
2012	400243295	WELD	No	Yes	155	150 to 350	Unused storage shed
2015	400862577	GARFIELD	No	No	155	150 to 350	Gravel pit scale house
2011	400179419	WELD	No	Yes	157	150 to 350	Existing well / storage building
2010	400054716	WELD	No	No	159	150 to 350	Equipment barn
2011	400188968	WELD	No	Yes	159	150 to 350	Abandoned
2014	400554054	WELD	No	Yes	159	150 to 350	Equipment shed
2014	400559404	WELD	No	Yes	160	150 to 350	Barn
2016	400950178	LA PLATA	No	Yes	162	150 to 350	Residence
2010	400021477	WELD	No	Yes	162	150 to 350	Goat barn
2009	1758386	WELD	No	Yes	168	150 to 350	Storage shed
2011	1635946	WELD	No	No	169	150 to 350	Storage shed
2013	400447386	WELD	No	No	169	150 to 350	Abandoned turkey barn
2013	400447391	WELD	No	No	169	150 to 350	Abandoned turkey barn
2011	400165164	WELD	No	Yes	178	150 to 350	Residence
2013	400367184	WELD	No	Yes	179	150 to 350	Shed
2011	400188780	WELD	No	Yes	180	150 to 350	Residence
2014	400562498	WELD	No	Yes	181	150 to 350	Garage / storage shed
2010	1697620	WELD	No	No	187	150 to 350	Livestock shed
2009	1758746	WELD	No	No	193	150 to 350	Storage shed
2011	400154431	WELD	No	Yes	198	150 to 350	Turkey barn
2012	400250031	WELD	No	Yes	198	150 to 350	Abandoned guard shack
2010	1774783	WELD	No	No	199	150 to 350	Cement service building
2011	400118102	YUMA	No	Yes	199	150 to 350	Steel barn



Annual Well Starts by County as of December 1, 2016

County	2000	2001	2002	2003	2004	2005	2006	2007	2008	2009	2010	2011	2012	2013	2014	2015	2016
ADAMS	18	13	4	19	22	24	13	41	14	14	21	1	15	6	29	3	2
ARAPAHOE					6	1	5	2	1	1	3	9	9	25	21		1
ARCHULETA	4	4	2	5	4	10	5	7	29	9	12	10	11		1	7	4
BACA	19	6	2	1	6	6	2	6	12		5	4	2	1			1
BENT	2				3	2	8	1	1			1	2				
BOULDER					2	5	11	9	14	25	16	13	7	14			
BROOMFIELD			2		1					10		21	11	5			
CHEYENNE	2	1	3	3		9	14	15	14	8	12	11	17	35	19	3	
COSTILLA																	
CROWLEY																2	
DELTA				5	4	6	5	2			9	2	3				
DENVER		2					7	5	4								
DOLORES					2		2	13	6	2		1	5	10	4		
EAGLE														1			
EL PASO											2		5		1		
ELBERT	2						1										3
FREMONT					1	3	2	2	5	3	9	16	9	2	4		1
GARFIELD	190	251	245	417	585	799	1,005	1,304	1,689	765	905	877	495	391	361	175	131
GUNNISON			1		1	1	9	5	1	4	5	2	4	1	2	4	1
HUERFANO	25	14	19	3	6	2			2		2		2	1	4	1	
JACKSON	24	2	4	10	10		3	3	12	1	8	7		7	7		24
JEFFERSON								2									
KIOWA	8	16	2	4	2	1	7	7	2	5	15	14	10	12	3	2	
KIT CARSON				1	1	6	2	1	14	3	1	1	3	1	2		
LA PLATA	99	135	118	110	103	104	108	179	199	131	67	54	3	10	40	38	39
LARIMER	1	1				1		4	8	1	28	2	10	4	1	9	3
LAS ANIMAS	202	286	205	221	296	384	413	326	222	14	7	78	1		1		
LINCOLN	2	2	1	5	2	2	1	2	18	11	14	21	23	41	41	12	2
LOGAN	4	6	3	3	2	11	12	12	3	7	3	9	13	4	6		
MESA	2	12	12	13	25	89	156	209	225	14	11	41	4	11	16	77	
MOFFAT	18	23	25	28	19	40	60	42	26	18	15	32	26	27	3	6	3
MONTEZUMA	2	3	5	5	1	7	2	4	22	10	3	8	18	12	8	1	
MONTROSE		3		2	1			1	2		1						
MORGAN	9	8	1	7	5	5	3	1	1	2	3	2	3	1	3	1	
PARK											2						
PHILLIPS	1			6	10	11	4	35	18	2	42	130	48		9		
PROWERS	2	4	4		5	5	6	3	5	2	3	1					1
RIO BLANCO	51	82	47	83	92	95	107	95	205	118	107	72	53	36	44	17	
RIO GRANDE														1			
ROUTT	5	12	1		1	6	3	2		2	1	2	4	2	2		
SAN MIGUEL	6	9	10	19	28	13	20	17	5	1	2	2			2		
SEDGWICK				1	2	1	1	5			3	8	3				
WASHINGTON	15	12	24	29	65	34	23	14	11	2	2	4	1	9	7	2	6
WELD	237	403	406	522	632	718	931	1,222	1,312	878	1,209	1,671	1,459	1,313	1,557	1,107	669
YUMA	42	162	108	106	144	597	593	445	336	27	213	106	16	13	39		
TOTAL	992	1,472	1,254	1,630	2,092	3,004	3,542	4,048	4,459	2,071	2,779	3,217	2,296	1,977	2,239	1,470	886

ALL COUNTIES





Active Wells by County and Status as of January 1, 2017

COUNTY	Drilling	Domestic	Injecting	Producing	Shut In	Temp Aband	Waiting on Completion	Active Storage	Total Active Wells
ADAMS	8		7	888	37	8	1	12	961
ARAPAHOE		1	2	141	7	10		44	205
ARCHULETA	1	5	1	109	12	12	6	1	147
BACA			16	114	11	4		56	201
BENT		1		30	6				37
BOULDER				309	1	1			311
BROOMFIELD				96					96
CHEYENNE			42	320	12	45	1		420
CROWLEY									0
DELTA				4	12		1		17
DENVER			1	45	2	1	3		52
DOLORES			2	35	1	1			39
EL PASO	1	1				1			3
ELBERT	1			69	2	1		1	74
FREMONT	1	3		62	6	6	2		80
GARFIELD	152	3	48	10,739	63	79	86	1	11,171
GUNNISON	3		2	33	6		4		48
HUERFANO			1	40	2	5			48
JACKSON	14		31	124	32				201
JEFFERSON				1	1		1	3	6
KIOWA	1		11	105	8	2	2		129
KIT CARSON		1	2	11		2			16
LA PLATA	4	7	29	3,158	77	18	3	30	3,326
LARIMER	4	2	19	199	22	17	1		264
LAS ANIMAS	1	4	13	2,772	10	107	12	19	2,938
LINCOLN	4	1	8	97	12	4			126
LOGAN	2		18	108	27	29		33	217
MESA	8	1	9	926	75	19	34	11	1,083
MOFFAT	3		9	482	42	35	5		576
MONTEZUMA		2	7	120	25	16			170
MONTROSE								1	1
MORGAN			20	89	80	35		81	305
OURAY		1				1			2
PARK									0
PHILLIPS			2	266	2	1	1		272
PITKIN								10	10
PROWERS				25	4	1			30
RIO BLANCO	18	3	297	2,327	143	93	8	2	2,891
ROUTT		2		32	6	4			44
SAN MIGUEL	1			110	11	8			130
SEDGWICK	2	1	1	13	3		2		22
WASHINGTON	5		23	406	18	7	3		462
WELD	774	1	55	21,912	145	91	45	5	23,028
YUMA	2	8	23	3,800	24	8	11	1	3,877
Totals	1,010	48	699	50,117	947	672	232	311	54,036



Monthly Statistics as of January 1, 2017

Page 1 of 2

YEAR and MONTH	Baker - Hughes Rig Count	Permits										Well Spud Notices	Active Drilling Permits	Active Wells	Public Visits			
		Drilling		Recompletion		Injection		Pits		Locations					Data	Office	Internet	
		Rcvd	Apvd	Rcvd	Apvd	Rcvd	Apvd	Rcvd	Apvd	Rcvd	Authz							
2011 TOTAL		4,709	4,659	325	320	44	32	190	192	2,382	2,267	3,218			187	1,294	1,337,865	
2012	JAN	73	372	258	26	21	3	0	11	5	142	129	243	5,217	46,958	12	106	112,686
	FEB	70	370	382	23	27	7	5	21	9	160	129	230	5,173	47,128	16	114	105,857
	MAR	66	292	347	21	14	2	2	17	24	133	172	293	5,132	47,263	26	138	111,746
	APR	66	410	235	16	24	5	5	9	2	137	106	241	4,785	47,377	12	108	107,627
	MAY	66	491	506	23	16	3	1	6	2	105	131	211	4,885	47,533	20	123	109,802
	JUN	69	326	377	11	19	8	6	5	8	110	89	147	5,136	47,860	11	111	108,849
	JUL	66	237	276	9	14	3	2	5	2	97	103	183	5,152	48,173	13	102	114,195
	AUG	62	313	288	6	9	6	4	23	5	83	97	178	5,031	49,153	11	112	110,908
	SEP	61	252	256	1	5	5	2	4	1	81	77	161	4,960	49,230	11	89	106,114
	OCT	62	326	265	9	3	7	6	2	19	94	82	162	5,009	49,236	8	105	108,833
	NOV	56	271	323	5	8	6	6	2	4	109	97	142	5,000	49,989	10	119	120,586
	DEC	57	322	260	4	8	8	5	9	3	122	81	105	5,081	50,067	9	78	107,240
2012 TOTAL		3,982	3,773	154	168	63	44	114	84	1,373	1,293	2,296			159	1,305	1,324,443	
2013	JAN	53	538	331	6	0	3	5	6	8	176	124	142	5,060	50,265	9	108	47,406
	FEB	56	260	455	10	5	2	3	4	11	91	141	139	5,250	50,372	7	102	40,649
	MAR	57	344	241	5	9	3	8	15	6	129	84	172	5,093	50,540	9	133	43,019
	APR	61	331	333	6	5	5	5	6	8	146	117	163	4,925	50,687	3	132	46,459
	MAY	61	350	342	8	6	6	6	10	7	106	142	162	5,110	50,810	3	123	45,215
	JUN	62	349	273	2	8	8	8	5	3	114	85	144	5,273	50,909	8	122	41,015
	JUL	68	864	304	11	4	9	2	9	5	218	91	160	5,070	51,091	7	154	45,558
	AUG	69	232	291	6	4	3	2	4	1	35	76	206	5,200	51,255	20	130	44,722
	SEP	69	212	362	9	5	10	9	3	19	56	109	164	5,185	51,407	5	105	41,256
	OCT	72	319	376	5	9	7	5	1	8	67	88	238	4,967	51,598	5	135	45,151
	NOV	69	346	353	4	13	7	4	2	27	67	85	163	5,141	51,711	12	119	38,903
	DEC	64	336	367	2	4	4	6	2	3	63	71	124	5,129	51,737	4	93	32,381
2013 TOTAL		4,481	4,028	74	72	67	63	67	106	1,268	1,213	1,977			92	1,456	511,734	
2014	JAN	62	278	232	3	2	3	4	14	8	90	43	171	4,926	51,840	1	90	46,150
	FEB	61	284	297	6	4	1	1	3	1	91	94	150	5,051	51,847	12	113	43,408
	MAR	62	367	329	4	6	7	1	6	6	110	88	183	4,997	51,952	16	140	46,620
	APR	63	276	317	2	3	2	5	8	3	89	99	172	4,897	52,060	11	188	45,558
	MAY	65	458	383	2	2	3	1	6	7	83	94	179	4,923	52,202	18	131	42,365
	JUN	67	429	377	3	0	6	7	5	2	134	92	223	4,924	52,337	10	156	42,518
	JUL	69	272	446	2	5	3	11	8	5	97	126	180	4,955	52,431	7	166	45,481
	AUG	73	376	259	4	3	4	4	3	4	111	87	220	5,060	52,582	8	145	42,431
	SEP	76	412	304	2	3	3	1	20	1	116	81	212	5,006	52,694	14	175	43,577
	OCT	76	459	371	3	2	9	2	4	6	93	109	190	4,827	52,785	19	138	46,030
	NOV	73	326	479	5	2	5	4	4	0	54	103	172	5,171	52,947	8	96	39,583
	DEC	69	286	397	1	2	2	7	1	2	45	99	187	5,236	53,054	6	144	37,964
2014 TOTAL		4,223	4,191	37	34	48	48	82	45	1,113	1,115	2,239			130	1,682	521,685	
2015	JAN	64	349	316	3	1	2	9	3	1	60	43	194	5,060	53,195	17	114	41,502
	FEB	49	324	161	3	2	5	6	9	0	73	28	114	4,750	53,309	4	117	38,245
	MAR	38	246	294	1	6	1	5	7	5	44	70	166	4,983	53,414	6	146	42,513
	APR	37	194	165	3	1	2	5	1	2	46	37	92	4,854	53,456	1	125	39,559
	MAY	39	324	190	1	4	2	6	8	0	41	44	108	4,632	53,535	5	113	unavailable
	JUN	38	327	281	4	1	0	5	2	1	52	49	142	4,726	53,608	5	138	unavailable
	JUL	38	373	250	4	2	2	1	0	0	57	48	121	4,663	53,706	7	145	26,975
	AUG	37	289	300	2	6	3	0	5	5	32	46	121	4,847	53,766	2	109	30,674
	SEP	33	242	312	3	1	1	7	0	3	59	49	100	4,953	53,806	4	146	31,642
	OCT	30	372	223	2	2	3	1	1	0	54	51	108	4,694	53,898	12	119	33,199
	NOV	31	190	254	6	2	4	3	1	0	21	49	117	4,765	53,719	7	105	29,112
	DEC	25	275	242	1	5	3	6	1	0	42	43	80	4,594	53,652	3	112	25,659
2015 TOTAL		3,505	2,988	33	33	28	54	38	17	581	557	1,463			73	1,489	339,080	
2016	JAN	22	250	126	1	0	3	5	0	0	34	9	68	4,528	53,698	2	118	30,105
	FEB	20	205	227	3	0	3	2	44	2	31	39	64	4,599	53,723	8	115	28,611
	MAR	17	268	268	0	0	2	2	5	0	34	36	70	4,530	53,710	3	132	30,902
	APR	17	185	224	0	1	3	4	0	0	24	39	61	4,511	53,774	4	113	27,914
	MAY	16	353	217	0	2	3	1	1	1	33	24	83	4,464	53,749	4	106	26,778
	JUN	16	315	233	0	0	2	3	2	1	38	30	58	4,456	53,651	2	80	27,284
	JUL	20	268	249	5	0	4	4	6	6	31	30	84	4,344	53,724	5	91	24,151
	AUG	21	141	150	1	3	5	3	2	0	33	23	85	4,436	53,740	1	106	29,192
	SEP	19	366	270	0	2	4	2	0	6	29	24	71	4,522	53,817	4	154	25,698
	OCT	19	334	297	6	1	6	3	1	0	42	29	92	4,601	53,903	1	135	25,893
	NOV	20	368	304	3	3	3	3	0	1	40	45	131	4,566	53,993	2	97	25,140
	DEC	26	342	267	1	4	7	5	1	2	48	25	104	4,477	54,036	5	92	23,449
2016 TOTAL		3,395	2,832	20	16	45	37	62	19	417	353	971			41	1,339	325,117	

Abbreviation Key:

Rcvd = Received, Apvd = Approved, Authz = Authorized



Oil and Gas Staff Report

January 30, 2017

25

Monthly Statistics as of January 1, 2017

Page 2 of 2

YEAR and MONTH	Well Oper Change	Operators		Bonds			Claim		Hearings		Enforcement			Remediation Projects		Inspections				
		New	Inactive	Release	Ind	Blntk	Replace	Ind	Blntk	Apps.	Orders	NOAVs	AOCs	OFVs	Cmplt	Spills	Rcvd	Comp	Wells	Locations
2011 TOTAL	6,743	33	31	79	44	43	4	4	403	349	230	10	19	247	527	726	536	12,394	-	
2012	JAN	1,044	3	3	7	5	1	1	0	70	72	18	1	-	27	35	68	23	998	970
	FEB	373	6	9	8	5	0	0	0	-	-	10	-	-	24	40	85	36	2,000	1,024
	MAR	375	4	1	7	3	9	0	0	44	38	19	-	-	23	38	63	61	2,202	1,146
	APR	473	4	2	10	3	2	0	0	80	59	11	-	-	19	35	26	99	1,700	929
	MAY	519	3	1	4	0	3	0	0	43	50	14	2	-	23	32	27	122	2,630	1,701
	JUN	1,263	3	4	3	3	4	0	0	-	-	5	-	-	35	39	46	98	1,435	1,091
	JUL	494	5	0	1	4	5	0	0	63	50	15	-	-	16	24	45	33	1,323	1,076
	AUG	293	6	5	2	8	0	1	0	67	54	24	3	2	21	28	127	33	1,904	1,432
	SEP	830	0	4	4	5	2	1	0	-	-	5	-	-	14	13	30	36	1,120	845
	OCT	485	1	2	9	1	0	0	0	30	36	6	1	-	13	44	116	37	1,397	1,017
	NOV	456	6	4	12	8	7	0	0	85	37	16	2	-	10	44	26	44	1,331	829
	DEC	941	6	2	3	1	0	0	0	-	-	14	-	-	19	30	31	19	1,031	610
2012 TOTAL	7,546	47	37	70	46	33	3	0	482	396	157	9	2	244	402	690	641	19,071	12,670	
2013	JAN	653	3	5	12	2	0	0	0	48	75	15	4	-	21	40	31	45	1,622	789
	FEB	289	4	2	6	3	2	0	0	41	35	11	2	-	15	30	42	90	1,044	615
	MAR	354	1	3	2	2	1	0	0	54	67	16	2	-	11	25	65	29	1,968	1,149
	APR	333	7	1	5	2	8	0	0	-	-	21	-	-	16	33	39	37	1,510	910
	MAY	346	2	1	3	0	0	0	0	46	50	22	6	-	13	31	41	60	2,621	1,576
	JUN	1,456	6	2	2	4	5	0	0	91	44	13	2	-	25	40	47	37	1,860	1,102
	JUL	1,009	4	1	2	2	0	0	0	96	70	25	3	-	21	47	50	22	2,298	1,338
	AUG	389	6	4	5	4	2	0	0	-	-	23	-	-	25	57	36	41	2,146	1,033
	SEP	277	4	1	6	1	0	0	0	101	51	7	2	-	16	60	43	51	1,536	703
	OCT	345	6	0	2	2	2	0	0	52	82	4	12	3	12	79	47	60	1,868	1,158
	NOV	442	2	0	2	2	0	0	0	-	-	30	-	-	12	51	31	34	2,401	1,613
	DEC	1,299	4	1	1	2	0	0	0	42	48	50	4	-	14	75	35	35	2,677	1,384
2013 TOTAL	7,192	49	21	48	26	20	0	0	571	522	237	37	3	201	568	507	541	23,551	13,370	
2014	JAN	1,971	6	3	3	2	0	0	0	57	46	25	2	-	8	68	46	28	3,243	1,597
	FEB	2,039	8	2	6	5	0	0	0	-	-	23	-	-	17	59	51	13	2,330	1,282
	MAR	493	2	3	1	5	0	0	0	97	75	29	10	-	22	63	66	31	1,822	1,298
	APR	312	5	3	6	4	1	0	0	74	64	17	8	1	20	57	47	59	2,651	1,715
	MAY	508	6	2	3	3	5	0	0	-	-	12	-	-	13	63	50	42	2,437	1,571
	JUN	1,008	5	3	7	4	1	0	1	95	90	14	6	1	16	74	44	50	3,209	1,717
	JUL	338	2	1	5	3	1	0	0	96	96	11	6	-	12	60	60	59	3,071	1,536
	AUG	452	6	2	2	3	0	0	0	-	-	8	-	-	31	56	32	58	2,788	1,682
	SEP	378	4	2	1	2	0	0	0	73	63	13	7	1	18	65	39	50	2,587	1,616
	OCT	887	8	2	0	2	0	1	0	80	75	12	3	1	13	74	78	36	3,886	1,914
	NOV	498	2	4	8	4	5	0	0	-	-	6	-	-	15	72	27	59	3,156	1,458
	DEC	1,414	1	1	0	2	0	0	0	126	89	9	1	-	58	75	56	17	3,028	1,596
2014 TOTAL	10,298	55	28	42	39	13	1	1	698	598	179	43	4	243	786	596	502	34,208	18,982	
2015	JAN	723	2	3	2	3	0	0	0	76	64	15	2	1	36	64	38	58	2,491	1,246
	FEB	555	5	2	2	3	1	0	0	-	-	10	-	-	22	44	34	64	2,667	1,382
	MAR	183	5	3	5	2	4	2	0	72	72	33	1	1	42	76	59	94	3,469	1,738
	APR	271	7	1	0	5	3	0	0	60	54	19	3	-	21	46	40	61	3,451	1,620
	MAY	436	8	0	0	2	3	0	0	89	54	10	10	2	25	46	56	41	2,869	1,422
	JUN	496	2	2	3	5	4	0	0	-	-	27	-	-	25	41	32	43	3,366	1,716
	JUL	396	3	3	0	5	1	0	0	123	140	5	13	1	32	67	52	28	3,445	1,774
	AUG	218	8	2	0	7	4	0	0	-	-	13	-	-	18	56	24	62	3,692	1,847
	SEP	267	6	5	1	7	4	0	2	112	78	25	11	-	30	41	44	40	2,887	1,528
	OCT	356	4	1	6	1	6	1	0	115	103	6	12	1	32	58	51	33	3,420	1,494
	NOV	97	2	3	5	0	0	0	1	-	-	6	-	-	15	38	47	40	3,348	1,666
	DEC	437	7	2	3	5	1	0	0	91	80	4	5	2	60	46	39	37	3,851	1,765
2015 TOTAL	4,435	59	27	27	45	31	3	3	738	645	173	57	8	358	623	516	601	38,956	19,198	
2016	JAN	508	2	1	0	5	5	0	0	76	66	4	7	1	29	51	44	36	3,184	1,551
	FEB	165	2	1	0	1	1	1	0	-	-	8	-	-	27	47	34	49	3,666	1,738
	MAR	1,032	6	4	2	2	2	1	1	62	57	3	7	1	19	42	50	45	3,020	1,647
	APR	236	3	3	2	7	4	0	0	34	32	6	4	2	20	40	48	90	4,041	2,112
	MAY	353	2	3	6	3	3	1	0	-	-	0	-	-	20	37	41	29	3,485	2,179
	JUN	175	6	3	3	4	1	1	1	67	65	3	6	2	20	36	40	77	4,098	2,329
	JUL	1,938	3	2	0	2	0	0	0	-	-	10	-	-	20	41	31	56	3,481	2,064
	AUG	118	3	3	3	2	1	1	1	71	43	20	4	-	20	51	38	38	4,067	2,286
	SEP	182	3	1	9	3	3	0	1	-	-	8	-	-	20	37	29	22	3,527	1,787
	OCT	171	1	3	7	5	1	0	0	96	74	23	7	1	21	40	32	36	3,325	1,809
	NOV	116	3	0	4	0	0	3	0	-	-	19	-	-	22	38	30	50	3,838	1,902
	DEC	2	4	4	1	7	2	1	1	67	60	3	8	-	23	53	28	72	2,651	1,282
2016 TOTAL	4,996	38	28	37	41	23	9	5	473	397	107	43	7	261	513	445				