



COLORADO

**Oil & Gas Conservation
Commission**

Department of Natural Resources

Staff Report

for March 20, 2017

Top Stories

◆ Flowline Audit Activity in 2016

The COGCC's flowline audit program assists operators in taking reasonable precautions to prevent flowline damage, preventing failures that cause spills and releases, identifying systematic flowline issues, and addressing issues of non-compliance. In 2016, the COGCC's newly formed Integrity Group conducted 24 audits, focusing on larger operators in the Denver Julesburg and Piceance Basins.

In each audit, operators provided information about their flowline integrity programs, which included flowline material and design, monitoring and maintenance including corrosion and cathodic protection, pressure testing procedures, and spill cleanup and repair procedures. Operators also described common issues they experienced in the field and mitigations they are implementing to reduce the number of spills.

The COGCC reviewed more than 3,800 flowline pressure tests associated with 2,760 wells. The 2016 audits also reviewed a full year of spill related data and determined that, based on the root causes reported by operators on submitted eForm 19s (Spill/Release Reports), corrosion caused 49 percent of the flowline-related spills, and natural force events like freezing caused 21 percent. Pipe, weld, or joint failures, incorrect operation, equipment failure, external damage, and excavation damage caused the remaining 30 percent of flowline spills.

In 2017, the COGCC's Priority Model, which is based upon factors such as population, equipment age, etc., is being used to select the flowlines for the year's audits. Mid-sized operators, those operating water floods, and those located in the Four Corners area are the focal points of 2017 audits. Some audits are conducted on site, while other audits are

reviewing the operator's digitally submitted documentation.

◆ State Regulators Release Assessment of Idaho's Oil and Gas Regulatory Program

COGCC Director Matt Lepore led a recent State Oil and Gas Regulatory Exchange (SOGRE) peer assessment in Idaho. In February, SOGRE presented the findings from the final assessment report to the Idaho Oil and Gas Conservation Commission and legislative committees in the Idaho House and Senate.

SOGRE is a joint venture between the Interstate Oil and Gas Compact Commission (IOGCC) and the Groundwater Protection Council (GWPC) that helps states continually improve state oil and gas regulatory programs by providing consultation and program assessment services targeted to state specific needs.

The SOGRE peer assessment offers state oil and gas agencies a unique opportunity to engage with technical, legal, and regulatory experts from across the country. Mike Paque, executive director of the GWPC, stated that SOGRE's efforts were "a living laboratory for developing sound oil and gas regulations and recognizing and addressing emerging issues in the oilfield."

◆ Produced Water NORM Study

The COGCC will soon start a new study with a familiar name: NORM, or naturally occurring radioactive materials. The purpose of the study is to characterize produced fluids (primarily produced water) for NORM content from geologic formations producing oil and gas throughout Colorado. The broad survey (Special Project 10048) complements the COGCC's 2014 "Analysis of Naturally Occurring Radioactive Materials in Drill Cuttings, Greater Wattenberg Field, Weld County," under Special Project 2136.



Both of these investigations are responsive to the October 2011 State Review of Oil and Natural Gas Environmental Regulations (STRONGER) review of COGCC rules. STRONGER recommended that the COGCC gather information on the occurrence and level of NORM in exploration and production (E&P) wastes in Colorado. Funding from one of the COGCC's line item budget appropriations will fund the investigation's analytical costs.

COGCC Environmental Staff will be collecting and analyzing produced water, hydraulic fracturing (HF) flow-back, and HF source waters in many areas of the state for NORM constituents such as uranium, thorium, and radium isotopes. The analytical data will help inform COGCC and other interested parties if oil and gas activities contribute to concentrations of NORM in produced fluids at or above levels of concern.

As an agency delegated to enforce groundwater standards and classifications adopted by the Water Quality Control Commission (WQCC), the COGCC will review thresholds such as those in Colorado Regulation No. 41 with respect to levels of NORM (if any) found in E&P waste.

This investigation may result in recommendations for additional studies focused on individual basins or geologic formations if NORM constituents are identified at levels of concern. COGCC Environmental Staff is developing a Sampling and Analysis Plan (SAP) which will guide field and laboratory processes for this study, and the COGCC has requested the cooperation of operators during the sample collection phase. Staff plans to complete the investigation by the end of the fiscal year, or June 30, 2017.

Compilation of the all available laboratory analyses and review of the data are scheduled for the fall of 2017 with production of a final report in the first quarter of 2018.

◆ Complaint Response in 2016

The COGCC implemented a new public complaint process in January 2015. Implementation began with a public complaints website, which includes guidance and a public complaint intake form. The use of an online intake form encourages written submittal of complaints and eliminates

duplicate complaint intake across COGCC staff members.

In September 2015, the COGCC implemented additional recommendations after hiring the complaint specialist. The process enhancements included the practice of closing all complaints in writing (via letter or email), attaching all complaint communication to the complaint, and maintaining a complaint hotline for questions and assistance.

The goal was to move the agency to a process that makes participation easier for Colorado residents while also streamlining the internal complaint intake and complaint resolution processes.

At the conclusion of the second quarter of FY 2016-17, 97.3 percent of complaints were received via the online tool, and 88.9 percent of citizen complaints were resolved within 90 days. Between the 2015 and 2016 calendar year, the number of complaints the COGCC received increased 6 percent, and the average resolution time decreased from 28.3 to 11.7 days.

In 2016, the COGCC received 414 complaints. The top complaint categories included noise (26.3 percent), odor/ air quality (21.0 percent), and lighting (5.1 percent). Recent data indicates that complaint volume will continue to increase. For January 2017, complaints are 44 percent above January 2016 numbers.

Further complaint process improvements for the upcoming year include a new digital complaint form and the development of information sheets on common complaint topics for the public.

◆ Gas Storage Workgroup Update

The COGCC is a participant in the States First Initiative, which is authoring "Underground Gas Storage Regulatory Considerations: A Guide for State and Federal Regulatory Agencies." When final, this guide will serve as a resource for regulatory agencies, but will not advocate for specific regulatory actions.

The States First Initiative is a state led program organized by the Interstate Oil and Gas Compact Commission (IOGCC) and the Ground Water Protection Council (GWPC). The States First

Initiative facilitates multi state collaboration and innovative regulatory solutions for states with oil and natural gas production or related issues.

◆ Updates from the Colorado PUC and US PHMSA

To discuss common regulatory issues, COGCC staff recently met with staff from the Colorado Public Utility Commission's (PUC's) Gas Safety Group and staff from the US Department of Transportation - Pipeline and Hazardous Material Safety Administration (PHMSA) at PHMSA offices in Lakewood. PHMSA is the federal pipeline and hazardous materials safety regulator. These two agencies shared information about the following five topics that touch Colorado oil and gas operations:

Excavation Damage Prevention

The PUC discussed the need for greater enforcement of excavator issues. Currently, excavators are regulated under C.R.S. Title 9 (Safety—Industrial and Commercial) and not Title 40 (Public Utilities). The PUC conducts most of its regulation under Title 40 at the present time.

PHMSA jurisdiction applies to both PHMSA and PUC regulated lines, including gas gathering and distribution lines. Last September, PHMSA issued a letter detailing deficiencies in Colorado's damage prevention program regulations and stated that PHMSA could begin enforcement on its own.

The two areas deemed insufficient in Colorado were prosecution and fines for excavation damage and the need for Colorado to mandate that 911 be called when damage to underground facilities occurred. In Colorado, calling 911 is a recommendation but not a requirement.

Gas Storage

PHMSA promulgated regulatory proposals for gas storage, and there are two issues related to the proposal. One involves intrastate versus interstate storage facility regulation, and the second involves determination of which facilities in Colorado fall under each category. The new administration wishes to review the proposed changes before additional actions are taken.

Belle Fourche Oil Spill in North Dakota

Last December, PHMSA issued a corrective action order requiring the Belle Fourche Bicentennial Pipeline System to be shut down and inspected after a significant oil spill near Belfield, North Dakota. Because horizontal directional drilling was used to install the line, the facility is considerably deeper than a trenched pipeline. Depths of 40 feet are common. Consequently, visual inspection techniques may not be as useful in this investigation.

In this incident, PHMSA considers the line to be a hybrid transmission/gathering line, and its investigation will continue in 2017. The investigation's current focus is on determining a root cause for the incident.

PHMSA Emergency Responder Program-Pipeline Emergency Response Guidelines (PERG)

PHMSA is sponsoring a pipeline safety and emergency response event on the Front Range this summer and seeks assistance with outreach to Colorado operators. Links to a recently developed emergency response app for both iPhone and Android can be found at this address:

<http://www.phmsa.dot.gov/hazmat/library/erg>

H₂S Regulations

PHMSA and the PUC require signage if H₂S concentrations are over 35 ppm.

◆ Local Government Liaison (LGL) Program Update

LGL Marc Morton provides valuable service, support, and outreach to inquiries and information requests from local governments, the public, operators, and other stakeholders interested in the regulation of oil and gas in Colorado. Marc also manages the Local Governmental Designee (LGD) training program and is available upon request to provide customized training to local governments.

If you represent a local government that has recently opted to participate in the voluntary LGD program, or are an LGD that is new to the role, it is highly recommended you contact Marc for an LGD training and orientation.



Local governments considering participation in the unique and valuable program are also welcomed to schedule a training or orientation session. LGD trainings and orientations offer information on the use of various tools available to the LGD to enhance their collaboration with COGCC. Trainings are customized but typically provide an overview of oil and gas exploration and production, an overview of the COGCC regulatory structure, an overview of the COGCC's well and location permitting processes, effective

LGD and public comment submittal on pending location and drilling permits, an overview of public participation opportunities, and hands on use of the COGCC website.

A list of the LGL outreach and public involvement activities conducted since the previous staff report is included in the latter half of the Public Outreach section below.

Public Outreach

➤ Outreach by Director and Other Staff

- On January 18, Quality Assurance Specialist Mike Leonard and Environmental Protection Specialist Bob Chesson gave an overview of the COGCC's Field Inspection and Environmental Units to the Aurora Oil and Gas Committee.
- On February 21, Director Matt Lepore participated in the Broomfield Community Forum on Oil and Gas Development at the request of the Broomfield City Council. Director Lepore addressed the audience of approximately 600 Broomfield citizens regarding the history of oil and gas development in Colorado; the COGCC's mission, make-up, and statutory authority; the Commission's regulatory regime; and spacing and pooling issues.
- From February 21 to 23, Integrity Engineer Ellice Hazard and Underground Injection Control (UIC) Lead Bob Koehler attended the Groundwater Protection Council's (GWPC's) Annual UIC Conference in Austin, Texas. The UIC Conference provides an opportunity for Local, State, and EPA regulators, GWPC staff, and industry representatives to discuss aspects of mutual interest regarding underground disposal and enhanced recovery wells. In conjunction with the EPA presentations GWPC pointed out that Federal funding of state UIC programs has not increased in any of the previous 10 years. Of interest to the conference was the news that Federal funding of state UIC programs has not increased in 10 years, and that several states modified regulations for Class II injection wells to increase seismic monitoring and limit injection, if necessary.
- From February 23 to 24, Director Lepore attended the Interstate Oil and Gas Compact Commission (IOGCC) sponsored Governor's Summit on Energy Security and Infrastructure. The Summit was hosted by Arkansas Governor Asa Hutchinson, who is the IOGCC's current Chair. Wyoming Governor Mead, Kentucky Governor Bevin, and Utah Governor Herbert, as well as a number of exceptional panelists. Director Lepore attended the Summit in his capacity as Second Vice-Chair of the IOGCC and as Colorado's Official Representative to the IOGCC.
- Between February 25 and 28, Director Lepore participated the Aspen Institute Series on Energy Governance, "A Policy Dialogue on Shale Development." Participants include members of academia, state oil and gas and environmental regulators, non-governmental entities, and industry representatives. The Policy Dialogue seeks to identify gaps in governance structures or practices around shale development and to propose practical means by which to bridge identified gaps.
- On March 1, Permit and Technical Services manager Jane Stanczyk attended the Professional Petroleum Data Management Association (PPDM) Symposium in Houston. She was invited to participate on a panel discussing the benefits and challenges of using PPDM's Well Identification Number Standard. There were three panels of experts, including oil and gas companies, oil and gas data vendors, and oil and gas regulatory agencies. The other panelist on the regulatory agencies panel was Joe Stasulli from the Texas Railroad Commission.
- From March 7 to 9, members of the COGCC Reclamation Staff attended the 2017 High Altitude Revegetation and Society for Ecological Restoration Conference. Reclamation Supervisor Dr. Denise Arthur moderated a technical session on invasive species.



- On March 8, Director Lepore, Permit and Technical Services Manager Stanczyk, and Hearings Manager Julie Murphy met with Boulder County attorneys and planning staff to discuss spacing and pooling issues, as well as procedures related to Rule 216, Comprehensive Drilling Plans.
 - On March 15, Director Lepore was a guest lecturer for Oil and Gas Law at the DU Sturm College of Law.
 - From March 20 to 24, UIC Lead Koehler will travel to Charleston, West Virginia to participate in the GWPC Peer Review Project. The Peer Review Project is a voluntary program where states request that their UIC programs be evaluated. The evaluation team consists of two UIC representatives from other states, an experienced USEPA staff or former staff member, and a GWPC facilitator. The team reviews written answers to questions, submits supplemental questions, visits the state for a day and a half interview, and compiles a summary report discussing program strengths and areas for improvement.
- **Outreach by LGLs**
- On January 19, Marc Morton coordinated the Southwest Colorado Gas and Oil Regulatory Team (GORT) meeting. COGCC Staff presenting information included Director Lepore, Environmental Manager Greg Deranleau, Field Inspection Unit Manager Margaret Ash, and Southwest Region Engineer Mark Weems.
 - On January 19, Marc Morton provided an LGD program overview to the San Miguel County LGD.
 - On February 1, Marc Morton travelled to Rangely and attended the presentation to operators provided by COGCC Northwest Region Engineer Craig Burger titled “Notice To Operators - Rule 912: Venting or Flaring Produced Natural Gas.”
 - On February 2, Marc Morton attended the monthly Garfield County Energy Advisory Board (EAB) meeting in Rifle.
 - On February 8, Marc Morton travelled to Brighton and provided an LGD orientation training to the Brighton LGD and staff.
 - On February 22, Marc Morton travelled to Parachute and provided an LGD orientation training to the LGD and staff of the Battlement Mesa Metropolitan District.
 - On February 28, Marc Morton travelled to Fort Morgan and provided an LGD orientation training to the Morgan County LGD and staff.
 - On March 1, Marc Morton travelled to Rifle and provided an LGD orientation training to the Rifle LGD and staff.
 - On March 2, Marc Morton travelled to Grand Junction and provided an LGD orientation training to the Mesa County LGD and staff. Marc also attended the monthly Garfield County Energy Advisory Board (EAB) meeting in Rifle that evening.
 - On March 9, Marc Morton attended a source water protection meeting in Denver sponsored by the Colorado Rural Water Association.

Regional Activities

➤ **Northwest Colorado**

◆ **Northwest Colorado Oil and Gas Forum**

Northwest Colorado Oil and Gas Forum (NWF) meetings in 2017 are scheduled for April 6, August 3, and December 7. The venues have not yet been confirmed, but all meetings will take place in Rifle.

Finalized NWF meeting information will be posted in future editions of the Staff Report and to the COGCC website approximately two to three weeks prior to each meeting.

Meeting information will also be emailed to those on the email distribution list. NWF meetings are open to the public, and public comment is held as part of each meeting. Past presentations (dating back to 2006) are available from

<http://cogcc.state.co.us/library.html#/forums>

All parties wishing to be placed on the next meeting agenda or added to the distribution list for announcements should contact Marc Morton at (303) 894-2100, ext. 5132 (direct), (720) 415-4959 (mobile), or by email:

marc.morton@state.co.us



◆ **Project Rulison**

The email for Project Rulison submittals is

DNR_rulison.submittal@state.co.us

◆ **Project Rio Blanco**

The email for Project Rio Blanco submittals is

DNR_rioblanco.submittal@state.co.us

➤ ***Southwest Colorado***

◆ **Fruitland Formation Outcrop Mitigation and Monitoring Projects**

South Fork Texas Creek Mitigation Site - La Plata County. Regularly scheduled operations and maintenance are being performed at the South Fork Texas Creek (SFTC) site by LTE, the COGCC's contractor. Since May 2009, the system has collected 19,745 Mcf of methane and generated 226,202 kWh of surplus electricity.

The results of Fruitland Outcrop monitoring efforts in 2015 were presented at the 2016 First Quarter GORT Meeting by LTE. The 2015 Fruitland Outcrop Monitoring Report has also been posted in the COGCC website library under the 3M project in the San Juan Basin at the following link:

http://cogcc.state.co.us/documents/library/AreaReports/SanJuanBasin/3m_project/2015%20FRUITLAND%20OUTCROP%20MONITORING%20REPORT_La_Plata.pdf

The 2015 4M Monitoring Report, prepared by Resource Hydrogeologic Services, has been posted in the COGCC website library under the 4M Project in the San Juan Basin at the following link:

http://cogcc.state.co.us/documents/library/AreaReports/SanJuanBasin/4m_project/FINAL%204M%20Project%20June%202016%20Monitoring%20Program%20Report.pdf

At all eleven 3M/4M monitoring well locations, the contractor replaced the 12V lead acid batteries during the summer and fall. The work included replacement of desiccants at each well during the spring or summer. The contractor replaced the lower transducer at the Beaver Creek monitoring well #1 in July. The cable for the upper transducer in this well was also replaced.

In October, the contractor replaced the cable for the lower transducer in the Wagon Gulch #2 monitoring well. In November, both the upper and lower transducers were replaced at the Fosset Gulch #1 monitoring well. As the monitoring well network ages, more system upgrades and maintenance are anticipated.

◆ **GORT Meetings**

Remaining GORT meetings in 2017 are scheduled for June 29 and October 12. These meetings will be held in Durango at the Durango Public Library (1900 E. 3rd Avenue in Durango) from 9:00 a.m. to 12:00 p.m.

GORT meeting agendas will be posted to the COGCC website approximately two to three weeks prior to each meeting, and emailed to those on the email distribution list. GORT meetings are open to the public, and public comment is held as part of each meeting.

All parties wishing to be placed on the next meeting agenda or added to the distribution list for announcements should contact Marc Morton at (303) 894-2100, ext. 5132 (direct), (720) 415-4959 (mobile), or by email:

marc.morton@state.co.us

Variations

◆ **Greenleaf Environmental Services LLC (Greenleaf)**

On February 3, the COGCC Director granted Greenleaf a Rule 502.b variance to Rule 603.a(1)

for the Greenleaf Disposal 1 Well (API #077-08255) in Mesa County. Rule 603.a.(1) states that "At the time of initial drilling, a Well shall be located not less than two hundred (200) feet from buildings, public roads, major above ground utility lines, or railroads." This well was a re-



entry of an existing well for conversion to a disposal well and is currently located 52 feet from the closest overhead power line.

Greenleaf arranged to have Grand Valley Power de-energize the line before moving in the drilling rig and commencing recompletion operations. After realizing that recompletion activities would require three weeks to complete, Greenleaf requested the 502.b variance so that the power line could be re-energized to allow power to the nearby disposal facility which was operating on generator power. The variance was granted with a condition of approval that the line would be de-energized when the rig is moved off the location.

order to leave access roads, well locations, and other equipment, as described below, in place for use on the Ranch. Red River Ranch is a privately held ranch that has full time staff managing it for reclamation, forest fire restoration, and improvement of wildlife habitat.

Well Location and Access Roads - The Locations and access roads will be retained in current conditions for use as prescribed fire breaks, game retrieval, staging of hunters, and temporary parking for Ranch trucks and equipment.

Water Gathering System - The water gathering system, used to move produced water from wells to treatment ponds, will be used to transfer water for firefighting, wildlife water, and irrigation.

Electrical System - The system wide buried electrical equipment will remain to provide electrical service between different parts of the Ranch.

API	Well Name	Form 4
05-071-08057	RRR 11-3	401003401
05-071-08572	RRR 11-4	401003950
05-071-09030	RRR 11-5	401025375
05-071-08620	RRR 11-6	401025425
05-071-09332	RRR 11-7	401004151
05-071-08055	RRR 13-1	401004554
05-071-08577	RRR 13-2	401026404
05-071-08691	RRR 14-1	401001247
05-071-08685	RRR 14-2	400985140
05-071-08578	RRR 14-3	401001775
05-071-09315	RRR 7-1	401003071
05-071-09316	RRR 8-1	401025070
05-071-09317	RRR 8-2	401025160
05-071-08955	RRR 17-2	401024757
05-071-08958	RRR 18-3	401006143
05-071-08966	RRR 18-6	401024742
05-071-08220	RRR 12-1	401010260
05-071-08219	RRR 13-4	401010290
05-071-08959	RRR 18-5	401009177

◆ **Red River Ranch Holdings LLC (RRRH)**

RRRH has been granted a surface owner variance on January 13 for 19 well locations located in Las Animas County (see table above). The variance request is from select parts of Rule 1004.a., in

◆ **Bill Barrett Corporation (BBC)**

BBC was granted a surface owner variance on January 26 from certain parts of Rules 1004.a.,c.,d and 1004.e at the Koskie 16H-28-38-16 Well (API #05-083-06656). The surface owner requested that a section of the access road remain and that road base, removed from the location, be relocated offsite for use by landowner in maintaining the road.

Final approval of the variance request was contingent upon successful final reclamation of the well pad and stabilization of the access road.

◆ **D.J Simmons Inc.**

DJ Simmons has been granted a surface owner variance for the Brewer Federal 1-17 Well (API #05-033-06070) from parts of Colorado’s Final Reclamation Rules. The surface owner requested that the well location remain flat and that the access road not be reclaimed to provide access for cattle grazing.

This variance included the following conditions of approval:



- Areas on the well pad that will not be re-contoured will be de-compacted and re-vegetated according to COGCC's Final Reclamation Rules.
- Berm placement along the eastern edge of the well pad is not allowed.
- No excess subsoil material or rocks from the BLM portion of the reclamation will be allowed on the surface of the pad. If topsoil is available, placement of the topsoil material is acceptable and recommended for use on the pad for re-vegetation.
- Equipment and materials from oil and gas development need to be removed from location including the power line along access road and gravel still present in the previous tank storage area.
- Wood debris not utilized during BLM reclamation activities are to be removed and properly disposed of.
- Location will need to pass a final reclamation inspection at a future date to verify that the location is stabilized with vegetation and weeds are controlled before the financial assurance is released.

◆ Pioneer Natural Resources USA Inc. (Pioneer)

Pioneer has been granted surface owner variances from certain final reclamation requirements for 12 locations located in Las Animas County.

Request #401150438, API #05-071-06637, Catfish 21-11

Pioneer was granted a variance from select requirements of Rule 1004.a. regarding re-contouring of the location. The landowner's intended use is for vehicle/hunting access and development of the property.

The following conditions of approval were applied to the variance:

- All corrective actions identified on a field inspection report must be performed by the corrective action date as a condition of approval for this variance until final reclamation is passed.

- Continue to monitor and manage the site for erosion and noxious weed control until final reclamation is passed.

Request #401150414, API #05-071-07054, Lorencito 12-12

Pioneer received a variance from select requirements of Rule 1004.a. regarding re-contouring of the Location and access road and from Rule 1004.c.(2) that requires 80 percent re-vegetation in area where gravel is to remain. The landowner's intended use is for vehicle and hunting access and development of the property.

The following conditions of approval were applied to the variance:

- Establish 80 percent of the reference area vegetation at the Location, except where identified gravel remains.
- Pioneer continue to monitor and manage the site for erosion and noxious weed control until final reclamation is passed.
- Corrective actions identified on a field inspection report must be performed by the corrective action date as a condition of approval for this variance until final reclamation is passed.

Request #401151352, API #05-071-07516, Valent Canyon 23-18

Pioneer was granted a variance from select requirements of rule 1004.a. and of 1004.c.(2), regarding re-contouring the access road, maintaining features of the access road, and the 80 percent re-vegetation standard on the access road.

The surface owner requested that the access road remain in place to provide access to their property. The fences and gates are to remain in place, and water bars will be installed along the road.

The following conditions of approval were applied to the variance:

- Establish adequate stormwater controls for long term stability and/or establish vegetation along the access road.
- All corrective actions identified on a field inspection report must be performed by the corrective action date

as a condition of approval for this variance until final reclamation is passed.

Request #401137806, API #05-071-06658, Lorencito 8-16-34-66

Pioneer was granted a variance from select requirements of Rule 1004.a. and of 1004.c.(2) regarding re-contouring the location and access road. The surface owner has signed a waiver to not re-contour the right of way or the Location. The access road and the well pad will be ripped and seeded and gravel will remain in place. A SCADA tower will remain at the Location. The landowner's intended use is for vehicle access and development of the property.

The following conditions of approval were applied to this variance:

- Disturbance associated with access or removal of the SCADA tower shall be fixed and reclaimed within the 1st growing season upon removal of the SCADA tower. Once the tower is removed any disturbance associated with the removal will need to be re-vegetated to at least 80 percent of pre-disturbance or reference area levels.
- Any current and all potential future corrective actions must be conducted by the correct date as a condition of approval for this variance until final reclamation is passed.

Variance Request #401123028, API #05-071-08392, Sidewinder 23-16

Pioneer was granted a variance from select requirements of Rule 1004.a. and of 1004.c.(2), regarding re-contouring the location and access road, maintaining features of the access road, and 80 percent re-vegetation of the access road.

The surface owner, the State Land Board (SLB), signed a waiver to not re-contour the right of way or the Location. The landowner's reason is that the access road and Location are beneficial and provide access to the property.

The following conditions of approval were applied to the variance:

- Fully establish adequate stormwater controls for long term stability and/or

establish vegetation along the access road.

- Continue to monitor and manage the site for erosion and noxious weed control until final reclamation is passed
- All corrective actions identified on a field inspection report must be performed by the corrective action date as a condition of approval for this variance until final reclamation is passed.

Request #401150973, API #05-071-08625, Shuffle-631S65W

Pioneer was granted from select requirements of Rule 1004.a. regarding re-contouring the Location. The surface owner, the SLB, has signed a waiver to not re-contour the access road or the Location. The access road was pre-existing and is the only access to the property. The landowner requests that the well pad be left flat.

The following conditions of approval were applied to the variance:

- Fully establish adequate stormwater controls for long term stability and/or establish vegetation along the access road.
- Continue to monitor and manage the site for erosion and noxious weed control until final reclamation is passed.

Variance #401137816, API #071-09033, Lorencito 8-29-34-66

Pioneer was granted a variance from select requirements of rule 1004.a. and of 1004.c.(2) regarding re-contouring the location and access road, maintaining features of the access road, and 80 percent re-vegetation of the access road. The surface owner has signed a waiver to not re-contour the right of way or the Location. Gravel is to be left in place on a small area at the beginning of the Location per the agreements. The landowner's intended use of this area is specified for vehicle access and development of the property.

The following conditions of approval were applied to the variance:

- Establish 80 percent of pre-disturbance or reference area vegetation on the



Location except where gravel was left for a turnaround.

- Maintain the access road per agreement with landowner until August 8, 2018 or until final reclamation is passed, whichever is later.
- Continue to monitor and manage the site for erosion and noxious weed control until final reclamation per this variance is fully achieved.
- Potential future corrective actions must be conducted by the correct date as a condition of approval for this variance until final reclamation is passed.

Request #401137837, API #05-071-08512, Lorencito 12-1-34-67 S

Pioneer was granted a variance from select requirements of rule 1004.a. Gravel is to be left in place, Best Management Practices (BMPs) added along the access road, and the well pad will be ripped and seeded. The landowner's intended use of this area is specified for vehicle access and development of the property.

The following conditions of approval were applied to the variance:

- Establish 80 percent of pre-disturbance or reference area vegetation on the location, except where gravel was left for a turnaround.
- Continue to monitor and manage the site for erosion and noxious weed control until final reclamation is fully achieved.
- Any and all potential future corrective actions must be conducted by the correction date as a condition of approval for this variance until the site has passed final reclamation.

Request #401138023, API #05-071-09373, Montoya 12-1R

Pioneer was granted a variance from select requirements of Rule 1004.a. and of 1004.c.(2), regarding re-contouring the Location and leaving gravel the in place. The surface owner has signed a waiver to not re-contour the right of way or the location. The landowner's intended use of this area is for vehicle access and development of the property.

The following conditions of approval were applied to the variance:

- Continue to monitor and manage the site for erosion and noxious weed control until final reclamation is fully achieved.
- Corrective actions must be conducted by the correct date as a condition of approval for this variance.

Request #401103361, API #05-071-06695, Bighorn Sheep 14-11

Pioneer was granted a variance from select requirements of Rule 1004.a., 1004.c.(2) regarding not re-contouring the location to leave gravel in place.

The landowner's intended use of this area is specified for hunting access, development, or other purposes. Currently, Pioneer has a SCADA tower at the location. The SCADA tower will remain while in use but once it is removed, the Location and access road will be ripped and seeded.

The following conditions of approval were applied to the variance:

- A variance for parts of Rule 1004.c.(2) was requested due to the presence of gravel however, there was no gravel noticed at the Location or access road during inspection. In order to stabilize the site for long-term stormwater control, the entire Location and access road must establish a uniform vegetation cover of at least 80 percent of pre-disturbance or reference area levels.
- Disturbance associated with access or removal of the SCADA tower shall be reclaimed within the first growing season upon removal of the tower. The disturbed area will need to be re-vegetated to at least 80 percent of pre-disturbance or reference area levels.

Request #401103914, API #05-071-09042, Lorencito 3-19-34-66

Pioneer was granted a variance from select requirements of rule 1004.a. regarding final reclamation requirements. The surface owner has signed a waiver to not re-contour the right of way or the Location and to leave the gravel as is.



The well pad is to be ripped and seeded. Any erosion will be fixed and the culverts cleaned out. The landowner's intended use of this area is specified for hunting access, development, or other purposes.

The following condition of approval was applied to the variance:

- Conduct long-term noxious weed control practices during the next growing season.

Request #401077359, API #05-071-06838, Jumping Cow 42-28

Pioneer was granted a variance from select requirements of Rule 1004.a. The surface owner has signed a waiver to not re-contour the right of way or the Location. The landowner's intended use of this area is specified for hunting access and a camp site.

The following conditions of approval were applied to the variance:

- Fully establish adequate stormwater controls for long term stability and/or establish vegetation along the access road.
- Continue to monitor and manage the site for stabilization until final reclamation is fully achieved.

◆ **Nighthawk Production LLC**

Nighthawk was granted a surface owner waiver of select requirements of Rule 1004.a. for the Craig 12-28 Well (API #05-073-06368) to not reclaim the access road or to remove the cattle guard. The landowner uses the road to access the property.

◆ **Synergy Resource Corporation**

Synergy Resources Corporation received a variance from Rule 210 regarding the official name to be represented on required signs. Synergy will be officially changing its name to SRC Energy Inc.

The official name change will occur in July 2017, and Synergy requested that that for newly drilled wells and acquisitions, signs will read Synergy Resources Corporation d/b/a SRC Energy Inc., on all permanent signs including wellheads and tank batteries.

Other required information, including well name, emergency phone numbers, and operator contact will remain unchanged. After July 31, 2017, Synergy will only list its new legal entity name on permanent signs.

Admin / Organization / Other

◆ **New Permit/Completion Tech**

Please welcome Cristi Bauer to the COGCC Permitting team. In February, she filled a vacancy in one of our Permit/Completion Tech positions.

Cristi has been with the COGCC since September 2016, serving as a temporary employee responsible for completeness reviews for Forms 2 and 2A. During one four day period recently, the COGCC received 290 applications, and yet Cristi is still smiling!

Cristi has 10 years of industry experience as an engineering technician and regulatory analyst.

COGCC organizational charts can be found on pages 19-22.

For contact information, please go to our homepage, find the "About Us" menu, and select "Contact Us."

◆ **Plugging and Reclaiming Orphaned Wells (PROW) - Project Updates**

The **Benchmark BOND NW Graylin D-Sand Unit #20W Plug and Abandon Project** is in the "distressed operator" section of the PROW Program (Order 1V-564). The location is in Logan County, approximately nine miles northwest of Sterling.



The COGCC plugged the well in January, and remaining project work includes abandoning the flowlines and removing equipment from the location. Staff continues to evaluate plugging and abandonment priorities for other wells in the NW Graylin Field.

The **Pagoda Plug and Abandon Project** is located approximately 14 miles southeast of Craig, near the Moffat and Routt county line, and includes two previously plugged wells. The landowner is improving and developing the east fork of the Williams Fork River habitat on his property and has requested that the COGCC cut off the existing above ground vertical PA markers. This project may be delayed until next summer or fall because of, one, scheduling conflicts with the landowner, and two, winter conditions.

The **Cache Unit #8 Plug and Abandon Project** is in the “distressed operator” section of the PROW Program (Order 1V-577). This location is in Montezuma County, approximately 26 miles west-southwest of Cortez.

The COGCC plugged the well in December, and remaining work includes abandoning both the injection line and the old oil flow line, removing the existing rig anchors, re-grading portions of the access road, and cleaning out a cattle guard. The COGCC is waiting on contractor availability to schedule the work.

The **Lloyd & Lowell #1 Plug and Abandon Project** is located about two miles west of DeBeque in Mesa County. This well was drilled in 1914 to a total depth of 3,045 feet. However, casing and cement records are not available. The well is currently discharging water and natural gas with a dark tar like material in place near the well. The volume of water flowing from the well over many years has created its own artificially irrigated wetlands, making access to the well very difficult.

Water analysis indicates 1,100 milligrams per liter total dissolved solids and 110 micrograms per liter of benzene. Downhole camera work was attempted, but a wooden plug was observed in the casing near surface. This project has been sent out to bid. A pre-bid meeting with contractors and the landowner was conducted on February 27. The contract has been set up to complete plugging and abandoning between

March 27 and May 22. Timing of the project may be delayed while working with the U.S. Army Corps of Engineers through wetland permitting requirements.

The **State #1-36 Plug and Abandon Project** is located approximately 6 miles east-southeast of Cortez in Montezuma County. The well was drilled in 1982 to a total depth of 500 feet in the Dakota Formation and had a show of natural gas but no economic production. The well has six inch outside diameter open casing rising four feet above ground with the well identification in raised welded beading on the casing. There is no surface plug, and it appears that the operator may have left the well for fresh water purposes. The work is scheduled for spring 2017.

The **Wolcott #1 Plug and Abandon Project** is a former domestic gas well located approximately 2 miles west of Mancos in Montezuma County. The well was drilled in 1981 to a total depth of 234 feet in the Dakota Formation and had a show of oil, but no economic production. The well has seven inch outside diameter open casing that is buckled at the surface. The well is discharging water to surface. The work is scheduled for spring 2017.

The **Doerfer #1-5 and Doerfer #2 Plug and Abandon Project** is in the “distressed operator” section of the PROW Program (Order 1V-586). Both wells are located approximately 3 miles south of Mancos. The Doerfer #1-5 well was drilled in 2009 to a total depth of 1,345 feet, and the Doerfer #2 well was drilled in 1979 to a total depth of 1,310 feet, with both wells terminating in the Dakota Formation. Both wells produced oil at a rate of three to four barrels of oil per day prior to being shut in. The work will be scheduled at a future date.

The **Ranchers BOND Retta J #1 Reclamation Project** is located in Larimer County, near the City of Windsor. The COGCC claimed the Ranchers Exploration bond through Order 1V-526. The site is complicated by the fact that the well was drilled on a closed Johnston Landfill, which ceased its business operations in 1982.

The Colorado Department of Public Health and the Environment (CDPHE) landfill closure plan does not allow any disturbance to the landfill area. Disturbance occurred during the well pad



construction and during the drilling operations. The COGCC required the drilling operation to end early in the drilling operations process and prohibited further oil and gas operations on the location.

The well was plugged and abandoned by the operator in April 2012, but the operator failed to implement adequate stormwater BMPs and reclaim the well site. The COGCC and CDPHE are working together to close the location since there is a landfill component and an oil and gas component.

The first phase of and soil sampling and reclamation design work was completed June 30, 2016. Additional design work is planned for spring 2017 with the goal of developing a plan to close the landfill and reclaim the location. Field work will be rescheduled for fall 2017.

Page 23 and 24 contain a spreadsheet listing PROW projects that are either planned, in progress, or completed as of March 9, 2017.

◆ **Interested Parties Notifications**

Chris Glade Oil & Gas LLC

BY ORDER OF THE COLORADO OIL AND GAS CONSERVATION COMMISSION

ORDER NO. 1V-556

TO ALL INTERESTED PARTIES AND TO WHOM IT MAY CONCERN:

Pursuant to Section 34-60-124 of the Colorado Revised Statutes and Order No. 1V-556 of the Colorado Oil and Gas Conservation Commission (“Commission”):

The Commission has revoked the rights of Chris Glade Oil & Gas LLC (“Glade”) (Operator No. 10378) to conduct oil and gas operations in Colorado, including transporting oil and gas to market.

The Commission has commenced activities to investigate, prevent, monitor, or mitigate conditions that threaten to cause, or that actually cause, significant adverse environmental impacts at oil and gas locations formerly

operated by Glade. These activities may include the plugging and abandonment of wells.

The Commission’s actions may impact the following properties, located in Rio Blanco County, Colorado:

1. Sections 4 and 6, Township 2 North, Range 103 West, 6th P.M.
2. Sections 36, Township 3 North, Range 104 West, 6th P.M.

Additional information regarding these properties can be found here: <http://cogccintranet/reg.html#/enforcement/orphans>

ANY PARTY WHO CLAIMS AN INTEREST IN THIS EQUIPMENT, SALEABLE PRODUCTS, APPURTENANCES, OR IN THE PLUGGING OF THESE WELLS MUST CONTACT THE COMMISSION’S ENFORCEMENT SUPERVISOR IMMEDIATELY, by: phone - (303) 894-2100; email - dnr_cogccenforcement@state.co.us; or mail - Colorado Oil and Gas Conservation Commission, Attn: Enforcement Supervisor, 1120 Lincoln Street, Suite 801, Denver, Colorado 80203.

Monument Global Resources Inc.

BY ORDER OF THE COLORADO OIL AND GAS CONSERVATION COMMISSION

ORDER NO. 1V-600

TO ALL INTERESTED PARTIES AND TO WHOM IT MAY CONCERN:

Pursuant to Section 34-60-124 of the Colorado Revised Statutes and Order No. 1V-600 of the Colorado Oil and Gas Conservation Commission (“Commission”):

The Commission has claimed all equipment, saleable product, and appurtenances related to the oil and gas operations of Monument Global Resources Inc. (“Monument”) (Operator No. 10430).

The Commission has revoked Monument’s right to conduct oil and gas operations in Colorado, including transporting oil and gas to market.

The Commission has commenced activities to investigate, prevent, monitor, or mitigate conditions that threaten to cause, or that actually cause, significant adverse environmental



impacts at oil and gas locations formerly operated by Monument. These activities may include the plugging and abandonment of wells.

The Commission's actions may impact the following properties, located in Montezuma County, Colorado:

1. Sections 1, 2 and 3, Township 34 North, Range 20 West, N.M. P.M.
2. Sections 34 and 35, Township 35 North, Range 20 West, N.M. P.M.

Additional information regarding these properties can be found here: <http://cogcc.state.co.us/reg.html#/enforcement/orphans>

ANY PARTY WHO CLAIMS AN INTEREST IN THIS EQUIPMENT, SALEABLE PRODUCTS, APPURTENANCES, OR IN THE PLUGGING OF THESE WELLS MUST CONTACT THE COMMISSION'S ENFORCEMENT SUPERVISOR IMMEDIATELY, by: phone - (303) 894-2100; email - dnr_cogccenforcement@state.co.us; or mail - Colorado Oil and Gas Conservation Commission, Attn: Enforcement Supervisor, 1120 Lincoln Street, Suite 801, Denver, Colorado 80203.

Cliff J. Nolte, LLC

BY ORDER OF THE COLORADO OIL AND GAS CONSERVATION COMMISSION

ORDER NO. 1V-582

TO ALL INTERESTED PARTIES AND TO WHOM IT MAY CONCERN:

Pursuant to Section 34-60-124 of the Colorado Revised Statutes and Order No. 1V-582 of the Colorado Oil and Gas Conservation Commission ("Commission"):

The Commission has claimed all equipment, saleable product, and appurtenances related to the oil and gas operations of Cliff J. Nolte, LLC ("Nolte") (Operator No. 10357).

The Commission has revoked Nolte's right to conduct oil and gas operations in Colorado, including transporting oil and gas to market.

The Commission has commenced activities to investigate, prevent, monitor, or mitigate conditions that threaten to cause, or that

actually cause, significant adverse environmental impacts at oil and gas locations formerly operated by Nolte. These activities may include the plugging and abandonment of wells.

The Commission's actions may impact the following properties, located in Lincoln County, Colorado:

1. Section 22, Township 12 South, Range 52 West, 6th P.M.

Additional information regarding these properties can be found here: <http://cogccintranet/reg.html#/enforcement/orphans>

ANY PARTY WHO CLAIMS AN INTEREST IN THIS EQUIPMENT, SALEABLE PRODUCTS, APPURTENANCES, OR IN THE PLUGGING OF THESE WELLS MUST CONTACT THE COMMISSION'S ENFORCEMENT SUPERVISOR IMMEDIATELY, by: phone - (303) 894-2100; email - dnr_cogccenforcement@state.co.us; or mail - Colorado Oil and Gas Conservation Commission, Attn: Enforcement Supervisor, 1120 Lincoln Street, Suite 801, Denver, Colorado 80203.

P&M Petroleum Management LLC

BY ORDER OF THE COLORADO OIL AND GAS CONSERVATION COMMISSION

ORDER NO. 1V-520

TO ALL INTERESTED PARTIES AND TO WHOM IT MAY CONCERN:

Pursuant to Section 34-60-124 of the Colorado Revised Statutes and Order No. 1V-520 of the Colorado Oil and Gas Conservation Commission ("Commission"):

The Commission has claimed all equipment, saleable product, and appurtenances related to the oil and gas operations of P&M Petroleum Management LLC ("P&M") (Operator No. 66565).

The Commission has revoked P&M's right to conduct oil and gas operations in Colorado, including transporting oil and gas to market.

The Commission has commenced activities to investigate, prevent, monitor, or mitigate conditions that threaten to cause, or that actually cause, significant adverse environmental



impacts at oil and gas locations formerly operated by P&M. These activities may include the plugging and abandonment of wells.

The Commission's actions may impact the following properties:

Adams County, Colorado:

1. Section 18, Township 1 South, Range 63 West, 6th P.M.
2. Section 22, Township 1 South, Range 67 West, 6th P.M.
3. Section 35, Township 2 South, Range 58 West, 6th P.M.

Arapahoe County, Colorado:

1. Section 31, Township 4 South, Range 63 West, 6th P.M.

Baca County, Colorado:

1. Section 10, Township 34 South, Range 41 West, 6th P.M.
2. Sections 19 and 30, Township 31 South, Range 41 West, 6th P.M.

Jackson County, Colorado:

1. Section 27, Township 10 North, Range 79 West, 6th P.M.

La Plata County, Colorado:

1. Section 5, Township 33 North, Range 8 West, N.M. P.M.

Logan County, Colorado:

1. Section 14, Township 9 North, Range 54 West, 6th P.M.
2. Section 16, Township 6 North, Range 52 West, 6th P.M.
3. Section 23, Township 11 North, Range 55 West, 6th P.M.
4. Section 31, Township 10 North, Range 53 West, 6th P.M.

Mesa County, Colorado:

1. Section 8, Township 10 South, Range 97 West, 6th P.M.

Moffat County, Colorado:

1. Section 17, Township 12 North, Range 98 West, 6th P.M.

2. Section 27, Township 9 North, Range 96 West, 6th P.M.

Montezuma County, Colorado:

1. Section 4, Township 38 North, Range 19 West, N.M. P.M.

Morgan County, Colorado:

1. Section 6, Township 1 North, Range 58 West, 6th P.M.
2. Section 11, Township 1 North, Range 59 West, 6th P.M.
3. Section 25, Township 2 North, Range 59 West, 6th P.M.
4. Section 21, Township 3 North, Range 58 West, 6th P.M.

Routt County, Colorado:

1. Sections 15 and 21, Township 4 North, Range 86 West, 6th P.M.

Washington County, Colorado:

1. Section 30, Township 2 South, Range 49 West, 6th P.M.

Weld County, Colorado:

1. Section 2, Township 1 North, Range 63 West, 6th P.M.
2. Section 19, Township 2 North, Range 62 West, 6th P.M.
3. Sections 16 and 35, Township 2 North, Range 63 West, 6th P.M.
4. Section 18, Township 9 North, Range 56 West, 6th P.M.

Additional information regarding these properties can be found here: <http://cogcc.state.co.us/reg.html#/enforcement/orphans>

ANY PARTY WHO CLAIMS AN INTEREST IN THIS EQUIPMENT, SALEABLE PRODUCTS, APPURTENANCES, OR IN THE PLUGGING OF THESE WELLS MUST CONTACT THE COMMISSION'S ENFORCEMENT SUPERVISOR IMMEDIATELY, by: phone - (303) 894-2100; email - dnr_cogccenforcement@state.co.us; or mail - Colorado Oil and Gas Conservation Commission, Attn: Enforcement Supervisor, 1120 Lincoln Street, Suite 801, Denver, Colorado 80203.



Premier Oil & Gas Inc.

BY ORDER OF THE COLORADO OIL AND GAS CONSERVATION COMMISSION

ORDER NO. 1V-592

TO ALL INTERESTED PARTIES AND TO WHOM IT MAY CONCERN:

Pursuant to Section 34-60-124 of the Colorado Revised Statutes and Order No. 1V-592 of the Colorado Oil and Gas Conservation Commission ("Commission"):

The Commission has claimed all equipment, saleable product, and appurtenances related to the oil and gas operations of Premier Oil & Gas Inc. (Operator No. 10236) ("Premier"). The Commission has revoked Premier's right to conduct oil and gas operations in Colorado, including transporting oil and gas to market.

The Commission has commenced activities to investigate, prevent, monitor, or mitigate conditions that threaten to cause, or that actually cause, significant adverse environmental impacts at oil and gas locations formerly operated by Premier. These activities may include the plugging and abandonment of wells.

The Commission's actions may impact the following properties, located in Jefferson County, Colorado:

1. Section 9, Township 2 South, Range 70 West, 6th P.M.

Additional information regarding these properties can be found here: <http://cogcc.state.co.us/reg.html#/enforcement/orphans>

ANY PARTY WHO CLAIMS AN INTEREST IN THIS EQUIPMENT, SALEABLE PRODUCTS, APPURTENANCES, OR IN THE PLUGGING OF THESE WELLS MUST CONTACT THE COMMISSION'S ENFORCEMENT SUPERVISOR IMMEDIATELY, by: phone - (303) 894-2100; email - dnr_cogccenforcement@state.co.us; or mail - Colorado Oil and Gas Conservation Commission, Attn: Enforcement Supervisor, 1120 Lincoln Street, Suite 801, Denver, Colorado 80203.

Ranchers Exploration Partners LLC

BY ORDER OF THE COLORADO OIL AND GAS CONSERVATION COMMISSION

ORDER NO. 1V-526

TO ALL INTERESTED PARTIES AND TO WHOM IT MAY CONCERN:

Pursuant to Section 34-60-124 of the Colorado Revised Statutes and Order No. 1V-526 of the Colorado Oil and Gas Conservation Commission ("Commission"):

The Commission has claimed all equipment, saleable product, and appurtenances related to the oil and gas operations of Ranchers Exploration Partners LLC ("Ranchers") (Operator No.10350). The Commission has revoked Ranchers' right to conduct oil and gas operations in Colorado, including transporting oil and gas to market.

The Commission has commenced activities to investigate, prevent, monitor, or mitigate conditions that threaten to cause, or that actually cause, significant adverse environmental impacts at oil and gas locations formerly operated by Ranchers. These activities may include the plugging and abandonment of wells.

The Commission's actions may impact the following properties, located in Weld County, Colorado:

1. Section 30, Township 3 North, Range 66 West, 6th P.M.
2. Section 24, Township 6 North, Range 68 West, 6th P.M.

Additional information regarding these properties can be found here: <http://cogcc.state.co.us/reg.html#/enforcement/orphans>

ANY PARTY WHO CLAIMS AN INTEREST IN THIS EQUIPMENT, SALEABLE PRODUCTS, APPURTENANCES, OR IN THE PLUGGING OF THESE WELLS MUST CONTACT THE COMMISSION'S ENFORCEMENT SUPERVISOR IMMEDIATELY, by: phone - (303) 894-2100; email - dnr_cogccenforcement@state.co.us; or mail - Colorado Oil and Gas Conservation Commission, Attn: Enforcement Supervisor, 1120 Lincoln Street, Suite 801, Denver, Colorado 80203.



Red Mesa Holdings/O&G LLC

BY ORDER OF THE COLORADO OIL AND GAS CONSERVATION COMMISSION

ORDER NO. 1V-508

TO ALL INTERESTED PARTIES AND TO WHOM IT MAY CONCERN:

Pursuant to Section 34-60-124 of the Colorado Revised Statutes and Order No. 1V-508 of the Colorado Oil and Gas Conservation Commission (“Commission”):

The Commission has commenced activities to investigate, prevent, monitor, or mitigate conditions that threaten to cause, or that actually cause, significant adverse environmental impacts at oil and gas locations formerly operated by Red Mesa Holdings/O&G LLC (“Red Mesa”) (Operator No. 10254). These activities may include the plugging and abandonment of wells and/or the reclamation of Red Mesa’s well sites and associated facilities.

The Commission’s actions may impact the following properties, located in La Plata County, Colorado:

1. Sections 1 and 2, Township 32 North, Range 13 West, N.M. P.M.
2. Sections 11, 13, 14, 21, 22, 26, 27, 28, 32, 33, 34 and 35, Township 33 North, Range 12 West, N.M. P.M.

Additional information regarding these properties can be found here: <http://cogcc.state.co.us/reg.html#/enforcement/orphans>

ANY PARTY WHO CLAIMS AN INTEREST IN THE PLUGGING AND ABANDONMENT OF THESE WELLS AND/OR THE RECLAMATION OF THESE WELL SITES AND ASSOCIATED FACILITIES, MUST CONTACT THE COMMISSION’S ENFORCEMENT SUPERVISOR IMMEDIATELY, by: phone - (303) 894-2100; email - dnr_cogccenforcement@state.co.us; or mail - Colorado Oil and Gas Conservation Commission, Attn: Enforcement Supervisor, 1120 Lincoln Street, Suite 801, Denver, Colorado 80203.

◆ Colorado Oil and Gas Information System (COGIS) Projects, Updates and Changes

Electronic Form (eForm) Submissions

The COGCC uses 41 types of forms to authorize oil and gas operations, inspect and monitor ongoing operations, and receive reports of operations. Of those 41 forms, 21 are currently available for electronic submittal through the eForms system.

The development team continues to work on the eForm conversion of existing forms. Currently, four forms are in various stages of development: Forms 11, 12, 14, 14A, and 43. In addition, the development team updates eForms with improvements requested by Staff and as required by rule revisions. In 2017, 97 percent of the forms available in eForms were submitted electronically by industry.

There are 786 operator users of eForms and 3,167 individual users. For any operator not currently enrolled in eForms, instructions for starting the process can be found on the COGCC website at:

<http://cogcc.state.co.us/Announcements/COUAIInformation.pdf>

Form 27 eForm Release

The COGCC’s Site Investigation and Remediation Workplan (Form 27) has been upgraded. The Governor’s Office of Information Technology (OIT) has completed development of the eForm 27, and COGCC Staff rolled it out to industry January 2. In the first two months of use, the COGCC has made some initial refinement and will evaluate the Form’s performance during the second quarter of 2017.

Applications and Location Assessments

The public can make comments on all submitted Drilling Permit Applications (Form 2s) and Location Assessments (Form 2As) through the eForm system. Simply go to the COGCC website and click on the menu option “Permits” or

<http://cogcc.state.co.us/permits.html#/permits>

On the “Permits Search” page, three search options are available. The first option, “All



Pending Permit Applications,” is used for public comments.

When the results are displayed for “Pending Applications,” a user can click on the document number hyperlink in the “Status” column, which logs him or her to the eForms application. Once the page is displayed with the selected document, the user can select the “Comment” button to make a comment on that particular form.

Data Access

The COGCC’s database is a comprehensive repository of Colorado’s oil and gas data. The information in the database is available to the public through interactive search tools and a variety of file downloads on the website. Users of bulk data come from many different sectors of the community, including academia, oil and gas operators, environmental groups, government agencies, and the media.

The number of these users and the variety of data requested are steadily increasing. Staff continues to publish additional data file downloads at:

<http://cogcc.state.co.us/data2.html#/downloads>

Current Data File Downloads

Complaints
Field Operations
GIS Shapefiles (12 files)
Mechanical Integrity Tests
Notices of Alleged Violation
Production Data (1999 - present)
Spacing Orders
Spills and Releases
Water Well Data

Future Data File Downloads

Enforcement Orders (OFVs and AOCs)
Underground Injection Control (UIC) Data

◆ **May 2017 Hearing Docket**

The docket for the May 2017 hearing will be available shortly after the March hearing. Hearing dockets are available on our website by clicking

on “Regulation” in the menu and then “Hearings”:

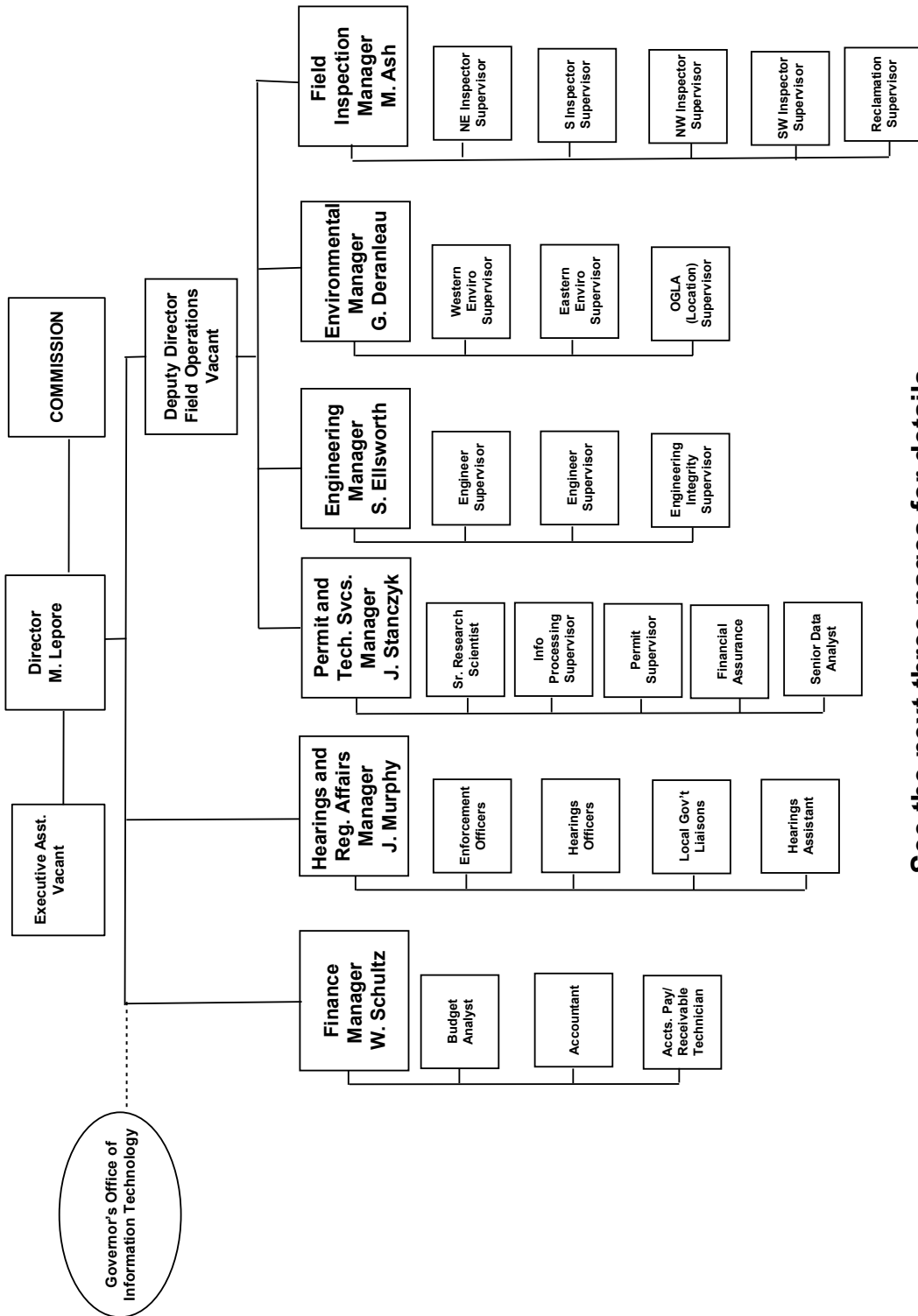
<http://cogcc.state.co.us/reg.html#/hearings>

Links to the notices and hearing applications are available from the Docket Number and Applicant, respectively, by clicking the May Gen_Docket link. To sign up for email notification of hearing notices and applications, please see the announcement and instructions on the homepage of the COGCC website.



Organizational Charts and Statistics

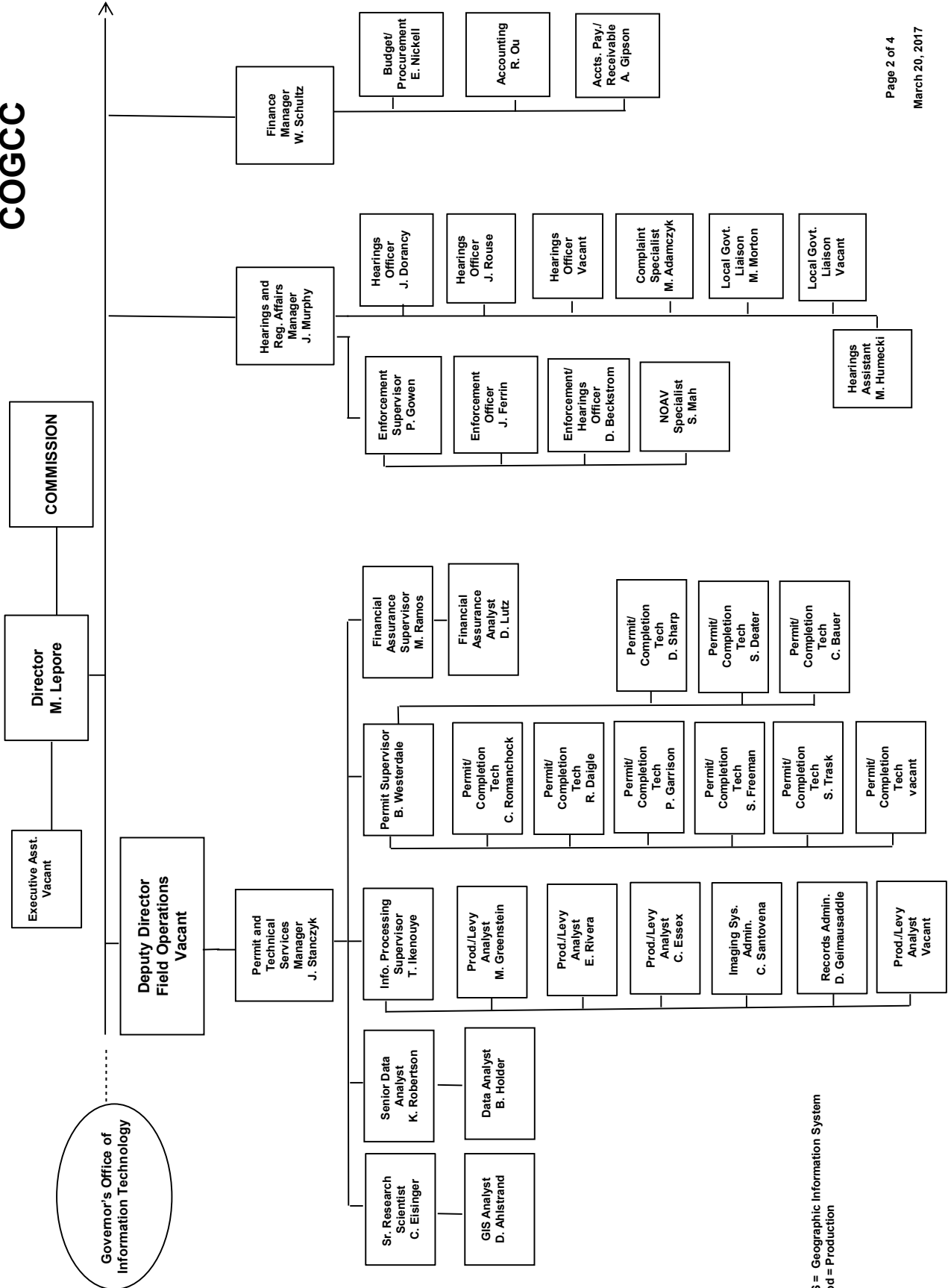
COLORADO OIL & GAS CONSERVATION COMMISSION



See the next three pages for details



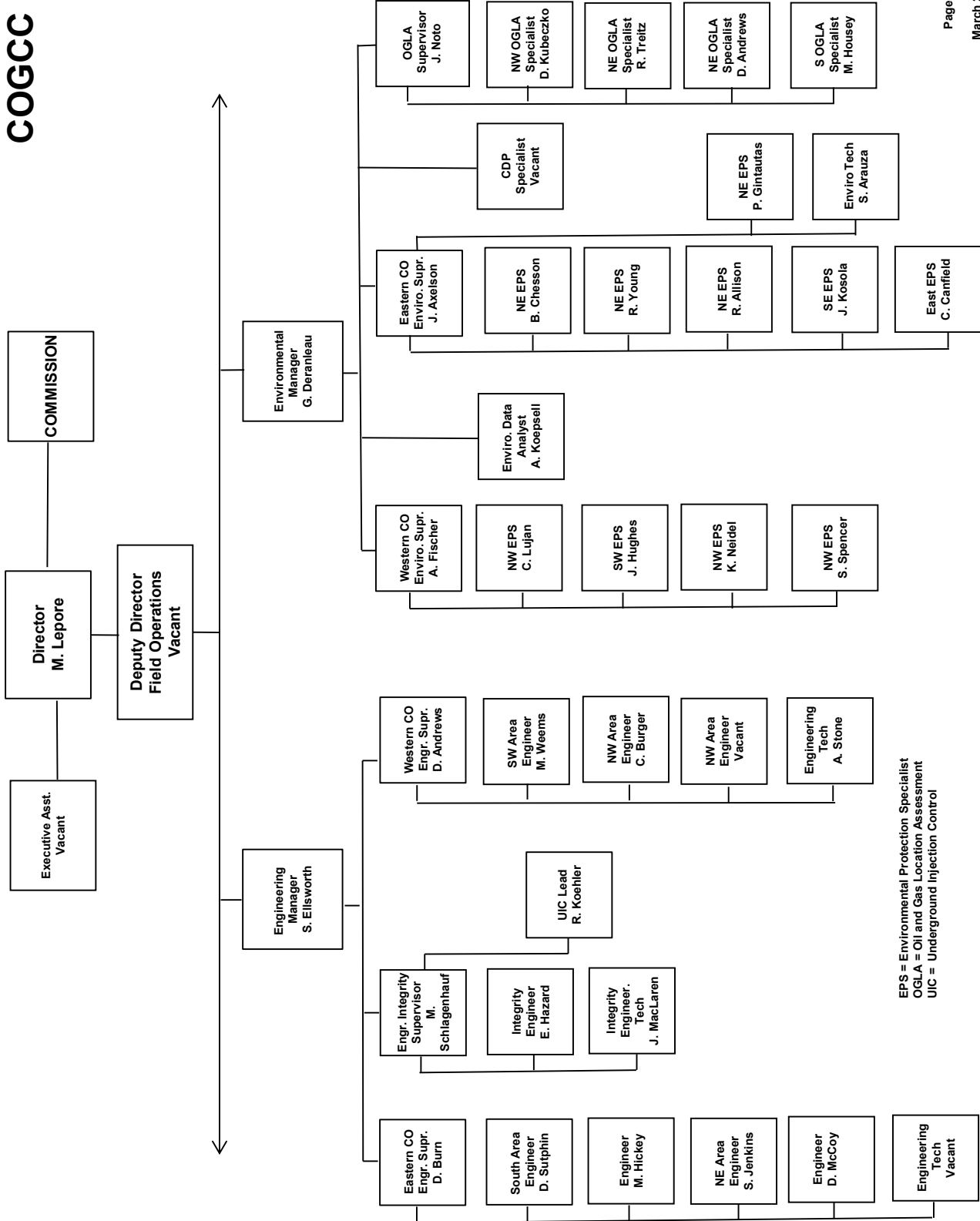
COGCC



GIS = Geographic Information System
Prod = Production



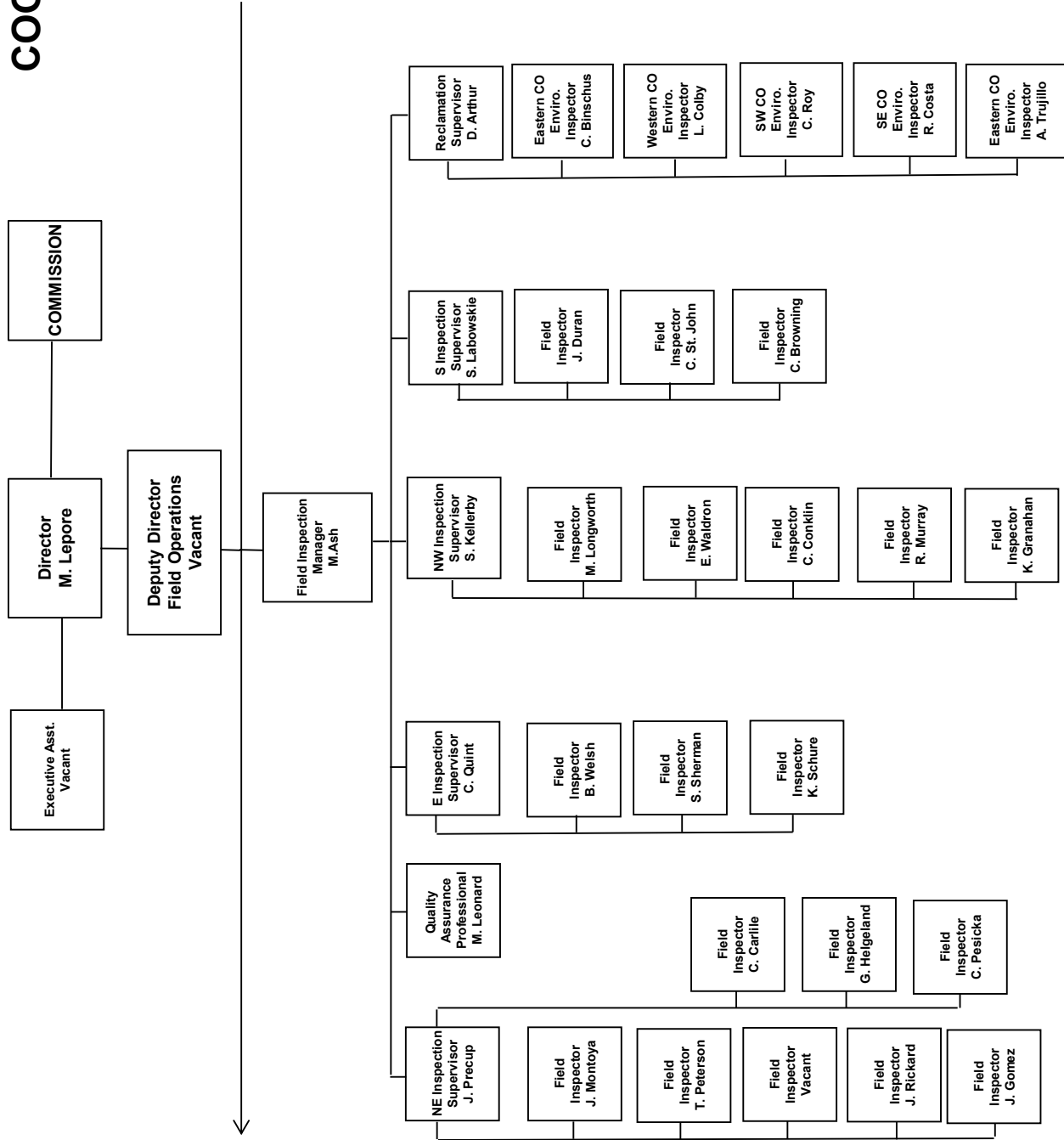
COGCC



EPS = Environmental Protection Specialist
 OGLA = Oil and Gas Location Assessment
 UIC = Underground Injection Control



COGCC





PLUGGING AND RECLAIMING ORPHANED WELLS (PROW) PROGRAM FISCAL YEAR 2016-17

BONDS AND OTHER SURETY CLAIM STATUS FOR "BOND CLAIM" PROJECTS		Order Number(s)	Total Bond Claim	Amount Spent in Prior Fiscal Years	Amount Avail for FY2016-17 and Future FYs
Atom Petroleum Bond Claim	1V-586	\$ 60,000	\$ -	\$ 60,000	
Benchmark Energy Bond Claim	1V-564	\$ 620,000	\$ 1,180	\$ 618,820	
CM Production Bond Claim	1V-581	\$ 67,849	\$ -	\$ 67,849	
Dolphin Bond Claim	1V-382	\$ 55,000	\$ 55,000	\$ -	
Monument Global Bond Claim	1V-577, 1V-600	\$ 80,231	\$ -	\$ 80,231	
Premier Bond Claim	1V-362, 1V-592	\$ 16,778	\$ 5,000	\$ 11,778	
Provide Bond Claim	1V-364	\$ 5,000	\$ 5,000	\$ -	
Red Mountain Bond Claim	1V-549 *	\$ 92,015	\$ -	\$ 92,015	
Ranchers Bond Claim	1V-526	\$ 63,424	\$ 30,183	\$ 33,241	
Red Mesa Holdings Bond Claim	1V-508	\$ 72,831	\$ 4,293	\$ 68,539	
Redwine Bond Claim	1V-470, 1V-494	\$ 30,000	\$ 30,000	\$ -	
Tatonka Bond Claim	1V-383	\$ 30,000	\$ 30,000	\$ -	
Texas Tea Bond Claim	1V-573	\$ 71,850	\$ -	\$ 71,850	
Think Oil Bond Claim	1V-458	\$ 12,570	\$ 12,570	\$ -	
TOTALS ->		\$ 1,277,548	\$ 173,226	\$ 1,104,322	

Note: * Red Mountain Bond Total Claim Amount includes \$24,169 bankruptcy deposit and \$5,000 State Land Board deposit (bond transfer)

PLANNED WORK		Project and Task	BOND	PROW	EMGY Orders
ENGR	Adams	Texas Tea Bond Claim: Task 2.1, 3.1A - Plug and Abandon, Flowline Abandonment - 320139, 001-08204	Planned Status		
ENGR	Adams	Texas Tea Bond Claim: Task 2.1, 3.1A - Plug and Abandon, Flowline Abandonment - 320206, 001-08443	Planned Status		
ENGR	Adams	Texas Tea Bond Claim: Task 2.1, 3.1A - Plug and Abandon, Flowline Abandonment - 320223, 001-08516	Planned Status	Planned Status	
ENGR	Adams	Texas Tea Bond Claim: Task 2.1, 3.1A - Plug and Abandon, Flowline Abandonment - 320240, 001-08699	Planned Status	Planned Status	
RECL	Adams	Texas Tea Bond Claim: Task 2.2 - Weed Control (maintenance) - Spindle and Sun Fields,	Planned Status	Planned Status	
ENGR	Adams	Texas Tea Bond Claim: Task 3.3, 3.7 - Plug and Abandon, Flowline Abandonment - 320257, 001-08775	Planned Status	Planned Status	
RECL	Jefferson	Provide - Red Mountain Bond Claim: Task 5 - Site Security - 324775,	Planned Status		



PLANNED WORK, cont.		Project and Task		BOND	PROW	EMGY Orders
Work Unit	County					
RECL	Larimer	Ranchers Bond Claim: Task 2 - Engineering Design - 419639,		Planned Status, CPHE Bond		
ENGR	Logan	J&L Oil Corp - North Shore Field: Task 1 - Flowline Abandonment - 389243,			Planned Status	
RECL	Logan	J&L Oil Corp - North Shore Field: Task 2 - Reclamation (initial work) - 389243,			Planned Status	
ENGR	Logan	J&L Oil Corp - North Shore Field: Task 1 - Flowline Abandonment - 389245,			Planned Status	
RECL	Logan	J&L Oil Corp - North Shore Field: Task 2 - Reclamation (initial work) - 389245,			Planned Status	
RECL	Logan	Simms #1: Task 1 - Reclamation (initial work) - 389425,			Planned Status	
RECL	Mesa	DB Orphan Blair #1: Task 5 - Reclamation (initial work) - 434038,			Planned Status	
ENGR	Mesa	Lloyd and Lowell #1: Task 2 - Plug and Abandon - 428669, 077-40017			Out to Bid	
FOPS	Moffat	Saunders et al #1: Task 1 - MIT or Other Well Work, Remove cables and junk - 391470, 081-05241			Planned Status	
ENGR	Montezuma	Atom Petroleum Bond Claim: Task 1.1 - Plug and Abandon - 313483, 083-06263		Out to Bid		
ENGR	Montezuma	Atom Petroleum Bond Claim: Task 1.1 - Plug and Abandon - 313628, 083-06653		Out to Bid		
RECL	Montezuma	Monument Global Bond Claim: Task 3 - Reclamation (initial work) - 313425,		Planned Status		
ENGR	Montezuma	State #1-36: Task 1 - Plug and Abandon - 313502, 083-06354			Out to Bid	
ENGR	Montezuma	Wolcott #1: Task 1 - Plug and Abandon - 313501, 083-06341			Out to Bid	
FOPS	Routt	Pagoda #1-31: Task 1 - MIT or Other Well Work, Cut off PA marker - 399362, 107-06115			Planned Status	
ENVR	Weld	O'Toole #1: Task 1 - Sampling and Analysis - 404980,			ENVR Field Inspection to determine sampling needs, if any	
RECL	Weld	Vaughney & Vaughney - Buckingham Field: Task 1 - Reclamation (initial work) - 405136,		Planned Status		
RECL	Weld	Vaughney & Vaughney - Buckingham Field: Task 1 - Reclamation (initial work) - 405138,		Planned Status		
RECL	Various	Weed Control and Stormwater BMP (maintenance)			Planned Status	
PLANNED WORK SUBTOTALS ->						



WORK IN PROGRESS		Page 3 of 4						
Work Unit	County	Project and Task	BOND Actual	PROW Actual	EMGY Actual	Subtotals Actual	Subtotals Actual	
FOPS	Jackson	CM Production Bond Claim: Site Security and Equipment Intervention Tasks, Lone Pine Field (Various Locations)	\$ 978	\$ -	\$ -	\$ -	\$ 978	
WORK IN PROGRESS SUBTOTALS ->			\$ 978	\$ -	\$ -	\$ -	\$ 978	
COMPLETED WORK								
Work Unit	County	Project and Task	BOND Actual	PROW Actual	EMGY Actual	Subtotals Actual	Subtotals Actual	
ENVR	Adams	Texas Tea Bond Claim: Task 1.2 - Sampling and Analysis, Spill or Remediation - 320257,	\$ 29,204	\$ -	\$ -	\$ -	\$ 29,204	
ENVR	Adams	Texas Tea Bond Claim: Task 1.3 - Sampling and Analysis, Groundwater Monitoring Wells - 318231,	\$ -	\$ -	\$ -	\$ -	\$ -	
RECL	Garfield	Dolphin Bond Claim: Task 15 - Mowing - 335477,	\$ -	\$ 787	\$ -	\$ 787	\$ 787	
ENVR	Jackson	CM Production Bond Claim: Field inspections, equipment and location labels, and verify electrical disconnect for Lone Pine Field	\$ -	\$ -	\$ -	\$ -	\$ -	
ENVR	Jackson	CM Production Bond Claim: Task 1.11 - Sampling and Analysis - Lone Pine Field,	\$ 2,240	\$ -	\$ -	\$ -	\$ 2,240	
ENGR	Jefferson	Premier Bond Claim: Task 1 - Plug and Abandon - 324776, 059-06026	\$ -	\$ 25,661	\$ -	\$ -	\$ 25,661	
ENVR	Jefferson	Premier Bond Claim: Task 2 - Sampling and Analysis, Spill or Remediation, Off-Site Disposal - 324776,	\$ 678	\$ 1,000	\$ -	\$ -	\$ 1,678	
FOPS	Jefferson	Provide - Red Mountain Bond Claim: Task 3 - Equipment Intervention, Equipment Salvage - 324775,	\$ -	\$ 1,000	\$ -	\$ -	\$ 1,000	
RECL	Jefferson	Provide - Red Mountain Bond Claim: Task 4 - Reclamation (initial work) - 324775,	\$ 19,215	\$ -	\$ -	\$ -	\$ 19,215	
FOPS	La Plata	Atom Petroleum Bond Claim: Task 1.2 - Equipment Intervention - 325653,	\$ 797	\$ -	\$ -	\$ -	\$ 797	
FOPS	La Plata	Red Mesa Holdings Bond Claim: Task 1 - Sampling and Analysis, Gauge tanks (Various Locations)	\$ 346	\$ -	\$ -	\$ -	\$ 346	
ENGR	La Plata	Red Mesa Holdings Bond Claim: Task 2 - MIT or Other Well Work, Complaint response, Bradenhead test - 325858, 067-07085	\$ 2,665	\$ -	\$ -	\$ -	\$ 2,665	
RECL	Larimer	Ranchers Bond Claim: Task 1 - Reclamation (initial work), Re-seeding (maintenance), Weed Control (maintenance) - 435790,	\$ 33,215	\$ -	\$ -	\$ -	\$ 33,215	
FOPS	Logan	Benchmark Energy Bond Claim: Task 1.1 - Site Security - Graylin NW and Mount Hope Fields,	\$ 496	\$ -	\$ -	\$ -	\$ 496	
FOPS	Logan	Benchmark Energy Bond Claim: Task 1.2 - Equipment Intervention, Gauge Tanks - Graylin NW and Mount Hope Fields,	\$ -	\$ -	\$ -	\$ -	\$ -	
RECL	Logan	Benchmark Energy Bond Claim: Task 1.3 - Weed Control (maintenance), Mowing - Graylin NW and Mount Hope Fields,	\$ 14,900	\$ -	\$ -	\$ -	\$ 14,900	
HEAR	Logan	Benchmark Energy Bond Claim: Task 1.4 - Title Work (legal) - Graylin NW and Mount Hope Fields,	\$ 8,000	\$ -	\$ -	\$ -	\$ 8,000	
FOPS	Logan	Benchmark Energy Bond Claim: Task 1.5 - Repair Power Lines - Graylin NW and Mount Hope Fields,	\$ 750	\$ -	\$ -	\$ -	\$ 750	



COMPLETED WORK, cont.		Project and Task					
Work Unit	County						
FOPS	Logan	Benchmark Energy Bond Claim: Task 1.6, 1.6B, 1.7, 1.8, 1.9 - Equipment Intervention, Fix Leaks, Fluid Handling, Berm	\$	17,683	\$	-	\$
FOPS	Logan	Benchmark Energy Bond Claim: Task 1.10 - Reclaim Oil - Graylin NW and Mount Hope Fields,	\$	-	\$	-	\$
ENVR	Logan	Benchmark Energy Bond Claim: Task 1.13, 2.1 - Spill or Remediation - 312152,	\$	9,195	\$	-	\$
ENVR	Logan	Benchmark Energy Bond Claim: Task 1.14 - Spill or Remediation, Off-Site Disposal - Graylin NW and Mount Hope Fields,	\$	2,929	\$	-	\$
FOPS	Logan	Benchmark Energy Bond Claim: Task 1.15, 1.16 - MIT or Other Well Work, Wireline Tags - Graylin NW and Mount Hope Fields,	\$	11,784	\$	-	\$
ENGR	Logan	Benchmark Energy Bond Claim: Task 2.2 - Plug and Abandon - 312158, 075-05972	\$	31,155	\$	-	\$
ENGR	Mesa	DB Orphan Blair #1: Task 4 - Plug and Abandon - 434038, 077-10211	\$	-	\$	24,467	\$
ENGR	Mesa	Lloyd and Lowell #1: Task 1 - Site Security, MIT or Other Well Work, Downhole Camera - 428669, 077-40017	\$	-	\$	7,506	\$
RECL	Moffat	Tatonka Bond Claim: Task 8 - Reclamation (initial work), Seeding - 313340,	\$	-	\$	3,462	\$
RECL	Moffat	Think Oil Bond Claim: Task 2 - Reclamation (initial work) - 392233,	\$	-	\$	18,600	\$
ENGR	Montezuma	Monument Global Bond Claim: Task 1 - Plug and Abandon - 313425, 083-05147	\$	49,605	\$	-	\$
ENV	Montezuma	Monument Global Bond Claim: Task 2 - Sampling and Analysis, Spill or Remediation - 313425, 083-05147	\$	4,502	\$	-	\$
RECL	Montrose	Redwine Bond Claim: Task 4 - Weed Control (maintenance), Stormwater BMP maintenance - 313641,	\$	-	\$	4,930	\$
ENGR	Ouray	Swanson-Peterson #1: Task 3 - Visual mitigation - 311784,	\$	-	\$	1,130	\$
COMPLETED WORK SUBTOTALS ->			\$	239,358	\$	88,543	\$
							17,683
							-
							9,195
							2,929
							11,784
							31,155
							24,467
							7,506
							3,462
							18,600
							49,605
							4,502
							4,930
							1,130
							327,901

NOTES:

Project and Task Format: [Location or Well Name and Number (if orphan) or Operator Name + "Bond Claim"] : "Task" [Task No(s)] - [Task Type(s)] - [Facility ID Number], [Well API Number (county and sequence code), if well work included with task]

ABBREVIATIONS:

ENGR = Engineering, RECL = Reclamation,
 ENVR = Environmental, FOPS = Field Operations
 HEAR = Hearings
 EMGY = Emergency Response Appropriation
 PROW = Plugging and Reclaiming Orphaned Wells

PROW FUNDS SCOREBOARD

\$	445,000	Annual PROW Allocation
\$	(356,326)	Planned Work Estimate
\$	-	Work In Progress
\$	(88,543)	Completed Work
\$	131	Projected Fiscal Year End Balance

(excludes work involving Bond Expenditures)

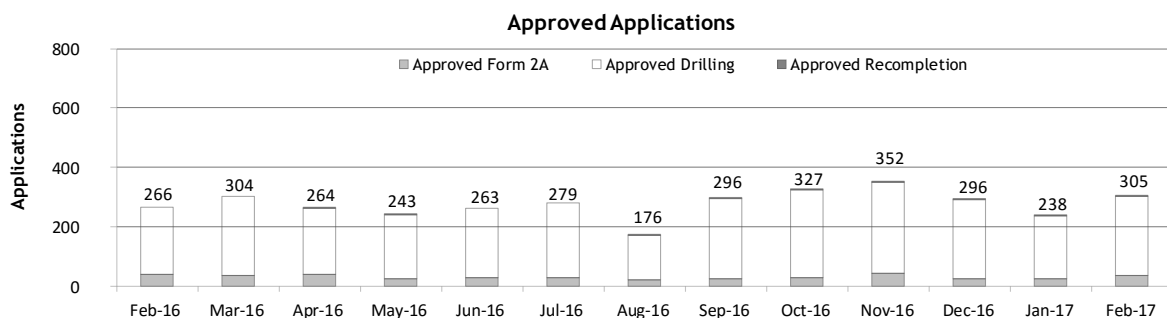
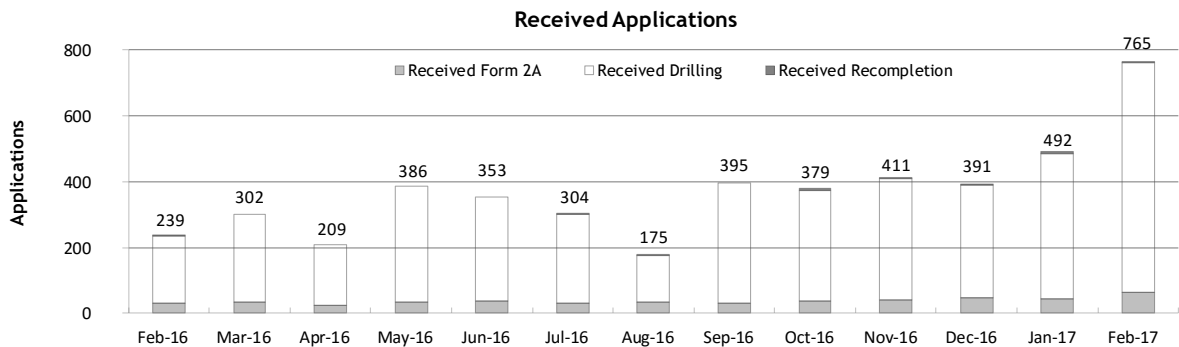


Monthly Permit Activity as of March 2, 2017

Form/Month	Backlog	Received	Approved	Withdrawn	Rejected	Incomplete ¹	In-Process	Remaining ²
Form2A								
Feb-16	120	31	39	1	0	32	79	111
Mar-16	111	34	36	3	0	27	79	106
Apr-16	106	24	39	2	0	29	60	89
May-16	89	33	24	0	2	27	69	96
Jun-16	96	38	30	3	0	23	78	101
Jul-16	101	31	30	3	0	25	74	99
Aug-16	99	33	23	2	0	19	88	107
Sep-16	107	29	24	1	0	17	94	111
Oct-16	111	38	29	2	0	25	93	118
Nov-16	118	40	45	0	3	22	88	110
Dec-16	110	48	25	6	0	20	107	127
Jan-17	127	42	25	1	1	18	124	142
Feb-17	142	62	38	2	0	28	136	164
Drilling								
Feb-16	802	205	227	1	15	212	552	764
Mar-16	764	268	268	16	59	220	469	689
Apr-16	689	185	224	13	20	155	462	617
May-16	617	353	217	1	16	138	598	736
Jun-16	736	315	233	6	2	125	685	810
Jul-16	810	268	249	24	0	145	660	805
Aug-16	805	141	150	9	7	126	654	780
Sep-16	780	366	270	0	12	77	787	864
Oct-16	864	334	297	1	0	82	818	900
Nov-16	900	368	304	7	64	138	755	893
Dec-16	893	342	267	15	9	115	829	944
Jan-17	944	442	211	1	13	89	1,072	1,161
Feb-17	1,161	701	263	14	0	86	1,499	1,585
Recompletion								
Feb-16	3	3	0	0	0	2	4	6
Mar-16	6	0	0	0	0	2	4	6
Apr-16	6	0	1	0	0	1	4	5
May-16	5	0	2	0	0	2	1	3
Jun-16	3	0	0	0	0	2	1	3
Jul-16	3	5	0	0	0	2	6	8
Aug-16	8	1	3	0	0	2	4	6
Sep-16	6	0	2	0	0	2	2	4
Oct-16	4	7	1	0	0	2	8	10
Nov-16	10	3	3	0	0	3	7	10
Dec-16	10	1	4	1	0	2	4	6
Jan-17	6	8	2	0	0	2	10	12
Feb-17	12	2	4	0	0	3	7	10

¹ Incomplete are applications that have missing or inaccurate data and cannot be approved.

² Backlog = Incomplete + In-process = Remaining permits from previous month.





Status of Permit Applications Filed By Month as of March 2, 2017

Form 2A Location Assessment

Year	Month	Received	Approved	Withdrawn	In Process	Percent In Process	Average			
							Days to Process	Less Than 30 Days	30 to 49 Days	Greater Than 50 Days
2011	TOTAL	2,391	2,298	93	0	0%		1,416	620	262
2012	TOTAL	1,359	1,291	68	0	0%		706	378	207
2013	TOTAL	1,281	1,202	78	1	0%		369	433	400
2014	TOTAL	1,114	1,067	46	1	0%		279	429	359
2015	TOTAL	592	560	25	7	1%		78	157	325
2016	JAN	34	33	0	1	3%	90	2	4	27
	FEB	31	30	1	0	0%	89	1	3	26
	MAR	34	32	2	0	0%	76	3	8	21
	APR	23	19	2	2	9%	85	1	3	15
	MAY	32	32	0	0	0%	100	1	5	26
	JUN	36	33	0	3	8%	69	3	11	19
	JUL	29	23	4	1	4%	82	7	1	15
	AUG	34	30	2	2	6%	101	1	2	27
	SEP	29	27	0	2	7%	79	5	3	19
	OCT	37	31	3	3	8%	60	3	12	16
	NOV	40	23	1	16	40%	71	1	4	18
	DEC	48	19	1	28	58%	49	4	5	10
2016	TOTAL	407	332	16	58	14%		32	61	239
2017	JAN	42	3	1	38	90%	41	0	3	0
	FEB	62	4	0	58	94%	22	4	0	0
2017	TOTAL	104	7	1	96	92%		4	3	0

Form 2 Application For Permit to Drill (APDs)

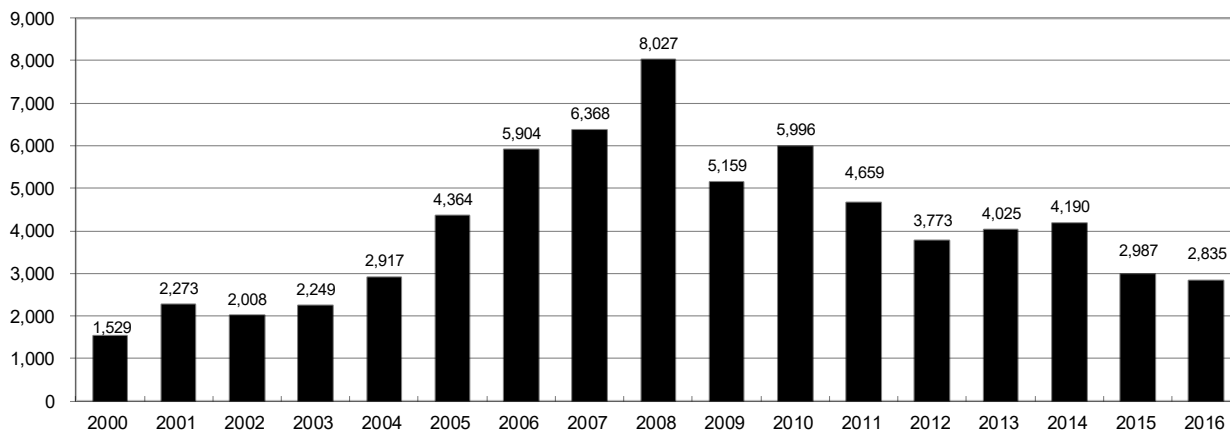
Year	Month	Received	Approved	Withdrawn	In Process	Percent In Process	Average			
							Days to Process	Less Than 30 Days	30 to 49 Days	Greater Than 50 Days
2011	TOTAL	4,691	4,557	132	0	0%		2,723	1,565	587
2012	TOTAL	3,955	3,816	139	0	0%		1,971	1,393	602
2013	TOTAL	4,548	4,312	235	1	0%		1,046	1,626	1,714
2014	TOTAL	4,208	4,026	155	27	1%		689	1,629	1,744
2015	TOTAL	3,237	3,070	130	37	1%		249	759	2,092
2016	JAN	232	231	1	0	0%	99	23	33	176
	FEB	180	177	3	0	0%	80	5	34	141
	MAR	249	246	3	0	0%	98	16	36	194
	APR	174	167	1	6	3%	68	31	24	112
	MAY	352	351	1	0	0%	94	9	61	281
	JUN	312	261	19	32	10%	89	6	51	204
	JUL	236	170	28	26	12%	87	30	1	144
	AUG	136	131	4	1	1%	95	9	26	98
	SEP	359	335	0	22	6%	75	22	72	242
	OCT	313	282	10	21	7%	80	20	26	241
	NOV	368	256	4	98	27%	75	29	22	208
	DEC	342	95	0	247	72%	66	4	16	75
2016	TOTAL	3,253	2,702	74	453	14%		204	402	2,116
2017	JAN	442	54	3	385	87%	44	5	37	15
2017	FEB	701	6	4	691	99%	11	4	2	0
2017	TOTAL	1,143	60	7	1,076	94%	55	9	39	15



Annual Drilling Permits by County as of March 2, 2017

County	2000	2001	2002	2003	2004	2005	2006	2007	2008	2009	2010	2011	2012	2013	2014	2015	2016	2017
ADAMS	38	28	9	26	39	34	37	89	51	35	21	8	40	40	51	96	74	26
ARAPAHOE		2	1	2	5	7	11	10	10	10	8	23	35	23	34	19	5	7
ARCHULETA	7	9	6	10	8	13	14	26	47	11	18	12	5	4	3	11	3	
BACA	22	6	2	3	7	8	2	11	13	3	4	5	3	1	1			
BENT	2				5	3	8	1	1		5		2	1				
BOULDER	1	5	6	7	17	13	21	37	32	35	24	30	22					
BROOMFIELD			2	7		1	1		2	33	28	11	36		31			
CHEYENNE	3	3	3	3	3	10	21	15	33	12	13	16	31	50	26	9		
COSTILLA																		
CROWLEY																	2	
DELTA			7	4	5	10	9	2			4	3	6	1	2			
DENVER		3					19	25	24									
DOLORES				1	1	1	6	10	12	21	8	8	13	12	3		3	
EAGLE														1				
ELBERT	2						4			1		1	2	2	4	3	3	
EL PASO																		
FREMONT					1	3	2	4	14	2	3	3	18	1	2			
GARFIELD	213	353	362	567	796	1,509	1,845	2,550	2,888	1,981	2,037	1,323	1,046	870	1,066	532	724	79
GRAND																		
GUNNISON			5	10	1	9	19	7	10	12	4	3	11	9	20	28	19	2
HUERFANO	41	27	27		8	2		7			2	1	9	1	13	2		
JACKSON	34	18	21	9	14	6	8	5	27	19	9	18	5	12	17	3	57	12
JEFFERSON	1						1	3	2					1				
KIOWA	11	18	2	4	2	1	11	9	26	7	16	17	17	12	5	3		
KIT CARSON				1	3	5	4	4	13	7	3	2	6	1	2		1	
LA PLATA	127	156	104	162	102	115	235	251	328	298	191	99	71	32	87	106	96	2
LARIMER	2		1			1		5	46	12	41	8	13	2	4	28	4	
LAS ANIMAS	268	400	259	180	332	413	500	362	303	88	92	85	11	2	1			
LINCOLN	2	2	1	6	3	4	1	2	58	44	48	31	36	87	129	24	5	1
LOGAN	4	7	3	3	6	13	17	14	5	9	17	8	27	4	5		1	
MESA	13	27	30	27	54	136	265	293	501	427	306	127	150	105	74	126	7	30
MOFFAT	35	52	62	63	63	60	120	68	57	51	53	93	88	44	54	12	17	1
MONTEZUMA	4		5	8	8	11	5	12	22	39	19	27	29	14	25	3	3	
MONTROSE	1	3	2	4	2		1	3	3		1	1						
MORGAN	9	9	2	7	9	7	3	6	2	1	6	13	5	16	6	4	28	
OTERO																		
PARK										3	4	1						
PHILLIPS	1	2		7	13	17	12	69	82	45	64	112	56		11	2		
PITKIN					1			1									1	
PROWERS	2	5	4		7	5	7	5	8	1	3	1			1		1	
RIO BLANCO	89	187	105	179	154	161	360	321	477	348	441	109	117	167	121	107	71	
RIO GRANDE	1	1		1					1	1			2		1			
ROUTT	20	13	1		4	6	9	8	4	2	3	10	4	12	4	9		
SAGUACHE	2		2					2	1	2								
SAN MIGUEL	11	13	27	18	42	45	35	23	20	13	10	2	1		2	3		
SEDGWICK				1	5	2	7	2	1	19	11	12	2		7	1		
WASHINGTON	23	17	27	34	128	50	69	45	11	1	6	12	6	19	12	9	7	
WELD	509	702	760	757	832	901	1,418	1,527	2,340	1,448	2,152	2,262	1,826	2,468	2,303	1,841	1,704	318
YUMA	31	205	160	138	237	782	797	541	545	105	299	148	11	9	53	3		
TOTAL	1,529	2,273	2,008	2,249	2,917	4,364	5,904	6,368	8,027	5,159	5,996	4,659	3,773	4,025	4,190	2,987	2,835	478

ALL COUNTIES





Form 2A Breakdown By County By Year as of March 2, 2017

Year	County	Form 2As Completed	In Process	New Location	CDP	SWH	RSO	CDPHE	
2009	Total State	818	818	0	408	2	80	5	5
2010	Total State	2,377	2,377	0	1,543	0	317	22	55
2011	Total State	2,297	2,297	0	1,724	1	259	16	5
2012	Total State	1,297	1,297	0	900	0	167	6	1
2013	Total State	1,195	1,194	1	845	0	144	2	4
2014	Total State	1,067	1,065	1	777	3	129	7	3
2015	Total State	574	565	9	399	0	95	2	2
2016	ADAMS	9	8	1	8	0	0	0	0
	ARAPAHOE	10	5	5	6	0	0	0	0
	ARCHULETA	1	0	1	0	0	1	0	0
	DOLORES	1	1	0	1	0	0	0	0
	ELBERT	3	3	0	0	0	0	0	0
	FREMONT	1	0	1	0	0	1	0	0
	GARFIELD	26	25	2	4	0	13	3	2
	GUNNISON	6	6	0	1	0	2	1	0
	HUERFANO	1	0	1	1	0	1	0	0
	JACKSON	10	10	0	5	0	9	0	0
	KIT CARSON	1	1	0	1	0	0	0	0
	LA PLATA	5	1	4	0	0	5	0	1
	LARIMER	2	2	0	2	0	0	0	0
	LINCOLN	5	5	0	4	0	0	0	0
	LOGAN	2	1	1	0	0	0	0	0
	MESA	4	4	0	2	0	3	0	1
	MOFFAT	15	9	6	6	0	15	0	1
	MONTEZUMA	1	1	0	1	0	0	0	0
	MORGAN	1	1	0	1	0	0	0	0
	PROWERS	1	1	0	1	0	0	0	0
	ROUTT	1	1	0	0	0	1	0	0
	WASHINGTON	6	6	0	6	0	0	0	0
	WELD	281	234	46	178	0	3	0	2
2016	Total State	393	325	68	228	0	54	4	7
2017	ADAMS	8	0	8	7	0	0	0	0
	ARAPAHOE	1	0	1	1	0	0	0	0
	CROWLEY	3	0	3	3	0	0	0	0
	ELBERT	1	0	1	1	0	0	0	0
	GARFIELD	3	0	3	2	0	2	0	0
	GUNNISON	1	0	1	0	0	1	0	0
	LA PLATA	2	0	2	0	0	2	0	0
	MESA	1	0	1	1	0	1	0	0
	MONTEZUMA	2	0	2	2	0	0	0	0
	RIO BLANCO	1	0	1	0	0	2	0	0
	WELD	18	0	18	13	0	0	0	0
2017	Total State	41	0	41	30	0	8	0	0

Abbreviations:

CDP = Comprehensive Drilling Plan

SWH = Sensitive Wildlife Habitat consultation

RSO = Restricted Surface Occupancy consultation

CDPHE= Colorado Department of Health and Environment consultation



Horizontal Well Activity as of March 2, 2017

County	2010		2011		2012		2013		2014		2015		2016		2017		Total			Completion		
	Permit	Spud	Permit	Spud	Permit	Spud	Permit	Spud	Permit	Spud	Permit	Spud	Permit	Spud	Permit	Spud	AC	PR	DA	PA		
ADAMS	2	3	1	1	2	2	26	2	42	18	92	3	72	2	26	35	3	23	1			
ARAPAHOE			10	1	22	4	11	13	22	11	9	1	5	1	7	32	2	30	1			
ARCHULETA	15	7	10	8	5	9	2	2	1	1	6	3	2	1	51	51						
BENT					1	1	1									1	1					
BOULDER			4													0						
CHEYENNE						7	2	1	1	1	1	1				9	1	1	5			
DELTA	2				6	1	1		2							3	3					
DOLORES	6				9	3	5	4	3	1						19	12	5	5			
EL PASO					10											0			1			
ELBERT					1											0						
FREMONT	12	5	3	4	4	1	1	1			1					18	10	7	1			
GARFIELD	16	2	18	6	43	6	18	4	20	11	12	7	4	4	4	47	37		1			
GUNNISON	1				3	2	2		9		18	2	10	1	1	6	4					
HUERFANO					4	1			2		2					1	1					
JACKSON	3	4	9	1	4	1	8	5	15	4	3		52	24	11	46	21	2	2			
KIOWA					1		4	2	1							2			1			
KIT CARSON					1		1	1								2			4			
LA PLATA	28	3	18	7	12	1	5	1	43	7	42	3	67	8	2	60	60	1	3			
LARIMER			5	1	2	1		2			22	8	4	3		18	11	2				
LAS ANIMAS	1	1														17	16					
LINCOLN	2	1	1				6		4	2						4	1	3				
LOGAN					1											2	2					
MESA	22	7	24	13	14		9	2	9	1	6	3			29	27	2	4				
MOFFAT	4		9	4	44	6	18	13	15	1	5	2	3	1	1	37	29	3	3			
MONTEZUMA	11	2	8	2	18	6	3	4	15	2					28	31		7				
MORGAN			6	2	2	1	13	1	6		4	1	28			5	5					
PARK	1	1	1													1						
RIO BLANCO	1	1	11	2	15	2	4	5	3	2	3				19	12	3					
ROUTT					1		1				3				10	1	6	1				
SAN MIGUEL															1	1		1				
WASHINGTON																1			1			
WELD	208	84	763	229	964	594	2,114	1,099	2,215	1,426	1,789	1,063	1,671	719	323	215	5,230	3,917	12	60		
YUMA																1	1					
TOTAL Horizontal	333	123	901	280	1,203	641	2,260	1,161	2,428	1,487	2,016	1,096	1,918	760	375	215	5,735	5	4,307	33	105	
Percent of Total HZ																		0%	75%	1%	2%	
Total All Permits	5,996		4,659		3,773		4,025		4,190		2,988		2,835		474							
HZ Percent of Total	5.6%		19.3%		31.9%		56.1%		57.9%		67.5%		67.7%		79.1%							



Well to Building Setbacks by Year and by County as of March 2, 2017

Count of well locations, grouped by proximity from well to buildings.

Location Proximity to Buildings	2010	2011	2012	2013	2014	2015	2016	2017	Percent of	
									Number of Locations	Total Locations
Less than 150 feet	3	3	2	0	3	2	0	0	15	0%
150 to 350 feet	58	61	39	34	38	12	15	2	296	3%
350 to 500 feet	110	97	61	64	48	33	23	2	488	6%
500 to 1000 feet	385	331	188	188	161	83	76	14	1,543	17%
1000 + feet	1,705	1,470	838	761	724	378	206	39	6,477	73%
TOTAL LOCATIONS	2,261	1,962	1,128	1,047	974	508	320	57	8,819	

County	TOTAL	Less than 150 feet	150 to 350 feet	350 to 500 feet	500 to 1000 feet	1000 + feet
ADAMS	88	0	4	9	23	52
ARAPAHOE	101	0	2	4	10	85
ARCHULETA	23	0	0	1	11	11
BACA	15	0	0	0	1	14
BENT	7	0	0	0	0	7
BOULDER	23	0	1	1	17	4
BROOMFIELD	33	0	0	4	13	16
CHEYENNE	140	1	0	0	2	137
CROWLEY	2	0	0	0	0	2
DELTA	7	0	0	2	1	4
DOLORES	20	0	0	0	7	13
EAGLE	1	0	0	0	0	1
EL PASO	14	0	0	0	3	11
ELBERT	14	0	0	0	3	11
FREMONT	40	0	2	7	8	23
GARFIELD	585	0	12	10	80	483
GUNNISON	48	1	0	4	1	42
HUERFANO	16	0	0	0	5	11
JACKSON	59	0	0	5	1	53
KIOWA	66	0	0	0	1	65
KIT CARSON	15	0	0	0	0	15
LA PLATA	136	0	6	14	46	70
LARIMER	41	0	5	5	15	16
LAS ANIMAS	201	1	6	7	37	150
LINCOLN	375	0	1	2	4	368
LOGAN	44	0	1	1	1	41
MESA	101	0	0	3	15	83
MOFFAT	187	0	1	2	16	168
MONTEZUMA	43	0	0	1	4	38
MONTROSE	2	0	0	0	0	2
MORGAN	31	0	0	2	4	25
PARK	4	0	0	0	0	4
PHILLIPS	275	1	4	6	21	243
PITKIN	1	0	0	0	0	1
PROWERS	6	0	0	0	0	6
RIO BLANCO	187	0	0	0	2	185
RIO GRANDE	2	0	0	0	1	1
ROUTT	30	0	0	0	2	28
SAN MIGUEL	14	0	0	0	0	14
SEDGWICK	33	0	0	1	3	29
WASHINGTON	79	0	2	0	3	74
WELD	5,185	11	240	381	1,138	3,412
YUMA	528	0	9	16	44	459



Well to Building Setbacks Less Than Two Hundred Feet as of March 2, 2017

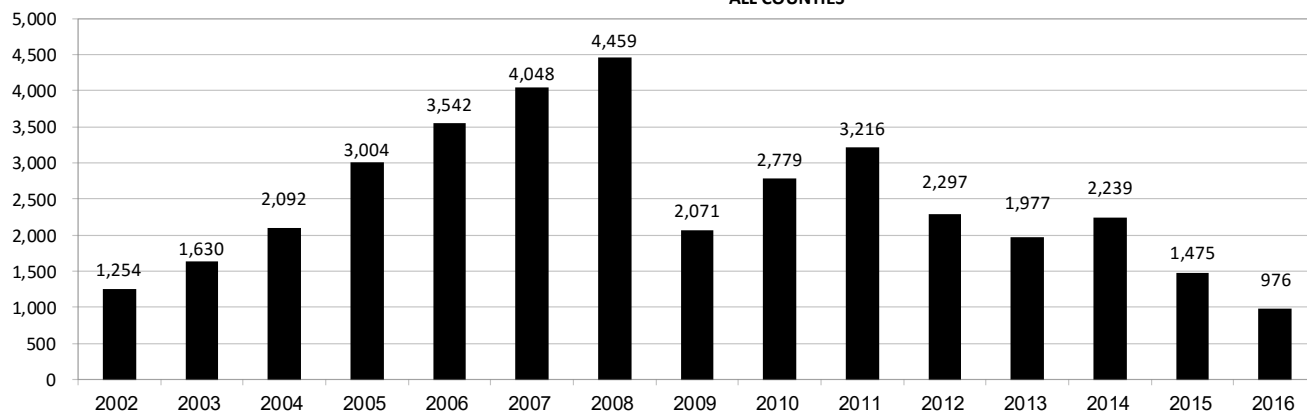
Year	Location Doc Number	County	High Density	New Location	Distance (Feet)	Proximity (Feet)	Building Description
2015	400768804	WELD	No	Yes	46	less 150	Building to be razed
2011	2587822	CHEYENNE	No	No	58	less 150	Water well house
2009	1691798	WELD	No	No	58	less 150	Vehicle garage
2010	400072164	WELD	No	Yes	69	less 150	Abandoned hog shed
2014	400569085	WELD	No	No	78	less 150	Well shed
2014	400600705	WELD	No	No	80	less 150	Livestock shed
2012	400240957	GUNNISON	No	Yes	90	less 150	Equipment shed
2015	400742811	WELD	No	Yes	102	less 150	Building to be razed
2009	1758843	WELD	No	Yes	103	less 150	Building to be razed
2011	1636646	WELD	No	No	122	less 150	Storage shed
2009	400011284	LAS ANIMAS	No	Yes	127	less 150	Operator is owner
2009	1786896	PHILLIPS	No	No	132	less 150	Grain storage
2014	400642113	WELD	No	Yes	142	less 150	Barn
2011	400117702	WELD	No	Yes	143	less 150	Irrigation pump house
2011	400227765	WELD	No	Yes	145	less 150	Storage barn
2014	400558626	LINCOLN	No	No	150	less 150	Gas plant equipment building
2009	1904205	WELD	No	No	154	150 to 350	Livestock enclosure
2012	400243295	WELD	No	Yes	155	150 to 350	Unused storage shed
2015	400862577	GARFIELD	No	No	155	150 to 350	Gravel pit scale house
2011	400179419	WELD	No	Yes	157	150 to 350	Existing well / storage building
2010	400054716	WELD	No	No	159	150 to 350	Equipment barn
2011	400188968	WELD	No	Yes	159	150 to 350	Abandoned
2014	400554054	WELD	No	Yes	159	150 to 350	Equipment shed
2014	400559404	WELD	No	Yes	160	150 to 350	Barn
2016	400950178	LA PLATA	No	Yes	162	150 to 350	Residence
2010	400021477	WELD	No	Yes	162	150 to 350	Goat barn
2009	1758386	WELD	No	Yes	168	150 to 350	Storage shed
2011	1635946	WELD	No	No	169	150 to 350	Storage shed
2013	400447386	WELD	No	No	169	150 to 350	Abandoned turkey barn
2013	400447391	WELD	No	No	169	150 to 350	Abandoned turkey barn
2011	400165164	WELD	No	Yes	178	150 to 350	Residence
2013	400367184	WELD	No	Yes	179	150 to 350	Shed
2011	400188780	WELD	No	Yes	180	150 to 350	Residence
2014	400562498	WELD	No	Yes	181	150 to 350	Garage / storage shed
2010	1697620	WELD	No	No	187	150 to 350	Livestock shed
2009	1758746	WELD	No	No	193	150 to 350	Storage shed
2011	400154431	WELD	No	Yes	198	150 to 350	Turkey barn
2012	400250031	WELD	No	Yes	198	150 to 350	Abandoned guard shack
2010	1774783	WELD	No	No	199	150 to 350	Cement service building
2011	400118102	YUMA	No	Yes	199	150 to 350	Steel barn



Annual Well Starts by County as of March 2, 2017

County	2002	2003	2004	2005	2006	2007	2008	2009	2010	2011	2012	2013	2014	2015	2016	2017
ADAMS	4	19	22	24	13	41	14	14	21	1	15	6	29	3	2	1
ARAPAHOE			6	1	5	2	1	1	3	9	9	25	21		1	
ARCHULETA	2	5	4	10	5	7	29	9	12	10	11		1	7	4	
BACA	2	1	6	6	2	6	12		5	4	2	1		1		
BENT			3	2	8	1	1			1	2					
BOULDER		2	5	11	9	14	25	16	13	7	14					
BROOMFIELD	2		1				10		21	11	5					
CHEYENNE	3	3		9	14	15	14	8	12	11	17	35	19	3		
COSTILLA																
CROWLEY													2			
DELTA		5	4	6	5	2			9	2	3					
DENVER					7	5	4									
DOLORES			2		2	13	6	2		1	5	10	4			
EAGLE												1				
EL PASO									2		5		1			
ELBERT					1									3		
FREMONT			1	3	2	2	5	3	9	16	9	2	4		1	
GARFIELD	245	417	585	799	1,005	1,304	1,689	765	905	877	495	391	361	176	144	50
GUNNISON	1		1	1	9	5	1	4	5	2	4	1	2	4	1	
HUERFANO	19	3	6	2			2		2		2	1	4	1		
JACKSON	4	10	10		3	3	12	1	8	7		7	7		24	
JEFFERSON						2										
KIOWA	2	4	2	1	7	7	2	5	15	14	10	12	3	2		
KIT CARSON		1	1	6	2	1	14	3	1	1	3	1	2			
LA PLATA	118	110	103	104	108	179	199	131	67	54	3	10	40	38	43	
LARIMER				1		4	8	1	28	2	10	4	1	9	3	
LAS ANIMAS	205	221	296	384	413	326	222	14	7	78	1		1			
LINCOLN	1	5	2	2	1	2	18	11	14	21	23	41	41	12	2	
LOGAN	3	3	2	11	12	12	3	7	3	9	13	4	6			
MESA	12	13	25	89	156	209	225	14	11	41	4	11	16	77	4	14
MOFFAT	25	28	19	40	60	42	26	18	15	32	26	27	3	6	3	
MONTEZUMA	5	5	1	7	2	4	22	10	3	8	18	12	8	1		
MONTROSE		2	1			1	2		1							
MORGAN	1	7	5	5	3	1	1	2	3	2	3	1	3	1		
PARK									2							
PHILLIPS		6	10	11	4	35	18	2	42	130	48		9			
PROWERS	4		5	5	6	3	5	2	3	1				1		
RIO BLANCO	47	83	92	95	107	95	205	118	107	71	54	36	44	17		
RIO GRANDE												1				
ROUTT	1		1	6	3	2		2	1	2	4	2	2			
SAN MIGUEL	10	19	28	13	20	17	5	1	2	2			2			
SEDGWICK		1	2	1	1	5			3	8	3					
WASHINGTON	24	29	65	34	23	14	11	2	2	4	1	9	7	2	6	2
WELD	406	522	632	718	931	1,222	1,312	878	1,209	1,671	1,459	1,313	1,557	1,111	738	218
YUMA	108	106	144	597	593	445	336	27	213	106	16	13	39			
TOTAL	1,254	1,630	2,092	3,004	3,542	4,048	4,459	2,071	2,779	3,216	2,297	1,977	2,239	1,475	976	285

ALL COUNTIES





Active Wells by County and Status as of March 2, 2017

COUNTY	Drilling	Domestic	Injecting	Producing	Shut In	Temp Aband	Waiting on Completion	Active Storage	Total Active Wells
ADAMS	9		7	879	37	11	1	12	956
ARAPAHOE		1	2	141	6	8		44	202
ARCHULETA		5	1	110	12	12	6	1	147
BACA			16	114	11	4		56	201
BENT		1		30	6				37
BOULDER				309	1	1			311
BROOMFIELD				96					96
CHEYENNE			42	320	12	45	1		420
CROWLEY									0
DELTA				4	12		1		17
DENVER			1	45	2	1	3		52
DOLORES			2	36	1	1			40
EL PASO		1				2			3
ELBERT	1			68	2	2		1	74
FREMONT	3	3		62	4	6	2		80
GARFIELD	185	3	48	10,779	62	81	61	1	11,220
GUNNISON	3		2	33	7		3		48
HUERFANO			1	40	2	5			48
JACKSON	12		31	123	32		2		200
JEFFERSON				1	1		1	3	6
KIOWA	1		11	105	8	2	2		129
KIT CARSON		1	2	11		2			16
LA PLATA	2	7	29	3,161	74	19	3	30	3,325
LARIMER	4	2	19	196	20	18	1		260
LAS ANIMAS	1	4	13	2,770	10	106	12	21	2,937
LINCOLN	4	1	9	95	13	4			126
LOGAN	2		19	106	27	29		33	216
MESA	21	1	10	947	73	21	3	11	1,087
MOFFAT	1		9	480	42	36	7		575
MONTEZUMA		2	7	120	24	16			169
MONTROSE								1	1
MORGAN			20	89	80	35		81	305
OURAY		1				1			2
PARK									0
PHILLIPS			2	266	2	1	1		272
PITKIN								10	10
PROWERS				25	2	1			28
RIO BLANCO	27	3	298	2,324	130	93	8	2	2,885
ROUTT		2		31	6	5			44
SAN MIGUEL	1			111	9	8			129
SEDGWICK	2	1	1	13	3		2		22
WASHINGTON	5		23	406	18	7	2		461
WELD	934	1	56	21,738	132	250	44	5	23,160
YUMA	2	8	23	3,801	23	8	11	1	3,877
Totals	1,220	48	704	49,985	906	841	177	313	54,194



Monthly Statistics as of March 2, 2017

Page 1 of 2

YEAR and MONTH	Baker - Hughes Rig Count	Permits										Well Spud Notices	Active		Public Visits			
		Drilling		Recompletion		Injection		Pits		Locations			Drilling Permits	Active Wells	Data	Office	Internet	
		Rcvd	Apvd	Rcvd	Apvd	Rcvd	Apvd	Rcvd	Apvd	Rcvd	Authz							
2011 TOTAL		4,709	4,659	325	320	44	32	190	192	2,382	2,267	3,218			187	1,294	1,337,865	
2012 TOTAL		3,982	3,773	154	168	63	44	114	84	1,373	1,293	2,296			159	1,305	1,324,443	
2013 JAN	53	538	331	6	0	3	5	6	8	176	124	142	5,060	50,265	9	108	47,406	
FEB	56	260	455	10	5	2	3	4	11	91	141	139	5,250	50,372	7	102	40,649	
MAR	57	344	241	5	9	3	8	15	6	129	84	172	5,093	50,540	9	133	43,019	
APR	61	331	333	6	5	5	5	6	8	146	117	162	4,925	50,687	3	132	46,459	
MAY	61	350	342	8	6	6	6	10	7	106	142	162	5,110	50,810	3	123	45,215	
JUN	62	349	273	2	8	8	8	5	3	114	85	145	5,273	50,909	8	122	41,015	
JUL	68	864	304	11	4	9	2	9	5	218	91	160	5,070	51,091	7	154	45,558	
AUG	69	232	291	6	4	3	2	4	1	35	76	206	5,200	51,255	20	130	44,722	
SEP	69	212	362	9	5	10	9	3	19	56	109	164	5,185	51,407	5	105	41,256	
OCT	72	319	376	5	9	7	5	1	8	67	88	238	4,967	51,598	5	135	45,151	
NOV	69	346	353	4	13	7	4	2	27	67	85	163	5,141	51,711	12	119	38,903	
DEC	64	336	367	2	4	4	6	2	3	63	71	124	5,129	51,737	4	93	32,381	
2013 TOTAL		4,481	4,028	74	72	67	63	67	106	1,268	1,213	1,977			92	1,456	511,734	
2014 JAN	62	278	232	3	2	3	4	14	8	90	43	171	4,926	51,840	1	90	46,150	
FEB	61	284	297	6	4	1	1	3	1	91	94	149	5,051	51,847	12	113	43,408	
MAR	62	367	329	4	6	7	1	6	6	110	88	184	4,997	51,952	16	140	46,620	
APR	63	276	317	2	3	2	5	8	3	89	99	171	4,897	52,060	11	188	45,558	
MAY	65	458	383	2	2	3	1	6	7	83	94	180	4,923	52,202	18	131	42,365	
JUN	67	429	377	3	0	6	7	5	2	134	92	222	4,924	52,337	10	156	42,518	
JUL	69	272	446	2	5	3	11	8	5	97	126	181	4,955	52,431	7	166	45,481	
AUG	73	376	259	4	3	4	4	3	4	111	87	217	5,060	52,582	8	145	42,431	
SEP	76	412	304	2	3	3	1	20	1	116	81	214	5,006	52,694	14	175	43,577	
OCT	76	459	371	3	2	9	2	4	6	93	109	192	4,827	52,785	19	138	46,030	
NOV	73	326	479	5	2	5	4	4	0	54	103	170	5,171	52,947	8	96	39,583	
DEC	69	286	397	1	2	2	7	1	2	45	99	188	5,236	53,054	6	144	37,964	
2014 TOTAL		4,223	4,191	37	34	48	48	82	45	1,113	1,115	2,239			130	1,682	521,685	
2015 JAN	64	349	316	3	1	2	9	3	1	60	43	193	5,060	53,195	17	114	41,502	
FEB	49	324	161	3	2	5	6	9	0	73	28	114	4,750	53,309	4	117	38,245	
MAR	38	246	294	1	6	1	5	7	5	44	70	166	4,983	53,414	6	146	42,513	
APR	37	194	165	3	1	2	5	1	2	46	37	92	4,854	53,456	1	125	39,559	
MAY	39	324	190	1	4	2	6	8	0	41	44	109	4,632	53,535	5	113	unavailable	
JUN	38	327	281	4	1	0	5	2	1	52	49	143	4,726	53,608	5	138	unavailable	
JUL	38	373	250	4	2	2	1	0	0	57	48	121	4,663	53,706	7	145	26,975	
AUG	37	289	300	2	6	3	0	5	5	32	46	121	4,847	53,766	2	109	30,674	
SEP	33	242	312	3	1	1	7	0	3	59	49	100	4,953	53,806	4	146	31,642	
OCT	30	372	223	2	2	3	1	1	0	54	51	108	4,694	53,898	12	119	33,199	
NOV	31	190	254	6	2	4	3	1	0	21	49	119	4,765	53,719	7	105	29,112	
DEC	25	275	242	1	5	3	6	1	0	42	43	80	4,594	53,652	3	112	25,659	
2015 TOTAL		3,505	2,988	33	33	28	54	38	17	581	557	1,466			73	1,489	339,080	
2016 JAN	22	250	126	1	0	3	5	0	0	34	9	68	4,528	53,698	2	118	30,105	
FEB	20	205	227	3	0	3	2	44	2	31	39	66	4,599	53,723	8	115	28,611	
MAR	17	268	268	0	0	2	2	5	0	34	36	69	4,530	53,710	3	132	30,902	
APR	17	185	224	0	1	3	4	0	0	24	39	62	4,511	53,774	4	113	27,914	
MAY	16	353	217	0	2	3	1	1	1	33	24	85	4,464	53,749	4	106	26,778	
JUN	16	315	233	0	0	2	3	2	1	38	30	59	4,456	53,651	2	80	27,284	
JUL	20	268	249	5	0	4	4	6	6	31	30	84	4,344	53,724	5	91	24,151	
AUG	21	141	150	1	3	5	3	2	0	33	23	90	4,436	53,740	1	106	29,192	
SEP	19	366	270	0	2	4	2	0	6	29	24	72	4,522	53,817	4	154	25,698	
OCT	19	334	297	6	1	6	3	1	0	42	29	88	4,601	53,903	1	135	25,893	
NOV	20	368	304	3	3	3	3	0	1	40	45	130	4,566	53,993	2	97	25,140	
DEC	26	342	267	1	4	7	5	1	2	48	25	103	4,477	54,036	5	92	23,449	
2016 TOTAL		3,395	2,832	20	16	45	37	62	19	417	353	976			41	1,339	325,117	
2017 JAN	28	442	211	8	2	2	2	0	0	42	25	120	4,492	54,111	6	79	28,702	
FEB	26	701	263	2	4	4	3	0	0	62	38	138	4,543	54,194	1	97	27,715	
2017 TOTAL		1,143	474	10	6	6	5	0	0	104	63	258	9,035					

Abbreviation Key: Rcvd = Received, Apvd = Approved, Authz = Authorized



Monthly Statistics as of March 2, 2017

YEAR and MONTH	Well Oper Change	Operators		Bonds					Hearings					Enforcement					Remediation Projects		Inspections	
		New	Inactive	Release		Claim		Apps.	Orders	NOAVs	AOCs	OFVs	Cmplt	Spills	Rcvd	Comp	Wells	Locations				
				Ind	Blnt	Ind	Blnt															
2011 TOTAL	6,743	33	31	79	44	43	4	4	403	349	230	10	19	247	527	726	536	12,394	-			
2012 TOTAL	7,546	47	37	70	46	33	3	0	482	396	157	9	2	244	402	690	641	19,071	12,670			
2013 JAN	653	3	5	12	2	0	0	0	48	75	15	4	-	21	40	31	45	1,622	789			
FEB	289	4	2	6	3	2	0	0	41	35	11	2	-	15	30	42	90	1,044	615			
MAR	354	1	3	2	2	1	0	0	54	67	16	2	-	11	25	65	29	1,968	1,149			
APR	333	7	1	5	2	8	0	0	-	-	21	-	-	16	33	39	37	1,510	910			
MAY	346	2	1	3	0	0	0	0	46	50	22	6	-	13	31	41	60	2,621	1,576			
JUN	1,456	6	2	2	4	5	0	0	91	44	13	2	-	25	40	47	37	1,860	1,102			
JUL	1,009	4	1	2	2	0	0	0	96	70	25	3	-	21	47	50	22	2,298	1,338			
AUG	389	6	4	5	4	2	0	0	-	-	23	-	-	25	57	36	41	2,146	1,033			
SEP	277	4	1	6	1	0	0	0	101	51	7	2	-	16	60	43	51	1,536	703			
OCT	345	6	0	2	2	2	0	0	52	82	4	12	3	12	79	47	60	1,868	1,158			
NOV	442	2	0	2	2	0	0	0	-	-	30	-	-	12	51	31	34	2,401	1,613			
DEC	1,299	4	1	1	2	0	0	0	42	48	50	4	-	14	75	35	35	2,677	1,384			
2013 TOTAL	7,192	49	21	48	26	20	0	0	571	522	237	37	3	201	568	507	541	23,551	13,370			
2014 JAN	1,971	6	3	3	2	0	0	0	57	46	25	2	-	8	68	46	28	3,243	1,597			
FEB	2,039	8	2	6	5	0	0	0	-	-	23	-	-	17	59	51	13	2,330	1,282			
MAR	493	2	3	1	5	0	0	0	97	75	29	10	-	22	63	66	31	1,822	1,298			
APR	312	5	3	6	4	1	0	0	74	64	17	8	1	20	57	47	59	2,651	1,715			
MAY	508	6	2	3	3	5	0	0	-	-	12	-	-	13	63	50	42	2,437	1,571			
JUN	1,008	5	3	7	4	1	0	1	95	90	14	6	1	16	74	44	50	3,209	1,717			
JUL	338	2	1	5	3	1	0	0	96	96	11	6	-	12	60	60	59	3,071	1,536			
AUG	452	6	2	2	3	0	0	0	-	-	8	-	-	31	56	32	58	2,788	1,682			
SEP	378	4	2	1	2	0	0	0	73	63	13	7	1	18	65	39	50	2,587	1,616			
OCT	887	8	2	0	2	0	1	0	80	75	12	3	1	13	74	78	36	3,886	1,914			
NOV	498	2	4	8	4	5	0	0	-	-	6	-	-	15	72	27	59	3,156	1,458			
DEC	1,414	1	1	0	2	0	0	0	126	89	9	1	-	58	75	56	17	3,028	1,596			
2014 TOTAL	10,298	55	28	42	39	13	1	1	698	598	179	43	4	243	786	596	502	34,208	18,982			
2015 JAN	727	2	3	2	3	0	0	0	76	64	15	2	1	36	64	38	58	2,491	1,246			
FEB	556	5	2	2	3	1	0	0	-	-	10	-	-	22	44	34	64	2,667	1,382			
MAR	183	5	3	5	2	4	2	0	72	72	33	1	1	42	76	59	94	3,469	1,738			
APR	271	7	1	0	5	3	0	0	60	54	19	3	-	21	46	40	61	3,451	1,620			
MAY	436	8	0	0	2	3	0	0	89	54	10	10	2	25	46	56	41	2,869	1,422			
JUN	496	2	2	3	5	4	0	0	-	-	27	-	-	25	41	32	43	3,366	1,716			
JUL	396	3	3	0	5	1	0	0	123	140	5	13	1	32	67	52	28	3,445	1,774			
AUG	218	8	2	0	7	4	0	0	-	-	13	-	-	18	56	24	62	3,692	1,847			
SEP	267	6	5	1	7	4	0	2	112	78	25	11	-	30	41	44	40	2,887	1,528			
OCT	356	4	1	6	1	6	1	0	115	103	6	12	1	32	58	51	33	3,420	1,494			
NOV	97	2	3	5	0	0	0	1	-	-	6	-	-	15	38	47	40	3,348	1,666			
DEC	437	7	2	3	5	1	0	0	91	80	4	5	2	60	46	39	37	3,851	1,765			
2015 TOTAL	4,440	59	27	27	45	31	3	3	738	645	173	57	8	358	623	516	601	38,956	19,198			
2016 JAN	508	2	1	0	5	5	0	0	76	66	4	7	1	29	51	44	36	3,184	1,551			
FEB	165	2	1	0	1	1	1	0	-	-	8	-	-	27	47	34	49	3,666	1,738			
MAR	1,032	6	4	2	2	2	1	1	62	57	3	7	1	19	42	50	45	3,020	1,647			
APR	236	3	3	2	7	4	0	0	34	32	6	4	2	20	40	48	90	4,041	2,112			
MAY	353	2	3	6	3	3	1	0	-	-	0	-	-	20	37	41	29	3,485	2,179			
JUN	199	6	3	3	4	1	1	1	67	65	3	6	2	20	36	40	77	4,098	2,329			
JUL	2,204	3	2	0	2	0	0	0	-	-	10	-	-	20	41	31	56	3,481	2,064			
AUG	135	3	3	3	2	1	1	1	71	43	20	4	-	20	51	38	38	4,067	2,286			
SEP	319	3	1	9	3	3	0	1	-	-	8	-	-	20	37	29	22	3,527	1,787			
OCT	336	1	3	7	5	1	0	0	96	74	23	7	1	21	40	32	36	3,325	1,809			
NOV	509	3	0	4	0	0	3	0	-	-	19	-	-	22	40	30	50	3,855	1,908			
DEC	93	4	4	1	7	2	1	1	67	60	3	8	-	23	65	28	72	3,372	1,680			
2016 TOTAL	6,089	38	28	37	41	23	9	5	473	397	107	43	7	261	527	445	600	43,121	23,090			
2017 JAN	22	3	3	3	3	1	0	0	80	72	1	11	1	46	46	23	12	2,984	1,429			
0 FEB	19	1	5	2	4	2	0	3	0	0	13	0	0	73	44	40	19	2,045	956			

Abbreviation Key: Ind = Individual, Blnt = Blanket, Apps = Application for Hearing, NOAV = Notice of Alleged Violation, AOC = Administrative Order of Consent, OFV = Order Finding Violation, Cmplt = Complaint, Comp = Completed