



**COLORADO**

**Oil & Gas Conservation  
Commission**

Department of Natural Resources

# Staff Report

for May 1, 2017

## Top Stories

### ◆ New Notification to Local Governmental Designees

The COGCC recently rolled out the use of a new digital (e-mail) notification that will be sent to Local Governmental Designees (LGDs) and which will supplement other notifications they may receive concerning certain types of hearing applications for lands within their jurisdiction.

Unlike other LGD notifications, however, this new notification is not based on a COGCC rule, but has been added to provide additional information to local governments to aid in their planning efforts for oil and gas development.

At present, per COGCC Rule 507.c, an operator must notice the LGD (or LGDs, if lands extend to multiple LGD jurisdictions) upon submittal of a hearing application for a new drilling unit, for additional wells within an existing drilling unit, or for modifications to an existing drilling unit order.

To supplement Rule 507.c, the COGCC will now send an automatic e-mail to the LGD when the Commission approves one of these types of applications for lands within their jurisdiction. If no such order is issued for lands within an LGD's jurisdiction, no email will be sent.

The first such distribution of these e-mails went to LGDs in 17 local governments.

The notifications provided the following information:

- The application docket numbers;
- The corresponding order number; and
- Map showing the location of the approved order.

Docket items are available on the website under the Regulation tab, and then under the Hearings

tab, by reviewing the docket of the applicable Commission Hearing. Search for orders under the Regulation tab, and then under the Orders tab, by simply entering the cause and order number.

LGDs should be aware that there will be a lag between the Commission Hearing and the time the orders are available on the website. The first e-mails of this type provided notice of the Drilling Unit orders issued at the March 20, 2017 Commission Hearing (in Loveland), and were sent during the week of April 10. In the future, the e-mails will be sent within a week of the Commission Hearing.

The next Commission Hearing is May 1 and 2 in Denver, and the schedule for all future Hearings can be found on the COGCC website under the Regulation tab, then under the Hearings tab.

COGCC welcomes comments and suggestions on how we may improve these (and other) types of notifications. Questions regarding the new notifications can be directed to Marc Morton, the COGCC Local Government Liaison at (303) 894-2100, ext. 5132 or by e-mail:

[marc.morton@state.co.us](mailto:marc.morton@state.co.us)

### ◆ COGCC GIS Online Interactive Map Update

The COGCC has recently updated the agency's interactive map to restore Address Search functionality, improve stability, and provide a better user experience. Map layers have been reorganized and in some cases relabeled to simplify navigation and provide a better explanation of the data presented.

Another notable addition is the capability to navigate and display locations in the context of the assessor's parcel number (APN). This parcel search feature is currently available for 24 counties; the parcel data for the remaining oil



and gas producing counties will be added as it is obtained and processed. For more information regarding these updates, please see this page:

<http://cogcc.state.co.us/maps.html#/gisonline>

#### ◆ Martinez v. COGCC

In November 2013, a group of citizens requested that the Colorado Oil and Gas Conservation Commission adopt a rule that the Commission “not issue any permits for the drilling of a well for oil and gas unless the best available science demonstrates, and an independent, third party organization confirms, that drilling can occur in a manner that does not cumulatively, with other actions, impair Colorado’s atmosphere, water, wildlife, and land resources, does not adversely impact human health and does not contribute to climate change.” The Commission denied the request after a hearing.

Plaintiffs appealed the Commission’s decision to Denver District Court. The District Court affirmed the Commission’s position. On appeal, the Colorado Court of Appeals reversed the District Court’s decision, sending the matter back to the Commission for additional consideration.

The March 23, 2017 Court of Appeals reversal turned on the interpretation of the statute which says:

*It is declared to be in the public interest to: [f]oster the responsible, balanced development, production, and utilization of the natural resources of oil and gas in the state of Colorado in a manner consistent with protection of public health, safety, and welfare, including protection of the environment and wildlife resources.*

The appeals court concluded that “in a manner consistent with” does not indicate a balancing test but rather a condition that must be fulfilled before oil and gas development can take place. The decision did not order the Commission to conduct the requested rulemaking, but instead rejected the Commission’s determination that the Commission did not have legal authority to adopt the proposed rule.

At this time, the Commission is still deciding whether to pursue an appeal to the Colorado Supreme Court.

See *Xiuhtezcatl Martinez et al v. COGCC*, 2017 CO A37.

#### ◆ The Seven Top Violations Explained

The COGCC Enforcement Program compiles a number of reports that summarize enforcement activities. They are posted here:

<http://cogcc.state.co.us/reg.html#/enforcement>

New reports are regularly added. Those interested should check back often to see updated information.

A review of one such report, the 2016 Annual Violations and Penalties Report under Executive Order No. D 2013-004, reveals seven categories of violations that were most frequently cited in enforcement orders entered in 2016, namely:

- Rule 308A / 308B - COGCC Form 5 / Form 5A
- Rule 309 - COGCC Form 7
- Rule 326 - Mechanical Integrity Testing
- Rule 605 - Oil & Gas Facilities (Berms)
- Rule 906 - Spills and Releases
- Rule 1003 - Interim Reclamation
- Permit / Order Violations.

Multiple guidance documents are available to assist operators in complying with these requirements. A more detailed write-up of these seven categories, with reference to rule-specific guidance documents, has been posted on the website under the Regulation tab, then under the Enforcement tab, and finally under the 2016 Enforcement Summary link, or at

<http://cogcc.state.co.us/documents/reg/Enforcement/2016%20Enforcement%20Summary.pdf>

If you have questions about enforcement orders, please contact either Peter Gowen ([peter.gowen@state.co.us](mailto:peter.gowen@state.co.us)), Jeremy Ferrin ([jeremy.ferrin@state.co.us](mailto:jeremy.ferrin@state.co.us)), David Beckstrom ([david.beckstrom@state.co.us](mailto:david.beckstrom@state.co.us)) or Steven Mah ([steven.mah@state.co.us](mailto:steven.mah@state.co.us)).

◆ **Financial Assurance Audit Results**

The plugging financial assurance required by Rule 706 ensures protection of the soil, proper plugging and abandonment of the well, and reclamation of the site. Rule 707 requires additional plugging financial assurance when an operator has too many inactive wells.

Inactive wells are not a source of revenue for the operator. The COGCC 100 Series Rules defines inactive wells as 1) shut-in (SI) well from which no production has been sold for 12 consecutive months, 2) any well which has been temporarily abandoned (TA) for six consecutive months, or 3) any injection well (IJ) which has not been utilized for 12 consecutive months.

Between June 2015 and March 2017, the COGCC Financial Assurance Unit audited all operators of wells in Colorado for compliance with Rule 707. Noncompliant operators were sent a Warning Letter with a deadline for providing financial assurance for plugging and reclamation. Those who did not respond to the Warning Letter were issued an NOAV.

The results of the audit are summarized below:

Operators Reviewed	494
Operators in Compliance Initially	434
Warning Letters Issued	60
NOAVs Issued	8
Additional Financial Assurance Secured	\$48.69 million

This Rule 707 compliance review is critical protection for the state from the financial risk posed by inadequately bonded operators. Going forward, the Financial Assurance Unit will continue this audit process, reviewing all operators every 2 years. The next reviews will begin in June 2017.

◆ **State CO<sub>2</sub> Enhanced Oil Recovery Deployment Work Group**

Governors Mather Mead (R-WY) and Steve Bullock (D-MT) jointly convened a 14 state work group to

conduct analysis, identify policies, and develop recommendations for State and Federal policymakers regarding the storage of CO<sub>2</sub>. The group aims to 1) expand CO<sub>2</sub> capture from power plants and industrial facilities, 2) build out pipeline infrastructure to transport that CO<sub>2</sub>, and 3) use CO<sub>2</sub> in oil production. In addition, the group is exploring policies to encourage the safe and permanent storage of CO<sub>2</sub>.

COGCC Engineering Staff also submitted comments on the group's White Paper entitled "21st Century Energy Infrastructure: Policy Recommendations for Development of American CO<sub>2</sub> Pipeline Networks."

◆ **New Basis for Well Status**

For several years, the status of a well in the database was updated only by the approval of a Form 5A, Completed Interval Report. Because a Form 5A is not required for all changes in well status, this method did not provide the most current, up to date status.

Form 7, Monthly Report of Operations, indicates all status changes for each active well and does so on a monthly basis. Therefore, as of March 14, a well's status in the database is based on the most recent Form 7.

The most dramatic change was a reduction in the number producing wells with a corresponding increase in the number of shut-in and temporarily abandoned wells. Because these well statuses change often, these numbers (see the Active Wells by County and Status table on Page 30) are expected to fluctuate.

◆ **Local Government Liaison (LGL) Program Update**

Marc Morton is COGCC's Local Government Liaison (LGL) and works to promote the benefits of participation in the nationally unique Local Governmental Designee (LGD) program offered by the COGCC.

As COGCC's LGL, Marc strives to enhance collaboration between local governments and the COGCC in the regulation of oil and gas by providing information, training, outreach, and consultation to LGDs, other local government staff, the public, non-governmental



organizations, industry representatives, elected officials, and others interested in collaborating with the COGCC regarding oil and gas regulation. Local governments may register to participate in the program by completing a signed COGCC Form 29.

As a reminder to currently participating LGDs, it is important to notify the COGCC (via submittal of an updated Form 29) of any change in email address or contact information, or of a change in the status of participation in the LGD program. The link to the Form 29 is available on the COGCC website ([cogcc.state.co.us](http://cogcc.state.co.us)) under the Regulation tab, and then under the Forms tab, or via the link below:

[http://cogcc.state.co.us/documents/reg/Forms/PDF\\_Forms/form29.pdf](http://cogcc.state.co.us/documents/reg/Forms/PDF_Forms/form29.pdf)

At present, 163 local governments participate in the voluntary LGD program, including 55 counties, 102 municipalities, and six special districts. Information pertinent to local governments is available on the COGCC website ([cogcc.state.co.us](http://cogcc.state.co.us)) under the Government tab, including a list of participating LGDs, LGD search tools, eForm login, LGD Newsletters, an LGD Program Fact Sheet, and other information.

LGD training is available upon request and is tailored to meet the specific needs of local governments.

A list of the LGL outreach and public involvement activities conducted since the previous staff report is included in the Public Outreach section below.

## Public Outreach

### ➤ Outreach by Director and Other Staff

- From April 2 to April 6, Environmental Data Analyst Arthur Koepsell, Senior Data Analyst Ken Robertson, and Senior Research Scientist Chris Eisinger attended the Groundwater Protection Council (GWPC) Risk Based Data Management System annual spring training in Lido, Florida.

At this national meeting, participants discuss trends and best management practices regarding application development and database management for ground water protection regulators. The presentations made by the COGCC attendees were as follows: “Colorado Use of RBDMS Environmental” by Arthur Koepsell, “Creating and Using Spatial Queries to Conduct Intersect Analyses” by Ken Robertson, and “Hands on with Power BI” by Chris Eisinger.

- On April 6, Engineering Integrity Supervisor Mark Schlagenhauf, P.E. delivered a joint presentation with Jake Janicek of Caerus Oil and Gas entitled “Oil and Gas Flowlines: Installation, Operation, and Regulation” for the Energy Advisory Board (EAB) meeting in Rifle. Mark discussed legal and regulatory aspects of flowlines, and Jake covered operational aspects of flowlines.
- On April 6, Engineering Integrity Supervisor Schlagenhauf gave a presentation called “Flowline Integrity Program Update” for the

Northwest Colorado Oil and Gas Forum in Rifle. The presentation was covered in *The Daily Sentinel*, a major news outlet for Colorado’s Western Slope.

- On April 18, Integrity Engineer Ellice Hazard participated in an Engineering Seminar at the University of Colorado - Denver. She discussed her past experiences in the private sector, her current role as an Integrity Engineer, and her perspective on working for the State of Colorado as an Engineer-In-Training.

### ➤ Outreach by the LGL

- On March 9 and at the request of BBC Research and Consulting, Permit and Technical Services Manager Jane Stanczyk, Senior Data Analyst Robertson, and Marc Morton consulted with BBC regarding COGCC GIS data retrieval capabilities and recently observed trends in drilling and completion.
- On March 9 and at the request of by the Colorado Rural Water Association, Marc attended the Association’s annual source water protection meeting at the Denver Federal Center in Lakewood.
- On March 15, Marc attended the bi-monthly meeting of the City of Aurora’s Oil and Gas Advisory Committee.





- On March 20, during the Commission Hearing in Loveland, Marc organized a working lunch between COGCC Commissioners, COGCC Staff, and local government representatives from Larimer County and several Larimer County municipalities including Fort Collins, Loveland, Timnath, and Windsor.
- On March 29, Marc Morton attended a Source Water Protection Planning Workshop organized by the Town of Castle Rock.
- On April 6, Marc Morton coordinated the Northwest Colorado Oil and Gas Forum meeting in Rifle. COGCC presenters included Director Matt Lepore, Environmental Unit Manager Greg Deranleau, Integrity Supervisor Schlagenhauf, and Marc Morton.
- On April 6, Marc Morton travelled to Rifle to attend the monthly Garfield County Energy Advisory Board meeting. COGCC Engineering Integrity Supervisor Mark Schlagenhauf provided a presentation titled "Oil and Gas Flowlines - Installation, Operation, and Regulation."
- On April 10, Marc Morton provided a two hour LGD orientation training to Commerce City staff at COGCC offices in Denver.
- From April 19 to 20, Marc Morton travelled to Rifle to attend the fifth annual Energy and Environment Symposium presented by Garfield County and the Colorado Mesa University Unconventional Energy Center.

## Regional Activities

### ➤ Northwest Colorado

#### ◆ Northwest Colorado Oil and Gas Forum

Remaining Northwest Colorado Oil and Gas Forum (NWF) meetings in 2017 are scheduled for August 3 and December 7. Meetings will be held in Rifle at the Colorado Mountain College - Rifle Campus / Clough Auditorium (3695 Airport Road, Rifle) between 9:00 a.m. and 12:00 p.m.

Meeting agendas are posted to the COGCC website approximately two weeks prior to each meeting. COGCC welcomes suggestions and input for speakers, topics, and meeting format and venue.

Meeting information is emailed to those on the email distribution list. NWF meetings are open to the public, and public comment is welcomed as part of each meeting. Past presentations (dating back to 2006) are available from

<http://cogcc.state.co.us/library.html#/forums>

All parties wishing to be placed on the next meeting agenda or added to the email distribution list for announcements should contact Marc Morton at (303) 894-2100, ext. 5132 (direct), (720) 415-4959 (mobile), or by email:

[marc.morton@state.co.us](mailto:marc.morton@state.co.us)

#### ◆ Project Rulison

The email for Project Rulison submittals is

[DNR\\_rulison.submittal@state.co.us](mailto:DNR_rulison.submittal@state.co.us)

#### ◆ Project Rio Blanco

The email for Project Rio Blanco submittals is

[DNR\\_rioblanco.submittal@state.co.us](mailto:DNR_rioblanco.submittal@state.co.us)

### ➤ Southwest Colorado

#### ◆ Fruitland Formation Outcrop Mitigation and Monitoring Projects

**South Fork Texas Creek Mitigation Site - La Plata County.** Regularly scheduled operations and maintenance are being performed at the South Fork Texas Creek (SFTC) site by LTE, the COGCC's contractor. Since May 2009, the system has collected 20,073 Mcf of methane and generated 231,231 kWh of surplus electricity.

The results of Fruitland Outcrop monitoring efforts in 2015 were presented at the 2016 First Quarter GORT Meeting by LTE. The 2015 Fruitland Outcrop Monitoring Report has also been posted in the COGCC website library under the 3M project in the San Juan Basin at the following link:



[http://cogcc.state.co.us/documents/library/AreaReports/SanJuanBasin/3m\\_project/2015%20FRUITLAND%20OUTCROP%20MONITORING%20REPORT\\_La\\_Plata.pdf](http://cogcc.state.co.us/documents/library/AreaReports/SanJuanBasin/3m_project/2015%20FRUITLAND%20OUTCROP%20MONITORING%20REPORT_La_Plata.pdf)

The 2016 4M Monitoring Report, prepared by Resource Hydrogeologic Services, has been posted in the COGCC website library under the 4M Project in the San Juan Basin at the following link:

[http://cogcc.state.co.us/documents/library/AreaReports/SanJuanBasin/4m\\_project/4M%20OM%20Report%202016.pdf](http://cogcc.state.co.us/documents/library/AreaReports/SanJuanBasin/4m_project/4M%20OM%20Report%202016.pdf)

At all eleven 3M/4M monitoring well locations, the contractor replaced the 12V lead acid batteries during last summer and fall. The work included replacement of desiccants at each well during last spring or summer. The contractor replaced the lower transducer at the Beaver Creek monitoring well #1 in July. The cable for the upper transducer in this well was also replaced.

Last fall, the contractor replaced the cable for the lower transducer in the Wagon Gulch #2 monitoring well. In addition, both the upper and lower transducers were replaced at the Fosset

Gulch #1 monitoring well. As the monitoring well network ages, more system upgrades and maintenance are anticipated.

#### ◆ Gas and Oil Regulatory Team (GORT) Meetings

Remaining GORT meetings in 2017 are scheduled for June 29 and October 12. These meetings will be held in Durango at the Durango Public Library (1900 E. 3rd Avenue) from 9:00 a.m. to 12:00 p.m.

GORT meeting agendas will be posted to the COGCC website approximately one to two weeks prior to each meeting, and emailed to those on the email distribution list. GORT meetings are open to the public, and public comment is held as part of each meeting. The COGCC welcomes suggestions and input for speakers, topics, and meeting format and venue.

All parties wishing to be placed on the next meeting agenda or added to the distribution list for announcements should contact Marc Morton at (303) 894-2100, ext. 5132 (direct), (720) 415-4959 (mobile), or by email:

[marc.morton@state.co.us](mailto:marc.morton@state.co.us)

## Variances

#### ◆ Linn Operating LLC (Linn)

On March 31, 2017, the COGCC Director granted Rule 502.b variances to Linn for 28 locations in Garfield County. The variances extend the March 1, 2017 performance requirement of the “Notice to Operators: Procedures for Preset Conductors (NTO)” until September 1, 2017.

The NTO required conductors preset prior to September 1, 2016 to be either plugged, permitted with an additional \$5,000 bond, or receive a COGCC approved alternative plan. Linn requested this extension due to the sale of all of these locations in early May 2017.

The extension will allow time for the new operator to evaluate these assets and determine the best course of future action.

## Admin / Organization / Other

#### ◆ Plugging and Reclaiming Orphaned Wells (PROW) - Project Updates

The Benchmark BOND NW Graylin D-Sand Unit #20W Plug and Abandon Project is in the “distressed operator” section of the PROW Program (Order 1V-564). The location is in Logan

County, approximately nine miles northwest of Sterling.

The COGCC plugged the well in January, and remaining project work includes abandoning the flowlines and removing equipment from the location. Staff continues to evaluate plugging



and abandonment priorities for other wells in the NW Graylin Field.

The **Pagoda Plug and Abandon Project** is located approximately 14 miles southeast of Craig, near the Moffat and Routt county line, and includes two previously plugged wells.

The landowner is improving and developing the east fork of the Williams Fork River habitat on his property and has requested that the COGCC cut off the existing above ground vertical plugging and abandonment markers. This project may be delayed until next summer or fall because of scheduling conflicts with the landowner.

The **Cache Unit #8 Plug and Abandon Project** is in the “distressed operator” section of the PROW Program (Order 1V-577). This location is in Montezuma County, approximately 26 miles west-southwest of Cortez.

The COGCC plugged the well in December, and remaining work includes abandoning both the injection line and the old oil flow line, removing the existing rig anchors, re-grading portions of the access road, and cleaning out a cattle guard. The COGCC is waiting on contractor availability to schedule the work.

The **Lloyd & Lowell #1 Plug and Abandon Project** is located about two miles west of DeBeque in Mesa County. This well was drilled in 1914 to a total depth of 3,045 feet. However, casing and cement records are not available. The well is currently discharging water and natural gas with a dark tar like material near the well. The volume of water flowing from the well over many years has created its own artificially irrigated wetlands, making access to the well difficult.

Water analysis indicates 1,100 milligrams per liter total dissolved solids and 110 micrograms per liter of benzene. Downhole camera work was attempted, but a wooden plug was observed in the casing near surface. This project has been sent out to bid. Timing of the project may be delayed while working with the U.S. Army Corps of Engineers through wetland permitting requirements.

The **State #1-36 Plug and Abandon Project** is located approximately 6 miles east-southeast of Cortez in Montezuma County. The well was drilled in 1982 to a total depth of 500 feet in the

Dakota Formation and had a show of natural gas but no economic production. The well has six inch outside diameter open casing rising four feet above ground with the well identification in raised welded beading on the casing. There is no surface plug, and it appears that the operator may have left the well for fresh water purposes. The work is scheduled for later in spring 2017.

The **Wolcott #1 Plug and Abandon Project** is a former domestic gas well located approximately two miles west of Mancos in Montezuma County. The well was drilled in 1981 to a total depth of 234 feet in the Dakota Formation and had a show of oil, but no economic production. The well has seven inch outside diameter open casing that is buckled at the surface. The well is discharging water to surface. The work is scheduled for later in spring 2017.

The **Doerfer #1-5 and Doerfer #2 Plug and Abandon Project** is in the “distressed operator” section of the PROW Program (Order 1V-586). Both wells are located approximately three miles south of Mancos. The Doerfer #1-5 well was drilled in 2009 to a total depth of 1,345 feet, and the Doerfer #2 well was drilled in 1979 to a total depth of 1,310 feet, with both wells terminating in the Dakota Formation. Both wells produced oil at a rate of three to four barrels of oil per day prior to being shut in. The work will be scheduled at a future date.

The **Ranchers BOND Retta J #1 Reclamation Project** is located in Larimer County, near the City of Windsor. The COGCC claimed the Ranchers Exploration bond in Order 1V-526. The site is complicated by the fact that the well was drilled on the closed Johnston Landfill, which ceased business operations in 1982.

The Colorado Department of Public Health and the Environment (CDPHE) landfill closure plan does not allow any disturbance to the landfill area. Disturbance occurred during the well pad construction and during the drilling operations. The COGCC required the drilling operation to end early in the drilling operations process and prohibited further oil and gas operations on the location.

The well was plugged and abandoned by the operator in April 2012, but the operator failed to implement adequate stormwater BMPs and reclaim the well site. The COGCC and CDPHE are



working together to close the location since there is a landfill component and an oil and gas component.

The first phase of and soil sampling and reclamation design work was completed June 30, 2016. Landfill cap design work has been contracted for late spring 2017, with the goal of developing a plan to close the landfill and reclaim the location. Field work will be rescheduled for fall 2017.

Pages 18 through 21 contain a spreadsheet listing PROW projects that are either planned, in progress, or completed as of April 21, 2017.

#### ◆ Interested Parties Notifications

##### Monument Global Resources Inc.

BY ORDER OF THE COLORADO OIL AND GAS CONSERVATION COMMISSION

ORDER NO. 1V-600

TO ALL INTERESTED PARTIES AND TO WHOM IT MAY CONCERN:

Pursuant to Section 34-60-124 of the Colorado Revised Statutes and Order No. 1V-600 of the Colorado Oil and Gas Conservation Commission ("Commission"):

The Commission has claimed all equipment, saleable product, and appurtenances related to the oil and gas operations of Monument Global Resources Inc. ("Monument") (Operator No. 10430). The Commission has revoked Monument's right to conduct oil and gas operations in Colorado, including transporting oil and gas to market.

The Commission has commenced activities to investigate, prevent, monitor, or mitigate conditions that threaten to cause, or that actually cause, significant adverse environmental impacts at oil and gas locations formerly operated by Monument. These activities may include the plugging and abandonment of wells.

The Commission's actions may impact the following properties, located in Montezuma County, Colorado:

1. Sections 1, 2 and 3, Township 34 North, Range 20 West, N.M. P.M.
2. Sections 34 and 35, Township 35 North, Range 20 West, N.M. P.M.

Additional information regarding these properties can be found here:

<http://cogcc.state.co.us/reg.html#/enforcement/orphans>

ANY PARTY WHO CLAIMS AN INTEREST IN THIS EQUIPMENT, SALEABLE PRODUCTS, APPURTENANCES, OR IN THE PLUGGING OF THESE WELLS MUST CONTACT THE COMMISSION'S ENFORCEMENT SUPERVISOR IMMEDIATELY, by: phone - (303) 894-2100; email - [dnr\\_cogccenforcement@state.co.us](mailto:dnr_cogccenforcement@state.co.us); or mail - Colorado Oil and Gas Conservation Commission, Attn: Enforcement Supervisor, 1120 Lincoln Street, Suite 801, Denver, Colorado 80203.

##### PetroHunter Operating Company

BY ORDER OF THE COLORADO OIL AND GAS CONSERVATION COMMISSION

ORDER NO. 1V-608

TO ALL INTERESTED PARTIES AND TO WHOM IT MAY CONCERN:

Pursuant to Section 34-60-124 of the Colorado Revised Statutes and Order No. 1V-608 of the Colorado Oil and Gas Conservation Commission ("Commission"):

The Commission has claimed all equipment, saleable product, and appurtenances related to the oil and gas operations of PetroHunter Operating Company ("PetroHunter") (Operator No. 10200). The Commission has revoked PetroHunter's right to conduct oil and gas operations in Colorado, including transporting oil and gas to market.

The Commission has commenced activities to investigate, prevent, monitor, or mitigate conditions that threaten to cause, or that actually cause, significant adverse environmental impacts at oil and gas locations formerly operated by PetroHunter. These activities may include the plugging and abandonment of wells.





The Commission's actions may impact the following properties, located in Rio Blanco County, Colorado:

1. Sections 1, 10, 14, 16, 21-23, 26, 27, 31 and 35, Township 1 North, Range 95 West, 6th P.M.

The Commission's actions may also impact the following properties, located in Garfield County, Colorado:

1. Section 9, Township 8 South, Range 96 West, 6th P.M.

The Commission's actions may impact the following properties, located in Mesa County, Colorado:

1. Section 18, Township 8 South, Range 96 West, 6th P.M.

Additional information regarding these properties can be found here:

<http://cogcc.state.co.us/reg.html#/enforcement/orphans>

ANY PARTY WHO CLAIMS AN INTEREST IN THIS EQUIPMENT, SALEABLE PRODUCTS, APPURTENANCES, OR IN THE PLUGGING OF THESE WELLS MUST CONTACT THE COMMISSION'S ENFORCEMENT SUPERVISOR IMMEDIATELY, by: phone - (303) 894-2100; email - [dnr\\_cogccenforcement@state.co.us](mailto:dnr_cogccenforcement@state.co.us); or mail - Colorado Oil and Gas Conservation Commission, Attn: Enforcement Supervisor, 1120 Lincoln Street, Suite 801, Denver, Colorado 80203.

### P&M Petroleum Management LLC

BY ORDER OF THE COLORADO OIL AND GAS CONSERVATION COMMISSION

ORDER NO. 1V-520

TO ALL INTERESTED PARTIES AND TO WHOM IT MAY CONCERN:

Pursuant to Section 34-60-124 of the Colorado Revised Statutes and Order No. 1V-520 of the Colorado Oil and Gas Conservation Commission ("Commission"):

The Commission has claimed all equipment, saleable product, and appurtenances related to the oil and gas operations of P&M Petroleum

Management LLC ("P&M") (Operator No. 66565). The Commission has revoked P&M's right to conduct oil and gas operations in Colorado, including transporting oil and gas to market.

The Commission has commenced activities to investigate, prevent, monitor, or mitigate conditions that threaten to cause, or that actually cause, significant adverse environmental impacts at oil and gas locations formerly operated by P&M. These activities may include the plugging and abandonment of wells.

The Commission's actions may impact the following properties:

Adams County, Colorado:

1. Section 18, Township 1 South, Range 63 West, 6th P.M.
2. Section 22, Township 1 South, Range 67 West, 6th P.M.
3. Section 35, Township 2 South, Range 58 West, 6th P.M.

Arapahoe County, Colorado:

1. Section 31, Township 4 South, Range 63 West, 6th P.M.

Baca County, Colorado:

1. Section 10, Township 34 South, Range 41 West, 6th P.M.
2. Sections 19 and 30, Township 31 South, Range 41 West, 6th P.M.

Jackson County, Colorado:

1. Section 27, Township 10 North, Range 79 West, 6th P.M.

La Plata County, Colorado:

1. Section 5, Township 33 North, Range 8 West, N.M. P.M.

Logan County, Colorado:

1. Section 14, Township 9 North, Range 54 West, 6th P.M.
2. Section 16, Township 6 North, Range 52 West, 6th P.M.
3. Section 23, Township 11 North, Range 55 West, 6th P.M.
4. Section 31, Township 10 North, Range 53 West, 6th P.M.



## Mesa County, Colorado:

1. Section 8, Township 10 South, Range 97 West, 6th P.M.

## Moffat County, Colorado:

1. Section 17, Township 12 North, Range 98 West, 6th P.M.
2. Section 27, Township 9 North, Range 96 West, 6th P.M.

## Montezuma County, Colorado:

1. Section 4, Township 38 North, Range 19 West, N.M. P.M.

## Morgan County, Colorado:

1. Section 6, Township 1 North, Range 58 West, 6th P.M.
2. Section 11, Township 1 North, Range 59 West, 6th P.M.
3. Section 25, Township 2 North, Range 59 West, 6th P.M.
4. Section 21, Township 3 North, Range 58 West, 6th P.M.

## Routt County, Colorado:

1. Sections 15 and 21, Township 4 North, Range 86 West, 6th P.M.

## Washington County, Colorado:

1. Section 30, Township 2 South, Range 49 West, 6th P.M.

## Weld County, Colorado:

1. Section 2, Township 1 North, Range 63 West, 6th P.M.
2. Section 19, Township 2 North, Range 62 West, 6th P.M.
3. Sections 16 and 35, Township 2 North, Range 63 West, 6th P.M.
4. Section 18, Township 9 North, Range 56 West, 6th P.M.

Additional information regarding these properties can be found here:

<http://cogcc.state.co.us/reg.html#/enforcement/orphans>

ANY PARTY WHO CLAIMS AN INTEREST IN THIS EQUIPMENT, SALEABLE PRODUCTS,

APPURTENANCES, OR IN THE PLUGGING OF THESE WELLS MUST CONTACT THE COMMISSION'S ENFORCEMENT SUPERVISOR IMMEDIATELY, by: phone - (303) 894-2100; email - [dnr\\_cogccenforcement@state.co.us](mailto:dnr_cogccenforcement@state.co.us); or mail - Colorado Oil and Gas Conservation Commission, Attn: Enforcement Supervisor, 1120 Lincoln Street, Suite 801, Denver, Colorado 80203.

**Premier Oil & Gas Inc.**

BY ORDER OF THE COLORADO OIL AND GAS CONSERVATION COMMISSION

ORDER NO. 1V-592

TO ALL INTERESTED PARTIES AND TO WHOM IT MAY CONCERN:

Pursuant to Section 34-60-124 of the Colorado Revised Statutes and Order No. 1V-592 of the Colorado Oil and Gas Conservation Commission ("Commission"):

The Commission has claimed all equipment, saleable product, and appurtenances related to the oil and gas operations of Premier Oil & Gas Inc. (Operator No. 10236) ("Premier"). The Commission has revoked Premier's right to conduct oil and gas operations in Colorado, including transporting oil and gas to market.

The Commission has commenced activities to investigate, prevent, monitor, or mitigate conditions that threaten to cause, or that actually cause, significant adverse environmental impacts at oil and gas locations formerly operated by Premier. These activities may include the plugging and abandonment of wells.

The Commission's actions may impact the following properties, located in Jefferson County, Colorado:

1. Section 9, Township 2 South, Range 70 West, 6th P.M.

Additional information regarding these properties can be found here:

<http://cogcc.state.co.us/reg.html#/enforcement/orphans>

ANY PARTY WHO CLAIMS AN INTEREST IN THIS EQUIPMENT, SALEABLE PRODUCTS, APPURTENANCES, OR IN THE PLUGGING OF THESE



WELLS MUST CONTACT THE COMMISSION'S ENFORCEMENT SUPERVISOR IMMEDIATELY, by: phone - (303) 894-2100; email - [dnr\\_cogccenforcement@state.co.us](mailto:dnr_cogccenforcement@state.co.us); or mail - Colorado Oil and Gas Conservation Commission, Attn: Enforcement Supervisor, 1120 Lincoln Street, Suite 801, Denver, Colorado 80203.

### Ranchers Exploration Partners LLC

BY ORDER OF THE COLORADO OIL AND GAS CONSERVATION COMMISSION

ORDER NO. 1V-526

TO ALL INTERESTED PARTIES AND TO WHOM IT MAY CONCERN:

Pursuant to Section 34-60-124 of the Colorado Revised Statutes and Order No. 1V-526 of the Colorado Oil and Gas Conservation Commission ("Commission"):

The Commission has claimed all equipment, saleable product, and appurtenances related to the oil and gas operations of Ranchers Exploration Partners LLC ("Ranchers") (Operator No. 10350). The Commission has revoked Ranchers' right to conduct oil and gas operations in Colorado, including transporting oil and gas to market.

The Commission has commenced activities to investigate, prevent, monitor, or mitigate conditions that threaten to cause, or that actually cause, significant adverse environmental impacts at oil and gas locations formerly operated by Ranchers. These activities may include the plugging and abandonment of wells.

The Commission's actions may impact the following properties, located in Weld County, Colorado:

1. Section 30, Township 3 North, Range 66 West, 6th P.M.
2. Section 24, Township 6 North, Range 68 West, 6th P.M.

Additional information regarding these properties can be found here:

<http://cogcc.state.co.us/reg.html#/enforcement/orphans>

ANY PARTY WHO CLAIMS AN INTEREST IN THIS EQUIPMENT, SALEABLE PRODUCTS, APPURTENANCES, OR IN THE PLUGGING OF THESE WELLS MUST CONTACT THE COMMISSION'S ENFORCEMENT SUPERVISOR IMMEDIATELY, by: phone - (303) 894-2100; email - [dnr\\_cogccenforcement@state.co.us](mailto:dnr_cogccenforcement@state.co.us); or mail - Colorado Oil and Gas Conservation Commission, Attn: Enforcement Supervisor, 1120 Lincoln Street, Suite 801, Denver, Colorado 80203.

### Red Mesa Holdings/O&G LLC

BY ORDER OF THE COLORADO OIL AND GAS CONSERVATION COMMISSION

ORDER NO. 1V-508

TO ALL INTERESTED PARTIES AND TO WHOM IT MAY CONCERN:

Pursuant to Section 34-60-124 of the Colorado Revised Statutes and Order No. 1V-508 of the Colorado Oil and Gas Conservation Commission ("Commission"):

The Commission has commenced activities to investigate, prevent, monitor, or mitigate conditions that threaten to cause, or that actually cause, significant adverse environmental impacts at oil and gas locations formerly operated by Red Mesa Holdings/O&G LLC ("Red Mesa") (Operator No. 10254). These activities may include the plugging and abandonment of wells and/or the reclamation of Red Mesa's well sites and associated facilities.

The Commission's actions may impact the following properties, located in La Plata County, Colorado:

1. Sections 1 and 2, Township 32 North, Range 13 West, N.M. P.M.
2. Sections 11, 13, 14, 21, 22, 26, 27, 28, 32, 33, 34 and 35, Township 33 North, Range 12 West, N.M. P.M.

Additional information regarding these properties can be found here:

<http://cogcc.state.co.us/reg.html#/enforcement/orphans>

ANY PARTY WHO CLAIMS AN INTEREST IN THE PLUGGING AND ABANDONMENT OF THESE WELLS



AND/OR THE RECLAMATION OF THESE WELL SITES AND ASSOCIATED FACILITIES, MUST CONTACT THE COMMISSION'S ENFORCEMENT SUPERVISOR IMMEDIATELY, by: phone - (303) 894-2100; email - [dnr\\_cogccenforcement@state.co.us](mailto:dnr_cogccenforcement@state.co.us); or mail - Colorado Oil and Gas Conservation Commission, Attn: Enforcement Supervisor, 1120 Lincoln Street, Suite 801, Denver, Colorado 80203.

#### ◆ Colorado Oil and Gas Information System (COGIS) Projects, Updates and Changes

##### Electronic Form (eForm) Submissions

The COGCC uses 41 types of forms to authorize oil and gas operations, inspect and monitor ongoing operations, and receive reports of operations. Of those 41 forms, 21 are currently available for electronic submittal through the eForms system.

The development team continues to work on the eForm conversion of existing forms. Currently, four forms are in various stages of development: Forms 11, 12, 14, 14A, and 43. In addition, the development team updates eForms with improvements requested by Staff and as required by rule revisions. In 2017, 97 percent of the forms available in eForms were submitted electronically by industry.

There are 796 operator users of eForms and 3,193 individual users. For any operator not currently enrolled in eForms, instructions for starting the process can be found on the COGCC website at:

<http://cogcc.state.co.us/Announcements/COUInformation.pdf>

##### Form 27 eForm Release

The COGCC's Site Investigation and Remediation Workplan (Form 27) has been upgraded. The Governor's Office of Information Technology (OIT) has completed development of the eForm 27, and COGCC Staff rolled it out to industry January 2. In the first two months of use, the COGCC has made some initial refinement and will evaluate the Form's performance during the second quarter of 2017.

##### Applications and Location Assessments

The public can make comments on all submitted Drilling Permit Applications (Form 2s) and Location Assessments (Form 2As) through the eForm system. Simply go to the COGCC website and click on the menu option "Permits" or

<http://cogcc.state.co.us/permits.html#/permits>

On the "Permits Search" page, three search options are available. The first option, "All Pending Permit Applications," is used for public comments.

When the results are displayed for "Pending Applications," a user can click on the document number hyperlink in the "Status" column, which logs him or her to the eForms application. Once the page is displayed with the selected document, the user can select the "Comment" button to make a comment on that particular form.

##### Data Access

The COGCC's database is a comprehensive repository of Colorado's oil and gas data. The information in the database is available to the public through interactive search tools and a variety of file downloads on the website. Users of bulk data come from many different sectors of the community, including academia, oil and gas operators, environmental groups, government agencies, and the media.

The number of these users and the variety of data requested are steadily increasing. Staff continues to publish additional data file downloads at:

<http://cogcc.state.co.us/data2.html#/downloads>

##### Current Data File Downloads

- Complaints
- Field Operations
- GIS Shapefiles (12 files)
- Mechanical Integrity Tests
- Notices of Alleged Violation
- Production Data (1999 - present)
- Spacing Orders
- Spills and Releases
- Water Well Data





## Future Data File Downloads

Enforcement Orders (OFVs and AOCs)  
Underground Injection Control (UIC) Data

## ◆ June 2017 Hearing Docket

The docket for the June 2017 hearing will be available shortly after the May hearing. Hearing dockets are available on our website by clicking on “Regulation” in the menu and then “Hearings”:

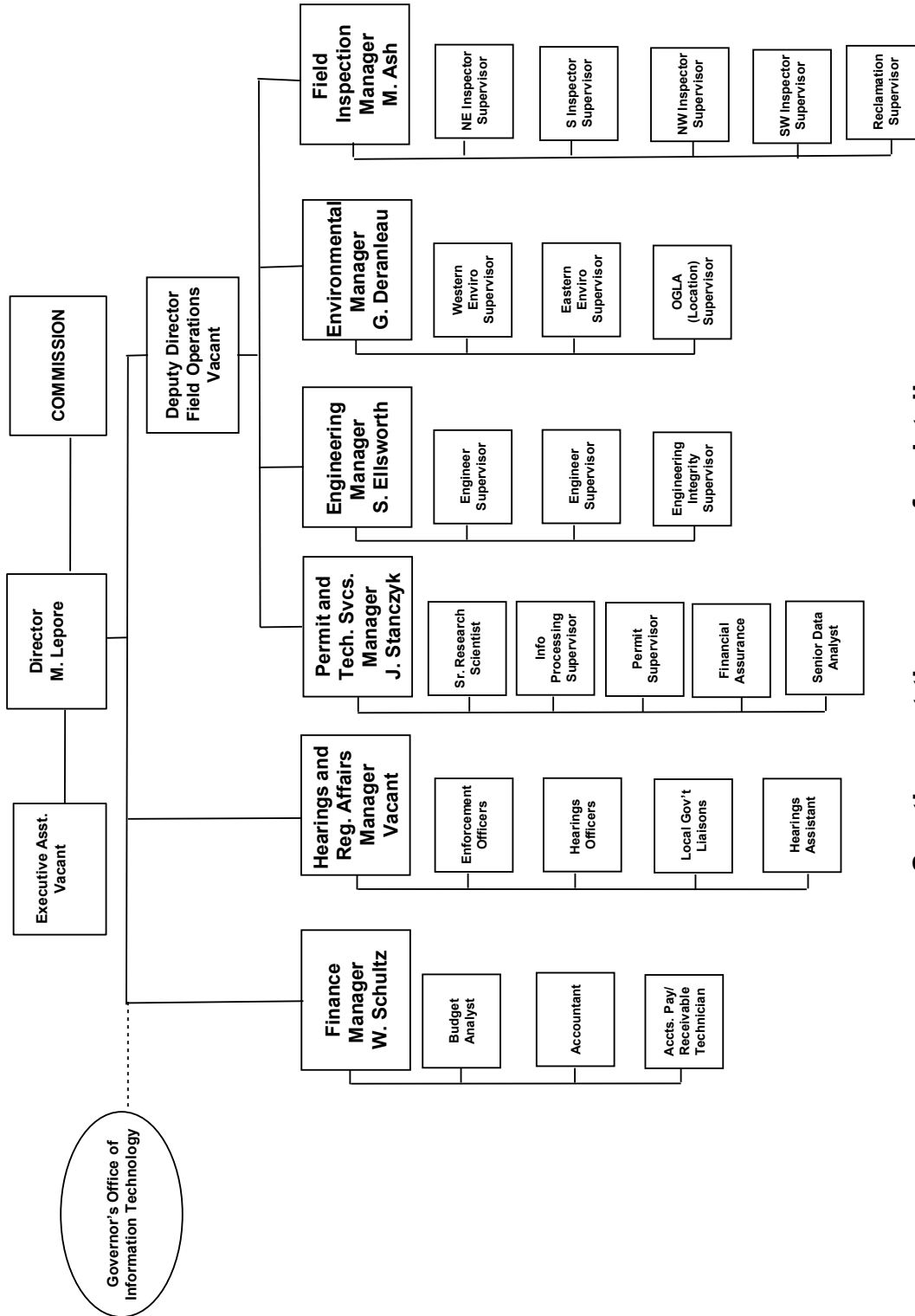
<http://cogcc.state.co.us/reg.html#/hearings>

Links to the notices and hearing applications are available from the Docket Number and Applicant, respectively, by clicking the June Gen\_Docket link. To sign up for email notification of hearing notices and applications, please see the announcement and instructions on the homepage of the COGCC website.



## Organizational Charts and Statistics

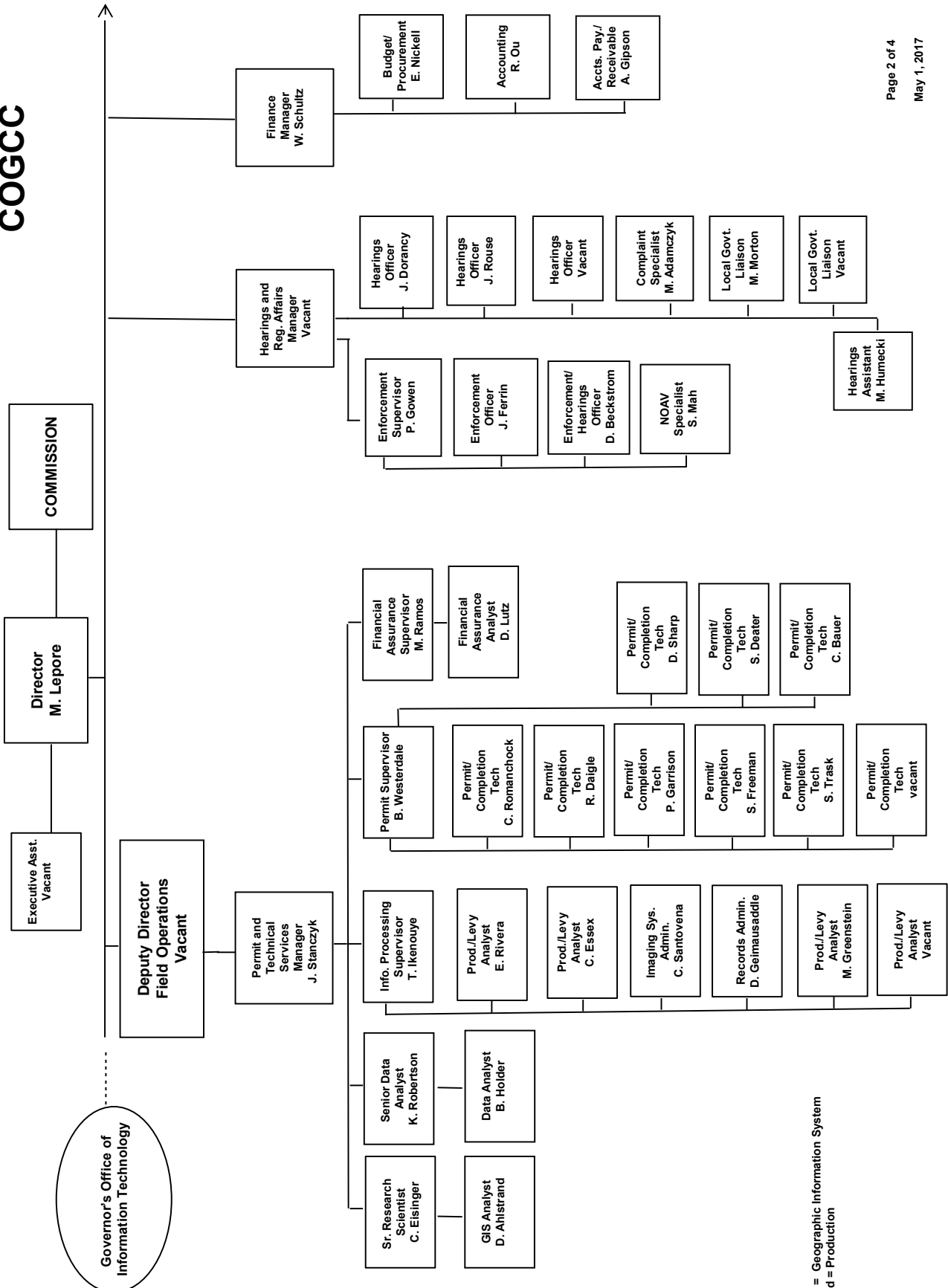
### COLORADO OIL & GAS CONSERVATION COMMISSION



See the next three pages for details



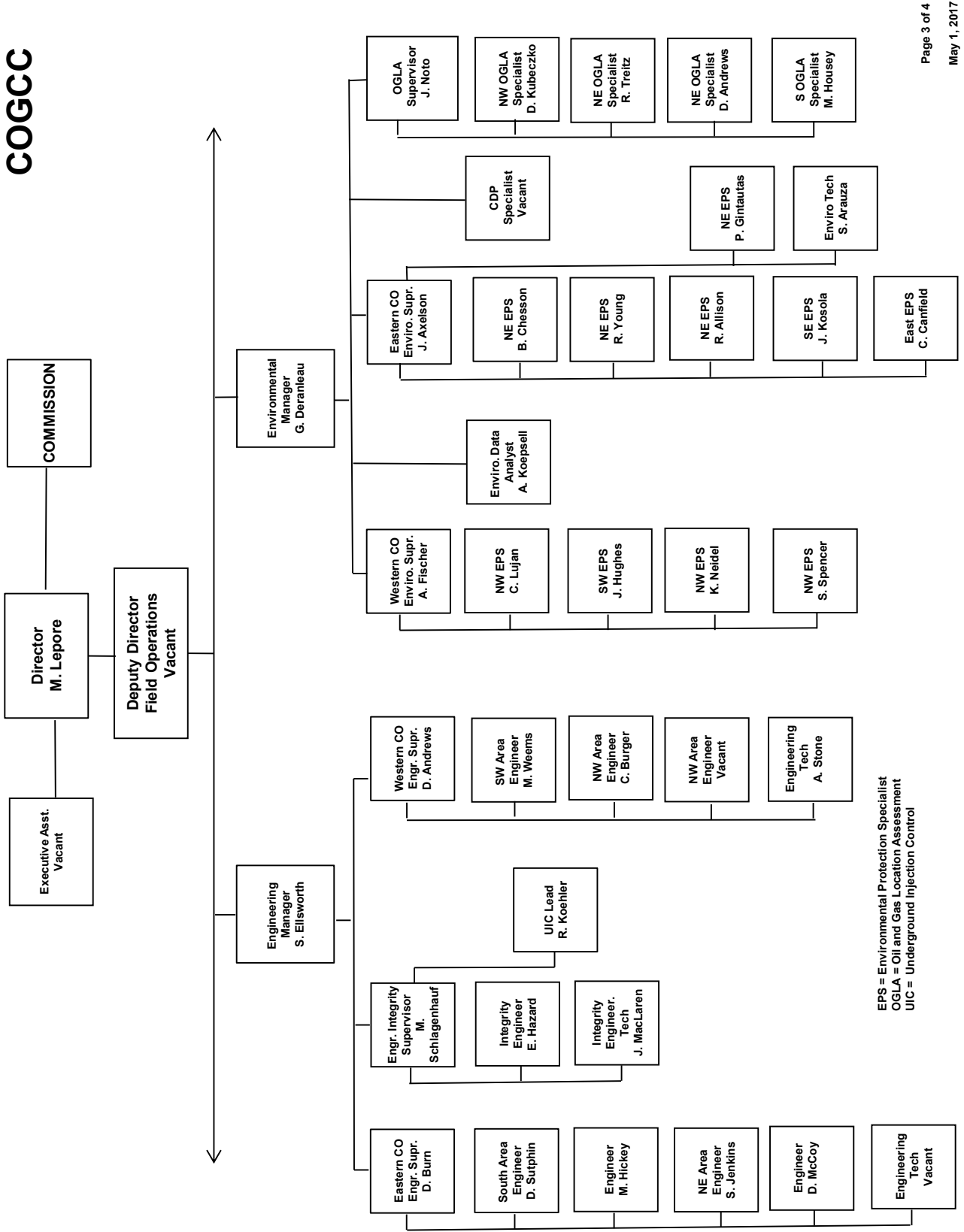
## COGCC



GIS = Geographic Information System  
Prod = Production



## COGCC

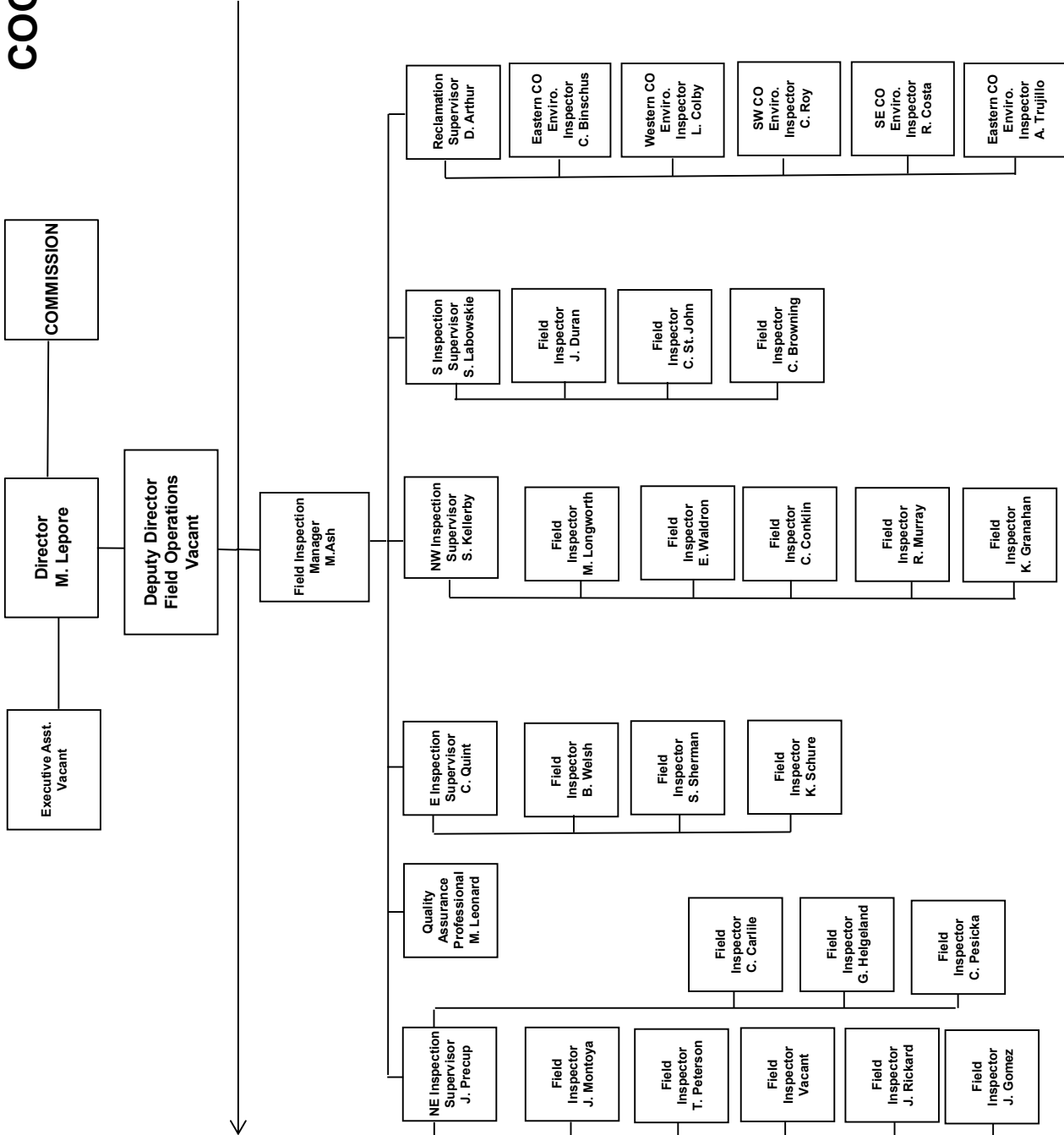


EPS = Environmental Protection Specialist  
 OGLA = Oil and Gas Location Assessment  
 UIC = Underground Injection Control





## COGCC





PLUGGING AND RECLAIMING ORPHANED WELLS (PROW) PROGRAM  
FISCAL YEAR 2016-17

BONDS AND OTHER SURETY CLAIM STATUS FOR "BOND CLAIM" PROJECTS						Page 1 of 4
Project	Order Number(s)	Total Bond Claim	Amount Spent in Prior Fiscal Years	Remaining Balance		
Atom Petroleum Bond Claim	1V-586	\$ 60,000	\$ -	\$ 60,000		
Benchmark Energy Bond Claim	1V-564	\$ 620,000	\$ 1,180	\$ 618,820		
CM Production Bond Claim	1V-581	\$ 67,849	\$ -	\$ 67,849		
Dolphin Bond Claim	1V-382	\$ 55,000	\$ 55,000	\$ -		
Monument Global Bond Claim	1V-577, 1V-600	\$ 80,231	\$ -	\$ 80,231		
Premier Bond Claim	1V-362, 1V-592	\$ 16,778	\$ 5,000	\$ 11,778		
Provide Bond Claim	1V-364	\$ 5,000	\$ 5,000	\$ -		
Red Mountain Bond Claim	1V-549 *	\$ 92,015	\$ -	\$ 92,015		
Ranchers Bond Claim	1V-526	\$ 63,424	\$ 30,183	\$ 33,241		
Red Mesa Holdings Bond Claim	1V-508	\$ 72,831	\$ 4,293	\$ 68,539		
Redwine Bond Claim	1V-470, 1V-494	\$ 30,000	\$ 30,000	\$ -		
Tatonka Bond Claim	1V-383	\$ 30,000	\$ 30,000	\$ -		
Texas Tea Bond Claim	1V-573	\$ 71,850	\$ -	\$ 71,850		
Think Oil Bond Claim	1V-458	\$ 12,570	\$ 12,570	\$ -		
<b>TOTALS -&gt;</b>		<b>\$ 1,277,548</b>	<b>\$ 173,226</b>	<b>\$ 1,104,322</b>		

Note: \* Red Mountain Bond Total Claim Amount includes \$24,169 bankruptcy deposit and \$5,000 State Land Board deposit (bond transfer)

PLANNED WORK		Project and Task	BOND	PROW	EMGY Orders
Work Unit	County				
RECL	Adams	Texas Tea Bond Claim: Task 2.2 - Weed Control (maintenance) - Spindle and Sun Fields		Planned	
RECL	Logan	Simms #1: Task 1 - Reclamation (initial work) - 389425		Planned	
FOPS	Moffat	Saunders et al #1: Task 1 - MIT or Other Well Work, Remove cables and junk - 391470, 081-05241		Planned	
FOPS	Routt	Pagoda #1-31: Task 1 - MIT or Other Well Work, Cut off PA marker - 399362, 107-06115		Planned	
RECL	Weld	Vaughney & Vaughney - Buckingham Field: Task 1 - Reclamation (initial work) - 405136	Planned		
RECL	Weld	Vaughney & Vaughney - Buckingham Field: Task 1 - Reclamation (initial work) - 405138	Planned		
RECL	Various	Weed Control and Stormwater BMP (maintenance)		Planned	



WORK IN PROGRESS		Project and Task	BOND Actual	PROW Actual	EMGY Actual	Subtotals Actual
Work Unit	County					
FOPS	Jackson	CM Production Bond Claim: Site Security and Equipment Intervention Tasks, Lone Pine Field (Various Locations)	\$ 1,386	\$ -	\$ -	1,386
RECL	Larimer	Ranchers Bond Claim: Task 2 - Engineering Design - 419639	\$ -	\$ -	\$ -	-
ENGR	Montezuma	State #1-36: Task 1 - Plug and Abandon - 313502, 083-06354	\$ -	Bids received and award pending	\$ -	-
ENGR	Montezuma	Wolcott #1: Task 1 - Plug and Abandon - 313501, 083-06341	\$ -	Bids received and award pending	\$ -	-
RECL	Montezuma	Monument Global Bond Claim: Task 3 - Reclamation (initial work) - 313425	\$ -	Purchase Order issued and work scheduled for April 2017	\$ -	-
RECL	Logan	J&L Oil Corp - North Shore Field: Task 2 - Reclamation (initial work) - 389243	\$ -	\$ 231	\$ -	231
RECL	Logan	J&L Oil Corp - North Shore Field: Task 2 - Reclamation (initial work) - 389245	\$ -	\$ 231	\$ -	231
<b>WORK IN PROGRESS SUBTOTALS -&gt;</b>			<b>\$ 1,386</b>	<b>\$ 462</b>	<b>\$ -</b>	<b>1,848</b>
COMPLETED WORK		Project and Task	BOND Actual	PROW Actual	EMGY Actual	Subtotals Actual
Work Unit	County					
ENVR	Adams	Texas Tea Bond Claim: Task 1.2 - Sampling and Analysis, Spill or Remediation - 320257,	\$ 29,204	\$ -	\$ -	29,204
ENVR	Adams	Texas Tea Bond Claim: Task 1.3 - Sampling and Analysis, Groundwater Monitoring Wells - 318231,	\$ -	\$ -	\$ -	-
RECL	Garfield	Dolphin Bond Claim: Task 15 - Mowing - 335477,	\$ -	\$ 787	\$ -	787
ENVR	Jackson	CM Production Bond Claim: Field inspections, equipment and location labels, and verify electrical disconnect for Lone Pine Field	\$ -	\$ -	\$ -	-
ENVR	Jackson	CM Production Bond Claim: Task 1.11 - Sampling and Analysis - Lone Pine Field,	\$ 2,240	\$ -	\$ -	2,240
ENGR	Jefferson	Premier Bond Claim: Task 1 - Plug and Abandon - 324776, 059-06026	\$ -	\$ 25,661	\$ -	25,661
ENVR	Jefferson	Premier Bond Claim: Task 2 - Sampling and Analysis, Spill or Remediation, Off-Site Disposal - 324776,	\$ 678	\$ 1,000	\$ -	1,678
FOPS	Jefferson	Provide - Red Mountain Bond Claim: Task 3 - Equipment Intervention, Equipment Salvage - 324775,	\$ -	\$ 1,000	\$ -	1,000
RECL	Jefferson	Provide - Red Mountain Bond Claim: Task 4 - Reclamation (initial work) - 324775,	\$ 19,215	\$ -	\$ -	19,215
RECL	Jefferson	Provide - Red Mountain Bond Claim: Task 5 - Site Security - 324775,	\$ 4,680	\$ -	\$ -	4,680



COMPLETED WORK, cont.		Page 3 of 3				
Work Unit	County	Project and Task	BOND Actual	PROW Actual	EMGY Actual	Subtotals Actual
FOPS	La Plata	Atom Petroleum Bond Claim: Task 1.2 - Equipment Intervention - 325653,	797 \$	- \$	- \$	797
FOPS	La Plata	Red Mesa Holdings Bond Claim: Task 1 - Sampling and Analysis, Gauge tanks (Various Locations)	346 \$	- \$	- \$	346
ENGR	La Plata	Red Mesa Holdings Bond Claim: Task 2 - MIT or Other Well Work, Complaint response, Bradenhead test - 325858, 067-07085	2,665 \$	- \$	- \$	2,665
RECL	Larimer	Ranchers Bond Claim: Task 1 - Reclamation (initial work), Re-Seeding (maintenance), Weed Control (maintenance) - 435790,	33,215 \$	- \$	- \$	33,215
FOPS	Logan	Benchmark Energy Bond Claim: Task 1.1 - Site Security - Graylin NW and Mount Hope Fields,	496 \$	- \$	- \$	496
FOPS	Logan	Benchmark Energy Bond Claim: Task 1.2 - Equipment Intervention, Gauge Tanks - Graylin NW and Mount Hope Fields,	- \$	- \$	- \$	-
RECL	Logan	Benchmark Energy Bond Claim: Task 1.3 - Weed Control (maintenance), Mowing - Graylin NW and Mount Hope Fields,	14,900 \$	- \$	- \$	14,900
HEAR	Logan	Benchmark Energy Bond Claim: Task 1.4 - Title Work (legal) - Graylin NW and Mount Hope Fields,	8,000 \$	- \$	- \$	8,000
FOPS	Logan	Benchmark Energy Bond Claim: Task 1.5 - Repair Power Lines - Graylin NW and Mount Hope Fields,	750 \$	- \$	- \$	750
FOPS	Logan	Benchmark Energy Bond Claim: Task 1.6, 1.6B, 1.7, 1.8, 1.9 - Equipment Intervention, Fix Leaks, Fluid Handling, Berm	17,683 \$	- \$	- \$	17,683
FOPS	Logan	Benchmark Energy Bond Claim: Task 1.10 - Reclaim Oil - Graylin NW and Mount Hope Fields,	- \$	- \$	- \$	-
ENVR	Logan	Benchmark Energy Bond Claim: Task 1.13, 2.1 - Spill or Remediation - 312152,	9,195 \$	- \$	- \$	9,195
ENVR	Logan	Benchmark Energy Bond Claim: Task 1.14 - Spill or Remediation, Off-Site Disposal - Graylin NW and Mount Hope Fields,	2,929 \$	- \$	- \$	2,929
FOPS	Logan	Benchmark Energy Bond Claim: Task 1.15, 1.16 - MIT or Other Well Work, Wireline Tags - Graylin NW and Mount Hope Fields,	11,784 \$	- \$	- \$	11,784
ENGR	Logan	Benchmark Energy Bond Claim: Task 2.2 - Plug and Abandon - 312158, 075-05972	31,155 \$	- \$	- \$	31,155
ENGR	Mesa	DB Orphan Blair #1: Task 4 - Plug and Abandon - 434038, 077-	- \$	24,467 \$	- \$	24,467
RECL	Mesa	DB Orphan Blair #1: Task 5 - Reclamation (initial work) - 434038,	- \$	4,360 \$	- \$	4,360
ENGR	Mesa	Lloyd and Lowell #1: Task 1 - Site Security, MIT or Other Well Work, Downhole Camera - 428669, 077-40017	- \$	7,506 \$	- \$	7,506
RECL	Moffat	Tatonka Bond Claim: Task 9 - Reclamation (initial work), Seeding - 313340,	- \$	3,462 \$	- \$	3,462
RECL	Moffat	Think Oil Bond Claim: Task 2 - Reclamation (initial work) -	- \$	18,600 \$	- \$	18,600
ENGR	Montezuma	Monument Global Bond Claim: Task 1 - Plug and Abandon - 313425, 083-05147	49,605 \$	- \$	- \$	49,605
ENV	Montezuma	Monument Global Bond Claim: Task 2 - Sampling and Analysis, Spill or Remediation - 313425, 083-05147	4,502 \$	- \$	- \$	4,502





Page 4 of 4

Work Unit	County	Project and Task	BOND Actual	PROW Actual	EMGY Actual	Subtotals Actual
RECL	Montrose	Redwine Bond Claim: Task 4 - Weed Control (maintenance), Stormwater BMP maintenance - 313641,	\$ -	4,930	\$ -	4,930
ENGR	Ouray	Swanson-Peterson #1: Task 3 - Visual mitigation - 311784,	\$ -	1,130	\$ -	1,130
<b>COMPLETED WORK SUBTOTALS -&gt;</b>			<b>\$ 244,038</b>	<b>\$ 92,903</b>	<b>\$ -</b>	<b>336,941</b>

**NOTES:**

Project and Task Format: [Location or Well Name and Number (if orphan) or Operator Name + "Bond Claim"] :  
 "Task" [Task No(s)] - [Task Type(s)] - [Facility ID Number], [Well API Number (county and sequence code,  
 if well work included with task)]

**ABBREVIATIONS:**

ENGR = Engineering, RECL = Reclamation,  
 ENVR = Environmental, FOPS = Field Operations  
 HEAR = Hearings  
 EMGY = Emergency Response Appropriation  
 PROW = Plugging and Reclaiming Orphaned Wells Appropriation

**PROW FUNDS SCOREBOARD**

	\$ 445,000	Annual PROW Appropriation
	\$(58,072)	Planned Work Estimate
	\$(462)	Work In Progress
	\$(92,903)	Completed Work
	<b>\$ 293,563</b>	<b>Projected Fiscal Year End Balance</b> (excludes work involving Bond Expenditures)

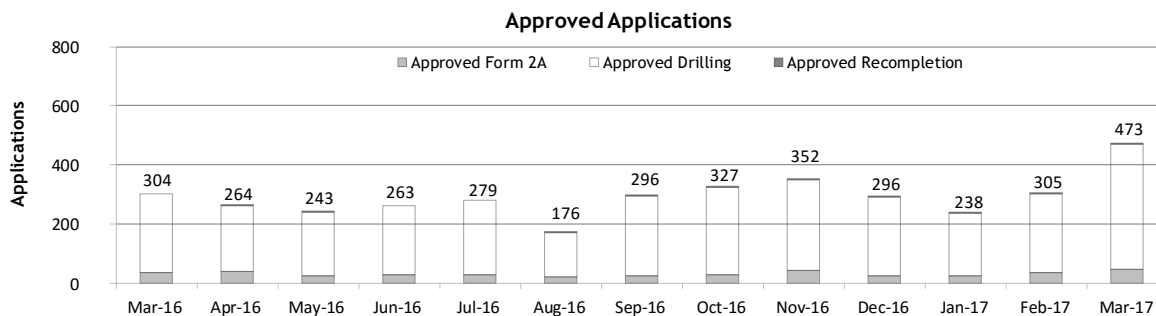
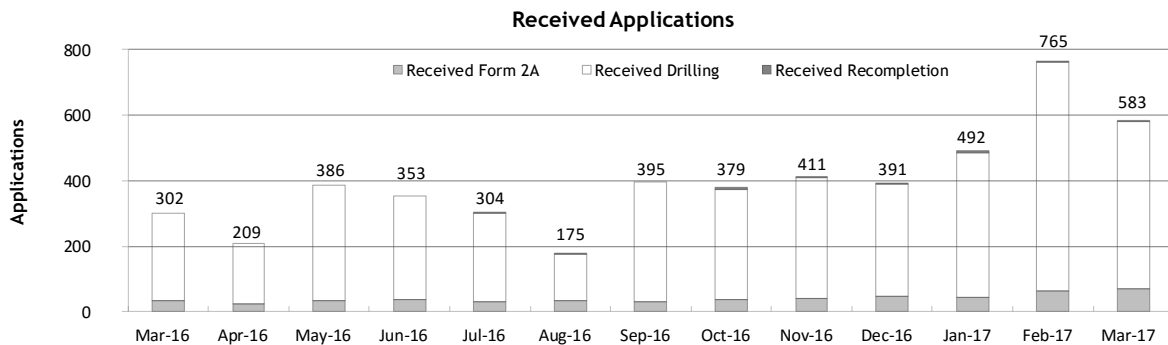


Monthly Permit Activity as of April 1, 2017

Form/Month	Backlog	Received	Approved	Withdrawn	Rejected	Incomplete <sup>1</sup>	In-Process	Remaining <sup>2</sup>
<b>Form2A</b>								
Mar-16	111	34	36	3	0	27	79	106
Apr-16	106	24	39	2	0	29	60	89
May-16	89	33	24	0	2	27	69	96
Jun-16	96	38	30	3	0	23	78	101
Jul-16	101	31	30	3	0	25	74	99
Aug-16	99	33	23	2	0	19	88	107
Sep-16	107	29	24	1	0	17	94	111
Oct-16	111	38	29	2	0	25	93	118
Nov-16	118	40	45	0	3	22	88	110
Dec-16	110	48	25	6	0	20	107	127
Jan-17	127	42	25	1	1	18	124	142
Feb-17	142	62	38	2	0	28	136	164
Mar-17	164	71	48	6	3	29	149	178
<b>Drilling</b>								
Mar-16	764	268	268	16	59	220	469	689
Apr-16	689	185	224	13	20	155	462	617
May-16	617	353	217	1	16	138	598	736
Jun-16	736	315	233	6	2	125	685	810
Jul-16	810	268	249	24	0	145	660	805
Aug-16	805	141	150	9	7	126	654	780
Sep-16	780	366	270	0	12	77	787	864
Oct-16	864	334	297	1	0	82	818	900
Nov-16	900	368	304	7	64	138	755	893
Dec-16	893	342	267	15	9	115	829	944
Jan-17	944	442	211	1	13	89	1,072	1,161
Feb-17	1,161	701	263	14	0	86	1,499	1,585
Mar-17	1,585	510	423	14	47	131	1,480	1,611
<b>Recompletion</b>								
Mar-16	6	0	0	0	0	2	4	6
Apr-16	6	0	1	0	0	1	4	5
May-16	5	0	2	0	0	2	1	3
Jun-16	3	0	0	0	0	2	1	3
Jul-16	3	5	0	0	0	2	6	8
Aug-16	8	1	3	0	0	2	4	6
Sep-16	6	0	2	0	0	2	2	4
Oct-16	4	7	1	0	0	2	8	10
Nov-16	10	3	3	0	0	3	7	10
Dec-16	10	1	4	1	0	2	4	6
Jan-17	6	8	2	0	0	2	10	12
Feb-17	12	2	4	0	0	3	7	10
Mar-17	10	2	2	0	0	2	8	10

<sup>1</sup> Incomplete are applications that have missing or inaccurate data and cannot be approved.

<sup>2</sup> Backlog = Incomplete + In-process = Remaining permits from previous month.





## Status of Permit Applications Filed By Month as of April 1, 2017

Form 2A Location Assessment										
Year	Month	Received	Approved	Withdrawn	In Process	Percent In Process	Average	Less Than 30 Days	30 to 49 Days	Greater Than 50 Days
							Days to Process			
2011	TOTAL	2,391	2,298	93	0	0%		1,416	620	262
2012	TOTAL	1,359	1,291	68	0	0%		706	378	207
2013	TOTAL	1,281	1,202	78	1	0%		369	433	400
2014	TOTAL	1,114	1,067	46	1	0%		279	429	359
2015	TOTAL	592	560	26	6	1%		78	157	325
2016	JAN	34	33	1	0	0%	90	2	4	27
	FEB	31	30	1	0	0%	89	1	3	26
	MAR	34	32	2	0	0%	76	3	8	21
	APR	23	19	2	2	9%	85	1	3	15
	MAY	32	32	0	0	0%	100	1	5	26
	JUN	36	35	0	1	3%	80	3	11	21
	JUL	29	23	4	1	4%	82	7	1	15
	AUG	34	30	3	1	3%	101	1	2	27
	SEP	29	28	0	1	3%	82	5	3	20
	OCT	37	33	3	1	3%	65	3	12	18
	NOV	40	29	3	8	20%	84	1	4	24
	DEC	48	31	1	16	33%	65	4	5	22
2016	TOTAL	407	355	20	31	8%		32	61	262
2017	JAN	42	14	1	27	64%	53	0	5	9
	FEB	59	15	1	43	73%	33	7	6	2
	MAR	71	1	0	70	99%	22	1	0	0
2017	TOTAL	172	30	2	140	81%		8	11	11

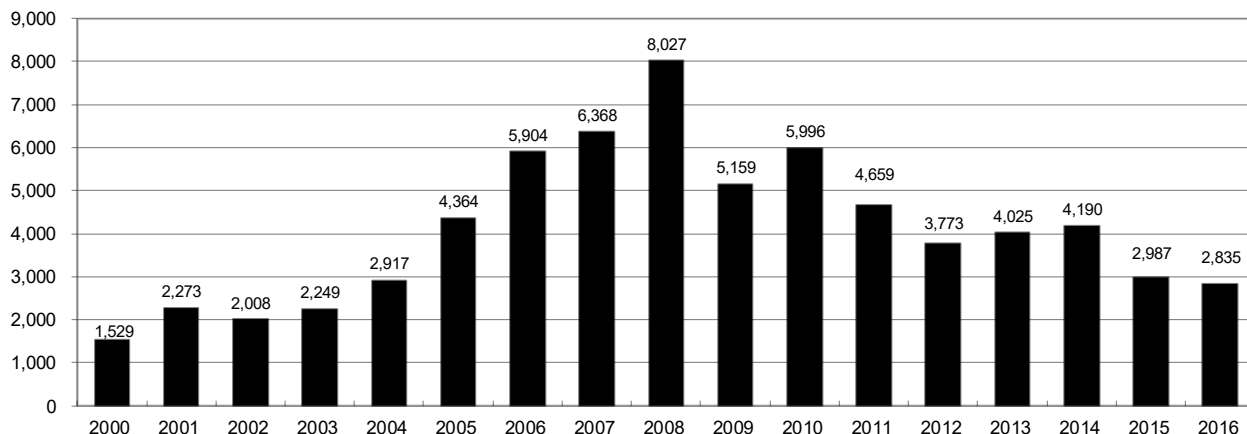
Form 2 Application For Permit to Drill (APDs)										
Year	Month	Received	Approved	Withdrawn	In Process	Percent In Process	Average	Less Than 30 Days	30 to 49 Days	Greater Than 50 Days
							Days to Process			
2011	TOTAL	4,691	4,557	132	0	0%		2,723	1,565	587
2012	TOTAL	3,955	3,816	139	0	0%		1,971	1,393	602
2013	TOTAL	4,548	4,312	235	1	0%		1,046	1,626	1,714
2014	TOTAL	4,208	4,026	155	27	1%		689	1,629	1,744
2015	TOTAL	3,237	3,070	130	37	1%		249	759	2,092
2016	JAN	232	231	1	0	0%	99	23	33	176
	FEB	180	177	3	0	0%	80	5	34	141
	MAR	249	246	3	0	0%	98	16	36	194
	APR	174	167	6	1	1%	68	31	24	112
	MAY	352	351	1	0	0%	94	9	61	281
	JUN	312	285	19	8	3%	89	6	51	228
	JUL	236	187	28	9	4%	87	30	1	161
	AUG	136	131	4	1	1%	95	9	26	98
	SEP	359	349	0	8	2%	75	22	72	256
	OCT	313	295	10	8	3%	80	20	26	254
	NOV	368	297	11	50	14%	75	29	22	249
	DEC	342	192	2	148	43%	66	4	16	172
2016	TOTAL	3,253	2,908	88	233	7%		204	402	2,322
2017	JAN	442	141	3	292	67%	62	5	41	99
2017	FEB	701	114	4	542	82%	40	36	35	44
2017	MAR	510	18	0	492	96%	22	9	9	0
2017	TOTAL	1,653	273	7	1,326	80%	124	50	85	143



## Annual Drilling Permits by County as of April 3, 2017

County	2000	2001	2002	2003	2004	2005	2006	2007	2008	2009	2010	2011	2012	2013	2014	2015	2016	2017
ADAMS	38	28	9	26	39	34	37	89	51	35	21	8	40	40	51	96	74	26
ARAPAHOE		2	1	2	5	7	11	10	10	10	8	23	35	23	34	19	5	12
ARCHULETA	7	9	6	10	8	13	14	26	47	11	18	12	5	4	3	11	3	4
BACA	22	6	2	3	7	8	2	11	13	3	4	5	3	1	1			
BENT	2				5	3	8	1	1		5		2	1				
BOULDER	1	5	6	7	17	13	21	37	32	35	24	30	22					
BROOMFIELD			2	7		1	1		2	33	28	11	36		31			
CHEYENNE	3	3	3	3	3	10	21	15	33	12	13	16	31	50	26	9		
COSTILLA																		
CROWLEY																		
DELTA			7	4	5	10	9	2			4	3	6	1	2			3
DENVER		3					19	25	24									
DOLORES				1	1	1	6	10	12	21	8	8	13	12	3		3	
EAGLE														1				
ELBERT	2						4			1		1	2	2	4	3	3	1
EL PASO										2	3	3	18	1	2			
FREMONT					1	3	2	4	14	13	22	14	11	2	8	2	2	
GARFIELD	213	353	362	567	796	1,509	1,845	2,550	2,888	1,981	2,037	1,323	1,046	870	1,066	532	724	124
GRAND																		
GUNNISON			5	10	1	9	19	7	10	12	4	3	11	9	20	28	19	3
HUERFANO	41	27	27		8	2			7		2	1	9	1	13	2		
JACKSON	34	18	21	9	14	6	8	5	27	19	9	18	5	12	17	3	57	13
JEFFERSON	1						1	3	2					1				
KIOWA	11	18	2	4	2	1	11	9	26	7	16	17	17	12	5	3		
KIT CARSON				1	3	5	4	4	13	7	3	2	6	1	2		1	
LA PLATA	127	156	104	162	102	115	235	251	328	298	191	99	71	32	87	106	96	2
LARIMER	2		1			1		5	46	12	41	8	13	2	4	28	4	
LAS ANIMAS	268	400	259	180	332	413	500	362	303	88	92	85	11	2	1			
LINCOLN	2	2	1	6	3	4	1	2	58	44	48	31	36	87	129	24	5	1
LOGAN	4	7	3	3	6	13	17	14	5	9	17	8	27	4	5		1	
MESA	13	27	30	27	54	136	265	293	501	427	306	127	150	105	74	126	7	47
MOFFAT	35	52	62	63	63	60	120	68	57	51	53	93	88	44	54	12	17	1
MONTEZUMA	4		5	8	8	11	5	12	22	39	19	27	29	14	25	3	3	1
MONTROSE	1	3	2	4	2		1	3	3		1	1						
MORGAN	9	9	2	7	9	7	3	6	2	1	6	13	5	16	6	4	28	
OTERO																		
PARK										3	4	1						
PHILLIPS	1	2		7	13	17	12	69	82	45	64	112	56		11	2		
PITKIN					1			1								1		
PROWERS	2	5	4		7	5	7	5	8	1	3	1			1		1	
RIO BLANCO	89	187	105	179	154	161	360	321	477	348	441	109	117	167	121	107	71	29
RIO GRANDE	1	1		1					1	1			2		1			
ROUTT	20	13	1		4	6	9	8	4	2	3	10	4	12	4	9		
SAGUACHE	2		2					2	1	2								
SAN MIGUEL	11	13	27	18	42	45	35	23	20	13	10	2	1		2	3		
SEDGWICK				1	5	2	7	2	1	19	11	12	2		7	1		
WASHINGTON	23	17	27	34	128	50	69	45	11	1	6	12	6	19	12	9	7	
WELD	509	702	760	757	832	901	1,418	1,527	2,340	1,448	2,152	2,262	1,826	2,468	2,303	1,841	1,704	637
YUMA	31	205	160	138	237	782	797	541	545	105	299	148	11	9	53	3		
<b>TOTAL</b>	<b>1,529</b>	<b>2,273</b>	<b>2,008</b>	<b>2,249</b>	<b>2,917</b>	<b>4,364</b>	<b>5,904</b>	<b>6,368</b>	<b>8,027</b>	<b>5,159</b>	<b>5,996</b>	<b>4,659</b>	<b>3,773</b>	<b>4,025</b>	<b>4,190</b>	<b>2,987</b>	<b>2,835</b>	<b>904</b>

## ALL COUNTIES







## Form 2A Breakdown By County By Year as of April 1, 2017

Year	County	Form 2As	Completed	In Process	New Location	CDP	SWH	RSO	CDPHE
2009	Total State	818	818	0	408	2	80	5	5
2010	Total State	2,377	2,377	0	1,543	0	317	22	55
2011	Total State	2,297	2,297	0	1,724	1	259	16	5
2012	Total State	1,297	1,297	0	900	0	167	6	1
2013	Total State	1,195	1,194	1	845	0	144	2	4
2014	Total State	1,067	1,065	1	777	3	129	7	3
2015	Total State	574	565	9	399	0	95	2	2
2016	ADAMS	9	8	1	8	0	0	0	0
	ARAPAHOE	10	7	2	6	0	0	0	0
	ARCHULETA	1	1	0	0	0	1	0	0
	DOLORES	1	1	0	1	0	0	0	0
	ELBERT	3	3	0	0	0	0	0	0
	FREMONT	1	0	1	0	0	1	0	0
	GARFIELD	26	26	1	4	0	13	3	2
	GUNNISON	6	6	0	1	0	2	1	0
	HUERFANO	1	0	1	1	0	1	0	0
	JACKSON	10	10	0	5	0	9	0	0
	KIT CARSON	1	1	0	1	0	0	0	0
	LA PLATA	5	1	4	0	0	5	0	1
	LARIMER	2	2	0	2	0	0	0	0
	LINCOLN	5	5	0	4	0	0	0	0
	LOGAN	2	1	1	0	0	0	0	0
	MESA	4	4	0	2	0	3	0	1
	MOFFAT	15	9	5	6	0	15	0	1
	MONTEZUMA	1	1	0	1	0	0	0	0
	MORGAN	1	1	0	1	0	0	0	0
	PROWERS	1	1	0	1	0	0	0	0
ROUTT	1	1	0	0	0	1	0	0	
WASHINGTON	6	6	0	6	0	0	0	0	
WELD	281	257	21	178	0	3	0	2	
2016	Total State	393	352	37	228	0	54	4	7
2017	ADAMS	14	0	14	13	0	0	0	0
	ARAPAHOE	11	1	10	9	0	0	0	0
	CROWLEY	3	3	0	3	0	0	0	0
	DOLORES	1	0	1	1	0	1	0	0
	ELBERT	1	1	0	1	0	0	0	0
	GARFIELD	8	2	6	2	0	4	1	0
	GUNNISON	1	0	1	0	0	1	0	0
	JACKSON	1	0	1	1	0	1	0	0
	LA PLATA	5	0	5	1	0	4	0	0
	LINCOLN	3	0	3	3	0	0	0	0
	MESA	4	2	2	2	0	1	0	0
	MONTEZUMA	2	0	2	2	0	0	0	0
RIO BLANCO	2	1	1	0	0	1	0	0	
WELD	101	14	87	66	0	4	0	0	
2017	Total State	157	24	133	104	0	17	1	0

Abbreviations:

CDP = Comprehensive Drilling Plan

SWH = Sensitive Wildlife Habitat consultation

RSO = Restricted Surface Occupancy consultation

CDPHE= Colorado Department of Health and Environment consultation



## Horizontal Well Activity as of April 1, 2017

County	2010		2011		2012		2013		2014		2015		2016		2017		Total		Completion			
	Permit	Spud	Permit	Spud	Permit	Spud	Permit	Spud	Permit	Spud	Permit	Spud	Permit	Spud	Permit	Spud	Spud	AC	PR	DA	PA	
ADAMS	2	3	1	1	17	2	26	2	42	18	92	3	72	2	26	6	35	3	23	1	1	
ARAPAHOE			10	1	22	4	11	13	22	11	9	1	5	1	12	2	32	2	29	1	1	
ARCHULETA	15	7	10	8	5	9	2	2	1	1	6	3	2	1	3	51	0	51				
BENT					1	1	1									1	1					
BOULDER			4													0	0					
CHEYENNE							7	2	1	1	1	1				9	9	1	1	5	5	
DELTA					6	1	1	1	2	2						3	3					
DOLORES	6				9	3	5	4	3	1						19	19	12	12	5	5	
EL PASO					10											0	0					
ELBERT					1											0	0					
FREMONT	12	5	3	4	4	1	1	1	1	1	1					18	18	10	7	1	1	
GARFIELD	16	2	18	6	43	6	18	4	20	11	12	7	4	4	4	47	47	38	38	2	2	
GUNNISON	1				3	2	2	2	9	2	18	2	10	1	1	6	6	4	4			
HUERFANO					4	1			2							1	1					
JACKSON	3	4	9	1	4	4	8	5	15	4	3		52	24	12	46	46	21	21	2	2	
KIOWA					1		4	2	1							2	2					
KIT CARSON					1		1	1	1							2	2					
LA PLATA	28	3	18	7	12	1	5	1	43	7	42	3	67	8	2	60	60	60	1	1	3	
LARIMER			5	1	2	1	2		2		22	8	4	3		18	18	11	11	2	2	
LAS ANIMAS	1	1														17	17	16	16			
LINCOLN	2	1	1				6		4	2						4	4	1	1	3	3	
LOGAN					1											2	2					
MESA	22	7	24	13	14		9	2	9	1	6	3				29	29	27	2	4	4	
MOFFAT	4		9	4	44	6	18	13	15	1	5	2	3	1	1	37	37	29	29	3	3	
MONTEZUMA	11	2	8	2	18	6	3	4	15	2						28	28	31	31	7	7	
MORGAN			6	2	2	1	13	1	6		4	1	28			5	5					
PARK	1	1	1													1	1					
RIO BLANCO	1	1	11	2	15	2	4	5	3	2	3					19	19	12	3	3	3	
ROUITT					1		1				3					10	10	1	6	1	1	
SAN MIGUEL																1	1					
WASHINGTON																1	1					
WELD	208	84	763	229	964	594	2,114	1,099	2,215	1,426	1,789	1,063	1,671	722	626	345	5,233	3,983	12	60	60	
YUMA																1	1					
<b>TOTAL Horizontal</b>	<b>333</b>	<b>123</b>	<b>901</b>	<b>280</b>	<b>1,203</b>	<b>641</b>	<b>2,260</b>	<b>1,161</b>	<b>2,428</b>	<b>1,487</b>	<b>2,016</b>	<b>1,096</b>	<b>1,918</b>	<b>763</b>	<b>687</b>	<b>351</b>	<b>5,738</b>	<b>5</b>	<b>4,373</b>	<b>33</b>	<b>106</b>	
Percent of Total HZ																						
Total All Permits	5,996		4,659		3,773		4,025		4,190		2,988		2,835		897		5,233		3,983		12	60
HZ Percent of Total	5.6%		19.3%		31.9%		56.1%		57.9%		67.5%		67.7%		76.6%		76.6%		76.6%		1%	2%

NOTE: As of March 14, 2017, well status based on Form 7, Monthly Report of Operations.



## Well to Building Setbacks by Year and by County as of April 1, 2017

Count of well locations, grouped by proximity from well to buildings.

Location Proximity to Buildings	2010	2011	2012	2013	2014	2015	2016	2017	Number of Locations	Percent of Total Locations
Less than 150 feet	3	3	2	0	3	2	0	0	15	0%
150 to 350 feet	58	61	39	34	38	12	15	4	298	3%
350 to 500 feet	110	97	61	64	48	33	23	6	492	6%
500 to 1000 feet	385	331	188	188	161	83	76	17	1,546	17%
1000 + feet	1,705	1,470	838	761	724	378	206	70	6,508	73%
<b>TOTAL LOCATIONS</b>	<b>2,261</b>	<b>1,962</b>	<b>1,128</b>	<b>1,047</b>	<b>974</b>	<b>508</b>	<b>320</b>	<b>97</b>	<b>8,859</b>	

County	TOTAL	Less than 150 feet	150 to 350 feet	350 to 500 feet	500 to 1000 feet	1000 + feet
ADAMS	88	0	4	9	23	52
ARAPAHOE	104	0	2	4	10	88
ARCHULETA	23	0	0	1	12	11
BACA	15	0	0	0	1	14
BENT	7	0	0	0	0	7
BOULDER	23	0	1	1	17	4
BROOMFIELD	33	0	0	4	13	16
CHEYENNE	140	1	0	0	2	137
CROWLEY	5	0	0	0	0	5
DELTA	7	0	0	2	1	4
DOLORES	20	0	0	0	7	13
EAGLE	1	0	0	0	0	1
EL PASO	14	0	0	0	3	11
ELBERT	15	0	0	0	3	12
FREMONT	40	0	2	7	8	23
GARFIELD	587	0	12	10	80	485
GUNNISON	48	1	0	4	1	42
HUERFANO	16	0	0	0	5	11
JACKSON	59	0	0	5	1	53
KIOWA	66	0	0	0	1	65
KIT CARSON	15	0	0	0	0	15
LA PLATA	136	0	6	14	46	70
LARIMER	41	0	5	5	15	16
LAS ANIMAS	201	1	6	7	37	150
LINCOLN	375	0	1	2	4	368
LOGAN	44	0	1	1	1	41
MESA	103	0	0	3	15	85
MOFFAT	187	0	1	2	16	168
MONTEZUMA	43	0	0	1	4	38
MONTROSE	2	0	0	0	0	2
MORGAN	31	0	0	2	4	25
PARK	4	0	0	0	0	4
PHILLIPS	275	1	4	6	21	243
PITKIN	1	0	0	0	0	1
PROWERS	6	0	0	0	0	6
RIO BLANCO	188	0	0	0	2	186
RIO GRANDE	2	0	0	0	1	1
ROUTT	30	0	0	0	2	28
SAN MIGUEL	14	0	0	0	0	14
SEDGWICK	33	0	0	1	3	29
WASHINGTON	79	0	2	0	3	74
WELD	5,209	11	242	385	1,140	3,431
YUMA	528	0	9	16	44	459


**Well to Building Setbacks Less Than Two Hundred Feet as of April 1, 2017**

Year	Location Doc Number	County	High Density	New Location	Distance (Feet)	Proximity (Feet)	Building Description
2015	400768804	WELD	No	Yes	46	less 150	Building to be razed
2011	2587822	CHEYENNE	No	No	58	less 150	Water well house
2009	1691798	WELD	No	No	58	less 150	Vehicle garage
2010	400072164	WELD	No	Yes	69	less 150	Abandoned hog shed
2014	400569085	WELD	No	No	78	less 150	Well shed
2014	400600705	WELD	No	No	80	less 150	Livestock shed
2012	400240957	GUNNISON	No	Yes	90	less 150	Equipment shed
2015	400742811	WELD	No	Yes	102	less 150	Building to be razed
2009	1758843	WELD	No	Yes	103	less 150	Building to be razed
2011	1636646	WELD	No	No	122	less 150	Storage shed
2009	400011284	LAS ANIMAS	No	Yes	127	less 150	Operator is owner
2009	1786896	PHILLIPS	No	No	132	less 150	Grain storage
2014	400642113	WELD	No	Yes	142	less 150	Barn
2011	400117702	WELD	No	Yes	143	less 150	Irrigation pump house
2011	400227765	WELD	No	Yes	145	less 150	Storage barn
2014	400558626	LINCOLN	No	No	150	less 150	Gas plant equipment building
2009	1904205	WELD	No	No	154	150 to 350	Livestock enclosure
2012	400243295	WELD	No	Yes	155	150 to 350	Unused storage shed
2015	400862577	GARFIELD	No	No	155	150 to 350	Gravel pit scale house
2011	400179419	WELD	No	Yes	157	150 to 350	Existing well / storage building
2010	400054716	WELD	No	No	159	150 to 350	Equipment barn
2011	400188968	WELD	No	Yes	159	150 to 350	Abandoned
2014	400554054	WELD	No	Yes	159	150 to 350	Equipment shed
2014	400559404	WELD	No	Yes	160	150 to 350	Barn
2016	400950178	LA PLATA	No	Yes	162	150 to 350	Residence
2010	400021477	WELD	No	Yes	162	150 to 350	Goat barn
2009	1758386	WELD	No	Yes	168	150 to 350	Storage shed
2011	1635946	WELD	No	No	169	150 to 350	Storage shed
2013	400447386	WELD	No	No	169	150 to 350	Abandoned turkey barn
2013	400447391	WELD	No	No	169	150 to 350	Abandoned turkey barn
2011	400165164	WELD	No	Yes	178	150 to 350	Residence
2013	400367184	WELD	No	Yes	179	150 to 350	Shed
2011	400188780	WELD	No	Yes	180	150 to 350	Residence
2014	400562498	WELD	No	Yes	181	150 to 350	Garage / storage shed
2010	1697620	WELD	No	No	187	150 to 350	Livestock shed
2009	1758746	WELD	No	No	193	150 to 350	Storage shed
2011	400154431	WELD	No	Yes	198	150 to 350	Turkey barn
2012	400250031	WELD	No	Yes	198	150 to 350	Abandoned guard shack
2010	1774783	WELD	No	No	199	150 to 350	Cement service building
2011	400118102	YUMA	No	Yes	199	150 to 350	Steel barn





# Oil and Gas Staff Report

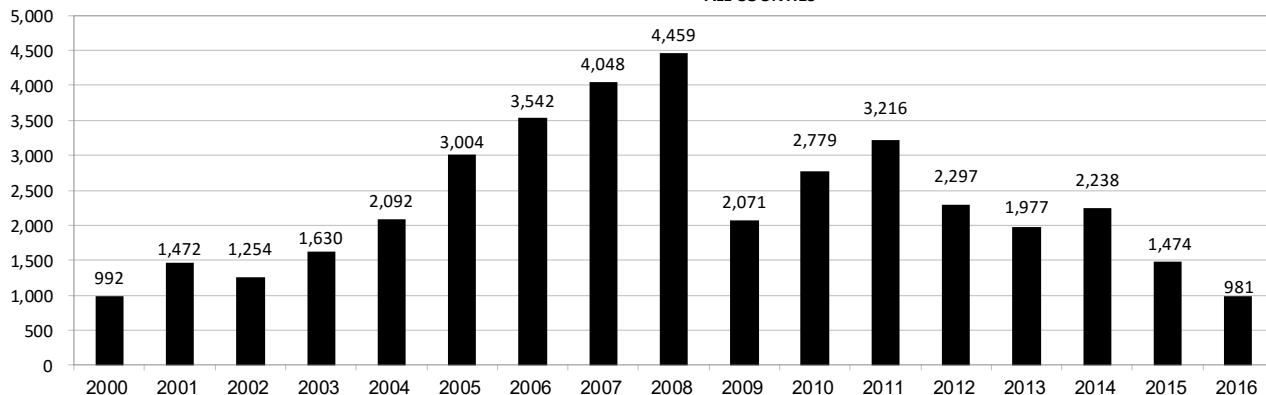
May 1, 2017

29

## Annual Well Starts by County as of April 1, 2017

County	2000	2001	2002	2003	2004	2005	2006	2007	2008	2009	2010	2011	2012	2013	2014	2015	2016	2017
ADAMS	18	13	4	19	22	24	13	41	14	14	21	1	15	6	29	3	2	7
ARAPAHOE					6	1	5	2	1	1	3	9	9	25	21		1	1
ARCHULETA	4	4	2	5	4	10	5	7	29	9	12	10	11		1	7	4	
BACA	19	6	2	1	6	6	2	6	12		5	4	2	1		1		
BENT	2				3	2	8	1	1			1	2					
BOULDER				2	5	11	9	14	25	16	13	7	14					
BROOMFIELD			2		1				10		21	11	5					
CHEYENNE	2	1	3	3		9	14	15	14	8	12	11	17	35	19	3		
COSTILLA																		
CROWLEY																2		
DELTA				5	4	6	5	2			9	2	3					
DENVER		2					7	5	4									
DOLORES					2		2	13	6	2		1	5	10	4			
EAGLE														1				
EL PASO											2		5		1			
ELBERT	2						1									3		1
FREMONT					1	3	2	2	5	3	9	16	9	2	4		1	
GARFIELD	190	251	245	417	585	799	1,005	1,304	1,689	765	905	877	495	391	361	176	145	67
GUNNISON			1		1	1	9	5	1	4	5	2	4	1	2	4	1	
HUERFANO	25	14	19	3	6	2			2		2		2	1	4	1		
JACKSON	24	2	4	10	10		3	3	12	1	8	7		7	7		24	
JEFFERSON								2										
KIOWA	8	16	2	4	2	1	7	7	2	5	15	14	10	12	3	2		
KIT CARSON				1	1	6	2	1	14	3	1	1	3	1	2			1
LA PLATA	99	135	118	110	103	104	108	179	199	131	67	54	3	10	40	38	43	
LARIMER	1	1				1		4	8	1	28	2	10	4	1	9	3	
LAS ANIMAS	202	286	205	221	296	384	413	326	222	14	7	78	1		1			
LINCOLN	2	2	1	5	2	2	1	2	18	11	14	21	23	41	41	12	2	
LOGAN	4	6	3	3	2	11	12	12	3	7	3	9	13	4	6			
MESA	2	12	12	13	25	89	156	209	225	14	11	41	4	11	16	77	4	19
MOFFAT	18	23	25	28	19	40	60	42	26	18	15	32	26	27	3	6	3	
MONTEZUMA	2	3	5	5	1	7	2	4	22	10	3	8	18	12	8	1		
MONTROSE		3		2	1			1	2		1							
MORGAN	9	8	1	7	5	5	3	1	1	2	3	2	3	1	3	1		
PARK											2							
PHILLIPS	1			6	10	11	4	35	18	2	42	130	48		9			
PROWERS	2	4	4		5	5	6	3	5	2	3	1					1	
RIO BLANCO	51	82	47	83	92	95	107	95	205	118	107	71	54	36	44	17		
RIO GRANDE														1				
ROUTT	5	12	1		1	6	3	2		2	1	2	4	2	2			
SAN MIGUEL	6	9	10	19	28	13	20	17	5	1	2	2			2			
SEDGWICK				1	2	1	1	5			3	8	3				1	
WASHINGTON	15	12	24	29	65	34	23	14	11	2	2	4	1	9	7	2	6	2
WELD	237	403	406	522	632	718	931	1,222	1,312	878	1,209	1,671	1,459	1,313	1,556	1,109	742	348
YUMA	42	162	108	106	144	597	593	445	336	27	213	106	16	13	39			
<b>TOTAL</b>	<b>992</b>	<b>1,472</b>	<b>1,254</b>	<b>1,630</b>	<b>2,092</b>	<b>3,004</b>	<b>3,542</b>	<b>4,048</b>	<b>4,459</b>	<b>2,071</b>	<b>2,779</b>	<b>3,216</b>	<b>2,297</b>	<b>1,977</b>	<b>2,238</b>	<b>1,474</b>	<b>981</b>	<b>446</b>

ALL COUNTIES





## Active Wells by County and Status as of April 1, 2017

COUNTY	Drilling	Domestic	Injecting	Producing	Shut In	Temp Aband	Waiting on Completion	Active Storage	Total Active Wells
ADAMS	15		7	861	49	11	1	12	956
ARAPAHOE		1	2	135	9	11		44	202
ARCHULETA	1	5	1	110	12	12	6	1	148
BACA			11	105	10	19		56	201
BENT		1		28	6	2			37
BOULDER				302	7	2			311
BROOMFIELD				95	1				96
CHEYENNE			43	320	11	43	1		418
CROWLEY									0
DELTA				3	13		1		17
DENVER			1	45	2	1	3		52
DOLORES			2	25	12	1			40
EL PASO		1				1			2
ELBERT	2			65	4	3		1	75
FREMONT	2	3		62	5	7	2		81
GARFIELD	182	3	50	10,687	154	88	66	1	11,231
GUNNISON	3		2	31	9		3		48
HUERFANO			1	38	4	5			48
JACKSON	12		31	123	32		1		199
JEFFERSON				1	1		1	3	6
KIOWA	1		11	102	11	2	2		129
KIT CARSON	1	1	2	11		2			17
LA PLATA	2	7	34	3,126	102	20	3	30	3,324
LARIMER	4	2	20	182	30	21	1		260
LAS ANIMAS	1	4	17	2,770	6	106	12	21	2,937
LINCOLN	4	1	9	95	12	5			126
LOGAN	2		23	106	23	29		34	217
MESA	25	1	9	935	80	22	3	11	1,086
MOFFAT	1		9	478	45	36	6		575
MONTEZUMA		2	7	119	25	16			169
MONTROSE								1	1
MORGAN			21	89	79	35		81	305
OURAY		1				1			2
PARK									0
PHILLIPS			3	265	2	2			272
PITKIN								10	10
PROWERS				23	2	3			28
RIO BLANCO	27	3	291	2,306	139	107	8	2	2,883
ROUTT		2		31	6	5			44
SAN MIGUEL	1			110	10	8			129
SEDGWICK	2	1	1	13	3		3		23
WASHINGTON	4		23	406	16	9	3		461
WELD	1,027	1	57	20,210	1,519	418	42	5	23,279
YUMA	2	8	23	3,798	25	9	11	1	3,877
Totals	1,321	48	711	48,211	2,476	1,062	179	314	54,322

NOTE: As of March 14, 2017, well status based on Form 7, Monthly Report of Operations.



# Oil and Gas Staff Report

May 1, 2017

31

Monthly Statistics as of April 3, 2017

Page 1 of 2

YEAR and MONTH	Baker - Hughes Rig Count	Permits										Well Spud Notices	Active Drilling Permits	Active Wells	Public Visits			
		Drilling		Recompletion		Injection		Pits		Locations					Data	Office	Internet	
		Rcvd	Apvd	Rcvd	Apvd	Rcvd	Apvd	Rcvd	Apvd	Rcvd	Authz							
<b>2011 TOTAL</b>		<b>4,709</b>	<b>4,659</b>	<b>325</b>	<b>320</b>	<b>44</b>	<b>32</b>	<b>190</b>	<b>192</b>	<b>2,382</b>	<b>2,267</b>	<b>3,216</b>			<b>187</b>	<b>1,294</b>	<b>1,337,865</b>	
<b>2012 TOTAL</b>		<b>3,982</b>	<b>3,773</b>	<b>154</b>	<b>168</b>	<b>63</b>	<b>44</b>	<b>114</b>	<b>84</b>	<b>1,373</b>	<b>1,293</b>	<b>2,297</b>			<b>159</b>	<b>1,305</b>	<b>1,324,443</b>	
2013 JAN	53	538	331	6	0	3	5	6	8	176	124	141	5,060	50,265	9	108	47,406	
FEB	56	260	455	10	5	2	3	4	11	91	141	139	5,250	50,372	7	102	40,649	
MAR	57	344	241	5	9	3	8	15	6	129	84	172	5,093	50,540	9	133	43,019	
APR	61	331	333	6	5	5	5	6	8	146	117	162	4,925	50,687	3	132	46,459	
MAY	61	350	342	8	6	6	6	10	7	106	142	162	5,110	50,810	3	123	45,215	
JUN	62	349	273	2	8	8	8	5	3	114	85	145	5,273	50,909	8	122	41,015	
JUL	68	864	304	11	4	9	2	9	5	218	91	160	5,070	51,091	7	154	45,558	
AUG	69	232	291	6	4	3	2	4	1	35	76	206	5,200	51,255	20	130	44,722	
SEP	69	212	362	9	5	10	9	3	19	56	109	164	5,185	51,407	5	105	41,256	
OCT	72	319	376	5	9	7	5	1	8	67	88	238	4,967	51,598	5	135	45,151	
NOV	69	346	353	4	13	7	4	2	27	67	85	163	5,141	51,711	12	119	38,903	
DEC	64	336	367	2	4	4	6	2	3	63	71	125	5,129	51,737	4	93	32,381	
<b>2013 TOTAL</b>		<b>4,481</b>	<b>4,028</b>	<b>74</b>	<b>72</b>	<b>67</b>	<b>63</b>	<b>67</b>	<b>106</b>	<b>1,268</b>	<b>1,213</b>	<b>1,977</b>			<b>92</b>	<b>1,456</b>	<b>511,734</b>	
2014 JAN	62	278	232	3	2	3	4	14	8	90	43	170	4,926	51,840	1	90	46,150	
FEB	61	284	297	6	4	1	1	3	1	91	94	149	5,051	51,847	12	113	43,408	
MAR	62	367	329	4	6	7	1	6	6	110	88	184	4,997	51,952	16	140	46,620	
APR	63	276	317	2	3	2	5	8	3	89	99	171	4,897	52,060	11	188	45,558	
MAY	65	458	383	2	2	3	1	6	7	83	94	180	4,923	52,202	18	131	42,365	
JUN	67	429	377	3	0	6	7	5	2	134	92	222	4,924	52,337	10	156	42,518	
JUL	69	272	446	2	5	3	11	8	5	97	126	181	4,955	52,431	7	166	45,481	
AUG	73	376	259	4	3	4	4	3	4	111	87	218	5,060	52,582	8	145	42,431	
SEP	76	412	304	2	3	3	1	20	1	116	81	214	5,006	52,694	14	175	43,577	
OCT	76	459	371	3	2	9	2	4	6	93	109	192	4,827	52,785	19	138	46,030	
NOV	73	326	479	5	2	5	4	4	0	54	103	170	5,171	52,947	8	96	39,583	
DEC	69	286	397	1	2	2	7	1	2	45	99	187	5,236	53,054	6	144	37,964	
<b>2014 TOTAL</b>		<b>4,223</b>	<b>4,191</b>	<b>37</b>	<b>34</b>	<b>48</b>	<b>48</b>	<b>82</b>	<b>45</b>	<b>1,113</b>	<b>1,115</b>	<b>2,238</b>			<b>130</b>	<b>1,682</b>	<b>521,685</b>	
2015 JAN	64	349	316	3	1	2	9	3	1	60	43	192	5,060	53,195	17	114	41,502	
FEB	49	324	161	3	2	5	6	9	0	73	28	114	4,750	53,309	4	117	38,245	
MAR	38	246	294	1	6	1	5	7	5	44	70	166	4,983	53,414	6	146	42,513	
APR	37	194	165	3	1	2	5	1	2	46	37	92	4,854	53,456	1	125	39,559	
MAY	39	324	190	1	4	2	6	8	0	41	44	109	4,632	53,535	5	113	unavailable	
JUN	38	327	281	4	1	0	5	2	1	52	49	143	4,726	53,608	5	138	unavailable	
JUL	38	373	250	4	2	2	1	0	0	57	48	121	4,663	53,706	7	145	26,975	
AUG	37	289	300	2	6	3	0	5	5	32	46	121	4,847	53,766	2	109	30,674	
SEP	33	242	312	3	1	1	7	0	3	59	49	100	4,953	53,806	4	146	31,642	
OCT	30	372	223	2	2	3	1	1	0	54	51	108	4,694	53,898	12	119	33,199	
NOV	31	190	254	6	2	4	3	1	0	21	49	120	4,765	53,719	7	105	29,112	
DEC	25	275	242	1	5	3	6	1	0	42	43	79	4,594	53,652	3	112	25,659	
<b>2015 TOTAL</b>		<b>3,505</b>	<b>2,988</b>	<b>33</b>	<b>33</b>	<b>28</b>	<b>54</b>	<b>38</b>	<b>17</b>	<b>581</b>	<b>557</b>	<b>1,465</b>			<b>73</b>	<b>1,489</b>	<b>339,080</b>	
2016 JAN	22	250	126	1	0	3	5	0	0	34	9	70	4,528	53,698	2	118	30,105	
FEB	20	205	227	3	0	3	2	44	2	31	39	66	4,599	53,723	8	115	28,611	
MAR	17	268	268	0	0	2	2	5	0	34	36	69	4,530	53,710	3	132	30,902	
APR	17	185	224	0	1	3	4	0	0	24	39	62	4,511	53,774	4	113	27,914	
MAY	16	353	217	0	2	3	1	1	1	33	24	85	4,464	53,749	4	106	26,778	
JUN	16	315	233	0	0	2	3	2	1	38	30	61	4,456	53,651	2	80	27,284	
JUL	20	268	249	5	0	4	4	6	6	31	30	84	4,344	53,724	5	91	24,151	
AUG	21	141	150	1	3	5	3	2	0	33	23	91	4,436	53,740	1	106	29,192	
SEP	19	366	270	0	2	4	2	0	6	29	24	72	4,522	53,817	4	154	25,698	
OCT	19	334	297	6	1	6	3	1	0	42	29	88	4,601	53,903	1	135	25,893	
NOV	20	368	304	3	3	3	3	0	1	40	45	130	4,566	53,993	2	97	25,140	
DEC	26	342	267	1	4	7	5	1	2	48	25	103	4,477	54,036	5	92	23,449	
<b>2016 TOTAL</b>		<b>3,395</b>	<b>2,832</b>	<b>20</b>	<b>16</b>	<b>45</b>	<b>37</b>	<b>62</b>	<b>19</b>	<b>417</b>	<b>353</b>	<b>981</b>			<b>41</b>	<b>1,339</b>	<b>325,117</b>	
2017 JAN	28	442	211	8	2	2	2	0	0	42	25	119	4,492	54,111	6	79	28,702	
FEB	26	701	263	2	4	4	3	0	0	62	38	137	4,543	54,194	1	97	27,715	
MAR	28	510	423	2	2	7	4	3	24	71	48	167	4,714	54,322	1	152	31,952	
<b>2017 TOTAL</b>		<b>1,653</b>	<b>897</b>	<b>12</b>	<b>8</b>	<b>13</b>	<b>9</b>	<b>3</b>	<b>24</b>	<b>175</b>	<b>111</b>	<b>423</b>			<b>8</b>	<b>328</b>	<b>88,369</b>	

Abbreviation Key: Rcvd = Received, Apvd = Approved, Authz = Authorized



## Monthly Statistics as of April 3, 2017

Page 2 of 2

YEAR and MONTH	Well Oper Change	Operators		Bonds			Claim		Hearings		Enforcement			Remediation Projects		Inspections			
		New	Inactive	Release Ind	Release Blnkt	Replace	Ind	Blnkt	Apps.	Orders	NOAVs	AOCs	OFVs	Cmplt	Spills	Rcvd	Comp	Wells	Locations
<b>2011 TOTAL</b>	<b>6,743</b>	<b>33</b>	<b>31</b>	<b>79</b>	<b>44</b>	<b>43</b>	<b>4</b>	<b>4</b>	<b>403</b>	<b>349</b>	<b>230</b>	<b>10</b>	<b>19</b>	<b>247</b>	<b>527</b>	<b>726</b>	<b>536</b>	<b>12,394</b>	<b>-</b>
<b>2012 TOTAL</b>	<b>7,546</b>	<b>47</b>	<b>37</b>	<b>70</b>	<b>46</b>	<b>33</b>	<b>3</b>	<b>0</b>	<b>482</b>	<b>396</b>	<b>157</b>	<b>9</b>	<b>2</b>	<b>244</b>	<b>402</b>	<b>690</b>	<b>641</b>	<b>19,071</b>	<b>12,670</b>
<b>2013</b>	<b>JAN</b>	653	3	5	12	2	0	0	48	75	15	4	-	21	40	31	45	1,622	789
	FEB	289	4	2	6	3	2	0	41	35	11	2	-	15	30	42	90	1,044	615
	MAR	354	1	3	2	2	1	0	54	67	16	2	-	11	25	65	29	1,968	1,149
	APR	333	7	1	5	2	8	0	-	-	21	-	-	16	33	39	37	1,510	910
	MAY	346	2	1	3	0	0	0	46	50	22	6	-	13	31	41	60	2,621	1,576
	JUN	1,456	6	2	2	4	5	0	91	44	13	2	-	25	40	47	37	1,860	1,102
	JUL	1,009	4	1	2	2	0	0	96	70	25	3	-	21	47	50	22	2,298	1,338
	AUG	389	6	4	5	4	2	0	-	-	23	-	-	25	57	36	41	2,146	1,033
	SEP	277	4	1	6	1	0	0	101	51	7	2	-	16	60	43	51	1,536	703
	OCT	345	6	0	2	2	2	0	52	82	4	12	3	12	79	47	60	1,868	1,158
	NOV	442	2	0	2	2	0	0	-	-	30	-	-	12	51	31	34	2,401	1,613
	DEC	1,299	4	1	1	2	0	0	42	48	50	4	-	14	75	35	35	2,677	1,384
<b>2013 TOTAL</b>	<b>7,192</b>	<b>49</b>	<b>21</b>	<b>48</b>	<b>26</b>	<b>20</b>	<b>0</b>	<b>0</b>	<b>571</b>	<b>522</b>	<b>237</b>	<b>37</b>	<b>3</b>	<b>201</b>	<b>568</b>	<b>507</b>	<b>541</b>	<b>23,551</b>	<b>13,370</b>
<b>2014</b>	<b>JAN</b>	1,971	6	3	3	2	0	0	57	46	25	2	-	8	68	46	28	3,243	1,597
	FEB	2,039	8	2	6	5	0	0	-	-	23	-	-	17	59	51	13	2,330	1,282
	MAR	493	2	3	1	5	0	0	97	75	29	10	-	22	63	66	31	1,822	1,298
	APR	312	5	3	6	4	1	0	74	64	17	8	1	20	57	47	59	2,651	1,715
	MAY	508	6	2	3	3	5	0	-	-	12	-	-	13	63	50	42	2,437	1,571
	JUN	1,008	5	3	7	4	1	0	95	90	14	6	1	16	74	44	50	3,209	1,717
	JUL	338	2	1	5	3	1	0	96	96	11	6	-	12	60	60	59	3,071	1,536
	AUG	452	6	2	2	3	0	0	-	-	8	-	-	31	56	32	58	2,788	1,682
	SEP	378	4	2	1	2	0	0	73	63	13	7	1	18	65	39	50	2,587	1,616
	OCT	887	8	2	0	2	0	1	80	75	12	3	1	13	74	78	36	3,886	1,914
	NOV	498	2	4	8	4	5	0	-	-	6	-	-	15	72	27	59	3,156	1,458
	DEC	1,414	1	1	0	2	0	0	126	89	9	1	-	58	75	56	17	3,028	1,596
<b>2014 TOTAL</b>	<b>10,298</b>	<b>55</b>	<b>28</b>	<b>42</b>	<b>39</b>	<b>13</b>	<b>1</b>	<b>1</b>	<b>698</b>	<b>598</b>	<b>179</b>	<b>43</b>	<b>4</b>	<b>243</b>	<b>786</b>	<b>596</b>	<b>502</b>	<b>34,208</b>	<b>18,982</b>
<b>2015</b>	<b>JAN</b>	727	2	3	2	3	0	0	76	64	15	2	1	36	64	38	58	2,491	1,246
	FEB	556	5	2	2	3	1	0	-	-	10	-	-	22	44	34	64	2,667	1,382
	MAR	183	5	3	5	2	4	2	72	72	33	1	1	42	76	59	94	3,469	1,738
	APR	271	7	1	0	5	3	0	60	54	19	3	-	21	46	40	61	3,451	1,620
	MAY	436	8	0	0	2	3	0	89	54	10	10	2	25	46	56	41	2,869	1,422
	JUN	496	2	2	3	5	4	0	-	-	27	-	-	25	41	32	43	3,366	1,716
	JUL	396	3	3	0	5	1	0	123	140	5	13	1	32	67	52	28	3,445	1,774
	AUG	218	8	2	0	7	4	0	-	-	13	-	-	18	56	24	62	3,692	1,847
	SEP	267	6	5	1	7	4	0	112	78	25	11	-	30	41	44	40	2,887	1,528
	OCT	356	4	1	6	1	6	1	115	103	6	12	1	32	58	51	33	3,420	1,494
	NOV	97	2	3	5	0	0	0	-	-	6	-	-	15	38	47	40	3,348	1,666
	DEC	437	7	2	3	5	1	0	91	80	4	5	2	60	46	39	37	3,851	1,765
<b>2015 TOTAL</b>	<b>4,440</b>	<b>59</b>	<b>27</b>	<b>27</b>	<b>45</b>	<b>31</b>	<b>3</b>	<b>3</b>	<b>738</b>	<b>645</b>	<b>173</b>	<b>57</b>	<b>8</b>	<b>358</b>	<b>623</b>	<b>516</b>	<b>601</b>	<b>38,956</b>	<b>19,198</b>
<b>2016</b>	<b>JAN</b>	508	2	1	0	5	5	0	76	66	4	7	1	29	51	44	36	3,184	1,551
	FEB	165	2	1	0	1	1	1	-	-	8	-	-	27	47	34	49	3,666	1,738
	MAR	1,035	6	4	2	2	2	1	62	57	3	7	1	19	42	50	45	3,020	1,647
	APR	236	3	3	2	7	4	0	34	32	6	4	2	20	40	48	90	4,041	2,112
	MAY	374	2	3	6	3	3	1	-	-	0	-	-	20	37	41	29	3,485	2,179
	JUN	202	6	3	3	4	1	1	67	65	3	6	2	20	36	40	77	4,098	2,329
	JUL	2,212	3	2	0	2	0	0	-	-	10	-	-	20	41	31	56	3,481	2,064
	AUG	136	3	3	3	2	1	1	71	43	20	4	-	20	51	38	38	4,067	2,286
	SEP	318	3	1	9	3	3	0	-	-	8	-	-	20	37	29	22	3,527	1,787
	OCT	406	1	3	7	5	1	0	96	74	23	7	1	21	40	32	36	3,325	1,809
	NOV	523	3	0	4	0	0	3	-	-	19	-	-	22	40	30	50	3,855	1,908
	DEC	170	4	4	1	7	2	1	67	60	3	8	-	23	66	28	72	3,372	1,680
<b>2016 TOTAL</b>	<b>6,285</b>	<b>38</b>	<b>28</b>	<b>37</b>	<b>41</b>	<b>23</b>	<b>9</b>	<b>5</b>	<b>473</b>	<b>397</b>	<b>107</b>	<b>43</b>	<b>7</b>	<b>261</b>	<b>528</b>	<b>445</b>	<b>600</b>	<b>43,121</b>	<b>23,090</b>
<b>2017</b>	<b>JAN</b>	94	3	3	3	3	1	0	80	72	1	11	1	46	47	23	12	3,007	1,447
	FEB	57	1	5	2	4	2	0	0	0	13	0	0	74	57	40	20	3,155	1,364
	MAR	50	6	4	2	2	2	1	86	65	18	3	0	44	47	59	21	2,918	1,384
	<b>2017 TOTAL</b>	<b>201</b>	<b>10</b>	<b>12</b>	<b>7</b>	<b>9</b>	<b>5</b>	<b>1</b>	<b>166</b>	<b>137</b>	<b>32</b>	<b>14</b>	<b>1</b>	<b>164</b>	<b>151</b>	<b>122</b>	<b>53</b>	<b>9,080</b>	<b>4,195</b>

Abbreviation Ind = Individual, Blnkt = Blanket, Apps = Application for Hearing, NOAV = Notice of Alleged Violation, AOC = Administrative Order of Consent, OFV = Order Finding Violation, Cmplt = Complaint, Comp = Completed