



COLORADO

**Oil & Gas Conservation
Commission**

Department of Natural Resources

Staff Report

for June 12, 2017

Top Stories

◆ **Notice to Operators Statewide Regarding Flowlines or Pipelines**

On May 2, the COGCC issued a Notice to Operators (NTO) that requires all operators to systematically inspect their inventory of existing Flowlines to verify that any existing Flowline not in active use, regardless of when it was installed or taken out of service, is abandoned pursuant to Rule 1103. As provided in the rule, the Flowline must be abandoned by being cut off below grade at the lesser of three feet below ground surface or at the depth of the Flowline, and sealed as described in this NTO.

In addition, operators are required to document the location of all existing, active Flowlines located within 1,000 feet of a Building Unit and ensure and document that these lines have integrity. These actions are required to be completed in two phases:

Phase I, was to be completed by May 30, 2017 and requires operators to inspect any existing Flowlines and pipelines located within 1,000 feet of a Building Unit. The second part of Phase I is to clearly mark unused risers using fluorescent paint, have all operating valves removed, be capped until they can be cut-off below grade and sealed pursuant to Rule 1103.

Phase II, to be completed by June 30, 2017, requires operators to ensure and document that all Flowlines within 1,000 feet of a Building Unit have integrity. The second part of Phase II requires operators to abandon any Flowline or pipeline not actively operated, regardless of distance to a Building Unit.

Frequently Asked Questions about the NTO are available here:

http://cogcc.state.co.us/documents/reg/Policies/NTO_FAQ_20170516.pdf

The full text of the NTO itself is available at this location:

http://cogcc.state.co.us/documents/reg/Policies/Flowline_Notice_to_Operators_20170502.pdf

◆ **Automated Facilities Notification Tool**

In May, the COGCC initiated a new tool using existing public data to help interested parties identify those oil and gas facilities located within 1,000 feet of all addresses in a particular area. The tool asks users to specify whether they want the facilities for a particular operator or the facilities located in a particular county or municipality. Facilities include, but are not limited to, wells, oil and gas locations, tank batteries, and pits.

After the user submits a simple request form, the tool sends an automated email with the requested information in a spreadsheet. The email explains many of the limitations to the underlying address and facility data. For instance, not all Colorado counties have a fully verified set of addresses with coordinates.

The hope is that this tool will provide a useful resource to the public and to regulated entities alike. To access the tool, please fill out the form at this link:

<http://cogcc.state.co.us/facinfo.html>

◆ **How to Use Colorado's One Call**

Key to the safe operation of each operator's flowline assets, Rule 1102.d states "As to any pipelines over which the Commission has jurisdiction, each operator shall become a member of the Utility Notification Center of Colorado and participate in Colorado's One Call notification system, the requirements of which



are established by §9-1.5-101., C.R.S. *et seq.* The COGCC Engineering Integrity Unit's audit process requires that operators show proof of membership in CO 811. Operators who did not respond adequately were issued a warning letter.

Operators must register with the Utility Notification Center of Colorado and verify membership by submitting a copy of the membership confirmation letter or a copy of the activation email to Mark Schlagenhauf, Engineering Integrity Supervisor, at

mark.schlagenhauf@state.co.us

The lifetime membership fee is \$25. For information about obtaining membership, send an email to the Utility Notification Center of Colorado at

member-services@co811.org

◆ Oil and Gas Data Available in New Mobile App

The Ground Water Protection Council (GWPC) has released its RBDMS WellFinder mobile application. WellFinder is a free mobile app which allows a user to find and identify oil and gas wells near their location. WellFinder pulls well data directly from state regulatory agencies, including the COGCC. The Wellfinder application provides emergency personnel, local governments, businesses, and the general public with quick and easy access to well information.

The initial map display gives a user the well's name and API well identification number. When the user clicks the well name fly out, a detail view opens that includes operator information and legal location details. Clicking the "More Details" button links to the COGCC Well Scout Card for more information including scanned well files and production data. It is possible to use RBDMS WellFinder to search by the API number, filter results by well status, and save wells.

RBDMS WellFinder is available for download at the App Store and on Google Play, and more background on the app can be found at this location:

<http://www.coordinatesolutions.com/rbdms-wellfinder/>

◆ Compliance With Rule 302

By rule, operators are obligated to keep their contact information on file with the COGCC up to date to ensure agency correspondence and notices can be delivered properly. Rule 302.a. not only requires a Form 1, Registration for Oil and Gas Operations, to be filed prior to the commencement of operations, but also requires that all changes of address of parties be immediately reported by submitting a new Form 1.

Rule 302.b. requires operators to file a Form 1A, Designation of Agent, listing the employee or third party company/individual the operator has approved to sign and submit documents to the COGCC. The Principal Agent named in the 1A is the employee or third party company/individual designated by the operator to be served with any notices issued to the operator by COGCC, so it is critical that the address for the Principal Agent is kept up to date. For all agents, the contact information submitted needs to include the phone number and email address. Any changes to the reported agent information must be made by immediately submitting a new Form 1A to add or remove agents or update contact information.

The Form 1 and Form 1A, and instructions for the forms, can be found at:

<http://cogcc.state.co.us/reg.html#/forms>

If you have questions about these forms or Rule 302, please contact any of the following Staff:

Martha Ramos - martha.ramos@state.co.us

Steven Mah - steven.mah@state.co.us

Jeremy Ferrin - jeremy.ferrin@state.co.us

◆ Local Government Liaison (LGL) Program Update

COGCC Local Government Liaison (LGL) Marc Morton is a key and useful resource for Local Government Designees (LGD), local government staff, or anyone interested in the regulation of oil and gas in Colorado. The COGCC implemented the LGD program in 1992 to provide a conduit for information exchange and collaboration between local governments and state regulators. Since then, many enhancements to the LGD program have occurred, including staffing of the LGL

position in 2012. No similar program is known to exist in any other oil and gas producing state.

Participation in the LGD program is voluntary. Moreover, the level of the program's use by local governments is at their discretion. Submittal to the COGCC of a completed Form 29 is required to participate, or to replace an outgoing LGD. Participation in the program provides significant benefits and opportunities that include providing LGDs with direct access to the COGCC well and location permitting process via the internet-based platform referred to as eForms.

LGDs (and any member of the public) may also comment on pending applications during the public comment period. LGDs may also request extension of the public comment period, and may request consultation with CDPHE on concerns related to public health or the environment.

LGDs also receive notification of many oil and gas activities. These notifications include but are not

limited to when permit applications are available for comment, when permits have been issued, when drilling is planned, when hydraulic fracturing is scheduled, and when a spacing order has been approved by the Commission.

LGDs, local government staff, elected officials, and other groups may request training from the LGL. Training sessions are customized to meet the needs and experience level of participants, but typically include information about COGCC regulations, the well and location permitting process, trends in oil and gas exploration and production, as well as hands-on use and navigation of the COGCC website, maps, and database.

A list of the LGL outreach and public involvement activities conducted since the previous staff report is included in the Public Outreach section below.

Public Outreach

➤ *Outreach by Director and Other Staff*

- On April 6 and April 20, COGCC staff participated in and presented at meetings of the Broomfield Oil and Gas Committee. This committee discussed and debated recommendations to make to Broomfield City Council for amending and updating the City's Comprehensive Plan to more thoroughly address oil and gas issues over which the City and County of Broomfield has jurisdiction. COGCC participants included Director Matt Lepore, Environmental Manager Greg Deranleau, Permitting and Technical Services Manager Jane Stanczyk, Engineering Manager Stuart Ellsworth, Oil and Gas Location Assessment Supervisor John Noto, and Oil and Gas Location Assessment Specialist Rebecca Treitz.
- On April 11, COGCC Environmental Manager Deranleau presented to several state representatives at the legislative breakfast sponsored by the Colorado Oil and Gas Association (COGA). Mr. Deranleau presented on the COGCC Local Governmental Designee program and opportunities, the COGCC permitting process, and how the Governor's Task Force rules tie the two together through the Large Urban Mitigation Area Facility process and the new requirement for operator registration in municipalities.
- On April 19 and 20, Director Lepore and several COGCC staff members attended and participated in the West Slope Energy and Environmental Symposium for Local Governments. Topics presented included: Orphan Well Program and Distressed Operators (David Andrews, Western Colorado Engineering Supervisor); Spacing and Pooling Demystified (Permitting and Technical Services Manager Stanczyk); Large Urban Mitigation Area Facility Panel (Environmental Manager Deranleau); and COGCC Regulatory Update (Director Lepore).
- On April 20, Reclamation Supervisor Denise Arthur, Ph.D. gave a presentation titled "COGCC Reclamation Guidance" at the Rocky Mountain Environmental Health and Safety Peer Group quarterly meeting. The meeting was well attended with many oil and gas operators, consultants and regulatory agencies present.
- On April 21, Underground Injection Control Lead Bob Koehler acted as a subject matter expert on a field trip conducted by the Seismological Society of America. Dr. Anne Sheehan of CU-



Boulder led the tour, first visiting a plugged injection well and a seismic monitoring station inside the Rocky Mountain Arsenal National Wildlife Refuge, then visiting the NGL C5 disposal facility located east of Hudson and adjacent to Interstate 76. On returning to Denver, the tour observed oil and gas operations along Highway 52 in southern Weld County.

- On April 25, Reclamation Specialist Chris Binchus participate in the USA Reclamation Summit. The emphasis summit was innovative equipment demonstrations, steep slope reclamation, erosion control implementation and application, and use of drone technology in restoration monitoring and vegetation/soil analysis. Approximately 250 participants attended the event. Chris served on a panel that answered questions about COGCC interim and final reclamation inspections and rules.
- Between May 5 and 25, Engineering Supervisor Schlagenhauf participated with STRONGER (State Review of Oil and Natural Gas Environmental Regulations) in a series of conference calls and surveys regarding existing state regulations for produced water pipelines. The group is working on developing guidelines for regulation of produced water pipelines.

STRONGER was formed in 1999 to reinvigorate and carry forward the state review process begun cooperatively in 1988 by the U.S. Environmental Protection Agency and the Interstate Oil and Gas Compact Commission. STRONGER is a 501(c)(3) multi stakeholder educational organization whose purpose is to assist states in documenting the environmental regulations associated with the exploration, development and production of crude oil and natural gas.

- On May 3, Engineering Integrity Supervisor Mark Schlagenhauf, P.E. and Field Inspection Quality Assurance Supervisor Mike Leonard participated in a planning meeting for the Pipeline Emergency Responders Initiative (PERI). PERI is

planned as a public private partnership among emergency response organizations and pipeline operators to improve emergency response. Organizations who participated included the federal Department of Transportation PHMSA (Pipeline and Hazardous Materials Safety Administration) and Volpe Center, the Colorado Public Utilities Commission, the Colorado Division of Fire Prevention and Control, CO 811, and the Pipeline Association for Public Awareness.

- On May 26, the COGCC held a Small Operator Outreach meeting in Fort Morgan, with 76 people in attendance in addition to COGCC Staff. Staff presented on topics such as the Flowline Notice to Operators, the Field Inspection Resolution Report, Most Common Field Inspection Issues, the Governor's Dashboard, and Common Storm Water Issues.

➤ *Outreach by the LGL*

- On April 19 and 20, Marc Morton attended the fifth annual Energy and Environment Symposium in Rifle, presented by Garfield County and the Colorado Mesa University Unconventional Energy Center.
- On April 25, Marc Morton provided a half day LGD orientation and training to Town of Milliken staff.
- On April 27, Marc Morton travelled to Grand Junction and attended the quarterly Mesa County Board of County Commissioners and Land / Resource Managers meeting.
- On May 3, Marc Morton attended the Fremont County Mayor's Roundtable meeting held in Williamsburg.
- On May 17, Northwest Regional Engineer Craig Burger and Marc Morton attended Wildland Fire and Energy Industry Safety Summit in Rifle, hosted by staff from the BLM.
- On May 17, Marc Morton attended the bi-monthly meeting of the City of Aurora Oil and Gas Advisory Committee meeting.

Regional Activities

➤ *Northwest Colorado*

◆ Northwest Colorado Oil and Gas Forum

Remaining Northwest Colorado Oil and Gas Forum (NWF) meetings in 2017 are scheduled for August

3 and December 7. Meetings will be held in Rifle at the Colorado Mountain College - Rifle Campus / Clough Auditorium (3695 Airport Road, Rifle) between 9:00 a.m. and 12:00 p.m. Meeting agendas are posted to the COGCC website approximately two weeks prior to each meeting.



The COGCC welcomes suggestions and input for speakers, topics, and meeting format and venue.

Meeting information is emailed to those on the email distribution list. NWF meetings are open to the public, and public comment is welcomed as part of each meeting. Past presentations (dating back to 2006) are available from

<http://cogcc.state.co.us/library.html#/forums>

All parties wishing to be placed on the next meeting agenda or added to the email distribution list for announcements should contact Marc Morton at (303) 894-2100, ext. 5132 (direct), (720) 415-4959 (mobile), or by email:

marc.morton@state.co.us

◆ Project Rulison

The email for Project Rulison submittals is

DNR_rulison.submittal@state.co.us

◆ Project Rio Blanco

The email for Project Rio Blanco submittals is

DNR_rioblanco.submittal@state.co.us

➤ *Southwest Colorado*

◆ Fruitland Formation Outcrop Mitigation and Monitoring Projects

South Fork Texas Creek Mitigation Site - La Plata County. Regularly scheduled operations and maintenance are being performed at the

South Fork Texas Creek (SFTC) site by LTE, the COGCC's contractor. Since May 2009, the system has collected 20,464 Mcf of methane and generated 238,662 kWh of surplus electricity.

At all eleven 3M/4M monitoring well locations, annual site inspection and routine maintenance visits are currently being performed by COGCC Staff. In March, a new transducer and cable was installed in the Wagon Gulch #1 monitoring well. The lower transducer had become unresponsive, and upon further inspection, it was discovered that the rugged cable had also been compromised. As the monitoring well network ages, more system maintenance and repairs are anticipated.

◆ Gas and Oil Regulatory Team (GORT) Meetings

Remaining GORT meetings in 2017 are scheduled for June 29 and October 12. These meetings will be held in Durango at the Durango Public Library (1900 E. 3rd Avenue) from 9:00 a.m. to 12:00 p.m.

GORT meeting agendas will be posted to the COGCC website approximately one to two weeks prior to each meeting, and emailed to those on the email distribution list. GORT meetings are open to the public, and public comment is held as part of each meeting. The COGCC welcomes suggestions and input for speakers, topics, and meeting format and venue.

All parties wishing to be placed on the next meeting agenda or added to the distribution list for announcements should contact Marc Morton at (303) 894-2100, ext. 5132 (direct), (720) 415-4959 (mobile), or by email:

marc.morton@state.co.us

Variances

◆ **BP Production Company (BP)**

On May 15, the COGCC Director granted BP a Rule 502.b variance to Rule 603.a.(1) for the BP Fischer-Mark Federal B5 well (API #067-10002) in La Plata County. Rule 603.a.(1) states that "At the time of initial drilling, a Well shall be located not less than two hundred (200) feet from buildings, public roads, major above ground utility lines, or railroads."

This well is an additional well on a built location and will be located 180 feet from the nearest public road, which is Forest Service Road 755. This road is maintained by the United States Forest Service, who granted a waiver and requested that the pad disturbance be minimized by locating this well less than the required 200 feet from the road.



◆ Red River Ranch Holdings, LLC (RRRH)

RRRH has been granted a surface owner variance on for 27 well locations located in Las Animas County (see table below). The variance request is from select parts of Rule 1004 in order to leave access roads, well locations, and other equipment, as described below, in place for use on the Ranch. RRRH is a privately held ranch that has full time staff managing it for reclamation, forest fire restoration, and improvement of wildlife habitat.

Well Name	Well API # Location ID	Document Number
RRR PP CW-A A	286150	400747990
RRR CW-D D	286531	400747989
POND B	285604	400747991
RRRPPCWE	286532	400747992
RRR 14-4 R68W	071-08570-00	401001841
RRR 2-3 R68W	071-08962-00	401002649
RRR 11-1 R68W	071-08964-00	401003357
RRR 17-4 R68W	071-08618-00	401005038
RRR 18-4 R68W	071-08217-00	401008212
RRR 13-4 R68W	071-08576-00	401024786
RRR 15-3 R68W	071-08619-00	401025462
RRR 16-1 R68W	071-08961-00	401025844
RRR 14-5 R68W	071-08579-00	401025885
RRR 18-3 R67W	071-08976-00	400999058
RRR 11-2 R68W	071-08571-00	401002099
RRR 12-1 R68W	071-09318-00	401004540
RRR 13-3 R68W	071-09344-00	401004713
RRR 17-1 R68W	071-08622-00	401004985
RRR 17-3 R68W	071-09054-00	401005027
RRR 18-2 R68W	071-08621-00	401005214
RRR 18-2R R68W	071-09319-00	401005340
RRR 2-1 R68W	071-08960-00	401020331
RRR 2-2 R68W	071-08963-00	401024253
RRR 12-2 R68W	071-09331-00	401024822
RRR 10-2 R68W	071-08056-00	401025201
RRR 13-6 R68W	071-08965-00	401027203
RRR 13-7 R68W	071-09002-00	401027212

Well Location and Access Roads - The locations and access roads will be retained in current conditions for use as prescribed fire breaks,

game retrieval, staging of hunters, and temporary parking for Ranch trucks and equipment.

Water Gathering System - The water gathering system, used to move produced water from wells to treatment ponds, will be used to transfer water for firefighting, wildlife water, and irrigation.

Electrical System - The system wide buried electrical equipment will remain to provide electrical service between different parts of the Ranch.

The following conditions of approval were applied to the variances:

- Establish 80 percent vegetation cover of reference area levels at the location, except where gravel remains at the flat portion of the well pad.
- Continue to monitor and manage the site for erosion and noxious weed control until final reclamation is passed.

◆ URSA Operating Company, LLC (URSA)

URSA has been granted a surface owner variance from certain final reclamation requirements Rule 1004

Request # 401149175, API #05-045-19727, Porter B Pad

The variance is for recontouring and revegetating a portion of the location, leaving the graveled portion of the location in place. The cut slope to be left will be reduced to a 2:1 Slope. All areas without gravel and recently regraded areas will be seeded and stabilized with surface owner seed mixture.

The following conditions of approval were applied to the variance:

- Establish 80 percent vegetation cover of reference area per the reclamation rules at the location and cut slopes.
- Continue to monitor and manage the site for erosion and noxious weed control until final reclamation is passed.



◆ Swift Energy Operating, LLC (Swift)

Swift has been granted a surface owner variance from certain final reclamation requirements in Rule 1004.

Request #401066742, API #05-067-067-09897, Waters 34-12-32

Swift received a variance to allow approximately 2.7 acres of a well pad surface and a 70 foot access road to remain graveled and not recontoured or revegetated. The variance areas will be used for ranching/farming operations. Some of the original disturbance was seeded (2.3 acres). The seeded reclamation area will remain subject to COGCC final reclamation rules.

The following condition of approval was applied to the variance:

- Location will need to pass a final reclamation inspection at a future date to verify that the reclaimed areas on the well pad have been successfully revegetated to 80 percent of a reference area and that weeds and stormwater erosion are controlled on the well pad and access road.

◆ SWN Production Company, LLC (SWN)

SWN has been granted a surface owner variance from certain final reclamation requirements in Rule 1004.

Request #401103990, API #05-107-06258, Williams 6-87

The variance is for recontouring and revegetating a portion of the location, leaving the graveled portion of the location in place. Landowner will utilize the unreclaimed portion of the location for erecting a building for hay storage and additional outside hay storage and equipment parking.

◆ Pioneer Natural Resources USA Inc. (Pioneer)

Pioneer has been granted surface owner variances from certain final reclamation requirements for locations located in Las Animas County:

Request #401195596, API #05-071-07684, Magnus 23-5

Pioneer received a variance from select requirements of Rule 1004.a. regarding recontouring of the location and access road and from Rule 1004.c.(2) that requires 80 percent re-vegetation along the access road where gravel is to remain. The landowner's intended use is for vehicle and hunting access and development of the property.

The following conditions of approval were applied to the variance:

- A variance from Rule 1004.c.(2) is requested due to the presence of gravel at the well pad. The surface owner requested gravel to be removed from well pad and reseeded. The gravel from the well pad shall be removed and the entire location must establish a uniform vegetation cover of at least 80 percent of reference area levels.
- Continue to monitor and manage the site for erosion and noxious weed control until final reclamation is passed.

Request #401195500, API #05-071-07687, Jennifer 24-4

Pioneer received a variance from select requirements of Rule 1004.a. regarding recontouring of the access road and from Rule 1004.c.(2) that requires 80 percent re-vegetation along the access road and location where gravel is to remain. The landowner's intended use is for vehicle access of the property.

The following conditions of approval were applied to the variance:

- Establish 80 percent vegetation cover of reference area levels at the location, except where the stock pile of gravel remains at the end of the access road.
- Continue to monitor and manage the site for erosion and noxious weed control until final reclamation is passed.

Request #401213086, API #05-071-08589, Axis 31-24

Pioneer received a variance from select requirements of Rule 1004.a. regarding recontouring of the location and access road and



from Rule 1004.c.(2) that requires 80 percent re-vegetation along the access road and location where gravel is to remain. The landowner's intended use is for vehicle access, staging hunting trips, development purposes, vantage point, and equipment parking.

The following conditions of approval were applied to the variance:

- Establish 80 percent vegetation cover of reference area levels at the location, except where gravel remains at the flat portion of the well pad.
- Install well marker at the plugged and abandoned wellhead.
- Continue to monitor and manage the site for erosion and noxious weed control until final reclamation is passed.

Request #401176202, API #05-071-08970, Aspen Rose 13-2

Pioneer received a variance from select requirements of Rule 1004.a. regarding re-contouring of the access road and from Rule 1004.c.(2) that requires 80 percent re-vegetation along the access road. The landowner's intended use is for vehicle access of the property.

The following conditions of approval were applied to the variance:

- Establish 80 percent vegetation cover of reference area levels along the sides of the access road.
- Interseed to establish Ladak alfalfa per surface owner's request.
- Fully establish adequate stormwater controls for long term stability along the access road.
- Continue to monitor and manage the site for erosion and noxious weed control until final reclamation is passed.

Request #401164994, API #05-071-09402, Blueberry 21-6

Pioneer received a variance from select requirements of Rule 1004.a. regarding re-contouring of the access road and from Rule 1004.c.(2) that requires 80 percent re-vegetation along the access road. The landowner's intended use is for vehicle access of the property.

The following condition of approval was applied to the variance:

- Continue to monitor and manage the site for erosion and noxious weed control until final reclamation is passed.

Request #401176974, API #05-071-09220, Panorama Deep 13-11

Pioneer received a variance from select requirements of Rule 1004.a. regarding re-contouring of the location and access road and from Rule 1004.c.(2) that requires 80 percent re-vegetation at the location where gravel is to remain. The landowner's intended use is to maintain current vegetation of the location and to minimize disturbance of to the access road which goes through the location to access the adjacent well location. The variance was granted only for not recontouring the location. The road will be reclaimed once the adjacent well is plugged and abandoned per rule.

The following conditions of approval were applied to the variance:

- A variance of 1004.c.(2) is requested due to the presence of gravel on the location. However, there was no gravel noticed at the location during inspection. In order to stabilize the site for long-term stormwater control, the entire location must establish a uniform vegetation cover of at least 80 percent of reference area levels.
- A variance request related to the access road is not applicable for this location. The access road is associated with the Panorama 13-11 well site.
- Continue to monitor and manage the site for erosion and noxious weed control until final reclamation is passed.

◆ Encana Oil and Gas (USA), Inc. (Encana)

Encana was granted a surface owner waivers of select requirements of Rule 1004 for two locations.

Request #401082626, API #05-077-05075, Clyde-State

Encana received a variance from select requirements of Rule 1004. Encana will not be



required to recontour and reclaim a portion of the access road. Road will be used for access for irrigation activities and grazing operations.

The following condition of approval were applied to the variance:

- Continue to monitor and manage the site for erosion and noxious weed control until final reclamation is passed.

Request #401082673, API #05-077-08558, Aitken

Encana received a variance from select requirements of Rule 1004. Encana will not be required to recontour and reclaim a portion the access road. Road will be used for access for irrigation and agricultural operations.

The following condition of approval was applied to the variance:

- Continue to monitor and manage the site for erosion and noxious weed control until final reclamation is passed.

Admin / Organization / Other

◆ Plugging and Reclaiming Orphaned Wells (PROW) - Project Updates

The **Benchmark BOND NW Graylin D-Sand Unit #20W Plug and Abandon Project** is in the “distressed operator” section of the PROW Program (Order 1V-564). The location is in Logan County, approximately nine miles northwest of Sterling.

The COGCC plugged the well in January, and remaining project work includes abandoning the flowlines and removing equipment from the location. Staff continues to evaluate plugging and abandonment priorities for other wells in the NW Graylin Field.

The **Pagoda Plug and Abandon Project** is located approximately 14 miles southeast of Craig, near the Moffat and Routt county line, and includes two previously plugged wells.

The landowner is improving and developing the east fork of the Williams Fork River habitat on his property and has requested that the COGCC cut off the existing above ground vertical plugging and abandonment markers. This project may be delayed until next summer or fall because of scheduling conflicts with the landowner.

The **Cache Unit #8 Plug and Abandon Project** is in the “distressed operator” section of the PROW Program (Order 1V-577). This location is in Montezuma County, approximately 26 miles west-southwest of Cortez.

The COGCC plugged the well in December, and remaining work includes abandoning both the injection line and the old oil flow line, removing the existing rig anchors, re-grading portions of the access road, and cleaning out a cattle guard. The COGCC is waiting on contractor availability to schedule the work.

The **Lloyd & Lowell #1 Plug and Abandon Project** is located about two miles west of DeBeque in Mesa County. This well was drilled in 1914 to a total depth of 3,045 feet. However, casing and cement records are not available. The well is currently discharging water and natural gas with a dark tar like material near the well. The volume of water flowing from the well over many years has created its own artificially irrigated wetlands, making access to the well difficult.

Water analysis indicates 1,100 milligrams per liter total dissolved solids and 110 micrograms per liter of benzene. Downhole camera work was attempted, but a wooden plug was observed in the casing near surface. This project has been sent out to bid. Timing of the project may be delayed while working with the U.S. Army Corps of Engineers through wetland permitting requirements.

The **State #1-36 Plug and Abandon Project** is located approximately 6 miles east-southeast of Cortez in Montezuma County. The well was drilled in 1982 to a total depth of 500 feet in the Dakota Formation and had a show of natural gas but no economic production. The well has six inch outside diameter open casing rising four feet above ground with the well identification in



raised welded beading on the casing. There is no surface plug, and it appears that the operator may have left the well for fresh water purposes. The work is scheduled for later in spring 2017.

The **Wolcott #1 Plug and Abandon Project** is a former domestic gas well located approximately two miles west of Mancos in Montezuma County. The well was drilled in 1981 to a total depth of 234 feet in the Dakota Formation and had a show of oil, but no economic production. The well has seven inch outside diameter open casing that is buckled at the surface. The well is discharging water to surface. The work is scheduled for later this spring or summer.

The **Doerfer #1-5 and Doerfer #2 Plug and Abandon Project** is in the “distressed operator” section of the PROW Program (Order 1V-586). Both wells are located approximately three miles south of Mancos. The Doerfer #1-5 well was drilled in 2009 to a total depth of 1,345 feet, and the Doerfer #2 well was drilled in 1979 to a total depth of 1,310 feet, with both wells terminating in the Dakota Formation. Both wells produced oil at a rate of three to four barrels of oil per day prior to being shut in. The work will be scheduled at a future date.

The **Ranchers BOND Retta J #1 Reclamation Project** is located in Larimer County, near the City of Windsor. The COGCC claimed the Ranchers Exploration bond in Order 1V-526. The site is complicated by the fact that the well was drilled on the closed Johnston Landfill, which ceased business operations in 1982.

The Colorado Department of Public Health and the Environment (CDPHE) landfill closure plan does not allow any disturbance to the landfill area. Disturbance occurred during the well pad construction and during the drilling operations. The COGCC required the drilling operation to end early in the drilling operations process and prohibited further oil and gas operations on the location.

The well was plugged and abandoned by the operator in April 2012, but the operator failed to implement adequate stormwater BMPs and reclaim the well site. The COGCC and CDPHE are working together to close the location since there is a landfill component and an oil and gas component.

The first phase of and soil sampling and reclamation design work was completed June 30, 2016. Landfill cap design work has been contracted for late spring 2017, with the goal of developing a plan to close the landfill and reclaim the location. Field work will be rescheduled for fall 2017.

Pages 17 through 20 contain a spreadsheet listing PROW projects that are either planned, in progress, or completed as of June 6, 2017.

◆ Interested Parties Notification

PetroHunter Operating Company

BY ORDER OF THE COLORADO OIL AND GAS CONSERVATION COMMISSION

ORDER NO. 1V-608

TO ALL INTERESTED PARTIES AND TO WHOM IT MAY CONCERN:

Pursuant to Section 34-60-124 of the Colorado Revised Statutes and Order No. 1V-608 of the Colorado Oil and Gas Conservation Commission (“Commission”):

The Commission has claimed all equipment, saleable product, and appurtenances related to the oil and gas operations of PetroHunter Operating Company (“PetroHunter”) (Operator No. 10200). The Commission has revoked PetroHunter’s right to conduct oil and gas operations in Colorado, including transporting oil and gas to market.

The Commission has commenced activities to investigate, prevent, monitor, or mitigate conditions that threaten to cause, or that actually cause, significant adverse environmental impacts at oil and gas locations formerly operated by PetroHunter. These activities may include the plugging and abandonment of wells.

The Commission’s actions may impact the following properties, located in Rio Blanco County, Colorado:

1. Sections 1, 10, 14, 16, 21-23, 26, 27, 31 and 35, Township 1 North, Range 95 West, 6th P.M.



The Commission's actions may also impact the following properties, located in Garfield County, Colorado:

1. Section 9, Township 8 South, Range 96 West, 6th P.M.

The Commission's actions may impact the following properties, located in Mesa County, Colorado:

1. Section 18, Township 8 South, Range 96 West, 6th P.M.

Additional information regarding these properties can be found here:

<http://cogcc.state.co.us/reg.html#/enforcement/orphans>

ANY PARTY WHO CLAIMS AN INTEREST IN THIS EQUIPMENT, SALEABLE PRODUCTS, APPURTENANCES, OR IN THE PLUGGING OF THESE WELLS MUST CONTACT THE COMMISSION'S ENFORCEMENT SUPERVISOR IMMEDIATELY, by: phone - (303) 894-2100; email - dnr_cogccenforcement@state.co.us; or mail - Colorado Oil and Gas Conservation Commission, Attn: Enforcement Supervisor, 1120 Lincoln Street, Suite 801, Denver, Colorado 80203.

◆ Colorado Oil and Gas Information System (COGIS) Projects, Updates and Changes

Electronic Form (eForm) Submissions

The COGCC uses 41 types of forms to authorize oil and gas operations, inspect and monitor ongoing operations, and receive reports of operations. Of those 41 forms, 21 are currently available for electronic submittal through the eForms system.

The development team continues to work on the eForm conversion of existing forms. Currently, four forms are in various stages of development: Forms 11, 12, 14, 14A, and 43. In addition, the development team updates eForms with improvements requested by Staff and as required by rule revisions. In 2017, industry electronically submitted 98 percent of the forms available in eForms.

There are 811 operator users of eForms and 3,243 individual users. For any operator not currently

enrolled in eForms, instructions for starting the process can be found on the COGCC website at:

<http://cogcc.state.co.us/Announcements/COUAIInformation.pdf>

Form 27 eForm

The COGCC's Site Investigation and Remediation Workplan (Form 27) has been upgraded. The Governor's Office of Information Technology (OIT) completed development of the eForm 27, and COGCC Staff rolled it out to industry January 2. Improvements to the Form since roll-out have included addition of "corrected GPS location" information for more accurate mapping of remediation projects and better data management of multiple site submissions so that each unique site is accurately mapped.

Suggestions for other improvements are welcome and may be submitted to the Environmental Manager via email at

greg.deranleau@state.co.us

Since January 2, COGCC Environmental Staff has processed and approved 437 Form 27s, and 76 Forms are currently in process.

Applications and Location Assessments

The public can make comments on all submitted Drilling Permit Applications (Form 2s) and Location Assessments (Form 2As) through the eForm system. Simply go to the COGCC website and click on the menu option "Permits" or

<http://cogcc.state.co.us/permits.html#/permits>

On the "Permits Search" page, three search options are available. The first option, "All Pending Permit Applications," is used for public comments.

When the results are displayed for "Pending Applications," a user can click on the document number hyperlink in the "Status" column, which logs him or her to the eForms application. Once the page is displayed with the selected document, the user can select the "Comment" button to make a comment on that particular form.

**Data Access**

The COGCC's database is a comprehensive repository of Colorado's oil and gas data. The information in the database is available to the public through interactive search tools and a variety of file downloads on the website. Users of bulk data come from many different sectors of the community, including academia, oil and gas operators, environmental groups, government agencies, and the media.

In May, staff released two new downloads: the GIS shapefiles for Oil and Gas Locations and for Tank Batteries. All the data file downloads are available at:

<http://cogcc.state.co.us/data2.html#/downloads>

New GIS Shapefile Downloads

Oil and Gas Locations
Tank Batteries

Current Data File Downloads

Complaints
Field Operations
GIS Shapefiles (12 files)
Mechanical Integrity Tests
Notices of Alleged Violation
Production Data (1999 - present)
Spacing Orders
Spills and Releases
Water Well Data

Future Data File Downloads

Enforcement Orders (OFVs and AOCs)
Underground Injection Control (UIC) Data

◆ July 2017 Hearing Docket

The docket for the July 2017 hearing will be available shortly after the June hearing. Hearing dockets are available on our website by clicking on "Regulation" in the menu and then "Hearings":

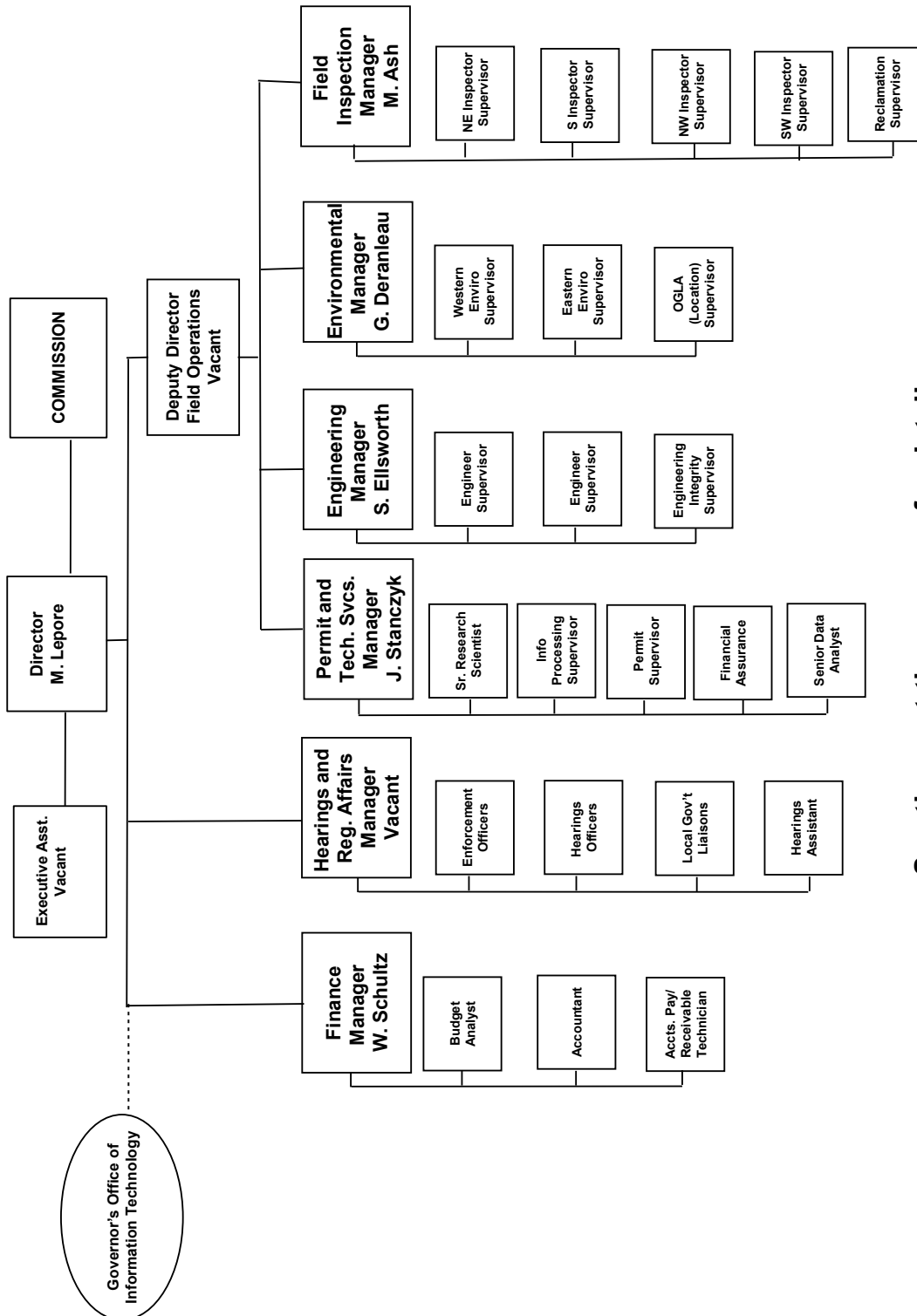
<http://cogcc.state.co.us/reg.html#/hearings>

Links to the notices and hearing applications are available from the Docket Number and Applicant, respectively, by clicking the July Gen_Docket

link. To sign up for email notification of hearing notices and applications, please see the announcement and instructions on the homepage of the COGCC website.

Organizational Charts and Statistics

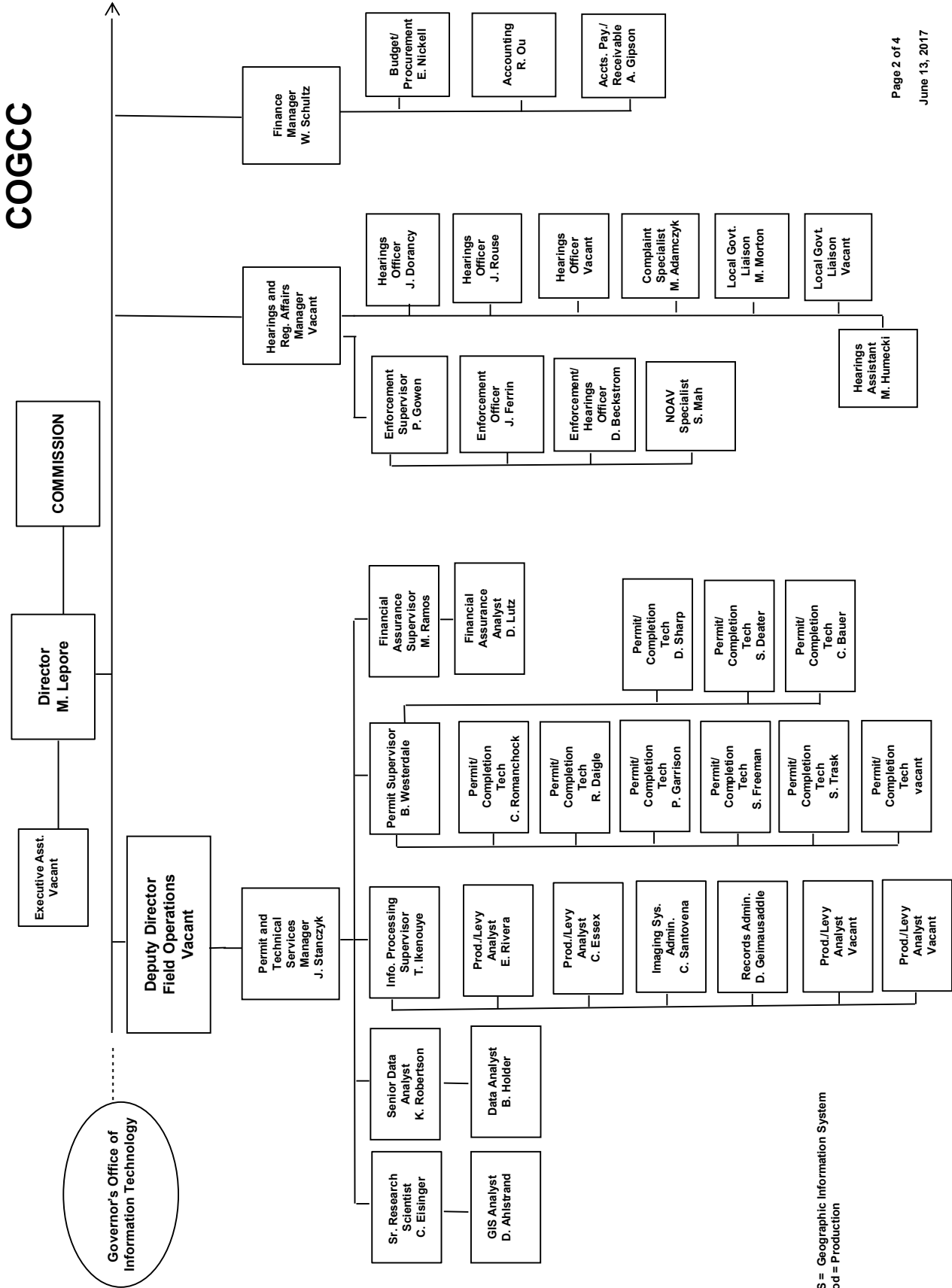
COLORADO OIL & GAS CONSERVATION COMMISSION



See the next three pages for details



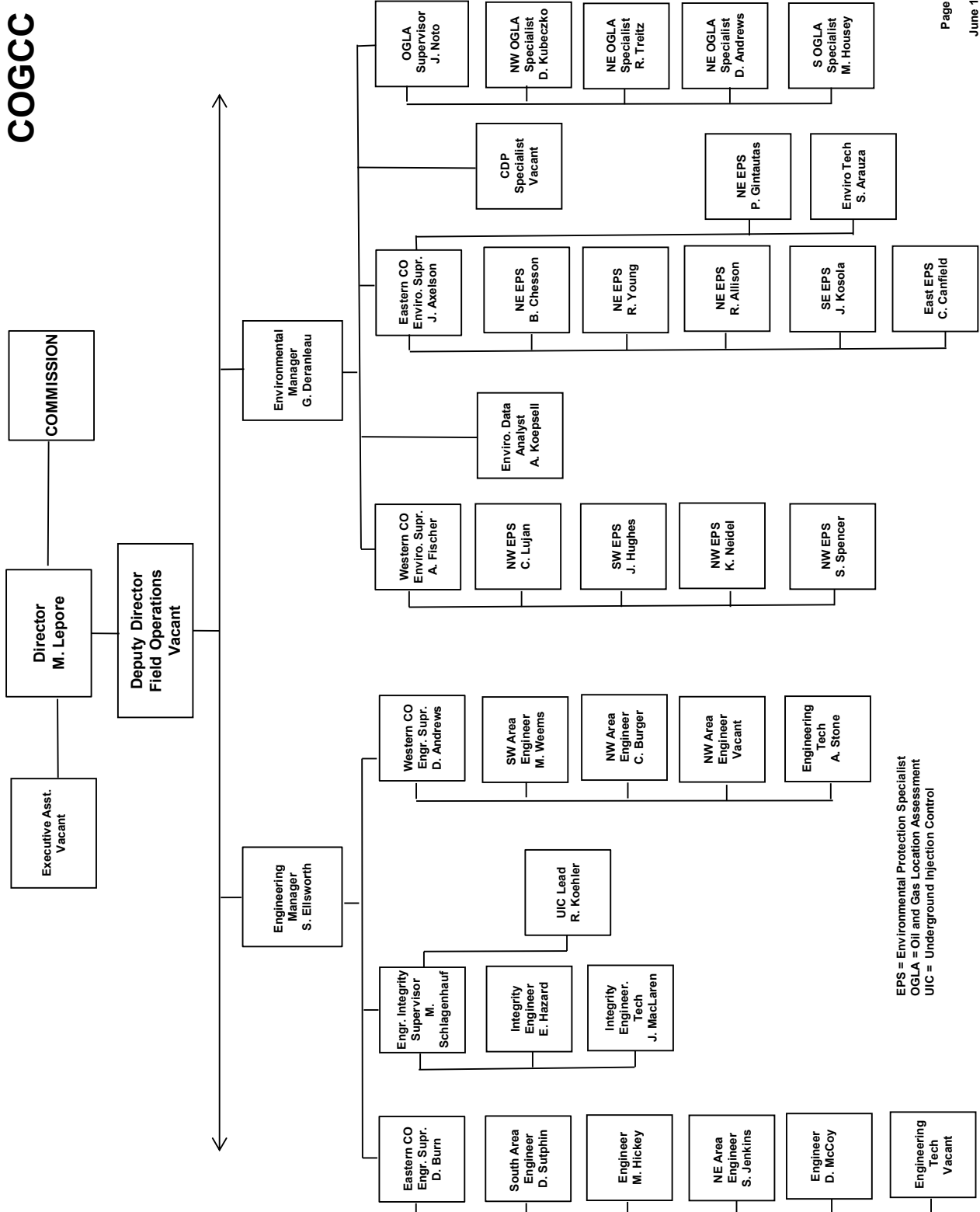
COGCC



GIS = Geographic Information System
Prod = Production



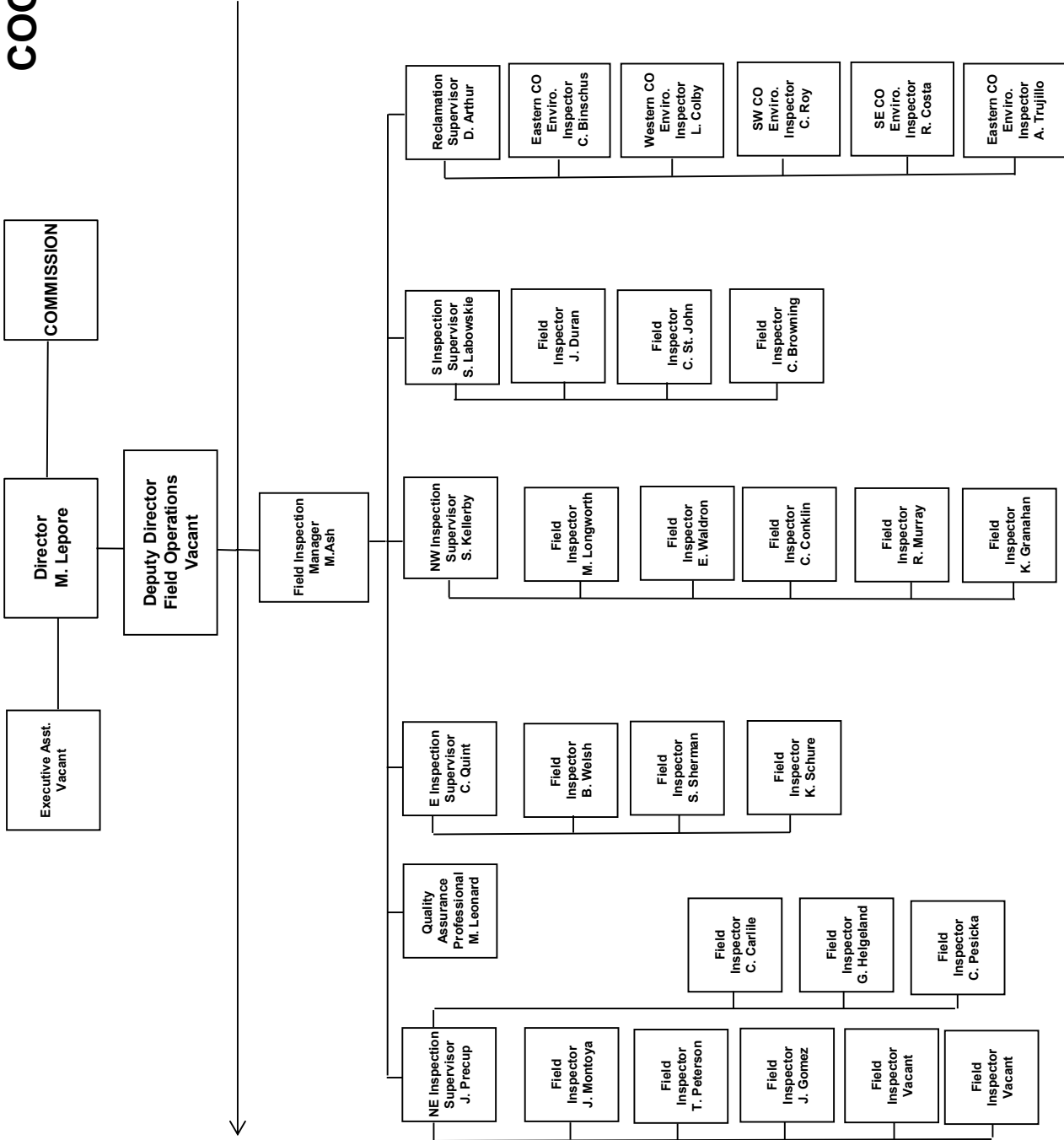
COGCC



EPS = Environmental Protection Specialist
 OGLA = Oil and Gas Location Assessment
 UIC = Underground Injection Control



COGCC





**PLUGGING AND RECLAIMING ORPHANED WELLS (PROW) PROGRAM
FISCAL YEAR 2016-17**

BONDS AND OTHER SURETY CLAIM STATUS FOR "BOND CLAIM" PROJECTS							Page 1 of 4
Project	Order Number(s)	Total Bond Claim	Amount Spent in Prior Fiscal Years	Remaining Balance			
Atom Petroleum Bond Claim	1V-586	\$ 60,000	\$ -	\$ 60,000			
Benchmark Energy Bond Claim	1V-564	\$ 620,000	\$ 1,180	\$ 618,820			
CM Production Bond Claim	1V-581	\$ 67,849	\$ -	\$ 67,849			
Dolphin Bond Claim	1V-382	\$ 55,000	\$ 55,000	\$ -			
Monument Global Bond Claim	1V-577, 1V-600	\$ 80,231	\$ -	\$ 80,231			
Premier Bond Claim	1V-362, 1V-592	\$ 16,778	\$ 5,000	\$ 11,778			
Provide Bond Claim	1V-364	\$ 5,000	\$ 5,000	\$ -			
Red Mountain Bond Claim	1V-549 *	\$ 92,015	\$ -	\$ 92,015			
Ranchers Bond Claim	1V-526	\$ 63,424	\$ 30,183	\$ 33,241			
Red Mesa Holdings Bond Claim	1V-508	\$ 72,831	\$ 4,293	\$ 68,539			
Redwine Bond Claim	1V-470, 1V-494	\$ 30,000	\$ 30,000	\$ -			
Tatonka Bond Claim	1V-383	\$ 30,000	\$ 30,000	\$ -			
Texas Tea Bond Claim	1V-573	\$ 71,850	\$ -	\$ 71,850			
Think Oil Bond Claim	1V-458	\$ 12,570	\$ 12,570	\$ -			
TOTALS -->		\$ 1,277,548	\$ 173,226	\$ 1,104,322			

Note: * Red Mountain Bond Total Claim Amount includes \$24,169 bankruptcy deposit and \$5,000 State Land Board deposit (bond transfer)

PLANNED WORK		Project and Task	BOND	PROW	EMGY Orders
RECL	Adams	Texas Tea Bond Claim: Task 2.2 - Weed Control (maintenance) - Spindle and Sun Fields		Planned	
RECL	Logan	Simms #1: Task 1 - Reclamation (initial work) - 389425		Planned	
FOPS	Moffat	Saunders et al #1: Task 1 - MIT or Other Well Work, Remove cables and junk - 391470, 081-05241		Planned	
FOPS	Routt	Pagoda #1-31: Task 1 - MIT or Other Well Work, Cut off PA marker - 399362, 107-06115		Planned	
RECL	Weld	Vaughey & Vaughey - Buckingham Field: Task 1 - Reclamation (initial work) - 405136	Planned		
RECL	Weld	Vaughey & Vaughey - Buckingham Field: Task 1 - Reclamation (initial work) - 405138	Planned		
RECL	Various	Weed Control and Stormwater BMP (maintenance)		Planned	



WORK IN PROGRESS		Project and Task	BOND Actual	PROW Actual	EMGY Actual	Subtotals Actual
Work Unit	County					
FOPS	Jackson	CM Production Bond Claim: Site Security and Equipment Intervention Tasks, Lone Pine Field (Various Locations)	\$ 1,386	\$ -	\$ -	1,386
RECL	Larimer	Ranchers Bond Claim: Task 2 - Engineering Design - 419639	\$ -	\$ -	\$ -	-
ENGR	Montezuma	State #1-36: Task 1 - Plug and Abandon - 313502, 083-06354	\$ -	Bids received and award pending	\$ -	-
ENGR	Montezuma	Wolcott #1: Task 1 - Plug and Abandon - 313501, 083-06341	\$ -	Bids received and award pending	\$ -	-
RECL	Montezuma	Monument Global Bond Claim: Task 3 - Reclamation (initial work) - 313425	\$ -	Purchase Order issued and work scheduled for April 2017	\$ -	-
RECL	Logan	J&L Oil Corp - North Shore Field: Task 2 - Reclamation (initial work) - 389243	\$ -	\$ 231	\$ -	231
RECL	Logan	J&L Oil Corp - North Shore Field: Task 2 - Reclamation (initial work) - 389245	\$ -	\$ 231	\$ -	231
WORK IN PROGRESS SUBTOTALS -->			\$ 1,386	\$ 462	\$ -	1,848
COMPLETED WORK		Project and Task	BOND Actual	PROW Actual	EMGY Actual	Subtotals Actual
ENVR	Adams	Texas Tea Bond Claim: Task 1.2 - Sampling and Analysis, Spill or Remediation - 320257,	\$ 29,204	\$ -	\$ -	29,204
ENVR	Adams	Texas Tea Bond Claim: Task 1.3 - Sampling and Analysis, Groundwater Monitoring Wells - 318231,	\$ -	\$ -	\$ -	-
RECL	Garfield	Dolphin Bond Claim: Task 15 - Mowing - 335477,	\$ -	\$ 787	\$ -	787
ENVR	Jackson	CM Production Bond Claim: Field inspections, equipment and location labels, and verify electrical disconnect for Lone Pine Field	\$ -	\$ -	\$ -	-
ENVR	Jackson	CM Production Bond Claim: Task 1.11 - Sampling and Analysis - Lone Pine Field,	\$ 2,240	\$ -	\$ -	2,240
ENGR	Jefferson	Premier Bond Claim: Task 1 - Plug and Abandon - 324776, 059-06026	\$ -	\$ 25,661	\$ -	25,661
ENVR	Jefferson	Premier Bond Claim: Task 2 - Sampling and Analysis, Spill or Remediation, Off-Site Disposal - 324776,	\$ 678	\$ 1,000	\$ -	1,678
FOPS	Jefferson	Provide - Red Mountain Bond Claim: Task 3 - Equipment Intervention, Equipment Salvage - 324775,	\$ -	\$ 1,000	\$ -	1,000
RECL	Jefferson	Provide - Red Mountain Bond Claim: Task 4 - Reclamation (initial work) - 324775,	\$ 19,215	\$ -	\$ -	19,215
RECL	Jefferson	Provide - Red Mountain Bond Claim: Task 5 - Site Security - 324775,	\$ 4,680	\$ -	\$ -	4,680



Oil and Gas Staff Report

June 12, 2017

19

Page 3 of 3

Work Unit	County	Project and Task	BOND Actual	PROW Actual	EMGY Actual	Subtotals Actual
FOPS	La Plata	Atom Petroleum Bond Claim: Task 1.2 - Equipment Intervention - 325653,	\$ 797	\$ -	\$ -	797
FOPS	La Plata	Red Mesa Holdings Bond Claim: Task 1 - Sampling and Analysis, Gauge tanks (Various Locations)	\$ 346	\$ -	\$ -	346
ENGR	La Plata	Red Mesa Holdings Bond Claim: Task 2 - MIT or Other Well Work, Complaint response, Bradenhead test - 325858, 067-07085	\$ 2,665	\$ -	\$ -	2,665
RECL	Larimer	Ranchers Bond Claim: Task 1 - Reclamation (initial work), Re-Seeding (maintenance), Weed Control (maintenance) - 435790,	\$ 33,215	\$ -	\$ -	33,215
FOPS	Logan	Benchmark Energy Bond Claim: Task 1.1 - Site Security - Graylin NW and Mount Hope Fields,	\$ 496	\$ -	\$ -	496
FOPS	Logan	Benchmark Energy Bond Claim: Task 1.2 - Equipment Intervention, Gauge Tanks - Graylin NW and Mount Hope Fields,	\$ -	\$ -	\$ -	-
RECL	Logan	Benchmark Energy Bond Claim: Task 1.3 - Weed Control (maintenance), Mowing - Graylin NW and Mount Hope Fields,	\$ 14,900	\$ -	\$ -	14,900
HEAR	Logan	Benchmark Energy Bond Claim: Task 1.4 - Title Work (legal) - Graylin NW and Mount Hope Fields,	\$ 8,000	\$ -	\$ -	8,000
FOPS	Logan	Benchmark Energy Bond Claim: Task 1.5 - Repair Power Lines - Graylin NW and Mount Hope Fields,	\$ 750	\$ -	\$ -	750
FOPS	Logan	Benchmark Energy Bond Claim: Task 1.6, 1.6B, 1.7, 1.8, 1.9 - Equipment Intervention, Fix Leaks, Fluid Handling, Berm	\$ 17,683	\$ -	\$ -	17,683
FOPS	Logan	Benchmark Energy Bond Claim: Task 1.10 - Reclaim Oil - Graylin NW and Mount Hope Fields,	\$ -	\$ -	\$ -	-
ENVR	Logan	Benchmark Energy Bond Claim: Task 1.13, 2.1 - Spill or Remediation - 312152,	\$ 9,195	\$ -	\$ -	9,195
ENVR	Logan	Benchmark Energy Bond Claim: Task 1.14 - Spill or Remediation, Off-Site Disposal - Graylin NW and Mount Hope Fields,	\$ 2,929	\$ -	\$ -	2,929
FOPS	Logan	Benchmark Energy Bond Claim: Task 1.15, 1.16 - MIT or Other Well Work, Wireline Tags - Graylin NW and Mount Hope Fields,	\$ 11,784	\$ -	\$ -	11,784
ENGR	Logan	Benchmark Energy Bond Claim: Task 2.2 - Plug and Abandon - 312158, 075-05972	\$ 31,155	\$ -	\$ -	31,155
ENGR	Mesa	DB Orphan Blair #1: Task 4 - Plug and Abandon - 434038, 077-	\$ -	\$ 24,467	\$ -	24,467
RECL	Mesa	DB Orphan Blair #1: Task 5 - Reclamation (initial work) - 434038,	\$ -	\$ 4,360	\$ -	4,360
ENGR	Mesa	Lloyd and Lowell #1: Task 1 - Site Security, MIT or Other Well Work, Downhole Camera - 428669, 077-40017	\$ -	\$ 7,506	\$ -	7,506
RECL	Moffat	Tatonka Bond Claim: Task 9 - Reclamation (initial work), Seeding - 313340,	\$ -	\$ 3,462	\$ -	3,462
RECL	Moffat	Think Oil Bond Claim: Task 2 - Reclamation (initial work) -	\$ -	\$ 18,600	\$ -	18,600
ENGR	Montezuma	Monument Global Bond Claim: Task 1 - Plug and Abandon - 313425, 083-05147	\$ 49,605	\$ -	\$ -	49,605
ENV	Montezuma	Monument Global Bond Claim: Task 2 - Sampling and Analysis, Spill or Remediation - 313425, 083-05147	\$ 4,502	\$ -	\$ -	4,502



Page 4 of 4

Work Unit	County	Project and Task	BOND Actual	PROW Actual	EMGY Actual	Subtotals Actual
RECL	Montrose	Redwine Bond Claim: Task 4 - Weed Control (maintenance), Stormwater BMP maintenance - 313641,	\$ -	4,930	\$ -	4,930
ENGR	Ouray	Swanson-Peterson #1: Task 3 - Visual mitigation - 311784,	\$ -	1,130	\$ -	1,130
COMPLETED WORK SUBTOTALS ->			\$ 244,038	\$ 92,903	\$ -	\$ 336,941

NOTES:

Project and Task Format: [Location or Well Name and Number (if orphan) or Operator Name + "Bond Claim"] : "Task" [Task No(s)] - [Task Type(s)] - [Facility ID Number], [Well API Number (county and sequence code, if well work included with task)]

ABREVIATIONS:

ENGR = Engineering, RECL = Reclamation,
 ENVR = Environmental, FOPS = Field Operations
 HEAR = Hearings
 EMGY = Emergency Response Appropriation
 PROW = Plugging and Reclaiming Orphaned Wells Appropriation

PROW FUNDS SCOREBOARD

\$ 445,000	Annual PROW Appropriation
(58,072)	Planned Work Estimate
(462)	Work In Progress
(92,903)	Completed Work
\$ 293,563	Projected Fiscal Year End Balance (excludes work involving Bond Expenditures)

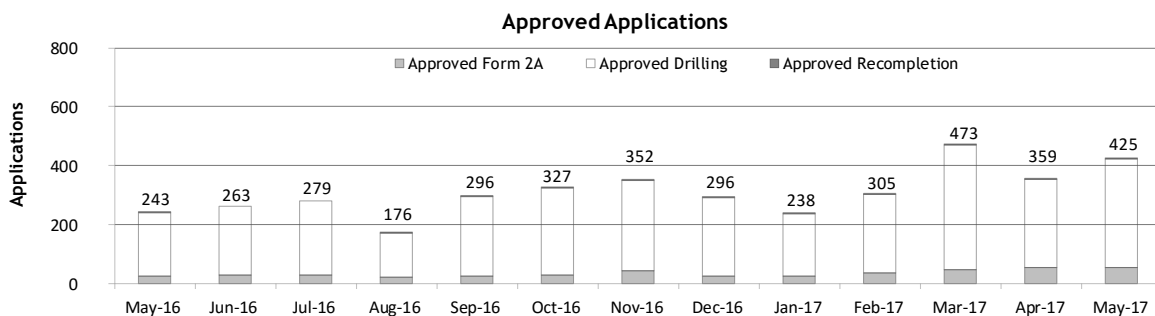
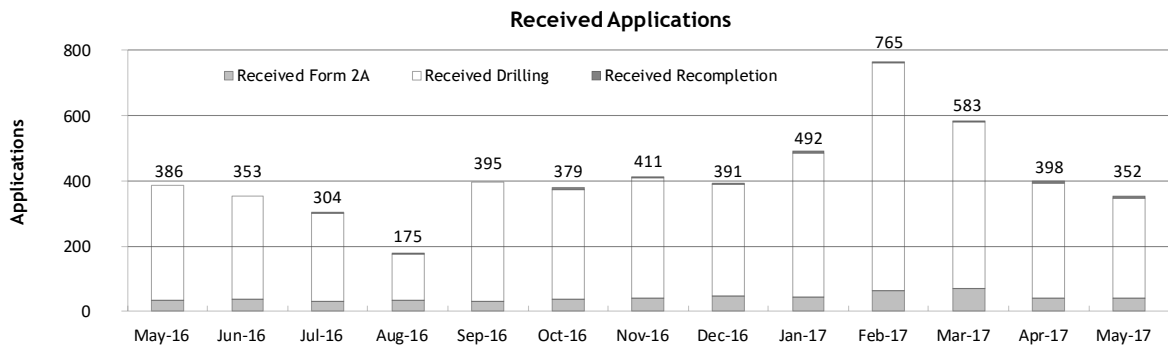


Monthly Permit Activity as of June 1, 2017

Form/Month	Backlog	Received	Approved	Withdrawn	Rejected	Incomplete ¹	In-Process	Remaining ²
Form2A								
May-16	89	33	24	0	2	27	69	96
Jun-16	96	38	30	3	0	23	78	101
Jul-16	101	31	30	3	0	25	74	99
Aug-16	99	33	23	2	0	19	88	107
Sep-16	107	29	24	1	0	17	94	111
Oct-16	111	38	29	2	0	25	93	118
Nov-16	118	40	45	0	3	22	88	110
Dec-16	110	48	25	6	0	20	107	127
Jan-17	127	42	25	1	1	18	124	142
Feb-17	142	62	38	2	0	28	136	164
Mar-17	164	71	48	6	3	29	149	178
Apr-17	178	41	54	3	0	34	128	162
May-17	162	41	55	0	0	25	123	148
Drilling								
May-16	617	353	217	1	16	138	598	736
Jun-16	736	315	233	6	2	125	685	810
Jul-16	810	268	249	24	0	145	660	805
Aug-16	805	141	150	9	7	126	654	780
Sep-16	780	366	270	0	12	77	787	864
Oct-16	864	334	297	1	0	82	818	900
Nov-16	900	368	304	7	64	138	755	893
Dec-16	893	342	267	15	9	115	829	944
Jan-17	944	442	211	1	13	89	1,072	1,161
Feb-17	1,161	701	263	14	0	86	1,499	1,585
Mar-17	1,585	510	423	14	47	131	1,480	1,611
Apr-17	1,611	352	301	21	14	167	1,460	1,627
May-17	1,627	307	367	13	52	168	1,334	1,502
Recompletion								
May-16	5	0	2	0	0	2	1	3
Jun-16	3	0	0	0	0	2	1	3
Jul-16	3	5	0	0	0	2	6	8
Aug-16	8	1	3	0	0	2	4	6
Sep-16	6	0	2	0	0	2	2	4
Oct-16	4	7	1	0	0	2	8	10
Nov-16	10	3	3	0	0	3	7	10
Dec-16	10	1	4	1	0	2	4	6
Jan-17	6	8	2	0	0	2	10	12
Feb-17	12	2	4	0	0	3	7	10
Mar-17	10	2	2	0	0	2	8	10
Apr-17	10	5	4	1	0	2	8	10
May-17	10	4	3	4	0	1	6	7

¹ Incomplete are applications that have missing or inaccurate data and cannot be approved.

² Backlog = Incomplete + In-process = Remaining permits from previous month.





Status of Permit Applications Filed By Month as of June 1, 2017

Form 2A Location Assessment										
Year	Month	Received	Approved	Withdrawn	In Process	Percent In Process	Average			
							Days to Process	Less Than 30 Days	30 to 49 Days	Greater Than 50 Days
2011	TOTAL	2,391	2,298	93	0	0%		1,416	620	262
2012	TOTAL	1,359	1,291	68	0	0%		706	378	207
2013	TOTAL	1,281	1,202	78	1	0%		369	433	400
2014	TOTAL	1,114	1,067	46	1	0%		279	429	359
2015	TOTAL	592	560	26	6	1%		78	157	325
2016	JAN	34	33	1	0	0%	90	2	4	27
	FEB	31	30	1	0	0%	89	1	3	26
	MAR	34	32	2	0	0%	76	3	8	21
	APR	23	19	2	2	9%	85	1	3	15
	MAY	32	32	0	0	0%	100	1	5	26
	JUN	36	36	0	0	0%	87	3	11	22
	JUL	29	23	4	1	4%	82	7	1	15
	AUG	34	30	3	1	3%	101	1	2	27
	SEP	29	28	0	1	3%	82	5	3	20
	OCT	37	34	3	0	0%	68	3	12	19
	NOV	40	31	3	6	15%	88	1	4	26
	DEC	48	41	1	6	13%	80	4	5	32
2016	TOTAL	407	369	20	17	4%		32	61	276
2017	JAN	42	28	2	12	29%	76	0	5	23
	FEB	59	43	1	15	25%	59	7	9	27
	MAR	70	41	2	27	39%	48	6	18	17
	APR	41	13	0	28	68%	33	5	7	1
	MAY	41	0	1	40	98%	0	0	0	0
2017	TOTAL	253	125	6	122	48%		18	39	68

Form 2 Application For Permit to Drill (APDs)

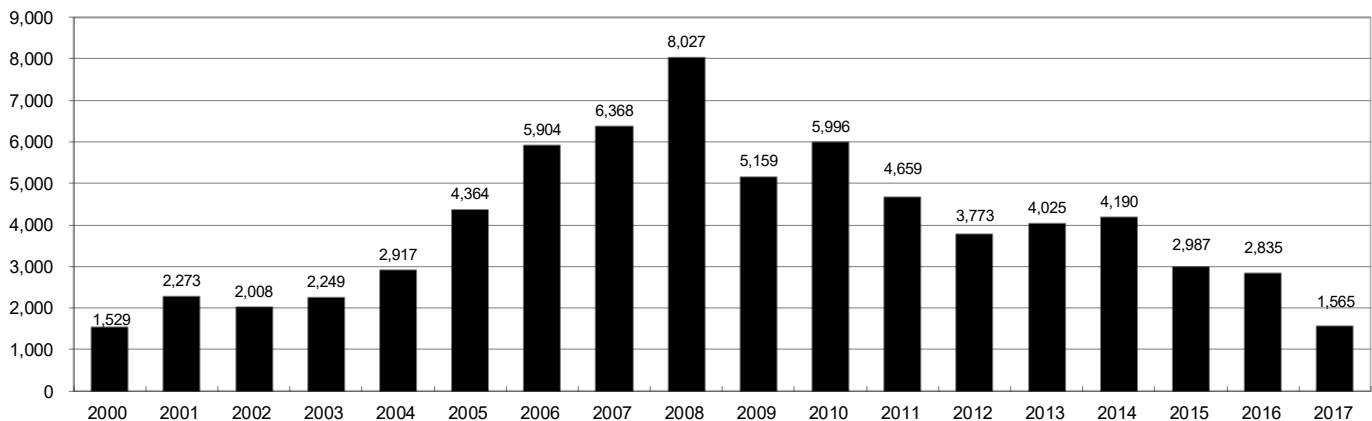
Form 2 Application For Permit to Drill (APDs)										
Year	Month	Received	Approved	Withdrawn	In Process	Percent In Process	Average			
							Days to Process	Less Than 30 Days	30 to 49 Days	Greater Than 50 Days
2011	TOTAL	4,691	4,557	132	0	0%		2,723	1,565	587
2012	TOTAL	3,955	3,816	139	0	0%		1,971	1,393	602
2013	TOTAL	4,548	4,312	235	1	0%		1,046	1,626	1,714
2014	TOTAL	4,208	4,026	155	27	1%		689	1,629	1,744
2015	TOTAL	3,237	3,070	130	37	1%		249	759	2,092
2016	JAN	232	231	1	0	0%	99	23	33	176
	FEB	180	177	3	0	0%	80	5	34	141
	MAR	249	246	3	0	0%	98	16	36	194
	APR	174	167	6	1	1%	68	31	24	112
	MAY	352	351	1	0	0%	94	9	61	281
	JUN	312	293	19	0	0%	89	6	51	236
	JUL	236	187	28	9	4%	87	30	1	161
	AUG	136	131	4	1	1%	95	9	26	98
	SEP	359	349	0	8	2%	75	22	72	256
	OCT	313	295	10	8	3%	80	20	26	255
	NOV	368	300	11	47	13%	75	29	22	252
	DEC	342	233	2	73	24%	66	4	16	214
2016	TOTAL	3,253	2,960	88	147	5%		204	402	2,376
2017	JAN	442	238	5	175	42%	79	5	41	197
	FEB	701	336	5	304	47%	65	36	39	262
	MAR	510	223	30	257	50%	61	15	70	139
	APR	352	84	1	267	76%	48	10	17	60
	MAY	307	7	0	300	98%	7	7	0	0
2017	TOTAL	2,312	888	41	1,303	56%		73	167	658



Annual Drilling Permits by County as of June 1, 2017

County	2000	2001	2002	2003	2004	2005	2006	2007	2008	2009	2010	2011	2012	2013	2014	2015	2016	2017
ADAMS	38	28	9	26	39	34	37	89	51	35	21	8	40	40	51	96	74	81
ARAPAHOE		2	1	2	5	7	11	10	10	10	8	23	35	23	34	19	5	20
ARCHULETA	7	9	6	10	8	13	14	26	47	11	18	12	5	4	3	11	3	4
BACA	22	6	2	3	7	8	2	11	13	3	4	5	3	1	1			
BENT	2				5	3	8	1	1		5		2	1				
BOULDER	1	5	6	7	17	13	21	37	32	35	24	30	22					
BROOMFIELD			2	7		1	1		2	33	28	11	36		31			
CHEYENNE	3	3	3	3	3	10	21	15	33	12	13	16	31	50	26	9		
COSTILLA																		
CROWLEY																2		3
DELTA			7	4	5	10	9	2			4	3	6	1	2			
DENVER		3					19	25	24									
DOLORES				1	1	1	6	10	12	21	8	8	13	12	3		3	1
EAGLE														1				
ELBERT	2						4			1		1	2	2	4	3	3	1
EL PASO										2	3	3	18	1	2			
FREMONT					1	3	2	4	14	13	22	14	11	2	8	2	2	
GARFIELD	213	353	362	567	796	1,509	1,845	2,550	2,888	1,981	2,037	1,323	1,046	870	1,066	532	724	164
GRAND																		
GUNNISON			5	10	1	9	19	7	10	12	4	3	11	9	20	28	19	5
HUERFANO	41	27	27		8	2			7		2	1	9	1	13	2		
JACKSON	34	18	21	9	14	6	8	5	27	19	9	18	5	12	17	3	57	13
JEFFERSON	1						1	3	2					1				
KIOWA	11	18	2	4	2	1	11	9	26	7	16	17	17	12	5	3		
KIT CARSON				1	3	5	4	4	13	7	3	2	6	1	2		1	
LA PLATA	127	156	104	162	102	115	235	251	328	298	191	99	71	32	87	106	96	54
LARIMER	2		1			1		5	46	12	41	8	13	2	4	28	4	20
LAS ANIMAS	268	400	259	180	332	413	500	362	303	88	92	85	11	2	1			
LINCOLN	2	2	1	6	3	4	1	2	58	44	48	31	36	87	129	24	5	5
LOGAN	4	7	3	3	6	13	17	14	5	9	17	8	27	4	5		1	
MESA	13	27	30	27	54	136	265	293	501	427	306	127	150	105	74	126	7	110
MOFFAT	35	52	62	63	63	60	120	68	57	51	53	93	88	44	54	12	17	3
MONTEZUMA	4		5	8	8	11	5	12	22	39	19	27	29	14	25	3	3	3
MONTROSE	1	3	2	4	2		1	3	3		1	1						
MORGAN	9	9	2	7	9	7	3	6	2	1	6	13	5	16	6	4	28	
OTERO																		
PARK										3	4	1						
PHILLIPS	1	2		7	13	17	12	69	82	45	64	112	56		11	2		
PITKIN					1			1								1		
PROWERS	2	5	4		7	5	7	5	8	1	3	1			1		1	
RIO BLANCO	89	187	105	179	154	161	360	321	477	348	441	109	117	167	121	107	71	31
RIO GRANDE	1	1		1				1	1				2		1			
ROUTT	20	13	1		4	6	9	8	4	2	3	10	4	12	4	9		
SAGUACHE	2		2					2	1	2								
SAN MIGUEL	11	13	27	18	42	45	35	23	20	13			1		2	3		
SEDGWICK				1	5	2	7	2	1	19	11	12	2		7	1		
WASHINGTON	23	17	27	34	128	50	69	45	11	1	6	12	6	19	12	9	7	4
WELD	509	702	760	757	832	901	1,418	1,527	2,340	1,448	2,152	2,262	1,826	2,468	2,303	1,841	1,704	1043
YUMA	31	205	160	138	237	782	797	541	545	105	299	148	11	9	53	3		
TOTAL	1,529	2,273	2,008	2,249	2,917	4,364	5,904	6,368	8,027	5,159	5,996	4,659	3,773	4,025	4,190	2,987	2,835	1,565

ALL COUNTIES





Form 2A Breakdown By County By Year as of June 2, 2017

Year	County	Form 2As	Completed	In Process	New Location	CDP	SWH	RSO	CDPHE
2009	Total State	818	818	0	408	2	80	5	5
2010	Total State	2,377	2,377	0	1,543	0	317	22	55
2011	Total State	2,297	2,297	0	1,724	1	259	16	5
2012	Total State	1,297	1,297	0	900	0	167	6	1
2013	Total State	1,195	1,194	1	845	0	144	2	4
2014	Total State	1,067	1,065	1	777	3	129	7	3
2015	Total State	574	565	7	399	0	95	2	2
2016	ADAMS	9	8	1	8	0	0	0	0
	ARAPAHOE	10	8	1	6	0	0	0	0
	ARCHULETA	1	1	0	0	0	1	0	0
	DOLORES	1	1	0	1	0	0	0	0
	ELBERT	3	3	0	0	0	0	0	0
	FREMONT	1	0	1	0	0	1	0	0
	GARFIELD	26	27	0	4	0	13	3	2
	GUNNISON	6	6	0	1	0	2	1	0
	HUERFANO	1	0	1	1	0	1	0	0
	JACKSON	10	10	0	5	0	9	0	0
	KIT CARSON	1	1	0	1	0	0	0	0
	LA PLATA	5	5	0	0	0	5	0	1
	LARIMER	2	2	0	2	0	0	0	0
	LINCOLN	5	5	0	4	0	0	0	0
	LOGAN	2	2	0	0	0	0	0	0
	MESA	4	4	0	2	0	3	0	1
	MOFFAT	15	11	2	6	0	15	0	1
	MONTEZUMA	1	1	0	1	0	0	0	0
	MORGAN	1	1	0	1	0	0	0	0
	PROWERS	1	1	0	1	0	0	0	0
	ROUTT	1	1	0	0	0	1	0	0
	WASHINGTON	6	6	0	6	0	0	0	0
	WELD	281	258	11	178	0	3	0	2
2016	Total State	393	362	17	228	0	54	4	7
2017	ADAMS	19	3	16	18	0	0	0	0
	ARAPAHOE	15	3	12	13	0	0	0	0
	CROWLEY	3	3	0	3	0	0	0	0
	DOLORES	1	1	0	1	0	1	0	0
	ELBERT	1	1	0	1	0	0	0	0
	GARFIELD	13	7	6	3	0	9	1	0
	GUNNISON	1	1	0	0	0	1	0	0
	JACKSON	1	0	1	1	0	1	0	0
	LA PLATA	8	5	3	4	0	6	0	0
	LARIMER	1	1	0	1	0	0	0	0
	LINCOLN	5	4	1	5	0	0	0	0
	MESA	6	5	1	4	0	1	0	0
	MOFFAT	1	1	0	1	0	1	0	0
	MONTEZUMA	2	2	0	2	0	0	0	0
	RIO BLANCO	4	2	2	2	0	3	0	0
	WASHINGTON	5	4	1	5	0	0	0	0
	WELD	151	73	78	101	0	5	0	0
2017	Total State	237	116	121	165	0	28	1	0

Abbreviations:

CDP = Comprehensive Drilling Plan SWH = Sensitive Wildlife Habitat consultation

RSO = Restricted Surface Occupancy consultation CDPHE= Colorado Department of Health and Environment consultation



Horizontal Well Activity as of June 2, 2017

County	2010		2011		2012		2013		2014		2015		2016		2017		Total				
	Permit	Spud	Permit	Spud	Permit	Spud	Permit	Spud	Permit	Spud	Permit	Spud	Permit	Spud	Permit	Spud	AC	PR	DA	PA	
ADAMS	2	3	1	1	17	2	26	2	42	18	92	3	72	2	81	8	35	3	23	1	
ARAPAHOE			10	1	22	4	11	13	22	11	9		5	1	19	2	32	2	29	1	
ARCHULETA	15	7	10	8	5	9	2	2	1	1	6	3	2	1	3	3	51	5	51	1	
BENT					1	1	1										1				
BOULDER			4														0				
CHEYENNE							7	2	1	1	1	1				9	3			5	
DELTA	2				6	1	1		2							3	3				
DOLORES	6				9	3	5	4	3	1						19	12			5	
EL PASO					10											0	0			1	
ELBERT					1											0	0				
FREMONT	12	5	3	4	4	1	1	1			1					18	18	10	7	1	
GARFIELD	16	2	18	6	43	6	18	4	20	11	12	7	4		4	47	38			2	
GUNNISON	1				3	2	2		9		18	2	10	1	3	2	6			4	
HUERFANO					4	1			2							1	1			1	
JACKSON	3	4	9	1	4		8	5	15	4	3		52	24	12	2	46	21		3	
KIOWA					1		4	2	1							2	2			1	
KIT CARSON					1		1	1								2	2			4	
LA PLATA	28	3	18	7	12	1	5	1	43	7	42	3	67	8	48	1	60	62	1	3	
LARIMER			5	1	2	1	2				22	8	4	3	20	19	18	11		2	
LAS ANIMAS	1	1														17	17	16			
LINCOLN	2	1	1				6		4	2						4	4	1		3	
LOGAN					1											2	2				
MESA	22	7	24	13	14		9	2	9	1	6	3				29	29	27	2	4	
MOFFAT	4		9	4	44	6	18	13	15	1	5	2	3	1	3	37	37	27		5	
MONTEZUMA	11	2	8	2	18	6	3	4	15	2	4	1	28			28	28	31		7	
MORGAN			6	2	2	1	13	1	6							5	5				
PARK	1	1	1													1	1				
RIO BLANCO	1	1	11	2	15	2	4	5	3	2	3				2	19	19	12	3		
ROUTT					1		1				3					10	10	1	6	1	
SAN MIGUEL																1	1			1	
WASHINGTON																1	1			1	
WELD	208	84	763	229	964	594	2,114	1,099	2,215	1,426	1,789	1,062	1,671	723	1,034	546	5,233	4,086	12	60	
YUMA																1	1			1	
TOTAL Horizontal	333	123	901	280	1,203	641	2,260	1,161	2,428	1,487	2,016	1,095	1,918	764	1,229	580	5,738	5	4,478	33	109
Percent of Total HZ																					
Total All Permits	5,996		4,659		3,773		4,025		4,190		2,988		2,835		1,565		5,233		4,086		12
HZ Percent of Total	5.6%		19.3%		31.9%		56.1%		57.9%		67.5%		67.7%		78.5%		78.5%		78.5%		2%

NOTE: As of March 14, 2017, well status based on Form 7, Monthly Report of Operations.



Well to Building Setbacks by Year and by County as of June 2, 2017

Count of well locations, grouped by proximity from well to buildings.

Location Proximity to Buildings	2010	2011	2012	2013	2014	2015	2016	2017	Number of Locations	Percent of
										Total Locations
Less than 150 feet	3	3	2	0	3	2	0	0	15	0%
150 to 350 feet	58	61	39	34	38	12	15	6	300	3%
350 to 500 feet	110	97	61	64	48	33	23	9	495	6%
500 to 1000 feet	385	331	188	188	161	83	76	33	1,562	17%
1000 + feet	1,705	1,470	838	761	724	378	206	154	6,592	74%
TOTAL LOCATIONS	2,261	1,962	1,128	1,047	974	508	320	202	8,964	

County	TOTAL	Less than 150 feet	150 to 350 feet	350 to 500 feet	500 to 1000 feet	1000 + feet
ADAMS	91	0	4	9	23	55
ARAPAHOE	107	0	2	5	10	90
ARCHULETA	24	0	0	1	12	11
BACA	15	0	0	0	1	14
BENT	7	0	0	0	0	7
BOULDER	23	0	1	1	17	4
BROOMFIELD	33	0	0	4	13	16
CHEYENNE	140	1	0	0	2	137
CROWLEY	5	0	0	0	0	5
DELTA	7	0	0	2	1	4
DOLORES	21	0	0	0	7	14
EAGLE	1	0	0	0	0	1
EL PASO	14	0	0	0	3	11
ELBERT	15	0	0	0	3	12
FREMONT	40	0	2	7	8	23
GARFIELD	593	0	12	10	80	491
GUNNISON	48	1	0	4	1	42
HUERFANO	16	0	0	0	5	11
JACKSON	59	0	0	5	1	53
KIOWA	66	0	0	0	1	65
KIT CARSON	15	0	0	0	0	15
LA PLATA	145	0	6	14	47	78
LARIMER	42	0	5	5	16	16
LAS ANIMAS	201	1	6	7	37	150
LINCOLN	379	0	1	2	4	372
LOGAN	45	0	1	1	1	42
MESA	106	0	0	3	16	87
MOFFAT	190	0	1	3	16	170
MONTEZUMA	45	0	0	1	4	40
MONTROSE	2	0	0	0	0	2
MORGAN	31	0	0	2	4	25
PARK	4	0	0	0	0	4
PHILLIPS	275	1	4	6	21	243
PITKIN	1	0	0	0	0	1
PROWERS	6	0	0	0	0	6
RIO BLANCO	189	0	0	0	2	187
RIO GRANDE	2	0	0	0	1	1
ROUTT	30	0	0	0	2	28
SAN MIGUEL	14	0	0	0	0	14
SEDGWICK	33	0	0	1	3	29
WASHINGTON	83	0	2	0	3	78
WELD	5,273	11	244	386	1,153	3,479
YUMA	528	0	9	16	44	459



Well to Building Setbacks Less Than Two Hundred Feet as of June 2, 2017

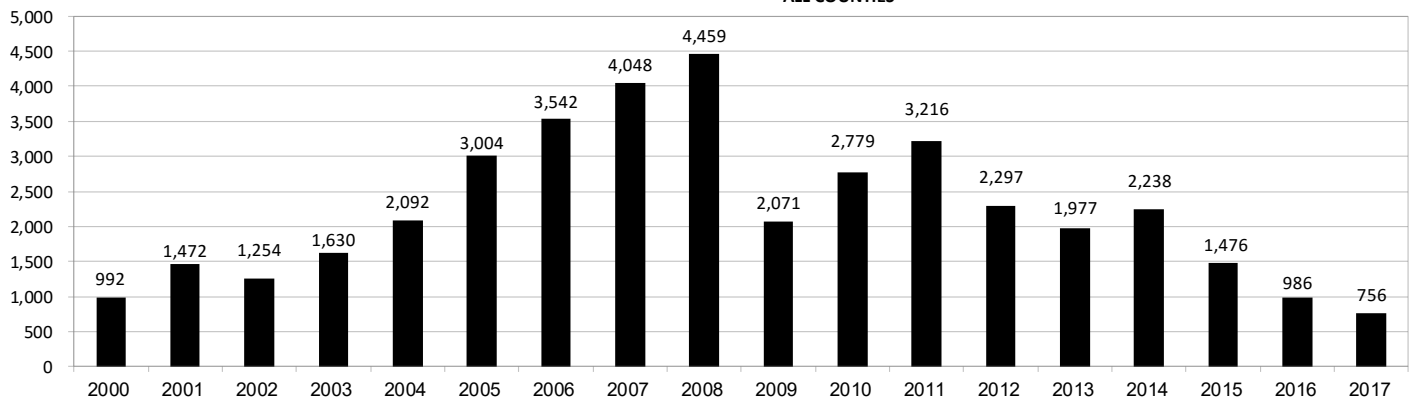
Year	Location Doc Number	County	High Density	New Location	Distance (Feet)	Proximity (Feet)	Building Description
2015	400768804	WELD	No	Yes	46	less 150	Building to be razed
2011	2587822	CHEYENNE	No	No	58	less 150	Water well house
2009	1691798	WELD	No	No	58	less 150	Vehicle garage
2010	400072164	WELD	No	Yes	69	less 150	Abandoned hog shed
2014	400569085	WELD	No	No	78	less 150	Well shed
2014	400600705	WELD	No	No	80	less 150	Livestock shed
2012	400240957	GUNNISON	No	Yes	90	less 150	Equipment shed
2015	400742811	WELD	No	Yes	102	less 150	Building to be razed
2009	1758843	WELD	No	Yes	103	less 150	Building to be razed
2011	1636646	WELD	No	No	122	less 150	Storage shed
2009	400011284	LAS ANIMAS	No	Yes	127	less 150	Operator is owner
2009	1786896	PHILLIPS	No	No	132	less 150	Grain storage
2014	400642113	WELD	No	Yes	142	less 150	Barn
2011	400117702	WELD	No	Yes	143	less 150	Irrigation pump house
2011	400227765	WELD	No	Yes	145	less 150	Storage barn
2014	400558626	LINCOLN	No	No	150	less 150	Gas plant equipment building
2009	1904205	WELD	No	No	154	150 to 350	Livestock enclosure
2012	400243295	WELD	No	Yes	155	150 to 350	Unused storage shed
2015	400862577	GARFIELD	No	No	155	150 to 350	Gravel pit scale house
2011	400179419	WELD	No	Yes	157	150 to 350	Existing well / storage building
2010	400054716	WELD	No	No	159	150 to 350	Equipment barn
2011	400188968	WELD	No	Yes	159	150 to 350	Abandoned
2014	400554054	WELD	No	Yes	159	150 to 350	Equipment shed
2014	400559404	WELD	No	Yes	160	150 to 350	Barn
2016	400950178	LA PLATA	No	Yes	162	150 to 350	Residence
2010	400021477	WELD	No	Yes	162	150 to 350	Goat barn
2009	1758386	WELD	No	Yes	168	150 to 350	Storage shed
2011	1635946	WELD	No	No	169	150 to 350	Storage shed
2013	400447386	WELD	No	No	169	150 to 350	Abandoned turkey barn
2013	400447391	WELD	No	No	169	150 to 350	Abandoned turkey barn
2011	400165164	WELD	No	Yes	178	150 to 350	Residence
2013	400367184	WELD	No	Yes	179	150 to 350	Shed
2011	400188780	WELD	No	Yes	180	150 to 350	Residence
2014	400562498	WELD	No	Yes	181	150 to 350	Garage / storage shed
2010	1697620	WELD	No	No	187	150 to 350	Livestock shed
2009	1758746	WELD	No	No	193	150 to 350	Storage shed
2011	400154431	WELD	No	Yes	198	150 to 350	Turkey barn
2012	400250031	WELD	No	Yes	198	150 to 350	Abandoned guard shack
2010	1774783	WELD	No	No	199	150 to 350	Cement service building
2011	400118102	YUMA	No	Yes	199	150 to 350	Steel barn



Annual Well Starts by County as of June 2, 2017

County	2000	2001	2002	2003	2004	2005	2006	2007	2008	2009	2010	2011	2012	2013	2014	2015	2016	2017
ADAMS	18	13	4	19	22	24	13	41	14	14	21	1	15	5	29	3	2	9
ARAPAHOE					6	1	5	2	1	1	3	9	9	25	21		1	2
ARCHULETA	4	4	2	5	4	10	5	7	29	9	12	10	11		1	7	4	1
BACA	19	6	2	1	6	6	2	6	12		5	4	2	1		1		
BENT	2				3	2	8	1	1			1	2					
BOULDER				2	5	11	9	14	25	16	13	7	14					
BROOMFIELD			2		1				10		21	11	5					
CHEYENNE	2	1	3	3		9	14	15	14	8	12	11	17	35	19	3		
COSTILLA																		
CROWLEY															2			1
DELTA				5	4	6	5	2			9	2	3					
DENVER		2					7	5	4									
DOLORES					2		2	13	6	2		1	5	10	4			
EAGLE														1				
EL PASO											2		5		1			
ELBERT	2						1									3		1
FREMONT					1	3	2	2	5	3	9	16	9	2	4		1	
GARFIELD	190	251	245	417	585	799	1,005	1,304	1,689	765	905	877	495	391	361	175	147	121
GUNNISON			1		1	1	9	5	1	4	5	2	4	1	2	4	1	2
HUERFANO	25	14	19	3	6	2			2		2		2	1	4	1		
JACKSON	24	2	4	10	10		3	3	12	1	8	7		7	7		24	2
JEFFERSON								2										
KIOWA	8	16	2	4	2	1	7	7	2	5	15	14	10	12	3	2		
KIT CARSON				1	1	6	2	1	14	3	1	1	3	1	2			1
LA PLATA	99	135	118	110	103	104	108	179	199	131	67	54	3	10	40	38	43	7
LARIMER	1	1				1		4	8	1	28	2	10	4	1	9	3	19
LAS ANIMAS	202	286	205	221	296	384	413	326	222	14	7	78	1		1			
LINCOLN	2	2	1	5	2	2	1	2	18	11	14	21	23	41	41	12		2
LOGAN	4	6	3	3	2	11	12	12	3	7	3	9	13	4	6			
MESA	2	12	12	13	25	89	156	209	225	14	11	41	4	11	16	77	4	32
MOFFAT	18	23	25	28	19	40	60	42	26	18	15	32	26	27	3	6	3	
MONTEZUMA	2	3	5	5	1	7	2	4	22	10	3	8	18	12	8	1		1
MONTROSE		3		2	1			1	2			1						
MORGAN	9	8	1	7	5	5	3	1	1	2	3	2	3	1	3	1		
PARK											2							
PHILLIPS	1			6	10	11	4	35	18	2	42	130	48		9			
PROWERS	2	4	4		5	5	6	3	5	2	3	1					1	
RIO BLANCO	51	82	47	83	92	95	107	95	205	118	107	71	54	36	44	17		4
RIO GRANDE														1				
ROUTT	5	12	1		1	6	3	2		2	1	2	4	2	2			
SAN MIGUEL	6	9	10	19	28	13	20	17	5	1	2	2			2			
SEDGWICK				1	2	1	1	5			3	8	3			1		
WASHINGTON	15	12	24	29	65	34	23	14	11	2	2	4	1	9	7	2	6	3
WELD	237	403	406	522	632	718	931	1,222	1,312	878	1,209	1,671	1,459	1,314	1,556	1,112	745	550
YUMA	42	162	108	106	144	597	593	445	336	27	213	106	16	13	39			
TOTAL	992	1,472	1,254	1,630	2,092	3,004	3,542	4,048	4,459	2,071	2,779	3,216	2,297	1,977	2,238	1,476	986	756

ALL COUNTIES





Active Wells by County and Status as of June 1, 2017

COUNTY	Drilling	Domestic	Injecting	Producing	Shut In	Temp Aband	Waiting on Completion	Active Storage	Total Active Wells
ADAMS	16		6	828	80	14	1	12	957
ARAPAHOE		1	3	130	14	11		44	203
ARCHULETA	1	5	1	110	12	12	6	1	148
BACA			10	104	12	19		56	201
BENT		1		27	7	2			37
BOULDER				303	7	1			311
BROOMFIELD				96					96
CHEYENNE			43	316	15	43	1		418
CROWLEY	1								1
DELTA				3	13		1		17
DENVER				45	3	1	3		52
DOLORES			2	25	12	1			40
EL PASO		1				1			2
ELBERT	2			64	5	3		1	75
FREMONT	2	3		59	8	7	2		81
GARFIELD	184	3	50	10,641	208	89	72	1	11,248
GUNNISON	4		2	28	11		3		48
HUERFANO			1	37	5	5			48
JACKSON	13		27	98	58				196
JEFFERSON				1	1		1	3	6
KIOWA	1		11	101	12	2	2		129
KIT CARSON	1	1	2	11		2			17
LA PLATA	2	7	33	3,072	142	26	3	34	3,319
LARIMER	17	2	20	181	31	21	1		273
LAS ANIMAS	1	4	17	2,736	29	115	12	21	2,935
LINCOLN	4	1	10	95	11	5			126
LOGAN	2		24	105	23	29		34	217
MESA	29	1	11	914	97	25	3	11	1,091
MOFFAT	2		10	458	60	36	6		572
MONTEZUMA		2	7	117	26	16		1	169
MONTROSE								1	1
MORGAN			22	89	78	35		81	305
OURAY		1				1			2
PARK									0
PHILLIPS			3	265	2	2			272
PITKIN								10	10
PROWERS				23	2	3			28
RIO BLANCO	30	3	302	2,148	265	129	7	2	2,886
ROUTT		2		27	9	4			42
SAN MIGUEL	1			92	22	14			129
SEDGWICK	2	1	1	13	3		3		23
WASHINGTON	4		24	384	36	9	3		460
WELD	1,012	1	58	19,426	2,310	445	44	5	23,301
YUMA	2	8	24	3,751	71	8	12	1	3,877
Totals	1,333	48	724	46,923	3,700	1,136	186	319	54,369

NOTE: As of March 14, 2017, well status based on Form 7, Monthly Report of Operations.



Oil and Gas Staff Report

June 12, 2017

31

Monthly Statistics as of June 2, 2017

Page 2 of 2

YEAR and MONTH	Well Oper Change	Operators		Bonds						Remediation						Inspections			
				Release		Claim		Hearings		Enforcement			Projects						
				Ind	Blntk	Ind	Blntk	Apps.	Orders	NOAVs	AOCs	OFVs	Cmplt	Spills	Rcvd			Comp	Wells
2011 TOTAL	6,743	33	31	79	44	43	4	4	403	349	230	10	19	247	527	726	536	12,394	-
2012 TOTAL	7,546	47	37	70	46	33	3	0	482	396	157	9	2	244	402	690	641	19,071	12,670
2013 TOTAL	7,192	49	21	48	26	20	0	0	571	522	237	37	3	201	568	507	541	23,551	13,370
2013 JAN	653	3	5	12	2	0	0	0	48	75	15	4	-	21	40	31	45	1,622	789
FEB	289	4	2	6	3	2	0	0	41	35	11	2	-	15	30	42	90	1,044	615
MAR	354	1	3	2	2	1	0	0	54	67	16	2	-	11	25	65	29	1,968	1,149
APR	333	7	1	5	2	8	0	0	-	-	21	-	-	16	33	39	37	1,510	910
MAY	346	2	1	3	0	0	0	0	46	50	22	6	-	13	31	41	60	2,621	1,576
JUN	1,456	6	2	2	4	5	0	0	91	44	13	2	-	25	40	47	37	1,860	1,102
JUL	1,009	4	1	2	2	0	0	0	96	70	25	3	-	21	47	50	22	2,298	1,338
AUG	389	6	4	5	4	2	0	0	-	-	23	-	-	25	57	36	41	2,146	1,033
SEP	277	4	1	6	1	0	0	0	101	51	7	2	-	16	60	43	51	1,536	703
OCT	345	6	0	2	2	2	0	0	52	82	4	12	3	12	79	47	60	1,868	1,158
NOV	442	2	0	2	2	0	0	0	-	-	30	-	-	12	51	31	34	2,401	1,613
DEC	1,299	4	1	1	2	0	0	0	42	48	50	4	-	14	75	35	35	2,677	1,384
2014 TOTAL	10,298	55	28	42	39	13	1	1	698	598	179	43	4	243	786	596	502	34,208	18,982
2015 TOTAL	4,440	59	27	27	45	31	3	3	738	645	173	57	8	358	623	516	601	38,957	19,198
2016 TOTAL	6,420	38	28	37	41	23	9	5	473	397	107	43	7	261	528	445	600	43,134	23,123
2017 TOTAL	1,576	14	15	8	19	10	1	4	294	230	41	20	1	381	248	79	106	14,712	7,274

Abbreviation Key: Ind = Individual, Blntk = Blanket, Apps = Application for Hearing, NOAV = Notice of Alleged Violation, AOC = Administrative Order of Consent, OFV = Order Finding Violation, Cmplt = Complaint, Comp = Completed