



COLORADO

**Oil & Gas Conservation
Commission**

Department of Natural Resources

Staff Report

for September 11, 2017

Top Stories

◆ The Governor's Seven Point Initiative

On August 22, Governor Hickenlooper announced the State's response following a three month review of oil and gas operations. The review included operators' responses to the COGCC's Notice to Operators (NTO) issued on May 2. The NTO was issued after the deadly home explosion in Firestone last April that killed two people and injured a third, and required operators to conduct a swift review of flowlines. The Governor stated the actions announced "are a responsible and appropriate response that places public safety first."

The Governor announced the following seven policy initiatives. COGCC Staff and stakeholders are working to implement the following initiatives, which include legislative and rulemaking changes as well as a peer review and a leak detection pilot program:

- Strengthen the COGCC's flowline regulations
- Enhance the 8-1-1 "one-call" program
- Create a nonprofit orphan well fund to plug and abandon orphan wells and provide refunds for in-home methane monitors
- Prohibit future domestic gas taps
- Create a technical workgroup to improve safety training
- Request peer-review of some COGCC rules
- Explore an ambient methane leak detection pilot program.

These initiatives should be completed within 12 months. COGCC Staff worked closely with the Governor's Office and other interested stakeholders in the development of these initiatives.

◆ Small Operator Meeting in Rifle

On August 3 at Colorado Mountain College in Rifle, the COGCC met with local small operators. West Slope Colorado Oil and Gas Association (COGA) hosted the meeting. The agenda addressed topics such as the Delayed Operations NTO, stormwater management best practices, spill and remediation reporting, most common field inspection issues, and the Flowline NTO.

Representing COGCC Staff were Director Matt Lepore, Engineering Manager Stuart Ellsworth, Reclamation Supervisor Denise Arthur, Permit Technician Sarah Freeman, Environmental Protection Specialists Carlos Lujan and Stan Spencer, and Field Inspector Emily Waldron. Program presentations are available on the COGCC website by first selecting "Regulation," then "Operator Guidance," and finally the link under the "Small Operator Meetings" box in the lower right corner, or by using this link:

http://cogcc.state.co.us/reg.html#/opguidance/small_operator_meetings_archive

The meeting objective was to familiarize and facilitate in person discussions between COGCC Staff and small operators to address small operator concerns and questions. Overall, these meetings help to ensure compliance with COGCC regulations.

◆ Data Now Available on Environmental Sampling

The COGCC, in conjunction with the Ground Water Protection Council (GWPC), has developed a publicly available, searchable database of groundwater, surface water, and soil sample analytical results from sites located throughout the state. This database is known as the COENV Database and has been active since September 2012.



COENV has sampling data from as far back as 1941 and currently contains over 15,497 sample locations and 42,340 individual samples. In Fiscal Year 2016-17, 1,528 water samples from 495 separate locations were added to COENV. Since the statewide rules for groundwater sampling went into effect (May 1, 2013), the COGCC has received a total of 7,906 samples from 2,346 separate locations.

The COENV Database allows for electronic data deliverables to be used for input. New samples from COGCC Staff sampling efforts, current COGCC baseline sampling rules (Rules 317B, 318AE4, 608, and 609), and operator driven voluntary baseline sampling programs are available.

The data can be accessed by the general public through the GIS Online map. Sample locations with available water and natural gas data appear as green triangles when the "Sample Sites" layer is turned on. The user can double click on a sample site and gain access to the analytical data for that site. In April 2014, all water sample data in COENV was made available for download in an Access database format for those who wish to query large datasets. The download can be found by going to this link:

<http://cogcc.state.co.us/documents/data/downloads/environmental/WaterWellDownload.html>

The database download has been used by a number of entities such as scientific organizations, local governments, and others to better understand background water quality in their areas of interest.

In addition to water samples, natural gas and produced liquid sample data collected from oil and gas wells by operators or COGCC Staff are stored in the COENV database. The data are collected as part of Bradenhead testing, plugging and abandoning wells, complaint investigations, and requests to vent or flare. Currently, the data are only available through the GIS online maps.

◆ Local Government Liaison (LGL) Program Update

Local Government Liaison (LGL) Marc Morton manages the COGCC's nationally unique Local

Governmental Designee (LGD) program that was initiated in 1992 with a COGCC rulemaking, and which has since undergone several enhancements. Marc works to promote the benefits of active participation in the voluntary LGD program, and encourages local governments and operators to collaborate as early as possible in oil and gas well and location planning. Marc provides information, training, outreach, and consultation to LGDs and other local government staff, non-governmental organizations, industry representatives, elected officials, and others interested in working with the COGCC.

As of this writing, 164 local governments participate in the voluntary LGD program, including 55 counties, 103 municipalities, and 6 special districts. Some information pertinent to local governments is available on the COGCC website (cogcc.state.co.us) under the [Government](#) tab, including a list of participating LGDs (and their contact information), LGD search tools, eForm login, LGD Newsletters, an LGD Program Fact Sheet, and other information. Customized LGD program training is available upon request by simply contacting Marc.

Marc is available to participate in educational forums and panel discussions, and with assistance from COGCC Staff, provides help and guidance to local governments on issues such as development of MOUs and local regulations pertaining to oil and gas facilities and land use, navigation of the COGCC web site and database, local government and public involvement opportunities, and other topics.

And as a reminder to all participating LGDs, it critical to notify the COGCC via submittal of an updated Form 29 (COGCC's LGD Registration Form) of any change in your email address or contact information, or of a change in the status of your participation in the LGD program. The link to Form 29 is available COGCC website (cogcc.state.co.us) under the [Regulation](#) tab, and then under the [Forms](#) tab, or via the link below:

http://cogcc.state.co.us/documents/reg/Forms/PDF_Forms/form29.pdf

A list of the LGL outreach and public involvement activities conducted since the last staff report is included in the Public Outreach section below.

Public Outreach

➤ **Outreach by the Director and Other Staff**

- On August 16, UIC Lead Bob Koehler gave a presentation on the Underground Injection Control Program permitting process at a Community Meeting sponsored by Ursa Operating Company LLC in Parachute. This meeting was the last in a series sponsored by Ursa and designed to educate local Grand Valley residents about the oil and gas industry and update them on the progress of Ursa's operation in the Grand Valley Planned Unit Development ("PUD").

➤ **Outreach by the LGL**

- On July 14, Marc Morton travelled to Hugo and provided an LGD Orientation Training to the new Lincoln County LGD, Trey James.
- On July 18, Marc Morton met with Legislative and Policy Advocate Morgan Cullen from the Colorado Municipal League (CML) at Morgan's request and briefed him on the status of the LGD program.
- On July 18, Marc Morton, Oil and Gas Location Assessment (OGLA) Supervisor John Noto, and Central OGLA Specialist Rebecca Trietz met with Town of Hudson LGD Joe Racine to discuss proposed oil and gas development within the Town and options for impact mitigation.

- On August 2, Marc Morton, OGLA Supervisor Noto, and Western Colorado OGLA Specialist Dave Kubeczko participated in an onsite meeting to discuss impact mitigation options at the proposed Ursa BMC A Pad in the Battlement Mesa PUD in Garfield County.
- On August 3, Marc Morton coordinated the Northwest Colorado Oil and Gas Forum meeting in Rifle attended by operators, regulators, local governments, the public and other stakeholders. COGCC Director Matt Lepore provided an update of current COGCC initiatives and projects. Engineering Manager Ellsworth provided an update concerning compliance with the Flowline NTO, and OGLA Supervisor Noto provided a presentation concerning guidance to operators on Best Management Practices and Conditions of Approval.
- On August 3, Marc Morton attended the monthly Garfield County Energy Advisory Board (EAB) meeting in Rifle. COGCC Engineering Manager Ellsworth provided an update concerning compliance with the Flowline NTO.
- On August 10, Marc travelled to Grand Junction and attended the Mesa County Board of County Commissioners and Land / Resource Managers quarterly meeting.

Regional Activities

➤ **Northwest Colorado**

◆ **Northwest Colorado Oil and Gas Forum**

The remaining Northwest Colorado Oil and Gas Forum (NWF) meeting in 2017 is scheduled for December 7. The meeting will be held in Rifle at the Colorado Mountain College - Rifle Campus / Clough Auditorium (3695 Airport Road, Rifle) between 9:00 a.m. and 12:00 p.m.

Meeting agendas are posted to the COGCC website approximately two weeks prior to each meeting. The COGCC welcomes suggestions and input for speakers, topics, and meeting format and venue. Meeting information is emailed to those on the email distribution list. NWF meetings are open to the public, and public

comment is welcomed as part of each meeting. Past presentations (dating back to 2006) are available from

<http://cogcc.state.co.us/library.html#/forums>

All parties wishing to be placed on the next meeting agenda or added to the email distribution list for announcements should contact Marc Morton at (303) 894-2100, ext. 5132 (direct), (720) 415-4959 (mobile), or by email:

marc.morton@state.co.us

◆ **Project Rulison**

The 5-year revision of the Project Rulison Sampling and Analysis Plan (RSAP) has been



completed. Major revisions to the plan included re-defining the exterior buffer zones to align with hydrogeologic flow patterns instead of more arbitrary circular rings in the original plan.

Meetings were conducted to encourage communication and collaboration between the COGCC, operators, the U.S. Department of Energy, the Colorado Department of Public Health and Environment (CDPHE), and other stakeholders. Comments were received from stakeholders and incorporated into the final RSAP. This document is in the COGCC's Area Reports Library and can be found at the following link:

<http://cogcc.state.co.us/documents/library/AreaReports/PiceanceBasin/Rulison/Rulison%20Sampling%20and%20Analysis%20Plan%20Revision%204%20062217.pdf>

The email for Project Rulison submittals is

DNR_rulison.submittal@state.co.us

◆ Project Rio Blanco

The email for Project Rio Blanco submittals is

DNR_rioblanco.submittal@state.co.us

➤ *Southwest Colorado*

◆ Fruitland Formation Outcrop Mitigation and Monitoring Projects

South Fork Texas Creek Mitigation Site - La Plata County. Regularly scheduled operations and maintenance are being performed at the

South Fork Texas Creek (SFTC) site by LTE, the COGCC's contractor. Since May 2009, the system has collected 21,137 Mcf of methane and generated 248,777 kWh of surplus electricity.

At all eleven 3M/4M monitoring well locations, annual site inspection and routine maintenance visits are currently being performed by COGCC Staff. In March, a new transducer and cable was installed in the Wagon Gulch #1 monitoring well. The lower transducer had become unresponsive, and upon further inspection, it was discovered that the rugged cable had also been compromised. As the monitoring well network ages, more system maintenance and repairs are anticipated.

◆ Gas and Oil Regulatory Team (GORT) Meeting

The remaining GORT meeting in 2017 is scheduled for October 12. The meeting will be held at the Durango Public Library (1900 E. 3rd Avenue) from 9:00 a.m. to 12:00 p.m.

GORT meeting agendas will be posted to the COGCC website approximately one to two weeks prior to each meeting, and emailed to those on the email distribution list. GORT meetings are open to the public, and public comment is held as part of each meeting. The COGCC welcomes suggestions and input for speakers, topics, and meeting format and venue.

All parties wishing to be placed on the next meeting agenda or added to the distribution list for announcements should contact Marc Morton at (303) 894-2100, ext. 5132 (direct), (720) 415-4959 (mobile), or by email:

marc.morton@state.co.us

Admin / Organization / Other

◆ Promotion of Jeremy Ferrin

Jeremy Ferrin has been promoted to the position of Enforcement Supervisor. This position was recently vacated upon the retirement of Peter Gowen. Jeremy joined the COGCC enforcement group in 2014, serving as an Enforcement Officer. During that time, Jeremy assumed additional responsibilities handling increasingly complex

enforcement matters. He will be a natural fit in the Supervisor position. Congratulations, Jeremy, on your well-deserved promotion.

◆ Promotion of Steven Mah

Steven Mah has been promoted to the position of Enforcement Officer. Steven joined the COGCC enforcement group in 2015, serving as the Notice

of Alleged Violation (NOAV) Specialist. His work with Staff initiating enforcement actions over the past two years will serve him well as he carries out his new responsibilities. Congratulations, Steven.

◆ New Hearings Officer

Jennifer Hazelton joined the COGCC as a Hearings Officer in July. As an attorney licensed in Colorado and Wyoming, she has worked at both national and boutique law firms, focusing her practice on the preparation of oil and gas title opinions. Jennifer also previously held positions in the COGCC Hearings and Permitting Units.

Jennifer graduated from Colorado State University with a bachelor's degree in political science and a minor in history. She earned a Juris Doctorate from the University of Wyoming College of Law.

◆ New Enforcement Officer

Steven Kirschner joined the COGCC as an Enforcement Officer in August. Previously, Steven worked as an Enforcement Advisor at the Colorado Department of Public Health and Environment in the Air Quality Control Division. Steven is an attorney licensed in Colorado.

Steven graduated from the University of Florida with a bachelor's degree in Journalism/East Asian Language and Literature (Japanese). He received his JD from the University of Florida, and he has an Master of Laws (LLM) in Natural Resources, Energy, and the Environment from the University of Colorado.

COGCC organizational charts can be found on pages 8-11. For contact information, please go to the COGCC homepage and select "Contact Us" in the upper right corner of the page.

◆ Plugging and Reclaiming Orphaned Wells (PROW) Project Updates

The COGCC performed field work for the following Orphan and Distressed Operator Program (ODO) projects since July 24. These projects relate either to "Orphan" locations or

wells for which there is no known responsible party, or they relate to "Distressed Operator" wells or locations for which surety claim funds are available.

The ODO project summary tables for Fiscal Year 2016-17 and then Fiscal Year 2017-18 are found on pages 12-20. The projects are sorted first by county and then by the project name. The field work described below pertains to ongoing projects or to recently completed projects. The agency has prioritized the ODO work planned for FY18, although each project is subject to change as new conditions arise during the year.

The **Texas Tea Project** began with Commission Order 1V-573. The project involves eight single well locations in Adams and Weld Counties. Recent FY18 work included plugging and abandonment of four wells and flowline abandonment at four locations.

The **CM Production Project** began with Commission Order 1V-581. The project involves 28 locations in Jackson, Logan, and Washington Counties. The original operators drilled a total of 31 wells, and the project involves single well and multi well pads. Recent FY18 work included spill response and wellhead leak repair in Jackson County.

The **Atom Petroleum Project** began with Commission Order 1V-586. The project involves three single well locations in La Plata and Montezuma Counties. Recent FY18 work included a site inspection and removal of fluids that had accumulated in the well cellar at the La Plata County well.

The **McCullough #4 Project** is located in La Plata County. Recent FY18 work included collection and analysis of gas samples from the wellhead. The analytic results will be used to help determine necessary plug placement during plugging and abandonment of the well.

The **Red Mesa Holdings Project** began with Commission Order 1V-508. The project involves 56 locations and 52 wells in La Plata County. Recent FY18 work included flowline riser marking and fluid removal from tanks.

The **DB Orphan #8 Project** is located in Mesa County. Recent FY18 work included setting a



surface plug in the well, ongoing gas monitoring, and a soil gas survey. COGCC Staff also met with Colorado Geological Survey staff to solicit assistance with a geological review for the area around the Town of De Beque.

The **Lloyd and Lowell #1 Project** is located in Mesa County. FY17 work included coordination with the U.S. Army Corps of Engineers (wetland permitting), and the COGCC recently received approval to proceed with the work for FY18. The well is discharging gas and water to surface and was originally drilled in 1912. It is located southwest of the Town of De Beque.

The **Pilcher #1 Project** is located in Montezuma County. Recent FY17 work included collection and analysis of soil samples at the former well pad. The analytic results will be used to prepare a scope for future environmental work.

The **Redwine Project** began with Commission Orders 1V-470 and 1V-494. The project involves one location in Montrose County. Most project work was completed in prior fiscal years. Recent FY18 work included a reclamation monitoring field inspection to identify maintenance needs and develop a contractor estimate for seeding and weed control.

◆ Colorado Oil and Gas Information System (COGIS) Projects, Updates and Changes

Electronic Form (eForm) Submissions

The COGCC uses 41 types of forms to authorize oil and gas operations, inspect and monitor ongoing operations, and receive reports of operations. Of those 41 forms, 21 are currently available for electronic submittal through the eForms system.

The development team continues to work on the eForm conversion of existing forms. Currently, four forms are in various stages of development: Forms 11, 12, 14, 14A, and 43. In addition, the development team updates eForms with improvements requested by Staff and as required by rule revisions.

In 2017, industry has electronically submitted 99 percent of the forms available in eForms. There are 844 operator users of eForms and 3,396 individual users. For any operator not currently

enrolled in eForms, instructions for starting the process can be found on the COGCC website at:

<http://cogcc.state.co.us/Announcements/COUAIInformation.pdf>

Applications and Location Assessments

The public can make comments on all submitted Drilling Permit Applications (Form 2s) and Location Assessments (Form 2As) through the eForm system. Simply go to the COGCC website and click on the menu option “Permits” or

<http://cogcc.state.co.us/permits.html#/permits>

On the “Permits Search” page, three search options are available. The first option, “All Pending Permit Applications,” is used for public comments. When the results are displayed for “Pending Applications,” a user can click on the document number hyperlink in the “Status” column, which logs him or her to the eForms application.

Once the page is displayed with the selected document, the user can select the “Comment” button to make a comment on that particular form.

Data Access

The COGCC’s database is a comprehensive repository of Colorado’s oil and gas data. The information in the database is available to the public through interactive search tools and a variety of file downloads on the website. Users of bulk data come from many different sectors of the community, including academia, oil and gas operators, environmental groups, government agencies, and the media. In June, Staff released Flowline inventory data from the May 2 NTO.

All the data file downloads are available at:

<http://cogcc.state.co.us/data2.html#/downloads>

New Download

Flowline NTO Imported Data



Current Data File Downloads

Complaints
Field Operations
GIS Shapefiles (12 files)
Mechanical Integrity Tests
Notices of Alleged Violation
Production Data (1999 - present)
Spacing Orders
Spills and Releases
Water Well Data

Future Data File Downloads

Enforcement Orders (OFVs and AOCs)
Underground Injection Control (UIC) Data

◆ October 2017 Hearing Docket

The docket for the October 2017 hearing will be available shortly after the September hearing. Hearing dockets are available on our website by clicking on “Regulation” in the menu and then “Hearings”:

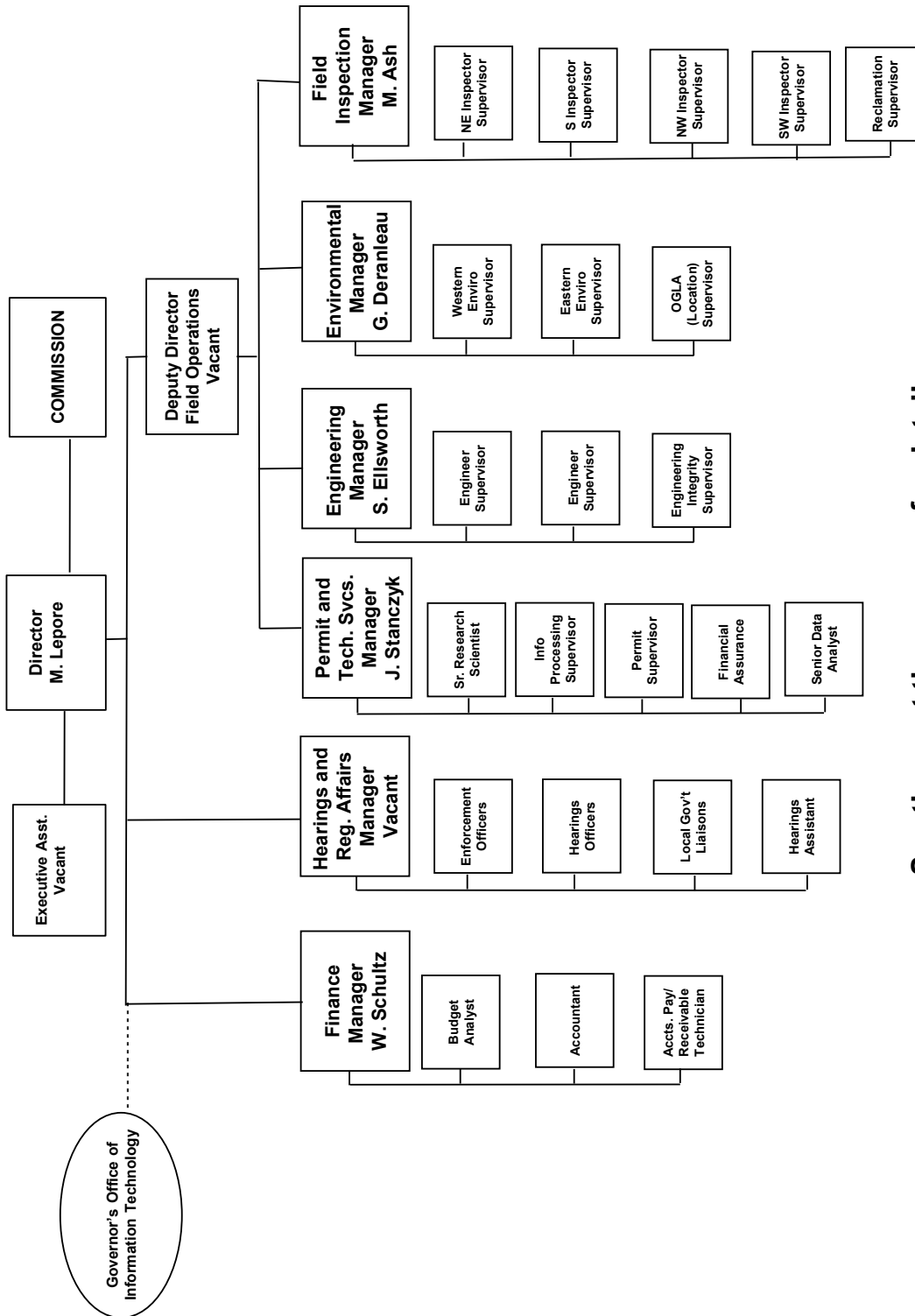
<http://cogcc.state.co.us/reg.html#/hearings>

Links to the notices and hearing applications are available from the Docket Number and Applicant, respectively, by clicking the October Gen_Docket link. To sign up for email notification of hearing notices and applications, please see the announcement and instructions on the homepage of the COGCC website.



Organizational Charts and Statistics

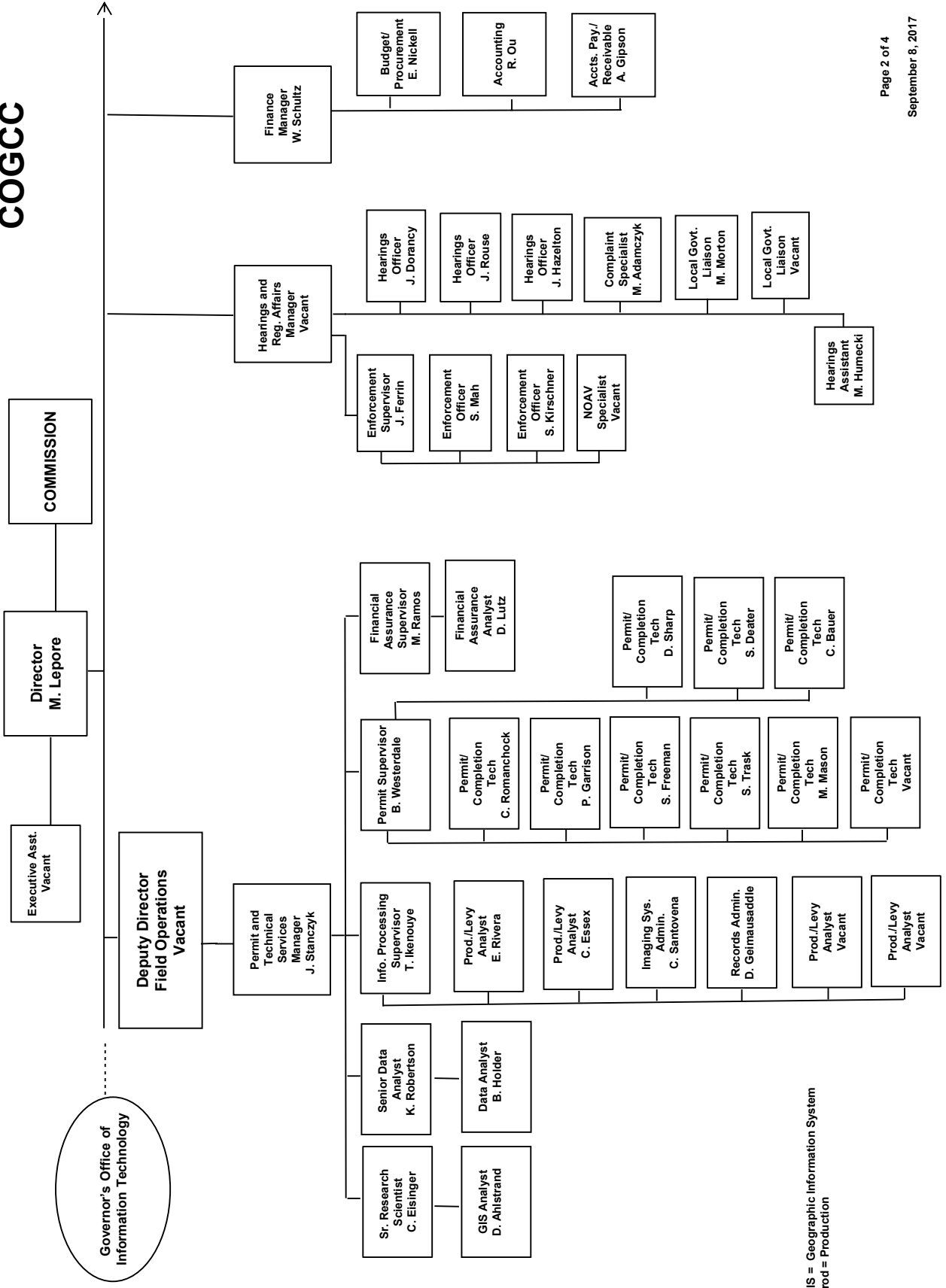
COLORADO OIL & GAS CONSERVATION COMMISSION



See the next three pages for details



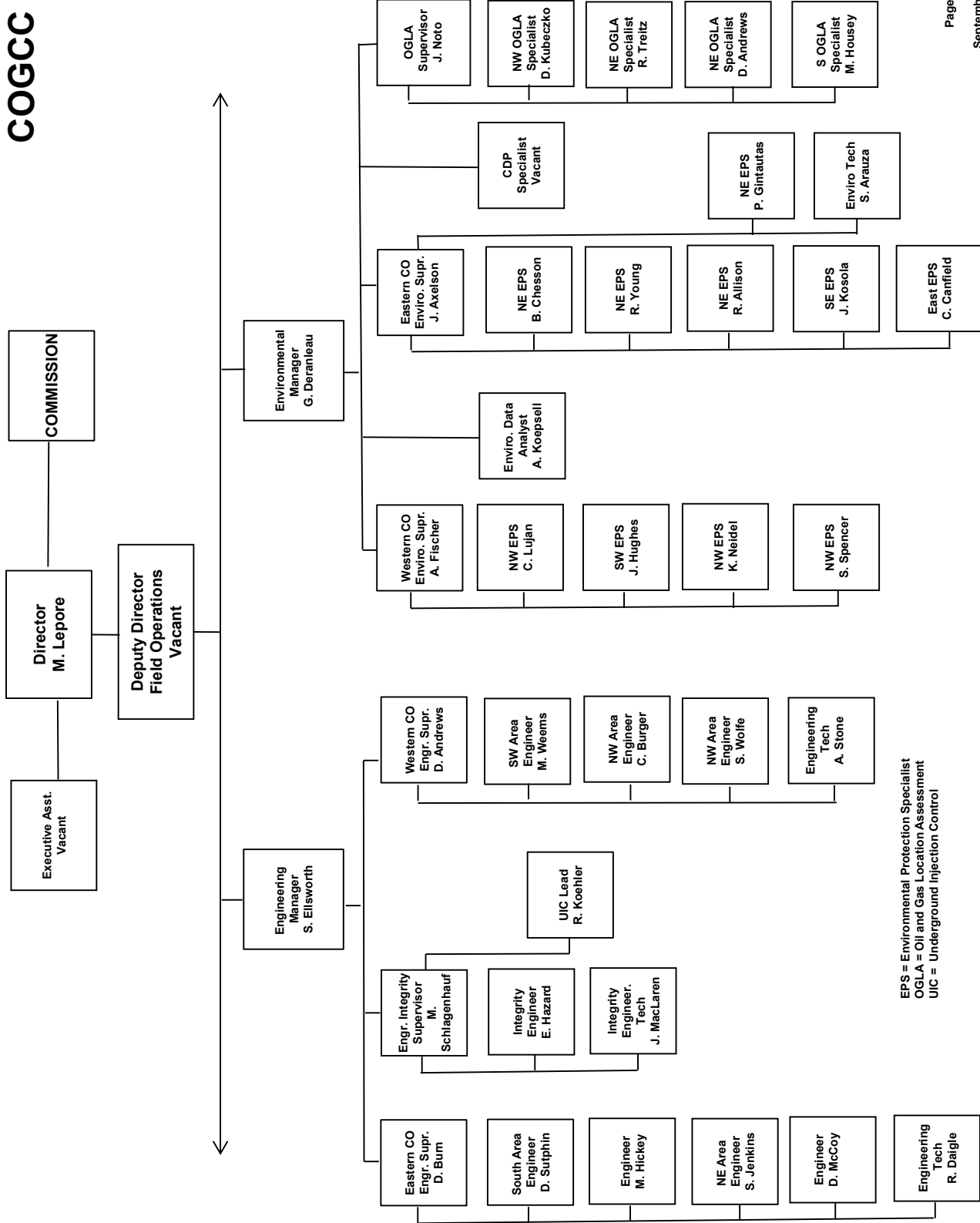
COGCC



GIS = Geographic Information System
Prod = Production



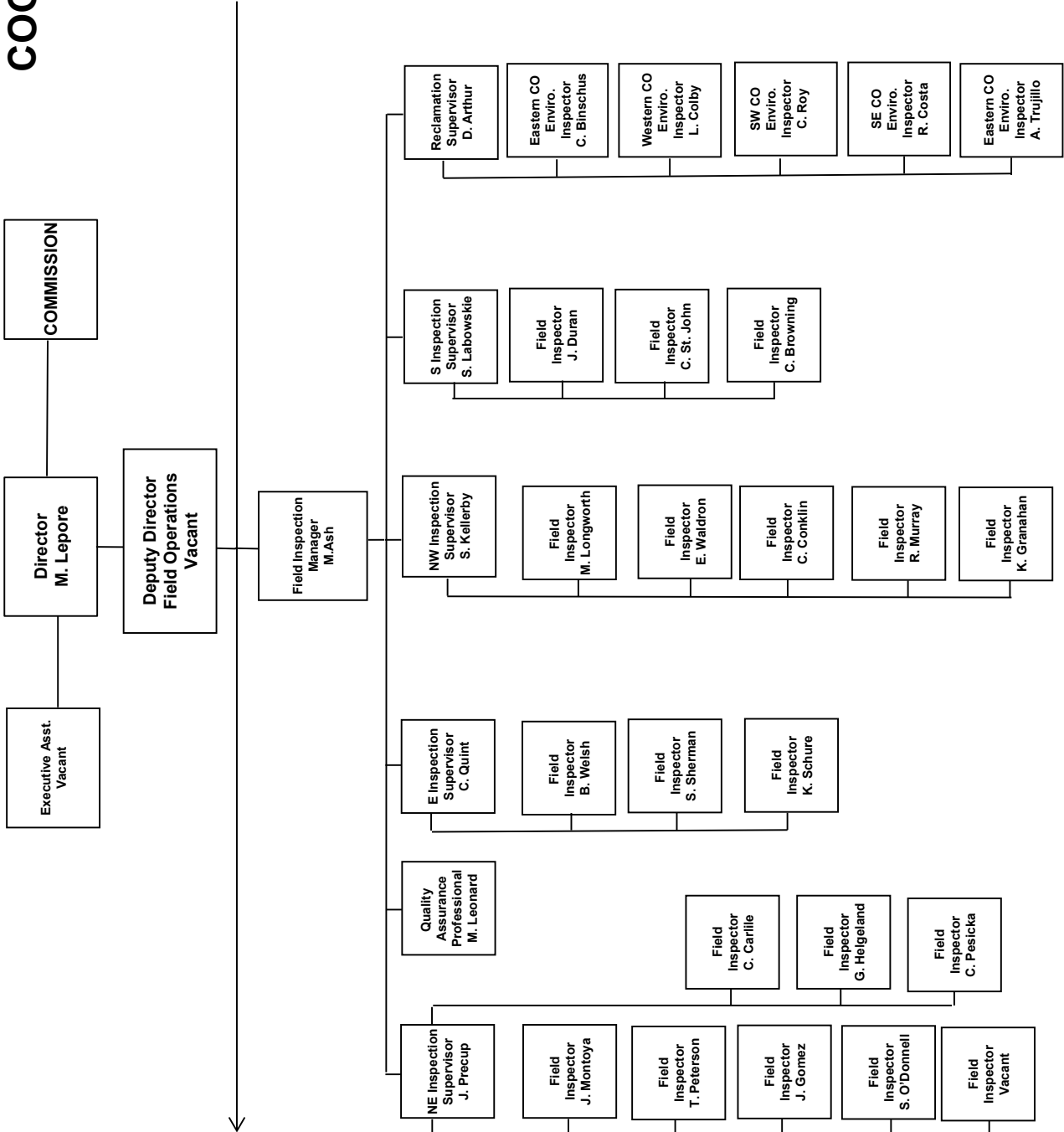
COGCC



EPS = Environmental Protection Specialist
 OGLA = Oil and Gas Location Assessment
 UIC = Underground Injection Control



COGCC





PLUGGING AND RECLAIMING ORPHANED WELLS (PROW) PROGRAM
FISCAL YEAR 2016-17

Project	Order Number(s)	Total Bond Claim	Amount Spent		Remaining Bond Balance
			in Prior Fiscal Years	in FY2016-17	
Atom Petroleum Bond Claim	1V-586	\$ 60,000	\$ -	\$ 797	\$ 59,203
Benchmark Energy Bond Claim	1V-564	\$ 620,000	\$ 1,180	\$ 97,751	\$ 521,069
CM Production Bond Claim	1V-581	\$ 67,849	\$ -	\$ 13,299	\$ 54,549
Dolphin Bond Claim	1V-382	\$ 55,000	\$ 55,000	\$ -	\$ -
Mackley Bond Claim	1V-587	\$ 6,745	\$ -	\$ 6,745	\$ -
Monument Global Bond Claim	1V-577, 1V-600	\$ 80,231	\$ -	\$ 76,310	\$ 3,921
Petrohunter Bond Claim	1V-608	\$ 62,573	\$ -	\$ 4,786	\$ 57,787
Premier Bond Claim	1V-362, 1V-592	\$ 16,778	\$ 5,000	\$ 11,778	\$ -
Provide Bond Claim	1V-364	\$ 5,000	\$ 5,000	\$ -	\$ -
Ranchers Bond Claim	1V-526	\$ 63,424	\$ 30,183	\$ 33,241	\$ -
Red Mesa Holdings Bond Claim	1V-508	\$ 72,831	\$ 4,293	\$ 7,965	\$ 60,574
Red Mountain Bond Claim	1V-549 *	\$ 92,015	\$ -	\$ 29,620	\$ 62,395
Redwine Bond Claim	1V-470, 1V-494	\$ 30,000	\$ 30,000	\$ -	\$ -
Tatonka Bond Claim	1V-383	\$ 30,000	\$ 30,000	\$ -	\$ -
Texas Tea Bond Claim	1V-573	\$ 71,850	\$ -	\$ 40,283	\$ 31,568
Think Oil Bond Claim	1V-458	\$ 12,570	\$ 12,570	\$ -	\$ -
TOTALS ->		\$ 1,346,866	\$ 173,226	\$ 322,574	\$ 851,066

Note: * Red Mountain Bond Total Claim Amount includes \$24,169 bankruptcy deposit and \$5,000 State Land Board deposit (bond transfer)



PLANNED WORK		Project and Task	BOND		PROW	EMGY Orders
Work Unit	County		Moved to FY2017-18 (August)			
ENGR	Adams	Texas Tea Bond Claim: Task 2.1, 3.1A - Plug and Abandon, Flowline Abandonment - 320139, 001-08204	Moved to FY2017-18 (August)		Moved to FY2017-18 (August)	
ENGR	Adams	Texas Tea Bond Claim: Task 2.1, 3.1A - Plug and Abandon, Flowline Abandonment - 320206, 001-08443			Moved to FY2017-18 (August)	
ENGR	Adams	Texas Tea Bond Claim: Task 2.1, 3.1A - Plug and Abandon, Flowline Abandonment - 320223, 001-08516			Moved to FY2017-18 (August)	
ENGR	Adams	Texas Tea Bond Claim: Task 2.1, 3.1A - Plug and Abandon, Flowline Abandonment - 320240, 001-08699			Moved to FY2017-18 Alternate List	
ENGR	Logan	J&L Oil Corp - North Shore Field: Task 1 - Flowline Abandonment - 389243,			Moved to FY2017-18 Alternate List	
ENGR	Logan	J&L Oil Corp - North Shore Field: Task 1 - Flowline Abandonment - 389245,			Moved to FY2017-18 Alternate List	
RECL	Logan	Simms #1: Task 1 - Reclamation (initial work) - 389425,			Moved to FY2017-18 Alternate List	
ENGR	Montezuma	Atom Petroleum Bond Claim: Task 1.1 - Plug and Abandon - 313483, 083-06263	Landowner Request: Moved to FY2017-18 (Fall)			
ENGR	Montezuma	Atom Petroleum Bond Claim: Task 1.1 - Plug and Abandon - 313628, 083-06653	Landowner Request: Moved to FY2017-18 (Fall)			
RECL	Weld	Vaughey & Vaughey - Buckingham Field: Task 1 - Reclamation (initial work) - 405136,	Project Delayed: Timing to be determined			
WORK IN PROGRESS						
Work Unit	County	Project and Task	BOND Actual	PROW Actual	EMGY Actual	Subtotals Actual
RECL	Adams	Texas Tea Bond Claim: Task 2.2 - Weed Control (maintenance) - Spindle and Sun Fields,	\$ 2,310	\$ -	\$ -	2,310
FOPS	Jackson	CM Production Bond Claim: Task 1.7, 1.8, 1.10, 3.1 - Equipment Intervention, MIT or Other Well Work - Lone Pine Field, Various	\$ 1,905	\$ -	\$ -	1,905
ENVS	Jackson	CM Production Bond Claim: Task 1.11 - Sampling and Analysis - Lone Pine Field,	\$ 4,905	\$ -	\$ -	4,905
ENGR	La Plata	McCullough #4: Task 1 - Plug and Abandon, Sampling and Analysis - 325208, 067-05620	\$ -	\$ 4,980	\$ -	4,980
RECL	La Plata	Red Mesa Holdings Bond Claim: Task 5 - Weed Control (maintenance) - Red Mesa Field,	\$ 4,954	\$ -	\$ -	4,954
RECL	Logan	J&L Oil Corp - North Shore Field: Task 2 - Reclamation (initial work) - 389243,	\$ -	\$ 231	\$ -	231
RECL	Logan	J&L Oil Corp - North Shore Field: Task 2 - Reclamation (initial work) - 389245,	\$ -	\$ 231	\$ -	231
ENGR	Mesa	DB Orphan #8: Task 1 - Plug and Abandon - 450650, 077-10381	\$ -	\$ 107,371	\$ -	107,371
ENGR	Mesa	Lloyd and Lowell #1: Task 2 - Plug and Abandon - 428669, 077-40017	\$ -	\$ 8	\$ -	8
WORK IN PROGRESS SUBTOTALS ->			\$ 14,074	\$ 112,821	\$ -	126,894



COMPLETED WORK	Project and Task	BOND Actual	PROW Actual	EMGY Actual	Subtotals Actual
ENVS Adams	Texas Tea Bond Claim: Task 1.2 - Sampling and Analysis, Spill or Remediation - 320257,	\$ 29,204	\$ -	\$ -	\$ 29,204
ENVS Adams	Texas Tea Bond Claim: Task 1.3 - Sampling and Analysis, Groundwater Monitoring Wells - 318231,	\$ 8,768	\$ -	\$ -	\$ 8,768
ENGR Boulder	Juhl #1: Task 1 - Plug and Abandon, Flowline Abandonment - 379627, 013-05018	\$ -	\$ 28,069	\$ -	\$ 28,069
RECL Garfield	Dolphin Bond Claim: Task 15 - Mowing - 335477,	\$ 787	\$ -	\$ -	\$ 787
RECL Garfield	Dolphin Bond Claim: Task 16 - Stormwater BMPs (maintenance) - 335477,	\$ -	\$ 1,698	\$ -	\$ 1,698
ENGR Garfield	Mackley Bond Claim: Task 1 - Plug and Abandon - 322296, 045-	\$ 6,745	\$ 75,142	\$ -	\$ 81,887
ENVS Jackson	CM Production Bond Claim: Task 1.4 - Site Security, Label equipment with COGCC contact information - Lone Pine Field,	\$ 408	\$ -	\$ -	\$ 408
ENVS Jackson	CM Production Bond Claim: Task 3.1, 3.2 - MIT or Other Well Work, Plug and Abandon - 324623, 057-06057	\$ 2,034	\$ -	\$ -	\$ 2,034
ENGR Jefferson	Premier Bond Claim: Task 1 - Plug and Abandon - 324776, 059-	\$ 11,100	\$ 14,561	\$ -	\$ 25,661
ENVS Jefferson	Premier Bond Claim: Task 2 - Sampling and Analysis, Spill or Remediation, Off-Site Disposal - 324776,	\$ 678	\$ 1,000	\$ -	\$ 1,678
	Red Mountain Bond Claim: Task 1 - Site Security, Fence Repair - 312133,	\$ 450	\$ -	\$ -	\$ 450
FOPS Jefferson	Red Mountain Bond Claim: Task 2 - Plug and Abandon, Equipment Salvage - 324775, 059-06024	\$ 1,000	\$ -	\$ -	\$ 1,000
RECL Jefferson	Red Mountain Bond Claim: Task 3 - Reclamation (initial work) - 324775,	\$ 23,765	\$ -	\$ -	\$ 23,765
RECL Jefferson	Red Mountain Bond Claim: Task 4 - Site Security - 324775,	\$ 4,680	\$ -	\$ -	\$ 4,680
FOPS La Plata	Atom Petroleum Bond Claim: Task 1.2 - Equipment Intervention - 325653,	\$ 797	\$ -	\$ -	\$ 797
FOPS La Plata	Red Mesa Holdings Bond Claim: Task 1 - Sampling and Analysis, Gauge tanks (Various Locations)	\$ 346	\$ -	\$ -	\$ 346
ENGR La Plata	Red Mesa Holdings Bond Claim: Task 2 - MIT or Other Well Work, Complaint response, Bradenhead test - 325858, 067-07085	\$ 2,665	\$ -	\$ -	\$ 2,665
RECL Larimer	Ranchers Bond Claim: Task 1 - Reclamation (initial work), Re-Seeding (maintenance), Weed Control (maintenance) - 435790,	\$ 33,215	\$ 692	\$ -	\$ 33,907
RECL Larimer	Ranchers Bond Claim: Task 2 - Engineering Design - 419639,	\$ -	\$ 53,881	\$ -	\$ 53,881
FOPS Logan	Benchmark Energy Bond Claim: Task 1.1 - Site Security - Graylin NW and Mount Hope Fields,	\$ 496	\$ -	\$ -	\$ 496
FOPS Logan	Benchmark Energy Bond Claim: Task 1.2 - Equipment Intervention, Gauge Tanks - Graylin NW and Mount Hope Fields,	\$ -	\$ -	\$ -	\$ -
RECL Logan	Benchmark Energy Bond Claim: Task 1.3 - Weed Control (maintenance), Mowing - Graylin NW and Mount Hope Fields,	\$ 14,900	\$ -	\$ -	\$ 14,900
HEAR Logan	Benchmark Energy Bond Claim: Task 1.4 - Title Work (legal) - Graylin NW and Mount Hope Fields,	\$ 8,000	\$ -	\$ -	\$ 8,000
FOPS Logan	Benchmark Energy Bond Claim: Task 1.5 - Repair Power Lines - Graylin NW and Mount Hope Fields,	\$ 750	\$ -	\$ -	\$ 750



COMPLETED WORK, cont.							Page 4 of 5
Work Unit	County	Project and Task	BOND Actual	PROW Actual	EMGY Actual	Subtotals Actual	
FOPS	Logan	Benchmark Energy Bond Claim: Task 1.6, 1.6B, 1.7, 1.8, 1.9 - Equipment Intervention, Fix Leaks, Fluid Handling, Berm Maintenance - Graylin NW and Mount Hope Fields,	\$ 9,543	\$ -	\$ -	\$ 9,543	
FOPS	Logan	Benchmark Energy Bond Claim: Task 1.10 - Reclaim Oil - Graylin NW and Mount Hope Fields,	\$ -	\$ -	\$ -	\$ -	
ENVS	Logan	Benchmark Energy Bond Claim: Task 1.13, 2.1 - Spill or Remediation - 312152,	\$ 9,195	\$ -	\$ -	\$ 9,195	
ENVS	Logan	Benchmark Energy Bond Claim: Task 1.14 - Spill or Remediation, Off-Site Disposal - Graylin NW and Mount Hope Fields,	\$ 11,929	\$ -	\$ -	\$ 11,929	
FOPS	Logan	Benchmark Energy Bond Claim: Task 1.15, 1.16 - MIT or Other Well Work, Wireline Tags - Graylin NW and Mount Hope Fields,	\$ 11,784	\$ -	\$ -	\$ 11,784	
ENGR	Logan	Benchmark Energy Bond Claim: Task 2.2 - Plug and Abandon - 312158, 075-05972	\$ 31,155	\$ -	\$ -	\$ 31,155	
ENVS	Mesa	DB Orphan #8: Task 2 - Sampling and Analysis, Soil Vapor Monitoring - 450650,	\$ -	\$ 19,174	\$ -	\$ 19,174	
ENVS	Mesa	DB Orphan #8: Task 3 - Soil Vapor Extraction System - 450650,	\$ -	\$ 4,950	\$ -	\$ 4,950	
ENVS	Mesa	DB Orphan #8: Task 4 - Environmental Assessment Report -	\$ -	\$ 6,844	\$ -	\$ 6,844	
ENGR	Mesa	DB Orphan Blair #1: Task 4 - Plug and Abandon - 434038, 077-	\$ -	\$ 24,467	\$ -	\$ 24,467	
RECL	Mesa	DB Orphan Blair #1: Task 5 - Reclamation (initial work) - 434038,	\$ -	\$ 4,360	\$ -	\$ 4,360	
ENGR	Mesa	Lloyd and Lowell #1: Task 1 - Site Security, MIT or Other Well Work, Downhole Camera - 428669, 077-40017	\$ -	\$ 7,506	\$ -	\$ 7,506	
FOPS	Moffat	Saunders et al #1: Task 1 - MIT or Other Well Work, Remove cables and junk - 391470, 081-05241	\$ -	\$ 1,308	\$ -	\$ 1,308	
RECL	Moffat	Tatonka Bond Claim: Task 9 - Reclamation (initial work), Seeding - 313340,	\$ -	\$ 3,462	\$ -	\$ 3,462	
RECL	Moffat	Think Oil Bond Claim: Task 2 - Reclamation (initial work) -	\$ -	\$ 18,600	\$ -	\$ 18,600	
ENGR	Montezuma	Monument Global Bond Claim: Task 1 - Plug and Abandon - 313425, 083-05147	\$ 49,945	\$ -	\$ -	\$ 49,945	
ENVS	Montezuma	Monument Global Bond Claim: Task 2 - Sampling and Analysis, Spill or Remediation - 313425, 083-05147	\$ 4,502	\$ -	\$ -	\$ 4,502	
RECL	Montezuma	Monument Global Bond Claim: Task 3 - Flowline Abandonment, Reclamation (initial work), Weed Control (maintenance), Clean Out Cattle Guard, Road Repair - 313425,	\$ 12,790	\$ -	\$ -	\$ 12,790	
RECL	Montezuma	Monument Global Bond Claim: Task 4 - Reclamation (initial work), Seeding (initial work) - 313425,	\$ 9,073	\$ -	\$ -	\$ 9,073	
ENGR	Montezuma	State #1-36: Task 1 - Plug and Abandon - 313502, 083-06354	\$ -	\$ 13,031	\$ -	\$ 13,031	
ENGR	Montezuma	Wolcott #1: Task 1 - Plug and Abandon - 313501, 083-06341	\$ -	\$ 13,404	\$ -	\$ 13,404	
RECL	Montrose	Redwine Bond Claim: Task 4 - Weed Control (maintenance), Stormwater BMP maintenance - 313641,	\$ -	\$ 4,930	\$ -	\$ 4,930	
ENGR	Ouray	Swanson-Peterson #1: Task 3 - Visual mitigation - 311784,	\$ -	\$ 1,130	\$ -	\$ 1,130	
FOPS	Rio Blanco	Petrohunter Bond Claim: Task 1 - Site Security, Equipment Intervention, Flowline Identification - Powell Park Field,	\$ 4,786	\$ -	\$ -	\$ 4,786	



COMPLETED WORK, cont.	Work Unit	County	Project and Task	BOND Actual	PROW Actual	EMGY Actual	Subtotals Actual
ENGR	Rio Blanco		Rangely Unknown #1: Task 1 - Plug and Abandon - 441404, 103-	\$ -	3,500 \$	- \$	3,500
FOPS	Routt		Pagoda #1-31: Task 1 - MIT or Other Well Work, Cut off PA marker - 399362, 107-06115	\$ -	1,308 \$	- \$	1,308
ENVS	San Miguel		Suckla #1: Task 2 - Sampling and Analysis - 399503,	\$ -	174 \$	- \$	174
FOPS	Washington		CM Production Bond Claim: Task 1.5 - Equipment Intervention - Hyde and Tap Fields,	\$ 4,047	- \$	- \$	4,047
ENVS	Weld		O'Toole #1: Task 1 - Sampling and Analysis - 404980,	\$ -	- \$	- \$	-
ENGR	Weld		Vaughney & Vaughney - Buckingham Field: Task 1 - Reclamation (initial work) - 405138,	\$ -	22,976 \$	- \$	22,976
RECL	Various		CDPHE Stormwater Permits (Various Reclamation Projects, statewide)	\$ 201	1,374 \$	- \$	1,575
COMPLETED WORK SUBTOTALS ->				\$ 308,950	\$ 328,327	\$ -	637,277

IN PROGRESS + COMPLETED WORK SUBTOTALS ->	\$ 323,024	\$ 441,148	\$ -	764,172
---	-------------------	-------------------	-------------	----------------

NOTES:

Project and Task Format: [Location or Well Name and Number (if orphan) or Operator Name + "Bond Claim"] : "Task" [Task No(s)] - [Task Type(s)] - [Facility ID Number], [Well API Number (county and sequence code, if well work included with task)]

ABBREVIATIONS:

- ENGR = Engineering, RECL = Reclamation,
- ENVS = Environmental, FOPS = Field Operations
- HEAR = Hearings
- EMGY = Emergency Response Appropriation
- PROW = Plugging and Reclaiming Orphaned Wells Appropriation

PROW FUNDS SCOREBOARD

\$ 445,000	Annual PROW Appropriation
\$ -	Planned Work Estimate
\$ (112,821)	Work In Progress
\$ (328,327)	Completed Work
\$ 3,852	Projected Fiscal Year End Balance

(excludes work involving Bond Expenditures)



PLUGGING AND RECLAIMING ORPHANED WELLS (PROW) PROGRAM FISCAL YEAR 2017-18

Page 1 of 4

BONDS AND OTHER SURETY CLAIM STATUS FOR ACTIVE FY2017-18 "BOND CLAIM" PROJECTS

Project	Order Number(s)	Total Bond Claim	Amount Spent		Remaining Bond Balance
			in Prior Fiscal Years	in FY2017-18	
Atom Petroleum Bond Claim	1V-586	\$ 60,000	\$ 797	\$ -	\$ 59,203
Benchmark Energy Bond Claim	1V-564	\$ 620,000	\$ 98,931	\$ -	\$ 521,069
CM Production Bond Claim	1V-581	\$ 67,849	\$ 13,299	\$ -	\$ 54,549
Dolphin Bond Claim	1V-382	\$ 55,000	\$ 55,000	\$ -	\$ -
Nolte Bond Claim	1V-582	\$ 61,838	\$ -	\$ -	\$ 61,838
Petrohunter Bond Claim	1V-608	\$ 62,573	\$ 4,786	\$ -	\$ 57,787
Pine Ridge Bond Claim	1V-622	\$ 85,000	\$ -	\$ -	\$ 85,000
Ranchers Bond Claim	1V-526	\$ 63,424	\$ 63,424	\$ -	\$ -
Red Mesa Holdings Bond Claim	1V-508	\$ 72,831	\$ 12,258	\$ -	\$ 60,574
Red Mountain Bond Claim*	1V-549, SLB	\$ 92,015	\$ 30,070	\$ -	\$ 61,945
Redwine Bond Claim	1V-470, 1V-494	\$ 30,000	\$ 30,000	\$ -	\$ -
Texas Tea Bond Claim	1V-573	\$ 71,850	\$ 40,283	\$ -	\$ 31,568
Vitruvian Exploration Bond Claim	1V-514	\$ 30,000	\$ -	\$ -	\$ 30,000
TOTALS ->		\$ 1,372,380	\$ 348,847	\$ -	\$ 1,023,533

Note: * Red Mountain Bond Total Claim Amount includes \$24,169 bankruptcy deposit and \$5,000 State Land Board deposit (bond transfer)



ACTIVE TASK LIST (PLANNED OR IN PROGRESS), cont.				
Work Unit	County	Project and Task	Task Status	Planning Comments
Environmental	Jackson	CM Production Bond Claim: Task 1.7, 1.10 - Equipment Intervention - 324634,	In Progress	Remove liquids from tanks
Engineering	Jackson	CM Production Bond Claim: Task 1.7, 1.8, 1.10, 3.1 - Equipment Intervention, MIT or Other Well Work - Lone Pine Field, Various	In Progress	Purge flowlines
Engineering	Jackson	CM Production Bond Claim: Task 3.1, 3.2 - MIT or Other Well Work, Plug and Abandon - 324599, 057-06011	Planned	Set downhole plug to TA well and MIT
Engineering	Jackson	CM Production Bond Claim: Task 3.1, 3.2 - MIT or Other Well Work, Plug and Abandon - 324630, 057-06093	Planned	Set downhole plug to TA well and MIT
Engineering	Jackson	CM Production Bond Claim: Task 3.1, 3.2 - MIT or Other Well Work, Plug and Abandon - 324626, 057-06069	Planned	Set downhole plug to TA well and MIT
Reclamation	Jefferson	Red Mountain Bond Claim: Task 14 - Stormwater BMPs (maintenance), Weed Control (maintenance) - 324775,	Planned	Reclamation maintenance (in-house Staff and Equipment)
Field Operation	La Plata	Atom Petroleum Bond Claim: Task 1.2 - Equipment Intervention - 325653,	In Progress	Remove liquids from tank
Engineering	La Plata	Red Mesa Holdings Bond Claim: Task 2 - MIT or Other Well Work, Complaint response, Bradenhead test - 325858, 067-07085	Planned	Set downhole plugs to TA well and MIT
Engineering	La Plata	Red Mesa Holdings Bond Claim: Task 2 - MIT or Other Well Work, Plug and Abandon, Flowline Abandonment - 325267, 067-06033	Planned	Plug well and abandon flowline
Reclamation	La Plata	Red Mesa Holdings Bond Claim: Task 5 - Weed Control (maintenance) - Red Mesa Field,	In Progress	Reclamation maintenance
Environmental	Larimer	Hall #1: Task 1 - Gas Meter Survey - 385978,	In Progress	Gas meter monitoring (in-house Staff and
Reclamation	Larimer	Ranchers Bond Claim: Task 1 - Reclamation (initial work), Re-Seeding (maintenance), Weed Control (maintenance) - 435790,	In Progress	Reclamation maintenance
Reclamation	Larimer	Ranchers Bond Claim: Task 3 - Reclamation (initial work), Re-Seeding (maintenance), Weed Control (maintenance), Re-seal breached landfill cover - 419639,	Planned	Reclamation and landfill cover installation
Reclamation	Lincoln	Nolte Bond Claim: Task 1 - Re-Seeding (maintenance), Weed Control (maintenance) - 421302,	Planned	Reclamation maintenance
Reclamation	Lincoln	Pine Ridge Bond Claim: Task 1 - Re-Seeding (maintenance), Weed Control (maintenance), Fence Removal - 433053,	Planned	Reclamation maintenance
Reclamation	Lincoln	Pine Ridge Bond Claim: Task 2 - Re-Seeding (maintenance), Weed Control (maintenance), Fence Removal - 430683,	Planned	Reclamation maintenance
Reclamation	Lincoln	Pine Ridge Bond Claim: Task 3 - Re-Seeding (maintenance), Weed Control (maintenance), Fence Removal - 430828,	Planned	Reclamation maintenance
Field Operation	Logan	Red Mountain Bond Claim: Task 12 - Equipment Intervention - 312261,	Planned	Remove liquids from tanks and heater treater
Environmental	Logan	Red Mountain Bond Claim: Task 13 - Sampling and Analysis, Spill or Remediation - 312261,	Planned	Collect samples for analysis to at produced water pit and around other production equipment.



ACTIVE TASK LIST (PLANNED OR IN PROGRESS), cont.				
Work Unit	County	Project and Task	Task Status	Planning Comments
Engineering	Logan	Red Mountain Bond Claim: Task 8 - Plug and Abandon, Flowline Abandonment - 312261, 075-08293	Planned	Plug well and abandon flowline
Environmental	Mesa	DB Orphan #8: Task 2 - Sampling and Analysis, Soil Vapor Monitoring - 450650,	In Progress	Soil gas monitoring
Environmental	Mesa	DB Orphan #8: Task 3 - Soil Vapor Extraction System - 450650,	In Progress	Monitor existing SVE system (in-house Staff and Equipment)
Engineering	Mesa	Lloyd and Lowell #1: Task 2 - Plug and Abandon - 428669, 077-	In Progress	Plug well
Engineering	Moffat	Vitruvian Exploration Bond Claim: Task 1 - Flowline Abandonment - 392478,	Planned	Abandon flowlines
Engineering	Moffat	Vitruvian Exploration Bond Claim: Task 1 - Flowline Abandonment - 392479,	Planned	Abandon flowlines
Engineering	Moffat	Vitruvian Exploration Bond Claim: Task 1 - Flowline Abandonment - 392480,	Planned	Abandon flowlines
Reclamation	Moffat	Vitruvian Exploration Bond Claim: Task 2 - Reclamation (initial work) - 392480,	Planned	Reclaim location
Reclamation	Montrose	Redwine Bond Claim: Task 4 - Stormwater BMPs (maintenance), Weed Control (maintenance) - 313641,	In Progress	Reclamation maintenance
Reclamation	Routt	Pine Ridge Bond Claim: Task 6 - Re-Seeding (maintenance), Weed Control (maintenance) - 316792,	Planned	Reclamation maintenance
COMPLETED TASK LIST - FY2017-18				
Work Unit	County	Project and Task	Task Status	Planning Comments
Engineering	Adams	Texas Tea Bond Claim: Task 2.1, 3.1A - Plug and Abandon, Flowline Abandonment - 320139, 001-08204	Completed	Plug well and abandon flowline
Engineering	Adams	Texas Tea Bond Claim: Task 2.1, 3.1A - Plug and Abandon, Flowline Abandonment - 320206, 001-08443	Completed	Plug well and abandon flowline
Engineering	Adams	Texas Tea Bond Claim: Task 3.3, 3.7 - Plug and Abandon, Flowline Abandonment - 320257, 001-08775	Completed	Plug well and abandon flowline
Environmental	La Plata	McCullough #4: Task 2 - Sampling and Analysis - 325208, 067-	Completed	Collect wellhead gas samples
Field Operation	La Plata	Red Mesa Holdings Bond Claim: Task 6 - Equipment Intervention, Remove crude oil - 325297,	Completed	Remove liquids from tank
Engineering	Mesa	DB Orphan #8: Task 1 - Plug and Abandon - 450650, 077-10381	Completed	Set surface plug, cut off casing, and weld plate
Environmental	Montezuma	Pitcher #1: Task 1 - Sampling and Analysis - 393155,	Completed	Collect samples at former tank battery location and develop remediation plan if needed



PROJECT FINANCIALS - FY2017-18

Project Name	BOND Actual	PROW Actual	EMGY Actual	Subtotals Actual
DB Orphan #8	\$ -	\$ 1,761	\$ -	\$ 1,761
McCullough #4	\$ -	\$ 1,200	\$ -	\$ 1,200
Pilcher #1	\$ -	\$ 1,074	\$ -	\$ 1,074
TOTAL EXPENDITURES ->	\$ -	\$ 4,035	\$ -	\$ 4,035

NOTES:

Project and Task Format: [Location or Well Name and Number (if orphan) or Operator Name + "Bond Claim"] :

"Task" [Task No(s)] - [Task Type(s)] - [Facility ID Number], [Well API Number (county and sequence code, if well work included with task)]

Project Financials: COGCC may be waiting on invoices for some Completed Tasks, and therefore expenditures for those Tasks may not be shown in the Project Financials Section.

PROW FUNDS SCOREBOARD

\$	445,000	Annual PROW Appropriation
\$	(439,055)	Planned and In Progress Estimate
\$	(4,035)	Completed Work
\$	1,910	Estimated Fiscal Year End Balance

(excludes work involving Bond Expenditures)

ABBREVIATIONS:

EMGY = Emergency Response Appropriation

PROW = Plugging and Reclaiming Orphaned Wells Appropriation



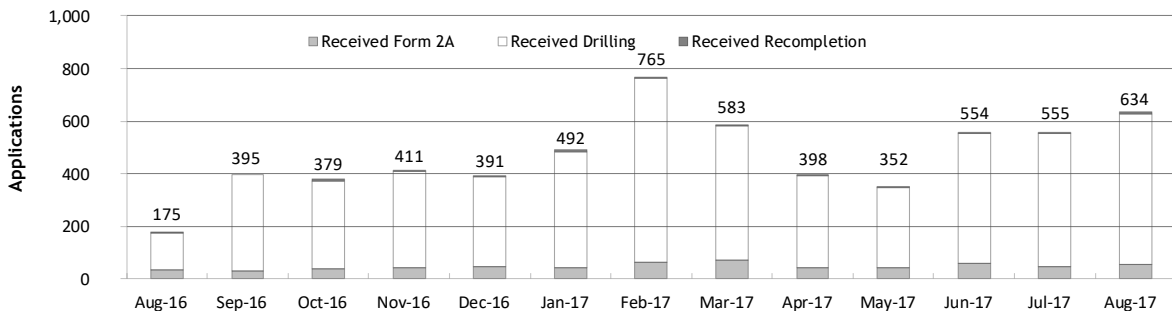
Monthly Permit Activity as of September 1, 2017

Form/Month	Backlog	Received	Approved	Withdrawn	Rejected	Incomplete ¹	In-Process	Remaining ²
Form2A								
Aug-16	99	33	23	2	0	19	88	107
Sep-16	107	29	24	1	0	17	94	111
Oct-16	111	38	29	2	0	25	93	118
Nov-16	118	40	45	0	3	22	88	110
Dec-16	110	48	25	6	0	20	107	127
Jan-17	127	42	25	1	1	18	124	142
Feb-17	142	62	38	2	0	28	136	164
Mar-17	164	71	48	6	3	29	149	178
Apr-17	178	41	54	3	0	34	128	162
May-17	162	41	55	0	0	25	123	148
Jun-17	148	58	40	2	1	31	132	163
Jul-17	163	45	31	3	1	33	140	173
Aug-17	173	53	49	6	0	33	138	171
Drilling								
Aug-16	805	141	150	9	7	126	654	780
Sep-16	780	366	270	0	12	77	787	864
Oct-16	864	334	297	1	0	82	818	900
Nov-16	900	368	304	7	64	138	755	893
Dec-16	893	342	267	15	9	115	829	944
Jan-17	944	442	211	1	13	89	1,072	1,161
Feb-17	1,161	701	263	14	0	86	1,499	1,585
Mar-17	1,585	510	423	14	47	131	1,480	1,611
Apr-17	1,611	352	301	21	14	167	1,460	1,627
May-17	1,627	307	367	13	52	168	1,334	1,502
Jun-17	1,502	493	331	3	9	185	1,467	1,652
Jul-17	1,652	508	234	49	75	146	1,656	1,802
Aug-17	1,802	572	349	13	20	137	1,855	1,992
Recompletion								
Aug-16	8	1	3	0	0	2	4	6
Sep-16	6	0	2	0	0	2	2	4
Oct-16	4	7	1	0	0	2	8	10
Nov-16	10	3	3	0	0	3	7	10
Dec-16	10	1	4	1	0	2	4	6
Jan-17	6	8	2	0	0	2	10	12
Feb-17	12	2	4	0	0	3	7	10
Mar-17	10	2	2	0	0	2	8	10
Apr-17	10	5	4	1	0	2	8	10
May-17	10	4	3	4	0	1	6	7
Jun-17	7	3	2	0	0	2	6	8
Jul-17	8	2	4	0	0	2	4	6
Aug-17	6	9	0	1	0	2	12	14

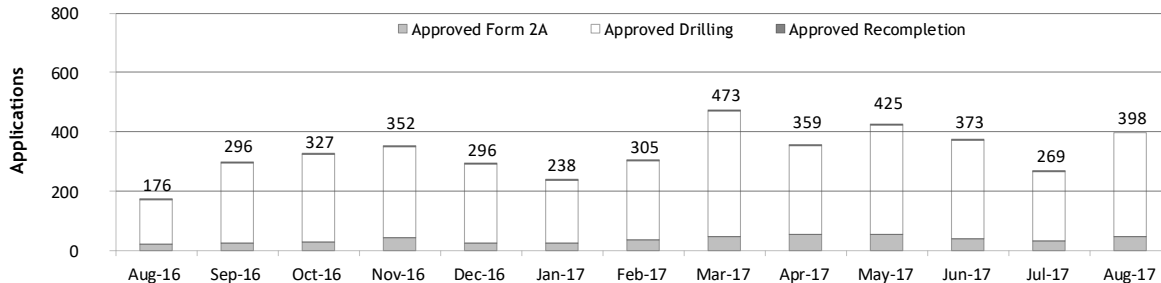
¹ Incomplete are applications that have missing or inaccurate data and cannot be approved.

² Backlog = Incomplete + In-process = Remaining permits from previous month.

Received Applications



Approved Applications




Status of Permit Applications Filed By Month as of September 1, 2017
Form 2A Location Assessment

Year	Month	Received	Approved	Withdrawn	In Process	Percent In Process	Average			
							Days to Process	Less Than 30 Days	30 to 49 Days	Greater Than 50 Days
2011	TOTAL	2,391	2,298	93	0	0%		1,416	620	262
2012	TOTAL	1,359	1,291	68	0	0%		706	378	207
2013	TOTAL	1,281	1,202	78	1	0%		369	433	400
2014	TOTAL	1,114	1,067	47	0	0%		279	429	359
2015	TOTAL	592	563	26	3	1%		78	157	328
2016	TOTAL	407	375	24	7	2%		32	61	282
2017	JAN	42	31	2	9	21%	84	0	5	26
	FEB	59	50	1	8	14%	71	7	9	34
	MAR	70	55	3	12	17%	65	6	18	31
	APR	41	27	1	13	32%	55	5	9	13
	MAY	41	24	2	15	37%	63	2	6	16
	JUNE	57	30	1	26	46%	41	7	16	7
	JULY	45	19	1	25	56%	37	6	13	0
	AUG	53	0	0	53	100%	0	0	0	0
2017	TOTAL	408	236	11	161	39%		33	76	127

Form 2 Application For Permit to Drill (APDs)

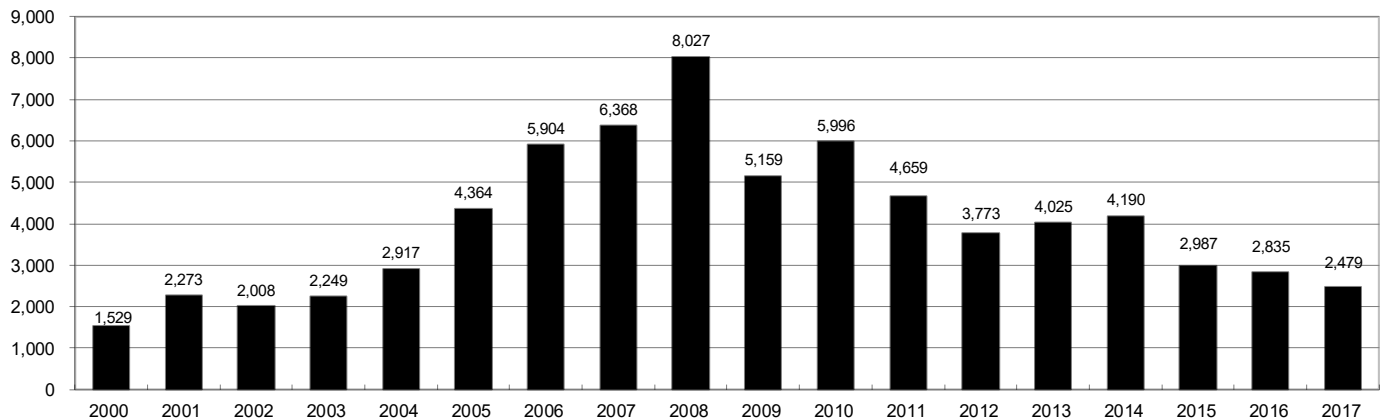
Year	Month	Received	Approved	Withdrawn	In Process	Percent In Process	Average			
							Days to Process	Less Than 30 Days	30 to 49 Days	Greater Than 50 Days
2011	TOTAL	4,691	4,557	132	0	0%		2,723	1,565	587
2012	TOTAL	3,955	3,816	139	0	0%		1,971	1,393	602
2013	TOTAL	4,548	4,312	235	1	0%		1,046	1,626	1,714
2014	TOTAL	4,208	4,026	182	0	0%		689	1,629	1,744
2015	TOTAL	3,237	3,088	130	19	1%		249	759	2,110
2016	JAN	232	231	1	0	0%	99	23	33	176
	FEB	180	177	3	0	0%	80	5	34	141
	MAR	249	246	3	0	0%	98	16	36	194
	APR	174	167	7	0	0%	68	31	24	112
	MAY	352	351	1	0	0%	94	9	61	281
	JUN	312	293	19	0	0%	113	6	51	236
	JUL	236	187	28	9	4%	100	30	1	161
	AUG	136	131	4	1	1%	95	9	26	98
	SEP	359	349	8	0	0%	81	22	72	256
	OCT	313	295	10	8	3%	84	20	26	255
	NOV	368	313	11	34	9%	91	29	22	265
	DEC	342	260	3	45	15%	107	4	16	241
2016	TOTAL	3,253	3,000	98	97	3%		204	402	2,416
2017	JAN	418	300	6	112	27%	99	5	41	260
	FEB	645	400	7	183	31%	76	36	39	326
	MAR	510	361	37	110	22%	87	15	70	278
	APR	344	203	9	130	38%	74	10	17	180
	MAY	307	174	9	124	40%	70	18	65	92
	JUNE	493	180	0	296	62%	61	12	75	95
	JULY	508	112	1	375	77%	48	22	27	63
	AUG	572	14	0	558	98%	21	6	8	0
2017	TOTAL	3,797	1,744	69	1,888	50%		124	342	1,294



Annual Drilling Permits by County as of September 1, 2017

County	2000	2001	2002	2003	2004	2005	2006	2007	2008	2009	2010	2011	2012	2013	2014	2015	2016	2017
ADAMS	38	28	9	26	39	34	37	89	51	35	21	8	40	40	51	96	74	111
ARAPAHOE		2	1	2	5	7	11	10	10	10	8	23	35	23	34	19	5	77
ARCHULETA	7	9	6	10	8	13	14	26	47	11	18	12	5	4	3	11	3	13
BACA	22	6	2	3	7	8	2	11	13	3	4	5	3	1	1			1
BENT	2				5	3	8	1	1		5		2	1				
BOULDER	1	5	6	7	17	13	21	37	32	35	24	30	22					
BROOMFIELD			2	7		1	1		2	33	28	11	36		31			
CHEYENNE	3	3	3	3	3	10	21	15	33	12	13	16	31	50	26	9		
COSTILLA																		
CROWLEY															2			3
DELTA			7	4	5	10	9	2			4	3	6	1	2			
DENVER		3					19	25	24									
DOLORES				1	1	1	6	10	12	21	8	8	13	12	3		3	1
EAGLE														1				
ELBERT	2						4			1		1	2	2	4	3	3	1
EL PASO										2	3	3	18	1	2			
FREMONT					1	3	2	4	14	13	22	14	11	2	8	2	2	1
GARFIELD	213	353	362	567	796	1,509	1,845	2,550	2,888	1,981	2,037	1,323	1,046	870	1,066	532	724	381
GRAND																		
GUNNISON			5	10	1	9	19	7	10	12	4	3	11	9	20	28	19	20
HUERFANO	41	27	27		8	2			7		2	1	9	1	13	2		
JACKSON	34	18	21	9	14	6	8	5	27	19	9	18	5	12	17	3	57	16
JEFFERSON	1						1	3	2					1				
KIOWA	11	18	2	4	2	1	11	9	26	7	16	17	17	12	5	3		
KIT CARSON				1	3	5	4	4	13	7	3	2	6	1	2		1	
LA PLATA	127	156	104	162	102	115	235	251	328	298	191	99	71	32	87	106	96	80
LARIMER	2		1			1		5	46	12	41	8	13	2	4	28	4	28
LAS ANIMAS	268	400	259	180	332	413	500	362	303	88	92	85	11	2	1			
LINCOLN	2	2	1	6	3	4	1	2	58	44	48	31	36	87	129	24	5	16
LOGAN	4	7	3	3	6	13	17	14	5	9	17	8	27	4	5		1	
MESA	13	27	30	27	54	136	265	293	501	427	306	127	150	105	74	126	7	132
MOFFAT	35	52	62	63	63	60	120	68	57	51	53	93	88	44	54	12	17	4
MONTEZUMA	4		5	8	8	11	5	12	22	39	19	27	29	14	25	3	3	6
MONTROSE	1	3	2	4	2		1	3	3		1	1						
MORGAN	9	9	2	7	9	7	3	6	2	1	6	13	5	16	6	4	28	
OTERO																		
PARK										3	4	1						
PHILLIPS	1	2		7	13	17	12	69	82	45	64	112	56		11	2		
PITKIN					1			1									1	
PROWERS	2	5	4		7	5	7	5	8	1	3	1			1		1	
RIO BLANCO	89	187	105	179	154	161	360	321	477	348	441	109	117	167	121	107	71	34
RIO GRANDE	1	1		1					1	1			2	1				
ROUTT	20	13	1		4	6	9	8	4	2	3	10	4	12	4	9		
SAGUACHE	2		2					2	1	2								
SAN MIGUEL	11	13	27	18	42	45	35	23	20	13	10	2	1		2	3		
SEDGWICK				1	5	2	7	2	1	19	11	12	2		7	1		
WASHINGTON	23	17	27	34	128	50	69	45	11	1	6	12	6	19	12	9	7	7
WELD	509	702	760	757	832	901	1,418	1,527	2,340	1,448	2,152	2,262	1,826	2,468	2,303	1,841	1,704	1,547
YUMA	31	205	160	138	237	782	797	541	545	105	299	148	11	9	53	3		
TOTAL	1,529	2,273	2,008	2,249	2,917	4,364	5,904	6,368	8,027	5,159	5,996	4,659	3,773	4,025	4,190	2,987	2,835	2,479

ALL COUNTIES





Form 2A Breakdown By County By Year as of September 1, 2017

Year	County	Form 2As	Completed	In Process	New Location	CDP	SWH	RSO	CDPHE	
2009	Total State	818	818	0	408	2	80	5	5	
2010	Total State	2,377	2,377	0	1,543	0	317	22	55	
2011	Total State	2,297	2,297	0	1,724	1	259	16	5	
2012	Total State	1,297	1,297	0	900	0	167	6	1	
2013	Total State	1,195	1,194	1	845	0	144	2	4	
2014	Total State	1,067	1,065	0	776	3	129	7	3	
2015	Total State	574	568	4	399	0	95	2	2	
2016	ADAMS	9	9	0	8	0	0	0	0	
	ARAPAHOE	10	9	0	5	0	0	0	0	
	ARCHULETA	1	1	0	0	0	1	0	0	
	DOLORES	1	1	0	1	0	0	0	0	
	ELBERT	3	3	0	0	0	0	0	0	
	FREMONT	1	0	1	0	0	1	0	0	
	GARFIELD	26	27	0	4	0	13	3	2	
	GUNNISON	6	6	0	1	0	2	1	0	
	HUERFANO	1	1	0	1	0	1	0	0	
	JACKSON	10	10	0	5	0	9	0	0	
	KIT CARSON	1	1	0	1	0	0	0	0	
	LA PLATA	5	5	0	0	0	5	0	1	
	LARIMER	2	2	0	2	0	0	0	0	
	LINCOLN	5	5	0	4	0	0	0	0	
	LOGAN	2	2	0	0	0	0	0	0	
	MESA	4	4	0	2	0	3	0	1	
	MOFFAT	15	11	0	6	0	13	0	1	
	MONTEZUMA	1	1	0	1	0	0	0	0	
	MORGAN	1	1	0	1	0	0	0	0	
	PROWERS	1	1	0	1	0	0	0	0	
	ROUTT	1	1	0	0	0	1	0	0	
	WASHINGTON	6	6	0	6	0	0	0	0	
	WELD	281	271	6	175	0	3	0	2	
	2016	Total State	393	377	7	224	0	52	4	7
	2017	ADAMS	25	5	20	25	0	0	0	0
		ARAPAHOE	19	10	9	17	0	0	0	0
		BACA	2	2	0	2	0	0	0	0
CROWLEY		3	3	0	3	0	0	0	0	
DOLORES		2	1	1	2	0	1	0	0	
ELBERT		1	1	0	1	0	0	0	0	
FREMONT		1	1	0	1	0	1	0	0	
GARFIELD		29	21	8	11	0	22	3	1	
GUNNISON		1	1	0	0	0	1	0	0	
JACKSON		5	4	1	4	0	5	0	0	
LA PLATA		11	8	3	4	0	10	0	0	
LARIMER		3	3	0	3	0	0	0	0	
LINCOLN		19	12	7	13	0	0	0	0	
MESA		11	8	3	7	0	4	0	0	
MOFFAT		1	1	0	1	0	1	0	0	
MONTEZUMA		3	3	0	3	0	0	0	0	
RIO BLANCO		5	3	2	2	0	4	0	0	
WASHINGTON	7	6	1	6	0	0	0	0		
WELD	240	133	107	166	0	9	0	2		
2017	Total State	388	226	162	271	0	58	3	3	

Abbreviations:

CDP = Comprehensive Drilling Plan SWH = Sensitive Wildlife Habitat consultation

RSO = Restricted Surface Occupancy consultation CDPHE= Colorado Department of Health and Environment consultation



Horizontal Well Activity as of September 1, 2017

County	2010		2011		2012		2013		2014		2015		2016		2017		Total				
	Permit	Spud	Permit	Spud	Permit	Spud	Permit	Spud	Permit	Spud	Permit	Spud	Permit	Spud	Permit	Spud	AC	PR	DA	PA	
ADAMS	2	3	1	1	17	2	26	1	42	18	92	3	72	2	111	20	34	3	23	1	
ARAPAHOE			10	1	22	4	11	13	22	11	9	1	5	1	76	9	32	2	29	1	
ARCHULETA	15	7	10	8	5	9	2	2	1	1	6	3	2	2	10	2	51		53		
BENT					1	1	1										1				
BOULDER			4														0				
CHEYENNE							7	2	1	1	1	1					9	3	5		
DELTA	2				6	1	1		2								3	3			
DOLORES	6				9	3	5	4	3	1							19	12	5		
EL PASO					10												0			1	
ELBERT					1												0				
FREMONT	12	5	3	4	4	1	1	1			1						18	10	7	1	
GARFIELD	16	2	18	6	43	6	18	4	20	11	12	7	4	4	4		47	40	2		
GUNNISON	1				3	2	2		9		18	2	10	1	13	2	6	4			
HUERFANO					4	1			2								1	1			
JACKSON	3	4	9	1	4	4	8	5	15	4	3		52	24	15	4	46	21	3		
KIOWA					1		4	2	1								2			1	
KIT CARSON					1		1	1									2			4	
LA PLATA	28	3	18	7	12	1	5	1	43	7	42	3	67	8	67	3	60	64	1	3	
LARIMER			5	1	2	1	2	2			22	8	4	3	28	25	18	11	2		
LAS ANIMAS	1	1															17	16			
LINCOLN	2	1	1				6		4	2							4	1	3		
LOGAN					1												2			2	
MESA	22	7	24	13	14		9	2	9	1	6	3					29	28	2	4	
MOFFAT	4		9	4	44	6	18	13	15	1	5	2	3	1	3		37	23	10		
MONTEZUMA	11	2	8	2	18	6	3	4	15	2	4	1	28				28	30	7		
MORGAN			6	2	2	1	13	1	6								5	5			
PARK	1	1	1														1				
RIO BLANCO	1	1	11	2	15	2	4	5	3	2	3				3		19	12	3		
ROUTT					1		1				3						10	1	6	1	
SAN MIGUEL																	1			1	
WASHINGTON							2,114	1,099	2,215	1,423	1,789	1,063	1,671	723	1,533	891	5,231	4,162	12	60	
WELD	208	84	763	229	964	594	2,114	1,099	2,215	1,423	1,789	1,063	1,671	723	1,533	891	5,231	4,162	12	60	
YUMA																	1			1	
TOTAL Horizontal	333	123	901	280	1,203	641	2,260	1,160	2,428	1,484	2,016	1,096	1,918	764	1,863	956	5,735	5	4,555	33	114
Percent of Total HZ																					
Total All Permits	5,996		4,659		3,773		4,025		4,190		2,988		2,835		2,479		5,231	0%	79%	1%	2%
HZ Percent of Total	5.6%		19.3%		31.9%		56.1%		57.9%		67.5%		67.7%		75.2%		79%	0%	79%	1%	2%



Well to Building Setbacks by Year and by County as of September 1, 2017

Count of well locations, grouped by proximity from well to buildings.

Location Proximity to Buildings	2010	2011	2012	2013	2014	2015	2016	2017	Number of Locations Since 2009	Percent of Total Locations
Less than 150 feet	3	3	2	0	3	2	0	0	15	0%
150 to 350 feet	58	61	39	34	38	12	15	8	302	3%
350 to 500 feet	110	97	61	64	48	33	23	13	499	6%
500 to 1000 feet	385	331	188	188	161	83	76	52	1,581	17%
1000 + feet	1,705	1,470	838	761	724	378	206	234	6,672	74%
TOTAL LOCATIONS	2,261	1,962	1,128	1,047	974	508	320	307	9,069	

County	TOTAL	Less than 150 feet	150 to 350 feet	350 to 500 feet	500 to 1000 feet	1000 + feet
ADAMS	94	0	4	9	24	57
ARAPAHOE	115	0	2	5	10	98
ARCHULETA	24	0	0	1	12	11
BACA	17	0	0	0	1	16
BENT	7	0	0	0	0	7
BOULDER	23	0	1	1	17	4
BROOMFIELD	33	0	0	4	13	16
CHEYENNE	140	1	0	0	2	137
CROWLEY	5	0	0	0	0	5
DELTA	7	0	0	2	1	4
DOLORES	21	0	0	0	7	14
EAGLE	1	0	0	0	0	1
EL PASO	14	0	0	0	3	11
ELBERT	15	0	0	0	3	12
FREMONT	41	0	2	7	9	23
GARFIELD	604	0	12	10	82	500
GUNNISON	48	1	0	4	1	42
HUERFANO	16	0	0	0	5	11
JACKSON	61	0	0	5	1	55
KIOWA	66	0	0	0	1	65
KIT CARSON	15	0	0	0	0	15
LA PLATA	146	0	6	14	47	79
LARIMER	42	0	5	5	16	16
LAS ANIMAS	201	1	6	7	37	150
LINCOLN	388	0	1	2	5	380
LOGAN	45	0	1	1	1	42
MESA	109	0	0	3	16	90
MOFFAT	190	0	1	3	16	170
MONTEZUMA	46	0	0	1	4	41
MONTROSE	2	0	0	0	0	2
MORGAN	31	0	0	2	4	25
PARK	4	0	0	0	0	4
PHILLIPS	275	1	4	6	21	243
PITKIN	1	0	0	0	0	1
PROWERS	6	0	0	0	0	6
RIO BLANCO	190	0	0	0	2	188
RIO GRANDE	2	0	0	0	1	1
ROUTT	30	0	0	0	2	28
SAN MIGUEL	14	0	0	0	0	14
SEDGWICK	33	0	0	1	3	29
WASHINGTON	85	0	2	0	3	80
WELD	5,337	11	246	390	1,167	3,520
YUMA	528	0	9	16	44	459



Well to Building Setbacks Less Than Two Hundred Feet as of September 1, 2017

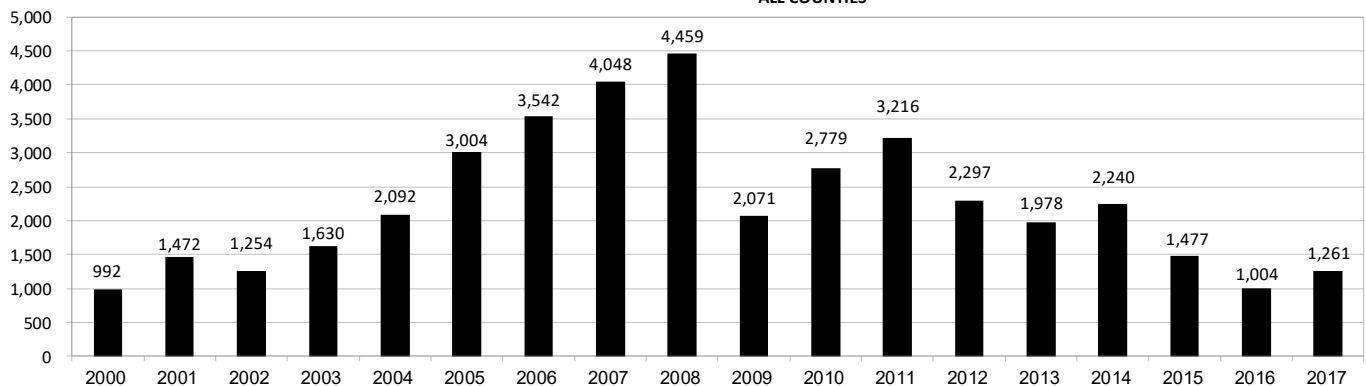
Year	Location Doc Number	County	High Density	New Location	Distance (Feet)	Proximity (Feet)	Building Description
2015	400768804	WELD	No	Yes	46	less 150	Building to be razed
2011	2587822	CHEYENNE	No	No	58	less 150	Water well house
2009	1691798	WELD	No	No	58	less 150	Vehicle garage
2010	400072164	WELD	No	Yes	69	less 150	Abandoned hog shed
2014	400569085	WELD	No	No	78	less 150	Well shed
2014	400600705	WELD	No	No	80	less 150	Livestock shed
2012	400240957	GUNNISON	No	Yes	90	less 150	Equipment shed
2015	400742811	WELD	No	Yes	102	less 150	Building to be razed
2009	1758843	WELD	No	Yes	103	less 150	Building to be razed
2011	1636646	WELD	No	No	122	less 150	Storage shed
2009	400011284	LAS ANIMAS	No	Yes	127	less 150	Operator is owner
2009	1786896	PHILLIPS	No	No	132	less 150	Grain storage
2014	400642113	WELD	No	Yes	142	less 150	Barn
2011	400117702	WELD	No	Yes	143	less 150	Irrigation pump house
2011	400227765	WELD	No	Yes	145	less 150	Storage barn
2014	400558626	LINCOLN	No	No	150	less 150	Gas plant equipment building
2009	1904205	WELD	No	No	154	150 to 350	Livestock enclosure
2012	400243295	WELD	No	Yes	155	150 to 350	Unused storage shed
2015	400862577	GARFIELD	No	No	155	150 to 350	Gravel pit scale house
2011	400179419	WELD	No	Yes	157	150 to 350	Existing well / storage building
2010	400054716	WELD	No	No	159	150 to 350	Equipment barn
2011	400188968	WELD	No	Yes	159	150 to 350	Abandoned
2014	400554054	WELD	No	Yes	159	150 to 350	Equipment shed
2014	400559404	WELD	No	Yes	160	150 to 350	Barn
2016	400950178	LA PLATA	No	Yes	162	150 to 350	Residence
2010	400021477	WELD	No	Yes	162	150 to 350	Goat barn
2009	1758386	WELD	No	Yes	168	150 to 350	Storage shed
2011	1635946	WELD	No	No	169	150 to 350	Storage shed
2013	400447386	WELD	No	No	169	150 to 350	Abandoned turkey barn
2013	400447391	WELD	No	No	169	150 to 350	Abandoned turkey barn
2011	400165164	WELD	No	Yes	178	150 to 350	Residence
2013	400367184	WELD	No	Yes	179	150 to 350	Shed
2011	400188780	WELD	No	Yes	180	150 to 350	Residence
2014	400562498	WELD	No	Yes	181	150 to 350	Garage / storage shed
2010	1697620	WELD	No	No	187	150 to 350	Livestock shed
2009	1758746	WELD	No	No	193	150 to 350	Storage shed
2011	400154431	WELD	No	Yes	198	150 to 350	Turkey barn
2012	400250031	WELD	No	Yes	198	150 to 350	Abandoned guard shack
2010	1774783	WELD	No	No	199	150 to 350	Cement service building
2011	400118102	YUMA	No	Yes	199	150 to 350	Steel barn



Annual Well Starts by County as of September 1, 2017

County	2000	2001	2002	2003	2004	2005	2006	2007	2008	2009	2010	2011	2012	2013	2014	2015	2016	2017
ADAMS	18	13	4	19	22	24	13	41	14	14	21	1	15	5	29	3	2	21
ARAPAHOE					6	1	5	2	1	1	3	9	9	25	21		1	10
ARCHULETA	4	4	2	5	4	10	5	7	29	9	12	10	11		1	7	4	5
BACA	19	6	2	1	6	6	2	6	12		5	4	2	2		1		
BENT	2				3	2	8	1	1			1	2					
BOULDER				2	5	11	9	14	25	16	13	7	14					
BROOMFIELD			2		1				10		21	11	5					
CHEYENNE	2	1	3	3		9	14	15	14	8	12	11	17	35	19	3		
COSTILLA																		
CROWLEY															2			1
DELTA				5	4	6	5	2			9	2	3					
DENVER		2						7	5	4								
DOLORES					2		2	13	6	2		1	5	10	4			1
EAGLE														1				
EL PASO											2		5		1			
ELBERT	2						1									3		1
FREMONT					1	3	2	2	5	3	9	16	9	2	4		1	1
GARFIELD	190	251	245	417	585	799	1,005	1,304	1,689	765	905	877	495	391	361	174	161	188
GUNNISON			1		1	1	9	5	1	4	5	2	4	1	2	4	1	3
HUERFANO	25	14	19	3	6	2			2		2	2	2	1	4	1		
JACKSON	24	2	4	10	10		3	3	12	1	8	7		7	7		24	7
JEFFERSON								2										
KIOWA	8	16	2	4	2	1	7	7	2	5	15	14	10	12	3	2		
KIT CARSON				1	1	6	2	1	14	3	1	1	3	1	2			1
LA PLATA	99	135	118	110	103	104	108	179	199	131	67	54	3	10	40	38	43	16
LARIMER	1	1				1		4	8	1	28	2	10	4	1	9	3	25
LAS ANIMAS	202	286	205	221	296	384	413	326	222	14	7	78	1		1			
LINCOLN	2	2	1	5	2	2	1	2	18	11	14	21	23	41	41	12	2	3
LOGAN	4	6	3	3	2	11	12	12	3	7	3	9	13	4	6			
MESA	2	12	12	13	25	89	156	209	225	14	11	41	4	11	17	77	4	71
MOFFAT	18	23	25	28	19	40	60	42	26	18	15	32	26	27	3	6	3	
MONTEZUMA	2	3	5	5	1	7	2	4	22	10	3	8	18	12	8	1		2
MONTROSE		3		2	1			1	2		1							
MORGAN	9	8	1	7	5	5	3	1	1	2	3	2	3	1	3	1		
PARK											2							
PHILLIPS	1			6	10	11	4	35	18	2	42	130	48		9			
PROWERS	2	4	4		5	5	6	3	5	2	3	1				1		
RIO BLANCO	51	82	47	83	92	95	107	95	205	118	107	71	54	36	43	17		4
RIO GRANDE														1				
ROUTT	5	12	1		1	6	3	2		2	1	2	4	2	2			
SAN MIGUEL	6	9	10	19	28	13	20	17	5	1	2	2			2			
SEDGWICK				1	2	1	1	5			3	8	3			1		
WASHINGTON	15	12	24	29	65	34	23	14	11	2	2	4	1	9	7	2	6	6
WELD	237	403	406	522	632	718	931	1,222	1,312	878	1,209	1,671	1,459	1,314	1,558	1,114	749	895
YUMA	42	162	108	106	144	597	593	445	336	27	213	106	16	13	39			
TOTAL	992	1,472	1,254	1,630	2,092	3,004	3,542	4,048	4,459	2,071	2,779	3,216	2,297	1,978	2,240	1,477	1,004	1,261

ALL COUNTIES





Active Wells by County and Status as of September 1, 2017

COUNTY	Drilling	Domestic	Injecting	Producing	Shut In	Temp Aband	Waiting on Completion	Active Storage	Total Active Wells
ADAMS	24		6	739	168	16	1	12	966
ARAPAHOE	10	1	3	117	27	11		44	213
ARCHULETA	1	5	1	111	12	12	6	1	149
BACA			14	99	20	12		56	201
BENT		1		26	7	3			37
BOULDER				270	39	1			310
BROOMFIELD				87	6				93
CHEYENNE			42	308	23	43	1		417
CROWLEY									0
DELTA				4	12		1		17
DENVER				45	3	1	3		52
DOLORES	1		2	31	6	1			41
EL PASO		1				1			2
ELBERT	1			67	3	3		1	75
FREMONT	3	3		57	8	7	2		80
GARFIELD	194	2	43	10,689	214	85	110	1	11,338
GUNNISON	5		2	33	7		3		50
HUERFANO			1	35	5	6			47
JACKSON	19		24	112	47				202
JEFFERSON				1	1		1	3	6
KIOWA			11	98	13	2	2		126
KIT CARSON		1	2	11		2			16
LA PLATA	5	7	33	3,084	135	27	3	34	3,328
LARIMER	29	2	21	165	41	21	1		280
LAS ANIMAS	1	4	18	2,706	57	116	12	21	2,935
LINCOLN	4	1	12	93	9	3			122
LOGAN			25	103	24	32		31	215
MESA	46	1	12	925	111	24	9	11	1,139
MOFFAT	1		11	445	67	37	6		567
MONTEZUMA	1	1	7	117	26	15		1	168
MONTROSE								1	1
MORGAN			14	77	99	34		81	305
OURAY		1				1			2
PARK									0
PHILLIPS			4	263	3	2			272
PITKIN								10	10
PROWERS				23	4	1			28
RIO BLANCO	31	3	261	2,138	309	137	7	2	2,888
ROUTT		2		26	10	3			41
SAN MIGUEL	1			69	45	14			129
SEDGWICK	2	1	1	12	4		2		22
WASHINGTON	7		23	376	45	8	1		460
WELD	1,157	1	60	14,930	6,831	554	51	5	23,589
YUMA	2	8	23	3,735	87	7	12	1	3,875
Totals	1,545	46	676	42,227	8,528	1,242	234	316	54,814



Monthly Statistics as of August 2, 2017

Page 1 of 2

YEAR and MONTH	Baker - Hughes Rig Count	Permits										Well Spud Notices	Active Drilling Permits	Active Wells	Public Visits		
		Drilling		Recompletion		Injection		Pits		Locations					Data	Office	Internet
		Rcvd	Apvd	Rcvd	Apvd	Rcvd	Apvd	Rcvd	Apvd	Rcvd	Authz						
2011 TOTAL		4,709	4,659	325	320	44	32	190	192	2,382	2,267	3,216			187	1,294	1,337,865
2012 TOTAL		3,982	3,773	154	168	63	44	114	84	1,373	1,293	2,297			159	1,305	1,324,443
2013 TOTAL		4,481	4,028	74	72	67	63	67	106	1,268	1,213	1,977			92	1,456	511,734
2013 JAN	53	538	331	6	0	3	5	6	8	176	124	141	5,060	50,265	9	108	47,406
FEB	56	260	455	10	5	2	3	4	11	91	141	139	5,250	50,372	7	102	40,649
MAR	57	344	241	5	9	3	8	15	6	129	84	173	5,093	50,540	9	133	43,019
APR	61	331	333	6	5	5	5	6	8	146	117	161	4,925	50,687	3	132	46,459
MAY	61	350	342	8	6	6	6	10	7	106	142	162	5,110	50,810	3	123	45,215
JUN	62	349	273	2	8	8	8	5	3	114	85	145	5,273	50,909	8	122	41,015
JUL	68	864	304	11	4	9	2	9	5	218	91	160	5,070	51,091	7	154	45,558
AUG	69	232	291	6	4	3	2	4	1	35	76	206	5,200	51,255	20	130	44,722
SEP	69	212	362	9	5	10	9	3	19	56	109	164	5,185	51,407	5	105	41,256
OCT	72	319	376	5	9	7	5	1	8	67	88	238	4,967	51,598	5	135	45,151
NOV	69	346	353	4	13	7	4	2	27	67	85	163	5,141	51,711	12	119	38,903
DEC	64	336	367	2	4	4	6	2	3	63	71	125	5,129	51,737	4	93	32,381
2014 TOTAL		4,223	4,191	37	34	48	48	82	45	1,113	1,115	2,240			130	1,682	521,685
2014 JAN	62	278	232	3	2	3	4	14	8	90	43	171	4,926	51,840	1	90	46,150
FEB	61	284	297	6	4	1	1	3	1	91	94	149	5,051	51,847	12	113	43,408
MAR	62	367	329	4	6	7	1	6	6	110	88	183	4,997	51,952	16	140	46,620
APR	63	276	317	2	3	2	5	8	3	89	99	173	4,897	52,060	11	188	45,558
MAY	65	458	383	2	2	3	1	6	7	83	94	179	4,923	52,202	18	131	42,365
JUN	67	429	377	3	0	6	7	5	2	134	92	223	4,924	52,337	10	156	42,518
JUL	69	272	446	2	5	3	11	8	5	97	126	181	4,955	52,431	7	166	45,481
AUG	73	376	259	4	3	4	4	3	4	111	87	218	5,060	52,582	8	145	42,431
SEP	76	412	304	2	3	3	1	20	1	116	81	214	5,006	52,694	14	175	43,577
OCT	76	459	371	3	2	9	2	4	6	93	109	191	4,827	52,785	19	138	46,030
NOV	73	326	479	5	2	5	4	4	0	54	103	167	5,171	52,947	8	96	39,583
DEC	69	286	397	1	2	2	7	1	2	45	99	191	5,236	53,054	6	144	37,964
2015 TOTAL		3,505	2,988	33	33	28	54	38	17	581	557	1,467			73	1,489	339,080
2015 JAN	64	349	316	3	1	2	9	3	1	60	43	190	5,060	53,195	17	114	41,502
FEB	49	324	161	3	2	5	6	9	0	73	28	116	4,750	53,309	4	117	38,245
MAR	38	246	294	1	6	1	5	7	5	44	70	166	4,983	53,414	6	146	42,513
APR	37	194	165	3	1	2	5	1	2	46	37	94	4,854	53,456	1	125	39,559
MAY	39	324	190	1	4	2	6	8	0	41	44	108	4,632	53,535	5	113	unavailable
JUN	38	327	281	4	1	0	5	2	1	52	49	143	4,726	53,608	5	138	unavailable
JUL	38	373	250	4	2	2	1	0	0	57	48	120	4,663	53,706	7	145	26,975
AUG	37	289	300	2	6	3	0	5	5	32	46	121	4,847	53,766	2	109	30,674
SEP	33	242	312	3	1	1	7	0	3	59	49	100	4,953	53,806	4	146	31,642
OCT	30	372	223	2	2	3	1	1	0	54	51	108	4,694	53,898	12	119	33,199
NOV	31	190	254	6	2	4	3	1	0	21	49	116	4,765	53,719	7	105	29,112
DEC	25	275	242	1	5	3	6	1	0	42	43	85	4,594	53,652	3	112	25,659
2016 TOTAL		3,395	2,832	20	16	45	37	62	19	417	353	1,004			41	1,339	325,117
2016 JAN	22	250	126	1	0	3	5	0	0	34	9	71	4,528	53,698	2	118	30,105
FEB	20	205	227	3	0	3	2	44	2	31	39	68	4,599	53,723	8	115	28,611
MAR	17	268	268	0	0	2	2	5	0	34	36	70	4,530	53,710	3	132	30,902
APR	17	185	224	0	1	3	4	0	0	24	39	63	4,511	53,774	4	113	27,914
MAY	16	353	217	0	2	3	1	1	1	33	24	85	4,464	53,749	4	106	26,778
JUN	16	315	233	0	0	2	3	2	1	38	30	67	4,456	53,651	2	80	27,284
JUL	20	268	249	5	0	4	4	6	6	31	30	87	4,344	53,724	5	91	24,151
AUG	21	141	150	1	3	5	3	2	0	33	23	97	4,436	53,740	1	106	29,192
SEP	19	366	270	0	2	4	2	0	6	29	24	72	4,522	53,817	4	154	25,698
OCT	19	334	297	6	1	6	3	1	0	42	29	89	4,601	53,903	1	135	25,893
NOV	20	368	304	3	3	3	3	0	1	40	45	131	4,566	53,993	2	97	25,140
DEC	26	342	267	1	4	7	5	1	2	48	25	104	4,477	54,036	5	92	23,449
2017 TOTAL		3,313	2,130	26	21	25	25	7	56	360	291	1,075			21	714	212,553

Abbreviation Key: Rcvd = Received, Apvd = Approved, Authz = Authorized



Oil and Gas Staff Report

September 11, 2017

31

Monthly Statistics as of August 2, 2017

Page 2 of 2

YEAR and MONTH	Well Oper Change	Operators		Bonds			Claim			Hearings		Enforcement			Remediation Projects		Inspections		
		New	Inactive	Release	Blnt	Replace	Ind	Blnt	Apps.	Orders	NOAVs	AOCs	OFVs	Cmplt	Spills	Rcvd	Comp	Wells	Locations
2011 TOTAL	6,743	33	31	79	44	43	4	4	403	349	230	10	19	247	527	726	536	12,394	-
2012 TOTAL	7,546	47	37	70	46	33	3	0	482	396	157	9	2	244	402	690	641	19,071	12,670
2013 TOTAL	7,192	49	21	48	26	20	0	0	571	522	237	37	3	201	568	507	541	23,551	13,370
2014 TOTAL	10,297	55	28	42	39	13	1	1	698	598	179	43	4	243	786	596	502	34,208	18,982
2015 TOTAL	4,458	59	27	27	45	31	3	3	738	645	173	57	8	358	623	516	601	38,957	19,198
2016 TOTAL	6,481	38	28	37	41	23	9	5	473	397	107	43	7	261	528	461	600	43,134	23,123
2017 TOTAL	3,673	25	18	11	23	10	1	5	509	436	48	27	2	578	356	281	154	20,072	10,701

Abbreviation Key: Ind = Individual, Blnt = Blanket, Apps = Application for Hearing, NOAV = Notice of Alleged Violation, AOC = Administrative Order of Consent, OFV = Order Finding Violation, Cmplt = Complaint, Comp = Completed