



COLORADO

Oil & Gas Conservation
Commission

Department of Natural Resources

Staff Report

for October 30, 2017

Top Stories

◆ Flowline Rulemaking Begins in December

On August 22, Governor Hickenlooper announced seven policy initiatives developed during the State's recent review of oil and gas operations. The COGCC will propose two of the changes, including strengthening COGCC flowline regulations and enhancing the 8-1-1 One Call program, through a rulemaking process.

COGCC Staff have begun drafting amended rules related to oil and gas flowlines to be considered by the Commission at its scheduled December Hearing. Amendments to the current rules may include added or changed definitions, and replacing the word *pipeline* with *flowline* throughout the rules in accordance with Commission Order 1R-103.

The COGCC is also considering changes to the 1100 Series Flowline Rules regarding the following nine topics:

- Adding applicable installation or design standards for flowlines;
- Including integrity monitoring standards and testing regimes;
- Addressing integrity management for flowlines that operate at atmospheric pressure;
- Removing the low pressure exemption from pressure testing and requiring integrity management;
- Improving flowline integrity management record keeping and reporting requirements in the event of an integrity failure;
- Improving regulatory oversight of flowlines that are designed to transport fluids from a wellsite to a remote production facility location;

- Incorporating requirements from the COGCC's May 2, 2017 Notice to Operators;
- Improving requirements for operators' membership in the Utility Notification Center of Colorado (UNCC or 8-1-1); and
- Improving flowline abandonment requirements.

◆ Small Operator Meeting in Durango

The COGCC hosted a small operator meeting on October 12 in Durango. COGCC Staff provided presentations and answered questions from oil and gas operators. Staff presentations included stormwater Best Management Practices or BMPs and a discussion of the Notice to Operators for Delayed Operations led by Reclamation Supervisor Denise Arthur.

Field Inspection Supervisor Steve Labowski presented critical field issues, and Environmental Protection Specialist Jim Hughes explained Spill and Release Reporting. The team also offered helpful hints about permitting and using the Colorado Oil and Gas Information System (COGIS) database.

Program presentations are available on the COGCC website by first selecting "Regulation," then "Operator Guidance," and finally the link under the "Small Operator Meetings" box in the lower right corner, or by using this link:

http://cogcc.state.co.us/reg.html#/opguidance/small_operator_meetings_archive

The meeting objective was to familiarize and facilitate in person discussion between COGCC Staff and small operators to address small operator concerns and questions. Overall, these meetings help to ensure compliance with COGCC regulation.



◆ Flowline Abandonment in Town of Frederick

COGCC Engineering Integrity Staff worked with the Town of Frederick and Foundation Energy to complete the abandonment of flowlines exposed at a stream crossing in the Frederick Recreation Area. The project involved communicating and coordinating the following work with both the operator and the Town:

- Locate and mark all utilities in the area using the 811 system;
- Identify the routes of the oil and gas flowlines and expose the endpoints; and
- Abandon the oil and gas flowlines per COGCC Rule 1103.

Foundation properly abandoned the flowlines, sealed the ends with cement, and backfilled areas below grade. The operator completed the project with an emphasis on public safety and with minimal disruption to ongoing open space activities at the park.

◆ 2016 Annual Report from Colorado 811 Cites Collaboration with the COGCC

Colorado 811 released its 2016 Annual Report and commended the COGCC for its outreach efforts supporting flowline safety practices in the oil and gas industry:

Another contributing factor to the increase in membership was the collaboration with the Colorado Oil and Gas Conservation Commission (COGCC). The COGCC referred 124 companies to Colorado 811. Of these, 98 registered as Tier One Members and 26 registered as Tier Two Members.

◆ Department of Natural Resources (DNR) Colorado Combined Campaign Chili Cook-Off

DNR's annual workplace giving launch event was held October 11 and had the following results: First Place - Mark Schlagenhauf, COGCC, "Szechuan Dragon Chili;" Second Place - Nick Massie, Colorado State Land Board, "Everything But The Beans;" Third Place (tie) - Johnie Abad, DNR Executive Director's Office (EDO), "Pork Green Chili Hot;" and Bill Levine, EDO, "Turkey Chili." A significant donation to the Boy Scouts Rocky Mountain Council was made from the proceeds.

◆ Local Government Liaison (LGL) Program Update

COGCC LGL Marc Morton provides valuable outreach and support to inquiries and information requests from local governments, the public, operators, and other stakeholders interested in the regulation of oil and gas in Colorado. Marc manages the Local Governmental Designee (LGD) participation and training program and is available upon request to provide customized training to local governments and answer questions regarding local government involvement with the COGCC.

If you represent a local government that has recently opted to participate in the voluntary LGD program or are an LGD that is new to the role, it is highly recommended you contact Marc to schedule an LGD training and orientation meeting. Local governments considering participation in the unique and valuable program are also welcome to schedule a training or orientation session.

LGD trainings and orientations offer information on the use of various tools available to the LGD to enhance their understanding of oil and gas regulation in Colorado. Trainings are customized to each user, but typically provide an overview of oil and gas exploration and production, an overview of the COGCC regulatory structure, an overview of COGCC's well and location permitting processes, effective LGD and public comment submittal on pending location and drilling permits, an overview of public participation opportunities, and hands on use of the COGCC website.

A list of the LGL outreach and public involvement activities conducted since the last staff report is included in the Public Outreach section below.

Public Outreach

➤ *Outreach by the Director and Other Staff*

- On August 31, Engineering Integrity Supervisor Mark Schlagenhauf, P.E. and Integrity Engineer Ellice Hazard attended a training pipeline safety and awareness sponsored by Colorado 811 in conjunction with Paradigm Liaison Services. The training focused on pipeline safety and awareness, including critical emergency response for threats against our national pipeline system.

The event included speakers from law enforcement agencies and the Federal Pipeline Safety Regulator PHMSA (Pipeline and Hazardous Materials Safety Administration). A number of case studies of threats to energy infrastructure were reviewed and a table top exercise was conducted.

- From September 19 to 21, Engineering Integrity Inspector Joe MacLaren attended the third annual Colorado 811 Damage Prevention Safety Summit. The Colorado Damage Prevention Safety Summit is the leading Colorado conference focused on improving safety and utility damage prevention across the state.

The event brings together safety representatives, utility owners and operators, regulators, and industry experts to provide practical and informative learning sessions.

- On October 18, Senior Data Analyst Ken Robertson was asked to serve on a panel of experts at the Professional Petroleum Data Management's (PPDM) annual Denver Data Management Workshop. This year's workshop focused on Digital Transformation and Data Governance.

The topic of the panel was Managing Data Through the E&P Life Cycle. The workshop was attended by data analysts from operators, consultants, and regulatory agencies.

➤ *Outreach by the LGL*

- On September 11 in Durango, Marc Morton coordinated a post-COGCC Commission Hearing meeting for area LGDs, area county commissioners, local government staff, Commissioners, and COGCC Staff.
- On September 20, Marc attend the bi-monthly meeting of the Aurora Oil and Gas Advisory Committee meeting in Aurora.
- On September 26, Marc met in Fort Collins with City of Fort Collins staff to discuss their ongoing concerns with area oil and gas operations and the planned timeline for the COGCC's upcoming Flowline Rulemaking.
- On October 5, Marc traveled to Grand Junction and provided an LGD orientation training to the new City of Grand Junction LGD and a representative of City staff.
- On October 5, Marc traveled to Rifle and attended the monthly Garfield County Energy Advisory Board (EAB) meeting.
- On October 12, Marc coordinated the Southwest Colorado Gas and Oil Regulatory Team (GORT) meeting in Durango.
- On October 12, Marc Morton, Field Inspection Manager Margaret Ash, and Field inspector Steve Labowskie met with recently appointed Dolores County LGD Steve Garchar in Durango to discuss public concerns about area oil and gas operations.

Regional Activities

➤ *Northwest Colorado*

◆ Northwest Colorado Oil and Gas Forum

The remaining Northwest Colorado Oil and Gas Forum (NWF) meeting in 2017 is scheduled for December 7. The meeting will be held in Rifle at the Colorado Mountain College - Rifle Campus / Clough Auditorium (3695 Airport Road, Rifle) between 9:00 a.m. and 12:00 p.m.

Meeting agendas are posted to the COGCC website approximately two weeks prior to each meeting. The COGCC welcomes suggestions and input for speakers, topics, and meeting format and venue. Meeting information is emailed to those on the email distribution list.

NWF meetings are open to the public, and public comment is welcomed as part of each meeting. Past presentations (dating back to 2006) are available from



<http://cogcc.state.co.us/library.html#/forums>

All parties wishing to be placed on the next meeting agenda or added to the email distribution list for announcements should contact Marc Morton at (303) 894-2100, ext. 5132 (direct), (720) 415-4959 (mobile), or by email:

marc.morton@state.co.us

◆ Project Rulison

The 5-year revision of the Project Rulison Sampling and Analysis Plan (RSAP) has been completed. Major revisions to the plan included re-defining the exterior buffer zones to align with hydrogeologic flow patterns instead of more arbitrary circular rings in the original plan.

Meetings were conducted to encourage communication and collaboration between the COGCC, operators, the U.S. Department of Energy, the Colorado Department of Public Health and Environment (CDPHE), and other stakeholders. Comments were received from stakeholders and incorporated into the final RSAP. This document is in the COGCC's Area Reports Library and can be found at the following link:

<http://cogcc.state.co.us/documents/library/AreaReports/PiceanceBasin/Rulison/Rulison%20Sampling%20and%20Analysis%20Plan%20Revision%204%20062217.pdf>

The email for Project Rulison submittals is

DNR_rulison.submittal@state.co.us

◆ Project Rio Blanco

The email for Project Rio Blanco submittals is

DNR_rioblanco.submittal@state.co.us

➤ Southwest Colorado

◆ Fruitland Formation Outcrop Mitigation and Monitoring Projects

South Fork Texas Creek Mitigation Site - La Plata County. Regularly scheduled operations and maintenance are being performed at the South Fork Texas Creek (SFTC) site by LTE, the COGCC's contractor. Since May 2009, the system has collected 21,373 Mcf of methane and generated 249,111 kWh of surplus electricity.

At all eleven 3M/4M monitoring well locations, annual site inspection and routine maintenance visits are currently being performed by COGCC Staff. In March, a new transducer and cable was installed in the Wagon Gulch #1 monitoring well. The lower transducer had become unresponsive, and upon further inspection, it was discovered that the rugged cable had also been compromised. As the monitoring well network ages, more system maintenance and repairs are anticipated.

◆ Gas and Oil Regulatory Team (GORT) Meeting

The GORT meeting schedule for 2018 is now in development and will be provided in the December Staff Report.

GORT meeting agendas will be posted to the COGCC website approximately one to two weeks prior to each meeting, and emailed to those on the email distribution list. GORT meetings are open to the public, and public comment is held as part of each meeting. The COGCC welcomes suggestions and input for speakers, topics, and meeting format and venue.

All parties wishing to be placed on the next meeting agenda or added to the distribution list for announcements should contact Marc Morton at (303) 894-2100, ext. 5132 (direct), (720) 415-4959 (mobile), or by email:

marc.morton@state.co.us

Variances

◆ Augustus Energy Partners II LLC

On September 15, per Rule 303.i.(2), Director Lepore issued the refile permit for the Augustus

Energy Partners II LLC BHR Fed J22-15-397-2RH well (API #103-11953) prior to the end of the 20 day comment period. The operator requested issuance per Rule 303.i.(2) due to exigent

circumstances. Augustus Energy had a rig contract that required spudding this well as soon as possible. In accordance with COGCC procedures, Augustus obtained waivers of the 20 day comment period from the Surface Owner and the Rio Blanco County LGD.

◆ **Kerr-McGee Oil & Gas Onshore LP**

On September 25, per Rule 303.i.(2), Director Lepore issued the permits for the Kerr-McGee Meguire 1 (API #123-45530) and Meguire 2 (API #123-45531) and location (Location ID #331104) prior to the end of the 20 day comment period. The operator requested issuance per Rule 303.i.(2) due to exigent circumstances. These wells were required to perform subsurface plugging and abandonment of two horizontal wells on the Adamson location (Location ID #442380). Both Adamson horizontal wells had fish downhole. In accordance with COGCC procedures, Kerr-McGee obtained waivers of the 20 day comment period from the Surface Owner and the Weld County LGD.

◆ **Pioneer Natural Resources USA Inc. (Pioneer)**

Pioneer (#10084) received a variance from select parts of Rule 1004.a for the Majestic Canyon #44-15 (05-071-06639). The property owner, Anthony Tamberelli (Majestic Canyon Ranch), requested that that the access road remain to allow access

to his property. Director Lepore approved the variance on July 27.

Pioneer (#10084) received a variance from certain aspects of Rule 1004.a for the Jill 32-15 (05-071-06732) regarding re-contouring and revegetation of the location. The property owner, Anthony Tamberelli (Majestic Canyon Ranch), requested that the location not be completely re-contoured. The intended use is for development of the property. Director Lepore approved the variance on July 27.

Pioneer (#10084) received a variance from certain aspects of Rule 1004.a for the Cash 33-10 (05-071-08047) regarding re-contouring the right of way and the location. The property owner's request was to allow vehicle access and later development. Director Lepore approved the variance on July 27.

Pioneer (#10084) received a variance from select parts of Rule 1004.a and Rule 1004.b for the Ricki J 31-22 (05-071-09651). The landowner requested that the right of way and location not be completely re-contoured, that a road culvert remain in place and that the pit remain open. This was an abandoned location; Pioneer did not drill the well or use the pit. The stated intended use from the surface owner is to utilize the flat space and provide access to the property. Director Lepore approved the variance on July 27.

Admin / Organization / Other

◆ **New Hearings and Regulatory Affairs Manager**

Julie Prine is the new Hearings and Regulatory Affairs Manager. Julie comes to the COGCC from the City of Denver, Department of Human Services, where she served as the Deputy Chief of Staff. She has experience in legislative compliance, regulatory affairs, and strategic planning. Julie graduated from the University of Houston with a law degree and is a member of the Colorado Bar Association.

◆ **New NOAV Specialist**

Kira Gillette joined the COGCC as the NOAV Specialist in September. Previously, Kira worked

as an Air Permit Engineer in the Oil and Gas unit at CDPHE. Before coming to Colorado, Kira worked as an Air Permit Engineer on the Frac Sand Mining team at the Minnesota Pollution Control Agency. Kira graduated from the University of Wisconsin - Madison with a bachelor's degree in Civil and Environmental Engineering.

COGCC organizational charts can be found on pages 8-11. For contact information, please go to the COGCC homepage and select "Contact Us" in the upper right corner of the page.



◆ Plugging and Reclaiming Orphaned Wells (PROW) Project Updates

The COGCC performed field work for the Orphan and Distressed Operator (ODO) Program projects described below since September 11. These projects relate either to “Orphan” locations or wells for which there is no known responsible party, or they relate to “Distressed Operator” projects in which surety claim funds are available.

The ODO project summary tables for Fiscal Year 2017-18 (FY18) are found on pages 12-16. The projects are sorted first by county and then by the project name. The field work described below pertains to ongoing projects or to recently completed projects. The agency has prioritized the ODO work planned for FY18, although each project is subject to change as new conditions arise during the year.

The **Juhl #1 Project** is located in Boulder County. Final invoices arrived for off-site disposal of fluids recovered from the well during plugging in FY17.

The **CM Production Project** began with Commission Order 1V-581. The project involves 28 locations in Jackson, Logan, and Washington Counties. The original operators drilled a total of 31 wells, and the project involves many single-well pads and two multi-well pads. Recent FY18 work included biannual water sampling; soil sampling and analysis at one well pad; and loading, hauling, and off-site disposal of produced water from a central tank battery at Lone Pine Field in Jackson County.

The **Ranchers Project** began with Commission Order 1V-526. The project involves two single well locations in Larimer County. Both wells were plugged and abandoned prior to FY17. Ranchers Exploration Partners, LLC drilled one of the two wells on the closed Johnston Landfill, which ceased business operations in 1982. Recent FY18 work included stormwater BMP maintenance and weed control.

The **DB Orphan #8 Project** is located in Mesa County. Recent FY18 work included installation of a wind turbine vent on the resident's soil vapor extraction system while the system is shut down for the winter. The SVE blowers are not

operating while the residents are not occupying the premises during the winter.

The **Redwine Project** began with Commission Orders 1V-470 and 1V-494. The project involves one location in Montrose County. Most project work was completed in prior fiscal years. Recent FY18 work included stormwater BMP maintenance and weed control.

◆ Colorado Oil and Gas Information System (COGIS) Projects, Updates and Changes

Electronic Form (eForm) Submissions

The COGCC uses 41 types of forms to authorize oil and gas operations, inspect and monitor ongoing operations, and receive reports of operations. Of those 41 forms, 21 are currently available for electronic submittal through the eForms system.

The development team continues to work on the eForm conversion of existing forms. Currently, four forms are in various stages of development: Forms 11, 12, 14, 14A, and 43. In addition, the development team updates eForms with improvements requested by Staff and as required by rule revisions.

In 2017, industry has electronically submitted 98 percent of the forms available in eForms. There are 857 operator users of eForms and 334 individual users. For any operator not currently enrolled in eForms, instructions for starting the process can be found on the COGCC website at:

<http://cogcc.state.co.us/Announcements/COUAINformation.pdf>

Applications and Location Assessments

The public can make comments on all submitted Drilling Permit Applications (Form 2s) and Location Assessments (Form 2As) through the eForm system. Simply go to the COGCC website and click on the menu option “Permits” or

<http://cogcc.state.co.us/permits.html#/permits>

On the “Permits Search” page, three search options are available. The first option, “All Pending Permit Applications,” is used for public comments. When the results are displayed for “Pending Applications,” a user can click on the



document number hyperlink in the “Status” column, which logs him or her to the eForms application.

Once the page is displayed with the selected document, the user can select the “Comment” button to make a comment on that particular form.

Data Access

The COGCC’s database is a comprehensive repository of Colorado’s oil and gas data. The information in the database is available to the public through interactive search tools and a variety of file downloads on the website. Users of bulk data come from many different sectors of the community, including academia, oil and gas operators, environmental groups, government agencies, and the media.

In June, Staff released Flowline inventory data from the May 2 NTO.

All the data file downloads are available at:

<http://cogcc.state.co.us/data2.html#/downloads>

New Download

Flowline NTO Imported Data

Current Data File Downloads

- Complaints
- Field Operations
- GIS Shapefiles (12 files)
- Mechanical Integrity Tests
- Notices of Alleged Violation
- Production Data (1999 - present)
- Spacing Orders
- Spills and Releases
- Water Well Data

Future Data File Downloads

- Enforcement Orders (OFVs and AOCs)
- Underground Injection Control (UIC) Data

◆ December 2017 Hearing Docket

The docket for the December 2017 hearing will be available shortly after the October hearing. Hearing dockets are available on our website by

clicking on “Regulation” in the menu and then “Hearings”:

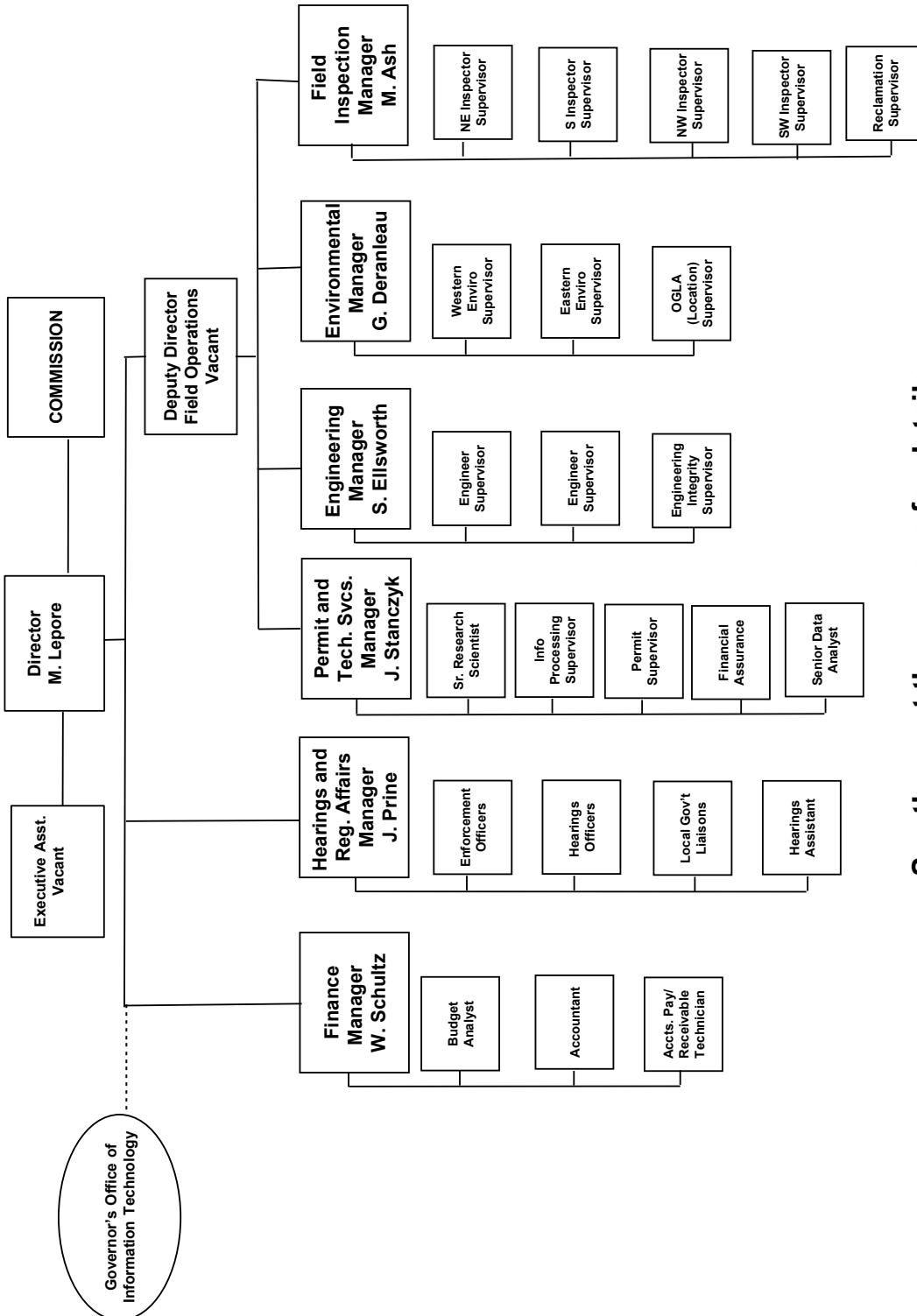
<http://cogcc.state.co.us/reg.html#/hearings>

Links to the notices and hearing applications are available from the Docket Number and Applicant, respectively, by clicking the December Gen_Docket link. To sign up for email notification of hearing notices and applications, please see the announcement and instructions on the homepage of the COGCC website.



Organizational Charts and Statistics

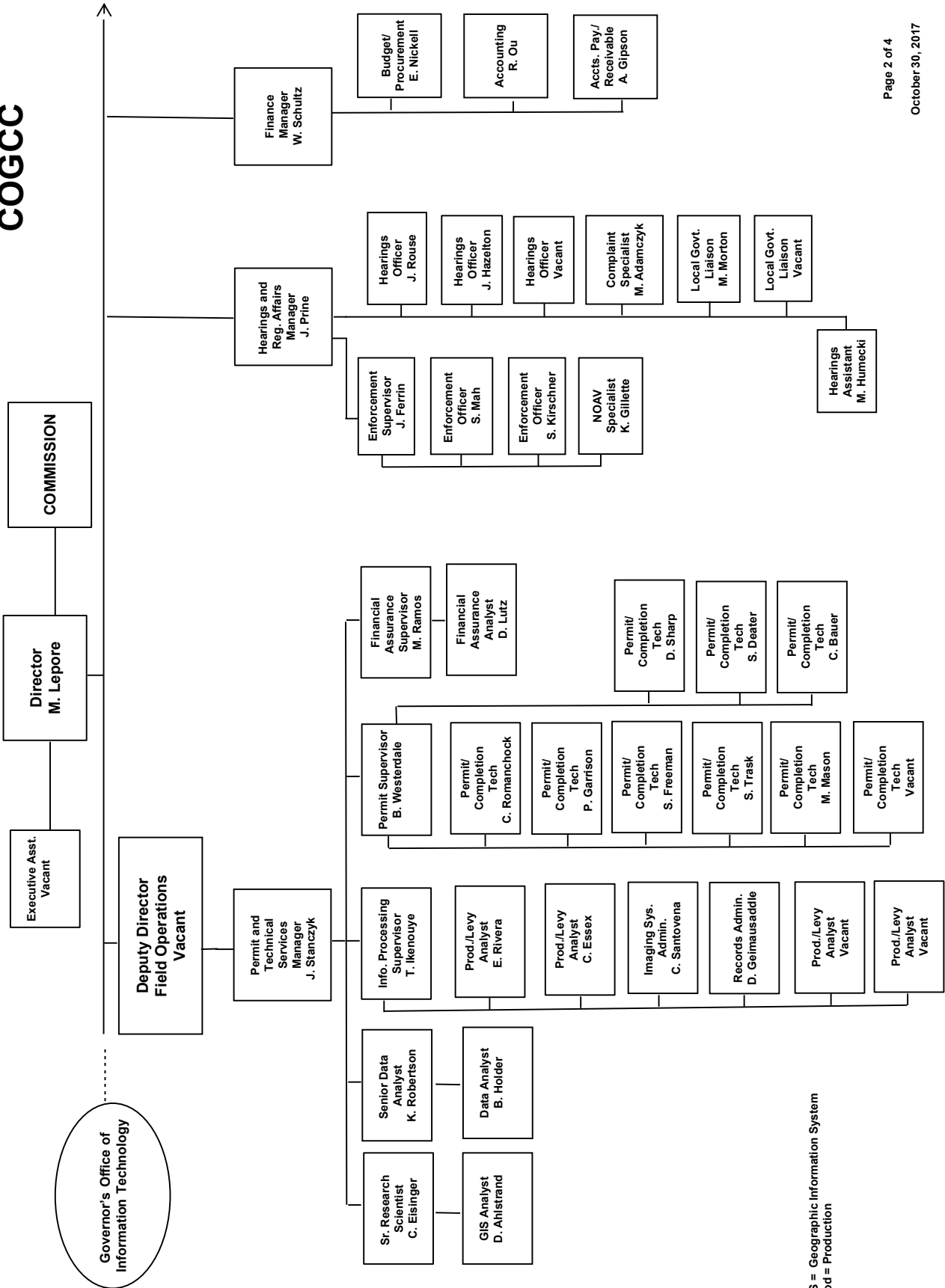
COLORADO OIL & GAS CONSERVATION COMMISSION



See the next three pages for details



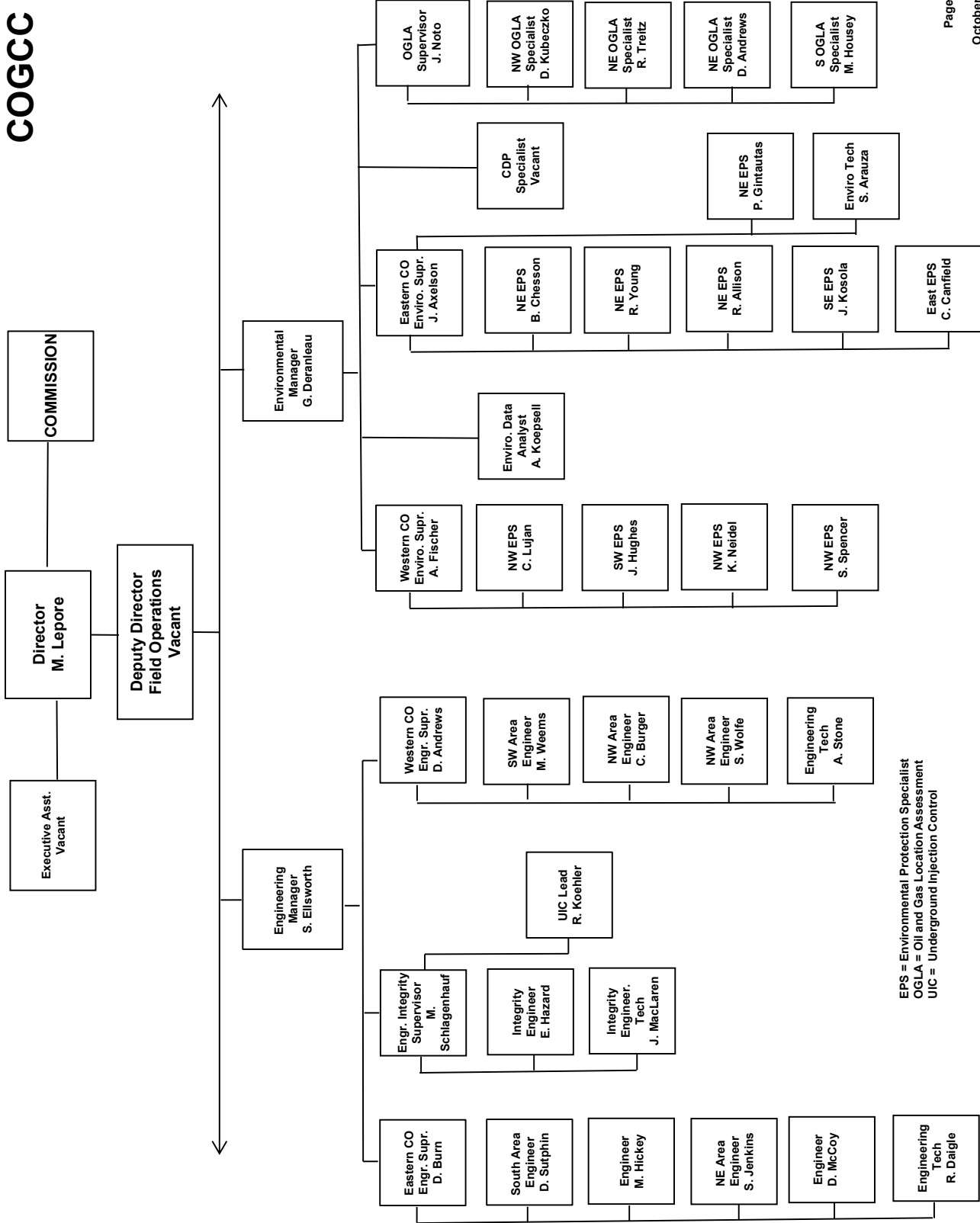
COGCC



GIS = Geographic Information System
Prod = Production



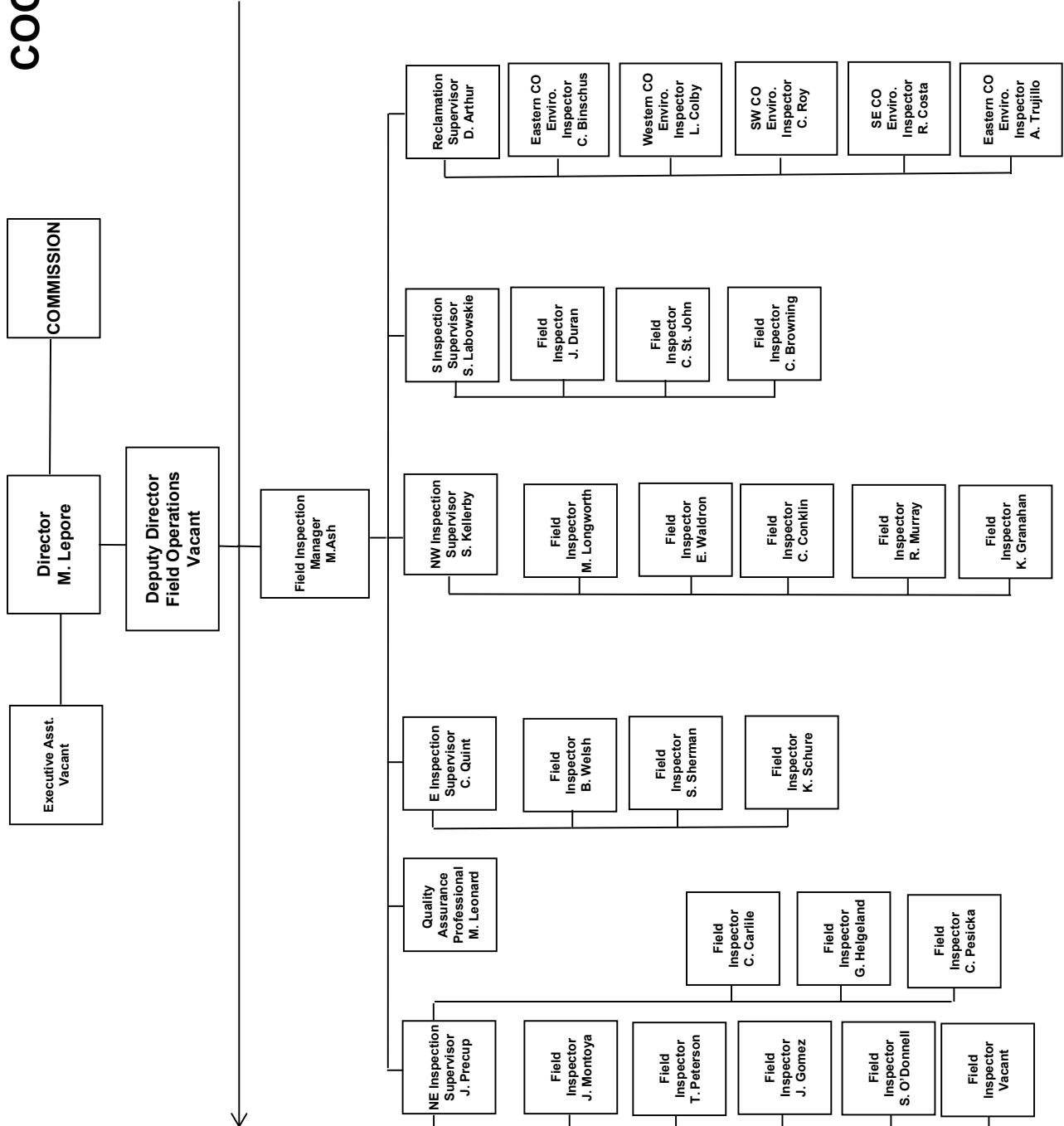
COGCC



EPS = Environmental Protection Specialist
 OGLA = Oil and Gas Location Assessment
 UIC = Underground Injection Control



COGCC





**PLUGGING AND RECLAIMING ORPHANED WELLS (PROW) PROGRAM
FISCAL YEAR 2017-18**

BONDS AND OTHER SURETY CLAIM STATUS FOR ACTIVE FY2017-18 "BOND CLAIM" PROJECTS

| Project | Order Number(s) | Total Bond Claim | Amount Spent | | Remaining Bond Balance |
|----------------------------------|-----------------|---------------------|-----------------------|-----------------|------------------------|
| | | | in Prior Fiscal Years | in FY2017-18 | |
| Atom Petroleum Bond Claim | 1V-586 | \$ 60,000 | \$ 797 | \$ 681 | \$ 58,521 |
| Benchmark Energy Bond Claim | 1V-564 | \$ 620,000 | \$ 98,931 | \$ - | \$ 521,069 |
| CM Production Bond Claim | 1V-581 | \$ 67,849 | \$ 13,299 | \$ 1,102 | \$ 53,447 |
| Dolphin Bond Claim | 1V-382 | \$ 55,000 | \$ 55,000 | \$ - | \$ - |
| Huriston, G Everett Bond Claim | 1V-390 | \$ 500 | \$ - | \$ - | \$ 500 |
| Noel Reynolds Bond Claim | 1V-374, 1V-375 | \$ 30,000 | \$ - | \$ - | \$ 30,000 |
| Nolte Bond Claim | 1V-582 | \$ 61,838 | \$ - | \$ - | \$ 61,838 |
| Pine Ridge Bond Claim | 1V-622 | \$ 85,000 | \$ - | \$ - | \$ 85,000 |
| Ranchers Bond Claim | 1V-526 | \$ 63,424 | \$ 63,424 | \$ - | \$ - |
| Red Mesa Holdings Bond Claim | 1V-508 | \$ 72,831 | \$ 12,258 | \$ 3,052 | \$ 57,522 |
| Red Mountain Bond Claim* | 1V-549, SLB | \$ 92,015 | \$ 30,070 | \$ - | \$ 61,945 |
| Redwine Bond Claim | 1V-470, 1V-494 | \$ 30,000 | \$ 30,000 | \$ - | \$ - |
| Texas Tea Bond Claim | 1V-573 | \$ 71,850 | \$ 40,283 | \$ - | \$ 31,568 |
| Vitruvian Exploration Bond Claim | 1V-514 | \$ 30,000 | \$ - | \$ - | \$ 30,000 |
| TOTALS --> | | \$ 1,340,307 | \$ 344,061 | \$ 4,835 | \$ 991,411 |

Note: * Red Mountain Bond Total Claim Amount includes \$24,169 bankruptcy deposit and \$5,000 State Land Board deposit (bond transfer)

ACTIVE TASK LIST (PLANNED OR IN PROGRESS) - FY2017-18

| Work Unit | County | Project and Task | Task Status | Planning Comments |
|-------------|---------|--|-------------|--|
| Reclamation | Adams | Texas Tea Bond Claim: Task 2.2 - Weed Control (maintenance) - Spindle and Sun Fields, | Planned | Reclamation maintenance |
| Engineering | Baca | Horizon Oil & Gas - Midway Field: Task 1 - Flowline Abandonment, Equipment Salvage - 378811, | Planned | Remove meter shed and abandon flowline |
| Reclamation | Baca | Horizon Oil & Gas - Midway Field: Task 2 - Reclamation (initial work), Stormwater BMPs (maintenance), Re-Seeding | Planned | Reclaim location |
| Reclamation | Fremont | Pine Ridge Bond Claim: Task 4 - Re-Seeding (maintenance), Weed Control (maintenance) - 382573, | Planned | Reclamation maintenance |
| Reclamation | Fremont | Pine Ridge Bond Claim: Task 5 - Re-Seeding (maintenance), Weed Control (maintenance) - 419495, | Planned | Reclamation maintenance |



| ACTIVE TASK LIST (PLANNED OR IN PROGRESS), cont. | | | | |
|--|-----------|---|-------------|---|
| Work Unit | County | Project and Task | Task Status | Planning Comments |
| Environmental | Jackson | CM Production Bond Claim: Task 1.11 - Sampling and Analysis - Lone Pine Field, | In Progress | Biannual sampling and analysis |
| Engineering | Jackson | CM Production Bond Claim: Task 3.1, 3.2 - MIT or Other Well Work, Plug and Abandon - 324599, 057-06011 | Planned | Set downhole plug to TA well and MIT |
| Engineering | Jackson | CM Production Bond Claim: Task 3.1, 3.2 - MIT or Other Well Work, Plug and Abandon - 324630, 057-06093 | Planned | Set downhole plug to TA well and MIT |
| Engineering | Jackson | CM Production Bond Claim: Task 3.1, 3.2 - MIT or Other Well Work, Plug and Abandon - 324626, 057-06069 | Planned | Set downhole plug to TA well and MIT |
| Reclamation | Jefferson | Red Mountain Bond Claim: Task 14 - Stormwater BMPs (maintenance), Weed Control (maintenance) - 324775, | Planned | Reclamation maintenance (in-house Staff and Equipment) |
| Engineering | La Plata | Atom Petroleum Bond Claim: Task 2.5 - MIT or Other Well Work - 325653, 067-06777 | Planned | Repair wellhead seal leak |
| Engineering | La Plata | Noel Reynolds Bond Claim: Task 1 - Plug and Abandon, Cut Casing, Weld Plate, Install Marker - 385368, 067-05448 | Planned | Cut casing, weld plate, and install marker |
| Engineering | La Plata | Noel Reynolds Bond Claim: Task 1 - Plug and Abandon, Flowline Abandonment - 325354, 067-06232 | Planned | Plug well and abandon flowline |
| Environmental | La Plata | Noel Reynolds Bond Claim: Task 2 - Sampling and Analysis, Spill or Remediation, Pit Closure - 325354, | Planned | Collect samples from former pit and close pit or develop remediation plan if needed |
| Engineering | La Plata | Red Mesa Holdings Bond Claim: Task 2 - MIT or Other Well Work, Complaint response, Bradenhead test - 325858, 067-07085 | Planned | Set downhole plugs to TA well and MIT |
| Engineering | La Plata | Red Mesa Holdings Bond Claim: Task 2 - MIT or Other Well Work, Plug and Abandon, Flowline Abandonment - 325267, 067-06033 | Planned | Plug well and abandon flowline |
| Reclamation | La Plata | Red Mesa Holdings Bond Claim: Task 5 - Weed Control (maintenance) - Red Mesa Field, | Planned | Reclamation maintenance |
| Reclamation | La Plata | Red Mesa Holdings Bond Claim: Task 7 - Stormwater BMPs (maintenance) - Red Mesa Field, | Planned | Install and maintain stormwater BMPs |
| Engineering | La Plata | Stewart #1: Task 1 - Engineering Design - 385262, | Planned | Engineering Design: access road for plugging and reclamation |
| Environmental | Larimer | Hall #1: Task 1 - Gas Meter Survey - 385978, | Planned | Gas meter monitoring (in-house Staff and |
| Reclamation | Lincoln | Nolte Bond Claim: Task 1 - Re-Seeding (maintenance), Weed Control (maintenance) - 421302, | Planned | Reclamation maintenance |
| Reclamation | Lincoln | Pine Ridge Bond Claim: Task 1 - Re-Seeding (maintenance), Weed Control (maintenance), Fence Removal - 433053, | Planned | Reclamation maintenance |
| Reclamation | Lincoln | Pine Ridge Bond Claim: Task 2 - Re-Seeding (maintenance), Weed Control (maintenance), Fence Removal - 430683, | Planned | Reclamation maintenance |



| ACTIVE TASK LIST (PLANNED OR IN PROGRESS), cont. | | Project and Task | Task Status | Planning Comments |
|--|-----------|---|-------------|--|
| Work Unit | County | | | |
| Reclamation | Lincoln | Pine Ridge Bond Claim: Task 3 - Re-Seeding (maintenance), Weed Control (maintenance), Fence Removal - 430828, | Planned | Reclamation maintenance |
| Reclamation | Logan | CM Production Bond Claim: Task 3.6 - Stormwater BMPs (maintenance), Weed Control (maintenance) - Cliff Field, | Planned | Weed control |
| Reclamation | Logan | CM Production Bond Claim: Task 3.6 - Weed Control (maintenance) - 312201, | Planned | Weed control |
| Field Operation | Logan | Red Mountain Bond Claim: Task 12 - Equipment Intervention - | Planned | Remove liquids from tanks and heater treater |
| Environmental | Logan | Red Mountain Bond Claim: Task 13 - Sampling and Analysis, Spill or Remediation - 312261, | Planned | Collect samples for analysis to at produced water pit and around other production equipment. |
| Engineering | Logan | Red Mountain Bond Claim: Task 8 - Plug and Abandon, Flowline Abandonment - 312261, 075-08293 | Planned | Plug well and abandon flowline |
| Environmental | Mesa | DB Orphan #8: Task 3 - Soil Vapor Extraction System - 450650, | In Progress | SVE blower shut down while residents are away for winter. Wind turbine ventilator installed. Periodic soil gas meter monitoring is on-going (in-house Staff and Equipment) |
| Engineering | Mesa | DeBeque #1: Task 1 - Plug and Abandon - 390877, 077-05147 | Planned | Plug well |
| Engineering | Mesa | Govt-Baker #1-A: Task 2 - Plug and Abandon - 390877, 077-05145 | Planned | Plug well |
| Engineering | Mesa | Lloyd and Lowell #1: Task 2 - Plug and Abandon - 428669, 077-40017 | Planned | Plug well |
| Engineering | Moffat | Vitruvian Exploration Bond Claim: Task 1 - Flowline Abandonment - 392479, | Planned | Abandon flowlines |
| Engineering | Moffat | Vitruvian Exploration Bond Claim: Task 1 - Flowline Abandonment - 392480, | Planned | Abandon flowlines |
| Reclamation | Moffat | Vitruvian Exploration Bond Claim: Task 2 - Reclamation (initial work) - 392480, | Planned | Reclaim location, planned for Spring 2018 |
| Engineering | Montezuma | Atom Petroleum Bond Claim: Task 1.1 - Plug and Abandon - 313483, 083-06263 | Planned | Plug well |
| Engineering | Montezuma | Atom Petroleum Bond Claim: Task 1.1 - Plug and Abandon - 313628, 083-06653 | Planned | Plug well |
| Field Operation | Montezuma | Atom Petroleum Bond Claim: Task 2.3 - Equipment Intervention, Equipment Salvage - 313483, | Planned | Remove production equipment |
| Field Operation | Montezuma | Atom Petroleum Bond Claim: Task 2.3 - Equipment Intervention, Equipment Salvage - 313628, | Planned | Remove production equipment |
| Engineering | Montezuma | Humiston, G Everett Bond Claim: Task 1 - Plug and Abandon - 313456, 083-06110 | Planned | Plug well |
| Reclamation | Montezuma | State #1-36: Task 2 - Reclamation (initial work) - 313502, | Planned | Reclaim location |
| Reclamation | Montezuma | Wolcott #1: Task 2 - Reclamation (initial work) - 313501, | Planned | Reclaim location |



| ACTIVE TASK LIST (PLANNED OR IN PROGRESS), cont. | | | |
|--|------------|--|--|
| Work Unit | County | Project and Task | Task Status Planning Comments |
| Reclamation | Routt | Pine Ridge Bond Claim: Task 6 - Re-Seeding (maintenance), Weed Control (maintenance) - 316792, | Planned Reclamation maintenance |
| Reclamation | Washington | CM Production Bond Claim: Task 3.6 - Weed Control (maintenance) - Hyde and Tap Fields, | Planned Weed control |
| COMPLETED TASK LIST - FY2017-18 | | | |
| Work Unit | County | Project and Task | Task Status Planning Comments |
| Engineering | Adams | Texas Tea Bond Claim: Task 2.1, 3.1A - Plug and Abandon, Flowline Abandonment - 320139, 001-08204 | Completed Plug well and abandon flowline; cut off casing during landfill expansion |
| Engineering | Adams | Texas Tea Bond Claim: Task 2.1, 3.1A - Plug and Abandon, Flowline Abandonment - 320206, 001-08443 | Completed Plug well and abandon flowline |
| Engineering | Adams | Texas Tea Bond Claim: Task 2.1, 3.1A - Plug and Abandon, Flowline Abandonment - 320240, 001-08699 | Completed Plug well and abandon flowline |
| Engineering | Adams | Texas Tea Bond Claim: Task 3.3, 3.7 - Plug and Abandon, Flowline Abandonment - 320257, 001-08775 | Completed Plug well and abandon flowline |
| Engineering | Boulder | Juhl #1: Task 1 - Plug and Abandon, Flowline Abandonment - 379627, 013-05018 | Completed Fluid disposal |
| Engineering | Jackson | CM Production Bond Claim: Task 1.14 - Sampling and Analysis, Spill or Remediation - 324630, | Completed Soil sampling and analysis |
| Environmental | Jackson | CM Production Bond Claim: Task 1.7, 1.10 - Equipment Intervention - 324634, | Completed Remove liquids from tanks |
| Field Operation | La Plata | Atom Petroleum Bond Claim: Task 1.2 - Equipment Intervention - 325653, | Completed Remove liquids from tank |
| Environmental | La Plata | McCullough #4: Task 2 - Sampling and Analysis - 325208, | Completed Collect wellhead gas samples |
| Field Operation | La Plata | Red Mesa Holdings Bond Claim: Task 6 - Equipment Intervention, Remove crude oil - 325297, | Completed Remove liquids from tank |
| Reclamation | Larimer | Ranchers Bond Claim: Task 1 - Reclamation (initial work), Re-Seeding (maintenance), Weed Control (maintenance) - 435790, | Completed Reclamation maintenance |
| Reclamation | Larimer | Ranchers Bond Claim: Task 2 - Engineering Design - 419639, | Completed Soil sampling and analysis |
| Engineering | Mesa | DB Orphan #8: Task 1 - Plug and Abandon - 450650, 077-10381 | Completed Set surface plug, cut off casing, and weld plate |
| Environmental | Mesa | DB Orphan #8: Task 2 - Sampling and Analysis, Soil Vapor Monitoring - 450650, | Completed Soil gas monitoring |
| Reclamation | Moffat | Tatonka Bond Claim: Task 10 - Weed Control (maintenance), Stormwater BMP maintenance - 313340, | Completed Stormwater permit |
| Environmental | Montezuma | Pilcher #1: Task 1 - Sampling and Analysis - 393155, | Completed Collect samples at former tank battery location and develop remediation plan if needed |
| Reclamation | Montrose | Redwine Bond Claim: Task 4 - Stormwater BMPs (maintenance), Weed Control (maintenance) - 313641, | Completed Reclamation maintenance |



| PROJECT FINANCIALS - FY2017-18 | BOND Actual | PROW Actual | EMGY Actual | Subtotals Actual |
|---------------------------------|-----------------|------------------|-------------|------------------|
| Atom Petroleum Bond Claim | \$ 681 | \$ - | \$ - | 681 |
| CM Production Bond Claim | \$ 1,102 | \$ - | \$ - | 1,102 |
| DB Orphan #8 | \$ - | \$ 12,974 | \$ - | 12,974 |
| Juhl #1 | \$ - | \$ 78 | \$ - | 78 |
| McCullough #4 | \$ - | \$ 3,007 | \$ - | 3,007 |
| Pilcher #1 | \$ - | \$ 1,074 | \$ - | 1,074 |
| Ranchers Bond Claim | \$ - | \$ 1,192 | \$ - | 1,192 |
| Red Mesa Holdings Bond Claim | \$ 3,052 | \$ - | \$ - | 3,052 |
| Redwine Bond Claim | \$ - | \$ 3,023 | \$ - | 3,023 |
| Tatonka Bond Claim | \$ - | \$ 350 | \$ - | 350 |
| TOTAL EXPENDITURES -> | \$ 4,835 | \$ 21,698 | \$ - | 26,533 |

NOTES:

Project and Task Format: [Location or Well Name and Number (if orphan) or Operator Name + "Bond Claim"] :

"Task" [Task No(s)] - [Task Type(s)] - [Facility ID Number], [Well API Number (county and sequence code, if well work included with task)]

Project Financials: COGCC may be waiting on invoices for some Completed Tasks, and therefore expenditures for those Tasks may not be shown in the Project Financials Section.

ABBREVIATIONS:

EMGY = Emergency Response Appropriation

PROW = Plugging and Reclaiming Orphaned Wells Appropriation

PROW FUNDS SCOREBOARD

| \$ | 445,000 | Annual PROW Appropriation |
|----|------------|--|
| \$ | (288,594) | Planned and In Progress Estimate |
| \$ | (134,364) | Completed Work (Waiting on Invoice Approval) |
| \$ | (21,698) | Completed Work (Invoiced) |
| \$ | 343 | Estimated Fiscal Year End Balance |

(Scoreboard excludes work involving Bond Expenditures)



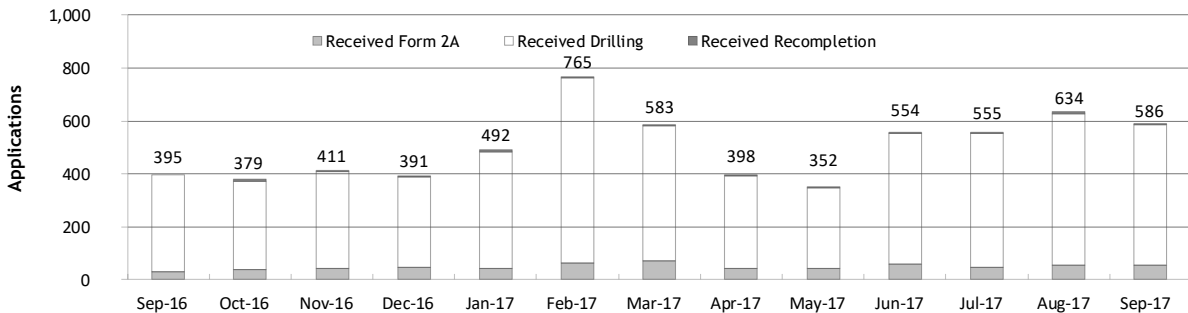
Monthly Permit Activity as of October 1, 2017

| Form/Month | Backlog | Received | Approved | Withdrawn | Rejected | Incomplete ¹ | In-Process | Remaining ² |
|---------------------|---------|----------|----------|-----------|----------|-------------------------|------------|------------------------|
| Form 2A | | | | | | | | |
| Sep-16 | 107 | 29 | 24 | 1 | 0 | 17 | 94 | 111 |
| Oct-16 | 111 | 38 | 29 | 2 | 0 | 25 | 93 | 118 |
| Nov-16 | 118 | 40 | 45 | 0 | 3 | 22 | 88 | 110 |
| Dec-16 | 110 | 48 | 25 | 6 | 0 | 20 | 107 | 127 |
| Jan-17 | 127 | 42 | 25 | 1 | 1 | 18 | 124 | 142 |
| Feb-17 | 142 | 62 | 38 | 2 | 0 | 28 | 136 | 164 |
| Mar-17 | 164 | 71 | 48 | 6 | 3 | 29 | 149 | 178 |
| Apr-17 | 178 | 41 | 54 | 3 | 0 | 34 | 128 | 162 |
| May-17 | 162 | 41 | 55 | 0 | 0 | 25 | 123 | 148 |
| Jun-17 | 148 | 58 | 40 | 2 | 1 | 31 | 132 | 163 |
| Jul-17 | 163 | 45 | 31 | 3 | 1 | 33 | 140 | 173 |
| Aug-17 | 173 | 53 | 49 | 6 | 0 | 33 | 138 | 171 |
| Sep-17 | 172 | 56 | 41 | 0 | 1 | 25 | 160 | 185 |
| Drilling | | | | | | | | |
| Sep-16 | 780 | 366 | 270 | 0 | 12 | 77 | 787 | 864 |
| Oct-16 | 864 | 334 | 297 | 1 | 0 | 82 | 818 | 900 |
| Nov-16 | 900 | 368 | 304 | 7 | 64 | 138 | 755 | 893 |
| Dec-16 | 893 | 342 | 267 | 15 | 9 | 115 | 829 | 944 |
| Jan-17 | 944 | 442 | 211 | 1 | 13 | 89 | 1,072 | 1,161 |
| Feb-17 | 1,161 | 701 | 263 | 14 | 0 | 86 | 1,499 | 1,585 |
| Mar-17 | 1,585 | 510 | 423 | 14 | 47 | 131 | 1,480 | 1,611 |
| Apr-17 | 1,611 | 352 | 301 | 21 | 14 | 167 | 1,460 | 1,627 |
| May-17 | 1,627 | 307 | 367 | 13 | 52 | 168 | 1,334 | 1,502 |
| Jun-17 | 1,502 | 493 | 331 | 3 | 9 | 185 | 1,467 | 1,652 |
| Jul-17 | 1,652 | 508 | 234 | 49 | 75 | 146 | 1,656 | 1,802 |
| Aug-17 | 1,802 | 572 | 349 | 13 | 20 | 137 | 1,855 | 1,992 |
| Sep-17 | 1,992 | 528 | 450 | 12 | 36 | 135 | 1,887 | 2,022 |
| Recompletion | | | | | | | | |
| Sep-16 | 6 | 0 | 2 | 0 | 0 | 2 | 2 | 4 |
| Oct-16 | 4 | 7 | 1 | 0 | 0 | 2 | 8 | 10 |
| Nov-16 | 10 | 3 | 3 | 0 | 0 | 3 | 7 | 10 |
| Dec-16 | 10 | 1 | 4 | 1 | 0 | 2 | 4 | 6 |
| Jan-17 | 6 | 8 | 2 | 0 | 0 | 2 | 10 | 12 |
| Feb-17 | 12 | 2 | 4 | 0 | 0 | 3 | 7 | 10 |
| Mar-17 | 10 | 2 | 2 | 0 | 0 | 2 | 8 | 10 |
| Apr-17 | 10 | 5 | 4 | 1 | 0 | 2 | 8 | 10 |
| May-17 | 10 | 4 | 3 | 4 | 0 | 1 | 6 | 7 |
| Jun-17 | 7 | 3 | 2 | 0 | 0 | 2 | 6 | 8 |
| Jul-17 | 8 | 2 | 4 | 0 | 0 | 2 | 4 | 6 |
| Aug-17 | 6 | 9 | 0 | 1 | 0 | 2 | 12 | 14 |
| Sep-17 | 14 | 2 | 6 | 0 | 0 | 2 | 8 | 10 |

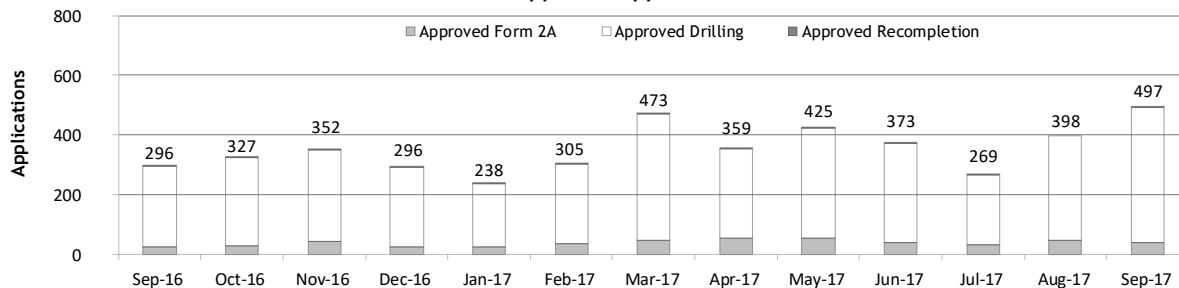
¹ Incomplete are applications that have missing or inaccurate data and cannot be approved.

² Backlog = Incomplete + In-process = Remaining permits from previous month.

Received Applications



Approved Applications





Status of Permit Applications Filed By Month as of October 1, 2017

Form 2A Location Assessment

| Year | Month | Received | Approved | Withdrawn | In Process | Percent In Process | Average | | | |
|------|-------|----------|----------|-----------|------------|--------------------|-----------------|-------------------|---------------|----------------------|
| | | | | | | | Days to Process | Less Than 30 Days | 30 to 49 Days | Greater Than 50 Days |
| 2011 | TOTAL | 2,391 | 2,298 | 93 | 0 | 0% | | 1,416 | 620 | 262 |
| 2012 | TOTAL | 1,359 | 1,291 | 68 | 0 | 0% | | 706 | 378 | 207 |
| 2013 | TOTAL | 1,281 | 1,202 | 78 | 1 | 0% | | 369 | 433 | 400 |
| 2014 | TOTAL | 1,114 | 1,067 | 47 | 0 | 0% | | 279 | 429 | 359 |
| 2015 | TOTAL | 592 | 563 | 26 | 3 | 1% | | 78 | 157 | 328 |
| 2016 | JAN | 34 | 33 | 1 | 0 | 0% | 90 | 2 | 4 | 27 |
| | FEB | 31 | 30 | 1 | 0 | 0% | 89 | 1 | 3 | 26 |
| | MAR | 34 | 32 | 2 | 0 | 0% | 76 | 3 | 8 | 21 |
| | APR | 23 | 19 | 3 | 1 | 4% | 85 | 1 | 3 | 15 |
| | MAY | 32 | 32 | 0 | 0 | 0% | 100 | 1 | 5 | 26 |
| | JUN | 36 | 36 | 0 | 0 | 0% | 87 | 3 | 11 | 22 |
| | JUL | 29 | 23 | 4 | 1 | 4% | 82 | 7 | 1 | 15 |
| | AUG | 34 | 30 | 3 | 1 | 3% | 101 | 1 | 2 | 27 |
| | SEP | 29 | 28 | 1 | 0 | 0% | 82 | 5 | 3 | 20 |
| | OCT | 37 | 34 | 3 | 0 | 0% | 68 | 3 | 12 | 19 |
| | NOV | 40 | 33 | 5 | 2 | 5% | 97 | 1 | 4 | 28 |
| | DEC | 48 | 45 | 1 | 2 | 4% | 91 | 4 | 5 | 36 |
| 2016 | TOTAL | 407 | 375 | 24 | 7 | 2% | | 32 | 61 | 282 |
| 2017 | JAN | 42 | 31 | 2 | 9 | 21% | 84 | 0 | 5 | 26 |
| | FEB | 59 | 50 | 1 | 8 | 14% | 71 | 7 | 9 | 34 |
| | MAR | 70 | 55 | 3 | 12 | 17% | 65 | 6 | 18 | 31 |
| | APR | 41 | 27 | 1 | 13 | 32% | 55 | 5 | 9 | 13 |
| | MAY | 41 | 24 | 2 | 15 | 37% | 63 | 2 | 6 | 16 |
| | JUNE | 57 | 30 | 1 | 26 | 46% | 41 | 7 | 16 | 7 |
| | JULY | 45 | 19 | 1 | 25 | 56% | 37 | 6 | 13 | 0 |
| | AUG | 53 | 0 | 0 | 53 | 100% | 0 | 0 | 0 | 0 |
| | SEP | 56 | 1 | 0 | 55 | 98% | 7 | 1 | 0 | 0 |
| 2017 | TOTAL | 464 | 237 | 11 | 216 | 47% | | 34 | 76 | 127 |

Form 2 Application For Permit to Drill (APDs)

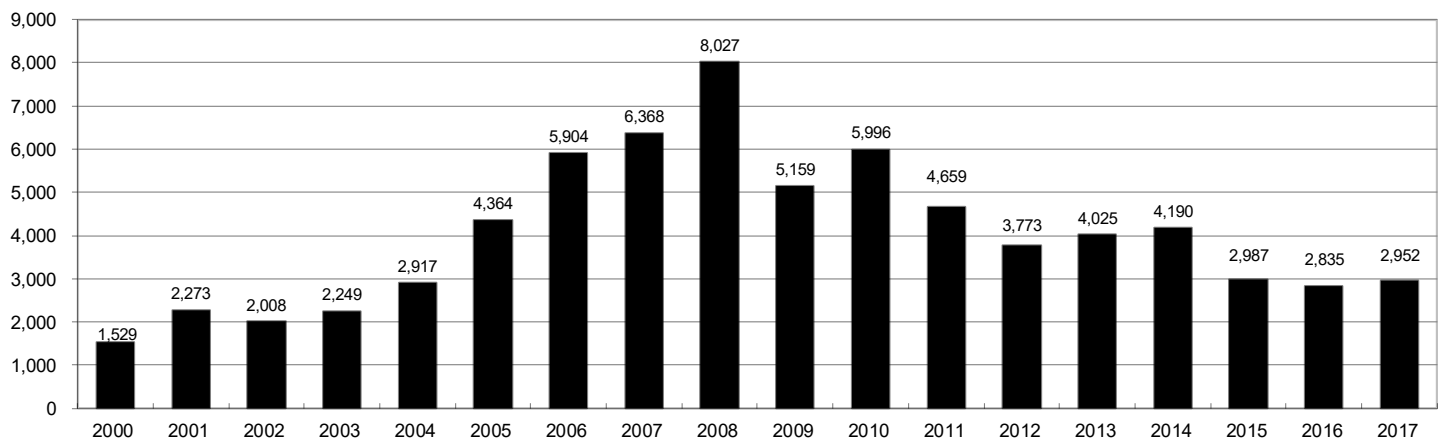
| Year | Month | Received | Approved | Withdrawn | In Process | Percent In Process | Average | | | |
|------|-------|----------|----------|-----------|------------|--------------------|-----------------|-------------------|---------------|----------------------|
| | | | | | | | Days to Process | Less Than 30 Days | 30 to 49 Days | Greater Than 50 Days |
| 2011 | TOTAL | 4,691 | 4,557 | 132 | 0 | 0% | | 2,723 | 1,565 | 587 |
| 2012 | TOTAL | 3,955 | 3,816 | 139 | 0 | 0% | | 1,971 | 1,393 | 602 |
| 2013 | TOTAL | 4,548 | 4,312 | 235 | 1 | 0% | | 1,046 | 1,626 | 1,714 |
| 2014 | TOTAL | 4,208 | 4,026 | 182 | 0 | 0% | | 689 | 1,629 | 1,744 |
| 2015 | TOTAL | 3,237 | 3,088 | 130 | 19 | 1% | | 249 | 759 | 2,110 |
| 2016 | JAN | 232 | 231 | 1 | 0 | 0% | 99 | 23 | 33 | 176 |
| | FEB | 180 | 177 | 3 | 0 | 0% | 80 | 5 | 34 | 141 |
| | MAR | 249 | 246 | 3 | 0 | 0% | 98 | 16 | 36 | 194 |
| | APR | 174 | 167 | 7 | 0 | 0% | 68 | 31 | 24 | 112 |
| | MAY | 352 | 351 | 1 | 0 | 0% | 94 | 9 | 61 | 281 |
| | JUN | 312 | 293 | 19 | 0 | 0% | 113 | 6 | 51 | 236 |
| | JUL | 236 | 187 | 28 | 9 | 4% | 100 | 30 | 1 | 161 |
| | AUG | 136 | 131 | 4 | 1 | 1% | 95 | 9 | 26 | 98 |
| | SEP | 359 | 349 | 8 | 0 | 0% | 81 | 22 | 72 | 256 |
| | OCT | 313 | 295 | 10 | 8 | 3% | 84 | 20 | 26 | 255 |
| | NOV | 368 | 313 | 11 | 34 | 9% | 91 | 29 | 22 | 265 |
| | DEC | 342 | 278 | 3 | 27 | 9% | 119 | 4 | 16 | 259 |
| 2016 | TOTAL | 3,253 | 3,018 | 98 | 79 | 2% | | 204 | 402 | 2,434 |
| 2017 | JAN | 418 | 300 | 6 | 112 | 27% | 99 | 5 | 41 | 260 |
| | FEB | 645 | 400 | 7 | 183 | 31% | 76 | 36 | 39 | 326 |
| | MAR | 510 | 361 | 37 | 110 | 22% | 87 | 15 | 70 | 278 |
| | APR | 344 | 203 | 9 | 130 | 38% | 74 | 10 | 17 | 180 |
| | MAY | 307 | 174 | 9 | 124 | 40% | 70 | 18 | 65 | 92 |
| | JUNE | 493 | 180 | 0 | 296 | 62% | 61 | 12 | 75 | 95 |
| | JULY | 508 | 112 | 1 | 375 | 77% | 48 | 22 | 27 | 63 |
| | AUG | 572 | 14 | 0 | 558 | 98% | 21 | 6 | 8 | 0 |
| | SEP | 528 | 12 | 0 | 516 | 98% | 6 | 12 | 0 | 0 |
| 2017 | TOTAL | 4,325 | 1,756 | 69 | 2,404 | 56% | | 136 | 342 | 1,294 |



Annual Drilling Permits by County as of October 1, 2017

| County | 2000 | 2001 | 2002 | 2003 | 2004 | 2005 | 2006 | 2007 | 2008 | 2009 | 2010 | 2011 | 2012 | 2013 | 2014 | 2015 | 2016 | 2017 |
|--------------|--------------|--------------|--------------|--------------|--------------|--------------|--------------|--------------|--------------|--------------|--------------|--------------|--------------|--------------|--------------|--------------|--------------|--------------|
| ADAMS | 38 | 28 | 9 | 26 | 39 | 34 | 37 | 89 | 51 | 35 | 21 | 8 | 40 | 40 | 51 | 96 | 74 | 111 |
| ARAPAHOE | | 2 | 1 | 2 | 5 | 7 | 11 | 10 | 10 | 10 | 8 | 23 | 35 | 23 | 34 | 19 | 5 | 78 |
| ARCHULETA | 7 | 9 | 6 | 10 | 8 | 13 | 14 | 26 | 47 | 11 | 18 | 12 | 5 | 4 | 3 | 11 | 3 | 18 |
| BACA | 22 | 6 | 2 | 3 | 7 | 8 | 2 | 11 | 13 | 3 | 4 | 5 | 3 | 1 | 1 | | | 4 |
| BENT | 2 | | | | 5 | 3 | 8 | 1 | 1 | | 5 | | 2 | 1 | | | | |
| BOULDER | 1 | 5 | 6 | 7 | 17 | 13 | 21 | 37 | 32 | 35 | 24 | 30 | 22 | | | | | |
| BROOMFIELD | | | 2 | 7 | | 1 | 1 | | 2 | 33 | 28 | 11 | 36 | | 31 | | | |
| CHEYENNE | 3 | 3 | 3 | 3 | 3 | 10 | 21 | 15 | 33 | 12 | 13 | 16 | 31 | 50 | 26 | 9 | | 1 |
| COSTILLA | | | | | | | | | | | | | | | | | | |
| CROWLEY | | | | | | | | | | | | | | | 2 | | | 3 |
| DELTA | | | 7 | 4 | 5 | 10 | 9 | 2 | | | 4 | 3 | 6 | 1 | 2 | | | |
| DENVER | | 3 | | | | | 19 | 25 | 24 | | | | | | | | | |
| DOLORES | | | | 1 | 1 | 1 | 6 | 10 | 12 | 21 | 8 | 8 | 13 | 12 | 3 | | 3 | 2 |
| EAGLE | | | | | | | | | | | | | | 1 | | | | |
| ELBERT | 2 | | | | | | 4 | | | 1 | | 1 | 2 | 2 | 4 | 3 | 3 | 1 |
| EL PASO | | | | | | | | | | 2 | 3 | 3 | 18 | 1 | 2 | | | |
| FREMONT | | | | | 1 | 3 | 2 | 4 | 14 | 13 | 22 | 14 | 11 | 2 | 8 | 2 | 2 | 1 |
| GARFIELD | 213 | 353 | 362 | 567 | 796 | 1,509 | 1,845 | 2,550 | 2,888 | 1,981 | 2,037 | 1,323 | 1,046 | 870 | 1,066 | 532 | 724 | 442 |
| GRAND | | | | | | | | | | | | | | | | | | |
| GUNNISON | | | 5 | 10 | 1 | 9 | 19 | 7 | 10 | 12 | 4 | 3 | 11 | 9 | 20 | 28 | 19 | 24 |
| HUERFANO | 41 | 27 | 27 | | 8 | 2 | | | 7 | | 2 | 1 | 9 | 1 | 13 | 2 | | |
| JACKSON | 34 | 18 | 21 | 9 | 14 | 6 | 8 | 5 | 27 | 19 | 9 | 18 | 5 | 12 | 17 | 3 | 57 | 20 |
| JEFFERSON | 1 | | | | | | 1 | 3 | 2 | | | | | 1 | | | | |
| KIOWA | 11 | 18 | 2 | 4 | 2 | 1 | 11 | 9 | 26 | 7 | 16 | 17 | 17 | 12 | 5 | 3 | | 3 |
| KIT CARSON | | | | 1 | 3 | 5 | 4 | 4 | 13 | 7 | 3 | 2 | 6 | 1 | 2 | | 1 | |
| LA PLATA | 127 | 156 | 104 | 162 | 102 | 115 | 235 | 251 | 328 | 298 | 191 | 99 | 71 | 32 | 87 | 106 | 96 | 92 |
| LARIMER | 2 | | 1 | | | 1 | | 5 | 46 | 12 | 41 | 8 | 13 | 2 | 4 | 28 | 4 | 29 |
| LAS ANIMAS | 268 | 400 | 259 | 180 | 332 | 413 | 500 | 362 | 303 | 88 | 92 | 85 | 11 | 2 | 1 | | | |
| LINCOLN | 2 | 2 | 1 | 6 | 3 | 4 | 1 | 2 | 58 | 44 | 48 | 31 | 36 | 87 | 129 | 24 | 5 | 20 |
| LOGAN | 4 | 7 | 3 | 3 | 6 | 13 | 17 | 14 | 5 | 9 | 17 | 8 | 27 | 4 | 5 | | | 1 |
| MESA | 13 | 27 | 30 | 27 | 54 | 136 | 265 | 293 | 501 | 427 | 306 | 127 | 150 | 105 | 74 | 126 | 7 | 171 |
| MOFFAT | 35 | 52 | 62 | 63 | 63 | 60 | 120 | 68 | 57 | 51 | 53 | 93 | 88 | 44 | 54 | 12 | 17 | 4 |
| MONTEZUMA | 4 | | 5 | 8 | 8 | 11 | 5 | 12 | 22 | 39 | 19 | 27 | 29 | 14 | 25 | 3 | 3 | 6 |
| MONTROSE | 1 | 3 | 2 | 4 | 2 | | 1 | 3 | 3 | | 1 | 1 | | | | | | |
| MORGAN | 9 | 9 | 2 | 7 | 9 | 7 | 3 | 6 | 2 | 1 | 6 | 13 | 5 | 16 | 6 | 4 | 28 | |
| OTERO | | | | | | | | | | | | | | | | | | |
| PARK | | | | | | | | | | 3 | 4 | 1 | | | | | | |
| PHILLIPS | 1 | 2 | | 7 | 13 | 17 | 12 | 69 | 82 | 45 | 64 | 112 | 56 | | 11 | 2 | | |
| PITKIN | | | | 1 | | | | 1 | | | | | | | | 1 | | |
| PROWERS | 2 | 5 | 4 | | 7 | 5 | 7 | 5 | 8 | 1 | 3 | 1 | | | 1 | | 1 | |
| RIO BLANCO | 89 | 187 | 105 | 179 | 154 | 161 | 360 | 321 | 477 | 348 | 441 | 109 | 117 | 167 | 121 | 107 | 71 | 113 |
| RIO GRANDE | 1 | 1 | | 1 | | | | | 1 | 1 | | | 2 | | 1 | | | |
| ROUTT | 20 | 13 | 1 | | 4 | 6 | 9 | 8 | 4 | 2 | 3 | 10 | 4 | 12 | 4 | 9 | | |
| SAGUACHE | 2 | | 2 | | | | | 2 | 1 | 2 | | | | | | | | |
| SAN MIGUEL | 11 | 13 | 27 | 18 | 42 | 45 | 35 | 23 | 20 | 13 | 10 | 2 | 1 | | 2 | 3 | | |
| SEDGWICK | | | | 1 | 5 | 2 | 7 | 2 | 1 | 19 | 11 | 12 | 2 | | 7 | 1 | | |
| WASHINGTON | 23 | 17 | 27 | 34 | 128 | 50 | 69 | 45 | 11 | 1 | 6 | 12 | 6 | 19 | 12 | 9 | 7 | 9 |
| WELD | 509 | 702 | 760 | 757 | 832 | 901 | 1,418 | 1,527 | 2,340 | 1,448 | 2,152 | 2,262 | 1,826 | 2,468 | 2,303 | 1,841 | 1,704 | 1,800 |
| YUMA | 31 | 205 | 160 | 138 | 237 | 782 | 797 | 541 | 545 | 105 | 299 | 148 | 11 | 9 | 53 | 3 | | |
| TOTAL | 1,529 | 2,273 | 2,008 | 2,249 | 2,917 | 4,364 | 5,904 | 6,368 | 8,027 | 5,159 | 5,996 | 4,659 | 3,773 | 4,025 | 4,190 | 2,987 | 2,835 | 2,952 |

ALL COUNTIES





Form 2A Breakdown By County By Year as of October 1, 2017

| Year | County | Form 2As | Completed | In Process | New Location | CDP | SWH | RSO | CDPHE |
|------------|-------------|----------|-----------|------------|--------------|-----|-----|-----|-------|
| 2009 | Total State | 818 | 818 | 0 | 408 | 2 | 80 | 5 | 5 |
| 2010 | Total State | 2,377 | 2,377 | 0 | 1,543 | 0 | 317 | 22 | 55 |
| 2011 | Total State | 2,297 | 2,297 | 0 | 1,724 | 1 | 259 | 16 | 5 |
| 2012 | Total State | 1,297 | 1,297 | 0 | 900 | 0 | 167 | 6 | 1 |
| 2013 | Total State | 1,195 | 1,194 | 1 | 845 | 0 | 144 | 2 | 4 |
| 2014 | Total State | 1,067 | 1,065 | 0 | 776 | 3 | 129 | 7 | 3 |
| 2015 | Total State | 574 | 568 | 4 | 399 | 0 | 95 | 2 | 2 |
| 2016 | ADAMS | 9 | 9 | 0 | 8 | 0 | 0 | 0 | 0 |
| | ARAPAHOE | 10 | 9 | 0 | 5 | 0 | 0 | 0 | 0 |
| | ARCHULETA | 1 | 1 | 0 | 0 | 0 | 1 | 0 | 0 |
| | DOLORES | 1 | 1 | 0 | 1 | 0 | 0 | 0 | 0 |
| | ELBERT | 3 | 3 | 0 | 0 | 0 | 0 | 0 | 0 |
| | FREMONT | 1 | 0 | 1 | 0 | 0 | 1 | 0 | 0 |
| | GARFIELD | 26 | 27 | 0 | 4 | 0 | 13 | 3 | 2 |
| | GUNNISON | 6 | 6 | 0 | 1 | 0 | 2 | 1 | 0 |
| | HUERFANO | 1 | | | 1 | 0 | 1 | 0 | 0 |
| | JACKSON | 10 | 10 | 0 | 5 | 0 | 9 | 0 | 0 |
| | KIT CARSON | 1 | 1 | 0 | 1 | 0 | 0 | 0 | 0 |
| | LA PLATA | 5 | 5 | 0 | 0 | 0 | 5 | 0 | 1 |
| | LARIMER | 2 | 2 | 0 | 2 | 0 | 0 | 0 | 0 |
| | LINCOLN | 5 | 5 | 0 | 4 | 0 | 0 | 0 | 0 |
| | LOGAN | 2 | 2 | 0 | 0 | 0 | 0 | 0 | 0 |
| | MESA | 4 | 4 | 0 | 2 | 0 | 3 | 0 | 1 |
| | MOFFAT | 15 | 11 | 0 | 6 | 0 | 13 | 0 | 1 |
| | MONTEZUMA | 1 | 1 | 0 | 1 | 0 | 0 | 0 | 0 |
| | MORGAN | 1 | 1 | 0 | 1 | 0 | 0 | 0 | 0 |
| | PROWERS | 1 | 1 | 0 | 1 | 0 | 0 | 0 | 0 |
| | ROUTT | 1 | 1 | 0 | 0 | 0 | 1 | 0 | 0 |
| | WASHINGTON | 6 | 6 | 0 | 6 | 0 | 0 | 0 | 0 |
| | WELD | 281 | 271 | 6 | 175 | 0 | 3 | 0 | 2 |
| 2016 | Total State | 393 | 377 | 7 | 224 | 0 | 52 | 4 | 7 |
| 2017 | ADAMS | 25 | 5 | 20 | 25 | 0 | 0 | 0 | 0 |
| | ARAPAHOE | 19 | 10 | 9 | 17 | 0 | 0 | 0 | 0 |
| | BACA | 2 | 2 | 0 | 2 | 0 | 0 | 0 | 0 |
| | CROWLEY | 3 | 3 | 0 | 3 | 0 | 0 | 0 | 0 |
| | DOLORES | 2 | 1 | 1 | 2 | 0 | 1 | 0 | 0 |
| | ELBERT | 1 | 1 | 0 | 1 | 0 | 0 | 0 | 0 |
| | FREMONT | 1 | 1 | 0 | 1 | 0 | 1 | 0 | 0 |
| | GARFIELD | 29 | 21 | 8 | 11 | 0 | 22 | 3 | 1 |
| | GUNNISON | 1 | 1 | 0 | 0 | 0 | 1 | 0 | 0 |
| | JACKSON | 5 | 4 | 1 | 4 | 0 | 5 | 0 | 0 |
| | LA PLATA | 11 | 8 | 3 | 4 | 0 | 10 | 0 | 0 |
| | LARIMER | 3 | 3 | 0 | 3 | 0 | 0 | 0 | 0 |
| | LINCOLN | 19 | 12 | 7 | 13 | 0 | 0 | 0 | 0 |
| | MESA | 11 | 8 | 3 | 7 | 0 | 4 | 0 | 0 |
| | MOFFAT | 1 | 1 | 0 | 1 | 0 | 1 | 0 | 0 |
| | MONTEZUMA | 3 | 3 | 0 | 3 | 0 | 0 | 0 | 0 |
| | RIO BLANCO | 5 | 3 | 2 | 2 | 0 | 4 | 0 | 0 |
| WASHINGTON | 7 | 6 | 1 | 6 | 0 | 0 | 0 | 0 | |
| WELD | 240 | 133 | 107 | 166 | 0 | 9 | 0 | 2 | |
| 2017 | Total State | 388 | 226 | 162 | 271 | 0 | 58 | 3 | 3 |

Abbreviations:

CDP = Comprehensive Drilling Plan SWH = Sensitive Wildlife Habitat consultation

RSO = Restricted Surface Occupancy consultation CDPHE= Colorado Department of Health and Environment consultation



Oil and Gas Staff Report

October 30, 2017

21

Horizontal Well Activity as of October 1, 2017

| County | 2013 | | 2014 | | 2015 | | 2016 | | 2017 | | Total | | | Completion | | |
|-------------------------|--------------|--------------|--------------|--------------|--------------|--------------|--------------|------------|--------------|--------------|--------------|----------|--------------|------------|------------|--|
| | Permit | Spud | Permit | Spud | Permit | Spud | Permit | Spud | Permit | Spud | AC | PR | DA | PA | | |
| ADAMS | 26 | 1 | 42 | 18 | 92 | 3 | 72 | 2 | 111 | 20 | 3 | 23 | | 1 | | |
| ARAPAHOE | 11 | 13 | 22 | 11 | 9 | | 5 | 1 | 77 | 10 | 2 | 29 | | 1 | | |
| ARCHULETA | 2 | | 1 | | 6 | 3 | 2 | 1 | 15 | 2 | | 53 | | | | |
| BENT | 1 | | | | | | | | | | | | | | | |
| BOULDER | | | | | | | | | | | | | | | | |
| CHEYENNE | 7 | 2 | 1 | 1 | 1 | 1 | | | | | 3 | 3 | | 5 | | |
| DELTA | 1 | | 2 | | | | | | | | | 3 | | | | |
| DOLORES | 5 | 4 | 3 | 1 | | | | | | | | 12 | | 5 | | |
| EL PASO | | | | | | | | | | | 0 | | | 1 | | |
| ELBERT | | | | | | | | | | | 0 | | | | | |
| FREMONT | 1 | 1 | | | 1 | | | | | | | 10 | 7 | 1 | | |
| GARFIELD | 18 | 4 | 20 | 11 | 12 | 7 | 4 | | 7 | | 47 | 40 | | 2 | | |
| GUNNISON | 2 | | 9 | | 18 | 2 | 10 | 1 | 16 | 2 | 6 | 4 | | | | |
| HUERFANO | | | 2 | | | | | | | | 1 | 1 | | | | |
| JACKSON | 8 | 5 | 15 | 4 | 3 | | 52 | 24 | 19 | 5 | 46 | 21 | | 3 | | |
| KIOWA | 4 | 2 | 1 | | | | | | | | 2 | | | 1 | | |
| KIT CARSON | 1 | 1 | | | | | | | | | 2 | | | 4 | | |
| LA PLATA | 5 | 1 | 43 | 7 | 42 | 3 | 67 | 8 | 74 | 3 | 60 | 64 | 1 | 3 | | |
| LARIMER | | 2 | | | 22 | 8 | 4 | 3 | 28 | 25 | 18 | 11 | 2 | | | |
| LAS ANIMAS | | | | | | | | | | | 17 | 16 | | | | |
| LINCOLN | 6 | | 4 | 2 | | | | | | | 4 | 1 | | 3 | | |
| LOGAN | | | | | | | | | | | 2 | 2 | | | | |
| MESA | 9 | 2 | 9 | 1 | 6 | 3 | | | | | 29 | 28 | 2 | 4 | | |
| MOFFAT | 18 | 13 | 15 | 1 | 5 | 2 | 3 | 1 | 3 | | 37 | 23 | | 10 | | |
| MONTEZUMA | 3 | 4 | 15 | 2 | | | | | | | 28 | 30 | | 7 | | |
| MORGAN | 13 | 1 | 6 | | 4 | 1 | 28 | | | | 5 | 5 | | | | |
| PARK | | | | | | | | | | | 1 | | | | | |
| RIO BLANCO | 4 | 5 | 3 | 2 | 3 | | | | 4 | | 19 | 12 | 3 | | | |
| ROUTT | 1 | | | | 3 | | | | | | 10 | 1 | 6 | 1 | | |
| SAN MIGUEL | | | | | | | | | | | 1 | | | 1 | | |
| WASHINGTON | | | | | | | | | | | 1 | | | 1 | | |
| WELD | 2,114 | 1,099 | 2,215 | 1,423 | 1,789 | 1,063 | 1,671 | 723 | 1,773 | 979 | 5,231 | 4,200 | 12 | 60 | | |
| YUMA | | | | | | | | | | | 1 | 1 | | | | |
| TOTAL Horizontal | 2,260 | 1,160 | 2,428 | 1,484 | 2,016 | 1,096 | 1,918 | 764 | 2,127 | 1,046 | 5,735 | 5 | 4,593 | 33 | 114 | |
| Percent of Total HZ | | | | | | | | | | | | | | | | |
| Total All Permits | 4,025 | | 4,190 | | 2,988 | | 2,835 | | 2,479 | | | 0% | 80% | 1% | 2% | |
| HZ Percent of Total | 56.1% | | 57.9% | | 67.5% | | 67.7% | | 85.8% | | | | | | | |



Well to Building Setbacks by Year and by County as of October 1, 2017

Count of well locations, grouped by proximity from well to buildings.

| Location Proximity to Buildings | 2010 | 2011 | 2012 | 2013 | 2014 | 2015 | 2016 | 2017 | Number of Locations Since 2009 | Percent of Total Locations |
|---------------------------------|--------------|--------------|--------------|--------------|------------|------------|------------|------------|--------------------------------|----------------------------|
| Less than 150 feet | 3 | 3 | 2 | 0 | 3 | 2 | 0 | 0 | 15 | 0% |
| 150 to 350 feet | 58 | 61 | 39 | 34 | 38 | 12 | 15 | 11 | 305 | 3% |
| 350 to 500 feet | 110 | 97 | 61 | 64 | 48 | 33 | 23 | 17 | 503 | 6% |
| 500 to 1000 feet | 385 | 331 | 188 | 188 | 161 | 83 | 76 | 60 | 1,589 | 17% |
| 1000 + feet | 1,705 | 1,470 | 838 | 761 | 724 | 378 | 206 | 253 | 6,691 | 74% |
| TOTAL LOCATIONS | 2,261 | 1,962 | 1,128 | 1,047 | 974 | 508 | 320 | 341 | 9,103 | |

| County | TOTAL | Less than 150 feet | 150 to 350 feet | 350 to 500 feet | 500 to 1000 feet | 1000 + feet |
|------------|-------|--------------------|-----------------|-----------------|------------------|-------------|
| ADAMS | 94 | 0 | 4 | 9 | 24 | 57 |
| ARAPAHOE | 115 | 0 | 2 | 5 | 10 | 98 |
| ARCHULETA | 24 | 0 | 0 | 1 | 12 | 11 |
| BACA | 17 | 0 | 0 | 0 | 1 | 16 |
| BENT | 7 | 0 | 0 | 0 | 0 | 7 |
| BOULDER | 23 | 0 | 1 | 1 | 17 | 4 |
| BROOMFIELD | 33 | 0 | 0 | 4 | 13 | 16 |
| CHEYENNE | 140 | 1 | 0 | 0 | 2 | 137 |
| CROWLEY | 5 | 0 | 0 | 0 | 0 | 5 |
| DELTA | 7 | 0 | 0 | 2 | 1 | 4 |
| DOLORES | 22 | 0 | 0 | 0 | 7 | 15 |
| EAGLE | 1 | 0 | 0 | 0 | 0 | 1 |
| EL PASO | 14 | 0 | 0 | 0 | 3 | 11 |
| ELBERT | 15 | 0 | 0 | 0 | 3 | 12 |
| FREMONT | 41 | 0 | 2 | 7 | 9 | 23 |
| GARFIELD | 606 | 0 | 12 | 10 | 82 | 502 |
| GUNNISON | 48 | 1 | 0 | 4 | 1 | 42 |
| HUERFANO | 16 | 0 | 0 | 0 | 5 | 11 |
| JACKSON | 62 | 0 | 1 | 5 | 1 | 55 |
| KIOWA | 66 | 0 | 0 | 0 | 1 | 65 |
| KIT CARSON | 15 | 0 | 0 | 0 | 0 | 15 |
| LA PLATA | 148 | 0 | 6 | 15 | 47 | 80 |
| LARIMER | 42 | 0 | 5 | 5 | 16 | 16 |
| LAS ANIMAS | 201 | 1 | 6 | 7 | 37 | 150 |
| LINCOLN | 391 | 0 | 1 | 2 | 5 | 383 |
| LOGAN | 45 | 0 | 1 | 1 | 1 | 42 |
| MESA | 111 | 0 | 0 | 3 | 16 | 92 |
| MOFFAT | 190 | 0 | 1 | 3 | 16 | 170 |
| MONTEZUMA | 46 | 0 | 0 | 1 | 4 | 41 |
| MONTROSE | 2 | 0 | 0 | 0 | 0 | 2 |
| MORGAN | 31 | 0 | 0 | 2 | 4 | 25 |
| PARK | 4 | 0 | 0 | 0 | 0 | 4 |
| PHILLIPS | 275 | 1 | 4 | 6 | 21 | 243 |
| PITKIN | 1 | 0 | 0 | 0 | 0 | 1 |
| PROWERS | 6 | 0 | 0 | 0 | 0 | 6 |
| RIO BLANCO | 190 | 0 | 0 | 0 | 2 | 188 |
| RIO GRANDE | 2 | 0 | 0 | 0 | 1 | 1 |
| ROUTT | 30 | 0 | 0 | 0 | 2 | 28 |
| SAN MIGUEL | 14 | 0 | 0 | 0 | 0 | 14 |
| SEDGWICK | 33 | 0 | 0 | 1 | 3 | 29 |
| WASHINGTON | 86 | 0 | 2 | 0 | 3 | 81 |
| WELD | 5,359 | 11 | 248 | 393 | 1,175 | 3,529 |
| YUMA | 528 | 0 | 9 | 16 | 44 | 459 |



Well to Building Setbacks Less Than Two Hundred Feet as of October 1, 2017

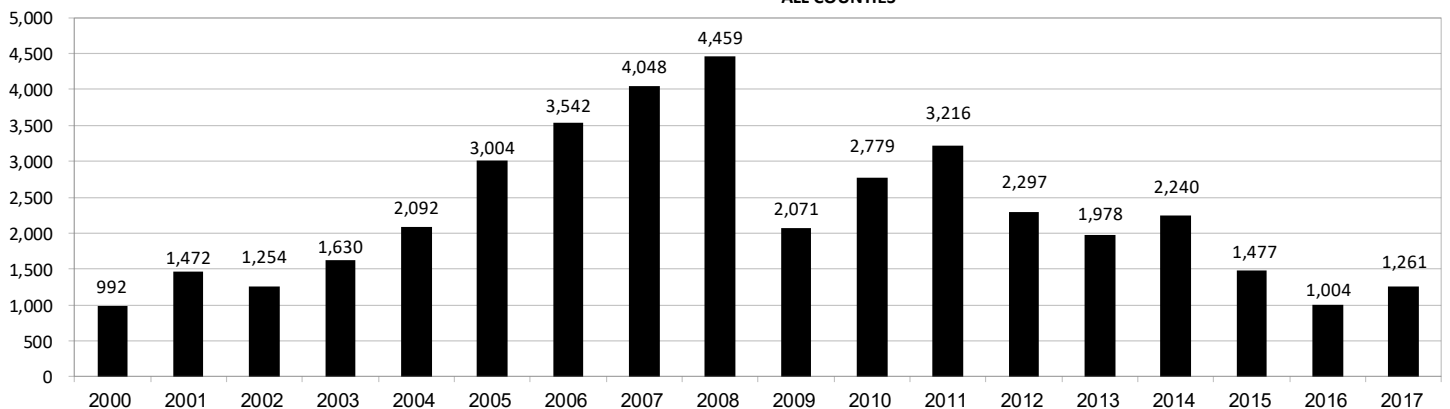
| Year | Location Doc Number | County | High Density | New Location | Distance (Feet) | Proximity (Feet) | Building Description |
|------|------------------------|------------|-----------------|-----------------|--------------------|---------------------|----------------------------------|
| 2015 | 400768804 | WELD | No | Yes | 46 | less 150 | Building to be razed |
| 2011 | 2587822 | CHEYENNE | No | No | 58 | less 150 | Water well house |
| 2009 | 1691798 | WELD | No | No | 58 | less 150 | Vehicle garage |
| 2010 | 400072164 | WELD | No | Yes | 69 | less 150 | Abandoned hog shed |
| 2014 | 400569085 | WELD | No | No | 78 | less 150 | Well shed |
| 2014 | 400600705 | WELD | No | No | 80 | less 150 | Livestock shed |
| 2012 | 400240957 | GUNNISON | No | Yes | 90 | less 150 | Equipment shed |
| 2015 | 400742811 | WELD | No | Yes | 102 | less 150 | Building to be razed |
| 2009 | 1758843 | WELD | No | Yes | 103 | less 150 | Building to be razed |
| 2011 | 1636646 | WELD | No | No | 122 | less 150 | Storage shed |
| 2009 | 400011284 | LAS ANIMAS | No | Yes | 127 | less 150 | Operator is owner |
| 2009 | 1786896 | PHILLIPS | No | No | 132 | less 150 | Grain storage |
| 2014 | 400642113 | WELD | No | Yes | 142 | less 150 | Barn |
| 2011 | 400117702 | WELD | No | Yes | 143 | less 150 | Irrigation pump house |
| 2011 | 400227765 | WELD | No | Yes | 145 | less 150 | Storage barn |
| 2014 | 400558626 | LINCOLN | No | No | 150 | less 150 | Gas plant equipment building |
| 2009 | 1904205 | WELD | No | No | 154 | 150 to 350 | Livestock enclosure |
| 2012 | 400243295 | WELD | No | Yes | 155 | 150 to 350 | Unused storage shed |
| 2015 | 400862577 | GARFIELD | No | No | 155 | 150 to 350 | Gravel pit scale house |
| 2011 | 400179419 | WELD | No | Yes | 157 | 150 to 350 | Existing well / storage building |
| 2010 | 400054716 | WELD | No | No | 159 | 150 to 350 | Equipment barn |
| 2011 | 400188968 | WELD | No | Yes | 159 | 150 to 350 | Abandoned |
| 2014 | 400554054 | WELD | No | Yes | 159 | 150 to 350 | Equipment shed |
| 2014 | 400559404 | WELD | No | Yes | 160 | 150 to 350 | Barn |
| 2016 | 400950178 | LA PLATA | No | Yes | 162 | 150 to 350 | Residence |
| 2010 | 400021477 | WELD | No | Yes | 162 | 150 to 350 | Goat barn |
| 2009 | 1758386 | WELD | No | Yes | 168 | 150 to 350 | Storage shed |
| 2011 | 1635946 | WELD | No | No | 169 | 150 to 350 | Storage shed |
| 2013 | 400447386 | WELD | No | No | 169 | 150 to 350 | Abandoned turkey barn |
| 2013 | 400447391 | WELD | No | No | 169 | 150 to 350 | Abandoned turkey barn |
| 2011 | 400165164 | WELD | No | Yes | 178 | 150 to 350 | Residence |
| 2013 | 400367184 | WELD | No | Yes | 179 | 150 to 350 | Shed |
| 2011 | 400188780 | WELD | No | Yes | 180 | 150 to 350 | Residence |
| 2014 | 400562498 | WELD | No | Yes | 181 | 150 to 350 | Garage / storage shed |
| 2010 | 1697620 | WELD | No | No | 187 | 150 to 350 | Livestock shed |
| 2009 | 1758746 | WELD | No | No | 193 | 150 to 350 | Storage shed |
| 2011 | 400154431 | WELD | No | Yes | 198 | 150 to 350 | Turkey barn |
| 2012 | 400250031 | WELD | No | Yes | 198 | 150 to 350 | Abandoned guard shack |
| 2010 | 1774783 | WELD | No | No | 199 | 150 to 350 | Cement service building |
| 2011 | 400118102 | YUMA | No | Yes | 199 | 150 to 350 | Steel barn |



Annual Well Starts by County as of September 1, 2017

| County | 2000 | 2001 | 2002 | 2003 | 2004 | 2005 | 2006 | 2007 | 2008 | 2009 | 2010 | 2011 | 2012 | 2013 | 2014 | 2015 | 2016 | 2017 |
|------------|------|-------|-------|-------|-------|-------|-------|-------|-------|-------|-------|-------|-------|-------|-------|-------|-------|-------|
| ADAMS | 18 | 13 | 4 | 19 | 22 | 24 | 13 | 41 | 14 | 14 | 21 | 1 | 15 | 5 | 29 | 3 | 2 | 21 |
| ARAPAHOE | | | | | 6 | 1 | 5 | 2 | 1 | 1 | 3 | 9 | 9 | 25 | 21 | | 1 | 10 |
| ARCHULETA | 4 | 4 | 2 | 5 | 4 | 10 | 5 | 7 | 29 | 9 | 12 | 10 | 11 | | 1 | 7 | 4 | 5 |
| BACA | 19 | 6 | 2 | 1 | 6 | 6 | 2 | 6 | 12 | | 5 | 4 | 2 | 2 | | 1 | | |
| BENT | 2 | | | | 3 | 2 | 8 | 1 | 1 | | | 1 | 2 | | | | | |
| BOULDER | | | | 2 | 5 | 11 | 9 | 14 | 25 | 16 | 13 | 7 | 14 | | | | | |
| BROOMFIELD | | | 2 | | 1 | | | | 10 | | 21 | 11 | 5 | | | | | |
| CHEYENNE | 2 | 1 | 3 | 3 | | 9 | 14 | 15 | 14 | 8 | 12 | 11 | 17 | 35 | 19 | 3 | | |
| COSTILLA | | | | | | | | | | | | | | | | | | |
| CROWLEY | | | | | | | | | | | | | | | 2 | | | 1 |
| DELTA | | | | 5 | 4 | 6 | 5 | 2 | | | 9 | 2 | 3 | | | | | |
| DENVER | | 2 | | | | | 7 | 5 | 4 | | | | | | | | | |
| DOLORES | | | | | 2 | | 2 | 13 | 6 | 2 | | 1 | 5 | 10 | 4 | | | 1 |
| EAGLE | | | | | | | | | | | | | | 1 | | | | |
| EL PASO | | | | | | | | | | | 2 | | 5 | | 1 | | | |
| ELBERT | 2 | | | | | | 1 | | | | | | | | | 3 | | 1 |
| FREMONT | | | | | 1 | 3 | 2 | 2 | 5 | 3 | 9 | 16 | 9 | 2 | 4 | | 1 | 1 |
| GARFIELD | 190 | 251 | 245 | 417 | 585 | 799 | 1,005 | 1,304 | 1,689 | 765 | 905 | 877 | 495 | 391 | 361 | 174 | 161 | 188 |
| GUNNISON | | | 1 | | 1 | 1 | 9 | 5 | 1 | 4 | 5 | 2 | 4 | 1 | 2 | 4 | 1 | 3 |
| HUERFANO | 25 | 14 | 19 | 3 | 6 | 2 | | | 2 | | 2 | 2 | 2 | 1 | 4 | 1 | | |
| JACKSON | 24 | 2 | 4 | 10 | 10 | | 3 | 3 | 12 | 1 | 8 | 7 | | 7 | 7 | | 24 | 7 |
| JEFFERSON | | | | | | | | 2 | | | | | | | | | | |
| KIOWA | 8 | 16 | 2 | 4 | 2 | 1 | 7 | 7 | 2 | 5 | 15 | 14 | 10 | 12 | 3 | 2 | | |
| KIT CARSON | | | | 1 | 1 | 6 | 2 | 1 | 14 | 3 | 1 | 1 | 3 | 1 | 2 | | | 1 |
| LA PLATA | 99 | 135 | 118 | 110 | 103 | 104 | 108 | 179 | 199 | 131 | 67 | 54 | 3 | 10 | 40 | 38 | 43 | 16 |
| LARIMER | 1 | 1 | | | | 1 | | 4 | 8 | 1 | 28 | 2 | 10 | 4 | 1 | 9 | 3 | 25 |
| LAS ANIMAS | 202 | 286 | 205 | 221 | 296 | 384 | 413 | 326 | 222 | 14 | 7 | 78 | 1 | | 1 | | | |
| LINCOLN | 2 | 2 | 1 | 5 | 2 | 2 | 1 | 2 | 18 | 11 | 14 | 21 | 23 | 41 | 41 | 12 | 2 | 3 |
| LOGAN | 4 | 6 | 3 | 3 | 2 | 11 | 12 | 12 | 3 | 7 | 3 | 9 | 13 | 4 | 6 | | | |
| MESA | 2 | 12 | 12 | 13 | 25 | 89 | 156 | 209 | 225 | 14 | 11 | 41 | 4 | 11 | 17 | 77 | 4 | 71 |
| MOFFAT | 18 | 23 | 25 | 28 | 19 | 40 | 60 | 42 | 26 | 18 | 15 | 32 | 26 | 27 | 3 | 6 | 3 | |
| MONTEZUMA | 2 | 3 | 5 | 5 | 1 | 7 | 2 | 4 | 22 | 10 | 3 | 8 | 18 | 12 | 8 | 1 | | 2 |
| MONTROSE | | 3 | | 2 | 1 | | | 1 | 2 | | 1 | | | | | | | |
| MORGAN | 9 | 8 | 1 | 7 | 5 | 5 | 3 | 1 | 1 | 2 | 3 | 2 | 3 | 1 | 3 | 1 | | |
| PARK | | | | | | | | | | | 2 | | | | | | | |
| PHILLIPS | 1 | | | 6 | 10 | 11 | 4 | 35 | 18 | 2 | 42 | 130 | 48 | | 9 | | | |
| PROWERS | 2 | 4 | 4 | | 5 | 5 | 6 | 3 | 5 | 2 | 3 | 1 | | | | 1 | | |
| RIO BLANCO | 51 | 82 | 47 | 83 | 92 | 95 | 107 | 95 | 205 | 118 | 107 | 71 | 54 | 36 | 43 | 17 | | 4 |
| RIO GRANDE | | | | | | | | | | | | | | 1 | | | | |
| ROUTT | 5 | 12 | 1 | | 1 | 6 | 3 | 2 | | 2 | 1 | 2 | 4 | 2 | 2 | | | |
| SAN MIGUEL | 6 | 9 | 10 | 19 | 28 | 13 | 20 | 17 | 5 | 1 | 2 | 2 | | | 2 | | | |
| SEDGWICK | | | | 1 | 2 | 1 | 1 | 5 | | | 3 | 8 | 3 | | | 1 | | |
| WASHINGTON | 15 | 12 | 24 | 29 | 65 | 34 | 23 | 14 | 11 | 2 | 2 | 4 | 1 | 9 | 7 | 2 | 6 | 6 |
| WELD | 237 | 403 | 406 | 522 | 632 | 718 | 931 | 1,222 | 1,312 | 878 | 1,209 | 1,671 | 1,459 | 1,314 | 1,558 | 1,114 | 749 | 895 |
| YUMA | 42 | 162 | 108 | 106 | 144 | 597 | 593 | 445 | 336 | 27 | 213 | 106 | 16 | 13 | 39 | | | |
| TOTAL | 992 | 1,472 | 1,254 | 1,630 | 2,092 | 3,004 | 3,542 | 4,048 | 4,459 | 2,071 | 2,779 | 3,216 | 2,297 | 1,978 | 2,240 | 1,477 | 1,004 | 1,261 |

ALL COUNTIES





Active Wells by County and Status as of October 1, 2017

| COUNTY | Drilling | Domestic | Injecting | Producing | Shut In | Temp Aband | Waiting on Completion | Active Storage | Total Active Wells |
|---------------|--------------|-----------|------------|---------------|--------------|--------------|-----------------------|----------------|--------------------|
| ADAMS | 24 | | 6 | 740 | 166 | 16 | 1 | 12 | 965 |
| ARAPAHOE | 11 | 1 | 3 | 117 | 27 | 11 | | 44 | 214 |
| ARCHULETA | 1 | 5 | 1 | 109 | 12 | 13 | 6 | 1 | 148 |
| BACA | | | 13 | 99 | 21 | 12 | | 56 | 201 |
| BENT | | 1 | | 25 | 8 | 3 | | | 37 |
| BOULDER | | | | 279 | 29 | 2 | | | 310 |
| BROOMFIELD | | | | 91 | 2 | | | | 93 |
| CHEYENNE | | | 42 | 310 | 21 | 43 | 1 | | 417 |
| CROWLEY | | | | | | | | | 0 |
| DELTA | | | | 4 | 12 | | 1 | | 17 |
| DENVER | | | | 45 | 3 | 1 | 3 | | 52 |
| DOLORES | 1 | | 2 | 31 | 6 | 1 | | | 41 |
| EL PASO | | 1 | | | | 1 | | | 2 |
| ELBERT | | | | 68 | 3 | 3 | | 1 | 75 |
| FREMONT | 3 | 3 | | 56 | 9 | 6 | 2 | | 79 |
| GARFIELD | 213 | 2 | 43 | 10682 | 230 | 56 | 143 | 1 | 11,370 |
| GUNNISON | 5 | | 2 | 32 | 8 | | 3 | | 50 |
| HUERFANO | | | 1 | 36 | 4 | 6 | | | 47 |
| JACKSON | 19 | | 23 | 109 | 49 | | | | 200 |
| JEFFERSON | | | | 1 | 1 | | 1 | 3 | 6 |
| KIOWA | | | 12 | 96 | 14 | 2 | 2 | | 126 |
| KIT CARSON | | 1 | 2 | 11 | | 2 | | | 16 |
| LA PLATA | 7 | 7 | 33 | 3087 | 132 | 27 | 3 | 34 | 3,330 |
| LARIMER | 29 | 2 | 22 | 162 | 42 | 19 | 1 | | 277 |
| LAS ANIMAS | 1 | 4 | 18 | 2689 | 73 | 115 | 12 | 22 | 2,934 |
| LINCOLN | 6 | 1 | 12 | 93 | 9 | 3 | | | 124 |
| LOGAN | | | 25 | 102 | 25 | 32 | | 30 | 214 |
| MESA | 59 | 1 | 12 | 930 | 108 | 26 | 3 | 11 | 1,150 |
| MOFFAT | 1 | | 9 | 427 | 82 | 37 | 6 | | 562 |
| MONTEZUMA | 1 | 1 | 7 | 118 | 25 | 15 | | 1 | 168 |
| MONTROSE | | | | | | | | 1 | 1 |
| MORGAN | | | 15 | 77 | 98 | 34 | | 81 | 305 |
| OURAY | | 1 | | | | 1 | | | 2 |
| PARK | | | | | | | | | 0 |
| PHILLIPS | | | 4 | 263 | 3 | 2 | | | 272 |
| PITKIN | | | | | | | | 10 | 10 |
| PROWERS | | | | 24 | 3 | 1 | | | 28 |
| RIO BLANCO | 28 | 3 | 301 | 2130 | 279 | 134 | 11 | 2 | 2,888 |
| ROUTT | | 2 | | 26 | 8 | 2 | | | 38 |
| SAN MIGUEL | 1 | | | 63 | 51 | 14 | | | 129 |
| SEDGWICK | 2 | 1 | 1 | 12 | 4 | | 2 | | 22 |
| WASHINGTON | 5 | | 23 | 379 | 44 | 9 | 1 | | 461 |
| WELD | 1206 | 1 | 57 | 14910 | 6797 | 649 | 44 | 5 | 23,669 |
| YUMA | 2 | 8 | 22 | 3735 | 88 | 7 | 12 | 1 | 3,875 |
| Totals | 1,625 | 46 | 711 | 42,168 | 8,496 | 1,305 | 258 | 316 | 54,925 |



Monthly Statistics as of October 1, 2017

Page 1 of 2

| YEAR and MONTH | Baker - Hughes Rig Count | Permits | | | | | | | | | | Well Spud Notices | Active Drilling Permits | Active Wells | Public Visits | | | |
|-------------------|-----------------------------|--------------|--------------|--------------|------------|-----------|-----------|------------|------------|--------------|--------------|----------------------|----------------------------|--------------|---------------|--------------|------------------|--|
| | | Drilling | | Recompletion | | Injection | | Pits | | Locations | | | | | Data | Office | Internet | |
| | | Rcvd | Apvd | Rcvd | Apvd | Rcvd | Apvd | Rcvd | Apvd | Rcvd | Authz | | | | | | | |
| 2011 TOTAL | | 4,709 | 4,659 | 325 | 320 | 44 | 32 | 190 | 192 | 2,382 | 2,267 | 3,216 | | | 187 | 1,294 | 1,337,865 | |
| 2012 TOTAL | | 3,982 | 3,773 | 154 | 168 | 63 | 44 | 114 | 84 | 1,373 | 1,293 | 2,297 | | | 159 | 1,305 | 1,324,443 | |
| 2013 | | | | | | | | | | | | | | | | | | |
| JAN | 53 | 538 | 331 | 6 | 0 | 3 | 5 | 6 | 8 | 176 | 124 | 141 | 5,060 | 50,265 | 9 | 108 | 47,406 | |
| FEB | 56 | 260 | 455 | 10 | 5 | 2 | 3 | 4 | 11 | 91 | 141 | 139 | 5,250 | 50,372 | 7 | 102 | 40,649 | |
| MAR | 57 | 344 | 241 | 5 | 9 | 3 | 8 | 15 | 6 | 129 | 84 | 173 | 5,093 | 50,540 | 9 | 133 | 43,019 | |
| APR | 61 | 331 | 333 | 6 | 5 | 5 | 5 | 6 | 8 | 146 | 117 | 161 | 4,925 | 50,687 | 3 | 132 | 46,459 | |
| MAY | 61 | 350 | 342 | 8 | 6 | 6 | 6 | 10 | 7 | 106 | 142 | 162 | 5,110 | 50,810 | 3 | 123 | 45,215 | |
| JUN | 62 | 349 | 273 | 2 | 8 | 8 | 8 | 5 | 3 | 114 | 85 | 145 | 5,273 | 50,909 | 8 | 122 | 41,015 | |
| JUL | 68 | 864 | 304 | 11 | 4 | 9 | 2 | 9 | 5 | 218 | 91 | 160 | 5,070 | 51,091 | 7 | 154 | 45,558 | |
| AUG | 69 | 232 | 291 | 6 | 4 | 3 | 2 | 4 | 1 | 35 | 76 | 206 | 5,200 | 51,255 | 20 | 130 | 44,722 | |
| SEP | 69 | 212 | 362 | 9 | 5 | 10 | 9 | 3 | 19 | 56 | 109 | 164 | 5,185 | 51,407 | 5 | 105 | 41,256 | |
| OCT | 72 | 319 | 376 | 5 | 9 | 7 | 5 | 1 | 8 | 67 | 88 | 238 | 4,967 | 51,598 | 5 | 135 | 45,151 | |
| NOV | 69 | 346 | 353 | 4 | 13 | 7 | 4 | 2 | 27 | 67 | 85 | 163 | 5,141 | 51,711 | 12 | 119 | 38,903 | |
| DEC | 64 | 336 | 367 | 2 | 4 | 4 | 6 | 2 | 3 | 63 | 71 | 125 | 5,129 | 51,737 | 4 | 93 | 32,381 | |
| 2013 TOTAL | | 4,481 | 4,028 | 74 | 72 | 67 | 63 | 67 | 106 | 1,268 | 1,213 | 1,977 | | | 92 | 1,456 | 511,734 | |
| 2014 | | | | | | | | | | | | | | | | | | |
| JAN | 62 | 278 | 232 | 3 | 2 | 3 | 4 | 14 | 8 | 90 | 43 | 171 | 4,926 | 51,840 | 1 | 90 | 46,150 | |
| FEB | 61 | 284 | 297 | 6 | 4 | 1 | 1 | 3 | 1 | 91 | 94 | 149 | 5,051 | 51,847 | 12 | 113 | 43,408 | |
| MAR | 62 | 367 | 329 | 4 | 6 | 7 | 1 | 6 | 6 | 110 | 88 | 183 | 4,997 | 51,952 | 16 | 140 | 46,620 | |
| APR | 63 | 276 | 317 | 2 | 3 | 2 | 5 | 8 | 3 | 89 | 99 | 173 | 4,897 | 52,060 | 11 | 188 | 45,558 | |
| MAY | 65 | 458 | 383 | 2 | 2 | 3 | 1 | 6 | 7 | 83 | 94 | 179 | 4,923 | 52,202 | 18 | 131 | 42,365 | |
| JUN | 67 | 429 | 377 | 3 | 0 | 6 | 7 | 5 | 2 | 134 | 92 | 223 | 4,924 | 52,337 | 10 | 156 | 42,518 | |
| JUL | 69 | 272 | 446 | 2 | 5 | 3 | 11 | 8 | 5 | 97 | 126 | 181 | 4,955 | 52,431 | 7 | 166 | 45,481 | |
| AUG | 73 | 376 | 259 | 4 | 3 | 4 | 4 | 3 | 4 | 111 | 87 | 218 | 5,060 | 52,582 | 8 | 145 | 42,431 | |
| SEP | 76 | 412 | 304 | 2 | 3 | 3 | 1 | 20 | 1 | 116 | 81 | 214 | 5,006 | 52,694 | 14 | 175 | 43,577 | |
| OCT | 76 | 459 | 371 | 3 | 2 | 9 | 2 | 4 | 6 | 93 | 109 | 191 | 4,827 | 52,785 | 19 | 138 | 46,030 | |
| NOV | 73 | 326 | 479 | 5 | 2 | 5 | 4 | 4 | 0 | 54 | 103 | 167 | 5,171 | 52,947 | 8 | 96 | 39,583 | |
| DEC | 69 | 286 | 397 | 1 | 2 | 2 | 7 | 1 | 2 | 45 | 99 | 191 | 5,236 | 53,054 | 6 | 144 | 37,964 | |
| 2014 TOTAL | | 4,223 | 4,191 | 37 | 34 | 48 | 48 | 82 | 45 | 1,113 | 1,115 | 2,240 | | | 130 | 1,682 | 521,685 | |
| 2015 | | | | | | | | | | | | | | | | | | |
| JAN | 64 | 349 | 316 | 3 | 1 | 2 | 9 | 3 | 1 | 60 | 43 | 190 | 5,060 | 53,195 | 17 | 114 | 41,502 | |
| FEB | 49 | 324 | 161 | 3 | 2 | 5 | 6 | 9 | 0 | 73 | 28 | 116 | 4,750 | 53,309 | 4 | 117 | 38,245 | |
| MAR | 38 | 246 | 294 | 1 | 6 | 1 | 5 | 7 | 5 | 44 | 70 | 166 | 4,983 | 53,414 | 6 | 146 | 42,513 | |
| APR | 37 | 194 | 165 | 3 | 1 | 2 | 5 | 1 | 2 | 46 | 37 | 94 | 4,854 | 53,456 | 1 | 125 | 39,559 | |
| MAY | 39 | 324 | 190 | 1 | 4 | 2 | 6 | 8 | 0 | 41 | 44 | 108 | 4,632 | 53,535 | 5 | 113 | unavailable | |
| JUN | 38 | 327 | 281 | 4 | 1 | 0 | 5 | 2 | 1 | 52 | 49 | 143 | 4,726 | 53,608 | 5 | 138 | unavailable | |
| JUL | 38 | 373 | 250 | 4 | 2 | 2 | 1 | 0 | 0 | 57 | 48 | 120 | 4,663 | 53,706 | 7 | 145 | 26,975 | |
| AUG | 37 | 289 | 300 | 2 | 6 | 3 | 0 | 5 | 5 | 32 | 46 | 121 | 4,847 | 53,766 | 2 | 109 | 30,674 | |
| SEP | 33 | 242 | 312 | 3 | 1 | 1 | 7 | 0 | 3 | 59 | 49 | 100 | 4,953 | 53,806 | 4 | 146 | 31,642 | |
| OCT | 30 | 372 | 223 | 2 | 2 | 3 | 1 | 1 | 0 | 54 | 51 | 108 | 4,694 | 53,898 | 12 | 119 | 33,199 | |
| NOV | 31 | 190 | 254 | 6 | 2 | 4 | 3 | 1 | 0 | 21 | 49 | 116 | 4,765 | 53,719 | 7 | 105 | 29,112 | |
| DEC | 25 | 275 | 242 | 1 | 5 | 3 | 6 | 1 | 0 | 42 | 43 | 85 | 4,594 | 53,652 | 3 | 112 | 25,659 | |
| 2015 TOTAL | | 3,505 | 2,988 | 33 | 33 | 28 | 54 | 38 | 17 | 581 | 557 | 1,467 | | | 73 | 1,489 | 339,080 | |
| 2016 | | | | | | | | | | | | | | | | | | |
| JAN | 22 | 250 | 126 | 1 | 0 | 3 | 5 | 0 | 0 | 34 | 9 | 71 | 4,528 | 53,698 | 2 | 118 | 30,105 | |
| FEB | 20 | 205 | 227 | 3 | 0 | 3 | 2 | 44 | 2 | 31 | 39 | 68 | 4,599 | 53,723 | 8 | 115 | 28,611 | |
| MAR | 17 | 268 | 268 | 0 | 0 | 2 | 2 | 5 | 0 | 34 | 36 | 70 | 4,530 | 53,710 | 3 | 132 | 30,902 | |
| APR | 17 | 185 | 224 | 0 | 1 | 3 | 4 | 0 | 0 | 24 | 39 | 63 | 4,511 | 53,774 | 4 | 113 | 27,914 | |
| MAY | 16 | 353 | 217 | 0 | 2 | 3 | 1 | 1 | 1 | 33 | 24 | 85 | 4,464 | 53,749 | 4 | 106 | 26,778 | |
| JUN | 16 | 315 | 233 | 0 | 0 | 2 | 3 | 2 | 1 | 38 | 30 | 67 | 4,456 | 53,651 | 2 | 80 | 27,284 | |
| JUL | 20 | 268 | 249 | 5 | 0 | 4 | 4 | 6 | 6 | 31 | 30 | 87 | 4,344 | 53,724 | 5 | 91 | 24,151 | |
| AUG | 21 | 141 | 150 | 1 | 3 | 5 | 3 | 2 | 0 | 33 | 23 | 97 | 4,436 | 53,740 | 1 | 106 | 29,192 | |
| SEP | 19 | 366 | 270 | 0 | 2 | 4 | 2 | 0 | 6 | 29 | 24 | 72 | 4,522 | 53,817 | 4 | 154 | 25,698 | |
| OCT | 19 | 334 | 297 | 6 | 1 | 6 | 3 | 1 | 0 | 42 | 29 | 89 | 4,601 | 53,903 | 1 | 135 | 25,893 | |
| NOV | 20 | 368 | 304 | 3 | 3 | 3 | 3 | 0 | 1 | 40 | 45 | 131 | 4,566 | 53,993 | 2 | 97 | 25,140 | |
| DEC | 26 | 342 | 267 | 1 | 4 | 7 | 5 | 1 | 2 | 48 | 25 | 104 | 4,477 | 54,036 | 5 | 92 | 23,449 | |
| 2016 TOTAL | | 3,395 | 2,832 | 20 | 16 | 45 | 37 | 62 | 19 | 417 | 353 | 1,004 | | | 41 | 1,339 | 325,117 | |
| 2017 | | | | | | | | | | | | | | | | | | |
| JAN | 28 | 442 | 211 | 8 | 2 | 2 | 2 | 0 | 0 | 42 | 25 | 131 | 4,492 | 54,111 | 6 | 79 | 28,702 | |
| FEB | 26 | 701 | 263 | 2 | 4 | 4 | 3 | 0 | 0 | 62 | 38 | 137 | 4,543 | 54,194 | 1 | 97 | 27,715 | |
| MAR | 28 | 510 | 423 | 2 | 2 | 7 | 4 | 3 | 24 | 71 | 48 | 172 | 4,714 | 54,322 | 1 | 152 | 31,952 | |
| APR | 29 | 352 | 301 | 5 | 4 | 3 | 7 | 1 | 2 | 41 | 54 | 132 | 4,635 | 54,369 | 1 | 103 | 30,406 | |
| MAY | 31 | 307 | 367 | 4 | 3 | 1 | 6 | 1 | 28 | 41 | 55 | 159 | 4,899 | 54,369 | 5 | 94 | 36,109 | |
| JUNE | 36 | 493 | 331 | 3 | 2 | 6 | 1 | 1 | 1 | 58 | 40 | 162 | 4,947 | 54,605 | 5 | 109 | 30,644 | |
| JULY | 37 | 508 | 234 | 2 | 4 | 2 | 2 | 1 | 1 | 45 | 31 | 182 | 4,999 | 54,699 | 2 | 80 | 27,025 | |
| AUG | 37 | 572 | 349 | 9 | 0 | 8 | 3 | 1 | 2 | 53 | 49 | 161 | 5,000 | 54,814 | 1 | 143 | 30,715 | |
| SEP | 35 | 528 | 450 | 2 | 6 | 0 | 0 | 1 | 1 | 56 | 41 | 148 | 4,976 | 54,925 | 2 | 114 | 27,402 | |
| 2017 TOTAL | | 4,413 | 2,929 | 37 | 27 | 33 | 28 | 9 | 59 | 469 | 381 | 1,384 | | | 24 | 971 | 270,670 | |

Abbreviation Key: Rcvd = Received, Apvd = Approved, Authz = Authorized



Oil and Gas Staff Report

October 30, 2017

27

Monthly Statistics as of October 1, 2017

Page 2 of 2

| YEAR and MONTH | Well Oper Change | Operators | | Bonds | | | | | | Hearings | | Enforcement | | | Remediation | | | Inspections | |
|----------------|------------------|-----------|----|---------|-------|-------|-------|---------|----------|----------|-----|-------------|----|-----|-------------|-------|-----------|-------------|--------|
| | | | | Release | | Claim | | Replace | Projects | | | | | | Inspections | | | | |
| | | | | Ind | Blnkt | Ind | Blnkt | | Rcvd | | | | | | Comp | Wells | Locations | | |
| 2011 TOTAL | 6,743 | 33 | 31 | 79 | 44 | 43 | 4 | 4 | 403 | 349 | 230 | 10 | 19 | 247 | 527 | 726 | 536 | 12,394 | - |
| 2012 TOTAL | 7,546 | 47 | 37 | 70 | 46 | 33 | 3 | 0 | 482 | 396 | 157 | 9 | 2 | 244 | 402 | 690 | 641 | 19,071 | 12,670 |
| 2013 JAN | 653 | 3 | 5 | 12 | 2 | 0 | 0 | 0 | 48 | 75 | 15 | 4 | - | 21 | 40 | 31 | 45 | 1,622 | 789 |
| FEB | 289 | 4 | 2 | 6 | 3 | 2 | 0 | 0 | 41 | 35 | 11 | 2 | - | 15 | 30 | 42 | 90 | 1,044 | 615 |
| MAR | 354 | 1 | 3 | 2 | 2 | 1 | 0 | 0 | 54 | 67 | 16 | 2 | - | 11 | 25 | 65 | 29 | 1,968 | 1,149 |
| APR | 333 | 7 | 1 | 5 | 2 | 8 | 0 | 0 | - | - | 21 | - | - | 16 | 33 | 39 | 37 | 1,510 | 910 |
| MAY | 346 | 2 | 1 | 3 | 0 | 0 | 0 | 0 | 46 | 50 | 22 | 6 | - | 13 | 31 | 41 | 60 | 2,621 | 1,576 |
| JUN | 1,456 | 6 | 2 | 2 | 4 | 5 | 0 | 0 | 91 | 44 | 13 | 2 | - | 25 | 40 | 47 | 37 | 1,860 | 1,102 |
| JUL | 1,009 | 4 | 1 | 2 | 2 | 0 | 0 | 0 | 96 | 70 | 25 | 3 | - | 21 | 47 | 50 | 22 | 2,298 | 1,338 |
| AUG | 389 | 6 | 4 | 5 | 4 | 2 | 0 | 0 | - | - | 23 | - | - | 25 | 57 | 36 | 41 | 2,146 | 1,033 |
| SEP | 277 | 4 | 1 | 6 | 1 | 0 | 0 | 0 | 101 | 51 | 7 | 2 | - | 16 | 60 | 43 | 51 | 1,536 | 703 |
| OCT | 345 | 6 | 0 | 2 | 2 | 2 | 0 | 0 | 52 | 82 | 4 | 12 | 3 | 12 | 79 | 47 | 60 | 1,868 | 1,158 |
| NOV | 442 | 2 | 0 | 2 | 2 | 0 | 0 | 0 | - | - | 30 | - | - | 12 | 51 | 31 | 34 | 2,401 | 1,613 |
| DEC | 1,299 | 4 | 1 | 1 | 2 | 0 | 0 | 0 | 42 | 48 | 50 | 4 | - | 14 | 75 | 35 | 35 | 2,677 | 1,384 |
| 2013 TOTAL | 7,192 | 49 | 21 | 48 | 26 | 20 | 0 | 0 | 571 | 522 | 237 | 37 | 3 | 201 | 568 | 507 | 541 | 23,551 | 13,370 |
| 2014 JAN | 1,971 | 6 | 3 | 3 | 2 | 0 | 0 | 0 | 57 | 46 | 25 | 2 | - | 8 | 68 | 46 | 28 | 3,243 | 1,597 |
| FEB | 2,039 | 8 | 2 | 6 | 5 | 0 | 0 | 0 | - | - | 23 | - | - | 17 | 59 | 51 | 13 | 2,330 | 1,282 |
| MAR | 493 | 2 | 3 | 1 | 5 | 0 | 0 | 0 | 97 | 75 | 29 | 10 | - | 22 | 63 | 66 | 31 | 1,822 | 1,298 |
| APR | 312 | 5 | 3 | 6 | 4 | 1 | 0 | 0 | 74 | 64 | 17 | 8 | 1 | 20 | 57 | 47 | 59 | 2,651 | 1,715 |
| MAY | 508 | 6 | 2 | 3 | 3 | 5 | 0 | 0 | - | - | 12 | - | - | 13 | 63 | 50 | 42 | 2,437 | 1,571 |
| JUN | 1,008 | 5 | 3 | 7 | 4 | 1 | 0 | 1 | 95 | 90 | 14 | 6 | 1 | 16 | 74 | 44 | 50 | 3,209 | 1,717 |
| JUL | 338 | 2 | 1 | 5 | 3 | 1 | 0 | 0 | 96 | 96 | 11 | 6 | - | 12 | 60 | 60 | 59 | 3,071 | 1,536 |
| AUG | 452 | 6 | 2 | 2 | 3 | 0 | 0 | 0 | - | - | 8 | - | - | 31 | 56 | 32 | 58 | 2,788 | 1,682 |
| SEP | 378 | 4 | 2 | 1 | 2 | 0 | 0 | 0 | 73 | 63 | 13 | 7 | 1 | 18 | 65 | 39 | 50 | 2,587 | 1,616 |
| OCT | 886 | 8 | 2 | 0 | 2 | 0 | 1 | 0 | 80 | 75 | 12 | 3 | 1 | 13 | 74 | 78 | 36 | 3,886 | 1,914 |
| NOV | 498 | 2 | 4 | 8 | 4 | 5 | 0 | 0 | - | - | 6 | - | - | 15 | 72 | 27 | 59 | 3,156 | 1,458 |
| DEC | 1,414 | 1 | 1 | 0 | 2 | 0 | 0 | 0 | 126 | 89 | 9 | 1 | - | 58 | 75 | 56 | 17 | 3,028 | 1,596 |
| 2014 TOTAL | 10,297 | 55 | 28 | 42 | 39 | 13 | 1 | 1 | 698 | 598 | 179 | 43 | 4 | 243 | 786 | 596 | 502 | 34,208 | 18,982 |
| 2015 JAN | 727 | 2 | 3 | 2 | 3 | 0 | 0 | 0 | 76 | 64 | 15 | 2 | 1 | 36 | 64 | 38 | 58 | 2,491 | 1,246 |
| FEB | 556 | 5 | 2 | 2 | 3 | 1 | 0 | 0 | - | - | 10 | - | - | 22 | 44 | 34 | 64 | 2,667 | 1,382 |
| MAR | 183 | 5 | 3 | 5 | 2 | 4 | 2 | 0 | 72 | 72 | 33 | 1 | 1 | 42 | 76 | 59 | 94 | 3,469 | 1,738 |
| APR | 271 | 7 | 1 | 0 | 5 | 3 | 0 | 0 | 60 | 54 | 19 | 3 | - | 21 | 46 | 40 | 61 | 3,451 | 1,620 |
| MAY | 436 | 8 | 0 | 0 | 2 | 3 | 0 | 0 | 89 | 54 | 10 | 10 | 2 | 25 | 46 | 56 | 41 | 2,869 | 1,422 |
| JUN | 508 | 2 | 2 | 3 | 5 | 4 | 0 | 0 | - | - | 27 | - | - | 25 | 41 | 32 | 43 | 3,366 | 1,716 |
| JUL | 396 | 3 | 3 | 0 | 5 | 1 | 0 | 0 | 123 | 140 | 5 | 13 | 1 | 32 | 67 | 52 | 28 | 3,445 | 1,774 |
| AUG | 218 | 8 | 2 | 0 | 7 | 4 | 0 | 0 | - | - | 13 | - | - | 18 | 56 | 24 | 62 | 3,693 | 1,847 |
| SEP | 273 | 6 | 5 | 1 | 7 | 4 | 0 | 2 | 112 | 78 | 25 | 11 | - | 30 | 41 | 44 | 40 | 2,887 | 1,528 |
| OCT | 356 | 4 | 1 | 6 | 1 | 6 | 1 | 0 | 115 | 103 | 6 | 12 | 1 | 32 | 58 | 51 | 33 | 3,420 | 1,494 |
| NOV | 97 | 2 | 3 | 5 | 0 | 0 | 0 | 1 | - | - | 6 | - | - | 15 | 38 | 47 | 40 | 3,348 | 1,666 |
| DEC | 437 | 7 | 2 | 3 | 5 | 1 | 0 | 0 | 91 | 80 | 4 | 5 | 2 | 60 | 46 | 39 | 37 | 3,851 | 1,765 |
| 2015 TOTAL | 4,458 | 59 | 27 | 27 | 45 | 31 | 3 | 3 | 738 | 645 | 173 | 57 | 8 | 358 | 623 | 516 | 601 | 38,957 | 19,198 |
| 2016 JAN | 508 | 2 | 1 | 0 | 5 | 5 | 0 | 0 | 76 | 66 | 4 | 7 | 1 | 29 | 51 | 44 | 36 | 3,184 | 1,551 |
| FEB | 165 | 2 | 1 | 0 | 1 | 1 | 1 | 0 | - | - | 8 | - | - | 27 | 47 | 34 | 49 | 3,666 | 1,738 |
| MAR | 1,035 | 6 | 4 | 2 | 2 | 2 | 1 | 1 | 62 | 57 | 3 | 7 | 1 | 19 | 42 | 50 | 45 | 3,020 | 1,646 |
| APR | 244 | 3 | 3 | 2 | 7 | 4 | 0 | 0 | 34 | 32 | 6 | 4 | 2 | 20 | 40 | 48 | 90 | 4,046 | 2,117 |
| MAY | 374 | 2 | 3 | 6 | 3 | 3 | 1 | 0 | - | - | 0 | - | - | 20 | 37 | 41 | 29 | 3,489 | 2,192 |
| JUN | 272 | 6 | 3 | 3 | 4 | 1 | 1 | 1 | 67 | 65 | 3 | 6 | 2 | 20 | 36 | 40 | 77 | 4,098 | 2,330 |
| JUL | 2,234 | 3 | 2 | 0 | 2 | 0 | 0 | 0 | - | - | 10 | - | - | 20 | 41 | 29 | 56 | 3,484 | 2,069 |
| AUG | 137 | 3 | 3 | 3 | 2 | 1 | 1 | 1 | 71 | 43 | 20 | 4 | - | 20 | 51 | 39 | 38 | 4,067 | 2,288 |
| SEP | 321 | 3 | 1 | 9 | 3 | 3 | 0 | 1 | - | - | 8 | - | - | 20 | 37 | 44 | 22 | 3,527 | 1,788 |
| OCT | 426 | 1 | 3 | 7 | 5 | 1 | 0 | 0 | 96 | 74 | 23 | 7 | 1 | 21 | 40 | 34 | 36 | 3,325 | 1,810 |
| NOV | 542 | 3 | 0 | 4 | 0 | 0 | 3 | 0 | - | - | 19 | - | - | 22 | 40 | 27 | 50 | 3,855 | 1,911 |
| DEC | 249 | 4 | 4 | 1 | 7 | 2 | 1 | 1 | 67 | 60 | 3 | 8 | - | 23 | 66 | 31 | 72 | 3,373 | 1,683 |
| 2016 TOTAL | 6,507 | 38 | 28 | 37 | 41 | 23 | 9 | 5 | 473 | 397 | 107 | 43 | 7 | 261 | 528 | 461 | 600 | 43,134 | 23,123 |
| 2017 JAN | 2,696 | 3 | 3 | 3 | 3 | 1 | 0 | 0 | 80 | 72 | 1 | 11 | 1 | 46 | 48 | 23 | 11 | 3,007 | 1,447 |
| FEB | 339 | 1 | 5 | 2 | 4 | 2 | 0 | 3 | 0 | 0 | 13 | 0 | 0 | 74 | 57 | 34 | 17 | 3,180 | 1,372 |
| MAR | 1,084 | 6 | 4 | 2 | 2 | 2 | 1 | 1 | 86 | 65 | 18 | 3 | 0 | 44 | 55 | 49 | 18 | 3,812 | 1,851 |
| APR | 849 | 3 | 0 | 1 | 5 | 5 | 0 | 0 | 0 | 0 | 6 | 0 | 0 | 32 | 40 | 43 | 29 | 2,892 | 1,575 |
| MAY | 495 | 1 | 3 | 0 | 5 | 0 | 0 | 0 | 128 | 93 | 3 | 6 | 0 | 185 | 55 | 46 | 30 | 2,485 | 1,481 |
| JUNE | 258 | 6 | 1 | 1 | 2 | 0 | 0 | 0 | 107 | 102 | 2 | 4 | 1 | 131 | 63 | 57 | 26 | 2,532 | 1,680 |
| JULY | 273 | 5 | 2 | 2 | 2 | 0 | 0 | 1 | 108 | 104 | 5 | 3 | 0 | 66 | 38 | 29 | 23 | 2,168 | 1,299 |
| AUG | 349 | 4 | 2 | 27 | 13 | 32 | 0 | 0 | 0 | 0 | 3 | 0 | 0 | 207 | 55 | 63 | 51 | 2,883 | 1,704 |
| SEP | 266 | 1 | 2 | 9 | 6 | 6 | 0 | 1 | 133 | 74 | 20 | 1 | 0 | 212 | 48 | 64 | 38 | 2,711 | 1,529 |
| 2017 TOTAL | 6,609 | 30 | 22 | 47 | 42 | 48 | 1 | 6 | 642 | 510 | 71 | 28 | 2 | 997 | 459 | 408 | 243 | 25,670 | 13,938 |

Abbreviation Key: Ind = Individual, Blnkt = Blanket, Apps = Application for Hearing, NOAV = Notice of Alleged Violation, AOC = Administrative Order of Consent, OFV = Order Finding Violation, Cmplnt = Complaint, Comp = Completed