



COLORADO

**Oil & Gas Conservation
Commission**

Department of Natural Resources

Staff Report

for December 11, 2017

Top Stories

◆ Financial Assurance for Excess Inactive Wells

The COGCC Financial Assurance Staff continues their audit of operators for compliance with Rule 707. The rule requires additional financial assurance when an operator has more inactive wells than the operator's blanket plugging and reclamation bond could cover on an individual basis. A well is defined as inactive if there have been no sales of product for more than a year. Such a well is not generating any revenue for the operator and represents a potential liability. This excess inactive well bond protects the State from the liability of plugging and reclaiming the wells of an insolvent operator.

Operators identified as being noncompliant with Rule 707 will receive a Warning Letter that notifies them of the amount of excess inactive financial assurance required and a due date. Failure to respond to the warning and provide the additional amount can lead to the issuance of a Notice of Alleged Violation. The COGCC encourages operators to conduct their own audit and increase their bond as needed. Operators may request an inactive well report from COGCC Financial Assurance Staff.

◆ Driving Methane Survey - Pilot Study

In August, the COGCC, in cooperation with the Colorado Department of Public Health and Environment - Air Pollution Control Division (CDPHE - APCD), submitted a proposal to Region 8 of the U.S. Environmental Protection Agency (EPA) to utilize its Geospatial Measurement of Air Pollution (GMAP) system for a driving air monitoring survey, primarily in Weld County. The COGCC proposed this pilot study for two basic purposes as follows:

- To determine if there are uncontrolled releases of natural gas from oil and gas producing facilities in close proximity to

residential areas that could result in public safety risks;

- To identify and stop emissions from oil and gas production facilities to protect human health and the environment in accordance with applicable air quality regulations.

GMAP surveying took place between November 1 and 15. The system was used to detect methane, total volatile organic constituents and benzene in areas selected by the COGCC for several reasons, but primarily for the large number of oil and gas facilities located in close proximity to both established and expanding residential areas within municipalities such as Dacono, Frederick, Firestone, Erie, and several others. The field work consisted of a total of seven days of surveying and covered approximately 100 miles of roads per day.

The real time surveying results did not identify any public safety risks. Some locations had elevated readings of methane, total volatile organic constituents, and benzene in close proximity to active oil and gas operations. EPA is expected to provide the final data to the COGCC no later than May 2018. The COGCC will use the data to prepare a summary report of findings and evaluate the GMAP system, or a comparable technology, for additional surveys.

This study may provide valuable data for the development of an ambient methane monitoring pilot program consistent with the Governor's recommendations following the home explosion in Firestone.

◆ Water Quality Report on Upper Pierre Aquifer

COGCC Staff undertook a study to document the water quality and the presence and origin of methane in the Upper Pierre Aquifer in Northeastern Weld County, Morgan County, and



Logan County. The Upper Pierre Aquifer has been largely unexplored until recently, and the recent increase in oil and gas exploration and production in northern Weld County, coupled with the increased interest in the Upper Pierre Aquifer as a source of water for livestock, industrial, and domestic uses, prompted the COGCC to conduct this study. The COGCC's report summarizing the results is available online in the Library from:

http://cogcc.state.co.us/documents/library/AreaReports/DenverBasin/UPWQ_Report_Final_11_07_17.pdf

◆ **Statement for Production Facilities with Groove-Lock Coupling and Sealing Systems**

On October 19, the COGCC issued a statement on use and precautions for groove-lock coupling and sealing systems. Additional information can be accessed on the COGCC website at this location:

http://cogcc.state.co.us/documents/reg/OpGuidance/COGCC_issue%20statement%20groove-lock%20coupling%20and%20sealing%20systems_10202017.pdf

◆ **Local Government Liaison (LGL) Program Update**

Local Government Liaison (LGL) Marc Morton provides valuable training, outreach, service, information, and support to local governments that participate in the COGCC's rules-based Local Governmental Designee (LGD) program. Marc also assists COGCC staff in various initiatives and special projects, and currently coordinates the Gas and Oil Regulatory Team (GORT) and Northwest Forum (NWF) meetings.

Marc is available upon request to provide training to LGDs and local government staff concerning the role of local government in oil and gas industry regulation in Colorado. LGD trainings typically take one of three forms:

- LGD orientation training (3-4 hours)
- LGD program and COGCC overview training (typically 6-8 hours)
- Topic-specific training (typically 1-2 hours).

Marc is also available to present information to local government regarding COGCC initiatives and ongoing projects, such as the recently upgraded Daily Activity Dashboard tool, the online complaint intake process, navigation of the COGCC website, best practices for submitting effective and COGCC-actionable comments on pending drilling or oil and gas location assessment permit applications, or any other topic of specific interest.

Colorado counties, municipalities, and special districts continue to utilize opportunities afforded via their active participation in the COGCC's rules-based LGD program. To maintain continuity in participation, the COGCC would like to be notified about turnover at the local government level in positions designated for the LGD role.

As of November 22, previously participating county governments who installed or appointed a replacement LGD in 2017 include:

- Adams County (LGD: Chris LaMere)
- Boulder County (LGD: Kim Sanchez)
- Broomfield City and County (LGD: Tami Yellico)
- Cheyenne County (LGD: Patrick Ward)
- Delta County (LGD: Tony Vervloet)
- Dolores County (LGD: Steve Garchar)
- Lincoln County (LGD: Trey James)
- Morgan County: (Pam Cherry)
- Rio Blanco County (LGD: Lannie Massie)
- Yuma County (LGD: Andrea Calhoon).

Previously participating city or town governments who appointed a replacement LGD in 2017 include:

- Brighton, City of (LGD: Holly Prather)
- Centennial, City of (LGD: Kelly Hickler)
- Grand Junction, City of (LGD: Trent Prall)
- Ignacio, Town of (LGD: Dan Naiman)
- Mancos, Town of (LGD: Heather Alvarez)
- Mead, Town of (LGD: Erika Rasmussen)
- Milliken, Town of (LGD: Kent Brown)
- Rifle, City of (LGD: Nathan Lindquist)
- Thornton, City of (LGD: Grant Penland).

Newly participating LGD program participants in 2017 include:

- Lochbuie, Town of (LGD: Steve Stamey)
- E. Cherry Creek Valley Water and Sanitation District (LGD: Chris Douglas).

A current list of local governments currently participating in the LGD program can be accessed through the following link on the COGCC website:

<http://cogcc.state.co.us/Infosys/lgd/list.cfm>

The COGCC welcomes LGDs new to the program and those who are replacing outgoing LGDs. We

also want to thank all former LGDs for their service in working with the COGCC and on behalf of their citizens.

And as a reminder to all participating LGDs, it is very important that you notify the COGCC (via submittal of an updated Form 29) of any change in your email address or contact information, or of a planned change to your designation of the LGD for your local government.

A list of the LGL outreach and public involvement activities conducted since the last staff report is included in the Public Outreach section below.

Public Outreach

➤ *Outreach by the Director and Other Staff*

- From September 18 to 22, Underground Injection Control (UIC) Lead Bob Koehler attended the EPA Region 8 Annual Meeting in Casper, Wyoming. Representatives from North and South Dakota, Montana, Wyoming, Utah, Colorado, EPA Region 8, EPA Headquarters, and Indian Tribes discussed topics relating to the six classes of EPA injection wells.

Discussion included current activity levels, trends, common problems, new regulations, and specific projects. Wyoming recruited speakers for short lectures on CO₂ in Wyoming regarding enhanced recovery, carbon sequestration, and the economics of CO₂. On the last day, the group took a field trip to a reverse osmosis plant used to treat produced water and to the disposal well under construction for the residual brine.

- On September 19, Engineering Manager Stuart Ellsworth presented to the Morgan County Commissioners and the Morgan County UIC Stakeholders a summary of the Colorado underground injection control program. The meeting was the first stakeholder meeting related to the moratorium resolution adopted by the Morgan County Commissioners on August 21, 2017.
- From September 26 to 30, Engineering Manager Ellsworth attended the Ground Water Protection Council (GWPC) Annual Meeting in Boston, Massachusetts. The GWPC, EPA, Pipeline and Hazardous Materials Safety Administration (PHMSA), and other state regulators met to

discuss underground injection, gas storage, produced water reuse and groundwater protection topics.

- On October 11, the CDPHE-APCD and the COGCC held their quarterly coordination meeting. In attendance from the CDPHE-APCD was Christopher Laplante, Stefanie Rucker, and Mark McMillan. Attending from the COGCC was Engineering Integrity Supervisor Mark Schlagenhauf, Quality Assurance Officer Mike Leonard, Field Inspection Supervisor Steve Labowskie, Engineering Manager Ellsworth, Location Assessment Supervisor John Noto, and Permitting and Technical Services Manager Jane Stanczyk. Topics of discussion included spacing orders, casing head gas venting, a mobile methane monitoring vehicle, the COGCC rulemaking, and opportunities for APCD to attend COGCC Monthly Operator Meetings.
- On October 24, UIC Lead Koehler participated in an Injection Well Stakeholders Meeting in Fort Morgan. Morgan County Commissioners requested a meeting in preparation for writing regulations for Underground Commercial Disposal Facilities. Presentations were made by Tom Parko, Weld County Director of Planning Services, and Anne Sheehan, PhD, University of Colorado Professor. Director Parko outlined Weld County Regulations for Special Use Permits for Commercial Injection Facilities, and Dr. Sheehan made a presentation on Induced Seismicity. Afterward there was a question and answer session in which the county commissioners quizzed Director Parko, Dr. Sheehan, and UIC Lead Koehler about aspects of Underground Commercial Disposal Facilities.



- On October 31 and November 2, Quality Assurance Officer Leonard delivered an online presentation to oil and gas regulators who were attending a TOPCORP training program in Bakersfield, California. Mike's webcasts focused on the COGCC's development and utilization of a priority rating system to guide well and location inspections.

TOPCORP is a consortium of university professionals with a background in geomechanics, petroleum geology, or engineering and communication skills. The consortium provides training for oil and gas regulators and policymakers. Mike and other field inspection staff have been involved with the program since its inception.

- On November 9, a COGCC Oil and Gas Location Assessment Specialist gave a presentation to the 4th grade classes of the Science, Technology, Engineering and Math (STEM) Magnet Lab School of the Adams 12 Five Star Schools. The students were presented with a brief introduction to the COGCC, its staff and responsibilities, a discussion of current methods of drilling operations, Colorado's regulatory process, and modern uses of oil and gas products.
- On November 13, Engineering Integrity Supervisor Schlagenhaut and Integrity Engineer Ellice Hazard presented an overview of the COGCC Flowline program to Professor Will Fleckenstein and his students in the Colorado School of Mines Society of Petroleum Engineers Student Chapter.
- On November 15, Financial Assurance Supervisor Martha Ramos, Oil and Gas Location Assessment Supervisor Noto, and Permitting Supervisor Barbara Westerdale were featured as speakers

at the Colorado Oil and Gas Association's Annual Small Operator Half-Day Meeting. Martha addressed Rule 302 requirements for operator registration and agent designation and Rule 707 requirements for additional financial assurance for excess inactive wells. John spoke about the Form 2A, Oil and Gas Location Assessment and Barbara covered the Form 2, Permit to Drill, the Form 5, Drilling Completion Report, and the Form 5A, Completed Interval Report.

➤ **Outreach by the LGL**

- Marc Morton attended the 21st Century Energy Transition Symposium in Fort Collins on October 31. The event was hosted by the Energy Institute and the Colorado State University School of Global Environmental Sustainability.
- Marc Morton attended the monthly Garfield County Energy Advisory Board meeting in Rifle on November 2.
- Marc Morton travelled to Wray on October 5 and provided a 1/2 day LGD orientation training to recently appointed Yuma County LGD Andrea Calhoon.
- On October 14, Marc Morton attended training provided by the Colorado State Land Board attended by several COGCC county LGDs and county staff.
- Marc attend the bi-monthly meeting of the Aurora Oil and Gas Advisory Committee meeting in Aurora on November 15.
- Marc Morton travelled to Delta County on November 16 and provided a 1/2 day LGD orientation training to recently appointed Delta County LGD Tony Vervloet.

Regional Activities

➤ **Northwest Colorado**

◆ **Northwest Colorado Oil and Gas Forum**

The Northwest Colorado Oil and Gas Forum (NWF) meetings for 2018 have been scheduled for March 1, August 2, and December 8. All meetings will be held in Rifle at the Colorado Mountain College - Rifle Campus / Clough Auditorium at 3595 Airport Road beginning at 9:00 a.m. and concluding by 12:00 p.m.

Meeting agendas will be posted to the COGCC website approximately one to two weeks prior to each meeting. The COGCC welcomes suggestions for speakers and topics. Meeting information is also emailed to those on the email distribution list.

All parties wishing to be placed on the meeting agenda or added to the email distribution list for announcements should contact Marc Morton at (303) 894-2100, ext. 5132 (direct), (720) 415-4959 (mobile), or by email:

marc.morton@state.co.us

As a reminder, NWF meetings are open to the public, and a public comment period is held as part of each meeting. Past NWF presentations (dating back to 2006) are available on the COGCC website at:

<http://cogcc.state.co.us/library.html#/forums>

◆ Project Rulison

The 5-year revision of the Project Rulison Sampling and Analysis Plan (RSAP) has been completed. Major revisions to the plan included re-defining the exterior buffer zones to align with hydrogeologic flow patterns instead of more arbitrary circular rings in the original plan.

Meetings were conducted to encourage communication and collaboration between the COGCC, operators, the U.S. Department of Energy, the Colorado Department of Public Health and Environment (CDPHE), and other stakeholders. Comments were received from stakeholders and incorporated into the final RSAP. This document is in the COGCC's Area Reports Library and can be found at the following link:

<http://cogcc.state.co.us/documents/library/AreaReports/PiceanceBasin/Rulison/Rulison%20Sampling%20and%20Analysis%20Plan%20Revision%204%20062217.pdf>

The email for Project Rulison submittals is

DNR_rulison.submittal@state.co.us

◆ Project Rio Blanco

The email for Project Rio Blanco submittals is

DNR_rioblanco.submittal@state.co.us

➤ *Southwest Colorado*

◆ Fruitland Formation Outcrop Mitigation and Monitoring Projects

South Fork Texas Creek Mitigation Site - La Plata County. Regularly scheduled operations

and maintenance are being performed at the South Fork Texas Creek (SFTC) site by LTE, the COGCC's contractor. Since May 2009, the system has collected 21,665 Mcf of methane and generated 254,045 kWh of surplus electricity.

At all eleven 3M/4M monitoring well locations, annual site inspection and routine maintenance visits are currently being performed by COGCC Staff. In March, a new transducer and cable was installed in the Wagon Gulch #1 monitoring well. The lower transducer had become unresponsive, and upon further inspection, it was discovered that the rugged cable had also been compromised. As the monitoring well network ages, more system maintenance and repairs are anticipated.

◆ Gas and Oil Regulatory Team (GORT) Meeting

The Southwest Colorado Gas and Oil Regulatory Team (GORT) meeting schedule for 2018 has been set. GORT meetings in 2018 are scheduled for February 8, June 21, and October 18. The February 8 meeting will be held from 9:00 a.m. to noon at the La Plata County Fairgrounds, Extension Building, 2500 Main Avenue, Durango.

The June 21 and October 18 GORT meetings will be held at the Durango Public Library at 1900 E. 3rd Avenue, Durango, between 9:00 a.m. and 12:00 p.m.

GORT meeting agendas will be posted to the COGCC website approximately one to two weeks prior to each meeting, and emailed to those on the email distribution list. The COGCC welcomes suggestions and input for speakers, topics, as well as meeting format and venue.

All parties wishing to be placed on the next meeting agenda or added to the distribution list for announcements should contact Marc Morton at (303) 894-2100, ext. 5132 (direct), (720) 415-4959 (mobile), or by email:

marc.morton@state.co.us

As a reminder, GORT meetings are open to the public, and a public comment period is held as part of each meeting.



Variations

◆ Bonanza Creek Energy Operating Company, LLC (Bonanza)

Mustang 12-26

On November 2, per Rule 303.i.(1), the COGCC Director approved the Form 2A Oil and Gas Location Assessment for the Bonanza Mustang 12-26 Location (ID #452874) and the Form 2 Permit to Drill for the Mustang V41-27-28XRLNB Well (API #123-45804) prior to the end of the 20 day comment period. The operator cited an imminent lease expiration as the basis for the expedited approval request. In accordance with COGCC procedures, Bonanza obtained waivers of the 20 day comment period from the Surface Owner and the Weld County LGD. The location and well are in the SW ¼ NW ¼ of Section 26, Township 4 North, Range 63 West in Weld County.

Mustang U-22

On November 2, per Rule 303.i.(1), the COGCC Director approved the Form 2A and Gas Location Assessment for the Bonanza Mustang U-2 Location (ID #452873) and the Form 2 Permit to Drill for the Mustang B11-23-24XRLNB Well (API #123-45803) prior to the end of the 20 day comment period. The operator cited an imminent lease expiration as the basis for the expedited approval request. In accordance with COGCC procedures, Bonanza obtained waivers of the 20 day comment period from the Surface Owner and the Weld County LGD. The location and well are

in the NE ¼ NE ¼ of Section 22, Township 4 North, Range 63 West in Weld County.

Mustang 14-26

On November 16, per Rule 303.i.(1), the COGCC Director approved the Form 2A Oil and Gas Location Assessment for the Bonanza Mustang 14-26 Location (ID #450210) prior to the end of the 20 day comment period. The operator cited an imminent lease expiration as the basis for the expedited approval request. In accordance with COGCC procedures, Bonanza obtained waivers of the 20 day comment period from the Surface Owner and the Weld County LGD. The location is in the NW ¼ SW ¼ of Section 26, Township 4 North, Range 63 West in Weld County.

◆ SandRidge Exploration and Production, LLC (SandRidge)

On November 8, per Rule 303.i.(2), the COGCC Director approved the Form 2 Permit to Drill for the SandRidge Beaver Creek 0881 1-3H34 Well (API #057-06602-01) prior to the end of the 20 day comment period. The operator cited significant economic hardship in the form of drilling rig stand by charges as the basis for the expedited approval request. In accordance with COGCC procedures, SandRidge obtained waivers of the 20 day comment period from the Surface Owner and the Jackson County LGD. The well is in the NW ¼ NE ¼ of Section 10, Township 7 North, Range 81 West in Jackson County.

Admin / Organization / Other

◆ New Permit Completions Technicians

We welcome Laurel Faber as a new permit completions tech on the Permitting team. Laurel has been with the COGCC since July as a temporary employee involved in completion reviews for operators in the GWA. She will be the lead permitter for the Encana global settlement for Form 5s and 5As. Prior to joining the COGCC, Laurel worked as a mudlogger and wellsite geologist in western Colorado for two years and was employed for almost two years as a geophysicist by a microseismic and borehole imaging company.

Laurel has a BS in Geology from the University of Colorado and a professional certificate in GIS from Colorado Mesa University.

We welcome Andrew Stone as a new permit completions tech on the Permitting team. Andrew has been an engineering tech with the COGCC for three and a half years. He was responsible for the engineering review of completion reports and involved in compliance tracking for MIT violations. He will be the lead permitter for the Synergy global settlement for Form 5s and 5As.



Prior to his career with the COGCC, Andrew was employed by a petroleum data company for four years and became familiar with well logs, COGCC required forms, and data manipulation software. Andrew holds a degree in Astronomy from the University of Colorado.

COGCC organizational charts can be found on pages 9-12. For contact information, please go to the COGCC homepage and select "Contact Us" in the upper right corner of the page.

◆ Plugging and Reclaiming Orphaned Wells (PROW) Project Updates

The COGCC performed field work for the Orphan and Distressed Operator (ODO) Program projects described below since October 30. These projects relate either to "Orphan" locations or wells for which there is no known responsible party, or they relate to "Distressed Operator" projects in which surety claim funds are available.

The ODO project summary tables for Fiscal Year 2017-18 (FY18) are found on pages 13-17. The projects are sorted first by county and then by the project name. The field work described below pertains to ongoing projects or to recently completed projects. The agency has prioritized the ODO work planned for FY18, although each project is subject to change as new conditions arise during the year.

The **Atom Petroleum Project** began with Commission Order 1V-586. The project involves three single well locations in La Plata and Montezuma Counties. Recent FY18 work included work on a wellhead that had been leaking oil and water into the well cellar. When a contractor arrived to assess the situation, the leak was not apparent. The COGCC will continue to monitor the cellar for leaks at the wellhead.

The **Noel Reynolds Project** began with Commission Orders 1V-374 and 1V-375. The project involves two single-well locations in La Plata County. Recent FY18 work included installation of wellhead fittings and a pressure gauge on one well. The well was reportedly plugged by the former operator. However, when the COGCC opened up the well to remove the wellhead and cut off the casing, there was no surface plug, and methane was detected in the

casing. As an interim measure, the wellhead was secured, and a pressure gauge was installed. Re-entry and plugging will be scheduled at a later date.

The **Red Mesa Holdings Project** began with Commission Order 1V-508. The project involves 56 locations and 52 wells in La Plata County. Recent FY18 work included temporary abandonment of one well (set downhole plugs) and the plugging and abandonment of a second well. Flowlines were also abandoned at both locations. Overhead powerline repair was needed prior to accessing one well, and oil-stained soils were observed at the plugged well while cutting off the casing after plugging. Off-site disposal of the waste is being scheduled as a separate task. In addition, stormwater best management practices (BMP) installation and maintenance was performed at three locations in the Red Mesa Field.

The **Provide Energy and Red Mountain Project** began with Commission Orders 1V-364 and 1V-508. The project involves six single well locations in Jefferson and Logan Counties. Both operators were responsible for the same well and location in Jefferson County, and Red Mountain was responsible for the other five wells in Logan County. Recent FY18 work included the plugging and abandonment of one well and associated flowlines in Logan County. The COGCC also collected soil samples at the well's tank battery and produced water pit for laboratory analysis.

The **Vitruvian Exploration Project** began with Commission Order 1V-514. The project involves three locations in Moffat County. Wells were plugged by the former operator before the bond claim. Recent FY18 work included flowline abandonment at two locations. The third location passed a final reclamation inspection with no work required.

◆ Colorado Oil and Gas Information System (COGIS) Projects, Updates and Changes

Electronic Form (eForm) Submissions

The COGCC uses 41 types of forms to authorize oil and gas operations, inspect and monitor ongoing operations, and receive reports of operations. Of those 41 forms, 21 are currently available for electronic submittal through the



eForms system. The development team continues to work on the eForm conversion of existing forms. Currently, four forms are in various stages of development: Forms 11, 12, 14, 14A, and 43. In addition, the development team updates eForms with improvements requested by Staff and as required by rule revisions.

In 2017, industry has electronically submitted 98 percent of the forms available in eForms. There are 868 operator users of eForms and 3,490 individual users. For any operator not currently enrolled in eForms, instructions for starting the process can be found on the COGCC website at:

<http://cogcc.state.co.us/Announcements/COUAINformation.pdf>

Applications and Location Assessments

The public can make comments on all submitted Drilling Permit Applications (Form 2s) and Location Assessments (Form 2As) through the eForm system. Simply go to the COGCC website and click on the menu option “Permits” or

<http://cogcc.state.co.us/permits.html#/permits>

On the “Permits Search” page, three search options are available. The first option, “All Pending Permit Applications,” is used for public comments. When the results are displayed for “Pending Applications,” a user can click on the document number hyperlink in the “Status” column, which logs him or her to the eForms application.

Once the page is displayed with the selected document, the user can select the “Comment” button to make a comment on that particular form.

Data Access

The COGCC’s database is a comprehensive repository of Colorado’s oil and gas data. The information in the database is available to the public through interactive search tools and a variety of file downloads on the website. Users of bulk data come from many different sectors of the community, including academia, oil and gas operators, environmental groups, government agencies, and the media.

In June, Staff released Flowline inventory data from the May 2 NTO.

All the data file downloads are available at:

<http://cogcc.state.co.us/data2.html#/downloads>

New Download

Flowline NTO Imported Data

Current Data File Downloads

Complaints
Field Operations
GIS Shapefiles (12 files)
Mechanical Integrity Tests
Notices of Alleged Violation
Production Data (1999 - present)
Spacing Orders
Spills and Releases
Water Well Data

Future Data File Downloads

Enforcement Orders (OFVs and AOCs)
Underground Injection Control (UIC) Data

◆ January 2018 Hearing Docket

The docket for the January 2018 hearing will be available shortly after the December hearing. Hearing dockets are available on our website by clicking on “Regulation” in the menu and then “Hearings”:

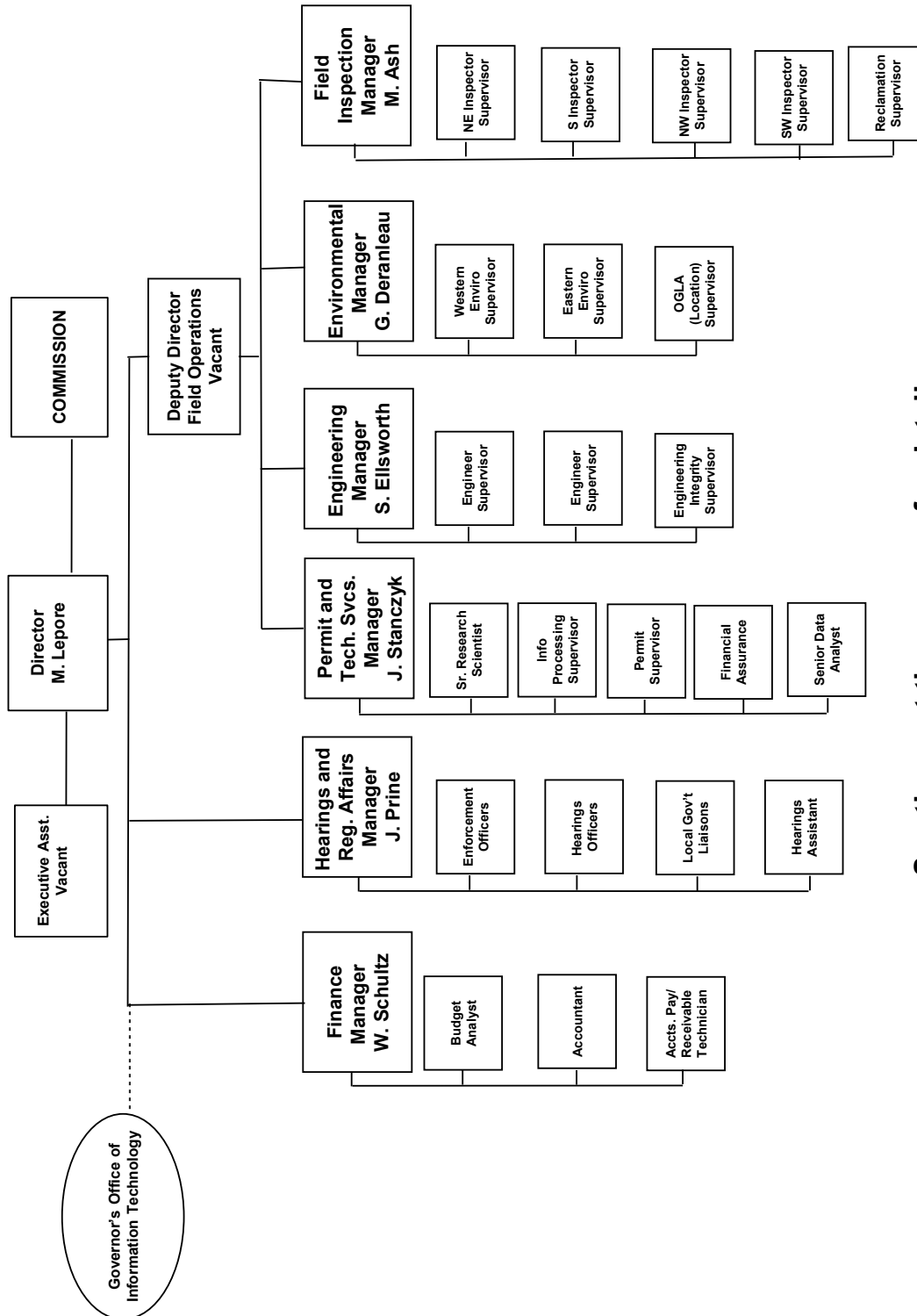
<http://cogcc.state.co.us/reg.html#/hearings>

Links to the notices and hearing applications are available from the Docket Number and Applicant, respectively, by clicking the January Gen_Docket link. To sign up for email notification of hearing notices and applications, please see the announcement and instructions on the homepage of the COGCC website.



Organizational Charts and Statistics

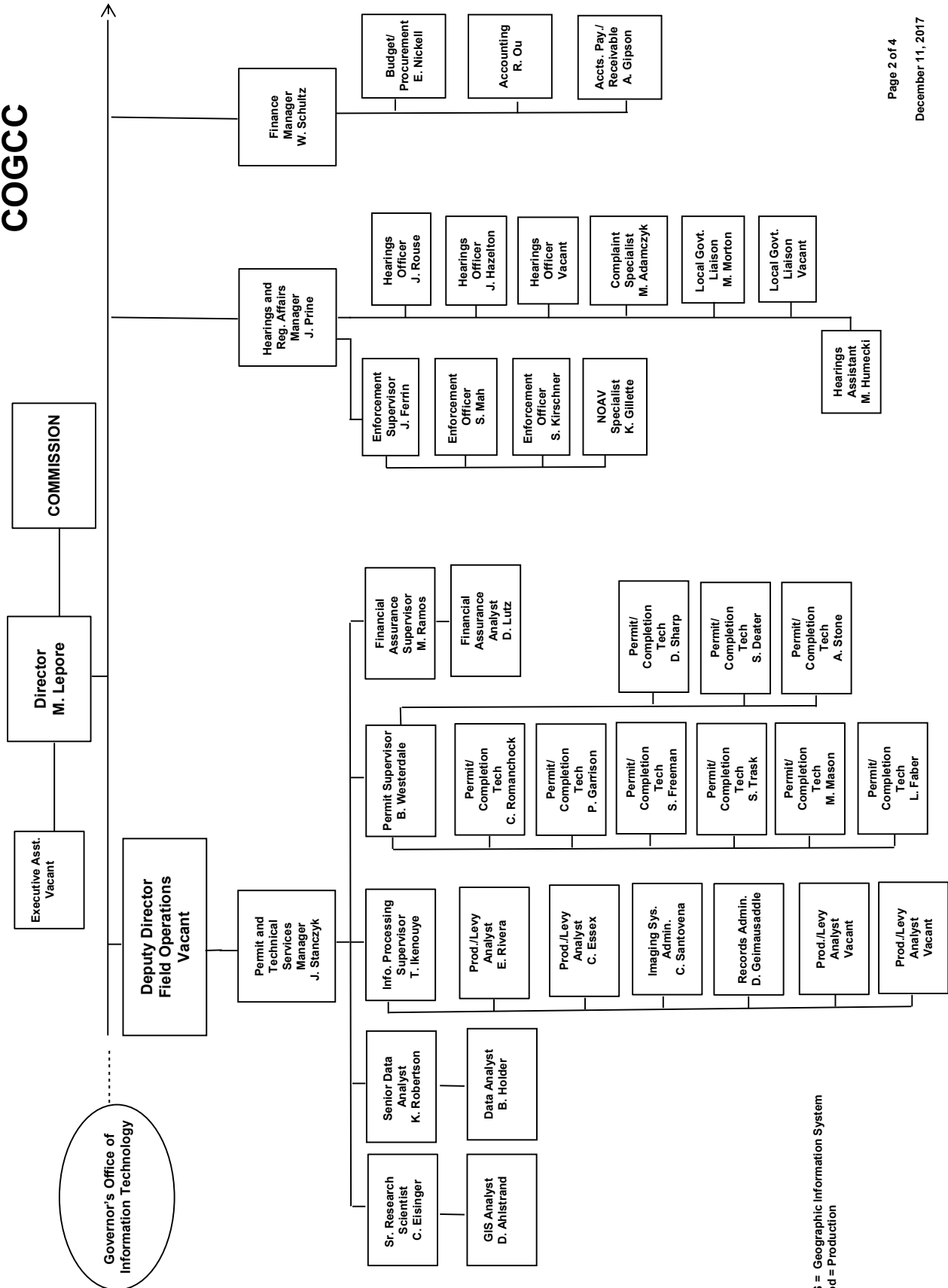
COLORADO OIL & GAS CONSERVATION COMMISSION



See the next three pages for details



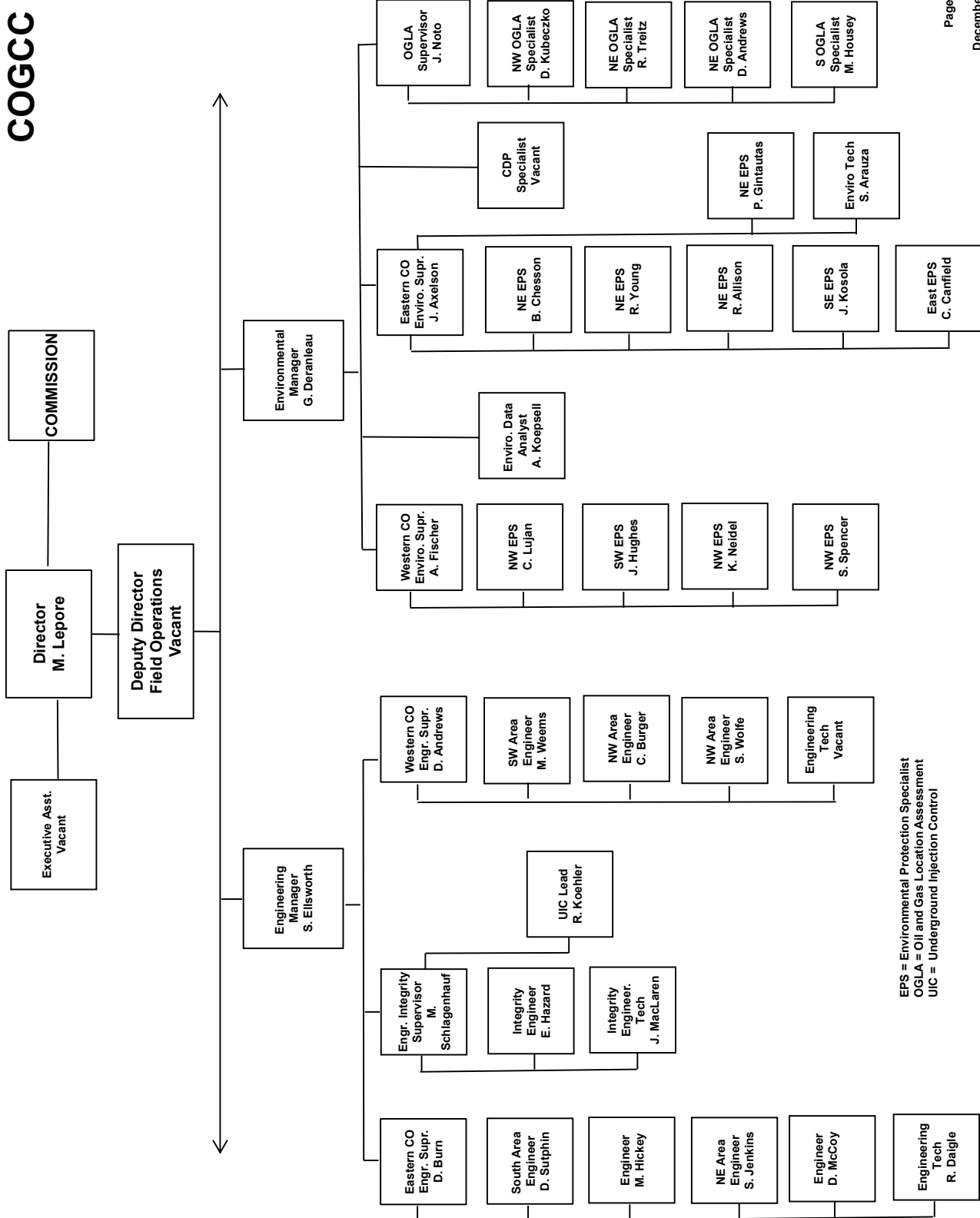
COGCC



GIS = Geographic Information System
 Prod = Production



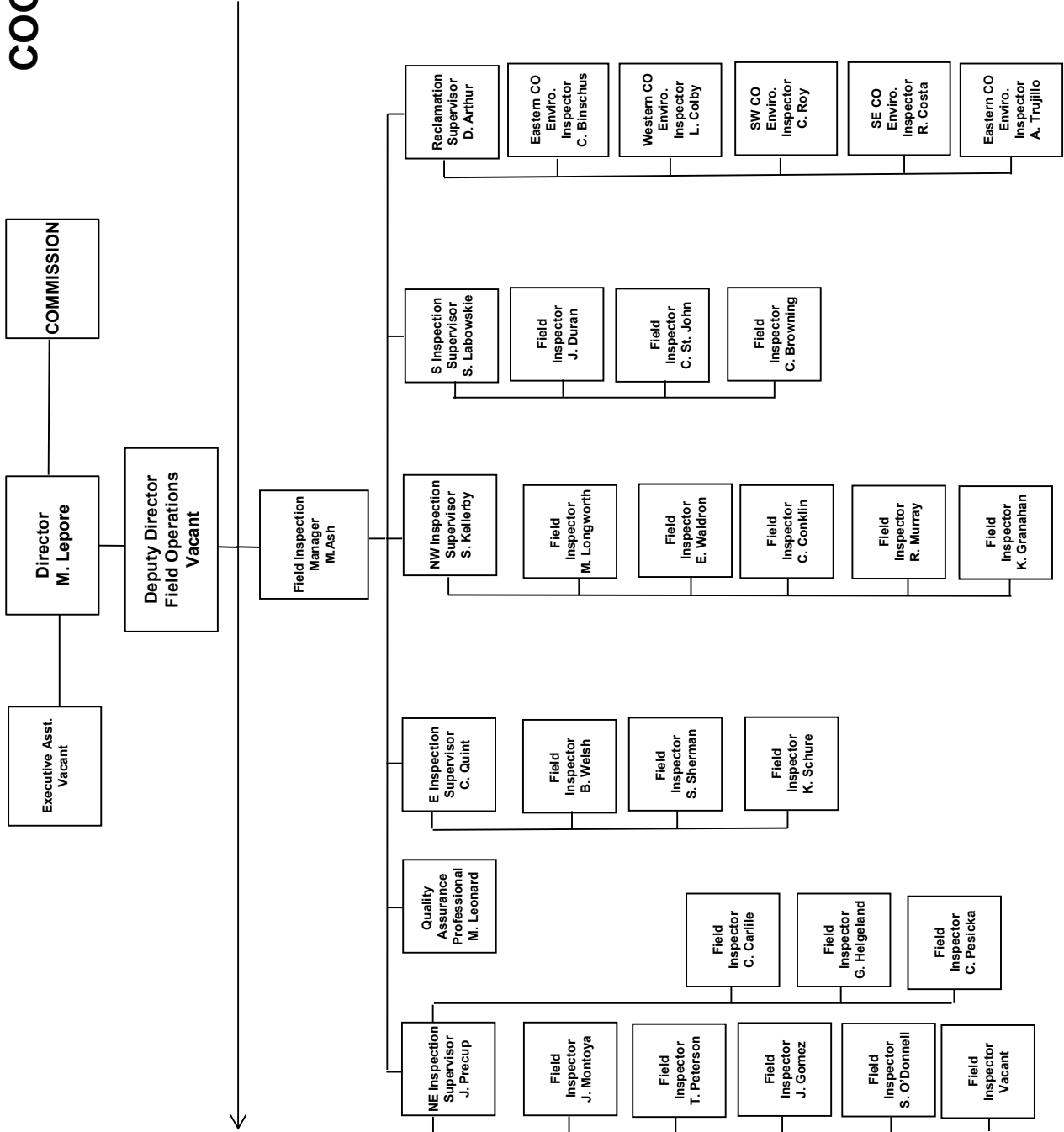
COGCC



EPS = Environmental Protection Specialist
 OGLA = Oil and Gas Location Assessment
 UIC = Underground Injection Control



COGCC





PLUGGING AND RECLAIMING ORPHANED WELLS (PROW) PROGRAM FISCAL YEAR 2017-18

Page 1 of 5

BONDS AND OTHER SURETY CLAIM STATUS FOR ACTIVE FY2017-18 "BOND CLAIM" PROJECTS

Project	Order Number(s)	Total Bond Claim	Amount Spent		Remaining Bond Balance
			in Prior Fiscal Years	in FY2017-18	
Atom Petroleum Bond Claim	1V-586	\$ 60,000	\$ 797	\$ 1,275	\$ 57,928
Benchmark Energy Bond Claim	1V-564	\$ 620,000	\$ 98,931	\$ -	\$ 521,069
CM Production Bond Claim	1V-581	\$ 67,849	\$ 13,299	\$ 26,043	\$ 28,506
Dolphin Bond Claim	1V-382	\$ 55,000	\$ 55,000	\$ -	\$ -
Humiston, G Everett Bond Claim	1V-390	\$ 500	\$ -	\$ -	\$ 500
Noel Reynolds Bond Claim	1V-374, 1V-375	\$ 30,000	\$ -	\$ 841	\$ 29,159
Nolte Bond Claim	1V-582	\$ 61,838	\$ -	\$ -	\$ 61,838
Pine Ridge Bond Claim	1V-622	\$ 85,000	\$ -	\$ -	\$ 85,000
Ranchers Bond Claim	1V-526	\$ 63,424	\$ 63,424	\$ -	\$ -
Red Mesa Holdings Bond Claim	1V-508	\$ 72,831	\$ 12,258	\$ 2,869	\$ 57,705
Red Mountain Bond Claim*	1V-549, SLB	\$ 92,015	\$ 30,070	\$ 30,675	\$ 31,271
Redwine Bond Claim	1V-470, 1V-494	\$ 30,000	\$ 30,000	\$ -	\$ -
Texas Tea Bond Claim	1V-573	\$ 71,850	\$ 40,283	\$ -	\$ 31,568
Vitruvian Exploration Bond Claim	1V-514	\$ 30,000	\$ -	\$ 9,010	\$ 20,990
TOTALS ->		\$ 1,340,307	\$ 344,061	\$ 70,713	\$ 925,534

Note: * Red Mountain Bond Total Claim Amount includes \$24,169 bankruptcy deposit and \$5,000 State Land Board deposit (bond transfer)

ACTIVE TASK LIST (PLANNED OR IN PROGRESS) - FY2017-18

Work Unit	County	Project and Task	Task Status	Planning Comments
Reclamation	Adams	Texas Tea Bond Claim: Task 2.2 - Weed Control (maintenance) - Spindle and Sun Fields,	Planned	Reclamation maintenance
Reclamation	Fremont	Pine Ridge Bond Claim: Task 4 - Re-Seeding (maintenance), Weed Control (maintenance) - 382573,	Planned	Reclamation maintenance
Reclamation	Fremont	Pine Ridge Bond Claim: Task 5 - Re-Seeding (maintenance), Weed Control (maintenance) - 419495,	Planned	Reclamation maintenance
Environmental	Jackson	CM Production Bond Claim: Task 1.11 - Sampling and Analysis - Lone Pine Field,	In Progress	Biannual sampling and analysis
Engineering	Jackson	CM Production Bond Claim: Task 3.1, 3.2 - MIT or Other Well Work, Plug and Abandon - 324599, 057-06011	Planned	Set downhole plug to TA well and MIT
Engineering	Jackson	CM Production Bond Claim: Task 3.1, 3.2 - MIT or Other Well Work, Plug and Abandon - 324630, 057-06093	Planned	Set downhole plug to TA well and MIT
Engineering	Jackson	CM Production Bond Claim: Task 3.1, 3.2 - MIT or Other Well Work, Plug and Abandon - 324626, 057-06069	Planned	Set downhole plug to TA well and MIT



ACTIVE TASK LIST (PLANNED OR IN PROGRESS), cont.			
Work Unit	County	Project and Task	Task Status Planning Comments
Reclamation	Jefferson	Red Mountain Bond Claim: Task 14 - Stormwater BMPs (maintenance), Weed Control (maintenance) - 324775,	Planned Reclamation maintenance (in-house Staff and Equipment)
Engineering	La Plata	Atom Petroleum Bond Claim: Task 2.5 - MIT or Other Well Work - 325653, 067-06777	In Progress Repair wellhead seal leak
Engineering	La Plata	Noel Reynolds Bond Claim: Task 1 - Plug and Abandon, Flowline Abandonment - 325354, 067-06232	Planned Plug well and abandon flowline
Engineering	La Plata	Noel Reynolds Bond Claim: Task 2 - Plug and Abandon - 385368, 067-05448	Planned Plug well
Environmental	La Plata	Red Mesa Holdings Bond Claim: Task 3 - Sampling and Analysis, Spill or Remediation - 325267,	Planned Remove hydrocarbon-impacted soil (includes sampling and analysis)
Reclamation	La Plata	Red Mesa Holdings Bond Claim: Task 4 - Reclamation (initial work) - 325267,	Planned Reclaim location
Reclamation	La Plata	Red Mesa Holdings Bond Claim: Task 5 - Weed Control (maintenance) - Red Mesa Field,	Planned Reclamation maintenance
Environmental	Larimer	Hall #1: Task 1 - Gas Meter Survey - 385978,	Planned Gas meter monitoring (in-house Staff and Equipment)
Engineering	Larimer	Sheffer Jack #1: Task 1 - Plug and Abandon, Flowline Abandonment - 385978, 069-05014	Planned FY2018 flowline utility locate in preparation to plug well and abandon flowline
Reclamation	Lincoln	Nolte Bond Claim: Task 1 - Re-Seeding (maintenance), Weed Control (maintenance) - 421302,	Planned Reclamation maintenance
Reclamation	Lincoln	Pine Ridge Bond Claim: Task 1 - Re-Seeding (maintenance), Weed Control (maintenance), Fence Removal - 433053,	Planned Reclamation maintenance
Reclamation	Lincoln	Pine Ridge Bond Claim: Task 2 - Re-Seeding (maintenance), Weed Control (maintenance), Fence Removal - 430683,	Planned Reclamation maintenance
Reclamation	Lincoln	Pine Ridge Bond Claim: Task 3 - Re-Seeding (maintenance), Weed Control (maintenance), Fence Removal - 430683,	Planned Reclamation maintenance
Reclamation	Logan	CM Production Bond Claim: Task 3.6 - Stormwater BMPs (maintenance), Weed Control (maintenance) - Cliff Field,	Planned Weed control
Reclamation	Logan	CM Production Bond Claim: Task 3.6 - Weed Control (maintenance) - 312201,	Planned Weed control
Environmental	Logan	Red Mountain Bond Claim: Task 11 - Sampling and Analysis, Spill or Remediation, Pit Closure - 450396,	Planned Remove pit fluids and pit liner; sampling and analysis for confirmation and pit closure.
Environmental	Logan	Red Mountain Bond Claim: Task 13 - Sampling and Analysis, Spill or Remediation - 312261,	In Progress Collected samples for analysis at produced water pit and around other production equipment.
Reclamation	Logan	Red Mountain Bond Claim: Task 21 - Weed Control (maintenance) - Merino and Twin Mills Fields,	Planned Reclamation maintenance
Environmental	Mesa	DB Orphan #8: Task 3 - Soil Vapor Extraction System - 450650,	In Progress SVE blower shut down while residents are away for winter. Wind turbine ventilator installed. Periodic
Engineering	Mesa	Lloyd and Lowell #1: Task 2 - Plug and Abandon - 428669, 077-	Planned Plug well
Reclamation	Moffat	Vitruvian Exploration Bond Claim: Task 2 - Reclamation (initial work) - 392480,	Planned Reclaim location
Engineering	Montezuma	Atom Petroleum Bond Claim: Task 1.1 - Plug and Abandon - 313483, 083-06263	Planned Plug well

ACTIVE TASK LIST (PLANNED OR IN PROGRESS), cont.				
Work Unit	County	Project and Task	Task Status	Planning Comments
Engineering	Montezuma	Atom Petroleum Bond Claim: Task 1.1 - Plug and Abandon - 313628, 083-06653	Planned	Plug well
Field Operations	Montezuma	Atom Petroleum Bond Claim: Task 2.3 - Equipment Intervention, Equipment Salvage - 313483,	Planned	Remove production equipment
Field Operations	Montezuma	Atom Petroleum Bond Claim: Task 2.3 - Equipment Intervention, Equipment Salvage - 313628,	Planned	Remove production equipment
Engineering	Montezuma	Humiston, G Everett Bond Claim: Task 1 - Plug and Abandon - 313456, 083-06110	Planned	Plug well
Reclamation	Montezuma	State #1-36: Task 2 - Reclamation (initial work) - 313502,	Planned	Reclaim location
Reclamation	Montezuma	Wolcott #1: Task 2 - Reclamation (initial work) - 313501,	Planned	Reclaim location
Reclamation	Routt	Pine Ridge Bond Claim: Task 6 - Re-Seeding (maintenance), Weed Control (maintenance) - 316792,	Planned	Reclamation maintenance
Reclamation	Washington	CM Production Bond Claim: Task 3.6 - Weed Control (maintenance) - Hyde and Tap Fields,	Planned	Weed control
Engineering	Washington	Vondy #3: Task 1 - Plug and Abandon - 402779, 121-08717	Planned	Plug well
Environmental	Weid	Severin & Co #1: Task 1 - Sampling and Analysis, Spill or Remediation - 407304,	Planned	Environmental sampling around wellhead (well is plugged)
COMPLETED TASK LIST - FY2017-18				
Work Unit	County	Project and Task	Task Status	Planning Comments
Engineering	Adams	Texas Tea Bond Claim: Task 2.1, 3.1A - Plug and Abandon, Flowline Abandonment - 320139, 001-08204	Completed	Plug well and abandon flowline; cut off casing during landfill expansion
Engineering	Adams	Texas Tea Bond Claim: Task 2.1, 3.1A - Plug and Abandon, Flowline Abandonment - 320206, 001-08443	Completed	Plug well and abandon flowline
Engineering	Adams	Texas Tea Bond Claim: Task 2.1, 3.1A - Plug and Abandon, Flowline Abandonment - 320240, 001-08699	Completed	Plug well and abandon flowline
Engineering	Adams	Texas Tea Bond Claim: Task 3.3, 3.7 - Plug and Abandon, Flowline Abandonment - 320257, 001-08775	Completed	Plug well and abandon flowline
Engineering	Boulder	Juhl #1: Task 1 - Plug and Abandon, Flowline Abandonment - 379627, 013-05018	Completed	Fluid disposal
Environmental	Jackson	CM Production Bond Claim: Task 1.14 - Sampling and Analysis, Spill or Remediation - 324630,	Completed	Soil sampling and analysis
Environmental	Jackson	CM Production Bond Claim: Task 1.7, 1.10 - Equipment Intervention - 324634,	Completed	Remove liquids from tanks
Field Operations	La Plata	Atom Petroleum Bond Claim: Task 1.2 - Equipment Intervention - 325653,	Completed	Remove liquids from tank
Environmental	La Plata	McCullough #4: Task 2 - Sampling and Analysis - 325208,	Completed	Collect wellhead gas samples
Engineering	La Plata	Noel Reynolds Bond Claim: Task 1 - MIT or Other Well Work, Install pressure gauge - 385368, 067-05448	Completed	Wellhead work to prepare for future re-entry to plug and abandon, installed pressure gauge.
Engineering	La Plata	Red Mesa Holdings Bond Claim: Task 2 - MIT or Other Well Work, Complaint response, Bradenhead test - 325858, 067-07085	Completed	Set downhole plugs to TA well, perform MIT, abandon flowline, and remove liquid tank bottoms
Engineering	La Plata	Red Mesa Holdings Bond Claim: Task 2 - MIT or Other Well Work, Plug and Abandon, Flowline Abandonment - 325267, 067-06033	Completed	Plug well and abandon flowlines, remove pump jack, and install stormwater BMPs



COMPLETED TASK LIST - FY2017-18, cont.

Work Unit	County	Project and Task	Task Status	Planning Comments
Field Operations	La Plata	Red Mesa Holdings Bond Claim: Task 6 - Equipment Intervention, Remove crude oil - 325297,	Completed	Remove liquids from tank
Reclamation	La Plata	Red Mesa Holdings Bond Claim: Task 7 - Stormwater BMPs (maintenance) - Red Mesa Field,	Completed	Install and maintain stormwater BMPs
Reclamation	Larimer	Ranchers Bond Claim: Task 1 - Reclamation (initial work), Re-Seeding (maintenance), Weed Control (maintenance) - 435790,	Completed	Reclamation maintenance
Reclamation	Larimer	Ranchers Bond Claim: Task 2 - Engineering Design - 419639,	Completed	Soil sampling and analysis
Engineering	Logan	Red Mountain Bond Claim: Task 8 - Plug and Abandon, Flowline Abandonment - 312261, 075-08293	Completed	Plug well and abandon flowline
Engineering	Mesa	DB Orphan #8: Task 1 - Plug and Abandon - 450650, 077-10381	Completed	Set surface plug, cut off casing, and weld plate
Environmental	Mesa	DB Orphan #8: Task 2 - Sampling and Analysis, Soil Vapor Monitoring - 450650,	Completed	Soil gas monitoring
Reclamation	Moffat	Tatonka Bond Claim: Task 10 - Weed Control (maintenance), Stormwater BMP maintenance - 313340,	Completed	Stormwater permit
Engineering	Moffat	Vitruvian Exploration Bond Claim: Task 1 - Flowline Abandonment - 392479,	Completed	Abandon flowlines
Engineering	Moffat	Vitruvian Exploration Bond Claim: Task 1 - Flowline Abandonment - 392480,	Completed	Abandon flowlines
Environmental	Montezuma	Pilcher #1: Task 1 - Sampling and Analysis - 393155,	Completed	Collect samples at former tank battery location and develop remediation plan if needed
Reclamation	Montrose	Redwine Bond Claim: Task 4 - Stormwater BMPs (maintenance), Weed Control (maintenance) - 313641,	Completed	Reclamation maintenance



PROJECT FINANCIALS - FY2017-18

Project Name	BOND Actual	PROW Actual	EMGY Actual	Subtotals Actual
Atom Petroleum Bond Claim	\$ 1,275	\$ -	\$ -	1,275
CM Production Bond Claim	\$ 26,043	\$ -	\$ -	26,043
DB Orphan #8	\$ -	\$ 13,027	\$ -	13,027
Juhl #1	\$ -	\$ 78	\$ -	78
McCullough #4	\$ -	\$ 3,007	\$ -	3,007
Noel Reynolds Bond Claim	\$ 841	\$ -	\$ -	841
Pilcher #1	\$ -	\$ 1,074	\$ -	1,074
Ranchers Bond Claim	\$ -	\$ 1,387	\$ -	1,387
Red Mesa Holdings Bond Claim	\$ 2,869	\$ -	\$ -	2,869
Red Mountain Bond Claim	\$ 30,675	\$ -	\$ -	30,675
Redwine Bond Claim	\$ -	\$ 3,023	\$ -	3,023
Tatonka Bond Claim	\$ -	\$ 350	\$ -	350
Vitruvian Exploration Bond Claim	\$ 9,010	\$ -	\$ -	9,010
TOTAL EXPENDITURES ->	\$ 70,712	\$ 21,946	\$ -	92,658

NOTES:

Project and Task Format: [Location or Well Name and Number (if orphan) or Operator Name + "Bond Claim"] :
 "Task" [Task No(s)] - [Task Type(s)] - [Facility ID Number], [Well API Number (county and sequence code),
 if well work included with task]]

Project Financials: COGCC may be waiting on invoices for some Completed Tasks, and therefore expenditures for those Tasks may not be shown in the Project Financials Section.

ABBREVIATIONS:

EMGY = Emergency Response Appropriation

PROW = Plugging and Reclaiming Orphaned Wells Appropriation

PROW FUNDS SCOREBOARD

\$ 445,000	Annual PROW Appropriation
\$ (220,624)	Planned and In Progress Estimate
\$ (199,780)	Completed Work (Waiting on Invoice Approval)
\$ (21,946)	Completed Work (Invoiced)
\$ 2,650	Estimated Fiscal Year End Balance

(Scoreboard excludes work involving Bond Expenditures)



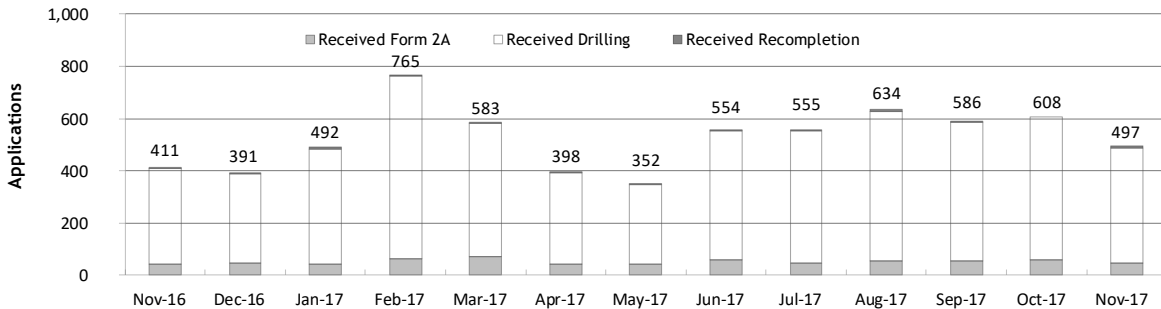
Monthly Permit Activity as of December 1, 2017

Form/Month	Backlog	Received	Approved	Withdrawn	Rejected	Incomplete ¹	In-Process	Remaining ²
Form2A								
Nov-16	118	40	45	0	3	22	88	110
Dec-16	110	48	25	6	0	20	107	127
Jan-17	127	42	25	1	1	18	124	142
Feb-17	142	62	38	2	0	28	136	164
Mar-17	164	71	48	6	3	29	149	178
Apr-17	178	41	54	3	0	34	128	162
May-17	162	41	55	0	0	25	123	148
Jun-17	148	58	40	2	1	31	132	163
Jul-17	163	45	31	3	1	33	140	173
Aug-17	173	53	49	6	0	33	138	171
Sep-17	171	56	41	0	1	25	160	185
Oct-17	185	58	40	6	2	25	170	195
Nov-17	195	47	38	2	0	24	178	202
Drilling								
Nov-16	900	368	304	7	64	138	755	893
Dec-16	893	342	267	15	9	115	829	944
Jan-17	944	442	211	1	13	89	1,072	1,161
Feb-17	1,161	701	263	14	0	86	1,499	1,585
Mar-17	1,585	510	423	14	47	131	1,480	1,611
Apr-17	1,611	352	301	21	14	167	1,460	1,627
May-17	1,627	307	367	13	52	168	1,334	1,502
Jun-17	1,502	493	331	3	9	185	1,467	1,652
Jul-17	1,652	508	234	49	75	146	1,656	1,802
Aug-17	1,802	572	349	13	20	137	1,855	1,992
Sep-17	1,992	528	450	12	36	135	1,887	2,022
Oct-17	2,022	550	311	75	64	139	1,983	2,122
Nov-17	2,122	438	331	19	59	125	2,026	2,151
Recompletion								
Nov-16	10	3	3	0	0	3	7	10
Dec-16	10	1	4	1	0	2	4	6
Jan-17	6	8	2	0	0	2	10	12
Feb-17	12	2	4	0	0	3	7	10
Mar-17	10	2	2	0	0	2	8	10
Apr-17	10	5	4	1	0	2	8	10
May-17	10	4	3	4	0	1	6	7
Jun-17	7	3	2	0	0	2	6	8
Jul-17	8	2	4	0	0	2	4	6
Aug-17	6	9	0	1	0	2	12	14
Sep-17	14	2	6	0	0	2	8	10
Oct-17	10	0	2	0	0	3	5	8
Nov-17	8	12	1	0	0	3	16	19

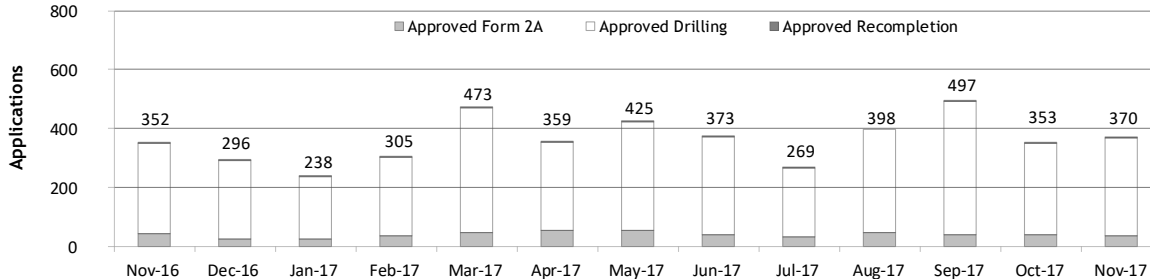
¹ Incomplete are applications that have missing or inaccurate data and cannot be approved.

² Backlog = Incomplete + In-process = Remaining permits from previous month.

Received Applications



Approved Applications





Status of Permit Applications Filed By Month as of December 1, 2017

Form 2A Location Assessment

Year	Month	Received	Approved	Withdrawn	In Process	Percent In Process	Average	Less Than 30 Days	30 to 49 Days	Greater Than 50 Days
							Days to Process			
2011	TOTAL	2,391	2,298	93	0	0%		1,416	620	262
2012	TOTAL	1,359	1,291	68	0	0%		706	378	207
2013	TOTAL	1,281	1,202	78	1	0%		369	433	400
2014	TOTAL	1,114	1,067	47	0	0%		279	429	359
2015	TOTAL	592	563	26	3	1%		78	157	328
2016	TOTAL	407	376	24	5	1%		32	61	283
2017	JAN	42	31	6	5	12%	84	0	5	26
	FEB	59	56	2	1	2%	88	7	9	40
	MAR	70	58	3	9	13%	71	6	18	34
	APR	41	32	2	7	17%	73	5	9	18
	MAY	41	30	2	9	22%	78	2	6	22
	JUNE	57	42	1	14	25%	60	7	16	19
	JULY	43	30	1	12	28%	53	6	14	10
	AUG	52	35	1	15	29%	55	6	9	20
	SEP	56	23	1	31	56%	44	4	10	9
	OCT	58	14	0	43	75%	28	9	5	0
	NOV	47	3	0	44	94%	14	3	0	0
2017	TOTAL	566	354	19	190	34%		55	101	198

Form 2 Application For Permit to Drill (APDs)

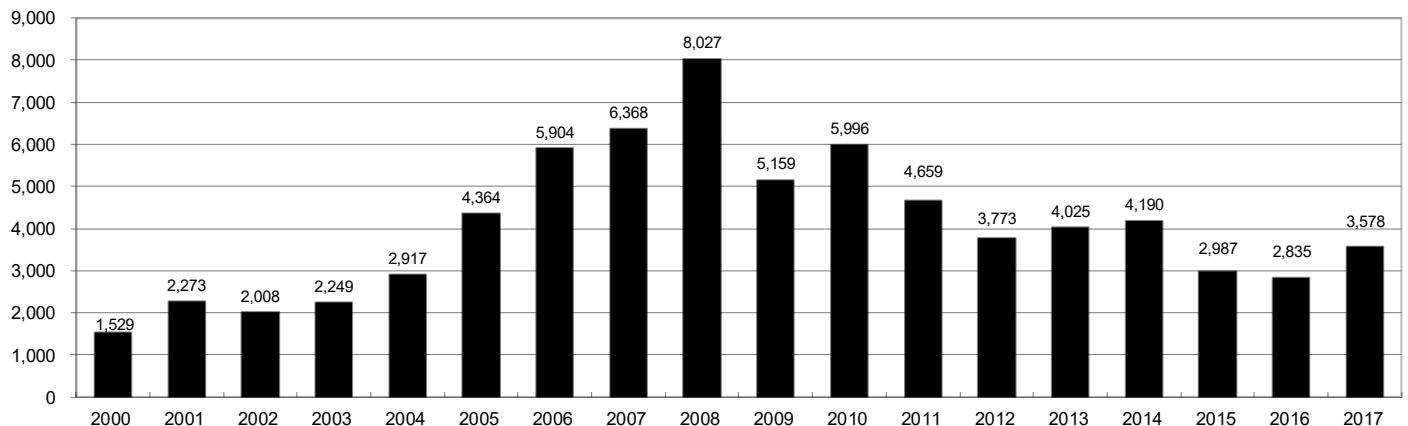
Year	Month	Received	Approved	Withdrawn	In Process	Percent In Process	Average	Less Than 30 Days	30 to 49 Days	Greater Than 50 Days
							Days to Process			
2011	TOTAL	4,691	4,557	132	0	0%		2,723	1,565	587
2012	TOTAL	3,955	3,816	139	0	0%		1,971	1,393	602
2013	TOTAL	4,548	4,312	235	1	0%		1,046	1,626	1,714
2014	TOTAL	4,208	4,026	182	0	0%		689	1,629	1,744
2015	TOTAL	3,237	3,088	130	19	1%		249	759	2,110
2016	TOTAL	3,253	3,026	98	71	2%		204	402	2,442
2017	JAN	418	319	50	49	12%	109	5	41	279
	FEB	645	484	32	74	13%	104	36	39	410
	MAR	510	388	37	83	16%	94	15	70	305
	APR	344	277	18	40	12%	104	10	17	255
	MAY	307	212	10	84	27%	84	18	65	130
	JUNE	493	289	1	186	39%	87	12	75	204
	JULY	508	247	5	215	46%	76	22	27	198
	AUG	572	266	14	242	46%	63	8	94	170
	SEP	528	183	4	325	63%	49	18	89	78
	OCT	550	108	4	407	78%	46	7	50	51
	NOV	438	35	0	403	92%	26	29	6	0
2017	TOTAL	5,313	2,808	175	2,108	40%		180	573	2,080



Annual Drilling Permits by County as of December 1, 2017

County	2000	2001	2002	2003	2004	2005	2006	2007	2008	2009	2010	2011	2012	2013	2014	2015	2016	2017
ADAMS	38	28	9	26	39	34	37	89	51	35	21	8	40	40	51	96	74	121
ARAPAHOE		2	1	2	5	7	11	10	10	10	8	23	35	23	34	19	5	78
ARCHULETA	7	9	6	10	8	13	14	26	47	11	18	12	5	4	3	11	3	18
BACA	22	6	2	3	7	8	2	11	13	3	4	5	3	1	1			3
BENT	2				5	3	8	1	1		5		2	1				
BOULDER	1	5	6	7	17	13	21	37	32	35	24	30	22					
BROOMFIELD			2	7		1	1		2	33	28	11	36		31			
CHEYENNE	3	3	3	3	3	10	21	15	33	12	13	16	31	50	26	9		0
COSTILLA																		
CROWLEY															2			3
DELTA			7	4	5	10	9	2			4	3	6	1	2			
DENVER		3					19	25	24									
DOLORES				1	1	1	6	10	12	21	8	8	13	12	3		3	2
EAGLE														1				
ELBERT	2						4			1		1	2	2	4	3	3	1
EL PASO										2	3	3	18	1	2			
FREMONT					1	3	2	4	14	13	22	14	11	2	8	2	2	1
GARFIELD	213	353	362	567	796	1,509	1,845	2,550	2,888	1,981	2,037	1,323	1,046	870	1,066	532	724	571
GRAND																		
GUNNISON			5	10	1	9	19	7	10	12	4	3	11	9	20	28	19	30
HUERFANO	41	27	27		8	2		7			2	1	9	1	13	2		
JACKSON	34	18	21	9	14	6	8	5	27	19	9	18	5	12	17	3	57	25
JEFFERSON	1						1	3	2					1				
KIOWA	11	18	2	4	2	1	11	9	26	7	16	17	17	12	5	3		0
KIT CARSON				1	3	5	4	4	13	7	3	2	6	1	2		1	
LA PLATA	127	156	104	162	102	115	235	251	328	298	191	99	71	32	87	106	96	103
LARIMER	2		1			1		5	46	12	41	8	13	2	4	28	4	29
LAS ANIMAS	268	400	259	180	332	413	500	362	303	88	92	85	11	2	1			
LINCOLN	2	2	1	6	3	4	1	2	58	44	48	31	36	87	129	24	5	28
LOGAN	4	7	3	3	6	13	17	14	5	9	17	8	27	4	5		1	1
MESA	13	27	30	27	54	136	265	293	501	427	306	127	150	105	74	126	7	215
MOFFAT	35	52	62	63	63	60	120	68	57	51	53	93	88	44	54	12	17	4
MONTEZUMA	4		5	8	8	11	5	12	22	39	19	27	29	14	25	3	3	6
MONTROSE	1	3	2	4	2		1	3	3		1	1						
MORGAN	9	9	2	7	9	7	3	6	2	1	6	13	5	16	6	4	28	
OTERO																		
PARK										3	4	1						
PHILLIPS	1	2		7	13	17	12	69	82	45	64	112	56		11	2		
PITKIN					1			1								1		
PROWERS	2	5	4		7	5	7	5	8	1	3	1			1		1	
RIO BLANCO	89	187	105	179	154	161	360	321	477	348	441	109	117	167	121	107	71	110
RIO GRANDE	1	1		1					1	1			2		1			
ROUTT	20	13	1		4	6	9	8	4	2	3	10	4	12	4	9		
SAGUACHE	2		2					2	1	2								
SAN MIGUEL	11	13	27	18	42	45	35	23	20	13	10	2	1		2	3		
SEDGWICK				1	5	2	7	2	1	19	11	12	2		7	1		
WASHINGTON	23	17	27	34	128	50	69	45	11	1	6	12	6	19	12	9	7	9
WELD	509	702	760	757	832	901	1,418	1,527	2,340	1,448	2,152	2,262	1,826	2,468	2,303	1,841	1,704	2,219
YUMA	31	205	160	138	237	782	797	541	545	105	299	148	11	9	53	3		1
TOTAL	1,529	2,273	2,008	2,249	2,917	4,364	5,904	6,368	8,027	5,159	5,996	4,659	3,773	4,025	4,190	2,987	2,835	3,578

ALL COUNTIES





Form 2A Breakdown By County By Year as of December 1, 2017

Year	County	Form 2As	Completed	In Process	New Location	CDP	SWH	RSO	CDPHE
2009	Total State	818	818	0	408	2	80	5	5
2010	Total State	2,377	2,377	0	1,543	0	317	22	55
2011	Total State	2,297	2,297	0	1,724	1	259	16	5
2012	Total State	1,297	1,297	0	900	0	167	6	1
2013	Total State	1,195	1,194	1	845	0	144	2	4
2014	Total State	1,067	1,065	0	776	3	129	7	3
2015	Total State	574	568	4	399	0	95	2	2
2016	Total State	393	378	5	224	0	52	4	7
2017	ADAMS	27	7	20	25	0	0	0	0
	ARAPAHOE	34	11	23	30	0	0	0	0
	ARCHULETA	2	0	2	1	0	2	0	0
	BACA	3	3	0	3	0	0	0	0
	CROWLEY	3	3	0	3	0	0	0	0
	DOLORES	2	2	0	2	0	1	0	0
	ELBERT	1	1	0	1	0	0	0	0
	FREMONT	1	1	0	1	0	1	0	0
	GARFIELD	31	29	2	11	0	22	3	1
	GUNNISON	3	3	0	0	0	2	0	0
	JACKSON	7	6	1	4	0	7	0	0
	LA PLATA	13	12	1	5	0	12	0	0
	LARIMER	3	3	0	3	0	0	0	0
	LINCOLN	25	22	3	19	0	0	0	0
	MESA	15	15	0	10	0	4	1	0
	MOFFAT	1	1	0	1	0	1	0	0
	MONTEZUMA	3	3	0	3	0	0	0	0
	RIO BLANCO	8	3	5	1	0	7	0	0
	WASHINGTON	9	8	1	8	0	1	0	0
	WELD	340	209	131	245	0	9	0	2
	YUMA	1	1	0	1	0	0	0	0
2017	Total State	532	343	189	377	0	69	4	3

Abbreviations:

CDP = Comprehensive Drilling Plan

SWH = Sensitive Wildlife Habitat consultation

RSO = Restricted Surface Occupancy consultation

CDPHE= Colorado Department of Health and Environment consultation



Horizontal Well Activity as of December 1, 2017

County	Prior Years Drilled		2009		2010		2011		2012		2013		2014		2015		2016		2017		Total			Completion		
	DA	PA	Permit	Spud	Permit	Spud	Permit	Spud	Permit	Spud	Permit	Spud	Permit	Spud	Permit	Spud	Permit	Spud	Permit	Spud	AC	PR	DA	PA		
ADAMS			6	5	2	3	1	1	17	2	26	1	42	18	92	3	72	2	121	22	56	3	23	1	1	
ARAPAHOE	2		10	1	10	1	10	1	22	4	11	13	22	11	9	5	5	1	77	14	46	2	29	1	1	
ARCHULETA	17		7	6	15	7	10	8	5	9	2	2	1	1	6	3	2	1	15	2	58		53			
BENT							4		1	1	1										1					
BOULDER																					0					
CHEYENNE	5	4					4		6	1	7	2	1	1	1	1					9	3	5		5	
DELTA									9	3	1	1	2								3	3				
DOLORES	9		18	2	6	2			9	3	5	4	3	1							18	12			5	
EL PASO									10												0				1	
ELBERT									1												0					
FREMONT	7	6	6	1	12	5	3	4	4	1	1	1	1		1						18	10	7		1	
GARFIELD	10	2	1	1	16	2	18	6	43	6	18	4	20	11	12	7	4		11		42	40			2	
GUNNISON	1				1				3	2	2	2	9		18	2	10	1	21	1	7	5				
HUERFANO									4	1			2								1	1				
JACKSON	8	1	1	8	3	4	9	1	4	4	8	5	15	4	3	52	24	8	24	8	52	20			3	
KIOWA									1		4	2	1								2				1	
KIT CARSON	1								1		1	1	1								2				4	
LA PLATA	28	2	11	2	28	3	18	7	12	1	5	1	43	7	42	3	67	8	80	4	74	68	1		3	
LARIMER	3	2					5	1	2	1	2	2			22	8	4	3	29	25	40	11			2	
LAS ANIMAS	16	2	4		1	1															16	16				
LINCOLN			2	1	2	1	1				6	4	4	2							4	1			3	
LOGAN	2								1												2					
MESA	3	2	36		22	7	24	13	14	14	9	2	9	1	6	3					31	28	2		4	
MOFFAT	7	1	1	6	3	4	9	4	44	6	18	13	15	1	5	2	3	1	3		35	23			10	
MONTEZUMA	6	1	1	23	6	11	8	2	18	6	3	4	15	2							36	28			7	
MORGAN							6	2	2	1	13	1	6		4	1	28				5	5				
PARK							1	1	1												1					
RIO BLANCO	7	2			1	1	11	2	15	2	4	5	3	2	3				4		16	12			3	
ROUITT	10	6	1						1		1				3						1	1			6	
SAN MIGUEL	1						1														1				1	
WASHINGTON	1																				1				1	
WELD	11	3	1	12	5	208	763	229	964	594	2,114	1,099	2,215	1,423	1,789	1,063	1,671	723	2,188	1,169	6,397	4,447	12		62	
YUMA	1						6														1				1	
TOTAL Horizontal	156	25	14	147	31	333	901	280	1,203	641	2,260	1,160	2,428	1,484	2,016	1,096	1,918	764	2,573	1,245	6,976	5	4,842	33	116	
Percent of Total HZ																						0%	69%	0%	2%	
Total All Permits						5,996	4,659	19.3%	3,773	31.9%	4,025	56.1%	4,190	57.9%	2,988	67.5%	2,835	67.7%	3,571	72.1%						
HZ Percent of Total						5.6%	19.3%		31.9%	56.1%	56.1%	56.1%	57.9%	57.9%	67.5%	67.5%	67.7%	67.7%	72.1%			0%	69%	0%	2%	



Well to Building Setbacks by Year and by County as of December 1, 2017

Count of well locations, grouped by proximity from well to buildings.

Location Proximity to Buildings	2010	2011	2012	2013	2014	2015	2016	2017	Number of Locations Since 2009	Percent of Total Locations
Less than 150 feet	3	3	2	0	3	2	0	0	15	0%
150 to 350 feet	58	61	39	34	38	12	15	15	309	3%
350 to 500 feet	110	97	61	64	48	33	23	21	507	6%
500 to 1000 feet	385	331	188	188	161	83	76	83	1,612	18%
1000 + feet	1,705	1,470	838	761	724	378	206	299	6,737	73%
TOTAL LOCATIONS	2,261	1,962	1,128	1,047	974	508	320	418	9,180	

County	TOTAL	Less than 150 feet	150 to 350 feet	350 to 500 feet	500 to 1000 feet	1000 + feet
ADAMS	96	0	4	9	25	58
ARAPAHOE	116	0	2	5	10	99
ARCHULETA	24	0	0	1	12	11
BACA	18	0	0	0	1	17
BENT	7	0	0	0	0	7
BOULDER	23	0	1	1	17	4
BROOMFIELD	33	0	0	4	13	16
CHEYENNE	140	1	0	0	2	137
CROWLEY	5	0	0	0	0	5
DELTA	7	0	0	2	1	4
DOLORES	22	0	0	0	7	15
EAGLE	1	0	0	0	0	1
EL PASO	14	0	0	0	3	11
ELBERT	15	0	0	0	3	12
FREMONT	41	0	2	7	9	23
GARFIELD	611	0	12	10	83	506
GUNNISON	49	1	0	4	1	43
HUERFANO	16	0	0	0	5	11
JACKSON	63	0	1	5	1	56
KIOWA	66	0	0	0	1	65
KIT CARSON	15	0	0	0	0	15
LA PLATA	150	0	6	15	49	80
LARIMER	42	0	5	5	16	16
LAS ANIMAS	201	1	6	7	37	150
LINCOLN	397	0	1	2	5	389
LOGAN	45	0	1	1	1	42
MESA	115	0	0	3	16	96
MOFFAT	190	0	1	3	16	170
MONTEZUMA	46	0	0	1	4	41
MONTROSE	2	0	0	0	0	2
MORGAN	31	0	0	2	4	25
PARK	4	0	0	0	0	4
PHILLIPS	275	1	4	6	21	243
PITKIN	1	0	0	0	0	1
PROWERS	6	0	0	0	0	6
RIO BLANCO	190	0	0	0	2	188
RIO GRANDE	2	0	0	0	1	1
ROUTT	30	0	0	0	2	28
SAN MIGUEL	14	0	0	0	0	14
SEDGWICK	33	0	0	1	3	29
WASHINGTON	87	0	2	0	3	82
WELD	5,411	11	251	398	1,193	3,557
YUMA	529	0	9	16	45	459


Well to Building Setbacks Less Than Two Hundred Feet as of December 1, 2017

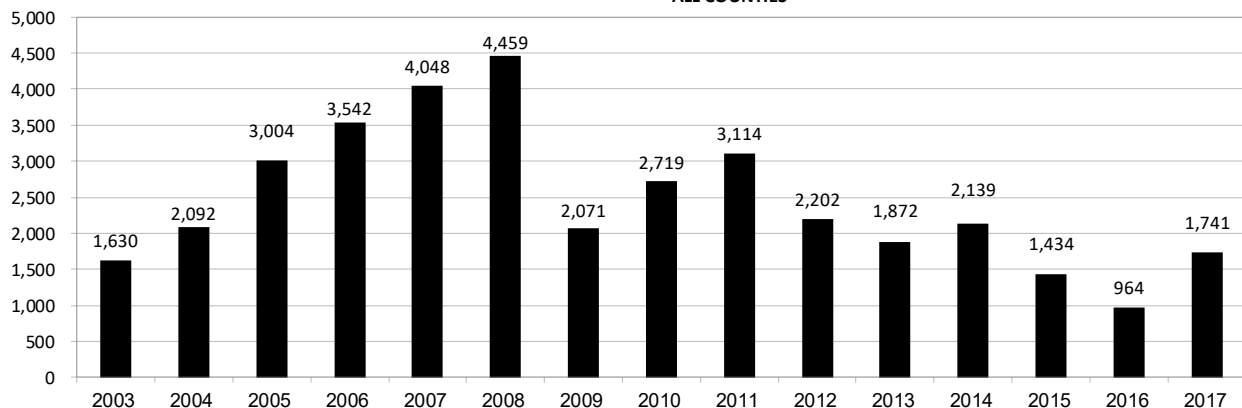
Year	Location Doc Number	County	High Density	New Location	Distance (Feet)	Proximity (Feet)	Building Description
2015	400768804	WELD	No	Yes	46	less 150	Building to be razed
2011	2587822	CHEYENNE	No	No	58	less 150	Water well house
2009	1691798	WELD	No	No	58	less 150	Vehicle garage
2010	400072164	WELD	No	Yes	69	less 150	Abandoned hog shed
2014	400569085	WELD	No	No	78	less 150	Well shed
2014	400600705	WELD	No	No	80	less 150	Livestock shed
2012	400240957	GUNNISON	No	Yes	90	less 150	Equipment shed
2015	400742811	WELD	No	Yes	102	less 150	Building to be razed
2009	1758843	WELD	No	Yes	103	less 150	Building to be razed
2011	1636646	WELD	No	No	122	less 150	Storage shed
2009	400011284	LAS ANIMAS	No	Yes	127	less 150	Operator is owner
2009	1786896	PHILLIPS	No	No	132	less 150	Grain storage
2014	400642113	WELD	No	Yes	142	less 150	Barn
2011	400117702	WELD	No	Yes	143	less 150	Irrigation pump house
2011	400227765	WELD	No	Yes	145	less 150	Storage barn
2014	400558626	LINCOLN	No	No	150	less 150	Gas plant equipment building
2009	1904205	WELD	No	No	154	150 to 350	Livestock enclosure
2012	400243295	WELD	No	Yes	155	150 to 350	Unused storage shed
2015	400862577	GARFIELD	No	No	155	150 to 350	Gravel pit scale house
2011	400179419	WELD	No	Yes	157	150 to 350	Existing well / storage building
2010	400054716	WELD	No	No	159	150 to 350	Equipment barn
2011	400188968	WELD	No	Yes	159	150 to 350	Abandoned
2014	400554054	WELD	No	Yes	159	150 to 350	Equipment shed
2014	400559404	WELD	No	Yes	160	150 to 350	Barn
2016	400950178	LA PLATA	No	Yes	162	150 to 350	Residence
2010	400021477	WELD	No	Yes	162	150 to 350	Goat barn
2009	1758386	WELD	No	Yes	168	150 to 350	Storage shed
2011	1635946	WELD	No	No	169	150 to 350	Storage shed
2013	400447386	WELD	No	No	169	150 to 350	Abandoned turkey barn
2013	400447391	WELD	No	No	169	150 to 350	Abandoned turkey barn
2011	400165164	WELD	No	Yes	178	150 to 350	Residence
2013	400367184	WELD	No	Yes	179	150 to 350	Shed
2011	400188780	WELD	No	Yes	180	150 to 350	Residence
2014	400562498	WELD	No	Yes	181	150 to 350	Garage / storage shed
2010	1697620	WELD	No	No	187	150 to 350	Livestock shed
2009	1758746	WELD	No	No	193	150 to 350	Storage shed
2011	400154431	WELD	No	Yes	198	150 to 350	Turkey barn
2012	400250031	WELD	No	Yes	198	150 to 350	Abandoned guard shack
2010	1774783	WELD	No	No	199	150 to 350	Cement service building
2011	400118102	YUMA	No	Yes	199	150 to 350	Steel barn



Annual Well Starts by County as of December 8, 2017

County	2003	2004	2005	2006	2007	2008	2009	2010	2011	2012	2013	2014	2015	2016	2017
ADAMS	19	22	24	13	41	14	14	21	1	13	4	23	3	2	23
ARAPAHOE		6	1	5	2	1	1	3	7	5	14	16		1	16
ARCHULETA	5	4	10	5	7	29	9	11	6	10		1	2	2	5
BACA	1	6	6	2	6	12		5	4	2	2		1		1
BENT		3	2	8	1	1			1	1					
BOULDER	2	5	11	9	14	25	16	13	7	14					
BROOMFIELD		1				10		21	11	5					
CHEYENNE	3		9	14	15	14	8	12	11	17	32	19	3		
COSTILLA															
CROWLEY												2			1
DELTA	5	4	6	5	2			3	2	1					
DENVER				7	5	4									
DOLORES		2		2	13	6	2		1	3	6	1			1
EAGLE											1				
EL PASO								2		4		1			
ELBERT				1									3		1
FREMONT		1	3	2	2	5	3	9	15	6	1	4		1	1
GARFIELD	417	585	799	1,005	1,304	1,689	765	898	869	493	388	357	172	161	277
GUNNISON		1	1	9	5	1	4	5	2	4	1	2	2	1	6
HUERFANO	3	6	2			2		1		1	1	2	1		
JACKSON	10	10		3	3	12	1	5	4		5	5		23	12
JEFFERSON					2										
KIOWA	4	2	1	7	7	2	5	15	13	10	9	3	2		
KIT CARSON	1	1	6	2	1	14	3	1	1	3	1	2			1
LA PLATA	110	103	104	108	179	199	131	58	32	3	8	20	23	20	29
LARIMER			1		4	8	1	28	2	10	4	1	8	3	25
LAS ANIMAS	221	296	384	413	326	222	14	7	78	1		1			
LINCOLN	5	2	2	1	2	18	11	13	21	22	38	39	12	2	11
LOGAN	3	2	11	12	12	3	7	3	9	13	4	6			
MESA	13	25	89	156	209	225	14	11	35	4	8	16	77	4	113
MOFFAT	28	19	40	60	42	26	18	15	27	18	20	3	6	3	
MONTEZUMA	5	1	7	2	4	22	10	1	2	10	7	8	1		2
MONTROSE	2	1			1	2		1							
MORGAN	7	5	5	3	1	1	2	3	0	3	1	3	1		
PARK								1							
PHILLIPS	6	10	11	4	35	18	2	42	130	48		9			
PROWERS		5	5	6	3	5	2	3	1				1		
RIO BLANCO	83	92	95	107	95	205	118	102	68	51	36	40	17		5
RIO GRANDE											1				
ROUTT		1	6	3	2		2	1	2	3	2	2			
SAN MIGUEL	19	28	13	20	17	5	1	2	2			1			
SEDGWICK	1	2	1	1	5			3	8	3			1		
WASHINGTON	29	65	34	23	14	11	2	2	4	1	9	7	2	6	8
WELD	522	632	718	931	1,222	1,312	878	1,185	1,632	1,404	1,256	1,506	1,096	735	1,203
YUMA	106	144	597	593	445	336	27	213	106	16	13	39			
TOTAL	1,630	2,092	3,004	3,542	4,048	4,459	2,071	2,719	3,114	2,202	1,872	2,139	1,434	964	1,741

ALL COUNTIES





Active Wells by County and Status as of December 8, 2017

COUNTY	Drilling	Domestic	Injecting	Producing	Shut In	Temp Aband	Waiting on Completion	Active Storage	Total Active Wells
ADAMS	26		6	693	211	18	1	12	967
ARAPAHOE	12	1	2	112	35	12		44	218
ARCHULETA	1	5	1	101	20	13	6	1	148
BACA	1		11	101	28	5		56	202
BENT		1		18	16	2			37
BOULDER				275	33	2			310
BROOMFIELD				90	3				93
CHEYENNE			43	289	39	44	1		416
CROWLEY									0
DELTA				3	12		1		16
DENVER				42	6	1	3		52
DOLORES			2	27	11	1			41
EL PASO		1				1			2
ELBERT	1			60	10	3		1	75
FREMONT	3	3		56	9	6	2		79
GARFIELD	254	2	42	10583	377	60	104	1	11,423
GUNNISON	4		2	25	16		2		49
HUERFANO			1	36	4	6			47
JACKSON	23		23	105	53		1		205
JEFFERSON					2		1	3	6
KIOWA			12	86	24	2	2		126
KIT CARSON		1	1	9	3	2			16
LA PLATA	20	7	36	2998	210	31	3	35	3,340
LARIMER	24	1	21	159	49	19	1		274
LAS ANIMAS	1	4	18	2648	109	119	12	23	2,934
LINCOLN	9	1	12	85	14	7			128
LOGAN			26	90	37	31		30	214
MESA	80	1	8	878	170	26	3	11	1,177
MOFFAT	1		12	402	104	36	6		561
MONTEZUMA	1	1	7	110	33	13			165
MONTROSE								1	1
MORGAN			15	50	125	34		81	305
OURAY		1				1			2
PARK									0
PHILLIPS			2	244	24	2			272
PITKIN								10	10
PROWERS				10	17	1			28
RIO BLANCO	28	3	293	2014	401	140	7	2	2,888
ROUTT		2		23	11	2			38
SAN MIGUEL	1			51	63	14			129
SEDGWICK	2		1	10	6	1	2		22
WASHINGTON	7		26	354	66	9	1		463
WELD	1147	1	61	13484	8225	755	30	5	23,708
YUMA	2	8	22	3700	120	9	13	1	3,875
Totals	1,648	44	706	40,021	10,696	1,428	202	317	55,062



Oil and Gas Staff Report

December 11, 2017

27

Monthly Statistics as of December 1, 2017

Page 1 of 2

YEAR and MONTH	Baker - Hughes Rig Count	Permits										Well Spud Notices	Active Drilling Permits	Active Wells	Public Visits		
		Drilling		Recompletion		Injection		Pits		Locations					Data	Office	Internet
		Rcvd	Apvd	Rcvd	Apvd	Rcvd	Apvd	Rcvd	Apvd	Rcvd	Authz						
2011 TOTAL		4,709	4,659	325	320	44	32	190	192	2,382	2,267	3,216			187	1,294	1,337,865
2012 TOTAL		3,982	3,773	154	168	63	44	114	84	1,373	1,293	2,297			159	1,305	1,324,443
2013 TOTAL		4,481	4,028	74	72	67	63	67	106	1,268	1,213	1,977			92	1,456	511,734
2013 JAN	53	538	331	6	0	3	5	6	8	176	124	141	5,060	50,265	9	108	47,406
FEB	56	260	455	10	5	2	3	4	11	91	141	139	5,250	50,372	7	102	40,649
MAR	57	344	241	5	9	3	8	15	6	129	84	173	5,093	50,540	9	133	43,019
APR	61	331	333	6	5	5	5	6	8	146	117	161	4,925	50,687	3	132	46,459
MAY	61	350	342	8	6	6	6	10	7	106	142	162	5,110	50,810	3	123	45,215
JUN	62	349	273	2	8	8	8	5	3	114	85	145	5,273	50,909	8	122	41,015
JUL	68	864	304	11	4	9	2	9	5	218	91	160	5,070	51,091	7	154	45,558
AUG	69	232	291	6	4	3	2	4	1	35	76	206	5,200	51,255	20	130	44,722
SEP	69	212	362	9	5	10	9	3	19	56	109	164	5,185	51,407	5	105	41,256
OCT	72	319	376	5	9	7	5	1	8	67	88	238	4,967	51,598	5	135	45,151
NOV	69	346	353	4	13	7	4	2	27	67	85	163	5,141	51,711	12	119	38,903
DEC	64	336	367	2	4	4	6	2	3	63	71	125	5,129	51,737	4	93	32,381
2014 TOTAL		4,223	4,191	37	34	48	48	82	45	1,113	1,115	2,241			130	1,682	521,685
2014 JAN	62	278	232	3	2	3	4	14	8	90	43	171	4,926	51,840	1	90	46,150
FEB	61	284	297	6	4	1	1	3	1	91	94	150	5,051	51,847	12	113	43,408
MAR	62	367	329	4	6	7	1	6	6	110	88	183	4,997	51,952	16	140	46,620
APR	63	276	317	2	3	2	5	8	3	89	99	172	4,897	52,060	11	188	45,558
MAY	65	458	383	2	2	3	1	6	7	83	94	180	4,923	52,202	18	131	42,365
JUN	67	429	377	3	0	6	7	5	2	134	92	223	4,924	52,337	10	156	42,518
JUL	69	272	446	2	5	3	11	8	5	97	126	181	4,955	52,431	7	166	45,481
AUG	73	376	259	4	3	4	4	3	4	111	87	218	5,060	52,582	8	145	42,431
SEP	76	412	304	2	3	3	1	20	1	116	81	214	5,006	52,694	14	175	43,577
OCT	76	459	371	3	2	9	2	4	6	93	109	191	4,827	52,785	19	138	46,030
NOV	73	326	479	5	2	5	4	4	0	54	103	167	5,171	52,947	8	96	39,583
DEC	69	286	397	1	2	2	7	1	2	45	99	191	5,236	53,054	6	144	37,964
2015 TOTAL		3,505	2,988	33	33	28	54	38	17	581	557	1,472			73	1,489	339,080
2015 JAN	64	349	316	3	1	2	9	3	1	60	43	196	5,060	53,195	17	114	41,502
FEB	49	324	161	3	2	5	6	9	0	73	28	115	4,750	53,309	4	117	38,245
MAR	38	246	294	1	6	1	5	7	5	44	70	166	4,983	53,414	6	146	42,513
APR	37	194	165	3	1	2	5	1	2	46	37	96	4,854	53,456	1	125	39,559
MAY	39	324	190	1	4	2	6	8	0	41	44	107	4,632	53,535	5	113	unavailable
JUN	38	327	281	4	1	0	5	2	1	52	49	142	4,726	53,608	5	138	unavailable
JUL	38	373	250	4	2	2	1	0	0	57	48	120	4,663	53,706	7	145	26,975
AUG	37	289	300	2	6	3	0	5	5	32	46	121	4,847	53,766	2	109	30,674
SEP	33	242	312	3	1	1	7	0	3	59	49	100	4,953	53,806	4	146	31,642
OCT	30	372	223	2	2	3	1	1	0	54	51	108	4,694	53,898	12	119	33,199
NOV	31	190	254	6	2	4	3	1	0	21	49	116	4,765	53,719	7	105	29,112
DEC	25	275	242	1	5	3	6	1	0	42	43	85	4,594	53,652	3	112	25,659
2016 TOTAL		3,395	2,832	20	16	45	37	62	19	417	353	1,008			41	1,339	325,117
2016 JAN	28	442	211	8	2	2	2	0	0	42	25	133	4,492	54,111	6	79	28,702
FEB	26	701	263	2	4	4	3	0	0	62	38	136	4,543	54,194	1	97	27,715
MAR	28	510	423	2	2	7	4	3	24	71	48	177	4,714	54,322	1	152	31,952
APR	29	352	301	5	4	3	7	1	2	41	54	131	4,635	54,369	1	103	30,406
MAY	31	307	367	4	3	1	6	1	28	41	55	169	4,899	54,369	5	94	36,109
JUNE	36	493	331	3	2	6	1	1	1	58	40	162	4,947	54,605	5	109	30,644
JULY	37	508	234	2	4	2	2	1	1	45	31	182	4,999	54,699	2	80	27,025
AUG	37	572	349	9	0	8	3	1	2	53	49	160	5,000	54,814	1	143	30,715
SEP	35	528	450	2	6	5	4	1	1	56	41	148	4,976	54,925	2	114	27,402
OCT	34	550	311	0	2	2	3	0	1	58	40	139	5,022	54,989	2	174	31,995
NOV	37	438	331	12	1	13	10	1	1	47	38	156	5,016	55,062	1	124	28,802
2017 TOTAL		5,401	3,571	49	30	53	45	10	61	574	459	1,693			27	1,269	331,467

Abbreviation Key: Rcvd = Received, Apvd = Approved, Authz = Authorized



Monthly Statistics as of December 1, 2017

Page 2 of 2

YEAR and MONTH	Well		Bonds						Hearings			Enforcement			Remediation Projects		Inspections	
	Oper Change	Operators New Inactive	Release Ind Blnkt	Replace	Claim Ind Blnkt	Apps. Orders	NOAVs AOCs OFVs	Cmpl	Spills	Rcvd	Comp	Wells	Locations					
2011 TOTAL	6,743	33	31 79 44	43	4 4	403 349	230 10 19	247 527	726 536	12,394	-							
2012 TOTAL	7,546	47	37 70 46	33	3 0	482 396	157 9 2	244 402	690 641	19,071	12,670							
2013 JAN	653	3	5 12 2	0 0 0	48 75	15 4 -	21 40	31 45	1,622	789								
FEB	289	4	2 6 3	2 0 0	41 35	11 2 -	15 30	42 90	1,044	615								
MAR	354	1	3 2 2	1 0 0	54 67	16 2 -	11 25	65 29	1,968	1,149								
APR	333	7	1 5 2	8 0 0	- -	21 - -	16 33	39 37	1,510	910								
MAY	346	2	1 3 0	0 0 0	46 50	22 6 -	13 31	41 60	2,621	1,576								
JUN	1,456	6	2 2 4	5 0 0	91 44	13 2 -	25 40	47 37	1,860	1,102								
JUL	1,009	4	1 2 2	0 0 0	96 70	25 3 -	21 47	50 22	2,298	1,338								
AUG	389	6	4 5 4	2 0 0	- -	23 - -	25 57	36 41	2,146	1,033								
SEP	277	4	1 6 1	0 0 0	101 51	7 2 -	16 60	43 51	1,536	703								
OCT	345	6	0 2 2	2 0 0	52 82	4 12 3	12 79	47 60	1,868	1,158								
NOV	442	2	0 2 2	0 0 0	- -	30 - -	12 51	31 34	2,401	1,613								
DEC	1,299	4	1 1 2	0 0 0	42 48	50 4 -	14 75	35 35	2,677	1,384								
2013 TOTAL	7,192	49	21 48 26	20 0 0	571 522	237 37 3	201 568	507 541	23,551	13,370								
2014 JAN	1,971	6	3 3 2	0 0 0	57 46	25 2 -	8 68	46 28	3,243	1,597								
FEB	2,039	8	2 6 5	0 0 0	- -	23 - -	17 59	51 13	2,330	1,282								
MAR	493	2	3 1 5	0 0 0	97 75	29 10 -	22 63	66 31	1,822	1,298								
APR	312	5	3 6 4	1 0 0	74 64	17 8 1	20 57	47 59	2,651	1,715								
MAY	508	6	2 3 3	5 0 0	- -	12 - -	13 63	50 42	2,437	1,571								
JUN	1,008	5	3 7 4	1 0 1	95 90	14 6 1	16 74	44 50	3,209	1,717								
JUL	338	2	1 5 3	1 0 0	96 96	11 6 -	12 60	60 59	3,071	1,536								
AUG	452	6	2 2 3	0 0 0	- -	8 - -	31 56	32 58	2,788	1,682								
SEP	378	4	2 1 2	0 0 0	73 63	13 7 1	18 65	39 50	2,587	1,616								
OCT	886	8	2 0 2	0 1 0	80 75	12 3 1	13 74	78 36	3,886	1,914								
NOV	498	2	4 8 4	5 0 0	- -	6 - -	15 72	27 59	3,156	1,458								
DEC	1,414	1	1 0 2	0 0 0	126 89	9 1 -	58 75	56 17	3,028	1,596								
2014 TOTAL	10,297	55	28 42 39	13 1 1	698 598	179 43 4	243 786	596 502	34,208	18,982								
2015 JAN	727	2	3 2 3	0 0 0	76 64	15 2 1	36 64	38 58	2,491	1,246								
FEB	556	5	2 2 3	1 0 0	- -	10 - -	22 44	34 64	2,667	1,382								
MAR	183	5	3 5 2	4 2 0	72 72	33 1 1	42 76	59 94	3,469	1,738								
APR	271	7	1 0 5	3 0 0	60 54	19 3 -	21 46	40 61	3,451	1,620								
MAY	436	8	0 0 2	3 0 0	89 54	10 10 2	25 46	56 41	2,869	1,422								
JUN	508	2	2 3 5	4 0 0	- -	27 - -	25 41	32 43	3,366	1,716								
JUL	396	3	3 0 5	1 0 0	123 140	5 13 1	32 67	52 28	3,445	1,774								
AUG	218	8	2 0 7	4 0 0	- -	13 - -	18 56	24 62	3,693	1,848								
SEP	273	6	5 1 7	4 0 2	112 78	25 11 -	30 41	44 40	2,887	1,528								
OCT	356	4	1 6 1	6 1 0	115 103	6 12 1	32 58	51 33	3,420	1,494								
NOV	97	2	3 5 0	0 0 1	- -	6 - -	15 38	47 40	3,348	1,666								
DEC	437	7	2 3 5	1 0 0	91 80	4 5 2	60 46	39 37	3,851	1,765								
2015 TOTAL	4,458	59	27 27 45	31 3 3	738 645	173 57 8	358 623	516 601	38,957	19,199								
2016 JAN	508	2	1 0 5	5 0 0	76 66	4 7 1	29 51	44 36	3,184	1,551								
FEB	165	2	1 0 1	1 1 0	- -	8 - -	27 47	34 49	3,666	1,738								
MAR	1,035	6	4 2 2	2 1 1	62 57	3 7 1	19 42	50 45	3,020	1,646								
APR	244	3	3 2 7	4 0 0	34 32	6 4 2	20 40	48 90	4,046	2,117								
MAY	374	2	3 6 3	3 1 0	- -	0 - -	20 37	41 29	3,491	2,193								
JUN	272	6	3 3 4	1 1 1	67 65	3 6 2	20 36	40 77	4,099	2,330								
JUL	2,234	3	2 0 2	0 0 0	- -	10 - -	20 41	29 56	3,483	2,068								
AUG	137	3	3 3 2	1 1 1	71 43	20 4 -	20 51	39 38	4,065	2,288								
SEP	321	3	1 9 3	3 0 1	- -	8 - -	20 37	44 22	3,527	1,788								
OCT	426	1	3 7 5	1 0 0	96 74	23 7 1	21 40	34 36	3,325	1,811								
NOV	550	3	0 4 0	0 3 0	- -	19 - -	22 40	27 50	3,855	1,912								
DEC	249	4	4 1 7	2 1 1	67 60	3 8 -	23 66	31 72	3,374	1,684								
2016 TOTAL	6,515	38	28 37 41	23 9 5	473 397	107 43 7	261 528	461 600	43,135	23,126								
2017 JAN	4,174	3	3 3 3	1 0 0	80 72	1 11 1	46 48	23 11	3,007	1,447								
FEB	353	1	5 2 4	2 0 3	0 0	13 0 0	74 57	34 17	3,180	1,372								
MAR	1,087	6	4 2 2	2 1 1	86 65	18 3 0	44 55	49 18	3,812	1,851								
APR	899	3	0 1 5	5 0 0	0 0	6 0 0	32 40	43 29	2,895	1,578								
MAY	572	1	3 0 5	0 0 0	128 93	3 6 0	185 55	46 30	2,488	1,484								
JUNE	320	6	1 1 2	0 0 0	107 102	2 4 1	131 63	57 26	2,532	1,680								
JULY	357	5	2 2 2	0 0 1	108 104	5 3 0	66 38	29 23	2,168	1,299								
AUG	477	4	2 27 13	32 0 0	0 0	3 0 0	207 55	63 51	2,885	1,705								
SEP	549	1	2 9 6	6 0 1	133 74	20 1 0	212 54	64 38	2,796	1,559								
OCT	143	1	0 0 2	2 0 0	131 79	3 5 4	237 51	37 24	2,757	1,580								
NOV	251	2	0 0 0	0 0 0	0 19	1 0 0	81 50	51 34	2,555	1,157								
2017 TOTAL	9,182	33	22 47 44	50 1 6	773 608	75 33 6	1,315 516	445 267	28,520	15,555								

Abbreviation Ind = Individual, Blnkt = Blanket, Apps = Application for Hearing, NOAV = Notice of Alleged Violation, AOC = Administrative Order of Consent, OFV = Order Finding
Key: Violation, Cmpl = Complaint, Comp = Completed