



**COLORADO**

**Oil & Gas Conservation  
Commission**

Department of Natural Resources

# Staff Report

for January 26, 2016

## Top Stories

### ◆ Delayed Cement Bond Log

Rule 308A requires the submittal of the cement bond log with the Drilling Completion Report (Form 5) within 60 days of rig release. To save rig costs, it is common for operators to run the cement bond log (CBL) when they conduct their completion operations, rather than immediately after cementing when the drilling rig is still on location. When the well is completed shortly after it is drilled, operators are able to comply with the Rule 308A requirements. However, if the CBL will not be run until the well is completed and the completion is delayed more than 60 days after rig release, full compliance with Rule 308A is not possible.

Anadarko Petroleum Corp. is delaying completions more than 60 days after rig release on many wells the operator is currently drilling. Anadarko's standard procedure, when it does not run the cement bond log in conjunction with completion operations, includes setting a valve for well control prior to logging. The valve then remains in the well until the well is completed. Due to the number of wells with delayed completions, the valve rental costs are significant. Therefore, Anadarko requested a DJ Basin-wide variance from Rule 308A allowing them to timely submit drilling completion reports without a cement bond log.

After receiving the request, COGCC engineering and permitting staff worked with Anadarko to develop terms for a variance that would protect public health, safety, and welfare and the environment while providing Anadarko with substantial economic savings. The variance granted by the COGCC Director includes compliance alternatives and specific instructions for filing the Form 5s, Form 7s, and Form 5As on wells subject to this variance. The compliance alternatives

require Anadarko to perform a Bradenhead test after cementing the production casing, run a CBL no later than two years after rig release, and perform Mechanical Integrity Tests on Waiting-On-Completion wells in accordance with Rule 326.d. The variance was granted with a condition that Anadarko submit an annual report of their wells subject to this variance.

Anadarko's delayed completions may also impact their compliance with the Series 1000 Reclamation Rules. As needed, Anadarko will request a site-specific variance for any Location if it would like to delay interim of final reclamation beyond the time period stipulated in the Rules.

Other operators are also delaying completions on the wells they are currently drilling. COGCC Staff has engaged these operators in discussions to fully understand the nature of their procedures, to determine when a variance will be required for compliance, and to provide clear directions for filing forms and reporting on delayed completion wells. To avoid violations and subsequent enforcement, all operators who are delaying completions should consult with the COGCC.

### ◆ Local Government Liaison Program

Local Government Liaisons (LGLs) Nancy Prince and Marc Morton continue to provide valuable outreach, service, and support in response to inquiries, information requests, and speaking requests from local government, the public, institutions of higher education, industry groups, and other organizations. Nancy and Marc also assist COGCC Staff in various initiatives and special projects.



Upon request and schedule permitting, the LGLs are available to present to your organization about COGCC initiatives and ongoing work, such as the online complaint process, an overview of use of memoranda of understanding, navigation of the COGCC website, best practices for submitting effective and COGCC-actionable comments on pending drilling or oil and gas location assessment permit applications, or any other topic of specific interest.

The year 2015 resulted in continued growth in Local Government Designee (LGD) participation, as well as a number of changes in which new LGDs have replaced outgoing LGDs.

Newly participating LGD program participants in 2015 include:

Pueblo, City (LGD: Sam Azad)  
Mesa County Federal Mineral Lease District (LGD: Chris McAnany)  
Stoneridge Metropolitan District (LGD: Kurt Schlegal)  
Mead Western Meadows Metropolitan District (Kurt Schlegal)

Previously participating county governments who installed or appointed a replacement LGD in 2015 include:

Adams County (LGD: Jennifer Rutter)  
Archuleta County (LGD: John Shepard)  
La Plata County (LGD: Brenna Kampf)  
Larimer County (LGD: Robert "Terry" Gilbert)  
Montezuma County (LGD: LeAnn Milligan)  
Prowers County (LGD: Keith Siemsen)  
Rio Grande County (LGD: Dixie Diltz)

Previously participating city or town governments who installed or appointed a replacement LGD include:

Bennet, Town (LGD: Trish Stiles)  
Boulder, City (LGD: Carl Castillo)  
Castle Rock, Town (LGD: Mary Shaw)  
Centennial, City (LGD: Alex Grimsman)  
Lafayette, City (LGD: Karen Westover)  
Longmont, City (LGD: Brad Schol)  
Milliken, Town (LGD: Martha Perkins)  
Pagosa Springs, Town (LGD: Greg Schulte)

Thornton, City (LGD: Robb Kolstad)  
Windsor, Town (LGD: Scott Ballstadt)

Previously participating Special Districts who installed or appointed a replacement LGD include:

Battlement Mesa Service Association (LGD: Charles Hall)

A current list of local governments currently participating in the LGD program can be accessed through the following link:

<http://cogcc.state.co.us/Infosys/lgd/list.cfm>

We welcome LGDs new to the program and those who are replacing outgoing LGDs. We also want to thank all former LGDs for their service and working with the COGCC. We welcome all LGD requests for training, and depending on specific needs, we can tailor training to be either a generalized overview training, or a focused (topic specific) training.

And as a reminder to all participating LGDs, it is very important that you notify COGCC (via submittal of an updated Form 29) of any change in your e-mail address or contact information, or of a change in the status of your participation in the LGD program:

[http://cogcc.state.co.us/documents/reg/Forms/PDF\\_Forms/form29.pdf](http://cogcc.state.co.us/documents/reg/Forms/PDF_Forms/form29.pdf)

A list of the LGL outreach and public involvement activities conducted since the last staff report is included in the Public Outreach section below.

## Public Outreach

### ➤ *Outreach by Director and Other Staff*

- On December 3, Energy Integrity Section Supervisor Mark Schlagenhauf presented "Risk Based Inspections: Recommendation One for Flowlines" at the Northwest Forum meeting in Rifle. The Forum was coordinated by LGL Marc Morton, and other COGCC presenters included Deputy Director Dave Kulmann, Regional Engineer Craig Burger, and Marc Morton. The presentations are available on the COGCC website under the Library tab, then under the Local Public Forum tab, and under the Northwest Colorado Oil and Gas Forum Presentations.
- On December 21, Location Assessment Supervisor John Noto and LGL Nancy Prince met with City of Thornton staff to discuss COGCC rules and local government input into the COGCC permitting process.
- On January 5, Director Lepore and LGL Nancy Prince met with Adams County Commissioners in a study session to discuss the COGCC field inspection program and local government input into the COGCC permitting process.

### ➤ *Outreach by LGLs*

- On December 1, Marc Morton and Nancy Prince travelled to the University of Northern Colorado in Greeley and provided a six hour training to 18 individuals including LGDs, local government staff, operators and other agency/group representatives. Kent Kuster of the Colorado Department of Public Health and the Environment (CDPHE) assisted in providing the training.
- On December 3, Marc Morton travelled to Rifle and attended the monthly Garfield County Energy Advisory Board (EAB) meeting.
- On December 17, Marc travelled to Grand Junction and attended the joint Mesa Board of County Commissioners and Land/Resource Managers quarterly meeting. He updated the group on the Governor's Task Force Rulemaking and the recently released COGCC Final Reclamation Inspection and Implementation Program Report.

- On January 6, Nancy Prince attended the Fremont County Mayors meeting and provided an update on the status of the Governor's Task Force rulemaking. There was also a discussion of ongoing vandalism at some existing well and production facilities.
- On January 15, Marc Morton sent information on federal oil and gas grants available from the U.S. Department of Transportation Pipeline and Hazardous Material Safety Administration to local government representatives. The COGCC plans to share news of similar community funding opportunities as information becomes available.

LGLs are also in the process of conducting informal new year LGD "check-in" and training needs assessment interviews. If you are an LGD, we look forward to speaking with you and receiving your input.

### ➤ *Northwest Colorado*

#### ◆ Northwest Colorado Oil and Gas Forum

Northwest Colorado Oil and Gas Forum meetings in 2016 are scheduled for April 7, August 4, and December 1. All meetings will be held in Rifle at the Colorado Mountain College in Clough Auditorium (3695 Airport Road in Rifle) from 9:00 a.m. to noon. The meetings are open to the public, and a public comment period is held as part of each meeting.

Past presentations (dating back to 2006) are available on the COGCC website under the Library tab, then under the Local Public Forum tab, and finally under the Northwest Colorado Oil and Gas Forum Presentations, or via the following website address:

<http://cogcc.state.co.us/library.html#/forums>

All parties wishing to be placed on the next meeting agenda or added to the distribution list for announcements should contact Marc Morton at 303-894-2100, ext. 5132 (direct), 720-415-4959 (mobile) or by e-mail:



## Regional Activities

[marc.morton@state.co.us](mailto:marc.morton@state.co.us)

### ◆ Project Rulison

The email for Project Rulison submittals is

[DNR\\_rulison.submittal@state.co.us](mailto:DNR_rulison.submittal@state.co.us)

### ◆ Project Rio Blanco

The email for Project Rio Blanco submittals is

[DNR\\_rioblanco.submittal@state.co.us](mailto:DNR_rioblanco.submittal@state.co.us)

### ➤ *Southwest Colorado*

### ◆ Fruitland Formation Outcrop Mitigation and Monitoring Projects

South Fork Texas Creek Mitigation Site - La Plata County. Regularly scheduled operations and maintenance continue at the South Fork Texas Creek (SFTC) site, performed by LTE, the

COGCC's contractor. Since May 2009, the system has collected 16,013 Mcf of methane and generated 250,229 kWh of surplus electricity. The annual 4M Outcrop Mitigation Summary Report, prepared by LTE, is due in January 2016 and will be posted to the COGCC website upon receipt.

### ◆ GORT Meetings

GORT meetings in 2016 are scheduled for March 24, July 28, and October 20. All meetings will be held in Durango at the Durango Public Library (1900 E. 3rd Ave. in Durango) from 8:30 a.m. to 11:30 a.m. The meetings are open to the public, and a public comment period is held as part of each meeting.

All parties wishing to be placed on the next meeting agenda or added to the distribution list for announcements should contact Marc Morton at 303-894-2100, ext. 5132 (direct), 720-415-4959 (mobile), or by e-mail:

[marc.morton@state.co.us](mailto:marc.morton@state.co.us)

## Variances

### ◆ Mendell Finisterre II, LLC

On December 30, 2015, the COGCC Director granted Mendell Finisterre II, LLC (Mendell) a Rule 502.b. variance to Rule 603.a.(1) for the Afton 12-16H-1 Well (API #001-09934) and the Afton 12-16H-2 Well (API #001-09935) in Adams County. Rule 603.a.(1) states that "At the time of initial drilling, a Well shall be located not less than two hundred (200) feet from buildings, public roads, major above ground utility lines, or railroads." As proposed, the wells will be located 191 feet from the closest overhead power line.

The Location (ID #434921) was approved in 2013 with eight wells with the wells arranged in two rows of four on the pad. The wells in one row are located 191 feet from the overhead power line. The first 2 wells were permitted in 2013 when the Rule 603.a.(1) setback was 150 feet.

Mendell has stated that they will utilize a drilling rig with a derrick height of 142 feet and a total

rig height of 158.2 feet. Mendell obtained a waiver of the 200 foot setback from United Power. The variance was granted through the approval of the Form 2 applications.

### ◆ Anadarko Petroleum Corp.

On December 30, 2015, the Director granted a Rule 502.b. variance to Anadarko Petroleum Corp. (Anadarko) to delay cement bond logs (CBLs) on their wells within the DJ Basin. The variance provides relief from the requirement of Rule 308A to run and submit a CBL with the Form 5 within 60 days of rig release of the last well on a pad.

To ensure protection of public health and safety in lieu of CBLs, this variance includes requirements for Anadarko to perform a Bradenhead test after cementing the production casing, submit Form 5s on time without CBLs attached, use comments on Form 5s and Form 5As to identify the wells with delayed CBLs, run a CBL no later

than two years after rig release, perform Mechanical Integrity Tests on Waiting-On-Completion wells in accordance with Rule 326.d, and submit an annual report of the wells subject to this variance.

## ◆ Black Hills Plateau Production, LLC

On November 20, 2015, the COGCC Director conditionally granted Black Hills Plateau Production, LLC (Black Hills) a Rule 502.b. variance allowing the storage of exploration and production waste (E&P Waste) in a modular large volume tank (MLVT) on the WHF D17 998 Location (Location No. 429734) in Mesa County. The conditional approval required the decommissioning and removal of the tank by December 31, 2015. Black Hills removed the tank by the deadline.

The COGCC's June 13, 2014 policy on the use of MLVT states that "Storing E&P Waste in an MLVT prior to obtaining a variance or an approved waste management plan would constitute a vio-

lation of Rules 907.a.(1) and (2)." Because Black Hills had begun use of the MLVT for the storage of treated flowback water prior to requesting or receiving a variance, the COGCC issued a Notice of Alleged Violation, consistent with the policy.

## ◆ Extraction Red Willow Production Co.

On December 11, 2015, per Rule 303.i., the Director approved the Form 2 Applications for Permits to Drill for Red Willow Production Company's SOUTHERN UTE 33-10 19-7H vertical pilot well and horizontal sidetrack well (API# 067-09967-00 and 067-09967-01) in La Plata County prior to the conclusion of the 20-day comment period. Because the proposed well is located within the Southern Ute Indian Tribe Reservation on tribal surface and minerals, the Form 2s are filed as a courtesy for the assignment of an API Number. The operator requested the issuance in order to begin work on this well as soon as possible.

## Admin / Organization / Other

### ◆ New Southwest Field Inspector

The Field Inspection unit welcomes William "Cal" St. John to the COGCC. Cal knows the oil and gas industry well, having worked both as a lease operator and as an environmental technician in the Piceance and DJ Basins. In addition to operating and monitoring equipment at well sites, Mr. St. John has experience with stormwater inspections, leak detection surveys with infrared cameras, spill response/remediation, and reclamation activities.

Prior to his time in the oil and gas industry, Cal worked for Boeing Corporation as a quality control inspector for manufactured components used by NASA in the international space station and shuttle programs. He has a bachelor's degree in computer science and has served in the U.S. Air Force.

A COGCC organizational chart can be found on pages 9-12. For contact information, please go to our homepage, find the "About Us" menu, and select "Contact Us."

### ◆ Plugging and Reclaiming Abandoned Wells (PRAW) - Project Updates

The Ridgway-Swanson-Peterson #1 Plugging and Abandonment (PA) Project is located in central Ouray County about one mile east of the Town of Ridgway. This well was drilled in 1947 and was later turned over to the landowner as a domestic natural gas supply. The gas petered out and has been shut in since approximately 1986, and the landowner has switched over to retail propane.

Following a COGCC inspection in 2011, the well was placed in the Orphaned Well PRAW Program. After a recent onsite bid meeting with contractors, the project was split up into two parts. The first part will remove the well shed, etc. to prepare the site for rig placement, and the second part will PA the well. The PA portion of the project is now successfully complete for a total cost of \$35,935, which is \$19,420 less than the bid price.

Removal of the shed is complete, but other miscellaneous work is on hold due to ground condi-



tions and contractor availability. The cost to complete this work is estimated to be \$3,800.

The **Think Oil Bond Vaughn #1 Plugging and Abandonment (PA) Project** is located in Moffat County about two miles southwest of the Town of Craig. This well was drilled in 1950 to a total depth (TD) of 10,003 feet through the Weber sandstone and Morgan Formation. The well was later plugged in 1989, but was re-entered in 1992 and drilled to a depth of 3,025 feet. The operator then directionally drilled the well to a true vertical depth (TVD) of 7,223 feet and a measured total depth (MTD) of 7,264 feet. The well was completed in the Niobrara Formation.

Because of mechanical problems and sub-economic production, the well was plugged in 1997. Various well site inspections by the COGCC found non-compliance with the Rules. An Order Finding Violation was issued and resulted in the State claiming the bond for this well (Order 1V-458). An inspection in 2015 determined that gas was leaking from the well casing. The well will be re-entered and plugged at a revised estimated cost of \$44,400. A request for contractor bids for this project has been issued, an onsite meeting with contractors is scheduled for January 11, and bids are due January 18. The bid selection will occur shortly thereafter, and field work is anticipated to start by mid February 2016.

The **Midfields State #1 Plugging and Abandonment (PA) Project** is located in Yuma County about 12 miles south of the Town of Wray. This well was drilled to an approximate depth of 3,650 feet in 1919. In 2009, an onsite inspection found venting gas and rolling water in the well. The well was excavated to a depth of six feet, and no casing was found.

The limited available records indicate a 16 inch diameter surface bore. A 20 foot long joint of 18 inch diameter PVC irrigation pipe was stuffed into the wellbore, and the excavated portion was backfilled. A plumb bob was lowered into the well, and it tagged up at a depth of 30 feet. For safety purposes, panels were erected around the well, and the well was left open to the atmosphere to prevent

shallow ground water contamination. The estimated cost to PA the well is \$50,000. A request for contractor bids for this project will proceed, with field work anticipated to start by the spring of 2016.

The **Noel Reynolds-Ester #1 Plugging and Abandonment (PA) Project** is located in La Plata County about 18 miles southwest of the City of Durango. This well was drilled in 1979 to an approximate depth of 3,467 feet into the Morrison Formation. The producing oil zones include the Dakota Sandstone (3,302 feet to 3,316 feet), Carlisle/Juan Lopez (3,030 to 3,014 feet), and Mancos/Gallup (2,594 to 2,622 feet).

The operator has since become financially insolvent, and the State claimed the \$30,000 bond in 2011 through Order 1V-375. This order placed the project into the PRAW program. The estimated cost to PA the well is \$45,000, but the project is on hold pending a Form 10 - Change of Operator and receipt of financial assurance for this well from Atom Petroleum, LLC.

The **Koenig-Ashby #1 and R. E. Leckler #1 Reclamation Project** is located in Logan County and will involve the remediation of soils contaminated by produced salt water spills. Sampling and analysis of the soils, as well as remediation project design, were completed in Fiscal Year 2014-15. This project has been placed on a reserve list pending progress on a higher priority PRAW project.

The **Dolphin Mulvihill #15-32D Reclamation Project** is located in Garfield County about 1.6 miles northeast of the City of Rifle. This well was plugged and abandoned in 2012, but the site must now be reclaimed. Plans include (1) an onsite meeting in the spring with the landowner, (2) reclamation design, and (3) determination of the cost to do the work.

The **Wallace Three Well Pads Reclamation Project** comprises three separate leases and well pads in Baca County about 20 miles southeast of the Town of Walsh. The wells at these sites were plugged and abandoned in June 2015. The farmer landowner has reclaimed the site to cultivated land, so the project is being removed from this year's PRAW program.

The **Redwine Bond South Nucla Unit #1-32 Reclamation Project** is located in the Montrose County about 28 miles southwest of the City of Montrose. This well was plugged and abandoned in May 2015 and is now ready for the closure of the drilling pit and reclamation of the site. The site is a cut and fill on a steep slope in the mountains with a drilling mud reserve pit in place. The cost to do this work has been estimated at \$96,235. Current plans include (1) design, (2) bid solicitation and (3) completion of the work by late spring or early summer 2016.

The **Ruth #1 Bond Project** is a well site located in Adams County, which will require the plugging of one well and the reclamation of a pit and the well site. To date, the soils analysis indicates that the pit contents meet standards for reclamation purposes. The soils analysis had a total cost of \$871. In addition, the production equipment has been removed at a cost of \$5,000. This project has been placed on hold for a higher priority project and is being held in reserve as a substitute.

The **River West #2 Project** is located in Larimer County near the Town of Windsor. Production equipment remains at the location, but the well has not been plugged and abandoned. COGCC Staff are reviewing options for the disposition of the well. The location also requires weed and erosion control because of tall weed debris along the access road and around the production facilities. Mowing the weeds will prevent the debris from moving off the location and will reduce a potential fire hazard created by the buildup of fuels in the form of weeds.

There are also signs of erosion on the site, which will be controlled by installing a variety of ditches, sediment traps, erosion blankets, seeding, and mulching.

Page 13 contains a spreadsheet listing PRAW projects that are either scheduled, in process, or completed as of January 18, 2016.

## ◆ Colorado Oil and Gas Information System (COGIS) Projects, Updates and Changes

### Electronic Form Submissions (eForm)

The COGCC uses 41 types of forms to authorize oil and gas operations, inspect and monitor on-going operations, and receive reports of operations. Of those 41 forms, 20 are currently available for electronic submittal through the eForms system.

The development team continues to work on the eForm conversion of existing forms. Currently, four forms are in various stages of development: Forms 14, 14A, 27, and the Warning Letter. In addition, the development team updates eForms with improvements requested by Staff and as required by rule revisions.

In 2015, 95 percent of the forms available in eForms were submitted electronically by industry. In the month of December 2015, 88 percent were submitted electronically. There are 636 operator users of eForms and 2,631 individual users. For any operator not currently enrolled in eForms, instructions for starting the process can be found on the COGCC website at:

<http://cogcc.state.co.us/Announcements/COUInformation.pdf>

### Form 27 eForm Development

The COGCC's Site Investigation and Remediation Workplan (Form 27) is due for an upgrade. The form was created in 1999 and only has been slightly modified since that time. The COGCC's eForm platform allows for seamless tracking of an issue in COGCC's database (known as the MRDB) from start to finish. Users of the new eForm will be able to see not only the origin of the issue as a spill report or complaint, but also its investigation, remediation, and site closure. An eForm will replace the existing paper form, and development is currently underway.

The revised Form 27's data fields will be developed to provide more information "at a glance" and also allow for operators to directly enter information about their projects. Moreover, op-



erators will be able to update their records as often as they need.

The conversion of the Form 27 to the established eForm platform will increase the efficiency of COGCC Staff effort; improve the effectiveness of communications regarding individual projects; and elegantly interface with spill reports, complaints, and existing facilities in the MRDB.

The Governor's Office of Information Technology (OIT) has completed development of the eForm 27, and COGCC Staff have conducted several rounds of internal testing, providing feedback for further refinement. Further testing by a select group of operators will be initiated prior to rollout of the eForm.

#### **Applications and Location Assessments**

The public can make comments on all submitted Drilling Permit Applications (Form 2s) and Location Assessments (Form 2As) through the eForm system. Simply go to the COGCC website and click on the menu option "Permits" or

<http://cogcc.state.co.us/permits.html#/permits>

On the "Permits Search" page, three search options are available. The first option, "All Pending Permit Applications," is used for public comments. When the results are displayed for "Pending Applications," a user can click on the document number hyperlink in the "Status" column, which logs him or her to the eForms application.

Once the page is displayed with the selected document, the user can select the Comment button to make a comment on that particular form.

#### **Data Access**

The COGCC's database is a comprehensive repository of Colorado's oil and gas data. The information in the database is available to the public through interactive search tools and a variety of file downloads on the website.

Users of this data come from many different sectors of the community, including academic institutions, oil and gas operators, environmental

groups, government agencies, and the media. The number of these users and the variety of data requested are steadily increasing. In order to better serve the public and address these demands for data, Staff will be enhancing the interactive search tools with additional search criteria. Staff will also be publishing additional data file downloads at:

<http://cogcc.state.co.us/data2.html#/downloads>

#### **Current Data File Downloads**

Spills and Releases (released December 16, 2015)  
GIS Shapefiles (12 files)  
Production Data (1999 - present)  
Spacing Orders  
Water Well Data  
Complaints  
Mechanical Integrity Tests  
Notices of Alleged Violation

#### **Future Data File Downloads**

Inspections (by February 1, 2016)  
Enforcement Orders (by March 31, 2016)

#### **◆ March 2016 Hearing Docket**

The docket for the March 2016 hearing will be available shortly after the January hearing. Hearing dockets are available on our website by clicking on "Regulation" in the menu and then "Hearings":

<http://cogcc.state.co.us/reg.html#/hearings>

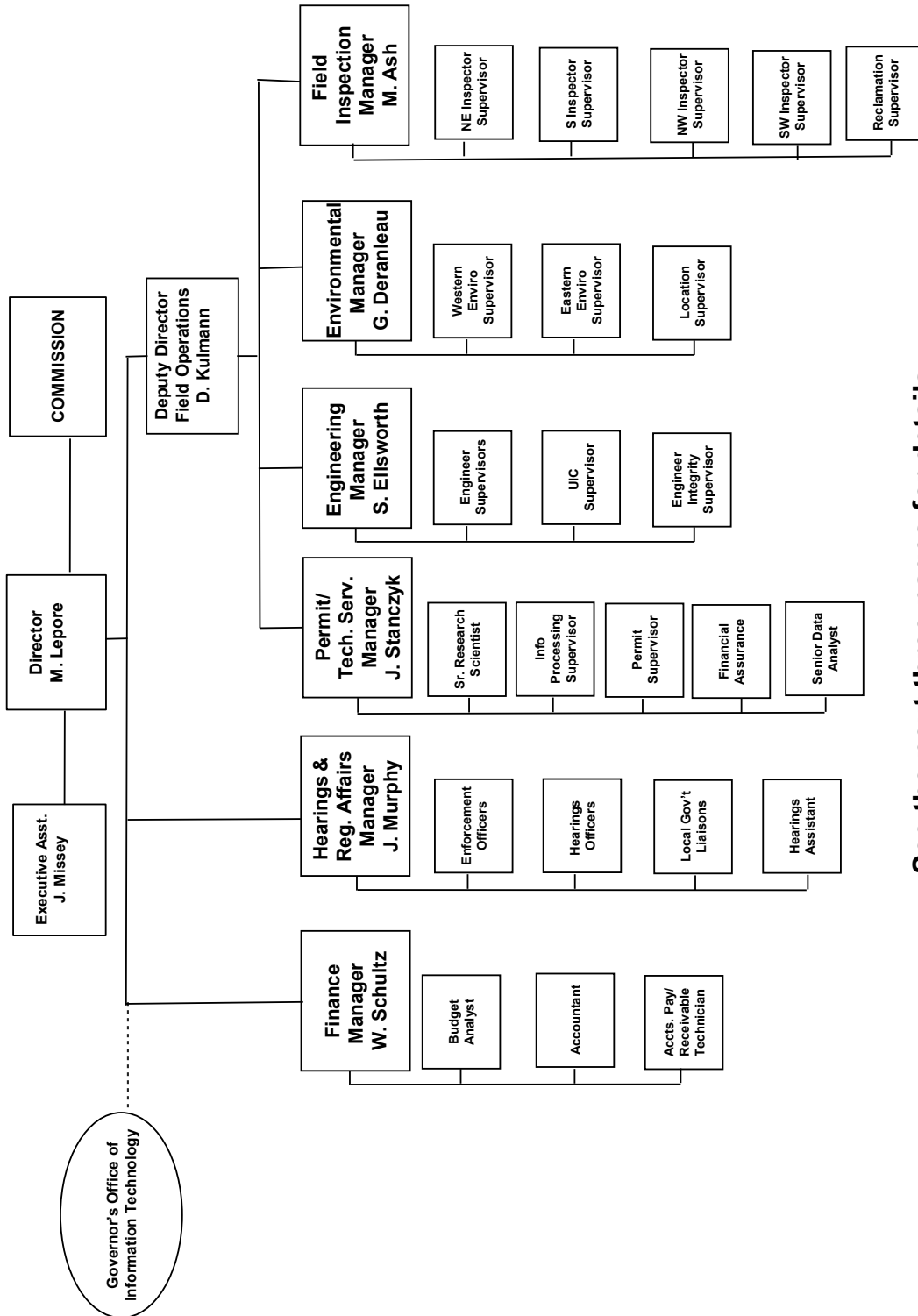
Links to the notices and hearing applications are available from the Docket Number and Applicant, respectively, by clicking the March Gen\_Docket link. To sign up for e-mail notification of hearing notices and applications, please see the announcement and instructions on the homepage of the COGCC website.





## Organizational Charts and Statistics

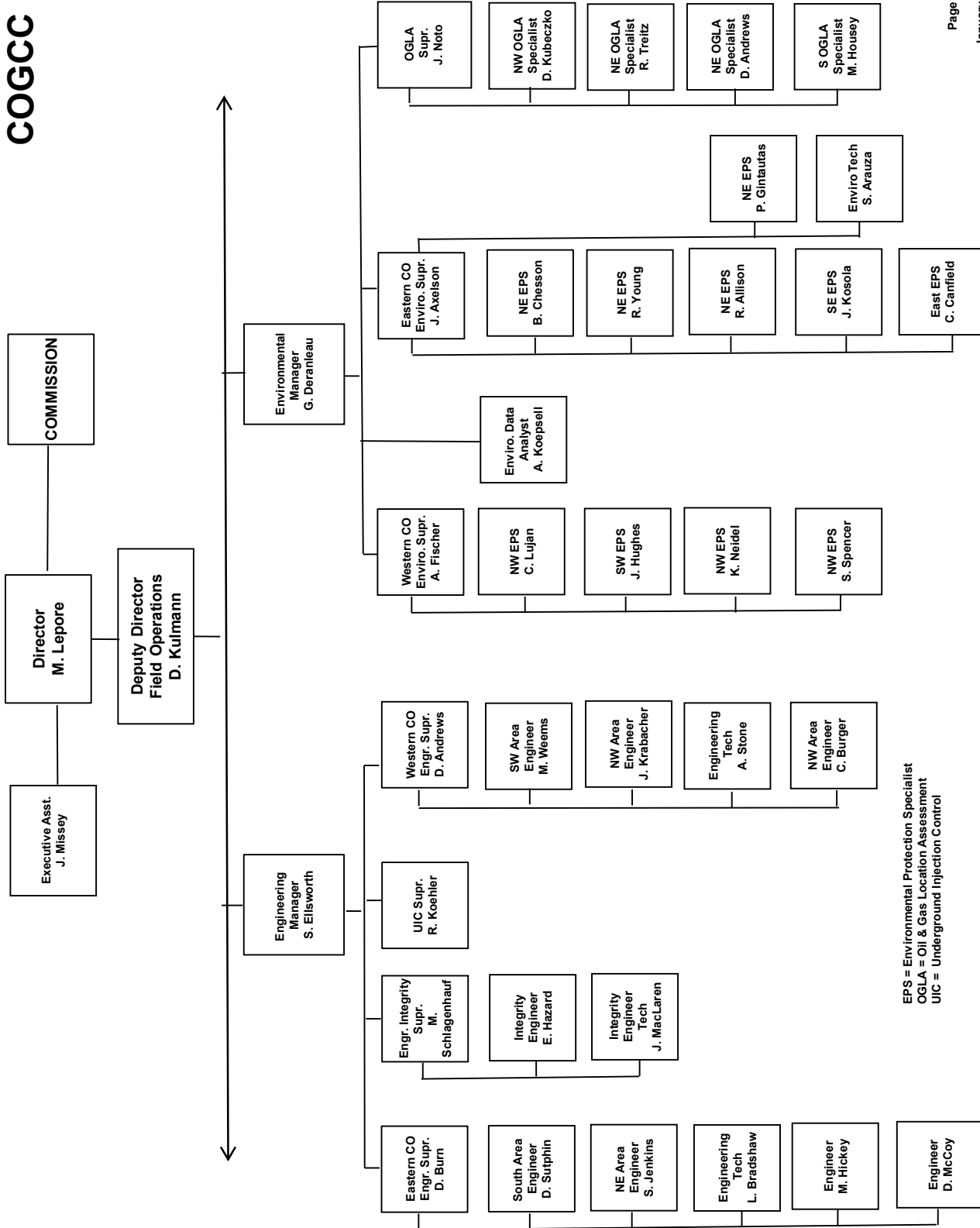
### COLORADO OIL & GAS CONSERVATION COMMISSION



See the next three pages for details



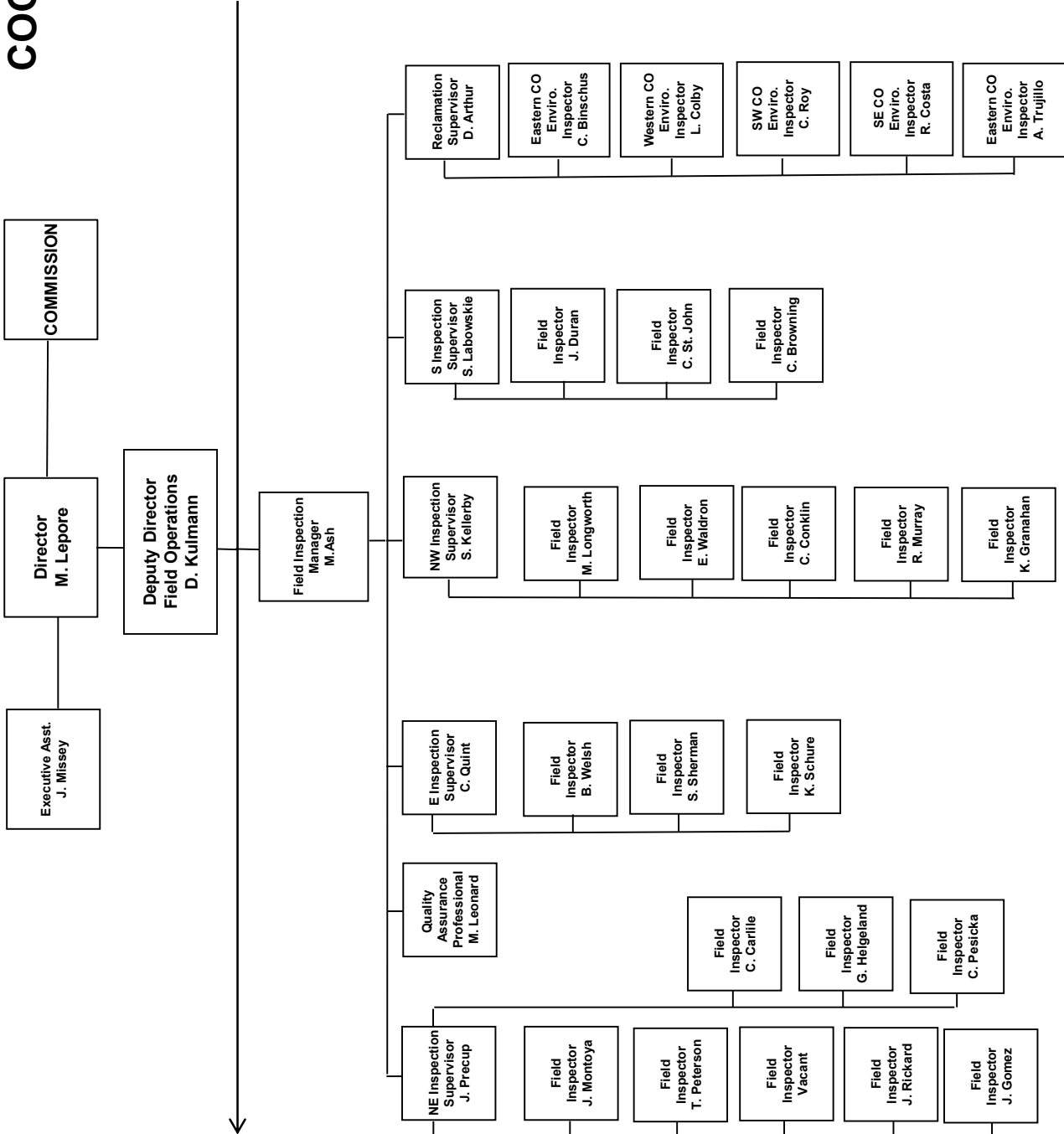
## COGCC



EPS = Environmental Protection Specialist  
 OGLA = Oil & Gas Location Assessment  
 UIC = Underground Injection Control

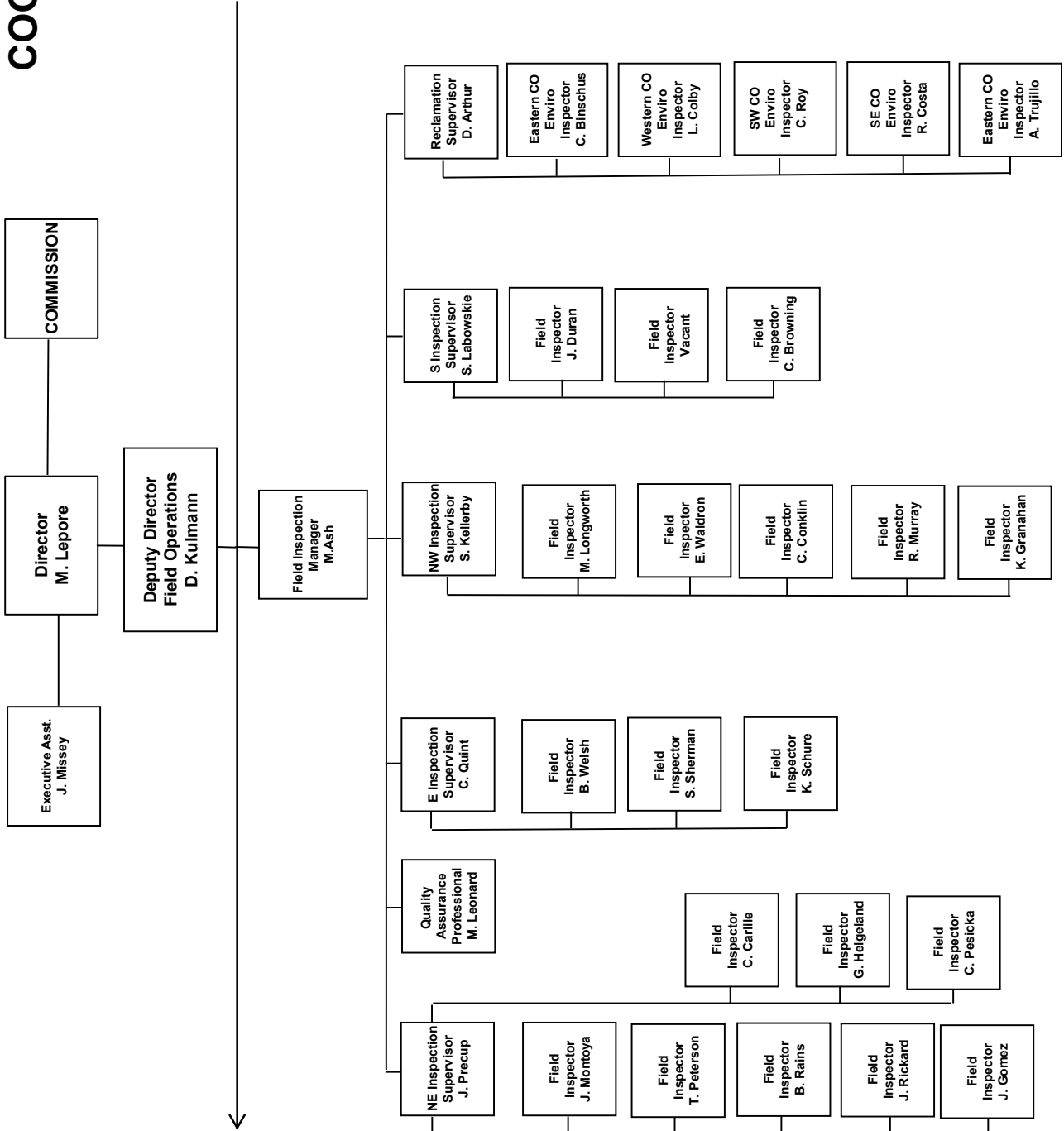


# COGCC





## COGCC





# Oil and Gas Staff Report

January 26, 2016

## PLUGGING AND RECLAIMING ABANDONED WELLS (PRAW) FOR ORPHANED LOCATIONS FISCAL YEAR 2015-16

PLANNED											
ESTIMATED TOTAL PROJECT COST											
County	Type	Project Name	Acct Code	Bond	PRAW	EMGY	Totals	Bond	PRAW	EMGY	Totals
Yuma	PA	Midfields State #1	MIDF	\$ 50,000	\$ 50,000	\$ 50,000	\$ 50,000				
La Plata	PA	Noel Reynolds Bond - Ester #1	NOEL	\$ 30,000	\$ 15,000	\$ 45,000	\$ 45,000				
Garfield	RECL	Dolphin -Mutvihill #15-32D	DOLP	\$ 25,000	\$ 25,000	\$ 25,000	\$ 25,000				
Montrose	RECL	Redwine Bond - SNU #1-31	REDW	\$ 96,235	\$ 96,235	\$ 96,235	\$ 96,235				
Larimer	RECL	River West #2 Retta J 1	RANC	\$ 10,000	\$ 10,000	\$ 10,000	\$ 10,000				
<b>TOTALS =&gt;</b>				<b>\$40,000</b>	<b>\$186,235</b>	<b>\$ 0</b>	<b>\$ 226,235</b>				
IN PROGRESS											
ESTIMATED TOTAL PROJECT COST											
County	Type	Project Name	Acct Code	Bond	PRAW	EMGY	Totals	Bond	PRAW	EMGY	Totals
Moffat	PA	Think Oil Bond - Vaughn #1	THK1	\$ 7,542	\$ 36,898	\$ 44,440	\$ 44,440				
<b>TOTALS =&gt;</b>				<b>\$ 7,542</b>	<b>\$ 36,898</b>	<b>\$ 0</b>	<b>\$ 44,440</b>	<b>\$ 0</b>	<b>\$ 0</b>	<b>\$ 0</b>	<b>\$ 0</b>
COMPLETED											
ESTIMATED TOTAL PROJECT COST											
County	Type	Project Name	Acct Code	Bond	PRAW	EMGY	Totals	Bond	PRAW	EMGY	Totals
Ourray	PA	Ridgway-Swanson-Peterson #1	SWAN	\$ 55,355	\$ 196	\$ 55,355	\$ 55,355	\$ 35,935	\$ 196	\$ 35,935	\$ 35,935
Mesa	RECL	DeBeque Orphans-Buckeye #1	DEBE	\$ 1,045	\$ 1,045	\$ 1,045	\$ 1,045				
Adams	ENV	Ruth #1	RUTH	\$ 4,228	\$ 4,228	\$ 4,228	\$ 4,228	\$ 4,228	\$ 4,228	\$ 4,228	\$ 4,228
La Plata	ENV	Red Mesa Holdings Bond - JCK #1	REDM	\$ 1,330	\$ 1,330	\$ 1,330	\$ 1,330	\$ 1,130	\$ 1,130	\$ 1,130	\$ 1,130
Weld	ENV	Carl A. Peters #1	CARL	\$ 2,500	\$ 2,500	\$ 2,500	\$ 2,500	\$ 2,691	\$ 2,691	\$ 2,691	\$ 2,691
Garfield	RECL	Dolphin Arroyo #9-16D	DOLP	\$ 5,000	\$ 5,000	\$ 5,000	\$ 5,000	\$ 5,000	\$ 5,000	\$ 5,000	\$ 5,000
Adams	PA	Ruth #1 Bond PA	RUTH	\$ 610	\$ 610	\$ 610	\$ 610	\$ 610	\$ 610	\$ 610	\$ 610
Logan	ENV	Luther #2	LUTH	\$ 9,228	\$ 61,036	\$ 70,264	\$ 70,264	\$ 9,228	\$ 41,607	\$ 0	\$ 50,835
<b>TOTALS =&gt;</b>				<b>\$ 9,228</b>	<b>\$ 61,036</b>	<b>\$ 0</b>	<b>\$ 70,264</b>	<b>\$ 9,228</b>	<b>\$ 41,607</b>	<b>\$ 0</b>	<b>\$ 50,835</b>
ESTIMATED TOTAL PROJECT COSTS											
County	Type	Project Name	Acct Code	Bond	PRAW	EMGY	Totals	Bond	PRAW	EMGY	Totals
<b>GRAND TOTALS</b>				<b>\$56,770</b>	<b>\$284,169</b>	<b>\$0</b>	<b>\$340,938</b>	<b>\$9,228</b>	<b>\$41,607</b>	<b>\$0</b>	<b>\$50,835</b>

SCOREBOARD (PRAW FUNDING ONLY)	
In Progress Estimated Totals	\$36,898
In Progress Spent to Date Totals	\$0
In Progress Remaining Totals	\$36,898
Completed to Date Totals	\$41,607
Sum of (In Progress Spent to Date) and (Completed to Date Totals)	\$41,607
Planned	\$186,235
Total Expenditures	\$227,842
Annual Budget Appropriation	\$445,000
Projected End of Year Balance	\$217,158

ABBREVIATIONS	
PA=plug & abandon	RECL=reclamation ENV=enviro remediation
EMGY	Funding from the Emergency Response (Budget Line Item)
PRAW	Funding from the Plug Recl Abandon Well (Budget Line Item)
TBD	To be determined



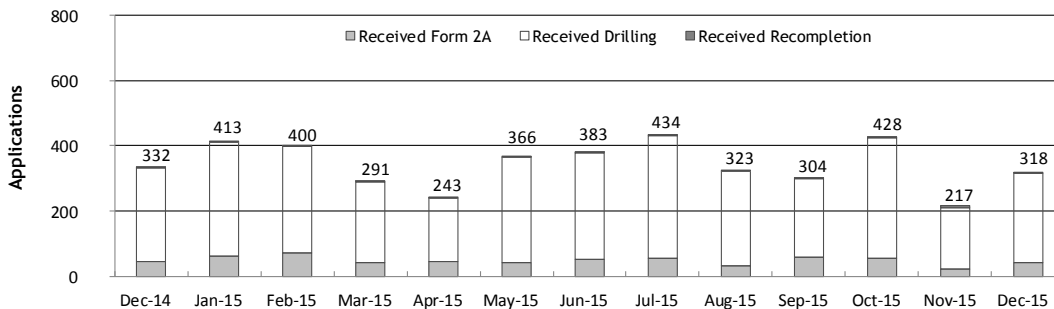
Monthly Permit Activity as of January 1, 2016

Form/Month	Backlog	Received	Approved	Withdrawn	Rejected	Incomplete <sup>1</sup>	In-Process	Remaining <sup>2</sup>
<b>Form2A</b>								
Dec-14	161	45	99	3	0	39	64	104
Jan-15	104	61	43	3	0	23	95	119
Feb-15	119	73	28	0	0	35	129	164
Mar-15	164	44	70	2	1	30	105	135
Apr-15	135	46	37	3	0	38	103	141
May-15	141	41	44	0	1	41	96	137
Jun-15	137	52	49	3	1	24	112	136
Jul-15	136	57	48	2	1	25	117	142
Aug-15	142	32	46	0	1	35	92	127
Sep-15	127	59	49	3	4	25	105	130
Oct-15	130	54	51	4	0	14	115	129
Nov-15	129	21	49	1	1	16	83	99
Dec-15	99	42	43	2	0	27	69	96
<b>Drilling</b>								
Dec-14	662	286	397	10	4	115	422	537
Jan-15	537	349	316	2	0	119	449	568
Feb-15	568	324	161	21	4	143	563	706
Mar-15	706	246	294	14	0	226	418	644
Apr-15	644	194	165	17	0	295	361	656
May-15	656	324	190	30	0	254	506	760
Jun-15	760	327	281	9	5	175	617	792
Jul-15	792	373	250	2	15	153	745	898
Aug-15	898	289	300	18	111	159	599	758
Sep-15	758	242	312	7	32	112	537	649
Oct-15	649	372	223	17	16	104	661	765
Nov-15	765	190	254	3	0	106	592	698
Dec-15	698	275	242	13	6	159	553	712
<b>Recompletion</b>								
Dec-14	8	1	2	1	0	2	4	6
Jan-15	6	3	1	0	0	3	5	8
Feb-15	8	3	2	0	0	3	6	9
Mar-15	9	1	6	0	0	1	3	4
Apr-15	4	3	1	0	0	2	4	6
May-15	6	1	4	0	0	2	1	3
Jun-15	3	4	1	0	0	2	4	6
Jul-15	6	4	2	0	0	1	7	8
Aug-15	8	2	6	1	0	1	2	3
Sep-15	3	3	1	0	0	1	4	5
Oct-15	5	2	2	1	0	1	3	4
Nov-15	4	6	2	0	0	1	7	8
Dec-15	8	1	5	2	0	0	2	2

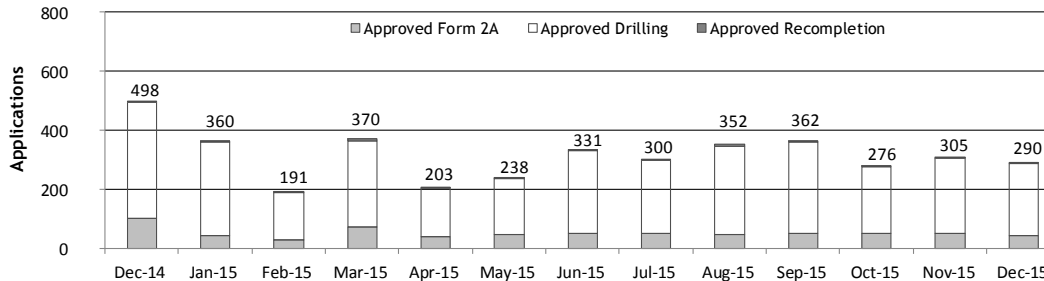
<sup>1</sup> Incomplete are permits that have missing or inaccurate data and cannot be approved.

<sup>2</sup> Backlog = Incomplete + In-process = Remaining permits from previous month.

Received Applications



Approved Applications





## Status of Permit Applications Filed By Month as of January 1, 2016

### Form 2A Location Assessment

Year	Month	Received	Approved	Withdrawn	In Process	Percent In Process	Average	Less Than 30 Days	30 to 49 Days	Greater Than 50 Days
							Days to Process			
2011	TOTAL	2,391	2,298	93	0	0%		1,416	620	262
2012	TOTAL	1,359	1,291	68	0	0%		706	378	207
2013	TOTAL	1,281	1,202	78	1	0%		369	433	400
2014	TOTAL	1,114	1,065	44	5	0%		279	429	357
2015	JAN	49	48	1	0	0%	57	6	15	27
	FEB	69	65	3	1	1%	66	5	16	44
	MAR	54	47	6	1	2%	59	6	20	21
	APR	39	39	0	0	0%	64	8	13	18
	MAY	40	39	1	0	0%	60	6	12	21
	JUN	54	52	1	1	2%	57	10	17	25
	JUL	45	44	0	1	2%	71	4	12	28
	AUG	68	65	2	1	1%	58	11	21	33
	SEP	58	50	2	6	10%	51	16	9	25
	OCT	53	28	1	23	43%	52	3	10	15
	NOV	21	6	0	15	71%	32	2	4	0
	DEC	42	1	0	41	98%	26	1	0	0
2015	TOTAL	592	484	17	90	15%		78	149	257

### Form 2 Application For Permit to Drill (APDs)

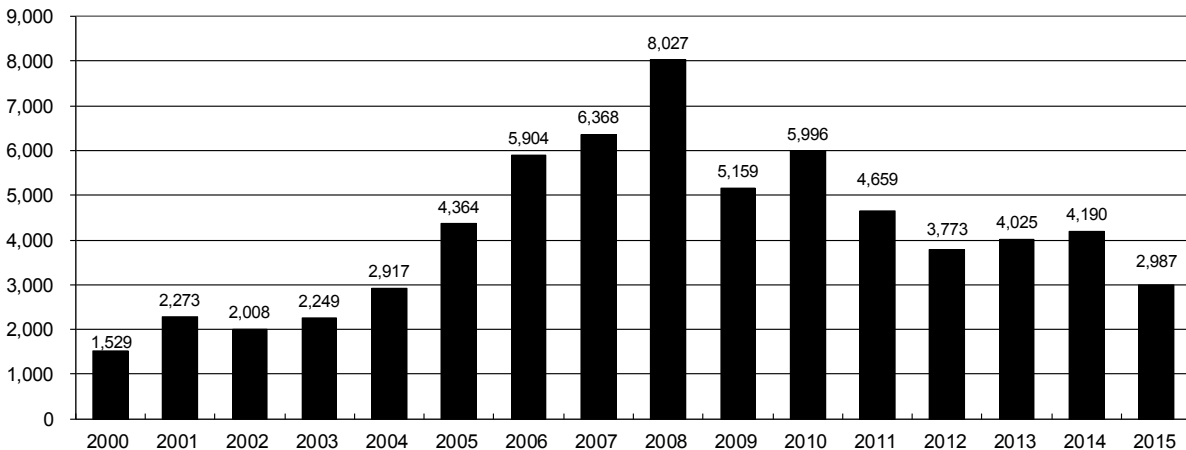
Year	Month	Received	Approved	Withdrawn	In Process	Percent In Process	Median Days	Less Than 30 Days	30 to 49 Days	Greater Than 50 Days
							to Process			
2011	TOTAL	4,691	4,557	132	0	0%		2,723	1,565	587
2012	TOTAL	3,955	3,816	139	0	0%		1,971	1,393	602
2013	TOTAL	4,548	4,312	235	1	0%		1,046	1,626	1,714
2014	TOTAL	4,208	4,014	146	48	1%		689	1,629	1,732
2015	JAN	291	281	1	9	3%	55	50	60	174
	FEB	294	277	17	0	0%	72	24	73	183
	MAR	306	247	35	24	8%	82	10	73	166
	APR	169	154	15	0	0%	78	28	35	94
	MAY	270	265	5	0	0%	77	9	84	172
	JUN	321	310	10	1	0%	67	45	81	186
	JUL	299	285	2	12	4%	65	15	84	192
	AUG	319	295	7	17	5%	85	11	64	222
	SEP	211	186	1	24	11%	69	17	37	136
	OCT	372	179	9	184	49%	54	16	75	88
	NOV	190	58	0	132	69%	35	15	46	2
	DEC	269	6	3	260	97%	62	5	0	1
2015	TOTAL	3,311	2,543	105	663	0		245	712	1,616



## Annual Drilling Permits by County as of January 1, 2016

County	2000	2001	2002	2003	2004	2005	2006	2007	2008	2009	2010	2011	2012	2013	2014	2015
ADAMS	38	28	9	26	39	34	37	89	51	35	21	8	40	40	51	96
ARAPAHOE		2	1	2	5	7	11	10	10	10	8	23	35	23	34	19
ARCHULETA	7	9	6	10	8	13	14	26	47	11	18	12	5	4	3	11
BACA	22	6	2	3	7	8	2	11	13	3	4	5	3	1	1	
BENT	2				5	3	8	1	1		5		2	1		
BOULDER	1	5	6	7	17	13	21	37	32	35	24	30	22			
BROOMFIELD			2	7		1	1		2	33	28	11	36		31	
CHEYENNE	3	3	3	3	3	10	21	15	33	12	13	16	31	50	26	9
COSTILLA																
CROWLEY							9	2			4	3	6	1		2
DELTA			7	4	5	10										
DENVER		3					19	25	24							
DOLORES				1	1	1	6	10	12	21	8	8	13	12	3	
EAGLE															1	
ELBERT	2						4			1		1	2	2	4	3
EL PASO											2	3	18	1	2	
FREMONT					1	3	2	4	14	13	22	14	11	2	8	2
GARFIELD	213	353	362	567	796	1,509	1,845	2,550	2,888	1,981	2,037	1,323	1,046	870	1,066	532
GRAND																
GUNNISON			5	10	1	9	19	7	10	12	4	3	11	9	20	28
HUERFANO	41	27	27		8	2			7		2	1	9	1	13	2
JACKSON	34	18	21	9	14	6	8	5	27	19	9	18	5	12	17	3
JEFFERSON	1						1	3	2					1		
KIOWA	11	18	2	4	2	1	11	9	26	7	16	17	17	12	5	3
KIT CARSON				1	3	5	4	4	13	7	3	2	6	1	2	
LA PLATA	127	156	104	162	102	115	235	251	328	298	191	99	71	32	87	106
LARIMER	2		1			1		5	46	12	41	8	13	2	4	28
LAS ANIMAS	268	400	259	180	332	413	500	362	303	88	92	85	11	2	1	
LINCOLN	2	2	1	6	3	4	1	2	58	44	48	31	36	87	129	24
LOGAN	4	7	3	3	6	13	17	14	5	9	17	8	27	4	5	
MESA	13	27	30	27	54	136	265	293	501	427	306	127	150	105	74	126
MOFFAT	35	52	62	63	63	60	120	68	57	51	53	93	88	44	54	12
MONTEZUMA	4		5	8	8	11	5	12	22	39	19	27	29	14	25	3
MONTROSE	1	3	2	4	2		1	3	3		1	1				
MORGAN	9	9	2	7	9	7	3	6	2	1	6	13	5	16	6	4
OTERO																
PARK										3	4	1				
PHILLIPS	1	2		7	13	17	12	69	82	45	64	112	56		11	2
PITKIN				1				1								1
PROWERS	2	5	4		7	5	7	5	8	1	3	1			1	
RIO BLANCO	89	187	105	179	154	161	360	321	477	348	441	109	117	167	121	107
RIO GRANDE	1	1		1					1	1			2		1	
ROUTT	20	13	1		4	6	9	8	4	2	3	10	4	12	4	9
SAGUACHE	2		2					2	1	2						
SAN MIGUEL	11	13	27	18	42	45	35	23	20	13	10	2	1		2	3
SEDGWICK				1	5	2	7	2	1	19	11	12	2		7	1
WASHINGTON	23	17	27	34	128	50	69	45	11	1	6	12	6	19	12	9
WELD	509	702	760	757	832	901	1,418	1,527	2,340	1,448	2,152	2,262	1,826	2,468	2,303	1,841
YUMA	31	205	160	138	237	782	797	541	545	105	299	148	11	9	53	3
TOTAL	1,529	2,273	2,008	2,249	2,917	4,364	5,904	6,368	8,027	5,159	5,996	4,659	3,773	4,025	4,190	2,987

## ALL COUNTIES







# Oil and Gas Staff Report

January 26, 2016

## Form 2A Breakdown By County By Year as of January 1, 2016

Year	County	Form 2As	Completed	In Process	New Location	CDP	SWH	RSO	CDPHE
2009	Total State	818	818	0	408	2	80	5	5
2010	Total State	2,377	2,377	0	1,543	0	317	22	55
2011	Total State	2,297	2,297	0	1,724	1	259	16	5
2012	Total State	1,297	1,297	0	900	0	167	6	1
2013	Total State	1,195	1,194	1	845	0	144	2	4
2014	ADAMS	23	22	1	20	0	0	0	0
	ARAPAHOE	18	18	0	18	0	0	0	1
	ARCHULETA	1	1	0	0	0	1	0	0
	BACA	1	1	0	1	0	0	0	0
	BROOMFIELD	1	1	0	0	0	0	0	0
	CHEYENNE	23	23	0	20	0	0	0	0
	CROWLEY	2	2	0	2	0	0	0	0
	DOLORES	2	2	0	2	0	1	0	0
	EL PASO	2	2	0	2	0	0	0	0
	ELBERT	4	4	0	4	0	0	0	0
	FREMONT	3	3	0	3	0	3	0	0
	GARFIELD	79	79	0	20	0	53	3	0
	GUNNISON	7	7	0	2	3	2	0	0
	HUERFANO	5	5	0	1	0	4	0	1
	JACKSON	14	14	0	9	0	14	0	0
	KIOWA	3	3	0	2	0	0	0	0
	KIT CARSON	2	2	0	2	0	0	0	0
	LA PLATA	14	14	0	4	0	13	0	0
	LARIMER	4	3	1	3	0	0	0	0
	LAS ANIMAS	1	1	0	1	0	0	0	0
	LINCOLN	135	135	0	119	0	0	0	0
	LOGAN	2	2	0	2	0	0	0	0
	MESA	8	8	0	3	0	5	1	0
	MOFFAT	11	11	0	9	0	11	1	0
	MONTEZUMA	15	15	0	15	0	0	0	0
	PHILLIPS	11	11	0	10	0	0	0	0
	PROWERS	1	1	0	1	0	0	0	0
	RIO BLANCO	20	20	0	13	0	17	0	0
	ROUTT	1	1	0	1	0	1	0	0
	SAN MIGUEL	1	1	0	1	0	0	0	0
	SEDGWICK	7	7	0	5	0	0	0	0
	WASHINGTON	13	13	0	13	0	0	0	0
	WELD	581	578	3	421	0	4	2	1
	YUMA	53	53	0	48	0	0	0	0
2014	Total State	1,068	1,063	5	777	3	129	7	3
2015	ADAMS	7	6	1	5	0	0	0	0
	ARAPAHOE	11	10	1	6	0	0	0	0
	ARCHULETA	5	5	0	2	0	4	0	1
	CHEYENNE	8	7	1	7	0	0	0	0
	ELBERT	3	3	0	3	0	0	0	0
	FREMONT	1	1	0	1	0	1	0	0
	GARFIELD	27	25	2	7	0	15	0	0
	GUNNISON	10	10	0	1	0	8	0	0
	HUERFANO	1	1	0	0	0	0	0	0
	JACKSON	7	2	5	4	0	7	1	0
	KIOWA	3	3	0	3	0	3	0	0
	LA PLATA	18	16	2	8	0	16	0	0
	LARIMER	3	3	0	1	0	0	0	0
	LINCOLN	26	26	0	25	0	0	0	0
	LOGAN	1	0	1	0	0	0	0	0
	MESA	12	11	1	8	0	6	0	0
	MOFFAT	9	8	1	5	0	9	0	0
	MONTEZUMA	3	3	0	3	0	0	0	0
	MORGAN	4	1	3	3	0	0	0	0
	PHILLIPS	2	2	0	2	0	0	0	0
	RIO BLANCO	13	13	0	8	0	13	0	0
	ROUTT	3	3	0	1	0	3	0	0
	SAN MIGUEL	2	2	0	2	0	2	0	0
	SEDGWICK	1	1	0	1	0	0	0	0
	WASHINGTON	14	13	1	12	0	0	0	0
	WELD	373	302	71	282	0	3	0	0
	YUMA	3	3	0	1	0	0	0	0
2015	Total State	570	480	90	401	0	90	1	1

Abbreviations:

CDP = Comprehensive Drilling Plan

SWH = Sensitive Wildlife Habitat consultation

RSO = Restricted Surface Occupancy consultation

CDPHE= Colorado Department of Health and Environment consultation



## Horizontal Well Activity as of January 1, 2016

County	Prior Years		2009		2010		2011		2012		2013		2014		2015		Total		Completion		
	Drilled	PA	Permit	Spud	Permit	Spud	Permit	Spud	Permit	Spud	Permit	Spud	Permit	Spud	Permit	Spud	Spud	AC	PR	DA	PA
ADAMS			6	5	2	3	1	1	2	2	26	2	42	18	92	3	33	3	8		
ARAPAHOE	2						10	1	4	22	4	13	22	11	9	31	2	23			
ARCHULETA	17		7	6	15	7	10	8	5	9	2	2	1		6	2	49				
BENT									1	1	1						1				
BOULDER							4										0				
CHEYENNE	5	4							6	1	7	2	1	1	1	1	9	3	3		
DELTA						2			9	3	1	4	2			3					
DOLORES	9		18	2	6				10		5	4	3	1		19		11			
EL PASO																0					
ELBERT									1							0					
FREMONT	7	6	6		12	5	3	4	4	1	1				1	17		10	6	1	
GARFIELD	10	2	1	1	16	2	18	6	43	6	18	4	20	11	12	7	47		27		
GUNNISON	1				1				3	2	2		9		18	2	5		3		
HUERFANO									4	1			2			1					
JACKSON	8	1	8		3	4	9	2	4	4	8	5	15	4	3	23		17		2	
KIOWA									1		4	2	1			2					
KIT CARSON	1								1		1	1				2					
LA PLATA	28	2	11	2	28	3	18	7	12	1	5	1	43	6	42	2	50		50	1	
LARIMER	3	2					5	1	2	1	2				22	8	15		4	2	
LAS ANIMAS	16	2	4		1	1										17		16			
LINCOLN			2	1	2	1	1			1	6		4	2		5		4			
LOGAN	2								1							2					
MESA	3	2	36		22	7	24	13	14		9	2	9	1	6	3	29		24	2	
MOFFAT	7	1	6	3	4		9	4	44	6	18	13	15	1	5	2	36		27	2	
MONTEZUMA	6	1	23	6	11	2	8	2	18	6	3	4	15	2		28		34		6	
MORGAN							6	2	2	1	13	1	6		4	1	5		3		
PARK					1	1	1									1					
RIO BLANCO	7	2			1	1	11	2	15	2	4	6	3	1	3	19		11	3		
ROUTT	10	6							1		1				3	10		1	5	1	
SAN MIGUEL	1						1									1					
WASHINGTON	1	1														1					
WELD	11	3	12	5	208	85	763	231	964	593	2,114	1,097	2,215	1,432	1,789	1,038	4,492		1,848	10	
YUMA	1	1	6													1					
<b>TOTAL Horizontal</b>	<b>156</b>	<b>25</b>	<b>147</b>	<b>31</b>	<b>333</b>	<b>124</b>	<b>901</b>	<b>283</b>	<b>1,203</b>	<b>641</b>	<b>2,260</b>	<b>1,159</b>	<b>2,428</b>	<b>1,491</b>	<b>2,016</b>	<b>1,069</b>	<b>4,954</b>	<b>5</b>	<b>2,181</b>	<b>29</b>	
<b>Percent of Total HZ</b>	<b>16%</b>	<b>9%</b>																<b>0%</b>	<b>44%</b>	<b>1%</b>	<b>2%</b>
<b>Total All Permits</b>			<b>5,159</b>		<b>5,996</b>		<b>4,659</b>		<b>3,773</b>		<b>4,025</b>		<b>4,190</b>		<b>3,622</b>						
<b>HZ Percent of Total</b>			<b>2.8%</b>		<b>5.6%</b>		<b>19.3%</b>		<b>31.9%</b>		<b>56.1%</b>		<b>57.9%</b>		<b>55.7%</b>						



## Well to Building Setbacks by Year and by County as of January 12, 2016

Count of well locations, grouped by proximity from well to buildings.

Location Proximity to Buildings	2009	2010	2011	2012	2013	2014	2015	Number of Locations	Percent of Total Locations
Less than 150 feet	2	3	3	2	0	3	2	15	0%
150 to 350 feet	37	58	61	39	34	38	12	279	3%
350 to 500 feet	50	110	97	61	64	48	33	463	5%
500 to 1000 feet	117	385	331	188	188	161	83	1,453	17%
1000 + feet	356	1,705	1,470	838	762	724	378	6,233	74%
<b>TOTAL LOCATIONS</b>	<b>562</b>	<b>2,261</b>	<b>1,962</b>	<b>1,128</b>	<b>1,048</b>	<b>974</b>	<b>508</b>	<b>8,443</b>	

County	TOTAL	Less than 150 feet	150 to 350 feet	350 to 500 feet	500 to 1000 feet	1000 + feet
ADAMS	78	0	4	9	18	47
ARAPAHOE	96	0	2	4	10	80
ARCHULETA	23	0	0	1	11	11
BACA	15	0	0	0	1	14
BENT	7	0	0	0	0	7
BOULDER	23	0	1	1	17	4
BROOMFIELD	33	0	0	4	13	16
CHEYENNE	140	1	0	0	2	137
CROWLEY	2	0	0	0	0	2
DELTA	7	0	0	2	1	4
DOLORES	19	0	0	0	7	12
EAGLE	1	0	0	0	0	1
EL PASO	14	0	0	0	3	11
ELBERT	11	0	0	0	2	9
FREMONT	40	0	2	7	8	23
GARFIELD	553	0	10	9	77	457
GUNNISON	43	1	0	4	1	37
HUERFANO	16	0	0	0	5	11
JACKSON	45	0	0	4	1	40
KIOWA	66	0	0	0	1	65
KIT CARSON	14	0	0	0	0	14
LA PLATA	133	0	5	14	46	68
LARIMER	39	0	5	4	14	16
LAS ANIMAS	201	1	6	7	37	150
LINCOLN	370	0	1	2	4	363
LOGAN	43	0	1	1	0	41
MESA	97	0	0	3	14	80
MOFFAT	177	0	0	2	14	161
MONTEZUMA	42	0	0	1	4	37
MONTROSE	2	0	0	0	0	2
MORGAN	29	0	0	2	4	23
PARK	4	0	0	0	0	4
PHILLIPS	275	1	4	6	21	243
PITKIN	1	0	0	0	0	1
PROWERS	5	0	0	0	0	5
RIO BLANCO	187	0	0	0	2	185
RIO GRANDE	2	0	0	0	1	1
ROUTT	29	0	0	0	2	27
SAN MIGUEL	14	0	0	0	0	14
SEDGWICK	33	0	0	1	3	29
WASHINGTON	72	0	2	0	3	67
WELD	4,915	11	227	359	1,062	3,256
YUMA	528	0	9	16	44	459


**Well to Building Setbacks Less Than Two Hundred Feet as of January 1, 2016**

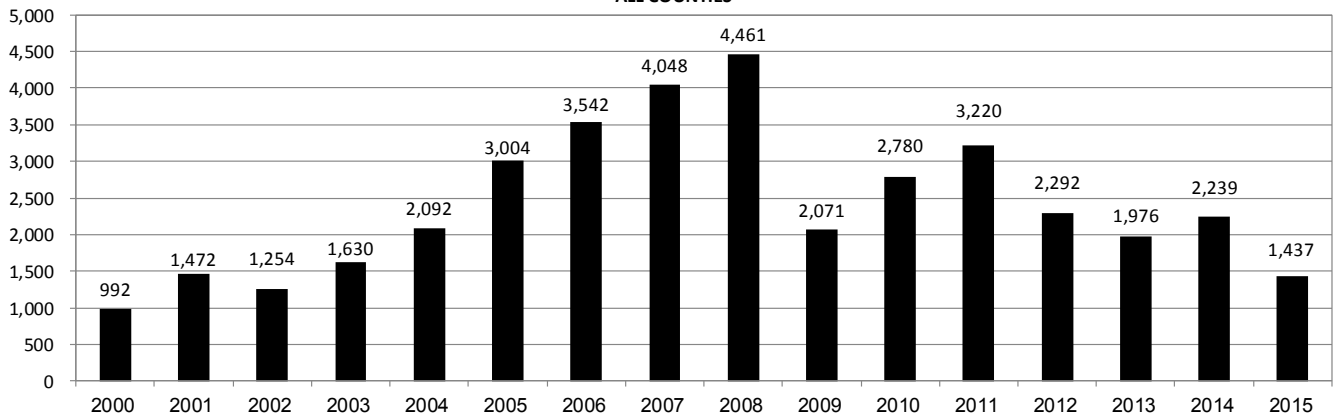
Year	Location Doc Number	County	High Density	New Location	Distance (Feet)	Proximity (Feet)	Building Description
2015	400768804	WELD	No	Yes	46	less 150	Building to be razed
2011	2587822	CHEYENNE	No	No	58	less 150	Water well house
2009	1691798	WELD	No	No	58	less 150	Vehicle garage
2010	400072164	WELD	No	Yes	69	less 150	Abandoned hog shed
2014	400569085	WELD	No	No	78	less 150	Well shed
2014	400600705	WELD	No	No	80	less 150	Livestock shed
2012	400240957	GUNNISON	No	Yes	90	less 150	Equipment shed
2015	400742811	WELD	No	Yes	102	less 150	Building to be razed
2009	1758843	WELD	No	Yes	103	less 150	Building to be razed
2011	1636646	WELD	No	No	122	less 150	Storage shed
2009	400011284	LAS ANIMAS	No	Yes	127	less 150	Operator is owner
2009	1786896	PHILLIPS	No	No	132	less 150	Grain storage
2014	400642113	WELD	No	Yes	142	less 150	Barn
2011	400117702	WELD	No	Yes	143	less 150	Irrigation pump house
2011	400227765	WELD	No	Yes	145	less 150	Storage barn
2014	400558626	LINCOLN	No	No	150	less 150	Gas plant equipment building
2009	1904205	WELD	No	No	154	150 to 350	Livestock enclosure
2012	400243295	WELD	No	Yes	155	150 to 350	Unused storage shed
2015	400862577	GARFIELD	No	No	155	150 to 350	Gravel Pit Scale House
2011	400179419	WELD	No	Yes	157	150 to 350	Existing well / storage building
2010	400054716	WELD	No	No	159	150 to 350	Equipment barn
2011	400188968	WELD	No	Yes	159	150 to 350	Abandoned
2014	400554054	WELD	No	Yes	159	150 to 350	Equipment shed
2014	400559404	WELD	No	Yes	160	151 to 350	Barn
2010	400021477	WELD	No	Yes	162	150 to 350	Goat barn
2009	1758386	WELD	No	Yes	168	150 to 350	Storage shed
2011	1635946	WELD	No	No	169	150 to 350	Storage shed
2013	400447386	WELD	No	No	169	150 to 350	Abandoned turkey barn
2013	400447391	WELD	No	No	169	150 to 350	Abandoned turkey barn
2011	400165164	WELD	No	Yes	178	150 to 350	Residence
2013	400367184	WELD	No	Yes	179	150 to 350	Shed
2011	400188780	WELD	No	Yes	180	150 to 350	Residence
2014	400562498	WELD	No	Yes	181	150 to 350	Garage / storage shed
2010	1697620	WELD	No	No	187	150 to 350	Livestock shed
2009	1758746	WELD	No	No	193	150 to 350	Storage shed
2011	400154431	WELD	No	Yes	198	150 to 350	Turkey barn
2012	400250031	WELD	No	Yes	198	150 to 350	Abandoned guard shack
2009	1774783	WELD	No	No	199	150 to 350	Cement service building
2011	400118102	YUMA	No	Yes	199	150 to 350	Steel barn



## Annual Well Starts by County as of January 1, 2016

County	2000	2001	2002	2003	2004	2005	2006	2007	2008	2009	2010	2011	2012	2013	2014	2015
ADAMS	18	13	4	19	22	24	13	41	14	14	21	1	15	6	30	4
ARAPAHOE					6	1	5	2	1	1	3	9	9	25	21	
ARCHULETA	4	4	2	5	4	10	5	7	29	9	12	10	11		1	5
BACA	19	6	2	1	6	6	2	6	12		5	4	2	1		1
BENT	2				3	2	8	1	1			1	2			
BOULDER				2	5	11	9	14	25	16	13	7	14			
BROOMFIELD			2		1				10		21	11	5			
CHEYENNE	2	1	3	3		9	14	15	14	8	12	11	17	35	19	3
COSTILLA																
CROWLEY																2
DELTA				5	4	6	5	2			9	2	3			
DENVER		2					7	5	4							
DOLORES					2		2	13	6	2		1	5	10	4	
EAGLE														1		
EL PASO											2		5		1	
ELBERT	2						1									3
FREMONT					1	3	2	2	5	3	10	16	8	1	4	1
GARFIELD	190	251	245	417	585	799	1,005	1,304	1,689	765	905	878	495	391	362	173
GUNNISON			1		1	1	9	5	1	4	5	2	4	1	2	2
HUERFANO	25	14	19	3	6	2			2		2		2	1	4	1
JACKSON	24	2	4	10	10		3	3	12	1	8	7		7	7	
JEFFERSON								2								
KIOWA	8	16	2	4	2	1	7	7	2	5	15	14	10	12	3	2
KIT CARSON				1	1	6	2	1	14	3	1	1	3	1	2	
LA PLATA	99	135	118	110	103	104	108	179	199	131	67	54	3	10	36	33
LARIMER	1	1				1		4	8	1	28	2	10	4	1	9
LAS ANIMAS	202	286	205	221	296	384	413	326	222	14	7	78	1		1	
LINCOLN	2	2	1	5	2	2	1	2	18	11	14	21	23	42	41	12
LOGAN	4	6	3	3	2	11	12	12	3	7	3	9	13	4	6	
MESA	2	12	12	13	25	89	156	209	225	14	11	41	4	11	16	76
MOFFAT	18	23	25	28	19	40	60	42	26	18	15	33	25	27	3	6
MONTEZUMA	2	3	5	5	1	7	2	4	22	10	3	8	18	12	8	1
MONTROSE		3		2	1			1	2			1				
MORGAN	9	8	1	7	5	5	3	1	1	2	3	2	3	1	4	1
PARK											2					
PHILLIPS	1			6	10	11	4	35	18	2	42	130	48		9	
PROWERS	2	4	4		5	5	6	3	5	2	3	1				1
RIO BLANCO	51	82	47	83	92	95	107	95	205	118	107	72	53	37	42	17
RIO GRANDE														1		
ROUTT	5	12	1		1	6	3	2		2	1	2	4	2	2	
SAN MIGUEL	6	9	10	19	28	13	20	17	5	1	2	2			2	
SEDGWICK				1	2	1	1	5			3	8	3			
WASHINGTON	15	12	24	29	65	34	23	14	11	2	2	4	1	9	7	2
WELD	237	403	406	522	632	718	931	1,222	1,314	878	1,209	1,672	1,457	1,311	1,560	1,084
YUMA	42	162	108	106	144	597	593	445	336	27	213	106	16	13	39	
<b>TOTAL</b>	<b>992</b>	<b>1,472</b>	<b>1,254</b>	<b>1,630</b>	<b>2,092</b>	<b>3,004</b>	<b>3,542</b>	<b>4,048</b>	<b>4,461</b>	<b>2,071</b>	<b>2,780</b>	<b>3,220</b>	<b>2,292</b>	<b>1,976</b>	<b>2,239</b>	<b>1,437</b>

ALL COUNTIES





## Active Wells by County and Status as of January 1, 2016

COUNTY	Drilling	Domestic	Injecting	Producing	Shut In	Temp Aband	Waiting on Completion	Active Storage	Total Active Wells
ADAMS	12		7	879	50	8	2	12	970
ARAPAHOE		1	2	147	7	9		43	209
ARCHULETA	1	5	1	102	17	13	6	1	146
BACA			16	117	19	4		55	211
BENT		1		30	6				37
BOULDER				299	11	1			311
BROOMFIELD				96					96
CHEYENNE	3		42	320	18	47	2		432
CROWLEY									
DELTA				4	13		1		18
DENVER			1	46	2		3		52
DOLORES	2		1	36	3	3			45
EL PASO	1	1				1			3
ELBERT	3			67	3	1			74
FREMONT	4	3		58	9	6			80
GARFIELD	189	5	43	10,596	79	100	20	1	11,033
GUNNISON	4		1	32	8	1	3		49
HUERFANO	1		1	37	3	6	1		49
JACKSON	1		30	111	38				180
JEFFERSON			2	1	1		1	1	6
KIOWA	1		11	106	9	2	2		131
KIT CARSON		1	2	12		3			18
LA PLATA	7	7	28	3,137	94	17	3	29	3,322
LARIMER	9	2	18	188	28	16	1		262
LAS ANIMAS		3	15	2,796	17	101	13	17	2,962
LINCOLN	12	1	7	95	13	7	1		136
LOGAN	10		16	112	41	29	3	10	221
MESA	23	1	5	887	88	15	62	10	1,091
MOFFAT	7		9	489	44	36	3		588
MONTEZUMA	2	2	6	121	34	12			177
MONTROSE						1			1
MORGAN	1		22	90	82	32		79	306
OURAY		2				1			3
PARK									
PHILLIPS			2	265	3	1	1		272
PITKIN								10	10
PROWERS	1			26	4				31
RIO BLANCO	24	3	293	2,307	168	89	12	2	2,898
ROUTT		2		33	7	3			45
SAN MIGUEL	1			109	15	4			129
SEDGWICK	2		1	14	3		2		22
WASHINGTON	6		23	401	30	7	3		470
WELD	951	1	50	21,266	310	39	27	3	22,647
YUMA	2	8	21	3,787	42	9	11	1	3,881
Totals	1,280	49	676	49,219	1,319	624	183	274	53,624



# Oil and Gas Staff Report

January 26, 2016

23

Monthly Statistics as of January 1, 2016

Page 1 of 2

YEAR and MONTH	Baker - Hughes Rig Count	Permits										Well Spud Notices	Active		Public Visits			
		Drilling		Recompletion		Injection		Pits		Locations			Drilling	Active	Data	Office	Internet	
		Rcvd	Apvd	Rcvd	Apvd	Rcvd	Apvd	Rcvd	Apvd	Rcvd	Authz		Permits	Wells				
2011 TOTAL		4,709	4,659	325	320	44	32	190	192	2,382	2,267	3,220			187	1,294	1,337,865	
2012	JAN	73	372	258	26	21	3	0	11	5	142	129	243	5,217	46,958	12	106	112,686
	FEB	70	370	382	23	27	7	5	21	9	160	129	230	5,173	47,128	16	114	105,857
	MAR	66	292	347	21	14	2	2	17	24	133	172	292	5,132	47,263	26	138	111,746
	APR	66	410	235	16	24	5	5	9	2	137	106	241	4,785	47,377	12	108	107,627
	MAY	66	491	506	23	16	3	1	6	2	105	131	211	4,885	47,533	20	123	109,802
	JUN	69	326	377	11	19	8	6	5	8	110	89	145	5,136	47,860	11	111	108,849
	JUL	66	237	276	9	14	3	2	5	2	97	103	183	5,152	48,173	13	102	114,195
	AUG	62	313	288	6	9	6	4	23	5	83	97	178	5,031	49,153	11	112	110,908
	SEP	61	252	256	1	5	5	2	4	1	81	77	161	4,960	49,230	11	89	106,114
	OCT	62	326	265	9	3	7	6	2	19	94	82	161	5,009	49,236	8	105	108,833
	NOV	56	271	323	5	8	6	6	2	4	109	97	142	5,000	49,989	10	119	120,586
	DEC	57	322	260	4	8	8	5	9	3	122	81	105	5,081	50,067	9	78	107,240
2012 TOTAL		3,982	3,773	154	168	63	44	114	84	1,373	1,293	2,292			159	1,305	1,324,443	
2013	JAN	53	538	331	6	0	3	5	6	8	176	124	142	5,060	50,265	9	108	47,406
	FEB	56	260	455	10	5	2	3	4	11	91	141	138	5,250	50,372	7	102	40,649
	MAR	57	344	241	5	9	3	8	15	6	129	84	172	5,093	50,540	9	133	43,019
	APR	61	331	333	6	5	5	5	6	8	146	117	165	4,925	50,687	3	132	46,459
	MAY	61	350	342	8	6	6	6	10	7	106	142	162	5,110	50,810	3	123	45,215
	JUN	62	349	273	2	8	8	8	5	3	114	85	143	5,273	50,909	8	122	41,015
	JUL	68	864	304	11	4	9	2	9	5	218	91	160	5,070	51,091	7	154	45,558
	AUG	69	232	291	6	4	3	2	4	1	35	76	206	5,200	51,255	20	130	44,722
	SEP	69	212	362	9	5	10	9	3	19	56	109	166	5,185	51,407	5	105	41,256
	OCT	72	319	376	5	9	7	5	1	8	67	88	237	4,967	51,598	5	135	45,151
	NOV	69	346	353	4	13	7	4	2	27	67	85	162	5,141	51,711	12	119	38,903
	DEC	64	336	367	2	4	4	6	2	3	63	71	123	5,129	51,737	4	93	32,381
2013 TOTAL		4,481	4,028	74	72	67	63	67	106	1,268	1,213	1,976			92	1,456	511,734	
2014	JAN	62	278	232	3	2	3	4	14	8	90	43	177	4,926	51,840	1	90	46,150
	FEB	61	284	297	6	4	1	1	3	1	91	94	151	5,051	51,847	12	113	43,408
	MAR	62	367	329	4	6	7	1	6	6	110	88	181	4,997	51,952	16	140	46,620
	APR	63	276	317	2	3	2	5	8	3	89	99	171	4,897	52,060	11	188	45,558
	MAY	65	458	383	2	2	3	1	6	7	83	94	178	4,923	52,202	18	131	42,365
	JUN	67	429	377	3	0	6	7	5	2	134	92	224	4,924	52,337	10	156	42,518
	JUL	69	272	446	2	5	3	11	8	5	97	126	181	4,955	52,431	7	166	45,481
	AUG	73	376	259	4	3	4	4	3	4	111	87	219	5,060	52,582	8	145	42,431
	SEP	76	412	304	2	3	3	1	20	1	116	81	205	5,006	52,694	14	175	43,577
	OCT	76	459	371	3	2	9	2	4	6	93	109	189	4,827	52,785	19	138	46,030
	NOV	73	326	479	5	2	5	4	4	0	54	103	175	5,171	52,947	8	96	39,583
	DEC	69	286	397	1	2	2	7	1	2	45	99	188	5,236	53,054	6	144	37,964
2014 TOTAL		4,223	4,191	37	34	48	48	82	45	1,113	1,115	2,239			130	1,682	521,685	
2015	JAN	64	349	316	3	1	2	9	3	1	60	43	188	5,060	53,195	17	114	41,502
	FEB	49	324	161	3	2	5	6	9	0	73	28	115	4,750	53,309	4	117	38,245
	MAR	38	246	294	1	6	1	5	7	5	44	70	159	4,983	53,414	6	146	42,513
	APR	37	194	165	3	1	2	5	1	2	46	37	95	4,854	53,456	1	125	39,559
	MAY	39	324	190	1	4	2	6	8	0	41	44	107	4,632	53,535	5	113	unavailable
	JUN	38	327	281	4	1	0	5	2	1	52	49	134	4,726	53,608	5	138	unavailable
	JUL	38	373	250	4	2	2	1	0	0	57	48	118	4,663	53,706	7	145	26,975
	AUG	37	289	300	2	6	3	0	5	5	32	46	121	4,847	53,766	2	109	30,674
	SEP	33	242	312	3	1	1	7	0	3	59	49	100	4,953	53,806	4	146	31,642
	OCT	30	372	223	2	2	3	1	1	0	54	51	108	4,694	53,898	12	119	33,199
	NOV	31	190	254	6	2	4	3	1	0	21	49	116	4,765	53,719	7	105	29,112
	DEC	25	275	242	1	5	3	6	1	0	42	43	76	4,594	53,652	3	112	25,659
2015 TOTAL		3,505	2,988	33	33	28	54	38	17	581	557	1,437			73	1,489	339,080	

Abbreviation Key: Rcvd = Received, Apvd = Approved, Authz = Authorized



Monthly Statistics as of January 1, 2016

Page 2 of 2

YEAR and MONTH	Well Oper Change	Operators		Bonds			Claim		Hearings		Enforcement			Remediation Projects		Inspections				
		New	Inactive	Release Ind	Release Blnt	Replace	Ind	Blnt	Apps.	Orders	NOAVs	AOCs	OFVs	Cmplt	Spills	Rcvd	Comp	Wells	Locations	
<b>2011 TOTAL</b>	<b>6,743</b>	<b>33</b>	<b>31</b>	<b>79</b>	<b>44</b>	<b>43</b>	<b>4</b>	<b>4</b>	<b>403</b>	<b>349</b>	<b>230</b>	<b>10</b>	<b>19</b>	<b>247</b>	<b>527</b>	<b>726</b>	<b>536</b>	<b>12,394</b>	<b>-</b>	
<b>2012</b>	<b>JAN</b>	1,052	3	3	7	5	1	1	0	70	72	18	1	-	27	35	68	23	998	970
	<b>FEB</b>	385	6	9	8	5	0	0	0	-	-	10	-	-	24	40	85	36	2,000	1,024
	<b>MAR</b>	379	4	1	7	3	9	0	0	44	38	19	-	-	23	38	63	61	2,202	1,146
	<b>APR</b>	478	4	2	10	3	2	0	0	80	59	11	-	-	19	35	26	99	1,700	929
	<b>MAY</b>	526	3	1	4	0	3	0	0	43	50	14	2	-	23	32	27	122	2,630	1,701
	<b>JUN</b>	1,270	3	4	3	3	4	0	0	-	-	5	-	-	35	39	46	98	1,435	1,091
	<b>JUL</b>	499	5	0	1	4	5	0	0	63	50	15	-	-	16	24	45	33	1,323	1,076
	<b>AUG</b>	301	6	5	2	8	0	1	0	67	54	24	3	2	21	28	127	33	1,904	1,432
	<b>SEP</b>	834	0	4	4	5	2	1	0	-	-	5	-	-	14	13	30	36	1,120	845
	<b>OCT</b>	485	1	2	9	1	0	0	0	30	36	6	1	-	13	44	116	37	1,397	1,017
	<b>NOV</b>	523	6	4	12	8	7	0	0	85	37	16	2	-	10	44	26	44	1,331	829
	<b>DEC</b>	958	6	2	3	1	0	0	0	-	-	14	-	-	19	30	31	19	1,031	610
<b>2012 TOTAL</b>	<b>7,690</b>	<b>47</b>	<b>37</b>	<b>70</b>	<b>46</b>	<b>33</b>	<b>3</b>	<b>0</b>	<b>482</b>	<b>396</b>	<b>157</b>	<b>9</b>	<b>2</b>	<b>244</b>	<b>402</b>	<b>690</b>	<b>641</b>	<b>19,071</b>	<b>12,670</b>	
<b>2013</b>	<b>JAN</b>	653	3	5	12	2	0	0	0	48	75	15	4	-	21	40	31	45	1,622	789
	<b>FEB</b>	289	4	2	6	3	2	0	0	41	35	11	2	-	15	30	42	90	1,044	615
	<b>MAR</b>	354	1	3	2	2	1	0	0	54	67	16	2	-	11	25	65	29	1,968	1,149
	<b>APR</b>	333	7	1	5	2	8	0	0	-	-	21	-	-	16	33	39	37	1,510	910
	<b>MAY</b>	346	2	1	3	0	0	0	0	46	50	22	6	-	13	31	41	60	2,621	1,576
	<b>JUN</b>	1,456	6	2	2	4	5	0	0	91	44	13	2	-	25	40	47	37	1,860	1,102
	<b>JUL</b>	1,009	4	1	2	2	0	0	0	96	70	25	3	-	21	47	50	22	2,298	1,338
	<b>AUG</b>	389	6	4	5	4	2	0	0	-	-	23	-	-	25	57	36	41	2,146	1,033
	<b>SEP</b>	277	4	1	6	1	0	0	0	101	51	7	2	-	16	60	43	51	1,536	703
	<b>OCT</b>	345	6	0	2	2	2	0	0	52	82	4	12	3	12	79	47	60	1,868	1,158
	<b>NOV</b>	442	2	0	2	2	0	0	0	-	-	30	-	-	12	51	31	34	2,401	1,613
	<b>DEC</b>	1,299	4	1	1	2	0	0	0	42	48	50	4	-	14	75	35	35	2,677	1,384
<b>2013 TOTAL</b>	<b>7,192</b>	<b>49</b>	<b>21</b>	<b>48</b>	<b>26</b>	<b>20</b>	<b>0</b>	<b>0</b>	<b>571</b>	<b>522</b>	<b>237</b>	<b>37</b>	<b>3</b>	<b>201</b>	<b>568</b>	<b>507</b>	<b>541</b>	<b>23,551</b>	<b>13,370</b>	
<b>2014</b>	<b>JAN</b>	1,971	6	3	3	2	0	0	0	57	46	25	2	-	8	72	46	28	3,243	1,597
	<b>FEB</b>	2,038	8	2	6	5	0	0	0	-	-	23	-	-	17	65	51	13	2,330	1,282
	<b>MAR</b>	493	2	3	1	5	0	0	0	97	75	29	10	-	22	64	66	31	1,822	1,298
	<b>APR</b>	313	5	2	6	4	1	0	0	74	64	17	8	1	20	66	47	59	2,651	1,715
	<b>MAY</b>	509	5	1	3	3	5	0	0	-	-	12	-	-	13	78	50	42	2,437	1,571
	<b>JUN</b>	1,011	5	2	7	4	1	0	1	95	90	14	6	1	16	74	44	50	3,209	1,717
	<b>JUL</b>	337	2	1	5	3	1	0	0	96	96	11	6	-	12	64	60	59	3,071	1,536
	<b>AUG</b>	452	6	1	2	4	0	0	0	-	-	8	-	-	31	63	32	58	2,788	1,682
	<b>SEP</b>	379	4	1	1	2	0	0	0	73	63	13	7	1	18	63	39	50	2,587	1,616
	<b>OCT</b>	886	8	1	0	2	0	1	0	80	75	12	3	1	13	78	78	36	3,886	1,914
	<b>NOV</b>	475	2	4	8	4	5	0	0	-	-	6	-	-	15	72	27	59	3,156	1,458
	<b>DEC</b>	1,402	1	1	0	2	0	0	0	126	89	9	1	-	58	91	56	17	3,028	1,596
<b>2014 TOTAL</b>	<b>10,266</b>	<b>54</b>	<b>22</b>	<b>42</b>	<b>40</b>	<b>13</b>	<b>1</b>	<b>1</b>	<b>698</b>	<b>598</b>	<b>179</b>	<b>43</b>	<b>4</b>	<b>243</b>	<b>850</b>	<b>596</b>	<b>502</b>	<b>34,208</b>	<b>18,982</b>	
<b>2015</b>	<b>JAN</b>	700	2	3	2	3	0	0	0	76	64	15	2	1	36	82	38	58	2,491	1,246
	<b>FEB</b>	556	5	2	2	3	1	0	0	-	-	10	-	-	22	43	34	64	2,667	1,382
	<b>MAR</b>	177	5	2	5	2	4	2	0	72	72	33	1	1	42	72	60	93	3,469	1,738
	<b>APR</b>	270	7	1	0	5	3	0	0	60	54	19	3	-	21	53	40	60	3,451	1,620
	<b>MAY</b>	436	8	0	0	2	3	0	0	89	54	10	10	2	25	55	56	41	2,869	1,422
	<b>JUN</b>	320	2	1	3	5	4	0	0	-	-	27	-	-	25	42	32	43	3,357	1,707
	<b>JUL</b>	376	3	2	0	5	1	0	0	123	140	5	13	1	32	74	46	26	3,445	1,774
	<b>AUG</b>	180	8	2	0	7	4	0	0	-	-	13	-	-	18	49	18	61	3,692	1,847
	<b>SEP</b>	246	6	5	1	7	4	0	2	112	78	25	11	-	30	48	39	38	2,887	1,528
	<b>OCT</b>	188	4	1	6	1	6	1	0	115	103	6	12	1	32	60	45	33	3,419	1,493
	<b>NOV</b>	43	2	3	5	0	0	0	1	-	-	6	-	-	15	45	32	40	3,348	1,666
	<b>DEC</b>	42	7	1	3	5	1	0	0	91	80	4	5	2	60	48	38	37	3,844	1,759
<b>2015 TOTAL</b>	<b>3,534</b>	<b>59</b>	<b>23</b>	<b>27</b>	<b>45</b>	<b>31</b>	<b>3</b>	<b>3</b>	<b>738</b>	<b>645</b>	<b>173</b>	<b>57</b>	<b>8</b>	<b>358</b>	<b>671</b>	<b>478</b>	<b>594</b>	<b>38,939</b>	<b>19,182</b>	

Abbreviation Ind = Individual, Blnt = Blanket, Apps = Application for Hearing, NOAV = Notice of Alleged Violation, AOC = Administrative Order of Consent, OFV = Order Finding Violation, Cmplt = Complaint, Comp = Completed