



**COLORADO**

**Oil & Gas Conservation  
Commission**

Department of Natural Resources

# Staff Report

for March 7, 2016

## Top Stories

### ◆ BLM Rulemaking on Venting and Flaring

This January, the U.S. Bureau of Land Management (BLM) proposed updating 30 year old regulations to reduce methane emissions and waste of natural gas from venting, flaring, and leaks during oil and gas production activities on public and American Indian lands. The proposed rules contain several sections that match Colorado's regulatory requirements administered by both the Colorado Department of Public Health and the Environment (CDPHE) and the COGCC. BLM's proposed rules also contain a process for states to request a variance to provisions in the federal rules if the state's rules satisfy BLM's requirements.

The BLM considered and included the following Colorado regulatory provisions in the proposed rules:

- Leak detection and repair
- Restrictions on high-bleed pneumatic controllers
- Emission controls on storage vessels
- Venting during unloading of liquids from the wellbore, and
- Combustion device efficiency.

The COGCC will continue working with industry and conservation groups to provide BLM with feedback by the April 8 deadline. The feedback is an effort to ensure that the final BLM rules both take into account the work that Colorado has already done and maintain an effective and efficient regulatory environment for oil and gas operations across the state.

### ◆ Health Hotline and Information Clearinghouse

In late January 2016, CDPHE launched both a telephone hotline and a website for the public

to report health concerns and locate a wide range of information about oil and gas in Colorado. As one of the recommendations made by the Governor's Oil and Gas Task Force last year, this new program combines health reporting and oil and gas information.

According to Dr. Larry Wolk, CDPHE's executive director and chief medical officer, hotline and website users will reach a team of professionals who are knowledgeable about the possible effects of oil and gas on health. As part of an exchange of information with callers and website visitors, the team will ask questions about health and environmental conditions relevant to the reported concern. If the team identifies a situation with an immediate health impact, CDPHE will quickly coordinate with other state and local agencies to address the concern.

In addition to health reporting, people can use the online clearinghouse to find current information about the oil and gas industry, Colorado air and water quality studies, and other public health information. The new hotline number is 303-389-1687, and the website can be accessed by using this link:

<http://www.colorado.gov/oghealth>

### ◆ District Court Decision on Earth Guardians Rulemaking Petition

On February 19, 2016, the Denver District Court upheld the COGCC's decision to deny a request to initiate a rulemaking filed by multiple members of the public. In November 2013, the petitioners requested that the COGCC stop issuing permits to drill new oil and gas wells until it could be demonstrated that development would not impair public health or the



environment. The COGCC received input from a number of stakeholders (including the public, industry, government agencies and other concerned citizen groups).

In a public hearing held on April 28, 2014, the COGCC voted unanimously to deny the petitioners' request. The petitioners appealed to the Denver District Court which issued a decision supporting COGCC's decision.

The Court confirmed that the Colorado Oil and Gas Conservation Act unambiguously requires the COGCC to "strike a balance between the regulation of oil and gas operations and protecting public health, the environment, and wildlife resources." The proposed ban on issuing new permits would be inconsistent with the COGCC's obligation to foster balanced development of Colorado's natural resources.

Additionally, the Court confirmed that COGCC used reasonable diligence and care in arriving at a decision that was well supported by the information received from the various stakeholders. For a copy of the Order, contact the Denver District Court at 720-865-8301 (reference case number 14CV32637).

## ◆ Local Government Liaison Program

Local Government Liaisons (LGLs) Nancy Prince and Marc Morton continue to provide valuable outreach, service, and support in response to inquiries, information requests, and speaking requests not only from local government designees (LGDs), but also from local government staff, the public, academia, non-profits, non-governmental organizations, industry groups, and other organizations. Nancy and Marc also assist COGCC staff in various initiatives and special projects.

An upcoming change that will improve and streamline communication with LGDs is our transition to the use of a Google group for email correspondence from LGLs to LGDs. This change will allow easy identification of email addresses that bounce (are no longer valid), so that gaps in LGD participation can be quickly addressed by the LGLs. This change will not impact eForm

(system-generated) notifications that go to individual LGDs.

And as a reminder to all participating LGDs, it is important to notify the COGCC (via submittal of an updated Form 29) of any change in your email address or contact information, or of a change in the status of your participation in the LGD program. The link to the Form 29 is available at this location on the COGCC website:

[http://cogcc.state.co.us/documents/reg/Forms/PDF\\_Forms/form29.pdf](http://cogcc.state.co.us/documents/reg/Forms/PDF_Forms/form29.pdf)

At present, 167 local governments participate in the LGD program, including 55 counties, 101 municipalities, and 11 special districts. The link to a list of participating LGDs can be found at this website address:

<http://cogcc.state.co.us/Infosys/lgd/list.cfm>

Recent changes in the LGD ranks include the following:

Michael Garner is the LGD for Rio Blanco County and serves as the Interim Planner for Rio Blanco County.

Helen Migchelbrink is now LGD for the Town of Mead and serves as the Town Engineer.

We welcome Michael and Helen to their new roles as LGDs.

The LGD training and outreach program for 2016 and beyond is under development. In response to feedback from LGDs, there will be an increased emphasis on topic specific training, networking, and information sharing. Information will be sent to all LGDs and posted on COGCC website within the next few weeks. In the meantime, we welcome requests for training, information, and guidance.

A list of the LGL outreach and public involvement activities conducted since the last staff report is included in the Public Outreach section below.

## Public Outreach

### ➤ Outreach by Director and Other Staff

- On January 25, GIS Analyst Dennis Ahlstrand and Environmental Protection Specialist Bob Chesson presented to the students at the Colorado School of Mines (CSM) for a Senior Project Class (PEGN 439). The class is a multi-disciplinary design course that integrates fundamentals and design concepts in geology, geophysics, and petroleum engineering, in which students work in integrated teams from each of the disciplines to plan and propose a prospect in an exploration play.

The students base their projects on a Weld County, Colorado oil and gas field, and they also access the COGCC's interactive map and other website resources. The exercise involves regulatory processes from permitting through post-drill reporting. COGCC Staff have been guiding the students in accessing COGCC data from the website since 2010.

- On February 11, Oil and Gas Location Assessment Supervisor John Noto, Western Location Specialist Dave Kubeczko, Field Inspection Quality Assurance Supervisor Mike Leonard, and LGL Marc Morton attended the CDPHE onsite consultation concerning Ursa Operating's proposed B and D pads within the Battlement Mesa Planned Unit Development (PUD). The meeting was also attended by staff from Garfield County, Battlement Mesa Service Association, and Ursa.
- On February 17, Director Matt Lepore was a panelist during the University of Texas Energy Week in Austin, presenting "Regulatory Responses to Hydraulic Fracturing."
- On February 24, Director Lepore spoke during the Groundwater Protection Council's Underground Injection Control Conference in Denver.
- On February 25, Hearings and Regulatory Affairs Manager Julie Murphy spoke to Club 20 regarding the COGCC's recently adopted rules implementing Governor's Task Force (GTF) Recommendation Numbers 17 and 20.

### ➤ Outreach by LGLs

- On January 11, Nancy Prince attended a meeting of the Morgan County Planning Commission regarding a pending county application for a proposed underground injection well site.
- On January 19, Marc Morton traveled to Hudson and visited with Town of Hudson LGD and Town Manager Joe Racine about several Town development and land use issues, as well as production reporting for wells located within Town limits.
- On January 26 and February 9, Nancy Prince attended public study sessions and hearings in Adams County regarding the status of county regulations and agreements with operators (MOUs).
- On February 4, Marc Morton traveled to Rifle and attended the monthly Garfield County Energy Advisory Board (EAB) meeting. Marc updated the group on the status and schedule for implementation of the recently completed GTF Rulemaking.
- On February 18, Marc Morton traveled to the Town of Mead in Weld County and met with newly appointed LGD Helen Migchelbrink.
- On February 18, Marc Morton traveled to Weld County and attended the bi-monthly Energy Industry Working Group meeting, hosted by Weld County Department of Public Works staff. Marc updated the group on the recently completed GTF rulemaking, recent changes in Weld County LGD participation, and the upcoming operator submittal deadline concerning a floodplain inventory of wells, tanks, and separators.
- On February 22, Nancy Prince attended the Adams County Local Emergency Planning Committee (LEPC) meeting in Brighton.
- On March 2, Nancy Prince attended the Fremont County Mayors' Meeting in Rockvale



## Regional Activities

and presented an outline of recent rule changes and their effective dates.

### ➤ **Northwest Colorado**

#### ◆ **Northwest Colorado Oil and Gas Forum**

Northwest Colorado Oil and Gas Forum (NWF) meetings in 2016 are scheduled for April 7, August 4, and December 1. The April 7 and December 1 meetings will be held in Rifle at the Colorado Mountain College in Clough Auditorium (3695 Airport Road) from 9:00 a.m. to noon, and the August 4 meeting will be held at the Ute Theater in Rifle (132 E. 4th Street).

NWF meeting agendas will be posted to the website approximately two to three weeks prior to each meeting, and emailed to those on the email distribution list. NWF meetings are open to the public, and a public comment period is held as part of each meeting.

Past presentations (dating back to 2006) are available on the COGCC website under the Library tab, then under the Local Public Forum tab, and finally under the Northwest Colorado Oil and Gas Forum Presentations link, or via the following website address:

<http://cogcc.state.co.us/library.html#/forums>

All parties wishing to be placed on the next meeting agenda or added to the distribution list for announcements should contact Marc Morton at 303-894-2100, ext. 5132 (direct), 720-415-4959 (mobile), or by email:

[marc.morton@state.co.us](mailto:marc.morton@state.co.us)

#### ◆ **Project Rulison**

The email for Project Rulison submittals is

[DNR\\_rulison.submittal@state.co.us](mailto:DNR_rulison.submittal@state.co.us)

#### ◆ **Project Rio Blanco**

The email for Project Rio Blanco submittals is

[DNR\\_rioblanco.submittal@state.co.us](mailto:DNR_rioblanco.submittal@state.co.us)

### ➤ **Southwest Colorado**

#### ◆ **Fruitland Formation Outcrop Mitigation and Monitoring Projects**

**South Fork Texas Creek Mitigation Site - La Plata County.** Regularly scheduled operations and maintenance continue at the South Fork Texas Creek (SFTC) site, performed by LTE, the COGCC's contractor. Since May 2009, the system has collected 16,222 Mcf of methane and generated 243,509 kWh of surplus electricity. The 2015 Fruitland Outcrop Monitoring Report has been posted to the COGCC website at the following link:

[http://cogccintranet/documents/library/AreaReports/SanJuanBasin/3m\\_project/2015%20FRUITLAND%20OUTCROP%20MONITORING%20REPORT\\_La\\_Plata.pdf](http://cogccintranet/documents/library/AreaReports/SanJuanBasin/3m_project/2015%20FRUITLAND%20OUTCROP%20MONITORING%20REPORT_La_Plata.pdf)

#### ◆ **GORT Meetings**

GORT meetings in 2016 are scheduled for March 24, July 28, and October 20. All meetings will be held in Durango at the Durango Public Library (1900 E. 3rd Avenue in Durango) from 8:30 a.m. to 11:30 a.m. GORT meeting agendas will be posted to the website approximately two to three weeks prior to each meeting, and emailed to those on the email distribution list. GORT meetings are open to the public, and a public comment period is held as part of each meeting.

All parties wishing to be placed on the next meeting agenda or added to the distribution list for announcements should contact Marc Morton at 303-894-2100, ext. 5132 (direct), 720-415-4959 (mobile), or by email:

[marc.morton@state.co.us](mailto:marc.morton@state.co.us)

## Variations

- ◆ Extraction Oil & Gas, LLC  
PDC Energy, Inc.  
Peterson Energy Operating, Inc.  
Chevron USA, Inc.

In March 2015, the Commission adopted floodplain rules to better protect oil and gas facilities subject to flooding and require more preparation from operators to reduce potential impacts. The Rules require operators to complete retrofitting existing facilities by April 1, 2016. Rule 603.h.(2)E. allows an operator to request a variance from the retrofitting and established a February 1, 2016 deadline to request such a variance.

The Commission received a total of four variance requests per Rule 603.h.(2)E. Three of these requests (Extraction Oil & Gas, LLC; PDC Energy,

Inc.; and Peterson Energy Operating, Inc.) are requests to delay installation of steel ring berms and anchoring from the April 1, 2016 deadline to July 1, 2016 for a small subset of each operator's wells. The variance became necessary when FEMA changed Colorado floodplain maps in January 2016, making additional operator facilities subject to the COGCC Rule.

The fourth variance request (Chevron USA, Inc.) was a request to delay the installation of a steel ring berm around one tank and delay the full removal of one pit, because both facilities would be removed by July 1, 2016 after CDPHE approval of a pending air permit.

On February 19, 2016, the COGCC Director granted the four Rule 603.h.(2)E. variances.

## Admin / Organization / Other

A COGCC organizational chart can be found on pages 9-12. For contact information, please go to our homepage, find the "About Us" menu, and select "Contact Us."

- ◆ Plugging and Reclaiming Abandoned Wells (PRAW) - Project Updates

The **Ridgway-Swanson-Peterson #1 Plug and Abandon (PA) Project** is located in central Ouray County about one mile east of the Town of Ridgway. This well was drilled in 1947 and was later turned over to the landowner as a domestic natural gas supply. The gas petered out and has been shut in since approximately 1986, and the landowner has switched over to retail propane.

Following a COGCC inspection in 2011, the well was placed in the Orphaned Well PRAW Program. After a recent onsite bid meeting with contractors, the project was split up into two parts. The first part removed the well shed, etc. to prepare the site for rig placement, and the second part PA'd (plugged and abandoned) the well.

The COGCC contractor successfully completed the PA portion of the project at a cost of \$35,935,

which is \$19,420 less than the bid price. A separate purchase order in the amount of \$3,800 was used to prepare the well site for the rig and then to reinstall the landowner's propane tank and fence following the plugging work. This subphase portion of the project now complete, bringing its final cost to \$39,735.

The **Think Oil Bond Vaughn #1 Plug and Abandon (PA) Project** is located in Moffat County about two miles southwest of the Town of Craig. This well was drilled in 1950 to a total depth (TD) of 10,003 feet through the Weber sandstone and Morgan Formation. The well was later plugged in 1989, but was re-entered in 1992 and drilled to a depth of 3,025 feet. The operator then directionally drilled the well to a true vertical depth (TVD) of 7,223 feet and a measured total depth (MTD) of 7,264 feet. The well was completed in the Niobrara Formation.

Because of mechanical problems and subeconomic production, the well was plugged in 1997. Various well site inspections by the COGCC found non-compliance with the Rules. An Order Finding Violation was issued and resulted in the State claiming the bond for this well (Order 1V-458). An inspection in 2015 determined that gas was



leaking from the well casing. The COGCC decided to reenter and plug the well. The project's bidding process is complete, and the winning bid came in at \$51,953. The work is scheduled to begin during the last week of February.

The **Think Oil Bond Silver Plug and Abandon (PA) Project** is located in Moffat County approximately one mile due west of the Town of Craig. This well was drilled in 1988 to a total depth (TD) of 8,280 feet and completed in the Niobrara Formation. Three sidetracks in the same formation were drilled off the original wellbore in 1991, resulting in the abandonment of the original wellbore and the first two sidetracks.

The principal owner of the well died, and the COGCC subsequently claimed the bond in 2014 in the amount of \$5,029 (Order 1V-458). The well will be reentered and plugged at an estimated cost of \$70,900.

The **Midfields State #1 Plug and Abandon (PA) Project** is located in Yuma County about 12 miles south of the Town of Wray. This well was drilled to an approximate depth of 3,650 feet in 1919. In 2009, an onsite inspection found venting gas and rolling water in the well. The well was excavated to a depth of six feet, and no casing was found.

The limited available records indicate a 16 inch diameter surface bore. A 20 foot long joint of 18 inch diameter PVC irrigation pipe was stuffed into the wellbore, and the excavated portion was backfilled. A plumb bob was lowered into the well, and it tagged up at a depth of 30 feet. For safety purposes, panels were erected around the well, and the well was left open to the atmosphere to prevent shallow ground water contamination. The estimated cost to PA the well is \$50,000. A request for contractor bids for this project will proceed, with field work anticipated to start by the spring of 2016.

The **Dolphin Mulvihill #15-32D Reclamation Project** is located in Garfield County about 1.6 miles northeast of the City of Rifle. This well was PA'd in 2012, but the site must now be

reclaimed. Plans include (1) an onsite meeting in the spring with the landowner, (2) reclamation design, and (3) determination of the cost to do the work.

The **Redwine Bond South Nucla Unit #1-32 Environmental Pit Closure Project** is located in Montrose County about 28 miles southwest of the City of Montrose. The well was PA'd in May 2015 and is now ready for the closure of the drilling mud reserve pit. A contractor has been selected. Field work is pending improved ground conditions, and the project will likely be completed in late spring or early summer 2016. A purchase order in the amount of \$24,126 has been issued.

The **Redwine Bond South Nucla Unit #1-32 Reclamation Project** is a followup to the pit closure and will involve the whole well site. The site is a cut and fill on a steep slope in the mountains with a drilling mud reserve pit in place. The cost to do this work has been estimated at \$96,235. Current plans include (1) design, (2) bid solicitation, and (3) completion of the work by late spring or early summer 2016.

The **River West #2 Project** is located in Larimer County near the Town of Windsor. Production equipment remains at the location, but the well has not been PA'd. COGCC Staff are reviewing options for the disposition of the well. The location also requires weed and erosion control because of tall weed debris along the access road and around the production facilities.

Mowing the weeds will prevent the debris from moving off the location and will reduce a potential fire hazard created by the buildup of herbaceous fuel. There are also signs of erosion on the site, which will be controlled by installing a variety of ditches, sediment traps, erosion blankets, seeding, and mulching.

Page 13 contains a spreadsheet listing PRAW projects that are either scheduled, in process, or completed as of February 25, 2016.



## ◆ Colorado Oil and Gas Information System (COGIS) Projects, Updates and Changes

### Electronic Form (eForm) Submissions

The COGCC uses 41 types of forms to authorize oil and gas operations, inspect and monitor on-going operations, and receive reports of operations. Of those 41 forms, 20 are currently available for electronic submittal through the eForms system.

The development team continues to work on the eForm conversion of existing forms. Currently, four forms are in various stages of development: Forms 14, 14A, 27, and the Warning Letter. In addition, the development team updates eForms with improvements requested by Staff and as required by rule revisions.

To date in 2016, 94 percent of the forms available in eForms were submitted electronically by industry. There are 655 operator users of eForms and 2,686 individual users. For any operator not currently enrolled in eForms, instructions for starting the process can be found on the COGCC website at:

<http://cogcc.state.co.us/Announcements/COUAINformation.pdf>

### Form 27 eForm Development

The COGCC's Site Investigation and Remediation Workplan (Form 27) is due for an upgrade. The form was created in 1999 and has only been slightly modified since that time. The COGCC's eForm platform allows for seamless tracking of an issue in the COGCC database (known as the MRDB) from start to finish. Users of the new eForm will be able to see not only the origin of the issue as a spill report or complaint, but also its investigation, remediation, and site closure. An eForm will replace the existing paper form, and development is currently underway.

The revised Form 27's data fields will be developed to provide more information "at a glance" and also allow for operators to directly enter information about their projects. Moreover, operators will be able to update their records as often as they need.

The conversion of the Form 27 to the established eForm platform will increase the efficiency of COGCC Staff effort; improve the effectiveness of communications regarding individual projects; and elegantly interface with spill reports, complaints, and existing facilities in the MRDB.

The Governor's Office of Information Technology (OIT) has completed development of the eForm 27, and COGCC Staff have completed internal testing. Further testing by a select group of operators has begun.

### Applications and Location Assessments

The public can make comments on all submitted Drilling Permit Applications (Form 2s) and Location Assessments (Form 2As) through the eForm system. Simply go to the COGCC website and click on the menu option "Permits" or

<http://cogcc.state.co.us/permits.html#/permits>

On the "Permits Search" page, three search options are available. The first option, "All Pending Permit Applications," is used for public comments. When the results are displayed for "Pending Applications," a user can click on the document number hyperlink in the "Status" column, which logs him or her to the eForms application.

Once the page is displayed with the selected document, the user can select the Comment button to make a comment on that particular form.

### Data Access

The COGCC's database is a comprehensive repository of Colorado's oil and gas data. The information in the database is available to the public through interactive search tools and a variety of file downloads on the website.

Users of this data come from many different sectors of the community, including academia, oil and gas operators, environmental groups, government agencies, and the media. The



number of these users and the variety of data requested are steadily increasing. Staff continues to publish additional data file downloads at:

<http://cogcc.state.co.us/data2.html#/downloads>

#### **Current Data File Downloads**

Complaints

Field Operations (Released February 22, 2016)

GIS Shapefiles (12 files)

Mechanical Integrity Tests

Notices of Alleged Violation

Production Data (1999 - present)

Spacing Orders

Spills and Releases

Water Well Data

#### **Future Data File Downloads**

Enforcement Orders (OFVs and AOCs)

Underground Injection Control (UIC) Data

#### ◆ **April 2016 Hearing Docket**

The docket for the April 2016 hearing will be available shortly after the March hearing. Hearing dockets are available on our website by clicking on “Regulation” in the menu and then “Hearings”:

<http://cogcc.state.co.us/reg.html#/hearings>

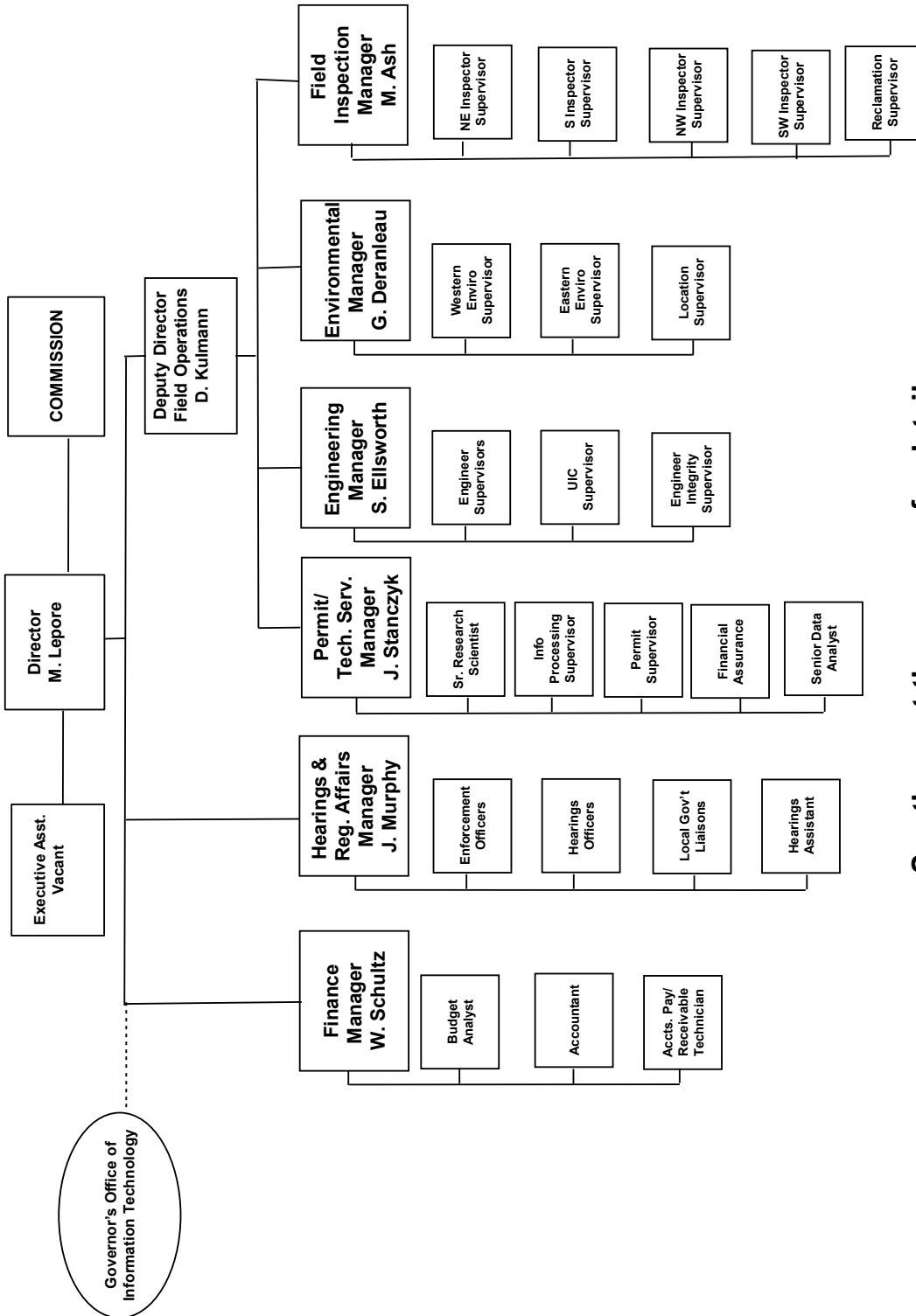
Links to the notices and hearing applications are available from the Docket Number and Applicant, respectively, by clicking the April Gen\_Docket link. To sign up for email notification of hearing notices and applications, please see the announcement and instructions on the homepage of the COGCC website.





## Organizational Charts and Statistics

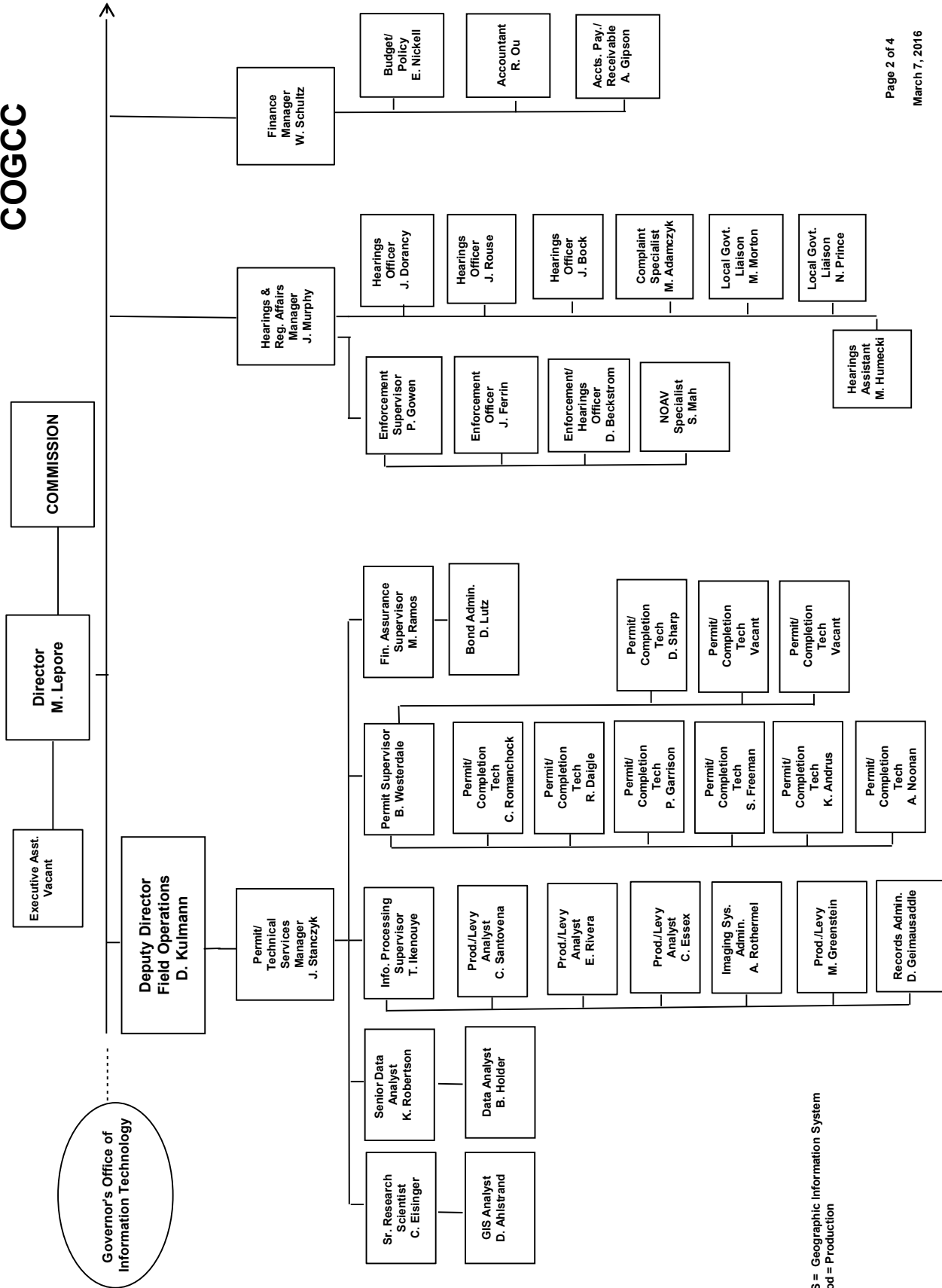
### COLORADO OIL & GAS CONSERVATION COMMISSION



See the next three pages for details

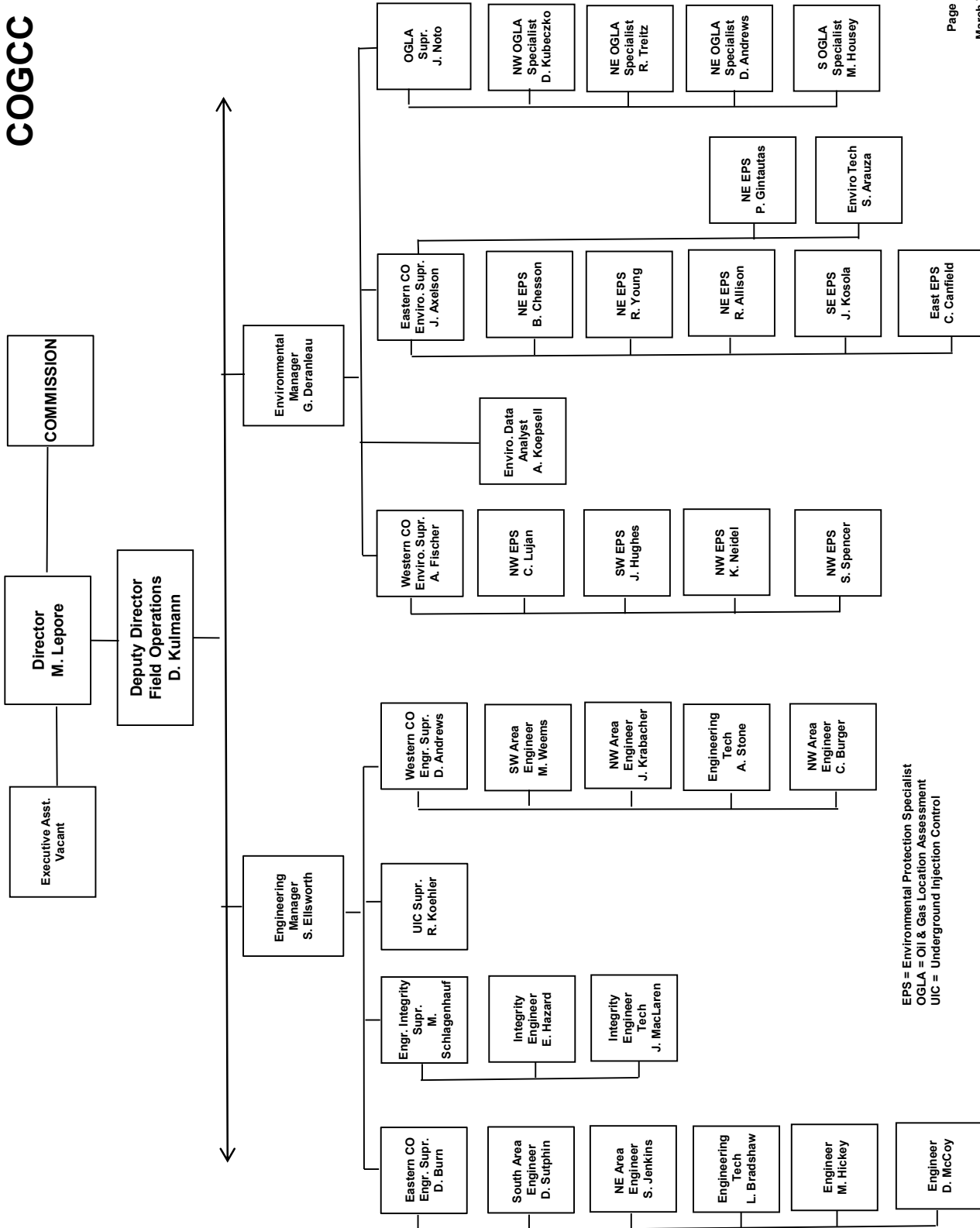


## COGCC





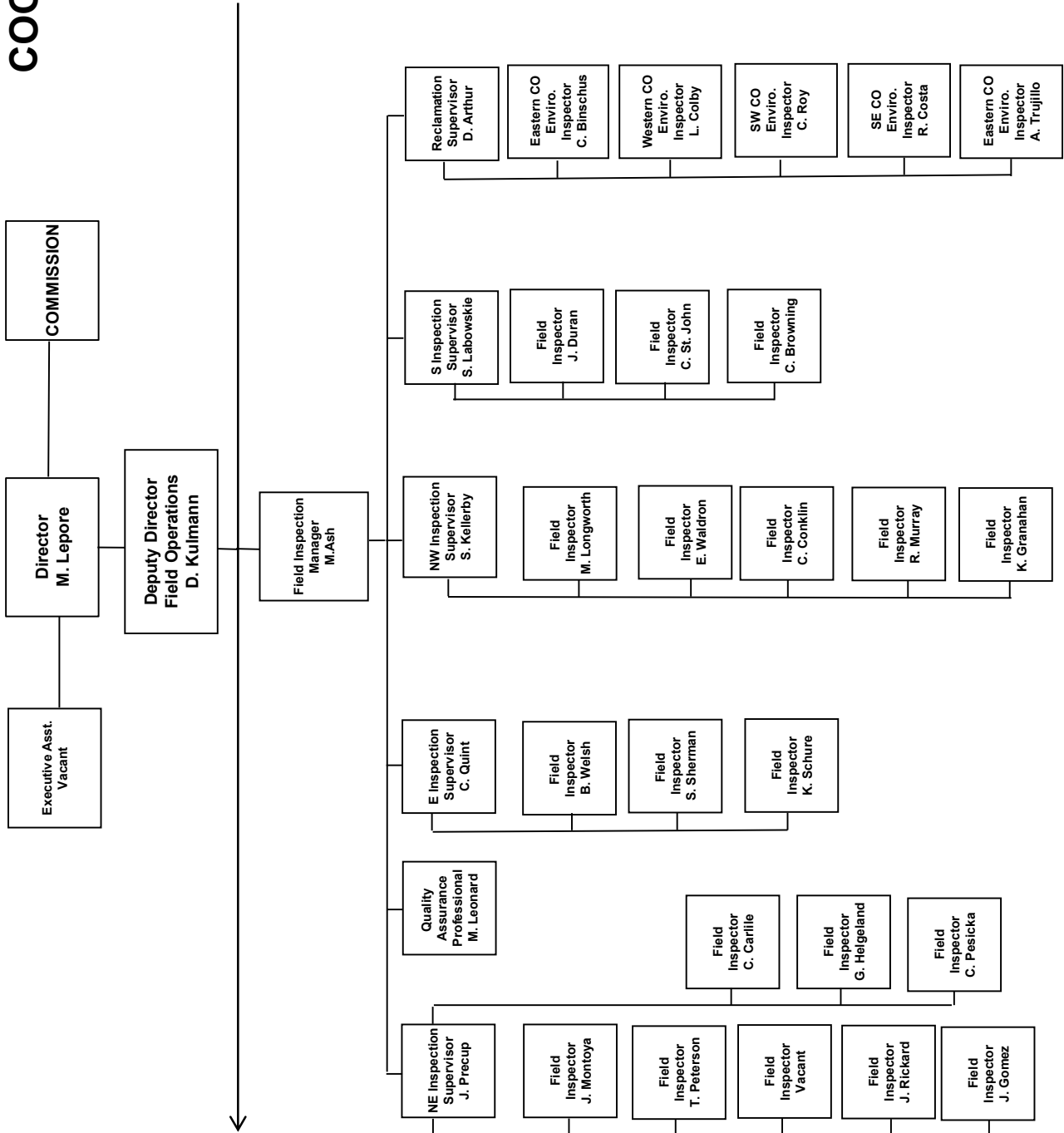
# COGCC



EPS = Environmental Protection Specialist  
 OGLA = Oil & Gas Location Assessment  
 UIC = Underground Injection Control



## COGCC





# Oil and Gas Staff Report

March 7, 2016

13

## PLUGGING AND RECLAIMING ABANDONED WELLS (PRAW) FOR ORPHANED LOCATIONS FISCAL YEAR 2015-16

County	Type	Project Name	Project No.	ESTIMATED TOTAL PROJECT COST			PLANNED			Description
				Bond	PRAW	EMGY	Totals	Bond	PRAW	
Yuma	PA	Midfields State #1	2014-10	\$ 50,000	\$ 50,000	\$ 50,000				Drilled in 1919 to TD=3650'. Gas flow and rolling water. Excavated to a depth of 6'. Installed 18" OD PVC to a depth of 20'.
Moffat	PA	Think Oil Bond Silver et al #1	2015-11	\$ 5,029	\$ 65,871	\$ 70,900				Drilled in 1988 to a TD=8280'; completed in the Niobrara. Three sidetracks were drilled in 1991. Principal deceased. Bond claimed 2014
Garfield	RECL	Dolphin -Muvihill #15-32D	2016-02	\$ 25,000	\$ 25,000	\$ 25,000				Dolphin Energy Corp well pad and lease road near Rifle.
Montrose	RECL	Redwine Bond - SNU #1-31	2013-17-21	\$ 96,235	\$ 96,235	\$ 96,235				Plugged May 2015; pit and well pad reclamation with cut and fill on steep terrain.
Montrose	ENV	Redwine Bond - SNU #1-31	2013-17-41	\$ 24,126	\$ 24,126	\$ 24,126				Drilling mud reserve pit closure.
<b>TOTALS =&gt;</b>				<b>\$ 5,029</b>	<b>\$261,232</b>	<b>\$ 0</b>	<b>\$ 266,261</b>			
<b>IN PROGRESS</b>										
County	Type	Project Name	Project No.	ESTIMATED TOTAL PROJECT COST			FY 2015-16 YTD EXPENDITURES			Description
				Bond	PRAW	EMGY	Totals	Bond	PRAW	
Moffat	PA	Think Oil Bond - Vaughn #1	2015-09	\$ 7,542	\$ 44,411	\$ 51,953				Drilled in 1950 to a TD=10,000'; PA in 1989; re-entered in 1999 and directionally drilled to a MTD=7264. Niobrara completion. PA 1997. Principal owner deceased. Gas leak found. Bond claimed. PRAW re-enter PA project.
Larimer	RECL	Ranchers BOND River West #2	2016-05-21	\$ 10,000	\$ 10,000	\$ 10,000				Revegetate the site.
<b>TOTALS =&gt;</b>				<b>\$17,542</b>	<b>\$ 44,411</b>	<b>\$ 61,953</b>	<b>\$ 0</b>	<b>\$ 0</b>	<b>\$ 0</b>	<b>\$ 0</b>
<b>COMPLETED</b>										
County	Type	Project Name	Project No.	ESTIMATED TOTAL PROJECT COST			FY 2015-16 YTD EXPENDITURES			Description
				Bond	PRAW	EMGY	Totals	Bond	PRAW	
Ourray	PA	Ridgway-Swanson-Peterson #1	2012-27	\$ 55,355	\$ 196	\$ 55,355	\$ 39,735	\$ 196	\$ 39,735	Drilled in 1947 to a TD=500'; turned over to landowner at some point in time for domestic use gas hookup; stopped producing gas and will be PA by PRAW Program.
Mesa	RECL	DeBeque Orphans- Buckeye #1	2016-04	\$ 196	\$ 196	\$ 196				Mowing.
Adams	ENV	Ruth #1	2013-16	\$ 1,045	\$ 1,045	\$ 1,045				EPS soil analysis complete for the pit at the CTB and deemed ready for reclamation with no need for soils remediation.
La Plata	ENV	Red Mesa Holdings Bond - JOK #1	2016-01	\$ 4,228	\$ 4,228	\$ 4,228				BOND Total Available = \$67,038.37.
Weld	ENV	Carl A. Peters #1	2016-07	\$ 1,330	\$ 1,330	\$ 1,330				HZ Well Policy-Operator to plug well; COGCC to pay for samples, plans, remediation and disposal.
Garfield	RECL	Dolphin Arroyo #9-16D	2015-06	\$ 2,500	\$ 2,500	\$ 2,500	\$ 2,691	\$ 2,691	\$ 2,691	Soil bed prep; seed and cover with straw.
Adams	PA	Ruth #1 Bond PA	2013-15	\$ 5,000	\$ 5,000	\$ 5,000				Bond claimed 8/20/2012 Order #1V-395; surface production equipment removed in July 2015.
Logan	ENV	Luther #2	2014-19-41	\$ 610	\$ 610	\$ 610	\$ 610	\$ 610	\$ 610	Follow up soils analysis for prior remediation.
<b>TOTALS =&gt;</b>				<b>\$ 9,228</b>	<b>\$ 61,036</b>	<b>\$ 70,264</b>	<b>\$ 9,228</b>	<b>\$ 45,407</b>	<b>\$ 0</b>	<b>\$ 54,635</b>
<b>GRAND TOTALS</b>				<b>\$31,799</b>	<b>\$366,679</b>	<b>\$0</b>	<b>\$398,477</b>	<b>\$45,407</b>	<b>\$0</b>	<b>\$54,635</b>
<b>SCOREBOARD (PRAW FUNDING ONLY)</b>										
				\$44,411	In Progress Estimated Totals					
				\$0	In Progress Spent to Date Totals					
				\$44,411	In Progress Remaining Totals					
				\$45,407	Completed to Date Totals					
				\$45,407	Sum of (In Progress Spent to Date) and (Completed to Date Totals)					
				\$261,232	Planned					
				\$306,639	Total Expenditures					
				\$445,000	Annual Budget Appropriation					
				\$138,361	Projected End of Year Balance					



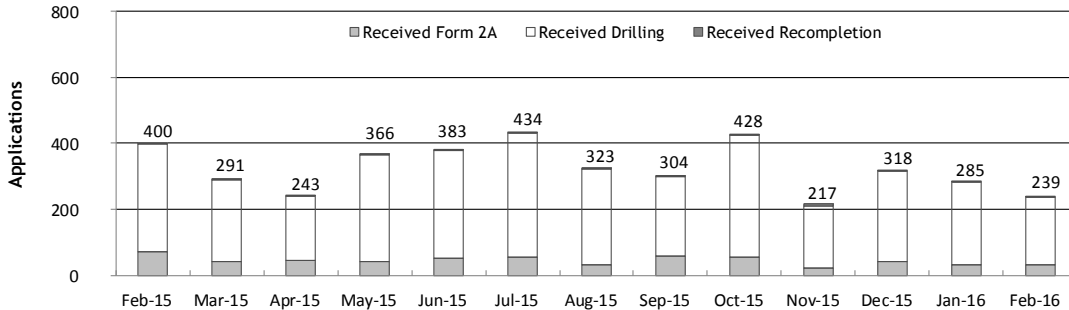
Monthly Permit Activity as of March 1, 2016

Form/Month	Backlog	Received	Approved	Withdrawn	Rejected	Incomplete <sup>1</sup>	In-Process	Remaining <sup>2</sup>
<b>Form2A</b>								
Feb-15	119	73	28	0	0	35	129	164
Mar-15	164	44	70	2	1	30	105	135
Apr-15	135	46	37	3	0	38	103	141
May-15	141	41	44	0	1	41	96	137
Jun-15	137	52	49	3	1	24	112	136
Jul-15	136	57	48	2	1	25	117	142
Aug-15	142	32	46	0	1	35	92	127
Sep-15	127	59	49	3	4	25	105	130
Oct-15	130	54	51	4	0	14	115	129
Nov-15	129	21	49	1	1	16	83	99
Dec-15	99	42	43	2	0	27	69	96
Jan-16	96	34	9	1	0	29	91	120
Feb-16	120	31	39	1	0	32	79	111
<b>Drilling</b>								
Feb-15	568	324	161	21	4	143	563	706
Mar-15	706	246	294	14	0	226	418	644
Apr-15	644	194	165	17	0	295	361	656
May-15	656	324	190	30	0	254	506	760
Jun-15	760	327	281	9	5	175	617	792
Jul-15	792	373	250	2	15	153	745	898
Aug-15	898	289	300	18	111	159	599	758
Sep-15	758	242	312	7	32	112	537	649
Oct-15	649	372	223	17	16	104	661	765
Nov-15	765	190	254	3	0	106	592	698
Dec-15	698	275	242	13	6	159	553	712
Jan-16	712	250	126	4	30	201	601	802
Feb-16	802	205	227	1	15	212	552	764
<b>Recompletion</b>								
Feb-15	8	3	2	0	0	3	6	9
Mar-15	9	1	6	0	0	1	3	4
Apr-15	4	3	1	0	0	2	4	6
May-15	6	1	4	0	0	2	1	3
Jun-15	3	4	1	0	0	2	4	6
Jul-15	6	4	2	0	0	1	7	8
Aug-15	8	2	6	1	0	1	2	3
Sep-15	3	3	1	0	0	1	4	5
Oct-15	5	2	2	1	0	1	3	4
Nov-15	4	6	2	0	0	1	7	8
Dec-15	8	1	5	2	0	0	2	2
Jan-16	2	1	0	0	0	1	2	3
Feb-16	3	3	0	0	0	2	4	6

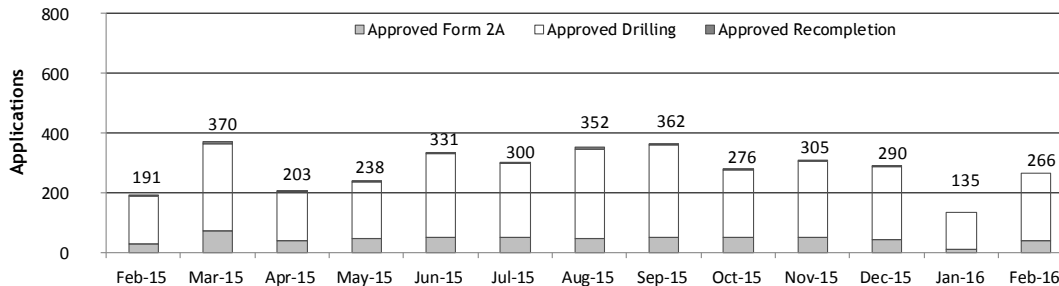
<sup>1</sup> Incomplete are applications that have missing or inaccurate data and cannot be approved.

<sup>2</sup> Backlog = Incomplete + In-process = Remaining permits from previous month.

Received Applications



Approved Applications





## Status of Permit Applications Filed By Month as of March 1, 2016

### Form 2A Location Assessment

Year	Month	Received	Approved	Withdrawn	In Process	Percent In Process	Average	Less Than 30 Days	30 to 49 Days	Greater Than 50 Days
							Days to Process			
2011	TOTAL	2,391	2,298	93	0	0%		1,416	620	262
2012	TOTAL	1,359	1,291	68	0	0%		706	378	207
2013	TOTAL	1,281	1,202	78	1	0%		369	433	400
2014	TOTAL	1,114	1,065	44	5	0%		279	429	357
2015	JAN	49	48	1	0	0%	57	6	15	27
	FEB	69	65	3	1	1%	66	5	16	44
	MAR	54	47	6	1	2%	59	6	20	21
	APR	39	39	0	0	0%	64	8	13	18
	MAY	40	39	1	0	0%	60	6	12	21
	JUN	54	52	1	0	0%	57	10	17	25
	JUL	45	44	0	1	2%	71	4	12	28
	AUG	68	65	2	1	1%	58	11	21	33
	SEP	58	54	2	2	3%	57	16	9	29
	OCT	53	44	2	7	13%	75	3	10	31
	NOV	21	13	0	8	38%	59	2	4	7
	DEC	42	16	1	25	60%	51	1	8	7
2015	TOTAL	592	526	19	46	8%		78	157	291
2016	JAN	34	6	0	28	82%	35	2	3	1
	FEB	31	0	0	31	100%	0	0	0	0
2016	TOTAL	65	6	0	59	91%		2	3	1

### Form 2 Application For Permit to Drill (APDs)

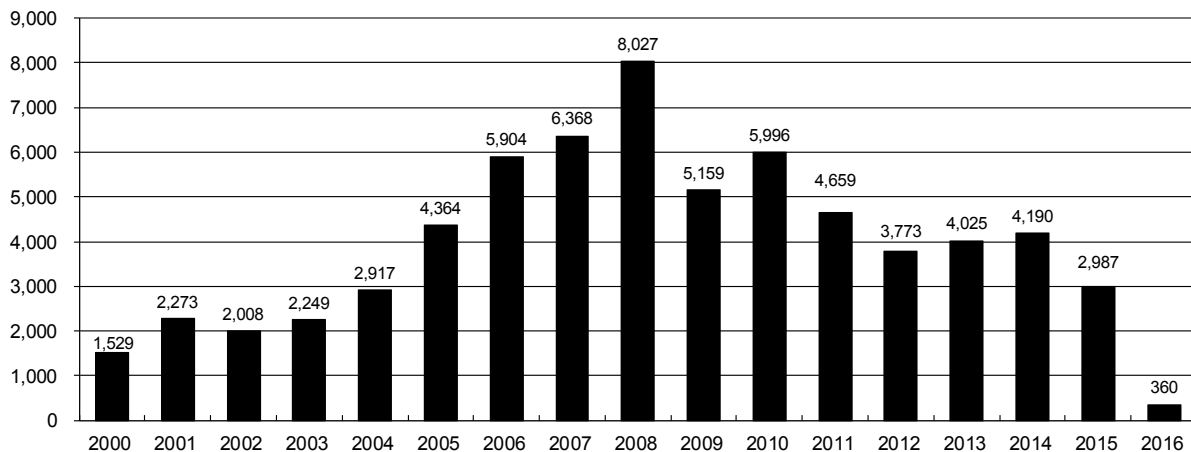
Year	Month	Received	Approved	Withdrawn	In Process	Percent In Process	Median Days	Less Than 30 Days	30 to 49 Days	Greater Than 50 Days
							to Process			
2011	TOTAL	4,691	4,557	132	0	0%		2,723	1,565	587
2012	TOTAL	3,955	3,816	139	0	0%		1,971	1,393	602
2013	TOTAL	4,548	4,312	235	1	0%		1,046	1,626	1,714
2014	TOTAL	4,208	4,014	146	48	1%		689	1,629	1,732
2015	JAN	291	281	1	9	3%	55	50	60	174
	FEB	294	277	17	0	0%	72	24	73	183
	MAR	306	249	35	22	7%	84	10	73	168
	APR	169	154	15	0	0%	78	28	35	94
	MAY	270	265	5	0	0%	77	9	84	172
	JUN	321	310	11	0	0%	67	45	81	186
	JUL	299	290	3	6	3%	67	15	84	197
	AUG	319	303	9	7	2%	87	11	64	230
	SEP	203	194	2	7	5%	73	17	37	144
	OCT	346	295	9	42	42%	80	16	75	204
	NOV	181	101	3	77	60%	53	15	46	45
	DEC	268	112	3	153	71%	54	9	47	56
2015	TOTAL	3,267	2,831	113	323	10%		249	759	1,853
2016	JAN	244	62	0	182	75%	35	23	33	6
	FEB	205	2	0	203	99%	3	2	0	0
2016	TOTAL	449	64	0	385	86%		25	33	6



## Annual Drilling Permits by County as of March 1, 2016

County	2000	2001	2002	2003	2004	2005	2006	2007	2008	2009	2010	2011	2012	2013	2014	2015	2016
ADAMS	38	28	9	26	39	34	37	89	51	35	21	8	40	40	51	96	19
ARAPAHOE		2	1	2	5	7	11	10	10	10	8	23	35	23	34	19	
ARCHULETA	7	9	6	10	8	13	14	26	47	11	18	12	5	4	3	11	2
BACA	22	6	2	3	7	8	2	11	13	3	4	5	3	1	1		
BENT	2				5	3	8	1	1		5		2	1			
BOULDER	1	5	6	7	17	13	21	37	32	35	24	30	22				
BROOMFIELD			2	7		1	1		2	33	28	11	36		31		
CHEYENNE	3	3	3	3	3	10	21	15	33	12	13	16	31	50	26	9	
COSTILLA																	
CROWLEY																2	
DELTA			7	4	5	10		2			4	3	6	1	2		
DENVER		3					19	25	24								
DOLORES				1	1	1	6	10	12	21	8	8	13	12	3		
EAGLE														1			
ELBERT	2						4			1		1	2	2	4	3	
EL PASO											3	3	18	1	2		
FREMONT					1	3	2	4	14	2	22	14	11	2	8	2	
GARFIELD	213	353	362	567	796	1,509	1,845	2,550	2,888	1,981	2,037	1,323	1,046	870	1,066	532	53
GRAND																	
GUNNISON			5	10	1	9	19	7	10	12	4	3	11	9	20	28	
HUERFANO	41	27	27		8	2		7			2	1	9	1	13	2	
JACKSON	34	18	21	9	14	6	8	5	27	19	9	18	5	12	17	3	16
JEFFERSON	1						1	3	2					1			
KIOWA	11	18	2	4	2	1	11	9	26	7	16	17	17	12	5	3	
KIT CARSON				1	3	5	4	4	13	7	3	2	6	1	2		
LA PLATA	127	156	104	162	102	115	235	251	328	298	191	99	71	32	87	106	27
LARIMER	2		1			1		5	46	12	41	8	13	2	4	28	
LAS ANIMAS	268	400	259	180	332	413	500	362	303	88	92	85	11	2	1		
LINCOLN	2	2	1	6	3	4	1	2	58	44	48	31	36	87	129	24	
LOGAN	4	7	3	3	6	13	17	14	5	9	17	8	27	4	5		1
MESA	13	27	30	27	54	136	265	293	501	427	306	127	150	105	74	126	
MOFFAT	35	52	62	63	63	60	120	68	57	51	53	93	88	44	54	12	1
MONTEZUMA	4		5	8	8	11	5	12	22	39	19	27	29	14	25	3	
MONTROSE	1	3	2	4	2		1	3	3		1	1					
MORGAN	9	9	2	7	9	7	3	6	2	1	6	13	5	16	6	4	14
OTERO																	
PARK										3	4	1					
PHILLIPS	1	2		7	13	17	12	69	82	45	64	112	56		11	2	
PITKIN				1				1								1	
PROWERS	2	5	4		7	5	7	5	8	1	3	1			1		1
RIO BLANCO	89	187	105	179	154	161	360	321	477	348	441	109	117	167	121	107	2
RIO GRANDE	1	1		1					1	1			2		1		
ROUTT	20	13	1		4	6	9	8	4	2	3	10	4	12	4	9	
SAGUACHE	2		2					2	1	2							
SAN MIGUEL	11	13	27	18	42	45	35	23	20	13	10	2	1		2	3	
SEDGWICK				1	5	2	7	2	1	19	11	12	2		7	1	
WASHINGTON	23	17	27	34	128	50	69	45	11	1	6	12	6	19	12	9	
WELD	509	702	760	757	832	901	1,418	1,527	2,340	1,448	2,152	2,262	1,826	2,468	2,303	1,841	224
YUMA	31	205	160	138	237	782	797	541	545	105	299	148	11	9	53	3	
<b>TOTAL</b>	<b>1,529</b>	<b>2,273</b>	<b>2,008</b>	<b>2,249</b>	<b>2,917</b>	<b>4,364</b>	<b>5,904</b>	<b>6,368</b>	<b>8,027</b>	<b>5,159</b>	<b>5,996</b>	<b>4,659</b>	<b>3,773</b>	<b>4,025</b>	<b>4,190</b>	<b>2,987</b>	<b>360</b>

## ALL COUNTIES







# Oil and Gas Staff Report

March 7, 2016

17

## Form 2A Breakdown By County By Year as of March 1, 2016

Year	County	Form 2As	Completed	In Process	New Location	CDP	SWH	RSO	CDPHE
2009	Total State	818	818	0	408	2	80	5	5
2010	Total State	2,377	2,377	0	1,543	0	317	22	55
2011	Total State	2,297	2,297	0	1,724	1	259	16	5
2012	Total State	1,297	1,297	0	900	0	167	6	1
2013	Total State	1,195	1,194	1	845	0	144	2	4
2014	Total State	1,068	1,063	5	777	3	129	7	3
2015	ADAMS	8	6	2	6	0	0	0	0
	ARAPAHOE	11	10	1	6	0	0	0	0
	ARCHULETA	5	5	0	2	0	4	0	1
	CHEYENNE	8	7	0	7	0	0	0	0
	ELBERT	3	3	0	3	0	0	0	0
	FREMONT	1	1	0	1	0	1	0	0
	GARFIELD	29	27	2	9	0	17	0	0
	GUNNISON	10	10	0	1	0	8	0	0
	HUERFANO	1	1	0	0	0	0	0	0
	JACKSON	7	7	0	4	0	7	1	0
	KIOWA	3	3	0	3	0	3	0	0
	LA PLATA	18	17	1	8	0	16	0	0
	LARIMER	3	3	0	1	0	0	0	0
	LINCOLN	26	26	0	25	0	0	0	0
	LOGAN	1	1	0	0	0	0	0	0
	MESA	12	11	1	8	0	6	0	0
	MOFFAT	9	9	0	5	0	9	0	0
	MONTEZUMA	3	3	0	3	0	0	0	0
	MORGAN	4	2	2	3	0	0	0	0
	PHILLIPS	2	2	0	2	0	0	0	0
	RIO BLANCO	13	13	0	8	0	13	0	0
	ROUTT	3	3	0	1	0	3	0	0
	SAN MIGUEL	2	2	0	2	0	2	0	0
	SEDGWICK	1	1	0	1	0	0	0	0
	WASHINGTON	14	14	0	12	0	0	0	0
	WELD	374	334	41	280	0	3	0	0
	YUMA	3	3	0	1	0	0	0	0
2015	Total State	574	524	50	402	0	92	1	1
2016	ARAPAHOE	1	0	1	1	0	0	0	0
	GARFIELD	8	0	8	0	0	6	0	2
	GUNNISON	2	0	2	1	0	1	0	0
	LINCOLN	1	0	1	1	0	0	0	0
	MOFFAT	2	0	2	1	0	2	0	0
	PROWERS	1	1	0	1	0	0	0	0
	WELD	49	0	45	30	0	0	0	0
2016	Total State	64	1	59	35	0	9	0	2

### Abbreviations:

CDP = Comprehensive Drilling Plan

SWH = Sensitive Wildlife Habitat consultation

RSO = Restricted Surface Occupancy consultation

CDPHE= Colorado Department of Health and Environment consultation





## Well to Building Setbacks by Year and by County as of March 1, 2016

Count of well locations, grouped by proximity from well to buildings.

Location Proximity to Buildings	2009	2010	2011	2012	2013	2014	2015	2016	Number of Locations	Percent of Total Locations
Less than 150 feet	2	3	3	2	0	3	2	0	15	0%
150 to 350 feet	37	58	61	39	34	38	12	3	282	3%
350 to 500 feet	50	110	97	61	64	48	33	3	466	5%
500 to 1000 feet	117	385	331	188	188	161	83	12	1,465	17%
1000 + feet	356	1,705	1,470	838	762	724	378	30	6,263	74%
<b>TOTAL LOCATIONS</b>	<b>562</b>	<b>2,261</b>	<b>1,962</b>	<b>1,128</b>	<b>1,048</b>	<b>974</b>	<b>508</b>	<b>48</b>	<b>8,491</b>	

County	TOTAL	Less than 150 feet	150 to 350 feet	350 to 500 feet	500 to 1000 feet	1000 + feet
ADAMS	78	0	4	9	18	47
ARAPAHOE	96	0	2	4	10	80
ARCHULETA	23	0	0	1	11	11
BACA	15	0	0	0	1	14
BENT	7	0	0	0	0	7
BOULDER	23	0	1	1	17	4
BROOMFIELD	33	0	0	4	13	16
CHEYENNE	140	1	0	0	2	137
CROWLEY	2	0	0	0	0	2
DELTA	7	0	0	2	1	4
DOLORES	19	0	0	0	7	12
EAGLE	1	0	0	0	0	1
EL PASO	14	0	0	0	3	11
ELBERT	11	0	0	0	2	9
FREMONT	40	0	2	7	8	23
GARFIELD	555	0	10	9	77	459
GUNNISON	43	1	0	4	1	37
HUERFANO	16	0	0	0	5	11
JACKSON	50	0	0	4	1	45
KIOWA	66	0	0	0	1	65
KIT CARSON	14	0	0	0	0	14
LA PLATA	134	0	5	14	46	69
LARIMER	39	0	5	4	14	16
LAS ANIMAS	201	1	6	7	37	150
LINCOLN	370	0	1	2	4	363
LOGAN	44	0	1	1	1	41
MESA	97	0	0	3	14	80
MOFFAT	178	0	0	2	15	161
MONTEZUMA	42	0	0	1	4	37
MONTROSE	2	0	0	0	0	2
MORGAN	30	0	0	2	4	24
PARK	4	0	0	0	0	4
PHILLIPS	275	1	4	6	21	243
PITKIN	1	0	0	0	0	1
PROWERS	6	0	0	0	0	6
RIO BLANCO	187	0	0	0	2	185
RIO GRANDE	2	0	0	0	1	1
ROUTT	29	0	0	0	2	27
SAN MIGUEL	14	0	0	0	0	14
SEDGWICK	33	0	0	1	3	29
WASHINGTON	73	0	2	0	3	68
WELD	4,951	11	230	362	1,072	3,274
YUMA	528	0	9	16	44	459


**Well to Building Setbacks Less Than Two Hundred Feet as of March 1, 2016**

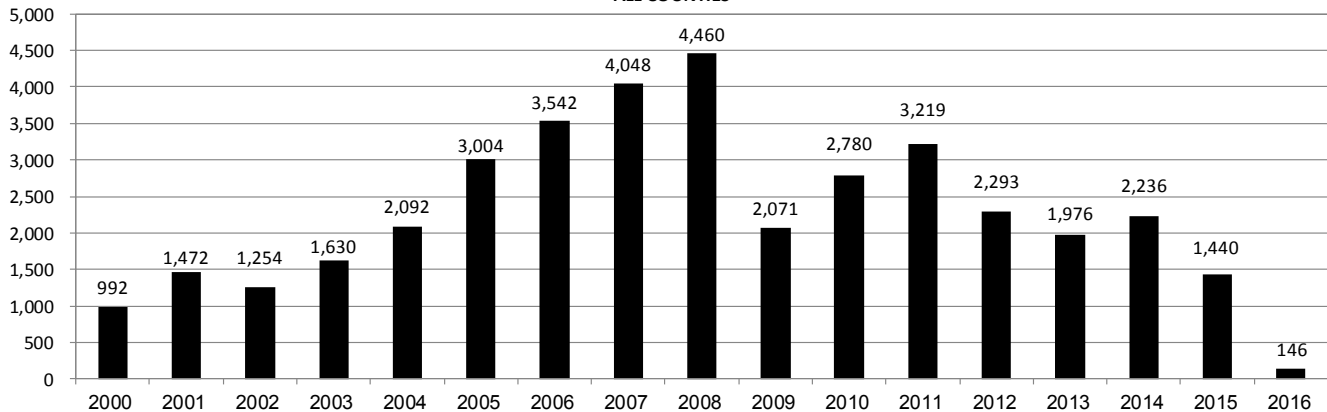
Year	Location Doc Number	County	High Density	New Location	Distance (Feet)	Proximity (Feet)	Building Description
2015	400768804	WELD	No	Yes	46	less 150	Building to be razed
2011	2587822	CHEYENNE	No	No	58	less 150	Water well house
2009	1691798	WELD	No	No	58	less 150	Vehicle garage
2010	400072164	WELD	No	Yes	69	less 150	Abandoned hog shed
2014	400569085	WELD	No	No	78	less 150	Well shed
2014	400600705	WELD	No	No	80	less 150	Livestock shed
2012	400240957	GUNNISON	No	Yes	90	less 150	Equipment shed
2015	400742811	WELD	No	Yes	102	less 150	Building to be razed
2009	1758843	WELD	No	Yes	103	less 150	Building to be razed
2011	1636646	WELD	No	No	122	less 150	Storage shed
2009	400011284	LAS ANIMAS	No	Yes	127	less 150	Operator is owner
2009	1786896	PHILLIPS	No	No	132	less 150	Grain storage
2014	400642113	WELD	No	Yes	142	less 150	Barn
2011	400117702	WELD	No	Yes	143	less 150	Irrigation pump house
2011	400227765	WELD	No	Yes	145	less 150	Storage barn
2014	400558626	LINCOLN	No	No	150	less 150	Gas plant equipment building
2009	1904205	WELD	No	No	154	150 to 350	Livestock enclosure
2012	400243295	WELD	No	Yes	155	150 to 350	Unused storage shed
2015	400862577	GARFIELD	No	No	155	150 to 350	Gravel Pit Scale House
2011	400179419	WELD	No	Yes	157	150 to 350	Existing well / storage building
2010	400054716	WELD	No	No	159	150 to 350	Equipment barn
2011	400188968	WELD	No	Yes	159	150 to 350	Abandoned
2014	400554054	WELD	No	Yes	159	150 to 350	Equipment shed
2014	400559404	WELD	No	Yes	160	151 to 350	Barn
2010	400021477	WELD	No	Yes	162	150 to 350	Goat barn
2009	1758386	WELD	No	Yes	168	150 to 350	Storage shed
2011	1635946	WELD	No	No	169	150 to 350	Storage shed
2013	400447386	WELD	No	No	169	150 to 350	Abandoned turkey barn
2013	400447391	WELD	No	No	169	150 to 350	Abandoned turkey barn
2011	400165164	WELD	No	Yes	178	150 to 350	Residence
2013	400367184	WELD	No	Yes	179	150 to 350	Shed
2011	400188780	WELD	No	Yes	180	150 to 350	Residence
2014	400562498	WELD	No	Yes	181	150 to 350	Garage / storage shed
2010	1697620	WELD	No	No	187	150 to 350	Livestock shed
2009	1758746	WELD	No	No	193	150 to 350	Storage shed
2011	400154431	WELD	No	Yes	198	150 to 350	Turkey barn
2012	400250031	WELD	No	Yes	198	150 to 350	Abandoned guard shack
2009	1774783	WELD	No	No	199	150 to 350	Cement service building
2011	400118102	YUMA	No	Yes	199	150 to 350	Steel barn



## Annual Well Starts by County as of March 1, 2016

County	2000	2001	2002	2003	2004	2005	2006	2007	2008	2009	2010	2011	2012	2013	2014	2015
ADAMS	18	13	4	19	22	24	13	41	14	14	21	1	15	6	29	4
ARAPAHOE					6	1	5	2	1	1	3	9	9	25	21	
ARCHULETA	4	4	2	5	4	10	5	7	29	9	12	10	11		1	7
BACA	19	6	2	1	6	6	2	6	12		5	4	2	1		1
BENT	2				3	2	8	1	1			1	2			
BOULDER				2	5	11	9	14	25	16	13	7	14			
BROOMFIELD			2		1				10		21	11	5			
CHEYENNE	2	1	3	3		9	14	15	14	8	12	11	17	35	19	3
COSTILLA																
CROWLEY																2
DELTA				5	4	6	5	2			9	2	3			
DENVER		2					7	5	4							
DOLORES					2		2	13	6	2		1	5	10	4	
EAGLE														1		
EL PASO											2		5		1	
ELBERT	2						1									3
FREMONT					1	3	2	2	5	3	10	16	9	1	4	1
GARFIELD	190	251	245	417	585	799	1,005	1,304	1,689	765	905	877	495	391	362	172
GUNNISON			1		1	1	9	5	1	4	5	2	4	1	2	2
HUERFANO	25	14	19	3	6	2			2		2		2	1	4	1
JACKSON	24	2	4	10	10		3	3	12	1	8	7		7	7	
JEFFERSON								2								
KIOWA	8	16	2	4	2	1	7	7	2	5	15	14	10	12	3	2
KIT CARSON				1	1	6	2	1	14	3	1	1	3	1	2	
LA PLATA	99	135	118	110	103	104	108	179	199	131	67	54	3	10	36	33
LARIMER	1	1				1		4	8	1	28	2	10	4	1	9
LAS ANIMAS	202	286	205	221	296	384	413	326	222	14	7	78	1		1	
LINCOLN	2	2	1	5	2	2	1	2	18	11	14	21	23	42	43	12
LOGAN	4	6	3	3	2	11	12	12	3	7	3	9	13	4	6	
MESA	2	12	12	13	25	89	156	209	225	14	11	41	4	11	16	76
MOFFAT	18	23	25	28	19	40	60	42	26	18	15	33	25	27	3	6
MONTEZUMA	2	3	5	5	1	7	2	4	22	10	3	8	18	12	8	1
MONTROSE		3		2	1			1	2		1					
MORGAN	9	8	1	7	5	5	3	1	1	2	3	2	3	1	4	1
PARK											2					
PHILLIPS	1			6	10	11	4	35	18	2	42	130	48		9	
PROWERS	2	4	4		5	5	6	3	5	2	3	1				1
RIO BLANCO	51	82	47	83	92	95	107	95	205	118	107	72	53	37	42	17
RIO GRANDE														1		
ROUTT	5	12	1		1	6	3	2		2	1	2	4	2	2	
SAN MIGUEL	6	9	10	19	28	13	20	17	5	1	2	2			2	
SEDGWICK				1	2	1	1	5			3	8	3			
WASHINGTON	15	12	24	29	65	34	23	14	11	2	2	4	1	9	7	2
WELD	237	403	406	522	632	718	931	1,222	1,313	878	1,209	1,672	1,457	1,311	1,556	1,086
YUMA	42	162	108	106	144	597	593	445	336	27	213	106	16	13	39	
<b>TOTAL</b>	<b>992</b>	<b>1,472</b>	<b>1,254</b>	<b>1,630</b>	<b>2,092</b>	<b>3,004</b>	<b>3,542</b>	<b>4,048</b>	<b>4,460</b>	<b>2,071</b>	<b>2,780</b>	<b>3,219</b>	<b>2,293</b>	<b>1,976</b>	<b>2,236</b>	<b>1,440</b>

ALL COUNTIES





## Active Wells by County and Status as of March 1, 2016

COUNTY	Drilling	Domestic	Injecting	Producing	Shut In	Temp Aband	Waiting on Completion	Active Storage	Total Active Wells
ADAMS	13		7	879	46	7	2	12	966
ARAPAHOE		1	2	145	7	9		43	207
ARCHULETA		5	1	105	15	13	6	1	146
BACA			16	116	18	4		55	209
BENT		1		30	6				37
BOULDER				308	2	1			311
BROOMFIELD				96					96
CHEYENNE	1		43	323	15	47	2		431
CROWLEY									0
DELTA				4	12		1		17
DENVER			1	46	2		3		52
DOLORES	2		1	36	3	3			45
EL PASO	1	1				1			3
ELBERT	3			68	2	1			74
FREMONT	4	3		59	8	6	1		81
GARFIELD	195	4	44	10,622	76	100	20	1	11,062
GUNNISON	4		1	33	8		2		48
HUERFANO	1		1	38	2	6	1		49
JACKSON	4		30	111	36				181
JEFFERSON			2	1	1		1	1	6
KIOWA	1		10	104	12	2	2		131
KIT CARSON		1	2	13		2			18
LA PLATA	11	7	28	3,135	94	15	3	29	3,322
LARIMER	1	2	18	199	24	16	1		261
LAS ANIMAS		3	14	2,798	15	102	13	17	2,962
LINCOLN	8	1	8	97	12	7	2		135
LOGAN	9		16	112	41	29	3	10	220
MESA	19	1	6	903	86	14	45	10	1,084
MOFFAT	4		9	485	49	35	4		586
MONTEZUMA		2	6	121	33	14			176
MONTROSE			1			1			2
MORGAN			22	91	81	34		80	308
OURAY		1				1			2
PARK									0
PHILLIPS			2	266	2	1	1		272
PITKIN								10	10
PROWERS				26	4		1		31
RIO BLANCO	25	3	295	2,301	174	90	12	2	2,902
ROUTT		2		33	7	3			45
SAN MIGUEL	1			110	14	5			130
SEDGWICK	2		1	14	3		2		22
WASHINGTON	6		22	402	29	7	3		469
WELD	913	1	51	21,407	265	38	29	3	22,707
YUMA	2	8	21	3,788	41	9	11	1	3,881
Totals	1,230	47	681	49,425	1,245	623	171	275	53,697



# Oil and Gas Staff Report

March 7, 2016

23

Monthly Statistics as of February 1, 2016

Page 1 of 2

YEAR and MONTH	Baker - Hughes Rig Count	Permits										Well Spud Notices	Active Drilling Permits	Active Wells	Public Visits			
		Drilling		Recompletion		Injection		Pits		Locations					Data	Office	Internet	
		Rcvd	Apvd	Rcvd	Apvd	Rcvd	Apvd	Rcvd	Apvd	Rcvd	Authz							
<b>2011 TOTAL</b>		<b>4,709</b>	<b>4,659</b>	<b>325</b>	<b>320</b>	<b>44</b>	<b>32</b>	<b>190</b>	<b>192</b>	<b>2,382</b>	<b>2,267</b>	<b>3,220</b>			<b>187</b>	<b>1,294</b>	<b>1,337,865</b>	
2012 JAN	73	372	258	26	21	3	0	11	5	142	129	243	5,217	46,958	12	106	112,686	
FEB	70	370	382	23	27	7	5	21	9	160	129	230	5,173	47,128	16	114	105,857	
MAR	66	292	347	21	14	2	2	17	24	133	172	292	5,132	47,263	26	138	111,746	
APR	66	410	235	16	24	5	5	9	2	137	106	241	4,785	47,377	12	108	107,627	
MAY	66	491	506	23	16	3	1	6	2	105	131	211	4,885	47,533	20	123	109,802	
JUN	69	326	377	11	19	8	6	5	8	110	89	145	5,136	47,860	11	111	108,849	
JUL	66	237	276	9	14	3	2	5	2	97	103	183	5,152	48,173	13	102	114,195	
AUG	62	313	288	6	9	6	4	23	5	83	97	178	5,031	49,153	11	112	110,908	
SEP	61	252	256	1	5	5	2	4	1	81	77	161	4,960	49,230	11	89	106,114	
OCT	62	326	265	9	3	7	6	2	19	94	82	162	5,009	49,236	8	105	108,833	
NOV	56	271	323	5	8	6	6	2	4	109	97	142	5,000	49,989	10	119	120,586	
DEC	57	322	260	4	8	8	5	9	3	122	81	105	5,081	50,067	9	78	107,240	
<b>2012 TOTAL</b>		<b>3,982</b>	<b>3,773</b>	<b>154</b>	<b>168</b>	<b>63</b>	<b>44</b>	<b>114</b>	<b>84</b>	<b>1,373</b>	<b>1,293</b>	<b>2,293</b>			<b>159</b>	<b>1,305</b>	<b>1,324,443</b>	
2013 JAN	53	538	331	6	0	3	5	6	8	176	124	142	5,060	50,265	9	108	47,406	
FEB	56	260	455	10	5	2	3	4	11	91	141	138	5,250	50,372	7	102	40,649	
MAR	57	344	241	5	9	3	8	15	6	129	84	172	5,093	50,540	9	133	43,019	
APR	61	331	333	6	5	5	5	6	8	146	117	165	4,925	50,687	3	132	46,459	
MAY	61	350	342	8	6	6	6	10	7	106	142	162	5,110	50,810	3	123	45,215	
JUN	62	349	273	2	8	8	8	5	3	114	85	143	5,273	50,909	8	122	41,015	
JUL	68	864	304	11	4	9	2	9	5	218	91	160	5,070	51,091	7	154	45,558	
AUG	69	232	291	6	4	3	2	4	1	35	76	206	5,200	51,255	20	130	44,722	
SEP	69	212	362	9	5	10	9	3	19	56	109	166	5,185	51,407	5	105	41,256	
OCT	72	319	376	5	9	7	5	1	8	67	88	237	4,967	51,598	5	135	45,151	
NOV	69	346	353	4	13	7	4	2	27	67	85	162	5,141	51,711	12	119	38,903	
DEC	64	336	367	2	4	4	6	2	3	63	71	123	5,129	51,737	4	93	32,381	
<b>2013 TOTAL</b>		<b>4,481</b>	<b>4,028</b>	<b>74</b>	<b>72</b>	<b>67</b>	<b>63</b>	<b>67</b>	<b>106</b>	<b>1,268</b>	<b>1,213</b>	<b>1,976</b>			<b>92</b>	<b>1,456</b>	<b>511,734</b>	
2014 JAN	62	278	232	3	2	3	4	14	8	90	43	174	4,926	51,840	1	90	46,150	
FEB	61	284	297	6	4	1	1	3	1	91	94	149	5,051	51,847	12	113	43,408	
MAR	62	367	329	4	6	7	1	6	6	110	88	184	4,997	51,952	16	140	46,620	
APR	63	276	317	2	3	2	5	8	3	89	99	170	4,897	52,060	11	188	45,558	
MAY	65	458	383	2	2	3	1	6	7	83	94	179	4,923	52,202	18	131	42,365	
JUN	67	429	377	3	0	6	7	5	2	134	92	224	4,924	52,337	10	156	42,518	
JUL	69	272	446	2	5	3	11	8	5	97	126	180	4,955	52,431	7	166	45,481	
AUG	73	376	259	4	3	4	4	3	4	111	87	220	5,060	52,582	8	145	42,431	
SEP	76	412	304	2	3	3	1	20	1	116	81	205	5,006	52,694	14	175	43,577	
OCT	76	459	371	3	2	9	2	4	6	93	109	189	4,827	52,785	19	138	46,030	
NOV	73	326	479	5	2	5	4	4	0	54	103	175	5,171	52,947	8	96	39,583	
DEC	69	286	397	1	2	2	7	1	2	45	99	187	5,236	53,054	6	144	37,964	
<b>2014 TOTAL</b>		<b>4,223</b>	<b>4,191</b>	<b>37</b>	<b>34</b>	<b>48</b>	<b>48</b>	<b>82</b>	<b>45</b>	<b>1,113</b>	<b>1,115</b>	<b>2,236</b>			<b>130</b>	<b>1,682</b>	<b>521,685</b>	
2015 JAN	64	349	316	3	1	2	9	3	1	60	43	192	5,060	53,195	17	114	41,502	
FEB	49	324	161	3	2	5	6	9	0	73	28	115	4,750	53,309	4	117	38,245	
MAR	38	246	294	1	6	1	5	7	5	44	70	159	4,983	53,414	6	146	42,513	
APR	37	194	165	3	1	2	5	1	2	46	37	90	4,854	53,456	1	125	39,559	
MAY	39	324	190	1	4	2	6	8	0	41	44	110	4,632	53,535	5	113	unavailable	
JUN	38	327	281	4	1	0	5	2	1	52	49	134	4,726	53,608	5	138	unavailable	
JUL	38	373	250	4	2	2	1	0	0	57	48	118	4,663	53,706	7	145	26,975	
AUG	37	289	300	2	6	3	0	5	5	32	46	121	4,847	53,766	2	109	30,674	
SEP	33	242	312	3	1	1	7	0	3	59	49	100	4,953	53,806	4	146	31,642	
OCT	30	372	223	2	2	3	1	1	0	54	51	108	4,694	53,898	12	119	33,199	
NOV	31	190	254	6	2	4	3	1	0	21	49	115	4,765	53,719	7	105	29,112	
DEC	25	275	242	1	5	3	6	1	0	42	43	76	4,594	53,652	3	112	25,659	
<b>2015 TOTAL</b>		<b>3,505</b>	<b>2,988</b>	<b>33</b>	<b>33</b>	<b>28</b>	<b>54</b>	<b>38</b>	<b>17</b>	<b>581</b>	<b>557</b>	<b>1,438</b>			<b>73</b>	<b>1,489</b>	<b>339,080</b>	
2016 JAN	22	250	126	1	0	3	5	0	0	34	9	70	4,528	53,698	2	118	30,105	
FEB	20	205	227	3	0	3	2			31	39	57	4,599	53,723	8	115	28,611	
<b>2016 TOTAL</b>		<b>455</b>	<b>353</b>	<b>4</b>	<b>0</b>	<b>6</b>	<b>7</b>	<b>0</b>	<b>0</b>	<b>65</b>	<b>48</b>	<b>127</b>			<b>10</b>	<b>233</b>	<b>30,105</b>	

Abbreviation Key: Rcvd = Received, Apvd = Approved, Authz = Authorized



## Monthly Statistics as of February 1, 2016

Page 2 of 2

YEAR and MONTH	Well Oper Change	Operators		Bonds				Hearings			Enforcement			Remediation Projects		Inspections				
		New	Inactive	Release Ind	Release Blnkt	Claim Ind	Claim Blnkt	Apps.	Orders	NOAVs	AOCs	OFVs	Cmplt	Spills	Rcvd	Comp	Wells	Locations		
<b>2011 TOTAL</b>	<b>6,743</b>	<b>33</b>	<b>31</b>	<b>79</b>	<b>44</b>	<b>43</b>	<b>4</b>	<b>4</b>	<b>403</b>	<b>349</b>	<b>230</b>	<b>10</b>	<b>19</b>	<b>247</b>	<b>527</b>	<b>726</b>	<b>536</b>	<b>12,394</b>	<b>-</b>	
<b>2012</b>	<b>JAN</b>	1,052	3	3	7	5	1	1	0	70	72	18	1	-	27	35	68	23	998	970
	FEB	385	6	9	8	5	0	0	0	-	-	10	-	-	24	40	85	36	2,000	1,024
	MAR	379	4	1	7	3	9	0	0	44	38	19	-	-	23	38	63	61	2,202	1,146
	APR	478	4	2	10	3	2	0	0	80	59	11	-	-	19	35	26	99	1,700	929
	MAY	526	3	1	4	0	3	0	0	43	50	14	2	-	23	32	27	122	2,630	1,701
	JUN	1,270	3	4	3	3	4	0	0	-	-	5	-	-	35	39	46	98	1,435	1,091
	JUL	499	5	0	1	4	5	0	0	63	50	15	-	-	16	24	45	33	1,323	1,076
	AUG	301	6	5	2	8	0	1	0	67	54	24	3	2	21	28	127	33	1,904	1,432
	SEP	834	0	4	4	5	2	1	0	-	-	5	-	-	14	13	30	36	1,120	845
	OCT	485	1	2	9	1	0	0	0	30	36	6	1	-	13	44	116	37	1,397	1,017
	NOV	523	6	4	12	8	7	0	0	85	37	16	2	-	10	44	26	44	1,331	829
	DEC	958	6	2	3	1	0	0	0	-	-	14	-	-	19	30	31	19	1,031	610
<b>2012 TOTAL</b>	<b>7,690</b>	<b>47</b>	<b>37</b>	<b>70</b>	<b>46</b>	<b>33</b>	<b>3</b>	<b>0</b>	<b>482</b>	<b>396</b>	<b>157</b>	<b>9</b>	<b>2</b>	<b>244</b>	<b>402</b>	<b>690</b>	<b>641</b>	<b>19,071</b>	<b>12,670</b>	
<b>2013</b>	<b>JAN</b>	653	3	5	12	2	0	0	0	48	75	15	4	-	21	40	31	45	1,622	789
	FEB	289	4	2	6	3	2	0	0	41	35	11	2	-	15	30	42	90	1,044	615
	MAR	354	1	3	2	2	1	0	0	54	67	16	2	-	11	25	65	29	1,968	1,149
	APR	333	7	1	5	2	8	0	0	-	-	21	-	-	16	33	39	37	1,510	910
	MAY	346	2	1	3	0	0	0	0	46	50	22	6	-	13	31	41	60	2,621	1,576
	JUN	1,456	6	2	2	4	5	0	0	91	44	13	2	-	25	40	47	37	1,860	1,102
	JUL	1,009	4	1	2	2	0	0	0	96	70	25	3	-	21	47	50	22	2,298	1,338
	AUG	389	6	4	5	4	2	0	0	-	-	23	-	-	25	57	36	41	2,146	1,033
	SEP	277	4	1	6	1	0	0	0	101	51	7	2	-	16	60	43	51	1,536	703
	OCT	345	6	0	2	2	2	0	0	52	82	4	12	3	12	79	47	60	1,868	1,158
	NOV	442	2	0	2	2	0	0	0	-	-	30	-	-	12	51	31	34	2,401	1,613
	DEC	1,299	4	1	1	2	0	0	0	42	48	50	4	-	14	75	35	35	2,677	1,384
<b>2013 TOTAL</b>	<b>7,192</b>	<b>49</b>	<b>21</b>	<b>48</b>	<b>26</b>	<b>20</b>	<b>0</b>	<b>0</b>	<b>571</b>	<b>522</b>	<b>237</b>	<b>37</b>	<b>3</b>	<b>201</b>	<b>568</b>	<b>507</b>	<b>541</b>	<b>23,551</b>	<b>13,370</b>	
<b>2014</b>	<b>JAN</b>	1,971	6	3	3	2	0	0	0	57	46	25	2	-	8	68	46	28	3,243	1,597
	FEB	2,038	8	2	6	5	0	0	0	-	-	23	-	-	17	59	51	13	2,330	1,282
	MAR	492	2	3	1	5	0	0	0	97	75	29	10	-	22	63	66	31	1,822	1,298
	APR	313	5	2	6	4	1	0	0	74	64	17	8	1	20	57	47	59	2,651	1,715
	MAY	509	5	1	3	3	5	0	0	-	-	12	-	-	13	63	50	42	2,437	1,571
	JUN	1,008	5	2	7	4	1	0	1	95	90	14	6	1	16	74	44	50	3,209	1,717
	JUL	338	2	1	5	3	1	0	0	96	96	11	6	-	12	60	60	59	3,071	1,536
	AUG	452	6	1	2	4	0	0	0	-	-	8	-	-	31	56	32	58	2,788	1,682
	SEP	378	4	1	1	2	0	0	0	73	63	13	7	1	18	65	39	50	2,587	1,616
	OCT	886	8	1	0	2	0	1	0	80	75	12	3	1	13	74	78	36	3,886	1,914
	NOV	487	2	4	8	4	5	0	0	-	-	6	-	-	15	72	27	59	3,156	1,458
	DEC	1,402	1	1	0	2	0	0	0	126	89	9	1	-	58	75	56	17	3,028	1,596
<b>2014 TOTAL</b>	<b>10,274</b>	<b>54</b>	<b>22</b>	<b>42</b>	<b>40</b>	<b>13</b>	<b>1</b>	<b>1</b>	<b>698</b>	<b>598</b>	<b>179</b>	<b>43</b>	<b>4</b>	<b>243</b>	<b>786</b>	<b>596</b>	<b>502</b>	<b>34,208</b>	<b>18,982</b>	
<b>2015</b>	<b>JAN</b>	700	2	3	2	3	0	0	0	76	64	15	2	1	36	64	38	58	2,491	1,246
	FEB	555	5	2	2	3	1	0	0	-	-	10	-	-	22	44	34	64	2,667	1,382
	MAR	178	5	2	5	2	4	2	0	72	72	33	1	1	42	76	59	94	3,469	1,738
	APR	270	7	1	0	5	3	0	0	60	54	19	3	-	21	46	40	61	3,451	1,620
	MAY	436	8	0	0	2	3	0	0	89	54	10	10	2	25	46	56	41	2,869	1,422
	JUN	321	2	1	3	5	4	0	0	-	-	27	-	-	25	41	32	43	3,357	1,707
	JUL	380	3	2	0	5	1	0	0	123	140	5	13	1	32	67	52	28	3,445	1,774
	AUG	210	8	2	0	7	4	0	0	-	-	13	-	-	18	56	24	62	3,692	1,847
	SEP	253	6	5	1	7	4	0	2	112	78	25	11	-	30	41	44	40	2,887	1,528
	OCT	291	4	1	6	1	6	1	0	115	103	6	12	1	32	58	51	33	3,420	1,494
	NOV	66	2	3	5	0	0	0	1	-	-	6	-	-	15	38	47	40	3,348	1,666
	DEC	129	7	1	3	5	1	0	0	91	80	4	5	2	60	46	39	37	3,851	1,765
<b>2015 TOTAL</b>	<b>3,789</b>	<b>59</b>	<b>23</b>	<b>27</b>	<b>45</b>	<b>31</b>	<b>3</b>	<b>3</b>	<b>738</b>	<b>645</b>	<b>173</b>	<b>57</b>	<b>8</b>	<b>358</b>	<b>623</b>	<b>516</b>	<b>601</b>	<b>38,947</b>	<b>19,189</b>	
<b>2016</b>	<b>JAN</b>	56	2	1	0	5	5	0	0	76	66	4	7	1	29	51	44	36	3,183	1,550
	FEB	11	2	1	0	1	1	1	0	0	0	8	0	0	27	41	32	49	3,578	1,684
<b>2016 TOTAL</b>	<b>67</b>	<b>4</b>	<b>2</b>	<b>0</b>	<b>6</b>	<b>6</b>	<b>1</b>	<b>0</b>	<b>76</b>	<b>66</b>	<b>12</b>	<b>7</b>	<b>1</b>	<b>56</b>	<b>92</b>	<b>76</b>	<b>85</b>	<b>6,761</b>	<b>3,234</b>	

Abbreviation Ind = Individual, Blnkt = Blanket, Apps = Application for Hearing, NOAV = Notice of Alleged Violation, AOC = Administrative Order of Consent, OFV = Order Finding Violation, Cmplt = Complaint, Comp = Completed

Note: Five months of spill report filings between January 2014 and December 2015 have been corrected from what was published in the January 26, 2016 staff report.