



COLORADO

**Oil & Gas Conservation
Commission**

Department of Natural Resources

Staff Report

for June 6, 2016

Top Stories

◆ Colorado Supreme Court: Local Control Rulings

On May 2, the Colorado Supreme Court issued two opinions that invalidated a voter-approved ban on the use, storage and disposal of hydraulic fracturing fluids in the City of Longmont and a voter-approved five-year moratorium on the use and storage of hydraulic fracturing fluids in the City of Fort Collins as preempted. In both cases, the court held that regulating hydraulic fracturing is a matter of mixed state and local concern and the ban and moratorium operationally conflicted with the state's regulatory regime.

In both cases, the Supreme Court:

- Stated it was applying “well established” preemption rules;
- Held the Oil and Gas Conservation Act, as a matter of statutory construction, did not expressly or impliedly preempt the ban or moratorium;
- Applied an “operational conflict” test for preemption;
- Held that regulating hydraulic fracturing was a matter of mixed state and local concern, and local prohibitions that render state regulatory schemes “superfluous” would necessarily give rise to an operational conflict; and
- Stated that in “virtually all cases, this [operational conflict] analysis will involve a facial evaluation of the respective statutory and regulatory schemes, not a factual inquiry as to the effect of those schemes ‘on the ground.’”

See *City of Longmont v. Colorado Oil and Gas Association*, 2016 CO 29; *City of Fort Collins v. Colorado Oil and Gas Association*, 2016 CO 28.

◆ Thanks to Departing Commissioners

We wish to thank Chairman Tom Compton and Commissioners Richard Alward and DeAnn Craig for their service to the State of Colorado. Over the course of the past eight to nine years, each has dedicated hundreds of hours to the business of regulating oil and gas exploration and production in our state. As a result of their expertise, guidance, and thoughtful participation, the Commission addressed technological innovations and citizen concerns while continuing to uphold the COGCC's mission of fostering the responsible development of Colorado's oil and gas natural resources.

In addition, we have directly benefitted from Chairman Compton's leadership. He, as a true statesman, chaired the Commission with a thoughtful tone as he received and acknowledged public testimony, listened steadfastly to staff presentations, and guided a robust deliberation by the Commission before it reached a decision. The terms for these individuals expire on July 1, 2016, and we wish them all the best!

◆ Colorado Supreme Court: Severance Tax Deduction Ruling

On April 25, the Colorado Supreme Court issued a decision that significantly broadened the deductions oil and gas companies can claim against their severance tax liability. As a result of the decision, BP and other oil and gas operators are entitled to a refund of severance tax paid in previous years that resulted from expenses they were not allowed to deduct. At this time, the decision and refunds should not impact the COGCC's budget.



A few unknown factors make precise estimates of refund amounts and future severance tax revenue difficult to predict. The Colorado Department of Revenue estimated the state will likely refund \$100 million and future severance tax revenues will likely decline. The General Assembly passed a bill (SB 16-218) in the last days of the 2016 session to finance refunds from the General Fund reserve. The bill also restricts the following unspent, unobligated severance tax revenues and prohibits expending the revenues until subsequent vote by JBC (presumably in or after January, 2017):

- Severance Tax Perpetual Base Account: \$19.1 million;
- Severance Tax Operational Account: \$10.0 million; and
- DOLA's Local Government Severance Tax Fund: \$48.3 million.

See *BP America Production Co. v. Colorado Department of Revenue*, 2016 CO 23.

◆ IOGCC Meets in Denver

Nearly 200 individuals from U.S. states and Canadian provinces attended the Interstate Oil and Gas Compact Commission's (IOGCC) second annual business meeting in Denver on May 15, 16, and 17. COGCC Chair Tom Compton provided introductory remarks to attendees on the first day, and Director Matt Lepore led the meeting of the Council of State Regulatory and Provincial Officials. In 1935, the State of Colorado and eight other oil-producing states formed IOGCC for the purpose of preserving oil and gas resources. This group provides state and provincial oil and gas regulators with an outlet to address current issues and challenges while

also discussing production reports and legislative matters.

During the second day, Director Lepore chaired the Legal and Regulatory Affairs Committee. This committee meeting included a presentation by Jane Stanczyk, COGCC Permitting and Technical Services Manager, who shared how Colorado recently reviewed financial assurance compliance and collected more than \$4 million in required excess inactive well bonding from operators. Todd Hartman, Colorado's Dpt. of Natural Resources Communications Director, addressed the Public Outreach Committee, providing lessons learned from the September 2013 flooding that impacted oil and gas operations along the South Platte River.

Notably, the first gathering of the Natural Gas Storage workgroup occurred during the business meeting. The Natural Gas Storage workgroup is a partnership formed between the IOGCC and the Ground Water Protection Council (GWPC) to discuss aging infrastructure, changing technology, and challenges implicit in regulating natural gas storage facilities. East Engineering Supervisor Diana Burn participated in the workgroup as COGCC's representative.

Of equal interest, the IOGCC's State Oil and Gas Field Inspector Forum met for the second consecutive year. Mike Leonard, the COGCC's Quality Assurance Supervisor, along with Dan Jarvis, Utah's Field Operations Manager, coordinated an agenda that covered topics from mechanical integrity testing to new drilling technology.

Public Outreach

◆ Local Government Liaison (LGL) Program

The COGCC established the Local Government Designee (LGD) program in 1992 as a mechanism for local governments to more easily and formally collaborate with COGCC regarding the regulation of oil and gas in Colorado. Participation in the valuable and unique LGD program is voluntary, but the level of the

program's use has grown substantially since its inception. The program involves 54 counties, 101 municipalities, and 11 special districts. Submittal to the COGCC of a completed Form 29 is required to participate. COGCC Form 29 is available online at:

http://cogcc.state.co.us/documents/reg/Forms/PDF_Forms/form29.pdf



Participating LGDs receive e-mail notification of various oil and gas activities throughout the life cycle of a well or an oil and gas location. Notifications include but are not limited to permit application comment period initiation, permit issuance, and planned hydraulic fracturing. Notices are based on the geographic boundaries as displayed on COGCC "Maps" link, and on contact information (e-mail address) from the Form 29 submitted by the jurisdiction. LGDs are reminded to update boundary and contact information when changes occur. LGDs can also designate others in the local government to receive LGD e-mail notifications.

The Spring 2016 LGD Newsletter was distributed to LGDs and others on May 5. Topics included:

- Recent COGCC Rulemaking (Governor's Task Force Rulemaking)
- Colorado Department of Public Health and Environment (CDPHE) Oil and Gas Health Information and Response Program
- Regional Oil & Gas Public Meetings
- 2016 Local Government Training Opportunities.

Copies of this and past newsletters are available on the COGCC website at

<http://cogcc.state.co.us/gov.html#/local>

If you did not receive a copy of the newsletter via email, and would like to be added to the distribution list, please send an email to either Nancy (nancy.prince@state.co.us) or Marc (marc.morton@state.co.us).

Topic specific training is being developed to provide LGDs with information on topics related to the LGD role. We expect to be able to offer this material either online or in person. Please contact Marc or Nancy if you would like to schedule a time for training with your group, or have a specific training request topic.

➤ **Outreach by Director and Other Staff**

- Between March and May of this year, Engineering Manager Stuart Ellsworth and Engineering Integrity Group Supervisor Mark Schlagenhauf participated in conference calls

with STRONGER (State Review of Oil and Natural Gas Environmental Regulations). The group is working on developing guidelines for gathering line regulation. STRONGER was formed in 1999 to reinvigorate and carry forward the state review process begun cooperatively in 1988 by the U.S. Environmental Protection Agency and the Interstate Oil and Gas Compact Commission.

STRONGER is a 501(c)(3) multi-stakeholder educational organization whose purpose is to assist states in documenting the environmental regulations associated with the exploration, development and production of crude oil and natural gas.

- On April 20, Director Matt Lepore participated in a panel discussion, "Navigating Oil and Gas Development in Urban Settings," at the Garfield County Energy and Environment Symposium.
- On April 21, Hearings and Regulatory Affairs Manager Julie Murphy addressed the Western States Land Commissioners Association Royalty Working Group Conference, providing the group with a summary of the COGCC's current regulatory and legislative issues.
- On May 5, West Region Engineering Supervisor Dave Andrews presented a talk entitled "Report Summary: Casing and Cement Standards for Geologic Isolation Piceance Basin Bradenhead Monitoring Area and Nearby Fields" at the monthly West Slope Colorado Oil and Gas Association (COGA) Meeting in Parachute.
- On May 9, Environmental Protection Specialist Peter Gintautas gave an information briefing to the Colorado Water Quality Control Commission (WQCC) regarding COGCC Special Project #2130. This project investigated occurrences of tert-butyl alcohol in groundwaters of the Raton Basin, and its final report can be downloaded from the Raton Basin section of the COGCC library web pages.
- On May 11 and 12, Southwest Region Engineer Mark Weems presented to the biennial Four Corners Oil and Gas Conference in Farmington, New Mexico. The conference aims to provide information on emerging oil and gas technology and notable changes to oil and gas regulations.



Mark's talk gave details of the COGCC's LGD program and its most recent newsletter, rules addressing venting and flaring of natural gas, and the new COGCC website.

- On May 12, 2016, Environmental Manager Greg Deranleau and Environmental Protection Specialist Rick Allison presented a status update regarding the Sand Creek Monitoring Well Investigation (Remediation Project #9445) to the Colorado Water Watch (CWW) Steering Committee. The Sand Creek Monitoring Well Investigation is an investigation into the source of stray thermogenic gas discovered when the CWW installed the monitoring well in November 2015. No domestic water wells have been impacted in the vicinity of the monitoring well, and the investigation will continue to focus on two potential production wells as the source. There will also be a plan for future monitoring or disposition of the Sand Creek Monitoring Well.
- On May 19, Director Lepore spoke at the American Petroleum Institute's National Meeting. His talk was titled, "Oil and Gas in Colorado: Past, Present, and Future (A Regulator's Perspective)."

➤ **Outreach by LGLs**

- On April 28, Marc Morton staffed a booth at a career fair hosted by the Leadville Lions Club and held at Leadville/Lake County High School. Marc provided interested students with information regarding earth sciences and environmental protection careers in both government and private organizations.
- On May 4, Nancy Prince attended the initial meeting of the City of Aurora Oil and Gas Advisory Committee. Aurora's City Council

formed the advisory committee after carefully deliberating on how to best accept stakeholder input into land use decisions regarding proposed oil and gas activities. The purpose of the Committee is "to assist City Council in promoting the efficient and equitable development of oil and gas while protecting the city's natural resources and local quality of life."

To include a range of key stakeholders on the advisory committee, the Council selected three citizens, five surface property owners, and three representatives from the oil and gas industry as voting members. City of Aurora staff and Nancy Prince are ad-hoc resource members of the advisory committee.

- On May 5, Nancy Prince met with Commerce City staff to answer questions about COGCC rules.
- On May 5, Marc Morton traveled to Grand Junction and attended the Mesa County Board of County Commissioners and Land / Resource Managers quarterly meeting.
- On May 5, Marc Morton traveled to Rifle and attended the monthly Garfield County Energy Advisory Board (EAB) meeting.
- On May 19, Marc Morton provided a written COGCC update to the Northern San Juan Basin Stakeholders meeting in Bayfield, organized by staff from the San Juan National Forest and BLM.
- On June 2, Marc Morton traveled to Rifle and attended the monthly Garfield County EAB meeting.

Regional Activities

➤ **Northwest Colorado**

◆ **Northwest Colorado Oil and Gas Forum**

Remaining Northwest Colorado Oil and Gas Forum (NWF) meetings in 2016 are scheduled for August

4 and December 1. The August 4 meeting will be held at the Ute Theater in Rifle (132 E. 4th Street) from 9:00 a.m. to noon, and the December 1 meeting will be held in Rifle at the Colorado Mountain College in Clough Auditorium (3695 Airport Road).



NWF meeting agendas will be posted to the website approximately two to three weeks prior to each meeting, and emailed to those on the email distribution list. NWF meetings are open to the public, and a public comment period is held as part of each meeting.

Past presentations (dating back to 2006) are available on the COGCC website under the Library tab, then under the Local Public Forum tab, and finally under the Northwest Colorado Oil and Gas Forum Presentations link, or via the following website address:

<http://cogcc.state.co.us/library.html#/forums>

All parties wishing to be placed on the next meeting agenda or added to the distribution list for announcements should contact Marc Morton at 303-894-2100, ext. 5132 (direct), 720-415-4959 (mobile), or by email:

marc.morton@state.co.us

◆ Project Rulison

The email for Project Rulison submittals is

DNR_rulison.submittal@state.co.us

◆ Project Rio Blanco

The email for Project Rio Blanco submittals is

DNR_rioblanco.submittal@state.co.us

➤ *Southwest Colorado*

◆ Fruitland Formation Outcrop Mitigation and Monitoring Projects

South Fork Texas Creek Mitigation Site - La Plata County. Regularly scheduled operations and

maintenance continue at the South Fork Texas Creek (SFTC) site, performed by LTE, the COGCC's contractor. Since May 2009, the system has collected 17,215 Mcf of methane and generated 254,906 kWh of surplus electricity.

The results of the 2015 Fruitland outcrop monitoring efforts were presented at the First Quarter GORT Meeting by LTE; the 2015 Fruitland Outcrop Monitoring Report has been posted in the COGCC website library under the 3M project in the San Juan Basin at the following link:

http://cogccintranet/documents/library/AreaReports/SanJuanBasin/3m_project/2015%20FRUITLAND%20OUTCROP%20MONITORING%20REPORT_La_Plata.pdf

◆ GORT Meetings

Remaining GORT meetings in 2016 are scheduled for July 28 and October 20. All meetings will be held in Durango at the Durango Public Library (1900 E. 3rd Avenue in Durango) from 8:30 a.m. to 11:30 a.m. GORT meeting agendas will be posted to the website approximately two to three weeks prior to each meeting, and emailed to those on the email distribution list. GORT meetings are open to the public, and a public comment period is held as part of each meeting.

All parties wishing to be placed on the next meeting agenda or added to the distribution list for announcements should contact Marc Morton at 303-894-2100, ext. 5132 (direct), 720-415-4959 (mobile), or by email:

marc.morton@state.co.us

Variances

◆ Murfin Drilling Company, Inc.

Murfin Drilling Company has been granted a variance at the Lansing Sand Unit 401 Well (05-009-06515) from part of Rule 1004.a. in order to leave the lease road in place for use by the

surface owner for his ranching operations. The remainder of the location, which is stable and without noxious weeds, is being reclaimed.



◆ **Pioneer Natural Resources USA, Inc.**

Pioneer Natural Resources USA, Inc. was granted a variance from certain aspects of final reclamation at the Lorencito 1-32-34-66 well location (05-071-07113). The variance request was to not re-grade or re-contour the access road and well pad in place, and to leave gravel on the well pad. Pioneer has entered into an agreement with the surface owner for ongoing reclamation and has demonstrated that this variance from final reclamation will not impact public health, public safety, public welfare, the environment, or wildlife resources.

The access road and the location are stabilized with vegetation and gravel and storm water controls in place. There were no noxious weeds observed in the last inspection.

◆ **Synergy Resources Corporation**

Synergy Resources Corporation has been granted a variance from interim reclamation Rule 1003.b. for the SRC-Wideman location. The site has eight wells that have been drilled but not completed. Completion of the wells is pending due to (1) a spacing/pooling issue with the COGCC and (2) a civil lawsuit. The variance was approved with several conditions of approval. First, the deadline for interim reclamation has been extended for one year and if aforementioned issues are not resolved, then interim reclamation shall occur or the operator will submit an alternative compliance plan. Second, the site will be maintained in good condition including site stabilization, stormwater and good housekeeping. Third, the operator will provide updates to the COGCC on the status of litigation.

◆ **Chevron USA, Inc.**
BP America Production Company
ARP Production Company, LLC

Director Lepore approved requests by Chevron USA, Inc. (Chevron), BP America Production Company (BP), and ARP Production Company, LLC (ARP) for variances to certain parts of Rule 1101.e.(1). This rule requires pressure testing at installation and on an annual basis to maximum anticipated operating pressure.

The Chevron variances apply to Chevron's Rangely Weber Sand Unit production area Facility Number 443642, Chevron's Skinner Ridge production area Facility number 444523, and to Chevron's Wilson Creek production area Facility Number 444524. Rangely Weber Sand Unit is undergoing enhanced recovery by water and gas injection, Skinner Ridge is a gas field, and Wilson Creek is a waterflood. In its variance requests, Chevron documents an equivalent or better system in place that complies with the intent of the rule to ensure flowline integrity and minimize spills. Chevron presented to the COGCC about the three variances.

The BP variance applies to BP's San Juan basin coalbed methane operations Facility Number 444174. In the request, BP documents an equivalent or better system in place that complies with the intent of the rule to ensure flow-line integrity and minimize spills. These coalbed methane operations extract natural gas and produced water but no crude oil.

The ARP variance applies to ARP's Purgatoire River coalbed methane operations Facility Number 444174 in Las Animas county. In the request, ARP documents an equivalent or better system in place that complies with the intent of the rule to ensure flow-line integrity and minimize spills. These coalbed methane operations produce natural gas and produced water but no crude oil.

Operators receiving variances must submit annual reports to COGCC staff on the effectiveness of their systems. Each variance is for a period of one year but can be extended up to four additional years at the Director's discretion.

◆ **Alfred Ward and Son**

On May 27, the Director granted a Rule 502.b. variance to Alfred Ward and Son to construct and operate a workover pit at the Pierce-63S56W/9NESW Location without an approved Form 2A Oil and Gas Location Assessment. The variance provides relief from the requirement of Rule 303.b. to submit and secure an approved Form 2A prior to construction of a workover pit on an existing Oil and Gas Location. The



operator submitted a variance request that would expedite the permit process in order to conduct well maintenance in a timely manner.

To ensure protection of public health and safety in lieu of the Form 2A Oil and Gas Location Assessment, this variance includes timing

requirements for closure of the pit in compliance with COGCC 900 Series Rules, a detailed review of potential sensitive environmental receptors via the Form 15 review, and a requirement that the pit will be lined in compliance with COGCC Rule 904.a(3).

Admin / Organization / Other

A COGCC organizational chart can be found on pages 11-14. For contact information, please go to our homepage, find the “About Us” menu, and select “Contact Us.”

◆ Plugging and Reclaiming Orphaned Wells (PROW) - Project Updates

The **Think Oil Bond Vaughn #1 Plug and Abandon (PA) Project** is located in Moffat County about two miles southwest of the Town of Craig. This well was drilled in 1950 to a total depth (TD) of 10,003 feet through the Weber sandstone and Morgan Formation. The well was later plugged in 1989, but was re-entered in 1992 and drilled to a depth of 3,025 feet.

The operator then directionally drilled the well to a true vertical depth (TVD) of 7,223 feet and a measured total depth (MTD) of 7,264 feet. The well was completed in the Niobrara Formation. Because of mechanical problems and sub-economic production, the well was plugged in 1997. Various well site inspections by the COGCC found non-compliance with the Rules. An Order Finding Violation was issued and resulted in the COGCC claiming the bond for this well (Order 1V-458). An inspection in 2015 determined that gas was leaking from the well casing.

Plugging work commenced during the second half of March, with an estimated final cost of \$73,143, or \$21,190 higher than the awarded bid price. The onsite bid meeting was conducted in January when the site was covered in snow. After thawing, it was discovered in March that the access road was inadequate and needed additional road base to allow heavy equipment to get in and out. Also, the actual wellbore condition differed from what was reported, and

additional work was required. The well has been plugged, but the final field work is contingent on the contractor addressing some residual leaking from the wellbore. The latest report is that the small leak has stopped and is likely due to a small volume of trapped gas that has vented to depletion.

The **Think Oil Bond Silver #1 Plug and Abandon (PA) Project** is located in Moffat County approximately one mile due west of the Town of Craig. This well was drilled in 1988 to a total depth (TD) of 8,280 feet and completed in the Niobrara Formation. Three sidetracks in the same formation were drilled off the original wellbore in 1991, resulting in the abandonment of the original wellbore and the first two sidetracks.

The principal owner of the well died, and the COGCC subsequently claimed the \$5,029 bond in 2014 (Order 1V-458). An onsite mandatory pre-bid meeting was conducted on May 5, and bids are due May 20.

The **Midfields State #1 Plug and Abandon (PA) Project** is located in Yuma County about 12 miles south of the Town of Wray. This well was drilled to an approximate depth of 3,650 feet in 1919. In 2009, an onsite inspection found venting gas and rolling water in the well. The well was excavated to a depth of six feet, and no casing was found.

The limited available records indicate a 16 inch diameter surface bore. For safety purposes, panels were erected around the well, and the well was left open to the atmosphere to prevent shallow ground water contamination.



A mandatory pre-bid meeting was conducted onsite on April 14. Bids have since been submitted, and the winning bid came in at \$21,491, or \$28,759 less than the engineering estimate of \$50,250. Work is scheduled for completion between May 20 and June 10.

The **Wheeler #2 Plug and Abandon (PA) Project** is located approximately 14 miles southwest of the Town of Durango in La Plata County. The well was drilled in 1969 and then temporarily abandoned as it waited on a gas contract and pipeline sales hookup. The COGCC recently found that this well still existed. Plans are to plug this well during the last week of May of this year. The engineer's estimate to PA the well \$48,970, and the winning bid came in at \$27,747.

The **Dolphin BOND Mulvihill #15-32D Reclamation (RECL) Project** is located in Garfield County about 1.6 miles northeast of the City of Rifle. This well was PA'd in 2012, but the site must now be reclaimed. At this time, the estimated cost for reclamation is \$25,850. The dirt work was completed in early May. Revegetation will commence on May 30 and the project will be concluded by June 3.

The **Redwine Bond South Nucla Unit #1-32 Environmental (ENV) Pit Closure Project** is located in Montrose County about 28 miles southwest of the City of Montrose. The well was PA'd in May 2015 and is now ready for the closure of the drilling mud reserve pit. A contractor has been selected, and a purchase order in the amount of \$24,126 has been issued. The field work, which began during the week of March 28, determined that additional excavation and disposal of oil contaminated soil would be required. This step necessitated an additional purchase order in the amount of \$25,000. The pit is now closed, and the project came in at a total cost of \$49,126.

The **Redwine Bond South Nucla Unit #1-32 Reclamation (RECL) Project** is a follow up to the pit closure project and will involve the entire well site. The site is a cut and fill on a steep slope in the mountains. The reserve mud pit is now closed. Total site reclamation has commenced and is estimated to be completed by June 30th. The updated cost to do this work is

estimated to be \$65,834. Work will be done in two phases: dirt recontouring in phase one, then topsoil replacement followed immediately with re-seeding in phase two. The project's anticipated completion date is June 30.

The **Timpe #1 Reclamation (RECL) Project** is located approximately 13 miles southeast of Ft. Morgan in Morgan County. This well was drilled in 1974 and was plugged as a dry hole shortly thereafter. A field inspection in 2006 and again in 2015 discovered the presence of cement pads and scrap metal debris on the location. For this project, the cement pads will be broken apart and removed, and the metal scrap debris will be removed. The disturbed areas will then be reclaimed to achieve compliance with COGCC Rule 1004 - Final Reclamation Requirements. The work has an estimated cost of \$15,000.

The **Tatonka BOND Culverwell #10-23-07-94 Reclamation (RECL) Project** is located approximately 18 miles west of Craig in Moffat County. Order 1V-383 authorized the COGCC to claim all surety properly, PA two conductor casings set in place, and reclaim the well site. This work is scheduled to be completed by mid June. This work will be in two phases, one for the dirt work and the other for revegetation. The estimated cost for both work phases is \$25,850.

The **Rancher BOND Retta J #1 Reclamation (RECL) Project** is located in Larimer County close to the City of Loveland. The well is located on the site of the Johnston Landfill, which closed its business operations in 1982. The well was PA'd by the operator on April 25, 2012, but the operator failed to implement adequate storm water BMPs and reclaim the well site. The complicated site includes the landfill component, and the COGCC and CDPHE are working together on its closure. The COGCC claimed the bond through Order 1V-526, and the re-design work and soil sampling for the reclamation is estimated to cost \$24,473. The work at the site is underway and will be completed by June 30. After this project concludes, followup work will be required to maintain the site.

The **Swanson-Peterson #1** is an orphan well site near Ridgway that was PA'd by the COGCC in November 2015. Later, surface disturbance occurred at the well site and along the surface owner's access road. The disturbance at the well site will need to be reclaimed according to the COGCC Rules. The disturbance along the surface owner's access road may need minor repairs. The project's estimated cost is \$5,000.

Page 15 contains a spreadsheet listing PRAW projects that are either scheduled, in process, or completed as of May 24, 2016.

◆ Colorado Oil and Gas Information System (COGIS) Projects, Updates and Changes

Electronic Form (eForm) Submissions

The COGCC uses 41 types of forms to authorize oil and gas operations, inspect and monitor ongoing operations, and receive reports of operations. Of those 41 forms, 20 are currently available for electronic submittal through the eForms system.

The development team continues to work on the eForm conversion of existing forms. Currently, four forms are in various stages of development: Forms 14, 14A, 27, and the Warning Letter. In addition, the development team updates eForms with improvements requested by Staff and as required by rule revisions.

To date in 2016, 94 percent of the forms available in eForms were submitted electronically by industry. There are 688 operator users of eForms and 2,794 individual users. For any operator not currently enrolled in eForms, instructions for starting the process can be found on the COGCC website at:

<http://cogcc.state.co.us/Announcements/COUAINformation.pdf>

Form 27 eForm Development

The COGCC's Site Investigation and Remediation Workplan (Form 27) is currently being upgraded. The Governor's Office of Information Technology (OIT) has completed development of the eForm 27, and COGCC Staff have completed internal

testing. Further testing by a select group of operators has begun and feedback is being received and incorporated into the final product.

Applications and Location Assessments

The public can make comments on all submitted Drilling Permit Applications (Form 2s) and Location Assessments (Form 2As) through the eForm system. Simply go to the COGCC website and click on the menu option "Permits" or

<http://cogcc.state.co.us/permits.html#/permits>

On the "Permits Search" page, three search options are available. The first option, "All Pending Permit Applications," is used for public comments. When the results are displayed for "Pending Applications," a user can click on the document number hyperlink in the "Status" column, which logs him or her to the eForms application. Once the page is displayed with the selected document, the user can select the Comment button to make a comment on that particular form.

Data Access

The COGCC's database is a comprehensive repository of Colorado's oil and gas data. The information in the database is available to the public through interactive search tools and a variety of file downloads on the website.

Users of this data come from many different sectors of the community, including academia, oil and gas operators, environmental groups, government agencies, and the media. The number of these users and the variety of data requested are steadily increasing. Staff continues to publish additional data file downloads at:

<http://cogcc.state.co.us/data2.html#/downloads>

**Current Data File Downloads**

Complaints
Field Operations
GIS Shapefiles (12 files)
Mechanical Integrity Tests
Notices of Alleged Violation
Production Data (1999 - present)
Spacing Orders
Spills and Releases
Water Well Data

Future Data File Downloads

Enforcement Orders (OFVs and AOCs)
Underground Injection Control (UIC) Data

◆ July 2016 Hearing Docket

The docket for the July 2016 hearing will be available shortly after the June hearing. Hearing dockets are available on our website by clicking on “Regulation” in the menu and then “Hearings”:

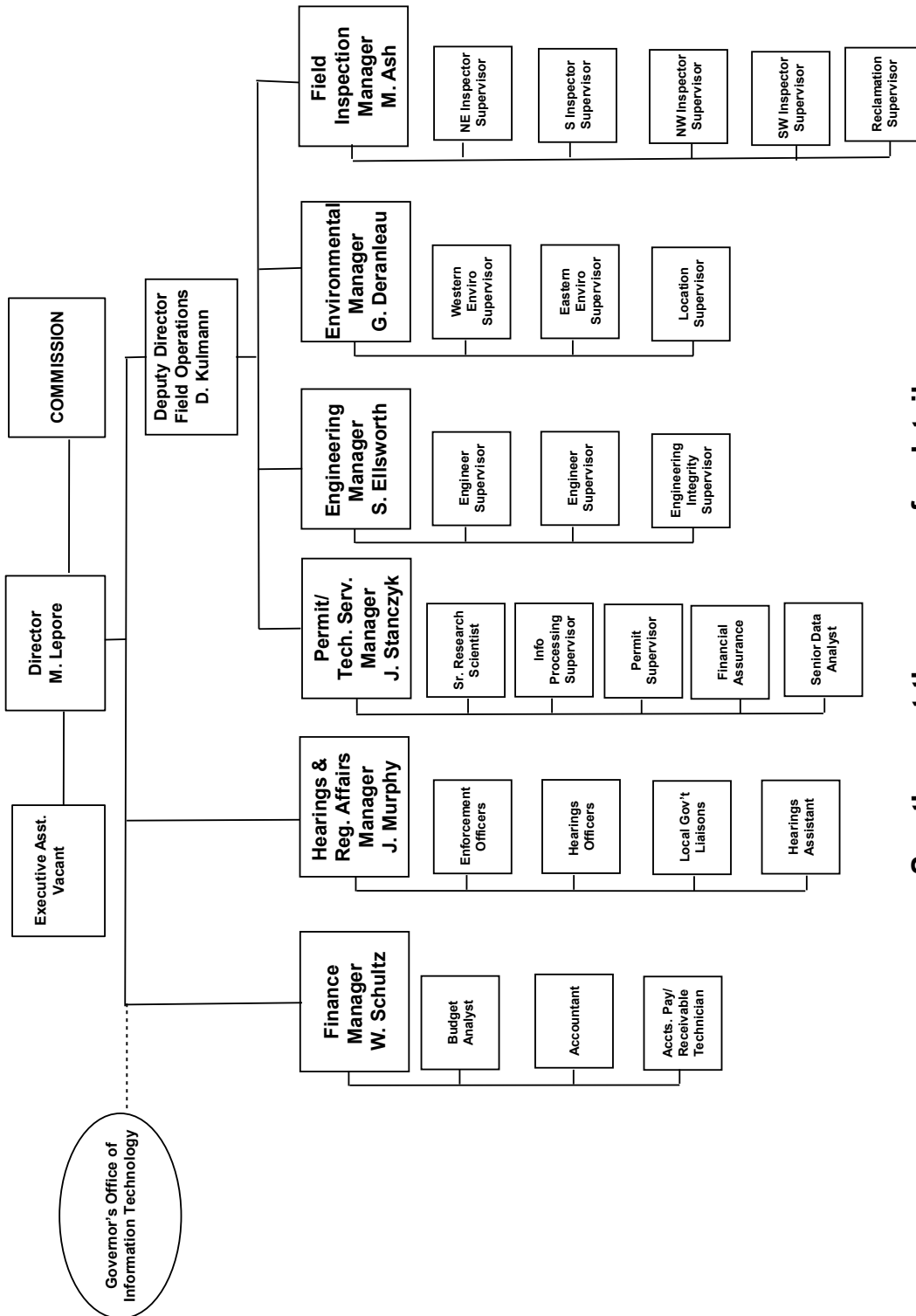
<http://cogcc.state.co.us/reg.html#/hearings>

Links to the notices and hearing applications are available from the Docket Number and Applicant, respectively, by clicking the June Gen_Docket link. To sign up for email notification of hearing notices and applications, please see the announcement and instructions on the homepage of the COGCC website.



Organizational Charts and Statistics

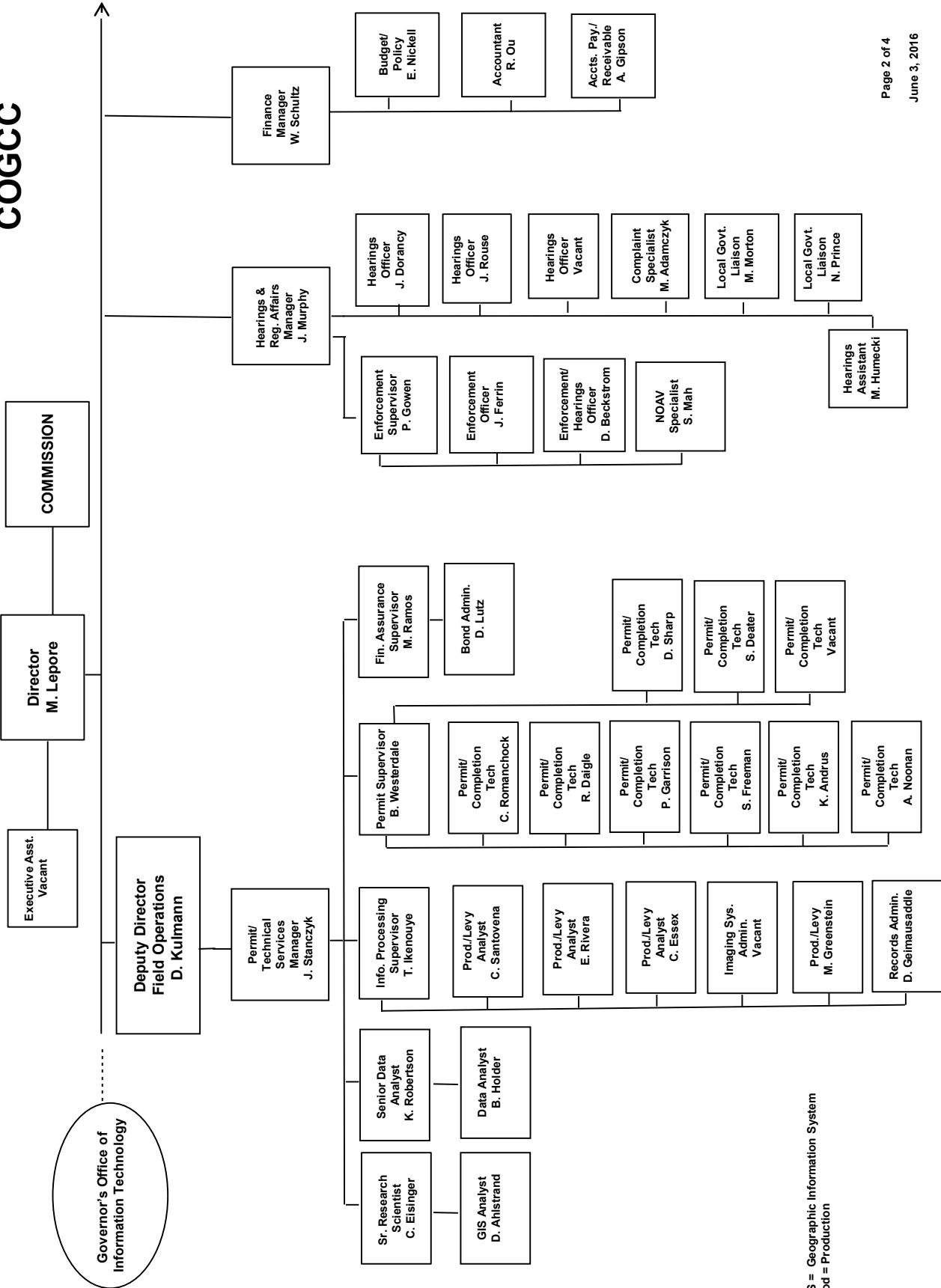
COLORADO OIL & GAS CONSERVATION COMMISSION



See the next three pages for details



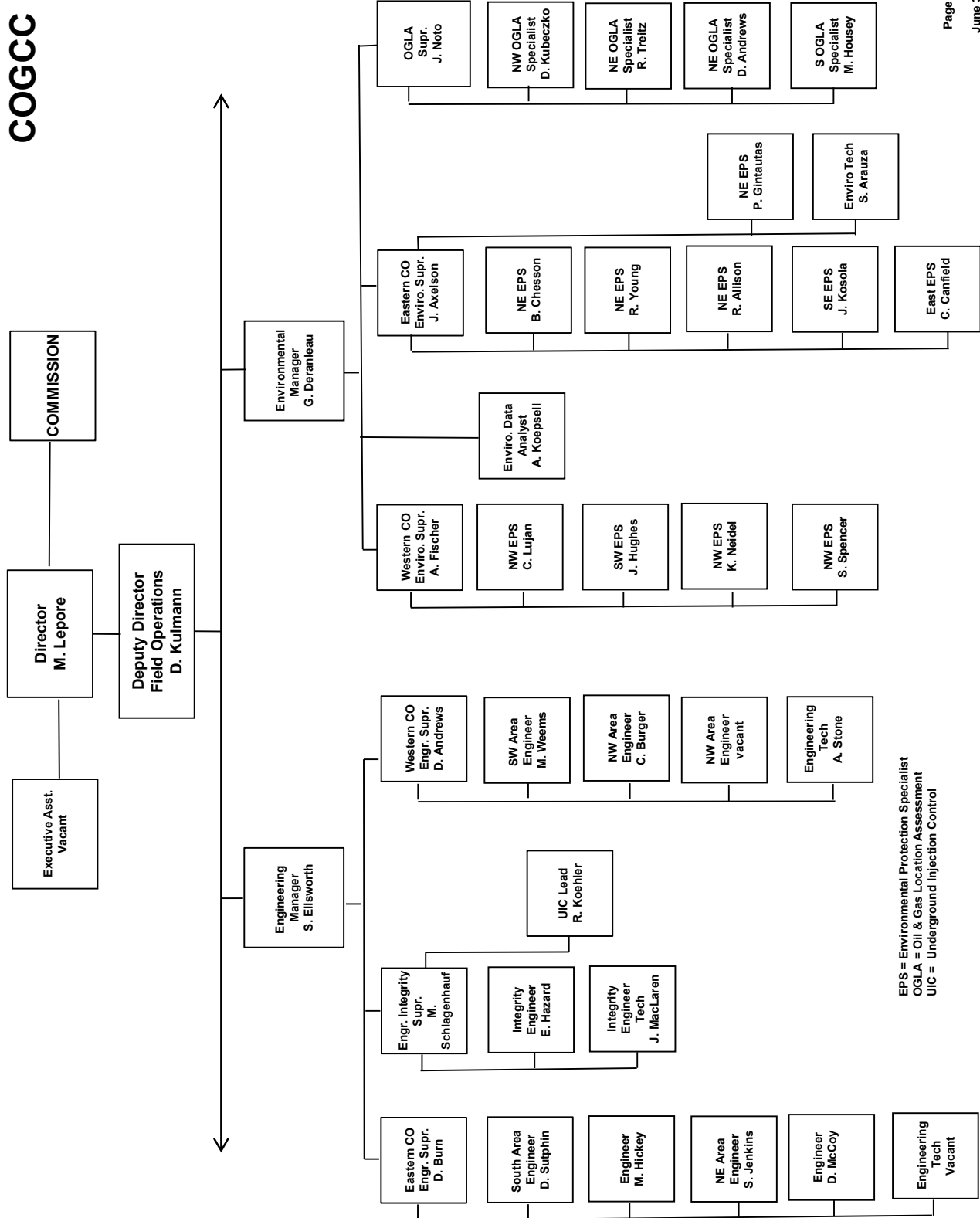
COGCC



GIS = Geographic Information System
Prod = Production



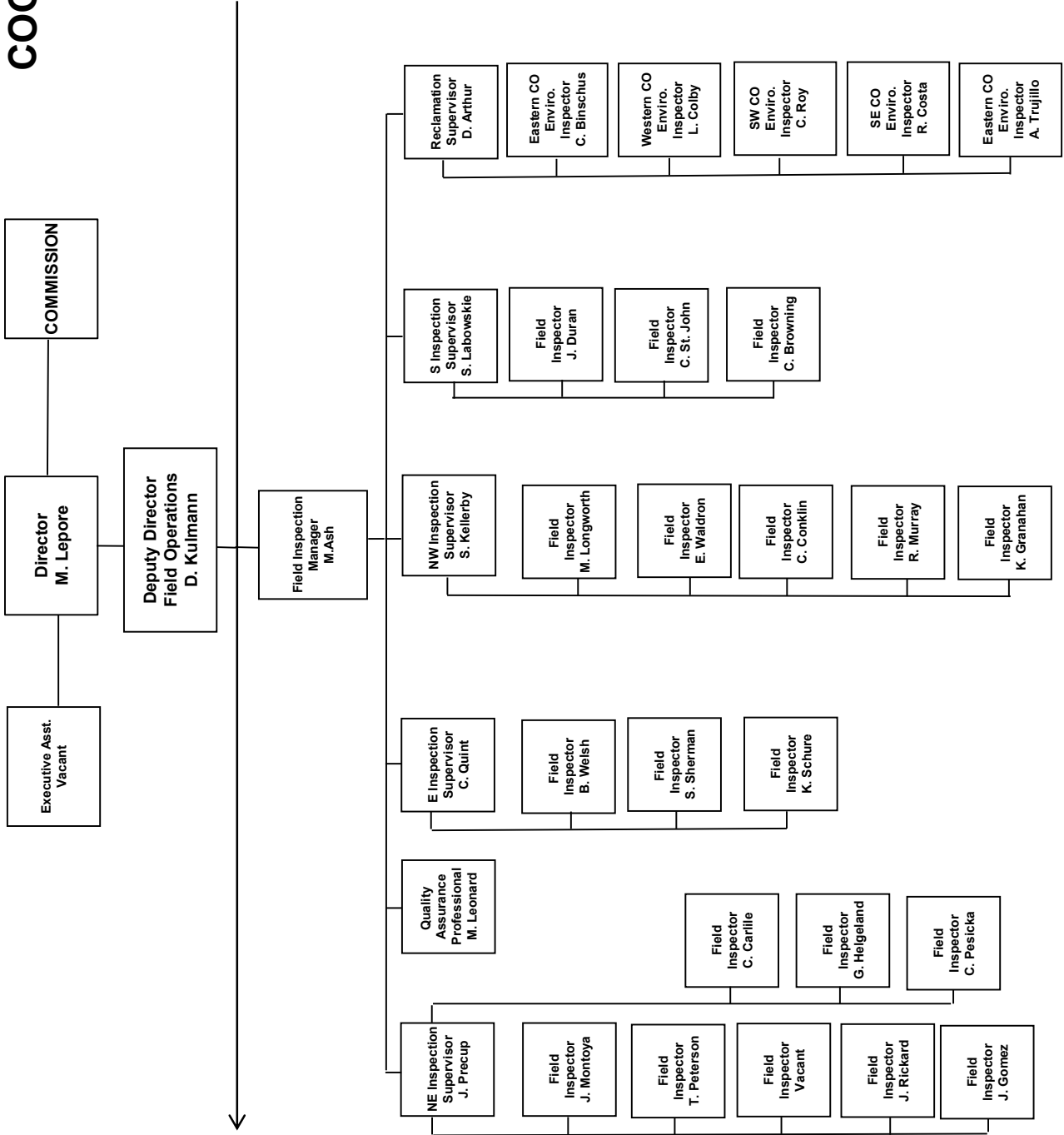
COGCC



EPS = Environmental Protection Specialist
 OGLA = Oil & Gas Location Assessment
 UIC = Underground Injection Control



COGCC





Oil and Gas Staff Report

June 6, 2016

PLUGGING AND RECLAIMING ORPHANED WELLS (PROW) AND LOCATIONS FISCAL YEAR 2015-16

County	Type	Project Name	Project No.	ESTIMATED TOTAL PROJECT COST			PLANNED FY 2015-16 YTD EXPENDITURES			Description
				Bond	PRAW	EMGY	Totals	Bond	PRAW	
Moffat	PA	Think Oil Bond Silver et al #1	2015-11	\$ 5,029	\$ 65,871	\$ 70,900				Drilled in 1988 to a TD=8280; completed in the Niobrara. Three sidetracks were drilled in 1991. Principal deceased. Bond claimed 2014.
Morgan	RECL	Time #1	2008-27	\$ 15,000	\$ 15,000	\$ 15,000				This well was PA in 1973. Site needs to be reclaimed.
Ouray	RECL	Ridgway Swanson-Peterson #1	2012-28	\$ 5,500	\$ 5,500	\$ 5,500				This well was PA in 2015. Site, road, to be reclaimed.
Moffat	RECL	Tatonka BOND Culverwell #10-23-07-94	2012-26	\$ 25,850	\$ 25,850	\$ 25,850				Either pull or plug conductor pipe; recontour the site; re-seeding 1V-383.
Garfield	RECL	Dolphin BOND Muivhill #15-32D	2016-02	\$ 21,227	\$ 21,227	\$ 21,227				Dolphin Energy Corp well pad and lease road near Rifle.
TOTALS =>				\$ 5,029	\$133,448	\$ 0				

County	Type	Project Name	Project No.	ESTIMATED TOTAL PROJECT COST			IN PROGRESS FY 2015-16 YTD EXPENDITURES			Description	
				Bond	PRAW	EMGY	Totals	Bond	PRAW		EMGY
Yuma	PA	Midfields State #1	2014-10	\$ 50,250	\$ 50,250	\$ 50,250				Drilled in 1919 to TD=3650; Gas flow & rolling water. Excavated to a depth of 6'. Installed 18" OD PVC to a depth of 20'.	
Larimer	RECL	Ranchers BOND Retta J #1	2016-05-21	\$ 24,473	\$ 24,473	\$ 24,473				Plugged May 2015; pit and well pad reclamation with cut and fill on steep terrain. Design plan.	
Montrose	RECL	Redwine Bond - SNU #1-31	2013-17-21	\$ 65,837	\$ 65,837	\$ 65,837				Drilled in 1950 to a TD=10,000; PA in 1989; re-entered in 1999 and directionally drilled to a MTD=7264; Niobrara completion; PA 1997; principal owner deceased; gas leak found; bond claimed; PROW re-enter PA project.	
Moffat	PA	Think Oil Bond - Vaughn #1	2015-09	\$ 7,542	\$ 44,411	\$ 51,953	\$ 7,542	\$ 65,601	\$ 73,143	An orphan well to be PA; drilled in 1969 to a TD=2900; plugged back to 1420' in 1970.	
La Plata	PA	Wheeler #2	2008-08	\$48,970	\$48,970	\$ 48,970					
TOTALS =>				\$32,015	\$209,468	\$ 0	\$ 241,483	\$ 7,542	\$ 65,601	\$ 0	\$ 73,143

County	Type	Project Name	Project No.	ESTIMATED TOTAL PROJECT COST			COMPLETED FY 2015-16 YTD EXPENDITURES			Description	
				Bond	PRAW	EMGY	Totals	Bond	PRAW		EMGY
Ouray	PA	Ridgway-Swanson-Peterson #1	2012-27	\$ 55,355	\$ 55,355	\$ 55,355				Drilled in 1947 to a TD=500; turned over to landowner at some point in time for domestic use gas hookup; stopped producing gas and will be PA by PROW Program. Bond claimed 8/20/2012 Order #1V-395; surface production equipment removed in July 2015.	
Adams	PA	Ruth #1 Bond PA	2013-15	\$ 5,000	\$ 5,000	\$ 5,000	\$ 5,000	\$ 5,000	\$ 5,000	Revegetate the site.	
Larimer	RECL	Ranchers BOND River West #2	2016-05-21	\$ 8,276	\$ 8,276	\$ 8,276	\$ 4,170	\$ 4,170	\$ 4,170	Soil bed prep; seed and cover with straw.	
Garfield	RECL	Dolphin Arroyo #9-16D	2015-06	\$ 2,500	\$ 2,500	\$ 2,500	\$ 2,691	\$ 2,691	\$ 2,691	Mowing.	
Mesa	RECL	DeBeque Orphans-Buckeye #1	2016-04	\$ 196	\$ 196	\$ 196	\$ 196	\$ 196	\$ 196	Drilling mud reserve pit closure.	
Montrose	ENV	Redwine Bond - SNU #1-31	2013-17-41	\$ 49,126	\$ 49,126	\$ 49,126	\$ 49,126	\$ 49,126	\$ 49,126	EPS soil analysis complete for the pit at the CTB and deemed ready for reclamation with no need for soils remediation.	
Adams	ENV	Ruth BOND #1	2013-16	\$ 1,045	\$ 1,045	\$ 1,045	\$ 1,045	\$ 1,045	\$ 1,045	BOND Total Available = \$67,038.37.	
La Plata	ENV	Red Mesa Holdings Bond - JCK #1	2016-01	\$ 4,228	\$ 4,228	\$ 4,228	\$ 4,228	\$ 4,228	\$ 4,228	HZ Well Policy-Operator to plug well; COGCC to pay for samples, plans, remediation and disposal.	
Weld	ENV	Carl A. Peters #1	2016-07	\$ 1,330	\$ 1,330	\$ 1,330	\$ 1,330	\$ 1,330	\$ 1,330	Follow up soils analysis for prior remediation.	
Logan	ENV	Luther #2	2014-19-41	\$ 610	\$ 610	\$ 610	\$ 610	\$ 610	\$ 610		
TOTALS =>				\$17,504	\$110,162	\$ 0	\$ 127,666	\$13,398	\$ 94,533	\$ 0	\$107,931

GRAND TOTALS	ESTIMATED TOTAL PROJECT COSTS			FY 2015-16 YTD EXPENDITURES				
	Bond	PRAW	EMGY	Totals	Bond	PRAW	EMGY	Totals
	\$54,548	\$453,078	\$ 0	\$507,625	\$20,940	\$160,134	\$ 0	\$181,074

SCOREBOARD (PROW FUNDING ONLY)

\$ 209,468	In Progress Estimated Totals
\$ 65,601	In Progress Spent to Date Totals
\$ 143,867	In Progress Remaining Totals
\$ 94,533	Completed to Date Totals
\$ 160,134	Sum of (In Progress Spent to Date) and (Completed to Date Totals)
\$ 277,315	Planned + in progress remaining
\$ 437,449	Total Expenditures
\$ 445,000	Annual Budget Appropriation
\$ 7,551	Projected End of Year Balance

05/24/2016 mew



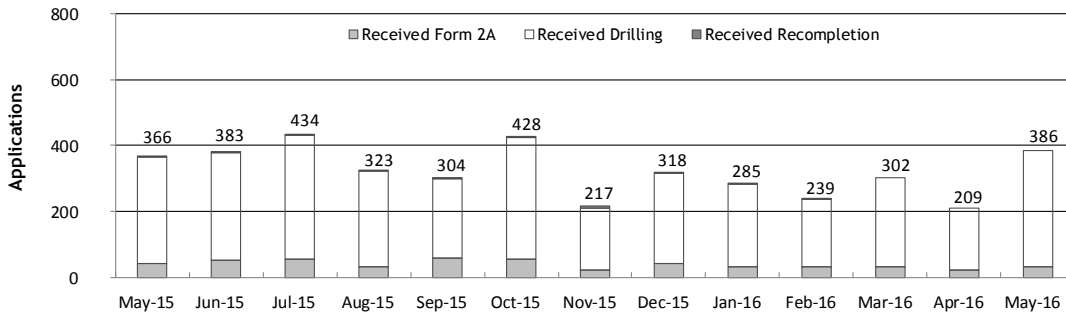
Monthly Permit Activity as of June 1, 2016

Form/Month	Backlog	Received	Approved	Withdrawn	Rejected	Incomplete ¹	In-Process	Remaining ²
Form2A								
May-15	141	41	44	0	1	41	96	137
Jun-15	137	52	49	3	1	24	112	136
Jul-15	136	57	48	2	1	25	117	142
Aug-15	142	32	46	0	1	35	92	127
Sep-15	127	59	49	3	4	25	105	130
Oct-15	130	54	51	4	0	14	115	129
Nov-15	129	21	49	1	1	16	83	99
Dec-15	99	42	43	2	0	27	69	96
Jan-16	96	34	9	1	0	29	91	120
Feb-16	120	31	39	1	0	32	79	111
Mar-16	111	34	36	3	0	27	79	106
Apr-16	106	24	39	2	0	29	60	89
May-16	89	33	24	0	2	27	69	96
Drilling								
May-15	656	324	190	30	0	254	506	760
Jun-15	760	327	281	9	5	175	617	792
Jul-15	792	373	250	2	15	153	745	898
Aug-15	898	289	300	18	111	159	599	758
Sep-15	758	242	312	7	32	112	537	649
Oct-15	649	372	223	17	16	104	661	765
Nov-15	765	190	254	3	0	106	592	698
Dec-15	698	275	242	13	6	159	553	712
Jan-16	712	250	126	4	30	201	601	802
Feb-16	802	205	227	1	15	212	552	764
Mar-16	764	268	268	16	59	220	469	689
Apr-16	689	185	224	13	20	155	462	617
May-16	617	353	217	1	16	138	598	736
Recompletion								
May-15	6	1	4	0	0	2	1	3
Jun-15	3	4	1	0	0	2	4	6
Jul-15	6	4	2	0	0	1	7	8
Aug-15	8	2	6	1	0	1	2	3
Sep-15	3	3	1	0	0	1	4	5
Oct-15	5	2	2	1	0	1	3	4
Nov-15	4	6	2	0	0	1	7	8
Dec-15	8	1	5	2	0	0	2	2
Jan-16	2	1	0	0	0	1	2	3
Feb-16	3	3	0	0	0	2	4	6
Mar-16	6	0	0	0	0	2	4	6
Apr-16	6	0	1	0	0	1	4	5
May-16	5	0	2	0	0	2	1	3

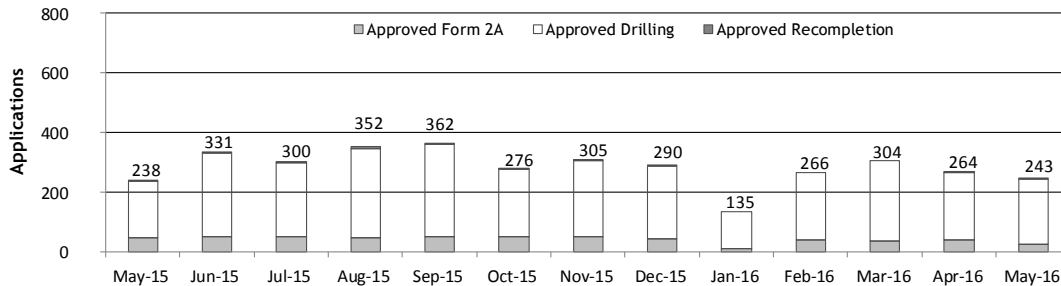
¹Incomplete are applications that have missing or inaccurate data and cannot be approved.

²Backlog = Incomplete + In-process = Remaining permits from previous month.

Received Applications



Approved Applications





Oil and Gas Staff Report

June 6, 2016

17

Status of Permit Applications Filed By Month as of June 1, 2016

Form 2A Location Assessment

Year	Month	Received	Approved	Withdrawn	In Process	Percent In Process	Average	Less Than 30 Days	30 to 49 Days	Greater Than 50 Days
							Days to Process			
2011	TOTAL	2,391	2,298	93	0	0%		1,416	620	262
2012	TOTAL	1,359	1,291	68	0	0%		706	378	207
2013	TOTAL	1,281	1,202	78	1	0%		369	433	400
2014	TOTAL	1,114	1,067	45	2	0%		279	429	359
2015	JAN	49	48	1	0	0%	57	6	15	27
	FEB	69	65	3	1	1%	66	5	16	44
	MAR	54	47	6	1	2%	59	6	20	21
	APR	39	39	0	0	0%	64	8	13	18
	MAY	40	39	1	0	0%	60	6	12	21
	JUN	54	52	2	0	0%	57	10	17	25
	JUL	45	44	0	1	2%	71	4	12	28
	AUG	68	65	2	1	1%	58	11	21	33
	SEP	58	54	2	2	3%	57	16	9	29
	OCT	53	50	2	5	9%	77	3	10	33
	NOV	21	17	1	4	19%	70	2	4	10
	DEC	42	34	3	5	12%	73	1	8	25
2015	TOTAL	592	554	23	15	3%		78	157	319
2016	JAN	34	29	0	5	24%	67	2	4	23
	FEB	31	23	1	7	32%	57	1	3	19
	MAR	34	20	0	14	68%	32	3	8	9
	APR	24	3	0	20	96%	23	1	2	0
	MAY	32	0	0	32	100%	0	0	0	0
2016	TOTAL	155	75	1	78	50%		7	17	51

Form 2 Application For Permit to Drill (APDs)

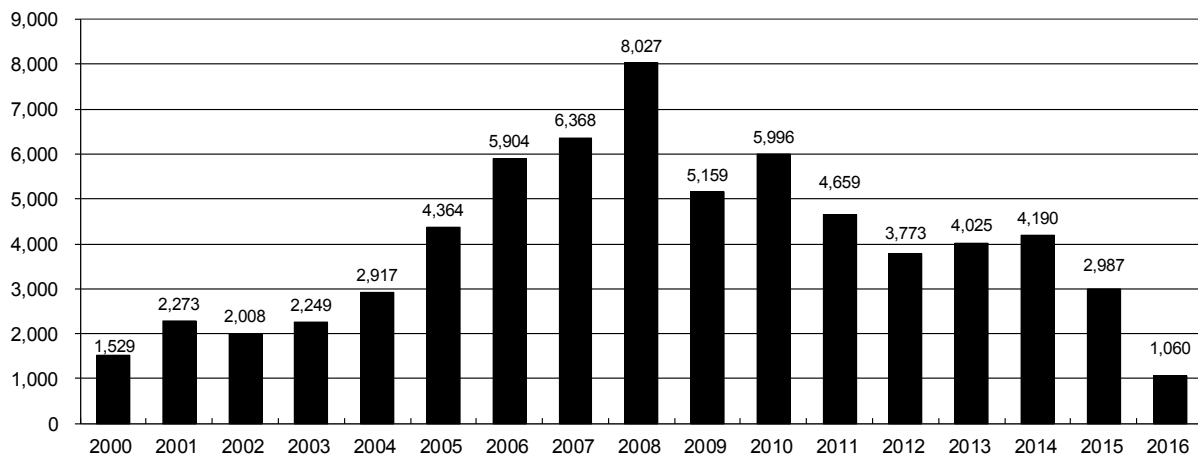
Year	Month	Received	Approved	Withdrawn	In Process	Percent In Process	Median Days	Less Than 30 Days	30 to 49 Days	Greater Than 50 Days
							to Process			
2011	TOTAL	4,691	4,557	132	0	0%		2,723	1,565	587
2012	TOTAL	3,955	3,816	139	0	0%		1,971	1,393	602
2013	TOTAL	4,548	4,312	235	1	0%		1,046	1,626	1,714
2014	TOTAL	4,208	4,026	155	27	1%		689	1,629	1,744
2015	JAN	291	281	1	9	3%	55	50	60	174
	FEB	294	277	17	0	0%	72	24	73	183
	MAR	306	249	35	22	7%	84	10	73	168
	APR	169	154	15	0	0%	78	28	35	94
	MAY	270	265	5	0	0%	77	9	84	172
	JUN	321	310	11	0	0%	67	45	81	186
	JUL	299	290	3	6	2%	67	15	84	197
	AUG	319	309	9	1	0%	90	11	64	236
	SEP	203	195	2	6	3%	74	17	37	145
	OCT	346	323	9	14	8%	91	16	75	232
	NOV	181	160	13	8	7%	86	15	46	104
	DEC	268	226	9	3	7%	78	9	47	170
2015	TOTAL	3,267	3,039	129	69	2%		249	759	2,061
2016	JAN	232	191	1	40	24%	68	23	33	136
	FEB	181	151	3	26	35%	68	5	35	114
	MAR	249	143	1	105	76%	59	16	36	91
	APR	185	55	0	119	90%	28	31	24	0
	MAY	352	3	0	349		2	3	0	0
2016	TOTAL	1,199	543	5	639	53%		78	128	341



Annual Drilling Permits by County as of June 1, 2016

County	2000	2001	2002	2003	2004	2005	2006	2007	2008	2009	2010	2011	2012	2013	2014	2015	2016
ADAMS	38	28	9	26	39	34	37	89	51	35	21	8	40	40	51	96	27
ARAPAHOE		2	1	2	5	7	11	10	10	10	8	23	35	23	34	19	1
ARCHULETA	7	9	6	10	8	13	14	26	47	11	18	12	5	4	3	11	3
BACA	22	6	2	3	7	8	2	11	13	3	4	5	3	1	1		
BENT	2				5	3	8	1	1		5		2	1			
BOULDER	1	5	6	7	17	13	21	37	32	35	24	30	22				
BROOMFIELD			2	7		1	1		2	33	28	11	36		31		
CHEYENNE	3	3	3	3	3	10	21	15	33	12	13	16	31	50	26	9	
COSTILLA																	
CROWLEY																2	
DELTA			7	4	5	10	9	2			4	3	6	1	2		
DENVER		3					19	25	24								
DOLORES				1	1	1	6	10	12	21	8	8	13	12	3		2
EAGLE														1			
ELBERT	2						4			1		1	2	2	4	3	
EL PASO																	
FREMONT					1	3	2	4	14	2	3	3	18	1	2		
GARFIELD	213	353	362	567	796	1,509	1,845	2,550	2,888	1,981	2,037	1,323	1,046	870	1,066	532	256
GRAND																	
GUNNISON			5	10	1	9	19	7	10	12	4	3	11	9	20	28	4
HUERFANO	41	27	27		8	2		7			2	1	9	1	13	2	
JACKSON	34	18	21	9	14	6	8	5	27	19	9	18	5	12	17	3	18
JEFFERSON	1						1	3	2					1			
KIOWA	11	18	2	4	2	1	11	9	26	7	16	17	17	12	5	3	
KIT CARSON				1	3	5	4	4	13	7	3	2	6	1	2		
LA PLATA	127	156	104	162	102	115	235	251	328	298	191	99	71	32	87	106	40
LARIMER	2		1			1		5	46	12	41	8	13	2	4	28	
LAS ANIMAS	268	400	259	180	332	413	500	362	303	88	92	85	11	2	1		
LINCOLN	2	2	1	6	3	4	1	2	58	44	48	31	36	87	129	24	1
LOGAN	4	7	3	3	6	13	17	14	5	9	17	8	27	4	5		1
MESA	13	27	30	27	54	136	265	293	501	427	306	127	150	105	74	126	
MOFFAT	35	52	62	63	63	60	120	68	57	51	53	93	88	44	54	12	1
MONTEZUMA	4		5	8	8	11	5	12	22	39	19	27	29	14	25	3	
MONTROSE	1	3	2	4	2		1	3	3		1	1					
MORGAN	9	9	2	7	9	7	3	6	2	1	6	13	5	16	6	4	14
OTERO																	
PARK										3	4	1					
PHILLIPS	1	2		7	13	17	12	69	82	45	64	112	56		11	2	
PITKIN				1				1								1	
PROWERS	2	5	4		7	5	7	5	8	1	3	1			1		1
RIO BLANCO	89	187	105	179	154	161	360	321	477	348	441	109	117	167	121	107	30
RIO GRANDE	1	1		1					1	1			2		1		
ROUTT	20	13	1		4	6	9	8	4	2	3	10	4	12	4	9	
SAGUACHE	2		2					2	1	2							
SAN MIGUEL	11	13	27	18	42	45	35	23	20	13	10	2	1		2	3	
SEDGWICK				1	5	2	7	2	1	19	11	12	2		7	1	
WASHINGTON	23	17	27	34	128	50	69	45	11	1	6	12	6	19	12	9	1
WELD	509	702	760	757	832	901	1,418	1,527	2,340	1,448	2,152	2,262	1,826	2,468	2,303	1,841	660
YUMA	31	205	160	138	237	782	797	541	545	105	299	148	11	9	53	3	
TOTAL	1,529	2,273	2,008	2,249	2,917	4,364	5,904	6,368	8,027	5,159	5,996	4,659	3,773	4,025	4,190	2,987	1,060

ALL COUNTIES





Form 2A Breakdown By County By Year as of June 1, 2016

Year	County	Form 2As	Completed	In Process	New Location	CDP	SWH	RSO	CDPHE
2009	Total State	818	818	0	408	2	80	5	5
2010	Total State	2,377	2,377	0	1,543	0	317	22	55
2011	Total State	2,297	2,297	0	1,724	1	259	16	5
2012	Total State	1,297	1,297	0	900	0	167	6	1
2013	Total State	1,195	1,194	1	845	0	144	2	4
2014	Total State	1,068	1,063	5	777	3	129	7	3
2015	ADAMS	8	7	1	5	0	0	0	1
	ARAPAHOE	11	10	1	6	0	0	0	0
	ARCHULETA	5	5	0	2	0	4	0	1
	CHEYENNE	7	7	0	7	0	0	0	0
	ELBERT	3	3	0	3	0	0	0	0
	FREMONT	1	1	0	1	0	1	0	0
	GARFIELD	32	27	5	9	0	20	1	0
	GUNNISON	10	10	0	1	0	8	0	0
	HUERFANO	1	1	0	0	0	0	0	0
	JACKSON	7	7	0	4	0	7	1	0
	KIOWA	3	3	0	3	0	3	0	0
	LA PLATA	18	17	1	8	0	16	0	0
	LARIMER	3	3	0	1	0	0	0	0
	LINCOLN	26	26	0	25	0	0	0	0
	LOGAN	1	1	0	0	0	0	0	0
	MESA	12	11	1	8	0	6	0	0
	MOFFAT	9	9	0	5	0	9	0	0
	MONTEZUMA	3	3	0	3	0	0	0	0
	MORGAN	4	2	2	3	0	0	0	0
	PHILLIPS	2	2	0	2	0	0	0	0
	RIO BLANCO	13	13	0	8	0	13	0	0
	ROUTT	3	3	0	1	0	3	0	0
	SAN MIGUEL	2	2	0	2	0	2	0	0
	SEDGWICK	1	1	0	1	0	0	0	0
WASHINGTON	15	15	0	13	0	0	0	0	
WELD	372	363	9	278	0	3	0	0	
YUMA	3	3	0	1	0	0	0	0	
2015	Total State	575	555	20	400	0	95	2	2
2016	ADAMS	2	0	2	1	0	0	0	0
	ARAPAHOE	1	1	0	1	0	0	0	0
	DOLORES	1	1	0	1	0	0	0	0
	GARFIELD	12	10	2	1	0	7	0	0
	GUNNISON	3	2	1	1	0	2	0	0
	HUERFANO	1	0	1	1	0	1	0	0
	JACKSON	2	0	2	1	0	2	0	0
	LA PLATA	1	0	1	0	0	1	0	0
	LINCOLN	2	1	1	1	0	0	0	0
	LOGAN	1	0	1	0	0	0	0	0
	MOFFAT	2	1	1	1	0	2	0	0
	MONTEZUMA	1	0	1	1	0	0	0	0
	MORGAN	1	0	1	1	0	0	0	0
	PHILLIPS	2	0	2	2	0	0	0	0
	PROWERS	1	1	0	1	0	0	0	0
	ROUTT	1	0	1	0	0	1	0	0
	WASHINGTON	1	1	0	1	0	0	0	0
	WELD	108	52	56	66	0	1	0	0
2016	Total State	143	70	73	81	0	17	0	0

Abbreviations:

CDP = Comprehensive Drilling Plan SWH = Sensitive Wildlife Habitat consultation

RSO = Restricted Surface Occupancy consultation CDPHE= Colorado Department of Health and Environment consultation



Well to Building Setbacks by Year and by County as of June 1, 2016

Count of well locations, grouped by proximity from well to buildings.

Location Proximity to Buildings	2009	2010	2011	2012	2013	2014	2015	2016	Number of Locations	Percent of Total Locations
Less than 150 feet	2	3	3	2	0	3	2	0	15	0%
150 to 350 feet	37	58	61	39	34	38	12	4	283	3%
350 to 500 feet	50	110	97	61	64	48	33	11	474	6%
500 to 1000 feet	117	385	331	188	188	161	83	28	1,481	17%
1000 + feet	356	1,705	1,470	838	762	724	378	94	6,327	74%
TOTAL LOCATIONS	562	2,261	1,962	1,128	1,048	974	508	137	8,580	

County	TOTAL	Less than 150 feet	150 to 350 feet	350 to 500 feet	500 to 1000 feet	1000 + feet
ADAMS	79	0	4	9	19	47
ARAPAHOE	97	0	2	4	10	81
ARCHULETA	23	0	0	1	11	11
BACA	15	0	0	0	1	14
BENT	7	0	0	0	0	7
BOULDER	23	0	1	1	17	4
BROOMFIELD	33	0	0	4	13	16
CHEYENNE	140	1	0	0	2	137
CROWLEY	2	0	0	0	0	2
DELTA	7	0	0	2	1	4
DOLORES	20	0	0	0	7	13
EAGLE	1	0	0	0	0	1
EL PASO	14	0	0	0	3	11
ELBERT	11	0	0	0	2	9
FREMONT	40	0	2	7	8	23
GARFIELD	565	0	10	9	77	469
GUNNISON	44	1	0	4	1	38
HUERFANO	16	0	0	0	5	11
JACKSON	50	0	0	4	1	45
KIOWA	66	0	0	0	1	65
KIT CARSON	14	0	0	0	0	14
LA PLATA	134	0	5	14	46	69
LARIMER	39	0	5	4	14	16
LAS ANIMAS	201	1	6	7	37	150
LINCOLN	371	0	1	2	4	364
LOGAN	44	0	1	1	1	41
MESA	97	0	0	3	14	80
MOFFAT	179	0	0	2	15	162
MONTEZUMA	42	0	0	1	4	37
MONTROSE	2	0	0	0	0	2
MORGAN	30	0	0	2	4	24
PARK	4	0	0	0	0	4
PHILLIPS	275	1	4	6	21	243
PITKIN	1	0	0	0	0	1
PROWERS	6	0	0	0	0	6
RIO BLANCO	187	0	0	0	2	185
RIO GRANDE	2	0	0	0	1	1
ROUTT	29	0	0	0	2	27
SAN MIGUEL	14	0	0	0	0	14
SEDGWICK	33	0	0	1	3	29
WASHINGTON	74	0	2	0	3	69
WELD	5,021	11	231	370	1,087	3,322
YUMA	528	0	9	16	44	459


Well to Building Setbacks Less Than Two Hundred Feet as of June 1, 2016

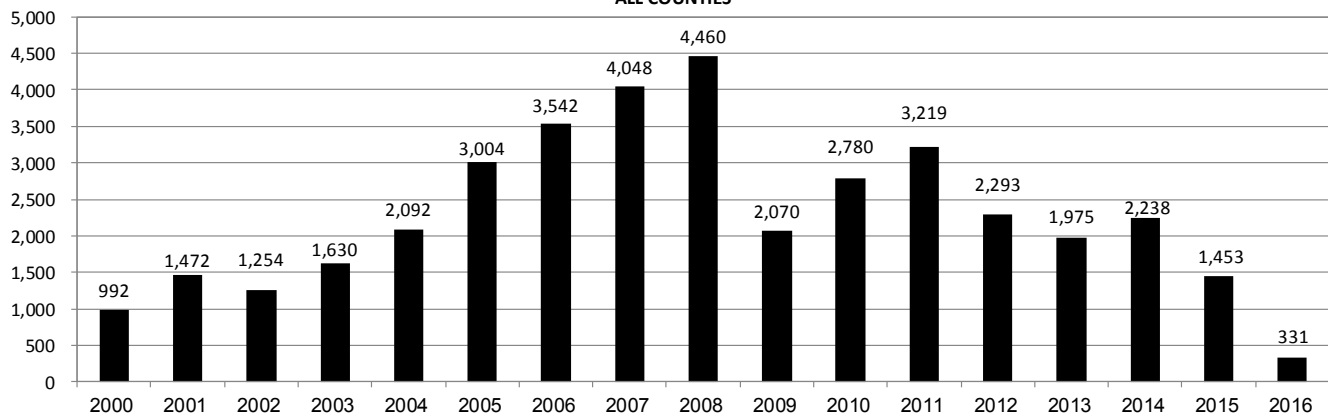
Year	Location Doc Number	County	High Density	New Location	Distance (Feet)	Proximity (Feet)	Building Description
2015	400768804	WELD	No	Yes	46	less 150	Building to be razed
2011	2587822	CHEYENNE	No	No	58	less 150	Water well house
2009	1691798	WELD	No	No	58	less 150	Vehicle garage
2010	400072164	WELD	No	Yes	69	less 150	Abandoned hog shed
2014	400569085	WELD	No	No	78	less 150	Well shed
2014	400600705	WELD	No	No	80	less 150	Livestock shed
2012	400240957	GUNNISON	No	Yes	90	less 150	Equipment shed
2015	400742811	WELD	No	Yes	102	less 150	Building to be razed
2009	1758843	WELD	No	Yes	103	less 150	Building to be razed
2011	1636646	WELD	No	No	122	less 150	Storage shed
2009	400011284	LAS ANIMAS	No	Yes	127	less 150	Operator is owner
2009	1786896	PHILLIPS	No	No	132	less 150	Grain storage
2014	400642113	WELD	No	Yes	142	less 150	Barn
2011	400117702	WELD	No	Yes	143	less 150	Irrigation pump house
2011	400227765	WELD	No	Yes	145	less 150	Storage barn
2014	400558626	LINCOLN	No	No	150	less 150	Gas plant equipment building
2009	1904205	WELD	No	No	154	150 to 350	Livestock enclosure
2012	400243295	WELD	No	Yes	155	150 to 350	Unused storage shed
2015	400862577	GARFIELD	No	No	155	150 to 350	Gravel Pit Scale House
2011	400179419	WELD	No	Yes	157	150 to 350	Existing well / storage building
2010	400054716	WELD	No	No	159	150 to 350	Equipment barn
2011	400188968	WELD	No	Yes	159	150 to 350	Abandoned
2014	400554054	WELD	No	Yes	159	150 to 350	Equipment shed
2014	400559404	WELD	No	Yes	160	151 to 350	Barn
2010	400021477	WELD	No	Yes	162	150 to 350	Goat barn
2009	1758386	WELD	No	Yes	168	150 to 350	Storage shed
2011	1635946	WELD	No	No	169	150 to 350	Storage shed
2013	400447386	WELD	No	No	169	150 to 350	Abandoned turkey barn
2013	400447391	WELD	No	No	169	150 to 350	Abandoned turkey barn
2011	400165164	WELD	No	Yes	178	150 to 350	Residence
2013	400367184	WELD	No	Yes	179	150 to 350	Shed
2011	400188780	WELD	No	Yes	180	150 to 350	Residence
2014	400562498	WELD	No	Yes	181	150 to 350	Garage / storage shed
2010	1697620	WELD	No	No	187	150 to 350	Livestock shed
2009	1758746	WELD	No	No	193	150 to 350	Storage shed
2011	400154431	WELD	No	Yes	198	150 to 350	Turkey barn
2012	400250031	WELD	No	Yes	198	150 to 350	Abandoned guard shack
2010	1774783	WELD	No	No	199	150 to 350	Cement service building
2011	400118102	YUMA	No	Yes	199	150 to 350	Steel barn



Annual Well Starts by County as of June 1, 2016

County	2000	2001	2002	2003	2004	2005	2006	2007	2008	2009	2010	2011	2012	2013	2014	2015	2016
ADAMS	18	13	4	19	22	24	13	41	14	14	21	1	15	6	29	4	1
ARAPAHOE					6	1	5	2	1	1	3	9	9	25	21		
ARCHULETA	4	4	2	5	4	10	5	7	29	9	12	10	11		1	7	1
BACA	19	6	2	1	6	6	2	6	12		5	4	2	1		1	
BENT	2				3	2	8	1	1			1	2				
BOULDER				2	5	11	9	14	25	16	13	7	14				
BROOMFIELD			2		1				10		21	11	5				
CHEYENNE	2	1	3	3		9	14	15	14	8	12	11	17	35	19	3	
COSTILLA																	
CROWLEY																2	
DELTA				5	4	6	5	2			9	2	3				
DENVER		2					7	5	4								
DOLORES					2		2	13	6	2		1	5	10	4		
EAGLE														1			
EL PASO											2		5		1		
ELBERT	2						1									3	
FREMONT					1	3	2	2	5	3	10	16	9	1	4	1	1
GARFIELD	190	251	245	417	585	799	1,005	1,304	1,689	765	905	877	495	391	362	173	56
GUNNISON			1		1	1	9	5	1	4	5	2	4	1	2	3	
HUERFANO	25	14	19	3	6	2			2		2		2	1	4	1	
JACKSON	24	2	4	10	10		3	3	12	1	8	7		7	7		9
JEFFERSON								2									
KIOWA	8	16	2	4	2	1	7	7	2	5	15	14	10	12	3	2	
KIT CARSON				1	1	6	2	1	14	3	1	1	3	1	2		
LA PLATA	99	135	118	110	103	104	108	179	199	131	67	54	3	10	36	34	17
LARIMER	1	1				1		4	8	1	28	2	10	4	1	9	
LAS ANIMAS	202	286	205	221	296	384	413	326	222	14	7	78	1		1		
LINCOLN	2	2	1	5	2	2	1	2	18	11	14	21	23	42	43	12	1
LOGAN	4	6	3	3	2	11	12	12	3	7	3	9	13	4	6		
MESA	2	12	12	13	25	89	156	209	225	14	11	41	4	11	16	77	
MOFFAT	18	23	25	28	19	40	60	42	26	18	15	33	25	27	3	6	
MONTEZUMA	2	3	5	5	1	7	2	4	22	10	3	8	18	12	8	1	
MONTROSE		3		2	1			1	2		1						
MORGAN	9	8	1	7	5	5	3	1	1	2	3	2	3	1	4	1	
PARK											2						
PHILLIPS	1			6	10	11	4	35	18	2	42	130	48		9		
PROWERS	2	4	4		5	5	6	3	5	2	3	1				1	
RIO BLANCO	51	82	47	83	92	95	107	95	205	118	107	72	53	36	43	17	
RIO GRANDE														1			
ROUTT	5	12	1		1	6	3	2		2	1	2	4	2	2		
SAN MIGUEL	6	9	10		28	13	20	17	5	1	2	2			2		
SEDGWICK				1	2	1	1	5			3	8	3				
WASHINGTON	15	12	24	29	65	34	23	14	11	2	2	4	1	9	7	2	1
WELD	237	403	406	522	632	718	931	1,222	1,313	877	1,209	1,672	1,457	1,311	1,557	1,095	244
YUMA	42	162	108	106	144	597	593	445	336	27	213	106	16	13	39		
TOTAL	992	1,472	1,254	1,630	2,092	3,004	3,542	4,048	4,460	2,070	2,780	3,219	2,293	1,975	2,238	1,453	331

ALL COUNTIES





Active Wells by County and Status as of June 1, 2016

COUNTY	Drilling	Domestic	Injecting	Producing	Shut In	Temp Aband	Waiting on Completion	Active Storage	Total Active Wells
ADAMS	12		7	885	39	7	2	12	964
ARAPAHOE		1	2	145	7	8		43	206
ARCHULETA	1	5	1	108	12	13	6	1	147
BACA			16	113	15	4		55	203
BENT		1		30	6				37
BOULDER				309	1	1			311
BROOMFIELD				96					96
CHEYENNE			43	320	15	44	1		423
CROWLEY									0
DELTA				4	12		1		17
DENVER			1	46	2		3		52
DOLORES	1		1	36	3	2			43
EL PASO	1	1				1			3
ELBERT	3			67	2	1		1	74
FREMONT	5	3		59	8	6	1		82
GARFIELD	170	4	45	10,631	73	101	59	1	11,084
GUNNISON	3		1	33	8		3		48
HUERFANO			1	40	2	5	1		49
JACKSON	10		31	110	36				187
JEFFERSON				1	1		1	3	6
KIOWA	1		11	104	10	2	2		130
KIT CARSON		1	2	11		2			16
LA PLATA	9	7	28	3,150	85	14	3	30	3,326
LARIMER	1	2	18	199	24	16	1		261
LAS ANIMAS		3	14	2,798	13	104	13	16	2,961
LINCOLN	6	1	8	96	11	7	2		131
LOGAN	8		16	113	40	29	3	10	219
MESA	4	1	7	897	80	16	61	11	1,077
MOFFAT	1		9	485	49	36	5		585
MONTEZUMA		2	6	121	31	14			174
MONTROSE								1	1
MORGAN			21	91	81	35		81	309
OURAY		1				1			2
PARK									0
PHILLIPS			2	266	2	1	1		272
PITKIN								10	10
PROWERS				26	4	1			31
RIO BLANCO	23	3	295	2,305	167	90	12	2	2,897
ROUTT		2		32	8	3			45
SAN MIGUEL	1			109	14	6			130
SEDGWICK	2		1	14	3		2		22
WASHINGTON	4		23	401	24	7	2		461
WELD	880	1	51	21,532	220	44	47	4	22,779
YUMA	2	8	23	3,790	34	9	11	1	3,878
Totals	1,148	47	684	49,573	1,142	630	243	282	53,749



Oil and Gas Staff Report

June 6, 2016

25

Monthly Statistics as of June 1, 2016

Page 1 of 2

YEAR and MONTH	Baker - Hughes Rig Count	Permits										Well Spud Notices	Active Drilling Permits	Active Wells	Public Visits		
		Drilling		Recompletion		Injection		Pits		Locations					Data	Office	Internet
		Rcvd	Apvd	Rcvd	Apvd	Rcvd	Apvd	Rcvd	Apvd	Rcvd	Authz						
2011 TOTAL		4,709	4,659	325	320	44	32	190	192	2,382	2,267	3,220			187	1,294	1,337,865
2012 JAN	73	372	258	26	21	3	0	11	5	142	129	243	5,217	46,958	12	106	112,686
FEB	70	370	382	23	27	7	5	21	9	160	129	230	5,173	47,128	16	114	105,857
MAR	66	292	347	21	14	2	2	17	24	133	172	292	5,132	47,263	26	138	111,746
APR	66	410	235	16	24	5	5	9	2	137	106	241	4,785	47,377	12	108	107,627
MAY	66	491	506	23	16	3	1	6	2	105	131	211	4,885	47,533	20	123	109,802
JUN	69	326	377	11	19	8	6	5	8	110	89	145	5,136	47,860	11	111	108,849
JUL	66	237	276	9	14	3	2	5	2	97	103	183	5,152	48,173	13	102	114,195
AUG	62	313	288	6	9	6	4	23	5	83	97	178	5,031	49,153	11	112	110,908
SEP	61	252	256	1	5	5	2	4	1	81	77	161	4,960	49,230	11	89	106,114
OCT	62	326	265	9	3	7	6	2	19	94	82	162	5,009	49,236	8	105	108,833
NOV	56	271	323	5	8	6	6	2	4	109	97	142	5,000	49,989	10	119	120,586
DEC	57	322	260	4	8	8	5	9	3	122	81	105	5,081	50,067	9	78	107,240
2012 TOTAL		3,982	3,773	154	168	63	44	114	84	1,373	1,293	2,293			159	1,305	1,324,443
2013 JAN	53	538	331	6	0	3	5	6	8	176	124	142	5,060	50,265	9	108	47,406
FEB	56	260	455	10	5	2	3	4	11	91	141	138	5,250	50,372	7	102	40,649
MAR	57	344	241	5	9	3	8	15	6	129	84	172	5,093	50,540	9	133	43,019
APR	61	331	333	6	5	5	5	6	8	146	117	164	4,925	50,687	3	132	46,459
MAY	61	350	342	8	6	6	6	10	7	106	142	161	5,110	50,810	3	123	45,215
JUN	62	349	273	2	8	8	8	5	3	114	85	145	5,273	50,909	8	122	41,015
JUL	68	864	304	11	4	9	2	9	5	218	91	160	5,070	51,091	7	154	45,558
AUG	69	232	291	6	4	3	2	4	1	35	76	206	5,200	51,255	20	130	44,722
SEP	69	212	362	9	5	10	9	3	19	56	109	165	5,185	51,407	5	105	41,256
OCT	72	319	376	5	9	7	5	1	8	67	88	238	4,967	51,598	5	135	45,151
NOV	69	346	353	4	13	7	4	2	27	67	85	162	5,141	51,711	12	119	38,903
DEC	64	336	367	2	4	4	6	2	3	63	71	123	5,129	51,737	4	93	32,381
2013 TOTAL		4,481	4,028	74	72	67	63	67	106	1,268	1,213	1,976			92	1,456	511,734
2014 JAN	62	278	232	3	2	3	4	14	8	90	43	172	4,926	51,840	1	90	46,150
FEB	61	284	297	6	4	1	1	3	1	91	94	150	5,051	51,847	12	113	43,408
MAR	62	367	329	4	6	7	1	6	6	110	88	183	4,997	51,952	16	140	46,620
APR	63	276	317	2	3	2	5	8	3	89	99	172	4,897	52,060	11	188	45,558
MAY	65	458	383	2	2	3	1	6	7	83	94	179	4,923	52,202	18	131	42,365
JUN	67	429	377	3	0	6	7	5	2	134	92	224	4,924	52,337	10	156	42,518
JUL	69	272	446	2	5	3	11	8	5	97	126	181	4,955	52,431	7	166	45,481
AUG	73	376	259	4	3	4	4	3	4	111	87	220	5,060	52,582	8	145	42,431
SEP	76	412	304	2	3	3	1	20	1	116	81	205	5,006	52,694	14	175	43,577
OCT	76	459	371	3	2	9	2	4	6	93	109	190	4,827	52,785	19	138	46,030
NOV	73	326	479	5	2	5	4	4	0	54	103	174	5,171	52,947	8	96	39,583
DEC	69	286	397	1	2	2	7	1	2	45	99	188	5,236	53,054	6	144	37,964
2014 TOTAL		4,223	4,191	37	34	48	48	82	45	1,113	1,115	2,238			130	1,682	521,685
2015 JAN	64	349	316	3	1	2	9	3	1	60	43	191	5,060	53,195	17	114	41,502
FEB	49	324	161	3	2	5	6	9	0	73	28	116	4,750	53,309	4	117	38,245
MAR	38	246	294	1	6	1	5	7	5	44	70	162	4,983	53,414	6	146	42,513
APR	37	194	165	3	1	2	5	1	2	46	37	89	4,854	53,456	1	125	39,559
MAY	39	324	190	1	4	2	6	8	0	41	44	109	4,632	53,535	5	113	unavailable
JUN	38	327	281	4	1	0	5	2	1	52	49	136	4,726	53,608	5	138	unavailable
JUL	38	373	250	4	2	2	1	0	0	57	48	121	4,663	53,706	7	145	26,975
AUG	37	289	300	2	6	3	0	5	5	32	46	121	4,847	53,766	2	109	30,674
SEP	33	242	312	3	1	1	7	0	3	59	49	100	4,953	53,806	4	146	31,642
OCT	30	372	223	2	2	3	1	1	0	54	51	108	4,694	53,898	12	119	33,199
NOV	31	190	254	6	2	4	3	1	0	21	49	117	4,765	53,719	7	105	29,112
DEC	25	275	242	1	5	3	6	1	0	42	43	76	4,594	53,652	3	112	25,659
2015 TOTAL		3,505	2,988	33	33	28	54	38	17	581	557	1,446			73	1,489	339,080
2016 JAN	22	250	126	1	0	3	5	0	0	34	9	70	4,528	53,698	2	118	30,105
FEB	20	205	227	3	0	3	2	44	2	31	39	60	4,599	53,723	8	115	28,611
MAR	17	268	268	0	0	2	2	5	0	34	36	68	4,530	53,710	3	132	30,902
APR	17	185	224	0	1	3	4	6	0	24	39	57	4,511	53,774	4	113	27,914
MAY	16	353	217	0	2	3	1	7	1	33	24	72	4,464	53,749	4	106	26,778
2016 TOTAL		1,261	1,062	4	3	14	14	62	3	156	147	327			21	584	144,310

Abbreviation Key: Rcvd = Received, Apvd = Approved, Authz = Authorized



Monthly Statistics as of June 1, 2016

Page 2 of 2

YEAR and MONTH	Well Oper Change	Operators		Bonds				Hearings		Enforcement			Remediation Projects		Inspections				
		New	Inactive	Release	Claim	Ind	Blnt	Replace	Ind	Blnt	Apps.	Orders	NOAVs	AOCs	OFVs	Cmplt	Spills	Rcvd	Comp
2011 TOTAL	6,743	33	31	79	44	43	4	4	403	349	230	10	19	247	527	726	536	12,394	-
2012 JAN	1,044	3	3	7	5	1	1	0	70	72	18	1	-	27	35	68	23	998	970
FEB	373	6	9	8	5	0	0	0	-	-	10	-	-	24	40	85	36	2,000	1,024
MAR	375	4	1	7	3	9	0	0	44	38	19	-	-	23	38	63	61	2,202	1,146
APR	473	4	2	10	3	2	0	0	80	59	11	-	-	19	35	26	99	1,700	929
MAY	519	3	1	4	0	3	0	0	43	50	14	2	-	23	32	27	122	2,630	1,701
JUN	1,263	3	4	3	3	4	0	0	-	-	5	-	-	35	39	46	98	1,435	1,091
JUL	494	5	0	1	4	5	0	0	63	50	15	-	-	16	24	45	33	1,323	1,076
AUG	293	6	5	2	8	0	1	0	67	54	24	3	2	21	28	127	33	1,904	1,432
SEP	830	0	4	4	5	2	1	0	-	-	5	-	-	14	13	30	36	1,120	845
OCT	485	1	2	9	1	0	0	0	30	36	6	1	-	13	44	116	37	1,397	1,017
NOV	456	6	4	12	8	7	0	0	85	37	16	2	-	10	44	26	44	1,331	829
DEC	942	6	2	3	1	0	0	0	-	-	14	-	-	19	30	31	19	1,031	610
2012 TOTAL	7,547	47	37	70	46	33	3	0	482	396	157	9	2	244	402	690	641	19,071	12,670
2013 JAN	653	3	5	12	2	0	0	0	48	75	15	4	-	21	40	31	45	1,622	789
FEB	289	4	2	6	3	2	0	0	41	35	11	2	-	15	30	42	90	1,044	615
MAR	354	1	3	2	2	1	0	0	54	67	16	2	-	11	25	65	29	1,968	1,149
APR	333	7	1	5	2	8	0	0	-	-	21	-	-	16	33	39	37	1,510	910
MAY	346	2	1	3	0	0	0	0	46	50	22	6	-	13	31	41	60	2,621	1,576
JUN	1,456	6	2	2	4	5	0	0	91	44	13	2	-	25	40	47	37	1,860	1,102
JUL	1,009	4	1	2	2	0	0	0	96	70	25	3	-	21	47	50	22	2,298	1,338
AUG	389	6	4	5	4	2	0	0	-	-	23	-	-	25	57	36	41	2,146	1,033
SEP	277	4	1	6	1	0	0	0	101	51	7	2	-	16	60	43	51	1,536	703
OCT	345	6	0	2	2	2	0	0	52	82	4	12	3	12	79	47	60	1,868	1,158
NOV	442	2	0	2	2	0	0	0	-	-	30	-	-	12	51	31	34	2,401	1,613
DEC	1,299	4	1	1	2	0	0	0	42	48	50	4	-	14	75	35	35	2,677	1,384
2013 TOTAL	7,192	49	21	48	26	20	0	0	571	522	237	37	3	201	568	507	541	23,551	13,370
2014 JAN	1,971	6	3	3	2	0	0	0	57	46	25	2	-	8	68	46	28	3,243	1,597
FEB	2,039	8	2	6	5	0	0	0	-	-	23	-	-	17	59	51	13	2,330	1,282
MAR	493	2	3	1	5	0	0	0	97	75	29	10	-	22	63	66	31	1,822	1,298
APR	312	5	2	6	4	1	0	0	74	64	17	8	1	20	57	47	59	2,651	1,715
MAY	508	5	1	3	3	5	0	0	-	-	12	-	-	13	63	50	42	2,437	1,571
JUN	1,008	5	2	7	4	1	0	1	95	90	14	6	1	16	74	44	50	3,209	1,717
JUL	338	2	1	5	3	1	0	0	96	96	11	6	-	12	60	60	59	3,071	1,536
AUG	452	6	1	2	4	0	0	0	-	-	8	-	-	31	56	32	58	2,788	1,682
SEP	378	4	1	1	2	0	0	0	73	63	13	7	1	18	65	39	50	2,587	1,616
OCT	886	8	1	0	2	0	1	0	80	75	12	3	1	13	74	78	36	3,886	1,914
NOV	487	2	4	8	4	5	0	0	-	-	6	-	-	15	72	27	59	3,156	1,458
DEC	1,414	1	1	0	2	0	0	0	126	89	9	1	-	58	75	56	17	3,028	1,596
2014 TOTAL	10,286	54	22	42	40	13	1	1	698	598	179	43	4	243	786	596	502	34,208	18,982
2015 JAN	714	2	3	2	3	0	0	0	76	64	15	2	1	36	64	38	58	2,491	1,246
FEB	556	5	2	2	3	1	0	0	-	-	10	-	-	22	44	34	64	2,667	1,382
MAR	183	5	2	5	2	4	2	0	72	72	33	1	1	42	76	59	94	3,469	1,738
APR	271	7	1	0	5	3	0	0	60	54	19	3	-	21	46	40	61	3,451	1,620
MAY	436	8	0	0	2	3	0	0	89	54	10	10	2	25	46	56	41	2,869	1,422
JUN	454	2	1	3	5	4	0	0	-	-	27	-	-	25	41	32	43	3,366	1,716
JUL	380	3	2	0	5	1	0	0	123	140	5	13	1	32	67	52	28	3,445	1,774
AUG	218	8	2	0	7	4	0	0	-	-	13	-	-	18	56	24	62	3,692	1,847
SEP	263	6	5	1	7	4	0	2	112	78	25	11	-	30	41	44	40	2,887	1,528
OCT	339	4	1	6	1	6	1	0	115	103	6	12	1	32	58	51	33	3,420	1,494
NOV	91	2	3	5	0	0	0	1	-	-	6	-	-	15	38	47	40	3,348	1,666
DEC	355	7	1	3	5	1	0	0	91	80	4	5	2	60	46	39	37	3,851	1,765
2015 TOTAL	4,260	59	23	27	45	31	3	3	738	645	173	57	8	358	623	516	601	38,956	19,198
2016 JAN	504	2	1	0	5	5	0	0	76	66	4	7	1	29	51	44	36	3,183	1,550
FEB	127	2	1	0	1	1	1	0	0	0	8	0	0	27	46	31	49	3,666	1,738
MAR	858	6	3	2	2	2	1	1	62	57	3	7	1	19	41	50	42	3,020	1,647
APR	41	3	2	2	7	4	0	0	34	32	6	4	2	20	40	40	90	4,037	2,107
MAY	0	2	0	6	3	3	1	0	0	0	0	0	0	21	28	31	27	3,296	2,086
2016 TOTAL	1,530	15	7	10	18	15	3	1	172	155	21	18	4	116	206	196	244	17,202	9,128

Abbreviation Key: Ind = Individual, Blnt = Blanket, Apps = Application for Hearing, NOAV = Notice of Alleged Violation, AOC = Administrative Order of Consent, OFV = Order Finding Violation, Cmplt = Complaint, Comp = Completed