



COLORADO

**Oil & Gas Conservation
Commission**

Department of Natural Resources

Staff Report

for July 18, 2016

Top Stories

◆ Randall Appointed as Executive Director

On June 6, Governor Hickenlooper announced Bob Randall's appointment as Executive Director of the Colorado Department of Natural Resources (DNR). Since 2010, Bob has advised DNR on policy, legislation, operations, and communications as its Deputy Executive Director. In February 2016, Bob accepted the Interim Executive Director post, soon after Mike King left DNR for a senior staff position at Denver Water.

Bob is no stranger to the COGCC. As Federal Land Coordinator at DNR in 2008, Bob worked closely with COGCC staff to develop new rules to implement House Bill 07-1298 and HB 07-1341. He began attending hearings as a seated member of the Commission five months ago and previously attended on King's behalf. We welcome Bob and congratulate him on his recent appointment to DNR's top job.

◆ COGCC Improves Environmental Database

The COGCC in conjunction with the Ground Water Protection Council (GWPC) has developed a publicly available and searchable database of groundwater, surface water, and soil sample analytical results from locations throughout the state. This database is referred to as the COENV database, and it has been active since September 2012. The COENV database has sampling data dating back as far as 1941 and currently contains over 14,635 sample locations and 38,779 individual samples.

Since the statewide rules for groundwater sampling went into effect (May 1, 2013), the COGCC has received a total of 6,081 samples from 2,237 separate locations. In FY 2015-16, 1,885 samples from 647 separate locations were

added to the COENV database. The COENV database allows for electronic data deliverables to be used for input. New samples from COGCC staff sampling efforts, current COGCC baseline sampling rules (Rules 317B, 318AE4, 608, and 609), and operator driven voluntary baseline sampling programs are available.

The data can be accessed through the GIS Online map. Sample locations with available water and natural gas data appear as green triangles when the 'Sample Sites' layer is turned on. The user can double click on a sample site to access the analytical data for that site.

In April 2014, the COGCC made the COENV database available for download in an Access database format for those who wish to query large datasets. Access to the download is under the Data section of the COGCC webpage under Downloads. The database download has been used by entities such as scientific organizations, local governments, non-governmental organizations, and others to better understand water quality in their area of interest.

◆ Garfield County Reclamation Project Update

For the Dolphin Arroyo #9-16D well, whose operator became insolvent in 2012, the COGCC recently finished work to plug wells and reclaim the site. According to Colorado statutes, the overall goal of reclamation is to establish a uniform native self-sustaining vegetation cover not less than 80 percent of a nearby reference area. As applied to Dolphin Arroyo #9-16D's pad and lease roads, this standard will provide long term stabilization of the location and return it to its pre-disturbance state.

The COGCC's Reclamation Staff began planning for Dolphin Arroyo #9-16D in early 2015,

completing price estimates and starting the construction stormwater permit process with the Colorado Department of Public Health and Environment (CDPHE). The field work began in May 2015 with installation of stormwater controls, removal of the cellar rings, dirt work on the access road and pad location to blend into the natural terrain, replacement of the topsoil, and deep cross ripping in preparation for revegetating the location.



Figure 1: The COGCC's contractor recontours 4.5 acres of the location in 2015.

COGCC contractors at Dolphin Arroyo #9-16D also took soil samples and developed a soil amendment and revegetation plan. In early June 2015, the contractor revegetated the site by amending the soil, preparing the seedbed, and broadcast seeding the location with native species. After the seeding, workers mulched and crimped straw for temporary stormwater controls while the vegetation established. The contractor also installed sediment logs and trenching to reduce the run of the slope for additional stormwater controls.

Since June 2015, the COGCC has performed site monitoring for stormwater controls and weed management, with a focus on successful revegetation by native species. Monitoring was conducted every two weeks. After four months, it was determined that the site was stabilized and stormwater monitoring went to a monthly schedule. The monitoring showed that a small area needed reseeding, and the COGCC's contractor conducted weed control and hand seeded the bare area.



Figure 2: In June 2016, the same 4.5 acre area of the location shows successful revegetation using all native species.

The COGCC is not the only organization achieving successful reclamation outcomes at oil and gas locations in Garfield County and other counties. Operators who adopt similar practices, including soil sampling, topsoil protection, soil amendment, and preparation of the seedbed for maximum establishment of native species, can boast having a similar set of 'before vs. after' photos of areas that were once well pads and lease roads.

◆ Enforcement Actions Year End Summary

COGCC enforcement efforts have increased with the growth in enforcement staffing, Governor Hickenlooper's Executive Order D 2013-004 (May 8, 2013), and the adoption of HB 14-1356 (Increase of COGCC Penalty Authority), effective June 6, 2014. Enforcement statistics for FY 2015-16 reflect this increase.

Increased enforcement staffing has primarily driven the increased enforcement effort. At the beginning of FY 2013-14, the enforcement team consisted of one full-time, in-house Enforcement Officer and one Assistant Attorney General. At the end of FY 2015-16, the enforcement team consisted of an Enforcement Supervisor, two in-house Enforcement Officers, an in-house Notice Of Alleged Violation (NOAV) Specialist, two full-time Assistant Attorneys General, and one part-time Assistant Attorney



General. As shown in Table 1 (below), a comparison of enforcement order statistics for the last three fiscal years reflects this increased enforcement effort.

Table 1: Enforcement Order Details by Fiscal Year

	Fiscal Year		
	2013-14	2014-15	2015-16
Total Enforcement Orders	53	38	74
AOCs	50	32	60
OFVs	2	5	10
Bond Foreclosures	1	1	4
NOAV's resolved	116	89	116
Violations resolved	328	160	215

The decrease in enforcement orders in FY 2014-15 is attributed to the major effort during the rulemaking implementing HB 14-1356, and development of a new corresponding enforcement policy. The FY 2015-16 statistics reflect a full current staffing level, without a resource-intensive rulemaking. Penalties have also increased under the new penalty regime of HB 14-1356 and corresponding Rule amendments. Table 2 (below) reflects these increases, which compares penalty statistics for the last three fiscal years. Total penalties are higher also because of the increase in the number of enforcement cases resolved.

Table 2: Penalty Statistics Comparison by Fiscal Year

Penalties	Fiscal Year		
	2013-14	2014-15	2015-16
Total	\$ 1,667,500	\$ 1,824,000	\$ 5,470,486
Suspended	269,750	1,065,050	1,034,736
Mandatory	1,397,750	758,950	4,435,750
Maximum	\$ 155,000	\$ 773,250	\$ 1,267,555
Minimum	1,000	0	1,000
Average	32,067	49,297	78,150
Median	20,000	20,000	27,750
Number	52	37	70

◆ Local Government Liaison (LGL) Program

When it involves oil and gas regulation in Colorado, LGLs Marc Morton and Nancy Prince focus on providing valuable and timely assistance, outreach, training, and support to local governments, the public, and other organizations. As part of that effort, the LGLs recently published the Spring 2016 Local Governmental Designee (LGD) Newsletter, which can be found at the following link:

http://cogcc.state.co.us/documents/gov/local/LGD_Newsletter/LGD_Newsletter_Spring_2016.pdf

Another issue of the newsletter is in the works. The most recent and previously published issues are available on the COGCC website under the "Government" link:

<http://cogcc.state.co.us/gov.html#/local>

The LGD Newsletters contain pertinent articles on topics such as the recently adopted Governors Task Force Rulemaking, summaries of other recent COGCC rulemakings, use of Memorandums of Understanding between local governments and operators, and other useful information to promote collaboration between local governments and the COGCC, and foster a greater understanding of oil and gas regulation in Colorado.

The LGD Newsletters also provide instruction on how to sign up to participate in the LGD program. We welcome feedback on the LGD Newsletters, suggestions for articles, and announcements your organization may want to share.

As a reminder to all LGDs, it is imperative that you notify the COGCC (via submittal of an updated COGCC Form 29) of any change in your LGD's e-mail address or contact information, or change in the status of your participation in the LGD program, such as a job change or retirement. If we don't have an LGD's correct email address, automatic e-mail notifications generated by our online forms and data processor (eForms) won't get to the intended recipient.



Free training is also offered to local governments and other organizations by the LGLs. Tell us what you want to learn about, and we will develop a customized training to meet your needs. LGLs can also provide a basic (half day to full day) LGD training that provides an overview of the COGCC, the LGD Program, and features and use of the website.

If you are an LGD or involved in the regulation of oil and gas, and have not had the basic course (offered in 2013, 2014, and 2015) or merely want a refresher or update, please let us know and we will deliver the training in person or in an online webinar format.

Public Outreach

➤ *Outreach by Director and Other Staff*

- On May 12, Geographic Information Systems (GIS) Analyst Dennis Ahlstrand and Senior Research Scientist Chris Eisinger presented “The COGCC Interactive Map - Workflows, Data Products, and the Permitting Process” at the Denver Petroleum User Group, a professional GIS users organization.
- On May 31 and June 14, Environmental Manager Greg Deranleau attended and participated in a Council Study Session and Council Hearing in the City and County of Broomfield. The primary agenda focus of both meetings was the proposal by Extraction Oil and Gas to modify the existing Memorandum of Understanding between Broomfield and Sovereign Energy following Extraction’s acquisition of Sovereign’s assets.

The new proposal includes a reduction of well pads, changing from directional to horizontal technology, and plugging of older vertical wells within Broomfield neighborhoods. Both meetings included presentations by the operator, numerous public comments, and opportunities for council members to ask questions of COGCC representatives. The proposal was ultimately adopted.

- On June 16, Senior Research Scientist Eisinger gave a presentation to the Metro Denver Economic Development Corporation regarding the potential surface impact of a 2,500 foot mandatory setback as proposed by Colorado ballot initiative #78.
- On June 20, Deputy Director Dave Kulmann, Oil and Gas Location Assessment Supervisor John Noto, and LGL Marc Morton traveled to the Town of Windsor to attend the Town Board and

Planning Commission work session on oil and gas regulation. Dave provided a presentation that summarized the COGCC’s regulatory structure, LGD program, and well and location permitting processes. John provided an overview of the recently adopted Governor’s Task Force Rulemaking.

- From June 27 to July 1, Director Matt Lepore was a member of a U.S. State Department Unconventional Gas Technical Engagement Program (UGTEP) delegation in Argentina. The U.S. delegation met with Argentine federal and provincial officials in Buenos Aires for two days, and then traveled to the Neuquen Province to meet with provincial and local officials regarding development of Argentina’s shale resources. The Argentines are keenly interested in balancing development of the hydrocarbon resources with environmental protection and social responsibility.

➤ *Outreach by LGLs*

- On June 15, Marc Morton travelled to Loveland provided a three hour training to City of Loveland staff that covered oil and gas exploration and production basics, the COGCC’s regulatory structure, the LGD program and public involvement, well and location permitting, and recent changes to COGCC rules affecting local governments.
- On June 15, Nancy Prince attended a regularly scheduled meeting of the Pueblo County Planning Commission. The Planning Commission voted to recommend approval by the Board of County Commissioners of Text Amendment No. 2015-001 Oil and Gas Regulations. The current version included changes that were responsive to comments submitted by the COGCC. This item is



scheduled to be heard by the Board of County Commissioners on July 13.

- On June 30, Marc Morton was interviewed by staff from Resources for the Future (RFF) and CDR, as part of an independent research project on community engagement practices in the oil and gas industry. RFF is an independent, nonpartisan organization that conducts economic research and analysis to help leaders make better decisions and craft smarter policies about natural resources and the environment. CDR is a Colorado-based non-profit organization

specializing in conflict management, collaboration and consensus building in the environmental and public policy arena.

- On July 6, Nancy Prince attended the monthly meeting of the Fremont County mayors in Coal Creek.
- On July 11, Marc Morton, Nancy Prince, and Hearings and Regulatory Affairs Manager Murphy presented information regarding the LGD Program to Colorado Department of Local Affairs staff.

Regional Activities

➤ Northwest Colorado

◆ Northwest Colorado Oil and Gas Forum

Remaining Northwest Colorado Oil and Gas Forum (NWF) meetings in 2016 are scheduled for August 4 and December 1. The August 4 meeting will be held at the Ute Theater in Rifle (132 E. 4th Street) from 9:00 a.m. to noon, and the December 1 meeting will be held in Rifle at the Colorado Mountain College in Clough Auditorium (3695 Airport Road).

NWF meeting agendas will be posted to the COGCC website approximately two to three weeks prior to each meeting, and emailed to those on the email distribution list. NWF meetings are open to the public, and a public comment period is held as part of each meeting.

Past presentations (dating back to 2006) are available on the website under the Library tab, then under the Local Public Forum tab, and finally under the Northwest Colorado Oil and Gas Forum Presentations link, or via the following website address:

<http://cogcc.state.co.us/library.html#/forums>

All parties wishing to be placed on the next meeting agenda or added to the distribution list for announcements should contact Marc Morton at 303-894-2100, ext. 5132 (direct), 720-415-4959 (mobile), or by email:

marc.morton@state.co.us

◆ Project Rulison

The email for Project Rulison submittals is

DNR_rulison.submittal@state.co.us

◆ Project Rio Blanco

The email for Project Rio Blanco submittals is

DNR_rioblanco.submittal@state.co.us

➤ Southwest Colorado

◆ Fruitland Formation Outcrop Mitigation and Monitoring Projects

South Fork Texas Creek Mitigation Site - La Plata County. Regularly scheduled operations and maintenance continue at the South Fork Texas Creek (SFTC) site, performed by LTE, the COGCC's contractor. Since May 2009, the system has collected 18,001 Mcf of methane and generated 259,974 kWh of surplus electricity.

The results of the 2015 Fruitland Outcrop monitoring efforts were presented at the First Quarter GORT Meeting by LTE; the 2015 Fruitland Outcrop Monitoring Report has been posted in the COGCC website library under the 3M project in the San Juan Basin at the following link:



http://cogccintranet/documents/library/AreaReports/SanJuanBasin/3m_project/2015%20FRUITLAND%20OUTCROP%20MONITORING%20REPORT_La_Plata.pdf

The 2015 4M Monitoring Report, prepared by Resource Hydrogeologic Services, has been posted in the COGCC website library under the 4M Project in the San Juan Basin at the following link:

http://cogccintranet/documents/library/AreaReports/SanJuanBasin/4m_project/FINAL%204M%20Project%20June%202016%20Monitoring%20Program%20Report.pdf

The Soil Gas Survey Results Report [Bryce 1-X Soil Gas Survey (June 2016)], prepared by Cottonwood Consulting, has been posted in the COGCC website library under Bondad, Colorado in the San Juan Basin section at the following link:

http://cogccintranet/documents/library/AreaReports/SanJuanBasin/Bondad/Soil%20Gas%20Survey%20Bondad_061716.pdf

◆ GORT Meetings

Remaining GORT meetings in 2016 are scheduled for July 28 and October 20. All meetings will be held in Durango at the Durango Public Library (1900 E. 3rd Avenue in Durango) from 8:30 a.m. to 11:30 a.m. GORT meeting agendas will be posted to the COGCC website approximately two to three weeks prior to each meeting, and emailed to those on the email distribution list. GORT meetings are open to the public, and a public comment period is held as part of each meeting.

All parties wishing to be placed on the next meeting agenda or added to the distribution list for announcements should contact Marc Morton at 303-894-2100, ext. 5132 (direct), 720-415-4959 (mobile), or by email:

marc.morton@state.co.us

Variations

◆ Encana Oil and Gas (USA) Inc. (Encana)

The COGCC Director granted Encana a final reclamation variance under the surface owner waiver provision of Rule 1001.c for the Buckskin Mesa Location (#256434). The location is being used and has been used as a hay storage facility by the land owner since the well was plugged. There are no stormwater, erosion, or noxious weed concerns, and the site is stabilized and well maintained.

◆ Citation Oil and Gas Corporation

The COGCC Director granted Citation Oil and Gas Corporation a variance from part of Rule 1004.a. under the surface owner waiver provision. The surface owner requested that a portion of the lease road remain in order to provide access for ranching operations. An inspection on March 28 of this year found that the road is stabilized and that there are no weed or erosion issues.

◆ Chevron USA Inc. (Chevron)

The COGCC Director approved a Memorandum of Understanding (Memorandum) with Chevron USA Inc. (Chevron) to memorialize operating and regulatory procedures at Chevron's Rangely Weber Sand Unit in Rio Blanco County, known in common parlance as the "Rangely Field." The Rangely Field is a large enhanced recovery project employing carbon dioxide and water injection. As a result of the Memorandum, Chevron received a variance to parts of Rule 326 requiring packer placement within 100 feet of the top perforation.

Packer placement at the Rangely Field requires latitude given the age of the wells, well construction methods, and configuration of the enhanced recovery system. The Memorandum between Chevron and the COGCC incorporates and updates field wide operating and regulatory procedures that have been in place since 1985. Many of these practices and procedures were based on letters and agreements over the past



several decades for operation of the field as well as the evolution of the EPA and COGCC underground injection control programs.

The most significant change is that Chevron will now submit an annual instead of a monthly report summarizing field activity from the previous year with estimates of operations for the coming year. Chevron's monthly summary of operations is more effectively captured on the COGCC's Form 7 Monthly Operations Reports and on other COGCC Forms.

◆ Extraction Oil and Gas, LLC (Extraction)

On June 24, per Rule 303.i.(2), the COGCC Director issued the Oil and Gas Location Assessment Form 2A permit for the Extraction Oil

and Gas Wind 31-P Location (ID #439018) prior to the end of the 20 day comment period. The operator requested issuance per Rule 303.i.(2) due to a need to expand this existing location to accommodate completion operations in late June.

The completion operations at this site were rescheduled in order to make a quieter retrofitted hydraulic fracturing fleet available for another location in an Urban Mitigation Area. Significant economic hardship would result if the Wind 31P pad completion operations were delayed. In accordance with COGCC procedures, Extraction obtained waivers of the 20 day comment period from the Surface Owner, Building Unit Owner in the Buffer Zone, and LGD.

Admin / Organization / Other

A COGCC organizational chart can be found on pages 11-14. For contact information, please go to our homepage, find the "About Us" menu, and select "Contact Us."

◆ Plugging and Reclaiming Orphaned Wells (PROW) - Project Updates

The **Think Oil Bond Vaughn #1 Plug and Abandon (PA) Project** is located in Moffat County about two miles southwest of the Town of Craig. This well was drilled in 1950 to a total depth (TD) of 10,003 feet through the Weber sandstone and Morgan Formation. The well was later plugged in 1989, but was re-entered in 1992 and drilled to a depth of 3,025 feet.

The operator then directionally drilled the well to a true vertical depth (TVD) of 7,223 feet and a measured total depth (MTD) of 7,264 feet. The well was completed in the Niobrara Formation. Because of mechanical problems and sub-economic production, the well was plugged in 1997. Various well site inspections by the COGCC found non-compliance with the Rules. An Order Finding Violation was issued and resulted in the COGCC claiming the bond for this well (Order 1V-458). An inspection in 2015 determined that gas was leaking from the well casing.

Plugging work commenced during the second half of March, with an estimated final cost of \$76,389, or \$24,436 higher than the awarded bid price. The onsite bid meeting was conducted in January when the site was covered in snow. After thawing, it was discovered that the access road was inadequate and needed additional road base to allow heavy equipment to get in and out. Also, the actual wellbore condition differed from what was reported, and additional work was required.

The well has been plugged, but the final field work is contingent on the contractor addressing residual leaking from the wellbore. The latest report shows that the small leak has stopped and was likely caused by a small volume of trapped gas that has since vented to depletion.

The **Wheeler #2 Plug and Abandon (PA) Project** is located approximately 14 miles southwest of the City of Durango in La Plata County. The well was drilled in 1969 and then temporarily abandoned until a gas contract and pipeline sales hookup were available. The COGCC recently found that this well still existed. A contractor successfully re-entered and plugged the well during the last week of May for a total cost of \$22,288.



The **Think Oil Bond Silver #1 Plug and Abandon (PA) Project** is located in Moffat County approximately one mile west of the Town of Craig. This well was drilled in 1988 to a total depth (TD) of 8,280 feet and completed in the Niobrara Formation. Three sidetracks in the same formation were drilled off the original wellbore in 1991, resulting in the abandonment of the original wellbore and the first two sidetracks.

The principal owner of the well died, and the COGCC subsequently claimed the \$5,029 bond in 2014 (Order 1V-458). A contractor successfully entered and plugged the well during the third week of June at a cost of \$54,722. Reclamation work at this location will occur next.

The **Midfields State #1 Plug and Abandon (PA) Project** is located in Yuma County about 12 miles south of the Town of Wray. This well was drilled to an approximate depth of 3,650 feet in 1919. In 2009, an onsite inspection found venting gas and rolling water in the well. The well was excavated to a depth of six feet, and no casing was found.

The limited available records indicate a 16 inch diameter surface bore. For safety purposes, panels were erected around the well, and the well was left open to the atmosphere to prevent shallow ground water contamination. This well was successfully re-entered and plugged during June for a total cost of \$27,938.

The **Premier Oil & Gas BOND Church Ranch #1W Plug and Abandon (PA) Project** is located about a mile north of the State #16-4 PA Project (shown above) and very near the City of Arvada and in Jefferson County. The well was drilled and completed as a vertical during year 2007 and drilled to a measured total depth (MTD) of 9,545 feet in the J Sand formation.

Details of the bond claim can be found by Order 1V-362. Plugging operations commenced during the final days of June and will continue into the first part of July. The first plug has been set at a depth of 8,600 feet, with the second plug planned for 4,600 feet. The latest cost estimate to plug the well is \$39,400.

The **Provide Energy BOND State #16-4 Plug and Abandon (PA) Project** is located very near the City of Arvada or a little over a mile from the intersection of Highways 72 and 93 in Jefferson County. The well was drilled and completed as a vertical to a measured total depth of 9,439 feet in 2007 in the Greenhorn formation.

The well was later purchased by Red Mountain Resources. Details of the BOND claim can be found in Order 1V-364. A contractor successfully re-entered and plugged the well during June for an estimated cost of \$23,947.

The **Ranchers BOND River West Reclamation (RECL) Project** is located in Larimer County near the City of Windsor and adjacent to the Retta J #1 Reclamation Project. There is currently production equipment on the location, and the well is in the process of being plugged and abandoned. The condition of the location required weed and erosion control practices to prevent environmental adverse impacts. This work involved mowing of tall weed debris at the site and installation of stormwater BMPs to prevent further erosion from occurring. The work was completed on February 29.

The **Buckeye #1 (RECL) Project** in Mesa county required weed control efforts to eliminate noxious weed infestation and reduce undesirable weed vegetation that created a unwanted debris source and competed with desirable perennial vegetation. The weed control practices included mowing and herbicide treatment.

The **Timpe #1 Reclamation (RECL) Project** is located approximately 13 miles southeast of Fort Morgan in Morgan County. This well was drilled in 1955 and was plugged and abandoned in 1973. A field inspection in 2006 and again in 2015 discovered the presence of cement pads and scrap metal debris at the location. The cement pads that remained at the location were as thick as four feet and had to be broken apart with heavy equipment so they could be removed.

Once all of the cement pads and scrap metal debris were removed and hauled away for disposal, the disturbed areas were reseeded with a native grass seed mixture and stabilized with a straw and corn stalk mulch. The project was completed on June 10.



The **Swanson-Peterson #1 (RECL) Project** is an orphan well site near Ridgway that was PA'd by the COGCC in November 2015. Following plugging of the well, reclamation of the location was performed in the spring of 2016, and additional revegetation was needed. This work was completed on April 28th.

The **Tatonka Culverwell #10-23-07-94 Reclamation (RECL) Project** is located approximately 18 miles west of the City of Craig in Moffat County. The location consists of 2.5 acres and required the removal of two conductor casings set in place. Then, the project recontoured the cut and fill pad area of the location and access road back to the original contours of the terrain. This work was completed on June 21. The location is now prepared for a fall seeding application to begin reestablishment of a native vegetation cover.

The **Dolphin Mulvihill #15-32D Reclamation (RECL) Project** is located in Garfield County about 1.6 miles northeast of the City of Rifle. This well was PA'd in 2012, but the site required final reclamation. The recontouring and soil preparation was completed in early May, followed by seeding and mulching in the disturbed areas to reestablish the vegetation cover and permanently stabilize the site. All project activities were completed on June 2.

The **Redwine South Nucla Unit #1-32 Reclamation (RECL) Project** was proceeded by the pit closure project and involved debris removal, recontouring, and revegetation practices to establish long term vegetation and achieve site stabilization. The site was a cut and fill on a steep slope in the mountains near the Town of Nucla, with approximately five acres of surface disturbance.

The work was performed in two phases. The first phase involved debris removal and recontouring. The second phase followed with broadcast seeding and a hydromulch application. Both phases of the reclamation project were completed on June 10.

The **Ranchers (BOND) Retta J #1 Reclamation (RECL) Project** is located in Larimer County near the City of Windsor. The site is complicated by the fact that the well was drilled on a closed out

landfill, the Johnston Landfill, which ceased its business operations in 1982. The CDPHE landfill closure plan does not allow any disturbance to the landfill area. Disturbance occurred during the well pad construction and during the drilling operations.

The COGCC had required the drilling operation to end early in the drilling operations process and prohibited further oil and gas operations on the location. The well was PA'd by the operator in April 2012, but the operator failed to implement adequate stormwater Best Management Practices (BMPs) and reclaim the well site. The COGCC and CDPHE are working together to close the location since there is a landfill component and an oil and gas component.

The COGCC claimed the Ranchers Exploration bond through Order 1V-526 for two locations. The first phase of the redesign work and soil sampling was required for planning the reclamation and landfill closure design. This work was completed June 30. Ongoing work will be required to provide closure of the landfill and properly reclaim the location.

Page 15 contains a spreadsheet listing PROW projects that are either scheduled, in process, or completed as of July 1, 2016.

◆ Colorado Oil and Gas Information System (COGIS) Projects, Updates and Changes

Electronic Form (eForm) Submissions

The COGCC uses 41 types of forms to authorize oil and gas operations, inspect and monitor on-going operations, and receive reports of operations. Of those 41 forms, 20 are currently available for electronic submittal through the eForms system.

The development team continues to work on the eForm conversion of existing forms. Currently, four forms are in various stages of development: Forms 14, 14A, 27, and the Warning Letter. In addition, the development team updates eForms with improvements requested by Staff and as required by rule revisions.



To date in 2016, 95 percent of the forms available in eForms were submitted electronically by industry. There are 696 operator users of eForms and 2,827 individual users. For any operator not currently enrolled in eForms, instructions for starting the process can be found on the COGCC website at:

<http://cogcc.state.co.us/Announcements/COUInformation.pdf>

Form 27 eForm Development

The COGCC's Site Investigation and Remediation Workplan (Form 27) is currently being upgraded. The Governor's Office of Information Technology (OIT) has completed development of the eForm 27, and COGCC Staff have completed internal testing. Further testing by a select group of operators has been undertaken and feedback is being received and incorporated into the final product.

Applications and Location Assessments

The public can make comments on all submitted Drilling Permit Applications (Form 2s) and Location Assessments (Form 2As) through the eForm system. Simply go to the COGCC website and click on the menu option "Permits" or

<http://cogcc.state.co.us/permits.html#/permits>

On the "Permits Search" page, three search options are available. The first option, "All Pending Permit Applications," is used for public comments. When the results are displayed for "Pending Applications," a user can click on the document number hyperlink in the "Status" column, which logs him or her to the eForms application. Once the page is displayed with the selected document, the user can select the Comment button to make a comment on that particular form.

Data Access

The COGCC's database is a comprehensive repository of Colorado's oil and gas data. The information in the database is available to the public through interactive search tools and a variety of file downloads on the website.

The interactive search tool for permits has been expanded to include the pending applications for Underground Injection Control (UIC) Permits (Form 31) and Injection Well Permits (Form 33). Like the other permit tools, the search can be conducted for a selected county or for the entire state. Users of bulk data come from many different sectors of the community, including academia, oil and gas operators, environmental groups, government agencies, and the media. The number of these users and the variety of data requested are steadily increasing. Staff continues to publish additional data file downloads at:

<http://cogcc.state.co.us/data2.html#/downloads>

Current Data File Downloads

Complaints
Field Operations
GIS Shapefiles (12 files)
Mechanical Integrity Tests
Notices of Alleged Violation
Production Data (1999 - present)
Spacing Orders
Spills and Releases
Water Well Data

Future Data File Downloads

Enforcement Orders (OFVs and AOCs)
Underground Injection Control (UIC) Data

◆ August 2016 Hearing Docket

The docket for the August 2016 hearing will be available shortly after the July hearing. Hearing dockets are available on our website by clicking on "Regulation" in the menu and then "Hearings":

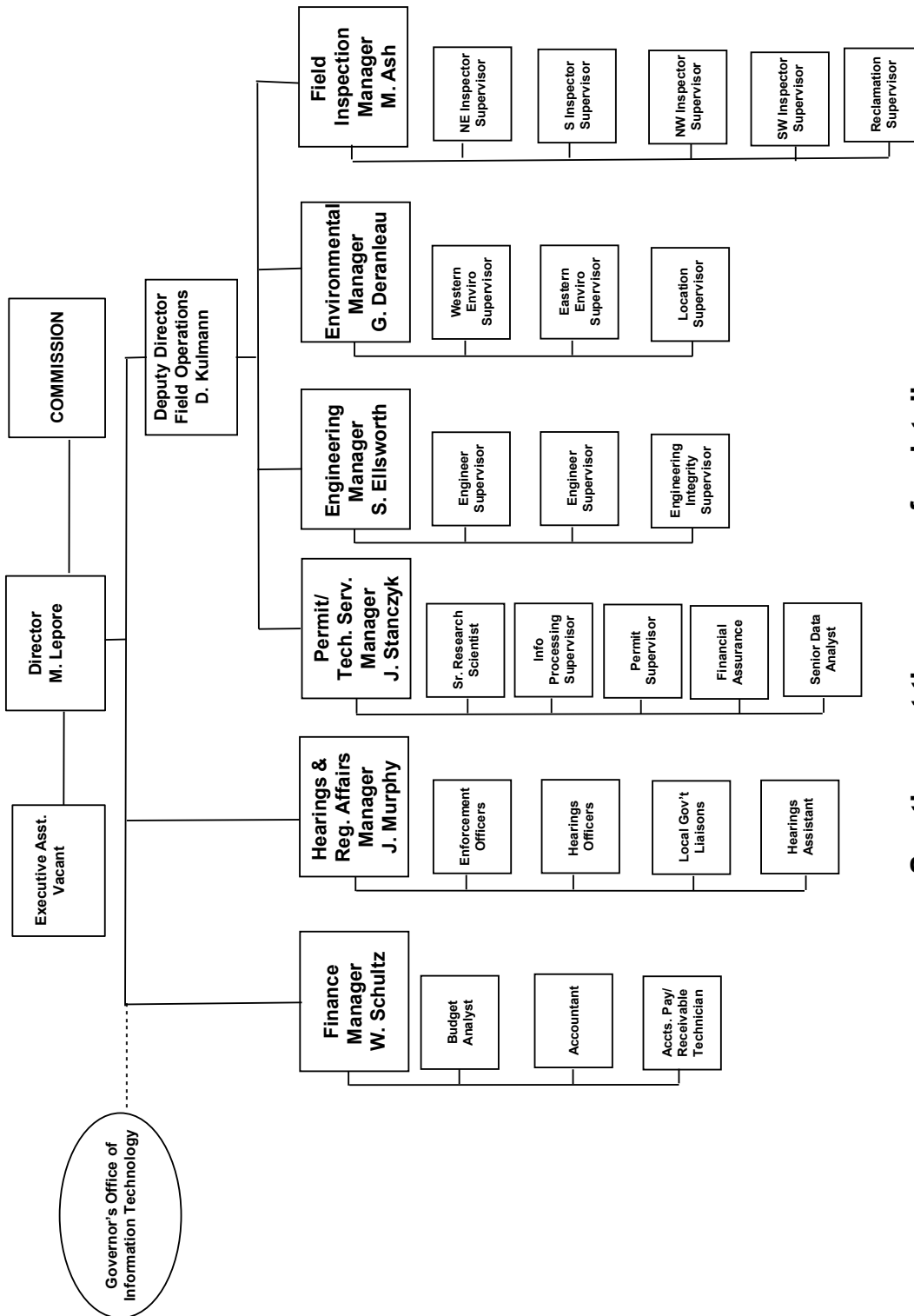
<http://cogcc.state.co.us/reg.html#/hearings>

Links to the notices and hearing applications are available from the Docket Number and Applicant, respectively, by clicking the August Gen_Docket link. To sign up for email notification of hearing notices and applications, please see the announcement and instructions on the homepage of the COGCC website.



Organizational Charts and Statistics

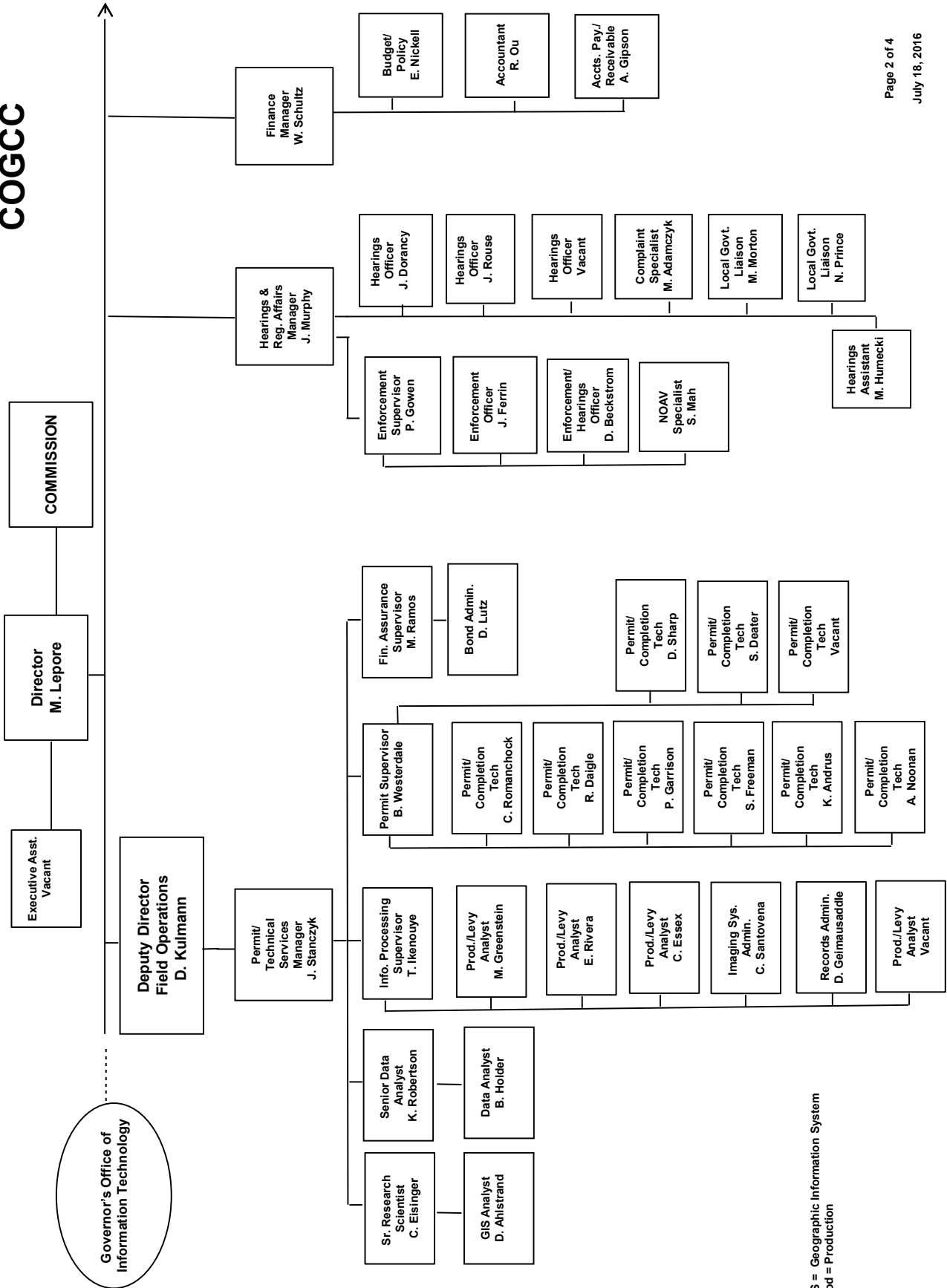
COLORADO OIL & GAS CONSERVATION COMMISSION



See the next three pages for details

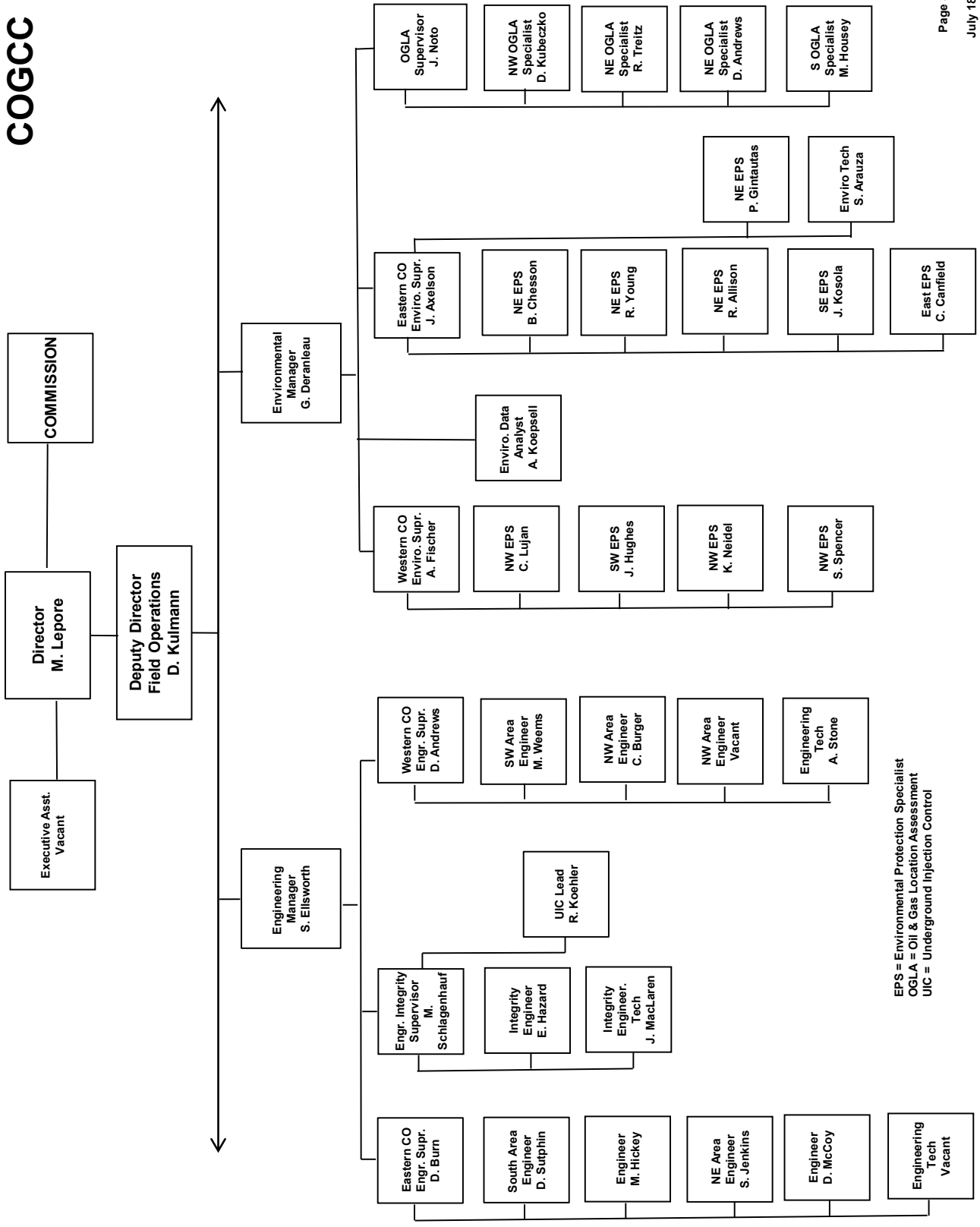


COGCC





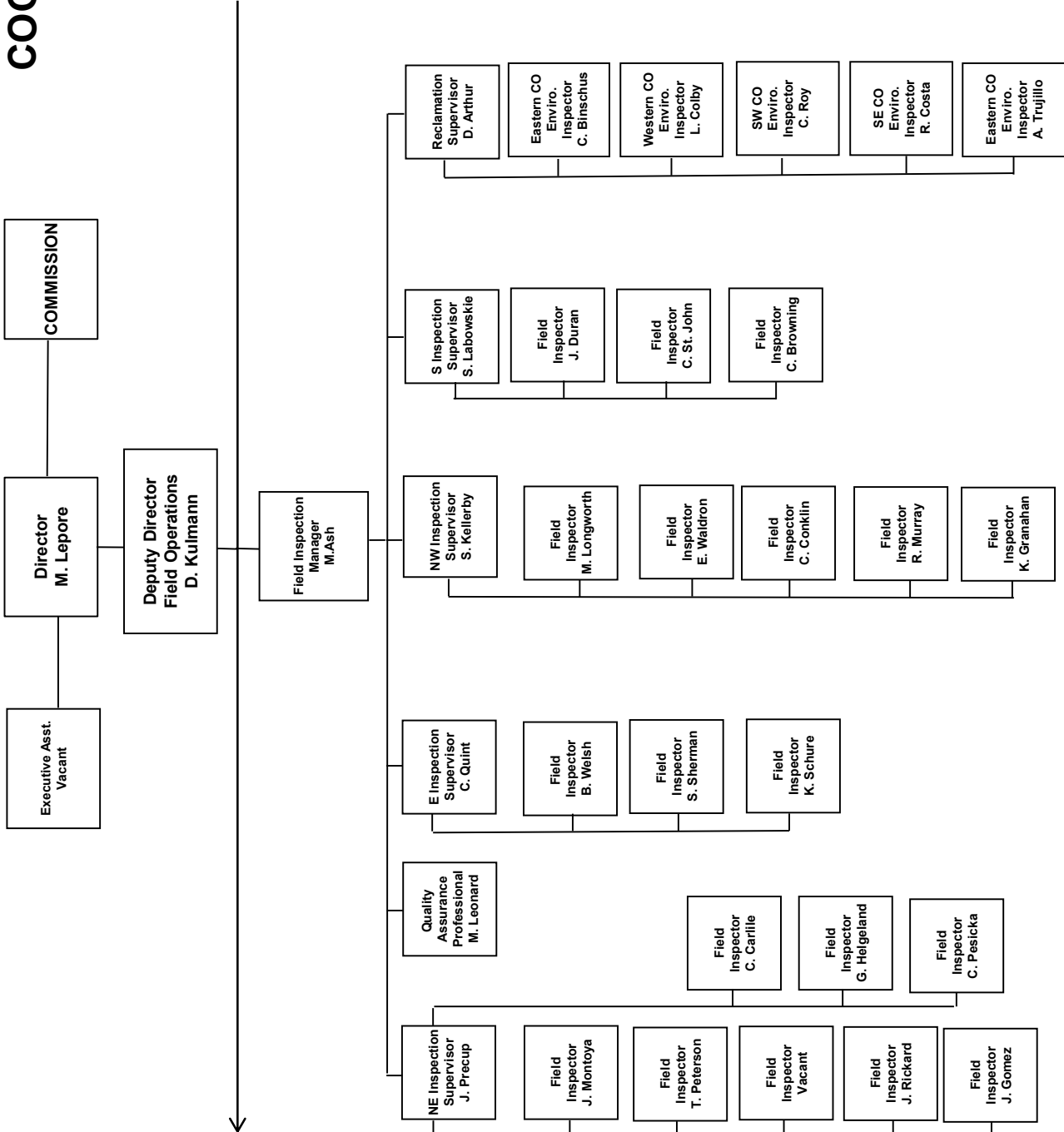
COGCC



EPS = Environmental Protection Specialist
 OGLA = Oil & Gas Location Assessment
 UIC = Underground Injection Control



COGCC





Oil and Gas Staff Report

July 18, 2016

PLUGGING AND RECLAIMING ABANDONED WELLS (PROW) FOR ORPHANED LOCATIONS FISCAL YEAR 2015-16

County	Type	Project Name	ESTIMATED TOTAL PROJECT COST			FY 2015-16 YTD EXPENDITURES			Totals	Description
			Bond	PROW	EMGY	Totals	Bond	PROW		
PLANNED										
IN PROGRESS										
COMPLETED										
Moffat	PA	Think Oil BOND - Vaughn #1	\$ 7,542	\$ 44,411	\$ 51,953	\$ 7,542	\$ 68,847	\$ 76,389	Drilled in 1950 to a TD=10,000'; PA in 1989; re-entered in 1999 and directionally drilled to a MTD=7264'; Niobrara completion; PA'd 1997; principal owner deceased; gas leak found; bond claimed; PROW re-enter PA project.	
Ouray	PA	Ridgway-Swanson- Peterson #1	\$ 51,555	\$ 51,555	\$ 51,555	\$ 39,735	\$ 39,735	\$ 39,735	Drilled in 1947 to a TD=500'; turned over to landowner at some point in time for domestic use gas hookup; stopped producing gas and will be PA'd by PROW	
Adams	PA	Ruth #1 BOND PA	\$ 5,000	\$ 5,000	\$ 5,000	\$ 5,000	\$ 5,000	\$ 5,000	Bond claimed 8/20/2012 Order #1V-395; surface production equipment removed in July 2015.	
La Plata	PA	Wheeler #2	\$ 27,747	\$ 27,747	\$ 27,747	\$ 22,288	\$ 22,288	\$ 22,288	An orphan well to be PA'd; drilled in 1969 to a TD=2900; plugged back to 1420' in 1970.	
Moffat	PA	Think Oil BOND - Silver et al #1	\$ 5,029	\$ 43,996	\$ 49,025	\$ 5,029	\$ 49,693	\$ 54,722	Drilled in 1988 to a TD=8280'; completed in the Niobrara. Three sidetracks were drilled in 1991. Principal deceased. Bond claimed 2014.	
Yuma	PA	Midfields State #1	\$ 21,491	\$ 21,491	\$ 21,491	\$ 27,938	\$ 27,938	\$ 27,938	Drilled in 1919 to TD=3650'. Gas flow and rolling water. Excavated to a depth of 6'. Installed 18" OD PVC to a depth of 20'.	
Jefferson	PA	Providence BOND - Red Mtn State 16-	\$ 802	\$ 23,145	\$ 23,947	\$ 802	\$ 23,145	\$ 23,947	Last work incl. deepening and hole problems; bankruptcy; BOND claim; PA.	
Jefferson	PA	Premier BOND - Church Ranch #1W	\$ 5,000	\$ 18,200	\$ 30,009	\$ 5,000	\$ 18,200	\$ 30,009	Found to be leaking gas - Emergency Designation.	
Larimer	RECL	Ranchers BOND - River West #2	\$ 8,276	\$ 2,691	\$ 8,276	\$ 4,170	\$ 2,446	\$ 4,170	Revegetate the site.	
Garfield	RECL	Dolphin Arroyo #9-16D	\$ 196	\$ 196	\$ 196	\$ 196	\$ 196	\$ 196	Soil bed prep; seed and cover with straw.	
Mesa	RECL	DeBeque Orphans-Buckeye #1	\$ 2,405	\$ 2,405	\$ 2,405	\$ 2,405	\$ 2,405	\$ 2,405	Mowing.	
Jefferson	RECL	Providence BOND - State 16-4	\$ 19,653	\$ 19,653	\$ 19,653	\$ 22,639	\$ 22,639	\$ 22,639	This well was PA'd in 1973. Site needs to be reclaimed.	
Morgan	RECL	Timpe #1	\$ 5,500	\$ 5,500	\$ 5,500	\$ 2,451	\$ 2,451	\$ 2,451	This well was PA'd in 2015. Site, road, to be reclaimed.	
Ouray	RECL	Ridgway Swanson-Peterson #1	\$ 23,500	\$ 23,500	\$ 23,500	\$ 23,500	\$ 23,500	\$ 23,500	Either pull or plug conductor pipe; recontour the site; re-seeding 1V-383.	
Ouray	RECL	Tatonka BOND - Tatonka Culverwell #10-23-07-94	\$ 21,227	\$ 21,227	\$ 21,227	\$ 21,227	\$ 21,227	\$ 21,227	Dolphin Energy Corp well pad and lease road near Rifle.	
Moffat	RECL	Dolphin BOND - Mulvihill #15-32D	\$ 69,002	\$ 69,002	\$ 69,002	\$ 69,002	\$ 69,002	\$ 69,002	PA'd May 2015; pit and well pad reclamation with cut and fill on steep terrain. Design plan.	
Montrose	RECL	Redwine BOND - SNU #1-31	\$ 24,473	\$ 24,473	\$ 24,473	\$ 24,473	\$ 24,473	\$ 24,473	Drilling mud reserve pit closure.	
Montrose	ENV	Ranchers BOND - Retta J #1	\$ 49,126	\$ 49,126	\$ 49,126	\$ 49,126	\$ 49,126	\$ 49,126	EPS soil analysis complete for the pit at the CTB and deemed ready for reclamation with no need for soils remediation.	
Adams	ENV	Redwine BOND - SNU #1-31	\$ 1,045	\$ 1,045	\$ 1,045	\$ 1,045	\$ 1,045	\$ 1,045	BOND Total Available = \$67,038.37.	
La Plata	ENV	Red Mesa Holdings BOND - JCK #1	\$ 4,228	\$ 4,228	\$ 4,228	\$ 4,228	\$ 4,228	\$ 4,228	HZ Well Policy-Operator to plug well; COGCC to pay for samples, plans, remediation and disposal.	
Weld	ENV	Carl A. Peters #1	\$ 1,330	\$ 1,330	\$ 1,330	\$ 1,330	\$ 1,330	\$ 1,330	Follow up soils analysis for prior remediation.	
Moffat	ENV	Think Oil BOND - Vaughn #1	\$ 1,782	\$ 1,782	\$ 1,782	\$ 1,782	\$ 1,782	\$ 1,782		
Logan	ENV	Luther #2	\$ 610	\$ 610	\$ 610	\$ 610	\$ 610	\$ 610		
TOTALS =>			\$62,755	\$426,207	\$495,770	\$58,649	\$445,000	\$6,809	\$510,458	
ESTIMATED TOTAL PROJECT COSTS										
GRAND TOTALS			Bond \$62,755	PROW \$426,207	EMGY \$6,809	Totals \$495,770	Bond \$58,649	PROW \$445,000	EMGY \$6,809	Totals \$510,458
SCOREBOARD (PROW FUNDING ONLY)										
TYPE	PA=plug & abandon	RECL=reclamation	ENV=enviro remediation							
EMGY	Funding from the Emergency Response (Budget Line Item)									
PROW	Funding from the Plug Recl Abandon Well (Budget Line Item)									
TBD	To be determined									
		\$	-	In Progress Estimated Totals						
		\$	-	In Progress Spent to Date Totals						
		\$	-	In Progress Remaining Totals						
		\$	445,000	Completed to Date Totals						
		\$	445,000	Sum of (In Progress Spent to Date) and (Completed to Date Totals)						
		\$	-	Planned + In progress remaining						
		\$	445,000	Total Expenditures						
		\$	445,000	Annual Budget Appropriation						
		\$	-	Projected End of Year Balance						



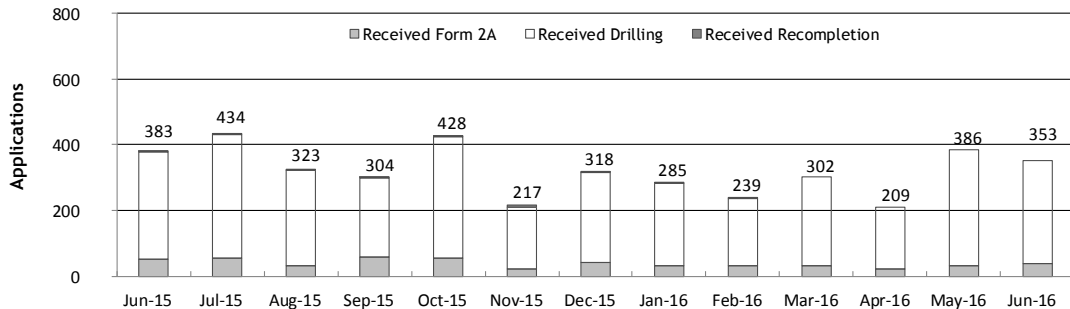
Monthly Permit Activity as of July 1, 2016

Form/Month	Backlog	Received	Approved	Withdrawn	Rejected	Incomplete ¹	In-Process	Remaining ²
Form2A								
Jun-15	137	52	49	3	1	24	112	136
Jul-15	136	57	48	2	1	25	117	142
Aug-15	142	32	46	0	1	35	92	127
Sep-15	127	59	49	3	4	25	105	130
Oct-15	130	54	51	4	0	14	115	129
Nov-15	129	21	49	1	1	16	83	99
Dec-15	99	42	43	2	0	27	69	96
Jan-16	96	34	9	1	0	29	91	120
Feb-16	120	31	39	1	0	32	79	111
Mar-16	111	34	36	3	0	27	79	106
Apr-16	106	24	39	2	0	29	60	89
May-16	89	33	24	0	2	27	69	96
Jun-16	96	38	30	3	0	23	78	101
Drilling								
Jun-15	760	327	281	9	5	175	617	792
Jul-15	792	373	250	2	15	153	745	898
Aug-15	898	289	300	18	111	159	599	758
Sep-15	758	242	312	7	32	112	537	649
Oct-15	649	372	223	17	16	104	661	765
Nov-15	765	190	254	3	0	106	592	698
Dec-15	698	275	242	13	6	159	553	712
Jan-16	712	250	126	4	30	201	601	802
Feb-16	802	205	227	1	15	212	552	764
Mar-16	764	268	268	16	59	220	469	689
Apr-16	689	185	224	13	20	155	462	617
May-16	617	353	217	1	16	138	598	736
Jun-16	736	315	233	6	2	125	685	810
Recompletion								
Jun-15	3	4	1	0	0	2	4	6
Jul-15	6	4	2	0	0	1	7	8
Aug-15	8	2	6	1	0	1	2	3
Sep-15	3	3	1	0	0	1	4	5
Oct-15	5	2	2	1	0	1	3	4
Nov-15	4	6	2	0	0	1	7	8
Dec-15	8	1	5	2	0	0	2	2
Jan-16	2	1	0	0	0	1	2	3
Feb-16	3	3	0	0	0	2	4	6
Mar-16	6	0	0	0	0	2	4	6
Apr-16	6	0	1	0	0	1	4	5
May-16	5	0	2	0	0	2	1	3
Jun-16	3	0	0	0	0	2	1	3

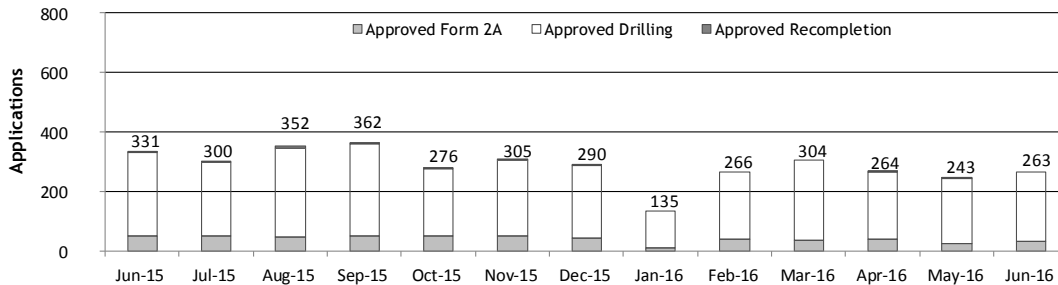
¹ Incomplete are applications that have missing or inaccurate data and cannot be approved.

² Backlog = Incomplete + In-process = Remaining permits from previous month.

Received Applications



Approved Applications





Oil and Gas Staff Report

July 18, 2016

17

Status of Permit Applications Filed By Month as of July 1, 2016

Form 2A Location Assessment

Year	Month	Received	Approved	Withdrawn	In Process	Percent In Process	Average	Less Than 30 Days	30 to 49 Days	Greater Than 50 Days
							Days to Process			
2011	TOTAL	2,391	2,298	93	0	0%		1,416	620	262
2012	TOTAL	1,359	1,291	68	0	0%		706	378	207
2013	TOTAL	1,281	1,202	78	1	0%		369	433	400
2014	TOTAL	1,114	1,067	45	2	0%		279	429	359
2015	JAN	49	48	1	0	0%	57	6	15	27
	FEB	69	65	3	1	1%	66	5	16	44
	MAR	54	47	6	1	2%	59	6	20	21
	APR	39	39	0	0	0%	64	8	13	18
	MAY	40	39	1	0	0%	60	6	12	21
	JUN	54	52	2	0	0%	57	10	17	25
	JUL	45	45	0	0	0%	77	4	12	29
	AUG	68	65	3	0	0%	58	11	21	33
	SEP	58	54	2	2	3%	57	16	9	29
	OCT	53	50	2	1	2%	89	3	10	37
	NOV	21	18	1	2	10%	83	2	4	12
	DEC	42	35	3	4	10%	80	1	8	26
2015	TOTAL	592	557	24	15	3%		78	157	319
2016	JAN	34	29	0	5	15%	73	2	4	23
	FEB	31	25	1	5	16%	66	1	3	21
	MAR	34	27	2	5	15%	62	3	8	16
	APR	23	12	0	11	48%	57	1	3	8
	MAY	32	6	0	26	81%	36	1	4	1
	JUN	37	2	0	35	95%	13	2	0	0
2016	TOTAL	191	101	3	87	46%		10	22	69

Form 2 Application For Permit to Drill (APDs)

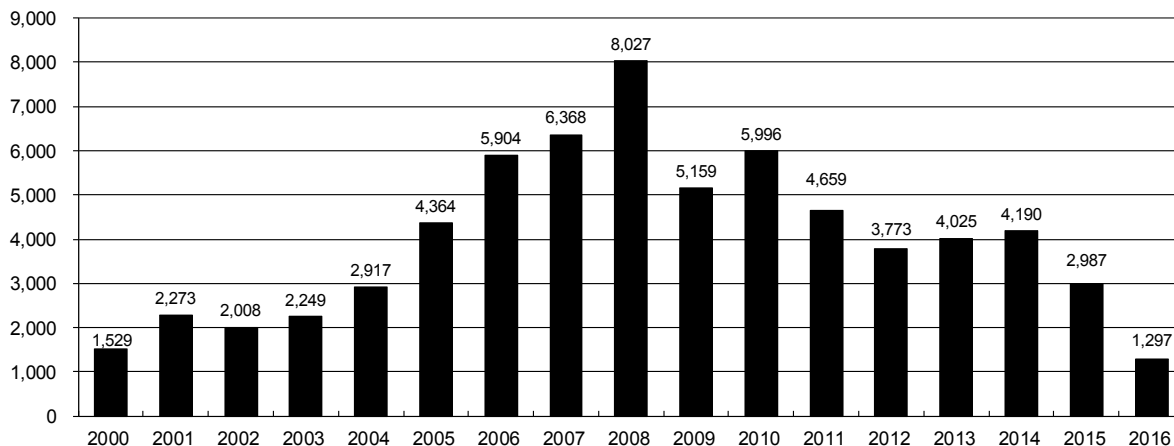
Year	Month	Received	Approved	Withdrawn	In Process	Percent In Process	Median Days	Less Than 30 Days	30 to 49 Days	Greater Than 50 Days
							to Process			
2011	TOTAL	4,691	4,557	132	0	0%		2,723	1,565	587
2012	TOTAL	3,955	3,816	139	0	0%		1,971	1,393	602
2013	TOTAL	4,548	4,312	235	1	0%		1,046	1,626	1,714
2014	TOTAL	4,208	4,026	155	27	1%		689	1,629	1,744
2015	JAN	291	290	1	0	0%	69	50	60	183
	FEB	294	277	17	0	0%	72	24	73	183
	MAR	306	249	35	22	7%	84	10	73	168
	APR	169	154	15	0	0%	78	28	35	94
	MAY	270	265	5	0	0%	77	9	84	172
	JUN	321	310	11	0	0%	67	45	81	186
	JUL	299	290	3	6	2%	67	15	84	197
	AUG	319	309	10	0	0%	90	11	64	236
	SEP	203	195	2	6	3%	74	17	37	145
	OCT	346	323	9	14	4%	91	16	75	232
	NOV	181	164	13	4	2%	89	15	46	108
	DEC	238	226	9	3	1%	78	9	47	170
2015	TOTAL	3,237	3,052	130	55	2%		249	759	2,074
2016	JAN	232	191	1	40	17%	68	23	33	136
	FEB	180	160	3	17	9%	70	5	34	123
	MAR	249	186	3	60	24%	69	16	36	134
	APR	174	133	0	41	24%	56	31	24	78
	MAY	352	83	1	268	76%	40	9	54	20
	JUN	313	10	2	301	96%	18	6	4	0
2016	TOTAL	1,500	763	10	727	48%		90	185	491



Annual Drilling Permits by County as of July 1, 2016

County	2000	2001	2002	2003	2004	2005	2006	2007	2008	2009	2010	2011	2012	2013	2014	2015	2016
ADAMS	38	28	9	26	39	34	37	89	51	35	21	8	40	40	51	96	32
ARAPAHOE		2	1	2	5	7	11	10	10	10	8	23	35	23	34	19	1
ARCHULETA	7	9	6	10	8	13	14	26	47	11	18	12	5	4	3	11	3
BACA	22	6	2	3	7	8	2	11	13	3	4	5	3	1	1		
BENT	2				5	3	8	1	1		5		2	1			
BOULDER	1	5	6	7	17	13	21	37	32	35	24	30	22				
BROOMFIELD			2	7		1	1		2	33	28	11	36		31		
CHEYENNE	3	3	3	3	3	10	21	15	33	12	13	16	31	50	26	9	
COSTILLA																	
CROWLEY																2	
DELTA			7	4	5	10		2			4	3	6	1	2		
DENVER		3					19	25	24								
DOLORES				1	1	1	6	10	12	21	8	8	13	12	3		2
EAGLE																	
ELBERT	2						4					1	2	2	4	3	
EL PASO										1	3	3	18	1	2		
FREMONT					1	3	2	4	14	13	22	14	11	2	8	2	2
GARFIELD	213	353	362	567	796	1,509	1,845	2,550	2,888	1,981	2,037	1,323	1,046	870	1,066	532	289
GRAND																	
GUNNISON			5	10	1	9	19	7	10	12	4	3	11	9	20	28	5
HUERFANO	41	27	27		8	2		7			2	1	9	1	13	2	
JACKSON	34	18	21	9	14	6	8	5	27	19	9	18	5	12	17	3	26
JEFFERSON	1						1	3	2					1			
KIOWA	11	18	2	4	2	1	11	9	26	7	16	17	17	12	5	3	
KIT CARSON				1	3	5	4	4	13	7	3	2	6	1	2		
LA PLATA	127	156	104	162	102	115	235	251	328	298	191	99	71	32	87	106	69
LARIMER	2		1			1		5	46	12	41	8	13	2	4	28	
LAS ANIMAS	268	400	259	180	332	413	500	362	303	88	92	85	11	2	1		
LINCOLN	2	2	1	6	3	4	1	2	58	44	48	31	36	87	129	24	1
LOGAN	4	7	3	3	6	13	17	14	5	9	17	8	27	4	5		1
MESA	13	27	30	27	54	136	265	293	501	427	306	127	150	105	74	126	
MOFFAT	35	52	62	63	63	60	120	68	57	51	53	93	88	44	54	12	1
MONTEZUMA	4		5	8	8	11	5	12	22	39	19	27	29	14	25	3	1
MONTROSE	1	3	2	4	2		1	3	3		1	1					
MORGAN	9	9	2	7	9	7	3	6	2	1	6	13	5	16	6	4	28
OTERO																	
PARK										3	4	1					
PHILLIPS	1	2		7	13	17	12	69	82	45	64	112	56		11	2	
PITKIN					1			1								1	
PROWERS	2	5	4		7	5	7	5	8	1	3	1			1		1
RIO BLANCO	89	187	105	179	154	161	360	321	477	348	441	109	117	167	121	107	30
RIO GRANDE	1	1		1					1	1			2		1		
ROUTT	20	13	1		4	6	9	8	4	2	3	10	4	12	4	9	
SAGUACHE	2		2					2	1	2							
SAN MIGUEL	11	13	27	18	42	45	35	23	20	13	10	2	1		2	3	
SEDGWICK				1	5	2	7	2	1	19	11	12	2		7	1	
WASHINGTON	23	17	27	34	128	50	69	45	11	1	6	12	6	19	12	9	2
WELD	509	702	760	757	832	901	1,418	1,527	2,340	1,448	2,152	2,262	1,826	2,468	2,303	1,841	803
YUMA	31	205	160	138	237	782	797	541	545	105	299	148	11	9	53	3	
TOTAL	1,529	2,273	2,008	2,249	2,917	4,364	5,904	6,368	8,027	5,159	5,996	4,659	3,773	4,025	4,190	2,987	1,297

ALL COUNTIES





Form 2A Breakdown By County By Year as of July 1, 2016

Year	County	Form 2As	Completed	In Process	New Location	CDP	SWH	RSO	CDPHE
2009	Total State	818	818	0	408	2	80	5	5
2010	Total State	2,377	2,377	0	1,543	0	317	22	55
2011	Total State	2,297	2,297	0	1,724	1	259	16	5
2012	Total State	1,297	1,297	0	900	0	167	6	1
2013	Total State	1,195	1,194	1	845	0	144	2	4
2014	Total State	1,067	1,065	2	777	3	129	7	3
2015	ADAMS	8	8	0	5	0	0	0	1
	ARAPAHOE	10	10	0	5	0	0	0	0
	ARCHULETA	5	5	0	2	0	4	0	1
	CHEYENNE	7	7	0	7	0	0	0	0
	ELBERT	3	3	0	3	0	0	0	0
	FREMONT	1	1	0	1	0	1	0	0
	GARFIELD	32	27	5	9	0	20	1	0
	GUNNISON	10	10	0	1	0	8	0	0
	HUERFANO	1	1	0	0	0	0	0	0
	JACKSON	7	7	0	4	0	7	1	0
	KIOWA	3	3	0	3	0	3	0	0
	LA PLATA	18	17	1	8	0	16	0	0
	LARIMER	3	3	0	1	0	0	0	0
	LINCOLN	26	26	0	25	0	0	0	0
	LOGAN	1	1	0	0	0	0	0	0
	MESA	12	11	1	8	0	6	0	0
	MOFFAT	9	9	0	5	0	9	0	0
	MONTEZUMA	3	3	0	3	0	0	0	0
	MORGAN	4	2	2	3	0	0	0	0
	PHILLIPS	2	2	0	2	0	0	0	0
	RIO BLANCO	13	13	0	8	0	13	0	0
	ROUTT	3	3	0	1	0	3	0	0
	SAN MIGUEL	2	2	0	2	0	2	0	0
	SEDGWICK	1	1	0	1	0	0	0	0
WASHINGTON	15	15	0	13	0	0	0	0	
WELD	372	365	7	278	0	3	0	0	
YUMA	3	3	0	1	0	0	0	0	
2015	Total State	574	558	16	399	0	95	2	2
2016	ADAMS	2	0	2	1	0	0	0	0
	ARAPAHOE	1	1	0	1	0	0	0	0
	DOLORES	1	1	0	1	0	0	0	0
	GARFIELD	13	11	2	1	0	7	0	2
	GUNNISON	3	2	1	1	0	2	0	0
	HUERFANO	1	0	1	1	0	1	0	0
	JACKSON	5	3	2	2	0	5	0	0
	KIT CARSON	1	0	1	1	0	0	0	0
	LA PLATA	1	0	1	0	0	1	0	1
	LINCOLN	2	1	1	1	0	0	0	0
	LOGAN	1	0	1	0	0	0	0	0
	MOFFAT	8	1	7	4	0	8	0	1
	MONTEZUMA	1	1	0	1	0	0	0	0
	MORGAN	1	1	0	1	0	0	0	0
	PROWERS	1	1	0	1	0	0	0	0
	ROUTT	1	0	1	0	0	1	0	0
	WASHINGTON	3	1	2	3	0	0	0	0
	WELD	132	72	60	81	0	1	0	2
2016	Total State	178	96	82	101	0	26	0	6

Abbreviations:

CDP = Comprehensive Drilling Plan

SWH = Sensitive Wildlife Habitat consultation

RSO = Restricted Surface Occupancy consultation

CDPHE= Colorado Department of Health and Environment consultation



Horizontal Well Activity as of July 1, 2016

County	Prior Years		2009		2010		2011		2012		2013		2014		2015		2016		Total		Completion		
	Drilled	PA	Permit	Spud	Permit	Spud	Permit	Spud	Permit	Spud	Permit	Spud	Permit	Spud	Permit	Spud	Permit	Spud	Spud	AC	PR	DA	PA
ADAMS			6	5	2	3	1	1	17	2	26	2	42	18	92	3	32	1	34	3	18		
ARAPAHOE	2				2		10	1	22	4	11	13	22	11	9		1	31	2	28		1	
ARCHULETA	17		7	6	15	7	10	8	5	9	2	2	1		6	3	2	50		50			
BENT									1	1	1							1				1	
BOULDER							4											0					
CHEYENNE	5	4							6	1	7	2	1	1	1	1		9		1		5	
DELTA						2			9	3	5	4	2					3		3			
DOLORES	9		18	2	6				10				3	1				19		11		5	
EL PASO																		0				1	
ELBERT									1									0					
FREMONT	7	6	6		12	5	3	4	4	1	1	1			1			18		10	7	1	
GARFIELD	10	2	1	1	16	2	18	6	43	6	18	4	20	11	12	7		47		33		1	
GUNNISON	1				1				3	2	2	2	9		18	2	4	5		4			
HUERFANO									4	1			2					1					
JACKSON	8	1	1	8	3	4	9	2	4	4	8	5	15	4	3		24	12	35		21	2	
KIOWA									1		4	2	1					2					
KIT CARSON	1								1		1	1						2				4	
LA PLATA	28	2	11	2	28	3	18	7	12	1	5	1	43	6	42	2	49	2	52		50	1	3
LARIMER	3	2					5	1	2	1	2	2			22	8		15		11		2	
LAS ANIMAS	16		4		1	1												17		16			
LINCOLN			2	1	2	1	1	1	1	1	6		4	2				5		3		2	
LOGAN	2								1									2					
MESA	3	2	36		22	7	24	13	14		9	2	9	1	6	3		29		27	2	4	
MOFFAT	7	1	6	3	4		9	4	44	6	18	13	15	1	5	2	1	36		29		2	
MONTEZUMA	6	1	23	6	11	2	8	2	18	6	3	4	15	2				28		33		7	
MORGAN							6	2	2	1	13	1	6		4	1	28	5		5			
PARK					1	1	1											1					
RIO BLANCO	7	2			1	1	11	2	15	2	4	5	3	2	3			19		12	3		
ROUTT	10	6	1						1		1				3			10		1	6	1	
SAN MIGUEL	1		1															1					
WASHINGTON	1																	1					
WELD	11	3	12	5	208	84	763	229	964	593	2,114	1,096	2,215	1,429	1,789	1,051	789	293	4,791		3,612	10	58
YUMA	1		6															1					1
TOTAL Horizontal	156	25	14	147	31	123	901	281	1,203	641	2,260	1,158	2,428	1,489	2,016	1,083	930	308	5,270	5	3,982	31	100
Percent of Total HZ																				0%	76%	1%	2%
Total All Permits							5,159		3,773		4,025		4,190		2,988		1,295						
HZ Percent of Total							2.8%		31.9%		56.1%		57.9%		67.5%		71.8%						



Well to Building Setbacks by Year and by County as of July 1, 2016

Count of well locations, grouped by proximity from well to buildings.

Location Proximity to Buildings	2009	2010	2011	2012	2013	2014	2015	2016	Number of Locations	Percent of Total Locations
Less than 150 feet	2	3	3	2	0	3	2	0	15	0%
150 to 350 feet	37	58	61	39	34	38	12	5	284	3%
350 to 500 feet	50	110	97	61	64	48	33	11	474	6%
500 to 1000 feet	117	385	331	188	188	161	83	35	1,488	17%
1000 + feet	356	1,705	1,470	838	762	724	378	111	6,344	74%
TOTAL LOCATIONS	562	2,261	1,962	1,128	1,048	974	508	162	8,605	

County	TOTAL	Less than 150 feet	150 to 350 feet	350 to 500 feet	500 to 1000 feet	1000 + feet
ADAMS	79	0	4	9	20	47
ARAPAHOE	97	0	2	4	10	81
ARCHULETA	23	0	0	1	11	11
BACA	15	0	0	0	1	14
BENT	7	0	0	0	0	7
BOULDER	23	0	1	1	17	4
BROOMFIELD	33	0	0	4	13	16
CHEYENNE	140	1	0	0	2	137
CROWLEY	2	0	0	0	0	2
DELTA	7	0	0	2	1	4
DOLORES	20	0	0	0	7	13
EAGLE	1	0	0	0	0	1
EL PASO	14	0	0	0	3	11
ELBERT	11	0	0	0	2	9
FREMONT	40	0	2	7	8	23
GARFIELD	566	0	10	9	77	470
GUNNISON	44	1	0	4	1	38
HUERFANO	16	0	0	0	5	11
JACKSON	52	0	0	4	1	47
KIOWA	66	0	0	0	1	65
KIT CARSON	14	0	0	0	0	14
LA PLATA	134	0	5	14	46	69
LARIMER	39	0	5	4	14	16
LAS ANIMAS	201	1	6	7	37	150
LINCOLN	371	0	1	2	4	364
LOGAN	44	0	1	1	1	41
MESA	97	0	0	3	14	80
MOFFAT	179	0	0	2	15	162
MONTEZUMA	43	0	0	1	4	38
MONTROSE	2	0	0	0	0	2
MORGAN	31	0	0	2	4	25
PARK	4	0	0	0	0	4
PHILLIPS	275	1	4	6	21	243
PITKIN	1	0	0	0	0	1
PROWERS	6	0	0	0	0	6
RIO BLANCO	187	0	0	0	2	185
RIO GRANDE	2	0	0	0	1	1
ROUTT	29	0	0	0	2	27
SAN MIGUEL	14	0	0	0	0	14
SEDGWICK	33	0	0	1	3	29
WASHINGTON	74	0	2	0	3	69
WELD	5,042	11	232	370	1,093	3,333
YUMA	528	0	9	16	44	459


Well to Building Setbacks Less Than Two Hundred Feet as of July 1, 2016

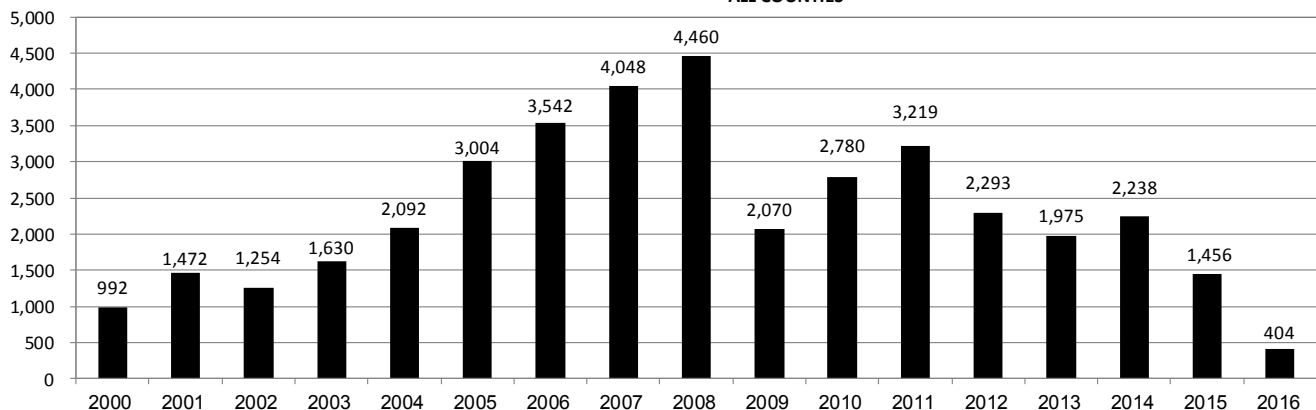
Year	Location Doc Number	County	High Density	New Location	Distance (Feet)	Proximity (Feet)	Building Description
2015	400768804	WELD	No	Yes	46	less 150	Building to be razed
2011	2587822	CHEYENNE	No	No	58	less 150	Water well house
2009	1691798	WELD	No	No	58	less 150	Vehicle garage
2010	400072164	WELD	No	Yes	69	less 150	Abandoned hog shed
2014	400569085	WELD	No	No	78	less 150	Well shed
2014	400600705	WELD	No	No	80	less 150	Livestock shed
2012	400240957	GUNNISON	No	Yes	90	less 150	Equipment shed
2015	400742811	WELD	No	Yes	102	less 150	Building to be razed
2009	1758843	WELD	No	Yes	103	less 150	Building to be razed
2011	1636646	WELD	No	No	122	less 150	Storage shed
2009	400011284	LAS ANIMAS	No	Yes	127	less 150	Operator is owner
2009	1786896	PHILLIPS	No	No	132	less 150	Grain storage
2014	400642113	WELD	No	Yes	142	less 150	Barn
2011	400117702	WELD	No	Yes	143	less 150	Irrigation pump house
2011	400227765	WELD	No	Yes	145	less 150	Storage barn
2014	400558626	LINCOLN	No	No	150	less 150	Gas plant equipment building
2009	1904205	WELD	No	No	154	150 to 350	Livestock enclosure
2012	400243295	WELD	No	Yes	155	150 to 350	Unused storage shed
2015	400862577	GARFIELD	No	No	155	150 to 350	Gravel pit scale house
2011	400179419	WELD	No	Yes	157	150 to 350	Existing well / storage building
2010	400054716	WELD	No	No	159	150 to 350	Equipment barn
2011	400188968	WELD	No	Yes	159	150 to 350	Abandoned
2014	400554054	WELD	No	Yes	159	150 to 350	Equipment shed
2014	400559404	WELD	No	Yes	160	151 to 350	Barn
2010	400021477	WELD	No	Yes	162	150 to 350	Goat barn
2009	1758386	WELD	No	Yes	168	150 to 350	Storage shed
2011	1635946	WELD	No	No	169	150 to 350	Storage shed
2013	400447386	WELD	No	No	169	150 to 350	Abandoned turkey barn
2013	400447391	WELD	No	No	169	150 to 350	Abandoned turkey barn
2011	400165164	WELD	No	Yes	178	150 to 350	Residence
2013	400367184	WELD	No	Yes	179	150 to 350	Shed
2011	400188780	WELD	No	Yes	180	150 to 350	Residence
2014	400562498	WELD	No	Yes	181	150 to 350	Garage / storage shed
2010	1697620	WELD	No	No	187	150 to 350	Livestock shed
2009	1758746	WELD	No	No	193	150 to 350	Storage shed
2011	400154431	WELD	No	Yes	198	150 to 350	Turkey barn
2012	400250031	WELD	No	Yes	198	150 to 350	Abandoned guard shack
2010	1774783	WELD	No	No	199	150 to 350	Cement service building
2011	400118102	YUMA	No	Yes	199	150 to 350	Steel barn



Annual Well Starts by County as of July 1, 2016

County	2000	2001	2002	2003	2004	2005	2006	2007	2008	2009	2010	2011	2012	2013	2014	2015	2016
ADAMS	18	13	4	19	22	24	13	41	14	14	21	1	15	6	29	4	1
ARAPAHOE					6	1	5	2	1	1	3	9	9	25	21		
ARCHULETA	4	4	2	5	4	10	5	7	29	9	12	10	11		1	7	2
BACA	19	6	2	1	6	6	2	6	12		5	4	2	1		1	
BENT	2				3	2	8	1	1			1	2				
BOULDER				2	5	11	9	14	25	16	13	7	14				
BROOMFIELD			2		1				10		21	11	5				
CHEYENNE	2	1	3	3		9	14	15	14	8	12	11	17	35	19	3	
COSTILLA																	
CROWLEY															2		
DELTA				5	4	6	5	2			9	2	3				
DENVER		2					7	5	4								
DOLORES					2		2	13	6	2		1	5	10	4		
EAGLE														1			
EL PASO											2		5		1		
ELBERT	2						1									3	
FREMONT					1	3	2	2	5	3	10	16	9	2	4	1	1
GARFIELD	190	251	245	417	585	799	1,005	1,304	1,689	765	905	877	495	391	362	173	67
GUNNISON			1		1	1	9	5	1	4	5	2	4	1	2	4	
HUERFANO	25	14	19	3	6	2			2		2		2	1	4	1	
JACKSON	24	2	4	10	10		3	3	12	1	8	7		7	7		12
JEFFERSON								2									
KIOWA	8	16	2	4	2	1	7	7	2	5	15	14	10	12	3	2	
KIT CARSON				1	1	6	2	1	14	3	1	1	3	1	2		
LA PLATA	99	135	118	110	103	104	108	179	199	131	67	54	3	10	36	34	17
LARIMER	1	1				1		4	8	1	28	2	10	4	1	9	
LAS ANIMAS	202	286	205	221	296	384	413	326	222	14	7	78	1		1		
LINCOLN	2	2	1	5	2	2	1	2	18	11	14	21	23	42	43	12	1
LOGAN	4	6	3	3	2	11	12	12	3	7	3	9	13	4	6		
MESA	2	12	12	13	25	89	156	209	225	14	11	41	4	11	16	77	
MOFFAT	18	23	25	28	19	40	60	42	26	18	15	33	25	27	3	6	
MONTEZUMA	2	3	5	5	1	7	2	4	22	10	3	8	18	12	8	1	
MONTROSE		3		2	1			1	2		1						
MORGAN	9	8	1	7	5	5	3	1	1	2	3	2	3	1	4	1	
PARK											2						
PHILLIPS	1			6	10	11	4	35	18	2	42	130	48		9		
PROWERS	2	4	4		5	5	6	3	5	2	3	1				1	
RIO BLANCO	51	82	47	83	92	95	107	95	205	118	107	72	53	36	43	17	
RIO GRANDE														1			
ROUTT	5	12	1		1	6	3	2		2	1	2	4	2	2		
SAN MIGUEL	6	9	10	19	28	13	20	17	5	1	2	2			2		
SEDGWICK				1	2	1	1	5			3	8	3				
WASHINGTON	15	12	24	29	65	34	23	14	11	2	2	4	1	9	7	2	1
WELD	237	403	406	522	632	718	931	1,222	1,313	877	1,209	1,672	1,457	1,310	1,557	1,097	302
YUMA	42	162	108	106	144	597	593	445	336	27	213	106	16	13	39		
TOTAL	992	1,472	1,254	1,630	2,092	3,004	3,542	4,048	4,460	2,070	2,780	3,219	2,293	1,975	2,238	1,456	404

ALL COUNTIES





Active Wells by County and Status as of July 1, 2016

COUNTY	Drilling	Domestic	Injecting	Producing	Shut In	Temp Aband	Waiting on Completion	Active Storage	Total Active Wells
ADAMS	12		7	883	37	7	1	12	959
ARAPAHOE		1	2	143	8	8		43	205
ARCHULETA	2	5	1	108	12	13	6	1	148
BACA			16	113	15	4		55	203
BENT		1		30	6				37
BOULDER				309	1	1			311
BROOMFIELD				96					96
CHEYENNE			43	320	15	44	1		423
CROWLEY									0
DELTA				4	12		1		17
DENVER			1	46	2		3		52
DOLORES			2	36	2	2			42
EL PASO	1	1				1			3
ELBERT	3			67	2	1		1	74
FREMONT	4	3		60	7	6	1		81
GARFIELD	172	4	45	10,630	72	101	67	1	11,092
GUNNISON	3		1	33	8		3		48
HUERFANO			1	40	2	5	1		49
JACKSON	12		31	110	36		1		190
JEFFERSON				1	1		1	3	6
KIOWA	1		11	105	9	2	2		130
KIT CARSON		1	2	11		2			16
LA PLATA	6	7	28	3,149	85	14	3	30	3,322
LARIMER	1	2	18	199	24	16	1		261
LAS ANIMAS		4	14	2,791	12	111	12	16	2,960
LINCOLN	6	1	8	96	11	7	2		131
LOGAN	8		16	113	40	29	3	10	219
MESA	4	1	7	896	80	16	61	11	1,076
MOFFAT	1		9	487	48	36	4		585
MONTEZUMA		2	6	122	28	14			172
MONTROSE								1	1
MORGAN			21	90	81	35		81	308
OURAY		1				1			2
PARK									0
PHILLIPS			2	266	2	1	1		272
PITKIN								10	10
PROWERS				26	4	1			31
RIO BLANCO	23	3	295	2,303	167	90	12	2	2,895
ROUTT		2		33	7	3			45
SAN MIGUEL	1			109	14	6			130
SEDGWICK	2		1	14	3		2		22
WASHINGTON	4		23	401	24	7	2		461
WELD	896	1	52	21,438	197	45	54	4	22,687
YUMA	2	8	23	3,793	32	9	11	1	3,879
Totals	1,164	48	686	49,471	1,106	638	256	282	53,651



Oil and Gas Staff Report

July 18, 2016

25

Monthly Statistics as of July 1, 2016

Page 1 of 2

YEAR and MONTH	Baker - Hughes Rig Count	Permits										Well Spud Notices	Active Drilling Permits	Active Wells	Public Visits			
		Drilling		Recompletion		Injection		Pits		Locations					Data	Office	Internet	
		Rcvd	Apvd	Rcvd	Apvd	Rcvd	Apvd	Rcvd	Apvd	Rcvd	Authz							
2011 TOTAL		4,709	4,659	325	320	44	32	190	192	2,382	2,267	3,218			187	1,294	1,337,865	
2012 JAN	73	372	258	26	21	3	0	11	5	142	129	243	5,217	46,958	12	106	112,686	
FEB	70	370	382	23	27	7	5	21	9	160	129	230	5,173	47,128	16	114	105,857	
MAR	66	292	347	21	14	2	2	17	24	133	172	293	5,132	47,263	26	138	111,746	
APR	66	410	235	16	24	5	5	9	2	137	106	241	4,785	47,377	12	108	107,627	
MAY	66	491	506	23	16	3	1	6	2	105	131	211	4,885	47,533	20	123	109,802	
JUN	69	326	377	11	19	8	6	5	8	110	89	145	5,136	47,860	11	111	108,849	
JUL	66	237	276	9	14	3	2	5	2	97	103	183	5,152	48,173	13	102	114,195	
AUG	62	313	288	6	9	6	4	23	5	83	97	178	5,031	49,153	11	112	110,908	
SEP	61	252	256	1	5	5	2	4	1	81	77	161	4,960	49,230	11	89	106,114	
OCT	62	326	265	9	3	7	6	2	19	94	82	162	5,009	49,236	8	105	108,833	
NOV	56	271	323	5	8	6	6	2	4	109	97	142	5,000	49,989	10	119	120,586	
DEC	57	322	260	4	8	8	5	9	3	122	81	105	5,081	50,067	9	78	107,240	
2012 TOTAL		3,982	3,773	154	168	63	44	114	84	1,373	1,293	2,294			159	1,305	1,324,443	
2013 JAN	53	538	331	6	0	3	5	6	8	176	124	142	5,060	50,265	9	108	47,406	
FEB	56	260	455	10	5	2	3	4	11	91	141	139	5,250	50,372	7	102	40,649	
MAR	57	344	241	5	9	3	8	15	6	129	84	172	5,093	50,540	9	133	43,019	
APR	61	331	333	6	5	5	5	6	8	146	117	163	4,925	50,687	3	132	46,459	
MAY	61	350	342	8	6	6	6	10	7	106	142	162	5,110	50,810	3	123	45,215	
JUN	62	349	273	2	8	8	8	5	3	114	85	144	5,273	50,909	8	122	41,015	
JUL	68	864	304	11	4	9	2	9	5	218	91	160	5,070	51,091	7	154	45,558	
AUG	69	232	291	6	4	3	2	4	1	35	76	206	5,200	51,255	20	130	44,722	
SEP	69	212	362	9	5	10	9	3	19	56	109	165	5,185	51,407	5	105	41,256	
OCT	72	319	376	5	9	7	5	1	8	67	88	238	4,967	51,598	5	135	45,151	
NOV	69	346	353	4	13	7	4	2	27	67	85	162	5,141	51,711	12	119	38,903	
DEC	64	336	367	2	4	4	6	2	3	63	71	122	5,129	51,737	4	93	32,381	
2013 TOTAL		4,481	4,028	74	72	67	63	67	106	1,268	1,213	1,975			92	1,456	511,734	
2014 JAN	62	278	232	3	2	3	4	14	8	90	43	172	4,926	51,840	1	90	46,150	
FEB	61	284	297	6	4	1	1	3	1	91	94	150	5,051	51,847	12	113	43,408	
MAR	62	367	329	4	6	7	1	6	6	110	88	184	4,997	51,952	16	140	46,620	
APR	63	276	317	2	3	2	5	8	3	89	99	172	4,897	52,060	11	188	45,558	
MAY	65	458	383	2	2	3	1	6	7	83	94	179	4,923	52,202	18	131	42,365	
JUN	67	429	377	3	0	6	7	5	2	134	92	223	4,924	52,337	10	156	42,518	
JUL	69	272	446	2	5	3	11	8	5	97	126	181	4,955	52,431	7	166	45,481	
AUG	73	376	259	4	3	4	4	3	4	111	87	221	5,060	52,582	8	145	42,431	
SEP	76	412	304	2	3	3	1	20	1	116	81	205	5,006	52,694	14	175	43,577	
OCT	76	459	371	3	2	9	2	4	6	93	109	190	4,827	52,785	19	138	46,030	
NOV	73	326	479	5	2	5	4	4	0	54	103	174	5,171	52,947	8	96	39,583	
DEC	69	286	397	1	2	2	7	1	2	45	99	197	5,236	53,054	6	144	37,964	
2014 TOTAL		4,223	4,191	37	34	48	48	82	45	1,113	1,115	2,248			130	1,682	521,685	
2015 JAN	64	349	316	3	1	2	9	3	1	60	43	193	5,060	53,195	17	114	41,502	
FEB	49	324	161	3	2	5	6	9	0	73	28	115	4,750	53,309	4	117	38,245	
MAR	38	246	294	1	6	1	5	7	5	44	70	165	4,983	53,414	6	146	42,513	
APR	37	194	165	3	1	2	5	1	2	46	37	89	4,854	53,456	1	125	39,559	
MAY	39	324	190	1	4	2	6	8	0	41	44	109	4,632	53,535	5	113	unavailable	
JUN	38	327	281	4	1	0	5	2	1	52	49	136	4,726	53,608	5	138	unavailable	
JUL	38	373	250	4	2	2	1	0	0	57	48	121	4,663	53,706	7	145	26,975	
AUG	37	289	300	2	6	3	0	5	5	32	46	121	4,847	53,766	2	109	30,674	
SEP	33	242	312	3	1	1	7	0	3	59	49	100	4,953	53,806	4	146	31,642	
OCT	30	372	223	2	2	3	1	1	0	54	51	108	4,694	53,898	12	119	33,199	
NOV	31	190	254	6	2	4	3	1	0	21	49	117	4,765	53,719	7	105	29,112	
DEC	25	275	242	1	5	3	6	1	0	42	43	76	4,594	53,652	3	112	25,659	
2015 TOTAL		3,505	2,988	33	33	28	54	38	17	581	557	1,450			73	1,489	339,080	
2016 JAN	22	250	126	1	0	3	5	0	0	34	9	70	4,528	53,698	2	118	30,105	
FEB	20	205	227	3	0	3	2	44	2	31	39	59	4,599	53,723	8	115	28,611	
MAR	17	268	268	0	0	2	2	5	0	34	36	68	4,530	53,710	3	132	30,902	
APR	17	185	224	0	1	3	4	6	0	24	39	57	4,511	53,774	4	113	27,914	
MAY	16	353	217	0	2	3	1	7	1	33	24	72	4,464	53,749	4	106	26,778	
JUN	16	315	233	0	0	2	3	8	1	38	30	61	4,456	53,651	2	80	27,284	
2016 TOTAL		1,576	1,295	4	3	16	17	70	4	194	177	387			23	664	171,594	

Abbreviation Key: Rcvd = Received, Apvd = Approved, Authz = Authorized



Monthly Statistics as of July 1, 2016

Page 2 of 2

YEAR and MONTH	Well Oper Change	Operators		Bonds			Claim		Hearings		Enforcement			Remediation Projects		Inspections			
		New	Inactive	Release Ind	Release Blnkt	Replace	Ind	Blnkt	Apps.	Orders	NOAVs	AOCs	OFVs	Cmpltd	Spills	Rcvd	Comp	Wells	Locations
2011 TOTAL	6,743	33	31	79	44	43	4	4	403	349	230	10	19	247	527	726	536	12,394	-
2012 JAN	1,044	3	3	7	5	1	1	0	70	72	18	1	-	27	35	68	23	998	970
FEB	373	6	9	8	5	0	0	0	-	-	10	-	-	24	40	85	36	2,000	1,024
MAR	375	4	1	7	3	9	0	0	44	38	19	-	-	23	38	63	61	2,202	1,146
APR	473	4	2	10	3	2	0	0	80	59	11	-	-	19	35	26	99	1,700	929
MAY	519	3	1	4	0	3	0	0	43	50	14	2	-	23	32	27	122	2,630	1,701
JUN	1,263	3	4	3	3	4	0	0	-	-	5	-	-	35	39	46	98	1,435	1,091
JUL	494	5	0	1	4	5	0	0	63	50	15	-	-	16	24	45	33	1,323	1,076
AUG	293	6	5	2	8	0	1	0	67	54	24	3	2	21	28	127	33	1,904	1,432
SEP	830	0	4	4	5	2	1	0	-	-	5	-	-	14	13	30	36	1,120	845
OCT	485	1	2	9	1	0	0	0	30	36	6	1	-	13	44	116	37	1,397	1,017
NOV	456	6	4	12	8	7	0	0	85	37	16	2	-	10	44	26	44	1,331	829
DEC	942	6	2	3	1	0	0	0	-	-	14	-	-	19	30	31	19	1,031	610
2012 TOTAL	7,547	47	37	70	46	33	3	0	482	396	157	9	2	244	402	690	641	19,071	12,670
2013 JAN	653	3	5	12	2	0	0	0	48	75	15	4	-	21	40	31	45	1,622	789
FEB	289	4	2	6	3	2	0	0	41	35	11	2	-	15	30	42	90	1,044	615
MAR	354	1	3	2	2	1	0	0	54	67	16	2	-	11	25	65	29	1,968	1,149
APR	333	7	1	5	2	8	0	0	-	-	21	-	-	16	33	39	37	1,510	910
MAY	346	2	1	3	0	0	0	0	46	50	22	6	-	13	31	41	60	2,621	1,576
JUN	1,456	6	2	2	4	5	0	0	91	44	13	2	-	25	40	47	37	1,860	1,102
JUL	1,009	4	1	2	2	0	0	0	96	70	25	3	-	21	47	50	22	2,298	1,338
AUG	389	6	4	5	4	2	0	0	-	-	23	-	-	25	57	36	41	2,146	1,033
SEP	277	4	1	6	1	0	0	0	101	51	7	2	-	16	60	43	51	1,536	703
OCT	345	6	0	2	2	2	0	0	52	82	4	12	3	12	79	47	60	1,868	1,158
NOV	442	2	0	2	2	0	0	0	-	-	30	-	-	12	51	31	34	2,401	1,613
DEC	1,299	4	1	1	2	0	0	0	42	48	50	4	-	14	75	35	35	2,677	1,384
2013 TOTAL	7,192	49	21	48	26	20	0	0	571	522	237	37	3	201	568	507	541	23,551	13,370
2014 JAN	1,971	6	3	3	2	0	0	0	57	46	25	2	-	8	68	46	28	3,243	1,597
FEB	2,039	8	2	6	5	0	0	0	-	-	23	-	-	17	59	51	13	2,330	1,282
MAR	493	2	3	1	5	0	0	0	97	75	29	10	-	22	63	66	31	1,822	1,298
APR	312	5	2	6	4	1	0	0	74	64	17	8	1	20	57	47	59	2,651	1,715
MAY	508	5	1	3	3	5	0	0	-	-	12	-	-	13	63	50	42	2,437	1,571
JUN	1,008	5	2	7	4	1	0	1	95	90	14	6	1	16	74	44	50	3,209	1,717
JUL	338	2	1	5	3	1	0	0	96	96	11	6	-	12	60	60	59	3,071	1,536
AUG	452	6	1	2	4	0	0	0	-	-	8	-	-	31	56	32	58	2,788	1,682
SEP	378	4	1	1	2	0	0	0	73	63	13	7	1	18	65	39	50	2,587	1,616
OCT	887	8	1	0	2	0	1	0	80	75	12	3	1	13	74	78	36	3,886	1,914
NOV	487	2	4	8	4	5	0	0	-	-	6	-	-	15	72	27	59	3,156	1,458
DEC	1,414	1	1	0	2	0	0	0	126	89	9	1	-	58	75	56	17	3,028	1,596
2014 TOTAL	10,287	54	22	42	40	13	1	1	698	598	179	43	4	243	786	596	502	34,208	18,982
2015 JAN	723	2	3	2	3	0	0	0	76	64	15	2	1	36	64	38	58	2,491	1,246
FEB	556	5	2	2	3	1	0	0	-	-	10	-	-	22	44	34	64	2,667	1,382
MAR	183	5	2	5	2	4	2	0	72	72	33	1	1	42	76	59	94	3,469	1,738
APR	271	7	1	0	5	3	0	0	60	54	19	3	-	21	46	40	61	3,451	1,620
MAY	436	8	0	0	2	3	0	0	89	54	10	10	2	25	46	56	41	2,869	1,422
JUN	454	2	1	3	5	4	0	0	-	-	27	-	-	25	41	32	43	3,366	1,716
JUL	380	3	2	0	5	1	0	0	123	140	5	13	1	32	67	52	28	3,445	1,774
AUG	218	8	2	0	7	4	0	0	-	-	13	-	-	18	56	24	62	3,692	1,847
SEP	263	6	5	1	7	4	0	2	112	78	25	11	-	30	41	44	40	2,887	1,528
OCT	342	4	1	6	1	6	1	0	115	103	6	12	1	32	58	51	33	3,420	1,494
NOV	95	2	3	5	0	0	0	1	-	-	6	-	-	15	38	47	40	3,348	1,666
DEC	355	7	1	3	5	1	0	0	91	80	4	5	2	60	46	39	37	3,851	1,765
2015 TOTAL	4,276	59	23	27	45	31	3	3	738	645	173	57	8	358	623	516	601	38,956	19,198
2016 JAN	504	2	1	0	5	5	0	0	76	66	4	7	1	29	51	44	36	3,183	1,550
FEB	149	2	1	0	1	1	1	0	-	-	8	-	-	27	47	31	49	3,666	1,738
MAR	1,004	6	3	2	2	2	1	1	62	57	3	7	1	19	41	50	42	3,020	1,647
APR	80	3	2	2	7	4	0	0	34	32	6	4	2	20	40	40	90	4,040	2,111
MAY	31	2	0	6	3	3	1	0	-	-	0	-	-	21	37	39	29	3,483	2,177
JUN	2	6	3	3	4	1	0	1	67	65	3	6	2	22	31	32	77	3,905	2,155
2016 TOTAL	1,770	21	10	13	22	16	3	2	239	220	24	24	6	138	247	236	323	21,297	11,378

Abbreviation Ind = Individual, Blnkt = Blanket, Apps = Application for Hearing, NOAV = Notice of Alleged Violation, AOC = Administrative Order of Consent, OFV = Order Finding Violation, Cmpltd = Complaint, Comp = Completed