



COLORADO

Oil & Gas Conservation  
Commission

Department of Natural Resources

# Staff Report

for October 24, 2016

## Top Stories

### ◆ Premier of the COGCC Daily Activity Dashboard

The design of the COGCC's new website gives the public added transparency and serves as a gateway to the same oil and gas facility and production data that COGCC staff use. On October 20, the COGCC launched the Daily Activity Dashboard, a new web based tool designed to give you, the user, rapid evaluation, display, and presentation of the agency's data. Because the Dashboard is a visual, interactive tool, the user may generate custom statistical charts, graphs, tables, and simple maps in near real time.

The COGCC will add features to the Dashboard over time. While the tool is being built, not all of the features will be consistently available. The Dashboard does not offer any new types of oil and gas data to the public, or replace existing ways of searching for online oil and gas data in the Colorado Oil and Gas Information System. Instead, the Daily Activity Dashboard provides you with a more efficient pathway to reach the most frequently used and requested data.

The COGCC invites the public to look at any of the following data sets currently shown in the Dashboard: pending permits, well status, production, well inspections, Notices of Alleged Violations or NOAVs, active notifications, and spills. This tool can be accessed by clicking "Dashboard" in the main menu of the homepage at the following address:

<http://cogcc.state.co.us/>

### ◆ Field Inspection Resolution Report (FIRR)

In October, the COGCC implemented changes to the existing field inspection report and implemented a new Field Inspection Resolution Report (FIRR) eForm. These changes occurred based on recommendations last year by the Lean

process improvement team that consisted of employees from both operators and the COGCC. The Lean team's recommendations were made to help ensure required corrective actions from inspectors are easy to identify in the inspection report and to provide operators a tool and process to formally respond to corrective actions.

The COGCC performed five training sessions throughout September with more than 100 operator attendees. These sessions occurred September 12 in Denver, September 14 in Glenwood Springs, September 20 in Denver, September 21 in Limon, and September 28 in Durango. All of the sessions provided attendees with a remote access option.

The COGCC plans at least one additional training session in Fort Morgan, and additional training sessions will be held as needs arise.

### ◆ Training Sequence for COGCC Inspectors

COGCC field inspection personnel, including inspectors and reclamation specialists, receive a significant amount of training during their employment with the COGCC. Each staff member's training can be divided into three distinct phases, and additional training opportunities are pursued where needed and budget permitting.

COGCC Training Phases I and II feature internal training, with detailed focus on the COGCC database, MapGuide, and inspection database tools; as well as COGCC rules, policies, guidance documents, and internal standard operating procedures. Training Phase I takes place immediately following hiring.

During Training Phase II, field staff are closely supervised for approximately one year with training sessions provided by their immediate



supervisor or other subject matter experts within the agency. Training Phase III for field inspectors includes programs external to the COGCC, such as certification programs in safety, stormwater, optical gas imaging, opacity, and odor.

The COGCC field inspection group also actively participates in TOPCORP, a training program jointly developed by the Colorado School of Mines, Penn State University and University of Texas at Austin. TOPCORP is geared toward regulators and policymakers and aims to provide practical knowledge that is applicable to the job. TOPCORP's four modules are:

1. Petroleum Geology and Engineering Concepts;
2. Petroleum Engineering Technology;
3. Environmental Management Technology; and
4. Communication and Hot Topics.

#### ◆ Registration for Local Government Now Open

A focus of the Local Government Liaisons (LGLs) has been the continuation, refinement, and delivery of Local Governmental Designee (LGD) Program training sessions. LGD training is targeted to LGDs, other local government staff, elected officials, and resource/regulatory agency staff, but every effort will be made to include all who register, including non-governmental agencies, citizen group representatives, environmental organizations, and operators.

Registration will be open until available training space is filled. Additional training dates may be added if warranted, and if an LGD is interested in an LGD training but the dates below or locations are not convenient, the LGLs can provide customized trainings at your local government venue or location, designed to fit your group's schedule or topic-specific needs. If this is your preference, please just ask.

Two full day sessions (8 AM to 4 PM) are scheduled in late 2016 and include:

- Wednesday, November 9 (Denver); and
- Tuesday, December 6 (Denver).

Topics to be covered include the following:

- Colorado Oil and Gas Conservation Commission Overview;
- Oil and Gas Basics;
- COGCC Rules, Policies, and Programs;
- LGD Program and Public Involvement Opportunities; and
- Overview and Navigation of the COGCC website.

Preregistration is required to attend an LGD Training. To preregister for one of the scheduled LGD trainings, please send an email to:

[dnr\\_cogcc.hearings\\_mgr@state.co.us](mailto:dnr_cogcc.hearings_mgr@state.co.us)

Please provide:

- Name(s) of those planning to attend;
- Contact information (e-mail and telephone);
- Role/position within local government or organization;
- Approximate number of years of experience with oil and gas regulation; and
- Your first and second preference for training dates.

Once preregistered, an e-mail confirming training participation will be sent. If a training is full, you will be placed on a wait list and notified of the next opening, or offered an alternative training date.

To get more information on the LGD program, please contact either Marc Morton or Nancy Prince.

#### ◆ Local Government Liaison Program

The LGD program provides unique opportunities for local governments to work with operators and the Colorado Oil and Gas Conservation Commission in planning for and managing oil and gas exploration and production activity in the community. Local Government Liaisons Marc Morton and Nancy Prince are available to assist LGDs in making the most of these opportunities.

Depending on the needs of the LGD and local government, this assistance can range from



individual consultation to specialized training to assistance in planning and implementing public involvement activities. COGCC rule, guidance and policy updates are also shared by way of newsletters, face to face meetings, and email communication.

A list of the LGL outreach and public involvement activities conducted since the last Staff Report is included in the Public Outreach section of the staff report (below).

## Public Outreach

### ➤ *Outreach by Director and Other Staff*

- On September 16, Permitting and Technical Services Manager Jane Stanczyk gave a presentation to the employees within the Customer Care Group at IHS. Her presentation was an overview of the COGCC's history and regulatory regime, and the relationship between industry and the Commission.
- On September 27, Engineering Integrity Supervisor Mark Schlagenhauf, P.E. presented a talk entitled "Flowline Regulation Update" for the Regulatory panel at a one day seminar on "Best Practices in Pipeline Leak Detection." The National Energy Technology Laboratory of the U.S. Department of Energy sponsored the event.
- On September 29, Senior Data Analyst Ken Robertson and GIS Specialist Chris Eisinger spoke at the annual Denver Professional Petroleum Data Management workshop. They presented the COGCC's risk-based field inspection prioritization system as a case study in using a robust, well managed database to increase operational efficiency.
- On October 4, Engineering Manager Stuart Ellsworth, P.E. and Engineering Integrity Supervisor Mark Schlagenhauf, P.E. presented the engineering aspects of oil and gas regulation to a ten person delegation visiting Denver from Tanzania. This Executive Exchange on Natural Gas Supply Chain event was organized by the U.S. Energy Association under funding from the federal government's Power Africa Initiative.

### ➤ *Outreach by LGLs*

- On August 31, Marc Morton travelled to Loveland to provide a customized three hour LGD and COGCC Overview training to staff from the Town

of Timnath, the City of Fort Collins, and Larimer County.

- On September 1, Marc Morton travelled to Rifle and attended the monthly Garfield County Energy Advisory Board (EAB) meeting. Marc updated the group on the status of Commission appointments, small operator training, and upcoming Commission Hearings.
- On September 8, Nancy Prince attended a public meeting of the Huerfano County Planning Commission to hear public comment on the Conditional Use Permit for the proposed Fortuna Santa Clara #1.
- On September 8, Nancy Prince met with the Trinidad LGD to discuss the LGD program and oil and gas activity in Las Animas County.
- On September 22, Marc Morton, Nancy Prince, and James Flores (Technical Expert and Outreach Liaison in the Oil and Gas Health Information and Response Program administered by the Colorado Department of Public Health and the Environment) provided a five hour LGD training to ten individuals at the COGCC Office in Denver. The training included introductions from various COGCC Managers. Director Lepore sat in on the morning training sessions.
- On September 28 and 29, Marc Morton attended the 21st Century Energy Transition Symposium in Fort Collins, hosted by the Energy Institute at Colorado State University.
- On October 4, Nancy Prince met with researchers from the National Hazards Center from the University of Colorado - Boulder to provide information about local concerns related to induced seismicity in Colorado. The researchers are involved in a National Science Foundation funded study.



- On October 5, Nancy Prince participated in the town of Rockvale Source Water Protection Planning Workshop. She provided information about historic oil and gas activity in the vicinity of the town's drinking water wells.
- On October 6, Marc Morton travelled to Rifle and attended the monthly Garfield County EAB meeting.
- On October 7, Nancy Prince attended the University of Colorado - Denver School of Public Affairs breakfast panel entitled "The Science of Hydraulic Fracturing and Lessons for Colorado."
- On October 7, Marc Morton met with staff from Grand County and provided an overview of opportunities available via the LGD program in light of the BLM's proposed upcoming lease sale in portions of Grand County and other Northwestern Colorado counties.

## Regional Activities

### ➤ Northwest Colorado

#### ◆ Northwest Colorado Oil and Gas Forum

The remaining Northwest Colorado Oil and Gas Forum (NWF) meeting in 2016 is scheduled for December 1. The meeting will be held in Rifle at the Colorado Mountain College in Clough Auditorium (3695 Airport Road).

NWF meeting agendas will be posted to the COGCC website approximately two to three weeks prior to each meeting, and emailed to those on the email distribution list. NWF meetings are open to the public, and a public comment period is held as part of each meeting.

Past presentations (dating back to 2006) are available on the website under the Library tab, then under the Local Public Forum tab, and finally under the Northwest Colorado Oil and Gas Forum Presentations link, or via the following website address:

<http://cogcc.state.co.us/library.html#/forums>

All parties wishing to be placed on the next meeting agenda or added to the distribution list for announcements should contact Marc Morton at 303-894-2100, ext. 5132 (direct), 720-415-4959 (mobile), or by email:

[marc.morton@state.co.us](mailto:marc.morton@state.co.us)

#### ◆ Project Rulison

The email for Project Rulison submittals is

[DNR\\_rulison.submittal@state.co.us](mailto:DNR_rulison.submittal@state.co.us)

#### ◆ Project Rio Blanco

The email for Project Rio Blanco submittals is

[DNR\\_rioblanco.submittal@state.co.us](mailto:DNR_rioblanco.submittal@state.co.us)

### ➤ Southwest Colorado

#### ◆ Fruitland Formation Outcrop Mitigation and Monitoring Projects

**South Fork Texas Creek Mitigation Site - La Plata County.** Regularly scheduled operations and maintenance continue at the South Fork Texas Creek (SFTC) site, performed by LTE, the COGCC's contractor. Since May 2009, the system has collected 18,811 Mcf of methane and generated 266,517 kWh of surplus electricity.

The results of the 2015 Fruitland Outcrop monitoring efforts were presented at the First Quarter GORT Meeting by LTE; the 2015 Fruitland Outcrop Monitoring Report has been posted in the COGCC website library under the 3M project in the San Juan Basin at the following link:

[http://cogccintranet/documents/library/AreaReports/SanJuanBasin/3m\\_project/2015%20FRUITLAND%20OUTCROP%20MONITORING%20REPORT\\_La\\_Plata.pdf](http://cogccintranet/documents/library/AreaReports/SanJuanBasin/3m_project/2015%20FRUITLAND%20OUTCROP%20MONITORING%20REPORT_La_Plata.pdf)

The 2015 4M Monitoring Report, prepared by Resource Hydrogeologic Services, has been posted in the COGCC website library under the 4M Project in the San Juan Basin at the following link:

[http://cogccintranet/documents/library/AreaReports/SanJuanBasin/4m\\_project/FINAL%204M%20Project%20June%202016%20Monitoring%20Program%20Report.pdf](http://cogccintranet/documents/library/AreaReports/SanJuanBasin/4m_project/FINAL%204M%20Project%20June%202016%20Monitoring%20Program%20Report.pdf)

The Soil Gas Survey Results Report [Bryce 1-X Soil Gas Survey (June 2016)], prepared by Cottonwood Consulting, has been posted in the COGCC website library under Bondad, Colorado in the San Juan Basin section at the following link:

[http://cogccintranet/documents/library/AreaReports/SanJuanBasin/Bondad/Soil%20Gas%20Survey%20Bondad\\_061716.pdf](http://cogccintranet/documents/library/AreaReports/SanJuanBasin/Bondad/Soil%20Gas%20Survey%20Bondad_061716.pdf)

## ◆ GORT Meetings

The next GORT meeting will be on April 6, 2017. The meeting will be held in Durango at the Durango Public Library (1900 E. 3rd Avenue in Durango) from 8:30 a.m. to 12:00 p.m. GORT meeting agendas will be posted to the COGCC website approximately two to three weeks prior to each meeting, and emailed to those on the email distribution list. GORT meetings are open to the public, and a public comment period is held as part of each meeting.

All parties wishing to be placed on the next meeting agenda or added to the distribution list for announcements should contact Marc Morton at 303-894-2100, ext. 5132 (direct), 720-415-4959 (mobile), or by email:

[marc.morton@state.co.us](mailto:marc.morton@state.co.us)

## Variances

### ◆ Pioneer Natural Resources USA Inc.

On September 26, per the surface owner waiver process outlined in Rule 1001.c., the COGCC Director issued variances from certain final reclamation requirements to Pioneer Natural Resources USA, Inc. (Pioneer). The variances cover the following nine well locations in Las Animas County:

- Lorencito 14-1 (05-071-08507)
- Lorencito 13-11 (05-071-08692)
- Lorencito 12-19 (05-071-09035)
- Lorencito 4-29 (05-071-07984)
- Lorencito 7-13 (05-071-07647)
- Lorencito 7-19 (05-071-09036)
- Lorencito 3-18 (05-071-07584)
- Moose 42-02 (05-071-06677)
- Hopscotch Deep 41-16 (05-071-09299).

Pioneer submitted detailed documentation, following the COGCC Operator Guidance for Rule 1001.c. Reclamation Variances and Waivers. In the variances, Pioneer requested leaving the access roads and not re-grading or re-contouring well pads. In several cases, the surface owners also requested that gravel be left on the well pad.

Eight of the variances included conditions of approval such as establishing 80 percent vegetation, conducting minor erosion control, and maintain a road as provided by the signed surface owner agreement.

### ◆ Synergy Resources Corporation (Synergy Resources)

On September 28, the COGCC Director granted Synergy Resources a variance from Rule 507.a. (1), which requires a 35-day pre-hearing notice. The variance requires Synergy Resources to send all interested parties 20-days before the hearing an amended hearing notice, the explanatory letter included with the operator's variance request, and the corrected copy of the lands map.

The Director granted the variance based in significant part on Synergy's sworn statement that no new parties would be affected by including the E1/2NW/4 of Section 27 in the application lands.



## Admin / Organization / Other

A COGCC organizational chart can be found on pages 10-13. For contact information, please go to our homepage, find the “About Us” menu, and select “Contact Us.”

### ◆ Plugging and Reclaiming Orphaned Wells (PROW) - Project Updates

The PROW list of planned projects that the COGCC will undertake in Fiscal Year 2016-17 is currently being finalized and will be published in a future Staff Report.

### ◆ Interested Parties Notification

#### Atom Petroleum, LLC

BY ORDER OF THE COLORADO OIL AND GAS CONSERVATION COMMISSION

ORDER NO. 1V-586

TO ALL INTERESTED PARTIES AND TO WHOM IT MAY CONCERN:

Pursuant to Section 34-60-124 of the Colorado Revised Statutes and Order No. 1V-586 of the Colorado Oil and Gas Conservation Commission (“Commission”):

The Commission has claimed all equipment, saleable product, and appurtenances related to the oil and gas operations of Atom Petroleum LLC (“Atom”) (Operator No. 10434).

The Commission has revoked Atom’s right to conduct oil and gas operations in Colorado, including transporting oil and gas to market.

The Commission has commenced activities to investigate, prevent, monitor, or mitigate conditions that threaten to cause, or that actually cause, significant adverse environmental impacts at oil and gas locations formerly operated by Atom. These activities may include the plugging and abandonment of wells.

The Commission’s actions may impact the following properties, located in La Plata and Montezuma Counties, Colorado:

1. Section 3, Township 33 North, Range 12 West, N.M. P.M.
2. Section 9, Township 35 North, Range 13 West, N.M. P.M.

ANY PARTY WHO CLAIMS AN INTEREST IN THIS EQUIPMENT, SALEABLE PRODUCT, APPURTENANCES, OR IN THE PLUGGING OF THESE WELLS MUST CONTACT THE COMMISSION’S ENFORCEMENT SUPERVISOR IMMEDIATELY, by phone - (303) 894-2100, email - [dnr\\_cogccenforcement@state.co.us](mailto:dnr_cogccenforcement@state.co.us), or mail - Colorado Oil and Gas Conservation Commission, Attn: Enforcement Supervisor, 1120 Lincoln Street, Suite 801, Denver, Colorado 80203.

#### Benchmark Energy, LLC

BY ORDER OF THE COLORADO OIL AND GAS CONSERVATION COMMISSION

ORDER NO. 1V-564

TO ALL INTERESTED PARTIES AND TO WHOM IT MAY CONCERN:

Pursuant to Section 34-60-124 of the Colorado Revised Statutes and Order No. 1V-564 of the Colorado Oil and Gas Conservation Commission (“Commission”):

The Commission has claimed all equipment, saleable product, and appurtenances related to the oil and gas operations of Benchmark Energy, LLC’s (“Benchmark”) (Operator No. 10380).

The Commission has revoked Benchmark’s right to conduct oil and gas operations in Colorado, including transporting oil and gas to market.

The Commission has commenced activities to investigate, prevent, monitor, or mitigate conditions that threaten to cause, or that actually cause, significant adverse environmental impacts at oil and gas locations formerly operated by Benchmark. These activities may include the plugging and abandonment of wells.

The Commission’s actions may impact the following properties, located in Logan County, Colorado:



1. Sections 5, 6, 7, 18 and 19, Township 8 North, Range 53 West, 6th P.M.
2. Sections 1, 12 and 13, Township 8 North, Range 54 West, 6th P.M.
3. Section 30, Township 9 North, Range 53 West, 6th P.M.
4. Sections 24 and 25, Township 9 North, Range 54 West, 6th P.M.

1. Sections 11 and 24, Township 2 North, Range 49 West, 6th P.M.
2. Section 4, Township 6 North, Range 81 West, 6th P.M.
3. Section 30, Township 9 North, Range 53 West, 6th P.M.
4. Sections 28 and 33, Township 9 North, Range 81 West, 6th P.M.
5. Section 33, Township 12 North, Range 54 West, 6th P.M.

ANY PARTY WHO CLAIMS AN INTEREST IN THIS EQUIPMENT, SALEABLE PRODUCTS, APPURTENANCES, OR IN THE PLUGGING OF THESE WELLS MUST CONTACT THE COMMISSION'S ENFORCEMENT SUPERVISOR IMMEDIATELY, by: phone - (303) 894-2100; email - [dnr\\_cogccenforcement@state.co.us](mailto:dnr_cogccenforcement@state.co.us); or mail - Colorado Oil and Gas Conservation Commission, Attn: Enforcement Supervisor, 1120 Lincoln Street, Suite 801, Denver, Colorado 80203.

ANY PARTY WHO CLAIMS AN INTEREST IN THIS EQUIPMENT, SALEABLE PRODUCT, APPURTENANCES, OR IN THE PLUGGING OF THESE WELLS MUST CONTACT THE COMMISSION'S ENFORCEMENT SUPERVISOR IMMEDIATELY, by phone - (303) 894-2100, email - [dnr\\_cogccenforcement@state.co.us](mailto:dnr_cogccenforcement@state.co.us), or mail - Colorado Oil and Gas Conservation Commission, Attn: Enforcement Supervisor, 1120 Lincoln Street, Suite 801, Denver, Colorado 80203.

**CM Production LLC**

BY ORDER OF THE COLORADO OIL AND GAS CONSERVATION COMMISSION

ORDER NO. 1V-581

TO ALL INTERESTED PARTIES AND TO WHOM IT MAY CONCERN:

Pursuant to Section 34-60-124 of the Colorado Revised Statutes and Order No. 1V-581 of the Colorado Oil and Gas Conservation Commission ("Commission"):

The Commission has claimed all equipment, saleable product, and appurtenances related to the oil and gas operations of CM Production LLC ("CM") (Operator No. 10352). The Commission has revoked CM's right to conduct oil and gas operations in Colorado, including transporting oil and gas to market.

The Commission has commenced activities to investigate, prevent, monitor, or mitigate conditions that threaten to cause, or that actually cause, significant adverse environmental impacts at oil and gas locations formerly operated by CM. These activities may include the plugging and abandonment of wells.

The Commission's actions may impact the following properties, located in Logan, Washington and Jackson Counties, Colorado:

**Texas Tea, LLC**

BY ORDER OF THE COLORADO OIL AND GAS CONSERVATION COMMISSION

ORDER NO. 1V-573

TO ALL INTERESTED PARTIES AND TO WHOM IT MAY CONCERN:

Pursuant to Section 34-60-124 of the Colorado Revised Statutes and Order No. 1V-573 of the Colorado Oil and Gas Conservation Commission ("Commission"):

The Commission has claimed all equipment, saleable product, and appurtenances related to the oil and gas operations of Texas Tea of Colorado, LLC, dba, Texas Tea, LLC ("Texas Tea") (Operator No. 87195). The Commission has revoked Texas Tea's right to conduct oil and gas operations in Colorado, including transporting oil and gas to market.

The Commission has commenced activities to investigate, prevent, monitor, or mitigate conditions that threaten to cause, or that actually cause, significant adverse environmental impacts at oil and gas locations formerly operated by Texas Tea. These activities may include the plugging and abandonment of wells.



The Commission's actions may impact the following properties, located in Adams and Weld Counties, Colorado:

1. Section 18, Township 1 North, Range 67 West, 6th P.M.
2. Sections 3, 9, 14, 16, 22, & 23, Township 1 South, Range 67 West, 6th P.M.
3. Section 17, Township 2 North, Range 67 West, 6th P.M.
4. Section 32, Township 2 North, Range 68 West, 6th P.M.
5. Section 4, Township 2 North, Range 61 West, 6th P.M.

ANY PARTY WHO CLAIMS AN INTEREST IN THIS EQUIPMENT, SALEABLE PRODUCT, APPURTENANCES, OR IN THE PLUGGING OF THESE WELLS MUST CONTACT THE COMMISSION'S ENFORCEMENT SUPERVISOR IMMEDIATELY, by phone - (303) 894-2100, email - [dnr\\_cogccenforcement@state.co.us](mailto:dnr_cogccenforcement@state.co.us), or mail - Colorado Oil and Gas Conservation Commission, Attn: Enforcement Supervisor, 1120 Lincoln Street, Suite 801, Denver, Colorado 80203.

#### ◆ Colorado Oil and Gas Information System (COGIS) Projects, Updates and Changes

##### Electronic Form (eForm) Submissions

The COGCC uses 41 types of forms to authorize oil and gas operations, inspect and monitor on-going operations, and receive reports of operations. Of those 41 forms, 20 are currently available for electronic submittal through the eForms system.

The development team continues to work on the eForm conversion of existing forms. Currently, four forms are in various stages of development: Forms 14, 14A, 27, and the Warning Letter. In addition, the development team updates eForms with improvements requested by Staff and as required by rule revisions.

To date in 2016, 95 percent of the forms available in eForms were submitted electronically by industry. There are 727 operator users of eForms and 2,894 individual users. For any operator not currently enrolled in eForms, instructions for starting the process can be found on the COGCC website at:

<http://cogcc.state.co.us/Announcements/COUInformation.pdf>

##### Form 27 eForm Development

The COGCC's Site Investigation and Remediation Workplan (Form 27) is currently being upgraded. The Governor's Office of Information Technology (OIT) has completed development of the eForm 27, and COGCC Staff have completed internal testing. Further testing by a select group of operators has been undertaken and feedback is being received and incorporated into the final product.

##### Applications and Location Assessments

The public can make comments on all submitted Drilling Permit Applications (Form 2s) and Location Assessments (Form 2As) through the eForm system. Simply go to the COGCC website and click on the menu option "Permits" or

<http://cogcc.state.co.us/permits.html#/permits>

On the "Permits Search" page, three search options are available. The first option, "All Pending Permit Applications," is used for public comments. When the results are displayed for "Pending Applications," a user can click on the document number hyperlink in the "Status" column, which logs him or her to the eForms application.

Once the page is displayed with the selected document, the user can select the Comment button to make a comment on that particular form.

##### Data Access

The COGCC's database is a comprehensive repository of Colorado's oil and gas data. The information in the database is available to the public through interactive search tools and a variety of file downloads on the website.

The interactive search tool for permits has been expanded to include the pending applications for Underground Injection Control (UIC) Permits (Form 31) and Injection Well Permits (Form 33). Like the other permit tools, the search can be conducted for a selected county or for the entire state.



Users of bulk data come from many different sectors of the community, including academia, oil and gas operators, environmental groups, government agencies, and the media. The number of these users and the variety of data requested are steadily increasing.

Staff continues to publish additional data file downloads at:

<http://cogcc.state.co.us/data2.html#/downloads>

### **Current Data File Downloads**

- Complaints
- Field Operations
- GIS Shapefiles (12 files)
- Mechanical Integrity Tests
- Notices of Alleged Violation
- Production Data (1999 - present)
- Spacing Orders
- Spills and Releases
- Water Well Data

### **Future Data File Downloads**

- Enforcement Orders (OFVs and AOCs)
- Underground Injection Control (UIC) Data

### **◆ December 2016 Hearing Docket**

The docket for the December 2016 hearing will be available shortly after the October hearing. Hearing dockets are available on our website by clicking on “Regulation” in the menu and then “Hearings”:

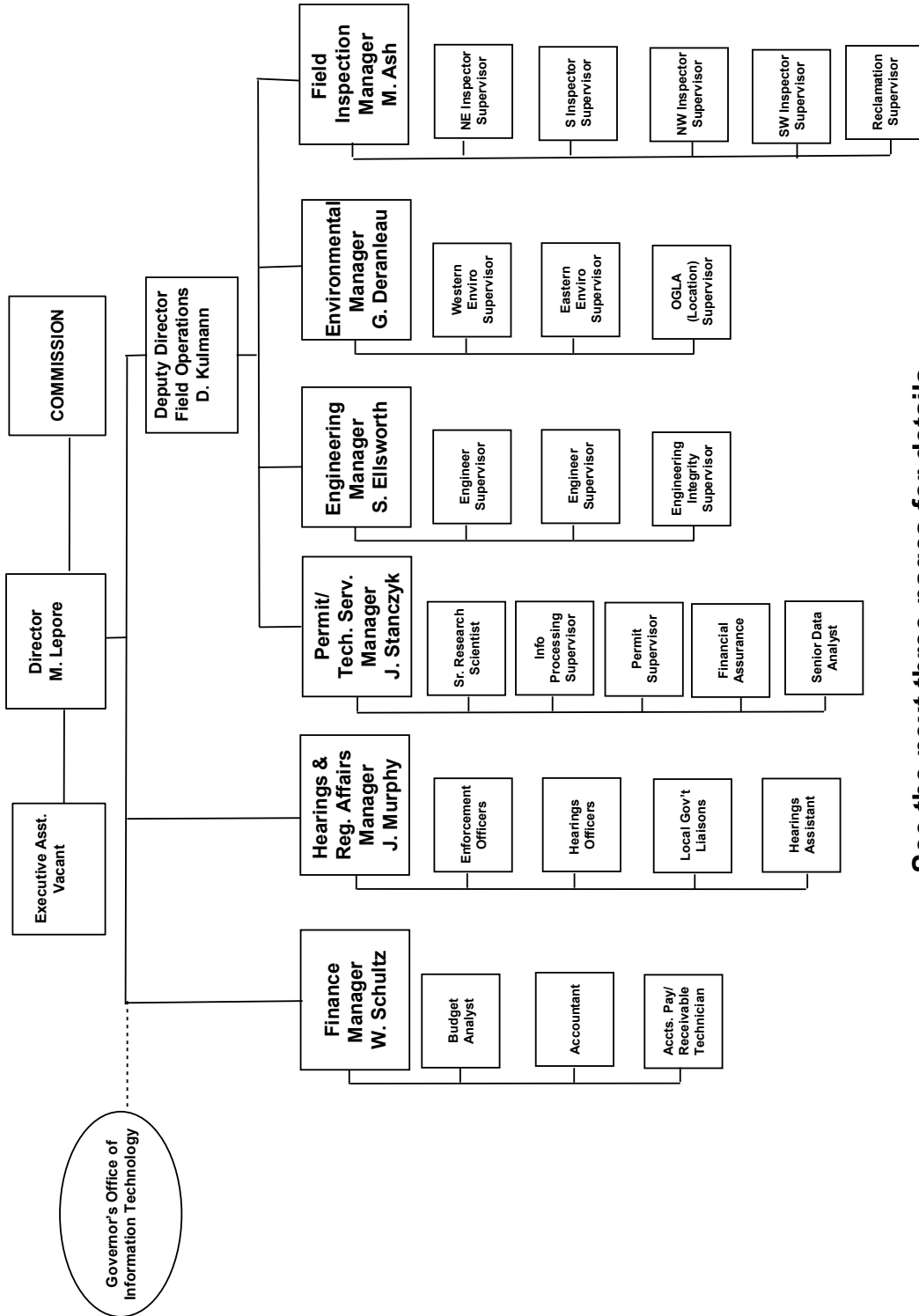
<http://cogcc.state.co.us/reg.html#/hearings>

Links to the notices and hearing applications are available from the Docket Number and Applicant, respectively, by clicking the December Gen\_Docket link. To sign up for email notification of hearing notices and applications, please see the announcement and instructions on the homepage of the COGCC website.



## Organizational Charts and Statistics

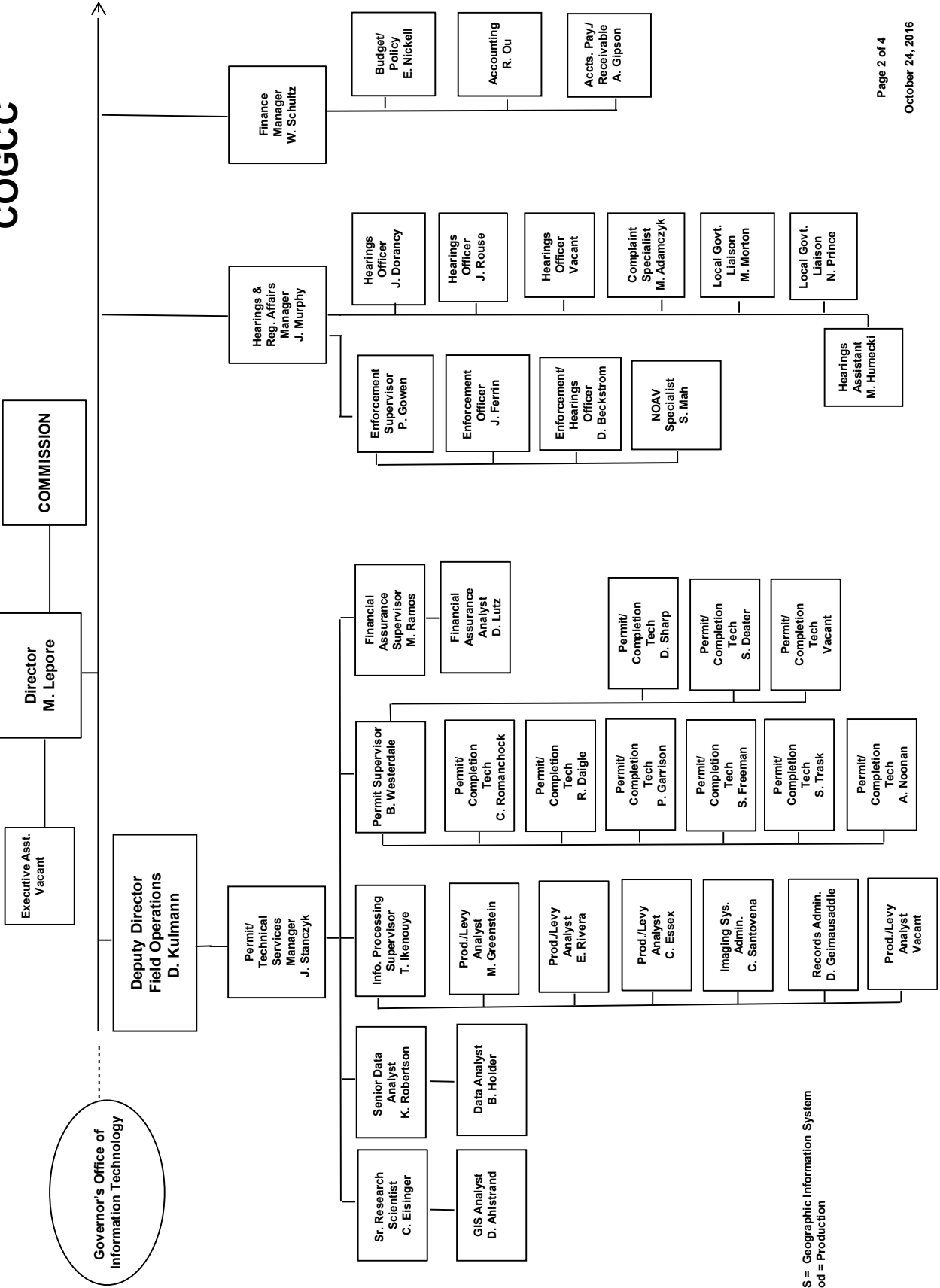
### COLORADO OIL & GAS CONSERVATION COMMISSION



See the next three pages for details



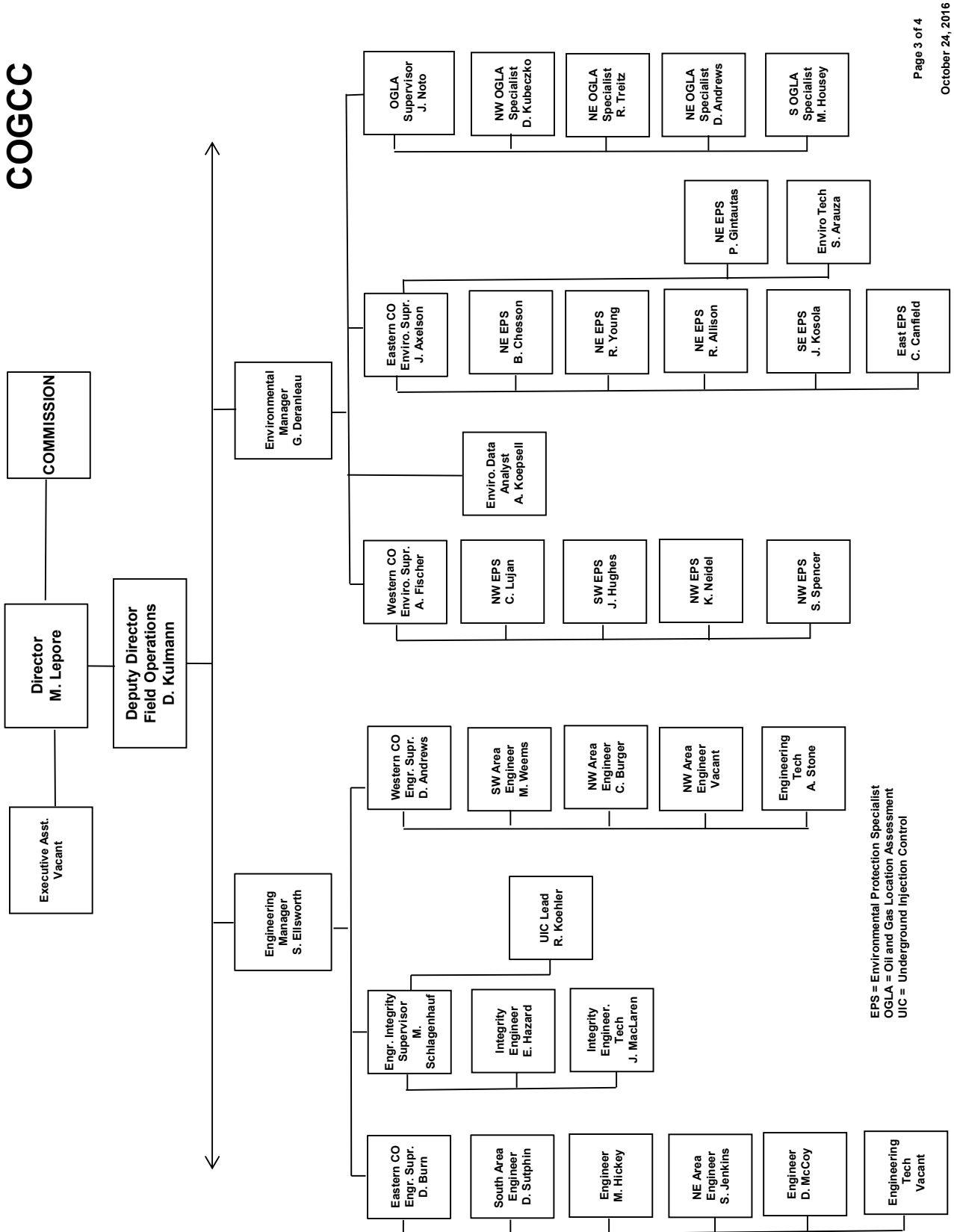
## COGCC



GIS = Geographic Information System  
Prod = Production



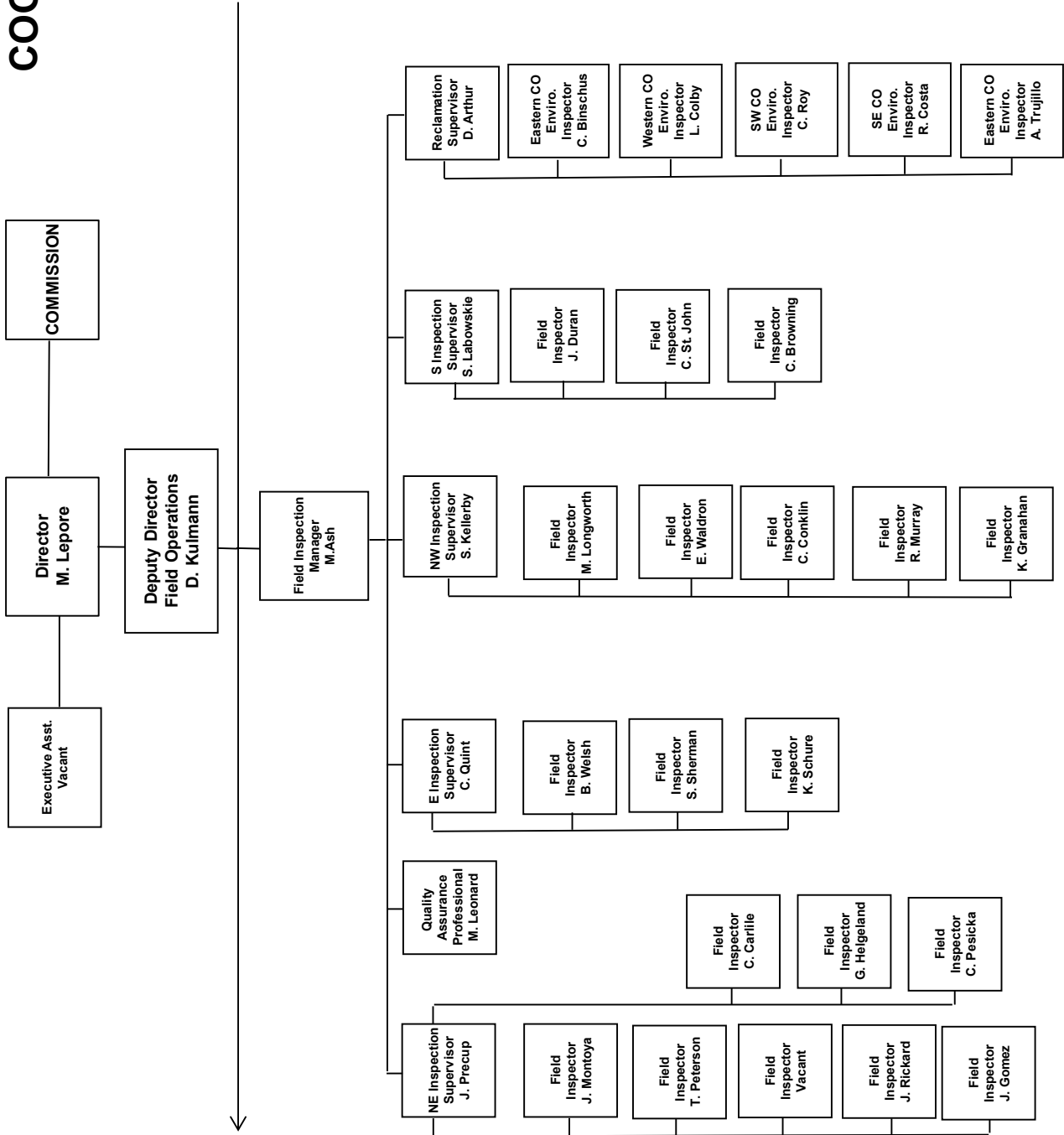
## COGCC



EPS = Environmental Protection Specialist  
 OGLA = Oil and Gas Location Assessment  
 UIC = Underground Injection Control



# COGCC





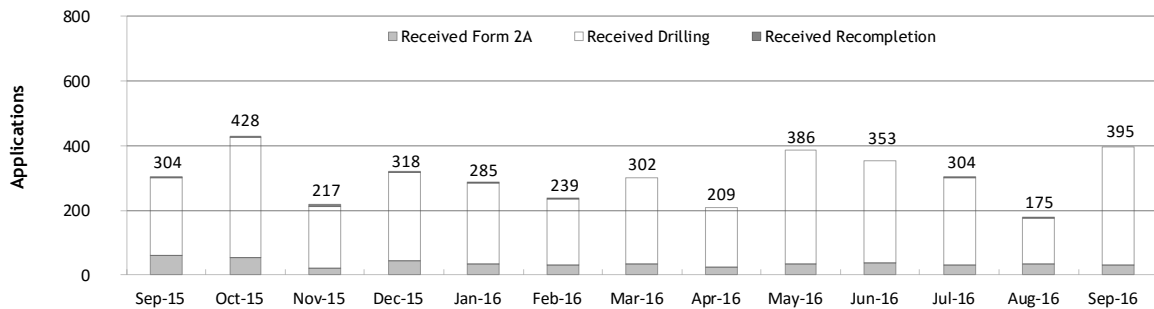
## Monthly Permit Activity as of October 1, 2016

Form/Month	Backlog	Received	Approved	Withdrawn	Rejected	Incomplete <sup>1</sup>	In-Process	Remaining <sup>2</sup>
<b>Form2A</b>								
Sep-15	127	59	49	3	4	25	105	130
Oct-15	130	54	51	4	0	14	115	129
Nov-15	129	21	49	1	1	16	83	99
Dec-15	99	42	43	2	0	27	69	96
Jan-16	96	34	9	1	0	29	91	120
Feb-16	120	31	39	1	0	32	79	111
Mar-16	111	34	36	3	0	27	79	106
Apr-16	106	24	39	2	0	29	60	89
May-16	89	33	24	0	2	27	69	96
Jun-16	96	38	30	3	0	23	78	101
Jul-16	101	31	30	3	0	25	74	99
Aug-16	99	33	23	2	0	19	88	107
Sep-16	107	29	24	1	0	17	94	111
<b>Drilling</b>								
Sep-15	758	242	312	7	32	112	537	649
Oct-15	649	372	223	17	16	104	661	765
Nov-15	765	190	254	3	0	106	592	698
Dec-15	698	275	242	13	6	159	553	712
Jan-16	712	250	126	4	30	201	601	802
Feb-16	802	205	227	1	15	212	552	764
Mar-16	764	268	268	16	59	220	469	689
Apr-16	689	185	224	13	20	155	462	617
May-16	617	353	217	1	16	138	598	736
Jun-16	736	315	233	6	2	125	685	810
Jul-16	810	268	249	24	0	145	660	805
Aug-16	805	141	150	9	7	126	654	780
Sep-16	780	366	270	0	12	77	787	864
<b>Recompletion</b>								
Sep-15	3	3	1	0	0	1	4	5
Oct-15	5	2	2	1	0	1	3	4
Nov-15	4	6	2	0	0	1	7	8
Dec-15	8	1	5	2	0	0	2	2
Jan-16	2	1	0	0	0	1	2	3
Feb-16	3	3	0	0	0	2	4	6
Mar-16	6	0	0	0	0	2	4	6
Apr-16	6	0	1	0	0	1	4	5
May-16	5	0	2	0	0	2	1	3
Jun-16	3	0	0	0	0	2	1	3
Jul-16	3	5	0	0	0	2	6	8
Aug-16	8	1	3	0	0	2	4	6
Sep-16	6	0	2	0	0	2	2	4

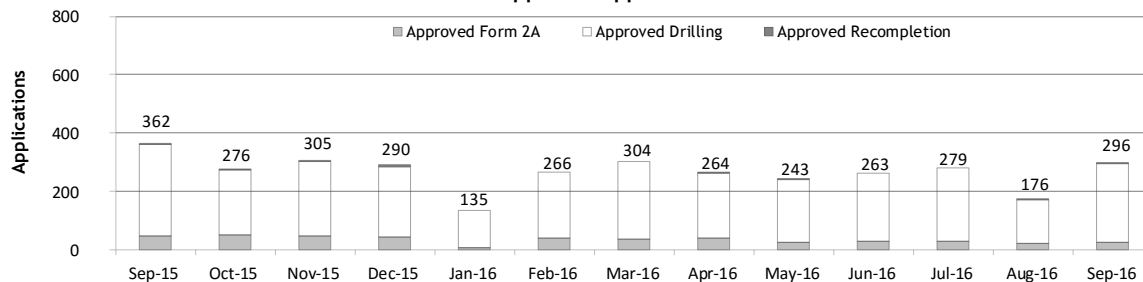
<sup>1</sup> Incomplete are applications that have missing or inaccurate data and cannot be approved.

<sup>2</sup> Backlog = Incomplete + In-process = Remaining permits from previous month.

## Received Applications



## Approved Applications





**Status of Permit Applications Filed By Month as of October 1, 2016**

Form 2A Location Assessment										
Year	Month	Received	Approved	Withdrawn	In Process	Percent In Process	Average	Less Than 30 Days	30 to 49 Days	Greater Than 50 Days
							Days to Process			
2011	TOTAL	2,391	2,298	93	0	0%		1,416	620	262
2012	TOTAL	1,359	1,291	68	0	0%		706	378	207
2013	TOTAL	1,281	1,202	78	1	0%		369	433	400
2014	TOTAL	1,114	1,067	45	2	0%		279	429	359
2015	JAN	49	48	1	0	0%	57	6	15	27
	FEB	69	65	3	1	1%	66	5	16	44
	MAR	54	47	6	1	2%	59	6	20	21
	APR	39	39	0	0	0%	64	8	13	18
	MAY	40	39	1	0	0%	60	6	12	21
	JUN	54	52	2	0	0%	57	10	17	25
	JUL	45	45	0	0	0%	77	4	12	29
	AUG	68	65	3	0	0%	58	11	21	33
	SEP	58	54	2	2	3%	57	16	9	29
	OCT	53	50	2	1	2%	89	3	10	37
	NOV	21	18	1	2	10%	83	2	4	12
	DEC	42	38	3	1	2%	80	1	8	26
2015	TOTAL	592	560	24	9	2%		78	157	325
2016	JAN	34	33	0	1	3%	90	2	4	27
	FEB	31	28	1	2	6%	76	1	3	24
	MAR	34	31	2	1	3%	71	3	8	20
	APR	23	16	1	6	26%	63	1	3	12
	MAY	32	26	0	6	19%	86	1	5	20
	JUN	36	25	0	11	31%	54	3	11	11
	JUL	30	10	4	16	53%	33	7	1	2
	AUG	34	6	0	28	82%	44	1	2	3
	SEP	29	0	0	29	100%	0	0	0	0
2016	TOTAL	283	175	8	100	35%		19	37	119

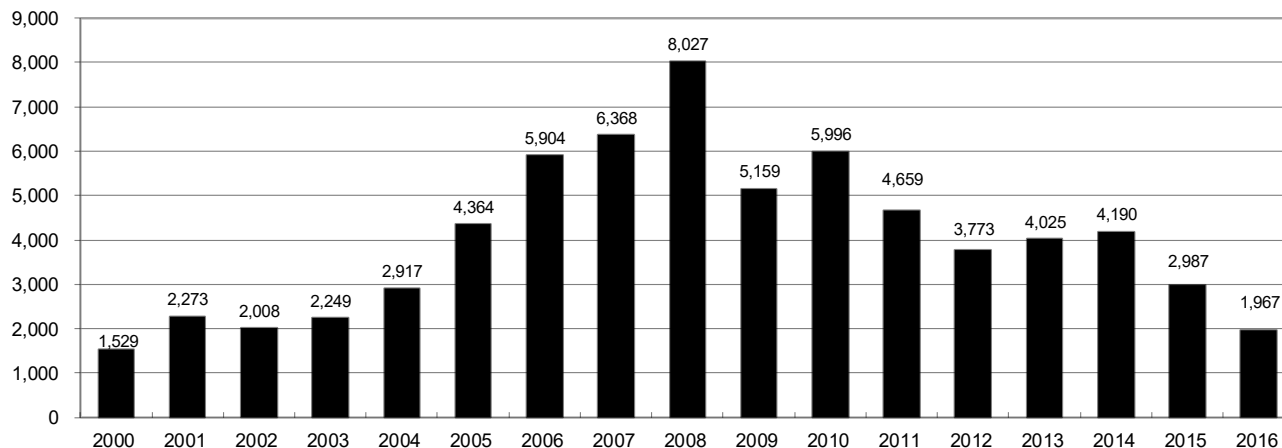
Form 2 Application For Permit to Drill (APDs)										
Year	Month	Received	Approved	Withdrawn	In Process	Percent In Process	Average	Less Than 30 Days	30 to 49 Days	Greater Than 50 Days
							Days to Process			
2011	TOTAL	4,691	4,557	132	0	0%		2,723	1,565	587
2012	TOTAL	3,955	3,816	139	0	0%		1,971	1,393	602
2013	TOTAL	4,548	4,312	235	1	0%		1,046	1,626	1,714
2014	TOTAL	4,208	4,026	155	27	1%		689	1,629	1,744
2015	JAN	291	290	1	0	0%	69	50	60	183
	FEB	294	277	17	0	0%	72	24	73	183
	MAR	306	249	35	22	7%	84	10	73	168
	APR	169	154	15	0	0%	78	28	35	94
	MAY	270	265	5	0	0%	77	9	84	172
	JUN	321	310	11	0	0%	67	45	81	186
	JUL	299	290	3	6	2%	67	15	84	197
	AUG	319	309	10	0	0%	90	11	64	236
	SEP	203	195	2	6	3%	74	17	37	145
	OCT	346	337	9	0	0%	101	16	75	246
	NOV	181	166	13	2	1%	91	15	46	110
	DEC	238	228	9	1	0%	79	9	47	172
2015	TOTAL	3,237	3,070	130	37	1%		249	759	2,092
2016	JAN	232	230	1	1	0%	98	23	33	175
	FEB	180	177	3	0	0%	80	5	34	141
	MAR	249	233	3	13	5%	91	16	36	181
	APR	174	161	1	12	7%	64	31	24	106
	MAY	352	295	1	56	16%	82	9	61	225
	JUN	312	189	19	104	33%	71	6	51	127
	JUL	261	101	15	145	56%	52	30	1	73
	AUG	141	26	0	115	82%	35	9	10	9
	SEP	360	7	0	353	98%	7	7	0	0
2016	TOTAL	2,261	1,419	43	799	35%		136	250	1,037



## Annual Drilling Permits by County as of October 1, 2016

County	2000	2001	2002	2003	2004	2005	2006	2007	2008	2009	2010	2011	2012	2013	2014	2015	2016
ADAMS	38	28	9	26	39	34	37	89	51	35	21	8	40	40	51	96	52
ARAPAHOE		2	1	2	5	7	11	10	10	10	8	23	35	23	34	19	4
ARCHULETA	7	9	6	10	8	13	14	26	47	11	18	12	5	4	3	11	3
BACA	22	6	2	3	7	8	2	11	13	3	4	5	3	1	1		
BENT	2				5	3	8	1	1		5		2	1			
BOULDER	1	5	6	7	17	13	21	37	32	35	24	30	22				
BROOMFIELD			2	7		1	1		2	33	28	11	36		31		
CHEYENNE	3	3	3	3	3	10	21	15	33	12	13	16	31	50	26	9	
COSTILLA																	
CROWLEY																2	
DELTA			7	4	5	10	9	2			4	3	6	1	2		
DENVER		3					19	25	24								
DOLORES				1	1	1	6	10	12	21	8	8	13	12	3		3
EAGLE														1			
ELBERT	2						4			1		1	2	2	4	3	
EL PASO										2	3	3	18	1	2		
FREMONT					1	3	2	4	14	13	22	14	11	2	8	2	2
GARFIELD	213	353	362	567	796	1,509	1,845	2,550	2,888	1,981	2,037	1,323	1,046	870	1,066	532	446
GRAND																	
GUNNISON			5	10	1	9	19	7	10	12	4	3	11	9	20	28	6
HUERFANO	41	27	27		8	2		7	7		2	1	9	1	13	2	
JACKSON	34	18	21	9	14	6	8	5	27	19	9	18	5	12	17	3	52
JEFFERSON	1						1	3	2					1			
KIOWA	11	18	2	4	2	1	11	9	26	7	16	17	17	12	5	3	
KIT CARSON				1	3	5	4	4	13	7	3	2	6	1	2		1
LA PLATA	127	156	104	162	102	115	235	251	328	298	191	99	71	32	87	106	90
LARIMER	2		1			1		5	46	12	41	8	13	2	4	28	4
LAS ANIMAS	268	400	259	180	332	413	500	362	303	88	92	85	11	2	1		
LINCOLN	2	2	1	6	3	4	1	2	58	44	48	31	36	87	129	24	3
LOGAN	4	7	3	3	6	13	17	14	5	9	17	8	27	4	5		1
MESA	13	27	30	27	54	136	265	293	501	427	306	127	150	105	74	126	
MOFFAT	35	52	62	63	63	60	120	68	57	51	53	93	88	44	54	12	10
MONTEZUMA	4		5	8	8	11	5	12	22	39	19	27	29	14	25	3	1
MONTROSE	1	3	2	4	2		1	3	3		1	1					
MORGAN	9	9	2	7	9	7	3	6	2	1	6	13	5	16	6	4	28
OTERO																	
PARK										3	4	1					
PHILLIPS	1	2		7	13	17	12	69	82	45	64	112	56		11	2	
PITKIN				1				1								1	
PROWERS	2	5	4		7	5	7	5	8	1	3	1			1		1
RIO BLANCO	89	187	105	179	154	161	360	321	477	348	441	109	117	167	121	107	50
RIO GRANDE	1	1		1					1	1			2		1		
ROUTT	20	13	1		4	6	9	8	4	2	3	10	4	12	4	9	
SAGUACHE	2		2					2	1	2							
SAN MIGUEL	11	13	27	18	42	45	35	23	20	13	10	2	1		2	3	
SEDGWICK				1	5	2	7	2	1	19	11	12	2		7	1	
WASHINGTON	23	17	27	34	128	50	69	45	11	1	6	12	6	19	12	9	4
WELD	509	702	760	757	832	901	1,418	1,527	2,340	1,448	2,152	2,262	1,826	2,468	2,303	1,841	1,206
YUMA	31	205	160	138	237	782	797	541	545	105	299	148	11	9	53	3	
TOTAL	1,529	2,273	2,008	2,249	2,917	4,364	5,904	6,368	8,027	5,159	5,996	4,659	3,773	4,025	4,190	2,987	1,967

## ALL COUNTIES







## Form 2A Breakdown By County By Year as of October 1, 2016

Year	County	Form 2As	Completed	In Process	New Location	CDP	SWH	RSO	CDPHE
2009	Total State	818	818	0	408	2	80	5	5
2010	Total State	2,377	2,377	0	1,543	0	317	22	55
2011	Total State	2,297	2,297	0	1,724	1	259	16	5
2012	Total State	1,297	1,297	0	900	0	167	6	1
2013	Total State	1,195	1,194	1	845	0	144	2	4
2014	Total State	1,067	1,065	2	777	3	129	7	3
2015	ADAMS	8	8	0	5	0	0	0	1
	ARAPAHOE	10	10	0	5	0	0	0	0
	ARCHULETA	5	5	0	2	0	4	0	1
	CHEYENNE	7	7	0	7	0	0	0	0
	ELBERT	3	3	0	3	0	0	0	0
	FREMONT	1	1	0	1	0	1	0	0
	GARFIELD	32	29	3	9	0	20	1	0
	GUNNISON	10	10	0	1	0	8	0	0
	HUERFANO	1	1	0	0	0	0	0	0
	JACKSON	7	7	0	4	0	7	1	0
	KIOWA	3	3	0	3	0	3	0	0
	LA PLATA	18	18	0	8	0	16	0	0
	LARIMER	3	3	0	1	0	0	0	0
	LINCOLN	26	26	0	25	0	0	0	0
	LOGAN	1	1	0	0	0	0	0	0
	MESA	12	11	1	8	0	6	0	0
	MOFFAT	9	9	0	5	0	9	0	0
	MONTEZUMA	3	3	0	3	0	0	0	0
	MORGAN	4	2	2	3	0	0	0	0
	PHILLIPS	2	2	0	2	0	0	0	0
	RIO BLANCO	13	13	0	8	0	13	0	0
	ROUTT	3	3	0	1	0	3	0	0
	SAN MIGUEL	2	2	0	2	0	2	0	0
	SEDGWICK	1	1	0	1	0	0	0	0
	WASHINGTON	15	15	0	13	0	0	0	0
	WELD	372	367	5	278	0	3	0	0
	YUMA	3	3	0	1	0	0	0	0
2015	Total State	574	563	11	399	0	95	2	2
2016	ADAMS	5	1	4	4	0	0	0	0
	ARAPAHOE	4	2	2	3	0	0	0	0
	DOLORES	1	1	0	1	0	0	0	0
	ELBERT	3	0	3	0	0	0	0	0
	FREMONT	1	0	1	0	0	1	0	0
	GARFIELD	20	14	6	2	0	11	1	2
	GUNNISON	6	2	4	1	0	2	1	0
	HUERFANO	1	0	1	1	0	1	0	0
	JACKSON	9	8	1	4	0	9	0	0
	KIT CARSON	1	1	0	1	0	0	0	0
	LA PLATA	1	1	0	0	0	1	0	1
	LARIMER	2	2	0	2	0	0	0	0
	LINCOLN	5	2	3	3	0	0	0	0
	LOGAN	1	1	0	0	0	0	0	0
	MESA	1	0	1	1	0	1	0	1
	MOFFAT	8	6	2	5	0	8	0	1
	MONTEZUMA	1	1	0	1	0	0	0	0
	MORGAN	1	1	0	1	0	0	0	0
	PROWERS	1	1	0	1	0	0	0	0
	ROUTT	1	0	1	0	0	1	0	0
	WASHINGTON	4	3	1	4	0	0	0	0
	WELD	188	121	67	115	0	1	0	2
2016	Total State	265	168	97	150	0	36	2	7

Abbreviations:

CDP = Comprehensive Drilling Plan      SWH = Sensitive Wildlife Habitat consultation

RSO = Restricted Surface Occupancy consultation      CDPHE= Colorado Department of Health and Environment consultation





## Well to Building Setbacks by Year and by County as of October 1, 2016

Count of well locations, grouped by proximity from well to buildings.

Location Proximity to Buildings	2009	2010	2011	2012	2013	2014	2015	2016	Number of Locations	Percent of Total Locations
Less than 150 feet	2	3	3	2	0	3	2	0	15	0%
150 to 350 feet	37	58	61	39	34	38	12	10	289	3%
350 to 500 feet	50	110	97	61	64	48	33	17	480	6%
500 to 1000 feet	117	385	331	188	188	161	83	54	1,507	17%
1000 + feet	356	1,705	1,470	838	762	724	378	149	6,382	74%
<b>TOTAL LOCATIONS</b>	<b>562</b>	<b>2,261</b>	<b>1,962</b>	<b>1,128</b>	<b>1,048</b>	<b>974</b>	<b>508</b>	<b>230</b>	<b>8,673</b>	

County	TOTAL	Less than 150 feet	150 to 350 feet	350 to 500 feet	500 to 1000 feet	1000 + feet
ADAMS	81	0	4	9	21	47
ARAPAHOE	98	0	2	4	10	82
ARCHULETA	23	0	0	1	11	11
BACA	15	0	0	0	1	14
BENT	7	0	0	0	0	7
BOULDER	23	0	1	1	17	4
BROOMFIELD	33	0	0	4	13	16
CHEYENNE	140	1	0	0	2	137
CROWLEY	2	0	0	0	0	2
DELTA	7	0	0	2	1	4
DOLORES	20	0	0	0	7	13
EAGLE	1	0	0	0	0	1
EL PASO	14	0	0	0	3	11
ELBERT	11	0	0	0	2	9
FREMONT	40	0	2	7	8	23
GARFIELD	571	0	11	9	78	473
GUNNISON	44	1	0	4	1	38
HUERFANO	16	0	0	0	5	11
JACKSON	57	0	0	5	1	51
KIOWA	66	0	0	0	1	65
KIT CARSON	15	0	0	0	0	15
LA PLATA	136	0	6	14	46	70
LARIMER	41	0	5	5	15	16
LAS ANIMAS	201	1	6	7	37	150
LINCOLN	372	0	1	2	4	365
LOGAN	44	0	1	1	1	41
MESA	97	0	0	3	14	80
MOFFAT	184	0	1	2	16	165
MONTEZUMA	43	0	0	1	4	38
MONTROSE	2	0	0	0	0	2
MORGAN	31	0	0	2	4	25
PARK	4	0	0	0	0	4
PHILLIPS	275	1	4	6	21	243
PITKIN	1	0	0	0	0	1
PROWERS	6	0	0	0	0	6
RIO BLANCO	187	0	0	0	2	185
RIO GRANDE	2	0	0	0	1	1
ROUTT	29	0	0	0	2	27
SAN MIGUEL	14	0	0	0	0	14
SEDGWICK	33	0	0	1	3	29
WASHINGTON	76	0	2	0	3	71
WELD	5,085	11	234	374	1,108	3,355
YUMA	528	0	9	16	44	459


**Well to Building Setbacks Less Than Two Hundred Feet as of October 1, 2016**

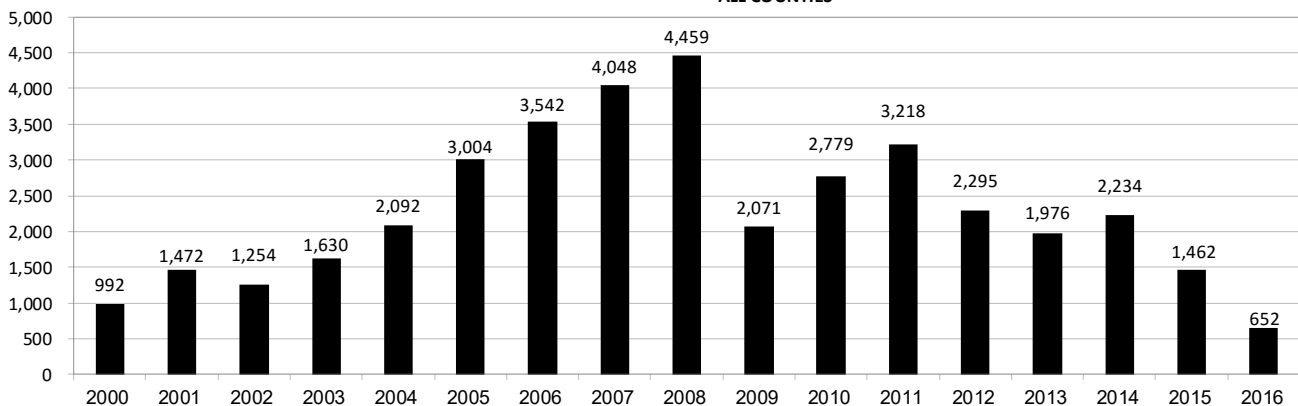
Year	Location Doc Number	County	High Density	New Location	Distance (Feet)	Proximity (Feet)	Building Description
2015	400768804	WELD	No	Yes	46	less 150	Building to be razed
2011	2587822	CHEYENNE	No	No	58	less 150	Water well house
2009	1691798	WELD	No	No	58	less 150	Vehicle garage
2010	400072164	WELD	No	Yes	69	less 150	Abandoned hog shed
2014	400569085	WELD	No	No	78	less 150	Well shed
2014	400600705	WELD	No	No	80	less 150	Livestock shed
2012	400240957	GUNNISON	No	Yes	90	less 150	Equipment shed
2015	400742811	WELD	No	Yes	102	less 150	Building to be razed
2009	1758843	WELD	No	Yes	103	less 150	Building to be razed
2011	1636646	WELD	No	No	122	less 150	Storage shed
2009	400011284	LAS ANIMAS	No	Yes	127	less 150	Operator is owner
2009	1786896	PHILLIPS	No	No	132	less 150	Grain storage
2014	400642113	WELD	No	Yes	142	less 150	Barn
2011	400117702	WELD	No	Yes	143	less 150	Irrigation pump house
2011	400227765	WELD	No	Yes	145	less 150	Storage barn
2014	400558626	LINCOLN	No	No	150	less 150	Gas plant equipment building
2009	1904205	WELD	No	No	154	150 to 350	Livestock enclosure
2012	400243295	WELD	No	Yes	155	150 to 350	Unused storage shed
2015	400862577	GARFIELD	No	No	155	150 to 350	Gravel pit scale house
2011	400179419	WELD	No	Yes	157	150 to 350	Existing well / storage building
2010	400054716	WELD	No	No	159	150 to 350	Equipment barn
2011	400188968	WELD	No	Yes	159	150 to 350	Abandoned
2014	400554054	WELD	No	Yes	159	150 to 350	Equipment shed
2014	400559404	WELD	No	Yes	160	151 to 350	Barn
2016	400950178	LA PLATA	No	Yes	162	151 to 350	Residence
2010	400021477	WELD	No	Yes	162	150 to 350	Goat barn
2009	1758386	WELD	No	Yes	168	150 to 350	Storage shed
2011	1635946	WELD	No	No	169	150 to 350	Storage shed
2013	400447386	WELD	No	No	169	150 to 350	Abandoned turkey barn
2013	400447391	WELD	No	No	169	150 to 350	Abandoned turkey barn
2011	400165164	WELD	No	Yes	178	150 to 350	Residence
2013	400367184	WELD	No	Yes	179	150 to 350	Shed
2011	400188780	WELD	No	Yes	180	150 to 350	Residence
2014	400562498	WELD	No	Yes	181	150 to 350	Garage / storage shed
2010	1697620	WELD	No	No	187	150 to 350	Livestock shed
2009	1758746	WELD	No	No	193	150 to 350	Storage shed
2011	400154431	WELD	No	Yes	198	150 to 350	Turkey barn
2012	400250031	WELD	No	Yes	198	150 to 350	Abandoned guard shack
2010	1774783	WELD	No	No	199	150 to 350	Cement service building
2011	400118102	YUMA	No	Yes	199	150 to 350	Steel barn



## Annual Well Starts by County as of October 1, 2016

County	2000	2001	2002	2003	2004	2005	2006	2007	2008	2009	2010	2011	2012	2013	2014	2015	2016
ADAMS	18	13	4	19	22	24	13	41	14	14	21	1	15	6	29	3	2
ARAPAHOE					6	1	5	2	1	1	3	9	9	25	21		
ARCHULETA	4	4	2	5	4	10	5	7	29	9	12	10	11		1	7	2
BACA	19	6	2	1	6	6	2	6	12		5	4	2	1		1	
BENT	2				3	2	8	1	1			1	2				
BOULDER				2	5	11	9	14	25	16	13	7	14				
BROOMFIELD			2		1				10		21	11	5				
CHEYENNE	2	1	3	3		9	14	15	14	8	12	11	17	35	19	3	
COSTILLA																	
CROWLEY											9	2	3			2	
DELTA				5	4	6	5	2									
DENVER		2					7	5	4								
DOLORES					2		2	13	6	2		1	5	10	4		
EAGLE														1			
EL PASO											2		5		1		
ELBERT	2						1									3	
FREMONT					1	3	2	2	5	3	9	16	9	2	4		1
GARFIELD	190	251	245	417	585	799	1,005	1,304	1,689	765	905	877	495	391	361	173	100
GUNNISON			1		1	1	9	5	1	4	5	2	4	1	2	4	1
HUERFANO	25	14	19	3	6	2			2		2		2	1	4	1	
JACKSON	24	2	4	10	10		3	3	12	1	8	7		7	7		24
JEFFERSON								2									
KIOWA	8	16	2	4	2	1	7	7	2	5	15	14	10	12	3	2	
KIT CARSON				1	1	6	2	1	14	3	1	1	3	1	2		
LA PLATA	99	135	118	110	103	104	108	179	199	131	67	54	3	10	36	34	24
LARIMER	1	1				1		4	8	1	28	2	10	4	1	9	3
LAS ANIMAS	202	286	205	221	296	384	413	326	222	14	7	78	1		1		
LINCOLN	2	2	1	5	2	2	1	2	18	11	14	21	23	41	41	12	2
LOGAN	4	6	3	3	2	11	12	12	3	7	3	9	13	4	6		
MESA	2	12	12	13	25	89	156	209	225	14	11	41	4	11	16	77	
MOFFAT	18	23	25	28	19	40	60	42	26	18	15	32	26	27	3	6	3
MONTEZUMA	2	3	5	5	1	7	2	4	22	10	3	8	18	12	8	1	
MONTROSE		3		2	1			1	2		1						
MORGAN	9	8	1	7	5	5	3	1	1	2	3	2	3	1	3	1	
PARK											2						
PHILLIPS	1			6	10	11	4	35	18	2	42	130	48		9		
PROWERS	2	4	4		5	5	6	3	5	2	3	1				1	
RIO BLANCO	51	82	47	83	92	95	107	95	205	118	107	72	53	36	43	17	
RIO GRANDE														1			
ROUTT	5	12	1		1	6	3	2		2	1	2	4	2	2		
SAN MIGUEL	6	9	10	19	28	13	20	17	5	1	2	2			2		
SEDGWICK				1	2	1	1	5			3	8	3				
WASHINGTON	15	12	24	29	65	34	23	14	11	2	2	4	1	9	7	2	4
WELD	237	403	406	522	632	718	931	1,222	1,312	878	1,209	1,672	1,458	1,312	1,557	1,105	486
YUMA	42	162	108	106	144	597	593	445	336	27	213	106	16	13	39		
<b>TOTAL</b>	<b>992</b>	<b>1,472</b>	<b>1,254</b>	<b>1,630</b>	<b>2,092</b>	<b>3,004</b>	<b>3,542</b>	<b>4,048</b>	<b>4,459</b>	<b>2,071</b>	<b>2,779</b>	<b>3,218</b>	<b>2,295</b>	<b>1,976</b>	<b>2,234</b>	<b>1,462</b>	<b>652</b>

ALL COUNTIES





## Active Wells by County and Status as of October 1, 2016

COUNTY	Drilling	Domestic	Injecting	Producing	Shut In	Temp Aband	Waiting on Completion	Active Storage	Total Active Wells
ADAMS	12		7	883	37	8	1	12	960
ARAPAHOE		1	2	143	8	8		43	205
ARCHULETA	1	5	1	109	12	13	6	1	148
BACA			16	115	12	4		55	202
BENT		1		30	6				37
BOULDER				309	1	1			311
BROOMFIELD				96					96
CHEYENNE			42	320	15	45	1		423
CROWLEY									0
DELTA				4	12		1		17
DENVER			1	46	2		3		52
DOLORES			2	37	1	1			41
EL PASO	1	1				1			3
ELBERT	3			67	2	1		1	74
FREMONT	2	3		61	7	6	1		80
GARFIELD	142	4	46	10,684	69	103	82	1	11,131
GUNNISON	4		1	33	8		3		49
HUERFANO			1	40	2	5			48
JACKSON	22		31	113	35				201
JEFFERSON				1	1		1	3	6
KIOWA	1		11	105	9	2	2		130
KIT CARSON		1	2	11		2			16
LA PLATA	5	7	28	3,148	85	17	4	30	3,324
LARIMER	4	2	19	199	23	16	1		264
LAS ANIMAS	1	4	13	2,785	9	110	12	19	2,953
LINCOLN	5	1	8	98	11	7			130
LOGAN	8		17	113	39	29	3	10	219
MESA	4	1	7	898	78	18	61	11	1,078
MOFFAT	3		9	487	43	35	5		582
MONTEZUMA		2	6	121	27	16			172
MONTROSE								1	1
MORGAN			21	90	81	35		81	308
OURAY		1				1			2
PARK									0
PHILLIPS			2	266	2	1	1		272
PITKIN								10	10
PROWERS				25	4	1			30
RIO BLANCO	18	3	298	2,321	152	91	8	2	2,893
ROUTT		2		32	6	4			44
SAN MIGUEL	1			109	12	8			130
SEDGWICK	2		1	14	3		2		22
WASHINGTON	6		23	401	21	7	2		460
WELD	931	1	54	21,522	170	72	60	4	22,814
YUMA	2	8	23	3,796	29	9	11	1	3,879
Totals	1,178	48	692	49,632	1,034	677	271	285	53,817



# Oil and Gas Staff Report

October 24, 2016

23

Monthly Statistics as of October 1, 2016

Page 1 of 2

YEAR and MONTH	Baker - Hughes Rig Count	Permits										Well Spud Notices	Active Drilling Permits	Active Wells	Public Visits		
		Drilling		Recompletion		Injection		Pits		Locations					Data	Office	Internet
		Rcvd	Apvd	Rcvd	Apvd	Rcvd	Apvd	Rcvd	Apvd	Rcvd	Authz						
<b>2011 TOTAL</b>		<b>4,709</b>	<b>4,659</b>	<b>325</b>	<b>320</b>	<b>44</b>	<b>32</b>	<b>190</b>	<b>192</b>	<b>2,382</b>	<b>2,267</b>	<b>3,218</b>			<b>187</b>	<b>1,294</b>	<b>1,337,865</b>
2012 JAN	73	372	258	26	21	3	0	11	5	142	129	243	5,217	46,958	12	106	112,686
FEB	70	370	382	23	27	7	5	21	9	160	129	230	5,173	47,128	16	114	105,857
MAR	66	292	347	21	14	2	2	17	24	133	172	293	5,132	47,263	26	138	111,746
APR	66	410	235	16	24	5	5	9	2	137	106	241	4,785	47,377	12	108	107,627
MAY	66	491	506	23	16	3	1	6	2	105	131	211	4,885	47,533	20	123	109,802
JUN	69	326	377	11	19	8	6	5	8	110	89	147	5,136	47,860	11	111	108,849
JUL	66	237	276	9	14	3	2	5	2	97	103	182	5,152	48,173	13	102	114,195
AUG	62	313	288	6	9	6	4	23	5	83	97	178	5,031	49,153	11	112	110,908
SEP	61	252	256	1	5	5	2	4	1	81	77	161	4,960	49,230	11	89	106,114
OCT	62	326	265	9	3	7	6	2	19	94	82	162	5,009	49,236	8	105	108,833
NOV	56	271	323	5	8	6	6	2	4	109	97	142	5,000	49,989	10	119	120,586
DEC	57	322	260	4	8	8	5	9	3	122	81	105	5,081	50,067	9	78	107,240
<b>2012 TOTAL</b>		<b>3,982</b>	<b>3,773</b>	<b>154</b>	<b>168</b>	<b>63</b>	<b>44</b>	<b>114</b>	<b>84</b>	<b>1,373</b>	<b>1,293</b>	<b>2,295</b>			<b>159</b>	<b>1,305</b>	<b>1,324,443</b>
2013 JAN	53	538	331	6	0	3	5	6	8	176	124	142	5,060	50,265	9	108	47,406
FEB	56	260	455	10	5	2	3	4	11	91	141	139	5,250	50,372	7	102	40,649
MAR	57	344	241	5	9	3	8	15	6	129	84	172	5,093	50,540	9	133	43,019
APR	61	331	333	6	5	5	5	6	8	146	117	163	4,925	50,687	3	132	46,459
MAY	61	350	342	8	6	6	6	10	7	106	142	162	5,110	50,810	3	123	45,215
JUN	62	349	273	2	8	8	8	5	3	114	85	144	5,273	50,909	8	122	41,015
JUL	68	864	304	11	4	9	2	9	5	218	91	160	5,070	51,091	7	154	45,558
AUG	69	232	291	6	4	3	2	4	1	35	76	206	5,200	51,255	20	130	44,722
SEP	69	212	362	9	5	10	9	3	19	56	109	164	5,185	51,407	5	105	41,256
OCT	72	319	376	5	9	7	5	1	8	67	88	238	4,967	51,598	5	135	45,151
NOV	69	346	353	4	13	7	4	2	27	67	85	163	5,141	51,711	12	119	38,903
DEC	64	336	367	2	4	4	6	2	3	63	71	123	5,129	51,737	4	93	32,381
<b>2013 TOTAL</b>		<b>4,481</b>	<b>4,028</b>	<b>74</b>	<b>72</b>	<b>67</b>	<b>63</b>	<b>67</b>	<b>106</b>	<b>1,268</b>	<b>1,213</b>	<b>1,976</b>			<b>92</b>	<b>1,456</b>	<b>511,734</b>
2014 JAN	62	278	232	3	2	3	4	14	8	90	43	171	4,926	51,840	1	90	46,150
FEB	61	284	297	6	4	1	1	3	1	91	94	150	5,051	51,847	12	113	43,408
MAR	62	367	329	4	6	7	1	6	6	110	88	183	4,997	51,952	16	140	46,620
APR	63	276	317	2	3	2	5	8	3	89	99	172	4,897	52,060	11	188	45,558
MAY	65	458	383	2	2	3	1	6	7	83	94	179	4,923	52,202	18	131	42,365
JUN	67	429	377	3	0	6	7	5	2	134	92	224	4,924	52,337	10	156	42,518
JUL	69	272	446	2	5	3	11	8	5	97	126	180	4,955	52,431	7	166	45,481
AUG	73	376	259	4	3	4	4	3	4	111	87	220	5,060	52,582	8	145	42,431
SEP	76	412	304	2	3	3	1	20	1	116	81	205	5,006	52,694	14	175	43,577
OCT	76	459	371	3	2	9	2	4	6	93	109	190	4,827	52,785	19	138	46,030
NOV	73	326	479	5	2	5	4	4	0	54	103	173	5,171	52,947	8	96	39,583
DEC	69	286	397	1	2	2	7	1	2	45	99	187	5,236	53,054	6	144	37,964
<b>2014 TOTAL</b>		<b>4,223</b>	<b>4,191</b>	<b>37</b>	<b>34</b>	<b>48</b>	<b>48</b>	<b>82</b>	<b>45</b>	<b>1,113</b>	<b>1,115</b>	<b>2,234</b>			<b>130</b>	<b>1,682</b>	<b>521,685</b>
2015 JAN	64	349	316	3	1	2	9	3	1	60	43	195	5,060	53,195	17	114	41,502
FEB	49	324	161	3	2	5	6	9	0	73	28	114	4,750	53,309	4	117	38,245
MAR	38	246	294	1	6	1	5	7	5	44	70	166	4,983	53,414	6	146	42,513
APR	37	194	165	3	1	2	5	1	2	46	37	87	4,854	53,456	1	125	39,559
MAY	39	324	190	1	4	2	6	8	0	41	44	108	4,632	53,535	5	113	unavailable
JUN	38	327	281	4	1	0	5	2	1	52	49	141	4,726	53,608	5	138	unavailable
JUL	38	373	250	4	2	2	1	0	0	57	48	121	4,663	53,706	7	145	26,975
AUG	37	289	300	2	6	3	0	5	5	32	46	121	4,847	53,766	2	109	30,674
SEP	33	242	312	3	1	1	7	0	3	59	49	100	4,953	53,806	4	146	31,642
OCT	30	372	223	2	2	3	1	1	0	54	51	108	4,694	53,898	12	119	33,199
NOV	31	190	254	6	2	4	3	1	0	21	49	117	4,765	53,719	7	105	29,112
DEC	25	275	242	1	5	3	6	1	0	42	43	76	4,594	53,652	3	112	25,659
<b>2015 TOTAL</b>		<b>3,505</b>	<b>2,988</b>	<b>33</b>	<b>33</b>	<b>28</b>	<b>54</b>	<b>38</b>	<b>17</b>	<b>581</b>	<b>557</b>	<b>1,454</b>			<b>73</b>	<b>1,489</b>	<b>339,080</b>
2016 JAN	22	250	126	1	0	3	5	0	0	34	9	69	4,528	53,698	2	118	30,105
FEB	20	205	227	3	0	3	2	44	2	31	39	62	4,599	53,723	8	115	28,611
MAR	17	268	268	0	0	2	2	5	0	34	36	68	4,530	53,710	3	132	30,902
APR	17	185	224	0	1	3	4	6	0	24	39	57	4,511	53,774	4	113	27,914
MAY	16	353	217	0	2	3	1	6	1	33	24	74	4,464	53,749	4	106	26,778
JUN	16	315	233	0	0	2	3	6	1	38	30	58	4,456	53,651	2	80	27,284
JUL	20	268	249	5	0	4	4	6	6	31	30	84	4,344	53,724	5	91	24,151
AUG	21	141	150	1	3	5	3	6	0	33	23	84	4,436	53,740	1	106	29,192
SEP	19	366	270	0	2	4	2	6	6	29	24	72	4,522	53,817	4	154	25,698
<b>2016 TOTAL</b>		<b>2,351</b>	<b>1,964</b>	<b>10</b>	<b>8</b>	<b>29</b>	<b>26</b>	<b>85</b>	<b>16</b>	<b>287</b>	<b>254</b>	<b>628</b>			<b>33</b>	<b>1,015</b>	<b>250,635</b>

Abbreviation Key: Rcvd = Received, Apvd = Approved, Authz = Authorized



Monthly Statistics as of October 1, 2016

Page 2 of 2

YEAR and MONTH	Well Oper Change	Operators		Bonds						Hearings			Enforcement			Remediation Projects		Inspections	
		New	Inactive	Release	Claim	Replace	Ind	Blnt	Apps.	Orders	NOAVs	AOCs	OFVs	Cmplt	Spills	Rcvd	Comp	Wells	Locations
2011 TOTAL	6,743	33	31	79	44	43	4	4	403	349	230	10	19	247	527	726	536	12,394	-
2012 JAN	1,044	3	3	7	5	1	1	0	70	72	18	1	-	27	35	68	23	998	970
FEB	373	6	9	8	5	0	0	0	-	-	10	-	-	24	40	85	36	2,000	1,024
MAR	375	4	1	7	3	9	0	0	44	38	19	-	-	23	38	63	61	2,202	1,146
APR	473	4	2	10	3	2	0	0	80	59	11	-	-	19	35	26	99	1,700	929
MAY	519	3	1	4	0	3	0	0	43	50	14	2	-	23	32	27	122	2,630	1,701
JUN	1,263	3	4	3	3	4	0	0	-	-	5	-	-	35	39	46	98	1,435	1,091
JUL	494	5	0	1	4	5	0	0	63	50	15	-	-	16	24	45	33	1,323	1,076
AUG	293	6	5	2	8	0	1	0	67	54	24	3	2	21	28	127	33	1,904	1,432
SEP	830	0	4	4	5	2	1	0	-	-	5	-	-	14	13	30	36	1,120	845
OCT	485	1	2	9	1	0	0	0	30	36	6	1	-	13	44	116	37	1,397	1,017
NOV	456	6	4	12	8	7	0	0	85	37	16	2	-	10	44	26	44	1,331	829
DEC	942	6	2	3	1	0	0	0	-	-	14	-	-	19	30	31	19	1,031	610
2012 TOTAL	7,547	47	37	70	46	33	3	0	482	396	157	9	2	244	402	690	641	19,071	12,670
2013 JAN	653	3	5	12	2	0	0	0	48	75	15	4	-	21	40	31	45	1,622	789
FEB	289	4	2	6	3	2	0	0	41	35	11	2	-	15	30	42	90	1,044	615
MAR	354	1	3	2	2	1	0	0	54	67	16	2	-	11	25	65	29	1,968	1,149
APR	333	7	1	5	2	8	0	0	-	-	21	-	-	16	33	39	37	1,510	910
MAY	346	2	1	3	0	0	0	0	46	50	22	6	-	13	31	41	60	2,621	1,576
JUN	1,456	6	2	2	4	5	0	0	91	44	13	2	-	25	40	47	37	1,860	1,102
JUL	1,009	4	1	2	2	0	0	0	96	70	25	3	-	21	47	50	22	2,298	1,338
AUG	389	6	4	5	4	2	0	0	-	-	23	-	-	25	57	36	41	2,146	1,033
SEP	277	4	1	6	1	0	0	0	101	51	7	2	-	16	60	43	51	1,536	703
OCT	345	6	0	2	2	2	0	0	52	82	4	12	3	12	79	47	60	1,868	1,158
NOV	442	2	0	2	2	0	0	0	-	-	30	-	-	12	51	31	34	2,401	1,613
DEC	1,299	4	1	1	2	0	0	0	42	48	50	4	-	14	75	35	35	2,677	1,384
2013 TOTAL	7,192	49	21	48	26	20	0	0	571	522	237	37	3	201	568	507	541	23,551	13,370
2014 JAN	1,971	6	3	3	2	0	0	0	57	46	25	2	-	8	68	46	28	3,243	1,597
FEB	2,039	8	2	6	5	0	0	0	-	-	23	-	-	17	59	51	13	2,330	1,282
MAR	493	2	3	1	5	0	0	0	97	75	29	10	-	22	63	66	31	1,822	1,298
APR	312	5	2	6	4	1	0	0	74	64	17	8	1	20	57	47	59	2,651	1,715
MAY	508	5	1	3	3	5	0	0	-	-	12	-	-	13	63	50	42	2,437	1,571
JUN	1,008	5	2	7	4	1	0	1	95	90	14	6	1	16	74	44	50	3,209	1,717
JUL	338	2	1	5	3	1	0	0	96	96	11	6	-	12	60	60	59	3,071	1,536
AUG	452	6	1	2	4	0	0	0	-	-	8	-	-	31	56	32	58	2,788	1,682
SEP	378	4	1	1	2	0	0	0	73	63	13	7	1	18	65	39	50	2,587	1,616
OCT	887	8	1	0	2	0	1	0	80	75	12	3	1	13	74	78	36	3,886	1,914
NOV	487	2	4	8	4	5	0	0	-	-	6	-	-	15	72	27	59	3,156	1,458
DEC	1,414	1	1	0	2	0	0	0	126	89	9	1	-	58	75	56	17	3,028	1,596
2014 TOTAL	10,287	54	22	42	40	13	1	1	698	598	179	43	4	243	786	596	502	34,208	18,982
2015 JAN	723	2	3	2	3	0	0	0	76	64	15	2	1	36	64	38	58	2,491	1,246
FEB	555	5	2	2	3	1	0	0	-	-	10	-	-	22	44	34	64	2,667	1,382
MAR	183	5	2	5	2	4	2	0	72	72	33	1	1	42	76	59	94	3,469	1,738
APR	271	7	1	0	5	3	0	0	60	54	19	3	-	21	46	40	61	3,451	1,620
MAY	436	8	0	0	2	3	0	0	89	54	10	10	2	25	46	56	41	2,869	1,422
JUN	496	2	1	3	5	4	0	0	-	-	27	-	-	25	41	32	43	3,366	1,716
JUL	380	3	2	0	5	1	0	0	123	140	5	13	1	32	67	52	28	3,445	1,774
AUG	218	8	2	0	7	4	0	0	-	-	13	-	-	18	56	24	62	3,692	1,847
SEP	263	6	5	1	7	4	0	2	112	78	25	11	-	30	41	44	40	2,887	1,528
OCT	356	4	1	6	1	6	1	0	115	103	6	12	1	32	58	51	33	3,420	1,494
NOV	97	2	3	5	0	0	0	1	-	-	6	-	-	15	38	47	40	3,348	1,666
DEC	428	7	1	3	5	1	0	0	91	80	4	5	2	60	46	39	37	3,851	1,765
2015 TOTAL	4,406	59	23	27	45	31	3	3	738	645	173	57	8	358	623	516	601	38,956	19,198
2016 JAN	504	2	1	0	5	5	0	0	76	66	4	7	1	29	51	44	36	3,183	1,550
FEB	165	2	1	0	1	1	1	0	-	-	8	-	-	27	47	34	49	3,666	1,738
MAR	1,019	6	3	2	2	2	1	1	62	57	3	7	1	19	41	50	45	3,020	1,647
APR	228	3	2	2	7	4	0	0	34	32	6	4	2	20	40	48	90	4,041	2,112
MAY	310	2	0	6	3	3	1	0	-	-	0	-	-	20	37	41	29	3,485	2,179
JUN	71	6	3	3	4	1	0	1	67	65	3	6	2	20	36	40	77	4,098	2,329
JUL	945	3	1	0	2	0	0	0	-	-	10	-	-	20	41	31	56	3,481	2,064
AUG	8	3	2	3	2	1	1	1	71	43	20	4	-	20	50	38	38	4,065	2,285
SEP	3	3	0	9	3	3	0	1	-	-	8	-	-	20	34	29	22	3,388	1,660
2016 TOTAL	3,253	30	13	25	29	20	4	4	310	263	62	28	6	195	377	355	442	32,427	17,564

Abbreviation Ind = Individual, Blntk = Blanket, Apps = Application for Hearing, NOAV = Notice of Alleged Violation, AOC = Administrative Order of Consent, OFV = Order Finding Violation, Cmplt = Complaint, Comp = Completed