



January 26, 2015

TOP STORIES

◆ Commission Adopts New Enforcement and Penalty Rules

On January 5, 2015, the COGCC approved rule and policy changes that significantly increase penalties for operators violating Commission regulations. The rule changes are designed to further deter violations and encourage prompt compliance.

The Commission increased maximum daily penalty amounts from \$1,000 to \$15,000 for each violation as well as eliminated a \$10,000 overall penalty cap for each violation. The new rules clarify the Commission's ability to assess a penalty for each day that evidence demonstrates a violation occurred. Other substantive changes include penalties for a pattern of violations, and new provisions for voluntary disclosure.

These changes to Commission penalty and enforcement rules implement House Bill 14-1356, approved by the General Assembly in 2014, and advance policy changes consistent with Executive Order No. D 2013-004, issued in 2013 by Governor John Hickenlooper.

The rule changes follow a six-month public process that began after legislation became effective in June 2014. The Commission held stakeholder meetings regarding the proposed rules on August 13, September 18, October 3 and November 18, 2014. The Commission invited and accepted written and verbal comments from stakeholders regarding the proposed rules during these stakeholder meetings.

◆ New Public Complaint Process

This month, the COGCC announced a new, streamlined process for handling public complaints related to oil and gas development. The new process makes it easier for the public to file complaints, and makes the agency's process for addressing, closing and communicating complaints more effective and transparent.

The COGCC has created a dedicated webpage to assist the public with filing complaints. That website (<http://cogcc.state.co.us/Complaints/Complaints.html>), which can be reached via a link on the left-hand side of the COGCC home page, includes the following features:

- A newly developed and easy to use tool to file a complaint online.
- Guidance for filing a complaint. (To be considered a formal complaint, all complaints are required to be in a written format.)
- Questions and answers related to the complaint process, including what to expect and rights of the complainant.

The new complaint procedure was developed using the Lean process, an exercise designed to increase efficiency, improve customer experience and minimize waste within established systems. Required information for a filing a formal complaint includes:

- What: A detailed description of the issue(s) you are experiencing.
- Where: Be as specific as possible regarding the location where the issue(s) are occurring. A street address, cross streets, county roads, or the name of the well location works best.



- How: How can the COGCC contact you to follow up? (Not absolutely required but highly recommended).

COGCC has dedicated staff to assist complainants with the formal written complaint process. Staff is available through an email to dnr_cogcc.complaints@state.co.us or via a central complaint line at 1-888-235-1101.

◆ Local Government Liaison (LGL) Program

Local Government Liaisons (LGLs) Marc Morton and Nancy Prince are planning the LGD training format and schedule for 2015. Both webinars and face-to-face sessions are under consideration. Training will be targeted to local governments who have yet to take available trainings offered in 2013 and 2014, but will also be made available to local government staff, elected officials, non-profit organizations, and others interested in the regulation of oil and gas in Colorado. The schedule will be published on the website once finalized. The LGLs are also available to provide specific training to local government groups on request. Contact Marc or Nancy for more information about LGD training.

As a reminder to all local governments that participate in the LGD program, it is extremely important that you notify the COGCC (via submittal of an updated Form 29) of any change to the designated LGD's e-mail address or contact information, or any change in the status of your jurisdiction's participation in the program. If we don't have an LGD's current e-mail address, eForm generated notifications will not be delivered.

LGDs are also reminded to periodically visit the COGCC website "MAPS" link to compare their geographic boundary with what is presented on the COGCC website, as the COGCC relies on this data to generate email notifications of pending and proposed well and location permit applications. If a city or town's mapped boundary is incorrect on our website, we request that the municipality, county, or special district submit either a shapefile with the correct information, or send us a current map. Questions about this procedure can be directed to Dennis Ahlstrand (COGCC GIS Analyst) or to the LGLs. Dennis' e-mail address is dennis.ahlstrand@state.co.us.

A list of the LGL outreach and public involvement activities conducted since the previous staff report is included in the latter half of the Public Outreach section below.

PUBLIC OUTREACH

➤ *Outreach by Director and other Staff Members*

- On December 1, Senior Data Analyst Ken Robertson, Senior Research Scientist (GIS) Chris Eisinger and Permit/Technical Services Manager Jane Stanczyk participated as panelists with representatives of local oil and gas operators at a Denver meeting of the Professional Petroleum Data Management Association. The panel addressed questions from industry and consulting data managers about all aspects of managing oil and gas industry data.
- On January 5, Mike Leonard, Quality Assurance Professional, presented "Minimizing Nuisance Impacts" at Noble Energy's Drilling and Environmental Health and Safety meeting in Greeley. The audience of over sixty drilling and drilling operations-related contractors were presented with an overview of COGCC's complaint process and procedures. Also included was a discussion of the most common complaints related to the drilling process and thoughts towards possible minimization and mitigation of those issues. COGCC's Northeast Inspection group was also in attendance to field questions and concerns.
- On January 8, Matt Lepore was a guest speaker at the Denver Petroleum Club.
- On January 15 and 16, Matt Lepore participated in the Governor's Task Force Meeting in Greeley.

➤ *Outreach by LGLs*

- On November 21 and December 5, Adams County and various operators continued negotiations on specific items in a Memorandum of Understanding. Nancy Prince provided information to the parties regarding COGCC's rules on these items.



- On December 3, Marc Morton met in Carbondale with Katrina Byers (LGD for the Town of Carbondale) as a follow up to a group LGD training provided earlier in 2014.
- On December 3, Marc Morton met in Glenwood Springs with Laurie Rink, Executive Director of the Middle Colorado Watershed Council, regarding the Council's proposal for potential public projects for riparian improvements to areas of the Middle Colorado River watershed.
- On December 4, Marc Morton attended the Northwest Oil and Gas Forum meeting in Rifle. Marc will be facilitating these meetings in the future on behalf of the COGCC.
- On December 6, Nancy Prince attended Aurora City Council meeting where changes to zoning ordinances related to oil and gas activities were discussed.
- On December 10, Nancy Prince gave a training session to the Tri-County Health Department oil and gas team. The presentation included COGCC rules, database and mapping programs.
- On December 15, Nancy Prince and Mike Leonard attended the Adams County Local Emergency Planning Committee (LEPC) meeting where they presented a summary of COGCC spill reporting and response rules.
- On December 17, Nancy Prince attended the initial meeting of the Aurora LEPC.
- On December 17, Marc Morton and Dave Kubeczko (Western Location Specialist) attended the quarterly Mesa County Land and Resource Managers meeting in Grand Junction.
- On December 22 and 26, and January 5, Marc Morton, John Noto (Oil and Gas Location Assessment Supervisor), and Doug Andrews (Northeast Location Specialist) consulted via a teleconference with staff from the Town of Timnath and their consultant (GBSM), and provided guidance regarding public submittal of comments on pending drilling and location permit applications, and in preparation for an upcoming planned public meeting.
- On January 6, Nancy Prince attended a meeting of Adams County Board of Commissioners where changes to zoning ordinances and Memorandum of Understanding between the County and Operators were presented.
- On January 7, Nancy Prince gave a presentation regarding COGCC spill reporting and response rules to the Aurora Oil and Gas Committee.
- On January 9, Marc Morton and Kent Kuster (Colorado Department of Public Health and Environment Oil and Gas Liaison) travelled to Timnath and provided presentations at a public forum at the request of the Town of Timnath. Other presenters included the Timnath Town Attorney, Timnath Mayor, and Peterson Energy. Presentations were followed by a public comment period. The meeting was moderated by staff from GBSM (Angela Jo Wolcott).

REGIONAL ACTIVITIES

➤ *Northwest Colorado*

◆ Northwest Colorado Oil and Gas Forum

Forum meetings for 2015 are scheduled for March 5, June 4, September 3, and December 3. All meetings will be held in Rifle at Colorado Mountain College from 10:00 a.m. to noon.

All parties wishing to be placed on the next meeting agenda or added to the distribution list for announcements should contact Marc Morton at 303-894-2100, ext. 5132 (direct) , 720-415-4959 (mobile) or by email: marc.morton@state.co.us.

◆ Project Rulison

The email for Project Rulison submittals is:

DNR_rulison.submittal@state.co.us

◆ Project Rio Blanco

The email for Project Rio Blanco submittals is:

DNR_rioblanco.submittal@state.co.us



➤ Southwest Colorado

◆ Gas and Oil Regulatory Team (GORT) Meetings

Forum meetings for 2015 are scheduled for February 19, May 14, August 20, and November 19. All meetings will be held at the La Plata County Fairgrounds, Animas Room, Durango, from 8:30 a.m. to noon.

Any party who wishes to be placed on the next meeting agenda should contact Marc Morton at 303-894-2100, ext. 5132 (direct) , 720-415-4959 (mobile) or by email: marc.morton@state.co.us.

◆ Fruitland Formation Outcrop Mitigation and Monitoring Projects (4M Projects)

4M Pilot Scale Mitigation Projects - La Plata County. In May 2014, the South Fork Texas Creek (SFTC) compressor was rebuilt to replace worn bearings. The heater plate in the methane sensor was also replaced. Regularly scheduled operations and maintenance, performed by COGCC's contractors, continues. Some successes of the project include:

Methane Mitigation:

- Gas containing methane concentrations of 78.4 - 99.5% (SFTC) and 0.2–5% (Pine River) were continuously recovered during the first and second quarters of 2014.
- Since conversion to a passive system in June of 2012 at Pine River, methane concentrations have remained at 0% - 5% following an increase in the first and second quarters of 2013.

Electrical Generation:

- SFTC has generated 179,463 kWh of surplus electricity since May 2009.
- System operated at 11 kW output to maintain steady operation during the first and second quarters of 2014.

Site Restoration:

- Plant growth over the methane mitigation system has improved in 2014.

4M Monitoring Wells La Plata and Archuleta Counties. There are 17 wells at 11 locations in

the 4M monitoring program. Well pressures are monitored remotely via satellite telemetry with one or two maintenance visits per year, depending upon data received. Two measurements per day are collected from each monitoring well. The BP Highlands MW 35-7-15 #1 was inspected by COGCC staff and Resource Hydrogeologic Services (RHS) on September 25, 2014. All components of this monitoring well were functioning properly. The COGCC and RHS conducted an annual inspection tour of all accessible monitoring wells on October 7 and 8, 2014. RHS and COGCC staff performed routine annual maintenance activities on October 23, 2014.

Ongoing Investigation, Reclamation and Mitigation of Residual Methane in the Vicinity of the Bryce 1-X Well Area, Bondad, Colorado. Two domestic water wells were sampled at the Bondad location on October 16, 2014 by Four Corners Geoscience. Free methane results ranged from 2.26 mg/l in the Middle well to 3.19 mg/l in the South well. Samples from the North well and from Fire Department lines were not taken because of flow issues.

ADMINISTRATION/ORGANIZATION/OTHER

◆ Congratulations to Chris Eisinger

Chris Eisinger, Senior Research Scientist, has been elected to the Board of Directors of the Rocky Mountain Associations of Geologists. Chris will be acting as the Second Vice President responsible for coordinating the monthly RMAG speakers and serving on the continuing education committee. Chris currently maintains our interactive GIS maps and data systems. He is also involved locally and nationally in tracking and understanding the potential impact of oil and gas activities on induced seismicity.

◆ New Permit/Completion Tech

Katrina Andrus is the newest member of the Permitting Staff. Katrina previously worked for the COGCC in a contract position reviewing water quality data and remediation plan applications in support of the environmental group. She has a bachelor's degree in environmental science from Metropolitan State University of Denver. Initially,



Katrina will be focusing on completeness review of Form 2's and 2A's.

◆ New Field Inspector

Tom Peterson joined the COGCC field inspection team on January 12, 2014. Tom will work in the western Wattenburg area and report to James Precup. Tom has more than 25 years of oil and gas experience including the supervision of drilling, completion, wireline perforating, frac, and work over operations.

We extend a special welcome to Katrina and Tom. An organizational chart can be found on Pages 8-11. For contact information, please go to our homepage and find "Staff Contact Information."

◆ Plugging and Reclaiming Abandoned Wells (PRAW) - Project Updates

The **DB Orphan Blair #1 Project** is located on the northwest edge of DeBeque in Mesa County. The well was found to be leaking water and was subsequently dug out and sealed to stop the flow. Lab analysis of a water sample indicates salt brine, which is indicative of oil and gas geologic sources. Based on old USGS reports and prior experience in the area, the COGCC believes the well was likely drilled around 1902. This plug and abandonment project was completed in mid-November of 2014 and, due to unforeseen circumstances, change orders increased the cost by \$33,374, for a total of \$98,443.

The **Pasture #1 Project** in Mesa County involved the final abandonment of this well, including cutting the casing off three feet below ground level and installing a well marker and sign. Tasks were completed in October, at a final cost of \$1,360.

The **Flessner #13 Project** has previously been reported as a dry and abandoned well located in Washington County about 23 miles south of Ft. Morgan and Brush. It was drilled in 1955 to a depth of 5,460 feet (J-Sand Formation) and reportedly plugged at the same time by Monsanto Chemical Company. A farmer complained that the well had never been plugged and abandoned and is currently obstructing farming operations. The project was competitively bid and awarded

to the winning contractor in the amount of \$47,700. Work recently commenced with plugging the well, and should be completed by January 17th. Actual costs are being tallied up now, and are not currently available.

The **Ackerman #1 Project** is a dry and abandoned well located in Larimer County about seven miles northwest of Wellington. It was drilled in 1963 to a depth of 5,745 feet (Dakota formation) and plugged in the same year by Alpha-Omega Exploration Company.

In October, COGCC Environmental Staff conducted a site inspection and collected a produced water sample. Because the well had ceased flowing at the time, a temporary pumping system was rented to collect the samples. Dissolved methane was detected in the sample and was determined to be biogenic, or bacteria generated, as opposed to the deeper strata thermogenic gas produced commercially. To eliminate biogenic gas, this well can be chlorinated to kill the bacteria. Analytical results indicate the water is fresh (1800 mg/L TDS) with no impacts to the surrounding grassland. These activities will be discussed with the landowner and COGCC management for the final disposition of the well. In the event the COGCC plugs the well, the estimated cost is \$40,000.

The **Gentry Project**, located in Rio Blanco County, includes 10 sites with eight wells and two pits located about one-half mile west of Rangely and one and a half miles south of State Highway 64. The surface owner brought the matter to the attention of the COGCC. Total estimated cost is \$90,000.

The **Wallace Oil and Gas BOND CLAIM Project** is located in far southeast Colorado in Baca County, about fifteen miles southeast of the town of Walsh. This project will include the salvaging of all miscellaneous production equipment and plugging three individual wells. The total cost is estimated at \$90,000, of which \$15,000 will come from the bond claim.

The **Noel Reynolds Ester #1 BOND CLAIM Project** is a temporarily abandoned well located in La Plata County about 18 miles southwest of Durango and six miles from the New Mexico state line. This project will include the removal of miscellaneous debris and unused equipment and the plugging of



the well. The total cost is estimated at \$50,000, of which \$30,000 will come from the bond claim.

The **Fremont Co-Group #3 Five Wells Project** includes five wells that need to be re-plugged and abandoned. These orphan wells are located in the Florence-Cañon City Field in Fremont County and were discovered during routine inspections. It is believed they were drilled in the early 1900s. None of these wells have an operator of record or any bond posted. The estimated cost to plug and abandon these wells is \$50,000.

The **Chapman #1 Project** is a dry and abandoned well located in Baca County about six miles southeast of Walsh. It was drilled in 1960 to a depth of 5,576 feet (St. Louis Formation) and plugged at the same time by Falcon Seaboard Drilling Company. The COGCC inspection report indicates four feet of casing protruding above ground, and bubbling, churning water could be heard from it. The plan is to re-plug the well at an estimated cost of \$45,000.

The **Stewart #1 Project** is a dry and abandoned well located in La Plata County about 26 miles southwest of Durango and about one mile from the New Mexico state line. It was drilled in 1949 to a depth of 3,314 feet and reported plugged at the same time by Ocean Oil Company. The well, which is situated in a ravine with tight quarters, making access difficult, was found to be leaking fairly fresh water.

No samples were taken at the time of inspection, but it was noted that the foliage was quite healthy, and there were no dry powdery residues, which are usually indicative of salt or calcium carbonate. The plan is to re-enter the well and re-plug it at an estimated cost of \$80,000.

Page 12 contains a spreadsheet listing PRAW projects that are either scheduled, in process or completed, as of January 15, 2015.

◆ Colorado Oil and Gas Information System (COGIS) Projects, Updates and Changes

Electronic Form Submissions (eForms)

The COGCC uses 41 types of forms to authorize oil and gas operations, to inspect and monitor on-going operations, and to receive reports of operations. Of those 41 forms, 14 forms are currently available for electronic submittal through the eForms system.

Forms currently available through eForms:

Form 2 -	Application for Permit to Drill
Form 2A -	Oil and Gas Location Assessment
Form 4 -	Sundry Notice
Form 5 -	Drilling Completion Report
Form 5A -	Completed Interval Report
Form 6 -	Well Abandonment Report
Form 10 -	Certification of Clearance/ Change of Operator
Form 15 -	Earthen Pit Report/Permit
Form 17 -	Bradenhead Test Report
Form 19 -	Spill/Release Report
Form 22 -	Accident Report
Form 23 -	Well Control Report
Form 41 -	Trade Secret Claim of Entitlement
Form 42 -	Notice of Notification (Notice of Hydraulic Fracturing)

In December 2014, more than 99% of the forms available in eForms were submitted electronically by industry. There are 508 operators using eForm and 1,980 individual users. For any operator not currently enrolled in eForms, instructions for starting the process can be found on the COGCC website at:

<http://cogcc.state.co.us/Announcements/COUAINformation.pdf>

The development team continues to work on the eForm conversion of existing forms. Currently, 8 types of forms are in various stages of development: Forms 7, 14, 14A, 21, 26, 31, 33 and NOAV. In addition, the development team updates eForms as required by rule revisions.



Website, Maps and Data Downloads

The COGCC website redesign is in the final testing stages with an anticipated release date to occur in March 2015. The new site will have better content organization and a cleaner interface - changes aimed at improving user access to our information.

In the coming months, our interactive web-based mapping tool (COGCC GIS Online) will also be updated with the aim of improved stability and a more efficient user experience.

At the request of numerous public and industry users, the GIS group has augmented the GIS well data download to include additional database fields. New map shapefiles have also been added for both pending permits and pending directionals across the state. Routine daily map updates continue, providing users easy access to near real-time well location and status information.

Public Comment Invited on Drilling Permit Applications and Location Assessments

The public can make comments on all submitted Drilling Permit Applications (Form 2) and Location Assessments (Form 2A) through the eForm system. This can be accomplished by going to the COGCC website and clicking on the menu option:

[“Permits” or http://cogcc.state.co.us/COGIS/DrillingPermits.asp.](http://cogcc.state.co.us/COGIS/DrillingPermits.asp)

On the COGIS-Permits page, three search options are available. The first option “All Pending Permit Applications” is used for public comments. When the results are displayed for “Pending Applications,” the public can click on the document number, which logs the user to the eForms application. Once the page is displayed with the selected document, the user can select the Comment button to make a comment on that particular form.

◆ March 2015 Hearing Docket

The docket for the March 2015 hearing will be available shortly after the January hearing. Hearing dockets are available on our website by clicking on “Hearings.” Links to the notices and hearing applications are available from the Docket

Number and Applicant, respectively. To sign up for e-mail notification of hearing notices and applications, please see the announcement and instructions on the homepage of the website: <http://cogcc.state.co.us>.

◆ Financial Assurance Unit Update

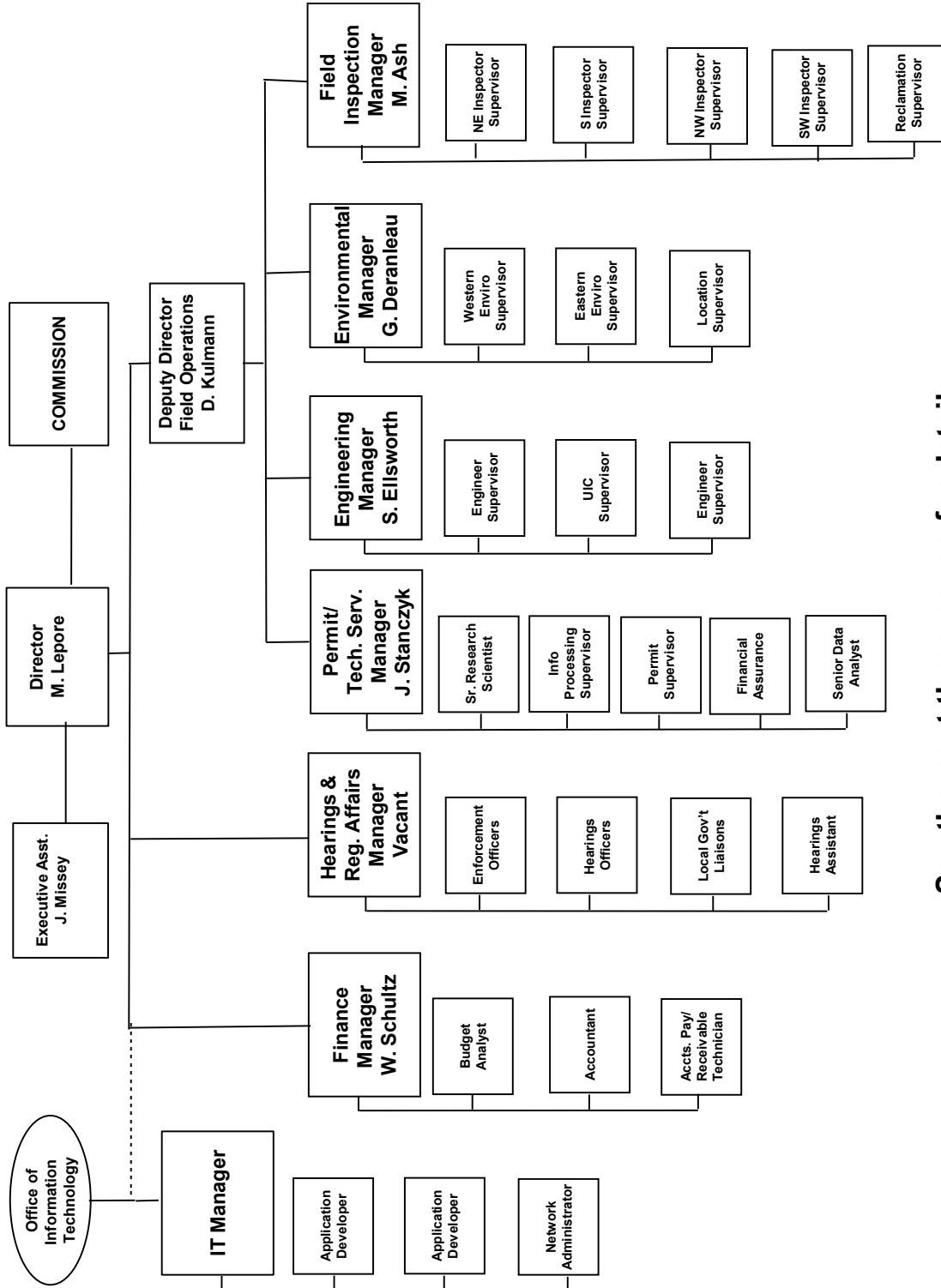
The Financial Assurance Unit is actively pursuing Rule 707.a compliance with formal requests to two operators for the additional financial assurance required for their excessive number of inactive wells. By rule, Sovereign Operating Company LLC (Op #10383) needs additional financial assurance for 21 inactive wells and Red Mesa Holding/O&G LLC (Op #10254) needs additional financial assurance for 13 inactive wells. Both operators have requested a hearing before the Commission in March, 2015 to present a plan for their inactive wells pursuant to Rule 707.a, which allows the financial assurance requirement to be modified or waived if the Commission approves the operator’s plan for returning wells to production or for plugging and abandoning wells on an acceptable schedule.

◆ Budget Update

Included in the Governor’s Fiscal Year 2015-16 budget request, submitted to the General Assembly on November 3, is a request for a permit-compliance technician, a hearing officer, funding for two contractors, and some additional office space. The requested staff will primarily assist with applications for permits to drill, completion reports, and pooling and spacing applications.



COLORADO OIL & GAS CONSERVATION COMMISSION



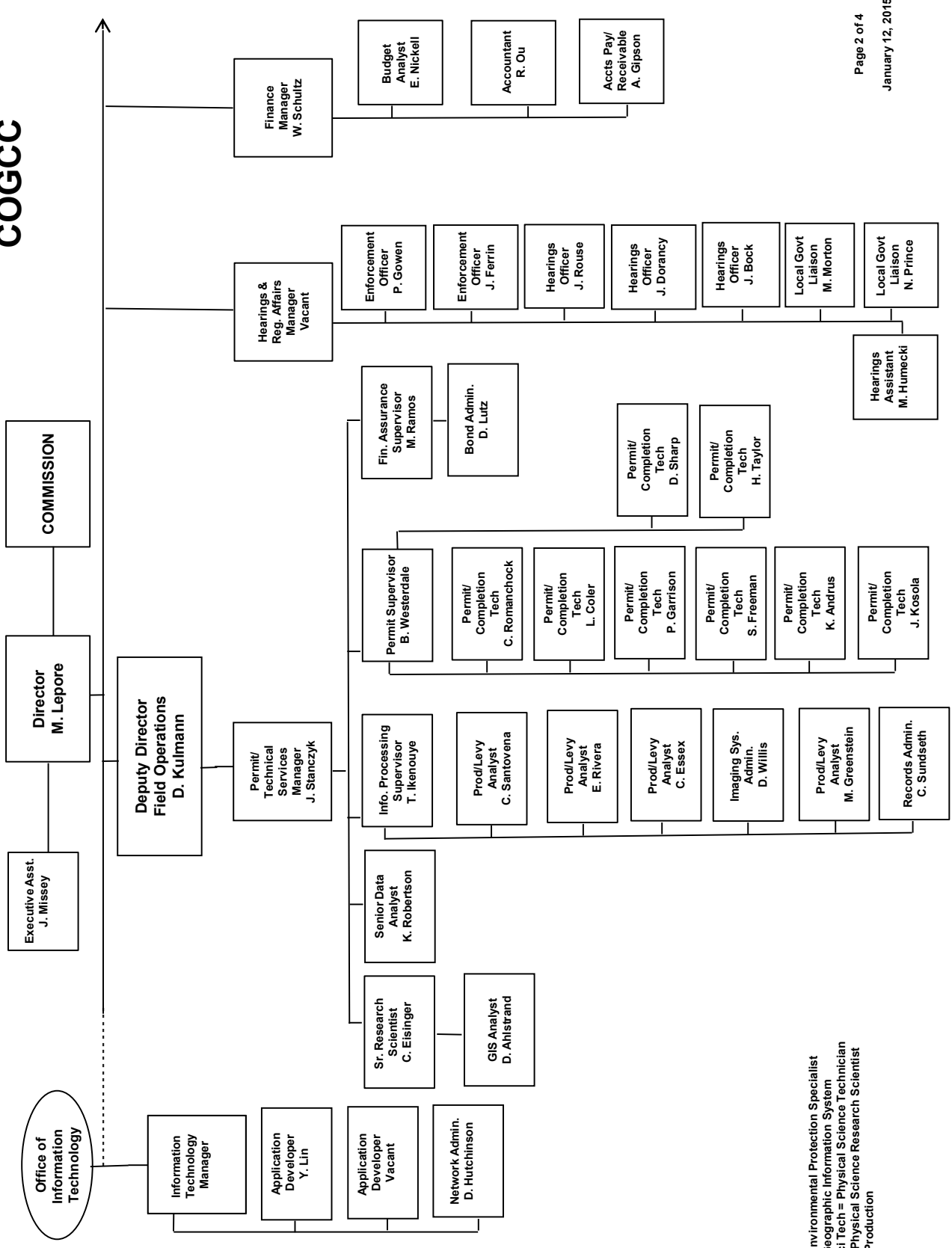
See the next three pages for details



Oil and Gas Staff Report

January 26, 2015

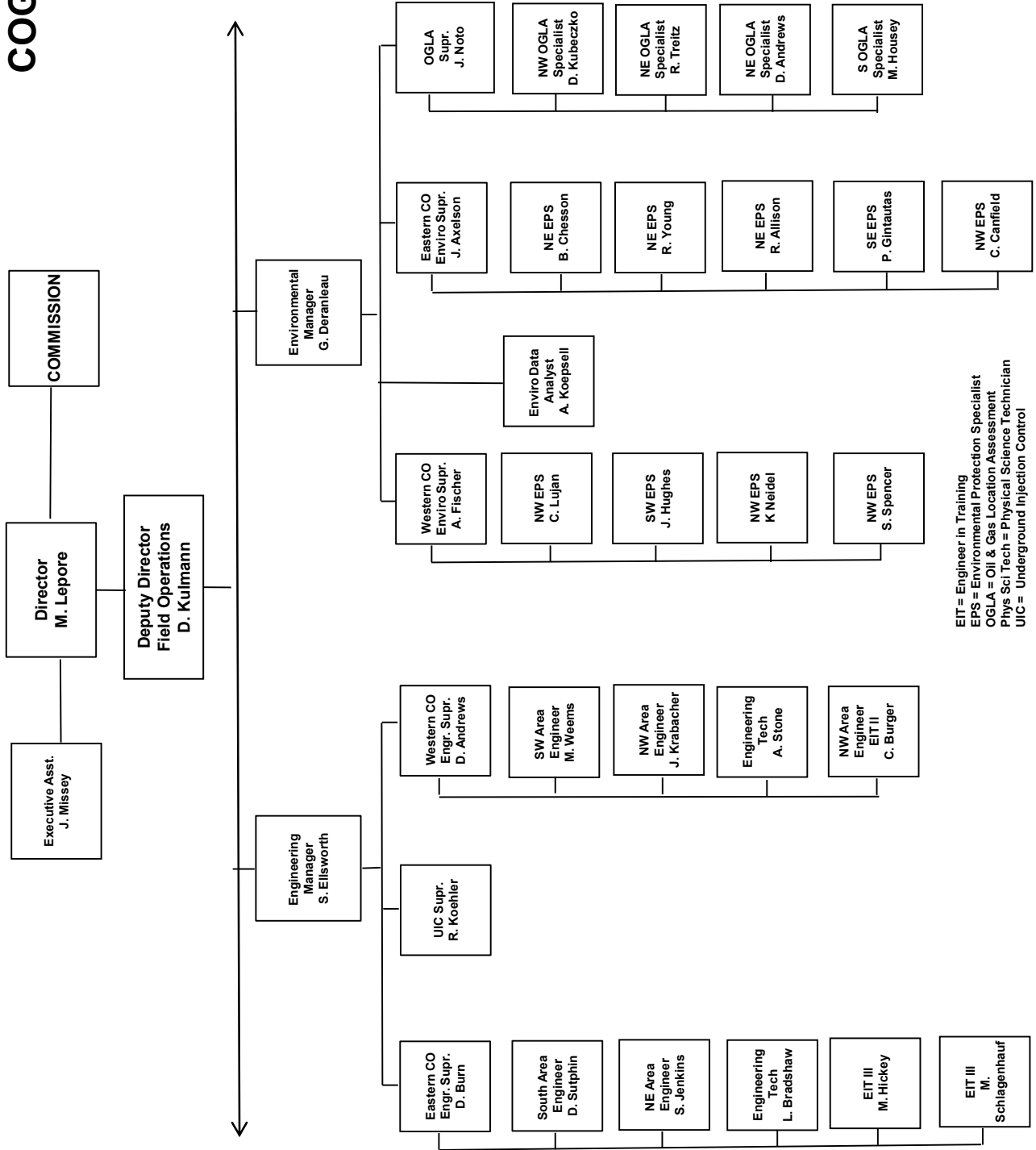
COGCC



EPS = Environmental Protection Specialist
 GIS = Geographic Information System
 Phys/Sci Tech = Physical Science Technician
 PSRS = Physical Science Research Scientist
 Prod = Production



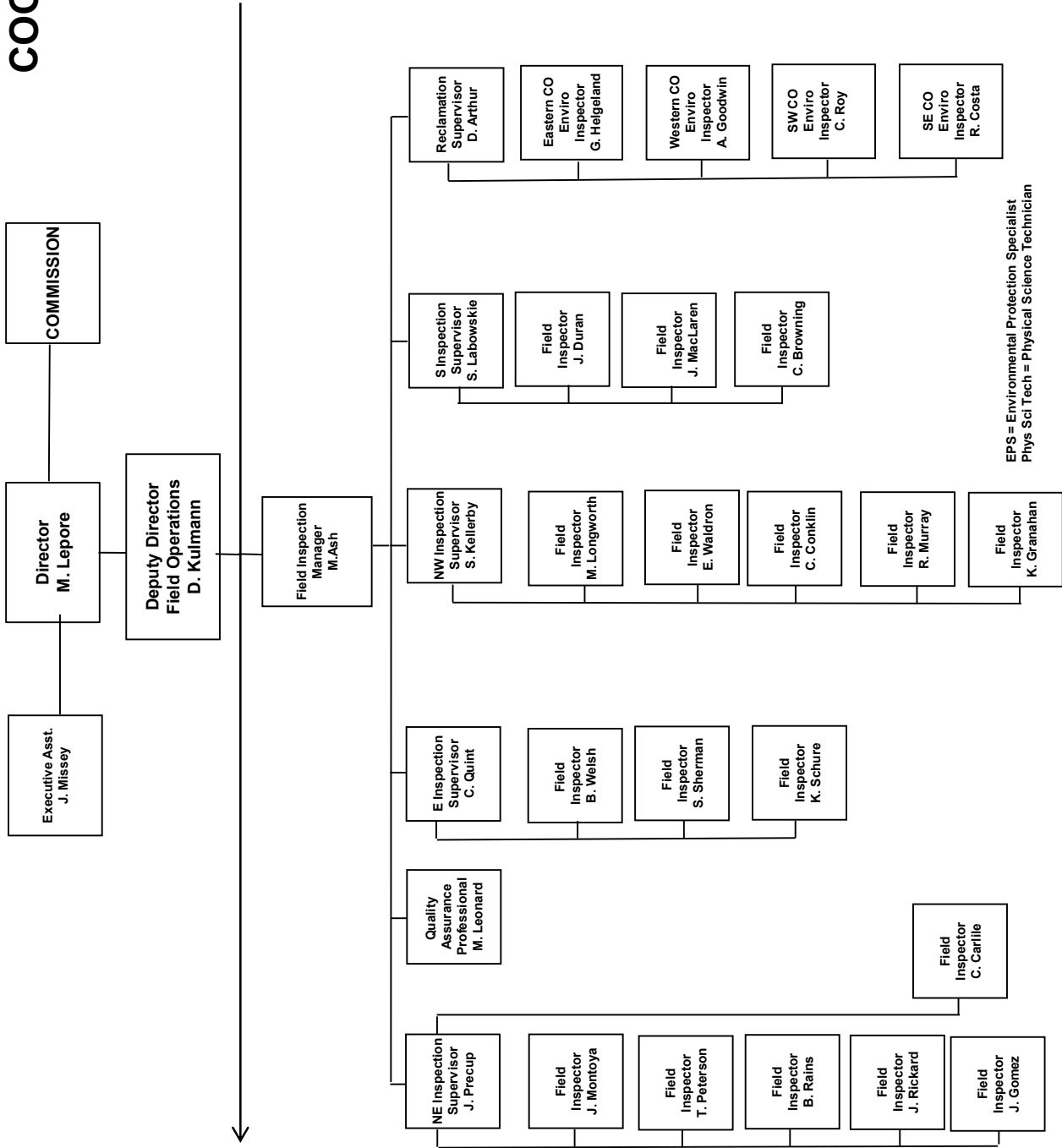
COGCC



EIT = Engineer in Training
 EPS = Environmental Protection Specialist
 OGLA = Oil & Gas Location Assessment
 Phys Sci Tech = Physical Science Technician
 UIC = Underground Injection Control



COGCC



EPS = Environmental Protection Specialist
Phys Sci Tech = Physical Science Technician



**PLUGGING AND RECLAIMING ABANDONED WELLS FOR ORPHANED LOCATIONS
FISCAL YEAR 2014-15**

PLANNED

County	Type	Project Name	Project No.	Manager	Acct Code	ESTIMATED TOTAL PROJECT COST			FY 2014-15 YTD EXPENDITURES			Description	
						Bond	PRAW	EMGY	Totals	Bond	PRAW		EMGY
Rio Blanco	PA	Gentry		Craig Burger	GENT	\$0	\$48,000	\$0	\$48,000	\$0	\$0	\$0	Plug and abandon
Baca	PA	Wallace Oil and Gas BOND	FYE2008-12	Diana Burn	WAL1 WAL2 WAL3 sub-total	\$15,000	\$75,000	\$0	\$90,000	\$0	\$0	\$0	BONDS claimed in 2004; three wells \$5,000 ea
						\$15,000	\$123,000	\$0	\$138,000				
La Plata	PA	Noel Reynolds Ester #1 BOND	FYE2014-03	Mark Weems	NOEL	\$30,000	\$20,000	\$0	\$50,000	\$0	\$0	\$0	Located in Red Mesa Field; Bond claimed in 2011
Fremont	PA	Fremont Co-Group #3 - Five Wells	FYE2014-09	Steve Jenkins	FREM	\$0	\$50,000	\$0	\$50,000	\$0	\$0	\$0	Five more wells needing to be plugged in the Florence Field.
Baca	PA	Chapman #1	FYE2008-42	Stuart Ellsworth	CHAP	\$0	\$45,000	\$0	\$45,000	\$0	\$0	\$0	Open casing 4' above GL. Heard "gas bubbling through liquid down hole" during 1998 inspection. Tagged bottom at 189' during 2007 inspection; no evidence of leaking.
La Plata	PA	Stewart #1	FYE2007-02	Mark Weems	STEW	\$0	\$80,000	\$0	\$80,000	\$0	\$0	\$0	Drilled dry & abandon 1949; appears to have fresh water flowing; located in ravine making difficult for rig access; located on recently acquired SUIT lands
					sub-total	\$30,000	\$195,000	\$0	\$225,000				
					TOTALS =>	\$45,000	\$318,000	\$0	\$363,000	\$0	\$0	\$0	

IN PROGRESS

County	Type	Project Name	Project No.	Manager	Acct Code	ESTIMATED TOTAL PROJECT COST			FY 2014-15 YTD EXPENDITURES			Description	
						Bond	PRAW	EMGY	Totals	Bond	PRAW		EMGY
Washington	PA	Flessner #13	FYE2014-02	Dirk Sulphin	FLES	\$0	\$45,500	\$0	\$45,500	\$0	\$0	\$0	DA 1955; Surf owner/farmer complaint; located in a cultivated farm and impeding farming operations.
Larimer	PA	Akerman #1	FYE2014-06	Mark Schlagenhauf	AKER	\$0	\$40,000	\$0	\$40,000	\$1,250	\$0	\$1,250	Well has open 4 1/2" at surface, water stopped flowing out of csg, well water sampled and analyzed; final dispensation pending.
					TOTALS =>	\$0	\$85,500	\$0	\$85,500	\$0	\$1,250	\$0	\$1,250

COMPLETED

County	Type	Project Name	Project No.	Manager	Acct Code	ESTIMATED TOTAL PROJECT COST			FY 2014-15 YTD EXPENDITURES			Description	
						Bond	PRAW	EMGY	Totals	Bond	PRAW		EMGY
Mesa	PA	DB Orphan Blair #1	FYE2014-01	Jay Krabacher	DEB1	\$0	\$65,069	\$0	\$65,069	\$0	\$98,443	\$0	Have capped well and stopped water flow; Re-enter; PA
Mesa	PA	Pasture #1	FYE2013-06	Jay Krabacher	HSTD	\$0	\$5,000	\$0	\$5,000	\$1,360	\$0	\$1,360	Leak has stopped; have cut off casing, installed PA marker and repaired the gate to the location.
					TOTALS =>	\$0	\$70,069	\$0	\$70,069	\$0	\$99,803	\$0	\$99,803

GRAND TOTALS

ESTIMATED TOTAL PROJECT COSTS			FY 2014-15 YTD EXPENDITURES				
Bond	PRAW	EMGY	Totals	Bond	PRAW	EMGY	Totals
\$45,000	\$473,569	\$0	\$518,569	\$0	\$101,053	\$0	\$101,053
SCOREBOARD (PRAW FUNDING ONLY)							
\$85,500	IN PROGRESS ESTIMATED TOTALS						
\$1,250	IN PROGRESS SPENT TO DATE TOTALS						
\$84,250	IN PROGRESS REMAINING TOTALS						
\$101,053	COMPLETED TO DATE TOTALS						
\$185,303	SUM OF (IN PROGRESS TOTALS) AND (COMPLETED TO DATE TOTALS)						
\$445,000	ANNUAL ALLOTMENT BUDGET TOTAL						
\$259,697	BALANCE PROJECTED TO DATE						

Notes:
 Project Types: "PA" indicates plugging and abandonment; "REC" indicates EMGY; indicates funding by the Emergency Response line item
 TBD: Cost estimates in process.
 PRAW: indicates funding by the Plugging and Reclaiming Abandoned Wells line



Oil and Gas Staff Report

January 26, 2015

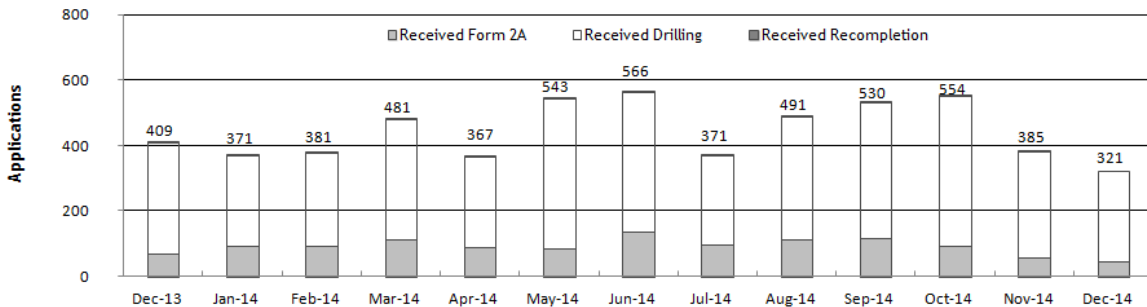
Monthly Permit Activity as of January 2, 2015

Form/Month	Backlog	Received	Approved	Withdrawn	Rejected	Incomplete ¹	In-Process	Remaining ²
Form2A								
Dec-13	179	68	71	6	0	57	113	170
Jan-14	170	90	43	7	0	47	163	210
Feb-14	210	91	94	3	0	51	153	204
Mar-14	204	110	88	4	0	48	174	222
Apr-14	222	89	99	18	0	25	169	194
May-14	194	83	94	7	0	26	150	176
Jun-14	176	134	92	3	0	30	185	215
Jul-14	215	97	126	3	0	28	155	183
Aug-14	183	111	87	4	0	36	167	203
Sep-14	203	116	81	3	0	47	188	235
Oct-14	235	93	109	6	0	74	139	213
Nov-14	213	54	103	6	0	46	109	158
Dec-14	155	42	99	3	0	39	56	95
Drilling								
Dec-13	763	338	367	7	0	110	617	727
Jan-14	727	278	232	77	0	75	621	696
Feb-14	696	284	297	4	0	109	570	679
Mar-14	679	367	329	13	0	103	601	704
Apr-14	704	276	317	16	0	63	584	647
May-14	647	458	383	16	0	53	653	706
Jun-14	706	429	377	8	0	62	688	750
Jul-14	750	272	446	2	0	65	509	574
Aug-14	574	376	259	24	0	90	577	667
Sep-14	667	412	304	21	0	109	645	754
Oct-14	754	458	370	10	0	137	694	832
Nov-14	832	326	479	19	0	128	532	660
Dec-14	660	279	397	10	4	115	413	528
Recompletion								
Dec-13	4	3	4	0	0	0	3	3
Jan-14	3	3	2	0	0	0	4	4
Feb-14	4	6	4	0	0	0	6	6
Mar-14	6	4	6	0	0	0	4	4
Apr-14	4	2	3	0	0	1	2	3
May-14	3	2	2	0	0	1	2	3
Jun-14	3	3	0	0	0	1	5	6
Jul-14	6	2	5	0	0	0	3	3
Aug-14	3	4	3	0	0	0	4	4
Sep-14	4	2	3	0	0	1	1	3
Oct-14	3	3	2	0	0	2	2	4
Nov-14	4	5	2	0	0	1	6	7
Dec-14	7	0	2	1	0	2	2	4

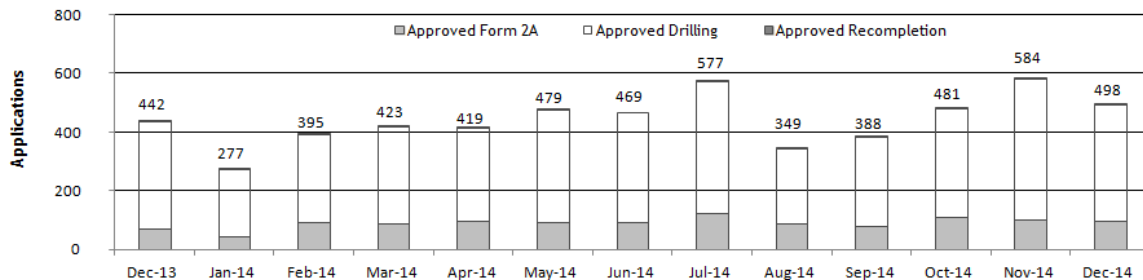
¹Incomplete are permits that have missing or inaccurate data and cannot be approved.

²Backlog = Incomplete + In-process = Remaining permits from previous month.

Received Applications



Approved Applications




Status of Permit Applications Filed By Month as of January 3, 2015
Form 2A Location Assessment

Year	Month	Received	Approved	Withdrawn	In Process	Percent In Process	Median Days to Process	Less Than 30 Days	30 to 49 Days	Greater Than 50 Days
2011	TOTAL	2,391	2,298	93	0	0%		1,416	620	262
2012	TOTAL	1,359	1,289	68	2	0%		706	378	205
2013	JAN	177	163	12	2	1%	35	99	45	19
	FEB	91	83	8	0	0%	34	42	29	12
	MAR	131	122	9	0	0%	51	41	46	35
	APR	150	141	7	2	1%	40	47	69	25
	MAY	105	100	4	1	1%	42	47	32	21
	JUN	107	89	16	2	2%	50	28	41	20
	JUL	204	198	3	3	1%	69	11	71	116
	AUG	58	56	2	0	0%	62	7	18	31
	SEP	56	53	3	0	0%	56	13	18	22
	OCT	63	61	2	0	0%	53	12	24	25
	NOV	76	70	5	1	1%	50	18	24	28
	DEC	68	61	6	1	1%	61	4	16	41
2013	TOTAL	1,286	1,197	77	12	1%		369	433	395
2014	JAN	85	82	3	0	0%	54	12	36	34
	FEB	88	85	2	1	1%	52	11	36	38
	MAR	113	108	5	0	0%	47	30	42	36
	APR	80	73	7	0	0%	45	18	35	20
	MAY	92	88	4	0	0%	52	13	34	41
	JUN	134	129	3	2	1%	61	36	54	39
	JUL	100	95	4	1	1%	41	37	38	20
	AUG	102	96	2	4	4%	46	33	26	37
	SEP	118	112	4	2	2%	46	29	45	38
	OCT	94	82	6	6	6%	35	34	35	13
	NOV	65	45	0	20	31%	32	20	23	2
	DEC	45	2	0	43	96%	27	2	0	0
2014	TOTAL	1,116	997	40	79	7%		275	404	318

Form 2 Application For Permit to Drill (APDs)

Year	Month	Received	Approved	Withdrawn	In Process	Percent In Process	Median Days to Process	Less Than 30 Days	30 to 49 Days	Greater Than 50 Days
2011	TOTAL	4,691	4,557	132	0	0%		2,723	1,565	587
2012	TOTAL	3,955	3,816	139	0	0%		1,971	1,393	602
2013	JAN	562	542	18	2	0%	36	278	179	86
	FEB	242	228	14	0	0%	36	78	126	38
	MAR	333	320	13	0	0%	43	123	119	84
	APR	327	314	13	0	0%	40	105	153	59
	MAY	369	340	27	2	1%	40	111	181	59
	JUN	330	305	22	3	1%	47	110	131	66
	JUL	796	762	11	23	3%	66	106	218	449
	AUG	313	308	4	1	0%	65	13	138	162
	SEP	188	186	2	0	0%	71	21	66	106
	OCT	339	332	7	0	0%	72	22	89	228
	NOV	373	357	11	5	1%	60	49	147	166
	DEC	380	311	66	3	1%	68	30	79	204
2013	TOTAL	4,552	4,305	208	39	1%		1,046	1,626	1,707
2014	JAN	261	255	5	1	0%	56	35	117	107
	FEB	298	285	13	0	0%	58	37	94	159
	MAR	359	351	8	0	0%	52	50	133	173
	APR	223	213	10	0	0%	47	20	121	74
	MAY	501	498	2	1	0%	71	40	155	305
	JUN	438	384	37	17	4%	53	111	138	138
	JUL	287	273	11	3	1%	47	62	119	94
	AUG	351	331	3	17	5%	55	61	126	147
	SEP	413	369	23	21	5%	49	62	150	158
	OCT	441	399	3	39	9%	38	129	199	72
	NOV	374	205	2	167	45%	36	54	132	23
	DEC	281	19	0	262	93%	13	19	0	0
2014	TOTAL	4,227	3,582	117	528	12%		680	1,484	1,450



Oil and Gas Staff Report

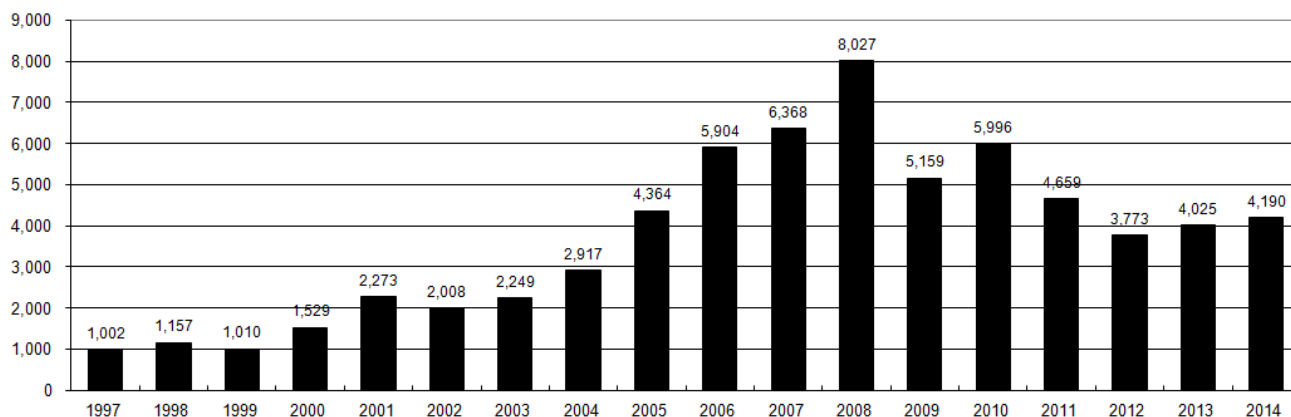
January 26, 2015

15

Annual Drilling Permits by County as of January 3, 2015

County	1997	1998	1999	2000	2001	2002	2003	2004	2005	2006	2007	2008	2009	2010	2011	2012	2013	2014
ADAMS	33	24	19	38	28	9	26	39	34	37	89	51	35	21	8	40	40	51
ARAPAHOE	9	1	2	0	2	1	2	5	7	11	10	10	10	8	23	35	23	34
ARCHULETA	3		1	7	9	6	10	8	13	14	26	47	11	18	12	5	4	3
BACA	7	13	15	22	6	2	3	7	8	2	11	13	3	4	5	3	1	1
BENT	5	3	5	2				5	3	8	1	1		5		2	1	
BOULDER	2	5		1	5	6	7	17	13	21	37	32	35	24	30	22		
BROOMFIELD						2	7		1	1		2	33	28	11	36		31
CHEYENNE	31	41	7	3	3	3	3	3	10	21	15	33	12	13	16	31	50	26
COSTILLA			1															
CROWLEY																		2
DELTA						7	4	5	10	9	2			4	3	6	1	2
DENVER	5	3	3		3					19	25	24						
DOLORES							1	1	1	6	10	12	21	8	8	13	12	3
EAGLE																		1
ELBERT	11	1		2						4			1		1	2	2	4
EL PASO													2	3	3	18	1	2
FREMONT	1							1	3	2	4	14	13	22	14	11	2	8
GARFIELD	141	95	130	213	353	362	567	796	1,509	1,845	2,550	2,888	1,981	2,037	1,323	1,046	870	1,066
GRAND																		
GUNNISON						5	10	1	9	19	7	10	12	4	3	11	9	20
HUERFANO	3	40	26	41	27	27		8	2			7		2	1	9	1	13
JACKSON	6	3		34	18	21	9	14	6	8	5	27	19	9	18	5	12	17
JEFFERSON		1	2	1						1	3	2						1
KIOWA	17	10	2	11	18	2	4	2	1	11	9	26	7	16	17	17	12	5
KIT CARSON	6	9	5				1	3	5	4	4	13	7	3	2	6	1	2
LA PLATA	40	82	107	127	156	104	162	102	115	235	251	328	298	191	99	71	32	87
LARIMER	3	1		2		1			1		5	46	12	41	8	13	2	4
LAS ANIMAS	136	195	195	268	400	259	180	332	413	500	362	303	88	92	85	11	2	1
LINCOLN	2			2	2	1	6	3	4	1	2	58	44	48	31	36	87	129
LOGAN	12	7		4	7	3	3	6	13	17	14	5	9	17	8	27	4	5
MESA	10	2	6	13	27	30	27	54	136	265	293	501	427	306	127	150	105	74
MOFFAT	28	21	15	35	52	62	63	63	60	120	68	57	51	53	93	88	44	54
MONTEZUMA	5	4	1	4		5	8	8	11	5	12	22	39	19	27	29	14	25
MONTROSE	1			1	3	2	4	2		1	3	3		1	1			
MORGAN	11	10	12	9	9	2	7	9	7	3	6	2	1	6	13	5	16	6
OTERO																		
PARK			1										3	4	1			
PHILLIPS				1	2		7	13	17	12	69	82	45	64	112	56		11
PITKIN								1			1							
PROWERS	3	9	3	2	5	4		7	5	7	5	8	1	3	1			1
RIO BLANCO	40	51	95	89	187	105	179	154	161	360	321	477	348	441	109	117	167	121
RIO GRANDE				1	1		1					1	1			2		1
ROUTT	1	1	4	20	13	1		4	6	9	8	4	2	3	10	4	12	4
SAGUACHE				2		2					2	1	2					
SAN MIGUEL	1	4	2	11	13	27	18	42	45	35	23	20	13	10	2	1		2
SEDGWICK	2						1	5	2	7	2	1	19	11	12	2		7
WASHINGTON	26	18	3	23	17	27	34	128	50	69	45	11	1	6	12	6	19	12
WELD	285	392	288	509	702	760	757	832	901	1,418	1,527	2,340	1,448	2,152	2,262	1,826	2,468	2,303
YUMA	116	111	60	31	205	160	138	237	782	797	541	545	105	299	148	11	9	53
TOTAL	1,002	1,157	1,010	1,529	2,273	2,008	2,249	2,917	4,364	5,904	6,368	8,027	5,159	5,996	4,659	3,773	4,025	4,190

ALL COUNTIES





Form 2A Breakdown By County By Year as of January 3, 2015

Year	County	Form 2As	Completed	In Process	New Location	CDP	SWH	RSO	CDPHE
2009	Total State	818	818	0	408	2	80	5	5
2010	Total State	2,378	2,376	0	1,601	0	327	22	55
2011	Total State	2,299	2,297	2	1,791	1	274	17	5
2012	Total State	1,298	1,294	4	946	0	173	6	1
2013	Total State	1,202	1,189	13	898	1	164	2	4
2014	ADAMS	24	19	5	22	0	0	0	0
	ARAPAHOE	18	16	2	18	0	0	0	1
	ARCHULETA	1	1	0	0	0	1	0	0
	BACA	1	1	0	1	0	0	0	0
	BROOMFIELD	1	1	0	0	0	0	0	0
	CHEYENNE	23	23	0	20	0	0	0	0
	CROWLEY	2	2	0	2	0	0	0	0
	DOLORES	2	2	0	2	0	1	0	0
	EL PASO	2	2	0	2	0	0	0	0
	ELBERT	4	4	0	4	0	0	0	0
	FREMONT	4	3	0	4	0	4	0	0
	GARFIELD	79	72	7	20	0	54	3	0
	GUNNISON	7	6	1	2	3	2	0	0
	HUERFANO	5	5	0	2	0	6	0	1
	JACKSON	14	14	0	9	0	14	0	0
	KIOWA	3	3	0	2	0	0	0	0
	KIT CARSON	3	2	0	3	0	0	0	0
	LA PLATA	14	14	0	4	0	14	0	0
	LARIMER	4	1	3	3	0	0	0	0
	LAS ANIMAS	1	1	0	1	0	0	0	0
	LINCOLN	135	132	3	121	0	0	0	0
	LOGAN	2	2	0	2	0	0	0	0
	MESA	8	8	0	3	0	5	1	0
	MOFFAT	11	10	1	11	0	12	2	0
	MONTEZUMA	15	14	1	16	0	0	0	0
	PHILLIPS	11	11	0	11	0	0	0	0
	PROWERS	1	1	0	1	0	0	0	0
	RIO BLANCO	20	18	2	14	0	19	0	0
	ROUTT	1	1	0	1	0	1	0	0
	SAN MIGUEL	1	1	0	1	0	0	0	0
	SEDGWICK	7	7	0	5	0	0	0	0
	WASHINGTON	13	13	0	13	0	0	0	0
WELD	582	528	51	436	0	5	2	1	
YUMA	53	53	0	48	0	0	0	0	
2014	Total State	1,072	991	76	804	3	138	8	3

Abbreviations:

CDP = Comprehensive Drilling Plan SWH = Sensitive Wildlife Habitat consultation

RSO = Restricted Surface Occupancy consultation CDPHE= Colorado Department of Health and Environment consultation



Oil and Gas Staff Report

January 26, 2015

17

Horizontal Well Activity as of January 3, 2015

County	Prior Years		2009		2010		2011		2012		2013		2014		Total		Completion			
	Drilled	PA	Permit	Spud	Permit	Spud	Permit	Spud	Permit	Spud	Permit	Spud	Permit	Spud	Spud	AC	PR	DA	PA	
ADAMS			6	5	2	3	1		17	2	26	2	24	19	31	5	5			
ARAPAHOE	2						10	1	22	4	11	13	22	11	31	2	9			
ARCHULETA	17		7	6	15	7	10	8	5	9	2		1	47		44				
BENT									1	1	1				1		1			
BOULDER							4								0					
CHEYENNE	5	4									7	2	1	1	8	2	3			
DELTA									6	1	1		2	1	2		2			
DOLORES	9		18	2	6				9	3	5	4	3		18		12		1	
EL PASO									10						0		1			
ELBERT									1						0					
FREMONT	7	6	6		12	5	3	4	4	1	1				17		10	6	1	
GARFIELD	10	2	1	1	16	2	18	6	43	6	18	4	20	9	38		26		2	
GUNNISON	1				1				3	2	2		9		3		3			
HUERFANO									4	1			2		1					
JACKSON	8	1	8		3	3	9	2	4	4	8	5	15	3	21		12	1	1	
KIOWA									1		4	1	1		1		1			
KIT CARSON	1								1		1				2				3	
LA PLATA	28	2	11	2	28	3	18	7	12	1	5	1	43	4	46		50		1	
LARIMER	3	2					5	1	2	1	2				7		4		2	
LAS ANIMAS	16	2	4		1	1									17		16		2	
LINCOLN			2	1	2	1	1		1	1	6	1	4		4		3			
LOGAN	2								1						2		2			
MESA	3	2	36	1	22	8	24	13	14		9	2	9	1	28		25	2	3	
MOFFAT	7	1	6	3	4		9	4	44	6	18	13	15	1	34	1	22	1	1	
MONTEZUMA	6	1	23	6	11	2	8	2	18	6	3	4	15	2	28		39		1	
MORGAN							6	2	2	1	13	1	6		4		2			
PARK							1	1							1					
RIO BLANCO	7	2			1	1	11	2	15	2	4	5	3	1	18		11	4		
ROUTT	10	6							1		1				10		2	6	1	
SAN MIGUEL	1														1		1		1	
WASHINGTON	1	1													1				1	
WELD	11	3	12	5	208	95	763	233	964	597	2,114	1,091	2,215	1,376	3,408		1,306	10	44	
YUMA	1	1	6												1				1	
TOTAL Horizontal	156	25	147	32	333	132	901	285	1,203	645	2,260	1,152	2,410	1,429	3,831	8	1,609	33	67	
Percent of Total HZ																	0%	42%	1%	2%
Total All Permits			5,159		5,996		4,659		3,773		4,025		4,190							
HZ Percent of Total			2.8%		5.6%		19.3%		31.9%		56.1%		57.5%							



Well to Building Setbacks by Year and by County as of January 3, 2015

Count of well locations, grouped by proximity from well to buildings.

Location Proximity to Buildings	2009	2010	2011	2012	2013	2014	Number of Locations	Percent of Total Locations
less than 150 feet	2	3	3	2	0	3	13	0%
150 to 350 feet	37	58	61	39	34	36	267	3%
350 to 500 feet	50	110	97	61	64	45	430	5%
500 to 1000 feet	117	385	331	188	188	147	1,370	17%
1000 + feet	356	1,705	1,470	838	762	660	5,855	75%
TOTAL LOCATIONS	562	2,261	1,962	1,128	1,048	891	7,852	

County	TOTAL	Less than 150 feet	150 to 350 feet	350 to 500 feet	500 to 1000 feet	1000 + feet
ADAMS	69	0	4	6	16	43
ARAPAHOE	84	0	2	4	9	69
ARCHULETA	18	0	0	1	9	8
BACA	15	0	0	0	1	14
BENT	7	0	0	0	0	7
BOULDER	23	0	1	1	17	4
BROOMFIELD	33	0	0	4	13	16
CHEYENNE	133	1	0	0	2	130
CROWLEY	2	0	0	0	0	2
DELTA	7	0	0	2	1	4
DOLORES	19	0	0	0	7	12
EAGLE	1	0	0	0	0	1
EL PASO	14	0	0	0	3	11
ELBERT	8	0	0	0	2	6
FREMONT	39	0	2	7	8	22
GARFIELD	521	0	9	5	73	434
GUNNISON	33	1	0	3	1	28
HUERFANO	15	0	0	0	5	10
JACKSON	43	0	0	4	1	38
KIOWA	63	0	0	0	1	62
KIT CARSON	14	0	0	0	0	14
LA PLATA	115	0	4	13	35	63
LARIMER	34	0	5	3	10	16
LAS ANIMAS	201	1	6	7	37	150
LINCOLN	345	0	1	2	4	338
LOGAN	43	0	1	1	0	41
MESA	89	0	0	3	14	72
MOFFAT	168	0	0	2	14	152
MONTEZUMA	39	0	0	1	4	34
MONTROSE	2	0	0	0	0	2
MORGAN	28	0	0	2	4	22
PARK	4	0	0	0	0	4
PHILLIPS	273	1	4	6	21	241
PROWERS	5	0	0	0	0	5
RIO BLANCO	173	0	0	0	2	171
RIO GRANDE	2	0	0	0	1	1
ROUTT	26	0	0	0	2	24
SAN MIGUEL	12	0	0	0	0	12
SEDGWICK	32	0	0	1	3	28
WASHINGTON	60	0	2	0	2	56
WELD	4,598	9	217	336	1,004	3,032
YUMA	525	0	9	16	44	456



Well to Building Setbacks Less Than Two Hundred Feet as of January 3, 2015

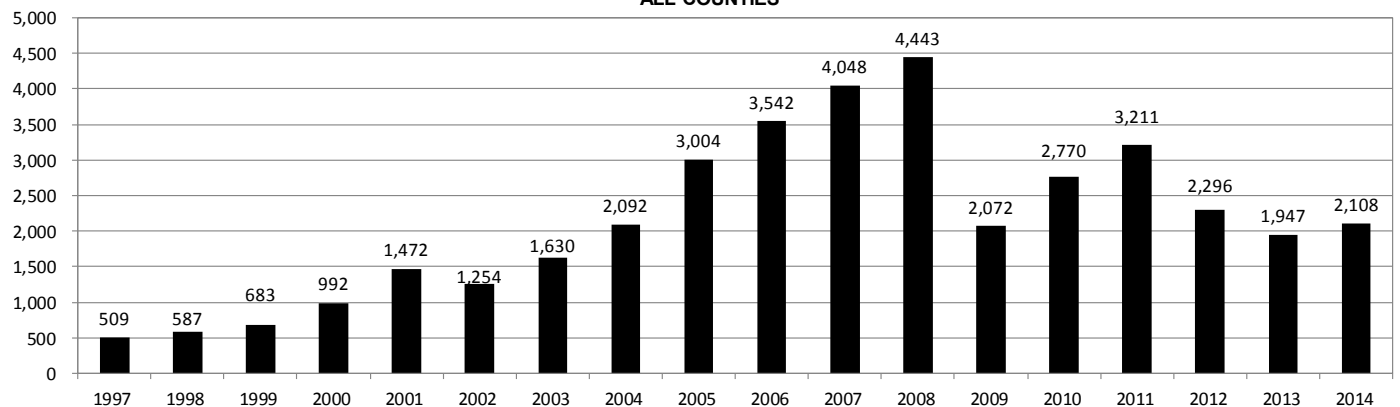
Year	Location Doc Number	County	High Density	New Location	Distance (Feet)	Proximity (Feet)	Building Description
2011	2587822	CHEYENNE	No	No	58	less 150	Water well house
2009	1691798	WELD	No	No	58	less 150	Vehicle garage
2010	400072164	WELD	No	Yes	69	less 150	Abandoned hog shed
2014	400569085	WELD	No	No	78	less 150	Well shed
2014	400600705	WELD	No	No	80	less 150	Livestock shed
2012	400240957	GUNNISON	No	Yes	90	less 150	Equipment shed
2009	1758843	WELD	No	Yes	103	less 150	Building to be razed
2011	1636646	WELD	No	No	122	less 150	Storage shed
2009	400011284	LAS ANIMAS	No	Yes	127	less 150	Operator is owner
2009	1786896	PHILLIPS	No	No	132	less 150	Grain storage
2014	400642113	WELD	No	Yes	142	less 150	Barn
2011	400117702	WELD	No	Yes	143	less 150	Irrigation pump house
2011	400227765	WELD	No	Yes	145	less 150	Storage barn
2014	400558626	LINCOLN	No	No	150	less 150	Gas plant equipment building
2009	1904205	WELD	No	No	154	150 to 350	Livestock enclosure
2012	400243295	WELD	No	Yes	155	150 to 350	Unused storage shed
2011	400179419	WELD	No	Yes	157	150 to 350	Existing well / storage building
2010	400054716	WELD	No	No	159	150 to 350	Equipment barn
2011	400188968	WELD	No	Yes	159	150 to 350	Abandoned
2014	400554054	WELD	No	Yes	159	150 to 350	Equipment shed
2014	400559404	WELD	No	Yes	160	151 to 350	Barn
2010	400021477	WELD	No	Yes	162	150 to 350	Goat barn
2009	1758386	WELD	No	Yes	168	150 to 350	Storage shed
2011	1635946	WELD	No	No	169	150 to 350	Storage shed
2013	400447386	WELD	No	No	169	150 to 350	Abandoned turkey barn
2013	400447391	WELD	No	No	169	150 to 350	Abandoned turkey barn
2011	400165164	WELD	No	Yes	178	150 to 350	Residence
2013	400367184	WELD	No	Yes	179	150 to 350	Shed
2011	400188780	WELD	No	Yes	180	150 to 350	Residence
2014	400562498	WELD	No	Yes	181	150 to 350	Garage / storage shed
2010	1697620	WELD	No	No	187	150 to 350	Livestock shed
2009	1758746	WELD	No	No	193	150 to 350	Storage shed
2011	400154431	WELD	No	Yes	198	150 to 350	Turkey barn
2012	400250031	WELD	No	Yes	198	150 to 350	Abandoned guard shack
2009	1774783	WELD	No	No	199	150 to 350	Cement service building
2011	400118102	YUMA	No	Yes	199	150 to 350	Steel barn



Annual Well Starts by County as of January 3, 2015

County	1997	1998	1999	2000	2001	2002	2003	2004	2005	2006	2007	2008	2009	2010	2011	2012	2013	2014
ADAMS	16	12	17	18	13	4	19	22	24	13	41	14	15	21	1	15	5	25
ARAPAHOE	3	2						6	1	5	2	1	1	3	9	9	25	20
ARCHULETA	1			4	4	2	5	4	10	5	7	26	9	12	9	11		1
BACA	7	11	8	19	6	2	1	6	6	2	6	12		5	4	2	1	
BENT	2	3	6	2				3	2	8	1	1			1	2		
BOULDER							2	5	11	9	14	25	16	13	7	14		
BROOMFIELD						2		1				10		21	11	5		
CHEYENNE	29	29	6	2	1	3	3		9	14	15	14	8	12	11	17	35	19
COSTILLA			1															
CROWLEY																		2
DELTA							5	4	6	5	2			4	1	3		1
DENVER	2	3	1		2						7	5	4					
DOLORES								2		2	13	4	2		1	5	10	1
EAGLE																	1	
EL PASO														2		5		1
ELBERT	2	2		2						1								
FREMONT		1						1	3	2	2	5	3	9	16	7	1	4
GARFIELD	28	19	94	190	251	245	417	585	799	1,005	1,304	1,688	768	904	878	495	393	355
GUNNISON						1		1	1	9	5	1	4	5	2	4	1	2
HUERFANO	2	31	9	25	14	19	3	6	2			2		2		2	1	2
JACKSON	3	3		24	2	4	10	10		3	3	10	1	6	7		7	5
JEFFERSON			2								2							
KIOWA	13	6	4	8	16	2	4	2	1	7	7	2	5	15	14	10	11	3
KIT CARSON	3	7	7				1	1	6	2	1	14	3	1	1	3	1	2
LA PLATA	48	65	80	99	135	118	110	103	104	108	179	199	131	67	54	3	10	27
LARIMER	1			1	1				1		4	8	1	28	2	10	4	1
LAS ANIMAS	90	120	182	202	286	205	221	296	384	413	326	221	14	7	78	1		1
LINCOLN	2			2	2	1	5	2	2	1	2	19	10	14	22	23	42	38
LOGAN	10	4		4	6	3	3	2	11	12	12	3	7	3	9	13	4	6
MESA	1	4	4	2	12	12	13	25	89	156	209	222	14	11	39	4	6	16
MOFFAT	1	8	10	18	23	25	28	19	40	60	42	25	18	15	34	25	26	2
MONTEZUMA	2	2		2	3	5	5	1	7	2	4	18	11	3	8	18	12	8
MONTROSE					3		2	1			1	2		1				
MORGAN	9	7	4	9	8	1	7	5	5	3	1	1	2	3	2	3	1	3
PARK															2			
PHILLIPS				1			6	10	11	4	35	18	2	42	130	48		9
PROWERS	2	8	4	2	4	4		5	5	6	3	5	2	3	1			
RIO BLANCO	9	9	62	51	82	47	83	92	95	107	95	203	116	107	72	53	36	41
RIO GRANDE																		1
ROUTT			1	5	12	1		1	6	3	2		2	1	2	4	2	2
SAN MIGUEL		3	1	6	9	10	19	28	13	20	17	5	1	2	2			1
SEDGWICK	2						1	2	1	1	5			3	8	3		
WASHINGTON	23	18	4	15	12	24	29	65	34	23	14	11	2	2	4	1	9	7
WELD	94	117	124	237	403	406	522	632	718	931	1,222	1,314	877	1,208	1,664	1,462	1,289	1,464
YUMA	104	93	52	42	162	108	106	144	597	593	445	336	27	213	107	16	13	39
TOTAL	509	587	683	992	1,472	1,254	1,630	2,092	3,004	3,542	4,048	4,443	2,072	2,770	3,211	2,296	1,947	2,108

ALL COUNTIES





Oil and Gas Staff Report

January 26, 2015

21

Active Wells by County and Status as of January 3, 2015

COUNTY	Drilling	Domestic	Injecting	Producing	Shut In	Temp Aband	Waiting on Completion	Active Storage	Intent to Plug	Total Active Wells
ADAMS	21		6	884	66	9	1	15		1,002
ARAPAHOE	8	1	2	141	10	9		43		214
ARCHULETA	2	5		102	10	13	6			138
BACA			10	129	41	6		55		241
BENT		1		25	11					37
BOULDER				313	2	1				316
BROOMFIELD				96	1					97
CHEYENNE	11		34	323	29	47	3			447
CROWLEY	2									2
DELTA			1	4	12		1			18
DENVER			1	46	2		3			52
DOLORES	3		1	40	1	4	1			50
EL PASO	1	1				1				3
ELBERT				63	7	1				71
FREMONT	5	3		61	5	6				80
GARFIELD	204	5	40	10,405	132	76	36	1		10,899
GUNNISON	3		1	27	12	1	4			48
HUERFANO	2		1	36	2	6	1			48
JACKSON	3		26	120	40	2	1			192
JEFFERSON			2	1	1		1	1		6
KIOWA	4		7	103	18	4	2			138
KIT CARSON	2	1	1	14	1	1	1			21
LA PLATA	6	7	31	3,135	93	22	5	29		3,328
LARIMER	1	2	18	181	35	18	2			257
LAS ANIMAS		3	16	2,821	43	87	21	17		3,008
LINCOLN	23	1	7	87	19	5	1			143
LOGAN	10		12	113	44	29	4	12		224
MESA	16	1	11	882	105	17	6	9		1,047
MOFFAT	4		8	490	51	36	9			598
MONTEZUMA	8	2	6	120	36	13	2			187
MONTROSE						3				3
MORGAN	1		23	89	81	33		79		306
OURAY		2				1				3
PARK					1					1
PHILLIPS	11		3	256	4	1	1			276
PITKIN								10		10
PROWERS	1			26	4					31
RIO BLANCO	23	4	286	2,296	204	78	13	3		2,907
ROUTT	1	2		32	6	2	3			46
SAN MIGUEL	1			120	7	2				130
SEDGWICK			1	14	3		2			20
WASHINGTON	8		23	410	31	7	6			485
WELD	1,219	1	39	20,214	454	26	37	2		21,992
YUMA	6	8	20	3,793	49	11	14	1		3,902
TOTAL	1,610	50	637	48,012	1,673	578	187	277	0	53,024



Monthly Statistics as of January 3, 2015

Page 1 of 2

YEAR and MONTH	Baker - Hughes Rig Count	Permits										Well Spud Notices	Active			Public Visits		
		Drilling		Recompletion		Injection		Pits		Locations			Drilling	Active	Public Visits			
		Rcvd	Apvd	Rcvd	Apvd	Rcvd	Apvd	Rcvd	Apvd	Rcvd	Authz		Permits	Wells	Data	Office	Internet	
2011 JAN	63	405	351	8	23	4	6	4	8	249	112	232	4,755	43,588	14	95	103,968	
FEB	61	343	249	15	2	7	6	5	3	184	150	209	4,733	43,869	21	80	96,171	
MAR	68	472	498	18	23	4	7	38	31	262	258	268	4,847	43,927	9	125	122,393	
APR	72	325	314	26	15	5	0	20	27	190	218	241	4,882	44,203	8	105	106,539	
MAY	72	372	367	20	25	3	6	12	8	214	171	248	4,904	44,752	14	124	73,024	
JUN	70	512	436	61	22	5	4	11	4	172	239	272	5,013	45,401	30	131	108,115	
JUL	69	457	436	13	55	2	1	13	7	215	158	261	5,113	45,710	20	74	103,585	
AUG	73	472	482	37	17	1	0	10	17	236	229	282	5,328	45,975	21	141	111,950	
SEP	77	336	389	22	29	7	0	35	34	159	203	322	5,361	46,115	9	120	116,043	
OCT	78	382	443	45	29	2	1	4	12	171	172	302	5,423	46,719	14	126	132,814	
NOV	80	342	324	29	57	0	1	12	13	166	174	305	5,409	46,721	18	96	130,612	
DEC	79	291	370	31	23	4	0	26	28	164	183	278	5,329	46,835	9	77	132,651	
2011 TOTAL		4,709	4,659	325	320	44	32	190	192	2,382	2,267	3,220			187	1,294	1,337,865	
2012 JAN	73	372	258	26	21	3	0	11	5	142	129	244	5,217	46,958	12	106	112,686	
FEB	70	370	382	23	27	7	5	21	9	160	129	231	5,173	47,128	16	114	105,857	
MAR	66	292	347	21	14	2	2	17	24	133	172	292	5,132	47,263	26	138	111,746	
APR	66	410	235	16	24	5	5	9	2	137	106	240	4,785	47,377	12	108	107,627	
MAY	66	491	506	23	16	3	1	6	2	105	131	211	4,885	47,533	20	123	109,802	
JUN	69	326	377	11	19	8	6	5	8	110	89	144	5,136	47,860	11	111	108,849	
JUL	66	237	276	9	14	3	2	5	2	97	103	184	5,152	48,173	13	102	114,195	
AUG	62	313	288	6	9	6	4	23	5	83	97	180	5,031	49,153	11	112	110,908	
SEP	61	252	256	1	5	5	2	4	1	81	77	159	4,960	49,230	11	89	106,114	
OCT	62	326	265	9	3	7	6	2	19	94	82	161	5,009	49,236	8	105	108,833	
NOV	56	271	323	5	8	6	6	2	4	109	97	142	5,000	49,989	10	119	120,586	
DEC	57	322	260	4	8	8	5	9	3	122	81	109	5,081	50,067	9	78	107,240	
2012 TOTAL		3,982	3,773	154	168	63	44	114	84	1,373	1,293	2,297			159	1,305	1,324,443	
2013 JAN	53	538	331	6	0	3	5	6	8	176	124	142	5,060	50,265	9	108	47,406	
FEB	56	260	455	10	5	2	3	4	11	91	141	139	5,250	50,372	7	102	40,649	
MAR	57	344	241	5	9	3	8	15	6	129	84	171	5,093	50,540	9	133	43,019	
APR	61	331	333	6	5	5	5	6	8	146	117	165	4,925	50,687	3	132	46,459	
MAY	61	350	342	8	6	6	6	10	7	106	142	160	5,110	50,810	3	123	45,215	
JUN	62	349	273	2	8	8	8	5	3	114	85	141	5,273	50,909	8	122	41,015	
JUL	68	864	304	11	4	9	2	9	5	218	91	163	5,070	51,091	7	154	45,558	
AUG	69	232	291	6	4	3	2	4	1	35	76	196	5,200	51,255	20	130	44,722	
SEP	69	212	362	9	5	10	9	3	19	56	109	162	5,185	51,407	5	105	41,256	
OCT	72	319	376	5	9	7	5	1	8	67	88	239	4,967	51,598	5	135	45,151	
NOV	69	346	353	4	13	7	4	2	27	67	85	157	5,141	51,711	12	119	38,903	
DEC	64	336	367	2	4	4	6	2	3	63	71	112	5,129	51,737	4	93	32,381	
2013 TOTAL		4,481	4,028	74	72	67	63	67	106	1,268	1,213	1,947			92	1,456	511,734	
2014 JAN	62	278	232	3	2	3	4	14	8	90	43	161	4,926	51,840	1	90	46,150	
FEB	61	284	297	6	4	1	1	3	1	91	94	142	5,051	51,847	12	113	43,408	
MAR	62	367	329	4	6	7	1	6	6	110	88	177	4,997	51,952	16	140	46,620	
APR	63	276	317	2	3	2	5	8	3	89	99	162	4,897	52,060	11	188	45,558	
MAY	65	458	383	2	2	3	1	6	7	83	94	171	4,923	52,202	18	131	42,365	
JUN	67	429	377	3	0	6	7	5	2	134	92	216	4,924	52,337	10	156	42,518	
JUL	69	272	446	2	5	3	11	8	5	97	126	178	4,955	52,431	7	166	45,481	
AUG	73	376	258	3	3	4	4	3	4	111	87	203	5,060	52,582	8	145	42,431	
SEP	76	412	304	1	3	3	1	20	1	116	81	186	5,006	52,694	14	175	43,577	
OCT	76	458	371	3	2	8	2	4	6	93	109	166	4,827	52,785	19	138	46,030	
NOV	73	326	479	5	2	4	4	4	0	54	103	173	5,171	52,947	8	96	39,583	
DEC	69	279	397	0	2	2	6	1	2	42	99	173	5,236	53,054	6	144	37,964	
2014 TOTAL		4,215	4,190	34	34	46	47	82	45	1,110	1,115	2,108			130	1,682	521,685	

Abbreviation

Key:

Rcvd = Received, Apvd = Approved, Authz = Authorized



Oil and Gas Staff Report

January 26, 2015

23

Monthly Statistics as of January 3, 2015

Page 2 of 2

YEAR and MONTH	Well Oper Change	Operators		Bonds					Hearings		Enforcement			Remediation Projects		Inspections				
		New	Inactive	Release Ind	Blntk	Claim Replace	Ind	Blntk	Apps.	Orders	NOAVs	AOCs	OFVs	Cmplt	Spills	Rcvd	Comp	Wells	Locations	
2011	JAN	815	1	2	3	1	4	0	0	16	15	43	3	2	33	40	47	45	1,316	-
	FEB	356	1	1	9	4	6	0	0	16	15	7	-	1	39	52	48	33	1,591	-
	MAR	596	2	3	6	3	9	0	0	-	-	31	-	-	31	48	59	27	1,675	-
	APR	404	2	0	3	2	1	0	0	24	24	8	-	-	10	52	38	61	959	-
	MAY	544	3	0	5	2	4	0	0	77	65	16	2	5	26	31	33	51	1,577	-
	JUN	795	2	2	2	2	0	3	0	51	58	30	1	4	14	38	53	25	1,099	-
	JUL	596	3	6	3	6	3	1	0	-	-	29	-	-	13	39	92	20	518	-
	AUG	575	2	3	12	7	2	0	1	68	54	26	2	2	19	54	106	56	1,032	-
	SEP	587	5	1	7	5	2	0	0	44	41	4	2	4	16	46	56	66	690	-
	OCT	552	4	2	12	6	7	0	3	57	45	9	-	-	15	38	102	28	636	-
	NOV	575	4	9	15	4	1	0	0	-	-	15	-	-	16	31	70	58	739	-
	DEC	348	4	2	2	2	4	0	0	50	32	12	-	1	15	58	22	66	562	-
2011 TOTAL		6,743	33	31	79	44	43	4	4	403	349	230	10	19	247	527	726	536	12,394	-
2012	JAN	1,052	3	3	7	5	1	1	0	70	72	18	1	-	27	35	68	23	998	970
	FEB	385	6	9	8	5	0	0	0	-	-	10	-	-	24	40	85	36	1,998	1,024
	MAR	379	4	1	7	3	9	0	0	44	38	19	-	-	23	38	63	61	2,200	1,149
	APR	478	4	2	10	3	2	0	0	80	59	11	-	-	19	35	26	99	1,700	930
	MAY	526	3	1	4	0	3	0	0	43	50	14	2	-	23	32	27	122	2,621	1,701
	JUN	1,270	3	4	3	3	4	0	0	-	-	5	-	-	35	39	46	98	1,432	1,091
	JUL	499	5	0	1	4	5	0	0	63	50	15	-	-	16	24	45	33	1,319	1,076
	AUG	301	6	5	2	8	0	1	0	67	54	24	3	2	21	28	127	33	1,898	1,432
	SEP	834	0	4	4	5	2	1	0	-	-	5	-	-	14	13	30	36	1,135	864
	OCT	485	1	2	9	1	0	0	0	30	36	6	1	-	13	44	116	37	1,407	1,029
	NOV	523	6	4	12	8	7	0	0	85	37	16	2	-	10	44	26	44	1,325	829
	DEC	958	6	2	3	1	0	0	0	-	-	14	-	-	19	30	31	19	1,031	610
2012 TOTAL		7,690	47	37	70	46	33	3	0	482	396	157	9	2	244	402	690	641	19,064	12,705
2013	JAN	655	3	5	12	2	0	0	0	48	75	15	4	-	21	40	31	45	1,622	789
	FEB	293	4	2	6	3	2	0	0	41	35	11	2	-	15	30	42	90	1,042	615
	MAR	355	1	3	2	2	1	0	0	54	67	16	2	-	11	25	65	29	1,966	1,150
	APR	335	7	1	5	2	8	0	0	-	-	21	-	-	16	33	39	37	1,508	910
	MAY	348	2	1	3	0	0	0	0	46	50	22	6	-	13	31	41	60	2,615	1,576
	JUN	1,458	6	2	2	4	5	0	0	91	44	13	2	-	25	40	47	37	1,857	1,102
	JUL	1,014	4	1	2	2	0	0	0	96	70	25	3	-	21	47	50	22	2,298	1,339
	AUG	389	6	4	5	4	2	0	0	-	-	23	-	-	25	57	36	41	2,145	1,033
	SEP	277	4	1	6	1	0	0	0	101	51	7	2	-	16	60	43	51	1,535	703
	OCT	345	6	0	2	2	2	0	0	52	82	4	12	3	12	79	47	60	1,865	1,157
	NOV	442	2	0	2	2	0	0	0	-	-	30	-	-	12	51	31	34	2,400	1,613
	DEC	1,299	4	1	1	2	0	0	0	42	48	50	4	-	14	75	35	35	2,676	1,384
2013 TOTAL		7,210	49	21	48	26	20	0	0	571	522	237	37	3	201	568	507	541	23,529	13,371
2014	JAN	1,976	6	3	3	2	0	0	0	57	46	25	2	-	8	72	46	28	3,243	1,597
	FEB	2,012	8	2	6	5	0	0	0	-	-	23	-	-	17	65	51	13	2,326	1,282
	MAR	494	2	3	1	5	0	0	0	97	75	29	10	-	22	64	66	31	1,799	1,297
	APR	313	5	2	6	4	1	0	0	74	64	17	8	1	20	66	47	59	2,601	1,713
	MAY	510	5	1	3	3	5	0	0	-	-	12	-	-	13	78	50	42	2,403	1,571
	JUN	994	5	2	7	4	1	0	1	95	90	14	6	1	16	74	44	50	3,148	1,714
	JUL	340	2	1	5	3	1	0	0	96	96	11	6	-	12	64	60	59	3,027	1,534
	AUG	345	6	1	2	4	0	0	0	-	-	8	-	-	31	63	32	58	2,748	1,679
	SEP	360	4	1	1	2	0	0	0	73	63	13	7	1	18	63	39	50	2,537	1,606
	OCT	830	8	1	0	2	0	1	0	80	75	12	3	1	13	78	78	36	3,844	1,911
	NOV	112	2	4	8	4	5	0	0	-	-	6	-	-	15	72	26	59	3,122	1,455
	DEC	1,089	1	1	0	2	0	0	0	126	89	9	1	-	59	83	50	17	2,814	1,402
2014 TOTAL		9,375	54	22	42	40	13	1	1	698	598	179	43	4	244	842	589	502	33,612	18,761

Abbreviation Ind = Individual, Blntk = Blanket, Apps = Application for Hearing, NOAV = Notice of Alleged Violation, AOC = Administrative Order of Consent, OFV = Order Finding Violation, Cmplt = Complaint, Comp = Completed