



March 2, 2015

TOP STORIES

◆ Governor's Task Force Releases Final Report

The Governor's Task Force on State and Local Regulation of Oil and Gas Operations (Task Force) concluded its work on Tuesday, February 24 after consideration of 36 different proposals put forward by Task Force members. Nine of the proposals received a "yes" vote from at least 14 of 21 members—the two thirds majority necessary for a proposal to be included in the Task Force's February 27 report to the Governor. The remainder of the proposals became part of a "minority report" sent on the same day.

Most of the nine proposals recommend amendments or additions to COGCC regulations. The Commission will consider each of them for rule-making in the coming months. For the recommendations that require an appropriation by the General Assembly, both the Colorado Department of Natural Resources (DNR) and the Colorado Department of Public Health and Environment (CDPHE) will submit budget requests for review by the Joint Budget Committee.

Listed by Task Force proposal number, below is a concise summary of the seven recommendations directly related the COGCC:

Proposal #17: This recommendation asks for COGCC rulemaking to "address Local Government collaboration with operators concerning locations of 'Large Scale Oil and Gas Facilities' in 'Urban Mitigation Areas,' as defined in COGCC rules."

Its primary purpose is to "create an incentive for early resolution of concerns about siting in urban areas, and could be done as part of an operator's permitting process at the COGCC." The process "would not apply in cases where the operator and the local government have already negotiated an MOU, site plan review, comprehensive development plan or have otherwise agreed on the location of a multi-well production facility."

Proposal #20: This recommendation states that "Upon the request of a municipal Local Government Designee (LGD), the operator shall provide...

- (a) ...a good faith estimate of the number of wells...that such operator intends to drill in the next five years in the municipal jurisdiction...
- (b) A map showing the location of the operator's existing well sites and related production facilities; sites for which operator has, or has made application for, COGCC permits; and sites identified for development on the operator's current drilling schedule for which it has not yet made application for COGCC permits."

The city, town, or city/county will then create an overlay of future drilling and production sites on its Comprehensive Plan land use map.

Proposal #25: To make sure that the COGCC's Local Governmental Designee (LGD) and Local Governmental Liaison (LGL) functions "are fully utilized and that they are adequately and properly resourced," this recommendation aims for:

- "Outreach to local governments that host oil and gas development to better understand barriers to greater utilization of the LGD/LGL functions
- Enhancing education and outreach to local governments on how to engage the LGD/LGL process
- Expanding the LGD comment period on APDs and appropriate Conditions of Approval (COA) to up to 60 days
- Offering financial and other support to train LGDs
- Application of Energy and Mineral Impact Assistance Funds to assist local governments with the creation of LGD positions."

Proposal #27: This proposal recommends that the General Assembly authorize and fund 12 new full time employees "to inspect oil and gas wells,



conduct environmental investigations and response actions, conduct intake of and track citizen complaints...and perform data analysis to support data and information requests..."

Below is the suggested allocation of the new positions:

- Three field inspectors
- Three environmental protection specialists
- Three engineering unit staff
- One NOAV specialist
- One complaint specialist, and
- One data analyst.

Proposal #37: This recommendation asks that the COGCC and the Colorado Department of Transportation (CDOT) "convene a working group to investigate as fully as possible any and all steps that can and should be taken by government and industry to reduce the use of large trucks and trailers in oil and gas activities."

This working group "should have full representation of all stakeholders, public and private."

Proposal #41: This recommendation would "establish a clearinghouse to communicate information regarding Colorado's oil and gas industry" to "facilitate the distribution of accurate, unbiased information to foster an improved understanding of oil and gas industry activities, practices...the federal, state, and local regulatory regime...and opportunities for public and local government participation in the regulatory decision-making process."

The proposal suggests that the clearinghouse become part of the programs and services offered by the Colorado Energy Office.

Proposal #52b: This recommendation asks for the COGCC to "implement and emphasize a compliance assistance program to help operators comply with complicated and ever-changing operating rules and policies and to assure that inspectors are enforcing those rules and policies in a consistent manner."

Noting that the COGCC has newly adopted penalty rules, in addition to other rules adopted beginning in 2008, this recommendation focuses on operator compliance with all rules, noting how

compliance "is critical to the protection of public health, safety, and welfare and the protection of the environment and wildlife."

The remaining two proposals pertain to General Assembly appropriations and staffing for the CDPHE.

◆ Complaint Resolution and the COGCC's Lean Process Improvement

The COGCC implemented a new public complaint process on January 9, 2015. The process includes dedicated staff for public complaint intake, a new online tool enabling the public to quickly and easily file a complaint, and a webpage providing complaint information to the public.

Between January 9 and February 16, the COGCC received 42 public complaints, of which 76 percent were received using the new online tool. Of these 42 complaints, COGCC staff made initial contact with the complainant within an average of 1.3 business days (goal of 2.0 days) and resolved 37 of these complaints in an average of 5.9 days.

◆ Raton Basin Groundwater Investigation of tert-Butyl Alcohol Completed

The COGCC recently completed a report entitled "Investigation of Occurrences of tert-Butyl Alcohol in Raton Basin Groundwater, Huerfano and Las Animas Counties, Colorado." This report documents an 18 month investigation into the presence of tert-Butyl Alcohol (TBA) in groundwater in an area of the state where coalbed methane natural gas production is prevalent. COGCC environmental protection specialists collected samples from more than 70 sources and analyzed data from 108 sources of groundwater, produced water, and domestic water wells in the study area.

Analytical data from samples obtained by the U.S. Environmental Protection Agency (EPA) and by an oil and gas operator were utilized in the study as well as those obtained by COGCC staff. Many wells were sampled on more than one occasion, and many of the wells were sampled by more than one entity.



Following this in-depth investigation, COGCC concluded that, at present, no link can be found between oil and gas exploration and production activities and TBA in groundwater accessed by domestic water wells, but the exact source cannot be identified, either. The complete report is available on the COGCC website at this link:

http://cogcc.state.co.us/Library/RatonBasin/Project_2130_Raton_Basin_TBA_summary_report_Jan2015.pdf.

◆ Major Improvements to FracFocus

Colorado is one of 20 states participating in FracFocus, a website launched in 2011 to give public access to reported chemicals that operators use for hydraulic fracturing within their area. FracFocus has received 1 million visitors since its inception four years ago, and is managed by the Ground Water Protection Council and the Interstate Oil and Gas Compact Commission.

During 2015, FracFocus will undergo several improvements to system function. The public's ability to search records will be enhanced with pull-down menus and search fields such as the disclosure submission date. Second, users who want to extract "machine readable" data sets, instead of PDF formats, will soon have that option. Both public users and participating companies will benefit from those changes.

Read more about FracFocus at

<http://www.gwpc.org/major-improvements-fracfocus-announced>.

◆ COGCC's Website, Maps and Data Downloads

The COGCC website redesign is in the final testing stages with an anticipated release date in March 2015. The new site will have better content organization and a cleaner interface - changes aimed at improving user access to COGCC information.

The GIS group has augmented the GIS well data download to include additional database fields. New map shapefiles have also been added for both pending permits and pending directionals across the state. Routine daily map updates con-

tinue, providing users easy access to near real-time well location and status information.

At the request of numerous public and industry users, COGCC staff plans to provide more information in the form of data downloads from the website. The data downloads currently available can be found on the "HELP" page of the website; the new downloads will be added as the data sets are constructed.

◆ Underground Injection Control

There are currently 33 injection permits in process with the COGCC. Five are enhanced recovery projects with all five being related to existing recovery facilities. Twenty-eight applications are for the disposal of exploration and production waste, of which five are related to existing facilities and 23 are related to new facilities. Ten of these are commercial disposal facilities.

The current average processing time for these permits is 182 days.

◆ Raton Basin Seismicity Study

On February 25th, Hal Macartney, the Geoscience Advisor with Pioneer Natural Resources, presented a summary of Pioneer's Raton Basin Seismicity Study. In attendance were representatives from the geophysics departments of the University of Colorado, Colorado State University, Colorado School of Mines, and Colorado Mesa University, in addition to the United States Geological Survey, U.S. EPA, Colorado Earthquake Hazard Mitigation Council, Colorado Department of Natural Resources (DNR) Dam Safety and Division of Water Resources, and the Colorado Department of Public Health and Environment (CDPHE) Water Quality Control Division.

◆ Local Government Liaison (LGL) Program

Local Government Liaisons (LGLs) Nancy Prince and Marc Morton are a direct link to help local governments and their constituents access information and find answers to questions and inquiries regarding oil and gas related issues in Colorado. LGLs work to assist, educate, and inform those interested in oil and gas in Colorado, and strive to increase communication and collabora-



tion between local governments, operators, stakeholders, the public, and COGCC staff. LGLs are available upon request to local governments and other groups to can provide presentations specific to a particular group's informational needs.

The LGLs track participation in the voluntary Local Government Designee (LGD) program, a primary tool offered by the COGCC that allows local governments to stay informed and current (via system-generated e-mail notifications) of oil and gas activity in their jurisdictions. LGLs also continue to work to expand participation in the voluntary LGD program.

As email used to transmit (to LGDs) pending permit applications and other oil and gas activity notifications specified in the COGCC rules, a current email address provided via a Form 29 is critical to active participation in the LGD program. Email is also used by LGLs to distribute the periodic LGD Newsletters and to notify participants of other critical information and COGCC updates. Local governments are therefore reminded to submit a new Form 29 when the LGD contact person changes, or when an LGD is assigned a new e-mail address.

The COGCC, through the LGLs, the Hearings and Regulatory Affairs Manager, and Kent Kuster (CDPHE Oil and Gas Liaison), offers periodic training to assist LGDs, local government staff, elected officials, and interested others in navigating COGCC rules, its website, and its information sources.

The LGD Training schedule for 2015 is being developed for release in March. In addition to continuing the statewide full day training, advanced topic training sessions are being considered. The LGLs are also available to provide training sessions tailored to meet the needs of local jurisdictions or groups, as requested.

A list of the LGL outreach and public involvement activities conducted since the previous staff report is included in the latter half of the Public Outreach section below.

PUBLIC OUTREACH

➤ *Outreach by Director and other Staff Members*

- On January 28, Director Matt Lepore was a Guest Speaker, Congressman Perlmutter's Youth Advisory Council.
- On January 30, Director Lepore was a Panelist, American Bar Association Continuing Legal Education seminar: A Case Study on the Interaction of Layered Frac'ing Laws and Regulations in Different States.
- On February 2 through 3, Director Lepore participated in the Governor's Task Force in Denver.
- On February 10, Director Lepore was a Guest Speaker, Colorado Rural Electric Association's Day at the Capitol.
- On February 9 through 11, Diana Burn and Bob Koehler attended the Ground Water Protection Council's 2015 UIC Conference in Austin, TX. The conference centered on Aquifer Management & Underground Injection with topics in induced seismicity, aquifer exemptions, wellbore integrity and FracFocus.
- On February 19, Stuart Ellsworth, Engineering Manager presented Current Issues and Growth of the Industry with an emphasis on understanding Hydraulic Fracturing to the Golden, Colorado Chapter of the Lions Club.
- On February 19, Director Lepore joined several COGCC staff in Durango at the quarterly Southwest Colorado Gas and Oil Regulatory (GORT) meeting. COGCC presenters included Director Lepore, Deputy Director of Operations Dave Kulmann, Environmental Protection Specialist Jim Hughes, and Marc Morton.
- On February 24, Director Lepore participated in the Governor's Task Force in Denver.

➤ *Outreach by LGLs*

- On January 13, Nancy Prince provided input to the Planning and Economic Development and



Redevelopment Committee of the Aurora City Council as it discusses ways to formalize the existing Oil and Gas Committee.

- On January 14, Nancy Prince attended the Fremont County Mayor's meeting where she presented an overview of the new complaint process.
- On January 22, Nancy Prince attended the Planning Commission Refresher Training sponsored by the Colorado Department of Local Affairs and Trinidad City Council.
- On January 27, Marc Morton, Nancy Prince, Deputy Director of Operations Kulmann, and Kathleen Staks (DNR Assistant Director for Energy) met with Jose Loera (MPA candidate and graduate student at University of Colorado at Denver) to discuss his proposed capstone project aimed at evaluating the effectiveness of and potential systematic improvements for the LGD-LGL programs.
- On January 28, Marc Morton traveled to Frederick and attended a neighborhood meeting at the request of Extraction Energy. The meeting was hosted by Town of Frederick staff and covered the proposed Bybee and Johnson Trust well pads. Meetings such as these are part of the Town's requirements for its Land Use Code and Special Use Permitting process.
- On January 29, Marc Morton and Dave Kubeczko (Oil and Gas Location Assessment Specialist) traveled to Rifle and attended the Garfield County Land and Resource Managers (quarterly) meeting.
- On February 3, Marc Morton and Greg Deranleau (Environmental Manager) met at the COGCC office in Denver with Troy Swain, who was recently hired as the Oil and Gas Liaison for Weld County. Marc and Greg provided Troy an overview of the COGCC website, the well and location permitting processes, and the LGD program.
- On February 4, Marc Morton attended a neighborhood meeting in Frederick at the request of Extraction Energy. The meeting was hosted by Town of Frederick staff and covered the pro-

posed Troutd well pad. Meetings such as these are part of the Town's requirements for its Land Use Code and Special Use Permitting process.

- On February 5, Marc Morton, Stan Spencer (Environmental Protection Specialist), and Carols Lujan (Environmental Protection Specialist), attended the monthly Garfield County Energy Advisory Board (EAB) meeting in Rifle. Marc provided a presentation regarding COGCC's recently revised and improved public complaint process.
- On February 11, Nancy Prince participated in a special meeting of the Aurora Oil and Gas Committee. The group agreed on committee operational guidelines, responsibility and composition, all of which will be presented for approval by the City's Planning and Economic Development and Redevelopment Committee at its next meeting.
- On February 12, Marc Morton met in Longmont with City of Longmont LGD Brien Schumacher.
- On February 19, Nancy Prince attended the Weld County Energy Industry Working Group meeting.

REGIONAL ACTIVITIES

➤ *Northwest Colorado*

◆ Northwest Colorado Oil and Gas Forum

Forum meetings for 2015 are scheduled for March 5, June 4, September 3, and December 3. All meetings will be held in Rifle at Colorado Mountain College from 10:00 a.m. to noon.

All parties wishing to be placed on the next meeting agenda or added to the distribution list for announcements should contact Marc Morton at 303-894-2100, ext. 5132 (direct) , 720-415-4959 (mobile) or by email: marc.morton@state.co.us.



◆ **Project Rulison**

Please note that the email for Project Rulison submittals has been changed to:

DNR_rulison.submittal@state.co.us

◆ **Project Rio Blanco**

Please note that the email for Project Rio Blanco submittals has been changed to:

DNR_rioblanco.submittal@state.co.us

➤ ***Southwest Colorado***

◆ **Gas and Oil Regulatory Team (GORT) Meetings**

Remaining meetings for 2015 are scheduled for May 14, August 20, and November 19. All meetings will be held at the La Plata County Fairgrounds, Animas Room, Durango, from 8:30 a.m. to noon.

Any party who wishes to be placed on the next meeting agenda should contact Marc Morton at 303-894-2100, ext. 5132 (direct) , 720-415-4959 (mobile) or by email: marc.morton@state.co.us.

◆ **Fruitland Formation Outcrop Mitigation and Monitoring Projects (4M Projects)**

4M Pilot Scale Mitigation Projects - La Plata County. In May 2014, the South Fork Texas Creek (SFTC) compressor was rebuilt to replace worn bearings. The heater plate in the methane sensor was also replaced. Regularly scheduled operations and maintenance, performed by COGCC's contractors, continues. The 4M Outcrop Mitigation Summary Report, prepared by LTE, is now available on the COGCC website.

Some successes of the project include:

Methane Mitigation:

- Gas containing methane concentrations of 91.9 - 99.5% (SFTC) and 0.2–5% (Pine River) were continuously recovered during the first and second quarters of 2014.

- Since conversion to a passive system in June of 2012 at Pine River, methane concentrations have remained at 0.2% - 5% following an increase in the first and second quarters of 2013.

Electrical Generation:

- SFTC has generated 205,706 kWh of surplus electricity since May 2009.
- System operated at 11 kW output to maintain steady operation during the first and second quarters of 2014.

Site Restoration:

- Plant growth over the methane mitigation system has improved in 2014.

4M Monitoring Wells La Plata and Archuleta Counties. There are 17 wells at 11 locations in the 4M monitoring program. Well pressures are monitored remotely via satellite telemetry with one or two maintenance visits per year, depending upon data received. Two measurements per day are collected from each monitoring well. The BP Highlands MW 35-7-15 #1 was inspected by COGCC staff and Resource Hydrogeologic Services (RHS) on September 25, 2014. All components of this monitoring well were functioning properly. The COGCC and RHS conducted an annual inspection tour of all accessible monitoring wells on October 7 and 8, 2014. RHS and COGCC staff performed routine annual maintenance activities on October 23, 2014.

Ongoing Investigation, Reclamation and Mitigation of Residual Methane in the Vicinity of the Bryce 1-X Well Area, Bondad, Colorado. Two domestic water wells were sampled at the Bondad location on October 16, 2014 by Four Corners Geoscience. Free methane results ranged from 2.26 mg/l in the Middle well to 3.19 mg/l in the South well. Samples from the North well and from Fire Department lines were not taken because of flow issues.

VARIANCES

◆ **EE3, LLC**

On February 9, 2015, Director Lepore granted a variance to Rule 603.a.(1) for EE3, which requires that at the time of drilling, a well must be located



at least 200 feet from a public road. The permitted location of the EE3 Grizzly 3-32H (057-06523) well in the NENW of Section 32 T8N-R80W in Jackson County was 200 feet from State Highway 14.

Due to a tight location, the drilling company placed the rig 180' from the road. EE3 self-reported the rule violation and staff issued a Notice of Alleged Violation (NOAV). As required by the NOAV, EE3 obtained a signed waiver of this encroachment from the Colorado Department of Transportation and submitted a request for a Rule 502.b variance. EE3 has also submitted a plan to revise internal company procedures to ensure that this type of violation will not occur again.

◆ XTO Energy, Inc.—Flowline

On February 13, 2015, Director Lepore approved a request by XTO Energy (XTO) for two variances to certain parts of Rule 1101.e.(1). This rule requires pressure testing at installation and on an annual basis to maximum anticipated operating pressure. The variances apply to XTO's Piceance Basin production area Facility Number 440749 and to XTO's San Juan Basin production area Facility Number 440752. XTO purports that annual pressure testing would be very difficult to accomplish, because it would require wells to be shut in fieldwide. In the request, XTO documents an equivalent or better system in place that complies with the intent of the rule to ensure flowline integrity and minimize spills.

Piceance Basin: XTO operates hundreds of miles of flowlines in the Piceance Basin field. The field produces natural gas, natural gas liquids and produced water. XTO tests all new flowlines at installation, either pneumatically or hydrostatically, at 100 percent of the manufacturer's maximum allowable operating pressure (MAOP) for the type of pipe prior to the time of installation.

XTO uses varieties of carbon steel and high density polyethylene (HDPE) pipe materials. Steel flowlines are hydro-tested to the MAOP. The poly-lines are pressure tested to 100 psi for eight hours. Steel flowlines have impressed cathodic protection, and readings are taken quarterly. The steel flowlines have corrosion coupons and some

of these lines are protected via corrosion inhibitor. XTO operates these flowlines at less than 80 percent of maximum allowable operating pressure (MAOP).

San Juan Basin: XTO operates hundreds of miles of flowlines in the San Juan Basin field. The field produces natural gas (coalbed methane) and produced water, but no crude oil. XTO tests all new flowlines using the same methods detailed above for the Piceance Basin.

XTO uses a continuous pressure monitoring system with pressure data uploaded in near-real time via satellite. Flowlines operate below specific design thresholds. SCADA (supervisory control and data acquisition) trigger over/under pressure event alarms before they exceed specifications. Transducers are installed at select locations to provide coverage for sensitive areas and to monitor critical points where the highest flowline pressures are possible. Shut-in systems are provided for flowlines in sensitive areas. Periodic inspection ("walk the line") and testing (quarterly safety systems checks, i.e., test shut-down equipment on wells and flowlines) are performed to ensure the system is functioning.

XTO will submit annual reports to COGCC staff on the effectiveness of the system, including GIS compatible map data, updates of changes and improvements, and tabular summary and root cause analysis of any flowline related spills. This variance is for a period of five years. At the end of the five year term, the COGCC will review the variance prior to renewal.

◆ BP America Production Company

BP America Production Company (BP) submitted a Sundry Notice requesting a variance to Rule 603.e(5), which requires Blowout Preventer Equipment (BOPE). This requirement is also in American Petroleum Institute Standard SP 53.6.2.8. BP requests the variance for their Parry E4 well (API No. 05-067-09870), located in the SW ¼ of the NE ¼ of Section 27, Township 33 North, Range 7 West, N. M. P.M. Rule 603.e.(5) requires that the BOP stack include a set of pipe rams when drilling.



BP submitted an Application for a Permit to Drill (APD) the Parry E4 well to the Fruitland Coal formation in the Ignacio Blanco field found in La Plata County. BP's APD had an accompanying Sundry Notice requesting relief or a variance to the rule requiring the operator to include a set of pipe rams as part of the BOP stack. BP proposed to work through an annular preventer (Washington Head) installed on top of the BOP containing a set of blind or shearing rams.

Eliminating the pipe rams that are normally set above the blind rams in the BOP will allow for the passing of more kinds of tools with a greater versatility in range of outside diameters than would be otherwise possible or feasible with the pipe rams in place. BP contends they will be complying with the basic intent of Rule 603.e. (5) by applying systems rated to at least 3,000 psig, and will be maintaining well control at all times as has been demonstrated previously by BP and other operators with the success and experience of the last twenty-five plus years in drilling and completing over 2,000 Fruitland coal gas wells.

In contrast with wildcat drilling, these wells will be developed in nature with known pressures to be 1,300 psig or less. The wells will be held in balance with previously tried and true mud systems and all other well control equipment and practices.

In conclusion, Director Lepore concurs with BP that the benefits far outweigh the risks in this request, verbally approved this variance request on February 2, and formally approved the associated Sundry Notice on February 4, 2013.

ADMINISTRATION/ORGANIZATION/OTHER

◆ Promotion of Kris Neidel

Kris Neidel has been promoted from an Environmental Protection Specialist (EPS) I to an EPS II. Kris joined the COGCC's Field Inspection Unit in July 2010, and transferred to the Environmental Group in June 2013. Kris continues to provide support in NW Colorado as well as other areas as needed. His presence and interaction with the operators has resulted in an overall improvement

of operating practices throughout NW Colorado, and he has been a great asset in helping to address legacy issues. Congratulations, Kris!

An organizational chart can be found on Pages 11-14. For contact information, please go to our homepage and find "Staff Contact Information."

◆ Plugging and Reclaiming Abandoned Wells (PRAW) - Project Updates

The **Flessner #13 Project** has previously been reported as a dry and abandoned well located in Washington County about 23 miles south of Ft. Morgan and Brush. It was drilled in 1955 to a depth of 5,460 feet (J-Sand Formation) and reportedly plugged at the same time by Monsanto Chemical Company. A farmer complained that the well had never been plugged and abandoned and is currently obstructing farming operations. The project was competitively bid and awarded to the winning contractor in the amount of \$47,700. This well was successfully plugged this past January for less than the bid amount, total costs were \$43,560.

The **Ruth #1 BOND CLAIM Project** is a well site located in Adams County that will require the plugging of one well, removal and salvaging of production equipment, and reclamation of a pit and the well site in general. To date, only the soils analysis for the pit has been completed in the amount of \$871. Final plans for the rest of the work are under review and will likely take place after July 1st.

The **Ackerman #1 Project** is a dry and abandoned well located in Larimer County about seven miles northwest of Wellington. It was drilled in 1963 to a depth of 5,745 feet (Dakota formation) and plugged in the same year by Alpha-Omega Exploration Company.

In October, COGCC Environmental Staff conducted a site inspection and collected a produced water sample. Because the well had ceased flowing at the time, a temporary pumping system was rented to collect the samples. Dissolved methane was detected in the sample and was determined to be biogenic, or bacteria generated, as opposed to the deeper strata thermogenic gas produced commercially. To eliminate biogenic gas,



this well can be chlorinated to kill the bacteria. Analytical results indicate the water is fresh (1800 mg/L TDS) with no impacts to the surrounding grassland. These activities will be discussed with the landowner and COGCC management for the final disposition of the well. In the event the COGCC plugs the well, the estimated cost is \$40,000.

The Gentry Project and the Gentry West Rangely Subdivision Projects, located in Rio Blanco County, includes 10 sites with eight wells and two pits located about one-half mile west of Rangely and one and a half miles south of State Highway 64. The surface owner brought the matter to the attention of the COGCC. Designs for the final plugging procedures and bidding documents are currently being prepared with plans to put the project out to bid in early March with actual plugging to take place this spring. The landowner/developer has recently indicated an interest in playing a part in the reclamation. The cost for the Gentry PA is \$59,700 and the Gentry West Reclamation is \$32,595 for a total estimated cost of \$92,295.

The Wallace Oil and Gas BOND CLAIM Project is located in far southeast Colorado in Baca County, about fifteen miles southeast of the town of Walsh. This project will include the salvaging of all miscellaneous production equipment and plugging three individual wells. The total cost is estimated at \$90,000, of which \$15,000 will come from the bond claim.

The Multiple Sites TBD Project is a reclamation project with multiple sites "to be determined" and was added in January to better balance plugging with reclamation efforts. Tentatively, \$75,000 has been set aside for this project.

The Redwine Resources Nucla Unit 1-32 BOND Project is located in Montrose County or about 30 miles SW of Montrose. It includes a temporarily abandoned well and a lined earthen drilling mud reserve pit. This well was vertically drilled in 2008 to a total depth of 9,199 feet or to the Cambrian Formation. Recently, pit and soil samples were taken to be analyzed in order to provide design parameters for closing the pit. Overall reclamation of the site will be done after

plugging. Closing the pit has been estimated to cost \$60,000.

The Noel Reynolds Ester #1 BOND CLAIM Project is a temporarily abandoned well located in La Plata County about 18 miles southwest of Durango and six miles from the New Mexico state line. This project will include the removal of miscellaneous debris and unused equipment and the plugging of the well. The total cost is estimated at \$50,000, of which \$30,000 will come from the bond claim.

The Fremont County Group #3 Five Wells Project includes five wells that need to be re-plugged and abandoned. These orphan wells are located in the Florence-Cañon City Field in Fremont County and were discovered during routine inspections. It is believed they were drilled in the early 1900s. None of these wells has an operator of record or any bond posted. The estimated cost to plug and abandon these wells is \$50,000.

The Chapman #1 Project is a dry and abandoned well located in Baca County about six miles southeast of Walsh. It was drilled in 1960 to a depth of 5,576 feet (St. Louis Formation) and plugged at the same time by Falcon Seaboard Drilling Company. The COGCC inspection report indicates four feet of casing protruding above ground, and bubbling, churning water could be heard from it. The plan is to re-plug the well at an estimated cost of \$45,000.

The Stewart #1 Project is a dry and abandoned well located in La Plata County about 26 miles southwest of Durango and about one mile from the New Mexico state line. It was drilled in 1949 to a depth of 3,314 feet and reported plugged at the same time by Ocean Oil Company. The well, which is situated in a ravine with tight quarters, making access difficult, was found to be leaking fairly fresh water.

No samples were taken at the time of inspection, but it was noted that the foliage was quite healthy, and there were no dry powdery residues, which are usually indicative of salt or calcium carbonate. The plan is to re-enter the well and re-plug it at an estimated cost of \$80,000.



Page 15 contains a spreadsheet listing PRAW projects that are either scheduled, in process or completed, as of February 18, 2015.

◆ **Colorado Oil and Gas Information System (COGIS) Projects, Updates and Changes**

Electronic Form Submissions (eForm)

The COGCC uses 41 types of forms to authorize oil and gas operations, to inspect and monitor ongoing operations, and to receive reports of operations. Of those 41 forms, 15 forms are currently available for electronic submittal through the eForms system.

Forms currently available through eForms:

Form 2 -	Application for Permit to Drill
Form 2A -	Oil and Gas Location Assessment
Form 4 -	Sundry Notice
Form 5 -	Drilling Completion Report
Form 5A -	Completed Interval Report
Form 6 -	Well Abandonment Report
Form 10 -	Certification of Clearance/ Change of Operator
Form 15 -	Earthen Pit Report/Permit
Form 17 -	Bradenhead Test Report
Form 19 -	Spill/Release Report
Form 21 -	Mechanical Integrity Test
Form 22 -	Accident Report
Form 23 -	Well Control Report
Form 41 -	Trade Secret Claim of Entitlement
Form 42 -	Notice of Notification (Notice of Hydraulic Fracturing)

To date in 2015, more than 98% of the forms available in eForms were submitted electronically by industry. There are 520 operators using eForm and 2,058 individual users. For any operator not currently enrolled in eForms, instructions for starting the process can be found on the COGCC website at

<http://cogcc.state.co.us/Announcements/COUAINformation.pdf>.

The development team continues to work on the eForm conversion of existing forms. Currently, seven types of forms are in various stages of development: Forms 7, 14, 14A, 26, 31, 33 and NO-

AV. In addition, the development team updates eForms as required by rule revisions.

Applications and Location Assessments

The public can make comments on all submitted Drilling Permit Applications (Form 2s) and Location Assessments (Form 2As) through the eForm system. Simply go to the COGCC website and click on the menu option “Permits” or

<http://cogcc.state.co.us/COGIS/DrillingPermits.asp>.

On the COGIS-Permits page, three search options are available. The first option, “All Pending Permit Applications,” is used for public comments. When the results are displayed for “Pending Applications,” the public can click on the document number, which logs the user to the eForms application. Once the page is displayed with the selected document, the user can select the Comment button to make a comment on that particular form.

◆ **April 2015 Hearing Docket**

The docket for the April 2015 hearing will be available shortly after the March hearing. Hearing dockets are available on our website by clicking on “Hearings.” Links to the notices and hearing applications are available from the Docket Number and Applicant, respectively. To sign up for e-mail notification of hearing notices and applications, please see the announcement and instructions on the homepage of the website:

<http://cogcc.state.co.us>.

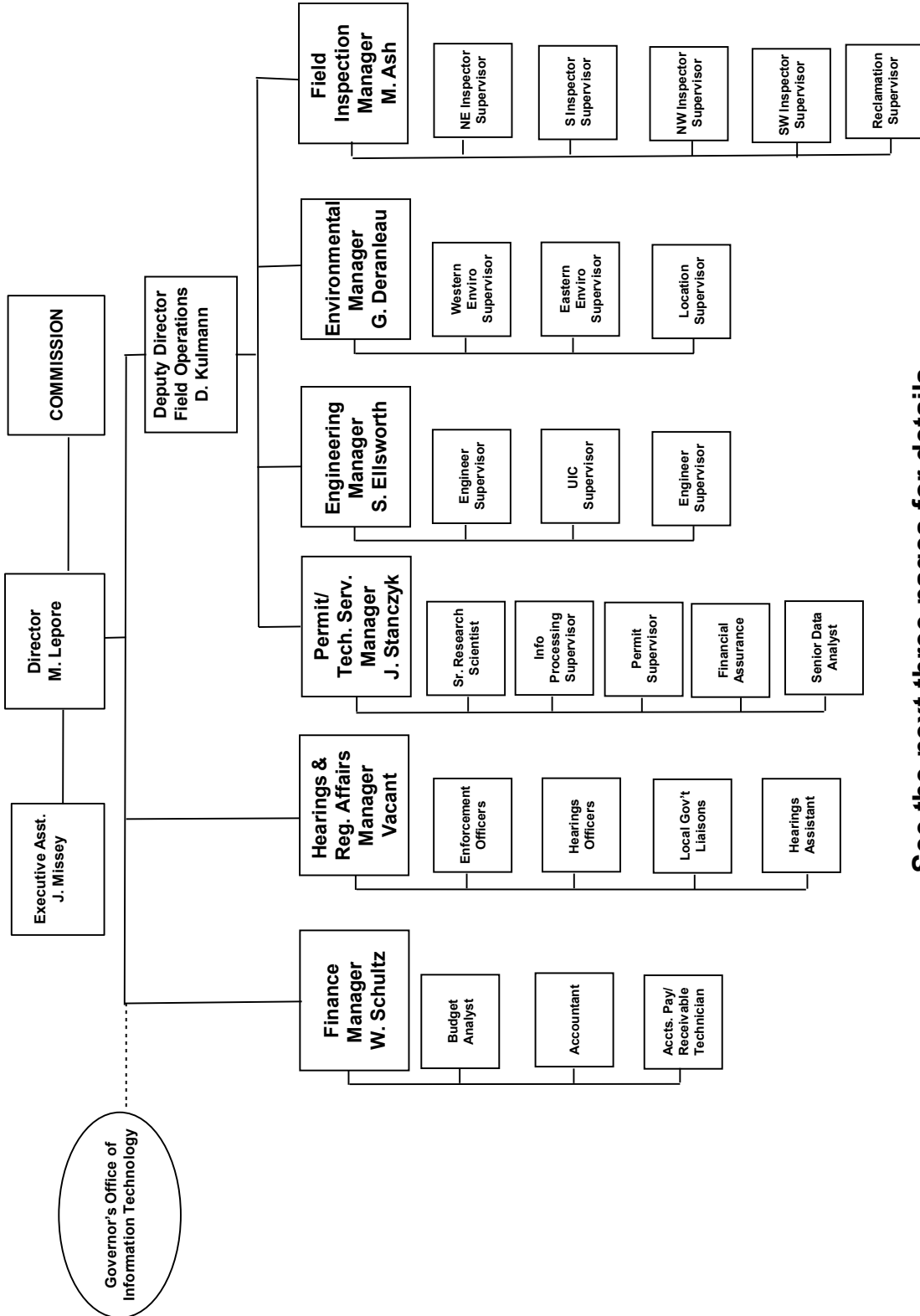


Oil and Gas Staff Report

March 2, 2015

11

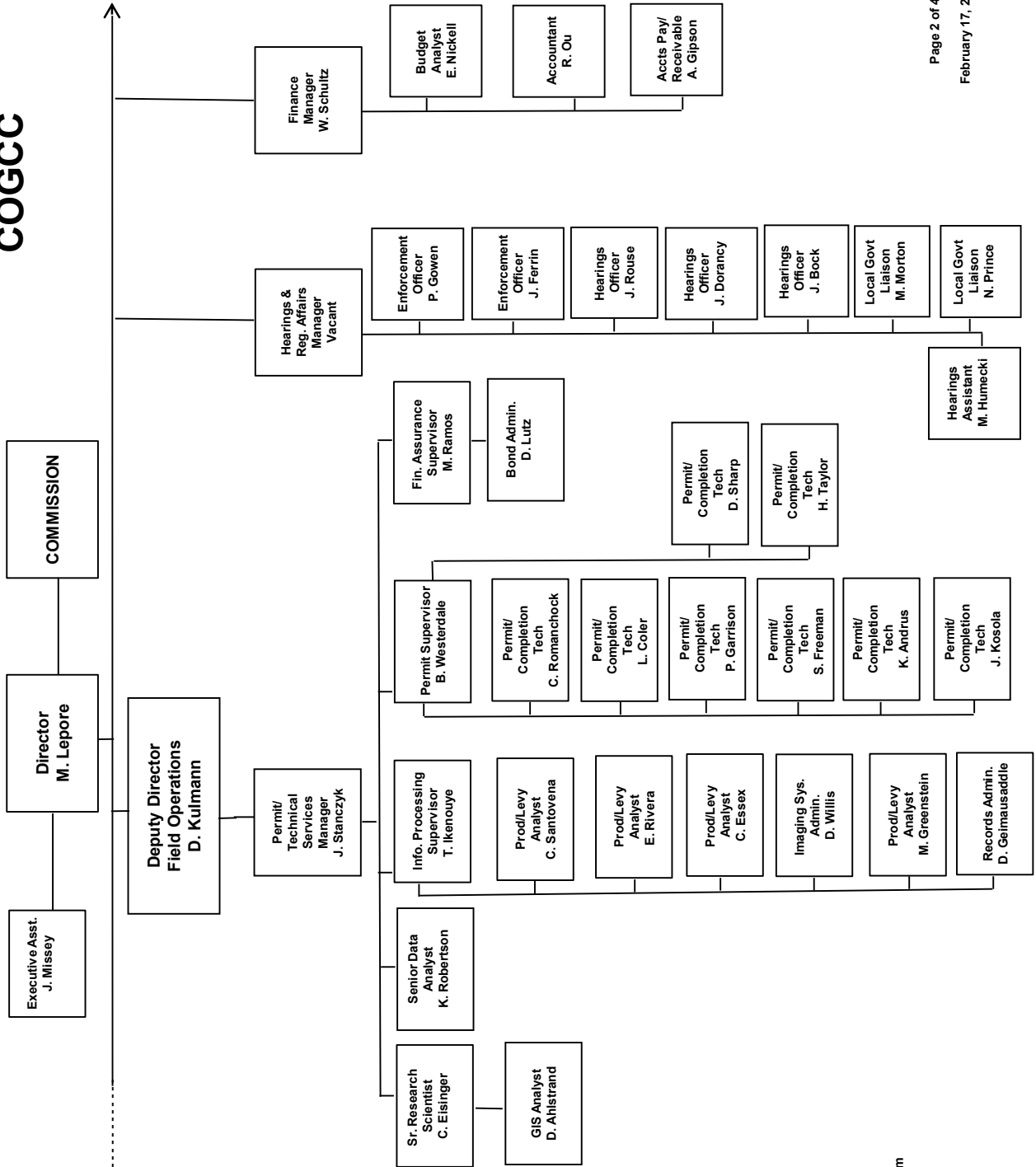
COLORADO OIL & GAS CONSERVATION COMMISSION



See the next three pages for details



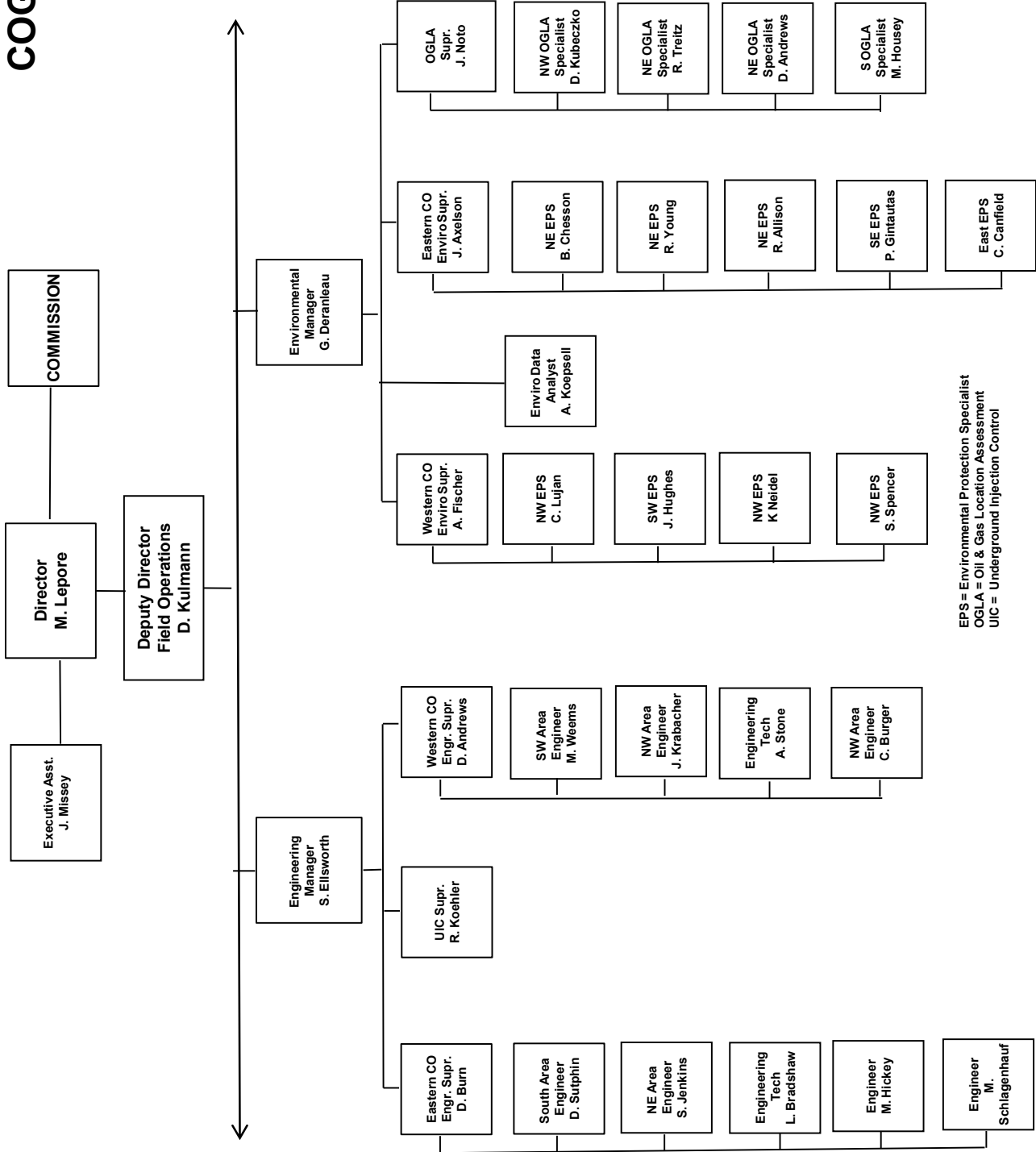
COGCC



Governor's Office of Information Technology



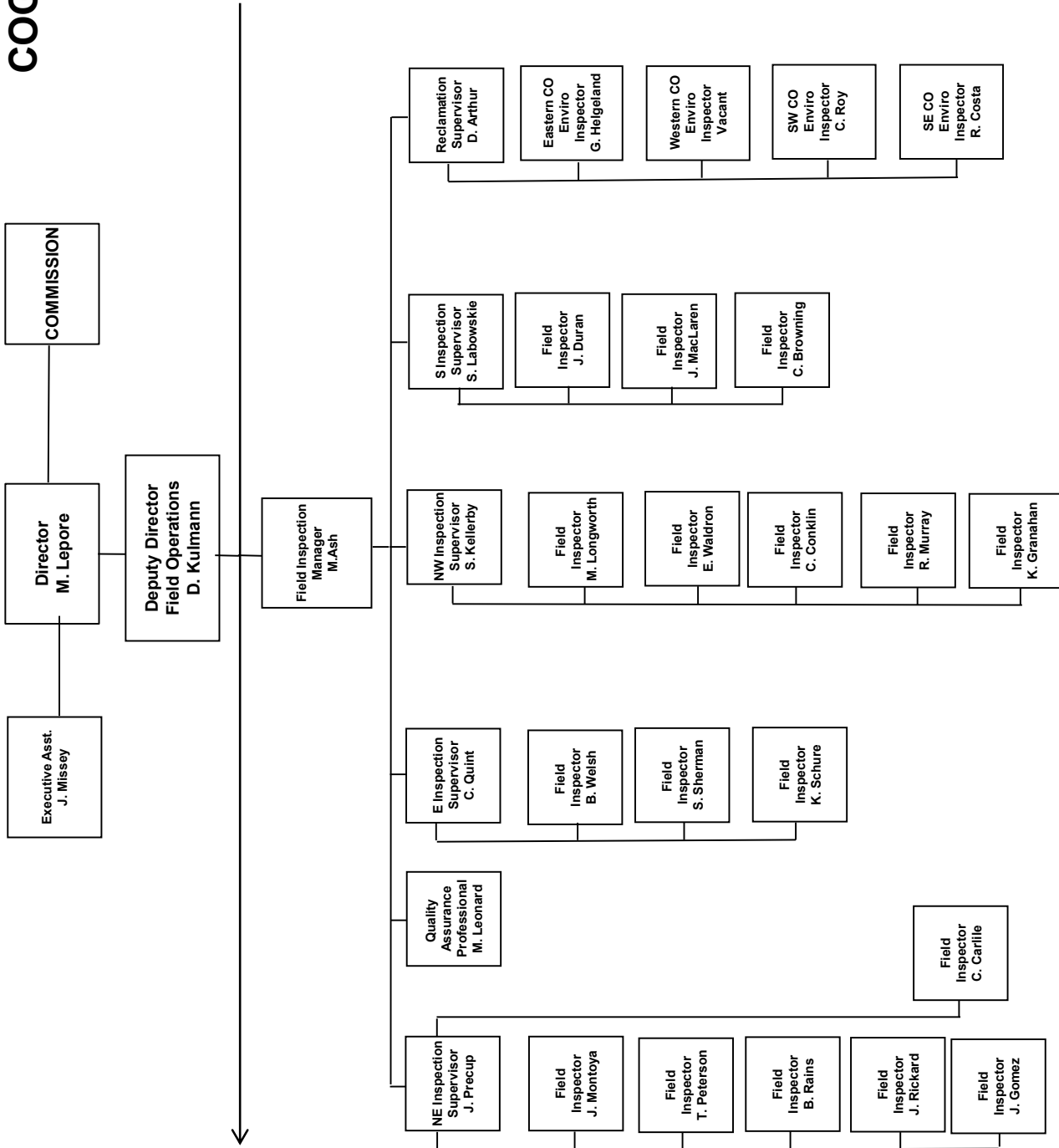
COGCC



EPS = Environmental Protection Specialist
 OGLA = Oil & Gas Location Assessment
 UIC = Underground Injection Control



COGCC





Oil and Gas Staff Report

March 2, 2015

15

PLUGGING AND RECLAIMING ABANDONED WELLS FOR ORPHANED LOCATIONS
FISCAL YEAR 2014-15

County	Type	Project Name	Project No.	Manager	Acct Code	PLANNED				FY 2014-15 YTD EXPENDITURES				Description	
						Bond	PRAW	EMGY	Totals	Bond	PRAW	EMGY	Totals		
Rio Blanco	PA	Gentry	FYE2014-07	Craig Burger	GENT	\$0	\$59,700	\$0	\$59,700					Plug and abandon	
Rio Blanco	Remediation	Gentry-West Rangely Subdivision	FYE2014-08	Stan Spencer	GENT	\$0	\$32,595	\$0	\$32,595					1) Sample & analyze pit bottom-Remediation Design-Implementation	
Baca	PA	Wallace Oil and Gas BOND	FYE2008-12	Diana Burn	WAL1 WAL2 WAL3	\$15,000	\$75,000	\$0	\$90,000					2) Demolition and scrap tank-Haul to metal salvaging contractor	
TBD	Reclamation	Multiple Sites TBD	FYE2015	Denise Arthur	TBD	\$0	\$75,000	\$0	\$75,000					3) Test soils for rouge gases near PA wells	
Montrose	Remediation	Redwine Resources-Nucla Unit 1-32 BOND	TBD	Jim Hughes	TBD	\$30,000	\$30,000	\$0	\$60,000					BONDS claimed in 2004; three wells \$5,000 ea	
						sub-total	\$45,000	\$272,295	\$0	\$317,295					
La Plata	PA	Noel Reynolds Ester #1 BOND	FYE2014-03	Mark Weems	NOEL	\$30,000	\$20,000	\$0	\$50,000					Located in Red Mesa Field; Bond claimed in 2011	
Fremont	PA	Fremont Co-Group #3 - Five Wells	FYE2014-09	Steve Jenkins	FREM	\$0	\$50,000	\$0	\$50,000					Five more wells needing to be plugged in the Florence Field.	
Baca	PA	Chapman #1	FYE2008-42	Stuart Ellsworth	CHAP	\$0	\$45,000	\$0	\$45,000					Open casing 4' above GL. Heard "gas bubbling through liquid down hole" during 1998 inspection. Tagged bottom at 189' during 2007 inspection; no evidence of leaking.	
La Plata	PA	Stewart #1	FYE2007-02	Mark Weems	STEW	\$0	\$80,000	\$0	\$80,000					Drilled dry & aband 1949; appears to have fresh water flowing; located in ravine making difficult for rig access; located on recently acquired SUIT lands	
						sub-total	\$30,000	\$195,000	\$0	\$225,000					
TOTALS =>							\$75,000	\$467,295	\$0	\$542,295	\$0	\$0	\$0	\$0	

County	Type	Project Name	Project No.	Manager	Acct Code	IN PROGRESS				FY 2014-15 YTD EXPENDITURES				Description
						Bond	PRAW	EMGY	Totals	Bond	PRAW	EMGY	Totals	
Larimer	PA	Akerman #1	FYE2014-06	Mark Schlagenhauf	AKER	\$0	\$40,000	\$0	\$40,000	\$1,250			\$1,250	Well has open 4 1/2" at surface, water stopped flowing out of csg, well water sampled and analyzed; final
TOTALS =>						\$0	\$40,000	\$0	\$40,000	\$0	\$1,250	\$0	\$1,250	

County	Type	Project Name	Project No.	Manager	Acct Code	COMPLETED				FY 2014-15 YTD EXPENDITURES				Description
						Bond	PRAW	EMGY	Totals	Bond	PRAW	EMGY	Totals	
Mesa	PA	DB Orphan Blair #1	FYE2014-01	Jay Krabacher	DEB1	\$0	\$65,069	\$0	\$65,069	\$0	\$98,443	\$0	\$98,443	Have capped well and stopped water flow; Re-enter; PA
Mesa	PA	Pasture #1	FYE2013-06	Jay Krabacher	HSTD	\$0	\$5,000	\$0	\$5,000	\$0	\$1,360	\$0	\$1,360	Leak has stopped; have cut off casing, installed PA marker and repaired the gate to the location.
Washington	PA	Flessner #13	FYE2014-02	Dirk Sutphin	FLES	\$0	\$47,700	\$0	\$47,700	\$0	\$43,560		\$43,560	DA 1955; Surf owner/farmer complaint; located in a cultivated farm and impeding farming operations.
Adams	Reclamation	Ruth #1	FYE2013-16	Bob Chesson	RUTH	\$5,000	\$0	\$0	\$5,000	\$0	\$871		\$871	EPS soil analysis completed for the pit at the CTB
TOTALS =>						\$5,000	\$117,769	\$0	\$122,769	\$0	\$144,234	\$0	\$144,234	

GRAND TOTALS	ESTIMATED TOTAL PROJECT COSTS				FY 2014-15 YTD EXPENDITURES			
	Bond	PRAW	EMGY	Totals	Bond	PRAW	EMGY	Totals
	\$80,000	\$625,064	\$0	\$705,064	\$0	\$145,484	\$0	\$145,484

SCOREBOARD (PRAW FUNDING ONLY)

\$40,000	IN PROGRESS ESTIMATED TOTALS
\$1,250	IN PROGRESS SPENT TO DATE TOTALS
\$38,750	IN PROGRESS REMAINING TOTALS
\$145,484	COMPLETED TO DATE TOTALS
\$184,234	SUM OF (IN PROGRESS TOTALS) AND (COMPLETED TO DATE TOTAL)
\$445,000	ANNUAL ALLOTMENT BUDGET TOTAL
\$260,766	BALANCE PROJECTED TO DATE

Notes:
Project Types: "PA" indicates plugging and abandonment, "REC" indicates
EMGY: indicates funding by the *Emergency Response* line item
TBD: Cost estimates in process.
PRAW: indicates funding by the *Plugging and Reclaiming Abandoned Wells* line item



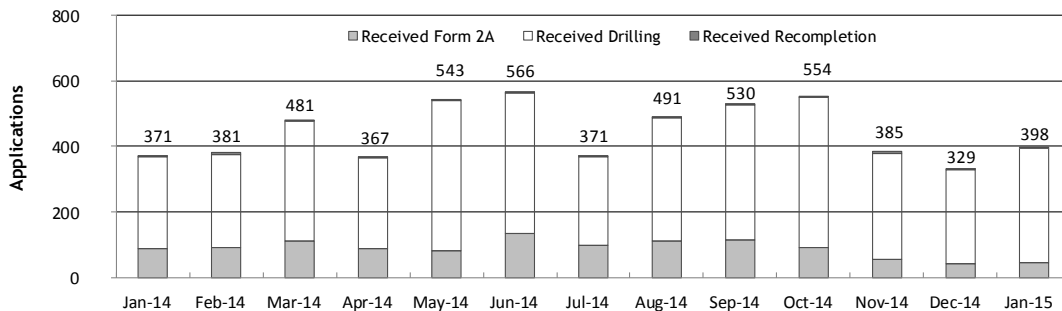
Monthly Permit Activity as of February 2, 2015

Form/Month	Backlog	Received	Approved	Withdrawn	Rejected	Incomplete ¹	In-Process	Remaining ²
Form2A								
Jan-14	170	90	43	7	0	47	163	210
Feb-14	210	91	94	3	0	51	153	204
Mar-14	204	110	88	4	0	48	174	222
Apr-14	222	89	99	18	0	25	169	194
May-14	194	83	94	7	0	26	150	176
Jun-14	176	134	92	3	0	30	185	215
Jul-14	215	97	126	3	0	28	155	183
Aug-14	183	111	87	4	0	36	167	203
Sep-14	203	116	81	3	0	47	188	235
Oct-14	235	93	109	6	0	74	139	213
Nov-14	213	54	103	6	0	46	109	158
Dec-14	155	42	99	3	0	39	56	95
Jan-15	95	46	43	3	0	23	72	95
Drilling								
Jan-14	727	278	232	77	0	75	621	696
Feb-14	696	284	297	4	0	109	570	679
Mar-14	679	367	329	13	0	103	601	704
Apr-14	704	276	317	16	0	63	584	647
May-14	647	458	383	16	0	53	653	706
Jun-14	706	429	377	8	0	62	688	750
Jul-14	750	272	446	2	0	65	509	574
Aug-14	574	376	259	24	0	90	577	667
Sep-14	667	412	304	21	0	109	645	754
Oct-14	754	458	370	10	0	137	694	832
Nov-14	832	326	479	19	0	128	532	660
Dec-14	660	286	397	10	4	115	420	535
Jan-15	535	349	316	2	0	119	447	566
Recompletion								
Jan-14	3	3	2	0	0	0	4	4
Feb-14	4	6	4	0	0	0	6	6
Mar-14	6	4	6	0	0	0	4	4
Apr-14	4	2	3	0	0	1	2	3
May-14	3	2	2	0	0	1	2	3
Jun-14	3	3	0	0	0	1	5	6
Jul-14	6	2	5	0	0	0	3	3
Aug-14	3	4	3	0	0	0	4	4
Sep-14	4	2	3	0	0	1	1	3
Oct-14	3	3	2	0	0	2	2	4
Nov-14	4	5	2	0	0	1	6	7
Dec-14	7	1	2	1	0	2	3	5
Jan-15	5	3	1	0	0	3	4	7

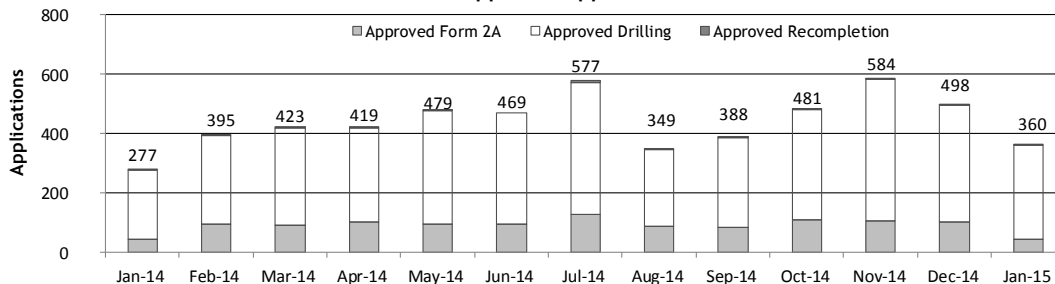
¹Incomplete are permits that have missing or inaccurate data and cannot be approved.

²Backlog = Incomplete + In-process = Remaining permits from previous month.

Received Applications



Approved Applications





Oil and Gas Staff Report

March 2, 2015

17

Status of Permit Applications Filed By Month as of February 8, 2015

Form 2A Location Assessment

Year	Month	Received	Approved	Withdrawn	In Process	Percent In Process	Median Days to Process	Less Than 30 Days	30 to 49 Days	Greater Than 50 Days
2011	TOTAL	2,391	2,298	93	0	0%		1,416	620	262
2012	TOTAL	1,359	1,289	68	2	0%		706	378	205
2013	TOTAL	1,286	1,198	78	10	1%		369	433	396
2014	JAN	85	82	3	0	0%	54	12	36	34
	FEB	88	86	2	0	0%	55	11	36	39
	MAR	113	108	5	0	0%	47	30	42	36
	APR	80	73	7	0	0%	45	18	35	20
	MAY	92	88	4	0	0%	52	13	34	41
	JUN	134	130	3	1	1%	62	36	54	40
	JUL	100	95	4	1	1%	41	37	38	20
	AUG	102	96	3	3	3%	46	33	26	37
	SEP	118	112	4	2	2%	46	29	45	38
	OCT	94	85	6	3	3%	36	34	35	16
	NOV	65	59	0	6	9%	37	20	27	12
	DEC	45	30	0	15	33%	37	6	21	3
2014	TOTAL	1,116	1,044	41	31	3%		279	429	336
2015	JAN	49	1	1	47	96%	21	1	0	0
	FEB	28	0	0	28	100%	0	0	0	0
2015	TOTAL	77	1	1	75	97%		1	0	0

Form 2 Application For Permit to Drill (APDs)

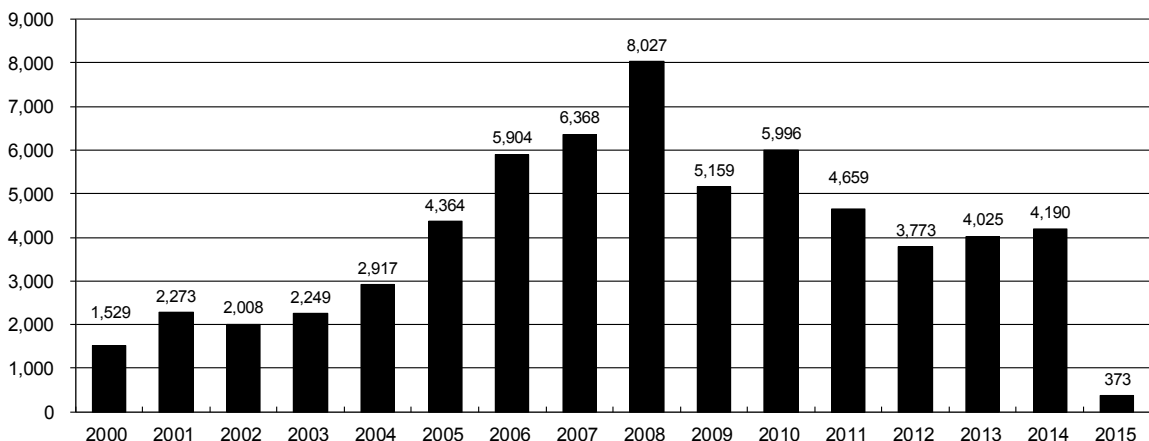
Year	Month	Received	Approved	Withdrawn	In Process	Percent In Process	Median Days to Process	Less Than 30 Days	30 to 49 Days	Greater Than 50 Days
2011	TOTAL	4,691	4,557	132	0	0%		2,723	1,565	587
2012	TOTAL	3,955	3,816	139	0	0%		1,971	1,393	602
2013	TOTAL	4,550	4,306	218	26	1%		1,046	1,626	1,708
2014	JAN	261	255	5	1	0%	56	35	117	107
	FEB	298	285	13	0	0%	58	37	94	159
	MAR	359	351	8	0	0%	52	50	133	173
	APR	223	213	10	0	0%	47	20	121	74
	MAY	501	498	2	1	0%	71	40	155	305
	JUN	438	385	37	16	4%	54	111	138	139
	JUL	287	273	11	3	1%	47	62	119	94
	AUG	350	332	4	14	4%	56	61	126	148
	SEP	413	373	23	17	4%	50	62	150	162
	OCT	441	405	3	33	7%	39	129	199	78
	NOV	374	325	2	47	13%	44	54	144	132
	DEC	281	209	0	72	26%	40	28	132	49
2014	TOTAL	4,226	3,904	118	204	5%		689	1,628	1,620
2015	JAN	310	50	0	260	84%	18	46	3	1
	FEB	83	1	0	82	99%	1	1	0	0
2015	TOTAL	393	51	0	342	87%		47	3	1



Annual Drilling Permits by County as of February 8, 2015

County	2000	2001	2002	2003	2004	2005	2006	2007	2008	2009	2010	2011	2012	2013	2014	2015
ADAMS	38	28	9	26	39	34	37	89	51	35	21	8	40	40	51	2
ARAPAHOE	0	2	1	2	5	7	11	10	10	10	8	23	35	23	34	
ARCHULETA	7	9	6	10	8	13	14	26	47	11	18	12	5	4	3	
BACA	22	6	2	3	7	8	2	11	13	3	4	5	3	1	1	
BENT	2				5	3	8	1	1		5		2	1		
BOULDER	1	5	6	7	17	13	21	37	32	35	24	30	22			
BROOMFIELD			2	7		1	1		2	33	28	11	36		31	
CHEYENNE	3	3	3	3	3	10	21	15	33	12	13	16	31	50	26	2
COSTILLA																
CROWLEY																2
DELTA			7	4	5	10	9	2			4	3	6	1	2	
DENVER		3					19	25	24							
DOLORES				1	1	1	6	10	12	21	8	8	13	12	3	
EAGLE														1		
ELBERT	2						4			1		1	2	2	4	
EL PASO										2	3	3	18	1	2	
FREMONT					1	3	2	4	14	13	22	14	11	2	8	
GARFIELD	213	353	362	567	796	1,509	1,845	2,550	2,888	1,981	2,037	1,323	1,046	870	1,066	116
GRAND																
GUNNISON			5	10	1	9	19	7	10	12	4	3	11	9	20	1
HUERFANO	41	27	27		8	2			7		2	1	9	1	13	
JACKSON	34	18	21	9	14	6	8	5	27	19	9	18	5	12	17	
JEFFERSON	1					1		3	2					1		
KIOWA	11	18	2	4	2	1	11	9	26	7	16	17	17	12	5	
KIT CARSON				1	3	5	4	4	13	7	3	2	6	1	2	
LA PLATA	127	156	104	162	102	115	235	251	328	298	191	99	71	32	87	3
LARIMER	2		1			1		5	46	12	41	8	13	2	4	13
LAS ANIMAS	268	400	259	180	332	413	500	362	303	88	92	85	11	2	1	
LINCOLN	2	2	1	6	3	4	1	2	58	44	48	31	36	87	129	2
LOGAN	4	7	3	3	6	13	17	14	5	9	17	8	27	4	5	
MESA	13	27	30	27	54	136	265	293	501	427	306	127	150	105	74	1
MOFFAT	35	52	62	63	63	60	120	68	57	51	53	93	88	44	54	1
MONTEZUMA	4		5	8	8	11	5	12	22	39	19	27	29	14	25	
MONTROSE	1	3	2	4	2		1	3	3		1	1				
MORGAN	9	9	2	7	9	7	3	6	2	1	6	13	5	16	6	
OTERO																
PARK										3	4	1				
PHILLIPS	1	2		7	13	17	12	69	82	45	64	112	56		11	
PITKIN				1				1								
PROWERS	2	5	4		7	5	7	5	8	1	3	1			1	
RIO BLANCO	89	187	105	179	154	161	360	321	477	348	441	109	117	167	121	26
RIO GRANDE	1	1		1					1	1			2		1	
ROUTT	20	13	1		4	6	9	8	4	2	3	10	4	12	4	
SAGUACHE	2		2					2	1	2						
SAN MIGUEL	11	13	27	18	42	45	35	23	20	13	10	2	1		2	
SEDGWICK				1	5	2	7	2	1	19	11	12	2		7	
WASHINGTON	23	17	27	34	128	50	69	45	11	1	6	12	6	19	12	
WELD	509	702	760	757	832	901	1,418	1,527	2,340	1,448	2,152	2,262	1,826	2,468	2,303	206
YUMA	31	205	160	138	237	782	797	541	545	105	299	148	11	9	53	
TOTAL	1,529	2,273	2,008	2,249	2,917	4,364	5,904	6,368	8,027	5,159	5,996	4,659	3,773	4,025	4,190	373

ALL COUNTIES





Oil and Gas Staff Report

March 2, 2015

19

Form 2A Breakdown By County By Year as of February 8, 2015

Year	County	Form 2As	Completed	In Process	New Location	CDP	SWH	RSO	CDPHE
2009	Total State	818	818	0	408	2	80	5	5
2010	Total State	2,378	2,376	0	1,601	0	327	22	55
2011	Total State	2,299	2,297	2	1,791	1	274	17	5
2012	Total State	1,298	1,294	4	946	0	173	6	1
2013	Total State	1,202	1,189	13	898	1	164	2	4
2014	ADAMS	23	20	3	21	0	0	0	0
	ARAPAHOE	18	16	2	18	0	0	0	1
	ARCHULETA	1	1	0	0	0	1	0	0
	BACA	1	1	0	1	0	0	0	0
	BROOMFIELD	1	1	0	0	0	0	0	0
	CHEYENNE	23	23	0	20	0	0	0	0
	CROWLEY	2	2	0	2	0	0	0	0
	DOLORES	2	2	0	2	0	1	0	0
	EL PASO	2	2	0	2	0	0	0	0
	ELBERT	4	4	0	4	0	0	0	0
	FREMONT	3	3	0	3	0	3	0	0
	GARFIELD	79	78	1	20	0	53	3	0
	GUNNISON	7	7	0	2	3	2	0	0
	HUERFANO	5	5	0	1	0	4	0	1
	JACKSON	14	14	0	9	0	14	0	0
	KIOWA	3	3	0	2	0	0	0	0
	KIT CARSON	2	2	0	2	0	0	0	0
	LA PLATA	14	14	0	4	0	13	0	0
	LARIMER	4	2	2	3	0	0	0	0
	LAS ANIMAS	1	1	0	1	0	0	0	0
	LINCOLN	135	135	0	119	0	0	0	0
	LOGAN	2	2	0	2	0	0	0	0
	MESA	8	8	0	3	0	5	1	0
	MOFFAT	11	11	0	9	0	11	1	0
	MONTEZUMA	15	15	0	15	0	0	0	0
	PHILLIPS	11	11	0	10	0	0	0	0
	PROWERS	1	1	0	1	0	0	0	0
	RIO BLANCO	20	20	0	13	0	17	0	0
	ROUTT	1	1	0	1	0	1	0	0
	SAN MIGUEL	1	1	0	1	0	0	0	0
	SEDGWICK	7	7	0	5	0	0	0	0
	WASHINGTON	13	13	0	13	0	0	0	0
	WELD	585	560	25	425	0	4	2	1
	YUMA	53	53	0	48	0	0	0	0
2014	Total State	1,072	1,039	33	782	3	129	7	3
2015	ADAMS	1	0	1	0	0	0	0	0
	ARAPAHOE	5	0	5	0	0	0	0	0
	GARFIELD	3	0	3	0	0	1	0	0
	GUNNISON	4	0	4	1	0	3	0	0
	HUERFANO	1	0	1	0	0	0	0	0
	JACKSON	1	0	1	1	0	1	0	0
	KIOWA	2	0	2	2	0	2	0	0
	LA PLATA	2	0	2	0	0	2	0	0
	LINCOLN	1	0	1	1	0	0	0	0
	MESA	1	0	1	0	0	1	0	0
	MOFFAT	1	0	1	0	0	1	0	0
	MONTEZUMA	2	0	2	2	0	0	0	0
	MORGAN	1	0	1	1	0	0	0	0
	RIO BLANCO	3	0	3	1	0	3	0	0
	WELD	45	0	45	36	0	0	0	0
2015	Total State	73	0	73	45	0	14	0	0

Abbreviations:

CDP = Comprehensive Drilling Plan SWH = Sensitive Wildlife Habitat consultation

RSO = Restricted Surface Occupancy consultation CDPHE= Colorado Department of Health and Environment consultation



Oil and Gas Staff Report

March 2, 2015

21

Well to Building Setbacks by Year and by County as of February 8, 2015

Count of well locations, grouped by proximity from well to buildings.

Location Proximity to Buildings	2009	2010	2011	2012	2013	2014	2015	Number of Locations	Percent of Total Locations
Less than 150 feet	2	3	3	2	0	3	0	13	0%
150 to 350 feet	37	58	61	39	34	38	2	269	3%
350 to 500 feet	50	110	97	61	64	48	7	437	5%
500 to 1000 feet	117	385	331	188	188	161	10	1,380	17%
1000 + feet	356	1705	1470	838	762	724	20	5,875	74%
TOTAL LOCATIONS	562	2261	1962	1128	1048	974	39	7,974	

County	TOTAL	Less than 150 feet	150 to 350 feet	350 to 500 feet	500 to 1000 feet	1000 + feet
ADAMS	70	0	4	7	16	43
ARAPAHOE	84	0	2	4	9	69
ARCHULETA	18	0	0	1	9	8
BACA	15	0	0	0	1	14
BENT	7	0	0	0	0	7
BOULDER	23	0	1	1	17	4
BROOMFIELD	33	0	0	4	13	16
CHEYENNE	133	1	0	0	2	130
CROWLEY	2	0	0	0	0	2
DELTA	7	0	0	2	1	4
DOLORES	19	0	0	0	7	12
EAGLE	1	0	0	0	0	1
EL PASO	14	0	0	0	3	11
ELBERT	8	0	0	0	2	6
FREMONT	39	0	2	7	8	22
GARFIELD	527	0	9	6	75	437
GUNNISON	33	1	0	3	1	28
HUERFANO	15	0	0	0	5	10
JACKSON	43	0	0	4	1	38
KIOWA	63	0	0	0	1	62
KIT CARSON	14	0	0	0	0	14
LA PLATA	115	0	4	13	35	63
LARIMER	35	0	5	3	11	16
LAS ANIMAS	201	1	6	7	37	150
LINCOLN	347	0	1	2	4	340
LOGAN	43	0	1	1	0	41
MESA	89	0	0	3	14	72
MOFFAT	169	0	0	2	14	153
MONTEZUMA	39	0	0	1	4	34
MONTROSE	2	0	0	0	0	2
MORGAN	28	0	0	2	4	22
PARK	4	0	0	0	0	4
PHILLIPS	273	1	4	6	21	241
PROWERS	5	0	0	0	0	5
RIO BLANCO	174	0	0	0	2	172
RIO GRANDE	2	0	0	0	1	1
ROUTT	26	0	0	0	2	24
SAN MIGUEL	12	0	0	0	0	12
SEDGWICK	32	0	0	1	3	28
WASHINGTON	60	0	2	0	2	56
WELD	4,625	9	219	341	1,011	3,045
YUMA	525	0	9	16	44	456



Well to Building Setbacks Less Than Two Hundred Feet as of February 8, 2015

Year	Location Doc Number	County	High Density	New Location	Distance (Feet)	Proximity (Feet)	Building Description
2011	2587822	CHEYENNE	No	No	58	less 150	Water well house
2009	1691798	WELD	No	No	58	less 150	Vehicle garage
2010	400072164	WELD	No	Yes	69	less 150	Abandoned hog shed
2014	400569085	WELD	No	No	78	less 150	Well shed
2014	400600705	WELD	No	No	80	less 150	Livestock shed
2012	400240957	GUNNISON	No	Yes	90	less 150	Equipment shed
2009	1758843	WELD	No	Yes	103	less 150	Building to be razed
2011	1636646	WELD	No	No	122	less 150	Storage shed
2009	400011284	LAS ANIMAS	No	Yes	127	less 150	Operator is owner
2009	1786896	PHILLIPS	No	No	132	less 150	Grain storage
2014	400642113	WELD	No	Yes	142	less 150	Barn
2011	400117702	WELD	No	Yes	143	less 150	Irrigation pump house
2011	400227765	WELD	No	Yes	145	less 150	Storage barn
2014	400558626	LINCOLN	No	No	150	less 150	Gas plant equipment building
2009	1904205	WELD	No	No	154	150 to 350	Livestock enclosure
2012	400243295	WELD	No	Yes	155	150 to 350	Unused storage shed
2011	400179419	WELD	No	Yes	157	150 to 350	Existing well / storage building
2010	400054716	WELD	No	No	159	150 to 350	Equipment barn
2011	400188968	WELD	No	Yes	159	150 to 350	Abandoned
2014	400554054	WELD	No	Yes	159	150 to 350	Equipment shed
2014	400559404	WELD	No	Yes	160	151 to 350	Barn
2010	400021477	WELD	No	Yes	162	150 to 350	Goat barn
2009	1758386	WELD	No	Yes	168	150 to 350	Storage shed
2011	1635946	WELD	No	No	169	150 to 350	Storage shed
2013	400447386	WELD	No	No	169	150 to 350	Abandoned turkey barn
2013	400447391	WELD	No	No	169	150 to 350	Abandoned turkey barn
2011	400165164	WELD	No	Yes	178	150 to 350	Residence
2013	400367184	WELD	No	Yes	179	150 to 350	Shed
2011	400188780	WELD	No	Yes	180	150 to 350	Residence
2014	400562498	WELD	No	Yes	181	150 to 350	Garage / storage shed
2010	1697620	WELD	No	No	187	150 to 350	Livestock shed
2009	1758746	WELD	No	No	193	150 to 350	Storage shed
2011	400154431	WELD	No	Yes	198	150 to 350	Turkey barn
2012	400250031	WELD	No	Yes	198	150 to 350	Abandoned guard shack
2009	1774783	WELD	No	No	199	150 to 350	Cement service building
2011	400118102	YUMA	No	Yes	199	150 to 350	Steel barn



Oil and Gas Staff Report

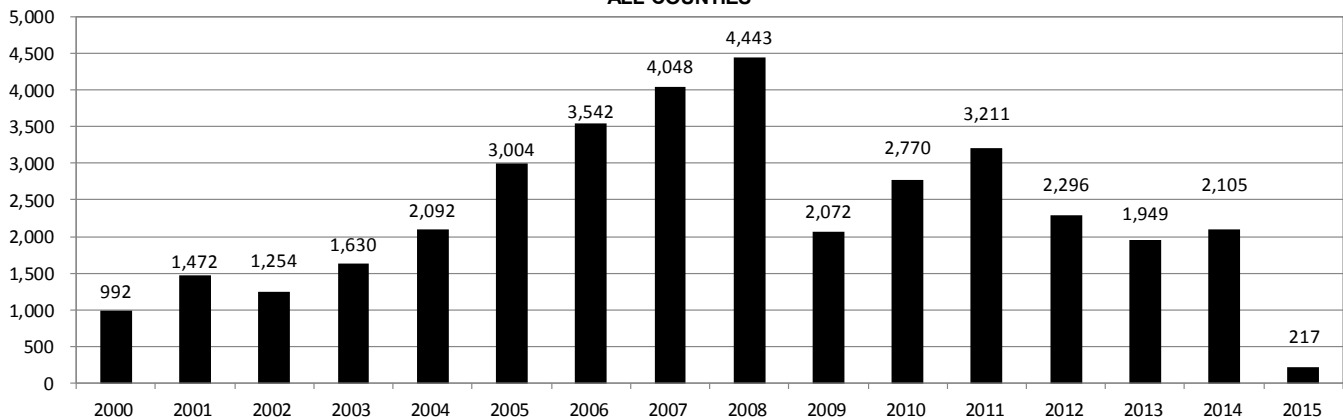
March 2, 2015

23

Annual Well Starts by County as of February 8, 2015

County	2000	2001	2002	2003	2004	2005	2006	2007	2008	2009	2010	2011	2012	2013	2014	2015
ADAMS	18	13	4	19	22	24	13	41	14	15	21	1	15	5	26	1
ARAPAHOE					6	1	5	2	1	1	3	9	9	25	20	
ARCHULETA	4	4	2	5	4	10	5	7	26	9	12	9	11		1	
BACA	19	6	2	1	6	6	2	6	12		5	4	2	1		1
BENT	2				3	2	8	1	1			1	2			
BOULDER				2	5	11	9	14	25	16	13	7	14			
BROOMFIELD			2		1				10		21	11	5			
CHEYENNE	2	1	3	3		9	14	15	14	8	12	11	17	35	19	
COSTILLA																
CROWLEY																2
DELTA				5	4	6	5	2			4	1	3		1	
DENVER		2					7	5	4							
DOLORES					2		2	13	4	2		1	5	10	4	
EAGLE														1		
EL PASO											2		5		1	
ELBERT	2						1									
FREMONT					1	3	2	2	5	3	9	16	8	1	4	
GARFIELD	190	251	245	417	585	799	1,005	1,304	1,688	768	904	878	495	393	355	36
GUNNISON			1		1	1	9	5	1	4	5	2	4	1	2	
HUERFANO	25	14	19	3	6	2			2		2		2	1	2	
JACKSON	24	2	4	10	10		3	3	10	1	6	7		7	5	
JEFFERSON								2								
KIOWA	8	16	2	4	2	1	7	7	2	5	15	14	10	11	3	
KIT CARSON				1	1	6	2	1	14	3	1	1	3	1	2	
LA PLATA	99	135	118	110	103	104	108	179	199	131	67	54	3	10	27	1
LARIMER	1	1				1		4	8	1	28	2	10	4	1	
LAS ANIMAS	202	286	205	221	296	384	413	326	221	14	7	78	1		1	
LINCOLN	2	2	1	5	2	2	1	2	19	10	14	22	23	42	38	1
LOGAN	4	6	3	3	2	11	12	12	3	7	3	9	13	4	6	
MESA	2	12	12	13	25	89	156	209	222	14	11	39	4	6	16	7
MOFFAT	18	23	25	28	19	40	60	42	25	18	15	34	25	26	2	
MONTEZUMA	2	3	5	5	1	7	2	4	18	11	3	8	18	12	8	1
MONTROSE		3		2	1			1	2		1					
MORGAN	9	8	1	7	5	5	3	1	1	2	3	2	3	1	3	
PARK											2					
PHILLIPS	1			6	10	11	4	35	18	2	42	130	48		9	
PROWERS	2	4	4		5	5	6	3	5	2	3	1				1
RIO BLANCO	51	82	47	83	92	95	107	95	203	116	107	72	53	36	42	2
RIO GRANDE														1		
ROUTT	5	12	1		1	6	3	2		2	1	2	4	2	2	
SAN MIGUEL	6	9	10	19	28	13	20	17	5	1	2	2			1	
SEDGWICK				1	2	1	1	5			3	8	3			
WASHINGTON	15	12	24	29	65	34	23	14	11	2	2	4	1	9	7	
WELD	237	403	406	522	632	718	931	1,222	1,314	877	1,208	1,664	1,461	1,291	1,456	166
YUMA	42	162	108	106	144	597	593	445	336	27	213	107	16	13	39	
TOTAL	992	1,472	1,254	1,630	2,092	3,004	3,542	4,048	4,443	2,072	2,770	3,211	2,296	1,949	2,105	217

ALL COUNTIES





Active Wells by County and Status as of February 8, 2015

COUNTY	Drilling	Domestic	Injecting	Producing	Shut In	Temp Aband	Waiting on Completion	Active Storage	Intent to Plug	Total Active Wells
ADAMS	18		6	883	66	9	5	15		1,002
ARAPAHOE	6	1	2	143	10	9		43		214
ARCHULETA	1	5		104	9	13	6			138
BACA	1		10	128	41	7		55		242
BENT		1		26	10					37
BOULDER				313	2	1				316
BROOMFIELD				96	1					97
CHEYENNE	8		34	328	27	46	2			445
CROWLEY	2									2
DELTA			1	3	13		1			18
DENVER			1	46	2		3			52
DOLORES	3		1	40	1	4	1			50
EL PASO	1	1				1				3
ELBERT				63	7	1				71
FREMONT	5	3		62	4	6				80
GARFIELD	216	5	40	10,451	126	76	34	1		10,949
GUNNISON	3		1	30	10	1	3			48
HUERFANO	1		1	37	2	6	1			48
JACKSON	3		24	123	39	2	1			192
JEFFERSON			2	1	1		1	1		6
KIOWA	4		7	102	19	4	2			138
KIT CARSON	2	1	1	14	1	1	1			21
LA PLATA	4	7	31	3,138	94	22	5	29		3,330
LARIMER	1	2	18	181	35	18	2			257
LAS ANIMAS		3	17	2,820	43	87	21	17		3,008
LINCOLN	19	1	7	95	14	6	2			144
LOGAN	10		13	116	40	29	4	12		224
MESA	23	1	11	882	106	17	7	9		1,056
MOFFAT	2		9	492	51	35	8			597
MONTEZUMA	9	2	6	121	35	13	2			188
MONTROSE						3				3
MORGAN	1		22	89	82	33		79		306
OURAY		2				1				3
PARK					1					1
PHILLIPS	3		3	262	6	1	1			276
PITKIN								10		10
PROWERS	1			26	4					31
RIO BLANCO	22	4	286	2,300	206	82	10	5		2,915
ROUTT	1	2		33	5	2	2			45
SAN MIGUEL	1			118	7	4				130
SEDGWICK			1	14	3		2			20
WASHINGTON	8		23	406	30	7	6			480
WELD	1,217	1	37	20,383	390	29	49	2		22,108
YUMA	5	8	20	3,735	109	11	13	1		3,902
TOTAL	1,601	50	635	48,204	1,652	587	195	279	0	53,203



Oil and Gas Staff Report

March 2, 2015

25

Monthly Statistics as of February 8, 2015

Page 1 of 2

YEAR and MONTH	Baker - Hughes Rig Count	Permits										Well Spud Notices	Active Drilling Permits	Active Wells	Public Visits			
		Drilling		Recompletion		Injection		Pits		Locations					Data	Office	Internet	
		Rcvd	Apvd	Rcvd	Apvd	Rcvd	Apvd	Rcvd	Apvd	Rcvd	Authz							
2011 TOTAL		4,709	4,659	325	320	44	32	190	192	2,382	2,267	3,220			187	1,294	1,337,865	
2012	JAN	73	372	258	26	21	3	0	11	5	142	129	244	5,217	46,958	12	106	112,686
	FEB	70	370	382	23	27	7	5	21	9	160	129	231	5,173	47,128	16	114	105,857
	MAR	66	292	347	21	14	2	2	17	24	133	172	292	5,132	47,263	26	138	111,746
	APR	66	410	235	16	24	5	5	9	2	137	106	240	4,785	47,377	12	108	107,627
	MAY	66	491	506	23	16	3	1	6	2	105	131	211	4,885	47,533	20	123	109,802
	JUN	69	326	377	11	19	8	6	5	8	110	89	144	5,136	47,860	11	111	108,849
	JUL	66	237	276	9	14	3	2	5	2	97	103	184	5,152	48,173	13	102	114,195
	AUG	62	313	288	6	9	6	4	23	5	83	97	180	5,031	49,153	11	112	110,908
	SEP	61	252	256	1	5	5	2	4	1	81	77	159	4,960	49,230	11	89	106,114
	OCT	62	326	265	9	3	7	6	2	19	94	82	161	5,009	49,236	8	105	108,833
	NOV	56	271	323	5	8	6	6	2	4	109	97	142	5,000	49,989	10	119	120,586
	DEC	57	322	260	4	8	8	5	9	3	122	81	109	5,081	50,067	9	78	107,240
2012 TOTAL			3,982	3,773	154	168	63	44	114	84	1,373	1,293	2,297			159	1,305	1,324,443
2013	JAN	53	538	331	6	0	3	5	6	8	176	124	143	5,060	50,265	9	108	47,406
	FEB	56	260	455	10	5	2	3	4	11	91	141	138	5,250	50,372	7	102	40,649
	MAR	57	344	241	5	9	3	8	15	6	129	84	141	5,093	50,540	9	133	43,019
	APR	61	331	333	6	5	5	5	6	8	146	117	164	4,925	50,687	3	132	46,459
	MAY	61	350	342	8	6	6	6	10	7	106	142	161	5,110	50,810	3	123	45,215
	JUN	62	349	273	2	8	8	8	5	3	114	85	141	5,273	50,909	8	122	41,015
	JUL	68	864	304	11	4	9	2	9	5	218	91	160	5,070	51,091	7	154	45,558
	AUG	69	232	291	6	4	3	2	4	1	35	76	200	5,200	51,255	20	130	44,722
	SEP	69	212	362	9	5	10	9	3	19	56	109	164	5,185	51,407	5	105	41,256
	OCT	72	319	376	5	9	7	5	1	8	67	88	238	4,967	51,598	5	135	45,151
	NOV	69	346	353	4	13	7	4	2	27	67	85	155	5,141	51,711	12	119	38,903
	DEC	64	336	367	2	4	4	6	2	3	63	71	114	5,129	51,737	4	93	32,381
2013 TOTAL			4,481	4,028	74	72	67	63	67	106	1,268	1,213	1,919			92	1,456	511,734
2014	JAN	62	278	232	3	2	3	4	14	8	90	43	164	4,926	51,840	1	90	46,150
	FEB	61	284	297	6	4	1	1	3	1	91	94	142	5,051	51,847	12	113	43,408
	MAR	62	367	329	4	6	7	1	6	6	110	88	176	4,997	51,952	16	140	46,620
	APR	63	276	317	2	3	2	5	8	3	89	99	163	4,897	52,060	11	188	45,558
	MAY	65	458	383	2	2	3	1	6	7	83	94	171	4,923	52,202	18	131	42,365
	JUN	67	429	377	3	0	6	7	5	2	134	92	215	4,924	52,337	10	156	42,518
	JUL	69	272	446	2	5	3	11	8	5	97	126	180	4,955	52,431	7	166	45,481
	AUG	73	376	258	3	3	4	4	3	4	111	87	203	5,060	52,582	8	145	42,431
	SEP	76	412	304	1	3	3	1	20	1	116	81	189	5,006	52,694	14	175	43,577
	OCT	76	458	371	3	2	9	2	4	6	93	109	165	4,827	52,785	19	138	46,030
	NOV	73	326	479	5	2	5	4	4	0	54	103	169	5,171	52,947	8	96	39,583
	DEC	69	286	397	1	2	2	7	1	2	42	99	168	5,236	53,054	6	144	37,964
2014 TOTAL			4,222	4,190	35	34	48	48	82	45	1,110	1,115	2,105			130	1,682	521,685
2015	JAN	64	349	316	3	1	2	8	3	1	46	43	167	5,060	53,195	17	114	41,502
2015 TOTAL			349	316	3	1	2	8	3	1	46	43	167			17	114	41,502

Abbreviation Key: Rcvd = Received, Apvd = Approved, Authz = Authorized



Monthly Statistics as of February 8, 2015

Page 2 of 2

YEAR and MONTH	Well			Bonds						Hearings					Enforcement				Remediation Projects		Inspections	
	Oper Change	Operators New	Operators Inactive	Release Ind	Release Blnkt	Bonds Replace	Claim Ind	Claim Blnkt	Apps.	Orders	NOAVs	AOCs	OFVs	Cmplt	Spills	Rcvd	Comp	Wells	Locations			
2011 TOTAL	6,743	33	31	79	44	43	4	4	403	349	230	10	19	247	527	726	536	12,394	-			
2012 JAN	1,052	3	3	7	5	1	1	0	70	72	18	1	-	27	35	68	23	998	970			
FEB	385	6	9	8	5	0	0	0	-	-	10	-	-	24	40	85	36	1,998	1,024			
MAR	379	4	1	7	3	9	0	0	44	38	19	-	-	23	38	63	61	2,200	1,149			
APR	478	4	2	10	3	2	0	0	80	59	11	-	-	19	35	26	99	1,700	930			
MAY	526	3	1	4	0	3	0	0	43	50	14	2	-	23	32	27	122	2,621	1,701			
JUN	1,270	3	4	3	3	4	0	0	-	-	5	-	-	35	39	46	98	1,432	1,091			
JUL	499	5	0	1	4	5	0	0	63	50	15	-	-	16	24	45	33	1,319	1,076			
AUG	301	6	5	2	8	0	1	0	67	54	24	3	2	21	28	127	33	1,898	1,432			
SEP	834	0	4	4	5	2	1	0	-	-	5	-	-	14	13	30	36	1,135	864			
OCT	485	1	2	9	1	0	0	0	30	36	6	1	-	13	44	116	37	1,407	1,029			
NOV	523	6	4	12	8	7	0	0	85	37	16	2	-	10	44	26	44	1,325	829			
DEC	958	6	2	3	1	0	0	0	-	-	14	-	-	19	30	31	19	1,031	610			
2012 TOTAL	7,690	47	37	70	46	33	3	0	482	396	157	9	2	244	402	690	641	19,064	12,705			
2013 JAN	655	3	5	12	2	0	0	0	48	75	15	4	-	21	40	31	45	1,622	789			
FEB	293	4	2	6	3	2	0	0	41	35	11	2	-	15	30	42	90	1,042	615			
MAR	355	1	3	2	2	1	0	0	54	67	16	2	-	11	25	65	29	1,966	1,150			
APR	335	7	1	5	2	8	0	0	-	-	21	-	-	16	33	39	37	1,508	910			
MAY	348	2	1	3	0	0	0	0	46	50	22	6	-	13	31	41	60	2,615	1,576			
JUN	1,458	6	2	2	4	5	0	0	91	44	13	2	-	25	40	47	37	1,857	1,102			
JUL	1,014	4	1	2	2	0	0	0	96	70	25	3	-	21	47	50	22	2,298	1,338			
AUG	389	6	4	5	4	2	0	0	-	-	23	-	-	25	57	36	41	2,145	1,033			
SEP	277	4	1	6	1	0	0	0	101	51	7	2	-	16	60	43	51	1,535	703			
OCT	345	6	0	2	2	2	0	0	52	82	4	12	3	12	79	47	60	1,865	1,158			
NOV	442	2	0	2	2	0	0	0	-	-	30	-	-	12	51	31	34	2,400	1,613			
DEC	1,299	4	1	1	2	0	0	0	42	48	50	4	-	14	75	35	35	2,676	1,384			
2013 TOTAL	7,210	49	21	48	26	20	0	0	571	522	237	37	3	201	568	507	541	23,529	13,371			
2014 JAN	1,976	6	3	3	2	0	0	0	57	46	25	2	-	8	72	46	28	3,243	1,597			
FEB	2,012	8	2	6	5	0	0	0	-	-	23	-	-	17	65	51	13	2,326	1,282			
MAR	494	2	3	1	5	0	0	0	97	75	29	10	-	22	64	66	31	1,797	1,298			
APR	313	5	2	6	4	1	0	0	74	64	17	8	1	20	66	47	59	2,601	1,712			
MAY	510	5	1	3	3	5	0	0	-	-	12	-	-	13	78	50	42	2,403	1,571			
JUN	998	5	2	7	4	1	0	1	95	90	14	6	1	16	74	44	50	3,148	1,714			
JUL	340	2	1	5	3	1	0	0	96	96	11	6	-	12	64	60	59	3,028	1,535			
AUG	438	6	1	2	4	0	0	0	-	-	8	-	-	31	63	32	58	2,749	1,680			
SEP	371	4	1	1	2	0	0	0	73	63	13	7	1	18	63	39	50	2,542	1,611			
OCT	831	8	1	0	2	0	1	0	80	75	12	3	1	13	78	78	36	3,847	1,914			
NOV	245	2	4	8	4	5	0	0	-	-	6	-	-	15	72	27	59	3,125	1,458			
DEC	1,267	1	1	0	2	0	0	0	126	89	9	1	-	58	91	56	17	2,994	1,566			
2014 TOTAL	9,795	54	22	42	40	13	1	1	698	598	179	43	4	243	850	596	502	33,803	18,938			
2015 JAN	101	2	3	2	3	0	0	0	76	64	15	2	1	38	76	35	58	2,439	1,228			
2015 TOTAL	101	2	3	2	3	0	0	0	76	64	15	2	1	38	76	35	58	2,439	1,228			

Abbreviation Ind = Individual, Blnkt = Blanket, Apps = Application for Hearing, NOAV = Notice of Alleged Violation, AOC = Administrative Order of Consent, OFV = Order Finding Violation, Cmplt = Completed, Comp = Completed