



TOP STORIES

◆ Commission Announces Improved Website

The Commission will roll out its new and improved website in mid-April 2015. For over a year, Staff has been working to provide a more accessible and intuitive website design. The new interface will feature a modern look and layout, which will enable users to easily navigate and access Commission data, maps and information.

A redesigned and up-to-date platform will enable Commission Staff to add new tools and data more elegantly and efficiently. The new website will also feature better search capability for content across the entire site and new downloadable data sets, which will be continuously added over the next few months.

While the interface has been redesigned, most of the tools embedded in the website—such as the database and COGIS—have not changed. These tools will retain their functionality, avoiding the need for current users to learn a new system. However, Staff does plan to update the database and other tools as the web upgrade project progresses. The public is welcome to check out the beta testing site at cogccuat.state.co.us.

◆ New Floodplain Rules Take Effect this Year and Next

On March 2, 2015, the Colorado Oil and Gas Conservation Commission unanimously approved new rules outlining requirements for facilities located within floodplains. The new rules implement recommendations in the COGCC's "Lessons Learned" report published after the Front Range floods of 2013. The rules will better protect oil and gas facilities subject to flooding and require more preparation from operators to reduce potential impacts. The new rules formalize "best management practices" when operating within a floodplain and require:

- All tanks, new and existing, to be surrounded by hardened berms made of steel instead of earthen barriers that can wash away in a flood;
- Critical equipment to be anchored according to an engineered anchoring plan so that equipment is more likely to resist flotation, collapse, lateral movement, or subsidence;
- The removal of existing pits used for exploration and product waste from within floodplains; and
- All new wells to be configured so operators can shut the well in remotely from outside the floodplain.

In addition, the new rules require operators, by April 1, 2016, to establish an inventory of wells and critical equipment located within a floodplain and to register them with the COGCC. Operators are also required to create a formal plan on how they will respond to a potential flood, making operators' and the COGCC's response to future floodplain events timely and efficient. Operators will have a central inventory of equipment located within a floodplain, allowing them to respond quickly pursuant to their flood response plans. This requirement will also allow the Commission to identify all equipment within a floodplain and take action to protect the public and the environment during flood events.

To determine whether a particular location is within a floodplain, operators must coordinate with relevant city, county, state and federal agencies. The COGCC does not designate floodplains and relies on these agencies to make such determinations.

The new rules are effective June 1, 2015 for new wells and equipment and April 1, 2016 for retrofitting of existing equipment.



◆ Operator Guidance and Industry Operations Meetings Aim at “Greater Compliance Through Clarity”

In an effort to improve communication and help facilitate compliance with COGCC Rules, expanded resources are being provided to operators online and through COGCC staff.

Staff recently added a new section to the COGCC website, entitled “Operator Guidance.” The public can find this section at the existing website under “Op Guidance” on the left toolbar. On the new website, “Operator Guidance” can be found by clicking on “Regulation” at the top of the page. This webpage provides guidance documents that explain both in summary and in detail numerous topics including GWA Wellbore Spacing Units, Form 2 and 2A Rejection Process, and Rules on Flowlines and Mechanical Integrity Testing.

In addition to the guidance documents, Staff will host Industry Operations Meetings on many of these same topics. Operators may attend in person at the Commission’s Denver office, or participate by phone. Upcoming meeting dates and topics include:

April 9	Rules 1101 and 1102: Flowlines
April 15	Rules 603.f and Rule 316C and Form 42: Field Operations Notice
April 21	Rules 319 and 326: Mechanical Integrity
April 28	Floodplain

◆ Local Government Liaison (LGL) Program

Local Government Liaisons (LGLs) Nancy Prince and Marc Morton are a direct link to help local governments and their constituents access information and find answers to questions and inquiries regarding oil and gas related issues in Colorado. LGLs work to assist, educate, and inform those interested in oil and gas in Colorado, and strive to increase communication and collaboration between local governments, operators, stakeholders, the public, and COGCC staff. LGLs are available upon request to local governments

and other groups to provide presentations specific to a particular group’s informational needs.

The Winter 2015 LGD Newsletter was published on February 25, 2015. This issue and all past issues are available on the cogcc.state.co.us website / Local Gov page.

The COGCC, through the LGLs, the Hearings and Regulatory Affairs Manager, and Kent Kuster (CDPHE Oil and Gas Liaison), offers periodic training to assist LGDs, local government staff, elected officials, and interested others in navigating COGCC rules, its website, and its information sources.

Training sessions were conducted on March 31 at COGCC offices in Denver and on April 6 at Aims Community College in Ft. Lupton. The proposed LGD training schedule for the remainder of 2015 follows. Each session begins at 9 am and ends at 3 pm. To register, or to get more information, send an email to marc.morton@state.co.us or nancy.prince@state.co.us.

May 5, Rifle
 June 9, Trinidad
 August 11, Durango
 September 22, Akron
 November 3, Weld County
 December 1, COGCC Denver office

The LGLs are also available to provide training sessions tailored to meet the needs of local jurisdictions or groups, as requested.

A list of the LGL outreach and public involvement activities conducted since the previous staff report is included in the latter half of the Public Outreach section below.

PUBLIC OUTREACH

➤ *Outreach by Director and other Staff Members*

- On March 6, Director Matt Lepore was a speaker at I-70 Corridor Regional Economic Advancement Partnership Day at the capitol.
- On March 10-12, members of the Field Inspection Unit attended the High Altitude Revegeta-



tion Committee and the Central Rockies Chapter of the Society for Ecological Restoration Workshop and Conference held in Ft Collins, CO. There was a session dedicated to Mining and Energy Development as well as other sessions on reclamation/restoration, invasive species, and reclamation/restoration of grassland and shrubland ecosystems. There were many attendees from Forest Service, BLM, Industry, Academia and Consulting. Denise Arthur Ph.D. from the COGCC Field inspection unit presented at the conference. Her presentation was titled "Reclamation Overview for the Oil and Gas Industry in Colorado, Challenges, and Successes."

- On March 12, Environmental Manager Greg Deranleau, with Supervisors Alex Fischer and John Axelson, presented to Colorado Department of Public Health and Environment's Water Quality Control Division staff and other CDPHE staff. The presentation provided an update of the HB98-181 annual report previously presented to the Water Quality Control Commission in January.
- On March 19 & 20, Director Lepore participated in an international dialogue on regulatory excellence hosted by the University of Pennsylvania Law School.
- On March 23, Director Lepore was a Guest Lecturer at a DU Law Class, Oil & Gas Presentation.

➤ *Outreach by LGLs*

- Nancy Prince and other COGCC staff, including Diana Burn, Chuck Browning, Jennifer Bock, and Denise Arthur, participated in writing and editing the Colorado Reader April edition: Oil and Gas in Colorado, a publication of the Colorado Foundation for Agriculture.
- On February 19, Marc Morton facilitated the quarterly Gas and Oil and Regulatory Team (GORT) meeting in Durango, CO. COGCC presenters included Director Matt Lepore, Deputy Director Dave Kulmann, and Environmental Protection Specialist Jim Hughes.
- On February 20, Marc Morton (Local Government Liaison) and Steve Labowskie (Southwest

Colorado Field Inspection Supervisor) traveled to Cortez and met with Leann Milligan (Montezuma County Planning Director) and Paul Hollar (Montezuma County Emergency Manager) to discuss content, logistics, and format of an upcoming informational public meeting scheduled for March 26, 2015. Kent Kuster (CDPHE Oil and Gas Liaison) joined the meeting via teleconference. The March 26 meeting was subsequently postponed.

- On February 24, at the request of the Colorado State University (CSU) Extension program, Marc Morton presented a webinar lecture to graduate students in the CSU Extension Energy Master program titled "Overview of Oil and Gas in Colorado."
- On March 4, Stuart Ellsworth (Engineering Manager), Bob Koehler (Underground Injection Control Lead), and Marc Morton attended a public meeting in Battlement Mesa (Garfield County) hosted by URSA (operator) and Garfield County in regards to URSA's planned injection well and drilling program in the area.
- On March 5, Marc Morton coordinated the Northwest Colorado Oil and Gas Forum meeting in Rifle, CO. COGCC Director Matt Lepore gave an update regarding recommendations issued by the Oil and Gas Task Force. COGCC Engineering Manager Stuart Ellsworth provided a presentation regarding Colorado's underground injection well program. Marc Morton provided presentations on current oil and gas statistics, and on COGCC's recently revised complaint process.
- On March 5, Marc Morton traveled to Rifle, CO and attended the monthly Energy Advisory Board (EAB) meeting hosted by Garfield County and provided an update on the 2014-2015 Oil and Gas Task Force recommendations.
- On March 10, Mike Leonard (Quality Assurance Professional) and Marc Morton attended an Adams County Local Emergency Planning Committee (LEPC) meeting in Brighton and took part in a tabletop exercise to discuss emergency response coordination.
- On March 10, Nancy Prince participated in the



annual Colorado Source Water Protection Plan conference in Golden.

- On March 31, Marc Morton, Nancy Prince, and Kent Kuster provided a 5-hour Local Government Designee (LGD) training to approximately 25 individuals at the COGCC office in Denver.

REGIONAL ACTIVITIES

➤ *Northwest Colorado*

◆ Northwest Colorado Oil and Gas Forum

Remaining Forum meetings for 2015 are scheduled for June 4, September 3, and December 3. All meetings will be held in Rifle at Colorado Mountain College from 10:00 a.m. to noon.

All parties wishing to be placed on the next meeting agenda or added to the distribution list for announcements should contact Marc Morton at 303-894-2100, ext. 5132 (direct) , 720-415-4959 (mobile) or by email: marc.morton@state.co.us.

◆ Piceance Basin Bradenhead Monitoring Area

COGCC Staff is in the process of reviewing annual reports submitted by operators pursuant to the July 8, 2010 “Notice to Operators Drilling Wells in the Buzzard, Mamm Creek, and Rulison Fields, Garfield County and Mesa County, Procedures and Submittal Requirements for Compliance with COGCC Order Nos. 1-107, 139-56, 191-22, and 369-2.”

◆ Project Rulison

A meeting was held on March 4, 2015 at the Department of Energy (DOE) Grand Junction Legacy Management office to discuss ongoing monitoring associated with natural gas drilling and production near the Rulison site. The meeting included Commission staff members Alex Fischer (by phone) and Stan Spencer plus consultant, Robert Morris, DOE Grand Junction Legacy Management (LM), the Colorado Department of Public Health and Environment Radioactive Material Unit leader, and Caerus Oil and Gas, LLC.

Topics included:

- DOE update on status, and current and future monitoring of Rulison
- Revision of Rulison sampling and analysis plan
- DOE update on status, and current and future monitoring of Rio Blanco
- Revision of Rio Blanco Sampling and Analysis Plan
- Management of E&P waste associated with uranium mill tailings.

The close of 2015 marks the end of the five-year period of DOE quarterly monitoring. No Rulison-related radionuclides have been detected. At the end of 2015, the monitoring program is to be modified as appropriate. DOE has published risk assessment and groundwater models, which show that institutional controls on the small parcel below ground zero are adequate. DOE indicated that they may modify the sampling plan for Rulison sampling points beginning in 2016.

The Rulison Sampling and Analysis Plan (RSAP), which O&G operators in the buffer zone follow, is also due for revision. Operators have the responsibility for revision of the RSAP and a plan to accomplish this will be established. Modeling and sampling have demonstrated that the risk of Rulison-related radionuclides being transported more than a mile from sub-surface ground zero is minute. The revised RSAP should reflect this information.

It was also determined, that in the extremely unlikely event that an elevated concentration of Rulison-related radionuclides is detected by monitoring, public announcements will be coordinated among DOE-LM, COGCC staff, and CDPHE Radiological Control staff.

The email for Project Rulison submittals is:

DNR_rulison.submittal@state.co.us

◆ Project Rio Blanco

The email for Project Rio Blanco submittals is:

DNR_rioblanco.submittal@state.co.us



➤ Southwest Colorado

◆ Gas and Oil Regulatory Team (GORT) Meetings

Remaining meetings for 2015 are scheduled for May 14, August 20, and November 19. All meetings will be held at the La Plata County Fairgrounds, Animas Room, Durango, from 8:30 a.m. to noon.

Any party who wishes to be placed on the next meeting agenda should contact Marc Morton at 303-894-2100, ext. 5132 (direct) , 720-415-4959 (mobile) or by email: marc.morton@state.co.us.

VARIANCES

◆ Linn Operating, Inc.

Linn Operating, Inc. (“Linn”) submitted surface casing cement reports for 4 wells (School House Point #OM1A A21 696 (“01A Well”), School House Point #OM01D A21 696 (“01D Well”), School House Point #OM02A A21 696 (“02A Well”), and School House Point #OM13B A21 696 (“13B Well”). COGCC Staff’s evaluation concluded that gaps in cement coverage along the surface casing strings were present. Staff required Linn to run cement bond logs (CBLs) on the surface strings. The CBLs confirmed gaps in cement coverage from 1050 to 125 feet in the 01A Well, 780 to 110 feet in the 01D Well, 950 to 850 feet in the 02A Well, and 1250 to 75 feet in the 013B Well. Based on Linn’s observations while drilling the surface holes, neither gas flows nor water flows were detected and, therefore, crossflow of fluids behind the surface casings is not expected in the poorly-cemented intervals. Linn plans to cement the production casing strings from total depth to 4,500 feet for isolation of producing zones and to provide remedial cement from 1,500 feet to surface in the production casing. Director Lepore granted Linn Rule 502.b.(1) Variances (Form 4, Sundry Notice Documents #400789042 (01A Well), #400789069 (01D Well), #400789075 (02A Well), and #400789080 (13B Well) for the cement requirements of Rule 317.i. Linn contends that the requested variances will not violate the basic intent of the Oil and Gas Conservation Act because environmental protection is provided with seals at the bottom and top

of the surface casings, fluid crossflow is not expected behind the surface casings, the production casing top of cement have been raised to reduce potential annular pressures at the surface casing shoes, and the bradenhead annulus of each well will be cemented from 1,500 feet to surface. There are no permitted water wells within a one-mile radius of the surface locations.

◆ Genesis Gas & Oil Colorado LLC

On March 20, 2015, Director Lepore granted a Rule 502.b limited variance to Genesis Gas & Oil Colorado LLC approving an extension through July 19th, 2015 in order for Genesis to complete required Mechanical Integrity Tests (“MITs”) for six wells in Rio Blanco County: the Fletcher Gulch 3-13, Fletcher Gulch 3-22, Fletcher Gulch 34-41, Fletcher Gulch 4-13, Calamity Ridge II Unit #14-31, and the Calamity Ridge II Unit #14-33. The variance was granted due to the Bureau of Land Management’s Winter Habitat Timing Limitations currently impacting Genesis’ ability to access the subject Wells.

PERMITS ISSUED UNDER SPECIAL CIRCUMSTANCES (Previously included with Variances)

◆ Verdad Oil & Gas Corp.

On March 5, 2015, per Rule 303.i.(1), Director Lepore issued the permit for the Verdad Oil & Gas Corp. CERVI 03N-63W-26-1N well (API # 123-41222) and location (Location ID # 441015) prior to the end of the 20-day comment period. The operator’s initial application for a well located in the SWSE SECTION 26-T3N-R63W in Weld County was within a wetland. At Staff’s direction, Verdad withdrew the first application and submitted a new application for the well to be located outside the wetlands. Due to lease expirations, the operator requested issuance per Rule 303.i.(1). In accordance with COGCC procedures, Verdad obtained waivers of the 20-day comment period from the Surface Owner and LGD.

ADMINISTRATION/ORGANIZATION/OTHER

◆ New Hearings and Regulatory Affairs Manager - Julie Murphy

Julie Murphy has been named Hearings and Regu-



latory Affairs Manager, effective April 6th. Ms. Murphy previously served as an Assistant Attorney General and worked with the Commission during the enforcement and penalty rule making and various enforcement matters. She holds a J.D., as well as Master Degrees in both Environmental Law and Earth and Environmental Resource Management. We are very pleased to welcome Ms. Murphy to the management team.

◆ New Imaging Systems Administrator

Allison Rothermel is the new Imaging Systems Administrator, more commonly known within the agency as the “Scanner”. Allison comes to us with nine years of experience in the banking industry, with the last three years working in image management. She has a bachelor’s degree in Sociology from Rogers State University in Oklahoma. Welcome Allison!

◆ New Records Administration Tech

Darla Geismausaddle joined the COGCC as the new Records Administration Tech in December. Her position includes the reception duties in the public room. Welcome Darla!

An organizational chart can be found on Pages 11-14. For contact information, please go to our homepage and find “Staff Contact Information.”

◆ Plugging and Reclaiming Abandoned Wells (PRAW) - Project Updates

The **DB Orphan Blair #1 Project** is located on the northwest edge of DeBeque in Mesa County. The well was found to be leaking water and was subsequently dug out and sealed to stop the flow. Lab analysis of a water sample indicates salt brine, which is indicative of oil and gas geologic sources. Based on old USGS reports and prior experience in the area, the COGCC believes the well was likely drilled around 1902. This plug and abandonment project was completed in mid-November of 2014 and, due to unforeseen circumstances, change orders increased the cost by \$33,374, for a total of \$98,443. During March, the landowner requested & received partial preliminary reclamation

work that included fence repairs and the installation of culvert in the adjacent ditch for a total cost of \$3,276.

The **Pasture #1 Project** in Mesa County involved the final abandonment of this well, including cutting the casing off three feet below ground level and installing a well marker and sign. Tasks were completed in October, at a final cost of \$1,360.

The **Flessner #13 Project** has previously been reported as a dry and abandoned well located in Washington County about 23 miles south of Ft. Morgan and Brush. It was drilled in 1955 to a depth of 5,460 feet (J-Sand Formation) and reportedly plugged at the same time by Monsanto Chemical Company. A farmer complained that the well had never been plugged and abandoned and is currently obstructing farming operations. The project was competitively bid and awarded to the winning contractor in the amount of \$47,700. This well was successfully plugged in January for less than the bid amount. Total costs were \$43,560.

The **Ruth #1 BOND CLAIM Project** is a well site located in Adams County, which will require the plugging of one well, removal and salvaging of production equipment, and reclamation of a pit and the well site in general. To date, only the soil analysis for the pit has been completed in the amount of \$871. Final plans for the rest of the work are under review and will likely take place after July 1st.

The **Ackerman #1 Project** is a dry and abandoned well located in Larimer County about seven miles northwest of Wellington. It was drilled in 1963 to a depth of 5,745 feet (Dakota formation) and plugged in the same year by Alpha-Omega Exploration Company.

In October, COGCC Environmental Staff conducted a site inspection and collected a produced water sample. Because the well had ceased flowing at the time, a temporary pumping system was rented to collect the samples. Dissolved methane was detected in the sample and was determined to be biogenic, or bacteria generated, as opposed to the deeper strata thermogenic gas produced commercially. To eliminate biogenic gas, this well can be chlorinated to kill the bacteria. Analytical results indicate the water is fresh (1800 mg/L TDS) with no impacts to the surrounding grassland. This well



has been deemed plugged back and reclassified as a fresh water well. It is being placed under the regulatory authority of the Colorado Division of Water Resources (CDWR).

The **Gentry Project & the Gentry-West Rangely Subdivision Projects**, located in Rio Blanco County, includes 10 sites with eight wells, two pits and a tank demolition and is located about one-half mile west of Rangely and one and a half miles south of State Highway 64. The surface owner brought the matter to the attention of the COGCC. Designs for the final plugging procedures and bidding documents are currently being prepared with plans to put the project out to bid in early March with actual plugging taking place this spring. The landowner/developer has recently indicated an interest in playing a part in the reclamation. The estimated cost for the Gentry PA is \$59,700 and the Gentry West Rangely Subdivision environmental remediation is \$25,096 for a total estimated cost of \$84,796. The plugging portion has been put out to bid with plans of completing the work by June 1st. A contractor has been selected for the environmental remediation and work is scheduled to be done by June 1st.

The **Wallace Oil and Gas BOND CLAIM Project** is located in far southeast Colorado in Baca County, about fifteen miles southeast of the town of Walsh. This project will include the salvaging of all miscellaneous production equipment and plugging three individual wells. The total cost is estimated at \$91,800, of which \$15,000 will come from the bond claim. The PA portion of the project has been put out to bid with plans to have the work completed by June 1st.

The **Multiple Sites TBD Project** is a reclamation project with multiple sites "to be determined" and was added in January to better balance plugging with reclamation efforts. The new and revised figure for this project is \$68,340.

The **Redwine Resources-Nucla Unit 1-32 BOND Project** is located in Montrose County or about 30 miles SW of Montrose, CO. It includes a temporarily abandoned well and a lined earthen drilling mud reserve pit. This well was vertically drilled in 2008 to a total depth of 9199' or to the Cambrian Formation. Recently, pit & soil samples were taken to be analyzed in order to provide

design parameters for closing the pit. The well will be plugged first for an estimated total cost of \$50,725 of which \$30,000 will be funded by the bond claim. Environmental remediation and reclamation will occur later. The plugging portion of the project has been put out to bid with work to be done by June 1st.

The **Noel Reynolds Ester #1 BOND CLAIM Project** is a temporarily abandoned well located in La Plata County about 18 miles southwest of Durango and six miles from the New Mexico state line. This project will include the removal of miscellaneous debris and unused equipment and the plugging of the well. The total cost is estimated at \$50,000, of which \$30,000 will come from the bond claim. There has been some interest recently expressed by another operator to acquire this well pending lease reviews and negotiations. The future of this project is uncertain at this time, and will likely be moved to another year.

The **Fremont Co-Group #3 Five Wells Project** includes five wells that need to be re-plugged and abandoned. These orphan wells are located in the Florence-Cañon City Field in Fremont County and were discovered during routine inspections. It is believed they were drilled in the early 1900s. None of these wells have an operator of record or any bond posted. The estimated cost to plug and abandon these wells is \$50,000. This project has been moved to another year.

The **Chapman #1 Project** is a dry and abandoned well located in Baca County about six miles southeast of Walsh. It was drilled in 1960 to a depth of 5,576 feet (St. Louis Formation) and plugged at the same time by Falcon Seaboard Drilling Company. The COGCC inspection report indicates four feet of casing protruding above ground, and bubbling, churning water could be heard from it. The plan is to re-plug the well at a revised estimated cost of \$46,450. It has been placed out to bid, with work to be completed by June 1st.

The **Stewart #1 Project** is a dry and abandoned well located in La Plata County about 26 miles southwest of Durango and about one mile from the New Mexico state line. It was drilled in 1949 to a depth of 3,314 feet and reported plugged at the same time by Ocean Oil Company. The well,



which is situated in a ravine with tight quarters, making access difficult, was found to be leaking fairly fresh water.

No samples were taken at the time of inspection, but it was noted that the foliage was quite healthy, and there were no dry powdery residues, which are usually indicative of salt or calcium carbonate. The plan is to re-enter the well and re-plug it at an estimated cost of \$80,000. This project has been moved to another year.

Page 12 contains a spreadsheet listing PRAW projects that are either scheduled, in process or completed, as of March 26, 2015.

◆ Colorado Oil and Gas Information System (COGIS) Projects, Updates and Changes

Electronic Form Submissions (eForm)

The COGCC uses 41 types of forms to authorize oil and gas operations, to inspect and monitor ongoing operations, and to receive reports of operations. Of those 41 forms, 15 forms are currently available for electronic submittal through the eForms system.

Forms currently available through eForms:

- Form 2 - Application for Permit to Drill
- Form 2A - Oil and Gas Location Assessment
- Form 4 - Sundry Notice
- Form 5 - Drilling Completion Report
- Form 5A - Completed Interval Report
- Form 6 - Well Abandonment Report
- Form 10 - Certification of Clearance/ Change of Operator
- Form 15 - Earthen Pit Report/Permit
- Form 17 - Bradenhead Test Report
- Form 19 - Spill/Release Report
- Form 21 - Mechanical Integrity Test
- Form 22 - Accident Report
- Form 23 - Well Control Report
- Form 41 - Trade Secret Claim of Entitlement
- Form 42 - Notice of Notification (Notice of Hydraulic Fracturing)

To date in 2015, more than 98% of the forms available in eForms were submitted electronically by industry. There are 520 operators using eForm and 2,058 individual users. For any operator not currently enrolled in eForms, instructions for

starting the process can be found on the COGCC website at

<http://cogcc.state.co.us/Announcements/COUAINformation.pdf>.

The development team continues to work on the eForm conversion of existing forms. Currently, seven types of forms are in various stages of development: Forms 7, 14, 14A, 26, 31, 33 and NOAV. In addition, the development team updates eForms as required by rule revisions.

Applications and Location Assessments

The public can make comments on all submitted Drilling Permit Applications (Form 2s) and Location Assessments (Form 2As) through the eForm system. Simply go to the COGCC website and click on the menu option “Permits” or

<http://cogcc.state.co.us/COGIS/DrillingPermits.asp>.

On the COGIS-Permits page, three search options are available. The first option, “All Pending Permit Applications,” is used for public comments. When the results are displayed for “Pending Applications,” the public can click on the document number, which logs the user to the eForms application. Once the page is displayed with the selected document, the user can select the Comment button to make a comment on that particular form.

◆ May 2015 Hearing Docket

The docket for the May 2015 hearing will be available shortly after the April hearing. Hearing dockets are available on our website by clicking on “Hearings.” Links to the notices and hearing applications are available from the Docket Number and Applicant, respectively. To sign up for e-mail notification of hearing notices and applications, please see the announcement and instructions on the homepage of the website:

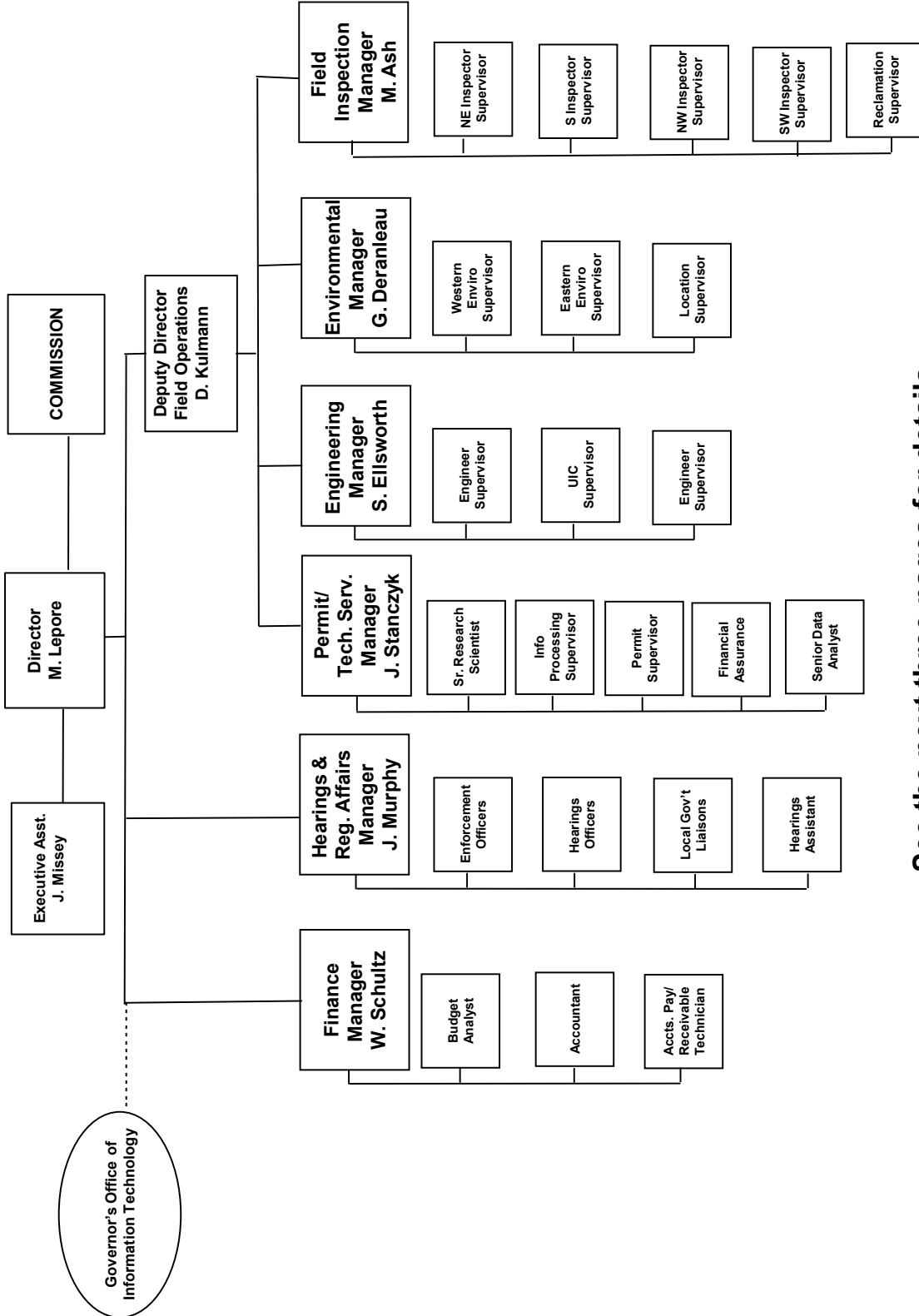
<http://cogcc.state.co.us>.



Oil and Gas Staff Report

April 13, 2015

COLORADO OIL & GAS CONSERVATION COMMISSION

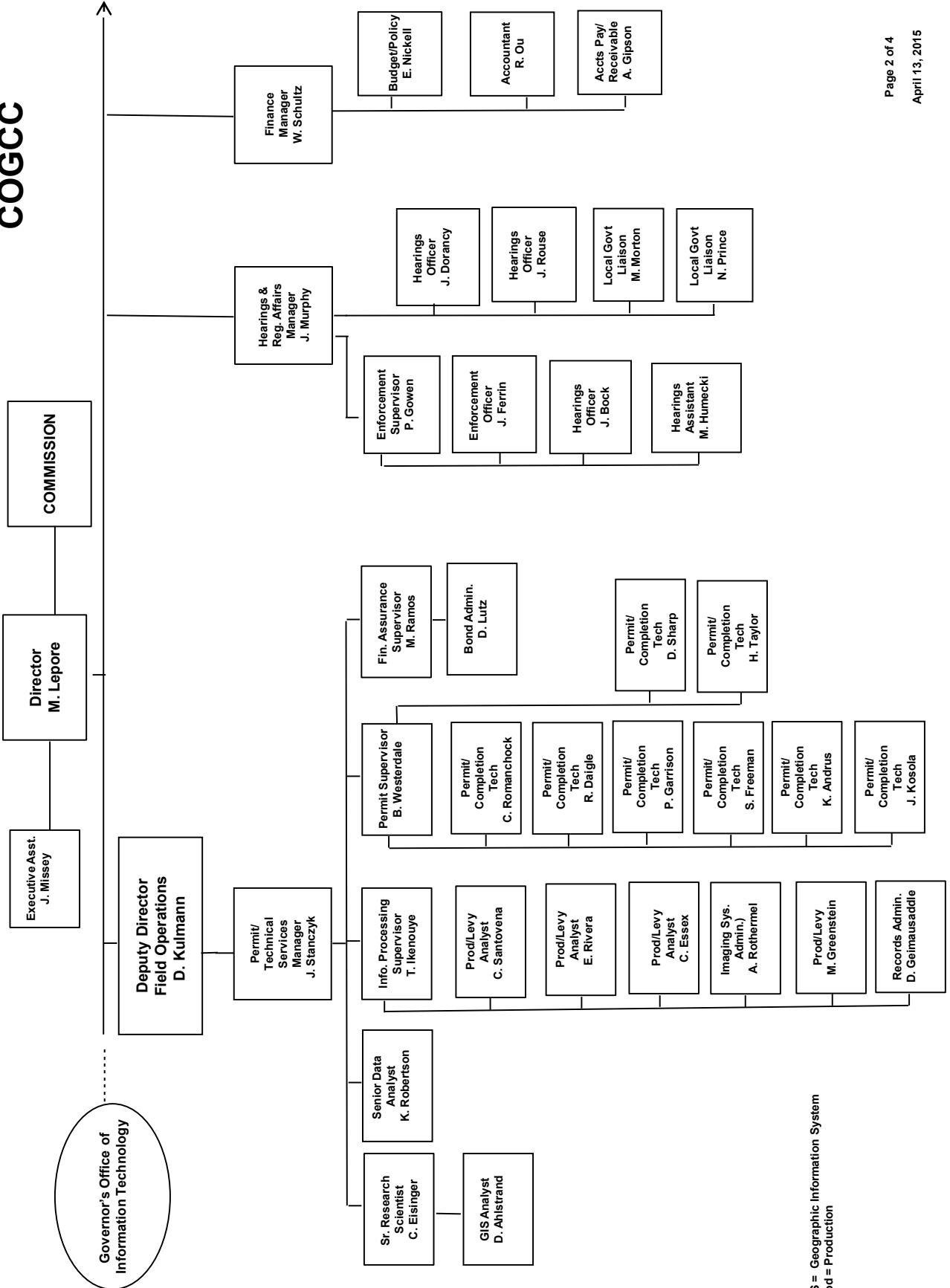


Governor's Office of Information Technology

See the next three pages for details

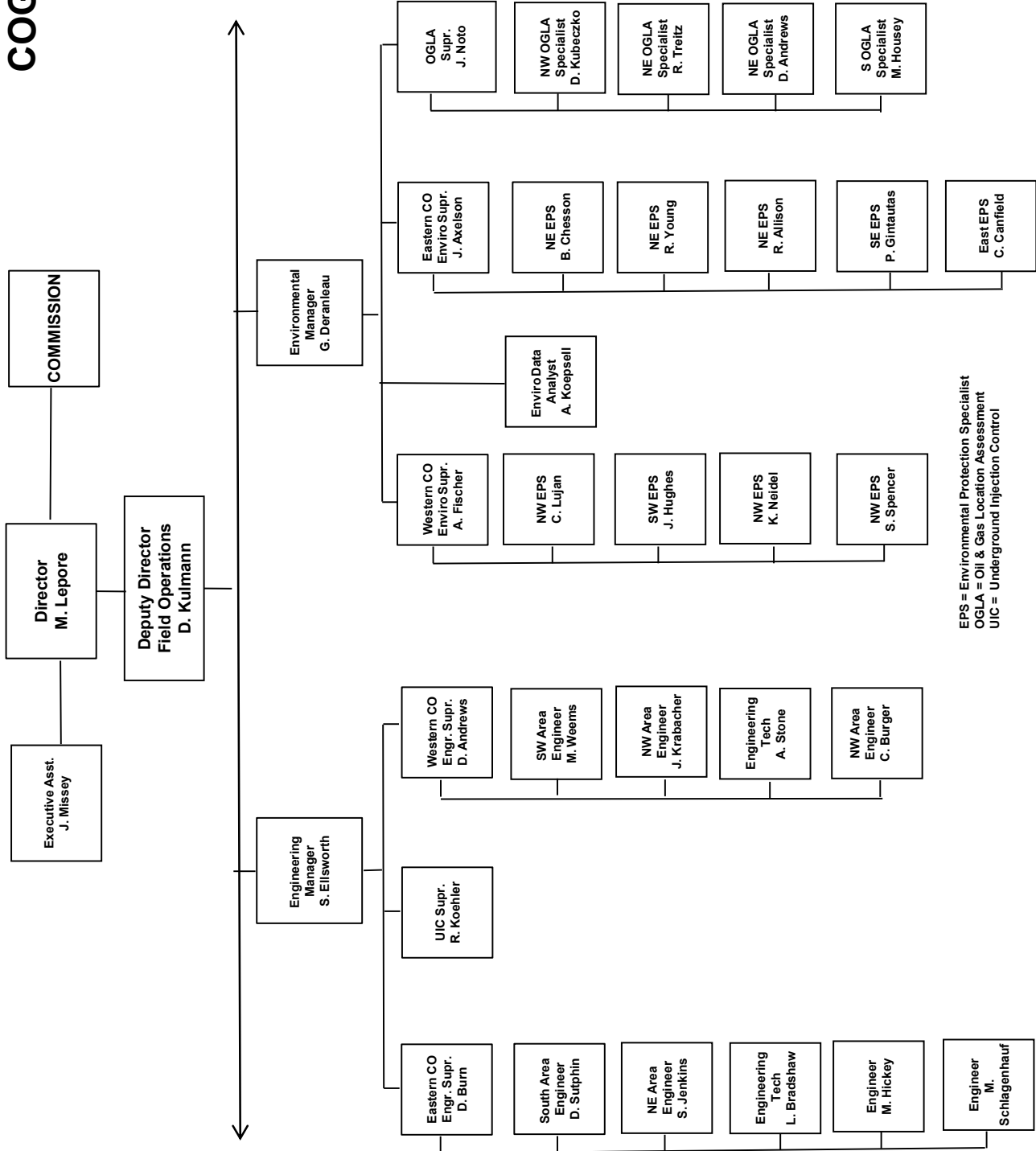


COGCC





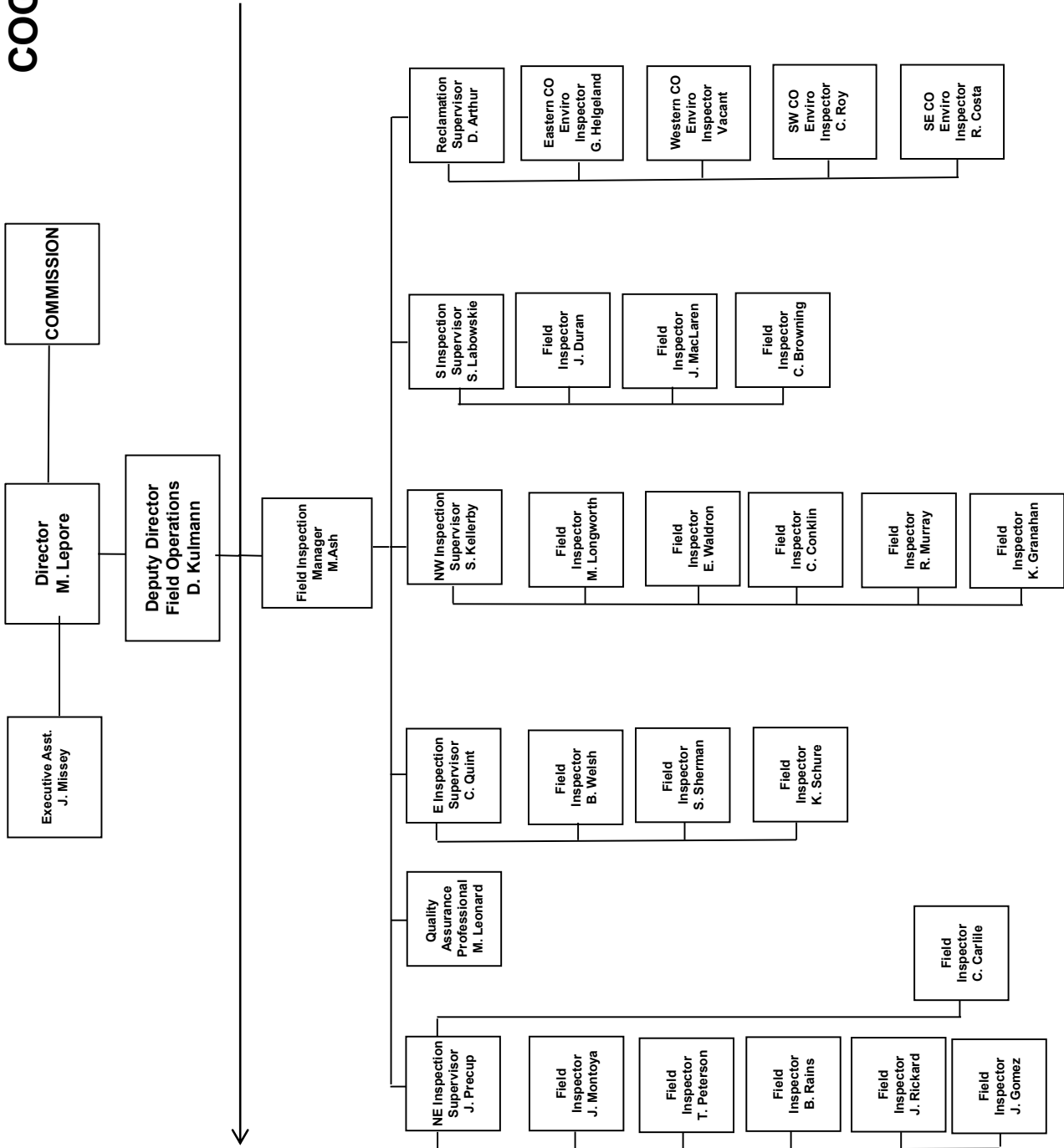
COGCC



EPS = Environmental Protection Specialist
 OGLA = Oil & Gas Location Assessment
 UIC = Underground Injection Control



COGCC





Oil and Gas Staff Report

April 13, 2015

13

PLUGGING AND RECLAIMING ABANDONED WELLS FOR ORPHANED LOCATIONS FISCAL YEAR 2014-15

County	Type	Project Name	Acct Code	PLANNED ESTIMATED TOTAL PROJECT COST				FY 2014-15 YTD EXPENDITURES				Description
				Bond	PRAW	EMGY	Totals	Bond	PRAW	EMGY	Totals	
TBD	RECL	Multiple Sites TBD	TBD	\$0	\$68,340	\$0	\$68,340					Multiple site reclamations TBD as per 2015 01 08 MTG
TOTALS =>				\$0	\$68,340	\$0	\$68,340					

County	Type	Project Name	Acct Code	IN PROGRESS ESTIMATED TOTAL PROJECT COST				FY 2014-15 YTD EXPENDITURES				Description
				Bond	PRAW	EMGY	Totals	Bond	PRAW	EMGY	Totals	
Montrose	PA	Redwine Resources-Nucla Unit 1-32 BOND	TBD	\$30,000	\$20,725	\$0	\$50,725					Response to Bankruptcy - PA prior to pit closure & reclamation
Rio Blanco	PA	Gentry	GENT	\$0	\$59,700	\$0	\$59,700					Plug and abandon five (5) wells + three (3) wells only to include cutting off casings & installing PA Markers = a grand total of eight (8) wells.
Baca	PA	Chapman #1	CHAP	\$0	\$46,450	\$0	\$46,450					Open casing 4' above GL. Heard "gas bubbling through liquid down hole" during 1998 inspection. Tagged bottom at 189' during 2007 inspection; no evidence of leaking.
Baca	PA	Wallace Oil and Gas BOND a) Newman 1-7 (WAL1) b) Watkins 1 (WAL2) c) Hume 17-1 (WAL3)	WAL1 WAL2 WAL3	\$15,000	\$76,800	\$0	\$91,800					BONDS claimed in 2004; three (3) wells to plug
Rio Blanco	ENV	Gentry-West Rangely Subdivision	GENT	\$0	\$25,096	\$0	\$25,096					1-Pit and 1-tank battery A) Sample and test (Table 910-1) B) Dispose contaminated soil C) Backfill and compact D) Demolish Tank and haul off
TOTALS =>				\$45,000	\$228,771	\$0	\$273,771	\$0	\$0	\$0	\$0	

County	Type	Project Name	Acct Code	COMPLETED ESTIMATED TOTAL PROJECT COST				FY 2014-15 YTD EXPENDITURES				Description
				Bond	PRAW	EMGY	Totals	Bond	PRAW	EMGY	Totals	
Mesa	PA	DB Orphan Blair #1	DEB1	\$0	\$65,069	\$0	\$65,069	\$0	\$98,443	\$0	\$98,443	Have capped well and stopped water flow; Re-enter; PA Leak has stopped; have cut off casing, installed PA marker and repaired the gate to the location.
Mesa	PA	Pasture #1	HSTD	\$0	\$5,000	\$0	\$5,000	\$0	\$1,360	\$0	\$1,360	DA 1955; Surf owner/farmer complaint; located in a cultivated farm and impeding farming operations.
Washington	PA	Flessner #13	FLES	\$0	\$47,700	\$0	\$47,700	\$0	\$43,560		\$43,560	EPS soil analysis completed for the pit at the CTB
Adams	ENV	Ruth #1	RUTH	\$5,000	\$0	\$0	\$5,000	\$871	\$0	\$0	\$871	Deemed a fresh water well and dropped from the program
Larimer	ENV	Akerman #1	AKER	\$0	\$0	\$0	\$0	\$0	\$1,250	\$0	\$1,250	Fence repairs and installation of a culvert over the ditch
Mesa	RECL	DB Orphan Blair #1	DEB1	\$0	\$3,276	\$0	\$3,276	\$0	\$3,276	\$0	\$3,276	
TOTALS =>				\$5,000	\$121,045	\$0	\$126,045	\$871	\$147,889	\$0	\$148,760	

GRAND TOTALS	ESTIMATED TOTAL PROJECT COSTS				FY 2014-15 YTD EXPENDITURES			
	Bond	PRAW	EMGY	Totals	Bond	PRAW	EMGY	Totals
	\$50,000	\$418,156	\$0	\$468,156	\$871	\$147,889	\$0	\$148,760

ABBREVIATIONS

TYPE	PA=plug abandon RECL=reclamation ENV=enviro remediation
EMGY	Funding from the Emergency Response (Budget Line Item)
PRAW	Funding from the Plug Recl Abandon Well (Budget Line Item)
TBD	To be determined

SCOREBOARD (PRAW FUNDING ONLY)

\$228,771	In Progress Estimated Totals
\$0	In Progress Spent to Date Totals
\$228,771	In Progress Remaining Totals
\$147,889	Completed to Date Totals
\$376,660	Sum of (In Progress Remaining Totals) and (Completed to Date Totals)
\$68,340	Planned
\$445,000	Total Expenditures
\$445,000	Annual Budget Appropriation
\$0	Projected End of Year Balance



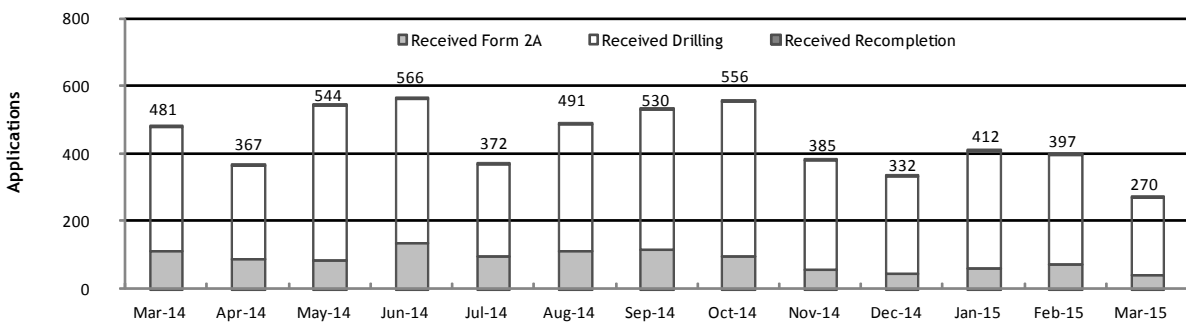
Monthly Permit Activity as of April 1, 2015

Form/Month	Backlog	Received	Approved	Withdrawn	Rejected	Incomplete ¹	In-Process	Remaining ²
Form2A								
Mar-14	204	110	88	4	0	48	174	222
Apr-14	222	89	99	18	0	25	169	194
May-14	194	83	94	7	0	26	150	176
Jun-14	176	134	92	3	0	30	185	215
Jul-14	215	97	126	3	0	28	155	183
Aug-14	183	111	87	4	0	36	167	203
Sep-14	203	116	81	3	0	47	188	235
Oct-14	235	94	109	6	0	74	140	214
Nov-14	214	54	103	6	0	46	113	159
Dec-14	159	45	99	3	0	39	63	102
Jan-15	102	60	43	3	0	23	93	116
Feb-15	116	71	28	0	0	35	124	159
Mar-15	159	38	70	2	0	30	95	125
Drilling								
Mar-14	679	367	329	13	0	103	601	704
Apr-14	704	276	317	16	0	63	584	647
May-14	647	459	383	16	0	53	654	707
Jun-14	707	429	377	8	0	62	689	751
Jul-14	751	272	446	2	0	65	510	575
Aug-14	575	376	259	24	0	90	578	668
Sep-14	668	412	304	21	0	109	646	755
Oct-14	755	459	370	10	0	137	697	834
Nov-14	834	326	479	19	0	128	534	662
Dec-14	662	286	397	10	4	115	422	537
Jan-15	537	349	316	2	0	119	449	568
Feb-15	568	323	161	21	0	143	566	709
Mar-15	709	231	294	14	0	226	406	632
Recompletion								
Mar-14	6	4	6	0	0	0	4	4
Apr-14	4	2	3	0	0	1	2	3
May-14	3	2	2	0	0	1	2	3
Jun-14	3	3	0	0	0	1	5	6
Jul-14	6	3	5	0	0	0	4	4
Aug-14	4	4	3	0	0	0	5	5
Sep-14	5	2	3	0	0	1	3	4
Oct-14	4	3	2	0	0	2	3	5
Nov-14	5	5	2	0	0	1	7	8
Dec-14	8	1	2	1	0	2	4	6
Jan-15	6	3	1	0	0	3	5	8
Feb-15	8	3	2	0	0	3	6	9
Mar-15	9	1	6	0	0	1	3	4

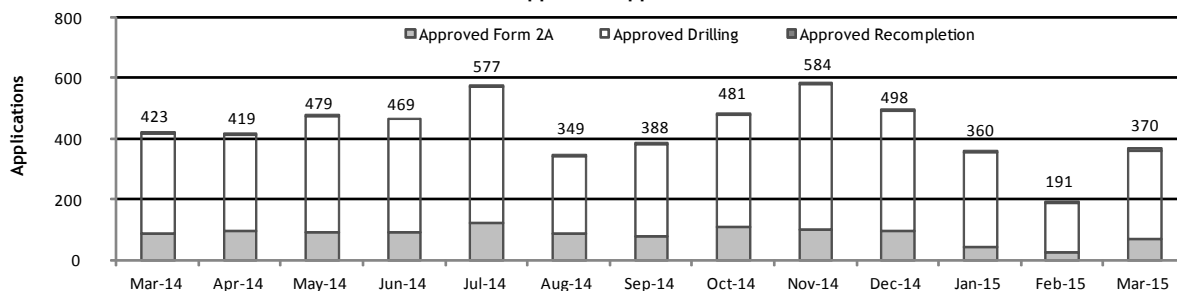
¹Incomplete are permits that have missing or inaccurate data and cannot be approved.

²Backlog = Incomplete + In-process = Remaining permits from previous month.

Received Applications



Approved Applications





Oil and Gas Staff Report

April 13, 2015

15

Status of Permit Applications Filed By Month as of April 1, 2015

Form 2A Location Assessment

Year	Month	Received	Approved	Withdrawn	In Process	Percent In Process	Median Days to Process	Less Than 30 Days	30 to 49 Days	Greater Than 50 Days
2011	TOTAL	2,391	2,298	93	0	0%		1,416	620	262
2012	TOTAL	1,359	1,291	68	0	0%		706	378	207
2013	TOTAL	1,281	1,200	78	3	0%		369	433	398
2014	JAN	85	82	3	0	0%	54	12	36	34
	FEB	88	86	2	0	0%	55	11	36	39
	MAR	113	108	5	0	0%	47	30	42	36
	APR	80	73	7	0	0%	45	18	35	20
	MAY	92	88	4	0	0%	52	13	34	41
	JUN	134	130	3	1	1%	62	36	54	40
	JUL	100	95	4	1	1%	41	37	38	20
	AUG	102	97	3	2	2%	48	33	26	38
	SEP	118	113	5	0	0%	47	29	45	39
	OCT	94	86	6	2	2%	38	34	35	17
	NOV	65	62	0	3	5%	40	20	27	15
	DEC	45	40	0	5	11%	45	6	21	13
2014	TOTAL	1,116	1,060	42	14	1%		279	429	352
2015	JAN	49	42	1	6	12%	48	6	15	21
	FEB	70	28	1	41	59%	39	5	15	8
	MAR	55	5	0	50	91%	20	5	0	0
2015	TOTAL	174	75	2	97	56%		16	30	29

Form 2 Application For Permit to Drill (APDs)

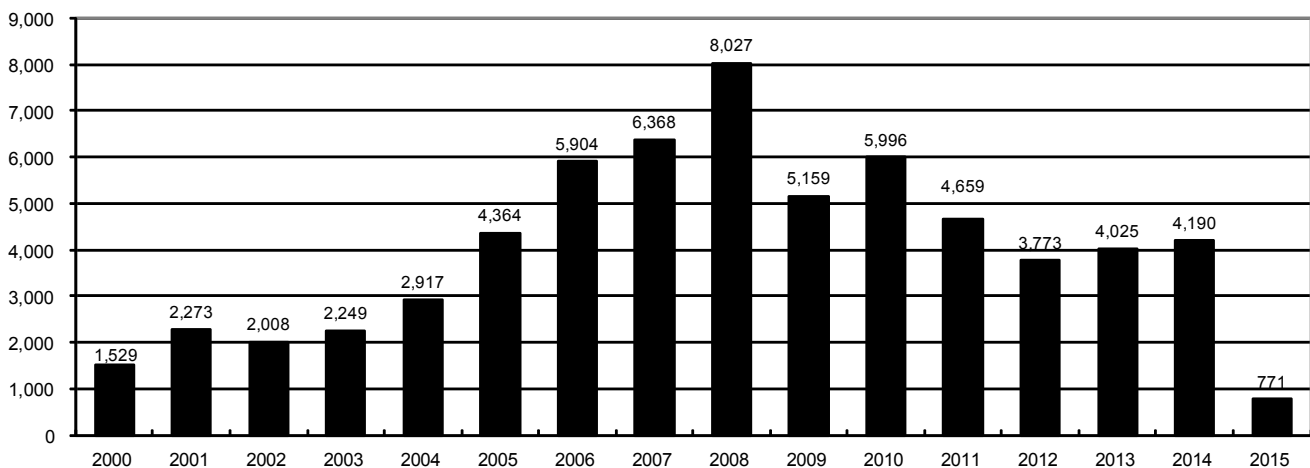
Year	Month	Received	Approved	Withdrawn	In Process	Percent In Process	Median Days to Process	Less Than 30 Days	30 to 49 Days	Greater Than 50 Days
2011	TOTAL	4,691	4,557	132	0	0%		2,723	1,565	587
2012	TOTAL	3,955	3,816	139	0	0%		1,971	1,393	602
2013	TOTAL	4,550	4,306	235	3	0%		1,046	1,626	1,712
2014	JAN	261	256	5	0	0%	57	35	117	108
	FEB	298	285	13	0	0%	58	37	94	159
	MAR	359	351	8	0	0%	52	50	133	173
	APR	223	213	10	0	0%	47	20	121	74
	MAY	501	498	3	0	0%	71	40	155	305
	JUN	438	400	37	1	0%	62	111	138	154
	JUL	287	273	12	2	1%	47	62	119	94
	AUG	350	332	4	14	4%	57	61	126	149
	SEP	413	375	29	9	2%	51	62	150	164
	OCT	441	407	3	31	7%	40	129	199	81
	NOV	374	345	3	26	7%	48	54	144	152
	DEC	281	245	0	36	13%	44	28	133	84
2014	TOTAL	4,226	3,980	127	119	3%		689	1,629	1,697
2015	JAN	291	256	1	34	12%	49	50	60	149
	FEB	294	92	6	196	67%	39	24	44	26
	MAR	306	20	2	284	93%	28	9	12	0
2015	TOTAL	585	348	7	230	39%		74	104	175



Annual Drilling Permits by County as of April 1, 2015

County	2000	2001	2002	2003	2004	2005	2006	2007	2008	2009	2010	2011	2012	2013	2014	2015
ADAMS	38	28	9	26	39	34	37	89	51	35	21	8	40	40	51	4
ARAPAHOE	0	2	1	2	5	7	11	10	10	10	8	23	35	23	34	5
ARCHULETA	7	9	6	10	8	13	14	26	47	11	18	12	5	4	3	1
BACA	22	6	2	3	7	8	2	11	13	3	4	5	3	1	1	
BENT	2				5	3	8	1	1		5		2	1		
BOULDER	1	5	6	7	17	13	21	37	32	35	24	30	22			
BROOMFIELD			2	7		1	1		2	33	28	11	36		31	
CHEYENNE	3	3	3	3	3	10	21	15	33	12	13	16	31	50	26	3
COSTILLA																
CROWLEY																2
DELTA			7	4	5	10	9	2			4	3	6	1	2	
DENVER		3					19	25	24							
DOLORES				1	1	1	6	10	12	21	8	8	13	12	3	
EAGLE														1		
ELBERT	2						4			1		1	2	2	4	
EL PASO										2	3	3	18	1	2	
FREMONT					1	3	2	4	14	13	22	14	11	2	8	
GARFIELD	213	353	362	567	796	1,509	1,845	2,550	2,888	1,981	2,037	1,323	1,046	870	1,066	146
GRAND																
GUNNISON			5	10	1	9	19	7	10	12	4	3	11	9	20	5
HUERFANO	41	27	27		8	2			7		2	1	9	1	13	
JACKSON	34	18	21	9	14	6	8	5	27	19	9	18	5	12	17	1
JEFFERSON	1						1	3	2					1		
KIOWA	11	18	2	4	2	1	11	9	26	7	16	17	17	12	5	2
KIT CARSON				1	3	5	4	4	13	7	3	2	6	1	2	
LA PLATA	127	156	104	162	102	115	235	251	328	298	191	99	71	32	87	19
LARIMER	2		1			1		5	46	12	41	8	13	2	4	13
LAS ANIMAS	268	400	259	180	332	413	500	362	303	88	92	85	11	2	1	
LINCOLN	2	2	1	6	3	4	1	2	58	44	48	31	36	87	129	3
LOGAN	4	7	3	3	6	13	17	14	5	9	17	8	27	4	5	
MESA	13	27	30	27	54	136	265	293	501	427	306	127	150	105	74	1
MOFFAT	35	52	62	63	63	60	120	68	57	51	53	93	88	44	54	3
MONTEZUMA	4		5	8	8	11	5	12	22	39	19	27	29	14	25	3
MONTROSE	1	3	2	4	2		1	3	3		1	1				
MORGAN	9	9	2	7	9	7	3	6	2	1	6	13	5	16	6	2
OTERO																
PARK										3	4	1				
PHILLIPS	1	2		7	13	17	12	69	82	45	64	112	56		11	
PITKIN					1			1								
PROWERS	2	5	4		7	5	7	5	8	1	3	1			1	
RIO BLANCO	89	187	105	179	154	161	360	321	477	348	441	109	117	167	121	78
RIO GRANDE	1	1		1					1	1			2		1	
ROUTT	20	13	1		4	6	9	8	4	2	3	10	4	12	4	
SAGUACHE	2		2					2	1	2						
SAN MIGUEL	11	13	27	18	42	45	35	23	20	13	10	2	1		2	1
SEDGWICK				1	5	2	7	2	1	19	11	12	2		7	
WASHINGTON	23	17	27	34	128	50	69	45	11	1	6	12	6	19	12	
WELD	509	702	760	757	832	901	1,418	1,527	2,340	1,448	2,152	2,262	1,826	2,468	2,303	481
YUMA	31	205	160	138	237	782	797	541	545	105	299	148	11	9	53	
TOTAL	1,529	2,273	2,008	2,249	2,917	4,364	5,904	6,368	8,027	5,159	5,996	4,659	3,773	4,025	4,190	771

ALL COUNTIES





Oil and Gas Staff Report

April 13, 2015

17

Form 2A Breakdown By County By Year as of April 1, 2015

Year	County	Form 2As	Completed	In Process	New Location	CDP	SWH	RSO	CDPHE
2009	Total State	818	818	0	408	2	80	5	5
2010	Total State	2,378	2,376	0	1,601	0	327	22	55
2011	Total State	2,299	2,297	2	1,791	1	274	17	5
2012	Total State	1,298	1,294	4	946	0	173	6	1
2013	Total State	1,202	1,189	13	898	1	164	2	4
2014	ADAMS	23	20	3	21	0	0	0	0
	ARAPAHOE	18	16	2	18	0	0	0	1
	ARCHULETA	1	1	0	0	0	1	0	0
	BACA	1	1	0	1	0	0	0	0
	BROOMFIELD	1	1	0	0	0	0	0	0
	CHEYENNE	23	23	0	20	0	0	0	0
	CROWLEY	2	2	0	2	0	0	0	0
	DOLORES	2	2	0	2	0	1	0	0
	EL PASO	2	2	0	2	0	0	0	0
	ELBERT	4	4	0	4	0	0	0	0
	FREMONT	3	3	0	3	0	3	0	0
	GARFIELD	79	78	1	20	0	53	3	0
	GUNNISON	7	7	0	2	3	2	0	0
	HUERFANO	5	5	0	1	0	4	0	1
	JACKSON	14	14	0	9	0	14	0	0
	KIOWA	3	3	0	2	0	0	0	0
	KIT CARSON	2	2	0	2	0	0	0	0
	LA PLATA	14	14	0	4	0	13	0	0
	LARIMER	4	2	2	3	0	0	0	0
	LAS ANIMAS	1	1	0	1	0	0	0	0
	LINCOLN	135	135	0	119	0	0	0	0
	LOGAN	2	2	0	2	0	0	0	0
	MESA	8	8	0	3	0	5	1	0
	MOFFAT	11	11	0	9	0	11	1	0
	MONTEZUMA	15	15	0	15	0	0	0	0
	PHILLIPS	11	11	0	10	0	0	0	0
	PROWERS	1	1	0	1	0	0	0	0
	RIO BLANCO	20	20	0	13	0	17	0	0
	ROUTT	1	1	0	1	0	1	0	0
	SAN MIGUEL	1	1	0	1	0	0	0	0
	SEDGWICK	7	7	0	5	0	0	0	0
	WASHINGTON	13	13	0	13	0	0	0	0
	WELD	585	560	25	425	0	4	2	1
	YUMA	53	53	0	48	0	0	0	0
2014	Total State	1,072	1,039	33	782	3	129	7	3
2015	ADAMS	3	1	2	2	0	0	0	0
	ARAPAHOE	5	2	3	0	0	0	0	0
	CHEYENNE	1	1	0	1	0	0	0	0
	GARFIELD	11	4	7	3	0	7	0	0
	GUNNISON	5	2	3	1	0	4	0	0
	HUERFANO	1	0	1	0	0	0	0	0
	JACKSON	2	1	1	2	0	2	0	0
	KIOWA	2	2	0	2	0	2	0	0
	LA PLATA	8	5	3	1	0	6	0	0
	LARIMER	3	0	3	1	0	0	0	0
	LINCOLN	4	1	3	4	0	0	0	0
	MESA	2	1	1	0	0	1	0	0
	MOFFAT	3	2	1	2	0	3	0	0
	MONTEZUMA	3	3	0	3	0	0	0	0
	MORGAN	1	1	0	1	0	0	0	0
	RIO BLANCO	7	4	3	5	0	7	0	0
	WASHINGTON	1	0	1	1	0	0	0	0
	WELD	106	42	64	83	0	1	0	0
2015	Total State	168	72	96	112	0	33	0	0

Abbreviations:

CDP = Comprehensive Drilling Plan SWH = Sensitive Wildlife Habitat consultation

RSO = Restricted Surface Occupancy consultation CDPHE= Colorado Department of Health and Environment consultation



Oil and Gas Staff Report

April 13, 2015

19

Well to Building Setbacks by Year and by County as of April 1, 2015

Count of well locations, grouped by proximity from well to buildings.

Location Proximity to Buildings	2009	2010	2011	2012	2013	2014	2015	Number of Locations	Percent of Total Locations
Less than 150 feet	2	3	3	2	0	3	2	15	0%
150 to 350 feet	37	58	61	39	34	38	3	270	3%
350 to 500 feet	50	110	97	61	64	48	12	442	5%
500 to 1000 feet	117	385	331	188	188	161	24	1,394	17%
1000 + feet	356	1,705	1,470	838	762	724	81	5,936	74%
TOTAL LOCATIONS	562	2,261	1,962	1,128	1,048	974	122	8,057	

County	TOTAL	Less than 150 feet	150 to 350 feet	350 to 500 feet	500 to 1000 feet	1000 + feet
ADAMS	72	0	4	7	16	45
ARAPAHOE	87	0	2	4	9	72
ARCHULETA	18	0	0	1	9	8
BACA	15	0	0	0	1	14
BENT	7	0	0	0	0	7
BOULDER	23	0	1	1	17	4
BROOMFIELD	33	0	0	4	13	16
CHEYENNE	134	1	0	0	2	131
CROWLEY	2	0	0	0	0	2
DELTA	7	0	0	2	1	4
DOLORES	19	0	0	0	7	12
EAGLE	1	0	0	0	0	1
EL PASO	14	0	0	0	3	11
ELBERT	8	0	0	0	2	6
FREMONT	39	0	2	7	8	22
GARFIELD	532	0	9	8	76	439
GUNNISON	35	1	0	3	1	30
HUERFANO	15	0	0	0	5	10
JACKSON	44	0	0	4	1	39
KIOWA	65	0	0	0	1	64
KIT CARSON	14	0	0	0	0	14
LA PLATA	122	0	4	13	40	65
LARIMER	35	0	5	3	11	16
LAS ANIMAS	201	1	6	7	37	150
LINCOLN	348	0	1	2	4	341
LOGAN	43	0	1	1	0	41
MESA	90	0	0	3	14	73
MOFFAT	171	0	0	2	14	155
MONTEZUMA	42	0	0	1	4	37
MONTROSE	2	0	0	0	0	2
MORGAN	29	0	0	2	4	23
PARK	4	0	0	0	0	4
PHILLIPS	273	1	4	6	21	241
PROWERS	5	0	0	0	0	5
RIO BLANCO	178	0	0	0	2	176
RIO GRANDE	2	0	0	0	1	1
ROUTT	26	0	0	0	2	24
SAN MIGUEL	12	0	0	0	0	12
SEDGWICK	32	0	0	1	3	28
WASHINGTON	62	0	2	0	2	58
WELD	4,671	11	220	344	1,019	3,077
YUMA	525	0	9	16	44	456



Well to Building Setbacks Less Than Two Hundred Feet as of April 1, 2015

Year	Location Doc Number	County	High Density	New Location	Distance (Feet)	Proximity (Feet)	Building Description
2015	400768804	WELD	No	Yes	46	less 150	Building to be razed
2011	2587822	CHEYENNE	No	No	58	less 150	Water well house
2009	1691798	WELD	No	No	58	less 150	Vehicle garage
2010	400072164	WELD	No	Yes	69	less 150	Abandoned hog shed
2014	400569085	WELD	No	No	78	less 150	Well shed
2014	400600705	WELD	No	No	80	less 150	Livestock shed
2012	400240957	GUNNISON	No	Yes	90	less 150	Equipment shed
2015	400742811	WELD	No	Yes	102	less 150	Building to be razed
2009	1758843	WELD	No	Yes	103	less 150	Building to be razed
2011	1636646	WELD	No	No	122	less 150	Storage shed
2009	400011284	LAS ANIMAS	No	Yes	127	less 150	Operator is owner
2009	1786896	PHILLIPS	No	No	132	less 150	Grain storage
2014	400642113	WELD	No	Yes	142	less 150	Barn
2011	400117702	WELD	No	Yes	143	less 150	Irrigation pump house
2011	400227765	WELD	No	Yes	145	less 150	Storage barn
2014	400558626	LINCOLN	No	No	150	less 150	Gas plant equipment building
2009	1904205	WELD	No	No	154	150 to 350	Livestock enclosure
2012	400243295	WELD	No	Yes	155	150 to 350	Unused storage shed
2011	400179419	WELD	No	Yes	157	150 to 350	Existing well / storage building
2010	400054716	WELD	No	No	159	150 to 350	Equipment barn
2011	400188968	WELD	No	Yes	159	150 to 350	Abandoned
2014	400554054	WELD	No	Yes	159	150 to 350	Equipment shed
2014	400559404	WELD	No	Yes	160	151 to 350	Barn
2010	400021477	WELD	No	Yes	162	150 to 350	Goat barn
2009	1758386	WELD	No	Yes	168	150 to 350	Storage shed
2011	1635946	WELD	No	No	169	150 to 350	Storage shed
2013	400447386	WELD	No	No	169	150 to 350	Abandoned turkey barn
2013	400447391	WELD	No	No	169	150 to 350	Abandoned turkey barn
2011	400165164	WELD	No	Yes	178	150 to 350	Residence
2013	400367184	WELD	No	Yes	179	150 to 350	Shed
2011	400188780	WELD	No	Yes	180	150 to 350	Residence
2014	400562498	WELD	No	Yes	181	150 to 350	Garage / storage shed
2010	1697620	WELD	No	No	187	150 to 350	Livestock shed
2009	1758746	WELD	No	No	193	150 to 350	Storage shed
2011	400154431	WELD	No	Yes	198	150 to 350	Turkey barn
2012	400250031	WELD	No	Yes	198	150 to 350	Abandoned guard shack
2009	1774783	WELD	No	No	199	150 to 350	Cement service building
2011	400118102	YUMA	No	Yes	199	150 to 350	Steel barn



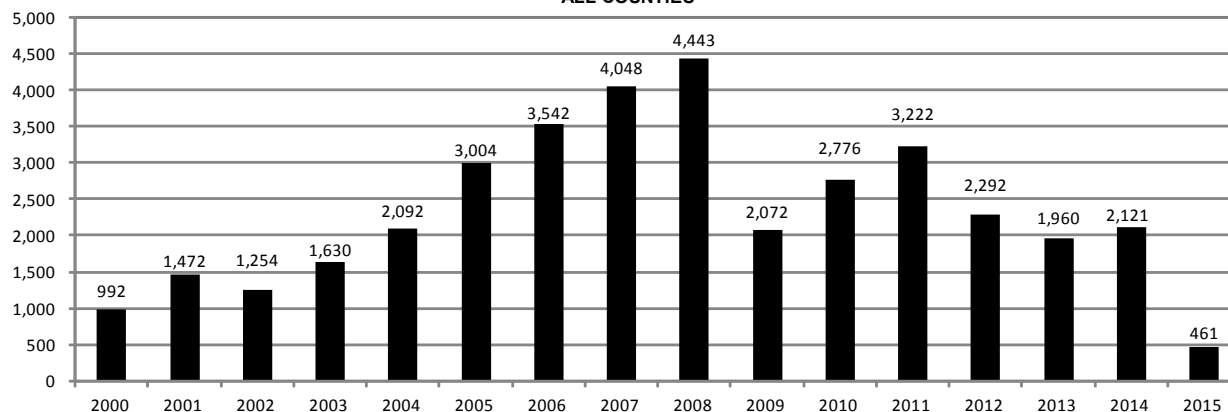
Oil and Gas Staff Report

April 13, 2015

Annual Well Starts by County as of April 1, 2015

County	2000	2001	2002	2003	2004	2005	2006	2007	2008	2009	2010	2011	2012	2013	2014	2015
ADAMS	18	13	4	19	22	24	13	41	14	15	21	1	15	5	26	2
ARAPAHOE					6	1	5	2	1	1	3	9	9	25	20	
ARCHULETA	4	4	2	5	4	10	5	7	26	9	12	10	11		1	
BACA	19	6	2	1	6	6	2	6	12		5	4	2	1		1
BENT	2				3	2	8	1	1			1	2			
BOULDER				2	5	11	9	14	25	16	13	7	14			
BROOMFIELD			2		1				10		21	11	5			
CHEYENNE	2	1	3	3		9	14	15	14	8	12	11	17	35	19	
COSTILLA																
CROWLEY																2
DELTA				5	4	6	5	2			7	3	3		1	
DENVER		2					7	5	4							
DOLORES					2		2	13	4	2		1	5	10	4	
EAGLE														1		
EL PASO											2		5		1	
ELBERT	2						1									
FREMONT					1	3	2	2	5	3	10	16	8	1	4	
GARFIELD	190	251	245	417	585	799	1,005	1,304	1,688	768	905	878	495	393	355	68
GUNNISON			1		1	1	9	5	1	4	5	2	4	1	2	
HUERFANO	25	14	19	3	6	2			2		2		2	1	2	
JACKSON	24	2	4	10	10		3	3	10	1	6	7		7	5	
JEFFERSON								2								
KIOWA	8	16	2	4	2	1	7	7	2	5	15	14	10	11	3	2
KIT CARSON				1	1	6	2	1	14	3	1	1	3	1	2	
LA PLATA	99	135	118	110	103	104	108	179	199	131	67	54	3	10	34	4
LARIMER	1	1				1		4	8	1	28	2	10	4	1	
LAS ANIMAS	202	286	205	221	296	384	413	326	221	14	7	78	1		1	
LINCOLN	2	2	1	5	2	2	1	2	19	10	14	21	23	42	38	1
LOGAN	4	6	3	3	2	11	12	12	3	7	3	9	13	4	6	
MESA	2	12	12	13	25	89	156	209	222	14	11	41	4	6	15	16
MOFFAT	18	23	25	28	19	40	60	42	25	18	15	33	25	27	2	
MONTEZUMA	2	3	5	5	1	7	2	4	18	11	3	8	18	12	8	1
MONTROSE		3		2	1			1	2		1					
MORGAN	9	8	1	7	5	5	3	1	1	2	3	2	3	1	3	
PARK											2					
PHILLIPS	1			6	10	11	4	35	18	2	42	130	48		9	
PROWERS	2	4	4		5	5	6	3	5	2	3	1				1
RIO BLANCO	51	82	47	83	92	95	107	95	203	116	107	72	53	36	42	8
RIO GRANDE														1		
ROUTT	5	12	1		1	6	3	2		2	1	2	4	2	2	
SAN MIGUEL	6	9	10	19	28	13	20	17	5	1	2	2			1	
SEDGWICK				1	2	1	1	5			3	8	3			
WASHINGTON	15	12	24	29	65	34	23	14	11	2	2	4	1	9	7	
WELD	237	403	406	522	632	718	931	1,222	1,314	877	1,209	1,672	1,457	1,301	1,466	357
YUMA	42	162	108	106	144	597	593	445	336	27	213	107	16	13	39	
TOTAL	992	1,472	1,254	1,630	2,092	3,004	3,542	4,048	4,443	2,072	2,776	3,222	2,292	1,960	2,121	461

ALL COUNTIES





Active Wells by County and Status as of April 1, 2015

COUNTY	Drilling	Domestic	Injecting	Producing	Shut In	Temp Aband	Waiting on Completion	Active Storage	Intent to Plug	Total Active Wells
ADAMS	15		6	870	86	9	2	15		1,003
ARAPAHOE	4	1	2	147	8	9		43		214
ARCHULETA	1	5		103	9	13	6			137
BACA	1		10	128	39	7		55		240
BENT		1		27	9					37
BOULDER				314	1	1				316
BROOMFIELD				97						97
CHEYENNE	5		34	326	26	48	3			442
CROWLEY	2									2
DELTA				3	14		1			18
DENVER			1	46	2		3			52
DOLORES	2		1	40	2	4	1			50
EL PASO	1	1				1				3
ELBERT				61	9	1				71
FREMONT	5	3		59	8	6				81
GARFIELD	198	5	39	10,476	131	81	44	1		10,975
GUNNISON	3		1	25	15	1	3			48
HUERFANO	1		1	37	2	6	1			48
JACKSON	3		26	116	45	2				192
JEFFERSON			2	1	1		1	1		6
KIOWA	5		7	102	18	3	2			137
KIT CARSON		1	1	16		1				19
LA PLATA	5	7	28	3,133	98	22	7	33		3,333
LARIMER	1	2	18	184	32	18	2			257
LAS ANIMAS		3	15	2,822	34	90	19	17		3,000
LINCOLN	12	1	7	95	14	4	2			135
LOGAN	10		13	114	42	29	4	12		224
MESA	22	1	10	880	108	17	18	9		1,065
MOFFAT	1		9	495	46	34	7			592
MONTEZUMA	7	2	6	122	35	15	1			188
MONTROSE						3				3
MORGAN	1		23	88	81	34		79		306
OURAY		2				1				3
PARK					1					1
PHILLIPS	1		3	263	5	1	1			274
PITKIN								10		10
PROWERS	1			25	5					31
RIO BLANCO	13	4	285	2,330	188	82	14	5		2,921
ROUTT	1	2		34	5	2	1			45
SAN MIGUEL	1			113	8	8				130
SEDGWICK			1	13	4		2			20
WASHINGTON	6		24	402	31	7	4			474
WELD	1,139	1	39	20,530	495	31	77	2		22,314
YUMA	1	8	20	3,783	48	9	13	1		3,883
Totals	1,468	50	632	48,420	1,705	600	239	283	0	53,397



Oil and Gas Staff Report

April 13, 2015

23

Monthly Statistics as of April 1, 2015

Page 1 of 2

YEAR and MONTH	Baker - Hughes Rig Count	Permits										Well Spud Notices	Active			Public Visits		
		Drilling		Recompletion		Injection		Pits		Locations			Drilling Permits	Active Wells	Data	Office	Internet	
		Rcvd	Apvd	Rcvd	Apvd	Rcvd	Apvd	Rcvd	Apvd	Rcvd	Authz							
2011 TOTAL		4,709	4,659	325	320	44	32	190	192	2,382	2,267	3,220			187	1,294	1,337,865	
2012 JAN	73	372	258	26	21	3	0	11	5	142	129	244	5,217	46,958	12	106	112,686	
FEB	70	370	382	23	27	7	5	21	9	160	129	231	5,173	47,128	16	114	105,857	
MAR	66	292	347	21	14	2	2	17	24	133	172	292	5,132	47,263	26	138	111,746	
APR	66	410	235	16	24	5	5	9	2	137	106	240	4,785	47,377	12	108	107,627	
MAY	66	491	506	23	16	3	1	6	2	105	131	211	4,885	47,533	20	123	109,802	
JUN	69	326	377	11	19	8	6	5	8	110	89	144	5,136	47,860	11	111	108,849	
JUL	66	237	276	9	14	3	2	5	2	97	103	184	5,152	48,173	13	102	114,195	
AUG	62	313	288	6	9	6	4	23	5	83	97	179	5,031	49,153	11	112	110,908	
SEP	61	252	256	1	5	5	2	4	1	81	77	161	4,960	49,230	11	89	106,114	
OCT	62	326	265	9	3	7	6	2	19	94	82	161	5,009	49,236	8	105	108,833	
NOV	56	271	323	5	8	6	6	2	4	109	97	142	5,000	49,989	10	119	120,586	
DEC	57	322	260	4	8	8	5	9	3	122	81	105	5,081	50,067	9	78	107,240	
2012 TOTAL		3,982	3,773	154	168	63	44	114	84	1,373	1,293	2,294			159	1,305	1,324,443	
2013 JAN	53	538	331	6	0	3	5	6	8	176	124	142	5,060	50,265	9	108	47,406	
FEB	56	260	455	10	5	2	3	4	11	91	141	138	5,250	50,372	7	102	40,649	
MAR	57	344	241	5	9	3	8	15	6	129	84	170	5,093	50,540	9	133	43,019	
APR	61	331	333	6	5	5	5	6	8	146	117	164	4,925	50,687	3	132	46,459	
MAY	61	350	342	8	6	6	6	10	7	106	142	162	5,110	50,810	3	123	45,215	
JUN	62	349	273	2	8	8	8	5	3	114	85	140	5,273	50,909	8	122	41,015	
JUL	68	864	304	11	4	9	2	9	5	218	91	162	5,070	51,091	7	154	45,558	
AUG	69	232	291	6	4	3	2	4	1	35	76	200	5,200	51,255	20	130	44,722	
SEP	69	212	362	9	5	10	9	3	19	56	109	168	5,185	51,407	5	105	41,256	
OCT	72	319	376	5	9	7	5	1	8	67	88	237	4,967	51,598	5	135	45,151	
NOV	69	346	353	4	13	7	4	2	27	67	85	158	5,141	51,711	12	119	38,903	
DEC	64	336	367	2	4	4	6	2	3	63	71	119	5,129	51,737	4	93	32,381	
2013 TOTAL		4,481	4,028	74	72	67	63	67	106	1,268	1,213	1,960			92	1,456	511,734	
2014 JAN	62	278	232	3	2	3	4	14	8	90	43	171	4,926	51,840	1	90	46,150	
FEB	61	284	297	6	4	1	1	3	1	91	94	142	5,051	51,847	12	113	43,408	
MAR	62	367	329	4	6	7	1	6	6	110	88	176	4,997	51,952	16	140	46,620	
APR	63	276	317	2	3	2	5	8	3	89	99	163	4,897	52,060	11	188	45,558	
MAY	65	458	383	2	2	3	1	6	7	83	94	171	4,923	52,202	18	131	42,365	
JUN	67	429	377	3	0	6	7	5	2	134	92	214	4,924	52,337	10	156	42,518	
JUL	69	272	446	2	5	3	11	8	5	97	126	181	4,955	52,431	7	166	45,481	
AUG	73	376	258	3	3	4	4	3	4	111	87	204	5,060	52,582	8	145	42,431	
SEP	76	412	304	1	3	3	1	20	1	116	81	189	5,006	52,694	14	175	43,577	
OCT	76	458	371	3	2	9	2	4	6	93	109	170	4,827	52,785	19	138	46,030	
NOV	73	326	479	5	2	5	4	4	0	54	103	170	5,171	52,947	8	96	39,583	
DEC	69	286	397	1	2	2	7	1	2	42	99	170	5,236	53,054	6	144	37,964	
2014 TOTAL		4,222	4,190	35	34	48	48	82	45	1,110	1,115	2,121			130	1,682	521,685	
2015 JAN	64	349	316	3	1	2	8	3	1	46	43	164	5,060	53,195	8	96	39,583	
FEB	49	323	161	3	2	5	6	9	0	71	28	112	4,750	53,309	6	144	37,964	
MAR	38	231	294	1	6	1	5	7	5	38	70	153	4,983	53,414	17	114	41,502	
2015 TOTAL		231	771	7	9	8	19	19	6	155	141	429			17	114	41,502	

Abbreviation Key: Rcvd = Received, Apvd = Approved, Authz = Authorized



Monthly Statistics as of April 1, 2015

Page 2 of 2

YEAR and MONTH	Well Oper Change	Operators		Bonds			Claim		Hearings		Enforcement			Remediation Projects		Inspections				
		New	Inactive	Release	Replace	Ind	Blnt	Ind	Blnt	Apps.	Orders	NOAVs	AOCs	OFVs	Cmplt	Spills	Rcvd	Comp	Wells	Locations
2011 TOTAL	6,743	33	31	79	44	43	4	4	403	349	230	10	19	247	527	726	536	12,394	-	
2012	JAN	1,052	3	3	7	5	1	1	0	70	72	18	1	-	27	35	68	23	998	970
	FEB	385	6	9	8	5	0	0	0	-	-	10	-	-	24	40	85	36	1,998	1,024
	MAR	379	4	1	7	3	9	0	0	44	38	19	-	-	23	38	63	61	2,200	1,149
	APR	478	4	2	10	3	2	0	0	80	59	11	-	-	19	35	26	99	1,700	930
	MAY	526	3	1	4	0	3	0	0	43	50	14	2	-	23	32	27	122	2,621	1,701
	JUN	1,270	3	4	3	3	4	0	0	-	-	5	-	-	35	39	46	98	1,432	1,091
	JUL	499	5	0	1	4	5	0	0	63	50	15	-	-	16	24	45	33	1,319	1,076
	AUG	301	6	5	2	8	0	1	0	67	54	24	3	2	21	28	127	33	1,898	1,432
	SEP	834	0	4	4	5	2	1	0	-	-	5	-	-	14	13	30	36	1,135	864
	OCT	485	1	2	9	1	0	0	0	30	36	6	1	-	13	44	116	37	1,407	1,029
	NOV	523	6	4	12	8	7	0	0	85	37	16	2	-	10	44	26	44	1,325	829
	DEC	958	6	2	3	1	0	0	0	-	-	14	-	-	19	30	31	19	1,031	610
2012 TOTAL	7,690	47	37	70	46	33	3	0	482	396	157	9	2	244	402	690	641	19,064	12,705	
2013	JAN	655	3	5	12	2	0	0	0	48	75	15	4	-	21	40	31	45	1,622	789
	FEB	293	4	2	6	3	2	0	0	41	35	11	2	-	15	30	42	90	1,042	615
	MAR	355	1	3	2	2	1	0	0	54	67	16	2	-	11	25	65	29	1,966	1,150
	APR	335	7	1	5	2	8	0	0	-	-	21	-	-	16	33	39	37	1,508	910
	MAY	348	2	1	3	0	0	0	0	46	50	22	6	-	13	31	41	60	2,615	1,576
	JUN	1,458	6	2	2	4	5	0	0	91	44	13	2	-	25	40	47	37	1,857	1,102
	JUL	1,014	4	1	2	2	0	0	0	96	70	25	3	-	21	47	50	22	2,298	1,338
	AUG	389	6	4	5	4	2	0	0	-	-	23	-	-	25	57	36	41	2,145	1,033
	SEP	277	4	1	6	1	0	0	0	101	51	7	2	-	16	60	43	51	1,535	703
	OCT	345	6	0	2	2	2	0	0	52	82	4	12	3	12	79	47	60	1,865	1,158
	NOV	442	2	0	2	2	0	0	0	-	-	30	-	-	12	51	31	34	2,400	1,613
	DEC	1,299	4	1	1	2	0	0	0	42	48	50	4	-	14	75	35	35	2,676	1,384
2013 TOTAL	7,210	49	21	48	26	20	0	0	571	522	237	37	3	201	568	507	541	23,529	13,371	
2014	JAN	1,976	6	3	3	2	0	0	0	57	46	25	2	-	8	72	46	28	3,243	1,597
	FEB	2,012	8	2	6	5	0	0	0	-	-	23	-	-	17	65	51	13	2,326	1,282
	MAR	494	2	3	1	5	0	0	0	97	75	29	10	-	22	64	66	31	1,797	1,298
	APR	313	5	2	6	4	1	0	0	74	64	17	8	1	20	66	47	59	2,601	1,712
	MAY	510	5	1	3	3	5	0	0	-	-	12	-	-	13	78	50	42	2,403	1,571
	JUN	998	5	2	7	4	1	0	1	95	90	14	6	1	16	74	44	50	3,152	1,718
	JUL	340	2	1	5	3	1	0	0	96	96	11	6	-	12	64	60	59	3,029	1,536
	AUG	438	6	1	2	4	0	0	0	-	-	8	-	-	31	63	32	58	2,750	1,681
	SEP	371	4	1	1	2	0	0	0	73	63	13	7	1	18	63	39	50	2,543	1,615
	OCT	831	8	1	0	2	0	1	0	80	75	12	3	1	13	78	78	36	3,847	1,914
	NOV	245	2	4	8	4	5	0	0	-	-	6	-	-	15	72	27	59	3,125	1,458
	DEC	1,267	1	1	0	2	0	0	0	126	89	9	1	-	58	91	56	17	3,024	1,597
2014 TOTAL	9,795	54	22	42	40	13	1	1	698	598	179	43	4	243	850	596	502	33,840	18,979	
2015	JAN	101	2	3	2	3	0	0	0	76	64	15	2	1	36	82	37	58	2,466	1,246
	FEB	0	5	2	2	3	1	0	0	-	-	11	-	-	22	43	34	64	2,632	1,378
	MAR	0	5	2	5	2	4	2	0	72	72	33	1	1	43	72	46	93	3,284	1,599
2015 TOTAL	101	12	7	9	8	5	2	0	148	136	59	3	2	101	197	117	215	8,382	4,223	

Abbreviation Ind = Individual, Blnt = Blanket, Apps = Application for Hearing, NOAV = Notice of Alleged Violation, AOC = Administrative Order of Consent, OFV = Order Finding Violation, Cmplt = Complaint, Comp = Completed