



May 18, 2015

TOP STORIES

◆ BLM's New Fracking Rule Parallels COGCC Rules

The Bureau of Land Management (BLM) published its final hydraulic fracturing rule on March 26, 2015. The BLM's rule applies to oil and gas operations on public lands (including split estate lands with federal minerals) and Indian lands. The BLM only allows operations on federal leaseholds and Indian lands once an operator has filed an Application for a Permit to Drill (APD) and has received approval from the BLM to commence operations. With the exception of Indian lands, operators in Colorado also need to have an APD approved by the COGCC.

The BLM's new hydraulic fracturing rule requires information from operators, including verification of cementing and mechanical integrity prior to fracturing, monitoring during fracturing, a plan for management of recovered fluids, and reporting after fracturing. The COGCC's rules on the same topics are detailed, and address the same objectives as the BLM rules. Included in the BLM's new rule is the option for states to request variances from new federal requirements. In order to avoid duplication and ensure consistency, COGCC staff has begun conversations with the BLM on opportunities for statewide variances on many of the new rules.

The rule, which can be found at 43 C.F.R. § 3160, and on the web at www.gpo.gov/fdsys/pkg/FR-2015-03-26/pdf/2015-06658.pdf, will become effective on June 24, 2015.

◆ Upper Pierre Aquifer

The COGCC is investigating the need to apply Rule 317 (protection of ground water) to the Upper Pierre Aquifer, which is located in the Cheyenne Basin of northern Weld County. The Division of Water Resources (DWR) has notified the Commission they are receiving and approving requests

to use Upper Pierre Aquifer water for beneficial purposes. These purposes include municipal water, and industrial and agriculture uses.

Commission staff has had several discussions with DWR and has held two meetings with operators to consider whether Rule 317 should be applied to the Upper Pierre Aquifer. These discussions are on-going and Staff will keep the Commission apprised of new developments.

◆ Local Government Liaison (LGL) Program

Local Government Liaisons (LGLs) Nancy Prince and Marc Morton are a direct link to help Local Governmental Designees (LGDs), local government staff, their constituents, and others access information and answer questions and inquiries regarding oil and gas related issues in Colorado. LGLs work to assist, educate, and inform those interested in oil and gas in Colorado, and strive to increase communication and collaboration between local governments/LGDs, operators, stakeholders, the public, and COGCC staff. LGLs are available upon request to local governments and other groups for presentations specific to a particular group's informational needs.

The COGCC, through the LGLs, Julie Murphy (COGCC Hearings and Regulatory Affairs Manager), and Kent Kuster (Oil and Gas Liaison to the COGCC from the Colorado Department of Public Health and the Environment), offers periodic training to assist LGDs, local government staff, elected officials, and interested others in navigating COGCC rules, its website, and its information sources.

Recent training sessions were conducted on April 7 in Fort Lupton and May 5 in Rifle. The proposed LGD training schedule for the remainder of 2015 follows. Each session begins at 9:00 am and ends at 3:00 pm. To register, or to get more information, send an email to



marc.morton@state.co.us or

nancy.prince@state.co.us

Training Sessions

June 9 in Trinidad

August 11 in Durango

September 22 in Akron

November 3 in Weld County

December 1 in Denver at the COGCC office

The LGLs are also available to provide training sessions tailored to meet the needs of local jurisdictions or groups, as requested.

A list of the LGL outreach and public involvement activities conducted since the previous staff report is included in the latter half of the Public Outreach section below.

PUBLIC OUTREACH

➤ *Outreach by Director and Other Staff*

- On April 7, Southwest Environmental Protection Specialist Jim Hughes participated in a pipeline emergency preparedness discussion hosted by La Plata County Office of Emergency Management (OEM) and Colorado Pipeline Awareness (CoPA).
- On April 17, Southwest Environmental Protection Specialist Jim Hughes attended the Four Corners Public Science Forum on Methane.
- On April 29 and 30, several COGCC and DNR representatives attended the Garfield County Energy and Environment Symposium in Rifle. DNR Executive Director Mike King spoke about the Governor's Task Force and the Path Ahead in Oil and Gas Regulation on April 29. The next day, Director Matt Lepore delivered a talk entitled "COGCC Regulatory Update and Other Relevant Topics." Also speaking was Underground Injection Control Lead Robert P. (Bob) Koehler, who addressed the audience on "Colorado's Underground Injection Control Program: Prevention and Mitigation of Induced Seismicity." Bob's talk was one of three presentations on Induced Seismicity featuring Rick Aster of Colorado State University and Randi Walters of Stanford University.

- On April 29, 30 and May 1, COGCC Field Inspection's Mike Leonard attended a Train the Trainer class titled "Field Leadership in the Oil and Gas Industry" at the Rocky Mountain Education Center at Red Rocks Community College. This class was sponsored by an OSHA grant to give trainers the skills to better educate other managers, supervisors and workers in the oil and gas industry. Mike will be presenting information from this class to field staff and supervisors at the COGCC.
- On May 14, Director Lepore attended the Gas and Oil Regulatory Team (GORT) meeting in Durango.
- On May 18 through 20, Director Lepore attended the Interstate Oil and Gas Compact Commission (IOGCC) Business Meeting in Salt Lake City.

➤ *Outreach by LGLs*

- On April 7, Marc Morton, Nancy Prince, and Kent Kuster (CDPHE Oil and Gas Liaison) provided a five hour Local Government Designee (LGD) training to approximately 20 individuals at the Aims College Campus in Fort Lupton.
- On April 8, Marc Morton attended the quarterly Mesa County Land and Resource Managers Meeting in Grand Junction. Marc updated the group on the status of the Governor's Task Force recommendations, the COGCC's new complaint process website, and the release of new floodplain rules.
- On the evening of April 8, Marc Morton attended the FrackingSENSE lecture series in Boulder. Panelists included Dr. Anthony Ingraffea (Cornell University) and Dr. Patty Limerick (University of Colorado). The FrackingSENSE series is organized by the Center of the American West and CU-Boulder. The panel discussion was followed by an audience question and answer period.
- On April 14, Marc Morton and Nancy Prince attended and provided information at a "Weld County Oil and Gas 101" meeting. This public meeting was organized by Weld County Oil and Gas Liaison Troy Swain and was attended by



various other Weld County staff and Weld County Commissioners Sean Conway, Julie Cozad, and Steve Moreno.

- On April 22, Nancy Prince participated in a meeting in Fort Morgan at which two water districts provided information on Source Water Protection Areas related to a proposed oil pipeline route.
- On April 23, Marc Morton staffed a COGCC booth at a career fair hosted by the Leadville Lions Club and held at the Leadville/Lake County High school in Leadville. Marc provided interested students and others with information regarding careers in earth sciences, petroleum geology, and environmental protection in both the private and public sectors.
- On April 23, Marc Morton attended the quarterly Garfield County Land and Resource Managers Meeting. Marc updated the group on the status of the Governor's Task Force recommendations, the COGCC's new complaint process website, and the release of new floodplain rules.
- On April 27, Nancy Prince attended the defense of a Capstone project report at the University of Colorado-Denver's School of Public Affairs. Graduate student Jose Loera presented an evaluation of the LGD program that will be useful to COGCC staff in planning training and outreach in the coming year.
- On April 29 and 30, Marc Morton and Nancy Prince attended the 3rd Annual Garfield County Energy and Environment Symposium in Rifle.
- On May 5, Marc Morton, Nancy Prince, and Kent Kuster (CDPHE Oil and Gas Liaison) provided a five hour Local Government Designee (LGD) training to approximately 25 individuals at the Garfield County Library in Rifle.
- On May 6, Nancy Prince attended the City of Aurora Oil and Gas Committee meeting. The structure, composition, and by-laws for this public information committee were discussed.

REGIONAL ACTIVITIES

➤ *Northwest Colorado*

◆ Northwest Colorado Oil and Gas Forum

Remaining Forum meetings for 2015 are scheduled for June 4, September 3, and December 3. All meetings will be held in Rifle at Colorado Mountain College from 10:00 am to noon.

All parties wishing to be placed on the next meeting agenda or added to the distribution list for announcements should contact Marc Morton at 303-894-2100, ext. 5132 (direct), 720-415-4959 (mobile) or by email:

marc.morton@state.co.us

◆ Project Rulison

The email for Project Rulison submittals is

DNR_rulison.submittal@state.co.us

◆ Project Rio Blanco

The email for Project Rio Blanco submittals is

DNR_rioblanco.submittal@state.co.us

➤ *Northeast Colorado*

◆ Luther #2 Remediation Project

The Luther #2 Remediation Project is located in Logan County approximately 7.5 miles west of Sterling. The well was drilled and abandoned in the 1950s. In 2014, the well discharged a small quantity of oil and produced water to the surface, covering an area of approximately 0.25 acres of cropland. The COGCC reentered and plugged the well under the PRAW program in June 2014.

The current stage of the project will remediate the small amount of residual oil that was discharged to the field. It will begin in early May 2015 with the application and incorporation of soil amendments to the affected area. Monthly aeration of the treatment area will be performed



using a rotary tiller to enhance bioremediation during the summer of 2015. Soil samples will be collected in the fall to determine if the area has been remediated well enough to be returned to crop production.

➤ *Southeast Colorado*

◆ Las Animas County Phase 3 Methane Study

The number of Coal Bed Methane (CBM) wells in the Raton Basin has increased from approximately 90 wells in 1993 to about 3,000 wells currently. As CBM development continues, there may be an increase in the potential for gas to seep from the outcrop of the coal seams or migrate to the surface from the coal seams through or along conduits, such as improperly plugged coal mine exploration core holes, old oil and gas wells, deep water wells, faults, fractures, or igneous intrusions.

Phase 3 of the Las Animas County, Raton Basin gas seep investigation will be conducted in May and June 2015 by a contractor as part of a special project. Data collected during the Phase 3 investigation will be compared to data collected during the Phase 1 and Phase 2 studies, providing an objective indication of whether gas seepage has changed or is occurring in previously unidentified areas.

The information will benefit stakeholders within the Raton Basin, including local governmental agencies, landowners, environmental groups, operators, and the COGCC. The data will also enable COGCC staff to track changes, if any, in the location and extent of gas seepage; to identify areas where seepage may have the potential to affect public health, safety, welfare, the environment; and to develop mitigation strategies, if needed.

➤ *Southwest Colorado*

◆ Fruitland Formation Outcrop Mitigation and Monitoring Projects

South Fork Texas Creek Mitigation Site - La Plata County. Regularly scheduled operations and maintenance continue at the South Fork Texas

Creek site, performed by a COGCC contractor. Since May 2009, the system has collected 13,907 Mcf of methane and generated 216,341 kWh of surplus electricity. The 4M Outcrop Mitigation Summary Report, prepared by LTE, is available on the COGCC website.

◆ Gas and Oil Regulatory Team (GORT) Meetings

Remaining meetings for 2015 are scheduled for May 14, August 20, and November 19. All meetings will be held at the La Plata County Fairgrounds, Animas Room, Durango, from 8:30 am to noon.

Any party who wishes to be placed on the next meeting agenda should contact Marc Morton at 303-894-2100, ext. 5132 (direct), 720-415-4959 (mobile) or by email:

marc.morton@state.co.us

ADMINISTRATION/ORGANIZATION/OTHER

◆ New Enforcement Supervisor Position

Peter Gowen has been promoted to the position of Enforcement Supervisor. This is a new position resulting from the increase in Hearings Unit staff over the past couple years. The Hearings Unit now includes nine full-time positions, and Peter is the first Supervisor within the unit. Peter has long taken a leadership role within the Unit, particularly on enforcement matters. Congratulations, Peter, on your well-deserved promotion.

◆ New Permitting Technician

Ryan Daigle has joined the COGCC as a Permit-Completions Technician. Ryan holds a degree in mechanical engineering from Louisiana Tech University and has his Engineer In Training license. He comes to the COGCC from Weatherford Laboratories, where he worked for over six years as a field engineer, wellsite geologist, core analyst and data analyst. In his spare time, Ryan has been pursuing a degree in geology.

A COGCC organizational chart can be found on pages 8-11. For contact information, please go to our homepage, find the "About Us" menu, and select "Contact Us."



◆ Budget Update

On April 24, Governor Hickenlooper signed Senate Bill 15-234, the Fiscal Year 2015-16 Long Appropriations Bill (*i.e.* annual state budget). Included in next year's budget are 14 full-time staff members for the COGCC. Twelve of these were recommended by the Governor's Oil and Gas Task Force; the other two were requested by the COGCC through the normal budget process.

◆ Plugging and Reclaiming Abandoned Wells (PRAW) - Project Updates

The **DB Orphan Blair #1 Project** is located on the northwest edge of DeBeque in Mesa County. The well was found to be leaking water and was subsequently dug out and sealed to stop the flow. The well was plugged in November 2014 at a total cost of \$98,443. During March 2015, the landowner requested and received onsite fence repairs and installation of culvert in the adjacent ditch at an additional cost of \$3,276.

The **Pasture #1 Project**, the final abandonment of a well in Mesa County, included cutting the casing off three feet below ground level and installing a well marker and sign. These tasks were completed in October 2014 at a final cost of \$1,360.

The **Flessner #13 Project** has previously been reported as a dry and abandoned well located in Washington County about 23 miles south of Ft. Morgan and Brush. It was drilled in 1955 to a depth of 5,460 feet (J-Sand Formation) and reportedly plugged at the same time by Monsanto Chemical Company. A farmer complained that the well had never been plugged and abandoned and currently obstructs farming operations. The project was competitively bid and awarded to the winning contractor in the amount of \$47,700. This well was successfully plugged in January 2015 for less than the bid amount, at a total cost of \$43,560.

The **Ackerman #1 Project** is a dry and abandoned well located in Larimer County about seven miles northwest of Wellington. It was drilled in 1963 to a depth of 5,745 feet (Dakota Formation) and plugged in the same year by Alpha-Omega Exploration Company. This well has been

plugged back and reclassified as a fresh water well. It is being placed under the regulatory authority of the DWR.

The **Gentry PA Project** and the **Gentry-West Rangely Subdivision Environmental Remediation Project** are both located in Rio Blanco County and include a total of ten sites comprising eight wells, two pits, and one tank demolition. These projects are located about one half mile west of Rangely and 1.5 miles south of State Highway 64.

During April of this year, all eight wells were re-entered and plugged for a total estimated cost of \$65,300. Work commenced this month on the two pits containing oil saturated soils, as well as the tank demolition. After excavating the pits, there was much more contaminated soil than anticipated. With the greater volume of soil and a discovery of several feet of oil sludge in the tank, costs have increased from \$25,999 to \$39,189.

The **Wallace Oil and Gas BOND CLAIM Project** is located in far southeast Colorado in Baca County, about fifteen miles southeast of the town of Walsh. This project will include the salvaging of all miscellaneous production equipment and plugging three individual wells. The total cost was estimated at \$91,800, of which \$15,000 will come from the bond claim. Bids were put out, and the winning bid came in at \$78,912, or \$12,888 less than the engineering estimate. A contract is in place, with work to be completed in June 2015.

The **Multiple Sites TBD Project**, a reclamation project with multiple sites "to be determined," was added in January 2015 to better balance plugging with reclamation efforts. For this project, \$70,144 is the new and revised cost estimate.

The **Redwine Resources-Nucla Unit 1-32 BOND Project** is located in Montrose County or about 30 miles southwest of Montrose. It includes a temporarily abandoned well and a lined earthen drilling mud reserve pit. This well was vertically drilled in 2008 to a total depth of 9,199 feet (Cambrian Formation). Recently, pit and soil samples were taken to be analyzed in order to provide design parameters for closing the pit. The winning bid to plug was awarded at a total cost of \$40,682 or \$10,043 less than the engineering estimate of \$50,725. Plugging work commenced during the week of May 11.



The **Chapman #1 Project** is a dry and abandoned well located in Baca County about six miles southeast of Walsh. It was drilled in 1960 to a depth of 5,576 feet (St. Louis Formation) and plugged at the same time by Falcon Seaboard Drilling Company. The COGCC inspection report indicates four feet of casing protruding above ground; and bubbling, churning water could be heard in the exposed pipe.

The plan is to re-plug the well at a revised estimated cost of \$46,450. Bids were put out, and the winning bid came in at \$26,470, or \$19,980 less than the engineering estimate. A contract is in place with work to be completed by June 2015.

The **Dolphin Arroyo #9-16D Reclamation Project** is located in Garfield County about one mile south of the town of Silt and about six miles east of Rifle. This site was constructed and operated by Dolphin Energy Corporation. The location was abandoned in 2012, about the time when Dolphin Energy became defunct. The site was not reclaimed as directed by COGCC final reclamation regulations.

Both the location and access road consist of a cut and fill into the terrain and are susceptible to erosion and weed infestation in their current state. Bond claim funds have been exhausted on prior Dolphin Energy projects, and all funds will come from the COGCC PRAW Program. Preliminary land reclamation work will include miscellaneous debris and equipment removal and disposal, land re-contouring, spreading of topsoil, and storm water control and soil erosion measures. The estimated cost to do this work is \$24,550.

Page 12 contains a spreadsheet listing PRAW projects that are either scheduled, in process or completed as of May 4, 2015.

◆ Colorado Oil and Gas Information System (COGIS) Projects, Updates and Changes

Electronic Form Submissions (eForm)

The COGCC uses 41 types of forms to authorize oil and gas operations, inspect and monitor ongoing operations, and receive reports of operations. Of those 41 forms, 15 forms are currently

available for electronic submittal through the eForms system.

The development team continues to work on the eForm conversion of existing forms. Currently, seven types of forms are in various stages of development: Forms 7, 14, 14A, 26, 31, 33, and NOAV. In addition, the development team updates eForms as required by rule revisions.

To date in 2015, more than 98% of the forms available in eForms were submitted electronically by industry. There are 546 operator users of eForms and 2,261 individual users. For any operator not currently enrolled in eForms, instructions for starting the process can be found on the COGCC website at

<http://cogcc.state.co.us/Announcements/COUAINformation.pdf>

Applications and Location Assessments

The public can make comments on all submitted Drilling Permit Applications (Form 2s) and Location Assessments (Form 2As) through the eForm system. Simply go to the COGCC website and click on the menu option “Permits” or

<http://cogcc.state.co.us/permits.html#/permits>

On the “Permits Search” page, three search options are available. The first option, “All Pending Permit Applications,” is used for public comments. When the results are displayed for “Pending Applications,” the public can click on the document number hyperlink in the “Status” column, which logs the user to the eForms application. Once the page is displayed with the selected document, the user can select the Comment button to make a comment on that particular form.

Data Access

The COGCC’s database is a comprehensive repository of Colorado’s oil and gas data. The information in the database is available to the public through interactive search tools and a variety of file downloads on the website.

Users of this data come from many different kinds of organizations, including academic institutions, the oil and gas industry, environmental groups,



government agencies, and the media. The number of these users and the variety of data requested are both steadily increasing. In order to better serve the public and address these demands for data, staff will be enhancing the interactive search tools with additional search criteria. Staff will also be publishing additional data file downloads at

<http://cogcc.state.co.us/data2.html#/downloads>

Current Data File Downloads

GIS Shapefiles (12 files)
Production Data (1999 - present)
Spacing Orders
Water Well Data

New Data File Downloads (Released May 7, 2015)

Complaints
Mechanical Integrity Tests

Future Data File Downloads

Notices of Alleged Violation (by July 31, 2015)
Spills-Releases-Remediation (by July 31, 2015)
Inspections (by December 31, 2015)
Enforcement Orders (by December 31, 2015)

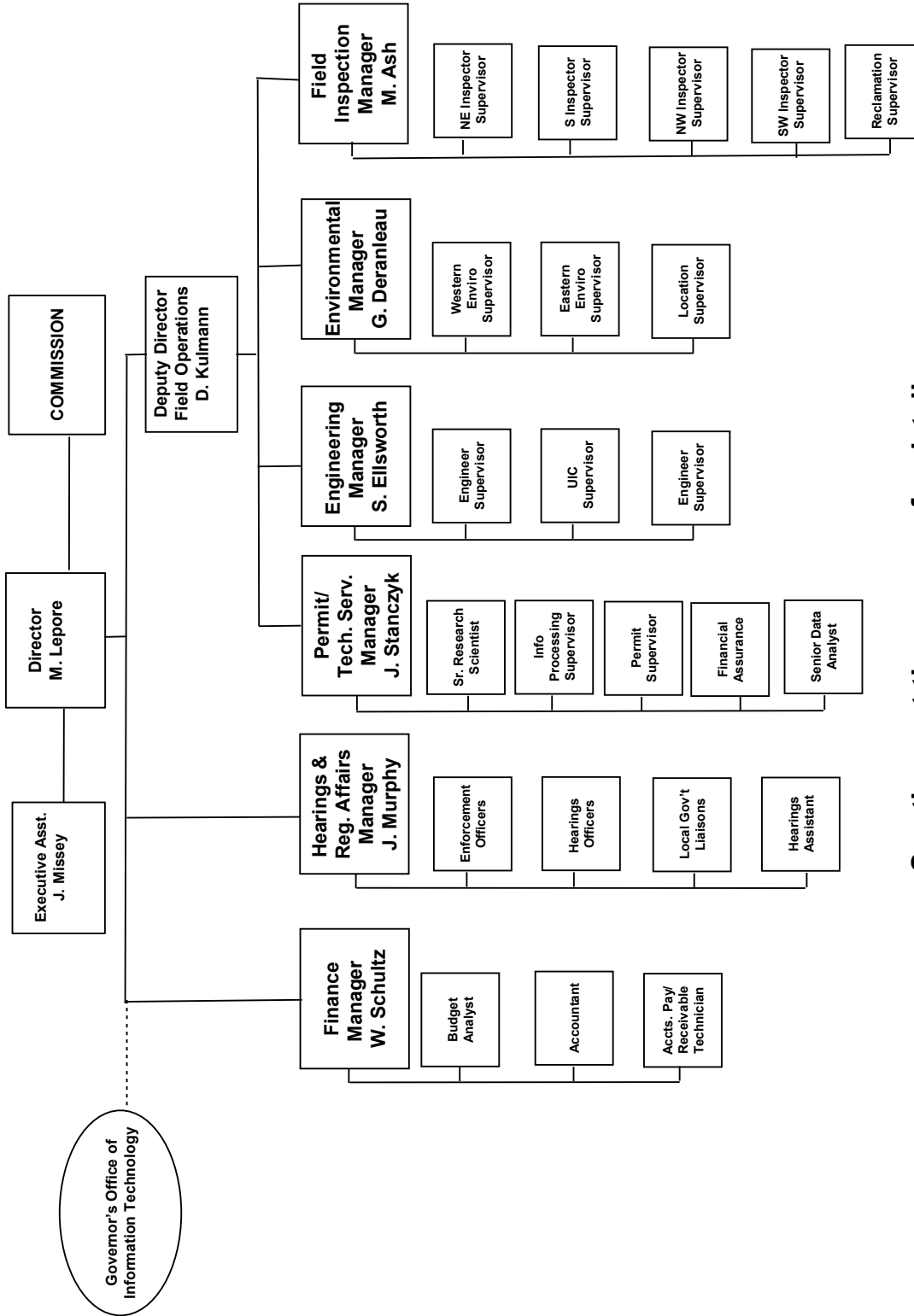
◆ **July 2015 Hearing Docket**

The docket for the July 2015 hearing will be available shortly after the May hearing. Hearing dockets are available on our website by clicking on “Regulation” in the menu and then “Hearings.” Links to the notices and hearing applications are available from the Docket Number and Applicant, respectively. To sign up for e-mail notification of hearing notices and applications, please see the announcement and instructions on the homepage of the website:

<http://cogcc.state.co.us/reg.html#/hearings>



COLORADO OIL & GAS CONSERVATION COMMISSION



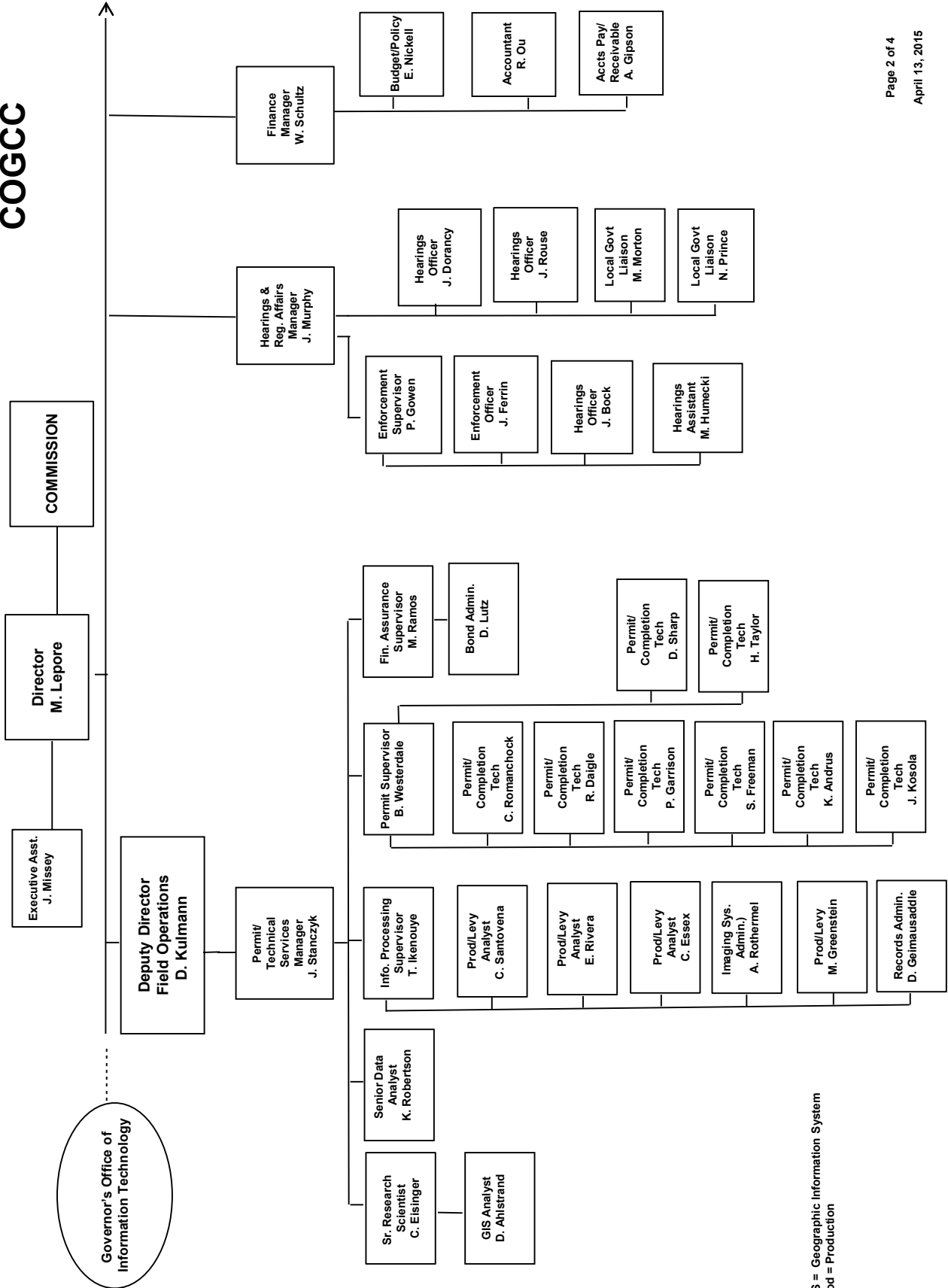
See the next three pages for details



Oil and Gas Staff Report

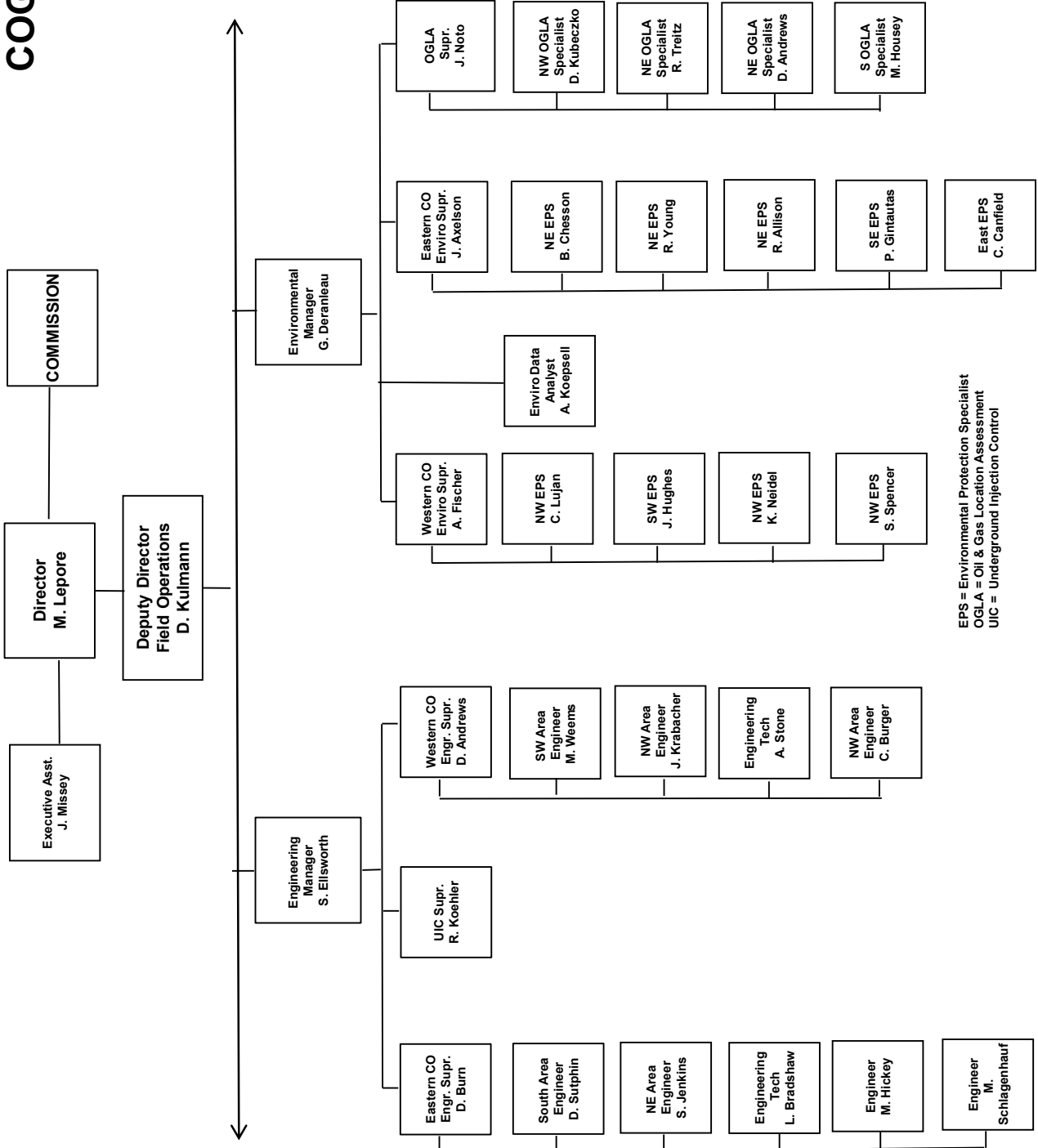
May 18, 2015

COGCC





COGCC



EPS = Environmental Protection Specialist
 OGLA = Oil & Gas Location Assessment
 UIC = Underground Injection Control

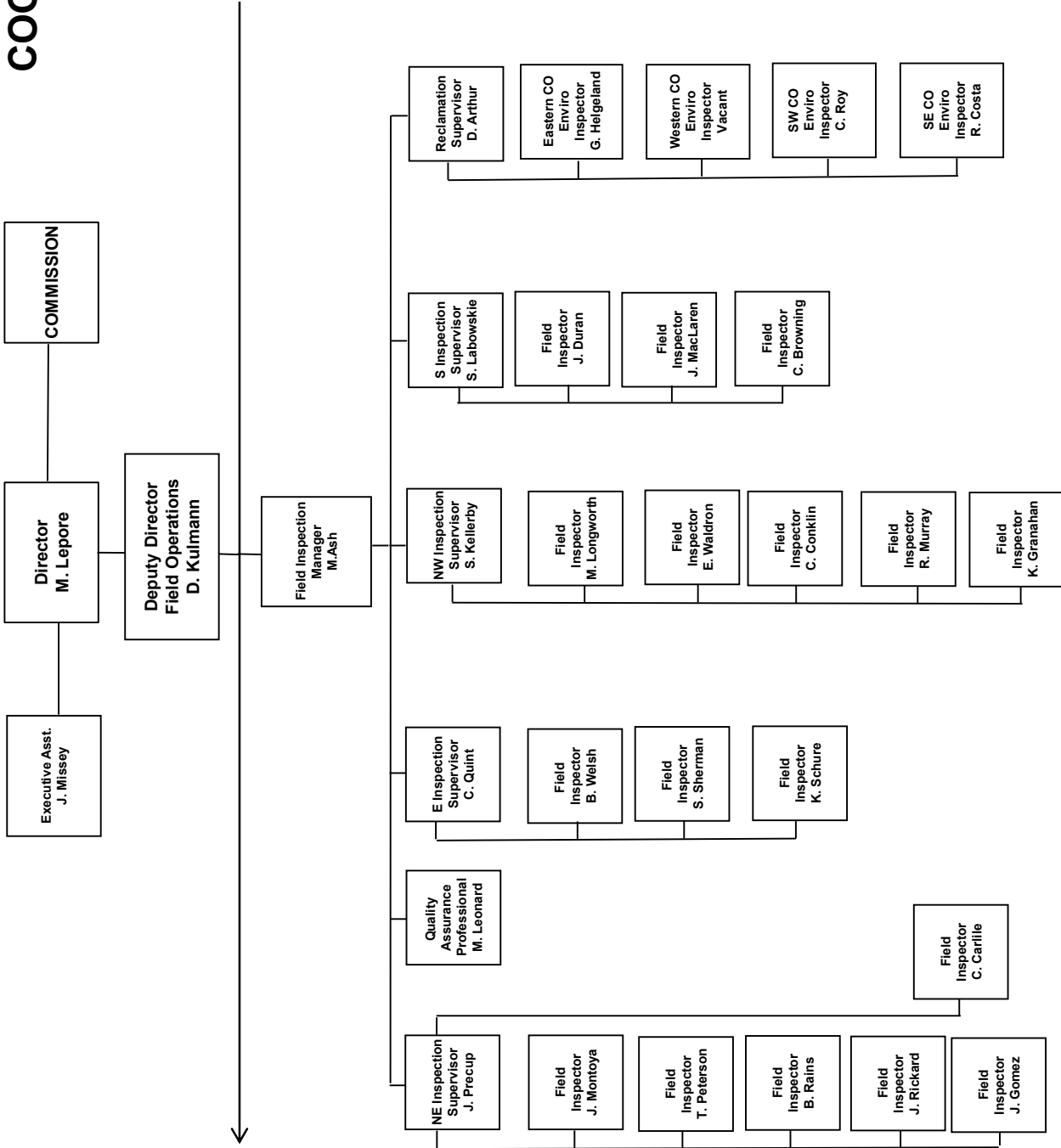


Oil and Gas Staff Report

May 18, 2015

11

COGCC





PLUGGING AND RECLAIMING ABANDONED WELLS FOR ORPHANED LOCATIONS
FISCAL YEAR 2014-15

County	Type	Project Name	Acct Code	PLANNED ESTIMATED TOTAL PROJECT COST				FY 2014-15 YTD EXPENDITURES				Description
				Bond	PRAW	EMGY	Totals	Bond	PRAW	EMGY	Totals	
TBD	RECL	Multiple Sites TBD	TBD	\$0	\$70,144	\$0	\$70,144					Multiple site reclamations TBD as per 2015 01 08 MTG
TOTALS =>				\$0	\$70,144	\$0	\$70,144	\$0	\$0	\$0	\$0	

County	Type	Project Name	Acct Code	IN PROGRESS ESTIMATED TOTAL PROJECT COST				FY 2014-15 YTD EXPENDITURES				Description
				Bond	PRAW	EMGY	Totals	Bond	PRAW	EMGY	Totals	
Montrose	PA	Redwine Resources-Nucla Unit 1-32 BOND	TBD	\$30,000	\$20,725	\$0	\$50,725					Response to Bankruptcy - PA prior to pit closure & reclamation
Garfield	RECL	Dolphin Arroyo #9-16D	ARRO	\$0	\$24,555	\$0	\$24,555					Access Road and Well Pad-Recontouring; debris removal Open casing 4' above GL. Heard "gas bubbling through liquid down hole" during 1998 inspection. Tagged bottom at 189' during 2007 inspection; no evidence of leaking.
Baca	PA	Chapman #1	CHAP	\$0	\$26,470	\$0	\$26,470					
Baca	PA	Wallace Oil and Gas BOND a) Newman 1-7 (WAL1) b) Watkins 1 (WAL2) c) Hume 17-1 (WAL3)	WAL1 WAL2 WAL3	\$15,000	\$63,912	\$0	\$78,912					BONDS claimed in 2004; three (3) wells to plug
Rio Blanco	ENV	Gentry-West Rangely Subdivision	GENT	\$0	\$25,999	\$0	\$25,999	\$0	\$39,189	\$0	\$0	1-Pit and 1-tank battery A) Sample and test (Table 910-1) B) Dispose contaminated soil C) Backfill and compact D) Demolish Tank and haul off
TOTALS =>				\$45,000	\$161,661	\$0	\$206,661	\$0	\$39,189	\$0	\$0	

County	Type	Project Name	Acct Code	COMPLETED ESTIMATED TOTAL PROJECT COST				FY 2014-15 YTD EXPENDITURES				Description
				Bond	PRAW	EMGY	Totals	Bond	PRAW	EMGY	Totals	
Mesa	PA	DB Orphan Blair #1	DEB1	\$0	\$65,069	\$0	\$65,069	\$0	\$98,443	\$0	\$98,443	Have capped well and stopped water flow; Re-enter; PA + one (1) previously PA well where the casing was cut off for a total of eight (8) wells in the project. Original plans included plugging five (5) wells and cutting off casings in three (3) previously PA wells. When cutting into the two of the three (3) previously PA wells, two (2) were found with no plugs! Leak has stopped; have cut off casing, installed PA marker and repaired the gate to the location. DA 1955; Surf owner/farmer complaint; located in a cultivated farm and impeding farming operations.
Rio Blanco	PA	Gentry	GENT	\$0	\$51,914	\$0	\$51,914	\$0	\$65,306	\$0	\$65,306	EPS soil analysis completed for the pit at the CTB
Mesa	PA	Pasture #1	HSTD	\$0	\$5,000	\$0	\$5,000	\$0	\$1,360	\$0	\$1,360	Deemed a fresh water well and dropped from the program
Washington	PA	Flessner #13	FLES	\$0	\$47,700	\$0	\$47,700	\$0	\$43,560		\$43,560	Fence repairs and installation of a culvert over the ditch
Adams	ENV	Ruth #1	RUTH	\$5,000	\$0	\$0	\$5,000	\$871	\$0	\$0	\$871	
Larimer	ENV	Akerman #1	AKER	\$0	\$0	\$0	\$0	\$0	\$1,250	\$0	\$1,250	
Mesa	RECL	DB Orphan Blair #1	DEB1	\$0	\$3,276	\$0	\$3,276	\$0	\$3,276	\$0	\$3,276	
TOTALS =>				\$5,000	\$172,959	\$0	\$177,959	\$871	\$213,195	\$0	\$214,066	

GRAND TOTALS	ESTIMATED TOTAL PROJECT COSTS				FY 2014-15 YTD EXPENDITURES			
	Bond	PRAW	EMGY	Totals	Bond	PRAW	EMGY	Totals
	\$50,000	\$404,764	\$0	\$454,764	\$871	\$252,384	\$0	\$214,066

ABREVIATIONS

TYPE	PA=plug abandon RECL=reclamation ENV=enviro remediation
EMGY	Funding from the Emergency Response (Budget Line Item)
PRAW	Funding from the Plug Recl Abandon Well (Budget Line Item)
TBD	To be determined

SCOREBOARD (PRAW FUNDING ONLY)

\$161,661	In Progress Estimated Totals
\$39,189	In Progress Spent to Date Totals
\$122,472	In Progress Remaining Totals
\$252,384	Completed to Date Totals
\$374,856	Sum of (In Progress Remaining Totals) and (Completed to Date Totals)
\$70,144	Planned
\$445,000	Total Expenditures
\$445,000	Annual Budget Appropriation
\$0	Projected End of Year Balance



Oil and Gas Staff Report

May 18, 2015

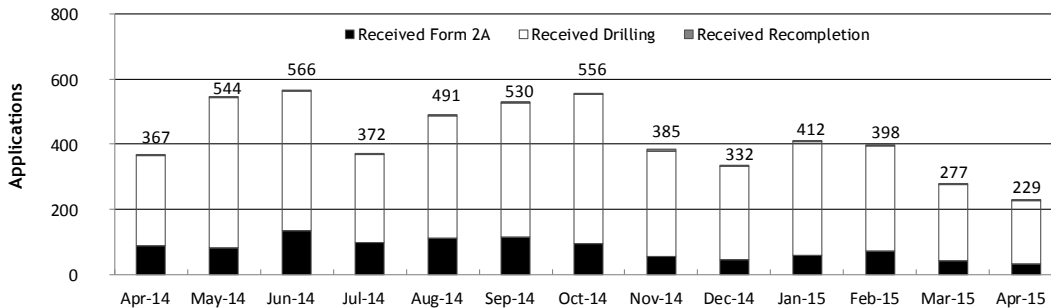
Monthly Permit Activity as of May 1, 2015

Form/Month	Backlog	Received	Approved	Withdrawn	Rejected	Incomplete ¹	In-Process	Remaining ²
Form2A								
Apr-14	222	89	99	18	0	25	169	194
May-14	194	83	94	7	0	26	150	176
Jun-14	176	134	92	3	0	30	185	215
Jul-14	215	97	126	3	0	28	155	183
Aug-14	183	111	87	3	0	36	168	204
Sep-14	204	116	81	3	0	47	189	236
Oct-14	236	94	109	6	0	74	141	215
Nov-14	215	54	103	6	0	46	114	160
Dec-14	160	45	99	3	0	39	64	103
Jan-15	103	60	43	3	0	23	94	117
Feb-15	117	72	28	0	0	35	126	161
Mar-15	161	43	70	2	0	30	102	132
Apr-15	132	33	37	3	0	38	87	125
Drilling								
Apr-14	704	276	317	16	0	63	584	647
May-14	647	459	383	16	0	53	654	707
Jun-14	707	429	377	8	0	62	689	751
Jul-14	751	272	446	2	0	65	510	575
Aug-14	575	376	259	24	0	90	578	668
Sep-14	668	412	304	21	0	109	646	755
Oct-14	755	459	370	10	0	137	697	834
Nov-14	834	326	479	19	0	128	534	662
Dec-14	662	286	397	10	4	115	422	537
Jan-15	537	349	316	2	0	119	449	568
Feb-15	568	323	161	21	0	143	566	709
Mar-15	709	233	294	14	0	226	408	634
Apr-15	634	193	165	17	0	295	350	645
Recompletion								
Apr-14	4	2	3	0	0	1	2	3
May-14	3	2	2	0	0	1	2	3
Jun-14	3	3	0	0	0	1	5	6
Jul-14	6	3	5	0	0	0	4	4
Aug-14	4	4	3	0	0	0	5	5
Sep-14	5	2	3	0	0	1	3	4
Oct-14	4	3	2	0	0	2	3	5
Nov-14	5	5	2	0	0	1	7	8
Dec-14	8	1	2	1	0	2	4	6
Jan-15	6	3	1	0	0	3	5	8
Feb-15	8	3	2	0	0	3	6	9
Mar-15	9	1	6	0	0	1	3	4
Apr-15	4	3	1	0	0	2	4	6

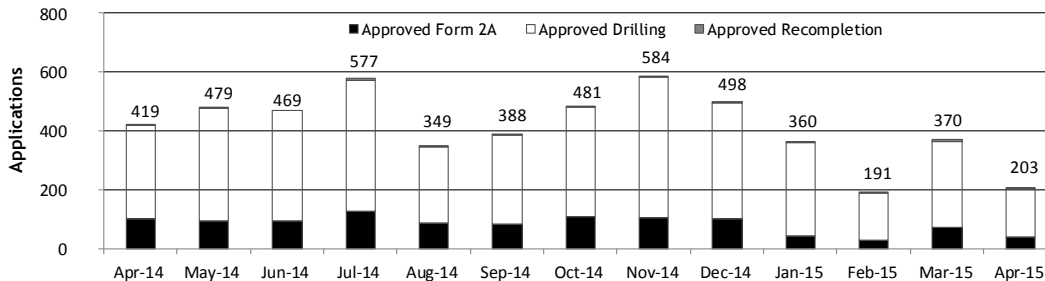
¹ Incomplete are permits that have missing or inaccurate data and cannot be approved.

² Backlog = Incomplete + In-process = Remaining permits from previous month.

Received Applications



Approved Applications





Status of Permit Applications Filed By Month as of May 1, 2015

Form 2A Location Assessment

Year	Month	Received	Approved	Withdrawn	In Process	Percent In Process	Median Days to Process	Less Than 30 Days	30 to 49 Days	Greater Than 50 Days
2011	TOTAL	2,391	2,298	93	0	0%		1,416	620	262
2012	TOTAL	1,359	1,291	68	0	0%		706	378	207
2013	TOTAL	1,281	1,200	78	3	0%		369	433	398
2014	JAN	85	82	3	0	0%	54	12	36	34
	FEB	88	86	2	0	0%	55	11	36	39
	MAR	113	108	5	0	0%	47	30	42	36
	APR	80	73	7	0	0%	45	18	35	20
	MAY	92	88	4	0	0%	52	13	34	41
	JUN	134	130	3	1	1%	62	36	54	40
	JUL	100	95	4	1	1%	41	37	38	20
	AUG	102	98	3	1	1%	50	33	26	39
	SEP	118	113	5	0	0%	47	29	45	39
	OCT	94	86	6	2	2%	38	34	35	17
	NOV	65	62	0	3	5%	40	20	27	15
	DEC	45	42	0	3	7%	49	6	21	15
2014	TOTAL	1,116	1,063	42	11	1%		279	429	355
2015	JAN	49	44	1	4	8%	50	6	15	23
	FEB	70	50	1	19	27%	52	5	16	29
	MAR	54	19	3	32	59%	30	6	13	0
	APR	39	2	0	37	95%	27	2	0	0
2015	TOTAL	212	115	5	92	43%		19	44	52

Form 2 Application For Permit to Drill (APDs)

Year	Month	Received	Approved	Withdrawn	In Process	Percent In Process	Median Days to Process	Less Than 30 Days	30 to 49 Days	Greater Than 50 Days
2011	TOTAL	4,691	4,557	132	0	0%		2,723	1,565	587
2012	TOTAL	3,955	3,816	139	0	0%		1,971	1,393	602
2013	TOTAL	4,550	4,306	235	3	0%		1,046	1,626	1,712
2014	JAN	261	256	5	0	0%	57	35	117	108
	FEB	298	285	13	0	0%	58	37	94	159
	MAR	359	351	8	0	0%	52	50	133	173
	APR	223	213	10	0	0%	47	20	121	74
	MAY	501	498	3	0	0%	71	40	155	305
	JUN	438	400	37	1	0%	62	111	138	154
	JUL	287	274	12	1	0%	48	62	119	95
	AUG	350	332	4	14	4%	57	61	126	149
	SEP	413	375	29	9	2%	51	62	150	164
	OCT	441	407	3	31	7%	40	129	199	81
	NOV	374	345	20	9	2%	48	54	144	153
	DEC	281	260	0	21	7%	49	28	133	99
2014	TOTAL	4,226	3,996	144	86	2%		689	1,629	1,714
2015	JAN	291	267	1	23	8%	51	50	60	160
	FEB	294	202	6	86	29%	55	24	73	107
	MAR	306	73	18	215	70%	38	10	58	6
	APR	169	12	1	156	92%	21	12	0	0
2015	TOTAL	1,060	554	26	480	45%		165	96	273



Oil and Gas Staff Report

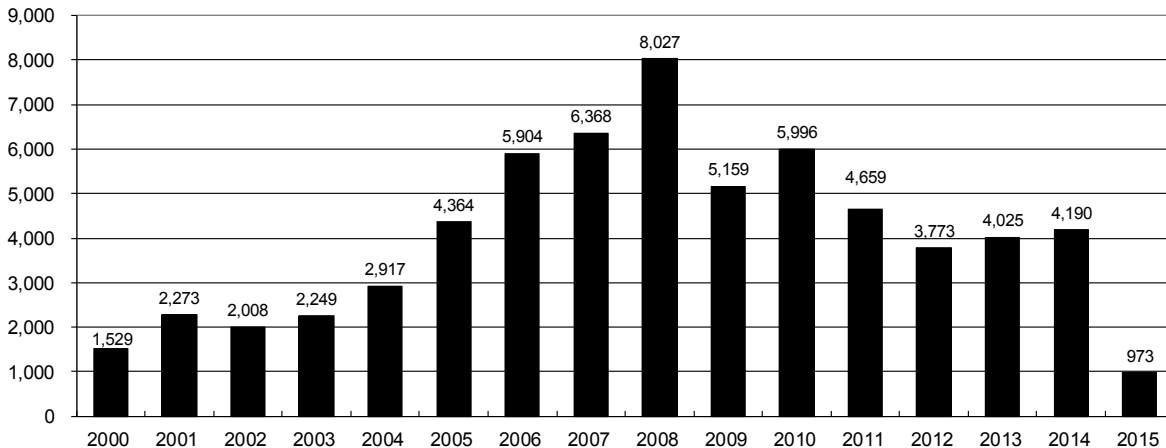
May 18, 2015

15

Annual Drilling Permits by County as of May 2, 2015

County	2000	2001	2002	2003	2004	2005	2006	2007	2008	2009	2010	2011	2012	2013	2014	2015
ADAMS	38	28	9	26	39	34	37	89	51	35	21	8	40	40	51	8
ARAPAHOE	0	2	1	2	5	7	11	10	10	10	8	23	35	23	34	8
ARCHULETA	7	9	6	10	8	13	14	26	47	11	18	12	5	4	3	1
BACA	22	6	2	3	7	8	2	11	13	3	4	5	3	1	1	
BENT	2				5	3	8	1	1		5		2	1		
BOULDER	1	5	6	7	17	13	21	37	32	35	24	30	22			
BROOMFIELD			2	7		1	1		2	33	28	11	36		31	
CHEYENNE	3	3	3	3	3	10	21	15	33	12	13	16	31	50	26	3
COSTILLA																
CROWLEY																2
DELTA			7	4	5	10	9	2			4	3	6	1	2	
DENVER		3					19	25	24							
DOLORES				1	1	1	6	10	12	21	8	8	13	12	3	
EAGLE														1		
ELBERT	2						4			1		1	2	2	4	
EL PASO										2	3	3	18	1	2	
FREMONT					1	3	2	4	14	13	22	14	11	2	8	
GARFIELD	213	353	362	567	796	1,509	1,845	2,550	2,888	1,981	2,037	1,323	1,046	870	1,066	213
GRAND																
GUNNISON			5	10	1	9	19	7	10	12	4	3	11	9	20	14
HUERFANO	41	27	27		8	2		7			2	1	9	1	13	2
JACKSON	34	18	21	9	14	6	8	5	27	19	9	18	5	12	17	1
JEFFERSON	1						1	3	2					1		
KIOWA	11	18	2	4	2	1	11	9	26	7	16	17	17	12	5	2
KIT CARSON				1	3	5	4	4	13	7	3	2	6	1	2	
LA PLATA	127	156	104	162	102	115	235	251	328	298	191	99	71	32	87	27
LARIMER	2		1			1		5	46	12	41	8	13	2	4	21
LAS ANIMAS	268	400	259	180	332	413	500	362	303	88	92	85	11	2	1	
LINCOLN	2	2	1	6	3	4	1	2	58	44	48	31	36	87	129	4
LOGAN	4	7	3	3	6	13	17	14	5	9	17	8	27	4	5	
MESA	13	27	30	27	54	136	265	293	501	427	306	127	150	105	74	1
MOFFAT	35	52	62	63	63	60	120	68	57	51	53	93	88	44	54	3
MONTEZUMA	4		5	8	8	11	5	12	22	39	19	27	29	14	25	3
MONTROSE	1	3	2	4	2		1	3	3		1	1				
MORGAN	9	9	2	7	9	7	3	6	2	1	6	13	5	16	6	2
OTERO																
PARK										3	4	1				
PHILLIPS	1	2		7	13	17	12	69	82	45	64	112	56		11	
PITKIN					1			1								
PROWERS	2	5	4		7	5	7	5	8	1	3	1			1	
RIO BLANCO	89	187	105	179	154	161	360	321	477	348	441	109	117	167	121	90
RIO GRANDE	1	1		1					1	1			2		1	
ROUTT	20	13	1		4	6	9	8	4	2	3	10	4	12	4	
SAGUACHE	2		2					2	1	2						
SAN MIGUEL	11	13	27	18	42	45	35	23	20	13	10	2	1		2	1
SEDGWICK				1	5	2	7	2	1	19	11	12	2		7	
WASHINGTON	23	17	27	34	128	50	69	45	11	1	6	12	6	19	12	1
WELD	509	702	760	757	832	901	1,418	1,527	2,340	1,448	2,152	2,262	1,826	2,468	2,303	568
YUMA	31	205	160	138	237	782	797	541	545	105	299	148	11	9	53	
TOTAL	1,529	2,273	2,008	2,249	2,917	4,364	5,904	6,368	8,027	5,159	5,996	4,659	3,773	4,025	4,190	973

ALL COUNTIES





Form 2A Breakdown By County By Year as of May 2, 2015

Year	County	Form 2As	Completed	In Process	New Location	CDP	SWH	RSO	CDPHE
2009	Total State	818	818	0	408	2	80	5	5
2010	Total State	2,377	2,377	0	1,543	0	317	22	55
2011	Total State	2,297	2,297	0	1,724	1	259	16	5
2012	Total State	1,297	1,297	0	900	0	167	6	1
2013	Total State	1,195	1,192	3	845	0	144	2	4
2014	ADAMS	23	22	1	20	0	0	0	0
	ARAPAHOE	18	17	1	18	0	0	0	1
	ARCHULETA	1	1	0	0	0	1	0	0
	BACA	1	1	0	1	0	0	0	0
	BROOMFIELD	1	1	0	0	0	0	0	0
	CHEYENNE	23	23	0	20	0	0	0	0
	CROWLEY	2	2	0	2	0	0	0	0
	DOLORES	2	2	0	2	0	1	0	0
	EL PASO	2	2	0	2	0	0	0	0
	ELBERT	4	4	0	4	0	0	0	0
	FREMONT	3	3	0	3	0	3	0	0
	GARFIELD	79	79	0	20	0	53	3	0
	GUNNISON	7	7	0	2	3	2	0	0
	HUERFANO	5	5	0	1	0	4	0	1
	JACKSON	14	14	0	9	0	14	0	0
	KIOWA	3	3	0	2	0	0	0	0
	KIT CARSON	2	2	0	2	0	0	0	0
	LA PLATA	14	14	0	4	0	13	0	0
	LARIMER	4	3	1	3	0	0	0	0
	LAS ANIMAS	1	1	0	1	0	0	0	0
	LINCOLN	135	135	0	119	0	0	0	0
	LOGAN	2	2	0	2	0	0	0	0
	MESA	8	8	0	3	0	5	1	0
	MOFFAT	11	11	0	9	0	11	1	0
	MONTEZUMA	15	15	0	15	0	0	0	0
	PHILLIPS	11	11	0	10	0	0	0	0
	PROWERS	1	1	0	1	0	0	0	0
	RIO BLANCO	20	20	0	13	0	17	0	0
	ROUTT	1	1	0	1	0	1	0	0
	SAN MIGUEL	1	1	0	1	0	0	0	0
	SEDGWICK	7	7	0	5	0	0	0	0
	WASHINGTON	13	13	0	13	0	0	0	0
	WELD	585	576	9	425	0	4	2	1
	YUMA	53	53	0	48	0	0	0	0
2014	Total State	1,072	1,060	12	781	3	129	7	3
2015	ADAMS	3	2	1	2	0	0	0	0
	ARAPAHOE	5	5	0	0	0	0	0	0
	CHEYENNE	1	1	0	1	0	0	0	0
	GARFIELD	12	9	3	3	0	8	0	0
	GUNNISON	5	5	0	1	0	4	0	0
	HUERFANO	1	1	0	0	0	0	0	0
	JACKSON	2	1	1	2	0	2	0	0
	KIOWA	2	2	0	2	0	2	0	0
	LA PLATA	10	7	3	3	0	8	0	0
	LARIMER	3	1	2	1	0	0	0	0
	LINCOLN	4	2	2	4	0	0	0	0
	MESA	5	2	3	2	0	2	0	0
	MOFFAT	4	2	2	2	0	4	0	0
	MONTEZUMA	3	3	0	3	0	0	0	0
	MORGAN	1	1	0	1	0	0	0	0
	RIO BLANCO	10	7	3	7	0	10	0	0
	ROUTT	1	0	1	0	0	1	0	0
	WASHINGTON	1	1	0	1	0	0	0	0
	WELD	131	60	71	103	0	2	0	0
2015	Total State	204	112	92	138	0	43	0	0

Abbreviations:

CDP = Comprehensive Drilling Plan SWH = Sensitive Wildlife Habitat consultation

RSO = Restricted Surface Occupancy consultation CDPHE= Colorado Department of Health and Environment consultation



Oil and Gas Staff Report

May 18, 2015

Horizontal Well Activity as of May 2, 2015

County	Prior Years		2009		2010		2011		2012		2013		2014		2015		Total		Completion		
	Drilled	PA	Permit	Spud	Permit	Spud	Permit	Spud	Permit	Spud	Permit	Spud	Permit	Spud	Permit	Spud	Spud	AC	PR	DA	PA
ADAMS			6	5	2	3	1		17	2	26	2	42	19	6	1	32	5	5		
ARAPAHOE	2						10	1	22	4	11	13	22	11	1		31	2	16		
ARCHULETA	17		7	6	15	7	10	8	5	9	2		1		1		47		48		
BENT									1	1	1						1		1		
BOULDER							4										0				
CHEYENNE	5	4							6	1	7	2	1	1			8		2		3
DELTA						1			9	3	5	4	3	1			19		13		1
DOLORES	9		18	2	6				10								0				1
EL PASO																	0				1
ELBERT									1								0				
FREMONT	7	6	6		12	5	3	4	4	1	1						17		10	6	1
GARFIELD	10	2	1	1	16	2	18	6	43	6	18	4	20	9	10	6	44		26		2
GUNNISON	1				1				3	2	2		9		8		3		3		
HUERFANO									4	1			2				1				
JACKSON	8	1	8		3	3	9	2	4		8	5	15	3	1		21		14	1	1
KIOWA									1		4	1	1				1		1		
KIT CARSON	1								1		1		1				2		1		3
LA PLATA	28	2	11	2	28	3	18	7	12	1	5	1	43	5	11	47		51		1	
LARIMER	3	2					5	1	2	1	2				16		7		4		2
LAS ANIMAS	16	2	4		1	1											17		17		1
LINCOLN			2	1	2	1	1		1	1	6	1	4				4		3		
LOGAN	2								1								2		2		
MESA	3	2	36	1	22	7	24	13	14		9	2	9	1	1	3	30		26	2	3
MOFFAT	7	1	6	3	4		9	4	44	6	18	13	15	1	1	34	1	22	1	1	
MONTEZUMA	6	1	23	6	11	2	8	2	18	6	3	4	15	2	2		28		40		1
MORGAN							6	2	2	1	13	1	6				4		2		
PARK							1	1									1				
RIO BLANCO	7	2			1	1	11	2	15	2	4	5	3	1			18		11	4	
ROUTT	10	6							1		1						10		2	6	1
SAN MIGUEL	1																1				1
WASHINGTON	1	1															1				1
WELD	11	3	12	5	208	93	763	233	964	593	2,114	1,096	2,215	1,386	545	393	3,810		1,651	10	44
YUMA	1		6														1		1		1
TOTAL Horizontal	156	25	147	32	333	130	901	285	1,203	641	2,260	1,157	2,428	1,441	603	403	4,245	8	1,975	33	65
Percent of Total HZ																		0%	47%	1%	2%
Total All Permits			5,159		5,996		4,659		3,773		4,025		4,190		973						
HZ Percent of Total			2.8%		5.6%		19.3%		31.9%		56.1%		57.9%		62.0%						



Well to Building Setbacks by Year and by County as of May 2, 2015

Count of well locations, grouped by proximity from well to buildings.

Location Proximity to Buildings	2009	2010	2011	2012	2013	2014	2015	Number of Locations	Percent of
									Total Locations
Less than 150 feet	2	3	3	2	0	3	2	15	0%
150 to 350 feet	37	58	61	39	34	38	4	271	3%
350 to 500 feet	50	110	97	61	64	48	15	445	5%
500 to 1000 feet	117	385	331	188	188	161	30	1,400	17%
1000 + feet	356	1,705	1,470	838	762	724	111	5,966	74%
TOTAL LOCATIONS	562	2,261	1,962	1,128	1,048	974	162	8,097	

County	TOTAL	Less than 150 feet	150 to 350 feet	350 to 500 feet	500 to 1000 feet	1000 + feet
ADAMS	74	0	4	8	16	46
ARAPAHOE	90	0	2	4	9	75
ARCHULETA	18	0	0	1	9	8
BACA	15	0	0	0	1	14
BENT	7	0	0	0	0	7
BOULDER	23	0	1	1	17	4
BROOMFIELD	33	0	0	4	13	16
CHEYENNE	134	1	0	0	2	131
CROWLEY	2	0	0	0	0	2
DELTA	7	0	0	2	1	4
DOLORES	19	0	0	0	7	12
EAGLE	1	0	0	0	0	1
EL PASO	14	0	0	0	3	11
ELBERT	8	0	0	0	2	6
FREMONT	39	0	2	7	8	22
GARFIELD	537	0	9	8	77	443
GUNNISON	38	1	0	3	1	33
HUERFANO	16	0	0	0	5	11
JACKSON	44	0	0	4	1	39
KIOWA	65	0	0	0	1	64
KIT CARSON	14	0	0	0	0	14
LA PLATA	124	0	4	13	41	66
LARIMER	37	0	5	4	12	16
LAS ANIMAS	201	1	6	7	37	150
LINCOLN	349	0	1	2	4	342
LOGAN	43	0	1	1	0	41
MESA	90	0	0	3	14	73
MOFFAT	171	0	0	2	14	155
MONTEZUMA	42	0	0	1	4	37
MONTROSE	2	0	0	0	0	2
MORGAN	29	0	0	2	4	23
PARK	4	0	0	0	0	4
PHILLIPS	273	1	4	6	21	241
PROWERS	5	0	0	0	0	5
RIO BLANCO	181	0	0	0	2	179
RIO GRANDE	2	0	0	0	1	1
ROUTT	26	0	0	0	2	24
SAN MIGUEL	12	0	0	0	0	12
SEDGWICK	32	0	0	1	3	28
WASHINGTON	63	0	2	0	2	59
WELD	4,688	11	221	345	1,022	3,089
YUMA	525	0	9	16	44	456



Well to Building Setbacks Less Than Two Hundred Feet as of May 2, 2015

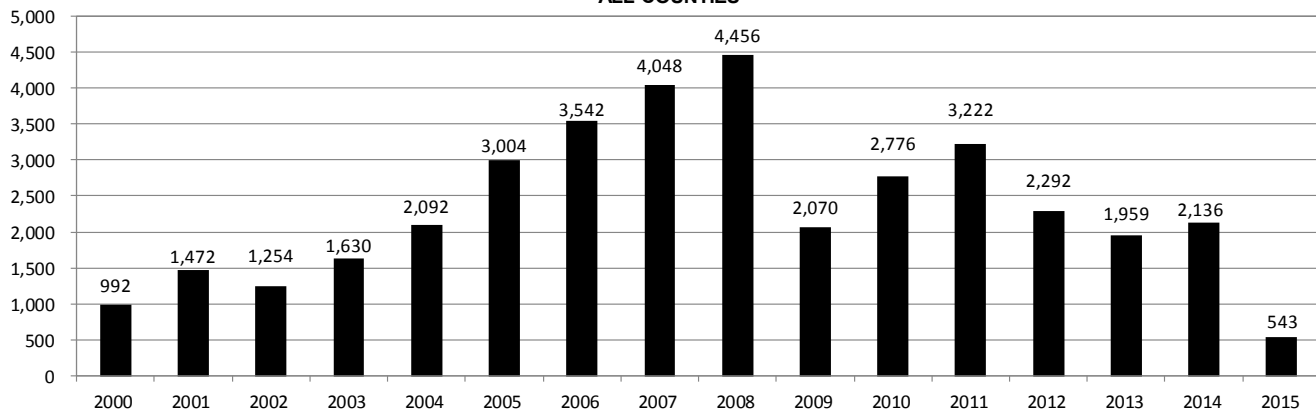
Year	Location Doc Number	County	High Density	New Location	Distance (Feet)	Proximity (Feet)	Building Description
2015	400768804	WELD	No	Yes	46	less 150	Building to be razed
2011	2587822	CHEYENNE	No	No	58	less 150	Water well house
2009	1691798	WELD	No	No	58	less 150	Vehicle garage
2010	400072164	WELD	No	Yes	69	less 150	Abandoned hog shed
2014	400569085	WELD	No	No	78	less 150	Well shed
2014	400600705	WELD	No	No	80	less 150	Livestock shed
2012	400240957	GUNNISON	No	Yes	90	less 150	Equipment shed
2015	400742811	WELD	No	Yes	102	less 150	Building to be razed
2009	1758843	WELD	No	Yes	103	less 150	Building to be razed
2011	1636646	WELD	No	No	122	less 150	Storage shed
2009	400011284	LAS ANIMAS	No	Yes	127	less 150	Operator is owner
2009	1786896	PHILLIPS	No	No	132	less 150	Grain storage
2014	400642113	WELD	No	Yes	142	less 150	Barn
2011	400117702	WELD	No	Yes	143	less 150	Irrigation pump house
2011	400227765	WELD	No	Yes	145	less 150	Storage barn
2014	400558626	LINCOLN	No	No	150	less 150	Gas plant equipment building
2009	1904205	WELD	No	No	154	150 to 350	Livestock enclosure
2012	400243295	WELD	No	Yes	155	150 to 350	Unused storage shed
2011	400179419	WELD	No	Yes	157	150 to 350	Existing well / storage building
2010	400054716	WELD	No	No	159	150 to 350	Equipment barn
2011	400188968	WELD	No	Yes	159	150 to 350	Abandoned
2014	400554054	WELD	No	Yes	159	150 to 350	Equipment shed
2014	400559404	WELD	No	Yes	160	151 to 350	Barn
2010	400021477	WELD	No	Yes	162	150 to 350	Goat barn
2009	1758386	WELD	No	Yes	168	150 to 350	Storage shed
2011	1635946	WELD	No	No	169	150 to 350	Storage shed
2013	400447386	WELD	No	No	169	150 to 350	Abandoned turkey barn
2013	400447391	WELD	No	No	169	150 to 350	Abandoned turkey barn
2011	400165164	WELD	No	Yes	178	150 to 350	Residence
2013	400367184	WELD	No	Yes	179	150 to 350	Shed
2011	400188780	WELD	No	Yes	180	150 to 350	Residence
2014	400562498	WELD	No	Yes	181	150 to 350	Garage / storage shed
2010	1697620	WELD	No	No	187	150 to 350	Livestock shed
2009	1758746	WELD	No	No	193	150 to 350	Storage shed
2011	400154431	WELD	No	Yes	198	150 to 350	Turkey barn
2012	400250031	WELD	No	Yes	198	150 to 350	Abandoned guard shack
2009	1774783	WELD	No	No	199	150 to 350	Cement service building
2011	400118102	YUMA	No	Yes	199	150 to 350	Steel barn



Annual Well Starts by County as of May 2, 2015

County	2000	2001	2002	2003	2004	2005	2006	2007	2008	2009	2010	2011	2012	2013	2014	2015
ADAMS	18	13	4	19	22	24	13	41	14	13	21	1	15	5	26	2
ARAPAHOE					6	1	5	2	1	1	3	9	9	25	20	
ARCHULETA	4	4	2	5	4	10	5	7	28	9	12	10	11		1	
BACA	19	6	2	1	6	6	2	6	12		5	4	2	1		1
BENT	2				3	2	8	1	1			1	2			
BOULDER				2	5	11	9	14	25	16	13	7	14			
BROOMFIELD			2		1				10		21	11	5			
CHEYENNE	2	1	3	3		9	14	15	14	8	12	11	17	35	19	1
COSTILLA																
CROWLEY																2
DELTA				5	4	6	5	2			7	3	3		1	
DENVER		2					7	5	4							
DOLORES					2		2	13	6	2		1	5	10	4	
EAGLE														1		
EL PASO											2		5		1	
ELBERT	2						1									
FREMONT					1	3	2	2	5	3	10	16	8	1	4	
GARFIELD	190	251	245	417	585	799	1,005	1,304	1,689	765	905	878	495	393	356	85
GUNNISON			1		1	1	9	5	1	4	5	2	4	1	2	
HUERFANO	25	14	19	3	6	2			2		2		2	1	2	
JACKSON	24	2	4	10	10		3	3	12	1	6	7		7	5	
JEFFERSON								2								
KIOWA	8	16	2	4	2	1	7	7	2	5	15	14	10	11	3	2
KIT CARSON				1	1	6	2	1	14	3	1	1	3	1	2	
LA PLATA	99	135	118	110	103	104	108	179	199	131	67	54	3	10	34	8
LARIMER	1	1				1		4	8	1	28	2	10	4	1	
LAS ANIMAS	202	286	205	221	296	384	413	326	222	14	7	78	1		1	
LINCOLN	2	2	1	5	2	2	1	2	18	11	14	21	23	42	39	1
LOGAN	4	6	3	3	2	11	12	12	3	7	3	9	13	4	6	
MESA	2	12	12	13	25	89	156	209	225	14	11	41	4	6	15	27
MOFFAT	18	23	25	28	19	40	60	42	26	18	15	33	25	27	3	
MONTEZUMA	2	3	5	5	1	7	2	4	19	10	3	8	18	12	8	1
MONTROSE		3		2	1			1	2		1					
MORGAN	9	8	1	7	5	5	3	1	1	2	3	2	3	1	3	
PARK											2					
PHILLIPS	1			6	10	11	4	35	18	2	42	130	48		9	
PROWERS	2	4	4		5	5	6	3	5	2	3	1				1
RIO BLANCO	51	82	47	83	92	95	107	95	204	118	107	72	53	36	42	8
RIO GRANDE														1		
ROUTT	5	12	1		1	6	3	2		2	1	2	4	2	2	
SAN MIGUEL	6	9	10	19	28	13	20	17	5	1	2	2			1	
SEDGWICK				1	2	1	1	5			3	8	3			
WASHINGTON	15	12	24	29	65	34	23	14	11	2	2	4	1	9	7	
WELD	237	403	406	522	632	718	931	1,222	1,314	878	1,209	1,672	1,457	1,300	1,478	406
YUMA	42	162	108	106	144	597	593	445	336	27	213	107	16	13	39	
TOTAL	992	1,472	1,254	1,630	2,092	3,004	3,542	4,048	4,456	2,070	2,776	3,222	2,292	1,959	2,136	543

ALL COUNTIES





Oil and Gas Staff Report

May 18, 2015

21

Active Wells by County and Status as of May 2, 2015

COUNTY	Drilling	Domestic	Injecting	Producing	Shut In	Temp Aband	Waiting on Completion	Active Storage	Intent to Plug	Total Active Wells
ADAMS	15		7	886	68	9	2	15		1,002
ARAPAHOE	2	1	2	149	8	9		43		214
ARCHULETA	1	5		103	9	13	6			137
BACA			9	124	40	6		55		234
BENT		1		29	7					37
BOULDER				314	1	1				316
BROOMFIELD				97						97
CHEYENNE	4		34	326	26	49	1			440
CROWLEY	2									2
DELTA				3	14		1			18
DENVER			1	46	2		3			52
DOLORES	2		1	35	7	4	1			50
EL PASO	1	1				1				3
ELBERT				67	3	1				71
FREMONT	5	3		58	9	6				81
GARFIELD	201	5	43	10,478	133	80	50	1		10,991
GUNNISON	3		1	25	15	1	3			48
HUERFANO	1		1	35	4	6	1			48
JACKSON	3		27	109	52	1				192
JEFFERSON			2	1	1		1	1		6
KIOWA	5		7	102	15	3	2			134
KIT CARSON		1	1	16		1				19
LA PLATA	10	7	28	3,133	104	18	6	33		3,339
LARIMER	1	2	18	186	31	18	1			257
LAS ANIMAS		3	14	2,818	31	89	18	17		2,990
LINCOLN	11	1	7	94	12	6	2			133
LOGAN	10		14	113	42	29	4	12		224
MESA	28	1	10	886	102	17	23	9		1,076
MOFFAT	1		9	494	48	34	11			597
MONTEZUMA	6	2	6	116	42	16				188
MONTROSE						3				3
MORGAN	1		24	88	80	33		79		305
OURAY		2				1				3
PARK					1					1
PHILLIPS			2	264	4	1	1			272
PITKIN								10		10
PROWERS	1			25	5					31
RIO BLANCO	11	4	282	2,327	194	82	15	5		2,920
ROUTT	1	2		32	7	2	1			45
SAN MIGUEL	1			112	9	8				130
SEDGWICK	2		1	13	4		2			22
WASHINGTON	6		23	405	28	7	4			473
WELD	1,040	1	43	20,598	524	38	101	2		22,347
YUMA	1	8	23	3,785	42	9	12	1		3,881
Totals	1,376	50	640	48,492	1,724	602	272	283	0	53,439



Monthly Statistics as of May 2, 2015

YEAR and MONTH	Baker - Hughes Rig Count	Permits										Well Spud Notices	Active Drilling Permits	Active Wells	Public Visits			
		Drilling		Recompletion		Injection		Pits		Locations					Data	Office	Internet	
		Rcvd	Apvd	Rcvd	Apvd	Rcvd	Apvd	Rcvd	Apvd	Rcvd	Authz							
2011 TOTAL		4,709	4,659	325	320	44	32	190	192	2,382	2,267	3,220			187	1,294	1,337,865	
2012 JAN	73	372	258	26	21	3	0	11	5	142	129	244	5,217	46,958	12	106	112,686	
FEB	70	370	382	23	27	7	5	21	9	160	129	231	5,173	47,128	16	114	105,857	
MAR	66	292	347	21	14	2	2	17	24	133	172	292	5,132	47,263	26	138	111,746	
APR	66	410	235	16	24	5	5	9	2	137	106	240	4,785	47,377	12	108	107,627	
MAY	66	491	506	23	16	3	1	6	2	105	131	211	4,885	47,533	20	123	109,802	
JUN	69	326	377	11	19	8	6	5	8	110	89	144	5,136	47,860	11	111	108,849	
JUL	66	237	276	9	14	3	2	5	2	97	103	184	5,152	48,173	13	102	114,195	
AUG	62	313	288	6	9	6	4	23	5	83	97	179	5,031	49,153	11	112	110,908	
SEP	61	252	256	1	5	5	2	4	1	81	77	161	4,960	49,230	11	89	106,114	
OCT	62	326	265	9	3	7	6	2	19	94	82	161	5,009	49,236	8	105	108,833	
NOV	56	271	323	5	8	6	6	2	4	109	97	142	5,000	49,989	10	119	120,586	
DEC	57	322	260	4	8	8	5	9	3	122	81	105	5,081	50,067	9	78	107,240	
2012 TOTAL		3,982	3,773	154	168	63	44	114	84	1,373	1,293	2,294			159	1,305	1,324,443	
2013 JAN	53	538	331	6	0	3	5	6	8	176	124	142	5,060	50,265	9	108	47,406	
FEB	56	260	455	10	5	2	3	4	11	91	141	138	5,250	50,372	7	102	40,649	
MAR	57	344	241	5	9	3	8	15	6	129	84	170	5,093	50,540	9	133	43,019	
APR	61	331	333	6	5	5	5	6	8	146	117	164	4,925	50,687	3	132	46,459	
MAY	61	350	342	8	6	6	6	10	7	106	142	162	5,110	50,810	3	123	45,215	
JUN	62	349	273	2	8	8	8	5	3	114	85	140	5,273	50,909	8	122	41,015	
JUL	68	864	304	11	4	9	2	9	5	218	91	162	5,070	51,091	7	154	45,558	
AUG	69	232	291	6	4	3	2	4	1	35	76	200	5,200	51,255	20	130	44,722	
SEP	69	212	362	9	5	10	9	3	19	56	109	168	5,185	51,407	5	105	41,256	
OCT	72	319	376	5	9	7	5	1	8	67	88	237	4,967	51,598	5	135	45,151	
NOV	69	346	353	4	13	7	4	2	27	67	85	158	5,141	51,711	12	119	38,903	
DEC	64	336	367	2	4	4	6	2	3	63	71	118	5,129	51,737	4	93	32,381	
2013 TOTAL		4,481	4,028	74	72	67	63	67	106	1,268	1,213	1,959			92	1,456	511,734	
2014 JAN	62	278	232	3	2	3	4	14	8	90	43	173	4,926	51,840	1	90	46,150	
FEB	61	284	297	6	4	1	1	3	1	91	94	146	5,051	51,847	12	113	43,408	
MAR	62	367	329	4	6	7	1	6	6	110	88	176	4,997	51,952	16	140	46,620	
APR	63	276	317	2	3	2	5	8	3	89	99	164	4,897	52,060	11	188	45,558	
MAY	65	458	383	2	2	3	1	6	7	83	94	172	4,923	52,202	18	131	42,365	
JUN	67	429	377	3	0	6	7	5	2	134	92	214	4,924	52,337	10	156	42,518	
JUL	69	272	446	2	5	3	11	8	5	97	126	180	4,955	52,431	7	166	45,481	
AUG	73	376	258	3	3	4	4	3	4	111	87	206	5,060	52,582	8	145	42,431	
SEP	76	412	304	1	3	3	1	20	1	116	81	190	5,006	52,694	14	175	43,577	
OCT	76	458	371	3	2	9	2	4	6	93	109	172	4,827	52,785	19	138	46,030	
NOV	73	326	479	5	2	5	4	4	0	54	103	172	5,171	52,947	8	96	39,583	
DEC	69	286	397	1	2	2	7	1	2	45	99	171	5,236	53,054	6	144	37,964	
2014 TOTAL		4,222	4,190	35	34	48	48	82	45	1,113	1,115	2,136			130	1,682	521,685	
2015 JAN	64	349	316	3	1	2	9	3	1	60	43	165	5,060	53,195	17	114	41,502	
FEB	49	323	161	3	2	5	6	9	0	72	28	112	4,750	53,309	4	117	38,245	
MAR	38	233	294	1	6	1	5	7	5	43	70	153	4,983	53,414	6	146	42,513	
APR	37	193	165	3	1	0	5	1	2	33	37	91	4,854	53,456	1	125	39,559	
2015 TOTAL		1,098	936	10	10	8	25	20	8	208	178	521			6	146	42,513	

Abbreviation Key: Rcvd = Received, Apvd = Approved, Authz = Authorized



Oil and Gas Staff Report

May 18, 2015

23

Monthly Statistics as of May 2, 2015

Page 2 of 2

YEAR and MONTH	Well			Bonds						Hearings			Enforcement			Remediation		Inspections	
	Oper Change	Operators New	Operators Inactive	Release Ind	Release Blnkt	Replace	Claim Ind	Claim Blnkt	Apps.	Orders	NOAVs	AOCs	OFVs	Cmplt	Spills	Rcvd	Comp	Wells	Locations
2011 TOTAL	6,743	33	31	79	44	43	4	4	403	349	230	10	19	247	527	726	536	12,394	-
2012 JAN	1,052	3	3	7	5	1	1	0	70	72	18	1	-	27	35	68	23	998	970
FEB	385	6	9	8	5	0	0	0	-	-	10	-	-	24	40	85	36	1,998	1,024
MAR	379	4	1	7	3	9	0	0	44	38	19	-	-	23	38	63	61	2,200	1,149
APR	478	4	2	10	3	2	0	0	80	59	11	-	-	19	35	26	99	1,700	930
MAY	526	3	1	4	0	3	0	0	43	50	14	2	-	23	32	27	122	2,621	1,701
JUN	1,270	3	4	3	3	4	0	0	-	-	5	-	-	35	39	46	98	1,432	1,091
JUL	499	5	0	1	4	5	0	0	63	50	15	-	-	16	24	45	33	1,319	1,076
AUG	301	6	5	2	8	0	1	0	67	54	24	3	2	21	28	127	33	1,898	1,432
SEP	834	0	4	4	5	2	1	0	-	-	5	-	-	14	13	30	36	1,135	864
OCT	485	1	2	9	1	0	0	0	30	36	6	1	-	13	44	116	37	1,407	1,029
NOV	523	6	4	12	8	7	0	0	85	37	16	2	-	10	44	26	44	1,325	829
DEC	958	6	2	3	1	0	0	0	-	-	14	-	-	19	30	31	19	1,031	610
2012 TOTAL	7,690	47	37	70	46	33	3	0	482	396	157	9	2	244	402	690	641	19,064	12,705
2013 JAN	655	3	5	12	2	0	0	0	48	75	15	4	-	21	40	31	45	1,622	789
FEB	293	4	2	6	3	2	0	0	41	35	11	2	-	15	30	42	90	1,042	615
MAR	355	1	3	2	2	1	0	0	54	67	16	2	-	11	25	65	29	1,966	1,150
APR	335	7	1	5	2	8	0	0	-	-	21	-	-	16	33	39	37	1,508	910
MAY	347	2	1	3	0	0	0	0	46	50	22	6	-	13	31	41	60	2,615	1,576
JUN	1,457	6	2	2	4	5	0	0	91	44	13	2	-	25	40	47	37	1,857	1,102
JUL	1,014	4	1	2	2	0	0	0	96	70	25	3	-	21	47	50	22	2,298	1,338
AUG	389	6	4	5	4	2	0	0	-	-	23	-	-	25	57	36	41	2,145	1,033
SEP	277	4	1	6	1	0	0	0	101	51	7	2	-	16	60	43	51	1,535	703
OCT	345	6	0	2	2	2	0	0	52	82	4	12	3	12	79	47	60	1,865	1,158
NOV	442	2	0	2	2	0	0	0	-	-	30	-	-	12	51	31	34	2,400	1,613
DEC	1,299	4	1	1	2	0	0	0	42	48	50	4	-	14	75	35	35	2,676	1,384
2013 TOTAL	7,208	49	21	48	26	20	0	0	571	522	237	37	3	201	568	507	541	23,529	13,371
2014 JAN	1,975	6	3	3	2	0	0	0	57	46	25	2	-	8	72	46	28	3,243	1,597
FEB	2,012	8	2	6	5	0	0	0	-	-	23	-	-	17	65	51	13	2,326	1,282
MAR	494	2	3	1	5	0	0	0	97	75	29	10	-	22	64	66	31	1,797	1,298
APR	313	5	2	6	4	1	0	0	74	64	17	8	1	20	66	47	59	2,601	1,712
MAY	519	5	1	3	3	5	0	0	-	-	12	-	-	13	78	50	42	2,403	1,571
JUN	1,012	5	2	7	4	1	0	1	95	90	14	6	1	16	74	44	50	3,152	1,718
JUL	340	2	1	5	3	1	0	0	96	96	11	6	-	12	64	60	59	3,029	1,536
AUG	437	6	1	2	4	0	0	0	-	-	8	-	-	31	63	32	58	2,750	1,681
SEP	384	4	1	1	2	0	0	0	73	63	13	7	1	18	63	39	50	2,543	1,615
OCT	832	8	1	0	2	0	1	0	80	75	12	3	1	13	78	78	36	3,847	1,914
NOV	342	2	4	8	4	5	0	0	-	-	6	-	-	15	72	27	59	3,125	1,458
DEC	1,322	1	1	0	2	0	0	0	126	89	9	1	-	58	91	56	17	3,024	1,597
2014 TOTAL	9,982	54	22	42	40	13	1	1	698	598	179	43	4	243	850	596	502	33,840	18,979
2015 JAN	366	2	3	2	3	0	0	0	76	64	15	2	1	36	82	37	58	2,466	1,246
FEB	148	5	2	2	3	1	0	0	-	-	11	-	-	22	43	34	64	2,634	1,381
MAR	40	5	2	5	2	4	2	0	72	72	33	1	1	42	72	50	93	3,440	1,738
APR	22	7	1	0	5	3	0	0	60	54	20	3	-	21	53	40	60	3,341	1,539
2015 TOTAL	576	19	8	9	13	8	2	0	208	190	79	6	2	121	250	161	275	11,881	5,904

Abbreviation Ind = Individual, Blnkt = Blanket, Apps = Application for Hearing, NOAV = Notice of Alleged Violation, AOC = Administrative Order of Consent, OFV = Order Finding Violation, Cmplt = Complaint, Comp = Completed