



COLORADO

Oil & Gas Conservation
Commission

Department of Natural Resources

Staff Report

Corrected July 20, 2015

TOP STORIES

◆ BLM Eastern Colorado Resource Plan

On May 4, the Royal Gorge Field Office of the U.S. Department of the Interior - Bureau of Land Management (BLM) announced the beginning of planning activities for the Eastern Colorado Resource Management Plan (RMP). The BLM conducts land use planning through its RMP process. Each RMP addresses activities on BLM land during a specified planning horizon and adheres to the National Environmental Protection Act assessment framework.

The BLM manages over 8 million acres of public lands and 27 million acres of mineral estate in Colorado. The BLM also manages areas where the surface is owned by other federal and tribal agencies. Most of this land is in the western half of the state, where nine field offices are located to manage specific resources. The Royal Gorge Field Office in Canyon City administers 700,000 surface acres and 6,800,000 sub-surface acres from Wyoming to New Mexico and from the Front Range to the Kansas border.

For the Eastern Colorado RMP, public envisioning and scoping activities will be underway through September 2015. The input from meetings and public comment will be used to draft alternatives and an impact analysis strategy. Public review of the draft report is planned for the summer of 2016. The proposed schedule includes the release of the Draft RMP and Environmental Impact Statement (EIS), public comment on this draft in 2017, and preparation of the final draft and public review and protest period in 2018. The agency anticipates having an approved RMP and Record of Decision in 2019.

Further information on the RMP process, examples of existing RMPs, and schedules for the Eastern Colorado process are available at

www.blm.gov/co/st/en.html

◆ Floodplain Rule Implementation

On March 2, the COGCC adopted Rule 603.h regarding requirements for oil and gas facilities located in Floodplains. The rule defines Floodplain as “any area of land officially declared to be in a 100 year floodplain by any Colorado Municipality, Colorado County, State Agency, or Federal Agency.”

As part of its guidance to operators and the other interested parties, the COGCC is compiling currently available Federal Emergency Management Agency (FEMA), state, county, and municipality geographic information system (GIS) data on 100 year floodplains. These data layers will be added to the COGCC online map (and updated periodically) to allow cursory assessment of a facility’s location relative to declared floodplains in the state.

The COGCC will provide this information as helpful guidance, but it will ultimately be the responsibility of the operator to verify a facility’s proximity to Floodplains directly through FEMA, state, and local agency data for the most up to date and accurate boundary information. Questions about facilities and their proximity to declared floodplains should be directed to COGCC Oil and Gas Location Assessment (OGLA) staff.

◆ Form 27 eForm Development

The COGCC’s Site Investigation and Remediation Workplan (Form 27) is due for an upgrade. The form was created in 1999 and has only been slightly modified since that time. The COGCC’s eForm platform allows for seamless tracking of an issue in COGCC’s database (known as the MRDB) from start to finish. Users of the new eForm will be able to see not only the origin of the issue as a spill report or complaint, but also its investigation, remediation, and site closure. An eForm will replace the existing paper form.

The revised Form 27’s data fields will be developed to provide more information “at a glance” and also allow for operators to directly enter information about their projects. Moreover, operators will be able to update their records as often as they need.

The conversion of the Form 27 to the established eForm platform will increase the efficiency of COGCC staff resources, improve the effectiveness of communications regarding individual projects, and elegantly interface with spill reports, complaints, and existing facilities in the MRDB. The COGCC introduced the proposed changes to the Colorado Oil and Gas Association (COGA) Environmental Health and Safety (EHS) Group on July 8.

◆ Local Government Liaison (LGL) Program

Local Government Liaisons (LGLs) Nancy Prince



and Marc Morton provide outreach, training, information, and consultation to local governments and their staffs, operators, the public, and others regarding oil and gas operations in Colorado. LGLs continue to stress to operators and local governments the importance of early and ongoing engagement and consultation regarding oil and gas operations.

An ongoing LGL task has been the delivery of LGD training sessions throughout Colorado in 2015. Kent Kuster (CDPHE Oil and Gas Liaison) has assisted with the training, giving an outline of CDPHE's role in oil and gas regulation. Since it was initiated by the LGLs in 2013, LGD training has been provided to over 300 attendees at 17 training sessions held around the state. Most recently, LGD training was provided to 12 individuals in Trinidad on June 9. Of the current participating LGDs, 36 of the 56 county LGDs (63%), 35 of the 100 municipal LGDs (35%), and 1 of the 9 special district LGDs (11%) have taken the training at least once.

Four remaining LGD trainings are scheduled in 2015. Pre-registration is required. Scheduled trainings include:

- Tuesday August 11, Durango (remaining spaces are reserved for Local Government staff);
- Tuesday, September 22 (Akron, Washington County Fairgrounds);
- Tuesday, November 3 (Weld County - location to be determined); and
- Tuesday, December 1 (COGCC office in Denver).

To pre-register for one of the trainings, please send an e-mail to

dnr_cogcc.hearings@state.co.us

or contact Marc Morton or Nancy Prince. Please note that registration may be capped at any time due to space limitations.

A list of the LGL outreach and public involvement activities conducted since the previous staff report is included in the latter half of the Public Outreach section below.

PUBLIC OUTREACH

➤ Outreach by Director and Other Staff

- On June 1, Director Matt Lepore was the Key-note Speaker at the MODFLOW Conference 2015 at the Colorado School of Mines in Golden. He presented "A Brief History of Technical Transformation in Colorado's Oil & Gas Sector - 2009-2014."

- On June 2, Director Lepore presented "The Role of Citizens, the State, and Local Government when Oil and Gas Moves in Next Door" at the American Association of Petroleum Geologists Annual Convention in Denver.
- On June 6-8, Director Lepore participated in the Aspen Institute's Modern Shale Production Forum in Aspen.
- On May 17, Mike Leonard attended the Interstate Oil and Gas Compact Commission (IOGCC) field inspector forum. This meeting was attended by 31 field inspectors from 25 states and was the first forum held by the IOGCC specifically focused on issues identified by field inspectors. Topics discussed during the day long forum included challenges faced by inspectors in the areas of mechanical integrity, aging wells, orphan wells, stakeholder/public relations, training, and technological needs.

➤ Outreach by LGLs

- On May 7, Marc Morton traveled to Rifle and attended the monthly Energy Advisory Board (EAB) meeting hosted by Garfield County.
- On May 7, Marc Morton traveled to Meeker and provided Northwest Colorado Bureau of Land Management (BLM) staff with a condensed version of Local Government Designee (LGD) training.
- On May 11, Nancy Prince hosted a presentation by Jose Loera, who is a University of Colorado-Denver master's degree candidate. His capstone project included a survey of LGDs regarding existing use of the LGD program and potential future improvements.
- On May 13, Nancy Prince, Bob Chesson, Dennis Ahlstrand, Chris Eisenger, Melissa Housey, Rebecca Treitz, and Doug Andrews attended the Denver Energy and Environment Expo in Denver. A number of attendees stopped by the COGCC booth to learn more about the COGCC's regulatory role.
- On May 14, Marc Morton facilitated the quarterly Gas and Oil Regulatory (GORT) meeting in Durango. COGCC presenters included Director Lepore and Marc Morton.
- On May 21, Nancy Prince gave a presentation on COGCC regulations to the Trustees of the Town of Foxfield.
- On June 2, Nancy Prince attended an environ-



ing meeting in Huerfano County. The meeting was held in the BLM Royal Gorge office and is the first of many public input opportunities in the planning process for the Eastern Plains Resource Management Plan.

- On June 4, Marc Morton coordinated the Northwest Colorado Oil and Gas Forum meeting in Rifle. COGCC presenters included Deputy Director Dave Kulmann and Marc Morton.
- On June 4, Marc Morton traveled to Rifle and attended the monthly Garfield EAB meeting.
- On June 9, Marc Morton, Nancy Prince, and Kent Kuster (CDPHE Oil and Gas Liaison) provided a five hour Local Government Designee (LGD) training to 12 individuals at the Trinidad State Junior College in Trinidad.
- On June 15, Marc Morton, Stuart Ellsworth, Margaret Ash, Steve Jenkins, Melissa Housey and Rebecca Trietz attended the Weld County Transportation Summit in Greeley.
- On June 18, Marc Morton traveled to Grand Junction and attended the quarterly Mesa County Land/Resource Managers meeting.
- On June 23, Marc Morton and Nancy Prince traveled to the Weld County Southwest Service Center in Longmont and attended an informational open house public meeting hosted by Weld County. The open house was entitled Oil and Gas 101. Additional Oil and Gas 101 meetings are being planned by Weld County.
- On July 1, Nancy Prince attended the Aurora Oil and Gas Committee meeting where she gave an update on implementation of recommendations from the Governor's Task Force and an overview of the COGCC rulemaking process.
- On July 1, Nancy Prince attended the initial stakeholders meeting for the Source Water Protection planning process for the Sage Water Users Association in Falcon.

REGIONAL ACTIVITIES

➤ *Northwest Colorado*

◆ Northwest Colorado Oil and Gas Forum

Remaining Forum meetings for 2015 are scheduled for September 3 and December 3. All meetings will be held in Rifle at Colorado Mountain College from 10:00 am to noon.

All parties wishing to be placed on the next meeting agenda or added to the distribution list

for announcements should contact Marc Morton at 303-894-2100, ext. 5132 (direct), 720-415-4959 (mobile) or by email:

marc.morton@state.co.us

◆ Project Rulison

The email for Project Rulison submittals is

DNR_rulison.submittal@state.co.us

◆ Project Rio Blanco

The email for Project Rio Blanco submittals is

DNR_rioblanco.submittal@state.co.us

➤ *Southwest Colorado*

◆ Fruitland Formation Outcrop Mitigation and Monitoring Projects

South Fork Texas Creek Mitigation Site - La Plata County. Regularly scheduled operations and maintenance continue at the South Fork Texas Creek (SFTC) site, performed by LTE, the COGCC's contractor. Since May 2009, the system has collected 14,473 Mcf of methane and generated 225,522 kWh of surplus electricity. The 4M Outcrop Mitigation Summary Report, prepared by LTE, is available on the COGCC website.

On May 29, LTE conducted a methane investigation at the SFTC site to identify the most prominent methane seepage areas at the pre-existing vapor collection and barrier system. A forward looking infrared (FLIR) camera was used to identify the locations of methane seepage. These areas are primarily along the edges of the impermeable membrane. Once these locations were identified, a portable gas flux meter was used to quantify the volume of methane seepage that is not currently being captured by the system. The investigation determined that methane gas not currently being captured by the system could be utilized with expansion of the mitigation activities on site.

◆ Gas and Oil Regulatory Team (GORT) Meetings

Remaining meetings for 2015 are scheduled for August 20 and November 19. All meetings will be held at the La Plata County Fairgrounds, Animas Room, Durango, from 8:30 am to noon.

Any party who wishes to be placed on the next meeting agenda should contact Marc Morton at 303-894-2100, ext. 5132 (direct), 720-415-4959 (mobile) or by email:

marc.morton@state.co.us



PERMIT ISSUANCE WITHOUT PUBLIC COMMENT

◆ PDC Energy, Inc.

On June 10, 2015, per Rule 303.i.(2), Director Lepore approved the Oil and Gas Location Assessment, Form 2A for the PDC Energy, Inc. R&R Farms 5N63W29L location (Location ID # 442014) prior to the conclusion of the 20-day comment period. The proposed location is a 6-well pad in the SWSW Section 29 5N 63W in Weld County. The operator requested the issuance per Rule 303.i.(2) in order to keep the current contracted rig in continuous operation, preventing PDC Energy from incurring an economic loss of \$20,000 per day. In accordance with COGCC procedures, PDC Energy obtained waivers of the 20-day comment period from the Surface Owner and the LGD.

VARIANCE

◆ PDC Energy, Inc.

On June 25, 2015, Director Lepore granted PDC Energy Inc. a Rule 502.b variance to Rule 605.a.(2) for the Hunt Federal 4N66W28Y Oil and Gas Location, form 2A document number 400827895. Rule 605.a.(2) states that "Tanks shall be located at least two (2) diameters or three hundred fifty (350) feet, whichever is smaller, from the boundary of the property on which it is built."

The production facility, which includes production tanks, for this location crosses the property line of two parcels owned by the same surface owner. The surface owner signed a waiver to support the variance document agreeing to the location of the production facility, including location of the tanks less than 350 feet or two tank diameters from the property line between the two parcels. The variance request was approved through the approval of the Form 2A application.

ADMINISTRATION/ORGANIZATION/OTHER

◆ New Environmental Protection Specialist (EPS) II Position

In response to recommendations from the Governor's Task Force, the Environmental Group added an EPS II position to the busy Denver Julesburg Basin. This position has been created in the heart of the Greater Wattenberg Area, and although small geographically, it includes a large number of wells, a high concentration of older wells, and a high level of current activity. The COGCC is pleased to announce that Southeast Colorado Regional EPS Peter Gintautas will be transferring into this new position effective July 15.

Peter has more than 30 years of experience in geology, geochemistry and environmental chemistry and has been with the COGCC since 2006, working in the Raton Basin during a period of intense development. Peter has performed research on the interaction and transport of gases, metals and organic compounds from natural and anthropogenic sources in groundwater, soil, sediment and surface water. Peter has investigated numerous instances of potential groundwater contamination, evaluating potential relationships to oil and gas exploration and production activities in Colorado.

Peter earned a BS in Geology from the University of Minnesota, an MS in Geology with a specialization in applied geochemistry from the University of Calgary and a PhD in Geochemistry with a minor in Geology from the Colorado School of Mines. His unique expertise performing both prospective (baseline) and retrospective studies of groundwater chemistry in areas with ongoing development of unconventional oil and gas resources will be an asset in his new area as well as in direct support of other investigations in the DJ Basin.

COGCC is currently backfilling the Southeast EPS vacancy.

A COGCC organizational chart can be found on pages 8-11. For contact information, please go to our homepage, find the "About Us" menu, and select "Contact Us."

◆ Plugging and Reclaiming Abandoned Wells (PRAW) - Project Updates

The **DB Orphan Blair #1 Project** is located on the northwest edge of DeBeque in Mesa County. The well was found to be leaking water and was subsequently dug out and sealed to stop the flow. The well was plugged in November 2014 at a total cost of \$98,443. During March of this year, the landowner requested and received onsite fence repairs and installation of culvert in the adjacent ditch at an additional cost of \$3,276.

The **Pasture #1 Project**, the final abandonment of a well in Mesa County, included cutting the casing off three feet below ground and installing a well marker and sign. These tasks were completed in October 2014 at a final cost of \$1,360.

The **Flessner #13 Project** has previously been reported as a dry and abandoned well located in Washington County about 23 miles south of Ft. Morgan and Brush. It was drilled in 1955 to a depth of 5,460 feet (J-Sand Formation) and reportedly plugged at the same time by Monsanto Chemical Company. A farmer complained that the well had never been plugged and abandoned and currently obstructs farming operations. The project was competitively bid and awarded to the winning contractor in the amount of \$47,700. This well was successfully plugged in January of



this year for less than the bid amount, at a total cost of \$43,630.

The **Ruth #1 BOND CLAIM Project** is a well site located in Adams County which will require the plugging of one well, removal and salvaging of production equipment, and reclamation of a pit and the well site in general. To date, only the soils analysis for the pit has been completed in the amount of \$871. Final plans for the rest of the work are under review and will likely take place after July 1st.

The **Ackerman #1 Project** is a dry and abandoned well located in Larimer County about seven miles northwest of Wellington. It was drilled in 1963 to a depth of 5,745 feet (Dakota Formation) and plugged in the same year by Alpha-Omega Exploration Company. This well has been plugged back and reclassified as a fresh water well. It is being placed under the regulatory authority of the DWR.

The **Gentry PA Project** and the **Gentry-West Rangely Subdivision Environmental Remediation Project** are both located in Rio Blanco County and include a total of ten sites comprising eight wells, two pits, and one tank demolition. These projects are located about one half mile west of Rangely and 1.5 miles south of State Highway 64.

During April of this year, all eight wells were re-entered and plugged at a final cost of \$63,552. After excavating the pits and tank battery, there was much more contaminated soil than anticipated. Because of the soil volume, costs to remediate increased from the planned \$24,999 to the final cost of \$36,489. This work was completed in May.

The **Wallace Oil and Gas BOND CLAIM Project** is located in far southeast Colorado in Baca County, about fifteen miles southeast of the town of Walsh. This project included salvaging miscellaneous production equipment and plugging three individual wells. The work was completed in June of this year at a final cost of \$82,889.

The **Multiple Sites Project**, or reclamation activities at Koenig-Ashby #1, R. E. Leckler #1, and Halcyon BOND Claim - Lord #1 and Neugebauer #1 are in Logan, Logan, and Garfield Counties, respectively. They were added in January of this year to better balance plugging with reclamation efforts. More information regarding these sites are presented in the PRAW Program Spreadsheet and Scoreboard.

The **Redwine Resources-Nucla Unit 1-32 BOND Project** is located in Montrose County or about 30 miles southwest of Montrose. It includes a temporarily abandoned well and a lined earthen drilling mud reserve pit. This well was vertically drilled in 2008 to a total depth of 9,199 feet (Cambrian Formation). Recently, pit and soil

samples were taken to be analyzed in order to provide design parameters for closing the pit. The winning bid to plug was awarded at a total cost of \$40,682 or \$10,043 less than the engineering estimate of \$50,725. Plugging work was completed in May of this year at a final cost of \$42,235.

The **Chapman #1 Project** was previously listed as a orphan oil and gas well drilled in 1960 to a depth of 5,576 feet and located in Baca County or about six miles southeast of Walsh. After rigging up on the well in June of this year, working on it and conducting further investigations, this well was determined to be a water well that had been drilled in the 1960s as a water supply well for oil and gas drilling purposes, and was later turned over to the surface owner. The current surface owner was unaware of the water well, believing it to be an abandoned oil and gas well. However, the original Chapman #1 oil and gas well had been plugged. Final cost for this work was \$14,556.

The **Dolphin Arroyo #9-16D Reclamation Project** is located in Garfield County about one mile south of the town of Silt and about six miles east of Rifle. This site was constructed and operated by Dolphin Energy Corporation. The location was abandoned in 2012, about the time when Dolphin Energy became defunct. The site was not reclaimed, as directed by COGCC final reclamation regulations.

Both the location and access road consist of a cut and fill into the terrain and are susceptible to erosion and weed infestation in their current state. Bond claim funds have been exhausted on prior Dolphin Energy projects, and all funds will come from the COGCC PRAW Program. Preliminary land reclamation work will include miscellaneous debris and equipment removal and disposal, land re-contouring, spreading of topsoil, and storm water control and soil erosion measures. This work was completed in late May and early June of this year at a final cost of \$24,625.

Page 12 contains a spreadsheet listing PRAW projects that are either scheduled, in process, or completed as of July 10, 2015.

◆ Colorado Oil and Gas Information System (COGIS) Projects, Updates and Changes

Electronic Form Submissions (eForm)

The COGCC uses 41 types of forms to authorize oil and gas operations, inspect and monitor ongoing operations, and receive reports of operations. Of those 41 forms, 15 are currently available for electronic submittal through the eForms system.

The development team continues to work on the eForm conversion of existing forms. Currently,



eight types of forms are in various stages of development: Forms 7, 14, 14A, 26, 27, 31, 33, and NOAV. In addition, the development team updates eForms as required by rule revisions.

To date in 2015, more than 98 percent of the forms available in eForms were submitted electronically by industry. There are 563 operator users of eForms and 2,337 individual users. For any operator not currently enrolled in eForms, instructions for starting the process can be found on the COGCC website at

<http://cogcc.state.co.us/Announcements/COUInformation.pdf>

Applications and Location Assessments

The public can make comments on all submitted Drilling Permit Applications (Form 2s) and Location Assessments (Form 2As) through the eForm system. Simply go to the COGCC website and click on the menu option “Permits” or

<http://cogcc.state.co.us/permits.html#/permits>

On the “Permits Search” page, three search options are available. The first option, “All Pending Permit Applications,” is used for public comments. When the results are displayed for “Pending Applications,” a user can click on the document number hyperlink in the “Status” column, which logs him or her to the eForms application. Once the page is displayed with the selected document, the user can select the Comment button to make a comment on that particular form.

Data Access

The COGCC’s database is a comprehensive repository of Colorado’s oil and gas data. The information in the database is available to the public through interactive search tools and a variety of file downloads on the website.

Users of this data come from many different kinds of organizations, including academic institutions, the oil and gas industry, environmental groups, government agencies, and the media. The number of these users and the variety of data requested are both steadily increasing. In order to better serve the public and address these demands for data, staff will be enhancing the interactive search tools with additional

search criteria. Staff will also be publishing additional data file downloads at

<http://cogcc.state.co.us/data2.html#/downloads>

Current Data File Downloads

GIS Shapefiles (12 files)
Production Data (1999 - present)
Spacing Orders
Water Well Data
Complaints
Mechanical Integrity Tests

Future Data File Downloads

Notices of Alleged Violation (by July 31, 2015)
Spills-Releases-Remediation (by July 31, 2015)
Inspections (by December 31, 2015)
Enforcement Orders (by December 31, 2015)

◆ September 2015 Hearing Docket

The docket for the September 2015 hearing will be available shortly after the July hearing. Hearing dockets are available on our website by clicking on “Regulation” in the menu and then “Hearings.” Links to the notices and hearing applications are available from the Docket Number and Applicant, respectively. To sign up for e-mail notification of hearing notices and applications, please see the announcement and instructions on the homepage of the website:

<http://cogcc.state.co.us/reg.html#/hearings>



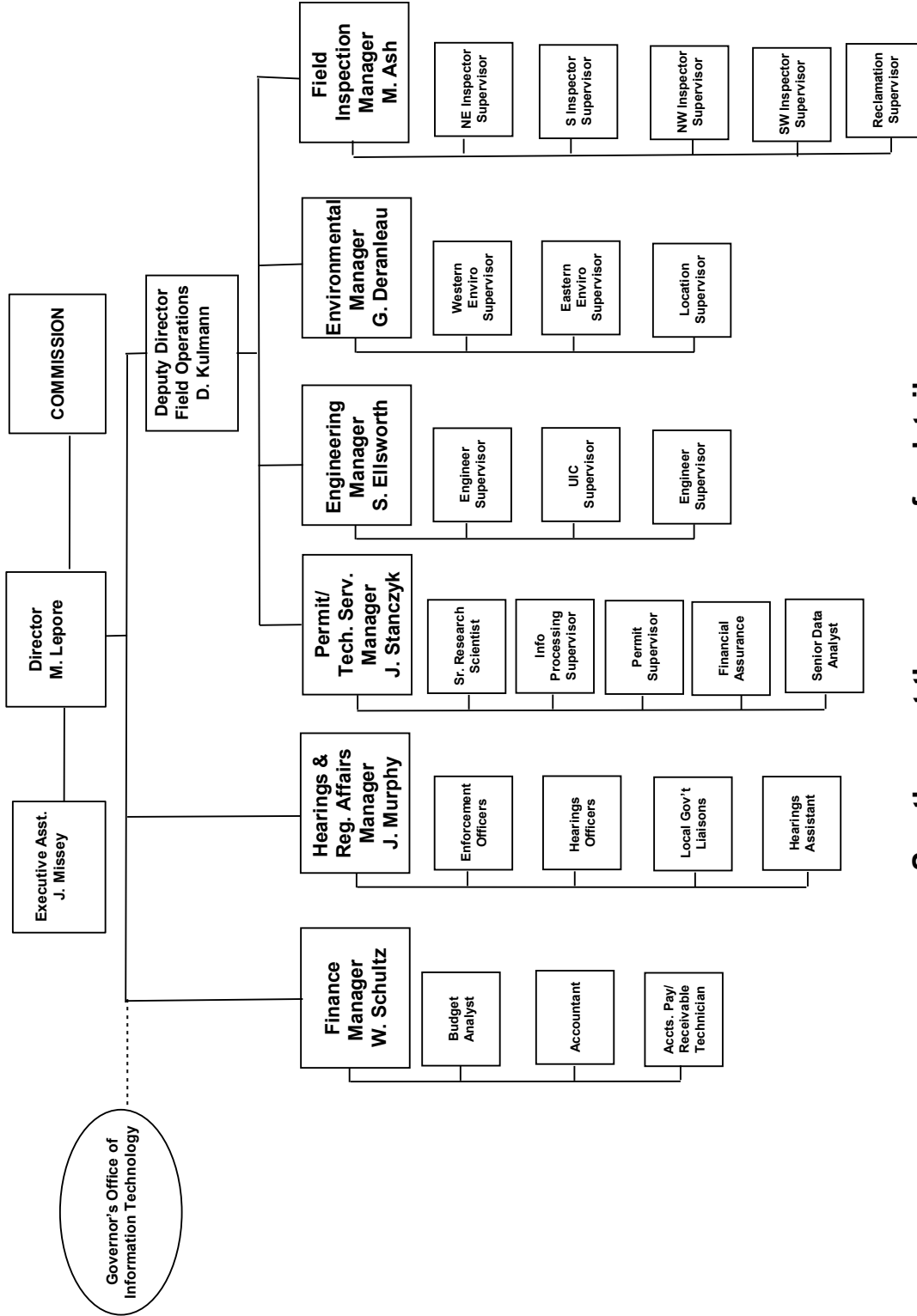
Oil and Gas Staff Report

July 20, 2015

7



COLORADO OIL & GAS CONSERVATION COMMISSION



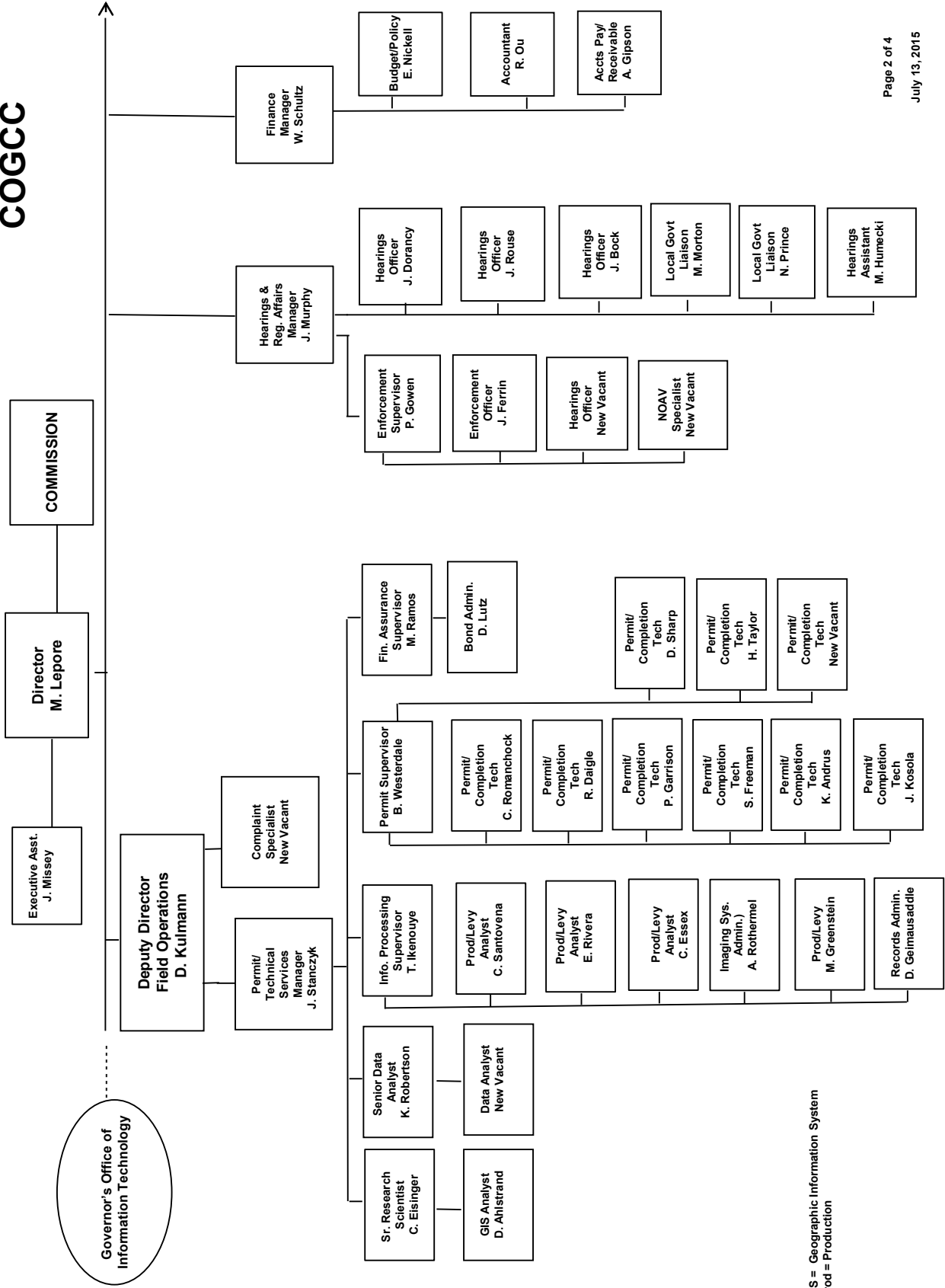
See the next three pages for details



Oil and Gas Staff Report

July 20, 2015

COGCC

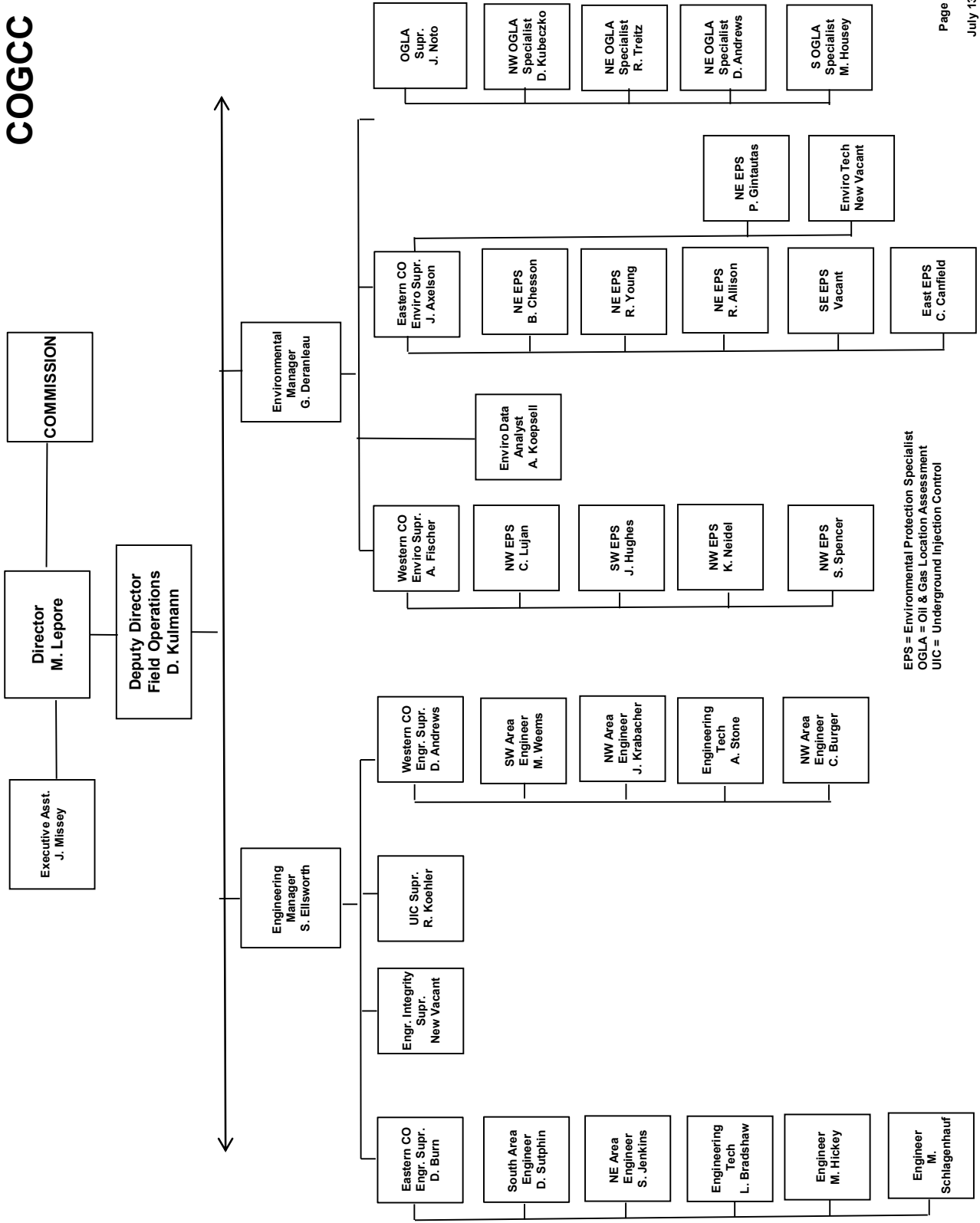


Governor's Office of Information Technology

GIS = Geographic Information System
 Prod = Production



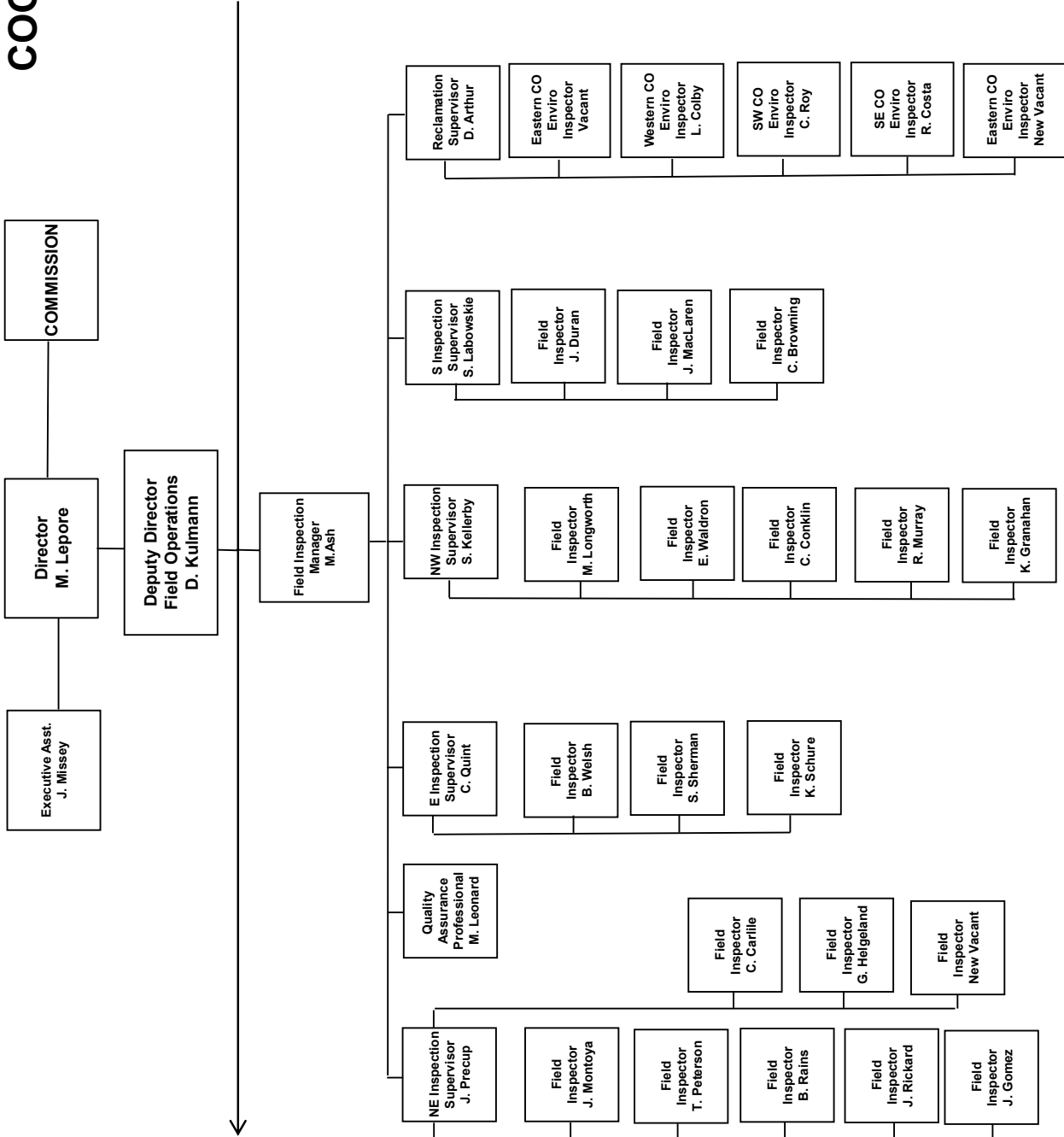
COGCC



EPS = Environmental Protection Specialist
 OGLA = Oil & Gas Location Assessment
 UIC = Underground Injection Control



COGCC





PLUGGING AND RECLAIMING ABANDONED WELLS (PRAW) FOR ORPHANED LOCATIONS
FISCAL YEAR 2014-15

				PLANNED				FY 2014-15 YTD EXPENDITURES				
County	Type	Project Name	Acct Code	ESTIMATED TOTAL PROJECT COST				FY 2014-15 YTD EXPENDITURES				Description
				Bond	PRAW	EMGY	Totals	Bond	PRAW	EMGY	Totals	
TOTALS =>				\$0	\$0	\$0	\$0	\$0	\$0	\$0	\$0	
				IN PROGRESS				FY 2014-15 YTD EXPENDITURES				
County	Type	Project Name	Acct Code	ESTIMATED TOTAL PROJECT COST				FY 2014-15 YTD EXPENDITURES				Description
				Bond	PRAW	EMGY	Totals	Bond	PRAW	EMGY	Totals	
TOTALS =>				\$0	\$0	\$0	\$0	\$0	\$0	\$0	\$0	
				COMPLETED				FY 2014-15 YTD EXPENDITURES				
County	Type	Project Name	Acct Code	ESTIMATED TOTAL PROJECT COST				FY 2014-15 YTD EXPENDITURES				Description
				Bond	PRAW	EMGY	Totals	Bond	PRAW	EMGY	Totals	
Baca	PA	Chapman #1	CHAP	\$0	\$46,450	\$0	\$46,450	\$0	\$14,556	\$0	\$14,556	Open casing 4' above GL. Heard "gas bubbling through liquid down hole" during 1998 inspection. Tagged bottom at 189' during 2007 inspection; no evidence of leaking.
Baca	PA	Wallace Oil and Gas BOND: a) Newman 1-7 (WAL1) b) Watkins 1 (WAL2) c) Hume 17-1 (WAL3)	WAL1 WAL2 WAL3	\$15,000	\$76,800	\$0	\$91,800	\$15,000	\$67,889	\$0	\$82,889	BONDS claimed in 2004; three (3) wells to plug.
Garfield	RECL	Dolphin Arroyo #9-16D	DOLP	\$0	\$16,120	\$0	\$16,120	\$0	\$16,120	\$0	\$16,120	Re-vegetation commenced June with a P.O. for \$16,120.
Logan	RECL	Koenig Ashby #1	KOEN	\$0	\$8,393	\$0	\$8,393	\$0	\$8,123	\$0	\$8,146	Soils testing; remediation design.
Logan	RECL	R.E. Leckler #1	LECK	\$0	\$8,393	\$0	\$8,393	\$0	\$8,169	\$0	\$8,146	Soils testing; remediation design.
Prowers	RECL	Halcyon BOND - Lord #1	LORD	\$6,272	\$0	\$0	\$3,643	\$7,980	\$0	\$0	\$7,980	Re-vegetation: Bond amount left for the Halcyon-\$9,379.
Kiowa	RECL	Halcyon BOND - Neugebauer #1	NEUG	\$21,486	\$0	\$0	\$5,736	\$11,868	\$0	\$0	\$11,868	Re-vegetation.
Rio Blanco	ENV	Gentry-West Rangely Subdivision	GENT	\$0	\$24,999	\$0	\$24,999	\$0	\$36,489		\$36,489	1-Pit and 1-tank battery A) Sample and test (Table 910-1) B) Dispose contaminated soil C) Backfill and compact D) Demolish tank and haul off
Garfield	RECL	Dolphin Arroyo #9-16D	DOLP	\$0	\$24,550	\$0	\$24,550	\$0	\$24,625	\$0	\$24,550	Recontour; debris removal.
Montrose	PA	Redwine Resources: Nucla Unit 1-32 BOND	REDW	\$30,000	\$20,725	\$0	\$50,725	\$30,000	\$12,235		\$41,709	Response to bankruptcy - PA prior to pit closure and reclamation.
Mesa	PA	DB Orphan Blair #1	DEB1	\$0	\$65,069	\$0	\$65,069	\$0	\$102,209	\$0	\$101,719	Have capped well and stopped water flow; re-enter and PA; fence repairs and culvert installed.
Rio Blanco	PA	Gentry	GENT	\$0	\$51,914	\$0	\$51,914	\$0	\$64,152	\$0	\$63,552	Plug and abandon seven (7) wells and one (1) previously PA well where the casing was cut off for a total of eight (8) wells in the project.
Mesa	PA	Pasture #1	HSTD	\$0	\$5,000	\$0	\$5,000	\$0	\$1,360	\$0	\$1,360	Original plans included plugging five (5) wells and cutting off casings in three (3) previously PA wells. When cutting into the two of the three (3) previously PA wells, two (2) were found with no plugs.
Washington	PA	Flessner #13	FLES	\$0	\$47,700	\$0	\$47,700	\$0	\$43,630		\$43,630	Leak has stopped; have cut off casing, installed PA marker and repaired the gate to the location.
Adams	ENV	Ruth #1	RUTH	\$4,826	\$0	\$0	\$5,000	\$871	\$0	\$0	\$871	DA 1955; surface owner/farmer complaint; located in a cultivated farm and impeding farming operations.
Larimer	ENV	Akerman #1	AKER	\$0	\$0	\$0	\$0	\$0	\$1,250	\$0	\$1,250	EPS soil analysis completed for the pit at the CTB.
TOTALS =>				\$77,584	\$396,113	\$0	\$473,697	\$65,719	\$400,807	\$0	\$464,835	Deemed a fresh water well and dropped from the program.

GRAND TOTALS	ESTIMATED TOTAL PROJECT COSTS				FY 2014-15 YTD EXPENDITURES			
	Bond	PRAW	EMGY	Totals	Bond	PRAW	EMGY	Totals
	\$77,584	\$396,113	\$0	\$473,697	\$65,719	\$400,807	\$0	\$466,526

ABREVIATIONS

TYPE	PA=plug abandon RECL=reclamation ENV=enviro remediation
EMGY	Funding from the Emergency Response (Budget Line Item)
PRAW	Funding from the Plug Recl Abandon Well (Budget Line Item)
TBD	To be determined

SCOREBOARD (PRAW FUNDING ONLY)

\$0	In Progress Estimated Totals
\$0	In Progress Spent to Date Totals
\$0	In Progress Remaining Totals
\$400,807	Completed to Date Totals
\$400,807	Sum of (In Progress Remaining Totals) and (Completed to Date Totals)
\$0	Planned
\$400,807	Total Expenditures
\$445,000	Annual Budget Appropriation
\$44,193	Projected End of Year Balance



Oil and Gas Staff Report

July 20, 2015

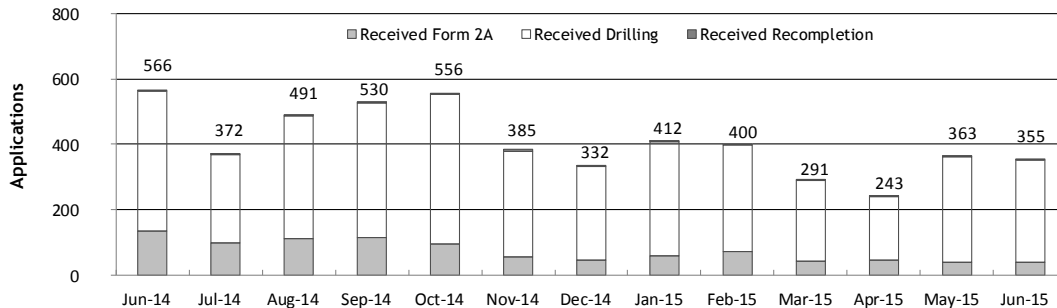
Monthly Permit Activity as of July 1, 2015

Form/Month	Backlog	Received	Approved	Withdrawn	Rejected	Incomplete ¹	In-Process	Remaining ²
Form2A								
Jun-14	176	134	92	3	0	30	185	215
Jul-14	215	97	126	3	0	28	155	183
Aug-14	183	111	87	3	0	36	168	204
Sep-14	204	116	81	3	0	47	189	236
Oct-14	236	94	109	6	0	74	141	215
Nov-14	215	54	103	6	0	46	114	160
Dec-14	160	45	99	3	0	39	64	103
Jan-15	103	60	43	3	0	23	94	117
Feb-15	117	73	28	0	0	35	127	162
Mar-15	162	44	70	2	0	30	103	134
Apr-15	133	46	37	3	0	38	101	139
May-15	139	40	44	0	0	41	94	135
Jun-15	135	38	49	3	0	24	97	121
Drilling								
Jun-14	707	429	377	8	0	62	689	751
Jul-14	751	272	446	2	0	65	510	575
Aug-14	575	376	259	24	0	90	578	668
Sep-14	668	412	304	21	0	109	646	755
Oct-14	755	459	370	10	0	137	697	834
Nov-14	834	326	479	19	0	128	534	662
Dec-14	662	286	397	10	4	115	422	537
Jan-15	537	349	316	2	0	119	449	568
Feb-15	568	324	161	21	4	143	563	706
Mar-15	706	246	294	14	0	226	418	644
Apr-15	644	194	165	17	0	295	361	656
May-15	656	322	190	30	0	254	504	758
Jun-15	758	314	281	9	5	175	602	777
Recompletion								
Jun-14	3	3	0	0	0	1	5	6
Jul-14	6	3	5	0	0	0	4	4
Aug-14	4	4	3	0	0	0	5	5
Sep-14	5	2	3	0	0	1	3	4
Oct-14	4	3	2	0	0	2	3	5
Nov-14	5	5	2	0	0	1	7	8
Dec-14	8	1	2	1	0	2	4	6
Jan-15	6	3	1	0	0	3	5	8
Feb-15	8	3	2	0	0	3	6	9
Mar-15	9	1	6	0	0	1	3	4
Apr-15	4	3	1	0	0	2	4	6
May-15	6	1	4	0	0	2	1	3
Jun-15	3	3	1	0	0	2	3	5

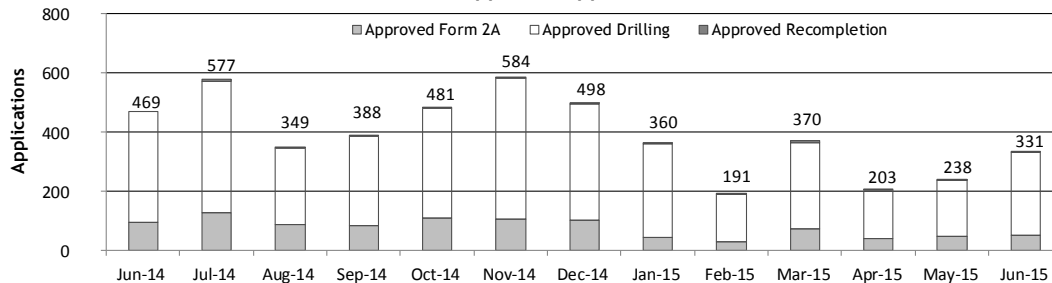
¹ Incomplete are permits that have missing or inaccurate data and cannot be approved.

² Backlog = Incomplete + In-process = Remaining permits from previous month.

Received Applications



Approved Applications





Status of Permit Applications Filed By Month as of July 1, 2015

Form 2A Location Assessment

Year	Month	Received	Approved	Withdrawn	In Process	Percent In Process	Median Days to Process	Less Than 30 Days	30 to 49 Days	Greater Than 50 Days
2011	TOTAL	2,391	2,298	93	0	0%		1,416	620	262
2012	TOTAL	1,359	1,291	68	0	0%		706	378	207
2013	TOTAL	1,281	1,200	78	3	0%		369	433	398
2014	JAN	85	82	3	0	0%	54	12	36	34
	FEB	88	86	2	0	0%	55	11	36	39
	MAR	113	108	5	0	0%	47	30	42	36
	APR	80	73	7	0	0%	45	18	35	20
	MAY	92	88	4	0	0%	52	13	34	41
	JUN	134	130	3	1	1%	62	36	54	40
	JUL	100	95	4	1	1%	41	37	38	20
	AUG	102	98	3	1	1%	50	33	26	39
	SEP	118	113	5	0	0%	47	29	45	39
	OCT	94	86	6	2	2%	38	34	35	17
	NOV	65	62	0	3	5%	40	20	27	15
	DEC	45	43	0	2	4%	52	6	21	16
2014	TOTAL	1,116	1,064	42	10	1%		279	429	356
2015	JAN	49	48	1	0	0%	57	6	15	27
	FEB	69	64	1	4	6%	63	5	16	43
	MAR	54	43	5	6	11%	54	6	20	17
	APR	39	27	0	12	31%	41	8	13	6
	MAY	40	17	1	22	55%	33	6	10	1
	JUN	55	6	0	49	89%	25	5	1	0
2015	TOTAL	306	205	8	93	30%		36	75	94

Form 2 Application For Permit to Drill (APDs)

Year	Month	Received	Approved	Withdrawn	In Process	Percent In Process	Median Days to Process	Less Than 30 Days	30 to 49 Days	Greater Than 50 Days
2011	TOTAL	4,691	4,557	132	0	0%		2,723	1,565	587
2012	TOTAL	3,955	3,816	139	0	0%		1,971	1,393	602
2013	TOTAL	4,550	4,306	235	3	0%		1,046	1,626	1,712
2014	JAN	261	256	5	0	0%	57	35	117	108
	FEB	298	285	13	0	0%	58	37	94	159
	MAR	359	351	8	0	0%	52	50	133	173
	APR	223	213	10	0	0%	47	20	121	74
	MAY	501	498	3	0	0%	71	40	155	305
	JUN	438	400	37	1	0%	62	111	138	154
	JUL	287	274	12	1	0%	48	62	119	95
	AUG	350	332	4	14	4%	57	61	126	149
	SEP	413	375	30	8	2%	51	62	150	164
	OCT	441	407	3	31	7%	40	129	199	81
	NOV	374	345	20	9	2%	48	54	144	153
	DEC	281	262	0	19	7%	50	28	133	101
2014	TOTAL	4,226	3,998	145	83	2%		689	1,629	1,716
2015	JAN	291	281	1	9	3%	55	50	60	174
	FEB	294	274	9	11	4%	71	24	73	180
	MAR	306	201	20	85	28%	65	10	73	120
	APR	169	97	15	57	34%	45	28	35	36
	MAY	275	108	2	165	60%	38	9	84	15
	JUN	340	53	0	287	84%	26	33	21	0
2015	TOTAL	1,675	1,014	47	614	37%		300	154	525



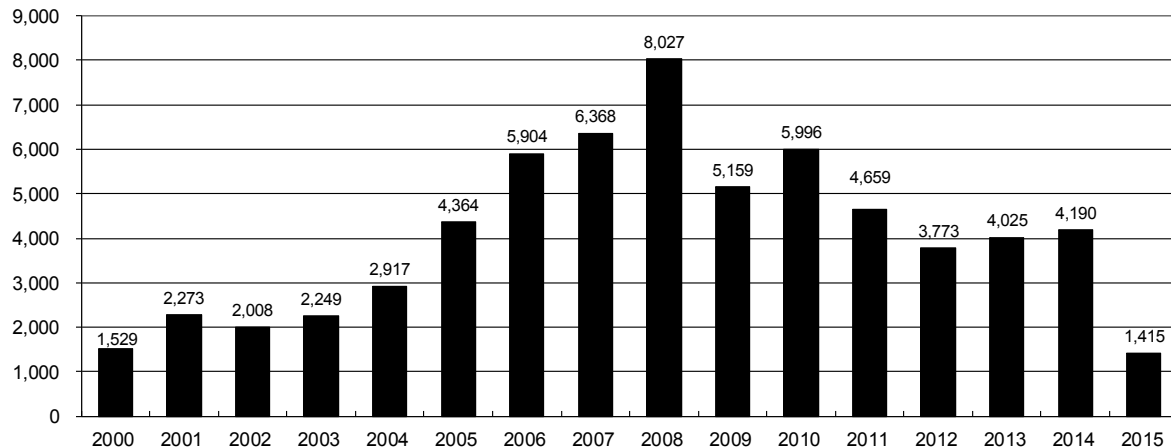
Oil and Gas Staff Report

July 20, 2015

Annual Drilling Permits by County as of July 1, 2015

County	2000	2001	2002	2003	2004	2005	2006	2007	2008	2009	2010	2011	2012	2013	2014	2015
ADAMS	38	28	9	26	39	34	37	89	51	35	21	8	40	40	51	9
ARAPAHOE	0	2	1	2	5	7	11	10	10	10	8	23	35	23	34	8
ARCHULETA	7	9	6	10	8	13	14	26	47	11	18	12	5	4	3	2
BACA	22	6	2	3	7	8	2	11	13	3	4	5	3	1	1	
BENT	2				5	3	8	1	1		5		2	1		
BOULDER	1	5	6	7	17	13	21	37	32	35	24	30	22			
BROOMFIELD			2	7		1	1		2	33	28	11	36		31	
CHEYENNE	3	3	3	3	3	10	21	15	33	12	13	16	31	50	26	3
COSTILLA																
CROWLEY																2
DELTA			7	4	5	10	9	2			4	3	6	1	2	
DENVER		3					19	25	24							
DOLORES				1	1	1	6	10	12	21	8	8	13	12	3	
EAGLE														1		
ELBERT	2						4			1		1	2	2	4	1
EL PASO										2	3	3	18	1	2	
FREMONT					1	3	2	4	14	13	22	14	11	2	8	
GARFIELD	213	353	362	567	796	1,509	1,845	2,550	2,888	1,981	2,037	1,323	1,046	870	1,066	229
GRAND																
GUNNISON			5	10	1	9	19	7	10	12	4	3	11	9	20	20
HUERFANO	41	27	27		8	2		7			2	1	9	1	13	2
JACKSON	34	18	21	9	14	6	8	5	27	19	9	18	5	12	17	3
JEFFERSON	1						1	3	2					1		
KIOWA	11	18	2	4	2	1	11	9	26	7	16	17	17	12	5	2
KIT CARSON				1	3	5	4	4	13	7	3	2	6	1	2	
LA PLATA	127	156	104	162	102	115	235	251	328	298	191	99	71	32	87	42
LARIMER	2		1			1		5	46	12	41	8	13	2	4	27
LAS ANIMAS	268	400	259	180	332	413	500	362	303	88	92	85	11	2	1	
LINCOLN	2	2	1	6	3	4	1	2	58	44	48	31	36	87	129	6
LOGAN	4	7	3	3	6	13	17	14	5	9	17	8	27	4	5	
MESA	13	27	30	27	54	136	265	293	501	427	306	127	150	105	74	24
MOFFAT	35	52	62	63	63	60	120	68	57	51	53	93	88	44	54	5
MONTEZUMA	4		5	8	8	11	5	12	22	39	19	27	29	14	25	3
MONTROSE	1	3	2	4	2		1	3	3		1	1				
MORGAN	9	9	2	7	9	7	3	6	2	1	6	13	5	16	6	4
OTERO																
PARK										3	4	1				
PHILLIPS	1	2		7	13	17	12	69	82	45	64	112	56		11	
PITKIN					1			1								1
PROWERS	2	5	4		7	5	7	5	8	1	3	1			1	
RIO BLANCO	89	187	105	179	154	161	360	321	477	348	441	109	117	167	121	96
RIO GRANDE	1	1		1					1	1			2		1	
ROUTT	20	13	1		4	6	9	8	4	2	3	10	4	12	4	1
SAGUACHE	2		2					2	1	2						
SAN MIGUEL	11	13	27	18	42	45	35	23	20	13	10	2	1		2	1
SEDGWICK				1	5	2	7	2	1	19	11	12	2		7	
WASHINGTON	23	17	27	34	128	50	69	45	11	1	6	12	6	19	12	1
WELD	509	702	760	757	832	901	1,418	1,527	2,340	1,448	2,152	2,262	1,826	2,468	2,303	925
YUMA	31	205	160	138	237	782	797	541	545	105	299	148	11	9	53	
TOTAL	1,529	2,273	2,008	2,249	2,917	4,364	5,904	6,368	8,027	5,159	5,996	4,659	3,773	4,025	4,190	1,415

ALL COUNTIES





Form 2A Breakdown By County By Year as of July 1, 2015

Year	County	Form 2As	Completed	In Process	New Location	CDP	SWH	RSO	CDPHE
2009	Total State	818	818	0	408	2	80	5	5
2010	Total State	2,377	2,377	0	1,543	0	317	22	55
2011	Total State	2,297	2,297	0	1,724	1	259	16	5
2012	Total State	1,297	1,297	0	900	0	167	6	1
2013	Total State	1,195	1,192	3	845	0	144	2	4
2014	ADAMS	23	22	1	20	0	0	0	0
	ARAPAHOE	18	17	1	18	0	0	0	1
	ARCHULETA	1	1	0	0	0	1	0	0
	BACA	1	1	0	1	0	0	0	0
	BROOMFIELD	1	1	0	0	0	0	0	0
	CHEYENNE	23	23	0	20	0	0	0	0
	CROWLEY	2	2	0	2	0	0	0	0
	DOLORES	2	2	0	2	0	1	0	0
	EL PASO	2	2	0	2	0	0	0	0
	ELBERT	4	4	0	4	0	0	0	0
	FREMONT	3	3	0	3	0	3	0	0
	GARFIELD	79	79	0	20	0	53	3	0
	GUNNISON	7	7	0	2	3	2	0	0
	HUERFANO	5	5	0	1	0	4	0	1
	JACKSON	14	14	0	9	0	14	0	0
	KIOWA	3	3	0	2	0	0	0	0
	KIT CARSON	2	2	0	2	0	0	0	0
	LA PLATA	14	14	0	4	0	13	0	0
	LARIMER	4	3	1	3	0	0	0	0
	LAS ANIMAS	1	1	0	1	0	0	0	0
	LINCOLN	135	135	0	119	0	0	0	0
	LOGAN	2	2	0	2	0	0	0	0
	MESA	8	8	0	3	0	5	1	0
	MOFFAT	11	11	0	9	0	11	1	0
	MONTEZUMA	15	15	0	15	0	0	0	0
	PHILLIPS	11	11	0	10	0	0	0	0
	PROWERS	1	1	0	1	0	0	0	0
	RIO BLANCO	20	20	0	13	0	17	0	0
	ROUTT	1	1	0	1	0	1	0	0
	SAN MIGUEL	1	1	0	1	0	0	0	0
	SEDGWICK	7	7	0	5	0	0	0	0
	WASHINGTON	13	13	0	13	0	0	0	0
	WELD	585	576	9	425	0	4	2	1
	YUMA	53	53	0	48	0	0	0	0
2014	Total State	1,072	1,060	12	781	3	129	7	3
2015	ADAMS	5	3	2	4	0	0	0	0
	ARAPAHOE	7	5	2	2	0	0	0	0
	ARCHULETA	2	0	2	1	0	1	0	0
	CHEYENNE	3	1	2	2	0	0	0	0
	ELBERT	3	1	2	3	0	0	0	0
	FREMONT	1	0	1	1	0	1	0	0
	GARFIELD	16	11	5	6	0	9	0	0
	GUNNISON	9	5	4	1	0	7	0	0
	HUERFANO	1	1	0	0	0	0	0	0
	JACKSON	2	2	0	2	0	2	0	0
	KIOWA	2	2	0	2	0	2	0	0
	LA PLATA	11	8	3	3	0	9	0	0
	LARIMER	3	3	0	1	0	0	0	0
	LINCOLN	5	5	0	5	0	0	0	0
	MESA	7	3	4	3	0	4	0	0
	MOFFAT	5	4	1	3	0	5	0	0
	MONTEZUMA	3	3	0	3	0	0	0	0
	MORGAN	1	1	0	1	0	0	0	0
	RIO BLANCO	12	9	3	8	0	12	0	0
	ROUTT	3	0	3	1	0	3	0	0
	WASHINGTON	3	1	2	3	0	0	0	0
	WELD	198	134	64	157	0	3	0	0
2015	Total State	302	202	100	212	0	58	0	0

Abbreviations:

CDP = Comprehensive Drilling Plan SWH = Sensitive Wildlife Habitat consultation

RSO = Restricted Surface Occupancy consultation CDPHE= Colorado Department of Health and Environment consultation



Well to Building Setbacks by Year and by County as of July 1, 2015

Count of well locations, grouped by proximity from well to buildings.

Location Proximity to Buildings	2009	2010	2011	2012	2013	2014	2015	Number of Locations	Percent of Total Locations
Less than 150 feet	2	3	3	2	0	3	2	15	0%
150 to 350 feet	37	58	61	39	34	38	6	273	3%
350 to 500 feet	50	110	97	61	64	48	18	448	5%
500 to 1000 feet	117	385	331	188	188	161	48	1,418	17%
1000 + feet	356	1,705	1,470	838	762	724	178	6,033	74%
TOTAL LOCATIONS	562	2,261	1,962	1,128	1,048	974	252	8,187	

County	TOTAL	Less than 150 feet	150 to 350 feet	350 to 500 feet	500 to 1000 feet	1000 + feet
ADAMS	75	0	4	8	17	46
ARAPAHOE	90	0	2	4	9	75
ARCHULETA	18	0	0	1	9	8
BACA	15	0	0	0	1	14
BENT	7	0	0	0	0	7
BOULDER	23	0	1	1	17	4
BROOMFIELD	33	0	0	4	13	16
CHEYENNE	134	1	0	0	2	131
CROWLEY	2	0	0	0	0	2
DELTA	7	0	0	2	1	4
DOLORES	19	0	0	0	7	12
EAGLE	1	0	0	0	0	1
EL PASO	14	0	0	0	3	11
ELBERT	9	0	0	0	2	7
FREMONT	39	0	2	7	8	22
GARFIELD	540	0	9	8	77	446
GUNNISON	38	1	0	3	1	33
HUERFANO	16	0	0	0	5	11
JACKSON	45	0	0	4	1	40
KIOWA	65	0	0	0	1	64
KIT CARSON	14	0	0	0	0	14
LA PLATA	125	0	4	14	41	66
LARIMER	39	0	5	4	14	16
LAS ANIMAS	201	1	6	7	37	150
LINCOLN	351	0	1	2	4	344
LOGAN	43	0	1	1	0	41
MESA	90	0	0	3	14	73
MOFFAT	173	0	0	2	14	157
MONTEZUMA	42	0	0	1	4	37
MONTROSE	2	0	0	0	0	2
MORGAN	29	0	0	2	4	23
PARK	4	0	0	0	0	4
PHILLIPS	273	1	4	6	21	241
PITKIN	1	0	0	0	0	1
PROWERS	5	0	0	0	0	5
RIO BLANCO	183	0	0	0	2	181
RIO GRANDE	2	0	0	0	1	1
ROUTT	26	0	0	0	2	24
SAN MIGUEL	12	0	0	0	0	12
SEDGWICK	32	0	0	1	3	28
WASHINGTON	63	0	2	0	2	59
WELD	4,762	11	223	347	1,037	3,144
YUMA	525	0	9	16	44	456



Well to Building Setbacks Less Than Two Hundred Feet as of July 1, 2015

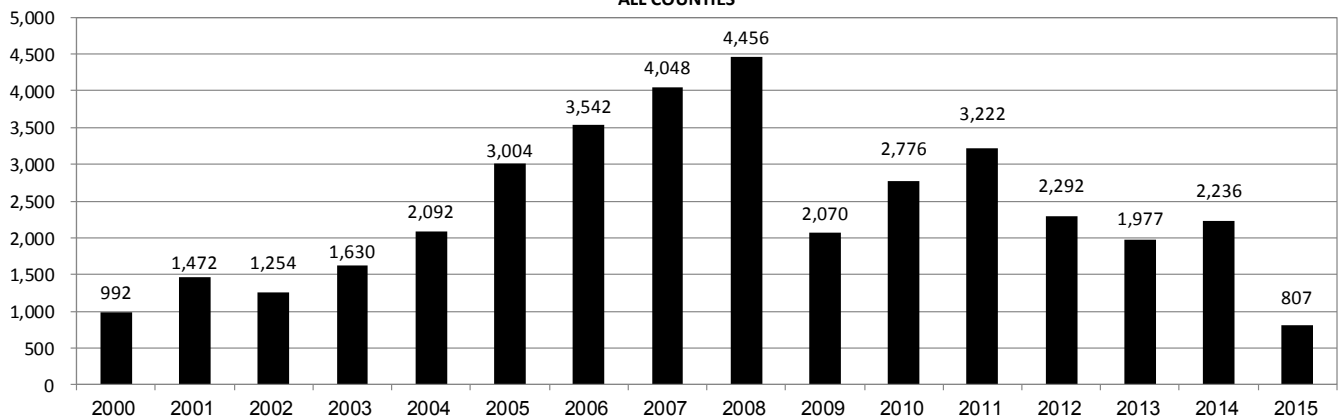
Year	Location Doc Number	County	High Density	New Location	Distance (Feet)	Proximity (Feet)	Building Description
2015	400768804	WELD	No	Yes	46	less 150	Building to be razed
2011	2587822	CHEYENNE	No	No	58	less 150	Water well house
2009	1691798	WELD	No	No	58	less 150	Vehicle garage
2010	400072164	WELD	No	Yes	69	less 150	Abandoned hog shed
2014	400569085	WELD	No	No	78	less 150	Well shed
2014	400600705	WELD	No	No	80	less 150	Livestock shed
2012	400240957	GUNNISON	No	Yes	90	less 150	Equipment shed
2015	400742811	WELD	No	Yes	102	less 150	Building to be razed
2009	1758843	WELD	No	Yes	103	less 150	Building to be razed
2011	1636646	WELD	No	No	122	less 150	Storage shed
2009	400011284	LAS ANIMAS	No	Yes	127	less 150	Operator is owner
2009	1786896	PHILLIPS	No	No	132	less 150	Grain storage
2014	400642113	WELD	No	Yes	142	less 150	Barn
2011	400117702	WELD	No	Yes	143	less 150	Irrigation pump house
2011	400227765	WELD	No	Yes	145	less 150	Storage barn
2014	400558626	LINCOLN	No	No	150	less 150	Gas plant equipment building
2009	1904205	WELD	No	No	154	150 to 350	Livestock enclosure
2012	400243295	WELD	No	Yes	155	150 to 350	Unused storage shed
2011	400179419	WELD	No	Yes	157	150 to 350	Existing well / storage building
2010	400054716	WELD	No	No	159	150 to 350	Equipment barn
2011	400188968	WELD	No	Yes	159	150 to 350	Abandoned
2014	400554054	WELD	No	Yes	159	150 to 350	Equipment shed
2014	400559404	WELD	No	Yes	160	151 to 350	Barn
2010	400021477	WELD	No	Yes	162	150 to 350	Goat barn
2009	1758386	WELD	No	Yes	168	150 to 350	Storage shed
2011	1635946	WELD	No	No	169	150 to 350	Storage shed
2013	400447386	WELD	No	No	169	150 to 350	Abandoned turkey barn
2013	400447391	WELD	No	No	169	150 to 350	Abandoned turkey barn
2011	400165164	WELD	No	Yes	178	150 to 350	Residence
2013	400367184	WELD	No	Yes	179	150 to 350	Shed
2011	400188780	WELD	No	Yes	180	150 to 350	Residence
2014	400562498	WELD	No	Yes	181	150 to 350	Garage / storage shed
2010	1697620	WELD	No	No	187	150 to 350	Livestock shed
2009	1758746	WELD	No	No	193	150 to 350	Storage shed
2011	400154431	WELD	No	Yes	198	150 to 350	Turkey barn
2012	400250031	WELD	No	Yes	198	150 to 350	Abandoned guard shack
2009	1774783	WELD	No	No	199	150 to 350	Cement service building
2011	400118102	YUMA	No	Yes	199	150 to 350	Steel barn



Annual Well Starts by County as of July 4, 2015

County	2000	2001	2002	2003	2004	2005	2006	2007	2008	2009	2010	2011	2012	2013	2014	2015
ADAMS	18	13	4	19	22	24	13	41	14	13	21	1	15	6	30	4
ARAPAHOE					6	1	5	2	1	1	3	9	9	25	21	
ARCHULETA	4	4	2	5	4	10	5	7	28	9	12	10	11		1	1
BACA	19	6	2	1	6	6	2	6	12		5	4	2	1		1
BENT	2				3	2	8	1	1			1	2			
BOULDER				2	5	11	9	14	25	16	13	7	14			
BROOMFIELD			2		1				10		21	11	5			
CHEYENNE	2	1	3	3		9	14	15	14	8	12	11	17	35	19	1
COSTILLA																
CROWLEY																2
DELTA				5	4	6	5	2			7	3	3		1	
DENVER		2						7	5	4						
DOLORES					2		2	13	6	2		1	5	10	4	
EAGLE														1		
EL PASO											2		5		1	
ELBERT	2						1									
FREMONT					1	3	2	2	5	3	10	16	8	1	4	1
GARFIELD	190	251	245	417	585	799	1,005	1,304	1,689	765	905	878	495	391	361	112
GUNNISON			1		1	1	9	5	1	4	5	2	4	1	2	1
HUERFANO	25	14	19	3	6	2			2		2		2	1	4	1
JACKSON	24	2	4	10	10		3	3	12	1	6	7		7	6	
JEFFERSON								2								
KIOWA	8	16	2	4	2	1	7	7	2	5	15	14	10	12	3	2
KIT CARSON				1	1	6	2	1	14	3	1	1	3	1	2	
LA PLATA	99	135	118	110	103	104	108	179	199	131	67	54	3	10	36	15
LARIMER	1	1				1		4	8	1	28	2	10	4	1	8
LAS ANIMAS	202	286	205	221	296	384	413	326	222	14	7	78	1		1	
LINCOLN	2	2	1	5	2	2	1	2	18	11	14	21	23	42	41	1
LOGAN	4	6	3	3	2	11	12	12	3	7	3	9	13	4	6	
MESA	2	12	12	13	25	89	156	209	225	14	11	41	4	10	16	39
MOFFAT	18	23	25	28	19	40	60	42	26	18	15	33	25	27	3	
MONTEZUMA	2	3	5	5	1	7	2	4	19	10	3	8	18	12	8	1
MONTROSE		3		2	1			1	2							
MORGAN	9	8	1	7	5	5	3	1	1	2	3	2	3	1	4	1
PARK											2					
PHILLIPS	1			6	10	11	4	35	18	2	42	130	48		9	
PROWERS	2	4	4		5	5	6	3	5	2	3	1				1
RIO BLANCO	51	82	47	83	92	95	107	95	204	118	107	72	53	37	42	13
RIO GRANDE														1		
ROUTT	5	12	1		1	6	3	2		2	1	2	4	2	2	
SAN MIGUEL	6	9	10	19	28	13	20	17	5	1	2	2			2	
SEDGWICK				1	2	1	1	5			3	8	3			
WASHINGTON	15	12	24	29	65	34	23	14	11	2	2	4	1	9	7	1
WELD	237	403	406	522	632	718	931	1,222	1,314	878	1,209	1,672	1,457	1,313	1,558	603
YUMA	42	162	108	106	144	597	593	445	336	27	213	107	16	13	39	
TOTAL	992	1,472	1,254	1,630	2,092	3,004	3,542	4,048	4,456	2,070	2,776	3,222	2,292	1,977	2,236	807

ALL COUNTIES





Oil and Gas Staff Report

July 20, 2015

21

Active Wells by County and Status as of July 4, 2015

COUNTY	Drilling	Domestic	Injecting	Producing	Shut In	Temp Aband	Waiting on Completion	Active Storage	Intent to Plug	Total Active Wells
ADAMS	16		7	877	76	9	2	16		1,003
ARAPAHOE		1	2	149	10	9		43		214
ARCHULETA	1	5	1	102	10	13	6	6		144
BACA			9	120	44	5		55		233
BENT		1		28	8					37
BOULDER				302	13	1				316
BROOMFIELD				97						97
CHEYENNE	3		37	323	24	49	2			438
CROWLEY	1									1
DELTA				3	14		1			18
DENVER			1	46	2		3			52
DOLORES	2		1	35	6	4	1			49
EL PASO	1	1				1				3
ELBERT				67	3	1				71
FREMONT	4	3		53	14	6				80
GARFIELD	212	5	43	10,497	131	79	49	1		11,017
GUNNISON	4		1	26	14	1	3			49
HUERFANO	2		1	35	4	6	1			49
JACKSON	3		30	108	41					182
JEFFERSON			2	1	1		1	1		6
KIOWA	2		7	100	18	2	2			131
KIT CARSON		1	1	15		2				19
LA PLATA	12	7	27	3,123	92	18	5	41		3,325
LARIMER	9	2	17	187	31	18	1			265
LAS ANIMAS		4	14	2,817	31	89	18	17		2,990
LINCOLN	7	1	7	94	14	7	2			132
LOGAN	10		15	114	40	29	4	12		224
MESA	32	1	8	889	101	17	31	9		1,088
MOFFAT	1		9	501	42	35	5			593
MONTEZUMA	6	2	6	113	42	16				185
MONTROSE						2				2
MORGAN	2		22	85	85	33		79		306
OURAY		2				1				3
PARK					1					1
PHILLIPS			2	263	5	1	1			272
PITKIN								10		10
PROWERS	1			25	5					31
RIO BLANCO	14	4	282	2,324	196	76	16	5		2,917
ROUTT	1	2		31	8	2	1			45
SAN MIGUEL	1			103	21	5				130
SEDGWICK	2		1	13	4		2			22
WASHINGTON	7		23	406	27	7	4			474
WELD	985	1	44	20,875	472	43	70	3		22,493
YUMA	1	8	23	3,522	305	9	11	1		3,880
Totals	1,342	51	643	48,469	1,955	596	242	299	0	53,597



Monthly Statistics as of July 4, 2015

Page 1 of 2

YEAR and MONTH	Baker - Hughes Rig Count	Drilling		Recompletion		Injection		Pits		Locations		Well Spud Notices	Active Drilling Permits	Active Wells	Public Visits		
		Rcvd	Apvd	Rcvd	Apvd	Rcvd	Apvd	Rcvd	Apvd	Rcvd	Authz				Data	Office	Internet
2011 TOTAL		4,709	4,659	325	320	44	32	190	192	2,382	2,267	3,220			187	1,294	1,337,865
2012 JAN	73	372	258	26	21	3	0	11	5	142	129	244	5,217	46,958	12	106	112,686
FEB	70	370	382	23	27	7	5	21	9	160	129	231	5,173	47,128	16	114	105,857
MAR	66	292	347	21	14	2	2	17	24	133	172	292	5,132	47,263	26	138	111,746
APR	66	410	235	16	24	5	5	9	2	137	106	240	4,785	47,377	12	108	107,627
MAY	66	491	506	23	16	3	1	6	2	105	131	211	4,885	47,533	20	123	109,802
JUN	69	326	377	11	19	8	6	5	8	110	89	144	5,136	47,860	11	111	108,849
JUL	66	237	276	9	14	3	2	5	2	97	103	184	5,152	48,173	13	102	114,195
AUG	62	313	288	6	9	6	4	23	5	83	97	179	5,031	49,153	11	112	110,908
SEP	61	252	256	1	5	5	2	4	1	81	77	161	4,960	49,230	11	89	106,114
OCT	62	326	265	9	3	7	6	2	19	94	82	161	5,009	49,236	8	105	108,833
NOV	56	271	323	5	8	6	6	2	4	109	97	142	5,000	49,989	10	119	120,586
DEC	57	322	260	4	8	8	5	9	3	122	81	105	5,081	50,067	9	78	107,240
2012 TOTAL		3,982	3,773	154	168	63	44	114	84	1,373	1,293	2,294			159	1,305	1,324,443
2013 JAN	53	538	331	6	0	3	5	6	8	176	124	142	5,060	50,265	9	108	47,406
FEB	56	260	455	10	5	2	3	4	11	91	141	138	5,250	50,372	7	102	40,649
MAR	57	344	241	5	9	3	8	15	6	129	84	172	5,093	50,540	9	133	43,019
APR	61	331	333	6	5	5	5	6	8	146	117	165	4,925	50,687	3	132	46,459
MAY	61	350	342	8	6	6	6	10	7	106	142	162	5,110	50,810	3	123	45,215
JUN	62	349	273	2	8	8	8	5	3	114	85	142	5,273	50,909	8	122	41,015
JUL	68	864	304	11	4	9	2	9	5	218	91	163	5,070	51,091	7	154	45,558
AUG	69	232	291	6	4	3	2	4	1	35	76	204	5,200	51,255	20	130	44,722
SEP	69	212	362	9	5	10	9	3	19	56	109	168	5,185	51,407	5	105	41,256
OCT	72	319	376	5	9	7	5	1	8	67	88	235	4,967	51,598	5	135	45,151
NOV	69	346	353	4	13	7	4	2	27	67	85	162	5,141	51,711	12	119	38,903
DEC	64	336	367	2	4	4	6	2	3	63	71	123	5,129	51,737	4	93	32,381
2013 TOTAL		4,481	4,028	74	72	67	63	67	106	1,268	1,213	1,976			92	1,456	511,734
2014 JAN	62	278	232	3	2	3	4	14	8	90	43	177	4,926	51,840	1	90	46,150
FEB	61	284	297	6	4	1	1	3	1	91	94	149	5,051	51,847	12	113	43,408
MAR	62	367	329	4	6	7	1	6	6	110	88	184	4,997	51,952	16	140	46,620
APR	63	276	317	2	3	2	5	8	3	89	99	167	4,897	52,060	11	188	45,558
MAY	65	458	383	2	2	3	1	6	7	83	94	179	4,923	52,202	18	131	42,365
JUN	67	429	377	3	0	6	7	5	2	134	92	222	4,924	52,337	10	156	42,518
JUL	69	272	446	2	5	3	11	8	5	97	126	183	4,955	52,431	7	166	45,481
AUG	73	376	258	3	3	4	4	3	4	111	87	221	5,060	52,582	8	145	42,431
SEP	76	412	304	1	3	3	1	20	1	116	81	202	5,006	52,694	14	175	43,577
OCT	76	459	371	3	2	9	2	4	6	93	109	188	4,827	52,785	19	138	46,030
NOV	73	326	479	5	2	5	4	4	0	54	103	178	5,171	52,947	8	96	39,583
DEC	69	286	397	1	2	2	7	1	2	45	99	186	5,236	53,054	6	144	37,964
2014 TOTAL		4,223	4,190	35	34	48	48	82	45	1,113	1,115	2,236			130	1,682	521,685
2015 JAN	64	349	316	3	1	2	9	3	1	60	43	184	5,060	53,195	17	114	41,502
FEB	49	324	161	3	2	5	6	9	0	73	28	116	4,750	53,309	4	117	38,245
MAR	38	246	294	1	6	1	5	7	5	44	70	153	4,983	53,414	6	146	42,513
APR	37	194	165	3	1	0	5	1	2	46	37	95	4,854	53,456	1	125	39,559
MAY	39	322	190	1	4	2	6	8	0	40	44	105	4,632	53,535	5	113	unavailable
JUN	38	314	281	3	1	0	5	2	1	38	49	133	4,726	53,608	113	138	unavailable
2015 TOTAL		1,749	1,407	14	15	10	36	30	9	301	271	786			146	753	161,819

Abbreviation

Key:

Rcvd = Received, Apvd = Approved, Authz = Authorized



Oil and Gas Staff Report

July 20, 2015

23

Monthly Statistics as of July 4, 2015

Page 2 of 2

YEAR and MONTH	Well Oper Change	Operators		Bonds			Claim		Hearings		Enforcement			Remediation Projects		Inspections			
		New	Inactive	Release Ind	Release Blnkt	Replace	Ind	Blnkt	Apps.	Orders	NOAVs	AOCs	OFVs	Cmplt	Spills	Rcvd	Comp	Wells	Locations
2011 TOTAL	6,743	33	31	79	44	43	4	4	403	349	230	10	19	247	527	726	536	12,394	-
2012 JAN	1,052	3	3	7	5	1	1	0	70	72	18	1	-	27	35	68	23	998	970
FEB	385	6	9	8	5	0	0	0	-	-	10	-	-	24	40	85	36	2,000	1,024
MAR	379	4	1	7	3	9	0	0	44	38	19	-	-	23	38	63	61	2,202	1,146
APR	478	4	2	10	3	2	0	0	80	59	11	-	-	19	35	26	99	1,700	929
MAY	526	3	1	4	0	3	0	0	43	50	14	2	-	23	32	27	122	2,630	1,701
JUN	1,270	3	4	3	3	4	0	0	-	-	5	-	-	35	39	46	98	1,435	1,091
JUL	499	5	0	1	4	5	0	0	63	50	15	-	-	16	24	45	33	1,323	1,076
AUG	301	6	5	2	8	0	1	0	67	54	24	3	2	21	28	127	33	1,904	1,432
SEP	834	0	4	4	5	2	1	0	-	-	5	-	-	14	13	30	36	1,120	845
OCT	485	1	2	9	1	0	0	0	30	36	6	1	-	13	44	116	37	1,397	1,017
NOV	523	6	4	12	8	7	0	0	85	37	16	2	-	10	44	26	44	1,331	829
DEC	958	6	2	3	1	0	0	0	-	-	14	-	-	19	30	31	19	1,031	610
2012 TOTAL	7,690	47	37	70	46	33	3	0	482	396	157	9	2	244	402	690	641	19,071	12,670
2013 JAN	662	3	5	12	2	0	0	0	48	75	15	4	-	21	40	31	45	1,622	789
FEB	293	4	2	6	3	2	0	0	41	35	11	2	-	15	30	42	90	1,044	615
MAR	355	1	3	2	2	1	0	0	54	67	16	2	-	11	25	65	29	1,968	1,149
APR	335	7	1	5	2	8	0	0	-	-	21	-	-	16	33	39	37	1,510	910
MAY	347	2	1	3	0	0	0	0	46	50	22	6	-	13	31	41	60	2,621	1,576
JUN	1,457	6	2	2	4	5	0	0	91	44	13	2	-	25	40	47	37	1,860	1,102
JUL	1,014	4	1	2	2	0	0	0	96	70	25	3	-	21	47	50	22	2,298	1,338
AUG	389	6	4	5	4	2	0	0	-	-	23	-	-	25	57	36	41	2,146	1,033
SEP	277	4	1	6	1	0	0	0	101	51	7	2	-	16	60	43	51	1,536	703
OCT	345	6	0	2	2	2	0	0	52	82	4	12	3	12	79	47	60	1,868	1,158
NOV	442	2	0	2	2	0	0	0	-	-	30	-	-	12	51	31	34	2,401	1,613
DEC	1,299	4	1	1	2	0	0	0	42	48	50	4	-	14	75	35	35	2,677	1,384
2013 TOTAL	7,215	49	21	48	26	20	0	0	571	522	237	37	3	201	568	507	541	23,551	13,370
2014 JAN	1,973	6	3	3	2	0	0	0	57	46	25	2	-	8	72	46	28	3,243	1,597
FEB	2,012	8	2	6	5	0	0	0	-	-	23	-	-	17	65	51	13	2,327	1,282
MAR	495	2	3	1	5	0	0	0	97	75	29	10	-	22	64	66	31	1,799	1,298
APR	313	5	2	6	4	1	0	0	74	64	17	8	1	20	66	47	59	2,603	1,715
MAY	519	5	1	3	3	5	0	0	-	-	12	-	-	13	78	50	42	2,405	1,571
JUN	1,012	5	2	7	4	1	0	1	95	90	14	6	1	16	74	44	50	3,156	1,717
JUL	340	2	1	5	3	1	0	0	96	96	11	6	-	12	64	60	59	3,032	1,536
AUG	437	6	1	2	4	0	0	0	-	-	8	-	-	31	63	32	58	2,752	1,682
SEP	384	4	1	1	2	0	0	0	73	63	13	7	1	18	63	39	50	2,546	1,616
OCT	832	8	1	0	2	0	1	0	80	75	12	3	1	13	78	78	36	3,850	1,914
NOV	434	2	4	8	4	5	0	0	-	-	6	-	-	15	72	27	59	3,127	1,458
DEC	1,332	1	1	0	2	0	0	0	126	89	9	1	-	58	91	56	17	3,011	1,596
2014 TOTAL	10,083	54	22	42	40	13	1	1	698	598	179	43	4	243	850	596	502	33,851	18,982
2015 JAN	444	2	3	2	3	0	0	0	76	64	15	2	1	36	82	37	58	2,467	1,246
FEB	428	5	2	2	3	1	0	0	-	-	11	-	-	22	43	34	64	2,635	1,381
MAR	127	5	2	5	2	4	2	0	72	72	33	1	1	42	72	50	93	3,447	1,738
APR	208	7	1	0	5	3	0	0	60	54	20	3	-	21	53	40	60	3,417	1,619
MAY	113	8	0	0	2	3	0	0	89	54	10	10	2	25	52	56	41	2,852	1,418
JUN	27	2	1	3	5	4	0	0	-	-	27	-	-	25	37	31	43	3,285	1,673
2015 TOTAL	1,347	29	9	12	20	15	2	0	297	244	116	16	4	171	339	248	359	18,103	9,075

Abbreviation Ind = Individual, Blnkt = Blanket, Apps = Application for Hearing, NOAV = Notice of Alleged Violation, AOC = Administrative Order of Consent, OFV = Order Finding
 Key: Violation, Cmplt = Complaint, Comp = Completed