



Staff Report

September 14, 2015

TOP STORIES

◆ Commission Outreach Across the State to Prepare for Governor's Task Force Rulemaking

Throughout July and August, Commission staff held 11 outreach meetings across Colorado to hear from local governments and other interested stakeholders about how Recommendations 17 and 20 from the Governor's Oil and Gas Task Force can be effectively implemented. Recommendation 17 directs the Commission to develop a collaborative process between local government and oil and gas operators on the siting of "Large Scale Oil and Gas Facilities" in Urban Mitigation Areas. Recommendation 20 would require developing a process for operators registered with the Commission to also register with municipalities and provide information about current and future drilling plans.

Thirty-nine local jurisdictions participated in meetings hosted by the City of Brighton, City and County of Broomfield, and the Counties of Garfield, Weld, and La Plata. Commission staff also held meetings with environmental groups, citizen advocacy groups, and industry trade associations. Attendees included Conservation Colorado, Battlement Mesa Concerned Citizens, Grand Valley Citizens Alliance, Weld Air and Water, Windsor Neighbors for Responsible Drilling, Western Colorado Congress, Western Resource Advocates, Colorado Oil and Gas Association (COGA), American Petroleum Institute, Colorado Petroleum Association, La Plata County Energy Council, and West Slope COGA. A full meeting list can be found at this link:

<http://cogcc.state.co.us/documents/reg/Rules/GtfRulemaking/20150723%20Task%20Force%20Rulemaking%20-%20Outreach%20Meeting%20Schedule.pdf>

Participants shared their perspectives on the potential impact of the new rules and suggested metrics by which the Commission could design

its rules. The outreach meetings were open to the public, received significant coverage in the media, and all occurred prior to the Commission drafting rules. With the outreach meetings concluded, staff has begun drafting rules and will begin conducting formal stakeholder meetings this fall. The Commission has scheduled a special hearing for the rulemaking on November 16 and 17, 2015, and will announce stakeholder meetings here on the Commission website:

<http://cogcc.state.co.us/reg.html#/rules/gtfrulemaking>

◆ LEAN Process for Field Inspections Starts

The COGCC is kicking off a Lean process improvement project focused on the COGCC's field inspection reporting processes. Specifically, the project will explore how issues documented during an inspection that warrant the operator's attention are documented and communicated to operators, and how questions from operators are quickly addressed. The goal of the project is to improve these reporting and communication processes, allowing more timely resolution of identified issues. The project, which begins September 16th, is being facilitated by a third party consultant and includes team members from both the COGCC and operators.

◆ Induced Seismicity Advisory Board

The University of Colorado Collaboratory for Induced Seismicity (CCIS) has received a National Science Foundation (NSF) grant to study several issues surrounding induced seismicity from injection wells. The COGCC's Engineering Manager, Stuart Ellsworth, serves on the External Advisory Board for CCIS. The study will probe the mechanisms by which injection wells induce earthquakes, potential for these earthquakes to cause damage, methods needed to quantify risks associated with injection induced earthquakes, and

strategies for sustainably managing and mitigating these risks. Specific details about the study may be reviewed on the following NSF webpage:

http://www.nsf.gov/awardsearch/showAward?AWD_ID=1520846&HistoricalAwards=false

◆ Excess Inactive Wells and Bonding

The COGCC's 700 Series financial assurance (bonding) rules specifically require additional bonding by an operator who has "excess inactive wells." An inactive well is defined in the rules as "any shut-in well from which no production has been sold for a period of 12 consecutive months; any well which has been temporarily abandoned for a period of six consecutive months; or any injection well which has not been utilized for a period of 12 consecutive months." Because such a well is not generating income for the operator, it is a potential liability.

An operator has "excess inactive wells" when the number of inactive wells poses plugging and reclamation costs that are greater than the operator's blanket plugging bond. To protect the State of Colorado from the liability for plugging and reclamation costs, the staff of the COGCC's financial assurance group regularly audits operators' inactive well counts.

Since June 2015, COGCC staff's evaluation of 64 operators has identified 11 operators with inadequate financial assurance for their "excess inactive wells." A Warning Letter was sent to each of these operators, directing them to provide the additional financial assurance. To date, two of these operators have not complied with the Warning Letter and have been issued a Notice of Alleged Violation.

◆ Garfield Reclamation Project Recap

The Dolphin Arroyo #9-16D Reclamation Project is located in Garfield County about one mile south of the Town of Silt and approximately six miles east of Rifle. This site was constructed and operated by Dolphin Energy Corporation. The operator became financially insolvent in 2012, and had not begun reclamation of the site.

The location and access road were constructed by cut and fill methods. The pad area had very limited vegetation, and the slopes had essentially no vegetation. The site was susceptible to erosion and weed infestation.

Using Plugging and Reclamation of Abandoned Wells (PRAW) program funds, the COGCC's Engineering staff managed the contractors who plugged the conductors. COGCC Reclamation staff contracted and oversaw the final site reclamation in two phases. The initial phase began in May 2015 and included removing the Cellars, recontouring dirt work on the access road and pad location to blend into the natural terrain, replacing the topsoil, and deep cross ripping the location in preparation for revegetating the location.



Access road before restoration in June 2015

The second phase of the reclamation process began in early June 2015 and involved preparing the seedbed, seeding, and mulching on approximately 4.5 acres of the disturbed area. The overall goal of the project is to establish a uniform native self-sustaining vegetation cover, to at least 80 percent of the surrounding vegetation cover. The cover will provide long term stabilization of the site and return the land to its pre-disturbance state. Construction stormwater controls were installed before the reclamation began and are being maintained until the vegetation is established. Additional stormwater controls were added during the seeding phase to stabilize the location by breaking up the run of the slope with sediment logs and trenching.

After a period of more than two months, the location is already showing signs of successful revegetation. Ongoing monitoring and management will be conducted by COGCC staff to ensure the location meets the final reclamation requirements in a timely manner.



Access road area after restoration, revegetation germination and stabilization in August 2015

◆ Local Government Liaison (LGL) Program

Local Government Liaisons (LGL) Marc Morton and Nancy Prince are a key COGCC resource for Local Government Designees (LGD), local government staff, and others interested in the regulation of oil and gas in Colorado. The COGCC implemented the LGD program in 1992 to provide a conduit for information and collaboration between local governments and state regulators. Since then, many enhancements to the LGD program have occurred and the COGCC LGD program serves as a national model for collaboration between local and state government.

Participation in the LGD program remains voluntary and the level of its use by local governments is discretionary. Submittal to COGCC of a completed Form 29 is required to participate. The form is available at the link below:

http://cogccintranet/documents/reg/Forms/PDF_Forms/form29.pdf

Participation in the program provides significant benefits and opportunities that include providing LGDs with direct access to the COGCC permitting process via the internet-based platform referred to as eForms. LGDs (and any member of the public) may also comment on pending applications during the finite public comment period. LGDs may request extension of the public com-

ment period, and may also request consultation with CDPHE regarding public health or environmental concerns. LGDs also receive notification of many oil and gas activities. These notifications include but are not limited to when permit applications are available for comment, permits have been issued, and hydraulic fracturing is scheduled.

The LGLs provide training across the state for LGDs and others interested in the regulation of oil and gas in Colorado. These training sessions include information about COGCC regulations, CDPHE regulations, trends in oil and gas exploration and production, and use and navigation of the COGCC website, maps and database.

Three remaining LGD trainings are scheduled in 2015. Pre-registration is required.

Scheduled trainings include:

- Tuesday, September 22 (Washington County Fairgrounds in Akron);
- Tuesday, November 3 (Weld County; location to be determined); and
- Tuesday, December 1 (COGCC office in Denver).

To pre-register for one of the trainings, please send an e-mail to:

dnr_cogcc.hearings@state.co.us

or contact Marc Morton or Nancy Prince. Please note that registration may be capped at any time due to space limitations.

Marc and Nancy may be reached using the following e-mail addresses, respectively:

marc.morton@state.co.us

nancy.prince@state.co.us

A list of the LGL outreach and public involvement activities conducted since the previous staff report is included in the latter half of the Public Outreach section below.



PUBLIC OUTREACH

➤ *Outreach by Director and Other Staff*

- On July 7, Director Matt Lepore, Hearings Manager Julie Murphy, and Kathleen Staks (Colorado Department of Natural Resources [DNR]- Assistant Director for Energy) joined other members of COGCC's Environmental, Engineering, and Local Government Liaison staff at the Governor's Task Force initial outreach meeting in Denver.
- On July 22, Director Lepore, Hearings Manager Murphy, and DNR Assistant Director Staks joined other members of COGCC's Environmental, Engineering, and Local Government Liaison staff at the Governor's Task Force outreach meeting in Broomfield.
- On July 28, Director Lepore, Hearings Manager Murphy, and DNR Assistant Director Staks joined other members of COGCC's Environmental, Engineering, and Local Government Liaison staff at the Governor's Task Force outreach meeting in Brighton.
- On July 29 and 30, Director Lepore, Hearings Manager Murphy, and DNR Assistant Director Staks joined other members of COGCC's Environmental, Engineering, and Local Government Liaison staff at three Governor's Task Force outreach meetings in Rifle.
- On August 1, Greg Deranleau, Environmental Manager, participated in an installation titled "IMPLANT" for the Biennial of the Americas. The IMPLANT installation involved the removal of a 250' core from Commons Park in Denver and replacement with a similar core from a park in Mexico City; the core from Denver was transported and emplaced in Bosque de Chapultepec in Mexico City. Mr. Deranleau provided insight and context regarding oil and gas exploration and production in the Denver-Julesburg Basin.
- On August 3, Director Lepore, Hearings Manager Murphy, and DNR Assistant Director Staks joined other members of COGCC's Environmental, Engineering, and Local Government Liaison staff

at the Governor's Task Force outreach meeting in Greeley.

- On August 5, Director Lepore participated in a Wirth Chair roundtable on hydraulic fracturing in Denver.
- On August 6, Director Lepore, Hearings Manager Murphy, and DNR Assistant Director Staks joined other members of COGCC's Environmental, Engineering, and Local Government Liaison staff at two Governor's Task Force outreach meetings in Durango.
- On August 10 and 11, Director Lepore, Hearings Manager Murphy, and DNR Assistant Director Staks joined other members of COGCC's Environmental, Engineering, and Local Government Liaison staff at two Governor's Task Force outreach meetings in Fort Collins and Denver, respectively.
- On August 13, Director Lepore was a panelist during the Western Energy Alliance (WEA) Annual Meeting in Beaver Creek.
- On August 25, Director Lepore was a panelist at COGA Rocky Mountain Energy Summit Technical Series in Denver.
- On September 3, Director Lepore was a Guest Lecturer at the Denver University Oil & Gas Law class.

➤ *Outreach by LGLs*

- On July 23, Marc Morton traveled to Rifle and attended the quarterly Garfield County Land and Resource Managers meeting.
- On August 3, Marc Morton traveled to Parachute and attended a community meeting hosted by Ursa Operating Company during which construction aspects of their ongoing drilling program in Battlement Mesa were discussed.
- On August 3, Nancy Prince met with the Town Administrator of Bennett to provide information on joining and utilizing the LGD program. Bennett has since submitted a Form 29 to initiate participation in the program.



- On August 6, Marc Morton traveled to Rifle and attended the monthly Energy Advisory Board (EAB) meeting hosted by Garfield County. COGCC now serves as a non-voting member of the EAB.
- On August 11, Marc Morton and Nancy Prince traveled to Durango and provided an LGD training to 18 participants including LGDs, local government staff, and industry representatives. This training was the fifth of eight scheduled trainings in 2015.
- On August 12, Marc Morton met with Archuleta County staff John Shepard and Bentley Henderson to discuss recent oil and gas permit application activity in the County, as well as LGD program opportunities.
- On August 12, Nancy Prince attended a meeting of the City of Aurora Planning and Economic Development Committee at which composition of the revised Oil and Gas Committee was discussed.
- On August 19, Nancy Prince attended the Pueblo County Planning Commission hearing. Pueblo County is considering a Text Amendment regarding regulations for oil and gas exploration and production activities in the County. The Hearing was continued until the November 18 meeting to allow for additional comments and responses to the proposed Text Amendment.
- On August 20, 2015, Marc Morton coordinated the quarterly Southwest Colorado Gas and Oil Regulatory Team (GORT) meeting in Durango. COGCC presenters included Director Lepore and Marc Morton. Others representatives from the COGCC included Steve Labowskie, Mark Weems, Catherine Roy, Joe McLaren, and Dave Andrews.
- On August 25, Nancy Prince, Marc Morton and Jill Dorancy participated in an Oil and Gas 101 information session/open house in Windsor also attended by Weld County Staff, Town of Windsor staff, and members of the public.
- From August 25 to 27, Marc Morton coordinated the COGCC's set up and staffing of an informa-

tional booth at the 2015 Rocky Mountain Energy Summit held at the Denver Convention Center. In addition to Marc, the following COGCC representatives assisted by staffing the booth: Deputy Director Dave Kulmann, Field Inspection Manager Margaret Ash, Mike Leonard, Diana Burn, Barbara Westerdale, Chris Eisinger, Jason Kosola, Bob Chesson, Sarah Freeman, Ryan Daigle, Melissa Housey, Chuck Romanchock, Rebecca Treitz, Holly Taylor, and Nancy Prince.

- On September 2, Nancy Prince participated in a regularly scheduled Fremont County Mayor's meeting, in which Phase II of a road improvement project funded by a DOLA mineral extraction grant was announced, and is expected to be built in the near future.
- On September 3, 2015 Marc Morton coordinated the quarterly Northwest Colorado Oil and Gas Forum meeting in Rifle. COGCC presenters included Deputy Director Kulmann and Marc Morton. Marc also attended the quarterly Garfield County EAB meeting in Rifle that evening.

REGIONAL ACTIVITIES

➤ *Northwest Colorado*

◆ Northwest Colorado Oil and Gas Forum

The remaining Forum meeting for 2015 is scheduled for December 3. The meeting will be held in Rifle at Colorado Mountain College from 10:00 am to noon.

All parties wishing to be placed on the next meeting agenda or added to the distribution list for announcements should contact Marc Morton at 303-894-2100, ext. 5132 (direct), 720-415-4959 (mobile) or by email:

marc.morton@state.co.us

◆ Project Rulison

The email for Project Rulison submittals is

DNR_rulison.submittal@state.co.us



◆ **Project Rio Blanco**

The email for Project Rio Blanco submittals is

DNR_rioblanco.submittal@state.co.us

➤ ***Southwest Colorado***

◆ **Fruitland Formation Outcrop Mitigation and Monitoring Projects**

South Fork Texas Creek Mitigation Site - La Plata County. Regularly scheduled operations and maintenance continue at the South Fork Texas Creek (SFTC) site, performed by LTE, the COGCC's contractor. Since May 2009, the system has collected 14,750 Mcf of methane and generated 229,682 kWh of surplus electricity. The 4M Outcrop Mitigation Summary Report, prepared by LTE, is available at this location on the COGCC website:

http://cogcc.state.co.us/documents/library/AreaReports/SanJuanBasin/4m_project/4M_Mitigation_Project_Summary_Report_2015_01.pdf

On May 29, LTE conducted a methane investigation at the SFTC site to identify the most prominent methane seepage areas at the pre-existing vapor collection and barrier system. A forward looking infrared (FLIR) camera was used to identify the locations of methane seepage. These areas are primarily along the edges of the impermeable membrane. Once these locations were identified, a portable gas flux meter was used to quantify the volume of methane seepage that is not currently being captured by the system. The investigation determined that methane gas not currently being captured by the system could be utilized with expansion of the mitigation activities on site. Findings were presented at the Gas and Oil Regulatory Team (GORT) on August 20, 2015.

◆ **GORT Meetings**

The remaining meeting for 2015 is scheduled for November 19. The meeting will be held at the La Plata County Fairgrounds, Animas Room, Durango, from 8:30 am to noon.

Any party who wishes to be placed on the next meeting agenda should contact Marc Morton at 303-894-2100, ext. 5132 (direct), 720-415-4959 (mobile) or by email:

marc.morton@state.co.us

VARIANCES

◆ **Bonanza Creek Energy Operating Company, LLC**

Bonanza Creek Energy Operating Company LLC (Bonanza) submitted a Sundry Notice on July 24, 2015, requesting a variance to the isolation requirement for a Mechanical Integrity Test (MIT) as specified in COGCC Rule 326.b(3) for its McCallum Unit #82 well (API No. 057-06143) located in the SESW of Section 2, Township 9 North, Range 79 West (6th P.M.). Rule 326.b.(3) required that a bridge plug or similar approved device for a MIT be placed within 100 feet of the highest perforation.

The current wellbore configuration consists of an 8-5/8 inch surface casing set at 142 feet and cemented to surface and a 4-1/2 inch production casing set at 1,361 feet and cemented to approximately 443 feet (COGCC-estimated cement top). This well has open production perforations from 1,278 feet to 1,296 feet.

The McCallum #82 well currently has a tight spot at 1,050 feet and the packer cannot be set deeper than 1,040 feet. Bonanza requested this variance for approval to perform the MIT with the isolation device set at 1,040 feet, which is 238 feet above the top perforation at 1,278 feet.

As required by COGCC Rule 502.b.(1), and as discussed above, Bonanza has made a good faith effort to comply, but was unable to abide by COGCC Rule 326.b.(3). Bonanza contends that this variance request does not violate the basic intent of the Oil and Gas Conservation Act. On July 28, 2015, the COGCC Director approved Bonanza's Rule 326.b.(3) variance request for this well.

The request was approved with two Conditions of Approval. (1) Operator shall complete and report a successful annual Bradenhead Test through the COGCC Form 17, per Rule 314. The test is to be submitted to COGCC by the end of August of each



year. (2) A COGCC Form 42, Field Operations Notice is required per Rule 316C.g. Notice of Bradenhead Test. The rule requires at least 48 hours advance written or emailed notice to the Commission of a Bradenhead test at any well.

◆ Chevron Production Company

For their Weber Sand Unit, Chevron Production Company (Chevron) was granted a variance on July 15, 2015 to a portion of Rule 201.b. that requires wellhead signs to have directions from the nearest access road. The Weber Sand Unit is within the Rangely field and is continuously monitored 24 hours a day, seven days a week. Chevron has an emergency response plan and agreements with all emergency responders in the area to report to one of 12 designated field staging areas. Additionally, although the area is criss crossed with lease roads, Colorado Highway 64 bisects the area. There appears to be little value in adding nearest public road is Highway 64 to 810 well head signs.

ADMINISTRATION/ORGANIZATION/OTHER

◆ New Permit Completions Technician

Christi Ng has joined the COGCC as a Permit-Completions Technician, filling the new position for a ninth tech in the Permitting Work Unit. Christi has eight years of combined experience as a permitting tech, engineering tech, and land records coordinator with various oil and gas operators based in Denver. Christi also worked as a contract Permit-Completions Tech for the COGCC in 2010.

Christi has a Master's in Public Affairs and is an active volunteer with a nonprofit organization here in Denver. The Permitting Work Unit is looking forward to the benefits of her experience and expertise.

◆ New Supervising Engineer

We are pleased to announce that Mark Schlagenhaufer has been appointed to the position of Engineering Supervisor. His unit will focus on creating a new flowline integrity program while continuing the COGCC's wellbore integrity program based on mechanical integrity tests (MITs). Mark

has been a part of the COGCC as Northeastern Area Engineer.

Prior to joining the COGCC, Mark worked as an Oil and Gas Advisor to the US Agency for International Development (USAID) and with Phillips Petroleum as a petroleum engineer. Mark has a Bachelor of Science in chemical engineering from Cornell University. He studied graduate level petroleum engineering at the University of Tulsa, and he is a licensed Colorado Professional Engineer.

◆ New Environmental Protection Specialist (EPS I) Position

In response to recommendations from the Governor's Task Force, the Environmental Work Unit added an Environmental Protection Specialist I (EPS I) position to support environmental field activities in the busy Denver Julesburg Basin with an emphasis on the Greater Wattenberg Area. This position will be filled by Steven Arauza starting September 14.

Steve earned his Master's Degree in Geological Sciences from the University of California at Santa Barbara and worked for the Texas Railroad Commission for 3 years before coming to Colorado. Steve has already been adding value to other work teams at the COGCC, as he has served as an intern in Engineering since April. Steve was selected from 160 applicants for this position and will be an immediate asset to the Environmental Work Unit.

A COGCC organizational chart can be found on pages 11-14. For contact information, please go to our homepage, find the "About Us" menu, and select "Contact Us."

◆ Plugging and Reclaiming Abandoned Wells (PRAW) - Project Updates

The **Ridgway-Swanson-Peterson #1** plugging and abandonment (PA) project is located in central Ouray County about one mile east of the town of Ridgway. This well was drilled in 1947 and was later turned over to the landowner as a domestic natural gas supply. The gas petered out and has been shut in approximately since 1986, and the landowner has switched over to



retail propane. Following a COGCC inspection in 2011, the well was placed in the Orphaned Well PRAW Program. The cost to PA the well is estimated at \$63,500.

The **Think Oil Bond Claim Vaughn #1** plugging and abandonment (PA) project is located in Moffat County about two miles southwest of the Town of Craig. This well was drilled in 1950 to a total depth (TD) of 10,003 feet through the Weber sandstone and Morgan formation. The well was later plugged in 1989 but was re-entered in 1992 and drilled to a depth of 3,025 feet. The operator then directionally drilled the well to a true vertical depth (TVD) of 7,223 feet and a measured total depth (MTD) of 7,264 feet; the well was completed in the Niobrara formation.

Because of mechanical problems and sub-economic production, the well was subsequently plugged in 1997. Various well site inspections by the COGCC found non-compliance with the rules and an Order Finding Violation resulted in the State claiming the bond for this well (Order 1V-458). An inspection in 2015 determined that gas was leaking from the well casing. The well will be re-entered and plugged at an estimated cost of \$30,000.

The **Midfields State #1** plugging and abandonment (PA) project is located in Yuma County about 12 miles south of the town of Wray. This well was drilled to an approximate depth of 3,650 feet in 1919. In 2009, an onsite inspection found venting gas and rolling water in the well. The well was excavated to a depth of six feet, and no casing was found.

The limited available records indicate a 16 inch diameter surface bore. A 20 foot long joint of 18 inch diameter PVC irrigation pipe was stuffed into the wellbore, and the excavated portion was backfilled. A plumb bob was lowered into the well, and it tagged up at a depth of 30 feet. For safety purposes, panels were erected around the well, and the well was left open to the atmosphere to prevent shallow ground water contamination. The estimated cost to PA the well is \$50,000.

The **Noel Reynolds-Ester #1** plugging and abandonment (PA) project is located in La Plata

County about 18 miles southwest of the Town of Durango. This well was drilled in 1979 to an approximate depth of 3,467 feet or into the Morrison formation. The producing oil zones include the Dakota sandstone (3,302 feet to 3,316 feet), Carlisle/Juan Lopez (3,030 to 3,014 feet), and Mancos/Gallup (2,594 to 2,622 feet). The operator has since become financially insolvent, and the State claimed the \$30,000 bond in 2011 through Order 1V-375. This order placed the project into the PRAW program. The estimated cost to PA the well is \$45,000.

The **Koenig-Ashby #1 and R. E. Leckler #1** reclamation project is located in Logan County and will involve the remediation of soils contaminated by produced salt water spills. Sampling and analysis of the soils, as well as remediation project design, were completed in Fiscal Year 2014-15. The cost to remediate and reclaim the site has not yet been determined.

The **Dolphin Mulvihill #15-32D** reclamation project is located in Garfield County about 1.6 miles northeast of the Town of Rifle. This well was plugged and abandoned in 2012, but the site must now be reclaimed. The cost to do this work has not yet been determined.

The **Wallace Three Well Pads** reclamation project comprises three separate leases and well pads in Baca County about 20 miles southeast of the Town of Walsh. The wells at these sites were plugged and abandoned in June 2015, and the sites are now up for reclamation. The cost to do this work has not yet been determined.

The **Redwine Bond South Nucla Unit #1-32** reclamation project is located in Montrose County about 28 miles southwest of Montrose. This well was plugged and abandoned in May 2015 and is now ready for the closure of the drilling pit and reclamation of the site. The site is a cut and fill on a steep slope in the mountains. The cost to do this work has not yet been determined.

The **Ruth #1 BOND CLAIM Project** is a well site located in Adams County, which will require the plugging of one well and the reclamation



of a pit and the well site. To date, the soils analysis for the pit has been completed for a total cost of \$871, and the production equipment has been removed at a cost of \$5,000. Final plans for the rest of the work are under review. In the meantime, this project has been placed back in the PRAW program inventory as an alternate or substitute for this year's program in the event of unforeseen circumstances and/or changes in plans.

Page 15 contains a spreadsheet listing PRAW projects that are either scheduled, in process, or completed as of September 3, 2015.

◆ Colorado Oil and Gas Information System (COGIS) Projects, Updates and Changes

Electronic Form Submissions (eForm)

The COGCC uses 41 types of forms to authorize oil and gas operations, inspect and monitor ongoing operations, and receive reports of operations. Of those 41 forms, 15 are currently available for electronic submittal through the eForms system.

The development team continues to work on the eForm conversion of existing forms. Currently, eight types of forms are in various stages of development: Forms 7, 14, 14A, 26, 27, 31, 33, and NOAV. In addition, the development team updates eForms as required by rule revisions.

To date in 2015, more than 97 percent of the forms available in eForms were submitted electronically by industry. In the month of August, over 99 percent were submitted electronically. There are 580 operator users of eForms and 2,405 individual users. For any operator not currently enrolled in eForms, instructions for starting the process can be found on the COGCC website at:

<http://cogcc.state.co.us/Announcements/COUAIInformation.pdf>

New Underground Injection Control eForms

The Form 31 Underground Injection Formation Permit, Form 33 Injection Well Permit, and Form 26 Source of Produced Water for Disposal have been converted to the COGCC's eForms electronic filing system. The eForm documents are being released on Monday, September 14, 2015. Operator training on the eForm 31, 33, and 26 will be on September 15 from 8:30AM to 12:00PM in the COGCC's Denver Office. There will be a simultaneous webinar platform for those who cannot attend. You may register for the webinar at the following address:

<https://attendee.gotowebinar.com/register/6859786344411257858>

Form 27 eForm Development

The COGCC's Site Investigation and Remediation Workplan (Form 27) is due for an upgrade. The form was created in 1999 and has only been slightly modified since that time. The COGCC's eForm platform allows for seamless tracking of an issue in COGCC's database (known as the MRDB) from start to finish. Users of the new eForm will be able to see not only the origin of the issue as a spill report or complaint, but also its investigation, remediation, and site closure. An eForm will replace the existing paper form, and development is currently underway.

The revised Form 27's data fields will be developed to provide more information "at a glance" and also allow for operators to directly enter information about their projects. Moreover, operators will be able to update their records as often as they need.

The conversion of the Form 27 to the established eForm platform will increase the efficiency of COGCC staff resources, improve the effectiveness of communications regarding individual projects, and elegantly interface with spill reports, complaints, and existing facilities in the MRDB.

Applications and Location Assessments

The public can make comments on all submitted Drilling Permit Applications (Form 2s) and



Location Assessments (Form 2As) through the eForm system. Simply go to the COGCC website and click on the menu option “Permits” or

<http://cogcc.state.co.us/permits.html#/permits>

On the “Permits Search” page, three search options are available. The first option, “All Pending Permit Applications,” is used for public comments. When the results are displayed for “Pending Applications,” a user can click on the document number hyperlink in the “Status” column, which logs him or her to the eForms application.

Once the page is displayed with the selected document, the user can select the Comment button to make a comment on that particular form.

Data Access

The COGCC’s database is a comprehensive repository of Colorado’s oil and gas data. The information in the database is available to the public through interactive search tools and a variety of file downloads on the website.

Users of this data come from many different organizations, including academic institutions, oil and gas operators, environmental groups, government agencies, and the media. The number of these users and the variety of data requested are steadily increasing. In order to better serve the public and address these demands for data, staff will be enhancing the interactive search tools with additional search criteria. Staff will also be publishing additional data file downloads at:

<http://cogcc.state.co.us/data2.html#/downloads>

Current Data File Downloads

GIS Shapefiles (12 files)
Production Data (1999 - present)
Spacing Orders
Water Well Data
Complaints
Mechanical Integrity Tests
Notices of Alleged Violation (released July 31, 2015)

Future Data File Downloads

Spills-Releases-Remediation (by October 15, 2015)
Inspections (by December 31, 2015)
Enforcement Orders (by December 31, 2015)

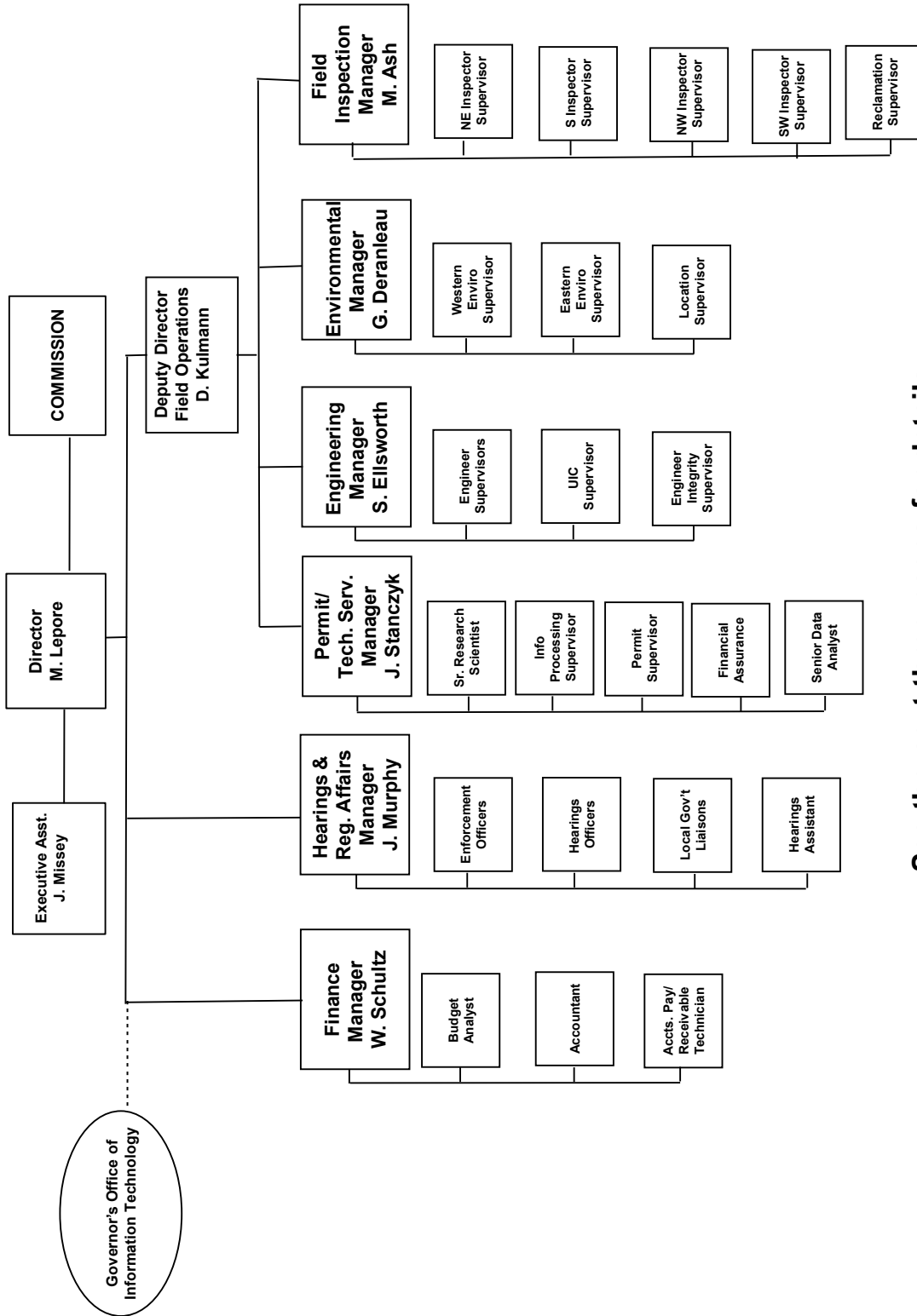
◆ October 2015 Hearing Docket

The docket for the October 2015 hearing will be available shortly after the September hearing. Hearing dockets are available on our website by clicking on “Regulation” in the menu and then “Hearings.” Links to the notices and hearing applications are available from the Docket Number and Applicant, respectively. To sign up for e-mail notification of hearing notices and applications, please see the announcement and instructions on the homepage of the website:

<http://cogcc.state.co.us/reg.html#/hearings>



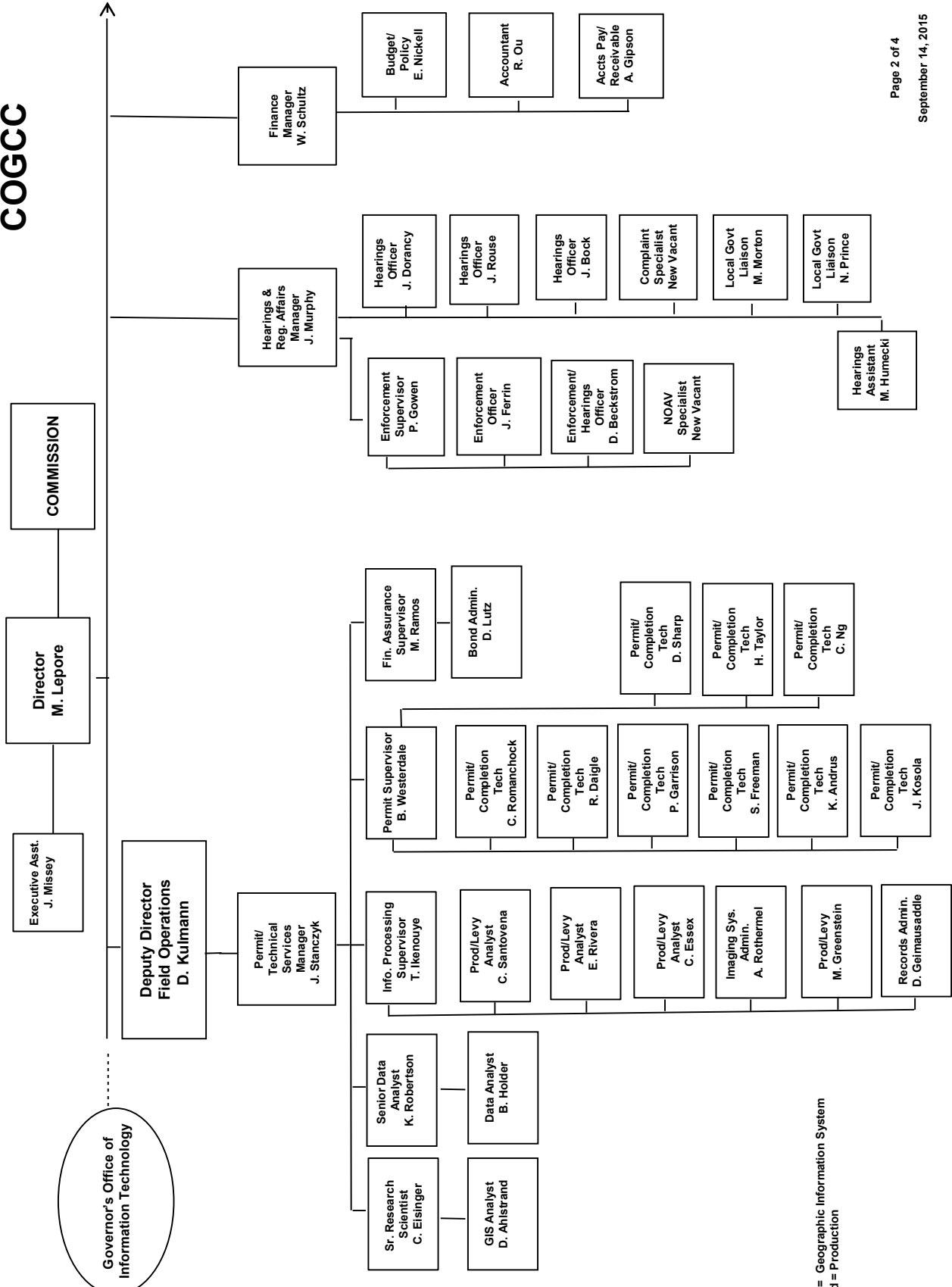
COLORADO OIL & GAS CONSERVATION COMMISSION



See the next three pages for details



COGCC

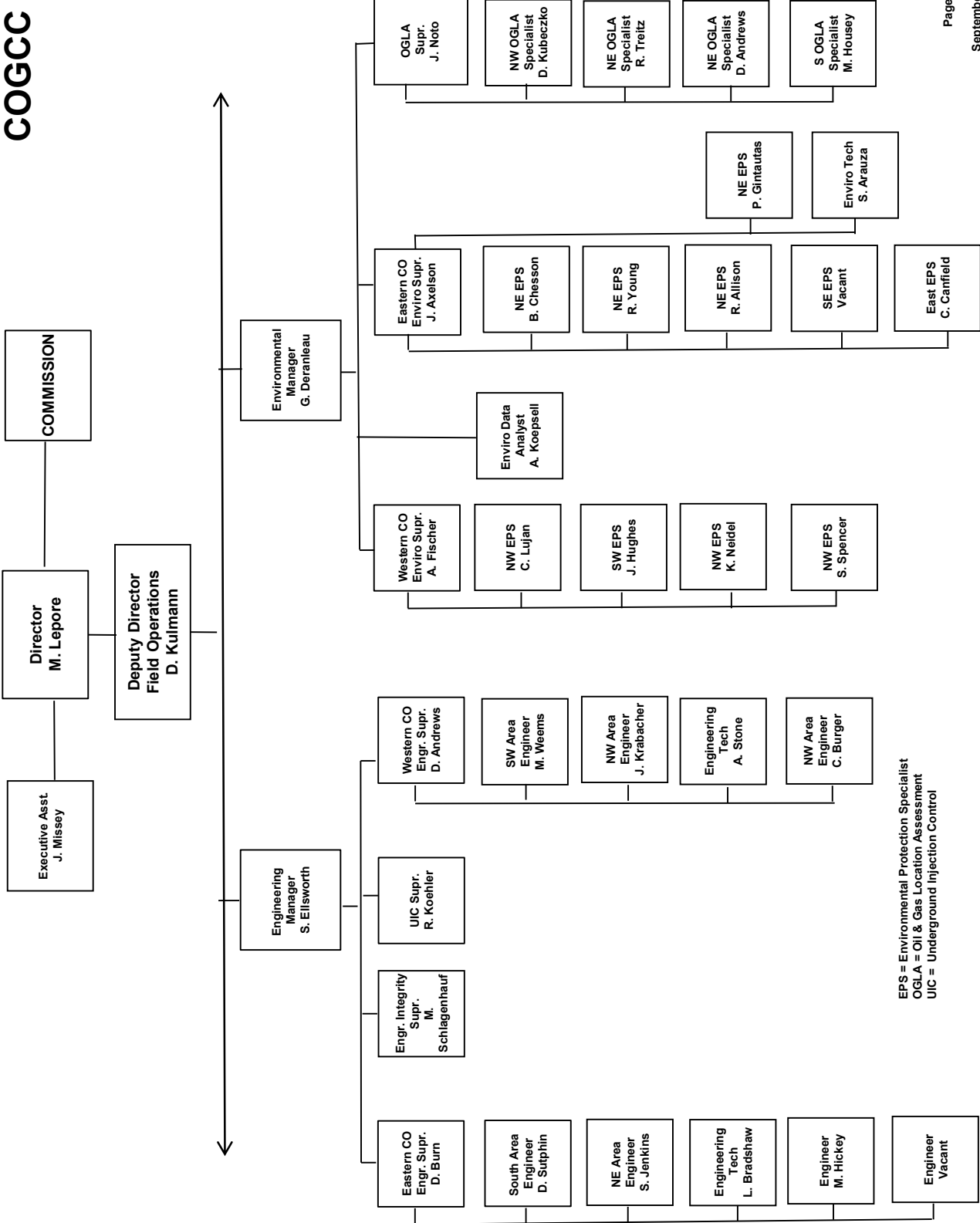


Governor's Office of Information Technology

GIS = Geographic Information System
Prod = Production



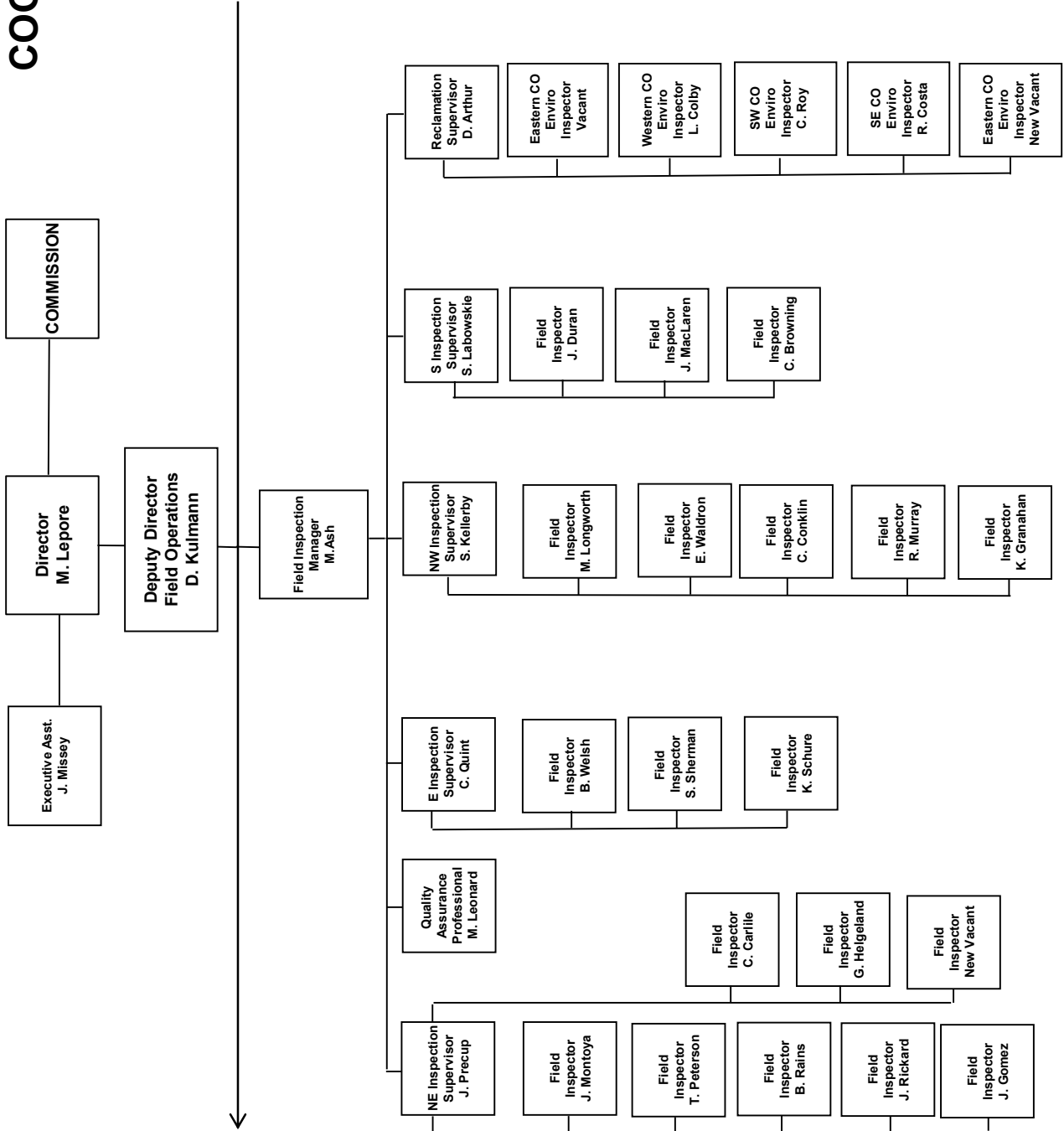
COGCC



EPS = Environmental Protection Specialist
 OGLA = Oil & Gas Location Assessment
 UIC = Underground Injection Control



COGCC





Oil and Gas Staff Report

September 14, 2015

15

PLUGGING AND RECLAIMING ABANDONED WELLS (PRAW) FOR ORPHANED LOCATIONS FISCAL YEAR 2015-16

County	Type	Project Name	Acct Code	PLANNED ESTIMATED TOTAL PROJECT COST				FY 2015-16 YTD EXPENDITURES				Description
				Bond	PRAW	EMGY	Totals	Bond	PRAW	EMGY	Totals	
Ourray	PA	Ridway-Swanson-Peterson #1	SWAN	\$0	\$63,500	\$0	\$63,500					Drilled in 1947 to a TD=500'; turned over to landowner at some point in time for Domestic Use Gaa Hookup; Stopped producing gas and will be PA by COGCC PRAW Program.
Moffat	PA	Think Oil Bond Vaughn #1	VAUG	\$7,542	\$42,458	\$0	\$50,000					Drilled in 1950 to a TD=10,000'; PA in 1989; re-entered in 1999 and directionally drilled to a MTD=7264; Niobrara completion; PA 1997; principle owner deceases; gas leak found; bond claimed; PRAW re-enter PA project.
Yuma	PA	Midfields State #1	MIDF	\$0	\$50,000	\$0	\$50,000					Drilled in 1919 to TD=3650'. Gas flow & rolling water. Excavated to a depth of 6'. Installed 18" OD PVC to a depth of 20'.
La Plata	PA	Noel Reynolds Bond - Ester #1	NOEL	\$30,000	\$15,000	\$0	\$45,000					Bond claimed 6/27/2011 Order #1V-374; PA.
Logan	RECL	Koenig-Ashby #1 & Leckler #1	KALE	\$0	TBD	\$0	\$0					Produced salt water kill soil to include remediation & site reclamation.
Garfield	RECL	Dolphin-Mulvihill #15-32D	DOLP	\$0	TBD	\$0	\$0					Dolphin Energy Corp well pad and lease road near Rifle.
Baca	RECL	Wallace O & G Bond Three Well Pads	WALL	\$0	TBD	\$0	\$0					Three well plugged in FYE2015 and reclamation required for pads and access roads.
Montrose	RECL	Redwine Bond SNU #1-31	REDW	\$0	TBD	\$0	\$0					Plugged May 2015; pit & well pad reclamation with cut and fill on steep terrain.
TOTALS =>				\$37,542	\$170,958	\$0	\$208,500	\$0	\$0	\$0	\$0	

County	Type	Project Name	Acct Code	IN PROGRESS ESTIMATED TOTAL PROJECT COST				FY 2015-16 YTD EXPENDITURES				Description
				Bond	PRAW	EMGY	Totals	Bond	PRAW	EMGY	Totals	
Adams	ENV	Ruth #1	RUTH	\$0	\$1,045	\$0	\$1,045	\$0	\$1,045	\$0	\$1,045	EPS soil analysis completed for the pit at the CTB. Remediation design and cost
TOTALS =>				\$0	\$1,045	\$0	\$1,045	\$0	\$1,045	\$0	\$1,045	

County	Type	Project Name	Acct Code	COMPLETED ESTIMATED TOTAL PROJECT COST				FY 2015-16 YTD EXPENDITURES				Description
				Bond	PRAW	EMGY	Totals	Bond	PRAW	EMGY	Totals	
TOTALS =>				\$0	\$0	\$0	\$0	\$0	\$0	\$0	\$0	

County	Type	Project Name	Acct Code	ESTIMATED TOTAL PROJECT COSTS				FY 2015-16 YTD EXPENDITURES			
				Bond	PRAW	EMGY	Totals	Bond	PRAW	EMGY	Totals
GRAND TOTALS				\$37,542	\$172,003	\$0	\$209,545	\$0	\$1,045	\$0	\$1,045

ABBREVIATIONS

TYPE	PA=plug & abandon	RECL=reclamation	ENV=enviro remediation
EMGY	Funding from the Emergency Response (Budget Line Item)		
PRAW	Funding from the Plug Recl Abandon Well (Budget Line Item)		
TBD	To be determined		

SCOREBOARD (PRAW FUNDING ONLY)

\$1,045	In Progress Estimated Totals
\$1,045	In Progress Spent to Date Totals
(\$0)	In Progress Remaining Totals
\$1,045	Completed to Date Totals
\$1,045	Sum of (In Progress Remaining Totals) and (Completed to Date Totals)
\$170,958	Planned
\$172,003	Total Expenditures
\$445,000	Annual Budget Appropriation
\$272,997	Projected End of Year Balance



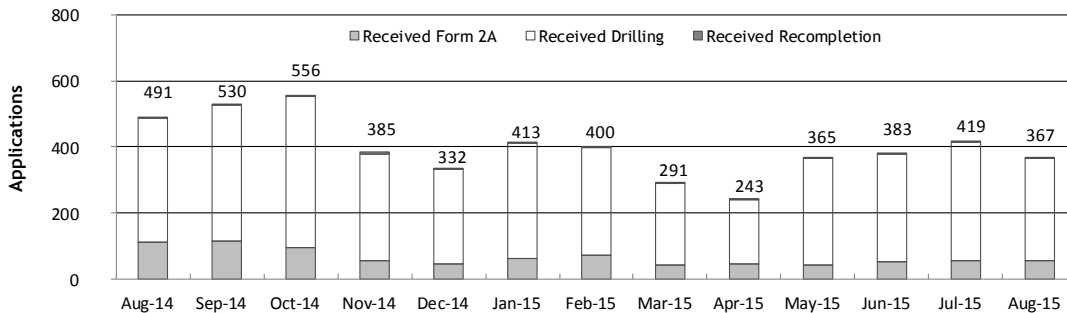
Monthly Permit Activity as of September 1, 2015

Form/Month	Backlog	Received	Approved	Withdrawn	Rejected	Incomplete ¹	In-Process	Remaining ²
Form2A								
Aug-14	183	111	87	3	0	36	168	204
Sep-14	204	116	81	3	0	47	189	236
Oct-14	236	94	109	6	0	74	141	215
Nov-14	215	54	103	6	0	46	114	160
Dec-14	160	45	99	3	0	39	64	103
Jan-15	103	61	43	3	0	23	95	118
Feb-15	118	73	28	0	0	35	128	163
Mar-15	163	44	70	2	0	30	105	135
Apr-15	135	46	37	3	0	38	103	141
May-15	141	41	44	0	0	41	96	138
Jun-15	137	52	49	3	0	24	113	137
Jul-15	137	57	48	2	0	25	93	144
Aug-15	118	56	46	0	1	35	92	127
Drilling								
Aug-14	575	376	259	24	0	90	578	668
Sep-14	668	412	304	21	0	109	646	755
Oct-14	755	459	370	10	0	137	697	834
Nov-14	834	326	479	19	0	128	534	662
Dec-14	662	286	397	10	4	115	422	537
Jan-15	537	349	316	2	0	119	449	568
Feb-15	568	324	161	21	4	143	563	706
Mar-15	706	246	294	14	0	226	418	644
Apr-15	644	194	165	17	0	295	361	656
May-15	656	323	190	30	0	254	505	759
Jun-15	759	327	281	9	5	175	616	791
Jul-15	791	358	250	2	15	153	729	882
Aug-15	882	309	300	18	111	159	603	762
Recompletion								
Aug-14	4	4	3	0	0	0	5	5
Sep-14	5	2	3	0	0	1	3	4
Oct-14	4	3	2	0	0	2	3	5
Nov-14	5	5	2	0	0	1	7	8
Dec-14	8	1	2	1	0	2	4	6
Jan-15	6	3	1	0	0	3	5	8
Feb-15	8	3	2	0	0	3	6	9
Mar-15	9	1	6	0	0	1	3	4
Apr-15	4	3	1	0	0	2	4	6
May-15	6	1	4	0	0	2	1	3
Jun-15	3	4	1	0	0	2	4	6
Jul-15	6	4	2	0	0	1	7	8
Aug-15	8	2	6	1	0	1	2	3

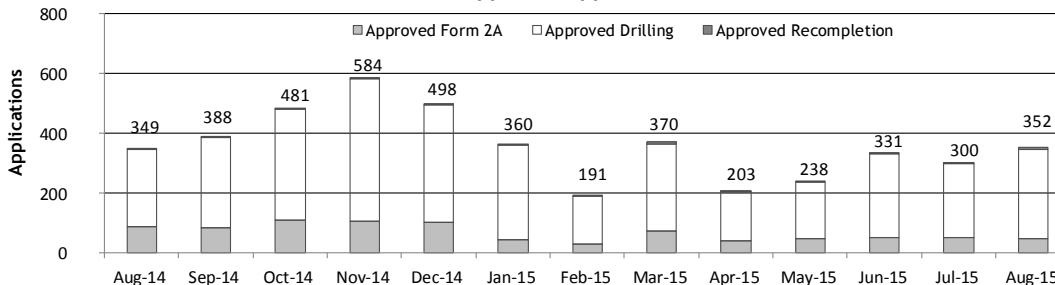
¹ Incomplete are permits that have missing or inaccurate data and cannot be approved.

² Backlog = Incomplete + In-process = Remaining permits from previous month.

Received Applications



Approved Applications





Oil and Gas Staff Report

September 14, 2015

17

Status of Permit Applications Filed By Month as of September 3, 2015

Form 2A Location Assessment

Year	Month	Received	Approved	Withdrawn	In Process	Percent In Process	Median Days to Process	Less Than 30 Days	30 to 49 Days	Greater Than 50 Days
2011	TOTAL	2,391	2,298	93	0	0%		1,416	620	262
2012	TOTAL	1,359	1,291	68	0	0%		706	378	207
2013	TOTAL	1,281	1,202	78	1	0%		369	433	400
2014	JAN	85	82	3	0	0%	54	12	36	34
	FEB	88	86	2	0	0%	55	11	36	39
	MAR	113	108	5	0	0%	47	30	42	36
	APR	80	73	7	0	0%	45	18	35	20
	MAY	92	88	4	0	0%	52	13	34	41
	JUN	134	130	3	1	1%	62	36	54	40
	JUL	100	95	4	1	1%	41	37	38	20
	AUG	102	98	3	1	1%	50	33	26	39
	SEP	118	113	5	0	0%	47	29	45	39
	OCT	94	86	6	2	2%	38	34	35	17
	NOV	65	62	1	2	3%	40	20	27	15
	DEC	45	43	0	2	4%	52	6	21	16
2014	TOTAL	1,116	1,064	43	9	1%		279	429	356
2015	JAN	49	48	1	0	0%	57	6	15	27
	FEB	69	64	2	3	4%	63	5	16	43
	MAR	54	47	5	2	4%	59	6	20	21
	APR	39	35	0	4	10%	53	8	13	14
	MAY	40	36	1	3	8%	52	6	12	18
	JUN	54	42	0	12	22%	44	10	17	15
	JUL	45	18	0	27	60%	34	4	11	3
	AUG	69	4	0	65	94%	17	4	0	0
2015	TOTAL	305	272	9	24	8%		41	93	138

Form 2 Application For Permit to Drill (APDs)

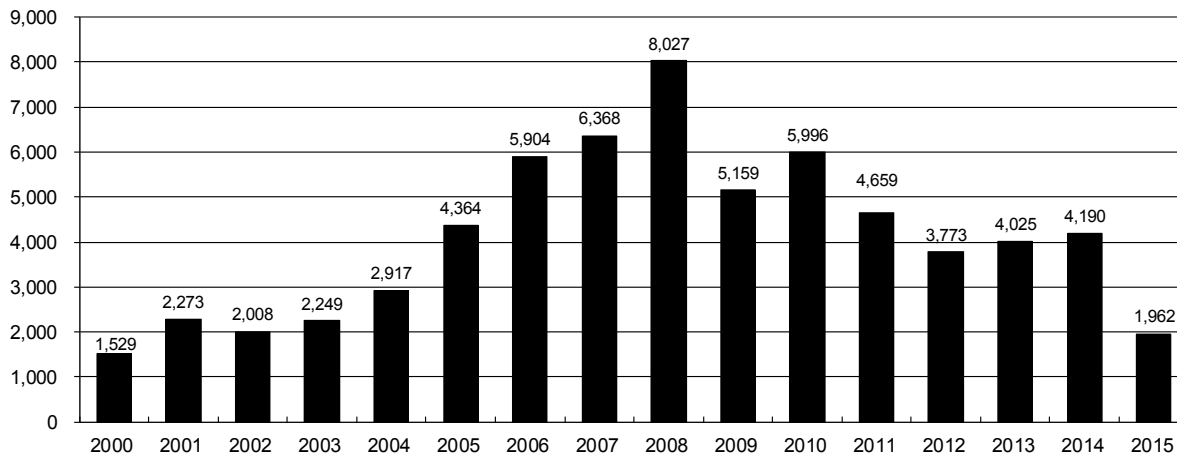
Year	Month	Received	Approved	Withdrawn	In Process	Percent In Process	Median Days to Process	Less Than 30 Days	30 to 49 Days	Greater Than 50 Days
2011	TOTAL	4,691	4,557	132	0	0%		2,723	1,565	587
2012	TOTAL	3,955	3,816	139	0	0%		1,971	1,393	602
2013	TOTAL	4,548	4,312	235	1	0%		1,046	1,626	1,714
2014	JAN	261	256	5	0	0%	57	35	117	108
	FEB	298	285	13	0	0%	58	37	94	159
	MAR	359	351	8	0	0%	52	50	133	173
	APR	223	213	10	0	0%	47	20	121	74
	MAY	501	498	3	0	0%	71	40	155	305
	JUN	438	401	37	0	0%	63	111	138	155
	JUL	287	274	12	1	0%	48	62	119	95
	AUG	350	332	4	14	4%	57	61	126	149
	SEP	413	375	30	8	2%	51	62	150	164
	OCT	441	412	3	26	6%	43	129	199	86
	NOV	374	345	20	9	2%	48	54	144	153
	DEC	281	264	1	16	6%	51	28	133	103
2014	TOTAL	4,226	4,006	146	74	2%		689	1,629	1,724
2015	JAN	291	281	1	9	3%	55	50	60	174
	FEB	294	277	9	8	3%	72	24	73	183
	MAR	306	236	32	38	12%	75	10	73	155
	APR	169	122	15	32	19%	57	28	35	62
	MAY	270	204	3	63	23%	59	9	84	111
	JUN	321	234	6	81	25%	47	45	81	110
	JUL	299	133	0	166	56%	42	15	84	40
	AUG	320	39	0	281	88%	37	6	17	16
2015	TOTAL	1,651	1,354	66	231	14%		365	406	795



Annual Drilling Permits by County as of September 3, 2015

County	2000	2001	2002	2003	2004	2005	2006	2007	2008	2009	2010	2011	2012	2013	2014	2015
ADAMS	38	28	9	26	39	34	37	89	51	35	21	8	40	40	51	18
ARAPAHOE	0	2	1	2	5	7	11	10	10	10	8	23	35	23	34	14
ARCHULETA	7	9	6	10	8	13	14	26	47	11	18	12	5	4	3	8
BACA	22	6	2	3	7	8	2	11	13	3	4	5	3	1	1	
BENT	2				5	3	8	1	1		5		2	1		
BOULDER	1	5	6	7	17	13	21	37	32	35	24	30	22			
BROOMFIELD			2	7		1	1		2	33	28	11	36		31	
CHEYENNE	3	3	3	3	3	10	21	15	33	12	13	16	31	50	26	4
COSTILLA																
CROWLEY																2
DELTA			7	4	5	10	9	2			4	3	6	1	2	
DENVER		3					19	25	24							
DOLORES				1	1	1	6	10	12	21	8	8	13	12	3	
EAGLE														1		
ELBERT	2						4			1		1	2	2	4	3
EL PASO										2	3	3	18	1	2	
FREMONT					1	3	2	4	14	13	22	14	11	2	8	
GARFIELD	213	353	362	567	796	1,509	1,845	2,550	2,888	1,981	2,037	1,323	1,046	870	1,066	321
GRAND																
GUNNISON			5	10	1	9	19	7	10	12	4	3	11	9	20	23
HUERFANO	41	27	27		8	2			7		2	1	9	1	13	2
JACKSON	34	18	21	9	14	6	8	5	27	19	9	18	5	12	17	3
JEFFERSON	1						1	3	2					1		
KIOWA	11	18	2	4	2	1	11	9	26	7	16	17	17	12	5	2
KIT CARSON				1	3	5	4	4	13	7	3	2	6	1	2	
LA PLATA	127	156	104	162	102	115	235	251	328	298	191	99	71	32	87	60
LARIMER	2		1			1		5	46	12	41	8	13	2	4	28
LAS ANIMAS	268	400	259	180	332	413	500	362	303	88	92	85	11	2	1	
LINCOLN	2	2	1	6	3	4	1	2	58	44	48	31	36	87	129	6
LOGAN	4	7	3	3	6	13	17	14	5	9	17	8	27	4	5	
MESA	13	27	30	27	54	136	265	293	501	427	306	127	150	105	74	62
MOFFAT	35	52	62	63	63	60	120	68	57	51	53	93	88	44	54	6
MONTEZUMA	4		5	8	8	11	5	12	22	39	19	27	29	14	25	3
MONTROSE	1	3	2	4	2		1	3	3		1	1				
MORGAN	9	9	2	7	9	7	3	6	2	1	6	13	5	16	6	4
OTERO																
PARK										3	4	1				
PHILLIPS	1	2		7	13	17	12	69	82	45	64	112	56		11	
PITKIN					1			1								1
PROWERS	2	5	4		7	5	7	5	8	1	3	1			1	
RIO BLANCO	89	187	105	179	154	161	360	321	477	348	441	109	117	167	121	100
RIO GRANDE	1	1		1					1	1			2		1	
ROUTT	20	13	1		4	6	9	8	4	2	3	10	4	12	4	3
SAGUACHE	2		2					2	1	2						
SAN MIGUEL	11	13	27	18	42	45	35	23	20	13	10	2	1		2	1
SEDGWICK				1	5	2	7	2	1	19	11	12	2		7	
WASHINGTON	23	17	27	34	128	50	69	45	11	1	6	12	6	19	12	4
WELD	509	702	760	757	832	901	1,418	1,527	2,340	1,448	2,152	2,262	1,826	2,468	2,303	1,286
YUMA	31	205	160	138	237	782	797	541	545	105	299	148	11	9	53	
TOTAL	1,529	2,273	2,008	2,249	2,917	4,364	5,904	6,368	8,027	5,159	5,996	4,659	3,773	4,025	4,190	1,962

ALL COUNTIES





Oil and Gas Staff Report

September 14, 2015

19

Form 2A Breakdown By County By Year as of September 3, 2015

Year	County	Form 2As	Completed	In Process	New Location	CDP	SWH	RSO	CDPHE
2009	Total State	818	818	0	408	2	80	5	5
2010	Total State	2,377	2,377	0	1,543	0	317	22	55
2011	Total State	2,297	2,297	0	1,724	1	259	16	5
2012	Total State	1,297	1,297	0	900	0	167	6	1
2013	Total State	1,195	1,192	3	845	0	144	2	4
2014	ADAMS	23	22	1	20	0	0	0	0
	ARAPAHOE	18	17	1	18	0	0	0	1
	ARCHULETA	1	1	0	0	0	1	0	0
	BACA	1	1	0	1	0	0	0	0
	BROOMFIELD	1	1	0	0	0	0	0	0
	CHEYENNE	23	23	0	20	0	0	0	0
	CROWLEY	2	2	0	2	0	0	0	0
	DOLORES	2	2	0	2	0	1	0	0
	EL PASO	2	2	0	2	0	0	0	0
	ELBERT	4	4	0	4	0	0	0	0
	FREMONT	3	3	0	3	0	3	0	0
	GARFIELD	79	79	0	20	0	53	3	0
	GUNNISON	7	7	0	2	3	2	0	0
	HUERFANO	5	5	0	1	0	4	0	1
	JACKSON	14	14	0	9	0	14	0	0
	KIOWA	3	3	0	2	0	0	0	0
	KIT CARSON	2	2	0	2	0	0	0	0
	LA PLATA	14	14	0	4	0	13	0	0
	LARIMER	4	3	1	3	0	0	0	0
	LAS ANIMAS	1	1	0	1	0	0	0	0
	LINCOLN	135	135	0	119	0	0	0	0
	LOGAN	2	2	0	2	0	0	0	0
	MESA	8	8	0	3	0	5	1	0
	MOFFAT	11	11	0	9	0	11	1	0
	MONTEZUMA	15	15	0	15	0	0	0	0
	PHILLIPS	11	11	0	10	0	0	0	0
	PROWERS	1	1	0	1	0	0	0	0
	RIO BLANCO	20	20	0	13	0	17	0	0
	ROUTT	1	1	0	1	0	1	0	0
	SAN MIGUEL	1	1	0	1	0	0	0	0
	SEDGWICK	7	7	0	5	0	0	0	0
	WASHINGTON	13	13	0	13	0	0	0	0
	WELD	585	576	9	425	0	4	2	1
	YUMA	53	53	0	48	0	0	0	0
2014	Total State	1,072	1,060	12	781	3	129	7	3
2015	ADAMS	5	4	1	4	0	0	0	0
	ARAPAHOE	11	7	4	6	0	0	0	0
	ARCHULETA	3	2	1	2	0	3	0	1
	CHEYENNE	3	2	1	2	0	0	0	0
	ELBERT	3	3	0	3	0	0	0	0
	FREMONT	1	0	1	1	0	1	0	0
	GARFIELD	22	15	7	7	0	12	0	0
	GUNNISON	9	9	0	1	0	7	0	0
	HUERFANO	1	1	0	0	0	0	0	0
	JACKSON	2	2	0	2	0	2	0	0
	KIOWA	3	2	1	3	0	3	0	0
	LA PLATA	12	9	3	3	0	10	0	0
	LARIMER	3	3	0	1	0	0	0	0
	LINCOLN	18	5	13	18	0	0	0	0
	MESA	8	5	3	4	0	4	0	0
	MOFFAT	6	5	1	4	0	6	0	0
	MONTEZUMA	3	3	0	3	0	0	0	0
	MORGAN	1	1	0	1	0	0	0	0
	PHILLIPS	2	0	2	2	0	0	0	0
	RIO BLANCO	12	12	0	8	0	12	0	0
	ROUTT	3	1	2	1	0	3	0	0
	SEDGWICK	1	0	1	1	0	0	0	0
	WASHINGTON	12	4	8	12	0	0	0	0
	WELD	271	195	76	209	0	2	0	0
2015	Total State	415	290	125	298	0	65	0	1

Abbreviations:

CDP = Comprehensive Drilling Plan SWH = Sensitive Wildlife Habitat consultation
 RSO = Restricted Surface Occupancy consultation CDPHE= Colorado Department of Health and Environment consultation



Horizontal Well Activity as of September 3, 2015

County	Prior Years		2009		2010		2011		2012		2013		2014		2015		Total		Completion			
	Drilled	PA	Permit	Spud	Permit	Spud	Permit	Spud	Permit	Spud	Permit	Spud	Permit	Spud	Permit	Spud	Spud	AC	PR	DA	PA	
ADAMS			6	5	2	3	1	1	17	2	26	2	42	18	16	3	33	5	6			
ARAPAHOE	2						10	1	22	4	11	13	22	11	5	31	2	22				
ARCHULETA	17		7	6	15	7	10	8	5	9	2		1		6	1	48					
BENT									1	1	1						1					
BOULDER							4										0					
CHEYENNE	5	4							6	1	7	2	1	1	1	1	9	2	3			
DELTA						1			9	3	5	4	3	1		3	19	13				
DOLORES	9		18	2	6				10							0	0					
EL PASO																						
ELBERT									1							0						
FREMONT	7	6	6		12	5	3	4	4	1	1					17		10	6	1		
GARFIELD	10	2	1	1	16	2	18	6	43	6	18	4	20	11	12	7	47	26				
GUNNISON	1				1				3	2	2		9		13	2	5	3				
HUERFANO									4	1			2			1						
JACKSON	8	1	8		3	4	9	2	4	4	8	5	15	3	3	22	15	1	2			
KIOWA									1		4	2	1			2						
KIT CARSON	1								1		1					2						
LA PLATA	28	2	11	2	28	3	18	7	12	1	5	1	43	6	22	2	50	53	1			
LARIMER	3	2					5	1	2	1	2				22	8	15	4	2			
LAS ANIMAS	16	2	4		1	1										17		17				
LINCOLN			2	1	2	1	1			1	6	1	4	2		6		4				
LOGAN	2								1							2		2				
MESA	3	2	36		22	7	24	13	14		9	2	9	1	1	3	29	25	2	3		
MOFFAT	7	1	6	3	4		9	4	44	6	18	13	15	1	2	1	35	27	1	1		
MONTEZUMA	6	1	23	6	11	2	8	2	18	6	3	4	15	2		28	40					
MORGAN							6	2	2	1	13	1	6		4	1	5	3				
PARK							1	1	1							1						
RIO BLANCO	7	2			1	1	11	2	15	2	4	6	3	1	3	19		11	3			
ROUITT	10	6							1		1			1		10		2	6	1		
SAN MIGUEL	1															1						
WASHINGTON	1	1														1						
WELD	11	3	12	5	208	85	763	231	964	593	2,114	1,098	2,215	1,433	1,240	762	4,218	1,747	10	48		
YUMA	1	1	6													1		1				
TOTAL Horizontal	156	25	147	31	333	123	901	283	1,203	641	2,260	1,161	2,428	1,492	1,351	791	4,678	7	2,086	32	69	
Percent of Total HZ	16%		9%																			
Total All Permits	5,159		2.8%		5,996		19.3%		3,773		4,025		4,190		1,962							
HZ Percent of Total	2.8%		5.6%		31.9%		56.1%		57.9%		68.9%		68.9%		0%		45%		1%		1%	



Oil and Gas Staff Report

September 14, 2015

21

Well to Building Setbacks by Year and by County as of September 4, 2015

Count of well locations, grouped by proximity from well to buildings.

Location Proximity to Buildings	2009	2010	2011	2012	2013	2014	2015	Number of Locations	Percent of Total Locations
Less than 150 feet	2	3	3	2	0	3	2	15	0%
150 to 350 feet	37	58	61	39	34	38	6	273	3%
350 to 500 feet	50	110	97	61	64	48	26	456	6%
500 to 1000 feet	117	385	331	188	188	161	62	1,432	17%
1000 + feet	356	1,705	1,470	838	762	724	239	6,094	74%
TOTAL LOCATIONS	562	2,261	1,962	1,128	1,048	974	335	8,270	

County	TOTAL	Less than 150 feet	150 to 350 feet	350 to 500 feet	500 to 1000 feet	1000 + feet
ADAMS	76	0	4	8	17	47
ARAPAHOE	93	0	2	4	10	77
ARCHULETA	20	0	0	1	10	9
BACA	15	0	0	0	1	14
BENT	7	0	0	0	0	7
BOULDER	23	0	1	1	17	4
BROOMFIELD	33	0	0	4	13	16
CHEYENNE	135	1	0	0	2	132
CROWLEY	2	0	0	0	0	2
DELTA	7	0	0	2	1	4
DOLORES	19	0	0	0	7	12
EAGLE	1	0	0	0	0	1
EL PASO	14	0	0	0	3	11
ELBERT	11	0	0	0	2	9
FREMONT	39	0	2	7	8	22
GARFIELD	544	0	9	8	77	450
GUNNISON	42	1	0	4	1	36
HUERFANO	16	0	0	0	5	11
JACKSON	45	0	0	4	1	40
KIOWA	65	0	0	0	1	64
KIT CARSON	14	0	0	0	0	14
LA PLATA	126	0	4	14	42	66
LARIMER	39	0	5	4	14	16
LAS ANIMAS	201	1	6	7	37	150
LINCOLN	351	0	1	2	4	344
LOGAN	43	0	1	1	0	41
MESA	92	0	0	3	14	75
MOFFAT	174	0	0	2	14	158
MONTEZUMA	42	0	0	1	4	37
MONTROSE	2	0	0	0	0	2
MORGAN	29	0	0	2	4	23
PARK	4	0	0	0	0	4
PHILLIPS	273	1	4	6	21	241
PITKIN	1	0	0	0	0	1
PROWERS	5	0	0	0	0	5
RIO BLANCO	186	0	0	0	2	184
RIO GRANDE	2	0	0	0	1	1
ROUTT	27	0	0	0	2	25
SAN MIGUEL	12	0	0	0	0	12
SEDGWICK	32	0	0	1	3	28
WASHINGTON	66	0	2	0	3	61
WELD	4,817	11	223	354	1,047	3,181
YUMA	525	0	9	16	44	456



Well to Building Setbacks Less Than Two Hundred Feet as of September 4, 2015

Year	Location Doc Number	County	High Density	New Location	Distance (Feet)	Proximity (Feet)	Building Description
2015	400768804	WELD	No	Yes	46	less 150	Building to be razed
2011	2587822	CHEYENNE	No	No	58	less 150	Water well house
2009	1691798	WELD	No	No	58	less 150	Vehicle garage
2010	400072164	WELD	No	Yes	69	less 150	Abandoned hog shed
2014	400569085	WELD	No	No	78	less 150	Well shed
2014	400600705	WELD	No	No	80	less 150	Livestock shed
2012	400240957	GUNNISON	No	Yes	90	less 150	Equipment shed
2015	400742811	WELD	No	Yes	102	less 150	Building to be razed
2009	1758843	WELD	No	Yes	103	less 150	Building to be razed
2011	1636646	WELD	No	No	122	less 150	Storage shed
2009	400011284	LAS ANIMAS	No	Yes	127	less 150	Operator is owner
2009	1786896	PHILLIPS	No	No	132	less 150	Grain storage
2014	400642113	WELD	No	Yes	142	less 150	Barn
2011	400117702	WELD	No	Yes	143	less 150	Irrigation pump house
2011	400227765	WELD	No	Yes	145	less 150	Storage barn
2014	400558626	LINCOLN	No	No	150	less 150	Gas plant equipment building
2009	1904205	WELD	No	No	154	150 to 350	Livestock enclosure
2012	400243295	WELD	No	Yes	155	150 to 350	Unused storage shed
2011	400179419	WELD	No	Yes	157	150 to 350	Existing well / storage building
2010	400054716	WELD	No	No	159	150 to 350	Equipment barn
2011	400188968	WELD	No	Yes	159	150 to 350	Abandoned
2014	400554054	WELD	No	Yes	159	150 to 350	Equipment shed
2014	400559404	WELD	No	Yes	160	151 to 350	Barn
2010	400021477	WELD	No	Yes	162	150 to 350	Goat barn
2009	1758386	WELD	No	Yes	168	150 to 350	Storage shed
2011	1635946	WELD	No	No	169	150 to 350	Storage shed
2013	400447386	WELD	No	No	169	150 to 350	Abandoned turkey barn
2013	400447391	WELD	No	No	169	150 to 350	Abandoned turkey barn
2011	400165164	WELD	No	Yes	178	150 to 350	Residence
2013	400367184	WELD	No	Yes	179	150 to 350	Shed
2011	400188780	WELD	No	Yes	180	150 to 350	Residence
2014	400562498	WELD	No	Yes	181	150 to 350	Garage / storage shed
2010	1697620	WELD	No	No	187	150 to 350	Livestock shed
2009	1758746	WELD	No	No	193	150 to 350	Storage shed
2011	400154431	WELD	No	Yes	198	150 to 350	Turkey barn
2012	400250031	WELD	No	Yes	198	150 to 350	Abandoned guard shack
2009	1774783	WELD	No	No	199	150 to 350	Cement service building
2011	400118102	YUMA	No	Yes	199	150 to 350	Steel barn

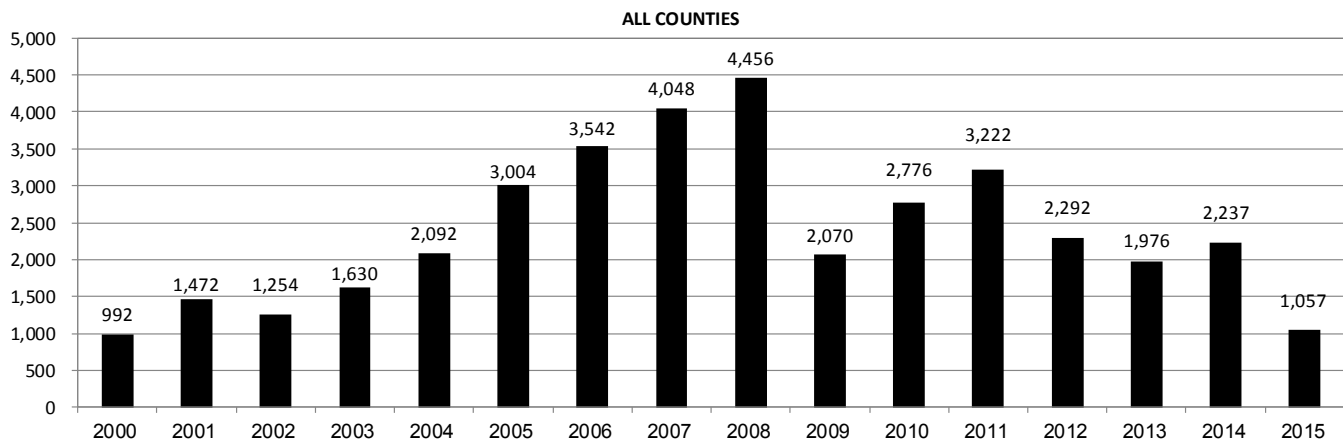


Oil and Gas Staff Report

September 14, 2015

Annual Well Starts by County as of September 3, 2015

County	2000	2001	2002	2003	2004	2005	2006	2007	2008	2009	2010	2011	2012	2013	2014	2015
ADAMS	18	13	4	19	22	24	13	41	14	13	21	1	15	6	30	4
ARAPAHOE					6	1	5	2	1	1	3	9	9	25	21	
ARCHULETA	4	4	2	5	4	10	5	7	28	9	12	10	11		1	3
BACA	19	6	2	1	6	6	2	6	12		5	4	2	1		1
BENT	2				3	2	8	1	1			1	2			
BOULDER				2	5	11	9	14	25	16	13	7	14			
BROOMFIELD			2		1				10		21	11	5			
CHEYENNE	2	1	3	3		9	14	15	14	8	12	11	17	35	19	3
COSTILLA																
CROWLEY																2
DELTA				5	4	6	5	2			7	3	3		1	
DENVER		2					7	5	4							
DOLORES					2		2	13	6	2		1	5	10	4	
EAGLE														1		
EL PASO											2		5		1	
ELBERT	2						1									1
FREMONT					1	3	2	2	5	3	10	16	8	1	4	1
GARFIELD	190	251	245	417	585	799	1,005	1,304	1,689	765	905	878	495	391	361	130
GUNNISON			1		1	1	9	5	1	4	5	2	4	1	2	2
HUERFANO	25	14	19	3	6	2			2		2		2	1	4	1
JACKSON	24	2	4	10	10		3	3	12	1	6	7		7	6	
JEFFERSON								2								
KIOWA	8	16	2	4	2	1	7	7	2	5	15	14	10	12	3	2
KIT CARSON				1	1	6	2	1	14	3	1	1	3	1	2	
LA PLATA	99	135	118	110	103	104	108	179	199	131	67	54	3	10	36	26
LARIMER	1	1				1		4	8	1	28	2	10	4	1	9
LAS ANIMAS	202	286	205	221	296	384	413	326	222	14	7	78	1		1	
LINCOLN	2	2	1	5	2	2	1	2	18	11	14	21	23	42	41	2
LOGAN	4	6	3	3	2	11	12	12	3	7	3	9	13	4	6	
MESA	2	12	12	13	25	89	156	209	225	14	11	41	4	10	16	52
MOFFAT	18	23	25	28	19	40	60	42	26	18	15	33	25	27	3	2
MONTEZUMA	2	3	5	5	1	7	2	4	19	10	3	8	18	12	8	1
MONTROSE		3		2	1			1	2		1					
MORGAN	9	8	1	7	5	5	3	1	1	2	3	2	3	1	4	1
PARK											2					
PHILLIPS	1			6	10	11	4	35	18	2	42	130	48		9	
PROWERS	2	4	4		5	5	6	3	5	2	3	1				1
RIO BLANCO	51	82	47	83	92	95	107	95	204	118	107	72	53	37	42	16
RIO GRANDE															1	
ROUTT	5	12	1		1	6	3	2		2	1	2	4	2	2	
SAN MIGUEL	6	9	10	19	28	13	20	17	5	1	2	2			2	
SEDGWICK				1	2	1	1	5			3	8	3			
WASHINGTON	15	12	24	29	65	34	23	14	11	2	2	4	1	9	7	1
WELD	237	403	406	522	632	718	931	1,222	1,314	878	1,209	1,672	1,457	1,312	1,559	798
YUMA	42	162	108	106	144	597	593	445	336	27	213	107	16	13	39	
TOTAL	992	1,472	1,254	1,630	2,092	3,004	3,542	4,048	4,456	2,070	2,776	3,222	2,292	1,976	2,237	1,057





Active Wells by County and Status as of September 3, 2015

COUNTY	Drilling	Domestic	Injecting	Producing	Shut In	Temp Aband	Waiting on Completion	Active Storage	Intent to Plug	Total Active Wells
ADAMS	16		7	884	67	9	2	16		1,001
ARAPAHOE		1	2	150	9	9		43		214
ARCHULETA	2	5	1	100	13	13	6	6		146
BACA			11	120	42	5		55		233
BENT		1		29	7					37
BOULDER				302	13	1				316
BROOMFIELD				97						97
CHEYENNE	5		40	323	22	48	2			440
CROWLEY	1									1
DELTA				3	14		1			18
DENVER			1	46	2		3			52
DOLORES	2		1	35	6	4	1			49
EL PASO	1	1				1				3
ELBERT	1			67	3	1				72
FREMONT	4	3		57	10	6				80
GARFIELD	199	5	43	10,519	121	76	43	1		11,007
GUNNISON	5		1	31	10	1	2			50
HUERFANO	2		1	35	4	6	1			49
JACKSON	3		30	108	41					182
JEFFERSON			2	1	1		1	1		6
KIOWA	2		10	104	12	2	2			132
KIT CARSON		1	1	14		3				19
LA PLATA	6	7	29	3,134	87	18	5	41		3,327
LARIMER	9	2	19	188	27	19	1			265
LAS ANIMAS		4	15	2,816	24	96	18	17		2,990
LINCOLN	8	1	6	91	19	7	1			133
LOGAN	10		15	113	41	29	3	13		224
MESA	43	1	9	897	97	17	25	9		1,098
MOFFAT	3		9	494	49	36	3			594
MONTEZUMA	6	2	6	116	38	17				185
MONTROSE						2				2
MORGAN	1		22	87	84	33		79		306
OURAY		2				1				3
PARK										
PHILLIPS			2	265	3	1	1			272
PITKIN								10		10
PROWERS	1			26	4					31
RIO BLANCO	17	4	293	2,295	195	88	16	5		2,913
ROUTT	1	2		31	9	2				45
SAN MIGUEL	1			109	15	5				130
SEDGWICK	2		1	14	3		2			22
WASHINGTON	7		24	403	29	7	4			474
WELD	1,003	1	49	21,071	412	41	63	3		22,643
YUMA	1	8	21	3,783	46	9	11	1		3,880
Totals	1,362	51	671	48,958	1,579	613	217	300	0	53,751



Oil and Gas Staff Report

September 14, 2015

25

Monthly Statistics as of September 3, 2015

Page 1 of 2

YEAR and MONTH	Baker - Hughes Rig Count	Permits										Well Spud Notices	Active Drilling Permits	Active Wells	Public Visits			
		Drilling		Recompletion		Injection		Pits		Locations					Data	Office	Internet	
		Rcvd	Apvd	Rcvd	Apvd	Rcvd	Apvd	Rcvd	Apvd	Rcvd	Authz							
2011 TOTAL		4,709	4,659	325	320	44	32	190	192	2,382	2,267	3,220			187	1,294	1,337,865	
2012 JAN	73	372	258	26	21	3	0	11	5	142	129	244	5,217	46,958	12	106	112,686	
FEB	70	370	382	23	27	7	5	21	9	160	129	231	5,173	47,128	16	114	105,857	
MAR	66	292	347	21	14	2	2	17	24	133	172	292	5,132	47,263	26	138	111,746	
APR	66	410	235	16	24	5	5	9	2	137	106	240	4,785	47,377	12	108	107,627	
MAY	66	491	506	23	16	3	1	6	2	105	131	211	4,885	47,533	20	123	109,802	
JUN	69	326	377	11	19	8	6	5	8	110	89	144	5,136	47,860	11	111	108,849	
JUL	66	237	276	9	14	3	2	5	2	97	103	184	5,152	48,173	13	102	114,195	
AUG	62	313	288	6	9	6	4	23	5	83	97	179	5,031	49,153	11	112	110,908	
SEP	61	252	256	1	5	5	2	4	1	81	77	161	4,960	49,230	11	89	106,114	
OCT	62	326	265	9	3	7	6	2	19	94	82	161	5,009	49,236	8	105	108,833	
NOV	56	271	323	5	8	6	6	2	4	109	97	142	5,000	49,989	10	119	120,586	
DEC	57	322	260	4	8	8	5	9	3	122	81	105	5,081	50,067	9	78	107,240	
2012 TOTAL		3,982	3,773	154	168	63	44	114	84	1,373	1,293	2,294			159	1,305	1,324,443	
2013 JAN	53	538	331	6	0	3	5	6	8	176	124	142	5,060	50,265	9	108	47,406	
FEB	56	260	455	10	5	2	3	4	11	91	141	138	5,250	50,372	7	102	40,649	
MAR	57	344	241	5	9	3	8	15	6	129	84	172	5,093	50,540	9	133	43,019	
APR	61	331	333	6	5	5	5	6	8	146	117	165	4,925	50,687	3	132	46,459	
MAY	61	350	342	8	6	6	6	10	7	106	142	162	5,110	50,810	3	123	45,215	
JUN	62	349	273	2	8	8	8	5	3	114	85	142	5,273	50,909	8	122	41,015	
JUL	68	864	304	11	4	9	2	9	5	218	91	163	5,070	51,091	7	154	45,558	
AUG	69	232	291	6	4	3	2	4	1	35	76	204	5,200	51,255	20	130	44,722	
SEP	69	212	362	9	5	10	9	3	19	56	109	168	5,185	51,407	5	105	41,256	
OCT	72	319	376	5	9	7	5	1	8	67	88	235	4,967	51,598	5	135	45,151	
NOV	69	346	353	4	13	7	4	2	27	67	85	162	5,141	51,711	12	119	38,903	
DEC	64	336	367	2	4	4	6	2	3	63	71	123	5,129	51,737	4	93	32,381	
2013 TOTAL		4,481	4,028	74	72	67	63	67	106	1,268	1,213	1,976			92	1,456	511,734	
2014 JAN	62	278	232	3	2	3	4	14	8	90	43	177	4,926	51,840	1	90	46,150	
FEB	61	284	297	6	4	1	1	3	1	91	94	149	5,051	51,847	12	113	43,408	
MAR	62	367	329	4	6	7	1	6	6	110	88	184	4,997	51,952	16	140	46,620	
APR	63	276	317	2	3	2	5	8	3	89	99	167	4,897	52,060	11	188	45,558	
MAY	65	458	383	2	2	3	1	6	7	83	94	179	4,923	52,202	18	131	42,365	
JUN	67	429	377	3	0	6	7	5	2	134	92	222	4,924	52,337	10	156	42,518	
JUL	69	272	446	2	5	3	11	8	5	97	126	184	4,955	52,431	7	166	45,481	
AUG	73	376	259	4	3	4	4	3	4	111	87	219	5,060	52,582	8	145	42,431	
SEP	76	412	304	2	3	3	1	20	1	116	81	203	5,006	52,694	14	175	43,577	
OCT	76	459	371	3	2	9	2	4	6	93	109	189	4,827	52,785	19	138	46,030	
NOV	73	326	479	5	2	5	4	4	0	54	103	176	5,171	52,947	8	96	39,583	
DEC	69	286	397	1	2	2	7	1	2	45	99	188	5,236	53,054	6	144	37,964	
2014 TOTAL		4,223	4,191	37	34	48	48	82	45	1,113	1,115	2,237			130	1,682	521,685	
2015 JAN	64	349	316	3	1	2	9	3	1	60	43	184	5,060	53,195	17	114	41,502	
FEB	49	324	161	3	2	5	6	9	0	73	28	116	4,750	53,309	4	117	38,245	
MAR	38	246	294	1	6	1	5	7	5	44	70	160	4,983	53,414	6	146	42,513	
APR	37	194	165	3	1	2	5	1	2	46	37	95	4,854	53,456	1	125	39,559	
MAY	39	326	190	1	4	2	6	8	0	41	44	105	4,632	53,535	5	113	unavailable	
JUN	38	327	281	4	1	0	5	2	1	52	49	133	4,726	53,608	113	138	unavailable	
JUL	38	358	250	4	2	2	1	0	0	57	48	119	4,663	53,706	138	145	26,975	
AUG	37	309	300	2	6	3	0	5	5	56	46	119	4,847	53,766	145	109	30,674	
2015 TOTAL		1,766	1,407	15	15	12	36	30	9	316	271	793			146	753	161,819	

Abbreviation Key: Rcvd = Received, Apvd = Approved, Authz = Authorized



YEAR and MONTH	Well Oper Change	Operators		Bonds					Hearings			Enforcement			Remediation Projects		Inspections			
		New	Inactive	Release Ind	Blnt	Replace	Claim Ind	Blnt	Apps.	Orders	NOAVs	AOCs	OFVs	Cmplt	Spills	Rcvd	Comp	Wells	Locations	
2011 TOTAL	6,743	33	31	79	44	43	4	4	403	349	230	10	19	247	527	726	536	12,394	-	
2012	JAN	1,052	3	3	7	5	1	1	0	70	72	18	1	-	27	35	68	23	998	970
	FEB	385	6	9	8	5	0	0	0	-	-	10	-	-	24	40	85	36	2,000	1,024
	MAR	379	4	1	7	3	9	0	0	44	38	19	-	-	23	38	63	61	2,202	1,146
	APR	478	4	2	10	3	2	0	0	80	59	11	-	-	19	35	26	99	1,700	929
	MAY	526	3	1	4	0	3	0	0	43	50	14	2	-	23	32	27	122	2,630	1,701
	JUN	1,270	3	4	3	3	4	0	0	-	-	5	-	-	35	39	46	98	1,435	1,091
	JUL	499	5	0	1	4	5	0	0	63	50	15	-	-	16	24	45	33	1,323	1,076
	AUG	301	6	5	2	8	0	1	0	67	54	24	3	2	21	28	127	33	1,904	1,432
	SEP	834	0	4	4	5	2	1	0	-	-	5	-	-	14	13	30	36	1,120	845
	OCT	485	1	2	9	1	0	0	0	30	36	6	1	-	13	44	116	37	1,397	1,017
	NOV	523	6	4	12	8	7	0	0	85	37	16	2	-	10	44	26	44	1,331	829
	DEC	958	6	2	3	1	0	0	0	-	-	14	-	-	19	30	31	19	1,031	610
2012 TOTAL	7,690	47	37	70	46	33	3	0	482	396	157	9	2	244	402	690	641	19,071	12,670	
2013	JAN	662	3	5	12	2	0	0	0	48	75	15	4	-	21	40	31	45	1,622	789
	FEB	293	4	2	6	3	2	0	0	41	35	11	2	-	15	30	42	90	1,044	615
	MAR	355	1	3	2	2	1	0	0	54	67	16	2	-	11	25	65	29	1,968	1,149
	APR	335	7	1	5	2	8	0	0	-	-	21	-	-	16	33	39	37	1,510	910
	MAY	347	2	1	3	0	0	0	0	46	50	22	6	-	13	31	41	60	2,621	1,576
	JUN	1,457	6	2	2	4	5	0	0	91	44	13	2	-	25	40	47	37	1,860	1,102
	JUL	1,014	4	1	2	2	0	0	0	96	70	25	3	-	21	47	50	22	2,298	1,338
	AUG	389	6	4	5	4	2	0	0	-	-	23	-	-	25	57	36	41	2,146	1,033
	SEP	277	4	1	6	1	0	0	0	101	51	7	2	-	16	60	43	51	1,536	703
	OCT	345	6	0	2	2	2	0	0	52	82	4	12	3	12	79	47	60	1,868	1,158
	NOV	442	2	0	2	2	0	0	0	-	-	30	-	-	12	51	31	34	2,401	1,613
	DEC	1,299	4	1	1	2	0	0	0	42	48	50	4	-	14	75	35	35	2,677	1,384
2013 TOTAL	7,215	49	21	48	26	20	0	0	571	522	237	37	3	201	568	507	541	23,551	13,370	
2014	JAN	1,974	6	3	3	2	0	0	0	57	46	25	2	-	8	72	46	28	3,243	1,597
	FEB	2,042	8	2	6	5	0	0	0	-	-	23	-	-	17	65	51	13	2,330	1,282
	MAR	495	2	3	1	5	0	0	0	97	75	29	10	-	22	64	66	31	1,822	1,298
	APR	313	5	2	6	4	1	0	0	74	64	17	8	1	20	66	47	59	2,651	1,715
	MAY	519	5	1	3	3	5	0	0	-	-	12	-	-	13	78	50	42	2,437	1,571
	JUN	1,014	5	2	7	4	1	0	1	95	90	14	6	1	16	74	44	50	3,209	1,717
	JUL	340	2	1	5	3	1	0	0	96	96	11	6	-	12	64	60	59	3,071	1,536
	AUG	437	6	1	2	4	0	0	0	-	-	8	-	-	31	63	32	58	2,788	1,682
	SEP	385	4	1	1	2	0	0	0	73	63	13	7	1	18	63	39	50	2,587	1,616
	OCT	838	8	1	0	2	0	1	0	80	75	12	3	1	13	78	78	36	3,886	1,914
	NOV	343	2	4	8	4	5	0	0	-	-	6	-	-	15	72	27	59	3,156	1,458
	DEC	1,402	1	1	0	2	0	0	0	126	89	9	1	-	58	91	56	17	3,028	1,596
2014 TOTAL	10,102	54	22	42	40	13	1	1	698	598	179	43	4	243	850	596	502	34,208	18,982	
2015	JAN	699	2	3	2	3	0	0	0	76	64	15	2	1	36	82	38	58	2,491	1,246
	FEB	533	5	2	2	3	1	0	0	-	-	10	-	-	22	43	34	64	2,667	1,382
	MAR	169	5	2	5	2	4	2	0	72	72	33	1	1	42	72	60	93	3,469	1,738
	APR	248	7	1	0	5	3	0	0	60	54	19	3	-	21	53	40	60	3,451	1,620
	MAY	200	8	0	0	2	3	0	0	89	54	10	10	2	25	55	56	41	2,869	1,422
	JUN	242	2	1	3	5	4	0	0	-	-	27	-	-	25	42	32	43	3,357	1,707
	JUL	84	3	2	0	5	1	0	0	123	140	5	13	1	32	74	46	26	3,443	1,771
	AUG	6	8	2	0	7	4	0	0	-	-	13	-	-	18	49	18	61	3,667	1,820
2015 TOTAL	2,091	29	9	12	20	15	2	0	297	244	114	16	4	171	347	260	359	18,304	9,115	

Abbreviation Key: Ind = Individual, Blnt = Blanket, Apps = Application for Hearing, NOAV = Notice of Alleged Violation, AOC = Administrative Order of Consent, OFV = Order Finding Violation, Cmplt = Complaint, Comp = Completed