



October 26, 2015

TOP STORIES

◆ LEAN Process for Field Inspections Underway

Between September 16 and 24th, a team comprised of six operator representatives and five COGCC staff collaborated using Lean process improvement techniques to develop changes to the agency's Field Inspection Reporting. The end goal of the collaboration is to ensure timely and smooth resolution of identified issues. The team mapped the current process, recognized waste and "pain points," and then developed solutions to address these opportunities.

The team made seven recommendations, which include updating the current field inspection report to make it easier to identify the issues found, and creating a new inspection response eForm; a process for operators to seek a factual review of inspection findings on a limited set of items; and several new guidance, matrix, or standard operating procedure documents to ensure more consistency in the process. The team quickly identified these solutions and are working to implement each one. It is anticipated that these seven recommendations could be fully implemented by March 31, 2016, assuming that the identified information technology solutions are prioritized appropriately.

◆ Local Government Liaison (LGL) Program

Local Government Liaisons (LGLs) Marc Morton and Nancy Prince are a key COGCC resource for Local Governmental Designees (LGDs), local government staff, and others interested in the regulation of oil and gas in Colorado.

The COGCC established the LGD program in 1992 to provide local governments a mechanism for input to the State's regulation of oil and gas exploration and production activities. Participation in the LGD program is voluntary, and the level of its use by local governments is discretionary. Submittal to COGCC

of a completed Form 29 is required to participate. The form is available online at:

http://cogcc.state.co.us/documents/reg/Forms/PDF_Forms/form29.pdf

Participation in the program provides significant benefits and opportunities to local governments. Benefits include providing LGDs with direct access to the COGCC permitting process via EForms, COGCC's internet-based platform. LGDs (and the public) may also comment on pending applications during the public comment period. LGDs may request extension of the public comment period on drilling or location permit applications, and may request consultation with the Colorado Department of Public Health and Environment (CDPHE) regarding public health or environmental concerns. LGDs receive notification of many oil and gas activities. Notifications include but are not limited to when permit applications are available for comment, when permits have been issued, and when hydraulic fracturing is scheduled.

The LGLs provide training to LGDs and others interested in the regulation of oil and gas in Colorado. Training sessions include information about COGCC regulations, CDPHE regulations, trends in oil and gas exploration and production, and the use and navigation of the COGCC website, maps, and database.

Two remaining LGD trainings are scheduled in 2015. Pre-registration is required.

Scheduled trainings include:

- Tuesday, November 3 (Weld County; location to be determined); and
- Tuesday, December 1 (COGCC office in Denver).

To pre-register for one of the trainings, please send an e-mail to:



dnr_cogcc.hearings@state.co.us

or contact Marc Morton or Nancy Prince. Please note that registration may be capped at any time due to space limitations.

Marc and Nancy may be reached using the following e-mail addresses, respectively:

marc.morton@state.co.us

nancy.prince@state.co.us

A list of the LGL outreach and public involvement activities conducted since the previous staff report is included in the latter half of the Public Outreach section below.

PUBLIC OUTREACH

➤ Outreach by Director and Other Staff

- On September 2, Local Government Liaison (LGL) Marc Morton, Engineering Manager Stuart Ellsworth, Engineering Supervisor Diana Burn, and Location Assessment Manager Jon Noto participated in a conference call with the City and County of Broomfield LGD and other City/County staff concerning general well drilling and completion practices.
- On September 19, Permitting Manager Jane Stanczyk and LGL Nancy Prince provided information to interested mineral owners at the Colorado Chapter of the National Association of Royalty Owners' annual conference in Denver.
- On September 26, Director Matt Lepore was a Guest Lecturer at Sturm College of Law on the topic of Contemporary Oil and Gas Regulatory Issues.
- On September 26, Diana Burn and Nancy Prince gave a presentation on leadership challenges in oil and gas regulation to students in the President's Leadership Class at the University of Colorado at Boulder.
- From September 27 to 30, Stuart Ellsworth, Diana Burn, Environmental Data Analyst Arthur Koepsell and Environmental Specialist Peter Gintautas attended the Groundwater Protection

Council's annual meeting in Oklahoma City. Peter presented results of the special projects investigation of the presence of tert-butyl alcohol in Raton Basin groundwater. During the meeting, these COGCC staff members participated in discussions of induced seismicity, well construction, water sampling, water analysis, Underground Injection Control wells, and database management.

- On October 13, Director Lepore was the keynote speaker at the Colorado Environmental Management Fall Conference on The Changing State of Energy and the Environment in Colorado: "A Brief History of Technical Transformation in Colorado's Oil & Gas Sector - 2009-2014."

➤ Outreach by LGLs

- On September 14, Nancy Prince attended a study session of Aurora's City Council at which the decision was made to submit the staff proposal to form an Oil and Gas Committee to the full session of Council. On September 21, the full Council approved the formation of the Committee.
- On September 15, Marc Morton was interviewed by Central Washington University graduate student Janessa Zucchetto regarding the social impacts of the oil and gas industry in Garfield County and about the COGCC's regulatory structure.
- On September 21, Nancy Prince gave a presentation on oil and gas activity in El Paso County to the Sage Water Users Association in Falcon. Her presentation provided background information for Source Water Protection Plan development.
- On September 22, Marc Morton and Nancy Prince travelled to Akron and provided LGD training to 12 individuals including LGDs, other local government staff, and industry representatives. Kent Kuster of the CDPHE assisted in providing the training. This training was the sixth of eight scheduled LGD trainings in 2015. To date, LGD training has been provided to 332 participants in 17 trainings held during 2013, 2014, and 2015.



- On September 30, Nancy Prince presented information on COGCC regulation of oil and gas – past, present and future – at the Colorado Chapter of the American Planning Association annual conference in Steamboat Springs.
- On October 1, Marc Morton travelled to Rifle and attended the monthly Garfield County Energy Advisory Board (EAB) meeting. Marc provided an update on the status of Governor's Task Force rulemaking by the COGCC, and about the COGCC Field Inspection process improvement effort.
- On October 5, Nancy Prince provided training on the COGCC website to members of the Executive Committee of the Pueblo Chapter of the Sierra Club.
- On October 8, Marc Morton attended the Mesa County Board of County Commissioners and Land/Resource Managers quarterly meeting in Grand Junction.
- On October 12, Nancy Prince spoke to a meeting of the Environmental Policy course at the University of Colorado at Denver School of Public Affairs.

REGIONAL ACTIVITIES

➤ *Northwest Colorado*

◆ Northwest Colorado Oil and Gas Forum

The remaining Forum meeting for 2015 is scheduled for December 3. The meeting will be held in Rifle at Colorado Mountain College from 10:00 am to noon.

All parties wishing to be placed on the next meeting agenda or added to the distribution list for announcements should contact Marc Morton at 303-894-2100, ext. 5132 (direct), 720-415-4959 (mobile) or by email:

marc.morton@state.co.us

◆ Project Rulison

The email for Project Rulison submittals is

DNR_rulison.submittal@state.co.us

◆ Project Rio Blanco

The email for Project Rio Blanco submittals is

DNR_rioblanco.submittal@state.co.us

➤ *Southwest Colorado*

◆ Red Mesa Bond Claim Project

During a COGCC field inspection of the **Red Mesa Holdings, LLC. BOND JCK #1** well in March 2015, an open excavation around a flow line was noted on this location. In April 2015, this operator filed for bankruptcy. In August, COGCC staff observed that the excavation was accumulating storm water and contained evidence of hydrocarbon liquids. The side walls of the excavation were sloughing off and the secondary containment for the tank battery was being undermined. In September, COGCC retained Crossfire LLC to remove the fluids within the excavation with a vacuum truck and backfill the hole to prevent further site degradation and impacts to the environment. Red Mesa Holdings' financial assurance bond money was used to perform necessary sampling and preliminary stabilization of this location. Total cost for sampling and stabilization at this site was \$4,228.

◆ Fruitland Formation Outcrop Mitigation and Monitoring Projects

South Fork Texas Creek Mitigation Site - La Plata County. Regularly scheduled operations and maintenance continue at the South Fork Texas Creek (SFTC) site, performed by LTE, the COGCC's contractor. Since May 2009, the system has collected 15,397 Mcf of methane and generated 239,527 kWh of surplus electricity. The 4M Outcrop Mitigation Summary Report, prepared by LTE, is available at this location on the COGCC website:



http://cogcc.state.co.us/documents/library/AreaReports/SanJuanBasin/4m_project/4M_Mitigation_Project_Summary_Report_2015_01.pdf

4M Monitoring Well Inspection/Maintenance: During the week of September 28, the annual inspection/maintenance tour of the 4M monitoring wells was performed. COGCC and Resource Hydrogeologic Services (RHS) staff performed routine site inspections of the 17 monitoring wells at 11 locations in La Plata and Archuleta counties. RHS staff downloaded data from the down-hole In-Situ Level Troll pressure transducers, inspected the well heads for leaks, and replaced the desiccants within the equipment enclosures.

COGCC and RHS staff updated several sites with twist lock connectors to facilitate data downloads. The team lowered the upper pressure transducer in the Wagon Gulch MW 34-5-4 #1 to prevent seasonal issues. The team replaced the Troll Net Hub at the Beaver Creek MW 35-6-17 location and removed the Troll Link 201. RHS staff sent this component back to the manufacturer for troubleshooting/service due to intermittent telemetry data transmissions.

◆ GORT Meetings

The remaining meeting for 2015 is scheduled for November 19. The meeting will be held at the La Plata County Fairgrounds, Animas Room, Durango, from 8:30 am to noon.

Any party who wishes to be placed on the next meeting agenda should contact Marc Morton at 303-894-2100, ext. 5132 (direct), 720-415-4959 (mobile) or by email:

marc.morton@state.co.us

VARIANCES

◆ Robert L Bayless Producer, LLC

Robert L Bayless Producer, LLC (“Bayless”) performed a Mechanical Integrity Test (MIT) on the Hells Hole 18-9 well that is located in Section 18 Township 2 South Range 103 West, 6th P.M. on

March 25, following a cement squeeze to repair holes in the casing. The MIT started at an initial pressure of 400 psi and lost 35 psi in 15 minutes. The MIT result met the requirement of Rule 326.g for less than 10% pressure loss, but staff judged the test as failed because the pressure did not stabilize during the test period. There remains a small leak at about 1875 feet, where Bayless attempted a five barrel cement squeeze in the casing. The squeeze was into a sand/shale sequence (Sego Sandstone) that does not contain usable water. The nearest water well produces from the overlying Upper Mesaverde formation and is located approximately 2350 feet from the well. The well is used for stock watering.

Bayless sold the Hells Hole 18-9 well to West Texas Operating, LLC dba Xtreme Energy Company (“Xtreme”). COGCC staff granted Xtreme a variance to Rule 326.f.(1) that requires the casing repair be completed within 6 months in order to provide for an additional 6 month period to test the well for production. The well will be operated using a rod pump at a maximum casing pressure of 100 psi, which is an operating pressure less than the pressure at which the casing leak was detected. Following the evaluation period, Xtreme will make an economic decision to repair the casing leak or plug and abandon the well. Xtreme contends that the requested variance will not violate the basic intent of the Oil and Gas Conservation Act.

On September 22, the COGCC Director approved Bayless’ Rule 326.f.(1) variance request for this well.

ADMINISTRATION/ORGANIZATION/OTHER

◆ New Northeast Reclamation Specialists

We are pleased to announce that Chris Binschus and Aaron Trujillo are the COGCC’s two new Northeast Reclamation Specialists. As part of the Reclamation Program in the Field Inspections Unit, both Chris and Aaron will conduct inspections triggered by events such as construction, stormwater requirements, interim and final reclamation, requests for bond release, and orphaned well reclamation.



Prior to joining the Reclamation Program, Chris worked as a wildlife biologist for oil and gas companies, monitoring environmental compliance of energy development with sensitive and threatened plant and animal species. He has a bachelor's degree in Wildlife Management and Conservation and a master's degree in Natural Resources Stewardship in Ecological Restoration.

Prior to coming to the COGCC, Aaron was a Private Lands Wildlife Biologist, a position jointly sponsored by the Bird Conservancy of the Rockies, the Natural Resources Conservation Service, and Colorado Parks and Wildlife. Aaron has a bachelor's degree in Wildlife Biology from Colorado State University.

◆ New Engineer in the Engineering Integrity Group

We are pleased to announce that Ellice Hazard has been appointed to the position of Engineer in the COGCC's new flowline integrity program. She holds a B.S. degree in Chemical Engineering from Colorado School of Mines.

She is currently an Engineer in Training who began her career at the Environmental Protection Agency in Underground Injection Control. She worked at Chevron Phillips Chemical Company in Sweeny, TX where she simulated rates, pressures, and temperatures of production facilities and flare headers and inspected facilities during maintenance turn-arounds. She also worked for a consulting firm helping O&G operators meet EPA's regulations and was a Process Engineer for an engineering design firm. In 2015 she joined COGCC as a Temporary Engineer in Underground Injection Control.

◆ New Southeast Environmental Protection Specialist (EPS II)

We are pleased to announce that Jason Kosola is the new Southeast Area Environmental Protection Specialist. Jason joined the COGCC in August 2014 as a Permit Completion Technician where he made significant contributions to the Permitting Group.

Prior to joining the COGCC, Jason worked as a geologist in environmental consulting, mining,

and oil and gas. He has a degree in geology from the University of Nebraska and has a professional geologist certification. Jason will relocate to establish a field office in Colorado Springs.

◆ New Engineering Technician in the Engineering Integrity Group

We are pleased to announce that Joe MacLaren has been appointed to the position of Engineering Technician in the COGCC's new flowline integrity program. He is a graduate from Fort Lewis College with a Bachelors of Science in Geology. He received the Rocky Mountain Association of Geologists outstanding student award at graduation.

After graduation he worked for a geotechnical engineering firm. He then worked 16 years as the Technical Manager for an oilfield service company working in the San Juan and Piceance basins of Colorado, focusing on corrosion mitigation of oilfield systems. Joe then went to work for Allied Pipeline Technologies as Project Manager and Safety Administrator. Joe was hired by the COGCC as the SW Field Inspector out of Durango in February 2014 before moving to the Engineering Integrity Group in October 2015.

A COGCC organizational chart can be found on pages 9-12. For contact information, please go to our homepage, find the "About Us" menu, and select "Contact Us."

◆ Plugging and Reclaiming Abandoned Wells (PRAW) - Project Updates

For a full description of the **Red Mesa Holdings, LLC. BOND JCK #1** project, see the Regional Activity section under Southwest Colorado.

The **Carl A. Peters #1** environmental project is located in the Town of Mead in Weld County. The COGCC initiated this project in support of Kerr McGee Onshore Oil and Gas LP's re-entry and re-plugging of an orphan well as required by the COGCC DJ Basin Horizontal Offset Policy, revised December 17, 2013. The subject well (API #05-123-07297) was originally drilled dry and abandoned in 1971 by Amoco Production Company, and it was re-entered in 1983 by Caribou Energy, Inc., who finally plugged the well without having produced it in 1987.



For this project, the COGCC provided exploration and production waste management oversight during the excavation to expose the wellhead for re-entry and sampled the sidewalls and base of the excavation for characterization of waste left in place, if any. The COGCC will incur costs associated with waste disposal and sample analysis. Because this well is located in a subsequently developed neighborhood and is less than 5 feet from a residential structure, COGCC Field Inspection and Engineering staff are monitoring the project closely. The current estimated COGCC PRAW cost is less than \$2,500. If residual soil or groundwater contamination is identified, the COGCC will proceed with investigation and remediation as appropriate and at additional cost.

The **Ridgway-Swanson-Peterson #1** plugging and abandonment (PA) project is located in central Ouray County about one mile east of the Town of Ridgway. This well was drilled in 1947 and was later turned over to the landowner as a domestic natural gas supply. The gas petered out and has been shut in since approximately 1986, and the landowner has switched over to retail propane. Following a COGCC inspection in 2011, the well was placed in the Orphaned Well PRAW Program. After the recent onsite bid meeting with contractors, the project was split up into two parts, the first to remove the well shed and the second to plug the well. The cost to PA the well has gone up due to the removal of the shed, and is now estimated at \$75,500, pending an accepted bid from the successful contractor.

The **Think Oil Bond Claim Vaughn #1** plugging and abandonment (PA) project is located in Moffat County about two miles southwest of the Town of Craig. This well was drilled in 1950 to a total depth (TD) of 10,003 feet through the Weber sandstone and Morgan formation. The well was later plugged in 1989 but was re-entered in 1992 and drilled to a depth of 3,025 feet. The operator then directionally drilled the well to a true vertical depth (TVD) of 7,223 feet and a measured total depth (MTD) of 7,264 feet; the well was completed in the Niobrara formation.

Because of mechanical problems and sub-economic production, the well was subse-

quently plugged in 1997. Various well site inspections by the COGCC found non-compliance with the rules and an Order Finding Violation resulted in the State claiming the bond for this well (Order 1V-458). An inspection in 2015 determined that gas was leaking from the well casing. The well will be re-entered and plugged at an estimated cost of \$30,000.

The **Midfields State #1** plugging and abandonment (PA) project is located in Yuma County about 12 miles south of the town of Wray. This well was drilled to an approximate depth of 3,650 feet in 1919. In 2009, an onsite inspection found venting gas and rolling water in the well. The well was excavated to a depth of six feet, and no casing was found.

The limited available records indicate a 16 inch diameter surface bore. A 20 foot long joint of 18 inch diameter PVC irrigation pipe was stuffed into the wellbore, and the excavated portion was backfilled. A plumb bob was lowered into the well, and it tagged up at a depth of 30 feet. For safety purposes, panels were erected around the well, and the well was left open to the atmosphere to prevent shallow ground water contamination. The estimated cost to PA the well is \$50,000.

The **Noel Reynolds-Ester #1** plugging and abandonment (PA) project is located in La Plata County about 18 miles southwest of the Town of Durango. This well was drilled in 1979 to an approximate depth of 3,467 feet or into the Morrison formation. The producing oil zones include the Dakota sandstone (3,302 feet to 3,316 feet), Carlisle/Juan Lopez (3,030 to 3,014 feet), and Mancos/Gallup (2,594 to 2,622 feet). The operator has since become financially insolvent, and the State claimed the \$30,000 bond in 2011 through Order 1V-375. This order placed the project into the PRAW program. The estimated cost to PA the well is \$45,000.

The **Koenig-Ashby #1 and R. E. Leckler #1** reclamation project is located in Logan County and will involve the remediation of soils contaminated by produced salt water spills. Sampling and analysis of the soils, as well as remediation project design, were completed in Fiscal Year 2014-15. The cost to remediate and reclaim the site has not yet been determined.



The **Dolphin Mulvihill #15-32D** reclamation project is located in Garfield County about 1.6 miles northeast of the Town of Rifle. This well was plugged and abandoned in 2012, but the site must now be reclaimed. The cost to do this work has not yet been determined.

The **Wallace Three Well Pads** reclamation project comprises three separate leases and well pads in Baca County about 20 miles southeast of the Town of Walsh. The wells at these sites were plugged and abandoned in June 2015, and the sites are now up for reclamation. The cost to do this work has not yet been determined.

The **Redwine Bond South Nucla Unit #1-32** reclamation project is located in Montrose County about 28 miles southwest of Montrose. This well was plugged and abandoned in May 2015 and is now ready for the closure of the drilling pit and reclamation of the site. The site is a cut and fill on a steep slope in the mountains. The cost to do this work has not yet been determined.

The **Ruth #1 BOND CLAIM Project** is a well site located in Adams County, which will require the plugging of one well and the reclamation of a pit and the well site. To date, the soils analysis indicates that the pit contents meet standards for reclamation purposes. The analysis had a total cost of \$871. In addition, the production equipment has been removed at a cost of \$5,000. Final plans for the site reclamation phase of the project are under review. To date, the PA portion of the project is currently an alternate or substitute project in this year's PRAW plugging program in the event of unforeseen circumstances and/or changes in plans.

Page 13 contains a spreadsheet listing PRAW projects that are either scheduled, in process, or completed as of October 13, 2015.

◆ Colorado Oil and Gas Information System (COGIS) Projects, Updates and Changes

Electronic Form Submissions (eForm)

The COGCC uses 41 types of forms to authorize oil and gas operations, inspect and monitor ongoing operations, and receive reports of operations. Of those 41 forms, 19 are currently availa-

ble for electronic submittal through the eForms system. Electronic versions of the Form 7, Form 26, Form 31, and Form 33 have been released within the past month.

The development team continues to work on the eForm conversion of existing forms. Currently, four types of forms are in various stages of development: Forms 14, 14A, 27, and NOAV. In addition, the development team updates eForms with improvements requested by staff and as required by rule revisions.

To date in 2015, nearly 97 percent of the forms available in eForms were submitted electronically by industry. In the month of September, over 96 percent were submitted electronically. There are 608 operator users of eForms and 2,533 individual users. For any operator not currently enrolled in eForms, instructions for starting the process can be found on the COGCC website at:

<http://cogcc.state.co.us/Announcements/COUAIinformation.pdf>

New Production Report Form7 eForm

The eForm version of the Form 7, Monthly Report of Operations (better known as the Production Report), was released on October 1. Prior to the release, the COGCC Production Analysts conducted seven training sessions that included webinar connections to reach more than 200 employees representing 130 operators. The old Form 7 version will be completely phased out by the end of 2015. Additional training sessions will be conducted for the 130 operators who have not yet participated in the training. Information on these future training opportunities can be found on the COGCC website at:

<http://cogcc.state.co.us/reg.html#/forms/form7eformconversion>

Form 27 eForm Development

The COGCC's Site Investigation and Remediation Workplan (Form 27) is due for an upgrade. The form was created in 1999 and has only been slightly modified since that time. The COGCC's eForm platform allows for seamless tracking of



an issue in COGCC's database (known as the MRDB) from start to finish. Users of the new eForm will be able to see not only the origin of the issue as a spill report or complaint, but also its investigation, remediation, and site closure.

An eForm will replace the existing paper form, and development is currently underway.

The revised Form 27's data fields will be developed to provide more information "at a glance" and also allow for operators to directly enter information about their projects. Moreover, operators will be able to update their records as often as they need.

The conversion of the Form 27 to the established eForm platform will increase the efficiency of COGCC staff resources, improve the effectiveness of communications regarding individual projects, and elegantly interface with spill reports, complaints, and existing facilities in the MRDB.

The Governor's Office of Information Technology (OIT) has completed initial development of the eForm 27, and COGCC staff has conducted its first round of testing followed by user feedback. Further testing by a select group of Operators will be done prior to rollout.

Applications and Location Assessments

The public can make comments on all submitted Drilling Permit Applications (Form 2s) and Location Assessments (Form 2As) through the eForm system. Simply go to the COGCC website and click on the menu option "Permits" or

<http://cogcc.state.co.us/permits.html#/permits>

On the "Permits Search" page, three search options are available. The first option, "All Pending Permit Applications," is used for public comments. When the results are displayed for "Pending Applications," a user can click on the document number hyperlink in the "Status" column, which logs him or her to the eForms application.

Once the page is displayed with the selected document, the user can select the Comment button to make a comment on that particular form.

Data Access

The COGCC's database is a comprehensive repository of Colorado's oil and gas data. The information in the database is available to the public through interactive search tools and a variety of file downloads on the website.

Users of this data come from many different organizations, including academic institutions, oil and gas operators, environmental groups, government agencies, and the media. The number of these users and the variety of data requested are steadily increasing. In order to better serve the public and address these demands for data, staff will be enhancing the interactive search tools with additional search criteria. Staff will also be publishing additional data file downloads at:

<http://cogcc.state.co.us/data2.html#/downloads>

Current Data File Downloads

GIS Shapefiles (12 files)
 Production Data (1999 - present)
 Spacing Orders
 Water Well Data
 Complaints
 Mechanical Integrity Tests
 Notices of Alleged Violation

Future Data File Downloads

Spills-Releases-Remediation (by December 31, 2015)
 Inspections (by December 31, 2015)
 Enforcement Orders (by December 31, 2015)

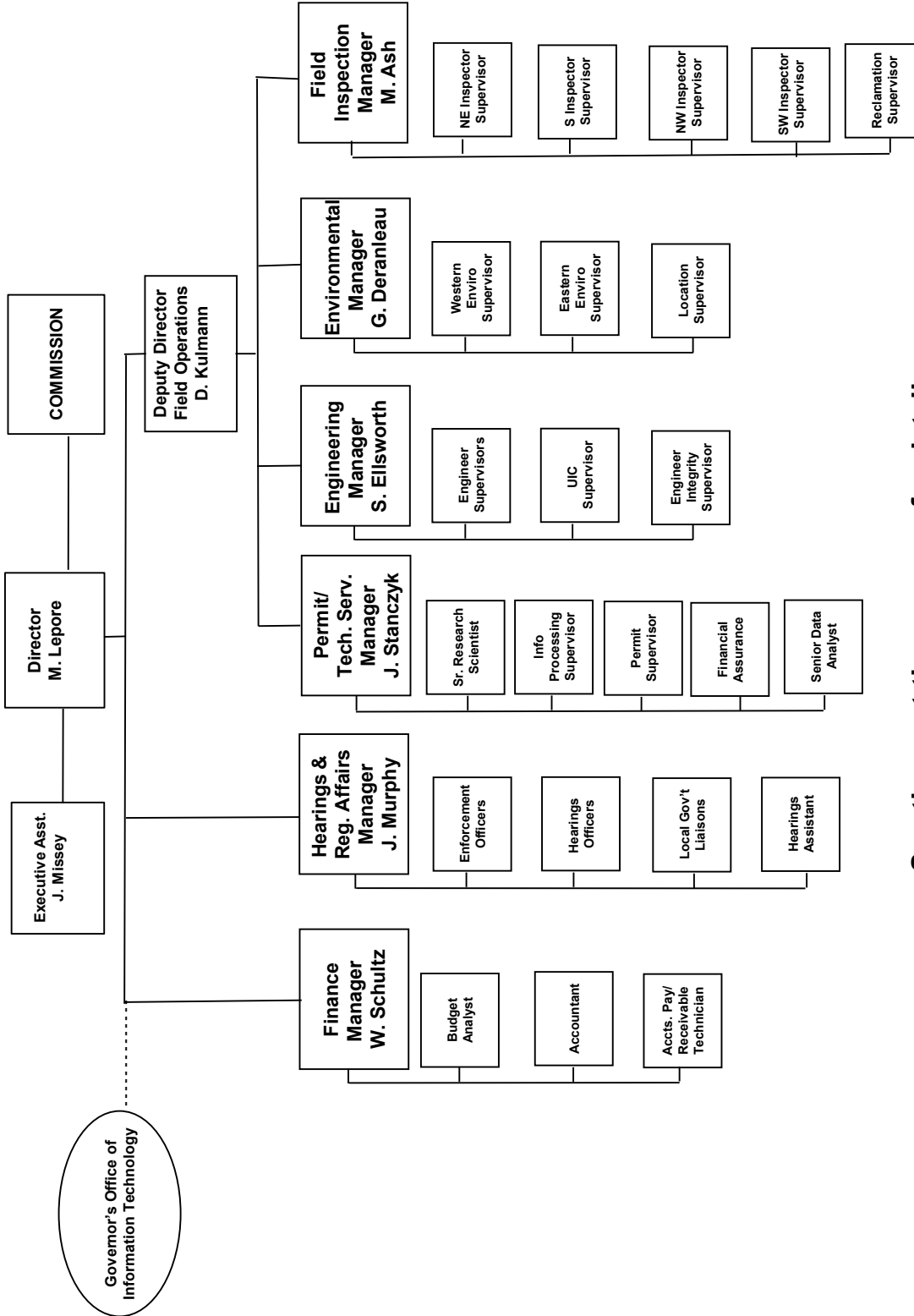
◆ December 2015 Hearing Docket

The docket for the December 2015 hearing will be available shortly after the October hearing. Hearing dockets are available on our website by clicking on "Regulation" in the menu and then "Hearings." Links to the notices and hearing applications are available from the Docket Number and Applicant, respectively. To sign up for e-mail notification of hearing notices and applications, please see the announcement and instructions on the homepage of the website:

<http://cogcc.state.co.us/reg.html#/hearings>



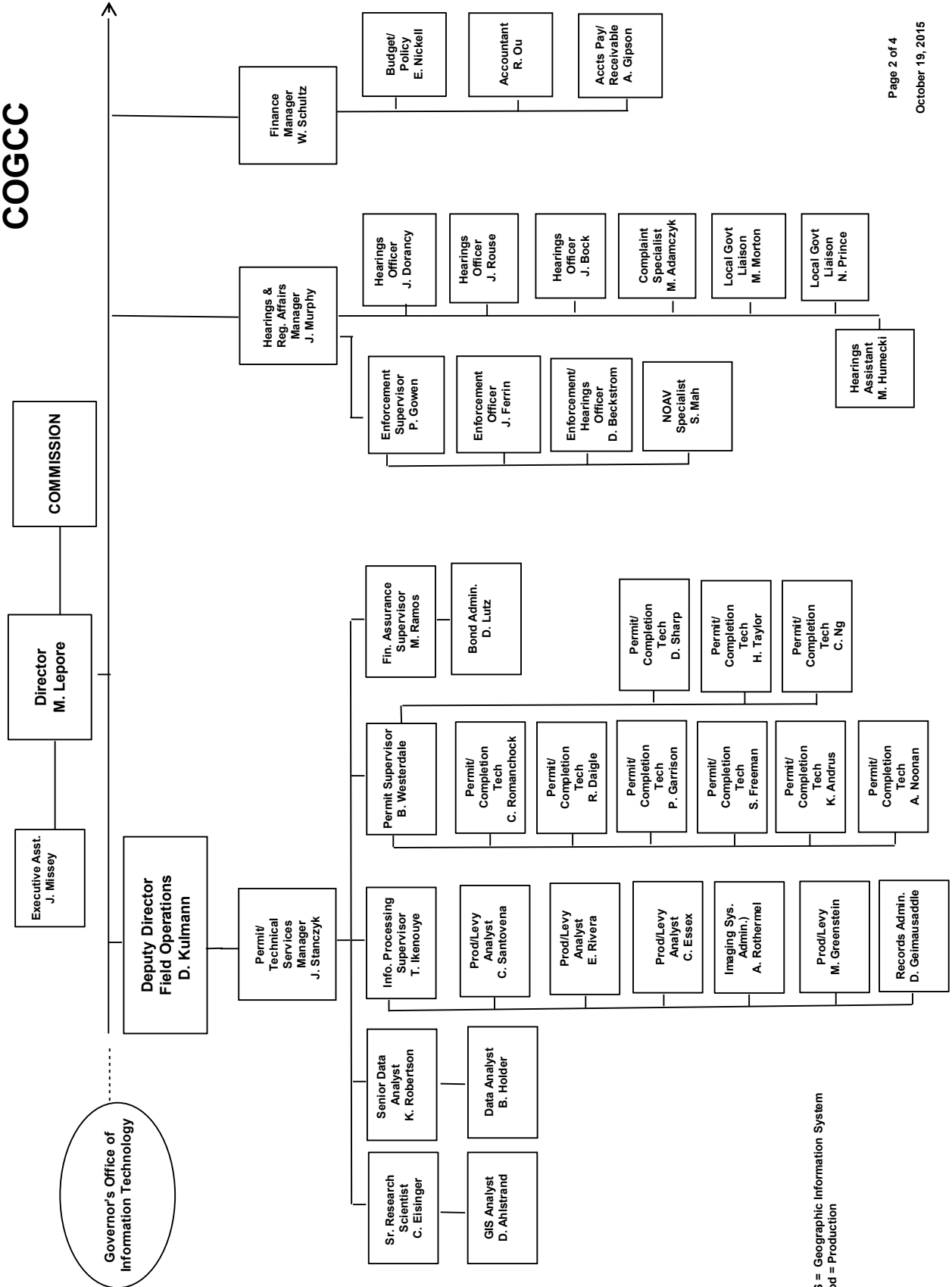
COLORADO OIL & GAS CONSERVATION COMMISSION



See the next three pages for details



COGCC



GIS = Geographic Information System
Prod = Production

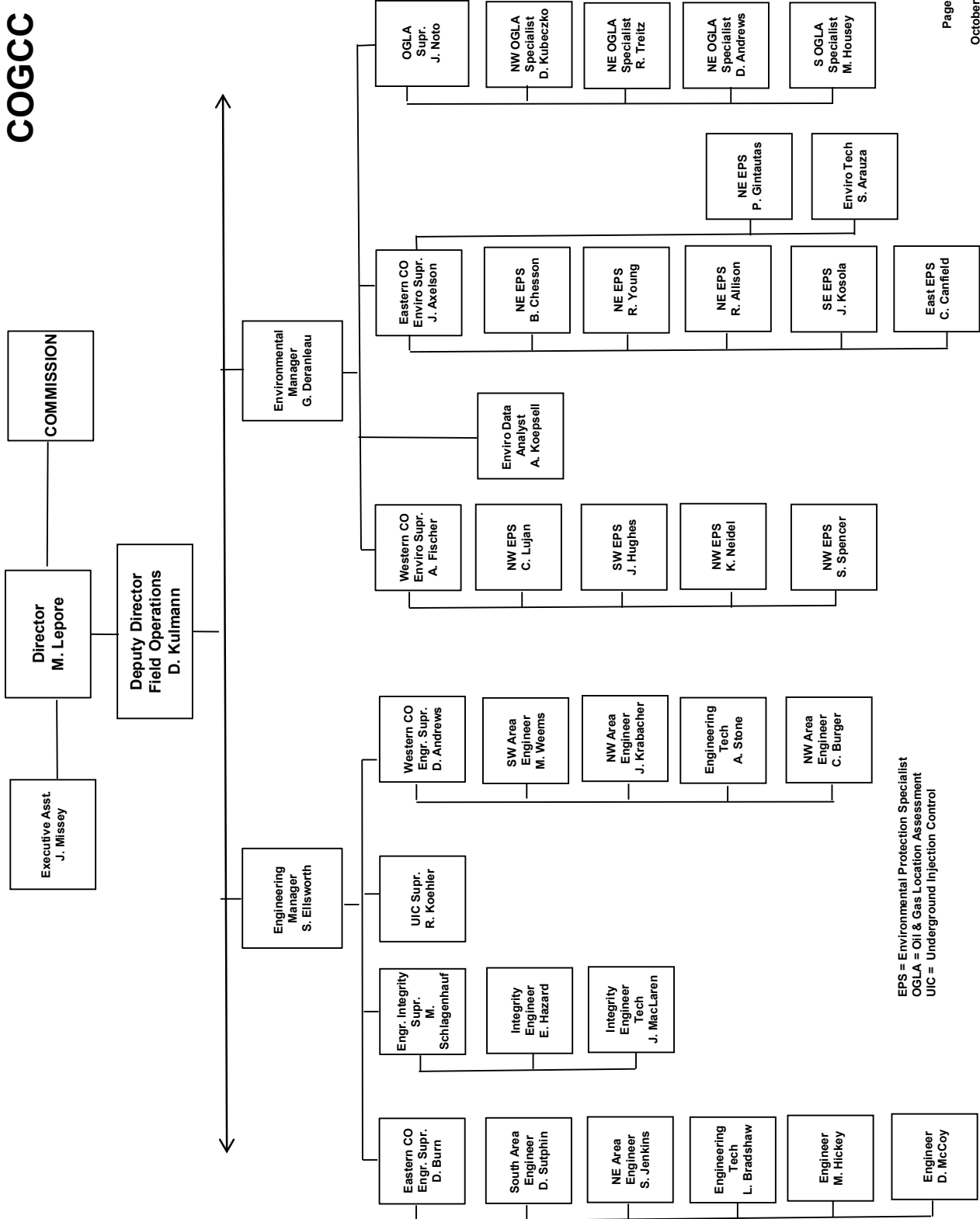


Oil and Gas Staff Report

October 26, 2015

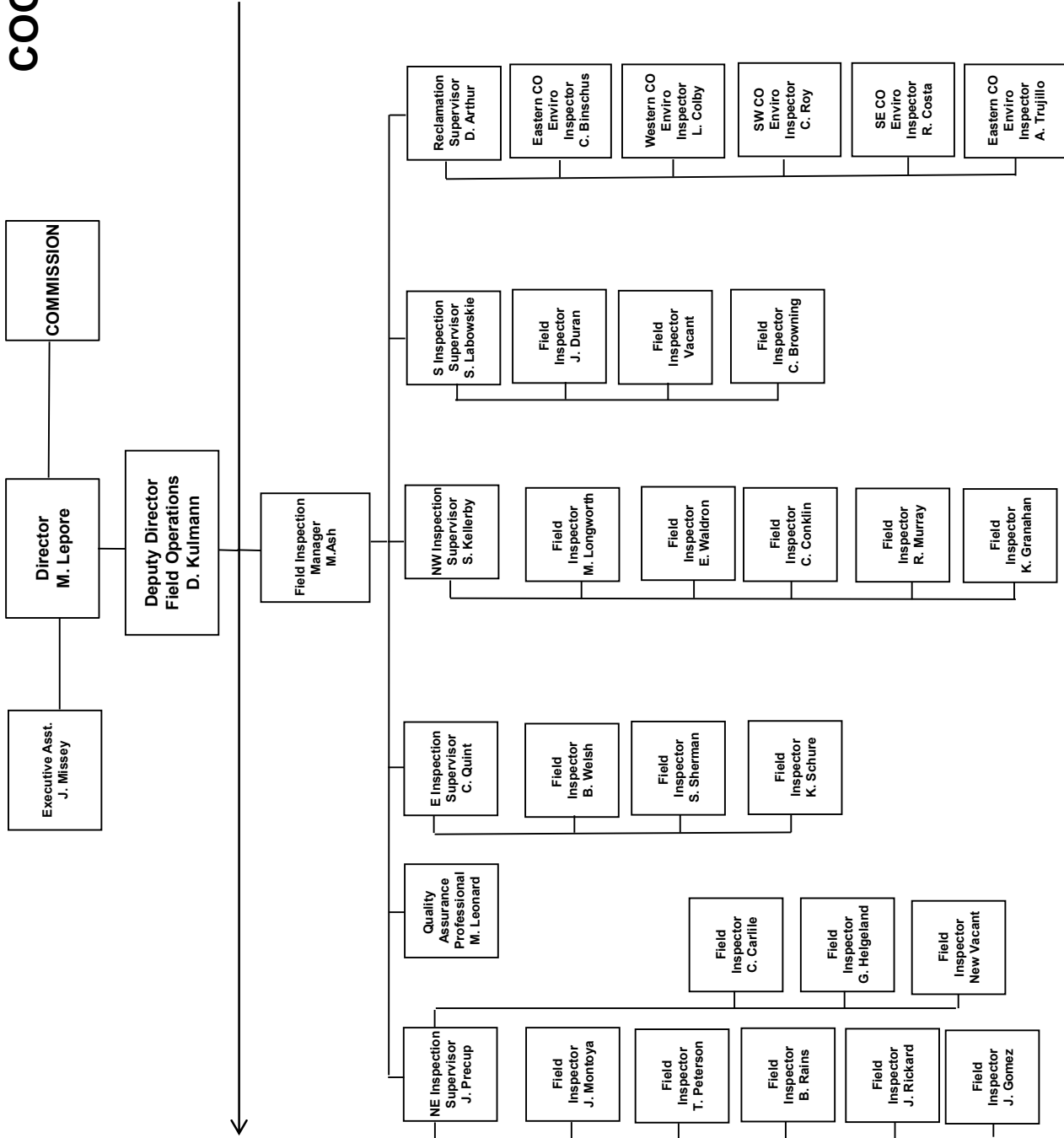
11

COGCC





COGCC





Oil and Gas Staff Report

October 26, 2015

13

PLUGGING AND RECLAIMING ABANDONED WELLS (PRAW) FOR ORPHANED LOCATIONS FISCAL YEAR 2015-16

County	Type	Project Name	Acct Code	ESTIMATED TOTAL PROJECT COST				FY 2015-16 YTD EXPENDITURES				Description
				Bond	PRAW	EMGY	Totals	Bond	PRAW	EMGY	Totals	
Ourray	PA	Ridgway-Swanson-Peterson #1	SWAN	\$ 0	\$ 75,500	\$ 0	\$ 75,500					Drilled in 1947 to a TD=500'; turned over to landowner at some point in time for Domestic Use Gas Hookup; Stopped producing gas and will be PA'd by PRAW Program.
Moffat	PA	Think Oil Bond - Vaughn #1	THK1	\$ 7,542	\$ 42,458	\$ 0	\$ 50,000					Drilled in 1950 to a TD=10,000'; PA'd in 1989; re-entered in 1999 and directionally drilled to a MTD=7,264'; Niobrara completion; PA'd in 1997; principal owner deceases; gas leak found; bond claimed; PRAW re-enter PA project.
Yuma	PA	Midfields State #1	MIDF	\$ 0	\$ 50,000	\$ 0	\$ 50,000					Drilled in 1919 to TD=3,650'. Gas flow and rolling water. Excavated to a depth of 6'. Installed 18" OD PVC to a depth of 20'.
La Plata	PA	Noel Reynolds Bond - Ester #1	NOEL	\$ 30,000	\$ 15,000	\$ 0	\$ 45,000					Bond claimed 6/27/2011 Order #1V-374; PA.
Logan	RECL	Koenig-Ashby #1	KOEN	\$ 0	TBD	\$ 0	\$ 0					Produced salt water kill soil to include remediation and site reclamation.
Logan	RECL	Leckler #1	LECK	\$ 0	TBD	\$ 0	\$ 0					Produced salt water kill soil to include remediation & site reclamation.
Garfield	RECL	Dolphin-Mulvihill #15-32D	DOLP	\$ 0	TBD	\$ 0	\$ 0					Dolphin Energy Corp well pad and lease road near Rifle.
Baca	PA	Wallace Oil and Gas BOND a) Newman 1-7 (WAL1) b) Watkins 1 (WAL2) c) Hume 17-1 (WAL3)	WAL1 WAL2 WAL3	\$ 0	TBD	\$ 0	\$ 0					Three well plugged in FYE2015; reclamation required for pads and access roads.
Montrose	RECL	Redwine Bond - SNU #1-31	REDW	\$ 0	TBD	\$ 0	\$ 0					Plugged May 2015; pit and well pad reclamation with cut and fill on steep terrain.
Adams	ENV	Ruth #1	RUTH	\$ 0	TBD	\$ 0	\$ 0					Site reclamation to include soils enhancement, contouring and re-seeding.
TOTALS =>				\$ 37,542	\$ 182,958	\$ 0	\$ 220,500					

IN PROGRESS												
County	Type	Project Name	Acct Code	ESTIMATED TOTAL PROJECT COST				FY 2015-16 YTD EXPENDITURES				Description
				Bond	PRAW	EMGY	Totals	Bond	PRAW	EMGY	Totals	
Weld	ENV	Carl A. Peters #1	CARL	\$ 0	\$ 2,500	\$ 0	\$ 2,500	\$ 0	\$ 0	\$ 0	\$ 0	HZ Well Policy - Operator to plug well; COGCC pays for samples, plans, remediation and disposal.
TOTALS =>				\$ 0	\$ 2,500	\$ 0	\$ 2,500	\$ 0	\$ 0	\$ 0	\$ 0	

COMPLETED												
County	Type	Project Name	Acct Code	ESTIMATED TOTAL PROJECT COST				FY 2015-16 YTD EXPENDITURES				Description
				Bond	PRAW	EMGY	Totals	Bond	PRAW	EMGY	Totals	
Mesa	RECL	DeBeque Orphans-Buckeye #1	DEBE	\$ 0	\$ 196	\$ 0	\$ 196	\$ 0	\$ 196	\$ 0	\$ 196	Mowing.
Adams	ENV	Ruth #1	RUTH	\$ 0	\$ 1,045	\$ 0	\$ 1,045	\$ 0	\$ 1,045	\$ 0	\$ 1,045	EPS soil analysis complete for the pit at the CTB and determined suitable for reclamation with no need for soils remediation.
La Plata	ENV	Red Mesa Holdings BOND - JCK #1	REDM	\$ 4,228	\$ 0	\$ 0	\$ 4,228	\$ 4,228	\$ 0	\$ 0	\$ 4,228	BOND Amount = \$67,038.37
Adams	PA	Rulth #1 Bond PA	RUTH	\$ 5,000	\$ 0	\$ 0	\$ 5,000	\$ 5,000	\$ 0	\$ 0	\$ 5,000	Bond claimed 8/20/2012 Order #1V-395; Surface production equipment removed in July 2015.
TOTALS =>				\$ 9,228	\$ 1,241	\$ 0	\$ 10,469	\$ 9,228	\$ 1,241	\$ 0	\$ 10,469	

ESTIMATED TOTAL PROJECT COSTS				FY 2015-16 YTD EXPENDITURES			
Bond	PRAW	EMGY	Totals	Bond	PRAW	EMGY	Totals
\$46,770	\$186,699	\$0	\$233,469	\$9,228	\$1,241	\$0	\$10,469

ABREVIATIONS

TYPE	PA=plug & abandon	RECL=reclamation	ENV=enviro remediation
EMGY	Funding from the Emergency Response (Budget Line Item)		
PRAW	Funding from the Plug Recl Abandon Well (Budget Line Item)		
TBD	To be determined		

SCOREBOARD (PRAW FUNDING ONLY)

\$2,500	In Progress Estimated Totals
\$0	In Progress Spent to Date Totals
\$2,500	In Progress Remaining Totals
\$1,241	Completed to Date Totals
\$3,741	Sum of (In Progress Remaining Totals) and (Completed to Date Totals)
\$182,958	Planned
\$186,699	Total Expenditures
\$445,000	Annual Budget Appropriation
\$258,301	Projected End of Year Balance



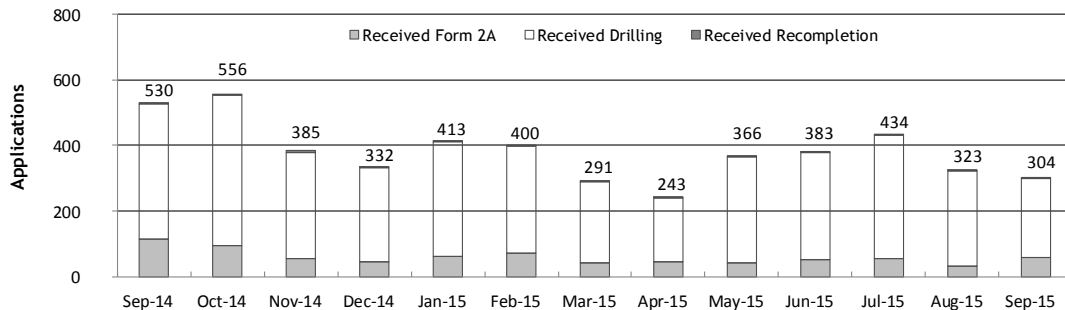
Monthly Permit Activity as of October 1, 2015

Form/Month	Backlog	Received	Approved	Withdrawn	Rejected	Incomplete ¹	In-Process	Remaining ²
Form2A								
Sep-14	205	116	81	3	0	47	189	237
Oct-14	237	94	109	6	0	74	141	216
Nov-14	216	54	103	6	0	46	114	161
Dec-14	161	45	99	3	0	39	64	104
Jan-15	104	61	43	3	0	23	95	119
Feb-15	119	73	28	0	0	35	129	164
Mar-15	164	44	70	2	1	30	105	135
Apr-15	135	46	37	3	0	38	103	141
May-15	141	41	44	0	1	41	96	137
Jun-15	137	52	49	3	1	24	112	136
Jul-15	136	57	48	2	1	25	117	142
Aug-15	142	32	46	0	1	35	92	127
Sep-15	127	59	49	3	4	25	105	130
Drilling								
Sep-14	668	412	304	21	0	109	646	755
Oct-14	755	459	370	10	0	137	697	834
Nov-14	834	326	479	19	0	128	534	662
Dec-14	662	286	397	10	4	115	422	537
Jan-15	537	349	316	2	0	119	449	568
Feb-15	568	324	161	21	4	143	563	706
Mar-15	706	246	294	14	0	226	418	644
Apr-15	644	194	165	17	0	295	361	656
May-15	656	324	190	30	0	254	506	760
Jun-15	760	327	281	9	5	175	617	792
Jul-15	792	373	250	2	15	153	745	898
Aug-15	898	289	300	18	111	159	599	758
Sep-15	758	242	312	7	32	112	537	649
Recompletion								
Sep-14	5	2	3	0	0	1	3	4
Oct-14	4	3	2	0	0	2	3	5
Nov-14	5	5	2	0	0	1	7	8
Dec-14	8	1	2	1	0	2	4	6
Jan-15	6	3	1	0	0	3	5	8
Feb-15	8	3	2	0	0	3	6	9
Mar-15	9	1	6	0	0	1	3	4
Apr-15	4	3	1	0	0	2	4	6
May-15	6	1	4	0	0	2	1	3
Jun-15	3	4	1	0	0	2	4	6
Jul-15	6	4	2	0	0	1	7	8
Aug-15	8	2	6	1	0	1	2	3
Sep-15	3	3	1	0	0	1	4	5

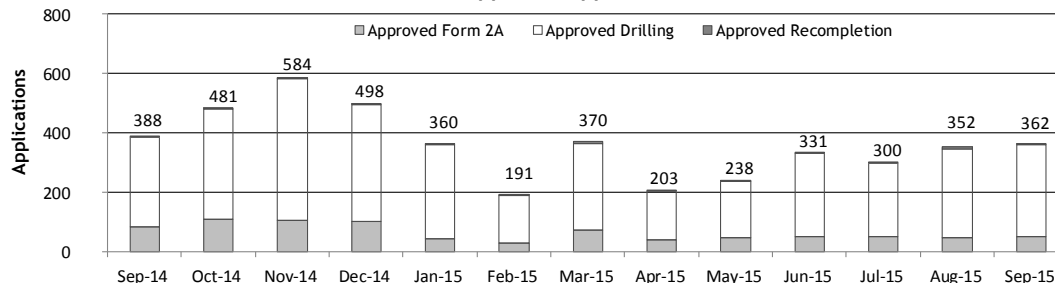
¹Incomplete are permits that have missing or inaccurate data and cannot be approved.

²Backlog = Incomplete + In-process = Remaining permits from previous month.

Received Applications



Approved Applications





Oil and Gas Staff Report

October 26, 2015

15

Status of Permit Applications Filed By Month as of October 2, 2015

Form 2A Location Assessment

Year	Month	Received	Approved	Withdrawn	In Process	Percent In Process	Median Days to Process	Less Than 30 Days	30 to 49 Days	Greater Than 50 Days
2011	TOTAL	2,391	2,298	93	0	0%		1,416	620	262
2012	TOTAL	1,359	1,291	68	0	0%		706	378	207
2013	TOTAL	1,281	1,202	78	1	0%		369	433	400
2014	JAN	85	82	3	0	0%	54	12	36	34
	FEB	88	86	2	0	0%	55	11	36	39
	MAR	113	108	5	0	0%	47	30	42	36
	APR	80	73	7	0	0%	45	18	35	20
	MAY	92	88	4	0	0%	52	13	34	41
	JUN	134	130	3	1	1%	62	36	54	40
	JUL	99	95	4	0	0%	41	37	38	20
	AUG	101	98	3	0	0%	50	33	26	39
	SEP	118	113	5	0	0%	47	29	45	39
	OCT	94	86	7	1	1%	38	34	35	17
	NOV	65	62	1	2	3%	40	20	27	15
	DEC	45	43	0	2	4%	52	6	21	16
2014	TOTAL	1,114	1,064	44	6	1%		279	429	356
2015	JAN	49	48	1	0	0%	57	6	15	27
	FEB	69	64	2	3	4%	63	5	16	43
	MAR	54	47	6	1	2%	59	6	20	21
	APR	39	39	0	0	0%	64	8	13	18
	MAY	40	38	1	1	3%	56	6	12	20
	JUN	54	50	0	4	7%	53	10	17	23
	JUL	45	28	0	17	38%	45	4	12	12
	AUG	68	30	1	37	54%	32	11	19	0
	SEP	58	4	0	54	93%	24	4	0	0
2015	TOTAL	476	348	11	117	25%		60	124	164

Form 2 Application For Permit to Drill (APDs)

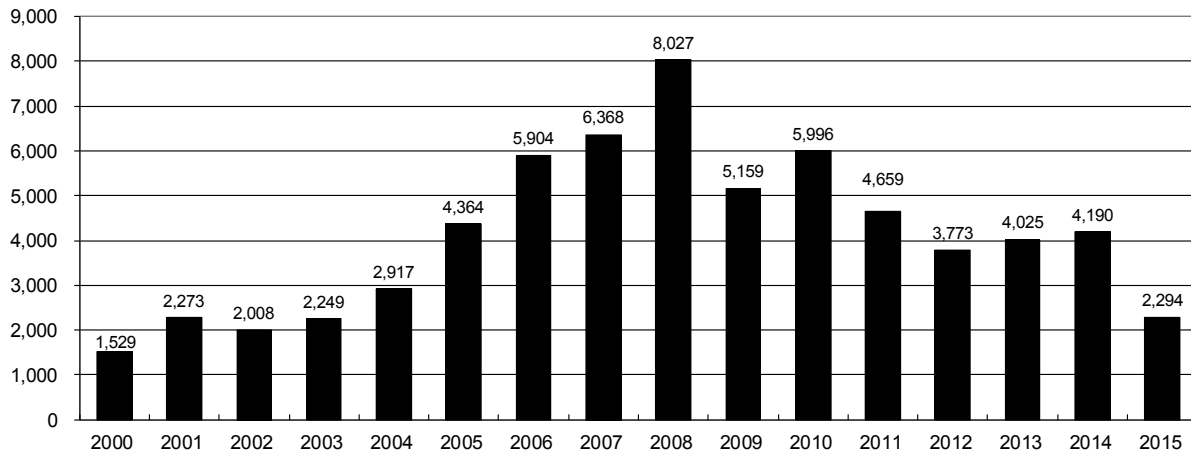
Year	Month	Received	Approved	Withdrawn	In Process	Percent In Process	Median Days to Process	Less Than 30 Days	30 to 49 Days	Greater Than 50 Days
2011	TOTAL	4,691	4,557	132	0	0%		2,723	1,565	587
2012	TOTAL	3,955	3,816	139	0	0%		1,971	1,393	602
2013	TOTAL	4,548	4,312	235	1	0%		1,046	1,626	1,714
2014	JAN	261	256	5	0	0%	57	35	117	108
	FEB	298	285	13	0	0%	58	37	94	159
	MAR	359	351	8	0	0%	52	50	133	173
	APR	223	213	10	0	0%	47	20	121	74
	MAY	501	498	3	0	0%	71	40	155	305
	JUN	438	401	37	0	0%	63	111	138	155
	JUL	286	274	12	0	0%	48	62	119	95
	AUG	336	332	4	0	0%	57	61	126	149
	SEP	413	375	30	8	2%	51	62	150	164
	OCT	441	412	3	26	6%	43	129	199	86
	NOV	374	345	20	9	2%	48	54	144	153
	DEC	278	264	1	13	5%	51	28	133	103
2014	TOTAL	4,208	4,006	146	56	1%		689	1,629	1,724
2015	JAN	291	281	1	9	3%	55	50	60	174
	FEB	294	277	9	8	3%	72	24	73	183
	MAR	306	238	34	34	11%	76	10	73	157
	APR	169	154	15	0	0%	78	28	35	94
	MAY	270	262	4	4	1%	75	9	84	169
	JUN	321	298	6	17	5%	64	45	81	174
	JUL	299	216	2	81	27%	51	15	84	123
	AUG	319	122	2	195	61%	48	11	64	48
	SEP	228	10	0	218	96%	25	5	4	1
2015	TOTAL	2,497	1,858	73	566	23%		197	558	1,123



Annual Drilling Permits by County as of October 2, 2015

County	2000	2001	2002	2003	2004	2005	2006	2007	2008	2009	2010	2011	2012	2013	2014	2015
ADAMS	38	28	9	26	39	34	37	89	51	35	21	8	40	40	51	45
ARAPAHOE	0	2	1	2	5	7	11	10	10	10	8	23	35	23	34	14
ARCHULETA	7	9	6	10	8	13	14	26	47	11	18	12	5	4	3	8
BACA	22	6	2	3	7	8	2	11	13	3	4	5	3	1	1	
BENT	2				5	3	8	1	1		5		2	1		
BOULDER	1	5	6	7	17	13	21	37	32	35	24	30	22			
BROOMFIELD			2	7		1	1		2	33	28	11	36		31	
CHEYENNE	3	3	3	3	3	10	21	15	33	12	13	16	31	50	26	4
COSTILLA																
CROWLEY																2
DELTA			7	4	5	10	9	2			4	3	6	1	2	
DENVER		3					19	25	24							
DOLORES				1	1	1	6	10	12	21	8	8	13	12	3	
EAGLE															1	
ELBERT	2						4			1		1	2	2	4	3
EL PASO										2	3	3	18	1	2	
FREMONT					1	3	2	4	14	13	22	14	11	2	8	1
GARFIELD	213	353	362	567	796	1,509	1,845	2,550	2,888	1,981	2,037	1,323	1,046	870	1,066	455
GRAND																
GUNNISON			5	10	1	9	19	7	10	12	4	3	11	9	20	24
HUERFANO	41	27	27		8	2		7			2	1	9	1	13	2
JACKSON	34	18	21	9	14	6	8	5	27	19	9	18	5	12	17	3
JEFFERSON	1						1	3	2						1	
KIOWA	11	18	2	4	2	1	11	9	26	7	16	17	17	12	5	2
KIT CARSON				1	3	5	4	4	13	7	3	2	6	1	2	
LA PLATA	127	156	104	162	102	115	235	251	328	298	191	99	71	32	87	77
LARIMER	2		1			1		5	46	12	41	8	13	2	4	28
LAS ANIMAS	268	400	259	180	332	413	500	362	303	88	92	85	11	2	1	
LINCOLN	2	2	1	6	3	4	1	2	58	44	48	31	36	87	129	20
LOGAN	4	7	3	3	6	13	17	14	5	9	17	8	27	4	5	
MESA	13	27	30	27	54	136	265	293	501	427	306	127	150	105	74	78
MOFFAT	35	52	62	63	63	60	120	68	57	51	53	93	88	44	54	6
MONTEZUMA	4		5	8	8	11	5	12	22	39	19	27	29	14	25	3
MONTROSE	1	3	2	4	2		1	3	3		1	1				
MORGAN	9	9	2	7	9	7	3	6	2	1	6	13	5	16	6	4
OTERO																
PARK										3	4	1				
PHILLIPS	1	2		7	13	17	12	69	82	45	64	112	56		11	1
PITKIN					1			1								1
PROWERS	2	5	4		7	5	7	5	8	1	3	1			1	
RIO BLANCO	89	187	105	179	154	161	360	321	477	348	441	109	117	167	121	104
RIO GRANDE	1	1		1					1	1			2		1	
ROUTT	20	13	1		4	6	9	8	4	2	3	10	4	12	4	6
SAGUACHE	2		2					2	1	2						
SAN MIGUEL	11	13	27	18	42	45	35	23	20	13	10	2	1		2	1
SEDGWICK				1	5	2	7	2	1	19	11	12	2		7	1
WASHINGTON	23	17	27	34	128	50	69	45	11	1	6	12	6	19	12	6
WELD	509	702	760	757	832	901	1,418	1,527	2,340	1,448	2,152	2,262	1,826	2,468	2,303	1,397
YUMA	31	205	160	138	237	782	797	541	545	105	299	148	11	9	53	
TOTAL	1,529	2,273	2,008	2,249	2,917	4,364	5,904	6,368	8,027	5,159	5,996	4,659	3,773	4,025	4,190	2,294

ALL COUNTIES





Oil and Gas Staff Report

October 26, 2015

17

Form 2A Breakdown By County By Year as of October 2, 2015

Year	County	Form 2As	Completed	In Process	New Location	CDP	SWH	RSO	CDPHE
2009	Total State	818	818	0	408	2	80	5	5
2010	Total State	2,377	2,377	0	1,543	0	317	22	55
2011	Total State	2,297	2,297	0	1,724	1	259	16	5
2012	Total State	1,297	1,297	0	900	0	167	6	1
2013	Total State	1,195	1,192	3	845	0	144	2	4
2014	ADAMS	23	22	1	20	0	0	0	0
	ARAPAHOE	18	17	1	18	0	0	0	1
	ARCHULETA	1	1	0	0	0	1	0	0
	BACA	1	1	0	1	0	0	0	0
	BROOMFIELD	1	1	0	0	0	0	0	0
	CHEYENNE	23	23	0	20	0	0	0	0
	CROWLEY	2	2	0	2	0	0	0	0
	DOLORES	2	2	0	2	0	1	0	0
	EL PASO	2	2	0	2	0	0	0	0
	ELBERT	4	4	0	4	0	0	0	0
	FREMONT	3	3	0	3	0	3	0	0
	GARFIELD	79	79	0	20	0	53	3	0
	GUNNISON	7	7	0	2	3	2	0	0
	HUERFANO	5	5	0	1	0	4	0	1
	JACKSON	14	14	0	9	0	14	0	0
	KIOWA	3	3	0	2	0	0	0	0
	KIT CARSON	2	2	0	2	0	0	0	0
	LA PLATA	14	14	0	4	0	13	0	0
	LARIMER	4	3	1	3	0	0	0	0
	LAS ANIMAS	1	1	0	1	0	0	0	0
	LINCOLN	135	135	0	119	0	0	0	0
	LOGAN	2	2	0	2	0	0	0	0
	MESA	8	8	0	3	0	5	1	0
	MOFFAT	11	11	0	9	0	11	1	0
	MONTEZUMA	15	15	0	15	0	0	0	0
	PHILLIPS	11	11	0	10	0	0	0	0
	PROWERS	1	1	0	1	0	0	0	0
	RIO BLANCO	20	20	0	13	0	17	0	0
	ROUTT	1	1	0	1	0	1	0	0
	SAN MIGUEL	1	1	0	1	0	0	0	0
	SEDGWICK	7	7	0	5	0	0	0	0
	WASHINGTON	13	13	0	13	0	0	0	0
	WELD	585	576	9	425	0	4	2	1
	YUMA	53	53	0	48	0	0	0	0
2014	Total State	1,072	1,060	12	781	3	129	7	3
2015	ADAMS	6	5	1	5	0	0	0	0
	ARAPAHOE	11	7	4	6	0	0	0	0
	ARCHULETA	4	2	2	2	0	4	0	1
	CHEYENNE	6	2	4	5	0	0	0	0
	ELBERT	3	3	0	3	0	0	0	0
	FREMONT	1	1	0	1	0	1	0	0
	GARFIELD	23	17	6	7	0	13	0	0
	GUNNISON	9	9	0	1	0	7	0	0
	HUERFANO	1	1	0	0	0	0	0	0
	JACKSON	3	2	1	3	0	3	1	0
	KIOWA	3	2	1	3	0	3	0	0
	LA PLATA	14	11	3	5	0	13	0	0
	LARIMER	3	3	0	1	0	0	0	0
	LINCOLN	24	19	5	24	0	0	0	0
	MESA	10	7	3	6	0	4	0	0
	MOFFAT	7	5	2	5	0	7	0	0
	MONTEZUMA	3	3	0	3	0	0	0	0
	MORGAN	1	1	0	1	0	0	0	0
	PHILLIPS	2	1	1	2	0	0	0	0
	RIO BLANCO	13	12	1	8	0	13	1	0
	ROUTT	3	2	1	1	0	3	0	0
	SAN MIGUEL	2	0	2	2	0	2	0	0
	SEDGWICK	1	1	0	1	0	0	0	0
	WASHINGTON	13	9	4	12	0	0	0	0
	WELD	301	219	82	231	0	2	0	0
	YUMA	2	0	2	0	0	0	0	0
2015	Total State	469	344	125	338	0	75	2	1

Abbreviations:

CDP = Comprehensive Drilling Plan SWH = Sensitive Wildlife Habitat consultation
 RSO = Restricted Surface Occupancy consultation CDPHE= Colorado Department of Health and Environment consultation



Horizontal Well Activity as of October 2, 2015

County	Prior Years		2009		2010		2011		2012		2013		2014		2015		Total		Completion			
	Drilled	PA	Permit	Spud	Permit	Spud	Permit	Spud	Permit	Spud	Permit	Spud	Permit	Spud	Permit	Spud	Spud	AC	PR	DA	PA	
ADAMS			6	5	2	3	1	1	17	2	26	2	42	18	42	3	33	3	8			
ARAPAHOE	2						10	1	22	4	11	13	22	11	5		31	2	23			
ARCHULETA	17		7	6	15	7	10	8	5	9	2		1		6	1	48		48			
BENT									1	1	1						1		1			
BOULDER							4										0					
CHEYENNE	5	4							6	1	7	2	1	1	1	1	9	2	2		3	
DELTA						1			9	3	5	4	3	1			2		3			
DOLORES	9		18	2	6				10								19		13		1	
EL PASO																	0				1	
ELBERT									1								0					
FREMONT	7	6		6	12	5	3	4	4	1	1						17		10	6	1	
GARFIELD	10	2	1	1	16	2	18	6	43	6	18	4	20	11	12	7	47		27		1	
GUNNISON	1				1				3	2	2		9		14	2	5		3			
HUERFANO									4	1			2				1					
JACKSON	8	1	1	8	3	4	9	2	4	1	8	5	15	3	3	3	22		15	1	2	
KIOWA									1		4	2	1				2		1			
KIT CARSON	1								1		1	1	1				2		2		3	
LA PLATA	28	2	11	2	28	3	18	7	12	1	5	1	43	6	31	2	50		53		1	
LARIMER	3	2							2	1							15		4		2	
LAS ANIMAS	16	2	4		1	1											17		17		1	
LINCOLN			2	1	2	1	1				6		4	2			5		4			
LOGAN	2								1								2		2			
MESA	3	2	36		22	7	24	13	14		9	2	9	1	1	3	29		24	2	4	
MOFFAT	7	1	1	6	3	4	9	4	44	6	18	13	15	1	2	1	35		27		1	
MONTEZUMA	6	1	23	6	11	2	8	2	18	6	3	4	15	2			28		40		1	
MORGAN									2	2	13	1	6		4	1	5		3			
PARK					1	1	1										1					
RIO BLANCO	7	2			1	1	11	2	15	2	4	6	3	1	3		19		12	3		
ROUTT	10	6	1						1		1				2		10		2	6	1	
SAN MIGUEL	1																1				1	
WASHINGTON	1																1				1	
WELD	11	3	12	5	208	85	763	231	964	593	2,114	1,098	2,215	1,432	1,347	820	4,275		1,770	10	48	
YUMA	1		6														1		1			
TOTAL Horizontal	156	25	14	147	31	333	901	283	1,203	641	2,260	1,160	2,428	1,490	1,495	849	4,733	5	2,113	32	70	
Percent of Total HZ																		0%		45%	1%	1%
Total All Permits						5,996	4,659		3,773		4,025		4,190		2,294							
HZ Percent of Total						5.6%	19.3%		31.9%		56.1%		57.9%		65.2%							



Oil and Gas Staff Report

October 26, 2015

19

Well to Building Setbacks by Year and by County as of October 2, 2015

Count of well locations, grouped by proximity from well to buildings.

Location Proximity to Buildings	2009	2010	2011	2012	2013	2014	2015	Percent of	
								Number of Locations	Total Locations
Less than 150 feet	2	3	3	2	0	3	2	15	0%
150 to 350 feet	37	58	61	39	34	38	8	275	3%
350 to 500 feet	50	110	97	61	64	48	29	459	6%
500 to 1000 feet	117	385	331	188	188	161	66	1,436	17%
1000 + feet	356	1,705	1,470	838	762	724	279	6,134	74%
TOTAL LOCATIONS	562	2,261	1,962	1,128	1,048	974	384	8,319	

County	TOTAL	Less than 150 feet	150 to 350 feet	350 to 500 feet	500 to 1000 feet	1000 + feet
ADAMS	77	0	4	8	18	47
ARAPAHOE	93	0	2	4	10	77
ARCHULETA	20	0	0	1	10	9
BACA	15	0	0	0	1	14
BENT	7	0	0	0	0	7
BOULDER	23	0	1	1	17	4
BROOMFIELD	33	0	0	4	13	16
CHEYENNE	135	1	0	0	2	132
CROWLEY	2	0	0	0	0	2
DELTA	7	0	0	2	1	4
DOLORES	19	0	0	0	7	12
EAGLE	1	0	0	0	0	1
EL PASO	14	0	0	0	3	11
ELBERT	11	0	0	0	2	9
FREMONT	40	0	2	7	8	23
GARFIELD	546	0	9	9	77	451
GUNNISON	42	1	0	4	1	36
HUERFANO	16	0	0	0	5	11
JACKSON	45	0	0	4	1	40
KIOWA	65	0	0	0	1	64
KIT CARSON	14	0	0	0	0	14
LA PLATA	128	0	4	14	43	67
LARIMER	39	0	5	4	14	16
LAS ANIMAS	201	1	6	7	37	150
LINCOLN	365	0	1	2	4	358
LOGAN	43	0	1	1	0	41
MESA	94	0	0	3	14	77
MOFFAT	174	0	0	2	14	158
MONTEZUMA	42	0	0	1	4	37
MONTROSE	2	0	0	0	0	2
MORGAN	29	0	0	2	4	23
PARK	4	0	0	0	0	4
PHILLIPS	274	1	4	6	21	242
PITKIN	1	0	0	0	0	1
PROWERS	5	0	0	0	0	5
RIO BLANCO	186	0	0	0	2	184
RIO GRANDE	2	0	0	0	1	1
ROUTT	28	0	0	0	2	26
SAN MIGUEL	12	0	0	0	0	12
SEDGWICK	33	0	0	1	3	29
WASHINGTON	68	0	2	0	3	63
WELD	4,839	11	225	356	1,049	3,197
YUMA	525	0	9	16	44	456



 Well to Building Setbacks Less Than Two Hundred Feet as of October 2, 2015

Year	Location Doc Number	County	High Density	New Location	Distance (Feet)	Proximity (Feet)	Building Description
2015	400768804	WELD	No	Yes	46	less 150	Building to be razed
2011	2587822	CHEYENNE	No	No	58	less 150	Water well house
2009	1691798	WELD	No	No	58	less 150	Vehicle garage
2010	400072164	WELD	No	Yes	69	less 150	Abandoned hog shed
2014	400569085	WELD	No	No	78	less 150	Well shed
2014	400600705	WELD	No	No	80	less 150	Livestock shed
2012	400240957	GUNNISON	No	Yes	90	less 150	Equipment shed
2015	400742811	WELD	No	Yes	102	less 150	Building to be razed
2009	1758843	WELD	No	Yes	103	less 150	Building to be razed
2011	1636646	WELD	No	No	122	less 150	Storage shed
2009	400011284	LAS ANIMAS	No	Yes	127	less 150	Operator is owner
2009	1786896	PHILLIPS	No	No	132	less 150	Grain storage
2014	400642113	WELD	No	Yes	142	less 150	Barn
2011	400117702	WELD	No	Yes	143	less 150	Irrigation pump house
2011	400227765	WELD	No	Yes	145	less 150	Storage barn
2014	400558626	LINCOLN	No	No	150	less 150	Gas plant equipment building
2009	1904205	WELD	No	No	154	150 to 350	Livestock enclosure
2012	400243295	WELD	No	Yes	155	150 to 350	Unused storage shed
2011	400179419	WELD	No	Yes	157	150 to 350	Existing well / storage building
2010	400054716	WELD	No	No	159	150 to 350	Equipment barn
2011	400188968	WELD	No	Yes	159	150 to 350	Abandoned
2014	400554054	WELD	No	Yes	159	150 to 350	Equipment shed
2014	400559404	WELD	No	Yes	160	151 to 350	Barn
2010	400021477	WELD	No	Yes	162	150 to 350	Goat barn
2009	1758386	WELD	No	Yes	168	150 to 350	Storage shed
2011	1635946	WELD	No	No	169	150 to 350	Storage shed
2013	400447386	WELD	No	No	169	150 to 350	Abandoned turkey barn
2013	400447391	WELD	No	No	169	150 to 350	Abandoned turkey barn
2011	400165164	WELD	No	Yes	178	150 to 350	Residence
2013	400367184	WELD	No	Yes	179	150 to 350	Shed
2011	400188780	WELD	No	Yes	180	150 to 350	Residence
2014	400562498	WELD	No	Yes	181	150 to 350	Garage / storage shed
2010	1697620	WELD	No	No	187	150 to 350	Livestock shed
2009	1758746	WELD	No	No	193	150 to 350	Storage shed
2011	400154431	WELD	No	Yes	198	150 to 350	Turkey barn
2012	400250031	WELD	No	Yes	198	150 to 350	Abandoned guard shack
2009	1774783	WELD	No	No	199	150 to 350	Cement service building
2011	400118102	YUMA	No	Yes	199	150 to 350	Steel barn



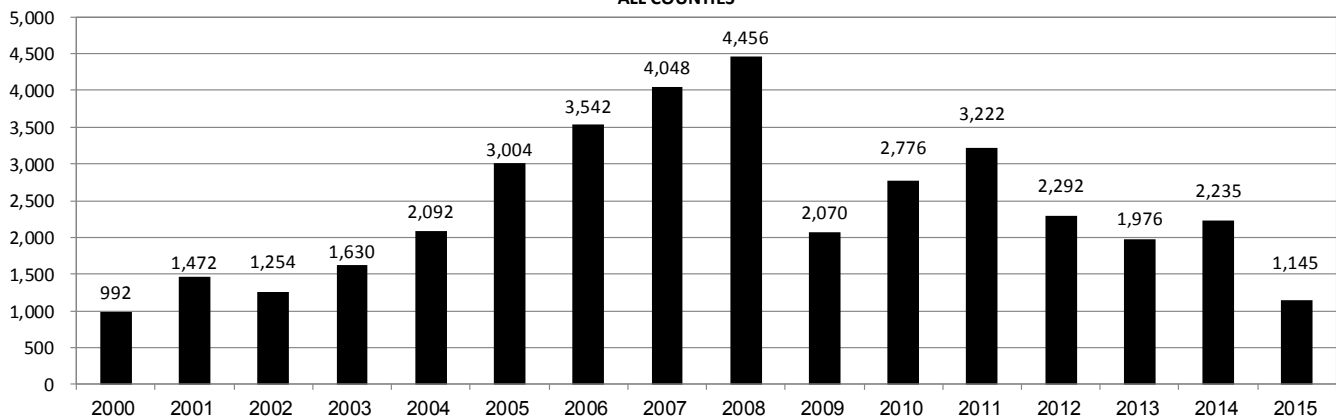
Oil and Gas Staff Report

October 26, 2015

Annual Well Starts by County as of October 2, 2015

County	2000	2001	2002	2003	2004	2005	2006	2007	2008	2009	2010	2011	2012	2013	2014	2015
ADAMS	18	13	4	19	22	24	13	41	14	13	21	1	15	6	30	4
ARAPAHOE					6	1	5	2	1	1	3	9	9	25	21	
ARCHULETA	4	4	2	5	4	10	5	7	28	9	12	10	11		1	3
BACA	19	6	2	1	6	6	2	6	12		5	4	2	1		1
BENT	2				3	2	8	1	1			1	2			
BOULDER				2	5	11	9	14	25	16	13	7	14			
BROOMFIELD			2		1				10		21	11	5			
CHEYENNE	2	1	3	3		9	14	15	14	8	12	11	17	35	19	3
COSTILLA																
CROWLEY																2
DELTA				5	4	6	5	2			7	3	3			
DENVER		2					7	5	4							
DOLORES					2		2	13	6	2		1	5	10	4	
EAGLE														1		
EL PASO											2		5		1	
ELBERT	2						1									1
FREMONT					1	3	2	2	5	3	10	16	8	1	4	1
GARFIELD	190	251	245	417	585	799	1,005	1,304	1,689	765	905	878	495	391	361	138
GUNNISON			1		1	1	9	5	1	4	5	2	4	1	2	2
HUERFANO	25	14	19	3	6	2			2		2		2	1	4	1
JACKSON	24	2	4	10	10		3	3	12	1	6	7		7	6	
JEFFERSON								2								
KIOWA	8	16	2	4	2	1	7	7	2	5	15	14	10	12	3	2
KIT CARSON				1	1	6	2	1	14	3	1	1	3	1	2	
LA PLATA	99	135	118	110	103	104	108	179	199	131	67	54	3	10	36	30
LARIMER	1	1				1		4	8	1	28	2	10	4	1	9
LAS ANIMAS	202	286	205	221	296	384	413	326	222	14	7	78	1		1	
LINCOLN	2	2	1	5	2	2	1	2	18	11	14	21	23	42	41	6
LOGAN	4	6	3	3	2	11	12	12	3	7	3	9	13	4	6	
MESA	2	12	12	13	25	89	156	209	225	14	11	41	4	10	16	59
MOFFAT	18	23	25	28	19	40	60	42	26	18	15	33	25	27	3	4
MONTEZUMA	2	3	5	5	1	7	2	4	19	10	3	8	18	12	8	1
MONTROSE		3		2	1			1	2		1					
MORGAN	9	8	1	7	5	5	3	1	1	2	3	2	3	1	4	1
PARK											2					
PHILLIPS	1			6	10	11	4	35	18	2	42	130	48		9	
PROWERS	2	4	4		5	5	6	3	5	2	3	1				1
RIO BLANCO	51	82	47	83	92	95	107	95	204	118	107	72	53	37	42	17
RIO GRANDE														1		
ROUTT	5	12	1		1	6	3	2		2	1	2	4	2	2	
SAN MIGUEL	6	9	10	19	28	13	20	17	5	1	2	2			2	
SEDGWICK				1	2	1	1	5			3	8	3			
WASHINGTON	15	12	24	29	65	34	23	14	11	2	2	4	1	9	7	2
WELD	237	403	406	522	632	718	931	1,222	1,314	878	1,209	1,672	1,457	1,312	1,558	859
YUMA	42	162	108	106	144	597	593	445	336	27	213	107	16	13	39	
TOTAL	992	1,472	1,254	1,630	2,092	3,004	3,542	4,048	4,456	2,070	2,776	3,222	2,292	1,976	2,235	1,145

ALL COUNTIES





Active Wells by County and Status as of October 1, 2015

COUNTY	Drilling	Domestic	Injecting	Producing	Shut In	Temp Aband	Waiting on Completion	Active Storage	Total Active Wells
ADAMS	15		7	894	61	9	2	13	1,001
ARAPAHOE		1	2	148	11	9		43	214
ARCHULETA	2	5	1	100	18	13	6	1	146
BACA			11	121	40	5		55	232
BENT		1		28	8				37
BOULDER				302	13	1			316
BROOMFIELD				97					97
CHEYENNE	5		40	321	24	48	2		440
CROWLEY	1								1
DELTA				4	13		1		18
DENVER			1	46	2		3		52
DOLORES	2		1	36	6	4	1		50
EL PASO	1	1				1			3
ELBERT	1			66	4	1			72
FREMONT	4	3		58	9	6			80
GARFIELD	188	5	44	10,533	120	76	44	1	11,011
GUNNISON	5		1	31	10	1	2		50
HUERFANO	2		1	35	4	6	1		49
JACKSON	2		30	109	40				181
JEFFERSON			2	1	1		1	1	6
KIOWA	1		10	103	13	2	2		131
KIT CARSON		1	2	13		3			19
LA PLATA	7	7	28	3,138	99	19	4	29	3,331
LARIMER	9	2	19	196	29	19	1		265
LAS ANIMAS		3	15	2,808	21	96	15	17	2,975
LINCOLN	10	1	7	91	18	7	1		135
LOGAN	10		15	113	44	29	3	10	224
MESA	50	1	6	885	88	14	25	9	1,078
MOFFAT	5		9	487	56	36	3		596
MONTEZUMA	2	2	6	121	39	15			185
MONTROSE						2			2
MORGAN	1		22	88	83	33		79	306
OURAY		2				1			3
PARK									
PHILLIPS			2	266	2	1	1		272
PITKIN								10	10
PROWERS	1			26	4				31
RIO BLANCO	17	3	292	2,297	192	88	16	3	2,908
ROUTT		2		32	9	2			45
SAN MIGUEL	1			109	15	5			130
SEDGWICK	2		1	14	3		2		22
WASHINGTON	8		24	402	30	7	4		475
WELD	843	1	48	21,323	394	40	45	3	22,697
YUMA	1	8	21	3,784	46	9	11	1	3,881
Totals	1,196	49	668	49,216	4,569	608	196	275	53,777



Oil and Gas Staff Report

October 26, 2015

23

Monthly Statistics as of October 2, 2015

Page 1 of 2

YEAR and MONTH	Baker - Hughes Rig Count	Permits										Well Spud Notices	Active			Public Visits		
		Drilling		Recompletion		Injection		Pits		Locations			Drilling Permits	Active Wells	Data	Office	Internet	
		Rcvd	Apvd	Rcvd	Apvd	Rcvd	Apvd	Rcvd	Apvd	Rcvd	Authz							
2011 TOTAL		4,709	4,659	325	320	44	32	190	192	2,382	2,267	3,220			187	1,294	1,337,865	
2012 JAN	73	372	258	26	21	3	0	11	5	142	129	243	5,217	46,958	12	106	112,686	
FEB	70	370	382	23	27	7	5	21	9	160	129	230	5,173	47,128	16	114	105,857	
MAR	66	292	347	21	14	2	2	17	24	133	172	292	5,132	47,263	26	138	111,746	
APR	66	410	235	16	24	5	5	9	2	137	106	241	4,785	47,377	12	108	107,627	
MAY	66	491	506	23	16	3	1	6	2	105	131	211	4,885	47,533	20	123	109,802	
JUN	69	326	377	11	19	8	6	5	8	110	89	145	5,136	47,860	11	111	108,849	
JUL	66	237	276	9	14	3	2	5	2	97	103	183	5,152	48,173	13	102	114,195	
AUG	62	313	288	6	9	6	4	23	5	83	97	178	5,031	49,153	11	112	110,908	
SEP	61	252	256	1	5	5	2	4	1	81	77	161	4,960	49,230	11	89	106,114	
OCT	62	326	265	9	3	7	6	2	19	94	82	161	5,009	49,236	8	105	108,833	
NOV	56	271	323	5	8	6	6	2	4	109	97	142	5,000	49,989	10	119	120,586	
DEC	57	322	260	4	8	8	5	9	3	122	81	105	5,081	50,067	9	78	107,240	
2012 TOTAL		3,982	3,773	154	168	63	44	114	84	1,373	1,293	2,292			159	1,305	1,324,443	
2013 JAN	53	538	331	6	0	3	5	6	8	176	124	142	5,060	50,265	9	108	47,406	
FEB	56	260	455	10	5	2	3	4	11	91	141	138	5,250	50,372	7	102	40,649	
MAR	57	344	241	5	9	3	8	15	6	129	84	172	5,093	50,540	9	133	43,019	
APR	61	331	333	6	5	5	5	6	8	146	117	165	4,925	50,687	3	132	46,459	
MAY	61	350	342	8	6	6	6	10	7	106	142	162	5,110	50,810	3	123	45,215	
JUN	62	349	273	2	8	8	8	5	3	114	85	143	5,273	50,909	8	122	41,015	
JUL	68	864	304	11	4	9	2	9	5	218	91	162	5,070	51,091	7	154	45,558	
AUG	69	232	291	6	4	3	2	4	1	35	76	205	5,200	51,255	20	130	44,722	
SEP	69	212	362	9	5	10	9	3	19	56	109	166	5,185	51,407	5	105	41,256	
OCT	72	319	376	5	9	7	5	1	8	67	88	237	4,967	51,598	5	135	45,151	
NOV	69	346	353	4	13	7	4	2	27	67	85	162	5,141	51,711	12	119	38,903	
DEC	64	336	367	2	4	4	6	2	3	63	71	123	5,129	51,737	4	93	32,381	
2013 TOTAL		4,481	4,028	74	72	67	63	67	106	1,268	1,213	1,977			92	1,456	511,734	
2014 JAN	62	278	232	3	2	3	4	14	8	90	43	176	4,926	51,840	1	90	46,150	
FEB	61	284	297	6	4	1	1	3	1	91	94	150	5,051	51,847	12	113	43,408	
MAR	62	367	329	4	6	7	1	6	6	110	88	184	4,997	51,952	16	140	46,620	
APR	63	276	317	2	3	2	5	8	3	89	99	167	4,897	52,060	11	188	45,558	
MAY	65	458	383	2	2	3	1	6	7	83	94	178	4,923	52,202	18	131	42,365	
JUN	67	429	377	3	0	6	7	5	2	134	92	223	4,924	52,337	10	156	42,518	
JUL	69	272	446	2	5	3	11	8	5	97	126	183	4,955	52,431	7	166	45,481	
AUG	73	376	259	4	3	4	4	3	4	111	87	219	5,060	52,582	8	145	42,431	
SEP	76	412	304	2	3	3	1	20	1	116	81	203	5,006	52,694	14	175	43,577	
OCT	76	459	371	3	2	9	2	4	6	93	109	189	4,827	52,785	19	138	46,030	
NOV	73	326	479	5	2	5	4	4	0	54	103	176	5,171	52,947	8	96	39,583	
DEC	69	286	397	1	2	2	7	1	2	45	99	187	5,236	53,054	6	144	37,964	
2014 TOTAL		4,223	4,191	37	34	48	48	82	45	1,113	1,115	2,235			130	1,682	521,685	
2015 JAN	64	349	316	3	1	2	9	3	1	60	43	185	5,060	53,195	17	114	41,502	
FEB	49	324	161	3	2	5	6	9	0	73	28	116	4,750	53,309	4	117	38,245	
MAR	38	246	294	1	6	1	5	7	5	44	70	160	4,983	53,414	6	146	42,513	
APR	37	194	165	3	1	2	5	1	2	46	37	95	4,854	53,456	1	125	39,559	
MAY	39	324	190	1	4	2	6	8	0	41	44	106	4,632	53,535	5	113	unavailable	
JUN	38	327	281	4	1	0	5	2	1	52	49	133	4,726	53,608	5	138	unavailable	
JUL	38	737	250	4	2	2	1	0	0	57	48	118	4,663	53,706	7	145	26,975	
AUG	37	289	300	2	6	3	0	5	5	32	46	119	4,847	53,766	2	109	30,674	
SEP	33	242	312	3	1	1	7	0	3	59	49	104	4,953	53,806	4	146	31,642	
2015 TOTAL		3,032	2,269	24	24	18	44	35	17	464	414	1,136			51	1,153	251,110	

Abbreviation Key: Rcvd = Received, Apvd = Approved, Authz = Authorized



Monthly Statistics as of October 2, 2015

Page 2 of 2

YEAR and MONTH	Well			Bonds						Hearings			Enforcement			Remediation Projects		Inspections	
	Oper Change	Operators New	Operators Inactive	Release Ind	Release Blnkt	Bonds Replace	Claim Ind	Claim Blnkt	Apps.	Orders	NOAVs	AOCs	OFVs	Cmplt	Spills	Rcvd	Comp	Wells	Locations
2011 TOTAL	6,743	33	31	79	44	43	4	4	403	349	230	10	19	247	527	726	536	12,394	-
2012 JAN	1,052	3	3	7	5	1	1	0	70	72	18	1	-	27	35	68	23	998	970
FEB	385	6	9	8	5	0	0	0	-	-	10	-	-	24	40	85	36	2,000	1,024
MAR	379	4	1	7	3	9	0	0	44	38	19	-	-	23	38	63	61	2,202	1,146
APR	478	4	2	10	3	2	0	0	80	59	11	-	-	19	35	26	99	1,700	929
MAY	526	3	1	4	0	3	0	0	43	50	14	2	-	23	32	27	122	2,630	1,701
JUN	1,270	3	4	3	3	4	0	0	-	-	5	-	-	35	39	46	98	1,435	1,091
JUL	499	5	0	1	4	5	0	0	63	50	15	-	-	16	24	45	33	1,323	1,076
AUG	301	6	5	2	8	0	1	0	67	54	24	3	2	21	28	127	33	1,904	1,432
SEP	834	0	4	4	5	2	1	0	-	-	5	-	-	14	13	30	36	1,120	845
OCT	485	1	2	9	1	0	0	0	30	36	6	1	-	13	44	116	37	1,397	1,017
NOV	523	6	4	12	8	7	0	0	85	37	16	2	-	10	44	26	44	1,331	829
DEC	958	6	2	3	1	0	0	0	-	-	14	-	-	19	30	31	19	1,031	610
2012 TOTAL	7,690	47	37	70	46	33	3	0	482	396	157	9	2	244	402	690	641	19,071	12,670
2013 JAN	662	3	5	12	2	0	0	0	48	75	15	4	-	21	40	31	45	1,622	789
FEB	293	4	2	6	3	2	0	0	41	35	11	2	-	15	30	42	90	1,044	615
MAR	355	1	3	2	2	1	0	0	54	67	16	2	-	11	25	65	29	1,968	1,149
APR	335	7	1	5	2	8	0	0	-	-	21	-	-	16	33	39	37	1,510	910
MAY	347	2	1	3	0	0	0	0	46	50	22	6	-	13	31	41	60	2,621	1,576
JUN	1,457	6	2	2	4	5	0	0	91	44	13	2	-	25	40	47	37	1,860	1,102
JUL	1,015	4	1	2	2	0	0	0	96	70	25	3	-	21	47	50	22	2,298	1,338
AUG	389	6	4	5	4	2	0	0	-	-	23	-	-	25	57	36	41	2,146	1,033
SEP	277	4	1	6	1	0	0	0	101	51	7	2	-	16	60	43	51	1,536	703
OCT	345	6	0	2	2	2	0	0	52	82	4	12	3	12	79	47	60	1,868	1,158
NOV	442	2	0	2	2	0	0	0	-	-	30	-	-	12	51	31	34	2,401	1,613
DEC	1,299	4	1	1	2	0	0	0	42	48	50	4	-	14	75	35	35	2,677	1,384
2013 TOTAL	7,216	49	21	48	26	20	0	0	571	522	237	37	3	201	568	507	541	23,551	13,370
2014 JAN	1,974	6	3	3	2	0	0	0	57	46	25	2	-	8	72	46	28	3,243	1,597
FEB	2,042	8	2	6	5	0	0	0	-	-	23	-	-	17	65	51	13	2,330	1,282
MAR	495	2	3	1	5	0	0	0	97	75	29	10	-	22	64	66	31	1,822	1,298
APR	313	5	2	6	4	1	0	0	74	64	17	8	1	20	66	47	59	2,651	1,715
MAY	519	5	1	3	3	5	0	0	-	-	12	-	-	13	78	50	42	2,437	1,571
JUN	1,014	5	2	7	4	1	0	1	95	90	14	6	1	16	74	44	50	3,209	1,717
JUL	340	2	1	5	3	1	0	0	96	96	11	6	-	12	64	60	59	3,071	1,536
AUG	437	6	1	2	4	0	0	0	-	-	8	-	-	31	63	32	58	2,788	1,682
SEP	385	4	1	1	2	0	0	0	73	63	13	7	1	18	63	39	50	2,587	1,616
OCT	880	8	1	0	2	0	1	0	80	75	12	3	1	13	78	78	36	3,886	1,914
NOV	474	2	4	8	4	5	0	0	-	-	6	-	-	15	72	27	59	3,156	1,458
DEC	1,402	1	1	0	2	0	0	0	126	89	9	1	-	58	91	56	17	3,028	1,596
2014 TOTAL	10,275	54	22	42	40	13	1	1	698	598	179	43	4	243	850	596	502	34,208	18,982
2015 JAN	699	2	3	2	3	0	0	0	76	64	15	2	1	36	82	38	58	2,491	1,246
FEB	556	5	2	2	3	1	0	0	-	-	10	-	-	22	43	34	64	2,667	1,382
MAR	169	5	2	5	2	4	2	0	72	72	33	1	1	42	72	60	93	3,469	1,738
APR	266	7	1	0	5	3	0	0	60	54	19	3	-	21	53	40	60	3,451	1,620
MAY	275	8	0	0	2	3	0	0	89	54	10	10	2	25	55	56	41	2,869	1,422
JUN	263	2	1	3	5	4	0	0	-	-	27	-	-	25	42	32	43	3,357	1,707
JUL	175	3	2	0	5	1	0	0	123	140	5	13	1	32	74	46	26	3,443	1,772
AUG	70	8	2	0	7	4	0	0	-	-	13	-	-	18	49	18	61	3,690	1,845
SEP	1	6	5	1	7	4	0	2	112	77	25	10	-	30	48	39	38	2,780	1,448
2015 TOTAL	2,474	46	18	13	39	24	2	2	532	461	157	39	5	251	518	363	484	28,217	14,180

Abbreviation Ind = Individual, Blnkt = Blanket, Apps = Application for Hearing, NOAV = Notice of Alleged Violation, AOC = Administrative Order of Consent, OFV = Order Finding
Key: Violation, Cmplt = Complaint, Comp = Completed