



COLORADO

Oil & Gas Conservation
Commission

Department of Natural Resources

Staff Report

for December 7, 2015

Top Stories

◆ Additional Bonding for Inactive Wells

The COGCC's Rule 707 specifically requires additional financial assurance (bonding) for an operator who has "excess Inactive Wells." An Inactive Well is defined in the 100 Series Rules as "any shut-in well from which no production has been sold for a period of twelve (12) consecutive months; any well which has been temporarily abandoned for a period of six (6) consecutive months; or, any injection well which has not been utilized for a period of twelve (12) consecutive months."

Such a well is not generating income for the operator and may not be actively maintained and monitored. Therefore, the well represents an increased risk and potential liability. In Rule 707, an operator with a blanket plugging bond has "excess Inactive Wells" when the number of inactive wells poses the risk that the plugging and reclamation costs for those wells will be greater than the value of the operator's blanket bond.

To protect the State from the liability of financial responsibility for plugging and reclaiming inactive wells, Rule 707 requires additional financial assurance for each excess Inactive Well according to the amounts in Rule 706: \$10,000 per well less than 3,000 feet deep, and \$20,000 per well greater than 3,000 feet deep. The COGCC's financial assurance group regularly audits oil and gas wells for evidence of sales and audits injection wells for evidence of utilization to determine the number of inactive wells and evaluate the operator's bonding compliance.

Thus far in 2015, the COGCC's evaluation of 103 operators identified 70 operators in compliance with Rule 707 and 33 operators with inadequate

financial assurance pursuant to the Rule. To gain compliance, the COGCC sent a Warning Letter to each of these 33 operators and directed them to provide the required additional financial assurance.

To date, 20 of these operators achieved compliance with Rule 707 by reducing the number of inactive wells and by increasing bond amounts. Operators reduce their inactive well count by returning a well to production and selling product from the well or by plugging and reclaiming the well.

The COGCC issued Notices of Alleged Violation (NOAVs) to six operators who failed to comply with the Warning Letter. Of the six, one operator had filed for bankruptcy, and the State claimed the operator's bond. Two were issued an Administrative Order on Consent (AOC) for additional bonding and a compliance plan, one achieved compliance by selling product and plugging wells, and the remaining two are currently being resolved by the enforcement staff.

Three operators have submitted variance requests with compliance plans as allowed in Rule 707. COGCC staff approved two of the plans, and staff is reviewing the third. Staff will continually monitor operators with a compliance plan. As a measure of its success, this audit and enforcement process has provided the State with an additional \$2,240,000 in plugging and reclamation financial assurance.

◆ Local Government Liaison (LGL) Program

Local Government Liaisons (LGLs) Marc Morton and Nancy Prince are a key COGCC resource for Local Governmental Designees (LGDs), local government staff, and others interested in the regulation of oil and gas in Colorado.



The COGCC established the LGD program in 1992 as a mechanism for local governments to provide input and collaborate with COGCC regarding the regulation of oil and gas in Colorado. Participation in the valuable and unique LGD program remains voluntary, and the level of its use by local governments is at their discretion. At present, 54 counties, 101 municipalities, and 11 special districts participate in the LGD program. Submittal of a completed Form 29 to the COGCC is required to participate. The form is available online at:

http://cogcc.state.co.us/documents/reg/Forms/PDF_Forms/form29.pdf

Participating LGDs receive e-mail notification of various oil and gas activities throughout the life cycle of a well or an oil and gas location. Notifications include but are not limited to the opening of the permit application comment period, the issuance of an approved permit, and hydraulic fracturing scheduling. Notices are based on local government boundary data displayed on the COGCC website's "Maps" link, and on contact information from the Form 29 submitted by

the jurisdiction. LGDs are reminded to update boundary and contact information when changes are made. LGDs can also designate others in the local government to receive LGD e-mail notifications.

The 2015 training schedule was concluded on December 1, with a total of eight trainings conducted at venues across the state. Since initiation of the LGD training program in 2013, a total of 350 participants have taken the training.

The LGLs are in the process of developing the 2016 training and outreach program, and various improvements and initiatives are planned to facilitate continuing education and information dissemination to LGDs and local governments. Contact Marc Morton or Nancy Prince with suggestions on training topics, venues, or formats for the coming year.

A list of the LGL outreach and public involvement activities conducted since the previous staff report is included in the latter half of the Public Outreach section below.

Public Outreach

➤ Outreach by Director and Other Staff

- On October 21, Director Matt Lepore spoke at the Colorado Energy Coalition on the Governor's Task Force and Rulemaking.
- On October 28, Director Lepore was a panelist at the Colorado State University-hosted 2015 Natural Gas Symposium.
- On November 5, Permitting Supervisor Barbara Westerdale, Deputy Director Dave Kulmann, Engineering Supervisor Diana Burn, Reclamation Supervisor Dr. Denise Arthur, Permitting and Technical Services Manager Jane Stanczyk, and Engineering Supervisor Mark Schlagenhauf gave presentations at the COGA Small Operator Outreach Half Day. The topics presented were: Reporting Compliance, Revision of Noise Rules, Correct Form 42 Submittals, Flaring Rules, Final Reclamation Requirements, Bonding for Excessive Inactive Wells, and the new Flowline Integrity Program.
- On November 7, Dr. Denise Arthur presented at the International Erosion Control Association (IECA) Mountain States Chapter Conference. The presentation focused on the basics of the PRAW program and the final reclamation of the lands disturbed by these orphaned well sites.
- On November 10, Director Lepore was a panelist at the 2015 Oklahoma Governor's Energy Conference.
- On November 12, Deputy Director Kulmann and Quality Assurance Professional Mike Leonard spoke at the DJ Basin operator meeting on November 12. The topics included social license to operate, the COGCC's complaint process, and

COGCC's LEAN event for the field inspection form. The event was attended by approximately 30 employees from various operators in the DJ basin.

- On November 16, Deputy Director Kulmann gave a presentation to the Citizen Action for Safe Energy group. Topics discussed included: an overview of the COGCC, the LGD program, the public complaint process, and how local governments and the public can engage in COGCC processes. LGL Nancy Prince and Complaint Specialist Megan Adamczyk also attended.
- On November 19, LGL Marc Morton coordinated the quarterly Southwest Colorado Gas and Oil Regulatory Team (GORT) meeting in Durango. COGCC presenters included Director Lepore, Mark Schlagenhauf, Southwest Region Engineer Mark Weems, and Marc Morton. Mark Weems' presentation provided COGCC guidance and recommendations in conducting mechanical integrity tests. Mark Schlagenhauf's presentation addressed COGCC guidance and recommendations on risk based inspections of flow lines. Other representatives from COGCC included Environmental Manager Greg Deranleau, Southwest Field Inspection Supervisor Steve Labowskie, Southwest Area Environmental Protection Specialist Jim Hughes, and Southwest Area Reclamation Specialist Catherine Roy.
- On November 19, the Engineering and Permitting Units conducted operator outreach to review the newly published guidance for how operators provide distance measurements required in an Application for Permit to Drill (Form 2).
- On December 3, Deputy Director Kulmann attended the Northwest Colorado Forum in Rifle.

➤ **Outreach by LGLs**

- On October 27, Nancy Prince attended a study session of the Adams County Board of Commissioners to provide an update on schedule for current rulemaking hearings.
- On October 29, Nancy Prince attended the Weld County Local Emergency Planning Committee meeting held at the Noble training facility.

- On November 3, Marc Morton and Nancy Prince travelled to the University of Northern Colorado in Greeley and provided LGD training to 18 individuals, including LGDs and other local government staff. Kent Kuster of the CDPHE assisted in providing the training.
- On November 4, Nancy Prince participated in the City of Aurora Oil and Gas Committee meeting and provided an update on the schedule and public comment opportunities for the current rulemaking hearings.
- On November 5, Marc Morton travelled to Rifle and attended the monthly Garfield County Energy Advisory Board (EAB) meeting. Marc provided an update on the status of the Governor's Task Force COGCC rulemaking.
- On November 9, Nancy Prince participated in the Sage Water Users Association Source Water Protection Plan Executive Committee meeting in Falcon.
- On November 12, Marc Morton travelled to Windsor and was interviewed by a Windsor High School student regarding the COGCC regulatory program concerning wildlife and environmental protection.
- On November 12 and 13, Nancy Prince participated in the Collaborative Community Planning Amid Controversy: Siting and Fracking workshop sponsored by faculty of University of Colorado-Denver, University of Denver, and Regis University.
- On November 18, Marc Morton travelled to Del Norte in Rio Grande County and provided an overview of the LGD program to Dixie Diltz, who is expected to fill the county LGD role in place of Rose Vanderpool of the County Department of Land Use Planning.



Regional Activities

➤ **Northwest Colorado**

◆ **Northwest Colorado Oil and Gas Forum**

Northwest Colorado Oil and Gas Forum meetings for 2016 are scheduled for April 7, August 4, and December 1. All meetings will be held in Rifle at Colorado Mountain College in Clough Auditorium (3695 Airport Road in Rifle) from 9:00 a.m. to noon. The meetings are open to the public, and a public comment period is held as part of each meeting.

Past presentations (dating back to 2006) are available on the COGCC website by clicking on the library link, then on the the local public forums link, and then on the Northwest Colorado Oil and Gas Forum Presentations link, or via the following website address:

<http://cogcc.state.co.us/library.html#/forums>

All parties wishing to be placed on the next meeting agenda or added to the distribution list for announcements should contact Marc Morton at 303-894-2100, ext. 5132 (direct), 720-415-4959 (mobile) or by e-mail:

marc.morton@state.co.us

◆ **Project Rulison**

The email for Project Rulison submittals is

DNR_rulison.submittal@state.co.us

◆ **Project Rio Blanco**

The email for Project Rio Blanco submittals is

DNR_rioblanco.submittal@state.co.us

➤ **Southwest Colorado**

◆ **Fruitland Formation Outcrop Mitigation and Monitoring Projects**

South Fork Texas Creek Mitigation Site - La Plata County. Regularly scheduled operations and maintenance continue at the South Fork Texas Creek (SFTC) site, performed by LTE, the COGCC's contractor. Since May 2009, the system has collected 15,771 Mcf of methane and generated 245,981 kWh of surplus electricity. The 4M Outcrop Mitigation Summary Report, prepared by LTE, is available at this location on the COGCC website:

http://cogcc.state.co.us/documents/library/AreaReports/SanJuanBasin/4m_project/4M_Mitigation_Project_Summary_Report_2015_01.pdf

◆ **GORT Meetings**

GORT meetings for 2016 are scheduled for March 24, July 28, and October 20. All meetings will be held in Durango at the Durango Public Library (1900 E. 3rd Ave. in Durango) from 8:30 a.m. to 11:30 a.m. The meetings are open to the public, and a public comment period is held as part of each meeting.

All parties wishing to be placed on the next meeting agenda or added to the distribution list for announcements should contact Marc Morton at 303-894-2100, ext. 5132 (direct), 720-415-4959 (mobile), or by e-mail:

marc.morton@state.co.us

Variances

◆ **Catamount Energy Partners, LLC**

On November 5, the COGCC Director granted Catamount Energy Partners LLC (Catamount) a

Rule 502.b variance to Rule 603.a.(1) for the Lamke 33-5-29 #1 Well (API#007-06322) and Location (ID # 443885) in Archuleta County. Rule 603.a.(1) states that "At the time of initial drill-

ing, a Well shall be located not less than two hundred (200) feet from buildings, public roads, major above ground utility lines, or railroads.” As proposed, the well will be located 113 feet from the closest overhead power line. This well location was selected to minimize disturbance, to avoid the Piedra River floodplain, and to honor the landowner’s request to mitigate visual impacts by retaining the existing tree cover between the well pad and offset building units. Catamount has stated that they will utilize a drilling rig with a derrick height not to exceed 75 feet in order to retain a setback safety margin of 1.5 times the rig height.

A letter was received by the La Plata Electric Association, Inc. (LPEA) stating that LPEA maintains 20 foot easements for two overhead, single-phase, 7.2 kV power lines adjoining the proposed well pad on the southerly and easterly sides. LPEA’s setback requirements for any portion of this well pad and its related equipment to the lines is 10 feet from the nearest conductor or energized piece of equipment. This setback is in place to maintain the minimum clearance requirements of the National Electric Safety Code.

LPEA stated that they do not contest Catamount’s proposed well pad, provided that this pad and all equipment remains outside of LPEA’s Rights-of-Way and the minimum ten foot setback is maintained. Based on the location drawing provided by Catamount, the well pad and related equipment will be outside the ROWs and the ten foot setback.

The variance request was approved through the approval of the Form 2 and 2A applications.

◆ Willford Resources, LLC

On November 20, per Rule 303.i.(2), the COGCC Director approved the Form 2 Application for Permit to Recomplete and Operate for the Williford Resources, L.L.C. M&M 5 Well (API# 067-06718) in La Plata County prior to the conclusion of the 20 day comment period.

The operator requested the issuance per Rule 303.i.(2) in order to avoid workover rig standby charges for a previously contracted rig and to ensure that the work could be performed prior to the onset of winter weather, which would restrict access to this well location. In accordance with COGCC procedures, Williford Resources obtained waivers of the 20-day comment period from the Surface Owner and the La Plata County LGD.

◆ Extraction Oil and Gas LLC, Anadarko E&P Onshore LLC, and Nighthawk Production, LLC

On November 12, the COGCC Director granted a two day variance pursuant to Rule 502.b. to Extraction Oil and Gas LLC, Anadarko E&P Onshore LLC, and Nighthawk Production, LLC from Rule 507 for applications filed in Docket Nos. 151200719, 151200724, 151200728, 151200730, 151200731, 151200732, 151200733, 151200734, 151200736, 151200737, 151200742, 151200744, 151200748, 151200763, 151200768, 151200769, and 151200770.

Rule 507 requires that notices be mailed at least thirty-five days in advance of the hearing. Unsigned notices were sent at least thirty-five days prior to the hearing and signed notices were sent no later than thirty-three days prior to the hearing, which complies with the intent of the Oil and Gas Act.

Admin / Organization / Other

◆ Hiring Update for Governor’s Task Force Recommended Staffing and Others

In total, the General Assembly authorized the addition of 14 full time positions starting in Fiscal Year 2015-16. Twelve of them were recommend-

ed by the Governor’s Task Force, and the other two had been previously requested by the COGCC.

COGCC managers started filling the positions as soon as possible, with the first, a field inspector, starting July 1. By early November 2015, 13 of the new positions had been filled. The hiring process



for the remaining position, an Oil and Gas Location Assessment and Land Use Planning Specialist, is underway.

The 14 new positions are as follows:

Field Inspectors (2)
 Reclamation Specialist
 Environmental Protection Specialist
 Environmental Technician
 Hearing Officer
 NOAV Specialist
 Permit/Completion Technician
 Engineering Integrity Supervisor
 Integrity Engineer
 Integrity Engineer Technician
 Complaint Specialist
 Data Analyst
 Oil and Gas Location Assessment and Land Use Planning Specialist.

◆ **New Permit-Completions Technician**

Ashley Noonan has joined the COGCC as a Permit-Completions Technician. Ashley has six and a half years of industry specific experience in regulatory submittals, compliance audits, and GIS tech support. Her most recent experience was with a regulatory consulting firm, and Ashley has previous experience with two major oil and gas operators as well. In her spare time, Ashley is completing her degree in environmental studies and geology.

◆ **New Northeast Field Inspector**

Conor Pesicka has been hired as the COGCC's newest field inspector. He will live in the Greely area and work with Field Inspector Supervisor Jim Precup's northeast field inspection team. Conor comes to the COGCC as a graduate of the Colorado School of Mines with a major in geological engineering. Prior to coming to the State, Conor worked on a drilling rig as a well site geologist and is proficient in logging data and in mineral and rock identification.

A COGCC organizational chart can be found on pages 10-13. For contact information, please go to our homepage, find the "About Us" menu, and select "Contact Us."

◆ **Plugging and Reclaiming Abandoned Wells (PRAW) - Project Updates**

The Red Mesa Holdings, LLC BOND JCK #1 well site had been inspected in March 2015, and the COGCC inspector noted an open excavation around a flow line. In April, this operator filed for bankruptcy. In August, COGCC staff observed that the excavation was accumulating storm water and contained evidence of hydrocarbon liquids. The side walls of the excavation were sloughing off and the secondary containment for the tank battery was being undermined.

In September, COGCC retained Crossfire LLC to remove the fluids within the excavation with a vacuum truck and backfill the hole to prevent further site degradation and impacts to the environment. Red Mesa Holdings' financial assurance bond money was used to perform necessary sampling and stabilization of this location. The project is complete, and the total expended for sampling and stabilization at this site was \$4,228.

The Carl A. Peters #1 environmental project is located in the Town of Mead in Weld County. The COGCC initiated this project in support of Kerr McGee Onshore Oil and Gas LP's re-entry and re-plugging of an orphan well as required by the COGCC DJ Basin Horizontal Offset Policy, revised December 17, 2013.

The subject well (API #05-123-07297) was originally drilled dry and abandoned in 1971 by Amoco Production Company, and it was re-entered in 1983 by Caribou Energy, Inc., who finally plugged the well without having produced it in 1987.

For this project, the COGCC provided exploration and production waste management oversight during the excavation to expose the wellhead for re-entry. The agency also sampled the sidewalls and base of the excavation for characterization of any waste left in place. The COGCC was responsible only for costs associated with waste disposal and sample analysis.

The estimated COGCC PRAW cost was less than \$2,500, and because no residual soil or groundwater contamination was identified, the COGCC's function is complete at a total cost of \$1,330.

The **Ridgway-Swanson-Peterson #1 plugging and abandonment (PA) project** is located in central Ouray County about one mile east of the Town of Ridgway. This well was drilled in 1947 and was later turned over to the landowner as a domestic natural gas supply. The gas petered out and has been shut in since approximately 1986, and the landowner has switched over to retail propane.

Following a COGCC inspection in 2011, the well was placed in the Orphaned Well PRAW Program. After a recent onsite bid meeting with contractors, the project was split up into two parts. The first part will remove the well shed, and the second part will PA the well. The COGCC is preparing to award the second task to the successful bidder in the amount of \$51,555. Total project costs are now estimated at \$55,355.

The **Think Oil Bond Claim Vaughn #1 plugging and abandonment (PA) project** is located in Moffat County about two miles southwest of the Town of Craig. This well was drilled in 1950 to a total depth (TD) of 10,003 feet through the Weber sandstone and Morgan formation. The well was later plugged in 1989 but was re-entered in 1992 and drilled to a depth of 3,025 feet. The operator then directionally drilled the well to a true vertical depth (TVD) of 7,223 feet and a measured total depth (MTD) of 7,264 feet. The well was completed in the Niobrara formation.

Because of mechanical problems and sub-economic production, the well was subsequently plugged in 1997. Various well site inspections by the COGCC found non-compliance with the rules and an Order Finding Violation resulted in the State claiming the bond for this well (Order 1V-458). An inspection in 2015 determined that gas was leaking from the well casing. The well will be re-entered and plugged at a revised estimated cost of \$44,400. A request for contractor bids for this project has been issued, and field work is anticipated to start by mid February 2016.

The **Midfields State #1 plugging and abandonment (PA) project** is located in Yuma County about 12 miles south of the Town of Wray. This well was drilled to an approximate depth of

3,650 feet in 1919. In 2009, an onsite inspection found venting gas and rolling water in the well. The well was excavated to a depth of six feet, and no casing was found.

The limited available records indicate a 16 inch diameter surface bore. A 20 foot long joint of 18 inch diameter PVC irrigation pipe was stuffed into the wellbore, and the excavated portion was backfilled. A plumb bob was lowered into the well, and it tagged up at a depth of 30 feet. For safety purposes, panels were erected around the well, and the well was left open to the atmosphere to prevent shallow ground water contamination. The estimated cost to PA the well is \$50,000. A request for contractor bids for this project will proceed with field work anticipated to start by spring 2016.

The **Noel Reynolds-Ester #1 plugging and abandonment (PA) project** is located in La Plata County about 18 miles southwest of the Town of Durango. This well was drilled in 1979 to an approximate depth of 3,467 feet or into the Morrison formation. The producing oil zones include the Dakota sandstone (3,302 feet to 3,316 feet), Carlisle/Juan Lopez (3,030 to 3,014 feet), and Mancos/Gallup (2,594 to 2,622 feet).

The operator has since become financially insolvent, and the State claimed the \$30,000 bond in 2011 through Order 1V-375. This order placed the project into the PRAW program. The estimated cost to PA the well is \$45,000, but the project is on hold pending a Form 10 - Change of Operator for this well from Atom Petroleum, LLC. Atom recently purchased wells owned and operated by Red Mesa Holdings.

The **Koenig-Ashby #1 and R. E. Leckler #1 reclamation project** is located in Logan County and will involve the remediation of soils contaminated by produced salt water spills. Sampling and analysis of the soils, as well as remediation project design, were completed in Fiscal Year 2014-15. The cost to remediate and reclaim the site has not yet been determined.

The **Dolphin Mulvihill #15-32D reclamation project** is located in Garfield County about 1.6 miles northeast of the Town of Rifle. This well



was plugged and abandoned in 2012, but the site must now be reclaimed. The cost to do this work has not yet been determined.

The **Wallace Three Well Pads reclamation project** comprises three separate leases and well pads in Baca County about 20 miles southeast of the Town of Walsh. The wells at these sites were plugged and abandoned in June 2015, and the sites are now up for reclamation. The cost to do this work has not yet been determined.

The **Redwine Bond South Nucla Unit #1-32 reclamation project** is located in Montrose County about 28 miles southwest of Montrose. This well was plugged and abandoned in May 2015 and is now ready for the closure of the drilling pit and reclamation of the site. The site is a cut and fill on a steep slope in the mountains. The cost to do this work has not yet been determined.

The **Ruth #1 BOND CLAIM Project** is a well site located in Adams County, which will require the plugging of one well and the reclamation of a pit and the well site. To date, the soils analysis indicates that the pit contents meet standards for reclamation purposes. The analysis had a total cost of \$871. In addition, the production equipment has been removed at a cost of \$5,000. Final plans for the site reclamation phase of the project are under review. To date, the PA portion of the project is currently an alternate or substitute project in this year's PRAW plugging program in the event of unforeseen circumstances and/or changes in plans.

Page 14 contains a spreadsheet listing PRAW projects that are either scheduled, in process, or completed as of November 20.

◆ **Colorado Oil and Gas Information System (COGIS) Projects, Updates and Changes**

Electronic Form Submissions (eForm)

The COGCC uses 41 types of forms to authorize oil and gas operations, inspect and monitor ongoing operations, and receive reports of operations. Of those 41 forms, 20 are currently available for electronic submittal through the eForms system. The electronic version of the Notice of Alleged Violation was recently completed.

The development team continues to work on the eForm conversion of existing forms. Currently, three types of forms are in various stages of development: Forms 14, 14A, and 27. In addition, the development team updates eForms with improvements requested by staff and as required by rule revisions.

To date in 2015, 96 percent of the forms available in eForms were submitted electronically by industry. In the month of November, 94 percent were submitted electronically. There are 622 operator users of eForms and 2,595 individual users. For any operator not currently enrolled in eForms, instructions for starting the process can be found on the COGCC website at:

<http://cogcc.state.co.us/Announcements/COUInformation.pdf>

Form 27 eForm Development

The COGCC's Site Investigation and Remediation Workplan (Form 27) is due for an upgrade. The form was created in 1999 and has only been slightly modified since that time. The COGCC's eForm platform allows for seamless tracking of an issue in COGCC's database (known as the MRDB) from start to finish. Users of the new eForm will be able to see not only the origin of the issue as a spill report or complaint, but also its investigation, remediation, and site closure. An eForm will replace the existing paper form, and development is currently underway.

The revised Form 27's data fields will be developed to provide more information "at a glance" and also allow for operators to directly enter information about their projects. Moreover, operators will be able to update their records as often as they need.

The conversion of the Form 27 to the established eForm platform will increase the efficiency of COGCC staff resources, improve the effectiveness of communications regarding individual projects, and elegantly interface with spill reports, complaints, and existing facilities in the MRDB.

The Governor's Office of Information Technology (OIT) has completed initial development of the eForm 27, and COGCC staff has conducted its first round of testing followed by user feedback. Further testing by a select group of Operators will be done prior to rollout.

Applications and Location Assessments

The public can make comments on all submitted Drilling Permit Applications (Form 2s) and Location Assessments (Form 2As) through the eForm system. Simply go to the COGCC website and click on the menu option "Permits" or

<http://cogcc.state.co.us/permits.html#/permits>

On the "Permits Search" page, three search options are available. The first option, "All Pending Permit Applications," is used for public comments. When the results are displayed for "Pending Applications," a user can click on the document number hyperlink in the "Status" column, which logs him or her to the eForms application.

Once the page is displayed with the selected document, the user can select the Comment button to make a comment on that particular form.

Data Access

The COGCC's database is a comprehensive repository of Colorado's oil and gas data. The information in the database is available to the public through interactive search tools and a variety of file downloads on the website.

Users of this data come from many different organizations, including academic institutions, oil and gas operators, environmental groups, government agencies, and the media. The number of these users and the variety of data requested are steadily increasing. In order to better serve the public and address these demands for data, staff will be enhancing the interactive search tools with additional search criteria. Staff will also be publishing additional data file downloads at:

<http://cogcc.state.co.us/data2.html#/downloads>

Current Data File Downloads

GIS Shapefiles (12 files)
Production Data (1999 - present)
Spacing Orders
Water Well Data
Complaints
Mechanical Integrity Tests
Notices of Alleged Violation

Future Data File Downloads

Spills-Releases-Remediation (by December 31, 2015)
Inspections (by December 31, 2015)
Enforcement Orders (by December 31, 2015)

◆ January 2016 Hearing Docket

The docket for the January 2016 hearing will be available shortly after the December hearing. Hearing dockets are available on our website by clicking on "Regulation" in the menu and then "Hearings:"

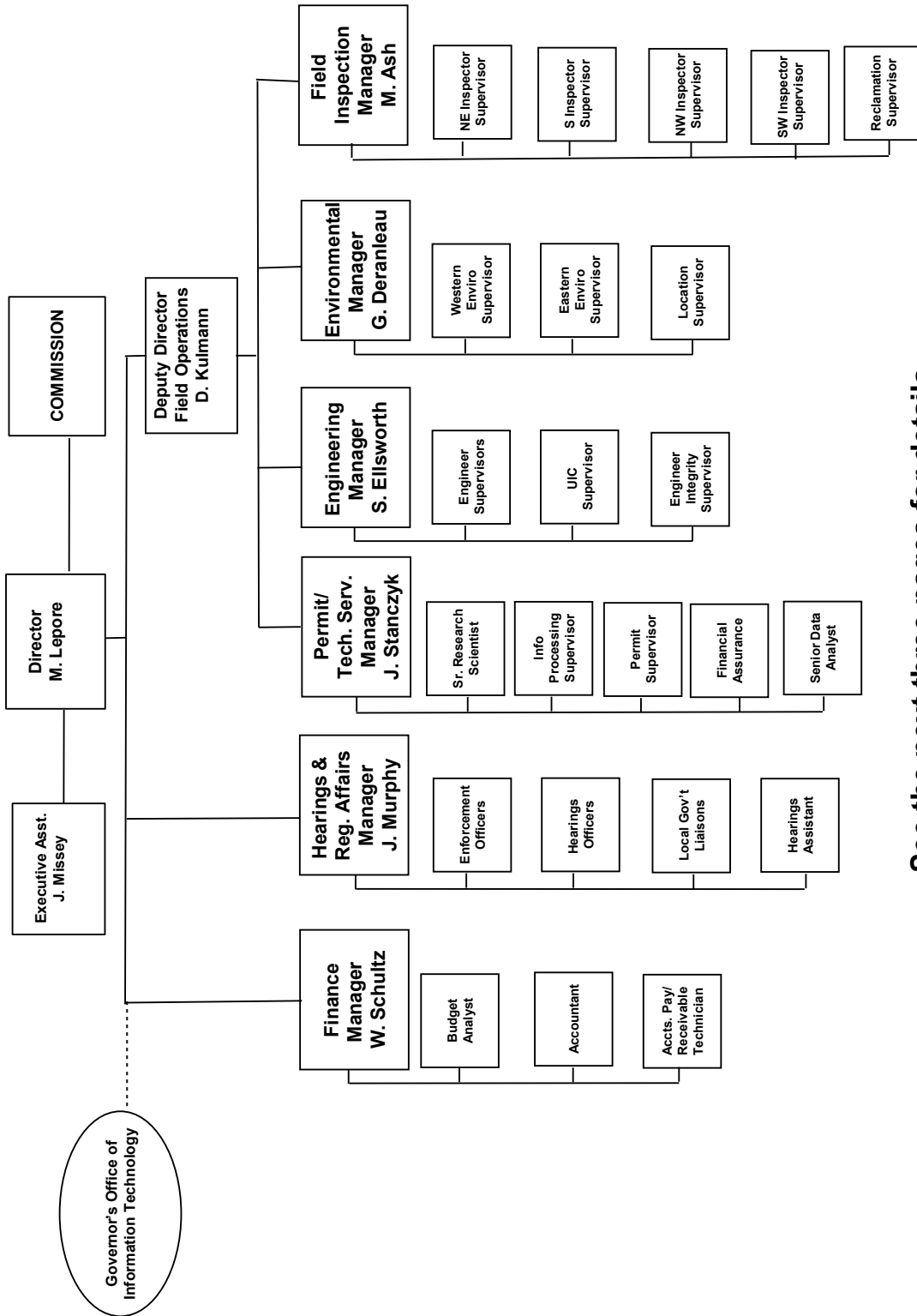
<http://cogcc.state.co.us/reg.html#/hearings>

Links to the notices and hearing applications are available from the Docket Number and Applicant, respectively, by clicking the January Gen_Docket link. To sign up for e-mail notification of hearing notices and applications, please see the announcement and instructions on the homepage of the COGCC website.



Organizational Charts and Statistics

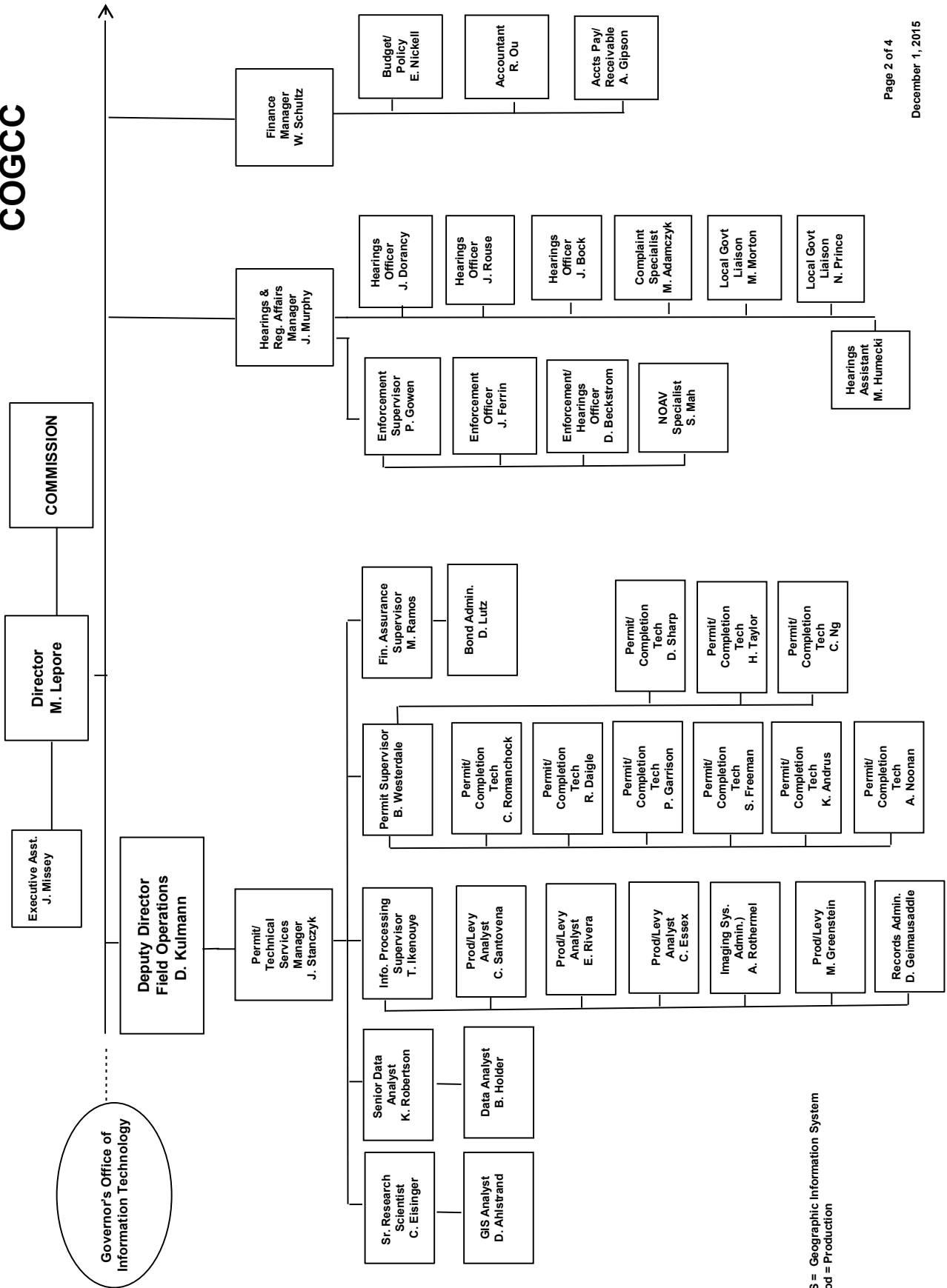
COLORADO OIL & GAS CONSERVATION COMMISSION



See the next three pages for details



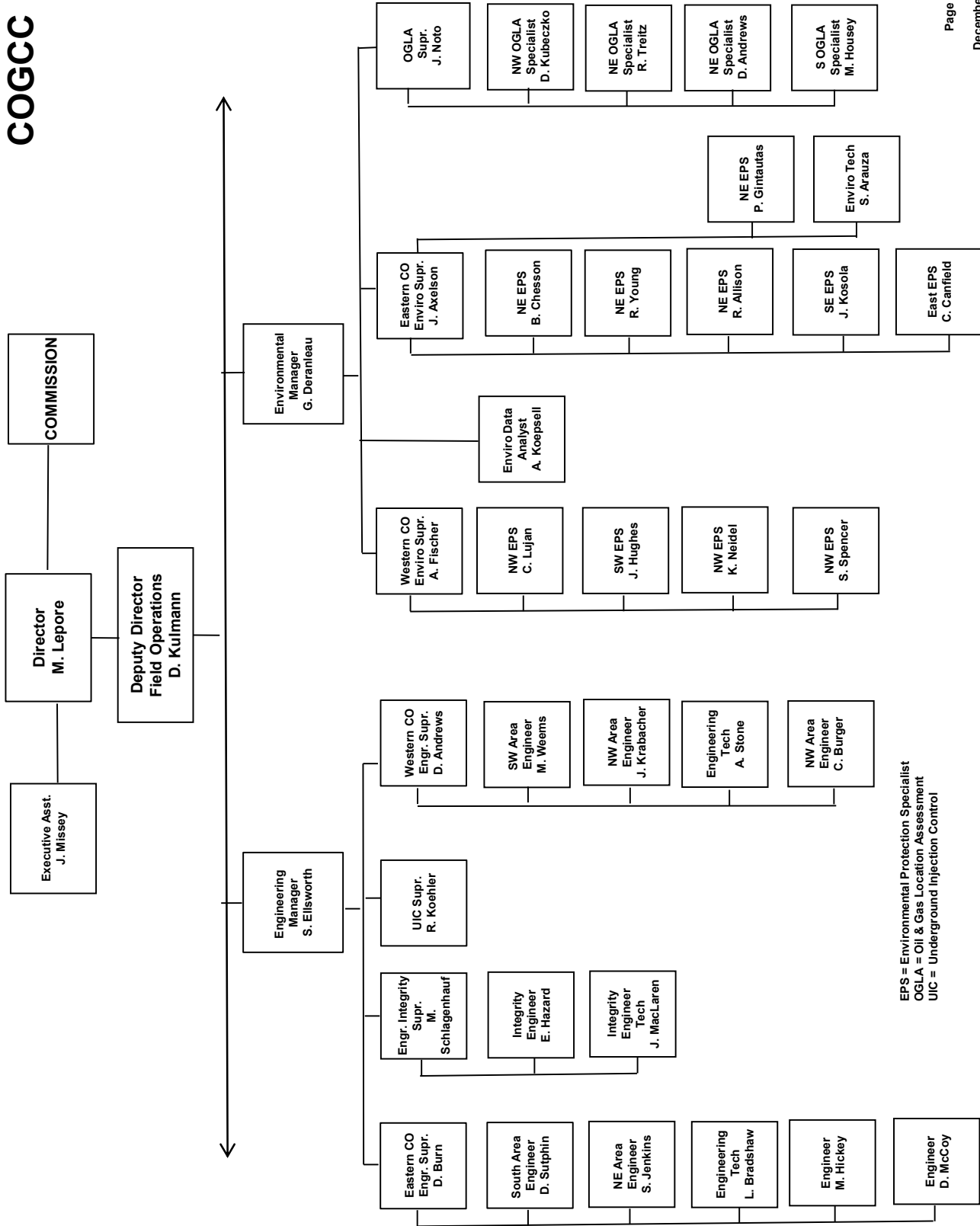
COGCC



GIS = Geographic Information System
Prod = Production



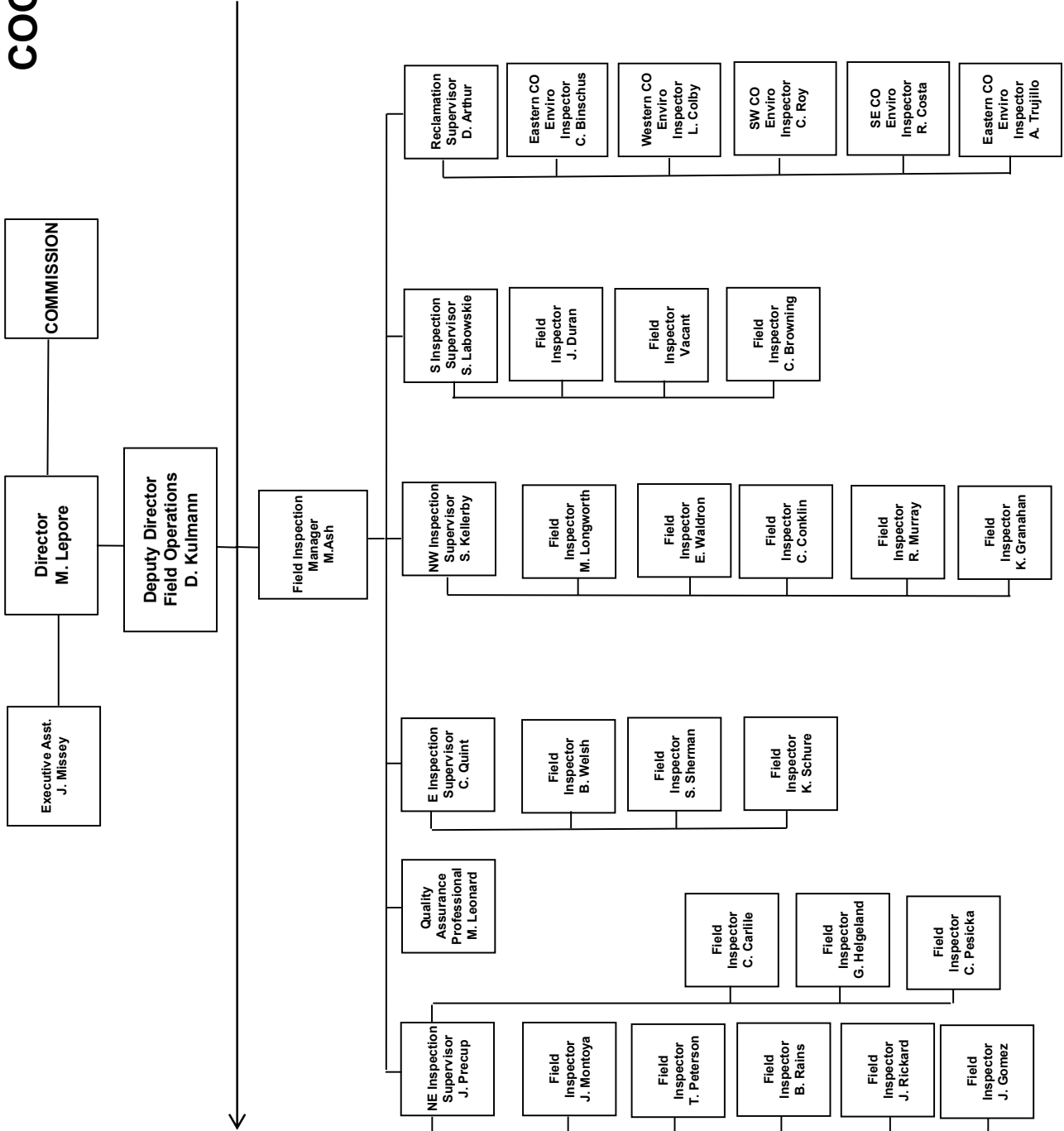
COGCC



EPS = Environmental Protection Specialist
 OGLA = Oil & Gas Location Assessment
 UIC = Underground Injection Control



COGCC





PLUGGING AND RECLAIMING ABANDONED WELLS (PRAW) FOR ORPHANED LOCATIONS FISCAL YEAR 2015-16

County	Type	Project Name	Acct Code	ESTIMATED TOTAL PROJECT COST			PLANNED FY 2015-16 YTD EXPENDITURES			Description
				Bond	PRAW	EMGY	Totals	Bond	PRAW	
Ourray	PA	Ridgway-Swanson-Peterson #1	SWAN	\$ 75,500	\$ 75,500	\$ 0	\$ 75,500	\$ 0	\$ 0	Drilled in 1947 to a TD=500'; turned over to landowner at some point in time for domestic use gas hookup; stopped producing gas and will be PA by PRAW Program.
Moffat	PA	Think Oil Bond - Vaughn #1	THK1	\$ 7,542	\$ 36,898	\$ 0	\$ 44,440	\$ 0	\$ 0	Drilled in 1950 to a TD=10,000'; PA in 1989; re-entered in 1999 and directionally drilled to a MTD=7264; Niobrara completion; PA 1997; principal owner ceases; gas leak found; bond claimed; PRAW re-enter PA project.
Yuma	PA	Midfields State #1	MIDF	\$ 50,000	\$ 50,000	\$ 0	\$ 50,000	\$ 0	\$ 0	Drilled in 1919 to TD=3650'. Gas flow & rolling water. Excavated to a depth of 6'. Installed 18" OD PVC to a depth of 20'.
La Plata	PA	Noel Reynolds Bond - Ester #1	NOEL	\$ 30,000	\$ 15,000	\$ 0	\$ 45,000	\$ 0	\$ 0	Bond claimed 6/27/2011 Order #1V-374; PA.
Logan	RECL	Koenig-Ashby #1	KOEN	TBD	TBD	\$ 0	\$ 0	\$ 0	\$ 0	Produced salt water kill soil to include remediation and site reclamation.
Logan	RECL	Lecker #1	LECK	TBD	TBD	\$ 0	\$ 0	\$ 0	\$ 0	Produced salt water kill soil to include remediation and site reclamation.
Garfield	RECL	Dolphin - Mulvihill #15-32D	DOLP	TBD	TBD	\$ 0	\$ 0	\$ 0	\$ 0	Dolphin Energy Corp well pad and lease road near Rifle.
Baca	PA	Wallace Oil and Gas BOND	WAL1 WAL2 WAL3	TBD	TBD	\$ 0	\$ 0	\$ 0	\$ 0	Three wells : a) Newman 1-7 (WAL1), b) Watkins 1 (WAL2), and c) Hume 17-1 (WAL3) plugged in FYE2015 and reclamation required for pads and access roads.
Montrose	RECL	Redwine Bond - SNU #1-31	REDW	TBD	TBD	\$ 0	\$ 0	\$ 0	\$ 0	Plugged May 2015; pit and well pad reclamation with cut and fill on steep terrain.
Adams	ENV	Ruth #1	RUTH	TBD	TBD	\$ 0	\$ 0	\$ 0	\$ 0	Site reclamation to include soils enhancement, contouring and re-seeding.
TOTALS =>				\$37,542	\$177,398	\$ 0	\$ 214,940	\$ 0	\$ 0	

County	Type	Project Name	Acct Code	ESTIMATED TOTAL PROJECT COST			IN PROGRESS FY 2015-16 YTD EXPENDITURES			Description	
				Bond	PRAW	EMGY	Totals	Bond	PRAW		EMGY
Mesa	RECL	DeBeque Orphans - Buckeye #1	DEBE	\$ 196	\$ 196	\$ 0	\$ 196	\$ 0	\$ 0	Mowing.	
Adams	ENV	Ruth #1	RUTH	\$ 1,045	\$ 1,045	\$ 0	\$ 1,045	\$ 0	\$ 0	EPS soil analysis complete for the pit at the CTB and deemed ready for reclamation with no need for soils remediation.	
La Plata	ENV	Red Mesa Holdings Bond - JCK #1	REDM	\$ 4,228	\$ 4,228	\$ 0	\$ 4,228	\$ 0	\$ 0	BOND Total Available = \$67,038.37	
Weld	ENV	Carl A. Peters #1	CARL	\$ 1,330	\$ 1,330	\$ 0	\$ 1,330	\$ 0	\$ 0	HZ Well Policy-Operator to plug well; COGCC to pay for samples, plans, remediation and disposal.	
Adams	PA	Ruth #1 Bond PA	RUTH	\$ 5,000	\$ 5,000	\$ 0	\$ 5,000	\$ 0	\$ 0	Bond claimed 8/20/2012 Order #1V-395; surface production equipment removed in July 2015.	
TOTALS =>				\$ 9,228	\$ 2,571	\$ 0	\$ 11,799	\$ 9,228	\$ 2,371	\$ 0	\$ 11,599

County	Type	Project Name	Acct Code	ESTIMATED TOTAL PROJECT COST			COMPLETED FY 2015-16 YTD EXPENDITURES			Description	
				Bond	PRAW	EMGY	Totals	Bond	PRAW		EMGY
Mesa	RECL	DeBeque Orphans - Buckeye #1	DEBE	\$ 196	\$ 196	\$ 0	\$ 196	\$ 0	\$ 0	Mowing.	
Adams	ENV	Ruth #1	RUTH	\$ 1,045	\$ 1,045	\$ 0	\$ 1,045	\$ 0	\$ 0	EPS soil analysis complete for the pit at the CTB and deemed ready for reclamation with no need for soils remediation.	
La Plata	ENV	Red Mesa Holdings Bond - JCK #1	REDM	\$ 4,228	\$ 4,228	\$ 0	\$ 4,228	\$ 0	\$ 0	BOND Total Available = \$67,038.37	
Weld	ENV	Carl A. Peters #1	CARL	\$ 1,330	\$ 1,330	\$ 0	\$ 1,330	\$ 0	\$ 0	HZ Well Policy-Operator to plug well; COGCC to pay for samples, plans, remediation and disposal.	
Adams	PA	Ruth #1 Bond PA	RUTH	\$ 5,000	\$ 5,000	\$ 0	\$ 5,000	\$ 0	\$ 0	Bond claimed 8/20/2012 Order #1V-395; surface production equipment removed in July 2015.	
TOTALS =>				\$ 9,228	\$ 2,571	\$ 0	\$ 11,799	\$ 9,228	\$ 2,371	\$ 0	\$ 11,599

ESTIMATED TOTAL PROJECT COSTS				FY 2015-16 YTD EXPENDITURES			
Bond	PRAW	EMGY	Totals	Bond	PRAW	EMGY	Totals
\$46,770	\$179,969	\$0	\$226,738	\$9,228	\$2,371	\$0	\$11,599

SCOREBOARD (PRAW FUNDING ONLY)	
\$0	In Progress Estimated Totals
\$0	In Progress Spent to Date Totals
\$0	In Progress Remaining Totals
\$2,371	Completed to Date Totals
\$2,371	Sum of (In Progress Remaining Totals) and (Completed to Date Totals)
\$177,398	Planned
\$179,769	Total Expenditures
\$445,000	Annual Budget Appropriation
\$265,231	Projected End of Year Balance

ABREVIATIONS	
PA=plug & abandon	RECL=reclamation ENV=enviro remediation
EMGY	Funding from the Emergency Response (Budget Line Item)
PRAW	Funding from the Plug Recl Abandon Well (Budget Line Item)
TBD	To be determined



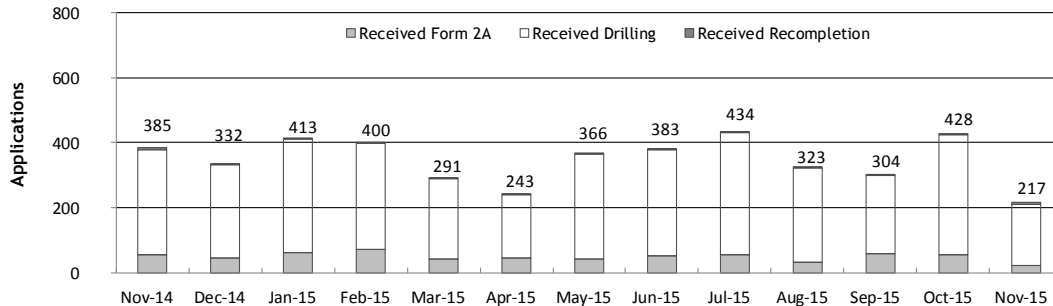
Monthly Permit Activity as of December 1, 2015

Form/Month	Backlog	Received	Approved	Withdrawn	Rejected	Incomplete ¹	In-Process	Remaining ²
Form2A								
Nov-14	216	54	103	6	0	46	114	161
Dec-14	161	45	99	3	0	39	64	104
Jan-15	104	61	43	3	0	23	95	119
Feb-15	119	73	28	0	0	35	129	164
Mar-15	164	44	70	2	1	30	105	135
Apr-15	135	46	37	3	0	38	103	141
May-15	141	41	44	0	1	41	96	137
Jun-15	137	52	49	3	1	24	112	136
Jul-15	136	57	48	2	1	25	117	142
Aug-15	142	32	46	0	1	35	92	127
Sep-15	127	59	49	3	4	25	105	130
Oct-15	130	54	51	4	0	14	115	129
Nov-15	129	21	49	1	1	16	83	99
Drilling								
Nov-14	834	326	479	19	0	128	534	662
Dec-14	662	286	397	10	4	115	422	537
Jan-15	537	349	316	2	0	119	449	568
Feb-15	568	324	161	21	4	143	563	706
Mar-15	706	246	294	14	0	226	418	644
Apr-15	644	194	165	17	0	295	361	656
May-15	656	324	190	30	0	254	506	760
Jun-15	760	327	281	9	5	175	617	792
Jul-15	792	373	250	2	15	153	745	898
Aug-15	898	289	300	18	111	159	599	758
Sep-15	758	242	312	7	32	112	537	649
Oct-15	649	372	223	17	16	104	661	765
Nov-15	765	190	254	3	0	106	592	698
Recompletion								
Nov-14	5	5	2	0	0	1	7	8
Dec-14	8	1	2	1	0	2	4	6
Jan-15	6	3	1	0	0	3	5	8
Feb-15	8	3	2	0	0	3	6	9
Mar-15	9	1	6	0	0	1	3	4
Apr-15	4	3	1	0	0	2	4	6
May-15	6	1	4	0	0	2	1	3
Jun-15	3	4	1	0	0	2	4	6
Jul-15	6	4	2	0	0	1	7	8
Aug-15	8	2	6	1	0	1	2	3
Sep-15	3	3	1	0	0	1	4	5
Oct-15	5	2	2	1	0	1	3	4
Nov-15	4	6	2	0	0	1	7	8

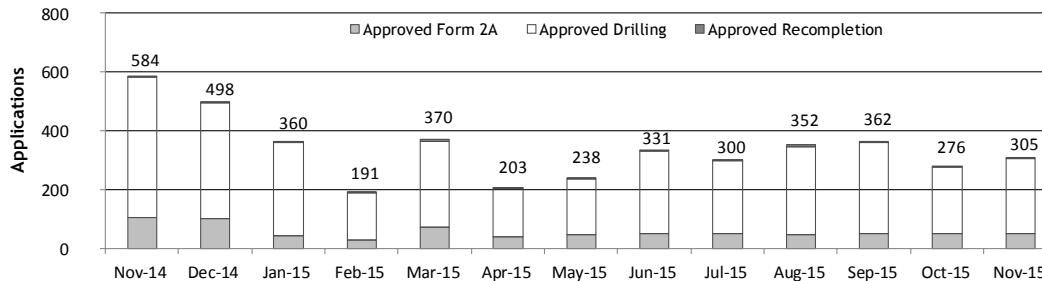
¹Incomplete are permits that have missing or inaccurate data and cannot be approved.

²Backlog = Incomplete + In-process = Remaining permits from previous month.

Received Applications



Approved Applications




Status of Permit Applications Filed By Month as of December 1, 2015
Form 2A Location Assessment

Year	Month	Received	Approved	Withdrawn	In Process	Percent In Process	Average	Less Than 30 Days	30 to 49 Days	Greater Than 50 Days
							Days to Process			
2011	TOTAL	2,391	2,298	93	0	0%		1,416	620	262
2012	TOTAL	1,359	1,291	68	0	0%		706	378	207
2013	TOTAL	1,281	1,202	78	1	0%		369	433	400
2014	TOTAL	1,114	1,065	44	5	0%		279	429	357
2015	JAN	49	48	1	0	0%	57	6	15	27
	FEB	69	65	2	2	3%	66	5	16	44
	MAR	54	47	6	1	2%	59	6	20	21
	APR	39	39	0	0	0%	64	8	13	18
	MAY	40	39	1	0	0%	60	6	12	21
	JUN	54	51	1	2	4%	54	10	17	24
	JUL	45	41	0	4	9%	64	4	12	25
	AUG	68	58	2	8	12%	53	11	21	26
	SEP	58	42	2	14	24%	45	16	9	17
	OCT	53	11	1	41	77%	33	3	8	0
	NOV	21	0	0	21	100%	0	0	0	0
2015	TOTAL	550	441	16	93	17%		75	143	223

Form 2 Application For Permit to Drill (APDs)

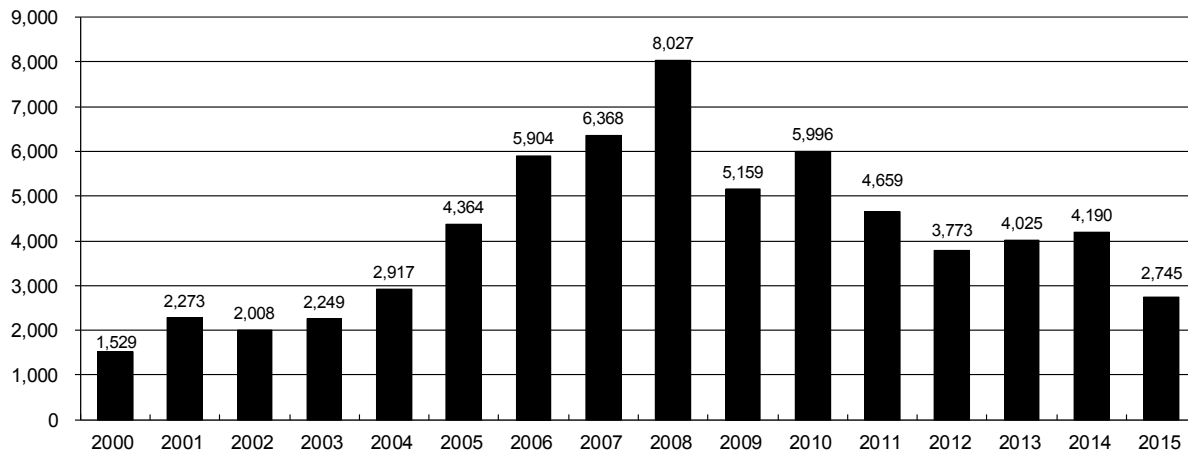
Year	Month	Received	Approved	Withdrawn	In Process	Percent In Process	Median Days	Less Than 30 Days	30 to 49 Days	Greater Than 50 Days
							to Process			
2011	TOTAL	4,691	4,557	132	0	0%		2,723	1,565	587
2012	TOTAL	3,955	3,816	139	0	0%		1,971	1,393	602
2013	TOTAL	4,548	4,312	235	1	0%		1,046	1,626	1,714
2014	TOTAL	4,208	4,014	146	48	1%		689	1,629	1,732
2015	JAN	291	281	1	9	3%	55	50	60	174
	FEB	294	277	9	8	3%	72	24	73	183
	MAR	306	247	34	25	8%	82	10	73	166
	APR	169	154	15	0	0%	78	28	35	94
	MAY	270	265	5	0	0%	77	9	84	172
	JUN	321	309	10	2	1%	67	45	81	185
	JUL	299	282	2	15	5%	62	15	84	189
	AUG	319	241	7	71	22%	71	11	64	167
	SEP	211	144	1	66	31%	62	17	37	94
	OCT	372	94	8	270	73%	41	16	74	4
	NOV	190	7	0	183	96%	15	8	0	0
2015	TOTAL	3,042	2,301	92	649	21%		233	665	1,428



Annual Drilling Permits by County as of December 1, 2015

County	2000	2001	2002	2003	2004	2005	2006	2007	2008	2009	2010	2011	2012	2013	2014	2015
ADAMS	38	28	9	26	39	34	37	89	51	35	21	8	40	40	51	74
ARAPAHOE	0	2	1	2	5	7	11	10	10	10	8	23	35	23	34	17
ARCHULETA	7	9	6	10	8	13	14	26	47	11	18	12	5	4	3	9
BACA	22	6	2	3	7	8	2	11	13	3	4	5	3	1	1	
BENT	2				5	3	8	1	1		5		2	1		
BOULDER	1	5	6	7	17	13	21	37	32	35	24	30	22			
BROOMFIELD			2	7		1	1		2	33	28	11	36		31	
CHEYENNE	3	3	3	3	3	10	21	15	33	12	13	16	31	50	26	6
COSTILLA																
CROWLEY																2
DELTA			7	4	5	10	9	2			4	3	6	1	2	
DENVER		3					19	25	24							
DOLORES				1	1	1	6	10	12	21	8	8	13	12	3	
EAGLE														1		
ELBERT	2						4			1		1	2	2	4	3
EL PASO										2	3	3	18	1	2	
FREMONT					1	3	2	4	14	13	22	14	11	2	8	1
GARFIELD	213	353	362	567	796	1,509	1,845	2,550	2,888	1,981	2,037	1,323	1,046	870	1,066	495
GRAND																
GUNNISON			5	10	1	9	19	7	10	12	4	3	11	9	20	25
HUERFANO	41	27	27		8	2			7		2	1	9	1	13	2
JACKSON	34	18	21	9	14	6	8	5	27	19	9	18	5	12	17	3
JEFFERSON	1						1	3	2					1		
KIOWA	11	18	2	4	2	1	11	9	26	7	16	17	17	12	5	3
KIT CARSON				1	3	5	4	4	13	7	3	2	6	1	2	
LA PLATA	127	156	104	162	102	115	235	251	328	298	191	99	71	32	87	98
LARIMER	2		1			1		5	46	12	41	8	13	2	4	28
LAS ANIMAS	268	400	259	180	332	413	500	362	303	88	92	85	11	2	1	
LINCOLN	2	2	1	6	3	4	1	2	58	44	48	31	36	87	129	24
LOGAN	4	7	3	3	6	13	17	14	5	9	17	8	27	4	5	
MESA	13	27	30	27	54	136	265	293	501	427	306	127	150	105	74	121
MOFFAT	35	52	62	63	63	60	120	68	57	51	53	93	88	44	54	10
MONTEZUMA	4		5	8	8	11	5	12	22	39	19	27	29	14	25	3
MONTROSE	1	3	2	4	2		1	3	3		1	1				
MORGAN	9	9	2	7	9	7	3	6	2	1	6	13	5	16	6	4
OTERO																
PARK										3	4	1				
PHILLIPS	1	2		7	13	17	12	69	82	45	64	112	56		11	2
PITKIN					1			1								1
PROWERS	2	5	4		7	5	7	5	8	1	3	1			1	
RIO BLANCO	89	187	105	179	154	161	360	321	477	348	441	109	117	167	121	104
RIO GRANDE	1	1		1					1	1			2		1	
ROUTT	20	13	1		4	6	9	8	4	2	3	10	4	12	4	9
SAGUACHE	2		2					2	1	2						
SAN MIGUEL	11	13	27	18	42	45	35	23	20	13	10	2	1		2	3
SEDGWICK				1	5	2	7	2	1	19	11	12	2		7	1
WASHINGTON	23	17	27	34	128	50	69	45	11	1	6	12	6	19	12	9
WELD	509	702	760	757	832	901	1,418	1,527	2,340	1,448	2,152	2,262	1,826	2,468	2,303	1,688
YUMA	31	205	160	138	237	782	797	541	545	105	299	148	11	9	53	2
TOTAL	1,529	2,273	2,008	2,249	2,917	4,364	5,904	6,368	8,027	5,159	5,996	4,659	3,773	4,025	4,190	2,745

ALL COUNTIES





Form 2A Breakdown By County By Year as of December 1, 2015

Year	County	Form 2As	Completed	In Process	New Location	CDP	SWH	RSO	CDPHE
2009	Total State	818	818	0	408	2	80	5	5
2010	Total State	2,377	2,377	0	1,543	0	317	22	55
2011	Total State	2,297	2,297	0	1,724	1	259	16	5
2012	Total State	1,297	1,297	0	900	0	167	6	1
2013	Total State	1,195	1,192	3	845	0	144	2	4
2014	ADAMS	23	22	1	20	0	0	0	0
	ARAPAHOE	18	17	1	18	0	0	0	1
	ARCHULETA	1	1	0	0	0	1	0	0
	BACA	1	1	0	1	0	0	0	0
	BROOMFIELD	1	1	0	0	0	0	0	0
	CHEYENNE	23	23	0	20	0	0	0	0
	CROWLEY	2	2	0	2	0	0	0	0
	DOLORES	2	2	0	2	0	1	0	0
	EL PASO	2	2	0	2	0	0	0	0
	ELBERT	4	4	0	4	0	0	0	0
	FREMONT	3	3	0	3	0	3	0	0
	GARFIELD	79	79	0	20	0	53	3	0
	GUNNISON	7	7	0	2	3	2	0	0
	HUERFANO	5	5	0	1	0	4	0	1
	JACKSON	14	14	0	9	0	14	0	0
	KIOWA	3	3	0	2	0	0	0	0
	KIT CARSON	2	2	0	2	0	0	0	0
	LA PLATA	14	14	0	4	0	13	0	0
	LARIMER	4	3	1	3	0	0	0	0
	LAS ANIMAS	1	1	0	1	0	0	0	0
	LINCOLN	135	135	0	119	0	0	0	0
	LOGAN	2	2	0	2	0	0	0	0
	MESA	8	8	0	3	0	5	1	0
	MOFFAT	11	11	0	9	0	11	1	0
	MONTEZUMA	15	15	0	15	0	0	0	0
	PHILLIPS	11	11	0	10	0	0	0	0
	PROWERS	1	1	0	1	0	0	0	0
	RIO BLANCO	20	20	0	13	0	17	0	0
	ROUTT	1	1	0	1	0	1	0	0
	SAN MIGUEL	1	1	0	1	0	0	0	0
	SEDGWICK	7	7	0	5	0	0	0	0
	WASHINGTON	13	13	0	13	0	0	0	0
	WELD	585	576	9	425	0	4	2	1
	YUMA	53	53	0	48	0	0	0	0
2014	Total State	1,072	1,060	12	781	3	129	7	3
2015	ADAMS	6	5	1	5	0	0	0	0
	ARAPAHOE	11	9	2	6	0	0	0	0
	ARCHULETA	5	3	2	2	0	4	0	1
	CHEYENNE	7	4	3	6	0	0	0	0
	ELBERT	3	3	0	3	0	0	0	0
	FREMONT	1	1	0	1	0	1	0	0
	GARFIELD	26	23	3	7	0	15	0	0
	GUNNISON	10	9	1	1	0	8	0	0
	HUERFANO	1	1	0	0	0	0	0	0
	JACKSON	5	2	3	4	0	5	1	0
	KIOWA	3	3	0	3	0	3	0	0
	LA PLATA	17	15	2	7	0	15	0	0
	LARIMER	3	3	0	1	0	0	0	0
	LINCOLN	26	25	1	25	0	0	0	0
	LOGAN	1	0	1	0	0	0	0	0
	MESA	11	10	1	7	0	5	0	0
	MOFFAT	9	7	2	5	0	9	0	0
	MONTEZUMA	3	3	0	3	0	0	0	0
	MORGAN	4	1	3	3	0	0	0	0
	PHILLIPS	2	2	0	2	0	0	0	0
	RIO BLANCO	13	12	1	8	0	13	0	0
	ROUTT	3	3	0	1	0	3	0	0
	SAN MIGUEL	2	2	0	2	0	2	0	0
	SEDGWICK	1	1	0	1	0	0	0	0
	WASHINGTON	13	12	1	12	0	0	0	0
	WELD	341	276	65	262	0	2	0	0
	YUMA	3	2	1	1	0	0	0	0
2015	Total State	530	437	93	378	0	85	1	1

Abbreviations:

CDP = Comprehensive Drilling Plan SWH = Sensitive Wildlife Habitat consultation

RSO = Restricted Surface Occupancy consultation CDPHE= Colorado Department of Health and Environment consultation



Well to Building Setbacks by Year and by County as of December 1, 2015

Count of well locations, grouped by proximity from well to buildings.

Location Proximity to Buildings	2009	2010	2011	2012	2013	2014	2015	Number of Locations	Percent of
									Total Locations
Less than 150 feet	2	3	3	2	0	3	2	15	0%
150 to 350 feet	37	58	61	39	34	38	9	276	3%
350 to 500 feet	50	110	97	61	64	48	31	461	5%
500 to 1000 feet	117	385	331	188	188	161	77	1,447	17%
1000 + feet	356	1,705	1,470	838	762	724	347	6,202	74%
TOTAL LOCATIONS	562	2,261	1,962	1,128	1,048	974	466	8,401	

County	TOTAL	Less than	150 to 350	350 to 500	500 to 1000	1000 +
		150 feet	feet	feet	feet	feet
ADAMS	77	0	4	8	18	47
ARAPAHOE	95	0	2	4	10	79
ARCHULETA	21	0	0	1	11	9
BACA	15	0	0	0	1	14
BENT	7	0	0	0	0	7
BOULDER	23	0	1	1	17	4
BROOMFIELD	33	0	0	4	13	16
CHEYENNE	137	1	0	0	2	134
CROWLEY	2	0	0	0	0	2
DELTA	7	0	0	2	1	4
DOLORES	19	0	0	0	7	12
EAGLE	1	0	0	0	0	1
EL PASO	14	0	0	0	3	11
ELBERT	11	0	0	0	2	9
FREMONT	40	0	2	7	8	23
GARFIELD	551	0	9	9	77	456
GUNNISON	42	1	0	4	1	36
HUERFANO	16	0	0	0	5	11
JACKSON	45	0	0	4	1	40
KIOWA	66	0	0	0	1	65
KIT CARSON	14	0	0	0	0	14
LA PLATA	132	0	4	14	46	68
LARIMER	39	0	5	4	14	16
LAS ANIMAS	201	1	6	7	37	150
LINCOLN	369	0	1	2	4	362
LOGAN	43	0	1	1	0	41
MESA	96	0	0	3	14	79
MOFFAT	176	0	0	2	14	160
MONTEZUMA	42	0	0	1	4	37
MONTROSE	2	0	0	0	0	2
MORGAN	29	0	0	2	4	23
PARK	4	0	0	0	0	4
PHILLIPS	275	1	4	6	21	243
PITKIN	1	0	0	0	0	1
PROWERS	5	0	0	0	0	5
RIO BLANCO	186	0	0	0	2	184
RIO GRANDE	2	0	0	0	1	1
ROUTT	29	0	0	0	2	27
SAN MIGUEL	14	0	0	0	0	14
SEDGWICK	33	0	0	1	3	29
WASHINGTON	71	0	2	0	3	66
WELD	4,891	11	226	358	1,056	3,238
YUMA	527	0	9	16	44	458



Well to Building Setbacks Less Than Two Hundred Feet as of December 1, 2015

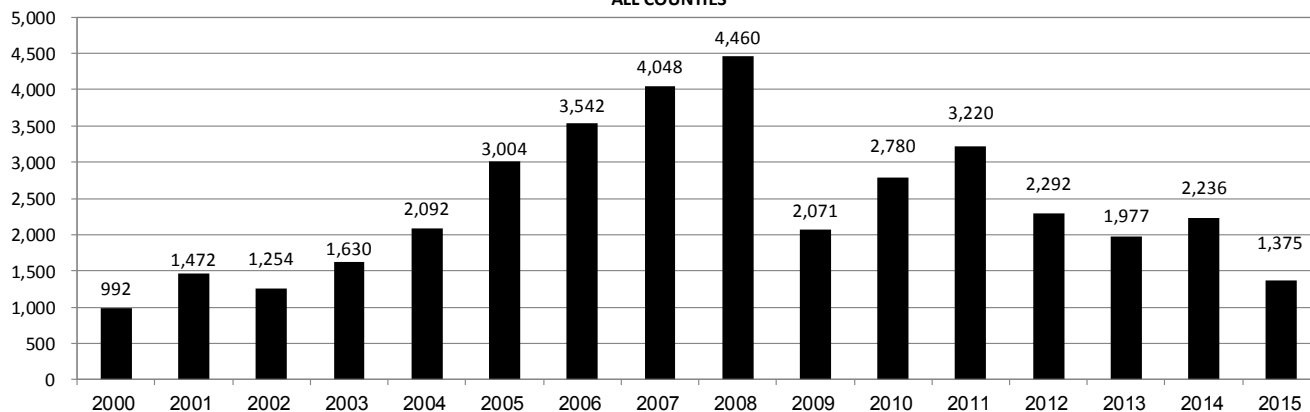
Year	Location Doc Number	County	High Density	New Location	Distance (Feet)	Proximity (Feet)	Building Description
2015	400768804	WELD	No	Yes	46	less 150	Building to be razed
2011	2587822	CHEYENNE	No	No	58	less 150	Water well house
2009	1691798	WELD	No	No	58	less 150	Vehicle garage
2010	400072164	WELD	No	Yes	69	less 150	Abandoned hog shed
2014	400569085	WELD	No	No	78	less 150	Well shed
2014	400600705	WELD	No	No	80	less 150	Livestock shed
2012	400240957	GUNNISON	No	Yes	90	less 150	Equipment shed
2015	400742811	WELD	No	Yes	102	less 150	Building to be razed
2009	1758843	WELD	No	Yes	103	less 150	Building to be razed
2011	1636646	WELD	No	No	122	less 150	Storage shed
2009	400011284	LAS ANIMAS	No	Yes	127	less 150	Operator is owner
2009	1786896	PHILLIPS	No	No	132	less 150	Grain storage
2014	400642113	WELD	No	Yes	142	less 150	Barn
2011	400117702	WELD	No	Yes	143	less 150	Irrigation pump house
2011	400227765	WELD	No	Yes	145	less 150	Storage barn
2014	400558626	LINCOLN	No	No	150	less 150	Gas plant equipment building
2009	1904205	WELD	No	No	154	150 to 350	Livestock enclosure
2012	400243295	WELD	No	Yes	155	150 to 350	Unused storage shed
2011	400179419	WELD	No	Yes	157	150 to 350	Existing well / storage building
2010	400054716	WELD	No	No	159	150 to 350	Equipment barn
2011	400188968	WELD	No	Yes	159	150 to 350	Abandoned
2014	400554054	WELD	No	Yes	159	150 to 350	Equipment shed
2014	400559404	WELD	No	Yes	160	151 to 350	Barn
2010	400021477	WELD	No	Yes	162	150 to 350	Goat barn
2009	1758386	WELD	No	Yes	168	150 to 350	Storage shed
2011	1635946	WELD	No	No	169	150 to 350	Storage shed
2013	400447386	WELD	No	No	169	150 to 350	Abandoned turkey barn
2013	400447391	WELD	No	No	169	150 to 350	Abandoned turkey barn
2011	400165164	WELD	No	Yes	178	150 to 350	Residence
2013	400367184	WELD	No	Yes	179	150 to 350	Shed
2011	400188780	WELD	No	Yes	180	150 to 350	Residence
2014	400562498	WELD	No	Yes	181	150 to 350	Garage / storage shed
2010	1697620	WELD	No	No	187	150 to 350	Livestock shed
2009	1758746	WELD	No	No	193	150 to 350	Storage shed
2011	400154431	WELD	No	Yes	198	150 to 350	Turkey barn
2012	400250031	WELD	No	Yes	198	150 to 350	Abandoned guard shack
2009	1774783	WELD	No	No	199	150 to 350	Cement service building
2011	400118102	YUMA	No	Yes	199	150 to 350	Steel barn



Annual Well Starts by County as of December 1, 2015

County	2000	2001	2002	2003	2004	2005	2006	2007	2008	2009	2010	2011	2012	2013	2014	2015
ADAMS	18	13	4	19	22	24	13	41	14	14	21	1	15	6	30	4
ARAPAHOE					6	1	5	2	1	1	3	9	9	25	21	
ARCHULETA	4	4	2	5	4	10	5	7	29	9	12	10	11		1	3
BACA	19	6	2	1	6	6	2	6	12		5	4	2	1		1
BENT	2				3	2	8	1	1			1	2			
BOULDER				2	5	11	9	14	25	16	13	7	14			
BROOMFIELD			2		1				10		21	11	5			
CHEYENNE	2	1	3	3		9	14	15	14	8	12	11	17	35	19	3
COSTILLA																
CROWLEY																2
DELTA				5	4	6	5	2			9	2	3			
DENVER		2					7	5	4							
DOLORES					2		2	13	6	2		1	5	10	4	
EAGLE														1		
EL PASO											2		5		1	
ELBERT	2					1										2
FREMONT					1	3	2	2	5	3	10	16	8	1	4	1
GARFIELD	190	251	245	417	585	799	1,005	1,304	1,689	765	905	878	495	391	362	164
GUNNISON			1		1	1	9	5	1	4	5	2	4	1	2	2
HUERFANO	25	14	19	3	6	2			2		2		2	1	4	1
JACKSON	24	2	4	10	10		3	3	12	1	8	7		7	6	
JEFFERSON								2								
KIOWA	8	16	2	4	2	1	7	7	2	5	15	14	10	12	3	2
KIT CARSON				1	1	6	2	1	14	3	1	1	3	1	2	
LA PLATA	99	135	118	110	103	104	108	179	199	131	67	54	3	10	36	31
LARIMER	1	1				1		4	8	1	28	2	10	4	1	9
LAS ANIMAS	202	286	205	221	296	384	413	326	222	14	7	78	1		1	
LINCOLN	2	2	1	5	2	2	1	2	18	11	14	21	23	42	41	11
LOGAN	4	6	3	3	2	11	12	12	3	7	3	9	13	4	6	
MESA	2	12	12	13	25	89	156	209	225	14	11	41	4	11	16	71
MOFFAT	18	23	25	28	19	40	60	42	26	18	15	33	25	27	3	6
MONTEZUMA	2	3	5	5	1	7	2	4	22	10	3	8	18	12	8	1
MONTROSE		3		2	1			1	2		1					
MORGAN	9	8	1	7	5	5	3	1	1	2	3	2	3	1	4	1
PARK												2				
PHILLIPS	1			6	10	11	4	35	18	2	42	130	48		9	
PROWERS	2	4	4		5	5	6	3	5	2	3	1				1
RIO BLANCO	51	82	47	83	92	95	107	95	204	118	107	72	53	37	42	17
RIO GRANDE														1		
ROUTT	5	12	1		1	6	3	2		2	1	2	4	2	2	
SAN MIGUEL	6	9	10	19	28	13	20	17	5	1	2	2			2	
SEDGWICK				1	2	1	1	5			3	8	3			
WASHINGTON	15	12	24	29	65	34	23	14	11	2	2	4	1	9	7	2
WELD	237	403	406	522	632	718	931	1,222	1,314	878	1,209	1,672	1,457	1,312	1,558	1,042
YUMA	42	162	108	106	144	597	593	445	336	27	213	106	16	13	39	
TOTAL	992	1,472	1,254	1,630	2,092	3,004	3,542	4,048	4,460	2,071	2,780	3,220	2,292	1,977	2,236	1,375

ALL COUNTIES





Active Wells by County and Status as of December 1, 2015

COUNTY	Drilling	Domestic	Injecting	Producing	Shut In	Temp Aband	Waiting on Completion	Active Storage	Total Active Wells
ADAMS	12		7	883	52	8	2	13	977
ARAPAHOE		1	2	148	8	9		43	211
ARCHULETA	2	5	1	101	17	13	6	1	146
BACA			16	119	31	5		55	226
BENT		1		29	7				37
BOULDER				301	12	1			314
BROOMFIELD				96					96
CHEYENNE	4		40	322	23	48	2		439
CROWLEY									
DELTA				4	13		1		18
DENVER			1	46	2		3		52
DOLORES	2		1	36	3	3	1		46
EL PASO	1	1				1			3
ELBERT	2			67	3	1			73
FREMONT	4	3		58	9	6			80
GARFIELD	193	5	43	10,583	104	77	25	1	11,031
GUNNISON	4		1	32	9	1	3		50
HUERFANO	2		1	35	4	6	1		49
JACKSON	1		30	111	38				180
JEFFERSON			2	1	1		1	1	6
KIOWA	1		10	106	10	2	2		131
KIT CARSON		1	2	12		3			18
LA PLATA	6	7	28	3,133	95	18	3	29	3,319
LARIMER	9	2	18	187	29	17	1		263
LAS ANIMAS		3	15	2,802	18	101	14	17	2,970
LINCOLN	16	1	7	93	14	7	1		139
LOGAN	10		16	113	43	29	3	10	224
MESA	57	1	6	889	88	15	23	9	1,088
MOFFAT	7		9	487	46	37	3		589
MONTEZUMA	2	2	6	121	35	12			178
MONTROSE						1			1
MORGAN	1		22	90	82	32		79	306
OURAY		2				1			3
PARK									
PHILLIPS			2	266	2	1	1		272
PITKIN								10	10
PROWERS	1			26	4				31
RIO BLANCO	24	3	293	2,305	175	89	14	2	2,905
ROUTT		2		33	7	3			45
SAN MIGUEL	1			109	15	4			129
SEDGWICK	2		1	14	3		2		22
WASHINGTON	7		24	402	30	7	3		473
WELD	959	1	47	21,276	324	44	34	3	22,688
YUMA	1	8	21	3,787	43	9	11	1	3,881
Totals	1,331	49	672	49,223	1,399	611	160	274	53,719

Note: The previously reported total of 4,569 shut-in wells as of October 1, 2015 had a typographical error; the correct total was 1,569.



Monthly Statistics as of December 1, 2015

Page 1 of 2

YEAR and MONTH	Baker - Hughes Rig Count	Permits										Well Spud Notices	Active			Public Visits		
		Drilling		Recompletion		Injection		Pits		Locations			Drilling Permits	Active Wells	Data	Office	Internet	
		Rcvd	Apvd	Rcvd	Apvd	Rcvd	Apvd	Rcvd	Apvd	Rcvd	Authz							
2011 TOTAL		4,709	4,659	325	320	44	32	190	192	2,382	2,267	3,220			187	1,294	1,337,865	
2012 JAN	73	372	258	26	21	3	0	11	5	142	129	243	5,217	46,958	12	106	112,686	
FEB	70	370	382	23	27	7	5	21	9	160	129	230	5,173	47,128	16	114	105,857	
MAR	66	292	347	21	14	2	2	17	24	133	172	292	5,132	47,263	26	138	111,746	
APR	66	410	235	16	24	5	5	9	2	137	106	241	4,785	47,377	12	108	107,627	
MAY	66	491	506	23	16	3	1	6	2	105	131	211	4,885	47,533	20	123	109,802	
JUN	69	326	377	11	19	8	6	5	8	110	89	145	5,136	47,860	11	111	108,849	
JUL	66	237	276	9	14	3	2	5	2	97	103	183	5,152	48,173	13	102	114,195	
AUG	62	313	288	6	9	6	4	23	5	83	97	178	5,031	49,153	11	112	110,908	
SEP	61	252	256	1	5	5	2	4	1	81	77	161	4,960	49,230	11	89	106,114	
OCT	62	326	265	9	3	7	6	2	19	94	82	161	5,009	49,236	8	105	108,833	
NOV	56	271	323	5	8	6	6	2	4	109	97	142	5,000	49,989	10	119	120,586	
DEC	57	322	260	4	8	8	5	9	3	122	81	105	5,081	50,067	9	78	107,240	
2012 TOTAL		3,982	3,773	154	168	63	44	114	84	1,373	1,293	2,292			159	1,305	1,324,443	
2013 JAN	53	538	331	6	0	3	5	6	8	176	124	142	5,060	50,265	9	108	47,406	
FEB	56	260	455	10	5	2	3	4	11	91	141	138	5,250	50,372	7	102	40,649	
MAR	57	344	241	5	9	3	8	15	6	129	84	172	5,093	50,540	9	133	43,019	
APR	61	331	333	6	5	5	5	6	8	146	117	165	4,925	50,687	3	132	46,459	
MAY	61	350	342	8	6	6	6	10	7	106	142	162	5,110	50,810	3	123	45,215	
JUN	62	349	273	2	8	8	8	5	3	114	85	143	5,273	50,909	8	122	41,015	
JUL	68	864	304	11	4	9	2	9	5	218	91	161	5,070	51,091	7	154	45,558	
AUG	69	232	291	6	4	3	2	4	1	35	76	206	5,200	51,255	20	130	44,722	
SEP	69	212	362	9	5	10	9	3	19	56	109	166	5,185	51,407	5	105	41,256	
OCT	72	319	376	5	9	7	5	1	8	67	88	237	4,967	51,598	5	135	45,151	
NOV	69	346	353	4	13	7	4	2	27	67	85	162	5,141	51,711	12	119	38,903	
DEC	64	336	367	2	4	4	6	2	3	63	71	123	5,129	51,737	4	93	32,381	
2013 TOTAL		4,481	4,028	74	72	67	63	67	106	1,268	1,213	1,977			92	1,456	511,734	
2014 JAN	62	278	232	3	2	3	4	14	8	90	43	177	4,926	51,840	1	90	46,150	
FEB	61	284	297	6	4	1	1	3	1	91	94	150	5,051	51,847	12	113	43,408	
MAR	62	367	329	4	6	7	1	6	6	110	88	181	4,997	51,952	16	140	46,620	
APR	63	276	317	2	3	2	5	8	3	89	99	170	4,897	52,060	11	188	45,558	
MAY	65	458	383	2	2	3	1	6	7	83	94	178	4,923	52,202	18	131	42,365	
JUN	67	429	377	3	0	6	7	5	2	134	92	223	4,924	52,337	10	156	42,518	
JUL	69	272	446	2	5	3	11	8	5	97	126	181	4,955	52,431	7	166	45,481	
AUG	73	376	259	4	3	4	4	3	4	111	87	219	5,060	52,582	8	145	42,431	
SEP	76	412	304	2	3	3	1	20	1	116	81	205	5,006	52,694	14	175	43,577	
OCT	76	459	371	3	2	9	2	4	6	93	109	189	4,827	52,785	19	138	46,030	
NOV	73	326	479	5	2	5	4	4	0	54	103	175	5,171	52,947	8	96	39,583	
DEC	69	286	397	1	2	2	7	1	2	45	99	188	5,236	53,054	6	144	37,964	
2014 TOTAL		4,223	4,191	37	34	48	48	82	45	1,113	1,115	2,236			130	1,682	521,685	
2015 JAN	64	349	316	3	1	2	9	3	1	60	43	188	5,060	53,195	17	114	41,502	
FEB	49	324	161	3	2	5	6	9	0	73	28	115	4,750	53,309	4	117	38,245	
MAR	38	246	294	1	6	1	5	7	5	44	70	159	4,983	53,414	6	146	42,513	
APR	37	194	165	3	1	2	5	1	2	46	37	95	4,854	53,456	1	125	39,559	
MAY	39	324	190	1	4	2	6	8	0	41	44	107	4,632	53,535	5	113	unavailable	
JUN	38	327	281	4	1	0	5	2	1	52	49	134	4,726	53,608	5	138	unavailable	
JUL	38	373	250	4	2	2	1	0	0	57	48	118	4,663	53,706	7	145	26,975	
AUG	37	289	300	2	6	3	0	5	5	32	46	119	4,847	53,766	2	109	30,674	
SEP	33	242	312	3	1	1	7	0	3	59	49	103	4,953	53,806	4	146	31,642	
OCT	30	372	223	2	2	3	1	1	0	54	51	105	4,694	53,898	12	119	33,199	
NOV	31	190	254	6	2	4	3	1	0	21	49	116	4,765	53,719	7	105	29,112	
2015 TOTAL		2,668	2,269	24	24	18	44	35	17	464	414	1,138			51	1,153	251,110	

Abbreviation

Key:

Rcvd = Received, Apvd = Approved, Authz = Authorized



Oil and Gas Staff Report

December 7, 2015

25

Monthly Statistics as of December 1, 2015

Page 2 of 2

YEAR and MONTH	Well Oper Change	Operators		Bonds					Hearings			Enforcement			Remediation Projects		Inspections		
				Release		Claim		Apps.	Orders	NOAVs	AOCs	OFVs	Cmplt	Spills	Rcvd	Comp	Wells	Locations	
		New	Inactive	Ind	Blnt	Replace	Ind	Blnt											
2011 TOTAL	6,743	33	31	79	44	43	4	4	403	349	230	10	19	247	527	726	536	12,394	-
2012 JAN	1,052	3	3	7	5	1	1	0	70	72	18	1	-	27	35	68	23	998	970
FEB	385	6	9	8	5	0	0	0	-	-	10	-	-	24	40	85	36	2,000	1,024
MAR	379	4	1	7	3	9	0	0	44	38	19	-	-	23	38	63	61	2,202	1,146
APR	478	4	2	10	3	2	0	0	80	59	11	-	-	19	35	26	99	1,700	929
MAY	526	3	1	4	0	3	0	0	43	50	14	2	-	23	32	27	122	2,630	1,701
JUN	1,270	3	4	3	3	4	0	0	-	-	5	-	-	35	39	46	98	1,435	1,091
JUL	499	5	0	1	4	5	0	0	63	50	15	-	-	16	24	45	33	1,323	1,076
AUG	301	6	5	2	8	0	1	0	67	54	24	3	2	21	28	127	33	1,904	1,432
SEP	834	0	4	4	5	2	1	0	-	-	5	-	-	14	13	30	36	1,120	845
OCT	485	1	2	9	1	0	0	0	30	36	6	1	-	13	44	116	37	1,397	1,017
NOV	523	6	4	12	8	7	0	0	85	37	16	2	-	10	44	26	44	1,331	829
DEC	958	6	2	3	1	0	0	0	-	-	14	-	-	19	30	31	19	1,031	610
2012 TOTAL	7,690	47	37	70	46	33	3	0	482	396	157	9	2	244	402	690	641	19,071	12,670
2013 JAN	653	3	5	12	2	0	0	0	48	75	15	4	-	21	40	31	45	1,622	789
FEB	289	4	2	6	3	2	0	0	41	35	11	2	-	15	30	42	90	1,044	615
MAR	354	1	3	2	2	1	0	0	54	67	16	2	-	11	25	65	29	1,968	1,149
APR	333	7	1	5	2	8	0	0	-	-	21	-	-	16	33	39	37	1,510	910
MAY	346	2	1	3	0	0	0	0	46	50	22	6	-	13	31	41	60	2,621	1,576
JUN	1,456	6	2	2	4	5	0	0	91	44	13	2	-	25	40	47	37	1,860	1,102
JUL	1,009	4	1	2	2	0	0	0	96	70	25	3	-	21	47	50	22	2,298	1,338
AUG	389	6	4	5	4	2	0	0	-	-	23	-	-	25	57	36	41	2,146	1,033
SEP	277	4	1	6	1	0	0	0	101	51	7	2	-	16	60	43	51	1,536	703
OCT	345	6	0	2	2	2	0	0	52	82	4	12	3	12	79	47	60	1,868	1,158
NOV	442	2	0	2	2	0	0	0	-	-	30	-	-	12	51	31	34	2,401	1,613
DEC	1,299	4	1	1	2	0	0	0	42	48	50	4	-	14	75	35	35	2,677	1,384
2013 TOTAL	7,192	49	21	48	26	20	0	0	571	522	237	37	3	201	568	507	541	23,551	13,370
2014 JAN	1,971	6	3	3	2	0	0	0	57	46	25	2	-	8	72	46	28	3,243	1,597
FEB	2,038	8	2	6	5	0	0	0	-	-	23	-	-	17	65	51	13	2,330	1,282
MAR	493	2	3	1	5	0	0	0	97	75	29	10	-	22	64	66	31	1,822	1,298
APR	313	5	2	6	4	1	0	0	74	64	17	8	1	20	66	47	59	2,651	1,715
MAY	509	5	1	3	3	5	0	0	-	-	12	-	-	13	78	50	42	2,437	1,571
JUN	1,011	5	2	7	4	1	0	1	95	90	14	6	1	16	74	44	50	3,209	1,717
JUL	336	2	1	5	3	1	0	0	96	96	11	6	-	12	64	60	59	3,071	1,536
AUG	452	6	1	2	4	0	0	0	-	-	8	-	-	31	63	32	58	2,788	1,682
SEP	378	4	1	1	2	0	0	0	73	63	13	7	1	18	63	39	50	2,587	1,616
OCT	886	8	1	0	2	0	1	0	80	75	12	3	1	13	78	78	36	3,886	1,914
NOV	475	2	4	8	4	5	0	0	-	-	6	-	-	15	72	27	59	3,156	1,458
DEC	1,402	1	1	0	2	0	0	0	126	89	9	1	-	58	91	56	17	3,028	1,596
2014 TOTAL	10,264	54	22	42	40	13	1	1	698	598	179	43	4	243	850	596	502	34,208	18,982
2015 JAN	700	2	3	2	3	0	0	0	76	64	15	2	1	36	82	38	58	2,491	1,246
FEB	556	5	2	2	3	1	0	0	-	-	10	-	-	22	43	34	64	2,667	1,382
MAR	177	5	2	5	2	4	2	0	72	72	33	1	1	42	72	60	93	3,469	1,738
APR	266	7	1	0	5	3	0	0	60	54	19	3	-	21	53	40	60	3,451	1,620
MAY	279	8	0	0	2	3	0	0	89	54	10	10	2	25	55	56	41	2,869	1,422
JUN	309	2	1	3	5	4	0	0	-	-	27	-	-	25	42	32	43	3,357	1,707
JUL	342	3	2	0	5	1	0	0	123	140	5	13	1	32	74	46	26	3,444	1,773
AUG	167	8	2	0	7	4	0	0	-	-	13	-	-	18	49	18	61	3,690	1,845
SEP	203	6	5	1	7	4	0	2	112	78	25	11	-	30	48	39	38	2,874	1,526
OCT	99	4	1	6	1	6	1	0	115	103	6	12	1	32	60	45	33	3,413	1,491
NOV	1	2	3	5	0	0	0	1	-	-	6	-	-	15	45	32	40	3,122	1,514
2015 TOTAL	2,999	46	18	13	39	24	2	2	532	462	157	40	5	251	518	363	484	28,312	14,259

Abbreviation Key: Ind = Individual, Blnt = Blanket, Apps = Application for Hearing, NOAV = Notice of Alleged Violation, AOC = Administrative Order of Consent, OFV = Order Finding Violation, Cmplt = Complaint, Comp = Completed