



Staff Report

January 27, 2014

TOP STORIES

◆ Update on Colorado Flood Response

The Colorado Oil and Gas Conservation Commission continues its vigorous response to the September 2013 floods along the Front Range of Colorado. It continues to support the oil and gas industry's recovery in flooded areas. It also continues to oversee the full cleanup of oil and gas materials spilled by the flood waters.

In anticipation of the floods, more than 2650 wells were shut-in by the industry and taken out of production. As of January 9, 2014, 82 percent of these wells are back in production.

Commission inspectors and engineers have completed a full inspection or evaluation of every well in the areas most affected by the flood waters. This has been a large and complex task. The Commission has completed more than 3100 individual inspections and evaluations related to the floods. These inspections and evaluations mean that Commission personnel have visited and examined every well and tank battery in the flood's impact zone. For this reason, the Commission staff is confident that it understands the impacts of the September floods upon the oil and gas industry and the Commission's work.

The cleanup and safe repair of oil and gas facilities damaged by flood waters and debris continues under close Commission oversight. Forty-three oil and gas facilities experienced spills of oil and gas materials in volumes requiring reporting to the Commission. Each of these spill sites was rapidly cleaned of any visible residues of spillage. Indeed, flood waters washed away spilled materials in most instances and left no visible residue. Operators are now testing and sampling to assure that no other residues remain, and they will report to the Commission the results of that cleanup work. The Commission will then confirm the cleanup to be complete. Cleanup at one such site has been fully completed.

The Commission expects fully completed cleanups at the great majority of these 43 sites over the next few months.

Finally, the Commission is organizing a workshop to discuss "Lessons Learned" from the September floods. The public and all interested persons will be invited to participate. These lessons will translate into better and more resilient oil and gas operations across Colorado.

For additional details on COGCC's flood response efforts, please refer to the previous Staff Reports (available online at www.cogcc.state.co.us). Links to recommendations for the public, and requirements for operators on dealing with flood-impacted facilities are available under the HOT TOPICS banner on the website.

◆ Buffer Zone Move-In, Rig-Up Notice Policy Effective February 1, 2014

An important element of the "Setback Rules" is the notification of Building Unit owners in close proximity to proposed Oil and Gas Operations. However, due to certain regulatory and operational circumstances, there are instances when a Building Unit owner in the Buffer Zone may not be notified in meaningful, beneficial timeframe, or may not be notified at all. Therefore, in order to provide this important notice, the Operator will provide Move-In, Rig-Up (hereafter "MIRU") Notice to all Building Unit owners within the Buffer Zone when more than 1 year has elapsed since previous notice or since drilling activity last occurred, or if no notice had previously been required.

The Buffer Zone MIRU Notice shall be sent at least 30 days, but no more than 90 days, prior to the Move-In, Rig-Up of the drilling rig. The Operator may rely on the county assessor tax records to identify the persons entitled to receive this MIRU Notice. The requirement to provide the MIRU Notice may be waived in writing at any time by an affected Building Unit owner. The Op-



erator may request an exception to provide MIRU Notice less than 30 days prior to Move-In, Rig-Up of the drilling rig due to exigent circumstances.

This policy is effective for Drilling Rig Move-In, Rig-Up Operations on or after February 1, 2014. For information on the requirements for Notice or to review the Policy, go to the COGCC website under PUBLIC ANNOUNCEMENTS.

◆ **Draft Policy on the Use of Modular Large Volume Storage Tanks**

Modular Large Volume Storage Tanks (“MLVST”) are above-ground tanks typically comprised of a free-standing steel structure with a synthetic liner draped inside to hold fluid. MLVST are capable of storing up to 50,000 barrels or more of water for well completion and are being used in lieu of historic in-ground pits or multiple small volume tanks. The benefit to the use of these tanks include cost savings, time savings, and a reduction in trips needed for setup and breakdown.

This policy is being developed in response to the recent and increasing use of MLVST to hold large volumes of fresh water typically associated with new well completions and to provide guidance to Operators who utilize MLVST.

A stakeholder meeting was held on January 15, 2014 to discuss the use of the MLVST. To review the draft policy or for more information, go to the COGCC website at www.cogcc.state.co.us under HOT TOPICS.

◆ **E & P Waste Spill and Release Rulemaking**

The Amended Spill and Release reporting rules will go into effect on February 1, 2014. COGCC staff are in the process of finalizing the new Spill/Release eForm 19. The new eForm 19 should be ready for deployment in early February. A training session for Industry will be conducted at the COGCC office sometime in February. Once a date is selected for training, an announcement will be posted on the COGCC website.

◆ **Local Government Liaison (LGL) Program Update**

Local Government Liaisons (LGL) Nancy Prince and Marc Morton continue to provide valuable assistance and support to local governments, communities, non-governmental organizations, operators, and COGCC staff, with a main goal of continually enhancing communication and collaboration between all who are interested in issues concerning oil and gas in Colorado. The LGLs strive to provide fact-based information and guidance so as to avoid and minimize conflict, and create mutually acceptable solutions to issues associated with oil and gas development. As always, the LGLs are available to answer questions and provide information, data, and or presentations about specific aspects of oil and gas operations, or about COGCCs rules, policies, or its role as a regulatory agency within the Department of Natural Resources (DNR).

Since the last Staff Report, the LGLs have responded to numerous questions, inquiries and concerns regarding oil and gas issues in Colorado. The LGLs are members of the team that will train operators and local governments about the Executive Order-mandated NOAV process improvements. LGLs are also in the process of planning LGD training and community outreach events in 2014 and beyond.

Entities that LGLs have consulted with since the last staff report include citizens of Arapahoe County, University of Northern Colorado faculty, staff from Arapahoe County, Elbert County, and Garfield County, Huerfano County, Lincoln County and staff of the municipalities of Bayfield, Meade, and Windsor. In addition to responding to these entities and individuals, a list of the LGL outreach and public involvement activities conducted since the last staff report is included in the Public Outreach section of this Staff Report.

A list of the LGL outreach and public involvement activities conducted since the last staff report is included in the Public Outreach section listed on the next page.

Public Outreach

➤ **Outreach by Director and other Staff Members**

- On January 6, Director Matt Lepore was invited



by the Secretary of Energy Advisory Board to speak at the FracFocus Task Force public meeting in Washington, DC. Matt was part of a panel of state regulators to provide his perspective on FracFocus 2.0.

- On January 15, 2014, Field Inspections Manager Margaret Ash gave a presentation at the UNGI (Unconventional Natural Gas and Oil Institute)-Unconventional Gas Technology Engagement Program (UGTEP) International Training Program on Reducing the Foot Print of Oil and Gas Operations.
- On January 17, Matt Lepore attended the GORT meeting in Durango, CO.

➤ Outreach by COGCC Local Government Liaisons (LGLs)

- On December 13, 2013, Nancy Prince and Oil and Gas Location Assessment Supervisor Greg Deranleau attended a stakeholder's meeting in Weld County related to potential changes in Weld County USR process for large production facilities.
- On December 16, 2013, Nancy Prince attended Town of Limon Planning Commission meeting where proposed oil and gas regulations were approved to be presented to Town Council.
- On December 17, 2013, Nancy Prince attended Brighton City Council where the Council voted to postpone action on draft oil and gas regulations indefinitely to allow time to review potential areas of operational conflict and evaluate alternative ways to ensure protection of shallow groundwater resources.
- On December 18, 2013, Marc Morton joined staff from the non-profit organization Groundwork Denver, other volunteers, and cooperating agencies (BLM and City and County of Denver Department of Environmental Health), and assisted in conducting a proper functioning condition assessment of Lower Bear Creek. This work is part of a comprehensive watershed planning effort by Groundwork Denver for the E.coli impaired segment of Lower Bear Creek in Jefferson, Arapahoe, and Denver Counties.
- On January 2, 2014, Nancy Prince attended

Limon Town Trustee meeting where new regulations and operator memorandum of understanding were approved as presented by Planning Commission.

- On January 7, 2014, Marc Morton travelled to Grand Junction and participated in a well-attended stakeholder forum organized by the Colorado Energy Office and the Water Center at Colorado Mesa University. The forum topic concerned feasibility of and regulation concerning potential re-use of produced water from oil and gas development for other beneficial uses on the Western Slope. A "white paper" on the topic is anticipated as a result of the forum.
- On January 8, 2014, Nancy Prince attended the Aurora Oil and Gas Committee meeting facilitated by the Aurora LGD. Topics included an update on oil and gas activity and informational presentation on leasing and surface use agreements.
- On January 13, 2014, Hearings Unit Manager Robert Frick, Nancy Prince, and Marc Morton, met in Denver with Tim Aston, Arapahoe County's Colorado State University (CSU) Extension Director, to inform him of the regulatory role of COGCC, and explore potential public outreach and collaboration efforts with Arapahoe County and the CSU Extension program.

REGIONAL ACTIVITIES

➤ NORTHWEST COLORADO

◆ Northwest Colorado Oil and Gas Forum

The Forum is an informal gathering of local, state, and federal government officials, oil and gas industry representatives, and citizens that have met regularly since 1989. The purpose of the Forum is to share information about oil and gas development in northwest Colorado and to make government officials and oil and gas industry representatives easily accessible to the public. Currently, the meetings are conducted once per quarter and are co-chaired by the COGCC Director Matt Lepore and Garfield County Commissioner Mike Samson.



The next meeting of the Forum is tentatively scheduled for February 27, 2014 in Grand Junction, CO at a location to be determined. All parties wishing to be placed on the meeting agenda, or added to the distribution list for announcements, should contact Dave Andrews at: 970-625-2497 or via email at: david.andrews@state.co.us

- Project Rulison

Please note that the email for Project Rulison submittals has been changed to:

DNR_rulison.submittal@state.co.us

- Project Rio Blanco

Please note that the email for Project Rio Blanco submittals has been changed to:

DNR_rioblanco.submittal@state.co.us

- SOUTHWEST COLORADO

- ◆ Gas and Oil Regulatory Team (GORT) Meeting

The last GORT/Southwest Colorado Oil and Gas Stakeholders meeting occurred on Friday, January 17, 2014 from 8:30 a.m. to noon at the La Plata County Fairgrounds in Durango, Colorado.

The next GORT meeting is scheduled for Tuesday, May 6, 2014 from 8:30 a.m. to noon at the La Plata County Fairgrounds- Animas Room, 2500 Main Avenue, Durango, Colorado. All parties wishing to be placed on the next meeting agenda should contact Mark Weems at 970-259-4587 or to: mark.weems@state.co.us.

- ◆ Fruitland Formation Outcrop Mitigation and Monitoring Projects (4M Projects)

Fruitland Formation Outcrop - 4M Pilot Scale Mitigation Projects La Plata County. The South Fork Texas Creek (SFTC) system operated between 10.9 and 11.1 Kilowatts (kW) power generation and was functional 97% of the time for the period September 1, 2013 and October 3, 2013. Disruption to the local power grid as a result of thunderstorms caused the main breaker on the system to trip and shutdown on September 26, 2013. LTE was onsite the following day to reset the breaker and get the system running again.

An average of 5.9 kW per hour were returned to the grid during these periods. Pine River continues to operate in a passive mode. General O&M continues at both locations. The 4M Mitigation Operations & Maintenance Report (September 30, 2013) has been posted on the COGCC webpage under Library, San Juan Basin, 4M Project Reports.

4M Monitoring Wells La Plata and Archuleta Counties. There are 17 wells at 11 locations in the COGCC 4M monitoring program. Well pressures are monitored remotely via satellite telemetry with one or two maintenance visits per year, depending upon data received. Operations and maintenance (O&M) activities were conducted on September 30 and October 1, 2013 by COGCC and Norwest staff. In general, the locations held up well during the recent large storm events although several access roads were damaged. The upper transducer at Highway 151 #2 starting giving erratic readings in late June 2013 and ceased transmitting in late July 2013. There was no surface evidence of problems, indicating the transducer itself has probably failed. Erratic readings from the upper transducer at Wagon Gulch #2 were determined to be from a loose wire in the hub which was reconnected. Data now appear to be transmitting normally. Well-head leaks at South Fork Texas Creek #2 are still evident and require repair. Pending O&M activities includes the replacement of the upper transducer at Highway 151 #2 and a rebuild of the well-head at South Fork Texas Creek #2. In addition it is planned to swap out the Level Troll™ datalogger system at a Basin Creek well and install an Aqua-Troll™ to run an assessment if different monitoring technologies may provide more accurate water level information. The Beaver Creek locations continue to be inaccessible due to surface access issues and the BP Highlands location was not visited due to potential road damage and wet road issues. Both locations are currently reporting normally via the telemetry system.

Ongoing Investigation, Reclamation, and Mitigation of Residual Methane in the Vicinity of the Bryce 1-X Well Area, Bondad, Colorado Four domestic water wells were sampled at the Bondad location on October 2, 2013 by COGCC and Four Corners Geoscience (FCG) staff. A visual inspection of the water at all locations indicated the water looked much cleaner than during past sampling events. Free methane results ranged from 1.41 mg/l in the South well to 6.91 mg/l in the



North well. All methane results were lower than the April 2013 sampling results. Analytical and isotopic data are pending.

➤ SOUTHEAST COLORADO

◆ U.S. EPA Raton Basin Hydraulic Fracturing Study - Las Animas and Huerfano Counties

As part of the retrospective study of possible impacts from well completions, a third round of sampling and analysis of groundwater from two areas in the Raton Basin was conducted during the week of November 5, 2012. COGCC staff, as well as contractors for Pioneer Natural Resources, collected split samples at many of the sites. The EPA released an interim progress report on the study in December 2012. The EPA is expected to release the study in a draft for public and peer review in 2014. Ultimately, results from the study are intended to inform the public and provide policymakers at all levels with high-quality scientific knowledge that can be used in decision-making. For more information on the EPA hydraulic study, go to <http://www.epa.gov/hfstudy/>.

➤ VARIANCES

On December 9, 2013, approval was granted for a Rule 502.b Variance Request by QEP Energy Company ("QEP") to bypass the requirement to perform a mechanical integrity test ("MIT") on a well shut in longer than 30 days and instead choosing to plug and abandon their McElvain #1-25 gas well (API No. 05-067-05306) during the first quarter of 2014. The well is located in the NWNW of Section 25, Township 33 North, Range 8 West, 6th P.M. in La Plata County. In August 2013, QEP was informed by letter that the subject well had been inactive for longer than six months and needed to state the reason requesting an extension and state the plans for future operation under Rule 319.b (1) & (3). A Sundry Notice, Form 4, or other form approved by the Director, must be submitted annually stating the method the well is closed to the atmosphere and plans for future operation. QEP requested and was granted a variance in the requirement to perform an MIT and returning the well to production within 30 days; however, QEP decided to plug and abandon the well because of lack of

feasibility in retrieving parted tubing currently left in the well. By virtue of QEP submitting plans and designs to plug and abandon the well via Form 6 and receiving subsequent approval on November 25, 2013, QEP is complying with the intent of the rules in protecting shallow ground water resources. The operator reports there is no Bradenhead/surface casing pressure found in the well and that sufficient surface casing has been set and cemented in place to further assure protection of shallow ground water sources. The operator will attempt to retrieve the parted tubing at the time of plugging. One of the conditions of approval to plug and abandon the well is to pressure test the production casing, report the results and modify plugging procedures accordingly.

A Rule 502.b Variance from Rule 305.d was granted on December 13, 2013. Rule 305.d requires a 20-day comment period for APDs. Encana Oil and Gas, Inc. ("Encana") requested a variance be granted to approve the Form 2 for their Lutz 1A well (API No. 05-123-09422) in the SENW of Section 31, Township 1 North, Range 65 West, 6th P.M. in Weld County, without the comment period. Encana filed this APD to re-enter to replug the well quickly in order to commence their horizontal drilling program.

On January 9, 2014, a Variance Request by Marathon Oil Company OXY USA WTP LP ("Marathon") to the requirement set forth in Rule 902.e., requesting a variance from the requirement set forth in the 100-Series definitions that multi-well pits will be in use for no more than three years, was granted to Marathon for one location (Facility no. 433736) in Garfield County. Marathon will be allowed to operate the subject pit until March 3, 2014, by which time Marathon will either convert the pit to a Centralized Exploration and Production Waste Management Facility under an approved Form 28 or close the pit under an approved Form 27.

On January 9, 2014, a Variance Request by Marathon Oil Company OXY USA WTP LP ("Marathon") to the requirement set forth in Rule 908.b.(5).D., requiring Centralized Exploration and Production Facilities (E&P) "to have a fire lane of at least ten (10) feet in width around the active treatment areas and within the perimeter fence. In addition, a buffer zone of at least ten (10) feet shall be maintained within the perimeter



fire lane." was granted to Marathon (Operator no. 53650) for one location (Facility no. 433736) in Garfield County. The existing impoundment is in terrain that precludes the construction of both the required 10-foot fire lane and 10-foot buffer zone. The Grand Valley Fire Protection District has supplied Marathon a letter summarizing their site visit, indicating adequate access is provided to the pit without installing the required buffer and access road.

A Rule 502.b Variance from Rule 318A.m was granted to Synergy Resources Corporation ("Synergy") on January 21, 2014 for the approval of the Application to Drill the Union A-5CHZ well (API No. 05-123-37398), in the SWNW of Section 5, Township 2 North, Range 68 West, 6th P.M. in Weld County. Rule 318A.m requires an operator proposing a horizontal well to obtain a waiver from the operator of a well within 150 feet of the proposed horizontal wellbore. Synergy attempted, but was unable to obtain, a Rule 318A.m waiver from Encana Oil & Gas (USA) Inc. regarding their Pietrzak #1 (API No. 05-123-10241) located 65 feet from Synergy's proposed horizontal Union A-5CHZ well. Prior to drilling their horizontal well, Synergy will conduct a gyro survey in the Pietrzak #1 to accurately determine the subsurface location of this older vertical well. Synergy will not complete their horizontal well until any zonal isolation deficiencies in the Pietrzak #1 have been remediated.

➤ ORGANIZATION

New Underground Injection Control and Geologic Advisor

Robert (Bob) Koehler has been promoted to the position of Underground Injection Control and Geologic Advisor. Bob joined the Commission in 2006 as an Engineering Technician to start the MIT Compliance Program. Bob brings his 7 years of Commission experience, 26 years of geologic experience, and a PhD in Geology to his new role. His duties will be to lead the Underground Injection Control (UIC) program's permitting and EPA reporting. His geologic knowledge will allow him to conduct the geologic and seismic reviews which are a part of UIC permits. Bob will also be available to advise the engineering staff on the depth usea-

ble water which is needed for wellbore casing and cements designs.

New Engineering Technician

The Engineering Unit welcomes Andrew Stone, who is filling a vacancy as our new Engineering Technician. Andrew has a Bachelor's Degree in Astronomy from University of Colorado. His oil and gas industry experience includes work as a Well-Header Technician for TGS-NOPEC, a global company specializing in geophysical and geological data. Andrew spent the last four years compiling permitting information, digital well logs, and various data from drilling, cementing, formation evaluation, seismic, completions, and production data to evaluate wellbore configurations. Andrew's skills will assist during review of Drilling Completion and Well Abandonment Reports, Mechanical Integrity Tests and Bradenhead Pressure Tests.

New Environmental Protection Specialist

Stanley Spencer has joined the Environmental Group. Stan will be based out of the Rifle office filling the vacant Environmental Protection Specialist position. Beginning January 13, 2014, Stan will be working and training out of the Denver office prior to relocating to Rifle. Stan has a Bachelors of Science in Natural Resource Management with graduate studies and continuing education in remedial technology, hydrogeology, and risk assessment. Stan has over 20 years of technical expertise in petroleum contaminated soil and groundwater remediation, UST management, abandoned and active mine lands, hydrogeology and surface-water, geophysics, solid, hazardous, and radioactive waste sites.

New Financial Assurance Analyst

Debbie Lutz joined the Financial Assurance Group as an Analyst on January 2, 2014. Debbie has extensive work experience in the banking industry. Her most recent positions have been as a customer advocate in mortgage lending. She worked with the Credit Union of Colorado as a branch supervisor for 2 years. Previously, she worked at federal credit unions for 11 years as a member relations officer, senior loan officer, loan counselor, and member service representative. With her work experience, knowledge, and strengths Debbie will



make a significant contribution to the Financial Assurance Unit at the COGCC.

New Production Specialist

Crystal Santovena has been hired as a Production Specialist. Crystal worked as a contractor with the COGCC for the last four years while attending Red Rocks Community College. She has assisted in the public room with scanning, processing, document management and administrative support.

New Enforcement Officer

Jeremy Ferrin joins the COGCC after six years in private practice. During that time, he practiced in the area of natural resources law, including natural resources litigation and regulatory compliance, practicing almost exclusively in oil and gas matters. Prior to law school, Jeremy worked for an environment consulting firm in Salt Lake City handling environment compliance issues. Jeremy graduated from the University of Utah in 2001 with a B.S. degree in Environmental Studies and a minor in Economics. He received his J.D. degree in 2007 from the University of Denver Sturm College of Law.

An organizational chart can be found on pages 11-14. For contact information, please go to our homepage, and then "Staff Contact Information."

➤ PLANNING/ADMINISTRATION/OTHER

◆ Plugging and Reclaiming Abandoned Wells (PRAW) - Project Updates

The DB Orphan Blair #1 Project came into being when on July 7, 2013 a ditch rider discovered water flowing from the ground and discharging into an irrigation ditch located on the NW edge of DeBeque, CO in Mesa County. The COGCC was contacted on July 9 and because other orphaned oil and gas wells had been previously discovered and plugged by the COGCC, the COGCC assumed responsibility and had water samples gathered for lab analysis. Lab analysis indicated salty water which is indicative of oil and gas geologic sources. The ground around the water flow was dug up and the source of the leak was deter-

mined to be from a hole in a pipeline which was traced back to an old abandoned well that appears to have been drilled around 1902 based on old USGS reports. The salt water discharge into the ditch was terminated by sealing the well head and then disconnecting the pipeline. The COGCC has placed this well in the PRAW program with plans to re-enter and plug this winter or next spring. To date a plugging design and cost estimate has been completed along with other supporting documents. Plans next are to submit for bid solicitation and contractor selection.

The PAST Project includes three leaking plugged and abandoned wells that were re-entered and re-plugged and have been renamed the 2013 Piceance Re-entries Project to avoid confusion with other work. Two are located in Garfield County and one is in Mesa County. This work has been successfully completed this past July with a final cost of \$236,776. These sites need surface reclamation which will likely take place in the next fiscal or after July 1, 2014.

The Pasture #1 Project involves the final abandonment of the well which includes cutting the casing off three feet below ground level and installing a well marker and sign. The final abandonment was pending the successful bleed off of residual gas pockets occurring after the plugging work.

The Debeque Environmental and Reclamation Project, involves the remediation and reclamation of soils contaminated by salt water in the vicinity of the orphaned wells known as the Homestead #2 and the Pasture #1 wells. Both sites are located in Mesa County on the NW edge of DeBeque, CO. Soil sampling and lab analysis has been completed on both well sites. With updated preliminary costs, it appears that only the Homestead #2 will have both remedial and reclamation work completed this fiscal year (July 1, 2013 thru June 30, 2014). Designs are to be completed in late February with plans to have the actual work completed April 30, 2014. Monitoring wells are to be installed with subsequent sampling and testing to verify success of the work. The Pasture #1 will likely have to be carried forward after July 1, 2014.

Biscuit Pad Remediation Project includes two



well pads and the two respective access roads where they are currently located in an active irrigated hayfield. The goal is reclaim and return the lands back to agricultural purposes. This project is located in Garfield County near the NE border of the town of Rifle and east Highway 13. The lowest bid from the list of qualified contractors came in at \$143,000 and the work had been awarded to Tally Ho Construction, Inc. Tally Ho facilities and offices are headquartered in Rifle, CO. On October 15, Tally Ho Construction commenced mobilization of equipment, personnel and supplies to the project and has completed approximately 30 percent of the project when comparing the cumulative expenditures made to date to the contract amount of \$143,000. Work has resumed with improved ground conditions from an earlier winter storm. Most efforts are currently being focused on the north pad including excavating fill and hauling it to the designated north fill area.

The Tatonka Reclamation Project includes three well pads located in Moffat County with two well pads being on the Culverwell property that can be found approximately 20 miles west of Craig, CO and a couple of miles north of Hwy 40 with another well pad and pit being located on the Gerber property and found four miles west of Craig and three miles north of Hwy 40. A contractor has provided a documented quote and price to reclaim the mud reserve pit on the Gerber pad. A purchase order not to exceed \$25,000 has been approved.

The Gentry Project is located in Rio Blanco County and includes 10 sites with eight wells and two pits that can be found approximately a half mile west of Rangely, CO and one and a half miles south of Hwy 64. The landowner has plans to do some land development and brought the matter to the attention of the COGCC.

Page 14 contains a spreadsheet listing PRAW projects that are either scheduled in process or completed as of January 22, 2014.

March 2014 Hearing Docket

A docket for the March 2014 hearing will be available shortly after the January hearing. Hearing dockets are available on our website by clicking

on "Hearings." Links to the notices and hearing applications are available from the Docket Number and Applicant, respectively. To sign up for e-mail notification of hearing notices and applications, please see the announcement and instructions on the homepage of the COGCC website: www.cogcc.state.co.us

➤ Colorado Oil and Gas Information System (COGIS) Projects, Updates and Changes

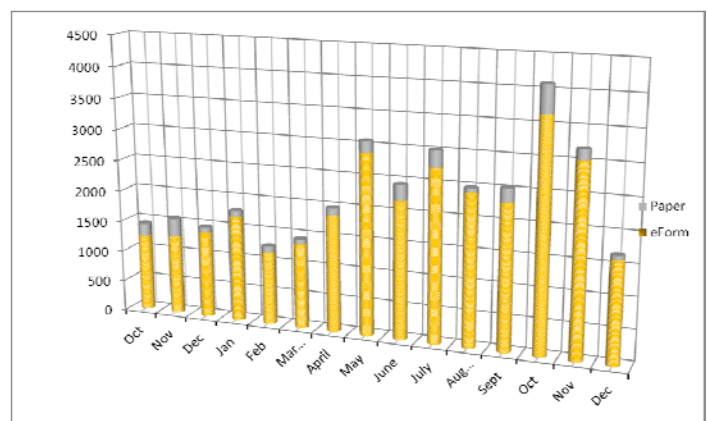
Environmental Database

During the past 18 months, the COGCC and the Ground Water Protection Council (GWPC) have been working together to develop a new Environmental Database that will contain the results from the Colorado Oil and Gas Association Voluntary Baseline Groundwater Quality Sampling program, along with other environmental data collected by the agency. The project included the development of a new relational database model that will allow the data to be accessible to the public from the COGCC website.

Other improvements include an Electronic Data Deliverable that allows industry to submit the results of the sampling directly to the COGCC, which can then process the information directly into the database. The application has many other features to help staff analyze the information and understand the lab results from the sampling. The interface will allow the public to view and download the results.

Electronic Form Submissions (eForm)

TOTAL ELECTRONIC FORM SUBMITTALS
OCTOBER 2012 - DECEMBER 2013
Forms currently available through eForm:

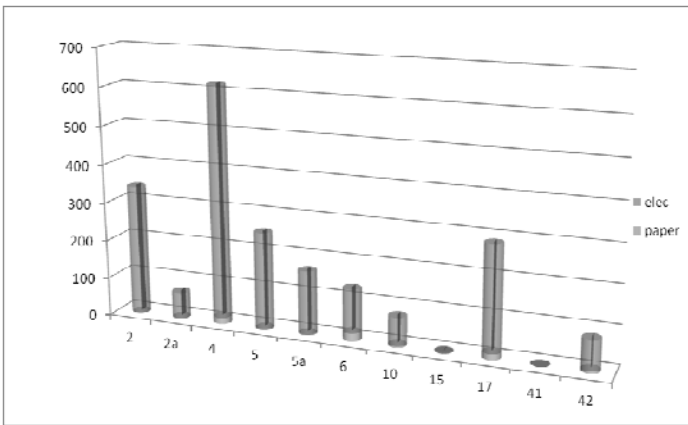




- Form 2 - Application for Permit to Drill
- Form 2A - Oil and Gas Location Assessment
- Form 4 - Sundry Notice
- Form 5 - Drilling Completion Report
- Form 5A - Completed Interval Report
- Form 6 - Well Abandonment Report
- Form 10 - Certification of Clearance/Change of Operator
- Form 15 - Earthen Pit Report/Permit
- Form 17 - Bradenhead Test Report
- Form 41 - Trade Secret Claim of Entitlement
- Form 42 - Notice of Notification (Notice of Hydraulic Fracturing)

Following is a breakdown by Form for the month of December 2013:

Revisions to Forms 2 and 2A



The revised Form 2 and 2A were released on August 5. The forms have been revised to accommodate the additional information required by the new Rules that were effective August 1, 2013. Staff took this opportunity to make some long-needed improvements to both forms.

The Form 4, Sundry Notice went live in eForm on April 30, and has become one of the fastest forms to achieve over an 80% usage within the electronic portal. With the addition to the suite of forms now available in eForms, processing of the Sundry can now be faster and more efficient

COGCC staff is available to answer questions as needed for either the new eForm 4 or for the revised paper Form 4.

The development team has now turned its atten-

tion to the Form 19 the Spill Report. The forms are in final staff testing. The form is anticipated for release in early February.

Form 15, Pit Permit and Report, is available in eForm and operators are encouraged to utilize the system to file this form. The form contains additional fields. The PDF version on the Forms page, <http://cogcc.state.co.us/Forms/forms.html>, is revised to reflect the changes that occurred from the release of the form in eForm.

As forms are released on eForm, updates to the PDF forms on our website will occur in tandem. These new versions of the PDF forms will reflect any changes that have taken place when forms are moved into eForm.

Along with the eForm system, a page is available where the operators can review all known bugs within the system and report any new ones they discover. Currently, there are 305 operators using eForm.

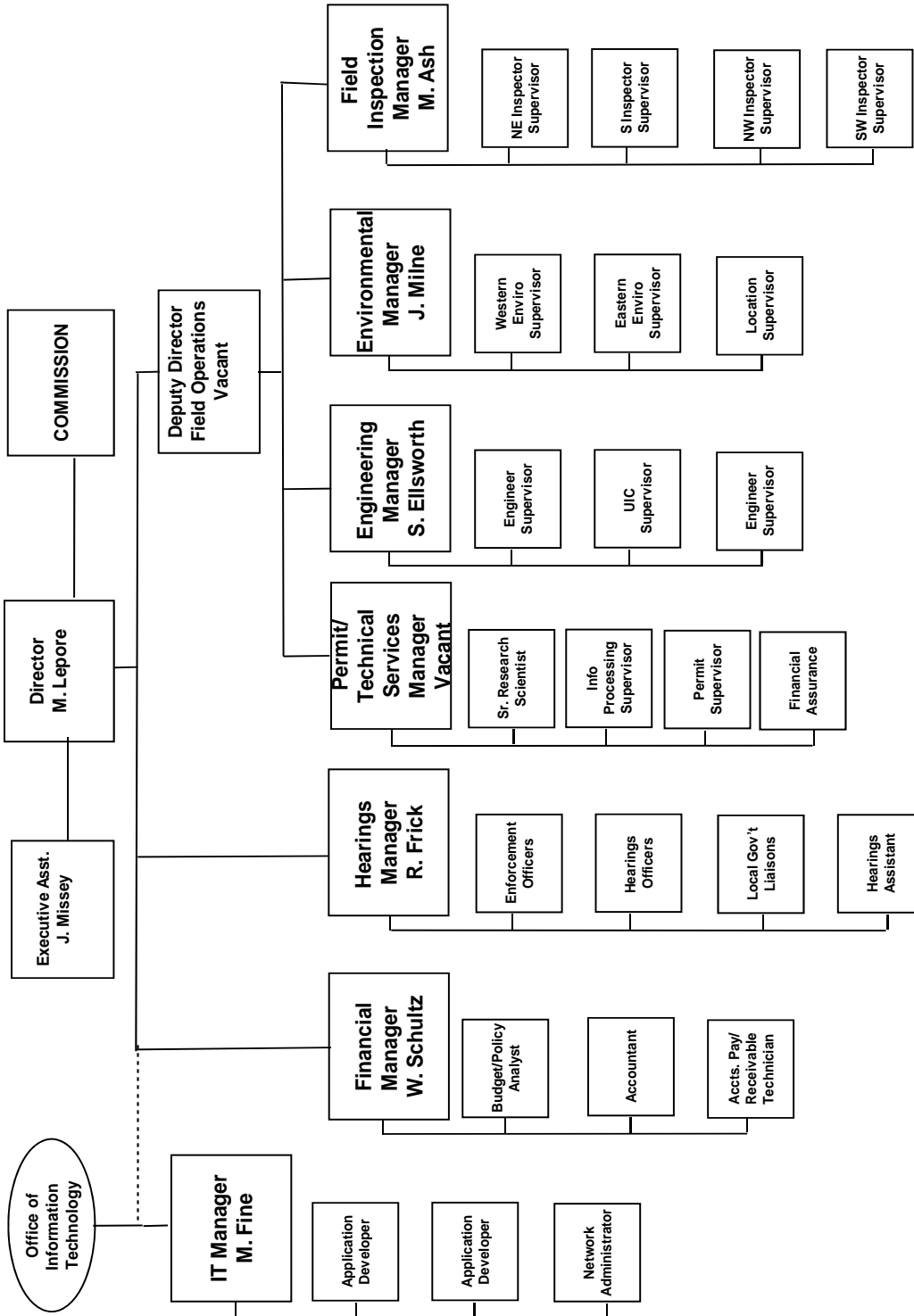
The public can make comments on all submitted Oil and Gas Location Assessment (OGLA) forms (Forms 2A) through the eForm system. This is accomplished by going to the COGCC website (<http://www.colorado.gov/cogcc>) and clicking on the menu option, "Permits", (or <http://cogcc.state.co.us/COGIS/DrillingPermits.asp>).

On the COGIS-Permits page, two search options are available for OGLA forms, "All Pending Location Assessments for" and "All Approved Location Assessments for." When the results are displayed for forms in process, the public can click on the document number, which logs the user onto the new eForm application. Once the page is displayed with the selected document, the user can select the Comment button to make a comment on that particular form. The public can use his same method to make comments on APDs (Form 2s).

For any operator not currently enrolled in eForm, instructions for starting the process can be found at <http://cogcc.state.co.us/Announcements/COUAINformation.pdf>.



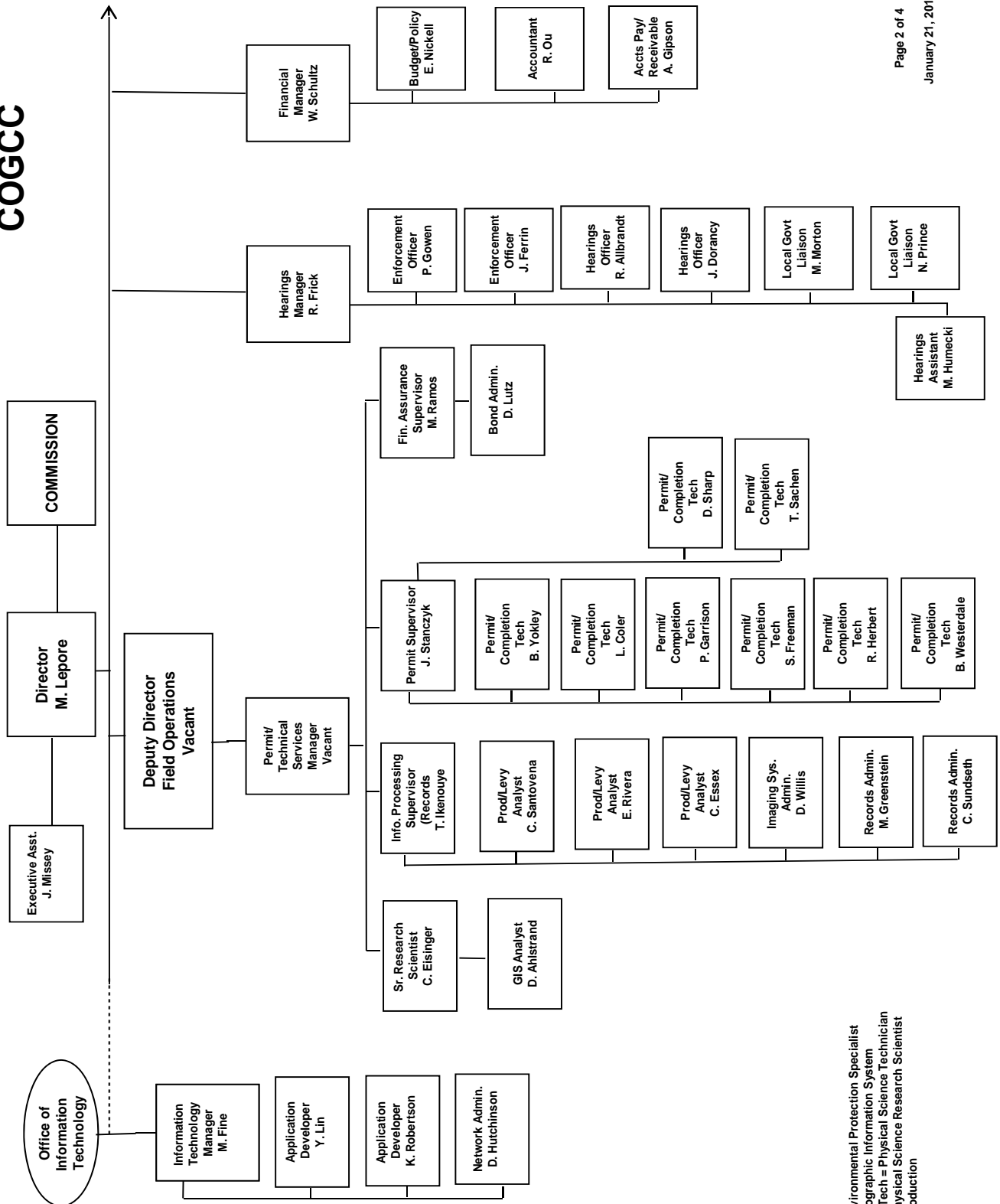
COLORADO OIL & GAS CONSERVATION COMMISSION



See the next three pages for details



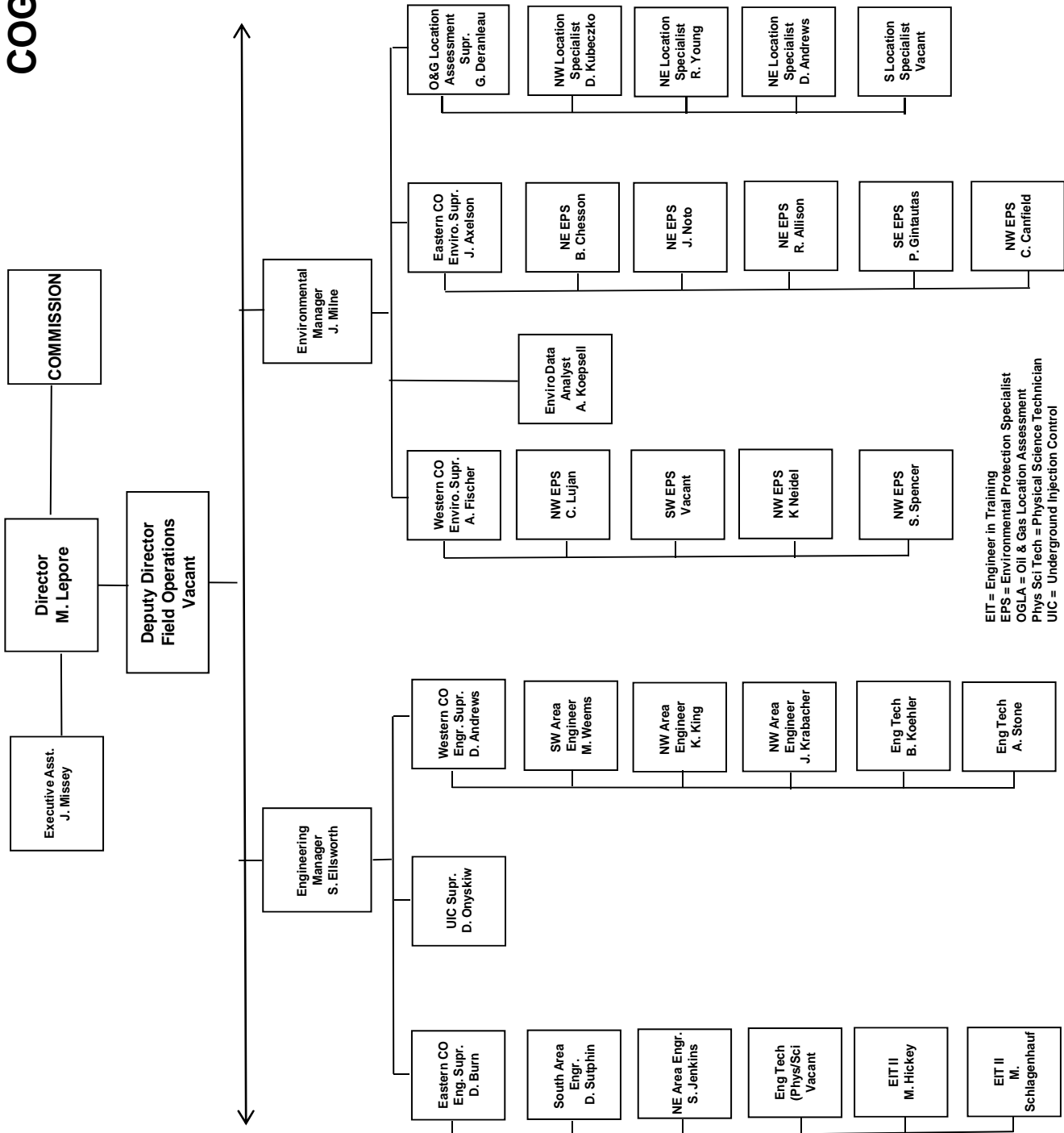
COGCC



EPS = Environmental Protection Specialist
 GIS = Geographic Information System
 Phys/Sci Tech = Physical Science Technician
 PSRS = Physical Science Research Scientist
 Prod = Production



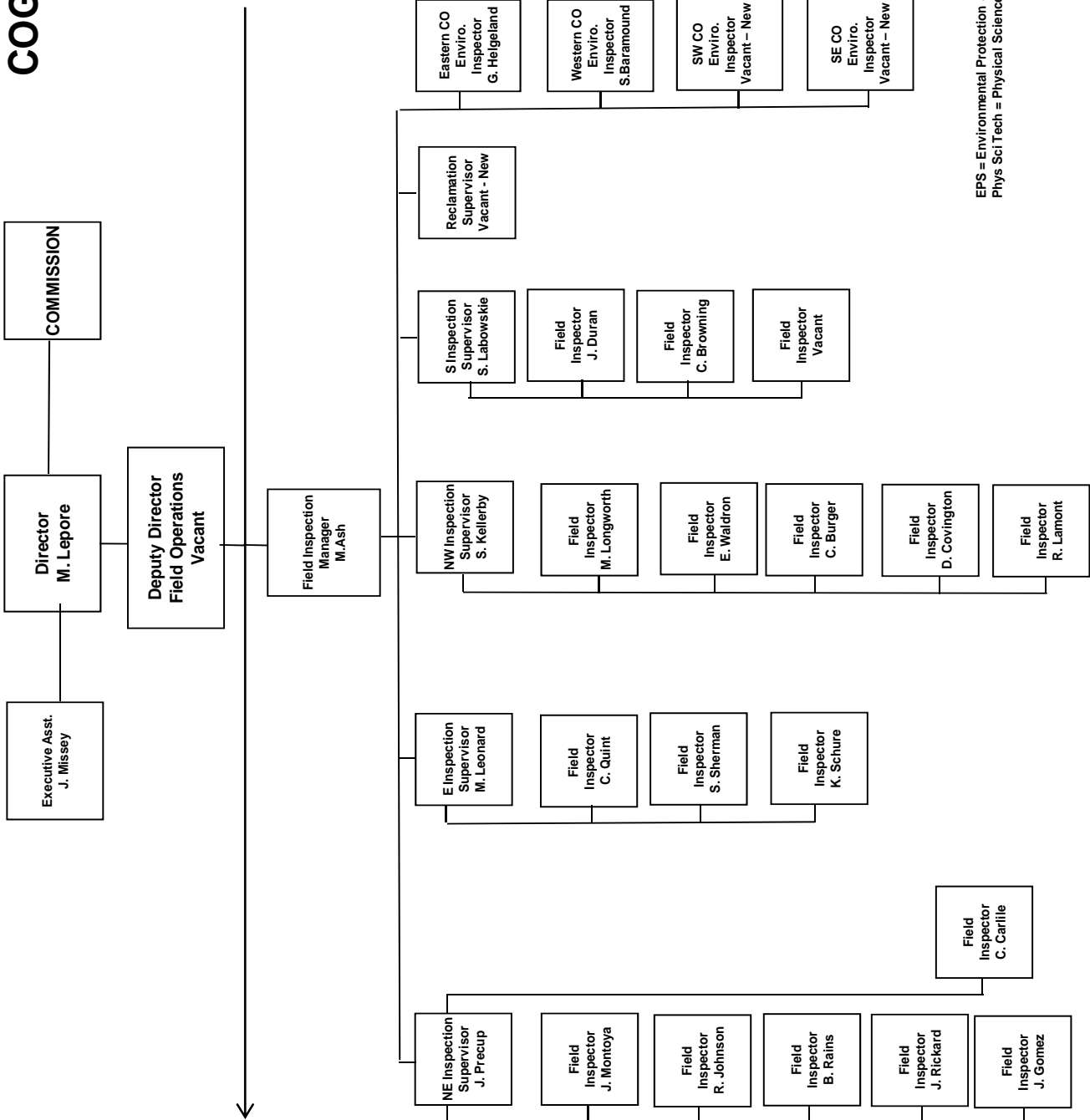
COGCC



EIT = Engineer in Training
 EPS = Environmental Protection Specialist
 OGLA = Oil & Gas Location Assessment
 Phys Sci Tech = Physical Science Technician
 UIC = Underground Injection Control



COGCC



EPS = Environmental Protection Specialist
Phys Sci Tech = Physical Science Technician



PLUGGING, AND RECLAIMING ABANDONED WELLS PROJECTS FOR ORPHANED LOCATIONS FISCAL YEAR 2013-2014													
COUNTY	TYPE	PROJECT NAME	Acct Code	ESTIMATED TOTAL PROJECT COST			FY 2013-2014 YTD EXPENDITURES			DESCRIPTION			
				BOND	PRAW	EMGY	TOTALS	BOND	PRAW		EMGY	TOTALS	
MESA	PA	Pasture #1	HSTD	\$0	\$5,000	\$0	\$5,000	\$0	\$0	\$0	\$0	Leak has stopped: will cut off casing and install PA marker and repair the gate to the location	
Rio Blanco	Plugging	Gentry	GENT	\$0	\$30,000	\$0	\$30,000	\$0	0	\$0	\$0	Plug and abandon	
Rio Blanco	Soils	Gentry	GENT	\$0	\$25,000	\$0	\$25,000	\$0	\$0	\$0	\$0	Contaminated soils to be remediated	
TOTALS =>				\$0	\$60,000	\$0	\$60,000	\$0	\$0	\$0	\$0		
IN PROGRESS													
Mesa	Plugging	DeBeque Water Flow	DEB1	\$0	\$61,728	\$0	\$61,728	\$0	\$1,728	\$0	\$1,728	Cap well and stop water flow; Re-enter; PA	
Garfield	Remediation	Biscuit Pad	DOLP	\$15,926	\$127,074	\$0	\$143,000	\$15,926	\$46,342	\$0	\$62,268	Two well pads and two access roads: South Pad dirt work mostly complete, still need to till in soil amendments and drill seeds North Pad dirtwork is current focus: work halted w/o better weather and ground conditions (6' in snow on grd)	
MESA	REC/ENV	DeBeque-HOMESTEAD #2 & PASTURE #1 SALT REMEDIATION, RECLAMATION, & SOIL GAS SURVEYS	HSTD	\$0	\$90,000	\$0	\$90,000	\$0	\$3,076	\$0	\$3,076	Two sites: only the Homestead #2 to be done this fiscal year. To incl. salt remediation, topsoil amendments/spreading, seeding, and soil gas surveys near plugged and abandonment wells.	
MOFFAT	REC	TATONKA; CULVERWELL 10-23-07-94 GERBER 07-24-07-92	TATO	\$0	\$35,000	\$0	\$35,000	\$0	\$641	\$0	\$0	Reclaim Three (3) well sites: Gerber well site and pit Culverwell 1-site w/ two conductor casings Culverwell 2nd-site w/ beginnings of pad scape off	
TOTALS =>				\$15,926	\$273,802	\$0	\$254,728	\$15,926	\$51,787	\$0	\$67,072		
COMPLETED													
MESA/Garfield	PLUG	2013 Piceance Re-entries	PICE	\$0	\$97,287	\$0	\$97,287	\$0	\$150,886	\$0	\$150,886	Plugging three wells	
TOTALS =>				\$0	\$97,287	\$0	\$97,287	\$0	\$150,886	\$0	\$150,886		
GRAND TOTALS =>													
ESTIMATED TOTAL PROJECT COSTS				BOND	PRAW	EMGY	TOTALS	BOND	PRAW	EMGY	TOTALS		
BOND				\$15,926	\$431,089	\$0	\$442,015	\$15,926	\$202,673	\$0	\$217,958		

BISCUIT RANCH RECLAMATION DESIGN The original bond amount was \$25,000. \$9074 were spent in FYE2013 for the design work supervised my Mike Hickey. The balance of \$15,296 will be carried forward to FYE2014. Includes well site for the Biscuit Ranch Mulvihill 15-32 D & Biscuit Ranch 10-31 D

Project Types: "PLUG" indicates plugging and abandonment, "REC" indicates reclamation, and "ENV" indicates environmental

EMGY: indicates funding by the Emergency Response line item

TBD: Cost estimates in process.

PRAW: indicates funding by the Plugging and Reclaiming Abandoned Wells line item

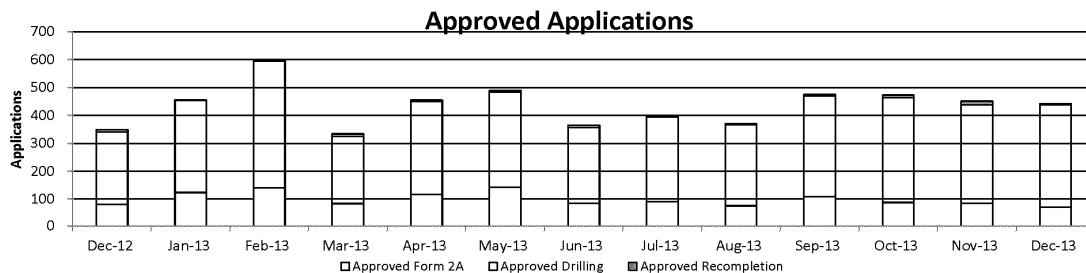
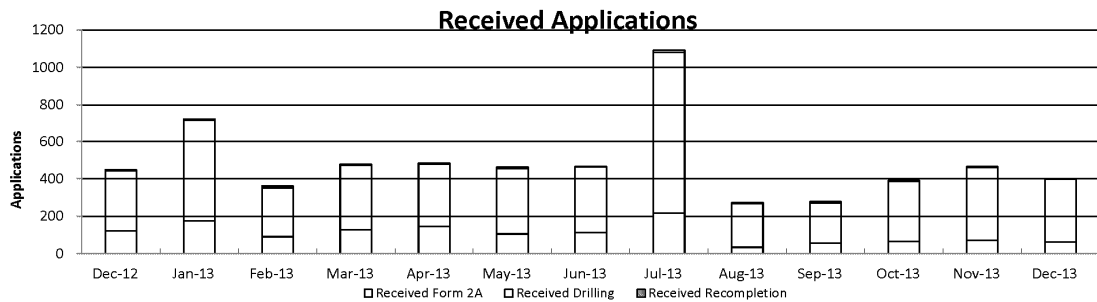
Revised 01/22/2014 mew



Colorado Oil & Gas Conservation Commission Monthly Permit Activity

	Backlog	Received	Approved	Withdrawn	Rejected	Incomplete	In-Process	Remaining
Form2A								
Dec-12	140	122	81	4	0	35	124	177
Jan-13	177	176	124	12	0	34	183	217
Feb-13	217	91	141	8	0	34	125	159
Mar-13	159	129	84	1	0	33	170	203
Apr-13	203	146	117	7	0	40	185	225
May-13	225	106	142	4	0	37	148	185
Jun-13	185	114	85	7	0	41	166	207
Jul-13	207	218	91	15	0	34	285	319
Aug-13	319	35	76	0	0	47	231	278
Sep-13	278	56	109	0	0	68	157	225
Oct-13	225	67	88	6	0	69	129	198
Nov-13	198	72	85	6	0	57	122	179
Dec-13	179	63	71	6	0	57	108	165
Drilling								
Dec-12	304	322	260	9	0	77	280	357
Jan-13	357	538	331	19	0	101	444	545
Feb-13	545	260	455	16	0	58	276	334
Mar-13	334	344	241	4	0	46	387	433
Apr-13	433	332	333	2	0	79	351	430
May-13	430	350	342	31	0	45	362	407
Jun-13	407	349	272	18	0	57	409	466
Jul-13	466	863	304	14	0	65	946	1011
Aug-13	1011	232	291	3	0	160	789	949
Sep-13	949	214	361	2	0	160	640	800
Oct-13	800	320	376	12	0	115	617	732
Nov-13	732	389	353	10	0	88	670	758
Dec-13	758	336	367	7	0	110	610	720
Recompletion								
Dec-12	5	4	8	1	0	0	0	0
Jan-13	0	6	0	0	0	0	4	6
Feb-13	6	10	5	0	0	0	11	11
Mar-13	11	5	9	0	0	1	6	7
Apr-13	7	6	5	0	0	2	6	8
May-13	8	8	6	0	0	0	10	10
Jun-13	10	2	8	0	0	0	4	4
Jul-13	4	11	4	0	0	0	11	11
Aug-13	11	6	4	0	0	0	13	13
Sep-13	13	9	5	0	0	0	17	17
Oct-13	17	5	9	0	0	0	12	13
Nov-13	13	4	13	0	0	0	4	4
Dec-13	4	2	4	0	0	0	2	2

Incomplete are permits that have missing or inaccurate data and cannot be approved.



Backlog = Incomplete + In-process = Remaining permits from previous month



Colorado Oil and Gas Conservation Commission
Status of Permit Applications Filed By Month
January 7, 2014

Form 2A Location Assessment

Year	Month	Received	Approved	Withdrawn	In Process	Percent In Process	Median Days to Process	Less Than 30 Days	30 to 49 Days	Greater Than 50 Days
2010	Total	2520	2433	85	0			1559	662	212
2011	Total	2391	2298	91	2	0%		1416	620	262
2012	Total	1359	1288	68	3	0%		706	378	204
2013	1	177	163	12	2	1%	35	99	45	19
2013	2	91	83	8	0	0%	34	42	29	12
2013	3	131	122	9	0	0%	51	41	46	35
2013	4	150	141	7	2	1%	40	47	69	25
2013	5	105	100	4	1	1%	42	47	32	21
2013	6	107	85	2	20	19%	40	28	41	16
2013	7	204	190	2	12	6%	63	11	71	108
2013	8	58	54	2	2	3%	58	7	18	29
2013	9	56	48	0	8	14%	44	13	18	17
2013	10	63	52	2	9	14%	42	12	24	16
2013	11	76	48	4	24	32%	35	18	24	6
2013	12	68	3	0	65	96%	26	3	0	0
2013	Total	1286	1089	52	145	11%		368	417	304
2014	1	16	0	0	16	100%	0	0	0	0
2014	Total	16	0	0	16	100%		0	0	0

Form 2 Application For Permit to Drill (APDs)

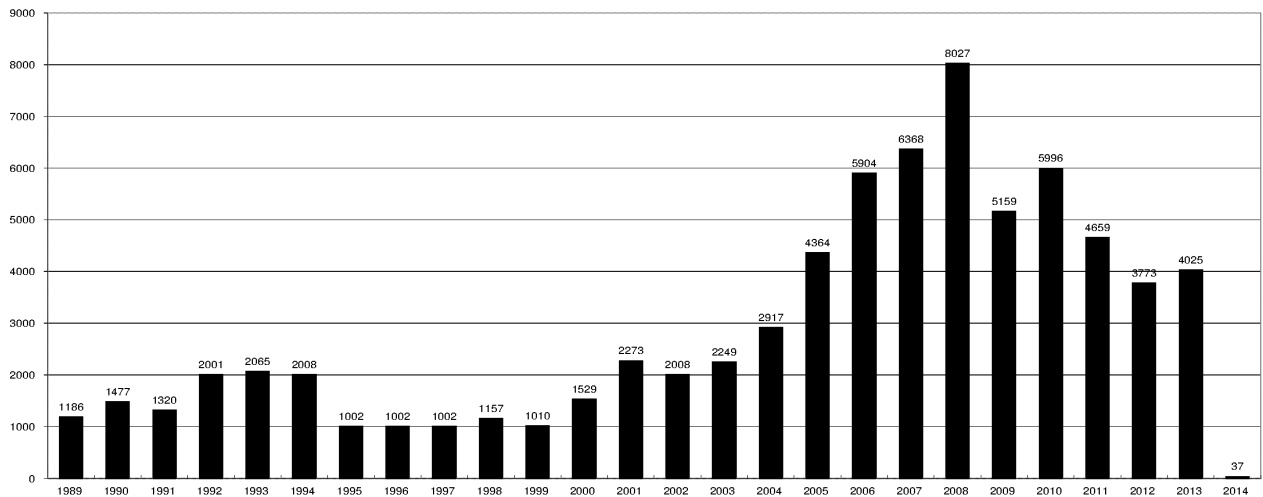
Year	Month	Received	Approved	Withdrawn	In Process	Percent In Process	Median Days to Process	Less Than 30 Days	30 to 49 Days	Greater Than 50 Days
2010	Total	5891	5746	144	0	0%		1760	2739	1744
2011	Total	4691	4557	129	3	0%	418	2723	1565	587
2012	Total	3955	3813	137	5	0%		1971	1393	599
2013	1	562	542	18	2	0%	36	278	179	86
2013	2	242	228	14	0	0%	36	78	126	38
2013	3	333	320	13	0	0%	43	123	119	84
2013	4	327	314	13	0	0%	40	105	153	59
2013	5	369	340	27	2	1%	40	111	181	59
2013	6	330	301	10	19	6%	43	110	131	62
2013	7	798	737	8	53	7%	62	106	218	424
2013	8	313	292	4	17	5%	57	13	138	146
2013	9	189	148	1	40	21%	52	21	66	68
2013	10	339	238	6	95	28%	49	22	89	134
2013	11	373	237	1	135	36%	40	49	147	46
2013	12	382	56	1	325	85%	29	27	28	1
2013	Total	4557	3753	116	688	15%		1043	1575	1207
2014	1	41	0	0	41	100%	0	0	0	0
2014	Total	41	0	0	41	100%		0	0	0



COLORADO OIL AND GAS CONSERVATION COMMISSION ANNUAL DRILLING PERMITS BY COUNTY

COUNTY	1988	1989	1990	1991	1992	1993	1994	1995	1996	1997	1998	1999	2000	2001	2002	2003	2004	2005	2006	2007	2008	2009	2010	2011	2012	2013	current as of 1/7 2014	
ADAMS	46	34	44	53	92	58	137	34	9	33	24	19	38	28	9	26	39	34	37	89	51	35	21	8	40	40		
ARAPAHOE	5	5	15	14	11	4	20	12	2	9	1	2	0	2	1	2	5	7	11	10	10	10	8	23	35	23		
ARCHULETA	8	5	18	5	2	1		3		3		1	7	9	6	10	8	13	14	26	47	11	18	12	5	4		
BACA	6	4	15	10	23	9	12	24	10	7	13	15	22	6	2	3	7	8	2	11	13	3	4	5	3	1		
BENT				1		2	2	4	2	5	3	5	2				5	3	8	1	1		5			2	1	
BOULDER	1		1	13	38	159	38	5	8	2	5		1	5	6	7	17	13	21	37	32	35	24	30	22			
BROOMFIELD																	2	7		1	1	2	33	28	11	36		
CHEYENNE	203	149	102	93	71	58	48	55	43	31	41	7	3	3	3	3	3	10	21	15	33	12	13	16	31	50	1	
COSTILLA												1																
CROWLEY	1		1	1																								
DELTA	1	1	2												7	4	5	10		9	2		4	3	6	1		
DENVER										5	3	3		3					19	25	24							
DOLORES	2		4	1	2	1										1	1	1	6	10	12	21	8	8	13	12		
EAGLE																											1	
ELBERT	9	12	8	5	3		2	13	16	11	1		2							4			1	1	2	2		
EL PASO																							2	3	3	18	1	
FREMONT	9	5	6	7	1	2	2	1	2	1								1	3	2	4	14	13	22	14	11	2	
GARFIELD	19	66	111	36	18	56	143	78	109	141	95	130	213	353	362	567	796	1509	1845	2550	2888	1981	2037	1323	1046	870	11	
GRAND						1																						
GUNNISON			2	2		1										5	10	1	9	19	7	10	12	4	3	11	9	
HUERFANO	3	5		4	17	3	3	2	1	3	40	26	41	27	27		8	2			7		2	1	9	1		
JACKSON	3	1	4	6	2	2	3	2	2	6	3		34	18	21	9	14	6	8	5	27	19	9	18	5	12		
JEFFERSON	1		4	2		1	1	1		1		2	1							1	3	2					1	
KIOWA	15	39	40	46	28	28	21	26	13	17	10	2	11	18	2	4	2	1	11	9	26	7	16	17	17	12		
KIT CARSON	9	5	7	8	8	15	28	11	7	6	9	5				1	3	5	4	4	13	7	3	2	6	1		
LA PLATA	302	218	388	128	120	40	40	20	71	40	82	107	127	156	104	162	102	115	235	251	328	298	191	99	71	32	2	
LARIMER	4	4	3	6	13	7	3		1	3	1		2		1			1		5	46	12	41	8	13	2		
LAS ANIMAS	10	30	36			9	32	95	134	136	195	195	268	400	259	180	332	413	500	362	303	88	92	85	11	2		
LINCOLN	8	6	4	7	7	11	8	9	3	2			2	2	1	6	3	4	1	2	58	44	48	31	36	87		
LOGAN	18	21	23	13	14	30	15	13	6	12	7		4	7	3	3	6	13	17	14	5	9	17	8	27	4		
MESA	1	12	29	20	22	2	22	6	11	10	2	6	13	27	30	27	54	136	265	293	501	427	306	127	150	105		
MOFFAT	13	25	27	19	40	52	43	40	41	28	21	15	35	52	62	63	63	60	120	68	57	51	53	93	88	44		
MONTEZUMA	6	7	10	8	7	11	15	9	13	5	4	1	4			5	8	8	11	5	12	22	39	19	27	29	14	
MONTRORSE				1						1			1	3	2	4	2		1	3	3		1	1				
MORGAN	34	27	36	13	10	11	19	12	10	11	10	12	9	9	2	7	9	7	3	6	2	1	6	13	5	16		
OTERO				2																								
PARK				1								1											3	4	1			
PHILLIPS			3		1	1							1	2		7	13	17	12	69	82	45	64	112	56			
PITKIN		1			2																1							
PROWERS	19	9	5	10	14	7	3	5	5	3	9	3	2	5	4		7	5	7	5	8	1	3	1				
RIO BLANCO	34	83	77	33	81	83	126	81	33	40	51	95	89	187	105	179	154	161	360	321	477	348	441	109	117	167		
RIO GRANDE	2	3	4	1		1							1	1			1				1	1			2			
ROUTT	4	3	12	4	2	3	1	2	1	1	1	4	20	13	1		4	6	9	8	4	2	3	10	4	12		
SAGUACHE	1							2					2		2					2	1	2						
SAN MIGUEL			2	2					1	1	4	2	11	13	27	18	42	45	35	23	20	13	10	2	1			
SEDGWICK				1				3		2						1	5	2	7	2	1	19	11	12	2			
WASHINGTON	40	29	23	28	24	26	25	12	19	26	18	3	23	17	27	34	128	50	69	45	11	1	6	12	6	19	1	
WELD	424	357	366	656	1224	1319	1030	254	305	285	392	288	509	702	760	757	832	901	1418	1527	2340	1448	2152	2262	1826	2468	22	
YUMA	14	20	45	60	104	53	167	168	123	116	111	60	31	205	160	138	237	782	797	541	545	105	299	148	11	9		
Total	1275	1186	1477	1320	2001	2065	2008	1002	1002	1002	1157	1010	1529	2273	2008	2249	2917	4364	5904	6368	8027	5159	5996	4659	3773	4025	37	

ALL COUNTIES





Colorado Oil and Gas Conservation Commission
Form 2A Breakdown By County By Year
January 7, 2014

Yr	County	Form2As	Completed	In Process	New Location	CDP	SWH	RSO	CDPHE
2009	Total State	818	818	0	408	2	80	5	5
2010	Total State	2378	2376	0	1601	0	327	22	55
2011	Total State	2299	2297	2	1791	1	274	17	5
2012	Total State	1298	1294	4	946	0	173	6	1
2013	ADAMS	15	14	1	13	0	0	0	0
2013	ARAPAHOE	15	13	2	15	0	0	0	0
2013	ARCHULETA	1	1	0	1	0	0	0	0
2013	BACA	1	1	0	1	0	1	0	0
2013	CHEYENNE	44	40	4	40	0	0	0	0
2013	DELTA	2	2	0	1	0	1	0	0
2013	DOLORES	9	7	2	7	0	4	0	0
2013	EAGLE	1	1	0	1	0	1	0	0
2013	EL PASO	1	1	0	1	0	0	0	0
2013	ELBERT	1	1	0	1	0	0	0	0
2013	FREMONT	4	2	2	6	0	1	0	0
2013	GARFIELD	89	67	22	35	0	71	1	0
2013	GUNNISON	9	7	2	3	1	3	1	0
2013	HUERFANO	3	1	2	1	0	0	0	0
2013	JACKSON	10	9	1	4	0	10	0	0
2013	KIOWA	9	8	1	8	0	0	0	0
2013	KIT CARSON	1	1	0	1	0	0	0	0
2013	LA PLATA	15	8	7	5	0	15	0	0
2013	LARIMER	2	1	1	1	0	1	0	0
2013	LAS ANIMAS	2	2	0	1	0	0	0	0
2013	LINCOLN	74	70	4	74	0	0	0	0
2013	LOGAN	4	4	0	0	0	0	0	0
2013	MESA	8	5	3	5	0	1	0	0
2013	MOFFAT	16	13	3	13	0	14	0	1
2013	MONTEZUMA	14	10	4	12	0	2	0	0
2013	MORGAN	16	11	5	16	0	0	0	0
2013	PITKIN	1	0	1	1	0	0	0	0
2013	RIO BLANCO	25	20	5	11	0	21	0	0
2013	ROUTT	9	8	1	10	0	9	0	0
2013	WASHINGTON	20	20	0	21	0	0	0	0
2013	WELD	797	719	78	588	0	8	0	3
2013	YUMA	8	8	0	2	0	0	0	0
2013	Total	1226	1075	151	899	1	163	2	4
2014	LINCOLN	2	0	2	2	0	0	0	0
2014	WASHINGTON	3	0	3	3	0	0	0	0
2014	WELD	5	0	5	4	0	0	0	0
2014	Total	10	0	10	9	0	0	0	0

CDP = Comprehensive Drilling Plan SWH = Sensitive Wildlife Habitat consultation

RSO = Restricted Surface Occupancy consultation CDPHE= Colorado Department of Health and Environment consultation



Colorado Oil and Gas Conservation Commission

Horizontal Well Activity

January 7, 2014

County	Prior Years			2009		2010		2011		2012		2013		2014		Completion					
	Drilled	DA	PA	Permit	Spud	Permit	Spud	Permit	Spud	Permit	Spud	Permit	Spud	Permit	Spud	Spud	AC	PR	DA	PA	
ADAMS				6	5	2	3	1		17	2	26	2		1	13	5	4			
ARAPAHOE	2							10	1	22	4	12	3			10	2	1			
ARCHULETA	17			7	6	15	7	10	8	5	9	2			47		40				
BENT												1	1			1					
BOULDER								4							0						
CHEYENNE	5		4									7	3	1	9		1		4		
DELTA										6	2	1			2		1				
DOLORES	9			18	2	6				9	1	5			12		6		1		
EL PASO										10					0					1	
ELBERT										1					0						
FREMONT	7	6		6		12	5	3	4	4	1	1	1		18		10	6	1		
GARFIELD	10		2	1	1	16	2	18	6	43	6	18	3		28		24			2	
GUNNISON	1					1				3	2	2			3		2				
HUERFANO										4	1				1						
JACKSON	8	1	1	8		3	3	9	2	4		8	5		18		11	1	1		
KIOWA										1		4	1		1						
KIT CARSON	1									1		1	1		2					3	
LA PLATA	28	2		11	2	28	3	18	7	12	1	5			41		46	1			
LARIMER	3	2						5	1	2	1		2		7		2	2			
LAS ANIMAS	16		2	4		1	1								17		14			3	
LINCOLN				2	1	2	1	1			1	6	1		4		3				
LOGAN	2									1					2		2				
MESA	3	2		36	1	22	8	24	13	14		9	2		27		25	2	2		
MOFFAT	7	1	1	6	3	4		9	4	44	7	18	13		34	1	17	1	1		
MONTEZUMA	6		1	23	6	11	2	8	3	18	2	3			19		29			1	
MORGAN								6	2	2	1	13	1		4		2				
PARK						1	1	1							1						
RIO BLANCO	7	2				1	1	11	2	15	2	4	5		17	1	7	3			
ROUITT	10	6	1							1		1			10		3	6	1		
SAN MIGUEL	1			1											1						
WASHINGTON	1		1												1					1	
WELD	11	3		12	5	208	95	763	235	964	598	2115	1045	18	33	2022		867	8	16	
YUMA	1			6											1					1	
TOTAL Horizontal	156	25	14	147	32	333	132	901	288	1203	641	2262	1089	18	35	2373	9	1117	30	39	
Percent of Total HZ		16%	9%														0%	47%	1%	2%	
Total All Permits				5159		5996		4659		3773		3661		3661							
Percent of Total				2.8%		5.6%		19.3%		31.9%		61.8%		0.5%							



Well to Building Setback Review

Colorado Oil and Gas Conservation Commission
January 7, 2014

Count of well locations by proximity groupings from well spot to buildings for all locations reviewed under the December 17, 2008 amended rules.

Location Proximity to Buildings	2009	2010	2011	2012	2013	2014	Number of Locations	Percent of Total Locations
less than 150 feet	2	3	3	2	0	0	10	0%
150 to 350 feet	37	58	61	39	34	1	230	3%
350 to 500 feet	50	110	97	61	64	1	383	5%
500 to 1000 feet	117	385	331	188	188	2	1211	17%
1000 + feet	356	1705	1470	838	762	4	5135	74%
Total Locations	562	2261	1962	1128	1048	8	6969	

County	Total	Less than 150 feet	150 to 350 feet	350 to 500 feet	500 to 1000 feet	1000 + feet
ADAMS	52	0	3	5	11	33
ARAPAHOE	66	0	2	4	9	51
ARCHULETA	17	0	0	1	9	7
BACA	14	0	0	0	1	13
BENT	7	0	0	0	0	7
BOULDER	23	0	1	1	17	4
BROOMFIELD	32	0	0	4	13	15
CHEYENNE	107	0	0	0	2	104
DELTA	7	0	0	2	1	4
DOLORES	17	0	0	0	6	11
EAGLE	1	0	0	0	0	1
EL PASO	12	0	0	0	2	10
ELBERT	4	0	0	0	1	3
FREMONT	35	0	2	7	6	20
GARFIELD	442	0	7	3	63	369
GUNNISON	26	0	0	2	1	22
HUERFANO	8	0	0	0	3	5
JACKSON	31	0	0	3	1	27
KIOWA	59	0	0	0	1	58
KIT CARSON	12	0	0	0	0	12
LA PLATA	97	0	3	12	28	54
LARIMER	32	0	3	3	10	16
LAS ANIMAS	200	0	6	7	37	149
LINCOLN	213	0	0	2	4	207
LOGAN	41	0	1	1	0	39
MESA	81	0	0	3	13	65
MOFFAT	155	0	0	2	13	140
MONTEZUMA	28	0	0	1	3	24
MONTROSE	2	0	0	0	0	2
MORGAN	27	0	0	2	4	21
PARK	4	0	0	0	0	4
PHILLIPS	262	0	4	6	20	231
PROWERS	4	0	0	0	0	4
RIO BLANCO	157	0	0	0	1	156
RIO GRANDE	2	0	0	0	1	1
ROUTT	24	0	0	0	2	22
SAN MIGUEL	11	0	0	0	0	11
SEDGWICK	25	0	0	1	3	21
WASHINGTON	49	0	1	0	1	47
WELD	4111	0	190	297	882	2736
YUMA	472	0	7	14	42	409



Well to Building Setback Review

Colorado Oil and Gas Conservation Commission
January 7, 2014

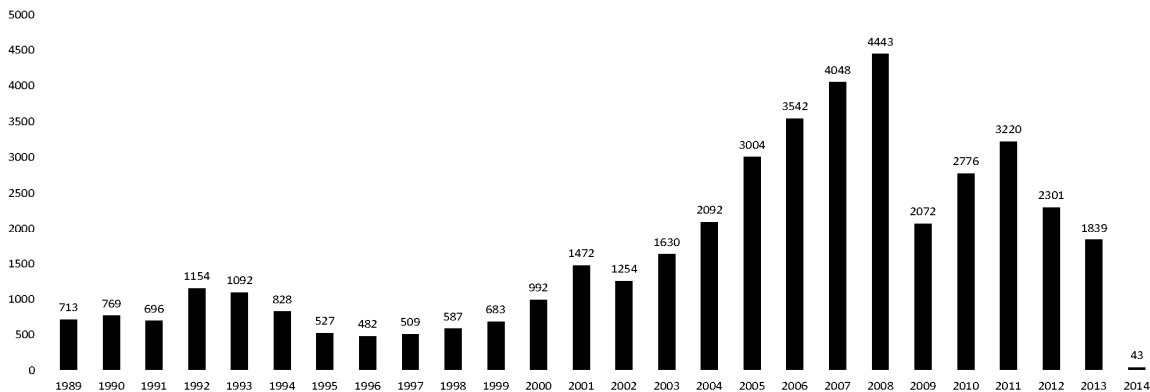
Listing of Locations less than 200 feet to Building

Year	Document Number	County	High Density	New Location	Distance	Proximity	Building Description
2011	2587822	CHEYENNE	No	No	58	less 150	Water well house
2009	1691798	WELD	No	No	58	less 150	Vehicle garage
2010	400072164	WELD	No	Yes	69	less 150	Abandoned hog shed
2012	400240957	GUNNISON	No	Yes	90	less 150	Equipment Shed
2009	1758843	WELD	No	Yes	103	less 150	Building to be razed
2011	1636646	WELD	No	No	122	less 150	Storage shed
2009	400011284	LAS ANIMAS	No	Yes	127	less 150	Operator is owner
2009	1786896	PHILLIPS	No	No	132	less 150	Grain Storage
2011	400117702	WELD	No	Yes	143	less 150	Irrigation pump house
2011	400227765	WELD	No	Yes	145	less 150	Storage Barn
2009	1904205	WELD	No	No	154	150 to 350	Livestock Enclosure
2012	400243295	WELD	No	Yes	155	150 to 350	Unused storage shed
2011	400179419	WELD	No	Yes	157	150 to 350	Existing well / storage building
2010	400054716	WELD	No	No	159	150 to 350	Equipment Barn
2011	400188968	WELD	No	Yes	159	150 to 350	Abandoned
2010	400021477	WELD	No	Yes	162	150 to 350	Goat Barn
2009	1758386	WELD	No	Yes	168	150 to 350	Storage Shed
2011	1635946	WELD	No	No	169	150 to 350	Storage shed
2013	400447386	WELD	No	No	169	150 to 350	Abandoned Turkey Barn
2013	400447391	WELD	No	No	169	150 to 350	Abandoned Turkey Barn
2011	400165164	WELD	No	Yes	178	150 to 350	Residence
2013	400367184	WELD	No	Yes	179	150 to 350	Shed
2011	400188780	WELD	No	Yes	180	150 to 350	Residence
2010	1697620	WELD	No	No	187	150 to 350	Livestock Shed
2009	1758746	WELD	No	No	193	150 to 350	Storage Shed
2011	400154431	WELD	No	Yes	198	150 to 350	Turkey barn
2012	400250031	WELD	No	Yes	198	150 to 350	abandoned guard shack
2009	1774783	WELD	No	No	199	150 to 350	cement service building
2011	400118102	YUMA	No	Yes	199	150 to 350	Steel Barn



COLORADO OIL AND GAS CONSERVATION COMMISSION																												
ANNUAL WELL STARTS BY COUNTY																												
COUNTY	1988	1989	1990	1991	1992	1993	1994	1995	1996	1997	1998	1999	2000	2001	2002	2003	2004	2005	2006	2007	2008	2009	2010	2011	2012	2013	2014	
ADAMS	39	27	26	36	54	20	54	28	6	16	12	17	18	13	4	19	22	24	13	41	14	15	21	2	14	5	1	
ALAMOSA																												
ARAPAHOE	2	4	16	11	11	3	9	8	3	3	2						6	1	5	2	1	1	3	9	8	14		
ARCHULETA	5	3	7	5	2	1		2		1			4	4	2	5	4	10	5	7	26	9	12	9	11			
BACA	5	5	12	6	21	8	9	19	9	7	11	8	19	6	2	1	6	6	2	6	12		5	5	1	1		
BENT				1			2	3	1	2	3	6	2				3	2	8	1	1		1	1	1	1		
BOULDER	2			7	18	56	15	5														25	16	13	7	14		
BROOMFIELD	3	2	3	7	14	27	22	2	2						2	2	5	11	9	14	25	16	13	7	14			
CHEYENNE	177	133	92	75	64	50	44	41	35	29	29	6	2	1	3	3	1	9	14	15	14	8	12	11	17	32	2	
CONEJOS																												
COSTILLA																												
CROWLEY	1		1										1															
CUSTER																												
DELTA	1		1													5	4	6	5	2			4	1	6			
DENVER											2	3	1		2						7	5	4					
DOLORES	2		4	1													2		2	13	4	2		1	3	6		
DOUGLAS																												
EAGLE																												
EL PASO																												
ELBERT	8	11	9	5	2			10	15	2	2		2						1								5	
FREMONT	6	3	5	7	1	1	1	2			1						1	3	2	2	5	3	9	16	7	2		
GARFIELD	3	12	24	8	3	4	15	13	7	28	19	94	190	251	245	417	585	799	1005	1304	1688	768	910	880	497	389	4	
GRAND							1																					
GUNNISON			1	2		1										1		1	1	9	5	1	4	5	2	4	1	
HUERFANO	6		2	2	6	1	1	2		2	31	9	25	14	19	3	6	2		2	2		2	2	1	1		
JACKSON	2	1	3	7	2		3	1	1	3	3		24	2	4	10	10		3	3	10	1	6	7		5		
JEFFERSON																												
KIOWA	14	32	35	37	28	19	20	22	8	13	6	4	8	16	2	4	2	1	7	7	2	5	15	15	10	8		
KIT CARSON	11	6	6	6	9	13	15	9	6	3	7	7					1	1	6	2	1	14	3	1	1	3	1	
LA PLATA	158	129	186	44	66	26	17	19	29	48	65	80	99	135	118	110	103	104	108	179	199	131	67	54	3	7		
LARIMER	8	5	1	6	13	5	3			2	1						4	8		4	8		1	28	2	10	4	
LAS ANIMAS	17	22	20	3	2	11	17	34	62	90	120	182	202	286	205	221	296	384	413	326	221	14	7	78	1			
LINCOLN	6	5	4	4	7	7	8	8	3	2					2	2	1	5	2	2	1	2	19	10	14	22	24	
LOGAN	17	19	19	8	13	24	9	11	4	10	4		4	6	3	3	2	11	12	12	3	7	3	9	13	4		
MESA	1	2	2	4	1		7	2	1	1	4	4	2	12	12	13	25	89	156	209	222	14	11	40	4	6		
MOFFAT	1	2	1	2	1	1	2	1	3	1	8	10	18	23	25	28	19	40	60	42	25	18	15	34	26	22		
MONTEZUMA	6	5	7	5	2	5	7	3	12	2	2		2	3	5	5	1	7	2	4	18	11	3	9	14	7		
MONTROSE				1																								
MORGAN	26	20	32	11	9	11	16	13	8	9	7	4	9	8	1	7	5	5	3	1	1	2	3	2	3	1		
OTERO				1																								
OURAY																												
PARK				1																								
PHILLIPS				3		1							1				6	10	11	4	35	18	2	42	129	50		
PITKIN			1		2																							
PROWERS	16	9	5	8	13	7	1	5	5	2	8	4	2	4	4		5	5	6	3	5	2	3	1				
PUEBLO																												
RIO BLANCO	1	8	10	1	3	8	6	7	5	9	9	62	51	82	47	83	92	95	107	95	203	116	107	72	52	36		
RIO GRANDE	1	2	2																									
ROUTT		1	1	3	1								1	5	12	1		1	6	3	2		2	1	2	4	2	
SAGUACHE	1							2																				
SAN MIGUEL				1							3	1	6	9	10	19	28	13	20	17	5	1	2	2	2			
SEDGWICK							1	3		2						1	2	1	1	5			3	8	3			
WASHINGTON	39	28	22	26	24	20	20	13	17	23	18	4	15	12	24	29	65	34	23	14	11	2	2	4	1	8		
WELD	176	200	168	296	660	723	389	94	136	94	117	124	237	403	406	522	632	718	931	1222	1314	877	1207	1666	1469	1222		
YUMA	12	16	41	47	102	39	114	145	101	104	93	52	42	162	108	106	144	597	593	445	336	27	213	108	16	12		
Grand Total	773	713	769	696	1154	1092	828	527	482	509	587	683	992	1472	1254	1630	2092	3004	3542	4048	4443	2072	2776	3220	2301	1839	43	

ALL COUNTIES





Colorado Oil and Gas Conservation Commission

Active Wells by County and Status as of 01/07/2014

County	Drilling	Domestic	Injecting	Producing	Shut In	Temp Aband	Waiting on Completion	Active Storage	Intent to Plug	Total Active Wells
ADAMS	4		7	886	71	8	2	17		995
ARAPAHOE	14	1	3	114	17	10	2	39		200
ARCHULETA	1	5		103	8	9	8			134
BACA	1		14	130	38	4		57		244
BENT	1	1		30	7					39
BOULDER				316	3	1				320
BROOMFIELD				94	3					97
CHEYENNE	22		37	310	27	44	2			442
DELTA			1	3	15		1			20
DENVER			1	44	4		3			52
DOLORES	4		1	40	2	1	1			49
EL PASO		1			1	1				3
ELBERT				67	2	2		1		72
FREMONT	1	3		69	3	6				82
GARFIELD	241	5	40	9955	162	70	93	3		10569
GUNNISON	2		1	22	15	1	4			45
HUERFANO	1		1	36	1	6	1			46
JACKSON	7		35	113	37					192
JEFFERSON				1	1		1	3		6
KIOWA	6		10	104	14	5	2			141
KIT CARSON		1	1	14	2	1	1			20
LA PLATA	1	7	32	3120	119	25	3	29		3336
LARIMER	5	2	26	181	23	16	2			255
LAS ANIMAS	1	4	19	2873	84	46	23	5		3055
LINCOLN	10	1	7	71	12	4	5			110
LOGAN	6		16	115	44	32	4	9		226
MESA	7	1	10	874	116	25	15	11		1059
MOFFAT	15		11	502	45	38	13			624
MONTEZUMA	2	2	8	131	28	13	2			186
MONTRORSE						4				4
MORGAN	3		18	80	91	42	1	83		318
OURAY		2				1				3
PARK				1						1
PHILLIPS	1		4	257	2	1	1			266
PITKIN								10		10
PROWERS				27	4					31
RIO BLANCO	24	4	276	2192	333	99	17	3		2948
ROUTT	2	2		28	11	2	1			46
SAN MIGUEL				116	12	3				131
SEDGWICK			1	14	4		2			21
WASHINGTON	8		25	415	38	7	3			496
WELD	1000	1	39	19511	274	25	89	2		20941
YUMA	5	8	21	3738	74	14	21	1		3882
Totals	1395	51	665	46697	1747	566	323	273	0	51717



Colorado Oil & Gas Conservation Commission Monthly Statistics

YEAR	MO	Baker - Hughes Rig Count	Drilling		Recompletion		Injection		Pits		Locations		Well Spud Notice	Active Drilling Permits	Active Wells	Public Visits		Well Oper Change	Oper New	
			Rcvd	Apvd	Rcvd	Apvd	Rcvd	Apvd	Rcvd	Apvd	Data	Office				Internet				
2010	Total	5703	5996	519	515	34	28	120	225	2461	2548	2803	197	1115	1112479	8421	46			
	JAN	63	405	351	8	23	4	6	4	8	249	112	232	4755	43588	14	95	103968	813	1
	FEB	61	343	249	15	2	7	6	5	3	184	150	209	4733	43869	21	80	96171	356	1
	MAR	68	472	498	18	23	4	7	38	31	262	258	268	4847	43927	9	125	122393	590	2
	APR	72	325	314	26	15	5	0	20	27	190	218	241	4882	44203	8	105	106539	402	2
	MAY	72	372	367	20	25	3	6	12	8	214	171	248	4904	44752	14	124	73024	545	3
	JUN	70	512	436	61	22	5	4	11	4	172	239	272	5013	45401	30	131	108115	790	2
	JUL	69	457	436	13	55	2	1	13	7	215	158	261	5113	45710	20	74	103585	595	3
	AUG	73	472	482	37	17	1	0	10	17	236	229	282	5328	45975	21	141	111950	573	2
	SEP	77	336	369	22	29	7	0	35	34	159	203	322	5361	46115	9	120	116043	584	5
	OCT	78	382	443	45	29	2	1	4	12	171	172	302	5423	46719	14	126	132814	552	4
	NOV	80	342	324	29	57	0	1	12	13	166	174	305	5409	46721	18	96	130612	572	4
	DEC	79	291	370	31	23	4	0	26	28	164	183	278	5329	46835	9	77	132651	347	4
2011	Total	4709	4659	325	320	44	32	190	192	2382	2267	3220	187	1294	1337865	6719	33			
	JAN	73	372	258	26	21	3	0	11	5	142	129	247	5217	46958	12	106	112686	1051	3
	FEB	70	370	382	23	27	7	5	21	9	160	129	231	5173	47128	16	114	105857	385	6
	MAR	66	292	347	21	14	2	2	17	24	133	172	292	5132	47263	26	138	111746	378	4
	APR	66	410	235	16	24	5	5	9	2	137	106	236	4785	47377	12	108	107627	477	4
	MAY	66	491	506	23	16	3	1	6	2	105	131	211	4885	47533	20	123	109802	527	3
	JUN	69	326	377	11	19	8	6	5	8	110	89	145	5136	47860	11	111	108849	1270	3
	JUL	66	237	276	9	14	3	2	5	2	97	103	190	5152	48173	13	102	114195	495	5
	AUG	62	313	288	6	9	6	4	23	5	83	97	180	5031	49153	11	112	110908	301	6
	SEP	61	252	256	1	5	5	2	4	1	81	77	160	4960	49230	11	89	106114	832	0
	OCT	62	326	265	9	3	7	6	2	19	94	82	158	5009	49236	8	105	108833	395	1
	NOV	56	271	323	5	8	6	6	2	4	109	97	142	5000	49989	10	119	120586	460	6
	DEC	57	322	260	4	8	8	5	9	3	122	81	107	5081	50067	9	78	107240	904	6
2012	Total	3982	3773	154	168	63	44	114	84	1373	1293	2299	159	1305	1324443	7475	47			
	JAN	53	538	331	6	0	3	5	6	8	176	124	139	5060	50265	9	108	47406	636	3
	FEB	56	260	455	10	5	2	3	4	11	91	141	134	5250	50372	7	102	40649	293	4
	MAR	57	344	241	5	9	3	8	15	6	129	84	163	5093	50540	9	133	43019	355	1
	APR	61	331	333	6	5	5	5	6	8	146	117	156	4925	50687	3	132	46459	334	7
	MAY	61	350	342	8	6	6	6	10	7	106	142	152	5110	50810	3	123	45215	349	2
	JUN	62	349	273	2	8	8	8	5	3	114	85	132	5273	50909	8	122	41015	1441	6
	JUL	68	864	304	11	4	9	2	9	5	218	91	153	5070	51091	7	154	45558	977	4
	AUG	69	232	291	6	4	3	2	4	1	35	76	176	5200	51255	20	130	44722	225	6
	SEP	69	219	362	9	5	10	9	3	19	56	109	155	5185	51407	5	105	41256	218	4
	OCT	72	319	376	5	9	7	5	1	8	67	88	214	4967	51598	5	135	45151	238	6
	NOV	69	346	353	4	13	7	4	2	27	67	85	151	5141	51711	12	119	38903	256	2
	DEC	64	336	367	2	4	4	4	2	3	63	71	102	5129	51737	4	93	32381	31	4
2013	Total	4481	4028	74	72	67	63	67	106	1268	1213	1827	92	1456	511734	5353	49			

Apvd = Approved, Rcvd = Received, Ind = Individual, Bknt = Banket, Apps = Application for Hearing, NOAV = Notice of Alleged Violation, AOC = Administrative Order of Consent, OFV = Order Finding Violation, Crptl = Complaint, Comp = Completed



Colorado Oil Gas Conservation Commission Monthly Statistics

YEAR	MO	Operators Inactive		Release		Bonds		Claim		Hearings		Violations		Remediation Projects		Inspections		
		Ind.	Blknt	Ind.	Blknt	Ind.	Blknt	Apprs.	Order	NOAV	AOC	OFV	Cmplt	Spills	Rcvd	Comp	Wells	Locations
2010	Total	33	40	38	74	0	1	155	136	319	10	3	218	493	511	382	17075	
	JAN	2	3	1	4	0	0	16	15	43	3	2	33	40	47	45	1316	
	FEB	1	4	0	6	0	0	16	15	7	0	1	39	52	48	33	1591	
	MAR	3	3	6	9	0	0	NA	NA	31	NA	NA	31	48	59	27	1675	
	APR	0	2	3	1	0	0	24	24	8	0	0	10	52	38	61	959	
	MAY	0	2	5	4	0	0	77	65	16	2	5	26	31	33	51	1577	
	JUN	2	2	2	0	3	0	51	58	30	1	4	14	38	53	25	1099	
	JUL	6	3	6	3	1	0	NA	NA	29	NA	NA	13	39	92	20	518	
	AUG	3	12	7	2	0	1	68	54	26	2	2	19	54	106	56	1032	
	SEP	1	7	5	2	0	0	44	41	4	2	4	16	46	56	66	690	
	OCT	2	12	6	7	0	3	57	45	9	0	0	15	38	102	28	636	
	NOV	9	15	4	1	0	0	NA	NA	15	NA	NA	16	31	70	58	739	
	DEC	2	2	2	4	0	0	50	32	12	0	1	15	58	22	66	562	
2011	Total	31	79	44	43	4	4	403	349	230	10	19	247	527	726	536	12394	
	JAN	3	7	5	1	1	0	70	72	18	1	0	27	35	68	23	998	970
	FEB	9	8	5	0	0	0	NA	NA	10	NA	NA	24	40	85	36	1998	1024
	MAR	1	7	3	9	0	0	44	38	19	0	0	23	38	63	61	2203	1149
	APR	2	10	3	2	0	0	80	59	11	0	0	19	35	26	99	1701	930
	MAY	1	4	0	3	0	0	43	50	14	2	0	23	32	27	122	2621	1701
	JUN	4	3	3	4	0	0	NA	NA	5	NA	NA	35	39	46	98	1432	1091
	JUL	0	1	4	5	0	0	63	50	15	0	0	16	24	45	33	1319	1076
	AUG	5	2	8	0	1	0	67	54	24	3	2	21	28	127	33	1898	1432
	SEP	4	4	5	2	1	0	NA	NA	5	NA	NA	14	13	30	36	1137	864
	OCT	2	9	1	0	0	0	30	36	6	1	0	13	44	116	37	1407	1029
	NOV	4	12	8	7	0	0	85	37	16	2	0	10	44	26	44	1324	828
	DEC	2	3	1	0	0	0	NA	NA	14	NA	NA	19	30	31	19	1046	625
2012	Total	37	70	46	33	3	0	482	396	157	9	2	244	402	690	641	19084	12719
	JAN	5	12	2	0	0	0	48	75	15	4	0	21	40	31	45	1673	829
	FEB	2	6	3	2	0	0	41	35	11	2	0	15	30	42	90	1042	614
	MAR	3	2	2	1	0	0	54	67	16	2	0	11	25	65	29	1967	1150
	APR	1	5	2	8	0	0	NA	NA	21	NA	NA	16	33	39	37	1508	910
	MAY	1	3	0	0	0	0	46	50	22	6	0	13	31	41	60	2648	1601
	JUN	2	2	4	5	0	0	91	44	13	2	0	25	40	47	37	1846	1091
	JUL	1	2	2	0	0	0	96	70	25	3	0	21	47	50	22	2297	1338
	AUG	4	5	4	2	0	0	NA	NA	23	NA	NA	25	57	36	41	2145	1028
	SEP	1	6	1	0	0	0	101	51	7	2	0	16	59	43	51	1535	692
	OCT	0	2	2	2	0	0	52	82	4	12	3	12	77	45	60	1863	1154
	NOV	0	2	2	0	0	0	NA	NA	30	NA	NA	12	42	25	34	2390	1605
	DEC	1	1	2	0	0	0	42	48	50	4	0	14	51	29	35	2632	1361
2013	Total	21	48	26	20	0	0	571	522	237	37	3	201	532	493	541	23546	13373

Apvd = Approved, Rcvd = Received, Ind = Individual, Blknt = Blanket, Apprs = Application for Hearing, NOAV = Notice of Alleged Violation, AOC = Administrative Order of Consent, OFV = Order Finding Violation, Cmplt = Completed