



Staff Report

March 17, 2014

TOP STORIES

◆ Lessons Learned Workshop on Colorado Flood

On February 6, 2014, the Colorado Oil and Gas Conservation Commission held a workshop to discuss "Lessons Learned" from the September 2013 floods. This workshop is a first step toward a future determination by the Commission whether additional policies, rules, recommendations, or other authorities should apply to oil and gas operations built near streams across Colorado. These lessons will translate into better and more resilient oil and gas operations across Colorado.

The workshop was well attended and broadcast by audio stream on the internet. The public and other stakeholders presented and a number of substantive suggestions emerged from the workshop.

A staff report was prepared regarding the workshop. When the report is finalized, it will be made public. For additional details on the flood response efforts and the lessons learned workshop, please refer to the previous Staff Reports (available online at www.cogcc.state.co.us). Links to recommendations for the public, and requirements for operators on dealing with flood-impacted facilities are available under the HOT TOPICS banner on the website.

◆ New E & P Waste Spill and Release Rules

On December 17, 2013, the Commission adopted Amended Rules 337 and 906 of its Rules of Practice and Procedure. As a result, Form 19 (Spill/Release Report) has been revised. The revisions align Form 19 with the amended rules. The revisions also provide for transition to an electronic, Internet-based reporting process. The COGCC will conduct two-hour training sessions for operators on the use of the revised Form 19 (which will be submitted via the eForm feature on the COGCC website). The training sessions will include a

presentation by COGCC staff, followed by time for questions and answers. All operators are urged to attend. The first training session took place at the COGCC offices in Denver on March 14, 2014, the second will take place at the COGCC's Rifle office on March 20, 2014 in Rifle. Pre-registration is required as venue size is limited. To pre-register please send an e-mail to chris.canfield@state.co.us. Please put "eForm 19 Implementation Training" in the subject line.

◆ Enforcement Program Training

Western Region Engineering Supervisor David Andrews, Hearings Manager Robert Frick, and Local Government Liaison Marc Morton conducted four public training sessions concerning upcoming changes to the COGCC's enforcement program on March 5 (Rifle), March 7 (Durango), March 10 (Longmont), and March 11 (Limon). A total of 265 persons representing operators, Local Government Designees, and other stakeholders attended the training sessions. The changes to COGCC's enforcement program result largely from a LEAN process management review of the program. response to Executive Order D 2013-004, changes to the Notice of Alleged Violation (NOAV) process resulted from the agency's review of its enforcement procedures. Changes to the NOAV process will be implemented on May 1. However, changes to COGCC's penalty structure, as proposed in the COGCC's response to the Executive Order, require legislative action and associated rulemaking. Executive Order D2013-004, COGCC's response to the Executive Order, and the training presentation are posted on COGCC's website.

◆ Optical Gas Imaging Training

COGCC staff members completed an optical gas imaging training and certification in Denver during the first week of March. Ten members of the Field Inspection Group learned how to set up and operate the FLIR (forward looking infra-red) cameras that are now being used by COGCC field in-



spectors. They learned how to optimally adjust their cameras for varying environmental conditions to find gas leaks and which gases can be found with FLIR optical gas imaging cameras. They were also introduced to basic infrared theory and heat transfer concepts. Basic inspection procedures were also covered including; equipment checkout, route planning, safety practices and reporting concepts. The inspectors are also able to create a digital movie documenting a gas leak by using FLIR Video Report software. The newly trained inspectors brings the total number of COGCC staff certified thermographers to 21.

◆ Interim Statewide Horizontal Offset Policy

On February 10, 2014, the COGCC implemented an "Interim Statewide Horizontal Offset Policy" to ensure proper isolation of existing wells prior to hydraulic fracturing operations being conducted on nearby horizontal wellbores. COGCC engineering staff engaged with industry technical representatives to develop the policy requiring that any improperly completed or plugged vertical wells within 1,500 feet of a lateral wellbore be remediated prior to stimulation or other mitigation measures, such as re-routing the horizontal lateral must be used. This statewide policy is an expansion of the "DJ Basin Horizontal Offset Policy" adopted on June 20, 2013 (revised December 17, 2013). Over the next several months, COGCC engineering staff will engage with operators across the state to establish Basin specific review.

◆ Local Government Liaison (LGL) Program Update

Local Government Liaisons (LGL) Nancy Prince and Marc Morton continue to provide valuable assistance and support to local governments, communities, non-governmental organizations, operators, and COGCC staff, with a main goal of continually enhancing communication and collaboration between all who are interested in issues concerning oil and gas in Colorado. The LGLs strive to provide fact-based information and guidance so as to avoid and minimize conflict, and create mutually acceptable solutions. The LGLs are available to answer questions and provide information, data, and or presentations about specific aspects of oil and gas operations,

or about COGCCs rules, policies, or its role as a regulatory agency within the Department of Natural Resources (DNR).

Since the last Staff Report, the LGLs have responded to numerous questions, inquiries and concerns regarding oil and gas issues in Colorado. The LGLs are members of the team that will train operators and local governments about the Executive Order-mandated NOAV process improvements. LGLs are also in the process of planning LGD training and community outreach events in 2014 and beyond.

Entities that LGLs have consulted with since the last staff report include staff from Moffat County, Morgan County, Pitkin County, Huerfano County, Adams County, El Paso County, Elbert County, Crowley County, Routt County, Weld County, municipalities including Brighton, Greeley, Loveland, Commerce City, and Mead, as well as inquiries from a number of private citizens. The LGLs have also been instrumental in coordinating procurement of venues and registration for COGCC's external training (targeting operators and local governments) regarding COGCC's enhanced enforcement and penalty policies. To date, over 250 individuals have registered for the training to occur in four locations around the state in March 2014 (Rifle, Durango, Longmont, and Limon).

In addition to responding to these entities and individuals, a list of the LGL outreach and public involvement activities conducted since the last staff report is included in the Public Outreach section of this Staff Report.

Public Outreach

➤ Outreach by Director and other Staff Members

- On February 10, 2014, Field Inspections Manager Margaret Ash participated in an 8-hour stormwater "best management practices workshop for oil and gas operations". After the classroom session, Margaret and Maura McGovern from the Colorado Department of Public Health and Environment ("CDPHE"), Division of Water Quality Control Division conducted a 1 1/2 hour question and answer session. The



workshop was held in Greeley, Colorado and attended by oil and gas operators, consultants and representatives from several local governments.

- On February 17, Director Matt Lepore was a guest lecturer at the University of Denver in their Distinguished Practitioner Seminar Series.
- On February 25, Director Lepore gave an oil and gas presentation to the Brighton City Council.
- On February 27, Director Lepore participated in the COGA-sponsored Legislative Seminar regarding our LGD program.
- On February 28, Director Lepore participated on a panel discussing local vs. state control of oil and gas development, sponsored by Continuing Legal Education, Inc. co-sponsored by the Environmental Law Section of the Colorado Bar Association.
- On March 10-11, Margaret Ash participated in the United States-Southern Africa Regional Unconventional Gas and Gas-to-Power Workshop in Gaborone, Botswana. Attendees presented and shared information on current unconventional resource development and gas-to-power issues in the region from government and other perspectives, as well as best management practices and lessons learned in the U.S. Margaret presented a discussion on the Commission's experience regulating Coal Bed Methane development and was a panelist for the discussion on Pursuing a Working Regulatory Model for Unconventional Gas.
- On March 13, Director Lepore participated on a Panel regarding environmental protection, regulation and compliance during the Rocky Mountain Conference for Excellence in Denver.

➤ Outreach by COGCC Local Government Liaisons (LGLs)

- On February 5, 2014, Nancy Prince attended the regularly scheduled El Paso County LGD information meeting where she presented an update on the recently revised COGCC Spill Rules.

- On February 5, Marc Morton travelled to the University of Northern Colorado in Greeley and gave a presentation to the University's Hydrofracturing Task Force, a group consisting of faculty, staff, and students concerned with the impact of oil and gas in the Greeley area. Marc's talk focused on COGCC's rules and policies addressing hydraulic fracturing and protection of surface and ground water resources. The talk was followed by a question and answer session.
- On February 6, Marc Morton travelled to Rifle and attended the monthly Garfield County Energy Advisory Board (meeting). During the public comment period, Marc gave a brief update concerning ongoing COGCC initiatives and efforts, including the fall 2013 flood response "lessons learned" workshop (held in Denver the same day), the enforcement and penalty process training schedule, and a summary of current job openings at the COGCC.
- On February 11, Marc Morton travelled to the University of Colorado at Boulder and attended the ongoing FrackingSense 2.0 lecture series hosted by the Center of American West and CU-Boulder. The February 11 talk was given by Barbara Green, attorney with Sullivan Green Seavy, LLC. Ms. Green's talk concerned oil and gas permitting practices in Colorado, and the role of local governments in the process.
- On February 12, Nancy Prince attended the Elbert County Commission meeting where the Commissioners approved changes to Zoning Regulations to allow for an administrative process via a Memorandum of Understanding with operators as an alternative to the Special Use review process.
- On February 20, Marc Morton travelled to Broomfield and gave a presentation to City and County of Broomfield staff. Marc's talk addressed COGCC's well and location permitting, the recently implemented "setback" rules, the LGD program, and an overview of information available on the COGCC website.
- On February 25, Director Lepore and Nancy Prince attended a working session of Brighton City Council where Matt gave a presentation on COGCC structure, rules, and the LGD program.



- On February 25, 2014, Marc Morton travelled to the University of Colorado at Boulder and attended the ongoing FrackingSense 2.0 lecture series hosted by the Center of the American West, and CU-Boulder. The February 25 talk was given by Roger Fragua, President of Cota Holdings, LLC, whose mission is support Tribal community and economic development in the energy and telecommunication sectors. Podcasts are available of this and other past presentations (and subsequent question and answer sessions) at <https://centerwest.org/events/frackingsense-2-0>.
- On March 11, Nancy Prince and Kent Kuster, CDPHE's Oil and Gas Liaison, attended a working session of Brighton Planning Commission where Nancy gave a presentation on COGCC structure, rules, and the LGD program.

REGIONAL ACTIVITIES

➤ NORTHWEST COLORADO

◆ Northwest Colorado Oil and Gas Forum

The Forum is an informal gathering of local, state, and federal government officials, oil and gas industry representatives, and citizens that have met regularly since 1989. The purpose of the Forum is to share information about oil and gas development in northwest Colorado and to make government officials and oil and gas industry representatives easily accessible to the public. Currently, the meetings are conducted once per quarter and are co-chaired by the COGCC Director Matt Lepore and Garfield County Commissioner Mike Samson.

The next meeting of the Forum is tentatively scheduled for June 5, 2014 at 10:00 a.m. in Rifle, CO at Colorado Mountain College. All parties wishing to be placed on the meeting agenda, or added to the distribution list for announcements, should contact Dave Andrews at: [970-625-2497](tel:970-625-2497) or via email at: david.andrews@state.co.us

• Project Rulison

Please note that the email for Project Rulison submittals has been changed to:

DNR_rulison.submittal@state.co.us

• Project Rio Blanco

Please note that the email for Project Rio Blanco submittals has been changed to:

DNR_rioblanco.submittal@state.co.us

➤ SOUTHWEST COLORADO

◆ Gas and Oil Regulatory Team (GORT) Meeting

The last GORT/Southwest Colorado Oil and Gas Stakeholders meeting occurred on Friday, January 17, 2014 from 8:30 a.m. to noon at the La Plata County Fairgrounds in Durango, Colorado.

The next GORT meeting is scheduled for Tuesday, May 6, 2014 from 8:30 a.m. to noon at the La Plata County Fairgrounds- Animas Room, 2500 Main Avenue, Durango, Colorado. All parties wishing to be placed on the next meeting agenda should contact Mark Weems at 970-259-4587 or to: mark.weems@state.co.us.

◆ Fruitland Formation Outcrop Mitigation and Monitoring Projects (4M Projects)

Fruitland Formation Outcrop - 4M Pilot Scale Mitigation Projects La Plata County. The South Fork Texas Creek (SFTC) system operated between 10.9 and 11.1 Kilowatts (kW) power generation and was functional 97% of the time for the period September 1, 2013 and October 3, 2013. Disruption to the local power grid as a result of thunderstorms caused the main breaker on the system to trip and shutdown on September 26, 2013. LTE was onsite the following day to reset the breaker and get the system running again. An average of 5.9 kW per hour were returned to the grid during these periods. Pine River continues to operate in a passive mode. General O&M continues at both locations. The 4M Mitigation Operations & Maintenance Report (September 30, 2013) has been posted on the COGCC webpage under Library, San Juan Basin, 4M Project Reports.

4M Monitoring Wells La Plata and Archuleta Counties. There are 17 wells at 11 locations in the COGCC 4M monitoring program. Well pressures are monitored remotely via satellite telemetry with one or two maintenance visits per year, depending upon data received. Operations and maintenance



(O&M) activities were conducted on September 30 and October 1, 2013 by COGCC and Northwest staff. In general, the locations held up well during the recent large storm events although several access roads were damaged. The upper transducer at Highway 151 #2 starting giving erratic readings in late June 2013 and ceased transmitting in late July 2013. There was no surface evidence of problems, indicating the transducer itself has probably failed. Erratic readings from the upper transducer at Wagon Gulch #2 were determined to be from a loose wire in the hub which was reconnected. Data now appears to be transmitting normally. Wellhead leaks at South Fork Texas Creek #2 are still evident and require repair. Pending O&M activities includes the replacement of the upper transducer at Highway 151 #2 and a rebuild of the wellhead at South Fork Texas Creek #2. In addition it is planned to swap out the Level Troll™ datalogger system at a Basin Creek well and install an AquaTroll™ to run an assessment if different monitoring technologies may provide more accurate water level information. The Beaver Creek locations continue to be inaccessible due to surface access issues and the BP Highlands location was not visited due to potential road damage and wet road issues. Both locations are currently reporting normally via the telemetry system.

Ongoing Investigation, Reclamation, and Mitigation of Residual Methane in the Vicinity of the Bryce 1-X Well Area, Bondad, Colorado Four domestic water wells were sampled at the Bondad location on October 2, 2013 by COGCC and Four Corners Geoscience staff. A visual inspection of the water at all locations indicated the water looked much cleaner than during past sampling events. Free methane results ranged from 1.41 mg/l in the South well to 6.91 mg/l in the North well. All methane results were lower than the April 2013 sampling results. Analytical and isotopic data are pending.

➤ SOUTHEAST COLORADO

◆ U.S. EPA Raton Basin Hydraulic Fracturing Study - Las Animas and Huerfano Counties

As part of the retrospective study of possible impacts from well completions, a third round of sampling and analysis of groundwater from two

areas in the Raton Basin was conducted during the week of November 5, 2012. COGCC staff, as well as contractors for Pioneer Natural Resources, collected split samples at many of the sites. The EPA released an interim progress report on the study in December 2012. The EPA is expected to release the study in a draft for public and peer review in 2014. Ultimately, results from the study are intended to inform the public and provide policymakers at all levels with high-quality scientific knowledge that can be used in decision-making. For more information on the EPA hydraulic study, go to <http://www.epa.gov/hfstudy/>.

➤ VARIANCES

1. Synergy Resources Corporation

A Rule 502.b Variance from Rule 318A.m was granted to Synergy Resources Corporation ("Synergy") on January 21, 2014 for approval of the Application for Permit-to-Drill the Union A-5CHZ Well (API No. 05-123-37398), in the SWNW Section 5, Township 2 North, Range 68 West, 6th P.M. in Weld County. Rule 318A.m requires an operator proposing a horizontal well to obtain a waiver from the operator of a well within 150 feet of the proposed horizontal wellbore. Synergy attempted, but was unable to obtain, a Rule 318A.m waiver from Encana Oil & Gas (USA) Inc. regarding their Pietrzak #1 (API No. 05-123-10241) located 65' from Synergy's proposed horizontal Union A-5CHZ well. Prior to drilling their horizontal well, Synergy will conduct a gyro survey in the Pietrzak #1 to accurately determine the subsurface location of this older vertical well. Synergy will not complete their horizontal well until any zonal isolation deficiencies in the Pietrzak #1 have been remediated.

2. Great Western Operating Company

A Rule 502.b Variance from Rule 603.a(1) was granted by the Director on January 22, 2014 to Great Western Operating Company ("Great Western"). Rule 603.a(1) requires that a well be located at least 200' from an above ground utility. Great Western requested a variance be granted to accommodate the surface owner's preferred well location as outside the irrigation pivot. The rig to be used on this site has a maximum height of 158.2'. Utility lines are high enough that the Operator will be able to enter the location and raise the rig without any interruption. Operator submitted a signed waiver from Poudre Valley



REA. Involved wells and document numbers are:

Lind EE 20-021HN	400521393
Lind EE 20-022HC	400521468
Lind EE 20-022HN	400521443
Lind EE 20-025HN	400521488
Lind EE 20-027HN	400521494
Lind EE 20-028HC	400520998

3. XTO Energy Inc.

On February 28, 2014, approval was granted for Rule 502.b Variance Request by XTO Energy Inc. ("XTO") to Order Nos. 112-138 and 112-156. XTO is proposing to drill a pilot hole and two horizontal laterals named the Burkett #4-24 Well (API No. 05-067-09904). The well is located in the S½ of Section 24, Township 35 North, Range 8 West, 6th P.M. in La Plata County.

Order No. 112-38 is currently the most recent order governing development of Section 24 for the Fruitland Coal. The order was approved in January 1998 and has certain requirements that are outdated when applied to horizontal wells. Order 112-138 requires that the permitted wells be: 1) located in the center of the NE¼ or the SW¼ of the section; 2) no closer than 990 feet to any outer boundary of the unit; 3) no closer than 130 feet to any interior quarter section line; and 4) no closer than 1200 feet from any producing Fruitland Coal well. XTO is seeking a 502.b variance to establish setbacks and well location requirements of Order No. 112-138 due to the special nature of the horizontal wells and geologic considerations. XTO stated that in order to maximize the efficient recovery of the minerals and protect correlative rights, a variance is necessary to permit this location.

The Burkett #4-24 Well requires both an exception to Order No. 112-138 for Section 32; as well as an exception to setbacks established under similar orders to units adjoining the S½ of section 24. Sections 23, 25, and 26 of 35 North, Range 8 West, 6th P.M. are governed by Order Nos. 112-156 and 112-138 respectively and have the same setback requirement of 990 feet to unit boundaries. Section 19, Township 35 North, Range 7 West, 6th P.M. is governed by Order No. 112-156 which requires a 990-foot setback to unit boundaries. The proposed Burkett #4-24 location encroaches (less than

990 feet) upon the adjoining unit in each of these four sections. Pursuant to the requirements of Rule 318.c. XTO sent letters requesting a waiver and/or consent to all parties entitled to notice of the requested exception location, including mineral estate owners in the units towards which the Well will encroach. XTO did not receive any objections. XTO received 97.8% consent from the mineral estate owners in the S½ of Section 23, Township 35 North, Range 8 West, 6th P.M.; 68.1.8% consent in the E½ of Section 25, Township 35 North, Range 8 West, 6th P.M.; 68.6% consent in the W½ of Section 25, Township 35 North, Range 8 West, 6th P.M.; 70.6% consent in the E½ of Section 26, Township 35 North, Range 8 West, 6th P.M.; consent from the Operator in Section 19. XTO could not get 100% consent and therefore requested the 502.b variance. Rule 502.b variance request and waivers/consents are attached to the well APD.

4. XTO Energy Inc.

A variance request was approved on February 28, 2014 for the Huber-Culhane #2-32 Well (API No. 05-067-09905) for XTO Energy, Inc ("XTO"). XTO is proposing to drill a pilot hole and two horizontal laterals. The well is located in the N½ of Section 32, Township 35 North, Range 8 West, 6th P.M. in La Plata County.

Order No. 112-138 is the order governing development of Section 32. The Order was approved in January 1998 and has certain requirements that are outdated when applied to horizontal wells. Order 112-138 requires that the permitted wells be: 1) located in the center of the NE¼ or the SW¼ of the section; 2) no closer than 990 feet to any outer boundary of the unit; 3) no closer than 130 feet to any interior quarter section line; and 4) no closer than 1200 feet from any producing Fruitland Coal well. XTO is seeking a 502.b variance to establish setbacks and well location requirements of Order No. 112-138 due to the special nature of the horizontal wells and geologic considerations. XTO submits that in order to maximize the efficient recovery of the minerals and protect correlative rights, it is reasonable to permit this location.

The Huber-Culhane #2-32 Well requires an exception to Order No. 112-138 for Section 32 as well as to setbacks established under similar orders to units adjoining the N½ of Section 32. Sections 29, 30, and 31, Township 35 North, Range 8 West, 6th P.M. are governed by Order Nos. 112-138 and 112-



156 respectively and have the same setback requirement of 990 feet to unit boundary. The proposed Huber-Culhane #2-32 location encroaches (less than 990 feet) upon the adjoining unit in each of these three sections. Pursuant to the requirements of Rule 318.c., XTO sent letters requesting a waiver and/or consent to all parties entitled to notice of the requested exception location, including mineral estate owners in the units towards which the Well will encroach. XTO did not receive any objections. XTO received 82.1% consent from the mineral estate owners in the N½ of Section 31, Township 35 North, Range 8 West, 6th P.M.; 87.2% consent in the E½ of Section 30, Township 35 North, Range 8 West, 6th P.M.; 90.5% consent in the W½ of Section 29, Township 35 North, Range 8 West, 6th P.M. XTO could not get 100% consent and therefore requested the 502.b variance. Rule 502.b variance request and waivers/consents are attached to the well APD.

5. XTO Energy Inc.

On March 11, 2014, a Rule 502.b. variance request by XTO Energy (XTO) was approved by the Director. XTO requested a variance to certain parts of Rule 1101.e.(1), requiring annual pipeline testing of water gathering lines defined as a "flowline" under Rule 100. The variance applies in XTO's Raton Basin coal bed methane (CBM) production area, Raton Basin Water Gathering Facility. XTO claimed that actual annual pressure testing would be difficult to accomplish, and that they have an equivalent or better system in place that complies with the intent of the rule, to ensure flowline integrity and minimize spills.

XTO operates over a hundred miles of flowlines that gather produced water from their CBM wells in the Raton Basin field. XTO tests new water flowlines, either pneumatically or hydrostatically, at 100% of the manufacturer's maximum allowable operating pressure (MAOP) for the type of pipe prior to the time of installation. XTO uses a continuous pressure monitoring system with pressure data uploaded in near-real time via satellite.

COGCC staff is requiring that XTO submit annual reports on the effectiveness of the system, including GIS compatible map data, update of changes and improvements, and tabular summary

and root cause analysis of any flowline related spills.

➤ ORGANIZATION

New Permit and Technical Services Manager

Jane Stanczyk has been promoted to the position of Permit and Technical Services Manager. Since December 2009, Jane held the position of Permitting Supervisor. As Permit Supervisor, Jane has consistently demonstrated her commitment to public service, exceptional job performance, and dedication to her colleagues -- hallmarks of leadership the COGCC seeks in its management team. Jane started her career with the COGCC as a Permit-Completions Technician in 2006 and acquired a working knowledge of the oil and gas industry during a 10-year career as a geologist with Exxon. She holds a Master's Degree in Geology from the University of Wisconsin-Madison and a Bachelor's Degree in Geology from Allegheny College in Pennsylvania. We are certain that Jane will carry on Thom Kerr's commitment to excellence in the Permitting and Technical Services group.

New Reclamation Supervisor

We are pleased to announce that Dr. Denise Arthur has been hired for the position of reclamation supervisor. This is a newly created position with the OGCC. Denise has twenty years of experience in restoration ecology and related fields. Denise received an undergraduate degree from University of Colorado and a PhD in the Rangeland Ecosystem Science with an emphasis in Restoration Ecology from Colorado State University. Denise has extensive experience in environmental consulting including in all aspects of erosion control, topsoil salvage and management; and final natural soil contouring and native re-vegetation. She has published numerous peer reviewed papers and has been a speaker at the 2006 High Altitude Restoration workshop 2006. She will supervise four reclamation specialists and report to Margaret Ash, Field Inspection Manager.

New Environmental Protection Specialist

Jim Hughes has been hired as a new Environmen-



tal Protection Specialist for the Southwest Region. Jim has a Bachelor of Science degree in Geology from Fort Lewis College in Durango and has 12 years of environmental and geological experience. He has provided oversight as an environmental inspector for the Western Expansion Pipeline and has worked as a well site geological consultant for ten years. Jim has provided support to the BLM acquiring data and preparing reports for use in the San Juan Basin Ground Water Modeling Study: Ground Water - Surface Water Interactions between Fruitland Coalbed Methane Development and Rivers. Jim will be a great asset to the COGCC with his pipeline experience and geologic knowledge of the Basin.

New Oil and Gas Location Assessment Specialist

Melissa Housey has been selected to fill the vacant Oil and Gas Location Assessment Specialist position for the southeast region and will provide support in the DJ Basin as well. Melissa is a registered professional geologist with over 18 years experience in environmental consulting. She has extensive project management experience in land use planning, environmental planning and permitting projects with a specific focus on multidisciplinary National Environmental Policy Act (NEPA) issues specializing in biological, geological and water resource assessment. She has provided consultation to the oil and gas industry for permitting solutions and regulatory compliance in Colorado, New Mexico, Utah and Ohio as well as for compliance with the Clean Water Act, the Endangered Species Act, geologic hazard assessment and Spill Prevention Control and Countermeasure plans (SPCC). Melissa holds a Bachelor's Degree in Geology and a Master's Degree in Geography and Environmental Studies.

New Area Engineer

Craig Burger is transferring to the Engineering Unit and filling the vacant Northwest Area Engineer position. Craig joined COGCC as a Northwest Area Field Inspector in January 2013. Previously, he spent more than 12 years working as a Project Manager and Project Engineer for various consulting companies, performing civil engineering design and construction oversight. Craig is a Colorado-licensed Professional Engineer and has earned two civil engi-

neering degrees (M.S. at Colorado State University and B.S. at Washington State University).

An organizational chart can be found on pages 12-15. For contact information, please go to our homepage, and then "Staff Contact Information."

➤ PLANNING/ADMINISTRATION/OTHER

◆ Plugging and Reclaiming Abandoned Wells (PRAW) - Project Updates

The DB Orphan Blair #1 Project came into being on July 7, 2013 when a ditch rider discovered water flowing from the ground and discharging into an irrigation ditch located on the NW edge of DeBeque, CO in Mesa County. The COGCC was contacted on July 9, 2013 and because other orphaned oil and gas wells had been previously discovered and plugged by the COGCC, the COGCC assumed responsibility and had water samples gathered for lab analysis. Lab analysis indicated salty water which is indicative of oil and gas geologic sources. The ground around the water flow was dug up and the source of the leak was determined to be from a hole in a pipeline which was traced back to an old abandoned well that appears to have been drilled around 1902 based on old USGS reports. The salt water discharge into the ditch was terminated by sealing the well head and then disconnecting the pipeline. The COGCC has placed this well in the PRAW program with plans to re-enter in May. To date a plugging design and cost estimate has been completed along with other supporting documents. Plans next are to submit for bid solicitation and contractor selection.

The PAST Project includes three leaking plugged and abandoned wells that were re-entered and re-plugged and have been renamed the 2013 Piceance Re-entries Project to avoid confusion with other work. Two are located in Garfield County and one is in Mesa County. This work has been successfully completed this past July with a final cost of \$236,776. These sites need surface reclamation which will likely take place in the next fiscal or after July 1, 2014.

The Pasture #1 Project involves the final abandonment of the well which includes cutting the casing off three feet below ground level and in-



stalling a well marker and sign. This work planned for and scheduled in May.

The DeBeque Environmental and Reclamation Project, involves the remediation and reclamation of soils contaminated by salt water in the vicinity of the orphaned wells known as the Homestead #2 and the Pasture #1 wells. Both sites are located in Mesa County on the NW edge of DeBeque, CO. Soil sampling and lab analysis has been completed on both well sites. With updated preliminary costs, it appears that only the Homestead #2 will have both remedial and reclamation work completed this fiscal year (July 1, 2013 thru June 14, 2013). Designs are nearing completion with plans to have the actual work completed April 30th. Monitoring wells are to be installed with subsequent sampling and testing to verify success of the work. The Pasture #1 will likely have to be carried forward after July 1.

Biscuit Pad Remediation Project includes two well pads and the two respective access roads where they are currently located in an active irrigated hayfield. The goal is reclaim and return the lands back to agricultural purposes. This project is located in Garfield County near the NE border of the town of Rifle and east Highway 13. The lowest bid from the list of qualified contractors came in at \$143,000 and the work had been awarded to Tally Ho Construction, Inc. Tally Ho facilities and offices are headquartered in Rifle, CO. On October 15, Tally Ho Construction commenced mobilization of equipment, personnel and supplies to the project and has completed approximately 30 percent of the project when comparing the cumulative expenditures made to date to the contract amount of \$143,000. Work is moving right along with improved ground conditions and spring weather. The project is estimated to be about 60 percent complete. Most efforts are currently being focused on the north pad including excavating fill and hauling it to the designated north fill area.

The Tatonka Reclamation Project includes three well pads located in Moffat County with two well pads being on the Culverwell property that can be found approximately 20 miles west of Craig, CO and a couple of miles north of Hwy 40 with another well pad and pit being located on the Gerber property and found four miles west of Craig and three miles north of Hwy 40. A con-

tractor has provided a documented quote and price to reclaim the mud reserve pit on the Gerber pad. A purchase order not to exceed \$25,000 has been approved.

The Gentry Project is located in Rio Blanco County and includes 10 sites with eight wells and two pits that can be found approximately a half mile west of Rangely, CO and one and a half miles south of Hwy 64. The landowner has plans to do some land development and brought the matter to the attention of the COGCC.

Page 16 contains a spreadsheet listing PRAW projects that are either scheduled in process or completed as of March 12, 2014.

April 2014 Hearing Docket

A docket for the April 2014 hearing will be available shortly after the March hearing. Hearing dockets are available on our website by clicking on "Hearings." Links to the notices and hearing applications are available from the Docket Number and Applicant, respectively. To sign up for e-mail notification of hearing notices and applications, please see the announcement and instructions on the homepage of the COGCC website: www.cogcc.state.co.us

➤ Colorado Oil and Gas Information System (COGIS) Projects, Updates and Changes

Environmental Database

During the past 18 months, the COGCC and the Ground Water Protection Council (GWPC) have been working together to develop a new Environmental Database that will contain the results from the from the Colorado Oil and Gas Association Voluntary Baseline Groundwater Quality Sampling program, along with other environmental data collected by the agency. The project Sampling program, along with other environmental data collected by the agency. The project included the development of a new relational database model that will allow the data to be accessible to the public from the COGCC website.

Other improvements include an Electronic Data Deliverable that allows industry to submit the

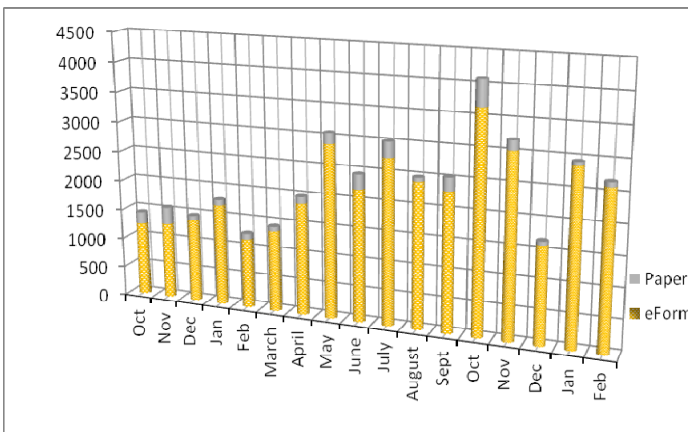


results of the sampling directly to the COGCC, which can then process the information directly into the database. The application has many other features to help staff analyze the information and understand the lab results from the sampling. The interface will allow the public to view and download the results.

Electronic Form Submissions (eForm)

TOTAL ELECTRONIC FORM SUBMITTALS
OCTOBER 2012 - FEBRUARY 2014

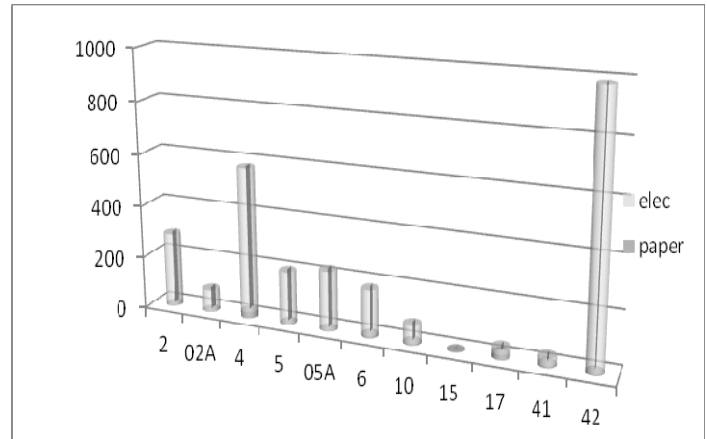
Forms currently available through eForm:



Form 2 - Application for Permit to Drill
Form 2A - Oil and Gas Location Assessment
Form 4 - Sundry Notice
Form 5 - Drilling Completion Report
Form 5A - Completed Interval Report
Form 6 - Well Abandonment Report
Form 10 - Certification of Clearance/Change of Operator
Form 15 - Earthen Pit Report/Permit
Form 17 - Bradenhead Test Report
Form 41 - Trade Secret Claim of Entitlement
Form 42 - Notice of Notification (Notice of Hydraulic Fracturing)

Following is a breakdown by Form for the month of February 2014:

Revisions to Forms 2 and 2A



The revised Form 2 and 2A were released on August 5. The forms have been revised to accommodate the additional information required by the new Rules that were effective August 1, 2013. Staff took this opportunity to make some long-needed improvements to both forms.

The Form 4, Sundry Notice went live in eForm on April 30, and has become one of the fastest forms to achieve over an 80% usage within the electronic portal. With the addition to the suite of forms now available in eForms, processing of the Sundry is faster and more efficient.

COGCC staff is available to answer questions as needed for either the new eForm 4 or for the revised paper Form 4.

The development team has now turned its attention to the Form 19 the Spill Report. The forms are in final staff testing. The form is anticipated for release in early February.

Form 15, Pit Permit and Report, is available in eForm and operators are encouraged to utilize the system to file this form. The form contains additional fields. The PDF version on the Forms page, <http://cogcc.state.co.us/Forms/forms.html>, is revised to reflect the changes that occurred from the release of the form in eForm.

As forms are released on eForm, updates to the PDF forms on our website will occur in tandem. These new versions of the PDF forms will reflect any changes that have taken place when forms are moved into eForm.



Along with the eForm system, a page is available where the operators can review all known bugs within the system and report any new ones they discover. Currently, there are 305 operators using eForm.

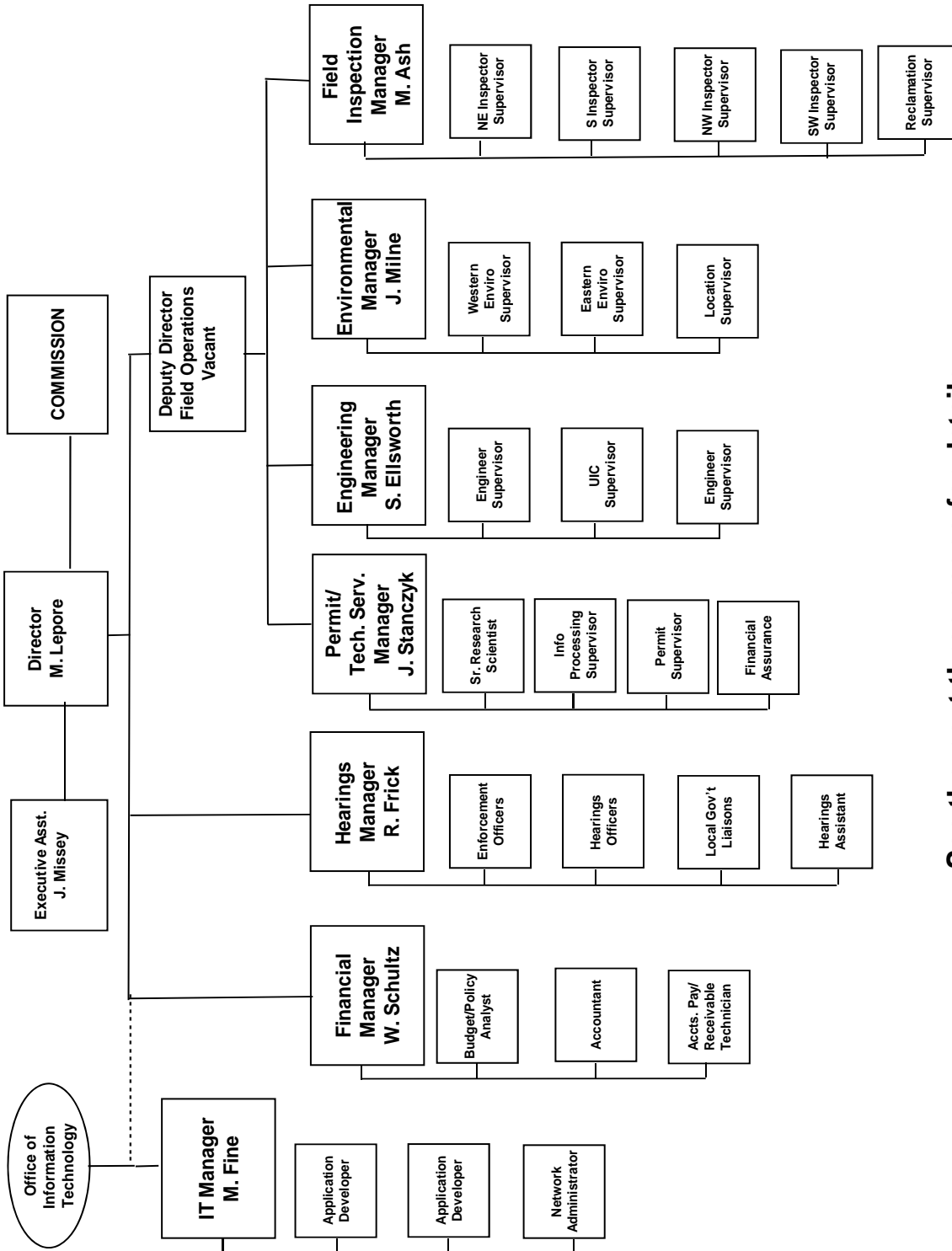
The public can make comments on all submitted Oil and Gas Location Assessment (OGLA) forms (Forms 2A) through the eForm system. This is accomplished by going to the COGCC website (<http://www.colorado.gov/cogcc>) and clicking on the menu option, "Permits", (or <http://cogcc.state.co.us/COGIS/DrillingPermits.asp>).

On the COGIS-Permits page, two search options are available for OGLA forms, "All Pending Location Assessments for" and "All Approved Location Assessments for." When the results are displayed for forms in process, the public can click on the document number, which logs the user onto the new eForm application. Once the page is displayed with the selected document, the user can select the Comment button to make a comment on that particular form. The public can use his same method to make comments on APDs (Form 2s).

For any operator not currently enrolled in eForm, instructions for starting the process can be found at <http://cogcc.state.co.us/Announcements/COUAINformation.pdf>.



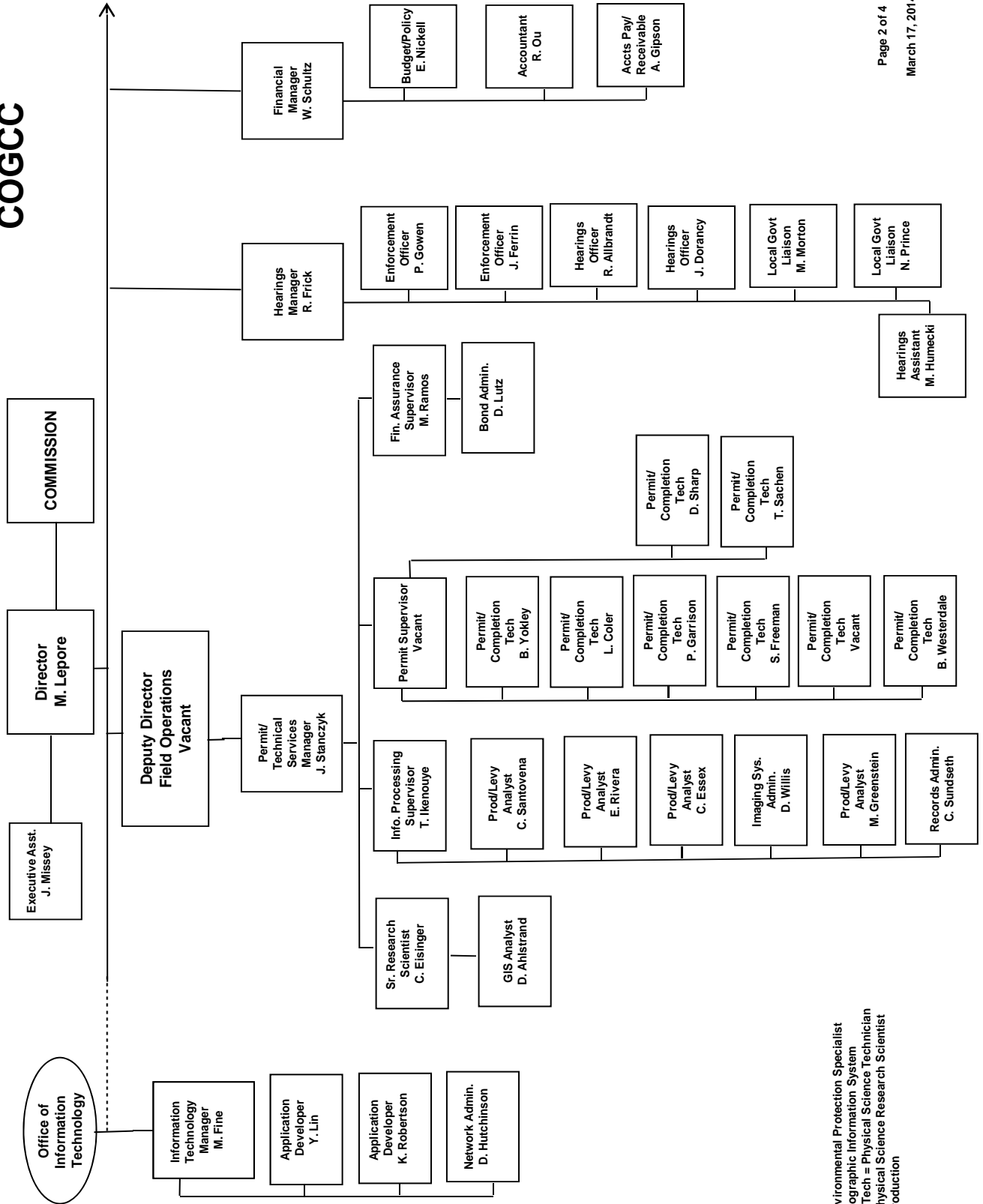
COLORADO OIL & GAS CONSERVATION COMMISSION



See the next three pages for details



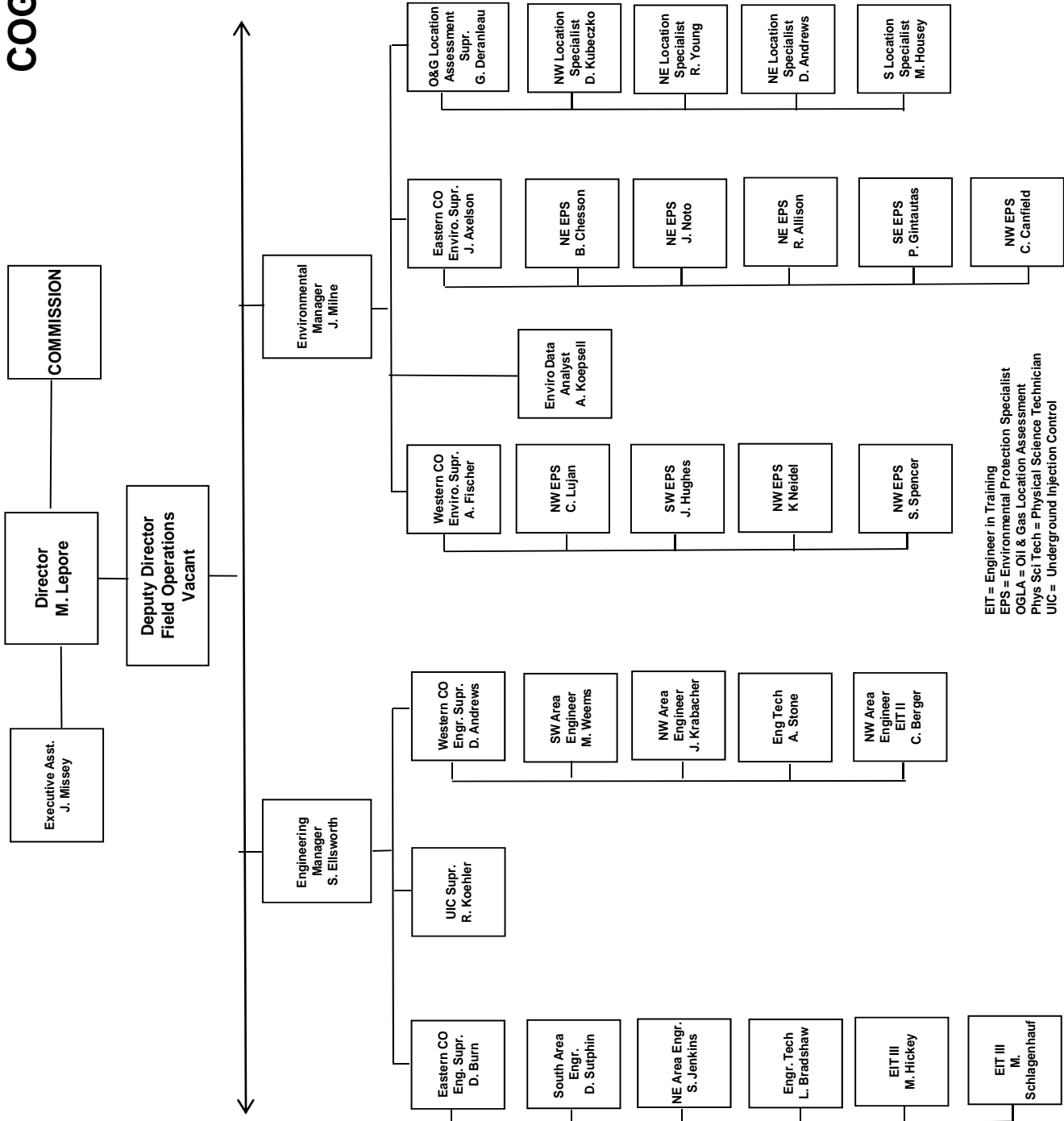
COGCC



EPS = Environmental Protection Specialist
 GIS = Geographic Information System
 Phys/Sci Tech = Physical Science Technician
 PSRS = Physical Science Research Scientist
 Prod = Production



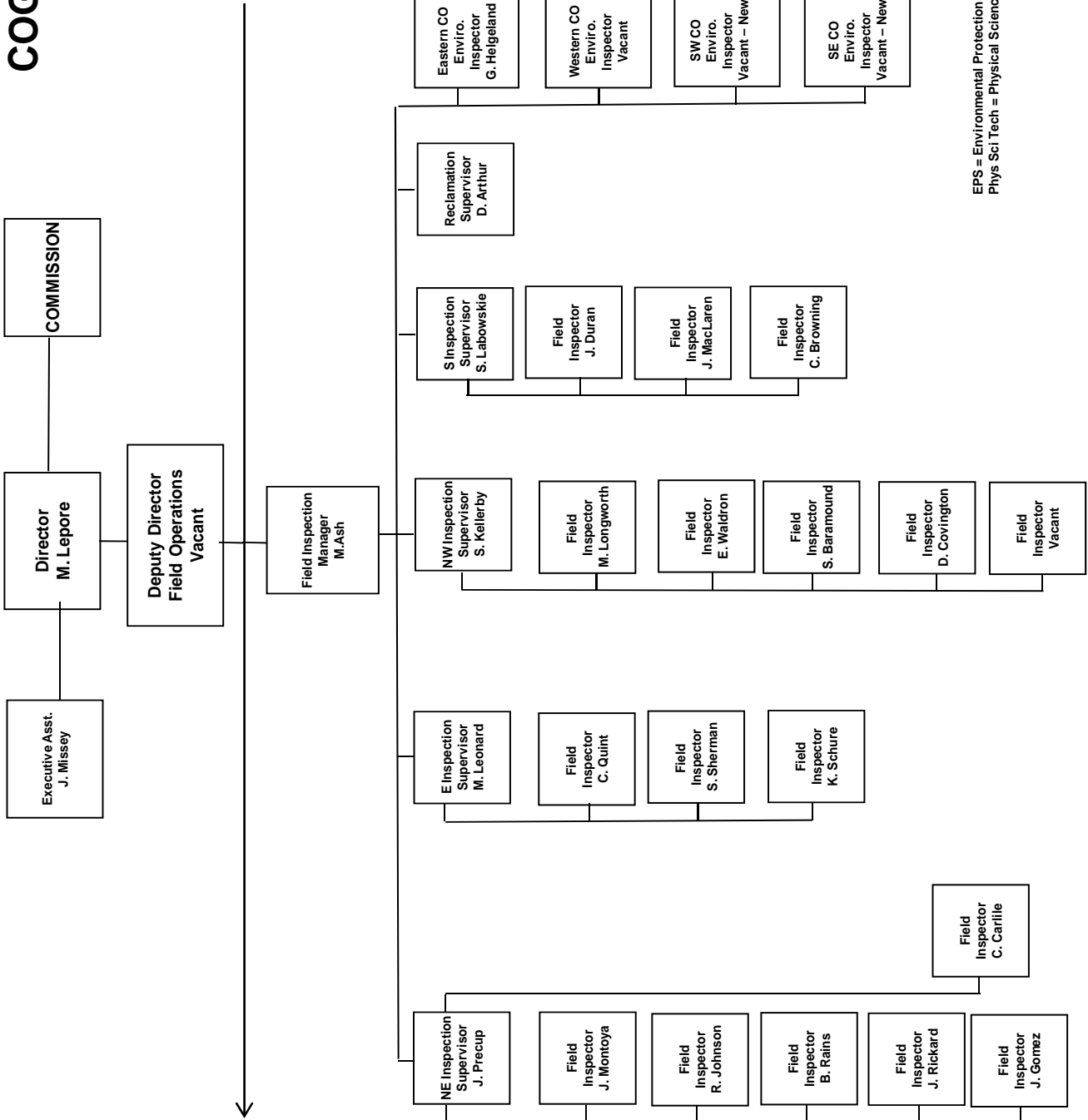
COGCC



EIT = Engineer in Training
 EPS = Environmental Protection Specialist
 OGLA = Oil & Gas Location Assessment
 Phys Sci Tech = Physical Science Technician
 UIC = Underground Injection Control



COGCC



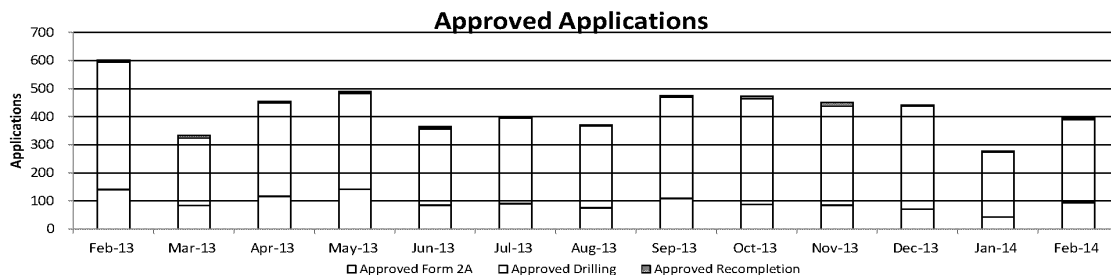
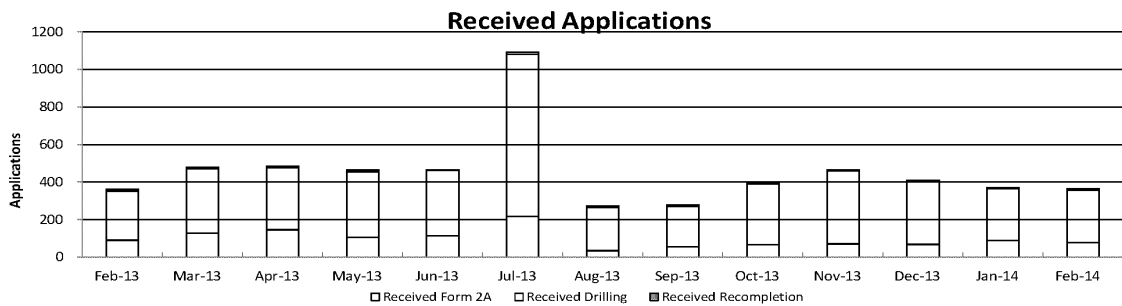
EPS = Environmental Protection Specialist
Phys Sci Tech = Physical Science Technician



Colorado Oil & Gas Conservation Commission Monthly Permit Activity

	Backlog	Received	Approved	Withdrawn	Rejected	Incomplete	In-Process	Remaining
Form2A								
Feb-13	217	91	141	8	0	34	125	159
Mar-13	159	129	84	1	0	33	170	203
Apr-13	203	146	117	7	0	40	185	225
May-13	225	106	142	4	0	37	148	185
Jun-13	185	114	85	7	0	41	166	207
Jul-13	207	218	91	15	0	34	285	319
Aug-13	319	35	76	0	0	47	231	278
Sep-13	278	56	109	0	0	68	157	225
Oct-13	225	67	88	6	0	69	129	198
Nov-13	198	72	85	6	0	57	122	179
Dec-13	179	68	71	6	0	57	113	170
Jan-14	170	90	43	7	0	47	163	210
Feb-14	210	78	94	3	0	51	140	191
Drilling								
Feb-13	545	260	455	16	0	58	276	334
Mar-13	334	344	241	4	0	46	387	433
Apr-13	433	332	333	2	0	79	351	430
May-13	430	350	342	31	0	45	362	407
Jun-13	407	349	272	18	0	57	409	466
Jul-13	466	863	304	14	0	65	946	1011
Aug-13	1011	232	291	3	0	160	789	949
Sep-13	949	214	361	2	0	160	640	800
Oct-13	800	324	376	12	0	115	617	736
Nov-13	736	389	353	10	0	88	670	762
Dec-13	762	338	367	7	0	110	616	726
Jan-14	726	277	232	77	0	75	619	694
Feb-14	694	281	297	4	0	109	565	674
Recompletion								
Feb-13	6	10	5	0	0	0	11	11
Mar-13	11	5	9	0	0	1	6	7
Apr-13	7	6	5	0	0	2	6	8
May-13	8	8	6	0	0	0	10	10
Jun-13	10	2	8	0	0	0	4	4
Jul-13	4	11	4	0	0	0	11	11
Aug-13	11	6	4	0	0	0	13	13
Sep-13	13	9	5	0	0	0	17	17
Oct-13	17	5	9	0	0	0	12	13
Nov-13	13	4	13	0	0	0	4	4
Dec-13	4	3	4	0	0	0	3	3
Jan-14	3	4	2	0	0	0	5	5
Feb-14	5	5	4	0	0	0	6	6

Incomplete are permits that have missing or inaccurate data and cannot be approved.



Backlog = Incomplete + In-process = Remaining permits from previous month



Colorado Oil and Gas Conservation Commission
 Status of Permit Applications Filed By Month
 March 3, 2014

Form 2A Location Assessment

Year	Month	Received	Approved	Withdrawn	In Process	Percent In Process	Median Days to Process	Less Than 30 Days	30 to 49 Days	Greater Than 50 Days
2010	Total	2520	2433	85	0			1559	662	212
2011	Total	2391	2298	91	2	0%		1416	620	262
2012	Total	1359	1288	68	3	0%		706	378	204
2013	1	177	163	12	2	1%	35	99	45	19
2013	2	91	83	8	0	0%	34	42	29	12
2013	3	131	122	9	0	0%	51	41	46	35
2013	4	150	141	7	2	1%	40	47	69	25
2013	5	105	100	4	1	1%	42	47	32	21
2013	6	107	86	3	18	17%	42	28	41	17
2013	7	204	196	2	6	3%	67	11	71	114
2013	8	58	56	2	0	0%	62	7	18	31
2013	9	56	51	2	3	5%	49	13	18	20
2013	10	63	57	2	4	6%	46	12	24	21
2013	11	76	65	5	6	8%	43	18	24	23
2013	12	68	52	5	11	16%	51	4	16	32
2013	Total	1286	1172	61	53	4%		369	433	370
2014	1	85	43	1	41	48%	36	12	29	2
2014	2	90	2	0	88	98%	24	2	0	0
2014	3	2	0	0	2	100%	0	0	0	0
2014	Total	177	45	1	131	74%		14	29	2

Form 2 Application For Permit to Drill (APDs)

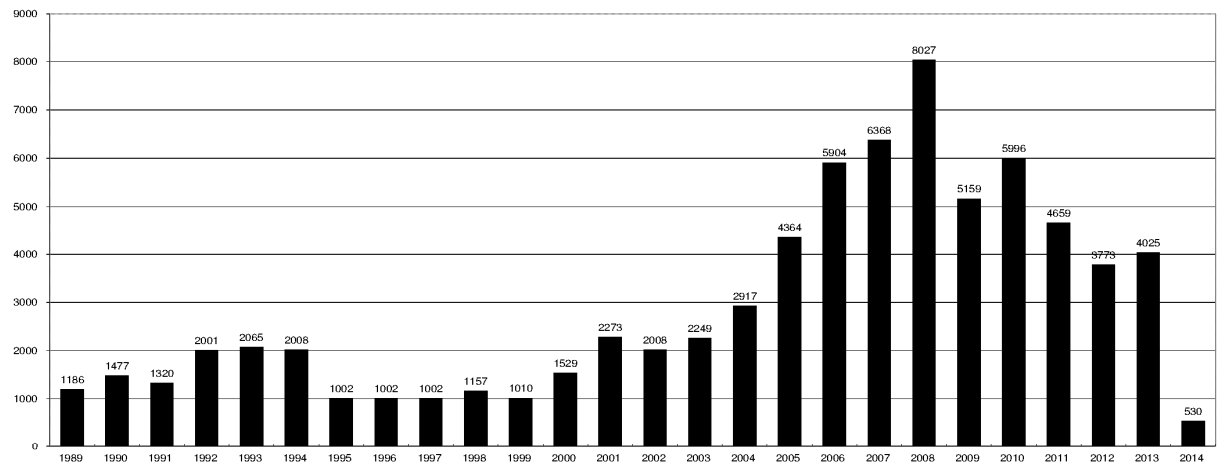
Year	Month	Received	Approved	Withdrawn	In Process	Percent In Process	Median Days to Process	Less Than 30 Days	30 to 49 Days	Greater Than 50 Days
2010	Total	5891	5746	144	0	0%		1760	2739	1744
2011	Total	4691	4557	129	3	0%	418	2723	1565	587
2012	Total	3955	3813	137	5	0%		1971	1393	599
2013	1	562	542	18	2	0%	36	278	179	86
2013	2	242	228	14	0	0%	36	78	126	38
2013	3	333	320	13	0	0%	43	123	119	84
2013	4	327	314	13	0	0%	40	105	153	59
2013	5	369	340	27	2	1%	40	111	181	59
2013	6	330	301	10	19	6%	43	110	131	62
2013	7	798	762	10	26	3%	66	106	218	449
2013	8	313	300	4	9	3%	60	13	138	154
2013	9	189	182	1	6	3%	66	21	66	102
2013	10	339	304	7	28	8%	60	22	89	200
2013	11	373	322	11	40	11%	51	49	147	131
2013	12	382	194	67	121	32%	46	31	79	86
2013	Total	4557	4109	195	253	6%		1047	1626	1510
2014	1	260	128	2	130	50%	39	35	81	16
2014	2	300	5	0	295	98%	15	4	1	0
2014	3	4	0	0	4	100%	0	0	0	0
2014	Total	564	133	2	429	76%		39	82	16



COLORADO OIL AND GAS CONSERVATION COMMISSION ANNUAL DRILLING PERMITS BY COUNTY

COUNTY	1988	1989	1990	1991	1992	1993	1994	1995	1996	1997	1998	1999	2000	2001	2002	2003	2004	2005	2006	2007	2008	2009	2010	2011	2012	2013	2014	current as of 3/3
1 ADAMS	46	34	44	53	92	58	137	34	9	33	24	19	38	28	9	26	39	34	37	89	51	35	21	8	40	40	3	
5 ARAPAHOE	5	5	15	14	11	4	20	12	2	9	1	2	0	2	1	2	5	7	11	10	10	10	8	23	35	23	7	
7 ARCHULETA	8	5	18	5	2	1		3		3			1	7	9	6	10	8	13	14	26	47	11	18	12	5	4	
9 BACA	6	4	15	10	23	9	12	24	10	7	13	15	22	6	2	3	7	8	2	11	13	3	4	5	3	1		
11 BENT				1	2	2	4	2	5	3	5	2					5	3	8	1	1		5			2	1	
13 BOULDER	1		1	13	38	159	38	5	8	2	5		1	5	6	7	17	13	21	37	32	35	24	30	22			
14 BROOMFIELD															2	7			1	1	2	33	28	11	36			
17 CHEYENNE	203	149	102	93	71	58	48	55	43	31	41	7	3	3	3	3	3	10	21	15	33	12	13	16	31	50	5	
23 COSTILLA															1													
25 CROWLEY	1		1	1																								1
29 DELTA	1	1	2												7	4	5	10	9	2			4	3	6	1		
31 DENVER											5	3	3	3					19	25	24							
33 DOLORES	2		4	1	2	1										1	1	1	6	10	12	21	8	8	13	12		
EAGLE																												1
39 ELBERT	9	12	8	5	3		2	13	16	11	1		2						4			1		1	2	2		
41 EL PASO																						2	3	3	18	1		
43 FREMONT	9	5	6	7	1	2	2	1	2	1							1	3	2	4	14	13	22	14	11	2		
45 GARFIELD	19	66	111	36	18	56	143	78	109	141	95	130	213	353	362	567	796	1509	1845	2550	2888	1981	2037	1323	1046	870	130	
49 GRAND							1																					
51 GUNNISON			2	2		1										5	10	1	9	19	7	10	12	4	3	11	9	
55 HUERFANO	3	5		4	17	3	3	2	1	3	40	26	41	27	27	8	2				7						1	
57 JACKSON	3	1	4	6	2	2	3	2	2	6	3		34	18	21	9	14	6	8	5	27	19	9	18	5	12	1	
59 JEFFERSON	1		4	2		1		1	1		1	2	1						1	3	2						1	
61 KIOWA	15	39	40	46	28	28	21	26	13	17	10	2	11	18	2	4	2	1	11	9	26	7	16	17	17	12	2	
63 KIT CARSON	9	5	7	8	8	15	26	11	7	6	9	5				1	3	5	4	4	13	7	3	2	6	1		
67 LA PLATA	302	218	388	128	120	40	40	20	71	40	82	107	127	156	104	162	102	115	235	251	328	298	191	99	71	32	16	
69 LARIMER	4	4	3	6	13	7	3			1	3	1			2			1			5	46	12	41	8	13	2	4
71 LAS ANIMAS	10	30	36			9	32	95	134	136	195	195	268	400	259	180	332	413	500	362	303	88	92	85	11	2		
73 LINCOLN	8	6	4	7	7	11	8	9	3	2			2	2	1	6	3	4	1	2	58	44	48	31	36	87	11	
75 LOGAN	18	21	23	13	14	30	15	13	6	12	7		4	7	3	3	6	13	17	14	5	9	17	8	27	4		
77 MESA	1	12	29	20	22	2	22	6	11	10	2	6	13	27	30	27	54	136	265	293	501	427	306	127	150	105	4	
81 MOFFAT	13	25	27	19	40	52	43	40	41	28	21	15	35	52	62	63	63	60	120	68	57	51	53	99	88	44	7	
83 MONTEZUMA	6	7	10	8	7	11	15	9	13	5	4	1	4			5	8	8	11	5	12	22	39	19	27	14	6	
85 MONTROSE				1							1			1	3	2	4	2		1	3	3	1	1	1			
87 MORGAN	34	27	36	13	10	11	19	12	10	11	10	12	9	9	2	7	9	7	3	6	2	1	6	13	5	16	6	
89 OTERO				2																								
93 PARK																							3	4	1			
95 PHILLIPS			3		1	1							1	2			7	13	17	12	69	82	45	64	112	56		
97 PITKIN		1			2													1			1							
99 PROWERS	19	9	5	10	14	7	3	5	5	3	9	3	2	5	4			1	5	7	5	8	1	3	1			
103 RIO BLANCO	34	83	77	33	81	83	126	81	33	40	51	95	89	187	105	179	154	161	360	321	477	348	441	109	117	167		
105 RIO GRANDE	2	3	4	1			1							1	1						1	1					2	
107 ROUTT	4	3	12	4	2	3	1	2	1	1	1	4	20	13	1		4	6	9	8	4	2	3	10	4	12	1	
109 SAGUACHE	1									2					2					2	1	2						
113 SAN MIGUEL			2	2							1	1	4	2	11	13	27	18	42	45	35	23	20	13	10	2	1	
115 SEDGWICK				1				3			2						1	5	2	7	2	1	19	11	12	2		
121 WASHINGTON	40	29	23	28	24	26	25	12	19	26	18	3	23	17	27	34	128	50	69	45	11	1	6	12	6	19	4	
123 WELD	424	357	366	656	1224	1319	1030	254	305	285	392	288	509	702	760	757	832	901	1418	1527	2340	1448	2152	2262	1826	2468	320	
125 YUMA	14	20	45	60	104	53	167	168	123	116	111	60	31	205	160	138	237	782	797	541	545	105	299	148	11	9	2	
0 Total	1275	1186	1477	1320	2001	2065	2008	1002	1002	1002	1157	1010	1529	2273	2008	2249	2917	4364	5904	6368	8027	5159	5996	4659	3773	4025	530	

ALL COUNTIES





Colorado Oil and Gas Conservation Commission
Form 2A Breakdown By County By Year
March 3, 2014

Yr	County	Form2As	Completed	In Process	New Location	CDP	SWH	RSO	CDPHE
2009	Total State	818	818	0	408	2	80	5	5
2010	Total State	2378	2376	0	1601	0	327	22	55
2011	Total State	2299	2297	2	1791	1	274	17	5
2012	Total State	1298	1294	4	946	0	173	6	1
2013	ADAMS	15	15	0	13	0	0	0	0
2013	ARAPAHOE	15	15	0	15	0	0	0	0
2013	ARCHULETA	1	1	0	1	0	0	0	0
2013	BACA	1	1	0	1	0	1	0	0
2013	CHEYENNE	44	44	0	40	0	0	0	0
2013	DELTA	2	2	0	1	0	1	0	0
2013	DOLORES	8	8	0	7	0	4	0	0
2013	EAGLE	1	1	0	1	0	1	0	0
2013	EL PASO	1	1	0	1	0	0	0	0
2013	ELBERT	1	1	0	1	0	0	0	0
2013	FREMONT	4	3	1	6	0	1	0	0
2013	GARFIELD	86	76	10	35	0	71	1	0
2013	GUNNISON	9	7	2	3	1	4	1	0
2013	HUERFANO	3	1	2	1	0	0	0	0
2013	JACKSON	10	10	0	4	0	10	0	0
2013	KIOWA	9	9	0	8	0	0	0	0
2013	KIT CARSON	1	1	0	1	0	0	0	0
2013	LA PLATA	15	13	2	5	0	15	0	0
2013	LARIMER	2	2	0	1	0	1	0	0
2013	LAS ANIMAS	2	2	0	1	0	0	0	0
2013	LINCOLN	74	73	1	74	0	0	0	0
2013	LOGAN	4	4	0	0	0	0	0	0
2013	MESA	8	6	2	5	0	1	0	0
2013	MOFFAT	16	14	2	13	0	14	0	1
2013	MONTEZUMA	14	14	0	12	0	2	0	0
2013	MORGAN	16	12	4	16	0	0	0	0
2013	PITKIN	1	0	1	1	0	0	0	0
2013	RIO BLANCO	20	20	0	11	0	21	0	0
2013	ROUITT	9	8	1	10	0	9	0	0
2013	WASHINGTON	20	20	0	21	0	0	0	0
2013	WELD	797	770	27	588	0	8	0	3
2013	YUMA	8	8	0	2	0	0	0	0
2013	Total	1217	1162	55	899	1	164	2	4
2014	ADAMS	5	0	5	4	0	0	0	0
2014	ARAPAHOE	3	0	3	3	0	0	0	0
2014	ARCHULETA	1	0	1	0	0	1	0	0
2014	CHEYENNE	2	0	2	2	0	0	0	0
2014	CROWLEY	2	1	1	2	0	0	0	0
2014	DOLORES	1	0	1	1	0	0	0	0
2014	GARFIELD	12	0	12	3	0	9	1	0
2014	GUNNISON	5	0	5	1	3	1	0	0
2014	HUERFANO	2	0	2	1	0	2	0	0
2014	JACKSON	1	0	1	1	0	1	0	0
2014	KIOWA	2	0	2	1	0	0	0	0
2014	LA PLATA	5	0	5	1	0	5	0	0
2014	LAS ANIMAS	1	0	1	1	0	0	0	0
2014	LINCOLN	35	8	27	27	0	0	0	0
2014	LOGAN	1	0	1	1	0	0	0	0
2014	MOFFAT	2	0	2	2	0	2	0	0
2014	MONTEZUMA	3	0	3	3	0	0	0	0
2014	PHILLIPS	1	0	1	1	0	0	0	0
2014	RIO BLANCO	3	0	3	3	0	3	0	0
2014	ROUITT	1	0	1	1	0	1	0	0
2014	WASHINGTON	7	3	4	7	0	0	0	0
2014	WELD	73	29	44	47	0	1	0	0
2014	YUMA	2	2	0	2	0	0	0	0
2014	Total	170	43	127	115	3	26	1	0

CDP = Comprehensive Drilling Plan SWH = Sensitive Wildlife Habitat consultation
RSO = Restricted Surface Occupancy consultation CDPHE= Colorado Department of Health and Environment consultant



Well to Building Setback Review

Colorado Oil and Gas Conservation Commission

March 3, 2014

Count of well locations by proximity groupings from well spot to buildings for all locations reviewed under the December 17, 2008 amended rules.

Location Proximity to Buildings	2009	2010	2011	2012	2013	2014	Number of Locations	Percent of Total Locations
less than 150 feet	2	3	3	2	0	0	10	0%
150 to 350 feet	37	58	61	39	34	8	237	3%
350 to 500 feet	50	110	97	61	64	10	392	6%
500 to 1000 feet	117	385	331	188	188	26	1235	17%
1000 + feet	356	1705	1470	838	762	77	5208	74%
Total Locations	562	2261	1962	1128	1048	121	7082	

County	Total	Less than 150 feet	150 to 350 feet	350 to 500 feet	500 to 1000 feet	1000 + feet
ADAMS	53	0	3	5	12	33
ARAPAHOE	68	0	2	4	9	53
ARCHULETA	17	0	0	1	9	7
BACA	14	0	0	0	1	13
BENT	7	0	0	0	0	7
BOULDER	23	0	1	1	17	4
BROOMFIELD	32	0	0	4	13	15
CHEYENNE	111	0	0	0	2	108
CROWLEY	1	0	0	0	0	1
DELTA	7	0	0	2	1	4
DOLORES	17	0	0	0	6	11
EAGLE	1	0	0	0	0	1
EL PASO	12	0	0	0	2	10
ELBERT	4	0	0	0	1	3
FREMONT	36	0	2	7	6	21
GARFIELD	449	0	8	3	64	374
GUNNISON	26	0	0	2	1	22
HUERFANO	8	0	0	0	3	5
JACKSON	32	0	0	3	1	28
KIOWA	60	0	0	0	1	59
KIT CARSON	12	0	0	0	0	12
LA PLATA	101	0	3	12	31	55
LARIMER	33	0	4	3	10	16
LAS ANIMAS	200	0	6	7	37	149
LINCOLN	224	0	0	2	4	218
LOGAN	41	0	1	1	0	39
MESA	82	0	0	3	13	66
MOFFAT	156	0	0	2	13	141
MONTEZUMA	32	0	0	1	3	28
MONTROSE	2	0	0	0	0	2
MORGAN	28	0	0	2	4	22
PARK	4	0	0	0	0	4
PHILLIPS	262	0	4	6	20	231
PROWERS	4	0	0	0	0	4
RIO BLANCO	157	0	0	0	1	156
RIO GRANDE	2	0	0	0	1	1
ROUTT	24	0	0	0	2	22
SAN MIGUEL	11	0	0	0	0	11
SEDGWICK	25	0	0	1	3	21
WASHINGTON	52	0	1	0	2	49
WELD	4178	0	195	306	900	2771
YUMA	474	0	7	14	42	411



Well to Building Setback Review

Colorado Oil and Gas Conservation Commission

March 3, 2014

Listing of Locations less than 200 feet to Building

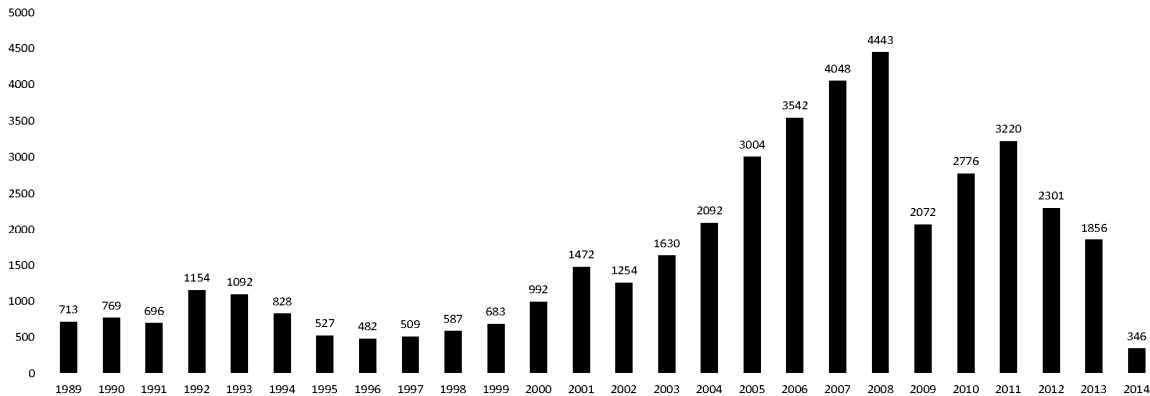
Year	Document Number	County	High Density	New Location	Distance	Proximity	Building Description
2011	2587822	CHEYENNE	No	No	58	less 150	Water well house
2009	1691798	WELD	No	No	58	less 150	Vehicle garage
2010	400072164	WELD	No	Yes	69	less 150	Abandoned hog shed
2012	400240957	GUNNISON	No	Yes	90	less 150	Equipment Shed
2009	1758843	WELD	No	Yes	103	less 150	Building to be razed
2011	1636646	WELD	No	No	122	less 150	Storage shed
2009	400011284	LAS ANIMAS	No	Yes	127	less 150	Operator is owner
2009	1786896	PHILLIPS	No	No	132	less 150	Grain Storage
2011	400117702	WELD	No	Yes	143	less 150	Irrigation pump house
2011	400227765	WELD	No	Yes	145	less 150	Storage Barn
2009	1904205	WELD	No	No	154	150 to 350	Livestock Enclosure
2012	400243295	WELD	No	Yes	155	150 to 350	Unused storage shed
2011	400179419	WELD	No	Yes	157	150 to 350	Existing well / storage building
2010	400054716	WELD	No	No	159	150 to 350	Equipment Barn
2011	400188968	WELD	No	Yes	159	150 to 350	Abandoned
2010	400021477	WELD	No	Yes	162	150 to 350	Goat Barn
2009	1758386	WELD	No	Yes	168	150 to 350	Storage Shed
2011	1635946	WELD	No	No	169	150 to 350	Storage shed
2013	400447386	WELD	No	No	169	150 to 350	Abandoned Turkey Barn
2013	400447391	WELD	No	No	169	150 to 350	Abandoned Turkey Barn
2011	400165164	WELD	No	Yes	178	150 to 350	Residence
2013	400367184	WELD	No	Yes	179	150 to 350	Shed
2011	400188780	WELD	No	Yes	180	150 to 350	Residence
2010	1697620	WELD	No	No	187	150 to 350	Livestock Shed
2009	1758746	WELD	No	No	193	150 to 350	Storage Shed
2011	400154431	WELD	No	Yes	198	150 to 350	Turkey barn
2012	400250031	WELD	No	Yes	198	150 to 350	abandoned guard shack
2009	1774783	WELD	No	No	199	150 to 350	cement service building
2011	400118102	YUMA	No	Yes	199	150 to 350	Steel Barn



COLORADO OIL AND GAS CONSERVATION COMMISSION ANNUAL WELL STARTS BY COUNTY

COUNTY	1988	1989	1990	1991	1992	1993	1994	1995	1996	1997	1998	1999	2000	2001	2002	2003	2004	2005	2006	2007	2008	2009	2010	2011	2012	2013	Current as of 3/3/2014	
ADAMS	39	27	26	36	54	20	54	28	6	16	12	17	18	13	4	19	22	24	13	41	14	15	21	2	14	5	11	
ALAMOSA																												
ARAPAHOE	2	4	16	11	11	3	9	8	3	3	2						6	1	5	2	1	1	3	9	8	14	3	
ARCHULETA	5	3	7	5	2	1		2		1			4	4	2	5	4	10	5	7	26	9	12	9	11			
BACA	5	5	12	6	21	8	9	19	9	7	11	8	19	6	2	1	6	6	2	6	12		5	5	1	1		
BENT				1			2	3	1	2	3	6	2				3	2	8	1	1			1	1	1		
BOULDER	2			7	18	56	15	5									2	5	11	9	14	25	16	13	7	14		
BROOMFIELD	3	2	3	7	14	27	22	2	2						2		1				10		22	11	5			
CHEYENNE	177	133	92	75	64	50	44	41	35	29	29	6	2	1	3	3		9	14	15	14	8	12	11	17	32	5	
CONEJOS																												
COSTILLA																												
CROWLEY	1		1																									
CLUSTER																												
DELTA	1		1														5	4	6	5	2			4	1	6		
DENVER										2	3	1		2						7	5	4						
DOLORES	2		4	1													2		2	13	4	2		1	3	9		
DOUGLAS																												
EAGLE																												
EL PASO																								2		5		1
ELBERT	8	11	9	5	2			10	15	2	2		2							1								
FREMONT	6	3	5	7	1	1	1	2			1							1	3	2	2	5	3	9	16	7	2	
GARFIELD	3	12	24	8	3	4	15	13	7	28	19	94	190	251	245	417	585	799	1005	1304	1688	768	910	880	497	389	65	
GRAND							1																					
GUNNISON			1	2		1										1		1	1	9	5	1	4	5	2	4	1	
HUERFANO	6			2	6	1	1	2		2	31	9	25	14	19	3	6	2			2					2	1	
JACKSON	2	1	3	7	2		3	1	1	3	3		24	2	4	10	10		3	3	10	1	6	7		5		
JEFFERSON										1		2									2							
KIOWA	14	32	35	37	28	19	20	22	8	13	6	4	8	16	2	4	2	1	7	7	2	5	15	15	10	8		
KIT CARSON	11	6	6	6	9	13	15	9	6	3	7	7					1	1	6	2	1	14	3	1	3	1		
LA PLATA	158	129	186	44	66	26	17	19	29	48	65	80	99	135	118	110	103	104	108	179	199	131	67	54	3	8	1	
LARIMER	8	5	1	6	13	5	3		2	1			1	1				1		4	8	1	28	2	10	4	1	
LAS ANIMAS	17	22	20	3	2	11	17	34	62	90	120	182	202	286	205	221	296	384	413	326	221	14	7	78	1			
LINCOLN	6	5	4	4	7	7	8	8	3	2			2	2	1	5	2	2	1	2	19	10	14	22	24	42	1	
LOGAN	17	19	19	8	13	24	9	11	4	10	4		4	6	3	3	2	11	12	12	3	7	3	9	13	4	1	
MESA	1	2	2	4	1		7	2	1	1	4	4	2	12	12	13	25	89	156	209	222	14	11	40	4	6		
MOFFAT	1	2	1	2	1	1	2	1	3	1	8	10	18	23	25	28	19	40	60	42	25	18	15	34	26	22		
MONTEZUMA	6	5	7	5	2	5	7	3	12	2	2		2	3	5	5	1	7	2	4	18	11	3	9	14	11	1	
MONTROSE				1												3					1	2						
MORGAN	26	20	32	11	9	11	16	13	8	9	7	4	9	8	1	7	5	5	3	1	1	2	3	2	3	1	2	
OTERO				1																								
OURAY																												
PARK				1																								
PHILLIPS			3			1											6	10	11	4	35	18	2	42	129	50		
PITKIN			1		2																							
PROWERS	16	9	5	8	13	7	1	5	5	2	8	4	2	4	4			5	5	6	3	5	2	3	1			
PUEBLO																												
RIO BLANCO	1	8	10	1	3	8	6	7	5	9	9	62	51	82	47	83	92	95	107	95	203	116	107	72	52	36	8	
RIO GRANDE	1	2	2																									
ROUTT	1	1	1	3	1							1	5	12	1		1	6	3	2		2	1	2	4	2		
SAGUACHE	1							2																				
SAN MIGUEL				1							3	1	6	9	10	19	28	13	20	17	5	1	2	2				
SEDGWICK				1			1	3		2																		
WASHINGTON	39	28	22	26	24	20	20	13	17	23	18	4	15	12	24	29	65	34	23	14	11	2	2	4	1	9	2	
WELD	176	200	168	296	660	723	389	94	136	94	117	124	237	403	406	522	632	718	931	1222	1314	877	1207	1666	1469	1229	244	
YUMA	12	16	41	47	102	39	114	145	101	104	93	52	42	162	108	106	144	597	593	445	336	27	213	108	16	12		
Grand Total	773	713	769	696	1154	1092	828	527	482	509	587	683	992	1472	1254	1630	2092	3004	3542	4048	4443	2072	2776	3220	2301	1856	346	

ALL COUNTIES





Colorado Oil and Gas Conservation Commission

Active Wells by County and Status as of 03/03/2014

County	Drilling	Domestic	Injecting	Producing	Shut In	Temp Aband	Waiting on Completion	Active Storage	Intent to Plug	Total Active Wells
ADAMS	14		7	897	60	8		17		1003
ARAPAHOE	10	1	3	125	15	9		39		202
ARCHULETA	1	5		106	7	9	6			134
BACA	1		11	132	39	4		57		244
BENT	1	1		29	7					38
BOULDER				317	2	1				320
BROOMFIELD				97						97
CHEYENNE	21		37	313	24	44	2			441
DELTA			1	3	14		1			19
DENVER			1	44	4		3			52
DOLORES	4		1	40	2	1	1			49
EL PASO	1	1				1				3
ELBERT				67	2	2		1		72
FREMONT	1	3		68	4	6				82
GARFIELD	209	5	42	10056	176	65	67	3		10623
GUNNISON	1		1	25	13	1	4			45
HUERFANO	1		1	36	1	6	1			46
JACKSON	6		36	112	40					194
JEFFERSON				1	1		1	3		6
KIOWA	5		9	102	16	4	1			137
KIT CARSON		1	1	14	2	1	1			20
LA PLATA	1	7	31	3120	108	25	4	30		3326
LARIMER	4	2	26	185	21	16	2			256
LAS ANIMAS	1	4	19	2870	79	50	23	5		3051
LINCOLN	10	1	8	74	11	1	3			108
LOGAN	6		17	117	39	31	4	9		223
MESA	6	1	10	875	117	26	14	11		1060
MOFFAT	12		10	501	49	38	10			620
MONTEZUMA	2	2	8	130	29	14	2			187
MONTROSE						4				4
MORGAN	3		18	83	90	40	1	83		318
OURAY		2				1				3
PARK				1						1
PHILLIPS	1		3	258	2	1	1			266
PITKIN								10		10
PROWERS				27	3					30
RIO BLANCO	20	4	277	2215	309	97	12	3		2937
ROUTT		2		33	8	1	1			45
SAN MIGUEL				118	10	3				131
SEDGWICK	1		1	14	4		2			22
WASHINGTON	9		25	415	31	6	3			489
WELD	961	1	39	19699	269	24	35	2		21030
YUMA	2	8	18	3751	59	14	21	1		3874
Totals	1315	51	661	47070	1667	554	226	274	0	51818



Colorado Oil & Gas Conservation Commission Monthly Statistics

YEAR	MO	Baker - Hughes Rig Count	Drilling				Permits				Injection				Pits				Locations				Well Spud		Active Drilling		Public Visits				Well Oper		Operators		Relief Ind.	
			Rcvd	Apvd	Rcvd	Apvd	Recompletion	Apvd	Rcvd	Apvd	Rcvd	Apvd	Rcvd	Apvd	Rcvd	Apvd	Rcvd	Apvd	Rcvd	Apvd	Autlz	Notice	Active	Permits	Data	Office	Internet	Change	New	Iractive						
2010	Total		5703	5996	519	515	34	28	120	225	2461	2548	2302	283	43588	197	1115	112479	8421	46	33	38														
	JAN	63	405	351	8	23	4	6	4	8	249	112	232	4755	14	95	103968	813	1	2	3															
	FEB	61	343	249	15	2	7	6	5	3	184	150	209	4733	21	80	96171	356	1	1	9															
	MAR	68	472	498	18	23	4	7	38	31	262	258	268	4847	9	125	122393	590	2	3	6															
	APR	72	325	314	26	15	5	0	20	27	190	218	241	4882	8	105	106539	402	2	0	3															
	MAY	72	372	367	20	25	3	6	12	8	214	171	248	44752	14	124	73024	545	3	0	5															
	JUN	70	512	436	61	22	5	4	11	4	172	239	272	5013	30	131	108115	790	2	2	2															
	JUL	69	457	436	13	55	2	1	13	7	215	158	261	5113	20	74	103585	595	3	6	3															
	AUG	73	472	482	37	17	1	0	10	17	236	229	282	5328	21	141	111950	573	2	3	12															
	SEP	77	336	389	22	29	7	0	35	34	159	203	322	5361	9	120	116043	584	5	1	7															
	OCT	78	382	443	45	29	2	1	4	12	171	172	302	5423	14	126	132814	552	4	2	12															
	NOV	80	342	324	29	57	0	1	12	13	166	174	305	5409	18	96	130612	572	4	9	15															
	DEC	79	291	370	31	23	4	0	26	28	164	183	278	5329	9	77	132651	347	4	2	2															
2011	Total		4709	4659	325	320	44	32	190	192	2382	2267	3220		187	1294	1337865	6719	33	31	79															
	JAN	73	372	258	26	21	3	0	11	5	142	129	247	5217	12	106	112686	1051	3	3	7															
	FEB	70	370	382	23	27	7	5	21	9	160	129	231	5173	16	114	105857	385	6	9	8															
	MAR	66	292	347	21	14	2	2	17	24	133	172	292	47263	26	138	111746	378	4	1	7															
	APR	66	410	235	16	24	5	5	9	2	137	106	236	4785	12	108	107627	477	4	2	10															
	MAY	66	491	506	23	16	3	1	6	2	105	131	211	4885	20	123	109802	527	3	1	4															
	JUN	69	326	377	11	19	8	6	5	8	110	89	145	5136	11	111	108849	1270	3	4	3															
	JUL	66	237	276	9	14	3	2	5	2	97	103	190	5152	13	102	114195	498	5	0	1															
	AUG	62	313	288	6	9	6	4	23	5	83	97	180	5031	11	112	110908	301	6	5	2															
	SEP	61	252	256	1	5	5	2	4	1	81	77	160	4960	11	89	106114	834	0	4	4															
	OCT	62	326	265	9	3	7	6	2	19	94	82	158	5009	8	105	108833	484	1	2	9															
	NOV	56	271	323	5	8	6	6	2	4	109	97	142	5000	10	119	120586	461	6	4	12															
	DEC	57	322	260	4	8	8	5	9	3	122	81	107	5081	9	78	107240	942	6	2	3															
2012	Total		3982	3773	154	168	63	44	114	84	1373	1293	2299		159	1305	1324443	7608	47	37	70															
	JAN	53	538	331	6	0	3	5	6	8	176	124	139	5060	9	108	47406	637	3	5	12															
	FEB	56	260	455	10	5	2	3	4	11	91	141	134	5250	7	102	40649	293	4	2	6															
	MAR	57	344	241	5	9	3	8	15	6	129	84	163	5093	9	133	43019	355	1	3	2															
	APR	61	331	333	6	5	5	5	6	8	146	117	156	4925	3	132	46459	335	7	1	5															
	MAY	61	350	342	8	6	6	6	10	7	106	142	152	5110	3	123	45215	349	2	1	3															
	JUN	62	349	273	2	8	8	8	5	3	114	85	132	5273	8	122	41015	1444	6	2	2															
	JUL	68	864	304	11	4	9	2	9	5	218	91	153	5070	7	154	45558	1010	4	1	2															
	AUG	69	232	291	6	4	3	2	4	1	35	76	176	5200	20	130	44722	382	6	4	5															
	SEP	69	212	362	9	5	10	9	3	19	56	109	155	5185	5	105	41256	256	4	1	6															
	OCT	72	319	376	5	9	7	5	1	8	67	88	214	4967	5	135	45151	331	6	0	2															
	NOV	69	346	353	4	13	7	4	2	27	67	85	151	5141	12	119	38903	402	2	0	2															
	DEC	64	336	367	2	4	4	6	2	3	63	71	102	5129	4	93	32381	212	4	1	1															
2013	Total		4481	4028	74	72	57	63	67	106	1288	1213	1827		92	1456	511734	6006	49	21	48															
	JAN	62	277	232	4	2	3	4	14	8	90	43	159	4926	1	90	46150	137	6	3	3															
	FEB	61	281	297	5	4	0	1	3	1	78	94	138	5051	12	113	43408	7	8	2	6															
2014	Total	123	558	529	9	6	3	5	17	9	168	137	297	9977	13	203	89558	144	14	5	9															

Apvd = Approved, Rcvd = Received, Ind = Individual, Blkkt = Blanket, Apprs = Application for Hearing, NOAV = Notice of Alleged Violation, AOC = Administrative Order of Consent, OFV = Order Finding Violation, Cmplnt = Complaint, Comp = Completed



Colorado Oil Gas Conservation Commission Monthly Statistics

YEAR	MO	Bonds		Claim	Hearings	Violations		Cmplt	Spills	Remediation		Inspections			
		Blknt	Replace			NOAV	AOC			OFV	Rcvd		Comp	Wells	Locations
2010	Total	40	74	0	1	155	136	319	10	3	218	493	511	382	17075
	JAN	1	4	0	0	16	15	43	3	2	33	40	47	45	1316
	FEB	4	6	0	0	16	15	7	0	1	39	52	48	33	1591
	MAR	3	9	0	0	NA	NA	31	NA	NA	31	48	59	27	1675
	APR	2	1	0	0	24	24	8	0	0	10	52	38	61	959
	MAY	2	4	0	0	77	65	16	2	5	26	31	33	51	1577
	JUN	2	0	3	0	51	58	30	1	4	14	38	53	25	1099
	JUL	6	3	1	0	NA	NA	29	NA	NA	13	39	92	20	518
	AUG	7	2	0	1	68	54	26	2	2	19	54	106	56	1032
	SEP	5	2	0	0	44	41	4	2	4	16	46	56	66	690
	OCT	6	7	0	3	57	45	9	0	0	15	38	102	28	636
	NOV	4	1	0	0	NA	NA	15	NA	NA	16	31	70	58	739
	DEC	2	4	0	0	50	32	12	0	1	15	58	22	66	562
2011	Total	44	43	4	4	403	349	230	10	19	247	527	726	536	12394
	JAN	5	1	1	0	70	72	18	1	0	27	35	68	23	998
	FEB	5	0	0	0	NA	NA	10	NA	NA	24	40	85	36	1998
	MAR	3	9	0	0	44	38	19	0	0	23	38	63	61	2203
	APR	3	2	0	0	80	59	11	0	0	19	35	26	99	1701
	MAY	0	3	0	0	43	50	14	2	0	23	32	27	122	1701
	JUN	3	4	0	0	NA	NA	5	NA	NA	35	39	46	98	1432
	JUL	4	5	0	0	63	50	15	0	0	16	24	45	33	1319
	AUG	8	0	1	0	67	54	24	3	2	21	28	127	33	1898
	SEP	5	2	1	0	NA	NA	5	NA	NA	14	13	30	36	1137
	OCT	1	0	0	0	30	36	6	1	0	13	44	116	37	1407
	NOV	8	7	0	0	85	37	16	2	0	10	44	26	44	1324
	DEC	1	0	0	0	NA	NA	14	NA	NA	19	30	31	19	1046
2012	Total	46	33	3	0	482	396	157	9	2	244	402	690	641	19084
	JAN	2	0	0	0	48	75	15	4	0	21	40	31	45	1673
	FEB	3	2	0	0	41	35	11	2	0	15	30	42	90	1042
	MAR	2	1	0	0	54	67	16	2	0	11	25	65	29	1967
	APR	2	8	0	0	NA	NA	21	NA	NA	16	33	39	37	1508
	MAY	0	0	0	0	46	50	22	6	0	13	31	41	60	2648
	JUN	4	5	0	0	91	44	13	2	0	25	40	47	37	1846
	JUL	2	0	0	0	96	70	25	3	0	21	47	50	22	2297
	AUG	4	2	0	0	NA	NA	23	NA	NA	25	57	36	41	2145
	SEP	1	0	0	0	101	51	7	2	0	16	60	43	51	1535
	OCT	2	2	0	0	52	82	4	12	3	12	79	47	60	1863
	NOV	2	0	0	0	NA	NA	30	NA	NA	12	51	31	34	2398
	DEC	2	0	0	0	42	48	50	4	0	14	75	35	35	2670
2013	Total	26	20	0	0	571	522	237	37	3	201	568	507	541	23592
	JAN	2	0	0	0	57	46	24	2	0	8	69	37	28	3234
	FEB	5	0	0	0	0	0	30	0	0	15	68	33	13	2226
2014	Total	7	0	0	0	57	46	54	2	0	23	137	70	41	5460

Apvd = Approved, Rcvd = Received, Ind = Individual, Blknt = Blanket, Apprs = Application for Hearing, NOAV = Notice of Alleged Violation, AOC = Administrative Order of Consent, OFV = Order Finding Violation, Cmplt = Complaint, Comp = Completed