



Staff Report

April 28, 2014

TOP STORIES

◆ New E & P Waste Spill and Release Rules

On December 17, 2013, the Commission adopted Amended Rules 337 and 906. As a result, Form 19 (Spill/Release Report) has been revised. The revisions align Form 19 with the amended rules. The revisions also provide for transition to an electronic, Internet-based reporting process. The COGCC has been conducting two-hour training sessions for operators on the use of the revised Form 19 (which will be submitted via the eForm feature on the COGCC website). The training sessions included a presentation by COGCC staff, followed by time for questions and answers. The first training session took place at the COGCC offices in Denver on March 14, 2014, the second was at the COGCC's Rifle office on March 20, 2014 in Rifle. Another training session is being offered at the COGCC offices in Denver on April 23, 2014. Pre-registration is required as venue size is limited. To pre-register please send an e-mail to chris.canfield@state.co.us. Please put "eForm 19 Implementation Training" in the subject line.

◆ Local Government Liaison (LGL) Program Update

Local Government Liaisons Marc Morton and Nancy Prince continue to provide valuable outreach, service, and support in response to inquiries, information requests, and speaking requests from local government, the public, secondary education institutions, other organizations, and industry. They also assist COGCC staff in various initiatives and special projects. The LGLs are available to speak to organizations about COGCC initiatives and ongoing work, such as, for example, the benefits of participation in the Local Government Designee (LGD) program, recent COGCC rule-makings, submitting comments to pending drilling and oil and gas location assessment and drilling permitting, or a topic of interest to various groups or organizations.

At present, 146 entities (56 counties, 82 municipalities, and 8 Special Districts) participate in the voluntary LGD program. Recent additions to the LGD ranks include the Town of Hotchkiss, where Michael Owens will take on the LGD role, and the Town of Victor, where Joseph Groves will serve as LGD. Newly (2014) appointed LGDs include Zach Ratkai (City of Evans), Leslie Klusmire (Town of Lake City), Bentley Henderson (Archuleta County), and Tom Parko (Weld County). Both LGDs who are new to the program and those who are replacing outgoing LGDs are welcome. And as a reminder to all LGDs, it is imperative that the COGCC be notified (via submittal of an updated Form 29) of any change in e-mail address or contact information, or change in the status of participation in the LGD program.

While additional training dates and venues are under consideration, the current LGD training schedule is below.

2014 LGD Training Schedule

- **Tuesday, June 17*** - Garfield County Public Library - Rifle Branch, 207 East Avenue, Rifle, CO
- **Tuesday, August 5** - Denver Area (location to be determined)
- **Tuesday, October 28*** - Durango Public Library, 1900 E 3rd Ave, Durango. CO

**Training to be held in conjunction with COGCC Commission Hearing.*

LGD training is recommended every two years for LGDs, associated staff, and others interested in the regulation of oil and gas in Colorado. If you are an LGD and did not take any of the eight trainings offered in 2013, we recommend you get pre-registered to reserve your space. If you aren't able to make one of these scheduled dates, call or e-mail Marc Morton or Nancy Prince and we will arrange specialized training for your group or organization at a convenient venue.

Published in conjunction with COGCC hearings

Department of Natural Resources: John W. Hickenlooper, Governor; Mike King, Executive Director; Matt Lepore, COGCC Director
1120 Lincoln St. Suite 801, Denver, CO 80203 PHONE: (303) 894-2100 FAX: (303) 894-2109 www.colorado.gov/cogcc; email: dnr.ogcc@state.co.us



LGD training provides an update on COGCC rules and policies; lifecycle of a well; well and location permitting; LGD rights, powers, and responsibilities; and website and database navigation. To pre-register for planned 2014 trainings, please send an email to dnr_cogcc.hearings_mgr@state.co.us

Be sure to include "LGD Pre-Registration Request" in the subject line, and include names, affiliation, email addresses, and phone contact information for all participants. In response, you will receive a confirmation email and additional details. Please note that space is limited at the venues, and registration may be capped.

A list of the LGL outreach and public involvement activities conducted since the last staff report is included in the Public Outreach section listed on the next page.

Public Outreach

➤ Outreach by Director and other Staff Members

- On April 11, 2014, Director Matt Lepore participated in a Hydraulic Fracturing Policy Roundtable sponsored by University of Colorado - Denver, School of Public Affairs.
- On April 14, Director Lepore gave a presentation during the Platts 8th Annual Rockies Oil & Gas on Colorado's oil and gas regulations and perspective on successful collaboration between the state, local governments, and operator.
- On April 17, Director Lepore participated on an oil and gas regulatory panel discussion during the Society of Petroleum Engineers (SPE) Western North America & Rocky Mountain Joint Regional Meeting.
- On April 23, Director Lepore spoke to the Denver Garden Club regarding the Colorado Floods.
- On April 26, Director Lepore participated in an oil and gas issues panel during the monthly Community Issues Forum in Fort Collins.

➤ Outreach by COGCC Local Government Liaisons (LGLs)

- On March 20, 2014, Local Government Liaisons Marc Morton and Nancy Prince provided Tom Parko, Director of Planning, and new LGD for Weld County, information and an overview of the LGD program.
- On March 31, Marc Morton and Britta Beckstead, Associate Enforcement Officer, took part in a panel discussion before the student body at New Vista High School in Boulder, at the request of Madeline Bachner of the Cottonwood Institute, and the Earth Task Force (ETF), a New Vista student-led group. Other panelists included Patrick Murphy (Environmental Health Specialist with the Boulder County Environmental Health Division), James Look of the Institute of Electrical and Electronics Engineers (IEEE), and Adam Schroeder, an oil and gas industry professional with Geo-Link, Inc. Topics included the benefits and risks of hydraulic fracturing, how the government protects people during oil and gas operations, potential legislation affecting the oil and gas industry, the future of oil and gas in Colorado, and water use during hydraulic fracturing.
- On March 31, Marc Morton attended the ongoing FrackingSENSE 2.0 lecture series hosted by the Center of the American West, University of Colorado-Boulder, and Boulder County, in conjunction with a grant from the National Science Foundation. The March 31 presentation was given by Norman Warpinski of Haliburton, and concerned historic and ongoing research associated with hydraulic fracturing. The presentation was followed by a question and answer session.
- On April 3, Marc Morton travelled to Rifle and attended the monthly Garfield County Energy Advisory Board (EAB) meeting. Stan Spencer, Northwest Region Environmental Protection Specialist, also attended. The EAB provides a forum for the oil and gas industry, the public, impacted landowners and local government to prevent or minimize conflict associated with oil and gas development through positive and proactive communication and actions that encourage responsible and balanced development of



these resources within Garfield County.

- On April 9, Marc Morton attended an open house and tour of the Anadarko "Hedge" location (east of Platteville, Weld County) coordinated by Colorado Department of Public Health and Environment - Air Pollution Control Division (APCD). The purpose of the open house and tour was to allow interested persons the opportunity to observe APCD inspection procedures of oil and gas facilities, including the use and operation of Optical Gas Imaging Infrared (IR) Cameras.
- On April 10, Greg Deranleau, Environmental Manager, Doug Andrews, Northeast Location Specialist and Nancy Prince met with Mineral Resources and Greeley staff to discuss a pending location assessment, and use of the LGD process to incorporate results of the city's Use by Special Review permitting process.
- On April 14, Marc Morton attended the initial FrackingSENSE Greeley community discussion organized by the Center of the American West, in conjunction with a research grant from the National Science Foundation, and with support and participation from the City of Greeley, KUNC, The Greeley Tribune, Weld Air and Water, University of Northern Colorado Greeley, Synergy Energy, and the UNC Faculty Task Force on Hydraulic Fracturing. The April 14 panel discussion concerned an overview of issues associated with drilling and well completion. Panelists included Debra Higley, Research Geologist with the U.S Geological Survey, Will Fleckenstein, Colorado School of Mines, and Joe Ryan, University of Colorado - Boulder. The presentations were followed by an audience question and answer session.
- On April 14, Nancy Prince met with Diana May, LGD for El Paso County, to discuss plans to schedule future LGD meetings.
- On April 15, Marc Morton attended the ongoing FrackingSENSE 2.0 lecture series hosted by the Center of the American West, University of Colorado-Boulder, and Boulder County, in conjunction with a grant from the National Science Foundation. The April 15 presentation was given by Josh Joshwick of the Oil and Gas Accountability Project and a former La Plata

County Commissioner. The presentation was followed by an audience question and answer session.

- On April 15, Nancy Prince and Melissa Housey, Southeast Location Specialist, attended an open house sponsored by Austin Exploration in Florence, Colorado where the next phases of their drilling program were explained.
- On April 16, Nancy Prince participated in a panel discussion at a meeting of Rocky Mountain Chapter of Certified Hazardous Materials Managers, regarding the intersection of state and local regulation of oil and gas exploration and production.
- On April 17, Nancy Prince and Mike Leonard, Quality Assurance Professional, attended a meeting of Douglas County Local Emergency Planning Committee to discuss emergency response at oil and gas exploration and production locations.

REGIONAL ACTIVITIES

➤ NORTHWEST COLORADO

◆ Northwest Colorado Oil and Gas Forum

The Forum is an informal gathering of local, state, and federal government officials, oil and gas industry representatives, and citizens that have met regularly since 1989. The purpose of the Forum is to share information about oil and gas development in northwest Colorado and to make government officials and oil and gas industry representatives easily accessible to the public. Currently, the meetings are conducted once per quarter and are co-chaired by the COGCC Director Matt Lepore and Garfield County Commissioner Mike Samson.

The next meeting of the Forum is tentatively scheduled for June 5, 2014 at 10:00 a.m. in Rifle, CO at Colorado Mountain College. All parties wishing to be placed on the meeting agenda, or added to the distribution list for announcements, should contact Dave Andrews at: [970-625-2497](tel:970-625-2497) or via email at: david.andrews@state.co.us



- Project Rulison

Please note that the email for Project Rulison submittals has been changed to:

DNR_rulison.submittal@state.co.us

- Project Rio Blanco

Please note that the email for Project Rio Blanco submittals has been changed to:

DNR_rioblanco.submittal@state.co.us

➤ **SOUTHWEST COLORADO**

- ◆ Gas and Oil Regulatory Team (GORT) Meeting

The last GORT/Southwest Colorado Oil and Gas Stakeholders meeting occurred on Friday, January 17, 2014 from 8:30 a.m. to noon at the La Plata County Fairgrounds in Durango, Colorado.

The next GORT meeting is scheduled for Tuesday, May 6, 2014 from 8:30 a.m. to noon at the La Plata County Fairgrounds- Animas Room, 2500 Main Avenue, Durango, Colorado. All parties wishing to be placed on the next meeting agenda should contact Mark Weems at 970-259-4587 or to: mark.weems@state.co.us.

- ◆ Fruitland Formation Outcrop Mitigation and Monitoring Projects (4M Projects)

Fruitland Formation Outcrop - 4M Pilot Scale Mitigation Projects La Plata County. The South Fork Texas Creek (SFTC) system operated between 10.9 and 11.1 Kilowatts (kW) power generation and was functional 97% of the time for the period September 1, 2013 and October 3, 2013. Disruption to the local power grid as a result of thunderstorms caused the main breaker on the system to trip and shutdown on September 26, 2013. LTE was onsite the following day to reset the breaker and get the system running again. An average of 5.9 kW per hour were returned to the grid during these periods. Pine River continues to operate in a passive mode. General O&M continues at both locations. The 4M Mitigation Operations & Maintenance Report (September 30, 2013) has been posted on the COGCC webpage under Library, San Juan Basin, 4M Project Reports.

4M Monitoring Wells La Plata and Archuleta Counties. There are 17 wells at 11 locations in the COGCC 4M monitoring program. Well pressures are monitored remotely via satellite telemetry with one or two maintenance visits per year, depending upon data received. Operations and maintenance (O&M) activities were conducted on September 30 and October 1, 2013 by COGCC and Northwest staff. In general, the locations held up well during the recent large storm events although several access roads were damaged. The upper transducer at Highway 151 #2 starting giving erratic readings in late June 2013 and ceased transmitting in late July 2013. There was no surface evidence of problems, indicating the transducer itself has probably failed. Erratic readings from the upper transducer at Wagon Gulch #2 were determined to be from a loose wire in the hub which was reconnected. Data now appears to be transmitting normally. Wellhead leaks at South Fork Texas Creek #2 are still evident and require repair. Pending O&M activities includes the replacement of the upper transducer at Highway 151 #2 and a rebuild of the wellhead at South Fork Texas Creek #2. In addition it is planned to swap out the Level Troll™ datalogger system at a Basin Creek well and install an AquaTroll™ to run an assessment if different monitoring technologies may provide more accurate water level information. The Beaver Creek locations continue to be inaccessible due to surface access issues and the BP Highlands location was not visited due to potential road damage and wet road issues. Both locations are currently reporting normally via the telemetry system.

Ongoing Investigation, Reclamation, and Mitigation of Residual Methane in the Vicinity of the Bryce 1-X Well Area, Bondad, Colorado Four domestic water wells were sampled at the Bondad location on October 2, 2013 by COGCC and Four Corners Geoscience staff. A visual inspection of the water at all locations indicated the water looked much cleaner than during past sampling events. Free methane results ranged from 1.41 mg/l in the South well to 6.91 mg/l in the North well. All methane results were lower than the April 2013 sampling results. Analytical and isotopic data are pending.

➤ **SOUTHEAST COLORADO**



◆ U.S. EPA Raton Basin Hydraulic Fracturing Study - Las Animas and Huerfano Counties

As part of the retrospective study of possible impacts from well completions, a third round of sampling and analysis of groundwater from two areas in the Raton Basin was conducted during the week of November 5, 2012. COGCC staff, as well as contractors for Pioneer Natural Resources, collected split samples at many of the sites. The EPA released an interim progress report on the study in December 2012. The EPA is expected to release the study in a draft for public and peer review in 2014. Ultimately, results from the study are intended to inform the public and provide policymakers at all levels with high-quality scientific knowledge that can be used in decision-making. For more information on the EPA hydraulic study, go to <http://www.epa.gov/hfstudy/>.

➤ VARIANCES

1. Tabula Rasa Energy LLC

A Rule 502.b Variance from Rule 603.a.(1) was granted by the Director on March 14, 2014 to Tabula Rasa Energy LLC ("Tabula"). Rule 603.a (1) requires that at the time of drilling, a well be located at least 200 feet from an above ground utility. Tabula requested a variance be granted to allow the installation of a second well on an existing location while minimizing surface disturbance and fill requirements. The overhead utility provides power to a nearby CO2 gas plant and it is owned and operated by Tabula. COGCC has required and Tabula agreed to temporarily de-energize the power lines during Move-In, Rig up and during rigging down operations. The rig to be used on this site has a maximum height of 116 feet, which provides for a 43 feet offset from the nearest point on the utility line, were the rig to topple. The location is the NE¼ SW¼ of Section 10, Township 29 South, Range 69 West, 6th P.M. in Huerfano County.

2. Triton Energy Services LLC

A Rule 502.b. Variance from Rule 305.d was granted by the Director on March 25, 2014. Rule 305.d requires a 20-day comment period for a

Form 2A or any associated Form 2, for a proposed Well or Production Facility. Form 2A document number 400563634, Triton 1, was approved without a 20-day comment period. Citing safety concerns, Triton Energy Services LLC ("Triton") submitted Form 2A to move the Triton 1 injection well 900 feet east of its previously approved location. The new location results in greater well setback from residences and the county road. The expedited approval process was necessary due to a contracted drilling rig nearing completion of the Triton 2 and scheduled to move to the Triton 1 location. Triton Energy acquired a waiver from the LGD acknowledging the expedition of the permit and Triton (or its subsidiary) is the surface owner. The location is the SW¼ NW¼ of Section 23, Township 4 North, Range 66 West, 6th P.M. in Weld County.

➤ ORGANIZATION

New Deputy Director

We are pleased to announce that Dave Kulmann joins the COGCC as the Deputy Director of Field Operations. He will be overseeing the Field Inspection, Engineering, Environmental, and Permitting Groups. Dave joins us after 11 years at Anadarko Petroleum Corp. Dave most recently was Anadarko's Regulatory Affairs Manager/Project Manager for Colorado and Wyoming. He also served as Anadarko's Financial Planning Manager/Project Manager for the Rockies and as their Field Business Process Manager - Rockies Div. Dave started his professional career at IBM in 1999, where his positions included Worldwide IT Business Controls Analyst. Additionally, Dave has extensive experience with LEAN process management. He holds a Master's Degree in Business Administration and a Bachelor's in Political Science from Louisiana State University.

New Environmental Manager

Greg Deranleau has been promoted to Environmental Manager. Greg served as the Oil and Gas Location Assessment Supervisor at COGCC since July 2010. The OGLA group is responsible for reviewing the surface disturbances associated with planned oil and gas development. Prior to his position as OGLA Supervisor, Greg spent 15 years with various environmental consulting firms and conducted extensive work at oil and gas produc-



tion facilities, gas plants, oil refineries, industrial and military facilities, mines, and underground storage tank sites. He has provided engineering and construction oversight for large civil construction projects including, evaporation pits, slurry wall installation, and soil excavations, and led a corporate program providing comprehensive spill prevention planning and technical training to oil-handling personnel in the oil and gas industry.

Greg has consistently assisted with projects such as the Setback and Groundwater Monitoring Rulemakings. He is one of the "final approval" team for Form 2s and 2As and has demonstrated his commitment to the agency and to the agency's Values Statements. Greg has a B.A. in Environmental Studies with a minor in Geology from the University of Colorado.

An organizational chart can be found on pages 9-12. For contact information, please go to our homepage, and then "Staff Contact Information."

➤ PLANNING/ADMINISTRATION/OTHER

◆ Plugging and Reclaiming Abandoned Wells (PRAW) - Project Updates

The DB Orphan Blair #1 Project came into being when on July 7, 2013 a ditch rider discovered water flowing from the ground and discharging into an irrigation ditch located on the NW edge of DeBeque, CO in Mesa County. The COGCC was contacted on July 9th and because other orphaned oil and gas wells had been previously discovered and plugged by the COGCC, the COGCC assumed responsibility and had water samples gathered for lab analysis. Lab analysis indicated salty water which is indicative of oil and gas geologic sources. The ground around the water flow was dug up and the source of the leak was determined to be from a hole in a pipeline which was traced back to an old abandoned well that appears to have been drilled around 1902 based on old USGS reports. The salt water discharge into the ditch was terminated by sealing the well head and then disconnecting the pipeline.

To date the plugging design, cost estimate and

bid documents have been prepared; however, this project has been delayed until after July 1st of this year due to the recent discovery of leaking wells found in Larimer County in proximity of the lands flooded last September.

The Larimer County Project includes three wells recently discovered in lands located in the rain flooded areas from last September. The Culver-Shamrock #1 is currently leaking, located in the flood plains of Thompson Creek and because of concerns for the spring runoff; it has been deemed an emergency project. Projects with emergency status by-passes the bidding process and a contractor has been selected. The Kaley #1 is leaking, too, and is located on higher grounds. The Jessica #1 has been previously plugged, is not currently leaking, but will be re-entered and assessed since it is of the same vintage and very close to the other two wells. Seventy-Five thousand dollars (\$75,000) have been allocated to plug these wells and because of budgetary constraints, this project displaced the DB Orphan Blair #1 project for this fiscal year (July 2013-June 2014).

The PAST Project includes three leaking plugged and abandoned wells that were re-entered and re-plugged and have been renamed the 2013 Piceance Re-entries Project to avoid confusion with other work. Two are located in Garfield County and one is in Mesa County. This work has been successfully completed this past July with a final cost of \$236,776. These sites need surface reclamation which will likely take place in the next fiscal or after July 1, 2014.

The Pasture #1 Project involves the final abandonment of the well which includes cutting the casing off three feet below ground level and installing a well marker and sign. This work, too, has been re-scheduled after July 1, 2014 because of the Larimer County Emergency Project.

The Debeque Environmental and Reclamation Project, involves the remediation and reclamation of soils contaminated by salt water in the vicinity of the orphaned wells known as the Homestead #2 and the Pasture #1 wells. Both sites are located in Mesa County on the NW edge of DeBeque, CO. Soil sampling and lab analysis has been completed on both well sites. With updated preliminary costs, it appears that only the Homestead #2 will have both remedial and reclamation work completed this fis-



cal year (July 1, 2013 thru June 30, 2014). Designs are nearing completion with plans to have the actual work completed May 30, 2014. Monitoring wells are to be installed with subsequent sampling and testing to verify success of the work. The Pasture #1 will likely have to be carried forward after July 1, 2014.

Biscuit Pad Remediation Project includes two well pads and the two respective access roads where they are currently located in an active irrigated hayfield. The goal is reclaim and return the lands back to agricultural purposes. This project is located in Garfield County near the NE border of the town of Rifle and east highway 13. The lowest bid from the list of qualified contractors came in at \$143,000 and the work had been awarded to Tally Ho Construction, Inc. Tally Ho facilities and offices are headquartered in Rifle, CO. On October 15, 2014 Tally Ho Construction commenced mobilization of equipment, personnel and supplies to the project and has completed approximately 64 percent of the project when comparing the cumulative expenditures made to date to the contract amount of \$143,000. Work is moving right along with improved ground conditions and spring weather. Most efforts are currently being focused on the north pad including excavating fill and hauling it to the designated north fill area.

The Tatonka Reclamation Project includes three well pads located in Moffat County with two well pads being on the Culverwell property that can be found approximately 20 miles west of Craig, CO and a couple of miles north of Hwy 40 with another well pad and pit being located on the Gerber property and found four miles west of Craig and three miles north of Hwy 40. A contractor has provided a documented quote and price to reclaim the mud reserve pit on the Gerber pad. A purchase order not to exceed \$25,000 has been approved. This project is also re-scheduled after July 1, 2014.

The Gentry Project is located in Rio Blanco County and includes 10 sites with eight wells and two pits that can be found approximately a half mile west of Rangely, CO and one and a half miles south of Hwy 64. The landowner has plans to do some land development and brought the

matter to the attention of the COGCC. This project is also re-scheduled after July 1, 2014.

Page 13 contains a spreadsheet listing PRAW projects that are either scheduled in process or completed as of April 23, 2014.

June 2014 Hearing Docket

A docket for the June 2014 hearing will be available shortly after the April hearing. Hearing dockets are available on our website by clicking on "Hearings." Links to the notices and hearing applications are available from the Docket Number and Applicant, respectively. To sign up for e-mail notification of hearing notices and applications, please see the announcement and instructions on the homepage of the COGCC website: www.cogcc.state.co.us

➤ Colorado Oil and Gas Information System (COGIS) Projects, Updates and Changes

Environmental Database

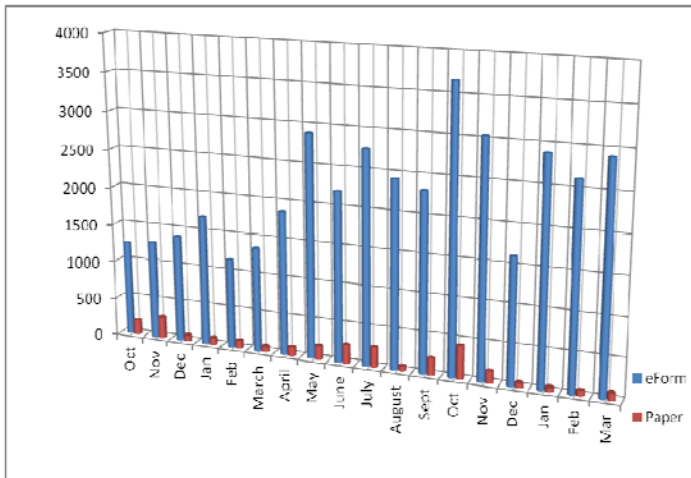
During the past 18 months, the COGCC and the Ground Water Protection Council (GWPC) have been working together to develop a new Environmental Database that will contain the results from the from the Colorado Oil and Gas Association Voluntary Baseline Groundwater Quality Sampling program, along with other environmental data collected by the agency. The project Sampling program, along with other environmental data collected by the agency. The project included the development of a new relational database model that will allow the data to be accessible to the public from the COGCC website.

Other improvements include an Electronic Data Deliverable that allows industry to submit the results of the sampling directly to the COGCC, which can then process the information directly into the database. The application has many other features to help staff analyze the information and understand the lab results from the sampling. The interface will allow the public to view and download the results.



Electronic Form Submissions (eForm)

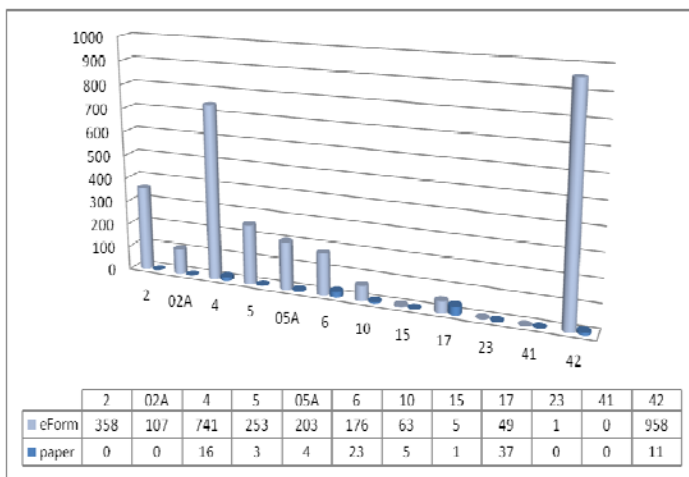
TOTAL ELECTRONIC FORM SUBMITTALS
OCTOBER 2012 - MARCH 2014



Forms currently available through eForm:

- Form 2 - Application for Permit to Drill
- Form 2A - Oil and Gas Location Assessment
- Form 4 - Sundry Notice
- Form 5 - Drilling Completion Report
- Form 5A - Completed Interval Report
- Form 6 - Well Abandonment Report
- Form 10 - Certification of Clearance/Change of Operator
- Form 15 - Earthen Pit Report/Permit
- Form 17 - Bradenhead Test Report
- Form 41 - Trade Secret Claim of Entitlement
- Form 42 - Notice of Notification (Notice of Hydraulic Fracturing)

Following is a breakdown by Form for the month of March 2014:



The development team is working on several forms concurrently. The Form 19 Spill Report and Form 22 Accident Report are in final testing and should be released soon. Forms 14, 14A, 26, 31 and 33 are in various stages of development.

As forms are released on eForm, updates to the PDF version on our Forms page, <http://cogcc.state.co.us/Forms/forms.html>, will occur in tandem. These new versions of the PDF forms will reflect any changes that have taken place when forms are moved into eForm.

Along with the eForm system, a page is available where the operators can review all known bugs within the system and report any new ones they discover. Currently, there are 305 operators using eForm.

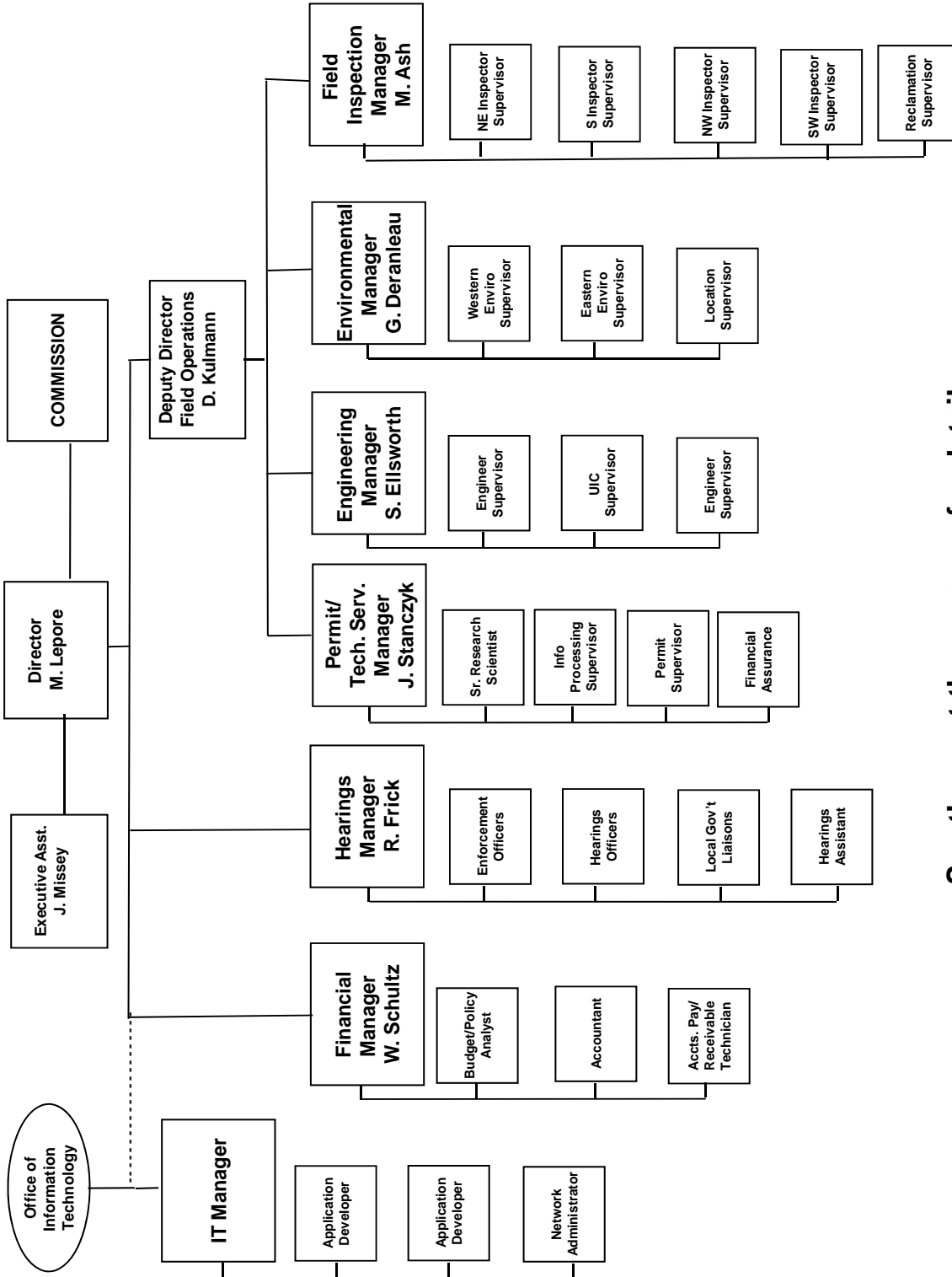
The public can make comments on all submitted Oil and Gas Location Assessment (OGLA) forms (Forms 2A) through the eForm system. This is accomplished by going to the COGCC website (<http://www.colorado.gov/cogcc>) and clicking on the menu option, "Permits", (or <http://cogcc.state.co.us/COGIS/DrillingPermits.asp>).

On the COGIS-Permits page, two search options are available for OGLA forms, "All Pending Location Assessments for" and "All Approved Location Assessments for." When the results are displayed for forms in process, the public can click on the document number, which logs the user onto the new eForm application. Once the page is displayed with the selected document, the user can select the Comment button to make a comment on that particular form. The public can use his same method to make comments on APDs (Form 2s).

For any operator not currently enrolled in eForm, instructions for starting the process can be found at <http://cogcc.state.co.us/Announcements/COUAINformation.pdf>.



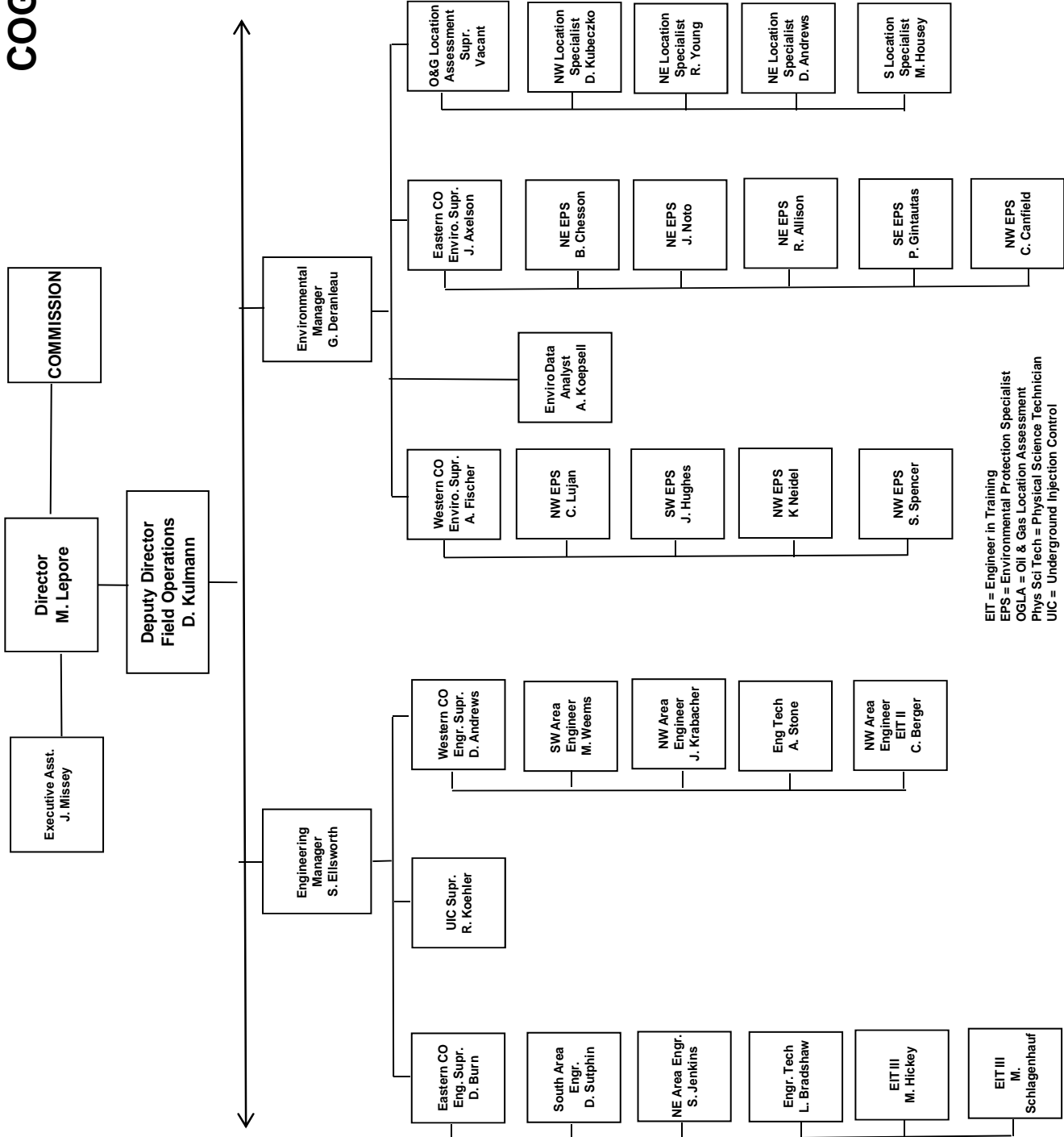
COLORADO OIL & GAS CONSERVATION COMMISSION



See the next three pages for details



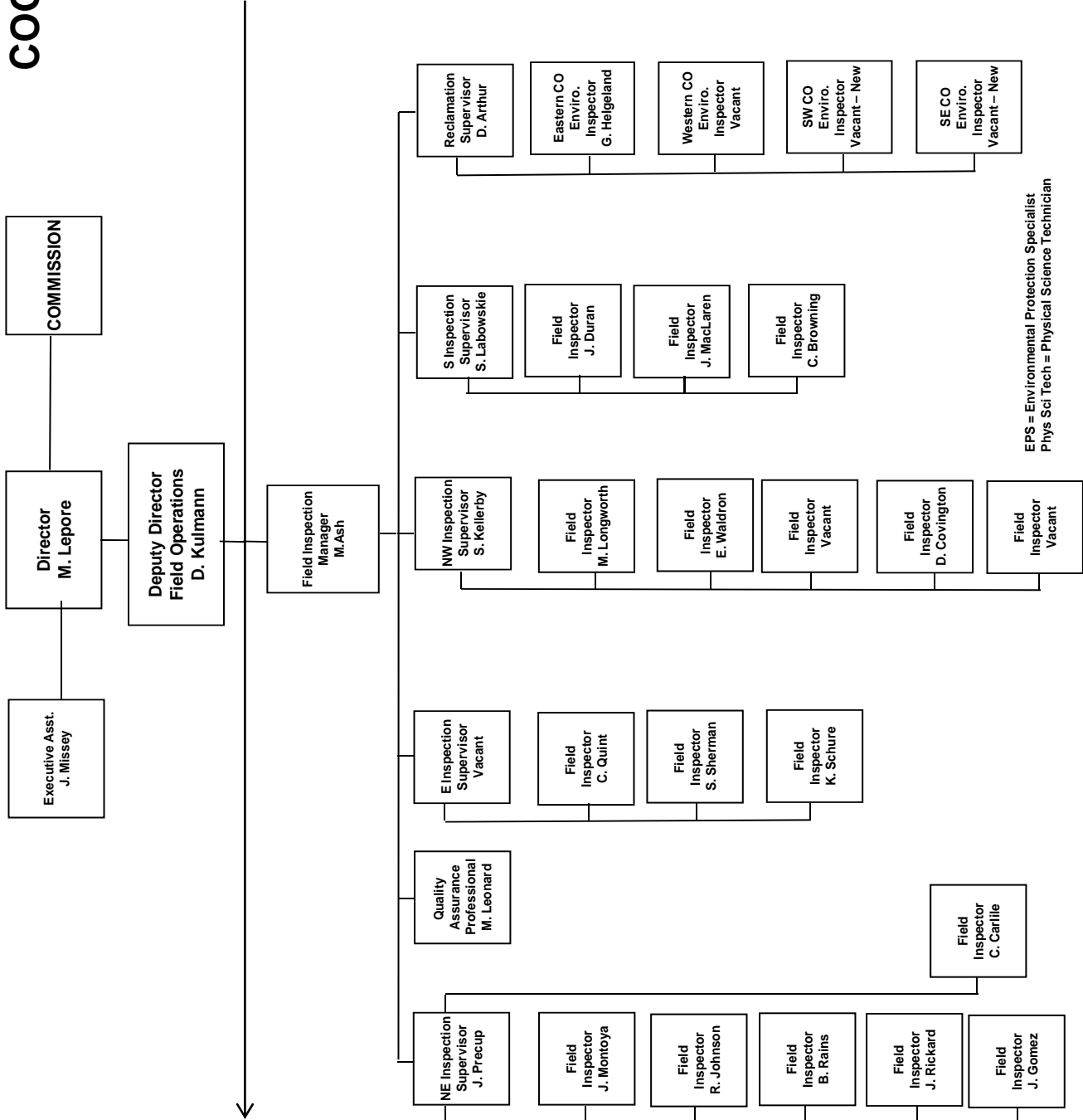
COGCC



EIT = Engineer in Training
 EPS = Environmental Protection Specialist
 OGLA = Oil & Gas Location Assessment
 Phys Sci Tech = Physical Science Technician
 UIC = Underground Injection Control



COGCC



EPS = Environmental Protection Specialist
Phys Sci Tech = Physical Science Technician



PLUGGING, AND RECLAIMING ABANDONED WELLS PROJECTS FOR ORPHANED LOCATIONS FISCAL YEAR 2013-2014												
PLANNED COUNTY	TYPE	PROJECT NAME	Acct Code	ESTIMATED TOTAL PROJECT COST			FY 2013-2014 YTD EXPENDITURES			DESCRIPTION		
				BOND	PRAW	EMGY	TOTALS	BOND	PRAW		EMGY	TOTALS
MESA	PA	Pasture #1	HSTD	\$0	\$5,000	\$0	\$5,000	\$0	\$0	\$0	\$0	Leak has stopped; will cut off casing and install PA marker and repair the gate to the location. Plans are to piggy back it with the DeBeque Water Flow to save on mobilization charges.
Rio Blanco	Plugging	Gentry	GENIT	\$0	\$30,000	\$0	\$30,000	\$0	\$0	\$0	\$0	Plug and abandon
Rio Blanco	Soils	Gentry	GENIT	\$0	\$25,000	\$0	\$25,000	\$0	\$0	\$0	\$0	Contaminated soils to be remediated
Mesa	Plugging	Debeque Water Flow-DB Orphan Blair #1	DEBT	\$0	\$49,728	\$0	\$49,728	\$0	\$1,728	\$0	\$1,728	Cap well and stop water flow. Re-enter, PA
		TOTALS =>		\$0	\$109,728	\$0	\$109,728	\$0	\$0	\$0	\$0	
IN PROGRESS												
COUNTY	TYPE	PROJECT NAME	Acct Code	BOND	PRAW	EMGY	TOTALS	BOND	PRAW	EMGY	TOTALS	DESCRIPTION
Larimer	Plugging	Kaley #1	KALE	\$0	\$25,000	\$0	\$25,000	\$0	\$0	\$0	\$0	Leaking PA well, will re-enter and plug
Larimer	Plugging	Jessica #1	JESS	\$0	\$25,000	\$0	\$25,000	\$0	\$0	\$0	\$0	Well not leaking, casing present; will re-enter to verify proper plugging and/or re-plug if necessary.
Larimer	Plugging	Culver-Shamrock #1	CULV	\$0	\$25,000	\$0	\$25,000	\$0	\$2,047	\$0	\$2,047	Two well pads and two access roads: Pad dirt work mostly complete; still need to fill in soil amendments and drill seeds North Pad South
Garfield	Remediation	Biscuit Pad	DOLP	\$15,926	\$127,074	\$0	\$143,000	\$15,926	\$74,914	\$0	\$90,840	incl. salt remediation, topsoil amendments/spreading, seeding, and ground conditions (6" in snow on grid)
MESA	REC/ENV	DeBeque-HOMESTEAD #2 & PASTURE #1 SALT REMEDIATION, RECLAMATION, & SOIL GAS SURVEYS	HSTD	\$0	\$50,000	\$0	\$50,000	\$0	\$7,298	\$0	\$7,298	Two sites; only the Homestead #2 to be done this fiscal year. To
MOFFAT	REC	TATONKA: CULVERWELL 10-23-07-94 GERBER 07-24-07-92	TATO	\$0	\$35,000	\$0	\$35,000	\$0	\$641	\$0	\$0	Reclaim Three (3) well sites: Gerber well site and pit Culverwell 1-site w/ two conductor casings Culverwell 2nd-site w/ beginnings of pad scrape off
		TOTALS =>		\$15,926	\$287,074	\$0	\$303,000	\$15,926	\$84,900	\$0	\$100,185	
COMPLETED												
COUNTY	TYPE	PROJECT NAME	Acct Code	BOND	PRAW	EMGY	TOTALS	BOND	PRAW	EMGY	TOTALS	DESCRIPTION
MESA/Garfield	PLUG	2013 Piceance Re-entries	PICE	\$0	\$97,287	\$0	\$97,287	\$0	\$150,886	\$0	\$150,886	Plugging three wells
		TOTALS =>		\$0	\$97,287	\$0	\$97,287	\$0	\$150,886	\$0	\$150,886	
		GRAND TOTALS =>		\$15,926	\$494,089	\$0	\$510,015	\$15,926	\$235,786	\$0	\$251,071	

BISCUIT RANCH RECLAMATION DESIGN* The original bond amount was \$25,000. \$9074 were spent in FYE2013 for the design work supervised my Mike Hickey. The balance of \$15,296 will be carried forward to FYE2014. Includes well site for the Biscuit Ranch Mulmhill 15-32 D & Biscuit Ranch 10-31 D

Project Types: "PLUG" indicates plugging and abandonment. "REC" indicates reclamation, and "ENV" indicates environmental

EMGY: indicates funding by the Emergency Response line item

TBD: Cost estimates in process.

PRAW: indicates funding by the Plugging and Reclaiming Abandoned Wells line item

Revised 04/23/2014 mew

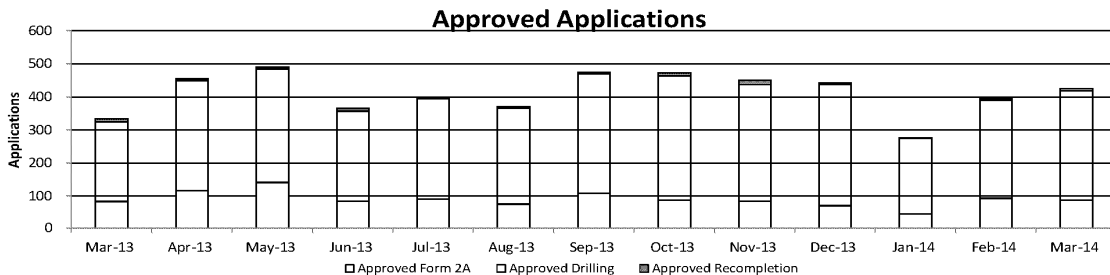
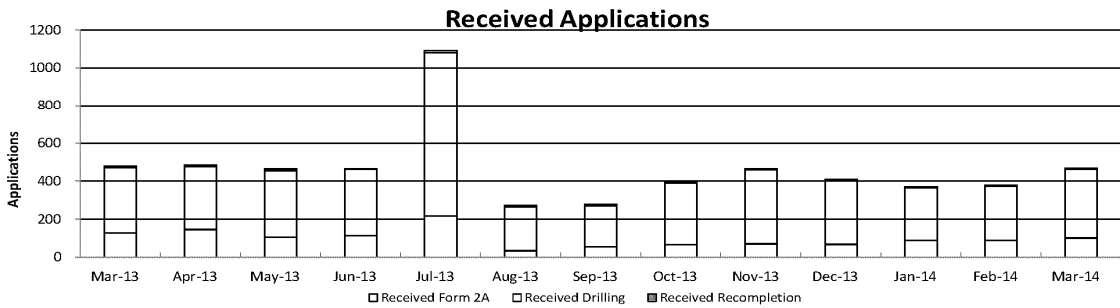


Colorado Oil & Gas Conservation Commission

Monthly Permit Activity

	Backlog	Received	Approved	Withdrawn	Rejected	Incomplete	In-Process	Remaining
Form2A								
Mar-13	159	129	84	1	0	33	170	203
Apr-13	203	146	117	7	0	40	185	225
May-13	225	106	142	4	0	37	148	185
Jun-13	185	114	85	7	0	41	166	207
Jul-13	207	218	91	15	0	34	285	319
Aug-13	319	35	76	0	0	47	231	278
Sep-13	278	56	109	0	0	68	157	225
Oct-13	225	67	88	6	0	69	129	198
Nov-13	198	72	85	6	0	57	122	179
Dec-13	179	68	71	6	0	57	113	170
Jan-14	170	90	43	7	0	47	163	210
Feb-14	210	90	94	3	0	51	140	203
Mar-14	191	102	88	5	0	48	152	200
Drilling								
Mar-13	334	344	241	4	0	46	387	433
Apr-13	433	332	333	2	0	79	351	430
May-13	430	350	342	31	0	45	362	407
Jun-13	407	349	272	18	0	57	409	466
Jul-13	466	863	304	14	0	65	946	1011
Aug-13	1011	232	291	3	0	160	789	949
Sep-13	949	214	361	2	0	160	640	800
Oct-13	800	325	376	12	0	115	622	737
Nov-13	737	389	353	10	0	88	675	763
Dec-13	763	338	367	7	0	110	617	727
Jan-14	727	277	232	77	0	75	620	695
Feb-14	695	283	297	4	0	109	568	677
Mar-14	677	362	331	13	0	103	592	695
Recompletion								
Mar-13	11	5	9	0	0	1	6	7
Apr-13	7	6	5	0	0	2	6	8
May-13	8	8	6	0	0	0	10	10
Jun-13	10	2	8	0	0	0	4	4
Jul-13	4	11	4	0	0	0	11	11
Aug-13	11	6	4	0	0	0	13	13
Sep-13	13	9	5	0	0	0	17	17
Oct-13	17	5	9	0	0	0	12	13
Nov-13	13	4	13	0	0	0	4	4
Dec-13	4	3	4	0	0	0	3	3
Jan-14	3	4	2	0	0	0	5	5
Feb-14	5	6	4	0	0	0	7	7
Mar-14	7	4	6	0	0	0	5	5

Incomplete are permits that have missing or inaccurate data and cannot be approved.



Backlog = Incomplete + In-process = Remaining permits from previous month



Colorado Oil and Gas Conservation Commission
Status of Permit Applications Filed By Month
 April 10, 2014

Form 2A Location Assessment

Year	Month	Received	Approved	Withdrawn	In Process	Percent In Process	Median Days to Process	Less Than 30 Days	30 to 49 Days	Greater Than 50 Days
2010	Total	2520	2433	85	0			1559	662	212
2011	Total	2391	2298	91	2	0%		1416	620	262
2012	Total	1359	1288	68	3	0%		706	378	204
2013	1	177	163	12	2	1%	35	99	45	19
2013	2	91	83	8	0	0%	34	42	29	12
2013	3	131	122	9	0	0%	51	41	46	35
2013	4	150	141	7	2	1%	40	47	69	25
2013	5	105	100	4	1	1%	42	47	32	21
2013	6	107	88	3	16	15%	47	28	41	19
2013	7	204	198	2	4	2%	69	11	71	116
2013	8	58	56	2	0	0%	62	7	18	31
2013	9	56	51	2	3	5%	49	13	18	20
2013	10	63	60	2	1	2%	51	12	24	24
2013	11	76	67	5	4	5%	45	18	24	25
2013	12	68	56	6	6	9%	54	4	16	36
2013	Total	1286	1185	62	39	3%		369	433	383
2014	1	85	70	3	12	14%	44	12	36	22
2014	2	88	51	1	36	41%	37	11	33	7
2014	3	113	14	1	98	87%	25	13	1	0
2014	4	24	0	0	24	100%	0	0	0	0
2014	Total	286	135	5	146	51%		36	70	29

Form 2 Application For Permit to Drill (APDs)

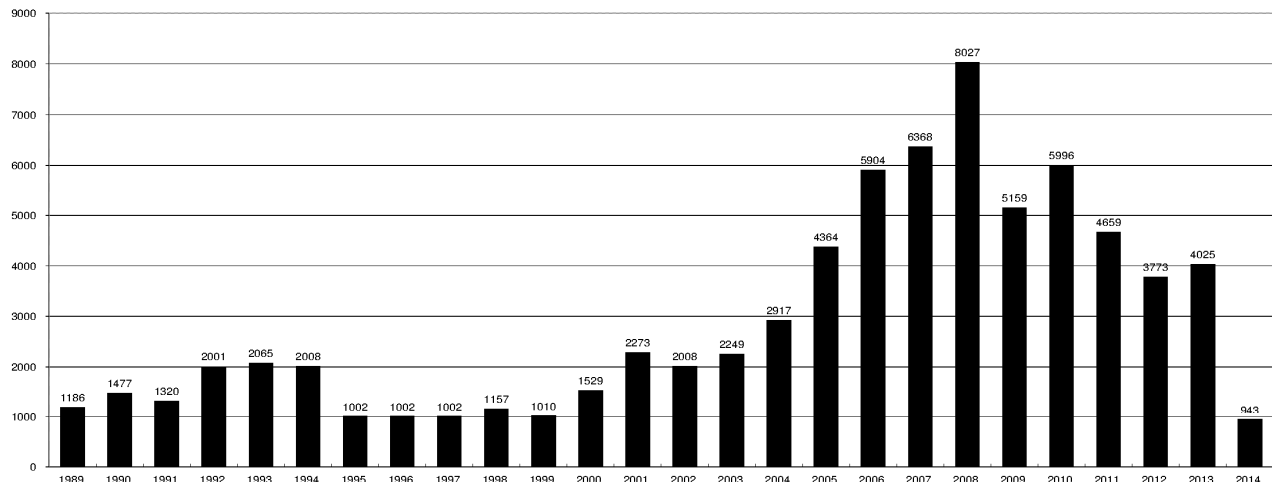
Year	Month	Received	Approved	Withdrawn	In Process	Percent In Process	Median Days to Process	Less Than 30 Days	30 to 49 Days	Greater Than 50 Days
2010	Total	5891	5746	144	0	0%		1760	2739	1744
2011	Total	4691	4557	129	3	0%	418	2723	1565	587
2012	Total	3955	3813	137	5	0%		1971	1393	599
2013	1	562	542	18	2	0%	36	278	179	86
2013	2	242	228	14	0	0%	36	78	126	38
2013	3	333	320	13	0	0%	43	123	119	84
2013	4	327	314	13	0	0%	40	105	153	59
2013	5	369	340	27	2	1%	40	111	181	59
2013	6	330	303	10	17	5%	45	110	131	64
2013	7	798	764	10	24	3%	67	106	218	451
2013	8	313	300	4	9	3%	60	13	138	154
2013	9	189	181	1	7	4%	66	21	66	101
2013	10	339	311	7	21	6%	63	22	89	207
2013	11	373	341	11	21	6%	55	49	147	150
2013	12	380	300	66	14	4%	65	30	79	193
2013	Total	4555	4244	194	117	3%		1046	1626	1646
2014	1	260	227	5	28	11%	47	35	117	79
2014	2	299	158	9	132	44%	39	37	90	36
2014	3	362	24	0	338	93%	24	15	11	0
2014	4	64	1	1	62	97%	3	1	0	0
2014	Total	985	410	15	560	57%		88	218	115



COLORADO OIL AND GAS CONSERVATION COMMISSION
ANNUAL DRILLING PERMITS BY COUNTY

COUNTY	1988	1989	1990	1991	1992	1993	1994	1995	1996	1997	1998	1999	2000	2001	2002	2003	2004	2005	2006	2007	2008	2009	2010	2011	2012	2013	2014	current as of 4/10
ADAMS	46	34	44	53	92	58	137	34	9	33	24	19	38	28	9	26	39	34	37	89	51	35	21	8	40	40	5	
ARAPAHOE	5	5	15	14	11	4	20	12	2	9	1	2	0	2	1	2	5	7	11	10	10	10	8	23	35	23	10	
ARCHULETA	8	5	18	5	2	1		3		3		1	7	9	6	10	8	13	14	26	47	11	18	12	5	4	1	
BACA	6	4	15	10	23	9	12	24	10	7	13	15	22	6	2	3	7	8	2	11	13	3	4	5	3	1		
BENT				1		2	2	4	2	5	3	5	2				5	3	8	1	1		5		2	1		
BOULDER	1		1	13	38	159	38	5	8	2	5		1	5	6	7	17	13	21	37	32	35	24	30	22			
BROOMFIELD															2	7			1	1		2	33	28	11	36		
CHEYENNE	203	149	102	93	71	58	48	55	43	31	41	7	3	3	3	3	3	10	21	15	33	12	13	16	31	50	7	
COSTILLA																												
CROWLEY	1		1	1																								2
DELTA	1	1	2												7	4	5	10	9	2			4	3	6	1		
DENVER											5	3	3		3				19	25	24							
DOLORES	2		4	1	2	1										1	1	1	6	10	12	21	8	8	13	12	1	
EAGLE																											1	
ELBERT	9	12	8	5	3		2	13	16	11	1		2						4			1		1	2	2		
EL PASO																						2	3	3	18	1		
FREMONT	9	5	6	7	1	2	2	1	2	1							1	3	2	4	14	13	22	14	11	2	1	
GARFIELD	19	66	111	36	18	56	143	78	109	141	95	130	213	353	362	567	796	1509	1845	2550	2888	1981	2037	1323	1046	870	265	
GRAND							1																					
GUNNISON			2	2		1									5	10	1	9	19	7	10	12	4	3	11	9	8	
HUERFANO	3	5		4	17	3	3	2	1	3	40	26	41	27	27		8	2			7		2	1	9	1		
JACKSON	3	1	4	6	2	2	3	2	2	6	3		34	18	21	9	14	6	8	5	27	19	9	18	5	12	3	
JEFFERSON	1		4	2		1		1	1	1	2	1							1	3	2					1		
KIOWA	15	39	40	46	28	28	21	26	13	17	10	2	11	18	2	4	2	1	11	9	26	7	16	17	17	12	4	
KIT CARSON	9	5	7	8	8	15	26	11	7	6	9	5					1	3	5	4	4	13	7	3	2	6	1	
LA PLATA	302	218	388	128	120	40	40	20	71	40	82	107	127	156	104	162	102	115	235	251	328	298	191	99	71	32	30	
LARIMER	4	4	3	6	13	7	3		1	3	1		2		1				1		5	46	12	41	8	13	2	4
LAS ANIMAS	10	30	36			9	32	95	134	136	195	195	268	400	259	180	332	413	500	362	303	88	92	85	11	2		
LINCOLN	8	6	4	7	7	11	8	9	3	2			2	2	1	6	3	4	1	2	58	44	48	31	36	87	24	
LOGAN	18	21	23	13	14	30	15	13	6	12	7		4	7	3	3	6	13	17	14	5	9	17	8	27	4	1	
MESA	1	12	29	20	22	2	22	6	11	10	2	6	13	27	30	27	54	136	265	293	501	427	306	127	150	105	5	
MOFFAT	13	25	27	19	40	52	43	40	41	28	21	15	35	52	62	63	63	60	120	68	57	51	53	93	88	44	18	
MONTEZUMA	6	7	10	8	7	11	15	9	13	5	4	1	4		5	8	8	11	5	12	22	39	19	27	29	14	8	
MONTRORSE				1						1			1	3	2	4	2		1	3	3		1	1	1			
MORGAN	34	27	36	13	10	11	19	12	10	11	10	12	9	9	2	7	9	7	3	6	2	1	6	13	5	16	6	
OTERO				2																								
PARK				1								1											3	4	1			
PHILLIPS			3		1	1								1	2		7	13	17	12	69	82	64	112	56			
PITKIN		1			2													1		1								
PROWERS	19	9	5	10	14	7	3	5	5	3	9	3	2	5	4		7	5	7	5	8	1	3	1				
RIO BLANCO	34	83	77	33	81	83	126	81	33	40	51	95	89	187	105	179	154	161	360	321	477	348	441	109	117	167	24	
RIO GRANDE	2	3	4	1			1						1	1			1				1					2	1	
ROLITT	4	3	12	4	2	3	1	2	1	1	1	4	20	13	1		4	6	9	8	4	2	3	10	4	12	1	
SAGUACHE	1							2					2		2						2	1	2					
SAN MIGUEL			2	2					1	1	4	2	11	13	27	18	42	45	35	23	20	13	10	2	1			
SEDGWICK				1				3		2						1	5	2	7	2	1	19	11	12	2			
WASHINGTON	40	29	23	28	24	26	25	12	19	26	18	3	23	17	27	34	128	50	69	45	11	1	6	12	6	19	5	
WELD	424	357	366	656	1224	1319	1030	254	305	285	392	288	509	702	760	757	832	901	1418	1527	2340	1448	2152	2262	1826	2468	507	
YUMA	14	20	45	60	104	53	167	168	123	116	111	60	31	205	160	138	237	782	797	541	545	105	299	148	11	9	2	
Total	1275	1186	1477	1320	2001	2065	2008	1002	1002	1002	1157	1010	1529	2273	2008	2249	2917	4364	5904	6368	8027	5159	5996	4659	3773	4025	943	

ALL COUNTIES





Colorado Oil and Gas Conservation Commission
 Form 2A Breakdown By County By Year
 April 10, 2014

Yr	County	Form2As	Completed	In Process	New Location	CDP	SWH	RSO	CDPHE
2009	Total State	818	818	0	408	2	80	5	5
2010	Total State	2378	2376	0	1601	0	327	22	55
2011	Total State	2299	2297	2	1791	1	274	17	5
2012	Total State	1298	1294	4	946	0	173	6	1
2013	ADAMS	15	15	0	13	0	0	0	0
2013	ARAPAHOE	15	15	0	15	0	0	0	0
2013	ARCHULETA	1	1	0	1	0	0	0	0
2013	BACA	1	1	0	1	0	1	0	0
2013	CHEYENNE	44	44	0	40	0	0	0	0
2013	DELTA	2	2	0	1	0	1	0	0
2013	DOLORES	8	8	0	7	0	4	0	0
2013	EAGLE	1	1	0	1	0	1	0	0
2013	EL PASO	1	1	0	1	0	0	0	0
2013	ELBERT	1	1	0	1	0	0	0	0
2013	FREMONT	4	3	1	6	0	1	0	0
2013	GARFIELD	86	80	6	35	0	71	1	0
2013	GUNNISON	9	8	1	3	1	4	1	0
2013	HUERFANO	3	1	2	1	0	0	0	0
2013	JACKSON	10	10	0	4	0	10	0	0
2013	KIOWA	9	9	0	8	0	0	0	0
2013	KIT CARSON	1	1	0	1	0	0	0	0
2013	LA PLATA	15	13	2	5	0	15	0	0
2013	LARIMER	2	2	0	1	0	1	0	0
2013	LAS ANIMAS	2	2	0	1	0	0	0	0
2013	LINCOLN	74	73	1	74	0	0	0	0
2013	LOGAN	4	4	0	0	0	0	0	0
2013	MESA	8	6	2	5	0	1	0	0
2013	MOFFAT	16	16	0	13	0	14	0	1
2013	MONTEZUMA	14	14	0	12	0	2	0	0
2013	MORGAN	16	12	4	16	0	0	0	0
2013	PITKIN	1	0	1	1	0	0	0	0
2013	RIO BLANCO	20	20	0	11	0	21	0	0
2013	ROUTT	9	8	1	10	0	9	0	0
2013	WASHINGTON	20	20	0	21	0	0	0	0
2013	WELD	796	776	20	588	0	8	0	3
2013	YUMA	8	8	0	2	0	0	0	0
2013	Total	1216	1175	41	899	1	164	2	4
2014	ADAMS	5	2	3	5	0	0	0	0
2014	ARAPAHOE	5	1	4	5	0	0	0	0
2014	ARCHULETA	1	0	1	0	0	1	0	0
2014	CHEYENNE	6	2	4	6	0	0	0	0
2014	CROWLEY	2	2	0	2	0	0	0	0
2014	DOLORES	1	1	0	1	0	0	0	0
2014	ELBERT	4	0	4	4	0	0	0	0
2014	FREMONT	1	0	1	1	0	1	0	0
2014	GARFIELD	21	2	19	5	0	14	1	0
2014	GUNNISON	5	4	1	1	3	1	0	0
2014	HUERFANO	4	0	4	1	0	4	0	0
2014	JACKSON	6	3	3	5	0	6	0	0
2014	KIOWA	2	2	0	1	0	0	0	0
2014	LA PLATA	7	4	3	1	0	8	0	0
2014	LAS ANIMAS	1	0	1	1	0	0	0	0
2014	LINCOLN	50	23	27	40	0	0	0	0
2014	LOGAN	1	1	0	1	0	0	0	0
2014	MESA	2	0	2	1	0	1	0	0
2014	MOFFAT	2	0	2	2	0	2	0	0
2014	MONTEZUMA	5	3	2	5	0	0	0	0
2014	PHILLIPS	1	0	1	1	0	0	0	0
2014	RIO BLANCO	5	1	4	4	0	5	0	0
2014	ROUTT	1	0	1	1	0	1	0	0
2014	WASHINGTON	7	4	3	7	0	0	0	0
2014	WELD	151	74	77	104	0	1	0	0
2014	YUMA	3	2	1	3	0	0	0	0
2014	Total	299	131	168	208	3	45	1	0

CDP = Comprehensive Drilling Plan SWH = Sensitive Wildlife Habitat consultation
 RSO = Restricted Surface Occupancy consultation CDPHE= Colorado Department of Health and Environment consultation



Colorado Oil and Gas Conservation Commission
Horizontal Well Activity
 April 11, 2014

County	Prior Years		2009		2010		2011		2012		2013		2014		Total		Completion		
	Drilled	PA	Permit	Spud	Permit	Spud	Permit	Spud	Permit	Spud	Permit	Spud	Permit	Spud	Spud	AC	PR	DA	PA
ADAMS			6	5	2	3	1	17	2	26	2	9	21	5	4				
ARAPAHOE	2				10	1	22	4	11	3	6	3	13	2	1				
ARCHULETA	17		7	6	15	7	10	8	5	9	2	1	47	1	43				
BENT																			
BOULDER							4												
CHEYENNE	5	4							6	2	7	2	1	8	1				
DELTA									9	3	5	4		18	13				
DOLORES	9		18	2	6				10					0					
EL PASO									1					0					
ELBERT									3	4	1	1		18	10	6			
FREMONT	7	6	6		12	5	3	4	4	1	1	1		28	25				
GARFIELD	10	2	1	1	16	2	18	6	43	6	18	3	3	3	3				
GUNNISON	1				1				4	1				1					
HUERFANO	8	1	8		3	3	9	2	4		8	5	3	18	12	1			
JACKSON									1		4	1	1	1					
KIOWA									1		1	1	1	2					
KIT CARSON	1								1		1	1	1	41	1	46			
LA PLATA	28	2	11	2	28	3	18	7	12	1	5	13		7	2	2			
LARIMER	3	2					5	1	2	1				17	14				
LAS ANIMAS	16		2	4	1	1								4	3				
LINCOLN														2					
LOGAN	2								1		1	6	1	2	2				
MESA	3	2	36	1	22	8	24	13	14		9	2	2	27	25	2			
MOFFAT	7	1	6	3	4		9	4	44	7	18	13	3	34	1	20			
MONTEZUMA	6	1	23	6	11	2	8	2	18	6	3	4	5	26	38				
MORGAN							6	2	2	1	13	1	6	4	2				
PARK														1					
RIO BLANCO	7	2			1	1	11	2	15	2	4	5		17	1	7	3		
ROUITT	10	6	1						1		1			10	3	6			
SAN MIGUEL	1													1					
WASHINGTON	1													1					
WELD	11	3	12	5	208	95	763	233	964	599	2114	1052	485	2354	982	10	32		
YUMA	1													1					
TOTAL Horizontal	156	25	14	147	32	333	132	901	285	1203	648	1103	534	372	2728	10	1257	32	55
Percent of Total HZ		16%	9%													0%	46%	1%	2%
Total All Permits				5159		5996		4659		3773		4025		530					
Percent of Total				2.8%		5.6%		19.3%		31.9%		56.1%		100.8%					



Well to Building Setback Review

Colorado Oil and Gas Conservation Commission
April 11, 2014

Count of well locations by proximity groupings from well spot to buildings for all locations reviewed under the December 17, 2008 amended rules.

Location Proximity to Buildings	2009	2010	2011	2012	2013	2014	Number of Locations	Percent of Total Locations
less than 150 feet	2	3	3	2	0	0	10	0%
150 to 350 feet	37	58	61	39	34	10	239	3%
350 to 500 feet	50	110	97	61	64	13	395	6%
500 to 1000 feet	117	385	331	188	188	42	1251	17%
1000 + feet	356	1705	1470	838	762	143	5274	74%
Total Locations	562	2261	1962	1128	1048	208	7169	

County	Total	Less than 150 feet				
		Less than 150 feet	150 to 350 feet	350 to 500 feet	500 to 1000 feet	1000 + feet
ADAMS	55	0	3	5	12	35
ARAPAHOE	69	0	2	4	9	54
ARCHULETA	17	0	0	1	9	7
BACA	14	0	0	0	1	13
BENT	7	0	0	0	0	7
BOULDER	23	0	1	1	17	4
BROOMFIELD	32	0	0	4	13	15
CHEYENNE	113	0	0	0	2	110
CROWLEY	2	0	0	0	0	2
DELTA	7	0	0	2	1	4
DOLORES	18	0	0	0	6	12
EAGLE	1	0	0	0	0	1
EL PASO	12	0	0	0	2	10
ELBERT	4	0	0	0	1	3
FREMONT	36	0	2	7	6	21
GARFIELD	454	0	8	3	65	378
GUNNISON	30	0	0	3	1	25
HUERFANO	8	0	0	0	3	5
JACKSON	33	0	0	3	1	29
KIOWA	62	0	0	0	1	61
KIT CARSON	12	0	0	0	0	12
LA PLATA	105	0	3	13	31	58
LARIMER	33	0	4	3	10	16
LAS ANIMAS	200	0	6	7	37	149
LINCOLN	239	0	0	2	4	233
LOGAN	42	0	1	1	0	40
MESA	82	0	0	3	13	66
MOFFAT	158	0	0	2	13	143
MONTEZUMA	33	0	0	1	3	29
MONTROSE	2	0	0	0	0	2
MORGAN	28	0	0	2	4	22
PARK	4	0	0	0	0	4
PHILLIPS	262	0	4	6	20	231
PROWERS	4	0	0	0	0	4
RIO BLANCO	158	0	0	0	1	157
RIO GRANDE	2	0	0	0	1	1
ROUTT	24	0	0	0	2	22
SAN MIGUEL	11	0	0	0	0	11
SEDGWICK	25	0	0	1	3	21
WASHINGTON	53	0	2	0	2	49
WELD	4221	0	196	307	915	2797
YUMA	474	0	7	14	42	411



Well to Building Setback Review

Colorado Oil and Gas Conservation Commission

April 11, 2014

Listing of Locations less than 200 feet to Building

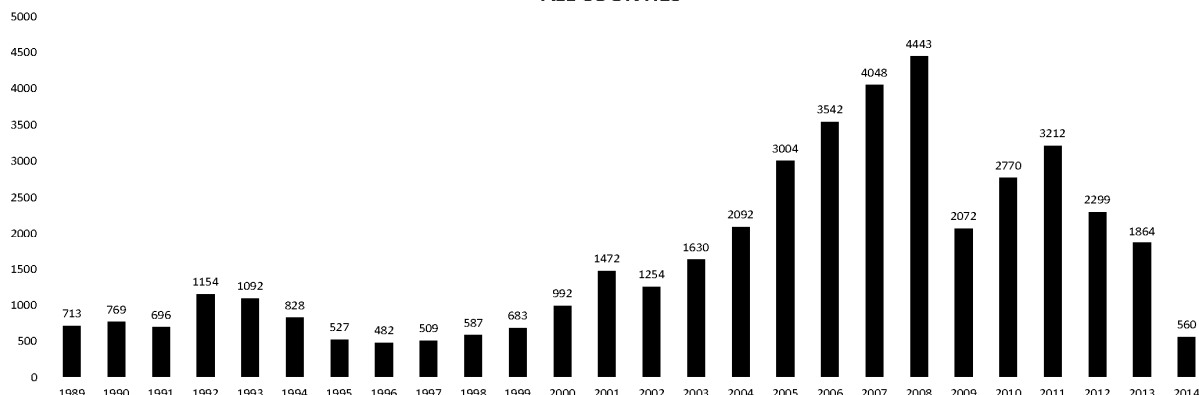
Year	Document Number	County	High Density	New Location	Distance	Proximity	Building Description
2011	2587822	CHEYENNE	No	No	58	less 150	Water well house
2009	1691798	WELD	No	No	58	less 150	Vehicle garage
2010	400072164	WELD	No	Yes	69	less 150	Abandoned hog shed
2012	400240957	GUNNISON	No	Yes	90	less 150	Equipment Shed
2009	1758843	WELD	No	Yes	103	less 150	Building to be razed
2011	1636646	WELD	No	No	122	less 150	Storage shed
2009	400011284	LAS ANIMAS	No	Yes	127	less 150	Operator is owner
2009	1786896	PHILLIPS	No	No	132	less 150	Grain Storage
2011	400117702	WELD	No	Yes	143	less 150	Irrigation pump house
2011	400227765	WELD	No	Yes	145	less 150	Storage Barn
2009	1904205	WELD	No	No	154	150 to 350	Livestock Enclosure
2012	400243295	WELD	No	Yes	155	150 to 350	Unused storage shed
2011	400179419	WELD	No	Yes	157	150 to 350	Existing well / storage building
2010	400054716	WELD	No	No	159	150 to 350	Equipment Barn
2011	400188968	WELD	No	Yes	159	150 to 350	Abandoned
2010	400021477	WELD	No	Yes	162	150 to 350	Goat Barn
2009	1758386	WELD	No	Yes	168	150 to 350	Storage Shed
2011	1635946	WELD	No	No	169	150 to 350	Storage shed
2013	400447386	WELD	No	No	169	150 to 350	Abandoned Turkey Barn
2013	400447391	WELD	No	No	169	150 to 350	Abandoned Turkey Barn
2011	400165164	WELD	No	Yes	178	150 to 350	Residence
2013	400367184	WELD	No	Yes	179	150 to 350	Shed
2011	400188780	WELD	No	Yes	180	150 to 350	Residence
2010	1697620	WELD	No	No	187	150 to 350	Livestock Shed
2009	1758746	WELD	No	No	193	150 to 350	Storage Shed
2011	400154431	WELD	No	Yes	198	150 to 350	Turkey barn
2012	400250031	WELD	No	Yes	198	150 to 350	abandoned guard shack
2009	1774783	WELD	No	No	199	150 to 350	cement service building
2011	400118102	YUMA	No	Yes	199	150 to 350	Steel Barn



COLORADO OIL AND GAS CONSERVATION COMMISSION ANNUAL WELL STARTS BY COUNTY

COUNTY	1988	1989	1990	1991	1992	1993	1994	1995	1996	1997	1998	1999	2000	2001	2002	2003	2004	2005	2006	2007	2008	2009	2010	2011	2012	2013	Current as of 4/11 2014	
ADAMS	39	27	26	36	54	20	54	28	6	16	12	17	18	13	4	19	22	24	13	41	14	15	21	2	14	5	11	
ALAMOSA																												
ARAPAHOE	2	4	16	11	11	3	9	8	3	3	2						6	1	5	2	1	1	3	9	8	14	7	
ARCHULETA	5	3	7	5	2	1		2		1			4	4	2	5	4	10	5	7	26	9	12	9	11			
BACA	5	5	12	6	21	8	9	19	9	7	11	8	19	6	2	1	6	6	2	6	12		5	5	1	1		
BENT				1			2	3	1	2	3	6	2				3	2	8	1	1			1	1	1		
BOULDER	2			7	18	56	15	5								2	5	11	9	14	25	16	13	7	14			
BROOMFIELD	3	2	3	7	14	27	22	2	2						2		1				10		21	11	5			
CHEYENNE	177	133	92	75	64	50	44	41	35	29	29	6	2	1	3	3		9	14	15	14	8	12	11	17	35	5	
CONEJOS																												
COSTILLA																												
CROWLEY	1		1																									1
CLUSTER																												
DELTA	1		1													5	4	6	5	2			4	1	6			
DENVER										2	3	1		2						7	5	4						
DOLORES	2		4	1													2		2	13	4	2		1	5	10		
DOUGLAS																												
EAGLE																												1
EL PASO																							2		5			1
ELBERT	8	11	9	5	2			10	15	2	2		2						1									
FREMONT	6	3	5	7	1	1	1	2			1							1	3	2	2	5	3	9	16	7	2	
GARFIELD	3	12	24	8	3	4	15	13	7	28	19	94	190	251	245	417	585	799	1005	1304	1688	768	904	879	494	390	112	
GRAND							1																					
GUNNISON			1	2		1										1		1	1	9	5	1	4	5	2	4	1	
HUERFANO	6			2	6	1	1	2		2	31	9	25	14	19	3	6	2			2		2	1	2	2	1	
JACKSON	2	1	3	7	2		3	1	1	3	3		24	2	4	10	10		3	3	10	1	6	7			5	
JEFFERSON										1											2							
KIOWA	14	32	35	37	28	19	20	22	8	13	6	4	8	16	2	4	2	1	7	7	2	5	15	15	10	8		
KIT CARSON	11	6	6	6	9	13	15	9	6	3	7	7					1	1	6	2	1	14	3	1	3	1		
LA PLATA	158	129	186	44	66	26	17	19	29	48	65	80	99	135	118	110	103	104	108	179	199	131	67	54	3	8	1	
LARIMER	8	5	1	6	13	5	3		2	1			1	1				1		4	8	1	28	2	10	4	1	
LAS ANIMAS	17	22	20	3	2	11	17	34	62	90	120	182	202	286	205	221	296	384	413	326	221	14	7	78	1			
LINCOLN	6	5	4	4	7	7	8	8	3	2			2	2	1	5	2	2	1	2	19	10	14	22	24	42	7	
LOGAN	17	19	19	8	13	24	9	11	4	10	4		4	6	3	3	2	11	12	12	3	7	3	9	13	4	2	
MESA	1	2	2	4	1		7	2	1	1	4	4	2	12	12	13	25	89	156	209	222	14	11	39	4	6		
MOFFAT	1	2	1	2	1	1	2	1	3	1	8	10	18	23	25	28	19	40	60	42	25	18	15	34	26	22		
MONTEZUMA	6	5	7	5	2	5	7	3	12	2	2		2	3	5	5	1	7	2	4	18	11	3	8	18	11	2	
MONTROSE				1												3					1	2	1					
MORGAN	26	20	32	11	9	11	16	13	8	9	7	4	9	8	1	7	5	5	3	1	1	2	3	2	3	1	2	
OTERO				1																								
OURAY																												
PARK				1																								
PHILLIPS			3			1										6	10	11	4	35	18	2	42	130	50			
PITKIN			1		2																							
PROWERS	16	9	5	8	13	7	1	5	5	2	8	4	2	4	4			5	5	6	3	5	2	3	1			
PUEBLO																												
RIO BLANCO	1	8	10	1	3	8	6	7	5	9	9	62	51	82	47	83	92	95	107	95	203	116	107	72	53	36	9	
RIO GRANDE	1	2	2																									
ROUTT	1	1	1	3	1							1	5	12	1		1	6	3	2		2	1	2	4	2		
SAGUACHE	1							2																				
SAN MIGUEL				1							3	1	6	9	10	19	28	13	20	17	5	1	2	2				
SEDGWICK				1			1	3		2							1	2	1	1	5		3	8	3			
WASHINGTON	39	28	22	26	24	20	20	13	17	23	18	4	15	12	24	29	65	34	23	14	11	2	2	4	1	9	3	
WELD	176	200	168	296	660	723	389	94	136	94	117	124	237	403	406	522	632	718	931	1222	1314	877	1208	1661	1463	1231	393	
YUMA	12	16	41	47	102	39	114	145	101	104	93	52	42	162	108	106	144	597	593	445	336	27	213	107	16	12	3	
Grand Total	773	713	769	696	1154	1092	828	527	482	509	587	683	992	1472	1254	1630	2092	3004	3542	4048	4443	2072	2770	3212	2299	1864	560	

ALL COUNTIES





Colorado Oil and Gas Conservation Commission

Active Wells by County and Status as of 04/11/2014

County	Drilling	Domestic	Injecting	Producing	Shut In	Temp Aband	Waiting on Completion	Active Storage	Intent to Plug	Total Active Wells
ADAMS	14		7	888	56	8	2	17		992
ARAPAHOE	15	1	4	123	15	9		39		206
ARCHULETA	1	5		106	7	9	6			134
BACA	1		11	126	45	4		57		244
BENT	1	1		29	7					38
BOULDER				313	3	1				317
BROOMFIELD				94	3					97
CHEYENNE	17		37	314	24	45	3			440
CROWLEY	1									1
DELTA				2	16		1			19
DENVER			1	44	4		3			52
DOLORES	3		1	39	4	1	1			49
EL PASO	1	1				1				3
ELBERT				67	2	2		1		72
FREMONT	1	3		65	2	6				77
GARFIELD	232	5	43	10077	182	64	67	3		10673
GUNNISON	1		1	25	14	1	4			46
HUERFANO	1		1	34	3	6	1			46
JACKSON	5		35	112	42					194
JEFFERSON					2		1	3		6
KIOWA	4		9	103	16	4	2			138
KIT CARSON		1	1	14	2	1	1			20
LA PLATA	1	7	31	3121	107	22	4	30		3323
LARIMER	3	2	26	176	30	18	2			257
LAS ANIMAS		4	20	2852	89	58	22	5		3050
LINCOLN	15	1	7	73	14	2	4			116
LOGAN	7		18	117	37	31	4	9		223
MESA	6	1	10	870	122	27	13	11		1060
MOFFAT	9		10	493	58	39	11			620
MONTEZUMA	2	2	9	128	30	13	2			186
MONTROSE					1	3				4
MORGAN	3		21	83	89	38	1	83		318
OURAY		2				1				3
PARK				1						1
PHILLIPS	3		3	258	2	1	1			268
PITKIN								10		10
PROWERS				27	3					30
RIO BLANCO	18	4	278	2202	317	91	16	3		2929
ROUTT		2		32	8	1	1			44
SAN MIGUEL				117	11	3				131
SEDGWICK	2		1	13	4		2			22
WASHINGTON	9		25	415	30	6	4			489
WELD	1065	1	39	19566	410	25	53	2		21161
YUMA	5	8	20	3752	56	13	21	1		3876
Totals	1446	51	669	46871	1867	554	253	274	0	51985



Colorado Oil Gas Conservation Commission Monthly Statistics

YEAR	MO	Baker - Hughes Rig Count	Drilling				Recompletion				Injection				Pits				Locations				Well Spud Notice		Active Drilling Permits		Well Oper		Public Visits		Well Change		Operators		Release					
			Rcvd	Apvd	5996	519	8	23	515	34	28	Rcvd	Apvd	25	8	8	225	2548	2303	232	4755	43588	Data	Office	Internet	Change	New	Inactive	Ind.	Blinkl										
2010	Total	5703	5996	519	8	23	34	28	120	225	2548	2303	232	4755	43588	197	1115	1112479	8421	46	33	38	40																	
	JAN	63	405	351	8	23	4	6	4	8	249	112	232	4755	43588	14	95	103968	815	1	2	3	1																	
	FEB	61	343	249	15	2	7	6	5	3	184	150	209	4733	43869	21	80	96171	356	1	1	9	4																	
	MAR	68	472	498	18	23	4	7	38	31	262	258	268	4847	43927	9	125	122393	596	2	3	6	3																	
	APR	72	325	314	26	15	5	0	20	27	190	218	241	4882	44203	8	105	106539	404	2	0	3	2																	
	MAY	72	372	367	20	25	3	6	12	8	214	171	248	4904	44752	14	124	73024	544	3	0	5	2																	
	JUN	70	512	436	61	22	5	4	11	4	172	239	272	5013	45401	30	131	108115	795	2	2	2	2																	
	JUL	69	457	436	13	55	2	1	13	7	215	158	261	5113	45710	20	74	103585	596	3	5	3	6																	
	AUG	73	472	482	37	17	1	0	10	17	236	229	282	5328	45975	21	141	111950	575	2	3	12	7																	
	SEP	77	336	389	22	29	7	0	35	34	159	203	322	5361	46115	9	120	116043	587	5	1	7	5																	
	OCT	78	382	443	45	29	2	1	4	12	171	172	302	5423	46719	14	126	132814	552	4	2	12	6																	
	NOV	80	342	324	29	57	0	1	12	13	166	174	305	5409	46721	18	96	130612	575	4	9	15	4																	
	DEC	79	291	370	31	23	4	0	26	28	164	183	278	5329	46835	9	77	132651	348	4	2	2	2																	
	Total	4709	4659	325	320	44	32	44	190	192	2382	2267	3220	46958	6743	187	1294	1337865	6743	33	31	79	44																	
	JAN	73	372	258	26	21	3	0	11	5	142	129	245	5217	46958	12	106	112686	1051	3	3	7	5																	
	FEB	70	370	382	23	27	7	5	21	9	160	129	231	5173	47128	16	114	105857	385	6	9	8	5																	
	MAR	66	292	347	21	14	2	2	17	24	133	172	290	5132	47263	26	138	111746	378	4	1	7	3																	
	APR	66	410	235	16	24	5	5	9	2	137	106	237	4785	47377	12	108	107627	477	4	2	10	3																	
	MAY	66	491	506	23	16	3	1	6	2	105	131	211	4885	47533	20	123	109802	527	3	1	4	0																	
	JUN	69	326	377	11	19	8	6	5	8	110	89	145	5136	47860	11	111	108849	1270	3	4	3	3																	
	JUL	66	237	276	9	14	3	2	5	2	97	103	190	5152	48173	13	102	114195	499	5	0	1	4																	
	AUG	62	313	288	6	9	6	4	23	5	83	97	179	5031	49153	11	112	110908	301	6	5	2	8																	
	SEP	61	252	256	1	5	5	2	4	1	81	77	159	4960	49230	11	89	106114	834	0	4	4	5																	
	OCT	62	326	265	9	3	7	6	2	19	94	82	160	5009	49236	8	105	108833	484	1	2	9	1																	
	NOV	56	271	323	5	8	6	6	2	4	109	97	142	5000	49989	10	119	120586	461	6	4	12	8																	
	DEC	57	322	260	4	8	8	5	9	3	122	81	107	5081	50067	9	78	107240	958	6	2	3	1																	
	Total	3982	3773	154	168	63	44	114	84	1373	1293	2296	159	1305	1324443	7625	47	37	70	46	37	70	46																	
2012	JAN	53	538	331	6	0	3	5	6	8	176	124	143	5060	50265	9	108	47406	639	3	5	12	2																	
	FEB	56	260	455	10	5	2	4	4	11	91	141	134	5250	50372	7	102	40649	293	4	2	6	3																	
	MAR	57	344	241	5	9	3	8	15	6	129	84	166	5093	50540	9	133	43019	355	1	3	2	2																	
	APR	61	331	333	6	5	5	5	6	8	146	117	162	4925	50687	3	132	46459	335	7	1	5	2																	
	MAY	61	350	342	8	6	6	6	10	7	106	142	152	5110	50810	3	123	45215	349	2	1	3	0																	
	JUN	62	349	273	2	8	8	8	5	3	114	85	134	5273	50909	8	122	41015	1448	6	2	2	4																	
	JUL	68	864	304	11	4	4	9	2	9	5	218	91	158	51091	7	154	45558	1011	4	1	2	2																	
	AUG	69	232	291	6	4	3	2	4	1	35	76	180	5200	51255	20	130	44722	388	6	4	5	4																	
	SEP	69	212	362	9	5	10	9	3	19	56	109	156	5185	51407	5	105	41256	258	4	1	6	1																	
	OCT	72	319	376	5	9	7	5	1	8	67	88	228	4967	51598	5	135	45151	344	6	0	2	2																	
	NOV	69	346	353	4	13	7	4	2	27	67	85	148	5141	51711	12	119	38903	428	2	0	2	2																	
	DEC	64	336	367	2	4	4	6	2	3	63	71	105	5129	51737	4	93	32381	1288	4	1	1	2																	
	Total	4481	4028	74	72	67	63	67	106	1268	1213	1866	92	1456	511734	7136	49	21	48	26	49	21	48																	
2013	JAN	62	277	232	4	2	3	4	14	8	90	43	159	4926	51840	1	90	46150	269	6	3	3	2																	
	FEB	61	281	297	5	4	0	1																																



Colorado Oil Gas Conservation Commission Monthly Statistics

YEAR	MO	Bonds		Claim		Hearings		Enforcement		Remediation		Inspections		
		Replace	Ind.	Blkkt	Apps.	Ordrs	NOAV	AOC	OFV	Spills	Rcvd	Comp	Wells	Locations
2010	Total	74	0	1	155	36	319	10	3	218	493	511	382	17075
	JAN	4	0	0	16	15	43	3	2	33	40	47	45	1316
	FEB	6	0	0	16	15	7	0	1	39	52	48	33	1591
	MAR	9	0	0	NA	NA	31	NA	NA	31	48	59	27	1675
	APR	1	0	0	24	24	8	0	0	10	52	38	61	959
	MAY	4	0	0	77	65	16	2	5	26	31	33	51	1577
	JUN	0	3	0	51	58	30	1	4	14	38	53	25	1099
	JUL	3	1	0	NA	NA	29	NA	NA	13	39	92	20	518
	AUG	2	0	1	68	54	26	2	2	19	54	106	56	1032
	SEP	2	0	0	44	41	4	2	4	16	46	56	66	690
	OCT	7	0	3	57	45	9	0	0	15	38	102	28	636
	NOV	1	0	0	NA	NA	15	NA	NA	16	31	70	58	739
	DEC	4	0	0	50	32	12	0	1	15	58	22	66	562
2011	Total	43	4	4	403	349	230	10	19	247	527	726	536	12394
	JAN	1	1	0	70	72	18	1	0	27	35	68	23	998
	FEB	0	0	0	NA	NA	10	NA	NA	24	40	85	36	1998
	MAR	9	0	0	44	38	19	0	0	23	38	63	61	2203
	APR	2	0	0	80	59	11	0	0	19	35	26	99	1701
	MAY	3	0	0	43	50	14	2	0	23	32	27	122	2621
	JUN	4	0	0	NA	NA	5	NA	NA	35	39	46	98	1432
	JUL	5	0	0	63	50	15	0	0	16	24	45	33	1319
	AUG	0	1	0	67	54	24	3	2	21	28	127	33	1898
	SEP	2	1	0	NA	NA	5	NA	NA	14	13	30	36	1137
	OCT	0	0	0	30	36	6	1	0	13	44	116	37	1407
	NOV	7	0	0	85	37	16	2	0	10	44	26	44	1324
	DEC	0	0	0	NA	NA	14	NA	NA	19	30	31	19	1046
2012	Total	33	3	0	482	396	157	9	2	244	402	690	641	19084
	JAN	0	0	0	48	75	15	4	0	21	40	31	45	1673
	FEB	2	0	0	41	35	11	2	0	15	30	42	90	1042
	MAR	1	0	0	54	67	16	2	0	11	25	65	29	1967
	APR	8	0	0	NA	NA	21	NA	NA	16	33	39	37	1508
	MAY	0	0	0	46	50	22	6	0	13	31	41	60	2615
	JUN	5	0	0	91	44	13	2	0	25	40	47	37	1857
	JUL	0	0	0	96	70	25	3	0	21	47	50	22	2298
	AUG	2	0	0	NA	NA	23	NA	NA	25	57	36	41	2145
	SEP	0	0	0	101	51	7	2	0	16	60	43	51	1535
	OCT	2	0	0	52	82	4	12	3	12	79	47	60	1865
	NOV	0	0	0	NA	NA	30	NA	NA	12	51	31	34	2400
	DEC	0	0	0	42	48	50	4	0	14	75	35	35	2676
2013	Total	20	0	0	571	522	237	37	3	201	568	507	541	23581
	JAN	0	0	0	57	46	24	2	0	8	69	37	28	3237
	FEB	0	0	0	0	0	0	0	0	15	68	33	13	2325
	MAR	0	0	0	97	75	36	10	0	22	63	48	31	1794
2014	Total	0	0	0	154	121	90	12	0	45	200	118	72	7356

Appvd = Approved; Rcvd = Received; Ind = Individual; Blkkt = Blanket; Apps = Application for Hearing; NOAV = Notice of Alleged Violation; AOC = Administrative Order of Consent; OFV = Order Finding Violation; Cmpl = Complaint; Comp = Completed