



Staff Report

June 17, 2014

TOP STORIES

◆ E & P Waste Spill and Release Rules

As a result of the December 2013 amendments to Rules 337 and 906, the Form 19 (Spill/Release Report) has been revised to align with the amended rules. The revisions provide for transition to an electronic, Internet-based reporting process (eForms) and the “paper submittals” of the Form 19 will be phased out. The eForm 19 was released on April 24, 2014. The COGCC conducted several two-hour training sessions for operators on the use of the eForm 19 which included a presentation by COGCC staff, followed by time for questions and answers. Three training sessions took place at the in March 2014 and were attended by approximately 100 industry representatives. Additional training sessions may be scheduled, if necessary.

◆ Local Government Liaison (LGL) Program Update

Local Government Liaisons (LGLs) Marc Morton and Nancy Prince continue to provide valuable assistance, outreach and support to local governments, the public, and other organizations. As part of that effort, the LGLs recently published the Spring 2014 Local Government Designee (LGD) Newsletter. The current and three previously published issues are available on the COGCC website under the “[Local Gov](#)” link. The newsletters contain pertinent articles on topics such as advantages to local governments for participating in the LGD program, use of Memorandums of Understanding (MOUs) between local governments and operators, and summaries of recent updates to COGCC rules and policies. The LGD Newsletters also provide instruction on how to sign up to participate in the LGD program. The LGD Newsletters contain various other items of interest to local governments, the public, and others interested in the regulations of oil and gas in Colorado.

146 entities (56 counties, 82 municipalities, and 8 Special Districts) currently participate in the voluntary (but highly beneficial) LGD program. Because participation in the LGD program is voluntary, the LGLs will be contacting all non-participating jurisdictions to encourage their participation in the valuable program, and inform them of the program’s benefits. This work will occur in the coming weeks.

As a reminder to all LGDs, it is imperative to contact COGCC, via submittal of an updated Form 29, of any change in e-mail address or contact information, or change in the status of your participation in the LGD program.

Free LGD training is offered by regularly by the COGCC. Training is recommended every two years for LGDs, associated staff, and others interested in the regulation of oil and gas in Colorado. If you are an LGD and have not taken part in training offered, various training upcoming training opportunities are available in 2014.

LGD training provides an update on COGCC rules and policies; information on lifecycle of a well; oil and gas basics; well and location permitting; LGD rights, powers, and responsibilities; and COGCC website and database navigation.

To pre-register for a planned 2014 training, please send an email to:
dnr_cogcc.hearings_mgr@state.co.us

Be sure to include “LGD Pre-Registration Request” in the subject line, and include names, affiliation, email addresses, and phone contact information for all participants. In response, you will receive a confirmation email and additional details. Please note that space is limited at the venues, and registration may be capped once a venue is filled.

If you aren’t able to make one of these scheduled dates (see below), please call or e-mail the LGLs (Marc Morton or Nancy Prince) and arrange-



ments can be made to provide training for your group or organization at a convenient venue.

2014 LGD Training Schedule

- **Monday, June 16** - Garfield County Public Library- Rifle Branch, 207 East Avenue, Rifle, CO
- **Tuesday, July 15** - Library 21c, 1175 Chapel Hills Drive, Colorado Springs, CO
- **Tuesday, August 5** - COGCC Denver Office, 1120 Lincoln Street., Suite 801, Denver, CO (Please note that the venue is at capacity, a wait list is available and a second training is under consideration)
- **Tuesday, October 28** - Durango Public Library, 1900 E 3rd Ave, Durango, CO

LGD training is recommended every two years for LGDs, associated staff, and others interested in the regulation of oil and gas in Colorado. If you are an LGD and did not take any of the eight trainings offered in 2013, we recommend you get pre-registered to reserve your space. If you aren't able to make one of these scheduled dates, call or e-mail Marc Morton or Nancy Prince and we will arrange specialized training for your group or organization at a convenient venue.

A list of the LGL outreach and public involvement activities conducted since the last staff report is included in the Public Outreach section listed on the next page.

Public Outreach

➤ Outreach by Director and other Staff Members

- On May 14, 2014, Field Inspections Manager Margaret Ash participated in a one and half hour panel discussion on stormwater regulation in Colorado. The discussion took place after a training program on Stormwater and Erosion Control for Oil and Gas Operations presented by Altitude Training Associates. Maura McGovern with the Water Quality Control Division also participated in the panel discussion. The workshop was held in Grand Junction, Colorado and attended by oil and gas operators and consultants.

- On May 31, Director Matt Lepore participated in a Townhall meeting with Rep. Kathleen Conti in Centennial on oil and gas regulations.
- On June 2, Director Lepore was on a panel to discuss latest developments in energy regulations during the Denver Metro Chamber of Commerce monthly meeting.
- On June 5, Deputy Director Dave Kulmann and Margaret Ash met with Western COGA during its Joint Task Force meeting to answer questions and provide update on activities within the OGCC.
- On June 5 and 6, Mike Leonard completed the FEMA Basic Public Information Office Training in Hugo Colorado. This course is part of a training curriculum that provides the foundation for more advanced training in public information.
- On June 6, Hearings Manager Robert J. Frick and Permitting Manager Jane Stanczyk presented at the Annual Colorado Conference of the Rockies Chapter National Organization of Royalty Owners in Longmont, Colorado. The presentation included COGCC website navigation, the well permitting process, and an overview of current industry trends in the state.

➤ Outreach by COGCC Local Government Liaisons (LGLs)

- On May 6, 2014, Nancy Prince, Marc Morton and Hearing Officer Jill Dorancy conducted an LGD Training at the Weld County Administration Building in Greeley. Training was provided to 24 individuals including area LGDs, other local government staff, representatives from academia, and one student.
- On May 7, Nancy Prince, Quality Assurance Professional Mike Leonard, and Oil and Gas Location Assessment Specialist Melissa Housey attended the Aurora LGD meeting where representatives from a land development company and an oil and gas operator described their process to develop surface use agreements that are in harmony with COGCC setback rules.
- On May 12, Marc Morton attended a FrackingSENSE: Greeley lecture (in Greeley, CO).



Panelists included COGCC Director Matt Lepore, Gary Graham of Western Resource Advocates, David Baumgarten of Gunnison County, and Mike Paules of WPX Energy. The topic was the regulatory environment for oil and gas. The FrackingSENSE: Greeley community event was organized by the Center of the American West, in conjunction with a research grant from the National Science Foundation, and with support and participation from the City of Greeley, KUNC, The Greeley Tribune, Weld Air and Water, University of Northern Colorado Greeley, Synergy Energy, and the UNC Faculty Task Force on Hydraulic Fracturing.

- On May 15 and 16, Marc Morton attended the Energy and Environment Symposium - Oil and Gas Education for Local Government, in Rifle, Colorado, and organized by Garfield County. Topics included fiscal impacts of oil and gas to local governments; research and information regarding environmental impacts of oil and gas development; recent regulatory changes; perspectives on local land use planning and local control of oil and gas; and local planning approaches to oil and gas regulation. COGCC Director Matt Lepore summarized recent COGCC regulatory changes. Marc and a portion of the group participated in a field tour of the Rulison Water Treatment Facility operated by WPX and a centralized hydraulic fracturing facility site also operated by WPX.
- On May 21, Nancy Prince met with Peter Wysocki, Director of Planning for Colorado Springs, and Cindy Thompkins, Manager for the towns of Calhan and Ramah regarding participation in the LGD program.
- On May 28, Robert Frick, Nancy Prince, and Melissa Housey met with Adams County Planning Department to discuss the process for their planned updates of oil and gas regulations.
- On May 28, Nancy Prince attended the kick-off meeting for the Town of Wiggins Source Water Protection Plan led by Colorado Rural Water Association.
- On May 29, Marc Morton attended the Mesa County Board of County Commissioners and Land/Resource Managers Quarterly Meeting in

Grand Junction. Representatives from various federal, state, and local land and resource management agencies attended the meeting and provided updates. Marc provided an update on COGCC activities including the upcoming Commission Hearing in Rifle, upcoming LGD training opportunities in western Colorado, and recent staffing changes. Marc also pointed out the availability online of the COGCC staff report concerning lessons learned as a result of the September 2013 flood event that affected northeast Colorado.

- On June 4, Nancy Prince attended the Fremont County local mayor's meeting to discuss status of the DOLA extraction grant-funded road repair and current oil and gas activity in the area.
- On June 5 and 6, Marc Morton attended the annual Martz Summer Conference at the Getches-Wilkinson Center at University of Colorado Law School in Boulder, CO titled Water and Air Quality Issues in Oil and Gas Development: The Evolving Framework on of Regulation and Management.
- On June 5 and 6, Nancy Prince and Mike Leonard completed the FEMA Basic Public Information Office Training in Hugo Colorado.
- On June 16, Marc Morton and Nancy Prince provided an LGD training at the Rifle Branch of the Garfield County Library. Training was provided to individuals including area LGDs, various prospective LGDs, local county and municipal government staff, and others.

REGIONAL ACTIVITIES

➤ NORTHWEST COLORADO

◆ Northwest Colorado Oil and Gas Forum

The Forum is an informal gathering of local, state, and federal government officials, oil and gas industry representatives, and citizens that have met regularly since 1989. The purpose of the Forum is to share information about oil and gas development in northwest Colorado and to make government officials and oil and gas indus-



try representatives easily accessible to the public. Currently, the meetings are conducted once per quarter and are co-chaired by Director Matt Lepore and Garfield County Commissioner Mike Samson.

The last meeting of the Forum was held on June 5, 2014 at 10:00 a.m. in Rifle, CO at Colorado Mountain College. The next meeting is in early September. All parties wishing to be placed on the meeting agenda, or added to the distribution list for announcements, should contact Dave Andrews at: [970-625-2497](tel:970-625-2497) or via email at: david.andrews@state.co.us

- Project Rulison

Please note that the email for Project Rulison submittals has been changed to:

DNR_rulison.submittal@state.co.us

- Project Rio Blanco

Please note that the email for Project Rio Blanco submittals has been changed to:

DNR_rioblanco.submittal@state.co.us

➤ **SOUTHWEST COLORADO**

- ◆ Gas and Oil Regulatory Team (GORT) Meeting

The last GORT/Southwest Colorado Oil and Gas Stakeholders meeting occurred on Friday-Tuesday, May 6, 2014 from 8:30 a.m. to noon at the La Plata County Fairgrounds in Durango, Colorado.

The next GORT meeting is scheduled for Friday, July 17, 2014 from 8:30 a.m. to noon at the La Plata County Fairgrounds- Animas Room, 2500 Main Avenue, Durango, Colorado. All parties wishing to be placed on the next meeting agenda should contact Mark Weems at 970-259-4587 or to: mark.weems@state.co.us.

- ◆ Fruitland Formation Outcrop Mitigation and Monitoring Projects (4M Projects)

Fruitland Formation Outcrop - 4M Pilot Scale Mitigation Projects La Plata County. The 4M Monitoring Report (May 22, 2014) has been

posted on the COGCC webpage under Library, San Juan Basin, 4M Project Reports.

4M Monitoring Wells La Plata and Archuleta Counties. There are 17 wells at 11 locations in the COGCC 4M monitoring program. Well pressures are monitored remotely via satellite telemetry with one or two maintenance visits per year, depending upon data received. Operations and maintenance (O&M) activities were conducted on September 30 and October 1, 2013 by COGCC and Northwest staff. In general, the locations held up well during the recent large storm events although several access roads were damaged. The upper transducer at Highway 151 #2 starting giving erratic readings in late June 2013 and ceased transmitting in late July 2013. There was no surface evidence of problems, indicating the transducer itself has probably failed. Erratic readings from the upper transducer at Wagon Gulch #2 were determined to be from a loose wire in the hub which was reconnected. Data now appears to be transmitting normally. Wellhead leaks at South Fork Texas Creek #2 are still evident and require repair. Pending O&M activities includes the replacement of the upper transducer at Highway 151 #2 and a rebuild of the wellhead at South Fork Texas Creek #2. In addition it is planned to swap out the Level Troll™ datalogger system at a Basin Creek well and install an AquaTroll™ to run an assessment if different monitoring technologies may provide more accurate water level information. The Beaver Creek locations continue to be inaccessible due to surface access issues and the BP Highlands location was not visited due to potential road damage and wet road issues. Both locations are currently reporting normally via the telemetry system. . A field visit by the COGCC and their contractor is planned for late June/early July .

Ongoing Investigation, Reclamation, and Mitigation of Residual Methane in the Vicinity of the Bryce 1-X Well Area, Bondad, Colorado Three domestic water wells were sampled at the Bondad location on May 14, 2014 by Four Corners Geoscience staff. Free methane results ranged from 0.63mg/l in the Middle well to 4.92 mg/l in the South well. Due to a mechanical failure, a sample from the North well was not obtained. Analytical and isotopic data are pending.



➤ SOUTHEAST COLORADO

◆ U.S. EPA Raton Basin Hydraulic Fracturing Study - Las Animas and Huerfano Counties

As part of the retrospective study of possible impacts from well completions, a third round of sampling and analysis of groundwater from two areas in the Raton Basin was conducted during the week of November 5, 2012. COGCC staff, as well as contractors for Pioneer Natural Resources, collected split samples at many of the sites. The EPA released an interim progress report on the study in December 2012. The EPA is expected to release the study in a draft for public and peer review in 2014. Ultimately, results from the study are intended to inform the public and provide policymakers at all levels with high-quality scientific knowledge that can be used in decision-making. For more information on the EPA hydraulic study, go to <http://www.epa.gov/hfstudy/>.

➤ VARIANCES

Noble Energy, LLC

A Form 2A (No. 400544706) containing a variance request from Rule 605.a.(2) was approved on May 21, 2014. Noble Energy, Inc. ("Noble") requested a variance from Rule 605.a.(2) for their Five Rivers K09-62-1HN Project. Rule 605.a.(2) requires tanks to be at least two (2) diameters or three hundred fifty (350) feet, whichever is smaller, from the boundary of the property on which it is built. Where the property line is a public way the tanks shall be two thirds (2/3) of the diameter from the nearest side of the public way or easement. In this case, the section line is the property line and a two diameter tank setback from the section/property line (line) would apply. The existing access road was built trending north, deviating northeast from the line. The land use and development has evolved in accordance with the orientation of the access road rather than the line. By seeking this variance, Noble seeks to continue consolidating facilities with the historical development, and to avoid placing production facilities in the floodplain west of the existing facilities. The property on both sides of the line is owned by the same landowner. The property is located at the SE¼ SE¼ of

Section 8, Township 4 North, Range 66 West, 6th P.M.

➤ ORGANIZATION

New Eastern Plains Field Inspection Supervisor

Craig Aaron Quint has been promoted and is now the Eastern Plains Field Inspection Supervisor. Although he started working for the COGCC as a field inspector in 2010, Craig has over 36 years of experience in the oil and gas industry including drilling, production, gas processing and wireline operations. He has had training and certification in numerous programs and worked many phase of oil and gas including exploration, completions, gas processing and regulatory. His stated goal is to combine and pass on his knowledge and experience in these areas to benefit his colleagues and the agency.

New Reclamation Specialists

Catherine Roy has over 10 years of experience working in restoration ecology, environmental consulting for oil and gas, and botany. She received her bachelor's degree from Utah State University and Master's degree in Biological Sciences with emphasis in Restoration Ecology from California Polytechnic State University in San Luis Obispo, CA. Catherine has also has a diverse background in environmental regulation and management. She will work out of her home office in Durango and will cover southwestern Colorado.

Ryan Costa is the new Reclamation Specialist for the southeastern region and is a native of this region. He has a bachelor's degree in Rangeland Ecology and Watershed Science from Colorado State University. He has worked in the oil and gas industry performing and monitoring reclamation and stormwater projects throughout Colorado and Wyoming for four years and has been involved in a broad range of reclamation projects throughout the state of Colorado. He has also served as an environmental technician for the mining and agricultural industries.

Amanda Goodwin has spent the past two years on Colorado's Western Slope as a stormwater inspector and reclamation coordinator for the private sector of the oil and gas industry. She comes by way of Utah, where she earned her Masters in



Landscape Architecture from Utah State University, with an emphasis in low impact design and phytoremediation. Prior to this, she received a bachelors and Masters in Architecture from Norwich University in Vermont, with a concentration in subterranean structures. Amanda will cover the northwestern part of the state.

New Field Inspectors

Curtis Conklin graduated from Colorado State University in 2003 with a Bachelor in Animal Science and Equine Industry Concentration. He has been in the Oil and Gas industry for almost eight years, starting as a certified heavy equipment operator building roads, locations, storm water and doing reclamation. Most recently he was with Cameron Surface Systems where he oversaw the installation of pressure control systems (i.e. well heads, frac trees, and valves) and pressure tests for various equipment. He is also a NCCCO Certified crane operator. He currently resides in Collbran, CO.

Kyle Granahan is a new field inspector working out of the Rifle area and will report to Shaun Kellerby. Kyle has been in the oil and gas industry since 2007 when he went to work for Schlumberger focusing on cementing and specialty frac jobs. In 2012, he started working with Patterson-UTI Drilling dealing with all aspects of and gas drilling. Kyle worked on Rig 308 which drilled many wells in the Rifle and Parachute area. Kyle has his Associates of Arts degree and is considering furthering his education in engineering.

An organizational chart can be found on pages 10-13. For contact information, please go to our homepage, and then "Staff Contact Information."

➤ PLANNING/ADMINISTRATION/OTHER

◆ Plugging and Reclaiming Abandoned Wells (PRAW) - Project Updates

The DB Orphan Blair #1 Project came into being when on July 7, 2013 a ditch rider discovered water flowing from the ground and discharging into an irrigation ditch located on the NW edge of DeBeque, CO in Mesa County. The

COGCC was contacted on July 9th and because other orphaned oil and gas wells had been previously discovered and plugged by the COGCC, the COGCC assumed responsibility and had water samples gathered for lab analysis. Lab analysis indicated salty water which is indicative of oil and gas geologic sources. The ground around the water flow was dug up and the source of the leak was determined to be from a hole in a pipeline which was traced back to an old abandoned well that appears to have been drilled around 1902 based on old USGS reports. The salt water discharge into the ditch was terminated by sealing the well head and then disconnecting the pipeline.

To date the plugging design, cost estimate and bid documents have been prepared; however, this project has been delayed until after July 1st of this year due to the recent discovery of leaking wells found in Larimer County in proximity of the lands flooded last September.

The Larimer County Project includes three wells recently discovered in lands located in the rain flooded areas from last September. All three wells have been re-entered and plugged by the COGCC. The Culver-Shamrock #1 was found to be leaking is located in the flood plains of Thompson Creek and because of concerns for the spring runoff; it was deemed an *Emergency Project*. Projects with emergency status by-pass the bidding process and a contractor was selected and hired. In close proximity are two additional wells that were also in need of plugging. The Kaley #1 was leaking, too, and is located on higher grounds in an irrigated hay field. The Jessica #1 has been previously plugged, is not currently leaking, but will be re-entered and assessed since it is of the same vintage and very close to the other two wells. Ninety-Five thousand five hundred fourteen dollars (\$95,514) were spent to plug these wells and because of budgetary constraints, this project displaced the DB Orphan Blair #1 project for this fiscal year (July 2013-June 2014).

The PAST Project includes three leaking plugged and abandoned wells that were re-entered and re-plugged and have been renamed the **2013 Piceance Re-entries Project** to avoid confusion with other work. Two are located in Garfield County and one is in Mesa County. This work commenced in June 2014 and successfully completed July 2014 for a total cost \$236,776. The fiscal



year begins July 1st; so, a portion of the costs were charged to FYE2013 and the balance to this fiscal year (FYE2014) or \$150,886. These sites need surface reclamation which will likely take place in the next fiscal or after July 1, 2014.

The Pasture #1 Project involves the final abandonment of the well which includes cutting the casing off three feet below ground level and installing a well marker and sign. This work, too, has been re-scheduled after July 1st because of the Larimer County Emergency Project.

The Debeque Environmental and Reclamation Project involves the remediation and reclamation of soils contaminated by salt water in the vicinity of the orphaned wells known as the Homestead #2 and the Pasture #1 wells. Both sites are located in Mesa County on the NW edge of DeBeque, CO. Soil sampling and lab analysis has been completed on both well sites. The Homestead #2 will be partially completed this fiscal year (FYE2014) and carried forward into next fiscal year (FYE2015). No work has been done on the Pasture #1 and it, too will also be carried forward after July 1st.

Biscuit Pad Remediation Project includes two well pads and the two respective access roads where they are currently located in an active irrigated hayfield. The goal is reclaim and return the lands back to agricultural purposes. This project is located in Garfield County near the NE border of the town of Rifle and east highway 13. The lowest bid from the list of qualified contractors came in at \$143,000 and the work had been awarded to Tally Ho Construction, Inc. Tally Ho facilities and offices are headquartered in Rifle, CO. Tally Ho Construction commenced work on the project October 2013. To date, approximately 92 percent of the project is complete with a goal to have the project fully completed within the next couple of weeks. The final punch list includes removal and disposal of materials used to minimize soil erosion (BMP's), seeding for the north pad and fill areas, final surveys for soils and rock materials and moved and placed, and demobilizing and moving equipment offsite.

The Tatonka Reclamation Project includes three well pads located in Moffat County with two well pads being on the Culverwell property that can

be found approximately 20 miles west of Craig, CO and a couple of miles north of Hwy 40 with another well pad and pit being located on the Gerber property and found four miles west of Craig and three miles north of Hwy 40. A contractor has provided a documented quote and price to reclaim the mud reserve pit on the Gerber pad. Work commenced on the Gerber pit and will have to be carried forward to after July 1st (FYE2015). No reclamation work has been done to date on the Culverwell pad. This project is also re-scheduled after July 1st.

The Gentry Project is located in Rio Blanco County and includes 10 sites with eight wells and two pits that can be found approximately a half mile west of Rangely, CO and one and a half miles south of Hwy 64. The landowner has plans to do some land development and brought the matter to the attention of the COGCC. This project is also re-scheduled after July 1, 2014.

Page 14 contains a spreadsheet listing PRAW projects that are either scheduled in process or completed as of June 4, 2014.

July 2014 Hearing Docket

A docket for the July 2014 hearing will be available shortly after the June hearing. Hearing dockets are available on our website by clicking on "Hearings." Links to the notices and hearing applications are available from the Docket Number and Applicant, respectively. To sign up for e-mail notification of hearing notices and applications, please see the announcement and instructions on the homepage of the COGCC website: www.cogcc.state.co.us

➤ Colorado Oil and Gas Information System (COGIS) Projects, Updates and Changes

Environmental Database

During the past 18 months, the COGCC and the Ground Water Protection Council (GWPC) have been working together to develop a new Environmental Database that will contain the results from the from the Colorado Oil and Gas Association Voluntary Baseline Groundwater Quality Sampling program, along with other environ-

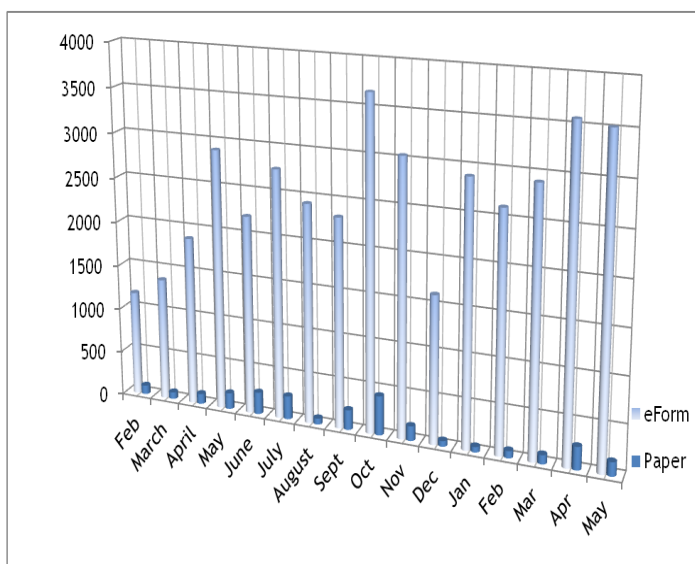


mental data collected by the agency. The project Sampling program, along with other environmental data collected by the agency. The project included the development of a new relational database model that will allow the data to be accessible to the public from the COGCC website.

Other improvements include an Electronic Data Deliverable that allows industry to submit the results of the sampling directly to the COGCC, which can then process the information directly into the database. The application has many other features to help staff analyze the information and understand the lab results from the sampling. The interface will allow the public to view and download the results.

Electronic Form Submissions (eForm)

TOTAL ELECTRONIC FORM SUBMITTALS
FEBRUARY 2013 - MAY 2014

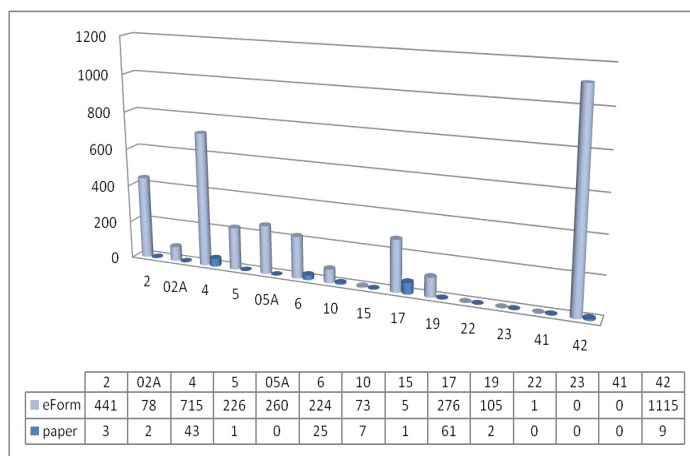


Forms currently available through eForm:

- Form 2 - Application for Permit to Drill
- Form 2A - Oil and Gas Location Assessment
- Form 4 - Sundry Notice
- Form 5 - Drilling Completion Report
- Form 5A - Completed Interval Report
- Form 6 - Well Abandonment Report
- Form 10 - Certification of Clearance/Change of Operator
- Form 15 - Earthen Pit Report/Permit
- Form 17 - Bradenhead Test Report

- Form 19 - Spill/Release Report
- Form 41 - Trade Secret Claim of Entitlement
- Form 42 - Notice of Notification (Notice of Hydraulic Fracturing)

Following is a breakdown by Form for the month of May 2014:



The development team is working on several forms concurrently. The Form 22 Accident Report is in final testing and should be released soon. Forms 14, 14A, 26, 31 and 33 are in various stages of development.

As forms are released on eForm, updates to the PDF version on our Forms page, <http://cogcc.state.co.us/Forms/forms.html>, will occur in tandem. These new versions of the PDF forms will reflect any changes that have taken place when forms are moved into eForm.

Along with the eForm system, a page is available where the operators can review all known bugs within the system and report any new ones they discover. Currently, there are 305 operators using eForm.

The public is permitted to make comments on all submitted Oil and Gas Location Assessment (OGLA) forms (Forms 2A) through the eForm system. This is accomplished by going to the COGCC website (<http://www.colorado.gov/cogcc>) and clicking on the menu option, "Permits", (or <http://cogcc.state.co.us/COGIS/DrillingPermits.asp>).

On the COGIS-Permits page, two search options are available for OGLA forms, "All Pending Loca-



tion Assessments for” and “All Approved Location Assessments for.” When the results are displayed for forms in process, the public can click on the document number, which logs the user onto the new eForm application. Once the page is displayed with the selected document, the user can select the Comment button to make a comment on that particular form. The public can use his same method to make comments on APDs (Form 2s).

For any operator not currently enrolled in eForm, instructions for starting the process can be found at <http://cogcc.state.co.us/Announcements/COUAINformation.pdf>.

Website Update Project

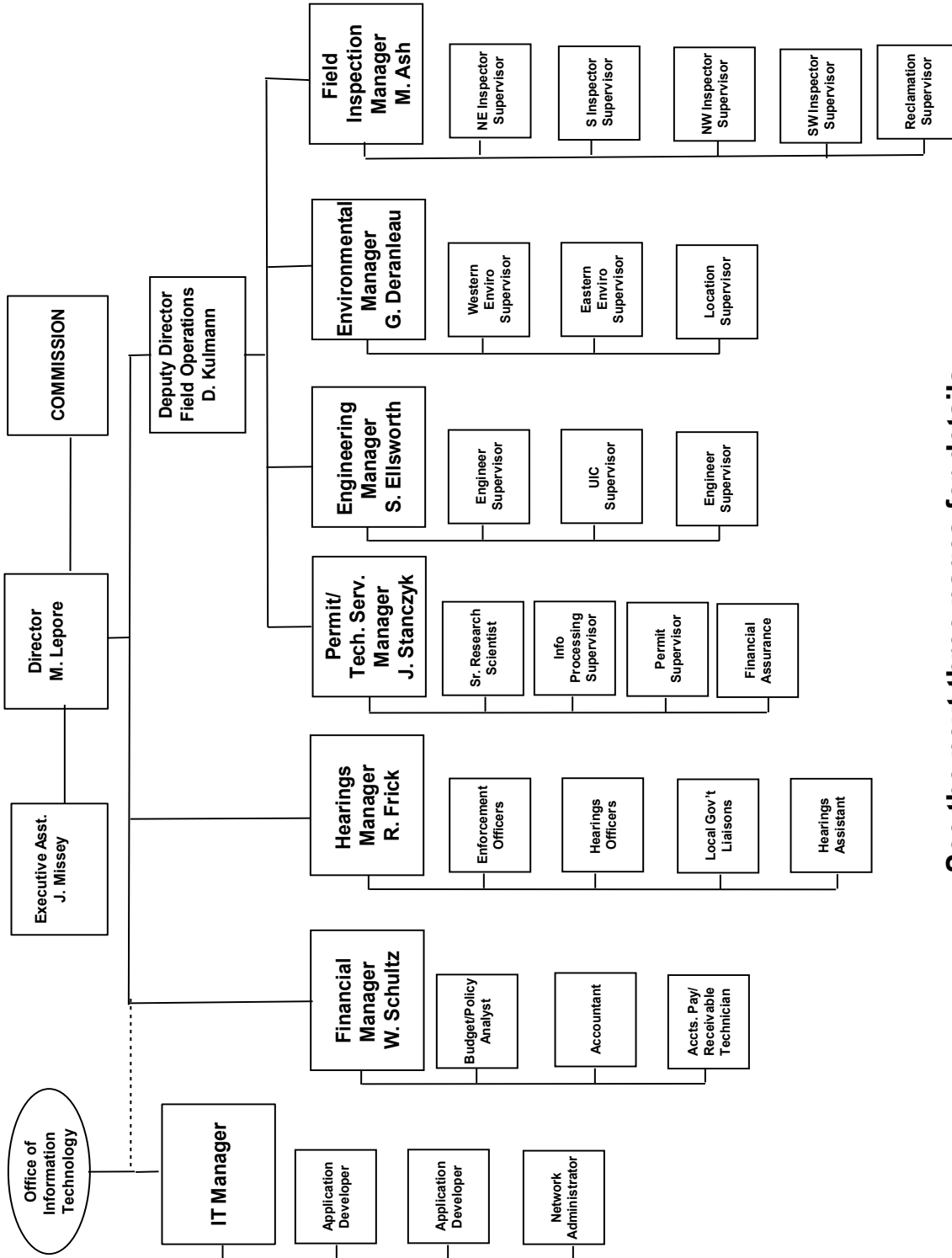
The COGCC website is being redesigned to simplify site navigation and to improve overall ease of use for both internal and external users. Content is being reorganized with an emphasis on public accessibility to information about oil and gas operations in the state, including Commission rules, regulations, hearings, wells, and production data. The new COGCC site is slated to go online in the Fall of 2014 with *beta* testing beginning this summer. Initially, most of the database search and mapping tools will be moved unchanged from the old site to the new, with a schedule of systematic future upgrades.

Financial Assurance Operator Audit

Since August 2013, the Financial Assurance unit, together with our student intern from Arrupe Jesuit High School, has been conducting a phone audit with operators to verify that our database contains accurate address and phone numbers as required by Rule 302.a, Registration for Oil and Gas Operations. Approximately 900 records were reviewed and letters were sent to 90 operators requesting submittal of a new Form 1 with current information. This has been a slow process, but some operators have been brought into compliance with receipt of their new Form 1. We are now beginning the final stage of this audit in which we initiate enforcement action for non-compliance.



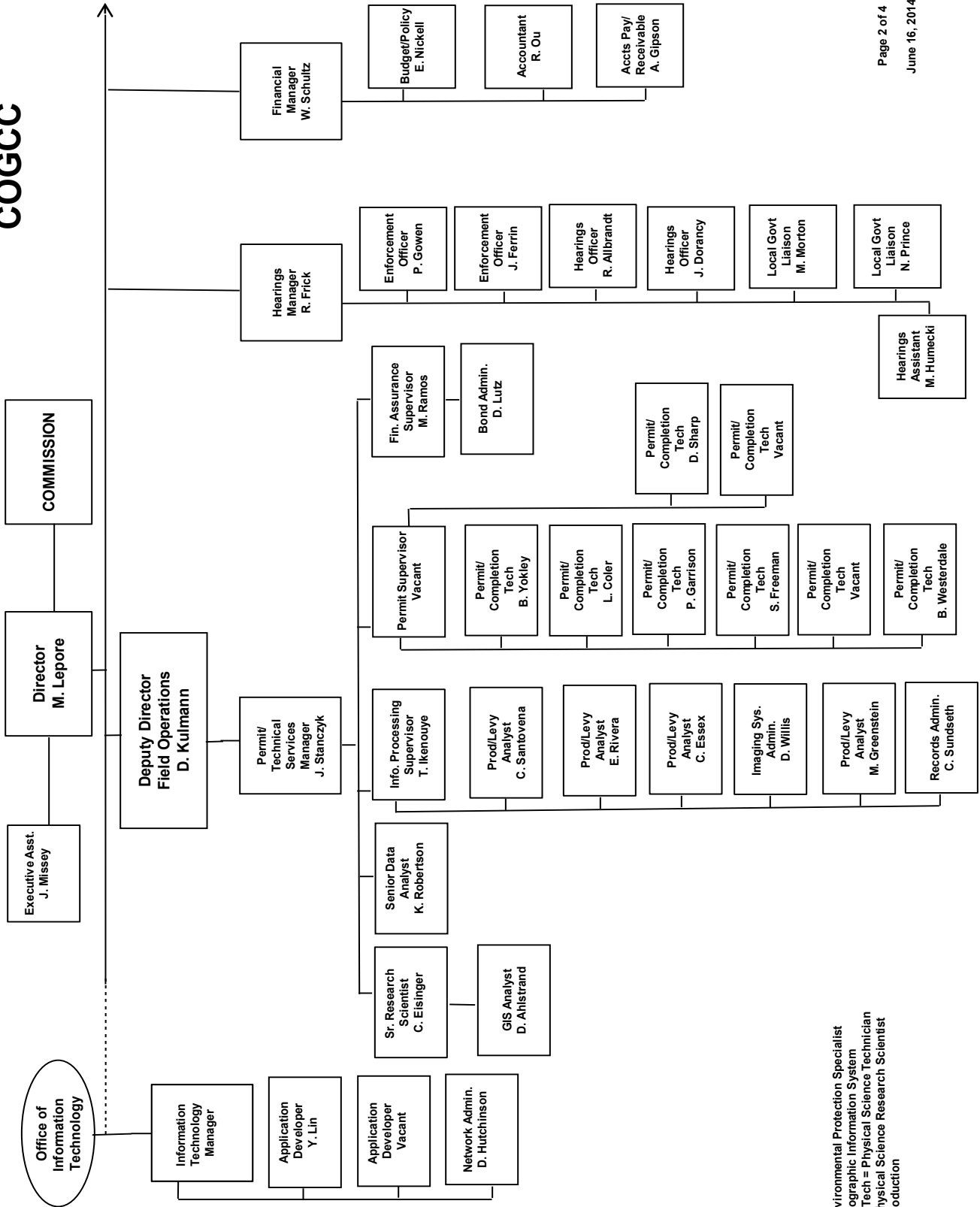
COLORADO OIL & GAS CONSERVATION COMMISSION



See the next three pages for details



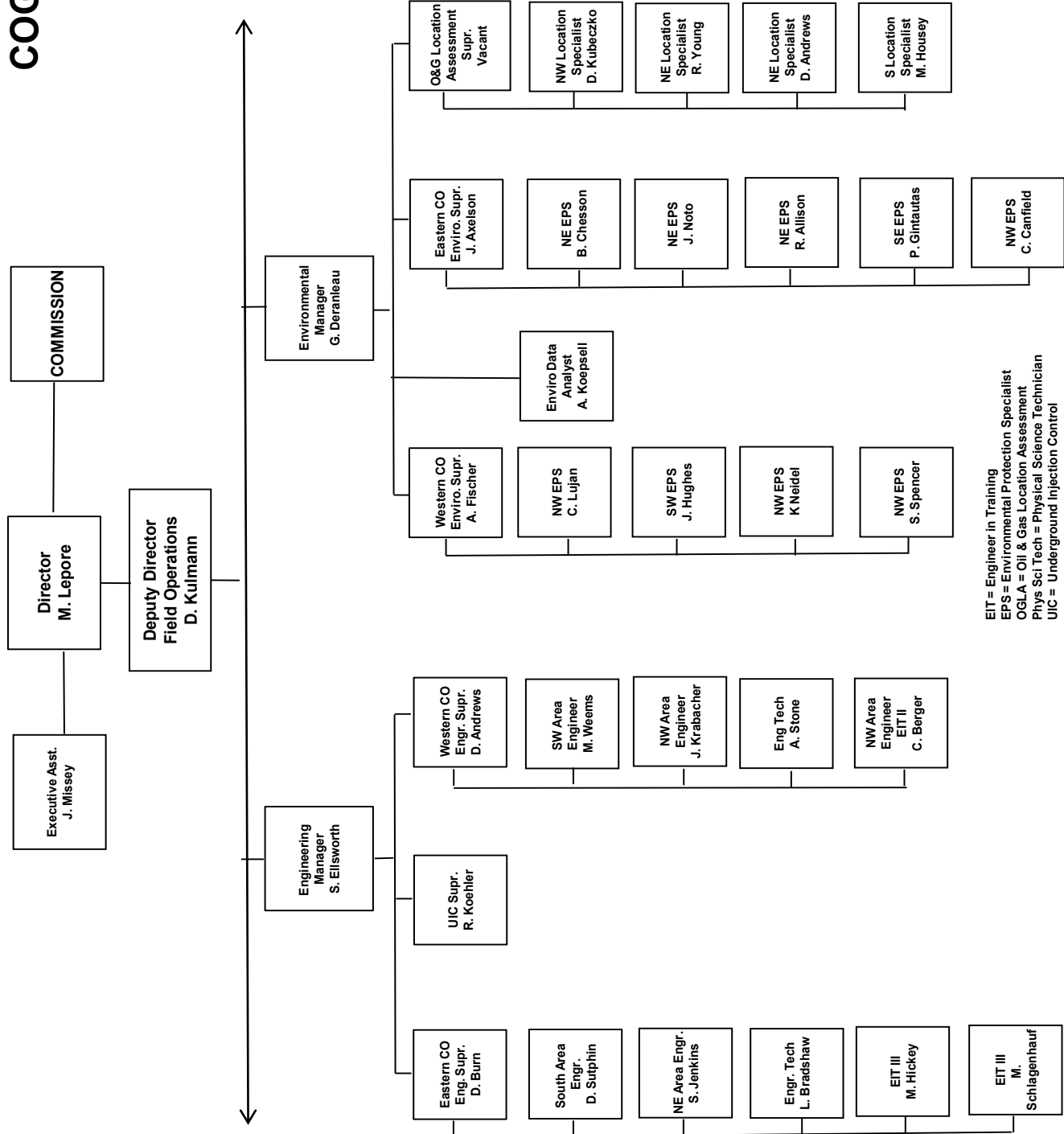
COGCC



EPS = Environmental Protection Specialist
 GIS = Geographic Information System
 Phys/Sci Tech = Physical Science Technician
 PSRS = Physical Science Research Scientist
 Prod = Production



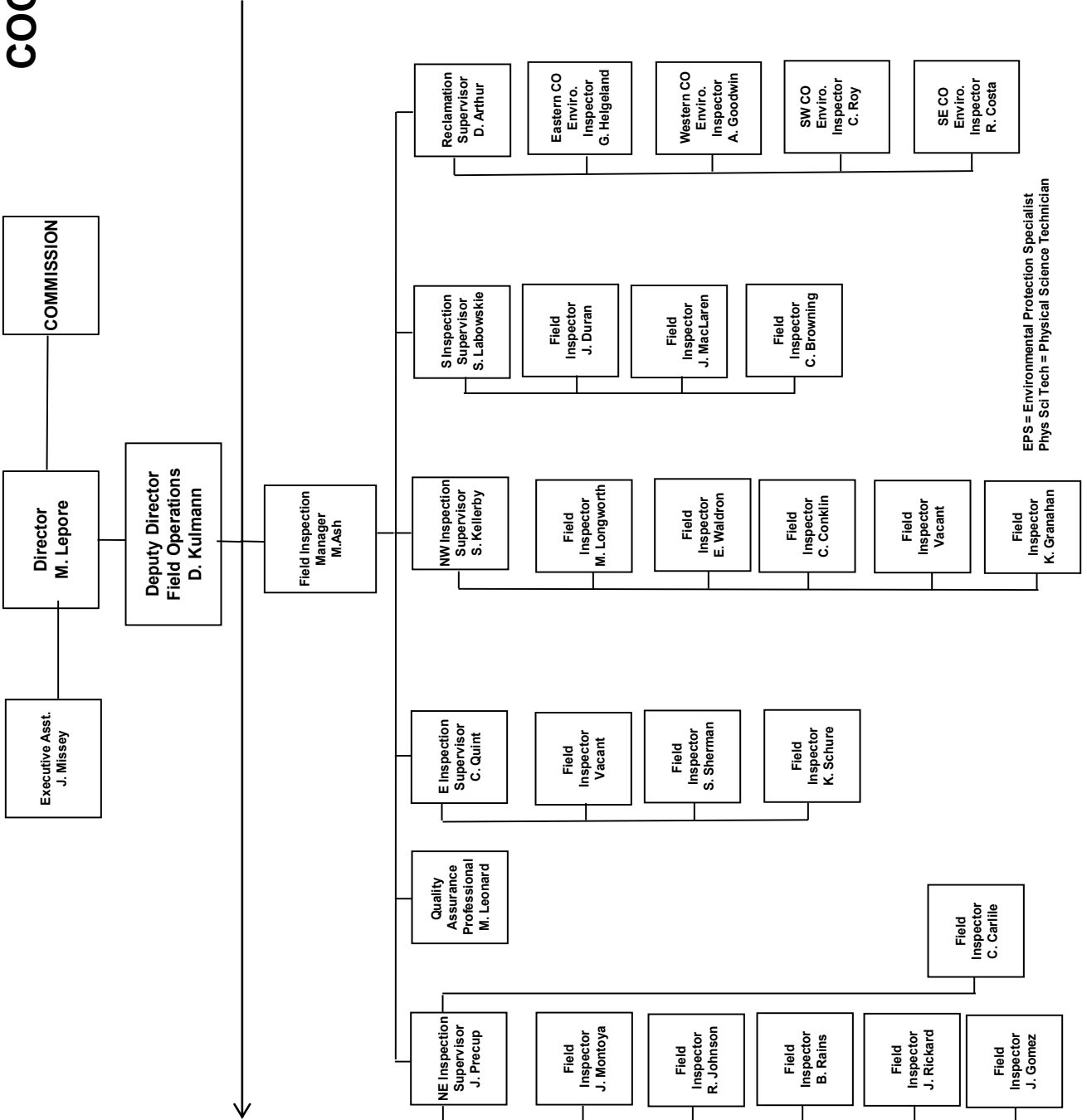
COGCC



EIT = Engineer in Training
 EPS = Environmental Protection Specialist
 OGLA = Oil & Gas Location Assessment
 Phys Sci Tech = Physical Science Technician
 UIC = Underground Injection Control



COGCC



EPS = Environmental Protection Specialist
Phys Sci Tech = Physical Science Technician



PLUGGING, AND RECLAIMING ABANDONED WELLS PROJECTS FOR ORPHANED LOCATIONS
FISCAL YEAR 2013-2014

PLANNED COUNTY	TYPE	PROJECT NAME	Acct Code	ESTIMATED TOTAL PROJECT COST			FY 2013-2014 YTD EXPENDITURES			DESCRIPTION		
				BOND	PRAW	EMGY	TOTALS	BOND	PRAW		EMGY	TOTALS
MESA	PA	Pasture #1	HSTD	\$0	\$5,000	\$0	\$5,000	\$0	\$0	\$0	Leak has stopped; will cut off casing and install PA marker and repair the gate to the location. Plans are to piggy back it with the Debeque Water Flow to save on mobilization charges.	
Rio Blanco	Plugging	Gentby	GENT	\$0	\$30,000	\$0	\$30,000	\$0	\$0	\$0	Plug and abandon	
Rio Blanco	Soils	Gentby	GENT	\$0	\$25,000	\$0	\$25,000	\$0	\$0	\$0	Contaminated soils to be remediated	
Mesa	Plugging	Debeque Water Flow-DB Orphan Blair #1	DEB1	\$0	\$49,728	\$0	\$49,728	\$0	\$1,728	\$1,728	Cap well and stop water flow. Re-enter; PA	
		TOTALS =>		\$0	\$109,728	\$0	\$109,728	\$0	\$1,728	\$1,728		
IN PROGRESS												
COUNTY	TYPE	PROJECT NAME	Acct Code	BOND	PRAW	EMGY	TOTALS	BOND	PRAW	EMGY	TOTALS	DESCRIPTION
Garfield	Remediation	Biscuit Pad	DOLP	\$15,926	\$127,074	\$0	\$143,000	\$15,926	\$116,284	\$0	\$132,210	Two well pads and two access roads: Pad dirt work mostly complete; still need to till in soil amendments and drill seeds dirtwork is current focus; work halted w/o better weather and ground conditions (c' in snow on grid)
MESA	REC/ENV	Debeque-HOMESTEAD #2 & PASTURE #1, SALT REMEDIATION, RECLAMATION, & SOIL GAS SURVEYS	HSTD	\$0	\$12,297	\$0	\$12,297	\$0	\$12,297	\$0	\$12,297	Two sites, only the Homestead #2 to be done this fiscal year. To incl. salt remediation, topsoil amendments/spreading, seeding, and soil gas surveys near plugged and abandonment wells.
MOFFATT	REC	TATONKA: CULVERWELL 10-23-07-94 ELDON GERBER 07-24-07-92	TATO	\$0	\$2,918	\$0	\$2,918	\$0	\$2,918	\$0	\$0	Reclaim Three (3) well sites: Gerber well site and pit Culverwell 1-site w/ two conductor casings Culverwell 2nd-site w/ beginnings of pad scrape off
		TOTALS =>		\$15,926	\$142,289	\$0	\$158,215	\$15,926	\$131,498	\$0	\$147,424	
COMPLETED												
COUNTY	TYPE	PROJECT NAME	Acct Code	BOND	PRAW	EMGY	TOTALS	BOND	PRAW	EMGY	TOTALS	DESCRIPTION
MESA/Garfield	PLUG	2013 Piceance Re-entries	PICE	\$0	\$97,287	\$0	\$97,287	\$0	\$150,886	\$0	\$150,886	Plugging three wells
Larimer	Plugging	Kaley #1	KALE	\$0	\$35,000	\$0	\$35,000	\$0	\$23,449	\$0	\$23,449	Leaking PA well; will re-enter and plug
Larimer	Plugging	Jessica #1	JESS	\$0	\$25,000	\$0	\$25,000	\$0	\$18,574	\$0	\$18,574	Well not leaking; casing present; will re-enter to verify proper plugging and/or re-plug if necessary.
Larimer	Plugging	Culver-Shamrock #1	CULV	\$0	\$25,000	\$0	\$25,000	\$0	\$53,491	\$0	\$53,491	
		TOTALS =>		\$0	\$182,287	\$0	\$182,287	\$0	\$246,400	\$0	\$246,400	
GRAND TOTALS =>												
ESTIMATED TOTAL PROJECT COSTS				BOND	PRAW	EMGY	TOTALS	BOND	PRAW	EMGY	TOTALS	
				\$15,926	\$434,304	\$0	\$450,230	\$15,926	\$379,626	\$0	\$395,552	
SCOREBOARD (PRAW FUNDING ONLY)												
IN PROGRESS ESTIMATED TOTALS				\$142,289								
IN PROGRESS SPENT TO DATE TOTALS				\$131,498								
IN PROGRESS REMAINING TOTALS				\$10,791								
COMPLETED TO DATE TOTALS				\$379,626								
SUM OF (IN PROGRESS TOTALS) AND (COMPLETED TO DATE TOTALS)				\$390,417								
ANNUAL ALLOTMENT BUDGET TOTAL				\$445,000								
BALANCE PROJECTED TO DATE				\$54,583								

BISCUIT RANCH RECLAMATION DESIGN* The original bond amount was \$25,000. \$9074 were spent in FYE2013 for the design work supervised my Mike Hickey. The balance of \$15,296 will be carried forward to FYE2014. Includes well site for the Biscuit Ranch Mulvihill 15-32 D & Biscuit Ranch 10-31 D

Project Types: "PLUG" indicates plugging and abandonment, "REC" indicates reclamation, and "ENV" indicates environmental remediation

EMGY: indicates funding by the Emergency Response line item

TBD: Cost estimates in process.

PRAW: indicates funding by the Plugging and Reclaiming Abandoned Wells line item

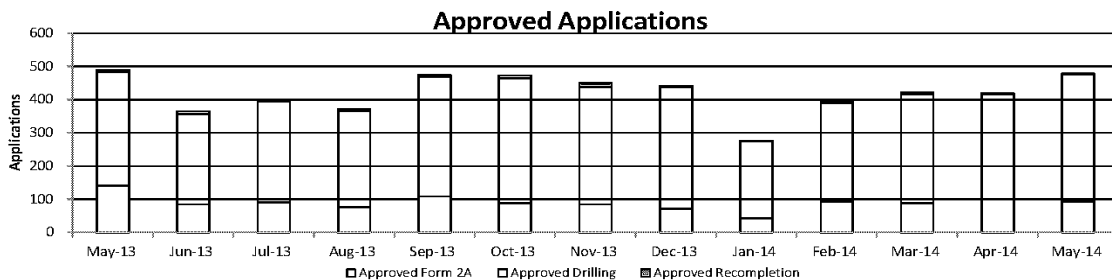
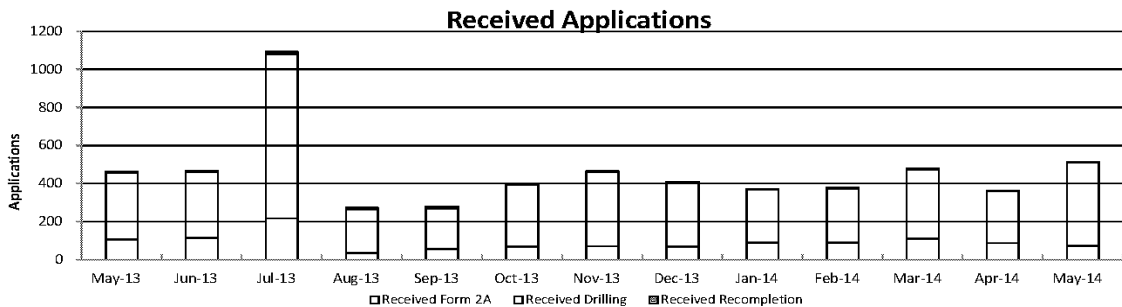
6/4/2014 msw



Colorado Oil & Gas Conservation Commission Monthly Permit Activity

	Backlog	Received	Approved	Withdrawn	Rejected	Incomplete	In-Process	Remaining
Form2A								
May-13	225	106	142	4	0	37	148	185
Jun-13	185	114	85	7	0	41	166	207
Jul-13	207	218	91	15	0	34	285	319
Aug-13	319	35	76	0	0	47	231	278
Sep-13	278	56	109	0	0	68	157	225
Oct-13	225	68	88	6	0	69	130	199
Nov-13	199	72	85	6	0	57	123	180
Dec-13	179	68	71	6	0	57	113	170
Jan-14	170	90	43	7	0	47	163	210
Feb-14	210	91	94	3	0	51	153	204
Mar-14	204	110	88	4	0	48	174	222
Apr-14	222	88	99	18	0	25	168	193
May-14	193	73	94	7	0	26	139	165
Drilling								
May-13	430	350	342	31	0	45	362	407
Jun-13	407	349	272	18	0	57	409	466
Jul-13	466	863	304	14	0	65	946	1011
Aug-13	1011	232	291	3	0	160	789	949
Sep-13	949	214	361	2	0	160	640	800
Oct-13	800	325	376	12	0	115	622	737
Nov-13	737	389	353	10	0	88	675	763
Dec-13	763	338	367	7	0	110	617	727
Jan-14	727	278	232	77	0	75	621	696
Feb-14	696	284	297	4	0	109	570	679
Mar-14	679	366	329	13	0	103	600	703
Apr-14	703	274	317	16	0	63	581	644
May-14	644	440	383	16	0	53	632	685
Recompletion								
May-13	8	8	6	0	0	0	10	10
Jun-13	10	2	8	0	0	0	4	4
Jul-13	4	11	4	0	0	0	11	11
Aug-13	11	6	4	0	0	0	13	13
Sep-13	13	9	5	0	0	0	17	17
Oct-13	17	5	9	0	0	0	12	13
Nov-13	13	4	13	0	0	0	4	4
Dec-13	4	3	4	0	0	0	3	3
Jan-14	3	3	2	0	0	0	4	4
Feb-14	4	6	4	0	0	0	6	6
Mar-14	6	4	6	0	0	0	4	4
Apr-14	4	2	3	0	0	1	2	3
May-14	3	2	2	0	0	1	2	3

Incomplete are permits that have missing or inaccurate data and cannot be approved.



Backlog = Incomplete + In-process = Remaining permits from previous month



Colorado Oil and Gas Conservation Commission
Status of Permit Applications Filed By Month

June 3, 2014

Form 2A Location Assessment

Year	Month	Received	Approved	Withdrawn	In Process	Percent In Process	Median Days to Process	Less Than 30 Days	30 to 49 Days	Greater Than 50 Days
2011	Total	2391	2298	93	0	0%		1416	620	262
2012	Total	1359	1289	68	2	0%		706	378	205
2013	1	177	163	12	2	1%	35	99	45	19
2013	2	91	83	8	0	0%	34	42	29	12
2013	3	131	122	9	0	0%	51	41	46	35
2013	4	150	141	7	2	1%	40	47	69	25
2013	5	105	100	4	1	1%	42	47	32	21
2013	6	107	89	15	3	3%	50	28	41	20
2013	7	204	198	3	3	1%	69	11	71	116
2013	8	58	56	2	0	0%	62	7	18	31
2013	9	56	53	3	0	0%	56	13	18	22
2013	10	63	61	2	0	0%	53	12	24	25
2013	11	76	70	5	1	1%	50	18	24	28
2013	12	68	61	6	1	1%	61	4	16	41
2013	Total	1286	1197	76	13	1%		369	433	395
2014	1	85	79	3	3	4%	50	12	36	31
2014	2	88	82	1	5	6%	48	11	36	35
2014	3	113	95	5	13	12%	40	30	42	23
2014	4	81	47	4	30	37%	33	18	28	1
2014	5	92	4	2	86	93%	26	3	1	0
2014	6	8	0	0	8	100%	0	0	0	0
2014	Total	459	307	15	137	30%		74	143	90

Form 2 Application For Permit to Drill (APDs)

Year	Month	Received	Approved	Withdrawn	In Process	Percent In Process	Median Days to Process	Less Than 30 Days	30 to 49 Days	Greater Than 50 Days
2011	Total	4691	4557	132	0	0%		2723	1565	587
2012	Total	3955	3816	139	0	0%		1971	1393	602
2013	1	562	542	18	2	0%	36	278	179	86
2013	2	242	228	14	0	0%	36	78	126	38
2013	3	333	320	13	0	0%	43	123	119	84
2013	4	327	314	13	0	0%	40	105	153	59
2013	5	369	340	27	2	1%	40	111	181	59
2013	6	330	305	22	3	1%	47	110	131	66
2013	7	798	764	11	23	3%	67	106	218	451
2013	8	313	306	4	3	1%	63	13	138	160
2013	9	188	185	2	1	1%	70	21	66	105
2013	10	339	330	7	2	1%	71	22	89	226
2013	11	373	355	11	7	2%	59	49	147	164
2013	12	380	311	66	3	1%	68	30	79	204
2013	Total	4554	4300	208	46	1%		1046	1626	1702
2014	1	261	244	5	12	5%	50	35	117	96
2014	2	298	269	13	16	5%	54	37	94	143
2014	3	359	307	8	44	12%	47	50	133	128
2014	4	224	134	7	83	37%	37	20	103	13
2014	5	501	22	0	479	96%	22	17	5	0
2014	6	47	0	0	47	100%	0	0	0	0
2014	Total	1690	976	33	681	40%		159	452	380



Colorado Oil and Gas Conservation Commission
Form 2A Breakdown By County By Year
June 4, 2014

Yr	County	Form2As	Completed	In Process	New Location	CDP	SWH	RSO	CDPHE
2009	Total State	818	818	0	408	2	80	5	5
2010	Total State	2378	2376	0	1601	0	327	22	55
2011	Total State	2299	2297	2	1791	1	274	17	5
2012	Total State	1298	1294	4	946	0	173	6	1
2013	ADAMS	15	15	0	13	0	0	0	0
2013	ARAPAHOE	15	15	0	15	0	0	0	0
2013	ARCHULETA	1	1	0	1	0	0	0	0
2013	BACA	1	1	0	1	0	1	0	0
2013	CHEYENNE	44	44	0	40	0	0	0	0
2013	DELTA	2	2	0	1	0	1	0	0
2013	DOLORES	8	8	0	7	0	4	0	0
2013	EAGLE	1	1	0	1	0	1	0	0
2013	EL PASO	1	1	0	1	0	0	0	0
2013	ELBERT	1	1	0	1	0	0	0	0
2013	FREMONT	3	3	0	6	0	1	0	0
2013	GARFIELD	86	82	4	35	0	71	1	0
2013	GUNNISON	9	9	0	3	1	4	1	0
2013	HUERFANO	3	3	0	1	0	0	0	0
2013	JACKSON	10	10	0	4	0	10	0	0
2013	KIOWA	9	9	0	8	0	0	0	0
2013	KIT CARSON	1	1	0	1	0	0	0	0
2013	LA PLATA	15	13	2	5	0	15	0	0
2013	LARIMER	2	2	0	1	0	1	0	0
2013	LAS ANIMAS	2	2	0	1	0	0	0	0
2013	LINCOLN	74	73	1	74	0	0	0	0
2013	LOGAN	4	4	0	0	0	0	0	0
2013	MESA	8	7	1	5	0	1	0	0
2013	MOFFAT	16	16	0	13	0	14	0	1
2013	MONTEZUMA	14	14	0	12	0	2	0	0
2013	MORGAN	16	12	4	16	0	0	0	0
2013	PITKIN	1	0	1	1	0	0	0	0
2013	RIO BLANCO	20	20	0	11	0	21	0	0
2013	ROUTT	9	8	1	10	0	9	0	0
2013	WASHINGTON	20	20	0	21	0	0	0	0
2013	WELD	784	783	1	588	0	8	0	3
2013	YUMA	8	8	0	2	0	0	0	0
2013	Total	1203	1188	15	899	1	164	2	4
2014	ADAMS	8	5	3	8	0	0	0	0
2014	ARAPAHOE	8	4	4	8	0	0	0	0
2014	ARCHULETA	1	1	0	0	0	1	0	0
2014	BROOMFIELD	1	0	1	0	0	0	0	0
2014	CHEYENNE	7	5	2	7	0	0	0	0
2014	CROWLEY	2	2	0	2	0	0	0	0
2014	DOLORES	2	1	1	2	0	0	0	0
2014	ELBERT	4	0	4	4	0	0	0	0
2014	FREMONT	2	1	1	2	0	2	0	0
2014	GARFIELD	33	19	14	7	0	22	1	0
2014	GUNNISON	5	4	1	1	3	1	0	0
2014	HUERFANO	4	4	0	2	0	4	0	0
2014	JACKSON	6	6	0	5	0	6	0	0
2014	KIOWA	2	2	0	1	0	0	0	0
2014	KIT CARSON	1	0	1	1	0	0	0	0
2014	LA PLATA	8	7	1	1	0	9	0	0
2014	LAS ANIMAS	1	1	0	1	0	0	0	0
2014	LINCOLN	65	47	18	54	0	0	0	0
2014	LOGAN	1	1	0	1	0	0	0	0
2014	MESA	5	1	4	2	0	3	0	0
2014	MOFFAT	6	1	5	6	0	5	2	0
2014	MONTEZUMA	8	8	0	8	0	0	0	0
2014	PHILLIPS	2	1	1	3	0	0	0	0
2014	RIO BLANCO	10	5	5	8	0	9	0	0
2014	ROUTT	1	0	1	1	0	1	0	0
2014	WASHINGTON	8	7	1	8	0	0	0	0
2014	WELD	229	166	63	168	0	5	0	0
2014	YUMA	16	3	13	13	0	0	0	0
2014	Total	446	302	144	324	3	68	3	0

CDP = Comprehensive Drilling Plan SWH = Sensitive Wildlife Habitat consultation
RSO = Restricted Surface Occupancy consultation CDPHE = Colorado Department of Health and Environment consultation



Colorado Oil and Gas Conservation Commission
Horizontal Well Activity
 June 4, 2014

County	Prior Years		2009		2010		2011		2012		2013		2014		Total		Completion				
	Drilled	DA	PA	Permit	Spud	Permit	Spud	Permit	Spud	Permit	Spud	Permit	Spud	Permit	Spud	Spud	AC	PR	DA	PA	
ADAMS				6	5	2	3	1	17	2	26	2	11	12	24	5	4				
ARAPAHOE	2							10	1	22	4	11	3	10	5	15	2				
ARCHULETA	17			7	6	15	7	10	8	5	9	2	1	1	47	1				43	
BENT															1	1					
BOULDER								4							0						
CHEYENNE	5		4								7	2	1	1	8	1				4	
DELTA									6	2	1				2	1					
DOLORES	9			18	2	6			9	3	5	4			18	14				1	
EL PASO									10						0					1	
ELBERT									1						0						
FREMONT	7	6		6		12	5	3	4	4	1	1			18	10			6	1	
GARFIELD	10		2	1	1	16	2	18	6	43	6	18	3	7	2	30	25			2	
GUNNISON	1					1				3	2	2	6	3	3	3					
HUERFANO										4	1				1	1					
JACKSON	8	1	1	8		3	3	9	2	4	8	5	7	18	12					1	
KIOWA															1	1					
KIT CARSON	1														2					3	
LA PLATA	28	2		11	2	28	3	18	7	12	1	5	13	41	1	47				1	
LARIMER	3	2						5	1	2	1	2		7	3	2					
LAS ANIMAS	16		2	4		1	1							17	15					3	
LINCOLN				2	1	2	1	1			1	6	1	4	3						
LOGAN	2													2	2						
MESA	3	2		36	1	22	8	24	13	14	9	2	3	1	28	28			2	2	
MOFFAT	7	1	1	6	3	4		9	4	44	6	18	13	3	33	1	25			1	
MONTEZUMA	6		1	23	6	11	2	8	2	18	6	3	4	9	26	42				1	
MORGAN								6	2	2	1	13	1	6	4	2					
PARK								1							1						
RIO BLANCO	7	2				1	1	11	2	15	2	4	5	17	1	11				3	
ROUITT	10	6	1							1		1		10	3	6				1	
SAN MIGUEL	1													1	1						
WASHINGTON	1													1	1					1	
WELD	11	3		12	5	208	95	763	233	964	596	2114	1061	812	536	2537	1106			10	
YUMA	1		1	6											1					34	
TOTAL Horizontal	156	25	14	147	32	333	132	901	285	1203	644	2260	1112	891	557	2918	10	1404	32	57	
Percent of Total HZ		16%	9%														0%	48%	1%	2%	
Total All Permits				5159		5996		4659		3773		4025		1566							
Percent of Total				2.8%		5.6%		19.3%		31.9%		56.1%		56.9%							



Well to Building Setback Review

Colorado Oil and Gas Conservation Commission
June 4, 2014

Count of well locations by proximity groupings from well spot to buildings for all locations reviewed under the December 17, 2008 amended rules.

Location Proximity to Buildings	2009	2010	2011	2012	2013	2014	Number of Locations	Percent of Total Locations
less than 150 feet	2	3	3	2	0	1	11	0%
150 to 350 feet	37	58	61	39	34	18	247	3%
350 to 500 feet	50	110	97	61	64	16	398	5%
500 to 1000 feet	117	385	331	188	188	70	1279	17%
1000 + feet	356	1705	1470	838	762	261	5392	74%
Total Locations	562	2261	1962	1128	1048	366	7327	

County	Total	Less than 150 feet				
		150 to 350 feet	350 to 500 feet	500 to 1000 feet	1000 + feet	
ADAMS	58	0	3	5	14	36
ARAPAHOE	72	0	2	4	9	57
ARCHULETA	18	0	0	1	9	8
BACA	14	0	0	0	1	13
BENT	7	0	0	0	0	7
BOULDER	23	0	1	1	17	4
BROOMFIELD	32	0	0	4	13	15
CHEYENNE	116	0	0	0	2	113
CROWLEY	2	0	0	0	0	2
DELTA	7	0	0	2	1	4
DOLORES	18	0	0	0	6	12
EAGLE	1	0	0	0	0	1
EL PASO	12	0	0	0	2	10
ELBERT	4	0	0	0	1	3
FREMONT	37	0	2	7	7	21
GARFIELD	471	0	9	3	68	391
GUNNISON	31	0	0	3	1	26
HUERFANO	14	0	0	0	4	10
JACKSON	36	0	0	3	1	32
KIOWA	62	0	0	0	1	61
KIT CARSON	12	0	0	0	0	12
LA PLATA	108	0	4	13	31	60
LARIMER	33	0	4	3	10	16
LAS ANIMAS	201	0	6	7	37	150
LINCOLN	262	0	1	2	4	255
LOGAN	42	0	1	1	0	40
MESA	84	0	0	3	13	68
MOFFAT	159	0	0	2	14	143
MONTEZUMA	35	0	0	1	4	30
MONTROSE	2	0	0	0	0	2
MORGAN	28	0	0	2	4	22
PARK	4	0	0	0	0	4
PHILLIPS	263	0	4	6	20	232
PROWERS	4	0	0	0	0	4
RIO BLANCO	162	0	0	0	1	161
RIO GRANDE	2	0	0	0	1	1
ROUTT	24	0	0	0	2	22
SAN MIGUEL	11	0	0	0	0	11
SEDGWICK	25	0	0	1	3	21
WASHINGTON	54	0	2	0	2	50
WELD	4302	0	201	310	934	2850
YUMA	475	0	7	14	42	412



Well to Building Setback Review

Colorado Oil and Gas Conservation Commission
June 4, 2014

Listing of Locations less than 200 feet to Building

Year	Document Number	County	High Density	New Location	Distance	Proximity	Building Description
2011	2587822	CHEYENNE	No	No	58	less 150	Water well house
2009	1691798	WELD	No	No	58	less 150	Vehicle garage
2010	400072164	WELD	No	Yes	69	less 150	Abandoned hog shed
2014	400569085	WELD	No	No	78	less 150	Well Shed
2012	400240957	GUNNISON	No	Yes	90	less 150	Equipment Shed
2009	1758843	WELD	No	Yes	103	less 150	Building to be razed
2011	1636646	WELD	No	No	122	less 150	Storage shed
2009	400011284	LAS ANIMAS	No	Yes	127	less 150	Operator is owner
2009	1786896	PHILLIPS	No	No	132	less 150	Grain Storage
2011	400117702	WELD	No	Yes	143	less 150	Irrigation pump house
2011	400227765	WELD	No	Yes	145	less 150	Storage Barn
2014	400558626	LINCOLN	No	No	150	less 150	Gas Plant Equipment Building
2009	1904205	WELD	No	No	154	150 to 350	Livestock Enclosure
2012	400243295	WELD	No	Yes	155	150 to 350	Unused storage shed
2011	400179419	WELD	No	Yes	157	150 to 350	Existing well / storage building
2010	400054716	WELD	No	No	159	150 to 350	Equipment Barn
2011	400188968	WELD	No	Yes	159	150 to 350	Abandoned
2014	400554054	WELD	No	Yes	159	150 to 350	Equipment Shed
2010	400021477	WELD	No	Yes	162	150 to 350	Goat Barn
2009	1758386	WELD	No	Yes	168	150 to 350	Storage Shed
2011	1635946	WELD	No	No	169	150 to 350	Storage shed
2013	400447386	WELD	No	No	169	150 to 350	Abandoned Turkey Barn
2013	400447391	WELD	No	No	169	150 to 350	Abandoned Turkey Barn
2011	400165164	WELD	No	Yes	178	150 to 350	Residence
2013	400367184	WELD	No	Yes	179	150 to 350	Shed
2011	400188780	WELD	No	Yes	180	150 to 350	Residence
2010	1697620	WELD	No	No	187	150 to 350	Livestock Shed
2009	1758746	WELD	No	No	193	150 to 350	Storage Shed
2011	400154431	WELD	No	Yes	198	150 to 350	Turkey barn
2012	400250031	WELD	No	Yes	198	150 to 350	abandoned guard shack
2009	1774783	WELD	No	No	199	150 to 350	cement service building
2011	400118102	YUMA	No	Yes	199	150 to 350	Steel Barn



Colorado Oil and Gas Conservation Commission

Active Wells by County and Status as of 06/04/2014

County	Drilling	Domestic	Injecting	Producing	Shut In	Temp Aband	Waiting on Completion	Active Storage	Intent to Plug	Total Active Wells
ADAMS	22		7	878	62	8	2	17		996
ARAPAHOE	18	1	4	125	13	9		39		209
ARCHULETA	1	5		105	7	9	7			134
BACA	1		11	126	44	5		57		244
BENT		1		29	7		1			38
BOULDER				313	3	1				317
BROOMFIELD				94	3					97
CHEYENNE	15		35	317	24	48	4			443
CROWLEY	1									1
DELTA				2	16		1			19
DENVER			1	44	4		3			52
DOLORES	3		1	39	4	1	1			49
EL PASO	1	1				1				3
ELBERT				66	3	2		1		72
FREMONT	2	3		63	4	6				78
GARFIELD	256	5	41	10082	188	63	91	3		10729
GUNNISON	1		1	25	14	1	4			46
HUERFANO	1		1	34	3	6	1			46
JACKSON	5		34	111	38	1				189
JEFFERSON				1	1		1	3		6
KIOWA	4		9	104	16	4	2			139
KIT CARSON		1	1	14	1	1	1			19
LA PLATA	8	7	32	3117	111	22	4	30		3331
LARIMER	3	2	26	173	33	18	2			257
LAS ANIMAS		4	19	2845	86	66	22	5		3047
LINCOLN	24	1	7	75	14	2	3			126
LOGAN	7		18	115	38	30	4	9		221
MESA	5	1	9	859	134	28	10	11		1057
MOFFAT	7		9	493	60	41	9			619
MONTEZUMA	3	2	9	128	30	13	2			187
MONTROSE					1	3				4
MORGAN	3		21	81	88	38	1	83		315
OURAY		2				1				3
PARK				1						1
PHILLIPS	3		3	258	2	1	1			268
PITKIN								10		10
PROWERS				27	3					30
RIO BLANCO	22	4	278	2188	320	91	18	4		2925
ROUTT		2		31	8	1	2			44
SAN MIGUEL				117	11	3				131
SEDGWICK	2		1	13	4		2			22
WASHINGTON	9		25	412	33	6	4			489
WELD	1185	1	38	19320	642	27	94	2		21309
YUMA	5	8	14	3752	63	13	20	1		3876
Totals	1617	51	655	46577	2136	570	317	275	0	52198



Colorado Oil Gas Conservation Commission Monthly Statistics

YEAR	MO	Bonds		Claim		Hearings		Enforcement		Remediation		Inspections		
		Replace	Ind.	Blhkt	Apps.	Orders	NOAV	AOC	OFV	Cmplt	Spills	Rcvd	Comp	Wells
2010	Total	74	0	1	155	136	319	10	3	218	493	511	382	17075
	JAN	4	0	0	16	15	43	3	2	33	40	47	45	1316
	FEB	6	0	0	16	15	7	0	1	39	52	48	33	1591
	MAR	9	0	0	NA	NA	31	NA	NA	31	48	59	27	1675
	APR	1	0	0	24	24	8	0	0	10	52	38	61	959
	MAY	4	0	0	77	65	16	2	5	26	31	33	51	1577
	JUN	0	3	0	51	58	30	1	4	14	38	53	25	1099
	JUL	3	1	0	NA	NA	29	NA	NA	13	39	92	20	518
	AUG	2	0	1	68	54	26	2	2	19	54	106	56	1032
	SEP	2	0	0	44	41	4	2	4	16	46	56	66	690
	OCT	7	0	3	57	45	9	0	0	15	38	102	28	636
	NOV	1	0	0	NA	NA	15	NA	NA	16	31	70	58	739
	DEC	4	0	0	50	32	12	0	1	15	58	22	66	562
2011	Total	43	4	4	403	349	230	10	19	247	527	726	536	12394
	JAN	1	1	0	70	72	18	1	0	27	35	68	23	998
	FEB	0	0	0	NA	NA	10	NA	NA	24	40	85	36	1998
	MAR	9	0	0	44	38	19	0	0	23	38	63	61	2200
	APR	2	0	0	80	59	11	0	0	19	35	26	99	1701
	MAY	3	0	0	43	50	14	2	0	23	32	27	122	2621
	JUN	4	0	0	NA	NA	5	NA	NA	35	39	46	98	1432
	JUL	5	0	0	63	50	15	0	0	16	24	45	33	1319
	AUG	0	1	0	67	54	24	3	2	21	28	127	33	1898
	SEP	2	1	0	NA	NA	5	NA	NA	14	13	30	36	1137
	OCT	0	0	0	30	36	6	1	0	13	44	116	37	1407
	NOV	7	0	0	85	37	16	2	0	10	44	26	44	1325
	DEC	0	0	0	NA	NA	14	NA	NA	19	30	31	19	1031
2012	Total	33	3	0	482	396	157	9	2	244	402	690	641	19067
	JAN	0	0	0	48	75	15	4	0	21	40	31	45	1622
	FEB	2	0	0	41	35	11	2	0	15	30	42	90	1042
	MAR	1	0	0	54	67	16	2	0	11	25	65	29	1967
	APR	8	0	0	NA	NA	21	NA	NA	16	33	39	37	1508
	MAY	0	0	0	46	50	22	6	0	13	31	41	60	2615
	JUN	5	0	0	91	44	13	2	0	25	40	47	37	1857
	JUL	0	0	0	96	70	25	3	0	21	47	50	22	2298
	AUG	2	0	0	NA	NA	23	NA	NA	25	57	36	41	1033
	SEP	0	0	0	101	51	7	2	0	16	60	43	51	1535
	OCT	2	0	0	52	82	4	12	3	12	79	47	60	1865
	NOV	0	0	0	NA	NA	30	NA	NA	12	51	31	34	2400
	DEC	0	0	0	42	48	50	4	0	14	75	35	35	2676
2013	Total	20	0	0	571	522	237	37	3	201	568	507	541	23530
	JAN	0	0	0	57	46	25	2	0	8	71	46	28	3247
	FEB	0	0	0	NA	NA	23	NA	NA	16	66	50	13	2326
	MAR	0	0	0	97	75	36	10	0	23	64	65	31	1798
	APR	1	0	0	74	64	17	8	1	20	66	47	59	2597
	MAY	5	0	0	NA	NA	12	NA	NA	14	105	45	42	2376
2014	Total	6	0	0	228	185	113	20	1	81	372	253	173	12344
	JAN	0	0	0	0	0	0	0	0	0	0	0	0	0
	FEB	0	0	0	0	0	0	0	0	0	0	0	0	0
	MAR	0	0	0	0	0	0	0	0	0	0	0	0	0
	APR	0	0	0	0	0	0	0	0	0	0	0	0	0
	MAY	0	0	0	0	0	0	0	0	0	0	0	0	0
	JUN	0	0	0	0	0	0	0	0	0	0	0	0	0
	JUL	0	0	0	0	0	0	0	0	0	0	0	0	0
	AUG	0	0	0	0	0	0	0	0	0	0	0	0	0
	SEP	0	0	0	0	0	0	0	0	0	0	0	0	0
	OCT	0	0	0	0	0	0	0	0	0	0	0	0	0
	NOV	0	0	0	0	0	0	0	0	0	0	0	0	0
	DEC	0	0	0	0	0	0	0	0	0	0	0	0	0

Apvd = Approved, Rcvd = Received, Ind = Individual, Blhkt = Blanket, Apps = Application for Hearing, NOAV = Notice of Alleged Violation, AOC = Administrative Order of Consent, OFV = Order Finding Violation, Cmplt = Complaint, Comp = Completed