



July 28, 2014

TOP STORIES

◆ Greeley Earthquakes

According to the United States Geological Survey (“USGS”), on the evening of May 31, 2014, a magnitude 3.1 event occurred about 5.6 miles north-east of Greeley. The event was both heard and felt by residents in the Greeley area with reported shaking being weak to light; the reported damage was none to very minor.

In the days subsequent to the event, geophysical researchers at the University of Colorado installed a network of five portable seismometers in the area to observe seismicity at a higher spatial, temporal, and magnitude resolution. Since recording on the network began, ~70 events greater than magnitude 0.5 have occurred, including a magnitude 2.6 event on June 23. With seismic activity not common in the area, the potential for the May and June earthquakes to be induced by high volume waste-water disposal was considered by the COGCC staff.

Based on coincident timing, location, and history of injection, the SWD C4A well, operated by NGL Water Solutions, was scrutinized by the COGCC staff in conjunction with the operator. Following the June 23, 2014 earthquake, the COGCC asked NGL to shut-in the well for a period of 20 days to evaluate the well, observe seismicity during a pause in injection, and devise an injection plan going forward. After the 20 days, NGL was allowed to begin reinjecting with guidance from the COGCC. A condition for future rate-of-injection increases is that no 2.5 magnitude events within 2.5 miles of the well are observed.

Related to the Greeley seismicity and the possibility of triggered seismic events associated with oil and gas activities across Colorado, COGCC staff Chris Eisinger and Stuart Ellsworth are currently working with the Colorado Geological Survey and earthquake researchers from the USGS and Colorado universities to establish an induced

seismicity advisory group. This group will be discussing a more comprehensive statewide seismic monitoring network, as well as better guidance for managing high volume injection in light of potentially induced earthquakes.

◆ Second Annual Employee Recognition Awards

For the second year in a row, staff had the opportunity to nominate a coworker for special recognition for their efforts and contributions in FY 2013-2014. Some of the categories were:

- Outstanding Project Performance
- Outstanding Customer Service
- Going way above and beyond the call of duty
- Steady Eddie/Edith
- Process Improvement
- Unsung Hero

Out of the 29 nominations submitted, Management recognized the following 11 staff members:

Dave Andrews - Engineering
John Duran - Field Inspection
Alex Fischer - Environmental
Penny Garrison - Permitting
Angie Gipson - Finance
Peter Gowen - Hearings
Randell Johnson - Field Inspection
Jan Missey - Executive Assistant
Kris Neidel - Environmental
Ken Robertson - Permitting/Tech Services
Dan Willis - Information Processing

Congratulations to all nominees!

◆ Local Government Liaison (LGL) Program Update

Local Government Liaisons (LGLs) Marc Morton and Nancy Prince have been busy providing outreach, training, information, and consultation to local governments and their staffs, operators, the public, and others regarding oil and gas operations in Colorado. LGLs continue to stress to op-



erators and local governments the importance of early engagement and consultation regarding oil and gas operations.

The LGLs are also working to increase participation in the voluntary Local Government Designee (LGD) program. In July the LGLs invited (via direct mailing) over 150 towns, cities, and counties not currently participating to join the LGD Program. LGLs also continue to monitor participating local governments to ensure their contact information is up to date and valid. Recently named replacement participating LGDs include, Calvin Feik (Bent County), Robert Narraci (Eagle County), Damian Peduto (La Plata County), James Dietrich (Montezuma County), Stephan Rodriguez (City of Aurora), Andrew Firestine (City of Centennial), Jim Ferree (City of Craig), and Marina Kopytkovskiy (Parker Water and Sanitation District). We welcome these newly appointed LGDs and appreciate their jurisdiction's continued participation in the valuable LGD program.

A major focus of the LGLs has been the development and rollout of LGD training sessions throughout Colorado in 2013 and 2014. Colorado Department of Public Health and Environment ("CDPHE") Oil and Gas Liaison Kent Kuster has assisted in providing many of the trainings, and we greatly appreciate his help. To date, training sessions has been provided to 198 attendees at eleven locations around the state. Most recently LGD training was provided to 18 individuals in Rifle on June 16, and 18 other individuals received the training in Colorado Springs on July 15. To date, the training has been provided to 67 individuals serving as their jurisdiction's LGD. Participants have included local government staff, elected officials, federal and state government staff, and others from the private sector, academia, environmental groups, and interested citizens.

Two remaining LGD trainings are scheduled in 2014. Pre-registration is required. Scheduled trainings include:

- Tuesday August 5, Denver (registration is closed - we are at capacity, but a waitlist is available), and

- Tuesday October 28, Durango.

To pre-register for the training in Durango, or to get on the wait list for the Denver training, please send an e-mail requesting registration to either Marc Morton or Nancy Prince at COGCC. Please note that registration may be capped at any time due to space limitations.

On another topic, the Summer LGD Newsletter is in the works. The concept of the LGD Newsletter is to provide to local governments and other stakeholders pertinent and timely information regarding oil and gas operations in Colorado, and to provide an additional forum for collaboration between the COGCC, local governments, communities, and other interested groups and individuals. We always welcome comments and suggestions for topics or articles for inclusion in an upcoming issue. Past issues of the LGD newsletter can be found on the COGCC website under the [LOCAL GOV](#) link.

A list of the LGL outreach and public involvement activities conducted since the last staff report is included in the Public Outreach section listed on the next page.

Public Outreach

➤ Outreach by Director and other Staff Members

- On June 30, Director Matt Lepore participated in the Oil & Gas Development Public Health & Enviro Conference at the Anschutz Medical Campus in Aurora.
- On July 18, Matt Lepore was on a panel during the Rocky Mountain Mineral Law Foundation Conference in Vail. The topic was "Varying Perspectives on City, Township, and County Oil and Gas Regulation."
- On July 21, Matt Lepore participated in the Modern Shale Gas and Oil Production Forum in Aspen, sponsored by the Aspen Institute Energy Environment Program.



➤ Outreach by COGCC Local Government Liaisons (LGLs)

- On June 19, Marc Morton and Oil and Gas Location Assessment Specialist Melissa Housey attended the monthly Energy Industry Working Group meeting, hosted by Weld County. Operators, subcontractors, Weld County staff, and local and state government representatives attended the meeting. Marc informed the group of the recent finalization of the MLVT policy, the upcoming Stakeholder meeting concerning the "clean-up" rulemaking, and of the upcoming Commission Hearing to be held in Weld County in July. Melissa offered assistance pertaining to relocation of oil and gas facilities required due to an upcoming US 34 widening and ROW acquisition project, and updated the group on the online availability of the updated [Form 19](#) (in eforms) to report spills and releases.
- On June 27, Nancy Prince gave a presentation about Colorado's LGD program at a continuing education seminar for university professors at Colorado College.
- On July 8, Nancy Prince participated in the Source Water Protection Plan Steering Committee meeting in Wiggins.
- On July 9, Nancy Prince attended the City of Aurora LGD meeting where she gave an update on recent COGCC policy and rule changes.
- On July 10, Marc Morton traveled to Pagosa Springs and took part in a working group meeting to review draft oil and gas regulations under consideration by Archuleta County.
- On July 11, Nancy Prince met with Commerce City planning staff to answer questions about COGCC regulations.
- On July 15, Nancy Prince met with El Paso County Parks staff to discuss the LGD program.
- On July 18, Nancy Prince met with Scott Trainor, new LGD for the City of Fountain.
- On July 18, Marc Morton travelled to Durango and took part in the quarterly Gas and Oil

Regulatory Team (GORT) meeting, as summarized elsewhere in this Staff Report.

REGIONAL ACTIVITIES

➤ NORTHWEST COLORADO

◆ Northwest Colorado Oil and Gas Forum

The Forum is an informal gathering of local, state, and federal government officials, oil and gas industry representatives, and citizens that have met regularly since 1989. The purpose of the Forum is to share information about oil and gas development in northwest Colorado and to make government officials and oil and gas industry representatives easily accessible to the public. Currently, the meetings are conducted once per quarter and are co-chaired by Director Matt Lepore and Garfield County Commissioner Mike Samson.

The last meeting of the Forum was held on June 5, 2014 at 10:00 a.m. in Rifle, CO at Colorado Mountain College. The next meeting is in early September. All parties wishing to be placed on the meeting agenda, or added to the distribution list for announcements, should contact Dave Andrews at: [970-625-2497](tel:970-625-2497) or via email at: david.andrews@state.co.us

• Project Rulison

Please note that the email for Project Rulison submittals has been changed to:

DNR_rulison.submittal@state.co.us

• Project Rio Blanco

Please note that the email for Project Rio Blanco submittals has been changed to:

DNR_rioblanco.submittal@state.co.us

➤ SOUTHWEST COLORADO

◆ Gas and Oil Regulatory Team (GORT) Meeting

The last GORT/Southwest Colorado Oil and Gas Stakeholders meeting occurred on Friday, July 18, 2014 from 8:30 a.m. to noon at the La Plata



County Fairgrounds in Durango, Colorado.

The next GORT meeting will be scheduled for late October, , 2014 from 8:30 a.m. to noon at the La Plata County Fairgrounds- Animas Room, 2500 Main Avenue, Durango, Colorado. All parties wishing to be placed on the next meeting agenda should contact Mark Weems at 970-259-4587 or to: mark.weems@state.co.us.

◆ Fruitland Formation Outcrop Mitigation and Monitoring Projects (4M Projects)

Fruitland Formation Outcrop - 4M Pilot Scale Mitigation Projects La Plata County. In May 2014 the South Fork Texas Creek compressor was rebuilt to replace worn bearings. The heater plate in the methane sensor was also replaced.

Some successes of the project include:

Methane Mitigation:

- Gas containing methane concentrations of 78.4-99.5% (SFTC) and 0.2-5% (Pine River) continuously recovered during the first and second quarter of 2014.
- Since conversion to passive system in June of 2012 at Pine River, methane concentrations have remained at 0% - 5% following an increase in 1st and 2nd quarter of 2013.

Electrical Generation:

- SFTC has generated 179,463 kWh of surplus electricity.
- System operated at 11kW output to maintain steady operation during the first and second quarters of 2014.

Site Restoration:

- Plant growth over the methane mitigation system has improved in 2014.

4M Monitoring Wells La Plata and Archuleta Counties. There are 17 wells at 11 locations in the COGCC 4M monitoring program. Well pressures are monitored remotely via satellite telemetry with one or two maintenance visits per year, depending upon data received. Operations and maintenance (O&M) activities were conducted on September 30 and October 1, 2013 by COGCC and Northwest staff. In general, the locations held up well during the recent large storm

events although several access roads were damaged. The upper transducer at Highway 151 #2 starting giving erratic readings in late June 2013 and ceased transmitting in late July 2013. There was no surface evidence of problems, indicating the transducer itself has probably failed. Erratic readings from the upper transducer at Wagon Gulch #2 were determined to be from a loose wire in the hub which was reconnected. Data now appears to be transmitting normally. Wellhead leaks at South Fork Texas Creek #2 are still evident and require repair. Pending O&M activities includes the replacement of the upper transducer at Highway 151 #2 and a rebuild of the wellhead at South Fork Texas Creek #2. In addition it is planned to swap out the Level Troll™ datalogger system at a Basin Creek well and install an AquaTroll™ to run an assessment if different monitoring technologies may provide more accurate water level information. The Beaver Creek locations continue to be inaccessible due to surface access issues and the BP Highlands location was not visited due to potential road damage and wet road issues. Both locations are currently reporting normally via the telemetry system. A field visit by the COGCC and their contractor is planned for later August 2014.

Ongoing Investigation, Reclamation, and Mitigation of Residual Methane in the Vicinity of the Bryce 1-X Well Area, Bondad, Colorado Three domestic water wells were sampled at the Bondad location on May 14, 2014 by Four Corners Geoscience staff. Free methane results ranged from 0.63mg/l in the Middle well to 4.92 mg/l in the South well. Due to a mechanical failure, a sample from the North well was not obtained on May 14. On July 15, 2014 a sample was obtained from the North well. Analytical and isotopic data are pending.

➤ **VARIANCES**

Great Western Operating Company, LLC

On June 19, 2014 Director Lepore approved the Oil and Gas Location Assessment, Form 2A and the Permit to Drill, Form 2 for the **Great Western** DeTienne FD #16-022HC location (# 429507) and well (123-39630) in the NW 1/4 of Section 10, Township 6 North, Range 67 West, 6th P.M. in Weld County. The approvals were done prior to the conclusion of the 20-day comment period, per



Rule 303.l.(1). Great Western requested the expedited approval in order to prevent the expiration of a lease. The Weld County Local Governmental Designee and the surface owner both consented in writing to the timing of this approval before the end of the comment period.

➤ ORGANIZATION

New Permit Group Supervisor

Barbara Westerdale has been promoted to Permitting Supervisor. Barbara has worked for the COGCC as a Permit-Completions Tech since 2011 with assignments on both sides of the state - in the Piceance Basin on the Western Slope and in the DJ Basin on the Front Range. Barbara came to the Commission with 12 years of experience as a geologist in oil and gas industry, as a Staff Geologist for Philips Petroleum and as a Division Petroleum Geologist for Champlin Petroleum. She holds a Bachelor's Degree in geology from Knox College. Her prior employment experience, within the oil industry and in other businesses, includes over 12 years in a supervisory position. In her role as a COGCC "permitter", Barbara's work performance has been effective and efficient, always conducted with technical excellence and in collaboration with other work units. The agency is certain to benefit from the application of her knowledge and skills to the supervision of the Permitting Group.

New Oil and Gas Location Assessment Supervisor

John Noto has been selected from a great field of well qualified internal candidates to be the new Oil and Gas Location Assessment Supervisor. John has been with COGCC since 2012. His previous experience at COGCC was as an OGLA Specialist covering the southeastern plains and as an Environmental Protection Specialist in the northeast. John grew up in metro Denver and attended CSU to earn a degree in Geology, and the University of Colorado at Denver to earn an MBA. He has over 25 years of experience working on environmental projects as a contractor for the EPA Emergency Response Branch. He has extensive project management experience ranging from initial assessments to removal planning and remediation. John is looking forward to his new role and the opportunity to once again work with the OGLA group.

New Permit Completions Technician

Alyssa Andrews has been hired as a permanent, full-time permit technician with the Permitting Group. Alyssa has been working as a contractor in the Permit Group for the past three months doing completeness reviews of Form 2 and 2A's and processing Form 6's. Alyssa has a degree in chemical engineering from the University of Washington. She spent the last three years working for Schlumberger in North Dakota as a measured-while-drilling field engineer.

An organizational chart can be found on pages 9-12. For contact information, please go to our homepage, and then "Staff Contact Information."

➤ PLANNING/ADMINISTRATION/OTHER

◆ COGCC - CPW Coordination Meeting Regarding HB 1298

COGCC Director Lepore and several staff members, including those from permitting, location assessment, environmental, reclamation, and field inspection met with Colorado Parks and Wildlife (CPW) management and staff on July 14, 2014. The meeting, held at CPW's field office in Greenwood Springs, was part of our agencies' ongoing efforts to ensure close communication and coordination in the permit consultation process required by HB 1298. During the meeting, the Directors of both agencies engaged in discussions that brought programmatic issues to the table with examples solicited from field staff on the ground who engage in COGCC's Rule 306.c. consultation process. The group discussed successful projects and processes, current and future challenges with respect to implementation, and Best Management Practices to protect wildlife among other topics.

◆ Plugging and Reclaiming Abandoned Wells (PRAW) - Project Updates

The DB Orphan Blair #1 Project came into being when on July 7, 2013 a ditch rider discovered water flowing from the ground and discharging into an irrigation ditch located on the NW edge of DeBeque, CO in Mesa County. The COGCC was contacted on July 9th and because other orphaned oil and gas wells had been previously discovered and plugged by the COGCC, the COGCC assumed re-



sponsibility and had water samples gathered for lab analysis. Lab analysis indicated salty water which is indicative of oil and gas geologic sources. The ground around the water flow was dug up and the source of the leak was determined to be from a hole in a pipeline which was traced back to an old abandoned well that appears to have been drilled around 1902 based on old USGS reports. The salt water discharge into the ditch was terminated by sealing the well head and then disconnecting the pipeline for a total cost of \$1,728.

To date the plugging design, cost estimate and bid documents have been prepared; however, this project has been delayed until after July 1st of this year due to the recent discovery of leaking wells found in Larimer County in proximity of the lands flooded last September.

The PAST Project includes three leaking plugged and abandoned wells that were re-entered and re-plugged and have been renamed the **2013 Piceance Re-entries Project** to avoid confusion with other work. Two are located in Garfield County and one is in Mesa County. This work has been successfully completed this past July with a final cost of \$236,776 of which \$150,583 occurred in FYE2014.

The Larimer County Project includes three wells recently discovered in lands located in the rain flooded areas from last September. Because two of the three were found to be leaking and concerns with elevating existing environmental impacts with the spring runoff, they were placed on emergency status and bypassed the normal bidding processes to expedite the re-entry and plugging by the COGCC. They include Culver-Shamrock #1, Kaley #1 and the Jessica #1. The Culver-Shamrock #1 is actually located in the flood plains of the Thompson Creek. All three (3) wells have been re-entered and successfully plugged by the COGCC at a final cost of \$95,267.

The Tatonka Reclamation Project includes three well pads located in Moffat County with two well pads being on the Culverwell property that can be found approximately 20 miles west of Craig, CO and a couple of miles north

of Hwy 40 with another well pad and pit being located on the Gerber property and found four miles west of Craig and three miles north of Hwy 40. Due to budget constraints, the Culver well pads were removed from the active projects list to be done at another time; however, the Gerber pit and pad was reclaimed this year at a final cost of \$28,559.

The Debeque Environmental and Reclamation Project involves the remediation and reclamation of soils contaminated by salt water in the vicinity of the orphaned wells known as the Homestead #2 and the Pasture #1 wells. Both sites are located in Mesa County on the NW edge of DeBeque, CO. Soil sampling and lab analysis has been completed on both well sites. Due to budget constraint, the Pasture #1 well site will not be remediated and reclaimed this year and will have to be done sometime in the future. Work has been completed on the Homestead #2. It underwent weed mitigation, soil remediation plus amendments worked in, and monitoring wells installed. Final cost is \$12,781.

The Luther #2 plug and abandonment project popped up unexpectedly with the discovery of an oil spill in a farmer's field. The well is located in Logan County just north of highway 14 and about seven and one half (7 ½) miles east of Sterling, CO. The well was reported as dry and abandoned upon drilling in 1956 and immediately plugged. Upon further examination, it was determined to never been properly plugged and it appears to have just been backfilled and covered over with dirt. It is suspected that over time enough gas and pressure worked its way up and blew out the dirt covering and scattered oil over the field in an area with the approximate dimensions of 300 ft by 30 ft and three (3) to four (4) inches deep. Flow from the well was a one shot event and not sustained; however, once reported, the well received emergency status with the state bypassing the normal bidding process and shortly thereafter hired a local contractor to plug the well. The well was re-entered and plugged during the last week of June for a total cost of \$12,113.

Biscuit Pad Remediation Project includes two well pads and the two respective access roads that are located in an active irrigated hayfield. This project is located in Garfield County near the NE border of the town of Rifle and east highway



13. The work was put out to competitive bid and the contract was awarded to Tally Ho Construction, Inc. Tally Ho facilities and offices are headquartered in Rifle, CO. Tally Ho commenced reclamation of these sites this past October and concluded the work during June 2014 on budget and within contract parameters for a total expenditure of \$143,928.

The Gentry Project is located in Rio Blanco County and includes 10 sites with eight wells and two pits that can be found approximately a half mile west of Rangely, CO and one and a half miles south of Hwy 64. The landowner has plans to do some land development and brought the matter to the attention of the COGCC.

The Pasture #1 Project involves the final abandonment of the well which includes cutting the casing off three feet below ground level and installing a well marker and sign. This work has been re-scheduled because of the Larimer County Emergency Project.

Planned projects for next year (FYE2015) are currently being identified and are undergoing the selection process. **The Gentry Project** and **Pasture #1 Project** are being considered for selection. The final projects will be presented in the September Staff Report.

Page 13 contains a spreadsheet listing PRAW projects that are either scheduled in process or completed as of July 22, 2014.

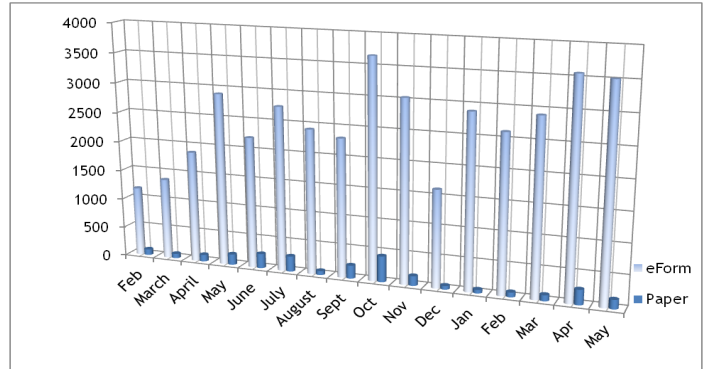
September 2014 Hearing Docket

A docket for the September 2014 hearing will be available shortly after the July hearing. Hearing dockets are available on our website by clicking on "Hearings." Links to the notices and hearing applications are available from the Docket Number and Applicant, respectively. To sign up for e-mail notification of hearing notices and applications, please see the announcement and instructions on the homepage of the COGCC website: www.cogcc.state.co.us

➤ Colorado Oil and Gas Information System (COGIS) Projects, Updates and Changes

Electronic Form Submissions (eForm)

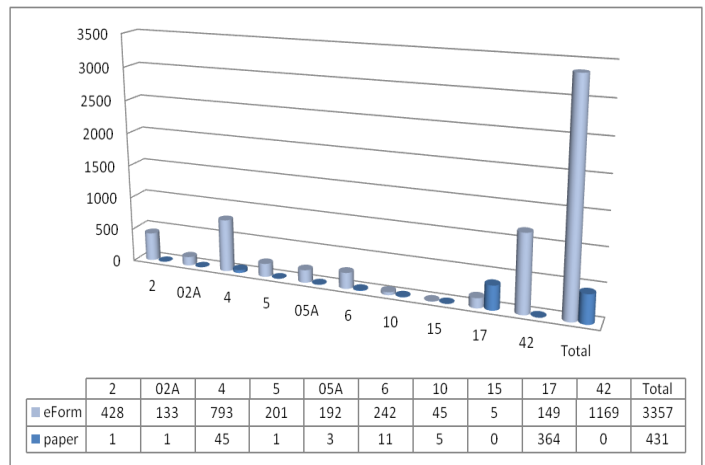
TOTAL ELECTRONIC FORM SUBMITTALS FEBRUARY 2013 - JUNE 2014



Forms currently available through eForm:

- Form 2 - Application for Permit to Drill
- Form 2A - Oil and Gas Location Assessment
- Form 4 - Sundry Notice
- Form 5 - Drilling Completion Report
- Form 5A - Completed Interval Report
- Form 6 - Well Abandonment Report
- Form 10 - Certification of Clearance/Change of Operator
- Form 15 - Earthen Pit Report/Permit
- Form 17 - Bradenhead Test Report
- Form 19 - Spill/Release Report
- Form 22 - Accident Report
- Form 23 - Well Control Report
- Form 41 - Trade Secret Claim of Entitlement
- Form 42 - Notice of Notification (Notice of Hydraulic Fracturing)

Following is a breakdown by Form for the month of June 2014:





The development team is working on several forms concurrently. The Form 31 and 33 are in final testing and should be released soon. Forms 14, 14A, 21, and 26 are in various stages of development.

As forms are released on eForm, updates to the PDF version on our Forms page, <http://cogcc.state.co.us/Forms/forms.html>, will occur in tandem. These new versions of the PDF forms will reflect any changes that have taken place when forms are moved into eForm.

Along with the eForm system, a page is available where the operators can review all known bugs within the system and report any new ones they discover. Currently, there are 452 operators using eForm and 1344 individual users.

The public is permitted to make comments on all submitted Oil and Gas Location Assessment (OGLA) forms (Forms 2A) through the eForm system. This is accomplished by going to the COGCC website (<http://www.colorado.gov/cogcc>) and clicking on the menu option, "Permits", (or <http://cogcc.state.co.us/COGIS/DrillingPermits.asp>).

On the COGIS-Permits page, two search options are available for OGLA forms, "All Pending Location Assessments for" and "All Approved Location Assessments for." When the results are displayed for forms in process, the public can click on the document number, which logs the user onto the eForm application. Once the page is displayed with the selected document, the user can select the Comment button to make a comment on that particular form. The public can use this same method to make comments on APDs (Form 2s).

For any operator not currently enrolled in eForm, instructions for starting the process can be found at <http://cogcc.state.co.us/Announcements/COUAINformation.pdf>.

On the COGIS-Permits page, two search options are available for OGLA forms, "All Pending Location Assessments for" and "All Approved Location Assessments for." When the results are displayed for forms in process, the public can click on the document number, which logs the user onto the new eForm application. Once the page is displayed with the selected document, the user can

select the Comment button to make a comment on that particular form. The public can use his same method to make comments on APDs (Form 2s).

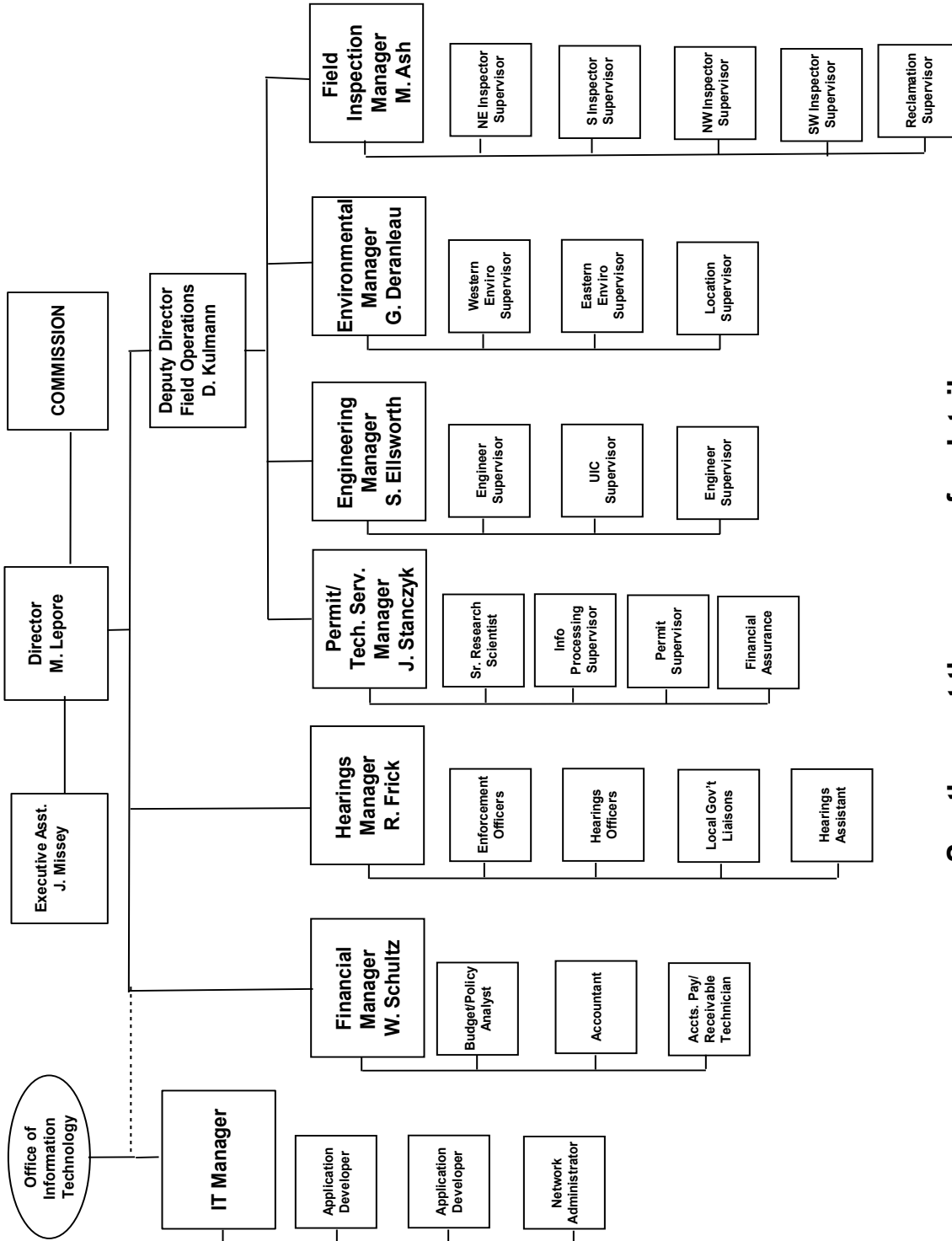
For any operator not currently enrolled in eForm, instructions for starting the process can be found at <http://cogcc.state.co.us/Announcements/COUAINformation.pdf>.

Website Update Project

The COGCC website is being redesigned to simplify site navigation and to improve overall ease of use for both internal and external users. Content is being reorganized with an emphasis on public accessibility to information about oil and gas operations in the state, including Commission rules, regulations, hearings, wells, and production data. The new COGCC site is slated to go online in the Fall of 2014 with *beta* testing beginning this summer. Initially, most of the database search and mapping tools will be moved unchanged from the old site to the new, with a schedule of systematic future upgrades.



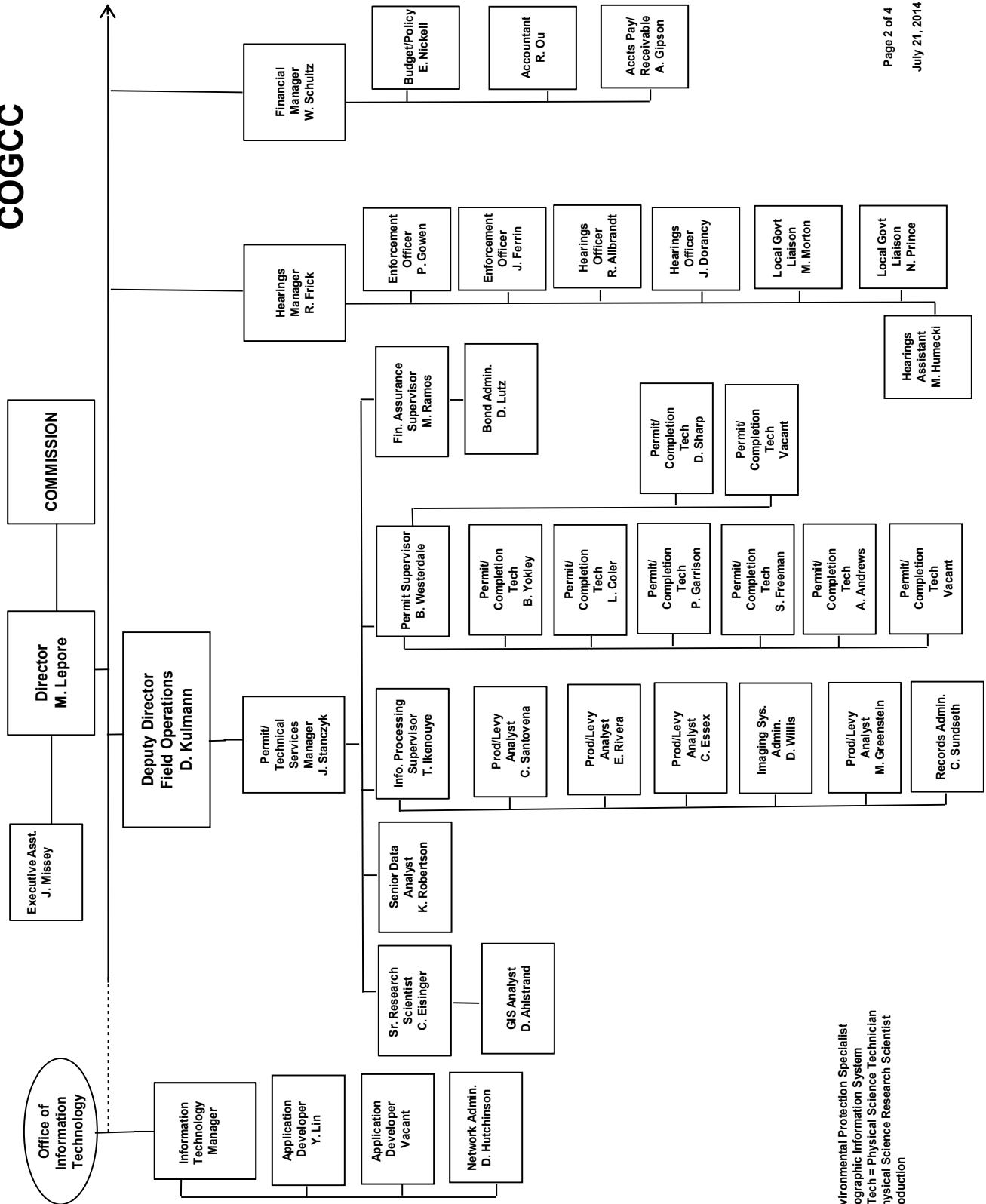
COLORADO OIL & GAS CONSERVATION COMMISSION



See the next three pages for details



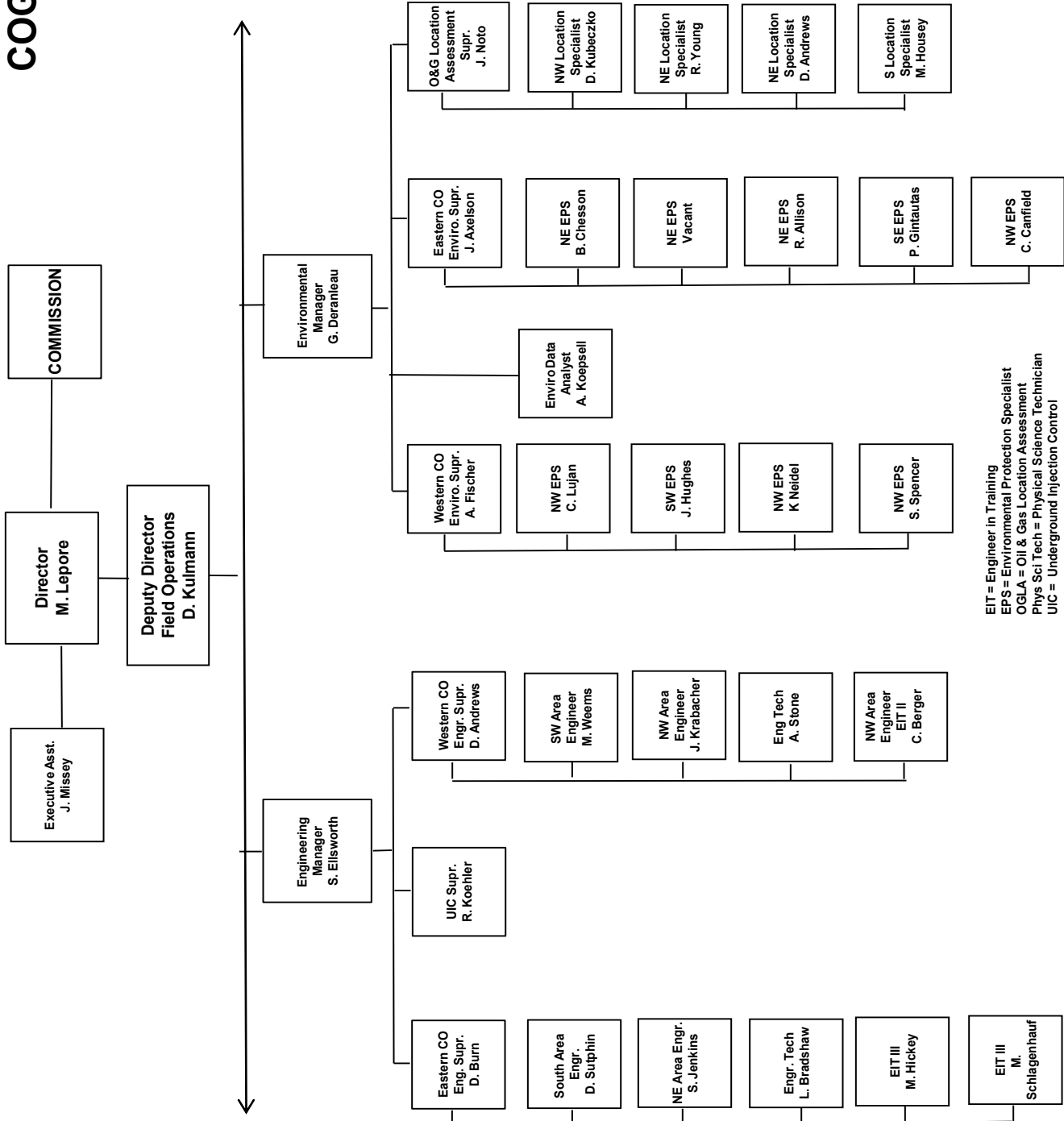
COGCC



EPS = Environmental Protection Specialist
 GIS = Geographic Information System
 Phys/Sci Tech = Physical Science Technician
 PSRS = Physical Science Research Scientist
 Prod = Production



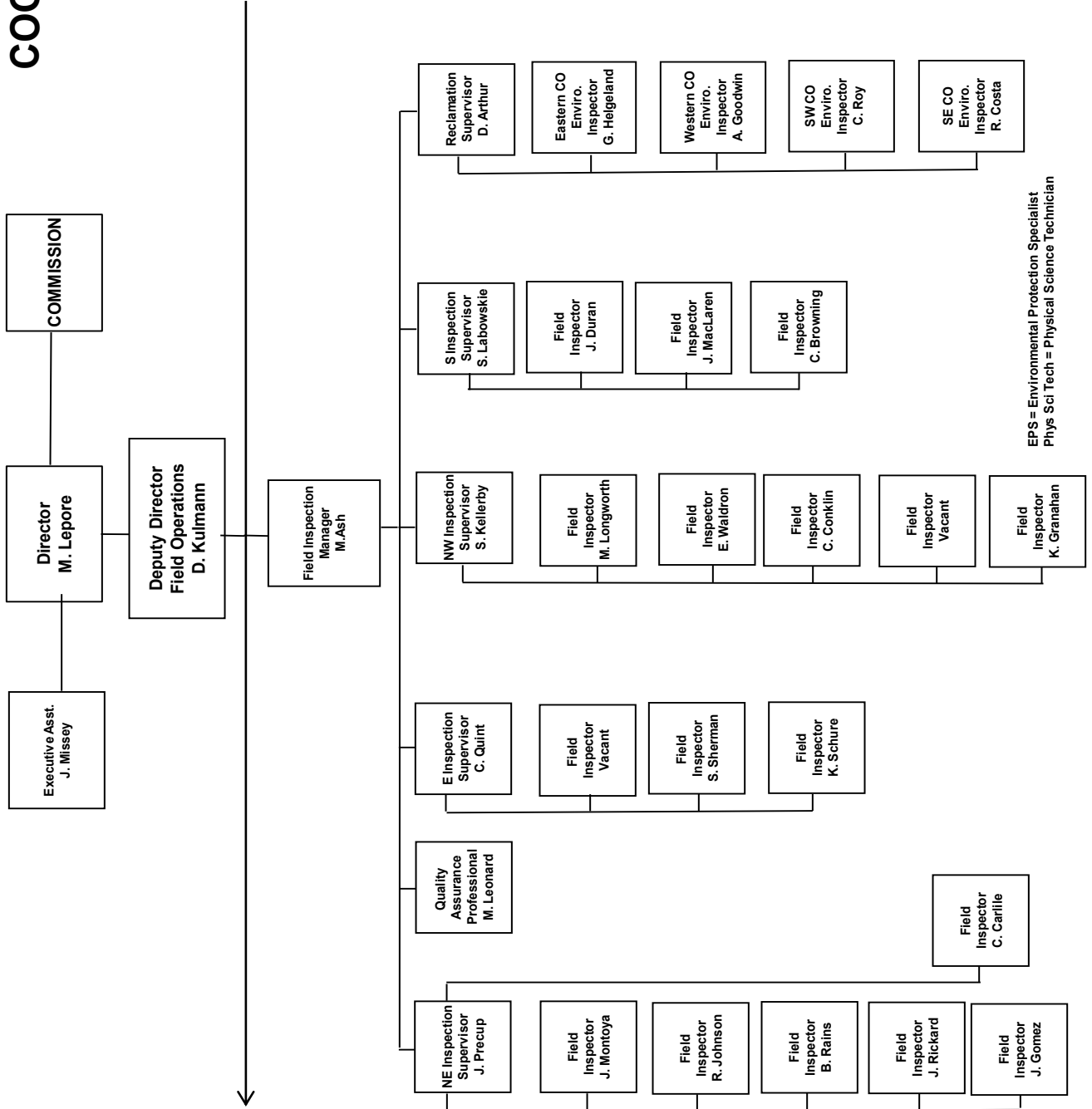
COGCC



EIT = Engineer in Training
 EPS = Environmental Protection Specialist
 OGLA = Oil & Gas Location Assessment
 Phys Sci Tech = Physical Science Technician
 UIC = Underground Injection Control



COGCC



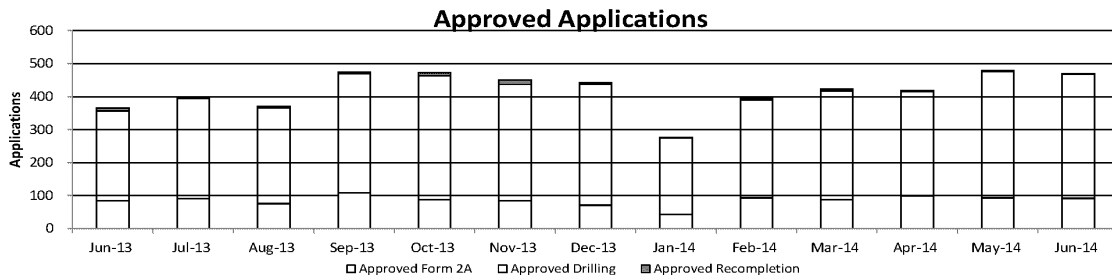
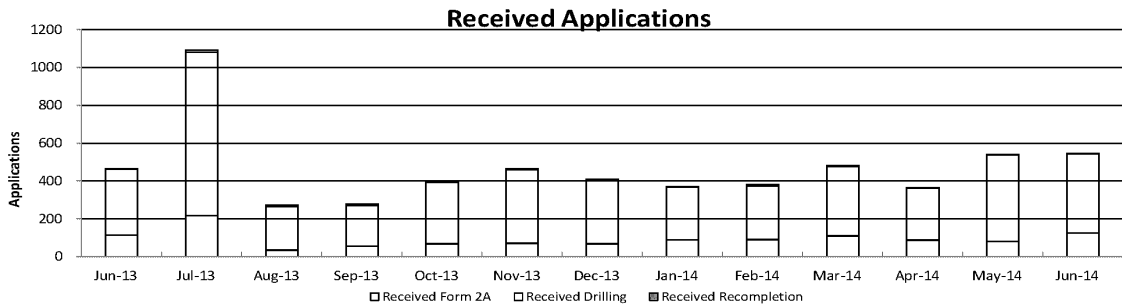
EPS = Environmental Protection Specialist
Phys Sci Tech = Physical Science Technician



Colorado Oil & Gas Conservation Commission Monthly Permit Activity

| | Backlog | Received | Approved | Withdrawn | Rejected | Incomplete | In-Process | Remaining |
|---------------------|---------|----------|----------|-----------|----------|------------|------------|-----------|
| Form2A | | | | | | | | |
| Jun-13 | 185 | 114 | 85 | 7 | 0 | 41 | 166 | 207 |
| Jul-13 | 207 | 218 | 91 | 15 | 0 | 34 | 285 | 319 |
| Aug-13 | 319 | 35 | 76 | 0 | 0 | 47 | 231 | 278 |
| Sep-13 | 278 | 56 | 109 | 0 | 0 | 68 | 157 | 225 |
| Oct-13 | 225 | 68 | 88 | 6 | 0 | 69 | 130 | 199 |
| Nov-13 | 199 | 72 | 85 | 6 | 0 | 57 | 123 | 180 |
| Dec-13 | 179 | 68 | 71 | 6 | 0 | 57 | 113 | 170 |
| Jan-14 | 170 | 90 | 43 | 7 | 0 | 47 | 163 | 210 |
| Feb-14 | 210 | 91 | 94 | 3 | 0 | 51 | 153 | 204 |
| Mar-14 | 204 | 110 | 88 | 4 | 0 | 48 | 174 | 222 |
| Apr-14 | 222 | 88 | 99 | 18 | 0 | 25 | 168 | 193 |
| May-14 | 193 | 81 | 94 | 7 | 0 | 26 | 147 | 173 |
| Jun-14 | 173 | 126 | 92 | 3 | 0 | 30 | 174 | 204 |
| Drilling | | | | | | | | |
| Jun-13 | 407 | 349 | 272 | 18 | 0 | 57 | 409 | 466 |
| Jul-13 | 466 | 863 | 304 | 14 | 0 | 65 | 946 | 1011 |
| Aug-13 | 1011 | 232 | 291 | 3 | 0 | 160 | 789 | 949 |
| Sep-13 | 949 | 214 | 361 | 2 | 0 | 160 | 640 | 800 |
| Oct-13 | 800 | 325 | 376 | 12 | 0 | 115 | 622 | 737 |
| Nov-13 | 737 | 389 | 353 | 10 | 0 | 88 | 675 | 763 |
| Dec-13 | 763 | 338 | 367 | 7 | 0 | 110 | 617 | 727 |
| Jan-14 | 727 | 278 | 232 | 77 | 0 | 75 | 621 | 696 |
| Feb-14 | 696 | 284 | 297 | 4 | 0 | 109 | 570 | 679 |
| Mar-14 | 679 | 367 | 329 | 13 | 0 | 103 | 601 | 704 |
| Apr-14 | 704 | 275 | 317 | 16 | 0 | 63 | 583 | 646 |
| May-14 | 646 | 457 | 383 | 16 | 0 | 53 | 651 | 704 |
| Jun-14 | 704 | 417 | 377 | 8 | 0 | 62 | 674 | 736 |
| Recompletion | | | | | | | | |
| Jun-13 | 10 | 2 | 8 | 0 | 0 | 0 | 4 | 4 |
| Jul-13 | 4 | 11 | 4 | 0 | 0 | 0 | 11 | 11 |
| Aug-13 | 11 | 6 | 4 | 0 | 0 | 0 | 13 | 13 |
| Sep-13 | 13 | 9 | 5 | 0 | 0 | 0 | 17 | 17 |
| Oct-13 | 17 | 5 | 9 | 0 | 0 | 0 | 12 | 13 |
| Nov-13 | 13 | 4 | 13 | 0 | 0 | 0 | 4 | 4 |
| Dec-13 | 4 | 3 | 4 | 0 | 0 | 0 | 3 | 3 |
| Jan-14 | 3 | 3 | 2 | 0 | 0 | 0 | 4 | 4 |
| Feb-14 | 4 | 6 | 4 | 0 | 0 | 0 | 6 | 6 |
| Mar-14 | 6 | 4 | 6 | 0 | 0 | 0 | 4 | 4 |
| Apr-14 | 4 | 2 | 3 | 0 | 0 | 1 | 2 | 3 |
| May-14 | 3 | 2 | 2 | 0 | 0 | 1 | 2 | 3 |
| Jun-14 | 3 | 3 | 0 | 0 | 0 | 1 | 5 | 6 |

Incomplete are permits that have missing or inaccurate data and cannot be approved.



Backlog = Incomplete + In-process = Remaining permits from previous month



Colorado Oil and Gas Conservation Commission
 Status of Permit Applications Filed By Month
 July 12, 2014

Form 2A Location Assessment

| Year | Month | Received | Approved | Withdrawn | In Process | Percent In Process | Median Days to Process | Less Than 30 Days | 30 to 49 Days | Greater Than 50 Days |
|------|-------|----------|----------|-----------|------------|--------------------|------------------------|-------------------|---------------|----------------------|
| 2011 | Total | 2391 | 2298 | 93 | 0 | 0% | | 1416 | 620 | 262 |
| 2012 | Total | 1359 | 1289 | 68 | 2 | 0% | | 706 | 378 | 205 |
| 2013 | 1 | 177 | 163 | 12 | 2 | 1% | 35 | 99 | 45 | 19 |
| 2013 | 2 | 91 | 83 | 8 | 0 | 0% | 34 | 42 | 29 | 12 |
| 2013 | 3 | 131 | 122 | 9 | 0 | 0% | 51 | 41 | 46 | 35 |
| 2013 | 4 | 150 | 141 | 7 | 2 | 1% | 40 | 47 | 69 | 25 |
| 2013 | 5 | 105 | 100 | 4 | 1 | 1% | 42 | 47 | 32 | 21 |
| 2013 | 6 | 107 | 89 | 15 | 3 | 3% | 50 | 28 | 41 | 20 |
| 2013 | 7 | 204 | 198 | 3 | 3 | 1% | 69 | 11 | 71 | 116 |
| 2013 | 8 | 58 | 56 | 2 | 0 | 0% | 62 | 7 | 18 | 31 |
| 2013 | 9 | 56 | 53 | 3 | 0 | 0% | 56 | 13 | 18 | 22 |
| 2013 | 10 | 63 | 61 | 2 | 0 | 0% | 53 | 12 | 24 | 25 |
| 2013 | 11 | 76 | 70 | 5 | 1 | 1% | 50 | 18 | 24 | 28 |
| 2013 | 12 | 68 | 61 | 6 | 1 | 1% | 61 | 4 | 16 | 41 |
| 2013 | Total | 1286 | 1197 | 76 | 13 | 1% | | 369 | 433 | 395 |
| 2014 | 1 | 85 | 81 | 3 | 1 | 1% | 52 | 12 | 36 | 33 |
| 2014 | 2 | 88 | 84 | 1 | 3 | 3% | 50 | 11 | 36 | 37 |
| 2014 | 3 | 113 | 107 | 5 | 1 | 1% | 45 | 30 | 42 | 35 |
| 2014 | 4 | 81 | 68 | 5 | 8 | 10% | 40 | 18 | 35 | 15 |
| 2014 | 5 | 92 | 59 | 3 | 30 | 33% | 38 | 13 | 34 | 12 |
| 2014 | 6 | 134 | 23 | 1 | 110 | 82% | 24 | 18 | 5 | 0 |
| 2014 | 7 | 39 | 0 | 0 | 39 | 100% | 0 | 0 | 0 | 0 |
| 2014 | Total | 632 | 422 | 18 | 192 | 30% | | 102 | 188 | 132 |

Form 2 Application For Permit to Drill (APDs)

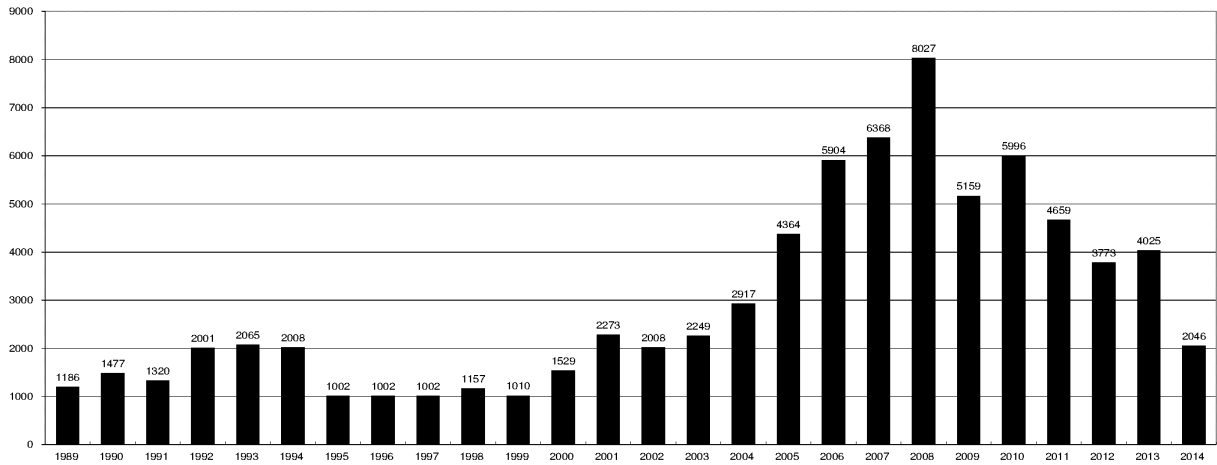
| Year | Month | Received | Approved | Withdrawn | In Process | Percent In Process | Median Days to Process | Less Than 30 Days | 30 to 49 Days | Greater Than 50 Days |
|------|-------|----------|----------|-----------|------------|--------------------|------------------------|-------------------|---------------|----------------------|
| 2011 | Total | 4691 | 4557 | 132 | 0 | 0% | | 2723 | 1565 | 587 |
| 2012 | Total | 3955 | 3816 | 139 | 0 | 0% | | 1971 | 1393 | 602 |
| 2013 | 1 | 562 | 542 | 18 | 2 | 0% | 36 | 278 | 179 | 86 |
| 2013 | 2 | 242 | 228 | 14 | 0 | 0% | 36 | 78 | 126 | 38 |
| 2013 | 3 | 333 | 320 | 13 | 0 | 0% | 43 | 123 | 119 | 84 |
| 2013 | 4 | 327 | 314 | 13 | 0 | 0% | 40 | 105 | 153 | 59 |
| 2013 | 5 | 369 | 340 | 27 | 2 | 1% | 40 | 111 | 181 | 59 |
| 2013 | 6 | 330 | 305 | 22 | 3 | 1% | 47 | 110 | 131 | 66 |
| 2013 | 7 | 798 | 764 | 11 | 23 | 3% | 67 | 106 | 218 | 451 |
| 2013 | 8 | 313 | 306 | 4 | 3 | 1% | 63 | 13 | 138 | 160 |
| 2013 | 9 | 188 | 186 | 2 | 0 | 0% | 71 | 21 | 66 | 106 |
| 2013 | 10 | 339 | 332 | 7 | 0 | 0% | 72 | 22 | 89 | 228 |
| 2013 | 11 | 373 | 357 | 11 | 5 | 1% | 60 | 49 | 147 | 166 |
| 2013 | 12 | 380 | 311 | 66 | 3 | 1% | 68 | 30 | 79 | 204 |
| 2013 | Total | 4554 | 4305 | 208 | 41 | 1% | | 1046 | 1626 | 1707 |
| 2014 | 1 | 261 | 246 | 5 | 10 | 4% | 51 | 35 | 117 | 98 |
| 2014 | 2 | 298 | 283 | 13 | 2 | 1% | 57 | 37 | 94 | 157 |
| 2014 | 3 | 359 | 350 | 8 | 1 | 0% | 51 | 50 | 133 | 171 |
| 2014 | 4 | 223 | 204 | 8 | 11 | 5% | 45 | 20 | 121 | 65 |
| 2014 | 5 | 501 | 257 | 0 | 244 | 49% | 43 | 40 | 154 | 63 |
| 2014 | 6 | 439 | 108 | 7 | 324 | 74% | 25 | 89 | 19 | 1 |
| 2014 | 7 | 98 | 2 | 0 | 96 | 98% | 13 | 2 | 0 | 0 |
| 2014 | Total | 2179 | 1450 | 41 | 688 | 32% | | 273 | 638 | 555 |



COLORADO OIL AND GAS CONSERVATION COMMISSION
ANNUAL DRILLING PERMITS BY COUNTY

| COUNTY | 1988 | 1989 | 1990 | 1991 | 1992 | 1993 | 1994 | 1995 | 1996 | 1997 | 1998 | 1999 | 2000 | 2001 | 2002 | 2003 | 2004 | 2005 | 2006 | 2007 | 2008 | 2009 | 2010 | 2011 | 2012 | 2013 | current as of 7/12 2014 | | |
|----------------|------|------|------|------|------|------|------|------|------|------|------|------|------|------|------|------|------|------|------|------|------|------|------|------|------|------|-------------------------|---|---|
| 1 ADAMS | 46 | 34 | 44 | 53 | 92 | 58 | 137 | 34 | 9 | 33 | 24 | 19 | 38 | 28 | 9 | 26 | 39 | 34 | 37 | 89 | 51 | 35 | 21 | 8 | 40 | 40 | 21 | | |
| 5 ARAPAHOE | 5 | 5 | 15 | 14 | 11 | 4 | 20 | 12 | 2 | 9 | 1 | 2 | 0 | 2 | 1 | 2 | 5 | 7 | 11 | 10 | 10 | 10 | 8 | 23 | 35 | 23 | 19 | | |
| 7 ARCHULETA | 8 | 5 | 18 | 5 | 2 | 1 | | 3 | | 3 | | | | | | 1 | 7 | 9 | 6 | 10 | 8 | 13 | 14 | 26 | 47 | 11 | 18 | | |
| 9 BACA | 6 | 4 | 15 | 10 | 23 | 9 | 12 | 24 | 10 | 7 | 13 | 15 | 22 | 6 | 2 | 3 | 7 | 8 | 2 | 11 | 13 | 3 | 4 | 5 | 3 | 1 | | | |
| 11 BENT | | | | 1 | | | 2 | 2 | 4 | 2 | 5 | 3 | 5 | 2 | | | | 5 | 3 | 8 | 1 | 1 | | 5 | | 2 | 1 | | |
| 13 BOULDER | 1 | | 1 | 13 | 38 | 159 | 38 | 5 | 8 | 2 | 5 | | 1 | 5 | 6 | 7 | 17 | 13 | 21 | 37 | 32 | 35 | 24 | 30 | 22 | | | | |
| 14 BROOMFIELD | | | | | | | | | | | | | | | | 2 | 7 | | 1 | 1 | 2 | 33 | 28 | 11 | 36 | | | | |
| 17 CHEYENNE | 203 | 149 | 102 | 93 | 71 | 58 | 48 | 55 | 43 | 31 | 41 | 7 | 3 | 3 | 3 | 3 | 3 | 10 | 21 | 15 | 33 | 12 | 13 | 16 | 31 | 50 | 12 | | |
| 23 COSTILLA | | | | | | | | | | | | 1 | | | | | | | | | | | | | | | | | |
| 25 CROWLEY | 1 | | 1 | 1 | | | | | | | | | | | | | | | | | | | | | | | | 2 | |
| 29 DELTA | 1 | 1 | 2 | | | | | | | | | | | | 7 | 4 | 5 | 10 | 9 | 2 | | | 4 | 3 | 6 | 1 | 1 | | |
| 31 DENVER | | | | | | | | | | 5 | 3 | 3 | | 3 | | | | | 19 | 25 | 24 | | | | | | | | |
| 33 DOLORES | 2 | | 4 | 1 | 2 | 1 | | | | | | | | | | 1 | 1 | 1 | 6 | 10 | 12 | 21 | 8 | 8 | 13 | 12 | 1 | | |
| EAGLE | | | | | | | | | | | | | | | | | | | | | | | | | | | | 1 | |
| 39 ELBERT | 9 | 12 | 8 | 5 | 3 | | 2 | 13 | 16 | 11 | 1 | | 2 | | | | | | 4 | | | 1 | | 1 | 2 | 2 | 4 | | |
| 41 EL PASO | | | | | | | | | | | | | | | | | | | | | | | 2 | 3 | 3 | 18 | 1 | | |
| 43 FREMONT | 9 | 5 | 6 | 7 | 1 | 2 | 2 | 1 | 2 | 1 | | | | | | | 1 | 3 | 2 | 4 | 14 | 13 | 22 | 14 | 11 | 2 | 4 | | |
| 45 GARFIELD | 19 | 66 | 111 | 36 | 18 | 56 | 143 | 78 | 109 | 141 | 95 | 130 | 213 | 353 | 362 | 567 | 796 | 1509 | 1845 | 2550 | 2888 | 1981 | 2037 | 1323 | 1046 | 870 | 551 | | |
| 49 GRAND | | | | | | | 1 | | | | | | | | | | | | | | | | | | | | | | |
| 51 GUNNISON | | | 2 | 2 | | 1 | | | | | | | | | 5 | 10 | 1 | 9 | 19 | 7 | 10 | 12 | 4 | 3 | 11 | 9 | 12 | | |
| 55 HUERFANO | 3 | 5 | | 4 | 17 | 3 | 3 | 2 | 1 | 3 | 40 | 26 | 41 | 27 | 27 | | 8 | 2 | | | 7 | | 2 | 1 | 9 | 1 | 8 | | |
| 57 JACKSON | 3 | 1 | 4 | 6 | 2 | 2 | 3 | 2 | 2 | 6 | 3 | | 34 | 18 | 21 | 9 | 14 | 6 | 8 | 5 | 27 | 19 | 9 | 18 | 5 | 12 | 7 | | |
| 59 JEFFERSON | 1 | | 4 | 2 | | 1 | | 1 | 1 | | 1 | 2 | 1 | | | | | | 1 | 3 | 2 | | | | | | 1 | | |
| 61 KIOWA | 15 | 39 | 40 | 46 | 28 | 28 | 21 | 26 | 13 | 17 | 10 | 2 | 11 | 18 | 2 | 4 | 2 | 1 | 11 | 9 | 26 | 7 | 16 | 17 | 17 | 12 | 4 | | |
| 63 KIT CARSON | 9 | 5 | 7 | 8 | 8 | 15 | 26 | 11 | 7 | 6 | 9 | 5 | | | | 1 | 3 | 5 | 4 | 4 | 13 | 7 | 3 | 2 | 6 | 1 | 1 | | |
| 67 LA PLATA | 302 | 218 | 388 | 128 | 120 | 40 | 40 | 20 | 71 | 40 | 82 | 107 | 127 | 156 | 104 | 162 | 102 | 115 | 235 | 251 | 328 | 298 | 191 | 99 | 71 | 32 | 37 | | |
| 69 LARIMER | 4 | 4 | 3 | 6 | 13 | 7 | 3 | | 1 | 3 | 1 | | 2 | | 1 | | | 1 | | 5 | 46 | 12 | 41 | 8 | 13 | 2 | 4 | | |
| 71 LAS ANIMAS | 10 | 30 | 36 | | | 9 | 32 | 95 | 134 | 136 | 195 | 195 | 268 | 400 | 259 | 180 | 332 | 413 | 500 | 362 | 303 | 88 | 92 | 85 | 11 | 2 | 1 | | |
| 73 LINCOLN | 8 | 6 | 4 | 7 | 7 | 11 | 8 | 9 | 3 | 2 | | 2 | 2 | 1 | 6 | 3 | 4 | 1 | 2 | 58 | 44 | 48 | 31 | 36 | 87 | 61 | | | |
| 75 LOGAN | 18 | 21 | 23 | 13 | 14 | 30 | 15 | 13 | 6 | 12 | 7 | | 4 | 7 | 3 | 3 | 6 | 13 | 17 | 14 | 5 | 9 | 17 | 8 | 27 | 4 | 1 | | |
| 77 MESA | 1 | 12 | 29 | 20 | 22 | 2 | 22 | 6 | 11 | 10 | 2 | 6 | 13 | 27 | 30 | 27 | 54 | 136 | 265 | 293 | 501 | 427 | 306 | 127 | 150 | 105 | 8 | | |
| 81 MOFFAT | 13 | 25 | 27 | 19 | 40 | 52 | 43 | 40 | 41 | 28 | 21 | 15 | 35 | 52 | 62 | 63 | 63 | 60 | 120 | 68 | 57 | 51 | 53 | 93 | 88 | 44 | 21 | | |
| 83 MONTEZUMA | 6 | 7 | 10 | 8 | 7 | 11 | 15 | 9 | 13 | 5 | 4 | 1 | 4 | | | 5 | 8 | 11 | 5 | 12 | 22 | 39 | 19 | 27 | 29 | 14 | 15 | | |
| 85 MONTROSE | | | | 1 | | | | | | | 1 | | 1 | 3 | 2 | 4 | 2 | | 1 | 3 | 3 | | 1 | 1 | | | | | |
| 87 MORGAN | 34 | 27 | 36 | 13 | 10 | 11 | 19 | 12 | 10 | 11 | 10 | 12 | 9 | 9 | 2 | 7 | 9 | 7 | 3 | 6 | 2 | 1 | 6 | 13 | 5 | 16 | 6 | | |
| 89 OTERO | | | | 2 | | | | | | | | | | | | | | | | | | | | | | | | | |
| 93 PARK | | | | | | | | | | | | | | | | | | | | | | | 3 | 4 | 1 | | | | |
| 95 PHILLIPS | | | 3 | | 1 | 1 | | | | | | 1 | | 2 | | 7 | 13 | 17 | 12 | 69 | 82 | 45 | 64 | 112 | 56 | | 1 | | |
| 97 PITKIN | | 1 | | | 2 | | | | | | | | | | | | | | 1 | | | | | | | | | | |
| 99 PROWERS | 19 | 9 | 5 | 10 | 14 | 7 | 3 | 5 | 5 | 3 | 9 | 3 | 2 | 5 | 4 | | | 7 | 5 | 7 | 5 | 8 | 1 | 3 | 1 | | | | |
| 103 RIO BLANCO | 34 | 83 | 77 | 33 | 81 | 83 | 126 | 81 | 33 | 40 | 51 | 95 | 89 | 187 | 105 | 179 | 154 | 161 | 360 | 321 | 477 | 348 | 441 | 109 | 117 | 167 | 47 | | |
| 105 RIO GRANDE | 2 | 3 | 4 | 1 | | | 1 | | | | | | 1 | 1 | | 1 | | | | | 1 | 1 | | | 2 | | 1 | | |
| 107 ROUTT | 4 | 3 | 12 | 4 | 2 | 3 | 1 | 2 | 1 | 1 | 1 | 4 | 20 | 13 | 1 | | | 4 | 6 | 9 | 8 | 4 | 2 | 3 | 10 | 4 | 12 | 4 | |
| 109 SAGUACHE | 1 | | | | | | | 2 | | | | 2 | 2 | | 2 | | | | 18 | 42 | 45 | 35 | 23 | 20 | 13 | 10 | 2 | 1 | 2 |
| 113 SAN MIGUEL | | | 2 | 2 | | | | | 1 | 1 | 4 | 2 | 11 | 13 | 27 | | | 1 | 5 | 2 | 7 | 2 | 1 | 19 | 11 | 12 | 2 | | |
| 115 SEDGWICK | | | | 1 | | | | 3 | | 2 | | | | | | | | | 1 | 5 | 2 | 7 | 2 | 1 | 19 | 11 | 12 | 2 | |
| 121 WASHINGTON | 40 | 29 | 23 | 28 | 24 | 26 | 25 | 12 | 19 | 26 | 18 | 3 | 23 | 17 | 27 | 34 | 128 | 50 | 69 | 45 | 11 | 1 | 6 | 12 | 6 | 19 | 7 | | |
| 123 WELD | 424 | 357 | 366 | 656 | 1224 | 1319 | 1030 | 254 | 305 | 285 | 392 | 288 | 509 | 702 | 760 | 757 | 832 | 901 | 1418 | 1527 | 2340 | 1448 | 2152 | 2262 | 1826 | 2468 | 1167 | | |
| 125 YUMA | 14 | 20 | 45 | 60 | 104 | 53 | 167 | 168 | 123 | 116 | 111 | 60 | 31 | 205 | 160 | 138 | 237 | 782 | 797 | 541 | 545 | 105 | 299 | 148 | 11 | 9 | 13 | | |
| 0 Total | 1275 | 1186 | 1477 | 1320 | 2001 | 2065 | 2008 | 1002 | 1002 | 1002 | 1157 | 1010 | 1529 | 2273 | 2008 | 2249 | 2917 | 4364 | 5904 | 6368 | 8027 | 5159 | 5996 | 4659 | 3773 | 4025 | 2046 | | |

ALL COUNTIES





Colorado Oil and Gas Conservation Commission
 Form 2A Breakdown By County By Year
 July 12, 2014

| Yr | County | Form2As | Completed | In Process | New Location | CDP | SWH | RSO | CDPHE |
|------|-------------|---------|-----------|------------|--------------|-----|-----|-----|-------|
| 2009 | Total State | 818 | 818 | 0 | 408 | 2 | 80 | 5 | 5 |
| 2010 | Total State | 2378 | 2376 | 0 | 1601 | 0 | 327 | 22 | 55 |
| 2011 | Total State | 2299 | 2297 | 2 | 1791 | 1 | 274 | 17 | 5 |
| 2012 | Total State | 1298 | 1294 | 4 | 946 | 0 | 173 | 6 | 1 |
| 2013 | ADAMS | 15 | 15 | 0 | 13 | 0 | 0 | 0 | 0 |
| 2013 | ARAPAHOE | 15 | 15 | 0 | 15 | 0 | 0 | 0 | 0 |
| 2013 | ARCHULETA | 1 | 1 | 0 | 1 | 0 | 0 | 0 | 0 |
| 2013 | BACA | 1 | 1 | 0 | 1 | 0 | 1 | 0 | 0 |
| 2013 | CHEYENNE | 44 | 44 | 0 | 40 | 0 | 0 | 0 | 0 |
| 2013 | DELTA | 2 | 2 | 0 | 1 | 0 | 1 | 0 | 0 |
| 2013 | DOLORES | 8 | 8 | 0 | 7 | 0 | 4 | 0 | 0 |
| 2013 | EAGLE | 1 | 1 | 0 | 1 | 0 | 1 | 0 | 0 |
| 2013 | EL PASO | 1 | 1 | 0 | 1 | 0 | 0 | 0 | 0 |
| 2013 | ELBERT | 1 | 1 | 0 | 1 | 0 | 0 | 0 | 0 |
| 2013 | FREMONT | 3 | 3 | 0 | 6 | 0 | 1 | 0 | 0 |
| 2013 | GARFIELD | 86 | 82 | 4 | 35 | 0 | 71 | 1 | 0 |
| 2013 | GUNNISON | 9 | 9 | 0 | 3 | 1 | 4 | 1 | 0 |
| 2013 | HUERFANO | 3 | 3 | 0 | 1 | 0 | 0 | 0 | 0 |
| 2013 | JACKSON | 10 | 10 | 0 | 4 | 0 | 10 | 0 | 0 |
| 2013 | KIOWA | 9 | 9 | 0 | 8 | 0 | 0 | 0 | 0 |
| 2013 | KIT CARSON | 1 | 1 | 0 | 1 | 0 | 0 | 0 | 0 |
| 2013 | LA PLATA | 15 | 13 | 2 | 5 | 0 | 15 | 0 | 0 |
| 2013 | LARIMER | 2 | 2 | 0 | 1 | 0 | 1 | 0 | 0 |
| 2013 | LAS ANIMAS | 2 | 2 | 0 | 1 | 0 | 0 | 0 | 0 |
| 2013 | LINCOLN | 74 | 73 | 1 | 74 | 0 | 0 | 0 | 0 |
| 2013 | LOGAN | 4 | 4 | 0 | 0 | 0 | 0 | 0 | 0 |
| 2013 | MESA | 8 | 7 | 1 | 5 | 0 | 1 | 0 | 0 |
| 2013 | MOFFAT | 16 | 16 | 0 | 13 | 0 | 14 | 0 | 1 |
| 2013 | MONTEZUMA | 14 | 14 | 0 | 12 | 0 | 2 | 0 | 0 |
| 2013 | MORGAN | 16 | 12 | 4 | 16 | 0 | 0 | 0 | 0 |
| 2013 | PITKIN | 1 | 0 | 1 | 1 | 0 | 0 | 0 | 0 |
| 2013 | RIO BLANCO | 20 | 20 | 0 | 11 | 0 | 21 | 0 | 0 |
| 2013 | ROUTT | 9 | 9 | 0 | 10 | 0 | 9 | 0 | 0 |
| 2013 | WASHINGTON | 20 | 20 | 0 | 21 | 0 | 0 | 0 | 0 |
| 2013 | WELD | 784 | 783 | 1 | 588 | 0 | 8 | 0 | 3 |
| 2013 | YUMA | 8 | 8 | 0 | 2 | 0 | 0 | 0 | 0 |
| 2013 | Total | 1203 | 1189 | 14 | 899 | 1 | 164 | 2 | 4 |
| 2014 | ADAMS | 9 | 7 | 2 | 9 | 0 | 0 | 0 | 0 |
| 2014 | ARAPAHOE | 8 | 7 | 1 | 8 | 0 | 0 | 0 | 0 |
| 2014 | ARCHULETA | 1 | 1 | 0 | 0 | 0 | 1 | 0 | 0 |
| 2014 | BROOMFIELD | 1 | 1 | 0 | 0 | 0 | 0 | 0 | 0 |
| 2014 | CHEYENNE | 15 | 7 | 8 | 13 | 0 | 0 | 0 | 0 |
| 2014 | CROWLEY | 2 | 2 | 0 | 2 | 0 | 0 | 0 | 0 |
| 2014 | DOLORES | 2 | 1 | 1 | 2 | 0 | 0 | 0 | 0 |
| 2014 | ELBERT | 4 | 4 | 0 | 4 | 0 | 0 | 0 | 0 |
| 2014 | FREMONT | 2 | 1 | 1 | 2 | 0 | 2 | 0 | 0 |
| 2014 | GARFIELD | 45 | 24 | 21 | 10 | 0 | 31 | 1 | 0 |
| 2014 | GUNNISON | 5 | 4 | 1 | 1 | 3 | 1 | 0 | 0 |
| 2014 | HUERFANO | 4 | 4 | 0 | 2 | 0 | 6 | 0 | 0 |
| 2014 | JACKSON | 12 | 6 | 6 | 8 | 0 | 12 | 0 | 0 |
| 2014 | KIOWA | 3 | 2 | 1 | 2 | 0 | 0 | 0 | 0 |
| 2014 | KIT CARSON | 2 | 1 | 1 | 2 | 0 | 0 | 0 | 0 |
| 2014 | LA PLATA | 9 | 7 | 2 | 2 | 0 | 10 | 0 | 0 |
| 2014 | LAS ANIMAS | 1 | 1 | 0 | 1 | 0 | 0 | 0 | 0 |
| 2014 | LINCOLN | 79 | 62 | 17 | 69 | 0 | 0 | 0 | 0 |
| 2014 | LOGAN | 2 | 1 | 1 | 2 | 0 | 0 | 0 | 0 |
| 2014 | MESA | 6 | 1 | 5 | 3 | 0 | 3 | 1 | 0 |
| 2014 | MOFFAT | 8 | 1 | 7 | 8 | 0 | 8 | 2 | 0 |
| 2014 | MONTEZUMA | 10 | 8 | 2 | 11 | 0 | 0 | 0 | 0 |
| 2014 | PHILLIPS | 2 | 1 | 1 | 3 | 0 | 0 | 0 | 0 |
| 2014 | RIO BLANCO | 12 | 5 | 7 | 9 | 0 | 11 | 0 | 0 |
| 2014 | ROUTT | 1 | 1 | 0 | 1 | 0 | 1 | 0 | 0 |
| 2014 | SAN MIGUEL | 1 | 1 | 0 | 1 | 0 | 0 | 0 | 0 |
| 2014 | WASHINGTON | 11 | 8 | 3 | 11 | 0 | 0 | 0 | 0 |
| 2014 | WELD | 308 | 235 | 73 | 211 | 0 | 5 | 2 | 0 |
| 2014 | YUMA | 41 | 12 | 29 | 35 | 0 | 0 | 0 | 0 |
| 2014 | Total | 606 | 416 | 190 | 432 | 3 | 91 | 6 | 0 |

CDP = Comprehensive Drilling Plan SWH = Sensitive Wildlife Habitat consultation
 RSO = Restricted Surface Occupancy consultation CDPHE= Colorado Department of Health and Environment consultation



Colorado Oil and Gas Conservation Commission
Horizontal Well Activity
July 14, 2014

| County | Prior Years | | 2009 | | 2010 | | 2011 | | 2012 | | 2013 | | 2014 | | Total | | Completion | | | |
|----------------------------|-------------|------------|-----------|-------------|-----------|-------------|------------|--------------|------------|--------------|------------|--------------|-------------|--------------|-------------|-----------|-------------|-----------|-----------|----|
| | Drilled | DA | PA | Permit | Spud | Permit | Spud | Permit | Spud | Permit | Spud | Permit | Spud | Permit | Spud | Spud | AC | PR | DA | PA |
| ADAMS | | | | 6 | 5 | 2 | 3 | 1 | 17 | 2 | 26 | 2 | 15 | 12 | 24 | 5 | 4 | | | |
| ARAPAHOE | 2 | | | | | | 10 | 1 | 22 | 4 | 11 | 4 | 13 | 5 | 16 | 2 | 3 | | | |
| ARCHULETA | 17 | | | 7 | 6 | 15 | 7 | 10 | 8 | 5 | 9 | 2 | 1 | 1 | 47 | 1 | 42 | | | |
| BENT | | | | | | | | | | | | 1 | 1 | | 1 | | | | | |
| BOULDER | | | | | | | | 4 | | | | | | | | 0 | | | | |
| CHEYENNE | 5 | | 4 | | | | | | 6 | 2 | 7 | 2 | 1 | 1 | 8 | 1 | 1 | | | |
| DELTA | | | | | | | | | 6 | 2 | 1 | 1 | 1 | 1 | 3 | 1 | 1 | | | |
| DOLORES | 9 | | | 18 | 2 | 6 | | | 9 | 3 | 5 | 4 | | | 18 | 13 | 1 | | | |
| EL PASO | | | | | | | | | 10 | | | | | | 0 | | | | | |
| ELBERT | | | | | | | | | 1 | | | | | | 0 | | | | | |
| FREMONT | 7 | 6 | | 6 | | 12 | 5 | 3 | 4 | 4 | 1 | 1 | | | 18 | 10 | 6 | 1 | | |
| GARFIELD | 10 | | 2 | 1 | 1 | 16 | 2 | 18 | 6 | 43 | 6 | 18 | 3 | 8 | 2 | 30 | 25 | | | 2 |
| GUNNISON | 1 | | | | | 1 | | | 3 | 2 | 2 | | 6 | 3 | 3 | 3 | | | | |
| HUERFANO | | | | | | | | | 4 | | 1 | | 1 | 1 | 1 | 1 | | | | |
| JACKSON | 8 | 1 | 1 | 8 | | 3 | 3 | 9 | 2 | 4 | 8 | 5 | 7 | 1 | 19 | 12 | 1 | | | 1 |
| KIOWA | | | | | | | | | 1 | | 4 | 1 | 1 | 1 | 1 | 1 | | | | |
| KIT CARSON | 1 | | | | | | | | 1 | | 1 | 1 | 1 | 1 | 2 | 2 | | | | 3 |
| LA PLATA | 28 | 2 | | 11 | 2 | 28 | 3 | 18 | 7 | 12 | 1 | 5 | 14 | 4 | 41 | 1 | 46 | 1 | | |
| LARIMER | 3 | 2 | | | | | | 5 | 1 | 2 | 1 | 2 | | | 7 | 2 | 2 | | | |
| LAS ANIMAS | 16 | | 2 | 4 | | 1 | 1 | | | | | | | | 17 | 14 | 3 | | | |
| LINCOLN | | | | 2 | 1 | 2 | 1 | 1 | | | 1 | 6 | 1 | 2 | 4 | 3 | | | | |
| LOGAN | 2 | | | | | | | | | | | | | | 2 | 2 | | | | |
| MESA | 3 | 2 | | 36 | 1 | 22 | 8 | 24 | 13 | 14 | 9 | 2 | 4 | 1 | 28 | 25 | 2 | | | 2 |
| MOFFAT | 7 | 1 | 1 | 6 | 3 | 4 | | 9 | 4 | 44 | 6 | 18 | 13 | 4 | 33 | 1 | 19 | 1 | | 1 |
| MONTEZUMA | 6 | | 1 | 23 | 6 | 11 | 2 | 8 | 2 | 18 | 6 | 3 | 4 | 10 | 26 | 39 | | | | 1 |
| MORGAN | | | | | | | | 6 | 2 | 2 | 1 | 13 | 1 | 6 | 4 | 2 | | | | |
| PARK | | | | | | | | 1 | | | | | | | 1 | | | | | |
| RIO BLANCO | 7 | 2 | | | | 1 | 1 | 11 | 2 | 15 | 2 | 4 | 5 | | 17 | 1 | 10 | 3 | | |
| ROUITT | 10 | 6 | 1 | | | | | | 1 | | 1 | | | | 10 | 3 | 6 | 1 | | |
| SAN MIGUEL | 1 | | | 1 | | | | | | | | | | | 1 | 1 | | | | |
| WASHINGTON | 1 | | 1 | | | | | | | | | | | | 1 | 1 | | | | |
| WELD | 11 | 3 | | 12 | 5 | 208 | 95 | 763 | 233 | 964 | 596 | 2114 | 1061 | 1144 | 724 | 2725 | 1099 | 10 | 34 | |
| YUMA | 1 | | 1 | 6 | | | | | | | | | | | 1 | 1 | | | | |
| TOTAL Horizontal | 156 | 25 | 14 | 147 | 32 | 333 | 132 | 901 | 285 | 1203 | 644 | 1113 | 1238 | 747 | 3109 | 10 | 1378 | 32 | 58 | |
| Percent of Total HZ | | 16% | 9% | | | | | | | | | | | | | 0% | 44% | 1% | 2% | |
| Total All Permits | | | | 5159 | | 5996 | | 4659 | | 3773 | | 4025 | | 2046 | | | | | | |
| Percent of Total | | | | 2.8% | | 5.6% | | 19.3% | | 31.9% | | 56.1% | | 60.5% | | | | | | |



Well to Building Setback Review

Colorado Oil and Gas Conservation Commission
July 14, 2014

Count of well locations by proximity groupings from well spot to buildings for all locations reviewed under the December 17, 2008 amended rules.

| Location Proximity to Buildings | 2009 | 2010 | 2011 | 2012 | 2013 | 2014 | Number of Locations | Percent of Total Locations |
|---------------------------------|------------|-------------|-------------|-------------|-------------|------------|---------------------|----------------------------|
| less than 150 feet | 2 | 3 | 3 | 2 | 0 | 1 | 11 | 0% |
| 150 to 350 feet | 37 | 58 | 61 | 39 | 34 | 22 | 251 | 3% |
| 350 to 500 feet | 50 | 110 | 97 | 61 | 64 | 25 | 407 | 5% |
| 500 to 1000 feet | 117 | 385 | 331 | 188 | 188 | 89 | 1298 | 17% |
| 1000 + feet | 356 | 1705 | 1470 | 838 | 762 | 340 | 5471 | 74% |
| Total Locations | 562 | 2261 | 1962 | 1128 | 1048 | 477 | 7438 | |

| County | Total | Less than 150 feet | 150 to 350 feet | 350 to 500 feet | 500 to 1000 feet | 1000 + feet |
|------------|-------|--------------------|-----------------|-----------------|------------------|-------------|
| ADAMS | 59 | 0 | 3 | 5 | 14 | 37 |
| ARAPAHOE | 76 | 0 | 2 | 4 | 9 | 61 |
| ARCHULETA | 18 | 0 | 0 | 1 | 9 | 8 |
| BACA | 14 | 0 | 0 | 0 | 1 | 13 |
| BENT | 7 | 0 | 0 | 0 | 0 | 7 |
| BOULDER | 23 | 0 | 1 | 1 | 17 | 4 |
| BROOMFIELD | 33 | 0 | 0 | 4 | 13 | 16 |
| CHEYENNE | 118 | 0 | 0 | 0 | 2 | 115 |
| CROWLEY | 2 | 0 | 0 | 0 | 0 | 2 |
| DELTA | 7 | 0 | 0 | 2 | 1 | 4 |
| DOLORES | 18 | 0 | 0 | 0 | 6 | 12 |
| EAGLE | 1 | 0 | 0 | 0 | 0 | 1 |
| EL PASO | 13 | 0 | 0 | 0 | 2 | 11 |
| ELBERT | 8 | 0 | 0 | 0 | 2 | 6 |
| FREMONT | 37 | 0 | 2 | 7 | 7 | 21 |
| GARFIELD | 476 | 0 | 9 | 3 | 68 | 396 |
| GUNNISON | 31 | 0 | 0 | 3 | 1 | 26 |
| HUERFANO | 14 | 0 | 0 | 0 | 4 | 10 |
| JACKSON | 36 | 0 | 0 | 3 | 1 | 32 |
| KIOWA | 62 | 0 | 0 | 0 | 1 | 61 |
| KIT CARSON | 13 | 0 | 0 | 0 | 0 | 13 |
| LA PLATA | 108 | 0 | 4 | 13 | 31 | 60 |
| LARIMER | 33 | 0 | 4 | 3 | 10 | 16 |
| LAS ANIMAS | 201 | 0 | 6 | 7 | 37 | 150 |
| LINCOLN | 280 | 0 | 1 | 2 | 4 | 273 |
| LOGAN | 42 | 0 | 1 | 1 | 0 | 40 |
| MESA | 84 | 0 | 0 | 3 | 13 | 68 |
| MOFFAT | 159 | 0 | 0 | 2 | 14 | 143 |
| MONTEZUMA | 35 | 0 | 0 | 1 | 4 | 30 |
| MONTROSE | 2 | 0 | 0 | 0 | 0 | 2 |
| MORGAN | 28 | 0 | 0 | 2 | 4 | 22 |
| PARK | 4 | 0 | 0 | 0 | 0 | 4 |
| PHILLIPS | 263 | 0 | 4 | 6 | 20 | 232 |
| PROWERS | 4 | 0 | 0 | 0 | 0 | 4 |
| RIO BLANCO | 162 | 0 | 0 | 0 | 1 | 161 |
| RIO GRANDE | 2 | 0 | 0 | 0 | 1 | 1 |
| ROUTT | 26 | 0 | 0 | 0 | 2 | 24 |
| SAN MIGUEL | 12 | 0 | 0 | 0 | 0 | 12 |
| SEDGWICK | 25 | 0 | 0 | 1 | 3 | 21 |
| WASHINGTON | 55 | 0 | 2 | 0 | 2 | 51 |
| WELD | 4360 | 0 | 205 | 319 | 952 | 2877 |
| YUMA | 487 | 0 | 7 | 14 | 42 | 424 |



Well to Building Setback Review

Colorado Oil and Gas Conservation Commission

July 14, 2014

Listing of Locations less than 200 feet to Building

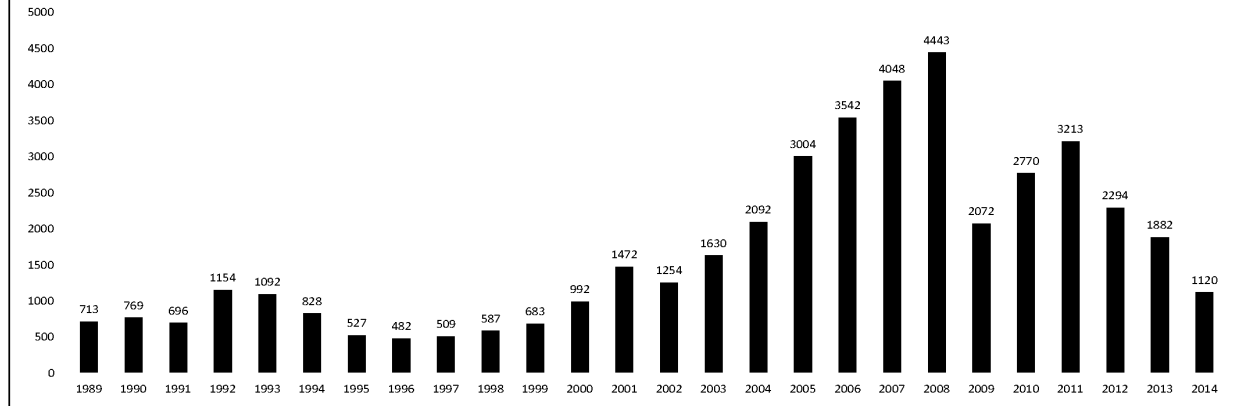
| Year | Document Number | County | High Density | New Location | Distance | Proximity | Building Description |
|------|-----------------|------------|--------------|--------------|----------|------------|----------------------------------|
| 2011 | 2587822 | CHEYENNE | No | No | 58 | less 150 | Water well house |
| 2009 | 1691798 | WELD | No | No | 58 | less 150 | Vehicle garage |
| 2010 | 400072164 | WELD | No | Yes | 69 | less 150 | Abandoned hog shed |
| 2014 | 400569085 | WELD | No | No | 78 | less 150 | Well Shed |
| 2012 | 400240957 | GUNNISON | No | Yes | 90 | less 150 | Equipment Shed |
| 2009 | 1758843 | WELD | No | Yes | 103 | less 150 | Building to be razed |
| 2011 | 1636646 | WELD | No | No | 122 | less 150 | Storage shed |
| 2009 | 400011284 | LAS ANIMAS | No | Yes | 127 | less 150 | Operator is owner |
| 2009 | 1786896 | PHILLIPS | No | No | 132 | less 150 | Grain Storage |
| 2011 | 400117702 | WELD | No | Yes | 143 | less 150 | Irrigation pump house |
| 2011 | 400227765 | WELD | No | Yes | 145 | less 150 | Storage Barn |
| 2014 | 400558626 | LINCOLN | No | No | 150 | less 150 | Gas Plant Equipment Building |
| 2009 | 1904205 | WELD | No | No | 154 | 150 to 350 | Livestock Enclosure |
| 2012 | 400243295 | WELD | No | Yes | 155 | 150 to 350 | Unused storage shed |
| 2011 | 400179419 | WELD | No | Yes | 157 | 150 to 350 | Existing well / storage building |
| 2010 | 400054716 | WELD | No | No | 159 | 150 to 350 | Equipment Barn |
| 2011 | 400188968 | WELD | No | Yes | 159 | 150 to 350 | Abandoned |
| 2014 | 400554054 | WELD | No | Yes | 159 | 150 to 350 | Equipment Shed |
| 2010 | 400021477 | WELD | No | Yes | 162 | 150 to 350 | Goat Barn |
| 2009 | 1758386 | WELD | No | Yes | 168 | 150 to 350 | Storage Shed |
| 2011 | 1635946 | WELD | No | No | 169 | 150 to 350 | Storage shed |
| 2013 | 400447386 | WELD | No | No | 169 | 150 to 350 | Abandoned Turkey Barn |
| 2013 | 400447391 | WELD | No | No | 169 | 150 to 350 | Abandoned Turkey Barn |
| 2011 | 400165164 | WELD | No | Yes | 178 | 150 to 350 | Residence |
| 2013 | 400367184 | WELD | No | Yes | 179 | 150 to 350 | Shed |
| 2011 | 400188780 | WELD | No | Yes | 180 | 150 to 350 | Residence |
| 2010 | 1697620 | WELD | No | No | 187 | 150 to 350 | Livestock Shed |
| 2009 | 1758746 | WELD | No | No | 193 | 150 to 350 | Storage Shed |
| 2011 | 400154431 | WELD | No | Yes | 198 | 150 to 350 | Turkey barn |
| 2012 | 400250031 | WELD | No | Yes | 198 | 150 to 350 | abandoned guard shack |
| 2009 | 1774783 | WELD | No | No | 199 | 150 to 350 | cement service building |
| 2011 | 400118102 | YUMA | No | Yes | 199 | 150 to 350 | Steel Barn |



COLORADO OIL AND GAS CONSERVATION COMMISSION ANNUAL WELL STARTS BY COUNTY

| COUNTY | 1988 | 1989 | 1990 | 1991 | 1992 | 1993 | 1994 | 1995 | 1996 | 1997 | 1998 | 1999 | 2000 | 2001 | 2002 | 2003 | 2004 | 2005 | 2006 | 2007 | 2008 | 2009 | 2010 | 2011 | 2012 | 2013 | Current as of 7/14 | |
|-------------|------|------|------|------|------|------|------|------|------|------|------|------|------|------|------|------|------|------|------|------|------|------|------|------|------|------|--------------------|---|
| ADAMS | 39 | 27 | 26 | 36 | 54 | 20 | 54 | 28 | 6 | 16 | 12 | 17 | 18 | 13 | 4 | 19 | 22 | 24 | 13 | 41 | 14 | 15 | 21 | 2 | 14 | 5 | 17 | |
| ALAMOSA | | | | | | | | | | | | | | | | | | | | | | | | | | | | |
| ARAPAHOE | 2 | 4 | 16 | 11 | 11 | 3 | 9 | 8 | 3 | 3 | 2 | | | | | | 6 | 1 | 5 | 2 | 1 | 1 | 3 | 9 | 8 | 14 | 10 | |
| ARCHULETA | 5 | 3 | 7 | 5 | 2 | 1 | | 2 | | 1 | | | 4 | 4 | 2 | 5 | 4 | 10 | 5 | 7 | 26 | 9 | 12 | 9 | 11 | | | |
| BACA | 5 | 5 | 12 | 6 | 21 | 8 | 9 | 19 | 9 | 7 | 11 | 8 | 19 | 6 | 2 | 1 | 6 | 6 | 2 | 6 | 12 | | 5 | 5 | 2 | 1 | | |
| BENT | | | | 1 | | | 2 | 3 | 1 | 2 | 3 | 6 | 2 | | | | 3 | 2 | 8 | 1 | 1 | | | 1 | 1 | 1 | | |
| BOULDER | 2 | | | 7 | 18 | 56 | 15 | 5 | | | | | | | | 2 | 5 | 11 | 9 | 14 | 25 | 16 | 13 | 7 | 14 | | | |
| BROOMFIELD | 3 | 2 | 3 | 7 | 14 | 27 | 22 | 2 | 2 | | | | | | 2 | | 1 | | | | 10 | | 21 | 11 | 5 | | | |
| CHEYENNE | 177 | 133 | 92 | 75 | 64 | 50 | 44 | 41 | 35 | 29 | 29 | 6 | 2 | 1 | 3 | 3 | | 9 | 14 | 15 | 14 | 8 | 12 | 11 | 16 | 35 | 11 | |
| CONEJOS | | | | | | | | | | | | | | | | | | | | | | | | | | | | |
| COSTILLA | | | | | | | | | | | | 1 | | | | | | | | | | | | | | | | |
| CROWLEY | | | | | | | | | | | | | | | | | | | | | | | | | | | | |
| CUSTER | 1 | | 1 | | | | | | | | | | | | | | | | | | | | | | | | | 1 |
| DELTA | 1 | | 1 | | | | | | | | | | | | | 5 | 4 | 6 | 5 | 2 | | | 4 | 1 | 6 | | 1 | |
| DENVER | | | | | | | | | | 2 | 3 | 1 | | 2 | | | | | 7 | 5 | 4 | | | | | | | |
| DOLORES | 2 | | 4 | 1 | | | | | | | | | | | | | 2 | | 2 | 13 | 4 | 2 | | 1 | 5 | 10 | | |
| DOUGLAS | | | | | | | | | | | | | | | | | | | | | | | | | | | | |
| EAGLE | | | | | | | | | | | | | | | | | | | | | | | | | | | | 1 |
| EL PASO | | | | | | | | | | | | | | | | | | | | | | | 2 | | 5 | | 1 | |
| ELBERT | 8 | 11 | 9 | 5 | 2 | | | 10 | 15 | 2 | 2 | | 2 | | | | | | 1 | | | | | | | | | |
| FREMONT | 6 | 3 | 5 | 7 | 1 | 1 | 1 | 2 | | | 1 | | | | | | | 1 | 3 | 2 | 2 | 5 | 3 | 9 | 16 | 7 | 2 | |
| GARFIELD | 3 | 12 | 24 | 8 | 3 | 4 | 15 | 13 | 7 | 28 | 19 | 94 | 190 | 251 | 245 | 417 | 585 | 799 | 1005 | 1304 | 1688 | 768 | 904 | 879 | 495 | 392 | 208 | |
| GRAND | | | | | | | 1 | | | | | | | | | | | | | | | | | | | | | |
| GUNNISON | | | 1 | 2 | | 1 | | | | | | | | | 1 | | 1 | 1 | 9 | 5 | 1 | 4 | 5 | 2 | 4 | 1 | | |
| HUERFANO | 6 | | 2 | 2 | 6 | 1 | 1 | 2 | | 2 | 31 | 9 | 25 | 14 | 19 | 3 | 6 | 2 | | | 2 | | 2 | 1 | 2 | 1 | | |
| JACKSON | 2 | 1 | 3 | 7 | 2 | | 3 | 1 | 1 | 3 | 3 | | 24 | 2 | 4 | 10 | 10 | | 3 | 3 | 10 | 1 | 6 | 7 | | 5 | 2 | |
| JEFFERSON | | | | | | | | | | | | | | | | | | | | | | | | | | | | |
| KIOWA | 14 | 32 | 35 | 37 | 28 | 19 | 20 | 22 | 8 | 13 | 6 | 4 | 8 | 16 | 2 | 4 | 2 | 1 | 7 | 7 | 2 | 5 | 15 | 15 | 10 | 9 | 1 | |
| KIT CARSON | 11 | 6 | 6 | 6 | 9 | 13 | 15 | 9 | 6 | 3 | 7 | 7 | | | | | 1 | 6 | 2 | 1 | 14 | 3 | 1 | 1 | 3 | 1 | | |
| LA PLATA | 158 | 129 | 186 | 44 | 66 | 26 | 17 | 19 | 29 | 48 | 65 | 80 | 99 | 135 | 118 | 110 | 103 | 104 | 108 | 179 | 199 | 131 | 67 | 54 | 3 | 8 | 14 | |
| LARIMER | 8 | 5 | 1 | 6 | 13 | 5 | 3 | | 2 | 1 | | | 1 | 1 | | | | 1 | | 4 | 8 | 1 | 28 | 2 | 10 | 4 | 1 | |
| LAS ANIMAS | 17 | 22 | 20 | 3 | 2 | 11 | 17 | 34 | 62 | 90 | 120 | 182 | 202 | 286 | 205 | 221 | 296 | 384 | 413 | 326 | 221 | 14 | 7 | 78 | 1 | | | |
| LINCOLN | 6 | 5 | 4 | 4 | 7 | 7 | 8 | 8 | 3 | 2 | | | 2 | 2 | 1 | 5 | 2 | 2 | 1 | 2 | 19 | 10 | 14 | 22 | 23 | 42 | 22 | |
| LOGAN | 17 | 19 | 19 | 8 | 13 | 24 | 9 | 11 | 4 | 10 | 4 | | 4 | 6 | 3 | 3 | 2 | 11 | 12 | 12 | 3 | 7 | 3 | 9 | 13 | 4 | 2 | |
| MESA | 1 | 2 | 2 | 4 | 1 | | 7 | 2 | 1 | 1 | 4 | 4 | 2 | 12 | 12 | 13 | 25 | 89 | 156 | 209 | 222 | 14 | 11 | 39 | 4 | 6 | 2 | |
| MOFFAT | 1 | 2 | 1 | 2 | 1 | 1 | 2 | 1 | 3 | 1 | 8 | 10 | 18 | 23 | 25 | 28 | 19 | 40 | 60 | 42 | 25 | 18 | 15 | 34 | 25 | 22 | 1 | |
| MONTEZUMA | 6 | 5 | 7 | 5 | 2 | 5 | 7 | 3 | 12 | 2 | 2 | | 2 | 3 | 5 | 5 | 1 | 7 | 2 | 4 | 18 | 11 | 3 | 8 | 18 | 11 | 4 | |
| MONTROSE | | | | 1 | | | | | | | | | | | | 3 | | | | | 1 | 2 | | 1 | | | | |
| MORGAN | 26 | 20 | 32 | 11 | 9 | 11 | 16 | 13 | 8 | 9 | 7 | 4 | 9 | 8 | 1 | 7 | 5 | 5 | 3 | 1 | 1 | 2 | 3 | 2 | 3 | 1 | 2 | |
| OTERO | | | | 1 | | | | | | | | | | | | | | | | | | | | | | | | |
| OURAY | | | | | | | | | | | | | | | | | | | | | | | | | | | | |
| PARK | | | | 1 | | | | | | | | | | | | | | | | | | | | | | | | |
| PHILLIPS | | | 3 | | 1 | | | | | | | | | | | 6 | 10 | 11 | 4 | 35 | 18 | 2 | 42 | 130 | 48 | | | |
| PITKIN | | 1 | | | 2 | | | | | | | | | | | | | | | | | | | | | | | |
| PROWERS | 16 | 9 | 5 | 8 | 13 | 7 | 1 | 5 | 5 | 2 | 8 | 4 | 2 | 4 | 4 | | | 5 | 5 | 6 | 3 | 5 | 2 | 3 | 1 | | | |
| PUEBLO | | | | | | | | | | | | | | | | | | | | | | | | | | | | |
| RIO BLANCO | 1 | 8 | 10 | 1 | 3 | 8 | 6 | 7 | 5 | 9 | 9 | 62 | 51 | 82 | 47 | 83 | 92 | 95 | 107 | 95 | 203 | 116 | 107 | 72 | 53 | 36 | 18 | |
| RIO GRANDE | 1 | 2 | 2 | | | | | | | | | | | | | | | | | | | | | | | | | |
| ROUTT | | 1 | 1 | 3 | 1 | | | | | | | 1 | 5 | 12 | 1 | | 1 | 6 | 3 | 2 | | 2 | 1 | 2 | 4 | 2 | | |
| SAGUACHE | 1 | | | | | | | 2 | | | | | | | | | | | | | | | | | | | | |
| SAN MIGUEL | | | | 1 | | | | | | | 3 | 1 | 6 | 9 | 10 | 19 | 28 | 13 | 20 | 17 | 5 | 1 | 2 | 2 | | | | |
| SEDGWICK | | | | | | | 1 | 3 | | | | | | | | | | | | | | | | | | | | |
| WASHINGTON | 39 | 28 | 22 | 26 | 24 | 20 | 20 | 13 | 17 | 23 | 18 | 4 | 15 | 12 | 24 | 29 | 65 | 34 | 23 | 14 | 11 | 2 | 2 | 4 | 1 | 9 | 4 | |
| WELD | 176 | 200 | 168 | 296 | 660 | 723 | 389 | 94 | 136 | 94 | 117 | 124 | 237 | 403 | 406 | 522 | 632 | 718 | 931 | 1222 | 1314 | 877 | 1208 | 1662 | 1461 | 1245 | 785 | |
| YUMA | 12 | 16 | 41 | 47 | 102 | 39 | 114 | 145 | 101 | 104 | 93 | 52 | 42 | 162 | 108 | 106 | 144 | 597 | 593 | 445 | 336 | 27 | 213 | 107 | 16 | 13 | 12 | |
| Grand Total | 773 | 713 | 769 | 696 | 1154 | 1092 | 828 | 527 | 482 | 509 | 587 | 683 | 992 | 1472 | 1254 | 1630 | 2092 | 3004 | 3542 | 4048 | 4443 | 2072 | 2770 | 3213 | 2294 | 1882 | 1120 | |

ALL COUNTIES





Colorado Oil and Gas Conservation Commission

Active Wells by County and Status as of 07/14/2014

| County | Drilling | Domestic | Injecting | Producing | Shut In | Temp Aband | Waiting on Completion | Active Storage | Intent to Plug | Total Active Wells |
|---------------|-------------|-----------|------------|--------------|-------------|------------|-----------------------|----------------|----------------|--------------------|
| ADAMS | 22 | | 7 | 878 | 63 | 8 | 2 | 16 | | 996 |
| ARAPAHOE | 18 | 1 | 4 | 124 | 14 | 9 | | 39 | | 209 |
| ARCHULETA | 1 | 5 | | 102 | 9 | 9 | 7 | | | 133 |
| BACA | 1 | | 11 | 128 | 43 | 5 | | 55 | | 243 |
| BENT | | 1 | | 29 | 7 | | 1 | | | 38 |
| BOULDER | | | | 314 | 2 | 1 | | | | 317 |
| BROOMFIELD | | | | 94 | 3 | | | | | 97 |
| CHEYENNE | 16 | | 38 | 314 | 24 | 48 | 4 | | | 444 |
| CROWLEY | 1 | | | | | | | | | 1 |
| DELTA | | | | 3 | 15 | | 1 | | | 19 |
| DENVER | | | 1 | 44 | 4 | | 3 | | | 52 |
| DOLORES | 3 | | 1 | 38 | 4 | 1 | 1 | | | 48 |
| EL PASO | 1 | 1 | | | | 1 | | | | 3 |
| ELBERT | | | | 65 | 4 | 2 | | | | 71 |
| FREMONT | 2 | 3 | | 62 | 4 | 6 | | | | 77 |
| GARFIELD | 274 | 5 | 41 | 10080 | 190 | 63 | 108 | 1 | | 10762 |
| GUNNISON | 1 | | 1 | 25 | 14 | 1 | 4 | | | 46 |
| HUERFANO | 1 | | 1 | 34 | 3 | 6 | 1 | | | 46 |
| JACKSON | 6 | | 33 | 110 | 40 | 1 | | | | 190 |
| JEFFERSON | | | 2 | 1 | 1 | | 1 | 1 | | 6 |
| KIOWA | 5 | | 9 | 104 | 16 | 4 | 2 | | | 140 |
| KIT CARSON | | 1 | 1 | 14 | 1 | 1 | 1 | | | 19 |
| LA PLATA | 13 | 7 | 32 | 3119 | 112 | 21 | 4 | 28 | | 3336 |
| LARIMER | 3 | 2 | 25 | 174 | 33 | 18 | 2 | | | 257 |
| LAS ANIMAS | 1 | 4 | 19 | 2844 | 82 | 74 | 21 | 3 | | 3048 |
| LINCOLN | 25 | 1 | 7 | 76 | 15 | 2 | 4 | | | 130 |
| LOGAN | 7 | | 16 | 116 | 37 | 30 | 4 | 12 | | 222 |
| MESA | 5 | 1 | 10 | 856 | 134 | 28 | 7 | 10 | | 1051 |
| MOFFAT | 8 | | 9 | 494 | 59 | 41 | 9 | | | 620 |
| MONTEZUMA | 4 | 2 | 9 | 127 | 31 | 13 | 2 | | | 188 |
| MONTROSE | | | | | | 3 | | | | 3 |
| MORGAN | 3 | | 21 | 83 | 86 | 38 | 1 | 79 | | 311 |
| OURAY | | 2 | | | | 1 | | | | 3 |
| PARK | | | | | 1 | | | | | 1 |
| PHILLIPS | 3 | | 3 | 258 | 2 | 1 | 1 | | | 268 |
| PITKIN | | | | | | | | 10 | | 10 |
| PROWERS | | | | 27 | 3 | | | | | 30 |
| RIO BLANCO | 22 | 4 | 278 | 2195 | 308 | 91 | 21 | 4 | | 2923 |
| ROUTT | | 2 | | 31 | 8 | 1 | 2 | | | 44 |
| SAN MIGUEL | | | | 116 | 11 | 2 | | | | 129 |
| SEDGWICK | 3 | | 1 | 13 | 4 | | 1 | | | 22 |
| WASHINGTON | 10 | | 25 | 411 | 33 | 6 | 4 | | | 489 |
| WELD | 1301 | 1 | 37 | 19281 | 651 | 33 | 139 | 2 | | 21445 |
| YUMA | 14 | 8 | 20 | 3749 | 60 | 13 | 20 | 1 | | 3885 |
| Totals | 1774 | 51 | 662 | 46533 | 2131 | 582 | 378 | 261 | 0 | 52372 |



Colorado Oil Gas Conservation Commission Monthly Statistics

| YEAR | MO | Baker-Hughes Rig Count | Drilling | | Recompletion | | Injection | | Pits | | Locations | | Well Spud | | Active Wells | | Public Visits | | Well Oper | | Operators | | Release | |
|------|-------|------------------------|----------|------|--------------|------|-----------|------|------|------|-----------|------|-----------|-------|--------------|---------|---------------|--------|-----------|--------|-----------|----------|---------|-------|
| | | | Rcvd | Apvd | Rcvd | Apvd | Rcvd | Apvd | Rcvd | Apvd | Rcvd | Apvd | Rcvd | Apvd | Drilling | Active | Data | Office | Internet | Change | New | Inactive | Inc. | Blink |
| 2010 | Total | 5703 | 5996 | 519 | 515 | 34 | 28 | 120 | 225 | 2461 | 2548 | 2803 | 4755 | 43588 | 197 | 1115 | 1112479 | 8421 | 46 | 33 | 38 | 40 | | |
| | JAN | 63 | 405 | 351 | 8 | 23 | 4 | 6 | 4 | 8 | 249 | 112 | 232 | 4755 | 43588 | 14 | 95 | 103968 | 815 | 1 | 2 | 3 | 1 | |
| | FEB | 61 | 343 | 249 | 15 | 2 | 7 | 6 | 5 | 3 | 184 | 150 | 209 | 4733 | 43869 | 21 | 80 | 96171 | 356 | 1 | 1 | 9 | 4 | |
| | MAR | 68 | 472 | 498 | 18 | 23 | 4 | 7 | 38 | 31 | 262 | 258 | 268 | 4847 | 43927 | 9 | 125 | 122393 | 596 | 2 | 3 | 6 | 3 | |
| | APR | 72 | 325 | 314 | 26 | 15 | 5 | 0 | 20 | 27 | 190 | 218 | 241 | 4882 | 44203 | 8 | 105 | 106539 | 404 | 2 | 0 | 3 | 2 | |
| | MAY | 72 | 372 | 367 | 20 | 25 | 3 | 6 | 12 | 8 | 214 | 171 | 248 | 4904 | 44752 | 14 | 124 | 73024 | 544 | 3 | 0 | 5 | 2 | |
| | JUN | 70 | 512 | 436 | 61 | 22 | 5 | 4 | 11 | 4 | 172 | 239 | 272 | 5013 | 45401 | 30 | 131 | 108115 | 795 | 2 | 2 | 2 | 2 | |
| | JUL | 69 | 457 | 436 | 13 | 55 | 2 | 1 | 13 | 7 | 215 | 158 | 261 | 5113 | 45710 | 20 | 74 | 103585 | 596 | 3 | 6 | 3 | 6 | |
| | AUG | 73 | 472 | 482 | 37 | 17 | 1 | 0 | 10 | 17 | 236 | 229 | 282 | 5328 | 45975 | 21 | 141 | 111950 | 575 | 2 | 3 | 12 | 7 | |
| | SEP | 77 | 336 | 389 | 22 | 29 | 7 | 0 | 35 | 34 | 159 | 203 | 322 | 5361 | 46115 | 9 | 120 | 116043 | 587 | 5 | 1 | 7 | 5 | |
| | OCT | 78 | 382 | 443 | 45 | 29 | 2 | 1 | 4 | 12 | 171 | 172 | 302 | 5423 | 46719 | 14 | 126 | 132814 | 552 | 4 | 2 | 12 | 6 | |
| | NOV | 80 | 342 | 324 | 29 | 57 | 0 | 1 | 12 | 13 | 166 | 174 | 305 | 5409 | 46721 | 18 | 96 | 130612 | 575 | 4 | 9 | 15 | 4 | |
| | DEC | 79 | 291 | 370 | 31 | 23 | 4 | 0 | 26 | 28 | 164 | 183 | 278 | 5329 | 46835 | 9 | 77 | 132651 | 348 | 4 | 2 | 2 | 2 | |
| 2011 | Total | 4709 | 4659 | 325 | 320 | 44 | 32 | 190 | 192 | 2382 | 2267 | 3220 | 49153 | 187 | 1294 | 1337865 | 6743 | 33 | 31 | 79 | 44 | | | |
| | JAN | 73 | 372 | 258 | 26 | 21 | 3 | 0 | 11 | 5 | 142 | 129 | 245 | 5217 | 46958 | 12 | 106 | 112686 | 1051 | 3 | 3 | 7 | 5 | |
| | FEB | 70 | 370 | 382 | 23 | 27 | 7 | 5 | 21 | 9 | 160 | 129 | 231 | 5173 | 47128 | 16 | 114 | 105857 | 385 | 6 | 9 | 8 | 5 | |
| | MAR | 66 | 292 | 347 | 21 | 14 | 2 | 2 | 17 | 24 | 133 | 172 | 290 | 5132 | 47263 | 26 | 138 | 111746 | 378 | 4 | 1 | 7 | 3 | |
| | APR | 66 | 410 | 235 | 16 | 24 | 5 | 5 | 9 | 2 | 137 | 106 | 237 | 4785 | 47377 | 12 | 108 | 107627 | 477 | 4 | 2 | 10 | 3 | |
| | MAY | 66 | 491 | 506 | 23 | 16 | 3 | 1 | 6 | 2 | 105 | 131 | 211 | 4885 | 47533 | 20 | 123 | 109802 | 527 | 3 | 1 | 4 | 0 | |
| | JUN | 69 | 326 | 377 | 11 | 19 | 8 | 6 | 5 | 8 | 110 | 89 | 145 | 5136 | 47860 | 11 | 111 | 108849 | 1270 | 3 | 4 | 3 | 3 | |
| | JUL | 66 | 237 | 276 | 9 | 14 | 3 | 2 | 5 | 2 | 97 | 103 | 190 | 5152 | 48173 | 13 | 102 | 114195 | 499 | 5 | 0 | 1 | 4 | |
| | AUG | 62 | 313 | 288 | 6 | 9 | 6 | 4 | 23 | 5 | 83 | 97 | 179 | 5031 | 49153 | 11 | 112 | 110908 | 301 | 6 | 5 | 2 | 8 | |
| | SEP | 61 | 252 | 256 | 1 | 5 | 5 | 2 | 4 | 1 | 81 | 77 | 159 | 4960 | 49230 | 11 | 89 | 106114 | 834 | 0 | 4 | 4 | 5 | |
| | OCT | 62 | 226 | 265 | 9 | 3 | 7 | 6 | 2 | 19 | 94 | 82 | 160 | 5009 | 49236 | 8 | 105 | 108833 | 485 | 1 | 2 | 9 | 1 | |
| | NOV | 56 | 271 | 323 | 5 | 8 | 6 | 6 | 2 | 4 | 109 | 97 | 142 | 5000 | 49989 | 10 | 119 | 120586 | 462 | 6 | 4 | 12 | 8 | |
| | DEC | 57 | 322 | 260 | 4 | 8 | 8 | 5 | 9 | 3 | 122 | 81 | 107 | 5081 | 50067 | 9 | 78 | 107240 | 958 | 6 | 2 | 3 | 1 | |
| 2012 | Total | 3982 | 3773 | 154 | 168 | 63 | 44 | 114 | 84 | 1373 | 1293 | 2296 | 50265 | 159 | 1305 | 1324443 | 7627 | 47 | 37 | 70 | 46 | | | |
| | JAN | 53 | 538 | 331 | 6 | 0 | 3 | 5 | 6 | 8 | 176 | 124 | 143 | 5060 | 50265 | 9 | 108 | 47406 | 655 | 3 | 5 | 12 | 2 | |
| | FEB | 56 | 260 | 455 | 10 | 5 | 2 | 3 | 4 | 11 | 91 | 141 | 134 | 5250 | 50372 | 7 | 102 | 40649 | 293 | 4 | 2 | 6 | 3 | |
| | MAR | 57 | 344 | 241 | 5 | 9 | 3 | 8 | 15 | 6 | 129 | 84 | 166 | 5093 | 50540 | 9 | 133 | 43019 | 355 | 1 | 3 | 2 | 2 | |
| | APR | 61 | 331 | 333 | 6 | 5 | 5 | 5 | 6 | 8 | 146 | 117 | 162 | 4925 | 50687 | 3 | 132 | 46459 | 335 | 7 | 1 | 5 | 2 | |
| | MAY | 61 | 350 | 342 | 8 | 6 | 6 | 6 | 10 | 7 | 106 | 142 | 152 | 5110 | 50810 | 3 | 123 | 45215 | 349 | 2 | 1 | 3 | 0 | |
| | JUN | 62 | 349 | 273 | 2 | 8 | 8 | 8 | 5 | 3 | 114 | 85 | 134 | 5273 | 50909 | 8 | 122 | 41015 | 1455 | 6 | 2 | 2 | 4 | |
| | JUL | 68 | 864 | 304 | 11 | 4 | 9 | 2 | 9 | 5 | 218 | 91 | 156 | 5070 | 51091 | 7 | 154 | 45558 | 1011 | 4 | 1 | 2 | 2 | |
| | AUG | 69 | 232 | 291 | 6 | 4 | 3 | 2 | 4 | 1 | 35 | 76 | 186 | 5200 | 51255 | 20 | 130 | 44722 | 389 | 6 | 4 | 5 | 4 | |
| | SEP | 69 | 212 | 362 | 9 | 5 | 10 | 9 | 3 | 19 | 56 | 109 | 156 | 5185 | 51407 | 5 | 105 | 41256 | 277 | 4 | 1 | 6 | 1 | |
| | OCT | 72 | 319 | 376 | 5 | 9 | 7 | 5 | 1 | 8 | 67 | 88 | 234 | 4967 | 51598 | 5 | 135 | 45151 | 345 | 6 | 0 | 2 | 2 | |
| | NOV | 69 | 346 | 353 | 4 | 13 | 7 | 4 | 2 | 27 | 67 | 85 | 151 | 5141 | 51711 | 12 | 119 | 38903 | 442 | 2 | 0 | 2 | 2 | |
| | DEC | 64 | 336 | 367 | 2 | 4 | 4 | 6 | 2 | 3 | 63 | 71 | 109 | 5129 | 51737 | 4 | 93 | 32381 | 1299 | 4 | 1 | 1 | 2 | |
| 2013 | Total | 4481 | 4028 | 74 | 72 | 67 | 63 | 67 | 106 | 1268 | 1213 | 1883 | 51840 | 92 | 1456 | 511734 | 7205 | 49 | 21 | 48 | 26 | | | |
| | JAN | 62 | 277 | 292 | 4 | 2 | 3 | 4 | 14 | 8 | 90 | 43 | 160 | 4926 | 51840 | 1 | 90 | 46150 | 1964 | 6 | 3 | 3 | 2 | |
| | FEB | 61 | 281 | 297 | 5 | 4 | 0 | 1 | 3 | 1 | 78 | 94 | 140 | 5051 | 51847 | 12 | 113 | 43408 | 1547 | 8 | 2 | 6 | 5 | |
| | MAR | 62 | 362 | 331 | 4 | 6 | 5 | 1 | 6 | 6 | 102 | 88 | 176 | 4997 | 51952 | 16 | 140 | 46620 | 403 | 2 | 3 | 1 | 5 | |
| | APR | 63 | 274 | 317 | 2 | 3 | 2 | 5 | 8 | 3 | 88 | 99 | 156 | 4897 | 52060 | 11 | 188 | 45558 | 268 | 5 | 2 | 6 | 4 | |
| | MAY | 65 | 440 | 383 | 2 | 2 | 2 | 2 | 1 | 6 | 73 | 94 | 166 | 4923 | 52202 | 18 | 131 | 42365 | 290 | 5 | 1 | 3 | 3 | |
| | JUN | 67 | 417 | 377 | 3 | 0 | 5 | 7 | 5 | 2 | 126 | 92 | 211 | 4924 | 52337 | 10 | 156 | 42518 | 126 | 5 | 2 | 7 | 4 | |
| 2014 | Total | 2051 | 1937 | 20 | 17 | 17 | 19 | 19 | 42 | 27 | 557 | 510 | 1009 | 68 | 818 | 266619 | 4598 | 31 | 13 | 26 | 23 | | | |

Apvd = Approved, Rcvd = Received, Ind = Individual, Blnk = Blanket, Appls = Application for Hearing, NOAV = Notice of Alleged Violation, AOC = Administrative Order of Consent, OFV = Order Fined Violation, Cmpl = Complaint, Comp = Completed



Colorado Oil Gas Conservation Commission
Monthly Statistics

| YEAR | MO | Bonds | | Claim | | Hearings | | Enforcement | | Compl. | | Spills | | Remediation | | Inspections | |
|------|-------|---------|------|---------|-------|----------|-----|-------------|-----|--------|--------|----------|------|-------------|-------|-------------|-------|
| | | Replace | Ind. | Blanket | Apps. | Orders | NOA | AOC | OFV | Compl. | Spills | Projects | Rcvd | Comp | Wells | Locations | |
| 2010 | Total | 74 | 0 | 1 | 155 | 136 | 319 | 10 | 3 | 218 | 493 | 511 | 382 | 17075 | | | |
| | JAN | 4 | 0 | 0 | 16 | 15 | 43 | 3 | 2 | 33 | 40 | 47 | 45 | 1316 | | | |
| | FEB | 6 | 0 | 0 | 16 | 15 | 7 | 0 | 1 | 39 | 52 | 48 | 33 | 1591 | | | |
| | MAR | 9 | 0 | 0 | NA | NA | 31 | NA | NA | 31 | 48 | 59 | 27 | 1675 | | | |
| | APR | 1 | 0 | 0 | 24 | 24 | 8 | 0 | 0 | 10 | 52 | 38 | 61 | 959 | | | |
| | MAY | 4 | 0 | 0 | 77 | 65 | 16 | 2 | 5 | 26 | 31 | 33 | 51 | 1577 | | | |
| | JUN | 0 | 3 | 0 | 51 | 58 | 30 | 1 | 4 | 14 | 38 | 53 | 25 | 1099 | | | |
| | JUL | 3 | 1 | 0 | NA | NA | 29 | NA | NA | 13 | 39 | 92 | 20 | 518 | | | |
| | AUG | 2 | 0 | 1 | 68 | 54 | 26 | 2 | 2 | 19 | 54 | 106 | 56 | 1032 | | | |
| | SEP | 2 | 0 | 0 | 44 | 41 | 4 | 2 | 4 | 16 | 46 | 56 | 66 | 690 | | | |
| | OCT | 7 | 0 | 3 | 57 | 45 | 9 | 0 | 0 | 15 | 38 | 102 | 28 | 636 | | | |
| | NOV | 1 | 0 | 0 | NA | NA | 15 | NA | NA | 16 | 31 | 70 | 58 | 739 | | | |
| | DEC | 4 | 0 | 0 | 50 | 32 | 12 | 0 | 1 | 15 | 58 | 22 | 66 | 562 | | | |
| 2011 | Total | 43 | 4 | 4 | 403 | 349 | 230 | 10 | 19 | 247 | 527 | 726 | 536 | 12394 | | | |
| | JAN | 1 | 0 | 0 | 70 | 72 | 18 | 1 | 0 | 27 | 35 | 68 | 23 | 998 | | | 970 |
| | FEB | 0 | 0 | 0 | NA | NA | 10 | NA | NA | 24 | 40 | 85 | 36 | 1998 | | | 1024 |
| | MAR | 9 | 0 | 0 | 44 | 38 | 19 | 0 | 0 | 23 | 38 | 63 | 61 | 2200 | | | 1149 |
| | APR | 2 | 0 | 0 | 80 | 59 | 11 | 0 | 0 | 19 | 35 | 26 | 99 | 1701 | | | 930 |
| | MAY | 3 | 0 | 0 | 43 | 50 | 14 | 2 | 0 | 23 | 32 | 27 | 122 | 2621 | | | 1701 |
| | JUN | 4 | 0 | 0 | NA | NA | 5 | NA | NA | 35 | 39 | 46 | 98 | 1432 | | | 1091 |
| | JUL | 5 | 0 | 0 | 63 | 50 | 15 | 0 | 0 | 16 | 24 | 45 | 33 | 1319 | | | 1076 |
| | AUG | 0 | 1 | 0 | 67 | 54 | 24 | 3 | 2 | 21 | 28 | 127 | 33 | 1898 | | | 1432 |
| | SEP | 2 | 1 | 0 | NA | NA | 5 | NA | NA | 14 | 13 | 30 | 36 | 1137 | | | 864 |
| | OCT | 0 | 0 | 0 | 30 | 36 | 6 | 1 | 0 | 13 | 44 | 116 | 37 | 1407 | | | 1029 |
| | NOV | 7 | 0 | 0 | 85 | 37 | 16 | 2 | 0 | 10 | 44 | 26 | 44 | 1325 | | | 829 |
| | DEC | 0 | 0 | 0 | NA | NA | 14 | NA | NA | 19 | 30 | 31 | 19 | 1031 | | | 610 |
| 2012 | Total | 33 | 3 | 0 | 482 | 396 | 157 | 9 | 2 | 244 | 402 | 690 | 641 | 19067 | | | 12705 |
| | JAN | 0 | 0 | 0 | 48 | 75 | 15 | 4 | 0 | 21 | 40 | 31 | 45 | 1622 | | | 789 |
| | FEB | 2 | 0 | 0 | 41 | 35 | 11 | 2 | 0 | 15 | 30 | 42 | 90 | 1042 | | | 615 |
| | MAR | 1 | 0 | 0 | 54 | 67 | 16 | 2 | 0 | 11 | 25 | 65 | 29 | 1967 | | | 1150 |
| | APR | 8 | 0 | 0 | NA | NA | 21 | NA | NA | 16 | 33 | 39 | 37 | 1508 | | | 910 |
| | MAY | 0 | 0 | 0 | 46 | 50 | 22 | 6 | 0 | 13 | 31 | 41 | 60 | 2615 | | | 1576 |
| | JUN | 5 | 0 | 0 | 91 | 44 | 13 | 2 | 0 | 25 | 40 | 47 | 37 | 1857 | | | 1102 |
| | JUL | 0 | 0 | 0 | 96 | 70 | 25 | 3 | 0 | 21 | 47 | 50 | 22 | 2298 | | | 1339 |
| | AUG | 2 | 0 | 0 | NA | NA | 23 | NA | NA | 25 | 57 | 36 | 41 | 2145 | | | 1033 |
| | SEP | 0 | 0 | 0 | 101 | 51 | 7 | 2 | 0 | 16 | 60 | 43 | 51 | 1535 | | | 703 |
| | OCT | 2 | 0 | 0 | 52 | 82 | 4 | 12 | 3 | 12 | 79 | 47 | 60 | 1865 | | | 1157 |
| | NOV | 0 | 0 | 0 | NA | NA | 30 | NA | NA | 12 | 51 | 31 | 34 | 2400 | | | 1613 |
| | DEC | 0 | 0 | 0 | 42 | 48 | 50 | 4 | 0 | 14 | 75 | 35 | 35 | 2676 | | | 1384 |
| 2013 | Total | 20 | 0 | 0 | 571 | 522 | 237 | 37 | 3 | 201 | 568 | 507 | 541 | 23530 | | | 13371 |
| | JAN | 0 | 0 | 0 | 57 | 46 | 25 | 2 | 0 | 8 | 71 | 46 | 28 | 3247 | | | 1601 |
| | FEB | 0 | 0 | 0 | NA | NA | 23 | NA | NA | 16 | 73 | 50 | 13 | 2326 | | | 1283 |
| | MAR | 0 | 0 | 0 | 97 | 75 | 36 | 10 | 0 | 23 | 65 | 65 | 31 | 1798 | | | 1297 |
| | APR | 1 | 0 | 0 | 74 | 64 | 17 | 8 | 1 | 20 | 65 | 47 | 59 | 2601 | | | 1713 |
| | MAY | 5 | 0 | 0 | NA | NA | 12 | NA | NA | 14 | 77 | 45 | 42 | 2400 | | | 1568 |
| | JUN | 1 | 0 | 1 | 95 | 90 | 10 | 6 | 1 | 16 | 78 | 35 | 50 | 3085 | | | 1649 |
| 2014 | Total | 7 | 0 | 1 | 323 | 275 | 123 | 26 | 2 | 97 | 429 | 288 | 223 | 15457 | | | 9111 |

Appd = Approved, Rcvd = Received, Ind = Individual, Blnk = Blanket, Apps = Application for Hearing, NOA = Notice of Alleged Violation, AOC = Administrative Order of Consent, OFV = Order Finding Violation, Compl = Complain, Comp = Completed