



TOP STORIES

◆ Task Force on State and Local Regulation of Oil and Gas Operations

The 21-member Governor's Task Force on State and Local Regulation of Oil and Gas Operations convened its first meeting September 25 in Denver, and met a second time on October 9 and 10 in Durango. As provided by Executive Order B 2014-006, the Task Force is charged with crafting findings and recommendations by February 27, 2015 that will address land use conflicts in siting oil and gas facilities near homes, schools, businesses and recreational areas.

The Task Force is co-chaired by Gwen Lachelt, La Plata County Commissioner, and Randy Cleveland, President of XTO Energy, Inc. and receives staff support from the Executive Director's Office in the Department of Natural Resources. According to the Executive Order, Governor Hickenlooper selected the Task Force members to represent a broad set of interests involved in responsible oil and gas development. In addition to the two Task Force co-chairs, six of its members come from the oil and gas, agricultural and homebuilder industries; six members represent local government and the conservation community; and seven members are respected civic leaders.

During the Task Force's first meeting, Colorado Oil and Gas Conservation Commission (COGCC) Director Matt Lepore presented an overview of the agency's regulatory regime, including key legal principles of Colorado's split estate, recent growth in horizontal drilling and hydrocarbon production in the state, and the COGCC's ongoing efforts to enhance protections for public health and safety. These protections have largely come from revisions to COGCC rules on water quality, setbacks, public notice and, currently in the process, a revision of the agency's penalty and enforcement rules.

In Durango, at the Task Force's second meeting, Director Lepore participated in a panel discussion concerning permitting of oil and gas operations, and continued to field questions about state regulatory procedures, environmental monitoring and the resolution of disagreements between surface and mineral owners. The Task Force will convene again in Longmont on November 20 and 21.

◆ Weld County Disposal Well Permitting Update

The COGCC has approved four new commercial disposal injection wells in Weld County since July 1, 2014. The new disposal wells have a cumulative disposal capacity of 68,000 barrels per day (bbl/day), or 2,053,000 bbl/month.

The COGCC now requires seismic monitoring equipment at all commercial disposal injection well sites. Two of the four new wells referenced above were approved after the COGCC instituted this policy and seismic monitors have been installed at these locations.

Nine commercial disposal well permits and one single-operator permit currently are in process in Weld County. The disposal wells have been drilled for five of these pending permits. In these cases, the COGCC is waiting for the operators to submit required information, such as Form 5 Well Completion Reports, 5A Interval Completion Reports, Mechanical Integrity Tests, or Water Sample Analyses, before the Injection Permits can be approved.

For the other five pending permits, the wells have not yet been drilled. Of these, a drilling permit has been approved for three and the drilling permit is still in process for the other two.



◆ Drill Cuttings Management Policy

The Drill Cuttings Management Policy went into effect on September 15, 2014. This policy was developed in cooperation with an industry stakeholder group and provides appropriate management options for drill cuttings. A Land Application Plan Checklist is also provided with the policy to help operators supply appropriate information when preparing waste management plans for land application of drill cuttings. The Policy and Checklist are available at the COGCC website by clicking on the menu option “Policies” or http://cogcc.state.co.us/RR_Docs_new/policies_new.html.

◆ Rule 604.c.(2)E.i. Implementation

At the August, 2014 special hearing of the Commission, Department of Natural Resources Executive Director Mike King instructed staff to develop a means of tracking the implementation of Rule 604.c.(2)E.i., which requires multi-well production facilities to be located “as far as possible” from building units. This rule is one of the mitigation measures required for oil and gas locations sited in a “Buffer Zone,” or within 1,000 feet of a building unit (*i.e.*, residence).

The COGCC has modified the Form 2A, Oil and Gas Location Assessment (OGLA), to accept additional information regarding setbacks from production facilities and wells to surrounding cultural features. The form now requires operators to identify oil and gas locations where the rule is applicable. It also requires operators to certify they have complied and provide information demonstrating compliance.

OGLA specialists will use the information provided to determine compliance with the rule. The revised Form 2A allows for statistics to be gathered for applications submitted after October 1, 2014. These statistics will be reported in future Staff Reports to the Commission. The Form 2A revisions were made with feedback from industry, and information about them has been posted to the website. Staff is currently developing guidance for operators to use when generating documentation to support their siting decisions.

◆ Policy - Practices and Procedures for Stimulation at Depths 2,000 Feet or Less

There are regions in Colorado where hydrocarbon-bearing formations are located 2,000 feet or less below ground surface and may be in close proximity to useable groundwater resources. The reduced thickness of confining rock layers between the hydrocarbon formation and useable groundwater increases the risk of potential adverse impacts to the groundwater and calls for heightened scrutiny of proposed oil and gas operations in these areas. Accordingly, the COGCC has developed a policy for reviewing APDs for proposed wells less than 2,000 feet deep that will be fracture stimulated. In addition to the COGCC’s standard permit requirements, the Engineering Staff will require the operator to provide detailed hydraulic fracture stimulation modeling for wells less than 2,000 feet deep. The COGCC may also impose site-specific mitigation measures to ensure nearby groundwater resources are protected during drilling and completion activities, including hydraulic fracture stimulation.

◆ Local Government Liaison (LGL) Program

Nancy Prince and Marc Morton are the COGCC’s Local Government Liaisons (LGLs). Their respective assigned geographic work areas can be seen by clicking http://cogcc.state.co.us/Contacts/LGD_Liaison.pdf. Together they manage the Local Government Designee (LGD) program, a powerful (but voluntary) program used by over 160 counties, municipalities and special districts statewide.

The LGLs focus on enhancing local and state collaboration in the regulation of oil and gas in Colorado. This is accomplished by providing training, information, outreach and consultation not only to LGDs and local governments, but also to the general public, non-governmental organizations, the oil and gas industry, the business community and others interested in the COGCC’s mission, rules, policies, procedures, database and website, or in oil and gas in Colorado.

Since the summer of 2012, the LGL Program has provided support, input and review services to many counties and municipalities seeking to develop local land use regulations and/or contrac-



tual agreements with operators (or both). The LGLs strive to provide these services in a fashion that complements and harmonizes the planned local regulations and operator agreements with COGCC rules, policies and procedures. Many of these collaborative efforts were initiated by the LGDs or other local government staff as a result of training and outreach provided by the LGLs. If your town, city, county, or special district needs assistance with local regulations or operator agreements, please contact Nancy or Marc at the following addresses:

nancy.prince@state.co.us

marc.morton@state.co.us

With regard to LGD training, the final of five 2014 LGD trainings will be held on Tuesday, October 28 in Durango, in conjunction with the scheduled Commission Hearing (on Monday October 27). Pre-registration for LGD training is required, as space is limited, but the training is free of charge. Contact Marc Morton regarding pre-registration for the Durango LGD training. The LGD training program for 2015 is being developed. Contact Nancy Prince or Marc Morton to pre-register for an upcoming 2015 LGD training, to suggest a date, or to host a training session at your venue.

A list of the LGL outreach and public involvement activities conducted since the last staff report is included in the Public Outreach section of the staff report.

PUBLIC OUTREACH

➤ Outreach by Director and other Staff Members

- On September 8, Director Matt Lepore was interviewed as part of a PBS Rocky Mountain News Hour show highlighting the Governor's Task Force and ballot initiative and the COGCC's regulatory role.
- On September 25 and October 9, Director Lepore made a presentation and answered questions at the first and second meetings of the Governor's Task Force on Local and State Regulation of Oil and Gas Operations.

- On October 2, Director Lepore, Engineering Manager Stuart Ellsworth, and Permit and Technical Services Manager Jane Stanczyk met with representatives of the BLM to discuss the proposed amendments to the interagency MOU.
- On October 2 and 9, the Field Inspection Unit's Mike Leonard led two joint field training sessions with the Colorado Department of Public Health and Environment (CDPHE) Air Quality Division, Oil and Gas Group. This training focused on oil and gas well completion operations.
- On October 3, Director Lepore participated on a panel at UC Denver regarding challenges in governing hydraulic fracturing in Colorado.
- On October 6, Director Lepore was a Guest Lecturer at DU's Energy Law Class regarding the COGCC's organizational structure and oil and gas rules.
- On October 6, Mike Leonard led a joint field training session with the CDPHE's Water Quality Division. This training provided an overview of oil and gas operations.

➤ Outreach by LGLs

- On September 9, Nancy Prince, Permitting Supervisor Barbara Westerdale, Oil and Gas Location Assessment (OGLA) Supervisor John Noto and OGLA Specialist Melissa Housey attended an open house hosted by Conoco Phillips for neighborhoods near some newly proposed locations in eastern Aurora.
- On September 10, Nancy Prince attended the Aurora City Council Planning, Economic Development and Redevelopment Policy Committee meeting where a potential update of the city's zoning code related to oil and gas was discussed.
- On September 17, Nancy Prince attended a meeting between oil and gas operators and Adams County staff regarding an update of zoning regulations and potential operator agreements.



- On September 22, and at the request of the Town of Berthoud, Marc Morton attended a public meeting in Berthoud organized and attended by Extraction Oil and Gas, LLC (and subcontractors) in response to questions concerning their planned drilling program, notifications concerning drilling units/mineral rights, pre-application notifications and a planned seismic program.
- On September 23 and 24, Nancy Prince and Deputy Director Dave Kulmann attended public information sessions in Adams County. Representatives from the Colorado Oil and Gas Association, Adams County, and Nancy Prince presented an overview of the regulatory framework for oil and gas activity in Adams County.
- On September 26, Nancy Prince attended the Aurora LGD meeting where proposed changes to the oil and gas regulations were discussed with stakeholders, including operators, developers and citizens.
- On October 2, Marc Morton and Nancy Prince met in Denver with BBC Research & Consulting regarding its research project with the Colorado Department of Transportation. The research will assess future impacts to transportation infrastructure resulting from increasing oil and gas activity.
- On October 2, Marc Morton and Environmental Protection Specialist Stan Spencer attended the monthly Garfield County Energy Advisory Board (EAB) meeting in Rifle. Marc provided an update on the recently convened Task Force on State and Local Regulation of Oil and Gas Operations, including public participation opportunities.
- On October 3, Marc Morton and Stan Spencer met with Stuart McArthur, the new Town Manager of and LGD for Parachute.

REGIONAL ACTIVITIES

➤ NORTHWEST COLORADO

◆ Northwest Colorado Oil and Gas Forum

The next meeting of the Forum will be held on December 4, 2014 at 10:00AM in Rifle at the Colorado Mountain College. All parties wishing to be placed on the meeting agenda or added to the distribution list for announcements should contact Dave Andrews at: 970-625-2497 or by email at david.andrews@state.co.us

◆ Project Rulison

Please note that the email for Project Rulison submittals has been changed to:

DNR_rulison.submittal@state.co.us

◆ Project Rio Blanco

Please note that the email for Project Rio Blanco submittals has been changed to:

DNR_rioblanco.submittal@state.co.us

➤ SOUTHWEST COLORADO

◆ Gas and Oil Regulatory Team (GORT) Meeting

The last GORT/Southwest Colorado Oil and Gas Stakeholders meeting occurred on Friday, July 18, 2014 from 8:30 a.m. to noon at the La Plata County Fairgrounds in Durango.

The next GORT meeting will be scheduled for November 6, 2014 from 8:30 a.m. to noon at the La Plata County Fairgrounds, Animas Room, 2500 Main Avenue, Durango. All parties wishing to be placed on the next meeting agenda should contact Mark Weems at 970-259-4587 or mark.weems@state.co.us

◆ Fruitland Formation Outcrop Mitigation and Monitoring Projects (4M Projects)

4M Pilot Scale Mitigation Projects La Plata County. In May 2014 the South Fork Texas Creek (SFTC) compressor was rebuilt to replace worn



bearings. The heater plate in the methane sensor was also replaced. Regularly scheduled operations and maintenance, performed by COGCC's contractors, continues.

Some successes of the project include:

Methane Mitigation:

- Gas containing methane concentrations of 78.4 - 99.5% (SFTC) and 0.2–5% (Pine River) continuously recovered during the first and second quarters of 2014.
- Since conversion to a passive system in June of 2012 at Pine River, methane concentrations have remained at 0% - 5% following an increase in the first and second quarters of 2013.

Electrical Generation:

- SFTC has generated 179,463 kWh of surplus electricity.
- System operated at 11 kW output to maintain steady operation during the first and second quarters of 2014.

Site Restoration:

- Plant growth over the methane mitigation system has improved in 2014.

4M Monitoring Wells La Plata and Archuleta Counties. There are 17 wells at 11 locations in the 4M monitoring program. Well pressures are monitored remotely via satellite telemetry with one or two maintenance visits per year, depending upon data received. Two measurements per day are collected from each monitoring well. The BP Highlands MW 35-7-15 #1 was inspected by COGCC staff and Resource Hydrogeologic Services (RHS) on September 25, 2014. All components of this monitoring well were functioning properly. The COGCC and RHS are planning to inspect the remaining program wells October 7 - 9, 2014.

Ongoing Investigation, Reclamation and Mitigation of Residual Methane in the Vicinity of the Bryce 1-X Well Area, Bondad, Colorado. Three domestic water wells were sampled at the Bondad location on May 14, 2014 by Four Corners Geoscience. Free methane results ranged from 0.63 mg/l in the Middle well to 4.92 mg/l in the South well. Due to a mechanical failure, a sam-

ple from the North well was not obtained on May 14. On July 15, 2014, a sample was obtained from the North well. Analytical results showed a methane concentration of 10.11 mg/l for that well.

ADMINISTRATION/ORGANIZATION/OTHER

◆ New NE Environmental Protection Specialist

Rob Young was selected as the new Northeast Environmental Protection Specialist. Rob has been with the COGCC since 2010 in the Oil & Gas Location Assessment Group. Prior to that he worked as a consulting environmental geologist and brings seventeen years of experience to the position.

An organizational chart can be found on Pages 8-11. For contact information, please go to our homepage and find "Staff Contact Information."

◆ Plugging and Reclaiming Abandoned Wells (PRAW) - Project Updates

The **DB Orphan Blair #1 Project** is located on the NW edge of DeBeque in Mesa County. The well was found to be leaking water and was subsequently dug out and sealed to stop the flow. Lab analysis of a water sample indicates salt brine, which is indicative of oil and gas geologic sources. Based on old USGS reports and prior experience in the area, the COGCC believes the well was likely drilled around 1902.

The plugging design and cost estimate have been prepared. Competitive bids were recently solicited, with RACS's, Inc. coming in with the winning bid of \$69,069. The three to five day project is expected to commence in October.

The **Pasture #1 Project** involves the final abandonment of the well, which includes cutting the casing off three feet below ground level and installing a well marker and sign. Plans are to complete this work immediately following the completion of the DB Orphan Blair #1 project.

The **Flessner #13 Project** has previously been reported as a dry and abandoned well located in Washington County about 23 miles south of Ft. Morgan and Brush. It was drilled in 1955 to a depth of 5,460 feet (J-Sand Formation) and reportedly plugged at the same time by Monsanto



Chemical Co. A farmer complained that the well had never been plugged and abandoned and is currently obstructing farming operations. The plan is to re-enter the well and re-plug it. The estimated cost is \$45,500.

The **Ackerman #1 Project** is a dry and abandoned well located in Larimer County about seven miles northwest of Wellington. It was drilled in 1963 to a depth of 5,745 feet (Dakota formation) and plugged at the same time by Alpha-Omega Exploration Co. A COGCC inspector recently discovered it was leaking water. The plan is to re-enter the well and re-plug it. The estimated cost is \$45,500. The project has been put out to bid, with a contractor to be selected by November 1.

The **Gentry Project**, located in Rio Blanco County, includes 10 sites with eight wells and two pits located about one-half mile west of Rangely and one and a half miles south of State Highway 64. The surface owner brought the matter to the attention of the COGCC. The Gentry project is estimated at a total cost of \$90,000.

The **Wallace Oil and Gas BOND CLAIM Project** is located in far southeast Colorado in Baca County or about fifteen miles southeast of the town of Walsh. This project will include the salvaging of all miscellaneous production equipment and plugging three individual wells. The total cost is estimated at \$90,000, of which \$30,000 will come from the bond claim.

The **Noel Reynolds Ester #1 BOND CLAIM Project** is a temporarily abandoned well located in La Plata County about 18 miles southwest of Durango and six miles from the New Mexico state line. This project will include the removal of miscellaneous debris and unused equipment and the plugging of the well. The total cost is estimated at \$50,000, of which \$30,000 will come from the bond claim.

The **Fremont Co-Group #3 Five Wells Project** includes five wells that need to be re-plugged and abandoned. These orphan wells are located in the Florence-Cañon City Field in Fremont County and were discovered during routine inspections. It is believed that they were drilled in the early 1900s. None of these wells have an

operator of record or any bond posted. The cost to plug and abandon these wells is estimated to be \$50,000.

The **Chapman #1 Project** is a dry and abandoned well located in Baca County about six miles south-east of Walsh. It was drilled in 1960 to a depth of 5,576 feet (St Louis Formation) and plugged at the same time by Falcon Seaboard Drilling Co. The COGCC inspection report indicates four feet of casing protruding above ground and bubbling, churning water could be heard from it. The plan is to re-plug the well at an estimated cost of \$45,000.

The **Stewart #1 Project** is a dry and abandoned well located in La Plata County about 26 miles southwest of Durango and about one mile from the New Mexico state line. It was drilled in 1949 to a depth of 3,314 feet and reported plugged at the same time by Ocean Oil Co. The well is situated in a ravine with tight quarters, making access difficult, and was found to be leaking fairly fresh water. No samples were taken at the time of inspection, but it was noted that the foliage was quite healthy, and there were no dry powdery residues, which are usually indicative of salt or calcium carbonate. The plan is to re-enter the well and re-plug it at an estimated cost of \$80,000.

Page 12 contains a spreadsheet listing PRAW projects that are either scheduled, in process or completed, as of October 6, 2014.

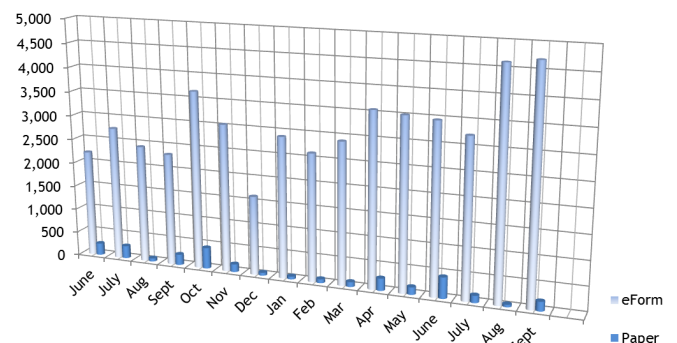
◆ Colorado Oil and Gas Information System (COGIS) Projects, Updates and Changes

Electronic Form Submissions (eForm)

TOTAL ELECTRONIC FORM SUBMITTALS

JUNE 2013 - SEPTEMBER 2014

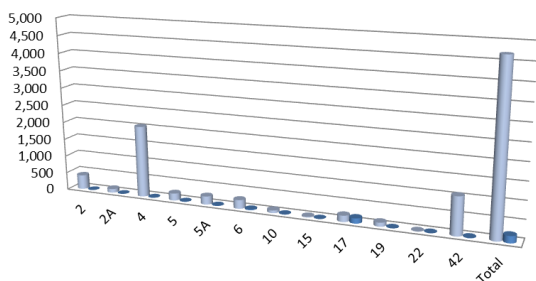
Forms currently available through eForm:





- Form 2 - Application for Permit to Drill
- Form 2A - Oil and Gas Location Assessment
- Form 4 - Sundry Notice
- Form 5 - Drilling Completion Report
- Form 5A - Completed Interval Report
- Form 6 - Well Abandonment Report
- Form 10 - Certification of Clearance/Change of Operator
- Form 15 - Earthen Pit Report/Permit
- Form 17 - Bradenhead Test Report
- Form 19 - Spill/Release Report
- Form 22 - Accident Report
- Form 23 - Well Control Report
- Form 41 - Trade Secret Claim of Entitlement
- Form 42 - Notice of Notification (Notice of Hydraulic Fracturing)

Following is a breakdown by Form for the month of SEPTEMBER 2014:



	2	2A	4	5	5A	6	10	15	17	19	22	42	Total
eForm	409	107	2,042	204	234	248	75	20	178	113	4	1,069	4703
paper	0	0	5	5	8	20	3	0	145	0	0	8	194

The development team is working on several forms concurrently. Forms 7, 14, 14A, 21, 26, 31 and 33 are in various stages of development.

As forms are released on eForm, updates to the PDF version on our Forms page, <http://cogcc.state.co.us/Forms/forms.html>, will occur in tandem. These new versions of the PDF forms will reflect any changes that have taken place when forms are moved into eForm.

Along with the eForm system, a page is available where the operators can review all known bugs within the system and report any new ones they discover. Currently, there are 486 operators using eForm and 1,851 individual users.

The public is permitted to make comments on all submitted OGLA forms (Forms 2A) through the eForm system. This can be accomplished by going

to the COGCC website and clicking on the menu option “Permits” or <http://cogcc.state.co.us/COGIS/DrillingPermits.asp>.

On the COGIS-Permits page, two search options are available for OGLA forms, “All Pending Location Assessments for” and “All Approved Location Assessments for.” When the results are displayed for forms in process, the public can click on the document number, which logs the user to the new eForm application. Once the page is displayed with the selected document, the user can select the Comment button to make a comment on that particular form. The public can use this same method to make comments on APDs (Form 2s).

For any operator not currently enrolled in eForm, instructions for starting the process can be found at <http://cogcc.state.co.us/Announcements/COUAINformation.pdf>.

◆ Website Update Project

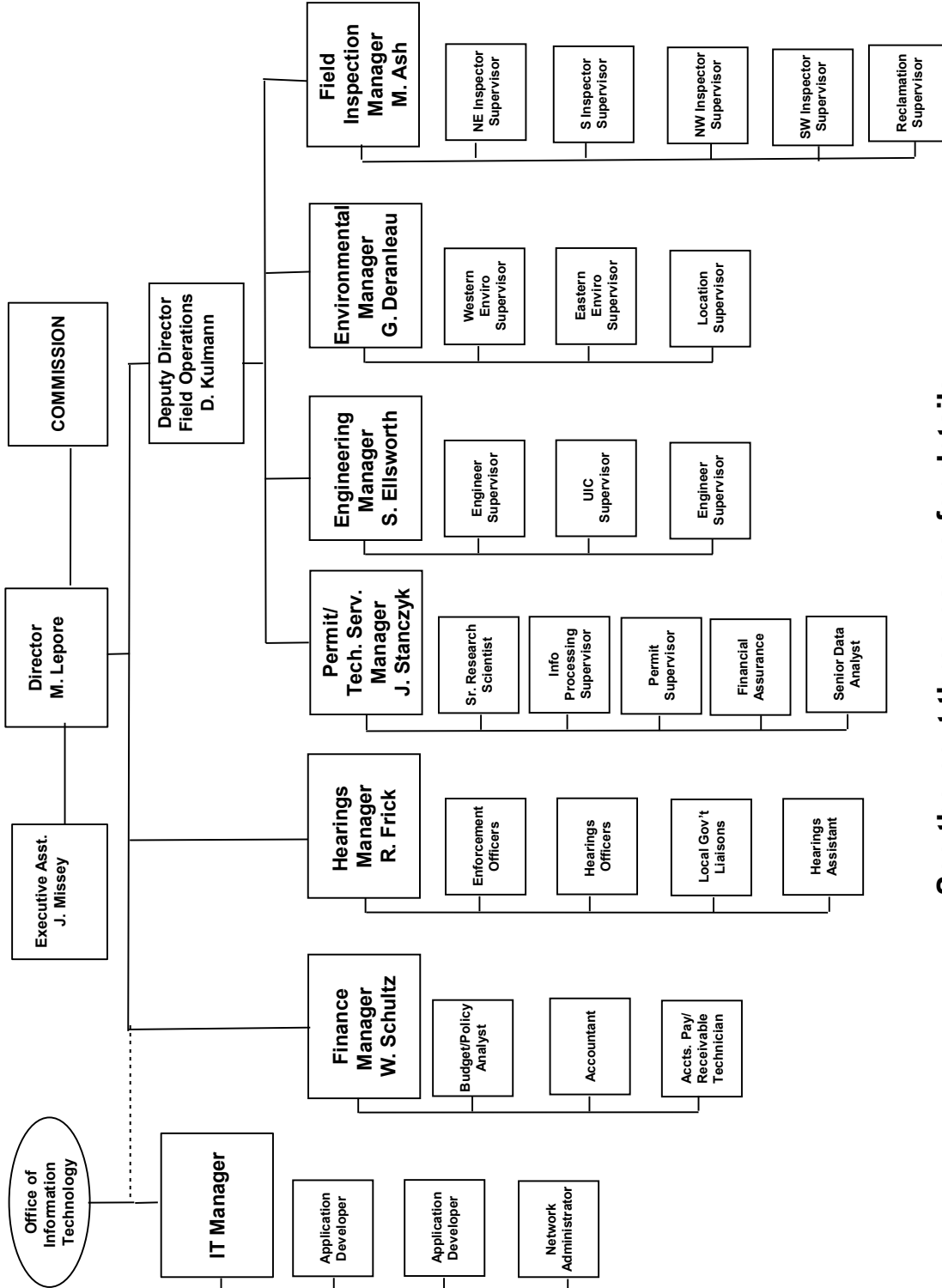
The COGCC website is being redesigned to simplify site navigation and to improve overall ease of use. Content is being reorganized with an emphasis on public accessibility to information about oil and gas operations in the state, including Commission rules, regulations, hearings, wells, and production data. The new COGCC site is slated to go online in the fourth quarter of 2014 with *beta* testing beginning soon. Initially, most of the database search and mapping tools will be moved unchanged from the old site to the new, with a schedule for future upgrades.

◆ December 2014 Hearing Docket

The docket for the December 2014 hearing will be available shortly after the October hearing. Hearing dockets are available on our website by clicking on “Hearings.” Links to the notices and hearing applications are available from the Docket Number and Applicant, respectively. To sign up for e-mail notification of hearing notices and applications, please see the announcement and instructions on the homepage of the website: <http://cogcc.state.co.us>.



COLORADO OIL & GAS CONSERVATION COMMISSION



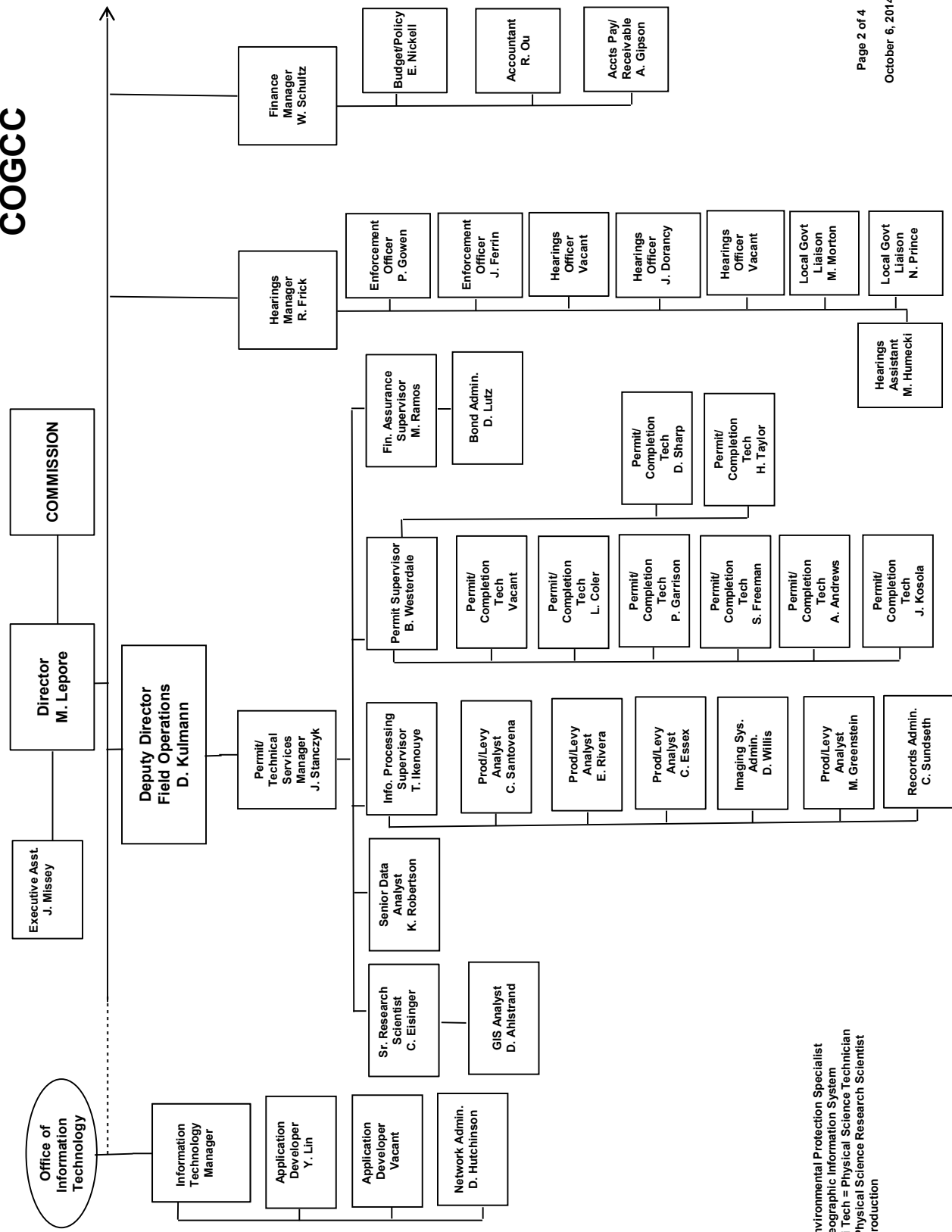
See the next three pages for details



Oil and Gas Staff Report

October 27, 2014

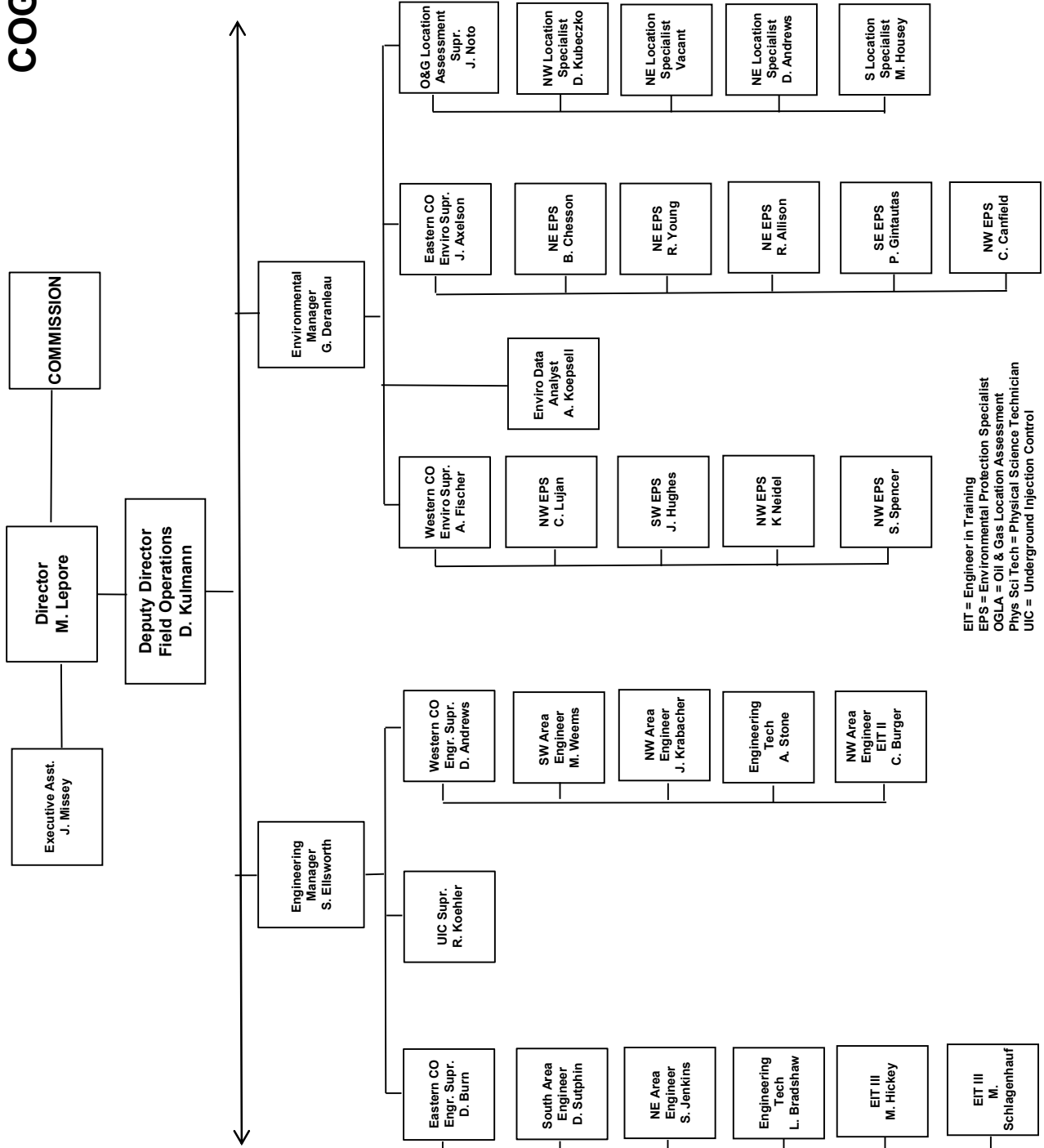
COGCC



EPS = Environmental Protection Specialist
 GIS = Geographic Information System
 Phys/Sci Tech = Physical Science Technician
 PSRS = Physical Science Research Scientist
 Prod = Production



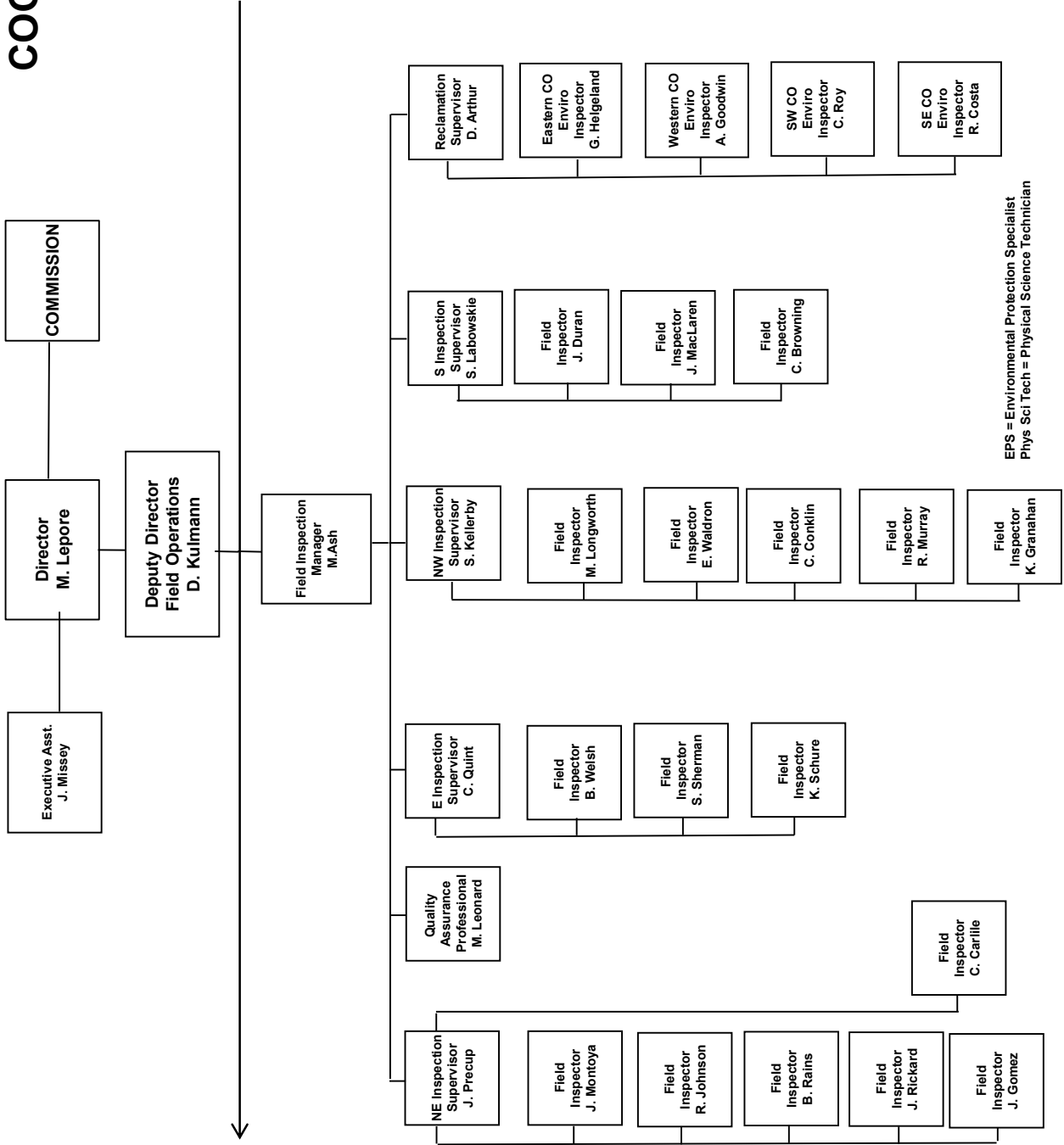
COGCC



EIT = Engineer in Training
 EPS = Environmental Protection Specialist
 OGLA = Oil & Gas Location Assessment
 Phys Sci Tech = Physical Science Technician
 UIC = Underground Injection Control



COGCC



EPS = Environmental Protection Specialist
Phys Sci Tech = Physical Science Technician



PLUGGING AND RECLAIMING ABANDONED WELLS FOR ORPHANED LOCATIONS
FISCAL YEAR 2014-16

COUNTY	TYPE	PROJECT NAME	PROJECT #	Acct Code	ESTIMATED TOTAL PROJECT COST				FY 2014-15 YTD EXPENDITURES				DESCRIPTION
					BOND	PRAW	EMGY	TOTALS	BOND	PRAW	EMGY	TOTALS	
Rio Blanco	PA	Gentry		GENT	\$0	\$48,000	\$0	\$48,000				\$0	Plug and abandon
Baca	PA	Wallace Oil and Gas BOND	FYE2008-12	WALL	\$30,000	\$60,000	\$0	\$90,000				\$0	BONDS claimed in 2004
					sub-total	\$108,000							
La Plata	PA	Noel Reynolds Ester #1 BOND	FYE2014-03	NOEL	\$30,000	\$20,000	\$0	\$50,000				\$0	Located in Red Mesa Field. Bond claimed in 2011
Fremont	PA	Fremont Co-Group #3 - Five Wells	FYE2014-09	FREM	\$0	\$50,000	\$0	\$50,000				\$0	Five more wells needing to be plugged in the Florence Field. Open casing 4' above GL. Heard "gas bubbling through liquid down hole" during 1998 inspection. Tagged bottom at 189' during 2007 inspection; no evidence of leaking.
Baca	PA	Chapman #1	FYE2008-42	CHAP	\$0	\$45,000	\$0	\$45,000				\$0	Drilled dry & abandon 1949; appears to have fresh water flowing; located in ravine making difficult for rig access; located on recently acquired SUIT lands
La Plata	PA	Stewart #1	FYE2007-02	STEW	\$0	\$80,000	\$0	\$80,000				\$0	
					sub-total	\$195,000							
					TOTALS =>	\$60,000	\$303,000	\$0	\$363,000	\$0	\$0	\$0	\$0

IN PROGRESS

COUNTY	TYPE	PROJECT NAME	PROJECT #	Acct Code	ESTIMATED TOTAL PROJECT COST				FY 2014-15 YTD EXPENDITURES				DESCRIPTION
					BOND	PRAW	EMGY	TOTALS	BOND	PRAW	EMGY	TOTALS	
Mesa	PA	DB Orphan Blair #1	FYE2014-01	DEB1	\$0	\$65,069	\$0	\$65,069				\$0	Have capped well and stopped water flow. Re-enter, PA. Leak has stopped; will cut off casing and install PA marker and repair the gate to the location. Plans are to piggy back it with the Debeque Water Flow to save on mobilization charges.
Mesa	PA	Pasture #1	FYE2013-06	HSTD	\$0	\$5,000	\$0	\$5,000				\$0	DA 1955; Surf owner/farmer complaint; located in a cultivated farm and impeding farming operations.
Washington	PA	Flessner #13	FYE2014-02	FLES	\$0	\$45,500	\$0	\$45,500				\$0	
Larimer	PA	Akerman #1	FYE2014-06	AKER	\$0	\$40,000	\$0	\$40,000				\$0	Well has open 4 1/2" at surface with water flowing out of csg
						\$0		\$0				\$0	
						\$0		\$0				\$0	
						\$0		\$0				\$0	
						\$0		\$0				\$0	
						\$0		\$0				\$0	
					TOTALS =>	\$0	\$155,569	\$0	\$155,569	\$0	\$0	\$0	\$0

COMPLETED

COUNTY	TYPE	PROJECT NAME	PROJECT #	Acct Code	ESTIMATED TOTAL PROJECT COST				FY 2014-15 YTD EXPENDITURES				DESCRIPTION
					BOND	PRAW	EMGY	TOTALS	BOND	PRAW	EMGY	TOTALS	
						\$0		\$0				\$0	
						\$0		\$0				\$0	
						\$0		\$0				\$0	
						\$0		\$0				\$0	
						\$0		\$0				\$0	
						\$0		\$0				\$0	
						\$0		\$0				\$0	
						\$0		\$0				\$0	
						\$0		\$0				\$0	
					TOTALS =>	\$0	\$0	\$0	\$0	\$0	\$0	\$0	\$0

GRAND TOTALS =>

ESTIMATED TOTAL PROJECT COSTS				FY 2014-15 YTD EXPENDITURES			
BOND	PRAW	EMGY	TOTALS	BOND	PRAW	EMGY	TOTALS
\$60,000	\$458,569	\$0	\$518,569	\$0	\$0	\$0	\$0

SCOREBOARD (PRAW FUNDING ONLY)

\$155,569	IN PROGRESS ESTIMATED TOTALS
\$0	IN PROGRESS SPENT TO DATE TOTALS
\$155,569	IN PROGRESS REMAINING TOTALS
\$0	COMPLETED TO DATE TOTALS
\$155,569	SUM OF (IN PROGRESS TOTALS) AND (COMPLETED TO DATE TOTALS)
\$445,000	ANNUAL ALLOTMENT BUDGET TOTAL
\$289,431	BALANCE PROJECTED TO DATE

Project Types: "PA" indicates plugging and abandonment, "REC" indicates reclamation, and "ENV" indicates environmental remediation
EMGY: indicates funding by the Emergency Response line item
TBD: Cost estimates in process.
PRAW: indicates funding by the Plugging and Reclaiming Abandoned Wells line item



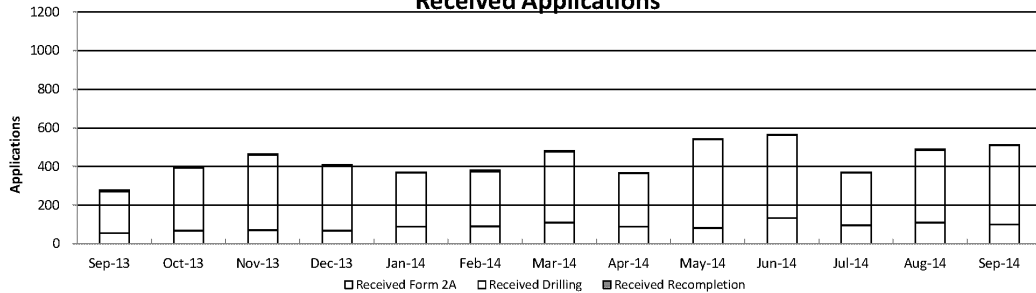
Colorado Oil & Gas Conservation Commission

Monthly Permit Activity

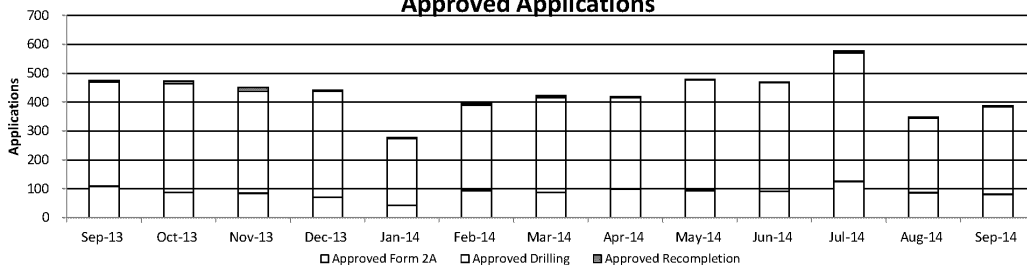
	Backlog	Received	Approved	Withdrawn	Rejected	Incomplete	In-Process	Remaining
Form2A								
Sep-13	278	56	109	0	0	68	157	225
Oct-13	225	68	88	6	0	69	130	199
Nov-13	199	72	85	6	0	57	123	180
Dec-13	179	68	71	6	0	57	113	170
Jan-14	170	90	43	7	0	47	163	210
Feb-14	210	91	94	3	0	51	153	204
Mar-14	204	110	88	4	0	48	174	222
Apr-14	222	89	99	18	0	25	169	194
May-14	194	83	94	7	0	26	150	176
Jun-14	176	134	92	3	0	30	185	215
Jul-14	215	97	126	3	0	28	148	183
Aug-14	176	111	87	4	0	36	160	196
Sep-14	196	101	81	3	0	47	166	213
Drilling								
Sep-13	949	214	361	2	0	160	640	800
Oct-13	800	325	376	12	0	115	622	737
Nov-13	737	389	353	10	0	88	675	763
Dec-13	763	338	367	7	0	110	617	727
Jan-14	727	278	232	77	0	75	621	696
Feb-14	696	284	297	4	0	109	570	679
Mar-14	679	367	329	13	0	103	601	704
Apr-14	704	276	317	16	0	63	584	647
May-14	647	458	383	16	0	53	653	706
Jun-14	706	429	377	8	0	62	688	750
Jul-14	750	272	446	2	0	65	509	574
Aug-14	574	374	259	24	0	90	575	665
Sep-14	665	411	304	21	0	109	642	751
Recompletion								
Sep-13	13	9	5	0	0	0	17	17
Oct-13	17	5	9	0	0	0	12	13
Nov-13	13	4	13	0	0	0	4	4
Dec-13	4	3	4	0	0	0	3	3
Jan-14	3	3	2	0	0	0	4	4
Feb-14	4	6	4	0	0	0	6	6
Mar-14	6	4	6	0	0	0	4	4
Apr-14	4	2	3	0	0	1	2	3
May-14	3	2	2	0	0	1	2	3
Jun-14	3	3	0	0	0	1	5	6
Jul-14	6	2	5	0	0	0	3	3
Aug-14	3	4	3	0	0	0	4	4
Sep-14	4	1	3	0	0	1	1	2

Incomplete are permits that have missing or inaccurate data and cannot be approved.

Received Applications



Approved Applications



Backlog = Incomplete + In-process = Remaining permits from previous month



Colorado Oil and Gas Conservation Commission
 Status of Permit Applications Filed By Month
 October 3, 2014

Form 2A Location Assessment

Year	Month	Received	Approved	Withdrawn	In Process	Percent In Process	Median Days to Process	Less Than 30 Days	30 to 49 Days	Greater Than 50 Days
2011	Total	2391	2298	93	0	0%		1416	620	262
2012	Total	1359	1289	68	2	0%		706	378	205
2013	1	177	163	12	2	1%	35	99	45	19
2013	2	91	83	8	0	0%	34	42	29	12
2013	3	131	122	9	0	0%	51	41	46	35
2013	4	150	141	7	2	1%	40	47	69	25
2013	5	105	100	4	1	1%	42	47	32	21
2013	6	107	89	16	2	2%	50	28	41	20
2013	7	204	198	3	3	1%	69	11	71	116
2013	8	58	56	2	0	0%	62	7	18	31
2013	9	56	53	3	0	0%	56	13	18	22
2013	10	63	61	2	0	0%	53	12	24	25
2013	11	76	70	5	1	1%	50	18	24	28
2013	12	68	61	6	1	1%	61	4	16	41
2013	Total	1286	1197	77	12	1%		369	433	395
2014	1	85	82	3	0	0%	54	12	36	34
2014	2	88	85	1	2	2%	52	11	36	38
2014	3	113	108	5	0	0%	47	30	42	36
2014	4	80	72	6	2	3%	43	18	35	19
2014	5	92	86	3	3	3%	49	13	34	39
2014	6	134	106	3	25	19%	37	36	54	16
2014	7	100	86	2	12	12%	35	37	38	11
2014	8	102	59	1	42	41%	30	33	23	3
2014	9	119	10	2	107	90%	21	9	1	0
2014	Total	913	694	26	193	21%		199	299	196

Form 2 Application For Permit to Drill (APDs)

Year	Month	Received	Approved	Withdrawn	In Process	Percent In Process	Median Days to Process	Less Than 30 Days	30 to 49 Days	Greater Than 50 Days
2011	Total	4691	4557	132	0	0%		2723	1565	587
2012	Total	3955	3816	139	0	0%		1971	1393	602
2013	1	562	542	18	2	0%	36	278	179	86
2013	2	242	228	14	0	0%	36	78	126	38
2013	3	333	320	13	0	0%	43	123	119	84
2013	4	327	314	13	0	0%	40	105	153	59
2013	5	369	340	27	2	1%	40	111	181	59
2013	6	330	305	22	3	1%	47	110	131	66
2013	7	796	762	11	23	3%	66	106	218	449
2013	8	313	308	4	1	0%	65	13	138	162
2013	9	188	186	2	0	0%	71	21	66	106
2013	10	339	332	7	0	0%	72	22	89	228
2013	11	373	357	11	5	1%	60	49	147	166
2013	12	380	311	66	3	1%	68	30	79	204
2013	Total	4552	4305	208	39	1%		1046	1626	1707
2014	1	261	255	5	1	0%	56	35	117	107
2014	2	298	285	13	0	0%	58	37	94	159
2014	3	359	351	8	0	0%	52	50	133	173
2014	4	223	212	10	1	0%	47	20	121	73
2014	5	501	451	1	49	10%	57	40	155	258
2014	6	439	360	37	42	10%	45	111	138	114
2014	7	287	224	6	57	20%	38	62	119	45
2014	8	353	195	1	157	44%	34	61	124	13
2014	9	413	26	6	381	92%	21	24	2	0
2014	Total	3134	2359	87	688	22%		440	1003	942



Oil and Gas Staff Report

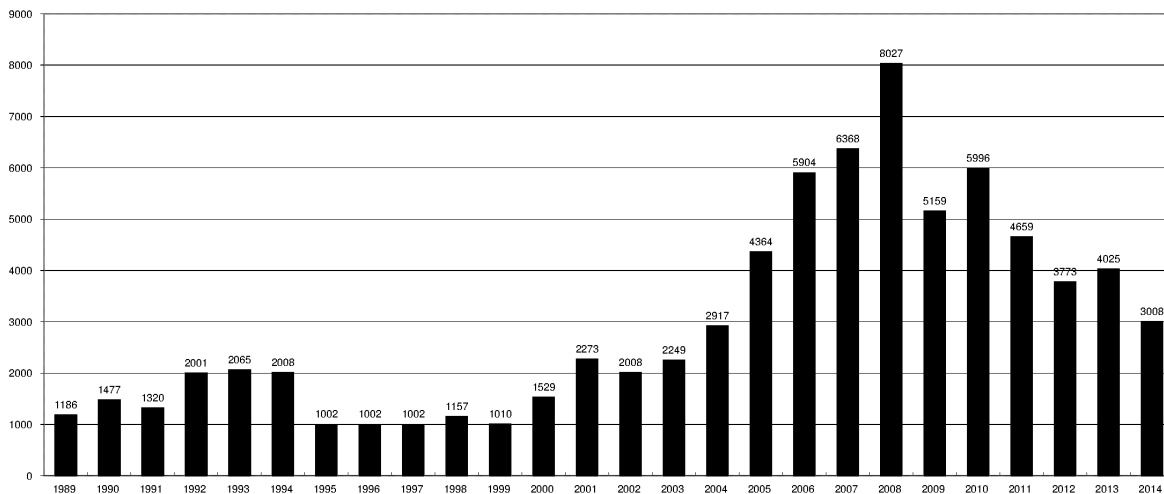
October 27, 2014

COLORADO OIL AND GAS CONSERVATION COMMISSION

ANNUAL DRILLING PERMITS BY COUNTY

COUNTY	1988	1989	1990	1991	1992	1993	1994	1995	1996	1997	1998	1999	2000	2001	2002	2003	2004	2005	2006	2007	2008	2009	2010	2011	2012	2013	2014	current as of 10/5/14
ADAMS	46	34	44	53	92	58	137	34	9	33	24	19	38	28	9	26	39	34	37	89	51	35	21	8	40	40	30	
ARAPAHOE	5	5	15	14	11	4	20	12	2	9	1	2	0	2	1	2	5	7	11	10	10	10	8	23	35	23	23	
ARCHULETA	8	5	18	5	2	1		3		3		1	7	9	6	10	8	13	14	26	47	11	18	12	5	4	3	
BACA	6	4	15	10	23	9	12	24	10	7	13	15	22	6	2	3	7	8	2	11	13	3	4	5	3	1		
BENT				1		2	2	4	2	5	3	5	2					5	3	8	1	1	5					
BOULDER	1		1	13	38	159	38	5	8	2	5		1	5	6	7	17	13	21	37	32	35	24	30	22			
BROOMFIELD																2	7		1	1		2	33	28	11	36		
CHEYENNE	203	149	102	93	71	58	48	55	43	31	41	7	3	3	3	3	3	10	21	15	33	12	13	16	31	50	22	
COSTILLA																												
CROWLEY	1		1	1																								2
DELTA	1	1	2												7	4	5	10	9	2			4	3	6	1	1	
DENVER											5	3	3		3					19	25	24						
DOLORES	2		4	1	2	1										1	1	1	6	10	12	21	8	8	13	12	3	
EAGLE																												1
ELBERT	9	12	8	5	3		2	13	16	11	1		2										1		1	2	4	
EL PASO																			4									
FREMONT	9	5	6	7	1	2	2	1	2	1								1	3	2	4	14	13	22	14	11	2	6
GARFIELD	19	66	111	36	18	56	143	78	109	141	95	130	213	353	362	567	796	1509	1845	2550	2888	1981	2037	1323	1046	870	742	
GRAND							1																					
GUNNISON			2	2		1										5	10	1	9	19	7	10	12	4	3	11	9	16
HUERFANO	3	5		4	17	3	3	2	1	3	40	26	41	27	27			8	2		7		2	1	9	1	10	
JACKSON	3	1	4	6	2	2	3	2	2	6	3		34	18	21	9	14	6	8	5	27	19	9	18	5	12	14	
JEFFERSON	1		4	2		1		1	1		1	2	1							1	3	2					1	
KIOWA	15	39	40	46	28	28	21	26	13	17	10	2	11	18	2	4	2	1	11	9	26	7	16	17	17	12	5	
KIT CARSON	9	5	7	8	8	15	26	11	7	6	9	5				1	3	5	4	4	13	7	3	2	6	1	2	
LA PLATA	302	218	388	128	120	40	40	20	71	40	82	107	127	156	104	162	102	115	235	251	328	298	191	99	71	32	57	
LARIMER	4	4	3	6	13	7	3		1	3	1		2		1			1		5	46	12	41	8	13	2	4	
LAS ANIMAS	10	30	36			9	32	95	134	136	195	195	268	400	259	180	332	413	500	362	303	88	92	85	11	2	1	
LINCOLN	8	6	4	7	7	11	8	9	3	2			2	2	1	6	3	4	1	2	58	44	48	31	36	87	105	
LOGAN	18	21	23	13	14	30	15	13	6	12	7		4	7	3	3	6	13	17	14	5	9	17	8	27	4	5	
MESA	1	12	29	20	22	2	22	6	11	10	2	6	13	27	30	27	54	136	265	293	501	427	306	127	150	105	52	
MOFFAT	13	25	27	19	40	52	43	40	41	28	21	15	35	52	62	63	63	60	120	68	57	51	53	93	88	44	46	
MONTEZUMA	6	7	10	8	7	11	15	9	13	5	4	1	4			5	8	8	11	5	12	22	39	19	27	29	14	19
MONTROSE											1		1	3	2	4	2			1	3	3		1	1			
MORGAN	34	27	36	13	10	11	19	12	10	11	10	12	9	9	2	7	9	7	3	6	2	1	6	13	5	16	6	
OTERO				2																								
PARK				1								1											3	4	1			
PHILLIPS			3		1	1							1	2		7	13	17	12	69	82	45	64	112	56		7	
PITKIN		1			2													1		1								
PROWERS	19	9	5	10	14	7	3	5	5	3	9	3	2	5	4			7	5	7	5	8	1	3	1			
RIO BLANCO	34	83	77	33	81	83	126	81	33	40	51	95	89	187	105	179	154	161	360	321	477	348	441	109	117	167	77	
RIO GRANDE	2	3	4	1			1						1	1							1	1			2		1	
ROUTT	4	3	12	4	2	3	1	2	1	1	1	4	20	13	1		4	6	9	8	4	2	3	10	4	12	4	
SAGUACHE	1							2					2		2					2	1	2						
SAN MIGUEL			2	2						1	1	4	2	11	13	27	18	42	45	35	23	20	13	10	2	1	2	
SEDGWICK				1				3		2							1	5	2	7	2	1	19	11	12	2	3	
WASHINGTON	40	29	23	28	24	26	25	12	19	26	18	3	23	17	27	34	128	50	69	45	11	1	6	12	6	19	10	
WELD	424	357	366	656	1224	1319	1030	254	305	285	392	288	509	702	760	757	832	901	1418	1527	2340	1448	2152	2282	1826	2468	1672	
YUMA	14	20	45	60	104	53	167	168	123	116	111	60	31	205	160	138	237	782	797	541	545	105	299	148	11	9	52	
Total	1275	1186	1477	1320	2001	2065	2008	1002	1002	1002	1157	1010	1529	2273	2008	2249	2917	4364	5904	6368	8027	5159	5996	4659	3773	4025	3008	

ALL COUNTIES





Colorado Oil and Gas Conservation Commission
Horizontal Well Activity
 October 5, 2014

County	Prior Years		2009		2010		2011		2012		2013		2014		Total		Completion			
	Drilled	DA PA	Permit	Spud	Permit	Spud	Permit	Spud	Permit	Spud	Permit	Spud	Permit	Spud	Spud	AC	PR	DA	PA	
ADAMS			6	5	2	3	1	1	17	2	26	2	23	12	24	5	4			
ARAPAHOE	2						10	1	22	4	11	5	15	8	20	2	3		2	
ARCHULETA	17		7	6	15	7	10	8	5	9	2	2	1		47		42		1	
BENT																				
BOULDER							4													
CHEYENNE	5	4																		
DELTA									6	1	1	1	1	1	8		2		3	
DOLORES	9		18	2	6				9	3	5	4	1		18		13		1	
EL PASO									10										1	
ELBERT																				
FREMONT	7	6	6		12	5	3	4	4	1	1	1		18		10	6	1		
GARFIELD	10	2	1	1	16	2	18	6	43	6	18	4	15	5	34		27		2	
GUNNISON	1				1				3	2	2		8		3		3			
HUERFANO									4	1	1		2							
JACKSON	8	1	8		3	3	9	2	4		8	5	12	2	20		12		1	
KIOWA											4	1	1							
KIT CARSON	1								1		1									
LA PLATA	28	2	11	2	28	3	18	7	12	1	5		20	1	42		46		1	
LARIMER	3	2					5	1	2	1	2				7		3		2	
LAS ANIMAS	16	2	4		1	1									17		14		3	
LINCOLN			2	1	2	1	1			1	6	1	3		4		3			
LOGAN	2								1						2		2			
MESA	3	2	36	1	22	8	24	13	14		9	2	9	1	28		25		2	
MOFFAT	7	1	6	3	4		9	4	44	6	18	13	13		33		19		1	
MONTEZUMA	6		1	23	6	11	2	8	2	18	6	3	4	14	26		39		1	
MORGAN							6	2	2	1	13	1	6		4		2			
PARK							1	1							1					
RIO BLANCO	7	2			1	1	11	2	15	2	4	5	3	1	18		10		3	
ROUITT	10	6	1						1		1				10		3		6	
SAN MIGUEL	1																			
WASHINGTON	1																			
WELD	11	3	12	5	208	95	763	233	964	595	2114	1069	1610	1049	3057		1170		12	
YUMA	1		6												1					
TOTAL Horizontal	156	25	14	147	32	132	901	285	1203	642	2260	1123	1758	1081	3451	10	1455	34	67	
Percent of Total HZ	16%	9%					4659		3773		4025		3008		0%	42%	1%	2%		
Total All Permits																				
Percent of Total							19.3%		31.9%		56.1%		58.4%							



Well to Building Setback Review

Colorado Oil and Gas Conservation Commission
October 5, 2014

Count of well locations by proximity groupings from well spot to buildings for all locations reviewed under the December 17, 2008 amended rules.

Location Proximity to Buildings	2009	2010	2011	2012	2013	2014	Number of Locations	Percent of Total Locations
less than 150 feet	2	3	3	2	0	3	13	0%
150 to 350 feet	37	58	61	39	34	32	261	3%
350 to 500 feet	50	110	97	61	64	34	416	5%
500 to 1000 feet	117	385	331	188	188	126	1335	17%
1000 + feet	356	1705	1470	838	762	525	5656	74%
Total Locations	562	2261	1962	1128	1048	720	7681	

County	Total	Less than 150 feet	150 to 350 feet	350 to 500 feet	500 to 1000 feet	1000 + feet
ADAMS	60	0	4	5	14	37
ARAPAHOE	78	0	2	4	9	63
ARCHULETA	18	0	0	1	9	8
BACA	14	0	0	0	1	13
BENT	7	0	0	0	0	7
BOULDER	23	0	1	1	17	4
BROOMFIELD	33	0	0	4	13	16
CHEYENNE	128	0	0	0	2	125
CROWLEY	2	0	0	0	0	2
DELTA	7	0	0	2	1	4
DOLORES	19	0	0	0	7	12
EAGLE	1	0	0	0	0	1
EL PASO	14	0	0	0	3	11
ELBERT	8	0	0	0	2	6
FREMONT	37	0	2	7	7	21
GARFIELD	495	0	9	5	70	411
GUNNISON	32	0	0	3	1	27
HUERFANO	14	0	0	0	4	10
JACKSON	40	0	0	3	1	36
KIOWA	63	0	0	0	1	62
KIT CARSON	14	0	0	0	0	14
LA PLATA	112	0	4	13	34	61
LARIMER	34	0	5	3	10	16
LAS ANIMAS	201	0	6	7	37	150
LINCOLN	320	0	1	2	4	313
LOGAN	43	0	1	1	0	41
MESA	87	0	0	3	14	70
MOFFAT	164	0	0	2	14	148
MONTEZUMA	36	0	0	1	4	31
MONTROSE	2	0	0	0	0	2
MORGAN	28	0	0	2	4	22
PARK	4	0	0	0	0	4
PHILLIPS	269	0	4	6	20	238
PROWERS	4	0	0	0	0	4
RIO BLANCO	167	0	0	0	1	166
RIO GRANDE	2	0	0	0	1	1
ROUTT	26	0	0	0	2	24
SAN MIGUEL	12	0	0	0	0	12
SEDGWICK	28	0	0	1	3	24
WASHINGTON	58	0	2	0	2	53
WELD	4454	0	211	325	979	2930
YUMA	524	0	9	15	44	456



Well to Building Setback Review

Colorado Oil and Gas Conservation Commission

October 5, 2014

Listing of Locations less than 200 feet to Building

Year	Document Number	County	High Density	New Location	Distance	Proximity	Building Description
2011	2587822	CHEYENNE	No	No	58	less 150	Water well house
2009	1691798	WELD	No	No	58	less 150	Vehicle garage
2010	400072164	WELD	No	Yes	69	less 150	Abandoned hog shed
2014	400569085	WELD	No	No	78	less 150	Well Shed
2014	400600705	WELD	No	No	80	less 151	Livestock Shed
2012	400240957	GUNNISON	No	Yes	90	less 150	Equipment Shed
2009	1758843	WELD	No	Yes	103	less 150	Building to be razed
2011	1636646	WELD	No	No	122	less 150	Storage shed
2009	400011284	LAS ANIMAS	No	Yes	127	less 150	Operator is owner
2009	1786896	PHILLIPS	No	No	132	less 150	Grain Storage
2014	400642113	WELD	No	Yes	142	less 150	Barn
2011	400117702	WELD	No	Yes	143	less 150	Irrigation pump house
2011	400227765	WELD	No	Yes	145	less 150	Storage Barn
2014	400558626	LINCOLN	No	No	150	less 150	Gas Plant Equipment Building
2009	1904205	WELD	No	No	154	150 to 350	Livestock Enclosure
2012	400243295	WELD	No	Yes	155	150 to 350	Unused storage shed
2011	400179419	WELD	No	Yes	157	150 to 350	Existing well / storage building
2010	400054716	WELD	No	No	159	150 to 350	Equipment Barn
2011	400188968	WELD	No	Yes	159	150 to 350	Abandoned
2014	400554054	WELD	No	Yes	159	150 to 350	Equipment Shed
2014	400559404	WELD	No	Yes	160	151 to 350	Barn
2010	400021477	WELD	No	Yes	162	150 to 350	Goat Barn
2009	1758386	WELD	No	Yes	168	150 to 350	Storage Shed
2011	1635946	WELD	No	No	169	150 to 350	Storage shed
2013	400447386	WELD	No	No	169	150 to 350	Abandoned Turkey Barn
2013	400447391	WELD	No	No	169	150 to 350	Abandoned Turkey Barn
2011	400165164	WELD	No	Yes	178	150 to 350	Residence
2013	400367184	WELD	No	Yes	179	150 to 350	Shed
2011	400188780	WELD	No	Yes	180	150 to 350	Residence
2010	1697620	WELD	No	No	187	150 to 350	Livestock Shed
2009	1758746	WELD	No	No	193	150 to 350	Storage Shed
2011	400154431	WELD	No	Yes	198	150 to 350	Turkey barn
2012	400250031	WELD	No	Yes	198	150 to 350	abandoned guard shack
2009	1774783	WELD	No	No	199	150 to 350	cement service building
2011	400118102	YUMA	No	Yes	199	150 to 350	Steel Barn



Oil and Gas Staff Report

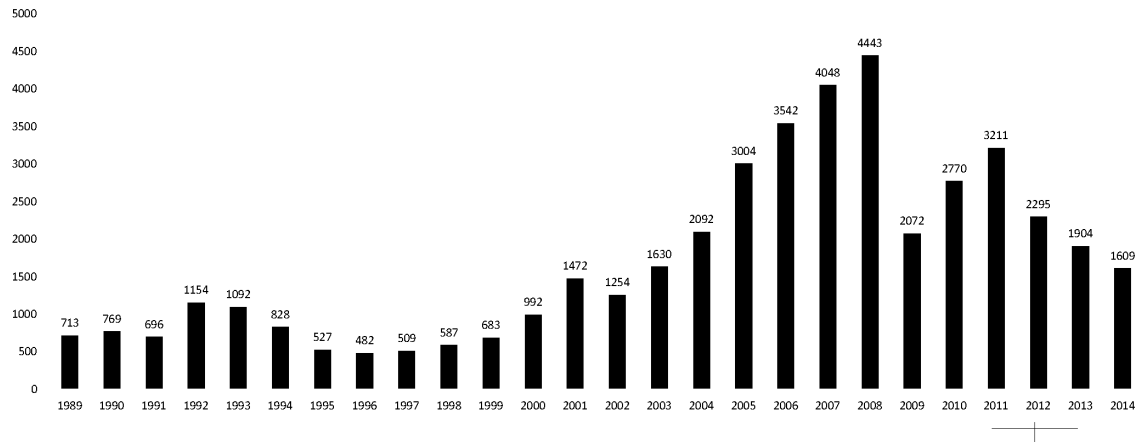
October 27, 2014

COLORADO OIL AND GAS CONSERVATION COMMISSION

ANNUAL WELL STARTS BY COUNTY

COUNTY	1988	1989	1990	1991	1992	1993	1994	1995	1996	1997	1998	1999	2000	2001	2002	2003	2004	2005	2006	2007	2008	2009	2010	2011	2012	2013	2014	Current as of 10/5/2014	
ADAMS	39	27	26	36	54	20	54	28	6	16	12	17	18	13	4	19	22	24	13	41	14	15	21	1	15	5	17		
ALAMOSA																													
ARAPAHOE	2	4	16	11	11	3	9	8	3	3	2							6	1	5	2	1	1	3	9	9	17	15	
ARCHULETA	5	3	7	5	2	1	2			1			4	4	2	5	4	10	5	7	26	9	12	9	11			1	
BACA	5	5	12	6	21	8	9	19	9	7	11	8	19	6	2	1	6	6	2	6	12	5	4	4	2	1			
BENT				1				2	3	1	2	3	6	2				3	2	8	1	1		1	1	1		1	
BOULDER	2			7	18	56	15	5										2	5	11	9	14	25	16	13	7	14		
BROOMFIELD	3	2	3	7	14	27	22	2	2						2			1					10	21	11	5			
CHEYENNE	177	133	92	75	64	50	44	41	35	29	29	6	2	1	3	3		9	14	15	14	8	12	11	17	35	14		
CONEJOS																													
COSTILLA											1																		
CROWLEY	1		1																										1
CUSTER																													
DELTA	1		1														5	4	6	5	2			4	1	3			1
DENVER											2	3	1		2					7	5	4							
DOLORES	2		4	1														2		13	4	2			1	5	10	1	
DOUGLAS																													
EAGLE																								2		5			1
EL PASO																													1
ELBERT	8	11	9	5	2			10	15	2	2		2																
FREMONT	6	3	5	7	1	1	1	2			1							1	3	2	2	5	3	9	16	7	2	2	
GARFIELD	3	12	24	8	3	4	15	13	7	28	19	94	190	251	245	417	585	799	1005	1304	1688	768	904	878	495	393	281		
GRAND																													
GUNNISON			1	2		1											1	1	1	9	5	1	4	5	2	4	1	2	
HUERNFANO	6			2	6	1	1	2		2	31	9	25	14	19	3	6	2	2	2	2	2	2	2	2	2	1	2	
JACKSON	2	1	3	7	2	3	1	1	3	3			24	2	4	10	10			3	3	10	1	6	7			5	
JEFFERSON										1		2																	
KIOWA	14	32	35	37	28	19	20	22	8	13	6	4	8	16	2	4	2	1	7	7	2	5	15	14	10	10		2	
KIT CARSON	11	6	6	6	9	13	15	9	6	3	7	7					1	1	6	2	1	14	3	1	1	3	1	2	
LA PLATA	158	129	186	44	66	26	17	19	29	48	65	80	99	135	118	110	103	104	108	179	199	131	67	54	3	8	21	2	
LARIMER	8	5	1	6	13	5	3			2	1			1	1														
LAS ANIMAS	17	22	20	3	2	11	17	34	62	90	120	182	202	286	205	221	296	384	413	326	221	14	7	78	1			1	
LINCOLN	6	5	4	4	7	7	8	8	3	2			2	2	1	5	2	2	1	2	19	10	14	22	23	42	25		
LOGAN	17	19	19	8	13	24	9	11	4	10	4		4	6	3	3	2	11	12	12	3	7	3	9	13	4	4		
MESA	1	2	2	4	1		7	2	1	1	4	4	2	12	12	13	25	89	156	209	222	14	11	39	4	6	16		
MOFFAT	1	2	1	2	1	1	2	1	3	1	8	10	18	23	25	28	19	40	60	42	25	18	15	34	25	23	1		
MONTEZUMA	6	5	7	5	2	5	7	3	12	2			2	3	5	5	1	7	2	4	18	11	3	8	18	12		6	
MONTROSE				1										3		2	1												
MORGAN	26	20	32	11	9	11	16	13	8	9	7	4	9	8	1	7	5	5	3	1	1	1	2	3	2	3	1	2	
OTERO				1																									
OURAY																													
PARK				1																									
PHILLIPS			3		1									1		6	10	11	4	35	18	2	42	130	48				
PITKIN		1			2																								
PROWERS	16	9	5	8	13	7	1	5	5	2	8	4	2	4	4		5	5	6	3	5	2	3	1					
PUEBLO																													
RIO BLANCO	1	8	10	1	3	8	6	7	5	9	9	62	51	82	47	83	92	95	107	95	203	116	107	72	53	36	26		
RIO GRANDE	1	2	2																										
ROUTT		1	1	3	1							1	5	12	1		1	6	3	2		2	1	2	4	2		1	
SAGUACHE																													
SAN MIGUEL				1							3	1	6	9	10	19	28	13	20	17	5	1	2	2					
SEDGWICK													1	3	2														
WASHINGTON	39	28	22	26	24	20	20	13	17	23	18	4	15	12	24	29	65	34	23	14	11	2	2	4	1	9	7		
WELD	176	200	168	296	660	723	389	94	136	94	117	124	237	403	406	522	632	718	931	1222	1314	877	1208	1664	1462	1260	1123		
YUMA	12	16	41	47	102	39	114	145	101	104	93	52	42	162	108	106	144	597	593	445	336	27	213	107	16	13	28		
Grand Total	773	713	769	696	1154	1092	828	527	482	509	587	683	992	1472	1254	1630	2092	3004	3542	4048	4443	2072	2770	3211	2295	1904	1609		

ALL COUNTIES





Colorado Oil and Gas Conservation Commission

Active Wells by County and Status as of 10/05/2014

County	Drilling	Domestic	Injecting	Producing	Shut In	Temp Aband	Waiting on Completion	Active Storage	Intent to Plug	Total Active Wells
ADAMS	22		7	863	75	8		16		992
ARAPAHOE	22	1	3	122	12	9		43		212
ARCHULETA	2	5		102	9	8	7			133
BACA	1		11	129	41	5		55		242
BENT		1		29	7		1			38
BOULDER				308	8	1				317
BROOMFIELD				93	4					97
CHEYENNE	17		36	320	23	48	4			448
CROWLEY	1									1
DELTA				4	14		1			19
DENVER			1	44	4		3			52
DOLORES	3		1	40	3	1	1			49
EL PASO	1	1				1				3
ELBERT				66	3	2				71
FREMONT	3	3		62	4	6				78
GARFIELD	299	5	37	10148	185	77	82	1		10834
GUNNISON	3		1	25	14	1	4			48
HUERFANO	3		1	32	5	6	1			48
JACKSON	5		29	108	46	2	2			192
JEFFERSON			2	1	1		1	1		6
KIOWA	5		10	104	16	4	2			141
KIT CARSON	2	1	1	14	1	1	1			21
LA PLATA	17	7	31	3117	110	21	6	28		3337
LARIMER	2	2	24	178	30	19	2			257
LAS ANIMAS		4	18	2840	79	81	22	3		3047
LINCOLN	19	1	8	84	16	2	5			135
LOGAN	9		15	115	37	29	4	12		221
MESA	19	1	10	857	130	20	7	9		1053
MOFFAT	5		8	486	56	36	10			601
MONTEZUMA	6	2	6	122	39	13	2			190
MONTROSE						3				3
MORGAN	3		24	82	85	34	1	79		308
OURAY		2				1				3
PARK					1					1
PHILLIPS	3		3	258	2	1	1			268
PITKIN								10		10
PROWERS				26	4					30
RIO BLANCO	21	4	289	2184	293	90	20	4		2905
ROUTT	1	2		31	8	1	2			45
SAN MIGUEL	1			117	10	2				130
SEDGWICK	1		1	13	4		2			21
WASHINGTON	12		24	403	42	7	4			492
WELD	1576	1	39	18984	893	28	156	2		21679
YUMA	8	8	20	3780	53	12	19	1		3901
Totals	2092	51	660	46291	2367	580	374	264	0	52679



Oil and Gas Staff Report

October 27, 2014

Colorado Oil Gas Conservation Commission Monthly Statistics

YEAR	MO	Baker-Hughes Rig Count	Drilling		Recompletion		Injection		Pits		Locations		Well Spud		Active Wells	Public Visits		Well Oper Change	Operators		Bonds				
			Rcvd	Apvd	Rcvd	Apvd	Rcvd	Apvd	Rcvd	Apvd	Rcvd	Apvd	Rcvd	Apvd		Data	Office		Internet	New	Inactive	Release Ind.	Blink	Replace	Ind.
2011		Total	4709	4659	325	320	44	32	190	192	2382	2267	3220			187	1294	1337865	6743	33	31	79	44	43	4
JAN		73	372	258	26	21	3	0	11	5	142	129	244	5217	46958	12	106	112686	1052	3	3	7	5	1	1
FEB		70	370	382	23	27	7	5	21	9	160	129	231	5173	47128	16	114	105657	385	6	9	8	5	0	0
MAR		66	292	347	21	14	2	2	17	24	133	172	292	5132	47263	26	138	111746	379	4	1	7	3	9	0
APR		66	410	235	16	24	5	5	9	2	137	106	240	4785	47377	12	108	107627	478	4	2	10	3	2	0
MAY		66	491	506	23	16	3	1	6	2	105	131	211	4885	47533	20	123	109802	526	3	1	4	0	3	0
JUN		69	326	377	11	19	8	6	5	8	110	89	144	5136	47860	11	111	108849	1270	3	4	3	3	4	0
JUL		66	237	276	9	14	3	2	5	2	97	103	184	5152	48173	13	102	114195	499	5	0	1	4	5	0
AUG		62	313	288	6	9	6	4	2	3	83	97	180	5031	49153	11	112	110908	301	6	5	2	8	0	1
SEP		61	252	256	1	5	5	2	4	1	81	77	159	4960	49230	11	89	106114	834	0	4	4	5	2	1
OCT		62	326	265	9	3	7	6	2	19	94	82	161	5009	49236	8	105	108333	485	1	2	9	1	0	0
NOV		56	271	323	5	8	6	6	2	4	109	97	142	5000	49989	10	119	120586	523	6	4	12	8	7	0
DEC		57	322	260	4	8	8	5	9	3	122	81	107	5081	50067	9	78	107240	958	6	2	3	1	0	0
2012	Total	3982	3773	154	168	63	44	114	84	1373	1293	2295			159	1305	1324443	7690	47	37	70	46	33	3	
JAN		53	538	331	6	0	3	5	6	6	176	124	143	5060	50265	9	108	47406	655	3	5	12	2	0	0
FEB		56	260	455	10	5	2	3	4	11	91	141	135	5250	50372	7	102	40549	293	4	2	6	3	2	0
MAR		57	344	241	5	9	3	8	15	6	129	84	170	5093	50540	9	133	43019	355	1	3	2	2	1	0
APR		61	331	333	6	5	6	5	6	8	146	117	160	4925	50687	3	132	46459	335	7	1	5	2	8	0
MAY		61	350	342	8	6	6	6	10	7	106	142	155	5110	50810	3	123	45215	348	2	1	3	0	0	0
JUN		62	349	273	2	8	8	8	5	3	114	85	138	5273	50909	8	122	41015	1458	6	2	2	4	5	0
JUL		68	864	304	11	4	4	9	2	4	218	91	155	5070	51091	7	154	45558	1013	4	1	2	2	0	0
AUG		69	232	291	6	4	4	3	2	4	35	76	187	5200	51255	20	130	44722	389	6	4	5	4	2	0
SEP		69	212	362	9	5	10	9	3	19	56	109	159	5185	51407	5	105	41256	277	4	1	6	1	0	0
OCT		72	319	376	5	9	7	5	1	8	67	88	237	4967	51598	5	135	45151	345	6	0	2	2	2	0
NOV		69	346	353	4	13	7	4	2	27	67	85	152	5141	51711	12	119	38903	442	2	0	2	2	0	0
DEC		64	336	367	2	4	4	4	2	3	63	71	113	5129	51737	4	93	32381	1299	4	1	1	2	0	0
2013	Total	4481	4028	74	72	67	63	67	106	1268	1213	1904			92	1456	511734	7209	49	21	48	26	20	0	
JAN		62	278	232	3	2	3	4	14	8	90	43	160	4926	51840	1	90	46150	1976	6	3	3	2	0	0
FEB		61	284	297	6	4	1	1	3	1	91	94	139	5051	51847	12	113	43408	2015	8	2	6	5	0	0
MAR		62	367	329	4	6	7	1	6	6	110	88	180	4937	51952	16	140	46620	494	2	3	1	5	0	0
APR		63	275	317	2	3	2	5	8	3	89	99	158	4897	52060	11	188	45558	298	5	2	6	4	1	0
MAY		65	458	383	2	2	3	1	6	7	83	94	167	4923	52202	18	131	42365	504	5	1	3	3	5	0
JUN		67	428	377	3	0	6	7	5	2	134	92	213	4924	52337	10	156	42518	960	5	2	7	4	1	0
JUL		69	272	446	2	5	4	4	11	8	5	97	126	4955	52431	7	166	45481	313	2	1	5	3	1	0
AUG		73	359	258	3	3	4	4	3	4	95	87	192	5060	52582	8	145	42431	214	6	1	2	4	0	0
SEP		76	411	304	1	3	2	1	20	1	101	81	184	5006	52694	14	175	43577	36	4	1	1	2	0	0
2014	Total	3132	2943	26	28	32	35	73	37	890	804	1570			97	1304	398108	6810	43	16	34	32	8	0	

Apvd = Approved, Rcvd = Received, Ind = Individual, Blink = Blanket, Appls = Application for Hearing, NOAV = Notice of Alleged Violation, AOC = Administrative Order of Consent, OPV = Order Finding Violation, Compl = Complaint, Comp = Completed



Colorado Oil Gas Conservation Commission
Monthly Statistics

YEAR	MO	aim	Hearings		Enforcement		Remediation		Inspections			
			Blnkt	Apps.	NOAV	AOC	OFV	Comp	Spills	Rcvd	Comp	Wells
	JAN	0	16	15	43	3	2	33	40	47	45	1316
	FEB	0	16	15	7	0	1	39	52	48	33	1591
	MAR	0	NA	NA	31	NA	NA	31	48	59	27	1675
	APR	0	24	24	8	0	0	10	52	38	61	959
	MAY	0	77	65	16	2	5	26	31	33	51	1577
	JUN	0	51	58	30	1	4	14	38	53	25	1099
	JUL	0	NA	NA	29	NA	NA	13	39	92	20	518
	AUG	1	68	54	26	2	2	19	54	106	56	1032
	SEP	0	44	41	4	2	4	16	46	56	66	690
	OCT	3	57	45	9	0	0	15	38	102	28	636
	NOV	0	NA	NA	15	NA	NA	16	31	70	58	739
	DEC	0	50	32	12	0	1	15	58	22	66	562
	2011 Total	4	403	349	230	10	19	247	527	726	536	12394
	JAN	0	70	72	18	1	0	27	35	68	23	998
	FEB	0	NA	NA	10	NA	NA	24	40	85	36	1998
	MAR	0	44	38	19	0	0	23	38	63	61	2200
	APR	0	80	59	11	0	0	19	35	26	99	1700
	MAY	0	43	50	14	2	0	23	32	27	122	2621
	JUN	0	NA	NA	5	NA	NA	35	39	46	98	1432
	JUL	0	63	50	15	0	0	16	24	45	33	1319
	AUG	0	67	54	24	3	2	21	28	127	33	1898
	SEP	0	NA	NA	5	NA	NA	14	13	30	36	1135
	OCT	0	30	36	6	1	0	13	44	116	37	1407
	NOV	0	85	37	16	2	0	10	44	26	44	1325
	DEC	0	NA	NA	14	NA	NA	19	30	31	19	1031
	2012 Total	0	482	396	157	9	2	244	402	690	641	19064
	JAN	0	48	75	15	4	0	21	40	31	45	1622
	FEB	0	41	35	11	2	0	15	30	42	90	1042
	MAR	0	54	67	16	2	0	11	25	65	29	1966
	APR	0	NA	NA	21	NA	NA	16	33	39	37	1508
	MAY	0	46	50	22	6	0	13	31	41	60	2615
	JUN	0	91	44	13	2	0	25	40	47	37	1857
	JUL	0	96	70	25	3	0	21	47	50	22	2298
	AUG	0	NA	NA	23	NA	NA	25	57	36	41	2145
	SEP	0	101	51	7	2	0	16	60	43	51	1535
	OCT	0	52	82	4	12	3	12	79	47	60	1865
	NOV	0	NA	NA	30	NA	NA	12	51	31	34	2400
	DEC	0	42	48	50	4	0	14	75	35	35	2676
	2013 Total	0	571	522	237	37	3	201	568	507	541	23529
	JAN	0	57	46	25	2	0	8	71	46	28	3243
	FEB	0	NA	NA	23	NA	NA	16	66	50	13	2326
	MAR	0	97	75	36	10	0	23	64	65	31	1799
	APR	0	74	64	17	8	1	20	66	47	59	2601
	MAY	0	NA	NA	12	NA	NA	14	77	45	42	2403
	JUN	1	95	90	14	6	1	16	74	44	50	3148
	JUL	0	96	96	9	6	0	12	64	60	59	3027
	AUG	0	NA	NA	8	NA	NA	30	64	32	58	2743
	SEP	0	73	63	14	7	1	18	63	37	50	2492
	2014 Total	1	492	434	158	39	3	157	609	426	390	23782
	2011-2014 Total	5	1476	1121	585	22	14	661	2106	2429	2076	87677

Appr = Approved, Recvd = Received, Ind = Individual, Blnkt = Blanket, Apps = Application for Hearing, NOAV = Notice of Alleged Violation, AOC = Administrative Order of Consent, OFV = Order Filing Violation, Crnght = Complaint, Comp = Completed