



TOP STORIES

◆ Complaint Resolution and the COGCC's Lean Process Improvement

The COGCC started a Lean Process Improvement project in October 2014 to address the manner in which public complaints are received and addressed. The project's vision statement has two parts: (1) to create a process that will be easy and transparent for Colorado residents to participate in, and (2) to streamline, and make more effective, the internal complaint intake and complaint resolution/close processes.

At the present time, the COGCC spends significant resources investigating and responding to public complaints. Many complaints require several field inspections to resolve, and some complaints may require multiple staff members to resolve. Given the staff time invested in each complaint, finding ways to streamline the process and make it more effective is a must.

As part of this project, a COGCC staff team held a three day event and generated several recommendations to implement the project's vision. Examples include building a complaints webpage accessible from the COGCC's homepage and providing guidance to the public about the process on that webpage, including how to file a complaint. Other recommendations would create a central complaint intake team, or develop internal standard operating procedures for all aspects of the complaint process.

Some of these recommendations are expected to be implemented by January 2015. Others, because they could require additional staff or changes to the COGCC's information systems, will be implemented later in the new year.

◆ Risk Based Inspection Implementation

Senate Bill 2013-202 directed the COGCC to adopt a risk based approach for inspecting oil and

gas locations and to submit a report to the Senate outlining changes to inspection practices and procedures needed to fully implement a risk based program. The Commission issued *Risk Based Inspections: Strategies to Address Environmental Risk Associated with Oil and Gas Operations* to the Senate in January 2014. One of the COGCC's recommendations was that the COGCC "should review integrity test results and inspect production facilities more frequently."

The COGCC is currently convening a series of stakeholder meetings to identify best management practices for flowlines and other production facilities. The stakeholder meetings have focused on the following two priorities:

- Developing policies for how operators must perform integrity test of flowlines (1101.e) and critical parts of production facilities (605.d). Draft policies have been completed and are currently under review.
- Developing policies and procedures for COGCC audits of integrity test records.

◆ Local Government Liaison (LGL) Program

Local Government Liaisons (LGLs) Marc Morton and Nancy Prince recently published the Fall 2014 Local Government Designee (LGD) Newsletter. This issue and previously published issues are available on the COGCC website under the "LOCAL GOV" link. The newsletters contain pertinent articles on topics such as advantages to local governments for participation in the LGD program, instructions for signing up for the program, and updates to COGCC rules and policies. The LGD newsletters also contain other items of interest to local governments, the public, and others interested in regulation of oil and gas in Colorado.



In total, 168 entities (56 counties, 104 municipalities, and eight special districts) currently participate in the voluntary LGD program. Recent new additions to the LGD ranks include the Town of Ault (Gary White), the Town of Wray (James DePue), the Town of Norwood (Patti Grafmyer), the Town of Kit Carson (Christie Johnson), the Town of Eckley (John Owens), the Town of Kersey (Brett Bloom), the Town of Yampa (Janet Ray), Town of Olney Springs (Carl McClure), and the Town of Cedaredge (Raymond Hanson).

Recent LGDs assigned to replace outgoing or retiring LGDs include Mark Williams (City of Durango), Stuart McArthur (Town of Parachute), Greg Lanning (City of Grand Junction), and Peter Wysocki (City of Colorado Springs). We welcome LGDs both new to the program and those who are replacing outgoing LGDs. A current list of participating LGDs can also be found under the "LOCAL GOV" link on the COGCC website.

As a reminder to all LGDs, it is imperative that you notify the COGCC (via submittal of an updated Form 29) of any change to an individual's e-mail address or contact information, or any change in the status of your jurisdiction's participation in the LGD program. If we don't have an LGD's current e-mail address, eForm generated notifications will not be delivered.

LGDs are also reminded to periodically visit the COGCC website "MAPS" link to compare their geographic boundary with what is presented on the COGCC website, as the COGCC relies on this data to generate email notifications of pending and proposed well and location permit applications. If a city or town's mapped boundary is incorrect on our website, we request that the municipality, county, or special district submit either a shapefile with the correct information, or merely send us a current map. Questions about this procedure can be directed to Dennis Ahlstrand (COGCC GIS Analyst) or to either of the LGLs. Dennis' e-mail address is dennis.ahlstrand@state.co.us.

A list of the LGL outreach and public involvement activities conducted since the previous staff report is included in the latter half of the Public Outreach section below.

PUBLIC OUTREACH

➤ *Outreach by Director and other Staff Members*

- On October 15, Environmental Manager Greg Deranleau and Western Oil and Gas Location Assessment Specialist Dave Kubeczko presented at a meeting of the Upper Colorado River Endangered Fish Recovery Program. The presentation focused on the COGCC's permitting and regulatory role with an emphasis on protection of surface water resources and sensitive habitat. Wyoming and Utah also shared their regulatory programs, and the hosts presented information on habitats and ongoing efforts to protect sensitive species.
- On October 19 through 22, Director Matt Lepore attended the Interstate Oil and Gas Compact Commission Annual Meeting in Columbus, Ohio.
- On October 24, Director Lepore participated in the Longmont site tour of the Governor's Task Force on State and Local Regulation of Oil and Gas Operations.
- On November 6, Reclamation Supervisor Denise Arthur gave a talk on reclamation issues at the Gas and Oil Regulatory Team (GORT) meeting in Durango. Director Lepore also attended the meeting.
- On November 10, Environmental Supervisor John Axelson delivered a presentation and answered questions about the COGCC's regulatory role in oil and gas development at the annual meeting of the Colorado Chapter of the Soil and Water Conservation Society held in Loveland.
- On November 10, Environmental Manager Greg Deranleau presented information and answered questions about the COGCC's regulatory role in oil and gas development at the South Park Master Leasing Plan Stakeholders meeting in the Town of Alma. The stakeholder group is meeting to identify concerns and areas of common ground regarding the preliminary plan by the U.S. Bureau of Land Management to lease minerals in the South Park Basin. Stakeholders include wildlife conservation groups, wilderness



conservation groups, regulatory agencies, and industry.

- On November 14, Director Lepore was a panel member on the Plenary Discussion, "Stakeholders and Community in Sustainable Natural Resource Development" at the American Society of International Law's biennial meeting titled "Reassessing International Economic Law and Development: New Challenges for Law and Policy."
- On November 14, Director Lepore was a guest lecturer at the University of Denver's law school. His session was titled "Community Expectations for the Sustainable Development of Natural Resources."
- On November 20 and 21, Director Lepore participated in a meeting of the Governor's Task Force on State and Local Regulation of Oil and Gas Operations in Loveland.
- On December 1 through 3, Director Lepore participated in the "Unconventional Gas Technical Engagement Program Expert Consultation Meetings" in Santiago and Punta Arenas, Chile, sponsored by the U.S. Department of the Interior, Bureau of Energy Resources.
- On December 5, Field Inspection Manager Margaret Ash was a guest lecturer at the TOPCORP training program in Austin, Texas. This training program for regulators and policy makers in the oil and gas industry was developed by the Colorado School of Mines, the University of Texas - Austin, and Pennsylvania State University, and is led by principal investigators at each of the three universities: Jim Ladlee (PSU), Hilary Olson, PhD (UT), and Azra Tutuncu, PhD (CSM). The following five members of the COGCC's field inspection and environmental work units were also present: Mike Leonard, Jim Precup, Susan Sherman, Joe McLaren, and Kris Neidel.
- On December 8 and 9, Permit and Technical Services Manager Jane Stanczyk and Hearings Officer Jill Dorancy participated in a horizontal drilling workshop hosted by the Utah Division of Oil, Gas and Mining, held at the Utah Department of Natural Resources office in Salt Lake City. The primary focus of the workshop was

the unique spacing and pooling requirements of developing hydrocarbon reservoirs with horizontal wells. The workshop was attended by invited state oil and gas regulators from Arkansas, Oklahoma, Nevada, North Dakota and Utah, and various oil and gas operators active in Utah.

- On December 10, Director Lepore participated in a meeting of the Governor's Task Force on State and Local Regulation of Oil and Gas Operations in Rifle.
 - Chris Eisinger, Senior Research Scientist, provided New Mexico Institute of Mining and Technology with a support letter and agreed to be an advisory panel participant in its proposed National Science Foundation study regarding induced seismicity in the Raton Basin. The \$3 million collaboration with the University of Colorado, Los Alamos National Laboratory, and the University of New Mexico would evaluate ways to reduce the risk of induced seismicity from oil and gas operations associated with saline water injection.
 - Stuart Ellsworth, Engineering Manager, provided the University of Colorado with a support letter and agreed to be an advisory panel participant in its proposed National Science Foundation study on induced seismicity: "Hazards SEES: The Risk Landscape of Earthquakes Induced by Deep Wastewater Injection."
 - Stuart Ellsworth, Engineering Manager, agreed to be on a Colorado School of Mines advisory panel to a National Science Foundation Sustainability Research Network grant, "Air Water Gas," led by the University of Colorado. The Mines portion of the grant will study wellbore integrity and probabilities of failure through finite element modeling.
- **Outreach by LGLs**
- On October 6, Nancy Prince met with Ft. Lupton planning staff to discuss COGCC oil and gas regulations and Ft. Lupton land use codes.



- On October 7, Nancy Prince attended a meeting of the Aurora Planning and Economic Redevelopment Committee, at which oil and gas regulations were discussed.
- On October 15, Nancy Prince attended a stakeholder meeting sponsored by Adams County to discuss potential changes to its land use code.
- On October 16, Marc Morton attended the bi-monthly Energy Industry Working Group meeting in Greeley, organized by Weld County Transportation staff. The meeting involved operators and subcontractors, county staff, and local government representatives. The purpose of these meetings is to better plan for oil and gas-related projects affecting transportation in Weld County. Marc updated the group on the Governor's Oil and Gas Task Force schedule, and reminded operators to adhere to pre-application notification requirements for locations in proximity to residential areas.
- On October 20, Marc Morton attended a FrackingSense lecture series in Timnath. The lecture series is hosted by Dr. Patty Limerick of the Center of the American West, in conjunction with a research grant from the National Science Foundation, and with support and participation from various groups. Panelists included Howard Boignon (oil and gas attorney), Teresa Coons (former Mayor of Grand Junction/immunologist), Pete Morton (Economist with Center of the American West), and Craig Rasmussen (Chief Operating Officer for Synergy Resources). The panelist discussion was followed by an audience question and answer session.
- On October 28, Marc Morton provided a half-day LGD training to 18 individuals comprised of local government staff, environmental consultants, and industry representatives. COGCC Hearings Manager Bob Frick, Colorado Department of Public Health & Environment (CDPHE) Oil and Gas Liaison Kent Kuster, and U.S. Bureau of Land Management - Durango Field Office representative Ryan Joyner provided the training.
- On October 29, Marc Morton travelled to Bayfield and attended the Northern San Juan Basin Stakeholders public meeting, organized by staff from the U.S. Department of Agriculture - San Juan National Forest.
- On October 29, Nancy Prince attended an information session for Adams County to present proposed land use code changes to the public.
- On October 30, Marc Morton and Southwest Region Field Inspector Steve Labowskie travelled to Cortez and met with staff from the Dolores Water Conservancy District. Marc and Steve provided the District with an overview of COGCC rules, permitting processes, and policies.
- On October 31, Nancy Prince and the Field Inspection Unit's Mike Leonard attended a follow-up stakeholder meeting sponsored by Adams County to discuss potential changes to their land use code.
- On November 3, Nancy Prince attended a work session of Aurora City Council at which proposed changes to land use code were discussed.
- On November 5, Nancy Prince attended the Fremont County mayors' meeting and presented information on the LGD program to newly elected officials.
- On November 6, Marc Morton attended the quarterly GORT meeting in Durango.
- On November 7, Marc Morton travelled to Cortez and met with LGDs James Dietrich and Leann Milligan of the Montezuma County Planning Department.
- During the month of November, Marc Morton assisted the Chama Peak Land Alliance (a non-profit based in Durango) in their selection and interview process to fill a newly created Stewardship Coordinator position.
- On November 11, Nancy Prince presented information on oil and gas activities to the Emerging Planning Professionals Committee of the American Planning Association - Colorado Chapter in Denver.



REGIONAL ACTIVITIES

➤ *Northeast Colorado*

◆ Naturally Occurring Radioactive Materials Study

In October 2011, the State Review of Oil & Natural Gas Environmental Regulations (STRONGER) team recommended that the COGCC gather information on the occurrence and level of Naturally Occurring Radioactive Materials (NORMs) in Exploration and Production (E&P) wastes in Colorado. Based on this recommendation, the COGCC initiated Special Project 2136, the "NORM Study," in 2014. The study started with the development of a sampling and analysis plan prepared by a third party-certified health physicist in cooperation with COGCC staff and involved review by the Radioactive Materials Unit of the CDPHE.

Due to the widespread practice of land application of cuttings as a beneficial soil amendment on agricultural lands, the COGCC focused the study on drill cuttings generated from the development of the Niobrara Formation in Weld County. A total of 36 samples were collected in 2014 and submitted for analysis to evaluate NORM levels. The following three types of samples were collected: 12 samples of drill cuttings, 12 samples of soils amended with cuttings, and 12 samples of native soil. Native soils were sampled to determine background concentrations.

The sample results indicated that no radionuclide levels exceed levels found in background samples. In many cases, the amount of radionuclides in background samples were found to be higher than the amounts in the drill cuttings. Although this study was limited in scope, the data collected to date indicates that the beneficial reuse of drill cuttings as a soil amendment in Weld County does not create conditions that pose a threat to human health or the environment.

A copy of the report will be posted to the COGCC website and a presentation of the findings will be provided to the Commission during the January 2015 Hearing. The COGCC will continue to evaluate NORM levels in cuttings gener-

ated from other areas of the state as well as other types of E&P wastes in the future.

➤ *Northwest Colorado*

◆ Northwest Colorado Oil and Gas Forum

A meeting of the Forum was held on December 4, 2014 at 10:00AM in Rifle at the Colorado Mountain College. All parties wishing to be placed on the next meeting agenda or added to the distribution list for announcements should contact Craig Burger at 970-625-2497 or by email to craig.burger@state.co.us.

◆ Project Rulison

Please note that the email for Project Rulison submittals has been changed to:

DNR_rulison.submittal@state.co.us

◆ Project Rio Blanco

Please note that the email for Project Rio Blanco submittals has been changed to:

DNR_rioblanco.submittal@state.co.us

➤ *Southwest Colorado*

◆ Gas and Oil Regulatory Team (GORT) Meeting

The most recent GORT meeting occurred on Thursday, November 6, 2014 between 8:30 a.m. and noon at the La Plata County Fairgrounds in Durango.

The next GORT meeting is scheduled for February 5, 2015 at 8:30 a.m. at the La Plata County Fairgrounds, Animas Room, 2500 Main Ave., Durango. Any party who wishes to be placed on the next meeting agenda should contact Mark Weems(970-259-4587) or mark.weems@state.co.us

◆ Fruitland Formation Outcrop Mitigation and Monitoring Projects (4M Projects)

4M Pilot Scale Mitigation Projects - La Plata County. In May 2014, the South Fork Texas Creek (SFTC) compressor was rebuilt to replace worn bearings. The heater plate in the methane sensor



was also replaced. Regularly scheduled operations and maintenance, performed by COGCC's contractors, continues. Some successes of the project include:

Methane Mitigation:

- Gas containing methane concentrations of 78.4 - 99.5% (SFTC) and 0.2–5% (Pine River) were continuously recovered during the first and second quarters of 2014.
- Since conversion to a passive system in June of 2012 at Pine River, methane concentrations have remained at 0% - 5% following an increase in the first and second quarters of 2013.

Electrical Generation:

- SFTC has generated 179,463 kWh of surplus electricity since May 2009.
- System operated at 11 kW output to maintain steady operation during the first and second quarters of 2014.

Site Restoration:

- Plant growth over the methane mitigation system has improved in 2014.

4M Monitoring Wells La Plata and Archuleta Counties. There are 17 wells at 11 locations in the 4M monitoring program. Well pressures are monitored remotely via satellite telemetry with one or two maintenance visits per year, depending upon data received. Two measurements per day are collected from each monitoring well. The BP Highlands MW 35-7-15 #1 was inspected by COGCC staff and Resource Hydrogeologic Services (RHS) on September 25, 2014. All components of this monitoring well were functioning properly. The COGCC and RHS conducted an annual inspection tour of all accessible monitoring wells on October 7 and 8, 2014. RHS and COGCC staff performed routine annual maintenance activities on October 23, 2014.

Ongoing Investigation, Reclamation and Mitigation of Residual Methane in the Vicinity of the Bryce 1-X Well Area, Bondad, Colorado. Two domestic water wells were sampled at the Bondad location on October 16, 2014 by Four Corners Geoscience. Free methane results ranged from 2.26 mg/l in the Middle well

to 3.19 mg/l in the South well. Samples from the North well and from Fire Department lines were not taken because of flow issues.

VARIANCE

◆ **Southwestern Energy Production**

Southwestern Energy Production Company (Southwestern) submitted a Form 4 Sundry Notice on August 29, 2014, requesting a variance to the isolation requirements for a Mechanical Integrity Test (MIT) as specified in former Rule 326.b.(1)A (re-numbered, effective September 30, 2014 as Rule 326.b.(3) for temporarily abandoned wells). The request is for the Walker 3-3 well (API No. 05-081-07099) located in the NENE of Section 3, Township 7 North, Range 93 West 6th P.M. COGCC Rule 326.b.(1)A requires that a bridge plug or similar approved isolating device for an MIT be placed within 100 feet of the highest perforation.

The current wellbore configuration consists of 9 5/8 inch surface casing set at 664 feet and cemented to surface, and 7 inch production casing set at 4,570 feet and cemented to approximately 400 feet (calculated cement top). The well has open production perforations from 3,946 feet to 4,384 feet. The operator reported that former production perforations had been squeezed with cement from 3,288 feet to 3,869 feet. The Walker 3-3 currently has a cast iron bridge plug set at 3,204 feet (bottom of bridge plug is at 3,209 feet), within 100 feet of the top squeezed perforation, but 737 feet above the uppermost open perforation.

Southwestern requested the variance for approval to perform the MIT with the current bridge plug in place. Moving the bridge plug would require a workover rig specifically for that task, an added expenditure and work-effort which would provide little incremental benefit for testing the casing below the bridge plug.

Walker 3-3's last MIT was completed in October 2009. Southwestern acquired Walker 3-3 and 27 other coalbed methane wells in July 2014. In order to maintain the current Temporary Abandoned status of Walker 3-3 and 27 other coalbed methane wells within the same field, Southwestern was required to conduct MITs on these wells before early



October 2014. Southwestern already conducted an MIT on Walker 3-3. If this variance is approved, the recent MIT will be used to demonstrate mechanical integrity for the portion of the well above 3,204 feet.

Southwestern is continuing to evaluate the future use of Walker 3-3 before making any changes to the well's current configuration. At this time, future plans may include re-entering the squeezed perforations.

As required by COGCC Rule 502.b.(1), and as discussed above, Southwestern made a good faith effort to comply, but was unable to comply with Rule 326.b.(1)A. Southwestern states that this variance request does not violate the basic intent of the Oil and Gas Conservation Act. On October 29, 2014, the COGCC Director approved Southwestern's Rule 326.b.(1)A variance request for this well.

ADMINISTRATION/ORGANIZATION/OTHER

◆ Congratulations to Margaret Ash

Margaret Ash, Field Inspection Manager, was selected as one of the Top Women in Energy for 2014 in the *Denver Business Journal*. Ms. Ash was honored for her 30 years of experience in environmental and regulatory management. Her grasp of the full breadth of environmental requirements imposed by local, state, and federal regulatory bodies, in the context of a rapidly changing industry, has helped her guide her team (currently 27 COGCC inspectors) and contribute to industry-wide discussions.

The selection committee noted that Ms. Ash has been instrumental in shaping thorough and sound regulations to address the environmental implications of energy development. Her industry-wide discussions and leadership have been, and continue to be, crucial to achieving balance in Colorado's public/private partnership for energy development and production in Colorado.

◆ Two New Hearings Officers

Jennifer Bock joined the COGCC as a Hearings Officer in October. Previously, Jennifer served as Water Director at High Country Conservation Advocates in Crested Butte. Jennifer is an attorney licensed in Colorado and California, and practiced land use and natural resources law at Rossmann and Moore, LLP in San Francisco before moving to Colorado to clerk for Justice Hobbs of the Colorado Supreme Court.

Jennifer graduated from Georgetown University with a bachelors degree in American studies and from the University of California - Berkeley Law School with a Juris Doctorate and a certificate in environmental law.

James Rouse joined the COGCC as a Hearings Officer from private law practice in general civil litigation and as a lead mediator with Court Mediation Services in Denver. Prior to starting his own practice, James worked for a law firm specializing in oil and gas title opinions, commission hearings, and civil litigation. During that period, James served as the Chapter 11 and Chapter 7 bankruptcy trustee for Empire Drilling Company.

He has also worked as counsel for Tenneco Oil Company and Cities Service Company in Tulsa, Oklahoma. James is a graduate of the Colorado School of Mines with a degree in geologic engineering. He earned a Juris Doctorate from the University of Oklahoma Law School.

◆ New Permit/Completion Tech

Charles Romanchock joined the COGCC Permitting Staff in early November. Chuck has a masters degree in geology from the University of Pennsylvania and four years of experience in the oil and gas industry, including extensive experience with well siting, core analysis, and micro-seismic integration.

◆ New Oil and Gas Location Specialist

Rebecca Treitz is the newest addition to the COGCC Oil and Gas Location Assessment (OGLA) group. Before coming to the COGCC, she worked for LT Environmental as a Project Geologist pri-



marily working on stormwater issues and spill prevention countermeasures and controls. For four years, she was part of the U.S. EPA Region 8's Superfund Technical Assessment Response Team contract.

Rebecca also held a technical position with URS Corporation in one of their Southern California offices. Her education includes a bachelor's degree in biology, environmental science, and geology from the University of Colorado - Boulder and a masters certificate in project management from the University of Denver.

We extend a special welcome to James, Jennifer, Chuck, and Rebecca. An organizational chart can be found on Pages 11-14. For contact information, please go to our homepage and find "Staff Contact Information."

◆ Plugging and Reclaiming Abandoned Wells (PRAW) - Project Updates

The **DB Orphan Blair #1 Project** is located on the northwest edge of DeBeque in Mesa County. The well was found to be leaking water and was subsequently dug out and sealed to stop the flow. Lab analysis of a water sample indicates salt brine, which is indicative of oil and gas geologic sources. Based on old USGS reports and prior experience in the area, the COGCC believes the well was likely drilled around 1902.

After the COGCC prepared plugging design and cost estimates, competitive bids were recently solicited. RACS's, Inc. came in with the winning bid of \$65,069. RACS began work in October and has plugged the well. During the project, the COGCC initiated several change orders after the contractor encountered problems down hole. The project's final cost will be available at a later date.

The **Pasture #1 Project** consists of the final abandonment of this well by performing two tasks: cutting the casing off three feet below ground level and installing a well marker and sign. The tasks were completed during the month of October at a final estimated cost of \$1,380.

The **Flessner #13 Project** has previously been reported as a dry and abandoned well located in Washington County about 23 miles south of Ft. Morgan and Brush. It was drilled in 1955 to a depth of 5,460 feet (J-Sand Formation) and reportedly plugged at the same time by Monsanto Chemical Company. A farmer complained that the well had never been plugged and abandoned and is currently obstructing farming operations. The project was competitively bid and awarded to the winning contractor in the amount of \$47,700. The work is targeted for completion between November 2014 and February 2015.

The **Ackerman #1 Project** is a dry and abandoned well located in Larimer County about seven miles northwest of Wellington. It was drilled in 1963 to a depth of 5,745 feet (Dakota formation) and plugged in the same year by Alpha-Omega Exploration Company. A COGCC inspector recently discovered it was leaking water. The work plan is to sample and test water from the well and determine the total depth of the well. For its final plugging and abandonment, the Ackerman #1 well has an estimated cost of \$40,000.

In October, COGCC Environmental Staff conducted a site inspection and collected a produced water sample. Dissolved methane was detected in the sample at a concentration of 13 milligrams per liter (mg/L). Analytical results indicate the water is a sodium-bicarbonate type water with a total dissolved solids concentration of 1,800 mg/L. Further analysis is pending, and the results are expected soon. No impacts to the surrounding grassland were evident during the site inspection.

The **Gentry Project**, located in Rio Blanco County, includes 10 sites with eight wells and two pits located about one-half mile west of Rangely and one and a half miles south of State Highway 64. The surface owner brought the matter to the attention of the COGCC. The Gentry project is estimated at a total cost of \$90,000.

The **Wallace Oil and Gas BOND CLAIM Project** is located in far southeast Colorado in Baca County or about fifteen miles southeast of the town of Walsh. This project will include the salvaging of all miscellaneous production equipment and plug-

ging three individual wells. The total cost is estimated at \$90,000, of which \$30,000 will come from the bond claim.

The Noel Reynolds Ester #1 BOND CLAIM Project is a temporarily abandoned well located in La Plata County about 18 miles southwest of Durango and six miles from the New Mexico state line. This project will include the removal of miscellaneous debris and unused equipment and the plugging of the well. The total cost is estimated at \$50,000, of which \$30,000 will come from the bond claim.

The Fremont Co-Group #3 Five Wells Project includes five wells that need to be re-plugged and abandoned. These orphan wells are located in the Florence-Cañon City Field in Fremont County and were discovered during routine inspections. It is believed that they were drilled in the early 1900s. None of these wells have an operator of record or any bond posted. The estimated cost to plug and abandon these wells is \$50,000.

The Chapman #1 Project is a dry and abandoned well located in Baca County about six miles southeast of Walsh. It was drilled in 1960 to a depth of 5,576 feet (St. Louis Formation) and plugged at the same time by Falcon Seaboard Drilling Company. The COGCC inspection report indicates four feet of casing protruding above ground, and bubbling, churning water could be heard from it. The plan is to re-plug the well at an estimated cost of \$45,000.

The Stewart #1 Project is a dry and abandoned well located in La Plata County about 26 miles southwest of Durango and about one mile from the New Mexico state line. It was drilled in 1949 to a depth of 3,314 feet and reported plugged at the same time by Ocean Oil Company. The well, which is situated in a ravine with tight quarters, making access difficult, and was found to be leaking fairly fresh water.

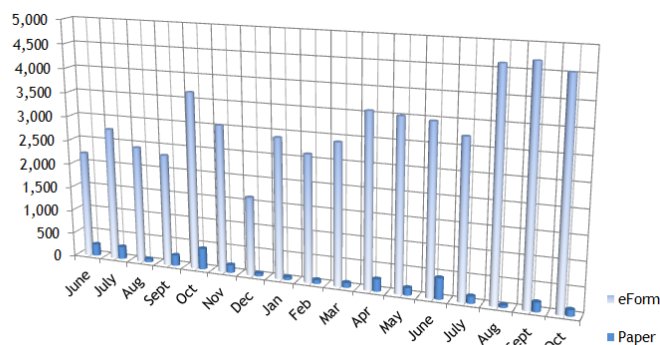
No samples were taken at the time of inspection, but it was noted that the foliage was quite healthy, and there were no dry powdery residues, which are usually indicative of salt or calcium carbonate. The plan is to re-enter the well and re-plug it at an estimated cost of \$80,000.

Page 15 contains a spreadsheet listing PRAW projects that are either scheduled, in process or completed, as of November 26, 2014

◆ Colorado Oil and Gas Information System (COGIS) Projects, Updates and Changes

Electronic Form Submissions (eForm)

TOTAL ELECTRONIC FORM SUBMITTALS
JUNE 2013 - OCTOBER 2014

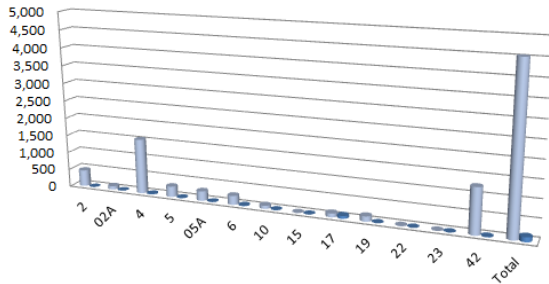


Forms currently available through eForm:

- Form 2 - Application for Permit to Drill
- Form 2A - Oil and Gas Location Assessment
- Form 4 - Sundry Notice
- Form 5 - Drilling Completion Report
- Form 5A - Completed Interval Report
- Form 6 - Well Abandonment Report
- Form 10 - Certification of Clearance/Change of Operator
- Form 15 - Earthen Pit Report/Permit
- Form 17 - Bradenhead Test Report
- Form 19 - Spill/Release Report
- Form 22 - Accident Report
- Form 23 - Well Control Report
- Form 41 - Trade Secret Claim of Entitlement
- Form 42 - Notice of Notification (Notice of Hydraulic Fracturing)



Following is a breakdown by Form for the month of OCTOBER 2014:



	2	02A	4	5	05A	6	10	15	17	19	22	23	42	Total
eForm	461	92	1,547	298	269	251	88	4	107	145	8	3	1,262	4535
paper	1	1	12	5	3	14	5	0	79	1	0	0	9	130

The development team is working on several forms concurrently. Forms 7, 14, 14A, 21, 26, 31 and 33 are in various stages of development.

As forms are released on eForm, updates to the PDF version on our Forms page, <http://cogcc.state.co.us/Forms/forms.html>, will occur in tandem. These new versions of the PDF forms will reflect any changes that have taken place when forms are moved into eForm.

Currently, there are 486 operators using eForm and 1,851 individual users. For any operator not currently enrolled in eForm, instructions for starting the process can be found at <http://cogcc.state.co.us/Announcements/COUAINformation.pdf>.

Public Comment Invited

The public can make comments on all submitted OGLA forms (Forms 2A) through the eForm system. This can be accomplished by going to the COGCC website and clicking on the menu option "Permits" or <http://cogcc.state.co.us/COGIS/DrillingPermits.asp>.

On the COGIS-Permits page, two search options are available for OGLA forms, "All Pending Location Assessments for" and "All Approved Location Assessments for." When the results are displayed for forms in process, the public can click on the document number, which logs the user to the new eForm application. Once the page is displayed with the selected document, the user can select the Comment button to make a comment

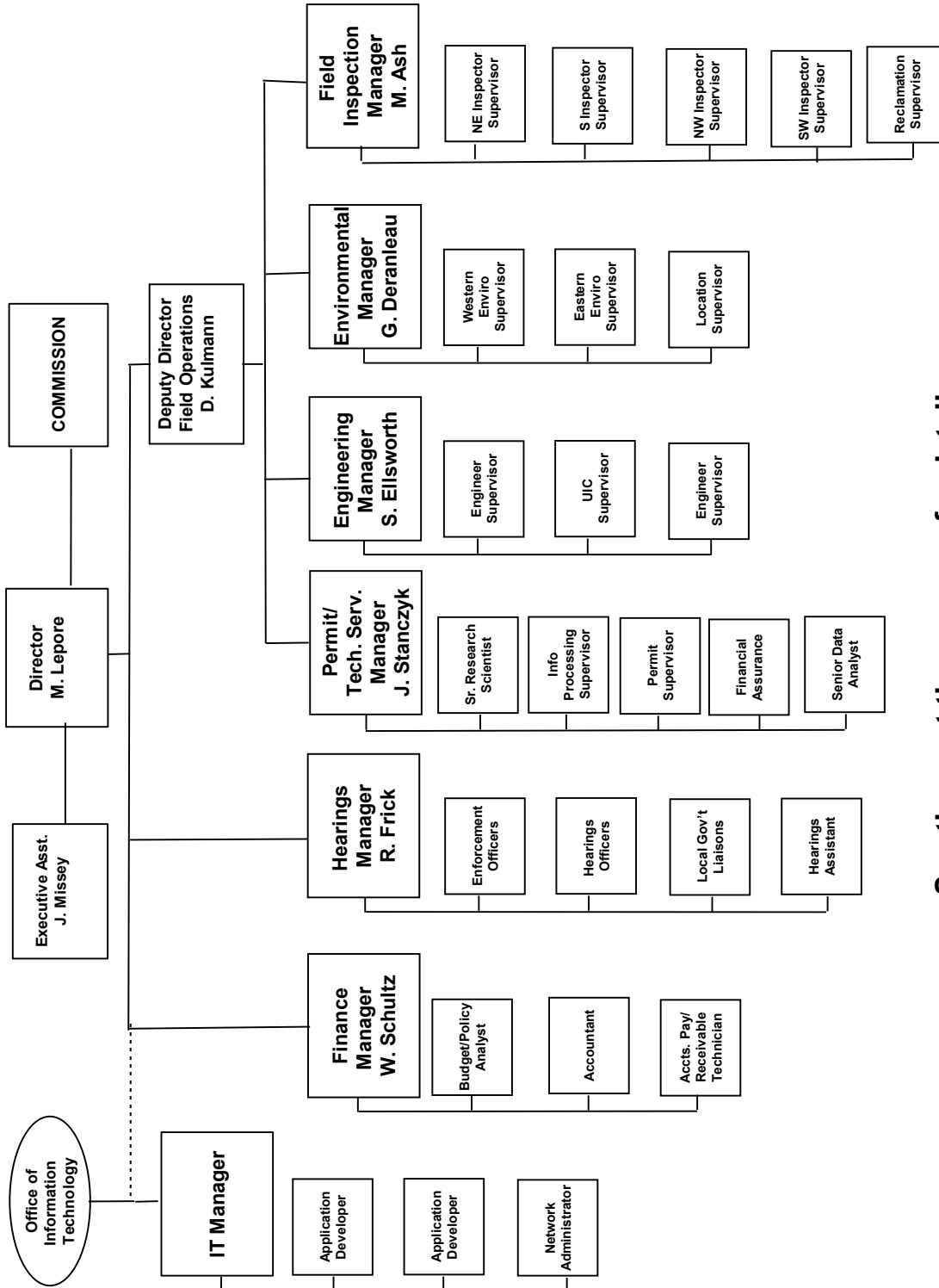
on that particular form. The public can use this same method to make comments on APDs (Form 2s).

◆ January 2015 Hearing Docket

The docket for the January 2015 hearing will be available shortly after the December hearing. Hearing dockets are available on our website by clicking on "Hearings." Links to the notices and hearing applications are available from the Docket Number and Applicant, respectively. To sign up for e-mail notification of hearing notices and applications, please see the announcement and instructions on the homepage of the website: <http://cogcc.state.co.us>.



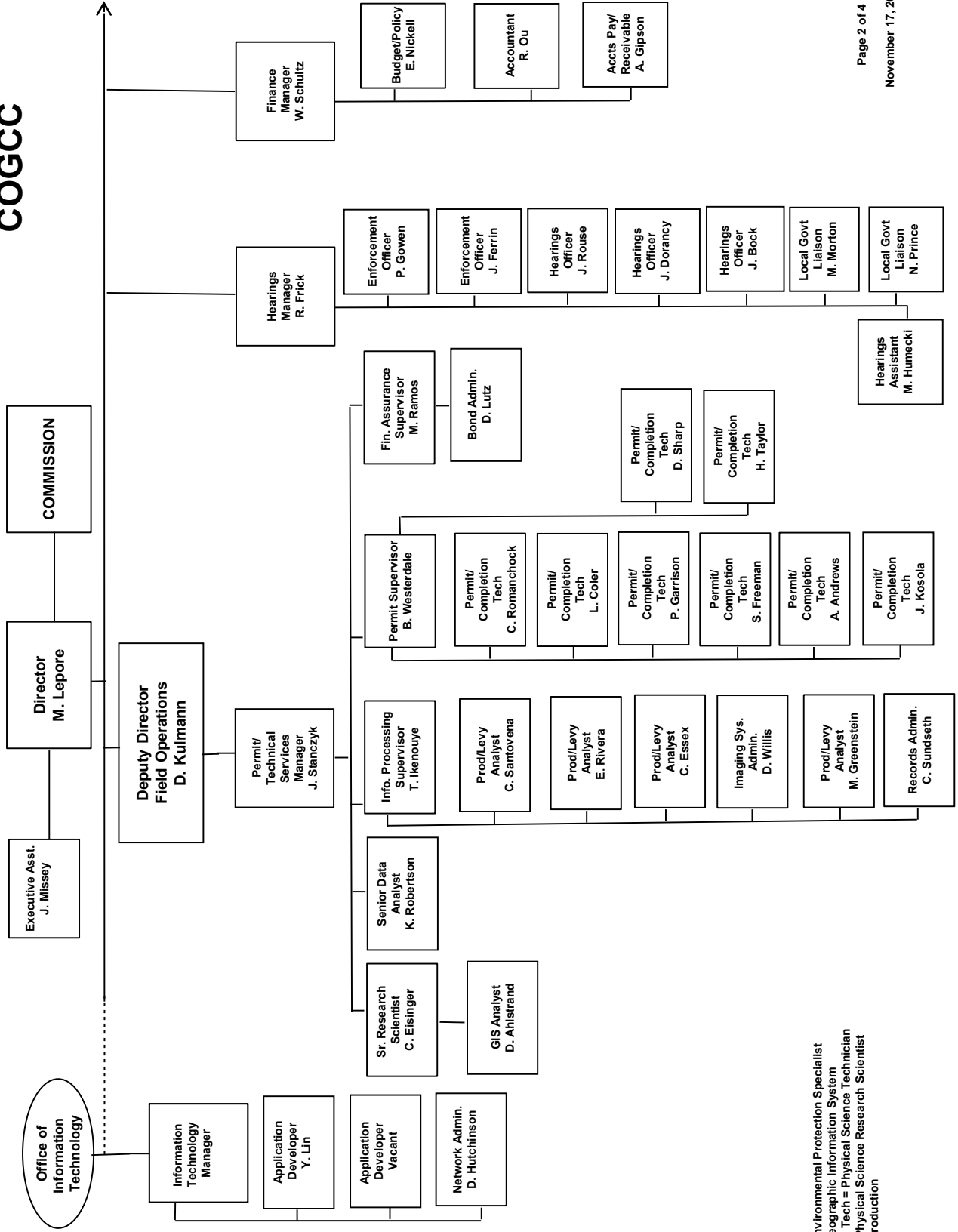
COLORADO OIL & GAS CONSERVATION COMMISSION



See the next three pages for details



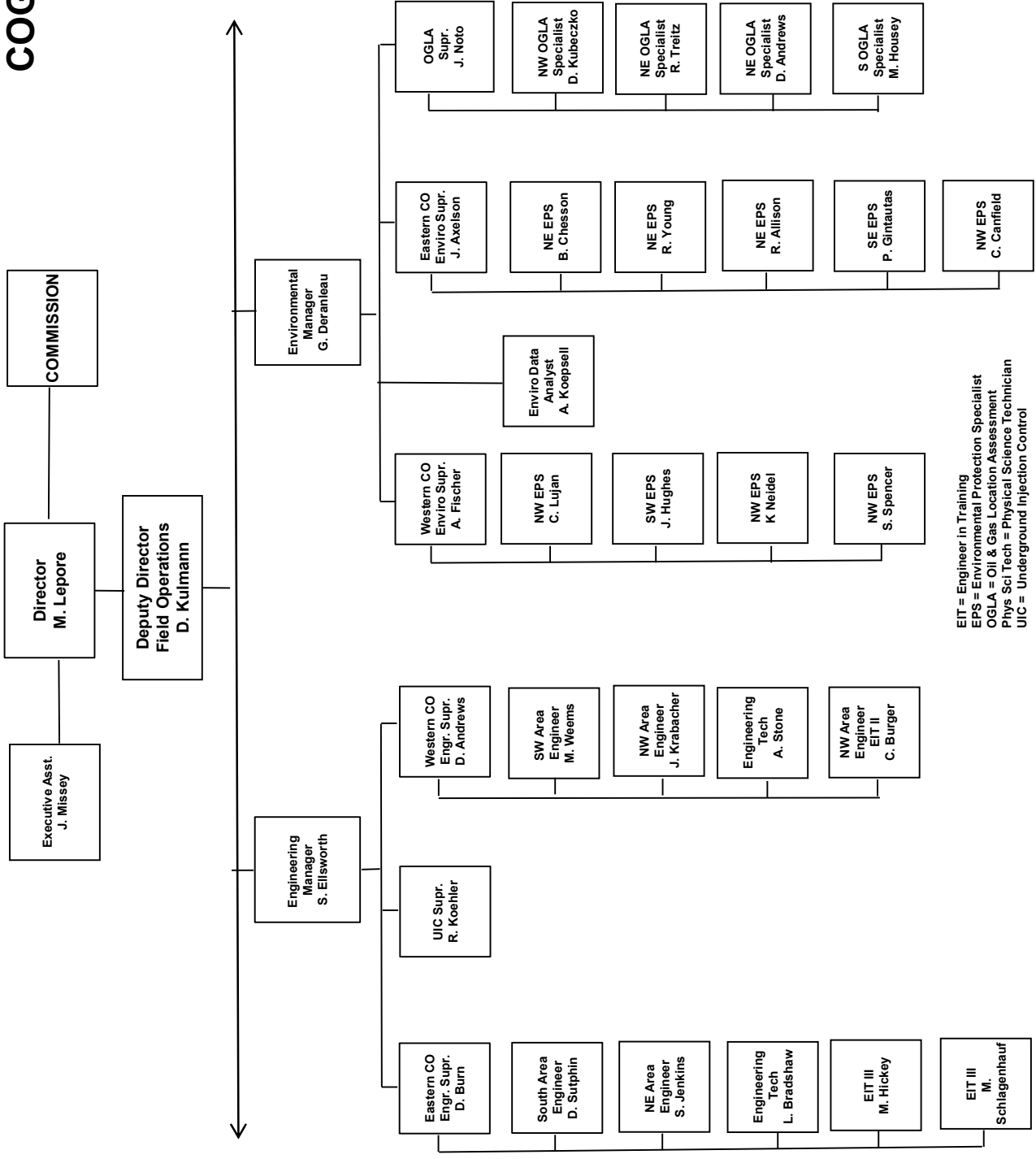
COGCC



EPS = Environmental Protection Specialist
 GIS = Geographic Information System
 Phys/Sci Tech = Physical Science Technician
 PSRS = Physical Science Research Scientist
 Prod = Production



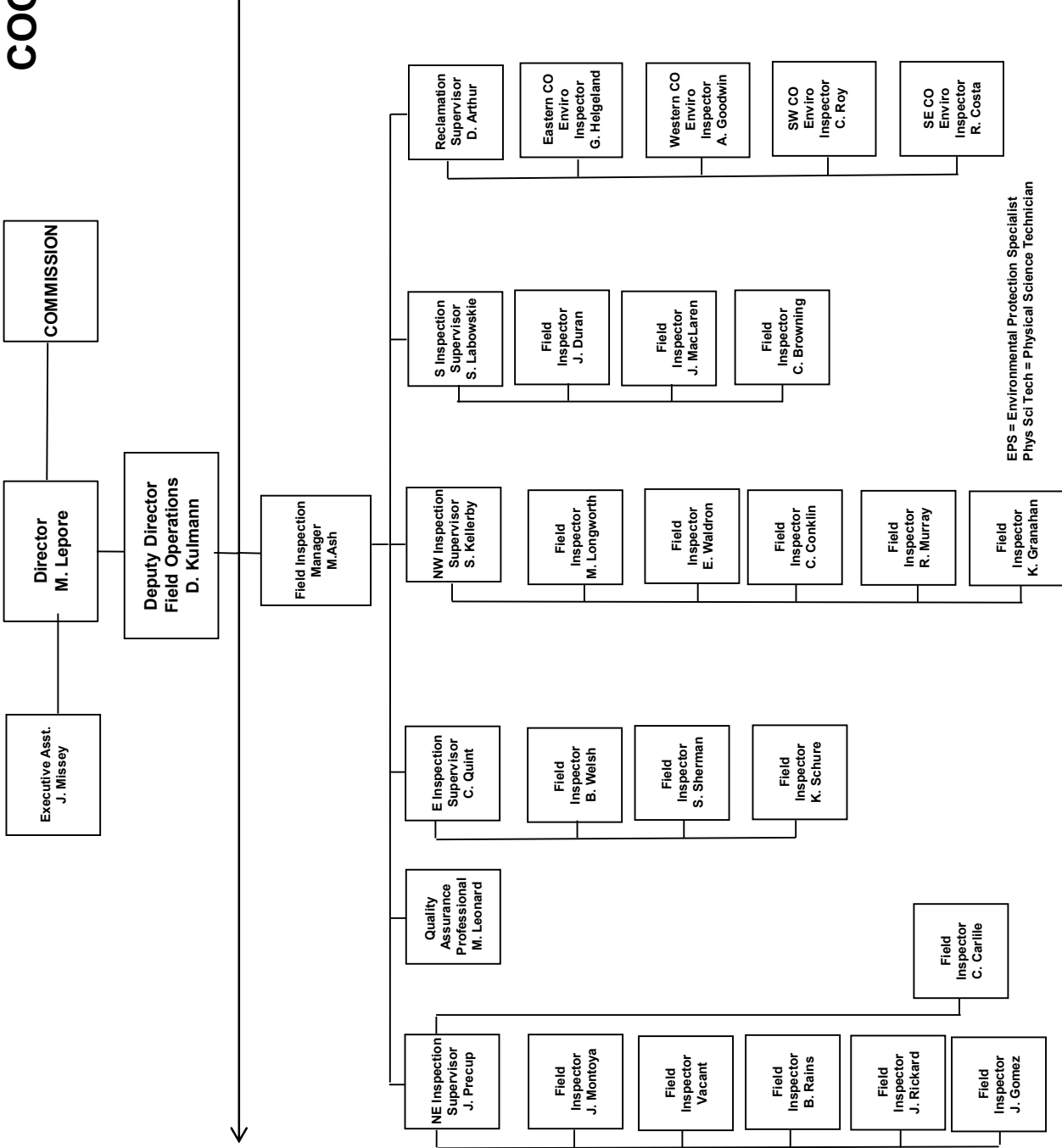
COGCC



EIT = Engineer in Training
 EPS = Environmental Protection Specialist
 OGLA = Oil & Gas Location Assessment
 Phys Sci Tech = Physical Science Technician
 UJC = Underground Injection Control



COGCC



EPS = Environmental Protection Specialist
Phys Sci Tech = Physical Science Technician



Oil and Gas Staff Report

December 15, 2014

PLUGGING AND RECLAIMING ABANDONED WELLS FOR ORPHANED LOCATIONS
FISCAL YEAR 2014-15

PLANNED													
County	Type	Project Name	Project No.	Manager	Acct Code	ESTIMATED TOTAL PROJECT COST			FY 2014-15 YTD EXPENDITURES			Description	
						Bond	PRAW	EMGY	Totals	Bond	PRAW		EMGY
Rio Blanco	PA	Gentry		Craig Burger	GENT	\$0	\$48,000	\$0	\$48,000	\$0	\$0	\$0	Plug and abandon
Baca	PA	Wallace Oil and Gas BOND	FYE2008-12	Diana Burr	WALL	\$30,000	\$60,000	\$0	\$90,000	\$0	\$0	\$0	BONDS claimed in 2004
						sub-total	\$108,000						
La Plata	PA	Noel Reynolds Ester #1 BOND	FYE2014-03	Mark Weems	NOEL	\$30,000	\$20,000	\$0	\$50,000	\$0	\$0	\$0	Located in Red Mesa Field; Bond claimed in 2011
Fremont	PA	Fremont Co-Group #3 - Five Wells	FYE2014-09	Steve Jenkins	FREM	\$0	\$50,000	\$0	\$50,000	\$0	\$0	\$0	Five more wells needing to be plugged in the Florence Field.
Baca	PA	Chapman #1	FYE2008-42	Stuart Ellsworth	CHAP	\$0	\$45,000	\$0	\$45,000	\$0	\$0	\$0	Open casing 4' above GL. Heard "gas bubbling through liquid down hole" during 1998 inspection. Tagged bottom at 189' during 2007 inspection; no evidence of leaking.
La Plata	PA	Stewart #1	FYE2007-02	Mark Weems	STEW	\$0	\$80,000	\$0	\$80,000	\$0	\$0	\$0	Drilled dry & abandon 1949; appears to have fresh water flowing; located in ravine making difficult for rig access; located on recently acquired SUIT lands
						sub-total	\$195,000						
TOTALS =>						\$60,000	\$303,000	\$0	\$363,000	\$0	\$0	\$0	

IN PROGRESS													
County	Type	Project Name	Project No.	Manager	Acct Code	ESTIMATED TOTAL PROJECT COST			FY 2014-15 YTD EXPENDITURES			Description	
						Bond	PRAW	EMGY	Totals	Bond	PRAW		EMGY
Washington	PA	Flessner #13	FYE2014-02	Dirk Sutphin	FLES	\$0	\$45,500	\$0	\$45,500	\$0	\$0	\$0	DA 1955; Surt owner/farmer complaint; located in a cultivated farm and impeding farming operations.
Larimer	PA	Akerman #1	FYE2014-06	Mark Schlagenhaut	AKER	\$0	\$40,000	\$0	\$40,000	\$417	\$417	\$417	Well has open 4 1/2" at surface with water flowing out of csg
TOTALS =>						\$0	\$85,500	\$0	\$85,500	\$0	\$417	\$0	\$417

COMPLETED													
County	Type	Project Name	Project No.	Manager	Acct Code	ESTIMATED TOTAL PROJECT COST			FY 2014-15 YTD EXPENDITURES			Description	
						Bond	PRAW	EMGY	Totals	Bond	PRAW		EMGY
Mesa	PA	DB Orphan Blair #1	FYE2014-01	Jay Krabacher	DEB1	\$0	\$65,069	\$0	\$65,069	\$0	\$0	\$0	Have capped well and stopped water flow; Re-enter; PA
Mesa	PA	Pasture #1	FYE2013-06	Jay Krabacher	HSTD	\$0	\$5,000	\$0	\$5,000	\$1,380	\$1,380	\$1,380	Leak has stopped; will cut off casing and install PA marker and repair the gate to the location. Plans are to piggy back it with the Debeque Water flow to save on mobilization charges.
TOTALS =>						\$0	\$70,069	\$0	\$70,069	\$0	\$1,380	\$0	\$1,380

SCOREBOARD (PRAW FUNDING ONLY)											
ESTIMATED TOTAL PROJECT COSTS						FY 2014-15 YTD EXPENDITURES					
Bond	PRAW	EMGY	Totals	Bond	PRAW	EMGY	Totals	Bond	PRAW	EMGY	Totals
\$60,000	\$458,569	\$0	\$518,569	\$0	\$1,797	\$0	\$1,797	\$0	\$1,797	\$0	\$1,797
\$85,500	IN PROGRESS ESTIMATED TOTALS										
\$417	IN PROGRESS SPENT TO DATE TOTALS										
\$85,083	IN PROGRESS REMAINING TOTALS										
\$86,880	SUM OF (IN PROGRESS TOTALS) AND (COMPLETED TO DATE TOTALS)										
\$445,000	ANNUAL ALLOTMENT BUDGET TOTAL										
\$358,120	BALANCE PROJECTED TO DATE										

Notes:
 Project Types: "PA" indicates plugging and abandonment, "REC" indicates EMGY; indicates funding by the Emergency Response line item
 TBD: Cost estimates in process.
 PRAW: indicates funding by the Plugging and Reclaiming Abandoned Wells line



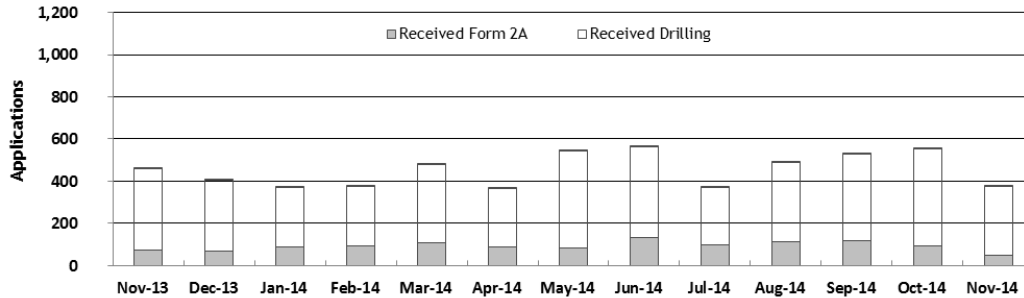
Colorado Oil & Gas Conservation Commission
 Monthly Permit Activity as of December 3, 2014

Form/Month	Backlog	Received	Approved	Withdrawn	Rejected	Incomplete ¹	In-Process	Remaining ²
Form2A								
Nov-13	199	72	85	6	0	57	123	180
Dec-13	179	68	71	6	0	57	113	170
Jan-14	170	90	43	7	0	47	163	210
Feb-14	210	91	94	3	0	51	153	204
Mar-14	204	110	88	4	0	48	174	222
Apr-14	222	89	99	18	0	25	169	194
May-14	194	83	94	7	0	26	150	176
Jun-14	176	134	92	3	0	30	185	215
Jul-14	215	97	126	3	0	28	155	183
Aug-14	183	111	87	4	0	36	167	203
Sep-14	203	116	81	3	0	47	188	235
Oct-14	235	93	109	6	0	74	139	213
Nov-14	213	51	103	6	0	46	109	155
Drilling								
Nov-13	737	389	353	10	0	88	675	763
Dec-13	763	338	367	7	0	110	617	727
Jan-14	727	278	232	77	0	75	621	696
Feb-14	696	284	297	4	0	109	570	679
Mar-14	679	367	329	13	0	103	601	704
Apr-14	704	276	317	16	0	63	584	647
May-14	647	458	383	16	0	53	653	706
Jun-14	706	429	377	8	0	62	688	750
Jul-14	750	272	446	2	0	65	509	574
Aug-14	574	376	259	24	0	90	577	667
Sep-14	667	412	304	21	0	109	645	754
Oct-14	754	458	371	10	0	137	694	831
Nov-14	831	322	479	19	0	128	527	655
Recompletion								
Nov-13	13	4	13	0	0	0	4	4
Dec-13	4	3	4	0	0	0	3	3
Jan-14	3	3	2	0	0	0	4	4
Feb-14	4	6	4	0	0	0	6	6
Mar-14	6	4	6	0	0	0	4	4
Apr-14	4	2	3	0	0	1	2	3
May-14	3	2	2	0	0	1	2	3
Jun-14	3	3	0	0	0	1	5	6
Jul-14	6	2	5	0	0	0	3	3
Aug-14	3	4	3	0	0	0	4	4
Sep-14	4	2	3	0	0	1	1	3
Oct-14	3	3	2	0	0	2	2	4
Nov-14	4	5	2	0	0	1	6	7

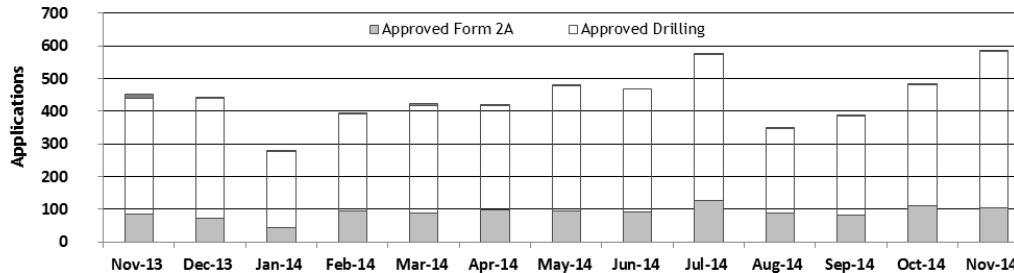
¹Incomplete are permits that have missing or inaccurate data and cannot be approved.

²Backlog = Incomplete + In-process - Remaining permits from previous month.

Received Applications



Approved Applications





Oil and Gas Staff Report

December 15, 2014

17

Colorado Oil and Gas Conservation Commission
 Status of Permit Applications Filed By Month as of December 2, 2014

Form 2A Location Assessment

Year	Month	Received	Approved	Withdrawn	In Process	Percent In Process	Median Days to Process	Less Than 30 Days	30 to 49 Days	Greater Than 50 Days
2011	TOTAL	2,391	2,298	93	0	0%		1,416	620	262
2012	TOTAL	1,359	1,289	68	2	0%		706	378	205
2013	JAN	177	163	12	2	1%	35	99	45	19
	FEB	91	83	8	0	0%	34	42	29	12
	MAR	131	122	9	0	0%	51	41	46	35
	APR	150	141	7	2	1%	40	47	69	25
	MAY	105	100	4	1	1%	42	47	32	21
	JUN	107	89	16	2	2%	50	28	41	20
	JUL	204	198	3	3	1%	69	11	71	116
	AUG	58	56	2	0	0%	62	7	18	31
	SEP	56	53	3	0	0%	56	13	18	22
	OCT	63	61	2	0	0%	53	12	24	25
	NOV	76	70	5	1	1%	50	18	24	28
	DEC	68	61	6	1	1%	61	4	16	41
2013	TOTAL	1,286	1,197	77	12	1%		369	433	395
2014	JAN	85	82	3	0	0%	54	12	36	34
	FEB	88	85	2	1	1%	52	11	36	38
	MAR	113	108	5	0	0%	47	30	42	36
	APR	80	73	7	0	0%	45	18	35	20
	MAY	92	87	4	1	1%	50	13	34	40
	JUN	134	111	3	20	15%	42	36	54	21
	JUL	100	94	2	2	2%	40	37	38	19
	AUG	102	96	2	4	4%	46	33	26	37
	SEP	118	99	2	15	13%	40	29	45	25
	OCT	94	65	3	26	28%	29	34	31	0
	NOV	65	2	0	63	97%	24	2	0	0
2014	TOTAL	1,071	902	33	132	12%		255	377	270

Form 2 Application For Permit to Drill (APDs)

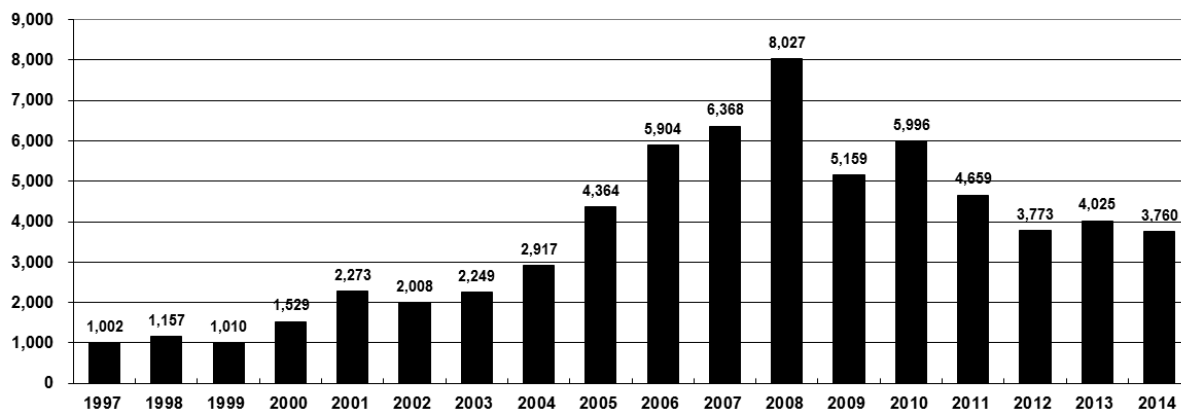
Year	Month	Received	Approved	Withdrawn	In Process	Percent In Process	Median Days to Process	Less Than 30 Days	30 to 49 Days	Greater Than 50 Days
2011	TOTAL	4,691	4,557	132	0	0%		2,723	1,565	587
2012	TOTAL	3,955	3,816	139	0	0%		1,971	1,393	602
2013	JAN	562	542	18	2	0%	36	278	179	86
	FEB	242	228	14	0	0%	36	78	126	38
	MAR	333	320	13	0	0%	43	123	119	84
	APR	327	314	13	0	0%	40	105	153	59
	MAY	369	340	27	2	1%	40	111	181	59
	JUN	330	305	22	3	1%	47	110	131	66
	JUL	796	762	11	23	3%	66	106	218	449
	AUG	313	308	4	1	0%	65	13	138	162
	SEP	188	186	2	0	0%	71	21	66	106
	OCT	339	332	7	0	0%	72	22	89	228
	NOV	373	357	11	5	1%	60	49	147	166
	DEC	380	311	66	3	1%	68	30	79	204
2013	TOTAL	4,552	4,305	208	39	1%		1,046	1,626	1,707
2014	JAN	261	255	5	1	0%	56	35	117	107
	FEB	298	285	13	0	0%	58	37	94	159
	MAR	359	351	8	0	0%	52	50	133	173
	APR	223	213	10	0	0%	47	20	121	74
	MAY	501	478	2	21	4%	64	40	155	285
	JUN	439	366	37	36	8%	47	111	138	120
	JUL	287	272	11	4	1%	47	62	119	93
	AUG	354	313	3	38	11%	50	61	126	129
	SEP	413	341	21	51	12%	45	62	150	130
	OCT	441	315	1	125	28%	32	129	179	8
	NOV	378	7	2	369	98%	14	8	1	0
2014	TOTAL	3,954	3,196	113	645	16%		615	1,333	1,278



Colorado Oil and Gas Conservation Commission
Annual Drilling Permits by County as of November 24, 2014

COUNTY	1997	1998	1999	2000	2001	2002	2003	2004	2005	2006	2007	2008	2009	2010	2011	2012	2013	2014
ADAMS	33	24	19	38	28	9	26	39	34	37	89	51	35	21	8	40	40	50
ARAPAHOE	9	1	2	0	2	1	2	5	7	11	10	10	10	8	23	35	23	28
ARCHULETA	3		1	7	9	6	10	8	13	14	26	47	11	18	12	5	4	3
BACA	7	13	15	22	6	2	3	7	8	2	11	13	3	4	5	3	1	1
BENT	5	3	5	2				5	3	8	1	1		5		2	1	
BOULDER	2	5		1	5	6	7	17	13	21	37	32	35	24	30	22		
BROOMFIELD						2	7		1	1		2	33	28	11	36		31
CHEYENNE	31	41		3	3	3	3	3	10	21	15	33	12	13	16	31	50	23
COSTILLA			1															
CROWLEY																		2
DELTA						7	4	5	10	9	2			4	3	6	1	2
DENVER	5	3	3		3					19	25	24						
DOLORES							1	1	1	6	10	12	21	8	8	13	12	3
EAGLE																		1
ELBERT	11	1		2						4					1	2	2	4
EL PASO													2	3	3	18	1	2
FREMONT	1							1	3	2	4	14	13	22	14	11	2	8
GARFIELD	141	95	130	213	353	362	567	796	1,509	1,845	2,550	2,888	1,981	2,037	1,323	1,046	870	972
GRAND																		
GUNNISON						5	10	1	9	19	7	10	12	4	3	11	9	20
HUERFANO	3	40	26	41	27	27		8	2			7		2	1	9	1	13
JACKSON	6	3		34	18	21	9	14	6	8	5	27	19	9	18	5	12	17
JEFFERSON		1	2	1						1	3	2						1
KIOWA	17	10	2	11	18	2	4	2	1	11	9	26	7	16	17	17	12	5
KIT CARSON	6	9	5				1	3	5	4	4	13	7	3	2	6	1	2
LA PLATA	40	82	107	127	156	104	162	102	115	235	251	328	298	191	99	71	32	74
LARIMER	3	1		2		1			1		5	46	12	41	8	13	2	4
LAS ANIMAS	136	195	195	268	400	259	180	332	413	500	362	303	88	92	85	11	2	1
LINCOLN	2			2	2	1	6	3	4	1	2	58	44	48	31	36	87	124
LOGAN	12	7		4	7	3	3	6	13	17	14	5	9	17	8	27	4	5
MESA	10	2	6	13	27	30	27	54	136	265	293	501	427	306	127	150	105	74
MOFFAT	28	21	15	35	52	62	63	63	60	120	68	57	51	53	93	88	44	53
MONTEZUMA	5	4	1	4		5	8	8	11	5	12	22	39	19	27	29	14	23
MONTROSE	1			1	3	2	4	2		1	3	3		1	1			
MORGAN	11	10	12	9	9	2	7	9	7	3	6	2	1	6	13	5	16	6
OTERO																		
PARK			1										3	4	1			
PHILLIPS				1	2		7	13	17	12	69	82	45	64	112	56		9
PITKIN									1		1							
PROWERS	3	9	3	2	5	4		7	5	7	5	8	1	3	1			1
RIO BLANCO	40	51	95	89	187	105	179	154	161	360	321	477	348	441	109	117	167	102
RIO GRANDE				1	1		1					1	1			2		1
ROUTT	1	1	4	20	13	1		4	6	9	8	4	2	3	10	4	12	4
SAGUACHE				2		2					2	1	2					
SAN MIGUEL	1	4	2	11	13	27	18	42	45	35	23	20	13	10	2	1		2
SEDGWICK	2						1	5	2	7	2	1	19	11	12	2		7
WASHINGTON	26	18	3	23	17	27	34	128	50	69	45	11	1	6	12	6	19	12
WELD	285	392	288	509	702	760	757	832	901	1,418	1,527	2,340	1,448	2,152	2,262	1,826	2,468	2,019
YUMA	116	111	60	31	205	160	138	237	782	797	541	545	105	299	148	11	9	53
TOTAL	1,002	1,157	1,010	1,529	2,273	2,008	2,249	2,917	4,364	5,904	6,368	8,027	5,159	5,996	4,659	3,773	4,025	3,760

ALL COUNTIES





Oil and Gas Staff Report

December 15, 2014

19

Colorado Oil and Gas Conservation Commission

Form 2A Breakdown By County By Year as of December 2, 2014

Year	County	Form 2As	Completed	In Process	New Location	CDP	SWH	RSO	CDPHE
2009	Total State	818	818	0	408	2	80	5	5
2010	Total State	2,378	2,376	0	1,601	0	327	22	55
2011	Total State	2,299	2,297	2	1,791	1	274	17	5
2012	Total State	1,298	1,294	4	946	0	173	6	1
2013	Total State	1,202	1,189	13	898	1	164	2	4
2014	ADAMS	23	19	4	21	0	0	0	0
	ARAPAHOE	18	13	5	18	0	0	0	0
	ARCHULETA	1	1	0	0	0	1	0	0
	BACA	1	1	0	1	0	0	0	0
	BROOMFIELD	1	1	0	0	0	0	0	0
	CHEYENNE	23	18	5	20	0	0	0	0
	CROWLEY	2	2	0	2	0	0	0	0
	DOLORES	2	2	0	2	0	1	0	0
	EL PASO	2	2	0	2	0	0	0	0
	ELBERT	4	4	0	4	0	0	0	0
	FREMONT	3	3	0	4	0	4	0	0
	GARFIELD	76	64	12	17	0	53	3	0
	GUNNISON	6	6	0	1	3	2	0	0
	HUERFANO	5	5	0	2	0	6	0	0
	JACKSON	14	14	0	9	0	14	0	0
	KIOWA	3	3	0	2	0	0	0	0
	KIT CARSON	2	2	0	2	0	0	0	0
	LA PLATA	14	14	0	4	0	14	0	0
	LARIMER	2	1	1	0	0	0	0	0
	LAS ANIMAS	1	1	0	1	0	0	0	0
	LINCOLN	130	126	4	116	0	0	0	0
	LOGAN	2	2	0	2	0	0	0	0
	MESA	8	8	0	3	0	5	1	0
	MOFFAT	12	9	3	12	0	12	3	0
	MONTEZUMA	14	12	2	15	0	0	0	0
	PHILLIPS	11	9	2	13	0	0	0	0
	PROWERS	1	1	0	1	0	0	0	0
	RIO BLANCO	19	17	2	13	0	18	0	0
	ROUTT	1	1	0	1	0	1	0	0
	SAN MIGUEL	1	1	0	1	0	0	0	0
	SEDGWICK	7	7	0	5	0	0	0	0
	WASHINGTON	13	13	0	13	0	0	0	0
	WELD	555	461	94	419	0	5	2	0
	YUMA	53	53	0	48	0	0	0	0
2014	Total State	1,030	896	134	774	3	136	9	0

Abbreviations:

CDP = Comprehensive Drilling Plan

SWH = Sensitive Wildlife Habitat consultation

RSO = Restricted Surface Occupancy consultation

CDPHE= Colorado Department of Health and Environment consultation



Colorado Oil and Gas Conservation Commission
Horizontal Wells by Year and County as of November 24, 2014

COUNTY	Prior Years		2009		2010		2011		2012		2013		2014		Total		Completion		
	Drilled	PA	Permit	Spud	Permit	Spud	Permit	Spud	Permit	Spud	Permit	Spud	Permit	Spud	Spud	AC	PR	DA	PA
ADAMS			6	5	2	3	1		17	2	26	2	41	14	26	5	4		
ARAPAHOE	2						10	1	22	4	11	13	18	11	31	2	3		2
ARCHULETA	17		7	6	15	7	10	8	5	9	2	2	1		47		42		1
BENT									1	1	1	1			2				
BOULDER							4								0				
CHEYENNE	5	4									7	2	1	1	8		2		3
DELTA								6	1	1	1	2	2	1	2		2		
DOLORES	9		18	2	6			9	3	3	5	4	3		18		13		1
EL PASO								10							0				1
ELBERT								1							0				
FREMONT	7	6	6		12	5	3	4	4	1	1	1			18		10		6
GARFIELD	10	2	1	1	16	2	18	6	43	6	18	4	16	8	37		27		2
GUNNISON	1				1				3	2	2		9		3		3		
HUERFANO								4	1				2		1				
JACKSON	8	1	8		3	3	9	2	4		8	5	15	3	21		12		1
KIOWA									1		4	1	1		1		1		
KIT CARSON	1								1		1	1			2				3
LA PLATA	28	2	11	2	28	3	18	7	12	1	5	1	34	3	45		47		1
LARIMER	3	2					5	1	2	1	2				7		4		2
LAS ANIMAS	16	2	4		1	1									17		15		2
LINCOLN			2	1	2	1	1			1	6	1	4		4		3		
LOGAN	2								1						2		2		
MESA	3	2	36	1	22	8	24	13	14		9	2	9	1	28		25		3
MOFFAT	7	1	6	3	4		9	4	44	6	18	13	15	1	34	1	20		1
MONTEZUMA	6	1	23	6	11	2	8	2	18	6	3	4	15	2	28		39		1
MORGAN							6	2	2	1	13	1	6		4		2		
PARK					1	1	1								1				
RIO BLANCO	7	2			1	1	11	2	15	2	4	5	3	1	18		11		3
ROUTT	10	6	1						1		1				10		3		6
SAN MIGUEL	1														1				1
WASHINGTON	1	1	1												1				1
WELD	11	3	12	5	208	95	763	233	964	597	2,114	1,092	1,942	1,256	3,289		1,184		42
YUMA	1	1	6												1				1
TOTAL Horizontal	156	25	147	32	333	132	901	285	1,203	645	2,260	1,155	2,137	1,302	3,707	8	1,474	32	68
Percent of Total HZ																0%	40%	1%	2%
Total All Permits			5,159		5,996		4,659		3,773		4,025		3,760						
HZ Percent of Total			2.8%		5.6%		19.3%		31.9%		56.1%		56.8%						



Oil and Gas Staff Report

December 15, 2014

21

Colorado Oil and Gas Conservation Commission
Well to Building Setback Review as of December 3, 2014

Count of well locations by proximity groupings from well spot to buildings for all locations reviewed under the December 17, 2008 amended rules.

Location Proximity to Buildings	2009	2010	2011	2012	2013	2014	Number of Locations	Percent of Total Locations
less than 150 feet	2	3	3	2	0	3	13	0%
150 to 350 feet	37	58	61	39	34	36	265	3%
350 to 500 feet	50	110	97	61	64	45	427	5%
500 to 1000 feet	117	385	331	188	188	147	1,356	17%
1000 + feet	356	1,705	1,470	838	762	660	5,791	74%
TOTAL LOCATIONS	562	2,261	1,962	1,128	1,048	891	7,852	

COUNTY	TOTAL	Less than 150 feet	150 to 350 feet	350 to 500 feet	500 to 1000 feet	1000 + feet
ADAMS	69	0	4	6	16	43
ARAPAHOE	81	0	2	4	9	66
ARCHULETA	18	0	0	1	9	8
BACA	15	0	0	0	1	14
BENT	7	0	0	0	0	7
BOULDER	23	0	1	1	17	4
BROOMFIELD	33	0	0	4	13	16
CHEYENNE	129	1	0	0	2	126
CROWLEY	2	0	0	0	0	2
DELTA	7	0	0	2	1	4
DOLORES	19	0	0	0	7	12
EAGLE	1	0	0	0	0	1
EL PASO	14	0	0	0	3	11
ELBERT	8	0	0	0	2	6
FREMONT	39	0	2	7	8	22
GARFIELD	515	0	9	5	71	430
GUNNISON	33	1	0	3	1	28
HUERFANO	15	0	0	0	5	10
JACKSON	43	0	0	4	1	38
KIOWA	63	0	0	0	1	62
KIT CARSON	14	0	0	0	0	14
LA PLATA	115	0	4	13	35	63
LARIMER	34	0	5	3	10	16
LAS ANIMAS	201	1	6	7	37	150
LINCOLN	340	0	1	2	4	333
LOGAN	43	0	1	1	0	41
MESA	89	0	0	3	14	72
MOFFAT	167	0	0	2	14	151
MONTEZUMA	37	0	0	1	4	32
MONTROSE	2	0	0	0	0	2
MORGAN	28	0	0	2	4	22
PARK	4	0	0	0	0	4
PHILLIPS	273	1	4	6	21	241
PROWERS	5	0	0	0	0	5
RIO BLANCO	172	0	0	0	1	171
RIO GRANDE	2	0	0	0	1	1
ROUTT	26	0	0	0	2	24
SAN MIGUEL	12	0	0	0	0	12
SEDGWICK	32	0	0	1	3	28
WASHINGTON	60	0	2	0	2	56
WELD	4,537	9	215	333	993	2,987
YUMA	525	0	9	16	44	456



Colorado Oil and Gas Conservation Commission

Well to Building Setback Review as of December 3, 2014

Listing of Locations less than 200 feet to Building

Year	Document Number	County	High Density	New Location	Distance (Feet)	Proximity (Feet)	Building Description
2011	2587822	CHEYENNE	No	No	58	less 150	Water well house
2009	1691798	WELD	No	No	58	less 150	Vehicle garage
2010	400072164	WELD	No	Yes	69	less 150	Abandoned hog shed
2014	400569085	WELD	No	No	78	less 150	Well shed
2014	400600705	WELD	No	No	80	less 150	Livestock shed
2012	400240957	GUNNISON	No	Yes	90	less 150	Equipment shed
2009	1758843	WELD	No	Yes	103	less 150	Building to be razed
2011	1636646	WELD	No	No	122	less 150	Storage shed
2009	400011284	LAS ANIMAS	No	Yes	127	less 150	Operator is owner
2009	1786896	PHILLIPS	No	No	132	less 150	Grain storage
2014	400642113	WELD	No	Yes	142	less 150	Barn
2011	400117702	WELD	No	Yes	143	less 150	Irrigation pump house
2011	400227765	WELD	No	Yes	145	less 150	Storage barn
2014	400558626	LINCOLN	No	No	150	less 150	Gas plant equipment building
2009	1904205	WELD	No	No	154	150 to 350	Livestock enclosure
2012	400243295	WELD	No	Yes	155	150 to 350	Unused storage shed
2011	400179419	WELD	No	Yes	157	150 to 350	Existing well / storage building
2010	400054716	WELD	No	No	159	150 to 350	Equipment barn
2011	400188968	WELD	No	Yes	159	150 to 350	Abandoned
2014	400554054	WELD	No	Yes	159	150 to 350	Equipment shed
2014	400559404	WELD	No	Yes	160	151 to 350	Barn
2010	400021477	WELD	No	Yes	162	150 to 350	Goat barn
2009	1758386	WELD	No	Yes	168	150 to 350	Storage shed
2011	1635946	WELD	No	No	169	150 to 350	Storage shed
2013	400447386	WELD	No	No	169	150 to 350	Abandoned turkey barn
2013	400447391	WELD	No	No	169	150 to 350	Abandoned turkey barn
2011	400165164	WELD	No	Yes	178	150 to 350	Residence
2013	400367184	WELD	No	Yes	179	150 to 350	Shed
2011	400188780	WELD	No	Yes	180	150 to 350	Residence
2010	1697620	WELD	No	No	187	150 to 350	Livestock shed
2009	1758746	WELD	No	No	193	150 to 350	Storage shed
2011	400154431	WELD	No	Yes	198	150 to 350	Turkey barn
2012	400250031	WELD	No	Yes	198	150 to 350	Abandoned guard shack
2009	1774783	WELD	No	No	199	150 to 350	Cement service building
2011	400118102	YUMA	No	Yes	199	150 to 350	Steel barn



Oil and Gas Staff Report

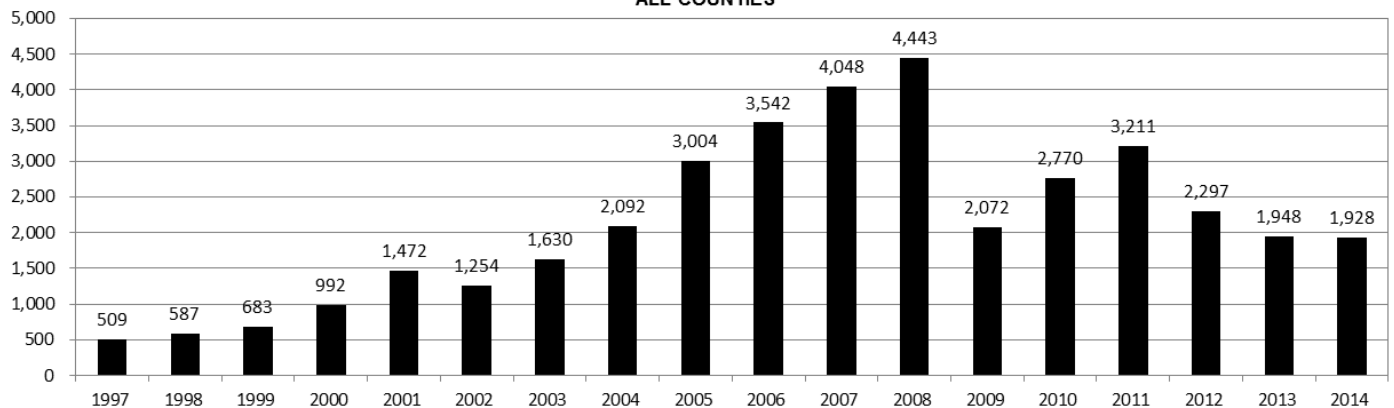
December 15, 2014

23

Colorado Oil and Gas Conservation Commission
Annual Well Starts by County as of November 24, 2014

COUNTY	1997	1998	1999	2000	2001	2002	2003	2004	2005	2006	2007	2008	2009	2010	2011	2012	2013	2014
ADAMS	16	12	17	18	13	4	19	22	24	13	41	14	15	21	1	15	5	20
ARAPAHOE	3	2						6	1	5	2	1	1	3	9	9	25	20
ARCHULETA	1			4	4	2	5	4	10	5	7	26	9	12	9	11		1
BACA	7	11	8	19	6	2	1	6	6	2	6	12		5	4	2	1	
BENT	2	3	6	2				3	2	8	1	1			1	2	1	
BOULDER							2	5	11	9	14	25	16	13	7	14		
BROOMFIELD						2		1				10		21	11	5		
CHEYENNE	29	29	6	2	1	3	3		9	14	15	14	8	12	11	17	35	18
COSTILLA			1															
CROWLEY																		2
DELTA							5	4	6	5	2			4	1	3		1
DENVER	2	3	1		2					7	5	4						
DOLORES								2		2	13	4	2		1	5	10	1
EAGLE																	1	
EL PASO														2		5		1
ELBERT	2	2		2						1								
FREMONT		1						1	3	2	2	5	3	9	16	7	2	2
GARFIELD	28	19	94	190	251	245	417	585	799	1,005	1,304	1,688	768	904	878	495	393	330
GUNNISON						1		1	1	9	5	1	4	5	2	4	1	2
HUERFANO	2	31	9	25	14	19	3	6	2			2		2		2	1	2
JACKSON	3	3		24	2	4	10	10		3	3	10	1	6	7		7	5
JEFFERSON			2									2						
KIOWA	13	6	4	8	16	2	4	2	1	7	7	2	5	15	14	10	11	2
KIT CARSON	3	7	7				1	1	6	2	1	14	3	1	1	3	1	2
LA PLATA	48	65	80	99	135	118	110	103	104	108	179	199	131	67	54	3	9	25
LARIMER	1			1	1				1		4	8	1	28	2	10	4	1
LAS ANIMAS	90	120	182	202	286	205	221	296	384	413	326	221	14	7	78	1		1
LINCOLN	2			2	2	1	5	2	2	1	2	19	10	14	22	23	42	32
LOGAN	10	4		4	6	3	3	2	11	12	12	3	7	3	9	13	4	6
MESA	1	4	4	2	12	12	13	25	89	156	209	222	14	11	39	4	6	16
MOFFAT	1	8	10	18	23	25	28	19	40	60	42	25	18	15	34	25	26	2
MONTEZUMA	2	2		2	3	5	5	1	7	2	4	18	11	3	8	18	12	8
MONTROSE					3		2	1			1	2		1				
MORGAN	9	7	4	9	8	1	7	5	5	3	1	1	2	3	2	3	1	2
PARK															2			
PHILLIPS				1			6	10	11	4	35	18	2	42	130	48		4
PROWERS	2	8	4	2	4	4		5	5	6	3	5	2	3	1			
RIO BLANCO	9	9	62	51	82	47	83	92	95	107	95	203	116	107	72	53	36	33
RIO GRANDE																		1
ROUTT			1	5	12	1		1	6	3	2		2	1	2	4	2	2
SAN MIGUEL		3	1	6	9	10		19	28	13	20	17	5	1	2	2		1
SEDGWICK	2						1	2	1	1	5			3	8	3		
WASHINGTON	23	18	4	15	12	24	29	65	34	23	14	11	2	2	4	1	9	7
WELD	94	117	124	237	403	406	522	632	718	931	1,222	1,314	877	1,208	1,664	1,463	1,289	1,340
YUMA	104	93	52	42	162	108	106	144	597	593	445	336	27	213	107	16	13	39
TOTAL	509	587	683	992	1,472	1,254	1,630	2,092	3,004	3,542	4,048	4,443	2,072	2,770	3,211	2,297	1,948	1,928

ALL COUNTIES





Colorado Oil and Gas Conservation Commission

Active Wells by County and Status as of November 24, 2014

COUNTY	Drilling	Domestic	Injecting	Producing	Shut In	Temp Aband	Waiting on Completion	Active Storage	Intent to Plug	Total Active Wells
ADAMS	24		7	849	89	8	1	17		995
ARAPAHOE	24	1	3	122	12	9		43		214
ARCHULETA	2	5		102	9	8	7			133
BACA	1		11	129	41	4		57		243
BENT		1		29	7		1			38
BOULDER				306	9	1				316
BROOMFIELD				93	4					97
CHEYENNE	15		34	318	29	50	4			450
CROWLEY	2									2
DELTA			1	4	13		1			19
DENVER			1	44	4		3			52
DOLORES	3		1	39	3	2	1			49
EL PASO	1	1				1				3
ELBERT				61	8	2				71
FREMONT	3	3		62	4	6				78
GARFIELD	281	5	42	10,234	187	74	55	1		10,879
GUNNISON	3		1	26	13	1	4			48
HUERFANO	3		1	32	5	6	1			48
JACKSON	6		29	108	46	2	2			193
JEFFERSON			2	1	1		1	1		6
KIOWA	5		10	103	17	4	2			141
KIT CARSON	2	1	1	14	1	1	1			21
LA PLATA	15	7	32	3,122	101	26	4	30		3,337
LARIMER	1	2	18	177	39	18	2			257
LAS ANIMAS		4	17	2,816	85	87	21	17		3,047
LINCOLN	22	1	8	86	17	3	4			141
LOGAN	11		15	110	42	29	4	12		223
MESA	19	1	11	852	133	19	6	9		1,050
MOFFAT	5		9	485	54	36	10			599
MONTEZUMA	8	2	6	119	41	13	2			191
MONTROSE						3				3
MORGAN	1		24	83	84	34	3	79		308
OURAY		2				1				3
PARK					1					1
PHILLIPS	6		3	258	3	1	1			272
PITKIN								10		10
PROWERS				26	4					30
RIO BLANCO	26	4	289	2,184	296	85	14	4		2,902
ROUTT	2	2		30	9	1	2			46
SAN MIGUEL	1			117	10	2				130
SEDGWICK			1	13	4		2			20
WASHINGTON	10		24	402	42	7	5			490
WELD	1,782	1	40	18,871	970	28	151	2		21,845
YUMA	13	8	20	3,770	67	12	14	1		3,905
TOTAL	2,297	51	661	46,197	2,504	584	329	283	0	52,906



Oil and Gas Staff Report

December 15, 2014

25

Colorado Oil and Gas Conservation Commission
 Monthly Statistics as of December 2, 2014

Page 1 of 2

YEAR and MONTH	Rig Count	Permits										Well Spud	Active		Public Visits			
		Drilling		Recompletior		Injection		Pits		Locations			Drilling	Active	Data	Office	Internet	
Baker - Hughes		Rcvd	Apvd	Rcvd	Apvd	Rcvd	Apvd	Rcvd	Apvd	Rcvd	Authz	Notices	Permits	Wells				
2011	JAN	63	405	351	8	23	4	6	4	8	249	112	232	4,755	43,588	14	95	103,968
	FEB	61	343	249	15	2	7	6	5	3	184	150	209	4,733	43,869	21	80	96,171
	MAR	68	472	498	18	23	4	7	38	31	262	258	268	4,847	43,927	9	125	122,393
	APR	72	325	314	26	15	5	0	20	27	190	218	241	4,882	44,203	8	105	106,539
	MAY	72	372	367	20	25	3	6	12	8	214	171	248	4,904	44,752	14	124	73,024
	JUN	70	512	436	61	22	5	4	11	4	172	239	272	5,013	45,401	30	131	108,115
	JUL	69	457	436	13	55	2	1	13	7	215	158	261	5,113	45,710	20	74	103,585
	AUG	73	472	482	37	17	1	0	10	17	236	229	282	5,328	45,975	21	141	111,950
	SEP	77	336	389	22	29	7	0	35	34	159	203	322	5,361	46,115	9	120	116,043
	OCT	78	382	443	45	29	2	1	4	12	171	172	302	5,423	46,719	14	126	132,814
	NOV	80	342	324	29	57	0	1	12	13	166	174	305	5,409	46,721	18	96	130,612
	DEC	79	291	370	31	23	4	0	26	28	164	183	278	5,329	46,835	9	77	132,651
2011 TOTAL			4,709	4,659	325	320	44	32	190	192	2,382	2,267	3,220			187	1,294	1,337,865
2012	JAN	73	372	258	26	21	3	0	11	5	142	129	244	5,217	46,958	12	106	112,686
	FEB	70	370	382	23	27	7	5	21	9	160	129	231	5,173	47,128	16	114	105,857
	MAR	66	292	347	21	14	2	2	17	24	133	172	292	5,132	47,263	26	138	111,746
	APR	66	410	235	16	24	5	5	9	2	137	106	240	4,785	47,377	12	108	107,627
	MAY	66	491	506	23	16	3	1	6	2	105	131	211	4,885	47,533	20	123	109,802
	JUN	69	326	377	11	19	8	6	5	8	110	89	144	5,136	47,860	11	111	108,849
	JUL	66	237	276	9	14	3	2	5	2	97	103	184	5,152	48,173	13	102	114,195
	AUG	62	313	288	6	9	6	4	23	5	83	97	180	5,031	49,153	11	112	110,908
	SEP	61	252	256	1	5	5	2	4	1	81	77	159	4,960	49,230	11	89	106,114
	OCT	62	326	265	9	3	7	6	2	19	94	82	161	5,009	49,236	8	105	108,833
	NOV	56	271	323	5	8	6	6	2	4	109	97	142	5,000	49,989	10	119	120,586
	DEC	57	322	260	4	8	8	5	9	3	122	81	109	5,081	50,067	9	78	107,240
2012 TOTAL			3,982	3,773	154	168	63	44	114	84	1,373	1,293	2,297			159	1,305	1,324,443
2013	JAN	53	538	331	6	0	3	5	6	8	176	124	142	5,060	50,265	9	108	47,406
	FEB	56	260	455	10	5	2	3	4	11	91	141	139	5,250	50,372	7	102	40,649
	MAR	57	344	241	5	9	3	8	15	6	129	84	171	5,093	50,540	9	133	43,019
	APR	61	331	333	6	5	5	5	6	8	146	117	165	4,925	50,687	3	132	46,459
	MAY	61	350	342	8	6	6	6	10	7	106	142	160	5,110	50,810	3	123	45,215
	JUN	62	349	273	2	8	8	8	5	3	114	85	141	5,273	50,909	8	122	41,015
	JUL	68	864	304	11	4	9	2	9	5	218	91	163	5,070	51,091	7	154	45,558
	AUG	69	232	291	6	4	3	2	4	1	35	76	196	5,200	51,255	20	130	44,722
	SEP	69	212	362	9	5	10	9	3	19	56	109	162	5,185	51,407	5	105	41,256
	OCT	72	319	376	5	9	7	5	1	8	67	88	239	4,967	51,598	5	135	45,151
	NOV	69	346	353	4	13	7	4	2	27	67	85	157	5,141	51,711	12	119	38,903
	DEC	64	336	367	2	4	4	6	2	3	63	71	112	5,129	51,737	4	93	32,381
2013 TOTAL			4,481	4,028	74	72	67	63	67	106	1,268	1,213	1,947			92	1,456	511,734
2014	JAN	62	278	232	3	2	3	4	14	8	90	43	161	4,926	51,840	1	90	46,150
	FEB	61	284	297	6	4	1	1	3	1	91	94	141	5,051	51,847	12	113	43,408
	MAR	62	367	329	4	6	7	1	6	6	110	88	178	4,997	51,952	16	140	46,620
	APR	63	275	317	2	3	2	5	8	3	89	99	161	4,897	52,060	11	188	45,558
	MAY	65	458	383	2	2	3	1	6	7	83	94	171	4,923	52,202	18	131	42,365
	JUN	67	428	377	3	0	6	7	5	2	134	92	216	4,924	52,337	10	156	42,518
	JUL	69	272	446	2	5	4	11	8	5	97	126	177	4,955	52,431	7	166	45,481
	AUG	73	359	258	3	3	4	4	3	4	95	87	203	5,060	52,582	8	145	42,431
	SEP	76	411	304	1	3	2	1	20	1	101	81	187	5,006	52,694	14	175	43,577
	OCT	76	458	371	3	2	8	3	4	6	93	109	165	4,827	52,785	19	138	46,030
	NOV	73	322	479	5	2	4	4	0	4	51	103	175	5,171	52,947	8	96	39,583
2014 TOTAL			3,912	3,793	34	32	44	42	77	47	1,034	1,016	1,935			124	1,538	483,721

Abbreviation Key: Rcvd = Received, Apvd = Approved, Authz = Authorized



Colorado Oil and Gas Conservation Commission
Monthly Statistics as of December 2, 2014

Page 2 of 2

YEAR and MONTH	Well		Bonds						Hearings					Enforcement			Remediation Projects		Inspections	
	Oper Change	Operators New Inactive	Release Ind	Blntk	Replace	Claim Ind	Blntk	Apps.	Orders	NOAVs	AOCs	OFVs	Cmplt	Spills	Rcvd	Comp	Wells	Locations		
2011 JAN	815	1	2	3	1	4	0	0	16	15	43	3	2	33	40	47	45	1,316	-	
FEB	356	1	1	9	4	6	0	0	16	15	7	-	1	39	52	48	33	1,591	-	
MAR	596	2	3	6	3	9	0	0	-	-	31	-	-	31	48	59	27	1,675	-	
APR	404	2	0	3	2	1	0	0	24	24	8	-	-	10	52	38	61	959	-	
MAY	544	3	0	5	2	4	0	0	77	65	16	2	5	26	31	33	51	1,577	-	
JUN	795	2	2	2	2	0	3	0	51	58	30	1	4	14	38	53	25	1,099	-	
JUL	596	3	6	3	6	3	1	0	-	-	29	-	-	13	39	92	20	518	-	
AUG	575	2	3	12	7	2	0	1	68	54	26	2	2	19	54	106	56	1,032	-	
SEP	587	5	1	7	5	2	0	0	44	41	4	2	4	16	46	56	66	690	-	
OCT	552	4	2	12	6	7	0	3	57	45	9	-	-	15	38	102	28	636	-	
NOV	575	4	9	15	4	1	0	0	-	-	15	-	-	16	31	70	58	739	-	
DEC	348	4	2	2	2	4	0	0	50	32	12	-	1	15	58	22	66	562	-	
2011 TOTAL	6,743	33	31	79	44	43	4	4	403	349	230	10	19	247	527	726	536	12,394	-	
2012 JAN	1,052	3	3	7	5	1	1	0	70	72	18	1	-	27	35	68	23	998	970	
FEB	385	6	9	8	5	0	0	0	-	-	10	-	-	24	40	85	36	1,998	1,024	
MAR	379	4	1	7	3	9	0	0	44	38	19	-	-	23	38	63	61	2,200	1,149	
APR	478	4	2	10	3	2	0	0	80	59	11	-	-	19	35	26	99	1,700	930	
MAY	526	3	1	4	0	3	0	0	43	50	14	2	-	23	32	27	122	2,621	1,701	
JUN	1,270	3	4	3	3	4	0	0	-	-	5	-	-	35	39	46	98	1,432	1,091	
JUL	499	5	0	1	4	5	0	0	63	50	15	-	-	16	24	45	33	1,319	1,076	
AUG	301	6	5	2	8	0	1	0	67	54	24	3	2	21	28	127	33	1,898	1,432	
SEP	834	0	4	4	5	2	1	0	-	-	5	-	-	14	13	30	36	1,135	864	
OCT	485	1	2	9	1	0	0	0	30	36	6	1	-	13	44	116	37	1,407	1,029	
NOV	523	6	4	12	8	7	0	0	85	37	16	2	-	10	44	26	44	1,325	829	
DEC	958	6	2	3	1	0	0	0	-	-	14	-	-	19	30	31	19	1,031	610	
2012 TOTAL	7,690	47	37	70	46	33	3	0	482	396	157	9	2	244	402	690	641	19,064	12,705	
2013 JAN	655	3	5	12	2	0	0	0	48	75	15	4	-	21	40	31	45	1,622	789	
FEB	293	4	2	6	3	2	0	0	41	35	11	2	-	15	30	42	90	1,042	615	
MAR	355	1	3	2	2	1	0	0	54	67	16	2	-	11	25	65	29	1,966	1,150	
APR	335	7	1	5	2	8	0	0	-	-	21	-	-	16	33	39	37	1,508	910	
MAY	348	2	1	3	0	0	0	0	46	50	22	6	-	13	31	41	60	2,615	1,576	
JUN	1,458	6	2	2	4	5	0	0	91	44	13	2	-	25	40	47	37	1,857	1,102	
JUL	1,014	4	1	2	2	0	0	0	96	70	25	3	-	21	47	50	22	2,298	1,339	
AUG	389	6	4	5	4	2	0	0	-	-	23	-	-	25	57	36	41	2,145	1,033	
SEP	277	4	1	6	1	0	0	0	101	51	7	2	-	16	60	43	51	1,535	703	
OCT	345	6	0	2	2	2	0	0	52	82	4	12	3	12	79	47	60	1,865	1,157	
NOV	442	2	0	2	2	0	0	0	-	-	30	-	-	12	51	31	34	2,400	1,613	
DEC	1,299	4	1	1	2	0	0	0	42	48	50	4	-	14	75	35	35	2,676	1,384	
2013 TOTAL	7,210	49	21	48	26	20	0	0	571	522	237	37	3	201	568	507	541	23,529	13,371	
2014 JAN	1,976	6	3	3	2	0	0	0	57	46	25	2	-	8	71	46	28	3,243	1,597	
FEB	2,012	8	2	6	5	0	0	0	-	-	23	-	-	16	66	50	13	2,326	1,282	
MAR	494	2	3	1	5	0	0	0	97	75	36	10	-	23	64	65	31	1,799	1,297	
APR	299	5	2	6	4	1	0	0	74	64	17	8	1	20	66	47	59	2,601	1,713	
MAY	506	5	1	3	3	5	0	0	-	-	12	-	-	14	77	45	42	2,403	1,571	
JUN	965	5	2	7	4	1	0	1	95	90	14	6	1	16	74	44	50	3,148	1,714	
JUL	339	2	1	5	3	1	0	0	96	96	9	6	-	12	64	60	59	3,027	1,534	
AUG	325	6	1	2	4	0	0	0	-	-	8	-	-	30	64	32	58	2,748	1,679	
SEP	327	4	1	1	2	0	0	0	73	63	14	7	1	18	63	37	50	2,537	1,606	
OCT	300	8	1	0	2	0	1	0	80	75	12	3	1	13	78	76	36	3,840	1,908	
NOV	0	2	4	8	4	5	0	0	-	-	6	-	-	15	72	21	59	3,003	1,352	
2014 TOTAL	7,543	53	21	42	38	13	1	1	572	509	176	42	4	185	759	523	485	30,675	17,253	

Abbreviation Ind = Individual, Blntk = Blanket, Apps = Application for Hearing, NOAV = Notice of Alleged Violation, AOC = Administrative Order of Consent, OFV = Order Finding Violation, Cmplt = Completed, Comp = Completed