



Staff Report

January 7, 2013

HAPPY NEW YEAR!

TOP STORIES

- ◆ The COGCC's Rifle office will be relocating to 796 Megan Avenue, Suite 201, on January 2, 2013. All other contact information will remain the same.

- ◆ Industry Training

Permitting and Engineering staff provided an all-day industry training seminar at the COGCC Denver office on December 4th. The training session focused on requirements for submitting Form 5, Drilling Completion Report, and the Form 5A, Completed Interval Report. Staff provided detailed space-by-space and line-by-line explanations of the data to be reported on both forms, and the required documentation for each. The PowerPoint slide presentations are posted on the COGCC website under "Forms" instructions.

The goal of this training session was to enable industry regulatory staff to submit accurate and complete Form 5s and Form 5As by providing operators with a better understanding of how COGCC staff reviews submitted forms. To achieve this goal, staff outlined significant elements of the verification process for each submitted form as well as the regulatory basis for the form requirements.

The December session reached the 40-person capacity quickly; more than 20 people were placed on a "waiting list" for a second session scheduled for Wednesday, January 9, 2013. A third session will be provided if there is a demand.

Participants expressed interest in similar training for the Form 6, Well Abandonment Report,

the Form 2, Application for Permit to Drill, and the Form 2A, Oil and Gas Location Assessment. Staff is currently preparing presentations for the requested topics.

- ◆ Local Government Liaison (LGL) Program Update

Local Government Liaisons (LGLs) Nancy Prince and Marc Morton have begun scheduling the first of several Local Government Designee (LGD) training sessions planned for 2013. The purposes of the training are: 1) to update LGDs on the status of rulemaking changes; 2) to provide LGDs with a refresher and update on their roles, responsibilities, and mechanisms for involvement and comment in the permitting process; 3) to provide an overview of COGCC staff roles, the COGCC website and its applications; 4) to provide an overview of the COGCC's regulatory authority; 5) to provide a summary of opportunities for public involvement; and 6) to provide information and get feedback regarding local government's role the regulation of oil and gas operations.

The initial rollout of the training is scheduled for February 6, in Limon, Colorado, and the target audience will be eastern Colorado LGDs and interested local government staff. On March 6, training will be held in Broomfield, which will target Denver metro area and central and northern Front Range LGDs, and associated staff. Additional sessions are being planned for Grand Junction in February, Durango in April, and additional eastern Colorado venues. Once confirmed, the entire schedule and registration details will be posted on the COGCC website. Ongoing LGD program activities include the development of an LGD training manual, and compilation of presentation materials, exercises, and other pertinent information.



In addition to preparations for LGD training, the LGLs have continued to provide valuable service, support, and outreach to inquiries and information requests from local government staff, the public, and operators. The LGLs also continue to consult and work with various state government agencies, operators, non-governmental agencies, the public, and others. To stay current regarding the initiatives concerning local government regulation of oil and gas operations, the LGLs make it a priority to attend as many city or county local government meetings concerning the oil and gas industry as possible.

A list of other LGL outreach activities is included in the Public Outreach section below.

Public Outreach

➤ Outreach by Director and other Staff Members

- On November 8, Denise Onyskiw, Underground Injection Control Program Supervisor, gave a presentation to the Boulder chapter of the Women's Information Network.
- On November 12, Director Matt Lepore was a featured speaker at the League of Women Voters of Denver "Hydraulic Fracturing Panel" at the Montview Presbyterian Church.
- On November 18, Stuart Ellsworth, Engineering Manager, spoke to the "Hydrofracturing Study Group" of the Sterling Area League of Women Voters in Sterling, Colorado.
- On December 1, COGCC Southern Field Inspection Supervisor Mike Leonard gave the Oilfield Awareness for First Responder Presentation in Limon. The presentation included several Emergency Agencies from the Lincoln County area.
- On December 4 - 5, Margaret Ash presented on the COGCC stormwater and reclamation program at the Mountain States Chapter, International Erosion Control Association (IECA) 2012 Annual Winter Conference.
- On December 17, Karen Spray, SW Environ-

mental Protection Specialist and Mark Weems, SW Regional Engineer, participated in the Northern San Juan Basin Technical Working Group in conjunction with the United States Forest Service (USFS), Bureau of Land Management (BLM) and Southern Ute Indian Tribe (SUIT).

- On December 18, Karen Spray participated in an area oil & gas tour for incoming La Plata County Commissioners Gwen Lachelt and Julie Westendorf and House Representative Mike McLachlan. The tour was organized by the La Plata Energy Council and their members to inform the newly elected officials about oil & gas operations in the county.

➤ Outreach by COGCC Local Government Liaisons (LGLs)

- On November 2, Marc Morton met in Greenwood Springs, CO with Pitkin County LGD/ Long Range Planner Ellen Sassano, and Cindy Houben, Director of Community Development regarding proposed drilling activity in Pitkin County. A follow-up meeting with County Commissioners and staff is scheduled for January 2013.
- On November 8, Robert J. Frick, Hearings Unit Manager, Marc Morton, and Nancy Prince participated in a panel discussion in Denver at the annual meeting of the Colorado Petroleum Association. The panel focused on the implementation of the Governor's Task Force regulations, and feedback to the LGLs from local communities.
- On November 13, Marc Morton attended a Boulder County Land Use staff presentation and public hearing regarding Boulder County's proposed oil and gas Land Use Code regulations to Board of County Commissioners.
- On November 16, Marc Morton met onsite with Garfield County residents to observe site conditions and listen to their concerns regarding oil and gas operations in their area.
- On November 20, Robert J. Frick, Marc Mor-



ton, and Nancy Prince met with Department of Natural Resources (DNR) Executive Director's Office (EDO) staff to discuss current status of regulations and Memoranda of Understanding in various local governments.

- On November 27, Nancy Prince attended the Colorado Springs City Council Meeting's first reading of draft oil and gas regulations. She attended a follow-up City Council meeting on December 11, in which the Council voted to table second reading of draft oil and gas regulations until February 12, 2013.
- On November 29, Robert J. Frick, Jake Matter, Colorado Assistant Attorney General, and Marc Morton met with staff from Black Diamond Minerals, and City of Fort Collins LGD Dan Weinheimer concerning Black Diamond's potential development of resources in the Fort Collins area. Marc attended a follow-up Fort Collins City Council meeting on December 4, 2012, addressing the first reading of the City's proposed updated land use regulations concerning oil and gas development.
- On December 1, Nancy Prince attended the Oil and Gas Awareness for First Responders training provided by Mike Leonard in Hugo, Colorado. There were a total of 20 participants from four local fire departments.
- On December 1, Nancy Prince and Mike Leonard visited the Hilcorp Myers location in El Paso County to observe drilling operations.
- On December 4, Nancy Prince attended a hearing with Huerfano County Commissioners and Planning Commission. This was an initial presentation of draft regulations from the Planning Commission to the County Commissioners, with a chance for comment on the draft regulations.
- On December 4, Marc Morton coordinated and attended an onsite meeting between COGCC Northeastern Field Inspector Mike Hickey, Boulder County LGD Dale Case, Boulder County Open Space staff, Encana Operations and Community Relations staff, and a Boulder County resident concerning noise,

vibration and aesthetic issues from a nearby Encana oil and gas well site.

- On December 6, 2012, Marc Morton attended the Garfield County Energy Advisory Board (EAB) meeting in Rifle, Colorado, and provided a brief update on the status of COGCC rulemaking hearings, and on the upcoming LGD training program.

REGIONAL ACTIVITIES

➤ NORTHWEST COLORADO

◆ Northwest Colorado Oil and Gas Forum

The Forum is an informal gathering of local, state, and federal government officials, oil and gas industry representatives, and citizens that have met regularly since 1989. The purpose of the Forum is to share information about oil and gas development in northwest Colorado and to make government officials and oil and gas industry representatives easily accessible to the public. Currently the meetings are conducted once per quarter and are co-chaired by the COGCC Director Matt Lepore, and Garfield County Commissioner Mike Samson.

The next meeting is scheduled for Thursday, February 21, 2013, at 10:00 am in Grand Junction (TBD). All parties wishing to be placed on the meeting agenda should contact Chris Canfield at 970-625-2497 or via email at: chris.canfield@state.co.us.

◆ Gunnison County Inspector

Welcome Carl Colby!!

Gunnison County retained a contractor to conduct inspections of oil and gas facilities in Gunnison County per the Intergovernmental Agreement between the COGCC and Gunnison County signed April 19, 2012. The inspector, Carl Colby, has significant oil and gas experience and has conducted reclamation projects for the Department of Reclamation Mining and Safety. Carl participated in a two-week training program with COGCC staff including field training and training on procedures and policies, the COGIS database and the field inspection form. The training program was completed on De-



ember 14, 2012. Carl will work with Shaun Kellerby, the COGCC Northwest field inspection supervisor, and participate in COGCC internal training programs. The Gunnison inspector will conduct inspections and develop inspection reports following COGCC procedures.

◆ Project Rulison

Please note that the email for Project Rulison submittals has been changed to:
DNR_rulison.submittal@state.co.us

◆ Project Rio Blanco

Please note that the email for Project Rio Blanco submittals has been changed to:
DNR_rioblanco.submittal@state.co.us

➤ SOUTHWEST COLORADO

◆ Gas and Oil Regulatory Team (GORT) Meeting

The next GORT/Southwest Colorado Oil and Gas Stakeholders meeting is scheduled for January 10, 2013, at 12:30 p.m. at the La Plata County Fairgrounds in Durango, Colorado.

All parties wishing to be placed on the next meeting agenda should contact Karen Spray at: 970-259-1619 or karen.spray@state.co.us.

◆ Fruitland Formation Outcrop Mitigation and Monitoring Projects (4M Projects)

Fruitland Formation Outcrop - 4M Pilot Scale Mitigation Projects La Plata County. The South Fork Texas Creek (SFTC) Mitigation system continued operation at approximately 11 kilowatts (kW) power generation and operated 100% of the period of September 30, 2012 through November 3, 2012. Approximately 5.5 kW of power is returned to the grid at this operating rate. Methane concentrations continue to average 99% at SFTC and less than 1% at PRR. Operations & Maintenance activities are continuing.

◆ 4M Monitoring Wells La Plata and Archuleta Counties. There are 17 wells at 11 locations in the COGCC 4M monitoring program. Well pressures are monitored remotely via satellite telemetry with one or two maintenance visits per

year, depending upon data received. Repairs were necessary at the Wagon Gulch site in Archuleta County in December 2012. The central data transmission modem failed and required replacement to maintain satellite communications with the transducers. Data continued to be collected during this time and were later downloaded.

◆ Ongoing Investigation, Reclamation, and Mitigation of Residual Methane in the Vicinity of the Bryce 1-X Well Area, Bondad, Colorado

All four water wells were sampled on October 10. Analytical results show decreases in methane concentrations in the Fire Station and Middle water wells and slight increases in the North and South water wells. All concentrations remain below 10 mg/l and the general water quality is stable. The next sampling is scheduled for April 2013.

➤ SOUTHEAST COLORADO

◆ U.S. EPA Raton Basin Hydraulic Fracturing Study - Las Animas and Huerfano Counties

As part of the retrospective study of possible impacts from well completions, a third round of sampling and analysis of groundwater from two areas in the Raton Basin was conducted during the week of November 5. COGCC Staff, as well as contractors for Pioneer Natural Resources, collected split samples at many of the sites. The EPA plans to release an interim progress report on the study in December, 2012. Data from the first two rounds of sampling and analysis is expected to be made available to the public at the time the progress report is released.

VARIANCES

1. On October 31, 2012, a Rule 502 Variance Request by Encana Oil & Gas (USA) Inc. ("Encana") to the cement coverage requirements for production casing in Rule 317.i. was approved by the Director for the Gardner Federal 28-2A (PC-28) Well (API No 05-045-21185) located in the NE $\frac{1}{4}$ NW $\frac{1}{4}$ (Lot 3) of Section 28, Township 7 South, Range 95 West, 6th P.M. Encana pumped the primary production casing cement approximately 260 feet below the shallowest producing



horizon. Encana subsequently performed two remedial cement squeeze jobs, which resulted in a post-remediation cement top of 5,350 feet. Bradenhead pressures observed in this well have been negligible, ranging from 0 to 28 psi, and the squeeze perforations have been successfully pressure-tested to 4,500 psi, which exceeds expected stimulation and production pressures. Encana contended that it complied with the basic intent of Rule 317.i. by not completing the upper portion of the shallowest producing horizon and achieving adequate isolation because the uppermost production perforation is at a depth of 5,560 feet or 210 feet below the top of cement. Approval was conditional on continued Bradenhead monitoring.

2. On December 3, 2012, a 502.b. Variance Request by Mineral Resources was approved by the Director for the Sheep Draw Directional #1 Multi-well (Location No. 431015). Rule 303.d (5) requires that in certain counties, the Oil and Gas Location Assessment Form 2A be submitted concurrently with the Application for Permit to Drill Form 2. Mineral Resources requested a variance for the approval of the Form 2A without the approval of a Form 2. The complexity of the project and the City of Greeley's land use approval process were presented as the basis for the request.
3. On December 6, 2012, a 502.b.(1) Variance Request by OXY USA WTP LP ("OXY") to the requirement that multi-well pits be used for no more than three years was granted by the Director. OXY requested permission to operate a multi-well pit for more than three years (Form 15 Document No. 1631154) (Facility no. 414640) until June 4, 2014, by which time OXY will either convert the pit to a Centralized Exploration and Production Waste Management Facility under an approved Form 28 or close the pit under an approved Form 27. OXY will continue to use an electronic monitoring and alarm system in conjunction with daily inspections to ensure that the intent of the Oil and Gas Act is met.
4. On December 7, 2012, a Rule 502.b.(1) Variance Request by Marathon Oil Company ("Marathon") for the Marathon Centralized E & P Waste Management Facility, Water Impound-

ments in Garfield County, CO. Location (COGCC ID No. 417873) in the SE $\frac{1}{4}$ SE $\frac{1}{4}$ Section 33, Township 5 South, Range 96 West, 6th PM in Garfield County was approved by the Director. Rule 908.b.(5).D. required Centralized Exploration and Production Facilities (E&P), "to have a fire lane of at least ten (10) feet in width around the active treatment areas and within the perimeter fence. In addition, a buffer zone of at least ten (10) feet shall be maintained within the perimeter fire lane." The existing impoundments are in terrain that precludes the construction of both the required 10-foot fire lane and the 10-foot buffer zone. Marathon will comply with the requirement for a 10-foot fire lane and is seeking a variance to reduce the buffer zone to eight feet, only.

The Grand Valley Fire Protection District supplied Marathon with a letter summarizing their site visit, stating adequate access is provided to the two ponds without installing the required buffer and access road.

ORGANIZATION

◆ New Oil and Gas Location Assessment Specialist

John Noto has joined the COGCC, filling the vacant Oil and Gas Location Assessment specialist position. John is a geologist with 22 years of experience as an environmental consultant working on assessments and remediations at petroleum sites, landfills, dry cleaning facilities, mining properties, and other hazardous sites. John also has a strong background in database management.

◆ New Northwest Colorado Field Inspector

The COGCC is also pleased to announce that Craig Burger has been hired as a field inspector for the Northwest Colorado area. Craig reports to Shaun Kellerby and will cover the southeastern part of the Piceance Basin including eastern Garfield and Mesa Counties, and will provide backup in Gunnison County. Craig has a Master degree in Civil Engineering with an emphasis in Geotechnical Engineering and has worked on reclamation of oil and gas locations and drill cutting management.



An organizational chart can be found on pages 9-11. For contact information, please go to our website and click on "Contacts" on our homepage, and then "Staff Contact Information."

PLANNING/ADMINISTRATION/OTHER

◆ Plugging and Reclaiming Abandoned Wells (PRAW) - Project Updates

The Bone #1 Well, located in Archuleta County, was successfully plugged and abandoned in early October by the COGCC under the auspices and supervision of the COGCC's PRAW (Plugging Reclamation Abandonment Well) Program. The final cost to plug the well was \$78,549 which was \$10,119 more than was originally estimated. The additional cost was due to the production tubing parting while pulling it and having to fish to retrieve it from the well. The tubing parted due to corrosion and lack of maintenance for many years. The well site and pad was reclaimed in mid-November for a total cost of \$7,225 or \$1,650 less than the \$8875 that was estimated resulting from the landowner's decision that additional topsoil was not necessary.

The KEG #1 well site, pad and pit, located in La Plata County was reclaimed by the COGCC during November for a total cost of \$12,420. This well was previously plugged by the COGCC in October 2011 per Commission's Order Finding Violation (Docket No. 1105-OV-12). The pit was previously tested in accordance with the 900 series E&P Waste Management rules and Table 910-1 standards. The results showed levels which resulted in lower than anticipated reclamation costs. The pit was backfilled, the site re-contoured & reseeded with grass, and crimped mulching. Rocks were gathered and placed in small groups in natural drainages, to create storm water runoff breaks, and the site fenced off to keep livestock out during seed germination and grass maturation.

The Adkins #1 Well located in Washington County was dropped from the PRAW program because further inquiry into the plugging bond determined that the operator, Kimbark, has been conducting business as Hallador Energy.

When contacted, Hallador agreed to re-plug the leaking well and has submitted a Form 6 - Notice of Intent to Plug and Abandon.

Page 12 contains a spreadsheet listing PRAW projects that are either scheduled in process or completed as of November 29, 2012.

◆ February 2013 Hearing Docket

A docket for the February 2013 hearing will be available shortly after the January hearing. Hearing dockets are available on our website by clicking on "Hearings." Links to the notices and hearing applications are available from the Docket Number and Applicant, respectively. To sign up for e-mail notification of hearing notices and applications, please see the announcement and instructions on the homepage of the COGCC website at: colorado.gov/cogcc.

Colorado Oil and Gas Information System (COGIS) Projects, Updates and Changes

Environmental Database

During the past 18 months, the COGCC and the Ground Water Protection Council (GWPC) have been working together to develop a new Environmental Database that will contain the results from the Colorado Oil and Gas Association Voluntary Baseline Groundwater Quality Sampling program, along with other environmental data collected by the agency. The project included the development of a new relational database model that will allow the data to be accessible to the public from the COGCC website.

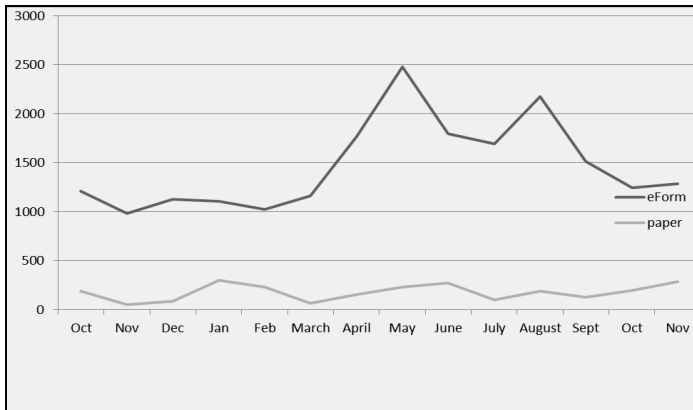
Other improvements include an Electronic Data Deliverable that allows industry to submit the results of the sampling directly to the COGCC, which can then process the information directly into the database. The application has many other features to help staff analyze the information and understand the lab results from the sampling. The interface will allow the public to view and download the results. This project would have not been possible without help and funding provided by the Department of Energy through the GWPC. The application and database are now being looked at by a number of other state oil and gas regulatory commissions



for their use to track environmental data. Training was conducted the week of October 8, at the Colorado Oil and Gas Association to further help industry understand how to submit information to the new system.

Electronic Form Submissions (eForm)

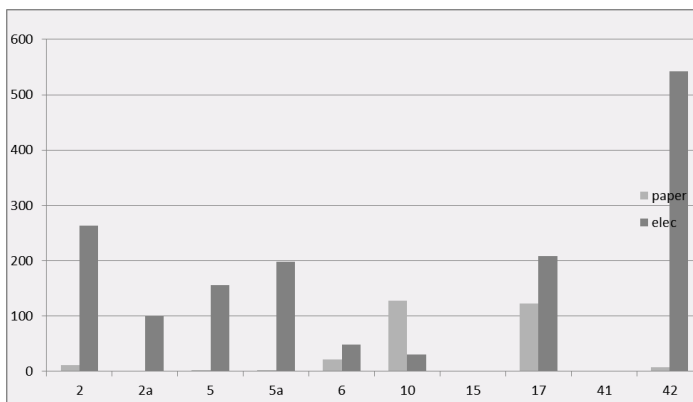
TOTAL ELECTRONIC FORM SUBMITTALS
OCTOBER 2011–NOVEMBER 2012



Forms currently available through eForm:

- Form 2 - Application for Permit to Drill
- Form 2A - Oil and Gas Location Assessment
- Form 5 - Drilling Completion Report
- Form 5A - Completed Interval Report
- Form 6 - Well Abandonment Report
- Form 10 - Certification of Clearance/Change of Operator
- Form 15 - Earthen Pit Report/Permit
- Form 17 - Bradenhead Test Report
- Form 41 - Trade Secret Claim of Entitlement
- Form 42 - Notice of Notification (Notice of Hydraulic Fracturing)

Following is a breakdown by form for the month of November:



Form 10, Certification of Clearance/Change of Operator was released in eForm in late October. The release allows the operator to utilize the COGCC database to get information on wells and other entities that could be changing owners. This assists the individual filling out the form, and also helps staff in the processing of the document by ensuring the information submitted will match what is in the COGCC database. Early reviews from operators and staff have been positive.

Form 15, Pit Permit and Report, is available in eForm and operators are encouraged to utilize the system to file this form. The form contains additional fields. The PDF version on the Forms page, <http://cogcc.state.co.us/Forms/forms.html>, is revised to reflect the changes that occurred from the release of the form in eForm.

Form 41, Trade Secret Claim of Entitlement, and Form 42, Notice of Notification (Notice of Hydraulic Fracturing), are now available in eForm. Both forms derived from the Hydraulic Fracturing Disclosure Rulemaking that occurred December, 2011.

As forms are released on eForm, updates to the PDF forms on our website will occur in tandem. These new versions of the PDF forms will reflect any changes that have taken place when forms are moved into eForm.

Along with the eForm system, a page is available where the operators can review all known bugs within the system and report any new ones they discover. Currently there are 305 operators using eForm.

The public can make comments on all submitted Oil and Gas Location Assessment (OGLA) forms (Forms 2A) through the eForm system. This is accomplished by going to the COGCC website (<http://www.colorado.gov/cogcc>) and clicking on the menu option, "Permits", (or <http://cogcc.state.co.us/COGIS/DrillingPermits.asp>).

On the COGIS-Permits page, two search options are available for OGLA forms, "All Pending Lo-



cation Assessments for” and “All Approved Location Assessments for.” When the results are displayed for forms in process, the public can click on the document number, which logs the user onto the new eForm application. Once the page is displayed with the selected document, the user can select the Comment button to make a comment on that particular form. The public can use this same method to make comments on APDs (Form 2s).

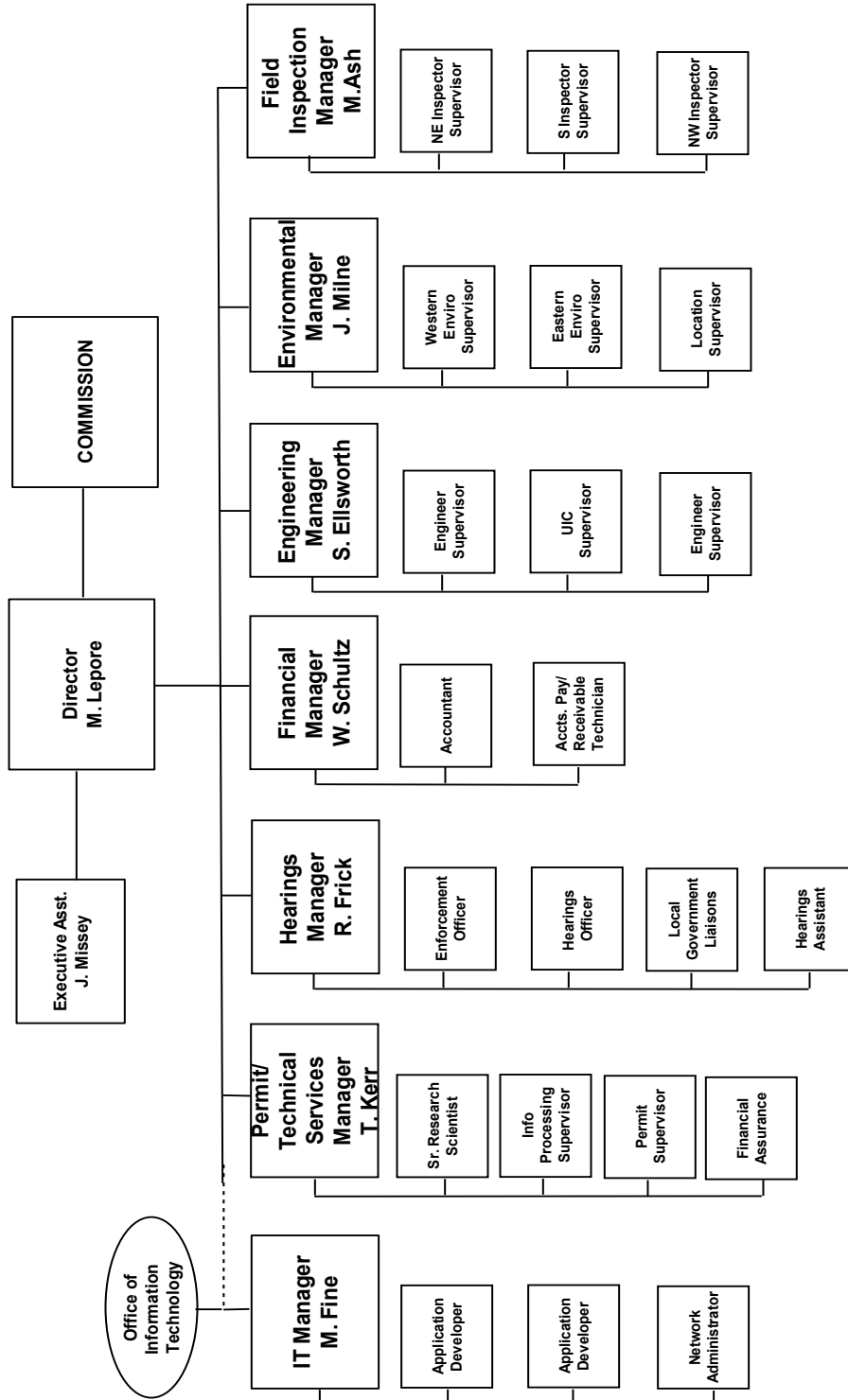
For any operator not currently enrolled in eForm, instructions for starting the process can be found at <http://cogcc.state.co.us/Announcements/COUAINformation.pdf>.

COGCC GIS Online

An upgrade of the COGCC GIS Online interactive map is now available on the COGCC’s website. Two new features are now available along with some minor changes. An Address Search button will zoom the map to the area of an input street address, city and zip code. The second new feature is an enhanced Print function. This will generate a PDF document which can be saved or printed. It allows choice of paper size, orientation, input of a legend and a map scale options.



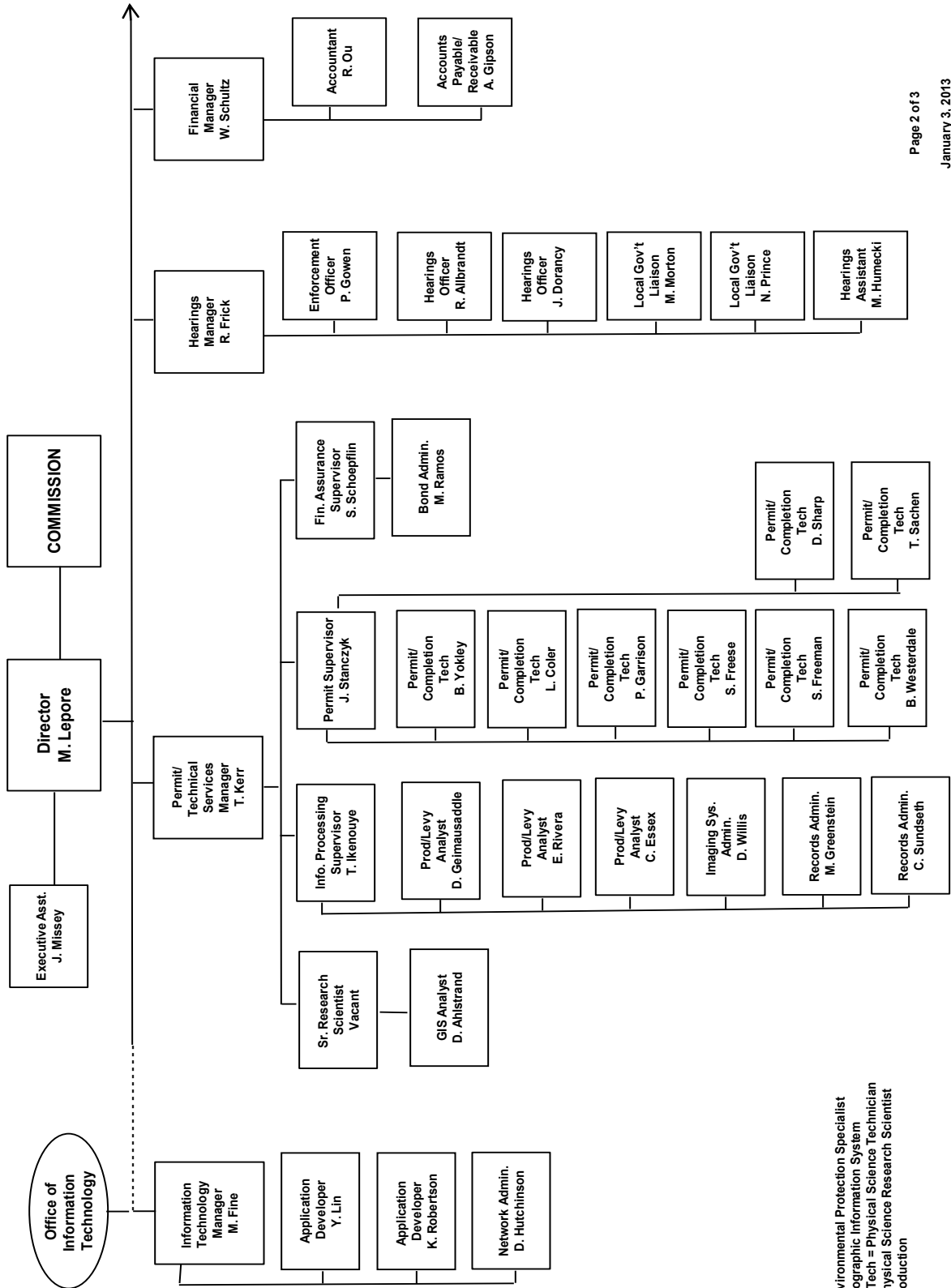
COLORADO OIL & GAS CONSERVATION COMMISSION



See the next two pages for details



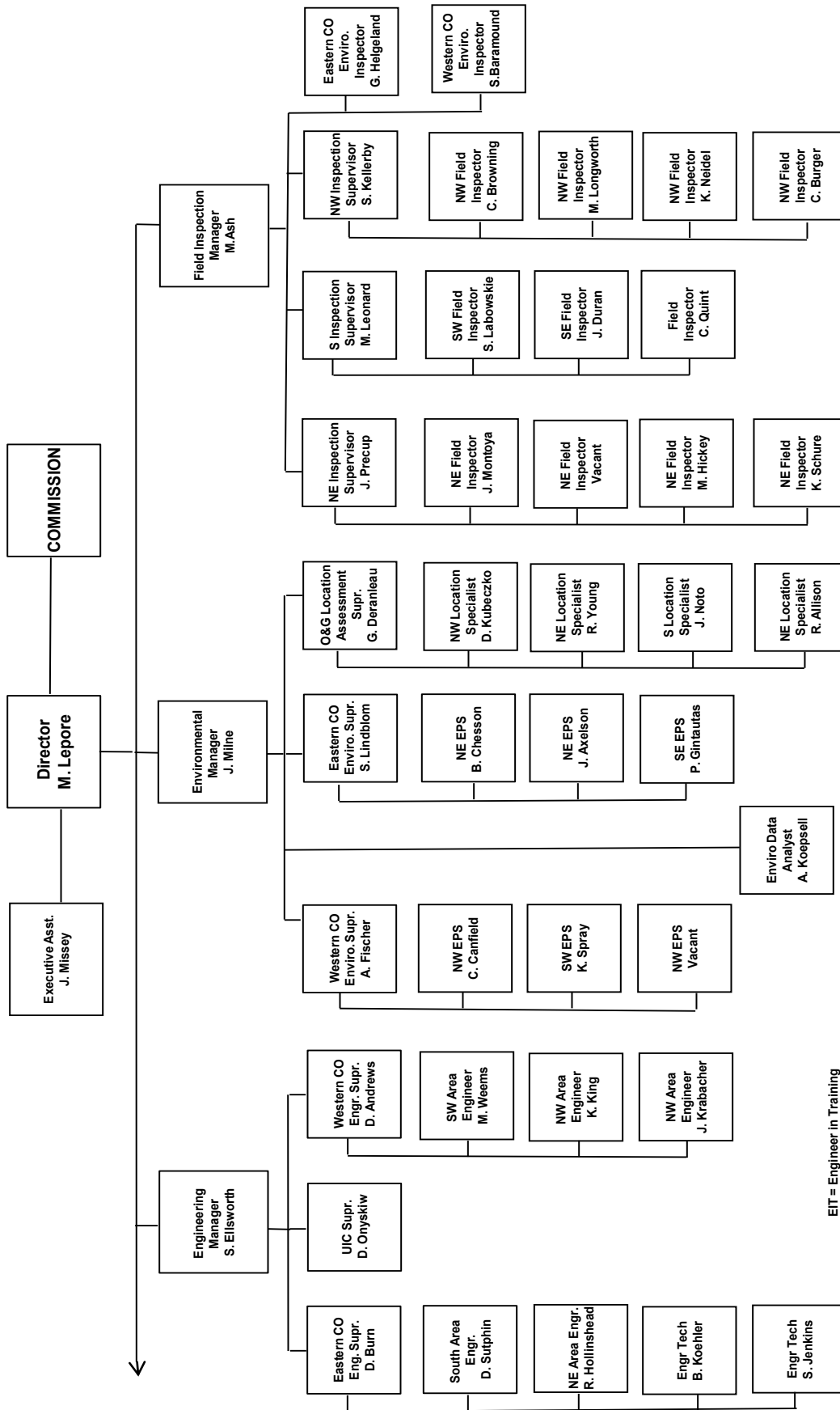
COLORADO OIL & GAS CONSERVATION COMMISSION ORGANIZATION



EPS = Environmental Protection Specialist
 GIS = Geographic Information System
 Phys/Sci Tech = Physical Science Technician
 PSRS = Physical Science Research Scientist
 Prod = Production



COLORADO OIL & GAS CONSERVATION COMMISSION ORGANIZATION



EIT = Engineer in Training
 EPS = Environmental Protection Specialist
 OGLA = Oil & Gas Location Assessment
 Phys Sci Tech = Physical Science Technician
 UIC = Underground Injection Control



PLUGGING, AND RECLAIMING ABANDONED WELLS PROJECTS FOR ORPHANED LOCATIONS
FISCAL YEAR 2012-2013

PLANNED	COUNTY	TYPE	PROJECT NAME	Acct Code	ESTIMATED TOTAL PROJECT COST			FY 2012-2013 YTD EXPENDITURES			DESCRIPTION		
					BOND	PRAW	EMGY	TOTALS	BOND	PRAW		EMGY	TOTALS
	GARFIELD	REC	BISCUIT RANCH RECLAMATION	DOLP	\$25,000	\$110,000	\$0	\$135,000				Reclaim two well pads and one staging area.	
	GARFIELD	PLUG	BISCUIT RANCH 10-31D PLUGGING AND ABANDONMENT	DOLP	\$0	\$90,000	\$0	\$90,000				Drill out, plug and abandon well, and dispose of fluids and cement.	
	LA PLATA	PLUG	LONG HOLLOW DAM	BOBB		\$3,200						Engineering Design	
	LA PLATA	PLUG	LONG HOLLOW DAM	BOBB		\$125,000						Plugged Bobby Taylor #1 is leaking gas in planned lake bed	
			TOTALS =>		\$25,000	\$328,200	\$0	\$225,000					
	IN PROGRESS												
	COUNTY	TYPE	PROJECT NAME		BOND	PRAW	EMGY	TOTALS	BOND	PRAW	EMGY	TOTALS	DESCRIPTION
	GARFIELD	REC	BISCUIT RANCH RECLAMATION DESIGN	DOLP	\$0	\$25,000	\$0	\$25,000					Reclamation design for two well pads and one staging area.
	MESA	REC/ENV	HOMESTEAD #1 AND PASTURE #1 SALT REMEDIATION, RECLAMATION, AND SOIL GAS SURVEYS		\$0	\$30,000	\$0	\$30,000					Salt remediation, topsoil spreading, seeding, and soil gas surveys near plugged and abandonment wells.
	MESA	PLUG	PASTURE #1 WELL PLUGGING, ABANDONMENT, AND DISPOSAL	PAST	\$0	\$49,000	\$0	\$49,000	\$0	\$15,814	\$0	\$15,814	Drill out, plug and abandon well, and dispose of fluids. Disposal of cement, and solids is complete.
	MOFFATT	PLUG	TATONKA: CULVERWELL 10-23-07-94 AND ELDON GERBER 07-24-07-92 PLUGGING AND ABANDONMENT	TATO	\$30,000	\$31,800	\$0	\$61,800	\$0	\$0	\$0	\$0	Plug and abandon two conductor pipes and one well and reclaim the pad including a drilling pit. Bid documents submitted to purchasing.
			TOTALS =>		\$30,000	\$135,800	\$0	\$165,800	\$0	\$15,814	\$0	\$15,814	
	COMPLETED												
	COUNTY	TYPE	PROJECT NAME		BOND	PRAW	EMGY	TOTALS	BOND	PRAW	EMGY	TOTALS	DESCRIPTION
	LA PLATA	REC	KEG #1 RECLAMATION	KILO	\$0	\$12,420	\$0	\$12,420	\$0	\$12,420	\$0	\$12,420	Pit is reclaimed; site re-contoured; seeding and fencing in place
	ARCHULETA	REC	BONE #1 RECLAMATION	BONE	\$0	\$8,875	\$0	\$8,875	\$0	\$7,225	\$0	\$7,225	Reclamation Completed; landowner reimbursed for seeding
	ARCHULETA	PLUG	BONE #1 PLUGGING AND ABANDONMENT	BONE	\$0	\$0	\$0	\$0	\$0	\$78,549	\$0	\$78,549	Plugged and abandonment is complete
	MOFFATT	REC	ELDON GERBER 07-24-07-92	TATO	\$0	\$5,500	\$0	\$5,500	\$0	\$4,960	\$0	\$4,960	Fencing & weed kill as preliminary to PA & final REC
	GARFIELD	ENV	MULVHILL 15-32D	DOLP	\$0	\$810	\$0	\$810	\$0	\$810	\$0	\$810	Collected Bradenhead gas sample & analysis
	FREMONT	PLUG	FREMONT CO ORPHANS 2012	FMTI	\$0	\$53,410	\$0	\$53,410	\$0	\$60,630	\$0	\$60,630	Six wells plugged; two emergency C/Os
			TOTALS =>		\$0	\$81,015	\$0	\$81,015	\$0	\$164,594	\$0	\$164,594	
			GRAND TOTALS =>		\$55,000	\$545,015	\$0	\$471,815	\$0	\$180,408	\$0	\$180,408	

Project Types: "PLUG" indicates plugging and abandonment, "REC" indicates reclamation, and "ENV" indicates environmental
 EMGY: indicates funding by the Emergency Response line item
 TBD: Cost estimates in process.
 PRAW: indicates funding by the Plugging and Reclaiming Abandoned Wells line item

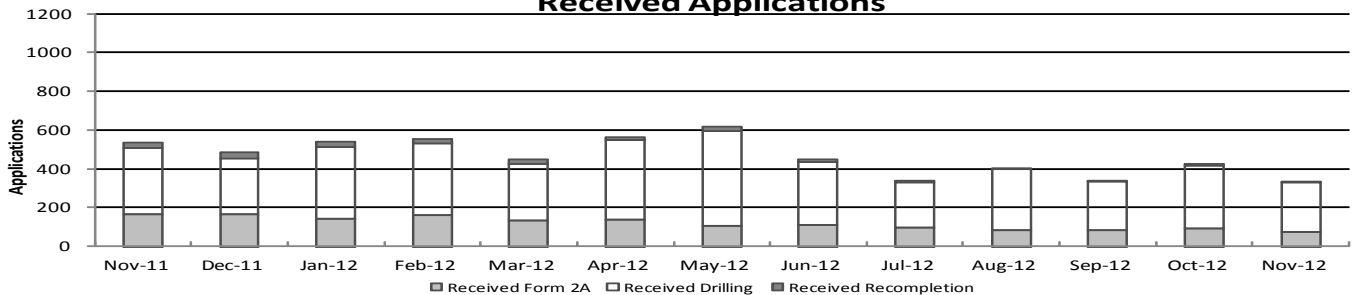


Colorado Oil & Gas Conservation Commission Monthly Permit Activity

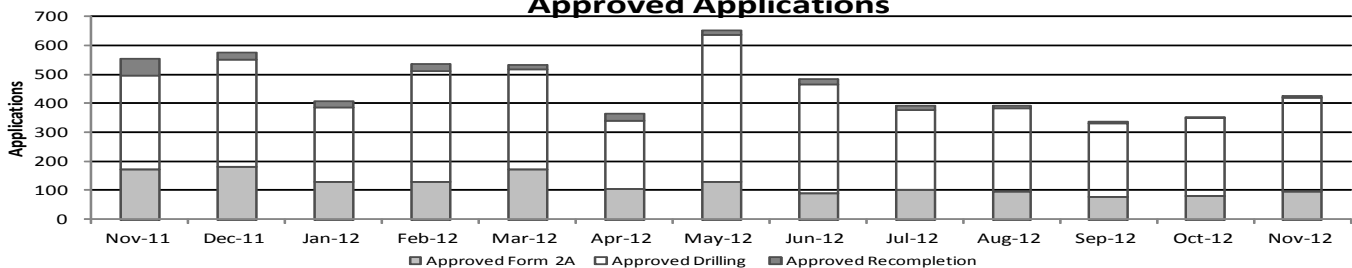
	Backlog	Received	Approved	Withdrawn	Rejected	Incomplete	In-Process	Remaining
Form2A								
Nov-11	196	166	174	9	0	69	110	179
Dec-11	179	164	183	5	0	44	111	155
Jan-12	155	142	129	1	0	50	117	167
Feb-12	167	160	129	3	0	44	150	195
Mar-12	195	133	172	5	0	32	119	151
Apr-12	151	137	106	1	0	48	133	181
May-12	181	105	131	6	0	51	98	149
Jun-12	149	110	89	2	0	54	114	168
Jul-12	168	96	103	4	0	51	106	157
Aug-12	157	83	97	6	0	54	83	137
Sep-12	137	81	77	5	0	47	88	136
Oct-12	136	92	82	8	0	30	108	138
Nov-12	138	73	97	13	0	19	82	101
Drilling								
Nov-11	381	342	324	8	0	146	245	391
Dec-11	391	291	370	5	0	118	189	307
Jan-12	307	372	258	7	0	133	281	414
Feb-12	414	370	382	8	0	103	291	394
Mar-12	394	292	347	13	0	103	223	326
Apr-12	326	410	235	1	0	127	373	500
May-12	500	491	506	25	0	110	350	460
Jun-12	460	326	377	9	0	114	286	400
Jul-12	400	234	276	4	0	91	263	354
Aug-12	354	313	288	9	0	146	224	370
Sep-12	370	252	256	24	0	98	244	342
Oct-12	342	325	267	29	0	65	306	371
Nov-12	371	255	323	21	0	65	217	282
Recompletion								
Nov-11	44	29	57	2	0	4	10	14
Dec-11	14	31	23	0	0	8	14	22
Jan-12	22	26	21	2	0	9	16	25
Feb-12	25	23	27	0	0	5	16	21
Mar-12	21	21	14	0	0	5	23	28
Apr-12	28	16	24	3	0	6	10	17
May-12	17	23	16	0	0	6	18	24
Jun-12	24	11	19	0	0	3	13	16
Jul-12	16	9	14	0	0	3	8	11
Aug-12	11	6	9	0	0	1	7	8
Sep-12	8	1	5	2	0	0	2	2
Oct-12	2	9	3	0	0	0	8	8
Nov-12	8	4	8	0	0	0	4	4

Incomplete are permits that have missing or inaccurate data and cannot be approved.

Received Applications



Approved Applications



Backlog = Incomplete + In-process = Remaining permits from previous month



Colorado Oil and Gas Conservation Commission
 Status of Permit Applications Filed By Month
 December 20, 2012

Form 2A Location Assessment

Year	Month	Received	Approved	Withdrawn	In Process	Percent In Process	Median Days to Process	Less Than 30 Days	30 to 49 Days	Greater Than 50 Days
2010	Total	2520	2433	85	0			1559	662	212
2011	1	236	234	2	0	0%	33	147	58	29
2011	2	174	163	11	0	0%	37	99	35	29
2011	3	281	273	8	0	0%	33	198	42	33
2011	4	189	180	9	0	0%	42	112	30	38
2011	5	211	198	13	0	0%	30	126	58	14
2011	6	184	181	3	0	0%	33	135	27	19
2011	7	211	199	11	1	0%	37	89	89	21
2011	8	245	240	4	1	0%	36	123	86	31
2011	9	156	145	9	2	1%	32	80	53	12
2011	10	167	158	9	0	0%	34	89	59	10
2011	11	171	162	8	1	1%	32	100	53	9
2011	12	166	165	0	1	1%	32	118	30	17
2011	Total	2391	2298	87	6	0%		1416	620	262
2012	1	141	138	3	0	0%	33	92	27	19
2012	2	160	152	8	0	0%	31	118	26	8
2012	3	135	133	2	0	0%	41	80	25	28
2012	4	126	119	7	0	0%	38	77	25	17
2012	5	119	115	4	0	0%	38	63	28	24
2012	6	101	95	5	1	1%	39	32	44	19
2012	7	104	96	5	3	3%	35	41	43	12
2012	8	72	66	4	2	3%	34	33	22	11
2012	9	77	71	5	1	1%	35	28	34	9
2012	10	84	82	5	7	7%	34	31	40	11
2012	11	85	56	4	25	29%	25	48	8	0
2012	12	99	0	1	98	99%				
2012	Total	1313	1123	53	137	10%		643	322	158

Form 2 Application For Permit to Drill (APDs)

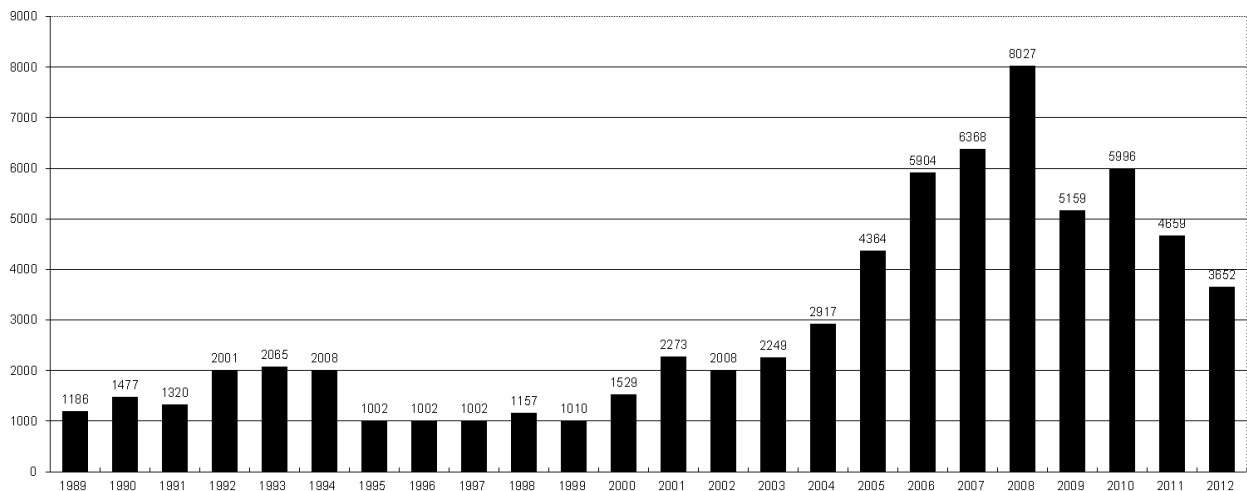
Year	Month	Received	Approved	Withdrawn	In Process	Percent In Process	Median Days to Process	Less Than 30 Days	30 to 49 Days	Greater Than 50 Days
2010	Total	5891	5746	144	0	0%		1760	2739	1744
2011	1	380	371	7	0	0%	32	235	106	40
2011	2	336	333	3	0	0%	36	182	114	51
2011	3	466	454	12	0	0%	35	326	67	82
2011	4	347	335	12	0	0%	40	174	117	69
2011	5	364	355	9	0	0%	32	196	145	35
2011	6	514	511	3	0	0%	32	424	94	48
2011	7	472	458	13	1	0%	39	145	272	56
2011	8	468	463	4	1	0%	37	212	179	108
2011	9	334	312	19	3	1%	30	230	82	24
2011	10	369	355	14	0	0%	32	212	149	19
2011	11	335	307	27	1	0%	36	191	138	24
2011	12	307	303	3	1	0%	37	196	102	31
2011	Total	4692	4557	126	7	0%	418	2723	1565	587
2012	1	368	361	7	0	0%	34	235	107	45
2012	2	371	360	11	0	0%	31	277	70	37
2012	3	284	279	5	0	0%	40	164	84	50
2012	4	418	405	13	0	0%	36	219	160	41
2012	5	509	491	18	0	0%	37	260	149	104
2012	6	280	275	3	2	1%	41	107	119	60
2012	7	281	272	6	3	1%	38	103	144	35
2012	8	282	259	20	3	1%	31	148	89	27
2012	9	215	188	21	6	3%	36	78	80	32
2012	10	355	337	5	13	4%	34	131	168	46
2012	11	244	158	13	73	30%	28	108	45	8
2012	12	261	5	0	256	98%	18	4	1	0
2012	Total	3868	3390	122	356	9%		1834	1216	485



COLORADO OIL AND GAS CONSERVATION COMMISSION ANNUAL DRILLING PERMITS BY COUNTY

COUNTY	1988	1989	1990	1991	1992	1993	1994	1995	1996	1997	1998	1999	2000	2001	2002	2003	2004	2005	2006	2007	2008	2009	2010	2011	current as of 12/20 2012	
ADAMS	46	34	44	53	92	58	137	34	9	33	24	19	38	28	9	26	39	34	37	89	51	35	21	8	40	
ARAPAHOE	5	5	15	14	11	4	20	12	2	9	1	2	0	2	1	2	5	7	11	10	10	10	8	23	35	
ARCHULETA	8	5	18	5	2	1		3		3		1	7	9	6	10	8	13	14	26	47	11	18	12	5	
BACA	6	4	15	10	23	9	12	24	10	7	13	15	22	6	2	3	7	8	2	11	13	3	4	5	2	
BENT				1		2	2	4	2	5	3	5	2				5	3	8	1	1		5		2	
BOULDER	1		1	13	38	159	38	5	8	2	5		1	5	6	7	17	13	21	37	32	35	24	30	22	
BROOMFIELD																2	7		1	1		2	33	28	11	36
CHEYENNE	203	149	102	93	71	58	48	55	43	31	41	7	3	3	3	3	3	10	21	15	33	12	13	16	30	
COSTILLA												1														
CROWLEY	1		1	1																						
DELTA	1	1	2																				4	3	6	
DENVER										5	3	3		3						19	25	24				
DOLORES	2		4	1	2	1											1	1	1	6	10	12	21	8	8	13
ELBERT	9	12	8	5	3		2	13	16	11	1		2						4			1			2	
EL PASO																						2	3	3	18	
FREMONT	9	5	6	7	1	2	2	1	2	1								1	3	2	4	14	13	22	14	11
GARFIELD	19	66	111	36	18	56	143	78	109	141	95	130	213	353	362	567	796	1509	1845	2550	2888	1981	2037	1323	1034	
GRAND							1																			
GUNNISON			2	2		1									5	10	1	9	19	7	10	12	4	3	11	
HUERFANO	3	5		4	17	3	3	2	1	3	40	26	41	27	27		8	2			7		2	1	9	
JACKSON	3	1	4	6	2	2	3	2	2	6	3		34	18	21	9	14	6	8	5	27	19	9	18	5	
JEFFERSON	1		4	2		1		1	1		1	2	1						1	3	2					
KIOWA	15	39	40	46	28	28	21	26	13	17	10	2	11	18	2	4	2	1	11	9	26	7	16	17	17	
KIT CARSON	9	5	7	8	8	15	26	11	7	6	9	5					1	3	5	4	13	7	3	2	6	
LA PLATA	302	218	388	128	120	40	40	20	71	40	82	107	127	156	104	162	102	115	235	251	328	298	191	99	62	
LARIMER	4	4	3	6	13	7	3		1	3	1		2					1		5	46	12	41	8	13	
LAS ANIMAS	10	30	36			9	32	95	134	136	195	195	268	400	259	180	332	413	500	362	303	88	92	85	11	
LINCOLN	8	6	4	7	7	11	8	9	3	2			2	2	1	6	3	4	1	2	58	44	48	31	36	
LOGAN	18	21	23	13	14	30	15	13	6	12	7		4	7	3	3	6	13	17	14	5	9	17	8	27	
MESA	1	12	29	20	22	2	22	6	11	10	2	6	13	27	30	27	54	136	265	293	501	427	306	127	150	
MOFFAT	13	25	27	19	40	52	43	40	41	28	21	15	35	52	62	63	63	60	120	68	57	51	53	93	86	
MONTEZUMA	6	7	10	8	7	11	15	9	13	5	4	1	4			5	8	8	11	5	12	22	39	19	27	29
MONTROSE				1						1			1	3	2	4	2		1	3	3		1	1		
MORGAN	34	27	36	13	10	11	19	12	10	11	10	12	9	9	2	7	9	7	3	6	2	1	6	13	3	
OTERO				2																						
PARK				1																			3	4	1	
PHILLIPS			3		1	1						1		1	2		7	13	17	12	69	82	45	64	112	56
PITKIN		1		2													1			1						
PROWERS	19	9	5	10	14	7	3	5	5	3	9	3	2	5	4			7	5	7	5	8	1	3	1	
RIO BLANCO	34	83	77	33	81	83	126	81	33	40	51	95	89	187	105	179	154	161	360	321	477	348	441	109	117	
RIO GRANDE	2	3	4	1			1						1	1		1					1	1				2
ROUTT	4	3	12	4	2	3	1	2	1	1	1	4	20	13	1		4	6	9	8	4	2	3	10	4	
SAGUACHE	1							2					2							2	1	2				
SAN MIGUEL			2	2					1	1	4	2	11	13	27	18	42	45	35	23	20	13	10	2	1	
SEDGWICK				1				3		2							1	5	2	7	2	1	19	11	12	2
WASHINGTON	40	29	23	28	24	26	25	12	19	26	18	3	23	17	27	34	128	50	69	45	11	1	6	12	6	
WELD	424	357	366	656	1224	1319	1030	254	305	285	392	288	509	702	760	757	832	901	1418	1527	2340	1448	2152	2262	1732	
YUMA	14	20	45	60	104	53	167	168	123	116	111	60	31	205	160	138	237	782	797	541	545	105	299	148	11	
Total	1275	1186	1477	1320	2001	2065	2008	1002	1002	1002	1157	1010	1529	2273	2008	2249	2917	4364	5904	6368	8027	5159	5996	4659	3852	

ALL COUNTIES





Colorado Oil and Gas Conservation Commission
Form 2A Breakdown By County By Year
December 20, 2012

Yr	County	Form2As	Completed	In Process	Infor- mational	Requires Approval	New Location	CDP	SWH	RSO	CDPHE
2009	Total State	818	818	0	728	108	408	2	80	5	5
2010	Total State	2378	2376	0	1824	637	1601	0	327	22	55
2011	ADAMS	10	10	0	1	1	9	0	0	0	0
2011	ARAPAHOE	20	20	0	12	0	21	0	0	0	0
2011	ARCHULETA	5	5	0	0	4	4	0	8	0	0
2011	BACA	5	5	0	3	1	4	0	1	0	0
2011	BOULDER	9	9	0	1	1	3	0	1	0	1
2011	BROOMFIELD	1	1	0	1	0	0	0	0	0	0
2011	CHEYENNE	17	17	0	7	0	12	0	0	0	0
2011	DELTA	2	2	0	0	0	1	0	0	0	0
2011	DOLORES	5	5	0	1	0	3	0	1	0	0
2011	EL PASO	5	5	0	0	0	5	0	0	0	0
2011	ELBERT	1	1	0	1	0	1	0	0	0	0
2011	FREMONT	11	11	0	3	0	8	0	0	0	0
2011	GARFIELD	116	116	0	0	67	50	0	101	9	1
2011	GUNNISON	7	7	0	0	4	5	1	6	0	0
2011	HUERFANO	1	1	0	1	0	1	0	0	0	0
2011	JACKSON	12	12	0	2	5	12	0	10	0	0
2011	KIOWA	19	19	0	12	1	18	0	1	0	0
2011	KIT CARSON	2	2	0	1	0	0	0	0	0	0
2011	LA PLATA	26	26	0	2	18	18	0	31	0	0
2011	LARIMER	7	7	0	7	0	7	0	0	0	0
2011	LAS ANIMAS	77	77	0	42	0	44	0	1	0	0
2011	LINCOLN	29	29	0	15	2	20	0	0	0	1
2011	LOGAN	10	10	0	9	0	8	0	0	0	0
2011	MESA	24	24	0	0	9	15	0	12	0	0
2011	MOFFAT	48	48	0	2	12	42	0	41	5	0
2011	MONTROSE	1	1	0	0	0	1	0	0	0	0
2011	MORGAN	10	10	0	6	0	10	0	0	0	0
2011	PARK	1	1	0	1	0	0	0	0	0	0
2011	PHILLIPS	129	129	0	56	0	126	0	0	0	0
2011	PROWERS	1	1	0	1	0	1	0	0	0	0
2011	RIO BLANCO	37	37	0	0	20	24	0	27	0	0
2011	RIO GRANDE	1	1	0	0	0	1	0	1	0	0
2011	ROUITT	8	8	0	0	0	9	0	10	1	0
2011	SEDGWICK	13	13	0	2	0	11	0	2	0	0
2011	WASHINGTON	13	13	0	10	1	12	0	0	0	0
2011	WELD	1469	1462	7	767	173	1161	0	20	2	2
2011	YUMA	149	149	0	38	0	123	0	0	0	0
2011	Total State	2301	2294	7	1004	319	1790	1	274	17	5
2012	ADAMS	19	19	0	0	0	19	0	0	0	0
2012	ARAPAHOE	21	16	5	0	0	16	0	0	0	0
2012	ARCHULETA	1	0	1	0	0	1	0	1	0	0
2012	BACA	3	2	1	0	0	2	0	1	0	0
2012	BENT	2	2	0	0	0	2	0	0	0	0
2012	BOULDER	3	3	0	0	0	0	0	0	0	0
2012	BROOMFIELD	7	7	0	0	0	1	0	0	0	0
2012	CHEYENNE	30	27	3	0	0	24	0	0	0	0
2012	DELTA	1	1	0	0	0	0	0	0	0	0
2012	DOLORES	1	1	0	0	0	1	0	0	0	0
2012	EL PASO	4	3	1	0	0	3	0	0	0	0
2012	ELBERT	1	1	0	0	0	1	0	0	0	0
2012	FREMONT	3	3	0	0	0	3	0	2	0	0
2012	GARFIELD	75	69	6	0	0	31	0	65	2	0
2012	GUNNISON	7	6	1	0	0	6	0	5	0	0
2012	HUERFANO	5	5	0	0	0	4	0	1	0	0
2012	JACKSON	3	2	1	0	0	3	0	2	0	0
2012	KIOWA	13	13	0	0	0	12	0	0	0	0
2012	KIT CARSON	6	6	0	0	0	4	0	0	0	0
2012	LA PLATA	8	8	0	0	0	3	0	7	0	0
2012	LARIMER	6	6	0	0	0	4	0	0	0	0
2012	LAS ANIMAS	8	8	0	0	0	6	0	0	0	0
2012	LINCOLN	35	33	2	0	0	32	0	0	0	0
2012	LOGAN	16	15	1	0	0	16	0	0	0	0
2012	MESA	9	8	1	0	0	5	0	3	0	0
2012	MOFFAT	46	45	1	0	0	37	0	43	4	0
2012	MONTENZUMA	8	8	0	0	0	8	0	0	0	0
2012	MORGAN	5	4	1	0	0	5	0	0	0	0
2012	PHILLIPS	38	38	0	0	0	35	0	0	0	0
2012	RIO BLANCO	35	35	0	0	0	15	0	28	0	0
2012	RIO GRANDE	1	1	0	0	0	1	0	1	0	0
2012	ROUITT	3	2	1	0	0	6	0	6	0	0
2012	SAN MIGUEL	1	1	0	0	0	1	0	0	0	0
2012	SEDGWICK	1	1	0	0	0	1	0	0	0	0
2012	WASHINGTON	12	6	6	0	0	8	0	0	0	0
2012	WELD	821	710	111	0	0	594	0	4	0	1
2012	YUMA	1	1	0	0	0	1	0	0	0	0
2012	Total	1259	1116	143	0	0	911	0	169	6	1

CDP = Comprehensive Drilling Plan SWH = Sensitive Wildlife Habitat consultation
RSO = Restricted Surface Occupancy consultation CDPHE= Colorado Department of Health and Environment consultation



Colorado Oil and Gas Conservation Commission

Horizontal Well Activity

December 20, 2012

County	Prior Years			2009		2010		2011		2012		Completion				
	Drilled	DA	PA	Permit	Spud	Permit	Spud	Permit	Spud	Permit	Spud	Spud	AC	PR	DA	PA
ADAMS				6	6	2	3	1		17		9	4	3		
ARAPAHOE	2							10	1	22	2	5	2	1		
ARCHULETA	17			7	3	15	7	10	7	5	9	43		38		
BOULDER								4				0				
CHEYENNE	5		4							2		5		1		4
DELTA										6	1					
DOLORES	2			18	2	6				9	1	5		5		1
EL PASO										10						
ELBERT										1						
FREMONT	7	6		6		12	5	3	4	4	1	17		9	6	1
GARFIELD	10		2	1	1	16	2	18	7	43	6	26		20		2
GUNNISON	1					1				3	2	3		1		
HUERFANO										4						
JACKSON	8	1	1	8		3	3	9	2	4		13		10	1	1
KIOWA										1						
KIT CARSON	1									1		1		1		
LA PLATA	28	2		11	1	28	3	18	7	12	1	40		45	1	
LARIMER	3	2						5	1	2	1	5		2	2	
LAS ANIMAS	16		2	4		1	1					17		14		2
LINCOLN				2	1	2	1	1				2		2		
LOGAN	2											2		2		
MESA	3	2		36	1	22	8	24	13	14		25		23	2	2
MOFFAT	7	1	1	6	3	4		9	2	44	3	15		12	1	1
MONTEZUMA	6		1	23	5	11	1	8	3	18	1	16		26		1
MORGAN								6	2	1		2		2		
PARK						1	1	1				1				
RIO BLANCO	7	2				1	1	11	1	15	2	11	1	6	3	
ROUTT	10	6	1							1		10		3	6	1
SAN MIGUEL	1			1								1		1		
WASHINGTON	1		1									1				1
WELD	11	3		12	5	208	92	763	234	895	540	882		389	7	6
YUMA	1		1	6								1				1
TOTAL Horizontal	149	25	14	147	28	333	128	901	284	1134	570	1158	7	616	29	24
Percent of Total HZ		17%	9%										1%	53%	3%	2%
Total All Permits				5159		5996		4659		3652						
Percent of Total				2.8%		5.6%		19.3%		31.1%						



Well to Building Setback Review

Colorado Oil and Gas Conservation Commission
December 20, 2012

Count of well locations by proximity groupings from well spot to buildings for all locations reviewed under the December 17, 2008 amended rules.

Location Proximity to Buildings	2009	2010	2011	2012	Number of Locations	Percent of Total Locations
less than 150 feet	4	1	4	1	10	0%
150 to 350 feet	45	55	60	34	194	3%
350 to 500 feet	54	111	96	53	314	5%
500 to 1000 feet	158	357	333	168	1016	17%
1000 + feet	547	1593	1498	712	4350	74%
Total Locations	808	2117	1991	968	5884	

County	Total	Less than 150 feet	150 to 350 feet	350 to 500 feet	500 to 1000 feet	1000 + feet
ADAMS	40	0	2	4	9	25
ARAPAHOE	53	0	2	4	6	41
ARCHULETA	15	0	0	1	9	5
BACA	12	0	0	0	1	11
BENT	7	0	0	0	0	7
BOULDER	23	0	1	1	17	4
BROOMFIELD	32	0	0	4	13	15
CHEYENNE	60	1	0	0	0	59
DELTA	6	0	0	2	1	3
DOLORES	10	0	0	0	4	6
EL PASO	11	0	0	0	1	10
ELBERT	3	0	0	0	1	2
FREMONT	33	0	2	7	6	18
GARFIELD	382	0	5	2	55	320
GUNNISON	18	1	0	2	1	14
HUERFANO	7	0	0	0	2	5
JACKSON	24	0	0	2	1	21
KIOWA	51	0	0	0	1	50
KIT CARSON	11	0	0	0	0	11
LA PLATA	89	0	3	9	25	52
LARIMER	31	0	3	3	10	15
LAS ANIMAS	198	1	6	7	37	147
LINCOLN	132	0	0	1	3	128
LOGAN	36	0	1	1	0	34
MESA	76	0	0	3	11	62
MOFFAT	141	0	0	2	11	128
MONTEZUMA	18	0	0	1	1	16
MONTROROSE	2	0	0	0	0	2
MORGAN	16	0	0	2	3	11
PARK	4	0	0	0	0	4
PHILLIPS	262	1	4	6	20	231
PROWERS	4	0	0	0	0	4
RIO BLANCO	138	0	0	0	1	137
RIO GRANDE	2	0	0	0	1	1
ROUTT	14	0	0	0	0	14
SAN MIGUEL	11	0	0	0	0	11
SEDGWICK	25	0	0	1	3	21
WASHINGTON	25	0	1	0	0	24
WELD	3398	6	157	235	720	2280
YUMA	464	0	7	14	42	401
TOTAL	5884	10	194	314	1016	4350



Well to Building Setback Review

Colorado Oil and Gas Conservation Commission
December 20, 2012

Listing of Locations less than 200 feet to Building

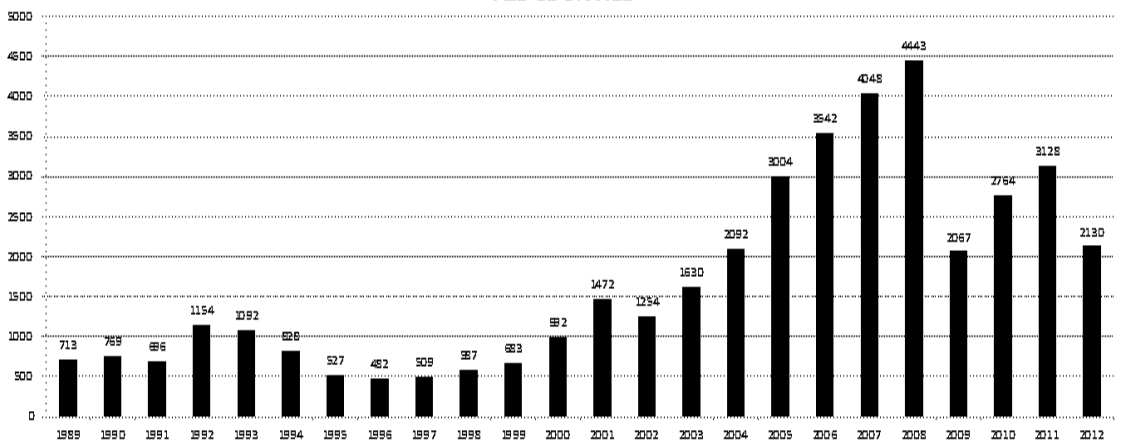
Year	Document Number	County	High Density	New Location	Distance	Proximity	Building Description
2011	2587822	CHEYENNE	No	No	58	less 150	Water well house
2009	1691798	WELD	No	No	58	less 150	Vehicle garage
2010	400072164	WELD	No	Yes	69	less 150	Abandoned hog shed
2012	400240957	GUNNISON	No	Yes	90	less 150	Equipment Shed
2009	1758843	WELD	No	Yes	103	less 150	Building to be razed
2011	1636646	WELD	No	No	122	less 150	Storage shed
2009	400011284	LAS ANIMAS	No	Yes	127	less 150	Operator is owner
2009	1786896	PHILLIPS	No	No	132	less 150	Grain Storage
2011	400117702	WELD	No	Yes	143	less 150	Irrigation pump house
2011	400227765	WELD	No	Yes	145	less 150	Storage Barn
2009	1904205	WELD	No	No	154	150 to 350	Livestock Enclosure
2012	400243295	WELD	No	Yes	155	150 to 350	Unused storage shed
2011	400179419	WELD	No	Yes	157	150 to 350	Existing well / storage building
2010	400054716	WELD	No	No	159	150 to 350	Equipment Barn
2011	400188968	WELD	No	Yes	159	150 to 350	Abandoned
2010	400021477	WELD	No	Yes	162	150 to 350	Goat Barn
2009	1758386	WELD	No	Yes	168	150 to 350	Storage Shed
2011	1635946	WELD	No	No	169	150 to 350	Storage shed
2011	400165164	WELD	No	Yes	178	150 to 350	Residence
2011	400188780	WELD	No	Yes	180	150 to 350	Residence
2010	1697620	WELD	No	No	187	150 to 350	Livestock Shed
2009	1758746	WELD	No	No	193	150 to 350	Storage Shed
2011	400154431	WELD	No	Yes	198	150 to 350	Turkey barn
2012	400250031	WELD	No	Yes	198	150 to 350	abandoned guard shack
2009	1774783	WELD	No	No	199	150 to 350	cement service building
2011	400118102	YUMA	No	Yes	199	150 to 350	Steel Barn



COLORADO OIL AND GAS CONSERVATION COMMISSION ANNUAL WELL STARTS BY COUNTY

COUNTY	1988	1989	1990	1991	1992	1993	1994	1995	1996	1997	1998	1999	2000	2001	2002	2003	2004	2005	2006	2007	2008	2009	2010	2011	2012	Current as of 12/30	
ADAMS	39	27	26	36	54	20	54	28	6	16	12	17	18	13	4	19	22	24	13	41	14	15	21	2	9		
ALAMOSA																											
ARAPAHOE	2	4	16	11	11	3	9	8	3	3	2						6	1	5	2	1	1	3	7	5		
ARCHULETA	5	3	7	5	2	1	2			1				4	4	2	5	4	10	5	7	26	9	11	7	11	
BACA	5	5	12	6	21	8	9	19	9	7	11	8	19	6	2	1	6	6	2	6	12		5	4	1		
BENT				1													3	2	8	1	1						
BOULDER	2			7	18	56	15	5																			
BROOMFIELD	3	2	3	7	14	27	22	2	2						2		1			11	9	14	25	16	13	7	14
CHEYENNE	177	133	92	75	64	50	44	41	35	29	29	6	2	1	3	3		9	14	15	14	8	12	11	16		
CONJOS																											
COSTILLA												1															
CROWLEY	1		1																								
CUSTER																											
DELTA	1		1														5	4	6	5	2			4	1	1	
DENVER										2	3	1		2						7	5	4					
DOLORES	2		4	1														2		2	13	4	2		1	3	
DOUGLAS																											
EAGLE																											
EL PASO																								2		5	
ELBERT	8	11	9	5	2			10	15	2	2		2							1							
FREMONT	6	3	5	7	1	1	1	2			1							1	3	2	2	5	3	9	16	6	
GARFIELD	3	12	24	8	3	4	15	13	7	28	19	94	190	251	245	417	585	799	1005	1304	1688	767	909	877	482		
GRAND							1																				
GUNNISON			1	2	1												1	1	1	9	5	1	4	5	2	4	
HUERFANO	6			2	6	1	1	2		2	31	9	25	14	19	3	6	2						1		1	
JACKSON	2	1	3	7	2		3	1	1	3	3		24	2	4	10	10			3	3	10	1	6	7		
JEFFERSON									1																		
KIOWA	14	32	35	37	28	19	20	22	8	13	6	4	8	16	2	4	2	1	7	7	2	5	14	15	10		
KIT CARSON	11	6	6	6	9	13	15	9	6	3	7	7						1	6	2	1	14	3	1	3		
LA PLATA	158	129	186	244	66	26	17	19	29	48	65	80	99	135	118	110	103	104	108	179	199	128	67	38	3		
LARIMER	8	5	1	6	13	5	3		2	1			1	1				1		4	8	1	28	2	10		
LAS ANIMAS	17	22	20	3	2	11	17	34	62	90	120	182	202	286	205	221	296	384	413	326	221	14	7	78	1		
LINCOLN	6	5	4	4	7	7	8	8	3	2			2	2	1	5	2	2	1	2	19	10	14	22	22		
LOGAN	17	19	19	8	13	24	9	11	4	10	4		4	2	12	12	13	25	89	156	209	222	14	11	37	4	
MESA	1	2	2	4	1		7	2	1	1	4	4	4	2	12	12	13	25	89	156	209	222	14	11	37	4	
MOFFAT	1	2	1	2	1	1	2	1	3	1	8	10	18	23	25	28	19	40	60	42	25	18	15	29	20		
MONTEZUMA	6	5	7	5	2	5	7	3	12	2	2		2	3	5	5	1	7	2	4	18	11	2	4	11		
MONTROSE				1																							
MORGAN	26	20	32	11	9	11	16	13	8	9	7	4	9	8	1	7	5	5	3	1	1	2	3	2	1		
OTERO	1																										
GURAY																											
PARK				1																				2			
PHILLIPS				3		1							1				6	10	11	4	35	18	2	42	105	42	
PITKIN		1			2																						
PROWERS	16	9	5	8	13	7	1	5	5	2	8	4	2	4	4		5	5	6	3	5	2	3	1			
PUEBLO																											
RIO BLANCO	1	8	10	1	3	8	6	7	5	9	9	62	51	82	47	83	92	95	107	95	203	115	106	69	47		
RIO GRANDE	1	2	2																								
ROUFF		1	1	3	1							1	5	12	1		1	6	3	2		2	1	2	3		
SAGUACHE	1							2																			
SAN MIGUEL				1							3	1	6	9	10	19	28	13	20	17	5	1	2	2			
SEDGWICK				1			1	3		2							1	2	1	1	5		3	7	3		
WASHINGTON	39	28	22	26	24	20	20	13	17	23	18	4	15	12	24	29	65	34	23	14	11	2	2	3			
WELD	176	200	168	296	660	723	389	94	136	94	117	124	237	403	406	522	632	718	931	1222	1314	877	1201	1640	1350		
YUMA	12	16	41	27	102	39	114	145	161	104	93	52	42	162	108	106	144	597	593	445	336	27	213	108	15		
Grand Total	773	713	769	696	1154	1092	828	527	482	509	587	683	992	1472	1254	1630	2092	3004	3542	4048	4443	2067	2764	3128	2130		

ALL COUNTIES





Colorado Oil Gas Conservation Commission Monthly Statistics

YEAR	MO	Baker - Hughes Rig Count	Drilling		Recompletion		Permits		Injection		Pits		Locations		Well Spud		Active Drilling Permits	Active Wells	Public Visits		Well Oper Change
			Rcvd	Apvd	Rcvd	Apvd	Rcvd	Apvd	Rcvd	Apvd	Rcvd	Apvd	Rcvd	Apvd	Data	Office			Internet		
2009	Total		4754	5159	344	334	68	55	178	242	765	571	1110	161	1071	984793	5666				
	JAN	45	506	462	11	31	4	5	10	50	277	186	191	4029	41207	26	85	105289	654		
	FEB	50	687	377	35	9	4	4	6	9	265	213	191	3722	41478	7	114	97167	734		
	MAR	51	653	713	33	31	5	2	9	9	206	300	235	3858	41632	19	104	103614	2171		
	APR	51	493	649	67	33	5	5	5	17	220	228	233	4040	41843	24	110	127472	597		
	MAY	53	389	622	29	57	3	6	10	47	200	218	237	4291	42096	11	97	85000	641		
	JUN	53	521	490	139	89	2	0	40	12	253	251	223	4373	42217	26	100	85000	653		
	JUL	60	460	432	54	81	1	1	19	15	185	222	245	4300	42324	10	84	85000	624		
	AUG	66	503	532	57	81	1	2	9	37	239	198	236	4481	42534	16	91	86609	556		
	SEP	68	403	437	33	31	3	1	3	8	166	196	245	4558	42686	9	76	83055	460		
	OCT	68	401	500	21	41	4	0	3	2	160	221	264	4502	42903	15	85	82492	423		
	NOV	68	308	421	14	19	1	1	3	10	162	171	230	4557	43139	14	94	90322	429		
	DEC	67	379	361	26	12	1	1	3	9	128	144	244	4735	43354	20	75	81459	479		
2010	Total		5703	5996	519	515	34	28	120	225	2461	2548	2764	197	1115	1112479	8421				
	JAN	63	405	351	8	23	4	6	4	8	249	112	234	4755	43588	14	95	103968	813		
	FEB	61	343	249	15	2	7	6	5	3	184	150	210	4733	43869	21	80	96171	356		
	MAR	68	472	498	18	23	4	7	38	31	262	258	267	4847	43927	9	125	122393	590		
	APR	72	325	314	26	15	5	0	20	27	190	218	238	4882	44203	8	105	106539	402		
	MAY	72	372	367	20	25	3	6	12	8	214	171	251	4904	44752	14	124	73024	545		
	JUN	70	512	436	61	22	5	4	11	4	172	239	271	5013	45401	30	131	108115	790		
	JUL	69	457	436	13	55	2	1	13	7	215	158	255	5113	45710	20	74	103585	595		
	AUG	73	472	482	37	17	1	0	10	17	236	229	283	5328	45975	21	141	111950	573		
	SEP	77	336	389	22	29	7	0	35	34	159	203	312	5361	46115	9	120	116043	584		
	OCT	78	382	443	45	29	2	1	4	12	171	172	290	5423	46719	14	126	132814	552		
	NOV	80	342	324	29	57	0	1	12	13	166	174	304	5409	46721	18	96	130612	572		
	DEC	79	291	370	31	23	4	0	26	28	164	183	267	5329	46835	9	77	132651	347		
2011	Total		4709	4659	325	320	44	32	190	192	2382	2267	3182	187	1294	1337865	6719				
	JAN	73	372	258	26	21	3	0	11	5	142	129	239	5217	46958	12	106	112686	1051		
	FEB	70	370	382	23	27	7	5	21	9	160	129	217	5173	47128	16	114	105857	385		
	MAR	66	292	347	21	14	2	2	17	24	133	172	284	5132	47263	26	138	111746	380		
	APR	66	410	235	16	24	5	5	9	2	136	106	213	4785	47377	12	108	107627	476		
	MAY	66	491	506	23	16	3	1	6	2	105	131	200	4885	47533	20	123	109802	525		
	JUN	69	327	377	13	19	7	6	5	8	97	89	139	5136	47860	11	111	108849	1268		
	JUL	66	230	276	9	14	4	2	5	2	92	103	162	5152	48173	13	102	114195	275		
	AUG	62	300	288	5	9	6	4	23	5	68	97	164	5031	49153	11	112	110908	295		
	SEP	61	251	256	1	5	5	2	5	1	80	77	139	4960	49230	11	89	106114.2	246		
	OCT	62	321	267	9	3	7	6	2	19	76	81	148	5009	49236	8	105	108833.3	318		
	NOV	56	255	323	4	8	6	6	2	4	73	97	137	5000	49989	10	119	120586	155		
2012	Total		3619	3515	150	160	55	39	106	81	1162	1211	2042	150	1227	1217203	5374				

Apvd = Approved, Rcvd = Received, Ind = Individual, Blmkt = Blanket, Apps = Application for Hearing, NCAV = Notice of Alleged Violation, AOC = Administrative Order of Consent, OFV = Order Finding Violation, Cmpmt = Complaint, Comp = Completed



Colorado Oil Gas Conservation Commission Monthly Statistics

YEAR	MO	Operators		Release		Bonds		Claim		Hearings		Violations		Remediation Projects		Field Insp		
		New	Inactive	Ind.	Blankt	Replace	Ind.	Blankt	Apps.	Order	NOAV	AOC	OFV	Cmplt	Spills		Rcvd	Comp
2009	Total	80	50	54	53	96	1	0	87	73	260	8	1	202	371	208	133	9991
	JAN	4	6	1	7	10	0	0	16	14	36	0	0	11	38	22	13	1160
	FEB	5	3	4	4	3	0	1	11	13	9	0	0	11	54	19	14	1143
	MAR	4	5	6	6	7	0	0	13	12	37	0	0	6	29	41	10	2046
	APR	5	2	9	2	4	0	0	21	15	5	0	2	17	42	23	22	1183
	MAY	3	3	10	0	8	0	0	NA	NA	8	NA	NA	13	38	44	51	1364
	JUN	3	0	2	2	2	0	0	23	20	22	0	0	20	34	52	42	1308
	JUL	5	0	0	0	8	0	0	12	6	37	1	1	20	46	39	26	971
	AUG	3	2	2	1	5	0	0	8	12	40	1	0	33	46	39	22	1581
	SEP	4	3	0	4	4	0	0	13	7	32	2	0	11	44	55	38	1388
	OCT	3	3	0	7	2	0	0	19	16	30	0	0	33	32	96	24	1595
	NOV	2	5	2	6	5	0	0	19	21	20	6	0	20	48	51	49	1535
	DEC	5	1	2	1	16	0	0	NA	NA	43	NA	NA	23	42	30	71	1801
2010	Total	46	33	38	40	74	0	1	155	136	319	10	3	218	493	511	382	17075
	JAN	1	2	3	1	4	0	0	16	15	43	3	2	33	40	47	45	1316
	FEB	1	1	9	4	6	0	0	16	15	7	0	1	40	52	48	33	1591
	MAR	2	3	6	3	9	0	0	NA	NA	31	NA	NA	33	48	59	27	1675
	APR	2	0	3	2	1	0	0	24	24	8	0	0	10	52	38	61	959
	MAY	3	0	5	2	4	0	0	77	65	16	2	5	26	31	33	51	1577
	JUN	2	2	2	2	0	3	0	51	58	30	1	4	14	38	53	25	1099
	JUL	3	6	3	6	3	1	0	NA	NA	29	NA	NA	13	39	92	20	518
	AUG	2	3	12	7	2	0	1	68	54	26	2	2	20	54	106	56	1032
	SEP	5	1	7	5	2	0	0	44	41	4	2	4	17	46	56	66	676
	OCT	4	2	12	6	7	0	3	57	45	9	0	0	15	38	102	28	598
	NOV	4	9	15	4	1	0	0	NA	NA	15	NA	NA	16	31	70	58	527
	DEC	4	2	2	2	4	0	0	50	32	12	0	1	13	58	22	66	532
2011	Total	33	31	79	44	43	4	4	403	349	230	10	19	250	527	726	536	12100
	JAN	3	3	7	5	1	1	10	70	72	18	1	0	29	34	68	23	970
	FEB	6	9	8	5	0	0	0	NA	NA	10	NA	NA	26	40	86	36	1024
	MAR	4	1	7	3	9	0	0	44	38	19	0	0	22	38	63	61	1149
	APR	4	2	10	3	2	0	0	80	59	11	0	0	19	35	25	98	930
	MAY	3	1	4	0	3	0	0	43	50	14	2	0	23	31	27	119	1701
	JUN	3	4	3	3	4	0	0	NA	NA	5	NA	NA	35	39	46	97	1084
	JUL	5	0	1	4	5	0	0	63	50	15	0	0	16	24	45	32	1075
	AUG	6	5	2	8	0	1	0	67	54	24	3	2	21	28	127	33	1432
	SEP	0	4	4	5	2	1	0	NA	NA	2	NA	NA	14	13	26	35	861
	OCT	1	2	9	1	0	0	0	30	36	5	1	0	15	42	95	36	1028
	NOV	6	4	12	8	7	0	0	85	37	16	2	0	6	40	19	42	821
2012	Total	41	35	67	45	33	3	10	482	396	139	9	2	226	364	627	612	12075

Apvd = Approved, Rcvd = Received, Ind = Individual, Blankt = Blanket, Apps = Application for Hearing, NOAV = Notice of Alleged Violation, AOC = Administrative Order of Consent, OFV = Order Finding Violation, Cmplt = Compliant, Comp = Completed