



# Staff Report

February 11, 2013

## TOP STORIES

### ◆ New Groundwater Rules effective May 1, 2013

On January 9, 2013, the Commission adopted new Rules requiring pre- and post- drilling groundwater sampling. The purpose of the Rules is to protect and preserve Colorado's groundwater resources, detect potential contamination and inform all stakeholders of groundwater quality both before and after oil and gas development. These Rules require collection of baseline water quality data before oil and gas development, and after drilling and completion operations. All water quality data generated under the rule will be publicly available at [www.cogcc.state.co.us](http://www.cogcc.state.co.us) under Hot Topics.

Rule 318A.e(4) has been amended in this rule-making to expand the existing water sampling requirements within the Greater Wattenberg Area ("GWA"). Rule 318A.e.(4)B. requires operators to obtain one baseline sample from a water source within the governmental quarter section in which a new Oil or Gas Well, the first well on a Multi-Well Site, or a Dedicated Injection Well is located within 12 months prior to setting conductor pipe. If a sampling location has previously been established within the governmental quarter section, and sampled within the prior sixty (60) months before spudding, no initial baseline sample is required. Operators may choose to obtain groundwater samples, but have the option of relying on pre-existing data. If there is no suitable water source within the governmental quarter section, a water source from a previously unsampled governmental quarter section within a 1/2 mile radius of the well, if any, must be sampled. Sampling at least one water source within a quarter section of a new oil or gas well will facilitate determination of existing groundwater conditions prior to commencement of new drilling activity.

Once a sample location is established in a governmental quarter section, no additional sample locations are required for that governmental quarter section. One subsequent sampling event must be conducted at the initial (or previously established) sample location between six (6) and twelve (12) months following completion of the well or dedicated injection well, or the last well on a multi-well site. Rule 318A.e.(4)C. provides specific exceptions from the sampling requirements.

Additional provisions of Rule 318A.e.(4) mirror the provisions of Rule 609, described below.

Rule 609 sets forth a new statewide rule for groundwater sampling and monitoring outside of the GWA area. The Rule does not apply to water sampling and monitoring associated with coalbed methane wells. Coalbed methane is addressed under Rule 608 and numerous Commission orders. This new Rule does not alter or amend any of the requirements of Rule 608 and related orders concerning water sampling and monitoring associated with coalbed methane wells.

Rule 609.b. sets forth requirements concerning the number of groundwater samples operators must obtain to satisfy the rule, the location of such samples relative to the proposed Oil and Gas Location, and the hierarchy of preferred sampling locations. Specific exceptions to the sampling requirements are set forth in Rule 609.c.

Rule 609.d. provides the general timing requirements for baseline sampling and follow up monitoring. The initial sample will assess pre-development groundwater conditions. The first follow-up sample assesses whether any short-term impacts related to drilling and completion may have occurred, while the second subsequent sample evaluates potential long-term im-



pacts. Under specific circumstances, operators may use water sample data previously obtained from an available water source to satisfy the initial baseline sampling or second subsequent sampling requirement.

Rules 609.e.(1) and (2) provide sampling procedures and a comprehensive set of analytical testing requirements applicable to all sampling conducted under the rule. The analytes to be sampled in the initial baseline sample are those routinely used by Commission staff to evaluate complaints regarding domestic well water quality. A reduced set of analytes, focused specifically on potential impacts of oil and gas operations, is required for the subsequent sampling events. Rule 609.e.(4) also addresses the potential presence of methane gas in any sample and requires the operator to notify the Commission and the relevant well owner of potentially dangerous levels of gas. Operators are also required to notify COGCC Staff if BTEX compounds or total petroleum hydrocarbons are detected in a water sample.

Under Rule 609.f, sampling results must be provided to the Director in an electronic format; all data provided to the Director will be posted to a searchable water quality database accessible through the Commission's website.

The Commission does not intend for Operators to be presumed liable based on conducting the sampling required under Rules 609 or 318A.e.(4), or based on the results of such sampling. Rule 609.g. and Rule 318A.e.(4), respectively, expressly state that owners or operators shall not be presumed to be liable, at fault, or causally responsible as a result of the sampling required by these Rules, or based on the sampling results.

For more information, the Rules are available at [www.cogcc.state.co.us](http://www.cogcc.state.co.us) under Hot Topics and Statewide Water Sampling and Monitoring Rule-making. The Rules have been submitted to the Secretary of State for publication.

#### ◆ **Rulemaking on Setbacks Continues**

A rulemaking hearing was held on January 7-9 regarding the proposed setbacks for the drilling

of new oil and gas wells. At the conclusion of the hearing, the Commissioners closed the administrative record and took a straw vote on the draft rule and proposed modifications. Another hearing was held on January 24, at which time the Commissioners elected to allow Parties to submit supplemental materials into the record, and to continue deliberations at the February 11 hearing.

#### ◆ **Industry Training**

On January 9, 2013, the Permitting and Engineering Staff presented a second session of the all-day industry training for submitting the Form 5, Drilling Completion Report, and the Form 5A, Completed Interval Report. The second session was provided to accommodate all the participant responses for the first session held in December; both sessions of this training were well-attended, with 30 participants at the first session and 33 at the second. Participants expressed interest in similar training for the Form 6, Well Abandonment Report, the Form 2, Application for Permit to Drill, and the Form 2A, Oil and Gas Location Assessment. Staff is currently preparing presentations for the requested topics.

#### ◆ **Local Government Liaison (LGL) Program Update**

Local Government Liaisons (LGLs) Marc Morton and Nancy Prince have scheduled three Local Government Designee (LGD) training sessions. As of late January, over 55 participants have registered for the training sessions, scheduled for February 6 in Limon, CO; February 20 in Grand Junction; and March 6 in Broomfield. Additional sessions are being planned for Durango in April, and additional eastern Colorado venues. Once confirmed, the entire schedule and registration details will be posted on the COGCC website. Ongoing LGD program activities include the development of an LGD training manual, and compilation of presentation materials, exercises, and other pertinent information. Additional trainings will be scheduled following the initial rollout after a re-evaluation of the content.



The purposes of the training are: 1) to update LGDs on the status of rulemaking changes; 2) to provide LGDs with a refresher and update on their roles, responsibilities, and mechanisms for involvement and comment in the permitting process; 3) to provide an overview of COGCC staff roles, the COGCC website and its applications; 4) to provide an overview of the COGCC's regulatory authority; 5) to provide a summary of opportunities for public involvement; and 6) to provide information and get feedback regarding local government's role the regulation of oil and gas operations.

In addition to preparations for LGD training, the LGLs have helped coordinate the continued rulemaking hearings, and continue to provide valuable service, support, and outreach to inquiries and information requests from local government staff, the public, and operators. The LGLs are also continuing to contact various entities who previously participated as LGDs, but whose information is no longer current in the COGCC database. The LGLs also continue to consult on an almost a daily basis with various state government agencies, operators, non-governmental agencies, the public, and others. The LGLs consulted with the staff from various entities including, but not limited to, the City of Loveland, the City of Fort Collins, Pitkin County, the Town of Milliken, the Town of Hudson, the Colorado Energy Office, League of Women Voters in Durango and the Association of Energy Service Professionals.

To stay current regarding the initiatives concerning local government regulation of oil and gas operations, the LGLs make it a priority to attend as many city or county local government meetings concerning the oil and gas industry as possible. Contact Marc Morton at 303-894-2100 x 5132 or [marc.morton@state.co.us](mailto:marc.morton@state.co.us), or Nancy Prince at 303-894-2100 x 5103 [nancy.prince@state.co.us](mailto:nancy.prince@state.co.us), if you are interested in taking part in a future training.

A list of other LGL outreach activities is included in the Public Outreach section listed on the next page.

## Public Outreach

### ➤ Outreach by Director and other Staff Members

- On January 4, Jane Stanczyk, Permit Unit Supervisor, and Local Governmental Liaisons, Nancy Prince and Marc Morton met with Joe Racine, Town of Hudson LGD, and Town planning staff to review GIS mapping applications and comment submittal tools for LGDs. The meeting focused on the increased activity drilling within and immediately outside of the town of Hudson, the impacts of this activity on the town, the benefits of town working directly with oil and gas operators, and the use of the COGCC website to monitor activity.
- On January 8-11, Arthur Koepsell, Environmental Data Analyst, provided training to operators in the Durango area. The training topics included uploading water quality data to the new CO\_ENV database and how to use the COGCC online maps. Mr. Koepsell met with representatives from BP, XTO, Conoco Phillips, Energen, and Four Corners Geoscience.
- On January 10, Director Matt Lepore attended the GORT meeting in Durango and gave a presentation on Groundwater.
- On January 10, Arthur Koepsell attended the GORT meeting and provided training regarding the GIS database and use of the map system.
- On January 24, 2013, Jim Milne, Environmental Manager, Bob Chesson, Northeast Environmental Specialist, and Dennis Ahlstrand, GIS Analyst, gave a presentation to students at the Colorado School of Mines. The presentation highlighted permit rules, data resources, and environmental considerations for their senior projects. This marked the third year of participation.



➤ Outreach by COGCC Local Government Liaisons (LGLs)

- On January 9, Nancy Prince attended the scheduled meeting of the Oil and Gas committee of the City of Aurora.
- On January 10, Marc Morton attended the Gas and Oil Regulatory Team (GORT) quarterly meeting in Durango, CO. COGCC staff presenters included Director Matt Lepore, Karen Spray, Southwest Environmental Protection Specialist, Arthur Koespell, and Dave Andrews, Western Colorado Engineering Supervisor.
- On January 12, Marc Morton travelled to Delta, CO and participated in a forum and panel discussion hosted by the League of Women Voters of Montrose County. The forum focused on hydraulic fracturing. Marc Morton provided a presentation on Colorado's Regulations on Aquifer Protections and Wellbore Cement and Casing Design. Other participants in the panel included Kent Kuster, Colorado Department of Public Health and Environment (CDPHE), Bruce Bertram, Delta County LGD, Eric Sanford, SG Interests 1, and Sarah Sauter and Lori Molitor, representatives of the Conservation Center.
- On January 16, Marc Morton, Karen Spray, Mark Weems, Southwest Area Engineer, and Dave Kubeczko, Northwest Location Specialist, travelled to Del Norte, CO and attended the Rio Grande Board of County Commissioners public hearing regarding their review of a Conditional Use (CU) permit application for the First Liberty Basin # 1 Well. The well is proposed to be located about three miles northwest of the Town of Del Norte, Rio Blanco County. The permit application was not approved at the meeting, and the County will continue deliberations on February 13.

**REGIONAL ACTIVITIES**

➤ NORTHWEST COLORADO

◆ Northwest Colorado Oil and Gas Forum

The Forum is an informal gathering of local,

state, and federal government officials, oil and gas industry representatives, and citizens that have met regularly since 1989. The purpose of the Forum is to share information about oil and gas development in northwest Colorado and to make government officials and oil and gas industry representatives easily accessible to the public. Currently the meetings are conducted once per quarter and are co-chaired by the COGCC Director Matt Lepore, and Garfield County Commissioner Mike Samson.

The next meeting is scheduled for Thursday, February 21, 2013, at 3:00 p.m. at Mesa State University—Main Campus, Maverick Center, Lecture Hall # 155, 1100 North Avenue, Grand Junction, Colorado 81501. All parties wishing to be placed on the meeting agenda should contact Chris Canfield at 970-625-2497 or via email at: [chris.canfield@state.co.us](mailto:chris.canfield@state.co.us).

◆ Project Rulison

Please note that the email for Project Rulison submittals has been changed to: [DNR\\_rulison.submittal@state.co.us](mailto:DNR_rulison.submittal@state.co.us)

◆ Project Rio Blanco

Please note that the email for Project Rio Blanco submittals has been changed to: [DNR\\_rioblanco.submittal@state.co.us](mailto:DNR_rioblanco.submittal@state.co.us)

➤ SOUTHWEST COLORADO

◆ Gas and Oil Regulatory Team (GORT) Meeting

The next GORT/Southwest Colorado Oil and Gas Stakeholders meeting is scheduled for April 18, 2013, at 8:30 a.m. to noon at the La Plata County Fairgrounds in Durango, Colorado.

All parties wishing to be placed on the next meeting agenda should contact Karen Spray at: 970-259-1619 or [karen.spray@state.co.us](mailto:karen.spray@state.co.us).

◆ Fruitland Formation Outcrop Mitigation and Monitoring Projects (4M Projects)

Fruitland Formation Outcrop - 4M Pilot Scale Mitigation Projects La Plata County. The South Fork Texas Creek (SFTC) Mitigation system con-



tinued operation at approximately 11 kilowatts (kW) power generation and operated 100% of the period of September 30, 2012 through November 3, 2012. Approximately 5.5 kW of power is returned to the grid at this operating rate. Methane concentrations continue to average 99% at SFTC and less than 1% at PRR. Operations & Maintenance activities are continuing.

- ◆ 4M Monitoring Wells La Plata and Archuleta Counties. There are 17 wells at 11 locations in the COGCC 4M monitoring program. Well pressures are monitored remotely via satellite telemetry with one or two maintenance visits per year, depending upon data received. Repairs were necessary at the Wagon Gulch site in Archuleta County in December 2012. The central data transmission modem failed and required replacement to maintain satellite communications with the transducers. Data continued to be collected during this time and was later downloaded.
- ◆ Ongoing Investigation, Reclamation, and Mitigation of Residual Methane in the Vicinity of the Bryce 1-X Well Area, Bondad, Colorado

All four water wells were sampled on October 10, 2012. Analytical results show decreases in methane concentrations in the Fire Station and Middle water wells and slight increases in the North and South water wells. All concentrations remain below 10 mg/l and the general water quality is stable. The next sampling is scheduled for April 2013.

## ➤ SOUTHEAST COLORADO

- ◆ U.S. EPA Raton Basin Hydraulic Fracturing Study - Las Animas and Huerfano Counties

As part of the retrospective study of possible impacts from well completions, a third round of sampling and analysis of groundwater from two areas in the Raton Basin was conducted during the week of November 5. COGCC Staff, as well as contractors for Pioneer Natural Resources, collected split samples at many of the sites. The EPA released an interim progress report on the study in December, 2012. The EPA is expected to release the study in a draft for

public and peer review in 2014. Ultimately, results from the study are intended to inform the public and provide policymakers at all levels with high-quality scientific knowledge that can be used in decision-making. For more information on the EPA hydraulic study, go to <http://www.epa.gov/hfstudy/>

## VARIANCES

No variances in this hearings cycle.

## ORGANIZATION

An organizational chart can be found on pages 8-10. For contact information, please go to our homepage, and then "Staff Contact Information."

## PLANNING/ADMINISTRATION/OTHER

- ◆ Plugging and Reclaiming Abandoned Wells (PRAW) - Project Updates

The **Biscuit Ranch** reclamation project, located on the northeastern outskirts of Rifle, CO., in Garfield County, includes the reclamation of two well pads and a compressor pad. The design phase of this project has now been completed with minor changes forthcoming from COGCC Staff. The future plans include obtaining a cost estimate and soliciting contractor bids to perform the work. Dirt work for the project is scheduled to begin late spring/early summer followed by re-seeding of the reclaimed lands in irrigated hay fields. Dry land re-vegetation where the compressor is located will likely occur in the fall.

The **Long Hollow Dam & Lake Project**, located southwest of Durango, CO., is currently under construction. The custodian of this property is the Animas-La Plata Water Conservancy District and their construction contractor is Weeminuche Construction Authority. Construction crews discovered a leaking gas well located within the planned lake bed. The leaking gas well has been identified as the Bobby Taylor #1 Well (API #05-067-06115) ("Well") located in the SW¼ NW¼ of Section 33, Township 33 North, Range 12 West. The Well was drilled in late 1976 and plugged in 1977. The COGCC is working on de-



signs and costs estimation for re-entry, drill out and re-plugging. The next steps are to solicit contractors' bids within a few weeks and commence work in late February or early March. The current estimated cost for the entire project is \$125,000.

Page 11 contains a spreadsheet listing PRAW projects that are either scheduled in process or completed as of January 24, 2013.

#### ◆ March 2013 Hearing Docket

A docket for the March 2013 hearing will be available shortly after the February hearing. Hearing dockets are available on our website by clicking on "Hearings." Links to the notices and hearing applications are available from the Docket Number and Applicant, respectively. To sign up for e-mail notification of hearing notices and applications, please see the announcement and instructions on the homepage of the COGCC website: [www.cogcc.state.co.us](http://www.cogcc.state.co.us)

#### Colorado Oil and Gas Information System (COGIS) Projects, Updates and Changes

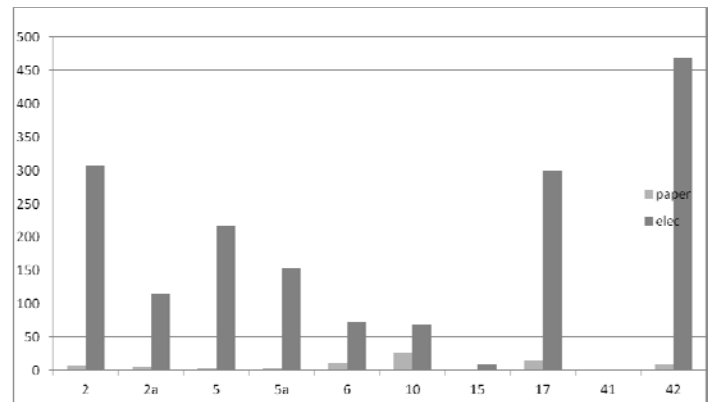
##### Environmental Database

During the past 18 months, the COGCC and the Ground Water Protection Council (GWPC) have been working together to develop a new Environmental Database that will contain the results from the Colorado Oil and Gas Association Voluntary Baseline Groundwater Quality Sampling program, along with other environmental data collected by the agency. The project included the development of a new relational database model that will allow the data to be accessible to the public from the COGCC website.

Other improvements include an Electronic Data Deliverable that allows industry to submit the results of the sampling directly to the COGCC, which can then process the information directly into the database. The application has many other features to help staff analyze the information and understand the lab results from the sampling. The interface will allow the public to view and download the results.

#### Electronic Form Submissions (eForm)

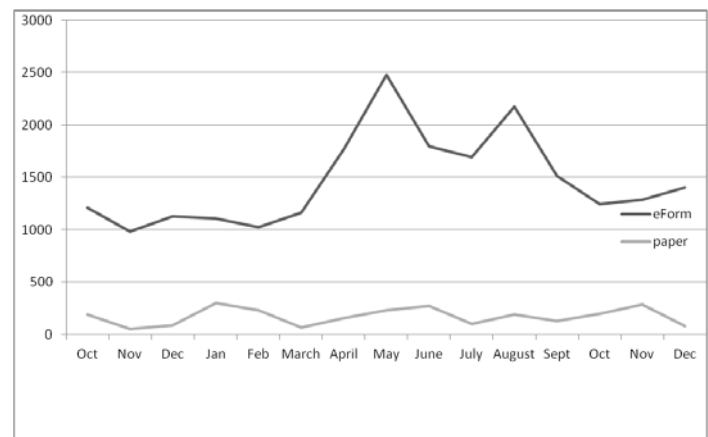
TOTAL ELECTRONIC FORM SUBMITTALS  
OCTOBER 2011 - DECEMBER 2012



Forms currently available through eForm:

Form 2 - Application for Permit to Drill  
Form 2A - Oil and Gas Location Assessment  
Form 5 - Drilling Completion Report  
Form 5A - Completed Interval Report  
Form 6 - Well Abandonment Report  
Form 10 - Certification of Clearance/Change of Operator  
Form 15 - Earthen Pit Report/Permit  
Form 17 - Bradenhead Test Report  
Form 41 - Trade Secret Claim of Entitlement  
Form 42 - Notice of Notification (Notice of Hydraulic Fracturing)

Following is a breakdown by form for the month of December:



Form 10, Certification of Clearance/Change of



Operator was released in eForm in late October. Reviews from operators and staff have been positive. Staff continues to work on final adjustments.

Form 15, Pit Permit and Report, is available in eForm and operators are encouraged to utilize the system to file this form. The form contains additional fields. The PDF version on the Forms page, <http://cogcc.state.co.us/Forms/forms.html>, is revised to reflect the changes that occurred from the release of the form in eForm.

Form 41, Trade Secret Claim of Entitlement, and Form 42, Notice of Notification (Notice of Hydraulic Fracturing), are now available in eForm. Both forms derived from the Hydraulic Fracturing Disclosure Rulemaking that occurred December, 2011.

As forms are released on eForm, updates to the PDF forms on our website will occur in tandem. These new versions of the PDF forms will reflect any changes that have taken place when forms are moved into eForm.

Along with the eForm system, a page is available where the operators can review all known bugs within the system and report any new ones they discover. Currently there are 305 operators using eForm.

The public can make comments on all submitted Oil and Gas Location Assessment (OGLA) forms (Forms 2A) through the eForm system. This is accomplished by going to the COGCC website (<http://www.colorado.gov/cogcc>) and clicking on the menu option, "Permits", (or <http://cogcc.state.co.us/COGIS/DrillingPermits.asp>).

On the COGIS-Permits page, two search options are available for OGLA forms, "All Pending Location Assessments for" and "All Approved Location Assessments for." When the results are displayed for forms in process, the public can click on the document number, which logs the user onto the new eForm application. Once the page is displayed with the selected document, the user can select the Comment button to make a comment on that particular form.

The public can use this same method to make comments on APDs (Form 2s).

Form 4, the Sundry Notice, is currently being developed and its release is anticipated by March 2013.

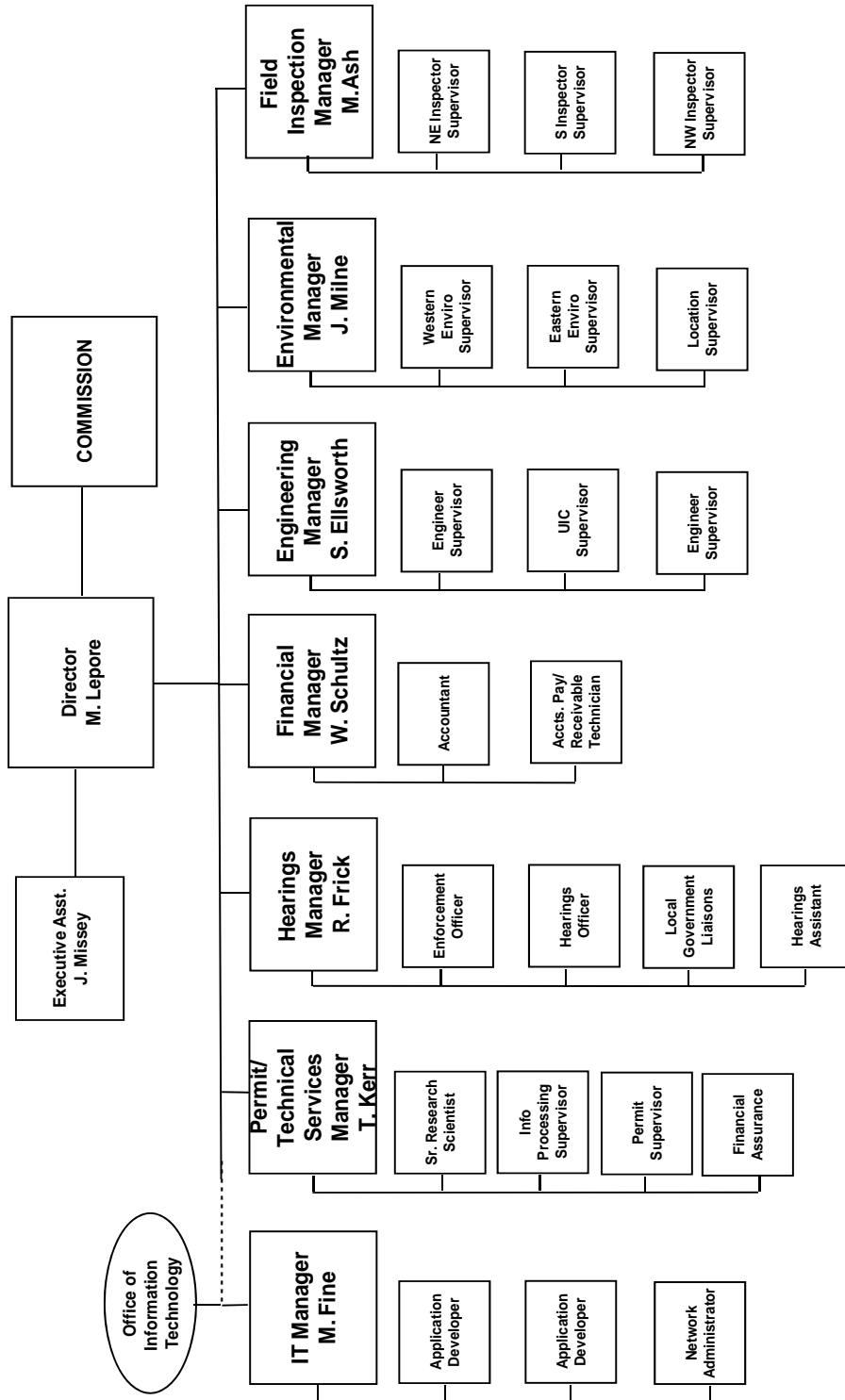
For any operator not currently enrolled in eForm, instructions for starting the process can be found at <http://cogcc.state.co.us/Announcements/COUAINformation.pdf>.

### COGCC GIS Online

An upgrade of the COGCC GIS Online interactive map is now available on the COGCC's website. Two new features are now available along with some minor changes. An Address Search button will zoom the map to the area of an input street address, city and zip code. The second new feature is an enhanced Print function. This will generate a PDF document which can be saved or printed. It allows choice of paper size, orientation, input of a legend and a map scale options.



## COLORADO OIL & GAS CONSERVATION COMMISSION

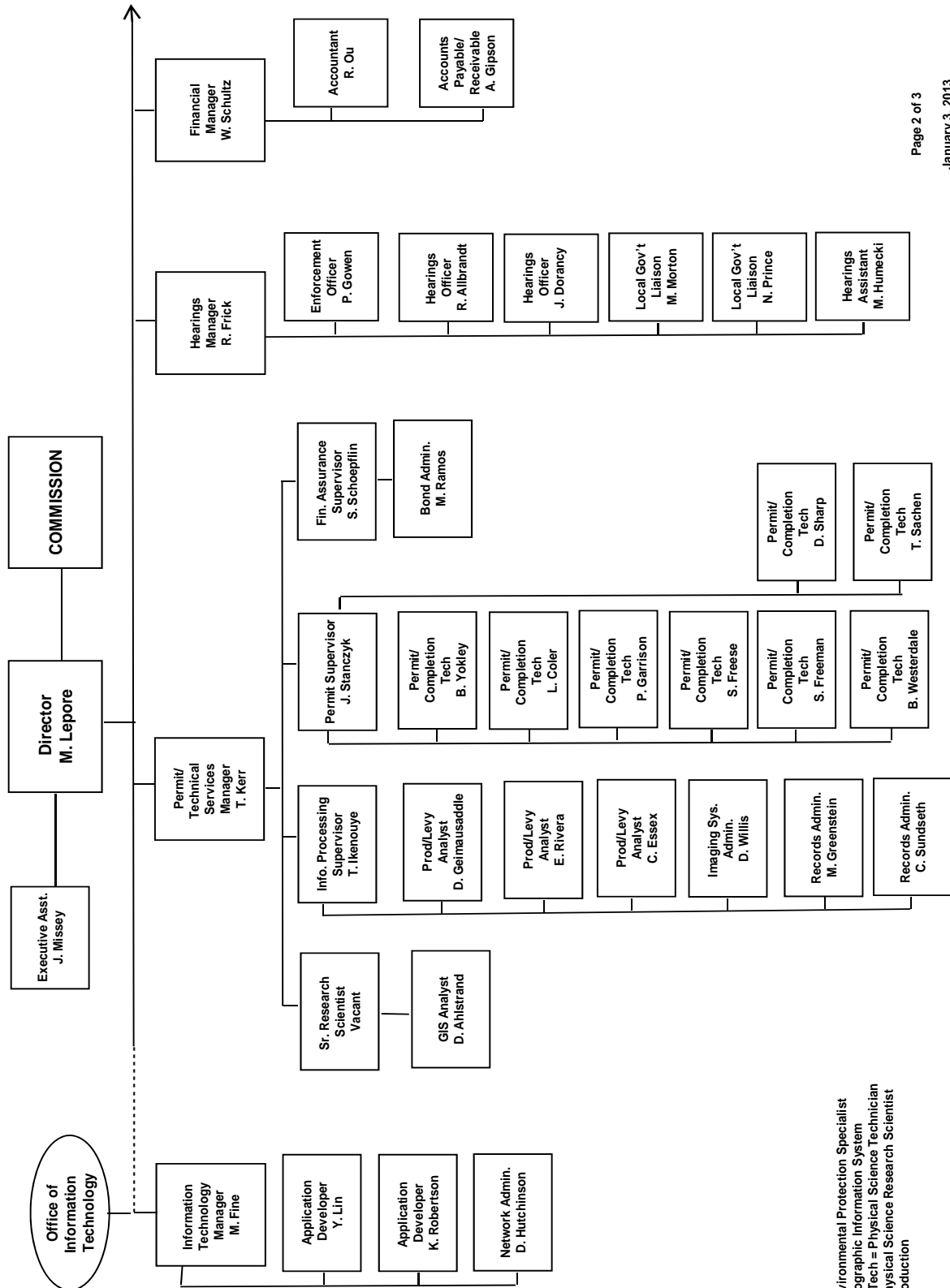


See the next two pages for details





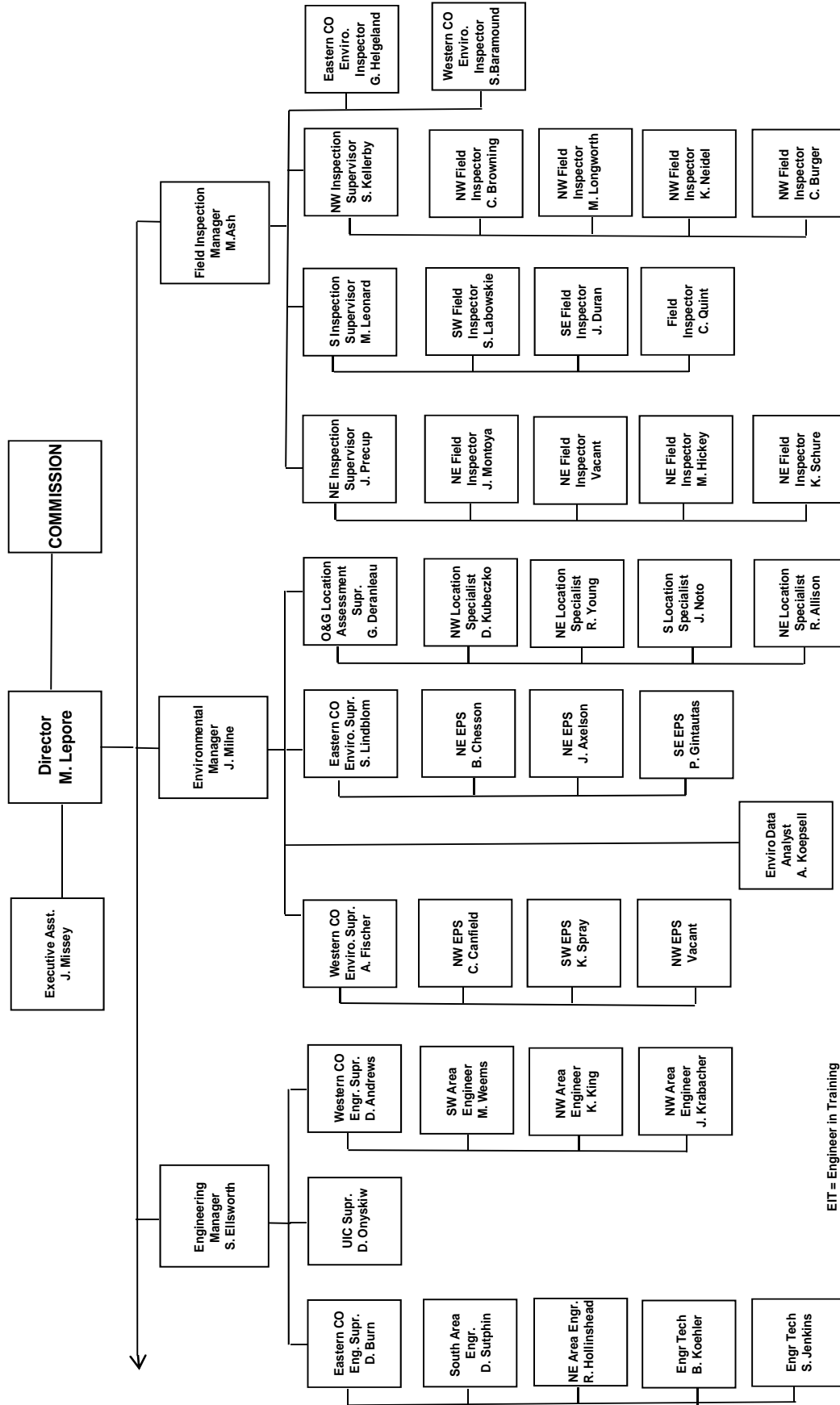
## COLORADO OIL & GAS CONSERVATION COMMISSION ORGANIZATION



EPS = Environmental Protection Specialist  
 GIS = Geographic Information System  
 Phys/Sci Tech = Physical Science Technician  
 PSRS = Physical Science Research Scientist  
 Prod = Production



## COLORADO OIL & GAS CONSERVATION COMMISSION ORGANIZATION



EIT = Engineer in Training  
 EPS = Environmental Protection Specialist  
 OGLA = Oil & Gas Location Assessment  
 Phys Sci Tech = Physical Science Technician  
 UIC = Underground Injection Control



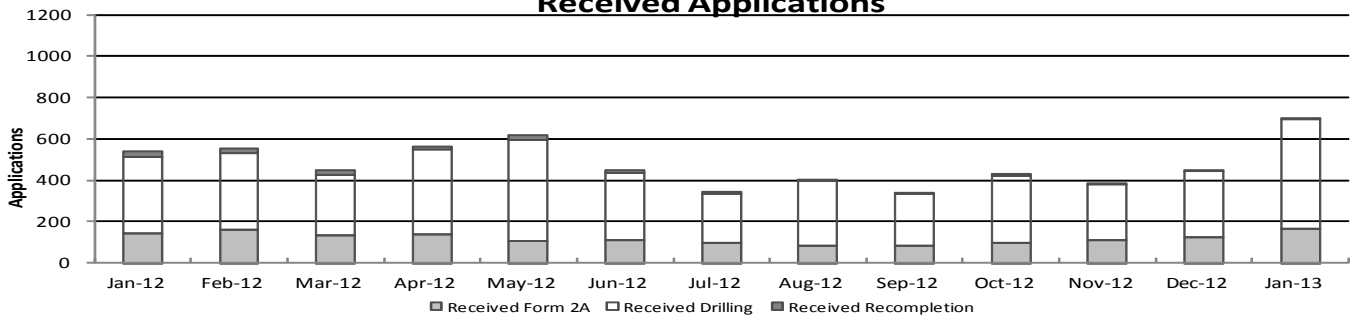


## Colorado Oil & Gas Conservation Commission Monthly Permit Activity

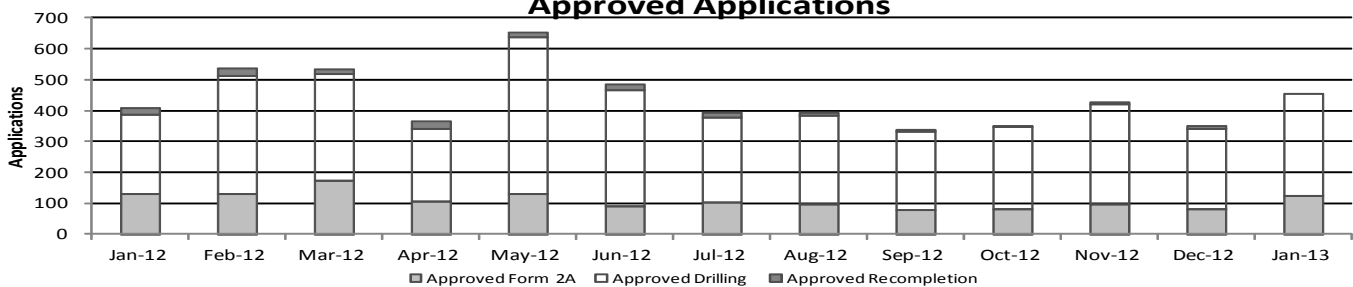
	Backlog	Received	Approved	Withdrawn	Rejected	Incomplete	In-Process	Remaining
<b>Form2A</b>								
Jan-12	155	142	129	1	0	50	117	167
Feb-12	167	160	129	3	0	44	151	195
Mar-12	195	133	172	5	0	32	119	151
Apr-12	151	137	106	1	0	48	133	181
May-12	181	105	131	6	0	51	98	149
Jun-12	149	110	89	2	0	54	114	168
Jul-12	168	97	103	4	0	51	107	158
Aug-12	158	83	97	6	0	54	84	138
Sep-12	138	81	77	5	0	47	90	137
Oct-12	137	94	82	8	0	30	110	141
Nov-12	141	109	97	13	0	19	112	140
Dec-12	140	122	81	4	0	35	124	177
Jan-13	177	166	124	12	0	34	173	207
<b>Drilling</b>								
Jan-12	307	372	258	7	0	133	281	414
Feb-12	414	370	382	8	0	103	291	394
Mar-12	394	292	347	13	0	103	223	326
Apr-12	326	410	235	1	0	127	373	500
May-12	500	491	506	25	0	110	350	460
Jun-12	460	326	377	9	0	114	286	400
Jul-12	400	237	276	4	0	91	266	357
Aug-12	357	313	288	9	0	146	227	373
Sep-12	373	252	256	24	0	98	247	345
Oct-12	345	326	265	29	0	65	312	377
Nov-12	377	271	323	21	0	65	239	304
Dec-12	304	322	260	9	0	77	280	357
Jan-13	357	528	331	19	0	101	434	535
<b>Recompletion</b>								
Jan-12	22	26	21	2	0	9	16	25
Feb-12	25	23	27	0	0	5	16	21
Mar-12	21	21	14	0	0	5	23	28
Apr-12	28	16	24	3	0	6	10	17
May-12	17	23	16	0	0	6	18	24
Jun-12	24	11	19	0	0	3	13	16
Jul-12	16	9	14	0	0	3	8	11
Aug-12	11	6	9	0	0	1	7	8
Sep-12	8	1	5	2	0	0	2	2
Oct-12	2	9	3	0	0	0	8	8
Nov-12	8	5	8	0	0	0	5	5
Dec-12	5	4	8	1	0	0	0	0
Jan-13	0	6	0	0	0	0	4	6

Incomplete are permits that have missing or inaccurate data and cannot be approved.

### Received Applications



### Approved Applications





Colorado Oil and Gas Conservation Commission  
**Status of Permit Applications Filed By Month**  
 February 1, 2013

### Form 2A Location Assessment

Year	Month	Received	Approved	Withdrawn	In Process	Percent In Process	Median Days to Process	Less Than 30 Days	30 to 49 Days	Greater Than 50 Days
2010	Total	2520	2433	85	0			1559	662	212
2011	Total	2391	2298	87	6	0%		1416	620	262
2012	1	141	138	3	0	0%	33	92	27	19
2012	2	160	152	8	0	0%	31	118	26	8
2012	3	135	133	2	0	0%	41	80	25	28
2012	4	126	119	7	0	0%	38	77	25	17
2012	5	119	115	4	0	0%	38	63	28	24
2012	6	101	95	5	1	1%	39	32	44	19
2012	7	104	96	5	3	3%	35	41	43	12
2012	8	72	66	4	2	3%	34	33	22	11
2012	9	77	71	5	1	1%	35	28	34	9
2012	10	94	82	5	7	7%	34	31	40	11
2012	11	85	56	4	25	29%	25	48	8	0
2012	12	99	0	1	98	99%				
2012	Total	1313	1123	53	137	10%		643	322	158
2013	1	177	27	9	141	80%	24	26	1	0
2013	Total	177	27	9	141	80%		26	1	0

### Form 2 Application For Permit to Drill (APDs)

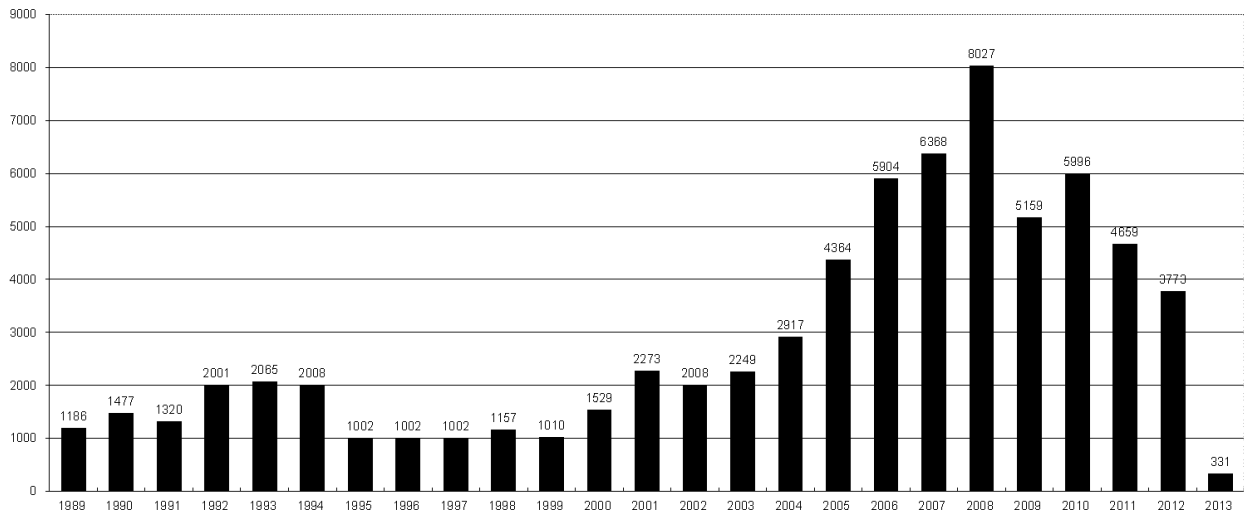
Year	Month	Received	Approved	Withdrawn	In Process	Percent In Process	Median Days to Process	Less Than 30 Days	30 to 49 Days	Greater Than 50 Days
2010	Total	5891	5746	144	0	0%		1760	2739	1744
2011	Total	4692	4557	126	7	0%	418	2723	1565	587
2012	1	368	361	7	0	0%	34	235	107	45
2012	2	371	360	11	0	0%	31	277	70	37
2012	3	284	279	5	0	0%	40	164	84	50
2012	4	418	405	13	0	0%	36	219	160	41
2012	5	509	491	18	0	0%	37	260	149	104
2012	6	280	275	3	2	1%	41	107	119	60
2012	7	281	272	6	3	1%	38	103	144	35
2012	8	282	259	20	3	1%	31	148	89	27
2012	9	215	188	21	6	3%	36	78	80	32
2012	10	355	337	5	13	4%	34	131	168	46
2012	11	244	158	13	73	30%	28	108	45	8
2012	12	261	5	0	256	98%	18	4	1	0
2012	Total	3868	3390	122	356	9%		1834	1216	485
2013	1	564	94	11	459	81%	27	73	20	1
2013	Total	564	94	11	459	81%		73	20	1



## COLORADO OIL AND GAS CONSERVATION COMMISSION ANNUAL DRILLING PERMITS BY COUNTY

COUNTY	1988	1989	1990	1991	1992	1993	1994	1995	1996	1997	1998	1999	2000	2001	2002	2003	2004	2005	2006	2007	2008	2009	2010	2011	2012	current as of 1/31 2013
ADAMS	46	34	44	53	92	58	137	34	9	33	24	19	38	28	9	26	39	34	37	89	51	35	21	8	40	
ARAPAHOE	5	5	15	14	11	4	20	12	2	9	1	2	0	2	1	2	5	7	11	10	10	10	8	23	35	
ARCHULETA	8	5	18	5	2	1		3		3			1	7	9	6	10	8	13	14	26	47	11	18	12	5
BACA	6	4	15	10	23	9	12	24	10	7	13	15	22	6	2	3	7	8	2	11	13	3	4	5	3	
BENT				1		2	2	4	2	5	3	5	2				5	3	8	1	1		5		2	
BOULDER	1		1	13	38	159	38	5	8	2	5		1	5	6	7	17	13	21	37	32	35	24	30	22	
BROOMFIELD															2	7		1	1		2	33	28	11	36	
CHEYENNE	203	149	102	93	71	58	48	55	43	31	41	7	3	3	3	3	10	21	15	33	12	13	16	31	6	
COSTILLA												1														
CROWLEY	1		1	1																						
DELTA	1	1	2												7	4	5	10	9	2			4	3	6	
DENVER										5	3	3		3					19	25	24					
DOLORES	2		4	1	2	1										1	1	1	6	10	12	21	8	8	13	
ELBERT	9	12	8	5	3		2	13	16	11	1		2						4			1		1	2	
EL PASO																							2	3	18	
FREMONT	9	5	6	7	1	2	2	1	2	1								3	2	4	14	13	22	14	11	
GARFIELD	19	66	111	36	18	56	143	78	109	141	95	130	213	353	362	567	796	1509	1845	2550	2888	1981	2037	1323	1046	60
GRAND							1																			
GUNNISON			2	2		1									5	10	1	9	19	7	10	12	4	3	11	2
HUERFANO	3	5		4	17	3	3	2	1	3	40	26	41	27	27		8	2			7		2	1	9	
JACKSON	3	1	4	6	2	2	3	2	2	6	3	34	18	21	9	14	6	8	5	27	19	9	18	5		
JEFFERSON	1		4	2		1		1	1		1	2	1						1	3	2					
KIOWA	15	39	40	46	28	28	21	26	13	17	10	2	11	18	2	4	2	1	11	9	26	7	16	17	17	
KIT CARSON	9	5	7	8	8	15	26	11	7	6	9	5				1	3	5	4	4	13	7	3	2	6	
LA PLATA	302	218	388	128	120	40	40	20	71	40	82	107	127	156	104	162	102	115	235	251	328	296	191	99	71	
LARIMER	4	4	3	6	13	7	3		1	3	1		2		1				5	46	12	41	8	13	1	
LAS ANIMAS	10	30	36			9	32	95	134	136	195	195	268	400	259	180	332	413	500	362	303	88	92	85	11	
LINCOLN	8	6	4	7	7	11	8	9	3	2			2	2	1	6	3	4	1	2	58	44	48	31	36	20
LOGAN	18	21	23	13	14	30	15	13	6	12	7		4	7	3	3	6	13	17	14	5	9	17	8	27	
MESA	1	12	29	20	22	2	22	6	11	10	2	6	13	27	30	27	54	136	265	293	501	427	306	127	150	56
MOFFAT	13	25	27	19	40	52	43	40	41	28	21	15	35	52	62	63	63	60	120	68	57	51	53	93	88	2
MONTEZUMA	6	7	10	8	7	11	15	9	13	5	4	1	4		5	8	8	11	5	12	22	39	19	27	29	
MONTROSE				1						1			1	3	2	4	2		1	3	3		1	1	1	
MORGAN	34	27	36	13	10	11	19	12	10	11	10	12	9	9	2	7	9	7	3	6	2	1	6	13	5	
OTERO				2																						
PARK				1																			3	4	1	
PHILLIPS			3		1	1							1	2		7	13	17	12	69	82	45	64	112	56	
PITKIN		1			2												1			1						
PROWERS	19	9	5	10	14	7	3	5	5	3	9	3	2	5	4		7	5	7	5	8	1	3	1		
RIO BLANCO	34	83	77	33	81	83	126	81	33	40	51	95	89	187	105	179	154	161	360	321	477	348	441	109	117	4
RIO GRANDE	2	3	4	1			1						1	1							1	1			2	
ROUITT	4	3	12	4	2	3	1	2	1	1	1	4	20	13	1		4	6	9	8	4	2	3	10	4	1
SAGUACHE	1							2					2		2						2	1	2			
SAN MIGUEL			2	2					1	1	4	2	11	13	27	18	42	45	35	23	20	13	10	2	1	
SEDGWICK				1				3	2							1	5	2	7	2	1	19	11	12	2	
WASHINGTON	40	29	23	28	24	26	25	12	19	26	18	3	23	17	27	34	128	50	69	45	11	1	6	12	6	3
WELD	424	357	366	656	1224	1319	1030	254	305	285	392	288	509	702	760	757	832	901	1418	1527	2340	1448	2152	2262	1826	176
YUMA	14	20	45	60	104	53	167	168	123	116	111	80	31	205	160	138	237	782	797	541	545	105	299	148	11	
Total	1275	1186	1477	1320	2001	2065	2008	1002	1002	1002	1157	1010	1529	2273	2008	2249	2917	4364	5904	6368	8027	5159	5996	4659	3773	331

ALL COUNTIES





Colorado Oil and Gas Conservation Commission  
 Form 2A Breakdown By County By Year  
 February 1, 2013

Yr	County	Form2As	Completed	In Process	Informational	Requires Approval	New Location	CDP	SWH	RSO	CDPHE
2009	Total State	818	818	0	728	108	408	2	80	5	5
2010	Total State	2378	2376	0	1824	637	1601	0	327	22	55
2011	Total State	2301	2294	7	1004	319	1790	1	274	17	5
2012	ADAMS	19	19	0	0	0	19	0	0	0	0
2012	ARAPAHOE	21	16	5	0	0	16	0	0	0	0
2012	ARCHULETA	1	0	1	0	0	1	0	1	0	0
2012	BACA	3	2	1	0	0	2	0	1	0	0
2012	BENT	2	2	0	0	0	2	0	0	0	0
2012	BOULDER	3	3	0	0	0	0	0	0	0	0
2012	BROOMFIELD	7	7	0	0	0	1	0	0	0	0
2012	CHEYENNE	30	27	3	0	0	24	0	0	0	0
2012	DELTA	1	1	0	0	0	0	0	0	0	0
2012	DOLORES	1	1	0	0	0	1	0	0	0	0
2012	EL PASO	4	3	1	0	0	3	0	0	0	0
2012	ELBERT	1	1	0	0	0	1	0	0	0	0
2012	FREMONT	3	3	0	0	0	3	0	2	0	0
2012	GARFIELD	75	69	6	0	0	31	0	65	2	0
2012	GUNNISON	7	6	1	0	0	6	0	5	0	0
2012	HUERFANO	5	5	0	0	0	4	0	1	0	0
2012	JACKSON	3	2	1	0	0	3	0	2	0	0
2012	KIOWA	13	13	0	0	0	12	0	0	0	0
2012	KIT CARSON	6	6	0	0	0	4	0	0	0	0
2012	LA PLATA	8	8	0	0	0	3	0	7	0	0
2012	LARIMER	6	6	0	0	0	4	0	0	0	0
2012	LAS ANIMAS	8	8	0	0	0	6	0	0	0	0
2012	LINCOLN	35	33	2	0	0	32	0	0	0	0
2012	LOGAN	16	15	1	0	0	16	0	0	0	0
2012	MESA	9	8	1	0	0	5	0	3	0	0
2012	MOFFAT	46	45	1	0	0	37	0	43	4	0
2012	MONTEZUMA	8	8	0	0	0	8	0	0	0	0
2012	MORGAN	5	4	1	0	0	5	0	0	0	0
2012	PHILLIPS	38	38	0	0	0	35	0	0	0	0
2012	RIO BLANCO	35	35	0	0	0	15	0	28	0	0
2012	RIO GRANDE	1	1	0	0	0	1	0	1	0	0
2012	ROUTT	3	2	1	0	0	6	0	6	0	0
2012	SAN MIGUEL	1	1	0	0	0	1	0	0	0	0
2012	SEDGWICK	1	1	0	0	0	1	0	0	0	0
2012	WASHINGTON	12	6	6	0	0	8	0	0	0	0
2012	WELD	821	710	111	0	0	594	0	4	0	1
2012	YUMA	1	1	0	0	0	1	0	0	0	0
2011	Total State	1259	1116	143	0	0	911	0	169	6	1
2013	ARAPAHOE	2	0	2	0	0	2	0	0	0	0
2013	CHEYENNE	2	0	2	0	0	1	0	0	0	0
2013	DOLORES	2	0	2	0	0	2	0	0	0	0
2013	FREMONT	2	0	2	0	0	2	0	0	0	0
2013	GARFIELD	5	0	5	0	0	3	0	4	0	0
2013	JACKSON	2	0	2	0	0	0	0	2	0	0
2013	LINCOLN	15	8	7	0	0	15	0	0	0	0
2013	LOGAN	1	0	1	0	0	0	0	0	0	0
2013	MOFFAT	1	0	1	0	0	1	0	1	0	0
2013	PITKIN	1	0	1	0	0	1	0	1	0	0
2013	RIO BLANCO	4	0	4	0	0	1	0	3	0	0
2013	ROUTT	2	0	2	0	0	3	0	3	0	0
2013	WASHINGTON	2	1	1	0	0	2	0	0	0	0
2013	WELD	120	12	108	0	0	74	0	0	0	0
2013	Total	161	21	140	0	0	107	0	14	0	0

CDP = Comprehensive Drilling Plan SWH = Sensitive Wildlife Habitat consultation  
 RSO = Restricted Surface Occupancy consultation CDPHE= Colorado Department of Health and Environment consultation



## Colorado Oil and Gas Conservation Commission

## Horizontal Well Activity

February 1, 2013

County	Prior Years			2009		2010		2011		2012		2013		Completion				
	Drilled	DA	PA	Permit	Spud	Permit	Spud	Permit	Spud	Permit	Spud	Permit	Spud	Spud	AC	PR	DA	PA
ADAMS				6	6	2	3	1		17			1	10	4	3		
ARAPAHOE	2							10	1	22	2			5	2	1		
ARCHULETA	17			7	3	15	7	10	7	5	9			43		39		
BOULDER								4						0				
CHEYENNE	5		4									2		5		1		4
DELTA										6	1			1				
DOLORES	2			18	2	6				9	1			5		5		1
EL PASO										10				0				
ELBERT										1				0				
FREMONT	7	6		6		12	5	3	4	4	1			17		9	6	1
GARFIELD	10		2	1	1	16	2	18	7	43	6	1		26		21		2
GUNNISON	1					1				3	2			3		1		
HUERFANO										4				0				
JACKSON	8	1	1	8		3	3	9	2	4				13		10	1	1
KIOWA										1				0				
KIT CARSON	1									1				1		1		
LA PLATA	28	2		11	1	28	3	18	7	12	1			40		45	1	
LARIMER	3	2						5	1	2	1			5		2	2	
LAS ANIMAS	16		2	4		1	1							17		14		2
LINCOLN				2	1	2	1	1				2		2		2		
LOGAN	2									1				2		2		
MESA	3	2		36	1	22	8	24	13	14		1		25		23	2	2
MOFFAT	7	1	1	6	3	4		9	2	44	5	1	1	18		13	1	1
MONTEZUMA	6		1	23	5	11	1	8	3	18	1			16		26		1
MORGAN								6	2	2				2		2		
PARK						1	1	1						1				
RIO BLANCO	7	2				1	1	11	1	15	2			11	1	6	3	
ROUTT	10	6	1							1				10		3	6	1
SAN MIGUEL	1			1										1		1		
WASHINGTON	1		1											1				1
WELD	11	3		12	5	208	92	763	234	964	551	141	83	976		422	7	6
YUMA	1		1	6										1				1
<b>TOTAL Horizontal</b>	<b>149</b>	<b>25</b>	<b>14</b>	<b>147</b>	<b>28</b>	<b>333</b>	<b>128</b>	<b>901</b>	<b>284</b>	<b>1203</b>	<b>583</b>	<b>148</b>	<b>85</b>	<b>1257</b>	<b>7</b>	<b>652</b>	<b>29</b>	<b>24</b>
<b>Percent of Total HZ</b>		<b>17%</b>	<b>9%</b>												<b>1%</b>	<b>52%</b>	<b>2%</b>	<b>2%</b>
<b>Total All Permits</b>				<b>5159</b>		<b>5996</b>		<b>4659</b>		<b>3773</b>		<b>331</b>						
<b>Percent of Total</b>				<b>2.8%</b>		<b>5.6%</b>		<b>19.3%</b>		<b>31.9%</b>		<b>44.7%</b>						





### Well to Building Setback Review

Colorado Oil and Gas Conservation Commission

February 1, 2013

Count of well locations by proximity groupings from well spot to buildings for all locations reviewed under the December 17, 2008 amended rules.

Location Proximity to Buildings	2009	2010	2011	2012	2013	Number of Locations	Percent of Total Locations
less than 150 feet	2	3	3	2	0	10	0%
150 to 350 feet	37	58	61	39	3	198	3%
350 to 500 feet	50	110	97	61	1	319	5%
500 to 1000 feet	117	385	331	188	14	1035	18%
1000 + feet	356	1705	1470	838	72	4441	75%
Total Locations	562	2261	1962	1128	90	5913	

County	Total	Less than 150 feet	150 to 350 feet	350 to 500 feet	500 to 1000 feet	1000 + feet
ADAMS	40	0	2	4	9	25
ARAPAHOE	53	0	2	4	6	41
ARCHULETA	16	0	0	1	9	6
BACA	13	0	0	0	1	12
BENT	7	0	0	0	0	7
BOULDER	23	0	1	1	17	4
BROOMFIELD	32	0	0	4	13	15
CHEYENNE	67	1	0	0	0	66
DELTA	6	0	0	2	1	3
DOLORES	10	0	0	0	4	6
EL PASO	11	0	0	0	1	10
ELBERT	3	0	0	0	1	2
FREMONT	33	0	2	7	6	18
GARFIELD	386	0	5	2	55	324
GUNNISON	19	1	0	2	1	15
HUERFANO	7	0	0	0	2	5
JACKSON	24	0	0	2	1	21
KIOWA	51	0	0	0	1	50
KIT CARSON	11	0	0	0	0	11
LA PLATA	89	0	3	9	25	52
LARIMER	31	0	3	3	10	15
LAS ANIMAS	198	1	6	7	37	147
LINCOLN	151	0	0	1	4	146
LOGAN	36	0	1	1	0	34
MESA	77	0	0	3	12	62
MOFFAT	142	0	0	2	11	129
MONTEZUMA	18	0	0	1	1	16
MONTROSE	2	0	0	0	0	2
MORGAN	17	0	0	2	3	12
PARK	4	0	0	0	0	4
PHILLIPS	262	1	4	6	20	231
PROWERS	4	0	0	0	0	4
RIO BLANCO	138	0	0	0	1	137
RIO GRANDE	2	0	0	0	1	1
ROUTT	15	0	0	0	0	15
SAN MIGUEL	11	0	0	0	0	11
SEDGWICK	25	0	0	1	3	21
WASHINGTON	28	0	1	0	0	27
WELD	3477	6	161	240	737	2333
YUMA	464	0	7	14	42	401
TOTAL	6003	10	198	319	1035	4441



## Well to Building Setback Review

Colorado Oil and Gas Conservation Commission

February 1, 2013

Listing of Locations less than 200 feet to Building

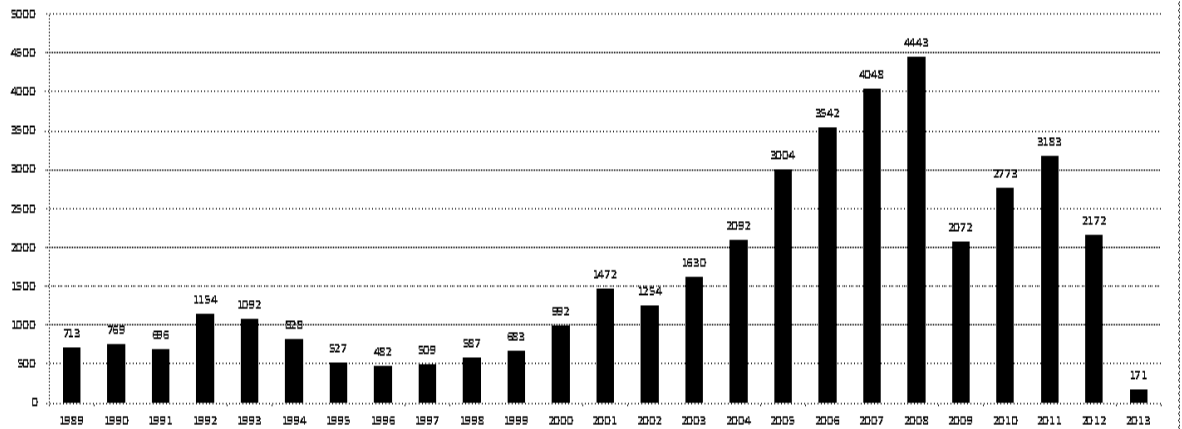
Year	Document Number	County	High Density	New Location	Distance	Proximity	Building Description
2011	2587822	CHEYENNE	No	No	58	less 150	Water well house
2009	1691798	WELD	No	No	58	less 150	Vehicle garage
2010	400072164	WELD	No	Yes	69	less 150	Abandoned hog shed
2012	400240957	GUNNISON	No	Yes	90	less 150	Equipment Shed
2009	1758843	WELD	No	Yes	103	less 150	Building to be razed
2011	1636646	WELD	No	No	122	less 150	Storage shed
2009	400011284	LAS ANIMAS	No	Yes	127	less 150	Operator is owner
2009	1786896	PHILLIPS	No	No	132	less 150	Grain Storage
2011	400117702	WELD	No	Yes	143	less 150	Irrigation pump house
2011	400227765	WELD	No	Yes	145	less 150	Storage Barn
2009	1904205	WELD	No	No	154	150 to 350	Livestock Enclosure
2012	400243295	WELD	No	Yes	155	150 to 350	Unused storage shed
2011	400179419	WELD	No	Yes	157	150 to 350	Existing well / storage building
2010	400054716	WELD	No	No	159	150 to 350	Equipment Barn
2011	400188968	WELD	No	Yes	159	150 to 350	Abandoned
2010	400021477	WELD	No	Yes	162	150 to 350	Goat Barn
2009	1758386	WELD	No	Yes	168	150 to 350	Storage Shed
2011	1635946	WELD	No	No	169	150 to 350	Storage shed
2011	400165164	WELD	No	Yes	178	150 to 350	Residence
2011	400188780	WELD	No	Yes	180	150 to 350	Residence
2010	1697620	WELD	No	No	187	150 to 350	Livestock Shed
2009	1758746	WELD	No	No	193	150 to 350	Storage Shed
2011	400154431	WELD	No	Yes	198	150 to 350	Turkey barn
2012	400250031	WELD	No	Yes	198	150 to 350	abandoned guard shack
2009	1774783	WELD	No	No	199	150 to 350	cement service building
2011	400118102	YUMA	No	Yes	199	150 to 350	Steel Barn



### COLORADO OIL AND GAS CONSERVATION COMMISSION ANNUAL WELL STARTS BY COUNTY

COUNTY	1988	1989	1990	1991	1992	1993	1994	1995	1996	1997	1998	1999	2000	2001	2002	2003	2004	2005	2006	2007	2008	2009	2010	2011	2012	Current as of 1/31/2013	
ADAMS	39	27	26	36	54	20	54	28	6	16	12	17	18	13	4	19	22	24	13	41	14	15	21	2	10	3	
ALAMOSA																											1
ARAPAHOE	2	4	16	11	11	3	9	8	3	3	2						6	1	5	2	1	1	3	8	5		
ARCHULETA	5	3	7	5	2	1				1																	
BACA	5	5	12	6	21	8	9	19	9	7	11	8	19	6	2	1	6	6	2	6	12	9	12	8	11		
BENT				1				2	3	1	2	3	6	2			3	2	8	1	1						
BOULDER	2			7	18	56	15	5									2	5	11	9	14	25	16	13	7	14	
BROOMFIELD	3	2	3	7	14	27	22	2									2					10	22	11	5		
CHEYENNE	177	133	92	75	64	50	44	41	35	29	29	6	2	1	3	3			9	14	15	14	8	12	11	17	1
CONEJOS																											
COSTILLA												1															
CROWLEY	1		1																								
CLUSTER																											
DELTA	1		1														5	4	6	5	2			4	1	1	
DENVER										2	3	1		2						7	5	4					
DOLORES	2		4	1													2		2	13	4	2		1	3	1	
DOUGLAS																											
EAGLE																											
EL PASO																								2		5	
ELBERT	8	11	9	5	2			10	15	2	2		2						1	3	2	5	3	9	16	6	1
FREMONT	6	3	5	7	1	1	1	2											1	2	2	5	3	9	16	6	1
GARFIELD	3	12	24	8	3	4	15	13	7	28	19	94	190	251	245	417	585	799	1005	1304	1688	788	910	881	498	44	
GRAND							1																				
GUNNISON			1	2		1										1		1	1	9	5	1	4	5	2	4	
HUERFANO	6			2	6	1	1	2		2	31	9	25	14	19	3	6	2				2	2			2	
JACKSON	2	1	3	7	2		3	1	1	3	3		24	2	4	10	10		3	3	10	1	6	7			
JEFFERSON																											
KIOWA	14	32	35	37	28	19	20	22	8	13	6	4	8	16	2	4	2	1	7	7	2	5	15	15	10	1	
KIT CARSON	11	6	6	6	9	13	15	9	6	3	7	7							1	6	2	1	14	3	1	1	3
LA PLATA	158	129	186	44	66	26	17	19	29	48	65	80	99	135	118	110	103	104	108	179	199	131	67	50	3		
LARIMER	8	5	1	6	13	5	3			2	1									4	8	1	28	2	10		
LAS ANIMAS	17	22	20	3	2	11	17	34	62	90	120	182	202	286	205	221	296	384	413	326	221	14	7	78	1		
LINCOLN	6	5	4	4	7	8	8	3	2				2	2	1	5	2	2	1	2	19	10	14	22	22	2	
LOGAN	17	19	19	8	13	24	9	11	4	10	4		4	6	3	3	2	11	12	12	3	7	3	8	13	4	
MESA	1	2	2	4	1		7	2	1	1	4	4	2	12	12	13	25	89	156	209	222	14	11	38	4		
MOFFAT	1	2	1	2	1	1	2	1	3	1	8	10	18	23	25	28	19	40	60	42	25	18	15	34	23	1	
MONTEZUMA	6	5	7	5	2	5	7	3	12	2	2		2	3	5	5	1	7	2	4	18	11	2	5	11	1	
MONTEZUMA				1																							
MORGAN	26	20	32	11	9	11	16	13	8	9	7	4	9	8	1	7	5	5	3	1	1	2	3	2	3		
OTERO				1																							
OURAY																											
PARK				1																							
PHILLIPS			3			1							1				6	10	11	4	35	18	2	42	105	42	
PITKIN		1			2																						
PROWERS	16	9	5	8	13	7	1	5	5	2	8	4	2	4	4			5	5	6	3	5	2	3	1		
PUEBLO																											
RIO BLANCO	1	8	10	1	3	8	6	7	5	9	9	62	51	82	47	83	92	95	107	95	203	116	107	70	47	5	
RIO GRANDE	1	2	2																								
ROUTT		1	1	3	1							1	5	12	1			1	6	3	2		2	1	2	3	1
SAGUACHE	1							2																			
SAN MIGUEL				1							3	1	6	9	10	19	28	13	20	17	5	1	2	2			
SEDGWICK				1			1	3		2																	
WASHINGTON	39	28	22	26	24	20	20	13	17	23	18	4	15	12	24	29	65	34	23	14	11	2	2	3	7	3	
WELD	176	200	168	296	660	723	389	94	136	94	117	124	237	403	406	522	632	718	931	1222	1314	877	1205	1669	1377	105	
YUMA	12	16	41	47	102	39	114	145	101	104	93	52	42	162	108	106	144	597	593	445	336	27	213	108	15		
Grand Total	773	713	769	696	1154	1092	828	527	482	509	587	683	992	1472	1254	1630	2092	3004	3542	4048	4443	2072	2773	3183	2172	171	

### ALL COUNTIES





## Colorado Oil Gas Conservation Commission Monthly Statistics

YEAR	MO	Baker - Hughes Rig Count	Drilling		Recompletion		Injection		Pits		Locations		Well Spud Notice		Active Drilling Permits	Active Wells	Public Visits			Well Oper Change
			Rcvd	Apvd	Rcvd	Apvd	Rcvd	Apvd	Rcvd	Apvd	Rcvd	Apvd	Rcvd	Apvd			Data	Office	Internet	
2010	Total		5703	5996	519	515	34	28	120	225	2461	2548	2773	197	1115	1112479	8421			
	JAN	63	405	351	8	23	4	6	4	8	249	112	233	14	95	103968	813			
	FEB	61	343	249	15	2	7	6	5	3	184	150	210	21	80	96171	356			
	MAR	68	472	498	18	23	4	7	38	31	262	258	268	9	125	122393	590			
	APR	72	325	314	26	15	5	0	20	27	190	218	238	8	105	106539	402			
	MAY	72	372	367	20	25	3	6	12	8	214	171	251	14	124	73024	545			
	JUN	70	512	436	61	22	5	4	11	4	172	239	271	30	131	108115	790			
	JUL	69	457	436	13	55	2	1	13	7	215	158	255	20	74	103585	595			
	AUG	73	472	482	37	17	1	0	10	17	236	229	283	21	141	111950	573			
	SEP	77	336	389	22	29	7	0	35	34	159	203	313	9	120	116043	584			
	OCT	78	382	443	45	29	2	1	4	12	171	172	290	14	126	132814	552			
	NOV	80	342	324	29	57	0	1	12	13	166	174	305	18	96	130612	572			
	DEC	79	291	370	31	23	4	0	26	28	164	183	267	9	77	132651	347			
2011	Total		4709	4659	325	320	44	32	190	192	2382	2267	3184	187	1294	1337865	6719			
	JAN	73	372	258	26	21	3	0	11	5	142	129	241	12	106	112686	1051			
	FEB	70	370	382	23	27	7	5	21	9	160	129	218	16	114	105857	385			
	MAR	66	292	347	21	14	2	2	17	24	133	172	286	26	138	111746	380			
	APR	66	410	235	16	24	5	5	9	2	137	106	220	12	108	107627	476			
	MAY	66	491	506	23	16	3	1	6	2	105	131	200	20	123	109802	525			
	JUN	69	326	377	11	19	7	6	5	8	110	89	141	11	111	108849	1268			
	JUL	66	237	276	9	14	4	2	5	2	97	103	165	13	102	114195	278			
	AUG	62	313	288	6	9	6	4	23	5	83	97	164	11	112	110908	297			
	SEP	61	252	256	1	5	5	2	4	1	81	77	141	11	89	106114.2	831			
	OCT	62	326	265	9	3	7	6	2	19	94	82	149	8	105	108833.3	391			
	NOV	56	271	323	5	8	6	6	2	4	109	97	142	10	119	120586	279			
	DEC	57	322	260	4	8	8	5	9	3	122	81	105	9	78	107240	254			
2012	Total		3982	3773	154	168	63	44	114	84	1373	1293	2172	159	1305	1324443	6415			
	JAN	53	528	331	6	0	3	5	6	8	166	124	142	9	108	NA	73			
2013	Total		528	331	6	0	3	5	6	8	166	124	142	9	108	0	73			

Apvd = Approved, Rcvd = Received, Ind = Individual, Blnk = Blanket, Apps = Application for Hearing, NOAV = Notice of Alleged Violation, AOC = Administrative Order of Consent, OFV = Order Finding Violation, Cmpmt = Compliant, Ccmp = Completed



## Colorado Oil Gas Conservation Commission Monthly Statistics

YEAR	MO	Operators		Release		Bonds		Claim		Hearings		Violations		Remediation Projects		Field Insp		
		New	Inactive	Ind.	Blkkt	Replace	Ind.	Blkkt	Apps.	Order	NOAV	AOC	OFV	Cmplt	Spills		Rcvd	Comp
2010	Total	46	33	38	40	74	0	1	155	136	319	10	3	218	493	511	382	17075
	JAN	1	2	3	1	4	0	0	16	15	43	3	2	33	40	47	45	1316
	FEB	1	1	9	4	6	0	0	16	15	7	0	1	40	52	48	33	1591
	MAR	2	3	6	3	9	0	0	NA	NA	31	NA	NA	33	48	59	27	1675
	APR	2	0	3	2	1	0	0	24	24	8	0	0	10	52	38	61	959
	MAY	3	0	5	2	4	0	0	77	65	16	2	5	26	31	33	51	1577
	JUN	2	2	2	2	0	3	0	51	58	30	1	4	14	38	53	25	1099
	JUL	3	6	3	6	3	1	0	NA	NA	29	NA	NA	13	39	92	20	518
	AUG	2	3	12	7	2	0	1	68	54	26	2	2	20	54	106	56	1032
	SEP	5	1	7	5	2	0	0	44	41	4	2	4	17	46	56	66	676
	OCT	4	2	12	6	7	0	3	57	45	9	0	0	15	38	102	28	598
	NOV	4	9	15	4	1	0	0	NA	NA	15	NA	NA	16	31	70	58	527
	DEC	4	2	2	2	4	0	0	50	32	12	0	1	13	58	22	66	532
2011	Total	33	31	79	44	43	4	4	403	349	230	10	19	250	527	726	536	12100
	JAN	3	3	7	5	1	1	10	70	72	18	1	0	29	34	68	23	970
	FEB	6	9	8	5	0	0	0	NA	NA	10	NA	NA	26	40	86	36	1024
	MAR	4	1	7	3	9	0	0	44	38	19	0	0	22	38	63	61	1149
	APR	4	2	10	3	2	0	0	80	59	11	0	0	19	35	25	98	930
	MAY	3	1	4	0	3	0	0	43	50	14	2	0	23	31	27	119	1701
	JUN	3	4	3	3	4	0	0	NA	NA	5	NA	NA	35	39	46	97	1085
	JUL	5	0	1	4	5	0	0	63	50	15	0	0	16	24	45	32	1076
	AUG	6	5	2	8	0	1	0	67	54	24	3	2	21	28	127	33	1432
	SEP	0	4	4	5	2	1	0	NA	NA	2	NA	NA	14	13	26	35	862
	OCT	1	2	9	1	0	0	0	30	36	5	1	0	15	42	96	36	1028
	NOV	6	4	12	8	7	0	0	85	37	16	2	0	8	43	21	42	821
	DEC	6	2	3	1	0	0	0	NA	NA	14	NA	NA	18	21	22	19	623
2012	Total	47	37	70	46	33	3	10	482	396	153	9	2	246	388	652	631	12701
	JAN	3	5	12	2	0	0	0	48	75	15	4	0	20	40	25	44	792
2013	Total	3	5	12	2	0	0	0	48	75	15	4	0	20	40	25	44	792

Apvd = Approved, Rcvd = Received, Ind = Individual, Blkkt = Blanket, Apps = Application for Hearing, NOAV = Notice of Alleged Violation, AOC = Administrative Order of Consent, OFV = Order Finding Violation, Cmplt = Compliant, Crmp = Completed