



Staff Report

March 25, 2013

TOP STORIES

◆ New Setback Rules effective on August 1, 2013

On February 11, 2013, the Commission adopted the long-awaited revised Setback Rules. In adopting the new and amended Rules, the Commission relied upon the entire administrative record for this rule making proceeding. Stakeholder meetings began in February 2012. The record included the Commission Staff's proposed Rules, revisions and numerous recommended modifications and alternatives; public comment, written testimony, and exhibits; and hours of public and party hearings. During this stakeholder process, the Commission Staff received significant information from diverse stakeholders, including concerned citizens, environmental and conservation groups, homebuilders, agricultural groups, local governments, the regulated industry and the Colorado Department of Public Health and Environment ("CDPHE") from February 2012 through October 2012. The Commission also considered a diverse array of stakeholder comments, positions, and alternative proposed rules regarding setback distances, mitigation measures, and notice and communication requirements through the stakeholder process and during the formal rule making hearing.

The Setback Rules ultimately adopted by the Commission strike a balance between the stakeholders' competing positions, and between mineral estate and surface estate owners' rights. The Rules also provide strong protective measures, including notice and communication requirements, without imposing undue costs or restrictions on oil and gas exploration and production activities in the state. The Rules require Operators to eliminate, minimize, or mitigate the impacts of oil and gas operations conducted in Designated Setback Locations, as newly defined in 100 Series Rules, by utilizing technically feasible and economically

practicable protective measures.

The Commission increased the existing setback distances of 350 feet in High Density Areas and 150 feet elsewhere to a uniform 500 feet statewide, and imposed technically advanced best management practices and protective measures to eliminate, minimize or mitigate potential nuisances and other adverse impacts for all Oil and Gas Locations within 1,000 feet of occupied buildings. In addition, Oil and Gas Locations may not be located within 1,000 feet of specified "High Occupancy Buildings," including schools, day care centers, hospitals, nursing homes, and correctional facilities, without Commission approval following a public hearing. Variance approval will be contingent on extensive mitigation measures.

The Commission also has adopted Rules that will enhance notice to and communication with Building Unit owners within 1,000 feet of oil and gas operations, increasing opportunities for local government representatives, including Local Governmental Designees ("LGDs"), to review and comment on new Oil and Gas Locations proposed within their jurisdictions.

The Setback Rules do not govern surface development that occurs subsequent to the initiation of oil and gas operations at a location and do not preclude occupied building units from being constructed within 500 feet of an Oil and Gas Location pursuant to a Surface Use Agreement or Site Specific Development Plan.

The Setback Rules are also not intended to address potential human health impacts associated with air emissions related to oil and gas development. The Commission, after consulting with CDPHE, believes that there are data gaps, related to oil and gas development's potential effect on human health, which warrant further study.



For more information, the Rules are available at www.cogcc.state.co.us under Hot Topics and Rulemaking to consider Statewide Setbacks. The Rules have been submitted to the Secretary of State for publication.

◆ **New Groundwater Rules effective May 1, 2013**

On January 9, 2013, the Commission adopted new Rules requiring pre- and post- drilling groundwater sampling. The purpose of the Rules is to protect and preserve Colorado's groundwater resources, detect potential contamination and inform all stakeholders of groundwater quality both before and after oil and gas development. The Rules require collection of baseline water quality data before oil and gas development, and after drilling and completion operations. All water quality data generated under the rule will be publicly available. For additional information on the Rule and the water quality data, you may visit www.cogcc.state.co.us under Hot Topics.

◆ Staff Training

Optical Gas Imagery Camera

The COGCC is participating in the Regional Air Quality Council's (RAQC) Optical Gas Imaging Camera Loan Program. The OGCC will be borrowing an optical imaging camera from RAQC to identify gas leaks at oil and gas sites and to then work with industry to voluntarily repair any identified leaks. As part of the program, nine field inspectors and one engineer received three days of training on the operation of the camera including the different settings that can be used in various environments to produce accurate information and records the leaks and the impact that backgrounds, reflections and shadows can have on data quality.

Pressure Control Systems Course

Northwest Field Inspectors Kris Neidel and Mike Longworth, and Northeast Field Inspector Mike Hickey participated with Encana Oil and Gas (USA) Inc. staff and members of the Patterson Rig #330 crew in a two-day pressure control training program. The training was provided by

Bladestone and focused on the fundamentals of how each individual piece of blowout prevention equipment is designed to work, the emergency shut in of wells, and how to recognize and contain a kick before it gets out of control. Encana requires that their Piceance basin drilling contractors participate in this training and COGCC staff was allowed to attend.

◆ Local Government Liaison (LGL) Program Update

Local Government Liaisons (LGLs) Nancy Prince and Marc Morton and Hearings Manager Robert Frick conducted three day-long Local Government Designee (LGD) training sessions, including February 6 (Limon), February 20 (Grand Junction), and March 6 (Broomfield). Additional trainings are planned for spring and summer following an evaluation of the initial rollout and content. Once confirmed, the entire schedule and registration details will be posted on the COGCC website. Ongoing LGD program activities include the development of an LGD training manual, and compilation of presentation materials, exercises, and other pertinent information.

The purposes of the training sessions are: 1) to update LGDs on the status of rulemaking changes; 2) to provide LGDs with a refresher and update on their roles, responsibilities, and mechanisms for involvement and comment in the permitting process; 3) to provide an overview of COGCC staff roles, the COGCC website and its applications; 4) to provide an overview of the COGCC's regulatory authority; 5) to provide a summary of opportunities for public involvement; and 6) to provide information and get feedback regarding local government's role the regulation of oil and gas operations.

In addition to preparing for and conducting LGD training, the LGLs continue to provide valuable service, support, and outreach to inquiries and information requests from local government staff, the public, and operators. The LGLs also continue to consult on an almost daily basis with various state and local government agencies, operators, non-governmental agencies, the public, and others. Entities recently consulted include staff from Pitkin County, Routt



County, Rio Grande County, and Garfield County.

To stay current regarding the initiatives concerning local government regulation of oil and gas operations, the LGLs make it a priority to attend as many city or county local government meetings concerning the oil and gas industry as possible. Contact Marc Morton at 303-894-2100 x5132 or marc.morton@state.co.us, or Nancy Prince at 303-894-2100 x5103 nancy.prince@state.co.us, if you are interested in taking part in a future training.

A list of other LGL outreach activities is included in the Public Outreach section listed on the next page.

Public Outreach

➤ Outreach by Director and other Staff Members

- On February 5, 2013, Dave Kubeczko, Western Oil and Gas Location Assessment Specialist, and Marc Morton, Local Government Liaison, participated in a panel discussion and work session in Glenwood Springs hosted by the Garfield County Board of County Commissioners to discuss SG Interests' proposed oil and gas development plans in the Thompson Divide area. Mr. Kubeczko presented the COGCC permit review processes and timelines, including the relationship of the state and federal permits, and public and local government involvement. SG Interests, United States Forest Service ("USFS"), Bureau of Land Management ("BLM"), Garfield County LGD and staff, and the general public presented and/or made comment.
- On February 6, Director Matt Lepore participated in a Town Hall Meeting with Ryan Sincavage, Instructor from University of Colorado-Denver, at the Rocky Mountain Hospital for Children, in Denver, Colorado.
- On February 19, Karen Spray, Southwest Environmental Protection Specialist, Mark Weems, Southwest Area Engineer, and Dave Kubeczko, Northwest Oil and Gas Location

Assessment Specialist, attended a public meeting in Kline, Colorado conducted by Swift Energy. Swift Energy has proposed two locations in the area where they plan to test the Mancos Shale formation using horizontal drilling technology. Swift Energy representatives, La Plata County staff and numerous area residents were in attendance.

- On February 20, Director Lepore gave a presentation to Club 20 in Grand Junction regarding new setback and groundwater rules.
- On February 21, Director Lepore spoke at the Club 20 Winter Policy Committee Meetings in Grand Junction.
- On February 22, Director Lepore spoke at the Eighth Annual Grand Junction Energy Expo and Forum in Grand Junction. In addition, the COGCC had a booth at the expo which was manned throughout the day by COGCC staff from the Rifle office.
- On February 22, Director Lepore, Chris Canfield, Northwest Environmental Protection Specialist, and David Andrews, Western Colorado Engineering Supervisor, attended the West Slope Colorado Oil and Gas Association annual banquet in Grand Junction.
- On February 24, 2013, Thom Kerr, Permitting Manager, Scott Denning, Professor of Atmospheric Sciences, Will Allison, Director of Division of Air Quality Control, and Mike Chiropolos, Chief Counsel, Lands Program, Western Resource Advocates participated in the Community Issues Forum convened by State Representatives Randy Fischer and Joann Ginal and State Senator John Kefalas at the Colorado State University, Behavioral Science Auditorium in Fort Collins. This forum was convened to provide local residents information on various aspects of oil and gas production and development.
- On February 25, Chris Canfield gave a presentation on the new statewide groundwater baseline sampling and monitoring rule at the 2013 Water Course offered by the Water Center at Colorado Mesa University. The



mission of the Water Center is to perform and facilitate interdisciplinary and collaborative research, education, outreach, and dialogue to address the water issues facing the Upper Colorado River Basin.

- On February 25, 2013 Peter Gintautas, Southeast Environmental Protection Specialist, participated in the Analytical Chemical Methods Technical Workshop held at the EPA Research Triangle Park campus in North Carolina. Discussions focused on improvements to analytical methods that could be of use in investigation of potential impacts to groundwater from oil and gas activities and hydraulic fracture completions in particular.
 - On February 26, Director Lepore gave a presentation at the Colorado Bar Association Environmental Law Section luncheon on the new setback and groundwater rules.
 - On February 27, Director Lepore gave at the Boulder County Bar Association-Environmental Law Section meeting in Boulder County a presentation on hydraulic fracturing and other current issues in state and local oil and gas regulations.
 - On February 27, Marc Morton, Dave Kubeczko, and Chris Canfield attended a public presentation and public hearing in Carbonale concerning proposed exploration on federal lands in the Thompson Divide area of Pitkin and Garfield Counties. The meeting was organized by Pitkin County staff, and presenters included staff or representatives from the US Forest Service, the Bureau of Land Management, the Thompson Divide Coalition, Pitkin County, Ursa Resources, and SG Interests. The general public provided comment to Pitkin County Commissioners following the formal presentations.
 - On February 27, Karen Spray and Mark Weems participated in a special meeting of the Northern San Juan Basin Stakeholders Group. The meeting was held in Durango, Colorado in response to public comments on the pending Fosset Gulch 9U #3 Well APD, located in Archuleta County.
 - On February 27, Stuart Ellsworth participated in a "Fracking in Colorado" Panel Discussion at Energy, Environment and Security Project at Colorado College, Colorado Springs.
 - On February 28, 2013, Thom Kerr participated in a panel with Laura Belanger, Water Resource Engineer with Western Resource Advocates; and Ken Carlson, CSU Professor of Civil and Environmental Engineering and Director of the Colorado Energy Consortium. The panel was organized by the Big Thompson Watershed Forum at their annual Watershed Meeting at the Island Grove Regional Park in Greeley. The panel topic was "Hydraulic Fracturing in the Front Range and Colorado."
 - On March 5, Stuart Ellsworth spoke at the REMTEC 2013 Conference - Hydraulic Fracturing: Technical and Policy Issues on *Down hole Aquifer Protection and Wellbore Integrity* in Westminster, Colorado.
- *Outreach by COGCC Local Government Liaisons (LGLs)*
- On February 4, Nancy Prince provided a briefing on the status of rulemaking hearings at the monthly mayor's meeting in Rockvale. Mayors from Rockvale, Coal Creek and Williamsburg and representatives from the City of Florence, Fremont County and Austex Energy were present.
 - On February 5, Marc Morton and Dave Kubeczko traveled to Rifle, CO and attended a Garfield County Board of County Commissioners Work Session. In attendance were representatives from SG Interests, USFS, BLM, Garfield County LGD and staff, and the general public.
 - On February 21, Marc Morton attended the Club 20 Public Lands and Natural Resource Policy Committee meeting (open to the public) in Grand Junction, CO.
 - On February 25, Marc Morton travelled to Loveland, CO to attend a City of Loveland Planning Commission public meeting concerning Loveland's proposed revisions to local zoning regulations regarding oil and gas



operations. The first reading of the revised regulations occurred on March 5.

- On February 25, Nancy Prince attended the monthly informal meeting of Colorado Springs City Council concerning the proposed revisions to local regulations regarding oil and gas operations. The second reading of the revised regulations was planned for the monthly formal meeting on March 12.
- On February 27, Marc Morton, along with Dave Kubeczko and Chris Canfield, travelled to Carbondale, CO to attend a public presentation and hearing concerning the proposed exploration on federal lands in the Thompson Divide area of Pitkin and Garfield Counties. The meeting was organized by Pitkin County staff, and presenters included staff or representatives from the USFS, BLM, the Thompson Divide Coalition, Pitkin County, Ursa Resources, and SG Interests.
- On March 1, Director Lepore, Robert J. Frick, Thom Kerr, Nancy Prince and Marc Morton met in Denver with staff from Department of Natural Resources (DNR) Executive Director's Office (EDO) and Public Relations office, the Department of Local Affairs (DOLA), staff from Colorado Petroleum Association (CPA), and Colorado Oil and Gas Association (COGA) to discuss the implementation of deliverables and actions resulting from the Governor's Task Force.

REGIONAL ACTIVITIES

➤ NORTHWEST COLORADO

◆ Northwest Colorado Oil and Gas Forum

The Forum is an informal gathering of local, state, and federal government officials, oil and gas industry representatives, and citizens that have met regularly since 1989. The purpose of the Forum is to share information about oil and gas development in northwest Colorado and to make government officials and oil and gas industry representatives easily accessible to the

public. Currently, the meetings are conducted once per quarter and are co-chaired by the COGCC Director Matt Lepore and Garfield County Commissioner Mike Samson.

The Forum met on Thursday, February 21, 2013 at Mesa State University in Grand Junction, Colorado. Chris Canfield presented a COGCC update on drilling statistics and trends. Director Lepore presented the new COGCC setback and groundwater rules.

The next meeting of the Forum is tentatively scheduled for Thursday, June 6, 2013 at 10:00 a.m. at the campus of Colorado Mountain College in Rifle, CO. All parties wishing to be placed on the meeting agenda, or added to the distribution list for announcements, should contact Chris Canfield at 970-625-2497 or via email at: chris.canfield@state.co.us.

◆ Project Rulison

Please note that the email for Project Rulison submittals has been changed to: DNR_rulison.submittal@state.co.us

◆ Project Rio Blanco

Please note that the email for Project Rio Blanco submittals has been changed to: DNR_rioblanco.submittal@state.co.us

➤ SOUTHWEST COLORADO

◆ Gas and Oil Regulatory Team (GORT) Meeting

The next GORT/Southwest Colorado Oil and Gas Stakeholders meeting is scheduled for April 18, 2013, from 8:30 a.m. to noon at the La Plata County Fairgrounds in Durango, Colorado.

All parties wishing to be placed on the next meeting agenda should contact Karen Spray at: 970-259-1619 or karen.spray@state.co.us.

◆ Fruitland Formation Outcrop Mitigation and Monitoring Projects (4M Projects)

Fruitland Formation Outcrop - 4M Pilot Scale Mitigation Projects La Plata County. The South Fork Texas Creek (SFTC) system experienced



operational difficulties between December 7 and 21, 2012. During this time, the turbine only ran for a total of 125 hours while the compressor would operate periodically and the system tried to restart itself. The system was brought back into production on December 21, 2012 by lowering the power demand/output to 9 kW. The system ran continuously at this output until January 12, 2013 when it once again shut down. The O&M contractor, LT Environmental, was unable to restart the system at that time and the area turbine vendor, Pumps and Services, was called in to troubleshoot the problem. On January 21, 2013, a bad igniter was replaced on the turbine and an internal fuel filter was replaced on the system. Since that time, the system has been running consistently at 11.5 kW.

The Pine River Ranches (PRR) system was shut down in July 2012 due to lack of methane and continues to be monitored as a passive venting system. General O&M continues at both locations.

- ◆ 4M Monitoring Wells La Plata and Archuleta Counties. There are 17 wells at 11 locations in the COGCC 4M monitoring program. Well pressures are monitored remotely via satellite telemetry with one or two maintenance visits per year, depending upon data received. The annual report on the status of the monitoring well system is in draft form and should be finalized by the contractor, Norwest Corporation, by mid-March 2013. Once finalized, the report will be posted on the COGCC webpage under Library, San Juan Basin, 4M Project Reports, 2012 4M Monitoring Report.
- ◆ Ongoing Investigation, Reclamation, and Mitigation of Residual Methane in the Vicinity of the Bryce 1-X Well Area, Bondad, Colorado

All four water wells were sampled on October 10, 2012. Analytical results show decreases in methane concentrations in the Fire Station and Middle water wells and slight increases in the North and South water wells. All concentrations remain below 10 mg/l and the general water quality is stable. The next sampling is scheduled for April 2013.

➤ SOUTHEAST COLORADO

- ◆ U.S. EPA Raton Basin Hydraulic Fracturing Study - Las Animas and Huerfano Counties

As part of the retrospective study of possible impacts from well completions, a third round of sampling and analysis of groundwater from two areas in the Raton Basin was conducted during the week of November 5. COGCC Staff, as well as contractors for Pioneer Natural Resources, collected split samples at many of the sites. The EPA released an interim progress report on the study in December, 2012. The EPA is expected to release the study in a draft for public and peer review in 2014. Ultimately, results from the study are intended to inform the public and provide policymakers at all levels with high-quality scientific knowledge that can be used in decision-making. For more information on the EPA hydraulic study, go to <http://www.epa.gov/hfstudy/>

VARIANCES

On February 15, 2013, staff approved three Rule 502.b Variance Requests for Rule 326.b.(1) to **Antelope Energy Company LLC** ("Antelope") for three wells: State 1-15 (API No. 05-107-06033), State of Colorado 1-16 (API: 05-107-06127), and Breeze State 11-8 (API No. 05-107-06223). Rule 326.b.(1) requires shut-in wells or wells incapable of production to pass a Mechanical Integrity Test (MIT). These three wells have been idle between two and four years. Antelope acquired the wells in June 2012. In lieu of an MIT, Antelope intends to return the three wells to production by April 1, 2013 depending on repair of a gas sales line, weather, road conditions, and equipment availability. Antelope submitted a Sundry Notice for each well outlining its technical plans for repair. The Sundries have been reviewed and approved by COGCC Staff.

Encana Oil & Gas (USA), Inc. ("Encana") submitted a Sundry Notice requesting a variance to the mechanical integrity requirements specified in Rule 326.d. for their Gardner Federal #28-1 (PC28) well (API No. 05-045-21190), located in the NE ¼ of the NW ¼ of Section 28, Township 7 South, Range 95 West, 6th P.M.



Rule 326.d. requires that all wells which lack mechanical integrity be repaired or plugged and abandoned within six months of failing a mechanical integrity test or of a determination through any other means that the well lacks mechanical integrity.

Encana spud the Gardner Federal #28-1 (PC28) well on May 10, 2012. Surface casing was set at a depth of 1,214 feet and cemented to surface. Encana set production casing at a depth of 7,883 feet on May 30, 2012. After the primary production casing cement job, the top of cement was reported at a depth of 3,300 feet using an August 11, 2012 cement bond log (CBL), although, based on COGCC staff review of the CBL, cement from the primary job is evident up to a depth of 3,242 feet. Mesaverde Group producing intervals were isolated with the primary production casing cement job. The Mesaverde logged top was reported as 4,732 feet on the Drilling Completion Report for this well.

As required by Rule 317.j., Encana pressure tested the well prior to proceeding with completion operations and identified a casing leak. The casing leak was confirmed at a depth of 2,675 feet using a temperature log, which correlated to the depth of a casing collar. Encana established a rate of 6 barrels per minute into the leak at a pressure of 1,760 pounds per square inch (psi). Encana requested and received approval from the Bureau of Land Management (BLM), the agency with primary jurisdiction for this federal well, and COGCC engineering staff to proceed with cutting production casing at 2,700 feet, retrieving the casing, and reinstalling production casing with a casing patch. However, Encana was unable to pull the casing from the wellbore after cutting the casing.

With prior approval from BLM and COGCC, Encana attempted to remediate the casing cut and casing leak by squeezing Class G cement in early September 2012, before completing the well. Pressure leakoff was still observed after the first remediation attempt. With prior approval from BLM and COGCC, Encana perforated and stimulated the well from 7,671 feet to 5,694 feet in late September 2012 using a frac

string and packer set at 3,500 feet to isolate the stimulation from the casing cut and collar leak. As required by Rule 341, bradenhead pressure was monitored continuously during stimulation, and bradenhead pressures were less than 30 psi during all seven frac stages. Pursuant to conditions of approval by BLM and COGCC, the production casing - frac string annulus was also monitored, and stabilized pressures after initial loading and stabilization were less than 200 psi during all seven frac stages (within the expected range of pressure for temperature effects during stimulation).

Encana proceeded with a second cement remediation attempt on December 21, 2012 by setting a bridge plug at a depth of 2,780 feet and performing a hesitation squeeze into the casing cut and collar leak with 50 sacks of 13.5 pound per gallon Gas Blok cement. A total of 7.4 barrels of cement slurry was pumped over the course of four hours. Subsequently, during mechanical integrity tests on December 27, 2012, the lower cement squeeze at the cut was capable of holding 1,300 psi, but leakoff was observed at 1,500 psi. Encana proposed a six-month variance to Rule 326.d. by setting a packer at a depth of 2,767 feet to isolate the collar leak and casing cut, while producing the well under the packer through tubing stung into the packer. Encana agreed to monitor the production casing - tubing annulus and submit the monitoring results to COGCC on a monthly basis. A corrective action notification threshold of 1,100 psi was also established for the production casing - tubing annulus.

COGCC staff verbally approved this variance request on December 28, 2012 and formally approved the associated Sundry Notice on February 8, 2013. As a condition of the approval, COGCC required daily monitoring of the bradenhead pressure and the production casing - tubing annulus pressure, with monthly reports due by the 10th of the month containing data for the prior month. The reported daily pressures for January 2013 and February 2013 have been consistently less than 20 psi and less than 30 psi for each annulus, respectively.

Encana contends that they complied with the basic intent of Rule 326.d. through their reme-



diation attempts; the current wellbore configuration, which isolates the known casing leaks from production gas; daily pressure monitoring; and monthly reporting. Encana has received approval of this strategy from BLM. COGCC has required that Encana submit an update on their plan of action at the conclusion of the six-month temporary variance approval period.

ORGANIZATION

An organizational chart can be found on pages 11-13. For contact information, please go to our homepage, and then "Staff Contact Information."

PLANNING/ADMINISTRATION/OTHER

◆ Plugging and Reclaiming Abandoned Wells (PRAW) - Project Updates

The **DeBeque Environmental and Reclamation Project** involves the remediation of soils contaminated by salt water in the vicinity of the orphaned wells known as the Homestead #1 and the Pasture #1 wells. Both sites are located in Mesa County on the NW edge of DeBeque, CO. Soil sampling and lab analysis is underway with a plan for remediation and reclamation to follow.

The **Trinidad MGP #1 Well Plugging Project** is located in Las Animas County, approximately 18 miles west of Trinidad, CO and just north of Highway 12. The well was drilled to a depth of 1,605 feet, targeting the Vermejo coal, and completed in late 1980. The original operator of the well was the City of Trinidad. In late 1984, the well was deemed uneconomical to produce and plugged. The well was discovered to be leaking gas in 2008 and an attempt to re-plug the well was made with the final decision being to extend the casing above ground level and vented to the atmosphere. Having new information on the well and a recent request by the new landowner to permanently plug it, the COGCC is making preparations for another re-entry and plugging.

The **Long Hollow Dam & Lake Project**, located southwest of Durango, CO., is currently under construction. The custodian of this property is

the Animas-La Plata Water Conservancy District and their construction contractor is Weeminuche Construction Authority. Construction crews discovered a leaking gas well located within the planned lake bed. The leaking gas well has been identified as the Bobby Taylor #1 Well (API #05-067-06115) ("Well") located in the SW¼ NW¼ of Section 33, Township 33 North, Range 12 West. The Well was drilled in late 1976 and plugged in 1977. COGCC staff has finished designs for re-entry, drill out and re-plugging with an estimated cost of \$114,800 to do the work.

There has been a delay in obtaining bids for the job due to a Colorado law requiring that 80% of the labor force be residents of Colorado. The project is approximately nine (9) miles from the New Mexico border and the only contractors responding to bid solicitations are residents of New Mexico. Department of Natural Resources contracting personnel are not aware of any variances or exceptions to the law and are now pursuing other measures.

Page 14 contains a spreadsheet listing PRAW projects that are either scheduled in process or completed as of February 27, 2013.

◆ May 2013 Hearing Docket

A docket for the May 2013 hearing will be available shortly after the March hearing. Hearing dockets are available on our website by clicking on "Hearings." Links to the notices and hearing applications are available from the Docket Number and Applicant, respectively. To sign up for e-mail notification of hearing notices and applications, please see the announcement and instructions on the homepage of the COGCC website: www.cogcc.state.co.us

◆ Colorado Oil and Gas Information System (COGIS) Projects, Updates and Changes

Environmental Database

During the past 18 months, the COGCC and the Ground Water Protection Council (GWPC) have been working together to develop a new Environmental Database that will contain the results from the Colorado Oil and Gas Association



Voluntary Baseline Groundwater Quality Sampling program, along with other environmental data collected by the agency. The project included the development of a new relational database model that will allow the data to be accessible to the public from the COGCC website.

Other improvements include an Electronic Data Deliverable that allows industry to submit the results of the sampling directly to the COGCC, which can then process the information directly into the database. The application has many other features to help staff analyze the information and understand the lab results from the sampling. The interface will allow the public to view and download the results.

◆ Onsite Inspection Policy

The COGCC has received a total of 149 requests for onsite inspections to date under the Policy For Onsite Inspections On Lands Where The Surface Owner Is Not A Party To A Surface Use Agreement or Other Relevant Agreement (Effective for APDs submitted after February 15, 2005)(“Policy”).

Thirty-three onsite inspections have been conducted, while 99 requests for inspections have been withdrawn. Seventeen onsite inspections are pending and will be scheduled, if necessary, after the APD is received, or after issues related to local governmental designee consultation, location change, or surface use agreements are resolved.

Of the 149 requests for onsite inspection, 80 were for locations in Weld County, 26 in Las Animas County, nine in Adams County, seven in La Plata County, five in Garfield County, four in Logan County, three each in Archuleta, Boulder, and Yuma Counties, two in Morgan and Lincoln Counties, and one each in Baca, Cheyenne, Kiowa, Larimer, and Washington Counties.

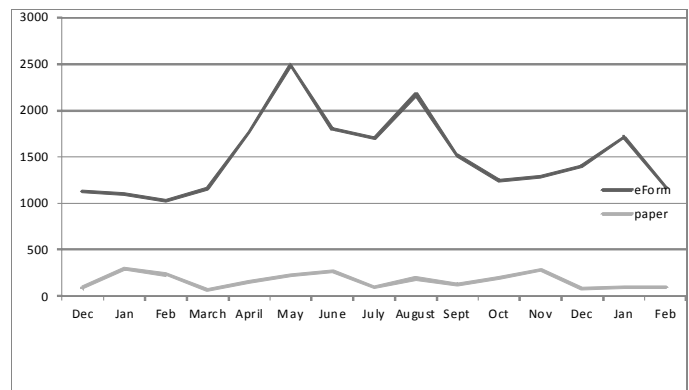
COGCC staff have attended on-site meetings to facilitate communication between the parties and to minimize impacts to the surface owner through voluntary measures implemented by the operator in instances where surface owners

have requested Onsite Inspections beyond the ten-business-day window provided for in the Policy, and where there is a dispute between parties regarding the date of the Rule 306 consultation. Rule 306 requires that the surface owner shall have participated in a good faith consultation in a timely manner with the operator prior to the surface owner requesting an onsite inspection under the Policy.

In addition to the Onsite Inspection Policy, onsite inspections are being conducted in the San Juan Basin under Cause 112, Order Nos. 156 and 157. These are cases where an Onsite Inspection was required because an APD was submitted without a surface use agreement.

Electronic Form Submissions (eForm)

TOTAL ELECTRONIC FORM SUBMITTALS
DECEMBER 2011 - FEBRUARY 2013

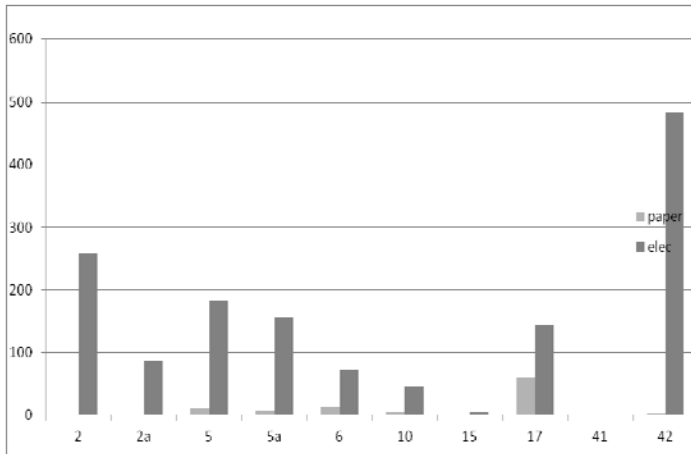


Forms currently available through eForm:

- Form 2 - Application for Permit to Drill
- Form 2A - Oil and Gas Location Assessment
- Form 5 - Drilling Completion Report
- Form 5A - Completed Interval Report
- Form 6 - Well Abandonment Report
- Form 10 - Certification of Clearance/Change of Operator
- Form 15 - Earthen Pit Report/Permit
- Form 17 - Bradenhead Test Report
- Form 41 - Trade Secret Claim of Entitlement
- Form 42 - Notice of Notification (Notice of Hydraulic Fracturing)



Following is a breakdown by Form for the month of February:



Form 10, Certification of Clearance/Change of Operator was released as an addition to the COGCC's eForm suite of online submission reports on November 14, 2012. Several training opportunities were provided just prior to the release of the eForm Form 10. Training materials were also published on the COGCC website to assist industry with the new eForm release. The electronic submission of Form 10s has increased to 56% as industry integrates or adopts filing reports within the eForm environment.

The COGCC also updated the paper Form 10 to allow for enhancements created through the development of the eForm Form 10.

COGCC staff is available to answer questions and provide training as needed for either the new eForm Form 10 or for the revised paper Form 10.

Form 15, Pit Permit and Report, is available in eForm and operators are encouraged to utilize the system to file this form. The form contains additional fields. The PDF version on the Forms page, <http://cogcc.state.co.us/Forms/forms.html>, is revised to reflect the changes that occurred from the release of the form in eForm.

As forms are released on eForm, updates to the PDF forms on our website will occur in tandem. These new versions of the PDF forms will reflect any changes that have taken place when

forms are moved into eForm.

Along with the eForm system, a page is available where the operators can review all known bugs within the system and report any new ones they discover. Currently, there are 305 operators using eForm.

The public can make comments on all submitted Oil and Gas Location Assessment (OGLA) forms (Forms 2A) through the eForm system. This is accomplished by going to the COGCC website (<http://www.colorado.gov/cogcc>) and clicking on the menu option, "Permits", (or <http://cogcc.state.co.us/COGIS/DrillingPermits.asp>).

On the COGIS-Permits page, two search options are available for OGLA forms, "All Pending Location Assessments for" and "All Approved Location Assessments for." When the results are displayed for forms in process, the public can click on the document number, which logs the user onto the new eForm application. Once the page is displayed with the selected document, the user can select the Comment button to make a comment on that particular form. The public can use this same method to make comments on APDs (Form 2s).

Form 4, the Sundry Notice, is currently being developed and its release is anticipated by late March 2013.

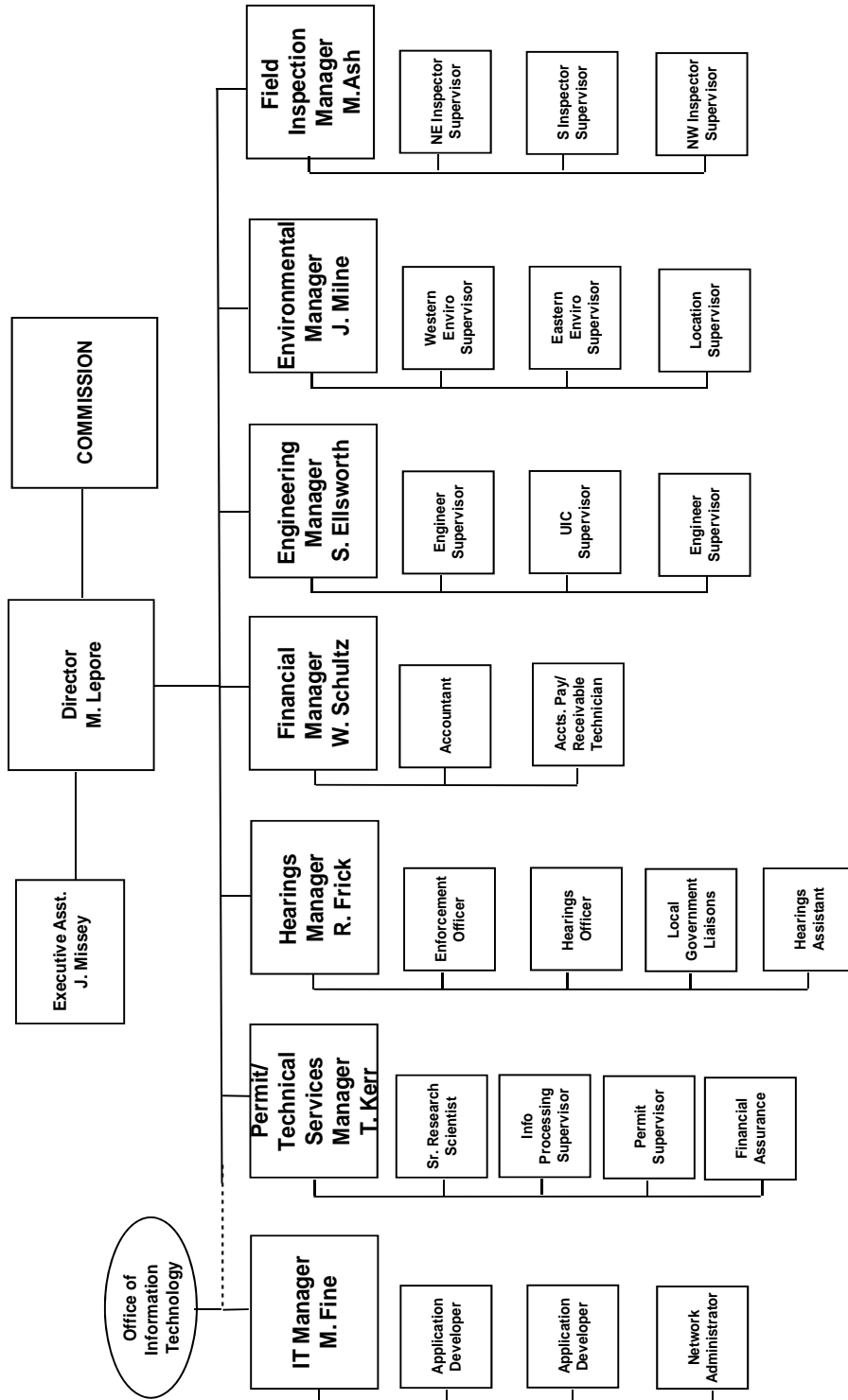
For any operator not currently enrolled in eForm, instructions for starting the process can be found at <http://cogcc.state.co.us/Announcements/COUAINformation.pdf>.

COGCC GIS Online

An upgrade of the COGCC GIS Online interactive map is now available on the COGCC's website. Two new features are now available along with some minor changes. An Address Search button will zoom the map to the area of an input street address, city and zip code. The second new feature is an enhanced Print function. This will generate a PDF document which can be saved or printed. It allows choice of paper size, orientation, input of a legend and a map scale options.



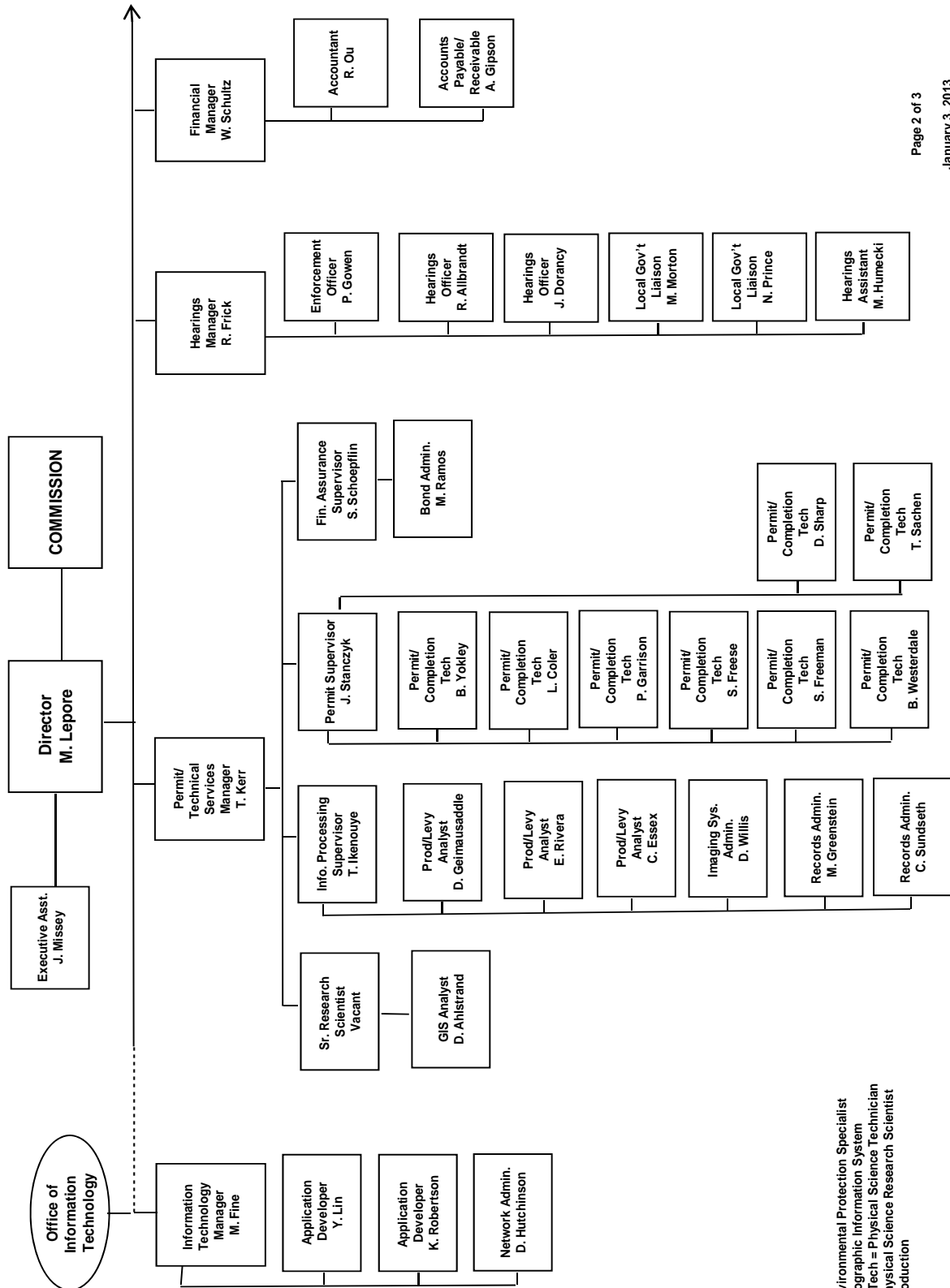
COLORADO OIL & GAS CONSERVATION COMMISSION



See the next two pages for details



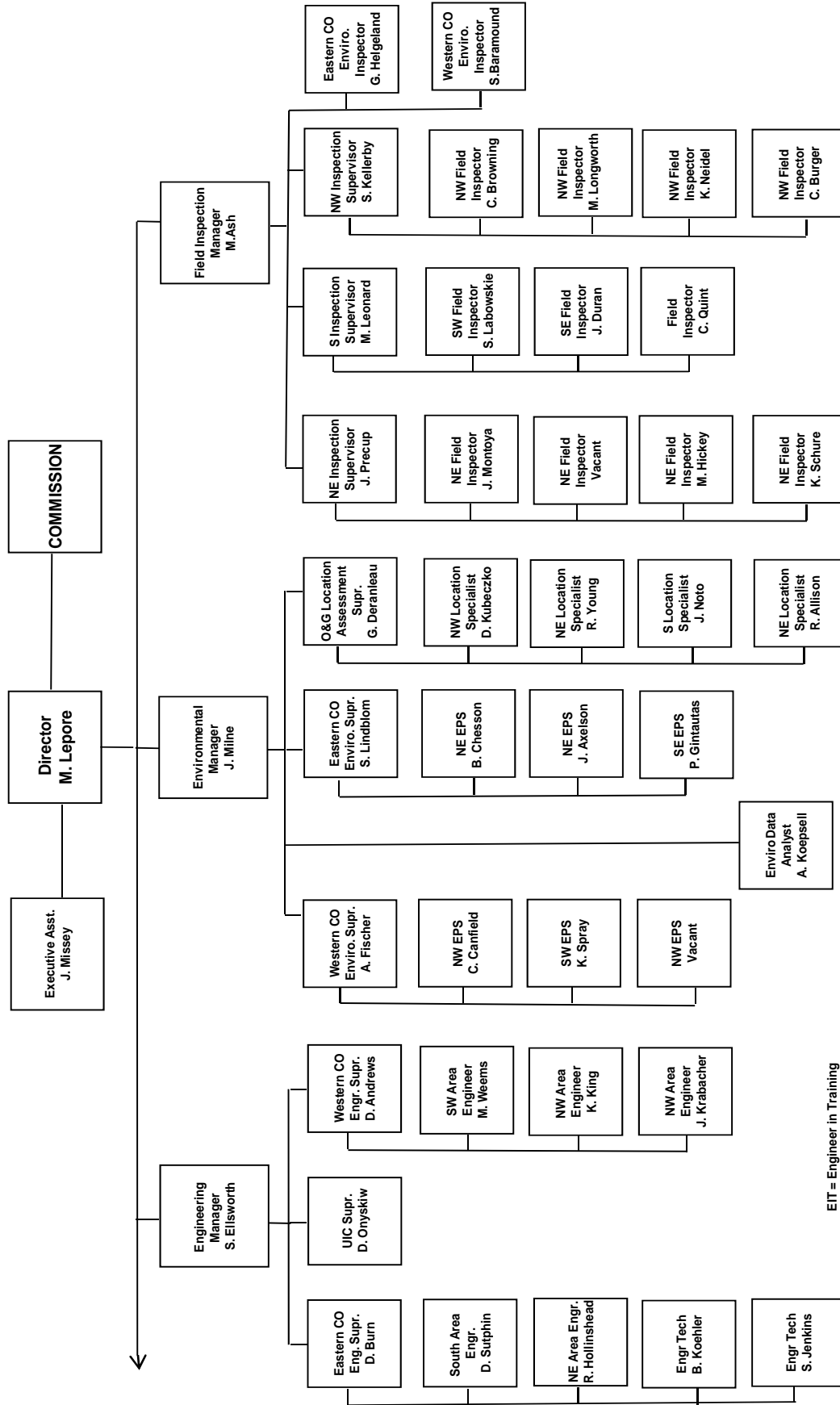
COLORADO OIL & GAS CONSERVATION COMMISSION ORGANIZATION



EPS = Environmental Protection Specialist
 GIS = Geographic Information System
 Phys/Sci Tech = Physical Science Technician
 PSRS = Physical Science Research Scientist
 Prod = Production



COLORADO OIL & GAS CONSERVATION COMMISSION ORGANIZATION



EIT = Engineer in Training
 EPS = Environmental Protection Specialist
 OGLA = Oil & Gas Location Assessment
 Phys Sci Tech = Physical Science Technician
 UIC = Underground Injection Control



PLUGGING, AND RECLAIMING ABANDONED WELLS PROJECTS FOR ORPHANED LOCATIONS
FISCAL YEAR 2012-2013

PLANNED	COUNTY	TYPE	PROJECT NAME	Acct Code	ESTIMATED TOTAL PROJECT COST			FY 2012-2013 YTD EXPENDITURES			DESCRIPTION	
					BOND	PRAW	EMGY	TOTALS	BOND	PRAW		EMGY
	GARFIELD	PLUG	BISCUIT RANCH-Mulvihill 15-32 D	DOLP	\$0	\$30,000	\$0	\$30,000				
	LAS ANIMAS	PLUG	Trinidad MCP #1		\$0	\$80,000	\$0	\$80,000				
	GARFIELD	REC	BISCUIT RANCH RECLAMATION	DOLP	\$25,000	\$110,000	\$0	\$135,000				Reclaim two well pads and one staging area.
	GARFIELD	PLUG	BISCUIT RANCH 10-31D PLUGGING	DOLP	\$0	\$90,000	\$0	\$90,000				Drill out, plug well, and dispose of fluids and cement.
	LA PLATA	PLUG	LONG HOLLOW DAM	BOBB	\$0	\$114,800	\$0	\$114,800				Plugged Bobby Taylor #1 is leaking gas in planned lake bed
			TOTALS =>		\$25,000	\$424,800	\$0	\$449,800				

IN PROGRESS

COUNTY	TYPE	PROJECT NAME	ESTIMATED TOTAL PROJECT COST			FY 2012-2013 YTD EXPENDITURES			DESCRIPTION			
			BOND	PRAW	EMGY	TOTALS	BOND	PRAW		EMGY	TOTALS	
MESA	REC/ENV	DeBeque-HOMESTEAD #1 & PASTURE #1 SALT REMEDIATION, RECLAMATION, & SOIL GAS SURVEYS	\$0	\$30,000	\$0	\$30,000	\$0	\$2,502	\$0	\$2,502	\$0	Salt remediation, topsoil spreading, seeding, and soil gas surveys near plugged and abandonment wells.
MESA	PLUG	PASTURE #1 PLUG & ABAND & DISPOSAL	\$0	\$49,000	\$0	\$49,000	\$0	\$17,536	\$0	\$17,536	\$0	Drill out, plug and abandon well, and dispose of fluids. Disposal of cement, and solids is complete.
		TOTALS =>	\$0	\$79,000	\$0	\$79,000	\$0	\$20,038	\$0	\$20,038	\$0	

COMPLETED

COUNTY	TYPE	PROJECT NAME	ESTIMATED TOTAL PROJECT COST			FY 2012-2013 YTD EXPENDITURES			DESCRIPTION			
			BOND	PRAW	EMGY	TOTALS	BOND	PRAW		EMGY	TOTALS	
GARFIELD	REC	BISCUIT RANCH RECLAMATION DESIGN	\$0	\$10,000	\$0	\$10,000	\$0	\$9,074	\$0	\$9,074	\$0	Reclamation design for two well pads and one staging area.
MOFFAT	PLUG	TATONKA; CULVERWELL 10-23-07-94 AND ELDON GERBER 07-24-07-92 PLUG & ABAND	\$30,000	\$31,800	\$0	\$61,800	\$30,000	\$700	\$0	\$30,700	\$0	Plug and abandon two conductor pipes and one well and reclaim the pad including a drilling pit. Bid documents submitted to purchasing.
LA PLATA	PLUG	LONG HOLLOW DAM	\$0	\$3,400	\$0	\$3,400	\$0	\$3,400	\$0	\$3,400	\$0	Engineering Design
LA PLATA	REC	KEG #1 RECLAMATION	\$0	\$10,000	\$0	\$10,000	\$0	\$9,245	\$0	\$9,245	\$0	Pit is reclaimed, site re-contoured, seeding and fencing in place
ARCHULETA	REC	BONE #1 RECLAMATION	\$0	\$5,000	\$0	\$5,000	\$0	\$7,225	\$0	\$7,225	\$0	Reclamation Completed; landowner reimbursed for seeding
ARCHULETA	PLUG	BONE #1 PLUG & ABAND	\$0	\$110,000	\$0	\$110,000	\$0	\$78,549	\$0	\$78,549	\$0	Plugged and abandonment is complete
MOFFAT	REC	ELDON GERBER 07-24-07-92	\$0	\$4,960	\$0	\$4,960	\$0	\$4,960	\$0	\$4,960	\$0	Fencing & weed kill as preliminary to PA & final REC
GARFIELD	ENV	MULVIHILL 15-32D	\$0	\$810	\$0	\$810	\$0	\$810	\$0	\$810	\$0	Collected Bradenhead gas sample & analysis
FREMONT	PLUG	FREMONT CO ORPHANS 2012	\$0	\$53,410	\$0	\$53,410	\$0	\$60,630	\$0	\$60,630	\$0	Six wells plugged; two emergency C/Os
		TOTALS =>	\$30,000	\$229,380	\$0	\$259,380	\$30,000	\$173,592	\$0	\$203,592	\$0	

ESTIMATED TOTAL PROJECT COSTS			FY 2012-2013 YTD EXPENDITURES				
BOND	PRAW	EMGY	TOTALS	BOND	PRAW	EMGY	TOTALS
\$55,000	\$733,180	\$0	\$788,180	\$30,000	\$193,630	\$0	\$223,630
GRAND TOTALS =>							

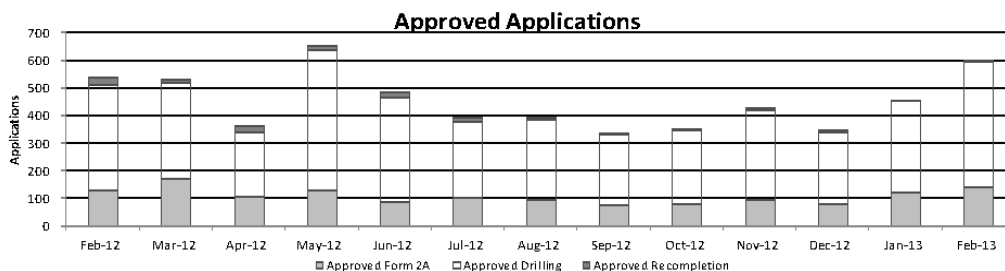
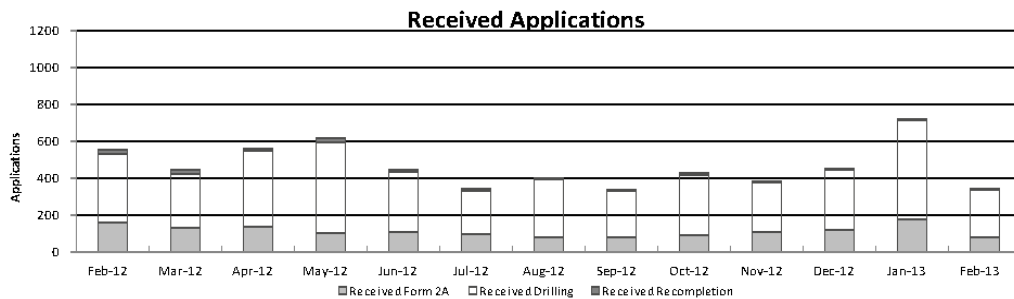
Project Types: "PLUG" indicates plugging and abandonment, "REC" indicates reclamation, and "ENV" indicates environmental
 EMGY: indicates funding by the Emergency Response line item
 TBD: Cost estimates in process.
 PRAW: indicates funding by the Plugging and Reclaiming Abandoned Wells line item



Colorado Oil & Gas Conservation Commission Monthly Permit Activity

	Backlog	Received	Approved	Withdrawn	Rejected	Incomplete	In-Process	Remaining
Form2A								
Feb-12	167	160	129	3	0	44	151	195
Mar-12	195	133	172	5	0	32	119	151
Apr-12	151	137	106	1	0	48	133	181
May-12	181	105	131	6	0	51	98	149
Jun-12	149	110	89	2	0	54	114	168
Jul-12	168	97	103	4	0	51	107	158
Aug-12	158	83	97	6	0	54	84	138
Sep-12	138	81	77	5	0	47	90	137
Oct-12	137	94	82	8	0	30	110	141
Nov-12	141	109	97	13	0	19	112	140
Dec-12	140	122	81	4	0	35	124	177
Jan-13	177	176	124	12	0	34	183	217
Feb-13	217	80	141	8	0	34	114	148
Drilling								
Feb-12	414	370	382	8	0	103	291	394
Mar-12	394	292	347	13	0	103	223	326
Apr-12	326	410	235	1	0	127	373	500
May-12	500	491	506	25	0	110	350	460
Jun-12	460	326	377	9	0	114	286	400
Jul-12	400	237	276	4	0	91	266	357
Aug-12	357	313	288	9	0	146	227	373
Sep-12	373	252	256	24	0	98	247	345
Oct-12	345	326	265	29	0	65	312	377
Nov-12	377	271	323	21	0	65	239	304
Dec-12	304	322	260	9	0	77	280	357
Jan-13	357	538	331	19	0	101	444	545
Feb-13	545	255	455	16	0	58	271	329
Recompletion								
Feb-12	25	23	27	0	0	5	16	21
Mar-12	21	21	14	0	0	5	23	28
Apr-12	28	16	24	3	0	6	10	17
May-12	17	23	16	0	0	6	18	24
Jun-12	24	11	19	0	0	3	13	16
Jul-12	16	9	14	0	0	3	8	11
Aug-12	11	6	9	0	0	1	7	8
Sep-12	8	1	5	2	0	0	2	2
Oct-12	2	9	3	0	0	0	8	8
Nov-12	8	5	8	0	0	0	5	5
Dec-12	5	4	8	1	0	0	0	0
Jan-13	0	6	0	0	0	0	4	6
Feb-13	6	9	5	0	0	0	10	10

Incomplete are permits that have missing or inaccurate data and cannot be approved.



Backlog = Incomplete + In-process = Remaining permits from previous month



Colorado Oil and Gas Conservation Commission
 Status of Permit Applications Filed By Month
 March 8, 2013

Form 2A Location Assessment

Year	Month	Received	Approved	Withdrawn	In Process	Percent In Process	Median Days to Process	Less Than 30 Days	30 to 49 Days	Greater Than 50 Days
2010	Total	2520	2433	85	0			1559	662	212
2011	Total	2391	2298	87	6	0%		1416	620	262
2012	1	141	138	3	0	0%	33	92	27	19
2012	2	160	152	8	0	0%	31	118	26	8
2012	3	135	133	2	0	0%	41	80	25	28
2012	4	126	119	7	0	0%	38	77	25	17
2012	5	119	115	4	0	0%	38	63	28	24
2012	6	101	95	5	1	1%	39	32	44	19
2012	7	104	96	5	3	3%	35	41	43	12
2012	8	72	67	4	1	1%	36	33	22	12
2012	9	77	72	5	0	0%	37	28	34	10
2012	10	94	89	5	0	0%	39	31	40	18
2012	11	85	77	5	3	4%	33	52	15	10
2012	12	147	118	3	26	18%	33	59	49	10
2012	Total	1361	1271	56	34	2%		706	378	187
2013	1	177	140	12	25	14%	28	99	39	2
2013	2	92	16	3	73	79%	24	16	0	0
2013	3	24	0	0	24	100%				
2013	Total	293	156	15	122	42%		115	39	2

Form 2 Application For Permit to Drill (APDs)

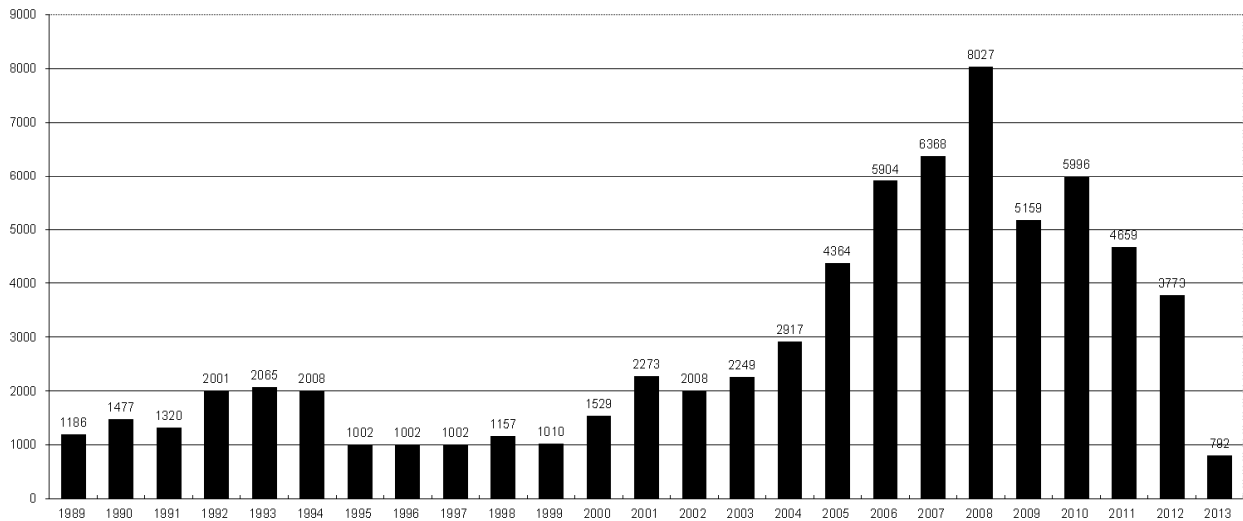
Year	Month	Received	Approved	Withdrawn	In Process	Percent In Process	Median Days to Process	Less Than 30 Days	30 to 49 Days	Greater Than 50 Days
2010	Total	5891	5746	144	0	0%		1760	2739	1744
2011	Total	4692	4557	126	7	0%		2723	1565	587
2012	1	368	361	7	0	0%	34	235	107	45
2012	2	371	360	11	0	0%	31	277	70	37
2012	3	284	279	5	0	0%	40	164	84	50
2012	4	418	405	13	0	0%	36	219	160	41
2012	5	509	491	18	0	0%	37	260	149	104
2012	6	280	275	3	2	1%	41	107	119	60
2012	7	281	273	6	2	1%	39	103	144	36
2012	8	282	262	20	0	0%	32	148	89	30
2012	9	212	192	20	0	0%	38	78	78	38
2012	10	355	349	5	1	0%	36	131	168	58
2012	11	244	226	14	4	2%	36	110	80	40
2012	12	351	320	9	22	6%	35	139	145	40
2012	Total	3955	3793	131	31	1%		1971	1393	579
2013	1	562	477	17	68	12%	31	278	175	25
2013	2	243	29	10	204	84%	28	28	3	2
2013	3	76	1	0	75	99%	2	1	0	0
2013	Total	881	507	27	347	39%		307	178	27



COLORADO OIL AND GAS CONSERVATION COMMISSION ANNUAL DRILLING PERMITS BY COUNTY

COUNTY	1988	1989	1990	1991	1992	1993	1994	1995	1996	1997	1998	1999	2000	2001	2002	2003	2004	2005	2006	2007	2008	2009	2010	2011	2012	current as of 3/08 2013			
ADAMS	46	34	44	53	92	58	137	34	9	33	24	19	38	28	9	26	39	34	37	89	51	35	21	8	40				
ARAPAHOE	5	5	15	14	11	4	20	12	2	9	1	2	0	2	1	2	5	7	11	10	10	10	8	23	35	4			
ARCHULETA	8	5	18	5	2	1		3		3		1	7	9	6	10	8	13	14	26	47	11	18	12	5	2			
BACA	6	4	15	10	23	9	12	24	10	7	13	15	22	6	2	3	7	8	2	11	13	3	4	5	3				
BENT				1		2	2	4	2	5	3	5	2				5	3	8	1	1		5		2				
BOULDER	1		1	13	38	159	38	5	8	2	5		1	5	6	7	17	13	21	37	32	35	24	30	22				
BROOMFIELD																													
CHEYENNE	203	149	102	93	71	58	48	55	43	31	41	7	3	3	3	3	3	10	21	15	33	12	13	16	31	12			
COSTILLA													1																
CROWLEY	1		1	1																									
DELTA	1	1	2													7	4	5	10	9	2			4	3	6			
DENVER										5	3	3		3						19	25	24							
DOLORES	2		4	1	2	1														6	10	12	21	8	8	13			
ELBERT	9	12	8	5	3		2	13	16	11	1		2							4			1		1	2			
EL PASO																							1	3	3	18			
FREMONT	9	5	6	7	1	2	2	1	2	1										1	3	2	4	14	13	22	14	11	1
GARFIELD	19	66	111	36	18	56	143	78	109	141	95	130	213	353	362	567	796	1509	1845	2550	2888	1981	2037	1323	1046	189			
GRAND							1																						
GUNNISON			2	2		1									5	10	1	9	19	7	10	12	4	3	11	2			
HUERFANO	3	5		4	17	3	3	2	1	3	40	26	41	27	27			8	2			7	2	1	9				
JACKSON	3	1	4	6	2	2	3	2	2	6	3		34	18	21	9	14	6	8	5	27	19	9	18	5	2			
JEFFERSON	1		4	2		1		1	1		1	2	1							1	3	2							
KIOWA	15	39	40	46	28	28	21	26	13	17	10	2	11	18	2	4	2	1	11	9	26	7	16	17	17				
KIT CARSON	9	5	7	8	8	15	26	11	7	6	9	5				1	3	5	4	4	13	7	3	2	6				
LA PLATA	302	218	388	128	120	40	40	20	71	40	82	107	127	156	104	162	102	115	235	251	328	298	191	99	71				
LARIMER	4	4	3	6	13	7	3		1	3	1		2		1					5	46	12	41	8	13	1			
LAS ANIMAS	10	30	36			9	32	95	134	136	195	195	268	400	259	180	332	413	500	362	303	88	92	85	11				
LINCOLN	8	6	4	7	7	11	8	9	3	2			2	2	1	6	3	4	1	2	58	44	48	31	36		30		
LOGAN	18	21	23	13	14	30	15	13	6	12	7		4	7	3	3	6	13	17	14	5	9	17	8	27				
MESA	1	12	29	20	22	2	22	6	11	10	2	6	13	27	30	27	54	136	265	293	501	427	306	127	150	64			
MOFFAT	13	25	27	19	40	52	43	40	41	28	21	15	35	52	62	63	63	60	120	68	57	51	53	93	88	4			
MONTEZUMA	6	7	10	8	7	11	15	9	13	5	4	1	4			5	8	8	11	5	12	22	39	19	27	29			
MONTROSE				1						1			1	3	2	4	2	1	3	3			1	1	1				
MORGAN	34	27	36	13	10	11	19	12	10	11	10	12	9	9	2	7	9	7	3	6	2	1	6	13	5				
OTERO				2																									
PARK				1								1										3	4	1					
PHILLIPS			3		1	1							1	2															
PITKIN		1			2																								
PROWERS	19	9	5	10	14	7	3	5	5	3	9	3	2	5	4					7	5	7	5	8	1	3	1		
RIO BLANCO	34	83	77	33	81	83	126	81	33	40	51	95	89	187	105	179	154	161	360	321	477	348	441	109	117	7			
RIO GRANDE	2	3	4	1		1							1	1								1	1						
ROUITT	4	3	12	4	2	3	1	2	1	1	1	4	20	13	1					6	9	8	4	2	3	10	4	1	
SAGUACHE	1							2					2		2							2	1	2					
SAN MIGUEL			2	2					1	1	4	2	11	13	27	18	42	45	35	23	20	13	10	2	1				
SEDGWICK				1				3		2						1	5	2	7	2	1	19	11	12	2				
WASHINGTON	40	29	23	28	24	26	25	12	19	26	18	3	23	17	27	34	128	50	89	45	11	6	12	6	5				
WELD	424	357	366	656	1224	1319	1030	254	305	285	392	288	509	702	760	757	832	901	1418	1527	2340	1448	2152	2262	1826	468			
YUMA	14	20	45	60	104	53	167	168	123	116	111	60	31	205	160	138	237	782	797	541	545	105	299	148	11				
Total	1275	1186	1477	1320	2001	2065	2008	1002	1002	1002	1157	1010	1529	2273	2008	2249	2917	4364	5904	6368	8027	5159	5996	4659	3773	792			

ALL COUNTIES





Colorado Oil and Gas Conservation Commission
Form 2A Breakdown By County By Year
March 8, 2013

Yr	County	Form2As	Completed	In Process	Informational	Requires Approval	New Location	CDP	SWH	RSO	CDPHE
2009	Total State	818	818	0	728	108	408	2	80	5	5
2010	Total State	2378	2376	0	1824	637	1601	0	327	22	55
2011	Total State	2301	2294	7	1004	319	1790	1	274	17	5
2012	ADAMS	19	19	0	0	0	19	0	0	0	0
2012	ARAPAHOE	21	16	5	0	0	16	0	0	0	0
2012	ARCHULETA	1	1	0	0	0	1	0	1	0	0
2012	BACA	3	3	0	0	0	2	0	1	0	0
2012	BENT	2	2	0	0	0	2	0	0	0	0
2012	BOULDER	3	3	0	0	0	0	0	0	0	0
2012	BROOMFIELD	7	7	0	0	0	1	0	0	0	0
2012	CHEYENNE	34	34	0	0	0	28	0	0	0	0
2012	DELTA	1	1	0	0	0	0	0	0	0	0
2012	DOLORES	1	1	0	0	0	1	0	0	0	0
2012	EL PASO	4	3	1	0	0	3	0	0	0	0
2012	ELBERT	1	1	0	0	0	1	0	0	0	0
2012	FREMONT	3	3	0	0	0	3	0	2	0	0
2012	GARFIELD	77	75	2	0	0	32	0	67	2	0
2012	GUNNISON	7	7	0	0	0	6	0	5	0	0
2012	HUERFANO	5	5	0	0	0	4	0	1	0	0
2012	JACKSON	3	2	1	0	0	3	0	2	0	0
2012	KIOWA	13	13	0	0	0	12	0	0	0	0
2012	KIT CARSON	6	6	0	0	0	4	0	0	0	0
2012	LA PLATA	8	8	0	0	0	3	0	7	0	0
2012	LARIMER	7	6	1	0	0	5	0	0	0	0
2012	LAS ANIMAS	8	8	0	0	0	6	0	0	0	0
2012	LINCOLN	45	45	0	0	0	41	0	0	0	0
2012	LOGAN	16	15	1	0	0	17	0	0	0	0
2012	MESA	10	10	0	0	0	5	0	3	0	0
2012	MOFFAT	47	47	0	0	0	38	0	44	4	0
2012	MONTEZUMA	8	8	0	0	0	8	0	0	0	0
2012	MORGAN	5	5	0	0	0	5	0	0	0	0
2012	PHILLIPS	38	38	0	0	0	35	0	0	0	0
2012	RIO BLANCO	35	35	0	0	0	15	0	28	0	0
2012	RIO GRANDE	1	1	0	0	0	1	0	1	0	0
2012	ROUTT	4	3	1	0	0	7	0	7	0	0
2012	SAN MIGUEL	1	1	0	0	0	1	0	0	0	0
2012	SEDGWICK	1	1	0	0	0	1	0	0	0	0
2012	WASHINGTON	13	8	5	0	0	7	0	0	0	0
2012	WELD	851	833	18	0	0	612	0	4	0	1
2012	YUMA	1	1	0	0	0	1	0	0	0	0
2012	Total State	1310	1275	35	0	0	946	0	173	6	1
2013	ARAPAHOE	6	2	4	0	0	6	0	0	0	0
2013	CHEYENNE	8	4	4	0	0	7	0	0	0	0
2013	DOLORES	2	0	2	0	0	2	0	0	0	0
2013	FREMONT	3	1	2	0	0	4	0	1	0	0
2013	GARFIELD	13	2	11	0	0	9	0	11	0	0
2013	JACKSON	2	2	0	0	0	0	0	2	0	0
2013	LAS ANIMAS	1	0	1	0	0	0	0	0	0	0
2013	LINCOLN	21	17	4	0	0	20	0	0	0	0
2013	LOGAN	1	1	0	0	0	0	0	0	0	0
2013	MOFFAT	2	1	1	0	0	2	0	2	0	0
2013	PITKIN	1	0	1	0	0	1	0	0	0	0
2013	RIO BLANCO	6	3	3	0	0	2	0	4	0	0
2013	ROUTT	2	0	2	0	0	2	0	2	0	0
2013	WASHINGTON	3	3	0	0	0	3	0	0	0	0
2013	WELD	194	108	86	0	0	130	0	2	0	0
2013	Total	265	144	121	0	0	188	0	24	0	0

CDP = Comprehensive Drilling Plan SWH = Sensitive Wildlife Habitat consultation
RSO = Restricted Surface Occupancy consultation CDPHE = Colorado Department of Health and Environment consultation



Colorado Oil and Gas Conservation Commission

Horizontal Well Activity

March 8, 2013

County	Prior Years			2009		2010		2011		2012		2013		Completion				
	Drilled	DA	PA	Permit	Spud	Permit	Spud	Permit	Spud	Permit	Spud	Spud	AC	PR	DA	PA		
ADAMS				6	6	2	3	1		17		1	10	4	3			
ARAPAHOE	2							10	1	22	2	2	5	2	1			
ARCHULETA	17			7	3	15	7	10	7	5	9	2	43	39				
BOULDER								4					0					
CHEYENNE	5		4									2	5	1	4			
DELTA										6	1		1					
DOLORES	2			18	2	6				9	1		5	6	1			
EL PASO										10			0					
ELBERT										1			0					
FREMONT	7	6		6		12	5	3	4	4	1		17	9	6	1		
GARFIELD	10		2	1	1	16	2	18	7	43	6	1	26	22		2		
GUNNISON	1					1				3	2		3	1				
HUERFANO										4			0					
JACKSON	8	1	1	8		3	3	9	2	4		2	13	10	1	1		
KIOWA										1			0					
KIT CARSON	1									1			1			3		
LA PLATA	28	2		11	1	28	3	18	7	12	1		40	46	1			
LARIMER	3	2						5	1	2	1		5	2	2			
LAS ANIMAS	16		2	4		1	1						17	15		2		
LINCOLN				2	1	2	1	1				5	2	3				
LOGAN	2									1			2	2				
MESA	3	2		36	1	22	8	24	13	14		1	25	23	2	2		
MOFFAT	7	1	1	6	3	4		9	2	44	5	2	4	21	16	1	1	
MONTEZUMA	6		1	23	5	11	1	8	3	18	1		16	27		1		
MORGAN								6	2	2			2	2				
PARK						1	1	1					1					
RIO BLANCO	7	2				1	1	11	1	15	2	1	11	1	6	3		
ROUTT	10	6	1							1			10	3	6	1		
SAN MIGUEL	1			1									1	1				
WASHINGTON	1		1										1			1		
WELD	11	3		12	5	208	92	763	234	964	551	373	174	1067	522	7	6	
YUMA	1		1	6									1			1		
TOTAL Horizontal	149	25	14	147	28	333	128	901	284	1203	583	391	179	1351	7	760	29	27
Percent of Total HZ		17%	9%												1%	56%	2%	2%
Total All Permits				5159		5996		4659		3773		792						
Percent of Total				2.8%		5.6%		19.3%		31.9%		49.4%						



Well to Building Setback Review

Colorado Oil and Gas Conservation Commission

March 8, 2013

Count of well locations by proximity groupings from well spot to buildings for all locations reviewed under the December 17, 2008 amended rules.

Location Proximity to Buildings	2009	2010	2011	2012	2013	Number of Locations	Percent of Total Locations
less than 150 feet	2	3	3	2	0	10	0%
150 to 350 feet	37	58	61	39	10	205	3%
350 to 500 feet	50	110	97	61	10	328	5%
500 to 1000 feet	117	385	331	188	40	1061	17%
1000 + feet	356	1705	1470	838	165	4534	74%
Total Locations	562	2261	1962	1128	225	6138	

County	Total	Less than 150 feet	150 to 350 feet	350 to 500 feet	500 to 1000 feet	1000 + feet
ADAMS	40	0	2	4	9	25
ARAPAHOE	55	0	2	4	7	42
ARCHULETA	16	0	0	1	9	6
BACA	13	0	0	0	1	12
BENT	7	0	0	0	0	7
BOULDER	23	0	1	1	17	4
BROOMFIELD	32	0	0	4	13	15
CHEYENNE	71	1	0	0	0	70
DELTA	6	0	0	2	1	3
DOLORES	10	0	0	0	4	6
EL PASO	11	0	0	0	1	10
ELBERT	3	0	0	0	1	2
FREMONT	34	0	2	7	6	19
GARFIELD	389	0	5	2	55	327
GUNNISON	19	1	0	2	1	15
HUERFANO	7	0	0	0	2	5
JACKSON	26	0	0	3	1	22
KIOWA	51	0	0	0	1	50
KIT CARSON	11	0	0	0	0	11
LA PLATA	89	0	3	9	25	52
LARIMER	31	0	3	3	10	15
LAS ANIMAS	198	1	6	7	37	147
LINCOLN	162	0	0	2	4	156
LOGAN	37	0	1	1	0	35
MESA	78	0	0	3	13	62
MOFFAT	144	0	0	2	12	130
MONTEZUMA	18	0	0	1	1	16
MONTROSE	2	0	0	0	0	2
MORGAN	17	0	0	2	3	12
PARK	4	0	0	0	0	4
PHILLIPS	262	1	4	6	20	231
PROWERS	4	0	0	0	0	4
RIO BLANCO	141	0	0	0	1	140
RIO GRANDE	2	0	0	0	1	1
ROUTT	15	0	0	0	0	15
SAN MIGUEL	11	0	0	0	0	11
SEDGWICK	25	0	0	1	3	21
WASHINGTON	30	0	1	0	1	28
WELD	3580	6	168	247	759	2400
YUMA	464	0	7	14	42	401
TOTAL	6138	10	205	328	1061	4534



Well to Building Setback Review

Colorado Oil and Gas Conservation Commission

February 1, 2013

Listing of Locations less than 200 feet to Building

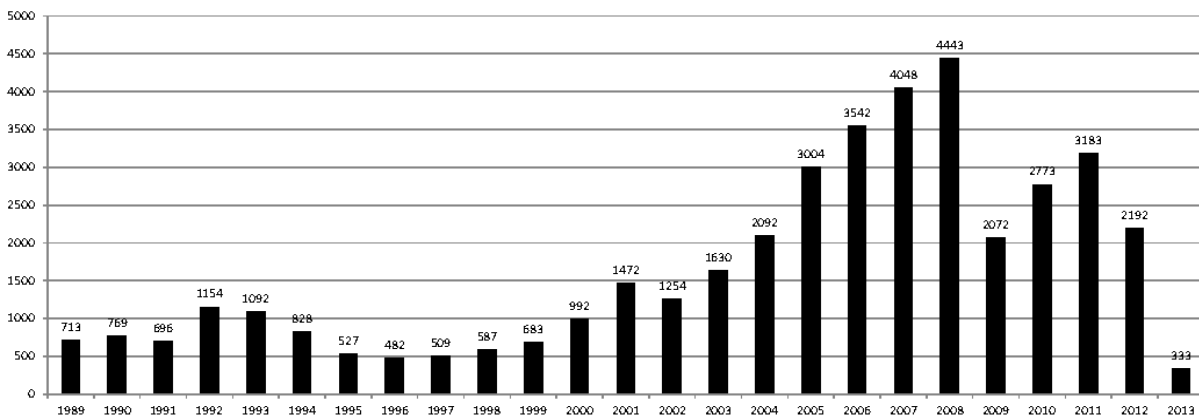
Year	Document Number	County	High Density	New Location	Distance	Proximity	Building Description
2011	2587822	CHEYENNE	No	No	58	less 150	Water well house
2009	1691798	WELD	No	No	58	less 150	Vehicle garage
2010	400072164	WELD	No	Yes	69	less 150	Abandoned hog shed
2012	400240957	GUNNISON	No	Yes	90	less 150	Equipment Shed
2009	1758843	WELD	No	Yes	103	less 150	Building to be razed
2011	1636646	WELD	No	No	122	less 150	Storage shed
2009	400011284	LAS ANIMAS	No	Yes	127	less 150	Operator is owner
2009	1786896	PHILLIPS	No	No	132	less 150	Grain Storage
2011	400117702	WELD	No	Yes	143	less 150	Irrigation pump house
2011	400227765	WELD	No	Yes	145	less 150	Storage Barn
2009	1904205	WELD	No	No	154	150 to 350	Livestock Enclosure
2012	400243295	WELD	No	Yes	155	150 to 350	Unused storage shed
2011	400179419	WELD	No	Yes	157	150 to 350	Existing well / storage building
2010	400054716	WELD	No	No	159	150 to 350	Equipment Barn
2011	400188968	WELD	No	Yes	159	150 to 350	Abandoned
2010	400021477	WELD	No	Yes	162	150 to 350	Goat Barn
2009	1758386	WELD	No	Yes	168	150 to 350	Storage Shed
2011	1635946	WELD	No	No	169	150 to 350	Storage shed
2011	400165164	WELD	No	Yes	178	150 to 350	Residence
2013	400367184	WELD	No	Yes	179	150 to 350	Farm Shed
2011	400188780	WELD	No	Yes	180	150 to 350	Residence
2010	1697620	WELD	No	No	187	150 to 350	Livestock Shed
2009	1758746	WELD	No	No	193	150 to 350	Storage Shed
2011	400154431	WELD	No	Yes	198	150 to 350	Turkey barn
2012	400250031	WELD	No	Yes	198	150 to 350	abandoned guard shack
2009	1774783	WELD	No	No	199	150 to 350	cement service building
2011	400118102	YUMA	No	Yes	199	150 to 350	Steel Barn



COLORADO OIL AND GAS CONSERVATION COMMISSION ANNUAL WELL STARTS BY COUNTY

COUNTY	1988	1989	1990	1991	1992	1993	1994	1995	1996	1997	1998	1999	2000	2001	2002	2003	2004	2005	2006	2007	2008	2009	2010	2011	2012	Current as of 3/13 2013		
ADAMS	39	27	26	36	54	20	54	28	6	16	12	17	18	13	4	19	22	24	13	41	14	15	21	2	10	3		
ALAMOSA																											2	
ARAPAHOE	2	4	16	11	11	3	9	8	3	3	2						6	1	5	2	1	1	3	8	5			
ARCHULETA	5	3	7	5	2	1		2		1			4	4	2	5	4	10	5	7	26	9	12	8	11			
BACA	5	5	12	6	21	8	9	19	9	7	11	8	19	6	2	1	6	6	2	6	12		5	5	1			
BENT				1			2	3	1	2	3	6	2				3	2	8	1	1			1	1			
BOULDER	2			7	18	56	15	5								2	5	11	9	14	25	16	13	7	14			
BROOMFIELD	3	2	3	7	14	27	22	2	2						2		1				10		22	11	5			
CHEYENNE	177	133	92	75	64	50	44	41	35	29	29	6	2	1	3	3		9	14	15	14	8	12	11	17	3		
CONEJOS																												
COSTILLA											1																	
CROWLEY	1		1																									
CUSTER																												
DELTA	1		1													5	4	6	5	2			4	1	1			
DENVER										2	3	1		2					7	5	4							
DOLORES	2		4	1													2		2	13	4	2		1	3	1		
DOUGLAS																												
EAGLE																												
EL PASO																								2		5		
ELBERT	8	11	9	5	2			10	15	2	2		2						1									
FREMONT	6	3	5	7	1	1	1	2			1						1	3	2	2	5	3	9	16	6	1		
GARFIELD	3	12	24	8	3	4	15	13	7	28	19	94	190	251	245	417	585	799	1005	1304	1688	768	910	881	496	81		
GRAND							1																					
GUNNISON			1	2		1										1	1	1	9	5	1	4	5	2	4			
HUERFANO	6			2	6	1	1	2		2	31	9	25	14	19	3	6	2			2		2	2	2	2		
JACKSON	2	1	3	7	2		3	1	1	3	3		24	2	4	10	10		3	3	10	1	6	7				
JEFFERSON								1				2								2								
KIOWA	14	32	35	37	28	19	20	22	8	13	6	4	8	16	2	4	2	1	7	7	2	5	15	15	10	2		
KIT CARSON	11	6	6	6	9	13	15	9	6	3	7	7				1	1	6	2	1	14	3	1	1	3			
LA PLATA	158	129	186	44	66	26	17	19	29	48	65	80	99	135	118	110	103	104	108	179	199	131	67	50	3			
LARIMER	8	5	1	6	13	5	3	2	1				1	1			1	1	4	8	1	28	2	10				
LAS ANIMAS	17	22	20	3	2	11	17	34	62	90	120	182	202	286	205	221	296	384	413	326	221	14	7	78	1			
LINCOLN	6	5	4	4	7	7	8	8	3	2			2	2	1	5	2	2	1	2	19	10	14	22	23	6		
LOGAN	17	19	19	8	13	24	9	11	4	10	4		4	6	3	3	2	11	12	12	3	7	3	8	13	4		
MESA	1	2	2	4	1		7	2	1	1	4	4	2	12	12	13	25	89	156	209	222	14	11	38	4	1		
MOFFAT	1	2	1	2	1	1	2	1	3	1	8	10	18	23	25	28	19	40	60	42	25	18	15	34	25	4		
MONTIZUMA	6	5	7	5	2	5	7	3	12	2	2		2	3	5	5	1	7	2	4	18	11	2	5	12	2		
MONTROSE				1											3					1	2		1					
MORGAN	26	20	32	11	9	11	16	13	8	9	7	4	9	8	1	7	5	5	3	1	1	2	3	2	3			
OTERO				1																								
OURAY																												
PARK				1																				2				
PHILLIPS			3			1							1			6	10	11	4	35	18	2	42	105	42			
PITKIN		1			2																							
PROWERS	16	9	5	8	13	7	1	5	5	2	8	4	2	4	4		5	5	6	3	5	2	3	1				
PUEBLO																												
RIO BLANCO	1	8	10	1	3	8	6	7	5	9	9	62	51	82	47	83	92	95	107	95	203	116	107	70	47	5		
RIO GRANDE	1	2	2																									
ROUITT		1	1	3	1							1	5	12	1		1	6	3	2		2	1	2	3	2		
SAGUACHE	1							2																				
SAN MIGUEL				1							3	1	6	9	10	19	28	13	20	17	5	1	2	2				
SEDGWICK				1			1	3		2							1	2	1	1	5			3	7	3		
WASHINGTON	39	28	22	26	24	20	20	13	17	23	18	4	15	12	24	29	65	34	23	14	11	2	2	3				
WELD	176	200	168	296	660	723	389	94	136	94	117	124	237	403	406	522	632	718	931	1222	1314	877	1205	1669	1394	215		
YUMA	12	16	41	47	102	39	114	145	101	104	93	52	42	162	108	106	144	597	593	445	336	27	213	108	15			
Grand Total	773	713	769	696	1154	1092	828	527	482	509	587	683	992	1472	1254	1630	2092	3004	3542	4048	4443	2072	2773	3183	2192	333		

ALL COUNTIES





Colorado Oil Gas Conservation Commission Monthly Statistics

YEAR	MO	Baker - Hughes Rig Count	Permits						Pits			Locations			Well Spud Notice	Active Drilling Permits	Active Wells	Public Visits			Well Oper Change
			Drilling Rcvd	Drilling Apvd	Recompletion Rcvd	Recompletion Apvd	Injection Rcvd	Injection Apvd	Rcvd	Apvd	Rcvd	Apvd	Rcvd	Apvd				Data	Office	Internet	
2010	Total		5703	5996	519	515	34	28	120	225	2461	2548	2773	197	1115	1112479	8421				
	JAN	63	405	351	8	23	4	6	4	8	249	112	233	14	95	103968	813				
	FEB	61	343	249	15	2	7	6	5	3	184	150	210	21	80	96171	356				
	MAR	68	472	498	18	23	4	7	38	31	262	258	268	9	125	122393	590				
	APR	72	325	314	26	15	5	0	20	27	190	218	238	8	105	106539	402				
	MAY	70	512	436	61	22	5	4	11	4	172	239	271	30	124	73024	545				
	JUN	69	457	436	13	55	2	1	13	7	215	158	255	20	74	103585	595				
	JUL	73	472	482	37	17	1	0	10	17	236	229	283	21	141	111950	573				
	SEP	77	336	389	22	29	7	0	35	34	159	203	313	9	120	116043	584				
	OCT	78	382	443	45	29	2	1	4	12	171	172	290	14	126	132814	552				
	NOV	80	342	324	29	57	0	1	12	13	166	174	305	18	96	130612	572				
	DEC	79	291	370	31	23	4	0	26	28	184	183	267	9	77	132651	347				
2011	Total		4709	4659	325	320	44	32	190	192	2382	2267	3184	187	1294	1337865	6719				
	JAN	73	372	258	26	21	3	0	11	5	142	129	241	12	106	112686	1051				
	FEB	70	370	382	23	27	7	5	21	9	160	129	218	16	114	105857	385				
	MAR	66	292	347	21	14	2	2	17	24	133	172	289	26	138	111746	380				
	APR	66	410	235	16	24	5	5	9	2	137	106	224	12	108	107627	476				
	MAY	66	491	506	23	16	3	1	6	2	105	131	202	20	123	109802	525				
	JUN	69	326	377	11	19	8	6	5	8	110	89	140	11	111	108849	1267				
	JUL	66	237	276	9	14	3	2	5	2	97	103	167	13	102	114195	278				
	AUG	62	313	288	6	9	6	4	23	5	83	97	169	11	112	110908	297				
	SEP	61	252	256	1	5	5	2	4	1	81	77	149	11	89	106114	831				
	OCT	62	326	265	9	3	7	6	2	19	94	82	151	8	105	108833	394				
	NOV	56	271	323	5	8	6	6	2	4	109	97	139	10	119	120586	290				
	DEC	57	322	260	4	8	8	5	9	3	122	81	104	9	78	107240	360				
2012	Total		3982	3773	154	168	63	44	114	84	1373	1293	2193	159	1305	1324443	6534				
	JAN	53	538	331	6	0	3	5	6	8	176	124	142	9	108	NA	474				
	FEB	56	255	455	9	5	2	3	4	11	80	141	136	7	102	NA	27				
2013	Total		793	786	15	5	5	8	10	19	256	265	278	16	210	0	501				

Apvd = Approved, Rcvd = Received, Ind = Individual, Blnk = Blanket, Apps = Application for Hearing, NDAV = Notice of Alleged Violation, ACC = Administrative Order of Consent, DFV = Order Finding Violation, Cnplt = Complaint, Comp = Completed



Colorado Oil Gas Conservation Commission Monthly Statistics

YEAR	MO	Operators		Release		Bonds		Claim		Hearings		Violations		Remediation		Inspections				
		New	Inactive	Ind.	Blntk	Ind.	Blntk	Replace	Ind.	Blntk	Apps.	Order	NOAV	AOC	OFV	Cmplt	Spills	Rcvd	Comp	Wells
2010	Total	46	33	38	40	74	0	1	155	136	319	10	3	218	493	511	382	17075		
	JAN	1	2	3	1	4	0	0	16	15	43	3	2	33	40	47	45	1316		
	FEB	1	1	9	4	6	0	0	16	15	7	0	1	40	52	48	33	1591		
	MAR	2	3	6	3	9	0	0	NA	NA	31	NA	NA	33	48	59	27	1675		
	APR	2	0	3	2	1	0	0	24	24	8	0	0	10	52	38	61	959		
	MAY	3	0	5	2	4	0	0	77	65	16	2	5	26	31	33	51	1577		
	JUN	2	2	2	2	0	3	0	51	58	30	1	4	14	38	53	25	1099		
	JUL	3	6	3	6	3	1	0	NA	NA	29	NA	NA	13	39	92	20	518		
	AUG	2	3	12	7	2	0	1	68	54	26	2	2	20	54	106	56	1032		
	SEP	5	1	7	5	2	0	0	44	41	4	2	4	17	46	56	66	690		
	OCT	4	2	12	6	7	0	3	57	45	9	0	0	15	38	102	28	636		
	NOV	4	9	15	4	1	0	0	NA	NA	15	NA	NA	16	31	70	58	739		
	DEC	4	2	2	2	4	0	0	50	32	12	0	1	13	58	22	66	562		
2011	Total	33	31	79	44	43	4	4	403	349	230	10	19	250	527	726	536	12394		
	JAN	3	3	7	5	1	1	0	70	72	18	1	0	27	35	68	23	998		
	FEB	6	9	8	5	0	0	0	NA	NA	10	NA	NA	24	40	85	36	1998		
	MAR	4	1	7	3	9	0	0	44	38	19	0	0	23	38	63	61	2203		
	APR	4	2	10	3	2	0	0	80	59	11	0	0	19	35	26	99	1701		
	MAY	3	1	4	0	3	0	0	43	50	14	2	0	23	32	27	122	2621		
	JUN	3	4	3	3	4	0	0	NA	NA	5	NA	NA	35	39	46	98	1432		
	JUL	5	0	1	4	5	0	0	63	50	15	0	0	16	24	45	33	1319		
	AUG	6	5	2	8	0	1	0	67	54	24	3	2	21	28	127	33	1898		
	SEP	0	4	4	5	2	1	0	NA	NA	5	NA	NA	14	13	30	36	1136		
	OCT	1	2	9	1	0	0	0	30	36	6	1	0	13	44	116	37	1406		
	NOV	6	4	12	8	7	0	0	85	37	16	2	0	10	44	26	44	1320		
	DEC	6	2	3	1	0	0	0	NA	NA	14	NA	NA	19	30	31	19	1046		
2012	Total	47	37	70	46	33	3	0	482	396	157	9	2	244	402	690	641	19078		
	JAN	3	5	12	2	0	0	0	48	75	15	4	0	21	40	30	45	1669		
	FEB	4	2	6	3	2	0	0	41	35	11	2	0	25	30	36	91	1029		
2013	Total	7	7	18	5	2	0	0	89	110	26	6	0	46	70	66	136	2698		

Apvd = Approved, Rcvd = Received, Ind = Individual, Blntk = Blanket, Apps = Application for Hearing, NOAV = Notice of Alleged Violation, AOC = Administrative Order of Consent, OFV = Order Finding Violation, Cmplt = Compliant, Comp = Completed