



Staff Report

May 6, 2013

TOP STORIES

Call for Nominations for the 2012 Outstanding Oil and Gas Operations Awards. Nominations are due on May 17, 2013. There are a number of categories including, but not limited to, Exploration, Water Quality Protection, Enhanced Recovery, Noise Impact Mitigation, Horizontal Drilling, E & P Waste management, Local Government Coordination, Environmental Protection, Community Relations and many more. Any interested stakeholder may nominate a 2012 Outstanding Oil and Gas Operation

New Setback Rules effective August 1, 2013

On February 11, 2013, the Commission adopted the long-awaited revised Setback Rules. The Commission increased the existing setback distances of 350 feet in High Density Areas and 150 feet elsewhere to a uniform 500 feet statewide, and imposed technically advanced best management practices and protective measures to eliminate, minimize or mitigate potential nuisances and other adverse impacts for all Oil and Gas Locations within 1,000 feet of occupied buildings. In addition, Oil and Gas Locations may not be located within 1,000 feet of specified "High Occupancy Buildings," including schools, day care centers, hospitals, nursing homes, and correctional facilities, without Commission approval following a public hearing. Variance approval will be contingent on extensive mitigation measures.

The Commission also has adopted Rules that will enhance notice to and communication with Building Unit owners within 1,000 feet of oil and gas operations, increasing opportunities for local government representatives, including Local Governmental Designees ("LGDs"), to review and comment on new Oil and Gas Locations proposed within their jurisdictions.

For more information, the Rules are available at

www.cogcc.state.co.us under Hot Topics and Rulemaking to consider Statewide Setbacks. The Rules have been submitted to the Secretary of State for publication.

New Groundwater Rules

On May 1, 2013, the Commission's Rules requiring pre- and post- drilling groundwater sampling became effective. The purpose of the Rules is to protect and preserve Colorado's groundwater resources, detect potential contamination and inform all stakeholders of groundwater quality both before and after oil and gas development. The Rules require collection of baseline water quality data before oil and gas development, and after drilling and completion operations. All water quality data generated under the rule will be publicly available. For additional information on the Rule and the water quality data, visit www.cogcc.state.co.us under Hot Topics.

Staff Training

US EPA Hydraulic Fracture Study

On April 16 and 17, Engineering Manager Stuart Ellsworth attended the *US EPA HF Technical Workshop on Well Construction Operation and Subsurface Modeling* at the EPA Research Triangle Park Campus, Research Triangle Park, North Carolina. Approximately 60 industry, consultants and regulatory agencies were invited to discuss how well construction and subsurface modeling relate to aquifer protection and hydraulic fracturing.

Visible Emission Training

COGCC field inspectors in the Northeast and South Regions have completed a Visible Emission Training program and will become certified in estimating opacity. Opacity is a standard applied to certain air pollution permits.



This training and certification will increase the field inspectors' ability to identify air pollution control issues and providing curate data to the Colorado Department of Public Health and Environment - Air Pollution Control Division (CDPHE-ACPD) when a potential issue is observed.

◆ Local Government Liaison (LGL) Program Update

Local Government Liaisons (LGLs) Nancy Prince and Marc Morton and Hearings Manager Robert Frick are following up on trainings offered in February and March 2013 by providing five additional Local Government Designee (LGD) training sessions this summer and fall at locations throughout Colorado.

The day-long class provides information on the roles, responsibilities, and tools available to the LGD. This includes a general overview of oil and gas exploration and development and COGCC regulations and hands on use of COGCC online database, maps and website applications, and e-forms. Training emphasizes how LGDs, their staff, and constituents and the public can work with COGCC and operators to minimize impact to local communities. The training also provides a summary of available opportunities for local government and the public to engage with COGCC staff and operators concerning oil and gas operations.

Staff from participating local governments, LGDs, their colleagues, and others are encouraged to attend. Local governments who are not presently participating in the LGD program are also encouraged to attend to learn more about how the program can support cooperation between the state and the local governments in regulating oil and gas exploration and production activities.

The purposes of the training sessions are: 1) to update LGDs on the status of rulemaking changes; 2) to provide LGDs with a refresher and update on their roles, responsibilities, and mechanisms for involvement and comment in the permitting process; 3) to provide an overview of COGCC staff roles, the COGCC website and its applications; 4) to provide an overview

of the COGCC's regulatory authority; 5) to provide a summary of opportunities for public involvement; and 6) to provide information and get feedback regarding local government's role the regulation of oil and gas operations.

Scheduled LGD training sessions now include:

Durango: Thursday, May 23
 Sterling: Tuesday, July 23
 Denver: Wednesday, August 21
 Glenwood Springs: Tuesday, September 24
 Lamar: Tuesday; November 12

To register for one of the trainings or get more information, please contact either Marc Morton or Nancy Prince.

Development continues on an LGD training manual. The first issue of a quarterly newsletter for local governments will be ready for distribution soon. The newsletter is planned to be a forum for information sharing between COGCC staff and local governments on topics of mutual interest.

In addition to preparing for and conducting LGD training, the LGLs continue to provide valuable service, support, and outreach to inquiries and information requests from local government staff, the public, and operators. The LGLs consult regularly with various state and local government agencies, operators, non-governmental agencies, the public, and others. The LGLs recently consulted with staff from a number of cities including: Colorado Springs, Fort Collins, Loveland, and Lafayette, as well as Arapahoe County, Elbert County, El Paso County, Rio Grande County, Weld County, and Broomfield County.

To stay current regarding the initiatives concerning local government regulation of oil and gas operations, the LGLs make it a priority to attend as many city or county local government meetings concerning the oil and gas industry as possible. Contact Marc Morton at 303-894-2100 x5132 or marc.morton@state.co.us, or Nancy Prince at 303-894-2100 x5103 or nancy.prince@state.co.us, if you are interested in taking part in a future training.



A list of other LGL outreach activities is included in the Public Outreach section listed on the next page.

Public Outreach

➤ Outreach by Director and other Staff Members

- On March 21, Margaret Ash, Field Inspection Manager, provided a briefing to the Colorado Department of Public Health and Environment - Air Pollution Control Division (ACPD). The briefing included a description of the organization of the COGCC, the staff and mission of the COGCC, a brief overview of the lifecycle of oil and gas development, and the interplay between COGCC and ACPD.
- On March 23, David Andrews, Western Colorado Engineering Supervisor, gave a presentation at the 2013 Spring Meeting of Club 20, an organization of counties, communities, tribes, businesses, individuals and associations in Western Colorado, at Colorado Mesa University in Grand Junction, CO. The presentation included a summary of COGCC's engineering and environmental rules related to hydraulic fracturing.
- On March 27, Director Matt Lepore met with Pitkin County Board of Commissioners and Planning Staff to discuss about the overview of the COGCC and upcoming new groundwater and setback rules and about the role of the Local Governmental Liaisons with the county. Director Lepore also discussed the COGCC's role in monitoring and resolving the plume of hydrocarbons in Parachute Creek.
- On April 4, Director Lepore spoke at the Garfield County Energy Advisory Board at the Rifle Branch Library in Rifle, Colorado.
- On April 4, Arthur Koepsell, Environmental Data Analyst, and Alex Fischer, Western Colorado Environmental Supervisor, provided an overview of the statewide groundwater baseline sampling and monitoring (Rule 609) to Operators at the Garfield County (GarCo) Task Force meeting in Battlement Mesa.
- On April 10, James Milne, Environmental Manager, participated as faculty at the Colorado Bar Association, Continuing Legal Education class on Meaningful Water Quality Sampling *vis-a-vis* Oil and Gas Drilling. The presentation was related to the new groundwater sampling rules and aquifer protection.
- On April 10, Margaret Ash, Mike Leonard, Southern Inspection Supervisor, Shaun Kellerby, Northwest Inspection Supervisor, and Jim Precup, Northeast Inspection Supervisor, attended the monthly Operators Environmental Safety and Health meeting. An overview of the field inspection program and the revision to the field inspection form were presented, followed by a question and answer session.
- On April 16, Greg Deranleau, Oil and Gas Location Assessment Supervisor, presented a brief COGCC Regulatory Overview to the Broomfield City Council. Mr. Deranleau answered Council Members' questions during a 3-hour Study Session. Other panelists included Gordon Pierce - Colorado Department of Public Health and Environment, Air Pollution Control Division (CDPHE-APCD), Geoff Wilson, Colorado Municipal League, and Ben Doyle, Boulder County Attorney's Office
- On April 16 and 17, Stuart Ellsworth, Engineering Manager, presented a summary of Colorado's regulator rules, policies and procedures related to well construction and verification of aquifer protections in Durham, North Carolina. The class was focused on Hydraulic Fracturing EPA Well Construction/Operation and Subsurface
- On April 17, Jim Milne and Bob Chesson, Northeast Environmental Protection Specialist, gave a lunchtime presentation to the Colorado Association of Environmental Professionals at the COGCC offices regarding the new groundwater sampling rules. Approximately 50 environmental scientists were present at the meeting.
- On April 17, Jim Milne and Bob Frick represented the COGCC during an evening public



meeting of the Anthem Highlands Homeowners Association. A representative from Broomfield County and the Presidents of Sovereign Energy and Peterson Energy were also in attendance. The topic was about proposed new directional well near the Anthem Highlands community. A list of public questions regarding the technology, regulations, and potential health impacts were answered, following short presentations by the Operator (Sovereign), Broomfield County, and the COGCC .

- On April 18, Karen Spray, Southwest Environmental Protection Specialist, and Mike Morton, Local Government Liaison, attended the GORT/Southwest Colorado Oil and Gas Stakeholders meeting in Durango, Colorado at the La Plata County Fairgrounds in Durango, Colorado.
- On April 18, Robert Chesson and Arthur Koespell presented at the Rocky Mountain Environmental Health and Safety Peer Group
- On April 20, Greg Deranleau presented a brief COGCC Regulatory Overview at a Town Hall Meeting in Golden, hosted by State Representative Sue Schafer and State Senator Jeanne Nicholson. The town hall was moderated by the League of Women Voters and focused on oil and gas drilling. Audience questions were answered by Mr. Deranleau, Jim Cole from COGA, and Matt Sura, a local attorney representing surface land owners.
- On April 23, Stuart Ellsworth met with Douglas County regarding Rule 317 and Rule 317A regarding aquifer coverage and well construction.
- On April 24, Margaret Ash and Mike Leonard gave a series of presentation at the DJ-Niobrara Safety Conference and Expo. Ms. Ash provided discussion of COGCC stormwater and reclamation rules and an overview of the Field Inspection program and Mr. Leonard presented on Oil and Gas for Emergency Responders.
- On April 25, Peter Gintautas, Southeast Environmental Protection Specialist, participated

in the Arkansas River Water Forum and Roundtable in Walsenburg, CO. His presentation in the Water and Energy session focused on what COGCC rules and practices are central to protecting groundwater resources during exploration and development of oil and gas resources.

- On April 25, James Milne and Chris Eisinger, Colorado Geological Survey, presented at the Denver Chapter of the Society of Independent Professional Earth Scientists (SIPES) about trends in the Niobrara play in the State of Colorado.
 - On April 25, Thom Kerr, Permitting and Technical Manager, presented at the Oil and Gas Workshop regarding the role of COGCC, projected future of oil and gas production in Weld County, the new setback requirements, known environmental impacts of oil and gas activity and/or reclamation, and Groundwater sampling requirements
- *Outreach by COGCC Local Government Liaisons (LGLs)*
- On March 7, Marc Morton attended the monthly Garfield County Energy Advisory Board (EAB)/public meeting in Rifle.
 - On March 12, Nancy Prince attended the Colorado Springs City Council second reading of rules governing oil and gas exploration and production activity. The City was considering the proposed regulations for oil and gas drilling within the city limits. The measure was defeated with a tie vote. The rules may be addressed again once the new Council is in place following April 2 elections.
 - On March 13, Nancy Prince attended the regularly scheduled meeting of the Aurora Oil and Gas Committee. Representatives of ConocoPhillips and Geokinetics discussed their respective future plans for the area.
 - On March 26, Nancy Prince attended a meeting of the Elbert County Oil and Gas Regulations and Memorandum of Understanding (MOU) Drafting Committee. She answered



questions about COGCC rules and local government's use of Best Management Practices (BMPs) to reflect operating conditions from MOUs with Operators in COGCC permit and location assessment applications.

- On March 27, Director Lepore, Dave Kubeczko, Oil and Gas Location Assessment Specialist, and Marc Morton, traveled to Aspen, CO and presented information to and fielded questions from the Pitkin County Board of County Commissioners, and met with Pitkin County staff regarding their concerns with proposed exploration on federal lands in the Thompson Divide area of Pitkin County.
- On April 2, Marc Morton attended a lecture given by Kirby Wynn, Garfield County Oil and Gas Liaison/Garfield County LGD, in Boulder, CO. The lecture was part of the continuing "FrackingSENSE" series hosted by Center of the American West, Colorado University Continuing Education, Boulder County, and the AirWaterGas Research Network. The lecture was titled "Garfield County's Lessons Learned about Oil and Gas Development: Building Relationships with Industry and the Community to Effectively Address Citizen Concerns."
- On April 3, Nancy Prince attended the regularly scheduled update meeting of the El Paso County LGD where she gave a brief overview of the new groundwater sampling and setback location rules. Ultra Petroleum and NexGen gave presentations on their plans for oil and gas exploration in El Paso County. Other attendees included two El Paso County Commissioners and other local government representatives.
- On April 10, Nancy Prince, Diana Burn, Eastern Colorado Engineering Supervisor, Margaret Ash and Jim Precup attended a community Open House sponsored by ConocoPhillips in Bennett, CO. There were eight information stations staffed by company personnel to discuss the plans for exploration and production in over 300,000 acres in four counties. Over 200 citizens, local elected

officials and industry representatives attended.

- On April 11, Nancy Prince, Greg Deranleau, and John Noto, Southern Location Specialist, attended the monthly meeting of the I-70 Regional Economic Advancement Partnership (REAP). Nancy gave a summary of the LGD program as part of a panel that included the LGDs from Arapahoe and Adams counties who described the county requirements for oil and gas activity.

REGIONAL ACTIVITIES

➤ NORTHWEST COLORADO

◆ Northwest Colorado Oil and Gas Forum

The Forum is an informal gathering of local, state, and federal government officials, oil and gas industry representatives, and citizens that have met regularly since 1989. The purpose of the Forum is to share information about oil and gas development in northwest Colorado and to make government officials and oil and gas industry representatives easily accessible to the public. Currently, the meetings are conducted once per quarter and are co-chaired by the COGCC Director Matt Lepore and Garfield County Commissioner Mike Samson.

The Forum met on Thursday, February 21, 2013, at Mesa State University in Grand Junction, Colorado. Chris Canfield presented a COGCC update on drilling statistics and trends. Director Lepore presented the new COGCC setback and groundwater rules.

The next meeting of the Forum is tentatively scheduled for Thursday, June 6, 2013, at 10:00 a.m. at the campus of Colorado Mountain College in Rifle, CO. All parties wishing to be placed on the meeting agenda, or added to the distribution list for announcements, should contact Chris Canfield at 970-625-2497 or via email at: chris.canfield@state.co.us.

◆ Project Rulison

Please note that the email for Project Rulison submittals has been changed to:



DNR_rulison.submittal@state.co.us

◆ Project Rio Blanco

Please note that the email for Project Rio Blanco submittals has been changed to:
DNR_rioblanco.submittal@state.co.us

➤ SOUTHWEST COLORADO

◆ Gas and Oil Regulatory Team (GORT) Meeting

The next GORT/Southwest Colorado Oil and Gas Stakeholders meeting is scheduled for Friday, July 19, 2013, from 8:30 a.m. to noon at the La Plata County Fairgrounds in Durango, Colorado. Please note that this is a Friday, rather than the normal Thursday meeting.

All parties wishing to be placed on the next meeting agenda should contact Karen Spray at: 970-259-1619 or karen.spray@state.co.us.

◆ Fruitland Formation Outcrop Mitigation and Monitoring Projects (4M Projects)

Fruitland Formation Outcrop - 4M Pilot Scale Mitigation Projects La Plata County. The South Fork Texas Creek (SFTC) system operated at 11.5 Kilowatts (kW) to 12 kW power generation and was functional 100% of the time for the period February 3, 2013 through March 2, 2013. An average of 5.4 kW per hour was returned to the grid during this period. Pine River continues to operate in a passive mode. General O&M continues at both locations.

◆ 4M Monitoring Wells La Plata and Archuleta Counties. There are 17 wells at 11 locations in the COGCC 4M monitoring program. Well pressures are monitored remotely via satellite telemetry with one or two maintenance visits per year, depending upon data received. The annual report on the status of the monitoring well system is in draft form and should be finalized by the contractor, Norwest Corporation, by mid-March 2013. Once finalized, the report will be posted on the COGCC webpage under Library, San Juan Basin, 4M Project Reports, 2012 4M Monitoring Report.

◆ Ongoing Investigation, Reclamation, and Mitigation of Residual Methane in the Vicinity of the Bryce 1-X Well Area, Bondad, Colorado

All four water wells were sampled on October 10, 2012. Analytical results show decreases in methane concentrations in the Fire Station and Middle water wells and slight increases in the North and South water wells. All concentrations remain below 10 mg/l and the general water quality is stable. The last sampling was completed on April 30, 2013. The results are anticipated by July 1, 2013.

➤ SOUTHEAST COLORADO

◆ U.S. EPA Raton Basin Hydraulic Fracturing Study - Las Animas and Huerfano Counties

As part of the retrospective study of possible impacts from well completions, a third round of sampling and analysis of groundwater from two areas in the Raton Basin was conducted during the week of November 5. COGCC staff, as well as contractors for Pioneer Natural Resources, collected split samples at many of the sites. The EPA released an interim progress report on the study in December, 2012. The EPA is expected to release the study in a draft for public and peer review in 2014. Ultimately, results from the study are intended to inform the public and provide policymakers at all levels with high-quality scientific knowledge that can be used in decision-making. For more information on the EPA hydraulic study, go to <http://www.epa.gov/hfstudy/>

VARIANCES

On March 5, 2013, Bill Barrett Corporation (BBC) submitted a Sundry Notice for a Rule 502.b Variance Request relating to Rule 326.b. (1). BBC requested a deferment until October 2013 in plugging the Lovely #1 Well (API No. 05-123-12684) in Weld County. COGCC staff contacted BBC in July 2012 to have the well either produce, complete and pass a Mechanical Integrity Test (MIT), or plugged and abandoned under Rule 326. BBC chose to plug and abandon the well and submitted a Form 6-Notice of Intent to Abandon (NOIA). The Form 6 was approved on August 17, 2012. BBC then failed to



complete the work within the six months before the NOIA expired and while the field in which the well is located was idle. On March 6, 2013, COGCC granted the 502.b Variance because the surface owner informed the COGCC staff that she has set the field up for a hay crop and does not want the field disturbed until the final crop of the season is harvested at the end of the summer.

On March 14, 2013, approval was granted for a Rule 502.b Variance Request by **Encana Oil & Gas (USA) Inc.** ("Encana") to delay plugging and abandonment of their Douglas Creek Unit #59 gas well (API No. 05-103-09683) until late in the second quarter of 2013. The well is located in the NW $\frac{1}{4}$ SW $\frac{1}{4}$ of Section 6, Township 3 South, Range 101 West in Rio Blanco County. In late July 2012, Encana detected production casing leak(s) above 4376'. Rule 326.d requires that such leaks be either repaired or the well plugged and abandoned within six months. Encana was not able to acquire and schedule a rig in time to beat the winter season when roads close in the area. There is a bridge plug set at 4408' above the perforations at 4434'-5180' with additional bridge plugs below between subintervals. These bridge plugs prevent migration of gas or fluids up the production casing. Encana states that all groundwater aquifers are behind the surface casing which extends down to 225'. The local topography and well construction suggest that surface and groundwater should be adequately protected behind the surface casing. The production casing is cemented up to 630' as confirmed by a Cement Bond Log. The production casing is uncemented from 630' up through the surface casing shoe at 225'. Approval was made conditional upon filing of a Form 6-Notice of Intent to Abandon by April 30, 2013.

On March 21, 2013, approval was granted for a Rule 502.b Variance Request by **Encana Oil & Gas (USA) Inc.** ("Encana") to delay plugging and abandonment of their Douglas Pass Unit #7704 gas well (API No. 05-045-06217) until late in the second quarter of 2013. The well is located in the NE $\frac{1}{4}$ SW $\frac{1}{4}$ of Section 34, Township 5 South, Range 102W in Garfield County. In late July 2012, Encana detected production casing leaks between 1780' and 6805'. Rule

326.d requires that such leaks be either repaired or the well plugged and abandoned within six months. Encana was not able to acquire and schedule a rig in time to beat the winter season when roads close in the area. Surface and groundwater are protected by surface (to 404') and intermediate casing strings (to 3476'). Approval was made conditional upon filing a Form 6-Notice of Intent to Abandon by April 30, 2013.

On April 1, 2013, approval was granted for a Rule 502.b Variance Request by **Quicksilver Resources Inc.** ("Quicksilver") (API No. 05-081-05352) to delay plugging and abandonment of the Alpha State #1-16 oil well until September, 2013. The well is located in the SE $\frac{1}{4}$ SE $\frac{1}{4}$ of Section 16, Township 7 North, Range 93 West in Moffat County. Quicksilver was initially contacted about the well in June 2012 and required to either to produce it, get it to pass a Mechanical Integrity Test (MIT), or plug and abandon the well under Rule 326. As a result of a communication breakdown between Quicksilver's Regulatory Department and COGCC Field Operations staff, the well was not addressed in the time required. A Notice of Alleged Violation was issued in February 2013 to have the well produced, pass an MIT, or be plugged and abandoned. At this time, the well cannot be accessed because of Bureau of Land Management road damage restrictions and wildlife stipulations for elk and other large game. Quicksilver requested a delay in plugging of the well until September 2013 when road conditions are acceptable and the wildlife stipulations have expired. Groundwater is protected by two casing strings: a 13-3/8" surface casing set at 800 feet-cemented to surface and an intermediate 9-5/8" string set at 4477 feet and cemented to 2981'. The closest water wells (2) are approximately 1.3 miles away. Both wells are less than 200' deep. It is anticipated that groundwater will be adequately protected behind the surface casing until the well can be plugged. A Form 6-Notice of Intent to Abandon was filed and approved on March 28, 2013.

On April 1, 2013 approval was granted for a Rule 502.b Variance Request by **Quicksilver Resources Inc.** ("Quicksilver") (API No. 05-107-



05056) to delay plugging and abandonment of the Grassy Creek State #1 oil well until September, 2013. The well is located in the NW¼ NW¼ of Section 36, Township 6 North, Range 87 West in Routt County. Quicksilver was initially contacted about the well in June 2012 and required to either to produce it, get it to pass a Mechanical Integrity Test (MIT), or plug and abandon the well. As a result of a communication breakdown between Quicksilver's Regulatory Department and COGCC Field Operations staff, the well was not addressed in the time required. A Notice of Alleged Violation was issued in February 2013 to have the well produced, pass a mechanical integrity test, or be plugged and abandoned. At this time, the well cannot be accessed because of road conditions and Colorado Parks and Wildlife stipulations (road closure from December 1 to April 15). Quicksilver requested a delay in plugging of the well until September 2013 when road conditions are acceptable and the Wildlife stipulations have expired. Groundwater is protected by 10-3/4" surface casing set at 265 feet and cemented to surface and a 7" production string. The closest water well is approximately 1.3 miles away to the northwest updip (but downhill) from the Grassy Creek State #1 in the Williams Fork Formation. The Grassy Creek State is spud in an anticlinal structure in the Iles Formation, the Williams Fork has been eroded. It is anticipated that groundwater will be adequately protected until the well can be plugged. A Form 6-Notice of Intent to Abandon was filed and approved on March 23, 2013.

ORGANIZATION

New Environmental Protection Specialist

The COGCC is pleased to announce that Carlos Lujan has joined the Environmental Group of COGCC. Carlos will be based out of the Rifle office filling the vacant Environmental Protection Specialist position. He began working and training out of the Denver office on April 1, 2013, and will be relocating to Rifle. Over the past three years, Carlos has provided support to the Environmental Group reviewing, evaluating pit closures and remediation work plans, focusing mainly on the backlog of work. Carlos is a Civil Engineer with graduate degrees in

Geohydrology bringing more than 30 years of professional experience in the fields of groundwater hydrology and environmental sciences.

New Northeast Field Inspector

Randell Johnson has been hired as a field inspector in the Northeast region effective April 1, 2013. His work area includes eastern Adams and Arapahoe Counties long with a portion of Southeastern Weld County. Randell brings more than 30 years of oilfield experience to the job including lease operations, well servicing and gas plant process operations. Randell reports to the Northeast Inspection Supervisor Jim Precup and works out of Brighton, Colorado.

Updated Regional Assignments

Oil and Gas Location assessment regional assignments were updated in March to better reflect regional permitting trends. Southeast Regional Oil and Gas Location Assessment (OGLA) Specialist John Noto's area was expanded to include Arapahoe, Adams, Denver, Washington, Yuma and a portion of Weld Counties. The balance of the Greater Wattenberg Area (GWA) was more evenly divided between Northeast Regional OGLA Specialists Rick Allison and Rob Young. On April 10, 2013, COGCC staff met with Colorado Parks and Wildlife Northeast Region Assistant Manager, Kathi Green, and new Northeast Energy Liaison, Tom Schneider, to coordinate implementation of HB 07-1298 in the region.

An organizational chart can be found on pages 12-14. For contact information, please go to our homepage, and then "Staff Contact Information."

PLANNING/ADMINISTRATION/OTHER

- ◆ Plugging and Reclaiming Abandoned Wells (PRAW) - Project Updates

The DeBeque Environmental and Reclamation Project involves the remediation of soils contaminated by salt water in the vicinity of the orphaned wells known as the Homestead #1 and



the Pasture #1 wells. Both sites are located in Mesa County on the NW edge of DeBeque, CO. Soil sampling and lab analysis is underway with a plan for remediation and reclamation to follow.

The Trinidad MGP #1, well plugging project is located in Las Animas County about 18 miles west of Trinidad, CO and is just north of highway 12. The well was drilled to a depth of 1605', targeting the Vermejo coal, and completed in late 1980. The original operator of the well was the City of Trinidad. In late 1984 the well was deemed uneconomical to produce and was plugged. The well was discovered to be leaking gas in 2008 and an attempt to re-plug the well was made with the final decision to extend the casing above ground level and vented to the atmosphere. Having new information on the well and a recent request by the new landowner to permanently plug it, the COGCC has submitted documentation to DNR Contractor to solicit competitive bids for another re-entry and plugging.

The Long Hollow Dam & Lake Project, located southwest of Durango, CO., is currently under construction. The custodian of this property is the Animas-La Plata Water Conservancy District and their construction contractor is Weeminuche Construction Authority. Construction crews discovered a leaking gas well located within the planned lake bed. The leaking gas well has been identified as the Bobby Taylor #1 Well (API #05-067-06115) ("Well") located in the SW¼ NW¼ of Section 33, Township 33 North, Range 12 West. The Well was drilled in late 1976 and plugged in 1977. The COGCC has successfully finished the task of re-entering, drilling out and re-plugging the well.

The PAST Project includes three leaking Plugged and Abandoned wells in need of re-entering and re-plugging. Two are located in Garfield County and one is in Mesa County. The combined estimated cost to re-plug all three wells is \$151,464. Documentation has been submitted to DNR-Contracting for competitive bid solicitation. Plans for Final plugging of the wells is in middle June of this year.

Page 15 contains a spreadsheet listing PRAW

projects that are either scheduled in process or completed as of April 17, 2013.

◆ June 2013 Hearing Docket

A docket for the June 2013 hearing will be available shortly after the May hearing. Hearing dockets are available on our website by clicking on "Hearings." Links to the notices and hearing applications are available from the Docket Number and Applicant, respectively. To sign up for e-mail notification of hearing notices and applications, please see the announcement and instructions on the homepage of the COGCC website: www.cogcc.state.co.us

◆ Colorado Oil and Gas Information System (COGIS) Projects, Updates and Changes

Environmental Database

During the past 18 months, the COGCC and the Ground Water Protection Council (GWPC) have been working together to develop a new Environmental Database that will contain the results from the Colorado Oil and Gas Association Voluntary Baseline Groundwater Quality Sampling program, along with other environmental data collected by the agency. The project included the development of a new relational database model that will allow the data to be accessible to the public from the COGCC website.

Other improvements include an Electronic Data Deliverable that allows industry to submit the results of the sampling directly to the COGCC, which can then process the information directly into the database. The application has many other features to help staff analyze the information and understand the lab results from the sampling. The interface will allow the public to view and download the results.

◆ Onsite Inspection Policy

The COGCC has received a total of 149 requests for onsite inspections to date under the Policy For Onsite Inspections On Lands Where The Surface Owner Is Not A Party To A Surface Use Agreement or Other Relevant Agreement (Effective for APDs submitted after February 15,



2005)(“Policy”).

Thirty-three onsite inspections have been conducted, while 99 requests for inspections have been withdrawn. Seventeen onsite inspections are pending and will be scheduled, if necessary, after the APD is received, or after issues related to local governmental designee consultation, location change, or surface use agreements are resolved.

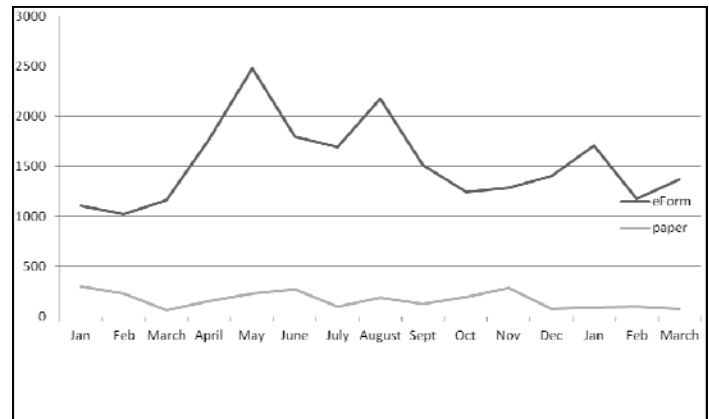
Of the 149 requests for onsite inspection, 80 were for locations in Weld County, 26 in Las Animas County, nine in Adams County, seven in La Plata County, five in Garfield County, four in Logan County, three each in Archuleta, Boulder, and Yuma Counties, two in Morgan and Lincoln Counties, and one each in Baca, Cheyenne, Kiowa, Larimer, and Washington Counties.

COGCC staff have attended on-site meetings to facilitate communication between the parties and to minimize impacts to the surface owner through voluntary measures implemented by the operator in instances where surface owners have requested Onsite Inspections beyond the ten-business-day window provided for in the Policy, and where there is a dispute between parties regarding the date of the Rule 306 consultation. Rule 306 requires that the surface owner shall have participated in a good faith consultation in a timely manner with the operator prior to the surface owner requesting an onsite inspection under the Policy.

In addition to the Onsite Inspection Policy, onsite inspections are being conducted in the San Juan Basin under Cause 112, Order Nos. 156 and 157. These are cases where an Onsite Inspection was required because an APD was submitted without a surface use agreement.

Electronic Form Submissions (eForm)

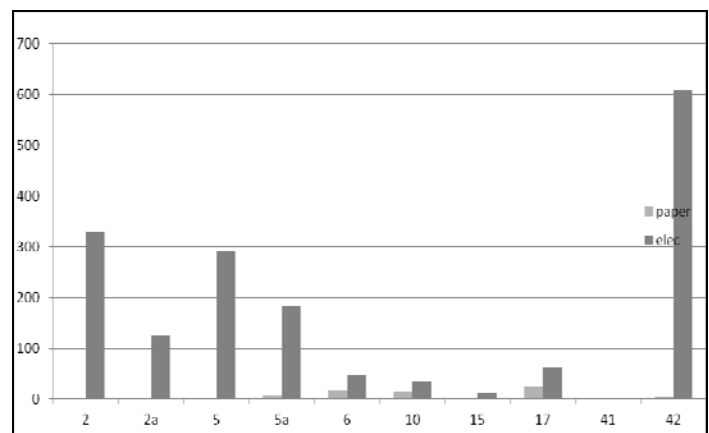
TOTAL ELECTRONIC FORM SUBMITTALS JANUARY 2012 - MARCH 2013



Forms currently available through eForm:

- Form 2 - Application for Permit to Drill
- Form 2A - Oil and Gas Location Assessment
- Form 4 - Sundry Notice
- Form 5 - Drilling Completion Report
- Form 5A - Completed Interval Report
- Form 6 - Well Abandonment Report
- Form 10 - Certification of Clearance/Change of Operator
- Form 15 - Earthen Pit Report/Permit
- Form 17 - Bradenhead Test Report
- Form 41 - Trade Secret Claim of Entitlement
- Form 42 - Notice of Notification (Notice of Hydraulic Fracturing)

Following is a breakdown by Form for the month of March:





The Form 4, Sundry Notice, was released in eForm the last week in April. The form was re-designed to add a number of new features and a new section for the Ground Water Sampling rules that went into effect on May 1. It is anticipated that the introduction of the Sundry Notice in eForm will result on a significant savings in staff time through a reduction of data entry. The COGCC currently receives an average of approximately 500 Sundry notices a month. The trend is within three months of introduction of a new eForm, upwards of 80% are filed electronically. Operator training for the new Sundry notice is planned for later in the month of May.

A big thank you goes out to the design staff development and testing which included Jane Stanczyk, Permitting Supervisor, Greg Deranleau, Oil and Gas Location Assessment Supervisor, Diana Burn, Eastern Colorado Engineering Supervisor, Arthur Koepsell, Environmental Data Analyst, and Application Developers Ken Robertson and Yihsin Lin. Without the long hours spent testing and fixing the bugs discovered during the testing, meeting the May 1 deadline would not have been possible.

COGCC staff is available to answer questions as needed for either the new eForm Form 4 or for the revised paper Form 4.

Form 15, Pit Permit and Report, is available in eForm and operators are encouraged to utilize the system to file this form. The form contains additional fields. The PDF version on the Forms page, <http://cogcc.state.co.us/Forms/forms.html>, is revised to reflect the changes that occurred from the release of the form in eForm.

As forms are released on eForm, updates to the PDF forms on our website will occur in tandem. These new versions of the PDF forms will reflect any changes that have taken place when forms are moved into eForm.

Along with the eForm system, a page is available where the operators can review all known bugs within the system and report any new ones they discover. Currently, there are 305 operators using eForm.

The public can make comments on all submitted Oil and Gas Location Assessment (OGLA) forms (Forms 2A) through the eForm system. This is accomplished by going to the COGCC website (<http://www.colorado.gov/cogcc>) and clicking on the menu option, "Permits", (or <http://cogcc.state.co.us/COGIS/DrillingPermits.asp>).

On the COGIS-Permits page, two search options are available for OGLA forms, "All Pending Location Assessments for" and "All Approved Location Assessments for." When the results are displayed for forms in process, the public can click on the document number, which logs the user onto the new eForm application. Once the page is displayed with the selected document, the user can select the Comment button to make a comment on that particular form. The public can use this same method to make comments on APDs (Form 2s).

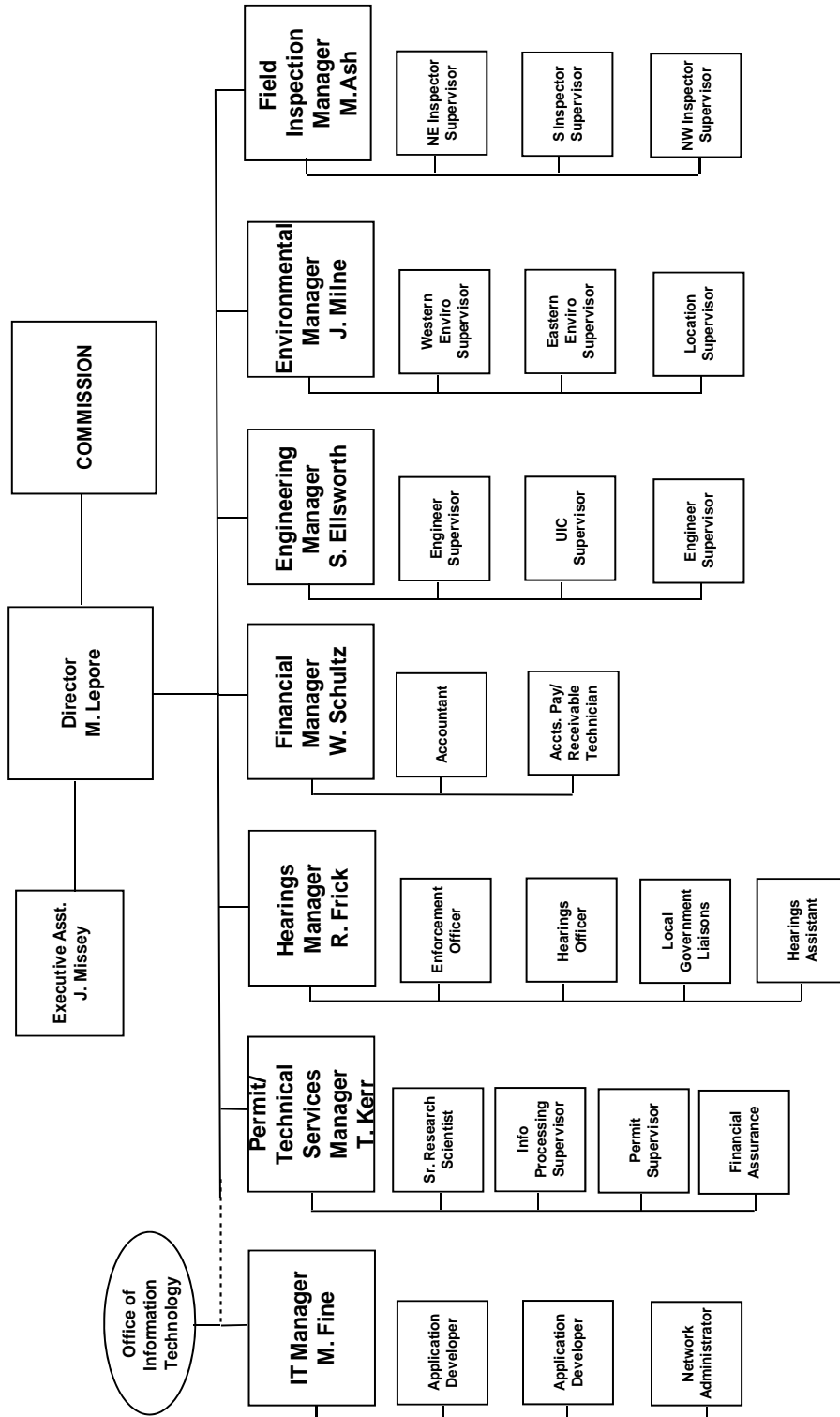
For any operator not currently enrolled in eForm, instructions for starting the process can be found at <http://cogcc.state.co.us/Announcements/COUAIInformation.pdf>.

COGCC GIS Online

An upgrade of the COGCC GIS Online interactive map is now available on the COGCC's website. Two new features are now available along with some minor changes. An Address Search button will zoom the map to the area of an input street address, city and zip code. The second new feature is an enhanced Print function. This will generate a PDF document which can be saved or printed. It allows choice of paper size, orientation, input of a legend and a map scale options.



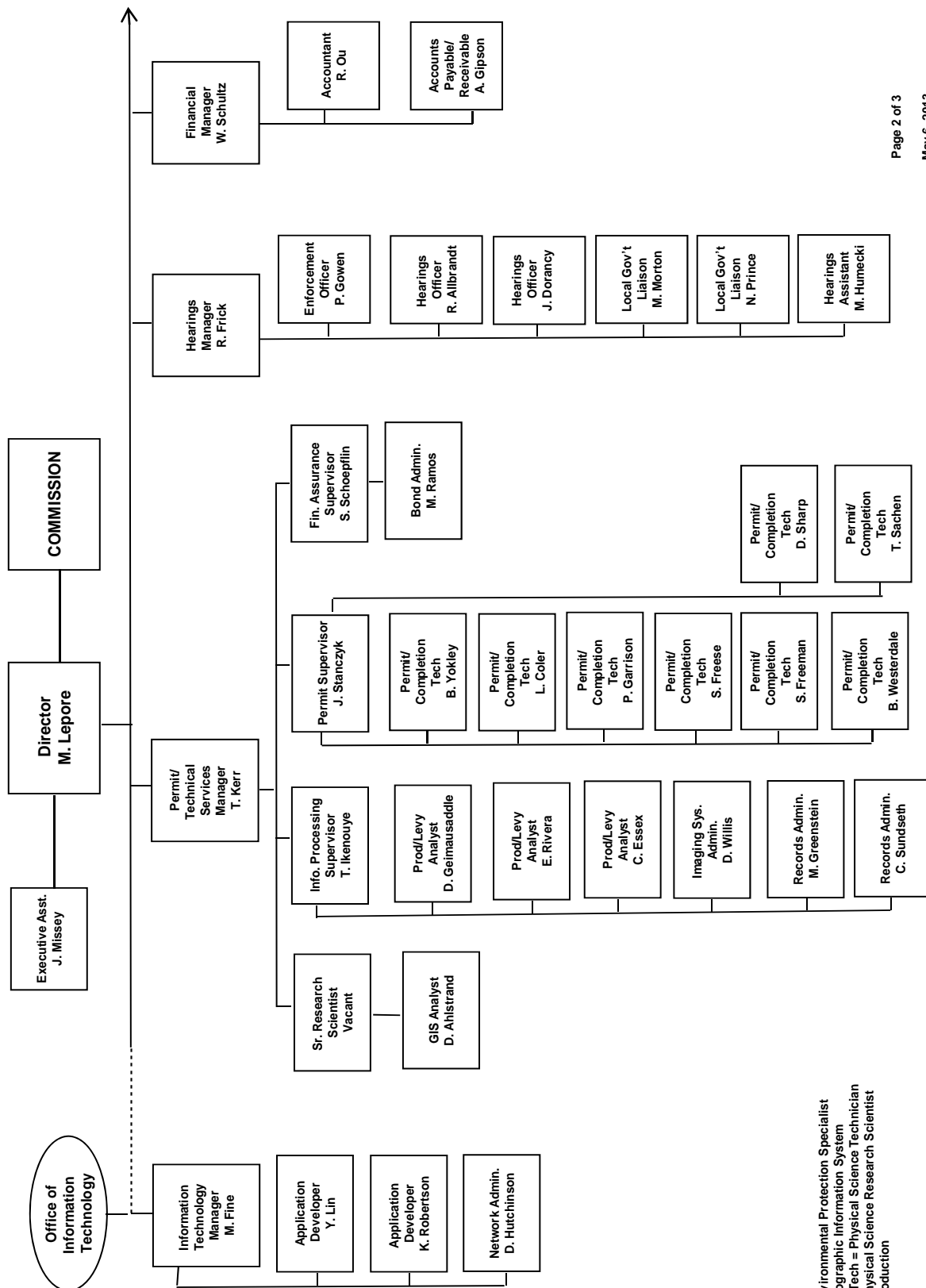
COLORADO OIL & GAS CONSERVATION COMMISSION



See the next two pages for details



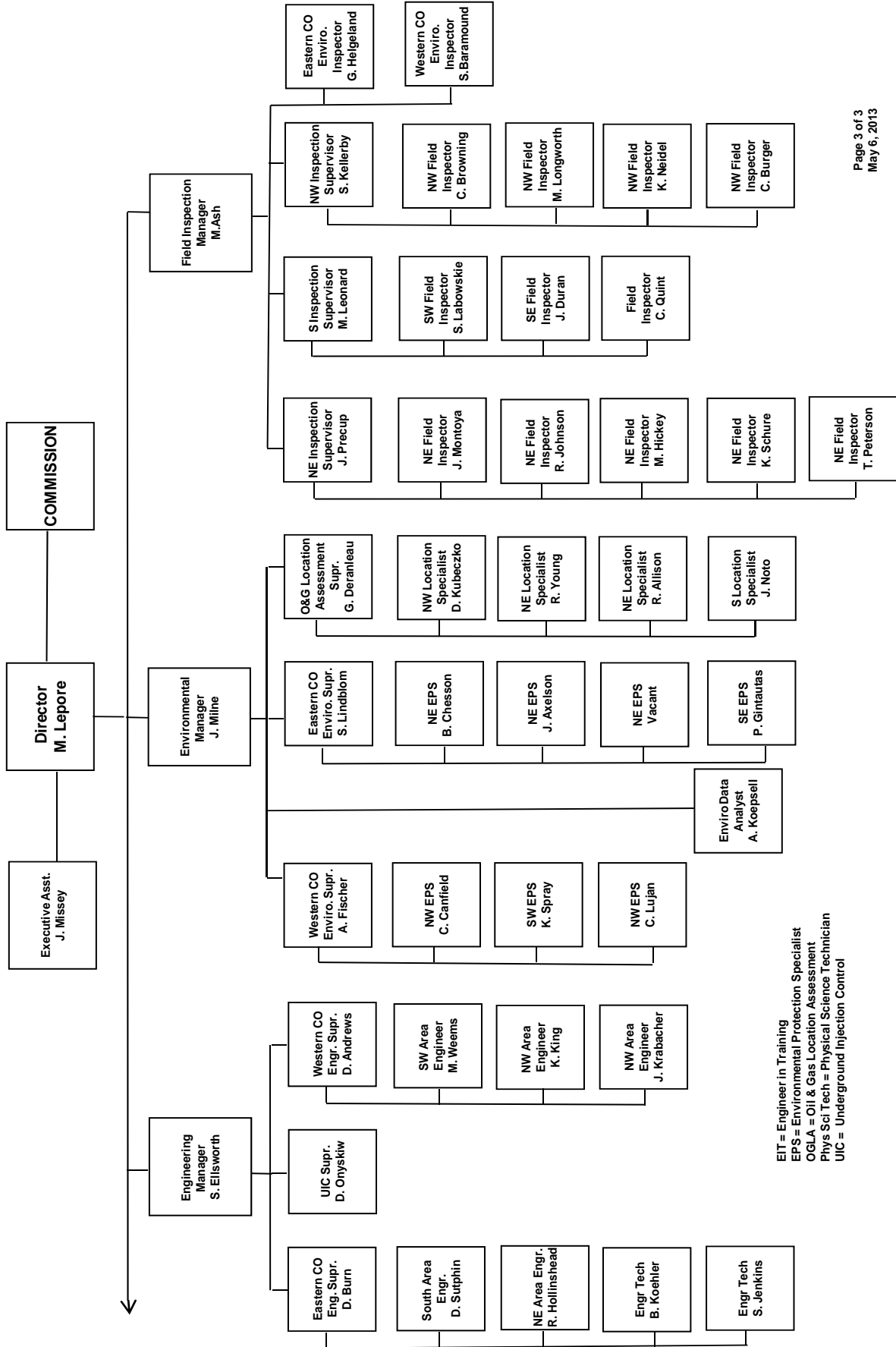
COLORADO OIL & GAS CONSERVATION COMMISSION ORGANIZATION



EPS = Environmental Protection Specialist
 GIS = Geographic Information System
 Phys/Sci Tech = Physical Science Technician
 PSRS = Physical Science Research Scientist
 Prod = Production



COLORADO OIL & GAS CONSERVATION COMMISSION ORGANIZATION



EIT = Engineer in Training
 EPS = Environmental Protection Specialist
 OGLA = Oil & Gas Location Assessment
 Phys Sci Tech = Physical Science Technician
 UIC = Underground Injection Control



PLUGGING, AND RECLAIMING ABANDONED WELLS PROJECTS FOR ORPHANED LOCATIONS

FISCAL YEAR 2012-2013

COUNTY	TYPE	PROJECT NAME	Acct Code	ESTIMATED TOTAL PROJECT COST			FY 2012-2013 YTD EXPENDITURES				
				BOND	PRAW	EMGY	TOTALS	BOND	PRAW	EMGY	TOTALS
TOTALS ==>				\$0	\$0	\$0	\$0	\$0	\$0	\$0	
IN PROGRESS											
COUNTY	TYPE	PROJECT NAME	Acct Code	BOND	PRAW	EMGY	TOTALS	BOND	PRAW	EMGY	TOTALS
MESA	REC/ENV	DeBeque-HOMESTEAD #1 & PASTURE #1 SALT REMEDIATION, RECLAMATION, & SOIL GAS SURVEYS	HSTD	\$0	\$30,000	\$0	\$30,000	\$0	\$3,656	\$0	\$3,656
LAS ANIMAS	PLUG	Trinidad MGP #1	TMGP	\$0	\$81,000	\$0	\$81,000				
MESA/Garfield	PLUG	PAST	PAST	\$0	\$151,464	\$0	\$151,464	\$0	\$0	\$0	\$0
TOTALS ==>				\$0	\$262,464	\$0	\$262,464	\$0	\$3,656	\$0	\$3,656
COMPLETED											
COUNTY	TYPE	PROJECT NAME		BOND	PRAW	EMGY	TOTALS	BOND	PRAW	EMGY	TOTALS
LA PLATA	PLUG	LONG HOLLOW DAM		\$0	\$114,800	\$0	\$114,800	\$0	\$88,526	\$0	\$88,526
MESA	REC	PASTURE #1		\$0	\$17,536	\$0	\$17,536	\$0	\$17,536	\$0	\$17,536
GARFIELD	REC	BISCUIT RANCH RECLAMATION DESIGN*		\$10,000	\$0	\$0	\$10,000	\$9,074	\$0	\$0	\$9,074
MOFFAT	PLUG	TATONKA: CULVERWELL 10-23-07-94 AND ELDON GERBER 07-24-07-92 PLUG & ABAND	TATO	\$30,000	\$31,800	\$0	\$61,800	\$30,000	\$700	\$0	\$30,700
LA PLATA	PLUG	LONG HOLLOW DAM		\$0	\$3,400	\$0	\$3,400	\$0	\$3,400	\$0	\$3,400
LA PLATA	REC	KEG #1 RECLAMATION		\$0	\$10,000	\$0	\$10,000	\$0	\$8,245	\$0	\$8,245
ARCHULETA	REC	BONE #1 RECLAMATION		\$0	\$5,000	\$0	\$5,000	\$0	\$7,225	\$0	\$7,225
ARCHULETA	PLUG	BONE #1 PLUG & ABAND		\$0	\$110,000	\$0	\$110,000	\$0	\$78,549	\$0	\$78,549
MOFFAT	REC	ELDON GERBER 07-24-07-92		\$0	\$4,960	\$0	\$4,960	\$0	\$4,960	\$0	\$4,960
GARFIELD	ENV	MULVIHILL 15-32D		\$0	\$810	\$0	\$810	\$0	\$810	\$0	\$810
FREMONT	PLUG	FREMONT CO ORPHANS, 2012	FMTI	\$0	\$53,410	\$0	\$53,410	\$0	\$60,630	\$0	\$60,630
TOTALS ==>				\$40,000	\$351,716	\$0	\$391,716	\$39,074	\$270,580	\$0	\$309,654
GRAND TOTALS ==>											
				BOND	PRAW	EMGY	TOTALS	BOND	PRAW	EMGY	TOTALS
				\$40,000	\$614,180	\$0	\$654,180	\$39,074	\$274,236	\$0	\$313,310

YTD Total PRAW Expenditures		
Budget Total	Spent	Remaining
\$445,000	(\$274,236)	\$170,764

Remaining PRAW Expenditures			
Project	PRAW Est	PRAW Spent	PRAW net
HSTD	\$30,000	-\$3,656	\$26,344
PAST-Recl	\$17,536	-\$17,536	\$0
PAST-Plug	\$151,464	\$0	\$151,464
MGP #1	\$81,000	\$0	\$81,000
SubTotals	\$280,000	-\$21,192	\$258,808
BONE #1			-\$85,774
Totals			\$173,034

*The original bond amount was \$25,000. \$9074 were spent in FYE2013 for the design work supervised by Mike Hickey. The balance of \$15,296 will be carried forward to FYE2014

Project Types: "PLUG" indicates plugging and abandonment, "REC" indicates reclamation, and "ENV" indicates environmental

EMGY: indicates funding by the *Emergency Response* line item

TBD: Cost estimates in process.

PRAW: indicates funding by the *Plugging and Reclaiming Abandoned Wells* line item

Updated: 04/17/2013

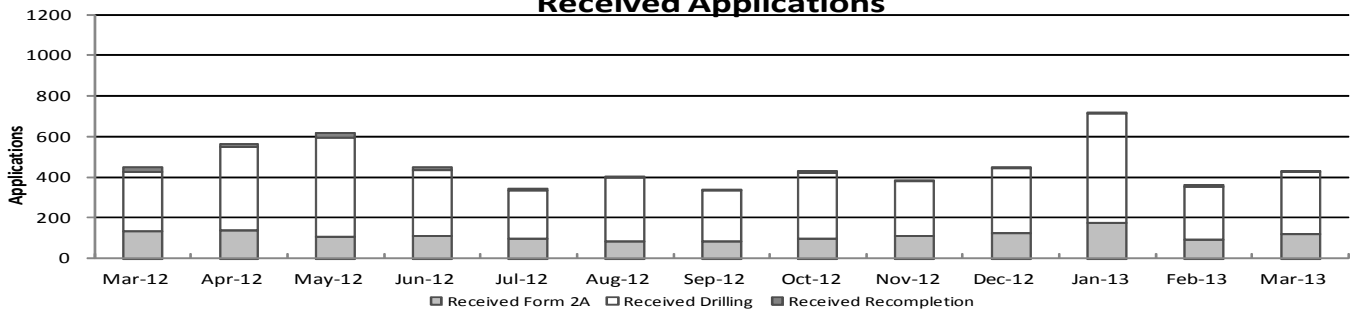


Colorado Oil & Gas Conservation Commission Monthly Permit Activity

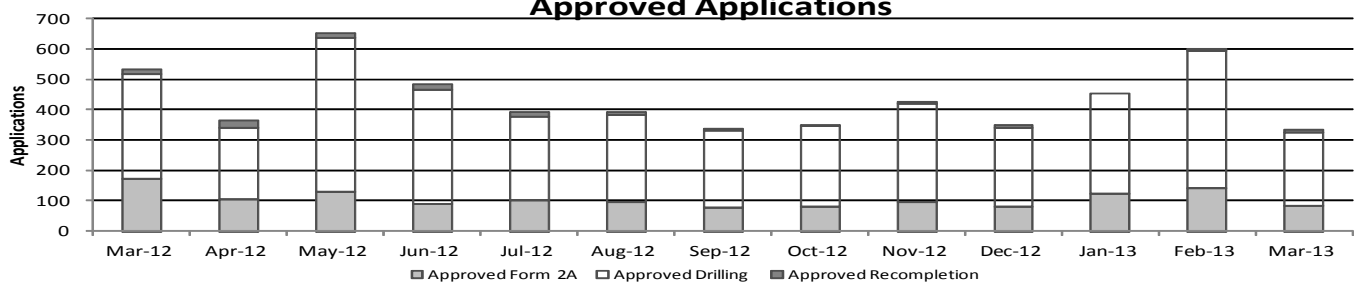
	Backlog	Received	Approved	Withdrawn	Rejected	Incomplete	In-Process	Remaining
Form2A								
Mar-12	195	133	172	5	0	32	119	151
Apr-12	151	137	106	1	0	48	133	181
May-12	181	105	131	6	0	51	98	149
Jun-12	149	110	89	2	0	54	114	168
Jul-12	168	97	103	4	0	51	107	158
Aug-12	158	83	97	6	0	54	84	138
Sep-12	138	81	77	5	0	47	90	137
Oct-12	137	94	82	8	0	30	110	141
Nov-12	141	109	97	13	0	19	112	140
Dec-12	140	122	81	4	0	35	124	177
Jan-13	177	176	124	12	0	34	183	217
Feb-13	217	91	141	8	0	34	125	159
Mar-13	159	121	84	1	0	33	162	195
Drilling								
Mar-12	394	292	347	13	0	103	223	326
Apr-12	326	410	235	1	0	127	373	500
May-12	500	491	506	25	0	110	350	460
Jun-12	460	326	377	9	0	114	286	400
Jul-12	400	237	276	4	0	91	266	357
Aug-12	357	313	288	9	0	146	227	373
Sep-12	373	252	256	24	0	98	247	345
Oct-12	345	326	265	29	0	65	312	377
Nov-12	377	271	323	21	0	65	239	304
Dec-12	304	322	260	9	0	77	280	357
Jan-13	357	538	331	19	0	101	444	545
Feb-13	545	259	455	16	0	58	271	333
Mar-13	333	304	241	4	0	46	346	392
Recompletion								
Mar-12	21	21	14	0	0	5	23	28
Apr-12	28	16	24	3	0	6	10	17
May-12	17	23	16	0	0	6	18	24
Jun-12	24	11	19	0	0	3	13	16
Jul-12	16	9	14	0	0	3	8	11
Aug-12	11	6	9	0	0	1	7	8
Sep-12	8	1	5	2	0	0	2	2
Oct-12	2	9	3	0	0	0	8	8
Nov-12	8	5	8	0	0	0	5	5
Dec-12	5	4	8	1	0	0	0	0
Jan-13	0	6	0	0	0	0	4	6
Feb-13	6	10	5	0	0	0	11	11
Mar-13	11	5	9	0	0	1	6	7

Incomplete are permits that have missing or inaccurate data and cannot be approved.

Received Applications



Approved Applications



Backlog = Incomplete + In-process = Remaining permits from previous month



Colorado Oil and Gas Conservation Commission
 Status of Permit Applications Filed By Month
 April 26, 2013

Form 2A Location Assessment

Year	Month	Received	Approved	Withdrawn	In Process	Percent In Process	Median Days to Process	Less Than 30 Days	30 to 49 Days	Greater Than 50 Days
2010	Total	2520	2433	85	0			1559	662	212
2011	Total	2391	2298	89	4	0%		1416	620	262
2012	1	141	138	3	0	0%	33	92	27	19
2012	2	160	152	8	0	0%	31	118	26	8
2012	3	135	133	2	0	0%	41	80	25	28
2012	4	126	119	7	0	0%	38	77	25	17
2012	5	119	115	4	0	0%	38	63	28	24
2012	6	101	96	5	0	0%	41	32	44	20
2012	7	104	98	5	1	1%	40	41	43	14
2012	8	72	67	4	1	1%	36	33	22	12
2012	9	77	72	5	0	0%	37	28	34	10
2012	10	94	89	5	0	0%	39	31	40	18
2012	11	85	79	5	1	1%	36	52	15	12
2012	12	146	127	3	16	11%	38	59	49	19
2012	Total	1360	1285	56	19	1%		706	378	201
2013	1	177	159	12	6	3%	32	99	45	15
2013	2	91	77	5	9	10%	31	42	29	6
2013	3	131	62	3	66	50%	30	38	23	1
2013	4	142	1	3	138	97%	0	1	0	0
2013	Total	541	299	23	219	40%		180	97	22

Form 2 Application For Permit to Drill (APDs)

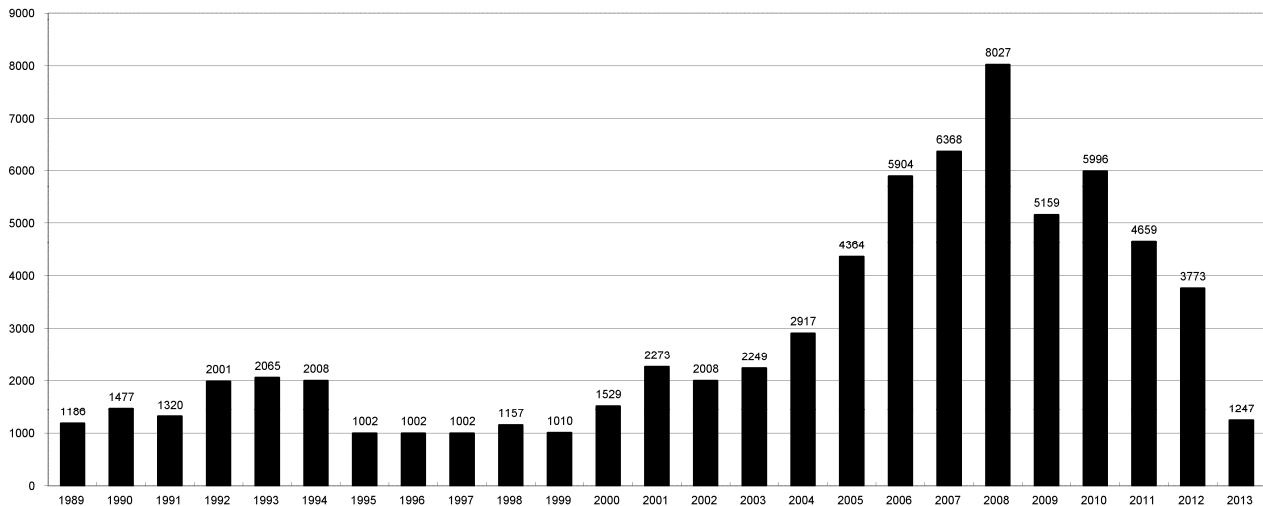
Year	Month	Received	Approved	Withdrawn	In Process	Percent In Process	Median Days to Process	Less Than 30 Days	30 to 49 Days	Greater Than 50 Days
2010	Total	5891	5746	144	0	0%		1760	2739	1744
2011	Total	4692	4557	128	5	0%		2723	1565	587
2012	1	368	361	7	0	0%	34	235	107	45
2012	2	371	360	11	0	0%	31	277	70	37
2012	3	284	279	5	0	0%	40	164	84	50
2012	4	418	405	13	0	0%	36	219	160	41
2012	5	509	491	18	0	0%	37	260	149	104
2012	6	280	277	3	0	0%	43	107	119	62
2012	7	281	274	6	1	0%	40	103	144	37
2012	8	282	262	20	0	0%	32	148	89	30
2012	9	212	192	20	0	0%	38	78	78	38
2012	10	355	349	5	1	0%	36	131	168	58
2012	11	244	228	14	2	1%	37	110	80	42
2012	12	351	333	9	9	3%	38	139	145	53
2012	Total	3955	3811	131	13	0%		1971	1393	597
2013	1	562	539	17	6	1%	35	278	179	83
2013	2	242	221	12	9	4%	34	78	126	30
2013	3	334	181	1	152	46%	29	117	59	9
2013	4	308	3	0	305	99%	14	3	0	0
2013	Total	1446	944	30	472	33%		476	364	122



COLORADO OIL AND GAS CONSERVATION COMMISSION
ANNUAL DRILLING PERMITS BY COUNTY

COUNTY	1988	1989	1990	1991	1992	1993	1994	1995	1996	1997	1998	1999	2000	2001	2002	2003	2004	2005	2006	2007	2008	2009	2010	2011	2012	current as of 4/26 2013	
ADAMS	46	34	44	53	92	58	137	34	9	33	24	19	38	28	9	26	39	34	37	89	51	35	21	8	40		
ARAPAHOE	5	5	15	14	11	4	20	12	2	9	1	2	0	2	1	2	5	7	11	10	10	10	8	23	35	8	
ARCHULETA	8	5	18	5	2	1		3		3			1	7	9	6	10	8	13	14	26	47	11	18	12	5	2
BACA	6	4	15	10	23	9	12	24	10	7	13	15	22	6	2	3	7	8	2	11	13	3	4	5	3		
BENT				1		2	2	4	2	5	3	5	2					5	3	8	1	1		5		2	
BOULDER	1		1	13	38	159	38	5	8	2	5		1	5	6	7	17	13	21	37	32	35	24	30	22		
BROOMFIELD															2	7			1	1	2	33	28	11	36		
CHEYENNE	203	149	102	93	71	58	48	55	43	31	41	7	3	3	3	3	3	10	21	15	33	12	13	16	31	16	
COSTILLA												1															
CROWLEY	1		1	1																							
DELTA	1	1	2												7	4	5	10	9	2			4	3	6		
DENVER										5	3	3		3					19	25	12						
DOLORES	2		4	1	2	1										1	1	1	6	10	24	21	8	8	13	2	
ELBERT	9	12	8	5	3		2	13	16	11	1		2						4			1		1	2		
EL PASO																						2	3	3	18		
FREMONT	9	5	6	7	1	2	2	1	2	1								1	3	2	4	14	13	22	14	2	
GARFIELD	19	66	111	36	18	56	143	78	109	141	95	130	213	353	362	567	796	1509	1845	2550	2888	1981	2037	1323	1046	309	
GRAND						1																					
GUNNISON			2	2		1									5	10	1	9	19	7	10	12	4	3	11	3	
HUERFANO	3	5	4	4	17	3	3	2	1	3	40	26	41	27	27		8	2			7		2	1	9		
JACKSON	3	1	4	6	2	2	3	2	2	6	3		34	18	21	9	14	6	8	5	27	19	9	18	5	2	
JEFFERSON	1		4	2		1		1	1	1		2	1							1	3	2					
KIOWA	15	39	40	46	28	28	21	26	13	17	10	2	11	18	2	4	2	1	11	9	26	7	16	17	17		
KIT CARSON	9	5	7	8	8	15	26	11	7	6	9	5				1	3	5	4	4	13	7	3	2	6		
LA PLATA	302	218	388	128	120	40	40	20	71	40	82	107	127	156	104	162	102	115	235	251	328	298	191	99	71		
LARIMER	4	4	3	6	13	7	3		1	3	1							1		5	46	12	41	8	13	1	
LAS ANIMAS	10	30	36			9	32	95	134	136	195	195	268	400	259	180	332	413	500	362	303	88	92	85	11	1	
LINCOLN	8	6	4	7	7	11	8	9	3	2			2	2	1	6	3	4	1	2	58	44	48	31	36	38	
LOGAN	18	21	23	13	14	30	15	13	6	12	7		4	7	3	3	6	13	17	14	5	9	17	8	27		
MESA	1	12	29	20	22	2	22	6	11	10	2	6	13	27	30	27	54	136	265	293	501	427	306	127	150	67	
MOFFAT	13	25	27	19	40	52	43	40	41	28	21	15	35	52	62	63	63	60	120	68	57	51	53	93	88	6	
MONTEZUMA	6	7	10	8	7	11	15	9	13	5	4	1	4		5	8	8	11	5	12	22	39	19	27	29		
MONTROSE										1					1	3	2	4	2	1	3	3	1	1	1	1	
MORGAN	34	27	36	13	10	11	19	12	10	11	10	12	9	9	2	7	9	7	3	6	2	1	6	13	5		
OTERO																											
PARK				1								1											3	4	1		
PHILLIPS			3		1	1								1	2		7	13	17	12	69	82	45	64	112	56	
PITKIN		1			2												1				1						
PROWERS	19	9	5	10	14	7	3	5	5	3	9	3	2	5	4		7	5	7	5	8	1	3	1			
RIO BLANCO	34	83	77	33	81	83	126	81	33	40	51	95	89	187	105	179	154	161	360	321	477	348	441	109	117	12	
RIO GRANDE	2	3	4	1			1							1	1						1	1				2	
ROUTT	4	3	12	4	2	3	1	2	1	1	1	4	20	13	1		4	6	9	8	4	2	3	10	4	4	
SAGUACHE	1								2												2	1	2				
SAN MIGUEL			2	2						1	1	4	2	11	13	27	18	42	45	35	23	20	13	10	2	1	
SEDGWICK					1			3		2							1	5	2	7	2	1	19	11	12	2	
WASHINGTON	40	29	23	28	24	26	25	12	19	26	18	3	23	17	27	34	128	50	69	45	11	6	12	6	5		
WELD	424	357	366	656	1224	1319	1030	254	305	285	392	288	509	702	760	757	832	901	1418	1527	2340	1448	2152	2262	1826	768	
YUMA	14	20	45	60	104	53	167	168	123	116	111	60	31	205	160	138	237	782	797	541	545	105	299	148	11	1	
Total	1275	1186	1477	1320	2001	2065	2008	1002	1002	1002	1157	1010	1529	2273	2008	2249	2917	4364	5904	6368	8027	5159	5996	4659	3773	1247	

ALL COUNTIES





Colorado Oil and Gas Conservation Commission
 Form 2A Breakdown By County By Year
 April 26, 2013

Yr	County	Form2As	Completed	In Process	Infor- mational	Requires Approval	New Location	CDP	SWH	RSO	CDPHE
2009	Total State	818	818	0	728	108	408	2	80	5	5
2010	Total State	2378	2376	0	1824	637	1601	0	327	22	55
2011	Total State	2301	2294	7	1004	319	1790	1	274	17	5
2012	ADAMS	19	19	0	0	0	19	0	0	0	0
2012	ARAPAHOE	21	16	5	0	0	16	0	0	0	0
2012	ARCHULETA	1	1	0	0	0	1	0	1	0	0
2012	BACA	3	3	0	0	0	2	0	1	0	0
2012	BENT	2	2	0	0	0	2	0	0	0	0
2012	BOULDER	3	3	0	0	0	0	0	0	0	0
2012	BROOMFIELD	7	7	0	0	0	1	0	0	0	0
2012	CHEYENNE	34	34	0	0	0	28	0	0	0	0
2012	DELTA	1	1	0	0	0	0	0	0	0	0
2012	DOLORES	1	1	0	0	0	1	0	0	0	0
2012	EL PASO	4	3	1	0	0	3	0	0	0	0
2012	ELBERT	1	1	0	0	0	1	0	0	0	0
2012	FREMONT	3	3	0	0	0	3	0	2	0	0
2012	GARFIELD	77	75	2	0	0	32	0	67	2	0
2012	GUNNISON	7	7	0	0	0	6	0	5	0	0
2012	HUERFANO	5	5	0	0	0	4	0	1	0	0
2012	JACKSON	3	2	1	0	0	3	0	2	0	0
2012	KIOWA	13	13	0	0	0	12	0	0	0	0
2012	KIT CARSON	6	6	0	0	0	4	0	0	0	0
2012	LA PLATA	8	8	0	0	0	3	0	7	0	0
2012	LARIMER	7	6	1	0	0	5	0	0	0	0
2012	LAS ANIMAS	8	8	0	0	0	6	0	0	0	0
2012	LINCOLN	45	45	0	0	0	41	0	0	0	0
2012	LOGAN	16	15	1	0	0	17	0	0	0	0
2012	MESA	10	10	0	0	0	5	0	3	0	0
2012	MOFFAT	47	47	0	0	0	38	0	44	4	0
2012	MONTEZUMA	8	8	0	0	0	8	0	0	0	0
2012	MORGAN	5	5	0	0	0	5	0	0	0	0
2012	PHILLIPS	38	38	0	0	0	35	0	0	0	0
2012	RIO BLANCO	35	35	0	0	0	15	0	28	0	0
2012	RIO GRANDE	1	1	0	0	0	1	0	1	0	0
2012	ROUTT	4	3	1	0	0	7	0	7	0	0
2012	SAN MIGUEL	1	1	0	0	0	1	0	0	0	0
2012	SEDGWICK	1	1	0	0	0	1	0	0	0	0
2012	WASHINGTON	13	8	5	0	0	7	0	0	0	0
2012	WELD	851	833	18	0	0	612	0	4	0	1
2012	YUMA	1	1	0	0	0	1	0	0	0	0
2012	Total State	1310	1275	35	0	0	946	0	173	6	1
2013	ADAMS	6	0	6	0	0	5	0	0	0	0
2013	ARAPAHOE	8	4	4	0	0	7	0	0	0	0
2013	ARCHULETA	1	0	1	0	0	1	0	0	0	0
2013	CHEYENNE	10	8	2	0	0	8	0	0	0	0
2013	DELTA	1	0	1	0	0	1	0	1	0	0
2013	DOLORES	5	2	3	0	0	4	0	1	0	0
2013	FREMONT	3	2	1	0	0	4	0	1	0	0
2013	GARFIELD	27	12	15	0	0	12	0	21	0	0
2013	GUNNISON	1	0	1	0	0	1	0	1	0	0
2013	JACKSON	3	2	1	0	0	0	0	3	0	0
2013	KIOWA	3	0	3	0	0	3	0	0	0	0
2013	LA PLATA	2	0	2	0	0	0	0	2	0	0
2013	LAS ANIMAS	1	1	0	0	0	0	0	0	0	0
2013	LINCOLN	41	24	17	0	0	40	0	0	0	0
2013	LOGAN	3	1	2	0	0	1	0	0	0	0
2013	MESA	1	0	1	0	0	1	0	1	0	0
2013	MOFFAT	6	1	5	0	0	6	0	7	0	0
2013	MONTEZUMA	5	0	5	0	0	3	0	0	0	0
2013	MORGAN	3	0	3	0	0	3	0	0	0	0
2013	PITKIN	1	0	1	0	0	1	0	0	0	0
2013	RIO BLANCO	7	5	2	0	0	3	0	5	0	0
2013	ROUTT	4	2	2	0	0	5	0	4	0	0
2013	WASHINGTON	14	3	11	0	0	14	0	0	0	0
2013	WELD	342	220	122	0	0	257	0	2	0	1
2013	YUMA	6	0	6	0	0	1	0	0	0	0
2013	Total	504	287	217	0	0	381	0	49	0	1

CDP = Comprehensive Drilling Plan SWH = Sensitive Wildlife Habitat consultation
 RSO = Restricted Surface Occupancy consultation CDPHE= Colorado Department of Health and Environment consultation



Colorado Oil and Gas Conservation Commission

Horizontal Well Activity

April 26, 2013

County	Prior Years			2009		2010		2011		2012		2013		Completion				
	Drilled	DA	PA	Permit	Spud	Permit	Spud	Permit	Spud	Permit	Spud	Permit	Spud	Spud	AC	PR	DA	PA
ADAMS				6	6	2	3	1		17	1			11	4	3		
ARAPAHOE	2							10	1	22	4	4		7	2	1		
ARCHULETA	17			7	3	15	7	10	7	5	9	2		43		39		
BOULDER								4						0				
CHEYENNE	5		4									2		5		1		4
DELTA										6	1			1				
DOLORES	9			18	2	6				9	1			12		6		1
EL PASO										10				0				
ELBERT										1				0				
FREMONT	7	6		6		12	5	3	4	4	1	1		17		9	6	1
GARFIELD	10		2	1	1	16	2	18	6	43	6	6		25		22		2
GUNNISON	1					1				3	2			3		1		
HUERFANO										4	1			1				
JACKSON	8	1	1	8		3	3	9	2	4		2		13		11	1	1
KIOWA										1				0				
KIT CARSON	1									1				1				3
LA PLATA	28	2		11	1	28	3	18	7	12	1			40		46	1	
LARIMER	3	2						5	1	2	1		2	7		2	2	
LAS ANIMAS	16		2	4		1	1							17		14		3
LINCOLN				2	1	2	1	1					6	3		3		
LOGAN	2									1				2		2		
MESA	3	2		36	1	22	8	24	13	14		1		25		23	2	2
MOFFAT	7	1	1	6	3	4		9	4	44	7	3	8	29		16	1	1
MONTEZUMA	6		1	23	5	11	1	8	3	18	2			17		27		1
MORGAN								6	2	2	1			3		2		
PARK						1	1	1						1				
RIO BLANCO	7	2				1	1	11	2	15	2	1		12	1	7	3	
ROUTT	10	6	1							1				10		3	6	1
SAN MIGUEL	1			1										1		1		
WASHINGTON	1		1											1				1
WELD	11	3		12	5	208	92	763	235	964	564	622	309	1216		582	7	7
YUMA	1		1	6										1				1
TOTAL Horizontal	156	25	14	147	28	333	128	901	287	1203	604	650	321	1524	7	821	29	29
Percent of Total HZ		16%	9%												0%	54%	2%	2%
Total All Permits				5159		5996		4659		3773		1247						
Percent of Total				2.8%		5.6%		19.3%		31.9%		52.1%						



Well to Building Setback Review

Colorado Oil and Gas Conservation Commission
April 26, 2013

Count of well locations by proximity groupings from well spot to buildings for all locations reviewed under the December 17, 2008 amended rules.

Location Proximity to Buildings	2009	2010	2011	2012	2013	Number of Locations	Percent of Total Locations
less than 150 feet	2	3	3	2	0	10	0%
150 to 350 feet	37	58	61	39	12	207	3%
350 to 500 feet	50	110	97	61	15	333	5%
500 to 1000 feet	117	385	331	188	52	1073	17%
1000 + feet	356	1705	1470	838	281	4650	74%
Total Locations	562	2261	1962	1128	360	6273	

County	Total	Less than 150 feet	150 to 350 feet	350 to 500 feet	500 to 1000 feet	1000 + feet
ADAMS	40	0	2	4	9	25
ARAPAHOE	57	0	2	4	7	44
ARCHULETA	16	0	0	1	9	6
BACA	13	0	0	0	1	12
BENT	7	0	0	0	0	7
BOULDER	23	0	1	1	17	4
BROOMFIELD	32	0	0	4	13	15
CHEYENNE	75	1	0	0	0	74
DELTA	6	0	0	2	1	3
DOLORES	12	0	0	0	4	8
EL PASO	11	0	0	0	1	10
ELBERT	3	0	0	0	1	2
FREMONT	35	0	2	7	6	20
GARFIELD	399	0	5	2	55	337
GUNNISON	19	1	0	2	1	15
HUERFANO	7	0	0	0	2	5
JACKSON	26	0	0	3	1	22
KIOWA	51	0	0	0	1	50
KIT CARSON	11	0	0	0	0	11
LA PLATA	89	0	3	9	25	52
LARIMER	31	0	3	3	10	15
LAS ANIMAS	199	1	6	7	37	148
LINCOLN	168	0	0	2	4	162
LOGAN	37	0	1	1	0	35
MESA	78	0	0	3	13	62
MOFFAT	144	0	0	2	12	130
MONTEZUMA	18	0	0	1	1	16
MONTROSE	2	0	0	0	0	2
MORGAN	17	0	0	2	3	12
PARK	4	0	0	0	0	4
PHILLIPS	262	1	4	6	20	231
PROWERS	4	0	0	0	0	4
RIO BLANCO	143	0	0	0	1	142
RIO GRANDE	2	0	0	0	1	1
ROUTT	18	0	0	0	0	18
SAN MIGUEL	11	0	0	0	0	11
SEDGWICK	25	0	0	1	3	21
WASHINGTON	33	0	1	0	1	31
WELD	3681	6	170	252	771	2482
YUMA	464	0	7	14	42	401
TOTAL	6273	10	207	333	1073	4650



Well to Building Setback Review

Colorado Oil and Gas Conservation Commission

April 26, 2013

Listing of Locations less than 200 feet to Building

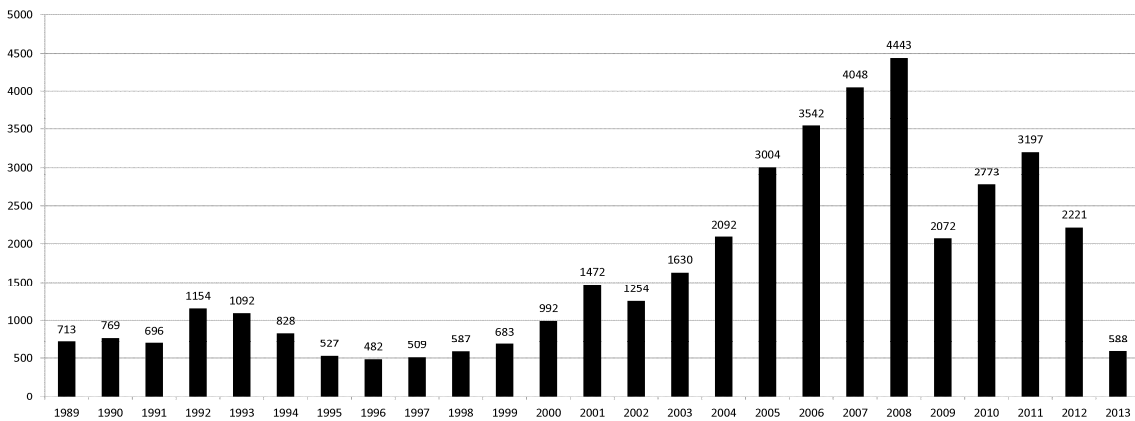
Year	Document Number	County	High Density	New Location	Distance	Proximity	Building Description
2011	2587822	CHEYENNE	No	No	58	less 150	Water well house
2009	1691798	WELD	No	No	58	less 150	Vehicle garage
2010	400072164	WELD	No	Yes	69	less 150	Abandoned hog shed
2012	400240957	GUNNISON	No	Yes	90	less 150	Equipment Shed
2009	1758843	WELD	No	Yes	103	less 150	Building to be razed
2011	1636646	WELD	No	No	122	less 150	Storage shed
2009	400011284	LAS ANIMAS	No	Yes	127	less 150	Operator is owner
2009	1786896	PHILLIPS	No	No	132	less 150	Grain Storage
2011	400117702	WELD	No	Yes	143	less 150	Irrigation pump house
2011	400227765	WELD	No	Yes	145	less 150	Storage Barn
2009	1904205	WELD	No	No	154	150 to 350	Livestock Enclosure
2012	400243295	WELD	No	Yes	155	150 to 350	Unused storage shed
2011	400179419	WELD	No	Yes	157	150 to 350	Existing well / storage building
2010	400054716	WELD	No	No	159	150 to 350	Equipment Barn
2011	400188968	WELD	No	Yes	159	150 to 350	Abandoned
2010	400021477	WELD	No	Yes	162	150 to 350	Goat Barn
2009	1758386	WELD	No	Yes	168	150 to 350	Storage Shed
2011	1635946	WELD	No	No	169	150 to 350	Storage shed
2011	400165164	WELD	No	Yes	178	150 to 350	Residence
2013	400367184	WELD	No	Yes	179	150 to 350	Farm Shed
2011	400188780	WELD	No	Yes	180	150 to 350	Residence
2010	1697620	WELD	No	No	187	150 to 350	Livestock Shed
2009	1758746	WELD	No	No	193	150 to 350	Storage Shed
2011	400154431	WELD	No	Yes	198	150 to 350	Turkey barn
2012	400250031	WELD	No	Yes	198	150 to 350	abandoned guard shack
2009	1774783	WELD	No	No	199	150 to 350	cement service building
2011	400118102	YUMA	No	Yes	199	150 to 350	Steel Barn



COLORADO OIL AND GAS CONSERVATION COMMISSION ANNUAL WELL STARTS BY COUNTY

COUNTY	1988	1989	1990	1991	1992	1993	1994	1995	1996	1997	1998	1999	2000	2001	2002	2003	2004	2005	2006	2007	2008	2009	2010	2011	2012	Current as of 4/26 2013		
ADAMS	39	27	26	36	54	20	54	28	6	16	12	17	18	13	4	19	22	24	13	41	14	15	21	2	11	3		
ALAMOSA																												
ARAPAHOE	2	4	16	11	11	3	9	8	3	3	2						6	1	5	2	1	1	3	8	5	4		
ARCHULETA	5	3	7	5	2	1		2		1			4	4	2	5	4	10	5	7	26	9	12	8	11			
BACA	5	5	12	6	21	8	9	19	9	7	11	8	19	6	2	1	6	6	2	6	12		5	5	1			
BENT				1		7	2	3	1	2	3	6	2				3	2	8	1	1			1	1			
BOULDER	2			7	18	56	15	5								2	5	11	9	14	25	16	13	7	14			
BROOMFIELD	3	2	3	7	14	27	22	2	2						2					10	10	22	11	5				
CHEYENNE	177	133	92	75	64	50	44	41	35	29	29	6	2	1	3	3		9	14	15	14	8	12	11	17	6		
CONEJOS																												
COSTILLA												1																
CROWLEY	1		1																									
CUSTER																												
DELTA	1		1													5	4	6	5	2			4	1	1			
DENVER										2	3	1		2						7	5	4						
DOLORES	2		4	1														2		13	4	2		1	3	1		
DOUGLAS																												
EAGLE																								2				
EL PASO																											5	
ELBERT	8	11	9	5	2			10	15	2	2		2						1									
FREMONT	6	3	5	7	1	1	1	2				1						3	2	2	5	3	9	16	6	1		
GARFIELD	3	12	24	8	3	4	15	13	7	28	19	94	190	251	245	417	585	799	1005	1304	1688	768	910	879	498	131		
GRAND						1																						
GUNNISON			1	2		1									1		1	1	9	5	1	4	5	2	4			
HUERFANO	6			2	6	1	1	2		2	31	9	25	14	19	3	6	2			2		2		2			
JACKSON	2	1	3	7	2		3	1	1	3	3		24	2	4	10	10		3	3	10	1	6	7				
JEFFERSON									1				2															
KIOWA	14	32	35	37	28	19	20	22	8	13	6	4	8	16	2	4	2	1	7	7	2	5	15	15	10	3		
KIT CARSON	11	6	6	6	9	13	15	9	6	3	7	7				1	1	6	2	1	14	3	1	1	3			
LA PLATA	158	129	186	44	66	26	17	19	29	48	65	80	99	135	118	110	103	104	108	179	199	131	67	54	3	3		
LARIMER	8	5	1	6	13	5	3		2	1				1	1					4	8	1	28	2	10	4		
LAS ANIMAS	17	22	20	3	2	11	17	34	62	90	120	182	202	286	205	221	296	384	413	326	221	14	7	78	1			
LINCOLN	6	5	4	4	7	7	8	8	3	2			2	2	1	5	2	2	1	2	19	10	14	23	23	12		
LOGAN	17	19	19	8	13	24	9	11	4	10	4		4	6	3	3	2	11	12	12	3	7	3	9	13	4		
MESA	1	2	2	4	1		7	2	1	1	4	4	2	12	12	13	25	89	156	209	222	14	11	39	4	1		
MOFFAT	1	2	1	2	1	1	2	1	3	1	8	10	18	23	25	28	19	40	60	42	25	18	15	34	25	9		
MONTEZUMA	6	5	7	5	2	5	7	3	12	2	2		2	3	5	5	1	7	2	4	18	11	2	9	12	3		
MONTROSE				1											3	2	1				1							
MORGAN	26	20	32	11	9	11	16	13	8	9	7	4	9	8	1	7	5	5	3	1	1	2	3	2	3			
OTERO				1																								
OURAY																												
PARK				1																				2				
PHILLIPS			3			1							1			6	10	11	4	35	18	2	42	108	42			
PITKIN		1			2																							
PROWERS	16	9	5	8	13	7	1	5	5	2	8	4	2	4	4			5	5	6	3	5	2	3	1			
PUEBLO																												
RIO BLANCO	1	8	10	1	3	8	6	7	5	9	9	62	51	82	47	83	92	95	107	95	203	116	107	71	51	12		
RIO GRANDE	1	2	2																								1	
ROUITT		1	1	3	1								1	5	12	1		1	6	3	2		2	1	2	3	2	
SAGUACHE	1							2																				
SAN MIGUEL				1							3	1	6	9	10	19	28	13	20	17	5	1	2	2				
SEDGWICK							1	3		2						1	2	1	1	5				3	7	3		
WASHINGTON	39	28	22	26	24	20	20	13	17	23	18	4	15	12	24	29	65	34	23	14	11	2	2	3	1	1		
WELD	176	200	168	296	660	723	389	94	136	94	117	124	237	403	406	522	632	718	931	1222	1314	877	1205	1670	1415	377		
YUMA	12	16	41	47	102	39	114	145	101	104	93	52	42	162	108	106	144	597	593	445	336	27	213	108	15	10		
Grand Total	773	713	769	696	1154	1092	828	527	482	509	587	683	992	1472	1254	1630	2092	3004	3542	4048	4443	2072	2773	3197	2221	588		

ALL COUNTIES





Colorado Oil Gas Conservation Commission Monthly Statistics

YEAR	MO	Baker - Hughes Rig Count	Drilling		Recompletion		Injection		Pits		Locations		Well Spud		Active Drilling Permits	Active Wells	Public Visits			Well Oper Change
			Rcvd	Apvd	Rcvd	Apvd	Rcvd	Apvd	Rcvd	Apvd	Rcvd	Authz	Notice	Data			Office	Internet		
2010	Total	5703	5996	519	515	34	28	120	225	2548	2773	197	1115	112479	8421					
	JAN	63	405	8	23	4	6	4	8	112	233	14	95	103968	813					
	FEB	61	343	15	2	7	6	5	3	184	210	21	80	96171	356					
	MAR	68	472	18	23	4	7	38	31	262	268	9	125	122393	590					
	APR	72	325	26	15	5	0	20	27	190	238	8	105	106539	402					
	MAY	72	372	20	25	3	6	12	8	214	251	14	124	73024	545					
	JUN	70	512	61	22	5	4	11	4	172	239	30	131	108115	790					
	JUL	69	457	13	55	2	1	13	7	215	158	20	74	103585	595					
	AUG	73	472	37	17	1	0	10	17	236	229	21	141	111950	573					
	SEP	77	336	22	29	7	0	35	34	159	203	9	120	116043	584					
	OCT	78	382	44	29	2	1	4	12	171	172	14	126	132814	552					
	NOV	80	342	29	57	0	1	12	13	166	174	18	96	130612	572					
	DEC	79	291	31	23	4	0	26	28	164	183	9	77	132651	347					
2011	Total	4709	4659	325	320	44	32	190	192	2382	2267	187	1294	1337865	6719					
	JAN	73	372	26	21	3	0	11	5	142	129	12	106	112686	1051					
	FEB	70	370	23	27	7	5	21	9	160	129	16	114	105857	385					
	MAR	66	292	21	14	2	2	17	24	133	172	26	138	111746	380					
	APR	66	410	16	24	5	5	9	2	137	106	12	108	107627	476					
	MAY	66	491	23	16	3	1	6	2	105	131	20	123	109802	527					
	JUN	69	326	11	19	8	6	5	8	110	89	11	111	108849	1269					
	JUL	66	237	9	14	3	2	5	2	97	103	13	102	114195	487					
	AUG	62	313	6	9	6	4	23	5	83	97	11	112	110908	297					
	SEP	61	252	1	5	5	2	4	1	81	77	11	89	106114	832					
	OCT	62	326	9	3	7	6	2	19	94	82	8	105	108833	393					
	NOV	56	271	5	8	6	6	2	4	109	97	10	119	120586	445					
	DEC	57	322	4	8	8	5	9	3	122	81	9	78	107240	606					
2012	Total	3982	3773	154	168	63	44	114	84	1373	1293	159	1305	1324443	7148					
	JAN	53	538	6	0	3	5	6	8	176	124	9	108	47406	539					
	FEB	56	259	10	5	2	3	4	11	141	133	7	102	40649	269					
	MAR	57	304	5	9	2	8	15	6	121	84	9	133	43019	180					
2013	Total	1101	1027	21	14	7	16	25	25	388	349	25	343	131074	988					

Apvd = Approved, Rcvd = Received, Ind = Individual, Blnk = Blanket, Apps = Application for Hearing, NOAV = Notice of Alleged Violation, AOC = Administrative Order of Consent, OFV = Order Finding Violation, Cmplnt = Complaint, Comp = Completed



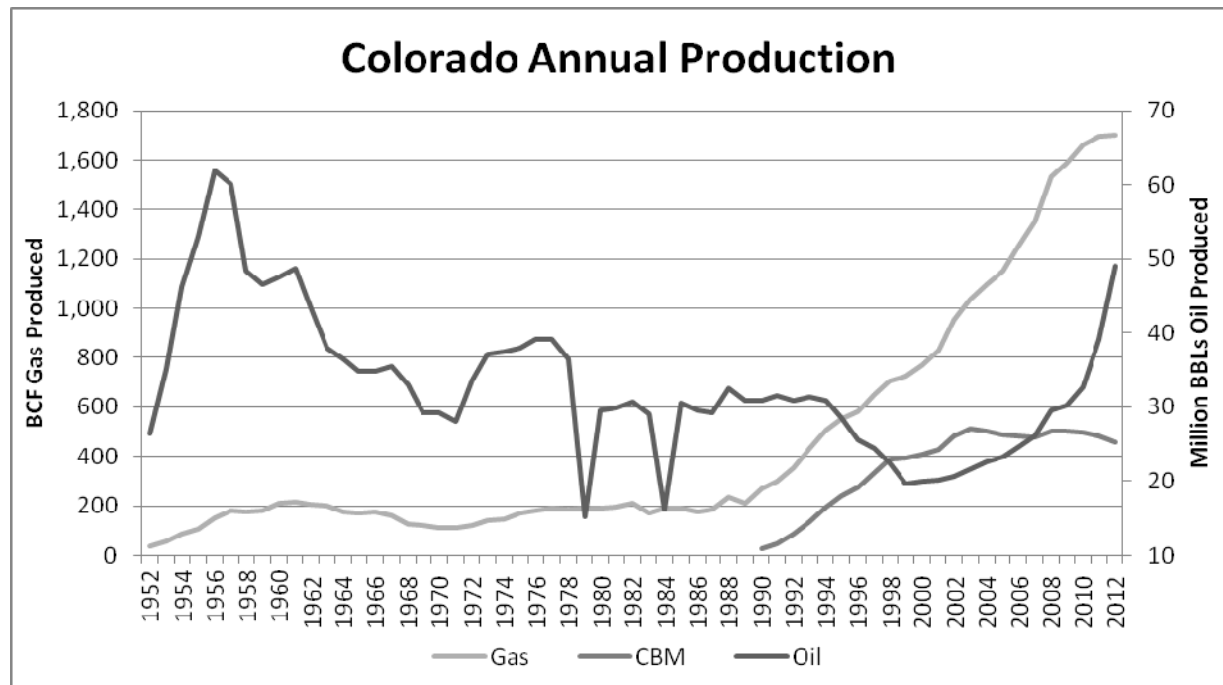
Colorado Oil Gas Conservation Commission Monthly Statistics

YEAR	MO	Operators		Release		Bonds		Claim		Hearings		Violations		Remediation		Inspections			
		New	Inactive	Ind.	Blknt	Replace	Ind.	Blknt	Apps.	Order	NOAV	AOC	OFV	Cmplt	Spills	Rcvd	Comp	Wells	Locations
2010	Total	46	33	38	40	74	0	1	155	136	319	10	3	218	493	511	382	17075	
	JAN	1	2	3	1	4	0	0	16	15	43	3	2	33	40	47	45	1316	
	FEB	1	1	9	4	6	0	0	16	15	7	0	1	40	52	48	33	1591	
	MAR	2	3	6	3	9	0	0	NA	NA	31	NA	NA	33	48	59	27	1675	
	APR	2	0	3	2	1	0	0	24	24	8	0	0	10	52	38	61	959	
	MAY	3	0	5	2	4	0	0	77	65	16	2	5	26	31	33	51	1577	
	JUN	2	2	2	2	0	3	0	51	58	30	1	4	14	38	53	25	1099	
	JUL	3	6	3	6	3	1	0	NA	NA	29	NA	NA	13	39	92	20	518	
	AUG	2	3	12	7	2	0	1	68	54	26	2	2	20	54	106	56	1032	
	SEP	5	1	7	5	2	0	0	44	41	4	2	4	17	46	56	66	690	
	OCT	4	2	12	6	7	0	3	57	45	9	0	0	15	38	102	28	636	
	NOV	4	9	15	4	1	0	0	NA	NA	15	NA	NA	16	31	70	58	739	
	DEC	4	2	2	2	4	0	0	50	32	12	0	1	13	58	22	66	562	
2011	Total	33	31	79	44	43	4	4	403	349	230	10	19	250	527	726	536	12394	
	JAN	3	3	7	5	1	1	0	70	72	18	1	0	27	35	68	23	998	970
	FEB	6	9	8	5	0	0	0	NA	NA	10	NA	NA	24	40	85	36	1998	1024
	MAR	4	1	7	3	9	0	0	44	38	19	0	0	23	38	63	61	2203	1149
	APR	4	2	10	3	2	0	0	80	59	11	0	0	19	35	26	99	1701	930
	MAY	3	1	4	0	3	0	0	43	50	14	2	0	23	32	27	122	2621	1701
	JUN	3	4	3	3	4	0	0	NA	NA	5	NA	NA	35	39	46	98	1432	1091
	JUL	5	0	1	4	5	0	0	63	50	15	0	0	16	24	45	33	1319	1076
	AUG	6	5	2	8	0	1	0	67	54	24	3	2	21	28	127	33	1898	1432
	SEP	0	4	4	5	2	1	0	NA	NA	5	NA	NA	14	13	30	36	1137	864
	OCT	1	2	9	1	0	0	0	30	36	6	1	0	13	44	116	37	1407	1029
	NOV	6	4	12	8	7	0	0	85	37	16	2	0	10	44	26	44	1324	828
	DEC	6	2	3	1	0	0	0	NA	NA	14	NA	NA	19	30	31	19	1046	625
2012	Total	47	37	70	46	33	3	0	482	396	157	9	2	244	402	690	641	19084	12719
	JAN	3	5	12	2	0	0	0	48	75	15	4	0	21	40	30	45	1672	827
	FEB	4	2	6	3	2	0	0	41	35	11	2	0	28	30	36	91	1040	612
	MAR	1	3	2	2	1	0	0	54	67	16	2	0	10	31	42	67	1958	1149
2013	Total	8	10	20	7	3	0	0	143	177	42	8	0	59	101	108	203	4670	2588

Apvd = Approved, Rcvd = Received, Ind = Individual, Blknt = Blanket, Apps = Application for Hearing, NOAV = Notice of Alleged Violation, AOC = Administrative Order of Consent, OFV = Order Finding Violation, Cmplt = Complaint, Comp = Completed



Colorado Annual Production



PRODUCTION STATISTICS

Year	Active Wells at End of Year	Increase or Loss from Previous Year	Oil Production in Barrels	Increase or Loss from Previous Year	Gas Production in MCF	Increase or Loss from Previous Year
2000	22,228		20,013,181	2%	769,984,237	6%
2001	22,879	3%	20,180,285	1%	831,412,077	8%
2002	23,711	4%	20,573,326	2%	951,424,582	14%
2003	25,042	6%	21,596,362	5%	1,035,353,117	9%
2004	26,968	8%	22,571,057	5%	1,095,374,928	6%
2005	28,952	7%	23,225,677	3%	1,152,486,698	5%
2006	31,096	7%	24,560,380	6%	1,253,125,832	9%
2007	33,815	9%	26,055,849	6%	1,351,009,635	8%
2008	39,944	18%	29,556,032	13%	1,532,627,412	13%
2009	40,958	3%	30,223,251	2%	1,588,621,102	4%
2010	43,354	6%	32,748,379	8%	1,663,036,290	5%
2011	46,835	8%	39,200,611	20%	1,697,282,997	2%
2012	50,067	7%	49,126,759	25%	1,702,680,150	0%



WELL COUNTS

	GWA	Weld County	State
Oil and Gas Wells	19,983	20,128	49,737
Injection Wells	16	38	913
Total Active Wells	20,001	20,166	50,650
Plugged Wells	2,716	4,296	33,665

Weld County Horizontal Wells

Year	Wells	Oil Produced	Gas Produced
2008	3	11.343	169.798
2009	7	84.394	426.985
2010	76	959.311	2,360.775
2011	300	5,244.280	16,486.161
2012	888	15,114.908	55,631.117