



Staff Report

June 17, 2013

TOP STORIES

DJ Basin Horizontal Offset Policy

On March 1, 2013, in cooperation with industry, the COGCC staff posted the "Interim DJ Basin Horizontal Offset Policy." This policy outlines wellbore isolation requirements of existing wells that will be in close proximity to proposed horizontal wellbores. With proposed horizontal wells weaving through a mature field, it is necessary to ensure that all wells, especially those of older vintage completed in formations deeper than the Niobrara and Codell, meet current standards. The policy includes several mitigation options that may be utilized. As part of a cooperative effort to finalize the policy, several DJ Basin operators agreed to perform a study throughout the month of March 2013 to evaluate aspects of the policy. On May 20th and 21st, COGCC engineering staff met with many DJ Basin operators individually to discuss the results of the study. A meeting with all of the horizontal DJ Basin operators was held on June 5th. The intent of this meeting is to finalize the policy and bring the final version before the commission for review at the June Hearing.

New Setback Rules effective August 1, 2013

On February 11, 2013, the Commission adopted the long-awaited revised Setback Rules. The Commission increased the existing setback distances of 350 feet in High Density Areas and 150 feet elsewhere to a uniform 500 feet statewide, and imposed technically advanced best management practices and protective measures to eliminate, minimize or mitigate potential nuisances and other adverse impacts for all Oil and Gas Locations within 1,000 feet of occupied buildings. In addition, Oil and Gas Locations may not be located within 1,000 feet of specified "High Occupancy Buildings," including schools, day care centers, hospitals, nursing homes, and correctional

facilities, without Commission approval following a public hearing. Variance approval will be contingent on extensive mitigation measures.

The Commission also has adopted Rules that will enhance notice to and communication with Building Unit owners within 1,000 feet of oil and gas operations, increasing opportunities for local government representatives, including Local Governmental Designees ("LGDs"), to review and comment on new Oil and Gas Locations proposed within their jurisdictions.

For more information, the Rules are available at www.cogcc.state.co.us under Hot Topics and Rulemaking to consider Statewide Setbacks. The Rules have been submitted to the Secretary of State for publication.

New Groundwater Rules

On May 1, 2013, the Commission's Rules requiring pre- and post- drilling groundwater sampling became effective. The purpose of the Rules is to protect and preserve Colorado's groundwater resources, detect potential contamination and inform all stakeholders of groundwater quality both before and after oil and gas development. The Rules require collection of baseline water quality data before oil and gas development, and after drilling and completion operations. All water quality data generated under the rule will be publicly available. For additional information on the Rule and the water quality data, visit www.cogcc.state.co.us under Hot Topics.

◆ Local Government Liaison (LGL) Program Update

Local Government Liaisons (LGLs) Nancy Prince and Marc Morton continue to provide outreach, education, training and consultation to local governments, their staffs, the public, and others regarding oil and gas in Colorado. In consultation



with COGCC staff, the LGLs respond on an almost daily basis to a myriad of requests for information, for guidance on navigating the COGCC website, or to provide assistance in resolving issues at the local level, including assistance in developing Memorandums of Understanding (MOUs) between local governments and operators. The LGLs also continue work to increase county and city or town participation in the voluntary Local Government Designee (LGD) program, and continue to follow up with participating local governments to ensure their contact information is up to date and valid.

In addition to providing three day-long LGD training sessions in the winter of 2013, the LGLs are responding to continued interest in the training and have scheduled five additional LGD training sessions this year at locations throughout Colorado. The most recent training occurred on May 23, and was held at the Durango Public Library. The training drew 13 attendees with representatives from La Plata County, Archuleta County, Rio Grande County, and Delta County, as well as representatives from the cities or towns of Durango, Bayfield, Ignacio, and Cortez. Colorado Department of Public Health and Environment Oil and Gas Liaison Kent Kuster and Hearings Manager Robert J. Frick have assisted in provided training. Karen Spray (Southwest Region Environmental Protection Specialist) assisted with the set up and operation of the Durango training.

The day-long class provides pertinent information on LGD roles, responsibilities, and tools available to them to engage. Training includes a general overview of COGCC, a summary of oil and gas exploration and development, an overview of COGCC regulations and the well permitting processes, instruction and hands-on use of the COGCC online database, website applications including Maps/COGIS, and Eforms, and provides instructions to LGDs and public to provide comment (to drilling permit applications). Training emphasizes how LGDs, their staff, as well as constituents and the public can engage with COGCC and operators to minimize impact to local communities. The training provides a summary of available opportunities for local government and the public to engage with COGCC staff and operators concerning oil and gas operations.

Staff from participating local governments, LGDs, and others are encouraged to attend future trainings. Representatives from local governments who are not presently participating in the LGD program are also encouraged to attend to learn more about how the program can support cooperation between the state and the local governments in regulating oil and gas exploration and production activities.

Except where noted below, venues are being scheduled, and LGD training sessions now planned include:

- Sterling:** Tuesday, July 23 - Northeastern Junior College Hays Student Center, 8:30 to 4:00
- Denver:** Wednesday, August 21
- Glenwood Springs:** Tuesday, September 24
- Lamar:** Tuesday; November 12

To register for one of the trainings or get updated information regarding the venues, please contact either Marc Morton or Nancy Prince (LGLs).

The LGLs also recently conceived, developed and distributed the inaugural issue of a quarterly LGD newsletter designed to give local governments and other stakeholders useful and pertinent information regarding oil and gas operations in Colorado. The next issue is expected to be out in late July 2013. The newsletter is planned to be a forum for information sharing between COGCC staff and local governments.

LGLs continue to provide valuable outreach, education, and consultation in response to the frequent inquiries and information requests from local government staff, homeowners groups, the public, and operators. The LGLs consult regularly with various federal, state and local government agencies, operators, non-governmental agencies, the public, and others. Local governments recently consulted include Broomfield County, Routt County, Town of Windsor, Eagle County, and Boulder County.

To stay current regarding the initiatives concerning local government regulation of oil and gas operations, the LGLs make it a priority to attend as many city or county local government meet-



ings concerning the oil and gas industry as possible. Contact Marc Morton at 303-894-2100 x5132 or marc.morton@state.co.us, or Nancy Prince at 303-894-2100 x5103 or nancy.prince@state.co.us, if you are interested in taking part in a future training.

A list of other LGL outreach activities is included in the Public Outreach section listed on the next page.

Public Outreach

➤ Outreach by Director and other Staff Members

- On April 24, 2013, Karen Spray, SW Environmental Protection Specialist, and Mark Weems, Regional Engineer, attended the quarterly meeting of the Northern San Juan Basin Stakeholder group in Bayfield, Colorado.
- On May 7, Director Matt Lepore participated on a panel "U.S. Federal and State Regulatory Perspectives: Pursuing a Working Regulatory Model for Shale Gas" in Jakarta, Indonesia, sponsored by the U.S. Department of State & Ministry of Energy & Mineral Resources of the Republic of Indonesia.
- On May 8, 2013, Mark Weems and Karen Spray traveled to Del Norte, Colorado and met with the Rio Grande County Commissioners, BLM staff, representatives of Dan A. Hughes Company (DAHC), and the public to discuss their proposed San Francisco Creek #1 wildcat well. The location is fee surface/federal mineral and has been strongly contested by some area residents. COGCC issued an APD, primarily focused on the surface operations while the BLM is entering the public comment portion of their permitting process, focused on the downhole portion.
- On May 14, 2013, Director Lepore, Marc Morton, Local Government Liaison, and Karen Spray participated in a question and answer session with La Plata County Commissioners Bobby Lieb, Julie Westendorff and Gwen Lachelt, County Manager Joe Kerby, Assistant County Manager Joanne Spina, Deputy County

Attorney Todd Weaver and Natural Resources Planner/Local Governmental Designee Courtney Roseberry. Items discussed included how other jurisdictions are dealing with hydraulic fracturing and if the COGCC anticipated any additional rulemaking in 2013.

- On May 16, Matt Lepore was part of a panel at the Energy & Environmental Symposium in Grand Junction. Topic was "State's Primary Regulatory Role."
- On May 16, Stuart Ellsworth, Engineering Manager, met with the Huerfano Community Forum at the Gardner Community Center regarding hydraulic fracture simulation of the Shell Freeman 3-24 well.
- On May 20, Matt Lepore was on a panel during the Energy Summit in Keystone. Topic was on "future energy developments and policy in the west."
- On May 29, Karen Spray attended an open house presented by the Colorado Oil and Gas Association (COGA) at the Durango Discovery Museum. President Tisha Schuller gave a presentation on the recent legislative session and ways to improve collaboration between all parties in the future.
- On June 3, Stuart Ellsworth participated in the EPA's Follow-up Technical Workshop on Subsurface Modeling at the EPA Conference Center in Arlington, Virginia. Mr. Ellsworth discussed Colorado's regulator rules, policies and procedures related to monitoring of hydraulic fracture treatments.
- On June 5, Stuart Ellsworth and Diana Burn, Eastern Engineering Supervisor, met with Douglas County Water Districts regarding Rule 317 and Rule 317A regarding aquifer coverage and well construction.
- On June 6, Director Lepore gave a slide presentation explaining the new legislative bills and an executive order at the Northwest Colorado Forum in Rifle, CO.

➤ Outreach by COGCC Local Government Liai-



sons (LGLs)

- On April 29, Marc Morton attended the public meeting in Battlement Mesa (Garfield County) where staff from COGCC, EPA, and CDPHE updated the audience regarding the status of the natural gas liquids release from the Williams Parachute gas plant. Additional information on the presentation is provided elsewhere in this Staff Report.
- On April 30, Nancy Prince attended the Arapahoe County Board of Commissioners meeting where they adopted oil and gas regulations.
- On April 30, COGCC staff including Jay Krabacher, Carlos Lujan, Kevin King, Shaun Kellerby, Chuck Browning, and Marc Morton operated a COGCC booth at the Encana Energy Expo in Rifle.
- On May 2, Marc Morton and Alex Fischer (West Environmental Supervisor) travelled to Fort Collins and presented to the Meadow Creek (Jackson County) Ranch Association, a Walden (Jackson County) area homeowners group, concerning COGCC's role, groundwater protection, and the well permitting process.
- On May 7, Nancy Prince met with staff from Brighton City Manager's office to discuss the LGD program.
- On May 14, Director Lepore, Karen Spray (Southwest Region Environmental Protection Specialist), and Marc Morton participated in a teleconference with La Plata County Commissioners and planning and legal staff
- On May 14, Nancy Prince and Jake Matter attended a working session of the Elbert County Board of County Commissioners to discuss COGCC rules relative to proposed County rules.
- On May 15 and 16, Marc Morton and Nancy Prince attended the Colorado Mesa University Energy and Environment Symposium in Grand Junction, and received training on a variety of topics related to western slope energy development. The training included a presentation by Director Matt Lepore. The LGLs and Director Lepore had the opportunity to engage with various operators, subcontractors, elected officials, local government officials, and regulators from nearby states.
- On May 23, Marc Morton, Nancy Prince, and Bob Frick (Hearings Manager) traveled to Durango and provided LGD training to group of 13 attendees that included various southwest Colorado LGDs and associated staff.
- On June 4, Marc Morton attended a Lafayette City Council Workshop session and public meeting focusing on potential options the City may take regarding local regulation of oil and gas operations.
- On June 5, Nancy Prince, Margaret Ash, Jim Precup, Mike Hickey and Randall Johnson met with Arapahoe County oil and gas working group to discuss COGCC field inspection processes and to introduce staff to new field inspector Randall Johnson.
- On June 5, Nancy Prince attended the regularly scheduled meeting of the El Paso County LGD group and gave a brief overview of oil and gas regulations enacted in the recent legislative session.
- On June 5, Marc Morton met with Town of Hudson LGD Joe Racine in Hudson to observe field and vicinity conditions following implementation of the MOUs with Encana and Great Western.
- On June 6, Marc Morton traveled to Rifle, Colorado and attended the monthly Garfield County Energy Advisory Board (EAB) Meeting, which included a presentations of findings from the U.S.G.S. concerning two recently published assessments of Piceance basin water quality.
- On June 6, Marc Morton (and other COGCC staff) attended the quarterly Northwest Forum meeting at the Colorado Mountain College Campus in Rifle, Colorado.
- On June 8, Marc Morton attended the first in a series of three Weld County sponsored workshops for surface owners in regards the new setback and associated rule changes.
- On June 11 - 12, Nancy Prince attended two of



the three Weld County sponsored workshops for surface owners.

- On June 12, Nancy Prince attended the Elbert County Board of County Commissioners meeting where draft rules were presented by the Planning Commission.

REGIONAL ACTIVITIES

➤ NORTHWEST COLORADO

◆ Northwest Colorado Oil and Gas Forum

The Forum is an informal gathering of local, state, and federal government officials, oil and gas industry representatives, and citizens that have met regularly since 1989. The purpose of the Forum is to share information about oil and gas development in northwest Colorado and to make government officials and oil and gas industry representatives easily accessible to the public. Currently, the meetings are conducted once per quarter and are co-chaired by the COGCC Director Matt Lepore and Garfield County Commissioner Mike Samson.

The next meeting of the Forum is tentatively scheduled for Thursday, September 5, 2013, at 10:00 a.m. at a location to be determined. All parties wishing to be placed on the meeting agenda, or added to the distribution list for announcements, should contact Chris Canfield at 970-625-2497 or via email at: chris.canfield@state.co.us.

◆ Project Rulison

Please note that the email for Project Rulison submittals has been changed to: DNR_rulison.submittal@state.co.us

◆ Project Rio Blanco

Please note that the email for Project Rio Blanco submittals has been changed to: DNR_rioblanco.submittal@state.co.us

➤ SOUTHWEST COLORADO

◆ Gas and Oil Regulatory Team (GORT) Meeting

The next GORT/Southwest Colorado Oil and Gas Stakeholders meeting is scheduled for Friday, July 19, 2013, from 8:30 a.m. to noon at the La Plata County Fairgrounds in Durango, Colorado. Please note that this is a Friday, rather than the normal Thursday meeting to accommodate venue conflicts.

All parties wishing to be placed on the next meeting agenda should contact Karen Spray at: 970-259-1619 or karen.spray@state.co.us.

◆ Fruitland Formation Outcrop Mitigation and Monitoring Projects (4M Projects)

Fruitland Formation Outcrop - 4M Pilot Scale Mitigation Projects La Plata County. The South Fork Texas Creek (SFTC) system operated at 11 Kilowatts (kW) to 12 kW power generation and was functional 72% of the time for the period March 3, 2013 through March 30, 2013 and 74% of the time for the period March 31, 2013 through April 27, 2013. System shut-downs occurred due to regional power outages on March 8, 2013 and April 8, 2013 and also due to a pressure loss resulting from a faulty filter gasket during the week of April 22, 2013. Temporary gasket repairs were made and a new gasket is on order. An average of 5.3 and 4.0 kW per hour were returned to the grid during these periods. Pine River continues to operate in a passive mode. General O&M continues at both locations.

◆ 4M Monitoring Wells La Plata and Archuleta Counties. There are 17 wells at 11 locations in the COGCC 4M monitoring program. Well pressures are monitored remotely via satellite telemetry with one or two maintenance visits per year, depending upon data received. A spring operations and maintenance visit is planned in June 2013 and three sites will undergo weed mitigation in June 2013.

◆ Ongoing Investigation, Reclamation, and Mitigation of Residual Methane in the Vicinity of the Bryce 1-X Well Area, Bondad, Colorado Three of the four water wells were sampled on April 3, 2013 with the fourth sampled on May 7, 2013 due to homeowner availability. Analytical results show increases in methane concentrations



in the Fire Station, Middle and South water wells and a decrease in the North water wells. Data are currently undergoing analysis and reports will be issued to the homeowners in June 2013. The next sampling is scheduled for October 2013.

➤ SOUTHEAST COLORADO

◆ U.S. EPA Raton Basin Hydraulic Fracturing Study - Las Animas and Huerfano Counties

As part of the retrospective study of possible impacts from well completions, a third round of sampling and analysis of groundwater from two areas in the Raton Basin was conducted during the week of November 5. COGCC staff, as well as contractors for Pioneer Natural Resources, collected split samples at many of the sites. The EPA released an interim progress report on the study in December, 2012. The EPA is expected to release the study in a draft for public and peer review in 2014. Ultimately, results from the study are intended to inform the public and provide policymakers at all levels with high-quality scientific knowledge that can be used in decision-making. For more information on the EPA hydraulic study, go to <http://www.epa.gov/hfstudy/>.

VARIANCES

On December 10, 2012 **Burlington Resources Oil & Gas LP** ("Burlington Resources") a subsidiary of ConocoPhillips Company) submitted a Sundry Notice for a 502.b Variance Request relating to Rule 326.b.(1) to defer the plugging and abandonment of their Carter Ute #6A (05-067-08181) well until no later than July 1, 2013. COGCC first contacted Burlington Resources about the need to produce the well, get it to pass a mechanical integrity test, or plug and abandon it on July 16, 2012. The request was approved by COGCC staff on May 6, 2013.

The Carter Ute #6A was drilled and completed in 1998. The well never produced economic quantities of gas so the decision was made to plug and abandon the well. Plugging operations were delayed because Burlington Resources needed to get partner approval; this made the

deferment request necessary. After waiting since July 20, 2012, Burlington Resources received approval in 2013. Plugging and abandonment were also delayed because a local operator, an interest partner in the well, expressed the desire to buy the well. However, a suitable agreement could not be reached. COGCC Staff evaluated the current well construction and past history and believe that the existing potential aquifer, the Ojo Alamo Formation, is adequately protected behind casing and cement until the well can be plugged.

The well is a Southern Ute Indian Tribe ("SUIT") surface and minerals lease where the COGCC has no jurisdiction. The COGCC Staff is thankful that the SUIT and Burlington Resources are cooperating with the COGCC in plugging the well.

On May 1, 2013 a Rule 502. b. variance to Rule 603.a(1) was granted to **WPX Energy** for three well permits to deepen existing water injection wells located on the same pad in Garfield County: the Williams GM 943-1D (API 045-18426), the Williams GM 923-1D (API 045-18424), and the Williams GM 931-1D (API 045-18425). Rule 603.a(1) requires the wellhead to be located a distance of 150 feet or 1-1/2 times the derrick height from above ground utility lines. WPX contends that these three wells were drilled prior to the construction of an overhead power line which is 206' from the wellheads. The Public Service Company signed a waiver stating that the required setback for a 149' rig of 224' would not be required in this instance since the 206' distance would allow adequate clearance in the event of a rig topple.

A Rule 502.b Variance from Rule 303.d.(5) was granted on April 25, 2013 to **Mineral Resources, Inc.** ("Mineral Resources"). Rule 303.d.(5) requires that in certain counties, the Oil and Gas Location Assessment Form 2A for a well location is only approved concurrently with the Application for Permit to Drill Form 2 for a well on the location. Mineral Resources requested a variance be granted for the approval of the Form 2A for their Downtown Directional #1 multi-well pad in NWNE, Section 5, T5N, R65W, within the City of Greeley, Weld



County without the approval of a Form 2 for a well on the pad. The complexity of the project and the City of Greeley's land use approval process were presented as the basis for the requested approval of the Form 2A prior to any Form 2's. The Mineral Resources Downtown Directional #1 multi-well pad was approved as Location ID Number 432599.

A Rule 502.b Variance from Rule 303.d.(5) was granted on May 30, 2013 to Mineral Resources, Inc. ("Mineral Resources"). Rule 303.d.(5) requires that in certain counties, the Oil and Gas Location Assessment Form 2A for a well location is only approved concurrently with the Application for Permit to Drill Form 2 for a well on the location. Mineral Resources requested a variance be granted for the approval of the Form 2A for their South Greeley Directional #1 multi-well pad in SWNE, Section 24, T5N, R66W, within the City of Greeley, Weld County without the approval of a Form 2 for a well on the pad. The complexity of the project and the City of Greeley's land use approval process were presented as the basis for the requested approval of the Form 2A prior to any Form 2's. The Mineral Resources Downtown Directional #1 multi-well pad was approved as Location ID Number 433138.

On May 31, 2013, a Rule 502.b Variance from Rule 303.d.(5) was granted to Mineral Resources, Inc. ("Mineral Resources"). Rule 303.d.(5) requires that in certain counties, the Oil and Gas Location Assessment Form 2A for a well location is only approved concurrently with the Application for Permit to Drill Form 2 for a well on the location. Mineral Resources requested a variance be granted for the approval of the Form 2A for their Midtown Directional #1 multi-well pad in NWSE, Section 8, T5N, R65W, within the City of Greeley, Weld County without the approval of a Form 2 for a well on the pad. The complexity of the project and the City of Greeley's land use approval process were presented as the basis for the requested approval of the Form 2A prior to any Form 2's. The Mineral Resources Midtown Directional #1 multi-well pad was approved as Location ID Number 433161.

New Environmental Protection Specialist

The COGCC is pleased to announce that Rick Allison has joined the Environmental Group of COGCC as the new Environmental Protection Specialist for Northeastern Colorado. Rick transferred from the Oil and Gas Location Assessment Group and has been with the COGCC for the last two and half years. Rick is a geologist with prior experience in environmental consulting working on the investigation and remediation of soil and groundwater contamination at petroleum impacted sites. Rick will work out of a field office in Northern Colorado and will report to James Milne.

New Northeast Field Inspector

The field inspection unit has hired Thomas Peterson to fill one of the new field inspector positions approved by legislature for 2013-2014. Mr. Peterson brings more than 30 years of oil field experience to the commission including drilling, wire line operations, completions and daily operations and maintenance of production equipment. Tom works out of a remote office near Johnston and will cover Larimer and western Weld County. He reports to Jim Precup NE Field Inspection Supervisor effective May 6, 2013.

An organizational chart can be found on pages 11-13. For contact information, please go to our homepage, and then "Staff Contact Information."

PLANNING/ADMINISTRATION/OTHER

◆ Legislative and Budget Update

The 2013 legislative session ended on May 8 with the passage of two bills affecting the COGCC and industry.

- Senate Bill 202 requires the COGCC to submit, by February 1, 2014, to the general assembly's Joint Budget Committee and the Senate and House committees of reference, a report that includes findings, recommendations, and a plan, including staffing and



equipment needs, for implementing a risk-based strategy for inspecting oil and gas locations. The strategy must target operational phases most likely to experience spills, excess emissions, and other types of violations. It must also prioritize locations for more in-depth inspections. The COGCC is required to implement the new risk-based inspection strategy by July 1, 2014.

- House Bill 1278 requires operators to report spills of one barrel or more of oil or exploration and production waste within 24 hours after the discovery of the spill. The COGCC will promulgate rules to implement this legislation.

On the budget side, the COGCC received an additional 19.4 full-time employees (FTE), effective July 1, 2013, through a combination of the Department's request for 5.0 FTE, Joint Budget Committee action for 9.4 FTE, and a Long Bill amendment for an additional 5.0 FTE. Of the 19.4 new positions, 11.0 will be inspectors. The remaining 8.4 FTE will be used for positions such as environmental specialists, engineers, enforcement officers, and other support staff.

◆ Plugging and Reclaiming Abandoned Wells (PRAW) - Project Updates

The **DeBeque Environmental and Reclamation Project**, involves the remediation of soils contaminated by salt water in the vicinity of the orphaned wells known as the Homestead #2 and the Pasture #1 wells. Both sites are located in Mesa County on the NW edge of DeBeque, CO. Soil sampling and lab analysis has been completed on both well sites with remedial and reclamation plans to be forthcoming.

The **Trinidad MGP #1**, well plugging project is located in Las Animas County about 18 miles west of Trinidad, CO and is just north of highway 12. The well was drilled to a depth of 1605', targeting the Vermejo coal, and completed in late 1980. The original operator of the well was the City of Trinidad. In late 1984 the well was deemed uneconomical to produce and plugged. The well was discovered to be

leaking gas in 2008 and an attempt to re-plug the well was made with the final decision being to extend the casing above ground level and vented to the atmosphere. Having new information on the well and a recent request by the new landowner to permanently plug it, the COGCC has plans to re-enter and plug the well in June of this year. The COGCC has received competitive bids and awarded the winning bid to a contractor in the amount of \$76,380. Subsequent to this report the COGCC hired an environmental company to perform a baseline soil gas vapor measurement for \$6,274 in close proximity to the well brings the estimated total expenditure for this project to \$82,564 for fiscal year ending June 30, 2013. Another soil gas vapor measurement will be made sometime in the future to help assess the success of the plugging work.

The **PAST Project** includes three leaking PA wells in need of re-entering and re-plugging and has been renamed the **2013 Piceance Re-entries Project** to avoid confusion with other work. Two are located in Garfield County and one is in Mesa County. The COGCC has received competitive bids and awarded the winning bid to a contractor in the amount of \$183,480. Plans for final plugging of the wells are to take place over June and July of this year.

Page 14 contains a spreadsheet listing PRAW projects that are either scheduled in process or completed as of June 6, 2013.

◆ July 2013 Hearing Docket

A docket for the July 2013 hearing will be available shortly after the June hearing. Hearing dockets are available on our website by clicking on "Hearings." Links to the notices and hearing applications are available from the Docket Number and Applicant, respectively. To sign up for e-mail notification of hearing notices and applications, please see the announcement and instructions on the homepage of the COGCC website: www.cogcc.state.co.us

◆ Colorado Oil and Gas Information System (COGIS) Projects, Updates and Changes



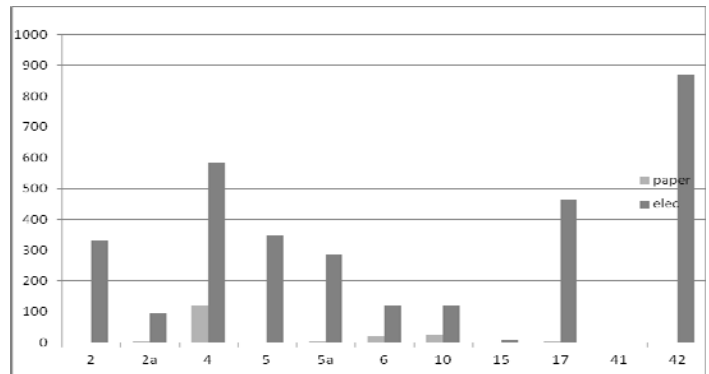
Environmental Database

During the past 18 months, the COGCC and the Ground Water Protection Council (GWPC) have been working together to develop a new Environmental Database that will contain the results from the Colorado Oil and Gas Association Voluntary Baseline Groundwater Quality Sampling program, along with other environmental data collected by the agency. The project included the development of a new relational database model that will allow the data to be accessible to the public from the COGCC website.

Other improvements include an Electronic Data Deliverable that allows industry to submit the results of the sampling directly to the COGCC, which can then process the information directly into the database. The application has many other features to help staff analyze the information and understand the lab results from the sampling. The interface will allow the public to view and download the results.

- Form 15 - Earthen Pit Report/Permit
- Form 17 - Bradenhead Test Report
- Form 41 - Trade Secret Claim of Entitlement
- Form 42 - Notice of Notification (Notice of Hydraulic Fracturing)

Following is a breakdown by Form for the month of March:



⇒ New eForm Sundry Notice Form 4

The Sundry Notice Form 4 was released in eForms on May 1st. As anticipated, industry regulatory staff very quickly implemented submittal of their Form 4s electronically. The total number of Sundry Notice Form 4s submitted in the month of May was 703, with 584 or 83% submitted in eForms. Staff continues to encounter and resolve small glitches, but the release has been nearly problem-free.

⇒ Revisions to Forms 2 and 2A

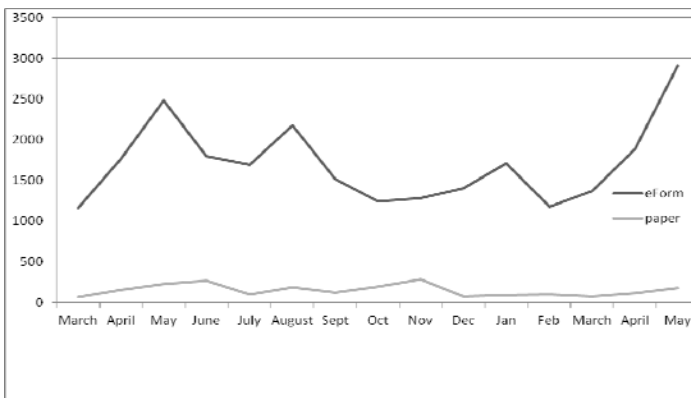
The Form 2 and 2A are being revised to accommodate the additional information required by the new Setback Rules that will be effective August 1st. Staff is taking this opportunity to make some long-needed improvements to both forms.

Industry training will be conducted this month for both the eForm 4 and the revised Forms 2 and 2A.

The Form 4, Sundry Notice went live in eForm on April 30, and has become one of the fastest forms to achieve over an 80% usage within the electronic portal. It achieved this in its first month of availability. With the addition to the suite of forms now available in eForms, processing of the Sundry can now be faster and more

Electronic Form Submissions (eForm)

TOTAL ELECTRONIC FORM SUBMITTALS
MARCH 2012 - MAY 2013



Forms currently available through eForm:

- Form 2 - Application for Permit to Drill
- Form 2A - Oil and Gas Location Assessment
- Form 4 - Sundry Notice
- Form 5 - Drilling Completion Report
- Form 5A - Completed Interval Report
- Form 6 - Well Abandonment Report
- Form 10 - Certification of Clearance/Change of Operator



efficient .

COGCC staff is available to answer questions as needed for either the new eForm Form 4 or for the revised paper Form 4.

The development team has now turned its attention to the changes that are required on the Form 2 and Form 2A for the rules that are set to go into effect on August 1.

Form 15, Pit Permit and Report, is available in eForm and operators are encouraged to utilize the system to file this form. The form contains additional fields. The PDF version on the Forms page, <http://cogcc.state.co.us/Forms/forms.html>, is revised to reflect the changes that occurred from the release of the form in eForm.

As forms are released on eForm, updates to the PDF forms on our website will occur in tandem. These new versions of the PDF forms will reflect any changes that have taken place when forms are moved into eForm.

Along with the eForm system, a page is available where the operators can review all known bugs within the system and report any new ones they discover. Currently, there are 305 operators using eForm.

The public can make comments on all submitted Oil and Gas Location Assessment (OGLA) forms (Forms 2A) through the eForm system. This is accomplished by going to the COGCC website (<http://www.colorado.gov/cogcc>) and clicking on the menu option, "Permits", (or <http://cogcc.state.co.us/COGIS/DrillingPermits.asp>).

On the COGIS-Permits page, two search options are available for OGLA forms, "All Pending Location Assessments for" and "All Approved Location Assessments for." When the results are displayed for forms in process, the public can click on the document number, which logs the user onto the new eForm application. Once the page is displayed with the selected document, the user can select the Comment button to make a comment on that particular form. The public can use this same method to make comments on APDs (Form 2s).

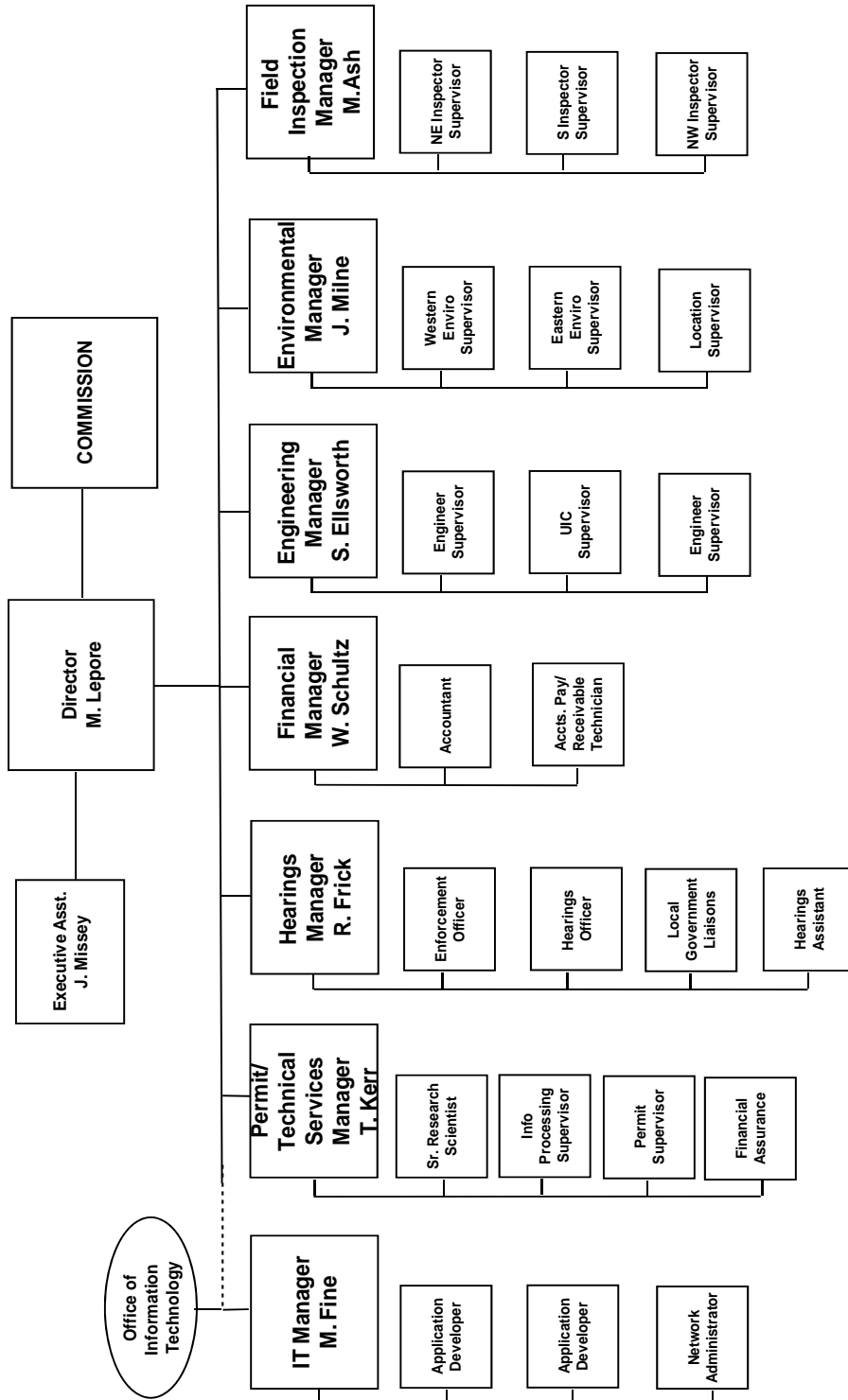
For any operator not currently enrolled in eForm, instructions for starting the process can be found at <http://cogcc.state.co.us/Announcements/COUAINformation.pdf>.

COGCC GIS Online

An upgrade of the COGCC GIS Online interactive map is now available on the COGCC's website. Two new features are now available along with some minor changes. An Address Search button will zoom the map to the area of an input street address, city and zip code. The second new feature is an enhanced Print function. This will generate a PDF document which can be saved or printed. It allows choice of paper size, orientation, input of a legend and a map scale options.



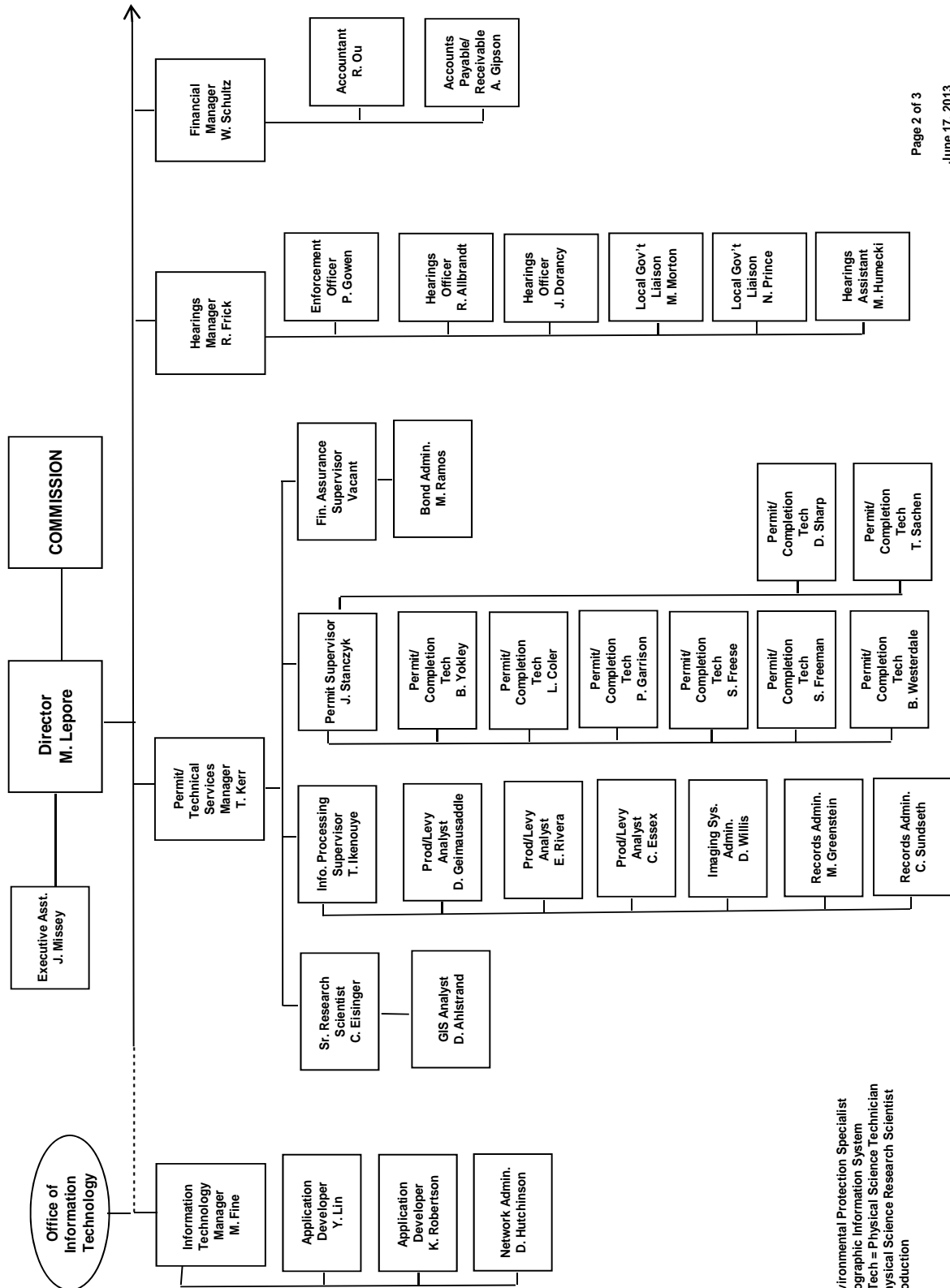
COLORADO OIL & GAS CONSERVATION COMMISSION



See the next two pages for details



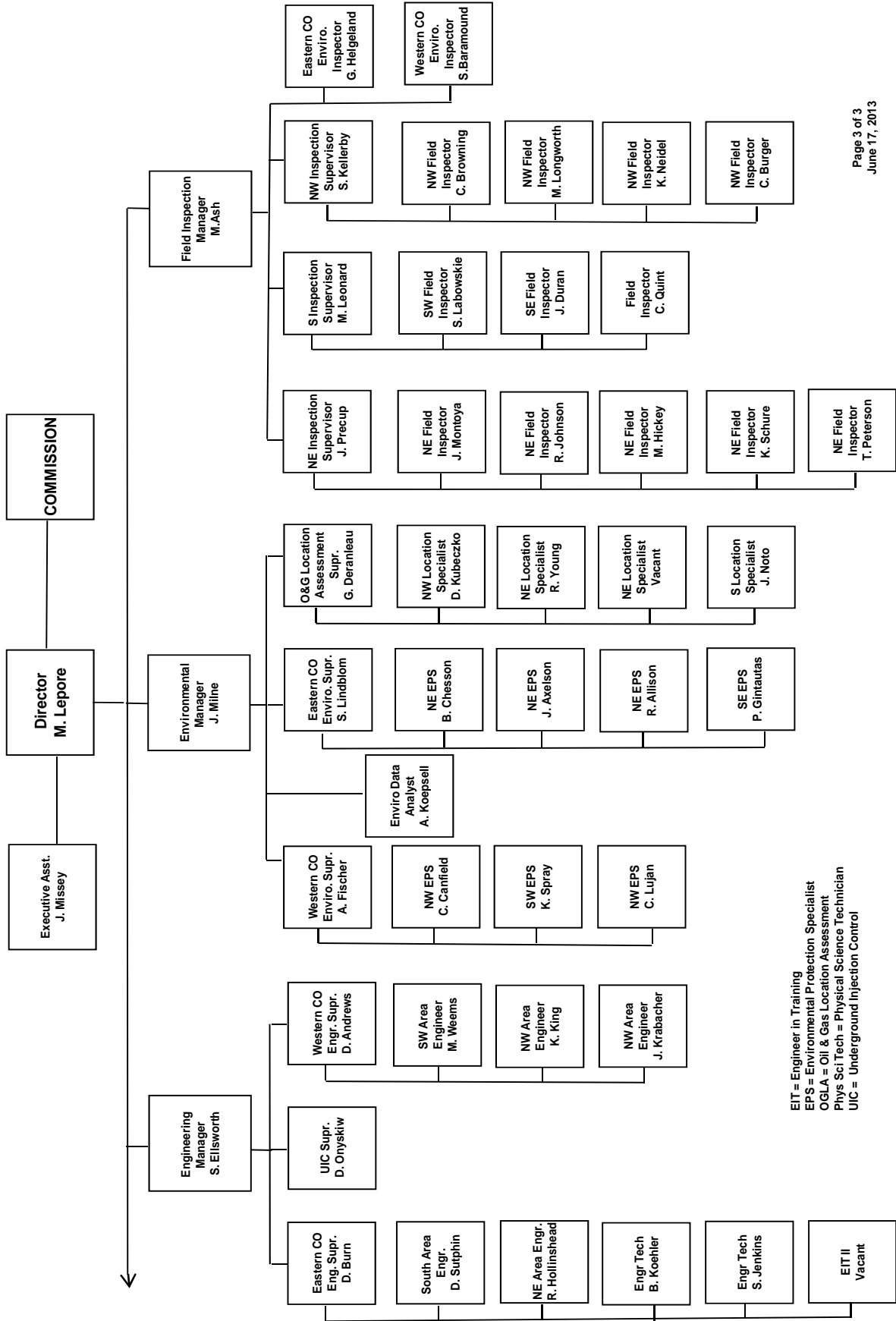
COLORADO OIL & GAS CONSERVATION COMMISSION ORGANIZATION



EPS = Environmental Protection Specialist
 GIS = Geographic Information System
 Phys/Sci Tech = Physical Science Technician
 PSRS = Physical Science Research Scientist
 Prod = Production



COLORADO OIL & GAS CONSERVATION COMMISSION ORGANIZATION



EIT = Engineer in Training
 EPS = Environmental Protection Specialist
 OGLA = Oil & Gas Location Assessment
 Phys Sci Tech = Physical Science Technician
 UIC = Underground Injection Control

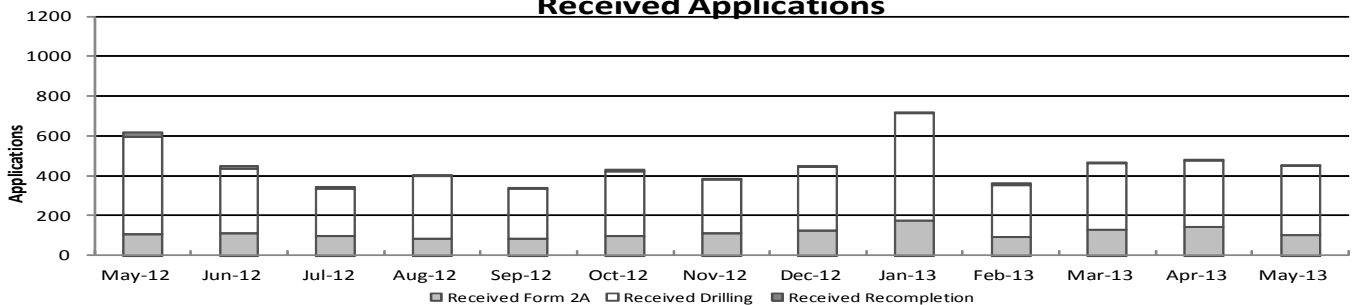


Colorado Oil & Gas Conservation Commission Monthly Permit Activity

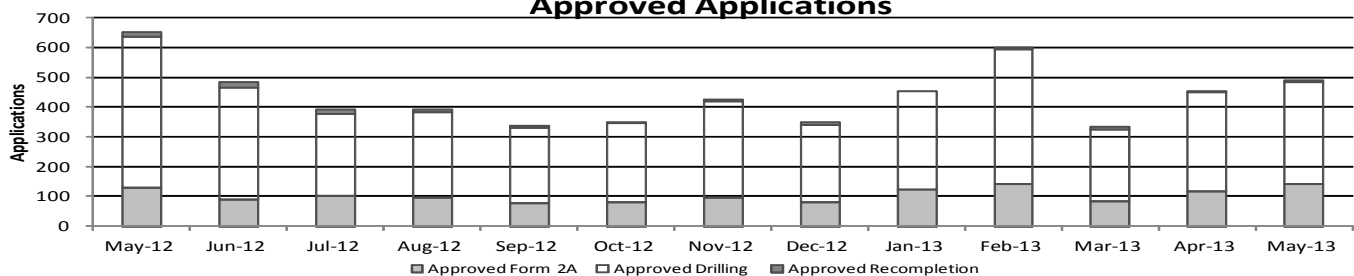
	Backlog	Received	Approved	Withdrawn	Rejected	Incomplete	In-Process	Remaining
Form2A								
May-12	181	105	131	6	0	51	98	149
Jun-12	149	110	89	2	0	54	114	168
Jul-12	168	97	103	4	0	51	107	158
Aug-12	158	83	97	6	0	54	84	138
Sep-12	138	81	77	5	0	47	90	137
Oct-12	137	94	82	8	0	30	110	141
Nov-12	141	109	97	13	0	19	112	140
Dec-12	140	122	81	4	0	35	124	177
Jan-13	177	176	124	12	0	34	183	217
Feb-13	217	91	141	8	0	34	125	159
Mar-13	159	129	84	1	0	33	170	203
Apr-13	203	144	117	7	0	40	183	223
May-13	223	100	142	4	0	37	140	177
Drilling								
May-12	500	491	506	25	0	110	350	460
Jun-12	460	326	377	9	0	114	286	400
Jul-12	400	237	276	4	0	91	266	357
Aug-12	357	313	288	9	0	146	227	373
Sep-12	373	252	256	24	0	98	247	345
Oct-12	345	326	265	29	0	65	312	377
Nov-12	377	271	323	21	0	65	239	304
Dec-12	304	322	260	9	0	77	280	357
Jan-13	357	538	331	19	0	101	444	545
Feb-13	545	260	455	16	0	58	276	334
Mar-13	334	334	241	4	0	46	377	423
Apr-13	423	331	333	2	0	79	340	419
May-13	419	347	342	31	0	45	348	393
Recompletion								
May-12	17	23	16	0	0	6	18	24
Jun-12	24	11	19	0	0	3	13	16
Jul-12	16	9	14	0	0	3	8	11
Aug-12	11	6	9	0	0	1	7	8
Sep-12	8	1	5	2	0	0	2	2
Oct-12	2	9	3	0	0	0	8	8
Nov-12	8	5	8	0	0	0	5	5
Dec-12	5	4	8	1	0	0	0	0
Jan-13	0	6	0	0	0	0	4	6
Feb-13	6	10	5	0	0	0	11	11
Mar-13	11	5	9	0	0	1	6	7
Apr-13	7	6	5	0	0	2	6	8
May-13	8	8	6	0	0	0	10	10

Incomplete are permits that have missing or inaccurate data and cannot be approved.

Received Applications



Approved Applications



Backlog = Incomplete + In-process = Remaining permits from previous month



Colorado Oil and Gas Conservation Commission
Status of Permit Applications Filed By Month
 June 6, 2013

Form 2A Location Assessment

Year	Month	Received	Approved	Withdrawn	In Process	Percent In Process	Median Days to Process	Less Than 30 Days	30 to 49 Days	Greater Than 50 Days
2010	Total	2520	2433	85	0			1559	662	212
2011	Total	2391	2298	89	4	0%		1416	620	262
2012	1	141	138	3	0	0%	33	92	27	19
2012	2	160	152	8	0	0%	31	118	26	8
2012	3	135	133	2	0	0%	41	80	25	28
2012	4	126	119	7	0	0%	38	77	25	17
2012	5	119	115	4	0	0%	38	63	28	24
2012	6	101	96	5	0	0%	41	32	44	20
2012	7	104	98	5	1	1%	40	41	43	14
2012	8	72	68	4	0	0%	40	33	22	13
2012	9	77	72	5	0	0%	37	28	34	10
2012	10	94	89	5	0	0%	39	31	40	18
2012	11	85	79	5	1	1%	36	52	15	12
2012	12	146	127	4	15	10%	38	59	49	19
2012	Total	1360	1286	57	17	1%		706	378	202
2013	1	177	162	12	3	2%	33	99	45	18
2013	2	91	83	7	1	1%	34	42	29	12
2013	3	131	102	4	25	19%	35	41	46	15
2013	4	150	115	4	31	21%	31	47	66	2
2013	5	105	26	1	78	74%	24	23	3	0
2013	6	29	0	0	29	100%				
2013	Total	683	488	28	167	24%		252	189	47

Form 2 Application For Permit to Drill (APDs)

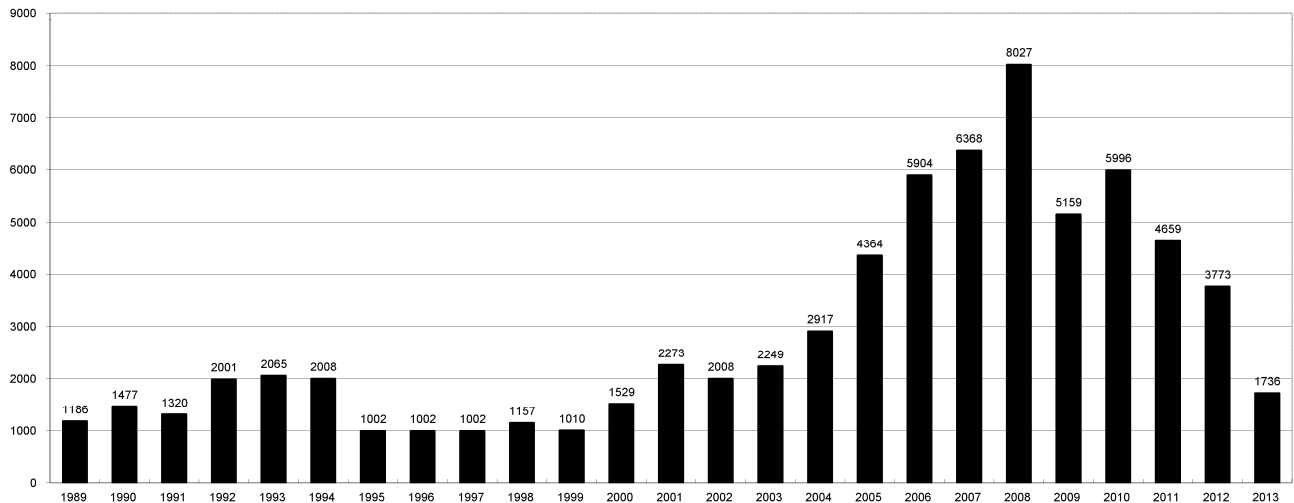
Year	Month	Received	Approved	Withdrawn	In Process	Percent In Process	Median Days to Process	Less Than 30 Days	30 to 49 Days	Greater Than 50 Days
2010	Total	5891	5746	144	0	0%		1760	2739	1744
2011	Total	4692	4557	128	5	0%		2723	1565	587
2012	1	368	361	7	0	0%	34	235	107	45
2012	2	371	360	11	0	0%	31	277	70	37
2012	3	284	279	5	0	0%	40	164	84	50
2012	4	418	405	13	0	0%	36	219	160	41
2012	5	509	491	18	0	0%	37	260	149	104
2012	6	280	277	3	0	0%	43	107	119	62
2012	7	281	274	6	1	0%	40	103	144	37
2012	8	282	262	20	0	0%	32	148	89	30
2012	9	212	192	20	0	0%	38	78	78	38
2012	10	355	350	5	0	0%	36	131	168	59
2012	11	244	228	14	2	1%	37	110	80	42
2012	12	351	334	14	3	1%	38	139	145	54
2012	Total	3955	3813	136	6	0%		1971	1393	599
2013	1	562	541	18	3	1%	35	278	179	85
2013	2	242	227	13	2	1%	36	78	126	37
2013	3	333	303	9	21	6%	36	123	119	67
2013	4	328	276	9	43	13%	34	105	151	23
2013	5	371	83	17	271	73%	25	66	19	0
2013	6	89	0	0	89	100%				
2013	Total	1925	1430	66	429	22%		650	594	212



COLORADO OIL AND GAS CONSERVATION COMMISSION ANNUAL DRILLING PERMITS BY COUNTY

COUNTY	1988	1989	1990	1991	1992	1993	1994	1995	1996	1997	1998	1999	2000	2001	2002	2003	2004	2005	2006	2007	2008	2009	2010	2011	2012	current as of 6/06 2013	
ADAMS	46	34	44	53	92	58	137	34	9	33	24	19	38	28	9	26	39	34	37	89	51	35	21	8	40	4	
ARAPAHOE	5	5	15	14	11	4	20	12	2	9	1	2	0	2	1	2	5	7	11	10	10	10	8	23	35	11	
ARCHULETA	8	5	18	5	2	1		3		3						6	10	8	13	14	26	47	11	18	12	5	3
BACA	6	4	15	10	23	9	12	24	10	7	13	15	22	6	2	3	7	8	2	11	13	3	4	5	3		
BENT				1		2	2	4	2	5	3	5	2				5	3	8	1	1		5		2	1	
BOULDER	1		1	13	38	159	38	5	8	2	5		1	5	6	7	17	13	21	37	32	35	24	30	22		
BROOMFIELD															2	7	7	1	1			2	33	28	11	36	
CHEYENNE	203	149	102	93	71	58	48	55	43	31	41	7	3	3	3	3	3	10	21	15	33	12	13	16	31	18	
COSTILLA												1															
CROWLEY	1		1	1																							
DELTA	1	1	2												7	4	5	10	9	2			4	3	6		
DENVER											5	3	3		3				19	25	24						
DOLORES	2		4	1	2	1										1	1	1	6	10	12	21	8	8	13	8	
ELBERT	9	12	8	5	3		2	13	16	11	1		2						4			1	1	2	1		
EL PASO																							2	3	3	18	
FREMONT	9	5	6	7	1	2	2	1	2	1								1	3	2	4	14	13	22	14	11	2
GARFIELD	19	66	111	36	18	56	143	78	109	141	95	130	213	353	362	567	796	1509	1845	2550	2888	1981	2037	1323	1046	369	
GRAND							1																				
GUNNISON			2	2		1										5	10	1	9	19	7	10	12	4	3	11	4
HUERFANO	3	5		4	17	3	3	2	1	3	40	26	41	27	27	5	10	1	9	19	7	10	12	4	3	11	4
JACKSON	3	1	4	6	2	2	3	2	2	6	3		34	18	21	9	14	6	8	5	27	19	9	18	5	2	
JEFFERSON	1		4	2		1		1	1	1	2	1							1	3	2						
KIOWA	15	39	40	46	28	28	21	26	13	17	10	2	11	18	2	4	2	1	11	9	26	7	16	17	17	4	
KIT CARSON	9	5	7	8	8	15	26	11	7	6	9	5						1	3	5	4	4	13	7	3	2	6
LA PLATA	302	218	388	128	120	40	40	20	71	40	82	107	127	156	104	162	102	115	235	251	328	298	191	99	71	3	
LARIMER	4	4	3	6	13	7	3		1	3	1		2		1	1	1	5	46	12	41	8	13	1	1		
LAS ANIMAS	10	30	36			9	32	95	134	136	195	195	268	400	259	180	332	413	500	362	303	88	92	85	11	1	
LINCOLN	8	6	4	7	7	11	8	9	3	2		2	2	1	6	3	4	1	2	58	44	48	31	36	54		
LOGAN	18	21	23	13	14	30	15	13	6	12	7		4	7	3	3	6	13	17	14	5	9	17	8	27	3	
MESA	1	12	29	20	22	2	22	6	11	10	2	6	13	27	30	27	54	136	265	293	501	427	306	127	150	67	
MOFFAT	13	25	27	19	40	52	43	40	41	28	21	15	35	52	62	63	63	60	120	68	57	51	53	93	88	12	
MONTEZUMA	6	7	10	8	7	11	15	9	13	5	4	1	4		5	8	8	11	5	12	22	39	19	27	29	5	
MONTROSE				1						1				1	3	2	4	2	1	3	3		1	1			
MORGAN	34	27	36	13	10	11	19	12	10	11	10	12	9	9	2	7	9	7	3	6	2	1	6	13	5	5	
OTERO				2																							
PARK				1								1											3	4	1		
PHILLIPS			3		1	1								1	2		7	13	17	12	69	82	45	64	112	56	
PITKIN		1		2														1		1							
PROWERS	19	9	5	10	14	7	3	5	5	3	9	3	2	5	4		7	5	7	5	8	1	3	1			
RIO BLANCO	34	83	77	33	81	83	126	81	33	40	51	95	89	187	105	179	154	161	360	321	477	348	441	109	117	16	
RIO GRANDE	2	3	4	1		1							1	1		1					1	1			2		
ROUTT	4	3	12	4	2	3	1	2	1	1	1	4	20	13	1		4	6	9	8	4	2	3	10	4	4	
SAGUACHE	1							2					2		2						2	1	2				
SAN MIGUEL			2	2					1	1	4	2	11	13	27	18	42	45	35	23	20	13	10	2	1		
SEDGWICK								3		2								5	2	7	2	1	19	11	12	2	
WASHINGTON	40	29	23	28	24	26	25	12	19	26	18	3	23	17	27	34	128	50	69	45	11	1	6	12	6	8	
WELD	424	357	366	656	1224	1319	1030	254	305	285	392	288	509	702	760	757	832	901	1418	1527	2340	1448	2152	2262	1826	1124	
YUMA	14	20	45	60	104	53	167	168	123	116	111	60	31	205	160	138	237	782	797	541	545	105	299	148	11	6	
Total	1275	1186	1477	1320	2001	2065	2008	1002	1002	1002	1157	1010	1529	2273	2008	2249	2917	4364	5904	6368	8027	5159	5996	4659	3773	1736	

ALL COUNTIES





Colorado Oil and Gas Conservation Commission
Form 2A Breakdown By County By Year
June 6, 2013

Yr	County	Form2As	Completed	In Process	Informational	Requires Approval	New Location	CDP	SWH	RSO	CDPHE
2009	Total State	818	818	0	728	108	408	2	80	5	5
2010	Total State	2378	2376	0	1824	637	1601	0	327	22	55
2011	Total State	2301	2294	7	1004	319	1790	1	274	17	5
2012	ADAMS	19	19	0	0	0	19	0	0	0	0
2012	ARAPAHOE	21	16	5	0	0	16	0	0	0	0
2012	ARCHULETA	1	1	0	0	0	1	0	1	0	0
2012	BACA	3	3	0	0	0	2	0	1	0	0
2012	BENT	2	2	0	0	0	2	0	0	0	0
2012	BOULDER	3	3	0	0	0	0	0	0	0	0
2012	BROOMFIELD	7	7	0	0	0	1	0	0	0	0
2012	CHEYENNE	34	34	0	0	0	28	0	0	0	0
2012	DELTA	1	1	0	0	0	0	0	0	0	0
2012	DOLORES	1	1	0	0	0	1	0	0	0	0
2012	EL PASO	4	3	1	0	0	3	0	0	0	0
2012	ELBERT	1	1	0	0	0	1	0	0	0	0
2012	FREMONT	3	3	0	0	0	3	0	2	0	0
2012	GARFIELD	77	77	0	0	0	32	0	67	2	0
2012	GUNNISON	7	7	0	0	0	6	0	5	0	0
2012	HUERFANO	5	5	0	0	0	4	0	1	0	0
2012	JACKSON	3	2	1	0	0	3	0	2	0	0
2012	KIOWA	13	13	0	0	0	12	0	0	0	0
2012	KIT CARSON	6	6	0	0	0	4	0	0	0	0
2012	LA PLATA	8	8	0	0	0	3	0	7	0	0
2012	LARIMER	7	6	1	0	0	5	0	0	0	0
2012	LAS ANIMAS	8	8	0	0	0	6	0	0	0	0
2012	LINCOLN	45	45	0	0	0	41	0	0	0	0
2012	LOGAN	16	16	0	0	0	17	0	0	0	0
2012	MESA	10	10	0	0	0	5	0	3	0	0
2012	MOFFAT	47	47	0	0	0	38	0	44	4	0
2012	MONTEZUMA	8	8	0	0	0	8	0	0	0	0
2012	MORGAN	5	5	0	0	0	5	0	0	0	0
2012	PHILLIPS	38	38	0	0	0	35	0	0	0	0
2012	RIO BLANCO	35	35	0	0	0	15	0	28	0	0
2012	RIO GRANDE	1	1	0	0	0	1	0	1	0	0
2012	ROUTT	4	4	0	0	0	4	0	7	0	0
2012	SAN MIGUEL	1	1	0	0	0	1	0	0	0	0
2012	SEDGWICK	1	1	0	0	0	1	0	0	0	0
2012	WASHINGTON	14	12	2	0	0	8	0	0	0	0
2012	WELD	849	842	7	0	0	611	0	4	0	1
2012	YUMA	1	1	0	0	0	1	0	0	0	0
2012	Total State	1309	1292	17	0	0	946	0	173	6	1
2013	ADAMS	6	1	5	0	0	4	0	0	0	0
2013	ARAPAHOE	11	7	4	0	0	10	0	0	0	0
2013	ARCHULETA	1	1	0	0	0	1	0	0	0	0
2013	CHEYENNE	16	10	6	0	0	14	0	0	0	0
2013	DELTA	1	0	1	0	0	1	0	1	0	0
2013	DOLORES	8	5	3	0	0	5	0	3	0	0
2013	EAGLE	1	0	1	0	0	1	0	1	0	0
2013	FREMONT	3	2	1	0	0	4	0	1	0	0
2013	GARFIELD	33	22	11	0	0	14	0	26	0	0
2013	GUNNISON	1	0	1	0	0	1	0	1	0	0
2013	JACKSON	5	2	3	0	0	0	0	5	0	0
2013	KIOWA	4	3	1	0	0	4	0	0	0	0
2013	LA PLATA	6	3	3	0	0	1	0	6	0	0
2013	LARIMER	1	0	1	0	0	0	0	1	1	0
2013	LAS ANIMAS	1	1	0	0	0	0	0	0	0	0
2013	LINCOLN	41	38	3	0	0	39	0	0	0	0
2013	LOGAN	4	3	1	0	0	0	0	0	0	0
2013	MESA	3	1	2	0	0	1	0	1	0	0
2013	MOFFAT	9	4	5	0	0	6	0	9	0	0
2013	MONTEZUMA	8	5	3	0	0	5	0	1	0	0
2013	MORGAN	3	3	0	0	0	5	0	0	0	0
2013	PITKIN	1	0	1	0	0	1	0	0	0	0
2013	RIO BLANCO	10	6	4	0	0	5	0	8	0	0
2013	ROUTT	5	2	3	0	0	5	0	5	0	0
2013	WASHINGTON	17	5	12	0	0	16	0	0	0	0
2013	WELD	436	345	91	0	0	325	0	3	0	1
2013	YUMA	7	5	2	0	0	2	0	0	0	0
2013	Total	642	474	168	0	0	471	0	72	1	1

CDP = Comprehensive Drilling Plan SWH = Sensitive Wildlife Habitat consultation

RSO = Restricted Surface Occupancy consultation CDPHE= Colorado Department of Health and Environment consultation



Colorado Oil and Gas Conservation Commission

Horizontal Well Activity

June 6, 2013

County	Prior Years			2009		2010		2011		2012		2013		Completion				
	Drilled	DA	PA	Permit	Spud	Permit	Spud	Permit	Spud	Permit	Spud	Permit	Spud	Spud	AC	PR	DA	PA
ADAMS				6	5	2	3	1		17	2		2	12	4	4		
ARAPAHOE	2							10	1	22	4	5		7	2	1		
ARCHULETA	17			7	6	15	7	10	8	5	9	2		47		40		
BENT												1						
BOULDER								4						0				
CHEYENNE	5		4									2	1	6		1		4
DELTA										6	2			2				
DOLORES	9			18	2	6				9	1			12		6		1
EL PASO										10		3		0				
ELBERT										1				0				
FREMONT	7	6		6		12	5	3	4	4	1	1	1	18		10	6	1
GARFIELD	10		2	1	1	16	2	18	7	43	6	12		26		22		2
GUNNISON	1					1				3	2			3		1		
HUERFANO										4	1			1				
JACKSON	8	1	1	8		3	3	9	2	4		2		13		11	1	1
KIOWA										1		1		0				
KIT CARSON	1									1				1				3
LA PLATA	28	2		11	2	28	3	18	7	12	1			41		46	1	
LARIMER	3	2						5	1	2	1			7		2	2	
LAS ANIMAS	16		2	4		1	1							17		14		3
LINCOLN				2	1	2	1	1	1				6	4		3		
LOGAN	2									1				2		2		
MESA	3	2		36	1	22	8	24	13	14		1		25		23	2	2
MOFFAT	7	1	1	6	3	4		9	4	44	7	5	10	31	1	16	1	1
MONTEZUMA	6		1	23	6	11	2	8	3	18	2	1		19		27		1
MORGAN								6	2	2	1	5		3		2		
PARK						1	1	1						1				
RIO BLANCO	7	2				1	1	11	2	15	2	1	2	14	1	7	3	
ROUTT	10	6	1							1				10		3	6	1
SAN MIGUEL	1			1										1		1		
WASHINGTON	1		1											1				1
WELD	11	3		12	5	208	95	763	236	964	590	903	402	1339		633	7	8
YUMA	1		1	6										1				1
TOTAL Horizontal	156	25	14	147	32	333	132	901	291	1203	632	951	421	1664	8	875	29	30
Percent of Total HZ		16%	9%												0%	53%	2%	2%
Total All Permits				5159		5996		4659		3773		1736						
Percent of Total				2.8%		5.6%		19.3%		31.9%		54.8%						



Well to Building Setback Review

Colorado Oil and Gas Conservation Commission

June 6, 2013

Count of well locations by proximity groupings from well spot to buildings for all locations reviewed under the December 17, 2008 amended rules.

Location Proximity to Buildings	2009	2010	2011	2012	2013	Number of Locations	Percent of Total Locations
less than 150 feet	2	3	3	2	0	10	0%
150 to 350 feet	37	58	61	39	13	208	3%
350 to 500 feet	50	110	97	61	26	344	5%
500 to 1000 feet	117	385	331	188	71	1092	17%
1000 + feet	356	1705	1470	838	411	4780	74%
Total Locations	562	2261	1962	1128	521	6434	

County	Total	Less than 150 feet	150 to 350 feet	350 to 500 feet	500 to 1000 feet	1000 + feet
ADAMS	41	0	2	5	9	25
ARAPAHOE	60	0	2	4	8	46
ARCHULETA	17	0	0	1	9	7
BACA	13	0	0	0	1	12
BENT	7	0	0	0	0	7
BOULDER	23	0	1	1	17	4
BROOMFIELD	32	0	0	4	13	15
CHEYENNE	77	1	0	0	0	76
DELTA	6	0	0	2	1	3
DOLORES	15	0	0	0	5	10
EL PASO	11	0	0	0	1	10
ELBERT	3	0	0	0	1	2
FREMONT	35	0	2	7	6	20
GARFIELD	407	0	5	2	56	344
GUNNISON	19	1	0	2	1	15
HUERFANO	7	0	0	0	2	5
JACKSON	26	0	0	3	1	22
KIOWA	54	0	0	0	1	53
KIT CARSON	11	0	0	0	0	11
LA PLATA	92	0	3	11	26	52
LARIMER	31	0	3	3	10	15
LAS ANIMAS	199	1	6	7	37	148
LINCOLN	182	0	0	2	4	176
LOGAN	40	0	1	1	0	38
MESA	78	0	0	3	13	62
MOFFAT	146	0	0	2	12	132
MONTEZUMA	23	0	0	1	2	20
MONTROSE	2	0	0	0	0	2
MORGAN	20	0	0	2	3	15
PARK	4	0	0	0	0	4
PHILLIPS	262	1	4	6	20	231
PROWERS	4	0	0	0	0	4
RIO BLANCO	144	0	0	0	1	143
RIO GRANDE	2	0	0	0	1	1
ROUTT	18	0	0	0	0	18
SAN MIGUEL	11	0	0	0	0	11
SEDGWICK	25	0	0	1	3	21
WASHINGTON	36	0	1	0	1	34
WELD	3782	6	171	260	785	2560
YUMA	469	0	7	14	42	406
TOTAL	6434	10	208	344	1092	4780



Well to Building Setback Review

Colorado Oil and Gas Conservation Commission

June 6, 2013

Listing of Locations less than 200 feet to Building

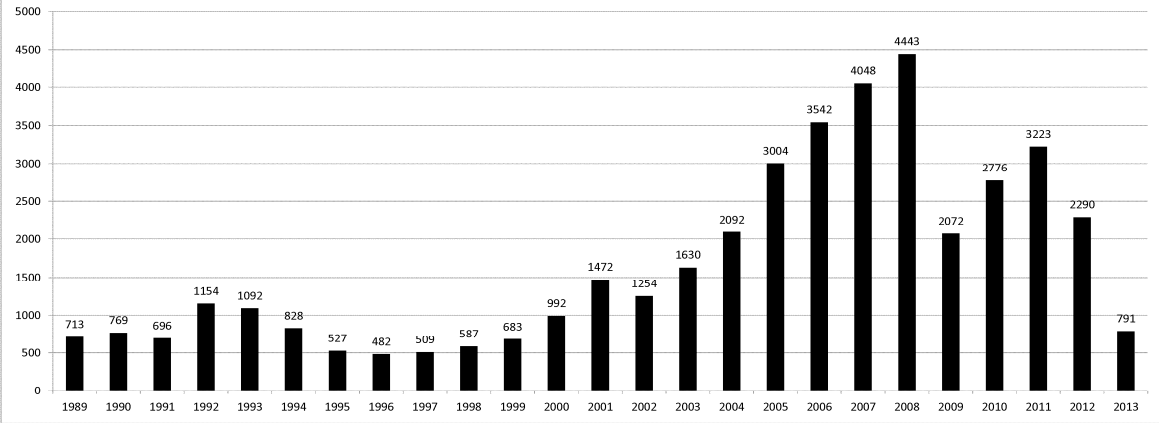
Year	Document Number	County	High Density	New Location	Distance	Proximity	Building Description
2011	2587822	CHEYENNE	No	No	58	less 150	Water well house
2009	1691798	WELD	No	No	58	less 150	Vehicle garage
2010	400072164	WELD	No	Yes	69	less 150	Abandoned hog shed
2012	400240957	GUNNISON	No	Yes	90	less 150	Equipment Shed
2009	1758843	WELD	No	Yes	103	less 150	Building to be razed
2011	1636646	WELD	No	No	122	less 150	Storage shed
2009	400011284	LAS ANIMAS	No	Yes	127	less 150	Operator is owner
2009	1786896	PHILLIPS	No	No	132	less 150	Grain Storage
2011	400117702	WELD	No	Yes	143	less 150	Irrigation pump house
2011	400227765	WELD	No	Yes	145	less 150	Storage Barn
2009	1904205	WELD	No	No	154	150 to 350	Livestock Enclosure
2012	400243295	WELD	No	Yes	155	150 to 350	Unused storage shed
2011	400179419	WELD	No	Yes	157	150 to 350	Existing well / storage building
2010	400054716	WELD	No	No	159	150 to 350	Equipment Barn
2011	400188968	WELD	No	Yes	159	150 to 350	Abandoned
2010	400021477	WELD	No	Yes	162	150 to 350	Goat Barn
2009	1758386	WELD	No	Yes	168	150 to 350	Storage Shed
2011	1635946	WELD	No	No	169	150 to 350	Storage shed
2011	400165164	WELD	No	Yes	178	150 to 350	Residence
2013	400367184	WELD	No	Yes	179	150 to 350	Farm Shed
2011	400188780	WELD	No	Yes	180	150 to 350	Residence
2010	1697620	WELD	No	No	187	150 to 350	Livestock Shed
2009	1758746	WELD	No	No	193	150 to 350	Storage Shed
2011	400154431	WELD	No	Yes	198	150 to 350	Turkey barn
2012	400250031	WELD	No	Yes	198	150 to 350	abandoned guard shack
2009	1774783	WELD	No	No	199	150 to 350	cement service building
2011	400118102	YUMA	No	Yes	199	150 to 350	Steel Barn



COLORADO OIL AND GAS CONSERVATION COMMISSION ANNUAL WELL STARTS BY COUNTY

COUNTY	1988	1989	1990	1991	1992	1993	1994	1995	1996	1997	1998	1999	2000	2001	2002	2003	2004	2005	2006	2007	2008	2009	2010	2011	2012	Current as of 6/06 2013	
ADAMS	39	27	26	36	54	20	54	28	6	16	12	17	18	13	4	19	22	24	13	41	14	15	21	2	14	4	
ALAMOSA																											
ARAPAHOE	2	4	16	11	11	3	9	8	3	3	2						6	1	5	2	1	1	3	9	8	5	
ARCHULETA	5	3	7	5	2	1		2		1			4	4	2	5	4	10	5	7	26	9	12	9	11		
BACA	5	5	12	6	21	8	9	19	9	7	11	8	19	6	2	1	6	6	2	6	12		5	5	1		
BENT				1				3	1	2	3	6	2				3	2	8	1	1			1	1		
BOULDER	2			7	18	56	15	5								2	5	11	9	14	25	16	13	7	14		
BROOMFIELD	3	2	3	7	14	27	22	2	2						2		1				10		22	11	5		
CHEYENNE	177	133	92	75	64	50	44	41	35	29	29	6	2	1	3	3		9	14	15	14	8	12	11	17	13	
CONEJOS																											
COSTILLA											1																
CROWLEY	1		1																								
CLUSTER																											
DELTA	1		1													5	4	6	5	2			4	1	1		
DENVER											2	3	1		2				7	5	4						
DOLORES	2		4	1													2		2	13	4	2		1	3	1	
DOUGLAS																											
EAGLE																											
EL PASO																							2			5	
ELBERT	8	11	9	5	2			10	15	2	2		2						1								
FREMONT	6	3	5	7	1	1	1	2			1						1	3	2	2	5	3	9	16	7	2	
GARFIELD	3	12	24	8	3	4	15	13	7	28	19	94	190	251	245	417	585	799	1005	1304	1688	768	910	881	498	173	
GRAND																											
GUNNISON			1	2		1									1		1	1	9	5	1	4	5	2	4		
HUERFANO	6			2	6	1	1	2		2	31	9	25	14	19	3	6	2					2	2	2	2	
JACKSON	2	1	3	7	2		3	1	1	3	3		24	2	4	10	10		3	3	10	1	6	7			
JEFFERSON										1																	
KIOWA	14	32	35	37	28	19	20	22	8	13	6	4	8	16	2	4	2	1	7	7	2	5	15	15	10	4	
KIT CARSON	11	6	6	6	9	13	15	9	6	3	7	7				1	1	6	2	1	14	3	1	1	3		
LA PLATA	158	129	186	44	66	26	17	19	29	48	65	80	99	135	118	110	103	104	108	179	199	131	67	54	3	7	
LARIMER	8	5	1	6	13	5	3		2	1			1	1				1		4	8	1	28	2	10	4	
LAS ANIMAS	17	22	20	3	2	11	17	34	62	90	120	182	202	286	205	221	296	384	413	326	221	14	7	78	1		
LINCOLN	6	5	4	4	7	7	8	8	3	2			2	2	1	5	2	2	1	2	19	10	14	23	23	20	
LOGAN	17	19	19	8	13	24	9	11	4	10	4		4	6	3	3	2	11	12	12	3	7	3	9	13	4	
MESA	1	2	2	4	1		7	2	1	1	4	4	2	12	12	13	25	89	156	209	222	14	11	40	4	2	
MOFFAT	1	2	1	2	1	1	2	1	3	1	8	10	18	23	25	28	19	40	60	42	25	18	15	34	26	11	
MONTEZUMA	6	5	7	5	2	5	7	3	12	2	2		2	3	5	5	1	7	2	4	18	11	3	9	14	3	
MONTROSE				1												3	2	1		1	2		1				
MORGAN	26	20	32	11	9	11	16	13	8	9	7	4	9	8	1	7	5	5	3	1	1	2	3	2	3		
OTERO				1																							
OURAY																											
PARK				1																			2				
PHILLIPS			3			1							1			6	10	11	4	35	18	2	42	129	50		
PITKIN		1			2																						
PROWERS	16	9	5	8	13	7	1	5	5	2	8	4	2	4	4		5	5	6	3	5	2	3	1			
PUEBLO																											
RIO BLANCO	1	8	10	1	3	8	6	7	5	9	9	62	51	82	47	83	92	95	107	95	203	116	107	71	52	15	
RIO GRANDE	1	2	2																								1
ROUTT		1	1	3	1							1	5	12	1		1	6	3	2		2	1	2	4	2	
SAGUACHE	1							2																			
SAN MIGUEL				1							3	1	6	9	10	19	28	13	20	17	5	1	2	2			
SEDGWICK							1	3		2						1	2	1	1	5			3	8	3		
WASHINGTON	39	28	22	26	24	20	20	13	17	23	18	4	15	12	24	29	65	34	23	14	11	2	2	4	1	3	
WELD	176	200	168	296	660	723	389	94	136	94	117	124	237	403	406	522	632	718	931	1222	1314	877	1207	1668	1463	507	
YUMA	12	16	41	47	102	39	114	145	101	104	93	52	42	162	108	106	144	597	593	445	336	27	213	108	16	10	
Grand Total	773	713	769	696	1154	1092	828	527	482	509	587	683	992	1472	1254	1630	2092	3004	3542	4048	4443	2072	2776	3223	2290	791	

ALL COUNTIES





Colorado Oil Gas Conservation Commission Monthly Statistics

YEAR	MO	Operators		Release		Bonds		Claim		Hearings		Violations		Remediation		Inspections			
		New	Inactive	Ind.	Blknt	Replace	Ind.	Blknt	Order	Apps.	NOAV	AOC	OFV	Crpmt	Spills	Rcvd	Comp	Wells	Locations
2010	Total	46	33	38	40	74	0	1	155	136	319	10	3	218	493	511	382	17075	
	JAN	1	2	3	1	4	0	0	16	15	43	3	2	33	40	47	45	1316	
	FEB	1	1	9	4	6	0	0	16	15	7	0	1	40	52	48	33	1591	
	MAR	2	3	6	3	9	0	0	NA	NA	31	NA	NA	33	48	59	27	1675	
	APR	2	0	3	2	1	0	0	24	24	8	0	0	10	52	38	61	959	
	MAY	3	0	5	2	4	0	0	77	65	16	2	5	26	31	33	51	1577	
	JUN	2	2	2	2	0	3	0	51	58	30	1	4	14	38	53	25	1099	
	JUL	3	6	3	6	3	1	0	NA	NA	29	NA	NA	13	39	92	20	518	
	AUG	2	3	12	7	2	0	1	68	54	26	2	2	20	54	106	56	1032	
	SEP	5	1	7	5	2	0	0	44	41	4	2	4	17	46	56	66	690	
	OCT	4	2	12	6	7	0	3	57	45	9	0	0	15	38	102	28	636	
	NOV	4	9	15	4	1	0	0	NA	NA	15	NA	NA	16	31	70	58	739	
	DEC	4	2	2	2	4	0	0	50	32	12	0	1	13	58	22	66	562	
2011	Total	33	31	79	44	43	4	4	403	349	230	10	19	250	527	726	536	12394	
	JAN	3	3	7	5	1	1	0	70	72	18	1	0	27	35	68	23	998	970
	FEB	6	9	8	5	0	0	0	NA	NA	10	NA	NA	24	40	85	36	1998	1024
	MAR	4	1	7	3	9	0	0	44	38	19	0	0	23	38	63	61	2203	1149
	APR	4	2	10	3	2	0	0	80	59	11	0	0	19	35	26	99	1701	930
	MAY	3	1	4	0	3	0	0	43	50	14	2	0	23	32	27	122	2621	1701
	JUN	3	4	3	3	4	0	0	NA	NA	5	NA	NA	35	39	46	98	1432	1091
	JUL	5	0	1	4	5	0	0	63	50	15	0	0	16	24	45	33	1319	1076
	AUG	6	5	2	8	0	1	0	67	54	24	3	2	21	28	127	33	1898	1432
	SEP	0	4	4	5	2	1	0	NA	NA	5	NA	NA	14	13	30	36	1137	864
	OCT	1	2	9	1	0	0	0	30	36	6	1	0	13	44	116	37	1407	1029
	NOV	6	4	12	8	7	0	0	85	37	16	2	0	10	44	26	44	1324	828
	DEC	6	2	3	1	0	0	0	NA	NA	14	NA	NA	19	30	31	19	1046	625
2012	Total	47	37	70	46	33	3	0	482	396	157	9	2	244	402	690	641	19084	12719
	JAN	3	5	12	2	0	0	0	48	75	15	4	0	21	40	31	45	1673	829
	FEB	4	2	6	3	2	0	0	41	35	11	2	0	28	30	42	90	1041	613
	MAR	1	3	2	2	1	0	0	54	67	16	2	0	11	25	64	28	1967	1150
	APR	7	1	5	2	8	0	0	NA	NA	21	NA	NA	12	31	38	37	1504	907
	MAY	2	1	3	0	0	0	0	46	50	22	6	0	13	25	34	60	2604	1568
2013	Total	17	12	28	9	11	0	0	189	227	85	14	0	85	151	209	260	8789	5067

Aprvd = Approved, Rcvd = Received, Ind = Individual, Blknt = Blanket, Apps = Application for Hearing, NOAV = Notice of Alleged Violation, AOC = Administrative Order of Consent, OFV = Order Finding Violation, Crpmt = Complaint, Comp = Completed