



Staff Report

July 29, 2013

TOP STORIES

New Setback Rules effective August 1, 2013

On February 11, 2013, the Commission adopted the long-awaited revised Setback Rules. The Commission increased the existing setback distances of 350 feet in High Density Areas and 150 feet elsewhere to a uniform 500 feet statewide, and imposed technically advanced best management practices and protective measures to eliminate, minimize or mitigate potential nuisances and other adverse impacts for all Oil and Gas Locations within 1,000 feet of occupied buildings. In addition, Oil and Gas Locations may not be located within 1,000 feet of specified "High Occupancy Buildings," including schools, day care centers, hospitals, nursing homes, and correctional facilities, without Commission approval following a public hearing. Variance approval will be contingent on extensive mitigation measures.

The Commission also has adopted Rules that will enhance notice to and communication with Building Unit owners within 1,000 feet of oil and gas operations, increasing opportunities for local government representatives, including Local Governmental Designees ("LGDs"), to review and comment on new Oil and Gas Locations proposed within their jurisdictions.

For more information, the Rules are available at www.cogcc.state.co.us under Hot Topics and Rulemaking to consider Statewide Setbacks. The Rules have been submitted to the Secretary of State for publication.

◆ Local Government Liaison (LGL) Program Update

Local Government Liaisons (LGLs) Nancy Prince and Marc Morton specialize in helping local governments find answers to oil and gas exploration

and production related questions, and strive to increase communication and coordination between local governments, operators, stakeholders and COGCC staff. As an example, in June and July, the LGLs provided assistance to various jurisdictions, including Elbert County, Pitkin County, Garfield County, Huerfano County, Arapahoe County, the City of Loveland, and the City of Aurora.

The LGLs actively encourage local governments across the state to participate in the Local Government Designee (LGD) program. The LGD program is voluntary, and LGDs are typically selected or appointed to these positions by the local government. To register to participate in the program, the jurisdiction must fill out, sign and submit a Form 29 to COGCC. The Form 29 is available on the COGCC website. Any change in LGD information (for example address, phone number, email address etc.) should also be submitted via a revised and signed Form 29.

The current list of participating LGDs is available under the "*Local Gov*" link on the COGCC website. LGD information is provided to facilitate communication between the public, the operators and other local governments. Local governments are encouraged to review their data, and verify contact information periodically, and update as needed as this list is the basis for email notification of pending permit application, other notifications regarding oil and gas activity and the LGD quarterly newsletter.

The LGLs assisted other staff in developing training materials for roll-out of the new setback rules. Training for operators is being planned by permit and OGLA staff and is scheduled for August 2 at Colorado Division of Wildlife Headquarters. Training will include a segment on operator interaction with local governments which is now required under the new rules. The expanded role of the LGD will be the focus of the next



newsletter, due out August 2 and will be a topic in upcoming LGD training sessions.

The most recent LGD training session was held in Sterling on July 23. Attendees included LGDs, local government staff and elected officials. The training was conducted by the Marc Morton, Nancy Prince and Hearings Manager, Robert J. Frick of COGCC, and Oil and Gas Liaison, Kent Kuster of CDPHE. COGCC engineering and field inspection staff were in attendance as well.

The format includes a morning session with general information about oil and gas, applicable COGCC and CDPHE rules, and the LGD program. Afternoon sessions provide more detail on the COGCC website and tools. Examples and discussions on ways to facilitate engagement of local governments with COGCC and operators to minimize impact to the local community are a highlight. LGD training sessions are a great opportunity for the local government representatives to network as they share questions and solutions. These sessions are geared for non-LGD local government staff as well - anyone at the local level who works with oil and gas exploration and production activity is encouraged to attend!!!

There are three LGD Training Sessions for the remainder of 2013. All sessions begin at 8:30 a.m. and conclude at 4:00 p.m.

Wednesday, August 21, COGCC Main Office, 1120 Lincoln Street, Suite 801, Denver, CO

Tuesday, September 24, Garfield County Administration Building, Board of County Commissioners, Room 100, Glenwood Springs, CO

Tuesday, November 12, Lamar, CO (venue to be determined).

Space is limited, so please register as soon as possible.

To stay current regarding the initiatives concerning local government regulation of oil and gas operations, the LGLs make it a priority to attend as many city or county local government meetings concerning the oil and gas industry as possible. Contact Marc Morton at 303-894-2100 x5132 or marc.morton@state.co.us, or Nancy Prince at

303-894-2100 x5103 or nancy.prince@state.co.us, if you are interested in updated information or to register for training sessions.

A list of other LGL outreach activities is included in the Public Outreach section listed on the next page.

Staff Training

On July 9, 2013, Hearing Officer Jill Dorancy attended a class on Petroleum Geology for Non-Geologists at the Colorado School of Mines. The class was taught by former Commissioner Dr. Steve Sonnenberg. The topics included Rock Cycle, Plate Tectonics and Structural Geology, Petroleum Systems, Porosity and Permeability, and Exploration and Exploitation Process.

Public Outreach

➤ *Outreach by Director and other Staff Members*

-
- On June 15, 2013, Director Matt Lepore spoke at the NARO (National Association of Royalty Owners) Rockies, Colorado Conference in Loveland, CO. The topic was "Setback Rules, 100 Series, Water Rules, 600 Series."
- On June 18, OGCC field inspectors and members of the Air Pollution Control Division's Oil & Gas Team conducted a joint training exercise on well completions; hydraulic fracturing and flow back operations. Each group shared information on applicable rules and their inspection process. The next round of joint training exercise will consist of small groups from each agency conducting site inspections at different types of facilities and sharing additional information on what each group is looking for in terms of compliance and enforcement.
- On June 20, Dave Andrews, Western Region Engineering Supervisor, conducted a drilling operations guest lecture and presentation for students and faculty of an Oil and Gas Production class at Colorado Mountain College's Rifle Campus. The presentation included a summary of COGCC's mission and organization, responsibilities of COGCC's Engineering Staff, general drill-



ing rules, wellbore integrity, casing and cementing requirements, drilling methods and equipment, drilling mud handling, well control and blowout prevention, and cementing.

- On June 25, Denise Onyskiw, Underground Injection Control Program Supervisor, taught the second annual UIC class to operators and consultants about UIC fundamentals and permit application preparation.
- On July 10, Jim Milne attended the COGA Environmental Health and Safety Meeting and did a presentation about spill reporting and an eForm 19, that is currently in development. A draft of the eForm was distributed to COGA members for comments.
- On July 16, Matt Lepore was part of a panel during the Energy Summit sponsored by the Northern CO Biz Report. Topic was "Regulations: Facts & Figures."

➤ Outreach by COGCC Local Government Liaisons (LGLs)

- On June 24, 2013, Nancy Prince and Marc Morton travelled to Brighton, CO and met with city management staff including Manuel Esquibel, City Manager and LGD, Marv Falconburg, Director of Community Development, Holly Prather, Community Development staff, Jim Landeck, Director Utilities Department, Joe Smith, Director of Streets and Fleet Department, and Margaret Brubaker, City Attorney. Nancy gave an overview of COGCC operations, and how local governments can have input in the oil and gas regulatory process through the LGD program.
- On June 25, Nancy Prince attended the Town of Bennett Board of Trustees study session where she gave a presentation on the structure of the LGD program and how it can benefit the local governments.
- On June 25, Marc Morton travelled to Broomfield and attended a regular meeting of the Broomfield City Council that included citizen comments on proposed and future oil and gas activity in the City/County limits. The meeting was followed by a City Council study session

where city staff and invited technical experts reviewed and discussed potential measures to address citizen concerns voiced at the prior Town Hall meeting, and via written comment.

- On June 26, Nancy Prince attended a meeting of the Elbert County Commissioners. Public comment was taken on the proposed oil and gas regulations, and the matter was continued to the next meeting on July 10.
- On June 27, Marc Morton travelled to Durango for a series of meetings and field work that included participating in a multiple stop tour within the San Juan Basin provided by Karen Spray, Southwest Region Environmental Protection Specialist. The tour included stops in Durango at the Fruitland Formation and Pictured Cliffs Sandstone contact, and area of gas migration; at the South Fork Texas Creek Active Mitigation System site (La Plata County); and the Pine River Ranches Passive Mitigation System site (La Plata County). The sites visited are part of the 3M and 4M project efforts, initiated in 2000 and 2007, and managed by Southwest Environmental Protection Specialist, Karen Spray. Darlene Markus, Field Representative for Congressman Scott Tipton, also participated in the tour.
- On June 28, Marc Morton met with Christi Zeller, Director of the La Plata County Energy Council (LCEC), and received valuable input and resources concerning LCEC's programs that promote safe and responsible natural gas development in La Plata County, and work to build community relations, increase public understanding, and address public issues relative to the industry.
- On June 28, Marc Morton met with Julie Levy, BP's Director of Government and Public Affairs (Rockies) concerning BPs area production, outreach, and public education efforts.
- On July 1, Nancy Prince, Margaret Ash and Mike Leonard met with the Kyle Fenner, the new Director of Planning and Community Development for Elbert County to explain the COGCC field inspection process.
- On July 3, Nancy Prince and Oil and Gas Loca-



tion Assessment Specialist, John Noto attended the Fremont County municipal leaders meeting in Florence. Representatives from Florence, Fremont County, Coal Creek and Rockvale were introduced to John, as the best contact for local concerns about permit conditions of approval and best management practices.

- On July 10, Nancy Prince attended a meeting of the Elbert County Commissioners. The Commissioners voted against adopting the draft regulations presented by the Planning Commission, and instructed staff to prepare a revised set of regulations and draft MOU to be presented at the next meeting on July 24.

REGIONAL ACTIVITIES

➤ NORTHWEST COLORADO

◆ Northwest Colorado Oil and Gas Forum

The Forum is an informal gathering of local, state, and federal government officials, oil and gas industry representatives, and citizens that have met regularly since 1989. The purpose of the Forum is to share information about oil and gas development in northwest Colorado and to make government officials and oil and gas industry representatives easily accessible to the public. Currently, the meetings are conducted once per quarter and are co-chaired by the COGCC Director Matt Lepore and Garfield County Commissioner Mike Samson.

The next meeting of the Forum is tentatively scheduled for Thursday, September 5, 2013, at 10:00 a.m. at a location to be determined. All parties wishing to be placed on the meeting agenda, or added to the distribution list for announcements, should contact Chris Canfield at 970-625-2497 or via email at: chris.canfield@state.co.us

• Project Rulison

Please note that the email for Project Rulison submittals has been changed to:

DNR_rulison.submittal@state.co.us

• Project Rio Blanco

Please note that the email for Project Rio Blanco submittals has been changed to:

DNR_rioblanco.submittal@state.co.us

➤ SOUTHWEST COLORADO

◆ Gas and Oil Regulatory Team (GORT) Meeting

The next GORT/Southwest Colorado Oil and Gas Stakeholders meeting occurred on Friday, July 19, 2013, from 8:30 a.m. to noon at the La Plata County Fairgrounds in Durango, Colorado.

Over 50 people were in attendance, including La Plata County Commissioner Julie Westendorff, County Manager Joe Kerby, representatives of the La Plata County League of Women's Voters, multiple operators, environmental groups and the general public.

The next GORT meeting is scheduled for Friday, October 18, 2013 from 8:30 a.m. to noon at the La Plata County Fairgrounds in Durango, Colorado. All parties wishing to be placed on the next meeting agenda should contact Karen Spray at: 970-259-1619 or karen.spray@state.co.us.

◆ Fruitland Formation Outcrop Mitigation and Monitoring Projects (4M Projects)

Fruitland Formation Outcrop - 4M Pilot Scale Mitigation Projects La Plata County. The South Fork Texas Creek (SFTC) system operated at 11.1 Kilowatts (kW) power generation and was functional 100% of the time for the period April 28, 2013 and June 1, 2013. An average of 6.4kW per hour were returned to the grid during these periods. Pine River continues to operate in a passive mode. General O&M continues at both locations.

4M Monitoring Wells La Plata and Archuleta Counties. There are 17 wells at 11 locations in the COGCC 4M monitoring program. Well pressures are monitored remotely via satellite telemetry with one or two maintenance visits per year, depending upon data received. Three sites were treated for weeds in June 2013. In late June 2013, data transmission problems were identified from the upper transducer in Well #1 at the Highway 151 location and ongoing data drops are being record-



ed in both upper transducers in the Wagon Gulch wells. Data reception from the Beaver Creek wells was reinstated in March 2013 for unknown reasons. Summer operations and maintenance are planned for August 2013 and data transmission issues will be addressed.

Ongoing Investigation, Reclamation, and Mitigation of Residual Methane in the Vicinity of the Bryce 1-X Well Area, Bondad, Colorado Three of the four water wells were sampled on April 30, 2013 with the fourth sampled on May 7, 2013 to accommodate to homeowner availability. Analytical results show increases in methane concentrations in the Fire Station, Middle and South water wells and a decrease in the North water wells. Long-term trends remain downward in each well however, and total dissolved solids (TDS) and most major cations/anions decreased during this sampling event. The next sampling is scheduled for October 2013.

➤ SOUTHEAST COLORADO

◆ U.S. EPA Raton Basin Hydraulic Fracturing Study - Las Animas and Huerfano Counties

As part of the retrospective study of possible impacts from well completions, a third round of sampling and analysis of groundwater from two areas in the Raton Basin was conducted during the week of November 5. COGCC staff, as well as contractors for Pioneer Natural Resources, collected split samples at many of the sites. The EPA released an interim progress report on the study in December, 2012. The EPA is expected to release the study in a draft for public and peer review in 2014. Ultimately, results from the study are intended to inform the public and provide policymakers at all levels with high-quality scientific knowledge that can be used in decision-making. For more information on the EPA hydraulic study, go to <http://www.epa.gov/hfstudy/>.

VARIANCES

On July 2, 2013, a variance from the requirement set forth in the 100-Series definitions that multi-well pits will be in use for no more than three years, was granted to **Encana Oil & Gas (USA) Inc.** (Operator no. 100185) for one location,

(Frac Pad J25 496, Pit Facility ID no. 418127) in Garfield County. COGCC extended the pit expiration date to July 7, 2014 in order to allow Encana to operate the pit for an additional 12 months. During this time, Encana will continue to utilize this pit to support completion operations in the Story Gulch area. Once the Divide Road Water Facility (Form 28 currently under review with the COGCC) is operational, the subject pit will be closed and the area will be reclaimed. Encana does not intend for this pit to be converted to an E&P Waste Management Facility. Encana will be allowed to operate the subject pit (Form 15 document no. 2607664) until July 8, 2014, by which time Encana will close the pit under an approved Form 27. No additional extensions will be granted by the Director. Encana is required to continue to monitor the leak detection and system in conjunction with daily inspections to ensure that the intent of the Oil and Gas Act is met.

On July 8, 2013, a 502.b Variance Request to Rule 603.a(1) requiring 150' setback from a public road was granted to the **United States Geological Survey** for a well permit to core 1500' of Niobrara. The Document Number for the Application for Permit to Drill is 2486399 and Sundry Notice is 400441986. The location for this stratigraphic well is in the NWNW of Section 3, Township 4 South, Range 83 West, 6th P.M. in Eagle County. It is 127 feet from County Road 4 and is located on BLM surface and minerals in an undeveloped area. The BLM approved the well and Eagle County granted a waiver. The location could not be located further away from the road due to a steep-sided drainage north of the location. A small truck-mounted rig is being used to drill the well during daylight hours only.

➤ ORGANIZATION

2 New Petroleum Engineers

Mark Schlagenhauf joins the Commission with over 25 years of experience. His prior work has been with oil and gas companies and the Federal government. He has experience in the Rocky Mountains, Mid-Continent, North Sea, Former Soviet Union, Latin America, Africa, Middle East and Asia. He is a Colorado Professional Engineer with a Bachelor of Science degree in Chemical Engineering with graduate with Petroleum Engineering



Graduate studies at University of Tulsa, Oklahoma.

Mike Hickey has over thirty five years of experience. He has been with the commission since 2011 as a Field Inspector in the DJ Basin. Prior to working for COGCC, Mike worked in engineering, home building, and oil and gas companies throughout Colorado, North Dakota, Wyoming and offshore California. He is a Colorado Professional Engineer with a Bachelor of Science Degree in Petroleum Engineering from the Colorado School of Mines.

New Research Scientist

The COGCC is pleased to announce that Chris Eisinger has joined the Permit/Technical Services Group as the new Research Scientist, filling the position vacated by Jim Milne's move to Environmental Group as Manager. Chris transferred from the Colorado Geologic Survey where he was the Senior Oil and Gas Geologist for three years. Chris is a geologist with experience in reservoir modeling and subsurface characterization. Additional experience includes groundwater resources, environmental remote sensing and volcanology.

New Budget Analyst

The COGCC welcomes the addition of Eric Nickell to its budget staff. Eric comes to us with twelve years experience as a budget and capital projects lead analyst and two years experience managing budgets in large organizations. Most recently, he worked as the Budget Director for the City of Boulder. He earned a bachelor's degree in chemistry with a minor in environmental issues from The Colorado College and a Master of Public Administration Degree from Princeton University.

An organizational chart can be found on pages 10 -12. For contact information, please go to our homepage, and then "Staff Contact Information."

➤ PLANNING/ADMINISTRATION/OTHER

◆ Plugging and Reclaiming Abandoned Wells (PRAW) - Project Updates

The DeBeque Environmental and Reclamation Project, involves the remediation of soils contaminated by salt water in the vicinity of the orphaned wells known as the Homestead #2 and the Pasture #1 wells. Both sites are located in Mesa County on the NW edge of DeBeque, CO. Soil sampling and lab analysis has been completed on both well sites with remedial and reclamation designs, plans & work to be scheduled and completed during this new fiscal year (July 1, 2013 thru June 30, 2014).

The Trinidad MGP #1, well plugging project is located in Las Animas County about 18 miles west of Trinidad, CO and is just north of highway 12. The well was drilled to a depth of 1605', targeting the Vermejo coal, and completed in late 1980. The original operator of the well was the City of Trinidad. In late 1984, the well was deemed uneconomical to produce and plugged. The well was discovered to be leaking gas in 2008 and an attempt to re-plug the well was made with the final decision being to extend the casing above ground level and vented to the atmosphere. Having new information on the well and a recent request by the new landowner to permanently plug it, the COGCC re-entered it and successfully re-plugged the well this past June. The winning bid came in at \$76,380. With new information and resourceful change orders upon well entry, the final invoice came to \$69,149 or a savings of \$7,231. In close proximity to the well and subsequent to this report, the COGCC hired an environmental company to perform a baseline soil gas vapor measurement for an additional \$6,274. This brings the total cost of the project to \$75,423 for fiscal year ending June 30, 2013. Another soil gas vapor measurement will be made sometime in the future to help assess the success of the plugging work.

The PAST Project includes three leaking PA wells in need of re-entering and re-plugging and has been renamed the **2013 Piceance Re-entries Project** to avoid confusion with other work. Two are located in Garfield County and one is in Mesa County. The COGCC has received competitive bids and awarded the winning bid to a contractor in the amount of \$183,480. Work commenced on this project on June 21 and has continued up to present time with plans of conclusion in mid-July. The first of the three wells has been re-



entered and successfully re-plugged. As of July 2, the second well has been being successfully re-entered and drilled out to its objective total measured depth of 4265' in preparation for plugging during the week of July 8. Total expenditures for this project and during the month of June have come to a total of \$86,193.

Page 13 contains a spreadsheet listing PRAW projects that are either scheduled in process or completed as of July 8, 2013.

◆ September 2013 Hearing Docket

A docket for the September 2013 hearing will be available shortly after the June hearing. Hearing dockets are available on our website by clicking on "Hearings." Links to the notices and hearing applications are available from the Docket Number and Applicant, respectively. To sign up for e-mail notification of hearing notices and applications, please see the announcement and instructions on the homepage of the COGCC website: www.cogcc.state.co.us

◆ Colorado Oil and Gas Information System (COGIS) Projects, Updates and Changes

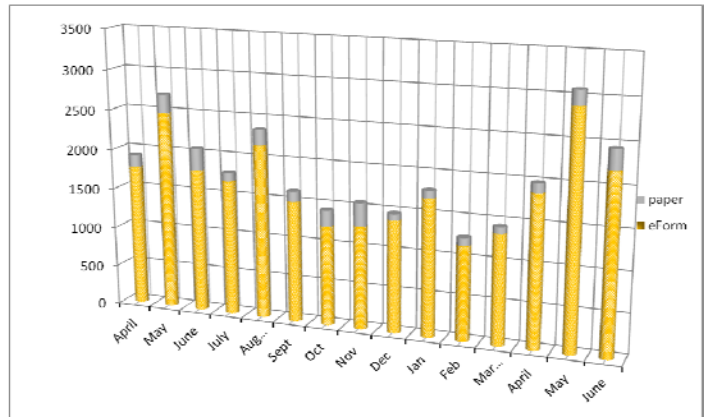
Environmental Database

During the past 18 months, the COGCC and the Ground Water Protection Council (GWPC) have been working together to develop a new Environmental Database that will contain the results from the Colorado Oil and Gas Association Voluntary Baseline Groundwater Quality Sampling program, along with other environmental data collected by the agency. The project included the development of a new relational database model that will allow the data to be accessible to the public from the COGCC website.

Other improvements include an Electronic Data Deliverable that allows industry to submit the results of the sampling directly to the COGCC, which can then process the information directly into the database. The application has many other features to help staff analyze the information and understand the lab results from the sampling. The interface will allow the public to view and download the results.

Electronic Form Submissions (eForm)

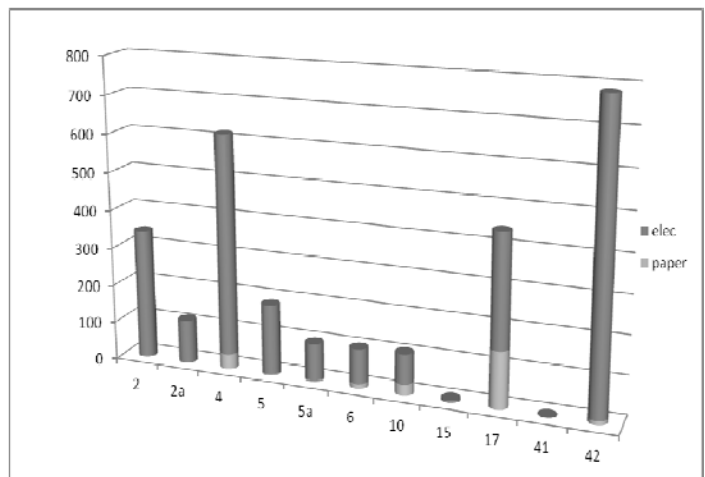
TOTAL ELECTRONIC FORM SUBMITTALS
APRIL 2012 - JUNE 2013



Forms currently available through eForm:

- Form 2 - Application for Permit to Drill
- Form 2A - Oil and Gas Location Assessment
- Form 4 - Sundry Notice
- Form 5 - Drilling Completion Report
- Form 5A - Completed Interval Report
- Form 6 - Well Abandonment Report
- Form 10 - Certification of Clearance/Change of Operator
- Form 15 - Earthen Pit Report/Permit
- Form 17 - Bradenhead Test Report
- Form 41 - Trade Secret Claim of Entitlement
- Form 42 - Notice of Notification (Notice of Hydraulic Fracturing)

Following is a breakdown by Form for the month of June 2013:





⇒ New eForm Sundry Notice Form 4

The Sundry Notice Form 4 was released in eForms on May 1. As anticipated, industry regulatory staff very quickly implemented submittal of their Form 4s electronically. The total number of Sundry Notice Form 4s submitted in the month of May was 703, with 584 or 83% submitted in eForms. Staff continues to encounter and resolve small glitches, but the release has been nearly problem-free.

⇒ Revisions to Forms 2 and 2A

The revised Form 2 and 2A will be released on August 1. The forms are being revised to accommodate the additional information required by the new Setback Rules that will be effective August 1st. Staff is taking this opportunity to make some long-needed improvements to both forms.

The development team has now turned its attention to the changes that are required on the Form 2 and Form 2A for the rules that are set to go into effect on August 1. Final staff testing of the revised Form 2 and 2a has been underway during the early part of July.

Industry training for the revised Forms 2 and 2A will be conducted August 2. In order to accommodate the anticipated large number of industry participants, the training will be held at the Parks and Wildlife Hunter Training Building in Denver.

The Form 4, Sundry Notice went live in eForm on April 30, and has become one of the fastest forms to achieve over an 80% usage within the electronic portal. It achieved this in its first month of availability. With the addition to the suite of forms now available in eForms, processing of the Sundry can now be faster and more efficient.

COGCC staff is available to answer questions as needed for either the new eForm 4 or for the revised paper Form 4.

The development team has now turned its attention to the changes that are required on the Form 2 and Form 2A for the rules that are set to

go into effect on August 1. Final staff testing of the revised Form 2 and 2a has been underway during the early part of July.

Form 15, Pit Permit and Report, is available in eForm and operators are encouraged to utilize the system to file this form. The form contains additional fields. The PDF version on the Forms page, <http://cogcc.state.co.us/Forms/forms.html>, is revised to reflect the changes that occurred from the release of the form in eForm.

As forms are released on eForm, updates to the PDF forms on our website will occur in tandem. These new versions of the PDF forms will reflect any changes that have taken place when forms are moved into eForm.

Along with the eForm system, a page is available where the operators can review all known bugs within the system and report any new ones they discover. Currently, there are 305 operators using eForm.

The public can make comments on all submitted Oil and Gas Location Assessment (OGLA) forms (Forms 2A) through the eForm system. This is accomplished by going to the COGCC website (<http://www.colorado.gov/cogcc>) and clicking on the menu option, "Permits", (or <http://cogcc.state.co.us/COGIS/DrillingPermits.asp>).

On the COGIS-Permits page, two search options are available for OGLA forms, "All Pending Location Assessments for" and "All Approved Location Assessments for." When the results are displayed for forms in process, the public can click on the document number, which logs the user onto the new eForm application. Once the page is displayed with the selected document, the user can select the Comment button to make a comment on that particular form. The public can use this same method to make comments on APDs (Form 2s).

For any operator not currently enrolled in eForm, instructions for starting the process can be found at <http://cogcc.state.co.us/Announcements/COUAINformation.pdf>.



- COGCC GIS Online

An upgrade of the COGCC GIS Online interactive map is now available on the COGCC's website. Two new features are now available along with some minor changes. An Address Search button will zoom the map is now available on the COGCC's website. Two new features are now available along with some minor changes. An Address Search button will zoom the map to the area of an input street address, city and zip code. The second new feature is an enhanced Print function. This will generate a PDF document which can be saved or printed. It allows choice of paper size, orientation, input of a legend and a map scale options.

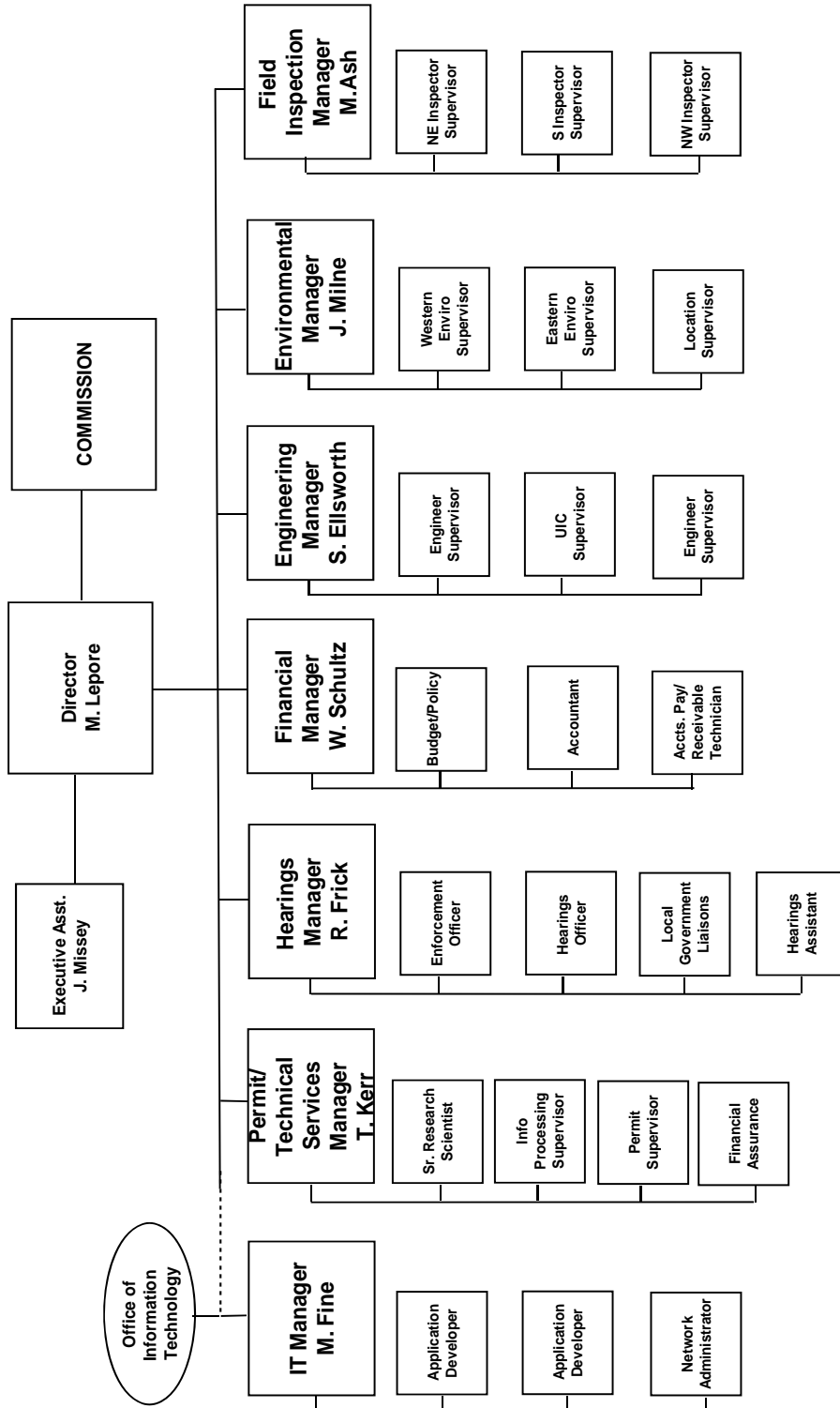
- Permitting, OGLA, and LGL

The Permitting, OGLA, and LGL staff are developing New Setback Rules guidance documents and training for internal staff, operators, local governments and the public. These materials will be available on the website by the end of July.

Colorado Parks and Wildlife has submitted changes for species-specific Sensitive Wildlife Habitat and Restricted Surface Occupancy areas. To become effective these changes require a rulemaking process including stakeholder meetings. The first stakeholder meeting was held June 26, 2013, with a subsequent meeting scheduled for July 31, 2013. The proposed changes are viewable on a Wildlife map on the COGCC website from a link on the Wildlife Stakeholder Meeting page. Shapefiles of the proposed changes are downloadable from this page as well.



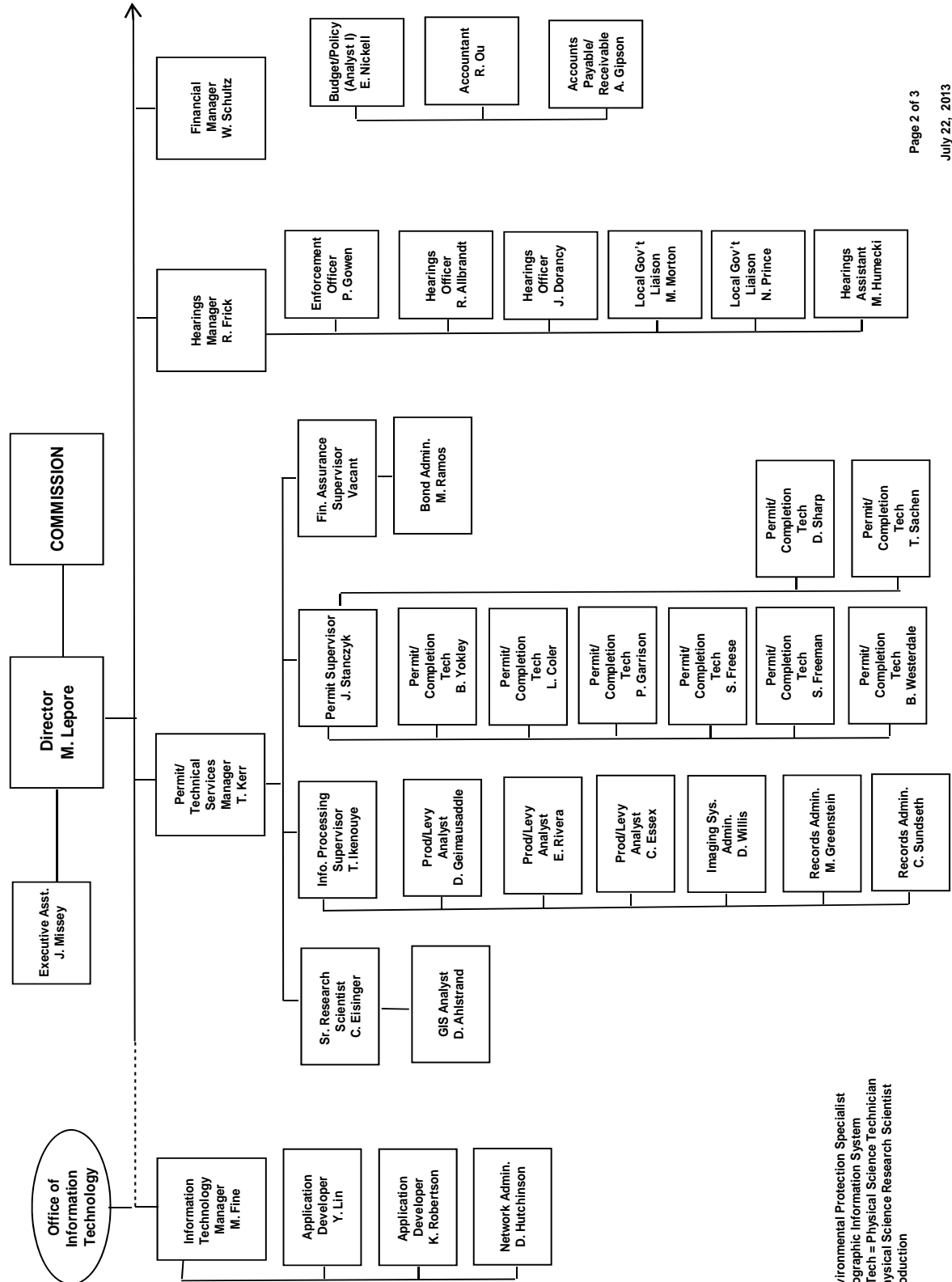
COLORADO OIL & GAS CONSERVATION COMMISSION



See the next two pages for details



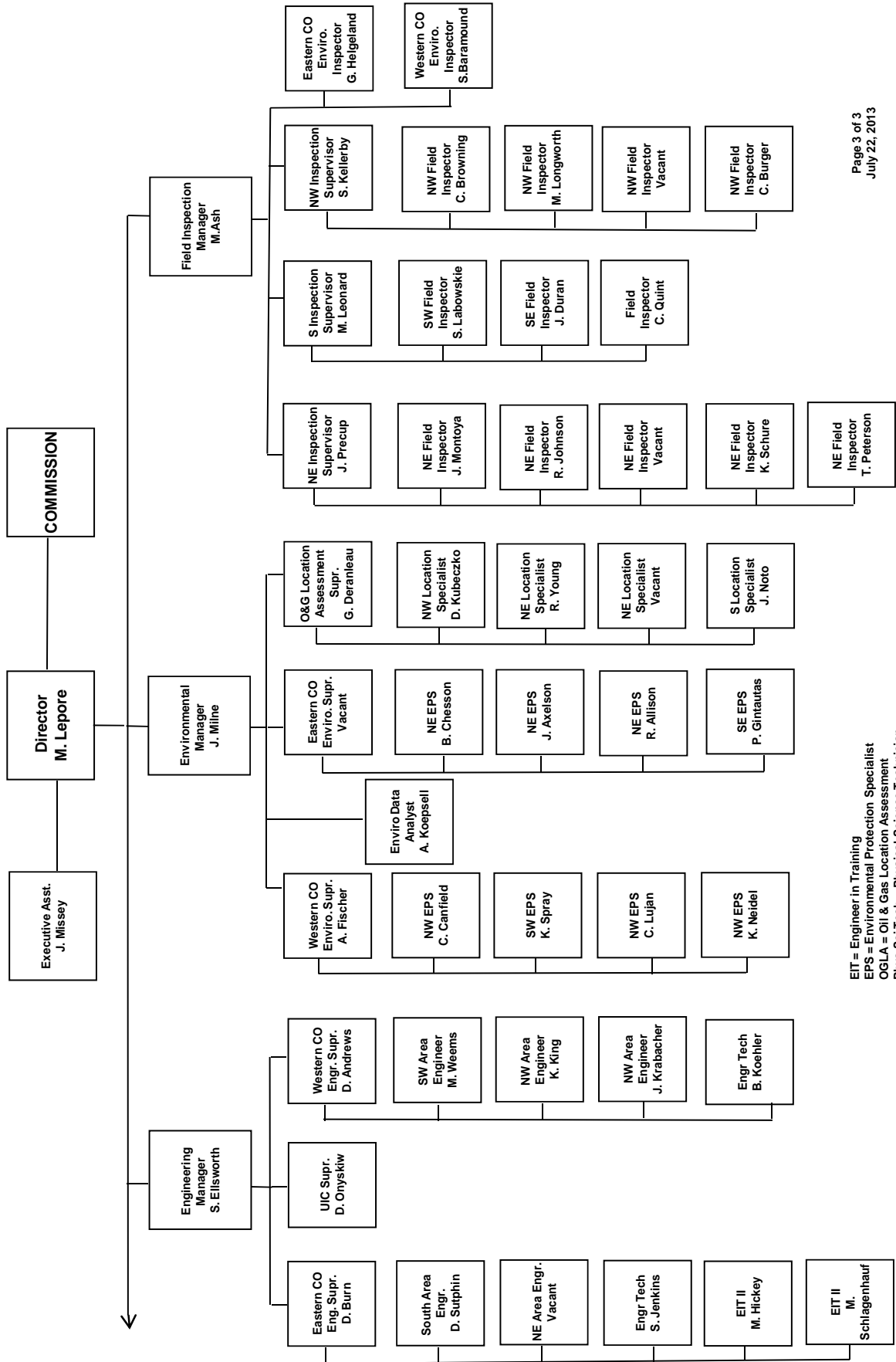
COLORADO OIL & GAS CONSERVATION COMMISSION ORGANIZATION



EPS = Environmental Protection Specialist
 GIS = Geographic Information System
 Phys/Sci Tech = Physical Science Technician
 PSRS = Physical Science Research Scientist
 Prod = Production



COLORADO OIL & GAS CONSERVATION COMMISSION ORGANIZATION



EIT = Engineer in Training
 EPS = Environmental Protection Specialist
 OGLA = Oil & Gas Location Assessment
 Phys Sci Tech = Physical Science Technician
 UIC = Underground Injection Control

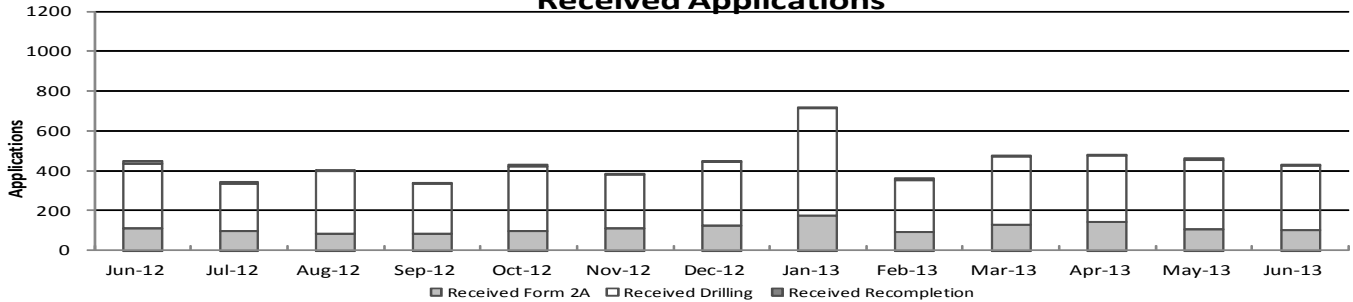


Colorado Oil & Gas Conservation Commission Monthly Permit Activity

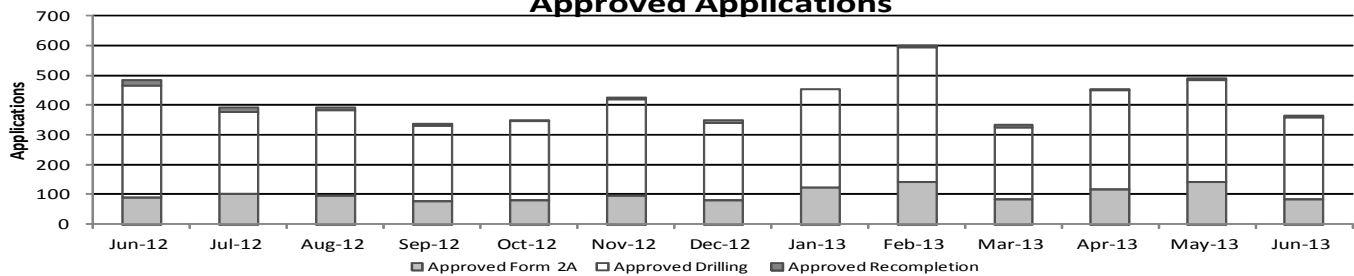
	Backlog	Received	Approved	Withdrawn	Rejected	Incomplete	In-Process	Remaining
Form2A								
Jun-12	149	110	89	2	0	54	114	168
Jul-12	168	97	103	4	0	51	107	158
Aug-12	158	83	97	6	0	54	84	138
Sep-12	138	81	77	5	0	47	90	137
Oct-12	137	94	82	8	0	30	110	141
Nov-12	141	109	97	13	0	19	112	140
Dec-12	140	122	81	4	0	35	124	177
Jan-13	177	176	124	12	0	34	183	217
Feb-13	217	91	141	8	0	34	125	159
Mar-13	159	129	84	1	0	33	170	203
Apr-13	203	144	117	7	0	40	183	223
May-13	223	106	142	4	0	37	146	183
Jun-13	183	102	85	7	0	41	152	193
Drilling								
Jun-12	460	326	377	9	0	114	286	400
Jul-12	400	237	276	4	0	91	266	357
Aug-12	357	313	288	9	0	146	227	373
Sep-12	373	252	256	24	0	98	247	345
Oct-12	345	326	265	29	0	65	312	377
Nov-12	377	271	323	21	0	65	239	304
Dec-12	304	322	260	9	0	77	280	357
Jan-13	357	538	331	19	0	101	444	545
Feb-13	545	260	455	16	0	58	276	334
Mar-13	334	343	241	4	0	46	386	432
Apr-13	432	331	333	2	0	79	349	428
May-13	428	349	342	31	0	45	359	404
Jun-13	404	325	273	18	0	57	381	438
Recompletion								
Jun-12	24	11	19	0	0	3	13	16
Jul-12	16	9	14	0	0	3	8	11
Aug-12	11	6	9	0	0	1	7	8
Sep-12	8	1	5	2	0	0	2	2
Oct-12	2	9	3	0	0	0	8	8
Nov-12	8	5	8	0	0	0	5	5
Dec-12	5	4	8	1	0	0	0	0
Jan-13	0	6	0	0	0	0	4	6
Feb-13	6	10	5	0	0	0	11	11
Mar-13	11	5	9	0	0	1	6	7
Apr-13	7	6	5	0	0	2	6	8
May-13	8	8	6	0	0	0	10	10
Jun-13	10	2	8	0	0	0	4	4

Incomplete are permits that have missing or inaccurate data and cannot be approved.

Received Applications



Approved Applications



Backlog = Incomplete + In-process = Remaining permits from previous month



Colorado Oil and Gas Conservation Commission
 Status of Permit Applications Filed By Month
 July 12, 2013

Form 2A Location Assessment

Year	Month	Received	Approved	Withdrawn	In Process	Percent In Process	Median Days to Process	Less Than 30 Days	30 to 49 Days	Greater Than 50 Days
2010	Total	2520	2433	85	0			1559	662	212
2011	Total	2391	2298	89	4	0%		1416	620	262
2012	1	141	138	3	0	0%	33	92	27	19
2012	2	160	152	8	0	0%	31	118	26	8
2012	3	135	133	2	0	0%	41	80	25	28
2012	4	126	119	7	0	0%	38	77	25	17
2012	5	119	115	4	0	0%	38	63	28	24
2012	6	101	96	5	0	0%	41	32	44	20
2012	7	104	98	5	1	1%	40	41	43	14
2012	8	72	68	4	0	0%	40	33	22	13
2012	9	77	72	5	0	0%	37	28	34	10
2012	10	94	89	5	0	0%	39	31	40	18
2012	11	85	79	5	1	1%	36	52	15	12
2012	12	145	127	12	6	4%	38	59	49	19
2012	Total	1359	1286	65	8	1%		706	378	202
2013	1	177	162	12	3	2%	33	99	45	18
2013	2	91	83	7	1	1%	34	42	29	12
2013	3	131	108	4	19	15%	38	41	46	21
2013	4	150	132	5	13	9%	35	47	69	16
2013	5	105	80	4	21	20%	29	47	31	2
2013	6	107	16	2	89	83%	24	15	1	0
2013	7	38	0	1	37	97%				
2013	Total	799	581	35	183	23%		291	221	69

Form 2 Application For Permit to Drill (APDs)

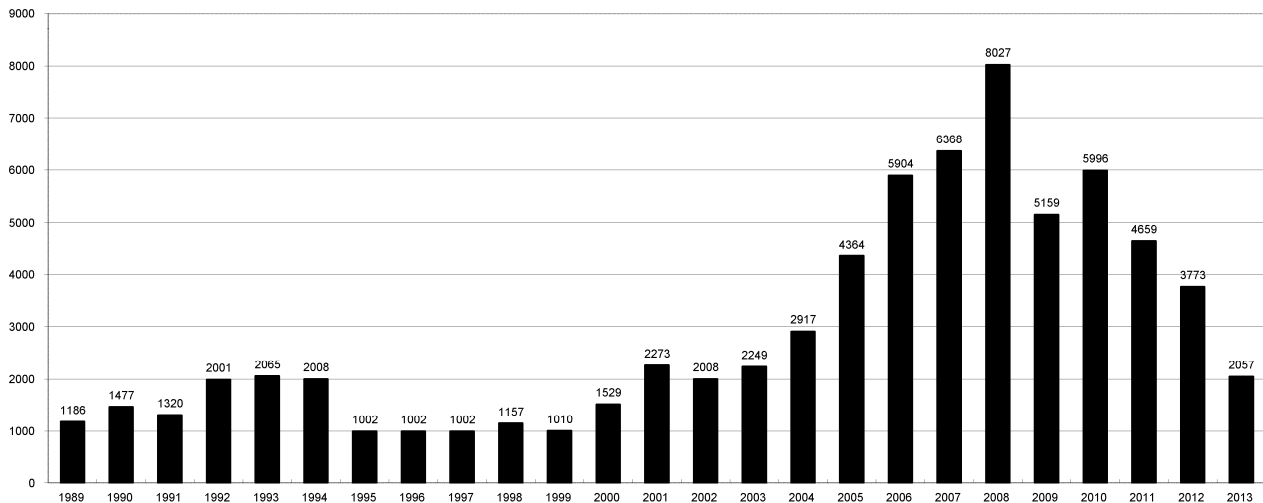
Year	Month	Received	Approved	Withdrawn	In Process	Percent In Process	Median Days to Process	Less Than 30 Days	30 to 49 Days	Greater Than 50 Days
2010	Total	5891	5746	144	0	0%		1760	2739	1744
2011	Total	4692	4557	128	5	0%		2723	1565	587
2012	1	368	361	7	0	0%	34	235	107	45
2012	2	371	360	11	0	0%	31	277	70	37
2012	3	284	279	5	0	0%	40	164	84	50
2012	4	418	405	13	0	0%	36	219	160	41
2012	5	509	491	18	0	0%	37	260	149	104
2012	6	280	277	3	0	0%	43	107	119	62
2012	7	281	274	6	1	0%	40	103	144	37
2012	8	282	262	20	0	0%	32	148	89	30
2012	9	212	192	20	0	0%	38	78	78	38
2012	10	355	350	5	0	0%	36	131	168	59
2012	11	244	228	14	2	1%	37	110	80	42
2012	12	351	334	14	3	1%	38	139	145	54
2012	Total	3955	3813	136	6	0%		1971	1393	599
2013	1	562	541	18	3	1%	35	278	179	85
2013	2	242	228	13	1	0%	36	78	126	38
2013	3	333	307	9	17	5%	37	123	119	71
2013	4	328	300	10	18	5%	36	105	153	45
2013	5	370	286	23	61	16%	33	112	173	12
2013	6	331	89	7	235	71%	27	74	14	1
2013	7	159	0	0	159	100%				
2013	Total	2325	1751	80	494	21%		770	764	252



COLORADO OIL AND GAS CONSERVATION COMMISSION ANNUAL DRILLING PERMITS BY COUNTY

COUNTY	1988	1989	1990	1991	1992	1993	1994	1995	1996	1997	1998	1999	2000	2001	2002	2003	2004	2005	2006	2007	2008	2009	2010	2011	2012	current as of 7/12 2013	
ADAMS	46	34	44	53	92	58	137	34	9	33	24	19	38	28	9	26	39	34	37	89	51	35	21	8	40	6	
ARAPAHOE	5	5	15	14	11	4	20	12	2	9	1	2	0	2	1	2	5	7	11	10	10	10	8	23	35	12	
ARCHULETA	8	5	18	5	2	1		3		3		1	7	9	6	10	8	13	14	26	47	11	18	12	5	3	
BACA	6	4	15	10	23	9	12	24	10	7	13	15	22	6	2	3	7	8	2	11	13	3	4	5	3		
BENT				1		2	2	4	2	5	3	5	2				5	3	8	1	1		5		2	1	
BOULDER	1		1	13	38	159	38	5	8	2	5		1	5	6	7	17	13	21	37	32	35	24	30	22		
BROOMFIELD																											
CHEYENNE	203	149	102	93	71	58	48	55	43	31	41	7	3	3	3	3	3	10	21	15	33	12	13	16	31	23	
COSTILLA												1															
CROWLEY	1		1	1																							
DELTA	1	1	2												7	4	5	10	9	2			4	3	6		
DENVER										5	3	3		3					19	25	24						
DOLORES	2		4	1	2	1										1	1	1	6	10	12	21	8	8	13	8	
ELBERT	9	12	8	5	3		2	13	16	11	1		2						4			1	1	1	2	1	
EL PASO																							2	3	3	18	1
FREMONT	9	5	6	7	1	2	2	1	2	1							1	3	2	4	14	13	22	14	11	2	
GARFIELD	19	66	111	36	18	56	143	78	109	141	95	130	213	353	362	567	796	1509	1845	2550	2888	1981	2037	1323	1046	469	
GRAND						1																					
GUNNISON			2	2		1									5	10	1	9	19	7	10	12	4	3	11	6	
HUERFANO	3	5	4	4	17	3	3	2	1	3	40	26	41	27	27		8	2		7	7		2	1	9		
JACKSON	3	1	4	6	2	2	3	2	2	6	3		34	18	21	9	14	6	8	5	27	19	9	18	5	6	
JEFFERSON	1		4	2		1	1	1	1	1	1	2	1						1	3	2						
KIOWA	15	39	40	46	28	28	21	26	13	17	10	2	11	18	2	4	2	1	11	9	26	7	16	17	17	7	
KIT CARSON	9	5	7	8	8	15	26	11	7	6	9	5				1	3	5	4	4	13	7	3	2	6		
LA PLATA	302	218	388	128	120	40	40	20	71	40	82	107	127	156	104	162	102	115	235	251	328	298	191	99	71	5	
LARIMER	4	4	3	6	13	7	3		1	3	1				2			1		5	46	12	41	8	13	1	
LAS ANIMAS	10	30	36			9	32	95	134	136	195	195	268	400	259	180	332	413	500	362	303	88	92	85	11	1	
LINCOLN	8	6	4	7	7	11	8	9	3	2			2	2	1	6	3	4	1	2	58	44	48	31	36	57	
LOGAN	18	21	23	13	14	30	15	13	6	12	7		4	7	3	3	6	13	17	14	5	9	17	8	27	4	
MESA	1	12	29	20	22	2	22	6	11	10	2	6	13	27	30	27	54	136	265	293	501	427	306	127	150	71	
MOFFAT	13	25	27	19	40	52	43	40	41	28	21	15	35	52	62	63	63	60	120	68	57	51	53	93	88	21	
MONTEZUMA	6	7	10	8	7	11	15	9	13	5	4	1	4		5	8	8	11	5	12	22	39	19	27	29	7	
MONTROSE				1						1			1	3	2	4	2		1	3	3		1	1	1	1	
MORGAN	34	27	36	13	10	11	19	12	10	11	10	12	9	9	2	7	9	7	3	6	2	1	6	13	5	5	
OTERO				2																							
PARK				1								1															
PHILLIPS			3		1	1								1	2		7	13	17	12	69	82	45	64	112	56	
PITKIN		1			2												1			1							
PROWERS	19	9	5	10	14	7	3	5	5	3	9	3	2	5	4		7	5	7	5	8	1	3	1			
RIO BLANCO	34	83	77	33	81	83	126	81	33	40	51	95	89	187	105	179	154	161	360	321	477	348	441	109	117	41	
RIO GRANDE	2	3	4	1		1								1	1						1	1				2	
ROUTT	4	3	12	4	2	3	1	2	1	1	1	4	20	13	1		4	6	9	8	4	2	3	10	4	5	
SAGUACHE	1							2					2							2	1	2					
SAN MIGUEL			2	2					1	1	4	2	11	13	27	18	42	45	35	23	20	13	10	2	1		
SEDGWICK				1				3		2						1	5	2	7	2	1	19	11	12	2		
WASHINGTON	40	29	23	28	24	26	25	12	19	26	18	3	23	17	27	34	128	50	69	45	11	1	6	12	6	12	
WELD	424	357	366	656	1224	1319	1030	254	305	285	392	288	509	702	760	757	832	901	1418	1527	2340	1448	2152	2262	1826	1274	
YUMA	14	20	45	60	104	53	167	168	123	116	111	60	31	205	160	138	237	782	797	541	545	105	299	148	11	8	
Total	1275	1186	1477	1320	2001	2065	2008	1002	1002	1002	1157	1010	1529	2273	2008	2249	2917	4364	5904	6368	8027	5159	5996	4659	3773	2057	

ALL COUNTIES





Colorado Oil and Gas Conservation Commission
Form 2A Breakdown By County By Year
July 12, 2013

Yr	County	Form2As	Completed	In Process	Informational	Requires Approval	New Location	CDP	SWH	RSO	CDPHE
2009	Total State	818	818	0	728	108	408	2	80	5	5
2010	Total State	2378	2376	0	1824	637	1601	0	327	22	55
2011	Total State	2301	2294	7	1004	319	1790	1	274	17	5
2012	ADAMS	19	19	0	0	0	19	0	0	0	0
2012	ARAPAHOE	21	16	5	0	0	16	0	0	0	0
2012	ARCHULETA	1	1	0	0	0	1	0	1	0	0
2012	BACA	3	3	0	0	0	2	0	1	0	0
2012	BENT	2	2	0	0	0	2	0	0	0	0
2012	BOULDER	3	3	0	0	0	0	0	0	0	0
2012	BROOMFIELD	7	7	0	0	0	1	0	0	0	0
2012	CHEYENNE	34	34	0	0	0	28	0	0	0	0
2012	DELTA	1	1	0	0	0	0	0	0	0	0
2012	DOLORES	1	1	0	0	0	1	0	0	0	0
2012	EL PASO	4	3	1	0	0	3	0	0	0	0
2012	ELBERT	1	1	0	0	0	1	0	0	0	0
2012	FREMONT	3	3	0	0	0	3	0	2	0	0
2012	GARFIELD	77	77	0	0	0	32	0	67	2	0
2012	GUNNISON	7	7	0	0	0	6	0	5	0	0
2012	HUERFANO	5	5	0	0	0	4	0	1	0	0
2012	JACKSON	3	2	1	0	0	3	0	2	0	0
2012	KIOWA	13	13	0	0	0	12	0	0	0	0
2012	KIT CARSON	6	6	0	0	0	4	0	0	0	0
2012	LA PLATA	8	8	0	0	0	3	0	7	0	0
2012	LARIMER	7	6	1	0	0	5	0	0	0	0
2012	LAS ANIMAS	8	8	0	0	0	6	0	0	0	0
2012	LINCOLN	45	45	0	0	0	41	0	0	0	0
2012	LOGAN	16	16	0	0	0	17	0	0	0	0
2012	MESA	10	10	0	0	0	5	0	3	0	0
2012	MOFFAT	47	47	0	0	0	38	0	44	4	0
2012	MONTEZUMA	8	8	0	0	0	8	0	0	0	0
2012	MORGAN	5	5	0	0	0	5	0	0	0	0
2012	PHILLIPS	38	38	0	0	0	35	0	0	0	0
2012	RIO BLANCO	35	35	0	0	0	15	0	28	0	0
2012	RIO GRANDE	1	1	0	0	0	1	0	1	0	0
2012	ROUTT	4	4	0	0	0	4	0	7	0	0
2012	SAN MIGUEL	1	1	0	0	0	1	0	0	0	0
2012	SEDGWICK	1	1	0	0	0	1	0	0	0	0
2012	WASHINGTON	14	12	2	0	0	8	0	0	0	0
2012	WELD	849	842	7	0	0	611	0	4	0	1
2012	YUMA	1	1	0	0	0	1	0	0	0	0
2012	Total State	1309	1292	17	0	0	946	0	173	6	1
2013	ARAPAHOE	12	8	4	0	0	11	0	0	0	0
2013	ARCHULETA	1	1	0	0	0	1	0	0	0	0
2013	BACA	1	0	1	0	0	1	0	1	0	0
2013	CHEYENNE	25	15	10	0	0	21	0	0	0	0
2013	DELTA	1	0	1	0	0	0	0	1	0	0
2013	DOLORES	7	6	1	0	0	5	0	3	0	0
2013	EAGLE	1	1	0	0	0	1	0	1	0	0
2013	FREMONT	3	2	1	0	0	4	0	1	0	0
2013	GARFIELD	45	28	17	0	0	20	0	35	0	0
2013	GUNNISON	2	1	1	0	0	2	0	1	0	0
2013	JACKSON	5	4	1	0	0	0	0	5	0	0
2013	KIOWA	6	5	1	0	0	6	0	0	0	0
2013	LA PLATA	7	3	4	0	0	2	0	7	0	0
2013	LARIMER	1	0	1	0	0	0	0	1	1	0
2013	LAS ANIMAS	1	1	0	0	0	0	0	0	0	0
2013	LINCOLN	47	40	7	0	0	45	0	0	0	0
2013	LOGAN	4	4	0	0	0	0	0	0	0	0
2013	MESA	3	3	0	0	0	1	0	1	0	0
2013	MOFFAT	12	7	5	0	0	9	0	10	0	0
2013	MONTEZUMA	7	6	1	0	0	5	0	2	0	0
2013	MORGAN	6	3	3	0	0	7	0	0	0	0
2013	PITKIN	1	0	1	0	0	1	0	0	0	0
2013	RIO BLANCO	12	10	2	0	0	7	0	10	0	0
2013	ROUTT	6	3	3	0	0	7	0	6	0	0
2013	WASHINGTON	18	12	6	0	0	17	0	0	0	0
2013	WELD	501	395	106	0	0	380	0	5	0	1
2013	YUMA	7	7	0	0	0	2	0	0	0	0
2013	Total	742	565	177	0	0	555	0	90	1	1

CDP = Comprehensive Drilling Plan SWH = Sensitive Wildlife Habitat consultation
RSO = Restricted Surface Occupancy consultation CDPHE= Colorado Department of Health and Environment consultation



Colorado Oil and Gas Conservation Commission

Horizontal Well Activity

July 12, 2013

County	Prior Years			2009		2010		2011		2012		2013		Spud	Completion				
	Drilled	DA	PA	Permit	Spud	Permit	Spud	Permit	Spud	Permit	Spud	Permit	Spud		AC	PR	DA	PA	
ADAMS				6	5	2	3	1		17	2		2	12	4	4			
ARAPAHOE	2							10	1	22	4	6		7	2	1			
ARCHULETA	17			7	6	15	7	10	8	5	9	2		47		40			
BENT													1	1					
BOULDER								4						0					
CHEYENNE	5		4									2	1	6		1		4	
DELTA										6	2			2					
DOLORES	9			18	2	6				9	1	3		12		6		1	
EL PASO										10				0					
ELBERT										1				0					
FREMONT	7	6		6		12	5	3	4	4	1	1	1	18		10	6	1	
GARFIELD	10		2	1	1	16	2	18	7	43	6	12	1	27		22		2	
GUNNISON	1					1				3	2	2		3		1			
HUERFANO										4	1			1					
JACKSON	8	1	1	8		3	3	9	2	4		4	2	15		11	1	1	
KIOWA										1		2		0					
KIT CARSON	1									1			1	2				3	
LA PLATA	28	2		11	2	28	3	18	7	12	1			41		46	1		
LARIMER	3	2						5	1	2	1		2	7		2	2		
LAS ANIMAS	16		2	4		1	1							17		14		3	
LINCOLN				2	1	2	1	1	1			6	1	4		3			
LOGAN	2									1				2		2			
MESA	3	2		36	1	22	8	24	13	14		4		25		23	2	2	
MOFFAT	7	1	1	6	3	4		9	4	44	7	10	12	33	1	16	1	1	
MONTEZUMA	6		1	23	6	11	2	8	3	18	2	2		19		27		1	
MORGAN								6	2	2	1	5	1	4		2			
PARK						1	1	1						1					
RIO BLANCO	7	2				1	1	11	2	15	2	1	4	16	1	7	3		
ROUTT	10	6	1							1				10		3	6	1	
SAN MIGUEL	1			1										1		1			
WASHINGTON	1		1											1				1	
WELD	11	3		12	5	208	95	763	236	964	590	1032	484	1421		674	7	9	
YUMA	1		1	6										1				1	
TOTAL Horizontal	156	25	14	147	32	333	132	901	291	1203	632	1095	513	1755	8	916	29	31	
Percent of Total HZ		16%	9%												0%	52%	2%	2%	
Total All Permits				5159		5996		4659		3773		2057							
Percent of Total				2.8%		5.6%		19.3%		31.9%		53.2%							



Well to Building Setback Review

Colorado Oil and Gas Conservation Commission
July 12, 2013

Count of well locations by proximity groupings from well spot to buildings for all locations reviewed under the December 17, 2008 amended rules.

Location Proximity to Buildings	2009	2010	2011	2012	2013	Number of Locations	Percent of Total Locations
less than 150 feet	2	3	3	2	0	10	0%
150 to 350 feet	37	58	61	39	14	209	3%
350 to 500 feet	50	110	97	61	30	348	5%
500 to 1000 feet	117	385	331	188	90	1111	17%
1000 + feet	356	1705	1470	838	474	4843	74%
Total Locations	562	2261	1962	1128	608	6521	

County	Total	Less than 150 feet	150 to 350 feet	350 to 500 feet	500 to 1000 feet	1000 + feet
ADAMS	42	0	2	5	9	26
ARAPAHOE	61	0	2	4	8	47
ARCHULETA	17	0	0	1	9	7
BACA	13	0	0	0	1	12
BENT	7	0	0	0	0	7
BOULDER	23	0	1	1	17	4
BROOMFIELD	32	0	0	4	13	15
CHEYENNE	82	1	0	0	0	81
DELTA	6	0	0	2	1	3
DOLORES	16	0	0	0	6	10
EAGLE	1	0	0	0	0	1
EL PASO	11	0	0	0	1	10
ELBERT	3	0	0	0	1	2
FREMONT	35	0	2	7	6	20
GARFIELD	411	0	5	2	57	347
GUNNISON	20	1	0	2	1	16
HUERFANO	7	0	0	0	2	5
JACKSON	28	0	0	3	1	24
KIOWA	56	0	0	0	1	55
KIT CARSON	11	0	0	0	0	11
LA PLATA	92	0	3	11	26	52
LARIMER	31	0	3	3	10	15
LAS ANIMAS	199	1	6	7	37	148
LINCOLN	184	0	0	2	4	178
LOGAN	41	0	1	1	0	39
MESA	80	0	0	3	13	64
MOFFAT	149	0	0	2	12	135
MONTEZUMA	24	0	0	1	2	21
MONTROSE	2	0	0	0	0	2
MORGAN	20	0	0	2	3	15
PARK	4	0	0	0	0	4
PHILLIPS	262	1	4	6	20	231
PROWERS	4	0	0	0	0	4
RIO BLANCO	148	0	0	0	1	147
RIO GRANDE	2	0	0	0	1	1
ROUTT	19	0	0	0	0	19
SAN MIGUEL	11	0	0	0	0	11
SEDGWICK	25	0	0	1	3	21
WASHINGTON	43	0	1	0	1	41
WELD	3828	6	172	264	802	2584
YUMA	471	0	7	14	42	408



Well to Building Setback Review

Colorado Oil and Gas Conservation Commission

July 12, 2013

Listing of Locations less than 200 feet to Building

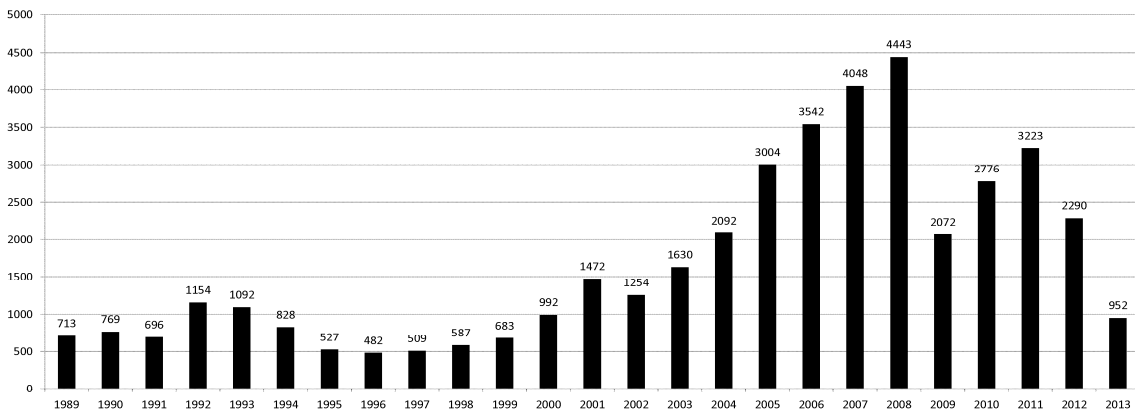
Year	Document Number	County	High Density	New Location	Distance	Proximity	Building Description
2011	2587822	CHEYENNE	No	No	58	less 150	Water well house
2009	1691798	WELD	No	No	58	less 150	Vehicle garage
2010	400072164	WELD	No	Yes	69	less 150	Abandoned hog shed
2012	400240957	GUNNISON	No	Yes	90	less 150	Equipment Shed
2009	1758843	WELD	No	Yes	103	less 150	Building to be razed
2011	1636646	WELD	No	No	122	less 150	Storage shed
2009	400011284	LAS ANIMAS	No	Yes	127	less 150	Operator is owner
2009	1786896	PHILLIPS	No	No	132	less 150	Grain Storage
2011	400117702	WELD	No	Yes	143	less 150	Irrigation pump house
2011	400227765	WELD	No	Yes	145	less 150	Storage Barn
2009	1904205	WELD	No	No	154	150 to 350	Livestock Enclosure
2012	400243295	WELD	No	Yes	155	150 to 350	Unused storage shed
2011	400179419	WELD	No	Yes	157	150 to 350	Existing well / storage building
2010	400054716	WELD	No	No	159	150 to 350	Equipment Barn
2011	400188968	WELD	No	Yes	159	150 to 350	Abandoned
2010	400021477	WELD	No	Yes	162	150 to 350	Goat Barn
2009	1758386	WELD	No	Yes	168	150 to 350	Storage Shed
2011	1635946	WELD	No	No	169	150 to 350	Storage shed
2011	400165164	WELD	No	Yes	178	150 to 350	Residence
2013	400367184	WELD	No	Yes	179	150 to 350	Farm Shed
2011	400188780	WELD	No	Yes	180	150 to 350	Residence
2010	1697620	WELD	No	No	187	150 to 350	Livestock Shed
2009	1758746	WELD	No	No	193	150 to 350	Storage Shed
2011	400154431	WELD	No	Yes	198	150 to 350	Turkey barn
2012	400250031	WELD	No	Yes	198	150 to 350	abandoned guard shack
2009	1774783	WELD	No	No	199	150 to 350	cement service building
2011	400118102	YUMA	No	Yes	199	150 to 350	Steel Barn



COLORADO OIL AND GAS CONSERVATION COMMISSION ANNUAL WELL STARTS BY COUNTY

COUNTY	1988	1989	1990	1991	1992	1993	1994	1995	1996	1997	1998	1999	2000	2001	2002	2003	2004	2005	2006	2007	2008	2009	2010	2011	2012	Current as of 7/12 2013	
ADAMS	39	27	26	36	54	20	54	28	6	16	12	17	18	13	4	19	22	24	13	41	14	15	21	2	14	4	
ALAMOSA																											
ARAPAHOE	2	4	16	11	11	3	9	8	3	3	2						6	1	5	2	1	1	3	9	8	7	
ARCHULETA	5	3	7	5	2	1		2					4	4	2	5	4	10	5	7	26	9	12	9	11		
BACA	5	5	12	6	21	8	9	19	9	7	11	8	19	6	2	1	6	6	2	6	12		5	5	1		
BENT				1			2	3	1	2	3	6	2				3	2	8	1	1			1	1	1	
BOULDER	2			7	18	56	15	5								2	5	11	9	14	25	16	13	7	14		
BROOMFIELD	3	2	3	7	14	27	22	2	2						2						10	15	22	11	5		
CHEYENNE	177	133	92	75	64	50	44	41	35	29	29	6	2	1	3	3		9	14	15	14	8	12	11	17	18	
CONEJOS																											
COSTILLA												1															
CROWLEY	1		1																								
CUSTER																											
DELTA	1		1													5	4	6	5	2			4	1	1		
DENVER										2	3	1		2					7	5	4						
DOLORES	2		4	1													2		2	13	4	2		1	3	1	
DOUGLAS																											
EAGLE																							2			5	
EL PASO																											
ELBERT	8	11	9	5	2			10	15	2	2		2							1							
FREMONT	6	3	5	7	1	1	1	2			1							1	3	2	2	5	3	9	16	7	2
GARFIELD	3	12	24	8	3	4	15	13	7	28	19	94	190	251	245	417	585	799	1005	1304	1688	768	910	881	498	207	
GRAND						1																					
GUNNISON			1	2		1										1		1	1	9	5	1	4	5	2	4	
HUERFANO	6			2	6	1	1	2			2	31	9	25	14	19	3	6	2			2				2	
JACKSON	2	1	3	7	2		3	1	1	3	3		24	2	4	10	10			3	3	10	1	6	7	2	
JEFFERSON								1			2										2						
KIOWA	14	32	35	37	28	19	20	22	8	13	6	4	8	16	2	4	2	1	7	7	2	5	15	15	10	4	
KIT CARSON	11	6	6	6	9	13	15	9	6	3	7	7					1	1	6	2	1	14	3	1	1	3	1
LA PLATA	158	129	186	44	66	26	17	19	29	48	65	80	99	135	118	110	103	104	108	179	199	131	67	54	3	7	
LARIMER	8	5	1	6	13	5	3		2	1			1	1					4	8	1	28	2	10	4		
LAS ANIMAS	17	22	20	3	2	11	17	34	62	90	120	182	202	286	205	221	296	384	413	326	221	14	7	78	1		
LINCOLN	6	5	4	4	7	7	8	8	3	2			2	2	1	5	2	2	1	2	19	10	14	23	23	25	
LOGAN	17	19	19	8	13	24	9	11	4	10	4		4	6	3	3	2	11	12	12	3	7	3	9	13	5	
MESA	1	2	2	4	1		7	2	1	1	4	4	2	12	12	13	25	89	156	209	222	14	11	40	4	3	
MOFFAT	1	2	1	2	1	1	2	1	3	1	8	10	18	23	25	28	19	40	60	42	25	18	15	34	26	14	
MONTEZUMA	6	5	7	5	2	5	7	3	12	2	2		2	3	5	5	1	7	2	4	18	11	3	9	14	3	
MONTROSE				1											3		2	1		1	2		1				
MORGAN	26	20	32	11	9	11	16	13	8	9	7	4	9	8	1	7	5	5	3	1	1	2	3	2	3	1	
OTERO				1																							
OURAY																											
PARK				1																			2				
PHILLIPS			3			1							1			6	10	11	4	35	18	2	42	129	50		
PITKIN		1			2																						
PROWERS	16	9	5	8	13	7	1	5	5	2	8	4	2	4	4		5	5	6	3	5	2	3	1			
PUEBLO																											
RIO BLANCO	1	8	10	1	3	8	6	7	5	9	9	62	51	82	47	83	92	95	107	95	203	116	107	71	52	20	
RIO GRANDE	1	2	2																							1	
ROUTT		1	1	3	1							1	5	12	1		1	6	3	2		2	1	2	4	2	
SAGUACHE	1							2																			
SAN MIGUEL				1							3	1	6	9	10	19	28	13	20	17	5	1	2	2			
SEDGWICK							1	3								1	2	1	1	5			3	8	3		
WASHINGTON	39	28	22	26	24	20	20	13	17	23	18	4	15	12	24	29	65	34	23	14	11	2	2	4	1	3	
WELD	176	200	168	296	660	723	389	94	136	94	117	124	237	403	406	522	632	718	931	1222	1314	877	1207	1668	1463	607	
YUMA	12	16	41	47	102	39	114	145	101	104	93	52	42	162	108	106	144	597	593	445	336	27	213	108	16	10	
Grand Total	773	713	769	696	1154	1092	828	527	482	509	587	683	992	1472	1254	1630	2092	3004	3542	4048	4443	2072	2776	3223	2290	952	

ALL COUNTIES





Colorado Oil & Gas Conservation Commission Monthly Statistics

YEAR	MO	Baker - Hughes Rig Count	Drilling				Permits				Pits				Locations				Well Spud Notice	Active Drilling Permits	Active Wells	Public Visits			Well Oper Change
			Rcvd	Apvd	Rcvd	Apvd	Rcvd	Apvd	Rcvd	Apvd	Rcvd	Apvd	Rcvd	Apvd	Rcvd	Apvd	Data	Office				Internet			
2010	Total	5703	5996	519	515	34	28	120	120	225	225	2461	2548	2798	197	1115	1112479	8421							
	JAN	63	405	351	8	23	4	6	4	8	8	249	112	233	14	95	103968	813							
	FEB	61	343	249	15	2	7	6	5	3	184	150	209	209	21	80	96171	356							
	MAR	68	472	498	18	23	4	7	38	31	262	258	268	268	9	125	122393	590							
	APR	72	325	314	26	15	5	0	20	27	190	218	240	240	8	105	106539	402							
	MAY	72	372	367	20	25	3	6	12	8	214	171	248	248	14	124	73024	545							
	JUN	70	512	436	61	22	5	4	11	4	172	239	273	273	30	131	108115	790							
	JUL	69	457	436	13	55	2	1	13	7	215	158	261	261	20	74	103585	595							
	AUG	73	472	482	37	17	1	0	10	17	236	229	283	283	21	141	111950	573							
	SEP	77	336	389	22	29	7	0	35	34	159	203	323	323	9	120	116043	584							
	OCT	78	382	443	45	29	2	1	4	12	171	172	302	302	14	126	132814	552							
	NOV	80	342	324	29	57	0	1	12	13	166	174	305	305	18	96	130612	572							
	DEC	79	291	370	31	23	4	0	26	28	164	183	279	279	9	77	132651	347							
2011	Total	4709	4659	325	320	44	32	190	192	192	2382	2267	3224	3224	187	1294	1337865	6719							
	JAN	73	372	258	26	21	3	0	11	5	142	129	245	245	12	106	112686	1051							
	FEB	70	370	382	23	27	7	5	21	9	160	129	231	231	16	114	105857	385							
	MAR	66	292	347	21	14	2	2	17	24	133	172	292	292	26	138	111746	378							
	APR	66	410	235	16	24	5	5	9	2	137	106	236	236	12	108	107627	476							
	MAY	66	491	506	23	16	3	1	6	2	105	131	212	212	20	123	109802	527							
	JUN	69	326	377	11	19	8	6	5	8	110	89	145	145	11	111	108849	1269							
	JUL	66	237	276	9	14	3	2	5	2	97	103	184	184	13	102	114195	487							
	AUG	62	313	288	6	9	6	4	23	5	83	97	177	177	11	112	110908	297							
	SEP	61	252	256	1	5	5	2	4	1	81	77	162	162	11	89	106114	832							
	OCT	62	326	265	9	3	7	6	2	19	94	82	157	157	8	105	108833	394							
	NOV	56	271	323	5	8	6	6	2	4	109	97	145	145	10	119	120586	446							
	DEC	57	322	260	4	8	8	5	9	3	122	81	108	108	9	78	107240	903							
2012	Total	3982	3773	154	168	63	44	114	114	84	1373	1293	2294	2294	159	1305	1324443	7445							
	JAN	53	538	331	6	0	3	5	176	124	176	124	140	140	9	108	47406	542							
	FEB	56	260	455	10	5	2	3	91	141	91	141	132	132	7	102	40649	284							
	MAR	57	343	241	5	9	2	8	129	84	129	84	163	163	9	133	43019	335							
	APR	61	331	333	6	5	5	5	144	117	144	117	151	151	3	132	46459	314							
	MAY	61	349	342	8	6	6	6	106	142	106	142	154	154	3	123	45215	277							
	JUN	62	325	273	2	8	7	8	102	85	102	85	140	140	8	122	41015	114							
2013	Total	2146	1975	37	33	24	35	748	693	693	748	693	880	880	39	720	263763	1866							

Apvd = Approved, Rcvd = Received, Ind = Individual, Blnkt = Blanket, Apps = Application for Hearing, NOAV = Notice of Alleged Violation, AOC = Administrative Order of Consent, OFV = Order Finding Violation, Cmpnt = Complaint, Comp = Completed



Colorado Oil Gas Conservation Commission Monthly Statistics

YEAR	MO	Operators		Release		Bonds		Claim		Hearings		Violations		Remediation		Inspections			
		New	Inactive	Ind.	Blknt	Replace	Ind.	Blknt	Apps.	Order	NOAV	AOC	OFV	Cmplt	Spills	Rcvd	Comp	Wells	Locations
2010	Total	46	33	38	40	74	0	1	155	136	319	10	3	218	493	511	382	17075	
	JAN	1	2	3	1	4	0	0	16	15	43	3	2	33	40	47	45	1316	
	FEB	1	1	9	4	6	0	0	16	15	7	0	1	40	52	48	33	1591	
	MAR	2	3	6	3	9	0	0	NA	NA	31	NA	NA	33	48	59	27	1675	
	APR	2	0	3	2	1	0	0	24	24	8	0	0	10	52	38	61	959	
	MAY	3	0	5	2	4	0	0	77	65	16	2	5	26	31	33	51	1577	
	JUN	2	2	2	2	0	3	0	51	58	30	1	4	14	38	53	25	1099	
	JUL	3	6	3	6	3	1	0	NA	NA	29	NA	NA	13	39	92	20	518	
	AUG	2	3	12	7	2	0	1	68	54	26	2	2	20	54	106	56	1032	
	SEP	5	1	7	5	2	0	0	44	41	4	2	4	17	46	56	66	690	
	OCT	4	2	12	6	7	0	3	57	45	9	0	0	15	38	102	28	636	
	NOV	4	9	15	4	1	0	0	NA	NA	15	NA	NA	16	31	70	58	739	
	DEC	4	2	2	2	4	0	0	50	32	12	0	1	13	58	22	66	562	
2011	Total	33	31	79	44	43	4	4	403	349	230	10	19	250	527	726	536	12394	
	JAN	3	3	7	5	1	1	0	70	72	18	1	0	27	35	68	23	998	970
	FEB	6	9	8	5	0	0	0	NA	NA	10	NA	NA	24	40	85	36	1998	1024
	MAR	4	1	7	3	9	0	0	44	38	19	0	0	23	38	63	61	2203	1149
	APR	4	2	10	3	2	0	0	80	59	11	0	0	19	35	26	99	1701	930
	MAY	3	1	4	0	3	0	0	43	50	14	2	0	23	32	27	122	2621	1701
	JUN	3	4	3	3	4	0	0	NA	NA	5	NA	NA	35	39	46	98	1432	1091
	JUL	5	0	1	4	5	0	0	63	50	15	0	0	16	24	45	33	1319	1076
	AUG	6	5	2	8	0	1	0	67	54	24	3	2	21	28	127	33	1898	1432
	SEP	0	4	4	5	2	1	0	NA	NA	5	NA	NA	14	13	30	36	1137	864
	OCT	1	2	9	1	0	0	0	30	36	6	1	0	13	44	116	37	1407	1029
	NOV	6	4	12	8	7	0	0	85	37	16	2	0	10	44	26	44	1324	828
	DEC	6	2	3	1	0	0	0	NA	NA	14	NA	NA	19	30	31	19	1046	625
2012	Total	47	37	70	46	33	3	0	482	396	157	9	2	244	402	690	641	19084	12719
	JAN	3	5	12	2	0	0	0	48	75	15	4	0	21	40	31	45	1673	829
	FEB	4	2	6	3	2	0	0	41	35	11	2	0	28	30	42	90	1042	614
	MAR	1	3	2	2	1	0	0	54	67	16	2	0	11	25	64	28	1967	1150
	APR	7	1	5	2	8	0	0	NA	NA	21	NA	NA	16	32	39	37	1508	910
	MAY	2	1	3	0	0	0	0	46	50	22	6	0	13	28	40	60	2646	1600
	JUN	6	2	2	4	5	0	0	91	44	15	2	0	24	39	40	37	1842	1076
2013	Total	23	14	30	13	16	0	0	280	271	100	16	0	113	194	256	297	10678	6179

Aprvd = Approved, Rcvd = Received, Ind = Individual, Blknt = Blanket, Apps = Application for Hearing, NOAV = Notice of Alleged Violation, AOC = Administrative Order of Consent, OFV = Order Finding Violation, Cmplt = Complaint, Comp = Completed