



Staff Report

September 16, 2013

◆ Local Government Liaison (LGL) Program Update

Local Government Liaisons (LGLs) Nancy Prince and Marc Morton specialize in helping local governments find answers to oil and gas exploration and production related questions, and strive to increase communication and coordination between local governments, operators, stakeholders and COGCC staff.

The LGLs actively encourage local governments across the state to participate in the Local Government Designee (LGD) program. The LGD program is voluntary, and LGDs are typically selected or appointed to these positions by the local government. To register to participate in the program, the jurisdiction must fill out, sign and submit a Form 29 to COGCC. The Form 29 is available on the COGCC website. Any change in LGD information (for example address, phone number, email address etc.) should also be submitted via a revised and signed Form 29.

The current list of participating LGDs is available under the "Local Gov" link on the COGCC website. LGD information is provided to facilitate communication between the public, the operators and other local governments. Local governments are encouraged to review their data, and verify contact information periodically, and update as needed as this list is the basis for email notification of pending permit application, other notifications regarding oil and gas activity and the LGD quarterly newsletter.

Marc Morton and Nancy Prince have been busy providing outreach, education, training, guidance, and consultation to local governments and their staffs, operators, the public, and others regarding oil and gas operations in Colorado. LGLs continue to stress to operators and local governments the importance of engaging early and often regarding oil and gas operations and

provide assistance in resolving issues at the local level. The LGLs also continue work to increase county and city or town participation in the voluntary LGD program, and continue to follow up with participating local governments to ensure their contact information is up to date and valid. New or updated participating LGDs include Davis Farrar (Town of Collbran), Sheryl Trent (City of Evans), and Kyle Fenner (Elbert County).

A major focus of the LGLs has been the development and rollout of LGD training sessions throughout Colorado in 2013. Thus far, the LGLs have provided six daylong training sessions at locations across the state, and the most recent training sessions were provided on July 23 in Sterling and August 21 in Denver, Colorado. To date, 107 individuals (including 52 individuals registered as their jurisdiction's LGD) have received the training.

There are two LGD Training Sessions for the remainder of 2013. All sessions begin at 8:30 a.m. and conclude at 4:00 p.m.

Tuesday, September 24, Garfield County, Board of County Commissioners Administration Building, 108 8th Street, Glenwood Springs, CO

Tuesday, November 6, Lamar, CO (venue to be determined).

To stay current regarding the initiatives concerning local government regulation of oil and gas operations, the LGLs make it a priority to attend as many city or county local government meetings concerning the oil and gas industry as possible. Contact Marc Morton at 303-894-2100 x5132 or marc.morton@state.co.us, or Nancy Prince at 303-894-2100 x5103 or nancy.prince@state.co.us, if you are interested in updated information or to register for training sessions.



In addition to developing and providing training to LGDs and local government staff, LGLs have assisted Permitting Supervisor Jane Stanczyk and Oil and Location Assessments Supervisor Greg Deranleau in providing training to operators concerning the recently enacted "Setback Rules" at four locations (Denver, Greeley, Durango, and Grand Junction) during the month of August.

The second issue of the LGD newsletter was published on August 9, with emphasis on the LGD role in the new setback rules. The concept of the newsletter is to provide to local governments and other stakeholders pertinent and timely information regarding oil and gas operations in Colorado, and to a forum for information sharing between COGCC staff and local governments. We welcome suggestions for topics, or articles for inclusion in the next issue which is expected to be out in November 2013.

LGLs also continue to provide outreach, education, and consultation in response to inquiries and information requests. Local governments inquiries received and responded to since July 11 include La Plata County, City and County of Broomfield, Larimer County, the City of Lafayette, the Town of Windsor, Commerce City, Routt County, Arapahoe County, Elbert County, Weld County, Adams County, Crowley County, the town of Frederick, and Moffat County. Others consulted recently include citizens from the jurisdictions of Frederick, Del Norte, Elbert County, a citizen from Canada, and a University of Northern Colorado staffer.

A list of the LGL outreach and public involvement activities conducted since the last staff report is included in the Public Outreach section listed on the next page.

Public Outreach

➤ Outreach by Director and other Staff Members

- On July 18, Director Matt Lepore attended Gas and Oil Regulatory Team ("GORT") meeting in Durango.
- On August 13, 2013, Mike Leonard, Southern Inspection Supervisor, provided a two-hour

training program for Local Emergency Responders ("LER") in Arapahoe County. The focus was on identifying various forms of oilfield equipment and potential hazards. The Arapahoe County LGD has requested another training session for LER that did not participate in the August 13, 2013 program.

- On August 20-24, 2013, six members of the OGCC field inspection staff participated in the TOPCORP pilot training program. Faculty from University of Texas-Austin, Pennsylvania State University, and Colorado School of Mines have been working on a training and certification program for regulators and policy makers. This program is being funded by a grant from Exxon Mobile and GE. In 2012, Margaret Ash, Field Inspection Manager, Jim Precup, Northeast Inspection Supervisor, and Mike Leonard met with faculty from the various universities and discussed regulatory issues and challenged. During the training program several field trips were held. Participants included regulators from Texas, Pennsylvania, Montana, and Alabama and also from EPA and BLM. Noble Energy provided a tour for the participants of the H&P 322 Flex Drill Rig, a hydraulic fracturing operation, and an EcoNode facility in eastern Weld County.
- On August 21, 2013, Mark Weems, Southwest Engineer, and Karen Spray, Southwest Environmental Protection Specialist, participated in the Northern San Juan Basin Stakeholders meeting held in Bayfield, Colorado. The group typically meets quarterly to discuss issues associated with development near the Fruitland Outcrop, primarily in Archuleta County. Participants include the United States Forest Service ("USFS"), Bureau of Land Management ("BLM"), various county LGDs, area operators and the public.
- On August 29, 2013, Margaret Ash, Mike Leonard, Peter Gintautas, Southeast Environmental Protection Specialist, Nancy Prince, Local Governmental Liaison, and John Noto, Southern Location Specialist, met with Raton Basin operators in Trinidad, Colorado to discuss the new groundwater sampling and setback rules and field inspection criteria. The presentation was followed by a question and answer session.



Approximately 35 people attended, including regulatory, reclamation, environmental and management staff from the Raton Basin operators. Also in attendance were consultants and contractors working in the Raton Basin.

- On September 4, 2013, Margaret Ash, Nancy Prince, Mike Leonard and Jim Precup met with various members of Arapahoe County staff including the county engineering, planning and environmental departments. The overall field inspection program was presented, along with a discussion of the complaint response process and an overview of production equipment.
- Margaret Ash is participating on a team organized for the purpose of modifying the Interstate Oil and Gas Compact Commission ("IOGCC") certification test for oil and gas inspectors. The team includes staff from various state organizations. The plan is to integrate the IOGCC certification program with the TOPCORP program. The initial kickoff was August 20, 2013 and the first round of review was held on September 11, 2013. The second round of review is scheduled for September 25, 2013.

➤ Outreach by COGCC Local Government Liaisons (LGLs)

- On July 15, 2013, Mike Leonard and Nancy Prince conducted a tour of existing oil and gas facilities in Elbert County for the new LGD, Kyle Fenner.
- On July 23, 2013, Nancy Prince gave a presentation to the North Colorado Springs Rotary club which included an overview of oil and gas basics and COGCC role in regulations.
- On August 5, 2013, Nancy Prince and Greg Deranleau, Oil and Gas Assessment Location Supervisor, gave a presentation about the new setback rules at the COGA pre-conference technical seminar on community engagement.
- On August 16, 2013, Marc Morton and Greg Deranleau participated in a conference call with City and County Broomfield staff, and provided guidance and input regarding Broomfield's draft Memorandum of Understanding (MOU) with Sovereign Energy, and provided input on

Broomfield's draft proposed oil and gas regulations.

- On August 29, 2013, Nancy Prince gave an introduction to the new setback rules at the first meeting of the Raton Basin Forum for operators in Trinidad.
- On September 9, 2013, Marc Morton attended a public open house in Loveland, Colorado hosted by Anadarko Petroleum Corp.
- On September 9, 2013, Nancy Prince, Margaret Ash, Mike Leonard, Jim Precup and Randell Johnson, Northeast Field Inspector, met with staff from Arapahoe County Planning, Environmental and Engineering departments to explain the COGCC inspection process.
- On September 9, 2013, Nancy Prince attended the City of Aurora Oil and Gas Committee Meeting.

REGIONAL ACTIVITIES

➤ NORTHWEST COLORADO

◆ Northwest Colorado Oil and Gas Forum

The Forum is an informal gathering of local, state, and federal government officials, oil and gas industry representatives, and citizens that have met regularly since 1989. The purpose of the Forum is to share information about oil and gas development in northwest Colorado and to make government officials and oil and gas industry representatives easily accessible to the public. Currently, the meetings are conducted once per quarter and are co-chaired by the COGCC Director Matt Lepore and Garfield County Commissioner Mike Samson.

The next meeting of the Forum is tentatively scheduled for Thursday, December 6, 2013, at 10:00 a.m. at a location to be determined. All parties wishing to be placed on the meeting agenda, or added to the distribution list for announcements, should contact Chris Canfield at 970-625-2497 or via email at: chris.canfield@state.co.us



- Project Rulison

Please note that the email for Project Rulison submittals has been changed to:

DNR_rulison.submittal@state.co.us

- Project Rio Blanco

Please note that the email for Project Rio Blanco submittals has been changed to:

DNR_rioblanco.submittal@state.co.us

➤ **SOUTHWEST COLORADO**

- ◆ Gas and Oil Regulatory Team (GORT) Meeting

The last GORT/Southwest Colorado Oil and Gas Stakeholders meeting occurred on Friday, July 19, 2013, from 8:30 a.m. to noon at the La Plata County Fairgrounds in Durango, Colorado.

Over 50 people were in attendance, including La Plata County Commissioner Julie Westendorff, County Manager Joe Kerby, representatives of the La Plata County League of Women's Voters, multiple operators, environmental groups and the general public.

The next GORT meeting is scheduled for Friday, October 18, 2013 from 8:30 a.m. to noon at the La Plata County Fairgrounds in Durango, Colorado. All parties wishing to be placed on the next meeting agenda should contact Karen Spray at: 970-259-1619 or karen.spray@state.co.us.

- ◆ Fruitland Formation Outcrop Mitigation and Monitoring Projects (4M Projects)

Fruitland Formation Outcrop - 4M Pilot Scale Mitigation Projects La Plata County. The South Fork Texas Creek (SFTC) system operated between 11.0 and 11.1 Kilowatts (kW) power generation and was functional 82% of the time for the period August 4, 2013 through August 28, 2013. The system shut down for two days which required the recalibration of the methane sensor to resume operation. An average of 5.7 kW per hour were returned to the grid during these periods. Pine River continues to operate in a passive mode. General O&M continues at both locations.

A draft annual report was prepared by LTE detailing operations at both sites since June 2012. That report has been reviewed by staff and the final report is pending. Once available, it will be posted on the COGCC webpage under Library, San Juan Basin, 4M Project Reports.

4M Monitoring Wells La Plata and Archuleta Counties. There are 17 wells at 11 locations in the COGCC 4M monitoring program. Well pressures are monitored remotely via satellite telemetry with one or two maintenance visits per year, depending upon data received. Summer operations and maintenance are planned for this month.

Ongoing Investigation, Reclamation, and Mitigation of Residual Methane in the Vicinity of the Bryce 1-X Well Area, Bondad, Colorado The next sampling of four domestic water wells is scheduled for October 2013.

➤ **SOUTHEAST COLORADO**

- ◆ U.S. EPA Raton Basin Hydraulic Fracturing Study - Las Animas and Huerfano Counties

As part of the retrospective study of possible impacts from well completions, a third round of sampling and analysis of groundwater from two areas in the Raton Basin was conducted during the week of November 5, 2012. COGCC staff, as well as contractors for Pioneer Natural Resources, collected split samples at many of the sites. The EPA released an interim progress report on the study in December 2012. The EPA is expected to release the study in a draft for public and peer review in 2014. Ultimately, results from the study are intended to inform the public and provide policymakers at all levels with high-quality scientific knowledge that can be used in decision-making. For more information on the EPA hydraulic study, go to <http://www.epa.gov/hfstudy/>.

VARIANCES

On July 26, 2013, a variance from final reclamation was granted to **Dunne Equities Operating Inc.** ("Dunne") (Operator No. 25376) for the Tallman Farm 1-3 Well (API No. 05-061-06730). The well has been plugged, equipment has been removed, the site re-contoured and reseeded. Some re-vegetation occurred with only a few bare areas



remaining. Dunne entered into a surface use agreement with the land owner for further reclamation activities that may need to occur.

On July 26, 2013, a variance from final reclamation was granted to **Oxy USA WTP LP** ("OXY") (Operator No. 66561) for the Kenai Latham #25 well location (API No. 05-077-08460) located in Section 25, Township 9 South, Range 97 West, 6th P.M. in Mesa County. The surface owner requested that the access road be allowed to remain and that no further grading and contouring occur on the location. The well has been plugged and abandoned, all equipment and debris has been removed and some re-grading and revegetation efforts were conducted. The vegetation growth is below the 80% required by Rule 1004 but natural restoration is occurring and the site is stable. An agreement between the surface owner and the operator was submitted as part of the variance request.

On July 26, 2013, **OXY USA Inc.** (Operator No. 66561) was granted a variance from interim reclamation for the Hightower Federal location (COGCC Document No. 2172046) located NESW of Section 20, Township 9 South, Range 92 West, 6th P.M. in Mesa County. OXY received a special use permit ("SUP") from the United States Forest Service who is the surface owner. The SUP outlines maintenance of the existing pad.

A Rule 502.b Variance from Rule 305.c was granted on August 15, 2013 to **Carrizo Niobrara LLC** ("Carrizo") (Operator No. 10439). Rule 305.c requires a 20-day comment period for Applications for Permit Drill ("APDs"). Carrizo requested a variance be granted to approve the Form 2 for their State 14-36 Well, (API No. 05- 123-13895), in the SENW of Section 36, Township 9 North, Range 59 West, 6th P.M. in Weld County, without the 20-day comment period. This APD is a re- enter to re-plug. Carrizo would like to re-plug this well quickly in order to commence their horizontal drilling program.

On August 15, 2013, a Rule 502.b Variance from Rule 305.c was granted to **Carrizo Niobrara LLC** ("Carrizo") (Operator No. 10439). Rule 305.c requires a 20 day comment period for APDs. Carrizo Niobrara requested a variance be granted to approve the Form 2 for their State 1-36 Well (API

No. 05-123-07230), in the NENW of Section 36, T9N, R59W in Weld County, without the 20-day comment period. This APD is a re-enter to re-plug. Carrizo Niobrara would like to re-plug this well quickly in order to commence their horizontal drilling program.

➤ ORGANIZATION

New Environmental Supervisor

John Axelson joins the COGCC staff as an Environmental Supervisor with 26 years of professional experience as a geologist, environmental scientist, and project manager. Prior to joining the COGCC as supervisor, John worked as the north-east Environmental Specialist where he has performed baseline groundwater studies, reclamation projects and worked with oil & gas operators to achieve compliance with the environmental regulations. During this time he has also investigated numerous public complaints, including alleged impacts to water wells and a variety of other environmental issues. Before his employment at the COGCC, John worked in environmental consulting performing remedial investigations and implementing remediation projects for both commercial and government clients.

New Oil and Gas Location Assessment Specialist

Doug Andrews has been hired as the new Oil and Gas Location Assessment Specialist effective August 2013. After receiving his Bachelor of Science degree in Geophysics from Virginia Tech, Doug began his career as an Environmental Field Geologist collecting soil and groundwater samples and installing monitoring wells. He progressed to Project Manager level overseeing the remediation of a portfolio of 40 leaking underground storage gasoline and diesel tank sites and managing the remediation of chlorinated solvent releases, conducting Phase I and Phase II Environmental Site Assessments, and ground penetrating radar and geophysical electromagnetic surveys for buried steel. In 2010, Doug started as an independent contractor with the COGCC reviewing and approving Form 2A Oil & Gas Location Assessments.

An organizational chart can be found on pages 10-12. For contact information, please go to our



homepage, and then "Staff Contact Information."

➤ PLANNING/ADMINISTRATION/OTHER

◆ Plugging and Reclaiming Abandoned Wells (PRAW) - Project Updates

The DeBeque Water Flow Project came into existence on July 7, 2013 when a ditch rider discovered water flowing from the ground and discharging into an irrigation ditch located on the NW edge of DeBeque, CO in Mesa County. The COGCC was contacted on July 9, 2013, and because other orphaned oil and gas wells had been previously discovered and plugged by the COGCC, the COGCC assumed responsibility and had water samples gathered for lab analysis. Lab analysis indicated salty water which is indicative of oil and gas geologic sources. The ground around the water flow was dug up and the source of the leak was determined to be from a hole in a pipeline which was traced back to an old abandoned well that appears to have been drilled around 1902 based on old USGS reports. The salt water discharge into the ditch was terminated by sealing the well head and then disconnecting the pipeline. The COGCC has placed this well in the PRAW program with plans to re-enter and plug this fall. More information is available on the COGCC website and is found at www.cogcc.state.co.us under Hot Topics.

The PAST Project includes three leaking PA wells in need of re-entering and re-plugging and has been renamed the 2013 Piceance Re-entries Project to avoid confusion with other work. Two are located in Garfield County and one is in Mesa County. The COGCC received competitive bids and awarded the winning bid to Magna Energy Services, LLC in the amount of \$183,480. Work commenced on this project on June 21, 2013 and concluded on July 29, 2013. As with many plugging projects, unforeseen circumstances popped up resulting in changes in plans along with change orders with the final cost to plug the three wells being \$237,079 or \$53,599 more than originally budgeted.

Biscuit Pad Remediation Project includes two well pads and the two respective access roads where they are currently located in an active irrigated hayfield. The goal is to reclaim and return

the lands back to agricultural purposes. This project is located in Garfield County near the NE border of the town of Rifle and East Highway 13. The onsite pre-bid meeting conducted by COGCC personnel included a total of 11 companies and their personnel. The lowest bid from the list of qualified contractors came in at \$143,000 and the work had been awarded to Tally Ho Construction, Inc. Tally Ho facilities and offices are headquartered in Rifle, CO.

The Debeque Environmental and Reclamation Project, involves the remediation of soils contaminated by salt water in the vicinity of the orphaned wells known as the Homestead #2 and the Pasture #1 wells. Both sites are located in Mesa County on the NW edge of DeBeque, CO. Soil sampling and lab analysis has been completed on both well sites with remedial and reclamation designs, plans & work to be scheduled and completed during the new fiscal year (July 1, 2013 through June 30, 2014)

The Tatonka Reclamation Project includes three well pads located in Moffat County with two well pads being on the Culverwell property that can be found approximately 20 miles west of Craig, CO and a couple of miles north of Hwy 40 with another well pad and pit being located on the Gerber property and found four miles west of Craig and three miles north of Hwy 40.

The Gentry Project is located in Rio Blanco County and includes 10 sites with eight wells and two pits that can be found approximately a half mile west of Rangely, CO and one and a half miles south of Hwy 64. The landowner has plans to develop the land and brought the matter to the attention of the COGCC.

Page 13 contains a spreadsheet listing PRAW projects that are either scheduled in process or completed as of September 11, 2013.

◆ October 2013 Hearing Docket

A docket for the October 2013 hearing will be available shortly after the September hearing. Hearing dockets are available on our website by clicking on "Hearings." Links to the notices and hearing applications are available from the Docket Number and Applicant, respectively. To sign



up for e-mail notification of hearing notices and applications, please see the announcement and instructions on the homepage of the COGCC website: www.cogcc.state.co.us

◆ [Colorado Oil and Gas Information System \(COGIS\) Projects, Updates and Changes](#)

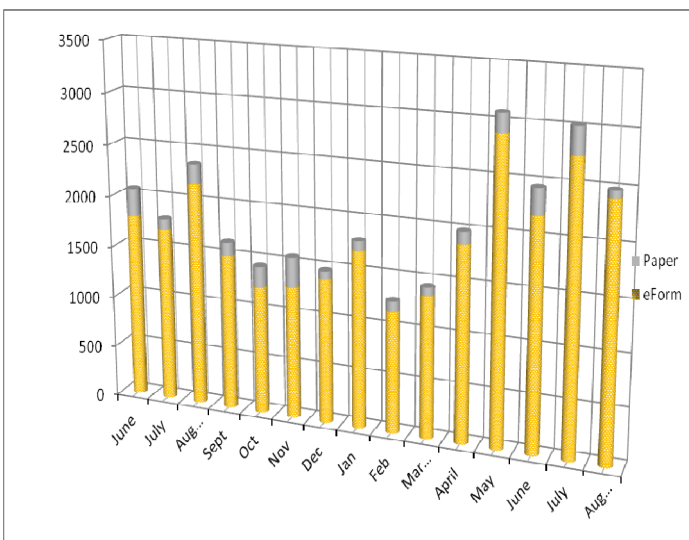
⇒ [Environmental Database](#)

During the past 18 months, the COGCC and the Ground Water Protection Council (GWPC) have been working together to develop a new Environmental Database that will contain the results from the Colorado Oil and Gas Association Voluntary Baseline Groundwater Quality Sampling program, along with other environmental data collected by the agency. The project included the development of a new relational database model that will allow the data to be accessible to the public from the COGCC website.

Other improvements include an Electronic Data Deliverable that allows industry to submit the results of the sampling directly to the COGCC, which can then process the information directly into the database. The application has many other features to help staff analyze the information and understand the lab results from the sampling. The interface will allow the public to view and download the results.

Electronic Form Submissions (eForm)

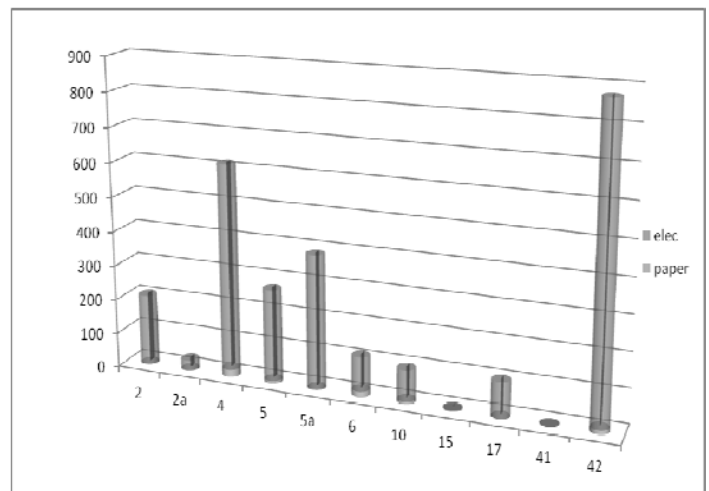
TOTAL ELECTRONIC FORM SUBMITTALS JUNE 2012 - AUGUST 2013



Forms currently available through eForm:

- Form 2 - Application for Permit to Drill
- Form 2A - Oil and Gas Location Assessment
- Form 4 - Sundry Notice
- Form 5 - Drilling Completion Report
- Form 5A - Completed Interval Report
- Form 6 - Well Abandonment Report
- Form 10 - Certification of Clearance/Change of Operator
- Form 15 - Earthen Pit Report/Permit
- Form 17 - Bradenhead Test Report
- Form 41 - Trade Secret Claim of Entitlement
- Form 42 - Notice of Notification (Notice of Hydraulic Fracturing)

Following is a breakdown by Form for the month of August 2013:



⇒ **Revisions to Forms 2 and 2A**

The revised Form 2 and 2A were released on August 5. The forms have been revised to accommodate the additional information required by the new Rules that were effective August 1st. Staff took this opportunity to make some long-needed improvements to both forms.

Industry training for the revised Forms 2 and 2A was conducted during August. Training occurred in Denver, Durango, and Grand Junction.

The Form 4, Sundry Notice went live in eForm on April 30, and has become one of the fastest forms to achieve over an 80% usage within the



electronic portal. This past month the Form 4 reached 97% in electronic submissions. With the addition to the suite of forms now available in eForms, processing of the Sundry can now be faster and more efficient.

COGCC staff is available to answer questions as needed for either the new eForm 4 or for the revised paper Form 4.

The development team has now turned its attention to the Form 19 the Spill Report.

Form 15, Pit Permit and Report, is available in eForm and operators are encouraged to utilize the system to file this form. The form contains additional fields. The PDF version on the Forms page, <http://cogcc.state.co.us/Forms/forms.html>, is revised to reflect the changes that occurred from the release of the form in eForm.

As forms are released on eForm, updates to the PDF forms on our website will occur in tandem. These new versions of the PDF forms will reflect any changes that have taken place when forms are moved into eForm.

Along with the eForm system, a page is available where the operators can review all known bugs within the system and report any new ones they discover. Currently, there are 305 operators using eForm.

The public can make comments on all submitted Oil and Gas Location Assessment (OGLA) forms (Forms 2A) through the eForm system. This is accomplished by going to the COGCC website (<http://www.colorado.gov/cogcc>) and clicking on the menu option, "Permits", (or <http://cogcc.state.co.us/COGIS/DrillingPermits.asp>).

On the COGIS-Permits page, two search options are available for OGLA forms, "All Pending Location Assessments for" and "All Approved Location Assessments for." When the results are displayed for forms in process, the public can click on the document number, which logs the user onto the new eForm application. Once the page is displayed with the selected document, the user can select the Comment button to make a comment on that particular form. The public can use this same method to make comments on APDs (Form

2s).

For any operator not currently enrolled in eForm, instructions for starting the process can be found at <http://cogcc.state.co.us/Announcements/COUAINformation.pdf>.

⇒ COGCC GIS Online

An upgrade of the COGCC GIS Online interactive map is now available on the COGCC's website. Two new features are now available along with some minor changes. An Address Search button will zoom the map to the area of an input street address, city and zip code. The second new feature is an enhanced Print function. This will generate a PDF document which can be saved or printed. It allows choice of paper size, orientation, input of a legend and a map scale options.

⇒ Permitting, OGLA, and LGL

During the month of August, Permitting, OGLA, and LGL staff conducted four sessions of industry training focusing on the new setback rules and the revised Form 2 and Form 2A. Each full day of training included an introduction followed by four presentations with time scheduled for questions and discussions:

- "Definitions, Setbacks, and Exceptions" covered the new setback terms and definitions, the structure of the new setbacks, and the requirements for exceptions to those setbacks. This segment was designed for land, facility planning, and regulatory groups.
- "Mitigation" covered the new requirements to mitigate potential adverse impacts and to include mitigation measures in the Form 2s and Form 2As. The training explained the setback situations when the applications must include the mitigation measures and discussed possible mitigation measures. This segment was designed for facility planning and regulatory groups.
- "Notification, Meetings, and Timelines" covered the new requirements for notices, meet-



ings, consultations, including the required timing for each. This segment was designed for groups responsible for communication with land owners and local governments.

- “Instructions for the Revised Form 2 and Form 2A” covered the details of completing the revised Form 2 and 2A. This segment was designed for regulatory groups that prepare and submit these forms.

The dates, locations, and attendance for the training days are summarized below:

August 2, Denver, 130 industry attendees
August 22, Greeley, 5 industry attendees
August 28, Durango, 23 industry attendees
August 30, Grand Junction, 18 industry attendees

The presentations were written and presented by the following COGCC staff: Diana Burn, Eastern Engineering Supervisor, Greg Deranleau, OGLA Supervisor, Penny Garrison, Permit Technician, Thom Kerr, Permitting and Technical Manager, Marc Morton, Western LGL, Nancy Prince, Eastern LGL, Jane Stanczyk, Permit Supervisor, and Barbara Westerdale, Permit Technician. Additional COGCC staff attended to assist with questions. The presentations have been posted on the COGCC website as a resource to industry, the public, and staff.

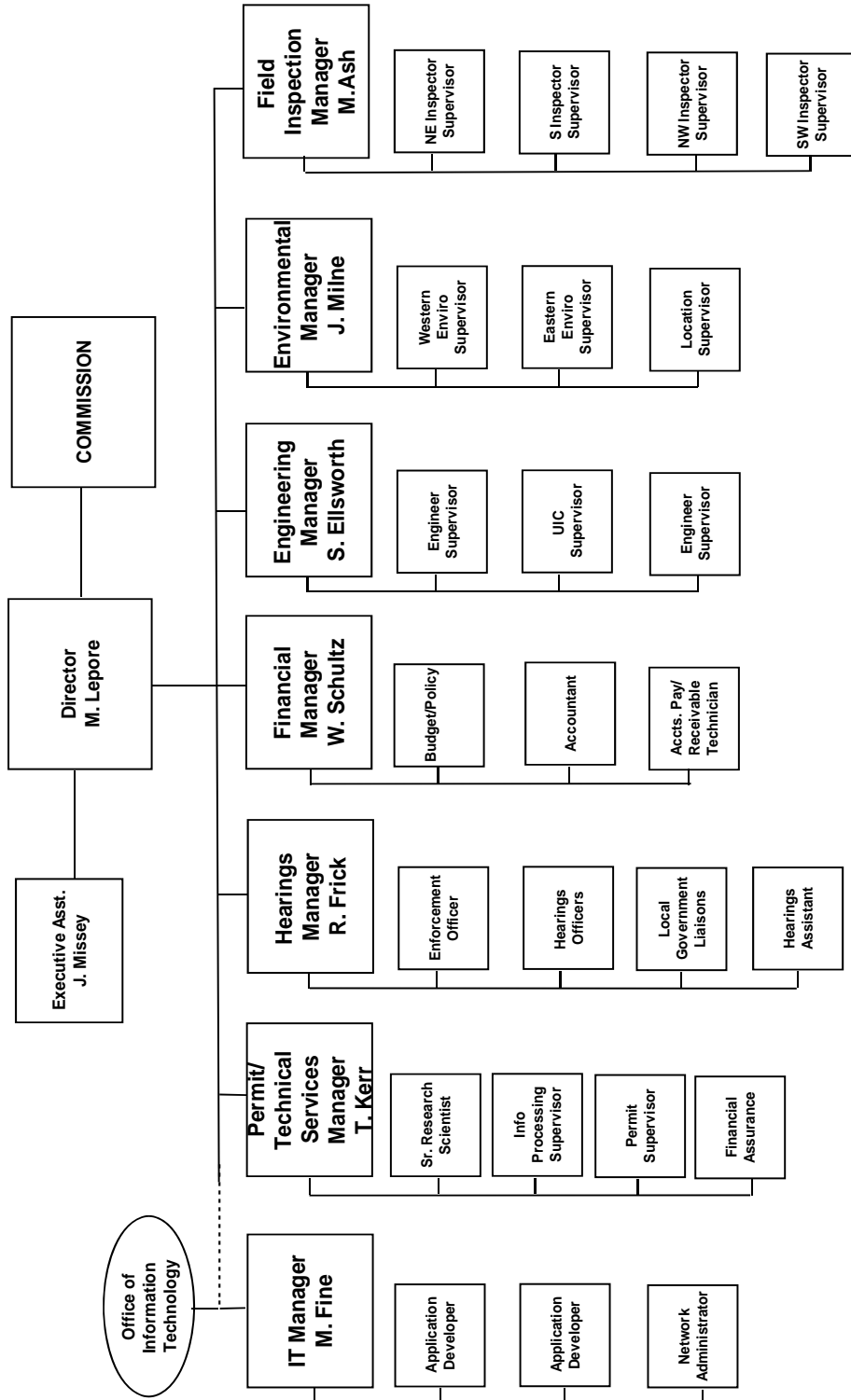
Colorado Parks and Wildlife (“CPW”) has submitted changes for species-specific Sensitive Wildlife Habitat and Restricted Surface Occupancy areas. To become effective these changes require a rulemaking process, including stakeholder meetings. The first stakeholder meeting was held June 26, 2013, with a subsequent meeting scheduled for July 31, 2013. The proposed changes are viewable on a Wildlife map on the COGCC website from a link on the Wildlife Stakeholder Meeting page. Shapefiles of the proposed changes are downloadable from this page as well.

The Commission will be holding a Rulemaking Hearing on Tuesday, September 17, 2013 at 9:00 a.m. regarding Wildlife Mapping. The Statement of Basis and Purpose, CPW Internal Definition for Maps and the Response to Comments on the Draft Updates to the Maps are posted to the COGCC

website at www.cogcc.state.co.us under Hot Topics and Wildlife Map Rulemaking.



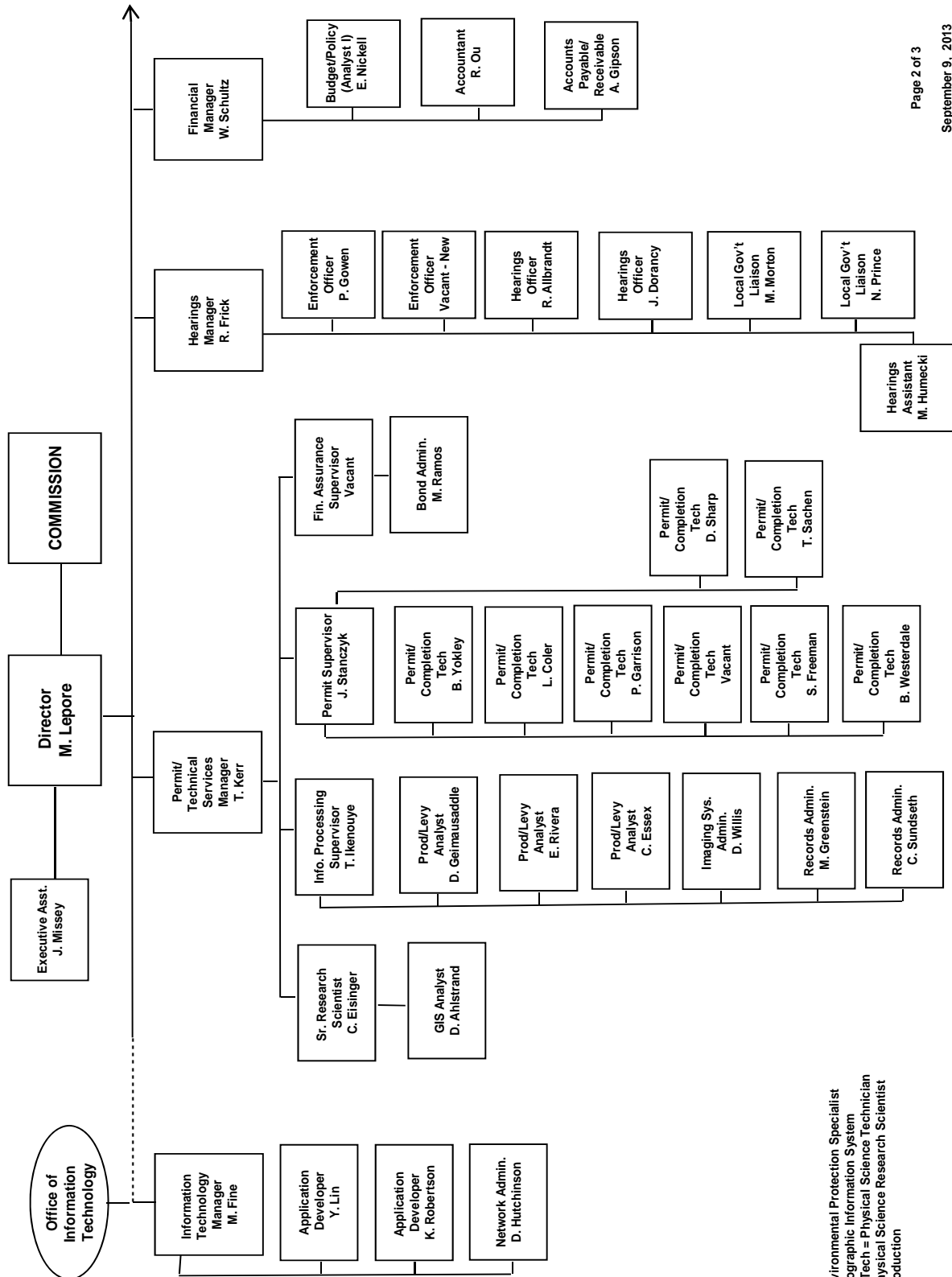
COLORADO OIL & GAS CONSERVATION COMMISSION



See the next two pages for details



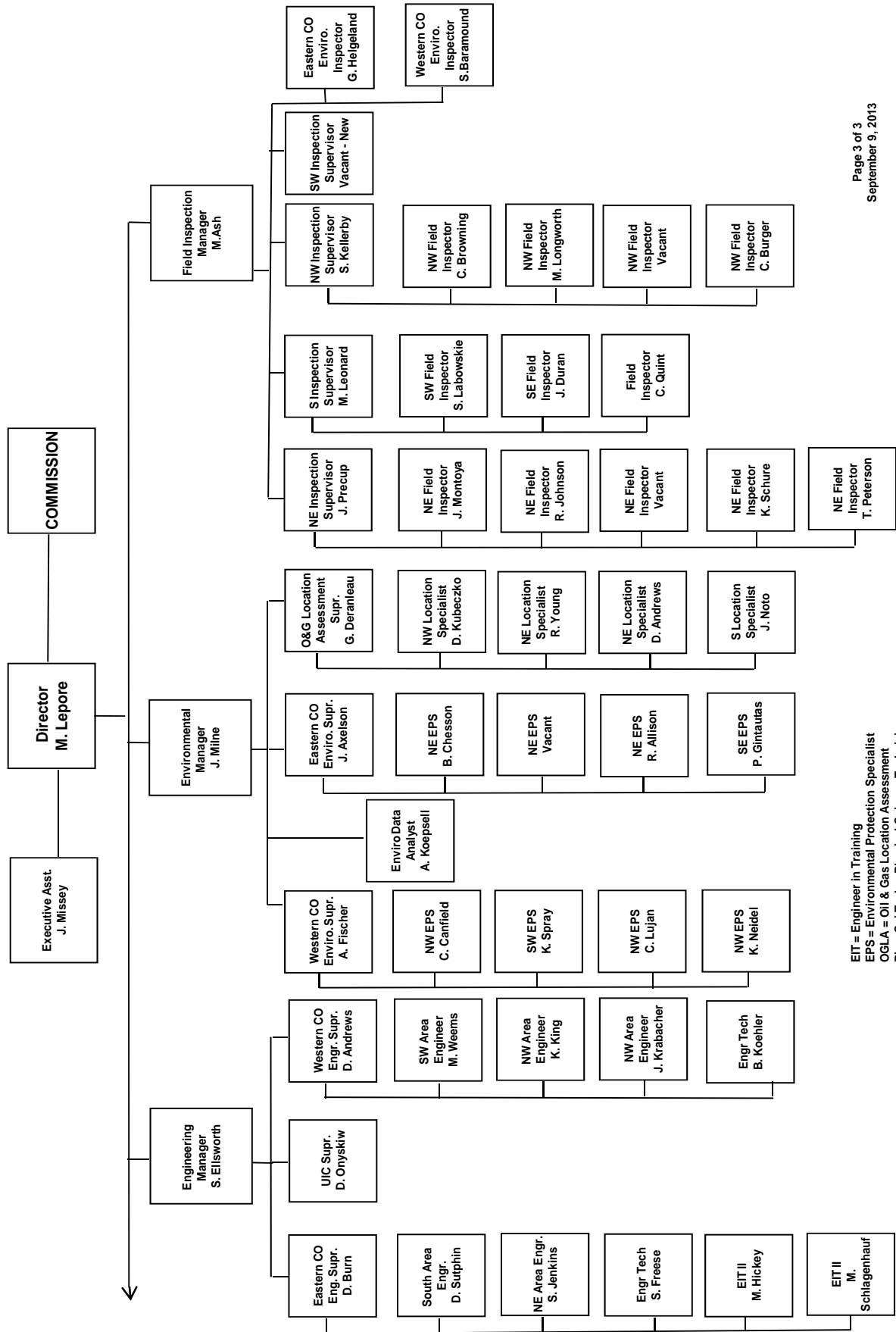
COLORADO OIL & GAS CONSERVATION COMMISSION ORGANIZATION



EPS = Environmental Protection Specialist
 GIS = Geographic Information System
 Phys/Sci Tech = Physical Science Technician
 PSRS = Physical Science Research Scientist
 Prod = Production



COLORADO OIL & GAS CONSERVATION COMMISSION ORGANIZATION



EIT = Engineer in Training
 EPS = Environmental Protection Specialist
 OGLA = Oil & Gas Location Assessment
 Phys Sci Tech = Physical Science Technician
 UIC = Underground Injection Control



PLUGGING, AND RECLAIMING ABANDONED WELLS PROJECTS FOR ORPHANED LOCATIONS FISCAL YEAR 2013-2014

COUNTY	TYPE	PROJECT NAME	Acct Code	ESTIMATED TOTAL PROJECT COST			FY 2013-2014 YTD EXPENDITURES			DESCRIPTION	
				BOND	PRAW	EMGY	TOTALS	BOND	PRAW		EMGY
MESA	REC/EW	DeBeque-HOMESTEAD #2 & PASTURE #1 SALT REMEDIATION, RECLAMATION, & SOIL GAS SURVEYS	HS1D	\$0	\$50,000	\$0	\$50,000	\$0	\$0	\$0	Two sites; only one site to be done this fiscal year. Salt remediation, topsoil spreading, seeding, and soil gas surveys near plugged and abandonment wells.
MOFFAT	REC	TATONKA; CULVERWELL 10-23-07-94 GERBER 07-24-07-92	TATO	\$0	\$35,000	\$0		\$0	\$0	\$0	Reclaim three well sites and a drilling pit
Rio Blanco	Plugging	Gentry		\$0	\$30,000	\$0	\$30,000	\$0	\$0	\$0	Plug and abandon
Rio Blanco	Soils	Gentry		\$0	\$25,000	\$0	\$25,000	\$0	\$0	\$0	Contaminated soils to be remediated
Garfield	Remediation	Biscuit Pad		\$15,926	\$127,074	\$0	\$143,000	\$0	\$0	\$0	Two well pads and two access roads
		TOTALS =>		\$15,926	\$267,074	\$0	\$283,000	\$0	\$0	\$0	
IN PROGRESS											
		TOTALS =>		\$0	\$61,728	\$0	\$61,728	\$0	\$1,728	\$0	Cap well and stop water flow; Re-enter; PA
COMPLETED											
MESA/Garfield	PLUG	2013 Piceance Re-entries	PICE	\$0	\$97,287	\$0	\$97,287	\$0	\$150,886	\$0	Plugging three wells
		TOTALS =>		\$0	\$97,287	\$0	\$97,287	\$0	\$150,886	\$0	
GRAND TOTALS =>											
				\$15,926	\$426,089	\$0	\$442,015	\$0	\$152,614	\$0	\$152,614

BISCUIR RANCH RECLAMATION DESIGN* The original bond amount was \$25,000. \$9074 were spent in FYE2013 for the design work supervised my Mike Hickey. The balance of \$15,296 will be carried forward to FYE2014. Includes well site for the Biscuit Ranch Mulvihill 15-32 D & Biscuit Ranch 10-31 D

Project Types: "PLUG" indicates plugging and abandonment, "REC" indicates reclamation, and "ENV" indicates environmental

EMGY: indicates funding by the Emergency Response line item

TBD: Cost estimates in process.

PRAW: indicates funding by the Plugging and Reclaiming Abandoned Wells line item

Revised 9/11/2013 new

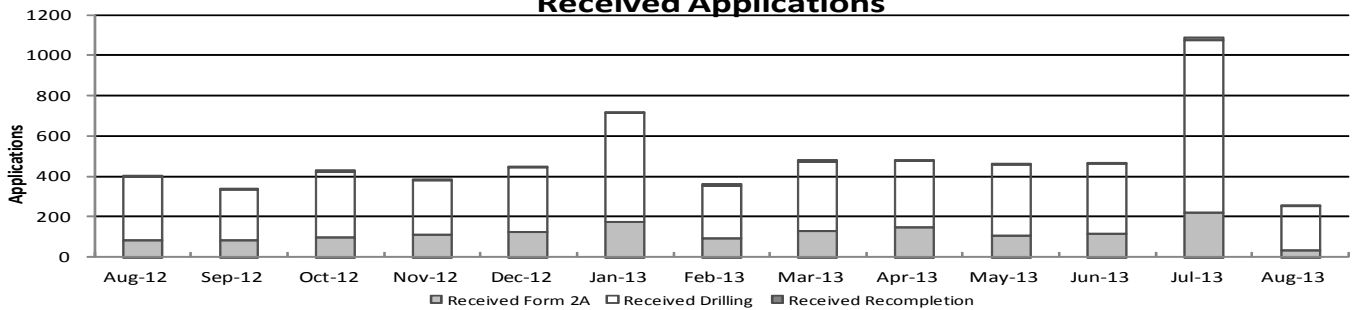


Colorado Oil & Gas Conservation Commission Monthly Permit Activity

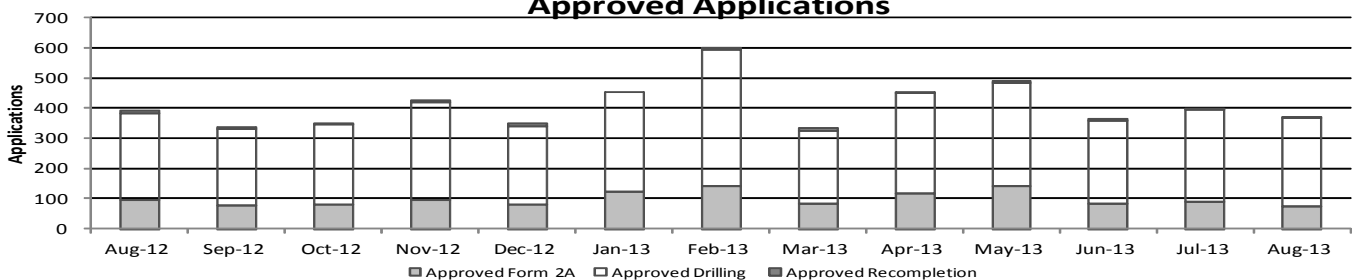
	Backlog	Received	Approved	Withdrawn	Rejected	Incomplete	In-Process	Remaining
Form2A								
Aug-12	158	83	97	6	0	54	84	138
Sep-12	138	81	77	5	0	47	90	137
Oct-12	137	94	82	8	0	30	110	141
Nov-12	141	109	97	13	0	19	112	140
Dec-12	140	122	81	4	0	35	124	177
Jan-13	177	176	124	12	0	34	183	217
Feb-13	217	91	141	8	0	34	125	159
Mar-13	159	129	84	1	0	33	170	203
Apr-13	203	145	117	7	0	40	184	224
May-13	223	106	142	4	0	37	146	183
Jun-13	183	114	85	7	0	41	164	205
Jul-13	193	218	91	15	0	34	271	305
Aug-13	305	30	76	0	0	47	212	259
Drilling								
Aug-12	357	313	288	9	0	146	227	373
Sep-12	373	252	256	24	0	98	247	345
Oct-12	345	326	265	29	0	65	312	377
Nov-12	377	271	323	21	0	65	239	304
Dec-12	304	322	260	9	0	77	280	357
Jan-13	357	538	331	19	0	101	444	545
Feb-13	545	260	455	16	0	58	276	334
Mar-13	334	344	241	4	0	46	387	433
Apr-13	433	331	333	2	0	79	350	429
May-13	429	350	342	31	0	45	361	406
Jun-13	406	349	273	18	0	57	407	464
Jul-13	464	858	304	14	0	65	939	1004
Aug-13	1004	221	291	3	0	160	771	931
Recompletion								
Aug-12	11	6	9	0	0	1	7	8
Sep-12	8	1	5	2	0	0	2	2
Oct-12	2	9	3	0	0	0	8	8
Nov-12	8	5	8	0	0	0	5	5
Dec-12	5	4	8	1	0	0	0	0
Jan-13	0	6	0	0	0	0	4	6
Feb-13	6	10	5	0	0	0	11	11
Mar-13	11	5	9	0	0	1	6	7
Apr-13	7	6	5	0	0	2	6	8
May-13	8	8	6	0	0	0	10	10
Jun-13	10	2	8	0	0	0	4	4
Jul-13	4	11	4	0	0	0	11	11
Aug-13	11	6	4	0	0	0	13	13

Incomplete are permits that have missing or inaccurate data and cannot be approved.

Received Applications



Approved Applications



Backlog = Incomplete + In-process = Remaining permits from previous month



Colorado Oil and Gas Conservation Commission
 Status of Permit Applications Filed By Month
 September 5, 2013

Form 2A Location Assessment

Year	Month	Received	Approved	Withdrawn	In Process	Percent In Process	Median Days to Process	Less Than 30 Days	30 to 49 Days	Greater Than 50 Days
2010	Total	2520	2433	85	0			1559	662	212
2011	Total	2391	2298	89	4	0%		1416	620	262
2012	1	141	138	3	0	0%	33	92	27	19
2012	2	160	152	8	0	0%	31	118	26	8
2012	3	135	133	2	0	0%	41	80	25	28
2012	4	126	119	7	0	0%	38	77	25	17
2012	5	119	115	4	0	0%	38	63	28	24
2012	6	101	96	5	0	0%	41	32	44	20
2012	7	104	98	5	1	1%	40	41	43	14
2012	8	72	68	4	0	0%	40	33	22	13
2012	9	77	72	5	0	0%	37	28	34	10
2012	10	94	89	5	0	0%	39	31	40	18
2012	11	85	79	5	1	1%	36	52	15	12
2012	12	145	127	12	6	4%	38	59	49	19
2012	Total	1359	1286	65	8	1%		706	378	202
2013	1	177	162	12	3	2%	33	99	45	18
2013	2	91	83	7	1	1%	34	42	29	12
2013	3	131	121	6	4	3%	49	41	46	34
2013	4	150	138	6	6	4%	38	47	69	22
2013	5	105	94	4	7	7%	35	47	32	15
2013	6	107	80	2	25	23%	35	28	41	11
2013	7	204	54	1	149	73%	35	11	42	1
2013	8	58	1	0	57	98%	27	1	0	0
2013	9	7	0	0	7	100%				
2013	Total	1030	733	38	259	25%		316	304	113

Form 2 Application For Permit to Drill (APDs)

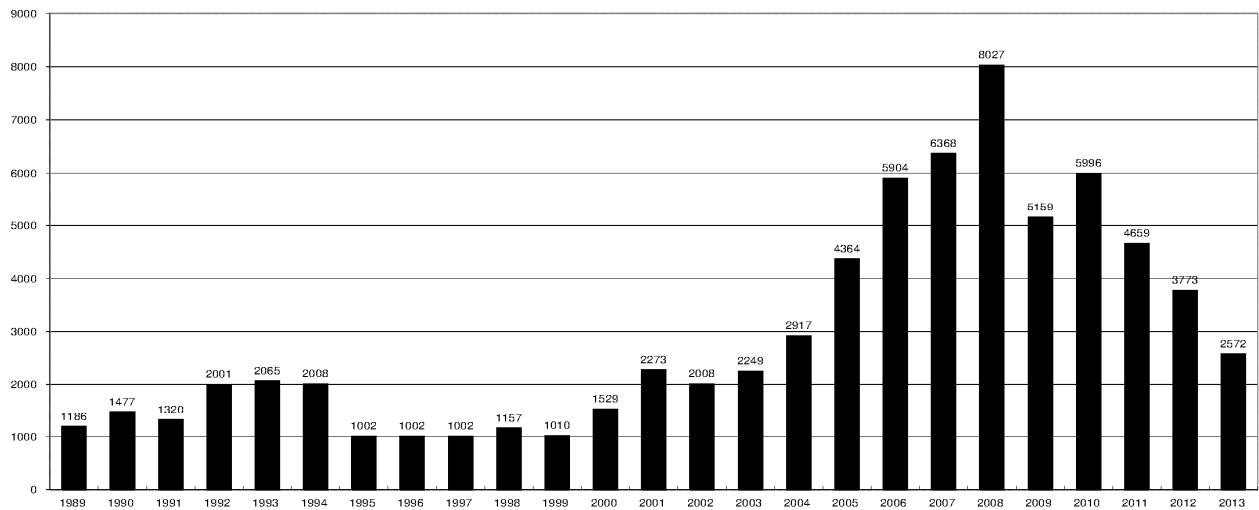
Year	Month	Received	Approved	Withdrawn	In Process	Percent In Process	Median Days to Process	Less Than 30 Days	30 to 49 Days	Greater Than 50 Days
2010	Total	5891	5746	144	0	0%		1760	2739	1744
2011	Total	4692	4557	128	5	0%		2723	1565	587
2012	1	368	361	7	0	0%	34	235	107	45
2012	2	371	360	11	0	0%	31	277	70	37
2012	3	284	279	5	0	0%	40	164	84	50
2012	4	418	405	13	0	0%	36	219	160	41
2012	5	509	491	18	0	0%	37	260	149	104
2012	6	280	277	3	0	0%	43	107	119	62
2012	7	281	274	6	1	0%	40	103	144	37
2012	8	282	262	20	0	0%	32	148	89	30
2012	9	212	192	20	0	0%	38	78	78	38
2012	10	355	350	5	0	0%	36	131	168	59
2012	11	244	228	14	2	1%	37	110	80	42
2012	12	351	334	14	3	1%	38	139	145	54
2012	Total	3955	3813	136	6	0%		1971	1393	599
2013	1	562	541	18	3	1%	35	278	179	85
2013	2	242	228	13	1	0%	36	78	126	38
2013	3	333	315	10	8	2%	40	123	119	79
2013	4	327	311	12	4	1%	39	105	153	56
2013	5	370	331	25	14	4%	37	112	181	49
2013	6	330	274	9	47	14%	36	110	131	35
2013	7	799	246	2	551	69%	34	106	130	14
2013	8	315	18	1	296	94%	31	0	18	0
2013	9	11	0	0	11	100%				
2013	Total	3289	2264	90	935	28%		912	1037	356



COLORADO OIL AND GAS CONSERVATION COMMISSION ANNUAL DRILLING PERMITS BY COUNTY

COUNTY	1988	1989	1990	1991	1992	1993	1994	1995	1996	1997	1998	1999	2000	2001	2002	2003	2004	2005	2006	2007	2008	2009	2010	2011	2012	2013	current as of 9/5
ADAMS	46	34	44	53	92	58	137	34	9	33	24	19	38	28	9	26	39	34	37	89	51	35	21	8	40	11	
ARAPAHOE	5	5	15	14	11	4	20	12	2	9	1	2	0	2	1	2	5	7	11	10	10	10	8	23	35	18	
ARCHULETA	8	5	18	5	2	1	3			3		1	7	9	6	10	8	13	14	26	47	11	18	12	5	3	
BACA	6	4	15	10	23	9	12	24	10	7	13	15	22	6	2	3	7	8	2	11	13	3	4	5	3	1	
BENT				1		2	2	4	2	5	3	5	2				5	3	8	1	1		5		2	1	
BOULDER	1		1	13	38	159	38	5	8	2	5		1	5	6	7	17	13	21	37	32	35	24	30	22		
BROOMFIELD																	2	7				2	33	28	11	36	
CHEYENNE	203	149	102	93	71	58	48	55	43	31	41	7	3	3	3	3	3	10	21	15	33	12	13	16	31	36	
COSTILLA												1															
CROWLEY	1		1	1																							
DELTA	1	1	2												7	4	5	10		9	2		4	3	6		
DENVER										5	3	3			3					19	25	24					
DOLORES	2		4	1	2	1										1	1	1	6	10	12	21	8	8	13	12	
EAGLE																											1
ELBERT	9	12	8	5	3		2	13	16	11	1		2							4			1	1	2	1	
EL PASO																							2	3	3	18	1
FREMONT	9	5	6	7	1	2	2	1	2	1							1	3	2	4	14	13	22	14	11	2	
GARFIELD	19	66	111	36	18	56	143	78	109	141	95	130	213	353	362	567	796	1509	1845	2550	2888	1981	2037	1323	1046	583	
GRAND							1																				
GUNNISON			2	2		1									5	10	1	9	19	7	10	12	4	3	11	7	
HUERFANO	3	5		4	17	3	3	2	1	3	40	26	41	27	27		8	2			7					9	
JACKSON	3	1	4	6	2	2	3	2	2	6	3		34	18	21	9	14	6	8	5	27	19	9	18	5	8	
JEFFERSON	1		4	2		1	1	1		1	2	1								1	3	2					
KIOWA	15	39	40	46	28	28	21	26	13	17	10	2	11	18	2	4	2	1	11	9	26	7	16	17	17	10	
KIT CARSON	9	5	7	8	8	15	26	11	7	6	9	5				1	3	5	4	4	13	7	3	2	6	1	
LA PLATA	302	218	388	128	120	40	40	20	71	40	82	107	127	156	104	162	102	115	235	251	328	298	191	99	71	22	
LARIMER	4	4	3	6	13	7	3		3	1		2			1		1			5	46	12	41	8	13	2	
LAS ANIMAS	10	30	36			9	32	95	134	136	195	195	268	400	259	180	332	413	500	362	303	88	92	85	11	1	
LINCOLN	8	6	4	7	7	11	8	9	3	2		2	2	1	6	3	3	4	1	2	58	44	48	31	36	65	
LOGAN	18	21	23	13	14	30	15	13	6	12	7		4	7	3	3	6	13	17	14	5	9	17	8	27	4	
MESA	1	12	29	20	22	2	22	6	11	10	2	6	13	27	30	27	54	136	265	293	501	427	306	127	150	98	
MOFFAT	13	25	27	19	40	52	43	40	41	28	21	15	35	52	62	63	63	60	120	68	57	51	53	93	88	33	
MONTEZUMA	6	7	10	8	7	11	15	9	13	5	4	1	4			5	8	8	11	5	12	22	39	19	27	9	
MONTROSE				1						1					1	3	2	4	2		1	3	3	1	1		
MORGAN	34	27	36	13	10	11	19	12	10	11	10	12	9	9	2	7	9	7	3	6	2	1	6	13	5	6	
OTERO				2																							
PARK				1																			3	4	1		
PHILLIPS			3		1	1								1	2		7	13	17	12	69	82	45	64	112	56	
PITKIN		1			2													1			1						
PROWERS	19	9	5	10	14	7	3	5	5	3	9	3	2	5	4		7	5	7	5	8	1	3	1			
RIO BLANCO	34	83	77	33	81	83	126	81	33	40	51	95	89	187	105	179	154	161	360	321	477	348	441	109	117	70	
RIO GRANDE	2	3	4	1		1							1	1			1				1	1				2	
ROUTT	4	3	12	4	2	3	1	2	1	1	1	4	20	13	1		4	6	9	8	4	2	3	10	4	6	
SAGUACHE	1							2					2								2	1	2				
SAN MIGUEL			2	2					1	1	4	2	11	13	27	18	42	45	35	23	20	13	10	2	1		
SEDGWICK				1				3		2							1	5	2	7	2	1	19	11	12	2	
WASHINGTON	40	29	23	28	24	26	25	12	19	26	18	3	23	17	27	34	128	50	69	45	11	1	6	12	6	17	
WELD	424	357	366	656	1224	1319	1030	254	305	285	392	288	509	702	760	757	832	901	1418	1527	2340	1448	2152	2262	1826	1535	
YUMA	14	20	45	60	104	53	167	168	123	116	111	60	31	205	160	138	237	782	797	541	545	105	299	148	11	8	
Total	1275	1186	1477	1320	2001	2065	1002	1002	1002	1002	1157	1010	1529	2273	2008	2249	2917	4364	5904	6368	8027	5159	5996	4659	3773	2572	

ALL COUNTIES





Colorado Oil and Gas Conservation Commission
 Form 2A Breakdown By County By Year
 September 5, 2013

Yr	County	Form2As	Completed	In Process	Informational	Requires Approval	New Location	CDP	SWH	RSO	CDPHE
2009	Total State	818	818	0	728	108	408	2	80	5	5
2010	Total State	2378	2376	0	1824	637	1601	0	327	22	55
2011	Total State	2301	2294	7	1004	319	1790	1	274	17	5
2012	ADAMS	19	19	0	0	0	19	0	0	0	0
2012	ARAPAHOE	21	16	5	0	0	16	0	0	0	0
2012	ARCHULETA	1	1	0	0	0	1	0	1	0	0
2012	BACA	3	3	0	0	0	2	0	1	0	0
2012	BENT	2	2	0	0	0	2	0	0	0	0
2012	BOULDER	3	3	0	0	0	0	0	0	0	0
2012	BROOMFIELD	7	7	0	0	0	1	0	0	0	0
2012	CHEYENNE	34	34	0	0	0	28	0	0	0	0
2012	DELTA	1	1	0	0	0	0	0	0	0	0
2012	DOLORES	1	1	0	0	0	1	0	0	0	0
2012	EL PASO	4	3	1	0	0	3	0	0	0	0
2012	ELBERT	1	1	0	0	0	1	0	0	0	0
2012	FREMONT	3	3	0	0	0	3	0	2	0	0
2012	GARFIELD	77	77	0	0	0	32	0	67	2	0
2012	GUNNISON	7	7	0	0	0	6	0	5	0	0
2012	HUERFANO	5	5	0	0	0	4	0	1	0	0
2012	JACKSON	3	2	1	0	0	3	0	2	0	0
2012	KIOWA	13	13	0	0	0	12	0	0	0	0
2012	KIT CARSON	6	6	0	0	0	4	0	0	0	0
2012	LA PLATA	8	8	0	0	0	3	0	7	0	0
2012	LARIMER	7	6	1	0	0	5	0	0	0	0
2012	LAS ANIMAS	8	8	0	0	0	6	0	0	0	0
2012	LINCOLN	45	45	0	0	0	41	0	0	0	0
2012	LOGAN	16	16	0	0	0	17	0	0	0	0
2012	MESA	10	10	0	0	0	5	0	3	0	0
2012	MOFFAT	47	47	0	0	0	38	0	44	4	0
2012	MONTEZUMA	8	8	0	0	0	8	0	0	0	0
2012	MORGAN	5	5	0	0	0	5	0	0	0	0
2012	PHILLIPS	38	38	0	0	0	35	0	0	0	0
2012	RIO BLANCO	35	35	0	0	0	15	0	28	0	0
2012	RIO GRANDE	1	1	0	0	0	1	0	1	0	0
2012	ROUTT	4	4	0	0	0	7	0	7	0	0
2012	SAN MIGUEL	1	1	0	0	0	1	0	0	0	0
2012	SEDGWICK	1	1	0	0	0	1	0	0	0	0
2012	WASHINGTON	14	12	2	0	0	8	0	0	0	0
2012	WELD	849	842	7	0	0	611	0	4	0	1
2012	YUMA	1	1	0	0	0	1	0	0	0	0
2012	Total State	1309	1292	17	0	0	946	0	173	6	1
2013	ADAMS	11	9	2	0	0	9	0	0	0	0
2013	ARAPAHOE	13	11	2	0	0	12	0	0	0	0
2013	ARCHULETA	1	1	0	0	0	1	0	0	0	0
2013	BACA	1	1	0	0	0	1	0	1	0	0
2013	CHEYENNE	34	27	7	0	0	30	0	0	0	0
2013	DELTA	1	0	1	0	0	0	0	1	0	0
2013	DOLORES	7	7	0	0	0	5	0	3	0	0
2013	EAGLE	1	1	0	0	0	1	0	1	0	0
2013	EL PASO	1	1	0	0	0	1	0	0	0	0
2013	ELBERT	1	0	1	0	0	1	0	0	0	0
2013	FREMONT	4	2	2	0	0	5	0	1	0	0
2013	GARFIELD	60	44	16	0	0	26	0	49	0	0
2013	GUNNISON	6	2	4	0	0	2	0	1	1	0
2013	JACKSON	8	7	1	0	0	2	0	8	0	0
2013	KIOWA	8	7	1	0	0	7	0	0	0	0
2013	KIT CARSON	1	1	0	0	0	1	0	0	0	0
2013	LA PLATA	10	5	5	0	0	3	0	10	0	0
2013	LARIMER	1	1	0	0	0	0	0	1	0	0
2013	LAS ANIMAS	2	1	1	0	0	1	0	0	0	0
2013	LINCOLN	56	48	8	0	0	54	0	0	0	0
2013	LOGAN	4	4	0	0	0	0	0	0	0	0
2013	MESA	7	3	4	0	0	4	0	1	0	0
2013	MOFFAT	15	10	5	0	0	12	0	13	0	1
2013	MONTEZUMA	8	7	1	0	0	6	0	2	0	0
2013	MORGAN	16	4	12	0	0	15	0	0	0	0
2013	PITKIN	1	0	1	0	0	1	0	0	0	0
2013	RIO BLANCO	16	11	5	0	0	10	0	14	0	0
2013	ROUTT	8	4	4	0	0	9	0	7	0	0
2013	WASHINGTON	18	17	1	0	0	19	0	0	0	0
2013	WELD	650	476	174	0	0	482	0	7	0	3
2013	YUMA	8	7	1	0	0	2	0	0	0	0
2013	Total	978	719	259	0	0	722	0	120	1	4

CDP = Comprehensive Drilling Plan SWH = Sensitive Wildlife Habitat consultation
 RSO = Restricted Surface Occupancy consultation CDPHE= Colorado Department of Health and Environment consultation



Colorado Oil and Gas Conservation Commission

Horizontal Well Activity

September 5, 2013

County	Prior Years			2009		2010		2011		2012		2013		Spud	Completion			
	Drilled	DA	PA	Permit	Spud	Permit	Spud	Permit	Spud	Permit	Spud	Permit	Spud		AC	PR	DA	PA
ADAMS				6	5	2	3	1		17	2		2	12	4	4		
ARAPAHOE	2							10	1	22	4	9	1	8	2	1		
ARCHULETA	17			7	6	15	7	10	8	5	9	2		47		40		
BENT													1					
BOULDER								4										
CHEYENNE	5		4									3	1	6		1		4
DELTA										6	2			2				
DOLORES	9			18	2	6				9	1	5		12		6		1
EL PASO										10				0				
ELBERT										1				0				
FREMONT	7	6		6		12	5	3	4	4	1	1	1	18		10	6	1
GARFIELD	10		2	1	1	16	2	18	7	43	6	14	1	27		23		2
GUNNISON	1					1				3	2	2		3		1		
HUERFANO										4	1			1				
JACKSON	8	1	1	8		3	3	9	2	4		5	4	17		11	1	1
KIOWA										1		3		0				
KIT CARSON	1									1		1	1	2				3
LA PLATA	28	2		11	2	28	3	18	7	12	1	1		41		46	1	
LARIMER	3	2						5	1	2	1		2	7		2	2	
LAS ANIMAS	16		2	4		1	1							17		14		3
LINCOLN				2	1	2	1	1	1				6	1	4		2	
LOGAN	2									1				2		2		
MESA	3	2		36	1	22	8	24	13	14		6	1	26		24	2	2
MOFFAT	7	1	1	6	3	4		9	4	44	7	10	13	34	1	17	1	1
MONTEZUMA	6		1	23	6	11	2	8	3	18	2	2		19		27		1
MORGAN								6	2	2	1	5	1	4		2		
PARK						1	1	1	1					1				
RIO BLANCO	7	2				1	1	11	2	15	2	3	5	17	1	7	3	
ROUTT	10	6	1							1				10		3	6	1
SAN MIGUEL	1			1										1		1		
WASHINGTON	1		1											1				1
WELD	11	3		12	5	208	95	763	236	964	590	1264	668	1605		768	7	9
YUMA	1		1	6										1				1
TOTAL Horizontal	156	25	14	147	32	333	132	901	291	1203	632	1343	703	1945	8	1012	29	31
Percent of Total HZ		16%	9%												0%	52%	1%	2%
Total All Permits				5159		5996		4659		3773		2572						
Percent of Total				2.8%		5.6%		19.3%		31.9%		52.2%						



Well to Building Setback Review

Colorado Oil and Gas Conservation Commission
September 5, 2013

Count of well locations by proximity groupings from well spot to buildings for all locations reviewed under the December 17, 2008 amended rules.

Location Proximity to Buildings	2009	2010	2011	2012	2013	Number of Locations	Percent of Total Locations
less than 150 feet	2	3	3	2	0	10	0%
150 to 350 feet	37	58	61	39	20	215	3%
350 to 500 feet	50	110	97	61	37	355	5%
500 to 1000 feet	117	385	331	188	117	1138	17%
1000+ feet	356	1705	1470	838	562	4931	74%
Total Locations	562	2261	1962	1128	736	6649	

County	Total	Less than 150 feet	150 to 350 feet	350 to 500 feet	500 to 1000 feet	1000+ feet
ADAMS	47	0	2	5	9	31
ARAPAHOE	64	0	2	4	9	49
ARCHULETA	17	0	0	1	9	7
BACA	14	0	0	0	1	13
BENT	7	0	0	0	0	7
BOULDER	23	0	1	1	17	4
BROOMFIELD	32	0	0	4	13	15
CHEYENNE	94	1	0	0	2	91
DELTA	6	0	0	2	1	3
DOLORES	17	0	0	0	6	11
EAGLE	1	0	0	0	0	1
EL PASO	12	0	0	0	2	10
ELBERT	3	0	0	0	1	2
FREMONT	35	0	2	7	6	20
GARFIELD	421	0	7	2	58	354
GUNNISON	21	1	0	2	1	17
HUERFANO	7	0	0	0	2	5
JACKSON	29	0	0	3	1	25
KIOWA	58	0	0	0	1	57
KIT CARSON	12	0	0	0	0	12
LA PLATA	94	0	3	11	27	53
LARIMER	32	0	3	3	10	16
LAS ANIMAS	199	1	6	7	37	148
LINCOLN	192	0	0	2	4	186
LOGAN	41	0	1	1	0	39
MESA	80	0	0	3	13	64
MOFFAT	152	0	0	2	13	137
MONTEZUMA	25	0	0	1	3	21
MONTROSE	2	0	0	0	0	2
MORGAN	21	0	0	2	4	15
PARK	4	0	0	0	0	4
PHILLIPS	262	1	4	6	20	231
PROWERS	4	0	0	0	0	4
RIO BLANCO	148	0	0	0	1	147
RIO GRANDE	2	0	0	0	1	1
ROUTT	20	0	0	0	0	20
SAN MIGUEL	11	0	0	0	0	11
SEDGWICK	25	0	0	1	3	21
WASHINGTON	46	0	1	0	1	44
WELD	3898	6	176	271	820	2625
YUMA	471	0	7	14	42	408
YUMA	471	0	7	14	42	408



Well to Building Setback Review

Colorado Oil and Gas Conservation Commission

September 5, 2013

Listing of Locations less than 200 feet to Building

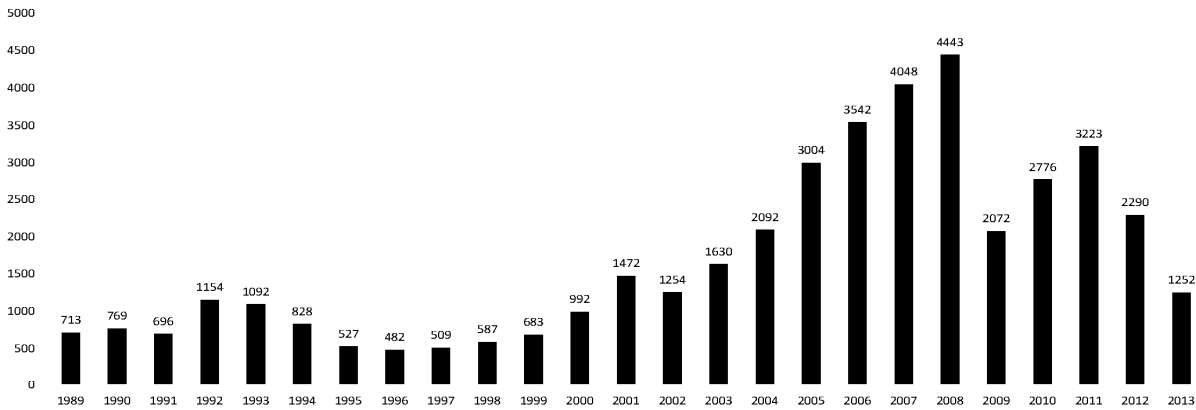
Year	Document Number	County	High Density	New Location	Distance	Proximity	Building Description
2011	2587822	CHEYENNE	No	No	58	less 150	Water well house
2009	1691798	WELD	No	No	58	less 150	Vehicle garage
2010	400072164	WELD	No	Yes	69	less 150	Abandoned hog shed
2012	400240957	GUNNISON	No	Yes	90	less 150	Equipment Shed
2009	1758843	WELD	No	Yes	103	less 150	Building to be razed
2011	1636646	WELD	No	No	122	less 150	Storage shed
2009	400011284	LAS ANIMAS	No	Yes	127	less 150	Operator is owner
2009	1786896	PHILLIPS	No	No	132	less 150	Grain Storage
2011	400117702	WELD	No	Yes	143	less 150	Irrigation pump house
2011	400227765	WELD	No	Yes	145	less 150	Storage Barn
2009	1904205	WELD	No	No	154	150 to 350	Livestock Enclosure
2012	400243295	WELD	No	Yes	155	150 to 350	Unused storage shed
2011	400179419	WELD	No	Yes	157	150 to 350	Existing well / storage building
2010	400054716	WELD	No	No	159	150 to 350	Equipment Barn
2011	400188968	WELD	No	Yes	159	150 to 350	Abandoned
2010	400021477	WELD	No	Yes	162	150 to 350	Goat Barn
2009	1758386	WELD	No	Yes	168	150 to 350	Storage Shed
2011	1635946	WELD	No	No	169	150 to 350	Storage shed
2013	400447386	WELD	No	No	169	150 to 350	Abandoned Turkey Barn
2013	400447391	WELD	No	No	169	150 to 350	Abandoned Turkey Barn
2011	400165164	WELD	No	Yes	178	150 to 350	Residence
2013	400367184	WELD	No	Yes	179	150 to 350	Farm Shed
2011	400188780	WELD	No	Yes	180	150 to 350	Residence
2010	1697620	WELD	No	No	187	150 to 350	Livestock Shed
2009	1758746	WELD	No	No	193	150 to 350	Storage Shed
2011	400154431	WELD	No	Yes	198	150 to 350	Turkey barn
2012	400250031	WELD	No	Yes	198	150 to 350	abandoned guard shack
2009	1774783	WELD	No	No	199	150 to 350	cement service building
2011	400118102	YUMA	No	Yes	199	150 to 350	Steel Barn



COLORADO OIL AND GAS CONSERVATION COMMISSION
ANNUAL WELL STARTS BY COUNTY

COUNTY	1988	1989	1990	1991	1992	1993	1994	1995	1996	1997	1998	1999	2000	2001	2002	2003	2004	2005	2006	2007	2008	2009	2010	2011	2012	Current as of 9/5/2013		
ADAMS	39	27	26	36	54	20	54	28	6	16	12	17	18	13	4	19	22	24	13	41	14	15	21	2	14	4		
ALAMOSA																												
ARAPAHOE	2	4	16	11	11	3	9	8	3	3	2						6	1	5	2	1	1	3	9	8	9		
ARCHULETA	5	3	7	5	2	1		2		1			4	4	2	5	4	10	5	7	26	9	12	9	11			
BACA	5	5	12	6	21	8	9	19	9	7	11	8	19	6	2	1	6	6	2	6	12		5	5	1			
BENT				1			2	3	1	2	3	6	2				3	2	8	1	1		1	1	1	1		
BOULDER	2			7	18	56	15	5								2	5	11	9	14	25	16	13	7	14			
BROOMFIELD	3	2	3	7	14	27	22	2	2						2		1				10		22	11	5			
CHEYENNE	177	133	92	75	64	50	44	41	35	29	29	6	2	1	3	3		9	14	15	14	8	12	11	17	25		
CONEJOS																												
COSTILLA														1														
CROWLEY	1		1																									
CUSTER																												
DELTA	1		1													5	4	6	5	2			4	1	1			
DENVER										2	3	1		2							7	5	4					
DOLORES	2		4	1													2		2	13	4	2		1	3	3		
DOUGLAS																												
EAGLE																												
EL PASO																								2		5		
ELBERT	8	11	9	5	2			10	15	2	2		2						1									
FREMONT	6	3	5	7	1	1	1	2		1							1	3	2	2	5	3	9	16	7	2		
GARFIELD	3	12	24	8	3	4	15	13	7	28	19	94	190	251	245	417	585	799	1005	1304	1688	768	910	881	498	266		
GRAND						1																						
GUNNISON			1	2	1											1		1	1	9	5	1	4	5	2	4		
HUERFANO	6			2	6	1	1	2		2	31	9	25	14	19	3	6	2										
JACKSON	2	1	3	7	2		3	1	1	3	3		24	2	4	10	10			3	3	10	1	6	7	4		
JEFFERSON									1			2																
KIOWA	14	32	35	37	28	19	20	22	8	13	6	4	8	16	2	4	2	1	7	7	2	5	15	15	10	4		
KIT CARSON	11	6	6	6	9	13	15	9	6	3	7	7				1	1	6	2	1	14	3	1	1	3	1		
LA PLATA	158	129	186	44	66	26	17	19	29	48	65	80	99	135	118	110	103	104	108	179	199	131	67	54	3	7		
LARIMER	8	5	1	6	13	5	3		2	1				1	1			1		4	8	1	28	2	10	4		
LAS ANIMAS	17	22	20	3	2	11	17	34	62	90	120	182	202	286	205	221	296	384	413	326	221	14	7	78	1			
LINCOLN	6	5	4	4	7	7	8	8	3	2			2	2	1	5	2	2	1	2	19	10	14	23	23	31		
LOGAN	17	19	19	8	13	24	9	11	4	10	4	4	4	6	3	3	2	11	12	12	3	7	3	9	13	5		
MESA	1	2	2	4	1		7	2	1	1	4	4	2	12	12	13	25	89	156	209	222	14	11	40	4	5		
MOFFAT	1	2	1	2	1	1	2	1	3	1	8	10	18	23	25	28	19	40	60	42	25	18	15	34	26	18		
MONTENZUMA	6	5	7	5	2	5	7	3	12	2	2	2	2	3	5	5	1	7	2	4	18	11	3	9	14	3		
MONTROSE				1												3		2	1		1	2	1					
MORGAN	26	20	32	11	9	11	16	13	8	9	7	4	9	8	1	7	5	5	3	1	1	2	3	2	3	1		
OTERO				1																								
OURAY																												
PARK				1																			2					
PHILLIPS			3			1								1			6	10	11	4	35	18	2	42	129	50		
PITKIN		1			2																							
PROWERS	16	9	5	8	13	7	1	5	5	2	8	4	2	4	4		5	5	6	3	5	2	3	1				
PUEBLO																												
RIO BLANCO	1	8	10	1	3	8	6	7	5	9	9	62	51	82	47	83	92	95	107	95	203	116	107	71	52	24		
RIO GRANDE	1	2	2																									
ROUITT		1	1	3	1								1	5	12	1		1	6	3	2		2	1	2	4	2	
SAGUACHE	1							2																				
SAN MIGUEL				1							3	1	6	9	10	19	28	13	20	17	5	1	2	2				
SEDGWICK				1			1	3		2							1	2	1	1	5		3	8	3			
WASHINGTON	39	28	22	26	24	20	20	13	17	23	18	4	15	12	24	29	65	34	23	14	11	2	2	4	1	5		
WELD	176	200	168	296	660	723	389	94	136	94	117	124	237	403	406	522	632	718	931	1222	1314	877	1207	1668	1463	816		
YUMA	12	16	41	47	102	39	114	145	101	104	93	52	42	162	108	106	144	597	593	445	336	27	213	108	16	11		
Grand Total	773	713	769	696	1154	1092	828	527	482	509	587	683	992	1472	1254	1630	2092	3004	3542	4048	4443	2072	2776	3223	2290	1252		

ALL COUNTIES





Colorado Oil Gas Conservation Commission Monthly Statistics

YEAR	MO	Baker - Hughes Rig Count	Permits						Pits			Locations		Well Spud Notice		Active Drilling Permits	Active Wells	Public Visits		Well Oper Change
			Drilling Rcvd	Drilling Apvd	Recompletion Rcvd	Recompletion Apvd	Injection Rcvd	Injection Apvd	Rcvd	Apvd	Rcvd	Apvd	Rcvd	Apvd	Data			Office	Internet	
2010	Total		5703	5996	519	515	34	28	120	225	2461	2548	2798	197	1115	1112479	8421			
	JAN	63	405	351	8	23	4	6	4	8	249	112	233	14	95	103968	813			
	FEB	61	343	249	15	2	7	6	5	3	184	150	209	21	80	96171	356			
	MAR	68	472	498	18	23	4	7	38	31	262	258	268	9	125	122393	590			
	APR	72	325	314	26	15	5	0	20	27	190	218	240	8	105	106539	402			
	MAY	72	372	367	20	25	3	6	12	8	214	171	248	14	124	73024	545			
	JUN	70	512	436	61	22	5	4	11	4	172	239	273	30	131	108115	790			
	JUL	69	457	436	13	55	2	1	13	7	215	158	261	20	74	103585	595			
	AUG	73	472	482	37	17	1	0	10	17	236	229	283	21	141	111950	573			
	SEP	77	336	389	22	29	7	0	35	34	159	203	323	9	120	116043	584			
	OCT	78	382	443	45	29	2	1	4	12	171	172	302	14	126	132814	552			
	NOV	80	342	324	29	57	0	1	12	13	166	174	305	18	96	130612	572			
	DEC	79	291	370	31	23	4	0	26	28	164	183	279	9	77	132651	347			
2011	Total		4709	4659	325	320	44	32	190	192	2382	2267	3224	187	1294	1337865	6719			
	JAN	73	372	258	26	21	3	0	11	5	142	129	245	12	106	112886	1051			
	FEB	70	370	382	23	27	7	5	21	9	160	129	231	16	114	105857	385			
	MAR	66	292	347	21	14	2	2	17	24	133	172	292	26	138	111746	378			
	APR	66	410	235	16	24	5	5	9	2	137	106	236	12	108	107627	476			
	MAY	66	491	506	23	16	3	1	6	2	105	131	212	20	123	109802	527			
	JUN	69	326	377	11	19	8	6	5	8	110	89	145	11	111	108849	1269			
	JUL	66	237	276	9	14	3	2	5	2	97	103	184	13	102	114195	487			
	AUG	62	313	288	6	9	6	4	23	5	83	97	177	11	112	110908	297			
	SEP	61	252	256	1	5	5	2	4	1	81	77	162	11	89	106114	832			
	OCT	62	326	265	9	3	7	6	2	19	94	82	157	8	105	108833	394			
	NOV	56	271	323	5	8	6	6	2	4	109	97	145	10	119	120586	446			
	DEC	57	322	260	4	8	8	5	9	3	122	81	108	9	78	107240	903			
2012	Total		3982	3773	154	168	63	44	114	84	1373	1293	2294	159	1305	1324443	7445			
	JAN	53	538	331	6	0	3	5	6	8	176	124	140	9	108	47406	612			
	FEB	56	260	455	10	5	2	3	4	11	91	141	129	7	102	40649	285			
	MAR	57	343	241	5	9	2	8	15	6	129	84	166	9	133	43019	347			
	APR	61	331	333	6	5	5	5	6	8	144	117	158	3	132	46459	331			
	MAY	61	349	342	8	6	5	6	10	7	106	142	155	3	123	45215	340			
	JUN	62	325	273	2	8	7	8	5	9	102	85	135	8	122	41015	1088			
	JUL	68	858	304	11	4	8	2	9	5	218	91	152	7	154	45558	334			
	AUG	69	221	291	6	4	2	2	4	1	30	76	173	20	130	44722	1			
2013	Total		3225	2570	54	41	34	39	59	55	996	860	1208	66	1004	354043	3338			

Apvd = Approved, Rcvd = Received, Ind = Individual, Blnk = Blanket, Apprs = Application for Hearing, NOAV = Notice of A leged Violation, AOC = Administrative Order of Consent, OFV = Order Finding Violation, Cmpmt = Complaint, Comp = Completed



Colorado Oil Gas Conservation Commission Monthly Statistics

YEAR	MO	Operators		Release		Bonds		Claim		Hearings		Violations		Remediation		Inspections			
		New	Inactive	Ind.	Blnkt	Replace	Ind.	Blnkt	Apps.	Order	NOAV	AOC	OFV	Cmplt	Spills	Rcvd	Comp	Wells	Locations
2010	Total	46	33	38	40	74	0	1	155	136	319	10	3	218	493	511	382	17075	
	JAN	1	2	3	1	4	0	0	16	15	43	3	2	33	40	47	45	1316	
	FEB	1	1	9	4	6	0	0	16	15	7	0	1	39	52	48	33	1591	
	MAR	2	3	6	3	9	0	0	NA	NA	31	NA	NA	31	48	59	27	1675	
	APR	2	0	3	2	1	0	0	24	24	8	0	0	10	52	38	61	959	
	MAY	3	0	5	2	4	0	0	77	65	16	2	5	26	31	33	51	1577	
	JUN	2	2	2	2	0	3	0	51	58	30	1	4	14	38	53	25	1099	
	JUL	3	6	3	6	3	1	0	NA	NA	29	NA	NA	13	39	92	20	518	
	AUG	2	3	12	7	2	0	1	68	54	26	2	2	19	54	106	56	1032	
	SEP	5	1	7	5	2	0	0	44	41	4	2	4	16	46	56	66	690	
	OCT	4	2	12	6	7	0	3	57	45	9	0	0	15	38	102	28	636	
	NOV	4	9	15	4	1	0	0	NA	NA	15	NA	NA	16	31	70	58	739	
	DEC	4	2	2	2	4	0	0	50	32	12	0	1	15	58	22	66	562	
2011	Total	33	31	79	44	43	4	4	403	349	230	10	19	247	527	726	536	12394	
	JAN	3	3	7	5	1	1	0	70	72	18	1	0	27	35	68	23	998	970
	FEB	6	9	8	5	0	0	0	NA	NA	10	NA	NA	24	40	85	36	1998	1024
	MAR	4	1	7	3	9	0	0	44	38	19	0	0	23	38	63	61	2203	1149
	APR	4	2	10	3	2	0	0	80	59	11	0	0	19	35	26	99	1701	930
	MAY	3	1	4	0	3	0	0	43	50	14	2	0	23	32	27	122	2621	1701
	JUN	3	4	3	3	4	0	0	NA	NA	5	NA	NA	35	39	46	98	1432	1091
	JUL	5	0	1	4	5	0	0	63	50	15	0	0	16	24	45	33	1319	1076
	AUG	6	5	2	8	0	1	0	67	54	24	3	2	21	28	127	33	1898	1432
	SEP	0	4	4	5	2	1	0	NA	NA	5	NA	NA	14	13	30	36	1137	864
	OCT	1	2	9	1	0	0	0	30	36	6	1	0	13	44	116	37	1407	1029
	NOV	6	4	12	8	7	0	0	85	37	16	2	0	10	44	26	44	1324	828
	DEC	6	2	3	1	0	0	0	NA	NA	14	NA	NA	19	30	31	19	1046	625
2012	Total	47	37	70	46	33	3	0	482	396	157	9	2	244	402	690	641	19084	12719
	JAN	3	5	12	2	0	0	0	48	75	15	4	0	21	40	31	45	1673	829
	FEB	4	2	6	3	2	0	0	41	35	11	2	0	16	30	42	90	1042	614
	MAR	1	3	2	2	1	0	0	54	67	16	2	0	11	25	65	29	1967	1150
	APR	7	1	5	2	8	0	0	NA	NA	21	NA	NA	16	33	39	37	1508	910
	MAY	2	1	3	0	0	0	0	46	50	22	6	0	13	29	40	60	2647	1601
	JUN	6	2	2	4	5	0	0	91	44	15	2	0	25	40	46	37	1846	1081
	JUL	4	1	2	2	0	0	0	96	70	25	3	0	20	44	48	22	2297	1333
	AUG	6	4	5	4	2	0	0	NA	NA	21	NA	NA	22	51	30	41	2052	945
2013	Total	33	19	37	19	18	0	0	376	341	146	19	0	144	292	341	361	15032	8463

Apvd = Approved, Rcvd = Received, Ind = Individual, Blnkt = Blanket, Apps = Application for Hearing, NOAV = Notice of A leged Violation, AOC = Administrative Order of Consent, OFV = Order Finding Violation, Cmplt = Complaint, Comp = Completed