



# Staff Report

October 28, 2013

## TOP STORIES

### ◆ Colorado Flood Response

The floods of September 2013 were caused by historic precipitation across Colorado's Front Range. Daily average flows in the South Platte watershed were 75 to 200 times average daily flows. Colorado's oil and gas industry shut-in more than 2,500 wells in advance of flooding. Well pads, tanks and other production equipment were inundated by high water and battered by fast moving currents and heavy flood debris across the South Platte River and its tributaries.

The COGCC's response to the flooding was rapid. Acting as part of the State of Colorado's emergency response, COGCC field inspection personnel, environmental specialists and engineers were in the field gathering and reporting detailed information. Verified information was provided to first responders, FEMA, industry, other local, state and federal agencies and to the public and media outlets. COGCC immediately established a dedicated email address for the public to use to report flood damage or other needs to the COGCC.

On September 26, the CDPHE reported that sampling from 29 sites along the South Platte River failed to detect any volatile organic compounds associated with oil and gas operations. Sampling showed high levels of E. Coli bacteria associated with the 220 million gallons of untreated or partially treated municipal sewage released from inundated municipal waste treatment facilities.

As of October 22, the COGCC has completed approximately 1,621 individual site inspections. Fourteen spills of oil or condensate totaling 20 barrels or more were reported. The total amount of oil or condensate spilled is 48,090 gallons. The 22 reported releases of produced water total 28,980 gallons.

The COGCC continues to work hard to protect public health and safety and to serve the people of Colorado in the aftermath of the floods. Highlights include:

- On September 23, 2013, the COGCC published a safety checklist for operators restarting shut-in wells.
- On September 30, 2013, the COGCC published worker health and safety information to advise operators working in the flood impact zone tainted with E. coli bacteria.
- On October 1, 2013, the COGCC issued a public release with information about how to deal with damaged equipment.
- On October 2, 2013, the COGCC published instructions on the safe disposal of flood debris at oil and gas operations.
- On October 4, 2013, the COGCC published comprehensive instructions to operators on reporting requirements, procedures for clean-up and repair of damaged facilities, and restarting shut-in oil and gas operations.
- On October 21, 2013, the COGCC published recommended practices for operators reconstructing facilities in flood impact zones. This document included detailed advice from COGCC staff observations and recommended best management practices for reconstructing damaged facilities.

### ◆ Sensitive Wildlife Habitat and Restricted Surface Occupancy Rulemaking

On September 17, the Commission approved updated Sensitive Wildlife Habitat and Restricted Surface Occupancy maps. The Sensitive Wildlife Habitat maps identify the areas for particular species where consultation with the Colorado Parks and Wildlife (CPW) surface owners are required to identify mitigation procedures that can be implemented to reduce the impact to wildlife from oil and gas development. The Restricted



Surface Occupancy maps are areas that have been identified for particular species where oil and gas development should not occur unless it is absolutely unavoidable for very specific reasons and an exception is justified and granted by the Director. These maps were originally adopted by rulemaking in 2008 and specified that the maps may be updated on a specific interval to capture updates performed by CPW. This was the first time the maps have been updated since that rulemaking.

The maps for Sage Grouse Sensitive Wildlife Habitat and Restricted Surface Occupancy were not updated. The update for those maps was deferred until a future date when some current projects mapping Sage Grouse Habitat are concluded and the maps can be updated with the latest data. It is anticipated that this update will take place in the first quarter of 2014.

Rules were also modified to address the definition of specific data collection and presentation methodologies used to create the maps for Mule Deer critical winter range, Lesser Prairie Chicken focal areas, and Gunnison Sage Grouse production areas.

The updated maps become effective on November 14, 2013. The new maps can be reviewed on the COGCC website by selecting "Wildlife Map Rulemaking" from the **HOT TOPICS** section of the homepage.

#### ◆ E & P Waste Spill and Release Rulemaking

House Bill 13-1278, codified at C.R.S. §34-60-130 requires oil and gas operators to report any spill of one barrel or more, or the equivalent of one barrel or more of oil or exploration and production ("E&P") waste within 24 hours after discovery of the spill. The operator is required to make a report to the COGCC, as well as to the entity with jurisdiction over emergency response within the affected local municipality or county. The operator's report of the spill must include any available information concerning the type of waste involved in the spill. The bill authorizes the Commission to promulgate rules to implement these requirements. There are proposed changes to Rule 300 Series and Rule 900 Series to implement the legislation.

The purpose of the Amended Rules is to create greater transparency of oil and gas operations by requiring operators to report oil spills of one (1) barrel or more. While the original rules required that operators report spills of five (5) barrels or more, many in the general public believed that too much E&P waste was being spilled without sufficient oversight. One barrel of oil equals forty-three (43) gallons, therefore, five (5) barrels equals two hundred fifteen (215) gallons. With tighter regulations for reporting spills, the COGCC can more closely monitor the cleanup of spills, as well as regulate operator's future activities. In addition, the public will also have a more clear understanding of oil and gas operations and understand that operators are engaged in best management practices to protect public health and safety as well as protect the environment from the impacts of oil and gas production.

A Stakeholder meeting was held on October 21, 2013 to address stakeholder questions. The next stakeholder meeting is scheduled for November 22, 2013. The time and location are to be determined. For more information, go to the **HOT TOPICS** section on our website.

#### ◆ Local Government Liaison (LGL) Program Update

Local Government Liaisons (LGLs) Nancy Prince and Marc Morton are a direct link to help local governments and their constituents find answers to questions and inquiries regarding oil and gas related issues in Colorado, and in accessing information and data available from the COGCC. LGLs work to educate those interested in oil and gas in Colorado, and to increase communication between local governments, operators, stakeholders, and COGCC staff. LGLs are available upon request to local governments and other groups to provide presentations specific to a particular group's informational needs.

Participation in the LGD program continues to increase as local governments are informed by LGLs of the benefits of the program. Local governments are reminded that submittal of a completed and signed Form 29 is required to register to participate in the program, or to update exist-



ing information.

As electronic notification (email) is the means for transmitting pending permit applications and other oil and gas activity notifications specified in the COGCC rules to LGDs, a current email address provided via a Form 29 is key to active participation in the LGD program. Email is also used by LGLs to distribute the quarterly Newsletter, the LGD Training Schedule, and notify participants of other critical information. Local governments are therefore encouraged to submit a new Form 29 when the LGD contact person changes, or when they are assigned a new e-mail address or telephone number.

As of October 15, there are 56 county LGDs, 80 municipal LGDs, and 8 special district LGDs registered as participants in the LGD program. The most recent LGD addition is Edward Moyer from Grand County. We welcome Grand County's participation in the LGD program. A current list of participating LGDs is available under the "Local Gov" link on the COGCC website. LGD information is provided to encourage and promote a continuous exchange of information between the public, the operators and other local governments concerning oil and gas development and related issues.

The COGCC, through the LGLs, Hearings Manager Robert Frick, and Kent Kuster of the Colorado Department of Public Health and Environment (CDPHE) offer periodic training to assist LGDs, local government staff, elected officials, and others navigate COGCC rules, its website, and information sources. To date in 2013, 109 individuals have taken the training, including 43 LGDs. This training provides guidance to local government staff, regarding oil and gas operations and regulation in Colorado. Besides LGDs, cities and counties considering participation in the LGD program are also invited to attend available trainings.

Six trainings have been held so far, and two day-long LGD Training Sessions for the remainder of 2013 are still open for registration, including:

**Tuesday, November 12**  
Home Economics Building  
Prowers County Fairground

2206 Saddle Club Drive;  
Lamar, Colorado

**Wednesday, November 20**  
Garfield County Board of County Commissioners  
Administration Building  
108 8th Street  
Glenwood Springs, Colorado

To register for either training, please contact either Marc Morton (tel: 303-894-2100 x5132; e-mail: [marc.morton@state.co.us](mailto:marc.morton@state.co.us)) or Nancy Prince (tel: 303-894-2100 x5103; e-mail: [nancy.prince@state.co.us](mailto:nancy.prince@state.co.us)),

The 2014 training schedule and content are under development. Please let us know if there is a specific topic of interest that you would like to see incorporated into the program, are interested in hosting a training, or if you have questions about the LGD program or LGD training.

The LGLs also continue to provide support to local governments and others in response to questions, inquiries and concerns regarding oil and gas regulation and activity. LGLs also provided multiple e-mail informational updates to local governments and others within the areas recently impacted by flooding, as summarized below. Besides flood response assistance, the LGLs responded to inquiries or questions from Arapahoe County, Elbert County, El Paso County, Huerfano County, Pitkin County, Weld County, and the municipalities of Commerce City, Firestone, Greeley, and Limon.

A list of the LGL outreach and public involvement activities conducted since the last staff report is included in the Public Outreach section listed on the next page.

## Public Outreach

### ➤ Outreach by Director and other Staff Members

- On October 3, Greg Deranleau, Oil and Gas Location Assessment Supervisor, presented at the Colorado Water Officials Association annual conference in Glenwood Springs. The focus of the conference was "A History of Water Use in



the Upper Colorado River Basin, Present Challenges & Future Opportunities.” COGCC’s presentation provided an overview of the regulatory role of COGCC, discussed water use and demands from current oil and gas development, and included analysis of water reuse and recycling programs with an emphasis on the Piceance Basin.

- On October 4, 2013 Margaret Ash, Field Inspection Manager, presented a overview of the COGCC Response to the September 2013 Flood at the Solid Waste Association of North America Rocky Mountain Annual Conference.
- On October 8, Director Matt Lepore presented a talk to the Colorado Environmental Management Society on “The Shale Oil and Gas Revolution: A Regulatory Perspective” in Denver.
- On October 9, Director Lepore presented to the Society of Petroleum Evaluation Engineers (SPEE) “The Current State of Colorado’s Oil and Gas Regulatory Environment” in Denver.
- On October 18, Director Lepore attended the Gas and Oil Regulatory Team (“GORT”) meeting in Durango.
- Margaret Ash is participating on a team organized for the purpose of modifying the Interstate Oil and Gas Compact Commission (“IOGCC”) certification test for oil and gas inspectors. The team includes staff from various state organizations. The plan is to develop a nationwide certification program and to integrate the IOGCC certification program with the TOPCORP program. Three conference calls have been conducted with staff from each state having been assigned to edit and revise different sections of the test. The last session was October 16, 2013.

#### ➤ Outreach by COGCC Local Government Liaisons (LGLs)

- On September 16, 2013, September 19, 2013, September 27, and October 2, 2013, the LGLs provided e-mail updates to dozens of local governments in flood affected area concerning industry and COGCC’s flood response efforts. Local governments were given instruction on

how to safely report issues associated with oil and gas facilities affected by flooding, updated information on COGCC’s flood response efforts, and other timely information.

- On October 2, 2013, Nancy Prince attended the regularly scheduled LGD meeting in El Paso County where operators provided project updates and COGCC and COGA gave updates on flood response activities.
- On October 4, 2013, Nancy Prince was interviewed by a Colorado College student as part of an upper division environmental studies seminar on contested spaces in the Pikes Peak region.
- On October 8, Marc Morton attended a FrackingSENSE lecture at the University of Colorado (Boulder) hosted by the Center of the American West, Boulder County, and the AirWaterGas Sustainability Research Network.
- On October 8, 2013, Nancy Prince participated in the Huerfano County Planning Commission working session where COGCC rules were discussed in context of several pending county permit applications.
- On October 10, 2013, Nancy Prince attended the Progressive 15 Fall Conference in Sterling. Fifteen northeastern Colorado counties participate in this organization. All have oil and gas activity and participate in the LGD program. Several counties and municipalities in the region are contemplating or working on oil and gas regulations.
- On October 15, 2013, Marc Morton attended another FrackingSENSE lecture at the University of Colorado (Boulder) hosted by the Center of the American West, Boulder County, and the AirWaterGas Sustainability Research Network.
- On October 17, 2013 Marc Morton and Robert Frick, Hearings Manager, travelled to Steamboat Springs and provided a presentation to a joint meeting of the Routt County Planning Commission and the Board of County Commissioners. The presentation provided an overview of COGCC; summarized information and regulations concerning property rights, spacing, pooling, and unitization; and an overview of the COGCC



online tools and database capabilities.

- On October 22, 2013 Nancy Prince and Greg Deranleau traveled to Walsenburg and presented details of the COGCC setback rules and the permitting process to the Huerfano County Planning Commission and Board of County Commissioners.

## REGIONAL ACTIVITIES

### ➤ NORTHWEST COLORADO

#### ◆ Northwest Colorado Oil and Gas Forum

The Forum is an informal gathering of local, state, and federal government officials, oil and gas industry representatives, and citizens that have met regularly since 1989. The purpose of the Forum is to share information about oil and gas development in northwest Colorado and to make government officials and oil and gas industry representatives easily accessible to the public. Currently, the meetings are conducted once per quarter and are co-chaired by the COGCC Director Matt Lepore and Garfield County Commissioner Mike Samson.

The next meeting of the Forum is tentatively scheduled for Thursday, December 6, 2013, at 10:00 a.m. at a location to be determined. All parties wishing to be placed on the meeting agenda, or added to the distribution list for announcements, should contact Chris Canfield at 970-625-2497 or via email at:

[chris.canfield@state.co.us](mailto:chris.canfield@state.co.us)

#### • Project Rulison

Please note that the email for Project Rulison submittals has been changed to:

[DNR\\_rulison.submittal@state.co.us](mailto:DNR_rulison.submittal@state.co.us)

#### • Project Rio Blanco

Please note that the email for Project Rio Blanco submittals has been changed to:

[DNR\\_rioblanco.submittal@state.co.us](mailto:DNR_rioblanco.submittal@state.co.us)

### ➤ SOUTHWEST COLORADO

#### ◆ Gas and Oil Regulatory Team (GORT) Meeting

The last GORT/Southwest Colorado Oil and Gas Stakeholders meeting occurred on Friday, October 18, from 8:30 a.m. to noon at the La Plata County Fairgrounds in Durango, Colorado.

The next GORT meeting is to be determined and will be identified in our next Staff Report. All parties wishing to be placed on the next meeting agenda should contact Karen Spray at: 970-259-1619 or [karen.spray@state.co.us](mailto:karen.spray@state.co.us).

#### ◆ Fruitland Formation Outcrop Mitigation and Monitoring Projects (4M Projects)

Fruitland Formation Outcrop - 4M Pilot Scale Mitigation Projects La Plata County. The South Fork Texas Creek (SFTC) system operated between 10.9 and 11.1 Kilowatts (kW) power generation and was functional 97% of the time for the period September 1, 2013 and October 3, 2013. Disruption to the local power grid as a result of thunderstorms caused the main breaker on the system to trip and shutdown on September 26, 2013. LTE was onsite the following day to reset the breaker and get the system running again. An average of 5.9 kW per hour were returned to the grid during these periods. Pine River continues to operate in a passive mode. General O&M continues at both locations. The 4M Mitigation Operations & Maintenance Report (September 30, 2013) has been posted on the COGCC webpage under Library, San Juan Basin, 4M Project Reports.

4M Monitoring Wells La Plata and Archuleta Counties. There are 17 wells at 11 locations in the COGCC 4M monitoring program. Well pressures are monitored remotely via satellite telemetry with one or two maintenance visits per year, depending upon data received. Operations and maintenance (O&M) activities were conducted on September 30 and October 1, 2013 by COGCC and Norwest staff. In general, the locations held up well during the recent large storm events although several access roads were damaged. The upper transducer at Highway 151 #2 starting giving erratic readings in late June 2013 and ceased transmitting in late July 2013. There was no surface evidence of problems, indicating the transducer itself has probably failed. Erratic readings from the upper transducer



at Wagon Gulch #2 were determined to be from a loose wire in the hub which was reconnected. Data now appear to be transmitting normally. Wellhead leaks at South Fork Texas Creek #2 are still evident and require repair. Pending O&M activities includes the replacement of the upper transducer at Highway 151 #2 and a rebuild of the wellhead at South Fork Texas Creek #2. In addition it is planned to swap out the Level Troll™ datalogger system at a Basin Creek well and install an AquaTroll™ to run an assessment if different monitoring technologies may provide more accurate water level information. The Beaver Creek locations continue to be inaccessible due to surface access issues and the BP Highlands location was not visited due to potential road damage and wet road issues. Both locations are currently reporting normally via the telemetry system.

Ongoing Investigation, Reclamation, and Mitigation of Residual Methane in the Vicinity of the Bryce 1-X Well Area, Bondad, Colorado Four domestic water wells were sampled at the Bondad location on October 2, 2013 by COGCC and Four Corners Geoscience (FCG) staff. A visual inspection of the water at all locations indicated the water looked much cleaner than during past sampling events. Free methane results ranged from 1.41 mg/l in the South well to 6.91 mg/l in the North well. All methane results were lower than the April 2013 sampling results. Analytical and isotopic data are pending.

### ➤ SOUTHEAST COLORADO

#### ◆ U.S. EPA Raton Basin Hydraulic Fracturing Study - Las Animas and Huerfano Counties

As part of the retrospective study of possible impacts from well completions, a third round of sampling and analysis of groundwater from two areas in the Raton Basin was conducted during the week of November 5, 2012. COGCC staff, as well as contractors for Pioneer Natural Resources, collected split samples at many of the sites. The EPA released an interim progress report on the study in December 2012. The EPA is expected to release the study in a draft for public and peer review in 2014. Ultimately, results from the study are intended to inform the public and provide policymakers at all levels with high-

quality scientific knowledge that can be used in decision-making. For more information on the EPA hydraulic study, go to <http://www.epa.gov/hfstudy/>.

### VARIANCES

An exigent circumstance variance per Rule 303.i.(2) was granted on October 4, 2013 for an Application to Drill ("APD") to Carrizo Niobrara LLC ("Carrizo") for the Nelson Ranches 4-27-10-59 Well (API. No. 05-123-38239) located in the SW¼SE¼ of Section 28, Township 10 North, Range 59 West, 6th P.M. in Weld County. Due to exigent circumstances, Carrizo Niobrara LLC will face significant economic hardship as an operator if this APD is not immediately approved. As stated in Rule 303.i.(2), this should provide the approval of this Form 2 without the Rule 305.d - 20 Day Comment Period. Carrizo obtained waivers from Weld County and the surface owner to expedite the approval of this application. Carrizo is in compliance with groundwater testing requirements for this location.

Quicksilver Resources ("Quicksilver") requested timing relief from Rule 303.i.(1) and (2) and was approved on October 4, 2013. Rule 303.i.(1) & (2) requires a 20-day comment period for APDs. Quicksilver requested this relief be granted to approve the Form 2s for the Pirtlaw Partners Ltd 32-09 (API No. 05-107-06250) and the Pirtlaw Partners Ltd 32-09H (API No. 05-107-06250) wellbores, in the SWNE of Section 9, Township 6 North, Range 87 West, 6th P.M. in Routt County, without the comment period. These APD's propose entering and deepening the Pirtlaw Partners Ltd 32-09 and then kicking off for a horizontal wellbore for the Pirtlaw Partners Ltd 32-09H. Quicksilver has received a waiver from Routt County permitting authority and a waiver from the surface owner. Quicksilver has and continues to be in compliance with wildlife stipulations of the location.

A Rule 603.a.(1) Variance was granted October 9, 2013 to Vessels Coal Gas Inc. ("Vessels") for the Oxbow Mining LLC 2 located in the SE¼ SW¼ of Section 9, Township 13 South, Range 90 West, 6<sup>th</sup> P.M. in Gunnison County. Vessels requested a 502.b variance to Rule 603.a.(1). The proposed location is located 130 feet from a railroad. The



railroad line is a spur that hauls only coal from the Oxbow Mine. The proposed well will be drilled to 100' to recover methane that is accumulating in vacated portions of the mine. Union Pacific Railroad did not grant a waiver to Vessels' request. The rig that will be used is a truck-mounted 52 foot rig; drilling operations will take four days.

## ➤ ORGANIZATION

### Four New Field Inspectors

The Field Inspection unit is pleased to announce the hiring of four engineering physical scientist technicians. All four new inspectors started on October 1, 2013.

Jason Gomez works in the Northeast area and reports to Jim Precup. Jason brings to the COGCC 10 years of experience working as a measurement technician and negotiating oil and gas leases.

Emily Waldron is assigned to Northwest Colorado and will report to Shaun Kellerby. Emily is a geologist with a background in well-site and reclamation.

Rich Lamont also works in the Northwest and will be located in Rifle, Colorado. Rich brings long history of well-site work including as a lease operator and flowback technician.

David Covington will work out of Rangley, Colorado and will also report to Shaun Kellerby. David previously worked for a major oil and gas company where he conducted detailed site inspections and audits of oil and gas locations to ensure compliance with OGCC, CDPHE, and BLM regulations.

### New Financial Assurance Supervisor

Martha Ramos is now the **Financial Assurance Supervisor**. Martha has been the acting supervisor for the last three months and prior to that she was the Financial Assurance Analyst for four years. She has implemented the changes in the rules adopted in 2008 that have had a significant impact on the Financial Assurance program and smaller operators. Most significantly, the in-

crease in the individual plugging bond also increased in the number of inactive well bond requirements; changes in reclamation requirements have made passing final reclamation inspections more rigorous and complex in tracking. Martha has created and implemented procedures to insure that these new requirements are being met.

An organizational chart can be found on pages 11-14. For contact information, please go to our homepage, and then "Staff Contact Information."

## ➤ PLANNING/ADMINISTRATION/OTHER

### ◆ Plugging and Reclaiming Abandoned Wells (PRAW) - Project Updates

The **DB Orphan Blair #1 Project** started on July 7, 2013 when a ditch rider discovered water flowing from the ground and discharging into an irrigation ditch located on the NW edge of DeBeque, CO in Mesa County. The COGCC was contacted on July 9 and because other orphaned oil and gas wells had been previously discovered and plugged by the COGCC, the COGCC assumed responsibility and had water samples gathered for lab analysis. Lab analysis indicated salty water which is indicative of oil and gas geologic sources. The ground around the water flow was dug up and the source of the leak was determined to be from a hole in a pipeline which was traced back to an old abandoned well that appears to have been drilled around 1902 based on old United State Geological Survey reports. The salt water discharge into the ditch was terminated by sealing the well head and then disconnecting the pipeline. The COGCC has placed this well in the PRAW program with plans to re-enter and plug this fall. More information is available on the COGCC website and is found under **HOT TOP-ICS**.

The **PAST Project** includes three leaking PA wells in need of re-entering and re-plugging and has been renamed the **2013 Piceance Re-entries Project** to avoid confusion with other work. Two are located in Garfield County and one is in Mesa County. The COGCC received competitive bids and awarded the winning bid to Magna Energy Services, LLC in the amount of \$183,480. Work began on this project on June 21 and concluded



on July 29. As with many plugging projects, unforeseen circumstances popped up resulting in changes in plans along with change orders with the final cost to plug the three wells being \$237,079 or \$53,599 more than originally budgeted.

**Biscuit Pad Remediation Project** includes two well pads and the two respective access roads where they are currently located in an active irrigated hayfield. The goal is reclaim and return the lands back to agricultural purposes. This project is located in Garfield County near the NE border of the town of Rifle and East Highway 13. The lowest bid from the list of qualified contractors came in at \$143,000 and the work was awarded to Tally Ho Construction, Inc. Tally Ho facilities and offices are headquartered in Rifle, CO. Work began about a week ago.

**The Debeque Environmental and Reclamation Project**, involves the remediation of soils contaminated by salt water in the vicinity of the orphaned wells known as the Homestead #2 and the Pasture #1 wells. Both sites are located in Mesa County on the NW edge of DeBeque, CO. Soil sampling and lab analysis has been completed on both well sites with remedial and reclamation designs, plans & work to be scheduled and completed during the new fiscal year (July 1, 2013 thru June 30, 2014).

**The Tatonka Reclamation Project** includes three well pads located in Moffat County with two well pads being on the Culverwell property that can be found approximately 20 miles west of Craig, CO and a couple of miles north of Hwy 40 with another well pad and pit being located on the Gerber property and found four miles west of Craig and three miles north of Hwy 40. A contractor has provided a documented quote and price to reclaim the mud reserve pit on the Gerber pad and a Request for Requisition is next.

**The Gentry Project** is located in Rio Blanco County and includes 10 sites with eight wells and two pits that can be found approximately a half mile west of Rangely, CO and one and a half miles south of Hwy 64. The landowner has plans to do some land development and brought the matter to the attention of the COGCC.

Page 15 contains a spreadsheet listing PRAW projects that are either scheduled in process or completed as of October 18, 2013.

◆ [December 2013 Hearing Docket](#)

A docket for the December 2013 hearing will be available shortly after the October hearing. Hearing dockets are available on our website by clicking on "Hearings." Links to the notices and hearing applications are available from the Docket Number and Applicant, respectively. To sign up for e-mail notification of hearing notices and applications, please see the announcement and instructions on the homepage of the COGCC website: [www.cogcc.state.co.us](http://www.cogcc.state.co.us)

◆ [Colorado Oil and Gas Information System \(COGIS\) Projects, Updates and Changes](#)

⇒ [Environmental Database](#)

During the past 18 months, the COGCC and the Ground Water Protection Council (GWPC) have been working together to develop a new Environmental Database that will contain the results from the Colorado Oil and Gas Association Voluntary Baseline Groundwater Quality Sampling program, along with other environmental data collected by the agency. The project included the development of a new relational database model that will allow the data to be accessible to the public from the COGCC website.

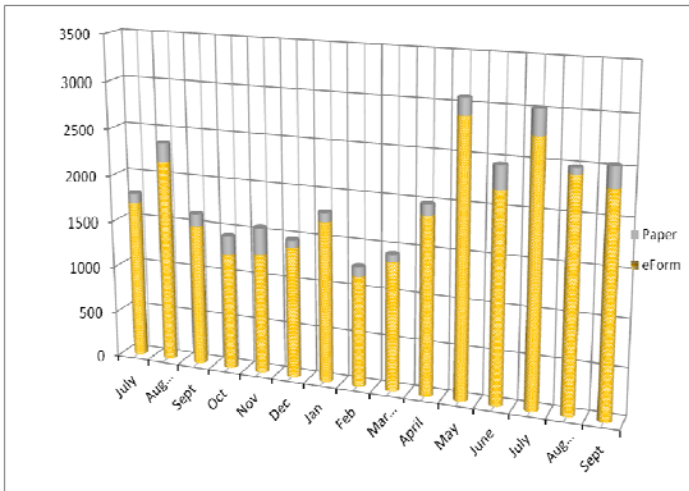
Other improvements include an Electronic Data Deliverable that allows industry to submit the results of the sampling directly to the COGCC, which can then process the information directly into the database. The application has many other features to help staff analyze the information and understand the lab results from the sampling. The interface will allow the public to view and download the results.





## Electronic Form Submissions (eForm)

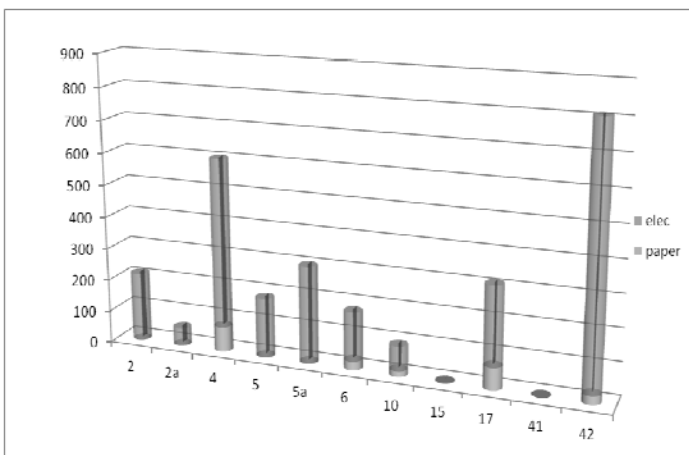
### TOTAL ELECTRONIC FORM SUBMITTALS JULY 2012 - SEPTEMBER 2013



Forms currently available through eForm:

- Form 2 - Application for Permit to Drill
- Form 2A - Oil and Gas Location Assessment
- Form 4 - Sundry Notice
- Form 5 - Drilling Completion Report
- Form 5A - Completed Interval Report
- Form 6 - Well Abandonment Report
- Form 10 - Certification of Clearance/Change of Operator
- Form 15 - Earthen Pit Report/Permit
- Form 17 - Bradenhead Test Report
- Form 41 - Trade Secret Claim of Entitlement
- Form 42 - Notice of Notification (Notice of Hydraulic Fracturing)

Following is a breakdown by Form for the month of September 2013:



## Revisions to Forms 2 and 2A

The revised Form 2 and 2A were released on August 5. The forms have been revised to accommodate the additional information required by the new Rules that were effective August 1<sup>st</sup>. Staff took this opportunity to make some long-needed improvements to both forms.

Industry training for the revised Forms 2 and 2A was conducted during August. Training occurred in Denver, Durango, and Grand Junction. COGCC staff continues to meet with operators to facilitate their use of the new Forms and staff is also working on guidance documents to help foster consistency throughout the permitting process.

The Form 4, Sundry Notice went live in eForm on April 30, and has become one of the fastest forms to achieve over an 80% usage within the electronic portal. With the addition to the suite of forms now available in eForms, processing of the Sundry can now be faster and more efficient.

COGCC staff is available to answer questions as needed for either the new eForm 4 or for the revised paper Form 4.

The development team has now turned its attention to the Form 19 the Spill Report.

Form 15, Pit Permit and Report, is available in eForm and operators are encouraged to utilize the system to file this form. The form contains additional fields. The PDF version on the Forms page, <http://cogcc.state.co.us/Forms/forms.html>, is revised to reflect the changes that occurred from the release of the form in eForm.

As forms are released on eForm, updates to the PDF forms on our website will occur in tandem. These new versions of the PDF forms will reflect any changes that have taken place when forms are moved into eForm.

Along with the eForm system, a page is available where the operators can review all known bugs within the system and report any new ones they discover. Currently, there are 305 operators using eForm.

The public can make comments on all submitted



Oil and Gas Location Assessment (OGLA) forms (Forms 2A) through the eForm system. This is accomplished by going to the COGCC website (<http://www.colorado.gov/cogcc>) and clicking on the menu option, "Permits", (or <http://cogcc.state.co.us/COGIS/DrillingPermits.asp>).

On the COGIS-Permits page, two search options are available for OGLA forms, "All Pending Location Assessments for" and "All Approved Location Assessments for." When the results are displayed for forms in process, the public can click on the document number, which logs the user onto the new eForm application. Once the page is displayed with the selected document, the user can select the Comment button to make a comment on that particular form. The public can use this same method to make comments on APDs (Form 2s).

For any operator not currently enrolled in eForm, instructions for starting the process can be found at <http://cogcc.state.co.us/Announcements/COUAINformation.pdf>.

⇒ [COGCC GIS Online](#)

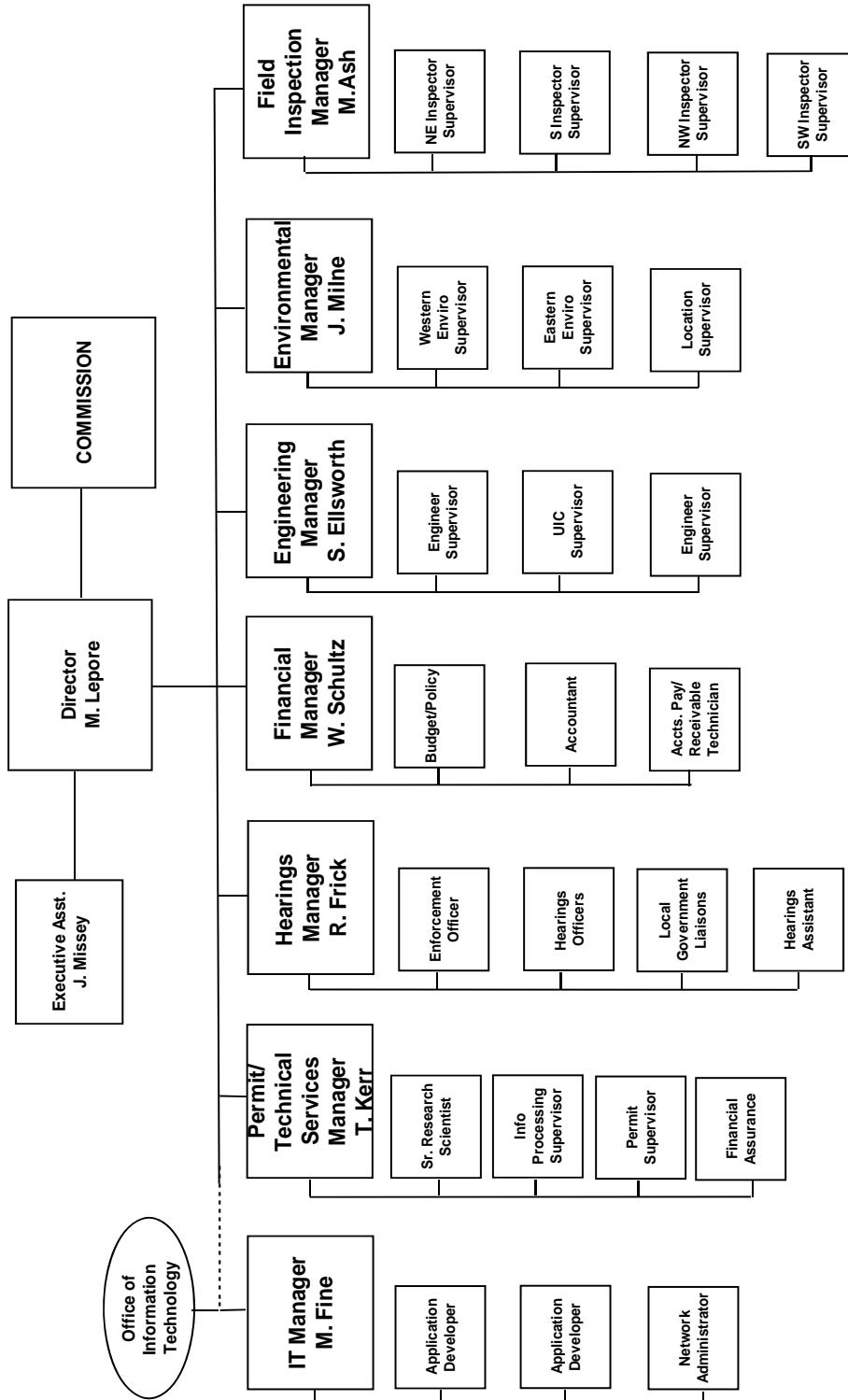
An upgrade of the COGCC GIS Online interactive map is now available on the COGCC's website. Two new features are now available along with some minor changes. An Address Search button will zoom the map to the area of an input street address, city and zip code. The second new feature is an enhanced Print function. This will generate a PDF document which can be saved or printed. It allows choice of paper size, orientation, input of a legend and a map scale options.

Colorado Parks and Wildlife ("CPW") has submitted changes for species-specific Sensitive Wildlife Habitat and Restricted Surface Occupancy areas. To become effective these changes require a rulemaking process, including stakeholder meetings. The first stakeholder meeting was held June 26, 2013, with a subsequent meeting scheduled for July 31, 2013. The proposed changes are viewable on a Wildlife map on the COGCC website from a link on the Wildlife Stakeholder Meeting page. Shapefiles of the proposed changes are downloadable from this page as well.

The Commission held a Rulemaking Hearing on Tuesday, September 17, 2013 at 9:00 a.m. regarding Wildlife Mapping. The Statement of Basis and Purpose, CPW Internal Definition for Maps and the Response to Comments on the Draft Updates to the Maps are posted to the COGCC website at [www.cogcc.state.co.us](http://www.cogcc.state.co.us) under Hot Topics and Wildlife Map Rulemaking.



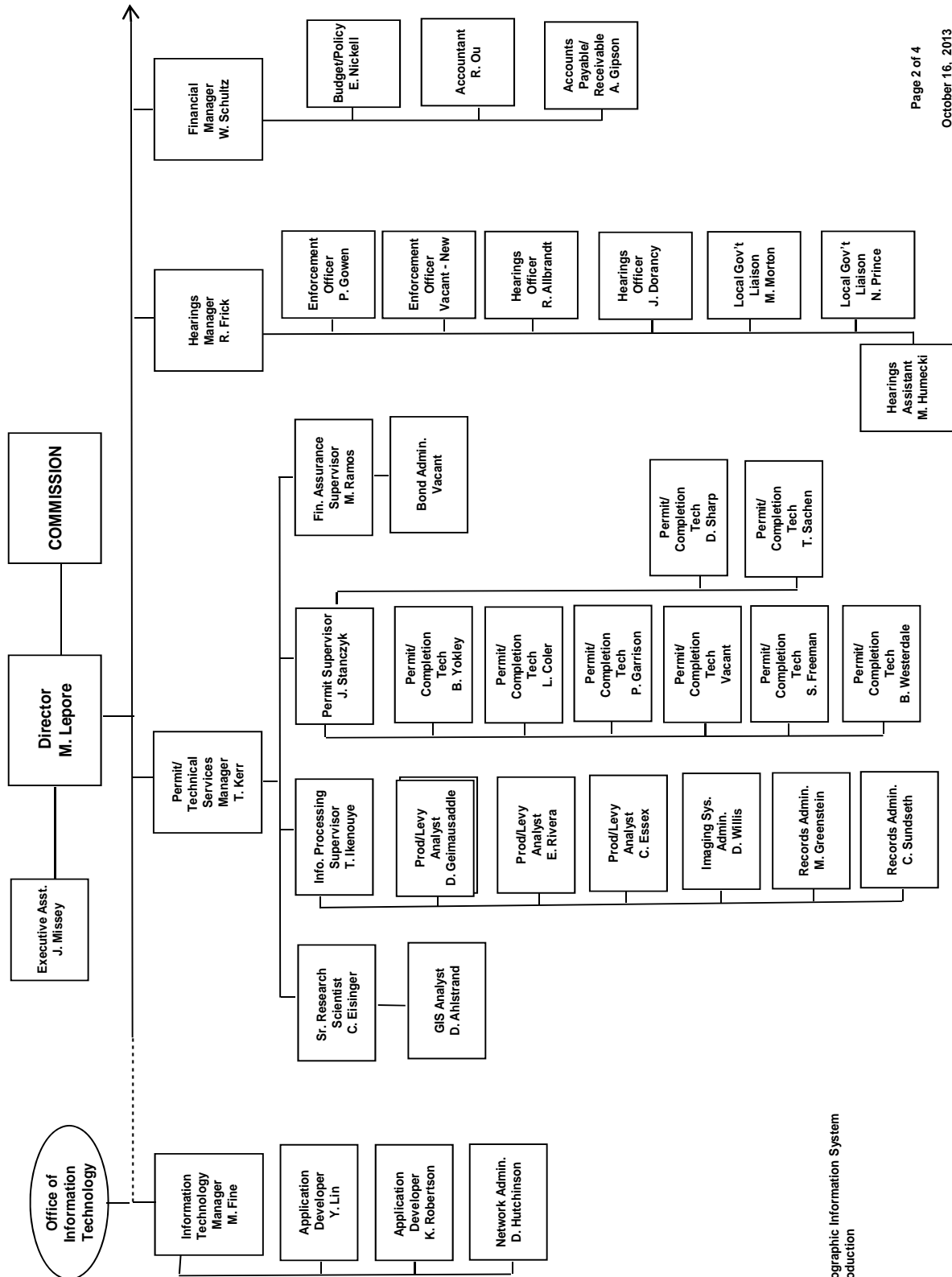
## COLORADO OIL & GAS CONSERVATION COMMISSION



See the next three pages for details

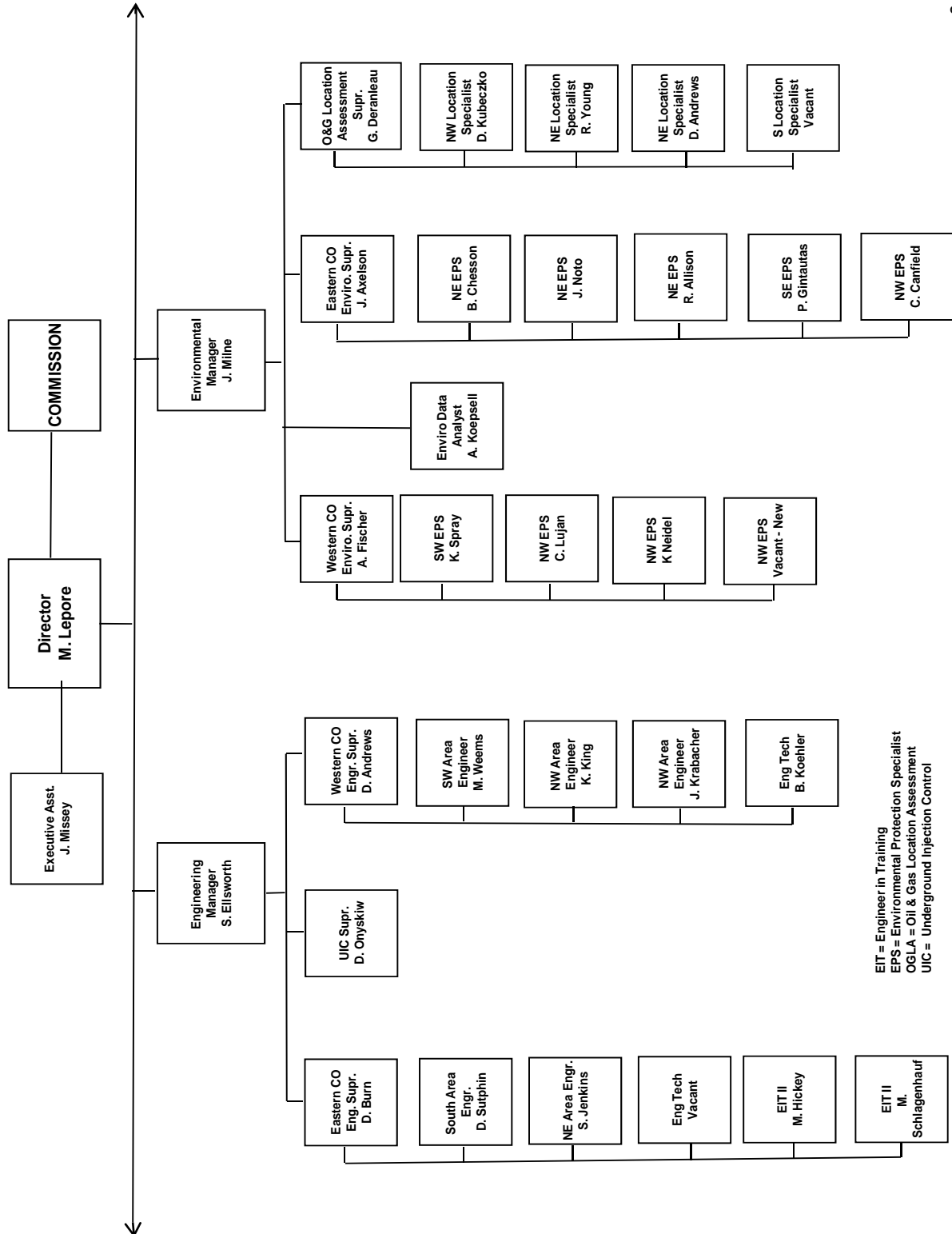


## COLORADO OIL & GAS CONSERVATION COMMISSION ORGANIZATION





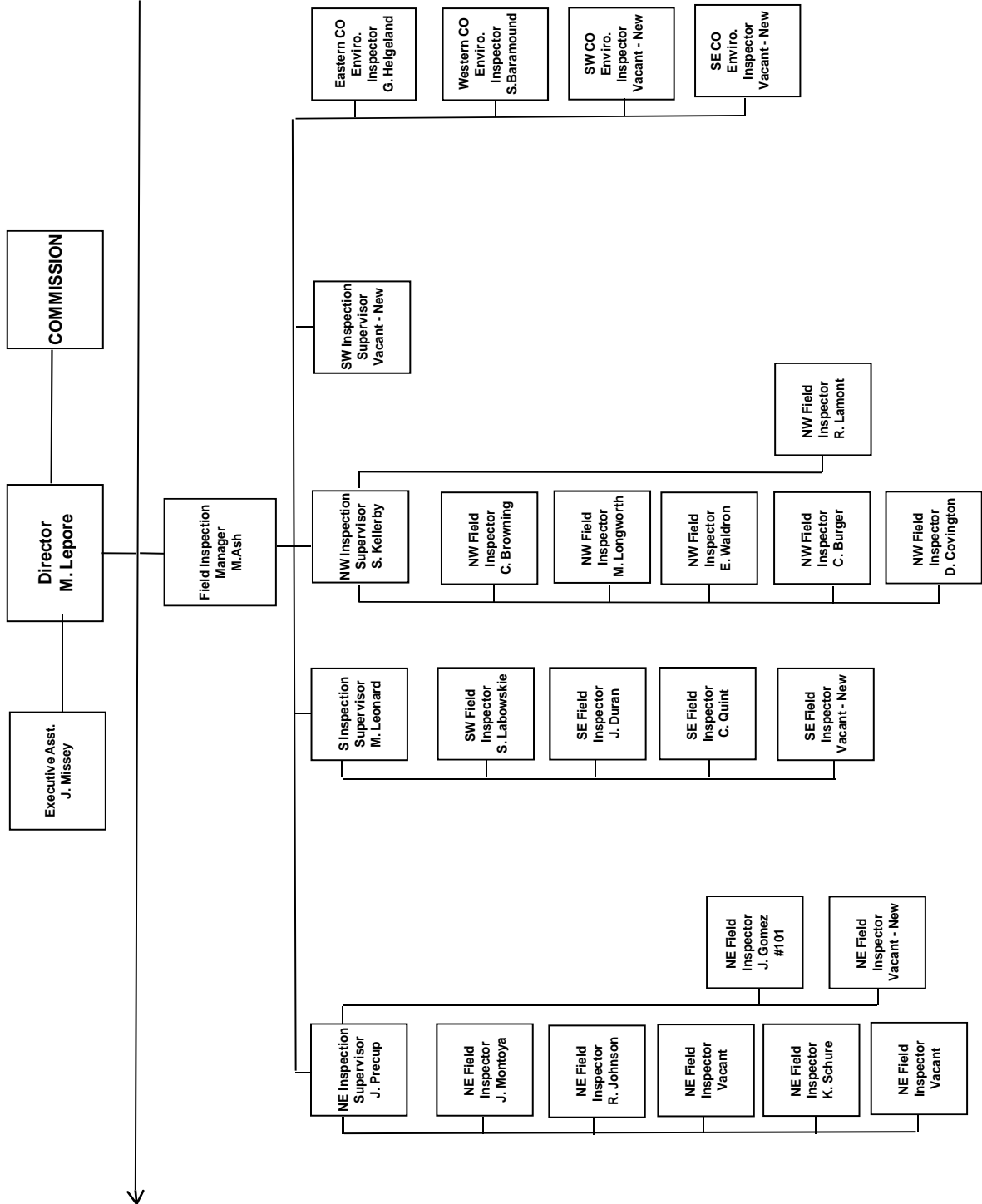
## COLORADO OIL & GAS CONSERVATION COMMISSION ORGANIZATION



EIT = Engineer in Training  
 EPS = Environmental Protection Specialist  
 OGLA = Oil & Gas Location Assessment  
 UIC = Underground Injection Control



## COLORADO OIL & GAS CONSERVATION COMMISSION ORGANIZATION





PLUGGING, AND RECLAIMING ABANDONED WELLS PROJECTS FOR ORPHANED LOCATIONS  
FISCAL YEAR 2013-2014

COUNTY	TYPE	PROJECT NAME	Acct Code	ESTIMATED TOTAL PROJECT COST			FY 2013-2014 YTD EXPENDITURES			DESCRIPTION	
				BOND	PRAW	EMGY	TOTALS	BOND	PRAW		EMGY
MESA	REC/ENV	DeBeque-HOMESTEAD #2 & PASTURE #1 SALT REMEDIATION, RECLAMATION, & SOIL GAS SURVEYS	HSTD	\$0	\$50,000	\$0	\$50,000	\$0	\$0	\$0	Two sites; only one site to be done this fiscal year. Salt remediation, topsoil spreading, seeding, and soil gas surveys near plugged and abandonment wells.
MESA	PA	Pasture #1	HSTD	\$0	\$5,000	\$0	\$5,000	\$0	\$0	\$0	Leak has stopped; will cut off casing and install PA marker and repair the gate to the location
MOFFAT	REC	TATONKA: CULVERWELL 10-23-07-94 GERBER 07-24-07-92	TATO	\$0	\$35,000	\$0	\$35,000	\$0	\$0	\$0	Reclaim three well sites Gerber well site and pit Culverwell 1-site w/ two conductor casings Culverwell 2nd-site w/ beginnings of pad scrape off
Rio Blanco	Plugging	Gentry	GENT	\$0	\$30,000	\$0	\$30,000	\$0	\$0	\$0	Plug and abandon
Rio Blanco	Soils	Gentry	GENT	\$0	\$25,000	\$0	\$25,000	\$0	\$0	\$0	Contaminated soils to be remediated
				\$0	\$145,000	\$0	\$145,000	\$0	\$0	\$0	
TOTALS ==>											

IN PROGRESS

COUNTY	TYPE	PROJECT NAME	Acct Code	ESTIMATED TOTAL PROJECT COST			FY 2013-2014 YTD EXPENDITURES			DESCRIPTION	
				BOND	PRAW	EMGY	TOTALS	BOND	PRAW		EMGY
Mesa	Plugging	Debeque Water Flow	DEB1	\$0	\$61,728	\$0	\$61,728	\$0	\$1,728	\$0	Cap well and stop water flow. Re-enter, PA
Garfield	Remediation	Biscuit Pad	DOLP	\$15,926	\$127,074	\$0	\$143,000	\$2,668	\$0	\$0	Two well pads and two access roads
				\$15,926	\$188,802	\$0	\$204,728	\$2,668	\$1,728	\$0	
TOTALS ==>											

COMPLETED

COUNTY	TYPE	PROJECT NAME	Acct Code	ESTIMATED TOTAL PROJECT COST			FY 2013-2014 YTD EXPENDITURES			DESCRIPTION	
				BOND	PRAW	EMGY	TOTALS	BOND	PRAW		EMGY
MESA/Garfield	PLUG	2013 Piceance Re-entries	PICE	\$0	\$97,287	\$0	\$97,287	\$0	\$150,886	\$0	Plugging three wells
				\$0	\$97,287	\$0	\$97,287	\$0	\$150,886	\$0	
TOTALS ==>											

GRAND TOTALS ==>

ESTIMATED TOTAL PROJECT COSTS			FY 2012-2013 YTD EXPENDITURES				
BOND	PRAW	EMGY	TOTALS	BOND	PRAW	EMGY	TOTALS
\$15,926	\$431,089	\$0	\$447,015	\$2,668	\$152,614	\$0	\$155,282

BISCUIT RANCH RECLAMATION DESIGN The original bond amount was \$25,000. \$9074 were spent in FYE2013 for the design work supervised my Mike Hickey. The balance of \$15,296 will be carried forward to FYE2014. Includes well site for the Biscuit Ranch Mulmhill 15-32 D & Biscuit Ranch 10-31 D

Project Types: "PLUG" indicates plugging and abandonment, "REC" indicates reclamation, and "ENV" indicates environmental

EMGY: indicates funding by the Emergency Response line item

TBD: Cost estimates in process.

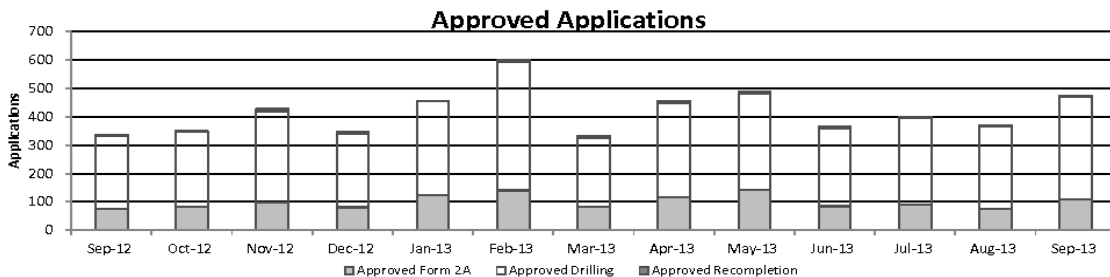
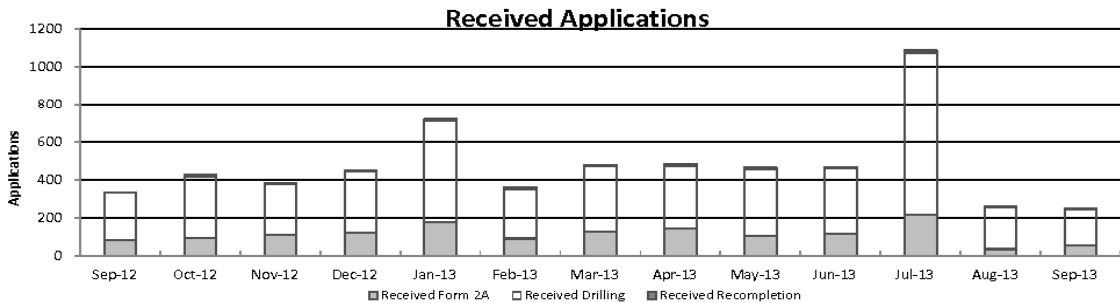
PRAW: indicates funding by the Plugging and Reclaiming Abandoned Wells line item



## Colorado Oil & Gas Conservation Commission Monthly Permit Activity

	Backlog	Received	Approved	Withdrawn	Rejected	Incomplete	In-Process	Remaining
<b>Form2A</b>								
Sep-12	138	81	77	5	0	47	90	137
Oct-12	137	94	82	8	0	30	110	141
Nov-12	141	109	97	13	0	19	112	140
Dec-12	140	122	81	4	0	35	124	177
Jan-13	177	176	124	12	0	34	183	217
Feb-13	217	91	141	8	0	34	125	159
Mar-13	159	129	84	1	0	33	170	203
Apr-13	203	145	117	7	0	40	184	224
May-13	223	106	142	4	0	37	146	183
Jun-13	183	114	85	7	0	41	164	205
Jul-13	193	218	91	15	0	34	271	306
Aug-13	305	35	76	0	0	47	217	264
Sep-13	264	54	109	0	0	68	141	209
<b>Drilling</b>								
Sep-12	373	252	256	24	0	98	247	345
Oct-12	345	326	265	29	0	65	312	377
Nov-12	377	271	323	21	0	65	239	304
Dec-12	304	322	260	9	0	77	280	357
Jan-13	357	538	331	19	0	101	444	545
Feb-13	545	260	455	16	0	58	276	334
Mar-13	334	344	241	4	0	46	387	433
Apr-13	433	331	333	2	0	79	350	429
May-13	429	350	342	31	0	45	361	406
Jun-13	406	349	273	18	0	57	407	464
Jul-13	464	859	304	14	0	65	940	1005
Aug-13	1005	221	291	3	0	160	772	932
Sep-13	932	189	362	2	0	160	597	757
<b>Recompletion</b>								
Sep-12	8	1	5	2	0	0	2	2
Oct-12	2	9	3	0	0	0	8	8
Nov-12	8	5	8	0	0	0	5	5
Dec-12	5	4	8	1	0	0	0	0
Jan-13	0	6	0	0	0	0	4	6
Feb-13	6	10	5	0	0	0	11	11
Mar-13	11	5	9	0	0	1	6	7
Apr-13	7	6	5	0	0	2	6	8
May-13	8	8	6	0	0	0	10	10
Jun-13	10	2	8	0	0	0	4	4
Jul-13	4	11	4	0	0	0	11	11
Aug-13	11	6	4	0	0	0	13	13
Sep-13	13	8	5	0	0	0	16	16

Incomplete are permits that have missing or inaccurate data and cannot be approved.



Backlog = Incomplete + In-process = Remaining permits from previous month





Colorado Oil and Gas Conservation Commission  
 Status of Permit Applications Filed By Month  
 October 12, 2013

Form 2A Location Assessment

Year	Month	Received	Approved	Withdrawn	In Process	Percent In Process	Median Days to Process	Less Than 30 Days	30 to 49 Days	Greater Than 50 Days
2010	Total	2520	2433	85	0			1559	662	212
2011	Total	2391	2298	91	2	0%		1416	620	262
2012	1	141	138	3	0	0%	33	92	27	19
2012	2	160	152	8	0	0%	31	118	26	8
2012	3	135	133	2	0	0%	41	80	25	28
2012	4	126	119	7	0	0%	38	77	25	17
2012	5	119	115	4	0	0%	38	63	28	24
2012	6	101	96	5	0	0%	41	32	44	20
2012	7	104	98	5	1	1%	40	41	43	14
2012	8	72	68	4	0	0%	40	33	22	13
2012	9	77	72	5	0	0%	37	28	34	10
2012	10	94	89	5	0	0%	39	31	40	18
2012	11	85	79	5	1	1%	36	52	15	12
2012	12	145	127	12	6	4%	38	59	49	19
2012	Total	1359	1286	65	8	1%		706	378	202
2013	1	177	162	12	3	2%	33	99	45	18
2013	2	91	83	7	1	1%	34	42	29	12
2013	3	131	121	8	2	2%	49	41	46	34
2013	4	150	141	6	3	2%	40	47	69	25
2013	5	105	96	4	5	5%	37	47	32	17
2013	6	107	84	2	21	20%	38	28	41	15
2013	7	204	148	1	55	27%	49	11	71	66
2013	8	58	35	1	22	38%	43	7	17	11
2013	9	56	10	0	46	82%	27	7	3	0
2013	10	18	0	0	18	100%				
2013	Total	1097	880	41	176	16%		329	353	198

Form 2 Application For Permit to Drill (APDs)

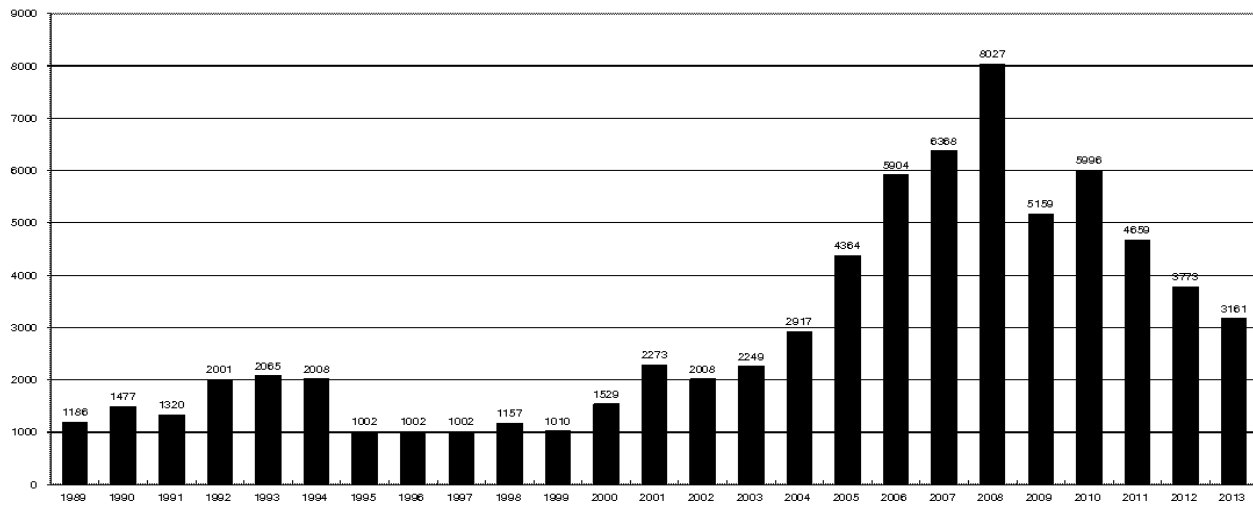
Year	Month	Received	Approved	Withdrawn	In Process	Percent In Process	Median Days to Process	Less Than 30 Days	30 to 49 Days	Greater Than 50 Days
2010	Total	5891	5746	144	0	0%		1760	2739	1744
2011	Total	4691	4557	129	3	0%	418	2723	1565	587
2012	1	368	361	7	0	0%	34	235	107	45
2012	2	371	360	11	0	0%	31	277	70	37
2012	3	284	279	5	0	0%	40	164	84	50
2012	4	418	405	13	0	0%	36	219	160	41
2012	5	509	491	18	0	0%	37	260	149	104
2012	6	280	277	3	0	0%	43	107	119	62
2012	7	281	274	6	1	0%	40	103	144	37
2012	8	282	262	20	0	0%	32	148	89	30
2012	9	212	192	20	0	0%	38	78	78	38
2012	10	355	350	5	0	0%	36	131	168	59
2012	11	244	228	14	2	1%	37	110	80	42
2012	12	351	334	14	3	1%	38	139	145	54
2012	Total	3955	3813	136	6	0%		1971	1393	599
2013	1	562	541	18	3	1%	35	278	179	85
2013	2	242	228	13	1	0%	36	78	126	38
2013	3	333	316	12	5	2%	40	123	119	80
2013	4	327	313	12	2	1%	39	105	153	58
2013	5	370	332	27	11	3%	37	112	181	50
2013	6	330	289	10	31	9%	39	110	131	50
2013	7	799	600	3	196	25%	50	106	219	285
2013	8	313	212	3	98	31%	47	13	138	62
2013	9	189	22	0	167	88%	29	14	8	1
2013	10	97	0	1	96	99%				
2013	Total	3562	2853	99	610	17%		939	1254	709



### ANNUAL DRILLING PERMITS BY COUNTY

COUNTY	1988	1988	1989	1991	1992	1993	1994	1995	1996	1997	1998	1999	2000	2001	2002	2003	2004	2005	2006	2007	2008	2009	2010	2011	2012	current as of 10/12 2013		
ADAMS	46	34	44	53	92	58	137	34	9	33	24	19	38	28	9	26	39	34	37	89	51	35	21	8	40	17		
ARAPAHOE	5	5	15	14	11	4	20	12	2	9	1	2	0	2	1	2	5	7	11	10	10	10	8	23	35	21		
ARCHULETA	8	5	18	5	2	1		3		3			1	7	9	6	10	8	13	14	26	47	11	18	12	5	4	
BACA	6	4	15	10	23	9	12	24	10	7	13	15	22	6	2	3	7	8	2	11	13	3	4	5	3	1		
BENT				1		2	2	4	2	5	3	5	2				5	3	8	1	1			5		2	1	
BOULDER	1		1	13	38	159	38	5	8	2	5		1	5	6	7	17	13	21	37	32	35	24	30	22			
BROOMFIELD																2	7		1	1		2	33	28	11	36		
CHEYENNE	203	149	102	93	71	58	48	55	43	31	41	7	3	3	3	3	3	10	21	15	33	12	13	16	31	43		
COSTILLA												1																
CROWLEY	1		1	1																								
DELTA	1	1	2												7	4	5	10	9	2			4	3	6	1		
DENVER										5	3	3		3					19	25	24							
DOLORES	2		4	1	2	1										1	1	1	6	10	12	21	8	8	13	12		
EAGLE																											1	
ELBERT	9	12	8	5	3		2	13	16	11	1		2							4				1	2	1		
EL PASO																								2	3	3	18	1
FREMONT	9	5	6	7	1	2	2	1	2	1							1	3	2	4	14	13	22	14	11	2		
GARFIELD	19	66	111	36	18	56	143	78	109	141	95	130	213	353	362	567	796	1509	1845	2550	2888	1981	2037	1323	1046	635		
GRAND							1																					
GUNNISON			2	2		1									5	10	1	9	19	7	10	12	4	3	11	7		
HUERFANO	3	5		4	17	3	3	2	1	3	40	26	41	27	27		8	2			7		2	1	9			
JACKSON	3	1	4	6	2	2	3	2	2	6	3		34	18	21		9	14	6	8	5	27	19	9	18	5	10	
JEFFERSON	1		4	2		1		1	1		2	1								1	3	2						
KIOWA	15	39	40	46	28	28	21	26	13	17	10	2	11	18	2	4	2	1	11	9	26	7	16	17	17	11		
KIT CARSON	9	5	7	8	8	15	26	11	7	6	9	5					1	3	5	4	4	13	7	3	2	6	1	
LA PLATA	302	218	388	128	120	40	40	20	71	40	82	107	127	156	104	162	102	115	235	251	328	298	191	99	71	31		
LARIMER	4	4	3	6	13	7	3		1	3	1				2	1				5	46	12	41	8	13	2		
LAS ANIMAS	10	30	36			9	32	95	134	136	195	195	268	400	259	180	332	413	500	362	303	88	92	85	11	1		
LINCOLN	8	6	4	7	7	11	8	9	3	2			2	2	1	6	3	4	1	2	58	44	48	31	36	71		
LOGAN	18	21	23	13	14	30	15	13	6	12	7		4	7	3	3	6	13	17	14	5	9	17	8	27	4		
MESA	1	12	29	20	22	2	22	6	11	10	2	6	13	27	30	27	54	136	265	293	501	427	306	127	150	100		
MOFFAT	13	25	27	19	40	52	43	40	41	28	21	15	35	52	62	63	63	60	120	68	57	51	53	93	88	39		
MONTEZUMA	6	7	10	8	7	11	15	9	13	5	4	1	4			5	8	8	11	5	12	22	39	19	27	29	11	
MONTRÓSE				1						1			1	3	2	4	2			1	3	3		1	1			
MORGAN	34	27	36	13	10	11	19	12	10	11	10	12	9	9	2	7	9	7	3	6	2	1	6	13	5	6		
OTERO				2																								
PARK				1																								
PHILLIPS			3		1	1										7	13	17	12	69	82	45	64	112	56			
PITKIN		1			2													1			1							
PROWERS	19	9	5	10	14	7	3	5	5	3	9	3	2	5	4		7	5	7	5	8	1	3	1				
RIO BLANCO	34	83	77	33	81	83	126	81	33	40	51	95	89	187	105	179	154	161	360	321	477	348	441	109	117	147		
RIO GRANDE	2	3	4	1			1						1	1		1					1	1				2		
ROUTT	4	3	12	4	2	3	1	2	1	1	1	4	20	13	1		4	6	9	8	4	2	3	10	4	11		
SAGUACHE	1							2					2								2	1	2					
SAN MIGUEL			2	2					1	1	4	2	11	13	27	18	42	45	35	23	20	13	10	2	1			
SEDGWICK				1				3		2						1	5	2	7	2	1	19	11	12	2			
WASHINGTON	40	29	23	28	24	26	25	12	19	26	18	3	23	17	27	34	128	50	69	45	11	1	6	12	6	18		
WELD	424	357	366	656	1224	1319	1030	254	305	285	392	288	509	702	760	757	832	901	1418	1527	2340	1448	2152	2262	1826	1942		
YUMA	14	20	45	60	104	53	167	168	123	116	111	60	31	205	160	138	237	782	797	541	545	105	299	148	11	9		
Total	1275	1186	1477	1320	2001	2065	1002	1002	1002	1157	1010	1529	2273	2008	2249	2917	4364	5904	6368	8027	5159	5996	4659	3773	3161			

ALL COUNTIES





Colorado Oil and Gas Conservation Commission  
 Form 2A Breakdown By County By Year  
 October 12, 2013

Yr	County	Form2As	Completed	In Process	Informational	Requires Approval	New Location	CDP	SWH	RSO	CDPHE
2009	Total State	818	818	0	728	108	408	2	80	5	5
2010	Total State	2378	2376	0	1824	637	1601	0	327	22	55
2011	Total State	2301	2294	7	1004	319	1790	1	274	17	5
2012	ADAMS	19	19	0	0	0	19	0	0	0	0
2012	ARAPAHOE	21	16	5	0	0	16	0	0	0	0
2012	ARCHULETA	1	1	0	0	0	1	0	1	0	0
2012	BACA	3	3	0	0	0	2	0	1	0	0
2012	BENT	2	2	0	0	0	2	0	0	0	0
2012	BOULDER	3	3	0	0	0	0	0	0	0	0
2012	BROOMFIELD	7	7	0	0	0	1	0	0	0	0
2012	CHEYENNE	34	34	0	0	0	28	0	0	0	0
2012	DELTA	1	1	0	0	0	0	0	0	0	0
2012	DOLORES	1	1	0	0	0	1	0	0	0	0
2012	EL PASO	4	3	1	0	0	3	0	0	0	0
2012	ELBERT	1	1	0	0	0	1	0	0	0	0
2012	FREMONT	3	3	0	0	0	3	0	2	0	0
2012	GARFIELD	77	77	0	0	0	32	0	67	2	0
2012	GUNNISON	7	7	0	0	0	6	0	5	0	0
2012	HUERFANO	5	5	0	0	0	4	0	1	0	0
2012	JACKSON	3	2	1	0	0	3	0	2	0	0
2012	KIOWA	13	13	0	0	0	12	0	0	0	0
2012	KIT CARSON	6	6	0	0	0	4	0	0	0	0
2012	LA PLATA	8	8	0	0	0	3	0	7	0	0
2012	LARIMER	7	6	1	0	0	5	0	0	0	0
2012	LAS ANIMAS	8	8	0	0	0	6	0	0	0	0
2012	LINCOLN	45	45	0	0	0	41	0	0	0	0
2012	LOGAN	16	16	0	0	0	17	0	0	0	0
2012	MESA	10	10	0	0	0	5	0	3	0	0
2012	MOFFAT	47	47	0	0	0	38	0	44	4	0
2012	MONTEZUMA	8	8	0	0	0	8	0	0	0	0
2012	MORGAN	5	5	0	0	0	5	0	0	0	0
2012	PHILLIPS	38	38	0	0	0	35	0	0	0	0
2012	RIO BLANCO	35	35	0	0	0	15	0	28	0	0
2012	RIO GRANDE	1	1	0	0	0	1	0	1	0	0
2012	ROUTT	4	4	0	0	0	7	0	7	0	0
2012	SAN MIGUEL	1	1	0	0	0	1	0	0	0	0
2012	SEDGWICK	1	1	0	0	0	1	0	0	0	0
2012	WASHINGTON	14	12	2	0	0	8	0	0	0	0
2012	WELD	849	842	7	0	0	611	0	4	0	1
2012	YUMA	1	1	0	0	0	1	0	0	0	0
2012	Total State	1309	1292	17	0	0	946	0	173	6	1
2013	ADAMS	11	10	1	0	0	9	0	0	0	0
2013	ARAPAHOE	14	12	2	0	0	14	0	0	0	0
2013	ARCHULETA	1	1	0	0	0	1	0	0	0	0
2013	BACA	1	1	0	0	0	1	0	1	0	0
2013	CHEYENNE	40	32	8	0	0	35	0	0	0	0
2013	DELTA	2	2	0	0	0	1	0	1	0	0
2013	DOLORES	7	7	0	0	0	5	0	3	0	0
2013	EAGLE	1	1	0	0	0	1	0	1	0	0
2013	EL PASO	1	1	0	0	0	1	0	0	0	0
2013	ELBERT	1	0	1	0	0	1	0	0	0	0
2013	FREMONT	4	2	2	0	0	5	0	1	2	0
2013	GARFIELD	67	51	16	0	0	27	0	56	2	0
2013	GUNNISON	7	3	4	0	0	3	0	2	1	0
2013	HUERFANO	2	0	2	0	0	0	0	0	0	0
2013	JACKSON	9	8	1	0	0	3	0	9	0	0
2013	KIOWA	8	8	0	0	0	7	0	0	0	0
2013	KIT CARSON	1	1	0	0	0	1	0	0	0	0
2013	LA PLATA	10	6	4	0	0	3	0	10	0	0
2013	LARIMER	1	1	0	0	0	0	0	1	0	0
2013	LAS ANIMAS	2	1	1	0	0	1	0	0	0	0
2013	LINCOLN	63	54	9	0	0	61	0	0	0	0
2013	LOGAN	4	4	0	0	0	0	0	0	0	0
2013	MESA	7	4	3	0	0	4	0	1	0	0
2013	MOFFAT	15	11	4	0	0	12	0	13	0	1
2013	MONTEZUMA	10	8	2	0	0	8	0	2	0	0
2013	MORGAN	16	5	11	0	0	15	0	0	0	0
2013	PITKIN	1	0	1	0	0	1	0	0	0	0
2013	RIO BLANCO	19	15	4	0	0	11	0	16	0	0
2013	ROUTT	8	7	1	0	0	9	0	8	0	0
2013	WASHINGTON	18	18	0	0	0	19	0	0	0	0
2013	WELD	683	584	99	0	0	511	0	7	0	3
2013	YUMA	8	8	0	0	0	2	0	0	0	0
2013	Total	1042	866	176	0	0	772	0	132	3	4

CDP = Comprehensive Drilling Plan SWH = Sensitive Wildlife Habitat consultation  
 RSO = Restricted Surface Occupancy consultation CDPHE = Colorado Department of Health and Environment consultation



## Colorado Oil and Gas Conservation Commission

## Horizontal Well Activity

October 12, 2013

County	Prior Years			2009		2010		2011		2012		2013		Completion				
	Drilled	DA	PA	Permit	Spud	Permit	Spud	Permit	Spud	Permit	Spud	Permit	Spud	Spud	AC	PR	DA	PA
ADAMS				6	5	2	3	1		17	2	6	2	12	4	4		
ARAPAHOE	2							10	1	22	4	11	2	9	2	1		
ARCHULETA	17			7	6	15	7	10	8	5	9	2		47		40		
BENT												1	1					
BOULDER								4						0				
CHEYENNE	5		4									5	2	7		1		4
DELTA										6	2	1		2				
DOLORES	9			18	2	6				9	1	5		12		6		1
EL PASO										10				0				
ELBERT										1				0				
FREMONT	7	6		6		12	5	3	4	4	1	1	1	18		10	6	1
GARFIELD	10		2	1	1	16	2	18	7	43	6	17	2	28		23		2
GUNNISON	1					1				3	2	2		3		1		
HUERFANO										4	1			1				
JACKSON	8	1	1	8		3	3	9	2	4		6	5	18		11	1	1
KIOWA										1		4		0				
KIT CARSON	1									1		1	1	2				3
LA PLATA	28	2		11	2	28	3	18	7	12	1	5		41		46	1	
LARIMER	3	2						5	1	2	1		2	7		2	2	
LAS ANIMAS	16		2	4		1	1							17		15		3
LINCOLN				2	1	2	1	1	1		1	6	1	5		2		
LOGAN	2									1				2		2		
MESA	3	2		36	1	22	8	24	13	14		7	2	27		24	2	2
MOFFAT	7	1	1	6	3	4		9	4	44	7	15	13	34	1	17	1	1
MONTEZUMA	6		1	23	6	11	2	8	3	18	2	3		19		28		1
MORGAN								6	2	2	1	5	1	4		2		
PARK						1	1	1						1				
RIO BLANCO	7	2				1	1	11	2	15	2	3	5	17	1	7	3	
ROUTT	10	6	1							1		1		10		3	6	1
SAN MIGUEL	1			1										1		1		
WASHINGTON	1		1											1				1
WELD	11	3		12	5	208	95	763	236	964	599	1654	800	1746		805	7	10
YUMA	1		1	6										1				1
<b>TOTAL Horizontal</b>	<b>156</b>	<b>25</b>	<b>14</b>	<b>147</b>	<b>32</b>	<b>333</b>	<b>132</b>	<b>901</b>	<b>291</b>	<b>1203</b>	<b>642</b>	<b>1761</b>	<b>840</b>	<b>2092</b>	<b>8</b>	<b>1051</b>	<b>29</b>	<b>32</b>
<b>Percent of Total HZ</b>		<b>16%</b>	<b>9%</b>												<b>0%</b>	<b>50%</b>	<b>1%</b>	<b>2%</b>
<b>Total All Permits</b>				<b>5159</b>		<b>5996</b>		<b>4659</b>		<b>3773</b>		<b>3161</b>						
<b>Percent of Total</b>				<b>2.8%</b>		<b>5.6%</b>		<b>19.3%</b>		<b>31.9%</b>		<b>55.7%</b>						



## Well to Building Setback Review

Colorado Oil and Gas Conservation Commission  
October 12, 2013

Count of well locations by proximity groupings from well spot to buildings for all locations reviewed under the December 17, 2008 amended rules.

Location Proximity to Buildings	2009	2010	2011	2012	2013	Number of Locations	Percent of Total Locations
less than 150 feet	2	3	3	2	0	10	0%
150 to 350 feet	37	58	61	39	27	222	3%
350 to 500 feet	50	110	97	61	50	368	5%
500 to 1000 feet	117	385	331	188	152	1173	17%
1000+ feet	356	1705	1470	838	617	4986	74%
Total Locations	562	2261	1962	1128	846	6759	

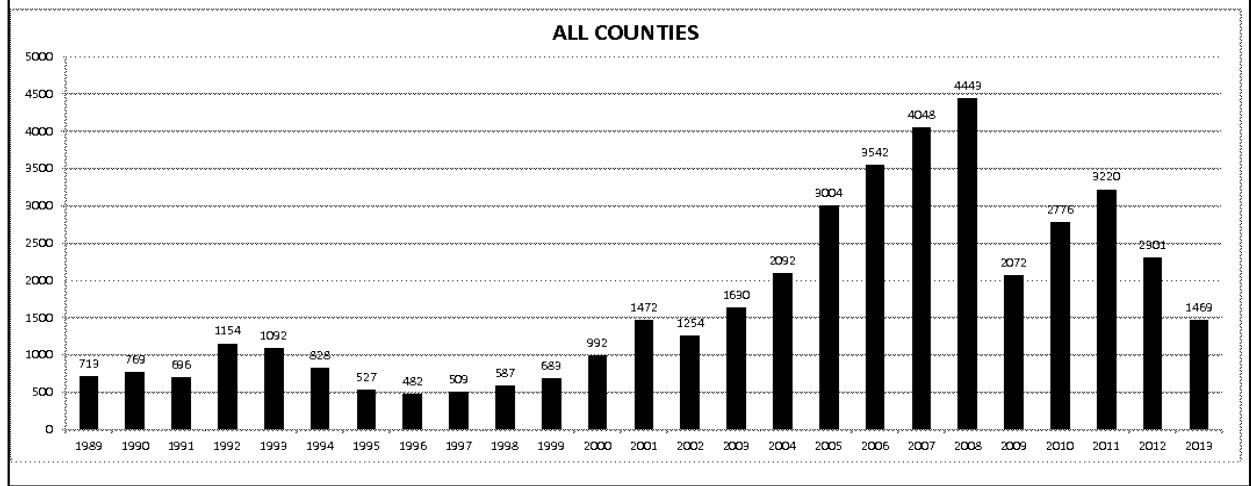
County	Total	Less than 150 feet	150 to 350 feet	350 to 500 feet	500 to 1000 feet	1000 + feet
ADAMS	48	0	2	5	10	31
ARAPAHOE	65	0	2	4	9	50
ARCHULETA	17	0	0	1	9	7
BACA	14	0	0	0	1	13
BENT	7	0	0	0	0	7
BOULDER	23	0	1	1	17	4
BROOMFIELD	32	0	0	4	13	15
CHEYENNE	99	1	0	0	2	94
DELTA	7	0	0	2	1	4
DOLORES	17	0	0	0	6	11
EAGLE	1	0	0	0	0	1
EL PASO	12	0	0	0	2	10
ELBERT	3	0	0	0	1	2
FREMONT	35	0	2	7	6	20
GARFIELD	428	0	7	2	60	359
GUNNISON	22	1	0	2	1	18
HUERFANO	7	0	0	0	2	5
JACKSON	30	0	0	3	1	26
KIOWA	59	0	0	0	1	57
KIT CARSON	12	0	0	0	0	12
LA PLATA	95	0	3	11	27	54
LARIMER	32	0	3	3	10	16
LAS ANIMAS	199	1	6	7	37	148
LINCOLN	198	0	0	2	4	186
LOGAN	41	0	1	1	0	39
MESA	80	0	0	3	13	64
MOFFAT	153	0	0	2	13	138
MONTEZUMA	26	0	0	1	3	22
MONTROSE	2	0	0	0	0	2
MORGAN	21	0	0	2	4	15
PARK	4	0	0	0	0	4
PHILLIPS	262	1	4	6	20	231
PROWERS	4	0	0	0	0	4
RIO BLANCO	152	0	0	0	1	149
RIO GRANDE	2	0	0	0	1	1
ROUTT	23	0	0	0	2	21
SAN MIGUEL	11	0	0	0	0	11
SEDGWICK	25	0	0	1	3	21
WASHINGTON	47	0	1	0	1	45
WELD	3989	6	183	284	850	2660
YUMA	472	0	7	14	42	409





COLORADO OIL AND GAS CONSERVATION COMMISSION  
**ANNUAL WELL STARTS BY COUNTY**

COUNTY	1988	1989	1990	1991	1992	1993	1994	1995	1996	1997	1998	1999	2000	2001	2002	2003	2004	2005	2006	2007	2008	2009	2010	2011	2012	2013		
ADAMS	39	27	26	36	54	20	54	28	6	16	12	17	18	13	4	19	22	24	13	41	14	15	21	2	14	4		
ALAMOSA																												
ARAPAHOE	2	4	16	11	11	3	9	8	3	3	2						6	1	5	2	1	1	3	9	8	11		
ARCHULETA	5	3	7	5	2	1				1			4	4	2	5	4	10	5	7	26	9	12	9	11			
BACA	5	5	12	6	21	8	9	19	9	7	11	8	19	6	2	1	6	6	2	6	12		5	5	1	1		
BENT			1							2	3	1	2	3	6	2				2	8	1		1	1	1		
BOULDER	2			7	18	56	15	5									2	5	11	9	14	25	16	13	7	14		
BROOMFIELD	3	2	3	7	14	27	22	2	2							2						10		22	11	5		
CHEYENNE	177	133	92	75	64	50	44	41	35	29	29	6	2	1	3	3		9	14	15	14	8	12	11	17	27		
CONEJOS																												
COSTILLA																												
CROWLEY	1		1												1													
CUSTER																												
DELTA	1		1														5	4	6	5	2			4	1	6		
DENVER												2	3	1		2												
DOLORES	2			4	1													2			2	13	4	2		1	3	4
DOUGLAS																												
EAGLE																												
EL PASO																								2			5	
ELBERT	8	11	9	5	2				10	15	2	2		2							1							
FREMONT	6	3	5	7	1	1	1	2		1								1	3	2	2	5	3	9	16	7	2	
GARFIELD	3	12	24	8	3	4	15	13	7	28	19	94	190	251	245	417	585	799	1005	1304	1688	768	910	880	497	323		
GRAND							1																					
GUNNISON			1	2		1											1	1	1	9	5	1	4	5	2	4		
HUERFANO	6			2	6	1	1	2																				
JACKSON	2	1	3	7	2		3	1	1	3	3		24	2	4	10	10			3	3	10	1	6	7	5		
JEFFERSON									1			2																
KIOWA	14	32	35	37	28	19	20	22	8	13	6	4	8	16	2	4	2	1	7	7	2	5	15	15	10	5		
KIT CARSON	11	6	6	6	9	13	15	9	6	3	7	7					1	1	6	2	1	14	3	1	1	3	1	
LA PLATA	158	129	186	44	66	26	17	19	29	48	65	80	99	135	118	110	103	104	108	179	199	131	67	54	3	7		
LARIMER	8	5	1	6	13	5	3		2	1							1	1			4	8	1	28	2	10	4	
LAS ANIMAS	17	22	20	3	2	11	17	34	62	90	120	182	202	286	205	221	296	384	413	526	221	14	7	78	1			
LINCOLN	6	5	4	4	7	7	8	8	3	2																		
LOGAN	17	19	19	8	13	24	9	11	4	10	4		4	6	3	3	2	11	12	12	3	7	3	9	13	5		
MESA	1	2	2	4	1		7	2	1	1	4	4	2	12	12	13	25	89	156	209	222	14	11	40	4	6		
MOFFAT	1	2	1	2	1	1	2	1	3	1	8	10	18	23	25	28	19	40	60	42	25	18	15	34	26	19		
MONTENZUMA	6	5	7	5	2	5	7	3	12	2	2		2	3	5	5	1	7	2	4	18	11	3	9	14	5		
MONTROSE				1													3				1	2						
MORGAN	26	20	32	11	9	11	16	13	8	9	7	4	9	8	1	7	5	5	3	1	1	2	3	2	3	1		
OTERO				1																								
OURAY																												
PARK				1																								
PHILLIPS				3		1																						
PITKIN																												
PROWERS	16	9	5	8	13	7	1	5	5	2	8	4	2	4	4			5	5	6	3	5	2	3	1			
PUEBLO																												
RIO BLANCO	1	8	10	1	3	8	6	7	5	9	9	62	51	82	47	83	92	95	107	95	203	116	107	72	52	31		
RIO GRANDE	1	2	2																									
ROUTT		1	1	3	1								1	5	12	1		1	6	3	2		2	1	2	4	2	
SAGUACHE	1								2																			
SAN MIGUEL				1																								
SEDGWICK				1			1	3		2																		
WASHINGTON	39	28	22	26	24	20	20	13	17	23	18	4	15	12	24	29	65	34	23	14	11	2	2	4	1	5		
WELD	176	200	168	296	660	723	389	94	136	94	117	124	237	408	406	522	632	718	931	1222	1314	877	1207	1666	1469	952		
YUMA	12	16	41	47	102	39	114	145	101	104	93	52	42	162	108	106	144	597	593	445	336	27	213	108	16	12		
Grand Total	773	713	769	696	1154	1092	828	527	482	509	587	683	992	1472	1254	1630	2092	3004	3542	4048	4443	2072	2776	3220	2301	1469		





COLORADO OIL AND GAS CONSERVATION COMMISSION  
ACTIVE WELLS BY COUNTY

October 12, 2013

County	Drilling	Domestic	Injecting	Producing	Shut In	Temp Aband	Waiting on Completion	Active Storage	Total Active Wells
ADAMS	3		7	894	62	9	1	16	992
ARAPAHOE	11	1	3	114	17	10	1	39	196
ARCHULETA	1	5		103	8		8		134
BACA	2		14	130	41	4		57	248
BENT	1	1		30	6				38
BOULDER				318	2	1			321
BROOMFIELD				94	3				97
CHEYENNE	23		38	306	27	45	1		440
DELTA			1	2	15	1	1		20
DENVER			1	43	5		3		52
DOLORES	4		2	39	1	1	1		48
EL PASO		1			1	1	2		5
ELBERT				67	2	2		1	72
FREMONT	1	3		69	3	6			82
GARFIELD	264	5	34	9,845	169	72	108	3	10,500
GUNNISON	1		1	22	15	1	4		44
HUERFANO			1	37	1	5	1		45
JACKSON	7		33	113	39				192
JEFFERSON				1	1		1	3	6
KIOWA	5		9	104	14	6	1		139
KIT CARSON		1	1	14	2	1	1		20
LA PLATA	3	7	32	3,128	116	25	3	29	3,343
LARIMER	5	2	27	179	24	15	2		254
LAS ANIMAS		4	19	2,882	97	48	27	3	3,080
LINCOLN	20	1	5	63	17	1	2		109
LOGAN	7		17	116	44	33	4	9	230
MESA	8	1	10	874	117	25	14	11	1,060
MOFFAT	14		11	499	50	38	12		624
MONTEZUMA	3	2	8	125	32	11	2		183
MONTROSE						4			4
MORGAN	3		15	79	103	42	1	83	326
OURAY		2				1			3
PARK					1				1
PHILLIPS	1		3	257	3	1	1		266
PITKIN								10	10
PROWERS				28	4				32
RIO BLANCO	21	4	273	2,188	341	102	17	2	2,948
ROUTT	2	2		29	11	2			46
SAN MIGUEL				117	11	3			131
SEDGWICK			1	13	4		2		20
WASHINGTON	5		24	417	38	8	3		495
WELD	797	1	37	19,480	246	24	97	2	20,684
YUMA	4	8	21	3,742	76	14	20	1	3,886
State Total	1,216	51	648	46,561	1,769	571	341	269	51,426





## Colorado Oil Gas Conservation Commission Monthly Statistics

YEAR	MO	Baker - Hughes Rig Count	Permits												Well Spud			Public Visits			Well Oper Change		
			Drilling			Recompletion			Injection			Pits			Locations			Active Drilling Permits	Active Wells	Data		Office	Internet
			Rcvd	Apvd	5996	Rcvd	Apvd	519	Rcvd	Apvd	28	Rcvd	Apvd	225	Rcvd	Apvd	2461						
2010	Total		5703	5996	519	8	23	4	6	4	8	249	112	232	4755	43588	14	95	103968	813			
	JAN	63	405	351	8	23	4	6	4	8	249	112	232	4755	43588	14	95	103968	813				
	FEB	61	343	249	15	2	7	6	5	3	184	150	209	4733	43869	21	80	96171	356				
	MAR	68	472	498	18	23	4	7	38	31	262	258	268	4847	43927	9	125	122393	590				
	APR	72	325	314	26	15	5	0	20	27	190	218	241	4882	44203	8	105	106339	402				
	MAY	70	375	367	20	25	3	6	12	8	214	171	248	4904	44752	14	124	73024	545				
	JUN	70	512	436	61	22	5	4	11	4	172	239	272	5013	45401	30	131	108115	790				
	JUL	69	457	436	13	55	2	1	13	7	215	158	261	5113	45710	20	74	103585	595				
	AUG	73	472	482	37	17	1	0	10	17	236	229	282	5328	45975	21	141	111950	573				
	SEP	77	336	389	22	29	7	0	35	34	159	203	322	5361	46115	9	120	116043	584				
	OCT	78	382	443	45	29	2	1	4	12	171	172	302	5423	46719	14	126	132814	552				
	NOV	80	342	324	29	57	0	1	12	13	166	174	305	5409	46721	18	96	130612	572				
	DEC	79	291	370	31	23	4	0	26	28	164	183	278	5329	46835	9	77	132651	347				
2011	Total		4709	4659	325	320	44	32	190	192	2382	2267	3220			187	1294	1337865	6719				
	JAN	73	372	258	26	21	3	0	11	5	142	129	247	5217	46958	12	106	112686	1051				
	FEB	70	370	382	23	27	7	5	21	9	160	129	231	5173	47128	16	114	105857	385				
	MAR	66	292	347	21	14	2	2	17	24	133	172	292	5132	47263	26	138	111746	378				
	APR	66	410	235	16	24	5	5	9	2	137	106	235	4785	47377	12	108	107627	477				
	MAY	66	491	506	23	16	3	1	6	2	105	131	212	4885	47533	20	123	109802	527				
	JUN	69	326	377	11	19	8	6	5	8	110	89	145	5136	47860	11	111	108849	1269				
	JUL	66	237	276	9	14	3	2	5	2	97	103	190	5152	48173	13	102	114195	495				
	AUG	62	313	288	6	9	6	4	23	5	83	97	179	5031	49153	11	112	110908	300				
	SEP	61	252	256	1	5	5	2	4	1	81	77	161	4960	49230	11	89	106114	832				
	OCT	62	326	265	9	3	7	6	2	19	94	82	158	5009	49236	8	105	108833	395				
	NOV	56	271	323	5	8	6	6	2	4	109	97	143	5000	49989	10	119	120586	460				
	DEC	57	322	260	4	8	8	5	9	3	122	81	108	5081	50067	9	78	107240	904				
2012	Total		3982	3773	154	168	63	44	114	84	1373	1293	2301			159	1305	1324443	7473				
	JAN	53	538	331	6	0	3	5	6	8	176	124	137	5060	50265	9	108	47406	622				
	FEB	56	260	455	10	5	2	3	4	11	91	141	134	5250	50372	7	102	40649	285				
	MAR	57	344	241	5	9	2	8	15	6	129	84	168	5093	50540	9	133	43019	348				
	APR	61	331	333	6	5	5	5	6	8	145	117	159	4925	50687	3	132	46459	334				
	MAY	61	350	342	8	6	6	6	10	7	106	142	154	5110	50810	3	123	45215	340				
	JUN	62	349	273	2	8	8	8	5	3	114	85	134	5273	50909	8	122	41015	1423				
	JUL	68	859	304	11	4	9	2	9	5	218	91	152	5070	51091	7	154	45558	768				
	AUG	69	221	291	6	4	3	2	4	1	35	76	174	5200	51255	20	130	44722	151				
	SEP	69	189	362	8	5	10	9	3	19	54	109	154	5185	51407	5	105	41256	72				
2013	Total		3441	2932	62	46	48	48	62	68	1068	969	1366			71	1109	395299	4343				

Apvd = Approved, Rcvd = Received, Ind = Individual, Blnk = Blanket, Apps = Application for Hearing, NOAV = Notice of Alleged Violation, AOC = Administrative Order of Consent, OFV = Order Finding Violation, Cmplt = Complaint, Comp = Completed



## Colorado Oil Gas Conservation Commission Monthly Statistics

YEAR	MO	Operators		Release		Bonds		Claim		Hearings		Violations		Remediation		Inspections			
		New	Inactive	Ind.	Blnkt	Replace	Ind.	Blnkt	Apps.	Order	NOAV	AOC	OFV	Comp	Spills	Rev	Comp	Wells	Locations
2010	Total	46	33	38	40	74	0	1	155	136	319	10	3	218	493	511	382	17075	
	JAN	1	2	3	1	4	0	0	16	15	43	3	2	33	40	47	45	1316	
	FEB	1	1	9	4	6	0	0	16	15	7	0	1	39	52	48	33	1591	
	MAR	2	3	6	3	9	0	0	NA	NA	31	NA	NA	31	48	59	27	1675	
	APR	2	0	3	2	1	0	0	24	24	8	0	0	10	52	38	61	959	
	MAY	3	0	5	2	4	0	0	77	65	16	2	5	26	31	33	51	1577	
	JUN	2	2	2	2	0	3	0	51	58	30	1	4	14	38	53	25	1099	
	JUL	3	6	3	6	3	1	0	NA	NA	29	NA	NA	13	39	92	20	518	
	AUG	2	3	12	7	2	0	1	68	54	26	2	2	19	54	106	56	1032	
	SEP	5	1	7	5	2	0	0	44	41	4	2	4	16	46	56	66	690	
	OCT	4	2	12	6	7	0	3	57	45	9	0	0	15	38	102	28	636	
	NOV	4	9	15	4	1	0	0	NA	NA	15	NA	NA	16	31	70	58	739	
	DEC	4	2	2	2	4	0	0	50	32	12	0	1	15	58	22	66	562	
2011	Total	33	31	79	44	43	4	4	403	349	230	10	19	247	527	726	536	12394	
	JAN	3	3	7	5	1	1	0	70	72	18	1	0	27	35	68	23	998	970
	FEB	6	9	8	5	0	0	0	NA	NA	10	NA	NA	24	40	85	36	1998	1024
	MAR	4	1	7	3	9	0	0	44	38	19	0	0	23	38	63	61	2203	1149
	APR	4	2	10	3	2	0	0	80	59	11	0	0	19	35	26	99	1701	930
	MAY	3	1	4	0	3	0	0	43	50	14	2	0	23	32	27	122	2621	1701
	JUN	3	4	3	3	4	0	0	NA	NA	5	NA	NA	35	39	46	98	1432	1091
	JUL	5	0	1	4	5	0	0	63	50	15	0	0	16	24	45	33	1319	1076
	AUG	6	5	2	8	0	1	0	67	54	24	3	2	21	28	127	33	1898	1432
	SEP	0	4	4	5	2	1	0	NA	NA	5	NA	NA	14	13	30	36	1137	864
	OCT	1	2	9	1	0	0	0	30	36	6	1	0	13	44	116	37	1407	1029
	NOV	6	4	12	8	7	0	0	85	37	16	2	0	10	44	26	44	1324	828
	DEC	6	2	3	1	0	0	0	NA	NA	14	NA	NA	19	30	31	19	1046	625
2012	Total	47	37	70	46	33	3	0	482	396	157	9	2	244	402	690	641	19084	12719
	JAN	3	5	12	2	0	0	0	48	75	15	4	0	21	40	31	45	1673	829
	FEB	4	2	6	3	2	0	0	41	35	11	2	0	15	30	42	90	1042	614
	MAR	1	3	2	2	1	0	0	54	67	16	2	0	11	25	65	29	1967	1150
	APR	7	1	5	2	8	0	0	NA	NA	21	NA	NA	16	33	39	37	1508	910
	MAY	2	1	3	0	0	0	0	46	50	22	6	0	13	31	41	60	2648	1601
	JUN	6	2	2	4	5	0	0	91	44	15	2	0	25	40	47	37	1846	1081
	JUL	4	1	2	2	0	0	0	96	70	25	3	0	20	46	50	22	2297	1333
	AUG	6	4	5	4	2	0	0	NA	NA	23	NA	NA	25	55	35	41	2144	1028
	SEP	4	1	6	1	0	0	0	101	51	7	2	0	14	57	27	51	1520	682
2013	Total	37	20	43	20	18	0	0	477	392	155	21	0	160	357	377	412	16645	9228

Appd = Approved, Revd = Received, Ind = Individual, Blnkt = Blanket, Apps = Application for Hearing, NOAV = Notice of Alleged Violation, AOC = Administrative Order of Consent, OFV = Order Finding Violation, Cmpl = Complaint, Comp = Completed