



Staff Report

January 23, 2012

I. STATISTICS

Our monthly statistics and permit activity report are on pages 18-27. These statistics include the permit and location assessment information previously included on the first page of the staff report.

II. NORTHWEST COLORADO

◆ Northwest Colorado Oil and Gas Forum

The Northwest Colorado Oil and Gas Forum (Forum) is an informal gathering of local, state, and federal government officials, oil and gas industry representatives, and citizens that have met regularly since 1989. The purpose of the Forum is to share information about oil and gas development in northwest Colorado and to make government officials and oil and gas industry representatives easily accessible to the public. Currently the meetings are conducted once per quarter and are co-chaired by the COGCC's Director, Dave Neslin, and Garfield County Commissioner, Mike Samson.

The next meeting is scheduled for March 1, 2012, at 10:00 am. The venue will once again be the Colorado Mountain College – West Garfield Campus, 3695 Airport Road in Rifle, CO.

All parties wishing to be placed on the meeting agenda should contact Chris Canfield at 970-625-2497 or via email at: chris.canfield@state.co.us.

◆ Mamm Creek Gas Field - West Divide Creek Gas Seep Remediation Update

EnCana has submitted the September 2011 remediation update of the ongoing remediation of shallow groundwater contamination in the West Divide Creek Seep area. The report and supporting analytical results are available on the COGCC website (colorado.gov/cogcc) under Library, Area Reports, Piceance Basin.

During the second half of 2011, Encana hired Rule Engineering to manage the remediation project. The low-flow air sparge system designed to remediate the shallow groundwater contamination from benzene, toluene, ethylbenzene, and total xylenes (BTEX) was operating from 1:00 am until 9:00 am daily prior to September 15, 2011, with operational air sparge wells discharging between 4 and 6 standard cubic feet per minute (SCFM) at pressures ranging from 3 to 4.5 pounds per square inch (PSI). After September 15, 2011, the air sparging system was optimized to run from 12:00 pm to 4:00 pm daily, with one blower running at 55 cubic feet per minute (CFM) and the other blower off. The changes increased operational efficiency of the blowers while maintaining the oxygenation of the aquifer.

BTEX compounds have not been detected in any West Divide Creek surface water samples since July 2005. The concentrations and the aerial extent of these compounds in groundwater continue to decrease gradually over time. Third quarter 2011 analytical results show that BTEX compounds in groundwater were only detected in 3 monitoring wells: MW-2, MW-4, and MW-17. Benzene was detected in these wells at concentrations of 130 ug/l, 57 ug/l and 64 ug/l, down from the higher concentrations of 430 ug/l, 440 ug/l and 230 ug/l, respectively, detected shortly after the event occurred in 2004. Thermogenic methane concentrations and aerial extent remain somewhat static and localized near the seep source area. Trace methane detections in many monitoring wells are too low for isotopic analysis. Methane was detected in MW-2 at a concentration of 8 mg/l, in MW-4 at 16 mg/l, in MW-9 at 4.9 mg/l, in MW-14 at 3.3 mg/l, and in MW-17 at 5.4 mg/l. Isotopic analysis of gas samples from these wells indicates that the methane continues to be primarily thermogenic.



III. SOUTHWEST COLORADO

◆ Gas and Oil Regulatory Team (GORT) Meeting

The next GORT/Southwest Colorado Oil and Gas Stakeholders meeting is currently being scheduled for some time in April 2012, at 8:30 am at the La Plata County Fairgrounds in Durango, Colorado.

All parties wishing to be placed on the next meeting agenda should contact Karen Spray at: 970-259-1619 or karen.spray@state.co.us.

◆ Fruitland Formation Outcrop Mitigation and Monitoring Projects (4M Projects)

Fruitland Formation Outcrop - 4M Pilot Scale Mitigation Projects La Plata County. The South Fork Texas Creek (SFTC) Mitigation system continued operation at approximately 11 Kilowatts (kW) power generation. From November 2, 2011, through December 2, 2011, it operated approximately 99% of the time. Approximately 5 kW of power is returned to the grid at this operating rate. Gas continues to be collected and vented at the Pine River Ranches (PRR) location. Methane concentrations currently average 99% at SFTC and less than 1% at PRR. Operations & Maintenance activities are continuing.

4M Monitoring Wells La Plata and Archuleta Counties. There are 17 wells at 11 locations in the COGCC 4M monitoring program. Well pressures are monitored remotely via satellite telemetry with one or two maintenance visits per year, depending upon data received. A surface use agreement that allowed access to the Beaver Creek Ranch locations was not renewed by the landowner and access to this site is currently restricted. COGCC staff are evaluating other potential access routes and are assessing the potential need to plug and abandon the wells should reliable access not be obtained. Discussions are ongoing.

◆ Ongoing Investigation, Reclamation, and Mitigation of Residual Methane in the Vicinity of the Bryce 1-X Well Area, Bondad, Colorado

The next sampling date is scheduled for April 2012.

IV. NORTHEAST COLORADO

◆ Other E&P Waste Disposal Options

COGCC staff recently identified numerous incidents involving the improper management of tank bottoms in northeast Colorado. Operators are reminded that tank bottoms, workover fluids, pigging wastes from gathering and flowlines, and natural gas gathering, processing, and storage wastes are considered "Other E&P Waste" and must be managed in accordance with Rule 907.f., which states that these types of wastes may be treated or disposed as follows:

- Disposal at a commercial solid waste disposal facility;
- Treatment at a centralized E&P waste management facility permitted in accordance with Rule 908;
- Injection into a Class II injection well permitted in accordance with Rule 325; or
- An alternative method proposed in a waste management plan in accordance with Rule 907.a.(3) and approved by the Director.

Neither the use of tank bottoms or other oily waste for stabilizing sandy or loose soils nor the intentional dumping of tank bottoms or other oily waste, which results in an impact to site soils, are acceptable land treatment alternatives. However, land treatment of oily waste is allowed by Rule 907.e. with certain requirements set forth in Rule 907.e.(2).

◆ Baseline Water Quality Sampling

COGCC environmental staff responded to, or are in the process of responding to, requests for baseline water quality sampling in Elbert, Douglas, Rio Grande, and Weld Counties. These requests are being tracked as complaints in the COGCC database under the baseline sampling request category. Staff also provided concerned landowners with information about the COGCC permitting and regulatory process, as well as an overview of the current level of activity in the area. Results of these investigations are summarized and provided to landown-



ers after laboratory analyses are complete. These data are also entered into the COGCC water quality database.

As of December 30, 2011, there is one approved permit in Elbert County for a vertical well in the NW¼ NE¼ of Section 10, Township 6 South, Range 64 West, and one pending permit in Rio Grande County in the NW¼ SE¼ of Section 24, Township 39 North, Range 5 East. There are no pending or approved permits in Douglas County.

Preliminary assessment of data indicates that water quality is good. Three of the 26 sampled wells contained methane concentrations sufficient for isotopic analysis. These analytical results are pending. A written report summarizing the results of the analyses of baseline water sampling in Elbert and Douglas Counties from the Dawson and Denver aquifers will be prepared and placed in the Library section of the COGCC website.

V. SOUTHEAST COLORADO

◆ Methane Investigation Monitoring, and Mitigation Plan (MIMMP) - Huerfano County

Petroglyph Energy Inc. (PEI) has completed plugging their CBM wells in Huerfano County.

Phase 2 Operations

PEI shut down operations of the Phase 2 reinjection system in September 2011. PEI reached agreements with 4 landowners on installation of methane mitigation systems at the landowners' homes as was approved at the September 2011 hearing. The 4 mitigation systems at domestic wells have been installed. Testing of the efficiency of 3 of the 4 systems is complete. Methane concentration after treatment in all 3 of the systems is less than 1.1mg/l, which should ensure that the well water can be brought into homes and used safely.

VI. ORGANIZATION

An organizational chart can be found on pages 14-16. For contact information, please go to our website and click on "Contacts" on our

homepage, and then "Staff Contact Information."

VII. PLANNING/ADMINISTRATION/OTHER

◆ Consultations with the Colorado Division of Wildlife and the Colorado Department of Public Health and Environment

According to Rule 306.c.(1), the Commission must consult with the Colorado Division of Wildlife (DOW) (now Colorado Parks and Wildlife) when: 1) an operator requests a modification of an existing Commission order to increase well density to more than one well per 40 acres; 2) a consultation is required in accordance with the 1200-series rules; 3) an operator requests a variance from a provision in the 1200-series rules; or 4) if DOW requests a consultation due to the presence of a federally listed threatened or endangered species. Correspondence regarding wildlife consultation should be submitted to:

Dean Riggs
Assistant Regional Manager - Northwest Division
711 Independent Avenue
Grand Junction, CO 81505

Similarly, Rule 306.d.(1)B requires the Commission to consult with the Colorado Department of Public Health and Environment (CDPHE) when an operator requests a modification of an existing Commission order to increase well density to more than one well per 40 acres. Operators should direct all documents submitted in this regard to:

Kent Kuster
Oil & Gas Consultant Coordinator
CDPHE
4300 Cherry Creek Drive South
Denver, CO 80246-1500

◆ Public Outreach Opportunities

Margaret Ash, Field Inspection Manager, and Greg Deranleau, the Oil and Gas Location Assessment (OGLA) Supervisor, presented information about the COGCC stormwater and OGLA process at the International Erosion Control Association's Winter Conference held on December 7, 2011, in Denver, CO. Margaret and Greg



also participated in a question and answer session with Matt Czahor from the Water Quality Control Division.

On December 12, 2011, Dave Neslin, Director, participated in a panel on hydraulic fracturing organized by the City of Aurora.

On December 16, 2011, Dave Neslin, Thom Kerr, Permit/Technical Services Manager, Debbie Baldwin, Environmental Manager, and Stuart Ellsworth, Engineering Manager, met with a number of stakeholders to discuss the recommendations made by the State Review of Oil and Natural Gas Environmental Regulations, Inc. (STRONGER) in its Colorado Hydraulic Fracturing State Review.

On December 19, 2011, Dave Neslin attended a Commerce City Council meeting to discuss their proposed hydraulic fracturing moratorium.

On December 20, 2011, Dave Neslin provided a briefing on the new hydraulic fracturing chemical disclosure regulations for approximately 25 Colorado legislators and staff.

On December 21, 2011, Mike Leonard, Southern Inspection Supervisor, Margaret Ash, and Nancy Prince, Permit/Completion Technician, participated in a town hall meeting in Colorado Springs, CO. The meeting was organized by Val Snider, Colorado Springs Councilman, and State of Colorado Representative Pete Lee. Mike provided a one-hour presentation that included an overview of the oil and gas conservation commission. Mike, Margaret, and Nancy then participated in a 45-minute question and answer session with Representative Lee and Councilman Snider.

On December 29, 2011, Dave Neslin attended an El Paso County Commissioners meeting to comment on their proposed oil and gas regulations.

On January 3, 2012, Dave Neslin and Debbie Baldwin attended an Arapahoe County Commissioners meeting to comment on their proposed oil and gas regulations.

On January 3, 2012, Stuart Ellsworth and Bob Chesson, Staff Environmental Specialist, met with the Division of Water Resources Commissioner and staff members to explain the COGCC basic well construction to protect fresh water, COGCC rules related to isolated of downhole fluids, COGCC's baseline water sample programs, and the publication *How Well Do You Know Your Water Well*.

On January 4, 2012, various COGCC managers and staff met with representatives of the City of Colorado Springs to discuss the City's concerns with two proposed exploratory wells.

On January 4, 2012, Kris Neidel, Northwestern Field Inspector, participated in a Routt County Planning Commission panel discussion on new oil and gas permits.

On January 5, 2012, Dave Neslin attended a meeting of the Commerce City Oil and Gas Land Use Committee to provide information on the COGCC's regulatory program. Greg Deranleau attended additional meetings of the Committee on January 12, 2012, and January 19, 2012.

On January 10, 2012, Debbie Baldwin participated in a public meeting in Commerce City regarding hydraulic fracturing. Debbie presented an overview of the COGCC's role in regulating oil and gas operations, introduced the group to the COGCC website and the information that is accessible using this tool, and explained how water resources are protected, how impacts are remediated and mitigated, and how allegations of impacts are investigated and participated in a question and answer session.

On January 10, 2012, Dave Neslin and Margaret Ash attended a meeting of the Town of Erie Board of Trustees to discuss oil and gas issues.

COGCC staff met with City and County of Broomfield staff on January 12, 2012, to review and discuss the agency permitting process and better facilitate consultation through the Local Government Designee (LGD) program. Topics of discussion included: types of oil and gas activity permit applications and the LGD's opportunities to consult and provide input; Broomfield's Use by Special Review process; review of planned



water supply reservoir location; and COGCC rules regarding hydraulic fracturing.

On January 12, 2012, Thom Kerr met with representatives of the Groundwater Protection Council to discuss the FracFocus website (www.fracfocus.org).

On January 13, 2012, Dave Neslin, Thom Kerr, Debbie Baldwin, and Greg Deranleau met with representatives of Arapahoe County to discuss oil and gas issues.

On January 17, 2012, Kris Neidel met with Routt County Government Officials to discuss an overview of COGCC drilling operations and field inspections.

On January 18, 2012, Dave Neslin met with the Joint Regulation Committee of the Colorado Legislature.

On January 18, 2012, Dave Neslin spoke at a forum on "Drawing the Blueprint for a Sustainable Natural Gas Future" organized by the University of Colorado Denver School of Public Affairs.

On January 24, 2012, Dave Neslin will speak on oil and gas development in Colorado at the Club 20 Annual Meeting in Denver.

◆ How Well Do You Know Your Water Well

The ever popular brochure *How Well Do You Know Your Water Well* has been updated and revised to include information about mitigating methane in water wells, current contact information for various agencies, and water well maintenance and record keeping. Water well owners are provided this useful brochure when water samples are collected from their wells by COGCC staff, operators, or third party contractors. The update project was initiated by COGA with support from the COGCC and cooperation of the Colorado Department of Public Health and Environment and the Department of Water Resources. Copies of the updated brochure have been provided to the COGCC Commissioners. An electronic version of the brochure is available in the Library section of the COGCC website.

◆ New Policy - COGCC Directional Survey Electronic Data Submittals

The COGCC has been working with industry and its IT developers to formulate a methodology to electronically report directional well bore locations. The tactic was to make the reporting process work for plans submitted at the time of permitting and for the final as-drilled survey data. The last stakeholder meeting was on October 26, 2011, and we went over the Internet reporting application, the standardized format, and the reporting and filing process. We have met and discussed this with industry engineering and regulatory representatives, the directional drilling companies, the data vendors, and agency IT staff.

With all of this accomplished, a new policy to require that all directional and horizontal well permits and completion reports include electronically submitted directional surveys and plans has been created and will go into effect January 1, 2012. This will allow mapping the entire wellbore path, providing a more accurate picture of where these wells are being proposed and drilled. The new COGCC Policy for Electronic Submittal of Directional Surveys and Plans is available for download from the "POLICIES" page on the COGCC website.

◆ Onsite Inspection Policy

The COGCC has received a total of 146 requests for onsite inspections to date under the Policy For Onsite Inspections On Lands Where The Surface Owner Is Not A Party To A Surface Use Agreement Policy, effective for Applications for Permits-to-Drill (APDs) submitted after February 15, 2005.

Thirty-two onsite inspections have been conducted, while 97 requests for inspections have been withdrawn. Sixteen onsite inspections are pending and will be scheduled, if necessary, after the Application for Permit-to-Drill (APD) is received, or after issues related to local governmental designee consultation, location change, or surface use agreements are resolved.



Of the 146 requests for onsite inspection, 80 were for locations in Weld County, 26 in Las Animas County, 9 in Adams County, 7 in La Plata County, 5 in Garfield County, 3 each in Archuleta, Boulder, Logan, and Yuma Counties, 2 in Morgan County, and 1 each in Baca, Cheyenne, Kiowa, Larimer, and Washington Counties.

COGCC staff have attended on-site meetings to facilitate communication between the parties and to minimize impacts to the surface owner through voluntary measures implemented by the operator in instances where surface owners have requested Onsite Inspections beyond the 10 business-day window provided for in the Policy, and where there is a dispute between parties regarding the date of the Rule 306 consultation.

In addition to the Onsite Inspection Policy, onsite inspections are being conducted in the San Juan Basin under Cause 112, Order Nos. 156 and 157. These are cases where an Onsite Inspection was required because an APD was submitted without a surface use agreement.

◆ Environmental Water Quality Database

A project to migrate analytical data to the SQL-server database was initiated in early 2011. The project is tasked with identifying new processes to allow for electronic submission of analytical data that are required by a variety of rules and orders and that are collected in support of investigations, spill/release responses, and remediation activities. The COGCC and the Groundwater Protection Council (GWPC) are working cooperatively on this project. COGCC and the GWPC anticipate having a standardized electronic data deliverable (EDD) format available to facilitate electronic data submission by early February 2012. The interface for entering field data, location data, and facility information will be similar to the e-Form applications used for other electronic submittals.

◆ Voluntary Baseline Groundwater Quality Sampling Program

The Colorado Oil and Gas Association (COGA), in cooperation with COGCC, developed a Voluntary Baseline Groundwater Quality Sampling

Program that was finalized in November 2011. The program went into effect January 1, 2012. It is open to all oil and gas operators throughout the state and provides a standardized program for baseline sampling and analysis of domestic water wells and other groundwater features such as seeps and springs. Data generated from the sampling program and the results will be submitted to the COGCC and used to determine if impacts to groundwater related to oil and gas operations have occurred. The Voluntary Program does not exempt oil and gas operators from the mandatory baseline groundwater monitoring required in the Greater Wattenburg Area by Rule 318A.e.(4), or Rule 608.b. requirements for Coalbed Methane Wells or other existing field-wide orders for groundwater sampling.

During 2011, several oil and gas operators performed voluntary baseline groundwater sampling and provided analytical data to COGCC. These operators were active in development of the Niobrara Formation in northern Weld County and collected samples from a number of domestic water wells.

◆ Plugging and Reclaiming Abandoned Wells (PRAW) - Project Status

On page 17 is a spreadsheet listing PRAW projects for Fiscal Year 2011-2012 that are planned (work has not yet commenced, awaiting cost estimates), in progress (bids have been solicited and some field work may have been performed), or completed.

◆ March 2012 Hearing Docket

A docket for the March 2012 hearing will be available shortly after the January hearing. Hearing dockets are available on our website by clicking on "Hearings." Links to the notices and hearing applications are available from the Docket Number and Applicant, respectively. To sign up for e-mail notification of hearing notices and applications, please see the announcement and instructions on the homepage of the COGCC website at: colorado.gov/cogcc.



◆ Colorado Oil and Gas Information System (“COGIS”)

COGIS is made up of many different components that are used by the COGCC, staff, industry, government agencies and many others.

➤ Internet

The COGCC determined it was most cost effective to develop applications and information in an Internet-available format. This allows for the same tools to be utilized in different environments, thus eliminating the re-creation of applications. The Internet connection was moved to a new network structure which provides a much more secure environment. The following are tabs on the Internet menu bar:

* General

This page has links to basic information concerning the COGCC, its function, and oil and gas development in Colorado.

* Contacts

This page has links to people and agencies that are involved with oil and gas regulation and related issues in the state. The page also contains phone lists and geographic areas of responsibility for COGCC staff.

* Library

This page contains links to documents resulting from COGCC studies, activity reports, and statistical downloads. The annual statistics and the weekly/monthly statistics are available here.

* Hearings

This page has links to the current and previous hearing schedules, which allow for review of the dockets, agendas, applications and their outcome. It also has information that is useful when considering filing an application for hearing or finding information about Commissioners.

* Rules

This page contains links to the COGCC statute, Rules and Regulations, and policies.

* Policies

This page contains links to COGCC policies.

* Orders

This application provides searchable capability of the COGCC’s orders. The search

by location is still under construction as we create the map layers for all spacing orders.

* Forms

All forms are available as Adobe Acrobat documents that can be downloaded, completed, printed and mailed; some are available as Excel and Word documents. Some example and instruction documents are viewable. The forms used by operators to submit information on location of wells and completion reports have been modified to accept latitude and longitude data. Eventually, online forms will be available here, but the exact time frame is unknown.

* Staff Report

Current and previous staff reports are viewable here.

* Permits

This application shows the last 12 months of approved permits and current pending permits; it may be filtered by county.

* News/Media

This category provides general information to the media. It contains statistics, charts, graphs, and other items of interest.

* Database

This application enables users to query well, production, and operator information. These queried databases contain the most current set of data and are updated throughout the day.

* Local Gov

This application provides database searches for local government contact information and oil and gas activity within a selected area.

* Images

This application is an interface to the COGCC’s historical paper files. All well files, logs, and hearing files have been scanned. This application is not user friendly and the preferred method is to use the database queries and click on the “docs” icon for wells and other facilities, or to use the Orders application.

* Maps

The Maps tab takes interested parties to the COGCC GIS Online page. From that page an Interactive map of the State of Colorado can be accessed by clicking on View Map. GIS



specialists can also download GIS Shapefiles from a link on the GIS Online page. The COGCC is grateful to the many agencies that have contributed data to our GIS Online map, including BLM, State Land Board, Division of Water Resources, Colorado Geologic Survey, CDPHE, NRCS, and others.

The Interactive map (GIS Online) was designed to display COGCC well data, field boundaries, spacing orders, special rule areas, and other COGCC data along with more than 100 other map layers that are relevant to oil and gas operations. The map has proven to be a valuable tool for oil and gas permitting, and for researching COGCC's oil and gas data repository. Some of the more important layers are:

1. Oil and Gas Wells - All wells in the State displayed as red dots on the map; a double click on any point opens the electronic informational "scout card" for that well.
2. Directional Bottomhole Locations - Points with leader lines to actual and planned bottomhole locations.
3. Permits - All valid oil and gas well permits in the State.
4. Pending Permits/Pending 2A Locations - Permit and Location applications that are currently under review by COGCC staff.
5. Field Boundaries - Polygon outlines of field boundaries.
6. Water Wells - Water well locations as mapped by the Division of Water Resources (DWR); this layer is updated monthly by DWR.
7. DOW Sensitive Wildlife Habitats and Restricted Surface Occupancy Areas.
8. Rule 317B Surface water, source water protection areas as mapped by CDPHE.
9. BLM data including Exploratory Units, Participating Areas, Subsurface Authority, Oil and Gas Leases, Lease Stipulations, etc.
10. State Land Board active leases.

11. Many Base Layers including roads, cities, towns, geology, soil surveys, topographic maps, and 2009 aerial photographs.

A second interactive map called "Wildlife Map" is also available for those who need to view specific wildlife activity or species information along with oil and gas well data.

GIS Shapefiles that are available for download include: Well locations, Directional Bottom Hole locations, Oil and Gas Field Boundary polygons, Facilities locations (primarily pits), DOW Wildlife Habitats, Rule 317B Buffers, and a few other area-specific shapefiles.

Currently, GIS Staff are reviewing "As Drilled" location submittals for accuracy, and are completing development of a new version (MapGuide 2010) of the Interactive Map. The new version is available internally to staff and should be available to the public sometime this month.

Completed formations were added to Internet Map and the Fields Polygon shapefile in July 2011.

* Help

In December 2008, two search tools were added to the Help menu to be used in conjunction with the map layers that were added for the Final Amended Rules.

The Oil & Gas Activity Notification Tool allows a user to enter a section-township-range of interest which returns a table identifying which quarter-quarter sections are subject to Rule 317B, RSO areas, or SWH requirements. The user can then click on a link, which opens the map, and zoom to the section of interest for further inspection.

The Map Temporary Coordinated Tool allows the user to enter a latitude and longitude to view on the map. The user can then turn on the relevant map layers to see which layers intersect the entered coordinates.

A tutorial document for the COGCC Interim Policy for APDs is posted in the Help area and the homepage of the website. This document helps explain the interim process that the COGCC used for processing APDs until the Final Amended Rules took effect. Included in the document are explanations



on how to use the new tools and map layers that have been developed for the Final Amended Rules.

The COGCC, with assistance from the Ground Water Quality Protection Council, has produced two Macromedia Flash movies to help users understand the many features available within the COGCC GIS Online system. The movies are located by clicking on the HELP link from the main menu or by using the following link: http://colorado.gov/cogcc/COGIS_Help/Help.asp.

Two applications on the COGCC website are available to help operators with the entering of data relating to locations. The first, a Footage calculator, will take a new latitude and longitude and calculate new footage calls based on the location supplied at the time of permitting. The tool should only be used to compare locations where latitude and longitude were supplied on the permit as required by the December 1, 2005, rule change. The second application converts latitude and longitude as measured in degrees, minutes, and seconds into decimal degrees. The decimal degree format is what COGIS is expecting on all forms requiring lat/long coordinates.

The eForm Training Manual has been updated to include all of the forms available within the system. It can be found at http://cogcc.state.co.us/COGIS_Help/eFormtraining/eFormTraining.htm. A document explaining the Local Government Designee process in eForm is now available in the Help section. The forms currently available in eform are: Applications for Permits-to-Drill (Form 2); Oil and Gas Location Assessment Form (Form 2A); Drilling Completion Report (Form 5); Completed Interval Report (Form 5A); Well Abandonment Report (Form 6); and Bradenhead Test Report (Form 17).

➤ Local Area Network

COGCC staff are connected to services by a Local Area Network (“LAN”) connection which provides email and data-sharing capabilities. The LAN is connected to the Centennial Building at 1313 Sherman Street by a wireless interface; this connection provides access to the Internet and other state services. COGCC staff utilize the same ap-

plications in their work as Internet users, in addition to others outlined below.

- * Database
The COGCC maintain a comprehensive database of regulated facilities (wells, pits, injection sites), incidents (inspections, complaints, spills), and affiliations (companies and contacts).
- * Imaging
This application provides the capability to convert the paper documents received by the COGCC to electronically available documents.
- * Form Processors
This set of applications allows users to input, route, edit, and update regulatory reports submitted by oil and gas operators.
- * eForm
This application utilizes the same code base that industry uses to submit Applications for Permits-to-Drill (Form 2), Oil and Gas Location Assessment Form (Form 2A), Drilling Completion Report (Form 5), Completed Interval Report (Form 5A), Well Abandonment Report (Form 6) and Bradenhead Test Report (Form 17). All of these forms are also being used by staff to input, route, edit, and update these forms internally.
- * Geographic Information Systems (GIS)
These applications provide the capability to create custom maps, convert survey calls to geographic coordinates, and convert and utilize geographic positioning system (GPS) data.

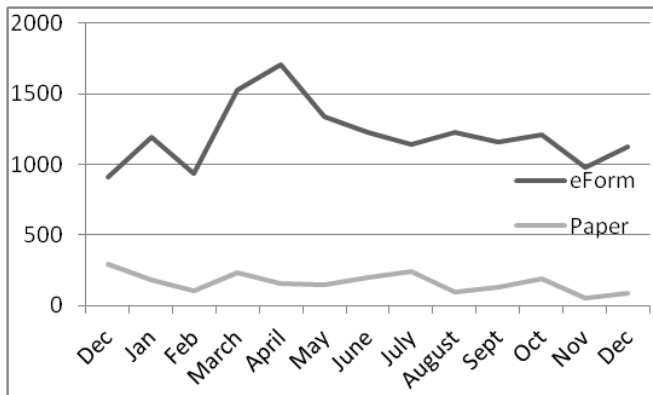
The GIS Administrator creates daily updates for the Internet map data downloads.
- * COGIS Tools
This set of applications allows COGCC staff to correct data in the database in addition to performing specialized workflow administration.
- Remote Users
This is the final component of the COGIS system. This laptop system consists of Internet applications and other report tools necessary for COGCC field staff to facilitate data collection and provide information.
- * Electronic Business
There are approximately 200 operators reporting production electronically.



◆ COGIS Projects, Updates and Changes

Electronic Form Submissions (eForm)

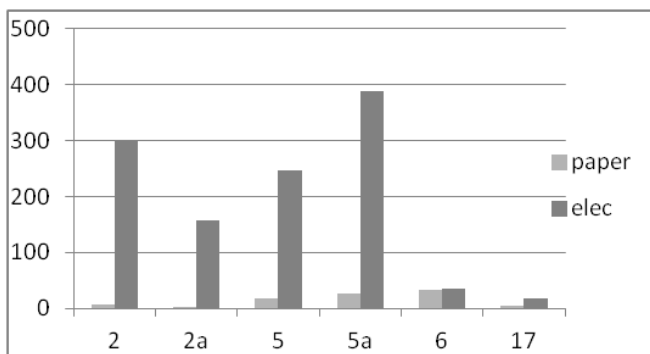
TOTAL ELECTRONIC FORM SUBMITTALS
DECEMBER 2010–DECEMBER 2011



Forms currently available through eForm:

- Form 2 - Application for Permit to Drill
- Form 2A - Oil and Gas Location Assessment
- Form 5 - Drilling Completion Report
- Form 5A - Completed Interval Report
- Form 6 - Well Abandonment Report
- Form 17 - Bradenhead Test Report

Following is a breakdown by form for the month of December.



The development of the Form 10, Certification of Clearance and/or Change of Operator, is underway. Due to some delays in the development process, the IT staff is now looking to release the beta version by the end of January.

The Field Staff Inspection Form has been released to the Inspectors and other field staff. This new form is more comprehensive and allows for a more focused inspection to take

place. Utilizing the eForm platform, this new version of eForm will run locally on the field laptop and allow for the form to be completed in the field. When the staff is connected to the network, the forms will be uploaded to COGIS and become part of the master database. When searching the database, the results will now separate the old and new inspection reports.

The IT staff will be looking at converting some other forms to the eForm platform. Each time a form is converted, an announcement will appear on the homepage letting the industry know which form is now available. The first form that will be released from this project will be the Form 15, the Pit Permit and Report. It was delayed due to some technical problems that arose in mid December. We are now looking for a late January release as testing is underway. The Form 4, the Sundry Notice, is undergoing some more design changes and development should begin in early February if all goes according to schedule.

Later this month the development staff will begin work on the Form 41, Trade Secret Claim of Entitlement. This form is expected to be ready by early February.

As forms are released on eForm, updates to the PDF forms on our website have not occurred. COGCC staff are currently starting to update the PDF forms that are available for paper submissions.

Along with the eForm system, a page is available where the operators can review all known bugs within the system and report any new ones they discover. Currently there are 248 operators signed up to use eForm.

The public can make comments on all submitted Oil and Gas Location Assessment (OGLA) forms (Forms 2A) through the eForm system. This is accomplished by going to the COGCC website (<http://www.colorado.gov/cogcc>) and clicking on the menu option, "Permits", (or <http://cogcc.state.co.us/COGIS/DrillingPermits.asp>).

On the COGIS-Permits page, two search options are available for OGLA forms, "All Pending Lo-



cation Assessments for” and “All Approved Location Assessments for.” When the results are displayed for forms in process, the public can click on the document number, which logs the user onto the new eForm application. Once the page is displayed with the selected document, the user can select the Comment button to make a comment on that particular form. The public can use this same method to make comments on APDs (Form 2s).

For any operator not currently enrolled in eForm, instructions for starting the process can be found at <http://cogcc.state.co.us/Announcements/COUInformation.pdf>

COGCC GIS Online

The latest version of the COGCC GIS Online is now available on the commission’s website. This new version of the GIS site utilizes a different technology than the old site. The new technology eliminates the need for the user to download and install a plugin, which limited the browser that it could be used in to Internet Explorer. The new version will work with almost any browser.

LAS File Upload

All digital well logs submitted to the COGCC over the Internet are to be in LAS (log ASCII) format. In addition to the LAS file, a paper log file is still required. Additionally an operator can submit the same log file in a PDS format, but the PDS format cannot replace the LAS requirement. To submit digital well logs over the Internet, an application must be completed. The application is available from the “Forms” page on the COGCC website <http://www.colorado.gov/cogcc>. To utilize the system, the operator will need to submit a Designation of Agent Form, Form 1A. COGCC staff are working with operators and logging companies to gain compliance with the digital log submission requirement. The rule still requires the operator to submit a paper copy of each well log (Rule 308A). All operators are required to be in compliance with this Rule for all wells completed since July 2004.

Spacing Orders Project

The spacing orders project has been completed for the first pass through the state. As new or-

ders are issued, the map layers will be updated.

Historic Wells Mapping Project

COGCC’s GIS staff obtained historic maps of the Florence Oil Field and had well locations converted to GIS formats. The GIS layer was added to the Field Inspectors’ laptops so that they can look for these old wells on the ground. Any old wells located will be added to the COGCC database and evaluated for further actions, if necessary. A 1927 Map Image of the Boulder Oil Field was added to the Internal map to assist in identifying historic wells in the area.

VIII.VARIANCES

1. Oxy USA WTP LP (“Oxy”) submitted a surface casing cement report to COGCC staff on October 26, 2011, for the Cascade Creek 697-05-22A Well, which is located in Lot 14, Section 5, Township 6 South, Range 97 West, 6th P.M. COGCC staff reviewed cement characteristics and pressures shown in the cement report to evaluate the likelihood that cement was present along the entire length of the surface casing. COGCC staff’s evaluation concluded that a significant gap of cement coverage was likely along the surface casing.

The surface casing cement program for the Cascade Creek 697-05-22A Well was generally consistent with the surface casing cement program for other wells on the same pad. Surface casing was set at a depth of 2,693 feet. Oxy reported pumping 1,069 sacks lead cement (12.3 pounds per gallon, 2.33 cubic feet per sack yield) and 150 sacks tail cement (12.8 pounds per gallon, 2.07 cubic feet per sack yield). Flowing casing pressure was 355 pounds per square inch (psi) at 2 barrels per minute prior to bumping the plug. Oxy bumped the plug at a pressure of 855 psi for 5 minutes, bled off the pressure, and the floats held, indicating that the cement did not “U-tube” back up the casing. Cement returns were not observed at surface, and therefore, it appears that the top of the cement column was lost to the formation.

Oxy proceeded with “topping-out” the surface casing cement, which is a common procedure for surface casing cementing in this area when



cement is not returned to surface during the primary attempt. Oxy reportedly topped out with 10.5 barrels of cement, with 2.5 bbls top-out cement returned to surface. This top-out cement volume was significantly less than the volume expected by COGCC staff. COGCC staff required a cement bond log (CBL) on the surface casing to verify actual cement placement. A significant gap in cement coverage is apparent on the CBL from 1,180 feet to 120 feet between the primary cement top and the bottom of the top-out cement, respectively.

COGCC staff suspects that the hole may have sloughed in towards the casing, creating a bridge for the top-out cement. As a result, cement is not present in a continuous column from the base of the surface casing to ground level, as required by Rule 317.h. However, based on a qualitative review, good to excellent cement bond is apparent on the CBL from the bottom of the surface casing to a depth of 1,730 feet. Fair to poor bond is present from 1,730 feet to 1,180 feet. Fair bond is present from 120 feet to surface.

Oxy and COGCC staff are concerned that attempts to squeeze remedial cement may compromise the integrity of the surface casing, which is set at a depth necessary to provide well control if gas kicks are encountered while drilling the production hole. Based on Oxy's observations while drilling the surface hole, neither gas flows nor water flows were detected from a depth of 2,715 feet to surface, and therefore, crossflow of fluids behind the surface casing is not expected in the interval from 1,180 feet to 120 feet. Furthermore, Oxy has proposed to pump cement from total depth to surface in two stages on the production casing. The first stage will be designed for a top of cement (TOC) at 2,800 feet with 50% excess cement and a swellable packer to be placed in the production casing-surface casing annulus above the planned TOC at a depth of 2,600 feet. After the packer sets, additional cement will be pumped in the production casing-surface casing annulus through a parasite sub located on the surface casing at a depth of 2,520 feet up to surface.

COGCC staff granted Oxy a variance in accordance with Rule 502.b.(1) for the cement re-

quirements of Rule 317.h. Oxy contends that the requested variance will not violate the basic intent of the Oil and Gas Conservation Act because environmental protection is provided with seals at the bottom and top of the surface casing, fluid crossflow is not expected behind the surface casing, and the production casing will be cemented to surface.

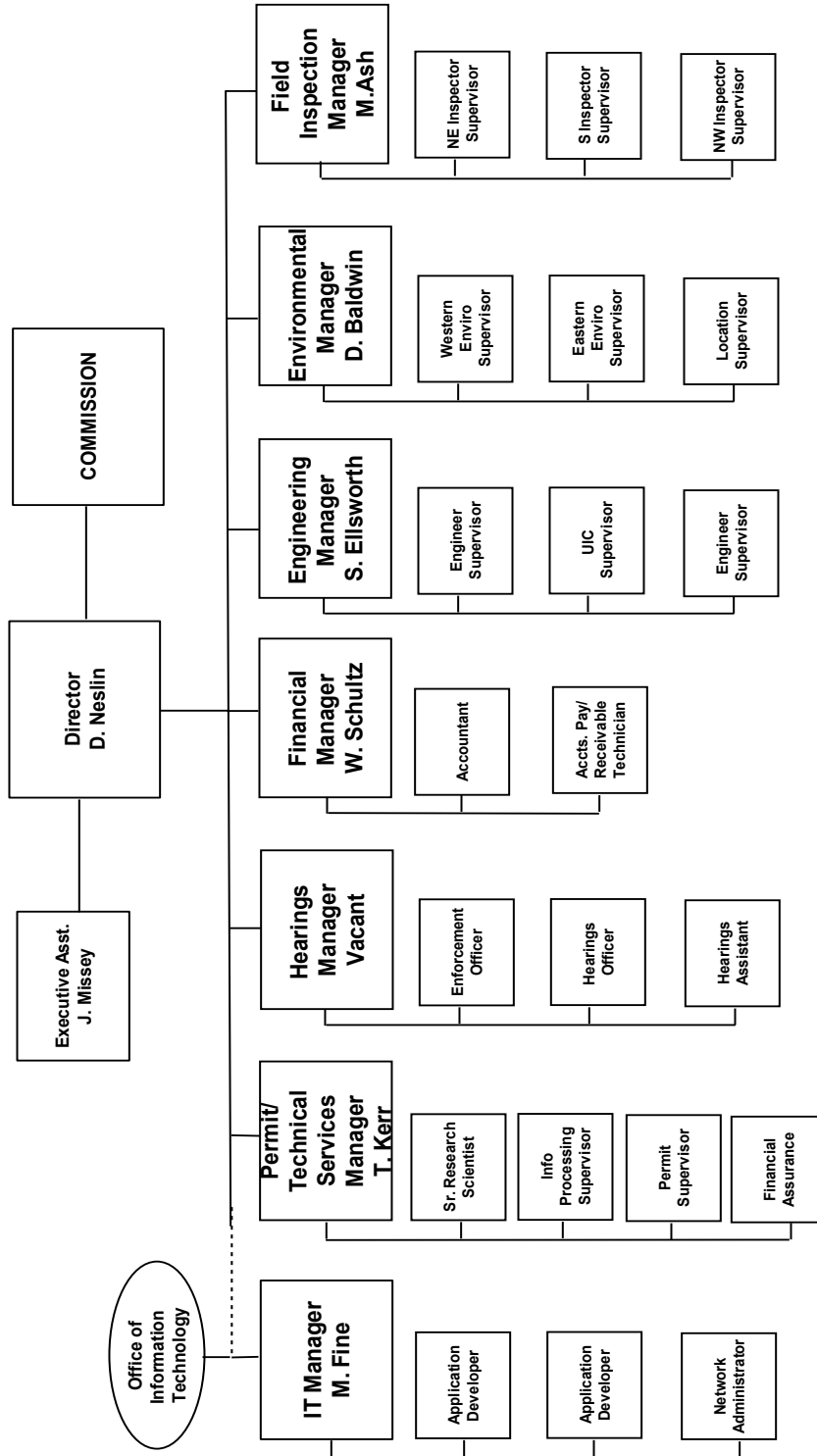
2. A 502.b. variance to Rule 318.a. was granted to Williams Production Company on December 8, 2011 for an application to recomplete the Bondad 33-10 #27, API #05-067-07949, NW¼ NE¼ Township 33 North, Range 10 West. The well required a 600 foot setback from a lease line under Rule 318 and was located less than the setback. One minority lessor did not respond to the exception location consent request thus requiring a variance for approval. Approval was granted because of the majority of the owners signed and returned the consent documents and the non-consenting party had not filed a protest.
3. The 502.b. variance was granted for the approval of 16 Black Raven Energy Inc. drilling permit applications that were expedited on December 16, 2011. Black Raven Energy Inc. requested issuance of permits with limited notice under Rule 303.l.(2) due to exigent circumstances, citing the need to maintain their contractual commitment to financial partners and drilling contractor. Black Raven's obligation to drill 60 wells by December 31, 2011 was nearing completion using 3 drilling rigs, each drilling one well a day. Unfortunately, the approved locations were found to be in an area that were proven to be uneconomic by the drilling program. Subsequently, the company had to find an alternate area that would provide the economics to satisfactorily meet the contractual commitment. The surface owner and the local government designee have acknowledged their support by providing waivers which are attached to the permits for all 16 wells. The first of this list of wells will begin drilling the week of December 18, 2011. Sixteen drilling permits and the corresponding oil and gas assessments were issued prior to the completion of the 20-day comment period. The wells are located in Phillips County and are listed below.



1. Brinkema 943-32-11 - NWNW, Section 32, T9N-R43W
 2. Dirks 843-3-41-L1 - NENE, Section 3, T8N-R43W
 3. Dirks 843-3-21-L6 - NENW, Section 3, T8N-R43W
 4. Dirks 843-3-31-L7 - NWNW, section 3, T8N-R3W
 5. Dirks 843-3-32-L10 - SWNE, Section 3, T8N-R43W
 6. Murray 943-34-31 - NWNE, Section 34, T9N-R43W
 7. Murray 943-34-41 - NENE, Section 34, T9N-R43W
 8. On The Brink 843-3-14 - SWSW, Section 3, T8N-R43W
 9. On The Brink 843-3-24 - SESW, Section 3, T8N-R43W
 10. On The Brink 843-3-44 - SESE, Section 3, T8N-R43W
 11. Sagehorn 844-3-21-L3 - NENW, Section 3, T8N-R44W
 12. Sagehorn 844-3-41-L8 - NENE, Section 3, T8N-R44W
 13. Sagehorn 844-3-21-L11 - SENW, Section 3, T8N-R44W
 14. Sagehorn 844-3-21-L12 - SWNW, Section 3, T8N-R44W
 15. Vieselmeyer 943-33-12 - SWNW, Section 33, T9N-R43W
 16. Vieselmeyer 943-33-33 - NWSE, Section 33, T9N-R43W
4. Exigent circumstances were requested by Noble for Form 2, McClellan PC G 04-180X, Doc 400234495. Noble has requested exigent circumstances, omitting the public comment period on this Form 2 (Doc 400234495), because the original hole was lost at 530 ft. They were given a verbal approval by engineering to skid the rig. The Form 5 and 6 have been submitted and approved. Noble needs this Form 2 approved to receive the API number and submit the new forms.



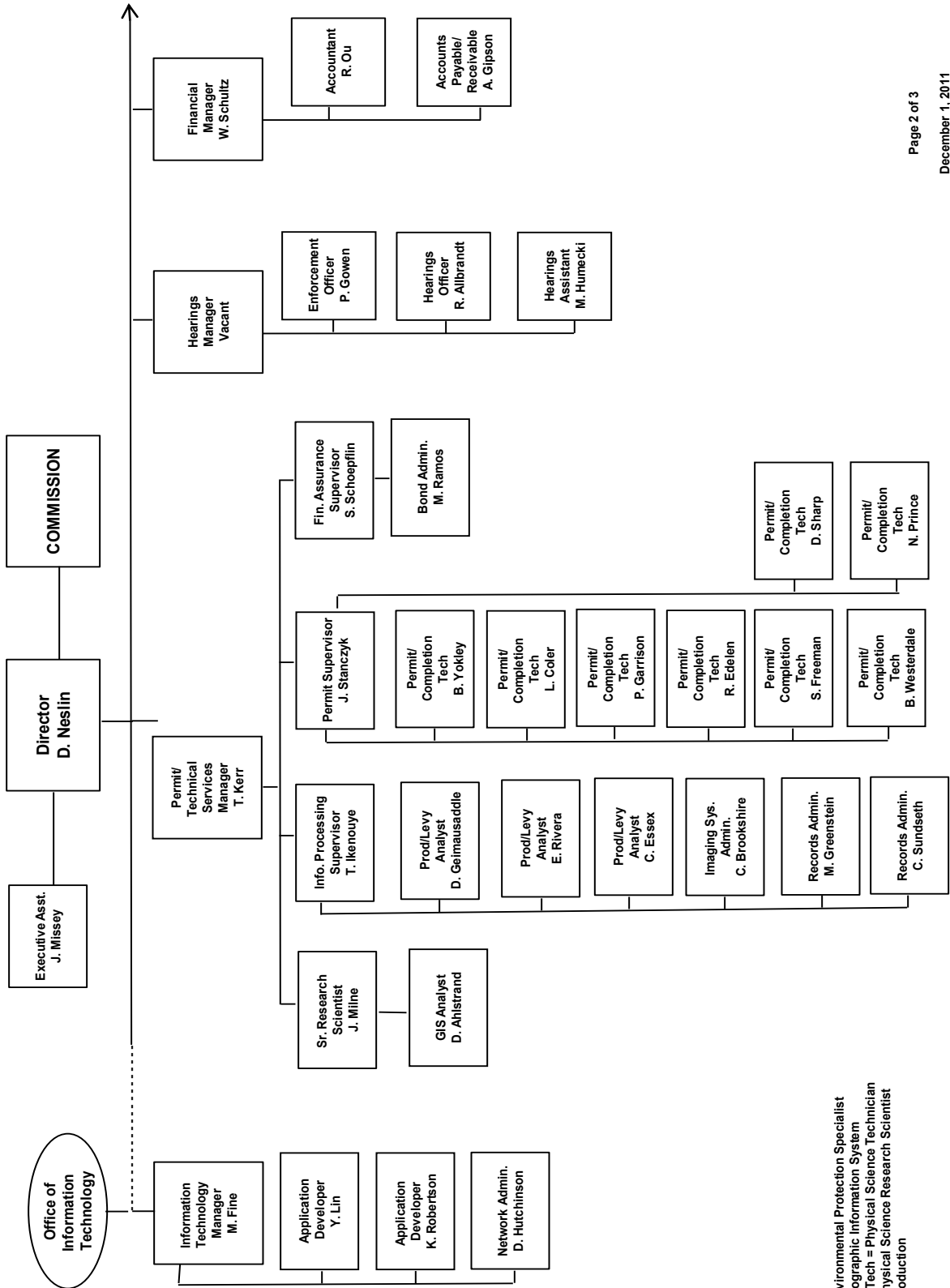
COLORADO OIL & GAS CONSERVATION COMMISSION



See the next two pages for details



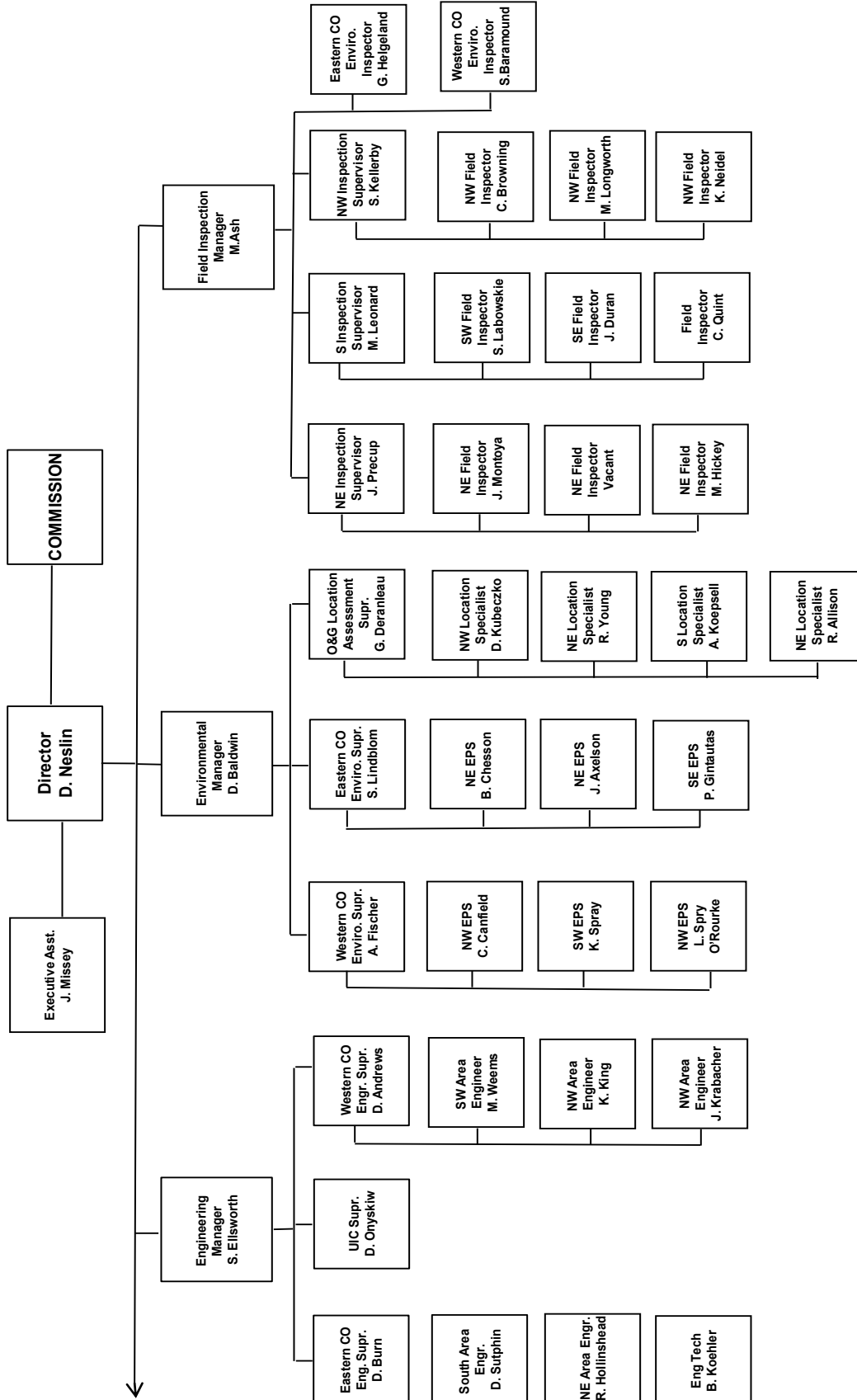
COLORADO OIL & GAS CONSERVATION COMMISSION ORGANIZATION



EPS = Environmental Protection Specialist
 GIS = Geographic Information System
 Phys/Sci Tech = Physical Science Technician
 PSRS = Physical Science Research Scientist
 Prod = Production



COLORADO OIL & GAS CONSERVATION COMMISSION ORGANIZATION



EIT = Engineer in Training
 EPS = Environmental Protection Specialist
 OGLA = Oil & Gas Location Assessment
 Phys Sci Tech = Physical Science Technician
 UIC = Underground Injection Control



PLUGGING, ABANDONMENT, AND WELL RECLAMATION PROJECTS FOR ORPHANED LOCATIONS
FISCAL YEAR 2011-2012

		ESTIMATED TOTAL PROJECT COST				FY 2011-2012 YTD EXPENDITURES				DESCRIPTION							
COUNTY	TYPE	PROJECT NAME	BOND	PRAW	EMGY	TOTALS	BOND	PRAW	EMGY	TOTALS	TOTALS	DESCRIPTION					
PLANNED																	
FREMONT	PLUG	11 WELLS	\$0	\$100,000	\$0	\$100,000	\$0	\$0	\$0	\$0	\$0	Plug abandoned wells in Florence area.					
GARFIELD	PLUG	BISCUIT RANCH 10-31D AND BRO-03B AND MULVHILL 15-32D	\$30,000	\$25,000	\$0	\$55,000	\$0	\$0	\$0	\$0	\$0	Reclaim five well pads, plug and abandon four conductor pipes, and plug and abandon three wells. Project is ready to put out for bids.					
MESA	PLUG	DEBEQUE ORPHANS ABANDONMENT - EARTHWORK CONST. AND RECL.	\$0	\$8,719	\$0	\$8,719	\$0	\$0	\$0	\$0	\$0	Additional reclamation work will be performed after the Pasture well is plugged, possible re-seeding.					
MOFFAT	PLUG	CULVERWELL AND ELDON GERBER	\$30,000	\$25,000	\$0	\$55,000	\$0	\$0	\$0	\$0	\$0	Plug and abandon two conductor pipes and one well and reclaim the pad including a drilling pit.					
OURAY	PLUG	RIDGEWAY WELLS	\$0	\$50,000	\$0	\$50,000	\$0	\$0	\$0	\$0	\$0	Plug and abandon old wells. Wells will be inspected in October before estimate is prepared.					
TOTALS =>											\$60,000	\$208,719	\$0	\$268,719	\$0	\$0	\$0
IN PROGRESS																	
ESTIMATED TOTAL PROJECT COST											BOND	PRAW	EMGY	TOTALS			
COUNTY	TYPE	PROJECT NAME	BOND	PRAW	EMGY	TOTALS	BOND	PRAW	EMGY	TOTALS	TOTALS	DESCRIPTION					
LOGAN	REC	COGCC KOENIG-ASHBY #1 AND R E LECKLER #1	\$0	\$30,000	\$0	\$30,000	\$0	\$0	\$0	\$0	\$0	Salt kill, erosion, concrete. Considerable earth work. Project has been put out for bids.					
LOGAN	REC	MITTELSTADT #1 AND LECKLER #1	\$60,000	\$0	\$0	\$60,000	\$0	\$0	\$0	\$0	\$0	Salt kill, erosion, pipe. Research is ongoing into bond claim.					
MESA	PLUG	DEBEQUE ORPHANS ABANDONMENT - PLUGGING AND ABANDONMENT	\$0	\$0	\$179,512	\$179,512	\$0	\$0	\$0	\$0	\$0	Complaint. Two wells have been plugged. Plug and abandon two remaining leaking wells. Work is in progress.					
MORGAN	REC	HUEY #1, HUEY #2A, HUEY #5, HUEY #8, HUEY #20, AND GEORGE E HUEY #1	\$0	\$24,900	\$0	\$24,900	\$0	\$24,900	\$0	\$24,900	\$0	Excess material. Work is complete. Awaiting final invoice.					
TOTALS =>											\$60,000	\$54,900	\$179,512	\$294,412	\$0	\$24,900	\$24,900
COMPLETED																	
ESTIMATED TOTAL PROJECT COST											BOND	PRAW	EMGY	TOTALS			
COUNTY	TYPE	PROJECT NAME	BOND	PRAW	EMGY	TOTALS	BOND	PRAW	EMGY	TOTALS	TOTALS	DESCRIPTION					
CHEYENNE	PLUG	GOLDENHAMMER	\$30,000	\$20,000	\$0	\$50,000	\$30,000	\$6,575	\$0	\$36,575	\$36,575	Project is completed.					
FREMONT	PLUG	HW-1619S69W #1, HW-3419S69W #2, HW-2919S69W #3, AND HW-2919S69W #4	\$0	\$22,600	\$0	\$22,600	\$0	\$20,075	\$0	\$20,075	\$20,075	Project is completed.					
LA PLATA	REC	DAVIES 1-22	\$0	\$8,899	\$0	\$8,899	\$0	\$8,899	\$0	\$8,899	\$8,899	Project is completed.					
LA PLATA	PLUG	KEG 1 WELL PLUGGING	\$5,000	\$19,700	\$0	\$24,700	\$5,000	\$19,700	\$0	\$24,700	\$24,700	Project is completed.					
TOTALS =>											\$35,000	\$71,199	\$0	\$106,199	\$35,000	\$55,249	\$90,249
GRAND TOTALS =>																	
ESTIMATED TOTAL PROJECT COSTS											BOND	PRAW	EMGY	TOTALS			
			\$155,000	\$334,818	\$179,512	\$669,330	\$35,000	\$80,149	\$0	\$115,149							

Project Types: "PLUG" indicates plugging and abandonment, "REC" indicates reclamation, and "ENV" indicates environmental
 EMGY: indicates funding by the Emergency Response line item
 TBD: Cost estimates in process.
 PRAW: indicates funding by the Plugging and Reclaiming Abandoned Wells line item
 Updated January 5, 2012

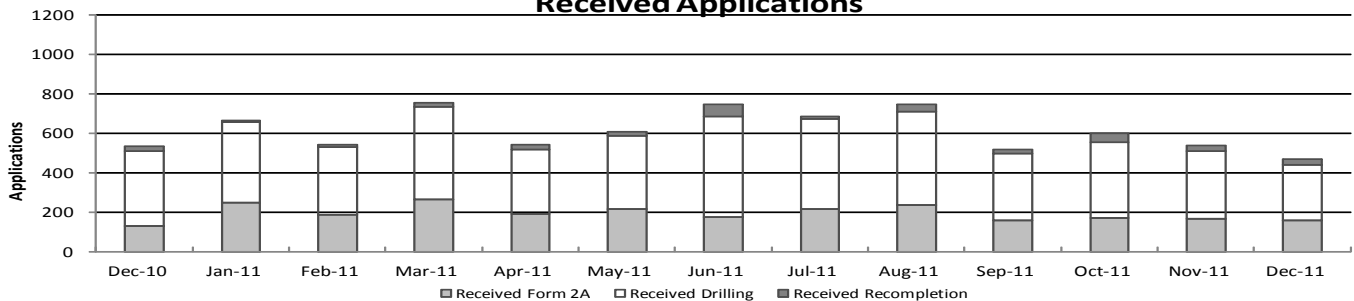


Colorado Oil & Gas Conservation Commission Monthly Permit Activity

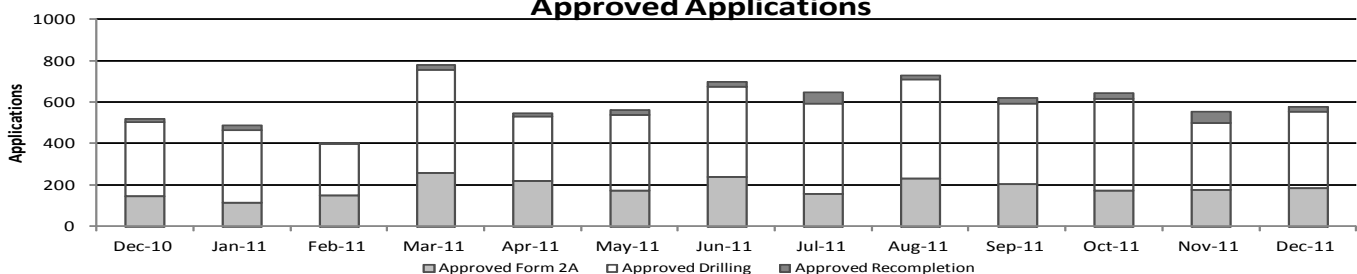
	Backlog	Received	Approved	Withdrawn	Rejected	Incomplete	In-Process	Remaining
Form2A								
Dec-10	141	128	144	2	0	25	98	123
Jan-11	123	249	112	4	0	37	219	256
Feb-11	256	184	150	7	0	50	233	283
Mar-11	283	262	258	6	0	80	201	281
Apr-11	281	190	218	6	0	80	167	247
May-11	247	214	171	10	0	88	192	280
Jun-11	280	172	239	4	0	60	149	209
Jul-11	209	215	158	8	0	65	193	258
Aug-11	247	236	229	6	0	66	182	248
Sep-11	244	159	203	6	0	58	136	194
Oct-11	194	171	172	12	0	50	131	181
Nov-11	194	166	174	9	0	69	108	177
Dec-11	171	159	183	5	0	44	98	142
Drilling								
Dec-10	334	379	361	4	0	68	280	348
Jan-11	348	405	351	7	0	114	281	395
Feb-11	395	343	249	3	0	113	373	486
Mar-11	486	472	498	3	0	129	328	457
Apr-11	457	325	314	7	0	129	332	461
May-11	461	372	367	15	0	142	309	451
Jun-11	451	512	436	2	0	99	426	525
Jul-11	525	457	436	9	0	107	430	537
Aug-11	537	472	482	8	0	141	378	519
Sep-11	519	336	389	8	0	108	350	458
Oct-11	458	382	443	16	0	85	296	381
Nov-11	381	342	324	8	0	146	245	391
Dec-11	391	279	370	5	0	118	177	295
Recompletion								
Dec-10	10	26	12	0	0	4	20	24
Jan-11	24	8	23	2	0	5	2	7
Feb-11	7	15	2	0	0	8	12	20
Mar-11	20	18	23	0	0	1	14	15
Apr-11	15	26	15	1	0	0	25	25
May-11	25	20	25	0	0	3	17	20
Jun-11	20	61	22	0	0	3	56	59
Jul-11	59	13	55	2	0	6	9	15
Aug-11	15	37	17	0	0	6	29	35
Sep-11	35	22	29	0	0	3	25	28
Oct-11	28	46	29	0	0	3	42	45
Nov-11	45	29	57	2	0	4	11	15
Dec-11	15	28	23	0	0	8	12	20

Incomplete are permits that have missing or inaccurate data and cannot be approved.

Received Applications



Approved Applications



Backlog = Incomplete + In-process = Remaining permits from previous month



Colorado Oil and Gas Conservation Commission
 Status of Permit Applications Filed By Month
 January 15, 2012

Form 2A Location Assessment

Year	Month	Received	Approved	Withdrawn	In Process	Percent In Process	Median Days to Process	Less Than 30 Days	30 to 49 Days	Greater Than 50 Days
2010	1	225	206	17	0	0%	36	153	27	26
2010	2	236	222	14	0	0%	41	169	39	14
2010	3	283	272	11	0	0%	36	197	58	17
2010	4	279	273	6	0	0%	34	176	76	21
2010	5	195	190	5	0	0%	31	76	93	21
2010	6	258	254	4	0	0%	28	177	58	19
2010	7	187	179	8	0	0%	36	64	98	17
2010	8	218	212	6	0	0%	35	113	64	35
2010	9	185	184	1	0	0%	27	123	54	7
2010	10	165	158	7	0	0%	27	112	35	11
2010	11	163	160	3	0	0%	26	118	36	6
2010	12	126	123	3	0	0%	28	81	24	18
2010	Total	2520	2433	85	0			1559	662	212
2011	1	236	234	2	0	0%	33	147	58	29
2011	2	174	163	11	0	0%	37	99	35	29
2011	3	281	273	8	0	0%	33	198	42	33
2011	4	189	177	9	3	2%	37	112	30	35
2011	5	211	198	13	0	0%	30	126	58	14
2011	6	184	179	3	2	1%	31	135	27	17
2011	7	211	197	9	5	2%	34	89	89	19
2011	8	245	237	4	4	2%	33	123	86	28
2011	9	156	144	8	4	3%	31	80	53	11
2011	10	167	155	8	4	2%	29	89	59	7
2011	11	171	157	7	7	4%	29	100	53	4
2011	12	166	106	0	60	36%	23	91	15	0
2011	Total	2391	2220	82	89	4%		1389	605	226

Form 2 Application For Permit to Drill (APDs)

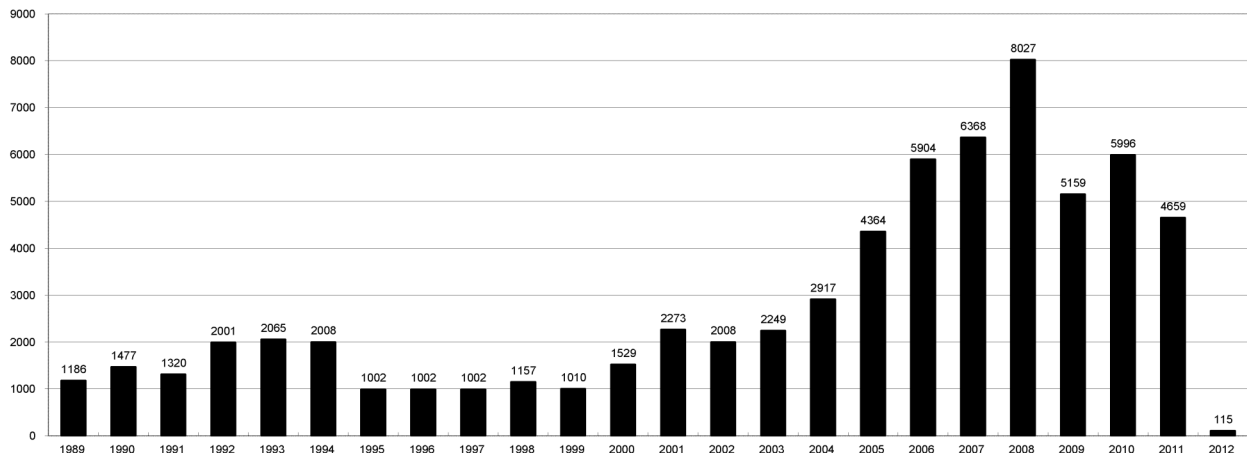
Year	Month	Received	Approved	Withdrawn	In Process	Percent In Process	Median Days to Process	Less Than 30 Days	30 to 49 Days	Greater Than 50 Days
2010	1	460	424	36	0	0%	44	24	221	188
2010	2	438	426	11	0	0%	51	13	255	163
2010	3	943	923	20	0	0%	50	67	340	571
2010	4	659	642	17	0	0%	38	102	455	147
2010	5	354	339	15	0	0%	41	75	209	94
2010	6	555	549	6	0	0%	36	268	290	125
2010	7	467	459	8	0	0%	42	99	268	123
2010	8	493	487	6	0	0%	39	220	194	144
2010	9	420	419	1	0	0%	37	175	221	62
2010	10	395	380	15	0	0%	29	212	147	40
2010	11	323	320	3	0	0%	26	215	79	39
2010	12	384	378	6	0	0%	26	290	60	48
2010	Total	5891	5746	144	0	0%		1760	2739	1744
2011	1	380	371	7	0	0%	32	235	106	40
2011	2	336	333	3	0	0%	36	182	114	51
2011	3	466	454	12	0	0%	35	326	67	82
2011	4	347	332	12	3	1%	37	174	117	66
2011	5	364	355	9	0	0%	32	196	145	35
2011	6	514	509	3	2	0%	31	424	94	46
2011	7	472	456	10	6	1%	38	145	272	54
2011	8	468	460	4	4	1%	36	212	179	105
2011	9	334	311	15	8	2%	30	230	82	23
2011	10	369	352	10	7	2%	30	212	149	16
2011	11	338	297	3	38	11%	30	192	139	11
2011	12	309	191	1	117	38%	27	152	51	3
2011	Total	4697	4421	89	185	4%	394	2680	1515	532



COLORADO OIL AND GAS CONSERVATION COMMISSION
ANNUAL DRILLING PERMITS BY COUNTY

COUNTY	1988	1989	1990	1991	1992	1993	1994	1995	1996	1997	1998	1999	2000	2001	2002	2003	2004	2005	2006	2007	2008	2009	2010	2011	current as of 1/15 2012	
ADAMS	46	34	44	53	92	58	137	34	9	33	24	19	38	28	9	26	39	34	37	89	51	35	21	8		
ARAPAHOE	5	5	15	14	11	4	20	12	2	9	1	2	0	2	1	2	5	7	11	10	10	10	8	23	2	
ARCHULETA	8	5	18	5	2	1		3		3		1	7	9	6	10	8	13	14	26	47	11	18	12		
BACA	6	4	15	10	23	9	12	24	10	7	13	15	22	6	2	3	7	8	2	11	13	3	4	5		
BENT				1		2	2	4	2	5	3	5	2				5	3	8	1	1			5		
BOULDER	1		1	13	38	159	38	5	8	2	5		1	5	6	7	17	13	21	37	32	35	24	30		
BROOMFIELD															2	7			1	1		2	33	28	11	
CHEYENNE	203	149	102	93	71	58	48	55	43	31	41	7	3	3	3	3	3	10	21	15	33	12	13	16		
COSTILLA												1														
CROWLEY	1		1	1																						
DELTA	1	1	2												7	4	5	10	9	2			4	3		
DENVER										5	3	3		3					19	25						
DOLORES	2		4	1	2	1												1	1	6	10	12	21	8	8	2
ELBERT	9	12	8	5	3		2	13	16	11	1		2						4			1	2	3	1	
EL PASO																		1	3	2	4	14	13	22	14	
FREMONT	9	5	6	7	1	2	2	1	2	1												13	20	14		
GARFIELD	19	66	111	36	18	56	143	78	109	141	95	130	213	353	362	567	796	1509	1845	2550	2888	1981	2037	1323	13	
GRAND						1																				
GUNNISON			2	2		1									5	10	1	9	19	7	10	12	4	3	2	
HUERFANO	3	5		4	17	3	3	2	1	3	40	26	41	27	27		8	2		7			2	1		
JACKSON	3	1	4	6	2	3	2	2	2	6	3		34	18	21	9	14	6	8	5	27	19	9	18		
JEFFERSON	1		4	2		1	1	1	1	1	2	1							1	3	2					
KIOWA	15	39	40	46	28	28	21	26	13	17	10	2	11	18	2	4	2	1	11	9	26	7	16	17	2	
KIT CARSON	9	5	7	8	8	15	26	11	7	6	9	5					1	3	5	4	13	7	3	2		
LA PLATA	302	218	388	128	120	40	40	20	71	40	82	107	127	156	104	162	102	115	235	251	328	298	191	99	4	
LARIMER	4	4	3	6	13	7	3		1	3	1		2													
LAS ANIMAS	10	30	36			9	32	95	134	136	195	195	268	400	259	180	332	413	500	362	303	88	92	85		
LINCOLN	8	6	4	7	7	11	8	9	3	2		2	2	1	6	3			4	1	2	58	44	48	31	
LOGAN	18	21	23	13	14	30	15	13	6	12	7		4	7	3	3	6	13	17	14	5	9	17	8		
MESA	1	12	29	20	22	2	22	6	11	10	2	6	13	27	30	27	54	136	265	293	501	427	306	127	9	
MOFFAT	13	25	27	19	40	52	43	40	41	28	21	15	35	52	62	63	63	60	120	68	57	51	53	93	1	
MONTEZUMA	6	7	10	8	7	11	15	9	13	5	4	1	4			5	8	8	11	5	12	22	39	19	27	1
MONTROSE				1						1			1	3	2	4	2			1	3	3		1	1	
MORGAN	34	27	36	13	10	11	19	12	10	11	10	12	9	9	2	7	9	7	3	6	2	1	6	13		
OTERO				2																						
PARK				1								1											3	4	1	
PHILLIPS			3		1	1							1	2		7	13	17	12	69	82	45	64	112	9	
PITKIN		1			2												1			1						
PROWERS	19	9	5	10	14	7	3	5	5	3	9	3	2	5	4			7	5	7	5	8	1	3	1	
RIO BLANCO	34	83	77	33	81	83	126	81	33	40	51	95	89	187	105	179	154	161	360	321	477	348	441	109		
RIO GRANDE	2	3	4	1		1							1	1	1						1	1				
ROUTT	4	3	12	4	2	3	1	2	1	1	1	4	20	13	1			4	6	9	8	4	2	3	10	
SAGUACHE	1							2					2		2					2	1	2				
SAN MIGUEL			2	2					1	1	4	2	11	13	27	18	42	45	35	23	20	13	10	2		
SEDGWICK				1				3		2						1	5	2	7	2	1	19	11	12		
WASHINGTON	40	29	23	28	24	26	25	12	19	26	18	3	23	17	27	34	128	50	69	45	11	1	6	12		
WELD	424	357	366	656	1224	1319	1030	254	305	285	392	288	509	702	760	757	832	901	1418	1527	2340	1448	2152	2262	67	
YUMA	14	20	45	60	104	53	167	168	123	116	111	60	31	205	160	138	237	782	797	541	545	105	299	148	3	
Total	1275	1186	1477	1320	2001	2065	2008	1002	1002	1002	1157	1010	1529	2273	2008	2249	2917	4364	5904	6368	8027	5159	5996	4659	115	

ALL COUNTIES





Colorado Oil and Gas Conservation Commission
 Form 2A Breakdown By County By Year
 January 15, 2012

Yr	County	Form2As	Complete	In Process	Informational	Requires Approval	New Location	CDP	SWH	RSO	CDPHE
2009	Total State	818	818	0	728	108	408	2	80	5	5
2010	ADAMS	7	7	0	8	1	7	0	0	0	0
2010	ARAPAHOE	8	8	0	8	0	4	0	0	0	0
2010	ARCHULETA	6	6	0	3	4	4	0	6	0	0
2010	BACA	3	3	0	3	0	2	0	0	0	0
2010	BENT	6	6	0	5	1	6	0	0	0	0
2010	BOULDER	7	7	0	6	1	0	0	1	0	2
2010	BROOMFIELD	11	11	0	11	0	0	0	0	0	0
2010	CHEYENNE	11	11	0	11	0	8	0	0	0	0
2010	DELTA	3	3	0	3	0	2	0	0	0	0
2010	DOLORES	4	4	0	3	1	2	0	1	0	0
2010	EL PASO	3	3	0	3	0	3	0	0	0	0
2010	FREMONT	19	19	0	19	0	15	0	0	0	0
2010	GARFIELD	170	170	0	2	170	83	0	140	11	4
2010	GUNNISON	6	6	0	0	8	8	0	4	1	0
2010	HUERFANO	1	1	0	1	0	1	0	0	0	0
2010	JACKSON	10	10	0	3	7	3	0	8	1	0
2010	KIOWA	12	12	0	12	0	10	0	0	0	0
2010	KIT CARSON	3	3	0	3	0	2	0	0	0	0
2010	LA PLATA	48	48	0	26	25	15	0	35	0	3
2010	LARIMER	20	20	0	20	1	9	0	0	0	1
2010	LAS ANIMAS	66	66	0	73	1	39	0	0	0	2
2010	LINCOLN	46	46	0	47	0	40	0	0	0	1
2010	LOGAN	4	4	0	15	0	12	0	0	0	0
2010	MESA	47	47	0	0	50	23	0	22	1	0
2010	MOFFAT	44	44	0	19	25	20	0	25	3	0
2010	MONTEZUMA	9	9	0	6	4	7	0	5	0	0
2010	MORGAN	10	10	0	6	4	10	0	0	0	0
2010	PARK	3	3	0	3	0	2	0	0	0	0
2010	PHILLIPS	47	47	0	47	0	32	0	0	0	2
2010	PROWERS	3	3	0	3	0	3	0	0	0	0
2010	RIO BLANCO	60	60	0	0	60	34	0	42	1	1
2010	ROUTT	4	4	0	0	4	3	0	4	1	0
2010	SAN MIGUEL	9	9	0	5	4	0	0	9	0	1
2010	SEDGWICK	11	11	0	11	0	1	0	0	0	0
2010	WASHINGTON	6	6	0	6	0	5	0	0	0	0
2010	WELD	1394	1393	0	1173	265	984	0	25	3	36
2010	YUMA	257	256	0	260	1	202	0	0	0	2
2010	Total State	2378	2376	0	1824	637	1601	0	327	22	55
2011	ADAMS	10	9	1	1	1	9	0	0	0	0
2011	ARAPAHOE	20	20	0	12	0	21	0	0	0	0
2011	ARCHULETA	5	4	1	0	4	4	0	8	0	0
2011	BACA	5	5	0	3	1	4	0	1	0	0
2011	BOULDER	9	9	0	1	1	3	0	1	0	1
2011	BROOMFIELD	1	1	0	1	0	0	0	0	0	0
2011	CHEYENNE	17	16	1	7	0	12	0	0	0	0
2011	DELTA	2	2	0	0	0	1	0	0	0	0
2011	DOLORES	5	4	1	1	0	3	0	1	0	0
2011	EL PASO	5	3	2	0	0	5	0	0	0	0
2011	ELBERT	1	1	0	1	0	1	0	0	0	0
2011	FREMONT	11	11	0	3	0	8	0	0	0	0
2011	GARFIELD	117	112	5	0	67	50	0	101	9	1
2011	GUNNISON	7	5	2	0	4	5	1	6	0	0
2011	HUERFANO	1	1	0	1	0	1	0	0	0	0
2011	JACKSON	12	12	0	2	5	12	0	10	0	0
2011	KIOWA	19	19	0	12	1	18	0	1	0	0
2011	KIT CARSON	2	2	0	1	0	0	0	0	0	0
2011	LA PLATA	26	24	2	2	18	18	0	31	0	0
2011	LARIMER	7	7	0	7	0	7	0	0	0	0
2011	LAS ANIMAS	77	73	4	42	0	44	0	1	0	0
2011	LINCOLN	29	29	0	15	2	20	0	0	0	1
2011	LOGAN	10	10	0	9	0	8	0	0	0	0
2011	MESA	24	23	1	0	9	15	0	12	0	0
2011	MOFFAT	48	47	1	2	12	42	0	41	5	0
2011	MONTEZUMA	1	1	0	0	0	1	0	0	0	0
2011	MORGAN	10	10	0	6	0	10	0	0	0	0
2011	PARK	1	1	0	1	0	0	0	0	0	0
2011	PHILLIPS	128	120	8	56	0	125	0	0	0	0
2011	PROWERS	1	1	0	1	0	1	0	0	0	0
2011	RIO BLANCO	37	32	5	0	20	24	0	27	0	0
2011	RIO GRANDE	1	0	1	0	0	1	0	1	0	0
2011	ROUTT	8	7	1	0	0	9	0	10	1	0
2011	SEDGWICK	13	12	1	2	0	11	0	2	0	0
2011	WASHINGTON	13	13	0	10	1	12	0	0	0	0
2011	WELD	1473	1418	55	767	173	1162	0	20	2	1
2011	YUMA	148	147	1	38	0	122	0	0	0	0
2011	Total	2304	2211	93	1004	319	1789	1	274	17	4

CDP = Comprehensive Drilling Plan SWH = Sensitive Wildlife Habitat consultation
 RSO = Restricted Surface Occupancy consultation CDPHE= Colorado Department of Health and Environment consultation



Colorado Oil and Gas Conservation Commission

Horizontal Well Activity

January 15, 2012

County	Prior Years			2009		2010		2011		2012		Summary				
	Drilled	DA	PA	Permit	Spud	Permit	Spud	Permit	Spud	Permit	Spud	Spud	AC	PR	DA	PA
ADAMS				6	5	2	3	1				8	3	3		
ARAPAHOE	2							10	1			3	2			
ARCHULETA	20			7	6	15	6	10	6		1	39		22		
BOULDER								4				0				
CHEYENNE	5		4									5		1		4
DOLORES	9			18	2	6					1	11		3		
FREMONT	7	6		6		12	5	3	4			16		6	6	
GARFIELD	10		2	1	1	16	2	18	7			20		16		2
GUNNISON	1					1					2	1		1		
JACKSON	8	1	1	8		3	3	9	1			12		9	1	1
KIT CARSON	1											1		1		
LA PLATA	28	2		11	1	28	3	18	7		1	39		36	2	
LARIMER	3	2						5	1			4		1	2	
LAS ANIMAS	16		2	4		1	1					17		14		2
LINCOLN				2	1	2	1	1				2		2		
LOGAN	2											2		2		
MESA	3	2		36	1	22	8	24	11	9		23		13	2	
MOFFAT	7	1	1	6	3	4		9	2	1		12	1	6	1	1
MONTEZUMA	6		1	23	4	11	1	8	2			13		10		1
MORGAN								6	2			2		2		
PARK						1		1				0				
RIO BLANCO	7	2				1	1	11	1			9	1	5	2	
ROUTT	10	6	1									10		3	6	1
SAN MIGUEL	1			1								1				
WASHINGTON	1		1									1				1
WELD	11	3		12	5	208	91	758	221	27	6	334		141	4	1
YUMA	1		1	6								1				1
TOTAL Horizontal	159	25	14	147	29	333	125	896	266	41	7	586	7	297	26	15
Percent of Total HZ		16%	9%										1%	51%	4%	3%
Total All Permits				5159		5996		4936		115						
Percent of Total				2.8%		5.6%		18.2%		35.7%						

DA = Dry & Abandoned; PA = Produced & Abandoned; AC = Active Injection or Storage; PR = Producing



Well to Building Setback Review

Colorado Oil and Gas Conservation Commission
January 15, 2012

Count of well locations by proximity groupings from well spot to buildings for all locations reviewed under the December 17, 2008 amended rules.

Location Proximity to Buildings	Number of Locations	Percent of Total Locations Reviewed
less than 150 feet	9	0%
150 to 350 feet	158	3%
350 to 500 feet	259	5%
500 to 1000 feet	838	17%
1000 + feet	3572	74%
Total Locations	4836	

County	Total	Less than 150 feet	150 to 350 feet	350 to 500 feet	500 to 1000 feet	1000 + feet
ADAMS	22	0	2	3	9	8
ARAPAHOE	37	0	1	4	1	31
ARCHULETA	14	0	0	1	8	5
BACA	10	0	0	0	1	9
BENT	5	0	0	0	0	5
BOULDER	20	0	1	1	15	3
BROOMFIELD	26	0	0	4	10	12
CHEYENNE	32	1	0	0	0	31
DELTA	5	0	0	1	1	3
DOLORES	8	0	0	0	4	4
EL PASO	6	0	0	0	0	6
ELBERT	2	0	0	0	1	1
FREMONT	30	0	2	7	6	15
GARFIELD	316	0	3	2	47	264
GUNNISON	10	0	0	1	1	8
HUERFANO	2	0	0	0	1	1
JACKSON	22	0	0	1	1	20
KIOWA	38	0	0	0	1	37
KIT CARSON	5	0	0	0	0	5
LA PLATA	80	0	3	7	21	49
LARIMER	26	0	3	3	9	11
LAS ANIMAS	186	1	4	6	37	138
LINCOLN	99	0	0	1	2	96
LOGAN	21	0	1	0	0	20
MESA	68	0	0	3	11	54
MOFFAT	97	0	0	1	5	91
MONTEZUMA	10	0	0	1	1	8
MONTROSE	2	0	0	0	0	2
MORGAN	13	0	0	1	1	11
PARK	4	0	0	0	0	4
PHILLIPS	215	1	3	4	17	190
PROWERS	4	0	0	0	0	4
RIO BLANCO	98	0	0	0	1	97
ROUTT	11	0	0	0	0	11
SAN MIGUEL	10	0	0	0	0	10
SEDGWICK	23	0	0	1	3	19
WASHINGTON	19	0	1	0	0	18
WELD	2779	6	127	192	581	1873
YUMA	461	0	7	14	42	398
TOTAL	4836	9	158	259	838	3572



Well to Building Setback Review

Colorado Oil and Gas Conservation Commission
January 15, 2012

Listing of Locations Closest to Buildings

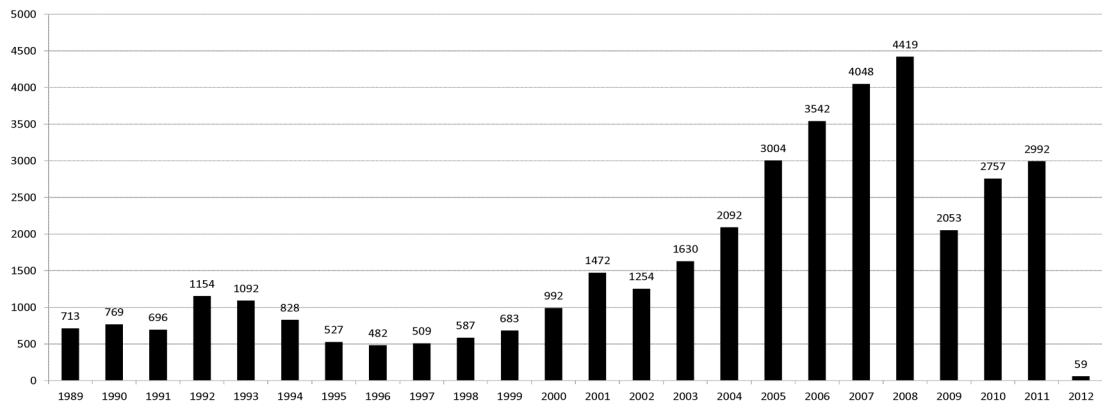
Year	Document Number	County	High Density	New Location	Distance	Proximity	Building Description
2011	2587822	CHEYENNE	No	No	58	less 150	Water well house
2009	1691798	WELD	No	No	58	less 150	Vehicle garage
2010	4E+08	WELD	No	Yes	69	less 150	Abandoned hog shed
2009	1758843	WELD	No	Yes	103	less 150	Building to be razed
2011	1636646	WELD	No	No	127	less 150	Storage shed
2009	4E+08	LAS ANIMAS	No	Yes	127	less 150	Operator is owner
2009	1786896	PHILLIPS	No	No	132	less 150	Grain Storage
2011	4E+08	WELD	No	Yes	143	less 150	Irrigation pump house
2011	4E+08	WELD	No	Yes	145	less 150	Storage Barn
2009	1904205	WELD	No	No	154	150 to 350	Livestock Enclosure
2011	4E+08	WELD	No	Yes	157	150 to 350	Existing well / storage building
2010	4E+08	WELD	No	No	159	150 to 350	Equipment Barn
2011	4E+08	WELD	No	Yes	159	150 to 350	Abandoned
2010	4E+08	WELD	No	Yes	162	150 to 350	Goat Barn
2009	1758386	WELD	No	Yes	168	150 to 350	Storage Shed
2011	1635946	WELD	No	No	169	150 to 350	Storage shed
2011	4E+08	WELD	No	Yes	178	150 to 350	Residence
2011	4E+08	WELD	No	Yes	180	150 to 350	Residence
2010	1697620	WELD	No	No	187	150 to 350	Livestock Shed
2009	1758746	WELD	No	No	193	150 to 350	Storage Shed
2011	4E+08	WELD	No	Yes	198	150 to 350	Storage barn
2009	1774783	WELD	No	No	199	150 to 350	cement service building
2011	4E+08	YUMA	No	Yes	199	150 to 350	Steel Barn
2010	4E+08	PHILLIPS	No	Yes	203	150 to 350	
2010	4E+08	WELD	No	No	205	150 to 350	
2010	4E+08	WELD	No	Yes	206	150 to 350	
2010	4E+08	WELD	No	No	208	150 to 350	
2009	4E+08	WELD	No	No	209	150 to 350	
2011	4E+08	YUMA	No	No	210	150 to 350	
2011	4E+08	WELD	No	Yes	211	150 to 350	
2009	4E+08	WELD	No	No	214	150 to 350	
2010	4E+08	WELD	No	Yes	215	150 to 350	
2011	4E+08	YUMA	No	No	220	150 to 350	
2009	1783811	LA PLATA	No	No	221	150 to 350	
2009	1758230	WELD	No	No	224	150 to 350	
2009	4E+08	WELD	No	Yes	226	150 to 350	
2010	2589724	WELD	No	No	227	150 to 350	
2010	4E+08	LARIMER	No	Yes	229	150 to 350	
2009	1691730	WELD	No	Yes	230	150 to 350	
2010	2094049	GARFIELD	No	Yes	230	150 to 350	
2011	4E+08	WELD	No	Yes	231	150 to 350	
2010	4E+08	WELD	No	Yes	231	150 to 350	
2010	4E+08	WELD	No	Yes	232	150 to 350	
2010	4E+08	WELD	No	Yes	233	150 to 350	
2011	4E+08	WELD	No	No	234	150 to 350	
2009	4E+08	WELD	No	No	235	150 to 350	
2010	4E+08	WELD	No	No	237	150 to 350	
2010	4E+08	WELD	No	No	239	150 to 350	
2009	4E+08	WELD	No	Yes	239	150 to 350	
2011	4E+08	WELD	No	No	240	150 to 350	
2011	4E+08	WELD	No	Yes	240	150 to 350	
2010	4E+08	WELD	No	No	240	150 to 350	
2011	4E+08	WELD	No	No	241	150 to 350	
2009	1758197	WELD	No	Yes	244	150 to 350	
2009	1808409	LA PLATA	No	No	245	150 to 350	
2011	4E+08	WELD	No	Yes	245	150 to 350	
2011	4E+08	WELD	No	Yes	245	150 to 350	
2011	4E+08	WELD	No	No	248	150 to 350	
2009	1786946	PHILLIPS	No	No	250	150 to 350	
2011	4E+08	WELD	No	Yes	253	150 to 350	
2010	2583093	WELD	No	Yes	255	150 to 350	
2010	4E+08	WELD	No	No	259	150 to 350	
2011	4E+08	WELD	No	No	260	150 to 350	
2011	4E+08	WELD	No	No	260	150 to 350	
2011	4E+08	WELD	No	Yes	260	150 to 350	
2011	4E+08	WELD	No	Yes	260	150 to 350	
2009	4E+08	WELD	No	No	260	150 to 350	
2009	1787005	ADAMS	No	No	261	150 to 350	
2010	2590292	WELD	Yes	No	262	150 to 350	
2009	4E+08	WELD	No	No	264	150 to 350	
2011	4E+08	WELD	No	Yes	264	150 to 350	
2009	4E+08	WELD	No	No	265	150 to 350	
2010	4E+08	FREMONT	Yes	Yes	266	150 to 350	
2011	4E+08	FREMONT	No	No	266	150 to 350	
2010	4E+08	LARIMER	No	Yes	266	150 to 350	
2009	4E+08	WELD	No	Yes	267	150 to 350	
2011	4E+08	WELD	No	No	270	150 to 350	
2010	2096918	WELD	No	No	272	150 to 350	
2011	4E+08	WELD	No	No	272	150 to 350	
2010	4E+08	WELD	No	Yes	275	150 to 350	
2011	4E+08	WELD	No	Yes	275	150 to 350	
2009	1757409	WELD	No	Yes	277	150 to 350	
2009	1699321	WELD	No	Yes	277	150 to 350	
2010	4E+08	WELD	No	Yes	280	150 to 350	
2010	4E+08	WELD	No	No	280	150 to 350	
2010	4E+08	WELD	No	Yes	280	150 to 350	
2009	1759022	WELD	No	No	281	150 to 350	
2011	4E+08	WELD	No	Yes	282	150 to 350	
2009	1903999	WELD	No	No	282	150 to 350	
2010	4E+08	PHILLIPS	No	Yes	284	150 to 350	
2011	4E+08	WELD	No	Yes	284	150 to 350	
2011	4E+08	WELD	No	No	284	150 to 350	
2010	4E+08	WELD	No	Yes	285	150 to 350	
2011	4E+08	WELD	No	Yes	288	150 to 350	
2010	4E+08	YUMA	No	Yes	288	150 to 350	
2011	4E+08	WELD	No	Yes	291	150 to 350	
2009	4E+08	ADAMS	No	No	292	150 to 350	
2010	1760668	WELD	No	No	292	150 to 350	
2010	4E+08	WELD	No	Yes	298	150 to 350	
2010	4E+08	LAS ANIMAS	No	Yes	298	150 to 350	
2011	4E+08	WELD	No	Yes	298	150 to 350	
2011	4E+08	WELD	No	Yes	298	150 to 350	



COLORADO OIL AND GAS CONSERVATION COMMISSION ANNUAL WELL STARTS BY COUNTY

COUNTY	1988	1989	1990	1991	1992	1993	1994	1995	1996	1997	1998	1999	2000	2001	2002	2003	2004	2005	2006	2007	2008	2009	2010	2011	2012	Current as of 1/15	
ADAMS	39	27	26	36	54	20	54	28	6	16	12	17	18	13	4	19	22	24	13	41	14	15	21	2			
ALAMOSA																											
ARAPAHOE	2	4	16	11	11	3	9	8	3	3	2						6	1	5	2	1	1	3	7			
ARCHULETA	5	3	7	5	2	1		2		1			4	4	2	5	4	10	5	7	24	9	10	6	1		
BACA	5	5	12	6	21	8	9	19	9	7	11	8	19	6	2	1	6	6	2	6	12		5	4			
BENT				1			2	3	1	2	3	6	2				3	2	8	1	1				1		
BOULDER	2			7	18	56	15	5								2	5	11	9	14	25	16	13	7			
BROOMFIELD	3	2	3	7	14	27	22	2	2						2		1				10		22	11			
CHEYENNE	177	133	92	75	64	50	44	41	35	29	29	6	2	1	3	3		9	14	15	14	8	12	9			
CONEIOS																											
COSTILLA												1															
CROWLEY	1		1																								
CUSTER																											
DELTA	1		1													5	4	6	5	2			4	1			
DENVER											2	3	1		2					7	5	4					
DOLORES	2		4	1													2		2	13	4	2					
DOUGLAS																											
EAGLE																											
EL PASO																								2			
ELBERT	8	11	9	5	2				10	15	2	2		2						1							
FREMONT	6	3	5	7	1	1	1	2									1	3	2	2	5	3	9	16			
GARFIELD	3	12	24	8	3	4	15	13	7	28	19	94	190	251	245	417	585	799	1005	1304	1679	765	910	853	22		
GRAND							1																				
GUNNISON			1	2		1										1		1	9	5	1	4	3	1			
HUERFANO	6			2	6	1	1	2		2	31	9	25	14	19	3	6	2			2		1				
JACKSON	2	1	3	7	2		3	1	1	3	3		24	2	4	10	10		3	3	10	1	6	6			
JEFFERSON									1					2						2							
KIOWA	14	32	35	37	28	19	20	22	8	13	6	4	8	16	2	4	2	1	7	7	2	5	14	13			
KIT CARSON	11	6	6	6	9	13	15	9	6	3	7	7				1	1	6	2	1	14	3	1	1			
LA PLATA	158	129	186	44	66	26	17	19	29	48	65	80	99	135	118	110	103	104	108	179	200	128	67	38			
LARIMER	8	5	1	6	13	5	3		2	1				1				1		4	8	1	28	2			
LAS ANIMAS	17	22	20	3	2	11	17	34	62	90	120	182	202	286	205	221	296	384	413	326	221	14	7	78			
LINCOLN	6	5	4	4	7	7	8	8	3	2				2	2	1	5	2	2	1	2	19	10	14	20		
LOGAN	17	19	19	8	13	24	9	11	4	10	4			4	6	3	3	2	11	12	12	3	7	3	8		
MESA	1	2	2	4	1		7	2	1	1	4	4	2	12	12	13	25	89	156	209	219	13	11	30	1		
MOFFAT	1	2	1	2	1	1	2	1	3	1	8	10	18	23	25	28	19	40	60	42	24	18	15	22			
MONTEZUMA	6	5	7	5	2	5	7	3	12	2	2		2	3	5	5	1	7	2	4	7	7	3	2			
MONTROSE				1																1	2		1				
MORGAN	26	20	32	11	9	11	16	13	8	9	7	4	9	8	1	7	5	5	3	1	1	2	3	2			
OTERO				1																							
OURAY																											
PARK				1																				2			
PHILLIPS			3			1								1			6	10	11	4	35	18	2	42	105		
PITKIN		1			2																						
PROWERS	16	9	5	8	13	7	1	5	5	2	8	4	2	4	4		5	5	6	3	5	2	3	1			
PUEBLO																											
RIO BLANCO	1	8	10	1	3	8	6	7	5	9	9	62	51	82	47	83	92	95	107	95	204	113	107	68	1		
RIO GRANDE	1	2	2																								
ROUTT				3	1								1	5	12	1			1	6	3	2		2	1	1	
SAGUACHE	1							2																			
SAN MIGUEL				1								3	1	6	9	10	19	28	13	20	17	5	1	2	2		
SEDGWICK				1			1	3		2							1	2	1	1	5		3	7			
WASHINGTON	39	28	22	26	24	20	20	13	17	23	18	4	15	12	24	29	65	34	23	14	11	2	2	3			
WELD	176	200	168	296	660	723	389	94	136	94	117	124	237	403	406	522	632	718	931	1222	1314	872	1195	1587	34		
YUMA	12	16	41	47	102	39	114	145	101	104	93	52	42	162	108	106	144	597	593	445	336	27	212	78			
Grand Total	773	713	769	696	1154	1092	828	527	482	509	587	683	992	1472	1254	1630	2092	3004	3542	4048	4419	2053	2757	2992	59		

ALL COUNTIES





Colorado Oil Gas Conservation Commission Monthly Statistics

YEAR	MO	Baker - Hughes Rig Count	Drilling		Recompletion		Injection		Pits		Locations		Well Spud Notice	Active Drilling Permits	Active Wells	Public Visits		
			Rcvd	Apvd	Rcvd	Apvd	Rcvd	Apvd	Rcvd	Apvd	Rcvd	Apvd				Data	Office	Internet
2008	Total		8400	8029	291	287	64	54	458	480						213	1291	1050973
	JAN	87	519	540	16	29	5	4	18	20				4976	37567	12	94	66135
	FEB	68	411	678	21	10	1	1	14	30				5331	37785	21	81	62220
	MAR	59	1476	483	21	19	19	3	29	2				5370	38105	21	70	68742
	APR	52	40	465	16	6	6	4	15	8	0	0		5416	38885	0	0	66271
	MAY	45	54	306	9	2	4	7	3	0	28	0		5229	39231	22	114	71092
	JUN	44	225	377	10	13	7	2	8	5	39	0	177	5109	39944	6	142	67461
	JUL	44	204	487	19	34	10	11	12	0	72	7	159	5132	40184	13	95	87216
	AUG	44	136	223	54	3	4	3	1	10	60	38	142	4955	40338	17	99	111016
	SEP	45	277	277	20	26	1	3	2	1	76	82	159	4622	40469	13	97	100329
	OCT	38	468	288	72	76	5	7	7	0	126	58	163	4317	40643	10	90	100695
	NOV	38	401	382	62	38	3	6	32	51	146	191	140	4154	40854	13	121	91528
	DEC	40	543	653	24	78	3	4	37	115	218	195	163	4100	40956	13	68	92088
2009	Total		4754	5159	344	334	68	55	178	242	765	571	1103			161	1071	984793
	JAN	45	506	462	11	31	4	5	10	50	277	186	192	4029	41207	26	85	105289
	FEB	50	687	377	35	9	4	4	6	9	265	183	189	3722	41478	7	114	97167
	MAR	51	653	713	33	31	5	5	9	9	206	300	234	3858	41632	19	104	103614
	APR	51	493	649	67	33	5	2	5	17	220	228	222	4040	41843	24	110	127472
	MAY	53	389	622	29	57	3	6	10	47	200	218	237	4291	42096	11	97	85000
	JUN	53	521	490	139	89	2	0	40	12	253	251	222	4373	42217	26	100	85000
	JUL	60	460	432	54	81	1	1	19	15	185	222	244	4300	42324	10	84	85000
	AUG	66	503	532	57	81	1	2	9	37	239	198	239	4481	42534	16	91	86609
	SEP	68	403	437	33	31	3	1	3	8	166	196	242	4558	42686	9	76	83055
	OCT	68	401	500	21	41	4	0	3	2	160	221	265	4502	42903	15	85	82492
	NOV	68	308	421	14	19	1	1	3	10	162	171	226	4557	43139	14	94	90322
	DEC	67	379	361	26	12	1	1	3	9	128	144	237	4735	43354	20	75	81459
2010	Total		5703	5996	519	515	34	28	120	225	2461	2548	2749			197	1115	1112479
	JAN	63	405	351	8	23	4	6	4	8	249	112	227	4755	43588	14	95	103968
	FEB	61	343	249	15	2	7	5	5	3	184	150	210	4733	43869	21	80	96171
	MAR	68	472	498	18	23	4	5	38	30	262	258	257	4847	43927	9	125	122393
	APR	72	325	314	26	15	4	0	20	27	190	218	231	4882	44203	8	105	106539
	MAY	72	372	367	20	25	3	6	12	8	214	171	243	4904	44752	14	124	73024
	JUN	70	512	436	61	22	5	2	11	4	172	239	270	5013	45401	30	131	108115
	JUL	69	457	436	13	55	3	1	13	7	215	158	239	5113	45710	20	74	103585
	AUG	73	472	482	37	17	1	0	10	17	236	229	248	5328	45975	21	141	111950
	SEP	77	336	389	22	29	7	0	35	34	159	203	264	5361	46115	9	120	116043
	OCT	78	382	443	46	29	2	0	4	12	171	172	249	5423	46719	14	126	132814
	NOV	80	342	324	29	57	0	0	12	13	166	174	259	5409	46721	18	96	130612
	DEC	79	279	370	28	23	4	0	24	28	159	183	11	5329	46835	9	77	132230
2011	Total		4697	4659	323	320	44	25	188	191	2377	2267	2708			187	1294	1337444

Apvd = Approved, Rcvd = Received, Ind = Individual, Blnt = Blanket, Apprs = Application for Hearing, NOAV = Notice of Alleged Violation, AOC = Administrative Order of Consent, OFV = Order Finding Violation, Cmplnt = Complaint, Comp = Completed



Colorado Oil Gas Conservation Commission Monthly Statistics

YEAR	MO	Well Oper Change	Operators		Release		Bonds		Claim		Hearings		Violations		Remediation		Field Insp			
			New	Inactive	Ind.	Blinkt	Replace	Ind.	Blinkt	Apps.	Order	NOAV	AOC	OFV	Cmplt	Spills		Rcvd	Comp	
2008	Total	9019	153	44	50	59	107	0	0	0	109	92	308	16	2	222	430	259	113	9454
	JAN	223	11	4	6	3	7	1	0	14	15	15	7	0	0	9	35	9	1	884
	FEB	646	6	2	6	1	10	0	0	4	7	21	0	0	15	25	7	16	1184	
	MAR	911	10	2	2	2	8	0	0	10	8	32	0	0	43	35	36	5	796	
	APR	1127	5	2	5	2	4	0	0	NA	NA	21	NA	NA	31	34	30	3	946	
	MAY	170	9	6	3	6	7	0	0	7	2	25	0	0	15	27	7	4	822	
	JUN	177	5	2	3	3	6	0	0	11	9	26	0	1	10	23	19	18	1093	
	JUL	251	8	7	3	5	9	0	0	5	5	9	1	0	12	23	26	8	798	
	AUG	185	5	0	2	3	4	0	0	10	9	25	0	0	14	10	20	6	744	
	SEP	320	7	10	7	5	12	0	0	6	5	22	0	0	20	21	8	17	782	
	OCT	508	5	9	10	12	7	0	0	13	4	16	0	0	24	34	13	14	575	
	NOV	545	6	4	2	7	18	0	0	7	9	27	0	0	3	54	21	16	725	
	DEC	603	3	2	5	4	4	0	0	NA	NA	21	NA	NA	6	50	12	25	642	
2009	Total	5666	80	50	54	53	96	1	0	87	73	260	8	1	202	371	208	133	9991	
	JAN	654	4	6	1	7	10	0	0	16	14	36	0	0	11	38	22	13	1160	
	FEB	734	5	3	4	4	3	0	1	11	13	9	0	0	11	54	19	14	1143	
	MAR	2171	4	5	6	6	7	0	0	13	12	37	0	0	6	29	41	10	2046	
	APR	597	5	2	9	2	4	0	0	21	15	5	0	2	17	42	23	22	1183	
	MAY	641	3	3	10	0	8	0	0	NA	NA	8	NA	NA	13	38	44	51	1364	
	JUN	653	3	0	2	2	0	0	0	23	20	22	0	0	20	34	52	42	1308	
	JUL	624	5	0	0	0	8	0	0	12	6	37	1	1	20	46	39	26	971	
	AUG	556	3	2	2	1	5	0	0	8	12	40	1	0	33	46	39	22	1581	
	SEP	460	4	3	0	4	4	0	0	13	7	32	2	0	11	44	55	38	1388	
	OCT	423	3	3	0	7	2	0	0	19	16	30	0	0	33	32	96	24	1595	
	NOV	429	2	5	2	6	5	0	0	19	21	20	6	0	20	48	51	49	1535	
	DEC	479	5	1	2	1	16	0	0	NA	NA	43	NA	NA	23	42	30	71	1801	
2010	Total	8421	46	33	38	40	74	0	1	155	136	319	10	3	218	493	511	382	17075	
	JAN	813	1	2	3	1	4	0	0	16	15	43	3	2	34	40	47	45	1316	
	FEB	356	1	1	9	4	6	0	0	16	15	7	0	1	40	51	48	33	1592	
	MAR	590	2	3	6	3	9	0	0	NA	NA	31	NA	NA	33	48	59	27	1674	
	APR	400	2	0	3	2	1	0	0	24	24	8	0	0	10	52	38	61	959	
	MAY	542	3	0	5	2	4	0	0	77	65	16	2	5	26	31	33	51	1577	
	JUN	787	2	2	2	2	0	3	0	51	58	30	1	4	14	38	53	25	1098	
	JUL	546	3	6	3	6	3	1	0	NA	NA	29	NA	NA	13	38	92	20	518	
	AUG	571	2	3	12	7	2	0	1	68	54	26	2	2	20	54	106	56	1032	
	SEP	558	5	1	7	5	2	0	0	44	41	4	2	4	17	38	56	66	691	
	OCT	512	4	2	12	6	7	0	3	57	45	9	0	0	15	38	98	28	669	
	NOV	345	4	9	15	4	1	0	0	NA	NA	15	NA	NA	15	31	71	60	532	
	DEC	187	4	2	2	2	4	0	0	50	32	12	0	1	12	57	21	66	581	
2011	Total	6207	33	31	79	44	43	4	4	403	349	230	10	19	249	516	722	538	12239	

Appvd = Approved, Rcvd = Received, Ind = Individual, Blinkt = Blanket, Apps = Application for Hearing, NOAV = Notice of Alleged Violation, AOC = Administrative Order of Consent, OFV = Order Finding Violation, Cmplt = Complaint, Comp = Completed