



Staff Report

March 5, 2012

◆ Farewell to COGCC Director Dave Neslin

Dave Neslin resigned from his post as Director to return to the practice of law effective February 24, 2012. He was appointed director in November 2007. He joined the law firm of Davis Graham & Stubbs with a focus on public lands and energy on March 1, 2012. Dave had this to say regarding his tenure at the COGCC: “Leading this agency through a time of dynamic change in energy development in Colorado has been a challenging, exciting and rewarding experience. I look forward to continuing the work of building collaborative, productive solution to energy and natural resources issues in a new forum.”

In a farewell email to the COGCC state, Dave stated: “I want you all to know how much I have enjoyed working with you and how proud I am of our work together during the past four years. I have spent much of the last few months attending community meetings and urging local governments to work with us. One of the points that I always emphasize is your expertise, experience, hard work, and professionalism, which I believe help set our program apart. The residents of Colorado are lucky to have each of you working on their behalf. I also emphasize that our mission includes both facilitating oil and gas development and ensuring that this development occurs in a responsible manner that protects the public and the environment. That’s a hard job sometimes, but your work proves that it is achievable—that we can produce the energy we need and use while protecting the qualities that make Colorado a special place.”

I. STATISTICS

Our monthly statistics and permit activity report are on pages 17-26. These statistics include the permit and location assessment infor-

mation previously included on the first page of the staff report.

II. NORTHWEST COLORADO

◆ Northwest Colorado Oil and Gas Forum

The Northwest Colorado Oil and Gas Forum (Forum) is an informal gathering of local, state, and federal government officials, oil and gas industry representatives, and citizens that have met regularly since 1989. The purpose of the Forum is to share information about oil and gas development in northwest Colorado and to make government officials and oil and gas industry representatives easily accessible to the public. Currently the meetings are conducted once per quarter and are co-chaired by the COGCC’s Acting Director, Thom Kerr, and Garfield County Commissioner, Mike Samson.

The next meeting is scheduled for June 1, 2012, at 10:00 am. The venue will be announced through the release of the agenda for the June meeting.

All parties wishing to be placed on the meeting agenda should contact Chris Canfield at 970-625-2497 or via email at: chris.canfield@state.co.us.

III. SOUTHWEST COLORADO

◆ Gas and Oil Regulatory Team (GORT) Meeting

The next GORT/Southwest Colorado Oil and Gas Stakeholders meeting is scheduled for April 19, 2012, at 8:30 am at the La Plata County Fairgrounds in Durango, Colorado.

All parties wishing to be placed on the next meeting agenda should contact Karen Spray at: 970-259-1619 or karen.spray@state.co.us.



◆ Fruitland Formation Outcrop Mitigation and Monitoring Projects (4M Projects)

Fruitland Formation Outcrop - 4M Pilot Scale Mitigation Projects La Plata County. The South Fork Texas Creek (SFTC) Mitigation system continued operation at approximately 11 Kilowatts (kW) power generation. From January 6, 2012, through February 3, 2012, it operated approximately 99% of the time. Approximately 3.3 kW of power is returned to the grid at this operating rate. Gas continues to be collected and vented at the Pine River Ranches (PRR) location. Methane concentrations currently average 99% at SFTC and less than 1% at PRR. Operations & Maintenance activities are continuing.

4M Monitoring Wells La Plata and Archuleta Counties. There are 17 wells at 11 locations in the COGCC 4M monitoring program. Well pressures are monitored remotely via satellite telemetry with one or two maintenance visits per year, depending upon data received. A surface use agreement that allowed access to the Beaver Creek Ranch locations was not renewed by the landowner and access to this site is currently restricted. COGCC staff are evaluating other potential access routes and are assessing the potential need to plug and abandon the wells should reliable access not be obtained. Discussions are ongoing.

◆ Ongoing Investigation, Reclamation, and Mitigation of Residual Methane in the Vicinity of the Bryce 1-X Well Area, Bondad, Colorado

The next sampling date is scheduled for April 2012.

IV. NORTHEAST COLORADO

◆ Other E&P Waste Disposal Options

COGCC staff recently identified numerous incidents involving the improper management of tank bottoms in northeast Colorado. Operators are reminded that tank bottoms, workover fluids, pigging wastes from gathering and flowlines, and natural gas gathering, processing, and storage wastes are considered "Other E&P Waste" and must be managed in accordance with Rule 907.f., which states that these types

of wastes may be treated or disposed as follows:

- Disposal at a commercial solid waste disposal facility;
- Treatment at a centralized E&P waste management facility permitted in accordance with Rule 908;
- Injection into a Class II injection well permitted in accordance with Rule 325; or
- An alternative method proposed in a waste management plan in accordance with Rule 907.a.(3) and approved by the Director.

Neither the use of tank bottoms or other oily waste for stabilizing sandy or loose soils nor the intentional dumping of tank bottoms or other oily waste, which results in an impact to site soils, are acceptable land treatment alternatives. However, land treatment of oily waste is allowed by Rule 907.e. with certain requirements set forth in Rule 907.e.(2).

◆ Baseline Water Quality Sampling

COGCC environmental staff responded to, or are in the process of responding to, requests for baseline water quality sampling in Elbert, Douglas, Rio Grande, and Weld Counties. These requests are being tracked as complaints in the COGCC database under the baseline sampling request category. Staff also provided concerned landowners with information about the COGCC permitting and regulatory process, as well as an overview of the current level of activity in the area. Results of these investigations are summarized and provided to landowners after laboratory analyses are complete. These data are also entered into the COGCC water quality database.

As of December 30, 2011, there is one approved permit in Elbert County for a vertical well in the NW¹/₄ NE¹/₄ of Section 10, Township 6 South, Range 64 West, and one pending permit in Rio Grande County in the NW¹/₄ SE¹/₄ of Section 24, Township 39 North, Range 5 East. There are no pending or approved permits in Douglas County.



Preliminary assessment of data indicates that water quality is good. Three of the 26 sampled wells contained methane concentrations sufficient for isotopic analysis. These analytical results are pending. A written report summarizing the results of the analyses of baseline water sampling in Elbert and Douglas Counties from the Dawson and Denver aquifers will be prepared. This report will include a compilation of analytical and isotopic results for samples collected by the COGCC from 26 domestic wells including location information and well construction information and an assessment of available water quality data from the USGS National Water Information System (NWIS) for Elbert County. Upon completion, this report will be placed in the Library section of the COGCC website.

V. SOUTHEAST COLORADO

◆ Methane Investigation Monitoring, and Mitigation Plan (MIMMP) - Huerfano County

Petroglyph Energy Inc. (PEI) has completed plugging their CBM wells in Huerfano County.

Phase 2 Operations

PEI shut down operations of the Phase 2 reinjection system in September 2011. PEI submitted a quarterly report on monitoring and activities conducted since the Commission adopted Order 1C-8 at the September 2011 hearing. The concentration of methane venting from several of the monitored water wells increased in comparison to the trends seen prior to the cessation of Phase 2 operations.

◆ U.S. EPA Raton Basin Hydraulic Fracturing Study - Las Animas and Huerfano Counties

Analytical data from the October 2011 sampling events is still under review and validation by the EPA and their contractors. Some follow-up sampling and analyses may be conducted later in 2012.

VI. ORGANIZATION

In October 2011, 3 of the COGCC staff engineers took the petroleum engineering Profes-

sional Engineering Exam. With their experience and a passing grade, **Ryan Hollinshead**, **Kevin King** and **Dirk Sutphin** have become Professional Engineers. This means that 8 of the 9 COGCC engineers are registered Colorado Professional Engineers.

Randy Edelen has been hired to fill the open NE field inspector position and will report to Jim Precup. Randy has an engineering degree from Colorado School of Mines and nearly 20 years of experience in drilling, operations and completion work. He has been part of the permitting technical services group for the COGCC since 2009. His drilling and completion background, plus knowledge of COGCC systems, will make him a valuable asset for the field inspection unit.

After 17 years with the COGCC, **Debbie Baldwin**, Environmental Manager, retired at the end of February. Debbie started out as an Environmental Protection Specialist, then rose to Environmental Supervisor, and in 2006 became Manager. Her extensive knowledge of both the industry and the COGCC will be missed. We wish her the best in her future endeavors.

Effective March 1, **Karen Spray** is Acting Environmental Manager during the transition period.

An organizational chart can be found on pages 13-15. For contact information, please go to our website and click on "Contacts" on our homepage, and then "Staff Contact Information."

VII. PLANNING/ADMINISTRATION/OTHER

◆ Consultations with the Colorado Division of Wildlife and the Colorado Department of Public Health and Environment

According to Rule 306.c.(1), the Commission must consult with the Colorado Division of Wildlife (DOW) (now Colorado Parks and Wildlife) when: 1) an operator requests a modification of an existing Commission order to increase well density to more than one well per 40 acres; 2) a consultation is required in accordance with the 1200-series rules; 3) an opera-



tor requests a variance from a provision in the 1200-series rules; or 4) if DOW requests a consultation due to the presence of a federally listed threatened or endangered species. Correspondence regarding wildlife consultation should be submitted to:

Dean Riggs
Assistant Regional Manager - Northwest Division
711 Independent Avenue
Grand Junction, CO 81505

Similarly, Rule 306.d.(1)B requires the Commission to consult with the Colorado Department of Public Health and Environment (CDPHE) when an operator requests a modification of an existing Commission order to increase well density to more than one well per 40 acres. Operators should direct all documents submitted in this regard to:

Kent Kuster
Oil & Gas Consultant Coordinator
CDPHE
4300 Cherry Creek Drive South
Denver, CO 80246-1500

◆ Public Outreach Opportunities

On January 25, 2012, Linda Spry O'Rourke, Northwest Environmental Protection Specialist, presented information regarding the new Hydraulic Fracturing Disclosure Rules to the Grand Junction Chamber of Commerce at their Energy Briefing. In addition to discussing the rule change highlights and a brief review of the FracFocus website, Linda spoke briefly regarding what type of activities the Environmental Protection Specialists deal with routinely. She also responded to questions across a wide array of subjects relative to oil and gas operations.

On January 26, 2012, Steve Lindblom, Environmental Supervisor, and Greg Deranleau, Oil & Gas Location Assessment Supervisor, attended a public meeting organized by the West Adams County Conservation District in Hudson, Colorado. COGCC staff addressed audience questions, discussed issues related to environmental protection, well spacing regulations, permitting activity in Adams County, and resources available on the COGCC website.

On January 26, 2012, Denise Onyskiw, UIC Program Supervisor, met with members of the Colorado Oil and Gas Association to discuss the underground injection control application process and seismic assessments.

On January 31, 2012, Dave Neslin, Director, attended a meeting with the Colorado Springs Board of Commissioners.

Greg Deranleau attended a meeting of the Commerce City Oil and Gas Land Use Committee on February 1, 2012.

On February 1, 2012, Dave Neslin, Thom Kerr, Permit/Technical Services Manager, and Greg Deranleau met with representatives of the town of Erie to discuss oil and gas issues and LGD coordination.

On February 2, 2012, Chris Canfield, Northwest Environmental Protection Specialist, presented an overview to the Garfield County Energy Advisory Board (EAB) on how spills and releases of exploration and production wastes are reported to and managed by the COGCC. The EAB was formed in 2004 to provide a forum for the oil and gas industry, the public, and local government to prevent or minimize conflict associated with oil and gas development through positive and proactive communication and actions that encourage responsible and balanced development of energy resources within Garfield County.

On February 10, 2012, Greg Deranleau met with Congressman Ed Perlmutter, congressional staffers, Commerce City staff, and representatives of Hilcorp Petroleum to discuss oil and gas permitting issues specific to Commerce City and Rocky Mountain Arsenal.

On February 13, 2012, Mike Leonard, South Colorado Field Inspection Supervisor, met with the City of Colorado Springs Fire Department and provided an overview of oil and gas exploration and production hazards for Emergency Responders.

On February 17, 2012, Stuart Ellsworth, Engineering Manager, and Bob Chesson, Staff Environmental Specialist, met with the Colorado



Ground Water Commission and staff members to explain the COGCC rules related to hydraulic fracturing, basic well construction to protect fresh water, COGCC rules related to isolated of downhole fluids, the publication "*How Well Do You Know Your Water Well.*"

Thom Kerr attended an Oil & Gas Drilling meeting in Byers, CO on February 18, 2012.

On February 18, 2012, Debbie Baldwin, Environmental Manager, participated in a town hall meeting held by Representative Jeanne Labuda. She presented information about the state's role in regulating oil and gas operations, including hydraulic fracturing.

Mike Leonard gave a presentation on oil and gas exploration and production hazards for Emergency Responders for the North Metro Fire District (NMFD) during a daylong training program. The training was requested by Lieutenant Bill Miller of the NMFD. Staff from Noble Energy, and Anadarko Petroleum also participated. The training included a morning classroom session and field visit to a production site. Noble Energy brought a trailer that provided a cut away version of a production separation vessel. The training was held on 3 separate days, February 21, 22, and 24, to allow for all of the NMFD personnel to attend the training and was held at the North Metro Fire Training Center in Erie, Colorado.

Mike Leonard has a background as a fire fighter and emergency responder including 9.5 years with the Cheyenne County Ambulance Service (CCAS) and Cheyenne Wells VFD (CWVFD). During his tenure with CCAS, Mike was a Colorado certified EMT-B, Certified Assistant EMT-B Instructor, and CPR Instructor. While at CWFD he spent 3 years as Assistant Chief, with duties that included scheduling and leading all training. He was also the trainer for Medical First Responder Program, CPR and vehicle extrication. In addition to these duties Mike held a position on the Cheyenne County 911 Authority Board and Cheyenne County Local Emergency Preparedness Board.

On February 21, 2012, Stuart Ellsworth and Jim Milne, Senior Research Scientist, attended The

Mineral & Energy Economy in Colorado legislative reception, and answered questions at the COGCC exhibit booth.

On February 21, 2012, Thom Kerr and Kris Neidel, NW Field Inspector, participated in an oil and gas work session with the Routt County Board of Commissioners. The meeting answered a list of 41 questions presented to COGCC by Routt county. Also discussed was the role of COGCC and the rights of the county in preparing Conditions of Approval to be attached to the permit.

On February 22, 2012, Margaret Ash, Field Inspection Manager, presented and also participated in a panel discussion, followed by a Question and Answer session sponsored by the Jefferson County League of Woman Voters in Lakewood, CO, regarding hydraulic fracturing.

On February 25, 2012, Stuart Ellsworth attended the Aurora City Council workshop on oil and gas rules to answer questions. The Aurora Staff made a presentation on our Oil and Gas regulations. Stuart was present to address questions regarding COGCC rules and regulations.

Margaret Ash participated in a meeting with the Steamboat Springs-Vail Board of Realtors on February 29, 2012, regarding an overview of oil and gas regulations.

◆ How Well Do You Know Your Water Well

The ever popular brochure *How Well Do You Know Your Water Well* has been updated and revised to include information about mitigating methane in water wells, current contact information for various agencies, and water well maintenance and record keeping. Water well owners are provided this useful brochure when water samples are collected from their wells by COGCC staff, operators, or third party contractors. The update project was initiated by COGA with support from the COGCC and cooperation of the Colorado Department of Public Health and Environment and the Department of Water Resources. Copies of the updated brochure have been provided to the COGCC Commissioners. An electronic version of the brochure is available in the Library section of the COGCC website.



◆ New Policy - COGCC Directional Survey Electronic Data Submittals

The COGCC has been working with industry and its IT developers to formulate a methodology to electronically report directional well bore locations. The tactic was to make the reporting process work for plans submitted at the time of permitting and for the final as-drilled survey data. The last stakeholder meeting was on October 26, 2011, and we went over the Internet reporting application, the standardized format, and the reporting and filing process. We have met and discussed this with industry engineering and regulatory representatives, the directional drilling companies, the data vendors, and agency IT staff.

With all of this accomplished, a new policy to require that all directional and horizontal well permits and completion reports include electronically submitted directional surveys and plans has been created and will go into effect January 1, 2012. This will allow mapping the entire wellbore path, providing a more accurate picture of where these wells are being proposed and drilled. The new COGCC Policy for Electronic Submittal of Directional Surveys and Plans is available for download from the "POLICIES" page on the COGCC website.

◆ Onsite Inspection Policy

The COGCC has received a total of 147 requests for onsite inspections to date under the Policy For Onsite Inspections On Lands Where The Surface Owner Is Not A Party To A Surface Use Agreement Policy, effective for Applications for Permits-to-Drill (APDs) submitted after February 15, 2005.

Thirty-two onsite inspections have been conducted, while 97 requests for inspections have been withdrawn. Sixteen onsite inspections are pending and will be scheduled, if necessary, after the Application for Permit-to-Drill (APD) is received, or after issues related to local governmental designee consultation, location change, or surface use agreements are resolved.

Of the 147 requests for onsite inspection, 81 were for locations in Weld County, 26 in Las Animas County, 9 in Adams County, 7 in La Plata County, 5 in Garfield County, 3 each in Archuleta, Boulder, Logan, and Yuma Counties, 2 in Morgan County, and 1 each in Baca, Cheyenne, Kiowa, Larimer, and Washington Counties.

COGCC staff have attended on-site meetings to facilitate communication between the parties and to minimize impacts to the surface owner through voluntary measures implemented by the operator in instances where surface owners have requested Onsite Inspections beyond the 10 business-day window provided for in the Policy, and where there is a dispute between parties regarding the date of the Rule 306 consultation.

In addition to the Onsite Inspection Policy, onsite inspections are being conducted in the San Juan Basin under Cause 112, Order Nos. 156 and 157. These are cases where an Onsite Inspection was required because an APD was submitted without a surface use agreement.

◆ Environmental Water Quality Database

A project to migrate analytical data to the SQL-server database was initiated in early 2011. The project is tasked with identifying new processes to allow for electronic submission of analytical data that are required by a variety of rules and orders and that are collected in support of investigations, spill/release responses, and remediation activities. The COGCC and the Groundwater Protection Council (GWPC) are working cooperatively on this project. COGCC and the GWPC anticipate having a standardized electronic data deliverable (EDD) format available to facilitate electronic data submission in the near future. The interface for entering field data, location data, and facility information will be similar to the e-Form applications used for other electronic submittals.

◆ Voluntary Baseline Groundwater Quality Sampling Program

The Colorado Oil and Gas Association (COGA), in cooperation with COGCC, developed a Voluntary Baseline Groundwater Quality Sampling



Program that was finalized in November 2011. The program went into effect January 1, 2012. It is open to all oil and gas operators throughout the state and provides a standardized program for baseline sampling and analysis of domestic water wells and other groundwater features such as seeps and springs. Data generated from the sampling program and the results will be submitted to the COGCC and used to determine if impacts to groundwater related to oil and gas operations have occurred. The Voluntary Program does not exempt oil and gas operators from the mandatory baseline groundwater monitoring required in the Greater Wattenburg Area by Rule 318A.e.(4), or Rule 608.b. requirements for Coalbed Methane Wells or other existing field-wide orders for groundwater sampling.

During 2011, several oil and gas operators performed voluntary baseline groundwater sampling and provided analytical data to COGCC. These operators were active in development of the Niobrara Formation in northern Weld County and collected samples from a number of domestic water wells.

◆ Plugging and Reclaiming Abandoned Wells (PRAW) - Project Status

On page 16 is a spreadsheet listing PRAW projects for Fiscal Year 2011-2012 that are planned (work has not yet commenced, awaiting cost estimates), in progress (bids have been solicited and some field work may have been performed), or completed. Work has resumed plugging the 2 remaining DeBeque orphan wells.

◆ April 2012 Hearing Docket

A docket for the April 2012 hearing will be available shortly after the March hearing. Hearing dockets are available on our website by clicking on "Hearings." Links to the notices and hearing applications are available from the Docket Number and Applicant, respectively. To sign up for e-mail notification of hearing notices and applications, please see the announcement and instructions on the homepage of the COGCC website at: colorado.gov/cogcc.

◆ Colorado Oil and Gas Information System ("COGIS")

COGIS is made up of many different components that are used by the COGCC, staff, industry, government agencies and many others.

➤ Internet

The COGCC determined it was most cost effective to develop applications and information in an Internet-available format. This allows for the same tools to be utilized in different environments, thus eliminating the re-creation of applications. The Internet connection was moved to a new network structure which provides a much more secure environment. The following are tabs on the Internet menu bar:

* General

This page has links to basic information concerning the COGCC, its function, and oil and gas development in Colorado.

* Contacts

This page has links to people and agencies that are involved with oil and gas regulation and related issues in the state. The page also contains phone lists and geographic areas of responsibility for COGCC staff.

* Library

This page contains links to documents resulting from COGCC studies, activity reports, and statistical downloads. The annual statistics and the weekly/monthly statistics are available here.

* Hearings

This page has links to the current and previous hearing schedules, which allow for review of the dockets, agendas, applications and their outcome. It also has information that is useful when considering filing an application for hearing or finding information about Commissioners.

* Rules

This page contains links to the COGCC statute, Rules and Regulations, and policies.

* Policies

This page contains links to COGCC policies.

* Orders

This application provides searchable capability of the COGCC's orders. The search



by location is still under construction as we create the map layers for all spacing orders.

* Forms

All forms are available as Adobe Acrobat documents that can be downloaded, completed, printed and mailed; some are available as Excel and Word documents. Some example and instruction documents are viewable. The forms used by operators to submit information on location of wells and completion reports have been modified to accept latitude and longitude data. Eventually, online forms will be available here, but the exact time frame is unknown.

* Staff Report

Current and previous staff reports are viewable here.

* Permits

This application shows the last 12 months of approved permits and current pending permits; it may be filtered by county.

* News/Media

This category provides general information to the media. It contains statistics, charts, graphs, and other items of interest.

* Database

This application enables users to query well, production, and operator information. These queried databases contain the most current set of data and are updated throughout the day.

* Local Gov

This application provides database searches for local government contact information and oil and gas activity within a selected area.

* Images

This application is an interface to the COGCC's historical paper files. All well files, logs, and hearing files have been scanned. This application is not user friendly and the preferred method is to use the database queries and click on the "docs" icon for wells and other facilities, or to use the Orders application.

* Maps

The Maps tab takes interested parties to the COGCC GIS Online page. From that page an Interactive map of the State of Colorado can be accessed by clicking on View Map. GIS

specialists can also download GIS Shapefiles from a link on the GIS Online page. The COGCC is grateful to the many agencies that have contributed data to our GIS Online map, including BLM, State Land Board, Division of Water Resources, Colorado Geologic Survey, CDPHE, NRCS, and others.

The Interactive map (GIS Online) was designed to display COGCC well data, field boundaries, spacing orders, special rule areas, and other COGCC data along with more than 100 other map layers that are relevant to oil and gas operations. The map has proven to be a valuable tool for oil and gas permitting, and for researching COGCC's oil and gas data repository. Some of the more important layers are:

1. Oil and Gas Wells - All wells in the State displayed as red dots on the map; a double click on any point opens the electronic informational "scout card" for that well.
2. Directional Bottomhole Locations - Points with leader lines to actual and planned bottomhole locations.
3. Permits - All valid oil and gas well permits in the State.
4. Pending Permits/Pending 2A Locations - Permit and Location applications that are currently under review by COGCC staff.
5. Field Boundaries - Polygon outlines of field boundaries.
6. Water Wells - Water well locations as mapped by the Division of Water Resources (DWR); this layer is updated monthly by DWR.
7. DOW Sensitive Wildlife Habitats and Restricted Surface Occupancy Areas.
8. Rule 317B Surface water, source water protection areas as mapped by CDPHE.
9. BLM data including Exploratory Units, Participating Areas, Subsurface Authority, Oil and Gas Leases, Lease Stipulations, etc.
10. State Land Board active leases.



11. Many Base Layers including roads, cities, towns, geology, soil surveys, topographic maps, and 2009 aerial photographs.

GIS Shapefiles that are available for download include: Well locations, Directional Bottom Hole locations, Oil and Gas Field Boundary polygons, Facilities locations (primarily pits), DOW Wildlife Habitats, Rule 317B Buffers, and a few other area-specific shapefiles.

Currently, GIS Staff are reviewing "As Drilled" location submittals for accuracy, and are completing development of a new version (MapGuide 2010) of the Interactive Map. The new version is available internally to staff and should be available to the public sometime this month.

Completed formations were added to Internet Map and the Fields Polygon shapefile in July 2011.

*

Help

The Oil & Gas Activity Notification Tool allows a user to enter a section-township-range of interest which returns a table identifying which quarter-quarter sections are subject to Rule 317B, RSO areas, or SWH requirements. The user can then click on a link, which opens the map, and zoom to the section of interest for further inspection.

A tutorial document for the COGCC Interim Policy for APDs is posted in the Help area and the homepage of the website. This document helps explain the interim process that the COGCC used for processing APDs until the Final Amended Rules took effect. Included in the document are explanations on how to use the new tools and map layers that have been developed for the Final Amended Rules.

The COGCC, with assistance from the Ground Water Quality Protection Council, has produced two Macromedia Flash movies to help users understand the many features available within the COGCC GIS Online system. The movies are located by clicking on the HELP link from the main menu or by using the following link: http://colorado.gov/cogcc/COGIS_Help/Help.asp.

Two applications on the COGCC website are available to help operators with the entering of data relating to locations. The first, a Footage calculator, will take a new latitude and longitude and calculate new footage calls based on the location supplied at the time of permitting. The tool should only be used to compare locations where latitude and longitude were supplied on the permit as required by the December 1, 2005, rule change. The second application converts latitude and longitude as measured in degrees, minutes, and seconds into decimal degrees. The decimal degree format is what COGIS is expecting on all forms requiring lat/long coordinates.

The eForm Training Manual has been updated to include all of the forms available within the system. It can be found at http://cogcc.state.co.us/COGIS_Help/eFormtraining/eFormTraining.htm. A document explaining the Local Government Designee process in eForm is now available in the Help section. The forms currently available in eform are: Applications for Permits-to-Drill (Form 2); Oil and Gas Location Assessment Form (Form 2A); Drilling Completion Report (Form 5); Completed Interval Report (Form 5A); Well Abandonment Report (Form 6); Earthen Pit Report/Permit (Form 15), and Bradenhead Test Report (Form 17).

➤ Local Area Network

COGCC staff are connected to services by a Local Area Network ("LAN") connection which provides email and data-sharing capabilities. The LAN is connected to the Centennial Building at 1313 Sherman Street by a wireless interface; this connection provides access to the Internet and other state services. COGCC staff utilize the same applications in their work as Internet users, in addition to others outlined below.

*

Database

The COGCC maintain a comprehensive database of regulated facilities (wells, pits, injection sites), incidents (inspections, complaints, spills), and affiliations (companies and contacts).

*

Imaging

This application provides the capability to convert the paper documents received by



the COGCC to electronically available documents.

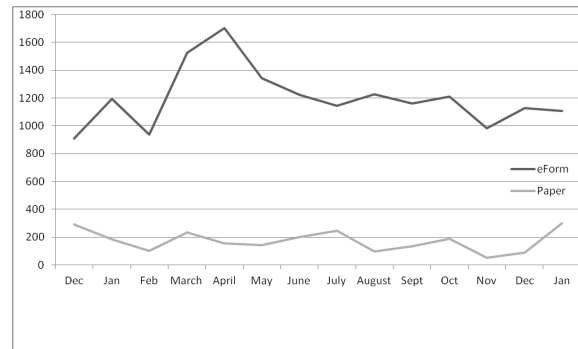
- * **Form Processors**
This set of applications allows users to input, route, edit, and update regulatory reports submitted by oil and gas operators.
- * **eForm**
This application utilizes the same code base that industry uses to submit Applications for Permits-to-Drill (Form 2), Oil and Gas Location Assessment Form (Form 2A), Drilling Completion Report (Form 5), Completed Interval Report (Form 5A), Well Abandonment Report (Form 6), Earthen Pit Report/Permit (Form 15) and Bradenhead Test Report (Form 17). All of these forms are also being used by staff to input, route, edit, and update these forms internally.
- * **Geographic Information Systems (GIS)**
These applications provide the capability to create custom maps, convert survey calls to geographic coordinates, and convert and utilize geographic positioning system (GPS) data.

The GIS Administrator creates daily updates for the Internet map data downloads.
- * **COGIS Tools**
This set of applications allows COGCC staff to correct data in the database in addition to performing specialized workflow administration.
- **Remote Users**
This is the final component of the COGIS system. This laptop system consists of Internet applications and other report tools necessary for COGCC field staff to facilitate data collection and provide information.
- * **Electronic Business**
There are approximately 200 operators reporting production electronically.

◆ COGIS Projects, Updates and Changes

Electronic Form Submissions (eForm)

TOTAL ELECTRONIC FORM SUBMITTALS
DECEMBER 2010–JANUARY 2012



Forms currently available through eForm:

Form 2 - Application for Permit to Drill

Form 2A - Oil and Gas Location Assessment

Form 5 - Drilling Completion Report

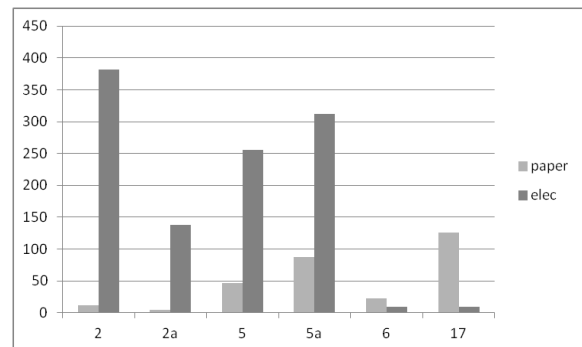
Form 5A - Completed Interval Report

Form 6 - Well Abandonment Report

Form 15 - Earthen Pit Report/ Permit now available

Form 17 - Bradenhead Test Report

Following is a breakdown by form for the month of January.



The Form 15, Pit Permit and Report, was released in eForm on February 3, 2012. The form had some new fields added from the older version. The PDF version on the Forms page, <http://cogcc.state.co.us/Forms/forms.html>, has also been revised to reflect the changes that occurred from the release of the form in



eForm. Operators are encouraged to file Form 15 by using the eForm process.

The development of the Form 10, Certification of Clearance and/or Change of Operator, is underway. Testing by internal staff began in early February.

The Field Staff Inspection Form was released on November 15, 2011, to the Inspectors and other field staff. This new form is more comprehensive and allows for a more focused inspection to take place. Utilizing the eForm platform, this new version of eForm will run locally on the field laptop and allow for the form to be completed in the field. When the staff is connected to the network, the forms are uploaded to COGIS and become part of the master database. When searching the database, the results will now separate the old and new inspection reports. As of the end of January, the Field Staff produced 1,978 inspection reports in the new system.

Form 4, the Sundry Notice, is undergoing additional design changes and development should begin soon. Look for a late spring release.

By the end of February development was completed on the Form 41, Trade Secret Claim of Entitlement. It is expected this form will be ready for release by mid-March, along with the Form 42, Notice of Notification, which includes the Notice of Hydraulic Fracturing Treatment.

As forms are released on eForm, updates to the PDF forms on our website have not occurred. COGCC staff are currently starting to update the PDF forms that are available for paper submissions.

Along with the eForm system, a page is available where the operators can review all known bugs within the system and report any new ones they discover. Currently there are 248 operators signed up to use eForm.

The public can make comments on all submitted Oil and Gas Location Assessment (OGLA) forms (Forms 2A) through the eForm system. This is accomplished by going to the COGCC website (<http://www.colorado.gov/cogcc>) and

clicking on the menu option, "Permits", (or <http://cogcc.state.co.us/COGIS/DrillingPermits.asp>).

On the COGIS-Permits page, two search options are available for OGLA forms, "All Pending Location Assessments for" and "All Approved Location Assessments for." When the results are displayed for forms in process, the public can click on the document number, which logs the user onto the new eForm application. Once the page is displayed with the selected document, the user can select the Comment button to make a comment on that particular form. The public can use this same method to make comments on APDs (Form 2s).

For any operator not currently enrolled in eForm, instructions for starting the process can be found at <http://cogcc.state.co.us/Announcements/COUAINformation.pdf>

COGCC GIS Online

The latest version of the COGCC GIS Online is now available on the commission's website. This new version of the GIS site utilizes a different technology than the old site. The new technology eliminates the need for the user to download and install a plugin, which limited the browser that it could be used in to Internet Explorer. The new version will work with almost any browser.

LAS File Upload

All digital well logs submitted to the COGCC over the Internet are to be in LAS (log ASCII) format. In addition to the LAS file, a paper log file is still required. Additionally an operator can submit the same log file in a PDS format, but the PDS format cannot replace the LAS requirement. To submit digital well logs over the Internet, an application must be completed. The application is available from the "Forms" page on the COGCC website <http://www.colorado.gov/cogcc>. To utilize the system, the operator will need to submit a Designation of Agent Form, Form 1A. COGCC staff are working with operators and logging companies to gain compliance with the digital log submission requirement. The rule still requires the operator to submit a paper copy of each well log (Rule 308A). All operators are required



to be in compliance with this Rule for all wells completed since July 2004.

Spacing Orders Project

The spacing orders project has been completed for the first pass through the state. As new orders are issued, the map layers will be updated.

Historic Wells Mapping Project

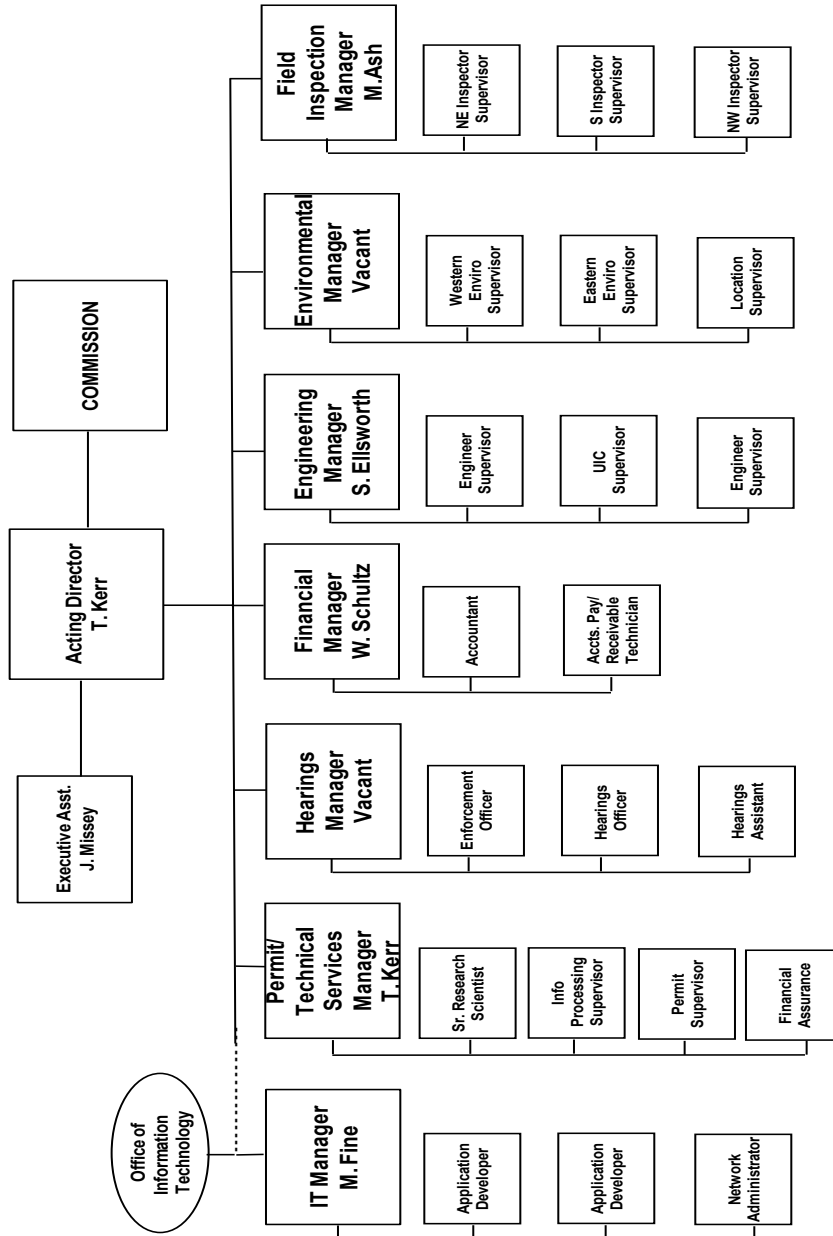
COGCC's GIS staff obtained historic maps of the Florence Oil Field and had well locations converted to GIS formats. The GIS layer was added to the Field Inspectors' laptops so that they can look for these old wells on the ground. Any old wells located will be added to the COGCC database and evaluated for further actions, if necessary. A 1927 Map Image of the Boulder Oil Field was added to the Internal map to assist in identifying historic wells in the area.

VIII. VARIANCES

On November 4, 2011, EnCana Oil & Gas (USA) Inc. (EnCana) attempted a mechanical integrity test ("MIT") to maintain the shut-in status of the O'Connell #34-4C (D34SE) Well, located in the NW $\frac{1}{4}$ NW $\frac{1}{4}$, Section 34, Township 7 South, Range 92 West, 6th P.M. During the 15-minute test period, the well lost more than 10% of the initial test pressure, which resulted in a failed test. EnCana subsequently submitted a Sundry Notice requesting a temporary variance to Rule 326.d., which requires that all wells which lack mechanical integrity be repaired, plugged, or abandoned within 6 months of failing a MIT. As required by COGCC Rule 502.b.(1), EnCana made a good faith effort to comply with Rule 326.d. EnCana suspects a leak at the DV tool is causing the problem and contends the existing cement above and below the DV tool adequately isolates any potential fluid flow in the casing-wellbore annulus. A retrievable bridge plug was set above the DV tool to temporarily abandon the well until the DV tool can be repaired. The Sundry Notice for this variance request was approved on January 23, 2012.



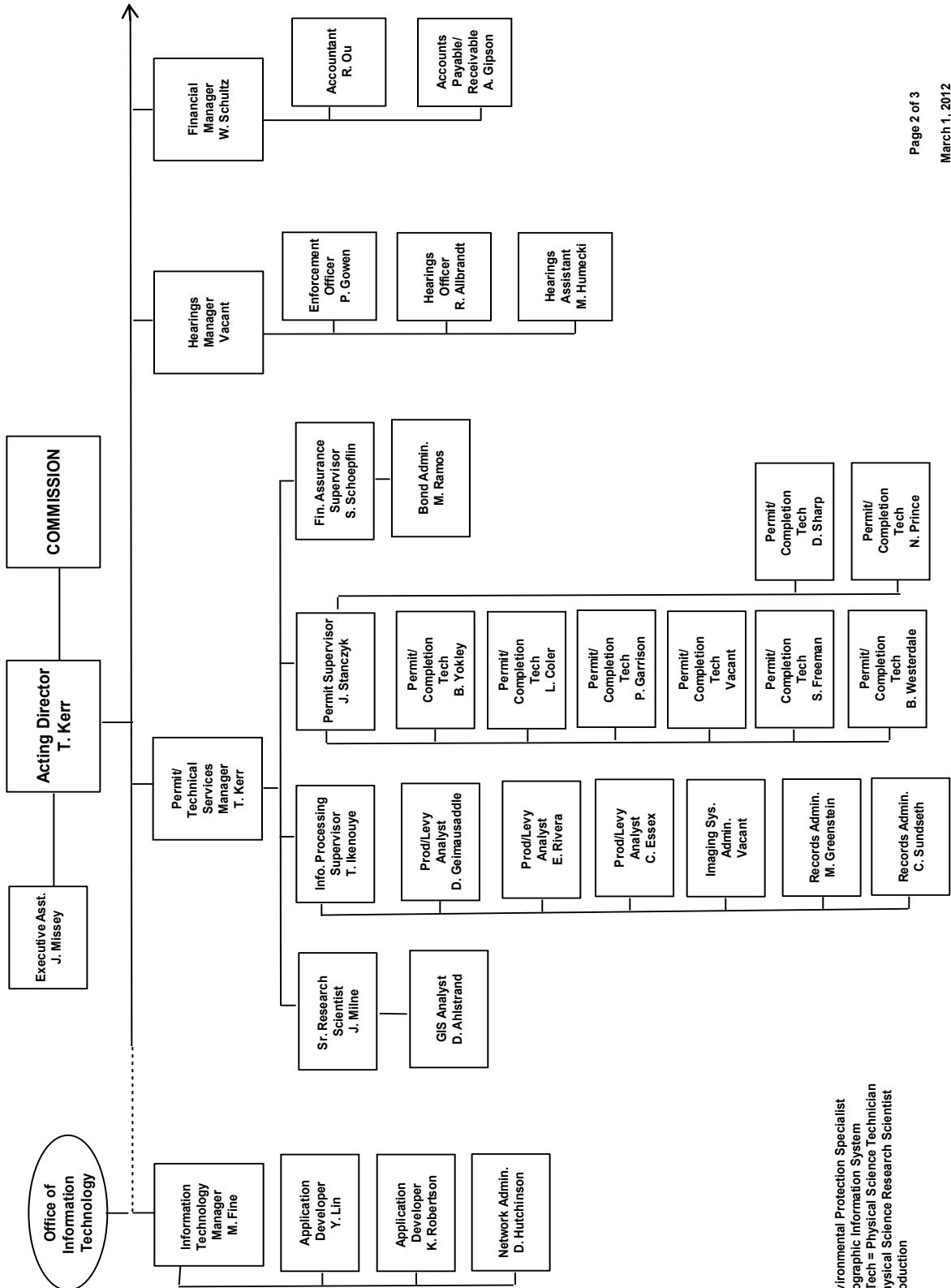
COLORADO OIL & GAS CONSERVATION COMMISSION



See the next two pages for details



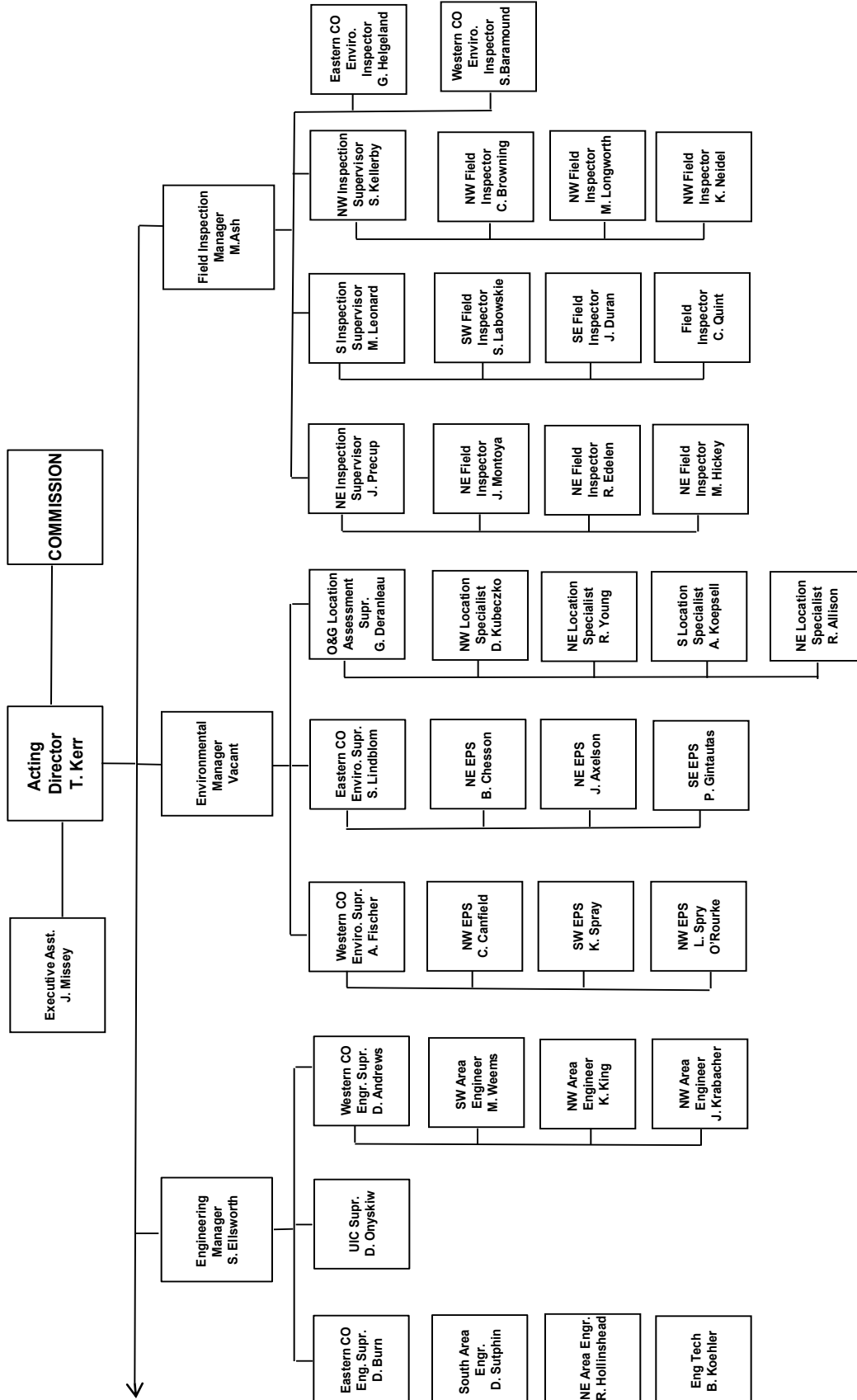
COLORADO OIL & GAS CONSERVATION COMMISSION ORGANIZATION



EPS = Environmental Protection Specialist
 GIS = Geographic Information System
 Phys/Sci Tech = Physical Science Technician
 PSRS = Physical Science Research Scientist
 Prod = Production



COLORADO OIL & GAS CONSERVATION COMMISSION ORGANIZATION



EIT = Engineer in Training
 EPS = Environmental Protection Specialist
 OGLA = Oil & Gas Location Assessment
 Phys Sci Tech = Physical Science Technician
 UIC = Underground Injection Control



PLUGGING, ABANDONMENT, AND WELL RECLAMATION PROJECTS FOR ORPHANED LOCATIONS

FISCAL YEAR 2011-2012

		ESTIMATED TOTAL PROJECT COST						FY 2011-2012 YTD EXPENDITURES							
COUNTY	TYPE	PROJECT NAME	BOND	PRAW	EMGY	TOTALS	BOND	PRAW	EMGY	TOTALS	BOND	PRAW	EMGY	TOTALS	
PLANNED															
ARCHULETA	PLUG	BONE #1	\$0	\$82,000	\$0	\$82,000	\$0	\$0	\$0	\$0	\$0	\$0	\$0	\$0	
FREMONT	PLUG	5 WELLS	\$0	\$50,000	\$0	\$50,000	\$0	\$0	\$0	\$0	\$0	\$0	\$0	\$0	
MESA	PLUG	DEBEQUE ORPHANS ABANDONMENT - EARTHWORK CONST. AND RECL.	\$0	\$8,523	\$0	\$8,523	\$0	\$0	\$0	\$0	\$0	\$0	\$0	\$0	
MOFFAT	PLUG	CULVERWELL AND ELDON GERBER	\$30,000	\$25,000	\$0	\$55,000	\$0	\$0	\$0	\$0	\$0	\$0	\$0	\$0	
OURAY	PLUG	RIDGEWAY WELLS	\$0	\$50,000	\$0	\$50,000	\$0	\$0	\$0	\$0	\$0	\$0	\$0	\$0	
TOTALS =>			\$30,000	\$215,523	\$0	\$245,523	\$0	\$0	\$0	\$0	\$0	\$0	\$0	\$0	
IN PROGRESS															
COMPLETED															
		ESTIMATED TOTAL PROJECT COST						FY 2011-2012 YTD EXPENDITURES							
COUNTY	TYPE	PROJECT NAME	BOND	PRAW	EMGY	TOTALS	BOND	PRAW	EMGY	TOTALS	BOND	PRAW	EMGY	TOTALS	
GARFIELD	PLUG	BISCUIT RANCH 10-31D AND BRO3-03B AND MULVIHILL 15-32D	\$30,000	\$73,703	\$0	\$103,703	\$0	\$0	\$0	\$0	\$0	\$0	\$0	\$0	
LOGAN	REC	MITTELSTADT #1 AND LECKLER #1	\$60,000	\$0	\$0	\$60,000	\$0	\$0	\$0	\$0	\$0	\$0	\$0	\$0	
MESA	PLUG	DEBEQUE ORPHANS ABANDONMENT - PLUGGING AND ABANDONMENT	\$0	\$0	\$179,512	\$179,512	\$0	\$0	\$0	\$0	\$0	\$0	\$0	\$0	
RIO GRANDE	PLUG	JYNNIER #1 ABANDONMENT	\$5,000	\$85,000	\$0	\$90,000	\$0	\$0	\$0	\$0	\$0	\$0	\$0	\$0	
TOTALS =>			\$95,000	\$158,703	\$179,512	\$433,215	\$0	\$0	\$0	\$0	\$0	\$0	\$0	\$0	
		ESTIMATED TOTAL PROJECT COST						FY 2011-2012 YTD EXPENDITURES							
COUNTY	TYPE	PROJECT NAME	BOND	PRAW	EMGY	TOTALS	BOND	PRAW	EMGY	TOTALS	BOND	PRAW	EMGY	TOTALS	
CHEYENNE	PLUG	GOLDENHAMMER	\$30,000	\$20,000	\$0	\$50,000	\$30,000	\$6,575	\$0	\$36,575	\$0	\$0	\$0	\$36,575	
FREMONT	PLUG	HW-1619S69W #1, HW-3419S69W #2, HW-2919S69W #3, AND HW-2919S69W #4	\$0	\$22,600	\$0	\$22,600	\$0	\$20,075	\$0	\$20,075	\$0	\$0	\$0	\$20,075	
LA PLATA	REC	DAVIES 1-22	\$0	\$8,890	\$0	\$8,890	\$0	\$8,890	\$0	\$8,890	\$0	\$0	\$0	\$8,890	
LA PLATA	PLUG	KEG 1 WELL PLUGGING	\$5,000	\$19,700	\$0	\$24,700	\$4,994	\$15,959	\$0	\$20,953	\$0	\$0	\$0	\$20,953	
LOGAN	REC	COGCC KOENIG-ASHBY #1 AND R E LECKLER #1	\$0	\$30,000	\$0	\$30,000	\$0	\$50,598	\$0	\$50,598	\$0	\$0	\$0	\$50,598	
MORGAN	REC	HUEY #1, HUEY #2A, HUEY #5, HUEY #9, HUEY #20, AND GEORGE E HUEY #1	\$0	\$24,900	\$0	\$24,900	\$0	\$24,997	\$0	\$24,997	\$0	\$0	\$0	\$24,997	
TOTALS =>			\$35,000	\$126,090	\$0	\$161,090	\$34,994	\$127,094	\$0	\$162,088	\$0	\$0	\$0	\$162,088	
		ESTIMATED TOTAL PROJECT COSTS						FY 2011-2012 YTD EXPENDITURES							
BOND	PRAW	EMGY	TOTALS	BOND	PRAW	EMGY	TOTALS	BOND	PRAW	EMGY	TOTALS	BOND	PRAW	EMGY	TOTALS
\$160,000	\$500,316	\$179,512	\$839,828	\$34,994	\$127,094	\$0	\$162,088	\$34,994	\$127,094	\$0	\$162,088	\$0	\$0	\$0	\$162,088
<p>Project Types: "PLUG" indicates plugging and abandonment. "REC" indicates reclamation, and "ENV" indicates environmental EMGY: indicates funding by the Emergency Response line item TBD: Cost estimates in process. PRAW: indicates funding by the Plugging and Reclaiming Abandoned Wells line item</p>															
Updated February 14, 2012															

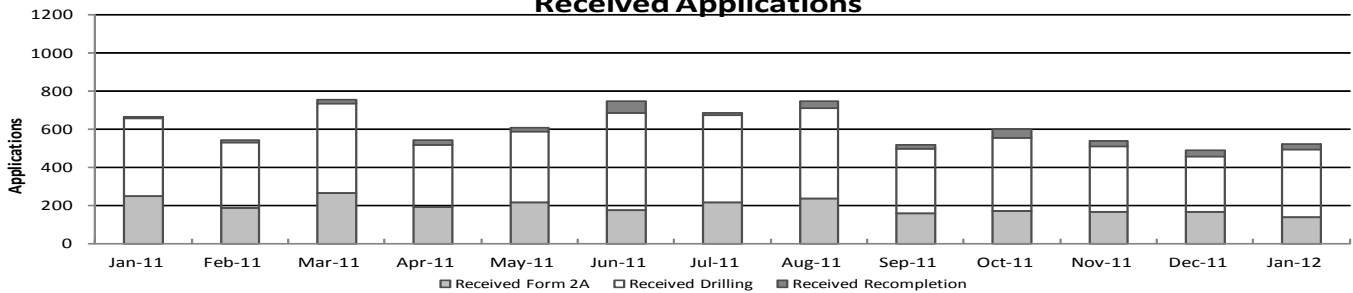


Colorado Oil & Gas Conservation Commission Monthly Permit Activity

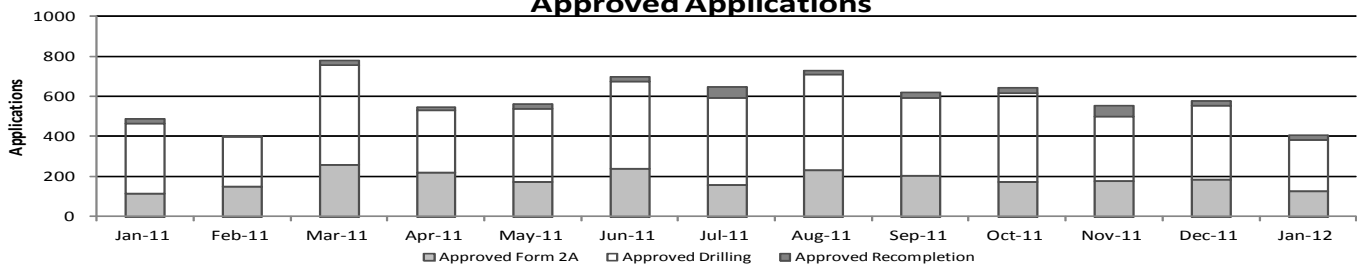
	Backlog	Received	Approved	Withdrawn	Rejected	Incomplete	In-Process	Remaining
Form2A								
Jan-11	123	249	112	4	0	37	219	256
Feb-11	256	184	150	7	0	50	233	283
Mar-11	283	262	258	6	0	80	201	281
Apr-11	281	190	218	6	0	80	167	247
May-11	247	214	171	10	0	88	192	280
Jun-11	280	172	239	4	0	60	149	209
Jul-11	209	215	158	8	0	65	193	258
Aug-11	247	236	229	6	0	66	182	248
Sep-11	244	159	203	6	0	58	136	194
Oct-11	194	171	172	12	0	50	131	181
Nov-11	194	166	174	9	0	69	108	177
Dec-11	171	164	183	5	0	44	103	147
Jan-12	147	136	125	1	0	50	107	157
Drilling								
Jan-11	348	405	351	7	0	114	281	395
Feb-11	395	343	249	3	0	113	373	486
Mar-11	486	472	498	3	0	129	328	457
Apr-11	457	325	314	7	0	129	332	461
May-11	461	372	367	15	0	142	309	451
Jun-11	451	512	436	2	0	99	426	525
Jul-11	525	457	436	9	0	107	430	537
Aug-11	537	472	482	8	0	141	378	519
Sep-11	519	336	389	8	0	108	350	458
Oct-11	458	382	443	16	0	85	296	381
Nov-11	381	342	324	8	0	146	245	391
Dec-11	391	291	370	5	0	118	189	307
Jan-12	307	357	259	7	0	133	265	398
Recompletion								
Jan-11	24	8	23	2	0	5	2	7
Feb-11	7	15	2	0	0	8	12	20
Mar-11	20	18	23	0	0	1	14	15
Apr-11	15	26	15	1	0	0	25	25
May-11	25	20	25	0	0	3	17	20
Jun-11	20	61	22	0	0	3	56	59
Jul-11	59	13	55	2	0	6	9	15
Aug-11	15	37	17	0	0	6	29	35
Sep-11	35	22	29	0	0	3	25	28
Oct-11	28	45	29	0	0	3	41	44
Nov-11	44	29	57	2	0	4	10	14
Dec-11	14	31	23	0	0	8	14	22
Jan-12	22	26	21	2	0	9	16	25

Incomplete are permits that have missing or inaccurate data and cannot be approved.

Received Applications



Approved Applications



Backlog = Incomplete + In-process = Remaining permits from previous month



Colorado Oil and Gas Conservation Commission
 Status of Permit Applications Filed By Month
 February 22, 2012

Form 2A Location Assessment

Year	Month	Received	Approved	Withdrawn	In Process	Percent In Process	Median Days to Process	Less Than 30 Days	30 to 49 Days	Greater Than 50 Days
2010	Total	2520	2433	85	0			1559	662	212
2011	1	236	234	2	0	0%	33	147	58	29
2011	2	174	163	11	0	0%	37	99	35	29
2011	3	281	273	8	0	0%	33	198	42	33
2011	4	189	179	9	1	1%	40	112	30	37
2011	5	211	198	13	0	0%	30	126	58	14
2011	6	184	181	3	0	0%	33	135	27	19
2011	7	211	198	10	3	1%	35	89	89	20
2011	8	245	238	4	3	1%	34	123	86	29
2011	9	156	144	8	4	3%	31	80	53	11
2011	10	167	155	8	4	2%	29	89	59	7
2011	11	171	160	7	4	2%	30	100	53	7
2011	12	166	151	0	15	9%	26	118	30	3
2011	Total	2391	2274	83	34	1%		1416	620	238
2012	1	141	82	1	57	40%	25	75	7	0
2012	2	132	0	0	132	100%				
2012	Total	273	82	1	189	69%		75	7	0

Form 2 Application For Permit to Drill (APDs)

Year	Month	Received	Approved	Withdrawn	In Process	Percent In Process	Median Days to Process	Less Than 30 Days	30 to 49 Days	Greater Than 50 Days
2010	Total	5891	5746	144	0	0%		1760	2739	1744
2011	1	380	371	7	0	0%	32	235	106	40
2011	2	336	333	3	0	0%	36	182	114	51
2011	3	466	454	12	0	0%	35	326	67	82
2011	4	347	334	12	1	0%	39	174	117	68
2011	5	364	355	9	0	0%	32	196	145	35
2011	6	514	511	3	0	0%	32	424	94	48
2011	7	472	457	11	4	1%	38	145	272	55
2011	8	468	461	4	3	1%	36	212	179	106
2011	9	334	311	15	8	2%	30	230	82	23
2011	10	369	352	12	5	1%	30	212	149	16
2011	11	338	303	8	27	8%	31	192	139	17
2011	12	309	288	1	20	6%	33	196	103	13
2011	Total	4697	4530	97	68	1%	404	2724	1567	554
2012	1	368	220	7	141	38%	26	186	53	2
2012	2	300	4	0	296	99%	13	3	1	0
2012	Total	668	224	7	437	65%		189	54	2



Colorado Oil and Gas Conservation Commission
Form 2A Breakdown By County By Year
February 22, 2012

Yr	County	Form2As	Completed	In Process	Infor- mational	Requires Approval	New Location	CDP	SWH	RSO	CDPHE
2009	Total State	818	818	0	728	108	408	2	80	5	5
2010	Total State	2378	2376	0	1824	637	1601	0	327	22	55
2011	ADAMS	10	9	1	1	1	9	0	0	0	0
2011	ARAPAHOE	20	20	0	12	0	21	0	0	0	0
2011	ARCHULETA	5	4	1	0	4	4	0	8	0	0
2011	BACA	5	5	0	3	1	4	0	1	0	0
2011	BOULDER	9	9	0	1	1	3	0	1	0	1
2011	BROOMFIELD	1	1	0	1	0	0	0	0	0	0
2011	CHEYENNE	17	16	1	7	0	12	0	0	0	0
2011	DELTA	2	2	0	0	0	1	0	0	0	0
2011	DOLORES	5	4	1	1	0	3	0	1	0	0
2011	EL PASO	5	3	2	0	0	5	0	0	0	0
2011	ELBERT	1	1	0	1	0	1	0	0	0	0
2011	FREMONT	11	11	0	3	0	8	0	0	0	0
2011	GARFIELD	117	112	5	0	67	50	0	101	9	1
2011	GUNNISON	7	5	2	0	4	5	1	6	0	0
2011	HUERFANO	1	1	0	1	0	1	0	0	0	0
2011	JACKSON	12	12	0	2	5	12	0	10	0	0
2011	KIOWA	19	19	0	12	1	18	0	1	0	0
2011	KIT CARSON	2	2	0	1	0	0	0	0	0	0
2011	LA PLATA	26	24	2	2	18	18	0	31	0	0
2011	LARIMER	7	7	0	7	0	7	0	0	0	0
2011	LAS ANIMAS	77	73	4	42	0	44	0	1	0	0
2011	LINCOLN	29	29	0	15	2	20	0	0	0	1
2011	LOGAN	10	10	0	9	0	8	0	0	0	0
2011	MESA	24	23	1	0	9	15	0	12	0	0
2011	MOFFAT	48	47	1	2	12	42	0	41	5	0
2011	MONTEZUMA	1	1	0	0	0	1	0	0	0	0
2011	MORGAN	10	10	0	6	0	10	0	0	0	0
2011	PARK	1	1	0	1	0	0	0	0	0	0
2011	PHILLIPS	128	120	8	56	0	125	0	0	0	0
2011	PROWERS	1	1	0	1	0	1	0	0	0	0
2011	RIO BLANCO	37	32	5	0	20	24	0	27	0	0
2011	RIO GRANDE	1	0	1	0	0	1	0	1	0	0
2011	ROUTT	8	7	1	0	0	9	0	10	1	0
2011	SEDGWICK	13	12	1	2	0	11	0	2	0	0
2011	WASHINGTON	13	13	0	10	1	12	0	0	0	0
2011	WELD	1473	1418	55	767	173	1162	0	20	2	1
2011	YUMA	148	147	1	38	0	122	0	0	0	0
2011	Total State	2304	2211	93	1004	319	1789	1	274	17	4
2012	ADAMS	5	0	5	0	0	5	0	0	0	0
2012	ARAPAHOE	2	0	2	0	0	2	0	0	0	0
2012	BOULDER	1	0	1	0	0	0	0	0	0	0
2012	CHEYENNE	5	0	5	0	0	3	0	0	0	0
2012	DOLORES	1	1	0	0	0	1	0	0	0	0
2012	EL PASO	1	0	1	0	0	1	0	0	0	0
2012	GARFIELD	16	8	8	0	0	10	0	12	0	0
2012	GUNNISON	4	1	3	0	0	4	0	2	0	0
2012	KIOWA	4	2	2	0	0	4	0	0	0	0
2012	KIT CARSON	2	0	2	0	0	0	0	0	0	0
2012	LA PLATA	2	0	2	0	0	1	0	1	0	0
2012	LARIMER	1	0	1	0	0	1	0	0	0	0
2012	LINCOLN	10	0	10	0	0	10	0	0	0	0
2012	LOGAN	1	0	1	0	0	0	0	0	0	0
2012	MESA	1	0	1	0	0	1	0	0	0	0
2012	MONTEZUMA	5	0	5	0	0	5	0	0	0	0
2012	MORGAN	1	0	1	0	0	1	0	0	0	0
2012	PHILLIPS	25	9	16	0	0	25	0	0	0	0
2012	RIO BLANCO	10	0	10	0	0	1	0	9	0	0
2012	SEDGWICK	1	1	0	0	0	1	0	0	0	0
2012	WELD	167	57	110	0	0	108	0	0	0	1
2011	Total	265	79	186	0	0	184	0	24	0	1

CDP = Comprehensive Drilling Plan SWH = Sensitive Wildlife Habitat consultation
RSO = Restricted Surface Occupancy consultation CDPHE = Colorado Department of Health and Environment consultation



Colorado Oil and Gas Conservation Commission
Horizontal Well Activity
 February 22, 2012

County	Prior Years			2009		2010		2011		2012		Summary				
	Drilled	DA	PA	Permit	Spud	Permit	Spud	Permit	Spud	Permit	Spud	Spud	AC	PR	DA	PA
ADAMS				6	5	2	3	1				8	3	3		
ARAPAHOE	2							10	1			3	2	1		
ARCHULETA	20			7	6	15	6	10	6	3	2	40		22		
BOULDER								4				0				
CHEYENNE	5		4									5		1		4
DOLORES	9			18	2	6				3		11		3		
FREMONT	7	6		6		12	5	3	4			16		8	6	
GARFIELD	10		2	1	1	16	2	18	7	8	2	22		18		2
GUNNISON	1					1				2		1		1		
JACKSON	8	1	1	8		3	3	9	1			12		9	1	1
KIT CARSON	1											1		1		
LA PLATA	28	2		11	1	28	3	18	7	1	1	40		36	2	
LARIMER	3	2						5	1			4		1	2	
LAS ANIMAS	16		2	4		1	1					17		14		2
LINCOLN				2	1	2	1	1				2		2		
LOGAN	2											2		2		
MESA	3	2		36	1	22	8	24	11	9		23		14	2	
MOFFAT	7	1	1	6	3	4		9	2	1		12	1	7	1	1
MONTEZUMA	6		1	23	4	11	1	8	2		1	14		10		1
MORGAN								6	2			2		2		
PARK						1		1				0				
RIO BLANCO	7	2				1	1	11	1	3		9	1	5	2	
ROUTT	10	6	1									10		3	6	1
SAN MIGUEL	1			1								1				
WASHINGTON	1		1									1				1
WELD	11	3		12	5	208	91	758	221	77	52	380		153	5	1
YUMA	1		1	6								1				1
TOTAL Horizontal	159	25	14	147	29	333	125	896	266	107	58	637	7	316	27	15
Percent of Total HZ		16%	9%										1%	50%	4%	2%
Total All Permits				5159		5996		4936		448						
Percent of Total				2.8%		5.6%		18.2%		23.9%						

DA = Dry & Abandoned; PA = Produced & Abandoned; AC = Active Injection or Storage; PR = Producing



Well to Building Setback Review

Colorado Oil and Gas Conservation Commission

February 22, 2012

Count of well locations by proximity groupings from well spot to buildings for all locations reviewed under the December 17, 2008 amended rules.

Location Proximity to Buildings	2009	2010	2011	2012	Number of Locations	Percent of Total Locations
less than 150 feet	4	1	4	1	10	0%
150 to 350 feet	45	55	60	2	162	3%
350 to 500 feet	54	111	95	2	262	5%
500 to 1000 feet	158	357	332	12	859	17%
1000 + feet	547	1594	1472	50	3663	74%
Total Locations	808	2118	1963	67	4956	

County	Total	Less than 150 feet	150 to 350 feet	350 to 500 feet	500 to 1000 feet	1000 + feet
ADAMS	22	0	2	3	9	8
ARAPAHOE	37	0	1	4	1	31
ARCHULETA	15	0	0	1	9	5
BACA	10	0	0	0	1	9
BENT	5	0	0	0	0	5
BOULDER	20	0	1	1	15	3
BROOMFIELD	26	0	0	4	10	12
CHEYENNE	33	1	0	0	0	32
DELTA	5	0	0	1	1	3
DOLORES	10	0	0	0	4	6
EL PASO	6	0	0	0	0	6
ELBERT	2	0	0	0	1	1
FREMONT	30	0	2	7	6	15
GARFIELD	327	0	3	2	49	273
GUNNISON	11	1	0	1	1	8
HUERFANO	2	0	0	0	1	1
JACKSON	22	0	0	1	1	20
KIOWA	40	0	0	0	1	39
KIT CARSON	5	0	0	0	0	5
LA PLATA	80	0	3	7	21	49
LARIMER	26	0	3	3	9	11
LAS ANIMAS	187	1	4	6	37	139
LINCOLN	99	0	0	1	2	96
LOGAN	21	0	1	0	0	20
MESA	68	0	0	3	11	54
MOFFAT	97	0	0	1	5	91
MONTEZUMA	10	0	0	1	1	8
MONTROSE	2	0	0	0	0	2
MORGAN	13	0	0	1	1	11
PARK	4	0	0	0	0	4
PHILLIPS	232	1	3	5	18	205
PROWERS	4	0	0	0	0	4
RIO BLANCO	101	0	0	0	1	100
ROUTT	11	0	0	0	0	11
SAN MIGUEL	10	0	0	0	0	10
SEDGWICK	25	0	0	1	3	21
WASHINGTON	19	0	1	0	0	18
WELD	2857	6	131	194	598	1928
YUMA	462	0	7	14	42	399
TOTAL	4956	10	162	262	859	3663



Well to Building Setback Review

Colorado Oil and Gas Conservation Commission
February 22, 2012

Listing of Locations less than 200 feet to Building

Year	Document Number	County	High Density	New Location	Distance	Proximity	Building Description
2011	2587822	CHEYENNE	No	No	58	less 150	Water well house
2009	1691798	WELD	No	No	58	less 150	Vehicle garage
2010	400072164	WELD	No	Yes	69	less 150	Abandoned hog shed
2012	400240957	GUNNISON	No	Yes	90	less 150	Equipment Shed
2009	1758843	WELD	No	Yes	103	less 150	Building to be razed
2011	1636646	WELD	No	No	122	less 150	Storage shed
2009	400011284	LAS ANIMAS	No	Yes	127	less 150	Operator is owner
2009	1786896	PHILLIPS	No	No	132	less 150	Grain Storage
2011	400117702	WELD	No	Yes	143	less 150	Irrigation pump house
2011	400227765	WELD	No	Yes	145	less 150	Storage Barn
2009	1904205	WELD	No	No	154	150 to 350	Livestock Enclosure
2011	400179419	WELD	No	Yes	157	150 to 350	Existing well / storage building
2010	400054716	WELD	No	No	159	150 to 350	Equipment Barn
2011	400188968	WELD	No	Yes	159	150 to 350	Abandoned
2010	400021477	WELD	No	Yes	162	150 to 350	Goat Barn
2009	1758386	WELD	No	Yes	168	150 to 350	Storage Shed
2011	1635946	WELD	No	No	169	150 to 350	Storage shed
2011	400165164	WELD	No	Yes	178	150 to 350	Residence
2011	400188780	WELD	No	Yes	180	150 to 350	Residence
2010	1697620	WELD	No	No	187	150 to 350	Livestock Shed
2009	1758746	WELD	No	No	193	150 to 350	Storage Shed
2011	400154431	WELD	No	Yes	198	150 to 350	Turkey barn
2009	1774783	WELD	No	No	199	150 to 350	cement service building
2011	400118102	YUMA	No	Yes	199	150 to 350	Steel Barn



Colorado Oil Gas Conservation Commission Monthly Statistics

YEAR	MO	Baker - Hughes Rig Count		Permits						Well			Active		Public Visits		
		Rcvd	Apvd	Drilling Rcvd	Apvd	Recompletion Rcvd	Apvd	Injection Rcvd	Apvd	Pits Rcvd	Apvd	Locations Rcvd	Authz	Spud Notice	Drilling Permits	Wells	Data
2009	Total	4754	5159	344	334	68	55	178	242	765	571	1103	161	1071	984793		
	JAN	45	506	462	31	4	5	10	50	277	186	192	41207	26	85	105289	
	FEB	50	687	377	9	4	4	6	9	265	213	189	3722	7	114	97167	
	MAR	51	653	713	31	5	5	9	9	206	300	234	3858	19	104	103614	
	APR	51	493	649	33	5	2	5	17	220	228	222	4040	24	110	127472	
	MAY	53	389	622	29	3	6	10	47	200	218	237	4291	11	97	85000	
	JUN	53	521	490	89	2	0	40	12	253	251	222	4373	26	100	85000	
	JUL	60	460	432	81	1	1	19	15	185	222	244	4300	10	84	85000	
	AUG	66	503	532	81	1	2	9	37	239	198	239	4481	16	91	86609	
	SEP	68	403	437	33	3	1	3	8	166	196	242	4558	9	76	83055	
	OCT	68	401	500	21	4	0	3	2	160	221	265	4502	15	85	82492	
	NOV	68	308	421	14	1	1	3	10	162	171	226	4557	14	94	90322	
	DEC	67	379	361	26	1	1	3	9	128	144	237	4735	20	75	81459	
2010	Total	5703	5996	519	515	34	28	120	225	2461	2548	2749	197	1115	1112479		
	JAN	63	405	351	8	23	4	6	8	249	112	227	4755	14	95	103968	
	FEB	61	343	249	15	2	7	6	3	184	150	210	4733	21	80	96171	
	MAR	68	472	498	18	23	4	7	38	262	258	257	4847	9	125	122393	
	APR	72	325	314	26	15	5	0	20	190	218	230	4882	8	105	106539	
	MAY	72	372	367	20	25	3	6	12	214	171	245	4904	14	124	73024	
	JUN	70	512	436	61	22	5	4	11	172	239	272	5013	30	131	108115	
	JUL	69	457	436	13	55	2	1	13	215	158	238	5113	20	74	103585	
	AUG	73	472	482	37	17	1	0	10	17	236	229	5328	21	141	111950	
	SEP	77	336	389	22	29	7	0	35	159	203	277	5361	9	120	116043	
	OCT	78	382	443	45	29	2	1	4	12	171	172	5423	14	126	132814	
	NOV	80	342	324	29	57	0	1	12	166	174	276	5409	18	96	130612	
	DEC	79	291	370	31	23	4	0	26	164	183	247	5329	9	77	132651	
2011	Total	4709	4659	325	320	44	32	190	192	2382	2267	3005	187	1294	1337865		
	JAN	73	357	259	26	21	0	0	5	136	125	217	5217	12	106	112686	
2012	Total	357	259	26	21	0	0	0	5	136	125	217	12	106	112686		

Apvd = Approved, Rcvd = Received, Ind = Individual, Blnk = Blanket, Apps = Application for Hearing, NOAV = Notice of Alleged Violation, AOC = Administrative Order of Consent, OFV = Order Finding Violation, Crmpt = Compliant, Comp = Completed



Colorado Oil Gas Conservation Commission Monthly Statistics

YEAR	MO	Well Oper Change	Operators		Release		Bonds		Claim		Hearings		Violations		Cmplt	Spills	Remediation		Field Insp
			New	Inactive	Ind.	Blanket	Ind.	Replace	Ind.	Blanket	Apps.	Order	NOAV	AOC			OFV	Rcvd	
2009	Total	5666	80	50	54	53	96	1	0	87	73	260	8	1	202	371	208	133	9991
	JAN	654	4	6	1	7	10	0	0	16	14	36	0	0	11	38	22	13	1160
	FEB	734	5	3	4	4	3	0	1	11	13	9	0	0	11	54	19	14	1143
	MAR	2171	4	5	6	6	7	0	0	13	12	37	0	0	6	29	41	10	2046
	APR	597	5	2	9	2	4	0	0	21	15	5	0	2	17	42	23	22	1183
	MAY	641	3	3	10	0	8	0	0	NA	NA	8	NA	NA	13	38	44	51	1364
	JUN	653	3	0	2	2	2	0	0	23	20	22	0	0	34	52	42	1308	
	JUL	624	5	0	0	0	8	0	0	12	6	37	1	1	20	46	39	26	971
	AUG	556	3	2	2	1	5	0	0	8	12	40	1	0	33	46	39	22	1581
	SEP	460	4	3	0	4	4	0	0	13	7	32	2	0	11	44	55	38	1388
	OCT	423	3	3	0	7	2	0	0	19	16	30	0	0	33	32	96	24	1595
	NOV	429	2	5	2	6	5	0	0	19	21	20	6	0	20	48	51	49	1535
	DEC	479	5	1	2	1	16	0	0	NA	NA	43	NA	NA	23	42	30	71	1801
2010	Total	8421	46	33	38	40	74	0	1	155	136	319	10	3	218	493	511	382	17075
	JAN	813	1	2	3	1	4	0	0	16	15	43	3	2	33	40	47	45	1316
	FEB	356	1	1	9	4	6	0	0	16	15	7	0	1	40	52	48	33	1591
	MAR	590	2	3	6	3	9	0	0	NA	NA	31	NA	NA	33	48	59	27	1675
	APR	402	2	0	3	2	1	0	0	24	24	8	0	0	10	52	38	61	959
	MAY	542	3	0	5	2	4	0	0	77	65	16	2	5	26	31	33	51	1577
	JUN	789	2	2	2	2	0	3	0	51	58	30	1	4	14	38	53	25	1099
	JUL	595	3	6	3	6	3	1	0	NA	NA	29	NA	NA	13	39	92	20	518
	AUG	572	2	3	12	7	2	0	1	68	54	26	2	2	20	54	106	56	1032
	SEP	575	5	1	7	5	2	0	0	44	41	4	2	4	17	46	56	66	676
	OCT	513	4	2	12	6	7	0	3	57	45	9	0	0	15	38	102	28	597
	NOV	354	4	9	15	4	1	0	0	NA	NA	15	NA	NA	16	31	70	58	513
	DEC	312	4	2	2	2	4	0	0	50	32	12	0	1	13	58	22	66	518
2011	Total	6413	33	31	79	44	43	4	4	403	349	230	10	19	250	527	726	536	12071
	JAN	336	3	3	7	5	1	1	10	70	72	0	1	0	29	30	42	23	920
2012	Total	336	3	3	7	5	1	1	10	70	72	0	1	0	29	30	42	23	920

Apvd = Approved, Rcvd = Received, Ind = Individual, Blanket = Blanket, Apps = Application for Hearing, NOAV = Notice of Alleged Violation, AOC = Administrative Order of Consent, OFV = Order Finding Violation, Cmplt = Complaint, Comp = Completed