



# Staff Report

May 29, 2012

## I. STATISTICS

Our monthly statistics and permit activity report are on pages 17-26. These statistics include the permit and location assessment information previously included on the first page of the staff report.

## II. NORTHWEST COLORADO

### ◆ Northwest Colorado Oil and Gas Forum

The Northwest Colorado Oil and Gas Forum (Forum) is an informal gathering of local, state, and federal government officials, oil and gas industry representatives, and citizens that have met regularly since 1989. The purpose of the Forum is to share information about oil and gas development in northwest Colorado and to make government officials and oil and gas industry representatives easily accessible to the public. Currently the meetings are conducted once per quarter and are co-chaired by the COGCC's Acting Director, Thom Kerr, and Garfield County Commissioner, Mike Samson.

The next meeting is scheduled for Wednesday, June 6, 2012, at 10:00 am at the Colorado Mountain College, West Garfield Campus, 3695 Airport Road, Rifle, CO 81650. Please note the day and date change.

All parties wishing to be placed on the meeting agenda should contact Chris Canfield at 970-625-2497 or via email at: [chris.canfield@state.co.us](mailto:chris.canfield@state.co.us).

### Garfield County Greenprint for Conservation and Economic Opportunity

COGCC staff participated in a meeting of the technical advisory team on water quality supporting a "greenprint" project for Garfield County. The greenprint will be a conservation

plan for county-wide open space. The project is sponsored by Garfield County, Great Outdoors Colorado, Aspen Valley Land Trust, and others.

## III. SOUTHWEST COLORADO

### ◆ Gas and Oil Regulatory Team (GORT) Meeting

The next GORT/Southwest Colorado Oil and Gas Stakeholders meeting is scheduled for August 30, 2012, at 8:30 am at the La Plata County Fairgrounds in Durango, Colorado.

All parties wishing to be placed on the next meeting agenda should contact Karen Spray at: 970-259-1619 or [karen.spray@state.co.us](mailto:karen.spray@state.co.us).

### ◆ Fruitland Formation Outcrop Mitigation and Monitoring Projects (4M Projects)

Fruitland Formation Outcrop - 4M Pilot Scale Mitigation Projects La Plata County. The South Fork Texas Creek (SFTC) Mitigation system continued operation at approximately 11 Kilowatts (kW) power generation. From February through March 2012, it operated approximately 99% of the time. Approximately 6.4 kW of power is returned to the grid at this operating rate. Gas continues to be collected and vented at the Pine River Ranches (PRR) location. Methane concentrations currently average 99% at SFTC and less than 1% at PRR. Operations & Maintenance activities are continuing.

4M Monitoring Wells La Plata and Archuleta Counties. There are 17 wells at 11 locations in the COGCC 4M monitoring program. Well pressures are monitored remotely via satellite telemetry with one or two maintenance visits per year, depending upon data received. An alternate access is still being sought for the Beaver Creek Ranch locations. The Fiddler #1 wellhead lost its seal over the winter due to freeze-thaw



conditions. Repairs are pending and long-term insulation methods are being evaluated as this is the second year this upset occurred. Other sites are being scheduled for weed mitigation and removal of remaining construction storm-water BMPs. A full O&M visit is scheduled for late May or early June 2012.

◆ Ongoing Investigation, Reclamation, and Mitigation of Residual Methane in the Vicinity of the Bryce 1-X Well Area, Bondad, Colorado

Groundwater sampling was conducted on April 3, 2012. Preliminary test results indicated all methane concentrations tested below 10 mg/l. Analytical data are pending. The middle well exhibited methane concentrations below the analytical range for isotopic testing (0.58 mg/L) and was therefore excluded from isotopic sampling. The next sampling date is scheduled for October 2012.

#### IV. NORTHEAST COLORADO

◆ Cease & Desist Order—Ranchers Exploration Partners, LLC

On April 27, 2012, Cease and Desist Order No. 1C-9 was issued to Ranchers Exploration Partners, LLC (Ranchers) by Acting Director Thom Kerr, for its drilling activities at the Retta J #1 Well (API No. 05-069-06431), located in Section 24, Township 6 North, Range 68 West, in Larimer County. In mid-2011, CDPHE issued a Compliance Advisory to Ranchers after it was discovered the permitted well location was on top of a closed, undocumented landfill. After consultation with CDPHE and COGCC staff, the well location was moved approximately 80 feet, where test borings showed no sign of landfill material. On April 25, 2012, the well was spud, whereupon the rig became unstable and subsided approximately 3 feet. Ranchers also experienced adverse drilling issues, and landfill debris was subsequently found in the drill cuttings. On April 26, 2012, Jim Precup, COGCC's NE Inspection Supervisor, conducted a site inspection and noted a lack of secondary confinement on the drill pad, as well as inadequate BMPs for stormwater management. The Cease and Desist order was issued pursuant to Commission Rule 522.d. and § 34-60-121 (5)(a),

C.R.S., finding that Ranchers failed to comply with: 1) the CDPHE Compliance Advisory; 2) COGCC Forms 2 and 2A, with Conditions of Approval; and 3) the COGCC Field Inspectors requirements. Ranchers was directed to cease drilling activity and take all action necessary to prevent further harm to the public health, safety, and environment.

◆ Other E&P Waste Disposal Options

COGCC staff recently identified numerous incidents involving the improper management of tank bottoms in northeast Colorado. Operators are reminded that tank bottoms, workover fluids, pigging wastes from gathering and flowlines, and natural gas gathering, processing, and storage wastes are considered "Other E&P Waste" and must be managed in accordance with Rule 907.f., which states that these types of wastes may be treated or disposed as follows:

- Disposal at a commercial solid waste disposal facility;
- Treatment at a centralized E&P waste management facility permitted in accordance with Rule 908;
- Injection into a Class II injection well permitted in accordance with Rule 325; or
- An alternative method proposed in a waste management plan in accordance with Rule 907.a.(3) and approved by the Director.

Neither the use of tank bottoms or other oily waste for stabilizing sandy or loose soils nor the intentional dumping of tank bottoms or other oily waste, which results in an impact to site soils, are acceptable land treatment alternatives. However, land treatment of oily waste is allowed by Rule 907.e. with certain requirements set forth in Rule 907.e.(2).

◆ Baseline Water Quality Sampling

COGCC environmental staff responded to, or are in the process of responding to, requests for baseline water quality sampling in Elbert, Douglas, Rio Grande, and Weld Counties. These requests are being tracked as complaints in the



COGCC database under the baseline sampling request category. Staff also provided concerned landowners with information about the COGCC permitting and regulatory process, as well as an overview of the current level of activity in the area. Results of these investigations are summarized and provided to landowners after laboratory analyses are complete. These data are also entered into the COGCC water quality database.

As of May 7, 2012, there is one approved permit in Elbert County for a vertical well in the NW $\frac{1}{4}$  NE $\frac{1}{4}$  of Section 10, Township 6 South, Range 64 West, and 2 pending permits in Rio Grande County (NW $\frac{1}{4}$  SE $\frac{1}{4}$  of Section 24, Township 39 North, Range 5 East and NE $\frac{1}{4}$  SE $\frac{1}{4}$  of Section 9, Township 40 North, Range 5 East). There are no pending or approved permits in Douglas County.

Preliminary assessment of data indicates that water quality is good. Three of the 26 sampled wells contained methane concentrations sufficient for isotopic analysis. These analytical results indicate that the methane present is of distinctly biogenic origin. Landowner letters are pending. A written report summarizing the results of the analyses of baseline water sampling in Elbert and Douglas Counties from the Dawson and Denver aquifers has been completed. This report includes a compilation of analytical results for samples collected by the COGCC from domestic wells, as well as water quality data from the USGS National Water Information System (NWIS) for Elbert County. This report is available to the public in the Library section of the COGCC website.

## V. SOUTHEAST COLORADO

### ◆ Methane Investigation Monitoring, and Mitigation Plan (MIMMP) - Huerfano County

Petroglyph Energy Inc. (PEI) has completed plugging their CBM wells in Huerfano County.

#### Phase 2 Operations

PEI shut down operations of the Phase 2 reinjection system in September 2011. Gas Seep monitoring at two locations is expected to be

completed this spring.

### ◆ U.S. EPA Raton Basin Hydraulic Fracturing Study - Las Animas and Huerfano Counties

Analytical data from the October 2011 sampling and analysis program are expected to be reviewed by EPA and contractors and made public at some point this summer. A follow-up sampling and analysis event, including samples collected from domestic water wells, monitoring wells, CBM wells, and surface waters is scheduled for May 14 to May 18, 2012. Split samples will be collected at several of the sites by operators and/or COGCC staff.

### ◆ Raton Basin Produced Water Discussions

Representatives of 3 Raton Basin coalbed methane operators met with COGCC engineering and environmental staff in April 2012 to discuss all aspects of produced water disposal in the Raton Basin. Staff of the CDPHE WQCD, the Division of Water Resources, and the Colorado Geological Survey also participated in the discussion of current and future disposal options for the approximately 80,000,000 barrels of water produced annually from CBM wells in the basin.

## VI. ORGANIZATION

**Kym Schure** is the newest field inspector for northeastern Colorado. He has a master's degree in earth and space science and worked for an environmental consulting firm that specialized in the development and remediation of oil and gas sites. He also has an agricultural background. Kym is based in Sterling, Colorado, and reports to Jim Precup, NE Colorado Field Supervisor. Randy Edelen, who had been working the northeast region, will be re-assigned to an area that will encompass southeastern Wattenberg, eastern Adams, and Arapahoe counties.

An organizational chart can be found on pages 13-15. For contact information, please go to our website and click on "Contacts" on our homepage, and then "Staff Contact Information."



## VII. PLANNING/ADMINISTRATION/OTHER

### ◆ Consultations with the Colorado Division of Wildlife and the Colorado Department of Public Health and Environment

According to Rule 306.c.(1), the Commission must consult with the Colorado Division of Wildlife (DOW) (now Colorado Parks and Wildlife) when: 1) an operator requests a modification of an existing Commission order to increase well density to more than one well per 40 acres; 2) a consultation is required in accordance with the 1200-series rules; 3) an operator requests a variance from a provision in the 1200-series rules; or 4) if DOW requests a consultation due to the presence of a federally listed threatened or endangered species. Correspondence regarding wildlife consultation should be submitted to:

Dean Riggs  
Assistant Regional Manager - Northwest Division  
711 Independent Avenue  
Grand Junction, CO 81505

Similarly, Rule 306.d.(1)B requires the Commission to consult with the Colorado Department of Public Health and Environment (CDPHE) when an operator requests a modification of an existing Commission order to increase well density to more than one well per 40 acres. Operators should direct all documents submitted in this regard to:

Kent Kuster  
Oil & Gas Consultant Coordinator  
CDPHE  
4300 Cherry Creek Drive South  
Denver, CO 80246-1500

### ◆ Public Outreach Opportunities

COGCC staff presented at and participated in 3 public meetings organized by CDPHE. The meetings were held on April 11, 2012, in Greeley, April 25, 2012, in Arapahoe County, and May 7, 2012, in Longmont. Staff highlighted the regulatory roles of each agency and answered questions from the public.

On April 25, 2012, Margaret Ash, Field Inspection Manager, met with the Arapahoe County

Public Works department to discuss the COGCC's inspection process. The meeting included a PowerPoint presentation on the inspection group, a demonstration of the field inspection form, and a question and answer session.

COGCC Field Inspection Supervisors Jim Precup and Mike Leonard participated in cross training with CDPHE Air Pollution Control Inspectors. Staff from both groups conducted joint inspections at several tank batteries and well sites and also worked on a joint odor/air pollution complaint. The training activities occurred on April 25 and 27, 2012.

On May 3, 2012, COGCC staff held a 3-hour eForm training in Longmont for operators and local government designee's (LGD). The training consisted of a PowerPoint presentation by a representative of the Engineering team on the process of establishing a well for production, including the regulatory forms and process the Commission follows. Other members of the staff provided detailed instructions on how an LGD uses the eForm system to review and comment on pending Applications for Permit to Drill (Form 2) and Oil and Gas Location Assessment (Form 2A). The remainder of the training dealt with specific questions from the operators on how to use the eForm system and how to complete specific forms. COGCC staff were in Durango on May 17th for the 3rd in a series of 4 eForm trainings.

On May 5, 2012 Dave Andrews, Western CO Engineering Supervisor, Chris Canfield, NW Environmental Protection Specialist, Jay Krabacher, NW Area Engineer, Chuck Browning, NW Field Inspector, and Barbara Westerdale, Permit/Completion Tech, staffed a booth at the 10<sup>th</sup> Annual EnCana Energy Expo in Rifle, Colorado. Staff answered questions on state regulations from industry representatives and the general public.

Thom Kerr, Acting Director, spoke at Trinidad Junior College on May 9, 2012, updating Local Government, Industry, and the Public on changes in COGCC rules, the Governors Task Force, and other recent COGCC activity.



Mark Weems, SW Area Engineer, presented at the Four Corners Oil and Gas Conference held in Farmington, NM on May 9, 2012. Dave Andrews was also in attendance. The conference featured presentations by industry and regulatory professionals on new technology, safety, and current regulatory compliance.

On May 15, 2012, Thom Kerr made a presentation to the Rocky Mountain Farmers Union in Fort Collins, CO.

Teri Ikenouye, Information Processing Supervisor, along with Production Analysts Cory Essex, Darla Geimausaddle, and Enrique Rivera, conducted a Production Reporting class for LGDs and Industry on May 15, 2012, in the COGCC's Denver Office.

On May 16, 2012, Karen Spray, Acting Environmental Manager, and Steve Labowski, SW Field Inspector, attended a Colorado Municipal League outreach session in Durango, CO.

Thom Kerr made a presentation at Vista Peak Prep School in Aurora on May 17, 2012, for the Town Hall meeting conducted by Representative Cindy McAree.

On May 18, 2012, Karen Spray hosted 53 Colorado School of Mines engineering students at the COGCC South Fork Texas Creek 4M Mitigation site. This site contains a pilot methane gas mitigation system where gas is captured and converted to electricity that is net-metered back into the grid system in cooperation with the La Plata Electric Association.

On May 19, 2012, Stuart Ellsworth, Engineering Manager, Karen Spray, Acting Environmental Manager, Mark Weems, SW Area Engineer, Margaret Ash, and Thom Kerr, participated in a program at Adams State College with presentations by the BLM and COGCC on leasing and drilling.

◆ *How Well Do You Know Your Water Well*

The ever popular brochure *How Well Do You Know Your Water Well* has been updated and revised to include information about mitigating methane in water wells, current contact infor-

mation for various agencies, and water well maintenance and record keeping. Water well owners are provided this useful brochure when water samples are collected from their wells by COGCC staff, operators, or third party contractors. The update project was initiated by COGA with support from the COGCC and cooperation of the Colorado Department of Public Health and Environment and the Department of Water Resources. Copies of the updated brochure have been provided to the COGCC Commissioners. An electronic version of the brochure is available in the Library section of the COGCC website.

◆ New Policy - COGCC Directional Survey Electronic Data Submittals

The COGCC has been working with industry and its IT developers to formulate a methodology to electronically report directional well bore locations. The tactic was to make the reporting process work for plans submitted at the time of permitting and for the final as-drilled survey data. The last stakeholder meeting was on October 26, 2011, and we went over the Internet reporting application, the standardized format, and the reporting and filing process. We have met and discussed this with industry engineering and regulatory representatives, the directional drilling companies, the data vendors, and agency IT staff.

With all of this accomplished, a new policy to require that all directional and horizontal well permits and completion reports include electronically submitted directional surveys and plans has been created and will go into effect January 1, 2012. This will allow mapping the entire wellbore path, providing a more accurate picture of where these wells are being proposed and drilled. The new COGCC Policy for Electronic Submittal of Directional Surveys and Plans is available for download from the "POLICIES" page on the COGCC website.

◆ Onsite Inspection Policy

The COGCC has received a total of 147 requests for onsite inspections to date under the Policy For Onsite Inspections On Lands Where The Surface Owner Is Not A Party To A Surface Use Agreement Policy, effective for Applications for



Permits-to-Drill (APDs) submitted after February 15, 2005.

Thirty-two onsite inspections have been conducted, while 98 requests for inspections have been withdrawn. Seventeen onsite inspections are pending and will be scheduled, if necessary, after the Application for Permit-to-Drill (APD) is received, or after issues related to local governmental designee consultation, location change, or surface use agreements are resolved.

Of the 147 requests for onsite inspection, 80 were for locations in Weld County, 26 in Las Animas County, 9 in Adams County, 7 in La Plata County, 5 in Garfield County, 3 each in Archuleta, Boulder, Logan, and Yuma Counties, 2 in Morgan County, and 1 each in Baca, Cheyenne, Kiowa, Larimer, Lincoln and Washington Counties.

COGCC staff have attended on-site meetings to facilitate communication between the parties and to minimize impacts to the surface owner through voluntary measures implemented by the operator in instances where surface owners have requested Onsite Inspections beyond the 10 business-day window provided for in the Policy, and where there is a dispute between parties regarding the date of the Rule 306 consultation.

In addition to the Onsite Inspection Policy, onsite inspections are being conducted in the San Juan Basin under Cause 112, Order Nos. 156 and 157. These are cases where an Onsite Inspection was required because an APD was submitted without a surface use agreement.

#### ◆ Environmental Water Quality Database

A project to migrate analytical data to the SQL-server database was initiated in early 2011. The project is tasked with identifying new processes to allow for electronic submission of analytical data that are required by a variety of rules and orders and that are collected in support of investigations, spill/release responses, and remediation activities. The COGCC and the Groundwater Protection Council (GWPC) are working cooperatively on this project. COGCC

and the GWPC anticipate having a standardized electronic data deliverable (EDD) format available to facilitate electronic data submission in the near future. The interface for entering field data, location data, and facility information will be similar to the e-Form applications used for other electronic submittals.

#### ◆ Voluntary Baseline Groundwater Quality Sampling Program

The Colorado Oil and Gas Association (COGA), in cooperation with COGCC, developed a Voluntary Baseline Groundwater Quality Sampling Program that was finalized in November 2011. The program went into effect January 1, 2012. It is open to all oil and gas operators throughout the state and provides a standardized program for baseline sampling and analysis of domestic water wells and other groundwater features such as seeps and springs. Data generated from the sampling program and the results will be submitted to the COGCC and used to determine if impacts to groundwater related to oil and gas operations have occurred. The Voluntary Program does not exempt oil and gas operators from the mandatory baseline groundwater monitoring required in the Greater Wattenburg Area by Rule 318A.e.(4), or Rule 608.b. requirements for Coalbed Methane Wells or other existing field-wide orders for groundwater sampling.

During 2011, several oil and gas operators performed voluntary baseline groundwater sampling and provided analytical data to COGCC. These operators were active in development of the Niobrara Formation in northern Weld County and collected samples from a number of domestic water wells. Data from nearly 50 water wells and surface water sources have been submitted to the COGCC from operators and will be added to the COGCC environmental database after its development is complete.

#### ◆ Plugging and Reclaiming Abandoned Wells (PRAW) - Project Status

On page 16 is a spreadsheet listing PRAW projects for Fiscal Year 2011-2012 that are planned (rescheduled for FY 12-13), in progress, or completed. The Debeque wells have



been plugged and reclamation work will begin. A contract has been awarded for the Jennifer #1 Well and work will begin shortly.

## ◆ July 2012 Hearing Docket

A docket for the July 2012 hearing will be available shortly after the May hearing. Hearing dockets are available on our website by clicking on "Hearings." Links to the notices and hearing applications are available from the Docket Number and Applicant, respectively. To sign up for e-mail notification of hearing notices and applications, please see the announcement and instructions on the homepage of the COGCC website at: [colorado.gov/cogcc](http://colorado.gov/cogcc).

## ◆ Colorado Oil and Gas Information System ("COGIS")

COGIS is made up of many different components that are used by the COGCC, staff, industry, government agencies and many others.

### ➤ Internet

The COGCC determined it was most cost effective to develop applications and information in an Internet-available format. This allows for the same tools to be utilized in different environments, thus eliminating the re-creation of applications. The Internet connection was moved to a new network structure which provides a much more secure environment. The following are tabs on the Internet menu bar:

#### \* General

This page has links to basic information concerning the COGCC, its function, and oil and gas development in Colorado.

#### \* Contacts

This page has links to people and agencies that are involved with oil and gas regulation and related issues in the state. The page also contains phone lists and geographic areas of responsibility for COGCC staff.

#### \* Library

This page contains links to documents resulting from COGCC studies, activity reports, and statistical downloads. The annual statistics and the weekly/monthly statistics are available here.

#### \* Hearings

This page has links to the current and previous hearing schedules, which allow for review of the dockets, agendas, applications and their outcome. It also has information that is useful when considering filing an application for hearing or finding information about Commissioners.

#### \* Rules

This page contains links to the COGCC statute, Rules and Regulations, and policies.

#### \* Policies

This page contains links to COGCC policies.

#### \* Orders

This application provides searchable capability of the COGCC's orders. The search by location is still under construction as we create the map layers for all spacing orders.

#### \* Forms

All forms are available as Adobe Acrobat documents that can be downloaded, completed, printed and mailed; some are available as Excel and Word documents. Some example and instruction documents are viewable. The forms used by operators to submit information on location of wells and completion reports have been modified to accept latitude and longitude data. Eventually, online forms will be available here, but the exact time frame is unknown.

#### \* Staff Report

Current and previous staff reports are viewable here.

#### \* Permits

This application shows the last 12 months of approved permits and current pending permits; it may be filtered by county.

#### \* News/Media

This category provides general information to the media. It contains statistics, charts, graphs, and other items of interest.

#### \* Database

This application enables users to query well, production, and operator information. These queried databases contain the most current set of data and are updated throughout the day.

#### \* Local Gov

This application provides database searches



for local government contact information and oil and gas activity within a selected area.

\* Images

This application is an interface to the COGCC's historical paper files. All well files, logs, and hearing files have been scanned. This application is not user friendly and the preferred method is to use the database queries and click on the "docs" icon for wells and other facilities, or to use the Orders application.

\* Maps

The Maps tab takes interested parties to the COGCC GIS Online page. From that page an Interactive map of the State of Colorado can be accessed by clicking on View Map. GIS specialists can also download GIS Shapefiles from a link on the GIS Online page. The COGCC is grateful to the many agencies that have contributed data to our GIS Online map, including BLM, State Land Board, Division of Water Resources, Colorado Geologic Survey, CDPHE, NRCS, and others.

The Interactive map (GIS Online) was designed to display COGCC well data, field boundaries, spacing orders, special rule areas, and other COGCC data along with more than 100 other map layers that are relevant to oil and gas operations. The map has proven to be a valuable tool for oil and gas permitting, and for researching COGCC's oil and gas data repository. Some of the more important layers are:

1. Oil and Gas Wells - All wells in the State displayed as red dots on the map; a double click on any point opens the electronic informational "scout card" for that well.
2. Directional Bottomhole Locations - Points with leader lines to actual and planned bottomhole locations.
3. Permits - All valid oil and gas well permits in the State.
4. Pending Permits/Pending 2A Locations - Permit and Location applications that are currently under review by COGCC staff.
5. Field Boundaries - Polygon outlines of field boundaries.

6. Water Wells - Water well locations as mapped by the Division of Water Resources (DWR); this layer is updated monthly by DWR.
7. CPW Sensitive Wildlife Habitats and Restricted Surface Occupancy Areas.
8. Rule 317B Surface water, source water protection areas as mapped by CDPHE.
9. BLM data including Exploratory Units, Participating Areas, Subsurface Authority, Oil and Gas Leases, Lease Stipulations, etc.
10. State Land Board active leases.
11. Many Base Layers including roads, cities, towns, geology, soil surveys, topographic maps, and 2009 aerial photographs.

GIS Shapefiles that are available for download include: Well locations, Directional Bottom Hole locations, Oil and Gas Field Boundary polygons, Facilities locations (primarily pits), DOW Wildlife Habitats, Rule 317B Buffers, and a few other area-specific shapefiles.

Currently, GIS Staff are reviewing "As Drilled" location submittals for accuracy, and are completing development of a new version (MapGuide 2010) of the Interactive Map. The new version is available internally to staff and should be available to the public sometime this month.

Completed formations were added to Internet Map and the Fields Polygon shapefile in July 2011.

\* Help

The Oil & Gas Activity Notification Tool allows a user to enter a section-township-range of interest which returns a table identifying which quarter-quarter sections are subject to Rule 317B, RSO areas, or SWH requirements. The user can then click on a link, which opens the map, and zoom to the section of interest for further inspection.

A tutorial document for the COGCC Interim Policy for APDs is posted in the Help area and the homepage of the website. This document helps explain the interim process





that the COGCC used for processing APDs until the Final Amended Rules took effect. Included in the document are explanations on how to use the new tools and map layers that have been developed for the Final Amended Rules.

The COGCC, with assistance from the Ground Water Protection Council, has produced two Macromedia Flash movies to help users understand the many features available within the COGCC GIS Online system. The movies are located by clicking on the HELP link from the main menu or by using the following link: [http://colorado.gov/cogcc/COGIS\\_Help/Help.asp](http://colorado.gov/cogcc/COGIS_Help/Help.asp).

Two applications on the COGCC website are available to help operators with the entering of data relating to locations. The first, a Footage calculator, will take a new latitude and longitude and calculate new footage calls based on the location supplied at the time of permitting. The tool should only be used to compare locations where latitude and longitude were supplied on the permit as required by the December 1, 2005, rule change. The second application converts latitude and longitude as measured in degrees, minutes, and seconds into decimal degrees. The decimal degree format is what COGIS is expecting on all forms requiring lat/long coordinates.

The eForm Training Manual has been updated to include all of the forms available within the system. It can be found at [http://cogcc.state.co.us/COGIS\\_Help/eFormtraining/eFormTraining.htm](http://cogcc.state.co.us/COGIS_Help/eFormtraining/eFormTraining.htm). A document explaining the Local Government Designee process in eForm is now available in the Help section. The forms currently available in eform are: Applications for Permits-to-Drill (Form 2); Oil and Gas Location Assessment Form (Form 2A); Drilling Completion Report (Form 5); Completed Interval Report (Form 5A); Well Abandonment Report (Form 6); Earthen Pit Report/Permit (Form 15), Bradenhead Test Report (Form 17); Trade Secret Claim of Entitlement (Form 41); and Notice of Notification (Notice of Hydraulic Fracturing) (Form 42).

## ➤ Local Area Network

COGCC staff are connected to services by a Local Area Network (“LAN”) connection

which provides email and data-sharing capabilities. The LAN is connected to the Centennial Building at 1313 Sherman Street by a wireless interface; this connection provides access to the Internet and other state services. COGCC staff utilize the same applications in their work as Internet users, in addition to others outlined below.

- \* **Database**  
The COGCC maintain a comprehensive database of regulated facilities (wells, pits, injection sites), incidents (inspections, complaints, spills), and affiliations (companies and contacts).
- \* **Imaging**  
This application provides the capability to convert the paper documents received by the COGCC to electronically available documents.
- \* **Form Processors**  
This set of applications allows users to input, route, edit, and update regulatory reports submitted by oil and gas operators.
- \* **eForm**  
This application utilizes the same code base that industry uses to submit Applications for Permits-to-Drill (Form 2), Oil and Gas Location Assessment Form (Form 2A), Drilling Completion Report (Form 5), Completed Interval Report (Form 5A), Well Abandonment Report (Form 6), Earthen Pit Report/Permit (Form 15), Bradenhead Test Report (Form 17), Trade Secret Claim of Entitlement (Form 41) and Notice of Notification (Notice of Hydraulic Fracturing) (Form 42). All of these forms are also being used by staff to input, route, edit, and update these forms internally.
- \* **Geographic Information Systems (GIS)**  
These applications provide the capability to create custom maps, convert survey calls to geographic coordinates, and convert and utilize geographic positioning system (GPS) data.  
  
The GIS Administrator creates daily updates for the Internet map data downloads.
- \* **COGIS Tools**  
This set of applications allows COGCC staff to correct data in the database in addition to performing specialized workflow administration.

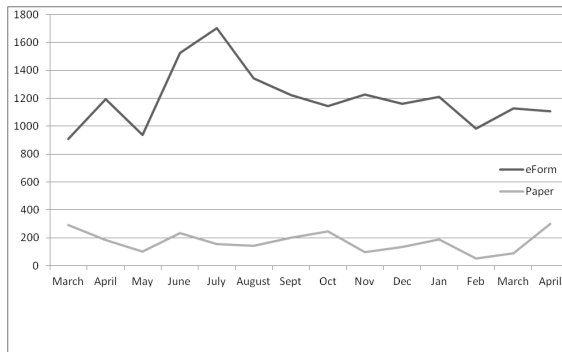


- Remote Users  
This is the final component of the COGIS system. This laptop system consists of Internet applications and other report tools necessary for COGCC field staff to facilitate data collection and provide information.
- \* Electronic Business  
There are approximately 200 operators reporting production electronically.

#### ◆ COGIS Projects, Updates and Changes

##### Electronic Form Submissions (eForm)

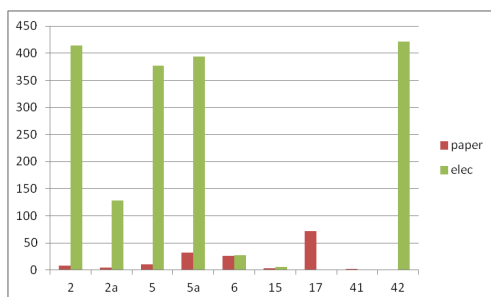
TOTAL ELECTRONIC FORM SUBMITTALS  
MARCH 2011—APRIL 2012



Forms currently available through eForm:

- Form 2 - Application for Permit to Drill
- Form 2A - Oil and Gas Location Assessment
- Form 5 - Drilling Completion Report
- Form 5A - Completed Interval Report
- Form 6 - Well Abandonment Report
- Form 15 - Earthen Pit Report/Permit
- Form 17 - Bradenhead Test Report
- Form 41 - Trade Secret Claim of Entitlement
- Form 42 - Notice of Notification (Notice of Hydraulic Fracturing)

Following is a breakdown by form for the month of April:



Form 15, Pit Permit and Report, is now available in eForm and operators are encouraged to utilize the system to file this form. The form has some new fields added from the older version. The PDF version on the Forms page, <http://cogcc.state.co.us/Forms/forms.html>, has also been revised to reflect the changes that occurred from the release of the form in eForm.

Form 41, Trade Secret Claim of Entitlement, and Form 42, Notice of Notification (Notice of Hydraulic Fracturing), are now available in eForm. Both forms came about from the Hydraulic Fracturing Disclosure Rulemaking that occurred last December.

The development of Form 10, Certification of Clearance and/or Change of Operator, is underway. Testing continues by the internal staff.

Form 4, the Sundry Notice, has begun development.

As forms are released on eForm, updates to the PDF forms on our website will occur in tandem. These new versions of the PDF forms will reflect any changes that have occurred.

Along with the eForm system, a page is available where the operators can review all known bugs within the system and report any new ones they discover. Currently there are 248 operators signed up to use eForm.

The public can make comments on all submitted Oil and Gas Location Assessment (OGLA) forms (Forms 2A) through the eForm system. This is accomplished by going to the COGCC website (<http://www.colorado.gov/cogcc>) and clicking on the menu option, "Permits", (or <http://cogcc.state.co.us/COGIS/DrillingPermits.asp>).

On the COGIS-Permits page, two search options are available for OGLA forms, "All Pending Location Assessments for" and "All Approved Location Assessments for." When the results are displayed for forms in process, the public can click on the document number, which logs the user onto the new eForm application. Once the page is displayed with the selected docu-



ment, the user can select the Comment button to make a comment on that particular form. The public can use this same method to make comments on APDs (Form 2s).

For any operator not currently enrolled in eForm, instructions for starting the process can be found at <http://cogcc.state.co.us/Announcements/COUAINformation.pdf>.

### COGCC GIS Online

The latest version of the COGCC GIS Online is now available on the commission's website. This new version of the GIS site utilizes a different technology than the old site. The new technology eliminates the need for the user to download and install a plugin, which limited the browser that it could be used in to Internet Explorer. The new version will work with almost any browser.

### LAS File Upload

All digital well logs submitted to the COGCC over the Internet are to be in LAS (log ASCII) format. In addition to the LAS file, a paper log file is still required. Additionally an operator can submit the same log file in a PDS format, but the PDS format cannot replace the LAS requirement. To submit digital well logs over the Internet, an application must be completed. The application is available from the "Forms" page on the COGCC website <http://www.colorado.gov/cogcc>. To utilize the system, the operator will need to submit a Designation of Agent Form, Form 1A. COGCC staff are working with operators and logging companies to gain compliance with the digital log submission requirement. The rule still requires the operator to submit a paper copy of each well log (Rule 308A). All operators are required to be in compliance with this Rule for all wells completed since July 2004.

### Spacing Orders Project

The spacing orders project has been completed for the first pass through the state. As new orders are issued, the map layers will be updated.

### Historic Wells Mapping Project

COGCC's GIS staff obtained historic maps of the Florence Oil Field and had well locations converted to GIS formats. The GIS layer was added

to the Field Inspectors' laptops so that they can look for these old wells on the ground. Any old wells located will be added to the COGCC database and evaluated for further actions, if necessary. A 1927 Map Image of the Boulder Oil Field was added to the Internal map to assist in identifying historic wells in the area.

## VIII. VARIANCES

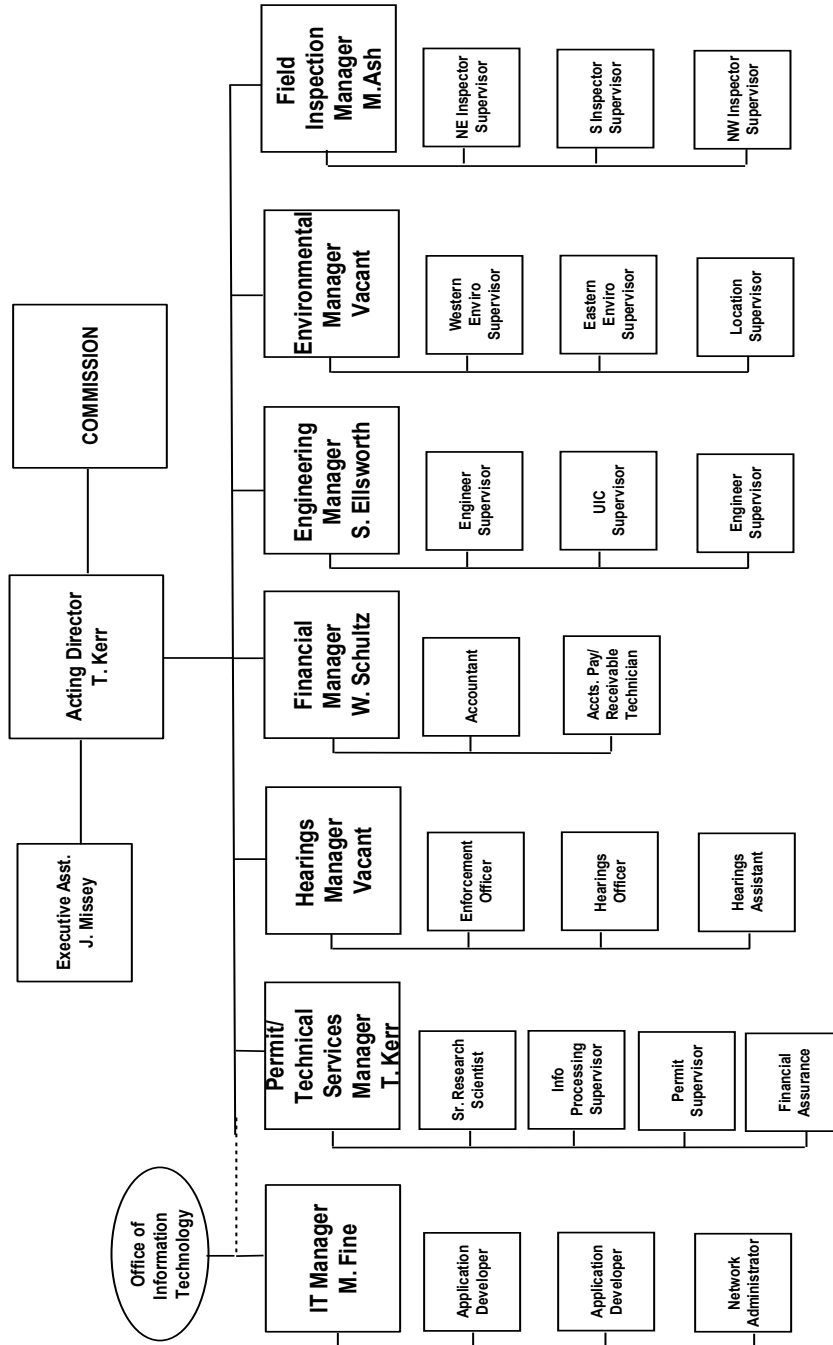
1. On April 20, 2012, a Rule 502.b Variance Request by Augustus Energy Partners was approved by the Acting Director for the Wise DB-18 Well (API No. 05-125-12075, Location No. 428587), located in the NW $\frac{1}{4}$  NE $\frac{1}{4}$  of Section 18, Township 5 North, Range 46 West in Yuma County. The proposed location is within the 318B WLR area, which specified that only 4 Niobrara wells may be drilled within a quarter section. The proposed well would be the 5<sup>th</sup>. Augustus provided information supporting a pilot project with the variance request, along with a signed surface owner waiver acknowledging the exception location.
2. On April 27, 2012, a Rule 502.b Variance Request by Augustus Energy Partners was approved by the Acting Director for the Deterding BB-15 1S45W Well (API No. 05-125-12076, Location No. 428961), located in the NW $\frac{1}{4}$  NW $\frac{1}{4}$  of Section 15, Township 1 South, Range 45 West in Yuma County. The proposed location is subject to the statewide spacing requirements of Rule 318.b, which allows only one producible well in each quarter quarter section. The proposed well would be the second. Augustus provided information supporting a pilot project with the variance request, along with a signed surface owner waiver acknowledging the exception location.
3. On May 11, 2012, a Rule 902.b Variance Request by Gunnison Energy Corporation ("GEC") was approved by the Acting Director for the Hotchkiss Water Storage Facility (Facility ID No. 421193), located in Gunnison County. GEC requested a variance allowing a temporary reduction in the freeboard of their lower pit, from two feet to one, to avoid the disposal of 30,000 bbls of water during repairs of the upper pit. Ninety percent of the water in the pit is from Muddy Creek and 10% from coalbed methane water. Water samples from both pits



showed organic constituents below Table 910-1 standards. Total dissolved Solids (TDS) were elevated at 576 ppm (upper pit) and 414 ppm (lower pit). These TDS levels are similar to levels found in test samples obtained prior to construction of the pits.



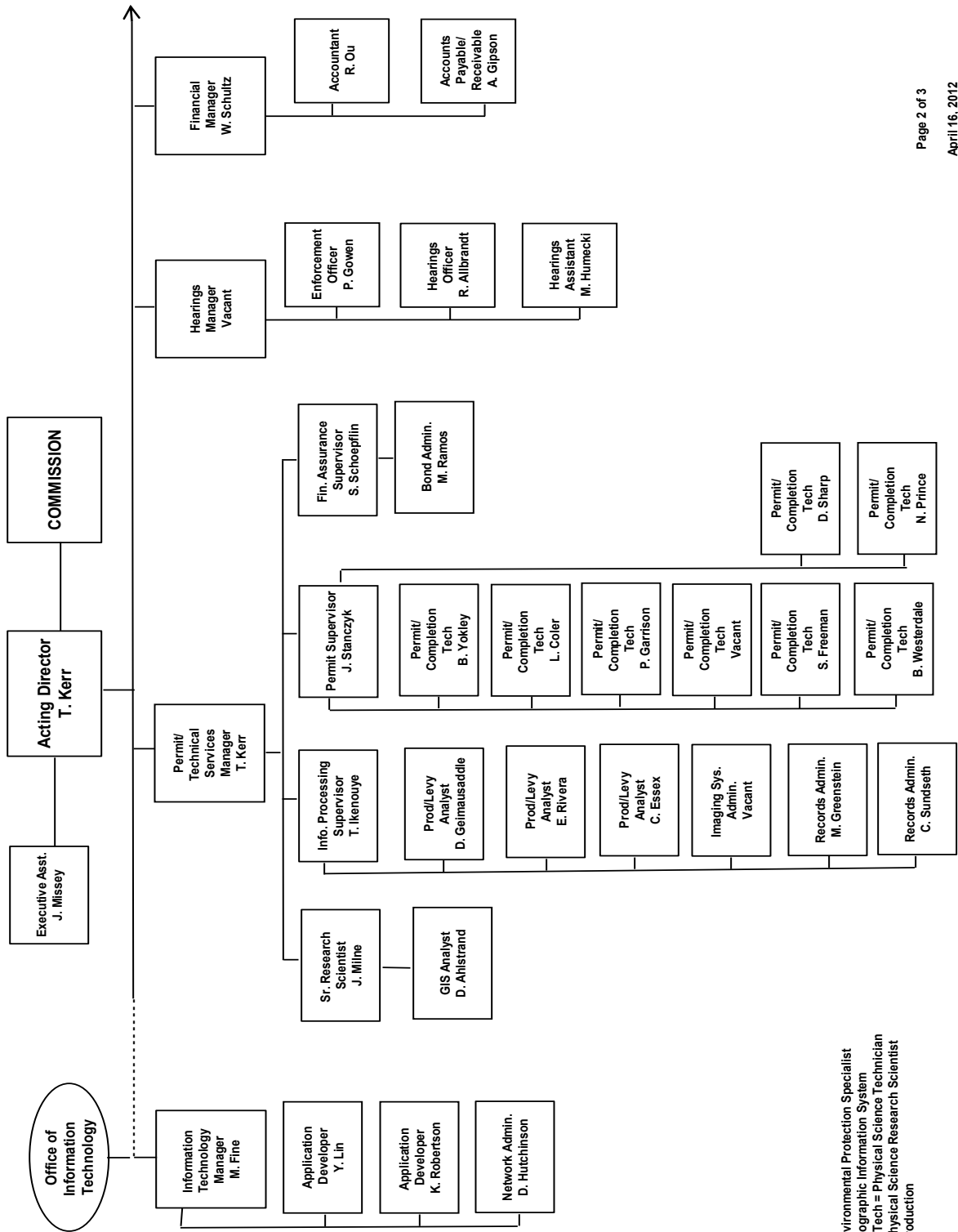
## COLORADO OIL & GAS CONSERVATION COMMISSION



See the next two pages for details



## COLORADO OIL & GAS CONSERVATION COMMISSION ORGANIZATION



EPS = Environmental Protection Specialist  
 GIS = Geographic Information System  
 Phys/Sci Tech = Physical Science Technician  
 PRS = Physical Science Research Scientist  
 Prod = Production







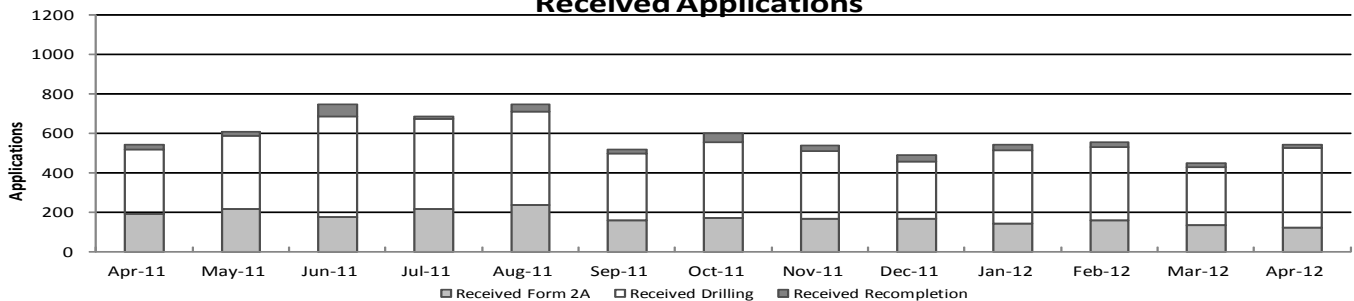


## Colorado Oil & Gas Conservation Commission Monthly Permit Activity

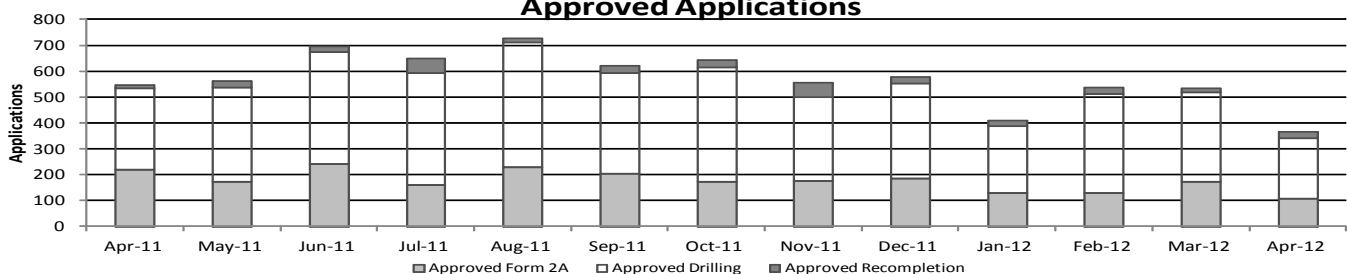
	Backlog	Received	Approved	Withdrawn	Rejected	Incomplete	In-Process	Remaining
<b>Form2A</b>								
Apr-11	281	190	218	6	0	80	167	247
May-11	247	214	171	10	0	88	192	280
Jun-11	280	172	239	4	0	60	149	209
Jul-11	209	215	158	8	0	65	193	258
Aug-11	258	236	229	6	0	66	193	259
Sep-11	259	159	203	6	0	58	151	209
Oct-11	209	171	172	12	0	50	146	196
Nov-11	196	166	174	9	0	69	110	179
Dec-11	179	164	183	5	0	44	111	155
Jan-12	155	142	129	1	0	50	117	167
Feb-12	167	159	129	3	0	44	150	194
Mar-12	194	133	172	5	0	32	118	150
Apr-12	150	120	106	1	0	48	115	163
<b>Drilling</b>								
Apr-11	457	325	314	7	0	129	332	461
May-11	461	372	367	15	0	142	309	451
Jun-11	451	512	436	2	0	99	426	525
Jul-11	525	457	436	9	0	107	430	537
Aug-11	537	472	482	8	0	141	378	519
Sep-11	519	336	389	8	0	108	350	458
Oct-11	458	382	443	16	0	85	296	381
Nov-11	381	342	324	8	0	146	245	391
Dec-11	391	291	370	5	0	118	189	307
Jan-12	307	372	258	7	0	133	281	414
Feb-12	414	370	382	8	0	103	291	394
Mar-12	394	292	347	13	0	103	223	326
Apr-12	326	405	235	1	0	127	368	495
<b>Recompletion</b>								
Apr-11	15	26	15	1	0	0	25	25
May-11	25	20	25	0	0	3	17	20
Jun-11	20	61	22	0	0	3	56	59
Jul-11	59	13	55	2	0	6	9	15
Aug-11	15	37	17	0	0	6	29	35
Sep-11	35	22	29	0	0	3	25	28
Oct-11	28	45	29	0	0	3	41	44
Nov-11	44	29	57	2	0	4	10	14
Dec-11	14	31	23	0	0	8	14	22
Jan-12	22	26	21	2	0	9	16	25
Feb-12	25	23	27	0	0	5	16	21
Mar-12	21	21	14	0	0	5	23	28
Apr-12	28	15	24	3	0	6	10	16

Incomplete are permits that have missing or inaccurate data and cannot be approved.

**Received Applications**



**Approved Applications**



Backlog = Incomplete + In-process = Remaining permits from previous month



Colorado Oil and Gas Conservation Commission  
 Status of Permit Applications Filed By Month  
 May 18, 2012

Form 2A Location Assessment

Year	Month	Received	Approved	Withdrawn	In Process	Percent In Process	Median Days to Process	Less Than 30 Days	30 to 49 Days	Greater Than 50 Days
2010	Total	2520	2433	85	0			1559	662	212
2011	1	236	234	2	0	0%	33	147	58	29
2011	2	174	163	11	0	0%	37	99	35	29
2011	3	281	273	8	0	0%	33	198	42	33
2011	4	189	179	9	1	1%	40	112	30	37
2011	5	211	198	13	0	0%	30	126	58	14
2011	6	184	181	3	0	0%	33	135	27	19
2011	7	211	198	10	3	1%	35	89	89	20
2011	8	245	239	4	2	1%	35	123	86	30
2011	9	156	145	9	2	1%	32	80	53	12
2011	10	167	156	8	3	2%	30	89	59	8
2011	11	171	161	7	3	2%	31	100	53	8
2011	12	166	164	0	2	1%	31	118	30	16
2011	Total	2391	2291	84	16	1%		1416	620	255
2012	1	141	137	3	1	1%	32	92	27	18
2012	2	160	148	7	5	3%	27	118	26	4
2012	3	135	118	1	16	12%	30	80	25	13
2012	4	126	78	1	47	37%	25	66	12	0
2012	5	85	0	0	85	100%				
2012	Total	647	481	12	154	24%		356	90	35

Form 2 Application For Permit to Drill (APDs)

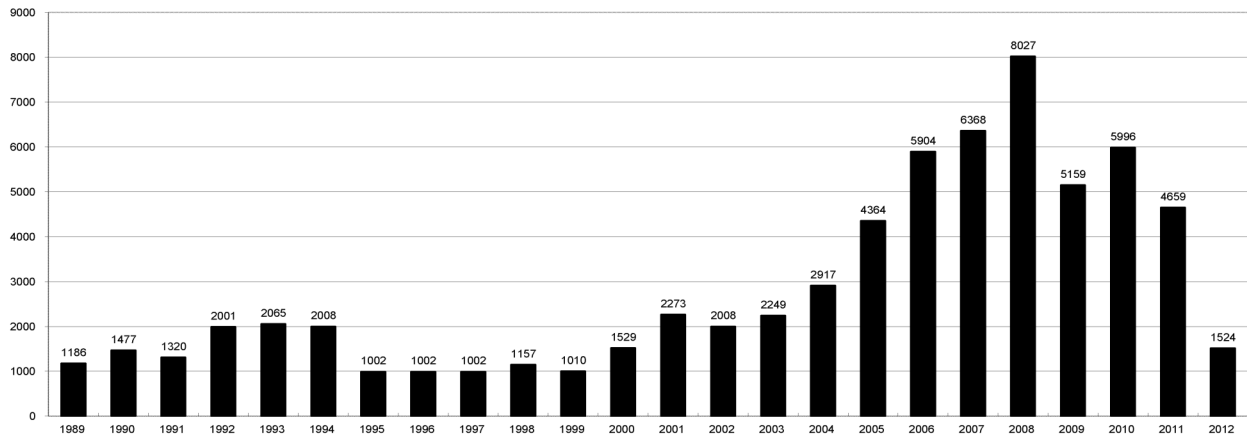
Year	Month	Received	Approved	Withdrawn	In Process	Percent In Process	Median Days to Process	Less Than 30 Days	30 to 49 Days	Greater Than 50 Days
2010	Total	5891	5746	144	0	0%		1760	2739	1744
2011	1	380	371	7	0	0%	32	235	106	40
2011	2	336	333	3	0	0%	36	182	114	51
2011	3	466	454	12	0	0%	35	326	67	82
2011	4	347	334	12	1	0%	39	174	117	68
2011	5	364	355	9	0	0%	32	196	145	35
2011	6	514	511	3	0	0%	32	424	94	48
2011	7	472	457	11	4	1%	38	145	272	55
2011	8	468	462	4	2	0%	36	212	179	107
2011	9	334	312	19	3	1%	30	230	82	24
2011	10	369	353	12	4	1%	31	212	149	17
2011	11	337	306	8	23	7%	34	192	139	21
2011	12	308	302	2	4	1%	36	196	102	29
2011	Total	4695	4550	102	41	1%	411	2724	1566	577
2012	1	368	359	7	2	1%	33	235	107	43
2012	2	371	354	10	7	2%	30	277	70	31
2012	3	284	255	3	26	9%	32	164	84	25
2012	4	420	304	4	112	27%	31	195	108	9
2012	5	407	2	0	405	100%	0	2	0	0
2012	Total	1850	1274	24	552	30%		873	369	108



COLORADO OIL AND GAS CONSERVATION COMMISSION  
**ANNUAL DRILLING PERMITS BY COUNTY**

COUNTY	1988	1989	1990	1991	1992	1993	1994	1995	1996	1997	1998	1999	2000	2001	2002	2003	2004	2005	2006	2007	2008	2009	2010	2011	current as of 5/18 2012	
ADAMS	46	34	44	53	92	58	137	34	9	33	24	19	38	28	9	26	39	34	37	89	51	35	21	8	15	
ARAPAHOE	5	5	15	14	11	4	20	12	2	9	1	2	0	2	1	2	5	7	11	10	10	10	8	23	11	
ARCHULETA	8	5	18	5	2	1		3		3		1	7	9	6	10	8	13	14	26	47	11	18	12	3	
BACA	6	4	15	10	23	9	12	24	10	7	13	15	22	6	2	3	7	8	2	11	13	3	4	5		
BENT				1			2	2	4	2	5	3	5	2			5	3	8	1	1			5		
BOULDER	1		1	13	38	159	38	5	8	2	5		1	5	6	7	17	13	21	37	32	35	24	30	11	
BROOMFIELD																	2	7		1	1	2	33	28	11	1
CHEYENNE	203	149	102	93	71	58	48	55	43	31	41		3	3	3	3	3	10	21	15	33	12	13	16	8	
COSTILLA													1													
CROWLEY	1		1	1																						
DELTA	1	1	2													7	4	5	10	9	2		4	3		
DENVER										5	3	3							19	25	24					
DOLORES	2		4	1	2	1								3			1	1	1	10	12	21	8	8	9	
ELBERT	9	12	8	5	3		2	13	16	11	1		2						4			1				
EL PASO																						2	3	3	10	
FREMONT	9	5	6	7	1	2	2	1	2	1							1	3	2	4	14	13	22	14	1	
GARFIELD	19	66	111	36	18	56	143	78	109	141	95	130	213	353	362	567	796	1509	1845	2550	2888	1981	2037	1323	349	
GRAND						1																				
GUNNISON			2	2		1										5	10	1	9	19	7	10	12	4	3	5
HUERFANO	3	5		4	17	3	3	2	1	3	40	26	41	27	27		8	2			7		2	1		
JACKSON	3	1	4	6	2	2	3	2	2	6	3		34	18	21	9	14	6	8	5	27	19	9	18	1	
JEFFERSON	1		4	2		1		1	1	1		2	1						1	3	2					
KIOWA	15	39	40	46	28	28	21	26	13	17	10	2	11	18	2	4	2	1	11	9	26	7	16	17	6	
KIT CARSON	9	5	7	8	8	15	26	11	7	6	9	5					1	3	5	4	13	7	3	2	3	
LA PLATA	302	218	388	128	120	40	40	20	71	40	82	107	127	156	104	162	102	115	235	251	328	298	191	99	34	
LARIMER	4	4	3	6	13	7	3		1	3	1		2				1		1	5	46	12	41	8	5	
LAS ANIMAS	10	30	36			9	32	95	134	136	195	195	268	400	259	180	332	413	500	362	303	88	92	85	9	
LINCOLN	8	6	4	7	7	11	8	9	3	2			2	2	1	6	3	4	1	2	58	44	48	31	12	
LOGAN	18	21	23	13	14	30	15	13	6	12	7		4	7	3	3	6	13	17	14	5	9	17	8	3	
MESA	1	12	29	20	22	2	22	6	11	10	2	6	13	27	30	27	54	136	265	293	501	427	306	127	81	
MOFFAT	13	25	27	19	40	52	43	40	41	28	21	15	35	52	62	63	63	60	120	68	57	51	53	93	20	
MONTEZUMA	6	7	10	8	7	11	15	9	13	5	4	1	4				5	8	11	5	12	22	39	19	27	20
MONTRORSE				1						1			1	3	2	4	2		1	3	3		1	1		
MORGAN	34	27	36	13	10	11	19	12	10	11	10	12	9	9	2	7	9	7	3	6	2	1	6	13		
OTERO				2																						
PARK			1									1										3	4	1		
PHILLIPS			3		1	1							1	2			7	13	17	12	69	82	45	64	112	54
PITKIN		1		2																1						
PROWERS	19	9	5	10	14	7	3	5	5	3	9	3	2	5	4		7	5	7	5	8	1	3	1		
RIO BLANCO	34	83	77	33	81	83	126	81	33	40	51	95	89	187	105	179	154	161	360	321	477	348	441	109	55	
RIO GRANDE	2	3	4	1		1							1	1			1				1	1				
ROUTT	4	3	12	4	2	3	1	2	1	1	1	4	20	13	1		4	6	9	8	4	2	3	10	1	
SAGUACHE	1							2					2				2				2	1	2			
SAN MIGUEL			2	2					1	1	4	2	11	13	27	18	42	45	35	23	20	13	10	2		
SEDGWICK				1				3		2							1	5	2	7	2	1	19	11	12	2
WASHINGTON	40	29	23	28	24	26	25	12	19	26	18	3	23	17	27	34	128	50	69	45	11	1	6	12		
WELD	424	357	366	656	1224	1319	1030	254	305	285	392	288	509	702	760	757	832	901	1418	1527	2340	1448	2152	2262	784	
YUMA	14	20	45	60	104	53	167	168	123	116	111	60	31	205	160	138	237	782	797	541	545	105	299	148	11	
Total	1275	1186	1477	1320	2001	2065	2008	1002	1002	1002	1157	1010	1529	2273	2008	2249	2917	4364	5904	6368	8027	5159	5996	4659	1524	

ALL COUNTIES





Colorado Oil and Gas Conservation Commission  
Form 2A Breakdown By County By Year  
May 18, 2012

Yr	County	Form2As	Completed	In Process	Informational	Requires Approval	New Location	CDP	SWH	RSO	CDPHE
2009	Total State	818	818	0	728	108	408	2	80	5	5
2010	Total State	2378	2376	0	1824	637	1601	0	327	22	55
2011	ADAMS	10	10	0	1	1	9	0	0	0	0
2011	ARAPAHOE	20	20	0	12	0	21	0	0	0	0
2011	ARCHULETA	5	5	0	0	4	4	0	8	0	0
2011	BACA	5	5	0	3	1	4	0	1	0	0
2011	BOULDER	9	9	0	1	1	3	0	1	0	1
2011	BROOMFIELD	1	1	0	1	0	0	0	0	0	0
2011	CHEYENNE	17	17	0	7	0	12	0	0	0	0
2011	DELTA	2	2	0	0	0	1	0	0	0	0
2011	DOLORES	5	5	0	1	0	3	0	1	0	0
2011	EL PASO	5	5	0	0	0	5	0	0	0	0
2011	ELBERT	1	1	0	1	0	1	0	0	0	0
2011	FREMONT	11	11	0	3	0	8	0	0	0	0
2011	GARFIELD	117	116	1	0	67	50	0	101	9	1
2011	GUNNISON	7	6	1	0	4	5	1	6	0	0
2011	HUERFANO	1	1	0	1	0	1	0	0	0	0
2011	JACKSON	12	12	0	2	5	12	0	10	0	0
2011	KIOWA	19	19	0	12	1	18	0	1	0	0
2011	KIT CARSON	2	2	0	1	0	0	0	0	0	0
2011	LA PLATA	26	26	0	2	18	18	0	31	0	0
2011	LARIMER	7	7	0	7	0	7	0	0	0	0
2011	LAS ANIMAS	77	77	0	42	0	44	0	1	0	0
2011	LINCOLN	29	29	0	15	2	20	0	0	0	1
2011	LOGAN	10	10	0	9	0	8	0	0	0	0
2011	MESA	24	24	0	0	9	15	0	12	0	0
2011	MOFFAT	48	48	0	2	12	42	0	41	5	0
2011	MONTROSE	1	1	0	0	0	1	0	0	0	0
2011	MORGAN	10	10	0	6	0	10	0	0	0	0
2011	PARK	1	1	0	1	0	0	0	0	0	0
2011	PHILLIPS	129	129	0	56	0	126	0	0	0	0
2011	PROWERS	1	1	0	1	0	1	0	0	0	0
2011	RIO BLANCO	37	37	0	0	20	24	0	27	0	0
2011	RIO GRANDE	1	0	1	0	0	1	0	1	0	0
2011	ROUTT	8	8	0	0	0	9	0	10	1	0
2011	SEDGWICK	13	13	0	2	0	11	0	2	0	0
2011	WASHINGTON	13	13	0	10	1	12	0	0	0	0
2011	WELD	1472	1458	14	767	173	1162	0	20	2	2
2011	YUMA	149	149	0	38	0	123	0	0	0	0
2011	Total State	2305	2288	17	1004	319	1791	1	274	17	5
2012	ADAMS	7	6	1	0	0	7	0	0	0	0
2012	ARAPAHOE	11	5	6	0	0	10	0	0	0	0
2012	BOULDER	1	1	0	0	0	0	0	0	0	0
2012	CHEYENNE	9	7	2	0	0	7	0	0	0	0
2012	DOLORES	1	1	0	0	0	1	0	0	0	0
2012	EL PASO	3	3	0	0	0	3	0	0	0	0
2012	FREMONT	3	1	2	0	0	3	0	2	0	0
2012	GARFIELD	40	29	11	0	0	15	0	33	1	0
2012	GUNNISON	6	2	4	0	0	5	0	4	0	0
2012	HUERFANO	4	0	4	0	0	3	0	0	0	0
2012	JACKSON	1	1	0	0	0	1	0	0	0	0
2012	KIOWA	5	4	1	0	0	4	0	0	0	0
2012	KIT CARSON	4	3	1	0	0	2	0	0	0	0
2012	LA PLATA	8	5	3	0	0	3	0	6	0	0
2012	LARIMER	1	1	0	0	0	1	0	0	0	0
2012	LAS ANIMAS	7	6	1	0	0	5	0	0	0	0
2012	LINCOLN	12	12	0	0	0	11	0	0	0	0
2012	LOGAN	3	3	0	0	0	2	0	0	0	0
2012	MESA	5	3	2	0	0	2	0	2	0	0
2012	MOFFAT	18	10	8	0	0	17	0	16	3	0
2012	MONTEZUMA	8	8	0	0	0	8	0	0	0	0
2012	MORGAN	2	1	1	0	0	2	0	0	0	0
2012	PHILLIPS	38	36	2	0	0	35	0	0	0	0
2012	RIO BLANCO	26	23	3	0	0	6	0	22	0	0
2012	RIO GRANDE	1	0	1	0	0	1	0	1	0	0
2012	ROUTT	4	0	4	0	0	4	0	4	0	0
2012	SEDGWICK	1	1	0	0	0	1	0	0	0	0
2012	WELD	398	302	96	0	0	283	0	3	0	1
2012	YUMA	1	1	0	0	0	1	0	0	0	0
2012	Total	628	475	153	0	0	443	0	93	4	1

CDP = Comprehensive Drilling Plan SWH = Sensitive Wildlife Habitat consultation

RSO = Restricted Surface Occupancy consultation CDPHE = Colorado Department of Health and Environment consultation



Colorado Oil and Gas Conservation Commission

## Horizontal Well Activity

May 18, 2011

County	Prior Years			2009		2010		2011		2012		Completion				
	Drilled	DA	PA	Permit	Spud	Permit	Spud	Permit	Spud	Permit	Spud	Spud	AC	PR	DA	PA
ADAMS				6	6	2	3	1		7		9	4	3		
ARAPAHOE	2							10	1	6		3	2	1		
ARCHULETA	17			7	3	15	7	10	7	3	4	38		25		
BOULDER								4				0				
CHEYENNE	5		4									5		1		4
DOLORES	2			18	2	6				5	1	5		5		
EL PASO										4						
FREMONT	7	6		6		12	5	3	4			16		9	6	1
GARFIELD	10		2	1	1	16	2	18	7	20	4	24		18		2
GUNNISON	1					1		1		2		1		1		
JACKSON	8	1	1	8		3	3	9	2	1		13		10	1	1
KIT CARSON	1											1		1		
LA PLATA	28	2		11	1	28	3	18	7	8	1	40		39	1	
LARIMER	3	2						5	1		1	5		1	2	
LAS ANIMAS	16		2	4		1	1					17		14		2
LINCOLN				2	1	2	1	1				2		2		
LOGAN	2											2		2		
MESA	3	2		36	1	22	8	24	13	10	3	28		17	2	1
MOFFAT	7	1	1	6	3	4	4	9	2	6		12	1	9	1	1
MONTEZUMA	6		1	23	5	11	1	8	2	10	1	15		23		1
MORGAN								6	2			2		2		
PARK						1	1	1				1				
RIO BLANCO	7	2				1	1	11	1	4	1	10	1	6	2	
ROUTT	10	6	1							1		10		3	6	1
SAN MIGUEL	1			1								1		1		
WASHINGTON	1		1									1				1
WELD	11	3		12	5	208	92	763	231	297	164	503		207	6	1
YUMA	1		1	6								1				1
<b>TOTAL Horizontal</b>	<b>149</b>	<b>25</b>	<b>14</b>	<b>147</b>	<b>28</b>	<b>333</b>	<b>128</b>	<b>901</b>	<b>280</b>	<b>384</b>	<b>180</b>	<b>765</b>	<b>8</b>	<b>400</b>	<b>27</b>	<b>17</b>
<b>Percent of Total HZ</b>		<b>17%</b>	<b>9%</b>										<b>1%</b>	<b>52%</b>	<b>4%</b>	<b>2%</b>
<b>Total All Permits</b>				<b>5159</b>		<b>5996</b>		<b>4659</b>		<b>988</b>						
<b>Percent of Total</b>				<b>2.8%</b>		<b>5.6%</b>		<b>19.3%</b>		<b>38.9%</b>						



## Well to Building Setback Review

Colorado Oil and Gas Conservation Commission

May 18, 2012

Count of well locations by proximity groupings from well spot to buildings for all locations reviewed under the December 17, 2008 amended rules.

Location Proximity to Buildings	2009	2010	2011	2012	Number of Locations	Percent of Total Locations
less than 150 feet	4	1	4	1	10	0%
150 to 350 feet	45	55	60	10	170	3%
350 to 500 feet	54	111	96	20	281	5%
500 to 1000 feet	158	357	332	62	909	17%
1000 + feet	547	1594	1491	316	3948	74%
<b>Total Locations</b>	<b>808</b>	<b>2118</b>	<b>1983</b>	<b>409</b>	<b>5318</b>	

County	Total	Less than 150 feet	150 to 350 feet	350 to 500 feet	500 to 1000 feet	1000 + feet
ADAMS	29	0	2	4	9	14
ARAPAHOE	42	0	1	4	2	35
ARCHULETA	15	0	0	1	9	5
BACA	10	0	0	0	1	9
BENT	5	0	0	0	0	5
BOULDER	21	0	1	1	16	3
BROOMFIELD	26	0	0	4	10	12
CHEYENNE	40	1	0	0	0	39
DELTA	5	0	0	1	1	3
DOLORES	10	0	0	0	4	6
EL PASO	11	0	0	0	1	10
ELBERT	2	0	0	0	1	1
FREMONT	31	0	2	7	6	16
GARFIELD	346	0	3	2	53	288
GUNNISON	13	1	0	1	1	10
HUERFANO	2	0	0	0	1	1
JACKSON	23	0	0	1	1	21
KIOWA	42	0	0	0	1	41
KIT CARSON	8	0	0	0	0	8
LA PLATA	87	0	3	8	23	53
LARIMER	27	0	3	3	9	12
LAS ANIMAS	196	1	5	6	37	147
LINCOLN	111	0	0	1	2	108
LOGAN	24	0	1	0	0	23
MESA	71	0	0	3	11	57
MOFFAT	108	0	0	1	5	102
MONTEZUMA	18	0	0	1	1	16
MONTROSE	2	0	0	0	0	2
MORGAN	13	0	0	1	1	11
PARK	4	0	0	0	0	4
PHILLIPS	260	1	3	6	20	230
PROWERS	4	0	0	0	0	4
RIO BLANCO	126	0	0	0	1	125
ROUTT	12	0	0	0	0	12
SAN MIGUEL	10	0	0	0	0	10
SEDGWICK	25	0	0	1	3	21
WASHINGTON	19	0	1	0	0	18
WELD	3056	6	138	210	637	2065
YUMA	464	0	7	14	42	401
<b>TOTAL</b>	<b>5318</b>	<b>10</b>	<b>170</b>	<b>281</b>	<b>909</b>	<b>3948</b>



## Well to Building Setback Review

Colorado Oil and Gas Conservation Commission  
May 18, 2012

### Listing of Locations less than 200 feet to Building

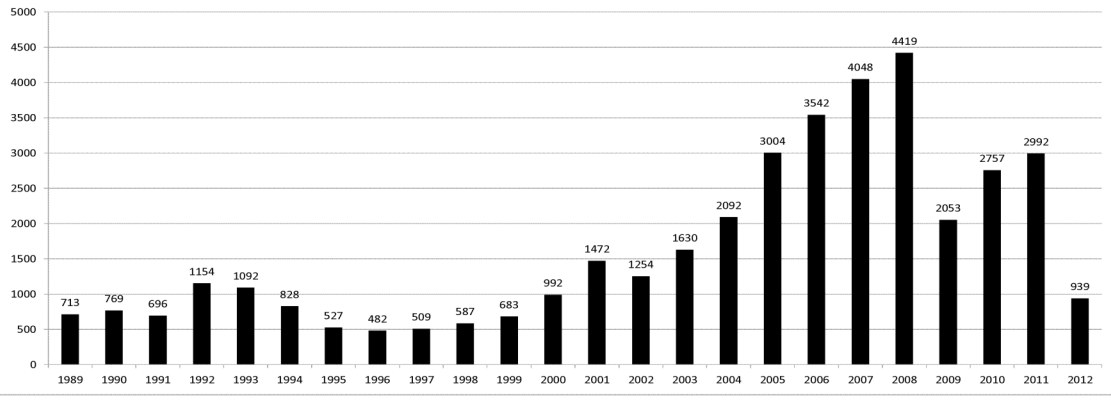
Year	Document Number	County	High Density	New Location	Distance	Proximity	Building Description
2011	2587822	CHEYENNE	No	No	58	less 150	Water well house
2009	1691798	WELD	No	No	58	less 150	Vehicle garage
2010	400072164	WELD	No	Yes	69	less 150	Abandoned hog shed
2012	400240957	GUNNISON	No	Yes	90	less 150	Equipment Shed
2009	1758843	WELD	No	Yes	103	less 150	Building to be razed
2011	1636646	WELD	No	No	122	less 150	Storage shed
2009	400011284	LAS ANIMAS	No	Yes	127	less 150	Operator is owner
2009	1786896	PHILLIPS	No	No	132	less 150	Grain Storage
2011	400117702	WELD	No	Yes	143	less 150	Irrigation pump house
2011	400227765	WELD	No	Yes	145	less 150	Storage Barn
2009	1904205	WELD	No	No	154	150 to 350	Livestock Enclosure
2012	400243295	WELD	No	Yes	155	150 to 350	Unused storage shed
2011	400179419	WELD	No	Yes	157	150 to 350	Existing well / storage building
2010	400054716	WELD	No	No	159	150 to 350	Equipment Barn
2011	400188968	WELD	No	Yes	159	150 to 350	Abandoned
2010	400021477	WELD	No	Yes	162	150 to 350	Goat Barn
2009	1758386	WELD	No	Yes	168	150 to 350	Storage Shed
2011	1635946	WELD	No	No	169	150 to 350	Storage shed
2011	400165164	WELD	No	Yes	178	150 to 350	Residence
2011	400188780	WELD	No	Yes	180	150 to 350	Residence
2010	1697620	WELD	No	No	187	150 to 350	Livestock Shed
2009	1758746	WELD	No	No	193	150 to 350	Storage Shed
2011	400154431	WELD	No	Yes	198	150 to 350	Turkey barn
2012	400250031	WELD	No	Yes	198	150 to 350	abandoned guard shack
2009	1774783	WELD	No	No	199	150 to 350	cement service building
2011	400118102	YUMA	No	Yes	199	150 to 350	Steel Barn



## COLORADO OIL AND GAS CONSERVATION COMMISSION ANNUAL WELL STARTS BY COUNTY

COUNTY	1988	1989	1990	1991	1992	1993	1994	1995	1996	1997	1998	1999	2000	2001	2002	2003	2004	2005	2006	2007	2008	2009	2010	2011	2012	Current as of 5/18
ADAMS	39	27	26	36	54	20	54	28	6	16	12	17	18	13	4	19	22	24	13	41	14	15	21	2	5	
ALAMOSA																										
ARAPAHOE	2	4	16	11	11	3	9	8	3	3	2						6	1	5	2	1	1	3	7		
ARCHULETA	5	3	7	5	2	1		2		1			4	4	2	5	4	10	5	7	24	9	10	6	4	
BACA	5	5	12	6	21	8	9	19	9	7	11	8	19	6	2	1	6	6	2	6	12		5	4		
BENT				1				2	3	1	2	3	6	2				3	2	8	1	1		1		
BOULDER	2			7	18	56	15	5									2	5	11	9	14	25	16	13	7	
BROOMFIELD	3	2	3	7	14	27	22	2	2						2		1					10	22	11	3	
CHEYENNE	177	133	92	75	64	50	44	41	35	29	29	6	2	1	3	3		9	14	15	14	8	12	9	4	
CONEJOS																										
COSTILLA												1														
CROWLEY	1		1																							
CUSTER																										
DELTA	1		1													5	4	6	5	2			4	1		
DENVER										2	3	1		2						7	5	4				
DOLORES	2		4	1													2		2	13	4	2			2	
DOUGLAS																										
EAGLE																										
EL PASO																								2	3	
ELBERT	8	11	9	5	2			10	15	2	2		2						1	3						
FREMONT	6	3	5	7	1	1	1	2			1							1	3	2	2	5	3	9	16	1
GARFIELD	3	12	24	8	3	4	15	13	7	28	19	94	190	251	245	417	585	799	1005	1304	1679	765	910	853	277	
GRAND							1																			
GUNNISON			1	2		1										1		1	1	9	5	1	4	3	1	
HUERFANO	6			2	6	1	1	2		2	31	9	25	14	19	3	6	2			2		1	1	1	
JACKSON	2	1	3	7	2		3	1	1	3	3		24	2	4	10	10			3	3	10	1	6	6	
JEFFERSON									1			2								2						
KIOWA	14	32	35	37	28	19	20	22	8	13	6	4	8	16	2	4	2	1	7	7	2	5	14	13	4	
KIT CARSON	11	6	6	6	9	13	15	9	6	3	7	7					1	1	6	2	1	14	3	1	1	
LA PLATA	158	129	186	44	66	26	17	19	29	48	65	80	99	135	118	110	103	104	108	179	200	128	67	38	1	
LARIMER	8	5	1	6	13	5	3		2	1			1	1				1	4	8	1	28	2	2		
LAS ANIMAS	17	22	20	3	2	11	17	34	62	90	120	182	202	286	205	221	296	384	413	326	221	14	7	78		
LINCOLN	6	5	4	4	7	7	8	8	3	2		2	2	1	5	2	2	1	2	19	10	14	20	5		
LOGAN	17	19	19	8	13	24	9	11	4	10	4		4	6	3	3	2	11	12	12	3	7	3	8		
MESA	1	2	2	4	1		7	2	1	1	4	4	2	12	12	13	25	89	156	209	219	13	11	30	3	
MOFFAT	1	2	1	2	1	1	2	1	3	1	8	10	18	23	25	28	19	40	60	42	24	18	15	22	3	
MONTEZUMA	6	5	7	5	2	5	7	3	12	2	2		2	3	5	5	1	7	2	4	7	7	3	2	3	
MONTROSE				1											3					1	2		1			
MORGAN	26	20	32	11	9	11	16	13	8	9	7	4	9	8	1	7	5	5	3	1	1	2	3	2	1	
OTERO				1																						
OURAY																										
PARK																								2		
PHILLIPS			3			1							1			6	10	11	4	35	18	2	42	105	42	
PITKIN		1			2																					
PROWERS	16	9	5	8	13	7	1	5	5	2	8	4	2	4	4		5	5	6	3	5	2	3	1		
PUEBLO																										
RIO BLANCO	1	8	10	1	3	8	6	7	5	9	9	62	51	82	47	83	92	95	107	95	204	113	107	68	16	
RIO GRANDE	1	2	2																							
ROUITT		1	1	3	1							1	5	12	1		1	6	3	2		2	1	1	1	
SAGUACHE	1							2																		
SAN MIGUEL				1							3	1	6	9	10		19	28	13	20	17	5	1	2	2	
SEDGWICK							1	3		2							1	2	1	1	5		3	7	3	
WASHINGTON	39	28	22	26	24	20	20	13	17	23	18	4	15	12	24	29	65	34	23	14	11	2	2	3		
WELD	176	200	168	296	660	723	389	94	136	94	117	124	237	403	406	522	632	718	931	1222	1314	872	1195	1587	541	
YUMA	12	16	41	47	102	39	114	145	101	104	93	52	42	162	108	106	144	597	593	445	336	27	212	78	14	
Grand Total	773	713	769	696	1154	1092	828	527	482	509	587	683	992	1472	1254	1630	2092	3004	3542	4048	4419	2053	2757	2992	939	

### ALL COUNTIES







## Colorado Oil Gas Conservation Commission Monthly Statistics

YEAR	MO	Baker - Hughes Rig Count	Drilling				Permits				Pits				Locations				Well Spud Notice	Active Drilling Permits	Active Wells	Public Visits	
			Rcvd	Apvd	Apvd	Rcvd	Recompletion	Rcvd	Apvd	Injection	Rcvd	Apvd	Rcvd	Apvd	Rcvd	Apvd	Authz	Data				Office	Internet
2009	Total		4754	5159	344	334	68	55	178	242	765	571	1103	161	1071	984793							
	JAN	45	506	462	11	31	4	5	10	50	277	186	192	26	85	105289							
	FEB	50	687	377	35	9	4	4	6	9	265	213	189	7	114	97167							
	MAR	51	653	713	33	31	5	5	9	9	206	300	234	19	104	103614							
	APR	51	493	649	67	33	5	2	5	17	220	228	222	24	110	127472							
	MAY	53	389	622	29	57	3	6	10	47	200	218	237	11	97	85000							
	JUN	53	521	490	139	89	2	0	40	12	253	251	222	26	100	85000							
	JUL	60	460	432	54	81	1	1	19	15	185	222	244	10	84	85000							
	AUG	66	503	532	57	81	1	2	9	37	239	198	239	16	91	86609							
	SEP	68	403	437	33	31	3	1	3	8	166	196	242	9	76	83055							
	OCT	68	401	500	21	41	4	0	3	2	160	221	265	15	85	82492							
	NOV	68	308	421	14	19	1	1	3	10	162	171	226	14	94	90322							
	DEC	67	379	361	26	12	1	1	3	9	128	144	237	20	75	81459							
2010	Total		5703	5996	519	515	34	28	120	225	2461	2548	2749	197	1115	1112479							
	JAN	63	405	351	8	23	4	6	4	8	249	112	236	14	95	103968							
	FEB	61	343	249	15	2	7	6	5	3	184	150	212	21	80	96171							
	MAR	68	472	498	18	23	4	7	38	31	262	258	262	9	125	122393							
	APR	72	325	314	26	15	5	0	20	27	190	218	232	8	105	106539							
	MAY	72	372	367	20	25	3	6	12	8	214	171	247	14	124	73024							
	JUN	70	512	436	61	22	5	4	11	4	172	239	273	30	131	108115							
	JUL	69	457	436	13	55	2	1	13	7	215	158	245	20	74	103585							
	AUG	73	472	482	37	17	1	0	10	17	236	229	279	21	141	111950							
	SEP	77	336	389	22	29	7	0	35	34	159	203	282	9	120	116043							
	OCT	78	382	443	45	29	2	1	4	12	171	172	279	14	126	132814							
	NOV	80	342	324	29	57	0	1	12	13	166	174	290	18	96	130612							
	DEC	79	291	370	31	23	4	0	26	28	164	183	253	9	77	132651							
2011	Total		4709	4659	325	320	44	32	190	192	2382	2267	3090	187	1294	1337865							
	JAN	73	372	258	26	21	3	0	11	5	142	129	226	12	106	112686							
	FEB	70	370	382	23	27	7	5	21	9	159	129	197	16	114	105857							
	MAR	66	292	347	21	14	2	2	17	24	133	172	253	26	138	111746							
	APR	66	405	235	15	24	5	5	9	2	120	106	161	12	108	107627							
2012	Total		1439	1222	85	86	17	12	58	40	554	536	837	66	466	437916							

Apvd = Approved, Rcvd = Received, Ind = Individual, Blhkt = Blanket, Apps = Application for Hearing, NOAV = Notice of Alleged Violation, AOC = Administrative Order of Consent, OFV = Order Finding Violation, Cmplnt = Complaint, Comp = Completed



## Colorado Oil Gas Conservation Commission Monthly Statistics

YEAR	MO	Well Oper Change	Operators		Release		Bonds		Claim		Hearings		Violations		Remediation Projects		Field Insp		
			New	Inactive	Ind.	Blnkt	Ind.	Replace	Ind.	Blnkt	Apps.	Order	NOAV	AOC	OFV	Spills		Rcvd	Comp
2009	Total	5666	80	50	54	53	96	1	0	87	73	260	8	1	202	371	208	133	9991
	JAN	654	4	6	1	7	10	0	0	16	14	36	0	0	11	38	22	13	1160
	FEB	734	5	3	4	4	3	0	1	11	13	9	0	0	11	54	19	14	1143
	MAR	2171	4	5	6	6	7	0	0	13	12	37	0	0	6	29	41	10	2046
	APR	597	5	2	9	2	4	0	0	21	15	5	0	2	17	42	23	22	1183
	MAY	641	3	3	10	0	8	0	0	NA	NA	8	NA	NA	13	38	44	51	1364
	JUN	653	3	0	2	2	2	0	0	23	20	22	0	0	20	34	52	42	1308
	JUL	624	5	0	0	0	8	0	0	12	6	37	1	1	20	46	39	26	971
	AUG	556	3	2	2	1	5	0	0	8	12	40	1	0	33	46	39	22	1581
	SEP	460	4	3	0	4	4	0	0	13	7	32	2	0	11	44	55	38	1388
	OCT	423	3	3	0	7	2	0	0	19	16	30	0	0	33	32	96	24	1595
	NOV	429	2	5	2	6	5	0	0	19	21	20	6	0	20	48	51	49	1535
	DEC	479	5	1	2	1	16	0	0	NA	NA	43	NA	NA	23	42	30	71	1801
2010	Total	8421	46	33	38	40	74	0	1	155	136	319	10	3	218	493	511	382	17075
	JAN	813	1	2	3	1	4	0	0	16	15	43	3	2	33	40	47	45	1316
	FEB	356	1	1	9	4	6	0	0	16	15	7	0	1	40	52	48	33	1591
	MAR	590	2	3	6	3	9	0	0	NA	NA	31	NA	NA	33	48	59	27	1675
	APR	402	2	0	3	2	1	0	0	24	24	8	0	0	10	52	38	61	959
	MAY	545	3	0	5	2	4	0	0	77	65	16	2	5	26	31	33	51	1577
	JUN	790	2	2	2	2	0	3	0	51	58	30	1	4	14	38	53	25	1099
	JUL	595	3	6	3	6	3	1	0	NA	NA	29	NA	NA	13	39	92	20	518
	AUG	573	2	3	12	7	2	0	1	68	54	26	2	2	20	54	106	56	1032
	SEP	584	5	1	7	5	2	0	0	44	41	4	4	2	17	46	56	66	676
	OCT	551	4	2	12	6	7	0	3	57	45	9	0	0	15	38	102	28	598
	NOV	560	4	9	15	4	1	0	0	NA	NA	15	NA	NA	16	31	70	58	525
	DEC	338	4	2	2	2	4	0	0	50	32	12	0	1	13	58	22	66	518
2011	Total	6697	33	31	79	44	43	4	4	403	349	230	10	19	250	527	726	536	12084
	JAN	492	3	3	7	5	1	1	10	70	72	18	1	0	29	34	68	23	936
	FEB	371	6	9	8	5	0	0	0	NA	NA	10	NA	NA	26	40	84	36	936
	MAR	294	4	1	7	3	9	0	0	44	38	19	0	0	23	36	62	61	1068
	APR	307	4	2	10	3	2	0	0	80	59	11	0	0	17	34	20	98	660
2012	Total	1464	17	15	32	16	12	1	10	194	169	58	1	0	95	144	234	218	3600

Apvd = Approved, Rcvd = Received, Ind = Individual, Blnkt = Blanket, Apps = Application for Hearing, NOAV = Notice of Alleged Violation, AOC = Administrative Order of Consent, OFV = Order Finding Violation, Cmplnt = Complaint, Comp = Completed